

Current Biology

Ovarian Hormones Organize the Maturation of Inhibitory Neurotransmission in the Frontal Cortex at Puberty Onset in Female Mice

Highlights

- Inhibitory neurotransmission increases in the frontal cortex after puberty
- Pre-pubertal, but not post-pubertal, gonadectomy blocks this increase
- Pre-pubertal hormone treatment accelerates maturation of tonic and phasic inhibition
- Hormone treatment, which drives early puberty, impacts behavioral flexibility

Authors

David J. Piekarski, Josiah R. Boivin,
Linda Wilbrecht

Correspondence

wilbrecht@berkeley.edu

In Brief

Piekarski et al. find that pubertal hormones play a critical role in the adolescent maturation of inhibitory neurotransmission in the frontal cortex. These data provide a putative mechanism by which the timing of puberty onset, independent of age, may play a role in the development of the frontal lobes and their associated functions.



Ovarian Hormones Organize the Maturation of Inhibitory Neurotransmission in the Frontal Cortex at Puberty Onset in Female Mice

David J. Piekarski,¹ Josiah R. Boivin,² and Linda Wilbrecht^{1,3,4,*}

¹Department of Psychology, University of California, Berkeley, 16 Barker Hall, Berkeley, CA 94720, USA

²Neuroscience Graduate Program, University of California, San Francisco, 1550 4th Street, San Francisco, CA 94158, USA

³Helen Wills Neuroscience Institute, University of California, Berkeley, 16 Barker Hall, Berkeley, CA 94720, USA

⁴Lead Contact

*Correspondence: wilbrecht@berkeley.edu

<http://dx.doi.org/10.1016/j.cub.2017.05.027>

SUMMARY

The frontal cortex matures late in development, showing dramatic changes after puberty onset, yet few experiments have directly tested the role of pubertal hormones in cortical maturation. One mechanism thought to play a primary role in regulating the maturation of the neocortex is an increase in inhibitory neurotransmission, which alters the balance of excitation and inhibition. We hypothesized that pubertal hormones could regulate maturation of the frontal cortex by this mechanism. Here, we report that manipulations of gonadal hormones do significantly alter the maturation of inhibitory neurotransmission in the cingulate region of the mouse medial frontal cortex, an associative region that matures during the pubertal transition and is implicated in decision making, learning, and psychopathology. We find that inhibitory neurotransmission, but not excitatory neurotransmission, increases onto cingulate pyramidal neurons during peri-pubertal development and that this increase can be blocked by pre-pubertal, but not post-pubertal, gonadectomy. We next used pre-pubertal hormone treatment to model early puberty onset, a phenomenon increasingly observed in girls living in developed nations. We find that pre-pubertal hormone treatment drives an early increase in inhibitory neurotransmission in the frontal cortex, but not the somatosensory cortex, suggesting that earlier puberty can advance cortical maturation in a regionally specific manner. Pre-pubertal hormone treatment also accelerates maturation of tonic inhibition and performance in a frontal-cortex-dependent reversal-learning task. These data provide rare evidence of enduring, organizational effects of ovarian hormones at puberty and provide a potential mechanism by which gonadal hormones could regulate the maturation of the associative neocortex.

INTRODUCTION

The onset of adolescence, initiated by the onset of puberty, is increasingly recognized as an inflection point for the development of associative regions of the neocortex [1]. Across mammals, adolescence is characterized by changes to cognitive and executive functions that coincide with large-scale reorganization of associative cortical regions, including the frontal cortex [2–4]. This period of development is also associated with declining plasticity in language-related circuits, declining capacity for recovery from cortical damage [5–11], and increased risk of psychiatric disease [3, 12]. Although it remains unclear whether these developmental changes are caused by the pubertal rise in gonadal hormones or are simply coincident [1], it is clear that early puberty onset exacerbates risk of psychiatric illnesses connected to frontal functions [13–15], suggesting a possible causal link. Gonadal steroid receptors are present across the neocortex [16–18], and a number of anatomical changes in the human cortex correlate with changes in hormone levels during puberty [19–23]. In rodent experiments that manipulate hormones, frontal cortex neuron density is sensitive to gonadectomy in females, but not males [24], but it is still unknown whether puberty onset impacts functional measures of frontal cortex circuit development such as inhibitory and excitatory neurotransmission.

Nuclear estrogen receptors in the associative cortices are expressed almost exclusively in fast-spiking interneurons [17, 25], suggesting that the pubertal rise in gonadal hormones may directly impact inhibitory neurotransmission. Fast-spiking interneurons are implicated in the regulation of cognition, plasticity, and neuropsychiatric illness [26–29], and are thought to play an important regulatory role in brain development by adjusting the balance of excitation and inhibition (E/I) onto cortical pyramidal neurons. This shift in E/I balance is most likely a key mechanism regulating sensitive-period plasticity in primary sensory cortices [30–32]. We have previously demonstrated a striking rise in the strength of inhibitory neurotransmission in deep layers of the frontal cortex during early adolescence [33], which led us to develop a working model in which gonadal steroids drive frontal cortex maturation by increasing the strength of local inhibitory neurotransmission [1].

In the present report, we manipulated exposure to gonadal steroids in mice at peri-pubertal ages and measured the

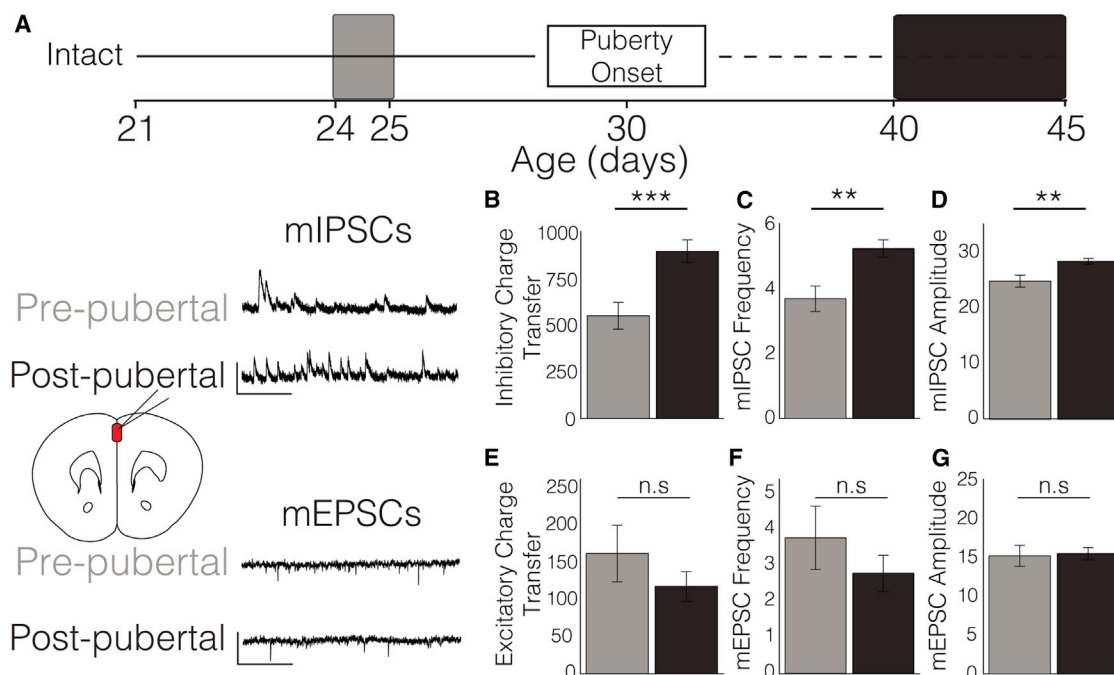


Figure 1. Inhibitory Neurotransmission Increases in Strength during Pubertal Development in L2/3 of the Cingulate Cortex but Excitatory Neurotransmission Does Not

(A) We made whole-cell recordings from L2/3 pyramidal cells in the cingulate cortex before puberty (P24–P25) and after puberty (P40–P45).

(B–D) mIPSC charge transfer (B), frequency (C), and amplitude (D) were significantly higher in adolescent mice (7 brains, 21 cells) compared to juveniles (6 brains, 19 cells).

(E–G) Neither mEPSC charge transfer (E), frequency (F), nor amplitude (G) was different between pre-pubertal (6 brains, 12 cells) and post-pubertal (6 brains, 11 cells) age groups.

These data suggest that a developmental change in the balance of excitation and inhibition onto these cingulate neurons is driven primarily by changes in inhibitory neurotransmission. All graphs are mean \pm SEM. Hypothesis tests were conducted using linear mixed models. **p < 0.01, ***p < 0.001; n.s., not significant. Scale bars, 50 pA (vertical), 500 ms (horizontal).

strength of excitatory and inhibitory inputs onto layer 2/3 (L2/3) pyramidal cells in the cingulate cortex, a subregion of the frontal association cortex implicated in goal-directed behavior, decision-making, and multiple forms of psychiatric disease. We found that intact gonads are necessary for the peri-pubertal increase in phasic inhibitory neurotransmission onto L2/3 pyramidal neurons, but that after this increase occurs the gonads are not necessary for maintaining inhibitory neurotransmission at post-pubertal levels. Because of the potential health consequences of early puberty onset in girls, we next developed a mouse model of early puberty in which we advanced the age of puberty onset by treating mice with gonadal hormones. We found that inducing early puberty advanced the maturation of both phasic and tonic inhibitory neurotransmission in the frontal cortex and altered performance in a frontal-cortex-dependent task.

These data demonstrate that pubertal hormones play a critical role in the maturation of inhibitory neurotransmission in the frontal cortex and support a causal role for puberty, independent of age, in adolescent development of the frontal cortex. Extrapolating from rodents to humans, our findings may enhance concerns about the risks of increasingly earlier puberty onset in modern society.

RESULTS

Inhibitory Neurotransmission onto L2/3 Pyramidal Neurons in the Cingulate Cortex Increases during Puberty

Because the strength of inhibition onto pyramidal neurons is thought to regulate sensitive-period maturation of the visual and auditory cortices, we first investigated whether inhibitory neurotransmission increases in the cingulate cortex during development. To this end, we measured miniature inhibitory and excitatory post-synaptic currents (mIPSCs and mEPSCs) onto visually identified L2/3 pyramidal cells of pre-pubertal (post-natal day 24–25 [P24–P25]) and post-pubertal mice (P40–P45) (Figure 1A). We focused on female mice in this study due to public health concerns surrounding early-onset puberty specifically in girls [13–15].

We found that mIPSC total charge transfer increased between P24 and P40 (553.86 ± 72.04 [6 brains, 19 cells] versus 901.36 ± 60.91 [7 brains, 21 cells] pA/s; $p < 0.001$; Figure 1B), and this change was driven by a significant increase in mIPSC frequency (3.60 ± 0.38 versus 5.10 ± 0.26 Hz; $p = 0.009$; Figure 1C) and amplitude (23.99 ± 1.04 versus 27.45 ± 0.50 pA; $p = 0.0015$; Figure 1D). In a subset of cells, mEPSC parameters were also collected. No changes in mEPSC total charge transfer

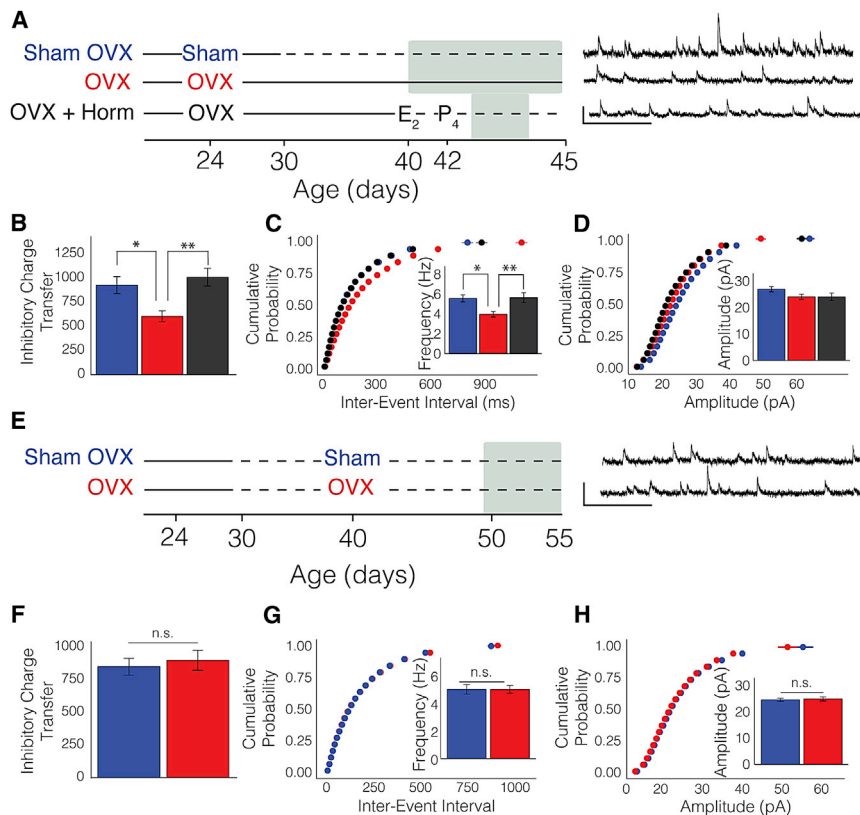


Figure 2. Pre-pubertal, but Not Post-pubertal, Ovariectomy Prevents the Rise in Inhibitory Neurotransmission

(A) Mice were either ovariectomized (OVX) or sham ovariectomized (Sham) prior to puberty. One group of OVX mice received hormone replacement during mid-adolescence (OVX + Horm). L2/3 pyramidal cells were patched between P40 and P45 for the OVX and sham OVX groups, and within 2 days of progesterone injection in the OVX + hormone group. E₂, estradiol; P₄, progesterone. (B–D) Pre-pubertal OVX (4 brains, 16 cells) resulted in significantly decreased inhibitory charge transfer (B) and mIPSC frequency (C) but no differences in mIPSC amplitude (D) compared to both sham controls (6 brains, 19 cells) and OVX + hormone mice (5 brains, 15 cells; planned comparisons).

(E) In a follow-up study, mice were either OVX or sham OVX after puberty (P40), and L2/3 pyramidal cells were patched 10–15 days later.

(F–H) There were no differences between sham OVX (6 brains, 10 cells) and OVX (6 brains, 16 cells) mice in inhibitory charge transfer (F), mIPSC frequency (G), or mIPSC amplitude (H).

All graphs are mean \pm SEM. Hypothesis tests were conducted using linear mixed models. *p < 0.05, **p < 0.01. Scale bars, 50 pA (vertical), 500 ms (horizontal). See also Table S1.

(163.68 ± 38.31 [6 brains, 12 cells] versus 118.55 ± 19.99 [6 brains, 11 cells] pA/s; $p = 0.29$; Figure 1E), frequency (3.76 ± 0.88 versus 2.78 ± 0.50 Hz; $p = 0.32$; Figure 1F), or amplitude (14.99 ± 1.34 versus 15.26 ± 0.77 pA; $p = 0.69$; Figure 1G) were observed. These data suggest that there was a change in the balance of excitation and inhibition onto L2/3 pyramidal neurons from P24 to P40 driven by changes in inhibitory neurotransmission.

Intact Gonads Are Necessary for Peri-pubertal Maturation of mIPSC Frequency in the Cingulate Cortex

To test whether intact gonads are necessary for the observed rise in mIPSC frequency, we performed ovariectomy (OVX) at P24 to prevent puberty onset and then collected mIPSC data at P40–P45 (4 brains, 16 cells; Figure 2A). A control group underwent sham OVX (6 brains, 19 cells), whereas a third group was ovariectomized at P24 and then injected with estradiol and progesterone during adolescence (5 brains, 15 cells) in a replacement regimen that is sufficient to induce puberty in intact mice (see Figures 3B–3E). The three groups differed significantly in total inhibitory charge transfer (sham OVX, 912.44 ± 86.31 ; OVX, 593.81 ± 57.30 ; OVX + hormone, 992.72 ± 89.83 pA/s; $p = 0.036$; Figure 2B) and mIPSC frequency (sham OVX, 5.68 ± 0.51 ; OVX, 3.98 ± 0.28 ; OVX + hormone, 5.60 ± 0.36 Hz; $p = 0.039$; Figure 2C). Using planned comparisons, we found that the sham OVX and OVX + hormone groups both had significantly higher mIPSC frequency than the OVX group ($p = 0.015$ and $p = 0.008$, respectively), suggesting that gonadal hormones are necessary and sufficient

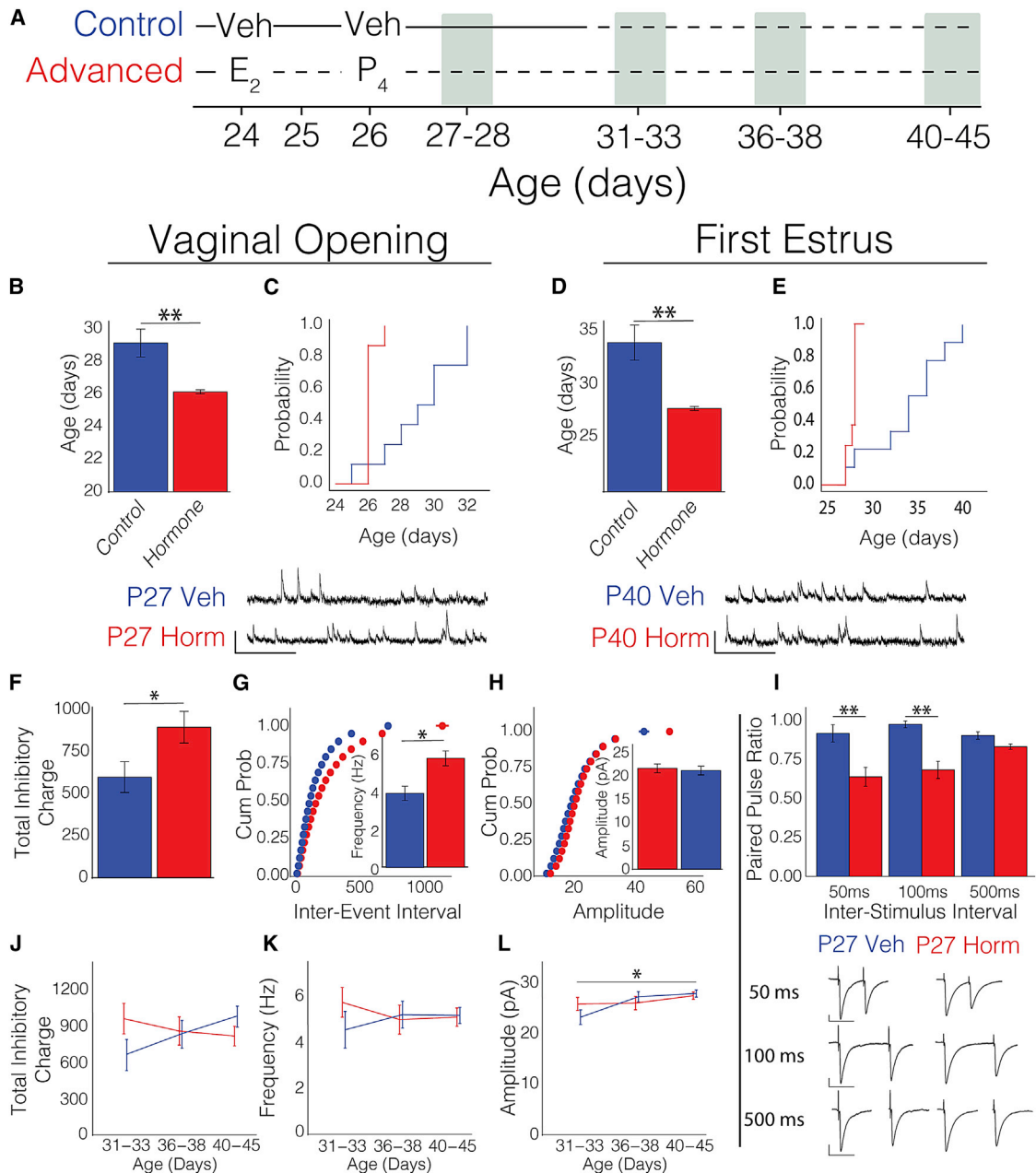
to increase mIPSC frequency. mIPSC amplitude did not vary between groups ($p = 0.49$; Figure 2D). Pre-pubertal OVX did not affect mEPSC charge transfer, frequency, or amplitude (Table S1).

These data demonstrate that intact gonads are necessary for the peri-pubertal increase in inhibitory neurotransmission onto cingulate cortex L2/3 pyramidal cells, establishing a causal role for pubertal hormones in the maturation of frontal inhibitory neurotransmission.

Gonadal Hormone Effects on mIPSCs Are Organizational

The effects of gonadal hormones can be classified as “organizational” or “activational.” If pubertal hormones organize the increase in frontal cortex inhibition at puberty, then post-pubertal withdrawal of gonadal hormones should not affect inhibition onto these cells. To test this hypothesis, we allowed mice to progress through normal pubertal development until P40, at which point mice underwent either OVX (6 brains, 16 cells) or sham surgeries (6 brains, 10 cells) (Figure 2E).

P40 OVX did not affect mIPSC charge transfer (sham OVX, 848.66 ± 63.72 ; OVX, 896.79 ± 77.09 ; $p = 0.75$; Figure 2F), frequency (sham OVX, 4.98 ± 0.28 ; OVX 4.99 ± 0.34 ; $p = 0.81$; Figure 2G), or amplitude (sham OVX, 24.90 ± 0.80 ; OVX 24.61 ± 0.64 ; $p = 0.76$; Figure 2H) 2 weeks after OVX. These data suggest that peri-pubertal exposure to gonadal steroids induces long-lasting changes to frontal cortex inhibition (an organizational effect), which does not require concurrent availability of circulating gonadal steroids (not activational).



A Mouse Model of Earlier Puberty Shows Early Increases in mIPSC Frequency and Altered Probability of GABA Release in the Cingulate Cortex

The age of puberty onset is advancing in girls [34–38], and early puberty is associated with increased risk for adolescent-onset psychopathology [13–15] and may reduce plasticity [1, 5, 9]. To understand how earlier puberty affects the developing cortex, we developed a mouse model of earlier puberty. This model advances first peri-pubertal exposure to gonadal steroids by injecting estradiol and progesterone at P24 and P26, respectively (Figure 3A). Control sibling cage-mates were injected with oil vehicle on both days (Figure 3A). This treatment significantly advanced vaginal opening ($P26.13 \pm 0.13$ versus $P29.13 \pm 0.85$; $n = 8$ per group; $t_{14} = 3.47$, $p < 0.01$; Figures 3B and 3C), which is the first external indicator of puberty onset in female mice. Hormones also advanced first estrus ($P27.7 \pm 0.18$ versus $P33.88 \pm 1.63$; $t_{13} = 3.50$, $p < 0.01$; Figures 3D and 3E), which agrees with previous literature showing that gonadal hormone injections disinhibit the hypothalamic-pituitary-gonadal axis to induce endogenous puberty [39, 40]. This treatment therefore yields an approximately 3- to 4-day time period during which age-matched, co-housed siblings vary only with respect to hormone exposure, allowing us to causally separate age- from hormone-dependent maturation of brain and behavior.

To determine whether a rise in gonadal steroids can induce frontal cortex inhibitory neurotransmission development, we compared hormone-treated (9 brains, 17 cells) and vehicle-treated (8 brains, 17 cells) mice at P27–P28, when cage-mates are age matched but differ with respect to hormone exposure. The hormone treatment group showed significant increases in inhibitory charge transfer (854.84 ± 80.52 versus 521.77 ± 73.04 pA/s; $p = 0.021$; Figure 3F) and mIPSC frequency (5.78 ± 0.37 versus 3.93 ± 0.39 Hz; $p = 0.018$; Figure 3G) but not mIPSC amplitude (21.46 ± 0.94 versus 20.99 ± 0.93 pA; $p = 0.71$; Figure 3H). There were no differences in mEPSC parameters (Table S1).

A change in mIPSC frequency could result from an increase in the number of synapses and/or enhanced probability of GABAergic vesicle release. To test this latter possibility, we conducted a paired-pulse-ratio experiment in hormone (4 brains, 7 cells)- and vehicle (6 brains, 11 cells)-treated animals at P27 with inter-stimulus intervals of 50, 100, and 500 ms. There was a main effect of hormone treatment ($p < 0.001$; Figure 3I) and inter-stimulus interval ($p = 0.006$), and an interaction ($p = 0.001$). Simple comparisons revealed that hormone-treated mice exhibited stronger synaptic depression at inhibitory synapses than vehicle-treated mice at 50 ms (paired pulse ratio: 0.64 ± 0.06 versus 0.87 ± 0.35 ; $p < 0.001$) and 100 ms (0.68 ± 0.05 versus 0.97 ± 0.023 ; $p < 0.001$). The groups did not differ at the 500-ms inter-stimulus interval after adjusting for multiple comparisons (0.83 ± 0.02 versus 0.90 ± 0.03 ; $p = 0.044$ unadjusted). These data suggest that hormone exposure can enhance the release probability of GABAergic vesicles.

Earlier Puberty Does Not Alter Later Adolescent mIPSC Frequency and Amplitude

It has been proposed that sensitivity to hormone exposure declines with age [41] such that earlier puberty may cause larger-magnitude changes or qualitatively different effects. To test whether earlier puberty alters inhibitory neurotransmission later in development, we treated intact pre-pubertal mice with either hormone or vehicle (as above at P24 and P26; Figure 3A) and collected data at P31–P33, P36–P38, and P40–P45, ages at which unmanipulated mice have begun puberty. A linear mixed model with hormone treatment and age group as between-subjects factors revealed no differences in inhibitory charge transfer (Figure 3J) between hormone treatment groups ($p = 0.81$) or age groups ($p = 0.70$), and no interaction ($p = 0.17$). There were also no significant differences in mIPSC frequency (Figure 3K) between hormone treatment groups ($p = 0.86$) or age groups ($p = 0.98$), and no interaction effect ($p = 0.47$) at these post-pubertal ages.

Our analysis did reveal a significant increase in mIPSC amplitude with age ($p = 0.012$; Figure 3L), but there was no effect of hormone treatment ($p = 0.81$) and no interaction ($p = 0.19$).

These data suggest that early exposure to gonadal hormones does not lead to abnormal inhibitory neurotransmission later in development.

Pubertal Hormones Do Not Strengthen Inhibitory Neurotransmission in the Barrel Cortex

To test whether hormone-driven increases in inhibitory neurotransmission are specific to the frontal cortex, we treated mice with either hormone (7 brains, 15 cells) or vehicle (4 brains, 10 cells) before puberty (Figure 4A) and collected data at P27–P28 from the somatosensory barrel cortex. Hormone treatment did not affect mIPSC inhibitory charge transfer (790.93 ± 119.41 hormone versus 1044.63 ± 281.66 vehicle, pA/s; $p = 0.33$; Figure 4B) or frequency (4.31 ± 0.53 hormone versus 4.71 ± 1.00 vehicle, Hz; $p = 0.69$; Figure 4C). However, hormone-treated mice had significantly smaller mIPSC amplitudes (23.15 ± 0.88) compared to vehicle controls (26.09 ± 1.35 pA; $p = 0.046$; Figure 4D). These data suggest that hormonal effects on the maturation of inhibition during adolescence are regionally specific.

Tonic Inhibition Is Sensitive to Gonadal Hormones

Although the above experiments focused on phasic inhibition at GABAergic synapses, tonic inhibition mediated by non-synaptic GABA receptors also affects neuronal excitability and changes dramatically at puberty onset in the hippocampus [42]. In the cortex, receptors expressing the δ subunit are a primary contributor to tonic inhibition [43]. These receptors are directly modulated by neurosteroids [44, 45], and are implicated in pubertal changes in synaptic plasticity and function of the mouse hippocampus [46].

11 cells in vehicle group). There were no main effects of hormone treatment or age, and no interaction in total charge transfer (J) or frequency (K). A main effect of age was found for mIPSC amplitude (L), without treatment or interaction effects.

All plots are mean \pm SEM. Hypothesis tests on pubertal milestones were conducted with two-sided t tests, and hypothesis tests for electrophysiology data were conducted using linear mixed models. Post hoc tests in the paired-pulse-ratio experiment (I) were conducted using Tukey's honest significant difference (HSD). * $p < 0.05$, ** $p < 0.01$. Scale bars, 50 pA (vertical), 500 ms (horizontal) for mini traces, and 50 pA (vertical), 50 ms (horizontal) for paired-pulse ratio. See also Table S1.

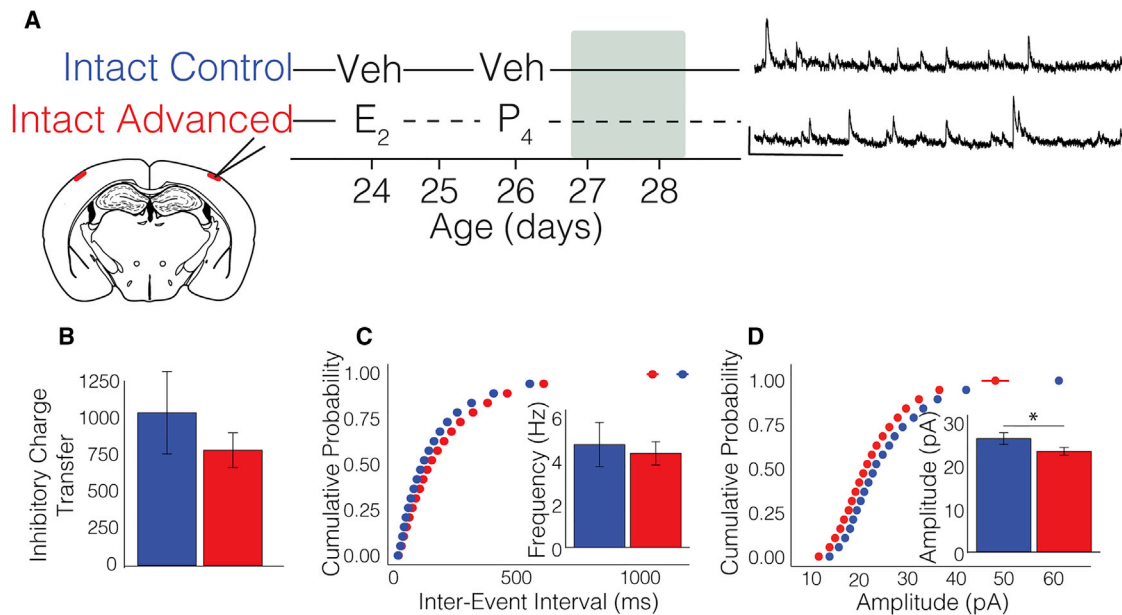


Figure 4. Early Exposure to Gonadal Steroids Does Not Increase Inhibitory Neurotransmission in the Somatosensory Cortex

(A) Mice were injected with either gonadal steroids (7 brains, 15 cells) or vehicle (4 brains, 10 cells) at P24 and P26. L2/3 pyramidal cells were patched at P27 or P28 in the barrel cortex.

(B–D) We observed no significant differences in inhibitory charge transfer (B) or mIPSC frequency (C), but the hormone treatment group did show significantly smaller mIPSC amplitude (D) compared to vehicle.

All graphs are mean \pm SEM. Hypothesis tests were conducted using linear mixed models. * $p < 0.05$. Scale bars, 50 pA (vertical), 500 ms (horizontal).

To measure tonic inhibition (Figure 5A), L2/3 pyramidal cells in the cingulate cortex were patched and excitatory neurotransmission was blocked. δ subunit-containing GABA receptors were opened by bath application of the superagonist THIP (4,5,6,7-tetrahydroisothiazolo-[5,4-c]pyridine-3-ol; 1 μ M) and then closed by the GABA_A antagonist bicuculline (20 μ M) (Figure 5B). The shift in holding current was used to infer tonic inhibition.

Tonic inhibition was measured at P27 in vehicle (4 brains, 6 cells; -26.55 ± 8.08 pA) and hormone (4 brains, 9 cells; -7.93 ± 2.88 pA)-treated mice (the mouse model of earlier puberty, as above), and in untreated post-pubertal mice at \sim P40 (3 brains; 6 cells; 1.53 ± 3.2 pA) (Figure 5A). There was a significant difference in tonic inhibition among groups ($p < 0.001$; Figure 5C). Post hoc comparisons revealed differences between hormone- and vehicle-treated mice ($p = 0.005$) and vehicle-treated and adolescent mice ($p < 0.001$), but no difference between hormone-treated P27 mice and P40 mice ($p = 0.12$).

These data suggest that the potential size of the tonic inhibitory current declines in L2/3 cingulate pyramids from P27 to P40, and early hormone treatment can advance this decline.

Exposure to Gonadal Hormones Alters Performance in a Cognitive Task Sensitive to the Integrity of the Dorsomedial Frontal Cortex

After documenting changes in inhibitory neurotransmission that occur in the cingulate after hormonal exposure, our next goal was to determine whether pubertal hormones also alter behavior dependent on this brain region. We previously established that excitotoxic lesions centered on the cingulate disrupt performance in an odor-based four-choice reversal task in both juvenile

and adults [47]. Performance in this task also changes significantly with development such that mice at P26 show more efficient reversal learning compared to mice P40 or older [1, 47]. We predicted that early hormone exposure would prematurely induce adult-like performance in the reversal phase of the task, indicated by an increase in trials to criterion.

Mice were treated at P24 and P26 with either hormone or vehicle (as above) and tested on the four-choice discrimination and reversal task at P27–P28 (Figure 6A). As predicted, hormone-treated mice required more trials to reach criterion during the reversal phase than littermate vehicle controls (controlling for cage; $F_{1,10} = 5.50$; $p = 0.041$; Figure 6B). Hormone and vehicle pairs did not differ in the discrimination phase ($F_{1,10} = 1.33$; $p = 0.28$; Figure 6B), suggesting that more basic aspects of task performance were comparable.

In order to determine whether hormones were necessary for the developmental increase in trials to criterion in this task, we also performed OVX or sham OVX at P24 and tested mice under the same paradigm between P40 and P45 (Figure 6C). OVX and sham groups did not differ in performance in the discrimination ($F_{1,9} = 0.27$; $p = 0.62$; Figure 6C) or reversal phase ($F_{1,9} = 0.09$; $p > 0.77$; Figure 6C).

These data suggest that hormones can prematurely induce adult-like reversal-learning performance but that maturation of reversal learning can still occur in the absence of intact gonads.

DISCUSSION

In the present report, we provide evidence that the rise in gonadal steroids at puberty is necessary for a developmental



All graphs are mean \pm SEM. Hypothesis tests were conducted using linear mixed models with Tukey's HSD test for post hoc comparisons. ** $p < 0.01$, *** $p < 0.001$. Scale bars, 25 pA (vertical), 25 s (horizontal).

Our current study included only females; however, we previously found that inhibitory neurotransmission matures similarly

Changes to mIPSC frequency most likely reflect changes to the pre-synaptic cell, whereas changes to mIPSC amplitude are thought to reflect the number of GABA receptors on the post-synaptic membrane. Because we primarily observe an effect of gonadal steroids on mIPSC frequency, our data suggest that gonadal steroids may primarily affect pre-synaptic inhibitory cells. An increase in mIPSC frequency could be caused by a larger number of synapses, a higher probability of vesicle release, or an increase in the number of docked synaptic vesicles per bouton. We found that early hormone exposure caused

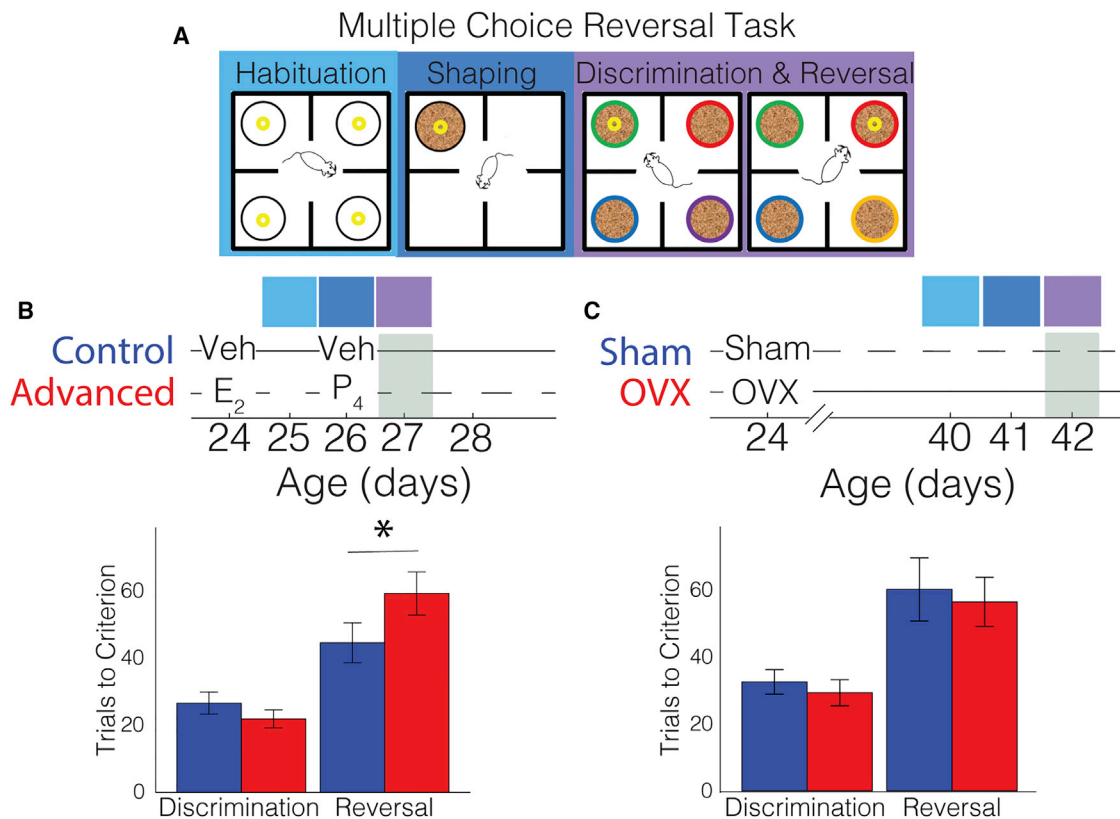


Figure 6. Hormone Exposure Induces Early Adult-like Performance in a Four-Choice Odor-Based Reversal-Learning Task

(A) A schematic of the 3-day protocol used for the behavior test measuring discrimination learning in which mice learn to choose one out of four odors, and reversal learning in which they have to update this rule when the reward contingency is changed to a new odor.

(B) Littermate mice housed in pairs were treated with either gonadal steroids or vehicle at P24 and P26 ($n = 11$ each group). Mice were habituated to the food reward on P25 (habituation), taught to dig in bowls to obtain a food reward on P26 (shaping), and run in both the discrimination and reversal phases of the task on P27. There were no differences between groups during the discrimination phase, but hormone-treated mice required significantly more trials to reach criterion in the reversal phase. This shift in behavioral performance occurs in a direction consistent with what would be expected to occur with development by P40 [1, 47].

(C) Pre-pubertal OVX or sham OVX groups did not differ on either discrimination or reversal when tested at P42. Given that maternal effects can impact performance on this task [48], groups were compared using F tests controlling for litter/cage.

All graphs are mean \pm SEM. * $p < 0.05$.

inhibitory synapses to become more depressing, suggesting that the release probability in GABAergic terminals was increased, which could enhance measures of mIPSC frequency and total inhibitory charge transfer. However, an increased number of synapses or docked vesicles could still contribute.

Because the source of inhibitory inputs onto patched pyramidal cells were not identified, it remains unknown what interneuron subtypes mediate the increase in phasic inhibition, but a strong candidate cell type is the parvalbumin-positive fast-spiking interneuron. In the rodent frontal cortex, estrogen receptor beta is expressed primarily in these interneurons [17, 25], providing a mechanism for pubertal estrogens to act specifically on these cells. This mechanism, however, still needs to be tested.

While hormone exposure increased phasic inhibitory neurotransmission, it reduced tonic inhibitory currents in the same population of cells. We speculate that changes in tonic inhibition may maintain homeostatic balance in the face of changing E/I balance. A decrease in the ratio of tonic to phasic inhibitory current would potentially alter information processing and circuit plasticity [26, 30], providing a basis for some of the

many functional changes observed in the frontal cortex during adolescence [1].

Increases in Inhibition Have Been Implicated in Regulating Sensitive Periods in the Neocortex

Studies in sensory cortices have identified numerous sensitive periods that vary by cortical region and input [57–59]. A common mechanism linking many of these identified sensitive periods is a change in E/I balance, driven largely by increased inhibitory neurotransmission. For example, in the literature on ocular dominance in the visual cortex, pharmacologically increasing inhibition can prematurely open [60] and close [61] sensitive-period plasticity, and reducing inhibition in adulthood can reopen sensitive-period plasticity [62]. Changes in mIPSCs in the visual cortex also track shifts in ocular dominance plasticity, such that an increase in mIPSC frequency onto L2/3 pyramidal neurons occurs with age (from week 3 to week 5) and is blocked by dark rearing, an environmental manipulation that delays sensitive-period onset [63].

The present data demonstrate that pubertal hormones can be causally linked to an increase in phasic inhibition in the frontal cortex, providing a potential mechanism by which puberty could regulate E/I balance and putative sensitive periods for plasticity in this region. Importantly, hormone treatment did not strengthen inhibitory neurotransmission in the somatosensory cortex, demonstrating regional specificity of the effect. It remains unclear how many regions of the cortex are affected by pubertal hormones, but it is possible that the associative cortex may be particularly sensitive to puberty. If pubertal hormones regulate sensitive periods of plasticity and learning in the frontal cortex in the human brain, the timing of educational and psychiatric interventions in relation to puberty may be critically important [9, 64].

Early Maturation of a Frontal-Cortex-Dependent Behavior Can Be Elicited by Hormonal Treatment, but Maturation Was Not Blocked by Ovariectomy

It is impossible to investigate human language learning and many education-relevant variables in mice, but we can probe simpler functions of the frontal cortex in mouse models. We have previously established that performance in an odor-based reversal-learning task in mice is dependent upon the integrity of the cingulate and surrounding frontal regions [47] and matures between P26 and P40 [1, 47]. Here, our mouse model of earlier puberty showed more adult-like performance at P27, but pre-pubertal ovariectomy did not prevent adult-like performance at P40. We speculate that the capacity for learning or plasticity surrounding the time of puberty onset may be altered, but puberty-independent and/or compensatory processes may be sufficient to eventually produce adult-form behavioral performance in ovariectomized mice.

Puberty Onset Is Advancing to Earlier Ages, and Early Puberty Is Associated with Disadvantage and Greater Disease Burden

Adolescence is a paradoxical life stage in which physical health is strong but there are increasing risks for wide ranges of psychiatric disorders and other negative outcomes [3, 12, 14, 15]. Earlier-than-normal puberty onset is associated with increased risk of psychiatric disease and lower educational achievement [14, 65–73]. In recent decades, the age at puberty onset has significantly advanced, particularly in girls [34–38], with the youngest ages observed in urban poor, African American, and Hispanic populations [36]. It is difficult to determine whether negative psychiatric and educational outcomes associated with early puberty are mediated by direct effects of pubertal hormones on the brain, indirect effects of psychosocial difficulties associated with early puberty, or complex interactions between pubertal timing and psychosocial factors [15]. However, the frontal cortex is implicated in many of these psychiatric and behavioral outcomes, and our data demonstrate that maturation of this region is directly impacted by gonadal hormones. Interestingly, we find that early exposure to gonadal hormones advances the timing of the maturation of inhibition but does not alter the levels that are reached in young adulthood. This result is in contrast to data in which earlier rather than later exposure to testosterone

was associated with lasting differences in behavior in hamsters [41, 54]. As we increase our knowledge, we speculate that we will find that some developing systems are sensitive to pubertal hormones and others are not, and the timing of puberty onset may alter the phase relationship between a number of intricately interconnected neural systems, resulting in different neural, emotional, and behavioral outcomes mediated by age at pubertal onset.

Conclusions

Our data suggest that pubertal hormones are critical for the maturation of inhibitory neurotransmission in the frontal cortex. Further work is required to understand the mechanisms by which gonadal maturation impacts neuronal development and how inhibitory neurotransmission alters plasticity of frontal cortical networks. However, our data provide novel evidence of enduring, organizational effects of pubertal ovarian steroids and provide further evidence that puberty directly impacts cerebral cortex maturation. Given that inhibitory neurotransmission regulates sensitive periods in other cortical regions and is implicated in psychopathology, we conclude that pubertal timing most likely plays a powerful role in frontal cortex development. To fully understand normative and pathological development of the brain and behavior, measures of puberty onset and changes in circulating gonadal hormones are important variables to consider in future investigations of adolescent brain maturation.

STAR★METHODS

Detailed methods are provided in the online version of this paper and include the following:

- KEY RESOURCES TABLE
- CONTACT FOR REAGENT AND RESOURCE SHARING
- EXPERIMENTAL MODEL AND SUBJECT DETAILS
- METHOD DETAILS
 - Puberty Onset
 - Hormone Manipulations
 - Slice Electrophysiology
 - Behavior
- QUANTIFICATION AND STATISTICAL ANALYSIS

SUPPLEMENTAL INFORMATION

Supplemental Information includes one table and can be found with this article online at <http://dx.doi.org/10.1016/j.cub.2017.05.027>.

AUTHOR CONTRIBUTIONS

Conceptualization, D.J.P. and L.W.; Methodology, D.J.P. and L.W.; Investigation, D.J.P. and J.R.B.; Writing, D.J.P., J.R.B., and L.W.; Supervision, L.W.; Funding Acquisition, D.J.P. and L.W.

ACKNOWLEDGMENTS

We thank three anonymous reviewers for their helpful and constructive criticism that has substantially improved the paper. We further thank Ron Dahl, Julianna Deardorff, Silvia Bunge, Kristen Delevich, Carolyn Johnson, Irv Zucker, Lance Kriegsfeld, and Judy Stamps for discussion. This research was funded by NIH F32MH110107 (D.J.P.), NIH R01DA029150 (L.W.), NSF 1640885 (L.W.), and The Center on the Developing Adolescent.

Received: January 11, 2017

Revised: April 3, 2017

Accepted: May 8, 2017

Published: June 1, 2017

REFERENCES

- Piekarski, D.J., Johnson, C.M., Boivin, J.R., Thomas, A.W., Lin, W.C., Delevich, K., Galarce, E.M., and Wilbrecht, L. (2017). Does puberty mark a transition in sensitive periods for plasticity in the associative neocortex? *Brain Res.* 1654, 123–144.
- Huizinga, M., Dolan, C.V., and van der Molen, M.W. (2006). Age-related change in executive function: developmental trends and a latent variable analysis. *Neuropsychologia* 44, 2017–2036.
- Paus, T., Keshavan, M., and Giedd, J.N. (2008). Why do many psychiatric disorders emerge during adolescence? *Nat. Rev. Neurosci.* 9, 947–957.
- Crone, E.A., and Dahl, R.E. (2012). Understanding adolescence as a period of social-affective engagement and goal flexibility. *Nat. Rev. Neurosci.* 13, 636–650.
- Lenneberg, E.H. (1967). *Biological Foundations of Language* (John Wiley & Sons).
- Johnson, J.S., and Newport, E.L. (1989). Critical period effects in second language learning: the influence of maturational state on the acquisition of English as a second language. *Cognit. Psychol.* 21, 60–99.
- Kim, K.H., Relkin, N.R., Lee, K.M., and Hirsch, J. (1997). Distinct cortical areas associated with native and second languages. *Nature* 388, 171–174.
- Hertz-Pannier, L., Chiron, C., Jambaqué, I., Renaux-Kieffer, V., Van de Moortele, P.-F., Delalande, O., Fohlen, M., Brunelle, F., and Le Bihan, D. (2002). Late plasticity for language in a child's non-dominant hemisphere: a pre- and post-surgery fMRI study. *Brain* 125, 361–372.
- Wright, B.A., and Zecker, S.G. (2004). Learning problems, delayed development, and puberty. *Proc. Natl. Acad. Sci. USA* 101, 9942–9946.
- Nemati, F., and Kolb, B. (2010). Motor cortex injury has different behavioral and anatomical effects in early and late adolescence. *Behav. Neurosci.* 124, 612–622.
- Nemati, F., and Kolb, B. (2012). Recovery from medial prefrontal cortex injury during adolescence: implications for age-dependent plasticity. *Behav. Brain Res.* 229, 168–175.
- Silberg, J., Pickles, A., Rutter, M., Hewitt, J., Simonoff, E., Maes, H., Carbonneau, R., Murrelle, L., Foley, D., and Eaves, L. (1999). The influence of genetic factors and life stress on depression among adolescent girls. *Arch. Gen. Psychiatry* 56, 225–232.
- Deardorff, J., Hayward, C., Wilson, K.A., Bryson, S., Hammer, L.D., and Agras, S. (2007). Puberty and gender interact to predict social anxiety symptoms in early adolescence. *J. Adolesc. Health* 41, 102–104.
- Whittle, S., Yücel, M., Lorenzetti, V., Byrne, M.L., Simmons, J.G., Wood, S.J., Pantelis, C., and Allen, N.B. (2012). Pituitary volume mediates the relationship between pubertal timing and depressive symptoms during adolescence. *Psychoneuroendocrinology* 37, 881–891.
- Graber, J.A. (2013). Pubertal timing and the development of psychopathology in adolescence and beyond. *Horm. Behav.* 64, 262–269.
- Simerly, R.B., Chang, C., Muramatsu, M., and Swanson, L.W. (1990). Distribution of androgen and estrogen receptor mRNA-containing cells in the rat brain: an in situ hybridization study. *J. Comp. Neurol.* 294, 76–95.
- Kritzer, M.F. (2002). Regional, laminar, and cellular distribution of immunoreactivity for ER alpha and ER beta in the cerebral cortex of hormonally intact, adult male and female rats. *Cereb. Cortex* 12, 116–128.
- Shughrue, P.J., Lane, M.V., Scrimo, P.J., and Merchenthaler, I. (1998). Comparative distribution of estrogen receptor-alpha (ER-alpha) and beta (ER-beta) mRNA in the rat pituitary, gonad, and reproductive tract. *Steroids* 63, 498–504.
- Herting, M.M., Gautam, P., Spielberg, J.M., Dahl, R.E., and Sowell, E.R. (2015). A longitudinal study: changes in cortical thickness and surface area during pubertal maturation. *PLoS ONE* 10, e0119774.
- Herting, M.M., Gautam, P., Spielberg, J.M., Kan, E., Dahl, R.E., and Sowell, E.R. (2014). The role of testosterone and estradiol in brain volume changes across adolescence: a longitudinal structural MRI study. *Hum. Brain Mapp.* 35, 5633–5645.
- Herting, M.M., Maxwell, E.C., Irvine, C., and Nagel, B.J. (2012). The impact of sex, puberty, and hormones on white matter microstructure in adolescents. *Cereb. Cortex* 22, 1979–1992.
- Peper, J.S., Brouwer, R.M., Schnack, H.G., van Baal, G.C., van Leeuwen, M., van den Berg, S.M., Delemarre-Van de Waal, H.A., Boomsma, D.I., Kahn, R.S., and Hulshoff Pol, H.E. (2009). Sex steroids and brain structure in pubertal boys and girls. *Psychoneuroendocrinology* 34, 332–342.
- Peper, J.S., Brouwer, R.M., Schnack, H.G., van Baal, G.C.M., van Leeuwen, M., van den Berg, S.M., Delemarre-Van de Waal, H.A., Janke, A.L., Collins, D.L., Evans, A.C., et al. (2008). Cerebral white matter in early puberty is associated with luteinizing hormone concentrations. *Psychoneuroendocrinology* 33, 909–915.
- Koss, W.A., Lloyd, M.M., Sadowski, R.N., Wise, L.M., and Juraska, J.M. (2015). Gonadectomy before puberty increases the number of neurons and glia in the medial prefrontal cortex of female, but not male, rats. *Dev. Psychobiol.* 57, 305–312.
- Blurton-Jones, M., and Tuszynski, M.H. (2002). Estrogen receptor-beta colocalizes extensively with parvalbumin-labeled inhibitory neurons in the cortex, amygdala, basal forebrain, and hippocampal formation of intact and ovariectomized adult rats. *J. Comp. Neurol.* 452, 276–287.
- Cho, K.K.A., Hoch, R., Lee, A.T., Patel, T., Rubenstein, J.L.R., and Sohal, V.S. (2015). Gamma rhythms link prefrontal interneuron dysfunction with cognitive inflexibility in *Dlx5/6*(+/–) mice. *Neuron* 85, 1332–1343.
- Sibille, E., Morris, H.M., Kota, R.S., and Lewis, D.A. (2011). GABA-related transcripts in the dorsolateral prefrontal cortex in mood disorders. *Int. J. Neuropsychopharmacol.* 14, 721–734.
- Lewis, D.A., and González-Burgos, G. (2008). Neuroplasticity of neocortical circuits in schizophrenia. *Neuropsychopharmacology* 33, 141–165.
- Berryer, M.H., Chattopadhyaya, B., Xing, P., Riebe, I., Bosoi, C., Sanon, N., Antoine-Bertrand, J., Lévesque, M., Avoli, M., Hamdan, F.F., et al. (2016). Decrease of SYNGAP1 in GABAergic cells impairs inhibitory synapse connectivity, synaptic inhibition and cognitive function. *Nat. Commun.* 7, 13340.
- Werkler, J.F., and Hensch, T.K. (2015). Critical periods in speech perception: new directions. *Annu. Rev. Psychol.* 66, 173–196.
- de Villers-Sidani, E., and Merzenich, M.M. (2011). Lifelong plasticity in the rat auditory cortex: basic mechanisms and role of sensory experience. *Prog. Brain Res.* 191, 119–131.
- Southwell, D.G., Froemke, R.C., Alvarez-Buylla, A., Stryker, M.P., and Gandhi, S.P. (2010). Cortical plasticity induced by inhibitory neuron transplantation. *Science* 327, 1145–1148.
- Vandenberg, A., Piekarski, D.J., Caporale, N., Muñoz-Cuevas, F.J., and Wilbrecht, L. (2015). Adolescent maturation of inhibitory inputs onto cingulate cortex neurons is cell-type specific and TrkB dependent. *Front. Neural Circuits* 9, 5.
- Marshall, W.A., and Tanner, J.M. (1969). Variations in pattern of pubertal changes in girls. *Arch. Dis. Child.* 44, 291–303.
- Akslaede, L., Sørensen, K., Petersen, J.H., Skakkebaek, N.E., and Juul, A. (2009). Recent decline in age at breast development: the Copenhagen Puberty Study. *Pediatrics* 123, e932–e939.
- Biro, F.M., Greenspan, L.C., Galvez, M.P., Pinney, S.M., Teitelbaum, S., Windham, G.C., Deardorff, J., Herrick, R.L., Succop, P.A., Hiatt, R.A., et al. (2013). Onset of breast development in a longitudinal cohort. *Pediatrics* 132, 1019–1027.
- Herman-Giddens, M.E. (2006). Recent data on pubertal milestones in United States children: the secular trend toward earlier development. *Int. J. Androl.* 29, 241–246, discussion 286–290.
- Rosenfield, R.L., Lipton, R.B., and Drum, M.L. (2009). Thelarche, pubarche, and menarche attainment in children with normal and elevated body mass index. *Pediatrics* 123, 84–88.

39. Ramirez, V.D., and Sawyer, C.H. (1965). Advancement of puberty in the female rat by estrogen. *Endocrinology* 76, 1158–1168.
40. Smith, E.R., and Davidson, J.M. (1968). Role of estrogen in the cerebral control of puberty in female rats. *Endocrinology* 82, 100–108.
41. Schulz, K.M., Molenda-Figueira, H.A., and Sisk, C.L. (2009). Back to the future: the organizational-activational hypothesis adapted to puberty and adolescence. *Horm. Behav.* 55, 597–604.
42. Shen, H., Gong, Q.H., Aoki, C., Yuan, M., Ruderman, Y., Dattilo, M., Williams, K., and Smith, S.S. (2007). Reversal of neurosteroid effects at $\alpha 4\beta 2\delta$ GABAA receptors triggers anxiety at puberty. *Nat. Neurosci.* 10, 469–477.
43. Pirker, S., Schwarzer, C., Wieselthaler, A., Sieghart, W., and Sperk, G. (2000). GABA(A) receptors: immunocytochemical distribution of 13 subunits in the adult rat brain. *Neuroscience* 101, 815–850.
44. Maguire, J., and Mody, I. (2007). Neurosteroid synthesis-mediated regulation of GABA(A) receptors: relevance to the ovarian cycle and stress. *J. Neurosci.* 27, 2155–2162.
45. Shen, H., Gong, Q.H., Yuan, M., and Smith, S.S. (2005). Short-term steroid treatment increases δ GABAA receptor subunit expression in rat CA1 hippocampus: pharmacological and behavioral effects. *Neuropharmacology* 49, 573–586.
46. Shen, H., Sabaliauskas, N., Sherpa, A., Fenton, A.A., Stelzer, A., Aoki, C., and Smith, S.S. (2010). A critical role for $\alpha 4\beta 2\delta$ GABAA receptors in shaping learning deficits at puberty in mice. *Science* 327, 1515–1518.
47. Johnson, C., and Wilbrecht, L. (2011). Juvenile mice show greater flexibility in multiple choice reversal learning than adults. *Dev. Cogn. Neurosci.* 1, 540–551.
48. Thomas, A.W., Caporale, N., Wu, C., and Wilbrecht, L. (2016). Early maternal separation impacts cognitive flexibility at the age of first independence in mice. *Dev. Cogn. Neurosci.* 18, 49–56.
49. Sisk, C.L., Schulz, K.M., and Zehr, J.L. (2003). Puberty: a finishing school for male social behavior. *Ann. N Y Acad. Sci.* 1007, 189–198.
50. Schulz, K.M., and Sisk, C.L. (2016). The organizing actions of adolescent gonadal steroid hormones on brain and behavioral development. *Neurosci. Biobehav. Rev.* 70, 148–158.
51. De Lorme, K.C., Schulz, K.M., Salas-Ramirez, K.Y., and Sisk, C.L. (2012). Pubertal testosterone organizes regional volume and neuronal number within the medial amygdala of adult male Syrian hamsters. *Brain Res.* 1460, 33–40.
52. Sano, K., Nakata, M., Musatov, S., Morishita, M., Sakamoto, T., Tsukahara, S., and Ogawa, S. (2016). Pubertal activation of estrogen receptor α in the medial amygdala is essential for the full expression of male social behavior in mice. *Proc. Natl. Acad. Sci. USA* 113, 7632–7637.
53. Romeo, R.D. (2003). Puberty: a period of both organizational and activational effects of steroid hormones on neurobehavioural development. *J. Neuroendocrinol.* 15, 1185–1192.
54. Schulz, K.M., Zehr, J.L., Salas-Ramirez, K.Y., and Sisk, C.L. (2009). Testosterone programs adult social behavior before and during, but not after, adolescence. *Endocrinology* 150, 3690–3698.
55. Swithers, S.E., McCurley, M., Hamilton, E., and Doerflinger, A. (2008). Influence of ovarian hormones on development of ingestive responding to alterations in fatty acid oxidation in female rats. *Horm. Behav.* 54, 471–477.
56. Kercmar, J., Snoj, T., Tobet, S.A., and Majdic, G. (2014). Gonadectomy prior to puberty decreases normal parental behavior in adult mice. *Horm. Behav.* 66, 667–673.
57. Fox, K. (1992). A critical period for experience-dependent synaptic plasticity in rat barrel cortex. *J. Neurosci.* 12, 1826–1838.
58. Lu, H.C., Gonzalez, E., and Crair, M.C. (2001). Barrel cortex critical period plasticity is independent of changes in NMDA receptor subunit composition. *Neuron* 32, 619–634.
59. de Villers-Sidani, E., Chang, E.F., Bao, S., and Merzenich, M.M. (2007). Critical period window for spectral tuning defined in the primary auditory cortex (A1) in the rat. *J. Neurosci.* 27, 180–189.
60. Fagiolini, M., and Hensch, T.K. (2000). Inhibitory threshold for critical-period activation in primary visual cortex. *Nature* 404, 183–186.
61. Iwai, Y., Fagiolini, M., Obata, K., and Hensch, T.K. (2003). Rapid critical period induction by tonic inhibition in visual cortex. *J. Neurosci.* 23, 6695–6702.
62. Harauzov, A., Spolidoro, M., DiCristo, G., De Pasquale, R., Cancedda, L., Pizzorusso, T., Viegi, A., Berardi, N., and Maffei, L. (2010). Reducing intracortical inhibition in the adult visual cortex promotes ocular dominance plasticity. *J. Neurosci.* 30, 361–371.
63. Morales, B., Choi, S.-Y., and Kirkwood, A. (2002). Dark rearing alters the development of GABAergic transmission in visual cortex. *J. Neurosci.* 22, 8084–8090.
64. Blakemore, S.J. (2010). The developing social brain: implications for education. *Neuron* 65, 744–747.
65. Graber, J.A., Seeley, J.R., Brooks-Gunn, J., and Lewinsohn, P.M. (2004). Is pubertal timing associated with psychopathology in young adulthood? *J. Am. Acad. Child Adolesc. Psychiatry* 43, 718–726.
66. Ge, X., Kim, I.J., Brody, G.H., Conger, R.D., Simons, R.L., Gibbons, F.X., and Cutrona, C.E. (2003). It's about timing and change: pubertal transition effects on symptoms of major depression among African American youths. *Dev. Psychol.* 39, 430–439.
67. Kaiser, J., and Gruzelier, J.H. (1996). Timing of puberty and EEG coherence during photic stimulation. *Int. J. Psychophysiol.* 21, 135–149.
68. Kaiser, J., and Gruzelier, J.H. (1999). Timing of puberty and syndromes of schizotypy: a replication. *Int. J. Psychophysiol.* 34, 237–247.
69. Zehr, J.L., Culbert, K.M., Sisk, C.L., and Klump, K.L. (2007). An association of early puberty with disordered eating and anxiety in a population of undergraduate women and men. *Horm. Behav.* 52, 427–435.
70. Copeland, W., Shanahan, L., Miller, S., Costello, E.J., Angold, A., and Maughan, B. (2010). Outcomes of early pubertal timing in young women: a prospective population-based study. *Am. J. Psychiatry* 167, 1218–1225.
71. Burt, S.A., McGue, M., DeMarte, J.A., Krueger, R.F., and Iacono, W.G. (2006). Timing of menarche and the origins of conduct disorder. *Arch. Gen. Psychiatry* 63, 890–896.
72. Obeidallah, D., Brennan, R.T., Brooks-Gunn, J., and Earls, F. (2004). Links between pubertal timing and neighborhood contexts: implications for girls' violent behavior. *J. Am. Acad. Child Adolesc. Psychiatry* 43, 1460–1468.
73. Tschann, J.M., Adler, N.E., Irwin, C.E., Jr., Millstein, S.G., Turner, R.A., and Kegeles, S.M. (1994). Initiation of substance use in early adolescence: the roles of pubertal timing and emotional distress. *Health Psychol.* 13, 326–333.
74. Ataka, T., and Gu, J.G. (2006). Relationship between tonic inhibitory currents and phasic inhibitory activity in the spinal cord lamina II region of adult mice. *Mol. Pain* 2, 36.
75. Bates, D., Maechler, M., Bolker, B., and Walker, S. (2015). Fitting linear mixed-effects models using lme4. *J. Stat. Softw.* 67, 1–48.
76. Fox, J., and Weisberg, S. (2011). *An R Companion to Applied Regression*, Second Edition (Sage).

STAR★METHODS

KEY RESOURCES TABLE

REAGENT or RESOURCE	SOURCE	IDENTIFIER
Chemicals, Peptides, and Recombinant Proteins		
Beta-estradiol 3-benzoate Powder	Sigma-Aldrich	E8515 sigma
Progesterone Powder	Spectrum Chemical MFG Corp	P1834
Meloxicam	Putney	26637-621-01
Buprenorphine	Reckitt Benckiser Pharmaceuticals	7571
Xylazine hydrochloride	Akorn	4811
Ketamine Hydrochloride	Putney	26637041101
THIP hydrochloride	Tocris	0807
Bicuculline methiodide	Tocris	2503
NBQX disodium salt	Tocris	1044
Tetrodotoxin	Tocris	1078
D-AP5	Tocris	0106
Experimental Models: Organisms/Strains		
B6.Cg-Tg(Thy1-YFP)HJrs/J	The Jackson Laboratory	Strain 003782

CONTACT FOR REAGENT AND RESOURCE SHARING

Further information and requests should be directed to and will be fulfilled by the Lead Contact, Linda Willbrecht (wilbrecht@berkeley.edu).

EXPERIMENTAL MODEL AND SUBJECT DETAILS

All experiments were conducted in female C57BL/6J mice from the Thy-1-YFP-H line bred in our animal facility. All mice were weaned at P21 and randomly separated into same-sex groups of 2 or 3 littermates. Mice varied in age from P24 to P55, depending on the experiment. All were housed on a 12:12 reverse light:dark cycle (lights on at 10PM). All procedures were approved by the Animal Care and Use Committee of the University of California, Berkeley and conformed to principles enunciated in the NIH guide for the use and care for laboratory animals.

METHOD DETAILS

Puberty Onset

To collect normative data from our colony on the age at pubertal milestones, we determined the age at vaginal opening and first estrus. Age at vaginal opening was determined by visual examination of the vagina beginning on P24. To determine age at first estrus, starting on the day of vaginal opening, vaginal lavages were collected by placing a small drop of distilled water at the vaginal opening to collect vaginal cells. The first day in which cornified epithelials represent a majority of cells was recorded as first estrus.

The mice used for vaginal lavages were not used for collection of any other data (i.e., behavior or electrophysiology) in order to avoid potential confounds related to the additional handling required for vaginal lavage. Visual assessment of vaginal opening was performed to confirm pubertal status of mice used in electrophysiology and behavior studies, but this one-time visual assessment (approximately 2 s) did not require any additional handling beyond what would otherwise be required to transfer mice to a behavior apparatus or anesthetize mice for perfusion/electrophysiology.

Hormone Manipulations

To accelerate puberty, female mice were injected with a regimen of steroid hormones dissolved in oil. The regimen consisted of a single subcutaneous (s.c.) 0.01 μ g/g 17 β -estradiol benzoate injection followed 48 hr later by a single subcutaneous progesterone (0.2 mg/g) injection.

To eliminate circulating gonadal steroids, ovariectomy or a control sham surgery was performed. In both cases, mice were pre-treated with s.c. injection of the analgesics buprenorphine (0.05mg/kg) and meloxicam (10mg/kg) and anesthetized with isoflurane vapors (Baxter Healthcare, Deerfield, IL). Mice were then ovariectomized through a midline incision in the abdomen. Each ovary was ligated with absorbable suture and excised. Incisions were closed with sterile sutures and wound clips (Mikron Auto Clip 9 mm,

Becton Dickinson, Franklin Lakes, NJ, USA). Follow up doses of meloxicam and buprenorphine were administered 12–24 hr after surgery (10mg/kg). Sham surgeries were also conducted in which a midline abdominal incision was made and the ovaries were simply visualized by the surgeon, rather than being ligated and excised. Sutures, post-op care, and analgesia were identical between procedures.

Slice Electrophysiology

Mice were deeply anesthetized with an overdose of ketamine/xylazine solution and perfused transcardially with ice-cold cutting solution containing (in mM): 110 choline-Cl, 2.5 KCl, 7 MgCl₂, 0.5 CaCl₂, 25 NaHCO₃, 11.6 Na-ascorbate, 3 Na-pyruvate, 1.25 NaH₂PO₄, and 25 D-glucose, and bubbled in 95% O₂/5% CO₂. 300 μ m thick coronal sections were cut in ice-cold cutting solution before being transferred to ACSF containing (in mM): 120 NaCl, 2.5 KCl, 1.3 MgCl₂, 2.5 CaCl₂, 26.2 NaHCO₃, 1 NaH₂PO₄ and 11 Glucose. Slices were bubbled with 95% O₂/5% CO₂ in a 37°C bath for 30 min, and allowed to recover for 60 min at room temperature before recording.

All recordings were made using a Multiclamp 700 B amplifier and were not corrected for liquid junction potential. Data were digitized at 10 kHz and filtered at 1 or 3 kHz using a Digidata 1440 A system with PClamp 10.2 software (Molecular Devices, Sunnyvale, CA, USA). Only cells with access resistance of < 25 M Ω were retained for analysis. Access resistance was not corrected. Cells were discarded if parameters changed more than 20%. Data were analyzed using MiniAnalysis (Synaptosoft, INC, GA), PClamp, or R (R 3.3.1; R Foundation for Statistical Computing, Vienna, AT).

Miniature inhibitory and excitatory post synaptic currents (mIPSCs and mEPSCs, respectively) were recorded in L2/3 pyramidal cells in the cingulate cortex. Whole cell mEPSCs were recorded at –70mV and mIPSCs at +10mV. The bath contained 32°C aCSF with 0.5 μ M tetrodotoxin to block action potentials. Recording pipettes had 2–5 M Ω resistances and were filled with internal solution (in mM): 115 Cs-methanesulfonate, 10 HEPES, 10 BAPTA, 10 Na₂-phosphocreatine, 5 NaCl, 2 MgCl₂, 4 Na-ATP, 0.3 Na-GTP. An integrated measure of the total inhibitory charge transfer was calculated using the equation: $Q = f \times Q_{mPSCs}$, where f is the frequency (Hz), and Q_{mPSCs} is the average charge transfer for each mPSC [74].

To calculate paired pulse ratio, L2/3 pyramidal cells in the cingulate cortex (ACC) were whole-cell patch clamped, and inhibitory currents were isolated using a high chloride internal solution (in mM): 115 CsCl, 10 HEPES, 10 Na₂-phosphocreatine, 5 NaCl, 2 MgCl₂, 4 Na-ATP, 0.3 Na-GTP, 0.02 EGTA and 15 KCl. The bath solution contained 5 μ M NBQX and 25 μ M APV to block AMPA/Kainate and NMDA currents, respectively. A bipolar stimulating electrode was placed ~300 μ m from the cell body, and stimulation intensity ranged between 1 and 2 μ A.

Paired pulse ratio was calculated by injecting 0.1 μ s stimulations at either 50 ms, 100 ms or 500 ms inter stimulus intervals and dividing the second pulse by the first pulse. With short inter-stimulus intervals, the second pulse overlapped with the decay phase of the first pulse; thus, all traces were baseline subtracted.

In experiments to measure tonic inhibition, inhibitory currents were isolated using a high chloride internal solution (in mM): 115 CsCl, 10 HEPES, 10 Na₂-phosphocreatine, 5 NaCl, 2 MgCl₂, 4 Na-ATP, 0.3 Na-GTP, 0.02 EGTA and 15 KCl. The bath solution contained 0.5 μ M tetrodotoxin (Tocris), 5 μ M NBQX (Tocris) and 25 μ M D-AP5 (Tocris) to block action potentials, AMPA/Kainate, and NMDA currents, respectively.

A cell was patched and voltage clamped at –70mV. After achieving a stable baseline, 1 μ M 4,5,6,7-tetrahydroisothiazolo-[5,4-c]pyridine-3-ol (THIP) (Tocris) was washed on for three minutes to open all GABA receptors containing the δ subunit, which provide extrasynaptic (tonic) inhibition in these cells. Finally, 20 μ M bicuculline (Tocris) was added to the aCSF. Tonic inhibition was calculated by subtracting the holding current during THIP administration from the holding current after bicuculline administration, after spontaneous IPSCs had been reduced.

In order to avoid oversampling from individual mice, a maximum of 4 cells per mouse were included for analysis across all electrophysiology experiments.

Behavior

For a full description of procedures, see [47, 48]. Briefly, mice were trained in a 4-choice discrimination and reversal task. Prior to training, mice were food restricted to 85% of ad libitum body weight, adjusting for expected weight gain with growth in young animals. On day 1, mice were habituated to the testing arena, on day 2 were taught to dig for cheerio reward in a pot filled with wood shavings, and on day 3 underwent a 4-choice odor discrimination and reversal task.

During the discrimination phase, the mouse learned to discriminate among four different pots differentiated only by the scent of the wood shavings, to learn that a cheerio was hidden beneath only the anise scented shavings. The stimulus presentation was pseudo-randomized so that an odor only repeated in a quadrant once per 4 trials in order to prevent mice from using a spatial strategy to solve the task. Each trial was considered complete when the mouse indicated a “decision” by digging in a pot. If the chosen pot contained a reward, the mouse was allowed to finish eating the cheerio, but if the pot did not contain a cheerio, the mouse was immediately placed back in the starting cylinder to prevent multiple digging choices. If a mouse did not dig in a pot within 3 min of the start of the trial, the mouse was placed back in the starting cylinder and the trial was scored an omission. In the unusual circumstance of 3 consecutive omissions, a pot with unscented shavings was placed in the start cylinder with the mouse in order to reinitiate digging. The discrimination phase ended after the mouse had successfully chosen the correct pot on eight out of the last ten choices.

Upon reaching criterion, the reversal phase was immediately started. All shavings were replaced with new shavings, and the thyme scented pot was replaced with a new pot filled with eucalyptus scented shavings. During this phase, the cheerio was now located in

the clove scented pot. The reversal phase was considered complete once the mouse reached criterion of eight out of the last ten choices correct. Animals typically completed both discrimination and reversal phases within 3 hr.

QUANTIFICATION AND STATISTICAL ANALYSIS

All data was analyzed blind to the experimental group. All statistical analyses were conducted in R (R 3.3.1; R Foundation for Statistical Computing, Vienna, AT) and statistical details are located in the results and figure legends. Because electrophysiology measures included multiple cells from the same brain, these data were analyzed by fitting a linear mixed model using residual maximum likelihood in the *lme4* package (version 1.1.12 [75]). Residuals were verified to be normally distributed. P values for these analyses were determined using the *car* package (version 2.1.3 [76]). Group assignment was included as the fixed effect and subject as the random effect. Student's t tests or analysis of variance (ANOVA) were used to analyze pubertal milestones and behavior, respectively. When required, Tukey's HSD test was used to control for error-rate in post hoc analyses. All results are reported as the mean \pm standard error of the mean (SEM). Differences were considered significant if $p < 0.05$.