

# Deep Reinforcement Learning Based Mode Selection and Resource Management for Green Fog Radio Access Networks

Yaohua Sun, *Student Member, IEEE*, Mugen Peng, *Senior Member, IEEE*,  
and Shiwen Mao, *Senior Member, IEEE*

**Abstract**—Fog radio access networks (F-RANs) are seen as potential architectures to support services of Internet of Things by leveraging edge caching and edge computing. However, current works studying resource management in F-RANs mainly consider a static system with only one communication mode. Given network dynamics, resource diversity, and the coupling of resource management with mode selection, resource management in F-RANs becomes very challenging. Motivated by the recent development of artificial intelligence, a deep reinforcement learning (DRL) based joint mode selection and resource management approach is proposed. Each user equipment (UE) can operate either in cloud RAN (C-RAN) mode or in device-to-device mode, and the resource managed includes both radio resource and computing resource. The core idea is that the network controller makes intelligent decisions on UE communication modes and processors' on-off states with precoding for UEs in C-RAN mode optimized subsequently, aiming at minimizing long-term system power consumption under the dynamics of edge cache states. By simulations, the impacts of several parameters, such as learning rate and edge caching service capability, on system performance are demonstrated, and meanwhile the proposal is compared with other different schemes to show its effectiveness. Moreover, transfer learning is integrated with DRL to accelerate learning process.

**Index Terms**—Fog radio access networks, communication mode selection, resource management, deep reinforcement learning, artificial intelligence.

## I. INTRODUCTION

As a promising architecture, the fog radio access network (F-RAN) can well support the future services of internet of things (IoT) with the help of edge caching and edge computing [1], [2]. These services include patient health monitoring [3], services with low latency [4], large scale IoT data analytics [5], and so on. In F-RANs, each user equipment (UE) can potentially operate in different communication modes including cloud RAN (C-RAN) mode, fog radio access

point (FAP) mode, device-to-device (D2D) mode, and so on. In C-RAN mode, UEs are served by multiple cooperative remote radio heads (RRHs), benefited from centralized signal processing and resource allocation, while UEs in FAP mode and D2D mode are served locally by FAPs and UEs equipped with cache, respectively. Recently, many studies have been conducted on F-RANs, in terms of performance analysis [6], radio resource allocation [7], the joint design of cloud and edge processing [8], the impact of cache size [9], and so on.

Although significant progress has been achieved, resource management in F-RANs still needs further investigation. Compared with resource management in traditional wireless networks, communication mode selection should be addressed as well due to the coupling with resource management, and meanwhile the dynamics of edge caching complicate the network environment, which both lead to a more challenging problem. Specifically, from the perspective of optimization, communication mode selection problem is usually NP-hard [10]. To solve the problem, classical algorithms like branch and bound and particle swarm can be adopted. Nevertheless, considering the network dynamics, communication modes of UEs need to be frequently updated, which makes algorithms with high complexity less applicable.

On the other hand, owing to the great development of fast and massively parallel graphical processing units as well as the explosive growth of data, deep learning has attracted a lot of attention and is widely adopted in speech recognition, image recognition, localization [11], [12], and so on. To help the computer learn environment from high-dimensional raw input data and make intelligent decisions, the author in [13] proposes to combine deep learning with reinforcement learning, and the proposal is known as deep reinforcement learning (DRL). In DRL, the deep neural network (DNN) adopted as the Q-function approximator is called deep Q network (DQN). Using replay memory and target DQN, DRL algorithm can realize stable training.

Totally speaking, applying DRL to wireless networks has the following considerable advantages. First, a DNN with a moderate size can finish the prediction given the input in almost real time since only a small number of simple operations is required for forward passing [14]. This facilitates a DRL agent to make a quick control decision on networks based on the Q values output by the DQN. Second, the powerful representation capabilities of DNNs allows the DRL agent to learn directly from the raw collected network data with high

Yaohua Sun (e-mail: sunyaohua@bupt.edu.cn) and Mugen Peng (e-mail: pmg@bupt.edu.cn) are with the Key Laboratory of Universal Wireless Communications (Ministry of Education), Beijing University of Posts and Telecommunications, Beijing, China. Shiwen Mao (smao@ieee.org) is with the Department of Electrical and Computer Engineering, Auburn University, Auburn, AL 36849-5201, USA. Corresponding author: Mugen Peng.

This work is supported in part by the State Major Science and Technology Special Project under 2017ZX03001025-006 and 2018ZX03001023-005, the National Natural Science Foundation of China under No. 61831002, the National Program for Special Support of Eminent Professionals, and the US National Science Foundation under grant CNS-1702957.

Copyright (c) 2018 IEEE. Personal use of this material is permitted. However, permission to use this material for any other purposes must be obtained from the IEEE by sending a request to pubs-permissions@ieee.org.

dimension instead of manual inputs. Third, by distributing computation across multiple machines and multiple cores, the time to train DQN can be greatly reduced [15]. Fourth, the DRL agent aims at optimizing a long-term performance, considering the impact of actions on future reward/cost. The fifth advantage of DRL is that it is a model-free approach, and hence does not rely on a specific system model that can be based on some ideal assumptions. At last, it is convenient for DRL based schemes to consider the cost incurred by system state transitions.

Motivated by the benefits of DRL, a DRL based joint mode selection and resource management approach is proposed, aiming at minimizing the long-term F-RAN system power consumption. Using DRL, the controller can quickly control the communication modes of UEs and the on-off states of processors in the cloud facing with the dynamics of edge caching states. After the controller makes the decision, pre-coding for UEs in C-RAN mode is optimized subsequently with quality of service (QoS) constraints and the computing capability constraint in the cloud.

#### A. Related Work and Challenges

Up to now, some attention has been paid to radio resource management in fog radio access networks. In [7], a cloud radio access network with each RRH equipped with a cache is investigated, and a content-centric beamforming design is presented, where a group of users requesting the same content is served by a RRH cluster. A mixed-integer nonlinear programming problem is formulated to minimize the weighted sum of backhaul cost and transmit power under the QoS constraint of each user group. While in [16], a similar network scenario is considered, aiming at minimizing the total system power consumption by RRH selection and load balancing. Specifically, the RRH operation power incurred by circuits and cooling system is included and backhaul capacity constraint is involved. The author in [17] goes one step further by jointly optimizing RRH selection, data assignment, and multicast beamforming. The data assignment refers to whether the content requested by a user group is delivered to a RRH via backhaul, which is not handled in [7] and [16]. To solve the NP-hard network power consumption minimization problem, which consists of RRH power consumption and backhaul power consumption, a generalized layered group sparse beamforming modeling framework is proposed. Different from previous works that mainly optimize network cost or system power consumption, the author in [18] tries to minimize the total content delivery latency of the network, which is the sum of wireless transmission latency and backhaul latency caused by downloading the uncached contents. Due to the fractional form and  $l_0$  norm in the objective function, the formulated problem is non-convex, which is then decomposed into beamforming design problem and data assignment problem.

Although the proposals in the above works achieve good performance, only C-RAN mode is taken into account. When a UE in F-RANs is allowed to operate in different communication modes, the problem of user communication mode selection should be handled, which is the key to gaining the

benefits of F-RANs [19]. In [20], the author investigates a joint mode selection and resource allocation problem in a downlink F-RAN, and particle swarm optimization is utilized to optimize user communication modes. Other approaches to mode selection problems include branch and bound [10] as well as Tabu search [21]. However, these optimization methods can induce high computational complexity. While in [22], evolutionary game is adopted to model the interaction of users for mode selection, in which the payoff of each user involves both the ergodic rate under a certain mode and the delay cost. Then, an algorithm based on replicator dynamics is proposed to achieve evolutionary equilibrium. Nevertheless, the proposed algorithm can get only the proportion of users selecting each communication mode, and therefore accurate communication mode control can not be realized.

Moreover, the works [7], [16]–[18], [20] research resource management problems under a static environment where content availability at each cache is unchanged. This assumption is reasonable for content delivery via FAPs or RRHs with a cache, since cached contents are usually updated on a large time scale, and meanwhile FAPs and RRHs have stable power supplies to keep the normal operations of their caches. On the contrary, for content delivery via D2D transmission, cache state dynamics should be taken into account. That is the local availability of the content requested by a UE at the cache of its paired UE can easily change with time, incurred by the autonomous and frequent cache update behavior of the UE holders, the dynamic battery level of the paired UE, user time-varying content requests, and so on. These dynamics will make mode selection algorithms with high complexity inapplicable. Even worse, the existence of interference between active D2D links and UEs in C-RAN mode complicates the wireless environment as well.

Fortunately, DRL, as an emerging approach to complicated control problems, has the potential to provide efficient solutions for wireless network design. In [23], a DRL based communication link scheduling algorithm is developed for a cache-enabled opportunistic interference alignment wireless network. Markov process is used to model the network dynamics including the dynamics of cache states at the transmitter side and channel state information (CSI). To extract features from the high dimensional input composed of CSI and cache states, a DNN with several convolutional layers is used to learn the state representation. In [24], DRL is applied in mobility management, and a convolutional NN and a recurrent NN are responsible for feature extraction from the Received Signal Strength Indicator. The performance is evaluated on a practical testbed in a wireless local area network, and significant throughput improvement is observed. While in [25], the author revisits the power consumption minimization problem in C-RANs using DRL to control the activation of RRHs, where the power consumption caused by the RRH on-off state transition is considered as well. In addition, the author in [26] shows that DRL based on Wolpertinger architecture is effective in cache management. Specifically, the request frequencies of each file over different time durations and the current file requests from users constitute the input state, and the action decides whether to cache the requested content.

## B. Contributions and Organization

In this paper, a network power consumption minimization problem for a downlink F-RAN is studied. Different from [7], [16], [17], [25], the power consumption induced by the running processors in the cloud for centralized signal processing is included as well. Owing to the caching capability of D2D transmitters, UEs can acquire the desired contents locally without accessing RRHs. This can help traffic offloading which alleviates the burden of fronthaul on one hand and on the other hand allows turning off some processors in the cloud to save energy since less computing resource is needed to support less number of UEs. Facing with the dynamic cache states at D2D transmitters and the interference between UEs in the same communication mode, a DRL based approach is proposed to help the network controller learn the environment from raw collected data and make intelligent and fast decisions on network operations to reduce system power consumption. *As far as we know, our paper is the first work to adopt DRL to solve joint communication mode selection and resource management problem taking the dynamics of edge cache states into account to achieve a green F-RAN.* The main contributions of the paper are:

- An energy minimization problem in a downlink F-RAN with two potential communication modes, i.e., C-RAN mode and D2D mode, is investigated. To make the system model more practical, the dynamics of cache states at D2D transmitters are considered, which are modeled by Markov process, and the power consumption caused by processors in the cloud is taken into account. Based on the system model, a Markov decision problem is formulated, where the network controller aims at minimizing the long-term system power consumption by controlling UE communication modes and processors' on-off states at each decision step with the precoding for UEs in C-RAN mode optimized subsequently.
- For the precoding optimization under given UE communication modes and processors' on-off states, the corresponding problem is formulated as a RRH transmission power minimization problem under per-UE QoS constraints, per-RRH transmission power constraints, and the computing resource constraint in the cloud, which is solved by an iterative algorithm based on  $l_0$  norm approximation. Then, a DRL based approach is proposed with UE communication modes, edge cache states, and processors' on-off states as input to select actions for communication mode and processor state control. After precoding optimization, the negative of system power consumption is determined and fed back to the controller as the reward, based on which the controller updates DQN.
- The impacts of important learning parameters and edge caching service capability on system performance are illustrated, and the proposal is compared with other several communication mode and processor state control schemes including Q-learning and random control. Furthermore, the effectiveness of integrating transfer learning with DRL to accelerate the training process in a new but

similar environment is demonstrated.

The remainder of this paper is organized as follows. Section II describes the downlink F-RAN model. Section III formulates the concerned energy minimization problem, and the DRL based approach is specified in Section IV. Simulation results are illustrated in Section V, followed by the conclusion in Section VI.

## II. SYSTEM MODEL

The discussed downlink F-RAN system is shown in Fig. 1, which consists of one cloud, multiple RRHs, multiple UEs with their paired D2D transmitters. The cloud contains multiple processors of heterogenous computing capabilities which are connected with each other via fiber links to achieve computing resource sharing, and the computing capability of processor  $n$  is characterized by  $D_n$  whose unit is million operations per time slot (MOPTS) [27]. For each processor in the cloud, it has two states, i.e., on state and off state, which are indicated by  $s_n^{processor} = 1$  and  $s_n^{processor} = 0$ , respectively. Meanwhile, content servers provide large-scale caching capability, and the controller is used for network control like resource management. The set of processors, RRHs, and UEs are denoted by  $\mathcal{N} = 1, 2, \dots, N$ ,  $\mathcal{K} = 1, 2, \dots, K$ , and  $\mathcal{M} = 1, 2, \dots, M$ , respectively. Each RRH is equipped with  $L$  antennas, and each UE is with one antenna. In addition, RRHs communicate with the cloud via high-bandwidth fronthaul.

The paired D2D transmitter for each UE is chosen by comprehensively considering the social tie and the physical condition as per in [28]. In the considered scenario, each UE can operate either in D2D mode or C-RAN mode which are denoted by a 0-1 indicator  $s_m^{mode}$ . Specifically,  $s_m^{mode} = 1$  means UE  $m$  operates in D2D mode, while  $s_m^{mode} = 0$  means that UE  $m$  is served by RRHs. Moreover, suppose that the D2D transmission does not interfere the RRH transmission by operating in different frequency bands, and all the UEs in the same communication mode share the same frequency band, hence interfering with each other. Finally, the high power node (HPN) with wide coverage is responsible for delivering control signalling and exchanges control information with the controller via backhaul [29]. In the following, models for communication, computing, caching, and system energy consumption are elaborated.

### A. Communication Model

By the collaborative transmission of RRHs, the received symbol of UE  $m$  in C-RAN mode is given by

$$y_m^C = \sum_{k \in \mathcal{K}} \mathbf{h}_{m,k}^H \mathbf{v}_{m,k} x_m + \sum_{m' \in \mathcal{M}, m' \neq m, s_{m'}^{mode} = 0} \sum_{k \in \mathcal{K}} \mathbf{h}_{m,k}^H \mathbf{v}_{m',k} x_{m'} + z_m, \quad (1)$$

where  $x_m$  is the message of UE  $m$ ,  $\mathbf{h}_{m,k}$  is the channel vector between RRH  $k$  and UE  $m$ ,  $\mathbf{v}_{m,k}$  is the precoding vector of RRH  $k$  for UE  $m$ , and  $z_m$  is the noise which follows the

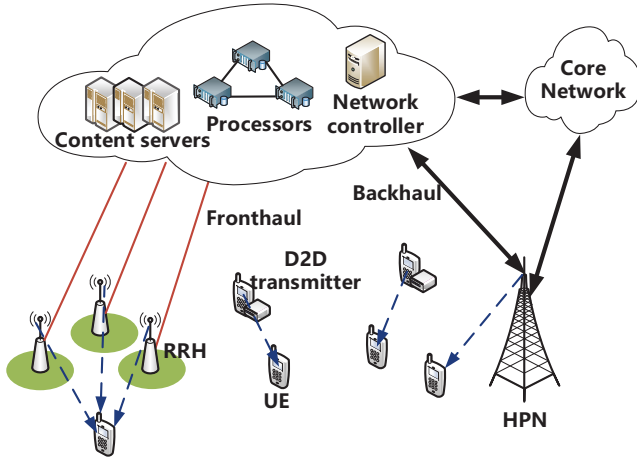


Fig. 1. A downlink F-RAN system.

distribution of  $\mathcal{CN}(0, \sigma^2)$ . Then the data rate achieved by UE  $m$  is given by

$$R_m^C = \log \left( 1 + \frac{\left| \sum_{k \in \mathcal{K}} \mathbf{h}_{m,k}^H \mathbf{v}_{m,k} \right|^2}{\sum_{m' \in \mathcal{M}, m' \neq m, s_{m'}^{\text{mode}}=0} \left| \sum_{k \in \mathcal{K}} \mathbf{h}_{m',k}^H \mathbf{v}_{m',k} \right|^2 + \sigma^2} \right) \quad (2)$$

For UE  $m$  in D2D mode, it is assumed that the D2D transmitter transmits at a constant power level, and the received symbol of UE  $m$  is given by

$$y_m^D = \sqrt{p_m} h_m x_m + \sum_{m' \in \mathcal{M}, m' \neq m, s_{m'}^{\text{mode}}=1} \sqrt{p_{m'}} h_{m,m'} x_{m'} + z_m, \quad (3)$$

where  $p_m$  is the transmit power of the D2D transmitter paired with UE  $m$ ,  $h_m$  is the channel coefficient between UE  $m$  and its D2D transmitter,  $h_{m,m'}$  is the channel coefficient between the D2D transmitter of UE  $m'$  and UE  $m$ . Then the data rate achieved by UE  $m$  in D2D mode is given by

$$R_m^{(D)} = \log \left( 1 + \frac{p_m |h_m|^2}{\sum_{m' \in \mathcal{M}, m' \neq m, s_{m'}^{\text{mode}}=1} p_{m'} |h_{m,m'}|^2 + \sigma^2} \right). \quad (4)$$

### B. Computing Model

To finish the basedband processing and generate the transmitted signals for RRHs, computing resource provision in the cloud plays a key role, whose model follows that in [27]. Specifically, the computing resource consumed by coding and modulation for UE  $m$  is given by

$$D_{m,1} = \beta R_m, \quad (5)$$

where  $R_m$  is the data rate of UE  $m$ . Meanwhile, the computing resource consumed by calculating the transmit signal for UE  $m$  depends on the number of non-zeros elements in its network wide precoding vector  $\mathbf{v}_m$ , which is modeled as

$$D_{m,2} = \alpha \|\mathbf{v}_m\|_0. \quad (6)$$

Then, the computing resource consumption for the whole system is calculated as

$$D_{\text{system}} = \sum_{m, s_m^{\text{mode}}=0} (D_{m,1} + D_{m,2}) = \beta \sum_{m, s_m^{\text{mode}}=0} R_m + \alpha \sum_{m, s_m^{\text{mode}}=0} \|\mathbf{v}_m\|_0. \quad (7)$$

Note that only the UEs accessing RRHs consume computing resource, and hence computing resource needed may decrease by serving UEs locally via D2D communication, which further allows turning off some processors to save energy. Moreover, it should be highlighted that additional constant terms can be added to (7) to account for the computing resource consumed by other baseband operations, which has no impact on our proposal.

### C. Caching Model

We define the value of the cache state at a D2D transmitter is **True** only when the requested content is cached in the D2D transmitter and the transmitter's battery level is high enough so that the holder is willing to share contents, and the cache state is **False** otherwise. Note that the cache state at each D2D transmitter can be highly dynamic due to the following reasons. First, although UEs are paired based on their social ties, this can not imply the content requested by a UE must be cached by its partner whose cached contents can be frequently updated by the device holder based on its own interest. Second, the UE battery level dynamically changes with time, and the user content request is time-varying.

To characterize the dynamics of cache states, Markov process is adopted as per [23] with the probability transition matrix given by

$$Pr_{\text{cache}} = \begin{bmatrix} Pr_{\text{True}, \text{True}} & Pr_{\text{True}, \text{False}} \\ Pr_{\text{False}, \text{True}} & Pr_{\text{False}, \text{False}} \end{bmatrix}, \quad (8)$$

where  $Pr_{\text{True}, \text{False}}$  denotes the transition probability of the cache state at a D2D transmitter from **True** to **False**.

### D. Energy Consumption Model

Totally speaking, the energy consumption in the concerned downlink F-RAN includes the energy consumption incurred by the running processors, fronthaul transmission, and wireless transmission. First, according to [30], the energy consumed by processor  $n$  in Watts is given by

$$E_n^{\text{processor}} = s_n^{\text{processor}} \mu D_n^3, \quad (9)$$

where  $\mu$  is a parameter depending on the structure of the processor. Second, the wireless transmission power for UE  $m$  is as follows.

$$E_m^{\text{wireless}} = (1 - s_m^{\text{mode}}) \frac{1}{\eta_1} \|\mathbf{v}_m\|_2^2 + s_m^{\text{mode}} \frac{1}{\eta_2} P_m, \quad (10)$$

which is the transmission power when UE  $m$  is either served by RRHs or served by its paired D2D transmitter.  $\eta_1$  and  $\eta_2$  are the efficiency of the power amplifier at each RRH and

at each UE, respectively [30]. Third, for the fronthaul energy consumption corresponding to UE  $m$ , it is simply modeled as

$$E_m^{\text{fronthaul}} = (1 - s_m^{\text{mode}}) P_m^{\text{front}}, \quad (11)$$

with  $P_m^{\text{front}}$  a constant representing the energy consumption for delivering the processed signal of UE  $m$  to its associated RRHs via fronthaul [16]. Then, the energy consumption of the whole system is given by

$$E_{\text{system}} = \sum_n E_n^{\text{processor}} + \sum_m E_m^{\text{fronthaul}} + \sum_m E_m^{\text{wireless}}. \quad (12)$$

It should be noted that the modeling of the caching state using a Markov process motivates the adoption of the Markov decision process (MDP) to formulate our concerned problem. In addition, since our aim is to achieve a green F-RAN under user QoS and computing resource constraints, the reward setting of the MDP will be closely related to the data rate, computing, and energy consumption models.

### III. PROBLEM FORMULATION AND DECOUPLING

In this section, an optimization problem aiming at minimizing the energy consumption in a downlink F-RAN is formulated from an MDP perspective. Specifically, the problem is decoupled into a joint control problem of processors' on-off states and UEs' communication modes and a precoding design problem under the computing resource constraint.

#### A. The Basics of MDP

From the energy consumption model, it can be seen that the cache state for each UE plays a key role in the following ways. On one hand, the cache state will influence the set of UEs that can potentially exploit D2D communication, which directly influences the energy consumption incurred by fronthaul and wireless transmission. On the other hand, since UEs served by local caching do not consume computing resource in the cloud anymore, there is a chance to turn off some processors to save energy. Facing with the dynamics of cache state for each UE pair, it is natural to formulate the energy minimization problem from an MDP perspective.

MDP provides a formalism for reasoning about planning and acting in the face of uncertainty, which can be defined using a tuple  $(\mathcal{S}, \mathcal{A}, \{\Pr_{sa}(\cdot)\}, U)$ .  $\mathcal{S}$  is the set of possible states,  $\mathcal{A}$  is the set of available actions,  $\{\Pr_{sa}(\cdot)\}$  gives the transition probabilities to each state if action  $a$  is taken in state  $s$ , and  $U$  is the reward function. The process of MPD is described as follows. At an initial state  $s_0$ , the agent takes an action  $a_0$ . Then the state of the system transits to the next state  $s_1$  according to the transition probabilities  $\{\Pr_{s_0 a_0}(\cdot)\}$ , and the agent receives a reward  $U_0$ . With the process continuing, a state sequence  $s_0, s_1, s_2, \dots$  is generated. The agent in an MPD aims to maximize a discounted accumulative reward when starting in state  $s$ , which is called state-value function and defined as

$$V^\pi(s) = \mathbb{E} \left[ \sum_{t=0}^{\infty} \gamma^t U_t | s_0 = s, \pi \right], \quad (13)$$

where  $U_t$  is the reward received at decision step  $t$ ,  $\gamma$  is a discount factor adjusting the effect of future rewards to the current decisions, and the policy  $\pi$  is a mapping from state  $s$  to a probability distribution over actions that the agent can take in state  $s$ .

The optimal state-value function is given by

$$V^*(s) = \max_{\pi} V^\pi(s). \quad (14)$$

Then, if  $V^*(s)$  is available, the optimal policy  $\pi^*$  is determined as

$$\pi^*(s_t) = \arg \max_{a \in \mathcal{A}} \bar{U}_{s_t}^a + \sum_{s_{t+1}} \Pr_{s_t a}(s_{t+1}) V^*(s_{t+1}), \quad (15)$$

where  $\bar{U}_{s_t}^a$  is the expected reward by taking action  $a$  at state  $s_t$ . To calculate  $V^*(s)$ , the value-iteration algorithm can be adopted. However, since the transition probabilities  $\{\Pr_{sa}(\cdot)\}$  are not easy to acquire in many practical problems, reinforcement learning algorithms, especially Q-learning, are widely adopted to handle MDP problems, for which the state space, explicit transition probabilities, and the reward function are not essential [31].

In Q-learning, the Q function is defined as

$$Q^\pi(s, a) = \mathbb{E} \left[ \sum_{t=0}^{\infty} \gamma^t U_t | s_0 = s, a_0 = a, \pi \right], \quad (16)$$

which is the expected accumulative reward when starting from state  $s$  with action  $a$  and then following policy  $\pi$ . Similarly, we can define the optimal Q function as

$$Q^*(s, a) = \max_{\pi} Q^\pi(s, a). \quad (17)$$

Q-learning is ensured to reach the optimal Q values under certain conditions [31], which is executed iteratively according to

$$Q_{t+1}(s, a) = (1 - \alpha) Q_t(s, a) + \alpha \left[ U_t + \gamma \max_{a'} Q_t(s_{t+1}, a') \right], \quad (18)$$

where  $\alpha$  is the learning rate. Once  $Q^*(s, a)$  for each state-action pair is achieved, the optimal policy can be determined as

$$\pi^*(s) = \arg \max_{a \in \mathcal{A}} Q^*(s, a). \quad (19)$$

#### B. Problem Formulation

In this paper, the energy minimization problem for the considered downlink F-RAN is formulated as an MDP problem, where the controller in the cloud tries to minimize long-term system energy consumption by controlling the on-off states of processors, the communication mode of each UE, and optimizing precoding vectors for RRH transmission. More formally, our concerned MPD problem is defined as follows.

- **State space:** The state space  $\mathcal{S}$  is defined as a set of tuples  $\mathcal{S} = \{\mathbf{s}^{\text{processor}}, \mathbf{s}^{\text{mode}}, \mathbf{s}^{\text{cache}}\}$ .  $\mathbf{s}^{\text{processor}}$  is a vector representing the current on-off states of all the processors, where the  $n$ -th element is  $s_n^{\text{processor}}$ .  $\mathbf{s}^{\text{mode}}$  is a vector representing the current communication modes of all the UEs, where the  $m$ -th element is  $s_m^{\text{mode}}$ . While

$\mathbf{s}^{cache}$  is a vector consisting of the cache state at each D2D transmitter.

- **Action space:** The action space  $\mathcal{A}$  is defined as a set of tuples  $\mathcal{A} = \{\{a_{processor}, a_{mode}\}\}$ .  $a_{processor}$  represents to turn on or turn off a certain processor, while  $a_{mode}$  represents to change the communication mode of a certain UE. Note that the network controller controls the on-off state of only one processor and the communication mode of only one UE each time to reduce the number of actions [25]. Moreover, the precoding design for RRH transmission is handled separately for the same reason [25].
- **Reward:** The immediate reward  $U$  is taken as the negative of system energy consumption which is the sum of energy consumption incurred by the running processors, fronthaul transmission, and wireless transmission as defined in (12). Hence, after communication mode and processor state control followed by the precoding optimization for UEs in C-RAN mode, the reward can be totally determined.

Note that due to the cache state dynamics, the state after control can transit to an infeasible state. In summary, three situations should be properly handled. The first one is that the controller selects D2D mode for a UE, but the cache state at its paired UE after transition is **False**. The second one is that the QoS of a UE in the C-RAN mode is not met due to too many sleeping processors, and the third one is that the QoS of a UE in D2D mode is unsatisfied because of the strong interference among active D2D links. To deal with these situations and always guarantee the QoS of UEs, protecting operations will be performed. Specifically, the UE with QoS violation will inform the HPN over the control channel, and then the HPN sends protecting operation information to the controller that reactivates all the processors and switches each UE in D2D mode with QoS violation to RRHs. In addition, the precoding for UEs in C-RAN mode will be re-optimized.

Motivated by the recent advances in artificial intelligence, DRL is utilized to control the on-off states of processors and the communication modes of UEs. The details about the DRL based approach will be introduced in the next section. After the controller takes an action using DRL, precoding is then optimized for RRH transmission, which is formulated as the following optimization problem.

$$\begin{aligned}
 & \min_{\{\mathbf{v}_m\}} \sum_{m, s_m^{mode}=0} \|\mathbf{v}_m\|_2^2 \\
 & (a1) R_m \geq R_{m,min}, \forall m, \\
 & (a2) \sum_{m, s_m^{mode}=0} \|\mathbf{v}_{m,k}\|_2^2 \leq p_{max}, \forall k, \\
 & (a3) \beta \sum_{m, s_m^{mode}=0} R_m + \alpha \sum_{m, s_m^{mode}=0} \|\mathbf{v}_m\|_0 \leq \sum_n s_n^{processor} D_n,
 \end{aligned} \tag{20}$$

where  $\mathbf{v}_m$  is the network wide precoding vector for UE  $m$ , the first constraint is to meet the QoS demand for each UE, the second constraint is the transmission power constraint for each RRH, while the last constraint is the computing resource constraint in the cloud. Note that once the controller takes an action, the parameters  $\{s_m^{mode}\}$  and  $\{s_n^{processor}\}$  will be determined.

#### IV. DRL BASED MODE SELECTION AND RESOURCE MANAGEMENT

In this section, the precoding optimization given processors' on-off states and communication modes of UEs is handled first, and then a DRL based algorithm is proposed to control the network facing with the dynamics of caching states at D2D transmitters and complex radio environment.

##### A. Precoding Design with the Computing Resource Constraint

For problem (20), the main difficulty to solve it lies in the non-convex constraint (a1) as well as the  $l_0$  norm and the sum rate in constraint (a3). Fortunately, the QoS constraint (a1) can be transformed into a second order cone constraint by the phase rotation of precoding [30]. Moreover, the  $l_0$  norm term in constraint (a3) can be approximated by re-weighted  $l_1$  norm as per [27] and [32]. Then, inspired by the proposal in [32], problem (20) can be solved iteratively and the problem for each iteration is as follows:

$$\begin{aligned}
 & \min_{\{\mathbf{v}_m\}} \sum_{m, s_m^{mode}=0} \|\mathbf{v}_m\|_2^2 \\
 & (e1) \sqrt{\sum_{m', s_{m'}^{mode}=0} |\mathbf{h}_m^H \mathbf{v}_{m'}|^2 + \sigma^2} \leq \sqrt{1 + \frac{1}{\gamma_m}} \text{Re} \{ \mathbf{h}_m^H \mathbf{v}_m \}, \forall m, \\
 & (e2) \text{Im} \{ \mathbf{h}_m^H \mathbf{v}_m \} = 0, \forall m, \\
 & (e3) \sum_{m, s_m^{mode}=0} \|\mathbf{v}_{m,k}\|_2^2 \leq p_{max}, \forall k, \\
 & (e4) \beta \sum_{m, s_m^{mode}=0} \tilde{R}_m + \alpha \sum_{m, s_m^{mode}=0} \sum_k \sum_l \theta_{m,k,l} |v_{m,k,l}| \leq \sum_n s_n^{processor} D_n, \\
 & (e5) v_{m,k,l} = 0, \text{ if it is set to 0 in the last iteration,}
 \end{aligned} \tag{21}$$

where  $\mathbf{h}_m$  is the channel vector from all the RRHs to UE  $m$ ,  $v_{m,k,l}$  is the precoding of the  $l$ -th antenna of RRH  $k$  for UE  $m$ ,  $\tilde{R}_m$  is the data rate of UE  $m$  calculated by the precoding output by the last iteration,  $\sum_{m, s_m^{mode}=0} \sum_k \sum_l \theta_{m,k,l} |v_{m,k,l}|$  is the norm approximation of the term  $\sum_{m, s_m^{mode}=0} \|\mathbf{v}_m\|_0$  in constraint (a3) of problem (20).  $\theta_{m,k,l}$  is updated as

$$\theta_{m,k,l} = \frac{1}{|\tilde{v}_{m,k,l}| + \xi}, \quad \forall m, \forall k, \forall l, \tag{22}$$

with  $\tilde{v}_{m,k,l}$  the precoding calculated by the last iteration and  $\xi$  a small enough parameter. Note that problem (21) is a convex optimization problem that can be efficiently solved by CVX [33], and the proof of the convexity is given by the following proposition.

**Proposition 1:** Problem (21) is a convex optimization problem.

**Proof:** First, it has been shown that constraints (e3) and (e5) are convex in [34], and meanwhile, the objective function as well as constraints (e1) and (e2) are also convex according to [35]. For the constraint (e4), it can be reformulated as the following inequality:

$$\begin{aligned}
 & \sum_{m, s_m^{mode}=0} \sum_k \sum_l \theta_{m,k,l} |v_{m,k,l}| \leq \\
 & \frac{1}{\alpha} \left( \sum_n s_n^{processor} D_n - \beta \sum_{m, s_m^{mode}=0} \tilde{R}_m \right)
 \end{aligned} \tag{23}$$

, where the right side is a constant and the left side is a convex reweighted  $l$ -1 norm [36]. Hence, it can be concluded that problem (21) is convex. ■

The algorithm diagram is listed in Algorithm 1. First, the precoding is initialized, which can be got by solving a relaxed version of problem (20) without considering the computing resource constraint. Then,  $\tilde{R}_m$  and the weight  $\theta_{m,k,l}$  can be calculated, based on which problem (21) can be solved. At the end of each iteration,  $v_{m,k,l}$  with small enough  $|v_{m,k,l}|$  is set to 0, and one possible criteria is comparing the value of  $|v_{m,k,l}|$  with  $\xi$  [16]. By updating  $\theta_{m,k,l}$  iteratively, the above

---

**Algorithm 1** Precoding optimization under the computing resource constraint

---

1: **Stage 1:**

The controller initializes precoding  $v_{m,k,l}$ ,  $\forall m, \forall k, \forall l$ , and then computes the weight  $\theta_{m,k,l}$  and data rate  $\tilde{R}_m$ .

2: **Stage 2:**

Compute the optimal precoding by solving problem (21) using CVX;

Update weight  $\theta_{m,k,l}$  based on the precoding result;

Let  $v_{m,k,l}$  equal to 0 if  $|v_{m,k,l}|$  is less than a given small threshold.

3: **Stage 3:**

Repeat **Stage 2** until the RRH transmit power consumption converges.

---

algorithm gradually sets  $v_{m,k,l} = 0$  for the UE-antenna link that has low transmit power [32]. Meanwhile, utilizing the interior point method, the complexity of the above algorithm for each iteration is  $\mathcal{O}\left((KLM)^{3.5}\right)$ .

### B. DRL based Mode Selection and Resource Management

After the precoding design under fixed UE communication modes and processors' on-off states is handled, the remaining task is to find a way of reaching a good policy for the MDP formulated in Subsection B of Section III. As introduced before, Q-learning is a widely adopted algorithm in the research of wireless networks for network control without knowing the transition probability and reward function in advance. However, Q-learning has three factors which can limit its application in future wireless networks. First, traditional Q-learning stores the Q-values in a tabular form. Second, to achieve the optimal policy, Q-learning needs to revisit each state-action pair infinitely often [31]. Third, the state for Q-learning is often manually defined like in [37]. These three characteristics will make Q-learning impractical when considering large system state and action spaces [38]. While DRL proposed in [13] can overcome these problems, and has the potential to achieve better performance owing to the following facts. First, DRL uses DQN to store learned Q-values in the form of connection weights between different layers. Second, with the help of replay memory and generalization capability brought by NNs, DRL can achieve good performance with less interactions with complex environments. Third, with DQN, DRL can directly learn the representation from high dimensional raw network data, and hence manual input is avoided.

Considering these benefits, the controller uses DRL to learn the control policy of UE communication modes and processors' on-off states by interacting with the dynamic environment to minimize the discounted and accumulative system power consumption for  $T$  decision steps, and that is to maximize the long term reward given by  $\mathbb{E} \left[ \sum_{t=0}^{T-1} \gamma^t U_t \right]$ . The training procedure of the DRL is shown in Algorithm 2. Specifically, given the current system state composed of UE communication modes, cache states at D2D transmitters, and processors' states, the controller takes this state as input of DQN to output the Q-values  $Q(s, a, \mathbf{w})$  corresponding with each action. Then, an action is selected based on  $\varepsilon$  greedy scheme, and the operational states of a certain processor and a certain UE are changed if needed. Afterward, the controller optimizes the precoding using Algorithm 1, and the cache state at each D2D transmitter transits according to the transition matrix. Once any QoS violation information from UEs is received by the HPN, the HPN will help those UEs with unsatisfied QoS in D2D mode access the C-RAN and the controller will activate all the processors. Next, this interaction is stored in the replay memory of the controller containing the state transition, the action, and the negative of system power consumption which is the reward. After several interactions, the controller will update DQN by training over a batch of interaction data randomly sampled from the replay memory, intending to minimize the mean-squared-error between the target Q values and the predicted Q values of DQN. In addition, every larger period, the controller will set the weights of DQN to the target DQN.

In addition to the proposal in [13], researchers have made some enhancements on DRL subsequently. To more effectively reuse the experienced transitions in the replay memory, prioritized replay is proposed. Moreover, double DRL is introduced to overcome the optimistic Q-value estimation involved in the calculation of the target value, while dueling DRL is proposed to effectively learn in the situation where the state value should be more cared about. Furthermore, DRL with deep deterministic policy gradient is introduced to address the continuous control problem. All these new DRL approaches take the advantage of the ideas of replay memory and target DQN in [13], and their specifications can be referred to [38]. Although only the proposal in [13] is adopted for our communication mode selection and resource management in this paper, these advances can be utilized as well, which does not affect the core idea and the main conclusions of the paper.

### V. SIMULATION RESULTS AND ANALYSIS

The simulation scenario is illustrated in Fig. 2 where the distance between each pair of RRHs is 800 m, and four UEs are randomly distributed within a disk area of radius 100 m whose center is the same as that of the RRHs. Each UE has a corresponding potential D2D transmitter that is randomly located within the distance of 20 m away from the UE. Each RRH is equipped with two antennas, and each UE is equipped with one antenna. The channel coefficient of each UE-antenna link consists of the fading related to distance modeled by  $distance^{-2}$ , shadow fading of 8 dB, and small scale fading



**Algorithm 2** DRL based communication mode selection and resource management

1: **Stage 1:**

Randomly initialize a deep neural network as DQN with parameters  $\mathbf{w}$  and make a copy of it to construct the target DQN with parameters  $\hat{\mathbf{w}} = \mathbf{w}$ . Then, the controller randomly selects actions for a period of time to store enough interaction samples into the replay memory, each of which consists of the state transition, the action, and reward.

2: **Stage 2:**

**For** epoch  $e = 0, 1, \dots, E - 1$ :

Initialize the beginning state  $s_0$ .

**For** decision step  $t = 0, 1, \dots, T - 1$ :

Generate a random number  $x$  between 0 and 1.

**If**  $x \leq \epsilon$ :

The controller randomly selects an action.

**Else:**

The controller selects the action  $a_t$  as  $a_t = \arg \max_{a \in \mathcal{A}} Q(s_t, a, \mathbf{w})$ .

**If end.**

The system state  $s_t$  transits to  $s_{t+1}$  according to the executed action  $a_t$  and the cache state transition matrix.

Optimize the precoding for UEs in C-RAN mode by Algorithm 1.

**If** any UE reports a QoS violation to the HPN via the control channel, the HPN delivers the message to the controller via backhaul and the controller then executes the protecting operation as specified in Subsection B of Section III.

**If end.**

The controller stores the reward  $U_t$  which is the negative of the system power consumption together with  $s_t$ ,  $s_{t+1}$ , and  $a_t$  as an interaction sample into the replay memory. When the capacity of the replay memory is full, the earliest sample is abandoned.

**If** the remainder when  $t + 1$  is divided by  $T'$  is 0:

Randomly fetch a mini-batch of interaction samples from the replay memory, and perform a single gradient update on  $\left(r_t + \hat{Q}(s_{t+1}, a_t, \hat{\mathbf{w}}) - Q(s_t, a_t, \mathbf{w})\right)^2$  with respect to  $\mathbf{w}$ .

**If end.**

Periodically set the value of parameters  $\mathbf{w}$  to  $\hat{\mathbf{w}}$ .

**For end.**

**For end.**

modeled by  $\mathcal{CN}(0, 1)$ , while the channel coefficients among UEs are only related to distance. The maximum transmission power of each RRH is set to 1.5 W, and the constant transmission power of each D2D transmitter is set to 100 mW. The QoS requirement of each UE is 5 dB. There are six processors with heterogeneous power consumptions and computing capabilities. The power consumptions corresponding with these six processors are 21.6 W, 6.4 W, 5 W, 8 W, 12.5 W, and 12.5 W, and their corresponding computing capabilities are 6 MOPTS, 4 MOPTS, 1 MOPTS, 2 MOPTS, 5 MOPTS, and 5 MOPTS.

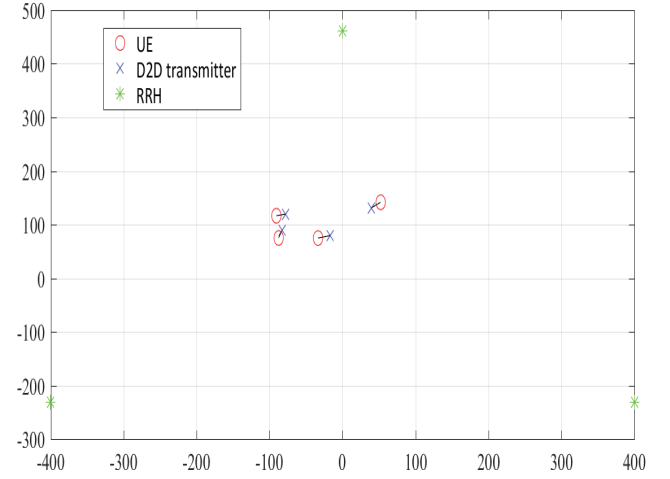


Fig. 2. The simulation scenario.

TABLE I  
SIMULATION PARAMETERS

Parameter	Value	Parameter	Value
The learning rate of Adam optimizer	0.0001	RRH power efficiency	$\frac{1}{40}$
The capacity of replay memory	5000	UE efficiency power	$\frac{1}{20}$
The number of steps to update target DQN	480	Discounted factor	0.99
The number of steps to update DQN	3	Noise	$10^{-13}$ W
The number of steps for $\epsilon$ linearly annealing from 1 to 0.01	3000	Fronthaul transmission power for each UE	5 W
Batch size for each DQN update	32	The initial steps to populate replay memory by random action selection	1000

It is assumed that  $Pr_{True, True} = Pr_{False, True} = \rho_m$  for UE  $m$ , where  $\rho_m$  can be explained as caching service capability of UE  $m$ 's paired D2D transmitter. The adopted DQN is a dense NN constructed by an input layer, two hidden layers, and an output layer. The number of neurons in the input layer is 14, while that in the output layer is 96. There are 24 neurons in each hidden layer, and ReLu is utilized as the activation function. All other parameters in the simulation are listed in Table I.

#### A. The Impacts of Learning Parameters

In this subsection, we investigate the impacts of learning rate and batch size on the performance of our proposal by training DRL with 32000 epochs. The initial state for each epoch in this section is that all the UEs operate in C-RAN mode with all processors turning on, and the cache state at each D2D transmitter is **False**. From Fig. 3, discounted and



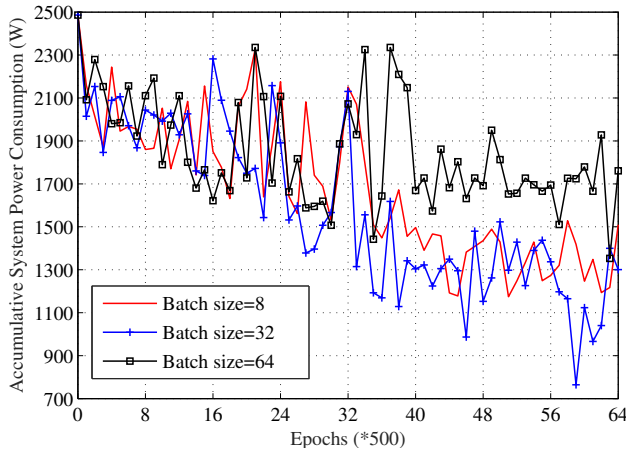


Fig. 3. The evolution of discounted accumulative system power consumption under different batch sizes.

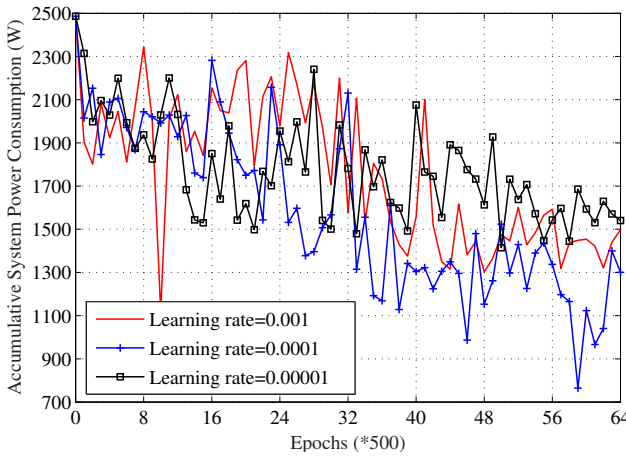


Fig. 4. The evolution of discounted accumulative system power consumption under different learning rates.

accumulative system power consumption is evaluated under different batch sizes with  $\rho_m = 0.9, \forall m$ . It can be seen that the performance when batch size is equal to 32 is the best, whose possible reason can be explained as follows. With a small batch size, the gradient is only a very rough approximation of the true gradient, and hence long time can be needed to achieve a good policy. On the contrary, if the batch size is too large, although the calculated gradient is more accurate, there is a chance that the learning process is trapped in local optimum. Under batch size of 32, simulation is conducted to select an appropriate learning rate as shown in Fig. 4. It can be observed that using a too small learning rate 0.00001, the learning process of DRL is slow, while a larger learning rate 0.001 will result in local optimum. Hence, we select the learning rate as 0.0001.

### B. The Impact of Edge Caching Service Capability

To demonstrate the influence of edge caching on system performance, we let  $\rho_m = \rho, \forall m$ , and vary the value of  $\rho$ . Fig. 5 shows the evolution of long term system power consumption under different  $\rho$ . It can be seen that a smaller  $\rho$  leads to more system power consumption. This is because when edge caches

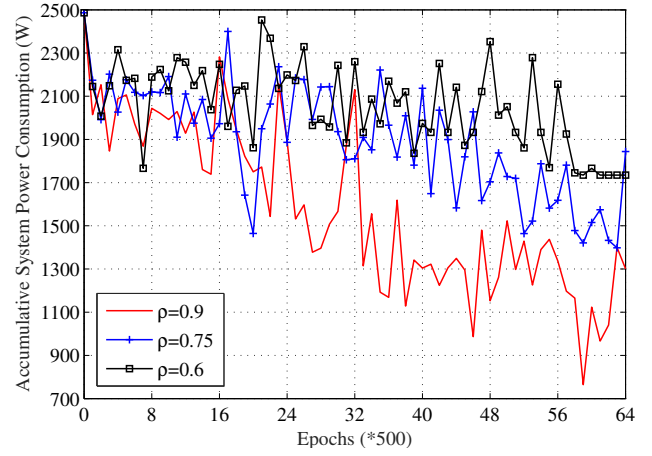


Fig. 5. The evolution of discounted accumulative system power consumption under different edge caching service capability.

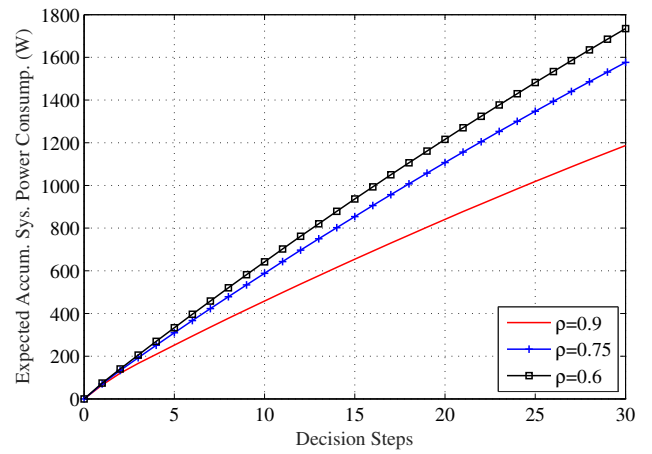


Fig. 6. The expected discounted accumulative system power consumption under different edge caching service capability.

have poorer service capability, more UEs need to be served by RRHs, which thus causes larger processor and fronthaul power consumption. In addition, Fig. 6 is drawn to intuitively show the expectation of long term system performance. The expected performance for each  $\rho$  is estimated by using the corresponding model trained in Fig. 5 to perform tests over 10000 epochs and then taking the average.

### C. The Effectiveness of Integrating Transfer Learning

To help the DRL model quickly adaptive to new environment where the cache state transition matrix at each D2D transmitter changes, transfer learning can be adopted, which is expected to accelerate the learning process by transferring the knowledge learned in a source task to a different but similar task. Since the learned knowledge of the DRL is stored in the form of connection weights of the DQN, we propose to set the weights of a well-trained DRL model to another new DRL model to be trained to avoid training from scratch. To verify this idea, the weights of the DRL model that is trained when  $\rho_m = 0.9, \forall m$ , are used for the weight initialization of the DRL model to be trained in two different environments with  $\rho_m = 0.75, \forall m$ , and  $\rho_m = 0.6, \forall m$ ,

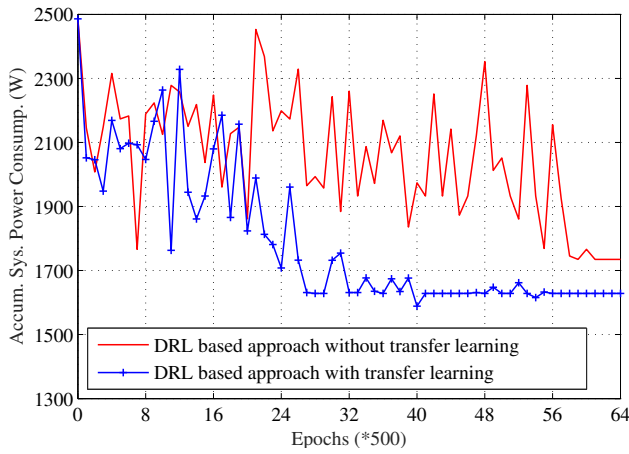


Fig. 7. The evolution of discounted accumulative system power consumption with transfer learning when  $\rho_m = 0.6$ , for all  $m$ .

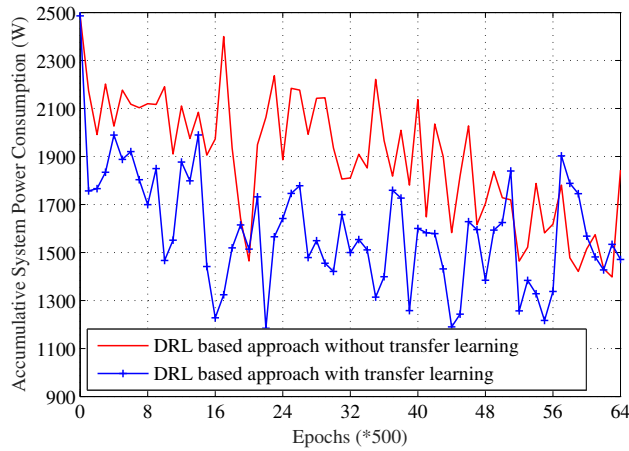


Fig. 8. The evolution of discounted accumulative system power consumption with transfer learning when  $\rho_m = 0.75$ , for all  $m$ .

respectively. By the results shown in Fig. 7 and Fig. 8, it is observed that transfer learning can effectively help DRL achieve performance similar to that achieved by training from scratch but with much less training time. Nevertheless, transfer learning can lead to negative guidance on the target task when the similarity between the source task and the target task is low [39].

#### D. Performance with Other Baselines

To verify the superiority of our proposal, the following baseline schemes are adopted in our simulation study:

- **D2D mode always:** In this scheme, the controller always progressively makes UEs operate in D2D mode and turns off all the processors.
- **DRL based, C-RAN mode only:** In this scheme, all the UEs operate in C-RAN mode, and the controller uses DRL to control the on-off states of processors only.
- **Q-learning based control:** In this scheme, the controller controls the UE communication modes and processors' states using the iterative Q-learning based on equation (18).

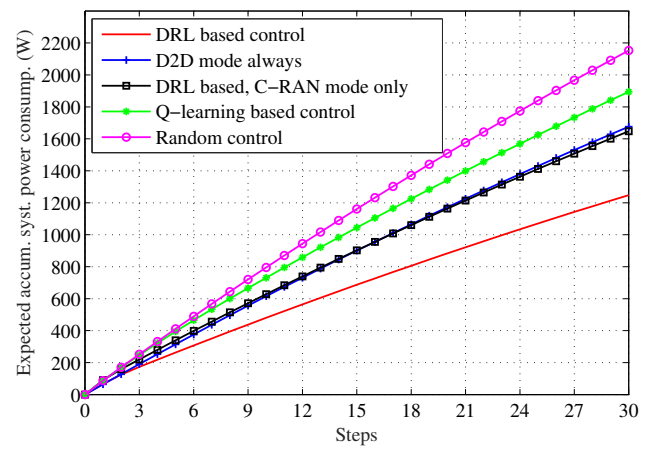


Fig. 9. Performance comparison with benchmark schemes.

- **Random control:** In this scheme, the controller selects each action with equal probability.

Note that in the above comparison baselines, after communication mode selection and processor state control is finished, precoding is optimized using Algorithm 1 if needed, and the protecting operation still applies to always guarantee the QoS of UEs. The comparison result is illustrated in Fig. 9, where a more general heterogeneous caching service capability at each D2D transmitter is considered. Specifically, we set  $\rho_1 = 0.5$ ,  $\rho_2 = 0.9$ ,  $\rho_3 = 0.9$ , and  $\rho_4 = 0.5$ . It can be found that our proposal performs the best, which shows its effectiveness on network control facing with dynamic and complex wireless environment. Specifically, due to the cache state dynamics and the interference among active D2D links, the D2D mode always scheme can lead to more frequent D2D communication failure compared with our proposal and hence more frequent protecting operations. While for the DRL based, C-RAN mode only scheme, although it does not suffer from the dynamic environment since all the UEs access RRHs, delivering all the traffic via RRH transmission will induce high fronthaul and processor power consumption. Moreover, compared with Q-learning, since replay memory helps DRL review the historical interactions and DQN has the capability of generalizing learned knowledge to new situations, our proposal therefore achieves better performance with the same number of interactions with the environment.

#### VI. CONCLUSION

In this article, a deep reinforcement learning (DRL) based approach has been developed for a fog radio access network (F-RAN) to minimize the long-term system power consumption under the dynamics of edge caching states. Specifically, the network controller can make a quick and intelligent decision on the user equipment (UE) communication modes and processors' on-off states given the current system state using the well trained DRL model, and the precoding for UEs in cloud RAN mode is then optimized under per UE quality of service constraints, per-RRH transmission power constraints, and the computing capability constraint in the cloud based on an iterative algorithm. By simulations, the impacts of learning

rate and batch size have been shown. Moreover, the impact of edge caching service capability on system power consumption has been demonstrated, and the superiority of DRL based approach compared with other baselines is significant. Finally, transfer learning has been integrated with DRL, which can reach performance similar to the case without transfer learning but needs much less interactions with the environment. In the future, it is interesting to incorporate power control of device-to-device UEs, subchannel allocation, as well as fronthaul resource allocation into DRL based resource management to achieve better F-RAN performance and make the system model more practical.

## REFERENCES

- [1] M. Peng, S. Yan, K. Zhang, and C. Wang, "Fog computing based radio access networks: Issues and challenges," *IEEE Netw.*, vol. 30, no. 4, pp. 46–53, Jul. 2016.
- [2] M. Chiang and T. Zhang, "Fog and IoT: An overview of research opportunities," *IEEE Internet Things J.*, vol. 3, no. 6, pp. 854–864, Dec. 2016.
- [3] P. Verma and S. Sood, "Fog assisted-IoT enabled patient health monitoring in smart homes," *IEEE Internet Things J.*, vol. 5, no. 3, pp. 1789–1796, Jun. 2018.
- [4] A. Yousefpour, G. Ishigaki, R. Gour, and J. P. Jue, "On reducing IoT service delay via fog offloading," *IEEE Internet Things J.*, vol. 5, no. 2, pp. 998–1010, Apr. 2018.
- [5] J. He *et al.*, "Multitier fog computing with large-scale IoT data analytics for smart cities," *IEEE Internet Things J.*, vol. 5, no. 2, pp. 677–686, Apr. 2018.
- [6] M. Peng, Y. Li, T. Quek, and C. Wang, "Device-to-device underlaid cellular networks under rician fading channels," *IEEE Trans. Wireless Commun.*, vol. 13, no. 8, pp. 4247–4259, Aug. 2014.
- [7] M. Peng, Y. Wang, T. Dang, and Z. Yan, "Cost-efficient resource allocation in cloud radio access networks with heterogeneous fronthaul expenditures," *IEEE Trans. Wireless Commun.*, vol. 16, no. 7, pp. 4626–4638, Jul. 2017.
- [8] J. Kang, O. Simeone, J. Kang, and S. Shamai, "Joint optimization of cloud and edge processing for fog radio access networks," *IEEE Wireless Commun.*, vol. 15, no. 11, pp. 7621–7632, Nov. 2016.
- [9] M. A. Maddah-Ali and U. Niesen, "Cache-aided interference channels," in *Proceedings of ISIT*, Hongkong, China, Jun. 2015, pp. 809–813.
- [10] G. Yu *et al.*, "Joint mode selection and resource allocation for device-to-device communications," *IEEE Trans. Commun.*, vol. 62, no. 11, pp. 3814–3824, Nov. 2014.
- [11] X. Wang, X. Wang, and S. Mao, "RF sensing for Internet of Things: A general deep learning framework," *IEEE Communications*, to appear.
- [12] X. Wang, L. Gao, S. Mao, and S. Pandey, "CSI-based fingerprinting for indoor localization: A deep learning approach," *IEEE Trans. Veh. Tech.*, vol. 66, no. 1, pp. 763–776, Jan. 2017.
- [13] V. Mnih *et al.*, "Human-level control through deep reinforcement learning," *Nature*, vol. 518, no. 7540, pp. 529–533, Feb. 2015.
- [14] H. Sun *et al.*, "Learning to optimize: Training deep neural networks for wireless resource management," arXiv:1705.09412v2, Oct. 2017, accessed on Apr. 15, 2018.
- [15] K. Chavez, H. Ong, and A. Hong, "Distributed deep Q-learning," arXiv:1508.04186, Oct. 2015, accessed on Apr. 15, 2018.
- [16] M. Peng, Y. Yu, H. Xiang, and H. V. Poor, "Energy-efficient resource allocation optimization for multimedia heterogeneous cloud radio access networks," *IEEE Trans. Multimedia*, vol. 18, no. 5, pp. 879–892, May 2016.
- [17] X. Peng, Y. Shi, J. Zhang, and K. B. Letaief, "Layered group sparse beamforming for cache-enabled green wireless networks," *IEEE Trans. Commun.*, vol. 65, no. 12, pp. 5589–5603, Dec. 2017.
- [18] X. Yang, J. Zheng, Z. Fei, and B. Li, "Optimal file dissemination and beamforming for cache-enabled C-RANs," *IEEE Access*, vol. 6, pp. 6390–6399, Nov. 2017.
- [19] M. Mukherjee, L. Shu, and D. Wang, "Survey of fog computing: Fundamental, network applications, and research challenges," *IEEE Commun. Surveys Tuts.*, Mar. 2018, doi: 10.1109/COMST.2018.2814571, submitted for publication.
- [20] H. Xiang, M. Peng, Y. Cheng, and H. Chen, "Joint mode selection and resource allocation for downlink fog radio access networks supported D2D," in *Proc. QSHINE'15*, Taipei, China, Aug. 2015, pp. 177–182.
- [21] M. Peng, K. Zhang, J. Jiang, J. Wang, and W. Wang, "Energy-efficient resource assignment and power allocation in heterogeneous cloud radio access networks," *IEEE Trans. Veh. Technol.*, vol. 64, no. 11, pp. 5275–5287, Nov. 2015.
- [22] S. Yan, M. Peng, M. Abana, and W. Wang, "An evolutionary game for user access mode selection in fog radio access networks," *IEEE Access*, vol. 5, Jan. 2017, pp. 2200–2210.
- [23] Y. He *et al.*, "Deep reinforcement learning-based optimization for cache-enabled opportunistic interference alignment wireless networks," *IEEE Trans. Veh. Tech.*, vol. 66, no. 11, pp. 10433–10445, Nov. 2017.
- [24] G. Cao, Z. Lu, X. Wen, T. Lei, and Z. Hu, "AIF: An artificial intelligence framework for smart wireless network management," *IEEE Commun. Lett.*, vol. 22, no. 2, pp. 400–403, Feb. 2018.
- [25] Z. Xu, Y. Wang, J. Tang, J. Wang, and M. Gursoy, "A deep reinforcement learning based framework for power-efficient resource allocation in cloud RANs," in *Proceedings of ICC*, Paris, France, May 2017, pp. 1–6.
- [26] C. Zhong, M. Gursoy, and S. Velipasalar, "A deep reinforcement learning-based framework for content caching," arXiv:1712.08132v1, Dec. 2017, accessed on Apr. 15, 2018.
- [27] Y. Liao, L. Song, Y. Li, and Y. Zhang, "How much computing capability is enough to run a cloud radio access network?" *IEEE Commun. Lett.*, vol. 21, no. 1, pp. 104–107, Jan. 2017.
- [28] D. Wu, L. Zhou, Y. Cai, H. Chao, and Y. Qian, "Physical-social-aware D2D content sharing networks: A provider-demander matching game," *IEEE Trans. Veh. Tech.*, Apr. 2018, doi: 10.1109/TVT.2018.2825366, submitted for publication.
- [29] M. Peng, Y. Li, J. Jiang, J. Li, and C. Wang, "Heterogeneous cloud radio access networks: A new perspective for enhancing spectral and energy efficiencies," *IEEE Wireless Commun.*, vol. 21, no. 6, pp. 126–135, Dec. 2014.
- [30] J. Tang, W. P. Tay, T. Q. S. Quek, and B. Liang, "System cost minimization in cloud RAN with limited fronthaul capacity," *IEEE Trans. Wireless Commun.*, vol. 16, no. 5, pp. 3371–3384, May 2017.
- [31] R. Sutton and A. Barto, *Reinforcement learning: An introduction*, Cambridge, MA: MIT Press, 1998.
- [32] B. Dai and W. Yu, "Sparse beamforming and user-centric clustering for downlink cloud radio access network," *IEEE Access*, vol. 2, pp. 1326–1339, Oct. 2014.
- [33] M. Peng, X. Xie, Q. Hu, J. Zhang, and H. V. Poor, "Contract-based interference coordination in heterogeneous cloud radio access networks," *IEEE J. Sel. Areas Commun.*, vol. 33, no. 6, pp. 1140–1153, Jun. 2015.
- [34] A. G. Gotsis and A. Alexiou, "Spatial resources optimization in distributed MIMO networks with limited data sharing," in *Globecom Workshop*, Atlanta, USA, Dec. 2013, pp. 789–794.
- [35] Y. Shi, J. Zhang, and K. B. Letaief, "Group sparse beamforming for green cloud radio access networks," in *Proceedings of Globecom*, Atlanta, USA, Dec. 2013, pp. 4662–4667.
- [36] E. Candes, M. Wakin, and S. Boyd, "Enhancing sparsity by reweighted  $l_1$  minimization," *Journal of Fourier Analysis and Applications*, vol. 14, no. 5, pp. 877–905, Oct. 2008.
- [37] M. Simsek *et al.*, "Learning based frequency- and time-domain inter-cell interference coordination in HetNets," *IEEE Trans. Veh. Tech.*, vol. 64, no. 10, pp. 4589–4602, Oct. 2015.
- [38] Y. Li, "Deep reinforcement learning: An overview," arXiv:1701.07274v5, Sep. 2017, accessed on Apr. 15, 2018.
- [39] R. Li, Z. Zhao, X. Chen, J. Palicot, and H. Zhang, "TACT: A transfer actor-critic learning framework for energy saving in cellular radio access networks," *IEEE Trans. Wireless Commun.*, vol. 13, no. 4, pp. 2000–2011, Apr. 2014.



**Yaohua Sun** (S'18) received the bachelor's degree (with first class Hons.) in telecommunications engineering (with management) from Beijing University of Posts and Telecommunications (BUPT), Beijing, China, in 2014. He is a Ph.D. student at the Key Laboratory of Universal Wireless Communications (Ministry of Education), BUPT. His research interests include game theory, resource management, deep reinforcement learning, network slicing, and fog radio access networks. He was the recipient of the National Scholarship in 2011 and 2017, and he

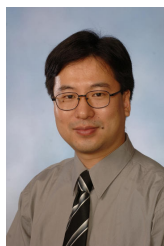
has been reviewers for *IEEE Transactions on Communications*, *Journal on Selected Areas in Communications*, *IEEE Communications Magazine*, *IEEE Communications Letters*, and *IEEE Internet of Things Journal*.



**Mugen Peng** (M'05, SM'11) received the Ph.D. degree in communication and information systems from the Beijing University of Posts and Telecommunications (BUPT), Beijing, China, in 2005. Afterward, he joined BUPT, where he has been a Full Professor with the School of Information and Communication Engineering since 2012. During 2014 he was also an academic visiting fellow at Princeton University, USA. He leads a Research Group focusing on wireless transmission and networking technologies in BUPT. He has authored and co-

authored over 90 refereed IEEE journal papers and over 300 conference proceeding papers. His main research areas include wireless communication theory, radio signal processing, cooperative communication, self-organization networking, heterogeneous networking, cloud communication, and Internet of Things.

Dr. Peng was a recipient of the 2018 Heinrich Hertz Prize Paper Award, the 2014 IEEE ComSoc AP Outstanding Young Researcher Award, and the Best Paper Award in the JCN 2016, IEEE WCNC 2015, IEEE GameNets 2014, IEEE CIT 2014, ICCTA 2011, IC-BNMT 2010, and IET CCWMC 2009. He is currently or have been on the Editorial/Associate Editorial Board of the *IEEE Communications Magazine*, *IEEE ACCESS*, *IEEE Internet of Things Journal*, *IET Communications*, and *China Communications*. He received the First Grade Award of Technological Invention Award three times in China.



**Shiwen Mao** (S'99-M'04-SM'09) received Ph.D. in electrical and computer engineering from Polytechnic University, Brooklyn, NY. He is the Samuel Ginn Distinguished Professor, and Director of the Wireless Engineering Research and Education Center at Auburn University, Auburn, AL. His research interests include 5G and IoT. He is a Distinguished Lecturer of the IEEE Vehicular Technology Society for 2014-2018 and a distinguished Speaker of the society for 2018-2021. He is on the Editorial Board of IEEE Transactions on Mobile Computing, IEEE

Transactions on Multimedia, IEEE Internet of Things Journal, IEEE Multimedia, and ACM GetMobile, among others. He received the 2017 IEEE ComSoc ITC Outstanding Service Award, the 2015 IEEE ComSoC TC-CSR Distinguished Service Award, the 2013 IEEE ComSoc MMTC Outstanding Leadership Award, and the NSF CAREER Award in 2010. He is a co-recipient of the Best Paper Awards from IEEE GLOBECOM 2016, IEEE GLOBECOM 2015, IEEE WCNC 2015, and IEEE ICC 2013, the Best Demo Award from IEEE SECON 2017, the IEEE ComSoc MMTC 2017 Best Conference Paper Award, and the 2004 IEEE Communications Society Leonard G. Abraham Prize in the Field of Communications Systems.