

# Serum-Free Manufacturing of Mesenchymal Stem Cell Tissue Rings Using Human Induced Pluripotent Stem Cells

Tackla S. Winston<sup>1,2§</sup>, Kantaphon Suddhapas<sup>1,2§</sup>, Chenyan Wang<sup>1,2</sup>, Rafael Ramos<sup>1,2</sup>, Pranav Soman<sup>1,2</sup>, Zhen Ma<sup>1,2#</sup>

<sup>1</sup>Department of Biomedical & Chemical Engineering, Syracuse University, Syracuse NY 13244 USA

<sup>2</sup>Syracuse Biomaterials Institute, Syracuse University, Syracuse NY 13244 USA

<sup>§</sup>These two authors equally contribute to this work.

<sup>#</sup>Correspondance: Dr. Zhen Ma, [zma112@syr.edu](mailto:zma112@syr.edu)

## ABSTRACT:

Combination of stem cell technology and 3D biofabrication approaches provide physiological similarity to *in vivo* tissues, and the capability of repairing and regenerating damaged human tissues. Mesenchymal stem cells (**MSCs**) have been widely used for regenerative medicine applications because of its immunosuppressive properties and multipotent potentials. To obtain large amount of high-quality MSCs without patient donation and invasive procedures, we differentiated MSCs from human induced pluripotent stem cells (**hiPSC-MSCs**) using serum-free E6 media supplemented with only one growth factor (bFGF) and two small molecules (SB431542 and CHIR99021). The differentiated cells showed high expression of common MSC-specific surface markers (CD90, CD73, CD105, CD144, and CD146), and a high potency for osteogenic and chondrogenic differentiation. With these cells, we have been able to manufacture MSC tissue rings with high consistency and robustness in pluronic-coated reusable PDMS devices. The MSC tissue rings were characterized based on inner diameter and outer ring diameter and observed cell-type dependent tissue contraction induced by the cell-matrix interaction. Our approach of simplified hiPSC-MSC differentiation, modular fabrication procedure, and serum-free culture conditions has great potential for scalable manufacturing of MSC tissue rings for different regenerative medicine applications.

**KEYWORDS:** Human induced pluripotent stem cells (hiPSCs); Mesenchymal stem cells (MSCs); Neural crest stem cells (NCSCs); Tissue rings; Tissue biomanufacturing.

## INTRODUCTION

Tissue engineering has offered a promising treatment option for tissue repair and regeneration, as it is intended to produce a biomimetic construct similar to the native tissue and to restore function<sup>1</sup>. Specifically, ring-shaped tissue constructs have been engineered for vascular and trachea tissue engineering purposes for better structural mimicry. Based on the self-assembly of smooth muscle cells, engineered vascular tissue rings have been fabricated in agarose wells with SmGM-2 media supplemented with 20% FBS, PDGF and TGF- $\beta$ 1 growth factors<sup>2</sup>. In addition, hybrid fibroblast-MSC tissue rings have been fabricated with collagen scaffolds and fused to form a tubular structure for trachea tissue engineering<sup>3</sup>. Tissue rings offer even force distribution across the constructs that circumvent the concentration of forces in the center often observed in conventional sheet-shaped tissue constructs. Ring shapes are also easier to handle and suture to the damaged native tissues with standard clinical procedures.

Current tissue ring engineering still heavily relies on primary cells, especially MSCs from bone marrow or adipose tissues<sup>4</sup>. Harvesting primary MSCs requires an invasive and painful procedure that yields only about 0.001% - 0.01% from bone marrow and about 0.05% from liposuction<sup>5,6</sup>. In addition, MSCs show reduction in both quantity and quality from older individuals, who are the primary population requiring autologous MSCs for disease treatment. Moreover, isolated MSCs have shown limited differentiation potential and low viability after several passages<sup>7,8</sup>. To overcome these limitations, current MSC research has been steered towards the derivation of MSCs from human induced pluripotent stem cells (**hiPSC-MSCs**). Early attempts for hiPSC-MSC differentiation involved either murine feeder layer or embryoid body formation<sup>9-13</sup>. More recent approaches used cocktails of growth factors and small molecules to generate hiPSC-MSCs in a more controlled way<sup>9</sup>. However, most methods are still depended on a serum contained culture media. High content of xenogeneic proteins in animal serum that might provoke an immune reaction in patients is one of the primary concerns for tissue engineering and cell therapeutic applications. High degree of batch-to-batch variation of serum production would also cause inconsistency in the generation of quality-assured cells, which makes standardization of cell and tissue manufacturing process very difficult.

In this study, we developed a simplified serum-free MSC differentiation protocol using two small molecules, SB431542 and CHIR99021, which inhibits TGF- $\beta$  and GSK-3 $\beta$  pathways respectively. Our differentiation protocol generated defined MSC population by controlling their developmental trajectory through intermediate neural crest stem cells (**NCSCs**). We successfully differentiated hiPSC-MSCs and used these cells to create mechanically viable tissue rings. Based on the morphological features of these tissue rings, we investigated how different fabrication and culture conditions would affect the ring quality. Taking advantage of a robust fabrication procedure and serum-free culture condition, we are able to fabricate the MSC tissue ring with high consistency and still maintain the multipotent MSC characteristics.

## **MATERIALS AND METHODS**

### ***hiPSC-MSC Differentiation and Maintenance***

The hiPSC line (WTC) was established in Bruce R. Conklin lab at Gladstone Institute of Cardiovascular Disease by reprogramming from adult skin fibroblasts from an Asian male. The hiPSCs were maintained on 6-well plates coated with growth factor reduced Geltrex (Life Technologies, Ca# A1413302) in Essential 8 (E8) media (Life Technologies, Ca# A1517001). Geltrex diluted for thin coating was prepared by thawing 5 mL of original Geltrex gel into 495 mL cold DMEM/F12 (Life Technologies, Ca# 11320033). hiPSCs were plated at a density of  $2.5 \times 10^4$  cells/cm<sup>2</sup> onto the Geltrex coated 6-well plates in E8 with 10  $\mu$ M Y-27632 (Biovision, Ca# 1784). hiPSC were maintained in E8 for two additional days, and then induced for differentiation at "Day 0" with differentiation media that consists of 10 ng/mL bFGF (R&D Systems Ca# 233-FB), 4  $\mu$ M SB431542 (Stemgent, Ca# 04-0010-10) and 4  $\mu$ M WNT agonist CHIR99021 (CHIR), (Stemgent, 04-2004) in Essential 6 (E6) media (Life Technologies, A1516401). Differentiation media was changed daily for the next 5 days. On day 6, the differentiated NCSCs were plated as '*Multipotent Passage 0*' (**MP0**) on a Geltrex coated 6-well plate in a serum-free MSC culture media (CTS StemPro MSC SFM), (Life Technologies, A1033201) at a density of  $4.0 \times 10^4$  cells/cm<sup>2</sup>. Every 6 days, the cells are re-plated at a density of  $2.0 \times 10^4$  cells/cm<sup>2</sup> for MP1, and then  $1.0 \times 10^4$  cells/cm<sup>2</sup> for MP2 – MP10. Starting from MP2, the surface coating switched from Geltrex to 1% Gelatin to support hiPSC-MSCs adhesion and growth. MP5 – MP10 hiPSC-MSCs were used to generate the tissue rings.

### ***Flow Cytometry***

The hiPSC-MSC differentiation was characterized using flow cytometry. Cells were singularized with 0.25% trypsin for 5 minutes and quenched with serum-free media. After washing with DPBS three times, cells were fixed with 4% (vol/vol) paraformaldehyde (PFA) for 15 minutes and incubated with fluorescent conjugated antibodies against cell surface markers: CD105, CD90, CD146, CD45 and CD73 (human MSC multi-Color flow kit, R&D Systems Ca# FMC002) for 45 minutes each in Wash/Permeabilization buffer (R&D Systems Ca# FC005). The labeled cells were analyzed by BD Accuri C6™ flow cytometer in Syracuse University Flow Core.

### ***Immunocytochemistry***

Cells were fixed with 4% (vol/vol) PFA for 15 minutes and blocked with 2% BSA for 30 minutes. Cells were incubated with primary antibodies (**Supplementary Table 1**) for 2 hours at room temperature or overnight at 4°C, and then incubated with secondary antibodies for 1.5 hours at room temperature. DAPI was used to stain cell nuclei. For bright-field and epi-fluorescent microscopy, the images were taken using a Nikon Eclipse Ti microscope with Zyla 4.2 PLUS sCMOS camera.

### ***Histology***

Tissue rings were fixed with 4% PFA overnight at 4°C and dehydrated with 30% sucrose solution (Fisher Scientific, S5-500) for 3 hours. Next, tissue rings were embedded with optimal cutting temperature compound (Fisher Scientific, 50363579), frozen overnight at -80°C, and then sectioned to a thickness of 10 µm with Cyrostat (Sakura, 6203) in McDonald lab at Syracuse University. H&E staining was performed with standard protocol. Tissue rings were rehydrated by alcohol with gradient concentration and counterstained with hematoxylin (Leica, 3801560) and eosin (Leica, 3801600). After dehydration with alcohol, tissue rings were cleared in xylene (Sigma-Aldrich, XX0060-4) and mounted with Permount (Fisher Scientific, SP15-100) on glass slides. Images were taken with Leica ICC50 microscope.

### ***Tri-lineage Differentiation***

The hiPSC-MSC tri-lineage differentiation and characterization were performed using human MSC functional identification kit (R&D System, SC006). To induce osteogenic differentiation, hiPSC-MSCs were plated on sterilized coverslip in a 24-well plate at  $4.2 \times 10^3$  cells/cm<sup>2</sup> and allowed to attach overnight or until 50 - 70% confluent. Osteogenic medium consisting of  $\alpha$ MEM (Life technologies, Ca# 12561056) and osteogenic supplement was replaced twice weekly. After 21 days, cells were incubated with anti-osteocalcin primary antibody overnight at 4°C and then with secondary antibody. For adipogenic induction, hiPSC-MSCs were plated on sterilized coverslip in a 24-well plate at  $2.1 \times 10^4$  cells/cm<sup>2</sup> and allowed to grow until 100% confluent. Adipogenic medium consisting of  $\alpha$ MEM and adipogenic supplement was replaced twice weekly. After 21 days, FABP4 was used to detect lipid droplets. To induce chondrogenesis,  $2.5 \times 10^5$  hiPSC-MSCs were transferred to a 15 mL falcon tube and pelleted by centrifugation (1000 rpm for 5 minutes). The supernatant was removed and chondrogenic differentiation medium consisting of DMEM/F-12, ITS supplement and chondrogenic supplement was changed every 3 days. After 21 days, pellets were sectioned, and stained with anti-aggrecan antibody for chondrocytes. Samples were visualized using the Nikon Eclipse Ti microscope with Zyla 4.2 PLUS sCMOS camera.

### ***Mold Fabrication***

The Acrylonitrile butadiene styrene (**ABS**) molds-negatives were designed using SolidWorks, converted into .stl files, and printed using Zortrax M200 high resolution extrusion 3D printer with 0.19mm layer thickness. These ABS molds were designed and fabricated for casting the polydimethylsiloxane (PDMS) devices, each of which had a center post (2 mm in diameter), and a trough (3 mm in width) for the formation of tissue rings. Entire device can fit in a cell culture well (21 mm in diameter) of the regular 24-well plate, which potentially offers easy handling for larger production of tissue rings. To facilitate the PDMS device removal from the ABS molds, we coated the molds with silicone spray (stoner, G0093241). PDMS base and curing agent were mixed at a ratio of 10:1 (w/w) in weighing boat and poured into the molds. The molds containing PDMS were then transferred into a desiccator, thoroughly degassed for about 3 hours to remove all bubbles and cured in an oven at 60°C overnight. The PDMS devices were then cut out using an Xacto knife from the ABS molds, rinsed in 70% ethanol for 15 minutes, and stored at room temperature.

Pluronic acid solution was used to coat PDMS devices to achieve a non-fouling surface that reduced cell adhesion to the PDMS surface. 10% Pluronic acid was made by adding 1g of Pluronic® F-127 (Sigma Aldrich, P2443) in 10 mL distilled water and dissolved in the oven at 50°C overnight. The 10% Pluronic acid was sterilized using Steriflip® Filter Unit (0.22 µm, EMD Millipore) and stored at room temperature. One day before cell seeding, the PDMS devices were rinsed with 70% ethanol and Dulbecco's phosphate-buffered saline (DPBS) (Life Technologies, Ca# 14190144,) consecutively, and then incubated with 10% Pluronic acid for 24 hours at room temperature.

### ***Tissue Ring Formation and Extraction***

hiPSC-MSCs were rinsed with DPBS, incubated with trypsin (Life Technologies, Ca# 25200056,) for 5 minutes at 37 °C, and quenched with cell culture media. The cell suspension was collected in a 15 mL tube, centrifuged to a pellet, and re-suspended in the desired cell culture media. Cell number was determined using a hemocytometer. Collagen scaffold was prepared by mixing rat tail collagen I (Life Technologies, A1048301), 1N NaOH (Sigma-Aldrich, 1091371000), distilled water, and 10X PBS (Life Technologies, AM9625) based on the manufacturer's instruction. Since collagen would rapidly gel at room temperature, other reagents were mixed in advance before adding collagen. When the cell suspension was ready, collagen I and cell suspension were added into the pre-mixed solutions to achieve different collagen density (0.5 mg/mL, 1 mg/mL and 2 mg/mL) with different total cell number (0.3 million cells and 0.6 million cells). These procedures should be completed on ice to avoid collagen being clogged inside the pre-chilled pipette tips. The cell-collagen mixture was loaded into PDMS devices, incubated at 37 °C with 5% CO<sub>2</sub> for 40 minutes, before cell culture media was filled to the top of the devices. The hiPSC-MSC tissue rings were cultured with different media, 5% serum media (DMEM supplemented with FBS), 10% serum media (DMEM supplemented with FBS), and serum-free media (CTS StemPro MSC SFM) (Life Technologies, Ca# A1033201). The media was changed every two days.

hiPSC-MSC tissue rings formed within 24 hours after cell seeding into the PDMS devices. Tissue rings could then be extracted out of the PDMS device after about 3 days or when strong enough to be gently pushed up to the top of the center posts. The morphology of tissue rings was imaged and examined using Nikon Eclipse Ti microscope with Zyla 4.2 PLUS sCMOS camera and NIS Element software. Each tissue ring was measured at least three times stochastically for inner diameter and outer ring diameter. The measurements were then averaged for each tissue ring.

## RESULTS AND DISCUSSION

We derived our MSCs from hiPSCs using chemical-defined media without any serum supplement (**Fig. S1**). We have been able to passage our hiPSC-MSCs up to MP10, and still observed MSC-like spindle morphology and high expression of MSC surface markers. We have optimized the process for fabricating hiPSC-MSC tissue rings (**Fig. 1**). We printed the ABS molds (**Fig. S2**) using the Zortrax M200 high resolution extrusion printer 3D printer with a 0.19 mm layer thickness and cast the PDMS devices with a 2 mm diameter center post. Starting from passage #5 (**MP5**), hiPSC-MSCs were used to fabricate the tissue rings by mixing with collagen scaffold in the PDMS devices coated with 10% Pluronic acid. Within 24 hours after seeding cells into the devices, cells aggregated surrounding the center post, and formed the tissue rings.

### *Derivation of Functional MSCs from hiPSCs*

The hiPSCs were first differentiated into neural crest stem cells (**NCSCs**) using E6 media supplemented with 10 ng/mL bFGF, 4  $\mu$ M CHIR and 4  $\mu$ M SB. To confirm successful NCSC differentiation, we performed the immunofluorescent staining, and showed that intermediate cells expressed NCSC markers (SOX10, FOX3D and NGFR) cultured in the differentiation medium (**Fig. S3a**). The NCSCs were then transferred into serum free MSC culture media for further differentiation into MSCs. After four passages in the serum free media, cells changed from the round-like morphology to the spindle-like morphology (**Fig. 2a**). Immunofluorescences confirmed that our hiPSC-MSCs expressed the MSC-specific surface protein markers that were commonly used to characterize primary hMSCs, such as CD90, CD73, CD105 and CD144 (**Fig. 2b**). Further analysis of the immunophenotype of the hiPSC-MSCs was performed using flow cytometry at MP4, which showed positive expression of mesenchymal markers CD73, CD90, CD105 and CD146, but low expression of the hematopoietic marker CD45 (**Fig. 2c**). We also directly seeded our hiPSC-MSCs to the cell culture dish without any protein coating. We observed the hiPSC-MSCs were able to adhere and proliferate on plain plastic. We also performed immunofluorescent staining on our hiPSC-MSCs grown on plain plastic, and found they highly expressed the markers of CD44, CD106 and CD166 (**Fig. S3b**). We also confirmed that intermediate NCSCs and hiPSC-MSCs had no expression of pluripotent markers NANOG (**Fig. S3c**).

The hiPSC-MSCs were then subjected to tri-lineage differentiation. The hiPSC-MSCs displayed robust osteogenic and chondrogenic differentiation as indicated by osteocalcin and aggrecan staining respectively (**Fig. 2d**). However, our hiPSC-MSCs showed limited adipogenic differentiation with little evidence of lipid droplet accumulation. Unlike primary bone marrow or adipose tissue derived hMSCs that is inclined to adipogenic differentiation by default, hiPSC-MSCs derived from the developmental route of NCSCs had a greater propensity to undergo osteogenic and chondrogenic differentiation rather than adipogenesis. Similar results were also reported that hiPSC-MSCs demonstrated robust differentiation into osteocytes and chondrocytes, but limited differentiation into adipocytes<sup>5</sup>.

### *Robust Tissue Ring Fabrication*

We successfully generated hiPSC-MSCs rings (0.6 million cells) at different collagen densities (0.5 mg/mL, 1 mg/mL and 2 mg/mL) and in different cell culture media (10% serum media, 5% serum media and serum-free media). Within 24 hours after extraction of hiPSC-MSC tissue ring from PDMS devices, we characterized two primary geometrical features (inner diameter and outer ring diameter) for the different conditions (**Fig. 3a**). We found that hiPSC-MSC tissue rings with 2 mg/mL collagen density had significantly smaller inner diameter than those with lower collagen density (**Fig. 3b**), indicating that high collagen content may induce tissue contraction. Similarly, the ring diameter decreased with the increase in collagen density, suggesting that collagen

increased the remodeling rate of the tissue rings (**Fig. 3c**). Tissue contraction mediated by collagen scaffold has been well studied in free-floating collagen model<sup>14,15</sup>. Fibroblast-laden collagen scaffolds were consistently observed with contraction over time, indicating that cell matrix interaction lead to the tissue remodeling process. Particularly, in our tissue ring model, we observed that high collagen density would induce fast tissue contraction after the ring was extracted from the PDMS devices.

Serum-based media remain a common standard culture condition in generating and expanding hMSCs. Previous reports on the tissue rings engineered from hMSCs and smooth muscle cells were heavily dependent on the serum-containing media. In our study, we derived our hiPSC-MSCs with a serum-free approach and explored whether we could also generate similar hiPSC-MSC tissue rings without the serum supplements. With different cell culture media, we found that hiPSC-MSC tissue rings cultured with serum-free media showed smaller inner diameter compared to serum-containing media (**Fig. 3d**), however there was no statistical difference in ring diameter among the different cell culture media (**Fig. 3e**). As far as we know, our results indicate the first-time tissue rings have been robustly produced from hiPSC-MSCs in serum-free chemical defined media.

Interestingly, the hiPSC-MSC tissue rings exhibited morphological changes after they were extracted out of the PDMS devices (**Fig. 4a**). The inner diameter decreased, and finally closed up at around day 3 after extraction, which was not seen on the tissue rings fabricated with human fibroblasts (**Fig. S1**). These results indicated that the tissue rings fabricated with different cell types exhibited different morphogenic behaviors, which might be related to the growth kinetics of the specific cell types. We found that our hiPSC-MSCs had very high proliferation rate, especially when they were cultured with serum-free media. It has been reported that interleukin (IL) 4 and 13 promoted MSC-laden collagen gel contraction<sup>16</sup>. Active secretion of cytokines and growth factors from hiPSC-MSCs would also lead to the dynamic morphological changes of ring shapes that were not observed on fibroblast tissue rings.

To increase the manufacturing efficiency, we decreased the total cell number used for each tissue ring from 0.6 million (0.6 M) to 0.3 million (0.3 M) and found no significant difference on both inner diameter and ring diameter between the two conditions (**Fig. 4b, c**). Even with a low cell number, we still found that hiPSC-MSC tissue rings turned into a circular shape after extraction out of the PDMS devices. This demonstrates an increase in the throughput of tissue ring production using minimal total cell number and shows great potential in scale-up tissue manufacturing with limited stem cell sources. We also explored the fabrication of mini tissue rings using small PDMS devices (fit in 48-well cell culture plate) and asymmetric tissue rings using the PDMS devices with off center posts (**Fig. S2**). We have been able to create and extract mini tissue rings with ~ 2 mm ring diameter (**Fig. 4d**) and asymmetric tissue rings with wider tissue on one side compared to the other side (**Fig. 4e**). This shows that the method can be used to fabricate tissue rings of different sizes and shapes with high mechanical integrity for specific applications.

### ***Chondrogenic Differentiation of hiPSC-MSC Tissue Rings***

To further characterize our hiPSC-MSC tissue rings, we performed Hematoxylin and Eosin (H&E) staining, which showed a highly cellularized tissue ring (**Fig. 5a**). Via immunohistochemical analysis, we confirmed that our hiPSC-MSCs continually maintained MSC characteristics after being engineered into a tissue ring by the expression of CD90 and CD73 (**Fig. 5b, c**). In addition, we successfully induced chondrogenic differentiation on the hiPSC-MSC tissue rings. Biomaterials and tissue engineering approaches have been studied to develop tracheal

substitutes for the treatment of narrowing or collapsing trachea. A functional trachea consists of cartilage rings capable of supporting an open windpipe. Previous studies have shown that primary hMSCs tissue rings could be differentiated into cartilaginous rings and tubes by adding TGF- $\beta$ 1 loaded microspheres for trachea tissue engineering. In our system, hiPSC-MSCs formed the ring shape 24 hours after seeding with collagen scaffold, and differentiation could be induced after Day 3. We confirmed our chondrogenic differentiation by aggrecan staining, which showed a uniform expression across the tissue rings (**Fig. 5d**). We found that the chondrogenic tissue rings could maintain the same inner diameter after removal from the PDMS devices, confirming the aggregation process of hiPSC-MSC rings and indicating that morphological changes of the ring shape were highly cell-type dependent. Our approach could potentially eliminate the need for microspheres as the carriers of additional growth factors to engineer cartilaginous rings from hiPSC-MSCs.

hiPSC-MSCs offer distinct advantages over primary MSCs, such as consistent production in large quantities, improvement of differentiation potentials, and relative homogeneous cell populations, which are amenable to scale-up manufacturing process for “off-shelf” or “on-demand” cell products<sup>17–19</sup>. Hence, our simplified protocol of hiPSC-MSC differentiation could be essential for biomanufacturing applications. On the other hand, engineering and manufacturing biologically functional tissues still faces great challenges in scalable production, quality maintenance and tissue transportation to patients, especially for complex tissue constructs. Our ring-shaped design offers a structured but simple tissue construct that could potentially be used in most commercially available bioreactors, thus our method could be scaled up to a clinically effective, reproducible, and safe process. By combining with robotics, mold fabrication and tissue assembly could be achieved in a more controlled and automated fashion, towards the goal of tissue manufacturing for regenerative medicine.

## DISCUSSIONS

Over the past decade, the protocols of direct differentiation of MSC from ESCs or hiPSCs have been continuously improved. Earliest attempt on MSC differentiation was completed on feeder cells by directly seeding the ESCs in the medium containing 20% FBS that allowed the cells to spontaneously differentiate from pluripotent state to multipotent state<sup>20</sup>. After 40 days, cell population only resulted in around 5% CD73+ MSC-like cells, which were then sorted based on CD73+ surface marker<sup>20</sup>. The cells were then expanded for 7-14 days with numerous passages till cells showed a spindle-like morphology<sup>20</sup>. Few years later, embryonic bodies (EB)-based approach was developed for MSC differentiation by formation of EBs on a gelatin coated plate with 10% FBS supplemented medium<sup>21,22</sup>. Outgrowing cells that migrated out of EBs were collected and cultured for 2 weeks, till they showed a spindle-like morphology. These cells showed high expression of MSC surface markers, such as CD90, CD73, CD105 and CD166, but low expression of hematopoietic stem cells (HSCs) surface markers, such as CD34, CD45 and CD14. These cells were able to achieve adipogenic, osteogenic and chondrogenic differentiation. By reducing the serum content, knockout serum replacement was used with supplement of bFGF to differentiate monolayer hiPSCs into MSCs<sup>23</sup>. The cells had high expression of CD29+, CD44+, CD73+, CD90+ and CD105+ surface markers, and low expression of CD11b-, CD14-, CD31- and CD34- surface markers. These hiPSC-MSCs showed efficient osteogenic and chondrogenic differentiation, but very limited adipogenic differentiation compared to bone marrow derived-MSCs.

The use of SB431542 for inhibiting TGF- $\beta$  signaling pathway has been widely adapted for MSC differentiation from hPSCs<sup>5,24,25</sup>. Mahmood et al<sup>24</sup> differentiated MSCs from EBs with knockout serum replacement and SB431542 in the absence of bFGF, and then maintained them in serum-contained medium (10% FBS). ESC-MSCs showed positive expression of CD44, CD73, CD146

and CD166, negative expression of CD34 and CD56, in addition to adipogenic and osteogenic differentiation, but no chondrogenic differentiation was performed. Adapting a similar protocol, Sanchez et al<sup>25</sup> differentiated MSCs from monolayer hESCs in the medium supplemented with TGF- $\beta$ 1 and SB431542. The hPSC-MSCs were sorted for CD73+/CD90+ expression and maintained with serum-containing medium (10% FBS). Trilineage differentiation showed efficient osteogenic and chondrogenic differentiation, but relatively low adipogenic differentiation. Chen et al<sup>5</sup> derived MSCs from monolayer ESCs and hiPSCs by inhibiting TGF- $\beta$  signaling pathway with SB431542 for 10 days in knockout serum medium. The hPSC-MSCs in this study like many others showed positive expression of MSC surface markers (CD73, CD90 and CD105), and negative expression of HSC surface markers (CD117, CD34 and CD45). Their hPSC-MSCs exhibited robust osteogenic and chondrogenic differentiation, whereas limited adipogenic differentiation. These were consistent with other research that has shown that primary decidual placental MSCs<sup>10</sup>, umbilical cord blood<sup>11</sup>, Wharton's jelly<sup>12,13</sup>, and fetal MSCs<sup>14,15</sup> have limited adipogenicity compared to adult bone marrow MSCs.

Recently, there has been a shift in the field of hiPSC-MSCs differentiation to better standardize the MSC differentiation process by controlling their developmental trajectory with defined intermediate cell types. The study conducted by Eto et al<sup>26</sup> derived hiPSC-MSCs based on two distinct developmental processes, mesodermal and neuroepithelial differentiation based on different combination of growth factors in serum-containing medium (mesoderm: 10% FBS plus bFGF, BMP4, Activin and LiCl; neuroepithelial: 10% FBS plus 100 nM retinoic acid). The MSCs were sorted based on PDGFR+/VEGFR2+ cells. The purified cells were characterized based on MSC surface markers and trilineage differentiation and showed no significant difference between the hiPSC-MSCs derived from two intermediate cell types.

In development, NCSCs undergo epithelial-mesenchymal transition from neuroepithelium, migrate to the mesoderm layer, and give rise to both ectodermal lineages (neural cells and pigment cells) and mesenchymal lineages (cranial bone and cartilage, primary aorta and cardiac cushions)<sup>27</sup>. All these tissue types have limited presence of adipose tissue at early development. When we differentiated NCSCs to mesenchymal derivatives, our MSCs showed a high potential to differentiate into bone, cartilage and vascular cells. It has even been hypothesized that dental pulp MSCs are probably derived from NCSCs. This motivates us to control the differentiation pathway to an intermediate cell type such as NCSCs, and thus enable us to obtain better defined MSC population compared to current existing approaches. We took the advantage of NCSC differentiation protocol developed by Menendez et al<sup>28</sup>, who used CHIR99021 in combination with SB431542 in a serum-based culture system. Hence, our new approach is able to not only derive hiPSC-MSCs under serum-free culture conditions, but also generate well-defined MSC population by controlling their developmental trajectory through NCSCs as intermediate cell type.

Among all the tissue constructs, ring-shaped tissue constructs offer several advantages over conventional sheet-shaped tissue constructs: (1) tissue rings offer even force distribution across the tissues, since the ring-shape design circumvents concentration of internal force in the center<sup>29</sup>; (2) tissue rings are easier to be handled and sutured to the damaged native tissues with standard clinical procedures<sup>30</sup>; (3) specifically for cardiovascular tissue, tissue rings could potentially be used to mimic the structural feature of vascular tissues. A stack assembly of tissue rings could be used to emulate special tissue architecture, such as vasculature and trachea, by mimicking the cross section of these tissues for better understanding their physiological and mechanical functions.

Generation of tissue rings for vascular tissue engineering has been pursued based on either smooth muscle cells (SMCs) or MSCs. Engineered vascular tissue rings were created in agarose



molds from both rat SMCs (rSMCs) and human SMCs (hSMCs) with high mechanical integrity<sup>31</sup>. By performing tensile strength testing, it was found rSMC tissue rings were structural thicker and mechanical stronger than hSMC tissue rings after 14 days culture. However, tissue rings generated from self-assembled human primary bone marrow MSCs (hMSCs) lacked mechanical strength and failed in the mechanical testing. The vascular tissue rings were also generated with hiPSC-derived SMCs (hiPSC-SMCs) using culture medium with 20% FBS, PDGF-BB, and TGF- $\beta$ 1 growth factors<sup>2</sup>. Low FBS medium (5% FBS) failed to generate tissue rings with the hiPSC-SMCs. Contractility was also determined for the hiPSC-SMC tissue rings for drug response and disease phenotyping. Carbachol and KCl were found to increase the contractility of the tissue rings. Furthermore, hiPSC-SMC tissue rings generated from patients with supravulvular aortic stenosis showed reduced responsiveness to the carbachol, comparing to the healthy control hiPSC-SMC tissue rings. Additionally, for trachea tissue engineering<sup>32</sup>, hMSC-based cartilaginous tissue rings were generated to create tissue tubes by stacking multiple rings together. To increase the tissue thickness and mechanical strength, TGF $\beta$ -loaded microspheres were mixed with the hMSCs for tissue ring fabrication. hMSC + microspheres tissue tubes were found to have similar tensile strength compared to the native rat trachea.

Although we emphasized the cartilage tissue engineering in our tissue ring study, we believe our hiPSC-MSCs will have a broader impact on the research related to MSC-based cell therapies, especially for bone and vascular tissue engineering. Furthermore, human primary MSCs have demonstrated their superior capability of immunomodulation by secretion of a variety of growth factors and cytokines<sup>33,34</sup>, which still put MSCs at the frontier of clinical trials. For example, secretome analysis of MSCs indicated that IGFBP7 produced by human MSCs would promote the osteogenesis for bone repair<sup>35</sup>. A series studies also suggested that secretion of TGF- $\alpha$ , VEGF and PDGF from MSCs would promote angiogenesis *in vitro* and *in vivo*. In future, we will perform secretome analysis on our hiPSC-MSCs, pursuing a new way of regenerative medicine based on cell-free therapeutic strategies<sup>36</sup>.

## CONCLUSIONS

To conclude, we have been able to establish a robust protocol to induce the conversion of hiPSCs into MSC-like cells under serum-free culture condition that eliminated the variabilities resulting from animal serum production. Our hiPSC-MSCs showed a high expression of MSC-specific biomarkers and had the capability of osteogenic and chondrogenic differentiation. We also demonstrated that these cells can be used in a modular system to engineer MSC tissue rings with minimal cell density and high morphological consistency. We were able to differentiate the MSC tissue rings into cartilaginous tissues, which could potentially be used for trachea tissue engineering.

## ACKNOWLEDGEMENT

This work was supported by the Nappi Family Foundation Research Scholar Project, NSF EBMS-1804875 and SU Collaboration for Unprecedented Success and Excellence (CUSE) Grant. Z.M. acknowledges the support from Lush Prize Young Researchers at Americas. T.W. acknowledges the support from Syracuse University STEM fellowship. We acknowledge the hiPSC line provided by Prof. Conklin from Gladstone Institute. We acknowledge the help from Jessica McDonald's Lab in the Department of Biology for tissue histology. We acknowledge the help from Zhaowei Jiang at Syracuse Flow Core for flow cytometry analysis.

## AUTHOR CONTRIBUTION

T.W., K.S. and Z.M. conceived and designed the sample fabrication and experiments. T.W. performed the serum-free hiPSC-MSC derivation, characterization, maintenance and tri-lineage

differentiation. K.S. performed the tissue ring fabrication, imaging and characterization. C.W. performed the histology study for the tissue rings. R.R. and P.S. fabricated the molds using 3D printing method. T.W. and Z.M. wrote the manuscript with discussions and improvements from all authors. Z.M. funded the study and supervised the project development.

#### **Conflict of Interest:**

We confirmed that there is no conflict of interests from the received funding for the publication of this article.

#### **Data Availability Statement:**

The authors declare that all data supporting the findings of this study are available within the paper and its supplementary Information. Source data for the figures are available from the corresponding authors upon reasonable request.

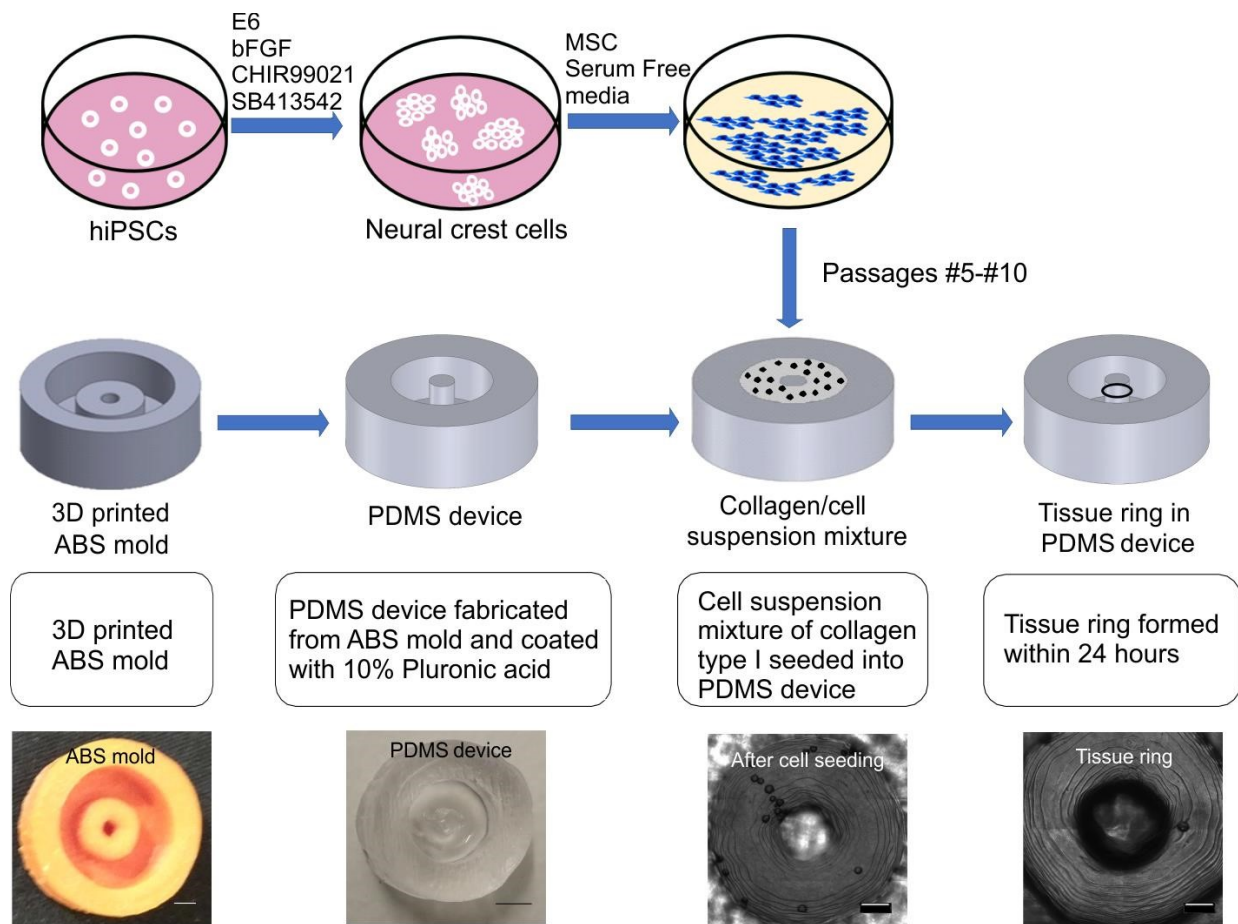
#### **REFERENCES:**

1. Flanagan, T. C. & Pandit, A. Living Artificial Heart Valve Alternatives : a Review. *Eur. Cells Mater.* **6**, 28–45 (2003).
2. Dash, B. C. *et al.* Tissue-Engineered Vascular Rings from Human iPSC-Derived Smooth Muscle Cells. *Stem Cell Reports* **7**, 19–28 (2016).
3. Naito, H. *et al.* Engineering bioartificial tracheal tissue using hybrid fibroblast-mesenchymal stem cell cultures in collagen hydrogels☆ *Interact. Cardiovasc. Thorac. Surg.* **12**, 156–161 (2011).
4. Caplan, A. I. & Correa, D. The MSC: An injury drugstore. *Cell Stem Cell* **9**, 11–15 (2011).
5. Chen, Y. S. *et al.* Small Molecule Mesengenic Induction of Human Induced Pluripotent Stem Cells to Generate Mesenchymal Stem / Stromal Cells. *Stem Cells Transl. Med.* 83–95 (2012).
6. Kern, S., Eichler, H., Stoeve, J., Klüter, H. & Bieback, K. Comparative Analysis of Mesenchymal Stem Cells from Bone Marrow, Umbilical Cord Blood, or Adipose Tissue. *Stem Cells* **24**, 1294–1301 (2006).
7. Stolzing, A., Jones, E., McGonagle, D. & Scutt, A. Age-related changes in human bone marrow-derived mesenchymal stem cells: Consequences for cell therapies. *Mech. Ageing Dev.* **129**, 163–173 (2008).
8. Zhou, S. *et al.* Age-related intrinsic changes in human bone-marrow-derived mesenchymal stem cells and their differentiation to osteoblasts. *Aging Cell* **7**, 335–343 (2008).
9. Fu, Q. L. *et al.* Mesenchymal stem cells derived from human induced pluripotent stem cells modulate T-cell phenotypes in allergic rhinitis. *Allergy* **67**, 1215–1222 (2012).
10. Barlow, S. *et al.* Comparison of human placenta-and bone marrow-derived multipotent mesenchymal stem cells. *Stem Cells Dev.* **17**, 1095–1108 (2008).
11. Rebelatto, C. K. *et al.* Dissimilar differentiation of mesenchymal stem cells from bone marrow, umbilical cord blood, and adipose tissue. *Exp. Biol. Med.* **233**, 901–913 (2008).
12. Hsieh, J.-Y., Fu, Y.-S., Chang, S.-J., Tsuang, Y.-H. & Wang, H.-W. Functional module analysis reveals differential osteogenic and stemness potentials in human mesenchymal stem cells from bone marrow and Wharton's jelly of umbilical cord. *Stem Cells Dev.* **19**, 1895–1910 (2010).
13. Kim, M. J. *et al.* Human chorionic-plate-derived mesenchymal stem cells and Wharton's jelly-derived mesenchymal stem cells: a comparative analysis of their potential as placenta-derived stem cells. *Cell Tissue Res.* **346**, 53 (2011).
14. Ngo, P., Ramalingam, P., Phillips, J. A. & Furuta, G. T. Collagen gel contraction assay. in *Cell-Cell Interactions* 103–109 (Springer, 2006).
15. Feng, Z. *et al.* Investigation on the mechanical properties of contracted collagen gels as a

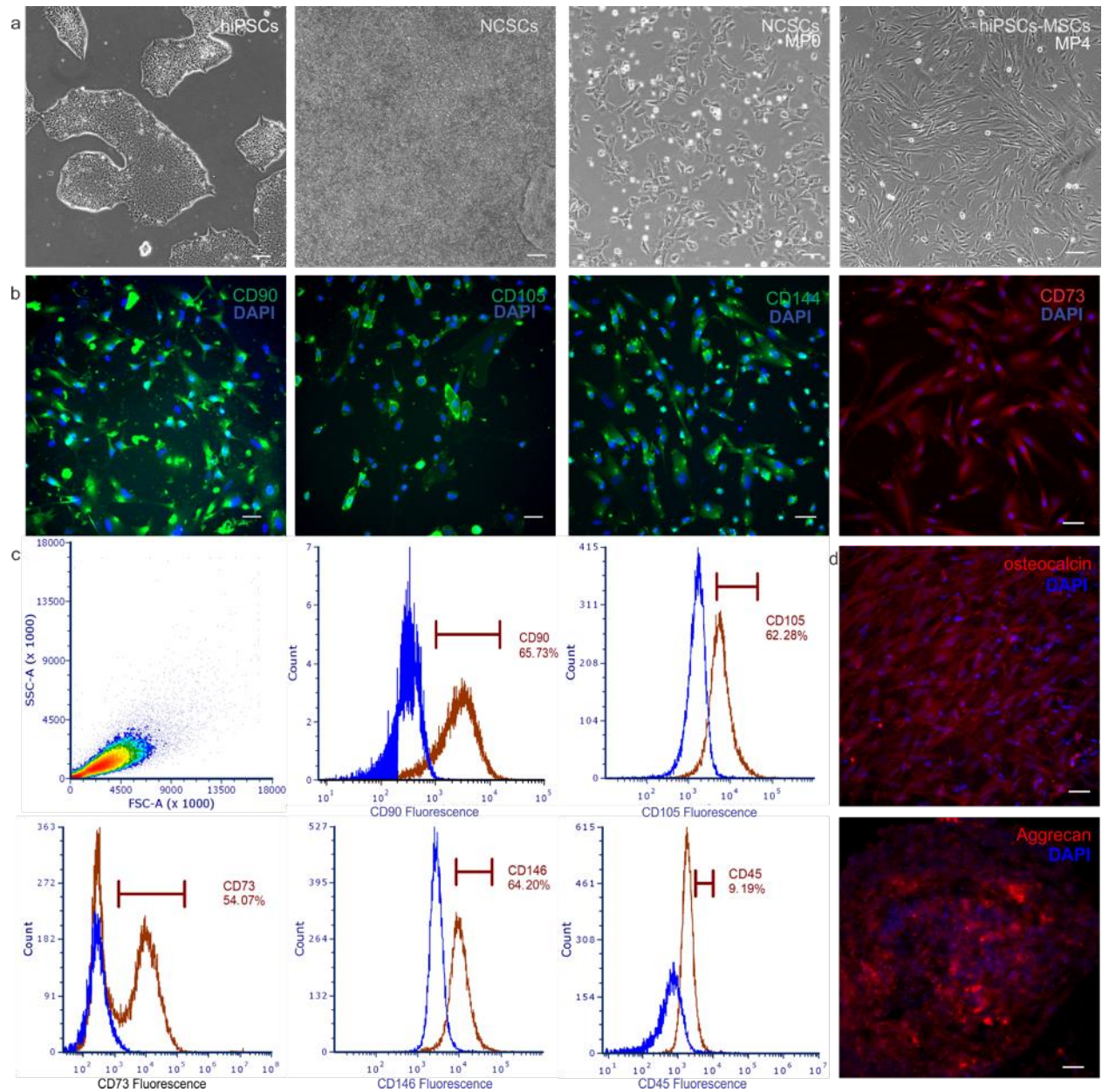
- scaffold for tissue engineering. *Artif. Organs* **27**, 84–91 (2003).
16. Liu, X. *et al.* Th2 cytokine regulation of type I collagen gel contraction mediated by human lung mesenchymal cells. *Am. J. Physiol. Cell. Mol. Physiol.* **282**, L1049–L1056 (2002).
  17. Langer, R. S. & Vacanti, J. P. Tissue engineering: the challenges ahead. *Sci. Am.* **280**, 86–89 (1999).
  18. Sipe, J. D. Tissue engineering and reparative medicine. *Ann. N. Y. Acad. Sci.* **961**, 1–9 (2002).
  19. Naughton, G. K. From lab bench to market: Critical issues in tissue engineering. *Ann. N. Y. Acad. Sci.* **961**, 372–385 (2002).
  20. Barberi, T., Willis, L. M., Socci, N. D. & Studer, L. Derivation of multipotent mesenchymal precursors from human embryonic stem cells. *PLoS Med.* **2**, 0554–0560 (2005).
  21. Brown, S. E., Tong, W. & Krebsbach, P. H. The derivation of mesenchymal stem cells from human embryonic stem cells. *Cells Tissues Organs* **189**, 256–260 (2008).
  22. Hwang, N. S. *et al.* In vivo commitment and functional tissue regeneration using human embryonic stem cell-derived mesenchymal cells. *Proc Natl Acad Sci U S A* **105**, 20641–20646 (2008).
  23. Kang, R. *et al.* Mesenchymal stem cells derived from human induced pluripotent stem cells retain adequate osteogenicity and chondrogenicity but less adipogenicity. *Stem Cell Res. Ther.* **6**, 1–14 (2015).
  24. Mahmood, A., Harkness, L., Schröder, H. D., Abdallah, B. M. & Kassem, M. Enhanced differentiation of human embryonic stem cells to mesenchymal progenitors by inhibition of TGF- $\beta$ /activin/nodal signaling using SB-431542. *J. Bone Miner. Res.* **25**, 1216–1233 (2010).
  25. Sánchez, L. *et al.* Enrichment of human ESC-derived multipotent mesenchymal stem cells with immunosuppressive and anti-inflammatory properties capable to protect against experimental inflammatory bowel disease. *Stem Cells* **29**, 251–262 (2011).
  26. Eto, S. *et al.* Mesenchymal stem cells derived from human iPS cells via mesoderm and neuroepithelium have different features and therapeutic potentials. *PLoS One* **13**, 1–22 (2018).
  27. Achilleos, A. & Trainor, P. A. Neural crest stem cells : discovery, properties and potential for therapy. *Cell Res.* **22**, 288–304 (2012).
  28. Menendez, L. *et al.* Directed differentiation of human pluripotent cells to neural crest stem cells. *Nat. Protoc.* **8**, 203–212 (2013).
  29. Shazly, T. *et al.* On the Uniaxial Ring Test of Tissue Engineered Constructs. 41–51 (2015). doi:10.1007/s11340-014-9910-2
  30. Strobel, H. A., Calamari, E. L., Alphonse, B., Hookway, T. A. & Rolle, M. W. Fabrication of Custom Agarose Wells for Cell Seeding and Tissue Ring Self- assembly Using 3D-Printed Molds. 3–9 (2018). doi:10.3791/56618
  31. Gwyther, T. A., Hu, J. Z., Billiar, K. L. & Rolle, M. W. Directed Cellular Self-Assembly to Fabricate Cell-Derived Tissue Rings for Biomechanical Analysis and Tissue Engineering. 1–5 (2011). doi:10.3791/3366
  32. Dikina, A. D., Strobel, H. A., Lai, B. P., Rolle, M. W. & Alsberg, E. Engineered cartilaginous tubes for tracheal tissue replacement via self-assembly and fusion of human mesenchymal stem cell constructs. *Biomaterials* **52**, 452–462 (2015).
  33. Tögel, F. E. & Westenfelder, C. Mesenchymal stem cells: a new therapeutic tool for AKI. *Nat. Rev. Nephrol.* **6**, 179–183 (2010).
  34. Warner, D. S. *et al.* Cell-based Therapy for Acute Organ Injury. 1099–1121 (2018).
  35. Infante, A. & Rodríguez, C. I. Secretome analysis of in vitro aged human mesenchymal stem cells reveals IGFBP7 as a putative factor for promoting osteogenesis. 1–12 (2018). doi:10.1038/s41598-018-22855-z
  36. Vizoso, F. J., Eiro, N., Cid, S., Schneider, J. & Perez-fernandez, R. Mesenchymal Stem Cell Secretome : Toward Cell-Free Therapeutic Strategies in Regenerative Medicine. (2017).

doi:10.3390/ijms18091852

## FIGURE CAPTIONS

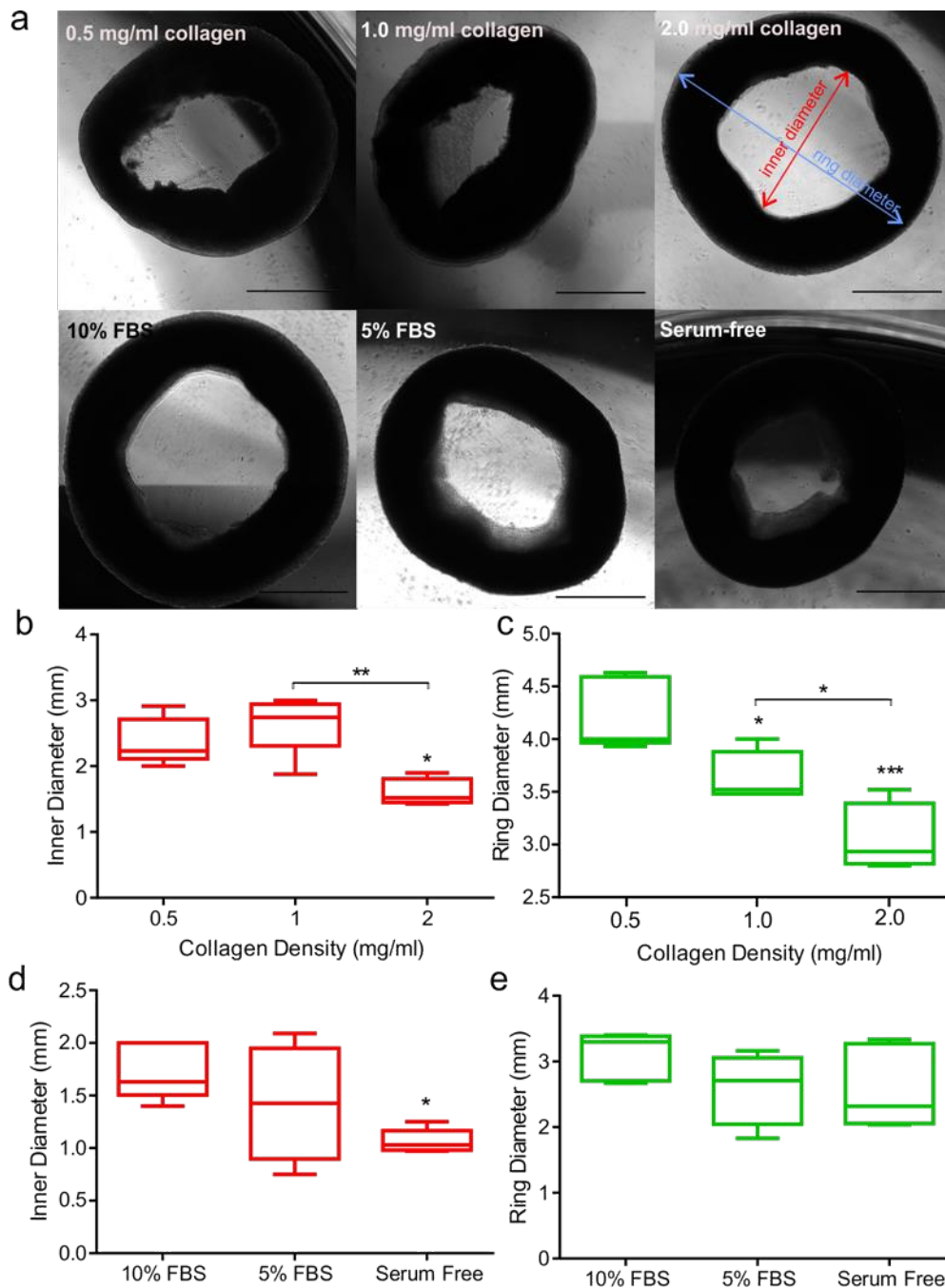


**Figure 1. Fabrication of hiPSC-MSC Tissue Rings.** The hiPSCs were differentiated into neural crest cells, which were then further differentiated into MSCs using a serum-free chemical-defined protocol. The PDMS devices were cast from 3D-printed ABS molds and coated with 10% Pluronic acid before cell seeding. Passage #5 - #10 hiPSC-MSCs were mixed with collagen scaffold, loaded into the PDMS devices to form, the tissue rings surrounding the center posts. Scale bar: 1 mm.

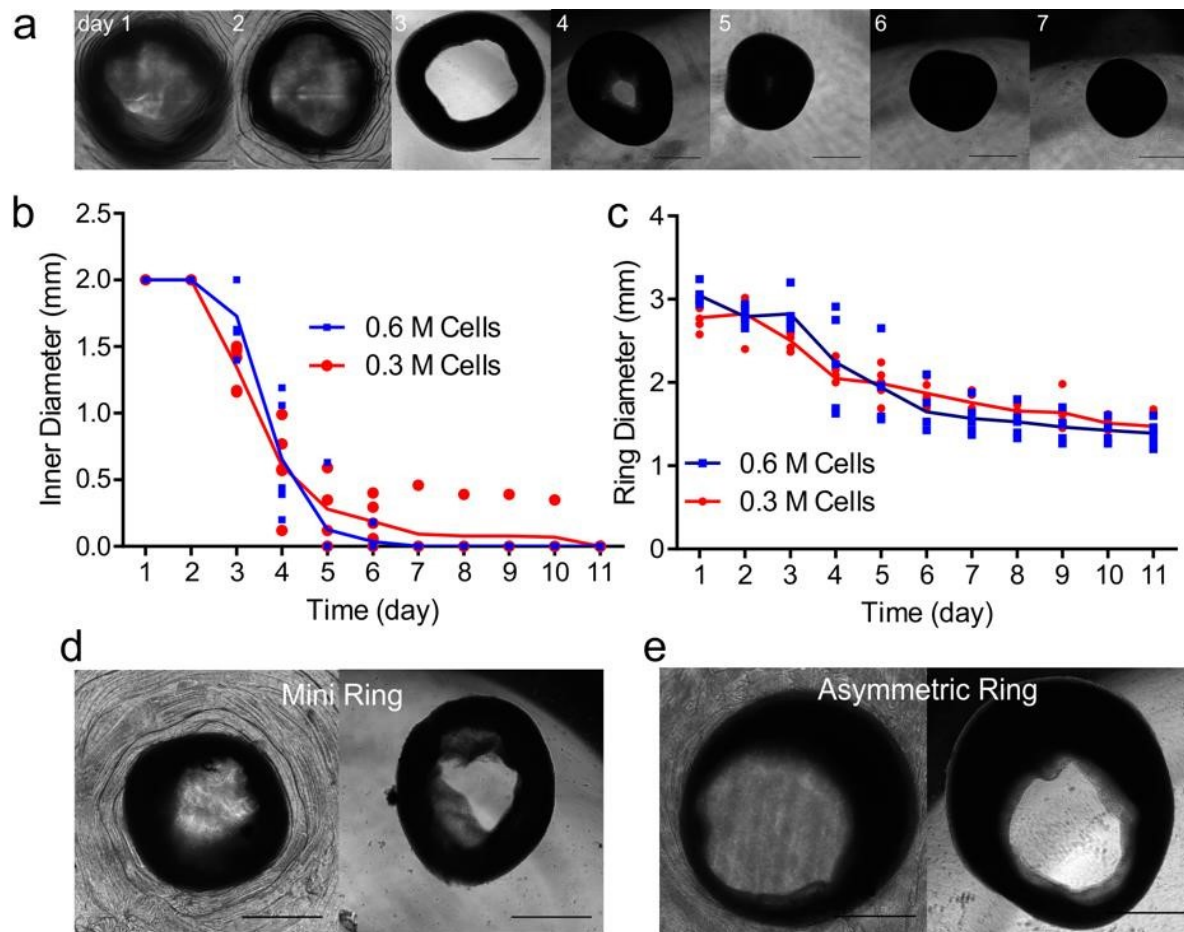


**Figure 2. Characterization of hiPSC-MSCs.** (a) The morphological changes during hiPSC-MSC differentiation from hiPSCs colonies, dense NCSCs in differentiation, dissociated single NCSCs and spindle-shape hiPSC-MSCs at passage #4 (MP4). (b) hiPSC-MSCs expressed CD90, CD105, CD144 and CD73, confirmed by immunocytochemistry. (c) Flow cytometry histograms showed that hiPSC-MSCs were positive for CD90, CD105, CD73, CD146, and negative for CD45 starting at MP4. (d) The hiPSC-MSCs also demonstrated the ability for osteogenic and chondrogenic differentiation. Scale bar: (a) 100  $\mu$ m, (b and c) 50  $\mu$ m.



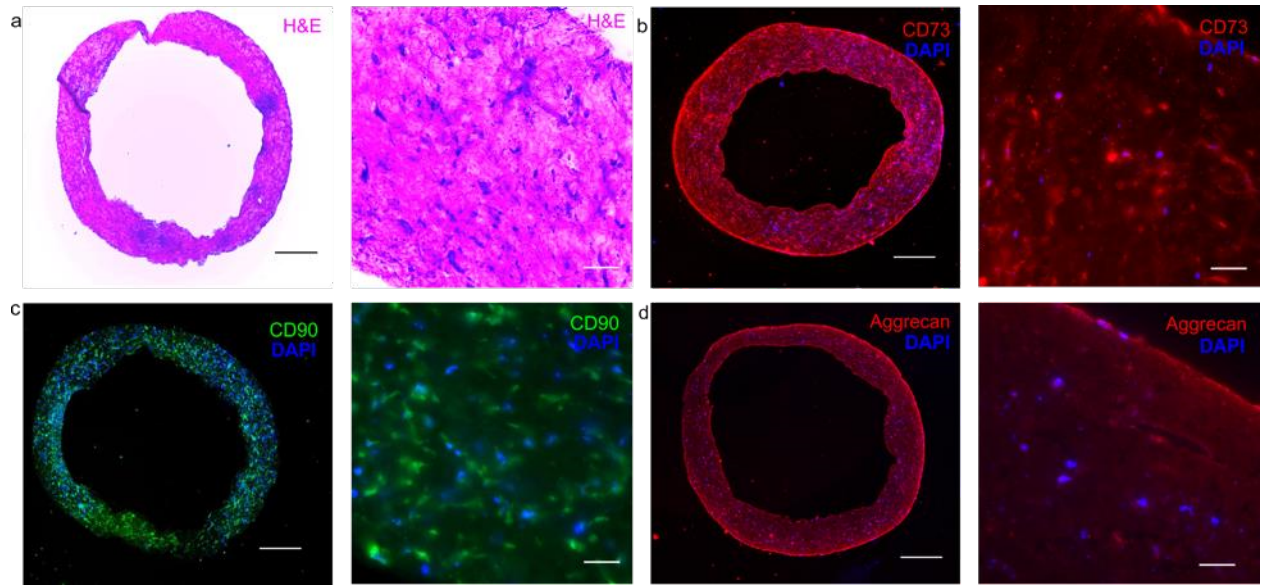


**Figure 3. Characterization of hiPSC-MSC Tissue Rings.** (a) The shape of hiPSC-MSC tissue rings 24 hours after extraction fabricated with different collagen densities and different culture media. (b) hiPSC-MSC tissue rings had smaller inner diameter at 2 mg/mL collagen density compared to lower densities. (c) The ring diameter decreased with increase in collagen density. hiPSC-MSC tissue rings showed (d) smaller inner diameter and (e) comparable ring diameter, for serum-containing media and serum-free media. Scale bar: 1 mm.



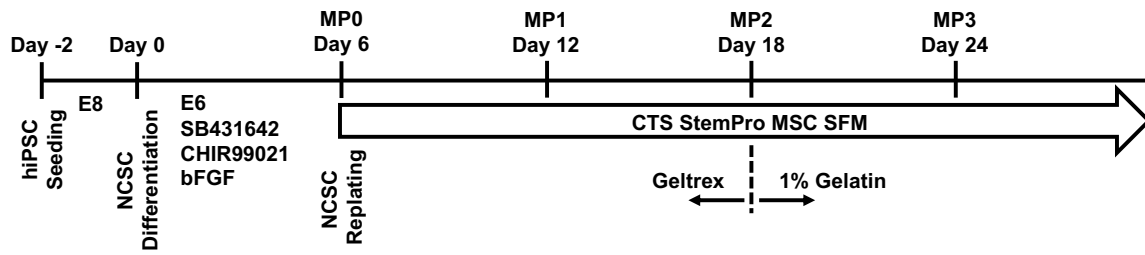
**Figure 4. Morphological Changes of hiPSC-MS C Tissue Rings.** (a) The morphology of hiPSC-MS C tissue rings before and after extraction indicated that ring shape turned into circular shape during continuous culturing. The tissue rings produced with low cell number (0.3 M cells in total) showed no significant difference in (b) inner diameter and (c) ring diameter compared to standard cell number (0.6 M cells in total). (d) The mini tissue rings and (e) asymmetric tissue rings were also fabricated with different designs of PDMS devices. Scale bar: 1 mm.



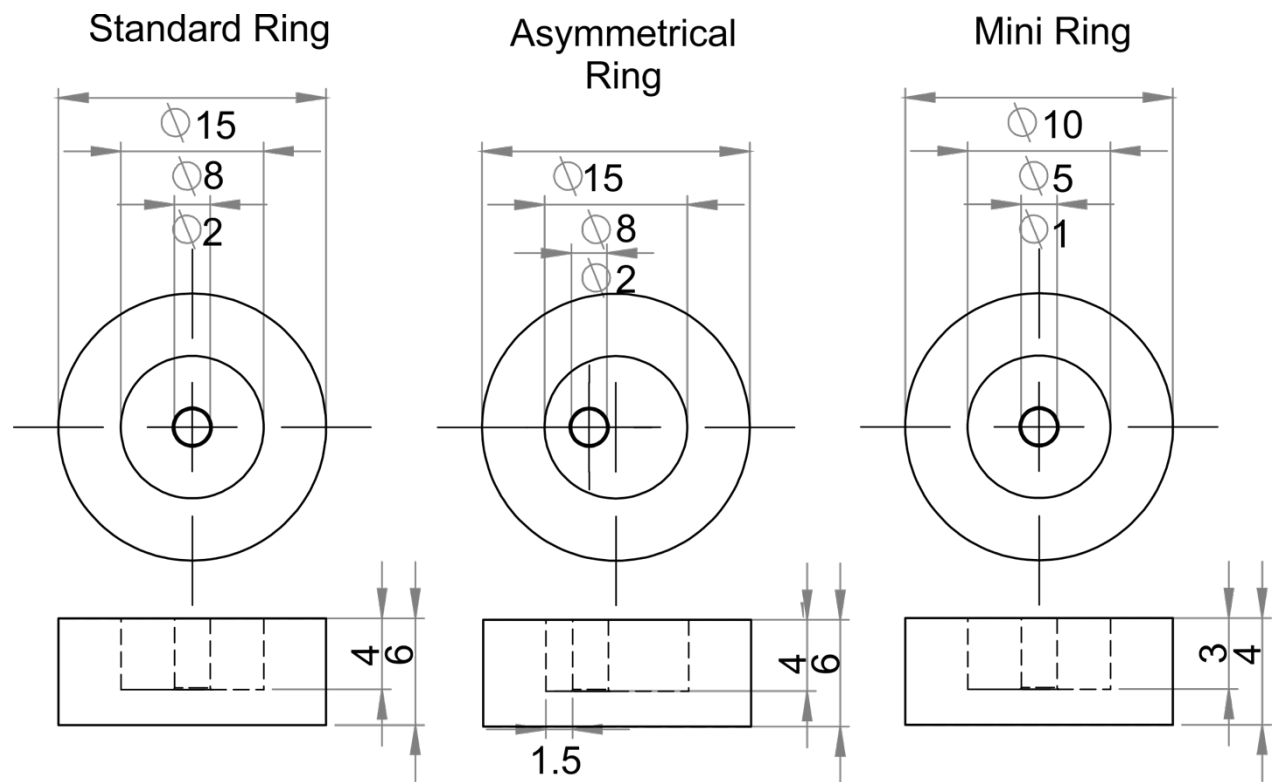


**Figure 5. Histochemistry of hiPSC-MSC Tissue Rings.** (a) H&E staining of hiPSC-MSC tissue rings represented cytoplasm (pink) and nuclei (blue). Immunofluorescent staining of hiPSC-MSC tissue ring with (b) CD73 and (c) CD90 demonstrated the tissue rings maintained the MSC biomarkers after the fabrication process. (d) The hiPSC-MSC tissue rings have been successfully differentiated into chondrogenic lineage, indicating the tissue rings retained the potency for further differentiation. Scale bar: whole tissue structure (left) 500  $\mu\text{m}$  and zoom-in close-ups (right) 10  $\mu\text{m}$ .

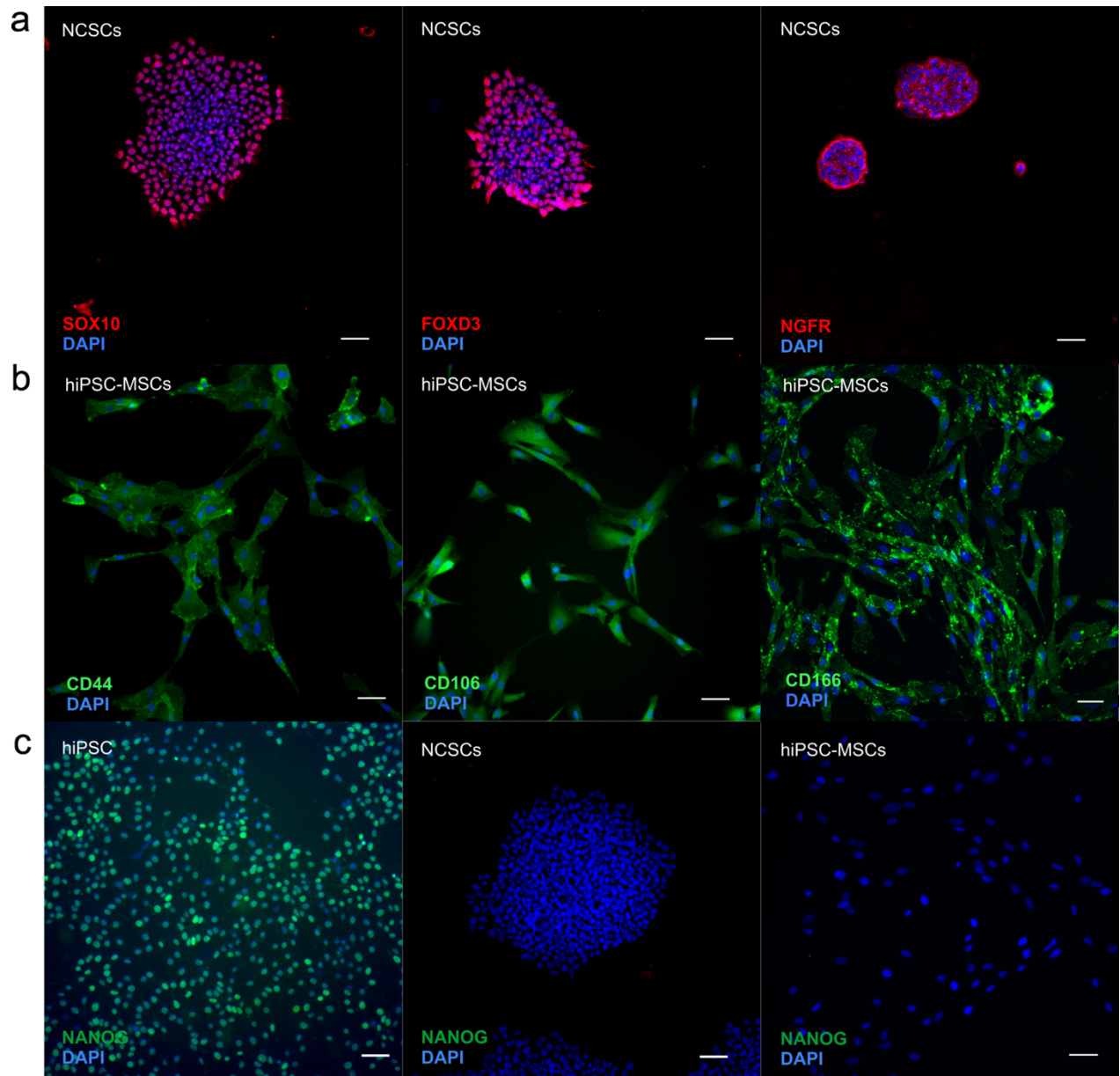
## SUPPLEMENTARY MATERIALS:



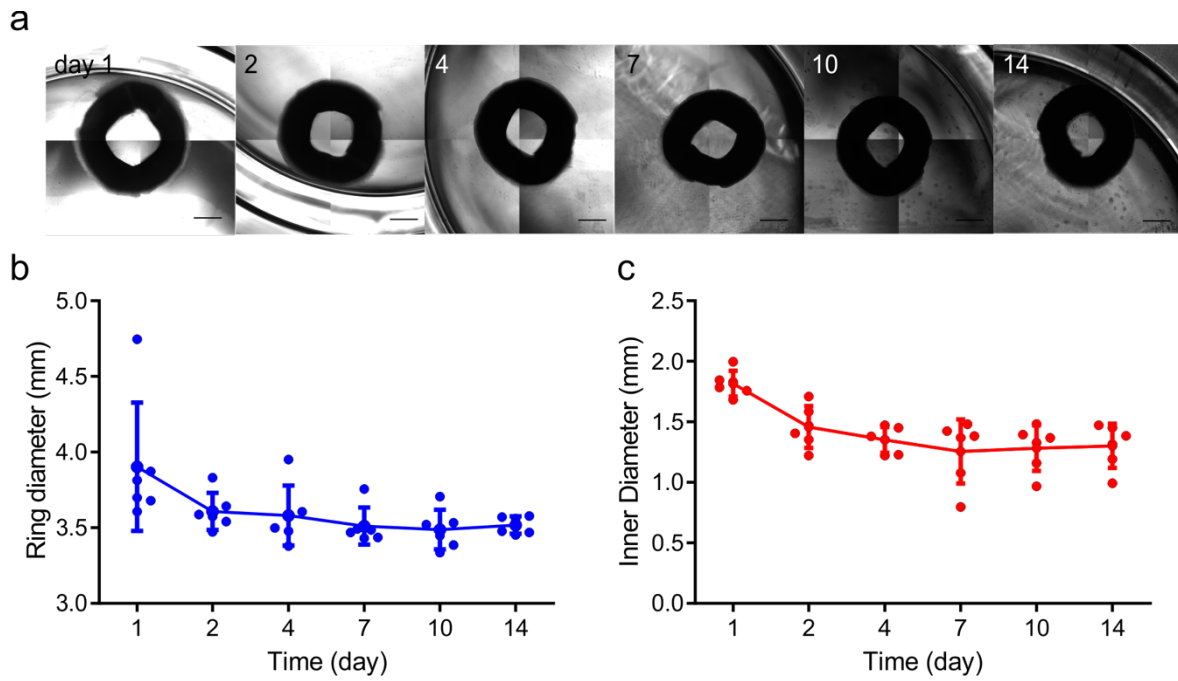
**Supplementary Figure 1:** The differentiation protocol for hiPSC-MSCs through intermediate cell type of NCSCs.



**Supplementary Figure 2:** SolidWork designs for the molds that were used to fabricate standard tissue rings and asymmetrical tissue rings in 24-well plate, and mini tissue rings in 48-well plate.



**Supplementary Figure 3:** (a) Intermediate cells expressed NCSC-specific markers of SOX10, FOXD3 and NGFR. (b) hiPSC-MSCs expressed MSC-specific surface markers of CD44, CD106 and CD166. (c) hiPSCs showed high expression of NANOG, but NCSCs and hiPSC-MSCs showed no expression of NANOG. Scale bar: 50  $\mu$ m.



**Supplementary Figure 4: Morphological Changes of Fibroblast Tissue Rings.** (a) The morphology of fibroblast tissue rings after extraction retained the ring shape with consistent (b) outer ring diameter and (c) inner diameter. Scale bar: 1 mm.

**Supplementary Table 1:** The primary antibodies used for immunofluorescent microscopy in this study.

<b>Antibodies</b>	<b>Markers</b>	<b>Vendors</b>	<b>Cat #</b>	<b>Dilution</b>
NANOG	hiPSC			
SOX10	NCSC			
FOXD3	NCSC			
NGFR	NCSC			
CD44	MSC			
CD73	MSC	Abcam	ab133582	1:50
CD90	MSC	Abcam	ab181469	1:200
CD105	MSC	Life Technologies	MA5-11854	1:100
CD106	MSC			
CD144	MSC	Sigma Aldrich	V1514	1:200
CD166	MSC			