

CONDENSED MATTER PHYSICS

Ultrafast electron calorimetry uncovers a new long-lived metastable state in 1T-TaSe₂ mediated by mode-selective electron-phonon coupling

Xun Shi^{1*†}, Wenjing You^{1†}, Yingchao Zhang^{1†}, Zhensheng Tao^{1‡}, Peter M. Oppeneer², Xianxin Wu³, Ronny Thomale³, Kai Rossnagel^{4,5,6}, Michael Bauer⁴, Henry Kapteyn¹, Margaret Murnane¹

Copyright © 2019
The Authors, some
rights reserved;
exclusive licensee
American Association
for the Advancement
of Science. No claim to
original U.S. Government
Works. Distributed
under a Creative
Commons Attribution
License 4.0 (CC BY).

Quantum materials represent one of the most promising frontiers in the quest for faster, lightweight, energy-efficient technologies. However, their inherent complexity and rich phase landscape make them challenging to understand or manipulate. Here, we present a new ultrafast electron calorimetry technique that can systematically uncover new phases of quantum matter. Using time- and angle-resolved photoemission spectroscopy, we measure the dynamic electron temperature, band structure, and heat capacity. This approach allows us to uncover a new long-lived metastable state in the charge density wave material 1T-TaSe₂, which is distinct from all the known equilibrium phases: It is characterized by a substantially reduced effective total heat capacity that is only 30% of the normal value, because of selective electron-phonon coupling to a subset of phonon modes. As a result, less energy is required to melt the charge order and transform the state of the material than under thermal equilibrium conditions.

INTRODUCTION

The discovery of new phases of matter has a long history of providing enhanced functionality, for example, for phase change memories. Moreover, the critical need for faster, smaller, and more energy-efficient nanotechnologies means that metastable phases of matter are a new frontier for functional materials (1–10). Correlated materials exhibit rich phase diagrams due to the coupling of charge, lattice, spin, and orbital degrees of freedom. These intertwined interactions can give rise to intriguing phenomena such as superconductivity, magnetism, and density waves (11, 12). Specifically, charge density wave (CDW) states, in which both the electron density and atomic lattice are modulated periodically with a characteristic wave vector (\mathbf{q}_{CDW}), are believed to arise from electron-phonon coupling, sometimes combined with, or even mediated by, electron-electron interactions (11). Because of the complexity of these interactions, the nature and origin of different phases and their transitions in strongly correlated materials are still under debate. In addition, the potential presence of metastable phases in many of these materials [e.g., the hidden state in 1T-TaS₂ (4, 6, 10)] has been a topic of great interest. However, methods to prepare, detect, and study metastable states are still under development. Whether these states are present in a wide range of materials is still an open question.

Ultrafast spectroscopies are emerging as powerful tools to study correlated materials because of their unique abilities to probe the dominant microscopic interactions. In particular, time- and angle-resolved photoemission spectroscopy (trARPES), time-resolved magneto-optical Kerr spectroscopy, and time-resolved electron/x-ray diffrac-

tion can probe the coupled dynamics of the charge, spin, and lattice systems, respectively, after a material is excited by an ultrafast laser pulse (13). For example, many past studies explored how the energy flows from the excited electron and spin systems to the phonon bath and how the state of material evolves (14–19). Other work uncovered how the characteristic time scales for the insulator-to-metal phase transition depend on different CDW interactions (20). More recently, a combination of trARPES and x-ray diffraction was used to directly measure the deformation potential (21). Using tabletop high harmonic generation, we used trARPES to identify a new super-excited magnetic state where the spin system absorbs sufficient energy within 20 fs to subsequently proceed through a magnetic phase transition (22).

Here, we present a new ultrafast electron calorimetry technique that can systematically uncover new phases of matter. Using trARPES, we measure the electron temperature, band structure, and heat capacity. We then show that this information can be used as a very sensitive probe of where phase changes occur within quantum materials, because electrons react very quickly—on femtosecond to attosecond time scales. Moreover, their heat capacity is generally the smallest component of the total heat capacity ($\times 100$ less than the lattice) and cannot be directly measured under thermal equilibrium conditions. We use our new ultrafast electron calorimetry technique to uncover a new charge-ordered phase in the transition metal dichalcogenide 1T-TaSe₂ that is simple to excite and that has remarkable properties. As the laser excitation fluence is increased to completely melt the CDW order, we observe a substantial reduction in the effective total heat capacity by 70%. This indicates that the electron-phonon coupling abruptly switches from nearly homogeneous to mode selective. The strong inhomogeneity within the phonon system, i.e., where some strongly coupled phonon modes thermalize to above the transition temperature (T_c) while the rest do not, drives the material into a new long-lived metastable CDW state, as illustrated in Fig. 1 and movie S1. This metastable CDW phase, with a continuously tunable order parameter depending on the laser fluence, is stable over time scales ranging from picoseconds to hundreds of picoseconds, thus markedly enriching the landscape of metastable ordered phases of 1T-TaSe₂. Most significantly,

¹Department of Physics and JILA, University of Colorado and NIST, Boulder, CO 80309, USA. ²Department of Physics and Astronomy, Uppsala University, Box 516, 75120 Uppsala, Sweden. ³Institut für Theoretische Physik und Astrophysik, Julius-Maximilians-Universität Würzburg, 97074 Würzburg, Germany. ⁴Institute of Experimental and Applied Physics, Kiel University, D-24098 Kiel, Germany. ⁵Deutsches Elektronen-Synchrotron DESY, D-22607 Hamburg, Germany. ⁶Ruprecht Haensel Laboratory, Kiel University and DESY, D-24098 Kiel and D-22607 Hamburg, Germany.

*Corresponding author. Email: xun.shi@colorado.edu

†These authors contributed equally to this work.

‡Present address: State Key Laboratory of Surface Physics and Department of Physics, Fudan University, Shanghai, China.

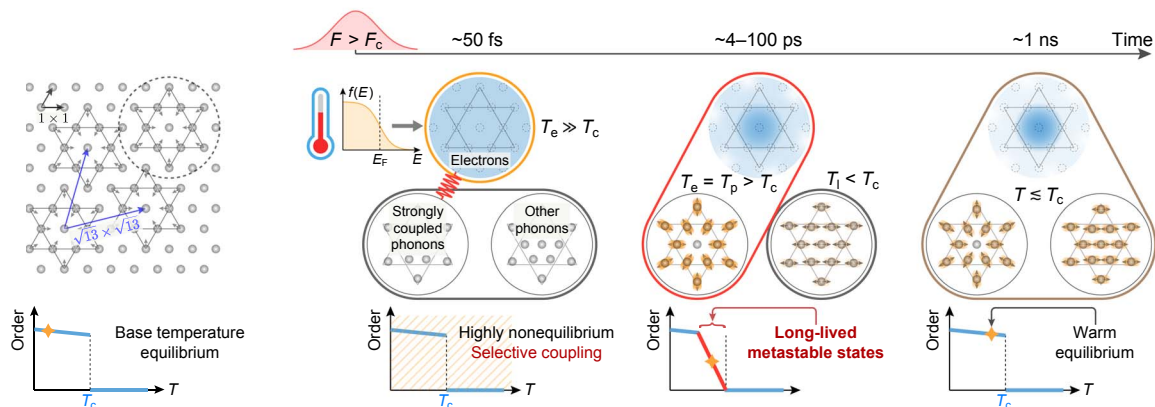


Fig. 1. Ultrafast electron calorimetry can measure the dynamic electron temperature and band structure to uncover a new long-lived metastable state mediated by mode-selective electron-phonon coupling. The upper left panel shows the top view of the Ta plane in 1T-TaSe₂. In the CDW state, displacement of the Ta atoms leads to a $\sqrt{13} \times \sqrt{13}$ superstructure consisting of 13-atom star-of-David clusters. After laser excitation, the evolution of the sample is determined first by the electron temperature and then by electron-phonon coupling, which depends on the fluence. For strong laser excitation, the electron-phonon coupling switches from nearly homogeneous to mode selective. The resulting inhomogeneity within the phonon bath drives the material into a new long-lived metastable CDW state. The blue shading represents the electron density in the real space, the gray circles represent Ta atoms, and both amplitudes are exaggerated for better visualization. T_e , T_p , and T_l refer to the temperatures of the electron, strongly coupled phonons, and the rest of the phonon bath, respectively. $f(E)$, Fermi-Dirac function.

this ultrafast phase transformation requires much less energy (~60%) than is required to melt the CDW order under thermal equilibrium conditions. Moreover, it has a very simple excitation mechanism that can still result in very selective excitation of a subset of phonon modes. Our findings, thus, uncover new manifestations of electron-phonon coupling and phase transition pathways in quasi-two-dimensional (2D) CDW systems. Finally, we note that our approach is general—it can be used to uncover the presence of transient and hidden phases in many other materials whenever there is a change in the coupling of the electron bath to the spin or phonon baths. This new knowledge can be used to inform new theories as well as to map the full functional phase space of quantum materials for applications.

RESULTS

Ultrafast melting of the CDW order

1T-TaSe₂ crystallizes in a quasi-2D crystal structure consisting of an undistorted hexagonal Ta layer sandwiched between two Se layers in the high-temperature phase. At lower temperatures, 1T-TaSe₂ transforms to an incommensurate CDW phase at 600 K and then to a commensurate CDW phase (first-order transition) at $T_c = 470$ K (23). This CDW phase is characterized by an electron density modulation and corresponding lattice distortion in a $\sqrt{13} \times \sqrt{13}$ periodicity (23). Each supercell forms a 13-atom star-of-David cluster, where 12 outer atoms are displaced inward, as shown in the left panel of Fig. 1. In our trARPES experiment, the sample in the CDW state (300 K) is photoexcited by a 1.6-eV pump pulse, and then the electronic structure as a function of time delay and pump fluence is measured by a 22.4-eV probe pulse produced from high harmonic generation (24).

The band structure of 1T-TaSe₂ in the CDW state has prominent features, including band folding and an opening of an energy gap, that can be clearly seen in the photoemission spectrum along the Γ -M direction before laser excitation. The disappearance of these features after laser excitation suggests that the CDW order is destroyed by an ultrafast laser pulse, as shown in Fig. 2A and also studied extensively in past work (14, 16, 25–27). During this process, the electron

system is directly excited to a nonthermal energy distribution, which rapidly thermalizes to a Fermi-Dirac distribution. To better understand the ultrafast CDW phase transition, we extract the time evolution of the electron temperature T_e by fitting energy distribution curves of the ARPES spectra with a Fermi-Dirac function multiplied by a Lorentzian-shape density of states (see the Supplementary Materials). The results are displayed in Fig. 2B and fig. S4, which show that the electrons reach a maximum temperature of thousands of Kelvin. To investigate the effect of the spatial charge redistribution at high temperature, we perform density functional theory (DFT) calculations on 1T-TaSe₂. As shown in Fig. 2C and fig. S3, at room temperature the charge is mainly distributed near the center of the star-of-David in real space (around the inner Ta atoms). In contrast, after laser excitation, the elevated electron temperature smears out the charge localization in the center of each star because of excitation of electrons to above the Fermi level (E_F). This subsequently modifies the interatomic potential and initiates rapid lattice rearrangement. On the short time scales required for this structural rearrangement to be launched (20 to 100 fs), the lattice temperature remains near 300 K.

Uncovering mode-selective electron-phonon coupling

To understand the complex interactions in the material, it is useful to investigate energy flow and coupling between the electron and lattice degrees of freedom. We first analyze the relaxation of the electron temperature as a function of laser fluence, which is governed by the electron-phonon coupling (13). As shown in Fig. 2D, the electron temperature decays to a plateau by ~4 ps, indicating that the electron bath has equilibrated with at least a part of the phonon bath. This quasi-equilibrium temperature increases with the laser fluence and, unexpectedly, shows an abrupt increase at a critical fluence (F_c) of about 0.7 mJ/cm², corresponding to when the electron temperature and part of the phonon bath cross the transition temperature T_c (see Fig. 2E). Note that in many material systems, the electrons and lattice (i.e., all the phonons) would have equilibrated by 4 ps. However, the solid red curve in Fig. 2E plots the quasi-equilibrium temperature calculated from the equilibrium heat capacity of the material (see the

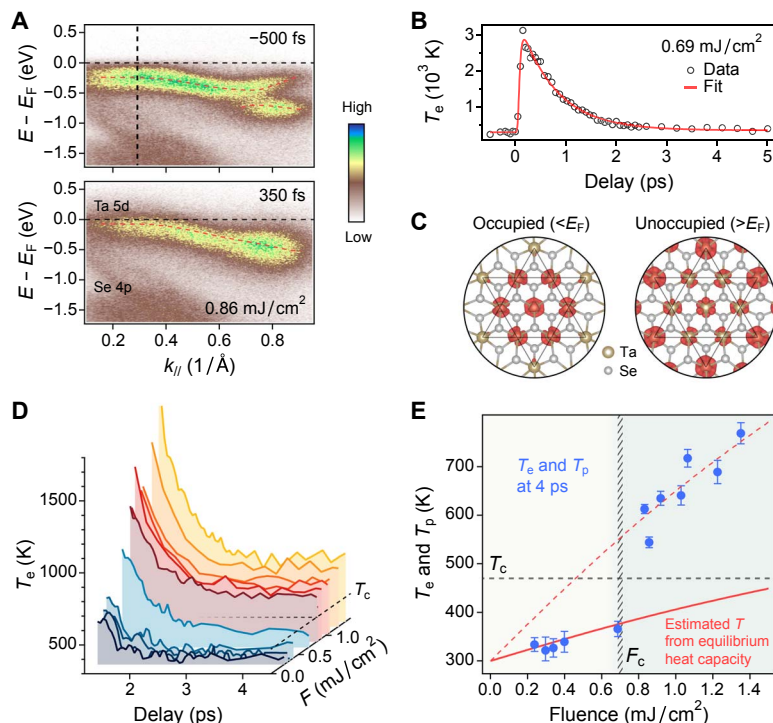


Fig. 2. Evolution of the electron temperature and sudden change in the electron-phonon coupling. (A) Photoemission spectra along the Γ -M direction before and after (350 fs) laser excitation with a fluence of 0.86 mJ/cm^2 . The disappearance of band folding and the CDW gap clearly suggest the collapse of the CDW order. (B) Temporal evolution of the electron temperature T_e at a fluence of 0.69 mJ/cm^2 . The red curve is the two-exponential fit to the data. (C) Calculated charge densities (red) in a star-of-David integrated over the energy windows on the occupied ($E_F - 1 \text{ eV}$, E_F) and unoccupied ($E_F + 0.2 \text{ eV}$, $E_F + 1.2 \text{ eV}$) sides. (D) Electron temperature dynamics as a function of laser fluence. (E) T_e at 4 ps, when the electron bath is nearly in equilibrium with part of the phonon bath (T_p). The error bars represent the measurement uncertainties. For $F < F_c$, this quasi-equilibrium temperature reaches the expected value in thermal equilibrium, as indicated by the solid red curve. However, for $F > F_c$, the temperature abruptly increases above the red curve, indicating a step decrease in the effective heat capacity—only a subset of phonons are strongly coupled to the hot electrons.

Supplementary Materials), showing that this is only true for $F < F_c$ in $1T$ -TaSe₂. The jump in temperature at F_c (Fig. 2E) thus reveals that there is a sudden reduction in the effective lattice heat capacity for $F > F_c$. This reduction is as large as 70% compared to below F_c , as further confirmed by the increased slope of the fluence-dependent electron temperature (see the red dashed curve in Fig. 2E). In the temperature range explored here, the heat capacity is close to the Dulong-Petit limit and thus cannot change so markedly under equilibrium conditions. Therefore, our results suggest that only a subset of phonon modes, which are strongly coupled to the hot electrons, contributes to the effective heat capacity at $F > F_c$, as illustrated in Fig. 1.

Detecting the presence of a long-lived metastable state

Given the anomalous changes in electron-phonon coupling observed at F_c , we also investigate the dynamic band structure. Here, we focus on the Ta $5d$ band near E_F , as shown in Fig. 2A. The time-dependent photoemission spectrum in Fig. 3A clearly shows the oscillation of the band position (in binding energy) that is coupled to the excited CDW amplitude mode (breathing mode of the stars) (14, 25, 28). Figure 3B plots the instantaneous band shift after excitation for two typical fluences. For low laser fluences in the perturbative regime, the band shift and electron temperature are strongly correlated. However, once the laser fluence exceeds F_c , the CDW order melts within a half cycle of a strongly damped amplitude mode oscillation before entering the metastable phase. We can model this behavior as a classical har-

monic oscillator (29), with an equation of motion for the band position $Q(\Delta t)$ given by

$$\ddot{Q}(\Delta t) = -\omega_0^2 [Q(\Delta t) - Q_0(\Delta t)] - 2\gamma \dot{Q}(\Delta t) \quad (1)$$

where ω_0 is the angular frequency and γ is the damping constant. The quasi-equilibrium coordinate $Q_0(\Delta t)$ is taken as

$$Q_0(\Delta t) = C_1(1 - e^{-\Delta t/\tau_1}) + C_2(e^{-\Delta t/\tau_2} - 1) \quad (2)$$

where τ_1 and τ_2 are the exponential rise and decay time constants. The data fit well to this model (Fig. 3B), and we plot in Fig. 3C the extracted oscillation frequencies and damping constants for different laser fluences. The oscillation frequency is $\sim 2 \text{ THz}$ and decreases slightly with fluence, while the damping constant increases linearly and, interestingly, exceeds the oscillation frequency near F_c .

Since the band shift is strongly coupled to both the atomic displacement (structural order parameter) and the band folding or energy gap (electronic order parameter; see the Supplementary Materials), it can represent the CDW order in this material. Next, we study the time evolution of the band shift as a function of excitation fluence to gain more insight into the ultrafast CDW transition. Figure 3D plots the peak of the quasi-equilibrium coordinate Q_0 , which represents the

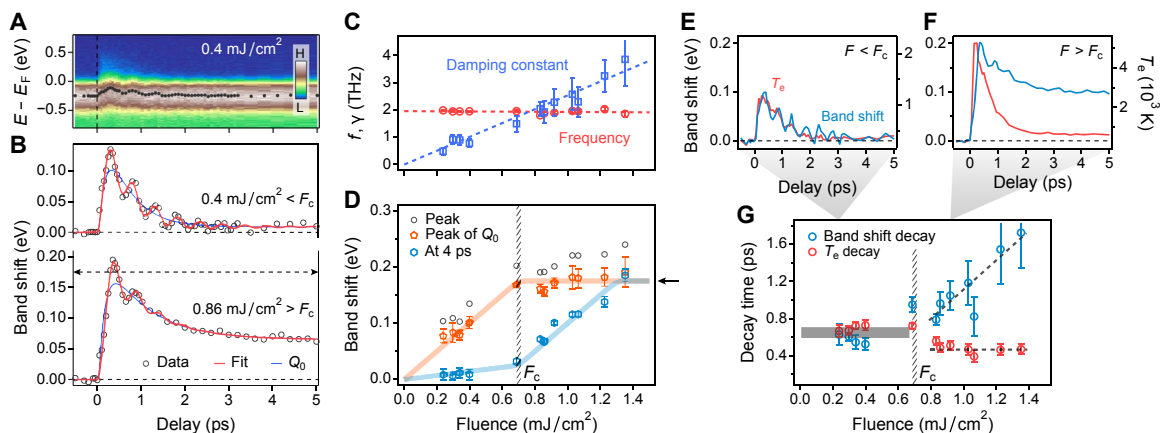


Fig. 3. Electronic band dynamics and the metastable state. (A) Time-dependent photoemission spectrum at the momentum k_{\parallel} as indicated by the vertical dashed line in Fig. 2A. The black dots represent the band positions. (B) Energy shift of the band shown in (A) at two representative laser fluences. Red curves indicate fits of the data, and blue curves indicate the quasi-equilibrium coordinate Q_0 as described in the main text. (C) Extracted oscillation frequency f and damping constant γ as a function of fluence. (D) Peak of band shift, peak of Q_0 , and band shift at 4 ps as a function of fluence. The arrow indicates the saturation value corresponding to melting of the CDW order. At fluences higher than 0.7 mJ/cm^2 , the material evolves into a new long-lived metastable state. (E and F) Comparison between the evolution of T_e and the band shift as a function of fluence. (G) Decay time scales of T_e and the band shift as a function of fluence. When $F > F_c$, the faster decay of T_e indicates an enhancement in the averaged electron-phonon coupling, while the decay of band shift starts to deviate from the former and becomes slower. The error bars include the measurement uncertainties and the SD of the fitting.

ultrafast CDW order suppression (orange curve) as well as the band shift at a delay of 4 ps (blue curve). At the same critical fluence F_c observed in the electron temperature dynamics (Fig. 2E), we observe that the peak of Q_0 saturates at the expected thermal equilibrium value of $\sim 175 \text{ meV}$ —corresponding to complete closure of the gap, while the band shift at 4 ps shows a kink (turning point). It is worth mentioning that the saturation of Q_0 is also consistently reflected in the fluence-dependent maximum T_e , which suggests a change of the effective electronic heat capacity at F_c (see the Supplementary Materials). These results reveal a close relationship between the electron-phonon coupling and the CDW transition and suggest that once the CDW order is completely melted at $F > F_c$, the phase of the material changes in an extraordinary way. The band shift after reaching a quasi-equilibrium at 4 ps behaves as if it undergoes a continuous phase transition (Fig. 3D), which is in strong contrast to the well-identified first-order transition that occurs under thermal equilibrium conditions. Moreover, this new state lasts for hundreds of picoseconds and, thus, provides access to a metastable CDW order in $1T\text{-TaSe}_2$. This is evidenced by the very small changes of both the band shift and the electron temperature at long time delays and also consistent with the ultrafast electron diffraction experiment (27) (see the Supplementary Materials). As shown in Fig. 4, which plots the band shift (order parameter) as a function of both time delay and laser fluence, this new state does not correspond to either of the equilibrium phases of the material. Note that this band shift markedly highlights the sudden change in the order parameter and material phase that occurs at the critical fluence.

Under weak excitation ($F < F_c$), our data show strong initial electron-phonon coupling (Fig. 3E) followed by nearly homogeneous excitation of the entire phonon bath within 4 ps (Fig. 2E). Moreover, the original CDW order recovers on comparable time scales to the decay of the electron temperature (Fig. 3E). In contrast, as the laser excitation fluence exceeds F_c , the averaged electron-phonon coupling constant increases within the first picoseconds (Fig. 3, F and G), likely related to the enhancement of the density of states at E_F as the flat band near the Brillouin zone center shifts upward. This is accompanied by a sudden

reduction in the effective lattice heat capacity at F_c —the electron-phonon coupling switches to being mode selective, and only a subset of phonons is coupled to the hot electrons and thermalized above T_c . This strong inhomogeneity within the phonon system has no counterpart under thermal equilibrium conditions and pushes the material into a new metastable CDW state (see movie S1 and fig. S8) along a path that lowers the free energy. This process takes longer for stronger laser excitation and no longer tracks the decay of the electron temperature (Fig. 3, F and G).

Thus, the origin of the new long-lived metastable state can be clearly attributed to the strong mode selectivity of the electron-phonon coupling, as illustrated in Figs. 1 and 4. We note that anisotropic electron-phonon coupling has also been reported in cuprates (30, 31), graphene (32), and theoretical calculation on metals (33). By investigating electron-phonon coupling in both the time domain and as a function of laser fluence, the results discussed here provide even more direct evidence of anisotropy and, in addition, reveal the transition from nearly homogeneous to mode-selective electron-phonon coupling and relate it to the formation of a new long-lived metastable state. Taking advantage of this kind of selective excitation of phonons, our data suggest that ultrashort laser pulses are able to transform the material into the new and otherwise unreachable intermediate CDW state. The laser energy required for the phase transition through this nonequilibrium pathway ($\sim 1.35 \text{ mJ/cm}^2$ as shown in Fig. 3D and fig. S9) is much lower ($\sim 60\%$) than that under thermal equilibrium conditions, where $\sim 2.2 \text{ mJ/cm}^2$ would be needed, as estimated from the heat capacity and the latent heat (see the Supplementary Materials). Hence, this experiment demonstrates an ultrafast, controllable, and energetically efficient way to manipulate the state of $1T\text{-TaSe}_2$, which can likely be extended to many other materials.

DISCUSSION

Finally, we discuss the underlying physical mechanisms that may be giving rise to our observations. In thermal equilibrium for a CDW material such as $1T\text{-TaSe}_2$, it has been pointed out that the phonon

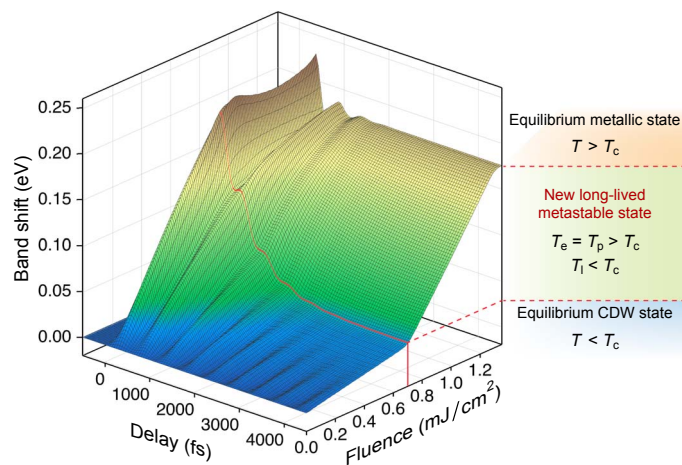


Fig. 4. Experimental band shift (order parameter) as a function of time delay and laser fluence. At fluences higher than F_c (~ 0.7 mJ/cm² indicated by the red line), the material suddenly evolves into a new metastable state that is distinct from either of the equilibrium phases. T_e , T_p , and T_l refer to the temperatures of the electron, strongly coupled phonons, and the rest of the phonon bath, respectively.

frequency softens around the CDW wave vector \mathbf{q}_{CDW} (known as a Kohn anomaly) (34). For temperatures below T_c , the frequency of some modes around \mathbf{q}_{CDW} approaches zero (giving rise to an imaginary value in ab initio calculations signaling the instability of the spatial configuration), and this induces a lattice instability. In the case of ultrafast excitation of 1T-TaSe₂, once the CDW order is suppressed, the zero phonon frequency recovers to a real value close to zero at the phase transition (i.e., at $F = F_c$). The electron-phonon coupling constant for a specific phonon mode (phonon branch ν at wave vector \mathbf{q}) is

$$\lambda_{\mathbf{q}\nu} = \frac{\gamma_{\mathbf{q}\nu}}{\pi N(E_F)\omega_{\mathbf{q}\nu}^2} \quad (3)$$

where $\gamma_{\mathbf{q}\nu}$ is the phonon linewidth, $N(E_F)$ is the density of states per spin, and $\omega_{\mathbf{q}\nu}$ is the phonon frequency. The ultralow frequency and large linewidth (35–37) of some phonon modes can lead to a mode-selective enhancement of the electron-phonon coupling to breathing and associated modes. This would explain the enhanced cooling of the electron bath on early 1-ps time scales, as well as the reduction in the heat capacity of the lattice—since some other phonon modes are more weakly coupled to the electron system. This might also be explained by the material becoming more 2D-like in the metastable state or due to surface decoupling. However, we see no evidence of surface decoupling in the ARPES spectra. A more quantitative explanation of the exotic electron-phonon coupling behavior during this ultrafast phase transition will require further experiments to measure the phonon dynamics [e.g., using ultrafast x-ray/electron diffuse scattering (38, 39)] combined with more advanced microscopic theories.

In summary, we use ultrafast electron calorimetry to measure the dynamic electron temperature, band structure, and heat capacity as a function of laser fluence and demonstrate that it is a powerful method for not only characterizing important physical quantities (e.g., electron-phonon coupling) and transient excited states but also revealing when and where microscopic interactions change the state of a material. We then use it to uncover a new long-lived metastable state that is

mediated by mode-selective electron-phonon coupling. This new state enriches the phase diagram of 1T-TaSe₂ and thus allows for better understanding and manipulation of CDW and electron-phonon interactions. Thus, time- and angle-resolved photoemission can uncover a broad set of exotic phenomena in correlated materials, making it possible to uncover previously unidentified phases that are elusive to traditional spectroscopies.

MATERIALS AND METHODS

Experiments

The trARPES experiments were done in a pump-probe scheme. The 1.6-eV infrared laser beam with a pulse duration of ~ 30 fs was generated by a Ti:Sapphire oscillator-amplifier system (KMLabs Dragon) at a repetition rate of 4 kHz. It was then split into pump and probe lines. In the probe line, the beam was first frequency doubled by a β -barium borate crystal to 3.2 eV and then focused into a waveguide filled with Kr gas for high harmonic generation. The data reported here were recorded using 22.4-eV photons (seventh order). A delay stage in the pump line was used to control the time delay between the pump and probe pulses. Single crystals of 1T-TaSe₂ were cleaved in situ and measured at 300 K under a vacuum of 3×10^{-10} torr. The photoelectrons were detected by a SPECS PHOIBOS 100 energy analyzer. The overall energy resolution is about 130 meV, which is mainly limited by the bandwidth of the ultrashort laser pulses.

Theoretical calculations

Our DFT calculations used the projector augmented wave (PAW) method encoded in the Vienna ab initio simulation package (VASP) (40–42). The PAW method was used to describe the wave functions near the core, and the generalized gradient approximation within the Perdew-Burke-Ernzerhof parameterization was used as the electron exchange-correlation functional (43). For band structure calculations, the cutoff energy of 500 eV was taken for expanding the wave functions into plane-wave basis. In the calculation, the Brillouin zone was sampled in the \mathbf{k} space within the Monkhorst-Pack scheme (44). The spin-orbit coupling was taken into account by the second variation method. In the calculations of 1T-TaSe₂, the numbers of these \mathbf{k} points were $14 \times 14 \times 8$ and $3 \times 3 \times 5$ for 1×1 unit cell and $\sqrt{13} \times \sqrt{13}$ supercell, respectively. For the CDW phase ($\sqrt{13} \times \sqrt{13}$ cell), we adopted the experimental structural parameters in (45).

SUPPLEMENTARY MATERIALS

Supplementary material for this article is available at <http://advances.sciencemag.org/cgi/content/full/5/3/eaav4449/DC1>

- Section S1. Data analysis of trARPES spectra
- Section S2. DFT calculations of electronic structure
- Section S3. Evolution of the electron temperature
- Section S4. The electronic band shift and the new metastable states
- Section S5. Relationship between the band shift and the CDW order
- Section S6. Caption of the supplementary movie

- Fig. S1. Fit of the trARPES spectra.
- Fig. S2. Band structure for 1T-TaSe₂ in the metallic state (1×1) with spin-orbit coupling.
- Fig. S3. Partial density of states projected onto three kinds of Ta atoms in the CDW state ($\sqrt{13} \times \sqrt{13}$) with spin-orbit coupling.
- Fig. S4. Analysis of the electron temperature.
- Fig. S5. Analysis of the band shift.
- Fig. S6. Schematic of the new long-lived metastable state mediated by mode-selective electron-phonon coupling.
- Fig. S7. The long-lasting metastable state.
- Fig. S8. ARPES spectra at selected time delays for the laser fluence of 0.86 mJ/cm².

Fig. S9. ARPES spectra at two time delays as a function of laser fluence.

Movie S1. Transforming a material into a new state after heating the electrons with an ultrafast laser.

References (46–51)

REFERENCES AND NOTES

- D. Fausti, R. I. Tobey, N. Dean, S. Kaiser, A. Dienst, M. C. Hoffmann, S. Pyon, T. Takayama, H. Takagi, A. Cavalleri, Light-induced superconductivity in a stripe-ordered cuprate. *Science* **331**, 189–191 (2011).
- Y. H. Wang, H. Steinberg, P. Jarillo-Herrero, N. Gedik, Observation of Floquet-Bloch states on the surface of a topological insulator. *Science* **342**, 453–457 (2013).
- R. Mankowsky, A. Subedi, M. Först, S. O. Mariager, M. Chollet, H. T. Lemke, J. S. Robinson, J. M. Glownia, M. P. Minitti, A. Frano, M. Fechner, N. A. Spaldin, T. Loew, B. Keimer, A. Georges, A. Cavalleri, Nonlinear lattice dynamics as a basis for enhanced superconductivity in $\text{YBa}_2\text{Cu}_3\text{O}_{6.5}$. *Nature* **516**, 71–73 (2014).
- L. Stojchevska, I. Vaskivskiy, T. Mertelj, P. Kusar, D. Svetin, S. Brazovskii, D. Mihailovic, Ultrafast switching to a stable hidden quantum state in an electronic crystal. *Science* **344**, 177–180 (2014).
- V. R. Morrison, R. P. Chatelain, K. L. Tiwari, A. Hendaoui, A. Bruhács, M. Chaker, B. J. Siwick, A photoinduced metal-like phase of monoclinic VO_2 revealed by ultrafast electron diffraction. *Science* **346**, 445–448 (2014).
- I. Vaskivskiy, J. Gospodaric, S. Brazovskii, D. Svetin, P. Sutar, E. Goreshnik, I. A. Mihailovic, T. Mertelj, D. Mihailovic, Controlling the metal-to-insulator relaxation of the metastable hidden quantum state in 1T-TaS_2 . *Sci. Adv.* **1**, e1500168 (2015).
- M. Mitrano, A. Cantaluppi, D. Nicoletti, S. Kaiser, A. Perucchi, S. Lupi, P. Di Pietro, D. Pontiroli, M. Riccò, S. R. Clark, D. Jaksch, A. Cavalleri, Possible light-induced superconductivity in K_3C_{60} at high temperature. *Nature* **530**, 461–464 (2016).
- J. Zhang, X. Tan, M. Liu, S. W. Teitelbaum, K. W. Post, F. Jin, K. A. Nelson, D. N. Basov, W. Wu, R. D. Averitt, Cooperative photoinduced metastable phase control in strained manganite films. *Nat. Mater.* **15**, 956–960 (2016).
- D. N. Basov, R. D. Averitt, D. Hsieh, Towards properties on demand in quantum materials. *Nat. Mater.* **16**, 1077–1088 (2017).
- K. Sun, S. Sun, C. Zhu, H. Tian, H. Yang, J. Li, Hidden CDW states and insulator-to-metal transition after a pulsed femtosecond laser excitation in layered chalcogenide $1\text{T-TaS}_2-x\text{Se}_x$. *Sci. Adv.* **4**, eaas9660 (2018).
- G. Grüner, The dynamics of charge-density waves. *Rev. Mod. Phys.* **60**, 1129–1181 (1988).
- D. J. Scalapino, A common thread: The pairing interaction for unconventional superconductors. *Rev. Mod. Phys.* **84**, 1383–1417 (2012).
- C. Giannetti, M. Capone, D. Fausti, M. Fabrizio, F. Parmigiani, D. Mihailovic, Ultrafast optical spectroscopy of strongly correlated materials and high-temperature superconductors: A non-equilibrium approach. *Adv. Phys.* **65**, 58–238 (2016).
- L. Perfetti, P. A. Loukakos, M. Lisowski, U. Bovensiepen, H. Berger, S. Biermann, P. S. Cornaglia, A. Georges, M. Wolf, Time evolution of the electronic structure of 1T-TaS_2 through the insulator-metal transition. *Phys. Rev. Lett.* **97**, 067402 (2006).
- F. Schmitt, P. S. Kirchmann, U. Bovensiepen, R. G. Moore, L. Rettig, M. Krenz, J.-H. Chu, N. Ru, L. Perfetti, D. H. Lu, M. Wolf, I. R. Fisher, Z.-X. Shen, Transient electronic structure and melting of a charge density wave in TbTe_3 . *Science* **321**, 1649–1652 (2008).
- M. Eichberger, H. Schäfer, M. Krumova, M. Beyer, J. Demsar, H. Berger, G. Moriena, G. Sciaini, R. J. D. Miller, Snapshots of cooperative atomic motions in the optical suppression of charge density waves. *Nature* **468**, 799–802 (2010).
- T. Rohwer, S. Hellmann, M. Wiesenmayer, C. Sohr, A. Stange, B. Slomski, A. Carr, Y. Liu, L. M. Avila, M. Källäne, S. Mathias, L. Kipp, K. Rossnagel, M. Bauer, Collapse of long-range charge order tracked by time-resolved photoemission at high momenta. *Nature* **471**, 490–493 (2011).
- C. L. Smallwood, J. P. Hinton, C. Jozwiak, W. Zhang, J. D. Koralek, H. Eisaki, D.-H. Lee, J. Orenstein, A. Lanzara, Tracking Cooper pairs in a cuprate superconductor by ultrafast angle-resolved photoemission. *Science* **336**, 1137–1139 (2012).
- F. Boschini, E. H. da Silva Neto, E. Razzoli, M. Zonno, S. Peli, R. P. Day, M. Michiardi, M. Schneider, B. Zwartsenberg, P. Nigge, R. D. Zhong, J. Schneeloch, G. D. Gu, S. Zhdanovich, A. K. Mills, G. Levy, D. J. Jones, C. Giannetti, A. Damascelli, Collapse of superconductivity in cuprates via ultrafast quenching of phase coherence. *Nat. Mater.* **17**, 416–420 (2018).
- S. Hellmann, T. Rohwer, M. Källäne, K. Hanff, C. Sohr, A. Stange, A. Carr, M.M. Murnane, H.C. Kapteyn, L. Kipp, M. Bauer, K. Rossnagel, Time-domain classification of charge-density-wave insulators. *Nat. Commun.* **3**, 1069 (2012).
- S. Gerber, S.-L. Yang, D. Zhu, H. Soifer, J. A. Sobota, S. Rebec, J. J. Lee, T. Jia, B. Moritz, C. Jia, A. Gauthier, Y. Li, D. Leuenberger, Y. Zhang, L. Chaix, W. Li, H. Jang, J.-S. Lee, M. Yi, G. L. Dakovski, S. Song, J. M. Glownia, S. Nelson, K. W. Kim, Y.-D. Chuang, Z. Hussain, R. G. Moore, T. P. Devereaux, W.-S. Lee, P. S. Kirchmann, Z.-X. Shen, Femtosecond electron-phonon lock-in by photoemission and x-ray free-electron laser. *Science* **357**, 71–75 (2017).
- P. Tengdin, W. You, C. Chen, X. Shi, D. Zusin, Y. Zhang, C. Gentry, A. Blonsky, M. Keller, P. M. Oppeneer, H. C. Kapteyn, Z. Tao, M. M. Murnane, Critical behavior within 20 fs drives the out-of-equilibrium laser-induced magnetic phase transition in nickel. *Sci. Adv.* **4**, eaap9744 (2018).
- J. A. Wilson, F. J. Di Salvo, S. Mahajan, Charge-density waves in metallic, layered, transition-metal dichalcogenides. *Phys. Rev. Lett.* **32**, 882–885 (1974).
- A. Rundquist, C. G. Durfee III, Z. Chang, C. Herne, S. Backus, M. M. Murnane, H. C. Kapteyn, Phase-matched generation of coherent soft x-rays. *Science* **280**, 1412–1415 (1998).
- J. C. Petersen, S. Kaiser, N. Dean, A. Simoncini, H. Y. Liu, A. L. Cavalieri, C. Cacho, I. C. E. Turcu, E. Springate, F. Frassetto, L. Poletto, S. S. Dhesi, H. Berger, A. Cavalleri, Clocking the melting transition of charge and lattice order in 1T-TaS_2 with ultrafast extreme-ultraviolet angle-resolved photoemission spectroscopy. *Phys. Rev. Lett.* **107**, 177402 (2011).
- C. Sohr, A. Stange, M. Bauer, K. Rossnagel, How fast can a Peierls–Mott insulator be melted? *Faraday Discuss.* **171**, 243–257 (2014).
- S. Sun, L. Wei, Z. Li, G. Cao, Y. Liu, W. J. Lu, Y. P. Sun, H. Tian, H. Yang, J. Li, Direct observation of an optically induced charge density wave transition in 1T-TaSe_2 . *Phys. Rev. B* **92**, 224303 (2015).
- J. Demsar, L. Forró, H. Berger, D. Mihailovic, Femtosecond snapshots of gap-forming charge-density-wave correlations in quasi-two-dimensional dichalcogenides 1T-TaS_2 and 2H-TaSe_2 . *Phys. Rev. B* **66**, 041101 (2002).
- T. K. Cheng, J. Vidal, H. J. Zeiger, G. Dresselhaus, M. S. Dresselhaus, E. P. Ippen, Mechanism for dispersive excitation of coherent phonons in Sb, Bi, Te, and Ti_2O_3 . *Appl. Phys. Lett.* **59**, 1923–1925 (1991).
- L. Perfetti, P. A. Loukakos, M. Lisowski, U. Bovensiepen, H. Eisaki, M. Wolf, Ultrafast electron relaxation in superconducting $\text{Bi}_2\text{Sr}_2\text{CaCu}_2\text{O}_{8+\delta}$ by time-resolved photoelectron spectroscopy. *Phys. Rev. Lett.* **99**, 197001 (2007).
- S. Dal Conte, C. Giannetti, G. Coslovich, F. Cilento, D. Bossini, T. Abebaw, F. Banfi, G. Ferrini, H. Eisaki, M. Greven, A. Damascelli, D. van der Marel, F. Parmigiani, Disentangling the electronic and phononic glue in a high- T_c superconductor. *Science* **335**, 1600–1603 (2012).
- J. C. Johansson, S. Ulstrup, F. Cilento, A. Crepaldi, M. Zacchigna, C. Cacho, I. C. Edmond Turcu, E. Springate, F. Fromm, C. Roidel, T. Seyller, F. Parmigiani, M. Griener, P. Hofmann, Direct view of hot carrier dynamics in graphene. *Phys. Rev. Lett.* **111**, 027403 (2013).
- P. Maldonado, K. Carva, M. Flammer, P. M. Oppeneer, Theory of out-of-equilibrium ultrafast relaxation dynamics in metals. *Phys. Rev. B* **96**, 174439 (2017).
- W. Kohn, Image of the Fermi surface in the vibration spectrum of a metal. *Phys. Rev. Lett.* **2**, 393–394 (1959).
- F. C. Weber, S. Rosenkranz, J.-P. Castellani, R. Osborn, R. Hott, R. Heid, K.-P. Bohnen, T. Egami, A. H. Said, D. Reznik, Extended phonon collapse and the origin of the charge-density wave in 2H-NbSe_2 . *Phys. Rev. Lett.* **107**, 107403 (2011).
- X. Zhu, Y. Cao, J. Zhang, E. W. Plummer, J. Guo, Classification of charge density waves based on their nature. *Proc. Natl. Acad. Sci. U.S.A.* **112**, 2367–2371 (2015).
- Y. Liu, D. F. Shao, L. J. Li, W. J. Lu, X. D. Zhu, P. Tong, R. C. Xiao, L. S. Ling, C. Y. Xi, L. Pi, H. F. Tian, H. X. Yang, J. Q. Li, W. H. Song, X. B. Zhu, Y. P. Sun, Nature of charge density waves and superconductivity in $1\text{T-TaSe}_2-x\text{Te}_x$. *Phys. Rev. B* **94**, 045131 (2016).
- M. Trigo, M. Fuchs, J. Chen, M. P. Jiang, M. Cammarata, S. Fahy, D. M. Fritz, K. Gaffney, S. Ghimire, A. Higginbotham, S. L. Johnson, M. E. Kozina, J. Larsson, H. Lemke, A. M. Lindenberg, G. Ndabashimiye, F. Quirin, K. Sokolowski-Tinten, C. Uher, G. Wang, J. S. Wark, D. Zhu, D. A. Reis, Fourier-transform inelastic X-ray scattering from time- and momentum-dependent phonon–phonon correlations. *Nat. Phys.* **9**, 790–794 (2013).
- T. Konstantinova, J. D. Rameau, A. H. Reid, O. Abdurazakov, L. Wu, R. Li, X. Shen, G. Gu, Y. Huang, L. Rettig, I. Avigo, M. Ligges, J. K. Freericks, A. F. Kemper, H. A. Dürr, U. Bovensiepen, P. D. Johnson, X. Wang, Y. Zhu, Nonequilibrium electron and lattice dynamics of strongly correlated $\text{Bi}_2\text{Sr}_2\text{CaCu}_2\text{O}_{8+\delta}$ single crystals. *Sci. Adv.* **4**, eaap7427 (2018).
- G. Kresse, J. Hafner, Ab initio molecular dynamics for liquid metals. *Phys. Rev. B* **47**, 558–561 (1993).
- G. Kresse, J. Furthmüller, Efficiency of ab-initio total energy calculations for metals and semiconductors using a plane-wave basis set. *Comput. Mater. Sci.* **6**, 15–50 (1996).
- G. Kresse, J. Furthmüller, Efficient iterative schemes for ab initio total-energy calculations using a plane-wave basis set. *Phys. Rev. B* **54**, 11169–11186 (1996).
- J. P. Perdew, K. Burke, M. Ernzerhof, Generalized gradient approximation made simple. *Phys. Rev. Lett.* **77**, 3865–3868 (1996).
- H. J. Monkhorst, J. D. Pack, Special points for Brillouin-zone integrations. *Phys. Rev. B* **13**, 5188–5192 (1976).
- R. Brouwer, F. Jellinek, The low-temperature superstructures of 1T-TaSe_2 and 2H-TaSe_2 . *Phys. B+C* **99**, 51–55 (1980).

46. S. Doniach, M. Sunjic, Many-electron singularity in x-ray photoemission and x-ray line spectra from metals. *J. Phys. C Solid State Phys.* **3**, 285 (1970).
47. S. C. Bayliss, A. Clarke, W. Y. Liang, Optical and thermal evidence for the metal-insulator transition in 1T-TaS₂. *J. Phys. C Solid State Phys.* **16**, L831 (1983).
48. L. X. Yang, G. Rohde, T. Rohwer, A. Stange, K. Hanff, C. Sohrt, L. Rettig, L. X. Cortés, F. Chen, D. L. Feng, T. Wolf, B. Kamble, I. Eremin, T. Popmintchev, M. M. Murnane, H. C. Kapteyn, L. Kipp, J. Fink, M. Bauer, U. Bovensiepen, K. Rossnagel, Ultrafast modulation of the chemical potential in BaFe₂As₂ by coherent phonons. *Phys. Rev. Lett.* **112**, 207001 (2014).
49. N. Erasmus, M. Eichberger, K. Haupt, I. Boshoff, G. Kassier, R. Birmurske, H. Berger, J. Demsar, H. Schwöerer, Ultrafast dynamics of charge density waves in 4H_b-TaSe₂ probed by femtosecond electron diffraction. *Phys. Rev. Lett.* **109**, 167402 (2012).
50. K. Haupt, M. Eichberger, N. Erasmus, A. Rohwer, J. Demsar, K. Rossnagel, H. Schwöerer, Ultrafast metamorphosis of a complex charge-density wave. *Phys. Rev. Lett.* **116**, 016402 (2016).
51. S. Vogelgesang, G. Storeck, J. G. Horstmann, T. Diekmann, M. Sivilis, S. Schramm, K. Rossnagel, S. Schäfer, C. Ropers, Phase ordering of charge density waves traced by ultrafast low-energy electron diffraction. *Nat. Phys.* **14**, 184–190 (2018).

Acknowledgments: We thank J. K. Freericks for useful discussions. **Funding:** M.M. and H.K. gratefully acknowledge support for the ARPES measurements from the National Science Foundation through the JILA Physics Frontiers Center PHY-1125844 and a Gordon and Betty Moore Foundation EPIQS Award GBMF4538. P.M.O. acknowledges financial support

from the Swedish Research Council (VR) and the K. and A. Wallenberg Foundation (grant no. 2015.0060). **Author contributions:** X.S., W.Y., Y.Z., and Z.T. performed trARPES measurements. K.R. provided 1T-TaSe₂ samples. X.S., W.Y., and Y.Z. analyzed the data. X.W., R.T., and P.M.O. provided theoretical input. X.S., K.R., M.B., H.K., and M.M. wrote the manuscript with inputs from all the other authors. X.S., W.Y., Y.Z., H.K., and M.M. conceived the investigation. All authors discussed the underlying physics. **Competing interests:** H.K. and M.M. have a financial interest in a laser company, KMLabs, that produces the lasers and high harmonic generation sources used in this work. H.K. is partially employed by KMLabs. The authors declare that they have no other competing interests. **Data and materials availability:** All data needed to evaluate the conclusions in the paper are present in the paper and/or the Supplementary Materials. Additional data related to this paper may be requested from the authors.

Submitted 17 September 2018

Accepted 14 January 2019

Published 1 March 2019

10.1126/sciadv.aav4449

Citation: X. Shi, W. You, Y. Zhang, Z. Tao, P. M. Oppeneer, X. Wu, R. Thomale, K. Rossnagel, M. Bauer, H. Kapteyn, M. Murnane, Ultrafast electron calorimetry uncovers a new long-lived metastable state in 1T-TaSe₂ mediated by mode-selective electron-phonon coupling. *Sci. Adv.* **5**, eaav4449 (2019).

Ultrafast electron calorimetry uncovers a new long-lived metastable state in 1T-TaSe₂ mediated by mode-selective electron-phonon coupling

Xun Shi, Wenjing You, Yingchao Zhang, Zhensheng Tao, Peter M. Oppeneer, Xianxin Wu, Ronny Thomale, Kai Rossnagel, Michael Bauer, Henry Kapteyn and Margaret Murnane

Sci Adv 5 (3), eaav4449.
DOI: 10.1126/sciadv.aav4449

ARTICLE TOOLS

<http://advances.sciencemag.org/content/5/3/eaav4449>

SUPPLEMENTARY MATERIALS

<http://advances.sciencemag.org/content/suppl/2019/02/25/5.3.eaav4449.DC1>

REFERENCES

This article cites 51 articles, 14 of which you can access for free
<http://advances.sciencemag.org/content/5/3/eaav4449#BIBL>

PERMISSIONS

<http://www.sciencemag.org/help/reprints-and-permissions>

Use of this article is subject to the [Terms of Service](#)

Science Advances (ISSN 2375-2548) is published by the American Association for the Advancement of Science, 1200 New York Avenue NW, Washington, DC 20005. 2017 © The Authors, some rights reserved; exclusive licensee American Association for the Advancement of Science. No claim to original U.S. Government Works. The title *Science Advances* is a registered trademark of AAAS.