

# Fine-scale transition to lower bacterial diversity and altered community composition precedes shell disease in laboratory-reared juvenile American lobster

Sarah G. Feinman<sup>1</sup>, Andrea Unzueta Martínez<sup>2,5</sup>, Jennifer L. Bowen<sup>1,5</sup>,  
Michael F. Thlusty<sup>3,4,\*</sup>

<sup>1</sup>Biology Department, University of Massachusetts Boston, Boston, MA 02125, USA

<sup>2</sup>Biology Department, University of Hawaii at Manoa, Honolulu, HI 96822, USA

<sup>3</sup>Anderson Cabot Center for Ocean Life, New England Aquarium, Boston, MA 02110, USA

<sup>4</sup>School for the Environment, University of Massachusetts Boston, Boston, MA 02125, USA

<sup>5</sup>Present address: Department of Marine and Environmental Science, Northeastern University, Nahant, MA 01908, USA

**ABSTRACT:** The American lobster *Homarus americanus* supports a valuable commercial fishery in the Northeastern USA and Maritime Canada; however, stocks in the southern portion of the lobster's range have shown declines, in part due to the emergence of shell disease. Epizootic shell disease is a bacterially induced cuticular erosion that renders even mildly affected lobsters unmarketable because of their appearance, and in more severe cases can cause mortality. Despite the importance of this disease, the associated bacterial communities have not yet been fully characterized. We sampled 2 yr old, laboratory-reared lobsters that displayed signs of shell disease at the site of disease as well as at 0.5, 1, and 1.5 cm away from the site of disease to determine how the bacterial community changed over this fine spatial scale. Illumina sequencing of the 16S rRNA gene revealed a distinct bacterial community at the site of disease, with significant reductions in bacterial diversity and richness compared to more distant sampling locations. The bacterial community composition 0.5 cm from the site of disease was also altered, and there was an observable decrease in bacterial diversity and richness, even though there were no signs of disease at that location. Given the distinctiveness of the bacterial community at the site of disease and 0.5 cm from the site of disease, we refer to these communities as affected and transitional, and suggest that these bacteria, including the previously proposed causative agent, *Aquimarina 'homaria'*, are important for the initiation and progression of this laboratory model of shell disease.

**KEY WORDS:** American lobster · Shell disease · Bacterial communities · Microbiome · High throughput sequencing · 16S rRNA gene

Resale or republication not permitted without written consent of the publisher

## INTRODUCTION

The American lobster *Homarus americanus* supports a valuable commercial fishery in the Gulf of Maine, with landings totaling over half a billion dollars in 2014 (National Marine Fisheries Service 2014). Although landings are at historic highs, the southern extent of this fishery has recently come under threat, with epizootic lobster shell disease being one poten-

tial driver (Thlusty et al. 2014). This disease occurs when bacteria consume the lobster cuticle resulting in deep lesions on infected lobsters (Smolowitz et al. 2005). Most types of shell disease first appear as melanized spots on the epicuticle (Thlusty & Metzler 2012). In the epizootic form of shell disease, these spots quickly develop into shallow lesions on the exocuticle that ultimately penetrate into the endocuticle and eventually cause ulceration (Smolowitz et al.

\*Corresponding author: mthlusty@neaq.org

2005). Due to the physical severity of epizootic shell disease, even mildly affected lobsters are generally considered unmarketable due to the unappealing appearance of their shells, thus affecting the value of this important commercial fishery (Castro et al. 2012).

In addition to aesthetic changes associated with epizootic shell disease, animals can also suffer from decreased health (Tlusty et al. 2014) and increased mortality (Castro et al. 2012). Lobsters affected by shell disease are energetically compromised, with disruptions to their metabolism and hormone signaling (Tarrant et al. 2012). They also tend to have high levels of the molting hormone ecdysone, which can disrupt their reproductive cycle (Laufer et al. 2005). These physiological changes may in turn influence population dynamics, particularly since disease prevalence among egg-bearing females can be as high as 70% (Castro & Somers 2012). The recent decline in the southern New England American lobster population has been positively associated with an increase in epizootic shell disease (Castro et al. 2012, Howell 2012), highlighting the importance of understanding the ecological dynamics of this disease.

Despite the importance of epizootic shell disease to the health of the American lobster and the importance of this fishery to coastal economic sustainability, the bacteria associated with epizootic shell disease have not yet been fully identified. Initial investigation of the bacteria associated with epizootic shell disease identified a few key members of the shell microbiome (Chistoserdov et al. 2005); however, this study was based on culturing techniques, which typically assess less than 1% of the bacterial community (Staley & Konopka 1985). Later studies based on culture-independent fingerprinting methods eliminated this culture bias; however, those studies did not fully characterize the bacterial community associated with both healthy and diseased shell throughout the progression of the disease (Chistoserdov et al. 2012, Quinn et al. 2012b, Whitten et al. 2014). A higher resolution sequencing study using next-generation sequencing techniques identified 170 different bacterial species associated with the lobster shell, an order of magnitude more than previous studies (Meres et al. 2012). This study examined the lobster shell bacterial community associated with 3 distinct disease states: diseased cuticle, healthy cuticle from diseased animals, and healthy cuticle from healthy animals, and concluded that the epizootic shell disease may be due to a dysbiotic shift in the shell bacterial community (Meres et al. 2012). These results highlight the importance of examining the bacterial community as a whole, as this disease may be due to changes

in the community, not individual bacteria. Further, an assessment of temporal changes in shell bacterial communities is needed to better understand the progression of shell disease.

The importance of microbially induced diseases to coastal ecosystem health is well documented (Harvell et al. 1999, Fey et al. 2015); however, it is still difficult to link specific bacterial taxa to these diseases. In this study, we used a laboratory-based model that has been used in numerous studies of lobster shell disease (Quinn et al. 2012a,b, Tlusty & Metzler 2012, Whitten et al. 2014) to characterize the bacterial communities recovered from lobster shells. Our objectives were to (1) compare healthy and diseased areas of the lobster shell, (2) investigate how these communities changed spatially and temporally as the disease progressed, and (3) identify any associated dysbiotic shifts that occurred in the bacterial community. We used Illumina 16S rRNA gene sequencing on samples collected over very fine spatial scales from the shell of diseased and healthy juvenile lobsters to analyze the lobster shell bacterial community and we examined how this community changed with distance from the site of disease. The animals used in this study were not formally diagnosed with epizootic shell disease, they instead suffered from a laboratory model of shell disease (LMSD) that is common in captivity and likely due to environmental stress. These results, nonetheless, allow closer scrutiny of the process of lesion initiation and spread, which would not be possible in wild lobster populations. Based on previous studies of LMSD (Whitten et al. 2014), we hypothesized that the bacterial community would gradually change and become less diverse with increasing distance from the site of melanization. Our results indicate shifts in bacterial community composition at the site of disease as well as at 0.5 cm from the site of disease, though these shifts were accompanied by a decrease, rather than an increase, in bacterial richness and diversity compared to unaffected shell.

## MATERIALS AND METHODS

### Sample collection

Samples were collected from 5 juvenile American lobsters raised at the New England Aquarium Lobster Research and Rearing Facility (Boston, MA, USA), which features a semi-closed recirculation system with water from Boston Harbor (15% water replacement daily). Lobsters were housed in conditions sim-

ilar to those described in prior shell disease research (Chistoserdov et al. 2012, Quinn et al. 2012b, Tlusty & Metzler 2012, Whitten et al. 2014). Briefly, all lobsters were kept in individual 9 cm diameter containers (hereafter referred to as pens) and fed a diet consisting of Economac-4™ (Aquafauna Bio-Marine), a commercially available shrimp feed. This diet lacks the carotenoid astaxanthin, causing the lobster shell to have no color, a desirable phenotype for this study as it allows early detection and better visualization of the melanization associated with LMSD (Tlusty & Hyland 2005).

The diseased lobsters used in this study were approximately 2 yr old and had all molted approximately 5 to 6 mo before the initiation of sampling, with the exception of a single lobster that molted approximately 3 mo prior to the initiation of sampling. These lobsters were chosen because they all had visible signs of LMSD on their left claw, though the degree of melanization varied among lobsters. Although LMSD was also present on other parts of the lobsters' shells, we focused solely on the left claw of each lobster in order to eliminate any potential confounding differences that could arise from comparing different parts of the lobster shell (Meres et al. 2012). We categorized the degree of melanization on each lobster claw, defining lesions as melanized areas of the shell that had become soft or pitted, and spots as areas that were melanized, but maintained a rigidity similar to that of the unaffected lobster shell.

We sampled the diseased lobsters approximately every 10 d over the course of the experiment for a total of 4 time points per lobster. Shell microbiome samples were collected using sterile toothpicks to scrape the bacterial community from the desired area of each lobster shell. Gentle contact was made between the toothpick and the lobster and this contact was maintained over the entire sampling area. Each toothpick was then stored in an individual cryovial and transported to the laboratory on dry ice where it was transferred to a  $-20^{\circ}\text{C}$  freezer. During each sampling, shell scrapings were taken from the center of the lesion or spot on the left claw (referred to as 0 cm) as well as at a distance of 0.5, 1, and 1.5 cm laterally at an angle away from the dactylus (Fig. 1). Samples were also taken from each lobster pen at a point just below the waterline, while the pen was out of the water, on all 4 sampling dates, for a total of 100 samples (5 samples per lobster, 5 lobsters, 4 time points). We kept photographic records of each lobster throughout the course of the experiment and used these photographs to guide our sampling and ensure that similar shell locations were sampled on each visit. Some

of the lobsters molted during the course of the experiment, but we continued to sample the same locations as described above after molting.

In addition to these samples, we also collected shell bacterial community samples from 5 lobsters that appeared to be free of disease. These additional lobsters were from the same age group and housed in the same conditions, but had all molted approximately 1 mo before the initiation of sampling and showed no visible signs of LMSD. We sampled these lobsters on the same dates as the diseased lobsters, but only took a single bacterial community sample from the left claw of each lobster. These lobsters served as a representation of what a healthy bacterial community might look like on a disease-free lobster, so lobsters from this group that developed signs of LMSD were subsequently eliminated from the study.

### DNA extraction and sequencing

DNA was extracted from toothpicks using the PowerSoil® DNA Extraction Kit (MOBIO) following the manufacturer's instructions. Kit negative controls, extractions containing no toothpick, were performed periodically and subsequently amplified to ensure that there was no kit contamination in the extracts (Salter et al. 2014). Additionally, DNA was extracted directly from a sterile toothpick, to ensure there was no amplification from the toothpick alone. DNA extracts from lobster and pen samples were amplified in triplicate using bacterial specific (515F: 5'-GTG CCA GCM GCC GCG GTA A-3'; 806R: 5'-GGA CTA CHV GGG TWT CTA AT-3'), uniquely barcoded, 16S rRNA primers containing adaptors for Illumina sequencing (Caporaso et al. 2012). Each 25  $\mu\text{l}$  PCR reaction contained 10  $\mu\text{l}$  5-Prime Hot Master Mix (5 Prime®, Thermo Fisher Scientific) and 0.2  $\mu\text{M}$  of each primer. In addition, 0.5 to 2  $\mu\text{l}$  of DNA was added to each reaction, depending on the original DNA

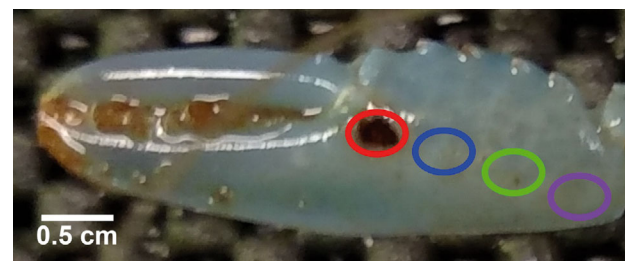


Fig. 1. Main sampling scheme employed in this study. Shell scrapings were taken from (●) center of lesion or spot on the left claw (referred to as 0 cm), and (●) 0.5 cm, (●) 1.0 cm, and (●) 1.5 cm from the lesion or spot

concentration. PCR products were purified using the QIAquick® PCR Purification Kit (QIAGEN) following the manufacturer's instructions, and quantified using a Qubit® 2.0 Fluorometer (Life Technologies, Thermo Scientific). PCR products were pooled in equimolar amounts and the quantity of the pool was checked using the KAPA Library Quantification Kit for Illumina Sequencing Platforms (Kapa Biosystems). The pool was then loaded onto a MiSeq sequencer (Illumina) and sequenced using a paired-end V2 300 cycle kit.

### Sequence analysis

Quality filtering and sequence analysis was performed in QIIME using default parameters unless noted (Caporaso et al. 2010). Paired-end reads were joined specifying at least 10 base pairs in overlap and sequences within a Phred score of 30 or higher were retained (indicating 99.9% accuracy in base calling). Chimeric sequences were identified using usearch61, an algorithm that performs both de novo and reference-based chimera detection, with the Genomes OnLine Database (GOLD) as a reference, and chimeras were subsequently removed (Edgar et al. 2011, Reddy et al. 2015). After these quality-filtering steps, 2 726 677 sequences remained. Operational taxonomic units (OTUs) were assigned at 97% sequence identity using Swarm (Mahé et al. 2014). OTUs identified as Archaea or chloroplasts, or that were unassigned at the kingdom level using the Ribosomal Database Project (RDP) classifier (Wang et al. 2007), were removed from downstream analysis. Samples were rarefied to the lowest sequencing depth, 4735 OTUs per sample, for analysis of community composition and alpha diversity.

### Statistical analysis

The weighted UniFrac metric was used for analysis of community composition because it considers both phylogenetic distance and abundance (Lozupone et al. 2011). We visualized differences in bacterial community structure among 0.5 cm increments on each lobster using principal coordinates analysis and tested for differences between these communities using permutational multivariate analysis of variance (PERMANOVA; Anderson 2001) with individual lobster as a blocking component. To test for pairwise differences in each 0.5 cm increment we compared logit-transformed weighted UniFrac similarities of each 0.5 cm comparison using a Welch's *t*-test, which accounts for

unequal variance, again using individual lobster as a blocking component (R Core Team 2014). We also used QIIME to calculate 2 alpha diversity metrics: phylogenetic distance, a richness estimator that takes phylogeny into account (Faith & Baker 2006), and Shannon diversity. Significance testing of alpha diversity measures was done using analysis of variance on linear models that included the individual lobster sampled as a random effect.

We defined the core microbiome as OTUs that were in  $n - 1$  samples within a given shell condition. This resulted in 76 OTUs that were considered to be 'core' to 1 or more shell condition. We then identified representative sequences from each of these OTUs using the NCBI Basic Local Alignment Search Tool (BLAST). All sequence information produced from this study is available from the Sequence Read Archive under accession no. PRJNA307069.

## RESULTS

Sequence analysis of the 100 bacterial samples taken from 5 diseased lobsters and their pens yielded 2 726 677 sequences corresponding to 18 204 unique OTUs defined at 97% sequence identity. Analysis of samples taken from the left claw of lobsters affected by LMSD showed that bacterial community composition at the site of disease (distance 0 cm) clustered separately from most other samples (Fig. 2A), indicating that lobster shell at the site of disease harbors a distinct bacterial community (PERMANOVA,  $F = 22.77$ ,  $p < 0.001$ ,  $df = 62$ ). The bacterial community found on lobster shell 0.5 cm away from the site of LMSD (Fig. 2A) was between the 0 cm community and the 1 and 1.5 cm communities, and distinct from each ( $F = 7.13$ ,  $p < 0.001$ ,  $df = 31$ , and  $F = 6.18$ ,  $p < 0.001$ ,  $df = 46$ ), indicating that this may be a transitional bacterial community, intermediate between affected and unaffected lobster shell. Bacterial communities from lobster shell 1 and 1.5 cm away from the site of the LMSD clustered together and more tightly than the bacterial communities from the other 2 sets of samples, indicating that these communities are more similar (Fig. 2A) and may represent an unaffected bacterial community distinct from affected and transitional communities ( $F = 17.00$ ,  $p < 0.001$ ,  $df = 62$ ). Importantly, we did not see a change in bacterial community composition driven by sampling date (Fig. S1 in the Supplement at [www.int-res.com/articles/suppl/d124p041\\_supp.pdf](http://www.int-res.com/articles/suppl/d124p041_supp.pdf)), indicating that distance from the site of disease was more important than temporal

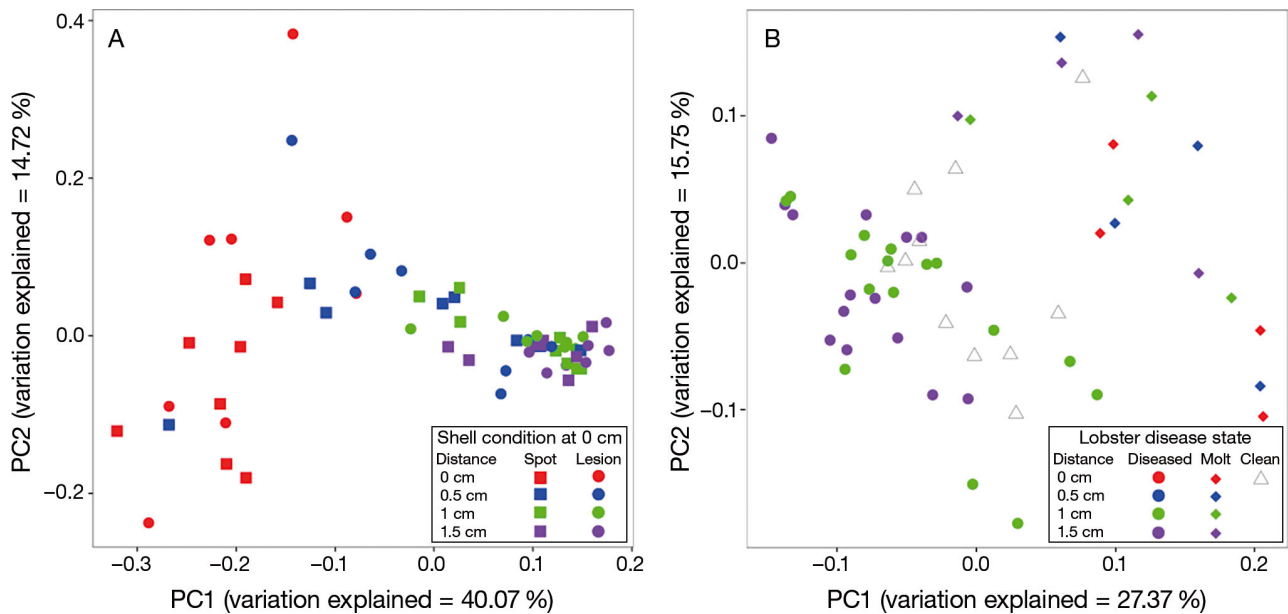


Fig. 2. Principal coordinates analysis of the weighted UniFrac metric comparing bacterial community composition of (A) diseased lobster shell and (B) unaffected lobster shell. Diseased lobster shell includes samples collected from (red) the site of LMSD, as well as (blue) 0.5 cm, (green) 1 cm, and (purple) 1.5 cm away from the site of the disease. Unaffected lobster shell includes (♦) samples from those same distances on lobsters affected by LMSD that had recently molted and were therefore considered disease free, (Δ) samples from the left claw of lobsters with no recorded history of disease, and samples collected from diseased lobsters (●) 1 and (●) 1.5 cm from the site of LMSD

patterns in determining bacterial community composition in this study.

Since the 1 and 1.5 cm distances appeared to represent unaffected lobster shell, we compared the bacterial community found at these locations to the bacterial community found on lobsters that did not have LMSD, including samples from the left claw of lobsters that showed no visible signs disease, and samples from 4 different locations on the left claw of lobsters that had recently molted (Fig. 2B). Samples taken 1 and 1.5 cm from the site of disease on diseased lobster shell clustered together with samples taken from the left claw of lobsters that showed no visible signs of LMSD (Fig. 2B, 'clean' lobsters compared to diseased lobsters;  $F = 6.13$ ,  $p > 0.95$ ,  $df = 41$ ), indicating that locations 1 and 1.5 cm from the site of LMSD are in fact representative of unaffected, disease-free shell.

Bacterial communities recovered from the shell of molted lobsters (Fig. 2B) showed no differences among location on the shell ( $F = 0.64$ ,  $p > 0.40$ ,  $df = 15$ ), suggesting that, in the area sampled, there was no systematic change in bacterial community composition across disease-free lobster shell. We therefore used molted lobsters as a baseline for what might be expected for community change among locations on a clean, disease-free lobster claw, and compared this to

the bacterial community change of each 0.5 cm increment on the lobsters (Fig. 3). We found that there was less similarity between bacterial communities at 0 and 0.5 cm (Fig. 3) in lobsters with lesions (Welch's  $t$ -test,  $t = -3.89$ ,  $p < 0.005$ ,  $df = 7$ ) and spots ( $t = -3.58$ ,

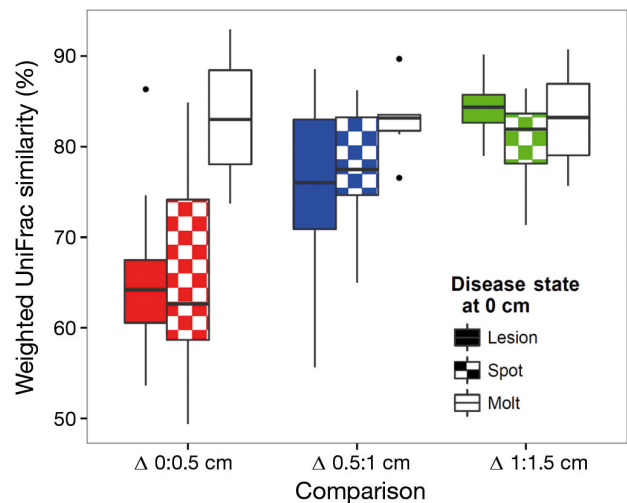


Fig. 3. Median weighted UniFrac similarity of each sequential 0.5 cm increment on the lobster claw. Midline indicates the median value, box indicates the 25th and 75th quartiles, and whiskers extend to the smallest or largest value observed within  $1.5 \times$  interquartile range beyond the box. Values not within that range are represented as outliers



$p < 0.01$ ,  $df = 8$ ) than in molted lobsters, indicating that the bacterial community at the site of disease was more different from adjacent sites than would be expected based on molted lobsters that showed no signs of the LMSD.

The weighted UniFrac similarities found when comparing bacterial community composition at 0.5 and 1 cm (Fig. 3) were statistically different on lobsters that had a lesion at 0 cm compared to lobsters that had molted ( $t = -2.16$ ,  $p < 0.05$ ,  $df = 16$ ), but were not statistically different at  $\alpha = 0.05$  for lobsters that had a spot at 0 cm ( $t = -2.10$ ,  $p > 0.06$ ,  $df = 10$ ). Despite this discrepancy on lobsters with a spot at 0 cm, we still consider the 0.5 cm distance a transitional zone in LMSD. First, the average weighted UniFrac similarity among the 0.5 and 1 cm distances on lobsters with a spot at 0 cm was lower than on molted lobsters, indicating that the 0.5 cm bacterial community on lobsters with a spot at 0 cm was less similar to adjacent sites than expected. Second, the results of the Welch's  $t$ -test were reasonably close ( $p = 0.062$ ) to being significant at an arbitrarily selected  $\alpha = 0.05$ . Finally, PERMANOVA analysis showed significant support for grouping the data into 3 different groups: 0, 0.5, and 1 and 1.5 cm when comparing all lobsters with a lesion at 0 cm ( $F = 16.30$ ,  $p < 0.001$ ,  $df = 30$ ), and lobsters with a spot at 0 cm ( $F = 13.06$ ,  $p < 0.001$ ,  $df = 30$ ). We therefore defined the 0.5 cm distance as a transitional zone harboring a bacterial community that was differentiated from the unaffected lobster shell community before the visual onset of LMSD.

The transitional zone was limited to the 0.5 cm distance as the weighted UniFrac similarity on lobsters that had lesions or spots on their left claw was not statistically different from the same comparison on the molted lobster shell at a distance of 1 and 1.5 cm (Fig. 3,  $t = 0.35$ ,  $p > 0.7$ ,  $df = 6$ , and  $t = -0.97$ ,  $p > 0.3$ ,  $df = 7$ ). This indicates that the bacterial community was not altered by LMSD at 1 cm away from the site of melanization (and presumably at more distant locations), and was therefore representative of what was found on unaffected lobster shell at this point in the molt cycle. Given these results, we hereafter differentiate 3 categories of shell: 0 cm, affected shell; 0.5 cm, transitional shell; and 1 cm and 1.5 cm, unaffected shell.

We also examined if the bacterial community within a spot could be con-

sidered a transitional condition from unaffected shell to the more advanced lesion shell. The lack of a distinct separation in the principal coordinates analysis between lobsters with lesions at 0 cm and spots at 0 cm (Fig. 2A) suggests that the categories of lesion and spot may not be meaningful with regard to the associated bacterial communities. To test this, we compared the bacterial community composition of lobsters with lesions to those with spots on both affected and transitional shell, and found there was no statistical evidence to support separating lesion bacterial communities from spot bacterial communities ( $F = 1.83$ ,  $p > 0.1$ ,  $df = 15$ , and  $F = 0.82$ ,  $p > 0.3$ ,  $df = 15$ ). These data suggest that, once there was visual evidence of LMSD, there was little subsequent change in bacterial community composition, and we therefore no longer distinguish between lesion and spot in our analysis.

After classifying samples into 3 discrete shell condition groups (affected, transitional, and unaffected) based on bacterial community composition, we compared differences in diversity within each group, using the pen where each lobster was kept as a baseline for maximum bacterial diversity (Fig. 4). Regardless of shell condition, bacterial diversity was consistently lower on the lobster shell than in the pen. Alpha diversity varied among shell conditions, with the lowest diversity observed on the affected shell. Bacterial diversity on the transitional shell was intermediate between the affected shell and unaffected shell, indicating that the drop in bacterial diversity began before the visual appearance of LMSD. These differences in diversity account for some of the differences seen in the rank abundance curve of each shell condition (Fig. S2 in the Supplement).

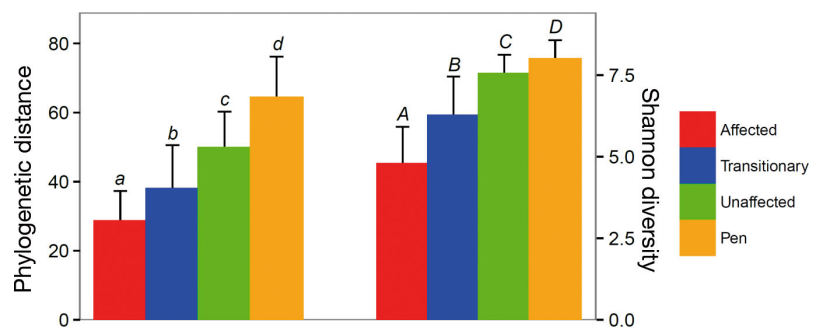


Fig. 4. Analysis of alpha diversity associated with LMSD for 3 different shell conditions and the lobster pen. Differences in diversity between shell conditions were significant at a  $p < 0.001$  for each diversity metric as indicated by letters (lowercase letters are used for comparisons using phylogenetic distance as a measure; uppercase letters are used for comparisons using Shannon diversity). Error bars represent standard deviation

We identified the bacteria that were important to changes in diversity among different shell conditions by analyzing the core microbiome. We defined the core microbiome as bacteria that were present in  $n - 1$  samples from each shell condition because bacteria that are truly important to causing a shift to a shell condition should be present in nearly all samples from that shell condition. While this criterion does not capture all of the most abundant bacteria present (see Fig. S2 in the Supplement), it narrows the focus to those that are more likely to be contributing to the progression of LMSD.

There were 76 OTUs considered to be part of the core microbiome of 1 or more shell condition

(Fig. 5). These 76 OTUs comprised a total of 49% of the sequences recovered from affected shell, 38% of the sequences recovered from transitional shell, and 36% of the sequences recovered from unaffected shell. Of these OTUs, 16 were considered unique to the core microbiome of unaffected shell (Fig. 5A,D), yet they only constituted 5% of the sequences from this shell condition. Conversely, there were 14 OTUs that were unique to the core microbiome of affected shell, accounting for 34% of the sequences from this shell condition (Fig. 5A,B). This stark contrast is due in part to the significantly lower diversity in the affected shell compared to the unaffected shell (Fig. 4). From the affected core

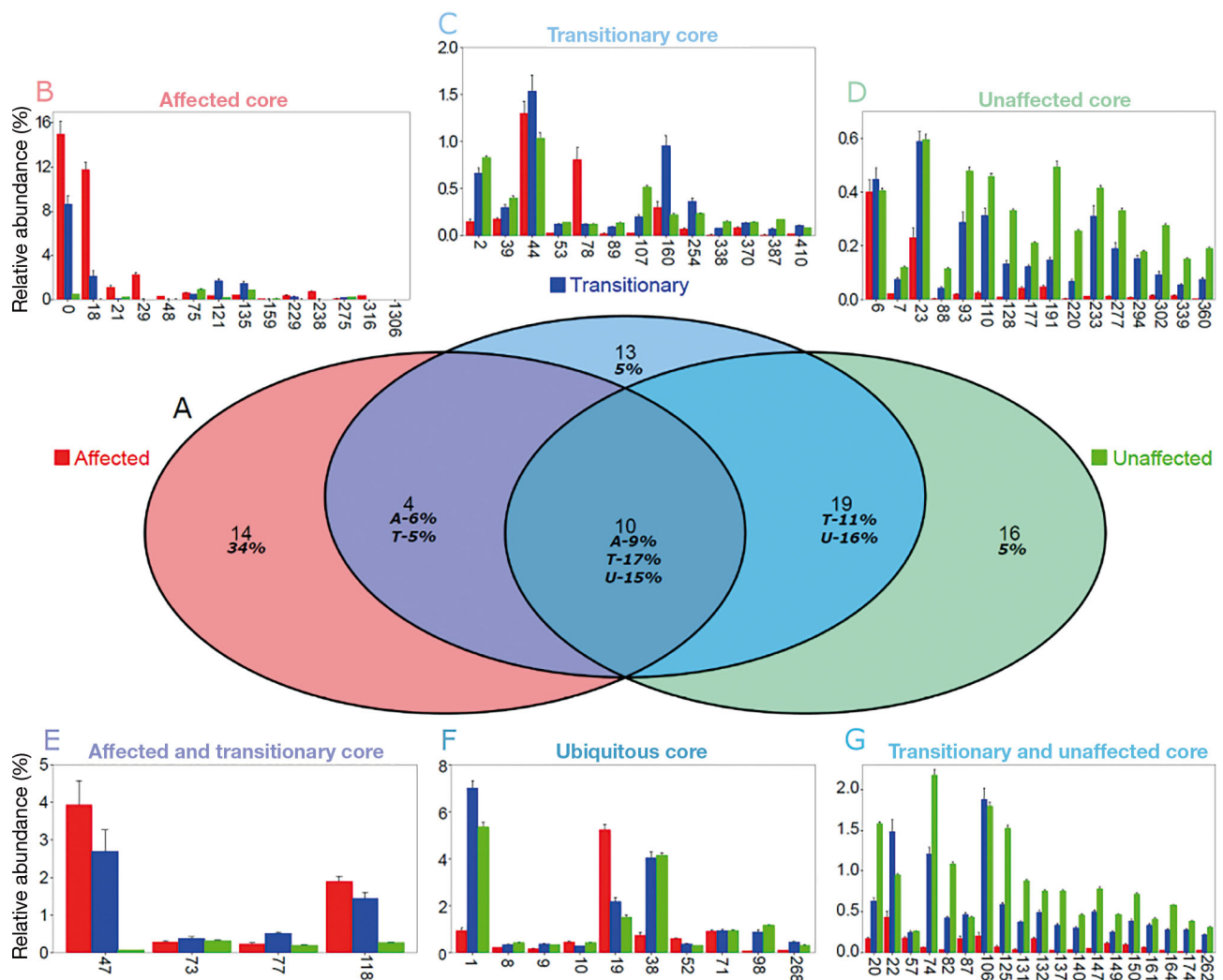


Fig. 5. (A) Core microbiome of each shell condition, with (B–G) accompanying bar charts of each operational taxonomic unit (OTU) in that core microbiome and its relative abundance within each shell condition (title text color matches the portion of (A) corresponding to the bar chart). Please note the difference in scale for each bar plot. Individual OTUs are designated by their OTU number along the x-axis. Error bars represent standard deviation. Numbers within the Venn diagram indicate the number of OTUs that belong to each core microbiome, while italics indicate the percent those OTUs account for in each shell condition

microbiome, we identified OTU 0, from the candidate genus *Candidatus* Thioglobus, and OTU 18, genus *Aquimarina*, as important to LMSD based on their proportional abundances (combined 27 %, Fig. 5B, Table 1).

There were 13 OTUs that were unique to the transitional core microbiome, accounting for 5 % of the sequences recovered from this part of the shell (Fig. 5A,C). The presence of OTUs that are unique to the transitional core microbiome indicates that there are members of the transitional bacterial community beyond what might be expected from a simple mixing of the microbiota from healthy and diseased lobster shell. OTUs 44, 78, and 160 from the genera *Marinobacter*, *Loktanella*, and *Candidatus* Endobugula, stood out as important members of the transitional core microbiome due to their abundance in both the affected and transitional shell conditions (Fig. 5C, Table 1).

There were also 33 OTUs found in the core microbiome of more than 1 shell condition. Of these 33 OTUs, 19 were shared between the transitional and unaffected shell (Fig. 5A,G), whereas only 4 OTUs

were shared between the transitional and affected shell (Fig. 5A,E). This low number of OTUs shared between the core microbiomes of transitional and affected shell provides further evidence that the bacteria associated with this transition zone are not merely a result of the outward expansion of the bacteria inhabiting affected shell. There were no OTUs shared between the affected and unaffected core microbiome that were not also a part of the transitional core microbiome, which also highlights the importance of the bacterial community found 0.5 cm from the site of LMSD as a transition between these 2 shell conditions. From the affected/transitional core microbiome overlap, we identified OTU 47 from the genus *Colwellia*, and OTU 118 from the genus *Arenicella* to be of interest based on their relative abundances (Fig. 5E, Table 1). Finally, there were 10 ubiquitous OTUs shared among the core microbiomes of all 3 shell conditions (Fig. 5A,F). OTU 1 from the genus *Perspicuibacter*, and OTU 19 from the genus *Lutimonas* were of particular importance due to their abundances on the transitional and affected shell, respectively (Fig. 5F, Table 1).

Table 1. Taxonomy for core operational taxonomic units (OTUs) identified in this study. Closest cultured representative for all OTUs, listed in order, from Fig. 5. **Bold** OTUs are those shown in Fig. 6. Abundance is the relative abundance in that shell condition. Note: OTU 0 has not yet been classified at the order or family level

OTU	Order	Family	Genus	Identity	Abundance
Affected Core					
<b>0</b>			<b><i>Thioglobus</i><sup>a</sup></b>	<b>91 %</b>	<b>15.0 %</b>
<b>18</b>	<b>Flavobacteriales</b>	<b>Flavobacteriaceae</b>	<b><i>Aquimarina</i></b>	<b>100 %</b>	<b>11.8 %</b>
21	Flavobacteriales	Flavobacteriaceae	<i>Maritimimonas</i>	96 %	1.1 %
29	Alteromonadales	Colwelliaceae	<i>Colwellia</i>	99 %	2.3 %
48	Alteromonadales	Colwelliaceae	<i>Colwellia</i>	100 %	0.3 %
75	Rhodobacterales	Rhodobacteraceae	<i>Loktanella</i>	99 %	0.6 %
121	Rhodobacterales	Hyphomonadaceae	<i>Robiginitomaculum</i>	96 %	0.4 %
135	Rhizobiales	Methylobacteriaceae	<i>Methylobacterium</i>	100 %	0.4 %
159	Oceanospirillales	Oceanospirillaceae	<i>Oleispira</i>	100 %	0.1 %
229	Rhodobacterales	Rhodobacteraceae	<i>Octadecabacter</i>	100 %	0.4 %
238	Rhizobiales	Hyphomicrobiaceae	<i>Maritalea</i>	99 %	0.7 %
275	Flavobacteriales	Flavobacteriaceae	<i>Cloacibacterium</i>	100 %	0.1 %
316	Oceanospirillales	Oceanospirillaceae	<i>Neptunomonas</i>	100 %	0.4 %
1306	Flavobacteriales	Flavobacteriaceae	<i>Lutimonas</i>	98 %	0.1 %
Transitional Core					
2	Arenicellales	Arenicellaceae	<i>Perspicuibacter</i>	99 %	0.7 %
39	Arenicellales	Arenicellaceae	<i>Arenicella</i>	98 %	0.3 %
<b>44</b>	<b>Alteromonadales</b>	<b>Alteromonadaceae</b>	<b><i>Marinobacter</i></b>	<b>100 %</b>	<b>1.5 %</b>
53	Rhodobacterales	Rhodobacteraceae	<i>Roseovarius</i>	100 %	0.1 %
<b>78</b>	<b>Rhodobacterales</b>	<b>Rhodobacteraceae</b>	<b><i>Loktanella</i></b>	<b>100 %</b>	<b>0.1 %</b>
89	Rhizobiales	Phyllobacteriaceae	<i>Pseudahrensia</i>	98 %	0.1 %
107	Rhodobacterales	Hyphomonadaceae	<i>Fretibacter</i>	96 %	0.2 %
<b>160</b>	<b>Cellvibrionales</b>	<b>Cellvibrionaceae</b>	<b><i>Endobugula</i><sup>a</sup></b>	<b>99 %</b>	<b>1.0 %</b>
254	Oceanospirillales	Alcanivoracaceae	<i>Marinicella</i>	99 %	0.4 %
338	Chromatiales	Thioalkalispiraceae	<i>Thiopfundum</i>	94 %	0.1 %

(Table continued on next page)



Table 1 (continued)

OTU	Order	Family	Genus	Identity	Abundance
370	Burkholderiales	Comamonadaceae	<i>Diaphorobacter</i>	100 %	0.1 %
387	Rhodothermales	Rubricoccaceae	<i>Rubrivirga</i>	98 %	0.1 %
410	Rhizobiales	Phyllobacteriaceae	<i>Aminobacter</i>	96 %	0.1 %
Unaffected Core					
6	Rhodobacterales	Rhodobacteraceae	<i>Amylibacter</i>	99 %	0.4 %
7	Rhodobacterales	Rhodobacteraceae	<i>Halocynthiibacter</i>	99 %	0.1 %
23	Thiotrichales	Thiotrichaceae	<i>Cocleimonas</i>	96 %	0.6 %
88	Rhizobiales	Phyllobacteriaceae	<i>Pseudahrensia</i>	99 %	0.1 %
93	Arenicellales	Arenicellaceae	<i>Arenicella</i>	97 %	0.5 %
110	Rhodobacterales	Hyphomonadaceae	<i>Fretibacter</i>	96 %	0.5 %
128	Chromatiales	Woeseiaceae	<i>Woeseia</i>	96 %	0.3 %
177	Acidimicrobiales	Acidimicrobiaceae	<i>Ilumatobacter</i>	100 %	0.2 %
191	Sphingobacteriales	Saprospiraceae	<i>Lewinella</i>	92 %	0.5 %
220	Acidimicrobiales	Microthrixaceae	<i>Microthrix</i> <sup>a</sup>	90 %	0.3 %
233	Sphingobacteriales	Saprospiraceae	<i>Lewinella</i>	91 %	0.4 %
277	Deferribacterales	Deferribacteraceae	<i>Caldithrix</i>	91 %	0.3 %
294	Nitrosomonadales	Nitrosomonadaceae	<i>Nitrosomonas</i>	99 %	0.2 %
302	Incertaesedis	Rhodothermaceae	<i>Rhodothermus</i>	89 %	0.3 %
339	Rhodobacterales	Rhodobacteraceae	<i>Labrenzia</i>	97 %	0.2 %
360	Rhizobiales	Phyllobacteriaceae	<i>Aminobacter</i>	95 %	0.2 %
Affected and Transitional Core					
<b>47</b>	<b>Alteromonadales</b>	<b>Colwelliaceae</b>	<b><i>Colwellia</i></b>	<b>99 %</b>	<b>3.3 %</b>
73	Oceanospirillales	Oceanospirillaceae	<i>Bacterioplanes</i>	91 %	0.3 %
77	Rhodobacterales	Rhodobacteraceae	<i>Loktanella</i>	100 %	0.4 %
<b>118</b>	<b>Arenicellales</b>	<b>Arenicellaceae</b>	<b><i>Arenicella</i></b>	<b>99 %</b>	<b>1.7 %</b>
Ubiquitous Core					
<b>1</b>	<b>Arenicellales</b>	<b>Arenicellaceae</b>	<b><i>Perspicuibacter</i></b>	<b>99 %</b>	<b>2.7 %</b>
8	Rhodobacterales	Rhodobacteraceae	<i>Amylibacter</i>	98 %	0.2 %
9	Rhodobacterales	Rhodobacteraceae	<i>Litoreibacter</i>	100 %	0.2 %
10	Rhodobacterales	Rhodobacteraceae	<i>Jannaschia</i>	100 %	0.2 %
<b>19</b>	<b>Flavobacteriales</b>	<b>Flavobacteriaceae</b>	<b><i>Lutimonas</i></b>	<b>96 %</b>	<b>2.5 %</b>
38	Arenicellales	Arenicellaceae	<i>Arenicella</i>	99 %	1.6 %
52	Rhodobacterales	Rhodobacteraceae	<i>Sulfitobacter</i>	100 %	0.3 %
71	Flavobacteriales	Flavobacteriaceae	<i>Maribacter</i>	99 %	0.6 %
98	Rhodobacterales	Hyphomonadaceae	<i>Litorimonas</i>	97 %	0.3 %
268	Rhizobiales	Methylobacteriaceae	<i>Methylobacterium</i>	100 %	0.2 %
Transitional and Unaffected Core					
20	Flavobacteriales	Flavobacteriaceae	<i>Lutimonas</i>	97 %	0.3 %
22	Thiotrichales	Thiotrichaceae	<i>Cocleimonas</i>	97 %	0.8 %
57	Rhodobacterales	Rhodobacteraceae	<i>Phaeobacter</i>	99 %	0.1 %
74	Verrucomicrobiales	Rubritaleaceae	<i>Rubritalea</i>	97 %	0.6 %
82	Acidimicrobiales	Microthrixaceae	<i>Microthrix</i> <sup>a</sup>	91 %	0.2 %
87	Rhodobacterales	Rhodobacteraceae	<i>Loktanella</i>	98 %	0.2 %
106	Cellvibrionales	Cellvibrionaceae	<i>Endobugula</i> <sup>a</sup>	97 %	1.0 %
125	Planctomycetales	Planctomycetaceae	<i>Blastopirellula</i>	91 %	0.3 %
131	Arenicellales	Arenicellaceae	<i>Perspicuibacter</i>	93 %	0.2 %
132	Rhodobacterales	Rhodobacteraceae	<i>Maribius</i>	95 %	0.2 %
137	Rhizobiales	Hyphomicrobiaceae	<i>Hyphomicrobium</i>	98 %	0.2 %
140	Rhodobacterales	Hyphomonadaceae	<i>Fretibacter</i>	95 %	0.2 %
147	Rhizobiales	Hyphomicrobiaceae	<i>Filomicrobium</i>	96 %	0.3 %
149	Flavobacteriales	Flavobacteriaceae	<i>Lutimonas</i>	97 %	0.1 %
150	Rhodobacterales	Rhodobacteraceae	<i>Oceaniovalibus</i>	94 %	0.2 %
161	Sphingobacteriales	Saprospiraceae	<i>Phaeodactylibacter</i>	89 %	0.2 %
164	Rhodobacterales	Rhodobacteraceae	<i>Citricella</i>	93 %	0.1 %
174	Chromatiales	Thioalkalispiraceae	<i>Thiopfundum</i>	93 %	0.2 %
262	Chromatiales	Granulosicoccaceae	<i>Granulosicoccus</i>	97 %	0.1 %

<sup>a</sup>Candidate classification

## DISCUSSION

High-throughput sequencing results from lobsters with and without visible signs of LMSD (i.e. lobsters with spots, lobsters with lesions, and lobsters that had recently molted and did not exhibit signs of LMSD) indicate the presence of 3 distinct bacterial communities (Fig. 6A). We classified these 3 distinct communities as affected, transitional, and unaffected shell communities based on weighted UniFrac analysis of community composition (Figs. 2 & 3). The presence of a distinct bacterial community at the site of disease agrees with prior work indicating that bacteria are the causative agent of shell disease (Chistoserdov et al. 2012). However, our small spatial scale sampling allowed a more comprehensive characterization of the bacterial community associated with LMSD, enabling

us to separate out the bacterial communities associated with the transition from unaffected to affected shell and thus identifying the presence of a third bacterial community on shells affected with LMSD, the transitional community.

Interestingly, our results indicate no differentiation among bacterial communities found on lobsters with lesions and spots in either affected or transitional shell. This finding is counter to previously reported genetic fingerprinting results that showed differences in the bacterial communities among lesions and spots (Quinn et al. 2012b). Based on their initial findings, Quinn et al. (2012b) suggested that the bacteria present in a spot may be important in initiating shell disease in lobsters, whereas bacteria found in lesions were secondary, opportunistic colonizers that thrived in the new conditions. The lack of differenti-

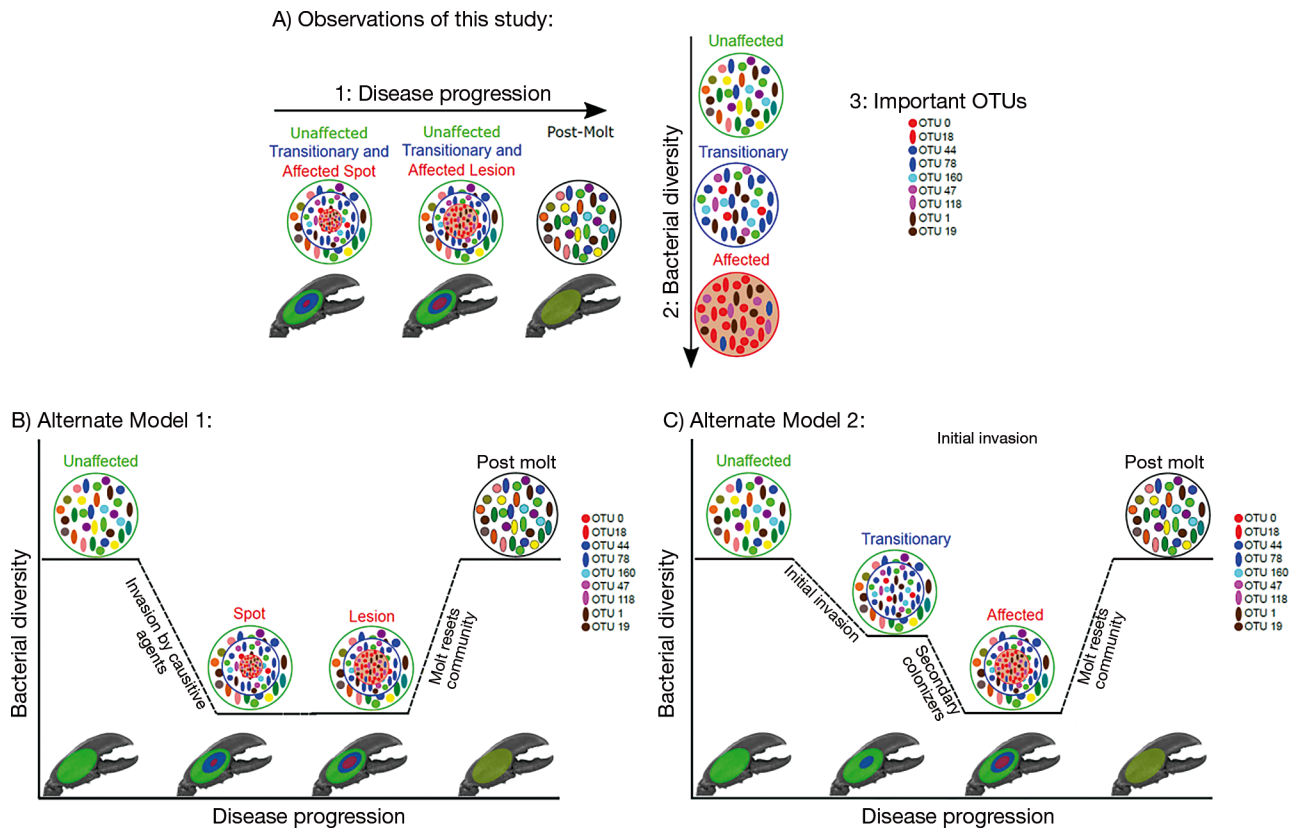


Fig. 6. Conceptual diagram of the laboratory model of shell disease (LMSD). Visual summary of the findings of this study showing (A) the main observations of this study and (B,C) 2 different alternate models of these data, though others are possible. (A1) The 3 distinct bacterial communities present on diseased lobster shell: unaffected, transitional, and affected shell communities, highlighting the lack of difference between spot and lesion communities. The post-molt community is fairly similar to the unaffected shell community, though this community, devoid of disease, is fairly uniform across the sampling area. (A2) The observed decrease in bacterial diversity as LMSD progresses. (A3) Several operational taxonomic units (OTUs) that are of interest to LMSD based on their abundances in either the transitional or affected shell communities. (B) Alternate Model 1. The transitional bacterial community, though unique, is unimportant to the progression of LMSD and simply represents a community that is able to live in the proximity of disease-causing bacteria. (C) Alternate Model 2. The transitional bacterial community consists of precursory bacteria that are present before visual signs of the disease occur

ation between lesion and spot communities in our data suggests that this may not be the case. The transitional shell bacterial community that we identified, however, may be important for initiation of LMSD while the affected shell bacterial community could represent secondary colonizers.

In addition to identifying 3 distinct bacterial communities, we observed a positive association between bacterial diversity and distance from the site of LMSD (Figs. 4 & 6A). This is contrary to work done by Whitten et al. (2014), which showed greater bacterial diversity in diseased shell compared to healthy shell. These previous results, however, were based on methods that recovered an average of 8 to 11 taxa per sample. The sequencing methods we used allowed for a much greater depth, which revealed a greater proportion of low abundance taxa, thereby increasing apparent diversity. The reduction in bacteria at the site of LMSD indicates that the diseased shell environment may be highly selective for specific bacterial taxa, perhaps due to the host response and the antibacterial effects of melanin. Alternatively, opportunistic bacteria associated with the newly exposed chitin matrix may outcompete other bacteria, thereby excluding them. Since bacterial diversity was also reduced on the transitional shell compared to the unaffected shell, we suggest that competition, rather than environmental factors, lowered bacterial diversity at the site of LMSD. It is also possible that, along with changes in the bacterial community, changes occurred in the physical environment of the transitional shell prior to the onset of disease that have yet to be identified.

The presence of a transitional community suggests that it is not just the bacteria at the site of disease that are altered during LMSD, but that there is also a change in the bacterial community composition at distances up to 0.5 cm away from the site of melanization. The transitional community could represent several possibilities, the 2 most parsimonious being (1) an outer edge of the disease zone that is fouled by disease causing bacteria, or (2) a novel community that is a precursor for pathogenic bacteria that later infect the lobster shell. These 2 alternate models for disease transmission, depicted in Fig. 6B,C, provide possible explanations for the changes in both bacterial diversity and community structure we observed over space and time. In Alternate Model 1 (Fig. 6B), the transitional and affected bacterial communities both appear when spots are first observable on the lobster shell. Here the transitional community is not involved as a causative agent of LMSD, but instead is present due to fouling from the

disease-causing community and changes in the shell environment that occur due to the presence of disease-causing bacteria. As LMSD progresses, the affected area of the shell increases (transition from spot to lesion), until the lobster eventually molts. This model is in agreement with previous reports regarding the progression of shell disease (Chistoserdov et al. 2012, Davies et al. 2014, Whitten et al. 2014), though the sampling schemes in these previous studies did not allow for the detection of a transitional community. Alternate Model 2 (Fig. 6C) interprets the transitional bacterial community as a precursor community arriving prior to the onset of visual signs of LMSD. In this model, the transitional community represents initial colonizers that may cause a shift in the lobster shell bacterial community and lower bacterial diversity prior to visual signs of disease. This initial invasion creates an environment that allows for secondary colonization that advances the disease state, at which time the melanization associated with shell disease becomes observable. The fact that the bacterial community at 0.5 cm is distinct from the community at 0 cm (Figs. 2 & 3), and that there are bacteria that are unique to the core microbiome at 0.5 cm (Fig. 5), offers support for this second model. This model hinges on the existence of a currently unobserved state, where the transitional and unaffected communities are present prior to visual signs of disease. This state will be difficult to observe in future studies as discovery would only come from researchers predicting the exact location where shell disease might occur and sampling that predicted location prior to visual signs of disease. While both of these alternate models differ from the currently proposed model for the progression of epizootic shell disease, both are in agreement with the previously proposed polymicrobial nature of shell disease that is either caused by or amplified by a dysbiosis in bacterial communities on unaffected shell (Meres et al. 2012). Culture studies examining growth dynamics of potential pathogens in the presence and absence of members of the transitional community could offer additional insights into the location and initiation of LMSD and could refine the models proposed here.

Given the potential importance of the transitional and affected shell communities to the initiation and progression of LMSD, we identified key bacterial members of these shell conditions from the core microbiome (Figs. 5 & 6A) and evaluated them in terms of the 2 hypothesized models. The affected shell was dominated by just 2 OTUs, 0 and 18, which accounted for nearly 27 % of the sequences from this

shell condition (Fig. 5B). Given their proportional dominance, these taxa appeared to be very important to the affected shell community. The closest cultured representative to OTU 0 was from *Candidatus Thioglobus singularis*, a mixotrophic bacterium belonging to the SUP05 clade, known for its potential to oxidize sulfur and fix carbon in the dark ocean and in low oxygen zones (Marshall & Morris 2015). This cultured representative, however, only shared 91% sequence identity with OTU 0. Therefore, this OTU likely represents a new, uncultured species. As this was the most abundant OTU from both the affected and transitional shell (see Table S1 in the Supplement), better identification and classification of this bacterium is important for understanding its role in the progression of LMSD. OTU 18, the second most abundant OTU on the affected shell (see Table S1), shared 100% sequence identity with a representative from the genus *Aquimarina* (Esteves et al. 2013), and 99% sequence identity with bacteria recovered from lobster shells after having been exposed to *Aquimarina* 'homaria' (Quinn et al. 2012a). *Aquimarina* 'homaria' has been identified by several studies as a potential causative agent of epizootic shell disease as it can readily be recovered from lesions (Chistoserdov et al. 2005, 2012, Quinn et al. 2012a, Whitten et al. 2014). The abundance of OTU 18 on the affected shell in this study (12%, Fig. 5B) confirms the potential importance of *Aquimarina* 'homaria' to LMSD, though its lack of dominance on the transitional shell (2%, Fig. 5B) suggests that it is not as successful outside of melanized areas of the shell (see Table S1).

In the transitional core microbiome (Fig. 5C), OTUs 44 and 160 appeared to be particularly important. OTU 44 was one of the most abundant OTUs in all shell conditions; however, it was only considered core to the transitional shell (Table 1, see Table S1). This OTU was most closely related to *Marinobacter salsuginis* (100% sequence identity; S. V. Law et al. unpubl. data, accession no. KT921331). Other species from this genus have proteins for the deacetylation of chitin (Song et al. 2013), which suggests that OTU 44 may be important to initiation of disease, creating conditions under which opportunistic colonizers associated with LMSD might thrive (Malloy 1978, Chistoserdov et al. 2005). OTU 160 was most closely related to the candidate species *Endobugula sertula* (99% sequence identity, McGovern & Hellberg 2003), a bryozoan symbiont that produces polyketides to protect the host larvae from predation (Lindquist & Hay 1996, Lopanik et al. 2004). In addition to OTUs 44 and 160, OTU 78 was part of the transitional core

microbiome, though quantitatively it appeared to be more important to the affected shell. Although this OTU was not a member of the affected shell core microbiome, it was present in 13 of the 16 affected shell samples and was present at relatively high abundance in 7 of those samples. This OTU, genus *Loktanella*, which shared 100% sequence identity with bacteria recovered from other diseased lobster shells (Quinn et al. 2012a), may therefore be infecting the shell alongside early colonizers, and, in some instances, growing in abundance as LMSD progresses.

Of the 4 OTUs shared between the affected and transitional core microbiomes (Fig. 5E), OTUs 47 and 118 were numerically dominant in both communities. OTU 47 belonged to the genus *Colwellia*, which Meres et al. (2012) reported as one of the many groups of species that helped to differentiate diseased and healthy lobster shell. In the current study, this bacterium was abundant on transitional shell, an area of the shell that would have previously remained unsampled, indicating that members of this genus may be more important in promoting LMSD than previously thought, if the transitional shell indeed reflects an initial invasion. OTU 118 was most closely aligned with *Arenicella chitinivorans* (99% sequence identity), a bacterium that differs from others in the same genus by its ability to degrade chitin (Nedashkovskaya et al. 2013). Given that previous work by Whitten et al. (2014) also recovered members of this genus from lesioned areas of the lobster shell, it appears that the ability to degrade chitin may be an important characteristic allowing bacteria to thrive on both the affected and transitional shell.

Many studies have reported the incidence of ubiquitous bacteria on the lobster shell, both on diseased and healthy shell (Chistoserdov et al. 2005, Meres et al. 2012, Whitten et al. 2014). In this study there were 10 OTUs present in the core microbiome of all 3 shell conditions (Fig. 5F), and OTUs 1 and 19 were proportionally dominant on the transitional and affected shell, respectively, though they were highly abundant in all 3 shell conditions (see Table S1). OTU 1 is most likely *Perspicuibacter marinus* (99% sequence identity), an aerobic marine bacterium recently isolated from surface seawater in Japan (Teramoto et al. 2015). At this time, not much is known about this organism, but it has been cultured and therefore could be used in future studies exploring the dynamics of the transitional lobster shell community. OTU 19, an important shell bacterium found on affected shell, was most similar to other bacteria found in association with sponges (99% sequence identity, Sipkema et al. 2011). It is likely that this bacterium is



from the genus *Lutimonas* (96% sequence identity, Buerger et al. 2012), which is part of the same family as *Aquimarina* and may represent another opportunistic colonizer of diseased lobster shell.

In addition to these core microbiome members, which appear to be important due to their relative abundance on either the transitional or affected shell, there were a number of other core microbiome OTUs that had identities similar to taxa identified in previous studies of epizootic shell disease. Several studies have reported *Aquimarina* 'homaria' as a potential causative agent in shell disease, including a bacterial challenge study that was able to recover this bacterium from lobsters with lesions (Quinn et al. 2012a) and a next-generation sequencing study that examined healthy and diseased shell (Meres et al. 2012). Although we only recovered a single OTU that was associated with the genus *Aquimarina* (OTU 18), we recovered several other OTUs, including *Lutimonas*, that were from the Flavobacteria family (Table 1). Several studies have reported that members of this family aside from *Aquimarina* are important to epizootic shell disease (Chistoserdov et al. 2012, Meres et al. 2012, Quinn et al. 2012b). In addition to *Aquimarina*, the '*Thalassobius*' genus has been associated with epizootic shell disease (Meres et al. 2012, Quinn et al. 2012a). Although we did not recover any bacteria from this genus, we recovered several bacteria from the Rhodobacteraceae family, including previously observed bacteria from the *Loktanella* and *Jannaschia* genera (Chistoserdov et al. 2012, Meres et al. 2012). In addition to *Aquimarina*, *Loktanella*, and *Jannaschia*, Meres et al. (2012) also reported bacteria from the genus *Cardiobacterium* and suborder Micrococineae as some of the most abundant bacteria in their study. We did not recover any bacteria from either of these groups, nor their respective orders. These differences could be due to the taxonomic identification tools used in different studies, but may also reflect differences in wild versus captive-raised lobsters.

In conclusion, using a fine spatial scale, we characterized changes in bacterial community composition that occur during the progression of LMSD. We demonstrated that affected areas of lobster shell have altered bacterial community composition and reduced bacterial diversity compared to unaffected shell. We also demonstrated that areas close to the site of disease, but not yet melanized, have altered bacterial communities and reduced bacterial diversity in comparison to unaffected shell, and represent a transitional community that may be important in the initiation of LMSD. We identified key bacteria associated

with each stage of the disease and proposed 2 different conceptual models, one that suggests that the transitional bacterial community arises due to fouling, and another that suggests the transitional shell harbors bacteria important to the initiation of LMSD. Understanding the full complement of bacteria associated with affected, transitional, and asymptomatic lobster shells is the first step toward understanding the role of the transitional bacterial community, and helping us develop mechanisms to diminish the spread and severity of this disease.

**Acknowledgements.** We thank Anita Kim from the New England Aquarium Lobster Research and Rearing Facility for caring for the animals used in this study, and Jeff Dusenberry for the use of the supercomputing facilities managed by the Research Computing Department at the University of Massachusetts Boston. We also thank Rachel Vincent, an undergraduate assistant on this research, as well as Patrick Kearns, John Angell, and all the members of the Bowen Laboratory. Funding for this project was provided by the Sanofi Genzyme Doctoral Research Fellowship (S.G.F.), the University of Massachusetts Boston Doctoral Dissertation Research Grant (S.G.F.), and the National Science Foundation Research Experience for Undergraduates Award DBI-1359241 to Dr. Rachel Skvirsky.

#### LITERATURE CITED

- Anderson MJ (2001) A new method for non-parametric multivariate analysis of variance. *Austral Ecol* 26:32–46
- ✦ Buerger S, Spoering A, Gavrish E, Leslin C, Ling L, Epstein SS (2012) Microbial scout hypothesis and microbial discovery. *Appl Environ Microbiol* 78:3229–3233
- ✦ Caporaso JG, Kuczynski J, Stombaugh J, Bittinger K and others (2010) QIIME allows analysis of high-throughput community sequencing data. *Nat Methods* 7:335–336
- ✦ Caporaso JG, Lauber CL, Walters WA, Berg-Lyons D and others (2012) Ultra-high-throughput microbial community analysis on the Illumina HiSeq and MiSeq platforms. *ISME J* 6:1621–1624
- ✦ Castro KM, Somers BA (2012) Observations of epizootic shell disease in American lobsters, *Homarus americanus*, in southern New England. *J Shellfish Res* 31:423–430
- ✦ Castro KM, Cobb JS, Gomez-Chiarri M, Tlusty M (2012) Epizootic shell disease in American lobsters *Homarus americanus* in southern New England: past, present and future. *Dis Aquat Org* 100:149–158
- ✦ Chistoserdov AY, Smolowitz R, Mirasol F, Hsu A (2005) Culture-dependent characterization of the microbial community associated with epizootic shell disease lesions in American lobster, *Homarus americanus*. *J Shellfish Res* 24:741–747
- ✦ Chistoserdov AY, Quinn RA, Gubbala SL, Smolowitz R (2012) Bacterial communities associated with lesions of shell disease in the American lobster, *Homarus americanus* Milne-Edwards. *J Shellfish Res* 31:449–462
- ✦ Davies CE, Whitten M, Kim A, Wootton EC and others (2014) A comparison of the structure of American (*Homarus americanus*) and European (*Homarus gammarus*) lobster



- cuticle with particular reference to shell disease. *J Invertebr Pathol* 117:33–41
- ✦ Edgar RC, Haas BJ, Clemente JC, Quince C, Knight R (2011) UCHIME improves sensitivity and speed of chimera detection. *Bioinformatics* 27:2194–2200
- ✦ Esteves AIS, Hardoim CCP, Xavier JR, Gonçalves JMS, Costa R (2013) Molecular richness and biotechnological potential of bacteria cultured from Irciniidae sponges in the north-east Atlantic. *FEMS Microbiol Ecol* 85:519–536
- ✦ Faith DP, Baker AM (2006) Phylogenetic diversity (PD) and biodiversity conservation: some bioinformatics challenges. *Evol Bioinform Online* 2:121–128
- ✦ Fey SB, Siepielski AM, Nusslé S, Cervantes-Yoshida K and others (2015) Recent shifts in the occurrence, cause, and magnitude of animal mass mortality events. *Proc Natl Acad Sci USA* 112:1083–1088
- ✦ Harvell CD, Kim K, Burkholder JM, Colwell RR and others (1999) Emerging marine diseases: climate links and anthropogenic factors. *Science* 285:1505–1510
- ✦ Howell P (2012) The status of the southern New England lobster stock. *J Shellfish Res* 31:573–579
- ✦ Laufer H, Demir N, Biggers WJ (2005) Response of the American lobster to the stress of shell disease. *J Shellfish Res* 24:757–760
- ✦ Lindquist N, Hay ME (1996) Palatability and chemical defense of marine invertebrate larvae. *Ecol Monogr* 66: 431–450
- ✦ Lopanik N, Lindquist N, Targett N (2004) Potent cytotoxins produced by a microbial symbiont protect host larvae from predation. *Oecologia* 139:131–139
- ✦ Lozupone C, Lladser ME, Knights D, Stombaugh J, Knight R (2011) UniFrac: an effective distance metric for microbial community comparison. *ISME J* 5:169–172
- ✦ Mahé F, Rognes T, Quince C, de Vargas C (2014) Swarm: robust and fast clustering method for amplicon-based studies. *PeerJ* 2:e593
- ✦ Malloy SC (1978) Bacteria induced shell disease of lobsters (*Homarus americanus*). *J Wildl Dis* 14:2–10
- ✦ Marshall KT, Morris RM (2015) Genome sequence of 'Candidatus Thioglobus singularis' strain PS1, a mixotroph from the SUP05 clade of marine gammaproteobacteria. *Genome Announc* 3:e01155-15
- ✦ McGovern TM, Hellberg ME (2003) Cryptic species, cryptic endosymbionts, and geographical variation in chemical defences in the bryozoan *Bugula neritina*. *Mol Ecol* 12: 1207–1215
- ✦ Meres NJ, Ajuzie CC, Sikaroodi M, Vemulapalli M, Shields JD, Gillevet PM (2012) Dysbiosis in epizootic shell disease of the American lobster (*Homarus americanus*). *J Shellfish Res* 31:463–472
- National Marine Fisheries Service (2014) NOAA Current Fishery Statistics. Fisheries of the United States, 2014 US Department of Commerce
- ✦ Nedashkovskaya OI, Cleenwerck I, Zhukova NV, Kim SB, deVos P (2013) *Arenicella chitinivorans* sp. nov., a gamma-proteobacterium isolated from the sea urchin *Strongylocentrotus intermedius*. *Int J Syst Evol Microbiol* 63: 4124–4129
- ✦ Quinn RA, Metzler A, Smolowitz RM, Tlusty M, Chistoserdov AY (2012a) Exposures of *Homarus americanus* shell to three bacteria isolated from naturally occurring epizootic shell disease lesions. *J Shellfish Res* 31:485–493
- ✦ Quinn RA, Metzler A, Tlusty M, Smolowitz RM, Leberg P, Chistoserdov AY (2012b) Lesion bacterial communities in American lobsters with diet-induced shell disease. *Dis Aquat Org* 98:221–233
- R Core Team (2014) R: A language and environment for statistical computing. R Foundation for Statistical Computing, Vienna
- ✦ Reddy TBK, Thomas AD, Stamatis D, Bertsch J and others (2015) The Genomes OnLine Database (GOLD) v. 5: a metadata management system based on a four level (meta)genome project classification. *Nucleic Acids Res* 43:D1099–D1106
- ✦ Salter SJ, Cox MJ, Turek EM, Calus ST and others (2014) Reagent and laboratory contamination can critically impact sequence-based microbiome analyses. *BMC Biol* 12:87
- ✦ Sipkema D, Schippers K, Maalcke WJ, Yang Y, Salim S, Blanch HW (2011) Multiple approaches to enhance the cultivability of bacteria associated with the marine sponge *Haliclona (gellius)* sp. *Appl Environ Microbiol* 77: 2130–2140
- ✦ Smolowitz R, Chistoserdov AY, Hsu A (2005) A description of the pathology of epizootic shell disease in the American lobster, *Homarus americanus*, H. Milne Edwards 1837. *J Shellfish Res* 24:749–756
- ✦ Song L, Ren L, Li X, Yu D, Yu Y, Wang X, Liu G (2013) Complete genome sequence of *Marinobacter* sp. BSs20148. *Genome Announc* 1:e00236-13
- ✦ Staley JT, Konopka A (1985) Measurement of in situ activities of nonphotosynthetic microorganisms in aquatic and terrestrial habitats. *Annu Rev Microbiol* 39:321–346
- ✦ Tarrant AM, Franks DG, Verslycke T (2012) Gene expression in American lobster (*Homarus americanus*) with epizootic shell disease. *J Shellfish Res* 31:505–513
- ✦ Teramoto M, Yagyu K, Nishijima M (2015) *Perspicuibacter marinus* gen. nov., sp. nov., a semi-transparent bacterium isolated from surface seawater, and description of *Arenicellaceae* fam. nov. and *Arenicellales* ord. nov. *Int J Syst Evol Microbiol* 65:353–358
- ✦ Tlusty M, Hyland C (2005) Astaxanthin deposition in the cuticle of juvenile American lobster (*Homarus americanus*): implications for phenotypic and genotypic coloration. *Mar Biol* 147:113–119
- ✦ Tlusty MF, Metzler A (2012) Relationship between temperature and shell disease in laboratory populations of juvenile American lobsters (*Homarus americanus*). *J Shellfish Res* 31:533–541
- ✦ Tlusty MF, Kim A, Castro KM (2014) Modeling shell disease in American lobster (*Homarus americanus*) as individual-based health trajectories. *Can J Fish Aquat Sci* 71: 808–813
- ✦ Wang Q, Garrity GM, Tiedje JM, Cole JR (2007) Naive Bayesian classifier for rapid assignment of rRNA sequences into the new bacterial taxonomy. *Appl Environ Microbiol* 73:5261–5267
- ✦ Whitten MMA, Davies CE, Kim A, Tlusty M, Wootton EC, Chistoserdov AY, Rowley AF (2014) Cuticles of European and American lobsters harbor diverse bacterial species and differ in disease susceptibility. *MicrobiologyOpen* 3: 395–409