

# The Makorin *lep-2* and the lncRNA *lep-5* regulate *lin-28* to schedule sexual maturation of the *C. elegans* nervous system

Hannah Lawson<sup>1</sup>, Edward Vuong<sup>2</sup>, Renee M Miller<sup>3</sup>, Karin Kiontke<sup>4</sup>,  
David HA Fitch<sup>4</sup>, Douglas S Portman<sup>1,2,5,6\*</sup>

<sup>1</sup>Department of Biology, University of Rochester, Rochester, United States;

<sup>2</sup>Department of Biomedical Genetics, University of Rochester, Rochester, United

States; <sup>3</sup>Department of Brain and Cognitive Sciences, University of Rochester,

Rochester, United States; <sup>4</sup>Center for Developmental Genetics, Department of

Biology, New York University, New York, United States; <sup>5</sup>Department of

Neuroscience, University of Rochester, Rochester, United States; <sup>6</sup>DelMonte

Institute for Neuroscience, University of Rochester, Rochester, United States

**Abstract** Sexual maturation must occur on a controlled developmental schedule. In mammals, Makorin3 (MKRN3) and the miRNA regulators *LIN28A/B* are key regulators of this process, but how they act is unclear. In *C. elegans*, sexual maturation of the nervous system includes the functional remodeling of postmitotic neurons and the onset of adult-specific behaviors. Here, we find that the *lin-28–let-7* axis (the ‘heterochronic pathway’) determines the timing of these events. Upstream of *lin-28*, the Makorin *lep-2* and the lncRNA *lep-5* regulate maturation cell-autonomously, indicating that distributed clocks, not a central timer, coordinate sexual differentiation of the *C. elegans* nervous system. Overexpression of human MKRN3 delays aspects of *C. elegans* sexual maturation, suggesting the conservation of Makorin function. These studies reveal roles for a Makorin and a lncRNA in timing of sexual differentiation; moreover, they demonstrate deep conservation of the *lin-28–let-7* system in controlling the functional maturation of the nervous system.

DOI: <https://doi.org/10.7554/eLife.43660.001>

\*For correspondence:  
douglas.portman@rochester.edu

**Competing interests:** The authors declare that no competing interests exist.

**Funding:** See page 24

**Received:** 15 November 2018

**Accepted:** 10 May 2019

**Published:** 02 July 2019

**Reviewing editor:** Yuichi Iino, University of Tokyo, Japan

© Copyright Lawson et al. This article is distributed under the terms of the [Creative Commons Attribution License](#), which permits unrestricted use and redistribution provided that the original author and source are credited.

## Introduction

The timing of sexual maturation is subject to complex regulation that reflects competing demands on biological systems (Bogin et al., 2011; Gluckman and Hanson, 2006; Parent et al., 2003). Over evolutionary time, the pressure on a species to reproduce rapidly is countered by the need to allow sufficient time for robust juvenile development. Optimum balance of these pressures is encoded by internal, genetic mechanisms that guide the timing of the juvenile-to-adult transition (Zhu et al., 2018). At the level of an individual, internal and external stimuli—for example the presence of mates and food, as well as health and nutritional status—interact with these timers to determine the onset of sexual maturation (Abreu and Kaiser, 2016; Avendaño et al., 2017; Livadas and Chrousos, 2016; Plant, 2015).

In general, the nature of these genetic timers and their interaction with other signals is not well understood. Furthermore, while the hallmark of the juvenile-to-adult transition is the functional maturation of the germline and genitalia, reproductive maturation is typically accompanied by a much broader suite of changes in morphology, physiology, and behavior. These behavioral changes entail not only the activation of copulatory programs themselves, but also include modifications to

**eLife digest** Most animals develop from juveniles, which cannot reproduce, to sexually mature adults. The most obvious signs of this transition are changes in body shape and size. However, changes also take place in the brain that enable the animals to adapt their behavior to the demands of adulthood. For example, fully fed adult male roundworms will leave a food source to search for mates, whereas juvenile males will continue feeding.

The transition to sexual maturity needs to be carefully timed. Too early, and the animal risks compromising key stages of development. Too late, and the animal may be less competitive in the quest for reproductive success. Cues in the environment, such as the presence of food and mates, interact with timing mechanisms in the brain to trigger sexual maturity. But how these mechanisms work – in particular where and how an animal keeps track of its developmental stage – is not well understood.

In the roundworm species *Caenorhabditis elegans*, waves of gene activity, known collectively as the heterochronic pathway, determine patterns of cell growth as animals mature. Through further studies of these worms, Lawson et al. now show that these waves also control the time at which neural circuits mature. In addition, the waves of activity occur inside the nervous system itself, rather than in a tissue that sends signals to the nervous system. Moreover, they occur independently inside many different neurons. Each neuron thus has its own molecular clock for keeping track of development.

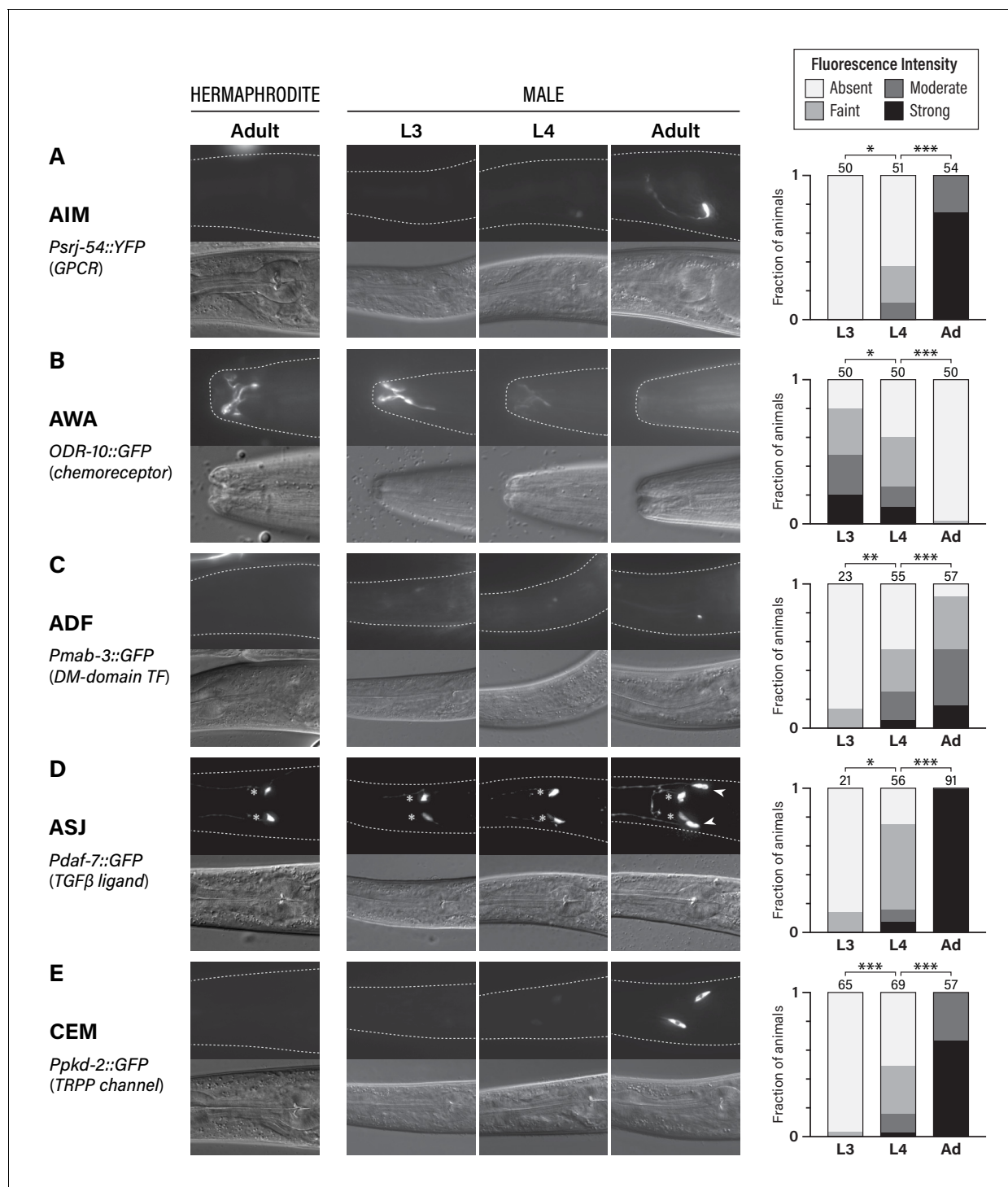
Several of the genes critical for developmental timekeeping in worms are also found in mammals, including two genes that help to control when puberty starts in humans. If one of these genes – called *MKRN3* – does not work correctly, it can lead to a condition that causes individuals to go through puberty several years earlier than normal. Studying the mechanisms identified in roundworms may help us to better understand this disorder. More generally, future work that builds on the results presented by Lawson et al. will help to reveal how environmental cues and gene activity interact to control when we become adults.

DOI: <https://doi.org/10.7554/eLife.43660.002>

decision-making circuits, allowing animals to incorporate reproductive drives when prioritizing behavioral programs. Whether genetic timers function at a single hub to coordinate behavioral transitions, or whether instead they may have distributed functions across different cell types, is unclear.

The timing of sexual maturation has been extensively studied in mammals, where it is coordinated by the temporally controlled production of gonadal steroids at puberty (Abreu and Kaiser, 2016; Avendaño et al., 2017; Livadas and Chrousos, 2016; Plant, 2015). This process is activated by the hypothalamic-pituitary-gonadal (HPG) axis, in which the pulsatile release of gonadotropin-releasing hormone (GnRH) by neurons in the hypothalamus activates gonadotropin production in the pituitary gland. This, in turn, triggers gonadal maturation and subsequent steroid hormone production. Upstream of HPG axis activation, a complex set of regulatory inputs converges on the release of the neuropeptide kisspeptin in the arcuate nucleus of the hypothalamus to stimulate GnRH production. Multiple studies suggest that kisspeptin release is influenced by environmental signals as well as internal timing cues (Harter et al., 2018). Recent studies in mice and humans have identified a number of genes important for this process, including the miRNA regulators *LIN28A/B*, their target *LET7*, and the Makorin *MKRN3*, whose loss causes Central Precocious Puberty in humans (Abreu et al., 2013; Corre et al., 2016; Gajdos et al., 2010; Ong et al., 2009; Park et al., 2012; Yi et al., 2018; Zhu et al., 2010; Zhu et al., 2018). However, where and how these genes act to regulate the onset of reproductive maturation remains unclear. Moreover, some aspects of this model are likely to be specific to mammals, highlighting the importance of studying these questions in diverse animals.

In the nematode *C. elegans*, juveniles pass through four larval stages before becoming sexually mature adults, offering an ideal opportunity to understand the mechanisms that regulate the juvenile-to-adult transition. Most studies addressing this question have focused on stage-specific events during larval development, particularly in the hypodermal seam cells, epidermal-like cells that lie along the sides of the body. In seam cells, stage-specific patterns of proliferation and differentiation



**Figure 1.** Five classes of neurons undergo male-specific functional maturation during the larval-to-adult transition. (A–E) Rows show expression of reporter genes for *srj-54*, *odr-10*, *mab-3*, *daf-7*, and *pkd-2*, respectively. At the left, the name of each marker, a brief description of its gene product, and the cell type whose maturation it marks are indicated. For all rows, representative epifluorescence (above; dashed line indicates outline of body) and DIC (below) images are shown for the indicated sex and stage. The graph at the right of each row shows expression levels in L3, L4, and adult males. Asterisks indicate the statistical significance of comparisons between L3 and L4 and between L4 and adult. Numbers above each bar indicate numbers of animals scored.

DOI: <https://doi.org/10.7554/eLife.43660.003>

The following source data is available for figure 1:

**Source data 1.** Source data for **Figure 1**.

DOI: <https://doi.org/10.7554/eLife.43660.004>

are controlled by a complex mechanism known as the 'heterochronic pathway' (Rougvie and Moss, 2013). In this mechanism, temporally controlled waves of miRNA expression (including the first two miRNAs discovered in any system, *lin-4* and *let-7*) act on a variety of targets to specify stage-specific events and regulate the transition from one stage to the next. The conserved miRNA regulator *lin-28* is also a key component of this mechanism. The heterochronic pathway also controls some events that occur during the larval-to-adult transition, including the cessation of molting, the fusion of the seam cells, and male-specific tail tip morphogenesis (TTM), a remodeling of four postmitotic posterior hypodermal cells (Del Rio-Albrechtsen et al., 2006; Rougvie and Moss, 2013). In some heterochronic mutants ('precocious' mutants), particular stage-specific events are skipped or occur too early; in others ('retarded' or 'delayed' mutants), events are delayed or absent.

Recent studies of TTM have identified two additional heterochronic genes, *lep-2*/Makorin and the lncRNA *lep-5*, that influence developmental timing by regulating LIN-28 stability (Herrera et al., 2016; Kiontke et al., 2019). Mutations in these genes cause a delayed phenotype, the retention of a larval-like, pointed ('Lep') tail tip in males. These mutants also have developmental defects in the body hypodermis, but they lack the seam cell lineage disruptions of other heterochronic mutants. Interestingly, *lep-2* mutant males have defects in mating behavior, suggesting a role for *lep-2* in the sexual maturation of the nervous system (Herrera et al., 2016).

While the maturation of the hypodermis has been well studied, the mechanisms that control the timing of adult-specific sexual behavior in *C. elegans* are poorly understood. In both sexes, males and hermaphrodites (somatic females that produce both eggs and sperm), sexual behavior requires larval neurogenesis that produces sex-specific circuits for copulation and egg-laying behavior (Emmons, 2018; García and Portman, 2016). The development of these circuits is independent of the gonad, relying instead on intrinsic lineage programs in which chromosomal sex acts via the sex-determination hierarchy to regulate neurogenesis and cell fate specification (Barr et al., 2018). Furthermore, multiple aspects of adult male behavior also require changes in synaptic connectivity and the functional modulation of pre-existing, post-mitotic neurons and circuits at the juvenile-to-adult transition (Portman, 2017). For example, the AWA olfactory neurons express the food-associated chemoreceptor *odr-10* in larvae of both sexes, but in males, *odr-10* expression is repressed at the larval-to-adult transition. This repression desensitizes males to food stimuli and promotes mate-searching behavior (Ryan et al., 2014). In other cases, adult-specific activation of gene expression in males, such as the expression of *daf-7* in the ASJ neurons (Hilbert and Kim, 2017) facilitates adult behavior. The extent to which sex-shared, postmitotic neurons are functionally modulated at the juvenile-to-adult transition remains unclear, and the mechanisms that control the timing of this modulation are unknown.

The striking involvement in mammalian puberty of orthologs of three *C. elegans* heterochronic genes (*lep-2*, *lin-28*, and *let-7*), together with the emerging appreciation that *C. elegans* sexual differentiation involves functional transitions in post-mitotic neurons, led us to explore the role of the heterochronic pathway in the timing of these changes. We find that the *lep-2/lep-5* branch of the heterochronic pathway plays a key role in timing the sexual differentiation of the *C. elegans* nervous system, demonstrating conservation of mechanism across species and raising the possibility that an unidentified *lep-5*-like lncRNA may play a key role in mammalian sexual maturation. Moreover, we find that this pathway acts cell-autonomously in multiple neurons, suggesting that genetic timing information is widely distributed across the nervous system. Multiple targets of *lin-41*, including *mab-3* and *lin-29a*, integrate the heterochronic and sex-determination pathways to regulate downstream effector genes and the activation of multiple adult behaviors. Interestingly, although the mammalian Makorin *MKRN3* functions in the opposite direction as its *C. elegans* ortholog *lep-2*, we find that *MKRN3* expression in the *C. elegans* nervous system is sufficient to delay sexual maturation, indicating that the pathway in which it interacts is functionally conserved across species. These findings identify the heterochronic pathway as an ancient regulator of sexual differentiation of the nervous system, provide specific mechanistic hypotheses for the functions of these genes in the mammalian brain, and suggest an important role for a yet-unidentified mammalian lncRNA in the timing of puberty.

## Results

### Multiple *C. elegans* neurons undergo male-specific functional maturation during the juvenile-to-adult transition

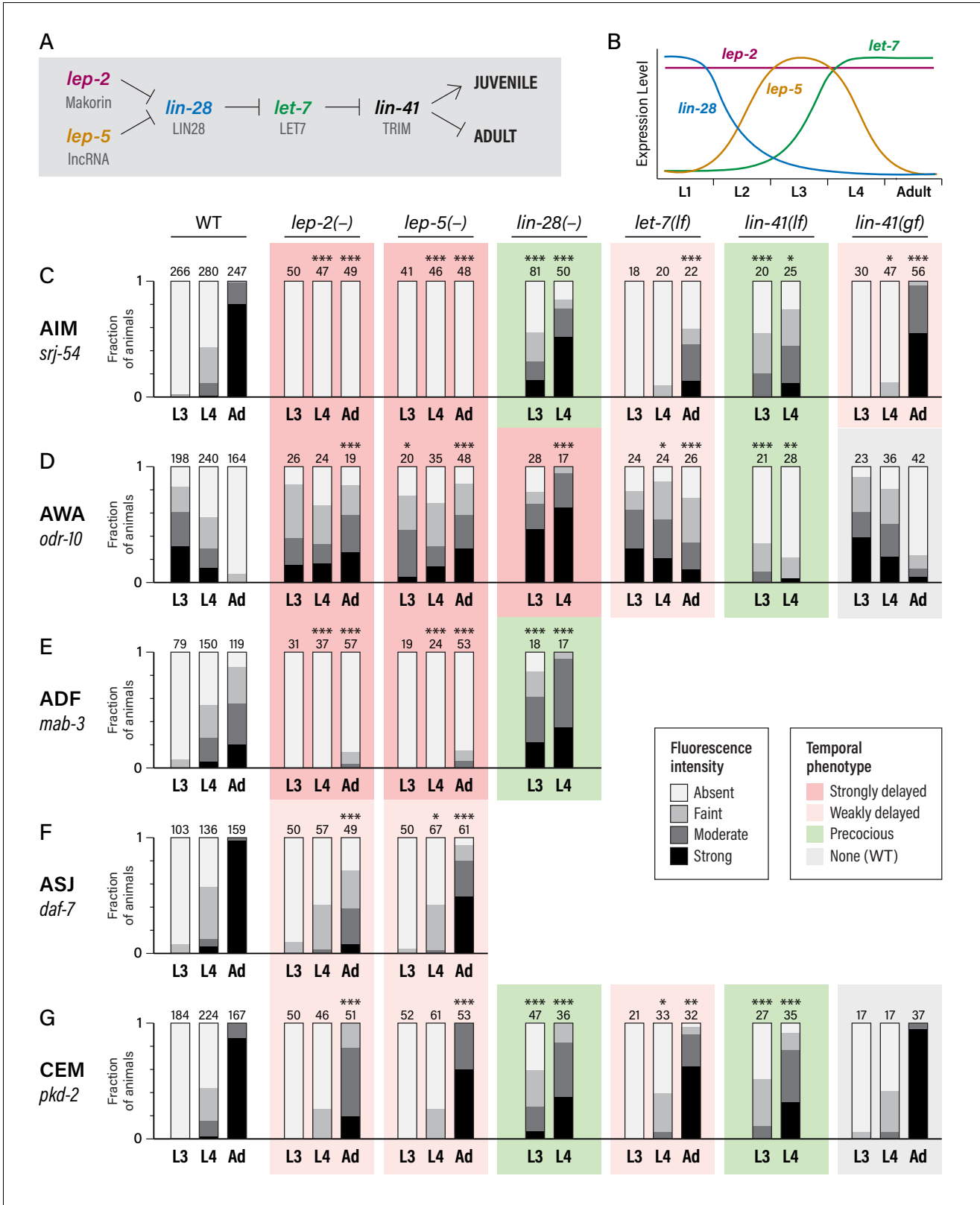
To visualize the sexual maturation of the *C. elegans* nervous system, we studied the developmental dynamics of the expression of five genes known to display sexually dimorphic expression in adults (**Figure 1**). Four of these reflect sexual dimorphism in shared (i.e., non-sex-specific) neurons: *srj-54*, a GPCR of unknown function expressed male-specifically in the AIM interneurons (**Lee and Portman, 2007; Portman, 2007**); *odr-10*, a chemoreceptor whose male-specific downregulation in the AWA olfactory neurons is associated with decreased diacetyl and food detection (**Lee and Portman, 2007; Ryan et al., 2014; Sengupta et al., 1996**); *mab-3*, a doublesex-family transcription factor that is male-specifically expressed in the ADF chemosensory neurons, where it promotes the detection of hermaphrodite sex pheromone (**Fagan et al., 2018; Yi et al., 2000**); and *daf-7*, a TGF $\beta$ -superfamily ligand that is male-specifically expressed in the ASJ chemosensory neurons and promotes the food-leaving behavior of adult males (**Hilbert and Kim, 2017; Ren et al., 1996**). We also studied *pkd-2*, a marker for the male-specific CEM pheromone-detection neurons, which exist in an undifferentiated state until late larval development (**Barr and Sternberg, 1999; Narayan et al., 2016; Srinivasan et al., 2008; Sulston et al., 1980; Sulston et al., 1983**). Importantly, all of these neurons are generated during embryogenesis and, with the exception of the CEMs, are thought to be functional components of larval circuits.

For all of the markers we examined, we found that sex-specific expression patterns were absent in young larvae, emerging only late in larval development (**Figure 1**). In L3 males, we detected virtually no expression of *srj-54* in AIM, *mab-3* in ADF, or, consistent with a previous report (**Hilbert and Kim, 2017**), *daf-7* in ASJ. Moderate expression of these markers was observed in L4 males, but the full extent of sex differences in expression was not fully apparent until adulthood (**Figure 1A,C,D**). With regard to *odr-10* expression in AWA, we observed the opposite pattern, confirming our earlier findings (**Ryan et al., 2014**): reporter expression was readily detectable in L3 males, as it is in adult hermaphrodites, and diminished in males through L4 into adulthood (**Figure 1B**). Thus, at least with respect to these markers, the AWA, AIM, ADF, and ASJ neurons in larval males exist in a hermaphrodite-like 'ground state' before they acquire adult-specific characteristics during the juvenile-to-adult transition. The CEMs, which are absent in hermaphrodites, underwent maturation with similar timing. As expected (**Barr and Sternberg, 1999**), we detected no expression of *pkd-2* in L3 males; intermediate expression was observed in L4 animals and was further strengthened in day-one adults (**Figure 1E**). This timing is consistent with that previously reported for other CEM-specific genes (**Barr et al., 2001; Portman and Emmons, 2004; Wang et al., 2015**) as well as the cholinergic maturation of these neurons (**Pereira et al., 2015**). Together, these findings reinforce the idea that the larval-to-adult transition involves not only the incorporation of new male-specific neurons into the nervous system (**Barr et al., 2018**), but also the molecular maturation of multiple classes of pre-existing neurons.

### The *lin-28*–*let-7* regulatory module controls the timing of sexual maturation of the *C. elegans* nervous system

To ask whether the heterochronic pathway has a role in the timing of these molecular maturation events, we examined animals carrying mutations in *lin-28* and *let-7*, as these genes are at the core of the late heterochronic timer (**Rougvie and Moss, 2013**) (**Figure 2A,B**). In the hypodermal seam and the male tail tip hypodermis, *lin-28* mutants precociously execute late-larval patterns of proliferation, differentiation, and morphogenesis (**Ambros, 1989; Ambros and Horvitz, 1984; Herrera et al., 2016; Moss et al., 1997**); conversely, *let-7* mutants retain larval-specific fates and male tail morphology as adults (**Reinhart et al., 2000; Slack et al., 2000; Vadla et al., 2012**).

We found that gene expression dynamics in the nervous system were similarly altered in these mutants (**Figure 2C–G**). *lin-28* mutant males exhibited precocious activation of *srj-54* in AIM, with clear reporter expression in over half of L3 males and over 80% of L4 males. In contrast, the sexual maturation of AIM was delayed in *let-7* mutant males, with very little *srj-54* expression detectable in L4 and only moderate expression in one-day adults (**Figure 2C**). (Since *let-7* null mutants are inviable, these experiments used the hypomorphic allele *n2853*; null phenotypes would likely be stronger



**Figure 2.** Heterochronic genes regulate the sexual maturation of multiple *C. elegans* neurons. (A) A subset of the heterochronic pathway, indicating genes and regulatory events important for the timing of the juvenile-to-adult transition in hypodermal tissues. (B) The temporal dynamics of *lep-2*, *lep-5*, *lin-28*, and *let-7* expression during larval development. (C–G) Expression of markers for the sexual maturation of five neuron classes in wild-type and heterochronic mutants. For each marker, expression is shown in the males of the indicated stage (L3, L4, and Adult) and genotype. ‘–’ indicates that a

Figure 2 continued on next page



## Figure 2 continued

null allele was used, while 'lf' and 'gf' indicate hypomorphic and hypermorphic alleles, respectively. For *lin-28(-)* and *lin-41(lf)*, only L3 and L4 males were scored. All strains were grown at 20°C except for *let-7(lf)* and *lin-41(bx42)* and their paired wild-type controls, which were grown at 25°C. Asterisks indicate the statistical significance of comparisons to paired wild-type controls of the same stage. Paired wild-type control data was pooled to create the WT graph at the left of each row. Numbers above each bar indicate numbers of animals scored. Graphs are shaded to indicate temporal phenotypes as shown in the legend.

DOI: <https://doi.org/10.7554/eLife.43660.005>

The following source data and figure supplements are available for figure 2:

**Source data 1.** Source data for **Figure 2**.

DOI: <https://doi.org/10.7554/eLife.43660.008>

**Figure supplement 1.** Structural features of the *lep-5* lncRNA required for its function in the nervous system.

DOI: <https://doi.org/10.7554/eLife.43660.006>

**Figure supplement 1—source data 1.** Source data for **Figure 2—figure supplement 1**.

DOI: <https://doi.org/10.7554/eLife.43660.007>

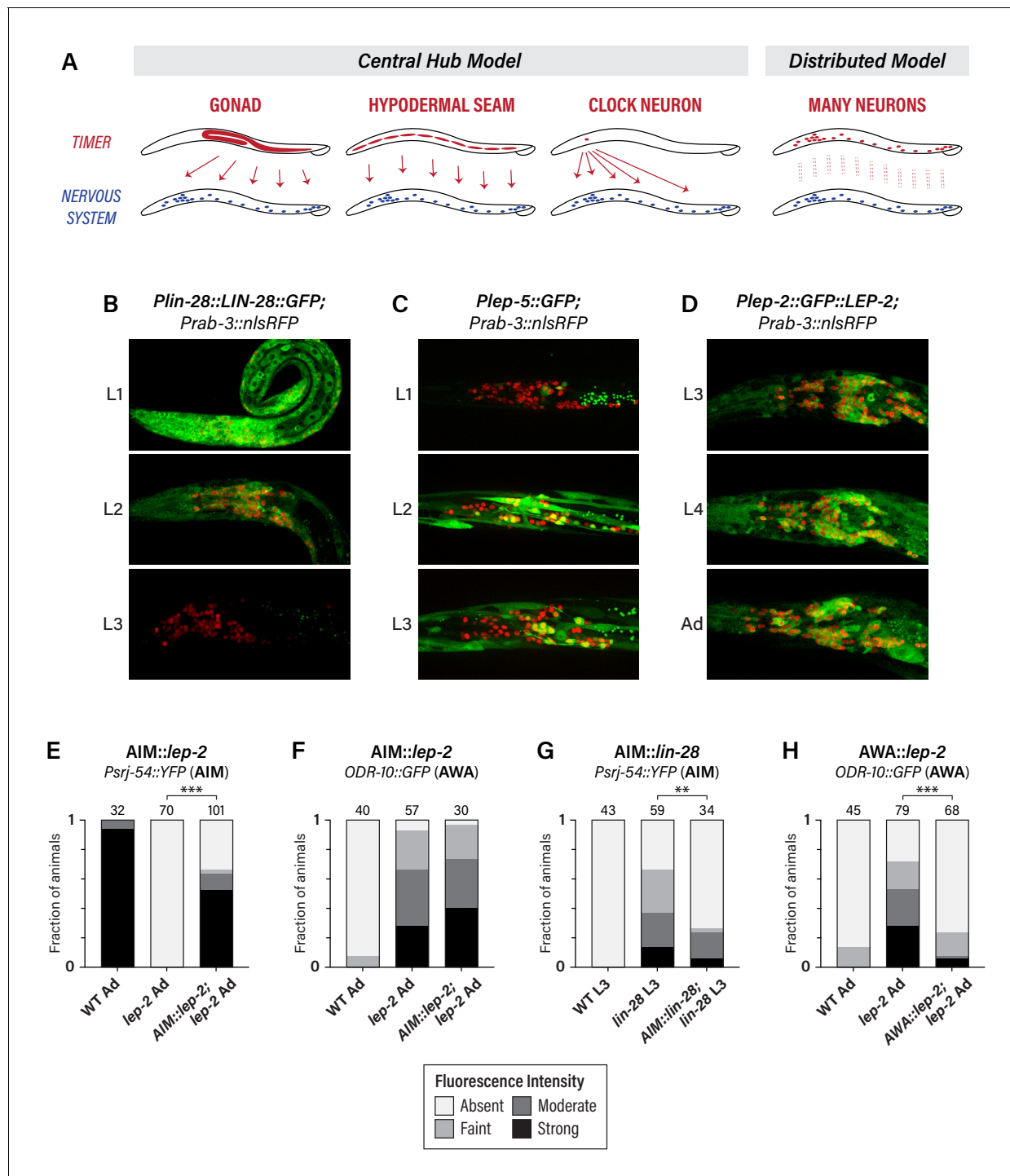
(Reinhart et al., 2000). We observed similar effects of *lin-28* and *let-7* mutations on *pkd-2* reporter expression in the CEMs (**Figure 2G**): loss of *lin-28* resulted in precocious expression in L3 males, while loss of *let-7* slightly reduced *pkd-2* expression in young adults. *let-7* mutant adults also retained larval-like expression of *odr-10* in AWA. Unexpectedly, however, *odr-10* downregulation did not occur precociously in *lin-28* mutant males; instead, levels increased in L4 (**Figure 2D**). Because *odr-10* downregulation does depend on genes downstream of *lin-28* (see below), some adult-specific characteristic(s) that are independent of *lin-28* are likely to be required for *odr-10* downregulation (e.g., signals from male-specific components of the adult nervous system). Finally, we also observed precocious ADF expression of *mab-3* in *lin-28* mutant males (**Figure 2E**), with strong expression initiating in L3. Together, these results demonstrate that the *lin-28*–*let-7* regulatory axis governs the timing of key events in the sexual maturation of the *C. elegans* nervous system.

In the hypodermis, a key target of *let-7* is *lin-41*, which encodes an RBCC protein of the NHL family (Slack et al., 2000). We found that loss of *lin-41* function resulted in precocious activation of *srj-54* in AIM and *pkd-2* in CEM, and precocious loss of *odr-10* in AWA (**Figure 2C,D,G**). Reciprocally, a *lin-41(gf)* allele (Del Rio-Albrechtsen et al., 2006) caused somewhat delayed maturation of the expression of *srj-54*, though it had no statistically significant effects on *odr-10* or *pkd-2* expression (**Figure 2C,D,G**). This discrepancy could reflect cell-type-specific thresholds for the degree of *lin-41* function necessary to elicit a gain-of-function phenotype. Together, these results indicate that *lin-41* is an important effector of *let-7* function in the nervous system, as it is in the hypodermis.

### The makorin *lep-2* and the lncRNA *lep-5* act upstream of *lin-28* to promote sexual differentiation

In the timing of male tail tip morphogenesis, the Makorin *lep-2* and the lncRNA *lep-5* act upstream of *lin-28* (Herrera et al., 2016; Kiontke et al., 2019). Because loss-of-function mutations in the *lep-2* ortholog *MKRN3* cause Central Precocious Puberty in humans (Abreu et al., 2013) and because of the sexual behavior defects in *C. elegans* *lep-2* mutant males (Herrera et al., 2016), we considered the possibility that the *lep-2/lep-5* branch of the heterochronic pathway might function in sexual differentiation of the *C. elegans* nervous system. Consistent with this idea, we found that these animals exhibited striking defects in neuronal maturation: for *srj-54*, *odr-10*, and *mab-3*, day one adult *lep-5* males retained the expression pattern typically seen in wild-type L3 males (**Figure 2C,D,E**). We observed weaker phenotypes for *daf-7* and *pkd-2*: in both cases, expression increased during larval development, but failed to reach the level typically seen in young adults (**Figure 2F,G**). Thus, *lep-2* is required for the sexual differentiation of AIM, AWA, and ADF, and also contributes to this process in ASJ and CEM. Intriguingly, the absence of sexually mature characteristics in young *lep-2* adult males stands in contrast to the Central Precocious Puberty that results from loss of human *MKRN3* function, a distinction to which we return below.

As is the case for tail tip morphogenesis (Kiontke et al., 2019), the *lep-5* mutant phenotype almost completely phenocopied that of *lep-2*. Mutant males failed to adopt adult-specific gene expression patterns in AIM, AWA, and ADF, but had only modest defects in marker expression in ASJ and CEMs (**Figure 2C–G**). *lep-5* encodes a lncRNA that is predicted to adopt a compact



**Figure 3.** The heterochronic pathway is a cell-autonomous, distributed timer of sexual maturation. (A) Models for non-autonomous and autonomous functions of the heterochronic pathway, as described in the text. (B) Expression of *LIN-28::GFP* and the pan-neural nuclear marker *Prab-3::nlsRFP*. Strong GFP expression is detected throughout the nervous system of L1 animals; this decreases during L2 and is virtually undetectable in L3. (C) *Plep-5::GFP* expression in L1, L2, and L3 animals. GFP is essentially undetectable in L1 but is seen in many head neurons in L2 and L3. (D) *Plep-2::GFP::LEP-2* expression in L3, L4, and Adult males. Broad GFP expression is seen in the nervous system at all stages examined. (E–H) Cell-type specific rescue. Numbers above each bar indicate numbers of animals scored. Asterisks indicate the significance of the comparison between transgenic animals and non-transgenic control siblings. (E) Expression of *Psrj-54::YFP* in wild-type, *lep-2* (non-transgenic siblings), and *lep-2; AIM::lep-2* males of the indicated stage. (F) Expression of *ODR-10::GFP* in wild-type, *lep-2* (non-transgenic siblings), and *lep-2; AIM::lep-2* males of the indicated stage. (G) Expression of *Psrj-54::YFP* in wild-type, *lin-28* (non-transgenic siblings), and *lin-28; AIM::lin-28* males of the indicated stage. (H) Expression of *ODR-10::GFP* in wild-type, *lep-2* (non-transgenic siblings), and *lep-2; AWA::lep-2* adult males.

Figure 3 continued on next page



Figure 3 continued

DOI: <https://doi.org/10.7554/eLife.43660.009>

The following source data and figure supplement are available for figure 3:

**Source data 1.** Source data for **Figure 3**.

DOI: <https://doi.org/10.7554/eLife.43660.011>

**Figure supplement 1.** *lin-4* is necessary for proper *lep-5::GFP* expression in the nervous system.

DOI: <https://doi.org/10.7554/eLife.43660.010>

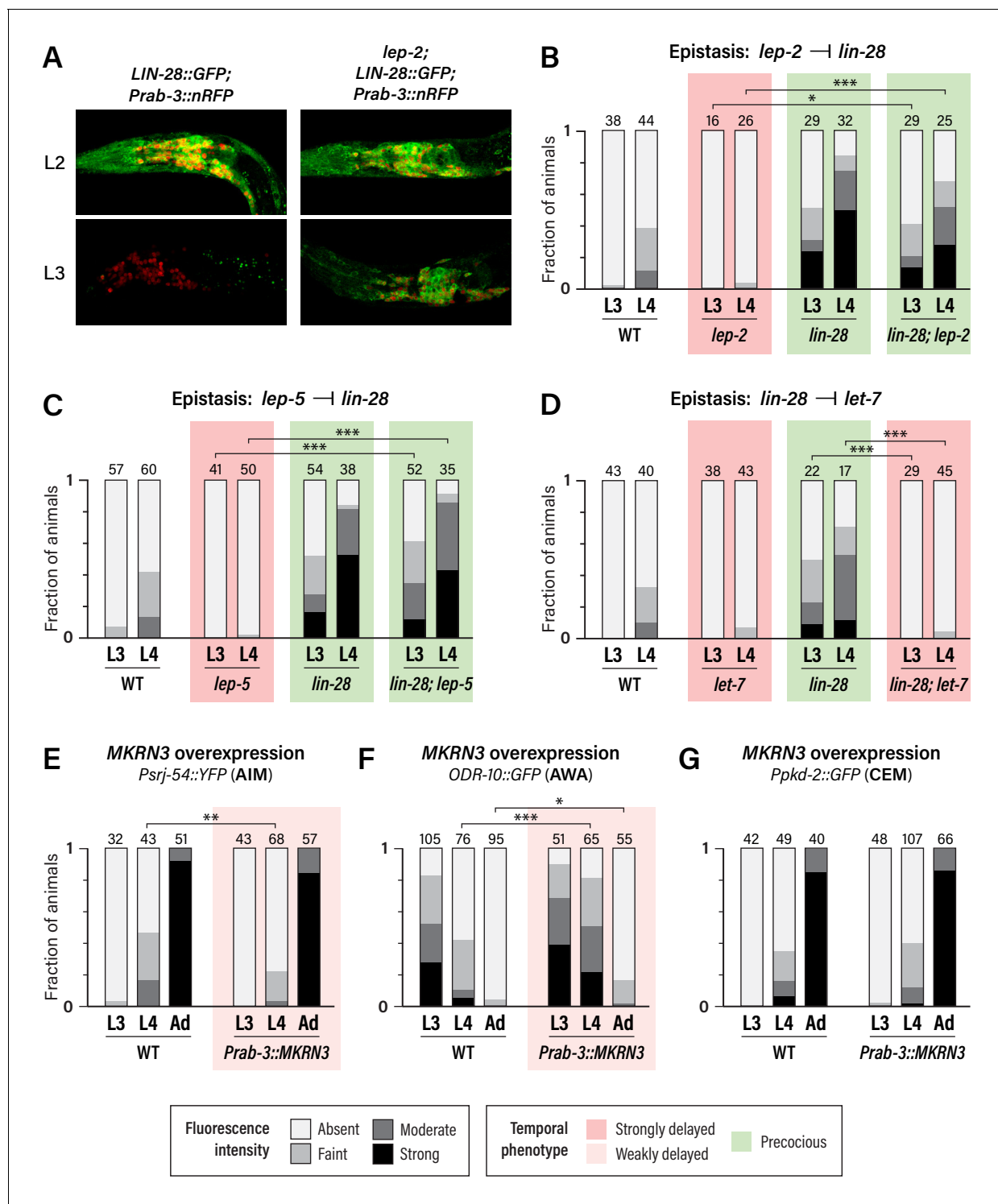
secondary structure with prominent stem-loop structures near its 5' and 3' ends, as well as a two-part central double-stranded 'zipper' region (**Figure 2—figure supplement 1A**) (Kiontke et al., 2019). *lep-5* has been proposed to function as an RNA scaffold, forming a tripartite complex with LEP-2 and LIN-28 to promote LIN-28 degradation (Kiontke et al., 2019). We found that a Crispr-mediated deletion of the predicted 3' hairpin, *lep-5(fs20)*, phenocopied the *lep-5* null allele, showing a nearly complete lack of *srj-54* expression in AIM in adult males (**Figure 2—figure supplement 1B**). *lep-5(fs8)*, a point mutation that disrupts the 5' hairpin, as well as *lep-5(fs21)*, a Crispr-engineered allele bearing a cluster of five point mutations predicted to disrupt the central zipper, caused a complete loss of *srj-54* expression in adults (**Figure 2—figure supplement 1B, C**). Furthermore, *lep-5(fs21fs25)*, a double mutant that carries a set of compensatory changes predicted to restore the central zipper, completely restored adult expression of *srj-54* (**Figure 2—figure supplement 1B, C**). The phenotypes of these mutants are consistent with those seen in male tail tip morphogenesis (Kiontke et al., 2019), indicating that *lep-5* likely acts through a similar mechanism in both tail tip morphogenesis and neuronal maturation.

### The *lep-2*–*lin-28*–*let-7* axis acts cell-autonomously to time the onset of sexual maturation in the nervous system

We considered several scenarios by which heterochronic genes could control the timing of neuronal maturation (**Figure 3A**). In one, heterochronic genes might act in the gonad to control the secretion of hormonal signals. However, this seems unlikely, as the development of the *C. elegans* gonad is largely independent of the heterochronic pathway (Rougvie and Moss, 2013) and, with the exception of vulva and hindgut development, (Kimble, 1981; Sulston et al., 1980), the gonad does not play a significant role in the sexual differentiation of the *C. elegans* soma (Barr et al., 2018). Alternatively, the heterochronic pathway might act as a central somatic timer (e.g., in seam cells or a master 'clock' neuron) from which it broadcasts temporal information to the nervous system. Finally, individual neurons might possess their own timers, such that temporal control is distributed throughout the nervous system.

To address this, we first confirmed earlier reports suggesting that *lin-28*, *lep-2*, and *lep-5* are broadly expressed in the nervous system (Herrera et al., 2016; Kiontke et al., 2019; Moss et al., 1997). Using a translational *LIN-28::GFP* reporter, we observed widespread expression in L1 and L2 animals, including extensive expression in the nervous system (**Figure 3B**). *LIN-28::GFP* abundance decreased during L2 in the nervous system and elsewhere, and by L3, expression was virtually undetectable, consistent with previous reports (Moss et al., 1997). We observed an inverse pattern of *Plep-5::GFP* expression in the nervous system, consistent with its previously described dynamics in the hypodermis (Kiontke et al., 2019). *Plep-5::GFP* was detectable in very few neurons in L1 larvae, but broad neuronal expression was apparent by L2 and L3 (**Figure 3C**). Interestingly, *lep-5* reporter expression appears to be restricted to a subset of the nervous system (**Figure 3C**), an important issue for future work. With a *Plep-2::lep-2::GFP* translational reporter (Herrera et al., 2016), we observed expression in many head neurons in early larvae (not shown) and in L3, L4, and adult males (**Figure 3C**). Because *lep-2* expression levels remain essentially constant during larval development (Herrera et al., 2016), *lep-2* likely does not itself provide timing information but rather seems to provide a permissive cue for the transition into adulthood. Instead, *lep-5* likely provides an instructive signal important for determining the onset of the sexual differentiation of the nervous system, as it does in the hypodermis (Kiontke et al., 2019).

To ask whether the heterochronic pathway functions in the nervous system itself, we restored expression of wild-type *lep-2* or *lin-28* in the nervous system of *lep-2* or *lin-28* mutants. Expression



**Figure 4.** Regulatory relationships and conservation of heterochronic function. (A) *LIN-28::GFP* expression persists into L3 in *lep-2* mutants (right), unlike wild-type (left). The images on the left are the same as those in **Figure 3C**, but the GFP signal intensity is doubled to highlight the difference in expression in L3. Images for wild-type and mutant were taken with identical settings and images were processed identically. (B–D) *Psrj-54::YFP* expression in the indicated single and double mutant adult males. Numbers above each bar indicate numbers of animals scored. (E–G) *MKRN3* overexpression in the nervous system. Non-transgenic siblings were used as WT controls. Numbers above each bar indicate numbers of animals scored. Asterisks indicate significance of the comparison of transgenic animals to control animals of the same stage. (E) *Psrj-54::YFP* expression in animals of the indicated genotype and stage. (F) *ODR-10::GFP* expression in animals of the indicated genotype and stage. (G) *Ppkd-2::GFP* expression in animals of the indicated genotype and stage.

Figure 4 continued on next page

Figure 4 continued

DOI: <https://doi.org/10.7554/eLife.43660.012>

The following source data and figure supplements are available for figure 4:

**Source data 1.** Source data for **Figure 4**.

DOI: <https://doi.org/10.7554/eLife.43660.015>

**Figure supplement 1.** Genetic control of male sexual differentiation and behavior.

DOI: <https://doi.org/10.7554/eLife.43660.013>

**Figure supplement 1—source data 1.** Source data for **Figure 4—figure supplement 1**.

DOI: <https://doi.org/10.7554/eLife.43660.014>

of *lep-2* under the control of the AIM-specific promoter *Peat-4prom11* (Serrano-Saiz et al., 2017) restored *srj-54* expression to *lep-2* mutant adults, but had no effect on *odr-10* expression in AWA (Figure 3E,F), indicating that *lep-2* acts cell-autonomously to control timing in AIM. Furthermore, *Peat-4prom11::lin-28* rescued the precocious maturation of AIM in *lin-28* mutant larvae (Figure 3G). Thus, timing information intrinsic to AIM itself is critical for the timely control of AIM's maturation. This property is not limited to AIM, as AWA-specific expression of *lep-2* (*Pgpa-4Δ6::lep-2(+)*) rescued the lack of *odr-10* downregulation in AWA in *lep-2* mutants (Figure 3H). Together, these findings indicate that the heterochronic pathway does not control an organism-wide temporal signal that is broadcast from a central timer; rather, timing information is distributed, such that individual neurons maintain their own internal clocks.

### ***lep-2* and *lep-5* function upstream of *lin-28* and its miRNA target *let-7* in the sexual differentiation of the nervous system**

Multiple studies have shown that *lin-28* negatively regulates the biogenesis and activity of multiple miRNA targets, including *let-7*, in *C. elegans*, *Drosophila*, and mammals (Tsialikas and Romer-Seibert, 2015). The decay of *lin-28* activity is a key regulatory point in the progression into adulthood, allowing the activation of *let-7* and the subsequent downregulation of its targets. In the hypodermal seam, *lin-28* decay is controlled at both the mRNA and protein levels (Huang et al., 2011; Morita and Han, 2006; Seggerson et al., 2002; Weaver et al., 2017; Weaver et al., 2014). In the male tail tip, *lep-2* and *lep-5* function together to promote the degradation of LIN-28 protein during L3 (Herrera et al., 2016; Kiontke et al., 2019). We carried out a series of genetic and molecular epistasis experiments to ask which aspects of this regulatory logic extend to the nervous system.

Unlike wild-type males, in which neuronal LIN-28::GFP decays during L2 and is virtually absent by L3, *lep-2* mutant males exhibited strong neuronal LIN-28::GFP that persisted into L3 and L4 (Figure 4A and data not shown). Thus, consistent with its role in the tail tip and other hypodermal cells (Herrera et al., 2016), *lep-2* promotes the timely decay of LIN-28 in the nervous system. We also examined expression of the AIM maturation marker *srj-54* in *lin-28*; *lep-2* double mutants. Like *lin-28* single mutants, these animals exhibited precocious AIM maturation (Figure 4B), confirming that *lep-2* acts genetically upstream of *lin-28*. We observed a similar phenotype in *lin-28*; *lep-5* double mutants (Figure 4C), indicating that *lep-5* also acts upstream of *lin-28* with respect to nervous system maturation. Finally, we confirmed that *lin-28* acts upstream of *let-7* in the nervous system by examining *srj-54* expression in *lin-28*; *let-7* mutants. As expected, AIM maturation was delayed compared to wild-type (Figure 4D). Thus, *lep-2* and *lep-5* regulate the *lin-28*–*let-7* regulatory module to control the onset of sexual differentiation of the *C. elegans* nervous system.

Together with previous work (Kiontke et al., 2019), our results support the idea that the onset of *lep-5* expression is a critical step in determining the timing of LIN-28 decay and the subsequent progression into adulthood. To investigate mechanisms controlling the timing of *lep-5* activation, we considered a role for genes involved in the timing of early larval development. The miRNA *lin-4* and its key target, the transcription factor *lin-14*, regulate stage-specific development in L1 and L2 (Rougvie and Moss, 2013). We found that neuronal expression of *Plep-5::GFP* was significantly disrupted in *lin-4* mutants: very little reporter expression was detectable in the nervous system of larvae of any stage (Figure 3—figure supplement 1). This suggests that *lin-4* is necessary to trigger the onset of *lep-5* expression in the nervous system, consistent with its role in promoting the L1 to L2 transition (Rougvie and Moss, 2013).

## Human MKRN3 can inhibit sexual differentiation of the *C. elegans* nervous system

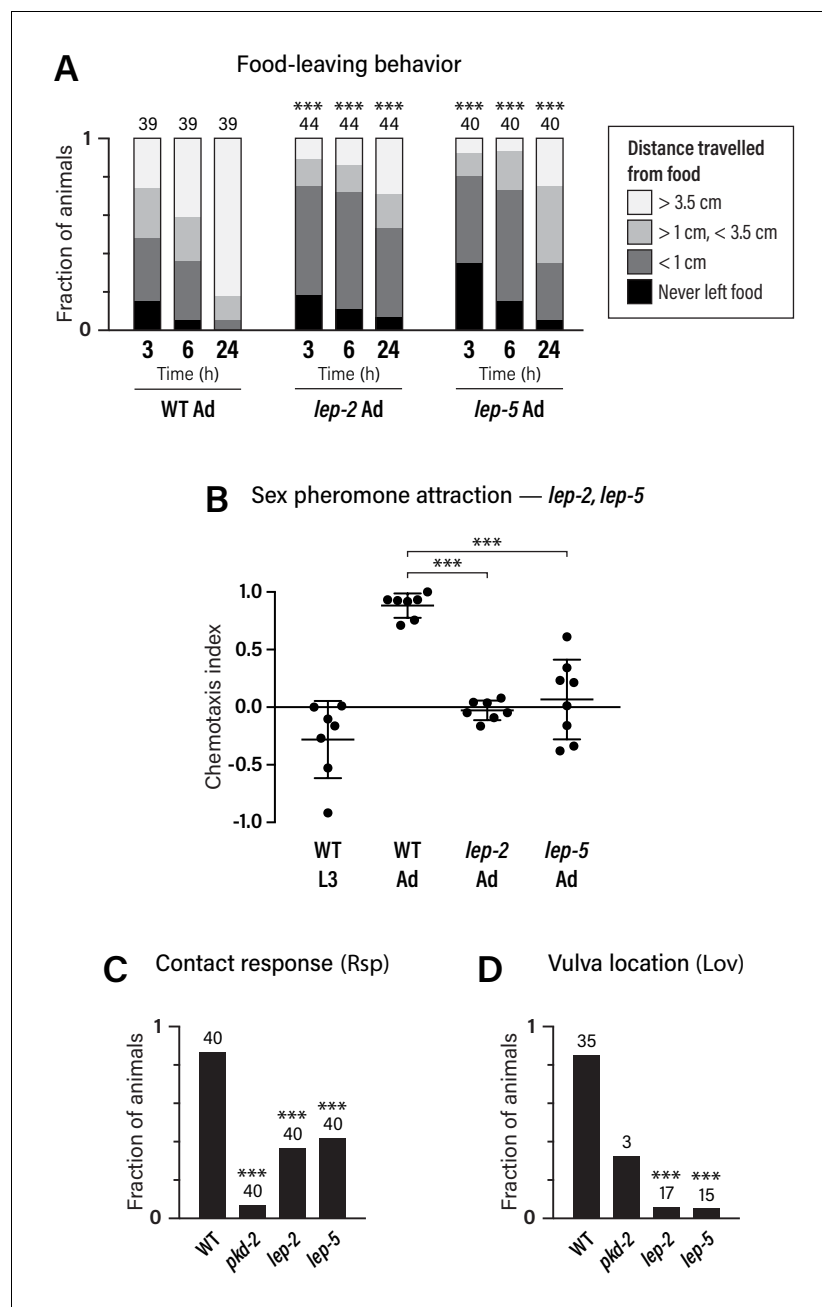
Because the *lep-2* and *lin-28* orthologs *MKRN3* and *LIN28A/B* are both implicated in the timing of human puberty, our results and those of [Herrera et al. \(2016\)](#) raise the possibility that *MKRN3* might act upstream of *LIN28A/B* in the mammalian nervous system. However, while loss of the *C. elegans* Makorin *lep-2* causes a delay in sexual differentiation, loss-of-function mutations in *MKRN3* are associated with the opposite phenotype, Central Precocious Puberty ([Abreu et al., 2013](#)). Several models can explain this apparent discrepancy. For example, it could be the case that both *MKRN3* and *LEP-2* inhibit *LIN28A/B* and *LIN-28*, but *LIN28A/B* might have multiple functions in mammalian puberty, acting both to promote and inhibit its onset ([Corre et al., 2016](#)). Alternatively, *MKRN3* might act to stabilize *LIN28A/B*, possibly by inhibiting another mammalian Makorin that might function more like *C. elegans lep-2*. Finally, *MKRN3* might regulate other substrates that function downstream of, or in parallel with, mammalian *LIN28A/B* in regulating puberty.

The first model predicts that *MKRN3* might be able to functionally substitute for *lep-2*. However, we found that pan-neural expression of *MKRN3* in *lep-2* mutants had no apparent effect on *srj-54* expression ([Figure 4—figure supplement 1A](#)). Though we cannot rule out the possibility that technical issues hindered rescue, this result suggests that *LEP-2* and *MKRN3* do not have equivalent biochemical functions.

Because wild-type *MKRN3* inhibits sexual differentiation in humans, we next asked whether it might have the same effect in *C. elegans*. Remarkably, expression of *MKRN3* from a pan-neuronal promoter in a wild-type background caused a modest but statistically significant delay in the activation of *srj-54* expression in AIM and the downregulation of *odr-10* expression in AWA ([Figure 4E,F](#)). However, we observed no effect of *MKRN3* overexpression on *pkd-2* expression ([Figure 4G](#)). The observation that *MKRN3* retains its ability to inhibit some aspects of sexual maturation when expressed in the *C. elegans* nervous system raises the intriguing possibility that *MKRN3* exerts an inhibitory effect on the conserved *lin-28–let-7*-dependent heterochronic timer and, moreover, that there is deep functional conservation of the mechanism in which it participates. The lack of an apparent effect of *MKRN3* overexpression on CEM maturation is consistent with our finding that these neurons rely less on *lep-2* and *lep-5* function ([Figure 2G](#)), indicating that their maturation occurs through mechanisms that are at least partially distinct from those that operate in AWA and AIM.

## Multiple effectors connect *lin-41* to the sexual maturation of the male nervous system

Our survey of heterochronic mutants ([Figure 2](#)) indicated that the *lin-28–let-7* pathway controls sexual maturity via the RNA-binding protein LIN-41, a direct target of *let-7* ([Slack et al., 2000](#)). LIN-41 regulates gene expression by binding to the 5' or 3' UTR of multiple target genes, including *lin-29a*, *mab-3*, *dmd-3*, and *mab-10* ([Aeschimann et al., 2017](#)). In the case of ADF, whose maturation is marked by the activation of *mab-3*, this provides a continuous molecular pathway connecting the *lep-2–lep-5–lin-28* timer to the sexual differentiation of ADF. With regard to the other neurons we studied, *mab-3* and *lin-29a* appear to have overlapping but distinct roles in sexual maturation. Studies carried out in parallel with this work found that *lin-29a* regulates expression of *srj-54* in AIM and *daf-7* in ASJ ([Pereira et al., 2019](#)). We found that the full extent of *srj-54* expression in AIM also depended on *mab-3* ([Figure 4—figure supplement 1B](#)). Thus, both *lin-29a* and *mab-3* promote AIM maturation, though the role of *mab-3* may be secondary and/or indirect. Furthermore, we found that the adult-specific repression of *odr-10* in AWA was lost in *mab-3* mutants but was unaffected by loss of *lin-29a* ([Figure 4—figure supplement 1C,D](#)). Thus, with respect to the molecular maturation events we have investigated here, both *mab-3* and *lin-29a* link the heterochronic pathway to downstream effectors of sexual differentiation. Because both *mab-3* and *lin-29a* are also targets of the master sexual regulator *tra-1* ([Fagan et al., 2018](#); [Pereira et al., 2019](#); [Yi et al., 2000](#)), these genes integrate sexual and temporal information to specify male-specific aspects of the sexual maturation of the *C. elegans* nervous system.



**Figure 5.** Adult-specific male behavior requires the function of the heterochronic pathway. (A) Food-leaving behavior. The maximum distance that a single animal had travelled from a small food spot was determined at 3, 6, and 24 hr after the beginning of the assay. Numbers indicate number of animals assayed. Asterisks indicate significance of comparisons to wild-type adults. (B) Attraction to a blend of ascaroside pheromones (*ascr#2/#3/#8*) using a quadrant-style assay. Each point represents the chemotaxis index calculated from one assay (ten animals). (C, D) Contact-response (Rsp) and Vulva-location (Lov) behavior. Numbers indicate number of animals tested. *pkd-2* mutant males, known to be defective in both behaviors (Barr et al., 2001), are used as controls.

DOI: <https://doi.org/10.7554/eLife.43660.016>

The following source data is available for figure 5:

**Source data 1.** Source data for Figure 5.

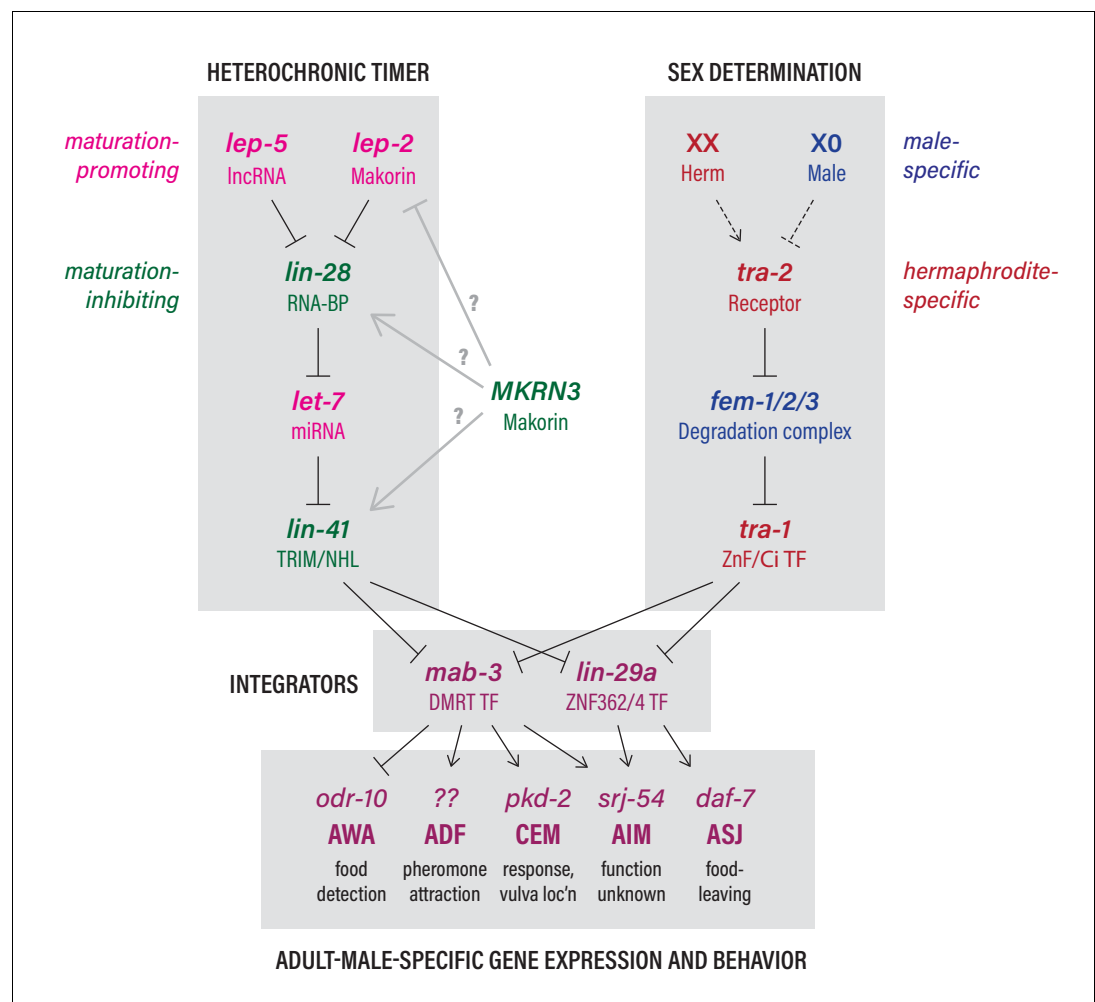
DOI: <https://doi.org/10.7554/eLife.43660.017>



## The heterochronic neuronal timer is necessary for the onset of sex differences in adult *C. elegans* behavior

With the exception of *srj-54*, whose function is unknown, each of the molecular markers used in this work is associated with adult-specific male behavior. Indeed, previous research has found that *lep-2* mutants have defects in male mating and food-leaving behaviors (Herrera et al., 2016), although the underlying mechanisms were unclear. We therefore surveyed these and other aspects of adult male behavior in both *lep-2* and *lep-5* mutants. While many heterochronic mutants have drastic, pleiotropic effects that interfere with behavioral assays, *lep-2* and *lep-5* males are, with the exception of a moderate defect in tail tip retraction, morphologically wild type. The retention of a pointed tail tip into adulthood is in itself thought not to significantly compromise male sexual behavior (Del Rio-Albrechtsen et al., 2006).

Food-leaving behavior, the propensity of well-fed males to leave a food source in search of mates, is manifested only in adulthood (Lipton et al., 2004). Multiple mechanisms promote male food-leaving, including signals from the male-specific ray sensory neurons, the neuropeptide receptor PDFR-1, the TGF $\beta$ -superfamily ligand DAF-7, and downregulation of the food-associated chemoreceptor *odr-10* (Barrios et al., 2012; Barrios et al., 2008; Hilbert and Kim, 2017; Lipton et al.,



**Figure 6.** The heterochronic and sex-determination pathways intersect to control adult-specific male gene expression and behavior. Genes are color-coded to indicate function as indicated. Grey arrows from *MKRN3* represent hypothetical interactions that could explain the ability of *MKRN3* to inhibit *C. elegans* sexual differentiation. See text for details.

DOI: <https://doi.org/10.7554/eLife.43660.018>

2004; Ryan et al., 2014). We found that *lep-2* and *lep-5* mutant males exhibited markedly decreased food-leaving behavior as adults (Figure 5A), indicating that both of these genes are important for the acquisition of male sexual drive.

We also examined attraction to ascaroside sex pheromones, a male-specific behavior that depends partially on *mab-3* function in ADF (Fagan et al., 2018; Srinivasan et al., 2008). We found that ascaroside attraction was absent in male larvae: L3 males were slightly repelled by an *ascr#2/#3/#8* blend, reminiscent of the behavior of adult hermaphrodites (Fagan et al., 2018) (Figure 5B). The transition to the adult behavioral state requires *lep-2* and *lep-5*, as pheromone attraction was abolished in these mutants (Figure 5B). In contrast, *lin-29a* mutant males exhibited no apparent defects in ascaroside attraction (Figure 3—figure supplement 1D), suggesting that *mab-3* is the primary effector of the sexual maturation of ADF.

Finally, we examined two sub-steps of male mating, response behavior ('Rsp', the typical backward-locomotion response of males to physical contact with hermaphrodites) and the subsequent vulva-location behavior ('Lov', the ability of the male to locate the hermaphrodite vulva) (Liu and Sternberg, 1995). While these behaviors depend primarily on male-specific sensorimotor circuits in the tail, sex-specific characteristics of shared neurons are also likely to be important for their execution (Barr and Sternberg, 1999; Koo et al., 2011; Liu and Sternberg, 1995; Liu et al., 2011; Sherlekar et al., 2013) (R.M.M. and D.S.P., unpublished results). We found that response behavior was reduced in both *lep-2* and *lep-5* mutant males, while vulva-location behavior was almost completely absent (Figure 5C,D). Together, these findings demonstrate that the Makorin *lep-2* and the lncRNA *lep-5*, and by extension, the heterochronic pathway, are important for implementing adult-specific sexual behavior in *C. elegans* males.

## Discussion

Although it has long been appreciated that animal behavior undergoes functional transitions commensurate with sexual maturation (Spear, 2000), the mechanisms that determine the timing of these changes are poorly understood. Indeed, in humans, adolescence is a period of heightened susceptibility to a variety of neuropsychiatric disorders (Jones, 2013; Walker et al., 2017), highlighting the importance of understanding the regulatory mechanisms that control these transitions. Here, we unite disparate findings from studies of mammalian puberty and *C. elegans* developmental biology to establish that a conserved developmental timer functions cell-autonomously to coordinate the sexual maturation of the *C. elegans* nervous system (Figure 6). Central to this mechanism is the temporal control provided by the lncRNA *lep-5*, which, together with the Makorin *lep-2*, promotes the timely decay of the conserved miRNA inhibitor LIN-28 (Kiontke et al., 2019). This decay permits the biosynthesis of mature *let-7* miRNA and, through the pathway shown in Figure 6, promotes the juvenile-to-adult transition.

The maturation events we have studied here entail not the incorporation of new neurons and circuits into the nervous system, but rather gene expression and functional changes in pre-existing, postmitotic neurons. As such, these events parallel similar changes in the mammalian hypothalamus, where both gene expression and physiological changes determine the timing of HPG axis maturation and the onset of puberty (Abreu and Kaiser, 2016; Avendaño et al., 2017; Livadas and Chrousos, 2016; Plant, 2015). Because *MKRN3*, *LIN28A/B*, and *LET7* are expressed in the hypothalamus and elsewhere in the mammalian brain, our results indicate that the neuronal function of the heterochronic pathway is an ancient regulator of the juvenile-to-adult transition. In this view, the activation effects of gonadal steroids at puberty (McCarthy et al., 2012) are likely to be a recent evolutionary adaptation that reinforces sexual differentiation of the mammalian nervous system via an endocrine feedback loop. Moreover, it suggests that puberty-independent events outside the hypothalamus that contribute to behavioral maturation during mammalian adolescence, such as the transition from play to aggression in Siberian hamsters (Paul et al., 2018), could also be timed by the heterochronic pathway.

In addition to identifying neuronal functions for *lep-2*, *lin-28*, and *let-7*, we also show that the recently identified lncRNA *lep-5* functions in this pathway. *lep-5* was identified in forward genetic screens for male tail morphogenesis defects; in *lep-5* mutants, LIN-28 protein persists longer than in wild-type, delaying the onset of expression of *dmd-3*, the master regulator of tail tip morphogenesis (Kiontke et al., 2019). Because *lep-5* is expressed in a temporal wave whose rise corresponds to the

time at which *lin-28* expression decays, *lep-5* is thought to provide an instructive temporal cue for the destabilization of LIN-28 and, in turn, allow production of the *let-7* miRNA and the progression through late-larval development. Because *lep-2* mutants have a phenotype essentially identical to that of *lep-5*, Kiontke et al., 2019 have proposed that *lep-5* serves as an RNA scaffold that recruits both LEP-2 and LIN-28; such a model is supported by in vivo crosslinking experiments demonstrating that *lep-5* binds to both LEP-2 and LIN-28. As a member of the Makorin family, LEP-2 may possess both RNA-binding and putative E3 ubiquitin ligase activities (Herrera et al., 2016), suggesting that a tripartite LEP-2–*lep-5*–LIN-28 complex could destabilize LIN-28 through ubiquitination by LEP-2 (Kiontke et al., 2019). Sequence homologs of *lep-5* have not been found outside of nematodes; however, lncRNAs are known to evolve rapidly, usually making it impossible to identify orthologs based on primary sequence alone (Diederichs, 2014). It is tempting to speculate that structural and/or functional orthologs of *lep-5* are present in mammals and could have an important role in the regulation of LIN28 and its control of puberty.

Intriguingly, mammalian MKRN3 has the opposite effect on developmental timing as its *C. elegans* ortholog *lep-2*. While *lep-2* mutant adults exhibit juvenile characteristics in the male tail tip (Herrera et al., 2016) and nervous system (this work), null or hypomorphic mutations in human MKRN3 lead to Central Precocious Puberty (Abreu et al., 2013), in which children younger than eight (girls) or nine (boys) years of age develop secondary sexual characteristics. This may reflect a generally more complex role for a putative MKRN3–LIN28–LET7 regulatory module in mammalian puberty compared to *C. elegans* sexual maturation. For example, overexpression of *Lin28a* delays puberty in male and female mice (Corre et al., 2016; Zhu et al., 2010), consistent with the maturation-inhibiting function of *C. elegans lin-28*. However, *Lin28b*<sup>−/−</sup> mice, as well as mice overexpressing *let-7*, also exhibit delayed sexual maturation, in contrast to the roles of *lin-28* and *let-7* in *C. elegans*; moreover, these effects were seen only in males (Corre et al., 2016). In mammals, these genes can be easily imagined to function at multiple steps in sexual development, such that apparently antagonistic activities could arise from roles for the mammalian heterochronic pathway in the production of both maturation-promoting and maturation-inhibiting signals. Clarification of these issues will require regionally and temporally controlled manipulations of mammalian gene activity. Here, we found that human MKRN3 was not able to rescue the defects of *C. elegans lep-2* mutants. Remarkably, however, MKRN3 overexpression caused a slight delay in the sexual maturation of two neuron types, AIM and AWA, in the *C. elegans* nervous system. This strongly suggests that the biochemical functions of LEP-2 and MKRN3 are not equivalent, and, moreover, that the mechanism by which MKRN3 regulates pubertal timing is conserved in *C. elegans*. Several potential models are consistent with these observations (Figure 6). MKRN3 might inhibit LEP-2, perhaps through a dominant-negative mechanism in which MKRN3 binds to *lep-5* but is unable to recognize *C. elegans* LIN-28. Alternatively, MKRN3 might somehow stabilize LIN-28, rather than promoting its degradation, or, less likely, MKRN3 could function in parallel with the *lep-2*–*lin-28* module. Further, we cannot rule out the possibility that MKRN3 overexpression artifactually inhibits *lep-2* function.

Ours are not the first studies to examine roles for the heterochronic pathway in the *C. elegans* nervous system. Early in larval development, the timing of synaptic remodeling of a class of GABAergic motoneurons is controlled by the heterochronic gene *lin-14*, which specifies multiple aspects of the L1 stage (Hallam and Jin, 1998). Later, a hermaphrodite-specific aspect of nervous system maturation, the outgrowth of the HSN axon, is controlled by *lin-14* and *lin-28* (Olsson-Carter and Slack, 2010). However, in neither case have the relevant targets of heterochronic function been identified. Interestingly, the heterochronic pathway, particularly *let-7* and *lin-41*, also has a role in regulating damaged-induced regeneration of the AVM axon in adults, an ability that declines with age (Zou et al., 2013). Moreover, studies in *Drosophila* also support a role for the heterochronic pathway in the timing of major transitions in the nervous system (Faunes and Larraín, 2016). *let-7* and related miRNAs control temporal specification of neuronal fate at the larval-to-pupal transition (Chawla et al., 2016; Marchetti and Tavosanis, 2017; Wu et al., 2012); they also regulate remodeling of neuromuscular anatomy and function at the pupal-to-adult transition (Caygill and Johnston, 2008; Sokol et al., 2008). Recently, *Drosophila lin-28* has been found to be widely expressed in the nervous system in late third instar larvae, and loss of *lin-28* function accelerates the larval-to-pupal transition (González-Itier et al., 2018). Together, these findings indicate an ancient role for this regulatory module in orchestrating developmental transitions in the nervous system.

Work carried out in parallel with the studies reported here (Pereira et al., 2019) found that the heterochronic pathway acts cell-autonomously to control several other aspects of male-specific sexual differentiation, including a neurotransmitter fate switch and changes in synaptic connectivity. Interestingly, Pereira et al. identified *lin-29a*, a male-specific isoform of *lin-29*, as a key mediator of many of these transitions, acting to integrate temporal and sexual signals. Here, our studies consider other aspects of male-specific functional maturation and focus on upstream components of the heterochronic pathway, particularly *lep-2* and *lep-5*, best known for their roles in male tail development (Herrera et al., 2016; Kiontke et al., 2019). The strong nervous system phenotypes of these mutants indicate that this specialized branch of the heterochronic pathway is critical for the sexual maturation of the nervous system. Moreover, these studies strongly suggest that the function of *MKRN3* in regulating human puberty is related to the *LIN28-LET7* axis and predict the central involvement of a yet-unidentified lncRNA in this process.

Though all of the maturation events we have studied here are male-specific, the heterochronic pathway almost certainly has a role in hermaphrodite-specific and non-sex-specific maturation of the *C. elegans* nervous system as well. Indeed, as mentioned above, differentiation of the hermaphrodite-specific HSN neuron requires heterochronic function (Olsson-Carter and Slack, 2010); however, little is known about non-male-specific changes in neuronal function that accompany sexual maturation. Interestingly, two recent studies have demonstrated functional transitions in chemosensory coding and behavior that occur at the juvenile-to-adult transition in hermaphrodites (Fujiwara et al., 2016; Hale et al., 2016). In one of these cases (Fujiwara et al., 2016), signaling from the gonad plays an important role, raising the more general possibility that signals from the gonad could intersect with cell-autonomous timers to provide more flexible control of behavior.

Although the phenomena we have studied here derive their sex-specificity by the integration of temporal and sexual signaling at the level of *mab-3* and *lin-29a*, other interactions between sex-determination and heterochronic timing are likely. By ChIP-seq studies, *lin-28* has been identified as a direct target of *tra-1* (Berkseth et al., 2013); both *tra-1* and *tra-2* are potential targets of the miRNA *let-7* (targetscan.org); the abundance of TRA-1 protein has been shown to be developmentally regulated (Weinberg et al., 2018) (H.L. and D.S.P., in prep.); and some phenotypes of heterochronic mutants can be considered sexual transformations (Ambros and Horvitz, 1984). Interestingly, many aspects of the timing of mammalian puberty also appear to be sex-specific (Abreu and Kaiser, 2016; Cousminer et al., 2016). Together, these observations blur the distinctions between sexual differentiation mechanisms and developmental timing pathways, helping provide a mechanistic understanding of the observation that sexual dimorphism often arises through heterochrony (McNamara, 2012). Because the deep crosstalk between sexual and temporal information is unlikely to be limited to *C. elegans*, reproductive maturation disorders and sex-biased disorders of the nervous system in humans will both be informed by a deeper appreciation of these intersections.

## Materials and methods

### Key resources table

Reagent type (species) or resource	Designation	Source or reference	Identifiers	Additional information
Gene ( <i>C. elegans</i> )	<i>him-5</i>	NA	WormBase ID: WBGene00001864	
Gene ( <i>C. elegans</i> )	<i>lep-2</i>	NA	WormBase ID: WBGene00002278	
Gene ( <i>C. elegans</i> )	<i>lep-5</i>	NA	WormBase ID: WBGene00010424	
Gene ( <i>C. elegans</i> )	<i>let-7</i>	NA	WormBase ID: WBGene00002285	
Gene ( <i>C. elegans</i> )	<i>lin-28</i>	NA	WormBase ID: WBGene00003014	

Continued on next page

Continued

Reagent type (species) or resource	Designation	Source or reference	Identifiers	Additional information
Gene (C. elegans)	<i>lin-29</i>	NA	WormBase ID: WBGene00003015	
Gene (C. elegans)	<i>lin-4</i>	NA	WormBase ID: WBGene00002993	
Gene (C. elegans)	<i>lin-41</i>	NA	WormBase ID: WBGene00003026	
Gene (C. elegans)	<i>mab-3</i>	NA	WormBase ID: WBGene00003100	
Gene (C. elegans)	<i>pha-1</i>	NA	WormBase ID: WBGene00004010	
Gene (C. elegans)	<i>unc-31</i>	NA	WormBase ID: WBGene00006767	
Gene (human)	MKRN3	NA	HGNC:7114	
Strain, strain background (C. elegans)	<i>otIs355[rab-3p(prom1)::2xNLS::TagRFP] IV; him-5(e1490) V; nyEx62[Plep-5::GFP + pRF4]</i>	this paper	DF305	<i>otIs355</i> : OH10689; <i>e1490</i> : CB4088; <i>nyEx62</i> see below
Strain, strain background (C. elegans)	<i>lin-4(e912) II; otIs355[rab-3p(prom1)::2xNLS::TagRFP] IV; him-5(e1490) V; nyEx62[Plep-5::GFP + pRF4]</i>	this paper	DF306	<i>e912</i> : CB2627; <i>otIs355</i> : OH10689; <i>e1490</i> : CB4088; <i>nyEx62</i> see below
Strain, strain background (C. elegans)	<i>pkd-2(sy606) IV; him-5(e1490) V</i>	Caenorhabditis Genetics Center	PT8	RRID:WB-STRAIN:PT8
Strain, strain background (C. elegans)	<i>fsIs5[Psj-54::YFP + cc::GFP] him-5(e1490) V</i>	<b>Lee and Portman, 2007</b>	UR219	
Strain, strain background (C. elegans)	<i>him-5(e1490) V; kys53[Podr-10::odr-10::GFP] X</i>	<b>Ryan et al., 2014</b>	UR460	
Strain, strain background (C. elegans)	<i>unc-31(e169) IV; him-5(e1490) V</i>	PMID: <a href="#">22023935</a>	UR624	
Strain, strain background (C. elegans)	<i>mab-3(e1240) II; him-5(e1490) V; kys53[ODR-10::GFP] X</i>	this paper	UR626	<i>e1240</i> : UR278; <i>e1490</i> : UR926; <i>kys53</i> : CX3344
Strain, strain background (C. elegans)	<i>pha-1(e2123) III; him-5(e1490) V; fsEx295[ODR-10::GFP fosmid + pBx1]</i>	<b>Ryan et al., 2014</b>	UR773	
Strain, strain background (C. elegans)	<i>him-5(e1490) V; lin-41(bx42) X; fsEx295[ODR-10::GFP fosmid + pBx1]</i>	this paper	UR786	<i>e1490</i> : UR926; <i>bx42</i> : EM106; <i>fsEx295</i> : UR773
Strain, strain background (C. elegans)	<i>lin-41(bx42) I; fsIs5[Psj-54::YFP + cc::GFP] him-5(e1490) V</i>	this paper	UR869	<i>bx42</i> : EM106; <i>fsIs5</i> : UR218; <i>e1490</i> : UR926
Strain, strain background (C. elegans)	<i>lin-41(ma104) I; myIs4[Ppkd-2::pkd-2::GFP + cc::GFP] him-5(e1490) V</i>	this paper	UR871	<i>ma104</i> : CT8; <i>myIs4</i> : UR1258; <i>e1490</i> : UR1258
Strain, strain background (C. elegans)	<i>lin-28(n719) I; fsIs5[Psj-54::YFP + cc::GFP] him-5(e1490) V</i>	this paper	UR872	<i>n719</i> : MT1524; <i>fsIs5</i> : UR218; <i>e1490</i> : UR218

Continued on next page



Continued

**Reagent type  
(species) or  
resource**
**Designation**
**Source or reference**
**Identifiers**
**Additional information**

Strain, strain background (C. elegans)	<i>lin-28(n719) I</i> ; <i>myls4[Ppkd-2::pkd-2::GFP + cc::GFP] him-5(e1490) V</i>	this paper	UR873	<i>n719</i> : MT1524; <i>myls4</i> : UR1258; <i>e1490</i> : UR1258
Strain, strain background (C. elegans)	<i>fsIs5[Psrrj-54::YFP + cc::GFP] him-5(e1490) V</i> ; <i>lep-5(fs8) X</i>	this paper	UR874	<i>fsIs5</i> : UR218; <i>e1490</i> : UR218; <i>fs8</i> : UR290
Strain, strain background (C. elegans)	<i>myls4[Ppkd-2::pkd-2::GFP + cc::GFP] him-5(e1490) V</i> ; <i>lep-5(fs8) X</i>	this paper	UR876	<i>myls4</i> : UR1258; <i>e1490</i> : UR1258; <i>fs8</i> : UR290
Strain, strain background (C. elegans)	<i>myls4[Ppkd-2::pkd-2::GFP + cc::GFP] him-5(e1490) V</i> ; <i>let-7(n2853) X</i>	this paper	UR878	<i>myls4</i> : UR1258; <i>e1490</i> : UR1258; <i>n2853</i> : MT7626
Strain, strain background (C. elegans)	<i>him-5(e1490) V</i>	this paper	UR926	<i>e1490</i> : CB4088
Strain, strain background (C. elegans)	<i>fsIs5[Psrrj-54::YFP + cc::GFP] him-5(e1490) V</i> ; <i>lep-5(fs20) X</i>	this paper	UR1248	<i>fsIs5</i> : UR218; <i>e1490</i> : UR218; <i>fs20</i> : UR1142
Strain, strain background (C. elegans)	<i>lep-2(ok900) IV</i> ; <i>fsIs5[Psrrj-54::YFP + cc::GFP] him-5(e1490) V</i>	this paper	UR1249	<i>ok900</i> : RB986; <i>fsIs5</i> : UR218; <i>e1490</i> : UR218
Strain, strain background (C. elegans)	<i>fsIs5[Psrrj-54::YFP + cc::GFP] him-5(e1490) V</i> ; <i>let-7(n2853) X</i>	this paper	UR1250	<i>fsIs5</i> : UR218; <i>e1490</i> : UR218; <i>n2853</i> : MT7626
Strain, strain background (C. elegans)	<i>pha-1(e2123) III</i> ; <i>fsIs5[Psrrj-54::YFP + cc::GFP] him-5(e1490) V</i> ; <i>fsEx295[ODR-10::GFP fosmid + pBx1]</i>	this paper	UR1251	<i>e2123</i> : GE24; <i>e1490</i> : UR926; <i>fsEx295</i> : UR773
Strain, strain background (C. elegans)	<i>pha-1(e2123) III</i> ; <i>lep-2(ok900) IV</i> ; <i>him-5(e1490) V</i> ; <i>fsEx295[ODR-10::GFP fosmid + pBx1]</i>	this paper	UR1252	<i>e2123</i> : GE24; <i>ok900</i> : RB986; <i>e1490</i> : UR926; <i>fsEx295</i> : UR773
Strain, strain background (C. elegans)	<i>lin-28(n719) I</i> ; <i>pha-1(e2123) III</i> ; <i>him-5(e1490) V</i> ; <i>fsEx295[ODR-10::GFP fosmid + pBx1]</i>	this paper	UR1253	<i>n719</i> : MT1524; <i>e2123</i> : GE24; <i>e1490</i> : UR926; <i>fsEx295</i> : UR773
Strain, strain background (C. elegans)	<i>him-5(e1490) V</i> ; <i>let-7(n2853) X</i> ; <i>fsEx295[ODR-10::GFP fosmid + pBx1]</i>	this paper	UR1254	<i>e1490</i> : UR926; <i>n2853</i> : MT7626; <i>fsEx295</i> : UR773
Strain, strain background (C. elegans)	<i>pha-1(e2123) III</i> ; <i>him-5(e1490) V</i> ; <i>let-41(ma104) X</i> ; <i>fsEx295[ODR-10::GFP fosmid + pBx1]</i>	this paper	UR1255	<i>e2123</i> : GE24; <i>e1490</i> : UR926; <i>ma104</i> : CT8; <i>fsEx294</i> : UR773
Strain, strain background (C. elegans)	<i>lin-29a(xe38) II</i> ; <i>him-5(e1490) V</i> ; <i>kyls53[Podr-10::odr-10::GFP] X</i>	this paper	UR1256	<i>xe38</i> : HW1693; <i>e1490</i> : UR926; <i>kyls53</i> : CX3344
Strain, strain background (C. elegans)	<i>lin-29a(xe40) II</i> ; <i>him-5(e1490) V</i> ; <i>kyls53[Podr-10::odr-10::GFP] X</i>	this paper	UR1257	<i>xe40</i> : HW1695; <i>e1490</i> : UR926; <i>kyls53</i> : CX3344

Continued on next page

Continued

Reagent type (species) or resource	Designation	Source or reference	Identifiers	Additional information
Strain, strain background (C. elegans)	<i>myls4[Ppkd-2::pkd-2::GFP + cc::GFP] him-5 (e1490) V</i>	this paper	UR1258	<i>myls4</i> : PT621; <i>e1490</i> : PT621
Strain, strain background (C. elegans)	<i>myls4[Ppkd-2::pkd-2::GFP + cc::GFP] him-5(e1490) V; lep-5(ny28) X</i>	this paper	UR1259	<i>myls4</i> : PT621; <i>e1490</i> : PT621; <i>ny28</i> : UR1022
Strain, strain background (C. elegans)	<i>lep-2(ok900) IV; myls4[Ppkd-2::pkd-2::GFP + cc::GFP] him-5 (e1490) V</i>	this paper	UR1260	<i>ok900</i> : RB986; <i>myls4</i> : UR1258; <i>e1490</i> : UR1258
Strain, strain background (C. elegans)	<i>lin-41(bx42) I; myls4[Ppkd-2::pkd-2::GFP + cc::GFP] him-5 (e1490) V</i>	this paper	UR1261	<i>bx42</i> : EM106; <i>myls4</i> : UR1258; <i>e1490</i> : UR1258
Strain, strain background (C. elegans)	<i>him-5(e1490) V; lep-5(ny28) X; fsEx527[1.5 kb MAB-3::GFP (pDZ162) + cc::GFP]</i>	this paper	UR1262	<i>e1490</i> : UR926; <i>ny28</i> : UR1022; <i>fsEx527</i> : UR1131
Strain, strain background (C. elegans)	<i>lep-2(ok900) IV; him-5(e1490) V; fsEx527[1.5 kb MAB-3::GFP (pDZ162) + cc::GFP]</i>	this paper	UR1263	<i>ok900</i> : RB986; <i>e1490</i> : UR926; <i>fsEx527</i> : UR1131
Strain, strain background (C. elegans)	<i>lin-28(n719) I; him-5(e1490) V; fsEx527[1.5 kb MAB-3::GFP (pDZ162) + cc::GFP]</i>	this paper	UR1264	<i>n719</i> : MT1524; <i>e1490</i> : UR926; <i>fsEx527</i> : UR1131
Strain, strain background (C. elegans)	<i>him-5(e1490) V; ksls2[Pdaf-7::GFP + rol-6(su1006)]</i>	this paper	UR1265	<i>e1490</i> : UR926; <i>ksls2</i> : FK181
Strain, strain background (C. elegans)	<i>him-5(e1490) V; lep-5(ny28) X; ksls2[Pdaf-7::GFP + rol-6(su1006)]</i>	this paper	UR1266	<i>e1490</i> : UR926; <i>ny28</i> : UR1022; <i>ksls2</i> : FK181
Strain, strain background (C. elegans)	<i>lep-2(ok900) IV; him-5(e1490) V; ksls2[Pdaf-7::GFP + rol-6(su1006)]</i>	this paper	UR1267	<i>ok900</i> : RB986; <i>e1490</i> : UR926; <i>ksls2</i> : FK181
Strain, strain background (C. elegans)	<i>fsIs5[Psrlj-54::YFP + cc::GFP] him-5(e1490) V; fsEx559[Prab-3::MKRN3::SL2::mCherry::unc-54 3' UTR + Pmyo-3::mCherry Line 1]</i>	this paper	UR1268	<i>fsIs5</i> : UR218; <i>e1490</i> : UR926; <i>fsEx559</i> : see below
Strain, strain background (C. elegans)	<i>fsIs5[Psrlj-54::YFP + cc::GFP] him-5(e1490) V; fsEx560[Prab-3::MKRN3::SL2::mCherry::unc-54 3' UTR + Pmyo-3::mCherry Line 2]</i>	this paper	UR1269	<i>fsIs5</i> : UR218; <i>e1490</i> : UR926; <i>fsEx560</i> : see below
Strain, strain background (C. elegans)	<i>lep-2(ok900) IV; fsIs5[Psrlj-54::YFP + cc::GFP] him-5(e1490) V; fsEx561[Peat-4prom11::lep-2::SL2::mCherry::unc-54 3' UTR + Pmyo-3::mCherry Line 1]</i>	this paper	UR1270	<i>ok900</i> : RB986; <i>fsIs5</i> : UR218; <i>e1490</i> : UR218; <i>fsEx561</i> : see below

Continued on next page

Continued

**Reagent type  
(species) or  
resource**
**Designation**
**Source or reference**
**Identifiers**
**Additional information**

Strain, strain background (C. elegans)	<i>lep-2(ok900) IV</i> ; <i>fsls5[Psj-54::YFP + cc::GFP]</i> <i>him-5(e1490) V</i> ; <i>fsEx562[Peat-4prom11::lep-2::Sl2::mCherry::unc-54 3' UTR + Pmyo-3::mCherry Line 2]</i>	this paper	UR1271	<i>ok900</i> : RB986; <i>fsls5</i> : UR218; <i>e1490</i> : UR218; <i>fsEx562</i> : see below
Strain, strain background (C. elegans)	<i>lep-2(ok900) IV</i> ; <i>fsls5[Psj-54::YFP + cc::GFP]</i> <i>him-5(e1490) V</i> ; <i>fsEx563[Peat-4prom11::lep-2::Sl2::mCherry::unc-54 3' UTR + Pmyo-3::mCherry Line 3]</i>	this paper	UR1272	<i>ok900</i> : RB986; <i>fsls5</i> : UR218; <i>e1490</i> : UR218; <i>fsEx563</i> : see below
Strain, strain background (C. elegans)	<i>lep-2(ok900) IV</i> ; <i>fsls5[Psj-54::YFP + cc::GFP]</i> <i>him-5(e1490) V</i> ; <i>fsEx564[Prab-3::MKRN3::SL2::mCherry::unc-54 3' UTR + Pmyo-3::mCherry Line 1]</i>	this paper	UR1273	<i>ok900</i> : RB986; <i>fsls5</i> : UR218; <i>e1490</i> : UR218; <i>fsEx564</i> : see below
Strain, strain background (C. elegans)	<i>lep-2(ok900) IV</i> ; <i>fsls5[Psj-54::YFP + cc::GFP]</i> <i>him-5(e1490) V</i> ; <i>fsEx565[Prab-3::MKRN3::SL2::mCherry::unc-54 3' UTR + Pmyo-3::mCherry Line 2]</i>	this paper	UR1274	<i>ok900</i> : RB986; <i>fsls5</i> : UR218; <i>e1490</i> : UR218; <i>fsEx565</i> : see below
Strain, strain background (C. elegans)	<i>lin-28(n719) I</i> ; <i>fsls5[Psj-54::YFP + cc::GFP]</i> <i>him-5(e1490) V</i> ; <i>fsEx566[Peat-4prom11::lin-28::Sl2::mCherry::unc-54 3' UTR + Pmyo-3::mCherry Line 1]</i>	this paper	UR1275	<i>n719</i> : MT1524; <i>fsls5</i> : UR218; <i>e1490</i> : UR218; <i>fsEx566</i> : see below
Strain, strain background (C. elegans)	<i>lin-28(n719) I</i> ; <i>fsls5[Psj-54::YFP + cc::GFP]</i> <i>him-5(e1490) V</i> ; <i>fsEx567[Peat-4prom11::lin-28::Sl2::mCherry::unc-54 3' UTR + Pmyo-3::mCherry Line 2]</i>	this paper	UR1276	<i>n719</i> : MT1524; <i>fsls5</i> : UR218; <i>e1490</i> : UR218; <i>fsEx567</i> : see below
Strain, strain background (C. elegans)	<i>pha-1(e2123) III</i> ; <i>lep-2(ok900) IV</i> ; <i>him-5(e1490) V</i> ; <i>fsEx295[ODR-10::GFP fosmid + pBx1]</i> ; <i>fsEx568[Pgpa-4del6::lep-2::Sl2::mCherry::unc-54 3' UTR + Pelt-2::GFP Line 1]</i>	this paper	UR1277	<i>pha-1</i> : GE24; <i>ok900</i> : RB986; <i>e1490</i> : UR926; <i>fsEx295</i> : UR773; <i>fsEx568</i> : see below
Strain, strain background (C. elegans)	<i>pha-1(e2123) III</i> ; <i>lep-2(ok900) IV</i> ; <i>him-5(e1490) V</i> ; <i>fsEx295[ODR-10::GFP fosmid + pBx1]</i> ; <i>fsEx569[Pgpa-4del6::lep-2::Sl2::mCherry::unc-54 3' UTR + Pelt-2::GFP Line 2]</i>	this paper	UR1278	<i>e2123</i> : GE24; <i>ok900</i> : RB986; <i>e1490</i> : UR926; <i>fsEx295</i> : UR773; <i>fsEx569</i> : see below
Strain, strain background (C. elegans)	<i>lin-28(n719) I</i> ; <i>lep-2(ok900) IV</i> ; <i>fsls5[Psj-54::YFP + cc::GFP]</i> <i>him-5(e1490) V</i>	this paper	UR1279	<i>n719</i> : MT1524; <i>ok900</i> : RB986; <i>fsls5</i> : UR218; <i>e1490</i> : UR218
Strain, strain background (C. elegans)	<i>lin-28(n719) I</i> ; <i>fsls5[Psj-54::YFP + cc::GFP]</i> <i>him-5(e1490) V</i> ; <i>lep-5(ny28) X</i>	this paper	UR1280	<i>n719</i> : MT1524; <i>fsls5</i> : UR218; <i>e1490</i> : UR218; <i>ny28</i> : UR1022
Strain, strain background (C. elegans)	<i>lin-28(n719) I</i> ; <i>fsls5[Psj-54::YFP + cc::GFP]</i> <i>him-5(e1490) V</i> ; <i>let-7(n2853) X</i>	this paper	UR1281	<i>n719</i> : MT1524; <i>fsls5</i> : UR218; <i>e1490</i> : UR218; <i>n2853</i> : MT7626

Continued on next page

Continued

Reagent type (species) or resource	Designation	Source or reference	Identifiers	Additional information
Recombinant DNA reagent	MKRN3 (NM_005664) Human Untagged Clone	Origene	Cat# SC319872	
Recombinant DNA reagent	pDONR221	Invitrogen		<a href="https://www.addgene.org/vector-database/2394/">https://www.addgene.org/vector-database/2394/</a>
Recombinant DNA reagent	Peat-4prom11::lep-2::SL2::mCherry::unc-54 3'UTR	this paper		Construction described below
Recombinant DNA reagent	Peat-4prom11::lin-28::SL2::mCherry::unc-54 3'UTR	this paper		Construction described below
Recombinant DNA reagent	Pgpa-4del6::lep-2::SL2::mCherry::unc-54 3'UTR	this paper		Construction described below
Recombinant DNA reagent	Prab-3::MKRN3::SL2::mCherry::unc-54 3'UTR	this paper		Construction described below
Software, algorithm	Prism 8		GraphPad Software	RRID:SCR_002798
Software, algorithm	ApE, A Plasmid Editor		M Wayne Davis	RRID:SCR_014266 <a href="http://jorgensen.biology.utah.edu/wayned/ap/">http://jorgensen.biology.utah.edu/wayned/ap/</a>

### C. elegans culture and staging

In general, *C. elegans* were cultured using standard methods (Stiernagle, 2006). All strains used here carried the mutation *him-5(e1490)* to increase the numbers of males, such that we refer to *him-5(e1490)* as the wild-type. All strains used in this work are listed in the Key resources table.

To isolate populations at specific larval stages, adult hermaphrodites were allowed to lay eggs for two hours, roughly synchronizing their progeny. Because male tail morphogenesis cannot be used to reliably stage some heterochronic mutant males under low magnification, sibling hermaphrodites were used as proxies to roughly stage animals. For all individuals scored, larval stage was definitively determined by the progression of gonadal development using DIC microscopy (Zeiss Axioplan 2, 63x Plan-Apo objective). Males in which the linker cell had migrated dorsally but not yet ventrally were staged as L3 larvae. Males in which the linker cell had migrated ventrally and extended posteriorly were staged as L4 larvae. One-day old adults were obtained by picking L3-L4 larvae and allowing them to mature overnight. Because *lin-28* hermaphrodites have severe egg-laying defects, we passed all strains containing *lin-28* mutations through the dauer stage to suppresses this phenotype (Liu and Ambros, 1991), allowing us to use timed egg-laying for rough synchronization.

### Imaging and quantitation of *fsEx295*, *fsIs5*, *fsEx527*, *ksIs2*, and *myIs4*

Animals were mounted on 4% agarose pads in M9 buffer supplemented with levamisole. GFP and DIC brightfield images were obtained using a 63x PlanApo objective on a Zeiss Axioplan 2. GFP intensity was qualitatively determined to be bright (3), moderate (2), faint (1), or absent (0). For rescue and overexpression experiments, the experimenter was blind to the presence or absence of the expression array when scoring reporter fluorescence. Animals not bearing the array were used as non-transgenic sibling controls. Representative images were taken using the same illumination intensity and exposure time. Images of *ksIs2* were captured using an Apotome. Fluorescence intensity data were compared using Mann-Whitney tests (for pairwise analyses) or Kruskal-Wallis tests with Dunn's correction (for multiple comparisons). For these and all other statistical analyses reported in this work, statistical significance is indicated in the figures as follows: \*0.01 < *p* < 0.05; \*\*0.001 < *p* < 0.01; \*\*\**p* < 0.001.

### Imaging of strains containing *maIs108* and *nyEx53*

Animals were mounted as described above and images were obtained using a Leica SP5 Confocal Microscope with a HyD hybrid detector and 63x objective. Z-series were obtained starting at the

most superficial neuron and ending at the deepest neuron as determined by expression of the pan-neuronal nuclear marker *otIs355[Prab-3::tagRFP::2xNLS]*. Images were taken at 0.5  $\mu\text{m}$  steps, 200 Hz, and 2x zoom. FIJI (*Schindelin et al., 2012*) was used to create max-intensity z-projections of the entire z-stack. Images were pseudocolored and merged using Adobe Photoshop. Quantitation and statistical analysis was carried out as described in the preceding paragraph.

## Imaging of strains containing *nyEx62*

Animals were mounted as above but were anesthetized with 20 mM  $\text{NaN}_3$ . Images were obtained using a Zeiss Axiolmager equipped with an Apotome using the 40x objective. Ten to fifteen slices, taken with a spacing of 0.5  $\mu\text{m}$ , were merged into a Z projection using Image J.

## Transgenic strains

cDNAs were amplified from RNA extracted from mixed-stage *him-5* cultures. *lep-2* and *lin-28* cDNAs were amplified using primers shown in Table S1. Human *MKRN3* cDNA was amplified from the plasmid SC319872 (Origene) using primers shown in Table S1. The resulting cDNAs were cloned into pDONR221 and recombined via Multisite Gateway Cloning (Invitrogen) to make following expression clones:

Peat-4prom11::*lep-2::SL2::mCherry::unc-54 3'UTR*  
Peat-4prom11::*lin-28::SL2::mCherry::unc-54 3'UTR*  
Pgpa-4del6::*lep-2::SL2::mCherry::unc-54 3'UTR*  
Prab-3::*MKRN3::SL2::mCherry::unc-54 3'UTR*

Transgenes were injected into young adult hermaphrodites using standard methods (*Evans, 2006*) to generate *fsEx* transgenic lines.

The *Plep-5::GFP* reporter was constructed by overlap extension PCR (*Nelson and Fitch, 2011*) using primers KKOl<sub>p</sub>-5\_1 and *plep-5\_GFP\_B* to amplify *C. elegans* genomic DNA (for fragment A) and primers pPD95.75.C and pPD95.75D to amplify from plasmid pPD95.75 (for fragment B). Final extension used primers KKlep5<sub>expr</sub>-9 and pPD95.75.D\*. Transgenes were injected with standard methods using the co-injection marker pRF4[*rol-6(d)*].

## Behavioral assays

### Food-Leaving assay

Males were isolated to a newly seeded plate approximately 16 hr prior to the start of the assay, at the L4 stage (to assay adults) or L1 (to assay L3s). Single males were placed on a 7  $\mu\text{L}$  spot of *E. coli* OP50 in the center of a 10 cm plate containing 10 mL of standard agar lacking cholesterol based on the method of *Lipton et al. (2004)*. At designated intervals, tracks were examined to determine the farthest distance traveled by the animal: zero (never left food), <1 cm (a 'minor excursion' off the food), >1 cm but <3.5 cm (a 'major excursion' off the food), or >3.5 cm (left the plate). Animals that died on the plate were censored. The fraction in each category for each genotype or age was compared with controls using a chi-square test (Prism 7.0).

### Ascaroside attraction

Pheromone attraction assays were performed and data were analyzed as previously described (*Fagan et al., 2018*).

### Response and location of vulva

Adult males were placed on a mating assay plate with 15 to 20 *unc-31; him-5* hermaphrodites and allowed four minutes to display mating behavior as previously described (*Barr and Sternberg, 1999; Liu and Sternberg, 1995*). Males were assayed in pairs and watched in real time to determine whether they could (1) respond to hermaphrodite contact and (2) locate the vulva. Data is reported as follows: Response = # of males responding/total # of males assayed. Location = # of males that locate the vulva/total # of males that responded. For each step, successful individuals were scored as one and unsuccessful individuals as 0. Kruskal-Wallis tests (with Dunn's correction) were used to analyze differences between groups.



## Acknowledgements

We are grateful to Jintao Luo for help with strain construction, Victoria DiMarco and Adam Mason for preliminary studies on *srj-54*, Laura Pereira and Oliver Hobert for sharing unpublished results, and Florian Aeschmann and Helge Großhans for providing *lin-29a* alleles. Some strains used in this work were provided by the *Caenorhabditis* Genetics Center (University of Minnesota), which is funded by the NIH Office of Research Infrastructure Programs (P40 OD010440). This research was supported by NIH R01 GM108885, R01 GM130136, and NSF IOS 1353075 (to DSP) and by NIH R01 GM100140, NSF DEB 0922012, and research funds from NYU Shanghai (to DHAF). EV was supported by the University of Rochester Medical Scientist Training Program, NIH T32 GM007356.

## Additional information

### Funding

Funder	Grant reference number	Author
National Institute of General Medical Sciences	R01 GM108885	Douglas Portman
National Institute of General Medical Sciences	R01 GM130136	Douglas Portman
National Science Foundation	IOS 1353075	Douglas Portman
National Institute of General Medical Sciences	T32 GM007356	Edward Vuong
National Institute of General Medical Sciences	R01 GM100140	David Fitch
National Science Foundation	DEB 0922012	David Fitch
New York University		David Fitch

The funders had no role in study design, data collection and interpretation, or the decision to submit the work for publication.

### Author contributions

Hannah Lawson, Conceptualization, Resources, Formal analysis, Investigation, Writing—original draft; Edward Vuong, Conceptualization, Investigation; Renee M Miller, Conceptualization, Formal analysis, Investigation; Karin Kiontke, Conceptualization, Resources, Investigation; David HA Fitch, Conceptualization, Resources, Funding acquisition; Douglas S Portman, Conceptualization, Formal analysis, Supervision, Funding acquisition, Writing—review and editing

### Author ORCIDs

Douglas S Portman  <https://orcid.org/0000-0003-2686-8839>

### Decision letter and Author response

Decision letter <https://doi.org/10.7554/eLife.43660.021>

Author response <https://doi.org/10.7554/eLife.43660.022>

## Additional files

### Supplementary files

- Transparent reporting form

DOI: <https://doi.org/10.7554/eLife.43660.019>

### Data availability

Data is available in supporting files.

## References

- Abreu AP**, Dauber A, Macedo DB, Noel SD, Brito VN, Gill JC, Cukier P, Thompson IR, Navarro VM, Gagliardi PC, Rodrigues T, Kochi C, Longui CA, Beckers D, de Zegher F, Montenegro LR, Mendonca BB, Carroll RS, Hirschhorn JN, Latronico AC, et al. 2013. Central precocious puberty caused by mutations in the imprinted gene MKRN3. *New England Journal of Medicine* **368**:2467–2475. DOI: <https://doi.org/10.1056/NEJMoa1302160>, PMID: 23738509
- Abreu AP**, Kaiser UB. 2016. Pubertal development and regulation. *The Lancet Diabetes & Endocrinology* **4**:254–264. DOI: [https://doi.org/10.1016/S2213-8587\(15\)00418-0](https://doi.org/10.1016/S2213-8587(15)00418-0), PMID: 26852256
- Aeschimann F**, Kumari P, Bartake H, Gaidatzis D, Xu L, Ciosk R, Großhans H. 2017. LIN41 Post-transcriptionally silences mRNAs by two distinct and Position-Dependent mechanisms. *Molecular Cell* **65**:476–489. DOI: <https://doi.org/10.1016/j.molcel.2016.12.010>, PMID: 28111013
- Ambros V**. 1989. A hierarchy of regulatory genes controls a larva-to-adult developmental switch in *C. elegans*. *Cell* **57**:49–57. DOI: [https://doi.org/10.1016/0092-8674\(89\)90171-2](https://doi.org/10.1016/0092-8674(89)90171-2), PMID: 2702689
- Ambros V**, Horvitz HR. 1984. Heterochronic mutants of the nematode *Caenorhabditis elegans*. *Science* **226**:409–416. DOI: <https://doi.org/10.1126/science.6494891>, PMID: 6494891
- Avendaño MS**, Vazquez MJ, Tena-Sempere M. 2017. Disentangling puberty: novel neuroendocrine pathways and mechanisms for the control of mammalian puberty. *Human Reproduction Update* **23**:737–763. DOI: <https://doi.org/10.1093/humupd/dmx025>, PMID: 28961976
- Barr MM**, DeModena J, Braun D, Nguyen CQ, Hall DH, Sternberg PW. 2001. The *Caenorhabditis elegans* autosomal dominant polycystic kidney disease gene homologs *lov-1* and *pkd-2* act in the same pathway. *Current Biology* **11**:1341–1346. DOI: [https://doi.org/10.1016/S0960-9822\(01\)00423-7](https://doi.org/10.1016/S0960-9822(01)00423-7), PMID: 11553327
- Barr MM**, García LR, Portman DS. 2018. Sexual dimorphism and sex differences in *Caenorhabditis elegans* Neuronal Development and Behavior. *Genetics* **208**:909–935. DOI: <https://doi.org/10.1534/genetics.117.300294>, PMID: 29487147
- Barr MM**, Sternberg PW. 1999. A polycystic kidney-disease gene homologue required for male mating behaviour in *C. elegans*. *Nature* **401**:386–389. DOI: <https://doi.org/10.1038/43913>, PMID: 10517638
- Barrios A**, Nurrish S, Emmons SW. 2008. Sensory regulation of *C. elegans* male mate-searching behavior. *Current Biology* **18**:1865–1871. DOI: <https://doi.org/10.1016/j.cub.2008.10.050>, PMID: 19062284
- Barrios A**, Ghosh R, Fang C, Emmons SW, Barr MM. 2012. PDF-1 neuropeptide signaling modulates a neural circuit for mate-searching behavior in *C. elegans*. *Nature Neuroscience* **15**:1675–1682. DOI: <https://doi.org/10.1038/nn.3253>, PMID: 23143519
- Berkseth M**, Ikegami K, Arur S, Lieb JD, Zarkower D. 2013. TRA-1 ChIP-seq reveals regulators of sexual differentiation and multilevel feedback in nematode sex determination. *PNAS* **110**:16033–16038. DOI: <https://doi.org/10.1073/pnas.1312087110>, PMID: 24046365
- Bogin B**, Brown BB, Prinstein MJ. 2011. Puberty and Adolescence: An Evolutionary Perspective. In: *Encyclopedia of Adolescence*. Academic Press. p. 275–286. DOI: <https://doi.org/10.1016/b978-0-12-373951-3.00033-8>
- Caygill EE**, Johnston LA. 2008. Temporal regulation of metamorphic processes in *Drosophila* by the let-7 and miR-125 heterochronic microRNAs. *Current Biology* **18**:943–950. DOI: <https://doi.org/10.1016/j.cub.2008.06.020>, PMID: 18571409
- Chawla G**, Deosthale P, Childress S, Wu YC, Sokol NS. 2016. A let-7-to-miR-125 MicroRNA switch regulates neuronal integrity and lifespan in *Drosophila*. *PLOS Genetics* **12**:e1006247. DOI: <https://doi.org/10.1371/journal.pgen.1006247>, PMID: 27508495
- Corre C**, Shinoda G, Zhu H, Cousminer DL, Crossman C, Bellissimo C, Goldenberg A, Daley GQ, Palmert MR. 2016. Sex-specific regulation of weight and puberty by the Lin28/let-7 axis. *Journal of Endocrinology* **228**:179–191. DOI: <https://doi.org/10.1530/JOE-15-0360>, PMID: 26698568
- Cousminer DL**, Widén E, Palmert MR. 2016. The genetics of pubertal timing in the general population: recent advances and evidence for sex-specificity. *Current Opinion in Endocrinology, Diabetes, and Obesity* **23**:57–65. DOI: <https://doi.org/10.1097/MED.0000000000000213>, PMID: 26574646
- Del Rio-Albrechtsen T**, Kiontke K, Chiou SY, Fitch DH. 2006. Novel gain-of-function alleles demonstrate a role for the heterochronic gene *lin-41* in *C. elegans* male tail tip morphogenesis. *Developmental Biology* **297**:74–86. DOI: <https://doi.org/10.1016/j.ydbio.2006.04.472>, PMID: 16806150
- Diederichs S**. 2014. The four dimensions of noncoding RNA conservation. *Trends in Genetics* **30**:121–123. DOI: <https://doi.org/10.1016/j.tig.2014.01.004>, PMID: 24613441
- Emmons SW**. 2018. Neural circuits of sexual behavior in *Caenorhabditis elegans*. *Annual Review of Neuroscience* **41**:349–369. DOI: <https://doi.org/10.1146/annurev-neuro-070815-014056>, PMID: 29709211
- Evans TC**. 2006. Transformation and microinjection. In: *WormBook: The Online Review of C. elegans Biology*. WormBook. DOI: <https://doi.org/10.1895/wormbook.1.108.1>
- Fagan KA**, Luo J, Lagoy RC, Schroeder FC, Albrecht DR, Portman DS. 2018. A Single-Neuron chemosensory switch determines the valence of a sexually dimorphic sensory behavior. *Current Biology* **28**:902–914. DOI: <https://doi.org/10.1016/j.cub.2018.02.029>, PMID: 29526590
- Faunes F**, Larraín J. 2016. Conservation in the involvement of heterochronic genes and hormones during developmental transitions. *Developmental Biology* **416**:3–17. DOI: <https://doi.org/10.1016/j.ydbio.2016.06.013>, PMID: 27297887

- Fujiwara M, Aoyama I, Hino T, Teramoto T, Ishihara T. 2016. Gonadal maturation changes chemotaxis behavior and neural processing in the olfactory circuit of *Caenorhabditis elegans*. *Current Biology* **26**:1522–1531. DOI: <https://doi.org/10.1016/j.cub.2016.04.058>, PMID: 27265391
- Gajdos ZK, Henderson KD, Hirschhorn JN, Palmert MR. 2010. Genetic determinants of pubertal timing in the general population. *Molecular and Cellular Endocrinology* **324**:21–29. DOI: <https://doi.org/10.1016/j.mce.2010.01.038>, PMID: 20144687
- García LR, Portman DS. 2016. Neural circuits for sexually dimorphic and sexually divergent behaviors in *Caenorhabditis elegans*. *Current Opinion in Neurobiology* **38**:46–52. DOI: <https://doi.org/10.1016/j.conb.2016.02.002>, PMID: 26929998
- Gluckman PD, Hanson MA. 2006. Evolution, development and timing of puberty. *Trends in Endocrinology & Metabolism* **17**:7–12. DOI: <https://doi.org/10.1016/j.tem.2005.11.006>, PMID: 16311040
- González-Itier S, Contreras EG, Larraín J, Glavic Á, Faunes F. 2018. A role for Lin-28 in growth and metamorphosis in *Drosophila melanogaster*. *Mechanisms of Development* **154**:107–115. DOI: <https://doi.org/10.1016/j.mod.2018.06.002>, PMID: 29908237
- Hale LA, Lee ES, Pantazis AK, Chronis N, Chalasani SH. 2016. Altered sensory code drives Juvenile-to-Adult behavioral maturation in *Caenorhabditis elegans*. *Eneuro* **3**:ENEURO.0175-16.2016. DOI: <https://doi.org/10.1523/ENEURO.0175-16.2016>, PMID: 28083560
- Hallam SJ, Jin Y. 1998. lin-14 regulates the timing of synaptic remodelling in *Caenorhabditis elegans*. *Nature* **395**:78–82. DOI: <https://doi.org/10.1038/25757>, PMID: 9738501
- Harter CJL, Kavanagh GS, Smith JT. 2018. The role of kisspeptin neurons in reproduction and metabolism. *Journal of Endocrinology* **238**:R173–R183. DOI: <https://doi.org/10.1530/JOE-18-0108>, PMID: 30042117
- Herrera RA, Kiontke K, Fitch DH. 2016. Makorin ortholog LEP-2 regulates LIN-28 stability to promote the juvenile-to-adult transition in *Caenorhabditis elegans*. *Development* **143**:799–809. DOI: <https://doi.org/10.1242/dev.132738>, PMID: 26811380
- Hilbert ZA, Kim DH. 2017. Sexually dimorphic control of gene expression in sensory neurons regulates decision-making behavior in *C. elegans*. *eLife* **6**:e21166. DOI: <https://doi.org/10.7554/eLife.21166>, PMID: 28117661
- Huang X, Zhang H, Zhang H. 2011. The zinc-finger protein SEA-2 regulates larval developmental timing and adult lifespan in *C. elegans*. *Development* **138**:2059–2068. DOI: <https://doi.org/10.1242/dev.057109>, PMID: 21471153
- Jones PB. 2013. Adult mental health disorders and their age at onset. *British Journal of Psychiatry* **54**:s5–s10. DOI: <https://doi.org/10.1192/bjp.bp.112.119164>, PMID: 23288502
- Kimble J. 1981. Alterations in cell lineage following laser ablation of cells in the somatic gonad of *Caenorhabditis elegans*. *Developmental Biology* **87**:286–300. DOI: [https://doi.org/10.1016/0012-1606\(81\)90152-4](https://doi.org/10.1016/0012-1606(81)90152-4), PMID: 7286433
- Kiontke KC, Herrera RA, Vuong E, Luo J, Schwarz EM, Fitch DHA, Portman DS. 2019. The long Non-Coding RNA lep-5 promotes the Juvenile-to-Adult transition by destabilizing LIN-28. *Developmental Cell* **49**:542–555. DOI: <https://doi.org/10.1016/j.devcel.2019.03.003>, PMID: 30956008
- Koo PK, Bian X, Sherlekar AL, Bunkers MR, Lints R. 2011. The robustness of *Caenorhabditis elegans* male mating behavior depends on the distributed properties of ray sensory neurons and their output through core and male-specific targets. *Journal of Neuroscience* **31**:7497–7510. DOI: <https://doi.org/10.1523/JNEUROSCI.6153-10.2011>, PMID: 21593334
- Lee K, Portman DS. 2007. Neural sex modifies the function of a *C. elegans* sensory circuit. *Current Biology* **17**:1858–1863. DOI: <https://doi.org/10.1016/j.cub.2007.10.015>, PMID: 17964163
- Lipton J, Kleemann G, Ghosh R, Lints R, Emmons SW. 2004. Mate searching in *Caenorhabditis elegans*: a genetic model for sex drive in a simple invertebrate. *Journal of Neuroscience* **24**:7427–7434. DOI: <https://doi.org/10.1523/JNEUROSCI.1746-04.2004>, PMID: 15329389
- Liu Y, LeBeauf B, Guo X, Correa PA, Gualberto DG, Lints R, Garcia LR. 2011. A cholinergic-regulated circuit coordinates the maintenance and bi-stable states of a sensory-motor behavior during *Caenorhabditis elegans* male copulation. *PLOS Genetics* **7**:e1001326. DOI: <https://doi.org/10.1371/journal.pgen.1001326>, PMID: 21423722
- Liu Z, Ambros V. 1991. Alternative temporal control systems for hypodermal cell differentiation in *Caenorhabditis elegans*. *Nature* **350**:162–165. DOI: <https://doi.org/10.1038/350162a0>, PMID: 26502479
- Liu KS, Sternberg PW. 1995. Sensory regulation of male mating behavior in *Caenorhabditis elegans*. *Neuron* **14**:79–89. DOI: [https://doi.org/10.1016/0896-6273\(95\)90242-2](https://doi.org/10.1016/0896-6273(95)90242-2), PMID: 7826644
- Livadas S, Chrousos GP. 2016. Control of the onset of puberty. *Current Opinion in Pediatrics* **28**:551–558. DOI: <https://doi.org/10.1097/MOP.0000000000000386>, PMID: 27386974
- Marchetti G, Tavasani G. 2017. Steroid hormone ecdysone signaling specifies mushroom body neuron sequential fate via chinmo. *Current Biology* **27**:3017–3024. DOI: <https://doi.org/10.1016/j.cub.2017.08.037>, PMID: 28966087
- McCarthy MM, Arnold AP, Ball GF, Blaustein JD, De Vries GJ. 2012. Sex differences in the brain: the not so inconvenient truth. *Journal of Neuroscience* **32**:2241–2247. DOI: <https://doi.org/10.1523/JNEUROSCI.5372-11.2012>, PMID: 22396398
- McNamara KJ. 2012. Heterochrony: the evolution of development. *Evolution: Education and Outreach* **5**:203–218. DOI: <https://doi.org/10.1007/s12052-012-0420-3>
- Morita K, Han M. 2006. Multiple mechanisms are involved in regulating the expression of the developmental timing regulator lin-28 in *Caenorhabditis elegans*. *The EMBO Journal* **25**:5794–5804. DOI: <https://doi.org/10.1038/sj.emboj.7601451>, PMID: 17139256

- Moss EG**, Lee RC, Ambros V. 1997. The cold shock domain protein LIN-28 controls developmental timing in *C. elegans* and is regulated by the *lin-4* RNA. *Cell* **88**:637–646. DOI: [https://doi.org/10.1016/S0092-8674\(00\)81906-6](https://doi.org/10.1016/S0092-8674(00)81906-6), PMID: 9054503
- Narayan A**, Venkatachalam V, Durak O, Reilly DK, Bose N, Schroeder FC, Samuel AD, Srinivasan J, Sternberg PW. 2016. Contrasting responses within a single neuron class enable sex-specific attraction in *Caenorhabditis elegans*. *PNAS* **113**:E1392–E1401. DOI: <https://doi.org/10.1073/pnas.1600786113>, PMID: 26903633
- Nelson MD**, Fitch DH. 2011. Overlap extension PCR: an efficient method for transgene construction. *Methods in Molecular Biology* **772**:459–470. DOI: [https://doi.org/10.1007/978-1-61779-228-1\\_27](https://doi.org/10.1007/978-1-61779-228-1_27), PMID: 22065455
- Olsson-Carter K**, Slack FJ. 2010. A developmental timing switch promotes axon outgrowth independent of known guidance receptors. *PLOS Genetics* **6**:e1001054. DOI: <https://doi.org/10.1371/journal.pgen.1001054>, PMID: 20700435
- Ong KK**, Elks CE, Li S, Zhao JH, Luan J, Andersen LB, Bingham SA, Brage S, Smith GD, Ekelund U, Gillson CJ, Glaser B, Golding J, Hardy R, Khaw KT, Kuh D, Luben R, Marcus M, McGeehin MA, Ness AR, et al. 2009. Genetic variation in LIN28B is associated with the timing of puberty. *Nature Genetics* **41**:729–733. DOI: <https://doi.org/10.1038/ng.382>, PMID: 19448623
- Parent AS**, Teilmann G, Juul A, Skakkebaek NE, Toppari J, Bourguignon JP. 2003. The timing of normal puberty and the age limits of sexual precocity: variations around the world, secular trends, and changes after migration. *Endocrine Reviews* **24**:668–693. DOI: <https://doi.org/10.1210/er.2002-0019>, PMID: 14570750
- Park SW**, Lee ST, Sohn YB, Cho SY, Kim SH, Kim SJ, Kim CH, Ko AR, Paik KH, Kim JW, Jin DK. 2012. LIN28B polymorphisms are associated with central precocious puberty and early puberty in girls. *Korean Journal of Pediatrics* **55**:388–392. DOI: <https://doi.org/10.3345/kjp.2012.55.10.388>, PMID: 23133486
- Paul MJ**, Probst CK, Brown LM, de Vries GJ. 2018. Dissociation of puberty and adolescent social development in a seasonally breeding species. *Current Biology* **28**:1116–1123. DOI: <https://doi.org/10.1016/j.cub.2018.02.030>, PMID: 29551412
- Pereira L**, Kratsios P, Serrano-Saiz E, Sheftel H, Mayo AE, Hall DH, White JG, LeBoeuf B, Garcia LR, Alon U, Hobert O. 2015. A cellular and regulatory map of the cholinergic nervous system of *C. elegans*. *eLife* **4**:e12432. DOI: <https://doi.org/10.7554/eLife.12432>, PMID: 26705699
- Pereira L**, Aeschmann F, Wang C, Lawson H, Serrano-Saiz E, Portman DS, Großhans H, Hobert O. 2019. Timing mechanism of sexually dimorphic nervous system differentiation. *eLife* **8**:e42078. DOI: <https://doi.org/10.7554/eLife.42078>, PMID: 30599092
- Plant TM**. 2015. Neuroendocrine control of the onset of puberty. *Frontiers in Neuroendocrinology* **38**:73–88. DOI: <https://doi.org/10.1016/j.yfrne.2015.04.002>, PMID: 25913220
- Portman DS**. 2007. Genetic control of sex differences in *C. elegans* neurobiology and behavior. *Advances in Genetics* **59**:1–37. DOI: [https://doi.org/10.1016/S0065-2660\(07\)59001-2](https://doi.org/10.1016/S0065-2660(07)59001-2), PMID: 17888793
- Portman DS**. 2017. Sexual modulation of sex-shared neurons and circuits in *Caenorhabditis elegans*. *Journal of Neuroscience Research* **95**:527–538. DOI: <https://doi.org/10.1002/jnr.23912>, PMID: 27870393
- Portman DS**, Emmons SW. 2004. Identification of *C. elegans* sensory ray genes using whole-genome expression profiling. *Developmental Biology* **270**:499–512. DOI: <https://doi.org/10.1016/j.ydbio.2004.02.020>, PMID: 15183729
- Reinhart BJ**, Slack FJ, Basson M, Pasquinelli AE, Bettinger JC, Rougvie AE, Horvitz HR, Ruvkun G. 2000. The 21-nucleotide *let-7* RNA regulates developmental timing in *Caenorhabditis elegans*. *Nature* **403**:901–906. DOI: <https://doi.org/10.1038/35002607>, PMID: 10706289
- Ren P**, Lim CS, Johnsen R, Albert PS, Pilgrim D, Riddle DL. 1996. Control of *C. elegans* larval development by neuronal expression of a TGF-beta homolog. *Science* **274**:1389–1391. DOI: <https://doi.org/10.1126/science.274.5291.1389>, PMID: 8910282
- Rougvie AE**, Moss EG. 2013. Developmental transitions in *C. elegans* larval stages. *Current Topics in Developmental Biology* **105**:153–180. DOI: <https://doi.org/10.1016/B978-0-12-396968-2.00006-3>, PMID: 23962842
- Ryan DA**, Miller RM, Lee K, Neal SJ, Fagan KA, Sengupta P, Portman DS. 2014. Sex, age, and hunger regulate behavioral prioritization through dynamic modulation of chemoreceptor expression. *Current Biology* **24**:2509–2517. DOI: <https://doi.org/10.1016/j.cub.2014.09.032>, PMID: 25438941
- Schindelin J**, Arganda-Carreras I, Frise E, Kaynig V, Longair M, Pietzsch T, Preibisch S, Rueden C, Saalfeld S, Schmid B, Tinevez JY, White DJ, Hartenstein V, Eliceiri K, Tomancak P, Cardona A. 2012. Fiji: an open-source platform for biological-image analysis. *Nature Methods* **9**:676–682. DOI: <https://doi.org/10.1038/nmeth.2019>, PMID: 22743772
- Seggerson K**, Tang L, Moss EG. 2002. Two genetic circuits repress the *Caenorhabditis elegans* heterochronic gene *lin-28* after translation initiation. *Developmental Biology* **243**:215–225. DOI: <https://doi.org/10.1006/dbio.2001.0563>, PMID: 11884032
- Sengupta P**, Chou JH, Bargmann CI. 1996. *odr-10* encodes a seven transmembrane domain olfactory receptor required for responses to the odorant diacetyl. *Cell* **84**:899–909. DOI: [https://doi.org/10.1016/S0092-8674\(00\)81068-5](https://doi.org/10.1016/S0092-8674(00)81068-5), PMID: 8601313
- Serrano-Saiz E**, Oren-Suissa M, Bayer EA, Hobert O. 2017. Sexually dimorphic differentiation of a *C. elegans* Hub Neuron Is Cell Autonomously Controlled by a Conserved Transcription Factor. *Current Biology* **27**:199–209. DOI: <https://doi.org/10.1016/j.cub.2016.11.045>, PMID: 28065609
- Sherlekar AL**, Janssen A, Siehr MS, Koo PK, Cafilisch L, Boggess M, Lints R. 2013. The *C. elegans* male exercises directional control during mating through cholinergic regulation of sex-shared command interneurons. *PLOS ONE* **8**:e60597. DOI: <https://doi.org/10.1371/journal.pone.0060597>, PMID: 23577128



- Slack FJ, Basson M, Liu Z, Ambros V, Horvitz HR, Ruvkun G. 2000. The lin-41 RBCC gene acts in the *C. elegans* heterochronic pathway between the let-7 regulatory RNA and the LIN-29 transcription factor. *Molecular Cell* **5**: 659–669. DOI: [https://doi.org/10.1016/S1097-2765\(00\)80245-2](https://doi.org/10.1016/S1097-2765(00)80245-2), PMID: 10882102
- Sokol NS, Xu P, Jan YN, Ambros V. 2008. *Drosophila* let-7 microRNA is required for remodeling of the neuromusculature during metamorphosis. *Genes & Development* **22**:1591–1596. DOI: <https://doi.org/10.1101/gad.1671708>, PMID: 18559475
- Spear LP. 2000. The adolescent brain and age-related behavioral manifestations. *Neuroscience & Biobehavioral Reviews* **24**:417–463. DOI: [https://doi.org/10.1016/S0149-7634\(00\)00014-2](https://doi.org/10.1016/S0149-7634(00)00014-2), PMID: 10817843
- Srinivasan J, Kaplan F, Ajredini R, Zachariah C, Alborn HT, Teal PE, Malik RU, Edison AS, Sternberg PW, Schroeder FC. 2008. A blend of small molecules regulates both mating and development in *Caenorhabditis elegans*. *Nature* **454**:1115–1118. DOI: <https://doi.org/10.1038/nature07168>, PMID: 18650807
- Stiernagle T. 2006. Maintenance of *C. elegans*. In: *WormBook: The Online Review of Caenorhabditis elegans Biology*. WormBook. DOI: <https://doi.org/10.1895/wormbook.1.101.1>
- Sulston JE, Albertson DG, Thomson JN. 1980. The *Caenorhabditis elegans* male: postembryonic development of nongonadal structures. *Developmental Biology* **78**:542–576. DOI: [https://doi.org/10.1016/0012-1606\(80\)90352-8](https://doi.org/10.1016/0012-1606(80)90352-8), PMID: 7409314
- Sulston JE, Schierenberg E, White JG, Thomson JN. 1983. The embryonic cell lineage of the nematode *Caenorhabditis elegans*. *Developmental Biology* **78**:542–576. DOI: [https://doi.org/10.1016/0012-1606\(83\)90201-4](https://doi.org/10.1016/0012-1606(83)90201-4)
- Tsialikas J, Romer-Seibert J. 2015. LIN28: roles and regulation in development and beyond. *Development* **142**: 2397–2404. DOI: <https://doi.org/10.1242/dev.117580>, PMID: 26199409
- Vadla B, Kemper K, Alaimo J, Heine C, Moss EG. 2012. lin-28 controls the succession of cell fate choices via two distinct activities. *PLOS Genetics* **8**:e1002588. DOI: <https://doi.org/10.1371/journal.pgen.1002588>, PMID: 22457637
- Walker DM, Bell MR, Flores C, Gulley JM, Willing J, Paul MJ. 2017. Adolescence and reward: making sense of neural and behavioral changes amid the chaos. *The Journal of Neuroscience* **37**:10855–10866. DOI: <https://doi.org/10.1523/JNEUROSCI.1834-17.2017>, PMID: 29118215
- Wang J, Kaletsky R, Silva M, Williams A, Haas LA, Androwski RJ, Landis JN, Patrick C, Rashid A, Santiago-Martinez D, Gravato-Nobre M, Hodgkin J, Hall DH, Murphy CT, Barr MM. 2015. Cell-Specific transcriptional profiling of ciliated sensory neurons reveals regulators of behavior and extracellular vesicle biogenesis. *Current Biology* **25**:3232–3238. DOI: <https://doi.org/10.1016/j.cub.2015.10.057>, PMID: 26687621
- Weaver BP, Zabinsky R, Weaver YM, Lee ES, Xue D, Han M. 2014. CED-3 caspase acts with miRNAs to regulate non-apoptotic gene expression dynamics for robust development in *C. elegans*. *eLife* **3**:e04265. DOI: <https://doi.org/10.7554/eLife.04265>, PMID: 25432023
- Weaver BP, Weaver YM, Mitani S, Han M. 2017. Coupled caspase and N-End rule ligase activities allow recognition and degradation of pluripotency factor LIN-28 during Non-Apoptotic development. *Developmental Cell* **41**:665–673. DOI: <https://doi.org/10.1016/j.devcel.2017.05.013>, PMID: 28602583
- Weinberg P, Berkseth M, Zarkower D, Hobert O. 2018. Sexually dimorphic unc-6/Netrin expression controls Sex-Specific maintenance of synaptic connectivity. *Current Biology* **28**:623–629. DOI: <https://doi.org/10.1016/j.cub.2018.01.002>, PMID: 29429615
- Wu YC, Chen CH, Mercer A, Sokol NS. 2012. let-7-Complex MicroRNAs regulate the temporal identity of *Drosophila* mushroom body neurons via chinmo. *Developmental Cell* **23**:202–209. DOI: <https://doi.org/10.1016/j.devcel.2012.05.013>, PMID: 22814608
- Yi W, Ross JM, Zarkower D. 2000. mab-3 is a direct tra-1 target gene regulating diverse aspects of *C. elegans* male sexual development and behavior. *Development* **127**:4469–4480. PMID: 11003845
- Yi BR, Kim HJ, Park HS, Cho YJ, Kim JY, Yee J, Chung JE, Kim JH, Lee KE, Gwak HS. 2018. Association between MKRN3 and LIN28B polymorphisms and precocious puberty. *BMC Genetics* **19**:47. DOI: <https://doi.org/10.1186/s12863-018-0658-z>, PMID: 30053798
- Zhu H, Shah S, Shyh-Chang N, Shinoda G, Einhorn WS, Viswanathan SR, Takeuchi A, Grasemann C, Rinn JL, Lopez MF, Hirschhorn JN, Palmert MR, Daley GQ. 2010. Lin28a transgenic mice manifest size and puberty phenotypes identified in human genetic association studies. *Nature Genetics* **42**:626–630. DOI: <https://doi.org/10.1038/ng.593>, PMID: 20512147
- Zhu J, Kusa TO, Chan YM. 2018. Genetics of pubertal timing. *Current Opinion in Pediatrics* **30**:1–540. DOI: <https://doi.org/10.1097/MOP.0000000000000642>, PMID: 29771761
- Zou Y, Chiu H, Zinovyeva A, Ambros V, Chuang CF, Chang C. 2013. Developmental decline in neuronal regeneration by the progressive change of two intrinsic timers. *Science* **340**:372–376. DOI: <https://doi.org/10.1126/science.1231321>, PMID: 23599497