

# Patterns, Drivers, and Challenges of Vector-Borne Disease Emergence

Andrea Swej,<sup>1</sup> Lisa I. Couper,<sup>2</sup> Lark L. Coffey,<sup>3</sup> Durrell Kapan,<sup>4</sup> and Shannon Bennett<sup>4</sup>

## Abstract

Vector-borne diseases are emerging at an increasing rate and comprise a disproportionate share of all emerging infectious diseases. Yet, the key ecological and evolutionary dimensions of vector-borne disease that facilitate their emergence have not been thoroughly explored. This study reviews and synthesizes the existing literature to explore global patterns of emerging vector-borne zoonotic diseases (VBZDs) under changing global conditions. We find that the vast majority of emerging VBZDs are transmitted by ticks (Ixodidae) and mosquitoes (Culicidae) and the pathogens transmitted are dominated by Rickettsiaceae bacteria and RNA viruses (Flaviviridae, Bunyaviridae, and Togaviridae). The most common potential driver of these emerging zoonoses is land use change, but for many diseases, the driver is unknown, revealing a critical research gap. While most reported VBZDs are emerging in the northern latitudes, after correcting for sampling bias, Africa is clearly a region with the greatest share of emerging VBZD. We highlight critical gaps in our understanding of VBZD emergence and emphasize the importance of interdisciplinary research and consideration of deeper evolutionary processes to improve our capacity for anticipating where and how such diseases have and will continue to emerge.

**Keywords:** vector-borne, zoonotic, infectious disease, global change, tick, mosquito

## Introduction

THE THREAT OF EMERGING infectious diseases to humans and wildlife is a pressing issue that is expected to worsen in response to human population growth and global change (Gratz 1999, Morens et al. 2004, Patz et al. 2008, Keesing et al. 2010, Kilpatrick and Randolph 2012). In 2015, mosquito-borne Zika virus emerged in South and Central America followed by mosquito-borne transmission in Southern Florida and at the Texas/Mexico border in the United States (Belluck and Alvarez 2016). Widespread Zika virus transmission, along with the new recognition of congenital Zika syndrome that causes fetal death or neurologic defects in babies born to women infected during pregnancy, has brought vector-borne pathogens to the forefront of public attention. Over 60% of emerging human diseases are zoonotic, or caused by microorganisms that are transmitted from wildlife to humans (Jones et al. 2008). Vector-borne zoonotic diseases (VBZDs), transmitted primarily by blood-feeding, or hematophagous, and arthropods, are an important subset of

zoonotic diseases that are emerging at an increasing rate relative to directly transmitted infectious diseases that lack an arthropod intermediary. The most recent compilation of data documenting that a high number of emerging infectious diseases are vector borne is over 15 years old (Jones et al. 2008). Specifically, although 14% of human infectious diseases are vector borne, VBZDs comprise 22% of all emerging infectious diseases of humans and are thus disproportionately represented among emerging infectious diseases (Cleaveland et al. 2001, Taylor et al. 2001, Woolhouse and Gowtage-Sequeria 2005, Vorou et al. 2007, Jones et al. 2008). Another recent report by the Centers for Disease Control (CDC) found that the number of reported cases of tick-borne diseases has doubled in recent years in the United States, mostly due to increased cases of Lyme disease, but also due to other diseases increasing or because new pathogens have been described (Rosenberg et al. 2018). The other major pathogens causing human infectious diseases consist of directly transmitted viruses, prions, bacteria, and parasites (Cleaveland et al. 2001, Jones et al. 2008, Keesing et al. 2010).

<sup>1</sup>Department of Biology, San Francisco State University, San Francisco, California.

<sup>2</sup>Department of Biology, Stanford University, Palo Alto, California.

<sup>3</sup>Department of Pathology, Microbiology, and Immunology, School of Veterinary Medicine, University of California, Davis, Davis, California.

<sup>4</sup>Institute for Biodiversity Science and Sustainability, California Academy of Sciences, San Francisco, California.

Despite recognition of VBZDs as a major group of emerging diseases, there has not been a systematic characterization of the most important vectors, pathogens, environmental contexts, or ecological and evolutionary features that promote their emergence. This study synthesizes reported VBZD incidences for multiple pathogens and vectors to identify patterns of emergence to ask when and where vectored pathogens have emerged and what common factors facilitate their emergence? The emergence of new or expanding vector-borne pathogens in humans likely reflects common ecological and evolutionary processes rather than isolated phenomena. We conducted a literature review to assess VBZD emergence and discuss key ecological and evolutionary characteristics of vector-borne diseases in contrast to nonvectored human pathogens to develop a conceptual framework for understanding why vector-borne diseases are disproportionately represented among global emerging infectious disease events.

## Methods

We followed the CDC definition of emerging infectious disease: a disease that has increased in incidence because it is newly described, recently expanded in distribution, or increased in prevalence. The definition of a vector can differ between fields and contexts (Wilson et al. 2018), but here, because we seek to understand evolutionary drivers and associations, we defined a vector as a blood-feeding arthropod in which a pathogen, once ingested with a vertebrate blood meal, replicates and is ultimately transmitted in a subsequent blood meal. This is in contrast to pathogens that might be mechanically transferred from one host to another on the exterior surfaces of the arthropod's body (Wilson et al. 2018). This review focuses on arthropods because they are the most common and well-characterized vectors of pathogens. Major groups of arthropod vectors include insects such as mosquitoes, fleas, and kissing bugs, as well as arachnids such as ticks. There are nonarthropod animals that engage in hematophagy, such as leeches, vampire bats, and even vampire finches (Schluter and Grant 1984), but these examples are unusual and their importance in pathogen transmission is limited, so they are not included in this analysis.

### Literature review of emerging VBZDs

Standardized database searches were conducted on BIOSIS Citation Index and Web of Science on July 10, 2018, and included the search terms “emerging AND infectious AND disease AND vector” in the topic field and the year range was 1940–2018. A disease that emerged more than once or in multiple locations was only counted once, but separate emergence locations were recorded. We explored spatial trends in vector-borne disease emergence by comparing emergence events by continent and by latitude. For the continent-level analysis, all 131 pathogens obtained from the BIOSIS and Web of Science searches were included, and the continent of emergence for each pathogen was determined from information provided in the relevant articles. Pathogens emerging simultaneously on multiple continents (e.g., *Borrelia miyamotoi*) were included in the count for each of those continents (e.g., North America and Europe).

We then sought to control for differences in surveillance effort by estimating each continent's capacity for detecting

emerging vector-borne pathogens. We used the number of field entomological articles published in each continent as a proxy for relative surveillance effort. Specifically, we conducted a Web of Science search on the topic “field entomology” between 1940 and 2018, which generated a list of 348 articles. For each article, we then determined the continent that the research occurred, rather than the home continent of the researchers (as reported by Web of Science), and tallied the number of studies per continent. We then divided the number of emerging vector-borne pathogens per continent by the number of field entomological articles per continent to obtain scaled emergence event values.

For the emergence-by-latitude analysis, we included all vector-borne pathogens with known emergence locations at the country level or finer, as determined by the available literature. This included 76 of the original 131 emerging vector-borne pathogens identified. For these pathogens, the mid-point latitude value of the reported emergence location was used in the analysis. For example, *Anaplasma phagocytophilum*, which was reported to emerge in Duluth, Minnesota (Bakken et al. 1994), would be assigned the middle latitude value for Duluth (roughly 46°N).

### Drivers of emergence

To quantitatively assess factors that may have promoted a particular emerging VBZD, we recorded drivers that were identified by the authors in the primary studies we reviewed. In the numerous cases where no driver was indicated or proposed, we recorded these diseases as “unspecified.”

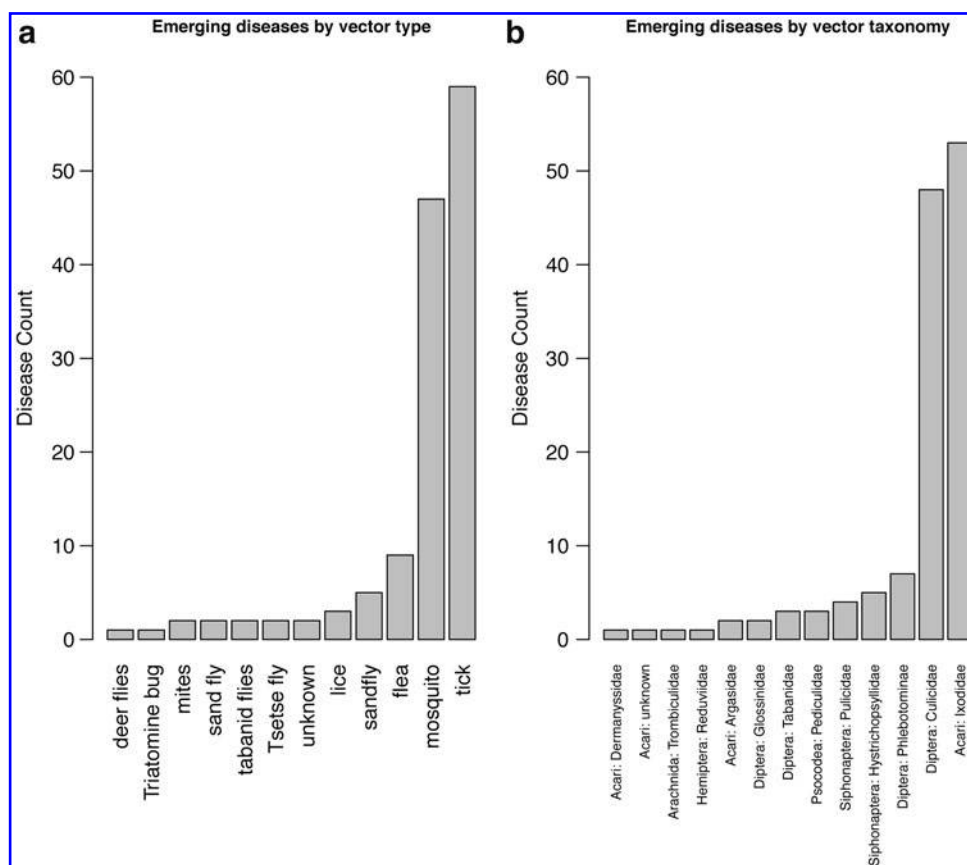
## Results

### Major patterns of emerging vector-borne diseases

Our analysis identified 131 emerging vector-borne diseases in the peer-reviewed scientific literature from the years 1940 to 2018 (Supplementary Table S1). The BIOSIS query resulted in 1020 results and Web of Science produced 836 results. All peer-reviewed journal articles were reviewed to determine if the article was about an emerging vector-borne disease (Supplementary Table S1). We identified 53 emerging vector-borne diseases since 2005, in addition to the 78 that were originally described by Jones et al. (2008). New genetic variants of pathogens that evolved to infect a new vector or host were considered separate pathogen emergence events in our analysis.

Our analysis found that acari (mites and ticks) and diptera (flies) comprise nearly 90% of all vectors involved in emerging VBZD (Fig. 1). Within these groups, the vectors most commonly involved in transmitting VBZD are dominated by hard ticks (family Ixodidae) and mosquitoes (family Culicidae), respectively, and are responsible for vectoring approximately three-quarters of all documented emerging VBZD. Ixodidae ticks transmit 40% of documented emerging VBZD and mosquito vector 36% (Supplementary Table S1 and Fig. 1). Examples of Ixodidae are *Ixodes*, *Dermacentor*, or *Amblyomma* spp. ticks that are responsible for transmitting some of the most prevalent and widespread bacterial infections to humans such as Lyme disease, Rocky Mountain spotted fever, and ehrlichiosis. Mosquito species involved in the majority of mosquito-borne diseases are primarily in the genera *Aedes*, *Anopheles*, or *Culex* and are well-known vectors

**FIG. 1.** Histogram showing the (a) primary vector types and (b) vector families of the 131 emerging vector-borne diseases identified. Eleven independent vector types and 13 vector families were identified. Some diseases were found to be vectored by multiple arthropods types and are categorized as such.

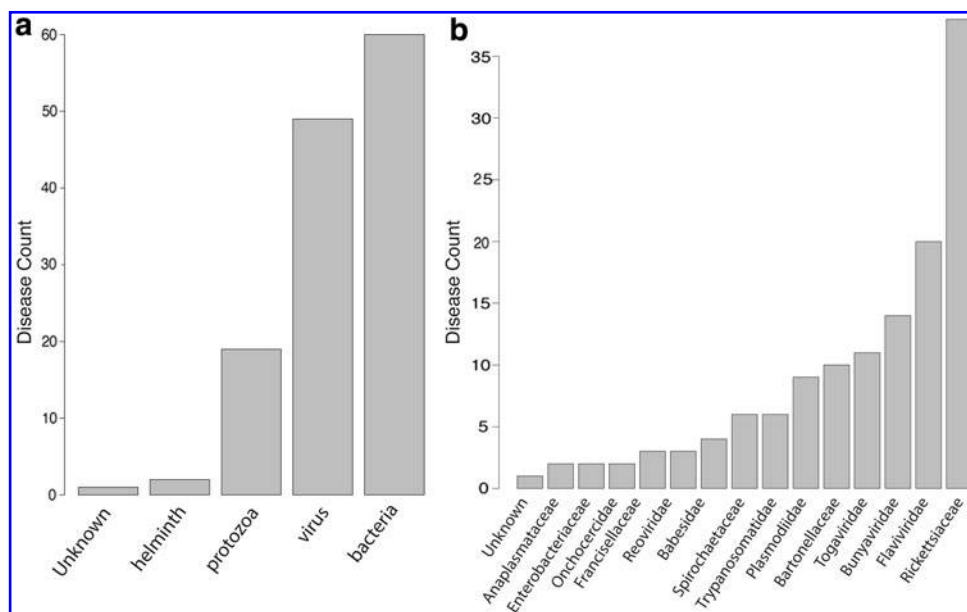


of West Nile virus, malaria, and Zika virus. The remaining emerging VBZDs are principally vectored by fleas, sand flies, and phlebotomine flies (Fig. 1).

The pathogens transmitted by the two most prominent vector families, Ixodidae ticks and Culicidae mosquitoes, are dominated by Rickettsiaceae ( $N=37$ ) and a variety of viruses, including Flaviviridae, Bunyaviridae, Togaviridae, and

rarely Reoviridae ( $N=49$ ). The remaining vector-borne pathogens are bacterial ( $N=23$ ), protozoan ( $N=9$ ), and a variety of other pathogens such as nematode worms and flukes (Supplementary Table S1 and Fig. 2b). Of the emerging pathogens transmitted by arthropod vectors, bacteria are responsible for 59% of all VBZDs, followed by viruses (27%), and then protozoa (15%) (Fig. 2). When

**FIG. 2.** Count of disease types categorized by (a) pathogen types and (b) pathogen family.



examining the types of emerging pathogens at the family level, the results showed that Rickettsiaceae bacteria are the most common family of pathogens by a large margin and account for over a quarter of all emerging pathogens at the family level.

### *Spatial patterns of emergence*

We found the highest number of vector-borne pathogen emergence events in North America (27%) followed by Europe (21%) and Asia (20%) (Fig. 3). However, as unequal surveillance efforts across continents may influence the detection of emergence events, we repeated this analysis after scaling the number of emerging pathogens using a proxy measure of surveillance effort for each continent by accounting for the relative number of field entomology publications from each region. Using this correction, we found Africa hosted substantially more emerging vector-borne pathogens (43%) than any other continent, and Australia also hosts a relatively larger share, while North America and Europe's contribution becomes smaller, perhaps due to sampling bias (Fig. 3). Analyzing vector-borne disease emergence patterns by latitude, in another effort to minimize surveillance bias, revealed that emergence events were highest at both the mid-latitudes (45°N) and the tropics (15°S), supporting both the scaled and unscaled results from above (Fig. 4).

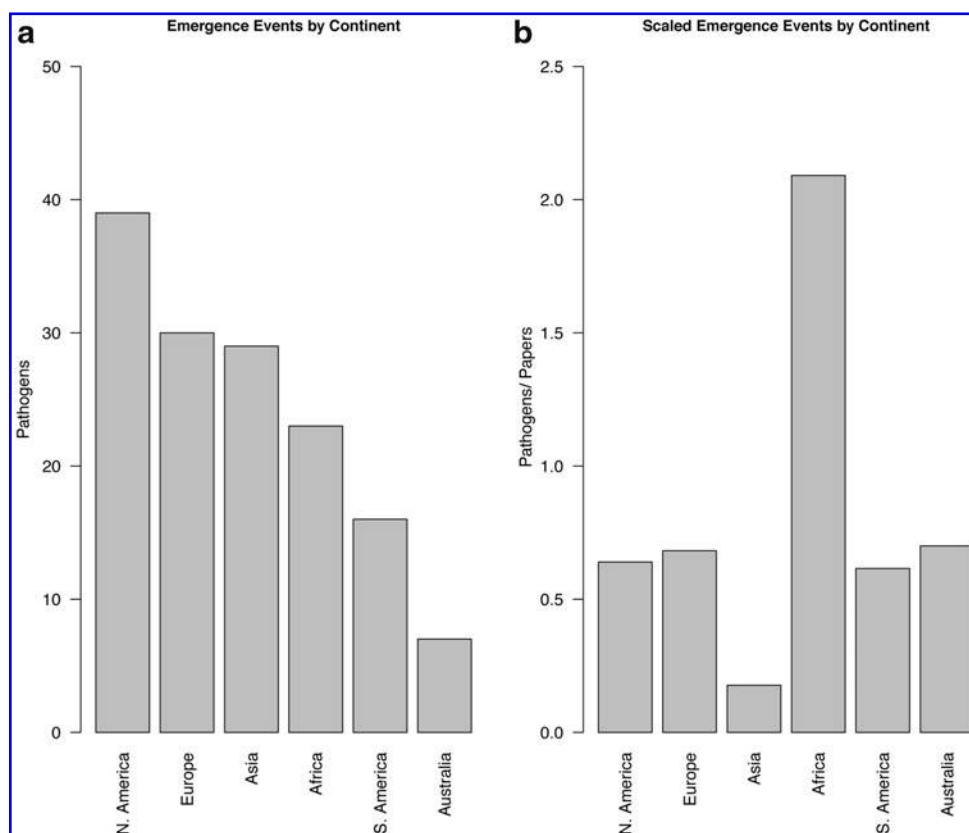
### *Potential drivers of emergence*

Our analyses found that, while climatic and weather-related factors are explicitly implicated in the emergence of

some VBZDs, these are not the most commonly noted reasons for emergence (Fig. 5). Instead, our analysis found that land use changes were the most commonly cited driver for VBZD emergence, accounting for 26% of all VBZD diseases (Fig. 5). The second largest category was unspecified or unknown drivers of emergence (14%). Following as the third most important category was international trade and commerce (11%), reflecting the way that increasing globalization has moved people, vectors, and pathogens into ever closer contact (Fig. 5). Climate and weather-related factors are ranked fourth as a driver of emerging VBZDs and account for 10% of identified VBZDs in this study.

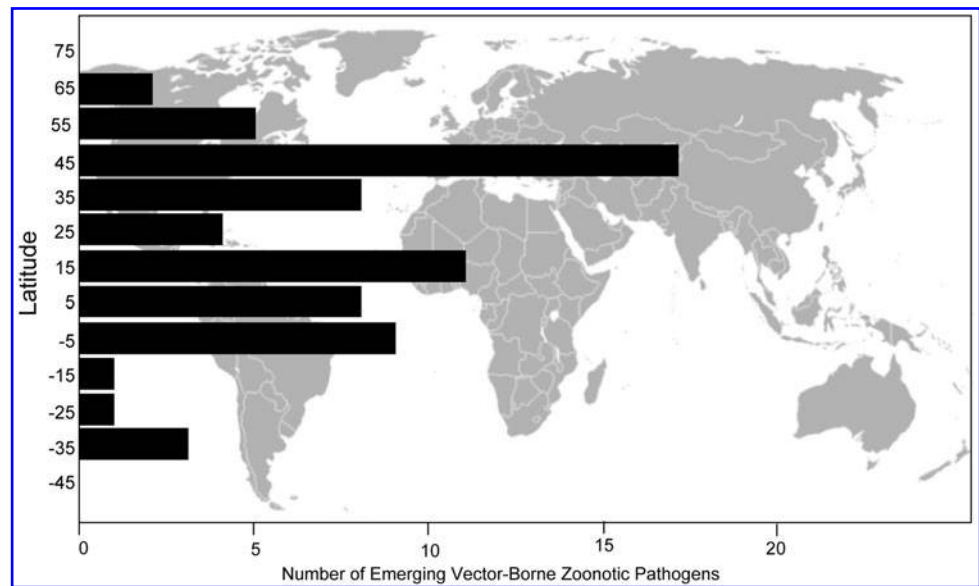
### **Discussion**

Our literature review revealed spatial and pathogen-related patterns and trends in vector-borne disease emergence and provides much needed quantitative analysis of characteristics and drivers of emerging vector-borne diseases. Ticks (family: Ixodidae) and mosquitoes (family: Culicidae) are the leading vectors of emerging VBZD, accounting for over 90% of documented instances of emerging VBZDs. Emerging VBZDs were largely found to be bacteria in the family Rickettsiaceae and viruses in the family Flaviviridae. Furthermore, Rickettsiaceae are more than two times more likely to be agents of an emerging VBZD than the next two most common pathogens, the viral families Bunyaviridae and Flaviviridae, each comprising 11% of all emerging VBZDs. The Rickettsiaceae are always transmitted by ticks (Tomassone et al. 2018), whereas Bunyaviridae and Flaviviridae are predominantly

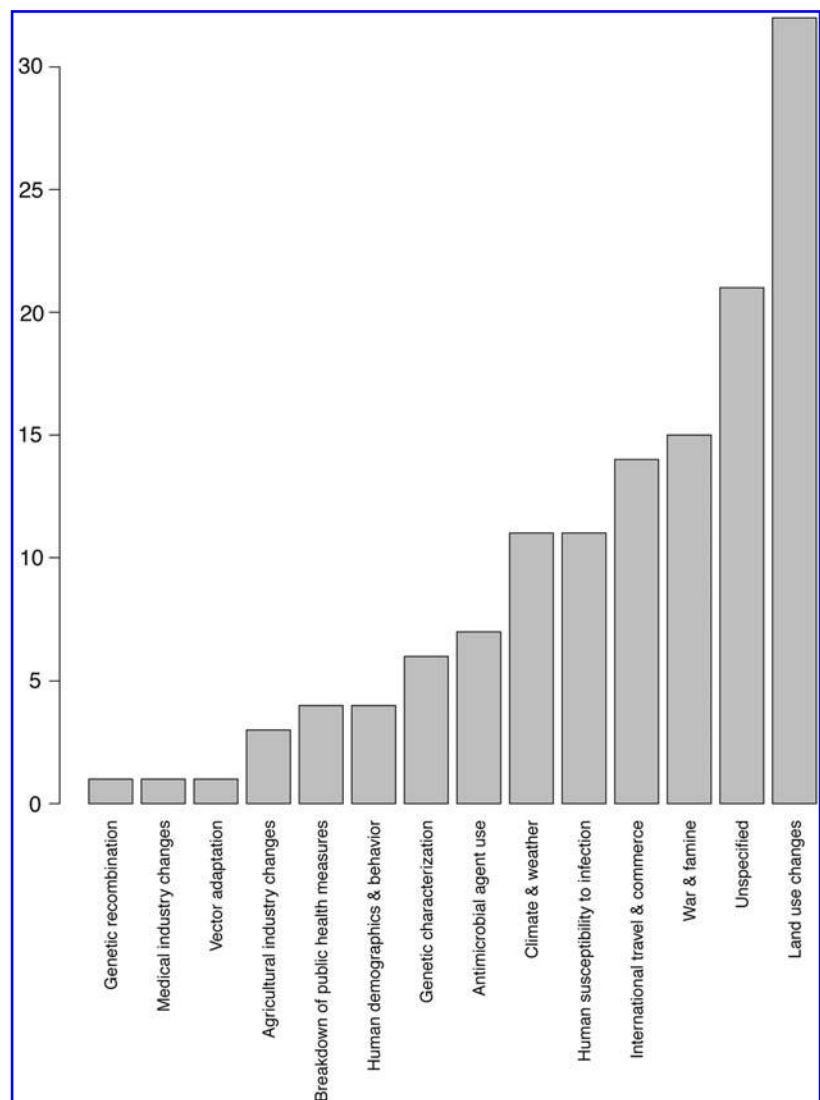


**FIG. 3.** Histogram showing locations of emerging vector-borne pathogens by continent (a) without and (b) with a surveillance bias correction.

**FIG. 4.** Emerging vector-borne disease events shown by latitude.



**FIG. 5.** Putative drivers of vector-borne disease emergence as specified by primary literature authors.



transmitted by *Aedes* or *Culex* mosquitoes, although some members are transmitted by hard ticks (van der Weijden et al. 2007, Yu et al. 2011, Wormser and Pritt 2015). Nearly half of all the emerging VBZDs (47%) are attributed to these agents, and suggest important aspects of their biology, evolutionary history, and transmission ecologies that facilitate their spread and emergence.

#### *The role of vector type in the emergence potential of pathogens*

Ticks and mosquitoes are the most common zoonotic disease vectors (Fig. 1). Their extremely high reproductive output under suitable conditions can contribute to high levels of transmission when pathogens are present. Certain mosquito vectors within the *Aedes* and *Culex* genera are invasive and highly successful in disturbed environments, thriving particularly well in peridomestic landscapes where human and domesticated animal blood meals are readily available (Juliano and Lounibos 2005, Medlock et al. 2012). *Aedes* species that vector dengue, Zika, and chikungunya viruses have adapted to breed in artificial water containers abundant in human communities. These ecological features contribute to effective and potentially large-scale transmission among humans.

Mosquitoes and ticks can support pathogens at high levels within their bodies and transmit them throughout the course of their lives. However, different feeding modes, continuous in the case of mosquitoes, and discrete and limited in the case of hard ticks, can impact transmission dynamics. Continuous feeding vectors take numerous blood meals and can transmit pathogens at any of these events. Limited-feeding hard ticks take only a single blood meal per life stage, of which they have three: larvae, nymph, and adult. In the latter case, vector competence and pathogen transmission depend on the persistence of the pathogen through the transstadial molt from one cohort to the next (e.g., from fed larvae to molted nymph). Co-feeding (Hudson et al. 2001, Beugnet and Marie 2009), long-lived vertebrate reservoir hosts (Kilpatrick et al. 2017), or asynchronous activity of life stages (Kurtenbach et al. 2006) are mechanisms for overcoming these life stage barriers at the population and community level in tick-borne diseases. A pattern that emerges from this analysis is that ticks primarily transmit emerging bacterial diseases ( $N=44/54$ ) and viral pathogens to a lesser degree, whereas mosquitoes only transmit viral pathogens (Supplementary Table S1). The ability of ticks to transmit multiple types of emerging pathogens may be partially responsible for their prominence as a vector of emerging zoonotic diseases.

#### *Spatial patterns of emerging VBZD*

Our analysis of spatial patterns of VBZD emergence found that North America and Europe are associated with the highest numbers of emerged VBZD over the last several decades. These patterns have been reported by others (Woolhouse and Gowtage-Sequeria, 2005, Jones et al. 2008), but minimized because of the high likelihood of surveillance bias. However, we conducted an analysis of emergence events based on latitude, an approach that is less prone to sampling bias, and found that temperate latitudes around 45°N have the highest number of emerging VBZD. Furthermore, we attempted to account for sampling bias by

scaling our results by the number of field entomology publications in the databases we used (BIOSIS and Web of Science). After correcting for spatial reporting biases, we find that Africa has likely experienced more than double the number of emergence events than any other continent. In the case of dengue, Africa was found to be particularly at risk for transmission due to high levels of precipitation and temperature suitability for dengue, as well as abundant and highly connected low-income urban and peri-urban centers to facilitate human movement (Bhatt et al. 2013). In addition, weaker surveillance systems, combined with the presence of ecological drivers of emergence such as rapid urbanization and relatively high wildlife species richness (Jones et al. 2008), position Africa to be particularly vulnerable to new and resurging vector-borne disease epidemics. In contrast, while the ecological drivers associated with vector-borne disease emergence are present in North America and Europe, these continents are better equipped to contain large-scale outbreaks due to greater surveillance, infectious disease research efforts, and health infrastructure (Jones et al. 2008).

#### *Potential drivers of emergence*

At the root of all global change is the unparalleled influence of human population growth on ecological processes. While the topic of vector-borne disease emergence, especially malaria, has been well covered elsewhere with respect to climate change (Rogers and Randolph 2006, Richert-Poeggeler et al. 2008, Paaismans et al. 2009, Proestos et al. 2015, Lafferty and Mordecai 2016), less attention has focused on other aspects of anthropogenic-driven global change. For instance, globalization and human movement far outpace the rate of climate change and is directly responsible for the circumglobal spread of several emerging VBZDs, including chikungunya and dengue viruses (Mackenzie et al. 2004, Wilder-Smith and Gubler 2008, Bennett 2014, Musso et al. 2015).

Dengue virus is a prime example of how the interaction between rapid pathogen evolution, human movement, and changing vector ecology has driven emergence. Dengue virus, which comprises four genetic and serologically distinct lineages, originated from zoonotic transmission amongst non-human primate hosts in tropical forest canopies, and emerged as the serotypes adapted to human hosts and vectors in the genus *Aedes* (Bennett 2010, Wang et al. 2000). Following the domestication and spread of its main vector *Ae. aegypti*, and later an increasingly important secondary vector *Ae. albopictus*, a global transmission arena was born, characterized by ongoing emergence in humans (Wilder-Smith and Gubler 2008, Lambrechts, Scott and Gubler 2010).

The movement of humans on all scales remains one of the main drivers of dengue resurgence. For example, across the Pacific, following the establishment of *Ae. aegypti*, travel of infected humans spread dengue virus, leading to widespread epidemics in the 1970s (Effler et al. 2005; Steel et al. 2010). Dengue continues to spark outbreaks in Hawaii (Effler et al. 2005) where both *Ae. aegypti* and *Ae. albopictus* persist after they became established in the 1890s (Winchester & Kapan, 2013). At the regional scale, in Thailand seasonal movement brings dengue into Bangkok from outlying provinces (Cummings et al. 2004). At a city-wide scale, Singapore's 2006 epidemic was fueled by human movement where

patches of mosquitoes in public spaces became infected and subsequently spread disease to uninfected hosts (Adams & Kapan 2009, Ooi et al. 2006).

Land use change as a prominent driver of VBZD emergence may explain the high prevalence of emerged VBZD in North America and Europe. Extensive land use change in these continents, most notably anthropogenic fragmentation in Europe (Wade et al. 2003), reforestation in the northeastern United States and deforestation in Africa (Cronon 1983, Stanek et al. 2002, Vijay et al. 2016), and urbanization across North America and Europe (Chen et al. 2014) provide increasing opportunities for contact between people and potential disease vectors and vector-borne disease reservoirs (Patz et al. 2008). Furthermore, warming in these mid-latitude regions appears to be increasing the geographic range and suitable season length for many arthropod species (Greer et al. 2008, Butterworth et al. 2017), whereas warming in tropical regions is resulting in shifts in arthropod range rather than overall increases (Lafferty and Mordecai 2016).

The emergence of Lyme disease, the most prevalent vector-borne disease in the Northern Hemisphere with an estimated 300,000 cases annually, exemplifies the way anthropogenic land use change can lead to emergence. Genetic studies estimate that the Lyme disease causing bacterium, *B. burgdorferi*, has been in North America for hundreds of thousands to millions of years (Hoen et al. 2009, Margos et al. 2011), but only emerged as a zoonotic pathogen in the early 1980s due to deforestation and secondary growth in the northeastern United States, which led to increased abundances of ticks and their hosts, particularly white-footed mice and deer (Barbour and Fish 1993). In this case, landscape change altered host-vector contact opportunities and land use patterns put humans in more contact with the vectors as well.

Due to the importance of abiotic limits to arthropod vectors, the emergence of VBZDs is often attributed to changes in climate and weather (Gubler et al. 2001, Ogden et al. 2006, Nakazawa et al. 2007, Medlock et al. 2013). Changing climatic conditions have been associated with changes in vector range (Ogden et al. 2006, Medlock et al. 2013), phenology (Ogden et al. 2008), and behavior (Tomassone et al. 2018). However, our analysis found that land use change and international trade and commerce are more frequently cited as important to VBZD emergence than climate and weather. Ecological impacts due to anthropogenic landscape changes, local contact opportunities, and humans and vectors moving between or to new climatically suitable regions due to globalization outrank climate change alone as drivers of emerging VBZDs.

Our review indicates that arboviral mutations are not the exclusive drivers of outbreaks or emergence events. Several other factors have been identified as shown in Fig. 5, but for arboviruses specifically include the following: (1) viral introductions into immunologically naive populations where most hosts are susceptible to infection, (2) intense urban encroachment where humans serve as amplifying hosts in an exclusive mosquito-human-mosquito cycle, (3) expansion into new areas by travelers with subclinical disease, but are transmissible to mosquitoes, (4) movement of mosquito vectors in human vehicles from local to regional scales (Adams and Kapan 2009, Stoddard et al. 2009), (5) serologic cross reactivity of sympatric viruses that results in antibody-driven enhancement of disease severity (Dejnirattisai et al.

2016, Paul et al. 2016), or (6) genetic differences in susceptibility across human populations. Lapses in mosquito control or incomplete insecticide coverage also contributes to arbovirus re-emergence (Maciel-de-Freitas and Valle 2014).

#### *Ecological and evolutionary attributes of VBZD*

The increasing emergence and prominence of VBZDs relative to other emerging infectious diseases suggest vector-pathogen relationships are especially sensitive to global change and other drivers of disease emergence. While it is generally understood that VBZD are emerging (Jones et al. 2008, Keesing et al. 2010, Woolhouse and Gowtage-Sequeria 2005), the ecological and evolutionary reasons for this phenomenon have not been thoroughly considered. We evaluate the unique ecological and evolutionary profiles of VBZD to better understand why they are disproportionately represented among all emerging infectious diseases.

Clearly, a common feature among arthropod vectors of pathogens is blood feeding or hematophagy. Hematophagy in arthropods has arisen independently 21 times (Marquardt and Kondratieff 2005) and represents a successful evolutionary strategy, presumably because blood is highly nutritious and accessible wherever vertebrates are present. Although blood is a rich source of protein as well as fluid in arid environments, it lacks some key nutrients, particularly B-vitamins such as biotin and folic acid (Buchner 1953, Noda et al. 1997, Russell and Moran 2006, Feldhaar 2011, Nikoh et al. 2014, Hunter et al. 2015). Thus, many hematophagous arthropods such as ticks and mosquitoes rely on obligate bacterial endosymbionts to synthesize important nutrients; for instance, *Wolbachia* in mosquitoes or *Rickettsia*, *Francisella*, or *Coxiella* in ticks (Buchner 1953, Noda et al. 1997, Hunter et al. 2015). Notably, many of these endosymbionts are closely related to pathogens.

*Rickettsia* species are common endosymbionts of arthropods, especially ticks, and some have evolved into vertebrate pathogens (Perlman et al. 2006). Many *Rickettsia* species once thought to be nonpathogenic, such as *R. helvetica*, *R. slovaca*, and *R. parkeri* (La Scola and Raoult 1997, Shpynov et al. 2003, Paddock et al. 2004), are now known to be pathogenic. Similarly, the bacterium *B. miyamotoi* was presumed to be a tick symbiont for many years until it was recognized as an emerging tick-borne pathogen throughout the northern hemisphere (Fukunaga et al. 1995, Barbour et al. 2009, Padgett et al. 2014, Krause et al. 2015). Likewise, *Coxiella burnetii*, the etiologic agent that causes Q fever, has evolutionary origins in an endosymbiotic *Coxiella* group (Duron et al. 2015). The close phylogenetic relationships between tick symbionts and pathogens suggest that the importance of ticks as vectors of emerging infectious diseases may stem partially from their dependence on symbiotic microorganisms, which furnish potential evolutionary sources of pathogens (Noda et al. 1997, Ahantarig et al. 2013, Duron et al. 2015). Furthermore, vector-borne viral pathogens in the families of Flaviviridae and Bunyaviridae share ancestry with mosquito-restricted viruses that are presumably nonpathogenic (Cook et al. 2006, Marklewitz et al. 2011, Bennett 2014, Chandler et al. 2014). Close symbiotic relationships between vectors and microorganisms may thus comprise an important source for emerging pathogens.

Homologous origins of vector endosymbionts and pathogens may also promote interactions within the vector between these groups (Ahantari et al. 2013). Indeed, the vector endosymbiont community can affect the transmission potential of a variety of pathogens such as dengue (Bian et al. 2010) and Zika viruses (Dutra et al. 2016), *Plasmodium* parasites (Dong et al. 2009), *A. marginale* (Gall et al. 2016), and *Borrelia burgdorferi* (Narasimhan et al. 2014) through a variety of mechanisms, including induced vector immunological responses (Dong et al. 2009, Wang et al. 2009), morphological changes (Narasimhan et al. 2014), or direct microbial competition (Cook and McGraw 2010). Efforts to manipulate vector symbionts as a means of vector and disease control, such as those currently underway to curb *Aedes* abundances and vector competence (O'Neill 2018), are an active field of study and hold promise as a way to alter future vector-borne disease emergence rates and incidence.

Although many tick endosymbionts are vertically transmitted from female to offspring at high levels (Ponnusamy et al. 2014, Williams-Newkirk et al. 2014), some *Rickettsia* species have evolved a horizontal transmission pathway through a vertebrate host that allows a pathogenic relationship to evolve. Gene exchange among microbes within the vector may be important for generating new pathogens, and evidence suggests that gene transfer may contribute to some level of genetic diversity required for successful infection of vertebrates (Ogden et al. 2015). Of the recent mosquito-restricted viral pathogens within the Flaviviridae and the Bunyaviridae families, (Chandler et al. 2014, 2015), in at least one case, pathogen and presumed symbiont differ by a complete gene (Chandler et al. 2014), demonstrated experimentally to be necessary for vertebrate infection (Yamao et al. 2009).

### RNA viruses as emerging pathogens

Evolutionary relationships and strategies for maintaining alternating arthropod-vertebrate-arthropod transmission of arboviruses (arthropod-borne viruses) are surprisingly conserved. Nearly all arboviruses belong to one of four RNA viral families (Togaviridae, Flaviviridae, Bunyaviridae, and Rhabdoviridae) and share common traits as pathogens. In particular, all arboviruses, except for the DNA virus African swine fever virus, possess RNA genomes that have high mutation rates due to the absence of proofreading enzymes for error correcting during replication (Hanley and Weaver 2008). In addition, Bunyaviruses have segmented genomes that often demonstrate incongruent evolutionary histories suggestive of reassortment and larger evolutionary change (Briese et al. 2013, Bennett et al. 2014). Our analyses found that Flaviviruses and Bunyaviruses were some of the most frequently reported emerging VBZDs likely due to the conservation of these traits.

Although factors promoting RNA arbovirus emergence are difficult to define, some mechanisms promoting emergence can be identified from patterns across outbreaks. The more recent emergence of chikungunya virus (Togaviridae), which initially began in Kenya in 2005, spread to Reunion Island off the coast of Madagascar, and then spread throughout Southeast Asia, was promoted by the following: (1) international travel where infected hosts (probably humans since they are the more frequent airline passengers) spread the virus long distances, (2) the unique entomological environ-

ment in the 2005 Reunion Island outbreak where the primary urban vector, *Aedes aegypti*, was absent, forcing a host-switch to a secondary vector, *Ae. albopictus*, and (3) viral mutations that augmented transmissibility for *Ae. albopictus* in Oceania and Southeast Asian outbreaks (Tsetsarkin et al. 2007, 2014, 2016). Arbovirus adaptation to vertebrate hosts can also promote emergence. Venezuelan equine encephalitis virus (Togaviridae) developed mutations that generated higher viremias (virus levels in blood) in horses, leading to equine epizootics and then human epidemics in Venezuela (Anishchenko et al. 2006). Thus, the ability to switch vectors and hosts under new contexts makes *Flaviviruses* and *Bunyaviruses* some of the most adaptable and nimble arboviruses.

Viral mutations are also an important emergence event, but are difficult to characterize. Dengue virus (Flaviviridae) infects 400 million people globally each year and Zika virus has spread rapidly since 2015 into more than 60 new countries and territories worldwide. In both of these pathogens, genetic mutations are linked to higher transmissibility and pathogenicity. A few mutations in dengue virus originating in Asia have been verified in the laboratory to lead to higher viremia in vertebrates and greater transmissibility in vectors and vertebrates (Rico-Hesse 2009). For Zika virus, a single mutation in the viral polyprotein has been linked to increased microcephaly and mortality in fetal mice (Yuan et al. 2017) and another mutation of a viral protein has been shown to increase infection and transmission by *Ae. aegypti* vectors (Liu et al. 2017). When West Nile virus (Flaviviridae) emerged in the United States beginning in 1999, a mutation was identified that increases viremia and fatality in avian hosts, causing massive mortality in American crows and promoting spread of the virus across the United States in the 2000s (Brault et al. 2007). A lineage distinguished by three mutations also emerged in 2001, which was more effective at being transmitted by United States mosquito *Culex pipiens*, particularly under warmer conditions (Kilpatrick et al. 2008). While these types of genetic mutations are difficult to detect and link definitively to disease emergence, more surveillance and laboratory studies can increase our ability to determine the role of genetic mutations in arbovirus emergence.

### Conclusion and synthesis

The emergence of VBZDs is an illustration of how humans are inextricably connected to global ecology. The unchecked growth of the human population over the last two centuries has created a large and ever-growing ecological niche for vectors that are exceptionally good at exploiting such opportunities and the evolutionary nimble microorganisms they carry. Increased ecological opportunities brought on by human population growth and landscape transformation coupled with the enormous evolutionary capacity of these microbes, facilitated by a vector delivery system, has set the stage for the emergence of vector-borne infectious diseases.

Pathogen transmission entails complex ecological interactions and often flexible or diverse genetic or gene expression profiles. Ecological complexity combined with inherent genetic variability, especially in RNA viruses, affords opportunities for spillover and adaptation to novel vectors and vertebrate hosts and sets vector-borne pathogens apart from directly transmitted pathogens to provide one possible explanation for the former's prominence among emerging infectious diseases.



Synthesis of the emergent ecological and evolutionary properties of vectors and their pathogens is critical to develop a more complete and nuanced understanding of vector-borne disease emergence, especially in the current age of global change. We highlight several major, nonmutually exclusive drivers of VBZD emergence (*e.g.*, land use change, international travel and commerce, and genetic mutations; Fig. 5). While many of the patterns we document here are not necessarily surprising, they do point to important paths in research and gaps in surveillance that stress the need for increasing capacity for international and interdisciplinary approaches. These types of efforts will be important in the quest to anticipate where and how VBZD have and will continue to emerge so that they can be managed.

### Acknowledgments

This work was the culmination of an American Association for the Advancement of Sciences (AAAS) Pacific Division conference session titled, 'Ecological and evolutionary factors driving the emergence of vector-borne diseases.'

### Author Contributions

A.S. conceived of the study and conducted data collection. All authors were involved in discussion and design of analyses. A.S., L.I.C., and D.K. conducted statistical analyses. The article was drafted and revised by all authors.

### Author Disclosure Statement

No conflicting financial interests exist.

### Funding Information

This work was supported by a San Francisco State University Presidential Award to A.S. and funding was provided by the National Science Foundation to A.S.: #1750037 and 1745411.

### Supplementary Material

Supplementary Table S1

### References

- Adams B, Kapan DD. Man bites mosquito: Understanding the contribution of human movement to vector-borne disease dynamics. *PLoS One* 2009; 4:e6763.
- Ahantari A, Trinachartvanit W, Baimai V, Grubhoffer L. Hard ticks and their bacterial endosymbionts (or would be pathogens). *Folia Microbiol (Praha)* 2013; 58:419–428.
- Anishchenko M, Bowen RA, Paessler S, Austgen L, et al. Venezuelan encephalitis emergence mediated by a phylogenetically predicted viral mutation. *Proc Natl Acad Sci USA* 2006; 103:4994–4999.
- Bakken JS, Dumler JS, Chen S-M, Eckman MR, et al. Human granulocytic ehrlichiosis in the Upper Midwest United States: A new species emerging? *JAMA* 1994; 272:212–218.
- Barbour AG, Fish D. The biological and social phenomenon of Lyme disease. *Science* 1993; 260:1610–1616.
- Barbour AG, Bunikis J, Travinsky B, Hoen AG, et al. Niche partitioning of *Borrelia burgdorferi* and *Borrelia miyamotoi* in the same tick vector and mammalian reservoir species. *Am J Trop Med Hyg* 2009; 81:1120–1131.
- Belluck P, Alvarez L. 4 Zika cases in Florida were likely spread by local mosquitoes, C.D.C. says. *The New York Times*. 2016.
- Bennett SN. Evolutionary dynamics of dengue virus. In: Hanley KA, Weaver SC, eds. *Frontiers in Dengue Virus Research*. Caister Academic Press, United Kingdom. 2010:157–172.
- Bennett SN. Taxonomy and evolutionary relationships of Flaviviruses. In: Gubler DJ, Ooi EE, Vasudevan S, Farrar J, eds. *Dengue and Dengue Hemorrhagic Fever*. Boston, MA: CAB International, 2014:322–333.
- Bennett SN, Gu SH, Kang HJ, Arai S, et al. Reconstructing the evolutionary origins and phylogeography of hantaviruses. *Trends Microbiol* 2014; 22:473–482.
- Beugnet F, Marie J-L. Emerging arthropod-borne diseases of companion animals in Europe. *Vet Parasitol* 2009; 163:298–305.
- Bhatt S, Gething PW, Brady OJ, Messina JP, et al. The global distribution and burden of dengue. *Nature* 2013; 496:504–507.
- Bian G, Xu Y, Lu P, Xie Y, et al. The endosymbiotic bacterium *Wolbachia* induces resistance to dengue virus in *Aedes aegypti*. *PLoS Pathog* 2010; 6:e1000833.
- Braut AC, Huang CY, Langevin SA, Kinney RM, et al. A single positively selected West Nile viral mutation confers increased virogenesis in American crows. *Nat Genet* 2007; 39:1162–1166.
- Briese T, Calisher CH, Higgs S. Viruses of the family Bunyaviridae: Are all available isolates reassortants? *Virology* 2013; 446:207–216.
- Buchner P. Endosymbiosis of animals with plant microorganisms. Basel, Switzerland: Verlag Birkhauser, 1953.
- Butterworth MK, Morin CW, Comrie AC. An analysis of the potential impact of climate change on dengue transmission in the Southeastern United States. *Environ Health Perspect* 2017; 125:579–585.
- Chandler JA, Liu RM, Bennett SN. RNA shotgun metagenomic sequencing of northern California (USA) mosquitoes uncovers viruses, bacteria, and fungi. *Front Microbiol* 2015; 6:186.
- Chandler JA, Thongsripong P, Green A, Kittayapong P, et al. Metagenomic shotgun sequencing of a Bunyavirus in wild-caught *Aedes aegypti* from Thailand informs the evolutionary and genomic history of the Phleboviruses. *Virology* 2014; 464:312–319.
- Chen M, Zhang H, Liu W, Zhang W. The global pattern of urbanization and economic growth: Evidence from the last three decades. *PLoS One* 2014; 9:e103799.
- Cleaveland S, Laurenson MK, Taylor LH. Diseases of humans and their domestic mammals: Pathogen characteristics, host range and the risk of emergence. *Philos Trans R Soc Lond B Biol Sci* 2001; 356:991–999.
- Cook PE, McGraw EA. *Wolbachia pipientis*: An expanding bag of tricks to explore for disease control. *Trends Parasitol* 2010; 26:373–375.
- Cook S, Bennett SN, Holmes EC, De Chesse R, et al. Isolation of a new strain of the Flavivirus, Cell Fusing Agent virus (CFAV), in a natural mosquito population from Puerto Rico. *J Gen Virol* 2006; 7:735–748.
- Cronon W. *Changes in the Land: Indians, Colonists, and the Ecology of New England*. New York: Hill and Wang, 1983.
- Cummings DA, Irizarry RA, Huang NE, Endy TP, et al. Travelling waves in the occurrence of dengue haemorrhagic fever in Thailand. *Nature* 2004; 27:344–347.
- Dejnirattisai W, Supasa P, Wongwiwat W, Rouvinski A, et al. Dengue virus sero-cross-reactivity drives antibody-dependent enhancement of infection with Zika virus. *Nat Immunol* 2016; 17:1102–1108.

- Dong Y, Manfredini F, Dimopoulos G. Implication of the mosquito midgut microbiota in the defense against malaria parasites. *PLoS Pathog* 2009; 5:e1000423.
- Duron O, Noel V, McCoy KD, Bonazzi M, et al. The recent evolution of a maternally-inherited endosymbiont of ticks led to the emergence of the Q Fever pathogen, *Coxiella burnetii*. *PLoS Pathog* 2015; 11:e1004892.
- Dutra HL, Rocha MN, Dias FB, Mansur SB, et al. *Wolbachia* blocks currently circulating Zika virus isolates in Brazilian *Aedes aegypti* mosquitoes. *Cell Host Microbe* 2016; 19:771–774.
- Effler PV, Pang L, Kitsutani P, Vorndam V, et al. Hawaii dengue outbreak investigation team: Dengue fever, Hawaii, 2001–2002. *Emerg Infect Dis* 2005; 11:742–749.
- Feldhaar H. Bacterial symbionts as mediators of ecologically important traits of insect hosts. *Ecol Entomol* 2011; 36:533–543.
- Fukunaga M, Takahashi Y, Tsuruta Y, Matsushita O, et al. Genetic and phenotypic analysis of *Borrelia miyamotoi* sp. nov. isolated from the ixodid tick *Ixodes persulcatus*, the vector for Lyme disease in Japan. *Int J Sys Bacteriol* 1995; 45:804–810.
- Gall CA, Reif KE, Scoles GA, Mason KL, et al. The bacterial microbiome of *Dermacentor andersoni* ticks influences pathogen susceptibility. *ISME J* 2016; 10:1846–1855.
- Gratz NG. Emerging and resurging vector-borne diseases. *Annu Rev Entomol* 1999; 44:51–75.
- Greer A, Ng V, Fisman D. Climate change and infectious diseases in North America: The road ahead. *CMAJ* 2008; 178: 715–722.
- Gubler DJ, Reiter P, Ebi KL, Yap W, et al. Climate variability and change in the United States: Potential impacts on vector- and rodent-borne diseases. *Environ Health Persp* 2001; 109: 223–233.
- Hanley KA, Weaver SC. Arbovirus evolution. In: Domingo E, Parrish CR, Holland JJ, eds. *Origin and Evolution of Viruses*. Academic Press, Cambridge, MA, 2008:351–391.
- Hoen AG, Margos G, Bent SJ, Diuk-Wasser MA, Barbour A, Kurtenbach K, Fish D. Phylogeography of *Borrelia burgdorferi* in the eastern United States reflects multiple independent Lyme disease emergence events. *Proceedings of the National Academy of Sciences* 2009; 106:15013–15018.
- Hudson PJ, Rizzoli A, Grenfell BT, Heesterbeek H, et al. *The Ecology of Wildlife Diseases*. Oxford, United Kingdom: Oxford University Press, 2001.
- Hunter DJ, Torkelson JL, Bodnar J, Mortazavi B, et al. The Rickettsia endosymbiont of *Ixodes pacificus* contains all the genes of de novo folate biosynthesis. *PLoS One* 2015; 10: e0144552.
- Jones KE, Patel NG, Levy MA, Storeygard A, et al. Global trends in emerging infectious diseases. *Nature* 2008; 451: 990–994.
- Juliano SA, Philip Lounibos L. Ecology of invasive mosquitoes: Effects on resident species and on human health. *Ecol Lett* 2005; 8:558–574.
- Keesing F, Belden LK, Daszak P, Dobson A, et al. Impacts of biodiversity on the emergence and transmission of infectious diseases. *Nature* 2010; 468:647–652.
- Kilpatrick AM, Dobson ADM, Levi T, Salkeld DJ, et al. Lyme disease ecology in a changing world: Consensus, uncertainty, and critical gaps for improving control. *Philos Trans R Soc Lond B Biol Sci* 2017; 372:20160117.
- Kilpatrick AM, Meola MA, Moudy RM, Kramer LD. Temperature, viral genetics, and the transmission of West Nile Virus by *Culex pipiens* mosquitoes. *PLoS Pathog* 2008; 4: e1000092.
- Kilpatrick AM, Randolph SE. Drivers, dynamics, and control of emerging vector-borne zoonotic diseases. *Lancet* 2012; 380: 1946–1955.
- Krause PJ, Fish D, Narasimhan S, Barbour AG. *Borrelia miyamotoi* infection in nature and in humans. *Clin Microbiol Infect* 2015; 21:631–639.
- Kurtenbach K, Hanincova K, Tsao JI, Margos G, et al. Fundamental processes in the evolutionary ecology of Lyme borreliosis. *Nat Rev Microbiol* 2006; 4:660–669.
- La Scola B, Raoult D. Laboratory diagnosis of rickettsioses: Current approaches to diagnosis of old and new rickettsial diseases. *J Clin Microbiol* 1997; 35:2715–2727.
- Lafferty KD, Mordecai EA. The rise and fall of infectious disease in a warmer world. *F1000Res* 2016; 5:pii:F1000 Faculty Rev-2040.
- Lambrechts L, Scott TW, Gubler DJ. Consequences of the expanding global distribution of *Aedes albopictus* for dengue virus transmission. *PLoS Negl Trop Dis* 2010; 4:e646.
- Liu Y, Liu J, Du S, Shan C, et al. Evolutionary enhancement of Zika virus infectivity in *Aedes aegypti* mosquitoes. *Nature* 2017; 545:482–486.
- Maciel-de-Freitas R, Valle D. Challenges encountered using standard vector control measures for dengue in Boa Vista, Brazil. *Bull World Health Organ* 2014; 92:685–689.
- Mackenzie JS, Gubler DJ, Petersen LR. Emerging flaviviruses: The spread and resurgence of Japanese encephalitis, West Nile and dengue viruses. *Nat Med* 2004; 10:S98–S109.
- Margos G, Vollmer SA, Ogden NH, Fish D. Population genetics, phylogeny and evolution of *Borrelia burgdorferi* sensu lato. *Infection, Genetics and Evolution* 2011; 11:1545–1563.
- Marklewitz M, Handrick S, Grasse W, Kurth A, et al. Gouléako virus isolated from West African mosquitoes constitutes a proposed novel genus in the family Bunyaviridae. *J Virol* 2011; 85:9227–9234.
- Marquardt WC, Kondratieff BC. Epidemiology and surveillance. In: Marquardt WC, ed. *Biology of Disease Vectors*. Burlington, MA: Academic Press, 2005.
- Medlock JM, Hansford KM, Bormane A, Derdakova M, et al. Driving forces for changes in geographical distribution of *Ixodes ricinus* ticks in Europe. *Parasit Vectors* 2013; 6:1.
- Medlock JM, Hansford KM, Schaffner F, Versteirt V, et al. A review of the invasive mosquitoes in Europe: Ecology, public health risks, and control options. *Vector Borne Zoonotic Dis* 2012; 12:435–447.
- Morens DM, Folkers GK, Fauci AS. The challenge of emerging and re-emerging infectious diseases. *Nature* 2004; 430:242–249.
- Musso D, Cao-Lormeau VM, Gubler DJ. Zika virus: Following the path of dengue and chikungunya? *Lancet* 2015; 386:243–244.
- Nakazawa Y, Williams R, Peterson AT, Mead P, et al. Climate change effects on plague and tularemia in the United States. *Vector Borne Zoonotic Dis* 2007; 7:529–540.
- Narasimhan S, Rajeevan N, Liu L, Zhao YO, et al. Gut microbiota of the tick vector *Ixodes scapularis* modulate colonization of the Lyme disease spirochete. *Cell Host Microbe* 2014; 15:58–71.
- Nikoh N, Hosokawa T, Moriyama M, Oshima K, et al. Evolutionary origin of insect-*Wolbachia* nutritional mutualism. *Proc Natl Acad Sci USA* 2014; 111:10257–10262.
- Noda H, Munderloh UG, Kurti TJ. Endosymbionts of ticks and their relationship to *Wolbachia* spp. and tick-borne pathogens

- of humans and animals. *Appl Environ Microbiol* 1997; 63: 3926–3932.
- O'Neill SL. The use of *Wolbachia* by the World Mosquito Program to interrupt transmission of *Aedes aegypti* transmitted viruses. In: Hilgenfeld R, Vasudevan S, eds. *Dengue and Zika: Control and Antiviral Treatment Strategies. Advances in Experimental Medicine and Biology*. Singapore, Singapore: Springer, 2018.
- Ogden NH, Bigras-Poulin M, Hanincova K, Maarouf A, et al. Projected effects of climate change on tick phenology and fitness of pathogens transmitted by the North American tick *Ixodes scapularis*. *J Theor Biol* 2008; 254:621–632.
- Ogden NH, Feil EJ, Leighton PA, Lindsay LR, et al. Evolutionary aspects of emerging lyme disease in Canada. *Appl Environ Microbiol* 2015; 81:7350–7359.
- Ogden NH, Maarouf A, Barker IK, Bigras-Poulin M, et al. Climate change and the potential for range expansion of the Lyme disease vector *Ixodes scapularis* in Canada. *Int J Parasitol* 2006; 36:63–70.
- Ooi EE, Goh K-T, Gubler DJ. Dengue prevention and 35 years of vector control in Singapore. *Emerg Infect Dis* 2006; 12: 887–893.
- Paaijmans KP, Read AF, Thomas MB. Understanding the link between malaria risk and climate. *Proc Natl Acad Sci USA* 2009; 106:13844–13849.
- Paddock CD, Sumner JW, Comer JA, Zaki SR, et al. *Rickettsia parkeri*: A newly recognized cause of spotted fever Rickettsiosis in the United States. *Clin Infect Dis* 2004; 38:805–811.
- Padgett K, Bonilla D, Kjemtrup A, Vilcins I-M, et al. Large scale spatial risk and comparative prevalence of *Borrelia miyamotoi* and *Borrelia burgdorferi* sensu lato in *Ixodes pacificus*. *PLoS One* 2014; 9:e110853.
- Patz JA, Olson SH, Uejio CK, Gibbs HK. Disease emergence from global climate and land use change. *Med Clin North Am* 2008; 92:1473–1491, XII.
- Paul LM, Carlin ER, Jenkins MM, Tan AL, et al. Dengue virus antibodies enhance Zika virus infection. *Clin Trans Immunology* 2016; 5:e117.
- Perlman SJ, Hunter MS, Zchori-Fein E. The emerging diversity of *Rickettsia*. *Proc Biol Sci* 2006; 273:2097–2106.
- Ponnusamy L, Gonzales A, Van Treuren W, Weiss S, et al. Diversity of Rickettsiales in the microbiome of the lone star tick *Amblyomma americanum*. *Appl Environ Microbiol* 2014; 80:354–359.
- Proestos Y, Christophides GK, Erguler K, Tanarhte M, et al. Present and future projections of habitat suitability of the Asian tiger mosquito, a vector of viral pathogens, from global climate simulation. *Philos Trans R Soc Lond B Biol Sci* 2015; 370:20130554.
- Richert-Poeggeler KR, Goetz R, Lindner K, Zahn V, et al. Impact of climate change on insect vector populations and the occurrence and prevalence of insect-transmitted plant viruses in major crop plants of Germany. *Parasitol Res* 2008; 103: S156.
- Rico-Hesse R. Dengue virus markers of virulence and pathogenicity. *Future Virol* 2009; 4:581.
- Rogers DJ, Randolph SE. Climate change and vector-borne diseases. *Adv Parasitol* 2006; 62:346–381.
- Rosenberg R, Lindsey NP, Fischer M, Gregory CJ, et al. Vital signs: Trends in reported vectoborne disease cases—United States and territories, 2004–2016. *CDC MMWR* 2018; 67: 496–501.
- Russell JA, Moran NA. Costs and benefits of symbiont infection in aphids: Variation among symbionts and across temperatures. *Proc Biol Sci* 2006; 273:603–610.
- Schluter D, Grant PR. Ecological correlates of morphological evolution in Darwin's finch, *Geospiza difficilis*. *Evolution* 1984; 38:856–869.
- Shpynov S, Fournier PE, Rudakov N, Raoult D. 'Candidatus Rickettsia tarasevichiae' in *Ixodes persulcatus* ticks collected in Russia. *Ann N Y Acad Sci* 2003; 990:162–172.
- Stanek G, Strle F, Gray J, Wormser GP. History and characteristics of Lyme borreliosis. In: Gray JS, Kahl O, Lane RS, Stanek G, eds. *Lyme Borreliosis: Biology, Epidemiology and Control*. Oxford, United Kingdom: CABI Publishing, 2002: 1–28.
- Steel A, Gubler DJ, Bennett SN. Natural attenuation of dengue type-2 after a series of island outbreaks: A retrospective phylogenetic study of events in the South Pacific three decades ago. *Virology* 2010; 405:505–512.
- Stoddard ST, Morrison AC, Vazquez-Prokopec GM, Paz Soldan V, et al. The role of human movement in the transmission of vector-borne pathogens. *PLoS Negl Trop Dis* 2009; 3: e481.
- Taylor LH, Latham SM, Woolhouse MEJ. Risk factors for human disease emergence. *Philos Trans R Soc Lond B Biol Sci* 2001; 356:983–989.
- Tomassone L, Portillo A, Novakova M, de Sousa R, et al. Neglected aspects of tick-borne rickettsioses. *Parasit Vectors* 2018; 11:263.
- Tsetsarkin KA, Chen R, Weaver SC. Interspecies transmission and chikungunya virus emergence. *Curr Opin Virol* 2016; 16: 143–150.
- Tsetsarkin KA, Chen R, Yun R, Rossi SL, et al. Multi-peaked adaptive landscape for chikungunya virus evolution predicts continued fitness optimization in *Aedes albopictus* mosquitoes. *Nat Commun* 2014; 5:4084.
- Tsetsarkin KA, Vanlandingham DL, McGee CE, Higgs S. A single mutation in Chikungunya virus affects vector specificity and epidemic potential. *Plos Pathog* 2007; 3:e201.
- van der Weijden WJ, Marcelis RAL, Reinhold W. Invasions of vector-borne diseases driven by transportation and climate change. In: Takken W, Knols BGJ, eds. *Emerging Pests and Vector-Borne Diseases in Europe*. Wageningen Academic Publishers, Wageningen, the Netherlands. 2007:439–463.
- Vijay, V, Pimm, SL, Jenkins, CN, Smith SJ. The impacts of oil palm on recent deforestation and biodiversity loss. *PLoS One* 2016; 11:e0159668.
- Vorou RM, Papavassiliou VG, Tsiodras S. Emerging zoonoses and vector-borne infections affecting humans in Europe. *Epidemiol Infect* 2007; 135:1231–1247.
- Wade TG, Riitters KH, Wickham JD, Jones KB. Distribution and causes of global forest fragmentation. *Conserv Ecol* 2003; 7:7.
- Wang E, Ni H, Xu R, Barrett A, et al. Evolutionary relationships of endemic/epidemic and sylvatic dengue viruses. *J Virol* 2000; 74:3227–3234.
- Wang J, Wu Y, Yang G, Aksoy S. Interactions between mutualist *Wigglesworthia* and tsetse peptidoglycan recognition protein (PGRP-LB) influence trypanosome transmission. *Proc Natl Acad Sci USA* 2009; 106:12133–12138.
- Wilder-Smith A, Gubler DJ. Geographic expansion of dengue: The impact of international travel. *Med Clin North Am* 2008; 92:1337–1390.
- Williams-Newkirk AJ, Rowe LA, Mixson-Hayden TR, Dasch GA. Characterization of the bacterial communities of life

- stages of free living lone star ticks (*Amblyomma americanum*). PLoS One 2014; 9:e102130.
- Wilson AJ, Morgan ER, Booth M, Norman R, et al. What is a vector? Philos Trans R Sci Lond B Biol Sci 2018; 372: 20160085.
- Winchester JC, Kapan DD. History of *Aedes* mosquitoes in Hawaii. J Am Mosq Control Assoc 2013; 29:154–163.
- Woolhouse MEJ, Gowtage-Sequeria S. Host range and emerging and reemerging pathogens. Emerg Infect Dis 2005; 11: 1842–1847.
- Wormser GP, Pritt B. Update and commentary on four emerging tick-borne infections: *Ehrlichia muris*-like agent, *Borrelia miyamotoi*, deer tick virus, heartland virus, and whether ticks play a role in transmission of *Bartonella henselae*. Infect Dis Clin North Am 2015; 29:371–381.
- Yamamoto T, Eshita Y, Kihara Y, Satho T, et al. Novel virus discovery in field-collected mosquito larvae using an improved system for rapid determination of viral RNA sequences (RDV ver4.0). Arch Virol 2009; 154:153.
- Yu X-J, Liang M-F, Zhang S-Y, Liu Y, et al. Fever with thrombocytopenia associated with a novel Bunyavirus in China. N Engl J Med 2011; 364:1523–1532.
- Yuan L, Huang XY, Liu ZY, Zhang F, et al. A single mutation in the prM protein of Zika virus contributes to fetal microcephaly. Science 2017; 358:933–936.

Address correspondence to:

Andrea Swee

Department of Biology

San Francisco State University

1600 Holloway Avenue

San Francisco, CA 94132

E-mail: aswei@sfsu.edu