

The Karl G. Jansky Very Large Array Sky Survey (VLASS): science case and survey design.

M. LACY,¹ S. A. BAUM,² C. J. CHANDLER,³ S. CHATTERJEE,⁴ T. E. CLARKE,⁵ S. DEUSTUA,⁶ J. ENGLISH,² J. FARNES,⁷ B. M. GAENSLER,⁸ N. GUGLIUCCI,⁹ G. HALLINAN,¹⁰ B. R. KENT,¹ A. KIMBALL,³ C. J. LAW,^{10,11} T. J. W. LAZIO,¹² J. MARVIL,³ S. A. MAO,¹³ D. MEDLIN,³ K. MOOLEY,¹⁰ E. J. MURPHY,¹ S. MYERS,³ R. OSTEN,⁶ G. T. RICHARDS,¹⁴ E. ROSOLOWSKY,¹⁵ L. RUDNICK,¹⁶ F. SCHINZEL,³ G. R. SIVAKOFF,¹⁵ L. O. SJOUEWERMANN,³ R. TAYLOR,^{17,18} R. L. WHITE,⁶ J. WROBEL,³ H. ANDERNACH,¹⁹ A. J. BEASLEY,¹ E. BERGER,²⁰ S. BHATNAGER,³ M. BIRKINSHAW,²¹ G. C. BOWER,²² W. N. BRANDT,^{23,24,25} S. BROWN,²⁶ S. BURKE-SPOLAOR,^{27,28} B. J. BUTLER,³ J. COMERFORD,²⁹ P. B. DEMOREST,³ H. FU,²⁶ S. GIACINTUCCI,⁵ K. GOLAP,³ T. GÜTH,³ C. A. HALES,^{30,3,*} R. HIRIART,³ J. HODGE,³¹ A. HORESH,³² Ž. IVEZIĆ,³³ M. J. JARVIS,^{34,18} A. KAMBLE,³⁵ N. KASSIM,⁵ X. LIU,³⁶ L. LOINARD,^{37,38} D. K. LYONS,³ J. MASTERS,¹ M. MEZCUA,^{39,40} G. A. MOELLENBROCK,³ T. MROCZKOWSKI,⁴¹ K. NYLAND,⁴² C. P. O'DEA,² S. P. O'SULLIVAN,⁴³ W. M. PETERS,⁵ K. RADFORD,³ U. RAO,³ J. ROBBETT,³ J. SALCIDO,³ Y. SHEN,^{36,44} A. SOBOTKA,³ S. WITZ,³ M. VACCARI,^{18,45} R. J. VAN WEEREN,³¹ A. VARGAS,³ P. K. G. WILLIAMS,³⁵ AND I. YOON¹

¹National Radio Astronomy Observatory, 520 Edgemont Road, Charlottesville, VA 22903, USA

²Department of Physics and Astronomy, University of Manitoba, Winnipeg, MB R3T 2N2, Canada

³National Radio Astronomy Observatory, 1003 Lopezville Road, Socorro, NM 87801, USA

⁴Cornell Center for Astrophysics and Planetary Science and Department of Astronomy, Cornell University, Ithaca, NY 14853, USA

⁵Naval Research Laboratory Remote Sensing Division, Code 7213, 4555 Overlook Avenue SW, Washington, DC 20375, USA

⁶Space Telescope Science Institute, 3700 San Martin Dr, Baltimore, MD 21218, USA

⁷Oxford e-Research Centre, Keble Road, Oxford OX1 3QG, UK

⁸Dunlap Institute for Astronomy and Astrophysics, University of Toronto, 50 St George Street, Toronto, ON M5S 3H4, Canada

⁹Department of Physics, St Anselm College, 100 Saint Anselm Drive, Manchester, NH 03102, USA

¹⁰California Institute of Technology, 1200 East California Boulevard, Pasadena, CA 91125, USA

¹¹Department of Astronomy and Radio Astronomy Lab, University of California, Berkeley, CA 94720, USA

¹²Jet Propulsion Laboratory, California Institute of Technology, Pasadena, CA 91109, USA

¹³Max-Planck-Institut für Radioastronomie, Auf dem Hügel 69, 53121 Bonn, Germany

¹⁴Department of Physics, Drexel University, 3141 Chestnut Street, Philadelphia, PA 19104, USA

¹⁵Department of Physics, University of Alberta, CCIS 4-181, Edmonton AB T6G 2E1, Canada

¹⁶Minnesota Institute for Astrophysics, School of Physics and Astronomy, University of Minnesota, 116 Church Street SE, Minneapolis, MN 55455, USA

¹⁷Department of Astronomy, University of Cape Town, Private Bag X3, Rondebosch 7701, South Africa

¹⁸Department of Physics and Astronomy, University of the Western Cape, Private Bag X17, Bellville 7535, South Africa

¹⁹Departamento de Astronomía, DCNE, Universidad de Guanajuato, Apdo. Postal 144, 36000 Guanajuato, Guanajuato, Mexico

²⁰Harvard Astronomy Department, 60 Garden Street, MS 46, Cambridge, MA 02138, USA

²¹HH Wills Physics Laboratory, University of Bristol, Tyndall Avenue, Bristol BS8 1TL, UK

²²Academia Sinica Institute of Astronomy and Astrophysics, 645 N. A'ohoku Place, Hilo, HI 96720, USA

²³Department of Astronomy and Astrophysics, 525 Davey Lab, The Pennsylvania State University, University Park, PA 16802, USA

²⁴Institute for Gravitation and the Cosmos, The Pennsylvania State University, University Park, PA 16802, USA

²⁵Department of Physics, 104 Davey Lab, The Pennsylvania State University, University Park, PA 16802, USA

²⁶The University of Iowa, Department of Physics and Astronomy, 203 Van Allen Hall, Iowa City, IA 52242, USA

²⁷Department of Physics and Astronomy, West Virginia University, White Hall, Morgantown, WV 26506, USA

²⁸Center for Gravitational Waves and Cosmology, West Virginia University, Morgantown, WV, USA.

²⁹Department of Astrophysical and Planetary Sciences, University of Colorado, Boulder, CO 80309, USA

³⁰School of Mathematics, Statistics and Physics, Newcastle University, Newcastle upon Tyne NE1 7RU, UK

³¹Leiden Observatory, Leiden University, PO Box 9513, NL-2300 RA Leiden, the Netherlands

³²Racah Institute of Physics, The Hebrew University of Jerusalem, Jerusalem, 91904, Israel

³³University of Washington, Dept. of Astronomy, Box 351580, Seattle, WA 98195, USA

³⁴Astrophysics, University of Oxford, Denys Wilkinson Building, Keble Road, Oxford OX1 3RH, UK

³⁵Center for Astrophysics | Harvard and Smithsonian, 60 Garden Street, Cambridge, MA 02138, USA

³⁶Department of Astronomy, University of Illinois at Urbana-Champaign, Urbana, IL 61801, USA

³⁷Instituto de Radioastronomía y Astrofísica, Universidad Nacional Autónoma de México, 58089, Michoacán, Mexico

³⁸Instituto de Astronomía, Universidad Nacional Autónoma de México, 04510 Ciudad de México, Mexico

³⁹Institute of Space Sciences (ICE, CSIC), Campus UAB, Carrer de Magrans, 08193 Barcelona, Spain

⁴⁰*Institut d'Estudis Espacials de Catalunya (IEEC), Carrer Gran Capit, 08034 Barcelona, Spain*

⁴¹*ESO - European Southern Observatory, Karl-Schwarzschild-Str. 2, DE-85748 Garching b. München, Germany*

⁴²*National Research Council, resident at the Naval Research Laboratory, Washington, DC 20375, USA*

⁴³*Hamburger Sternwarte, Universität Hamburg, Gojenbergsweg 112, D-21029 Hamburg, Germany.*

⁴⁴*National Center for Supercomputing Applications, University of Illinois at Urbana-Champaign, Urbana, IL 61801, USA*

⁴⁵*INAF - Istituto di Radioastronomia, via Gobetti 101, I-40129 Bologna, Italy*

ABSTRACT

The Very Large Array Sky Survey (VLASS) is a synoptic, all-sky radio sky survey with a unique combination of high angular resolution ($\approx 2''.5$), sensitivity (a 1σ goal of $70 \mu\text{Jy}/\text{beam}$ in the coadded data), full linear Stokes polarimetry, time domain coverage, and wide bandwidth (2–4 GHz). The first observations began in September 2017, and observing for the survey will finish in 2024. VLASS will use approximately 5500 hours of time on the Karl G. Jansky Very Large Array (VLA) to cover the whole sky visible to the VLA (Declination $> -40^\circ$), a total of $33\,885 \text{ deg}^2$. The data will be taken in three epochs to allow the discovery of variable and transient radio sources. The survey is designed to engage radio astronomy experts, multi-wavelength astronomers, and citizen scientists alike. By utilizing an “on the fly” interferometry mode, the observing overheads are much reduced compared to a conventional pointed survey. In this paper, we present the science case and observational strategy for the survey, and also results from early survey observations.

Keywords: Surveys; radio continuum: general; methods: observational

1. INTRODUCTION

1.1. Motivation

The advent of wide bandwidth backends has increased the sensitivity of radio interferometers such as the Karl G. Jansky Very Large Array (VLA; [Perley et al. 2011](#)) to radio continuum emission by a factor of several, as well as providing instantaneous frequency-dependent flux density and polarization information across bandwidths covering factors of order two in frequency. When coupled with another important innovation, on the fly mosaicking (OTFM, see the OTFM guide at <https://go.nrao.edu/vlass-mosaicking> and [Mooley et al. 2018a, 2019](#)), the sky can be rapidly imaged to a relatively deep limit at high angular resolution, providing both polarization and spectral index information. Such advances justify another major survey with the VLA, complementing the earlier NRAO VLA Sky Survey (NVSS; [Condon et al. 1998](#)) and Faint Images of the Radio Sky at Twenty centimetres (FIRST; [Becker et al. 1995](#)) surveys.

A new radio survey with the VLA was further motivated by major surveys now being undertaken in the optical and near-infrared. Large-format detectors in these regimes have greatly expanded the capabilities of surveys, making the combination of depth and frequent re-observation possible over tens of thousands of square degrees. These capabilities have allowed synoptic surveys that characterize stellar and galaxy populations in unprecedented detail. Optical photometric surveys already available include the Sloan Digital Sky Survey (SDSS; [Abolfathi et al. 2018](#)), HyperSuprimeCam (HSC;

[Aihara et al. 2018](#)), the Dark Energy Camera Legacy Survey (DECaLS) and related surveys ([Dey et al. 2019](#)), the Dark Energy Survey (DES; [Abbott et al. 2018](#)) and the Panoramic Survey Telescope and Rapid Response System (Pan-STARRS; [Chambers et al. 2016](#)). In the near-infrared, surveys such as the UKIRT Infrared Deep Sky Survey (UKIDSS; [Lawrence et al. 2007](#)) and surveys made with the Visible and Infrared Survey Telescope for Astronomy (VISTA; [Sutherland et al. 2015](#)) exist over much of the sky, and there is also an all-sky infrared survey by the *Wide-field Infrared Survey Explorer* (WISE) at 3.5, 4.6, 12 and $22 \mu\text{m}$ ([Wright et al. 2010](#)). Spectroscopic surveys have also taken advantage of new technologies, including the Baryon Oscillation Spectroscopic Survey (BOSS; [Dawson et al. 2013](#)).

Following the conclusion of the Expanded VLA (EVLA) Project in 2013, the National Radio Astronomy Observatory (NRAO) announced that it would consider a new radio sky survey to exploit the new and upgraded capabilities of the telescope.

Radio interferometry is a relatively specialized branch of astronomy, and having science-ready survey data products available is particularly valuable. This is illustrated by the very high usage of NVSS and FIRST data products. A quantitative measure comes from statistics gathered from the FIRST image server,¹ which provides JPEG or FITS cutouts extracted from the FIRST survey at user-specified positions. In a recent 18 month interval, the server delivered (on average) more than 7500 images per day, or one image every 12s ($>95\%$ of these

* Marie Skłodowska-Curie Fellow

¹ <http://third.ucllnl.org/cgi-bin/firstcutout>

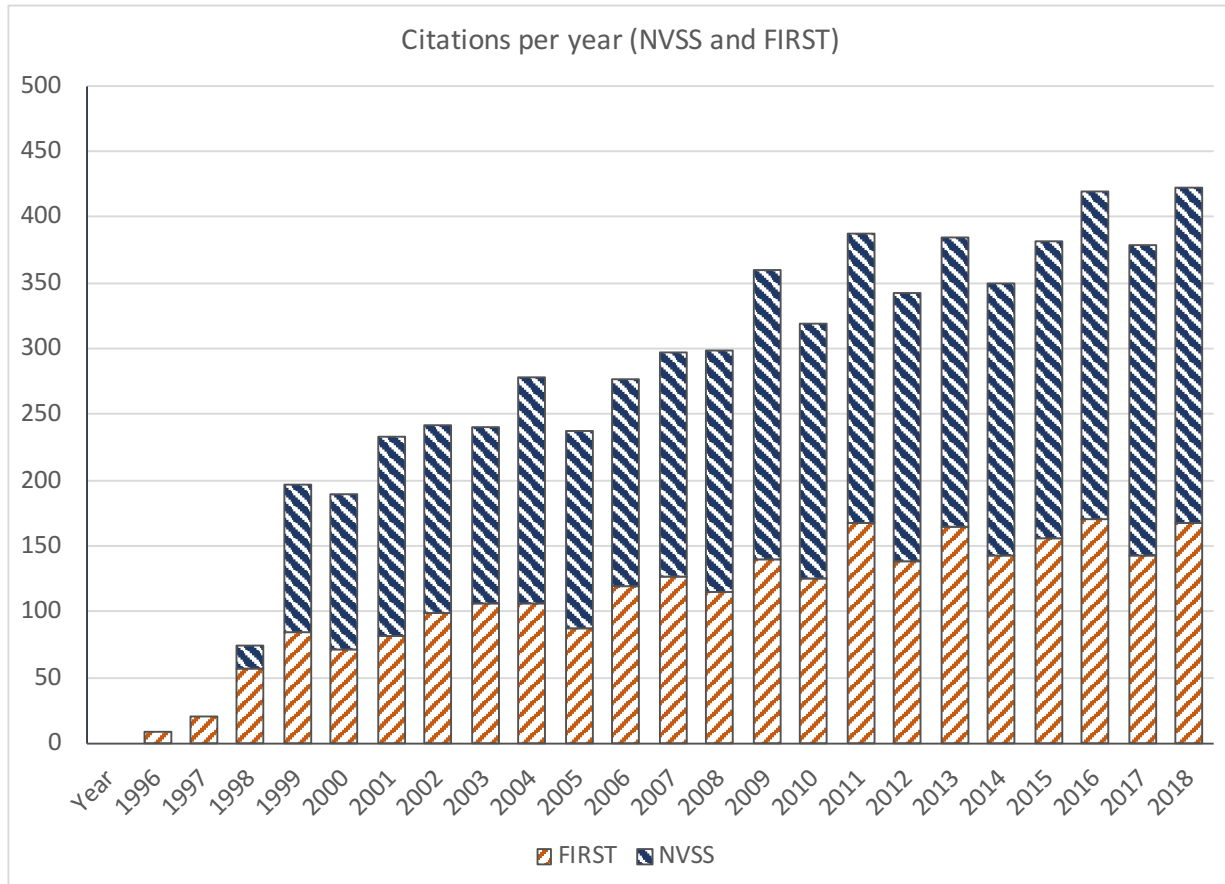


Figure 1. Surveys can have considerable “staying power”, as illustrated by the citation statistics for two surveys conducted using the Very Large Array. The NRAO VLA Sky Survey (NVSS, [Condon et al. 1998](#)), and the Faint Images of the Radio Sky at Twenty Centimeters (FIRST, [Becker et al. 1995](#); [White et al. 1997](#)). Even though both surveys are approaching their second decade since completion, the number of citations, as indexed by the Astrophysics Data System shown here as a stacked histogram of NVSS and FIRST citations (which may include some double counting from papers that use both surveys), is holding steady or increasing.

are scripted queries rather than individual users going to the website). Each image served is equivalent to a three-minute VLA observation (the exposure time required to reach the FIRST depth). Every 10 days, the effective exposure time (7500 images per day \times 3 min. per image \times 10 days) provided is equal to the 4000 hr used originally to conduct the FIRST survey. Figure 1 shows that such surveys also provide a very high return in terms of citations.

1.2. Survey Design

The concept for VLASS was developed through a community-led process, beginning with a public workshop at the January 2014 meeting of the American Astronomical Society, the submission of 22 white papers² (on which much of Section 2 of this paper is based) and a competitive debate within a community-led Survey Science Group and its constituent working groups. An internal NRAO scientific and technical review, followed by a Community Review,

provided important additional input. The design of VLASS paid extremely close attention to the Square Kilometre Array (SKA) pathfinders, leading to a survey that will both stand alone, yet also be complementary to those surveys.

The VLASS design that emerged from the above process is an approximately 5500 hr survey covering the whole sky visible to the VLA at high angular resolution (≈ 2.5 arcsec) in three epochs, as summarized in Table 1, and detailed in Section 3 below. VLASS uses the VLA to capture the radio spectrum from 2 GHz to 4 GHz in 2 MHz channels, with calibrated polarimetry in Stokes I, Q and U, providing wideband spectral and polarimetric data for a myriad of targets and source types, thereby addressing a broad range of scientific questions. VLASS is to be carried out in three passes, each separated by approximately 32 months, resulting in a synoptic view of the dynamic radio sky similar to those now available at other wavelengths. VLASS provides measurements of the radio sky at epochs approximately 20 years after FIRST and NVSS, at sensitivity levels between those of FIRST/NVSS and the upcoming radio surveys from

² <https://go.nrao.edu/vlass-whitepapers>

Table 1. Summary of the VLASS design goals

Parameter	Value
Total Area	33885 deg ² , $\delta > -40^\circ$
Cadence	3 epochs, separated by ~32 months
Frequency Coverage	2 – 4 GHz
Angular Resolution	2''5 (B/BnA configurations)
Continuum Image rms (Stokes I)	$\sigma_I = 70 \mu\text{Jy}/\text{beam}$ combined $\sigma_I = 120 \mu\text{Jy}/\text{beam}$ per-epoch
On-Sky Integration Time	4504 hr total 1501 hr per epoch,
Scheduled Time (w/ 19% overhead + 3% for failed observations)	5520 hr in total observing, 1840 hr per epoch
Estimated total detections [†]	~5,300,000

[†]Estimated number of individual source components (including parts of single resolved sources) above $5\sigma \approx 350 \mu\text{Jy}$ in the final cumulative images.

the SKA and its precursors. This is critical to enable early identification and filtering for the most interesting transient events. VLASS will be the first radio survey to image the sky at an angular resolution comparable to those of optical and near-infrared surveys. This resolution does, however, come at a cost. The rms surface brightness sensitivity of the standard image products will be limited to a brightness temperature of ≈ 1.5 K, and sources with diffuse emission on angular scales $\gtrsim 30$ arcseconds will be poorly imaged and will have their total flux densities underestimated due to lack of short baseline coverage.

The approach adopted provides both astronomers and citizen scientists (e.g., Banfield et al. 2015) with information for every accessible point of the radio sky. In conjunction with a well-designed archive database and data access tools, VLASS users will be able to implement advanced machine learning techniques to study and classify millions of radio sources (e.g., Aniyani & Thorat 2017; Alger et al. 2018; Alhassan et al. 2018; Lukic et al. 2018).

1.3. This paper

In this paper, we describe the science motivation for VLASS, summarize the technical implementation, and show some early results as a resource for potential users of the survey data. Further details of the survey may be found in the VLASS memo series, located at <https://go.nrao.edu/vlass-wiki>. Section 2 describes the science goals of the survey. Section 3 describes the survey strategy picked to address those science goals. Section 4 outlines the survey implementation plan, with Section 4.1 describing the observing plan, and Section 4.2 the data products. Section 5 describes the commensal surveys that will be carried out at the VLA in conjunction with VLASS. In Section 6, we describe the calibration of the survey data. (We defer the description of the imaging to memos and future publications, as some imaging algorithms remain under development.) In Section 7 we describe the Education and Public Outreach efforts aligned with the Survey. Section 8 provides a short summary.

2. VLASS SCIENCE THEMES

There are four themes that run throughout the VLASS design and science goals. These exploit the unique capabilities of the Karl G. Jansky VLA:

1. Hidden Explosions and Transient Events
2. Faraday Tomography of The Magnetic Sky
3. Imaging Galaxies through Time and Space
4. The New Milky Way Galaxy

2.1. Key Science Theme 1: Hidden Explosions and Transient Events

Radio transients arise from diverse phenomena, including astrophysical blast waves, catastrophic collapses, compact object mergers accompanied by gravitational waves, magnetic acceleration of relativistic charged particles, shocks in high energy particle jets and in magnetized diffuse interstellar plasma, flaring reconnection events in the atmospheres of low mass stars, and the cosmic beacons of rotating neutron stars, white dwarfs, and black hole accretion disks. While the detection of such events has previously relied on the synoptic survey capability of modern wide-field optical, X-ray and γ -ray observatories, VLASS now also offers the potential to systematically characterize the dynamic sky at radio frequencies, targeting both Galactic and extragalactic transient populations. As described below, the most numerous radio transients, with the greatest potential impact, belong to populations that can be hidden from view in other wavebands, and in some cases are detectable only at radio wavelengths.

VLASS observations will enable searches for transients in multiple ways. Slow transients, with durations from weeks to years, can be found using the VLASS basic data products (Section 4.2.1, in particular the Quick Look images). Fast transients (milliseconds to seconds duration), such as Fast Radio Bursts, will be found using two commensal projects described in Section 5. *realfast* will search the raw VLASS

data stream for transient events, and the VLA Low-band Ionosphere and Transient Experiment (VLITE) will pass its low frequency data through a special pipeline designed to find fast transient events. In the remainder of this Section, we focus on the slow transient population.

2.1.1. *What is the true rate of explosions in the local Universe?*

Phenomena associated with the explosive death throes of massive stars have been studied for decades at all wavelengths. These phenomena include the various classes of supernovae, the highly relativistic outflows of γ -ray bursts (GRBs) and the mergers of compact objects. Also related to these are the tidal disruption events (TDEs) that occur when a star falls into a supermassive black hole, an example of which has recently been identified in a radio survey (Anderson et al. 2019). In Figure 2 we show a plot of areal density of transients versus their flux density at 3 GHz. The expected rates of different transient classes, shown as dashed gray lines in the plot, are compilations from literature (see references given by Mooley et al. 2016) (see also Metzger et al. (2015) for an independent study that yields similar estimates, of order a few tens each in VLASS of binary neutron star mergers (BNS), GRBs and Orphan GRB Afterglows (OAs), and TDEs). The limits shown for VLASS represent the expected cumulative number of detected transients, with the requirement that a transient event must be detected at $> 10\sigma$ in a single epoch, to overcome noise fluctuations in the data when comparing two epochs, each with 5×10^{10} synthesized beams, as well as image artifacts that masquerade as transients. (We note that this is conservative – one can use much lower detection threshold (e.g., 6σ) combined with the requirement that the detected transient must be located in a nearby galaxy ($z < 0.1$) to overcome high- σ thermal noise fluctuations.)

As well as providing a window into the life cycles of massive stars, these explosive events also probe the formation of compact objects and can provide a standard candle for precision cosmology. However, the true rate of such events is poorly constrained; specifically:

- A comparison of the star formation rate and supernova (SN) discovery implies that as many as 40% of SNs remain undetected in the traditional optical searches, largely due to extinction via dust obscuration, with far reaching consequences for models of stellar and galaxy evolution (Mattila et al. 2012).
- The relativistic outflows associated with GRBs and compact object mergers are highly collimated. Thus, only those bursts that are collimated in the direction of Earth are detected at γ -ray or X-ray wavelengths. Best estimates suggest this corresponds to a small fraction of the true event rate, dependent on the typical opening angle of the collimated jet. GRBs whose outflows

are not pointed towards Earth, but whose unbeamed emission can be detected at cm-radio wavelengths are OAs, and can be detected in surveys for radio transients (Rhoads 1997; Ghirlanda et al. 2014).

At its reference frequency of 3 GHz, the light curves from extragalactic explosive events can have a characteristic rise time as long as one year (e.g., SNs, Salas et al. 2013), and thus the three epochs of VLASS will essentially be three *independent* epochs, thereby maximally leveraging the observing time of the VLASS towards the identification of independent transient events. The sensitivity of VLASS to long-duration transients does not come at the expense of sensitivity to transients on shorter timescales, including, but not limited to, Galactic transients and relativistic transients viewed on-axis or close to on-axis. The rapid release of VLASS Quick Look images (Section 4.2.1) will enable early identification of candidate transients whether they are short or long duration events.

Confirmation and classification of VLASS transients will rely on follow-up observations with the VLA, as well as triggered follow-up from the community at optical and NIR wavelengths. The former will sample the light curve of the event and, more importantly, will allow confirmation of the broad Spectral Energy Distribution (SED) of the radio transient (1–50 GHz), a capability unique to the VLA among radio instruments capable of synoptic surveys (at least until the construction of the ngVLA; Selina et al. 2018). The triggering of optical/NIR follow-up allows detailed characterization of the host, which is the primary tool in classification of a radio transient. Confirmation of distance, and thus energetics, together with the radio transient SED and location within a galaxy, will provide a means to distinguish between the various classes of explosive events (cf. Figure 4 of Mooley et al. 2018a). The shallow depth of individual epochs of the VLASS is well suited to this task. At these depths, a transient event should be identified with a known optical/infrared host galaxy and there should be no “hostless” events for the known classes discussed below. Furthermore, the high angular resolution of VLASS allows identification of the location *within* the host galaxy. This discriminator allows us to assess the likelihood that the event is due to AGN variability or a TDE (if located at host galaxy center), or a SN or BNS merger associated with a catastrophic stellar demise.

The promise of VLASS for discovering transient radio sources was illustrated by the discovery of a decades long transient using multi-epoch radio survey data, including Epoch 1 of VLASS (Law et al. 2018a). The transient is located about $0''.5$ from the center of its host galaxy, and may correspond to the first OA to be discovered (Marcote et al. 2019).

2.1.2. *The Gravitational Wave Era*

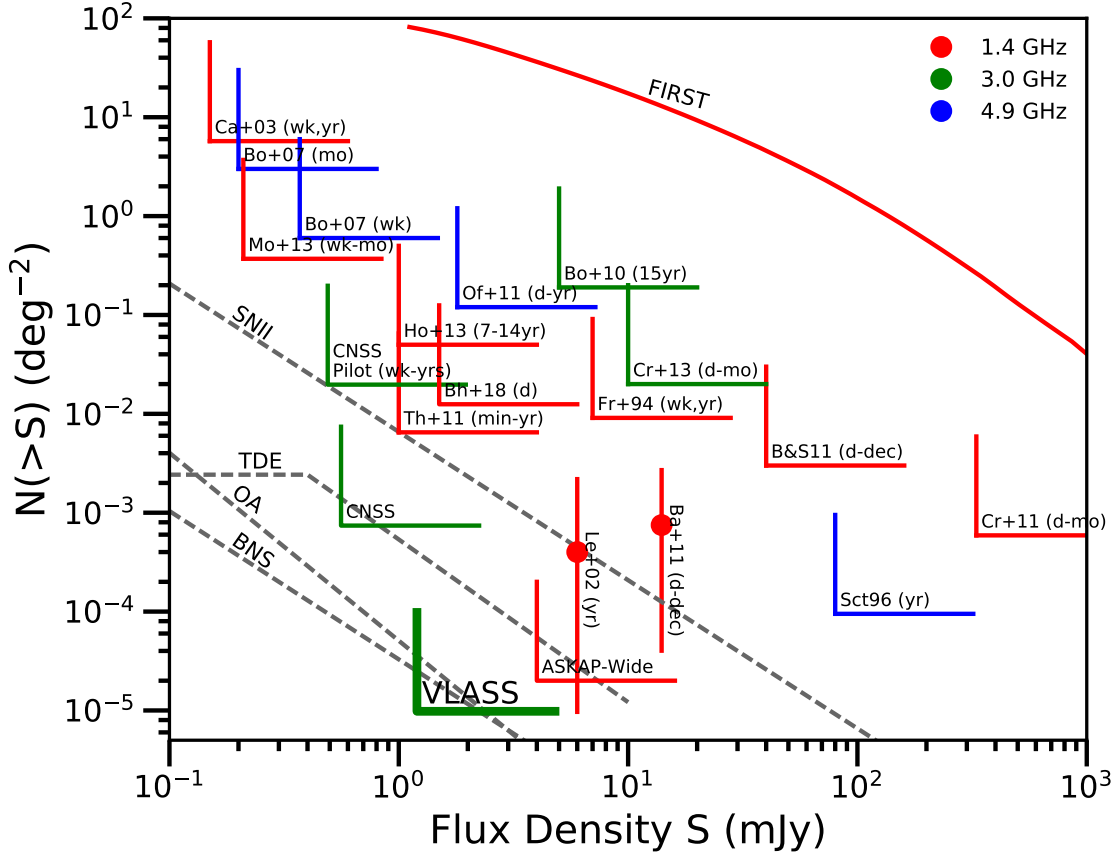


Figure 2. The areal densities of extragalactic radio transients. The dashed gray lines give the instantaneous source counts for different classes of transients at 3 GHz, assuming luminosities and densities from Mooley et al. (2016). The solid red line represents the total 1.4 GHz source counts from FIRST (Becker et al. 1995). Wedges indicate upper limits to the transient rates from previous surveys and errorbars (2σ) are transient rates for past detections (see compilation at <http://www.tauceti.caltech.edu/kunal/radio-transient-surveys/index.html> for updates). The markers are color-coded according to observing frequency, and indicate the time range to which each survey was sensitive (days (d), weeks (wk), months (mo) years (yr) and decades (dec)). Adapted from Mooley et al. (2016). References: Ba+11, Bannister et al. (2011); Bo+07, Bower et al. (2007); Bo+10, Bower et al. (2010); B&S 11 Bower & Saul (2011); Ca+03, Carilli et al. (2003); Cr+11, Croft et al. (2011); Cr+13, Croft et al. (2013); Fr+94, Frail et al. (1994); Ho+13, Hodge et al. (2013); Le+02, Levinson et al. (2002); Mo+13 Mooley et al. (2013); CNSS Pilot, CNSS, Mooley et al. (2016); Of+11, Ofek et al. (2011); Sct96, W.K. Scott, 1996 PhD Thesis, University of British Columbia; Th+11, Thyagarajan et al. (2011)

Advanced LIGO (aLIGO) and Advanced Virgo (AdV) recently detected the first confirmed binary neutron star coalescence, GW170817, considerably improving our understanding of these events and confirming their role as the forge within which the bulk of the heavy elements are synthesized (Abbott et al. 2017). Radio observations have been key in establishing the mass and energy of the material dynamically ejected during the merger, investigating the presence of a relativistic jet and constraining the environment of a neutron star merger for the first time (Hallinan et al. 2017; Alexander et al. 2017; Mooley et al. 2018b). The results to date have been surprising, with the bulk of the radio emission consistent with a wide-angle outflow of mildly relativistic material (Kasliwal et al. 2017; Mooley et al. 2018b; Margutti et al. 2018; Hotokezaka et al. 2018; Troja et al. 2018), and late-time emission dominated by a narrow energetic jet (Mooley et al.

2018c,d; Ghirlanda et al. 2018). This event is just the first of an impending torrent of candidate neutron star-mergers. Advanced LIGO and Advanced Virgo resumed operations in April 2019 (during VLASS observations of the second half of the sky for the first epoch) with a greatly enhanced sensitivity. The sensitivity will increase in subsequent science runs as detectors improve and with the eventual operation of a LIGO detector in India and the KAGRA interferometer in Japan. VLASS will deliver reference image data over most of the sky to help constrain follow-up observations of potential gravitational wave events.

2.2. Key Science Theme 2: Faraday Tomography of The Magnetic Sky

The VLA's Wide-band Digital ARchitecture (WIDAR) correlator has opened a major new window for wideband

polarization work, enabling us to characterize properties of the magneto-ionic medium in AGNs and in galaxies across a wide range of redshifts both directly, from their broadband polarized emission, and also when seen against polarized background sources (Mao et al. 2014). The increase in the sensitivity and the wideband capability of the VLASS will provide a six-fold increase in the density of polarized sources with reliable Faraday rotation compared to what is available today (Taylor et al. 2009).

2.2.1. Polarization in VLASS

Faraday rotation in a magneto-ionic medium produces various external or internal depolarization processes (e.g., Burn 1966; Tribble 1991; Sokoloff et al. 1998). These provide a unique and critical diagnostic of the magneto-ionic medium, but only when observed over a wide frequency range with near-continuous frequency coverage (e.g., O’Sullivan et al. 2012; Anderson et al. 2016; Ma et al. 2017; Pasetto et al. 2018, Figure 3). Until a few years ago, polarimetric studies have either relied on a small number of widely-spaced narrow bands, or have observed over a continuous but relatively narrow ($\sim 10\%$) fractional bandwidth. Both these approaches have severe shortcomings. Degeneracies between different types of depolarization behavior, and hence the underlying physical properties of polarized sources and foreground gas, can only be broken by wideband spectropolarimetry (Farnsworth et al. 2011).

The 2–4 GHz band of VLASS presents a unique opportunity to examine sources that would have been severely depolarized at lower frequencies. A useful comparison can be made with the bandwidth depolarization present in the NVSS survey. The original catalog (Condon et al. 1998) reported band-averaged polarization in two 50 MHz channels centered around 1.4 GHz. Therefore, sources with rotation measure (RM) of $|RM| > 100 \text{ rad m}^{-2}$ were significantly depolarized. The Taylor et al. (2009) rotation measure catalog performed a split-band analysis to derive RMs, and thus it is sensitive to a maximum $|RM|$ of approximately 500 rad m^{-2} . By contrast, the higher frequency and smaller channel widths of VLASS mean that the sensitivity of the VLASS will extend to $|\max(RM)| \approx 16,000 \text{ rad m}^{-2}$ using 16 MHz channels.

Even higher maximum rotation measures could be probed by going to the full 2 MHz native resolution of the VLASS data. The frequency coverage sets the resolution in Faraday depth space, as shown in Figure 9 of Section 4.2.1, where the width of the Faraday depth response function is $\approx 200 \text{ rad m}^{-2}$. For example, Faraday components with separations of $> 100 \text{ rad m}^{-2}$ would depolarize the NVSS, but with the VLASS transfer function of 200 rad m^{-2} they can be separated and measured (e.g., Sun et al. 2015). This provides a resolution of 10 rad m^{-2} at a signal-to-noise ratio (SNR) of

10, sufficiently small to enable foreground screen experiments, such as the one described in Section 2.2.4 below.

The $70 \mu\text{Jy}$ rms for the full, combined, three epoch survey will result in \approx six polarized sources per square degree at $\text{SNR}=10$, using the 20 cm results of Rudnick & Owen (2014) and Stil et al. (2014). The loss in polarized intensity at the 2–4 GHz band due to a typical spectral index of -0.7 for the total intensity spectrum is compensated by the reduced typical wavelength-dependent depolarization (by a factor of ~ 1.3) in the 2–4 GHz band compared with the lower frequency, 1–2 GHz (20 cm) band (Lamee et al. 2016). Note that this result is based on the 9 arcminute resolution SPASS survey (Carretti et al. 2013), so the reduction in beam depolarization may result in even larger fractional polarizations at 2–4 GHz, $\sim 10\%$ (see Section 6.4.2). Thus, the VLASS sensitivity gives at least a factor of six times the polarized source density of the NVSS, a major improvement for targeted foreground experiments, and will, in addition, allow much greater access to the rare population of heavily depolarized sources.

Foreground experiments are limited by the scatter in RM in the background sources. A fundamental limit to the RM scatter comes from the intrinsic variation in the extragalactic sources themselves, currently estimated to be $\sim 5\text{--}7 \text{ rad m}^{-2}$ (Schnitzeler 2010). The VLASS can approach this limit for polarized flux densities $\gtrsim 1.5 \text{ mJy}$, providing a source density of ~ 3 per square degree, an order of magnitude higher than the NVSS.

Based on the counts from NVSS, over 10^5 sources with polarized fluxes $> 0.75 \text{ mJy}$ ($\text{SNR} > 10$; 5% [0.5%] for $I = 15$ [150] mJy) will be detected in VLASS. VLASS will thus enable the first large depolarization catalog to be produced, from which the origins of the depolarization can be statistically evaluated.

The relatively high frequencies of the VLASS 2–4 GHz polarization survey will also uncover previously unknown populations of sources with extremely large Faraday depths and those that are heavily depolarized due to Faraday effects, and hence missed in the lower frequency catalogs.

2.2.2. The magneto-ionic medium in AGN, galaxies and their immediate environments

As described in Section 2.3.2, feedback from AGN is important in galaxy formation. Thus, investigating how radio galaxies impart energy into the ISM/IGM is crucial. While minimal interaction between radio lobes and the environment would lead to a thin “skin” of thermal material around the lobes (e.g., Bicknell et al. 1990; Kaczmarek et al. 2018), significant interaction should lead to large-scale mixing of thermal gas with the synchrotron emitting material throughout the lobe, causing internal Faraday dispersion (e.g., Anderson et al. 2016). O’Sullivan et al. (2013) fitted the depolarization trend of the lobes in one such radio galaxy, Centaurus A, and found a thermal gas of density 10^{-4} cm^{-3} well mixed

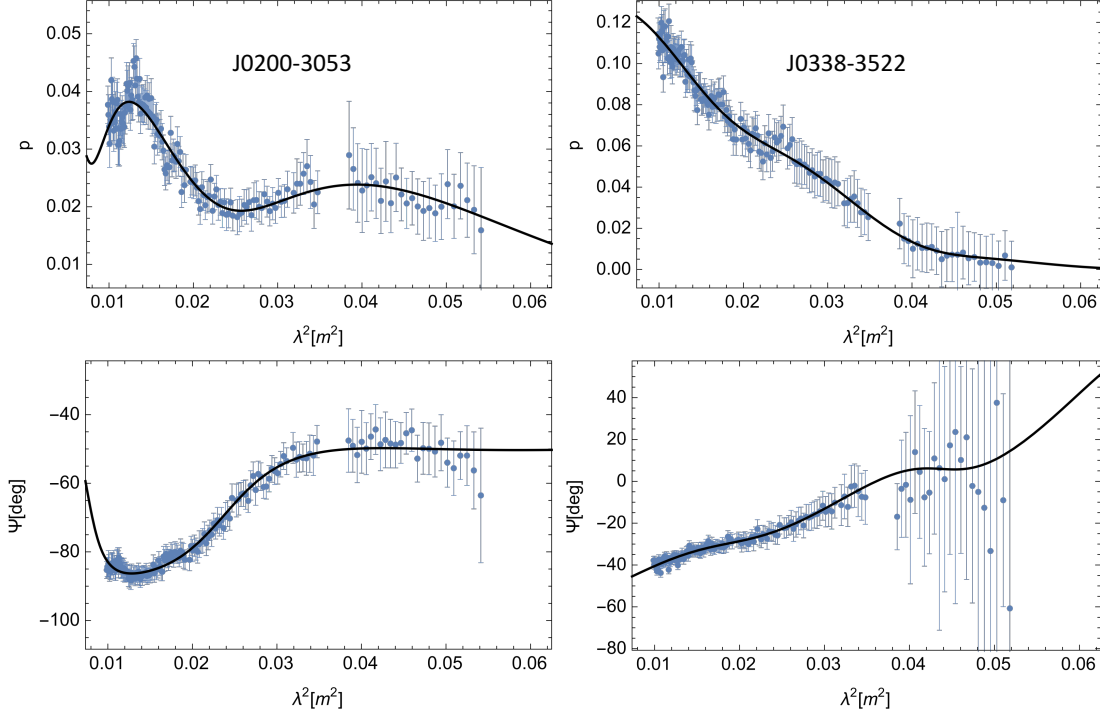


Figure 3. Two radio sources with complicated Faraday structures from the Australia Telescope Compact Array observations of O’Sullivan et al. (2017). Both the degree of polarization, p , and the position angle, ψ , vary rapidly with frequency. Such sources would be possible to identify from VLASS data alone (which spans the range $0.006 < \lambda^2 < 0.023 \text{ m}^2$).

with synchrotron-emitting gas in the lobes. A sensitive wide-band polarization survey allows statistical studies of this phenomenon through estimation of the thermal gas content in a large number of radio galaxies, covering a range of luminosities, redshifts, and environments. Most of these polarized sources will be spatially resolved by the VLASS (Rudnick & Owen 2014), allowing, to first order, the separation of depolarization along the line of sight from beam depolarization (across the line of sight).

2.2.3. The emergence and growth of large-scale magnetic fields in galaxies

Spatially resolved images of the polarized synchrotron emission from nearby galaxies demonstrate the existence of ordered magnetic fields in the ISM (e.g., Beck et al. 1996; Beck 2015). However, the evolution of galactic-scale magnetic fields over cosmic time is poorly constrained, because this traditional approach becomes increasingly challenging for distant galaxies. An alternative approach is to utilize the statistics of integrated synchrotron polarization of unresolved galaxies to infer their overall magnetic field properties (e.g., Stil et al. 2009). In the presence of a large-scale galactic field, the position angle of the integrated polarized radiation is aligned with the minor axis of the galaxy for rest frame frequencies above a few GHz.

In star-forming galaxies, which are mostly spirals, polarization reflects the degree of ordering in the intrinsic disk field. The fractional polarization distribution of nearby disk galaxies at 4.8 GHz was measured by Stil et al. (2009) and Mitchell (2009), who carried out a survey of 47 nearby (within 100 Mpc) galaxies using the Effelsberg Telescope. These data show that at least 60% of normal spiral galaxies show a degree of polarization higher than 1%, and in some cases higher than 10%. Moreover, there is a strong correlation between polarization position angle and the optical minor axis of the galaxy disk. Unlike the Effelsberg observations, VLASS resolves such galaxies, reducing beam depolarization, and thus we expect to detect even higher fractional polarizations.

2.2.4. Quasar absorption line systems

Mg II absorbers are associated with a $\sim 10^4$ K photoionized circumgalactic medium in a wide range of host galaxy types and redshifts (see Churchill et al. 2005, for a review). These systems potentially trace outflows from star formation (e.g., Norman et al. 1996) and cold-mode accretion (e.g., Kacprzak et al. 2010). When seen against polarized background sources, the Faraday depth provides a direct measure of the electron density and the magnetic field strength in Mg II absorbing systems, parameters that are both currently poorly constrained. Bernet et al. (2008, 2013), Joshi & Chand (2013), Kim et al.

(2016) and Farnes et al. (2014, 2017) have demonstrated the presence of larger RM scatter in systems associated with Mg II absorbers, and have interpreted this as evidence for magnetic fields with strengths $\sim 1\mu\text{G}$ out to $z \sim 2$, possibly associated with outflows. Polarization data from VLASS will be able to significantly increase the sample size of such studies from the < 100 currently available, and rigorously test models for circumgalactic gas and photoionization, and the evolution of large-scale magnetic fields over cosmic time (Basu et al. 2018).

2.2.5. Spatially resolving magnetic field structures in distant galaxies

Strong gravitational lensing of polarized background quasars by foreground galaxies has proven to be a clean and effective way of measuring the in situ magnetic fields in individual cosmologically distant galaxies. Mao et al. (2017) used the broadband polarization properties of the lensing system CLASS B1152+199 observed with the VLA and derived coherent axisymmetric magnetic fields at the μG level in the star forming lensing galaxy at $z = 0.44$, currently the most distant galaxy for which we have both a magnetic field strength and a geometry measurement. Wavelength-dependent depolarization towards the lensing system can also provide information on turbulence in the magnetized medium in distant galaxies. A crude estimation based on the the statistics of the Cosmic Lens All-Sky survey (CLASS; Myers et al. 2003) suggests that the VLASS has the potential to identify ~ 10 new wide separation ($> 2''.5$) gravitational lensing systems.

2.3. Key Science Theme 3: Imaging Galaxies through Time and Space

2.3.1. The Evolution of Accretion Activity in Active Galactic Nuclei

There is now strong evidence that the standard Active Galactic Nucleus (AGN) unification paradigm (e.g., Antonucci 1993; Urry & Padovani 1995) is incomplete. For example, observational evidence (e.g., Hardcastle et al. 2007; Herbert et al. 2010; Best & Heckman 2012) suggests that many or most low-luminosity ($L_{1.4\text{ GHz}} < 10^{25}\text{ W Hz}^{-1}$) radio galaxies in the local universe correspond to a distinct type of AGN. These sources accrete through a radiatively inefficient mode (the so-called “radio mode”), rather than the radiatively efficient accretion mode typical of radio-quiet optically or X-ray selected AGN [sometimes called “quasar mode”; see Heckman & Best (2014) for a recent review covering these feedback processes]. The role of these two accretion modes appears to be strongly influenced by the environment (e.g., Tasse et al. 2008) while the presence or absence of a radio-loud AGN appears to be a strong function of the stellar mass of the host galaxy (e.g., Best et al. 2005; Janssen et al. 2012; Williams & Röttgering 2015).

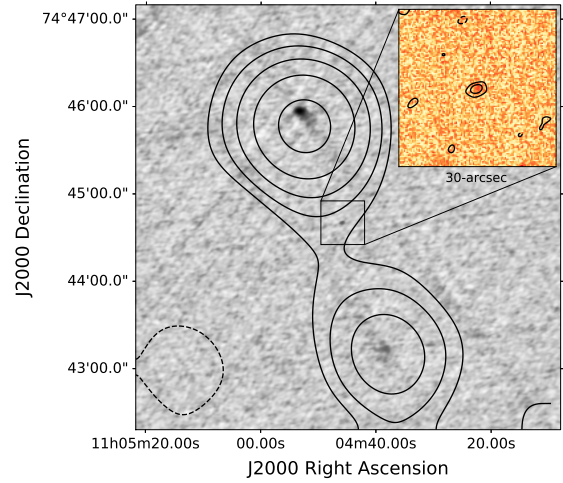


Figure 4. An example of a giant radio galaxy whose host galaxy has been identified using VLASS data. The greyscale shows the VLASS image, the contours are from NVSS (at $-0.75, 0.75, 1.5, 3.0, 6.0$ and 12 mJy/beam). The inset shows the PanSTARRS i -band image with VLASS contours at $-0.26, 0.26$ and 0.52 mJy/beam .

The combination of sensitivity and angular resolution of VLASS allows the study of the entire AGN population from classical radio-loud sources down to the realm of radio-quiet AGN at low redshifts ($L_{1.4\text{ GHz}} \sim 10^{22-23}\text{ W Hz}^{-1}$; Jarvis & Rawlings 2004; Wilman et al. 2008; Kimball et al. 2011; Condon et al. 2013a), and, with stacking, out to significantly higher redshifts (e.g. White et al. 2007; Coziol et al. 2017). VLASS is sensitive enough to detect luminous radio galaxies and radio-loud quasars out to $z \sim 5$ (typical 3 GHz flux densities of a few mJy, e.g., van Breugel et al. 1999; Saxena et al. 2018; Bañados et al. 2018), allowing the study of their evolution from the first billion years of the Universe to the present day. Morphology and spectral index information from VLASS will allow the evolution of different morphological (e.g. FRI, FRII) and physical (e.g. compact steep spectrum, GHz-peaked spectrum, blazar and BLLac) classes of radio-loud AGN to be quantified.

2.3.2. AGN Feedback

Feedback from AGN on the ISM of their host galaxies is important in galaxy formation: it is intimately linked to the star formation history (e.g., Hopkins & Beacom 2006), and could suppress cooling in massive galaxies, producing the bright-end cut-off of the luminosity function (e.g., Best et al. 2006; Croton et al. 2006). The nature of this AGN feedback is very much under debate: it has been shown that energy deposited by radio jets can either trigger or quench star formation (e.g., Wagner et al. 2012). Recent studies from both a theoretical (Silk 2013) and observational (Kalfountzou et al. 2012, 2014) perspective have shown that powerful radio-

loud AGN may actually provide a positive form of feedback. On the other hand, there is little evidence for any type of feedback from radio-quiet objects based on the latest studies using *Herschel* (e.g., Bonfield et al. 2011; Rosario et al. 2013; Pitchford et al. 2016). Moreover, the interplay between jets and feedback in nearby satellite galaxies is even more poorly understood (e.g., Croft et al. 2006; Lacy et al. 2017).

The morphological information from VLASS allows the selection of large samples of specific types of radio source to aid the understanding of feedback. For example, extended FRI sources for “radio mode” feedback in groups and clusters (e.g., Feretti et al. 2012; Clarke et al. 2014; Russell et al. 2017) (visible out to $z \approx 0.5$), and powerful, compact sources for “quasar mode” feedback and interactions between jets and ionized gas in compact radio galaxies (e.g., Stockton et al. 1996; Worrall et al. 2012; Lonsdale et al. 2015) (visible out to $z > 2$) can be identified.

2.3.3. Radio source environments

The details of the mechanism(s) of interaction between radio-loud AGN and their environments, on all scales, remain unclear. Basic questions, such as whether the most powerful sources are expanding supersonically throughout their lifetimes (e.g., Begelman & Cioffi 1989; Hardcastle & Worrall 2000), or what provides the pressure supporting the lobes of low-power objects (e.g., Birzan et al. 2008; Croston et al. 2008) remain unanswered. These questions can only be addressed by the accumulation of large, statistically complete samples of radio sources with imaging capable of resolving them on scales ~ 10 kpc, combined with excellent multi-wavelength data. Information on both large and small-scale radio structure is required. As an illustration, Villarreal Hernández & Andernach (2018) use VLASS Epoch 1 data to discover new giant (> 1 Mpc) radio sources. VLASS can detect both the extended lobes and the unresolved cores of these objects, which can then be identified with the correct host galaxy (e.g. Figure 4).

2.3.4. Radio emission from AGN

There is nothing in the optical/UV properties of quasars (continuum, emission, absorption) that can be used to predict whether a given quasar is radio-loud or not (e.g., Kratzer 2014). An important avenue forward is to have better demographics across a broad range of luminosity and redshift, seeking to confirm marginal evidence that objects are more likely to be strong radio sources at lower redshift and higher luminosity. Further insight can be gained from radio demographics as a function of quasar emission line ratios and widths (e.g., Boroson 2002).

Even radio-quiet quasars are not radio-silent. It is not clear whether the radio emission is from failed jets, star formation, or shocks (e.g., Kimball et al. 2011; Condon et al. 2013b; Zakamska & Greene 2014; White et al. 2017), indeed there is

evidence that all three may contribute. VLASS will provide better demographics – both for direct detection (out to $z \approx 0.1$) and stacking analysis (for more distant radio-quiet quasars) – key to understanding this question.

2.3.5. Dual AGN

It has long been suspected that the development of gravitational instabilities in galaxy mergers may drive gas deep to the vicinity of the supermassive black hole and trigger episodes of AGN activity (Shlosman et al. 1989; Barnes & Hernquist 1991). However, the key small-scale physical processes remain poorly constrained by observations and unresolved in simulations. In particular, because of observational challenges, only a few examples are known of the population of late-stage mergers in which the black holes in both host galaxies accrete and power AGN predicted by simulations (e.g., Van Wassenhove et al. 2012; Blecha et al. 2013). At radio wavelengths, an ongoing challenge has been having enough sky coverage covered with sufficient resolution to obtain a substantial number of detections of pairs at separations below a few kiloparsecs.

VLASS is ideally suited to identify a large, uniform sample of sub-galactic-scale dual AGN as it will overcome the three major observational challenges faced in previous surveys by offering: (1) arcsecond-level angular resolution, (2) an enormous survey area combined with sub-mJy sensitivity, and (3) a generic AGN indicator (high surface brightness radio emission) unaffected by dust obscuration (see also Burke-Spolaor et al. 2014). Previous searches in the 92 square degree VLA Stripe 82 survey (VS82; Hodge et al. 2011) have shown a high success rate when direct mining of pairs using high-resolution radio data is performed (e.g., Figure 5; Fu et al. 2015a,b). VLASS has comparable sensitivity and angular resolution to the VS82, making it possible to apply the same technique to a $370\times$ larger area, dramatically increasing the sample size; the formulation of Burke-Spolaor et al. (2014) estimates thousands of merging galaxies will be present in the sample. By comparing the large sample of uniformly selected dual AGN with matched control samples, a number of outstanding questions in the merger paradigm of galaxy evolution can be addressed: Do mergers trigger and synchronize black hole accretion? What is the origin of the two accretion/feedback modes (radiative-mode vs. jet-mode)? Can AGN feedback significantly affect the star formation activity in Myr timescales? As the immediate precursor of massive black hole binaries, studies of kpc-scale galaxy mergers will also have important implications for low-frequency gravitational wave experiments.

2.3.6. Star formation in galaxies

The surface brightness sensitivity of VLASS is not high enough to detect diffuse emission far out in galactic disks, even in nearby ($z \lesssim 0.1$) systems. However, emission from

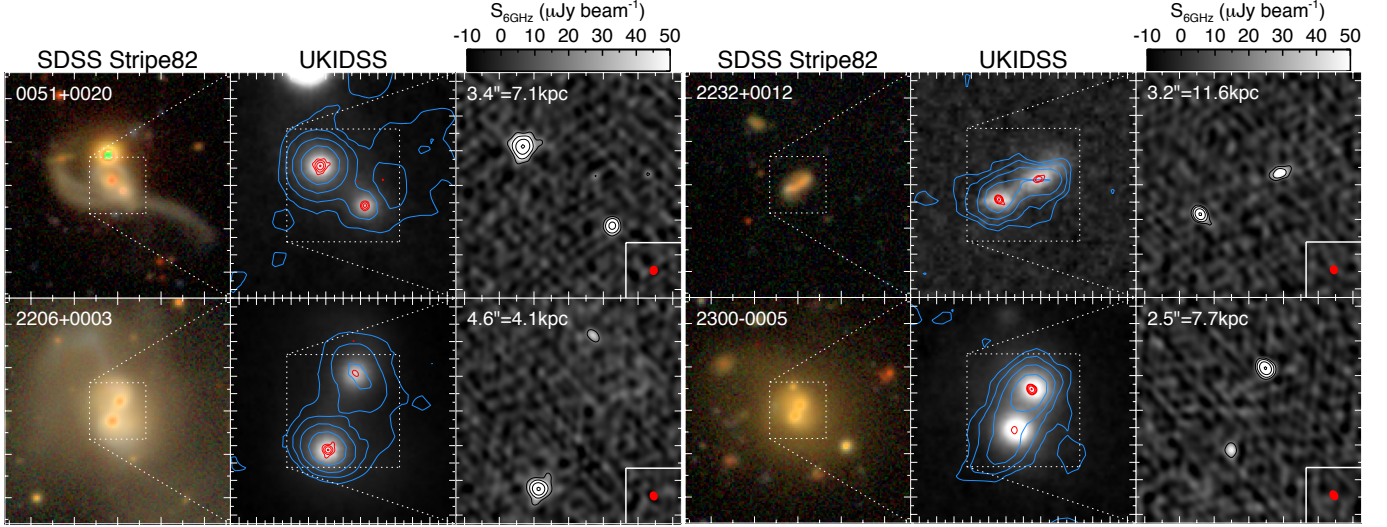


Figure 5. Kpc-scale dual radio AGN mined from the VLA Stripe 82 survey. For each system, we show a wide-field SDSS deep coadded *gri* color image, a narrow-field UKIDSS *J*-band image overlaid with the 1.4 GHz contours from VS82 (*blue*; $1''.8$ beam) and the VLA 6 GHz A-configuration continuum contours (*red*; $0''.3$ beam), and a zoom-in on the VLA 6 GHz intensity map. The projected separation of each pair is labeled. VLASS will cover more than 300 times more area than VS82, so, despite the lower resolution of VLASS, many examples of dual AGN at $z \sim 0.1$ to $z > 1$ with separations ~ 3 to ~ 30 kpc will be found.

the higher brightness central regions of normal star forming galaxies is detectable, even in a single epoch of VLASS, and VLASS has the resolution to identify compact star forming regions or weak AGN in the nuclear regions (Figure 6).

VLASS is deep enough to detect emission from star formation in ultraluminous infrared galaxies (ULIRGs) out to $z \sim 0.5$. This will allow us to increase the number of radio detections by a factor ≈ 5 compared to studies using FIRST (e.g., Stanford et al. 2000). Furthermore, at VLASS frequencies and lower we expect the radio spectra of the most intense, compact starbursts to flatten or turn over due to thermal absorption by ionized gas (e.g., Arp220; Varenus et al. 2016). By measuring the radio spectra of $z < 0.5$ ULIRGs using VLASS and other data, we will be able to assess the column density of ionized gas towards the star forming regions, and estimate the free-free emission at high frequencies.

2.4. Key Science Theme 4: The New Milky Way Galaxy

At visible wavelengths, dust obscuration and absorption effects can be significant toward the Galactic plane, but these effects are not problematic at radio wavelengths, and there is a rich history of using radio observations to find objects deep within the Galaxy (see Helfand et al. 2006, and references therein). Further, there has been a host of surveys of the Galaxy at wavelengths that do penetrate deep into the Galaxy, from the infrared to γ -ray (e.g., with *Spitzer*, *Herschel*, *Chandra*, *XMM-Newton*, and *Fermi*). VLASS will cover a wide range of Galactic longitude: $-15^\circ \leq \ell \leq 260^\circ$ ($\approx 75\%$ of the Galactic Plane). VLASS is complementary to an on-going VLA survey, GLOSTAR (A Global View of

Star Formation in the Galaxy; Medina et al. (2019)) which will map a smaller region of the Galactic Plane at $|b| < 1^\circ$ in 4–8 GHz continuum (to $\approx 40 \mu\text{Jy rms}$) and several molecular and recombination lines. VLASS naturally lends itself to finding a variety of Galactic radio sources. The panoply of Galactic science means that there is a large discovery space for unexpected phenomena. In the remainder of this section, we highlight three topics that will be further illuminated by the Galactic coverage afforded by the VLASS.

2.4.1. Compact Objects

The 2–4 GHz frequency of VLASS makes it especially sensitive to rare pulsar systems that are likely to be at low Galactic latitudes close to the Galactic Plane, and therefore have their emission highly scattered (e.g., PSR-BH binaries). By applying a series of “filters” such as spectral index, polarization and compactness, the large number of sources detected in VLASS can be reduced to a feasible number on which to conduct a periodicity search using single dish telescopes (e.g., Frail et al. 2018). Specific goals for pulsar searches with VLASS include: the improvement of electron-density and magnetic field models for the Milky Way (e.g., Cordes & Lazio 2002; Yao et al. 2017; Van Eck et al. 2011; Jansson & Farrar 2012) by finding more pulsars in the Galactic Plane and Bulge, the discovery of compact binary systems (powerful laboratories for General Relativity), recycled (“millisecond”) pulsars for incorporation into pulsar timing arrays, and exotic systems such as pulsar-black hole systems.

2.4.2. Coronal Magnetic Activity on Cool Stars

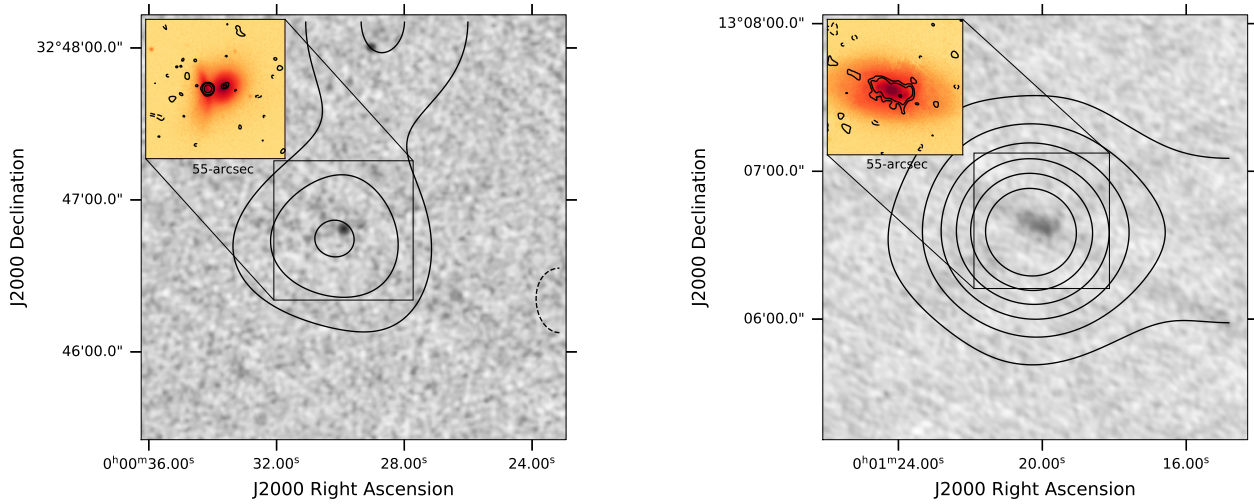


Figure 6. Two nearby starforming galaxies from the sample of Condon et al. (2019) in VLASS. *Left*, IC 5373, a merging galaxy pair at $z = 0.033$, *right* NGC 7803 at $z = 0.018$. In both images, the VLASS data are shown in greyscale, and contours are from NVSS (at -1, 1, 2, 3, 4, 5 and 6 mJy beam⁻¹). The insets show PanSTARRS r -band images with VLASS contours superposed (levels -0.26, 0.26, 0.39, 0.78 and 1.56 mJy beam⁻¹). In both cases, not only are the galaxies detected, but also spatially resolved. In particular, both of the merging pair in IC 5373 are separately detected, with the easternmost galaxy having a compact radio structure that may indicate either a nuclear starburst or a weak AGN.

The radio emission from nearby active stars provides a unique probe of accelerated particles and magnetic fields that occur in them, which is useful for a broader understanding of dynamo processes in stars, as well as the particle environment around those stars. The large magnetic field strengths now known to occur around some brown dwarfs were first detected through their effect on cm-wavelength radio emission (Berger et al. 2001; Hallinan et al. 2006) before the signatures were seen through Zeeman splitting of absorption lines at near infrared wavelengths (Reiners & Basri 2007). The stellar byproduct of exoplanet transit probes like *Kepler* and *TESS* will yield information on key stellar parameters like rotation, white-light flaring, and asteroseismic constraints on stellar ages. Unlike other diagnostics of magnetic activity, such as coronal emission, which displays a maximum value of $L_X/L_{\text{bol}} \approx 10^{-3}$, incoherent stellar radio emission usually shows no saturation effects. Thus, the level of radio emission can vary by orders of magnitude depending on the instantaneous particle acceleration events and plasma properties. Stellar flares and energetic events in the photospheres, chromospheres and coronae of late-type stars are receiving new attention across many wavelength regimes of the electromagnetic spectrum, as the number of known magnetically-active stars with exoplanets increases due to missions like *Kepler* and *TESS*. The impacts of flares, energetic winds, CMEs and other phenomena on the development of exoplanet atmospheres and the habitability of planets may be significant (Tarter et al. 2007; Cohen et al. 2015).

Scaling from the luminosity distribution of currently known active stars, VLASS will be able to detect ultracool dwarfs to distances of 10–20 pc, active dwarf stars to a few tens of parsecs, and active binaries to slightly less than 2 kpc. At the distances to the nearest star forming regions (150–300 pc), VLASS sensitivity limits will probe stellar radio luminosities above $1\text{--}4 \times 10^{16} \text{ erg s}^{-1} \text{ Hz}^{-1}$, enabling studies of particle acceleration in young stellar objects (YSOs) at a range of evolutionary stage, from classes I–III.

The combination of VLASS with the LSST and *eROSITA* surveys will form a foundation for the identification and study of nearby active stars, covering the evolution of magnetic activity from YSOs from the early stages of star formation until they join the main sequence. Particularly powerful will be cross-correlating variable or transient sources identified in LSST surveys with VLASS and vice-versa, enabling unbiased constraints on sources producing extreme magnetic activity. The multi-epoch nature of VLASS will allow for constraints on variability of particle acceleration. As MacGregor et al. (2018) recently demonstrated with their discovery of flares from Proxima Centauri using ALMA, there is still discovery potential for magnetic activity in the radio domain.

2.4.3. Star Formation and Evolution, Distant Thermal Sources, and Galactic Structure

Young, massive stars produce an H II region, while intermediate and low-mass stars end their lives by expelling their outer layers into the interstellar medium (ISM) and producing planetary nebulae (PNe). In both cases, the hot central star ionizes the surrounding material, which then emits free-free radio emission. Radio observations provide a powerful means

of identifying these thermal Galactic sources because they are relatively unaffected by dust obscuration that affects visible and near-infrared wavelengths (e.g., Hoare et al. 2012; Kwitter et al. 2014).

Typical time scales for an H II region or PNe to evolve are short. For example, the expansion time scale of an H II region may be only 10^5 yr (Franco et al. 1990; Garcia-Segura & Franco 1996), and it may take only 10^4 yr for a star to evolve from the asymptotic giant branch (AGB) through the PNe phase to become a white dwarf (Kwok 2005). Population synthesis models predict a range in the numbers of Galactic planetary nebulae (Sabin et al. 2014), but the total number of known nebulae from optical searches is significantly lower than even the most conservative prediction. Consequently, a sensitive, all-sky survey unaffected by dust is required to correctly trace evolutionary sequences. Further, as tracers of massive star formation, H II regions are a natural means to map out the spiral structure of the Galaxy.

Detecting distant thermal sources, such as H II regions and PNe, requires a combination of both angular resolution and adequate brightness temperature sensitivity. An H II region might be several arcseconds in size (0.5 pc at a distance of 10 kpc), while surveys of nearby PNe show that they tend to be a few to several arcseconds in size (Aaquist & Kwok 1990). Given that most H II regions and PNe are not simple spherical shells, but show more compact sub-structure, an angular resolution of a few arcseconds is desirable. Produced by the free-free emission from ionized gas, expected brightness temperatures might be a few hundreds of degrees to 10^3 K. Thus, arcsecond angular resolution and a brightness temperature sensitivity of order 10 K or better is sufficient to detect large numbers of distant thermal sources. VLASS, combined with radio observations at other frequencies and infrared observations, will provide an expanded sample of H II regions and PNe throughout 75% of the Galactic disk, allowing a fuller census of these phenomena.

2.5. VLASS in the context of upcoming astronomical facilities

VLASS stands on the shoulders of the pioneering NVSS and FIRST surveys carried out with the VLA from 1993 to 2011. VLASS additionally sets the stage for future radio surveys and facilities, such as surveys using *MeerKAT* (Jonas & MeerKAT Team (2016) [in particular the MeerKAT International GHz Tiered Extragalactic Exploration Survey (MIGHTEE) and MeerKAT Large Area Sky Survey (MeerKLASS) (Jarvis et al. 2016; Santos et al. 2016)]; surveys using the *Australian Square Kilometre Array Pathfinder* [ASKAP, in particular the Evolutionary Map of the Universe (EMU) survey (Norris et al. 2011) and the Polarization Sky Survey of the Universe’s Magnetism (POSSUM) (Gaensler et al. 2010)]; the *Westerbork Synthesis Radio Telescope* [WSRT/Apertif, in particular the WODAN survey, Röttgering et al. (2011)], and the ongoing

LoFAR Two Metre Sky Survey (Shimwell et al. 2017), leading to Phase 1 science operations of the *Square Kilometre Array* (SKA) that will commence in the late 2020s. Each of these facilities includes dedicated surveys at ≈ 1.4 GHz as a prime component of their science programs (Norris 2017). The observing band and parameters of VLASS, and the fact that VLASS surveys 65% of the Southern sky, means that it will be complementary to these lower frequency programs.

The combination of VLASS with SKA precursor surveys at $\approx 1\text{--}2$ GHz — MIGHTEE, POSSUM/EMU and WODAN — will provide 1–4 GHz of frequency coverage to increase the ability to characterize complex spectral and Faraday structures, opening up new and exciting science that combines the strengths of the VLA and SKA precursors. The high frequency and high angular resolution of the VLA were important drivers in the design of VLASS, however, the synergies with the SKA precursor surveys can and should be capitalized upon. For example, the MIGHTEE survey (Jarvis et al. 2017) will provide accurate total flux densities and luminosities for extended AGN, whilst also providing a longer baseline in frequency for spectral index measurement that can be used to infer the physical state of AGN and the environments in which they reside.

From the point of view of the dynamic radio sky, VLASS will also provide a unique snapshot of the Universe some 20 years after the FIRST survey. Current large-area radio transient detection surveys, such as the recent Stripe 82 survey of Mooley et al. (2016), successfully utilized the “Epoch 0” provided from FIRST, as well as other historical VLA-based surveys, as a starting point for identification of newly appearing objects from the first new VLA epochs.

Much of the science of VLASS depends on identification of radio sources in the optical/infrared. Fortunately, many innovative surveys in these wavebands are planned for the next decade. In the optical, both the Zwicky Transient Facility (ZTF; Smith et al. 2014) and the Large Synoptic Survey Telescope (LSST; Ivezić et al. 2019) will provide access to information on optical transients, and LSST will also produce a deep, multiband galaxy survey over the whole southern sky. With a planned launch date in 2022, the *Euclid* mission will survey 15,000 square degrees of sky, mostly within the area covered by VLASS, in the optical and near-infrared (e.g., Amendola et al. 2018), resulting in sub-arcsecond resolution imaging and grism spectroscopy of a large fraction of the host galaxies of VLASS sources. Spectroscopic surveys with the next generation of fibre spectrographs (SDSS-V; Kollmeier et al. 2017), the Dark Energy Spectroscopic Instrument (DESI; Levi et al. 2013), the Prime Focus Spectrograph (PFS) on Subaru (Tamura 2016), the 4MOST and MOONS spectrographs at the European Southern Observatory (de Jong et al. 2012; Cirasuolo et al. 2012), and the Maunakea Spectroscopic Explorer (MSE; McConnachie et al. 2016) will

obtain many millions of galaxy spectra, including the hosts of VLASS sources. These can be used not only for redshifts and classifications, but also for studying the stellar populations and metal contents of the host galaxies. By 2030, we expect $\approx 50\%$ of VLASS sources to have reliable photometric redshifts from a combination of space-based infrared and ground-based optical photometry, and $\approx 20\%$ to have spectroscopic redshifts from large spectroscopic surveys.

3. SURVEY STRATEGY

3.1. Context

NVSS has provided the wider astronomy community with a reliable reference image of the radio sky at Gigahertz frequencies for the past 20 years. VLASS provides a radio reference image at $2''5$ resolution, 20 times higher linear resolution than NVSS (which covers the same sky area), and with three times the sky coverage and two times better linear resolution than FIRST. VLASS also include wideband spectral and polarimetric information at three epochs. With a cumulative survey depth of $70 \mu\text{Jy beam}^{-1}$, VLASS will be ~ 4 times more sensitive than the NVSS to unresolved sources with spectral indices $\alpha \sim -0.7$, where $S_\nu \propto \nu^\alpha$.

3.2. Science Requirements

The Science Case outlined in Section 2 was distilled into a set of science requirements that the survey should meet. The **all-sky coverage** was driven by the need to detect rare transient events (Section 2.1), and to provide the largest possible reference survey for multiwavelength studies. The **depth** was driven by the need for the survey to have a significantly better point source sensitivity in the coadded data than previous all-sky radio surveys. The **three epoch strategy** was driven by the need to have each epoch deep enough to detect most classes of radio transient, and the **32 month cadence** was driven by the need to give slow transients enough time to rise (or fall) between epochs (Section 2.1). The **angular resolution** was driven by the need to reliably identify optical counterparts to both normal radio sources and transients, and also to reduce beam depolarization when studying the polarimetric properties of extended radio sources (Section 2.2). In addition, other technical requirements were applied to the flux density scale and polarization calibration in order to ensure accurate spectral and polarization properties.

3.3. Description

Area and Depth: The goal of the survey is to cover the entire sky visible to the VLA, with a requirement that at least 90% of that area be observed per epoch. The full area amounts to $\approx 33,885 \text{ deg}^2$ (all sky north of declination -40°), or 82% of the celestial sphere. The sensitivity goal is a 1σ rms depth of $70 \mu\text{Jy}$ for the three epochs combined. Recognizing that the rms is a function of location on the sky (in particular, in

regions with a large amount of interference, the sensitivity may be worse), the survey requirement is that the rms should be within 40% of the theoretical rms for at least 90% of the area observed.

Angular Resolution: High angular resolution is a key requirement for VLASS. It is essential for providing physical insight into the nature of the radio source identifications (for example, whether a transient source is centered on the nucleus of a galaxy or in its periphery, or whether a double source is associated with a single host galaxy nucleus or is a dual AGN), and to correctly identify radio sources either in crowded cluster fields (e.g., Figure 7), or when the radio source is associated with a very high redshift/dusty AGN that may be almost invisible even in a very deep optical survey. In this regard, Helfand et al. (2015) make a case for high angular resolution to make reliable cross-identifications in the next generation of deep optical/near-infrared surveys. The methodology of Helfand et al. has, however, been disputed by Condon (2015). Also, McAlpine et al. (2012) studied the effect on the reliability of source identifications of decreasing resolution of a radio survey from 6 to 15 arcsec, showing only a modest decrease in completeness of source identifications, and only a small fractional contamination by incorrect identifications (from 0.8% at 6-arcsec resolution to 2.3% at 15 arcsec). Nevertheless, this small fraction of mis-identifications may represent some of the most scientifically interesting objects.

Our angular resolution requirement is therefore driven by the need for VLASS to be able to decompose radio structures on the scale of the optical size of host galaxy at cosmological distances (redshifts $\gtrsim 1$), i.e., $\approx 30 \text{ kpc}$, corresponding to $\approx 3\text{-arcsec}$. Thus, VLASS is being conducted in the VLA's B and BnA configurations, providing a synthesized beam of $\approx 2''5$ over the entire sky. In practice, the beam varies with declination and hour angle(s) of an observation, leading to the survey requirement that the geometric mean of the FWHM of the synthesized beam should be $< 3 \text{ arcsec}$ over at least 60% of the survey, with a beam axial ratio (major axis over minor axis) of < 2 .

Cadence of Multiple Epochs: A cadence between epochs of at least 2 years is required to meet the transient science goals. Since the VLA configuration cycle is 16 months, observing the same half the sky observable by the VLA each time the VLA is in B-configuration gives a cadence of 32 months for any given point on the sky (± 4 months to allow for the duration of each B-configuration), and matches well both the scientific and operational needs. The entire sky will be imaged three times down to an rms depth of $\sim 120 \mu\text{Jy/beam}$ on this timescale, providing three epochs of high-resolution maps and catalogs for immediate time-domain science, as well as providing a critical baseline for all future transient

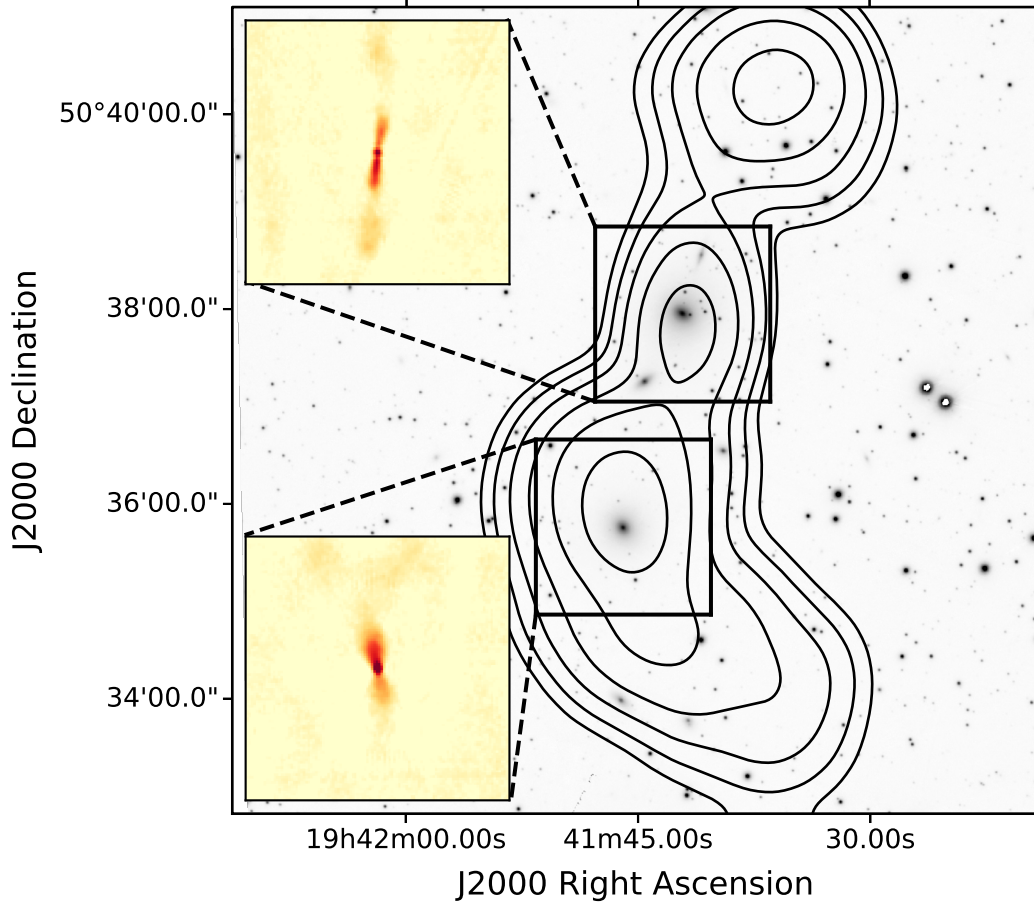


Figure 7. The radio source 3C402, illustrating the advance in angular resolution provided by VLASS over the whole sky. The contours show the NVSS image (contour levels 1,2,4,8,16 and 32 mJy), which is superposed on a greyscale of the PanSTARRS *i*-band image. The two insets show the VLASS data (made with the lower 1/3 of the frequency band (peak flux density=0.062 Jy beam⁻¹, beamsize 2''.9 × 2''.6 at a position angle of 19°) corresponding to the two AGN that make up this radio source (Riley & Pooley 1975). The inset boxes are 1.8 arcmin on a side. The resolution of VLASS shows that what looks plausibly like a single radio source in the NVSS breaks up into two separate sources in VLASS, identified with two different galaxies, both at a redshift of 0.026. (Note that 3C402 is outside of the FIRST footprint.)

surveys and follow-up of multi-wavelength transient events (e.g., gravitational waves, LSST, etc.).

Observing campaigns are named by epoch and sky coverage, for example, VLASS1.1 observations correspond to the first epoch observations of the first half of the sky, and VLASS1.2 the first epoch observations of the second half of the sky. Thus the final set of observations planned correspond to VLASS3.2.

Sensitivity: The sensitivity of a single epoch is set by the desire to image the whole sky as rapidly as possible given the data rate limit for regular VLA observations of ~ 25 MB/s. The sensitivity of the VLA for mosaicking is computed

using the procedure given in the VLA mosaicking guide: <https://go.nrao.edu/vlass-mosaicking>. For continuum (Stokes I) at 2–4 GHz (S-band) these calculations yield a survey speed, SS , of:

$$SS = 16.55 \left(\frac{\sigma_I}{100 \mu\text{Jy/beam}} \right)^2 \text{ deg}^2 \text{ hr}^{-1} \quad (1)$$

for an image rms of σ_I . This assumes 1500 MHz of useable bandwidth (after RFI excision) and an image averaged over the band using multi-frequency synthesis. (The integration time needed to survey a given area to a particular depth

is given by dividing that area by the survey speed.) The data rate constraint implies a maximum survey speed of 23.83 square degrees per hour, which results in an RMS of $120 \mu\text{Jy}/\text{beam}$ per epoch, or $70 \mu\text{Jy}/\text{beam}$ when all three epochs are combined. This is significantly deeper than any previous all sky radio survey.

Calibration: the flux density scale calibration accuracy requirement is 10% (with a goal of 5%) over 90% of the observed area. The polarization leakage requirement is $< 0.75\%$ (with a goal of 0.25%) over 90% of the survey. The absolute polarization position angle accuracy requirement was originally set to 2° . This was obtained by the need to measure a typical rotation measure of 10 rad m^{-2} to 30% accuracy by comparing a VLASS measurement to a hypothetical perfect measurement at another frequency. Unfortunately, systematic issues with calibrator models and polarization position angle calibration mean that these requirements may need to be relaxed for at least some fraction of the final survey products (see Section 6.3).

Overhead: In the estimates for total observing time, allowance is made for the overhead for slewing, set-up, and calibration that will apply to a given component of the survey. When originally planning the survey, it was assumed that the overheads would be $\approx 19\%$, arising from a combination of 4-hr, 6-hr, and 8-hr scheduling blocks. Accounting for additional integration time needed to overcome the increase in system temperature at low elevations, and a potential failure rate of 3% (mostly due to high winds, system failures, or interrupts by Target of Opportunity Observations (ToOs)), a wall-clock time of 5520 hours was predicted to be needed to execute the survey. This amounts to 920 hours per configuration cycle. The properties of VLASS based on these assumptions are summarized in Table 1. The actual overhead realised during the observations of the first half of the first epoch was 21%, corresponding to 935 hours per configuration cycle. Calibration overhead was slightly higher, about 23% for the second half of the first epoch due to the preference for shorter scheduling blocks during the windy season, and the replacement of 3C 48 as a calibrator due to its flaring behaviour at that time.

4. SURVEY IMPLEMENTATION

The implementation plan is split into an observing plan, a plan for data processing and data products, and archiving and data distribution. More details on the survey implementation may be found in the VLASS Memo Series, available at <https://go.nrao.edu/vlass-memos>. In addition, we refer later in the text to several of the EVLA Memos available at <https://go.nrao.edu/evla-memos>.

4.1. Observing

4.1.1. Observing Status

VLASS as proposed requires approximately 5520 hours of observing time, which will be carried out over the course of six cycles of VLA observing in its B and BnA configurations, spanning a total period of seven years (although the execution of the third epoch is subject to the successful passing of a review during the second epoch). In addition, a ~ 200 hr pilot survey was undertaken in the summer of 2016 to test the observation strategy, as detailed in VLASS Memo #2. Observations of the survey proper started in September 2017 as the VLA entered its B-configuration. Throughout the lifetime of VLASS, the VLA will continue to follow its 16-month standard configuration cycle (D-C-B-A), with the time in each configuration modified to minimize the impact of the VLASS on other users of the VLA. South of declination -15° , VLASS is utilizing the hybrid BnA configuration (where antennas on the north arm of the VLA are located in their A-configuration positions, while the east and west arms remain in the B-configuration) between the B and A parts of the standard VLA configuration cycle. This provides a more circular synthesized beam, comparable to that obtained at higher declinations in the B configuration.

Half of the sky was observed in the first configuration cycle, from September 2017 to February 2018 as shown in Figure 8, and the remaining half of the sky from February 2019 to July 2019, to complete the first all-sky observations. These two halves (campaigns VLASS1.1 and VLASS1.2) together comprise the entire first epoch of VLASS. To maintain the required ~ 32 -month cadence, the parts of the sky that constitute the first and second halves will continue to be observed as the first and second half of every epoch of VLASS.

4.1.2. Scheduling Considerations

The VLA is normally operated using a “dynamic scheduling queue” where the individual Scheduling Blocks (SBs) are created in the VLA Observation Preparation Tool (OPT) for a prescribed range of Local Sidereal Time (LST), and submitted to the VLA Observation Scheduling Tool (OST) to be queued up for observation by the array according to weather and scheduling priority. To facilitate this for VLASS, the sky is divided into 899 tiles roughly $10^\circ \times 4^\circ$ in size, each corresponding to an observing duration of ≈ 2 hr. To reduce calibration overheads, these tiles are combined (in groups of 2, 3, or 4 tiles) to make scheduling blocks of 4–8 hr duration. The tiles are arranged in 32 tiers in Declination, from South to North, and are indexed from one in order of increasing RA. The tile names give the tier and the tile number within that tier. For example, the tile named T14t05 is the 5th tile in the 14th tier. See VLASS Memos #4 and #7 for details.

Provision is made to accommodate the possibility that time critical, triggered, target of opportunity (ToO) programs may

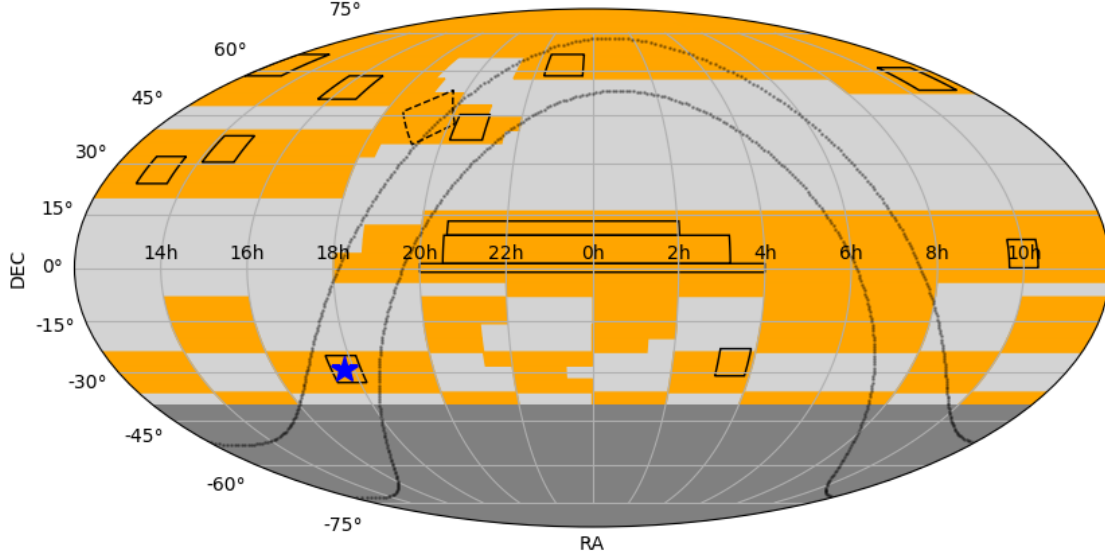


Figure 8. Sky coverage for the first and second half of each VLASS epoch. Orange-shaded areas indicate the regions to be observed in the first half of each VLASS epoch. The light gray areas will be observed in the second half of each epoch. Solid black outlines show the VLASS Pilot Survey fields. The dashed-outline region indicates the Kepler field. The Galactic center is indicated by the blue star; the Galactic plane ($\pm 10^\circ$ galactic latitude) is indicated by the dotted curves. The dark grey below Declination -40° is outside the VLASS coverage area.

interrupt a VLASS observation, by observing all essential calibrations at the start of an SB if at all possible; there is currently no mechanical provision in the way schedules are constructed or executed for the suspension and restarting of schedule blocks on the VLA. The possibility of SB interrupts is minimized by having the majority of VLASS SBs no more than ~ 4 hr in length. With this block length, ToO observations can generally be fitted into the regular dynamic schedule between VLASS blocks. No VLASS SBs had to be interrupted to support ToOs during VLASS Epoch 1 observations.

4.1.3. Mosaic Observing Pattern

In order to carry out VLASS, the sky is observed using a large number of mosaicked pointings of the VLA. At 2–4 GHz, the VLA has a field of view given by the primary beam response of the 25-meter diameter antennas (EVLA Memo #195). In order to optimally cover a given sky area in an efficient manner, the array conducts raster scans using OTFM. In OTFM there is very little move-and-settle overhead as the array is in continuous motion over a row of a raster with only a short startup (~ 5 – 10 sec) at the start of a row. The separation of scan rows is chosen by the desire to obtain uniformity in sensitivity. The VLASS row separation of $7.2'$ results in a uniformity within 0.28% at 3 GHz and 5.1% at 3.95 GHz. To reach the survey speed goal of 23.83 square

degrees per hour (excluding calibration overheads), a scan speed of $\approx 3.31 \text{ arcmin s}^{-1}$ is used. During OTFM, the phase center is discretely sampled often enough (more than ten times across the beam) to ensure minimal ($< 1\%$) smearing of the response. In the case of VLASS, the phase center of the array is discretely stepped every 0.9 seconds, i.e., every $0.3'$. Short correlator “dump” times are required to sample these phase centers (0.45 seconds for VLASS). The scan rate is decreased at very low declinations (by 5% at $\delta = -20^\circ$ to 74% at $\delta = -40^\circ$) in order to increase the time-on-sky at low declinations to account for the increased system temperatures when pointing close to the horizon due to ground pickup.

4.2. Data processing and products

VLASS data products are broken down into classes of “Basic”, “Enhanced”, and “Commensal”. The Basic Data Products (BDPs) for VLASS are those produced by NRAO using standard data processing systems or modest extensions thereof. The BDPs have been defined to be a set of products from which the community can derive the science from the survey, requiring little post-processing on the user’s part. Enhanced Data Products (EDPs), and Enhanced Data Services (EDSs), require extra resources or involve specialized domain expertise, and are defined and produced by community members. Commensal data products are produced

by dedicated backend instruments that operate alongside ongoing VLASS observations (see Section 5).

In order to keep up with the observing, the VLASS BDP Pipeline must process and image the data at a rate commensurate with the observing rate. This is effected through the parallel production of $1^\circ \times 1^\circ$ images on NRAO-based cluster nodes or externally provided systems (e.g., through XSEDE; Towns et al. 2014).

4.2.1. Basic Data Products

The BDPs of VLASS consist of

- Raw visibility data;
- Calibration products and a process to generate calibrated data;
- Quick Look continuum images;
- Single Epoch images, and image cubes in Stokes I,Q,U, coarsely sampled in frequency;
- Single Epoch component catalogs;
- Cumulative VLASS images, and image cubes in Stokes I,Q,U with both coarse and fine sampling in frequency for epoch 2 and following, and
- Cumulative VLASS component catalogs.

The resources for processing, curating, and serving the BDPs are provided by NRAO. Teams led by NRAO carry out the activities required for the processing and Quality Assurance (QA) of the products. Table 2 summarizes the components of each data product and the timescale for their production. Specific details of individual BDP are described below.

Raw Visibility Data: The raw visibility data for VLASS are stored in the standard VLA archive. These data are available immediately after observation, with no proprietary period.

Calibration Data: the VLASS Calibration determines, on the basis of *a priori* factors and from observations of standard calibration sources, the corrections to the raw data amplitude, phase, and visibility weights to be applied to the data. This process also determines the flags that are needed to remove bad data due to instrumental faults, RFI, and other causes of error. When applied to the VLASS data, this calibration allows the production of images in the next processing stage. This process only includes the derivation of the complex gain and bandpass calibration factors known through previous measurements or determined by the observations of calibrators and transferred to the VLASS target observations. Details of the calibrations applied may be found in Section 6.

VLASS data are processed using a modified version of the standard CASA-based VLA calibration pipeline, initially

developed and tested on the VLASS pilot observations. Once the pipeline has run, and after QA, users can gain access to the calibrated data from the Archive. Archiving the calibrated visibility data themselves would double the required data storage, which is too costly. Instead, the calibration products are archived as BDPs, and the archive maintains scripts to regenerate the calibrated dataset via a request through the NRAO archive interface.

Quick Look Images: the identification of transient and variable objects is a key VLASS science goal. Certain populations of transients will evolve on short time scales (\sim days) and can only be robustly identified through rapid follow-up VLA observations soon after detection in VLASS data. These include Galactic transients (e.g., stellar flares) and relativistic transients viewed on-axis or close to on-axis (e.g., GRBs, blazar flares). For this reason, Quick Look images are produced as soon as possible after data acquisition, with the goal that they be produced within two weeks of observation. The Quick Look Stokes I images, averaged over the entire band, and a corresponding rms sensitivity (noise) image are produced using the standard CASA mosaicking algorithm. They are then made available via the web either from a webserver or the NRAO archive. The simple imaging algorithms used to generate the Quick Look images on a short timescale result in relatively poor positional and flux density accuracies when compared to pointed observations of the same fields. The properties of the Quick Look images are described in VLASS Memo #13.

Single Epoch Images: these fully calibrated and quality-assured images will be produced using a specialized CASA-based wide-field Imaging Pipeline developed by NRAO staff. Data products will comprise Stokes I continuum images (averaged over the band), images of the rms noise, spectral index and uncertainty, and spectral image cubes with 128 MHz channels for Stokes IQU. The planes of these cubes will be stored with their default (native resolution) beams for their respective frequencies; scripts will be provided to convolve these images to the lowest common resolution ($\approx 3''.5$). Currently, details of the processes and algorithms to generate the Single Epoch images are still being finalized. They will be detailed in an upcoming VLASS Memo.

Single Epoch Component Catalogs: the main image analysis task for VLASS is the production of the component catalogs for the Single Epoch images. Studies of the performance of different radio continuum image source finders include Hancock et al. (2012) and Hopkins et al. (2015), which consider the available options in the context of ASKAP. Also available as a proof of concept is the source finding carried out for the VLA Stripe-82 surveys by Mooley et al. (2016). There is also a comprehensive discussion by Mooley et al. (2013) on the analysis of archival

Table 2. VLASS Basic Data Products

Data Product	Components	Production Timescale
Raw Visibility Data	Standard VLA data	Immediate
Calibrated Data	Initial Calibration and Flagging Tables	1 week after observation (initial), 3 months after observation (final)
	Final Calibration and Flagging Tables	
	Pipeline Control Scripts	
	Flagging Commands	
Quick Look Images	QA Reports & Plots	2 weeks after observation
	Stokes I Images	
Single Epoch Images	Stokes I Noise Images	6 mos. I wideband continuum, 12 months IQU cubes*
	Stokes I continuum images, & noise images	
	Stokes IQU coarse (128 MHz) spectral cubes, & noise cubes	
	Stokes I Spectral Index, and uncertainty images (generated using Multi Frequency Synthesis)	
Single Epoch Component Catalog	Component Position and uncertainty (centroid of Stokes I emission)	with Single Epoch Images
	Peak Brightness in Stokes IQU & uncertainty	
	Flux Density in Stokes IQU & uncertainty	
	Spectral Index at Peak Brightness (I) & uncertainty	
	Integrated Spectral Index (I) & uncertainty	
	Peak IQU spectrum (bright sources)	
Cumulative VLASS Images	Basic Shape information for I	12 months I wideband continuum, 16 months IQU cubes
	Stokes I continuum images, & noise images	
	Tapered Stokes I continuum images, & noise images	
	Stokes IQU coarse (128 MHz) spectral cubes, & noise cubes	
	Stokes IQU fine (16 MHz) spectral cubes, & noise cubes	
Cumulative VLASS Component Catalog	Stokes I Spectral Index, Curvature, and uncertainty images	with Cumulative VLASS Images
	Component Position and uncertainty (centroid of Stokes I emission)	
	Peak Brightness in Stokes IQU & uncertainty	
	Flux Density in Stokes IQU & uncertainty	
	Spectral Index, Curvature at Peak Brightness (Stokes I) and uncertainty	
	Peak IQU spectrum (bright sources)	
	Basic Shape information for I	

*The Single Epoch products will be delayed for epoch 1.

VLA ECDFS multi-epoch data. We tested several different source detection and characterization software packages using early VLASS data. We found that pyBDSF (Mohan & Rafferty 2015) provided the best results overall for the VLASS dataset, in particular, its ability to reject false detections from sidelobes was found to be superior to that of other codes. Inclusion of the spectral index images and polarimetric images from VLASS requires some extensions to the basic source finder. More advanced catalogs, including multi-wavelength matching, will be made as part of the EDPs. Details of the Single Epoch component catalogs and tests of different source finding algorithms will be published in a future VLASS Memo.

Cumulative VLASS Images: the Cumulative Images will be produced using similar algorithms to those of the Single Epoch Images, but using all available epochs; these will serve as the final set of VLASS images. The products will comprise Stokes I continuum images (averaged over the band),

images of the rms noise, spectral index, spectral curvature and associated uncertainty maps, and spectral image cubes with 128 MHz channels for Stokes IQU, as for Single Epoch. In addition, there will be finely-sampled (16 MHz channel) cubes for the brightest sources, providing a significantly better Faraday transfer function than the Single Epoch cubes (Figure 9). Also, a set of wideband Stokes I continuum, spectral index, spectral curvature and associated uncertainty maps will be derived using a uv -taper to improve the surface brightness sensitivity for extended emission (resolution $\approx 7''.5$). (Spatial scales up to $\sim 20''$ are well-sampled by the VLA at 3 GHz in the B-configuration for the observing mode used by the survey.) Strongly variable sources will be taken into account during the imaging for all Cumulative data products.

Cumulative VLASS Component Catalog: the Cumulative Component Catalog will be produced in a manner similar to the Single Epoch Component Catalog, and will serve as the reference catalog for VLASS.

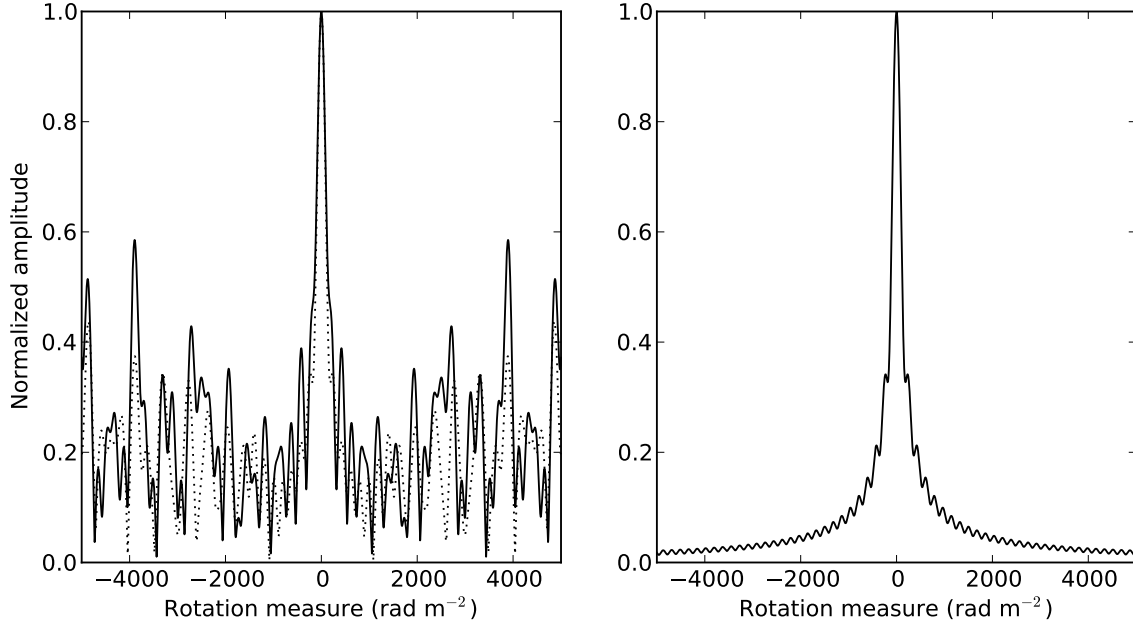


Figure 9. The Faraday depth response function. The dotted line in the left-hand plot shows the response for equally-weighted channels in the VLASS BDP “coarse” cubes (128 MHz channel width), the solid line shows the response weighted by the channel noise in a typical Observation from the VLASS Pilot Survey in Stripe 82. The right-hand plot shows the response for the VLASS BDP “fine” cubes (16 MHz channel width), assuming equally weighted channels. In all cases, the available non-RFI contaminated frequencies at 2–4 GHz provides a FWHM response of $\sim 200 \text{ rad m}^{-2}$, but the fine cubes have a much better response to high rotation measures ($> 1000 \text{ rad m}^{-2}$).

4.2.2. Enhanced Data Products

The EDPs require additional resource and/or more domain expertise, and so are defined and produced by the VLASS community outside NRAO. These data products require external support to define, produce, and validate.

The CIRADA Project. Many of the EDPs and EDSs will be provided as part of the Canadian Initiative for Radio Astronomy Data Analysis (CIRADA; <http://cirada.org>) a program led by a consortium of Canadian universities, in partnership with NRAO and the Canadian Astronomy Data Centre (CADIC), and funded by the Canada Foundation for Innovation. CIRADA will produce EDPs for VLASS as follows:

- Multi-wavelength catalogues that provide optical spectroscopy/redshifts and morphology, infrared photometry and X-ray luminosities for each detected radio object based on available wide-area, multi-wavelength surveys;
- Identification of clustered detected components into single physically associated radio sources;
- Average level of Faraday rotation measure for each detected source;
- Decomposition of interfering Faraday components in the same source using rotation measure synthesis;
- Cubes of Faraday depth across extended sources;
- Automated quality assurance for BDP images, to identify and correct common image artifacts that could otherwise act as false positives in searches for radio transients;
- Source extraction and catalog generation, featuring rapid and robust identification of variable and transient objects;
- The VLASS Transient Marshal (VTM), a web interface incorporating existing multi-wavelength data, allowing users to filter and identify transients relevant to their own interests;
- Transient alerts via VOEvent (<http://bit.ly/voevent>) which will be automatically transmitted to the wider astronomical community as soon as possible after completion of the associated VLASS observations, including a link to the corresponding VTM entry.

The CIRADA EDPs and EDSs will use software operating on computing infrastructure provided by Compute Canada. The core areas of work will be:

- Advanced continuum software development. This EDP captures all features of the imaging data, including multi-wavelength properties and spectral slopes of sources across the VLASS band.
- Transient Source Identification Software Development: CIRADA will develop software that automatically assesses data quality and that identifies time-variable sources on time scales from milliseconds to years. This EDP also requires the creation of an alert service and event list for all variable and transient objects.
- Faraday Rotation and Rotation Measure Synthesis: CIRADA will make Faraday rotation and rotation measure synthesis maps of all polarized sources detected in VLASS.
- Cross-Matched Database: CIRADA will develop a project-wide database structure that supports high-performance, distributed queries. The database will integrate data from other wavebands (e.g., optical, X-ray) and allow for cross-matching of EDPs with other astronomy surveys. CIRADA will adapt existing remote visualization solutions (such as CARTA, Rosolowsky et al. 2015) to provide responsive, in-browser visualization databases with $> 10^7$ rows.
- Advanced Analytics, Data Science and Visualisation: CIRADA will build custom interfaces to the cross-matched database, supporting queries based on source type using a Bayesian classification framework. This will also require data mining and visualization tools that exploit the EDPs.
- Long-term Archiving and Services: CIRADA will provide enhanced access to and long-term archiving of science-ready data products. The Canadian Astronomy Data Centre (CADC) is already serving the VLASS Quick Look images via its standard interface, including an image cutout service (<https://www.cadc-ccda.hia-ihc.nrc-cnrc.gc.ca/en/search/>).

Other initiatives. The South African Inter-University Institute for Data Intensive Astronomy (IDIA (<http://idia.ac.za>); Simmonds et al. 2016) will play a strong role in the production of polarization products and visualization capabilities, in collaboration with CIRADA.

Other areas for EDPs will undoubtedly become apparent. Criteria for including EDPs in the VLASS archive will be relevance to the VLASS science case and cost of curating and serving the products.

4.3. Archiving and Data Distribution

A comprehensive survey like VLASS produces a diverse set of data products and requires a full-featured archive to serve

it to the public. Currently, products are served from a website hosted by the NRAO. This will be replaced in late 2019 by an archive site that will feature basic search capabilities for all the BDPs (raw data, calibration products, catalogs and image products).

EDPs will be made available through the NRAO archive as resources permit. The VLASS products, either in basic form, or further processed, may also be made available via alternative EDSs (see Section 4.2.2). EDSs are required for the curation and distribution of EDPs that fall beyond the capabilities of NRAO to support.

5. COMMENSAL EXPERIMENTS

Independently of VLASS, two groups are developing new instruments dedicated to analyzing VLA data in parallel with all ongoing observations (called “commensal” observing). The *realfast* (Law et al. 2018b) and VLITE (Clarke et al. 2016) commensal projects will enhance the scientific productivity of VLASS by performing fast transient searches and low-frequency observing, respectively.

5.1. *Realfast*

realfast is a commensal fast transient survey system at the VLA. The VLA correlator has observing modes that generate fast-sampled visibilities at a rate on the order of one TeraByte per hour. However, this data rate is far too large to sustainably record and analyze. *realfast* solves this problem by using a dedicated compute cluster for real-time detection of candidate transients.

As a commensal system, primary observers like the VLASS team configure their observations and retrieve their data from the archive as usual. The VLA observing system will configure the correlator to send a fast-sampled copy of visibilities (sampled every 5-20 ms) to the *realfast* cluster, which dedisperses and images to search for transients over the full field of view (Law 2017). The VLA image 1σ sensitivity is 5 mJy in 5 ms for observations from 1 to 5 GHz with 1 GHz of bandwidth.

realfast started development in late 2016 with support from the National Science Foundation and will begin science observing in the summer of 2019. The initial deployment used existing CPUs in the VLA correlator, but the full system uses a new, dedicated GPU cluster. Candidate transient detections made during VLASS will be integrated with transient alert and other VLASS data aggregation services. The raw visibility data, calibration products, and search software will be openly available to the community (<http://realfast.io>).

5.2. The VLASS Commensal Sky Survey

The VLITE system uses the VLA low band receivers located near the prime focus to observe simultaneously with all regular Cassegrain observations. Developed with funding

from the US Naval Research Laboratory (NRL), VLITE uses splitters, dedicated samplers and spare fibers to make available 64 MHz of bandwidth covering 320–384 MHz from the new broadband low frequency receivers (Clarke et al. 2011) to a custom-designed real-time DiFX correlator producing full polarization products (Deller et al. 2007). It operates at a spectral resolution of 100 kHz and temporal resolution of 2 s.

VLITE became operational in November of 2014. During its initial 2.5 years of operation, VLITE recorded more than 15,800 hours of data using 10 antennas. In 2016, VLITE’s DiFX correlator was modified to allow data recording during OTFM to provide support to VLASS. In 2017, VLITE was expanded to 16 antennas, which more than doubles the number of baselines. VLITE also has an independent fast transient GPU-based processing system which has recently begun operation. This system is capable of detecting fast radio bursts if the dispersion measure is less than 1000 pc cm³.

Standard VLITE data are processed for astrophysics use and transient searches with a two day delay using an automated pipeline based on the Obit data reduction package (Cotton 2008). Pipeline astrophysical data products include science-ready images, calibrated uv data and source catalogs. The VLASS data are processed separately to allow survey-specific processing choices, such as common restoring beams. The main VLITE data products are three degree square science-ready mosaics; however calibrated uv-data and source catalogs are also kept.

VLITE was operational for the VLASS pilot observations during the summer of 2016 using ten antennas, and initial processing of the data resulted in mosaics with noise levels of ~6 mJy/beam with a resolution of ~20 arcseconds. During the first epoch of survey observations in 2017, VLITE operated with 15 to 16 antennas. Automated data processing is underway, and initial mosaics have noise levels at roughly 3 mJy/beam and resolutions of ~12–25 arcseconds. Observations from the VLITE for VLASS Commensal Sky Survey (VCSS), when combined with the VLASS data, offer instantaneous spectra for point sources across the sky, can serve as an independent verification of any transient events, and provide information on extended source structures. We highlight the science potential of VCSS in Figure 10 where we show two examples of sources seen in NVSS, VCSS and VLASS. The top row highlights the resolution of VCSS over NVSS for separating components of a double-double radio galaxy, enabling a more direct spectral comparison to VLASS. In the bottom row, VCSS reveals the structure of a steep spectrum source in a galaxy cluster that is unresolved in NVSS and not detected by VLASS. This shows that VCSS will be of great value for detecting diffuse objects (with scale sizes $\gtrsim 30$ arcsec) that will be resolved out by VLASS. VCSS is also more sensitive to ultra-steep spectrum ($\alpha < -1.8$) sources than VLASS.

NRL archives all raw and calibrated VLITE data and provides it to the community for scientific use (details at <https://go.nrao.edu/vlite>). VCSS data products may eventually be served from the NRAO archive. The continued expansion of the VLITE system into a full 27 antenna wideband commensal system, called the LOw Band Observatory (LOBO), may occur during the VLASS program.

6. CALIBRATION OF VLASS DATA

6.1. Overview

Calibration of VLASS uses a modified version of the CASA calibration pipeline that is designed for ALMA and VLA data (Shinnaga et al. 2015). The VLASS calibration pipeline is now fairly mature, and unlikely to change significantly over the course of the project, so we describe it here. Imaging of VLASS data is still under development. Quick Look images are now available for the pilot and first epoch, and are characterized in VLASS Memo 13.³ The Single Epoch and Cumulative imaging pipelines are yet to be finalized, and will be detailed in future VLASS publications.

The steps in the calibration pipeline follow standard practice in radio interferometry. To begin, the data are flagged for known issues caught by on-line systems during the observations. Then, the model of the flux density calibrator is obtained. (The primary flux density calibrator used is 3C 286, though when this is not available other common calibrators such as 3C 48 or 3C 138 are used.) Standard calibrations for antenna gain curves, atmospheric opacity and antenna positions are then made. Any compression of the data due to RFI is corrected for using the switched power information (Section 6.2). First-pass calibration tables are then made for the delay, bandpass and gain calibrations. RFI and bad data on the bandpass and delay calibrators are flagged. The calibrations are then recalculated, and then a further iteration of flagging on the calibrators, this time including the gain calibrators, is performed. The flux densities and spectral indices of all calibrators for which prior models are not available are obtained, and the final set of standard calibrations is made and applied. At this point, the polarization calibration (Section 6.3) is derived, and any outliers in the calibration tables are flagged before they are applied to the data. One more round of data flagging is then carried out, to flag the target data. Finally, the weights of the visibilities are reset according to the standard deviation in each spectral window. This often helps with reducing the effects of low level RFI that are missed by the earlier flagging.

6.2. Gain compression

RFI can lead to significant gain compression (e.g., Mooley et al. 2016), especially in regions of the sky dominated by

³ Draft available at <https://go.nrao.edu/vlass-memo013>

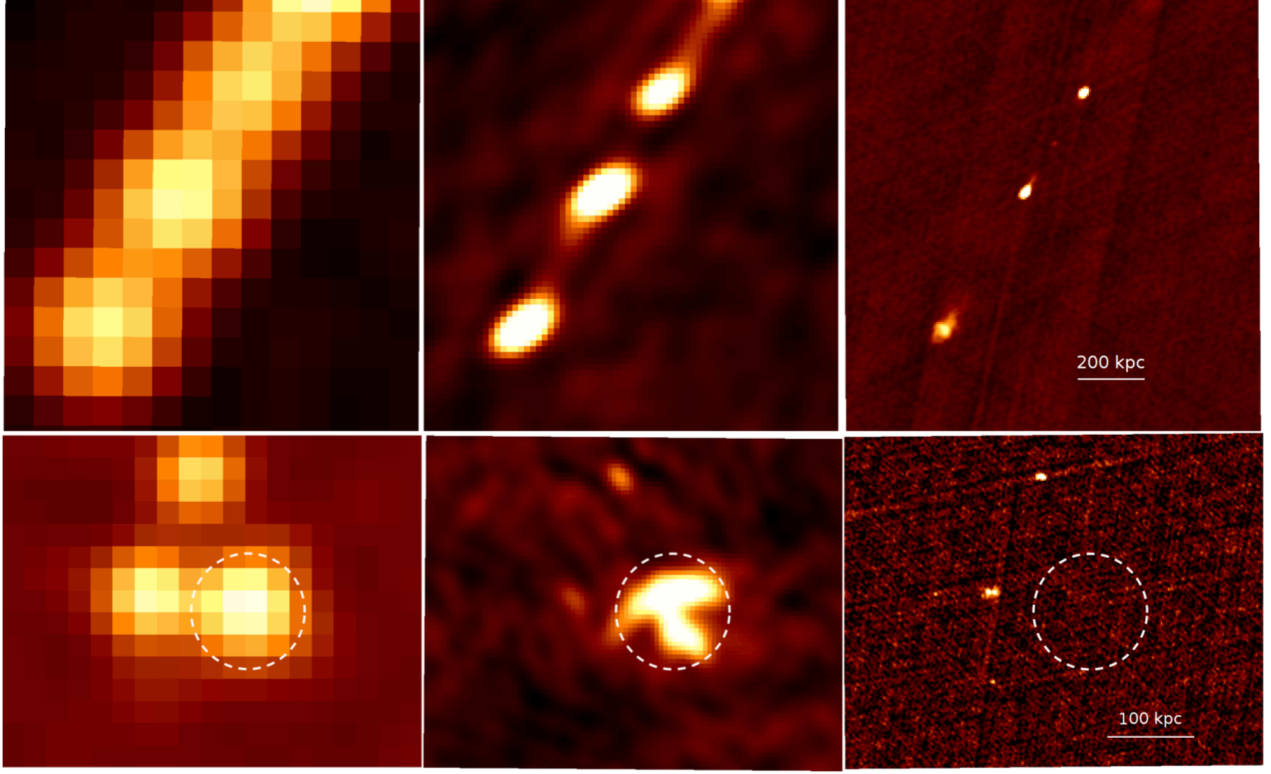


Figure 10. VCSS will add the detection of low surface brightness steep spectrum emission to the VLASS dataset. The top row shows the $z = 0.519$ double-double radio galaxy B1834+620 in NVSS (left, peak flux density = $240 \text{ mJy beam}^{-1}$), the VCSS epoch 1 first look image (middle, peak flux density = $660 \text{ mJy beam}^{-1}$, beam= $23''.13 \times 13''.6$, at a position angle of -58°) and the VLASS first epoch Quick Look image (right, peak flux density = 38 mJy/beam , beam= $2''.88 \times 2''.13$, at a position angle of -59°). The white scale bar on VLASS image shows 200 kpc at the redshift of the source. The bottom row shows the field near the center of the galaxy cluster Abell 566 ($z = 0.097$) in NVSS (left, peak flux density= 20 mJy/beam), VCSS epoch 1 (middle, peak flux density = 122 mJy/beam , beam= $18''.32 \times 12''.20$, at a position angle of 26°), and the VLASS first epoch Quick Look image (right, peak flux density = 4.3 mJy/beam , beam= $2''.74 \times 2''.14$, at a position angle of 40°). The white scale bar on the VLASS image shows 100 kpc at the redshift of the galaxy cluster. The diffuse halo source (circled) is detected in NVSS and VCSS, but not in VLASS.

satellite emission. This can lead to erroneous flux calibration, and, in particular, some parts of the survey near the “Clarke Belt” (corresponding to the apparent Declination ($\approx -5.5^\circ$) of geostationary satellites as seen from the VLA) are badly affected by this. We therefore implemented a correction that uses the switched power data (EVLA Memo #145). The switched power adds a known power P_{cal} for half the time, switched in and out at a rate of 10 Hz. By taking the difference of the power when the switched power is on (P_{on}) to that when it is off (P_{off}), the system gain can be estimated as $G = (P_{\text{on}} - P_{\text{off}})/P_{\text{cal}}$ (assuming the other contributions to the power, including the RFI, remain steady on this timescale). This correction was applied to about 30% of the scheduling blocks.

This allows calibration of the gain as a function of time, and thus correction of the gain compression (when it affects the data by about 30% or less). Careful scheduling ensured that gain compression levels of $>30\%$ were only seen in $< 0.1\%$ of the data (see EVLA Memo #206).

6.3. Polarization calibration

VLASS is observed with full polarization calibration. During VLASS1.1, leakage terms were derived either from observations of a point source over a large range of parallactic angle ($\gtrsim 60^\circ$), or via observations of a source known to be unpolarized. From VLASS1.2 onwards only observations of an unpolarized calibrator will be used, in order to simplify scheduling and calibration. (Pilot observations were also observed with polarization calibrators where possible, but few observations have a large enough range in parallactic angle to calibrate well.) The polarization position angle is determined using observations of the primary calibrator 3C286 (or, if this is not available, 3C138 or J1800+7828). It should be noted that all the calibration is performed on-axis, and that the quality of the polarization calibration of the images will deteriorate away from the phase centers. The level of deterioration will be assessed prior to the generation of Single Epoch polarization products, and may result in a

decision being made to correct it using polarization-dependent primary beams.

Commissioning of VLASS polarization calibration revealed an unexpected limitation in determining accurate polarization position angles, described in EVLA Memo #205. A residual variation in circular polarization cross-hand phases that depends on parallactic angle is observed, which translates to an increased uncertainty of the polarization position angles. Unfortunately, this does not seem to be correctable. The absolute polarization position angles thus cannot be assumed reliable to better than $\sim 5^\circ$. This does not affect the accuracy of relative polarization position angles, and is thus not expected to significantly degrade the ability to determine rotation measures within the VLASS data itself, however, it will affect comparisons with other datasets.

The data products are produced in Stokes parameters I, Q and U. Although circular polarization (Stokes V) is, in principle, also calibrated, the calibration systematics in Stokes V are much larger and it is not considered usable for science. The width of the Faraday transfer function (when the full 2–4 GHz bandwidth is available) is 200 rad m^{-2} (Figure 9), and the uncertainty in the rotation measure is $\approx 200/(2 \cdot \text{SNR}) \text{ rad m}^{-2}$. The uncertainty level was confirmed by measuring the standard deviation of fitted rotation measures to bright point sources with simple Faraday screens in the Stripe 82 data from the pilot survey.

6.4. Calibration Performance

6.4.1. The flux density scale

Several phase calibrators were observed multiple times during VLASS 1.1, as they were used to calibrate more than one tile. These can be used to give an estimate of the reproducibility of the flux density calibration (if the phase calibrator is not variable). Two of these that appeared not to be variable, J0318+1628 and J1326+3154, were selected to check the stability of the flux calibration, and the accuracy of the correction for gain compression. The RMS about the mean is 1.9% for J0318+1628 (26 observations) and 0.7% for J1326+3154 (42 observations), indicating that the flux calibration consistency is very good (Figure 11). Note, however, that, as discussed in VLASS Memo #13, the Quick Look images do not achieve this level of flux density accuracy due to the imaging algorithm used.

6.4.2. Polarization

Early polarimetry data from the first epoch of VLASS are shown in Figures 12 and 13. These show VLASS polarimetric data on 3C402 (also shown in total intensity in Figure 7) compared to split-band data from NVSS (Taylor et al. 2009). The much higher angular resolution of VLASS enables variations in the Faraday Rotation to be seen that were not apparent in the NVSS data. Overall, the rotation

measures (RM) from NVSS and VLASS agree well. For the Northern component (3C402N), we obtain -1.8 rad m^{-2} from NVSS and -1.6 rad m^{-2} (with a scatter of 30 rad m^{-2}) from VLASS (variations in the RM in the NVSS image are not meaningful as the entire source is contained within one beam). For the southern component (3C402S) we obtain -28 rad m^{-2} from NVSS and -33 rad m^{-2} (with a scatter of 25 rad m^{-2}) from VLASS. As expected, given the much reduced beam depolarization, the fractional polarization is much higher in the VLASS images. 3C402N is 6.7% polarized in NVSS, compared to 13% (with a scatter of 8%) from VLASS, and for 3C402S is 1.7% polarized in NVSS compared to 11% (with a scatter of 8%) from VLASS.

7. EDUCATION AND OUTREACH

Education, outreach and communication have been included in the planning for VLASS from the outset and are an integral part of the survey. Information for scientists and the public about VLASS and access to available material are disseminated via multiple platforms (social and print media, presentations, etc.) and include links to the VLASS web page at vlass.org and to NRAO Science web pages. These provide access to the catalogues and data products for astronomers, whether expert radio astronomers or not.

Formal and informal education and public outreach (EPO) activities, e.g., blogs, images and community events, are listed at vlass.org. Our emphasis is on the development of programs that are evidence-based, i.e., are firmly rooted in education research and evaluation methods, and involve both astronomers and educators in all phases of the project. Specific programs may be new or leverage already existing ones reflecting the interests of scientists and educators. Therefore we encourage all scientists who use VLASS data and are interested in engaging with the public to contact epo@vlass.org. Examples of the types of activities that will become relevant after the first epoch of data collection are citizen science research, engaging with non-professional science societies such as local astronomy clubs and teacher training programs, and participating in lecture circuits.

As an example of one of our VLASS EPO activities, in the first year of VLASS operations we held two VLASS data visualization workshops. The goal of these activities was for the participants to learn how to produce images from radio observations that balance aesthetic considerations with scientific information. Participants learned techniques for constructing images that engage the viewer such that they turn to resources to learn more about the astronomy targets. While the resultant images are intended to explain the science, the *process* of creating public images is exploratory, and can lead to scientific discoveries. Many journal examples show that the clarity of the image is appealing for professional articles as well.

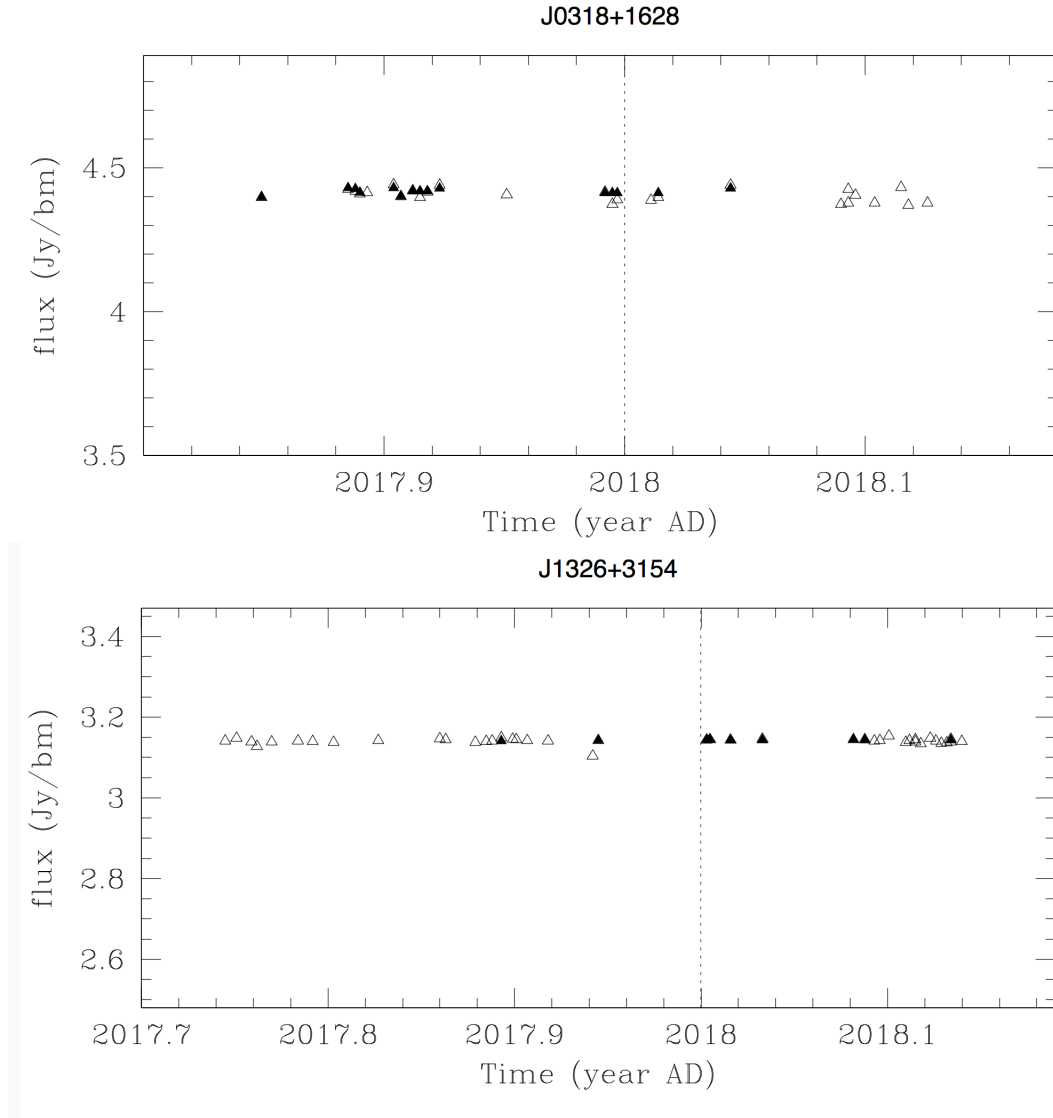


Figure 11. Two phase calibrators, J0318+1628 and J1326+3154, that showed little variability when observed multiple times during the first half of the first epoch. Open triangles represent observations that did not need to be corrected for gain compression, filled triangles correspond to observations that had the correction applied.

We describe the first workshop, held 2018 July 11, since it introduces to radio astronomers two departures from usual practices. This was the first time the instructor for this workshop was remote and instructing via an online video application (Zoom). The 20 participants, consisting of summer interns, postdocs, faculty and staff, had low through medium imaging skill levels. Nevertheless the experiment was a success, in part due to the assistance of a moderator, who monitored the chat dialogs and progress.

A preparatory lecture introduced the participants to the methods of visualization, human perception, visual grammar, color harmonies and conventions expected in public outreach images. (Information on image-making techniques are provided in [English \(2017\)](#).) Subsequently, participants

worked collaboratively in small teams for enhanced learning via social engagement. They used Quick Look VLASS images of the radio source 4C 48.49 divided into 4 subbands, and the free GNU Image Manipulation Package (GIMP). Rather than assigning different colors to a single parameter, they assigned a color to each of the subbands. This second departure from a convention in radio astronomy, allowed participants to reveal the changes in spectral index across the target without using contour-like plots. During the critique portion of the workshop the participants considered whether the color harmony they chose communicated the science they wished to highlight to a layperson. Although each team used the same data, the resultant draft images were vivid and diverse. Those from a second VLASS imaging workshop are shown in Figure 14.

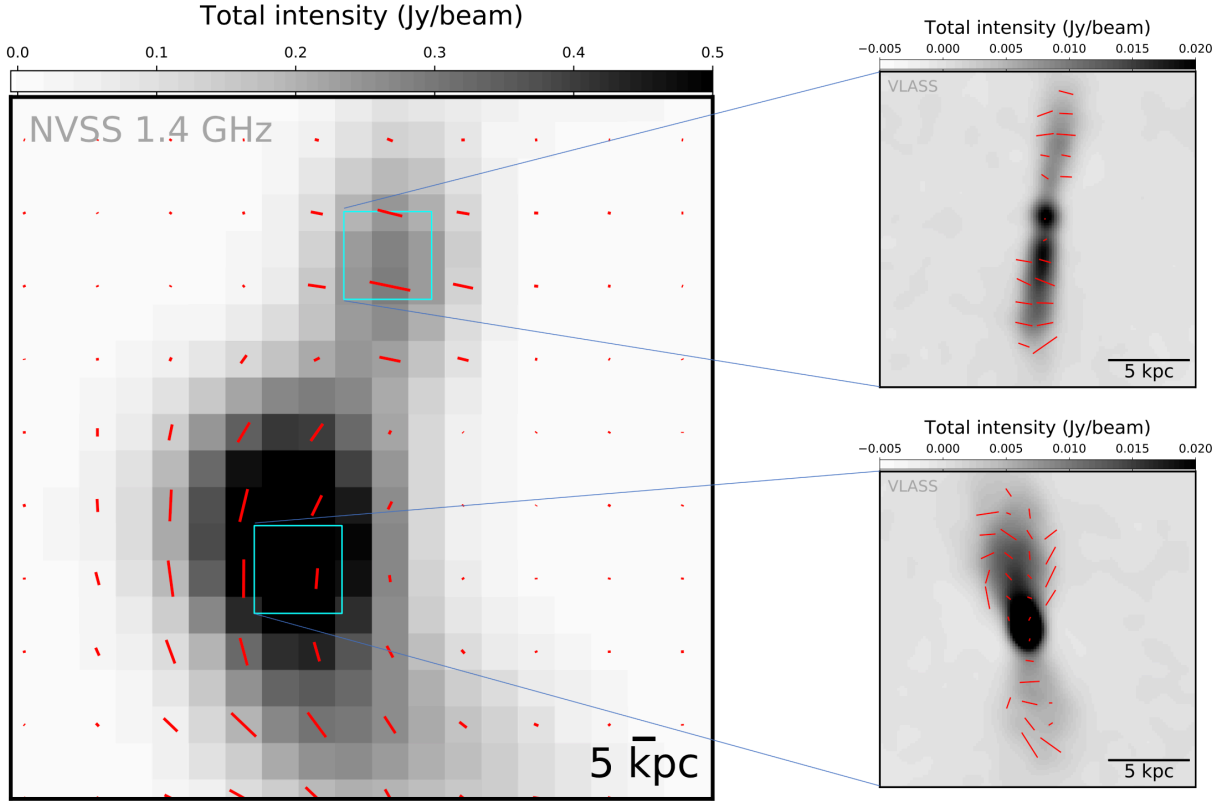


Figure 12. Polarization vectors superposed on total intensity images of the radio source 3C402. On the left is the NVSS data, on the right are the two active radio galaxies 3C402N and 3C402S that together make up the NVSS source. The NVSS total intensity image peaks at 0.71 Jy/beam. In the NVSS image, the lengths of the polarization vectors are scaled such that a 5 kpc long vector (the size of the scale bar) corresponds to a fractional polarization of 1% in the low-band (1365 MHz) polarization image of [Taylor et al. \(2009\)](#). In the VLASS images, 5 kpc corresponds to a fractional polarization of 86%. The beam of the NVSS image is $64'' \times 54''$ at position angle 1° ; the beam of the VLASS image is $2''.9 \times 2''.6$ at position angle 19° .

VLASS imaging data and products are also used in Science, Technology, Engineering and Math (STEM) programs for students. The NRAO National and International Non-traditional Exchange program (NINE) aims to broaden participation of under-represented groups in radio astronomy. VLASS imaging data products are used as a means to expose students to Python and data mining. Participants in NINE workshops bring the computing and development skills back to their home institutions to lead tutorials with fellow students and faculty (<https://go.nrao.edu/nine>). Figure 15 shows the results from a NINE workshop at the University of the West Indies, St. Augustine.

8. SUMMARY

The VLA Sky Survey is a radio survey with a unique combination of high ($2''.5$) resolution, sensitivity (a goal of $70 \mu\text{Jy rms}$), full linear Stokes polarimetry, time domain

coverage, and wide bandwidth (between 2 and 4 GHz) over 82% of the sky. It is the first large-scale synoptic radio survey ever undertaken, and will enable a science program that will benefit the entire astronomical community, open new parts of scientific discovery space, and keep its legacy value for decades to come. It is a fitting complement to large surveys in the optical and infrared domains that are either currently underway, or planned for the next decade.

A pilot survey was undertaken in the summer of 2016, the first half of the first epoch was observed from 2017 September to 2018 February, and the second half of the first epoch from 2019 February to 2019 July. These observations successfully demonstrated the feasibility of the survey, and indicate that it will ultimately reach the goals described in this paper. Quick Look image products are now available for these early observations, and, although their use for science should be subject to strong caveats regarding the positional

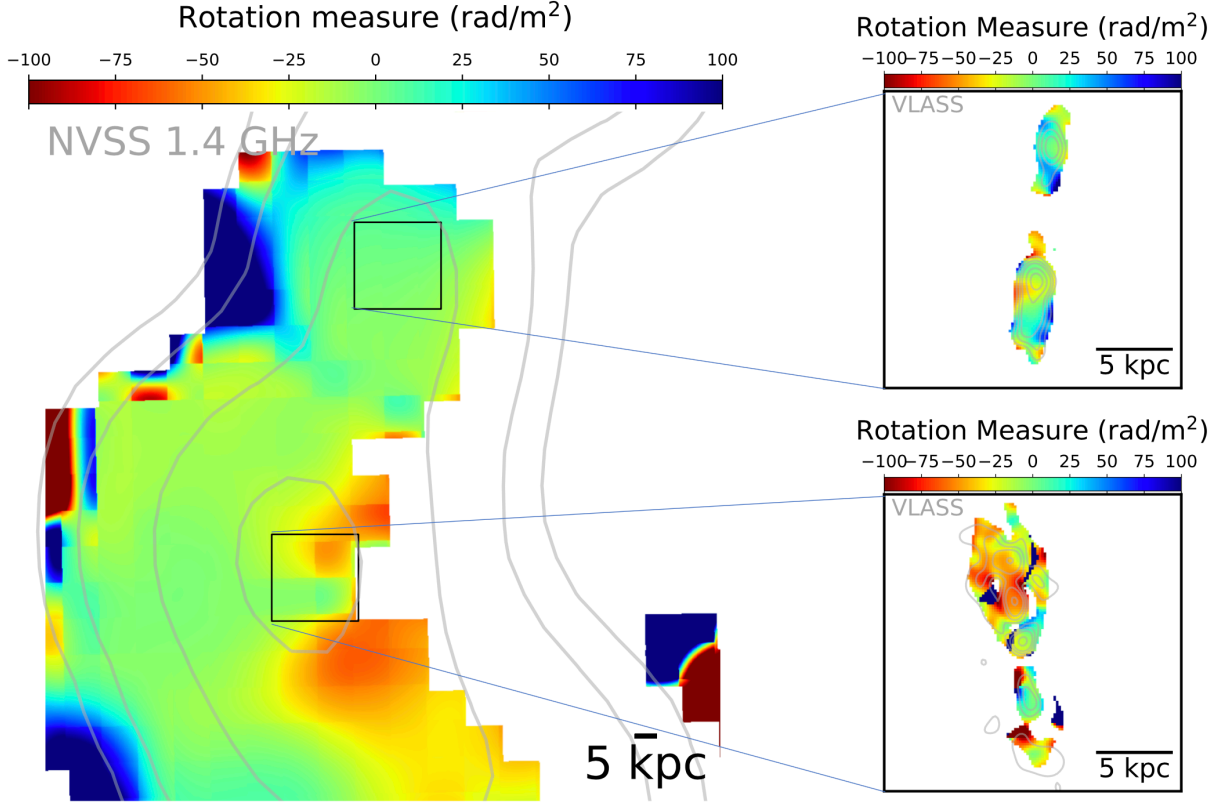


Figure 13. Rotation measure images for 3C402. On the left is the NVSS image, using reprocessed data from [Taylor et al. \(2009\)](#). Contours are Stokes I flux density (levels 9, 30, 150, 450 and 840 mJy/beam). On the right are shown 3C402N and 3C402S in VLASS, with contours of polarized flux density (levels 0.8, 1.2, 1.6, 2.4, 3.2 Jy/beam).

and flux density accuracy, they have already proven to be useful for some scientific applications. A full suite of Single Epoch processing will commence early in 2020, which will result in significantly more accurate data products and include polarimetry.

The National Radio Astronomy Observatory is a facility of the National Science Foundation operated under cooperative agreement by Associated Universities, Inc. CIRADA is funded by a grant from the Canada Foundation for Innovation 2017 Innovation Fund (Project 35999), as well as by the Provinces of Ontario, British Columbia, Alberta, Manitoba and Quebec. This research made use of NASA’s Astrophysics Data System (ADS) Abstract Service. Part of this research was carried out at the Jet Propulsion Laboratory, California Institute of Technology, under a contract with the National Aeronautics and Space Administration. SC acknowledges support from the NSF (AAG 1815242). SC and TJWL are

members of the NANOGrav Physics Frontier Center, which is supported by the NSF (award number 1430284). CJL is supported by NSF award 1611606. Partial support for the work of L. Rudnick comes from NSF grants AST-1211595 and 1714205 to the University of Minnesota. This work used the Extreme Science and Engineering Discovery Environment (XSEDE), which is supported by National Science Foundation grant number ACI-1548562. HA benefited from grant CIIC 218/2019 of the University of Guanajuato, Mexico. BRK acknowledges support from the NRAO NINE program and Office of Diversity and Inclusion. GRS acknowledges support from NSERC Discovery Grant RGPIN-06569-2016. SBS is supported by NSF award #1458952. SPO acknowledges financial support from the Deutsche Forschungsgemeinschaft (DFG) under grant BR2026/23. L.L. acknowledges the financial support of DGAPA, UNAM (IN112417), and CONACyT, Mexico.

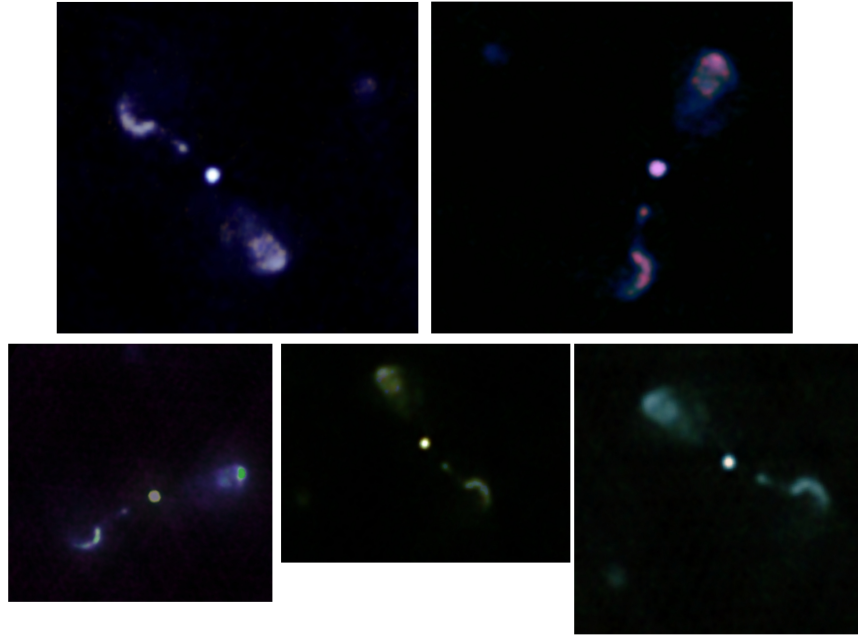


Figure 14. Images produced during an image-making workshop at the University of Manitoba (July 2018). Using the layers schema in GIMP, a different colour was assigned to each of four VLASS frequency subbands for the AGN 4C 48.49. Each participant attempted to retain the viewers' attention by selecting a harmonious palette of colours, orientation, and cropping. A mask was applied to reduce Quick Look imaging artifacts. The variety of images demonstrates that a number of visualization solutions are valid. Credit: Top row, left to right: G. Ferrand (RIKEN) and D. Romano (University of New South Wales). Bottom row, left to right: M. Boyce, Y. Gordon, A. Vantyghem (University of Manitoba).

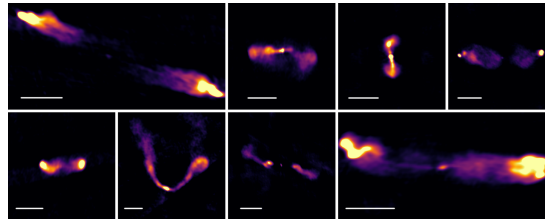


Figure 15. A sample of cutout images of extended VLASS sources identified during a recent NINE workshop by participants from the University of the West Indies, St. Augustine. The scale bars are 30 arcseconds in length.

REFERENCES

- Aaquist, O. B., & Kwok, S. 1990, *A&AS*, 84, 229
- Abbott, B. P., Abbott, R., Abbott, T. D., et al. 2017, *ApJL*, 848, L13, doi: [10.3847/2041-8213/aa920c](https://doi.org/10.3847/2041-8213/aa920c)
- Abbott, T. M. C., Abdalla, F. B., Allam, S., et al. 2018, *ApJS*, 239, 18, doi: [10.3847/1538-4365/aae9f0](https://doi.org/10.3847/1538-4365/aae9f0)
- Abolfathi, B., Aguado, D. S., Aguilar, G., et al. 2018, *ApJS*, 235, 42, doi: [10.3847/1538-4365/aa9e8a](https://doi.org/10.3847/1538-4365/aa9e8a)
- Aihara, H., Armstrong, R., Bickerton, S., et al. 2018, *PASJ*, 70, S8, doi: [10.1093/pasj/psx081](https://doi.org/10.1093/pasj/psx081)
- Alexander, K. D., Berger, E., Fong, W., et al. 2017, *ApJL*, 848, L21, doi: [10.3847/2041-8213/aa905d](https://doi.org/10.3847/2041-8213/aa905d)
- Alger, M. J., Banfield, J. K., Ong, C. S., et al. 2018, *MNRAS*, 478, 5547, doi: [10.1093/mnras/sty1308](https://doi.org/10.1093/mnras/sty1308)
- Alhassan, W., Taylor, A. R., & Vaccari, M. 2018, *MNRAS*, 480, 2085, doi: [10.1093/mnras/sty2038](https://doi.org/10.1093/mnras/sty2038)
- Amendola, L., Appleby, S., Avgoustidis, A., et al. 2018, *Living Reviews in Relativity*, 21, 2, doi: [10.1007/s41114-017-0010-3](https://doi.org/10.1007/s41114-017-0010-3)
- Anderson, C. S., Gaensler, B. M., & Feain, I. J. 2016, *ApJ*, 825, 59, doi: [10.3847/0004-637X/825/1/59](https://doi.org/10.3847/0004-637X/825/1/59)
- Anderson, M. M., Mooley, K. P., Hallinan, G., et al. 2019, *arXiv e-prints*, arXiv:1910.11912. <https://arxiv.org/abs/1910.11912>
- Aniyan, A. K., & Thorat, K. 2017, *ApJS*, 230, 20, doi: [10.3847/1538-4365/aa7333](https://doi.org/10.3847/1538-4365/aa7333)
- Antonucci, R. 1993, *ARA&A*, 31, 473, doi: [10.1146/annurev.aa.31.090193.002353](https://doi.org/10.1146/annurev.aa.31.090193.002353)
- Bañados, E., Carilli, C., Walter, F., et al. 2018, *ApJL*, 861, L14, doi: [10.3847/2041-8213/aac511](https://doi.org/10.3847/2041-8213/aac511)

- Banfield, J. K., Wong, O. I., Willett, K. W., et al. 2015, *MNRAS*, 453, 2326, doi: [10.1093/mnras/stv1688](https://doi.org/10.1093/mnras/stv1688)
- Bannister, K. W., Murphy, T., Gaensler, B. M., Hunstead, R. W., & Chatterjee, S. 2011, *MNRAS*, 412, 634, doi: [10.1111/j.1365-2966.2010.17938.x](https://doi.org/10.1111/j.1365-2966.2010.17938.x)
- Barnes, J. E., & Hernquist, L. E. 1991, *ApJL*, 370, L65, doi: [10.1086/185978](https://doi.org/10.1086/185978)
- Basu, A., Mao, S. A., Fletcher, A., et al. 2018, *MNRAS*, 477, 2528, doi: [10.1093/mnras/sty766](https://doi.org/10.1093/mnras/sty766)
- Beck, R. 2015, *A&A Rv*, 24, 4, doi: [10.1007/s00159-015-0084-4](https://doi.org/10.1007/s00159-015-0084-4)
- Beck, R., Brandenburg, A., Moss, D., Shukurov, A., & Sokoloff, D. 1996, *ARA&A*, 34, 155, doi: [10.1146/annurev.astro.34.1.155](https://doi.org/10.1146/annurev.astro.34.1.155)
- Becker, R. H., White, R. L., & Helfand, D. J. 1995, *ApJ*, 450, 559, doi: [10.1086/176166](https://doi.org/10.1086/176166)
- Begelman, M. C., & Cioffi, D. F. 1989, *ApJL*, 345, L21, doi: [10.1086/185542](https://doi.org/10.1086/185542)
- Berger, E., Ball, S., Becker, K. M., et al. 2001, *Nature*, 410, 338
- Bernet, M. L., Miniati, F., & Lilly, S. J. 2013, *ApJL*, 772, L28, doi: [10.1088/2041-8205/772/2/L28](https://doi.org/10.1088/2041-8205/772/2/L28)
- Bernet, M. L., Miniati, F., Lilly, S. J., Kronberg, P. P., & Dessauges-Zavadsky, M. 2008, *Nature*, 454, 302, doi: [10.1038/nature07105](https://doi.org/10.1038/nature07105)
- Best, P. N., & Heckman, T. M. 2012, *MNRAS*, 421, 1569, doi: [10.1111/j.1365-2966.2012.20414.x](https://doi.org/10.1111/j.1365-2966.2012.20414.x)
- Best, P. N., Kaiser, C. R., Heckman, T. M., & Kauffmann, G. 2006, *MNRAS*, 368, L67, doi: [10.1111/j.1745-3933.2006.00159.x](https://doi.org/10.1111/j.1745-3933.2006.00159.x)
- Best, P. N., Kauffmann, G., Heckman, T. M., et al. 2005, *MNRAS*, 362, 25, doi: [10.1111/j.1365-2966.2005.09192.x](https://doi.org/10.1111/j.1365-2966.2005.09192.x)
- Bicknell, G. V., Cameron, R. A., & Gingold, R. A. 1990, *ApJ*, 357, 373, doi: [10.1086/168928](https://doi.org/10.1086/168928)
- Bîrzan, L., McNamara, B. R., Nulsen, P. E. J., Carilli, C. L., & Wise, M. W. 2008, *ApJ*, 686, 859, doi: [10.1086/591416](https://doi.org/10.1086/591416)
- Blecha, L., Civano, F., Elvis, M., & Loeb, A. 2013, *MNRAS*, 428, 1341, doi: [10.1093/mnras/sts114](https://doi.org/10.1093/mnras/sts114)
- Bonfield, D. G., Jarvis, M. J., Hardcastle, M. J., et al. 2011, *MNRAS*, 416, 13, doi: [10.1111/j.1365-2966.2011.18826.x](https://doi.org/10.1111/j.1365-2966.2011.18826.x)
- Boroson, T. A. 2002, *ApJ*, 565, 78, doi: [10.1086/324486](https://doi.org/10.1086/324486)
- Bower, G. C., & Saul, D. 2011, *ApJL*, 728, L14, doi: [10.1088/2041-8205/728/1/L14](https://doi.org/10.1088/2041-8205/728/1/L14)
- Bower, G. C., Saul, D., Bloom, J. S., et al. 2007, *ApJ*, 666, 346, doi: [10.1086/519831](https://doi.org/10.1086/519831)
- Bower, G. C., Croft, S., Keating, G., et al. 2010, *ApJ*, 725, 1792, doi: [10.1088/0004-637X/725/2/1792](https://doi.org/10.1088/0004-637X/725/2/1792)
- Burke-Spolaor, S., Brazier, A., Chatterjee, S., et al. 2014, *ArXiv e-prints*. <https://arxiv.org/abs/1402.0548>
- Burn, B. J. 1966, *MNRAS*, 133, 67
- Carilli, C. L., Ivison, R. J., & Frail, D. A. 2003, *ApJ*, 590, 192, doi: [10.1086/375005](https://doi.org/10.1086/375005)
- Carretti, E., Crocker, R. M., Staveley-Smith, L., et al. 2013, *Nature*, 493, 66, doi: [10.1038/nature11734](https://doi.org/10.1038/nature11734)
- Chambers, K. C., Magnier, E. A., Metcalfe, N., et al. 2016, *ArXiv e-prints*. <https://arxiv.org/abs/1612.05560>
- Churchill, C., Steidel, C., & Kacprzak, G. 2005, in *Astronomical Society of the Pacific Conference Series*, Vol. 331, Extra-Planar Gas, ed. R. Braun, 387
- Cirasuolo, M., Afonso, J., Bender, R., et al. 2012, in *Society of Photo-Optical Instrumentation Engineers (SPIE) Conference Series*, Vol. 8446, Proc. SPIE, 84460S
- Clarke, T., Mroczkowski, T., Brown, S., et al. 2014, *ArXiv e-prints*. <https://arxiv.org/abs/1401.0329>
- Clarke, T. E., Kassim, N. E., Brisken, W., et al. 2016, in *Proc. SPIE*, Vol. 9906, Ground-based and Airborne Telescopes VI, 99065B
- Clarke, T. E., Perley, R. A., Kassim, N. E., et al. 2011, in *General Assembly and Scientific Symposium*, 2011 XXXth URSI
- Cohen, O., Ma, Y., Drake, J. J., et al. 2015, *ApJ*, 806, 41, doi: [10.1088/0004-637X/806/1/41](https://doi.org/10.1088/0004-637X/806/1/41)
- Condon, J. 2015, *ArXiv e-prints*. <https://arxiv.org/abs/1502.05616>
- Condon, J. J., Cotton, W. D., Greisen, E. W., et al. 1998, *AJ*, 115, 1693, doi: [10.1086/300337](https://doi.org/10.1086/300337)
- Condon, J. J., Kellermann, K. I., Kimball, A. E., Ivezić, Ž., & Perley, R. A. 2013a, *ApJ*, 768, 37, doi: [10.1088/0004-637X/768/1/37](https://doi.org/10.1088/0004-637X/768/1/37)
- . 2013b, *ApJ*, 768, 37, doi: [10.1088/0004-637X/768/1/37](https://doi.org/10.1088/0004-637X/768/1/37)
- Condon, J. J., Matthews, A. M., & Broderick, J. J. 2019, *ApJ*, 872, 148, doi: [10.3847/1538-4357/ab0301](https://doi.org/10.3847/1538-4357/ab0301)
- Cordes, J. M., & Lazio, T. J. W. 2002, *ArXiv Astrophysics e-prints*. <http://ascl.net/0207156>
- Cotton, W. D. 2008, *PASP*, 120, 439, doi: [10.1086/586754](https://doi.org/10.1086/586754)
- Coziol, R., Andernach, H., Torres-Papaqui, J. P., Ortega-Minakata, R. A., & Moreno del Rio, F. 2017, *MNRAS*, 466, 921, doi: [10.1093/mnras/stw3164](https://doi.org/10.1093/mnras/stw3164)
- Croft, S., Bower, G. C., Keating, G., et al. 2011, *ApJ*, 731, 34, doi: [10.1088/0004-637X/731/1/34](https://doi.org/10.1088/0004-637X/731/1/34)
- Croft, S., Bower, G. C., & Whysong, D. 2013, *ApJ*, 762, 93, doi: [10.1088/0004-637X/762/2/93](https://doi.org/10.1088/0004-637X/762/2/93)
- Croft, S., van Breugel, W., de Vries, W., et al. 2006, *ApJ*, 647, 1040, doi: [10.1086/505526](https://doi.org/10.1086/505526)
- Croston, J. H., Pratt, G. W., Böhringer, H., et al. 2008, *A&A*, 487, 431, doi: [10.1051/0004-6361:20079154](https://doi.org/10.1051/0004-6361:20079154)
- Croton, D. J., Springel, V., White, S. D. M., et al. 2006, *MNRAS*, 365, 11, doi: [10.1111/j.1365-2966.2005.09675.x](https://doi.org/10.1111/j.1365-2966.2005.09675.x)
- Dawson, K. S., Schlegel, D. J., Ahn, C. P., et al. 2013, *AJ*, 145, 10, doi: [10.1088/0004-6256/145/1/10](https://doi.org/10.1088/0004-6256/145/1/10)
- de Jong, R. S., Bellido-Tirado, O., Chiappini, C., et al. 2012, in *Society of Photo-Optical Instrumentation Engineers (SPIE) Conference Series*, Vol. 8446, Proc. SPIE, 84460T
- Deller, A. T., Tingay, S. J., Bailes, M., & West, C. 2007, *PASP*, 119, 318, doi: [10.1086/513572](https://doi.org/10.1086/513572)
- Dey, A., Schlegel, D. J., Lang, D., et al. 2019, *AJ*, 157, 168, doi: [10.3847/1538-3881/ab089d](https://doi.org/10.3847/1538-3881/ab089d)

- English, J. 2017, *International Journal of Modern Physics D*, 26, 1730010, doi: [10.1142/S0218271817300105](https://doi.org/10.1142/S0218271817300105)
- Farnes, J. S., O’Sullivan, S. P., Corrigan, M. E., & Gaensler, B. M. 2014, *ApJ*, 795, 63, doi: [10.1088/0004-637X/795/1/63](https://doi.org/10.1088/0004-637X/795/1/63)
- Farnes, J. S., Rudnick, L., Gaensler, B. M., et al. 2017, *ApJ*, 841, 67, doi: [10.3847/1538-4357/aa7060](https://doi.org/10.3847/1538-4357/aa7060)
- Farnsworth, D., Rudnick, L., & Brown, S. 2011, *AJ*, 141, 191, doi: [10.1088/0004-6256/141/6/191](https://doi.org/10.1088/0004-6256/141/6/191)
- Feretti, L., Giovannini, G., Govoni, F., & Murgia, M. 2012, *Astronomy and Astrophysics Review*, 20, 54, doi: [10.1007/s00159-012-0054-z](https://doi.org/10.1007/s00159-012-0054-z)
- Frail, D. A., Goss, W. M., & Whiteoak, J. B. Z. 1994, *ApJ*, 437, 781, doi: [10.1086/175038](https://doi.org/10.1086/175038)
- Frail, D. A., Ray, P. S., Mooley, K. P., et al. 2018, *MNRAS*, 475, 942, doi: [10.1093/mnras/stx3281](https://doi.org/10.1093/mnras/stx3281)
- Franco, J., Tenorio-Tagle, G., & Bodenheimer, P. 1990, *ApJ*, 349, 126, doi: [10.1086/168300](https://doi.org/10.1086/168300)
- Fu, H., Myers, A. D., Djorgovski, S. G., et al. 2015a, *ApJ*, 799, 72, doi: [10.1088/0004-637X/799/1/72](https://doi.org/10.1088/0004-637X/799/1/72)
- Fu, H., Wrobel, J. M., Myers, A. D., Djorgovski, S. G., & Yan, L. 2015b, *ApJL*, 815, L6, doi: [10.1088/2041-8205/815/1/L6](https://doi.org/10.1088/2041-8205/815/1/L6)
- Gaensler, B. M., Landecker, T. L., Taylor, A. R., & POSSUM Collaboration. 2010, in *Bulletin of the American Astronomical Society*, Vol. 42, American Astronomical Society Meeting Abstracts #215, 515
- Garcia-Segura, G., & Franco, J. 1996, *ApJ*, 469, 171, doi: [10.1086/177769](https://doi.org/10.1086/177769)
- Ghirlanda, G., Burlon, D., Ghisellini, G., et al. 2014, *PASA*, 31, e022, doi: [10.1017/pasa.2014.14](https://doi.org/10.1017/pasa.2014.14)
- Ghirlanda, G., Salafia, O. S., Paragi, Z., et al. 2018, *arXiv e-prints*. <https://arxiv.org/abs/1808.00469>
- Hallinan, G., Antonova, A., Doyle, J. G., et al. 2006, *ApJ*, 653, 690, doi: [10.1086/508678](https://doi.org/10.1086/508678)
- Hallinan, G., Corsi, A., Mooley, K. P., et al. 2017, *Science*, 358, 1579, doi: [10.1126/science.aap9855](https://doi.org/10.1126/science.aap9855)
- Hancock, P. J., Murphy, T., Gaensler, B. M., Hopkins, A., & Curran, J. R. 2012, *MNRAS*, 422, 1812, doi: [10.1111/j.1365-2966.2012.20768.x](https://doi.org/10.1111/j.1365-2966.2012.20768.x)
- Hardcastle, M. J., Evans, D. A., & Croston, J. H. 2007, *MNRAS*, 376, 1849, doi: [10.1111/j.1365-2966.2007.11572.x](https://doi.org/10.1111/j.1365-2966.2007.11572.x)
- Hardcastle, M. J., & Worrall, D. M. 2000, *MNRAS*, 319, 562, doi: [10.1046/j.1365-8711.2000.03883.x](https://doi.org/10.1046/j.1365-8711.2000.03883.x)
- Heckman, T. M., & Best, P. N. 2014, *ARA&A*, 52, 589, doi: [10.1146/annurev-astro-081913-035722](https://doi.org/10.1146/annurev-astro-081913-035722)
- Helfand, D. J., Becker, R. H., White, R. L., Fallon, A., & Tuttle, S. 2006, *AJ*, 131, 2525, doi: [10.1086/503253](https://doi.org/10.1086/503253)
- Helfand, D. J., White, R. L., & Becker, R. H. 2015, *ApJ*, 801, 26, doi: [10.1088/0004-637X/801/1/26](https://doi.org/10.1088/0004-637X/801/1/26)
- Herbert, P. D., Jarvis, M. J., Willott, C. J., et al. 2010, *MNRAS*, 406, 1841, doi: [10.1111/j.1365-2966.2010.16783.x](https://doi.org/10.1111/j.1365-2966.2010.16783.x)
- Hoare, M. G., Purcell, C. R., Churchwell, E. B., et al. 2012, *PASP*, 124, 939, doi: [10.1086/668058](https://doi.org/10.1086/668058)
- Hodge, J. A., Becker, R. H., White, R. L., & Richards, G. T. 2013, *ApJ*, 769, 125, doi: [10.1088/0004-637X/769/2/125](https://doi.org/10.1088/0004-637X/769/2/125)
- Hodge, J. A., Becker, R. H., White, R. L., Richards, G. T., & Zeimann, G. R. 2011, *AJ*, 142, 3, doi: [10.1088/0004-6256/142/1/3](https://doi.org/10.1088/0004-6256/142/1/3)
- Hopkins, A. M., & Beacom, J. F. 2006, *ApJ*, 651, 142, doi: [10.1086/506610](https://doi.org/10.1086/506610)
- Hopkins, A. M., Whiting, M. T., Seymour, N., et al. 2015, *PASA*, 32, e037, doi: [10.1017/pasa.2015.37](https://doi.org/10.1017/pasa.2015.37)
- Hotokezaka, K., Kiuchi, K., Shibata, M., Nakar, E., & Piran, T. 2018, *ApJ*, 867, 95, doi: [10.3847/1538-4357/aadf92](https://doi.org/10.3847/1538-4357/aadf92)
- Ivezić, Ž., Kahn, S. M., Tyson, J. A., et al. 2019, *ApJ*, 873, 111, doi: [10.3847/1538-4357/ab042c](https://doi.org/10.3847/1538-4357/ab042c)
- Janssen, R. M. J., Röttgering, H. J. A., Best, P. N., & Brinchmann, J. 2012, *A&A*, 541, A62, doi: [10.1051/0004-6361/201219052](https://doi.org/10.1051/0004-6361/201219052)
- Jansson, R., & Farrar, G. R. 2012, *ApJL*, 761, L11, doi: [10.1088/2041-8205/761/1/L11](https://doi.org/10.1088/2041-8205/761/1/L11)
- Jarvis, M., Taylor, R., Agudo, I., et al. 2016, in *Proceedings of MeerKAT Science: On the Pathway to the SKA*. 25-27 May, 2016 Stellenbosch, South Africa (MeerKAT2016). Online at <https://pos.sissa.it/cgi-bin/reader/conf.cgi?confid=277>, 6
- Jarvis, M. J., & Rawlings, S. 2004, *NewAR*, 48, 1173, doi: [10.1016/j.newar.2004.09.006](https://doi.org/10.1016/j.newar.2004.09.006)
- Jarvis, M. J., Taylor, A. R., Agudo, I., et al. 2017, *ArXiv e-prints*. <https://arxiv.org/abs/1709.01901>
- Jonas, J., & MeerKAT Team. 2016, in *Proceedings of MeerKAT Science: On the Pathway to the SKA*. 25-27 May, 2016 Stellenbosch, South Africa (MeerKAT2016). Online at <https://pos.sissa.it/cgi-bin/reader/conf.cgi?confid=277>, 1
- Joshi, R., & Chand, H. 2013, *MNRAS*, 434, 3566, doi: [10.1093/mnras/stt1277](https://doi.org/10.1093/mnras/stt1277)
- Kacprzak, G. G., Churchill, C. W., Ceverino, D., et al. 2010, *ApJ*, 711, 533, doi: [10.1088/0004-637X/711/2/533](https://doi.org/10.1088/0004-637X/711/2/533)
- Kaczmarek, J. F., Purcell, C. R., Gaensler, B. M., et al. 2018, *MNRAS*, 476, 1596, doi: [10.1093/mnras/sty269](https://doi.org/10.1093/mnras/sty269)
- Kalfountzou, E., Jarvis, M. J., Bonfield, D. G., & Hardcastle, M. J. 2012, *MNRAS*, 427, 2401, doi: [10.1111/j.1365-2966.2012.22093.x](https://doi.org/10.1111/j.1365-2966.2012.22093.x)
- Kalfountzou, E., Stevens, J. A., Jarvis, M. J., et al. 2014, *MNRAS*, 442, 1181, doi: [10.1093/mnras/stu782](https://doi.org/10.1093/mnras/stu782)
- Kasliwal, M. M., Korobkin, O., Lau, R. M., Wollaeger, R., & Fryer, C. L. 2017, *ApJL*, 843, L34, doi: [10.3847/2041-8213/aa799d](https://doi.org/10.3847/2041-8213/aa799d)
- Kim, K. S., Lilly, S. J., Miniati, F., et al. 2016, *ApJ*, 829, 133, doi: [10.3847/0004-637X/829/2/133](https://doi.org/10.3847/0004-637X/829/2/133)
- Kimball, A. E., Kellermann, K. I., Condon, J. J., Ivezić, Ž., & Perley, R. A. 2011, *ApJL*, 739, L29, doi: [10.1088/2041-8205/739/1/L29](https://doi.org/10.1088/2041-8205/739/1/L29)
- Kollmeier, J. A., Zasowski, G., Rix, H.-W., et al. 2017, *ArXiv e-prints*. <https://arxiv.org/abs/1711.03234>

- Kratzer, R. M. 2014, PhD thesis, Drexel University
- Kwitter, K. B., Méndez, R. H., Peña, M., et al. 2014, *RMxAA*, 50, 203. <https://arxiv.org/abs/1403.2246>
- Kwok, S. 2005, *Journal of Korean Astronomical Society*, 38, 271, doi: [10.5303/JKAS.2005.38.2.271](https://doi.org/10.5303/JKAS.2005.38.2.271)
- Lacy, M., Croft, S., Fragile, C., Wood, S., & Nyland, K. 2017, *ApJ*, 838, 146, doi: [10.3847/1538-4357/aa65d7](https://doi.org/10.3847/1538-4357/aa65d7)
- Lamee, M., Rudnick, L., Farnes, J. S., et al. 2016, *ApJ*, 829, 5, doi: [10.3847/0004-637X/829/1/5](https://doi.org/10.3847/0004-637X/829/1/5)
- Law, C. J. 2017, *rfpipe: Radio interferometric transient search pipeline*, Astrophysics Source Code Library. <http://ascl.net/1710.002>
- Law, C. J., Gaensler, B. M., Metzger, B. D., Ofek, E. O., & Sironi, L. 2018a, *ApJL*, 866, L22, doi: [10.3847/2041-8213/aae5f3](https://doi.org/10.3847/2041-8213/aae5f3)
- Law, C. J., Bower, G. C., Burke-Spolaor, S., et al. 2018b, *ApJS*, 236, 8, doi: [10.3847/1538-4365/aab77b](https://doi.org/10.3847/1538-4365/aab77b)
- Lawrence, A., Warren, S. J., Almaini, O., et al. 2007, *MNRAS*, 379, 1599, doi: [10.1111/j.1365-2966.2007.12040.x](https://doi.org/10.1111/j.1365-2966.2007.12040.x)
- Levi, M., Bebek, C., Beers, T., et al. 2013, *ArXiv e-prints*. <https://arxiv.org/abs/1308.0847>
- Levinson, A., Ofek, E. O., Waxman, E., & Gal-Yam, A. 2002, *ApJ*, 576, 923, doi: [10.1086/341866](https://doi.org/10.1086/341866)
- Lonsdale, C. J., Lacy, M., Kimball, A. E., et al. 2015, *ApJ*, 813, 45, doi: [10.1088/0004-637X/813/1/45](https://doi.org/10.1088/0004-637X/813/1/45)
- Lukic, V., Brüggen, M., Banfield, J. K., et al. 2018, *MNRAS*, 476, 246, doi: [10.1093/mnras/sty163](https://doi.org/10.1093/mnras/sty163)
- Ma, Y. K., Mao, S. A., Basu, A., Heiles, C., & West, J. 2017, *Galaxies*, 5, 66, doi: [10.3390/galaxies5040066](https://doi.org/10.3390/galaxies5040066)
- MacGregor, M. A., Weinberger, A. J., Wilner, D. J., Kowalski, A. F., & Cranmer, S. R. 2018, *ApJL*, 855, L2, doi: [10.3847/2041-8213/aaad6b](https://doi.org/10.3847/2041-8213/aaad6b)
- Mao, S. A., Banfield, J., Gaensler, B., et al. 2014, *ArXiv e-prints*. <https://arxiv.org/abs/1401.1875>
- Mao, S. A., Carilli, C., Gaensler, B. M., et al. 2017, *Nature Astronomy*, 1, 621, doi: [10.1038/s41550-017-0218-x](https://doi.org/10.1038/s41550-017-0218-x)
- Marcote, B., Nimmo, K., Salafia, O. S., et al. 2019, *ApJL*, 876, L14, doi: [10.3847/2041-8213/ab1aad](https://doi.org/10.3847/2041-8213/ab1aad)
- Margutti, R., Alexander, K. D., Xie, X., et al. 2018, *ApJL*, 856, L18, doi: [10.3847/2041-8213/aab2ad](https://doi.org/10.3847/2041-8213/aab2ad)
- Mattila, S., Dahlen, T., Efstathiou, A., et al. 2012, *ApJ*, 756, 111, doi: [10.1088/0004-637X/756/2/111](https://doi.org/10.1088/0004-637X/756/2/111)
- McAlpine, K., Smith, D. J. B., Jarvis, M. J., Bonfield, D. G., & Fleuren, S. 2012, *MNRAS*, 423, 132, doi: [10.1111/j.1365-2966.2012.20715.x](https://doi.org/10.1111/j.1365-2966.2012.20715.x)
- McConnachie, A., Babusiaux, C., Balogh, M., et al. 2016, *ArXiv e-prints*. <https://arxiv.org/abs/1606.00043>
- Medina, S. N. X., Urquhart, J. S., Dzib, S. A., et al. 2019, *A&A*, 627, A175, doi: [10.1051/0004-6361/201935249](https://doi.org/10.1051/0004-6361/201935249)
- Metzger, B. D., Williams, P. K. G., & Berger, E. 2015, *ApJ*, 806, 224, doi: [10.1088/0004-637X/806/2/224](https://doi.org/10.1088/0004-637X/806/2/224)
- Mitchell, L. 2009, PhD thesis, University of Calgary. <https://central.bac-lac.gc.ca/.item?id=MR54376&op=pdf&app=Library>
- Mohan, N., & Rafferty, D. 2015, *PyBDSF: Python Blob Detection and Source Finder*, Astrophysics Source Code Library. <http://ascl.net/1502.007>
- Mooley, K. P., Frail, D. A., Ofek, E. O., et al. 2013, *ApJ*, 768, 165, doi: [10.1088/0004-637X/768/2/165](https://doi.org/10.1088/0004-637X/768/2/165)
- Mooley, K. P., Myers, S. T., Frail, D. A., et al. 2019, *ApJ*, 870, 25, doi: [10.3847/1538-4357/aaef7c](https://doi.org/10.3847/1538-4357/aaef7c)
- Mooley, K. P., Hallinan, G., Bourke, S., et al. 2016, *ApJ*, 818, 105, doi: [10.3847/0004-637X/818/2/105](https://doi.org/10.3847/0004-637X/818/2/105)
- Mooley, K. P., Frail, D. A., Myers, S. T., et al. 2018a, *ApJ*, 857, 143, doi: [10.3847/1538-4357/aab7f3](https://doi.org/10.3847/1538-4357/aab7f3)
- Mooley, K. P., Nakar, E., Hotokezaka, K., et al. 2018b, *Nature*, 554, 207, doi: [10.1038/nature25452](https://doi.org/10.1038/nature25452)
- Mooley, K. P., Deller, A. T., Gottlieb, O., et al. 2018c, *Nature*, 561, 355, doi: [10.1038/s41586-018-0486-3](https://doi.org/10.1038/s41586-018-0486-3)
- Mooley, K. P., Frail, D. A., Dobie, D., et al. 2018d, *ApJL*, 868, L11, doi: [10.3847/2041-8213/aaeda7](https://doi.org/10.3847/2041-8213/aaeda7)
- Myers, S. T., Jackson, N. J., Browne, I. W. A., et al. 2003, *MNRAS*, 341, 1, doi: [10.1046/j.1365-8711.2003.06256.x](https://doi.org/10.1046/j.1365-8711.2003.06256.x)
- Norman, C. A., Bowen, D. V., Heckman, T., Blades, C., & Danly, L. 1996, *ApJ*, 472, 73, doi: [10.1086/178042](https://doi.org/10.1086/178042)
- Norris, R. P. 2017, *Nature Astronomy*, 1, 671, doi: [10.1038/s41550-017-0233-y](https://doi.org/10.1038/s41550-017-0233-y)
- Norris, R. P., Hopkins, A. M., Afonso, J., et al. 2011, *PASA*, 28, 215, doi: [10.1071/AS11021](https://doi.org/10.1071/AS11021)
- Ofek, E. O., Frail, D. A., Breslauer, B., et al. 2011, *ApJ*, 740, 65, doi: [10.1088/0004-637X/740/2/65](https://doi.org/10.1088/0004-637X/740/2/65)
- O'Sullivan, S. P., Purcell, C. R., Anderson, C. S., et al. 2017, *MNRAS*, 469, 4034, doi: [10.1093/mnras/stx1133](https://doi.org/10.1093/mnras/stx1133)
- O'Sullivan, S. P., Brown, S., Robshaw, T., et al. 2012, *MNRAS*, 421, 3300, doi: [10.1111/j.1365-2966.2012.20554.x](https://doi.org/10.1111/j.1365-2966.2012.20554.x)
- O'Sullivan, S. P., Feain, I. J., McClure-Griffiths, N. M., et al. 2013, *ApJ*, 764, 162, doi: [10.1088/0004-637X/764/2/162](https://doi.org/10.1088/0004-637X/764/2/162)
- Pasetto, A., Carrasco-González, C., O'Sullivan, S., et al. 2018, *A&A*, 613, A74, doi: [10.1051/0004-6361/201731804](https://doi.org/10.1051/0004-6361/201731804)
- Perley, R. A., Chandler, C. J., Butler, B. J., & Wrobel, J. M. 2011, *ApJL*, 739, L1, doi: [10.1088/2041-8205/739/1/L1](https://doi.org/10.1088/2041-8205/739/1/L1)
- Pitchford, L. K., Hatziminaoglou, E., Feltre, A., et al. 2016, *MNRAS*, 462, 4067, doi: [10.1093/mnras/stw1840](https://doi.org/10.1093/mnras/stw1840)
- Reiners, A., & Basri, G. 2007, *ApJ*, 656, 1121, doi: [10.1086/510304](https://doi.org/10.1086/510304)
- Rhoads, J. E. 1997, *ApJL*, 487, L1, doi: [10.1086/310876](https://doi.org/10.1086/310876)
- Riley, J. M., & Pooley, G. G. 1975, *MmRAS*, 80, 105
- Rosario, D. J., Trakhtenbrot, B., Lutz, D., et al. 2013, *A&A*, 560, A72, doi: [10.1051/0004-6361/201322196](https://doi.org/10.1051/0004-6361/201322196)
- Rosolowsky, E., Kern, J., Federl, P., et al. 2015, in *Astronomical Society of the Pacific Conference Series*, Vol. 495, *Astronomical Data Analysis Software and Systems XXIV (ADASS XXIV)*, ed. A. R. Taylor & E. Rosolowsky, 121

- Röttgering, H., Afonso, J., Barthel, P., et al. 2011, *Journal of Astrophysics and Astronomy*, 32, 557, doi: [10.1007/s12036-011-9129-x](https://doi.org/10.1007/s12036-011-9129-x)
- Rudnick, L., & Owen, F. N. 2014, *ApJ*, 785, 45, doi: [10.1088/0004-637X/785/1/45](https://doi.org/10.1088/0004-637X/785/1/45)
- Russell, H. R., McNamara, B. R., Fabian, A. C., et al. 2017, *MNRAS*, 472, 4024, doi: [10.1093/mnras/stx2255](https://doi.org/10.1093/mnras/stx2255)
- Sabin, L., Parker, Q. A., Corradi, R. L. M., et al. 2014, *MNRAS*, 443, 3388, doi: [10.1093/mnras/stu1404](https://doi.org/10.1093/mnras/stu1404)
- Salas, P., Bauer, F. E., Stockdale, C., & Prieto, J. L. 2013, *MNRAS*, 428, 1207, doi: [10.1093/mnras/sts104](https://doi.org/10.1093/mnras/sts104)
- Santos, M., Bull, P., Camera, S., et al. 2016, in *Proceedings of MeerKAT Science: On the Pathway to the SKA. 25-27 May, 2016 Stellenbosch, South Africa (MeerKAT2016)*. Online at <https://pos.sissa.it/cgi-bin/reader/conf.cgi?confid=277>, 32
- Saxena, A., Marinello, M., Overzier, R. A., et al. 2018, *MNRAS*, 480, 2733, doi: [10.1093/mnras/sty1996](https://doi.org/10.1093/mnras/sty1996)
- Schnitzeler, D. H. F. M. 2010, *MNRAS*, 409, L99, doi: [10.1111/j.1745-3933.2010.00957.x](https://doi.org/10.1111/j.1745-3933.2010.00957.x)
- Selina, R. J., Murphy, E. J., McKinnon, M., et al. 2018, in *Astronomical Society of the Pacific Conference Series*, Vol. 517, *Science with a Next Generation Very Large Array*, ed. E. Murphy, 15
- Shimwell, T. W., Röttgering, H. J. A., Best, P. N., et al. 2017, *A&A*, 598, A104, doi: [10.1051/0004-6361/201629313](https://doi.org/10.1051/0004-6361/201629313)
- Shinnaga, H., Humphreys, E., Indebetouw, R., et al. 2015, in *Astronomical Society of the Pacific Conference Series*, Vol. 499, *Revolution in Astronomy with ALMA: The Third Year*, ed. D. Iono, K. Tatematsu, A. Wootten, & L. Testi, 355
- Shlosman, I., Frank, J., & Begelman, M. C. 1989, *Nature*, 338, 45, doi: [10.1038/338045a0](https://doi.org/10.1038/338045a0)
- Silk, J. 2013, *ApJ*, 772, 112, doi: [10.1088/0004-637X/772/2/112](https://doi.org/10.1088/0004-637X/772/2/112)
- Simmonds, R., Taylor, R., Horrell, J., et al. 2016, in *2016 IST-Africa Week Conference*, 1–8
- Smith, R. M., Dekany, R. G., Bebek, C., et al. 2014, in *Proc. SPIE*, Vol. 9147, *Ground-based and Airborne Instrumentation for Astronomy V*, 914779
- Sokoloff, D. D., Bykov, A. A., Shukurov, A., et al. 1998, *MNRAS*, 299, 189, doi: [10.1046/j.1365-8711.1998.01782.x](https://doi.org/10.1046/j.1365-8711.1998.01782.x)
- Stanford, S. A., Stern, D., van Breugel, W., & De Breuck, C. 2000, *ApJS*, 131, 185, doi: [10.1086/317369](https://doi.org/10.1086/317369)
- Stil, J. M., Keller, B. W., George, S. J., & Taylor, A. R. 2014, *ApJ*, 787, 99, doi: [10.1088/0004-637X/787/2/99](https://doi.org/10.1088/0004-637X/787/2/99)
- Stil, J. M., Krause, M., Beck, R., & Taylor, A. R. 2009, *ApJ*, 693, 1392, doi: [10.1088/0004-637X/693/2/1392](https://doi.org/10.1088/0004-637X/693/2/1392)
- Stockton, A., Ridgway, S. E., & Kellogg, M. 1996, *AJ*, 112, 902, doi: [10.1086/118063](https://doi.org/10.1086/118063)
- Sun, X. H., Rudnick, L., Akahori, T., et al. 2015, *AJ*, 149, 60, doi: [10.1088/0004-6256/149/2/60](https://doi.org/10.1088/0004-6256/149/2/60)
- Sutherland, W., Emerson, J., Dalton, G., et al. 2015, *A&A*, 575, A25, doi: [10.1051/0004-6361/201424973](https://doi.org/10.1051/0004-6361/201424973)
- Tamura, N. 2016, in *IAU Symposium*, Vol. 319, *Galaxies at High Redshift and Their Evolution Over Cosmic Time*, ed. S. Kaviraj, 55–55
- Tarter, J. C., Backus, P. R., Mancinelli, R. L., et al. 2007, *Astrobiology*, 7, 30, doi: [10.1089/ast.2006.0124](https://doi.org/10.1089/ast.2006.0124)
- Tasse, C., Best, P. N., Röttgering, H., & Le Borgne, D. 2008, *A&A*, 490, 893, doi: [10.1051/0004-6361:20079299](https://doi.org/10.1051/0004-6361:20079299)
- Taylor, A. R., Stil, J. M., & Sunstrum, C. 2009, *ApJ*, 702, 1230, doi: [10.1088/0004-637X/702/2/1230](https://doi.org/10.1088/0004-637X/702/2/1230)
- Thyagarajan, N., Helfand, D. J., White, R. L., & Becker, R. H. 2011, *ApJ*, 742, 49, doi: [10.1088/0004-637X/742/1/49](https://doi.org/10.1088/0004-637X/742/1/49)
- Towns, J., Cockerill, T., Dahan, M., et al. 2014, *Computing in Science & Engineering*, 16, 62, doi: [10.1109/MCSE.2014.80](https://doi.org/10.1109/MCSE.2014.80)
- Tribble, P. C. 1991, *MNRAS*, 250, 726
- Troja, E., Piro, L., Ryan, G., et al. 2018, *MNRAS*, 478, L18, doi: [10.1093/mnras/sly061](https://doi.org/10.1093/mnras/sly061)
- Urry, C. M., & Padovani, P. 1995, *PASP*, 107, 803, doi: [10.1086/133630](https://doi.org/10.1086/133630)
- van Breugel, W., De Breuck, C., Stanford, S. A., et al. 1999, *ApJL*, 518, L61, doi: [10.1086/312080](https://doi.org/10.1086/312080)
- Van Eck, C. L., Brown, J. C., Stil, J. M., et al. 2011, *ApJ*, 728, 97, doi: [10.1088/0004-637X/728/2/97](https://doi.org/10.1088/0004-637X/728/2/97)
- Van Wassenhove, S., Volonteri, M., Mayer, L., et al. 2012, *ApJL*, 748, L7, doi: [10.1088/2041-8205/748/1/L7](https://doi.org/10.1088/2041-8205/748/1/L7)
- Varenus, E., Conway, J. E., Martí-Vidal, I., et al. 2016, *A&A*, 593, A86, doi: [10.1051/0004-6361/201628702](https://doi.org/10.1051/0004-6361/201628702)
- Villarreal Hernández, A. C., & Andernach, H. 2018, *ArXiv e-prints*, <https://arxiv.org/abs/1808.07178>
- Wagner, A. Y., Bicknell, G. V., & Umemura, M. 2012, *ApJ*, 757, 136, doi: [10.1088/0004-637X/757/2/136](https://doi.org/10.1088/0004-637X/757/2/136)
- White, R. L., Becker, R. H., Helfand, D. J., & Gregg, M. D. 1997, *ApJ*, 475, 479
- White, R. L., Helfand, D. J., Becker, R. H., Glikman, E., & de Vries, W. 2007, *ApJ*, 654, 99, doi: [10.1086/507700](https://doi.org/10.1086/507700)
- White, S. V., Jarvis, M. J., Kalfountzou, E., et al. 2017, *MNRAS*, 468, 217, doi: [10.1093/mnras/stx284](https://doi.org/10.1093/mnras/stx284)
- Williams, W. L., & Röttgering, H. J. A. 2015, *MNRAS*, 450, 1538, doi: [10.1093/mnras/stv692](https://doi.org/10.1093/mnras/stv692)
- Wilman, R. J., Miller, L., Jarvis, M. J., et al. 2008, *MNRAS*, 388, 1335, doi: [10.1111/j.1365-2966.2008.13486.x](https://doi.org/10.1111/j.1365-2966.2008.13486.x)
- Worrall, D. M., Birkinshaw, M., Young, A. J., et al. 2012, *MNRAS*, 424, 1346, doi: [10.1111/j.1365-2966.2012.21320.x](https://doi.org/10.1111/j.1365-2966.2012.21320.x)
- Wright, E. L., Eisenhardt, P. R. M., Mainzer, A. K., et al. 2010, *AJ*, 140, 1868, doi: [10.1088/0004-6256/140/6/1868](https://doi.org/10.1088/0004-6256/140/6/1868)
- Yao, J. M., Manchester, R. N., & Wang, N. 2017, *ApJ*, 835, 29, doi: [10.3847/1538-4357/835/1/29](https://doi.org/10.3847/1538-4357/835/1/29)
- Zakamska, N. L., & Greene, J. E. 2014, *MNRAS*, 442, 784, doi: [10.1093/mnras/stu842](https://doi.org/10.1093/mnras/stu842)

Facilities:

Facility: VLA.