



# Characterizing Magnetic Field Morphologies in Three Serpens Protostellar Cores with ALMA

Valentin J. M. Le Gouellec<sup>1,2</sup> , Charles L. H. Hull<sup>3,4,14</sup> , Anaëlle J. Maury<sup>2,5</sup> , Josep M. Girart<sup>6,7</sup> , Łukasz Tychoniec<sup>8</sup> , Lars E. Kristensen<sup>9</sup> , Zhi-Yun Li<sup>10</sup> , Fabien Louvet<sup>11</sup> , Paulo C. Cortes<sup>4,12</sup> , and Ramprasad Rao<sup>13</sup>

<sup>1</sup> European Southern Observatory, Alonso de Córdova 3107, Vitacura, Santiago, Chile; [Valentin.LeGouellec@eso.org](mailto:Valentin.LeGouellec@eso.org)  
<sup>2</sup> AIM, CEA, CNRS, Université Paris-Saclay, Université Paris Diderot, Sorbonne Paris Cité, F-91191 Gif-sur-Yvette, France  
<sup>3</sup> National Astronomical Observatory of Japan, NAOJ Chile, Alonso de Córdova 3788, Office 61B, 7630422, Vitacura, Santiago, Chile  
<sup>4</sup> Joint ALMA Observatory, Alonso de Córdova 3107, Vitacura, Santiago, Chile  
<sup>5</sup> Harvard-Smithsonian Center for Astrophysics, Cambridge, MA 02138, USA  
<sup>6</sup> Institut de Ciències de l'Espai (ICE-CSIC), Campus UAB, Carrer de Can Magrans S/N, E-08193 Cerdanyola del Vallès, Catalonia, Spain  
<sup>7</sup> Institut d'Estudis Espacials de Catalunya, E-08030 Barcelona, Catalonia, Spain  
<sup>8</sup> Leiden Observatory, Leiden University, P.O. Box 9513, 2300 RA, Leiden, The Netherlands  
<sup>9</sup> Centre for Star and Planet Formation, Niels Bohr Institute and Natural History Museum of Denmark, University of Copenhagen, Øster Voldgade 5-7, DK-1350 Copenhagen K, Denmark  
<sup>10</sup> Department of Astronomy, University of Virginia, 530 McCormick Road, Charlottesville, VA 22904, USA  
<sup>11</sup> Departamento de Astronomía, Universidad de Chile, Camino el Observatorio 1515, Las Condes, Santiago, Chile  
<sup>12</sup> National Radio Astronomy Observatory, 520 Edgemont Road, Charlottesville, VA 22903, USA  
<sup>13</sup> Submillimeter Array, Academia Sinica Institute of Astronomy and Astrophysics, 645 N. A'ohoku Place, Hilo, HI 96720, USA  
Received 2019 May 16; revised 2019 August 27; accepted 2019 August 29; published 2019 November 5

## Abstract

With the aim of characterizing the dynamical processes involved in the formation of young protostars, we present high-angular-resolution ALMA dust polarization observations of the Class 0 protostellar cores Serpens SMM1, Emb 8(N), and Emb 8. With spatial resolutions ranging from 150 to 40 au at 870  $\mu\text{m}$ , we find unexpectedly high values of the polarization fraction along the outflow cavity walls in Serpens Emb 8(N). We use 3 mm and 1 mm molecular tracers to investigate outflow and dense-gas properties and their correlation with the polarization. These observations allow us to investigate the physical processes involved in the radiative alignment torques (RATs) acting on dust grains along the outflow cavity walls, which experience irradiation from accretion processes and outflow shocks. The inner core of SMM1-a presents a polarization pattern with a poloidal magnetic field at the bases of the two lobes of the bipolar outflow. To the south of SMM1-a we see two polarized filaments, one of which seems to trace the redshifted outflow cavity wall. The other may be an accretion streamer of material infalling onto the central protostar. We propose that the polarized emission we see at millimeter wavelengths along the irradiated cavity walls can be reconciled with the expectations of RAT theory if the aligned grains present at  $<500$  au scales in Class 0 envelopes have grown larger than the 0.1  $\mu\text{m}$  size of dust grains in the interstellar medium. Our observations allow us to constrain the magnetic field morphologies of star-forming sources within the central cores, along the outflow cavity walls, and in possible accretion streamers.

**Key words:** ISM: jets and outflows – ISM: magnetic fields – polarization – radiation mechanisms: thermal – stars: protostars

**Supporting material:** data behind figures

## 1. Introduction

Protostellar cores are forming within the densest parts of molecular clouds, where star formation mostly occurs along organized filamentary structures (André et al. 2000, 2014). Within these dense regions, prestellar cores, which are stellar precursors, are collapsing under their own gravitational field and form Class 0 protostellar cores. At this evolutionary stage, the protostar is accreting material from the surrounding envelope, where most of the source's mass is still located. The accretion is known to be ruled by a variety of physical processes, of which the main observational signature is the vigorous ejection of material in the form of a bipolar outflow. The evolution of these young accreting objects is well known to be strongly regulated by magnetic fields,

which impact protostellar disk formation (Wurster & Li 2018), accretion and ejection processes, effects of turbulence (Offner & Chaban 2017), and core fragmentation (Machida et al. 2005).

We can better understand these phenomena by observing the polarization of thermal dust emission, which is the most commonly used tracer of magnetic fields in the interstellar medium (ISM), from the scales of molecular clouds down to the  $\sim 100$  au spatial scales of Class 0 disks. Dust grains are assumed to produce polarized thermal emission thanks to the alignment of their angular momentum (aligned along their minor axis) with the ambient magnetic field, via the actions of radiative alignment torques (RATs, Lazarian 2007; Andersson et al. 2015). Thus, the emission we detect is polarized orthogonal to the magnetic field component projected on the plane of the sky.

Single-dish observations of the magnetized ISM have revealed organized magnetic field lines toward dense star-forming filamentary structures, unveiling the role of the magnetic field on 0.1 to 10 pc scales (Alves et al. 2008; Planck Collaboration et al. 2016; Pattle et al. 2017). Interferometric observatories such as the Submillimeter Array (SMA) and the

<sup>14</sup> NAOJ Fellow.



Combined Array for Research in Millimeter-wave Astronomy (CARMA) probed magnetic field morphologies at the scales of the protostellar envelopes ( $\sim 1000$  au). More recently, observations with the Atacama Large Millimeter/submillimeter Array (ALMA) are able to resolve the tiniest features of protostellar cores (see Li et al. 2014; Hull & Zhang 2019 for reviews).

At the core-envelope scale, dust polarization observations have unveiled interesting results about the relative orientation of the magnetic field with respect to the bipolar outflow. The outflow of a protostellar core is considered to be closely linked with the core rotation axis, because the outflow launching mechanisms can consist of magnetohydrodynamic (MHD) disk winds triggered within the rotating circumstellar disk (Pudritz et al. 2006; Frank et al. 2014; Bally 2016). Consequently, the study of the magnetic field orientation with respect to the bipolar outflow axis is an important proxy to understand the role played by the magnetic field in the regulation of the angular momentum of a protostellar core. At envelope scales of  $\sim 1000$  au, Hull et al. (2014) and Hull & Zhang (2019) (with twice the sample) found that the magnetic field is randomly aligned compared with the outflow axis, suggesting that the magnetic field at envelope scales is not affecting the magnetically driven winds at disk scales. However, a more recent work by Galametz et al. (2018) using a smaller sample, suggested a bimodal distribution, exhibiting magnetic fields that are preferentially aligned either parallel or perpendicular to the outflow orientation. In addition, they noticed that there is more large-scale rotation and multiple systems in cores where there is a large angle between the main core-scale field and the outflow axis. Simulations have shown that these results could depend strongly on the relative strengths of the magnetic field, turbulence, and rotation (e.g., Machida et al. 2006; Offner et al. 2016; Hull et al. 2017b; Lee et al. 2017).

The orientation of the magnetic field in protostellar cores has been the focus of studies investigating the formation of disks, which is strongly impacted by the phenomenon of magnetic braking. This is the case because the magnetic field can remove enough angular momentum from the envelope material to impede the formation of large protostellar disks at early times (Hennebelle et al. 2016). In this respect, Maury et al. (2019) characterized the disk size distribution in a sample of Class 0 protostars and suggested that the magnetic field may indeed play an important role in the formation of disk structure at the earliest protostellar evolutionary stage.

The magnetic field morphologies seen in small-scale (i.e., a few hundred au) observations from CARMA, SMA, and ALMA have unveiled a variety of scenarios. These include a few results showing that the magnetic field seems to follow the edges of the outflow cavity (Hull et al. 2017a; Maury et al. 2018; Hull et al. 2019), as well as magnetic field morphologies in young embedded disk structures that seem to exhibit both poloidal and toroidally wrapped field components (Stephens et al. 2013; Rao et al. 2014; Segura-Cox et al. 2015; Alves et al. 2018; Harris et al. 2018; Ohashi et al. 2018; Sadavoy et al. 2018a).

The Serpens region exhibits a filamentary structure with two compact star-forming clumps, Serpens Main and Serpens South, which are located at a distance of  $436 \pm 9$  pc (Ortiz-León et al. 2017). The recent star formation episode observed in this region has been tentatively interpreted as resulting from a collision of two molecular clouds (Duarte-Cabral et al. 2010, 2011). Serpens SMM1, Emb 8(N), and Emb 8 are three Class 0 protostars in the NW subcluster of Serpens

**Table 1**  
Serpens Source Information

Name	$\alpha_{J2000}$	$\delta_{J2000}$	$M_{\text{env}}$ ( $M_{\odot}$ )	$L_{\text{bol}}$ ( $L_{\odot}$ )
Serpens SMM1-a	18:29:49.81	+1:15:20.41	20	100
Serpens SMM1-b1	18:29:49.68	+1:15:21.09		
Serpens SMM1-b2	18:29:49.66	+1:15:21.20		
Serpens SMM1-c	18:29:49.93	+1:15:22.00		
Serpens SMM1-d	18:29:49.99	+1:15:22.98		
Serpens Emb 8	18:29:48.09	+1:16:43.30	9.4	5.4
Serpens Emb 8-b	18:29:48.13	+1:16:44.57		
Serpens Emb 8-c	18:29:48.03	+1:16:42.70		
Serpens Emb 8(N)	18:29:48.73	+1:16:55.61		

**Note.** Values of envelope mass and bolometric luminosity are from observations that encompass the whole core of SMM1 (Enoch et al. 2011; Kristensen et al. 2012), as well as Emb 8 and Emb 8(N) together (Enoch et al. 2009, 2011).

Main. The position of the peak dust continuum emission, associated with these three protostellar cores and their surrounding core fragments (possibly containing protostars), can be found in Table 1.

The intermediate-mass protostellar source Serpens SMM1<sup>15</sup> is the most luminous source in the cloud (Lee et al. 2014), with a luminosity of  $L_{\text{bol}} = 100 L_{\odot}$  (Kristensen et al. 2012). The protostellar envelope was found to have a mass of about  $M_{\text{env}} \sim 20 M_{\odot}$  (Enoch et al. 2011) and is surrounded by a disk-like structure with  $M_{\text{disk}} \sim 1.0 M_{\odot}$  and  $R_{\text{disk}} \sim 300$  au (Enoch et al. 2009). ALMA observations from Hull et al. (2016) show a one-sided, high-velocity, highly collimated molecular jet ( $\sim 80 \text{ km s}^{-1}$ ) from the central source SMM1-a. The base of the narrow jet is surrounded by a wide-angle outflow cavity, whose walls were observed in free-free emission by the Karl G. Jansky Very Large Array (VLA) (Rodríguez-Kamenetzky et al. 2016). Hull et al. (2016) showed an extremely high-velocity (EHV), one-sided redshifted molecular jet from the protobinary system SMM1-b located to the NW of the central source. These three sources were observed in full polarization by CARMA in the TADPOL survey (Hull et al. 2014). Hull et al. (2016) attributed the ionization of the outflow cavity walls to UV radiation escaping from the accreting central protostar or to the precession of the high-velocity jet, which would impact the surrounding envelope. Goicoechea et al. (2012) proposed an alternative scenario, where the ionizing radiation is caused by distributed shocks throughout the outflow. Interferometric dust polarization observations of this source have suggested that the SE redshifted lobe of the bipolar outflow from SMM1-a is shaping the magnetic field (Hull et al. 2017a). SMM1-a is also known to host a hot corino-like central region, because a few complex organic molecules (COMs) have previously been detected, including methanol, methyl formate, dimethyl ether, vinyl cyanide, and ethylene glycol (Kristensen et al. 2010; Öberg et al. 2011; Tychoniec et al. 2018). Hot corinos are thought to correspond to the central region of the protostar, where the temperature is high enough to sublimate icy grain mantles, which release COMs into the gas phase (Maury et al. 2014; Walsh et al. 2014).

<sup>15</sup> Serpens SMM1 has been called by many other names, such as Serpens-Emb6, Serpens FIRS1, Serpens-FIR1, IRAS 18273+0113, S68 FIR, S68 FIRS1, and S68-1b.

Serpens Emb 8 and 8(N)<sup>16</sup> are two low-mass protostellar sources separated by  $15''.7$ , i.e.,  $\sim 7000$  au. These sources were observed in Enoch et al. (2009, 2011) with Bolocam and have a combined envelope mass of  $M_{\text{env}} \sim 9.4 M_{\odot}$  and a bolometric luminosity of  $L_{\text{bol}} = 5.4 L_{\odot}$ . These observations have a spatial resolution of  $\sim 13,500$  au, thus encompassing the two protostellar sources. ALMA dust polarization observations of Serpens Emb 8 exhibited a chaotic magnetic field morphology; the authors concluded that the magnetic field is most likely weak with respect to the cloud-scale turbulence (Hull et al. 2017b).

Regarding the relative age of Emb 8 and 8(N), the differences between the two bipolar outflows of both sources offer a clue. Unlike Emb 8, Emb 8(N) exhibits a pristine EHV jet on both sides, which has not propagated as far as the outflow from Emb 8 (Dionatos et al. 2010; Tychoniec et al. 2019). As molecular jets are generally an indication of the young age of a protostar (Bally 2016), we propose that Emb 8(N) may be younger. Moreover the outflow opening angles of these sources are quite different, which can be related to age (Arce & Sargent 2006; Velusamy et al. 2014; Hsieh et al. 2017). The opening angle of Emb 8(N) is smaller, again suggesting a younger age for Emb 8(N).

In this paper we present ALMA  $870 \mu\text{m}$  polarization observations toward the three Class 0 protostars Emb 8(N), Serpens SMM1, and Serpens Emb 8. We describe in Section 2 the different observational data and the data reduction. In Section 3 we present the dust polarization and total intensity maps, as well as a few molecular line observations. Finally, we discuss in Section 4 the different polarization patterns and the potential grain alignment mechanisms implied, as well as the relations between the bipolar outflow and the magnetic field morphology. Finally, we draw our conclusions in Section 5.

## 2. ALMA Observations and Data Reduction

We present three  $870 \mu\text{m}$  ALMA dust polarization observations of our three sources in Serpens. Each of the data sets A, B, and C targeted all three sources, and they were taken on 2015 June 3 and 7, 2016 September 12 and 13, and 2017 July 31 (ALMA projects: 2013.1.00726.S, 2015.1.00768.S, 2016.1.00710.S; PI: C. Hull). The synthesized beam of our observations varies from  $0''.33$  to  $0''.11$ , corresponding to a spatial resolution varying from  $\sim 144$  au in data set A up to  $\sim 48$  au in data set C, at a distance of 436 pc. Each data set consists of four spectral windows of 2 GHz each, ranging in frequency from 336.5 to 350.5 GHz. The details of the observations can be found in Table 2. In data sets A, B, and C the polarization calibrators were respectively J1751+0939, J1751+0939, and J1924-2914, chosen for their high polarization fraction. The ALMA flux calibration accuracy in Band 7 ( $870 \mu\text{m}$ ) is 10%. See Nagai et al. (2016) for a complete description of the ALMA polarization system.

We faced some issues when imaging data sets B and C, since they were “semi-pass,” because the requested resolution and sensitivity were not reached. To improve our image quality, the data sets were combined together following three different schemes during the production of the Stokes images (see Table 3). The choices of which data sets to merge depended on

**Table 2**  
ALMA Observation Details

Data Set	Baselines (m)		Calibrators
A	16.5–763	bandpass	J1751+0939
		phase	J1751+0939
		flux	Titan
B	12.4–3042	bandpass	J1751+0939
		phase	J1751+0939
		flux	J1751+0939
C	11.7–3320	bandpass	See note
		phase	
		flux	

**Note.** In data set C, all three calibrators were J1751+0939 in one execution, and J1924-2914 in the other.

which of them produced the best images at our multiple desired spatial resolutions.

The polarized dust continuum images were produced by using the CASA task `clean`, applying four rounds of consecutive phase-only self-calibration, using the total intensity (Stokes  $I$ ) solutions as a model for the Stokes  $Q$  and  $U$ , with a Briggs weighting parameter of `robust = 1`. The three Stokes parameters  $I$ ,  $Q$ , and  $U$  were cleaned separately after the last round of self-calibration using an appropriate residual threshold and number of iterations. The linear polarization properties of the radiation field from the thermal dust emission are given by the Stokes parameters  $Q$  and  $U$ , whereas the Stokes  $I$  parameter gives the total intensity of the dust continuum emission. The quantities derived from the combined use of the three Stokes maps are the polarized intensity  $P$ , the polarization fraction  $P_{\text{frac}}$ , and the polarization position angle  $\chi$ :

$$P = \sqrt{Q^2 + U^2} \quad (1)$$

$$P_{\text{frac}} = \frac{P}{I} \quad (2)$$

$$\chi = \frac{1}{2} \arctan\left(\frac{U}{Q}\right). \quad (3)$$

Although the Stokes parameters  $Q$  and  $U$  can be positive or negative, the polarized intensity  $P$  is always positive. This introduces a bias in the measurement of the polarized intensity, especially for emission with a low signal-to-noise ratio (S/N), where  $P$  is below the  $3\sigma_P$  threshold,  $\sigma_P$  being the noise in the  $P$  map. We corrected this bias in our  $P$  maps in order to arrive at the corrected polarized intensity, following the method described in Vaillancourt (2006) and Hull & Plambeck (2015). Note that in Case-3, the Stokes parameters  $I$  and  $Q$  &  $U$  come from different combinations of data sets (see Table 3). Therefore, before debiasing  $P$  and making the  $P$  and  $I$  images, we used the CASA task `imsmooth` to smooth the three Stokes parameters  $I$ ,  $Q$ , and  $U$  to have the same reconstructed beam (by convolving the map with a 2D Gaussian kernel). The resulting beam was chosen in such a way that it encompasses perfectly the two beams resulting from the different combinations. In addition, we performed a primary beam correction on all the maps of total intensity and polarized intensity presented in this article.

<sup>16</sup> Serpens Emb 8 has also been called S68N, and Serpens Emb 8(N) also has the name S68Nb.



**Table 3**  
Imaging Details

Case	Source	$I$	$Q$ and $U$	$\theta_{\text{res}}$ (arcsec)	$I_{\text{peak}}$ (mJy/beam)	$I_{\text{rms}}$ (mJy/beam)	$Q_{\text{rms}}$ (mJy/beam)	$U_{\text{rms}}$ (mJy/beam)	Figures
Data set A	Ser-Emb 8	A	A	$0.35 \times 0.32$	102	0.060	0.024	0.024	8–10
	Ser-Emb 8(N)	A	A	$0.35 \times 0.32$	55	0.066	0.024	0.025	1
Case-1	Ser-SMM1	ABC	ABC	$0.15 \times 0.14$	203	0.57	0.033	0.030	5–7, 14
Case-2	Ser-Emb 8	AC	AC	$0.20 \times 0.16$	75	0.18	0.024	0.024	8
	Ser-Emb 8(N)	AC	AC	$0.26 \times 0.22$	44	55	0.025	0.025	1–4
Case-3	Ser-SMM1	C	B	$0.13 \times 0.13$	182	0.7	0.066	0.058	5, 11, 15
	Ser-Emb 8	C	BC	$0.12 \times 0.11$	53	0.2	0.033	0.033	8
	Ser-Emb 8(N)	C	BC	$0.14 \times 0.11$	53	150	0.035	0.035	1

**Note.** Case-1, Case-2, and Case-3 are different combinations of the data sets A, B, and C.  $\theta_{\text{res}}$  is the angular resolution of the observations.  $I_{\text{peak}}$  is the peak total intensity of the Stokes  $I$  total intensity map.  $I_{\text{rms}}$ ,  $Q_{\text{rms}}$ , and  $U_{\text{rms}}$  are the noise values in the Stokes  $I$ ,  $Q$ , and  $U$  maps, respectively. The values are calculated as flux density per unit of synthesized beam  $\theta_{\text{res}}$ . The maps of Serpens SMM1 and Emb 8 from data set A were previously published in Hull et al. (2017a, 2017b).

Finally, we present 1.3 mm (Band 6) and 3 mm (Band 3) ALMA spectral-line data (ALMA projects: 2013.1.00726.S and 2016.1.00710.S; PI: C. Hull), which were taken on 2014 August 18 and 2016 October 4, respectively, and have angular resolutions of approximately  $0''.45 \times 0''.55$  and  $0''.56 \times 0''.6$ . The data include the following transitions: CO ( $J = 2 \rightarrow 1$ ) (used to trace the outflow, shown in Hull et al. 2016, 2017a for the case of Serpens SMM1),  $^{13}\text{CS}$  ( $J = 5 \rightarrow 4$ ),  $\text{C}^{18}\text{O}$  ( $J = 2 \rightarrow 1$ ), and  $\text{DCO}^+$  ( $J = 3 \rightarrow 2$ ).

### 3. Results

Below, we discuss our results from the dust polarization, continuum, and spectral-line observations of the three protostars Serpens Emb 8(N), SMM1, and Emb 8. In Figures 1, 5, and 8 we describe the magnetic field morphology recovered at several spatial scales probed by the ALMA data (for example, data set C recovered angular scales from  $0''.11$  to  $\sim 1''.3$ ). In Figures 2, 6, and 9 we discuss the spatial correlation of the dust continuum emission, magnetic field orientation, and the molecular outflows. In Figures 3, 7, and 10 we present maps of polarization fraction and polarized intensity. Finally, in Figure 4 we compare the dust polarization with the emission of molecular species tracing the dense gas ( $^{13}\text{CS}$  ( $J = 5 \rightarrow 4$ ),  $\text{C}^{18}\text{O}$  ( $J = 2 \rightarrow 1$ ), and  $\text{DCO}^+$  ( $J = 3 \rightarrow 2$ )) toward Serpens Emb 8(N).

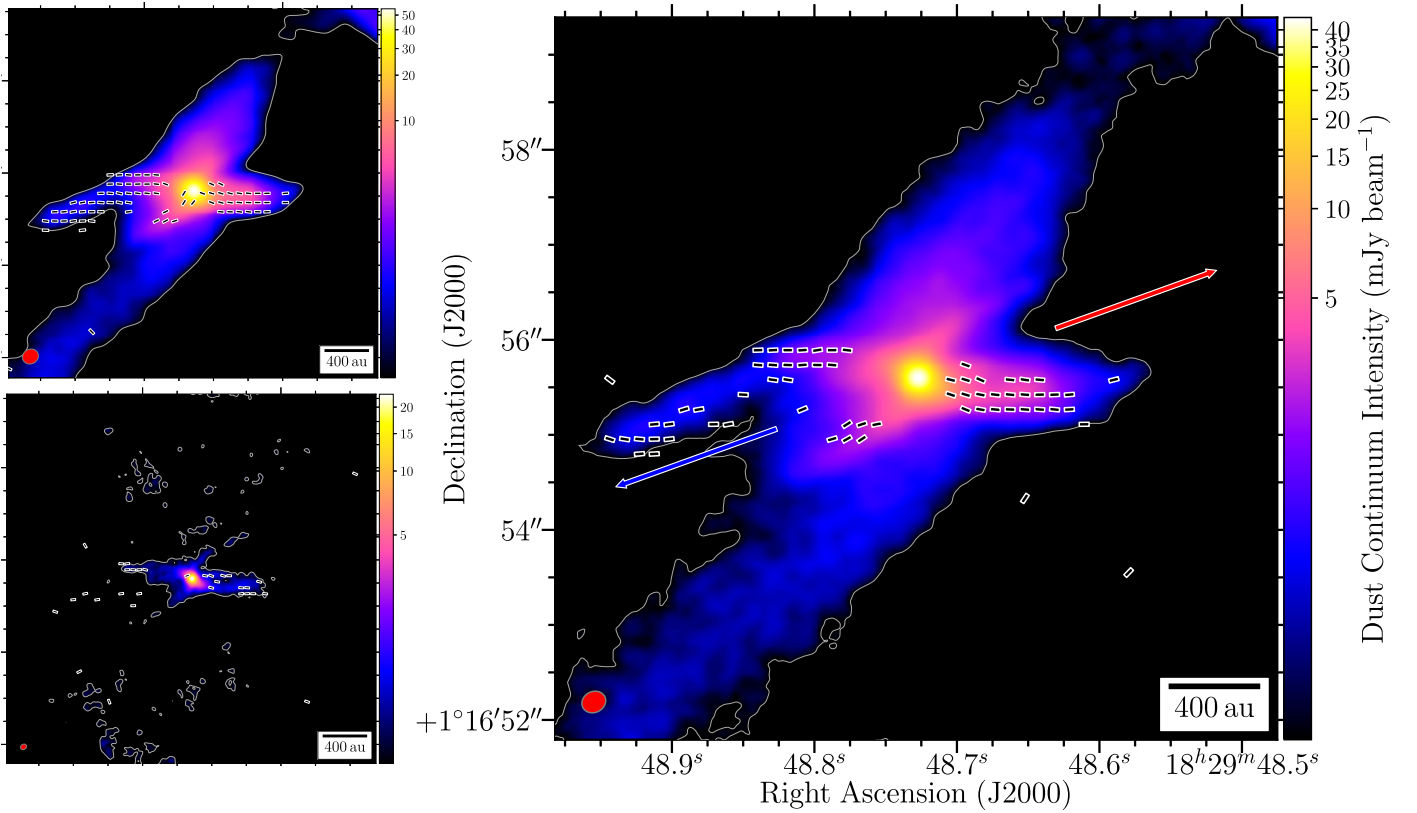
#### 3.1. Serpens Emb 8(N)

Serpens Emb 8(N) has never been observed at such high angular resolution. In Figure 1 we show multi-scale observations of the magnetic field and thermal dust continuum emission around the protostar, with spatial resolutions of 146, 105, and 55 au (from data set A, Case-2, and Case-3: see Table 3). We resolve progressively enhanced dust continuum emission along the outflow cavity walls, although this becomes faint at the highest angular resolution (Figure 1, bottom left panel). This type of structure is created by the outflow, which clears the cavity and causes material to accumulate beside the outflow, resulting in a high-density, compact feature that is enhanced because of how the emission is spatially filtered by the ALMA interferometer. The intermediate-resolution map (Figure 1, right panel) is the one that recovers the highest flux density in both total intensity and polarized dust emission. Most of the features are resolved out in the highest resolution

map, which may be because the emission is too faint, resulting in a loss of signal due to a lack of sensitivity in the higher resolution beam. Note that as the polarized intensity is less limited in dynamic range than the total intensity, dust polarization appears where there is no detection of Stokes  $I$ , especially in the highest resolution maps we present of all three sources.

Apart from the dust emission seen along the outflow walls, a filament is seen in the low- and mid-resolution maps in the dust continuum, orientated NW to SE, which has no obvious relation with the protostellar outflow and appears unpolarized (see Figure 1 top left and right panels). The mid-resolution map clearly allows us to disentangle the outflow cavity walls (traced by the high-resolution polarized emission) from this large unpolarized filament. We see a clear asymmetry in the polarization of the cavity walls, which may be linked to this filament. On each side of the bipolar outflow, one side of the outflow cavity walls is depolarized: the northern wall on the redshifted side, and the southern wall on the blueshifted side. These depolarized zones overlap with the large-scale filament, suggesting that, for example, the polarized emission from the cavity wall and from the large filamentary structure could have blended together, resulting in the depolarization we see. Indeed, the emission from infalling envelope material is known to be polarized (e.g., in B335: Maury et al. 2018; BHR 71 IRS1: Hull et al. 2019; and in SMM1-a, see below). Given the average flux of this filamentary structure, a detection of polarized emission at  $3\sigma_p$  would imply a polarization fraction of 20%. We address the question of the local conditions necessary to enhance the alignment of dust grains in Section 4.4; in light of the fact that grain alignment in the filament is not likely to be strongly enhanced, it is possible that the filament appears unpolarized because the recovered continuum is simply too faint to detect polarization. Therefore, the filament may alter the polarized emission at places where it is in the same line of sight as the outflow cavity walls.

This filament does not appear in the highest resolution map (Figure 1 bottom left panel). If we broadly calculate what its flux would have been at the highest angular resolution given the flux measured in the mid-resolution map (Figure 1 right panel), we obtain a value below the  $3\sigma_I$  threshold, suggesting a lack of sensitivity rather than a filtering effect. Moreover, the fact that the data sets B and C (Tables 2, 3) have significantly less integration time strengthens this hypothesis.



**Figure 1.** Magnetic field around Serpens Emb 8(N). Line segments represent the magnetic field orientation, rotated by  $90^\circ$  from the dust polarization angle  $\chi$  (the length of the segments does not represent any quantity). They are plotted where the polarized intensity  $P > 3\sigma_P$ . The color scale is the total intensity (Stokes  $I$ ) of the thermal dust emission, shown from  $3\sigma_I$ . The gray contour indicates the  $3\sigma_I$  level. Top left: data set A, see Table 3.  $\sigma_P = 35 \mu\text{Jy beam}^{-1}$ ,  $\sigma_I = 66 \mu\text{Jy beam}^{-1}$ . The peak polarized and total intensities are  $0.51 \text{ mJy beam}^{-1}$  and  $55 \text{ mJy beam}^{-1}$ , respectively. The red ellipse in the lower left corner represents the synthesized beam of ALMA from data set A only. The beam size is  $0''.35 \times 0''.32$ , with a position angle of  $-61.5^\circ$ . Right: combination of the data sets A and C, see Table 3 Case-2.  $\sigma_P = 35 \mu\text{Jy beam}^{-1}$ ,  $\sigma_I = 55 \mu\text{Jy beam}^{-1}$ . The peak polarized and total intensities are  $0.38 \text{ mJy beam}^{-1}$  and  $44 \text{ mJy beam}^{-1}$ , respectively. The blue and red arrows represent the directions of the blueshifted and redshifted lobes of the bipolar outflow, respectively. The beam size is  $0''.26 \times 0''.22$ , with a position angle of  $-64^\circ$ . Bottom left: combination of the data sets A, B, and C differently for Stokes  $I$ ,  $Q$ , and  $U$ , see Table 3 Case-3.  $\sigma_P = 43 \mu\text{Jy beam}^{-1}$ ,  $\sigma_I = 150 \mu\text{Jy beam}^{-1}$ . The peak polarized and total intensities are  $0.23 \text{ mJy beam}^{-1}$  and  $27 \text{ mJy beam}^{-1}$ , respectively. The beam size is  $0''.14 \times 0''.11$ , with a position angle of  $-60.8^\circ$ . The Stokes  $I$ ,  $Q$ , and  $U$  maps for the high-, mid-, and low-resolution observations are available in FITS format as the data behind the figure.

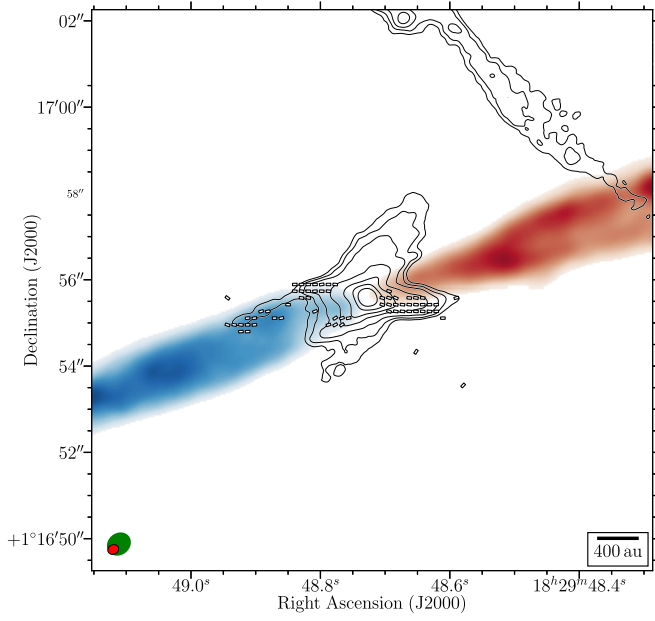
(The data used to create this figure are available.)

Figure 2 presents the integrated blue- and redshifted CO ( $J = 2 \rightarrow 1$ ) emission around the protostar. CO faithfully traces the outflowing gas in Class 0 protostars because it is still mostly molecular at this stage of protostellar evolution (Arce et al. 2007; Panoglou et al. 2012). The results exhibit a pristine, very high-velocity,<sup>17</sup> highly collimated molecular jet, strengthening the above assumption that the structures seen in the dust continuum trace the cavity walls, because they perfectly embrace the CO outflow. It is worth noting, however, that some vectors show up within the CO emission, particularly on the blueshifted side of the outflow. This polarized emission might be still linked to the outflow cavity wall, and might simply overlap with the CO emission because of projection effects. We shall also keep in mind that the spatial resolution of the CO emission is twice as coarse as the resolution of the dust continuum. A kinematic study by Tychoniec et al. (2019) found that this collimated jet is consistent with the young age of the source, considering the narrow opening angle and the small dynamical age of the jet (the relative age of Emb 8(N) and Emb 8 is discussed in Section 4.3).

<sup>17</sup> Note that we integrated the emission in such a way that we probe both the high-velocity and EHV components of the outflow: see Tychoniec et al. (2019) for details.

The polarized dust intensity and polarization fraction in Serpens Emb 8(N) are shown in Figure 3. As the polarization fraction comes from the ratio of the polarized intensity  $P$  to the total intensity  $I$ , it is important to consider the S/N of both  $P$  (color scale) and  $I$  (contours) in order to determine whether the corresponding polarization fraction is reliable. Therefore, in order to derive the polarization fraction, we considered only emission within the zones of  $3\sigma_P$  and  $5\sigma_I$ , where  $\sigma_P$  and  $\sigma_I$  are the rms noise levels in polarized and total intensity, respectively. Figure 3 shows a significant amount of dust polarization along the outflow cavity walls, whereas the central region is unpolarized, at this resolution, where the Stokes  $I$  emission peaks. The lower-resolution map (Figure 1, top left panel), however, shows a detection of polarized emission associated with the Stokes  $I$  peak, corresponding to a polarization fraction of  $\sim 0.4\%$ .

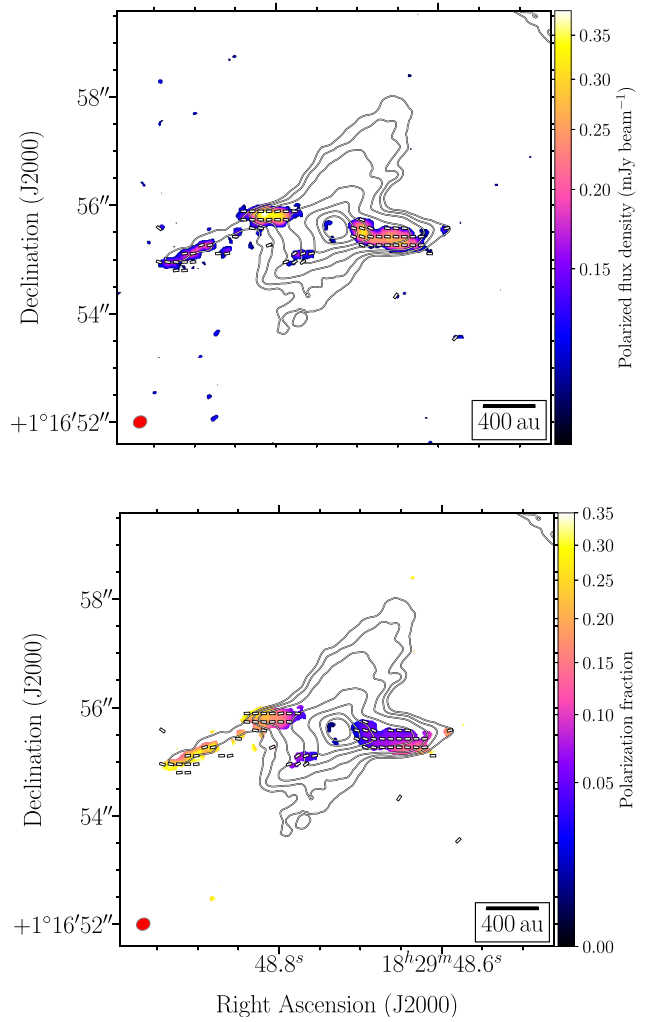
It is common to see a “polarization fraction hole” where the dust continuum emission peaks. This can be due to collisional dust de-alignment in high-density regimes (Lazarian 2005; Bethell et al. 2007; Pelkonen et al. 2009), or higher magnetic field dispersion in zones of high column density, because we know the degree of organization of the magnetic field is a key point to allow the detection of polarized dust emission (Maury et al. 2018). In our case, we might observe this



**Figure 2.** Moment 0 map of CO ( $J = 2 \rightarrow 1$ ) on a color scale overlaid with the total intensity contours and magnetic field orientations around Serpens Emb 8(N). The moment 0 map is constructed by integrating emission from  $-53$  to  $0$   $\text{km s}^{-1}$  (blue) and from  $15$  to  $40$   $\text{km s}^{-1}$  (red).  $v_{\text{LSR}}$  is  $\sim 8.5$   $\text{km s}^{-1}$ . The peaks of the red- and blueshifted moment 0 maps are  $2.10$   $\text{Jy beam}^{-1} \text{ km s}^{-1}$  and  $2.52$   $\text{Jy beam}^{-1} \text{ km s}^{-1}$ , respectively. Same as Figure 1 (right) for the line segments. The black contours trace the dust continuum from Case-2 (see Table 3) at levels of 11, 16, 24, 44, 74, 128,  $256 \times \sigma_I$ , where  $\sigma_I = 55 \mu\text{Jy beam}^{-1}$ . The red ellipse in the lower left corner represents the synthesized beam of ALMA continuum observations. The beam size is  $0''.26 \times 0''.22$ , with a position angle of  $-64^\circ$ . The green ellipse represents the resolution from the molecular line maps. Its size is  $0''.53 \times 0''.45$ . Note that the two lobes of the outflow have been plotted on different flux scales to enhance their visibility; as a result, relative fluxes should not be inferred from this image. The red and blueshifted moment 0 maps are available in FITS format as the data behind the figure.

(The data used to create this figure are available.)

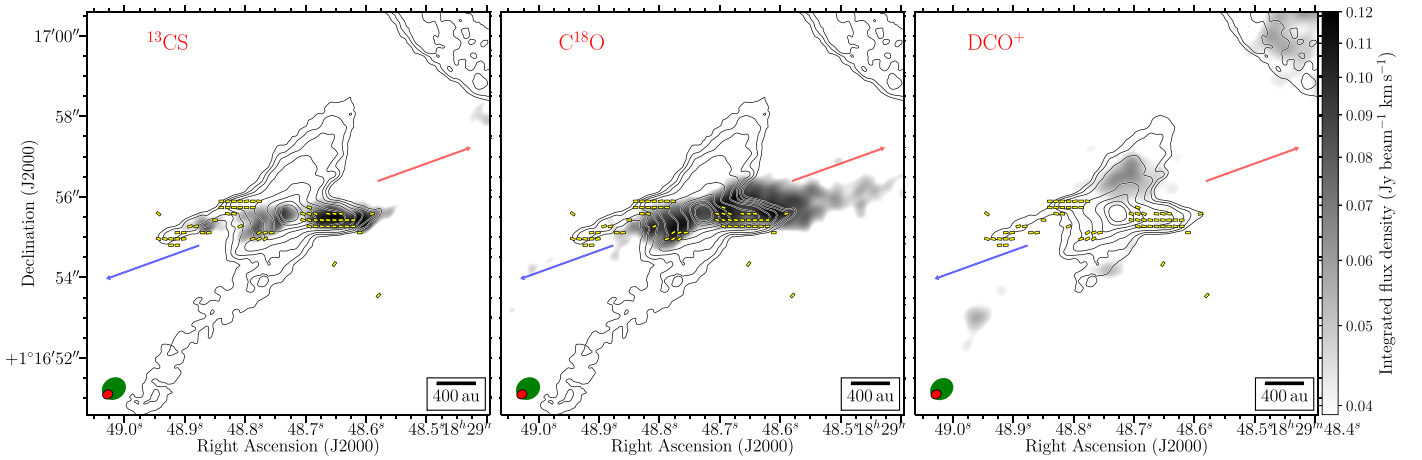
phenomenon in the inner core of Emb 8 (N). However, line-of-sight effects can result in a depolarized signal in the center of the protostar as we see through zones where the redshifted and blueshifted counterparts have both affected the polarized dust emission. This effect can decrease the polarized intensity in the equatorial plane, as has been seen in synthetic observations by Frau et al. (2011), under the threshold of the  $3\sigma_P$  level. In addition, at our resolution, a sharp change in magnetic field orientation can produce cancellation of the polarized signal within the beam lying in the equatorial plane, leading to a beam-sized depolarization zone (Kataoka et al. 2012; Lee et al. 2017; Kwon et al. 2019). However, almost no polarized emission is detected at this location in the map with the highest angular resolution (Figure 1 bottom left panel), and thus the lack of polarization detection is likely due to low sensitivity at higher resolution (see Table 3). Thus, there is probably polarization toward the peak of the dust continuum emission, and more sensitive, high-angular-resolution observations should be able to recover it. In contrast, the polarization fraction along the outflow cavity walls, within the  $5\sigma_I$  and  $3\sigma_P$  zones, reaches 30% at 690 au and 36% at 1150 au from the center of the protostar, along the northern edge of the blueshifted outflow. The southern redshifted outflow cavity



**Figure 3.** Dust polarization intensity (top) and polarization fraction (bottom) in Serpens Emb 8(N) from Case-2. Same as Figure 1 (right) for the line segments. The color scale in the top panel is the polarized intensity  $P$ , shown where  $P > 3\sigma_P$ . The color scale in the bottom panel is the polarized fraction  $P_{\text{frac}}$ , shown where  $P > 3\sigma_P$  and  $I > 5\sigma_I$ . The peak polarized intensity is  $0.38$   $\text{mJy beam}^{-1}$ . The black contours represent the total intensity (Stokes  $I$ ) at the following levels: 11, 16, 24, 44, 74, 128,  $256 \times \sigma_I$ , where  $\sigma_I = 55 \mu\text{Jy beam}^{-1}$ .

wall is less polarized with a maximum in polarization fraction of 25% at 790 au from the protostar.

Finally, Figure 4 presents the integrated intensity maps for the emission of the three dense-gas tracers  $^{13}\text{CS}$  ( $J = 5 \rightarrow 4$ ),  $\text{C}^{18}\text{O}$  ( $J = 2 \rightarrow 1$ ), and  $\text{DCO}^+$  ( $J = 3 \rightarrow 2$ ), which we compare with the polarized intensity. It is striking to notice how both  $^{13}\text{CS}$  and  $\text{C}^{18}\text{O}$  show up roughly where we see polarized continuum emission in an E–W orientation, aligned with the outflow.  $\text{C}^{18}\text{O}$  is typically optically thin in protostellar cores, and thus traces high-density material that is warm enough to trigger the sublimation of  $\text{C}^{18}\text{O}$  that was frozen onto dust grains. The spatial extent of this molecule has been used as a tracer of protostellar accretion (Jørgensen et al. 2015; Visser et al. 2015).  $^{13}\text{CS}$  peaks at the same place as  $\text{C}^{18}\text{O}$ , but is less spatially extended, and seems to be very well coupled with the dust emission in the SW outflow cavity wall. The kinematics of these two lines did not reveal any evidence of rotation in the inner core, which has been seen previously in molecular line



**Figure 4.** Moment 0 maps of  $^{13}\text{CS}$  ( $J = 5 \rightarrow 4$ ),  $\text{C}^{18}\text{O}$  ( $J = 2 \rightarrow 1$ ), and  $\text{DCO}^+$  ( $J = 3 \rightarrow 2$ ) around Serpens Emb 8(N). The black contours represent the total intensity (Stokes  $I$ ) at the following levels: 7, 11, 16, 24, 44, 74, 128,  $256 \times \sigma_I$ , where  $\sigma_I = 55 \mu\text{Jy beam}^{-1}$ , from Case-2.  $v_{\text{LSR}}$  is about  $\sim 8.5 \text{ km s}^{-1}$ . Left: moment 0 map of  $^{13}\text{CS}$  ( $J = 5 \rightarrow 4$ ) in grayscale constructed by integrating emission from 5 to  $12 \text{ km s}^{-1}$ . The rms noise level of the moment 0 map is  $16 \text{ mJy beam}^{-1} \text{ km s}^{-1}$ . The peak of the moment 0 map is  $0.12 \text{ Jy beam}^{-1} \text{ km s}^{-1}$ . Middle: moment 0 map of  $\text{C}^{18}\text{O}$  ( $J = 2 \rightarrow 1$ ) in grayscale, constructed by integrating emission from 6 to  $11.25 \text{ km s}^{-1}$ . The rms noise level of the moment 0 map is  $12 \text{ mJy beam}^{-1} \text{ km s}^{-1}$ . The peak of the moment 0 map is  $0.11 \text{ Jy beam}^{-1} \text{ km s}^{-1}$ . Right: moment 0 map of  $\text{DCO}^+$  ( $J = 3 \rightarrow 2$ ) in grayscale, constructed by integrating emission from 8 to  $10 \text{ km s}^{-1}$ . The rms noise level of the moment 0 map is  $13 \text{ mJy beam}^{-1} \text{ km s}^{-1}$ . The peak of the moment 0 map is  $0.067 \text{ Jy beam}^{-1} \text{ km s}^{-1}$ . Same as Figure 1 (right) for the line segments. The red and blue arrows represent the bipolar outflow directions. The beam size of the continuum emission (red ellipse) is  $0''.26 \times 0''.22$ , with a position angle of  $-64^\circ$ . The green ellipse represents the resolution from the molecular line maps. Its size is  $0''.53 \times 0''.45$ .

observations of Class 0 disk–envelope systems (Ohashi et al. 2014; Yen et al. 2015; Lee et al. 2016; Jacobsen et al. 2019; Hsieh et al. 2019). Rather, the kinematic information suggests that the gas is linked with the outflow motion. Finally, we present the integrated moment 0 map of the  $\text{DCO}^+$  emission. This molecule is formed from a reaction between  $\text{H}_2\text{D}^+$  and the remnant CO in the gas phase. As low temperatures are essential for deuterium fractionation,  $\text{DCO}^+$  is known to be a good tracer of the cold, dense material located at the disk–envelope interface (Jørgensen et al. 2004, 2011; Murillo et al. 2015, 2018). Its emission appears anticorrelated with the polarization, and rather seems to trace the filamentary structure mentioned above that is crossing over the protostar. This anticorrelation with dust polarization has also been seen in emission of  $\text{N}_2\text{D}^+$  in BHR 71 (Hull et al. 2019), suggesting that tracers of cold, dense material such as  $\text{DCO}^+$ ,  $\text{N}_2\text{D}^+$ , and  $\text{N}_2\text{H}^+$  are good proxies for probing the conditions necessary for dust-grain alignment in protostellar cores. Finally, we do not detect an organized velocity gradient in the  $\text{DCO}^+$  at the  $0.5 \text{ km s}^{-1}$  spectral resolution of our data, and thus the role of the aforementioned large-scale filamentary structure in the formation of Serpens Emb 8(N) remains to be determined.

### 3.2. Serpens SMM1

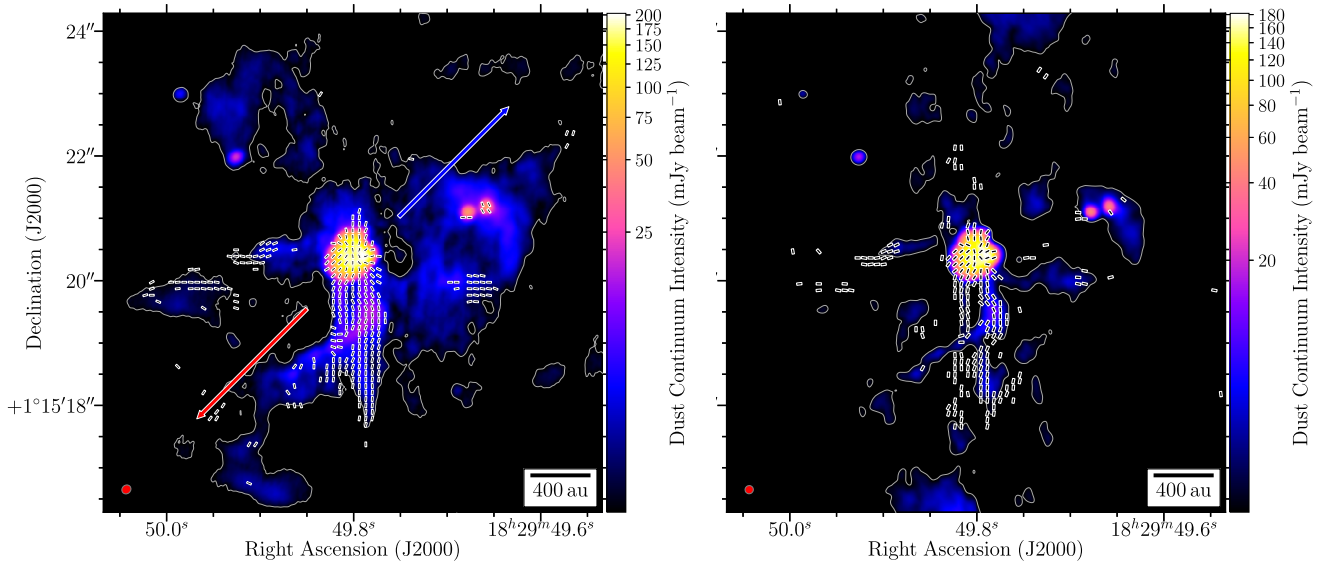
We now present the results of our second source, Serpens SMM1, an intermediate-mass Class 0 protostellar core. In Figure 5 we present the magnetic field orientations and thermal dust continuum emission. The  $\text{CO}$  ( $J = 2 \rightarrow 1$ ) integrated emission tracing the low-velocity bipolar outflow around the protostar is shown in Figure 6. Lower resolution polarization observations of this source (as well as the CO map presented here) were first published in Hull et al. (2017a). They found that the dust along the edges of the cavity of the wide-angle, low-velocity redshifted outflow was highly polarized. However, they did not detect any polarization that was clearly related to the redshifted EHV jet of SMM1, reported in Hull et al. (2016). The results from our observations at higher

angular resolution in Figures 5 and 7 present a more complex picture of the dust emission and magnetic field morphology, with an angular resolution reaching  $0''.15 \times 0''.14$  ( $\sim 57 \text{ au}$ ).

SMM1-c, SMM1-d, and the two binary components of SMM1-b are now totally resolved (see Appendix A for a scheme of the SMM1 core). The polarization to the west of SMM1-a and to the south of SMM1-b has been mostly resolved out compared with the lower resolution observations. Just a few remaining polarization detections are seen toward the binary and just to the south of it, consistent with the results from Hull et al. (2017a). To the east of SMM1-a we see weak polarization toward the E–W cavity edge, which was already relatively faint in the lower angular resolution data. Our results, however, show a clear filamentary structure to the south of SMM1-a, visible in polarization and total intensity. This structure consists of two highly polarized filaments (hereafter designated as the Eastern and Western filaments, see Appendix A for a schematic presentation of the different features in SMM1), which have magnetic fields that clearly lie along their major axes. These two filaments observed to the south of SMM1-a appear to be connected to the central core, i.e., the resolved hot corino of SMM1-a, which exhibits a complex polarization pattern. We discuss the possible physical origin of these filaments in Section 4.3.

In Figure 7 we present the dust polarization intensity and polarization fraction around SMM1-a. It is immediately apparent that the two filaments to the south of SMM1-a exhibit high polarization fractions, reaching values of 10% or higher (the Eastern filament reaches a maximum of 20%). In the zone where the two filaments appear to cross, the polarization intensity and orientation suggest that the superposition in the plane of the sky of the emission emanating from the two filaments has caused the polarization to cancel. Indeed, where the two filaments cross there is a clearly depolarized zone the size of the beam (Figure 7). This strengthens the idea that these filaments are two separate structures. Moreover, to the east of the depolarized zone the magnetic field orientation is a bit offset from the major axis of the Eastern filament. This suggests that the polarization in this location is coming from both filaments, resulting in an average





**Figure 5.** Magnetic field around Serpens SMM1. Line segments represent the magnetic field orientation, rotated by  $90^\circ$  from the dust polarization angle  $\chi$  (the length of the segments does not represent any quantity). They are plotted where the polarized intensity  $P > 3\sigma_P$ . The color scale is the total intensity (Stokes  $I$ ) of the thermal dust emission, which is shown when  $I > 3\sigma_I$ . Left: combination of data sets A, B, and C, see Table 3 Case-1.  $\sigma_P = 53 \mu\text{Jy beam}^{-1}$  and  $\sigma_I = 0.57 \text{ mJy beam}^{-1}$ . The peak polarized and total intensities are  $6.28 \text{ mJy beam}^{-1}$  and  $203 \text{ mJy beam}^{-1}$ , respectively. The red ellipse in the lower left corner represents the beam size, i.e.,  $0''.15 \times 0''.14$ , with a position angle of  $-48^\circ.5$ . Right: combination of the data sets B and C, see Table 3 Case-3.  $\sigma_P = 80 \mu\text{Jy beam}^{-1}$  and  $\sigma_I = 0.7 \text{ mJy beam}^{-1}$ . The peak polarized and total intensities are  $5.6 \text{ mJy beam}^{-1}$  and  $182 \text{ mJy beam}^{-1}$ , respectively. The red ellipse in the lower left corner represents the beam size, i.e.,  $0''.13 \times 0''.13$ , with a position angle of  $-58^\circ.8$ . The Stokes  $I$ ,  $Q$ , and  $U$  maps for the high- and mid-resolution observations are available in FITS format as the data behind the figure.

(The data used to create this figure are available.)

magnetic field orientation that is not perfectly aligned with either of them. Finally, to the south of the curved Western filament, the polarization is orientated perfectly N-S along the straight Eastern filament. The potential causes of these highly polarized filaments are discussed in Section 4.3.

As introduced in Section 3.1, we observe the “polarization hole” phenomenon in the inner core of SMM1-a, where we see a clear difference in polarization fraction between the hot corino and the two southern filaments. However, inside this central region (within the  $\sim 32\sigma_I$  level, i.e., above the 9% level of the peak total intensity), the polarization appears quite inhomogeneous. Both the polarized intensity and the polarization fraction (achieving a maximum of 6%) exhibit strong peaks to the SE of the Stokes  $I$  peak. This highly polarized spot clearly contrasts with the remaining area within this central zone, which on average has a polarization fraction of  $\sim 1\%$ . At first glance, the inferred magnetic field orientation in this central region appears quite radial. We discuss in Sections 4.1 and 4.2 the potential causes of this polarization pattern in SMM1-a, which we attribute primarily to a poloidal magnetic field morphology.

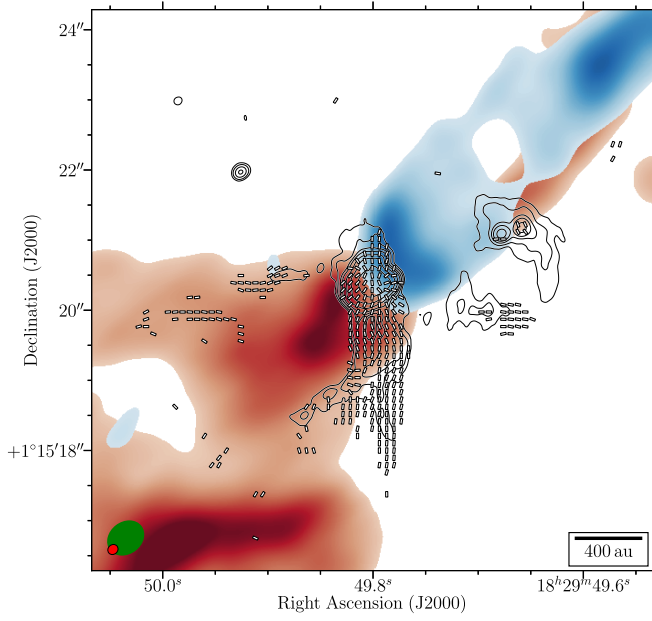
### 3.3. Serpens Emb 8

Finally, we present the ALMA dust polarization data of the protostar Serpens Emb 8, located at  $\sim 7000 \text{ au}$  to the SW of Serpens Emb 8(N). In Figure 8 we present two high-angular-resolution maps of this source, with spatial resolutions of 80 and 50 au. Apart from the central source Emb 8 we now clearly resolve the two companions, which we deem Emb 8-b and Emb 8-c (see Table 1 and the right panel of Figure 8). As was the case for Serpens Emb 8(N), we attribute the loss of signal at high resolution to a lack of sensitivity.

This source was the focus of Hull et al. (2017b), where they compare the observed magnetic field morphology of data set A with turbulent MHD simulations. They found that Serpens Emb 8 may have formed in a weakly magnetized environment, because no obvious hourglass morphology was detected. Additionally, they found no correlation between the magnetic morphology and the gradient of the dust emission, suggesting that the field is not strong enough to shape the structure of the dust. The magnetic field morphology observed does not present major changes as we increase in resolution from data set A (Hull et al. 2017b) to Case-3 (Figure 8 right panel). However, we now begin to resolve the magnetic field orientation in the central core Emb 8, which exhibits an homogeneous E-W pattern. As for the dust polarization in the envelope, it mainly shows up around Emb 8-b and to the south of Emb 8, in a large arc-shaped structure that is not strongly correlated with the outflow (like Emb 8(N), for example). As for Emb 8-c, this source appears unpolarized.

In Figure 9 we present the magnetic field orientations from data set A overlaid with Stokes  $I$  contours and the integrated redshifted and blueshifted emission from CO ( $J = 2 \rightarrow 1$ ) on a color scale. Contrary to the two other protostars presented above, the dust polarization is not clearly correlated with the molecular outflow. It is worth noting some hints of outflow cavity wall around the base of the blueshifted outflow, where the dust emission seems to follow the wide-angle outflow; however, there is almost no polarized dust emission in this area. On the redshifted side, there are no obvious correlations, because the CO emission is far from the detected dust emission. Nevertheless, all the magnetic field orientations to the south of Emb 8 are quite aligned with the outflow axis, suggesting that the magnetic field may not be totally uncorrelated with the bipolar outflow. Indeed, to the south of the central core, about





**Figure 6.** Moment 0 map of CO ( $J = 2 \rightarrow 1$ ) on a color scale overlaid with the total intensity contours and magnetic field orientations around Serpens SMM1. Same as Figure 5 (left) for the line segments. The moment 0 on the color scale is constructed by integrating emission from  $-13$  to  $4 \text{ km s}^{-1}$  (blue) and from  $10.5$  to  $30 \text{ km s}^{-1}$  (red).  $v_{\text{LSR}}$  is  $\sim 8.5 \text{ km s}^{-1}$ . The peaks of the red- and blueshifted moment 0 maps are  $5.40 \text{ Jy beam}^{-1} \text{ km s}^{-1}$  and  $3.90 \text{ Jy beam}^{-1} \text{ km s}^{-1}$ , respectively. The black contours tracing the dust continuum are  $8, 12, 20, 32, 64 \times$  the rms noise  $\sigma_I$  in the Stokes  $I$  map, where  $\sigma_I = 0.57 \text{ mJy beam}^{-1}$ . The red ellipse in the lower left corner represents the synthesized beam after combining data sets A, B, and C. The beam size is  $0''.15 \times 0''.14$ , with a position angle of  $-48^\circ$ . The green ellipse represents the resolution from the molecular line map, and measures  $0''.53 \times 0''.45$ . Note that the two lobes of the outflow have been plotted on different flux scales to enhance their visibility; as a result, relative fluxes should not be inferred from this image. The redshifted and blueshifted moment 0 maps are available in FITS format as the data behind the figure.

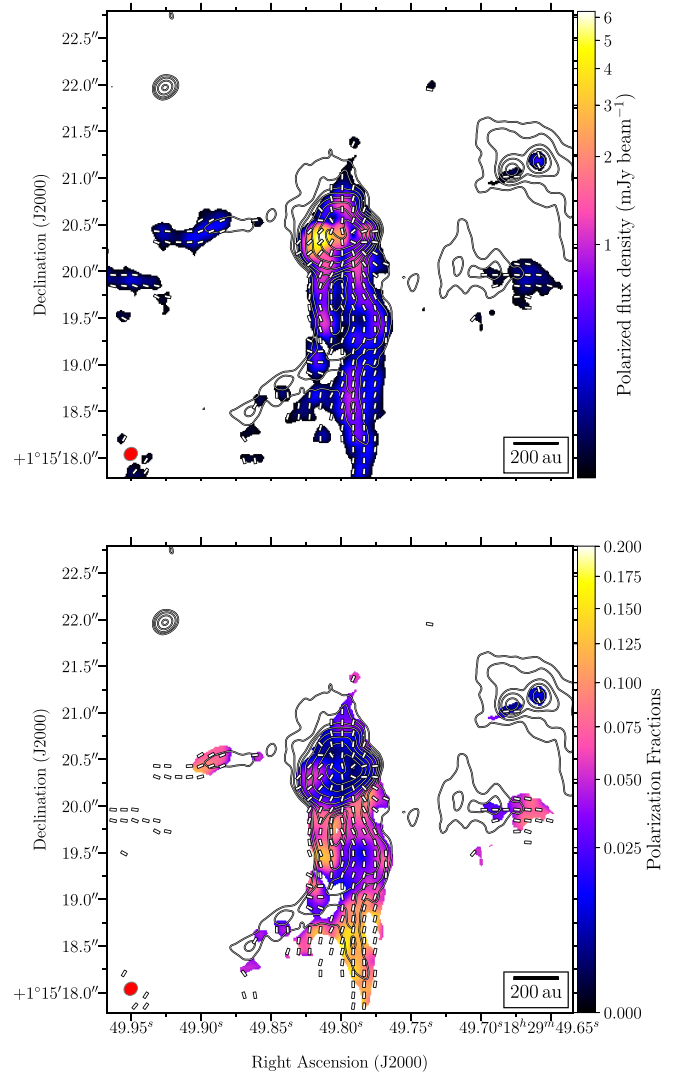
(The data used to create this figure are available.)

70% of the magnetic field line segments are aligned with the outflow axis within an offset of  $\pm 20^\circ$ .

Finally in Figure 10 we present the maps of polarized intensity and polarization fraction of Emb 8 from data set A. The polarized intensity peaks in the central core, which has a polarization fraction of 0.7%. The polarization fraction within the core increases progressively to the north and south of the central core, achieving values of up to 30% inside the regions of  $5\sigma_I$  and  $3\sigma_P$ .

#### 4. Discussion

Our high-resolution polarimetric results from the three protostars Serpens Emb 8(N), SMM1, and Emb 8 lead us to discuss the causes of the polarization patterns in each of these sources. We investigate the different environmental conditions and try to cautiously infer the possible physical processes that would lead to the different behaviors (e.g., polarization fraction and spatial distribution) of the polarized thermal dust emission. We start by focusing on the polarization pattern seen in the inner cores of our sources, investigating first the optical thickness and the correlation between the structure of the continuum emission and the polarization (Section 4.1). Second, under the hypothesis that the polarization reflects the magnetic field morphology, we discuss the poloidal pattern of the magnetic field visible in the inner core of two of our sources (Section 4.2). Third, we study the

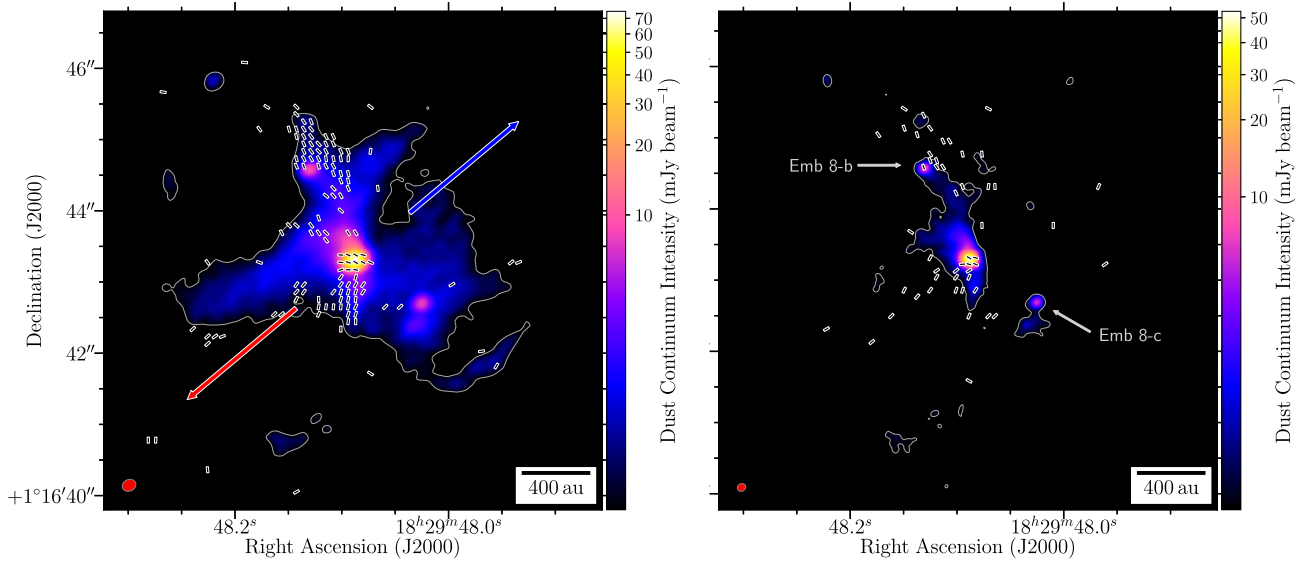


**Figure 7.** Dust polarization intensity (top) and polarization fraction (bottom) in SMM1a, from Case-1. Same as Figure 5 (left) for the line segments. The black contours tracing the dust continuum are  $8, 12, 20, 32, 64, 128, 220, 300 \times$  the rms noise level  $\sigma_I$  in the Stokes  $I$  map, where  $\sigma_I = 0.57 \text{ mJy beam}^{-1}$ . The color scale in the top panel is the polarized intensity  $P$ , which is shown where  $P > 3\sigma_P$ . The color scale in the bottom panel is the polarization fraction  $P_{\text{frac}}$ , which is shown where  $P > 3\sigma_P$  and  $I > 5\sigma_I$ . The peak polarized intensity is  $203 \text{ mJy beam}^{-1}$ . The red ellipse in the lower left corner represents the synthesized beam after combining data sets A, B, and C and measures  $0''.15 \times 0''.14$ , with a position angle of  $-48^\circ$ .

correlation between the outflow morphology and the magnetic field, especially around the outflow cavity walls (Section 4.3). Finally, we investigate the cause of the enhancement of the polarization along the cavity walls, focusing particularly on the role played by the radiation field (Section 4.4).

##### 4.1. Investigating Possible Grain-alignment Mechanisms Causing Polarization in Inner Envelopes at Scales of $r < 200 \text{ au}$

In protostellar envelopes, the long axes of dust grains are expected to be oriented orthogonal to the surrounding magnetic field (Andersson et al. 2015). This effect has been the target of many observations in both low- and high-mass star-forming regions (see Hull & Zhang 2019 for a review of interferometric polarization observations). *B*-RATs (designating dust grains



**Figure 8.** Magnetic field around Serpens Emb 8 from Case-1. Line segments represent the magnetic field orientation, rotated by  $90^\circ$  from the dust polarization angle  $\chi$  (the length of the segments does not represent any quantity). They are plotted where the polarized intensity  $P > 3\sigma_p$ . The color scale is the total intensity (Stokes  $I$ ) of the thermal dust emission, which is shown where  $I > 3\sigma_I$ . Left: combination of data sets A and C, see Table 3 Case-2.  $\sigma_p = 30 \mu\text{Jy beam}^{-1}$  and  $\sigma_I = 0.18 \text{ mJy beam}^{-1}$ . The peak polarized and total intensities are  $0.48 \text{ mJy beam}^{-1}$  and  $75 \text{ mJy beam}^{-1}$ , respectively. The red ellipse in the lower left corner represents the beam size, i.e.,  $0''.20 \times 0''.16$ , with a position angle of  $-67^\circ$ . Right: combination of data sets B and C, see Table 3 Case-3.  $\sigma_p = 30 \mu\text{Jy beam}^{-1}$  and  $\sigma_I = 0.2 \text{ mJy beam}^{-1}$ . The peak polarized and total intensities are  $0.32 \text{ mJy beam}^{-1}$  and  $53 \text{ mJy beam}^{-1}$ , respectively. The red ellipse in the lower left corner represents the beam size, i.e.,  $0''.12 \times 0''.11$ , with a position angle of  $-62.7^\circ$ . The Stokes  $I$ ,  $Q$ , and  $U$  maps for the high- and mid-resolution observations are available in FITS format as the data behind the figure.

(The data used to create this figure are available.)

magnetically aligned via radiative alignment torques) is the favored mechanism to explain the polarization at core/ISM scales, although an improved version of the theory including paramagnetic inclusions in dust grains had to be developed in order to reproduce the high ( $\sim 20\%$ ) polarization fractions observed by *Planck* in the diffuse ISM; see Hoang & Lazarian (2016). Guillet et al. (2018) also proposed an explanation for the high values of polarization fraction encountered at ISM scales. Their models revealed that, when there is a high enough mass fraction ( $\sim 0.8$ – $1$ ) of aligned grains, a combined population of silicate and amorphous carbon grains can reproduce these high polarization fractions. While this grain alignment mechanism most likely continues to operate at the high column densities typical of inner envelopes, the different local conditions of radiation, temperature, opacity, and density in these regions might cause other mechanisms to contribute to the millimeter and submillimeter (hereafter “(sub)millimeter”) polarization signal from dust. These effects include dust self-scattering and alignment of dust grains with respect to the radiation direction, both of which we explore below.

#### 4.1.1. Grain Alignment via Radiative Torques

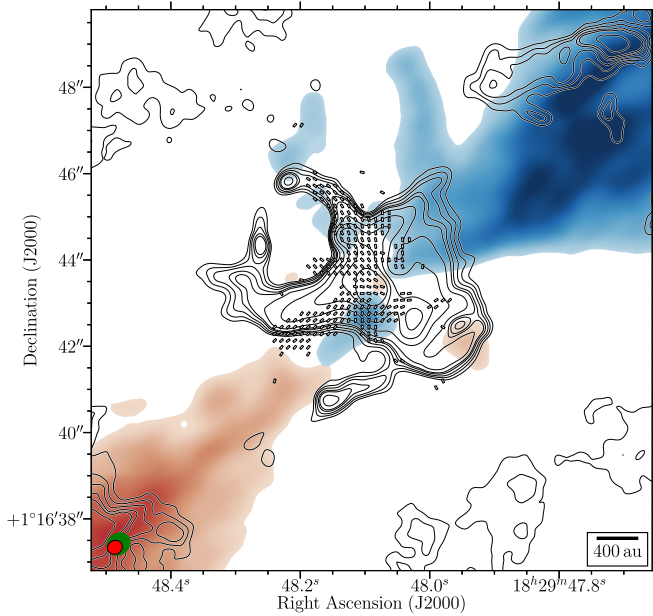
The polarization orientations in SMM1-a (where no additional rotation had been performed on the polarization angle  $\chi$ ) from the highest resolution observation (Case-3 of Table 3) are plotted in Figure 11. The central region of SMM1-a, inside the  $32\sigma_I$  contour, exhibits a generally azimuthal polarization pattern, which could be characteristic of dust grains that are aligned with respect to the local radiation field, rather than with the local magnetic field. In the theoretical study led by Lazarian & Hoang (2007) and Tazaki et al. (2017), they found that in environments such as protoplanetary disks, the Larmor

precession timescale of large dust grains ( $\geq 100 \mu\text{m}$ ) can be longer than the gaseous damping timescale, which causes the grains to be aligned via RATs with respect to the gradient in the radiation field instead of with respect to the magnetic field. In this case, sometimes known as “*k*-RAT” alignment, the long axes of the dust grains may be aligned orthogonal to the gradient in the radiation emanating from the central protostar.

In our high-angular-resolution observations of SMM1-a, we compare the relative orientation between the polarization and the radiation field in the center of the protostar. To do so, we use the map of Stokes  $I$  gradient as a proxy for the radiation field. In this way, we can test whether the polarization orientation is perpendicular to the Stokes  $I$  gradient, which would be an argument in favor of the *k*-RAT solution. A caveat of this comparison is that inhomogeneous (i.e., aspherical) conditions of temperature, density, and optical thickness may alter this correlation. In addition, the photons that are primarily responsible for the radiative torque acting on grains at a given location are those with the largest energy density, i.e., those near the peak of the spectral energy distribution (SED) at that location. These may or may not be the (sub)millimeter photons that we detect with ALMA. Nevertheless, we think this is a reasonable assumption, which has been discussed before in the interpretation of high-resolution ALMA results (Sadavoy et al. 2018a).

The bottom left panel of Figure 12 shows the distribution of the differences between the inferred magnetic field position angles<sup>18</sup> and the Stokes  $I$  gradient in the inner core of SMM1-a

<sup>18</sup> While here our aim is to test the *k*-RAT mechanisms by comparing the relationship between the radiation field and the polarization (which is unrelated to the magnetic field in *k*-RAT models), Figure 12 shows HROs using the inferred magnetic field, because we ultimately conclude that the polarization in all of our sources is most likely caused by magnetically aligned grains (see Section 4.2).

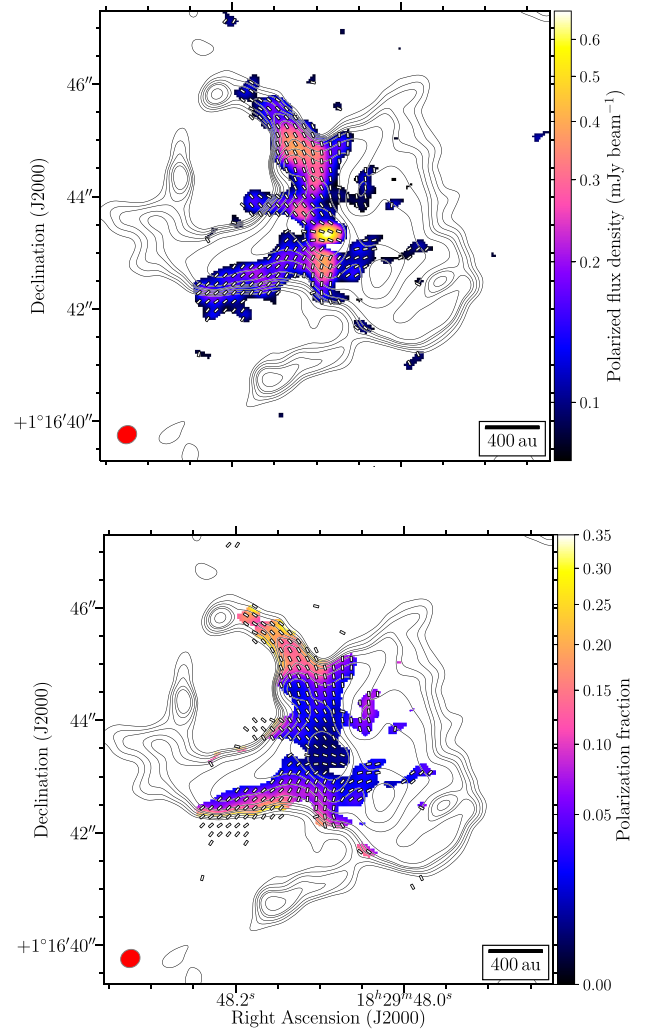


**Figure 9.** Moment 0 map of CO ( $J = 2 \rightarrow 1$ ) on a color scale overlaid with the total intensity contours and magnetic field orientations around Serpens Emb 8. Line segments represent the magnetic field orientation, rotated by  $90^\circ$  from the dust polarization angle  $\chi$  (the length of the segments does not represent any quantity). They are plotted where the polarized intensity  $P > 3\sigma_P$ , where  $\sigma_P = 25 \mu\text{Jy beam}^{-1}$ . The moment 0 on the color scale is constructed by integrating emission from  $-10$  to  $6.5 \text{ km s}^{-1}$  (blue) and from  $11$  to  $21 \text{ km s}^{-1}$  (red).  $v_{\text{LSR}}$  is  $\sim 8.5 \text{ km s}^{-1}$ . The peaks of the red- and blueshifted moment 0 maps are  $1.65 \text{ Jy beam}^{-1} \text{ km s}^{-1}$  and  $1.68 \text{ Jy beam}^{-1} \text{ km s}^{-1}$ , respectively. The black contours, which are tracing the dust continuum from data set A (see Table 3), are  $3, 6, 9, 13, 16, 24, 44, 74, 128 \times$  the rms noise  $\sigma_I$  in the Stokes  $I$  map, where  $\sigma_I = 60 \mu\text{Jy beam}^{-1}$ . The red ellipse in the lower left corner represents the synthesized beam of ALMA continuum observations. The beam size is  $0''.35 \times 0''.32$ , with a position angle of  $-63^\circ$ . The green ellipse represents the resolution from the molecular line maps, measuring  $0''.53 \times 0''.45$ . Note that the two lobes of the outflow have been plotted on different flux scales to enhance their visibility; as a result, relative fluxes should not be inferred from this image. The redshifted and blueshifted moment 0 maps are available in FITS format as the data behind the figure.

(The data used to create this figure are available.)

(details of the calculations can be found in Appendix B). The resulting distribution is single-peaked, with a maximum at  $0^\circ$ , which suggests a polarization orientation perpendicular to the inferred radiation field. This implies that it is possible that dust grains have been aligned with their minor axes along the radiation gradient. However, several caveats remain in this hypothesis: the distribution is quite broad, suggesting some imperfections in this alignment solution. In addition, the peak in polarized intensity yields a strong deviation from the perfect azimuthal pattern.

This type of azimuthal polarization pattern caused by large dust grains has been seen in the HL Tau disk at 3 mm wavelengths (Kataoka et al. 2017; Stephens et al. 2017). However, some caveats were raised by Yang et al. (2019), who explained that  $k$ -RATs should enhance the polarized emission along the major axis of an inclined disk instead of exhibiting the azimuthally symmetric polarized intensity seen in HL Tau. In the case of Class 0 protostars, the age of the system is a determining factor for the amount of grain growth that has occurred. However, the typical duration of the Class 0 stage of  $\sim 0.2 \text{ Myr}$  (Dunham et al. 2015; Kristensen & Dunham 2018) seems to be long enough, because grain growth has been



**Figure 10.** Dust polarization intensity (top) and polarization fraction (bottom) in Serpens Emb 8 from data set A. Same as Figure 9 for the line segments and the Stokes  $I$  contours. The color scale in the top panel is the polarized intensity  $P$ , which is shown where  $P > 3\sigma_P$ . The color scale in the bottom panel is the polarization fraction  $P_{\text{frac}}$ , shown where  $P > 3\sigma_P$  and  $I > 5\sigma_I$ . The peak of the polarized intensity is  $0.69 \text{ mJy beam}^{-1}$ . The red ellipse in the lower left corner represents the synthesized beam of ALMA continuum observations. The beam size is  $0''.35 \times 0''.32$ , with a position angle of  $-63^\circ$ .

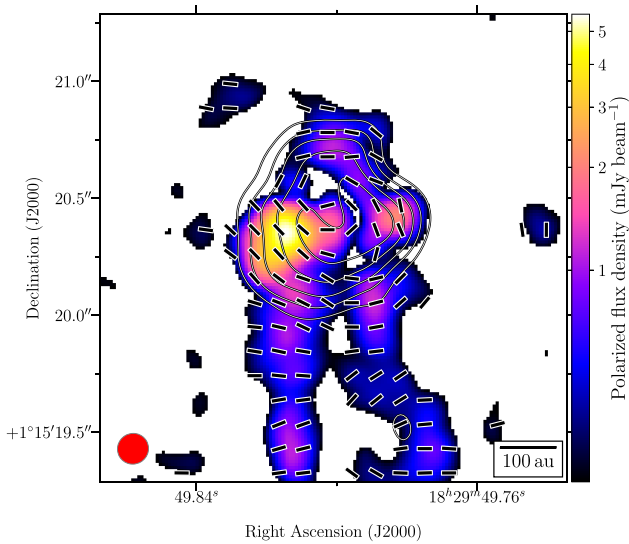
inferred in a few young stellar objects (Chiang et al. 2012; Sadavoy et al. 2016; Chacón-Tanarro et al. 2017; Agurto-Gangas et al. 2019) and protoplanetary disks (e.g., Pérez et al. 2012, 2015; Trotta et al. 2013; Testi et al. 2014; Tazzari et al. 2016; Liu et al. 2017; Harsono et al. 2018; Huang et al. 2018). However, based on the aforementioned results, the dust grain size of  $\geq 100 \mu\text{m}$  invoked in Tazaki et al. (2017) is at the upper limit of the grain sizes inferred to-date in Class 0 protostars.

In order to constrain the physical conditions (and possibly dust-grain growth) within the central cores and to discuss the possible grain-alignment mechanisms, we investigated the optical thickness of our sources by measuring the spectral index  $\alpha$  of the observed flux densities, given by

$$F_\nu \approx F_{\nu_0} \left( \frac{\nu}{\nu_0} \right)^\alpha. \quad (4)$$

We use the continuum observations from our ALMA Band 3 (3 mm) data set as well as our Band 7 ( $870 \mu\text{m}$ ) data set B





**Figure 11.** Polarization orientations in SMM1-a from Case-3. Same as Figure 5 (right panel) for the line segments, except that in this case, they are *not* rotated by  $90^\circ$ , and instead represent the actual polarization orientations. The color scale is the dust polarization intensity  $P$ . Both the color scale and the line segments are shown where  $P > 3\sigma_P$ , where  $\sigma_P = 80 \mu\text{Jy beam}^{-1}$ . The black contours represent the total intensity at 16, 38, 72, 130, 200  $\times \sigma_I$ , where  $\sigma_I = 0.7 \text{ mJy beam}^{-1}$ . The beam size of the continuum emission (red ellipse) is  $0''.13 \times 0''.13$ .

(Table 2), which are separated by a period of three weeks. To measure the flux of SMM1-a, Emb 8(N), and Emb 8, we fit a single 2D Gaussian component model to the visibilities of our data sets using the UVMULTIFIT tool (Martí-Vidal et al. 2014). Figure 13 shows the fit results and the spectral index  $\alpha$  for the inner core ( $\sim 200$  au) of our sources. An optically thick source would have a spectral index of  $\alpha \approx 2$  (blackbody case, in the Rayleigh–Jeans regime), whereas a source considered to be optically thin would have  $\alpha \geq 3$ . We were not able to spatially resolve the spectral index in the inner cores of our sources because the beam of the 3 mm data set is significantly larger than the beam of our Band 7 observations. We are thus averaging the optical depth over the hot corino of SMM1-a with this Gaussian fitting.

In Figure 14 we present the brightness temperature over the center of SMM1-a, overlaid with the Stokes  $I$  and polarized intensity contours. The brightness temperature peaks at 101 K and is as low as  $\sim 20$  K at the outer edges of the hot corino. Moreover, we notice that inside the hot corino, the peaks in the polarized emission identified above are located on either side of the Stokes  $I$  peak (i.e., the horseshoe-shaped zone, which is likely to be an optical depth effect), which suggests that the polarized emission is not originating in the regions of highest optical depth in the central core of SMM1-a.

The joint consideration of the brightness temperature map and the derived spectral index value suggests that the very inner  $\sim 100$  au zone is optically thick and/or has dust emissivity properties that are significantly different from the rest of the hot corino. Dust-grain growth may have begun in the very center of the hot corino; however, to confirm this we will need to further investigate the spatial distribution of the dust emissivity index and the dust temperature (Bracco et al. 2017). Tazaki et al. (2017) predict that the  $k$ -RAT mechanism requires large dust grains in order to operate, so this grain-alignment hypothesis may indeed be relevant in the inner core of

SMM1-a. However, two strong contradictions lead us to discard  $k$ -RATs as the dominant polarization mechanism occurring here: the first one is the breadth of the distribution in the HRO histogram presented above. The second is that we do not observe the polarized intensity predicted in Yang et al. (2019), where their model predicts that the  $k$ -RAT mechanism should enhance the polarized intensity along the major axis of the protoplanetary disk structure, as mentioned above. This last point is not straightforward for SMM1-a, because we do not detect any hints of a flattened, rotationally supported structure in any of our molecular line observations.

#### 4.1.2. Dust Self-scattering

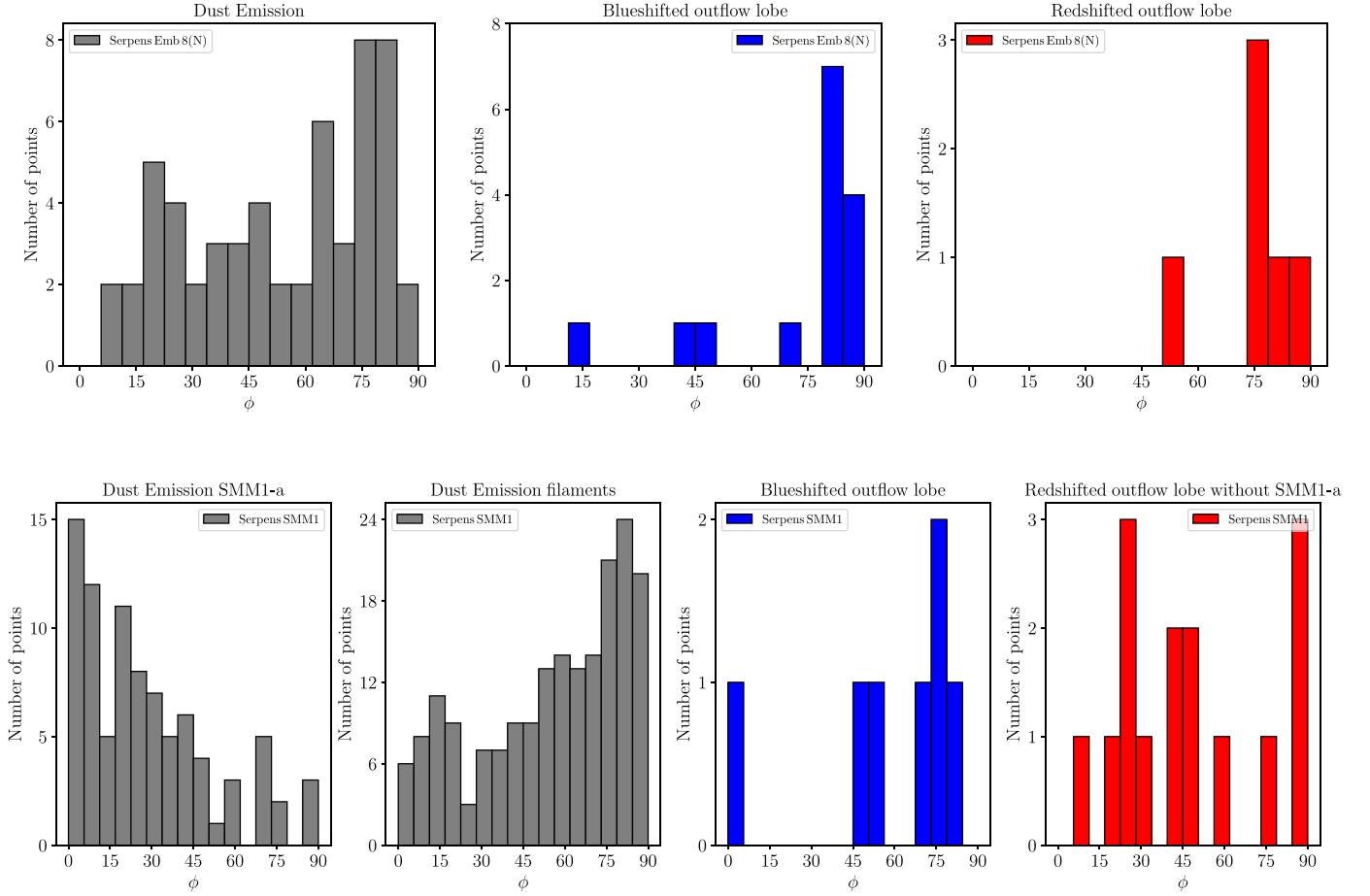
Polarized dust emission can also arise from self-scattering of dust grains. If the dust grain sizes have reached  $\sim 100 \mu\text{m}$ , the self-scattering effect is expected to be the dominant polarization pattern in dense environments such as those found in protoplanetary disks (Kataoka et al. 2015). Self-scattering is a highly frequency-dependent phenomenon (Stephens et al. 2017), reaching a maximum efficiency for dust grains with sizes of  $\sim \lambda/2\pi$  (Kataoka et al. 2015). Observations of dust scattering in protoplanetary disks have found several polarization patterns, which are highly dependent on both the optical thickness and inclination of the observed disks (Kataoka et al. 2016; Bacciotti et al. 2018; Girart et al. 2018; Hull et al. 2018; Ohashi et al. 2018; Dent et al. 2019).

SMM1-a is most likely inclined (Yıldız et al. 2015 estimate an inclination of  $50^\circ$  with respect to the line of sight), and its hot corino, as seen above, might be optically thick in the center; thus, the polarization might arise from the outer layer of this central core. Sahu et al. (2019) proposed two scenarios to describe the geometry of a different hot corino, namely that of NGC 1333 IRAS 4A1: either an optically thick circumstellar disk or a temperature-stratified dense envelope. If the structure we see in SMM1-a is flattened by rotation, it is conceivable that the asymmetry in the polarized intensity (which is brighter on the near side, which we know thanks to the location of the redshifted jet) is due to dust self-scattering. However, several points fail to corroborate this hypothesis of self-scattering in SMM1-a. First, the typical level of polarization fraction expected from dust self-scattering is  $\sim 1\%$ , whereas we observe a highly polarized spot in SMM1-a, which exhibits a polarization fraction of 6%. Second, the polarization orientations (see Figure 11) do not fit the prediction of self-scattering theory, especially around the highly polarized zone on the redshifted side. Finally, as mentioned above, the current lack of a detected disk structure toward SMM1-a makes it difficult to interpret our results in the context of the self-scattering theory, which requires a disk-like structure.

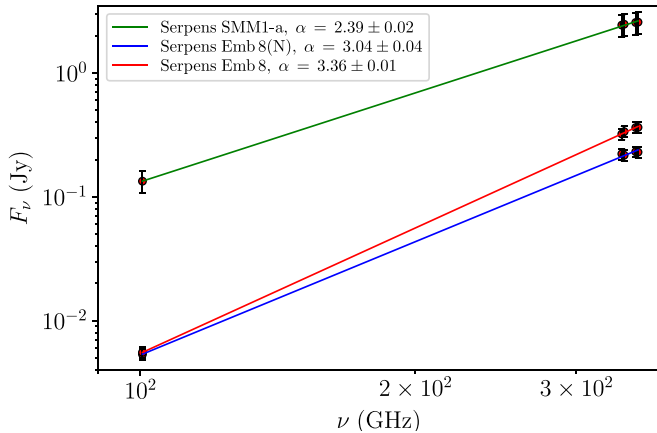
In their models, Yang et al. (2017) characterized the polarization emanating from inclined disks where the scattering grains had not yet settled to the disk mid-plane. In such disks, the polarized intensity becomes more asymmetric (i.e., the polarized emission gets brighter on the near side of the disk) as the optical depth increases. We do see an asymmetry in the polarized intensity in SMM1-a. However, unlike the models of Yang et al., which show polarization primarily along the minor axes of the disks, we see primarily azimuthal polarization, inconsistent with dust self-scattering in an inclined disk.

In Serpens Emb 8, we do see polarization in the inner core ( $\sim 200$  au) at a level of 0.7%. The self-scattering phenomena could indeed create this level of polarization fraction; however,





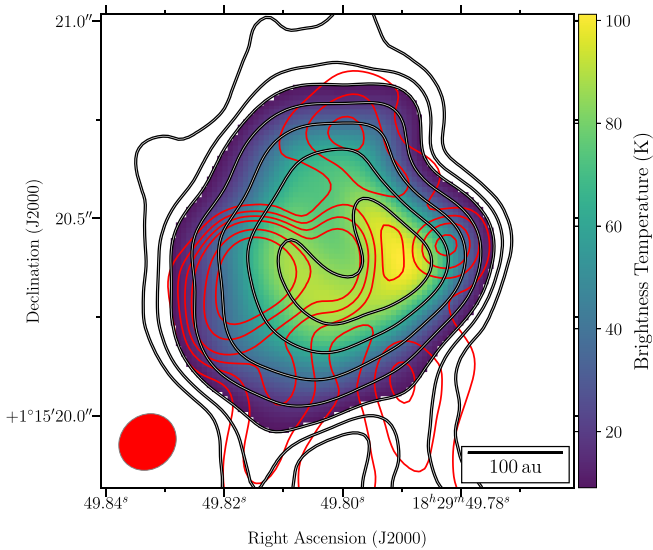
**Figure 12.** Calculated histograms of relative orientation (HROs) between the inferred magnetic field orientation and the density gradients in the total intensity maps (in gray), or in the blueshifted (in blue) and redshifted (in red) moment 0 maps of the CO ( $J = 2 \rightarrow 1$ ) low-velocity outflow in Emb 8(N) (top) and Serpens SMM1 (bottom). In SMM1-a, the dust emission is separated into the central hot corino and the two southern filaments. Furthermore, concerning the redshifted outflow lobe of SMM1, we did not calculate the gradient in the central zone of SMM1-a, in order to focus more clearly on the correlation between the outflow cavity walls and the magnetic field orientation. See Appendix B for the gradient maps and a detailed explanation of how the HROs were produced.



**Figure 13.** Flux evolution with frequency from the best-fit visibility models. The y-axis is the integrated flux in jansky obtained fitting multiple 2D Gaussian components to the source visibilities. The x-axis is the frequency in gigahertz. Two data sets were used here, containing observations at  $870 \mu\text{m}$  (Band 7) and 3 mm (Band 3). Each point is a fit to the visibilities from one spectral window, displayed with an error bar of  $\pm\sigma$ , where  $\sigma$  is the error that takes into account both the error of the fitting algorithm on each point and the 10% uncertainty in the ALMA flux calibration system.

as mentioned above, we would expect the polarization orientation to be along the minor axis of the source, which can be inferred from the bipolar outflow axis (Cox et al. 2018). In the case of Emb 8, the orientation of the polarization is not aligned with its inferred minor axis. Moreover, given the spectral index of its inner core ( $\alpha \approx 3.36$ ), it is most likely optically thin. Consequently, we discard this hypothesis for Emb 8 as well.

In these sources, it is not always straightforward to determine which polarization mechanism causes the polarization from the innermost regions of our sources. Overall, however, we conclude that neither self-scattering nor grain alignment via  $k$ -RATs is occurring in our sources. Moreover, a final caveat regarding the potential occurrence of these two polarization mechanisms is how the environmental conditions of the hot corino would change the dust grain size distribution. For example, the temperature and radiation from this high-column-density zone may be adequate to trigger radiative torque disruption (RATD), recently introduced in Hoang et al. (2019) and Hoang et al. (2019). Via the RATD phenomenon, large aggregates can be spun-up to suprathermal rotation speeds and disrupted into individual icy grains, which would lower the



**Figure 14.** Brightness temperature map of the inner core of SMM1-a from Case-1. The color scale represents the brightness temperature calculated in the Rayleigh–Jeans approximation at a wavelength of  $870\ \mu\text{m}$ . The brightness temperature peaks at 101 K. The black contours represent the total intensity at 12, 20, 32, 64, 128, 220,  $300 \times \sigma_I$ , where  $\sigma_I = 0.57\ \text{mJy beam}^{-1}$ . The red contours represent the polarized intensity at 3, 10, 17, 24, 32, 50,  $68 \times \sigma_P$ , where  $\sigma_P = 53\ \mu\text{Jy beam}^{-1}$ . The red ellipse in the lower left corner represents the synthesized beam after combining data sets A, B, and C. The beam size is  $0''.15 \times 0''.14$ , with a position angle of  $-48^\circ.5$ .

maximum dust grain size encountered in these kinds of environments. If this is indeed the case, the resulting (smaller) dust grain size distribution would make it likely that *B*-RATs are the dominant grain-alignment mechanism even in the bright, dense hot corino regions that we observe.

We did not discuss the case of Emb 8(N), because it exhibits almost no detection in the center. In summary, we assume that *B*-RATs are the dominant grain-alignment mechanism responsible for the polarization detected in our three sources. Under this assumption, we continue below by discussing the inferred magnetic field maps we obtain in our three sources.

#### 4.2. Poloidal Magnetic Field at Outflow Launching Points

Since our analysis presented in Section 4.1 suggests that most of the polarization detected toward the continuum peaks of our sources cannot be entirely due to self-scattering or alignment with the radiation field, here we explore the properties of the magnetic field as inferred from the detected polarization patterns. We present maps where the polarization orientations have been rotated by  $90^\circ$  to show the orientation of the magnetic field projected on the plane of the sky.

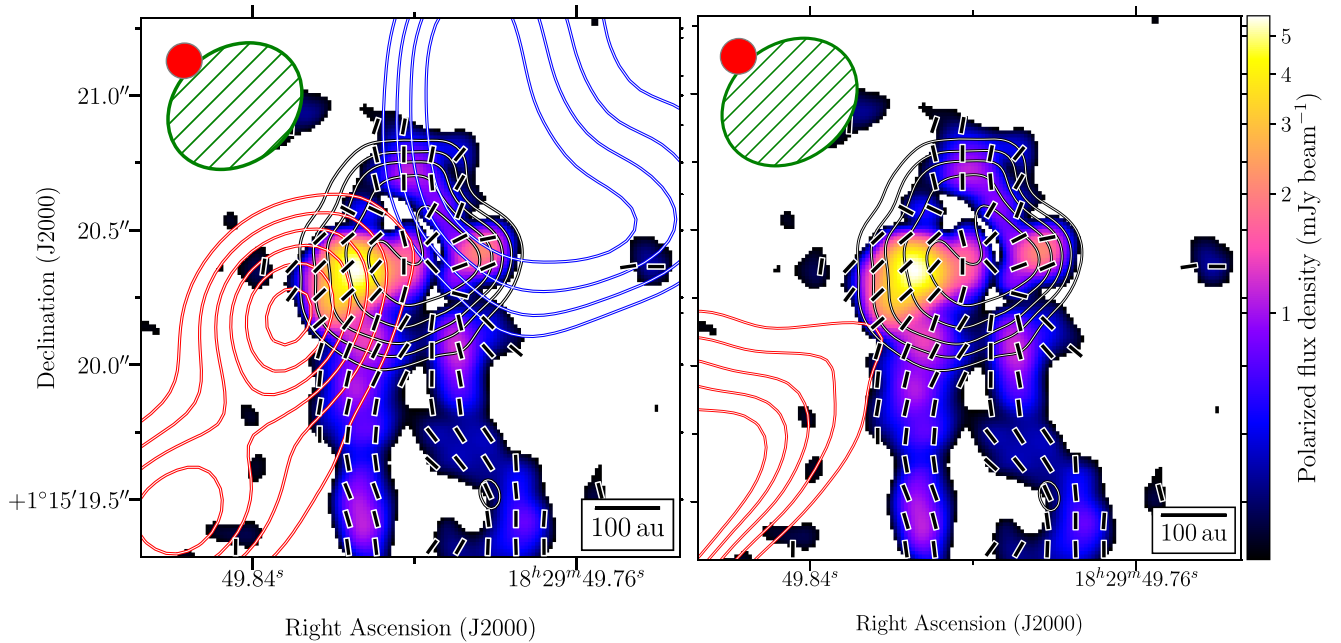
Both Serpens SMM1-a and Emb 8(N) seem to exhibit poloidal magnetic field morphologies in the central 200 au of their cores. In Figure 15 we present the magnetic field orientation in SMM1-a overlaid with the low-velocity blue- and redshifted outflow and the EHV redshifted molecular jet, revealing significant correlations between the outflowing material and the magnetic field. Indeed, the magnetic field seems to present a bipolar structure that follows the molecular emission on both sides of the low-velocity CO outflow. Moreover, the redshifted EHV jet axis appears perfectly aligned with the magnetic field orientation within the highly polarized zone, i.e., the SE part of the central core of SMM1-a. This suggests a connection between the magnetic field in this

region and the base of the EHV jet. Another point that corroborates the poloidal field hypothesis is the structure of the polarized intensity map. Between the two highly polarized zones in SMM1-a, respectively linked with the red- and blueshifted sides of the outflow, is a depolarized delimitation line that clearly divides the two sides of the poloidal magnetic field in SMM1-a (see the thin white region in the center of the color scale in Figure 15). This effect is also seen in Emb 8(N) (see Section 3.1), and can be explained by the sharp change of polarization orientation, which causes a line of depolarization with a width equal to the beam size (Kwon et al. 2019). Consequently, having such a depolarized line supports our hypothesis that a poloidal magnetic field configuration is the cause of the polarization in the central core of SMM1-a. The case of the central 200 au in Emb 8(N) is less obvious, because we do not detect a large amount of polarized intensity. However, the observations at the lowest angular resolution (Figure 1 top left panel) show a few detections in the center, suggesting the presence of a poloidal magnetic field in the central core of Emb 8(N).

We plotted the distribution of the difference in angle between the magnetic field orientation and the gradient from the moment 0 map of the low-velocity red- and blueshifted outflow of SMM1-a in Figure 12 (see the two bottom right panels). We compare CO and polarization data with different angular resolutions, which explains the small number of points displayed in the histograms. To derive the gradient in the HRO histograms, we select regions with strong gradients in the integrated blue- and redshifted CO maps in order to pick up only the polarization orientations associated with the edge of the outflow cavities (see Appendix B for the gradient maps and details of the calculations). In the case of the blueshifted outflow of SMM1-a, the few beams contributing to the histogram are located to the NW of the inner core of SMM1-a (see Figure 15). These few points, while not statistically significant, still suggest that the magnetic field is tracing the blueshifted outflow cavity. The few points in the histogram on the redshifted side seem randomly distributed, because the low-velocity redshifted outflow emission is spatially extended and does not exclusively overlap with the polarization in the central zone of SMM1-a.

The question remains, why is the polarized intensity so different between the red- and blueshifted sides of the outflow in SMM1-a? An asymmetry is clearly visible in the maps of polarized intensity and polarization fraction (Figure 7). We see an intense peak of 6% at the base of the one-sided, redshifted molecular jet, which may be the cause of the enhanced polarization efficiency. However, Rodríguez-Kamenetzky et al. (2016, and references therein) and Dionatos et al. (2014) detected ionized and atomic jets on the blueshifted side of SMM1-a, where we see no signs of enhanced polarization.

Hoang et al. (2018) developed a new theory of grain alignment by mechanical alignment torques (MATs). Unlike the mechanical alignment theorized by Gold (1952), who proposed that the major axes of dust grains could become aligned parallel to the gas–dust flow, Hoang et al. found that dust grains can become aligned with respect to the magnetic field through mechanical torques induced by supersonic gas–dust drift (in an outflow or a wind from an asymptotic giant branch star, for example), yielding a polarization orientation that is consistent with a poloidal magnetic field aligned with the bipolar outflow axis. Consequently, the EHV redshifted jet may trigger a significant amount of grain alignment efficiency via



**Figure 15.** Magnetic field and outflow around SMM1-a from Case-3. Same as Figure 5 (right panel) for the line segments. Same as Figure 11 for the polarized intensity on the color scale and Stokes  $I$  contours. The blue contours represent the moment 0 map of the low-velocity blueshifted outflow, constructed by integrating the emission of the CO ( $J = 2 \rightarrow 1$ ) from  $-13$  to  $4$  km s $^{-1}$ . The levels are 5, 6, 7, 8, 10, 12  $\times 0.4$  Jy beam $^{-1}$  km s $^{-1}$ , the rms noise level of the moment 0 map. The red contours in the left panel represent the moment 0 map of the low-velocity redshifted outflow constructed by integrating the emission of the CO ( $J = 2 \rightarrow 1$ ) from 16 to 21 km s $^{-1}$ . The levels are 6, 7, 8, 9, 10, 11, 12  $\times 0.14$  Jy beam $^{-1}$  km s $^{-1}$ , the rms noise level of the moment 0 map. Finally, the red contours in the right panel represent the moment 0 map of the EHV redshifted jet constructed by integrating the emission of the CO ( $J = 2 \rightarrow 1$ ) from 40 to 80 km s $^{-1}$ . The levels are 8, 10, 12, 14, 16  $\times 0.03$  Jy beam $^{-1}$  km s $^{-1}$ , the rms noise level of the moment 0 map. No blueshifted emission is shown in the right panel, because we do not see any trace of the EHV jet on the blueshifted side. The beam size of the continuum emission (red ellipse) is  $0''.13 \times 0''.13$ . The green ellipse represents the resolution from the molecular line maps, and measures  $0''.53 \times 0''.45$ .

the MAT mechanism, which can contribute, along with RAT alignment, to the observed intense polarization at the base of the redshifted molecular jet. According to the RAT theory, magnetic grain alignment can easily produce this 6% level of polarization; however, such a high peak in polarization fraction within the otherwise weakly polarized “polarization hole” is quite unexpected, and has never been seen before so clearly, to our knowledge. In summary, MATs may be occurring at the same time as RATs, but it is not trivial to disentangle the relative roles played by these two alignment mechanisms.

In their observations of the intermediate-mass Class 0 source OMC-3 MMS 6 with  $\sim 60$  au resolution, Takahashi et al. (2019) reported a similar asymmetry in the polarized emission at the base of the redshifted outflow from that source, where they argued that grains are most likely magnetically aligned. It is therefore possible that this type of asymmetry in the polarized intensity could be caused by inclination effects; SMM1-a and OMC-3 MMS 6 have similar estimates for their inclination angles. While Frau et al. (2011) did see symmetric, double-peaked polarization profiles along the minor axes of their models of collapsing, magnetized protostellar cores (which did not take into account optical depth effects), they did not see the same types of asymmetries seen here and in Takahashi et al. (2019).

Outflow launching theories have predicted that magnetic field lines can be wrapped by the rotation of the inner envelope and the disk (Hennebelle & Ciardi 2009; Kataoka et al. 2012), resulting in a toroidal magnetic field morphology that has tentatively been seen in a few observations of protostellar cores and disks (e.g., Rao et al. 2014; Alves et al. 2018; Ohashi et al. 2018). We do not detect this morphology here, suggesting that

the poloidal component of the magnetic field is dominant over any rotation in SMM1-a. At the scales we resolve, we probe the material at the disk-envelope interface, where we do not see any evidence of a rotationally supported disk. In such a case, a poloidal field aligned with the bipolar outflow axis is an expected result from MHD simulations of jets and outflows (Fendt 2006; Pudritz et al. 2007; Ramsey & Clarke 2019). A possible proof of this scenario is the work by Lee et al. (2018), who report linear spectral-line polarization in the SiO molecular jet emanating from the Class 0 protostar HH 212. The shear between the wind from the disk and the ambient medium may produce a poloidal field at or near the interface, which would be consistent with what is observed here, provided that the interface region dominates the polarized emission.

Given the  $\sim 50^\circ$  inclination of the system, the magnetic field component orthogonal to the mid-plane  $B_z$  is likely to be dominant over the radial component  $B_r$  of the field, and will be reflected in the projected field morphology in the plane of the sky (Harris et al. 2018). This scenario is consistent with the magnetic field morphology we see in the center of the SMM1-a core, which is predominantly poloidal, but does have a significant radial component, leading us to consider whether SMM1 is actually more pole-on than previously thought. The estimation of the source inclination made in Yıldız et al. (2015) may not be particularly robust, because they simply examined the shape of the outflow (i.e., whether the outflow lobes were overlapping, and what is the spatial extent of the low-velocity line wings) in the red- and blueshifted lobes, in order to infer inclination values within bins of  $10^\circ$ ,  $30^\circ$ , and  $70^\circ$ , with an uncertainty of  $30^\circ$ . In addition, if SMM1 were close to edge-on,



the fragments of the SMM1 core, SMM1-b, -c, and -d, should lie close to the equatorial plane of the core, as inferred from the bipolar outflow of SMM1-a. However, SMM1-b lies along the outflow cavity, which favors a source configuration closer to pole-on. The two other fragments SMM1-c and SMM1-d, however, are aligned with the equatorial plane projected on the plane of the sky. The fact remains that, assuming SMM1 has an intrinsically poloidal magnetic field, a configuration closer to pole-on could yield the radial component of the magnetic field that we see projected on the plane of the sky toward the hot corino of SMM1-a.

Finally, the presumed poloidal magnetic field morphology can also result from the magnetic field lines being pinched by the gravitational collapse of the core, typically known as the “hourglass” magnetic field morphology (Girart et al. 2006). Magnetic field orientations exhibiting a radial pattern similar to what we see in the central core of SMM1-a have been seen toward the high-mass star-forming region W51 (albeit at larger scales and lower,  $\sim 1000$  au resolution) in the observations of Koch et al. (2018), who attribute the pattern to gravitational infall. While the first observations of hourglass-shaped fields were seen at the  $\sim 1000$  au scales of protostellar envelopes, it is not impossible that the detected poloidal magnetic field in the inner  $\sim 200$  au core of SMM1-a is affected by this gravitational pinching effect. This effect has been seen, for example, in the magnetic field morphology probed in the inner few hundred au of the B335 protostellar core (Maury et al. 2018).

Note that the collapse of magnetized material can also form a flattened structure known as a “pseudodisk” (Galli & Shu 1993). While the curved Western filament in SMM1-a is most likely tracing one of the redshifted outflow cavity walls, it is possible that the N–S oriented Eastern filament is linked to this pseudodisk and traces infalling material. MHD simulations showed enhanced infall of material at  $45^\circ$  between the equatorial plane and the outflow axis of a protostar (Kölligan & Kuiper 2018); this is similar to the orientation of the Eastern filament. Projection effects could explain why these two filaments might be of different natures—such as accretion streamers or structures associated with outflow cavity walls (see Section 4.3)—despite being so close to one another.

#### 4.3. Magnetic Field Lines along Outflow Cavity Walls

At scales larger than the central 200 au, it is clear that outflow activity is strongly linked with the magnetic field in the two protostellar sources SMM1-a and Emb 8(N), because the magnetic field morphology seems to follow the outflow cavity walls from the central 200 au up to  $\sim 1000$  au.

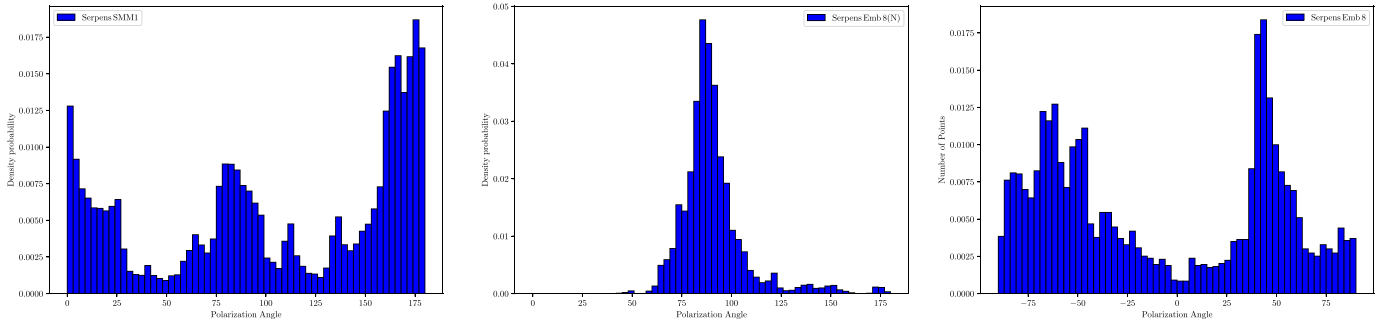
In SMM1, our results at the highest angular resolution resolve out most of the polarized emission except the two very bright filaments to the south of SMM1-a. The distribution in the HROs comparing the dust continuum emission with the magnetic field from both filaments (calculated after removing the central core emission, see Appendix B for details; see Figure 12, bottom row, second from the left) exhibits a distribution roughly peaking at  $90^\circ$ , which confirms that the magnetic field lies along the two filamentary structures. As mentioned in Section 4.2, the highly polarized Western filament follows the edge of redshifted integrated CO emission, indicating that it most likely corresponds to the outflow cavity wall. The Eastern filament is clearly shifted from the outflow axis, and does not overlap with any structure seen in the moment 0 map of CO tracing the outflow. We propose that the

Eastern filament may correspond to a polarized accretion streamer that is infalling onto the central protostar. Filamentary structures seem to be common at scales  $\gtrsim 1000$  au in protostellar cores (Tobin et al. 2010; Lee et al. 2012; Cox et al. 2018; Sadavoy et al. 2018b; Hull et al. 2019; Takahashi et al. 2019), and many cases exhibit magnetic fields that lie along the structures’ major axes. Accretion-related filamentary structures have been seen in MHD simulations of magnetized, collapsing cores (e.g., Seifried et al. 2015; Väisälä et al. 2019); detailed comparisons of these types of simulations with high-resolution observations such as those we present here will paint a clearer picture of the nature of these magnetized structures and their possible link to protostellar accretion processes.

Serpens Emb 8(N) presents a very pristine case of a magnetic field aligned along the outflow cavity walls: indeed, the HRO distributions in the top three panels of Figure 12, comparing the magnetic field and both dust and CO moment 0 emission gradients, all peak at  $\sim 90^\circ$ . Note that the distribution from the gradient of the continuum dust emission map (top left panel of Figure 12) has some points between  $15^\circ$  and  $45^\circ$  that correspond to the magnetic field orientations located where the dust-emission gradient is no longer dominated by the outflow cavity walls, but rather by the central core emission (on the redshifted side). The polarization patterns observed recently in B335 (Maury et al. 2018) and in BHR 71 IRS2 (Hull et al. 2019) appear quite similar to the case of Emb 8(N), and have magnetic field lines that are pinched in the equatorial plane and that clearly follow the outflow cavity walls. In B335, comparisons with MHD simulations (Maury et al. 2018; Yen et al. 2019) have led to the conclusion that this source most likely formed in a magnetically dominated environment. Future observations at higher angular resolution of the kinematic properties and polarized emission in the central zone of Emb 8(N) will allow us to better understand the physical conditions responsible for this magnetic field structure.

The large-scale polarization data of this region, observed with the SCUBA polarimeter on the James Clerk Maxwell telescope (Davis et al. 2000; Matthews et al. 2009), indicate an overall E–W orientation of the magnetic field in the Serpens Main molecular cloud. It is interesting to examine the potential influence of this large-scale magnetic field on our results at high spatial resolution. The bipolar outflow of Emb 8(N) has an orientation that is  $20^\circ$  different from purely E–W. Even in the CARMA polarization data (Hull et al. 2014), the recovered magnetic field is purely E–W. The results we present here show an overall E–W magnetic field lying along the outflow cavity walls (see Figures 1 and 16 for the HRO); however, in some places the magnetic field deviates from the overall E–W orientation and clearly follows the cavity edges, which indicates that the magnetic field at this scale has been affected by the outflow activity. As for the redshifted outflow of SMM1-a, it is relevant to discuss the potential impact of the outflow on the magnetic field. We previously identified the Eastern filament as a potential accretion streamer, whereas the Western filament is very likely the redshifted cavity wall, which therefore exhibits an associated magnetic field completely different from the large-scale field. Hull et al. (2017a) did not find in their energetic comparisons an obvious difference between the magnetic and the outflow energies; however, we think this hypothesis of having an outflow-shaped magnetic field is reasonable, considering how the magnetic field orientations at small scales have deviated from the large-scale field morphology.





**Figure 16.** Distribution of the magnetic field position angles in our three protostars. We selected the position angles in the central  $\sim 4''$  zone around each protostar, and where the polarized intensity was above the  $3\sigma_P$  level, where  $\sigma_P$  is the rms noise level of the polarized intensity map.

Serpens Emb 8 seems dominated by polarized emission mainly emanating from the envelope of the protostar, and thus there is not as clear a correlation with the outflow. Still, the thermal dust emission on the blueshifted side shows some hints of outflow cavity walls, but with polarization that is a bit offset to the east of this zone. To the SE of the Stokes  $I$  peak, there is a large area of polarization corresponding to a magnetic field that is perfectly aligned along the outflow axis, indicating that the outflow might have influenced the magnetic field in this zone. Emb 8 is similar in some ways to the protostar BHR 71 IRS1 (Hull et al. 2019), in the sense that the magnetic field seems to be affected by both the outflow activity and the envelope-based polarized emission, as can be seen in the northern outflow cavity of BHR 71 IRS1.

As mentioned in Section 4.2, the high values of polarization fraction we encounter near fast-moving material could be explained by a contribution from the MAT mechanism to the observed polarization, especially on the redshifted side of the central core of SMM1-a and in Emb 8(N), which both exhibit very high-velocity, highly collimated jets. Indeed, if we look at the values of polarization fraction in Emb 8(N), which reach 36% on the blueshifted side, we see that these detections are located on the edge of the CO emission (Figure 2), indicating a possible interaction between the molecular jet and the aligned dust grains emitting this polarized emission. With RAT theory it is difficult to reproduce these high polarization fractions, even with very elongated aligned dust grains; consequently, it is conceivable that both MATs and RATs are occurring in the type of environment that we are seeing in Emb 8(N). This hypothesis is reinforced by the fact that the polarization in the southern cavity wall of the redshifted jet of Emb 8(N) is fainter and has a lower polarization fraction precisely where the redshifted CO emission does not overlap completely with the polarized dust emission. This suggests that we may need to consider outflow evolution (for example, precession with respect to the outflow cavity walls) in order to better understand our observations. Finally, we note that we detect values of high polarization fraction toward Serpens Emb 8 where there is no intense gas–dust flow, i.e., far away from the bipolar outflow (see Figure 10). However, Emb 8 has two little companions, Emb 8-b and Emb 8-c, that may play a role in enhancing the polarization observed in the core. In summary, the local environmental conditions in protostars—particularly around their molecular outflows and jets—may be conducive to alignment from both MATs and RATs, thus yielding enhanced levels of dust polarization. However, our observations are not yet able to disentangle the roles played by each of these two grain alignment mechanisms.

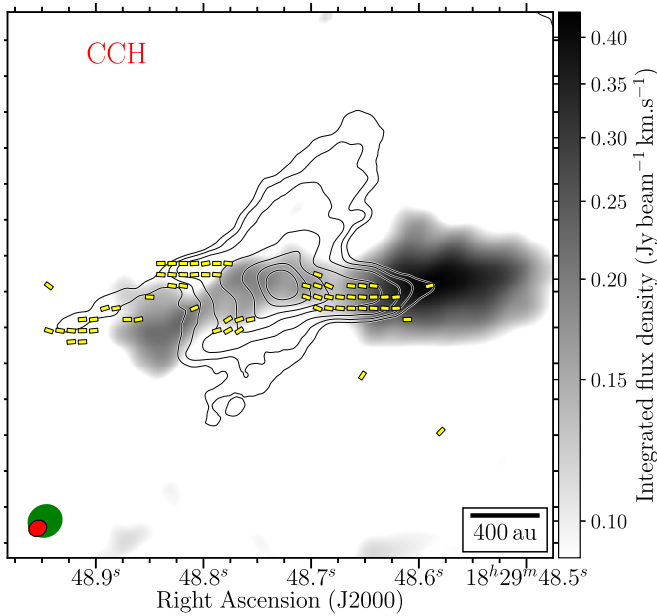
#### 4.4. Addressing the Cause of Enhanced Polarization along Cavity Walls

Our results lead us to the question, what are the physical conditions necessary to achieve enhanced polarization in the walls of an outflow cavity?

One local condition along outflow cavities that clearly distinguishes them from the rest of the envelope is that they are exposed to a strong, high-energy radiation field emanating from the central protostar. Indeed, energetic photons are expected to be generated by the accretion processes in the central protostar, leading to a high flux of UV and X-ray photons that heat the envelope via the photoelectric effect (Spaans et al. 1995; Stäuber et al. 2004, 2005). As outflow cavities are cleared of envelope material by the outflow itself, these energetic photons can escape from the central protostar and travel throughout the cavity. The shape of the cavity edges (e.g., parabolic) allows this high-energy radiation to impinge upon the cavity walls (Visser et al. 2012). Indeed, ionized cavity walls have been seen toward SMM1-a by Hull et al. (2016), who analyzed free-free emission seen in the VLA observations of Rodríguez-Kamenetzky et al. (2016).

The inner surfaces of the cavity walls also see their chemical composition evolve, thanks to molecular photodissociation by UV photons (Drozdovskaya et al. 2015). Observations of light hydrides, water, and high- $J$  transitions of CO have led to a better understanding of the effect of the UV field on the chemistry in highly irradiated protostellar outflows (van Kempen et al. 2009; Yıldız et al. 2012; Lee et al. 2015; Benz et al. 2016). The physics of UV-irradiated shocks in these same regions has also been addressed in a number of studies focusing on *Herschel* observations (Goicoechea et al. 2012; Kristensen et al. 2013, 2017; Mottram et al. 2014, 2017; Karska et al. 2018). Note that Tychoniec et al. (2019) report that the redshifted molecular jet of Emb 8(N) has a bow shock visible in SiO ( $J = 5 \rightarrow 4$ ) emission  $\sim 3000$  au from the central source; this type of shock could contribute to the irradiation of the outflow cavity walls and thus to the enhanced polarization we see.

UV-irradiated cavity walls toward Class 0 protostars have been inferred from observations of UV-tracing molecules such as  $c\text{-C}_3\text{H}_2$  and CCH, which are expected to be seen in photon-dominated regions (PDRs; Murillo et al. 2018). These two molecules have been seen toward other highly irradiated regions such as the Orion bar (Cuadrado et al. 2015), the Horsehead nebula (Guzmán et al. 2015), and protoplanetary disks (Kastner et al. 2015; Bergin et al. 2016). Of the Class 0 sources whose cavity walls show both UV-tracing molecules and dust polarization, there are two so far that exhibit an excellent correlation between the polarization



**Figure 17.** Moment 0 map of CCH ( $N = 3 \rightarrow 2$ ,  $J = 7/2 \rightarrow 5/2$ ,  $F = 4 \rightarrow 3$ ) around Serpens Emb 8(N). The black contours represent the total intensity (Stokes  $I$ ) at the following levels: 11, 16, 24, 44, 74, 128,  $256 \times$  the rms level in the Stokes  $I$  dust emission map, where  $\sigma_I = 55 \mu\text{Jy beam}^{-1}$ , from Case-2.  $v_{\text{LSR}}$  is  $\sim 8.5 \text{ km s}^{-1}$ . The grayscale is the moment 0 map of CCH constructed by integrating emission from 5.4 to  $12.8 \text{ km s}^{-1}$ . The rms noise level of the moment 0 map is  $0.32 \text{ mJy beam}^{-1} \text{ km s}^{-1}$ . Same as Figure 1 (right) for the line segments, which represent the magnetic field. The red and blue arrows represent the bipolar outflow directions. The beam size of the continuum emission (red ellipse) is  $0.26'' \times 0.22''$ , with a position angle of  $-64^\circ$ . The green ellipse represents the resolution of the molecular line maps, and measures  $0.46'' \times 0.41''$ .

and the molecular emission. The first is B335; Imai et al. (2016) found CCH and  $c\text{-C}_3\text{H}_2$  emission along the cavity walls, which also show enhanced polarization (Maury et al. 2018). The second is Ser-Emb 8(N), discussed above and shown in Figure 17.<sup>19</sup>

The UV radiation field emanating from the material accreting onto the central protostar is a good candidate to explain enhanced polarization in the cavity walls via the RAT grain-alignment mechanism. We see what appear to be thick layers of polarization from magnetically aligned dust grains in the outflow cavity walls of Emb 8(N) ( $\sim 200 \text{ au}$  thick) and BHR 71 IRS2 ( $\sim 300 \text{ au}$  thick). In an attempt to reveal the nature of the radiation responsible for aligning the grains in outflow cavity walls, Hull et al. (2019) calculated the depth to which UV and longer-wavelength photons could penetrate in order to align grains to the depth that they see in their observations, and also to align a sufficient quantity of grains to produce the typical polarization fractions that they (and we) detect.

Following the procedure of Hull et al. (2019), we estimate the depth to which UV and longer-wavelength photons can penetrate into the walls of the outflow cavities of Serpens Emb 8(N). From their PDR model results, Girart et al. (2005) found that UV radiation is fully extinguished at a visual magnitude of  $\sim 1$ , which corresponds a column density between  $10^{21}$  and

$10^{22} \text{ cm}^{-2}$  (Bohlin et al. 1978). We calculate the gas mass inside a circular area of  $300 \text{ au}$  in diameter located at a distance of  $600 \text{ au}$  from the protostar along the SW cavity wall of Emb 8(N), using the following relation between the flux density and the gas mass:

$$M_{\text{gas}} = \frac{S_\nu d^2}{\kappa_\nu B_\nu(T_d)}, \quad (5)$$

where  $B_\nu(T_d)$  is the Planck function at the  $343.5 \text{ GHz}$  frequency of our observations, the distance  $d = 440 \text{ pc}$ , the estimated dust temperature  $T_d \approx 20 \text{ K}$  (Hull et al. 2017a), and the opacity  $\kappa_\nu$  at a wavelength of  $1 \text{ mm}$  is  $2.74 \text{ cm}^2 \text{ g}^{-1}$  (Ossenkopf & Henning 1994). We assume a gas-to-dust ratio of 100. The flux density along the cavity walls of Emb 8(N) is not constant and slowly decreases the further we look from the central protostar. We selected the SW outflow cavity wall because it is not just the brightest cavity wall, it also presents resolved polarized dust emission that matches very well the integrated intensity of the CCH emission line, as shown in Figure 17. Note, however, that the CCH emission is even brighter at  $>600 \text{ au}$  distances from the central source, suggesting that UV radiation efficiently drives UV-sensitive chemistry even where the column density of the cavity wall has decreased.

We derive the column density in the cavity wall of Emb 8(N) as follows:

$$N_{\text{H}_2} = \frac{M_{\text{gas}}}{\mu_{\text{H}_2} m_{\text{H}} A}, \quad (6)$$

where  $m_{\text{H}}$  is the mass of a hydrogen atom,  $\mu_{\text{H}_2}$  is the mean molecular weight per hydrogen molecule ( $\mu_{\text{H}_2} = 2.8$  for gas composed of 71% hydrogen, 27% helium, and 2% metal mass; Kauffmann et al. 2008), and  $A$  is the area over which we derived the flux density. Given a flux density of  $\sim 5.5 \text{ mJy}$  measured in a  $200 \text{ au}$  diameter circle located at  $600 \text{ au}$  from the dust continuum peak of Emb 8(N), we obtain values of column density between  $\sim 3.4 \times 10^{22} \text{ cm}^{-2}$  and  $\sim 2.5 \times 10^{23} \text{ cm}^{-2}$ , using dust temperatures of  $100 \text{ K}$  and  $20 \text{ K}$ , respectively. Note that the gas temperature is usually much higher than the dust temperature, as has been seen in models of UV-irradiated outflow cavity walls (Visser et al. 2012; Drozdovskaya et al. 2015); however, the two temperatures are largely decoupled. Note that these values of the envelope column density at small scales are at best lower limits, as a result of the interferometric filtering of the optically thin dust continuum emission. As a result, these values strongly suggest that UV radiation cannot penetrate deep inside the cavity walls.

Finally, we estimate the penetration depth of longer-wavelength photons impinging on the cavity walls. Ossenkopf & Henning (1994) calculated opacity values  $\kappa_\nu$  at different wavelengths for gas number densities of  $10^6$  and  $10^8 \text{ cm}^{-3}$ ,<sup>20</sup> and thus we use the  $\kappa_\nu$  values from Ossenkopf & Henning (1994) corresponding to gas densities of  $10^6 \text{ cm}^{-3}$ . The optical depth is given by the following equation:

$$\tau_\nu = \int_0^s \kappa_\nu \rho_{\text{dust}} ds. \quad (7)$$

<sup>19</sup> Note that Serpens Emb 8 also shows CCH (M. van Gelder et al. 2019, in preparation; ALMA project 2017.1.01174.S, PI E. van Dishoeck) toward much of the polarized emission that is published in Hull et al. (2017b) and shown at higher resolution in Figure 10. However, in this source, which has a chaotic magnetic field morphology, the outflow cavities are not clear. Further work is necessary to tell the full story of the relationship between UV-sensitive chemistry and the enhanced polarization in Emb 8.

<sup>20</sup> Our two derived gas densities for the SW cavity wall of Emb 8(N) are  $1.24 \times 10^8 \text{ cm}^{-3}$  at  $20 \text{ K}$  and  $1.74 \times 10^7 \text{ cm}^{-3}$  at  $100 \text{ K}$ .

If we assume constant values of dust opacity  $\kappa_\nu$  and dust mass density  $\rho_{\text{dust}}$  throughout the thickness of the cavity wall, we can derive the path length  $s$  at an optical depth of  $\tau = 1$  by using  $s = 1/\kappa_\nu \rho_{\text{dust}}$ . Note the values of  $\kappa_\nu$  in Ossenkopf & Henning (1994) are normalized by the dust mass density, and thus we multiply these values by  $\rho_{\text{dust}}$  in our calculations.<sup>21</sup> For 1  $\mu\text{m}$  photons, the penetration depths assuming temperatures of 20 K and 100 K are  $\sim 1$  au and  $\sim 7$  au, respectively. For 10  $\mu\text{m}$  photons, the depths are  $\sim 5$  au and  $\sim 35$  au. For 100  $\mu\text{m}$  photons, the depths are  $\sim 200$  au and  $\sim 1400$  au. Finally, for 1 mm photons, the depths are  $\sim 4200$  au and  $\sim 30,000$  au.

RAT theory suggests that dust grains can only be spun-up efficiently by photons whose wavelengths are comparable to the dust grain size (Lazarian & Hoang 2007). Assuming this is true, and given that most short-wavelength ( $\lesssim 10 \mu\text{m}$ ) photons do not penetrate to depths larger than a few tens of au, our observations suggest that a population of large,  $> 10 \mu\text{m}$  sized dust grains should be present in the cavity walls of Serpens Emb 8(N) to explain the  $\sim 300$  au thickness of the polarized emission. Note that, in their study of the polarized outflow cavities of BHR 71 IRS2, Hull et al. (2019) also find that only long-wavelength (i.e., mid- to far-infrared) photons can penetrate to depths similar to those where we see polarization in the cavity walls of Serpens Emb 8(N).

Hull et al. conclude that this scenario of a “thick” layer of aligned dust grains in BHR 71 is more likely than the scenario where the polarization is produced by an extremely thin layer of grains aligned only by UV/optical photons. However, even given the likelihood of the thick-wall scenario, the numbers we calculate above are still an upper limit to the penetration depth. This is because the “thick” wall we see will have its thickness increased, at least to a small degree, by the projection of the curved cavity wall onto the plane of the sky.

Beyond outflow cavity walls, the high polarization fractions observed at small radii, where dense protostellar envelopes are optically thick to short-wavelength photons, require that grains be large ( $> 10 \mu\text{m}$ ) in order to be aligned via *B*-RATs with the local (sub)millimeter radiation field, as shown for the first time in Valdivia et al. (2019). While dust is known to grow to such sizes in circumstellar disks (e.g., Pérez et al. 2012; Testi et al. 2014; Stephens et al. 2017; Hull et al. 2018), this degree of grain growth at large ( $\sim 500$ – $1000$  au) distances from the central source is unexpected, although a recent work by Galametz et al. (2019) has found that large grains (millimeter-sized) might be present in Class 0 protostellar envelopes. However, as was proposed in Wong et al. (2016), outflow activity may be sufficient to transport large dust grains from the innermost part of the core (where the large grains are most likely formed) to the envelope, where we can detect their presence via the dust polarization we observe in outflow cavity walls (in the case of our calculations, at 600 au from the center of the protostar).

Because the average size of the dust grains probed changes with observing wavelength, it would be interesting to perform longer-wavelength measurements of the polarized features we detect that are presumably not being irradiated by a strong UV field. Such observations would allow us to characterize the environmental conditions (in terms of dust grain population and radiation field) necessary for RATs to occur. Indeed, the

Eastern filament in SMM1-a, the polarization to the north of the central core of Emb 8, the polarization detection in the equatorial plane in B335 (Maury et al. 2018)), the “arm-like” structure in OMC-3 MMS 6 (Takahashi et al. 2019), the magnetized bridge in IRAS 16293 (Sadavoy et al. 2018b), and the sharp filamentary structure to the NE of BHR 71 IRS1 (Hull et al. 2019) are unlikely to be strongly illuminated by UV radiation from the central protostar, because these structures are not associated with the outflow cavity walls. This leaves us with the question, where does the irradiation and/or anisotropic radiation field necessary to align these grains via RATs come from? While the answer is not yet clear, comparing dust polarization observations with synthetic observations of MHD models (see Valdivia et al. 2019) will enable a deeper understanding of the dust grain populations in the innermost regions of Class 0 envelopes.

## 5. Conclusions

We have presented ALMA dust polarization observations of the three Class 0 protostars Serpens SMM1, Emb 8(N), and Emb 8, at spatial scales from  $\sim 150$  au down to  $\sim 40$  au. The conclusions we draw are as follows.

1. Serpens Emb 8(N) exhibits strong polarization along its outflow cavity walls, with magnetic field orientations aligned with the major axis of the dust emission.
2. In Emb 8(N), there is an obvious anticorrelation between areas where we see polarized dust emission and emission from warm dense-gas tracers such as  $\text{C}^{18}\text{O}$  and  $^{13}\text{CS}$ , and regions of cold, dense gas traced by  $\text{DCO}^+$ .
3. Serpens SMM1-a presents several interesting polarized emission zones. To the south of the central  $\sim 200$  au core are two polarized filaments with magnetic field orientations along the filamentary structure. We identified one filament as being the cavity wall of the redshifted outflow; we speculate that the other one may be a potential infalling accretion streamer.
4. The inner cores of SMM1-a and Emb 8(N) exhibit poloidal magnetic fields that are perfectly aligned with the bipolar outflows; no hints of toroidal magnetic fields wrapped by core rotation have been found.
5. The polarized intensity map of the inner core of SMM1-a presents a clear asymmetry, exhibiting an intense polarized spot that peaks at 6% in polarization fraction. This asymmetry in the polarized emission may be linked to the fact we only see an EHV molecular jet on the redshifted side of the bipolar outflow, which could contribute to the high efficiency of the grain alignment in this zone via a combination of the MAT and RAT alignment mechanisms.
6. We propose that the enhanced polarization seen along outflow cavity walls in Class 0 protostars is caused by irradiation of the cavities, which have been cleared of material by the outflow activity. Several studies (including the spectral-line observations of Emb 8(N) that we show here) have reported UV-tracing molecules along outflow cavity walls, indicating chemistry driven by UV irradiation in these regions. However, to align dust grains deep within the walls of the cavity and to cause the high polarization fraction that we see, longer-wavelength (i.e., mid- to far-infrared) photons may be necessary, which would most effectively align large ( $> 10 \mu\text{m}$  sized) grains.

<sup>21</sup> The chosen  $\kappa$  values from Ossenkopf & Henning (1994) are the following:  $\kappa_{1 \mu\text{m}} = 1.18 \times 10^4 \text{ cm}^2 \text{ g}^{-1}$ ,  $\kappa_{10 \mu\text{m}} = 2.35 \times 10^3 \text{ cm}^2 \text{ g}^{-1}$ ,  $\kappa_{100 \mu\text{m}} = 5.92 \times 10^1 \text{ cm}^2 \text{ g}^{-1}$ , and  $\kappa_{1 \text{ mm}} = 2.74 \text{ cm}^2 \text{ g}^{-1}$ .



This challenges our current understanding of grain growth in Class 0 sources.

7. High polarization fractions are seen in highly embedded areas of Class 0 sources that are unlikely to be irradiated by the central protostar. These regions include the possible accretion streamer to the south of SMM1-a, the polarized emission we see to the north of the central core of Emb 8, and magnetized filamentary structures detected toward several other sources. The question of what would trigger the enhanced polarization in these regions—which are highly embedded, and far away from any obvious source of strong irradiation—remains open.

More work is needed to better understand the relationships among the radiation field, chemistry, and dust-grain alignment in young protostellar sources. Understanding better the environmental conditions that trigger enhanced polarization in embedded protostars will require working with next-generation full-polarization radiative transfer such as POLARIS (Brauer et al. 2016; Reissl et al. 2016, 2017); this future work will ultimately improve our understanding of the role played by the magnetic field in protostellar evolution.

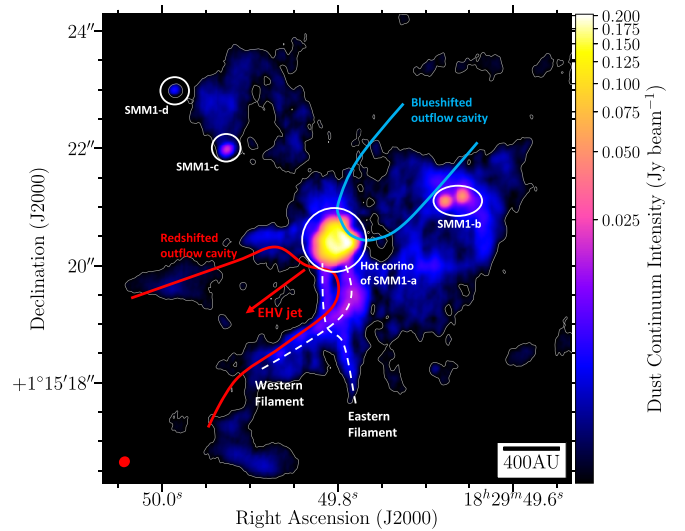
The authors acknowledge the support of the North American ALMA Science Center. V.J.M.L.G. and C.L.H.H. acknowledge the ESO Studentship Program, and the guidance and support of Eric Villard. C.L.H.H. acknowledges the support of both the NAOJ Fellowship as well as JSPS KAKENHI grant 18K13586. This work has received support from the European Research Council (ERC Starting Grant MagneticYSOs with grant agreement no. 679937). J.M.G. acknowledges the support of the Spanish MINECO AYA2017-84390-C2-R grant, and the Joint ALMA Observatory Visitor Program. Astrochemistry in Leiden is supported by the Netherlands Research School for Astronomy (NOVA), by a Royal Netherlands Academy of Arts and Sciences (KNAW) professor prize, and by the European Union A-ERC grant 291141 CHEMPLAN. L.E.K. acknowledges a research grant (19127) from VILLUM FONDEN. Z.-Y.L. is supported in part by NASA 80NSSC18K1095 and NSF AST-1716259 and AST-1815784. This paper makes use of the following ALMA data: ADS/JAO.ALMA#2016.1.00710.S, ADS/JAO.ALMA#2013.1.00726.S, ADS/JAO.ALMA#2015.1.00768.S, and ADS/JAO.ALMA#2017.1.01174.S. ALMA is a partnership of ESO (representing its member states), NSF (USA) and NINS (Japan), together with NRC (Canada), MOST and ASIAA (Taiwan), and KASI (Republic of Korea), in cooperation with the Republic of Chile. The Joint ALMA Observatory is operated by ESO, AUI/NRAO, and NAOJ. The National Radio Astronomy Observatory is a facility of the National Science Foundation operated under cooperative agreement by Associated Universities, Inc.

*Facility:* ALMA.

*Software:* APLpy, an open-source plotting package for Python hosted at <http://aplpy.github.com> (Robitaille & Bressert 2012). CASA (McMullin et al. 2007). Astropy (Astropy Collaboration et al. 2018).

## Appendix A Scheme of the SMM1 Core

A schematic view of the Serpens SMM1 core is shown in Figure 18.



**Figure 18.** Schematic view of Serpens SMM1. The color scale is the total intensity (Stokes  $I$ ) of the thermal dust emission from Case-1, shown when  $I > 3\sigma_I$ , from the combination of data sets A, B, and C; see Table 3 Case-1.  $\sigma_I = 0.57$  mJy beam $^{-1}$ . The peak in the total intensity is 203 mJy beam $^{-1}$ . The red ellipse in the lower left corner represents the beam size, measuring  $0''.15 \times 0''.14$ , with a position angle of  $-48^\circ.5$ .

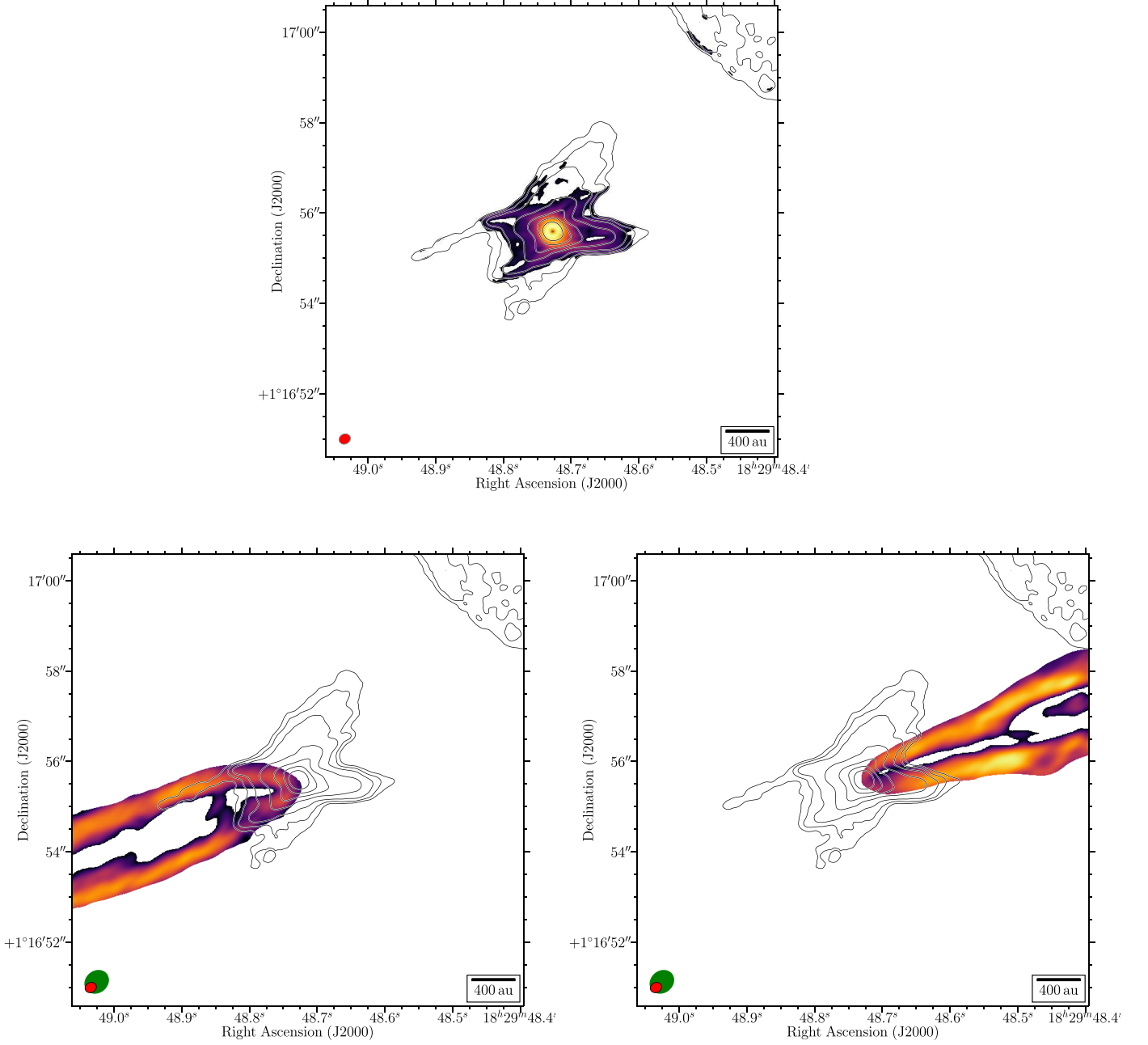
## Appendix B Gradient Maps Derived for the Histograms in SMM1 and Emb 8(N)

The histograms presented in Figure 12 show the distributions of relative orientations between the magnetic field and the intensity gradients of both the continuum dust emission and the integrated CO ( $J = 2 \rightarrow 1$ ) moment 0 emission, within the Serpens SMM1-a and Emb 8(N) protostellar cores.

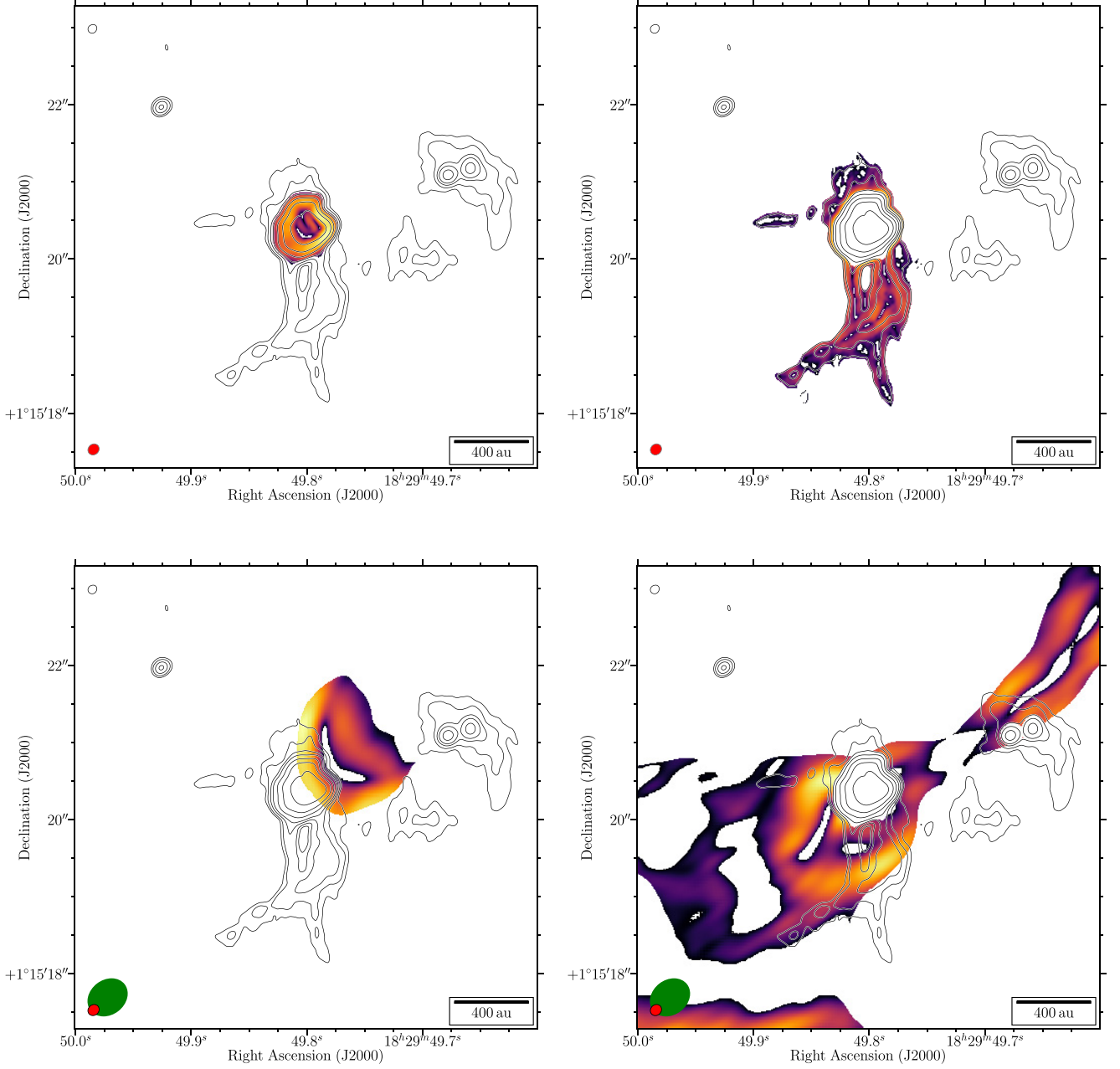
To produce the histograms, we select the magnetic field orientations in pixels with emission over the  $3\sigma_P$  threshold, where  $\sigma_P$  is the rms noise value of the polarized intensity map. In the case of the SMM1-a core, the emission from its neighbors, i.e., SMM1-b, -c, and -d, is removed by hand in order to take into account only the emission related to SMM1-a. We consider separately the emission emanating from the central inner core of SMM1-a (applying a threshold of  $25\sigma_I$ , where  $\sigma_I$  is the rms noise level of the Stokes  $I$  map) and the emission emanating from the dust cavity walls and filaments (where the selected emission is between  $7\sigma_I$  and  $25\sigma_I$ ). As for Emb 8(N), we just select the value above  $11\sigma_I$  in the total intensity map, in order to focus on the central core and to avoid considering any emission from the large-scale dense, cold filament described in Section 3.1. Concerning the blue- and redshifted moment 0 maps, we use the same ranges of integration as the those presented in Figures 2 and 6, applying a threshold of three times the rms noise level of the moment 0 maps.

After calculating the gradient, we apply a selection on the gradient values in order to focus on the relationship between the magnetic field and the emission gradients in regions of *high* gradient. This selects, for example, the clear outflow cavity walls in the dust emission and moment 0 maps, the filamentary structures of SMM1-a, and the central inner cores of our protostars. In order to select regions of high gradient, we consider only gradients  $> 1/100 \times (\text{peak} - \text{rms})$  for the moment 0 maps, and  $> 1/1000 \times (\text{peak} - \text{rms})$  for the dust





**Figure 19.** Gradient maps in Serpens Emb 8(N). The black contours trace the dust continuum from Case-2 at  $11, 16, 24, 44, 74, 128, 256 \times \sigma_I$  in the total intensity map of dust emission, where  $\sigma_I = 55 \mu\text{Jy beam}^{-1}$ . Top: the color scale represents the gradient within the central zone of Emb 8(N), derived using the total intensity map of dust emission. The gradients are computed where the emission is  $>11\sigma_I$  in this central region. Bottom left: gradient derived within the moment 0 map of the blueshifted CO emission integrated from  $-53$  to  $0 \text{ km s}^{-1}$ . Bottom right: gradient derived within the moment 0 map of the redshifted CO emission integrated from  $15$  to  $40 \text{ km s}^{-1}$ . The noise value in both moment 0 maps is  $0.1 \text{ Jy beam}^{-1} \text{ km s}^{-1}$ ; the gradients are calculated where the integrated CO emission is  $>3 \times$  this value. All gradients are displayed where the gradient is  $>1/100 \times (\text{peak} - \text{rms})$  in the moment 0 maps, and  $>1/1000 \times (\text{peak} - \text{rms})$  in the dust emission maps.




**Figure 20.** Gradient maps in Serpens SMM1-a. The black contours trace the dust continuum from Case-1 at  $8, 12, 20, 32, 64, 128, 256 \times \sigma_I$  in the total intensity map of dust emission, where  $\sigma_I = 0.57 \text{ mJy beam}^{-1}$ . Top left: the color scale represents the gradient derived within the central zone of SMM1-a and using the total intensity map of dust emission. The gradients are computed where the emission is  $>25\sigma_I$  in this central region. Top right: gradient derived within the filaments and outflow cavities of SMM1-a and using the total intensity map. The gradients are computed where the emission is between  $7\sigma_I$  and  $25\sigma_I$ ; we also remove the emission from the other cores SMM1-b, -c, and -d. Bottom left: gradient derived within the moment 0 map of the blueshifted CO emission integrated from  $-13$  to  $4 \text{ km s}^{-1}$ . Bottom right: gradient derived within the moment 0 map of the redshifted CO emission integrated from  $10.5$  to  $30 \text{ km s}^{-1}$ . The noise values in the blue- and redshifted CO moment 0 maps are  $0.58$  and  $0.43 \text{ Jy beam}^{-1} \text{ km s}^{-1}$ , respectively. The gradients are calculated where the integrated CO emission is  $>3 \times$  these values. All gradients are displayed where the gradient is  $>1/100 \times (\text{peak} - \text{rms})$  in the moment 0 maps, and  $>1/1000 \times (\text{peak} - \text{rms})$  in the dust emission maps. Emission in the central zone of SMM1-a and from SMM1-b has been removed in order to focus on the outflow cavities of SMM1-a.

continuum maps. Where both a gradient value and a magnetic field position angle are selected in the same location, a point is added to the distribution. Finally, we Nyquist-sample the final distributions presented in the histograms, i.e., using four points per synthesized beam (two points in R.A. and two in decl.) in both the dust or CO moment 0 maps. We present the gradient maps in Figures 19 and 20.

### ORCID iDs

Valentin J. M. Le Gouellec  <https://orcid.org/0000-0002-5714-799X>

Charles L. H. Hull  <https://orcid.org/0000-0002-8975-7573>

Josep M. Girart  <https://orcid.org/0000-0002-3829-5591>

Łukasz Tychoniec  <https://orcid.org/0000-0002-9470-2358>

Paulo C. Cortes  <https://orcid.org/0000-0002-3583-780X>

Ramprasad Rao  <https://orcid.org/0000-0002-1407-7944>

### References

- Agurto-Gangas, C., Pineda, J. E., Szűcs, L., et al. 2019, *A&A*, **623**, A147
- Alves, F. O., Franco, G. A. P., & Girart, J. M. 2008, *A&A*, **486**, L13
- Alves, F. O., Girart, J. M., Padovani, M., et al. 2018, *A&A*, **616**, A56
- Andersson, B.-G., Lazarian, A., & Vaillancourt, J. E. 2015, *ARA&A*, **53**, 501
- André, P., Di Francesco, J., Ward-Thompson, D., et al. 2014, in *Protostars and Planets VI*, ed. H. Beuther et al. (Tucson, AZ: Univ. Arizona Press), 27
- André, P., Ward-Thompson, D., & Barsony, M. 2000, in *Protostars and Planets IV*, ed. V. Mannings, A. P. Boss, & S. S. Russell (Tucson, AZ: Univ. Arizona Press), 59
- Arce, H. G., & Sargent, A. I. 2006, *ApJ*, **646**, 1070
- Arce, H. G., Shepherd, D., Gueth, F., et al. 2007, in *Protostars and Planets V*, ed. B. Reipurth, D. Jewitt, & K. Keil (Tucson, AZ: Univ. Arizona Press), 245
- Astropy Collaboration, Price-Whelan, A. M., Sipőcz, B. M., et al. 2018, *AJ*, **156**, 123
- Bacciotti, F., Girart, J. M., Padovani, M., et al. 2018, *ApJL*, **865**, L12
- Bally, J. 2016, *ARA&A*, **54**, 491
- Benz, A. O., Bruderer, S., van Dishoeck, E. F., et al. 2016, *A&A*, **590**, A105
- Bergin, E. A., Du, F., Cleeves, L. I., et al. 2016, *ApJ*, **831**, 101
- Bethell, T. J., Chepurnov, A., Lazarian, A., & Kim, J. 2007, *ApJ*, **663**, 1055
- Bohlin, R. C., Savage, B. D., & Drake, J. F. 1978, *ApJ*, **224**, 132
- Bracco, A., Palmeirim, P., André, P., et al. 2017, *A&A*, **604**, A52
- Brauer, R., Wolf, S., & Reissl, S. 2016, *A&A*, **588**, A129
- Chacón-Tanarro, A., Caselli, P., Bizzocchi, L., et al. 2017, *A&A*, **606**, A142
- Chiang, H.-F., Looney, L. W., & Tobin, J. J. 2012, *ApJ*, **756**, 168
- Cox, E. G., Harris, R. J., Looney, L. W., et al. 2018, *ApJ*, **855**, 92
- Cuadrado, S., Goicoechea, J. R., Pilleri, P., et al. 2015, *A&A*, **575**, A82
- Davis, C. J., Chrysostomou, A., Matthews, H. E., Jenness, T., & Ray, T. P. 2000, *ApJL*, **530**, L115
- Dent, W. R. F., Pinte, C., Cortes, P. C., et al. 2019, *MNRAS*, **482**, L29
- Dionatos, O., Jørgensen, J. K., Teixeira, P. S., Güdel, M., & Bergin, E. 2014, *A&A*, **563**, A28
- Dionatos, O., Nisini, B., Codella, C., & Giannini, T. 2010, *A&A*, **523**, A29
- Drozdovskaya, M. N., Walsh, C., Visser, R., Harsono, D., & van Dishoeck, E. F. 2015, *MNRAS*, **451**, 3836
- Duarte-Cabral, A., Dobbs, C. L., Peretto, N., & Fuller, G. A. 2011, *A&A*, **528**, A50
- Duarte-Cabral, A., Fuller, G. A., Peretto, N., et al. 2010, *A&A*, **519**, A27
- Dunham, M. M., Allen, L. E., Evans, N. J., II, et al. 2015, *ApJS*, **220**, 11
- Enoch, M. L., Corder, S., Duchêne, G., et al. 2011, *ApJS*, **195**, 21
- Enoch, M. L., Evans, N. J., II, Sargent, A. I., & Glenn, J. 2009, *ApJ*, **692**, 973
- Fendt, C. 2006, *ApJ*, **651**, 272
- Frank, A., Ray, T. P., Cabrit, S., et al. 2014, in *Protostars and Planets VI*, ed. H. Beuther et al. (Tucson, AZ: University of Arizona Press), 451
- Frau, P., Galli, D., & Girart, J. M. 2011, *A&A*, **535**, A44
- Galametz, M., Maury, A., Girart, J. M., et al. 2018, *A&A*, **616**, A139
- Galametz, M., Maury, A. J., Valdivia, V., et al. 2019, arXiv:1910.04652
- Galli, D., & Shu, F. H. 1993, *ApJ*, **417**, 220
- Girart, J. M., Fernández-López, M., Li, Z. Y., et al. 2018, *ApJL*, **856**, L27
- Girart, J. M., Rao, R., & Marrone, D. P. 2006, *Sci*, **313**, 812
- Girart, J. M., Viti, S., Estalella, R., & Williams, D. A. 2005, *A&A*, **439**, 601
- Goicoechea, J. R., Cernicharo, J., Karska, A., et al. 2012, *A&A*, **548**, A77
- Gold, T. 1952, *MNRAS*, **112**, 215
- Guillet, V., Fanciullo, L., Verstraete, L., et al. 2018, *A&A*, **610**, A16
- Guzmán, V. V., Pety, J., Goicoechea, J. R., et al. 2015, *ApJL*, **800**, L33
- Harris, R. J., Cox, E. G., Looney, L. W., et al. 2018, *ApJ*, **861**, 91
- Harsono, D., Bjerkeli, P., van der Wiel, M. H. D., et al. 2018, *NatAs*, **2**, 646
- Hennnebelle, P., & Ciardi, A. 2009, *A&A*, **506**, L29
- Hennnebelle, P., Commerçon, B., Chabrier, G., & Marchand, P. 2016, *ApJL*, **830**, L8
- Hoang, T., Cho, J., & Lazarian, A. 2018, *ApJ*, **852**, 129
- Hoang, T., & Lazarian, A. 2016, *ApJ*, **831**, 159
- Hoang, T., Tram, L. N., Lee, H., & Ahn, S.-H. 2019, *NatAs*, **3**, 766
- Hsieh, T.-H., Hirano, N., Belloche, A., et al. 2019, *ApJ*, **871**, 100
- Hsieh, T.-H., Lai, S.-P., & Belloche, A. 2017, *AJ*, **153**, 173
- Huang, J., Andrews, S. M., Cleeves, L. I., et al. 2018, *ApJ*, **852**, 122
- Hull, C. L. H., Girart, J. M., Kristensen, L. E., et al. 2016, *ApJL*, **823**, L27
- Hull, C. L. H., Girart, J. M., Tychoniec, Ł., et al. 2017a, *ApJ*, **847**, 92
- Hull, C. L. H., Le Gouellec, V. J. M., Girart, J. M., et al. 2019, arXiv:1910.07290
- Hull, C. L. H., Mocz, P., Burkhardt, B., et al. 2017b, *ApJL*, **842**, L9
- Hull, C. L. H., & Plambeck, R. L. 2015, *JAI*, **4**, 1550005
- Hull, C. L. H., Plambeck, R. L., Kwon, W., et al. 2014, *ApJS*, **213**, 13
- Hull, C. L. H., Yang, H., Li, Z.-Y., et al. 2018, *ApJ*, **860**, 82
- Hull, C. L. H., & Zhang, Q. 2019, *FrASS*, **6**, 3
- Imai, M., Sakai, N., Oya, Y., et al. 2016, *ApJL*, **830**, L37
- Jacobsen, S. K., Jørgensen, J. K., Di Francesco, J., et al. 2019, *A&A*, **629**, A29
- Jørgensen, J. K., Bourke, T. L., Nguyen Luong, Q., & Takakuwa, S. 2011, *A&A*, **534**, A100
- Jørgensen, J. K., Schöier, F. L., & van Dishoeck, E. F. 2004, *A&A*, **416**, 603
- Jørgensen, J. K., Visser, R., Williams, J. P., & Bergin, E. A. 2015, *A&A*, **579**, A23
- Karska, A., Kaufman, M. J., Kristensen, L. E., et al. 2018, *ApJS*, **235**, 30
- Kastner, J. H., Qi, C., Gorti, U., et al. 2015, *ApJ*, **806**, 75
- Kataoka, A., Machida, M. N., & Tomisaka, K. 2012, *ApJ*, **761**, 40
- Kataoka, A., Muto, T., Momose, M., et al. 2015, *ApJ*, **809**, 78
- Kataoka, A., Tsukagoshi, T., Momose, M., et al. 2016, *ApJL*, **831**, L12
- Kataoka, A., Tsukagoshi, T., Pohl, A., et al. 2017, *ApJL*, **844**, L5
- Kauffmann, J., Bertoldi, F., Bourke, T. L., Evans, N. J., II, & Lee, C. W. 2008, *A&A*, **487**, 993
- Koch, P. M., Tang, Y.-W., Ho, P. T. P., et al. 2018, *ApJ*, **855**, 39
- Kölligan, A., & Kuiper, R. 2018, *A&A*, **620**, A182
- Kristensen, L. E., & Dunham, M. M. 2018, *A&A*, **618**, A158
- Kristensen, L. E., Gusdorf, A., Mottram, J. C., et al. 2017, *A&A*, **601**, L4
- Kristensen, L. E., Klaassen, P. D., Mottram, J. C., Schmalzl, M., & Hogerheijde, M. R. 2013, *A&A*, **549**, L6
- Kristensen, L. E., van Dishoeck, E. F., Bergin, E. A., et al. 2012, *A&A*, **542**, A8
- Kristensen, L. E., van Dishoeck, E. F., van Kempen, T. A., et al. 2010, *A&A*, **516**, A57
- Kwon, W., Stephens, I. W., Tobin, J. J., et al. 2019, *ApJ*, **879**, 25
- Lazarian, A. 2005, in *AIP Conf. Ser. 784, Magnetic Fields in the Universe: From Laboratory and Stars to Primordial Structures*, ed. E. M. de Gouveia dal Pino, G. Lugones, & A. Lazarian (Melville, NY: AIP), 42
- Lazarian, A. 2007, *JQSRT*, **106**, 225
- Lazarian, A., & Hoang, T. 2007, *MNRAS*, **378**, 910
- Lee, C.-F., Hwang, H.-C., Ching, T.-C., et al. 2018, *NatCo*, **9**, 4636
- Lee, C.-F., Hwang, H.-C., & Li, Z.-Y. 2016, *ApJ*, **826**, 213
- Lee, J. W. Y., Hull, C. L. H., & Offner, S. S. R. 2017, *ApJ*, **834**, 201
- Lee, K., Looney, L., Johnstone, D., & Tobin, J. 2012, *ApJ*, **761**, 171
- Lee, K. I., Fernández-López, M., Storm, S., et al. 2014, *ApJ*, **797**, 76
- Lee, S., Lee, J.-E., & Bergin, E. A. 2015, *ApJS*, **217**, 30
- Li, H.-B., Goodman, A., Sridharan, T. K., et al. 2014, in *Protostars and Planets VI*, ed. H. Beuther (Tucson, AZ: Univ. Arizona Press), 101
- Liu, Y., Henning, T., Carrasco-González, C., et al. 2017, *A&A*, **607**, A74
- Machida, M. N., Matsumoto, T., Hanawa, T., & Tomisaka, K. 2005, *MNRAS*, **362**, 382
- Machida, M. N., Matsumoto, T., Hanawa, T., & Tomisaka, K. 2006, *ApJ*, **645**, 1227
- Martí-Vidal, I., Vlemmings, W. H. T., Muller, S., & Casey, S. 2014, *A&A*, **563**, A136
- Matthews, B. C., McPhee, C. A., Fissel, L. M., & Curran, R. L. 2009, *ApJS*, **182**, 143
- Maury, A. J., André, P., Testi, L., et al. 2019, *A&A*, **621**, A76
- Maury, A. J., Belloche, A., André, P., et al. 2014, *A&A*, **563**, L2
- Maury, A. J., Girart, J. M., Zhang, Q., et al. 2018, *MNRAS*, **477**, 2760

- McMullin, J. P., Waters, B., Schiebel, D., Young, W., & Golap, K. 2007, in ASP Conf. Ser. 376, *Astronomical Data Analysis Software and Systems XVI*, ed. R. A. Shaw, F. Hill, & D. J. Bell (San Francisco, CA: ASP), 127
- Mottram, J. C., Kristensen, L. E., van Dishoeck, E. F., et al. 2014, *A&A*, 572, A21
- Mottram, J. C., van Dishoeck, E. F., Kristensen, L. E., et al. 2017, *A&A*, 600, A99
- Murillo, N. M., Bruderer, S., van Dishoeck, E. F., et al. 2015, *A&A*, 579, A114
- Murillo, N. M., van Dishoeck, E. F., van der Wiel, M. H. D., et al. 2018, *A&A*, 617, A120
- Nagai, H., Nakanishi, K., Paladino, R., et al. 2016, *ApJ*, 824, 132
- Öberg, K. I., van der Marel, N., Kristensen, L. E., & van Dishoeck, E. F. 2011, *ApJ*, 740, 14
- Offner, S. S. R., & Chaban, J. 2017, *ApJ*, 847, 104
- Offner, S. S. R., Dunham, M. M., Lee, K. I., Arce, H. G., & Fielding, D. B. 2016, *ApJL*, 827, L11
- Ohashi, N., Saigo, K., Aso, Y., et al. 2014, *ApJ*, 796, 131
- Ohashi, S., Kataoka, A., Nagai, H., et al. 2018, *ApJ*, 864, 81
- Ortiz-León, G. N., Dzib, S. A., Kounkel, M. A., et al. 2017, *ApJ*, 834, 143
- Ossenkopf, V., & Henning, T. 1994, *A&A*, 291, 943
- Panoglou, D., Cabrit, S., Pineau Des Forêts, G., et al. 2012, *A&A*, 538, A2
- Pattle, K., Ward-Thompson, D., Berry, D., et al. 2017, *ApJ*, 846, 122
- Pelkonen, V.-M., Juvela, M., & Padoan, P. 2009, *A&A*, 502, 833
- Pérez, L. M., Carpenter, J. M., Chandler, C. J., et al. 2012, *ApJL*, 760, L17
- Pérez, L. M., Chandler, C. J., Isella, A., et al. 2015, *ApJ*, 813, 41
- Planck Collaboration, Ade, P. A. R., Aghanim, N., et al. 2016, *A&A*, 586, A136
- Pudritz, R. E., Ouyed, R., Fendt, C., & Brandenburg, A. 2007, in *Protostars and Planets V*, ed. B. Reipurth, D. Jewitt, & K. Keil (Tucson, AZ: Univ. Arizona Press), 277
- Pudritz, R. E., Rogers, C. S., & Ouyed, R. 2006, *MNRAS*, 365, 1131
- Ramsey, J. P., & Clarke, D. A. 2019, *MNRAS*, 484, 2364
- Rao, R., Girart, J. M., Lai, S.-P., & Marrone, D. P. 2014, *ApJL*, 780, L6
- Reissl, S., Seifried, D., Wolf, S., Banerjee, R., & Klessen, R. S. 2017, *A&A*, 603, A71
- Reissl, S., Wolf, S., & Brauer, R. 2016, *A&A*, 593, A87
- Robitaille, T., & Bressert, E. 2012, *APLpy: Astronomical Plotting Library in Python*, Astrophysics Source Code Library, ascl:1208.017
- Rodríguez-Kamenetzky, A., Carrasco-González, C., Araudo, A., et al. 2016, *ApJ*, 818, 27
- Sadavoy, S. I., Myers, P. C., Stephens, I. W., et al. 2018a, *ApJ*, 859, 165
- Sadavoy, S. I., Myers, P. C., Stephens, I. W., et al. 2018b, *ApJ*, 869, 115
- Sadavoy, S. I., Stutz, A. M., Schnee, S., et al. 2016, *A&A*, 588, A30
- Sahu, D., Liu, S.-Y., Su, Y.-N., et al. 2019, *ApJ*, 872, 196
- Segura-Cox, D. M., Looney, L. W., Stephens, I. W., et al. 2015, *ApJL*, 798, L2
- Seifried, D., Banerjee, R., Pudritz, R. E., & Klessen, R. S. 2015, *MNRAS*, 446, 2776
- Spaans, M., Hogerheijde, M. R., Mundy, L. G., & van Dishoeck, E. F. 1995, *ApJL*, 455, L167
- Stäuber, P., Doty, S. D., van Dishoeck, E. F., & Benz, A. O. 2005, *A&A*, 440, 949
- Stäuber, P., Doty, S. D., van Dishoeck, E. F., Jørgensen, J. K., & Benz, A. O. 2004, *A&A*, 425, 577
- Stephens, I. W., Looney, L. W., Kwon, W., et al. 2013, *ApJL*, 769, L15
- Stephens, I. W., Yang, H., Li, Z.-Y., et al. 2017, *ApJ*, 851, 55
- Takahashi, S., Machida, M. N., Tomisaka, K., et al. 2019, *ApJ*, 872, 70
- Tazaki, R., Lazarian, A., & Nomura, H. 2017, *ApJ*, 839, 56
- Tazzari, M., Testi, L., Ercolano, B., et al. 2016, *A&A*, 588, A53
- Testi, L., Birmstiel, T., Ricci, L., et al. 2014, in *Protostars and Planets VI*, ed. H. Beuther (Tucson, AZ: Univ. Arizona Press), 339
- Tobin, J. J., Hartmann, L., Looney, L. W., & Chiang, H.-F. 2010, *ApJ*, 712, 1010
- Trotta, F., Testi, L., Natta, A., Isella, A., & Ricci, L. 2013, *A&A*, 558, A64
- Tychoniec, L., Hull, C. L. H., & Kristensen, L. E. 2019, arXiv:1910.07857
- Tychoniec, L., Hull, C. L. H., Tobin, J. J., & van Dishoeck, E. F. 2018, in *IAU Symp. 332, Astrochemistry VII: Through the Cosmos from Galaxies to Planets*, ed. M. Cunningham, T. Millar, & Y. Aikawa (Cambridge: Cambridge Univ. Press), 249
- Vaillancourt, J. E. 2006, *PASP*, 118, 1340
- Väisälä, M. S., Shang, H., Krasnopolsky, R., et al. 2019, *ApJ*, 873, 114
- Valdivia, V., Maury, A., Brauer, R., et al. 2019, *MNRAS*, 488, 4897
- van Kempen, T. A., Wilner, D., & Gurwell, M. 2009, *ApJL*, 706, L22
- Velusamy, T., Langer, W. D., & Thompson, T. 2014, *ApJ*, 783, 6
- Visser, R., Bergin, E. A., & Jørgensen, J. K. 2015, *A&A*, 577, A102
- Visser, R., Kristensen, L. E., Bruderer, S., et al. 2012, *A&A*, 537, A55
- Walsh, C., Millar, T. J., Nomura, H., et al. 2014, *A&A*, 563, A33
- Wong, Y. H. V., Hirashita, H., & Li, Z.-Y. 2016, *PASJ*, 68, 67
- Wurster, J., & Li, Z.-Y. 2018, *FrASS*, 5, 39
- Yang, H., Li, Z.-Y., Looney, L. W., Girart, J. M., & Stephens, I. W. 2017, *MNRAS*, 472, 373
- Yang, H., Li, Z.-Y., Stephens, I. W., Kataoka, A., & Looney, L. 2019, *MNRAS*, 483, 2371
- Yen, H.-W., Koch, P. M., Takakuwa, S., et al. 2015, *ApJ*, 799, 193
- Yen, H.-W., Zhao, B., Hsieh, I. T., et al. 2019, *ApJ*, 871, 243
- Yildiz, U. A., Kristensen, L. E., van Dishoeck, E. F., et al. 2012, *A&A*, 542, A86
- Yildiz, U. A., Kristensen, L. E., van Dishoeck, E. F., et al. 2015, *A&A*, 576, A109