



Cite this: DOI: 10.1039/c9lc00621d

Layer-by-layer fabrication of 3D hydrogel structures using open microfluidics†

Ulri N. Lee, ^{‡a} John H. Day, ^{‡a} Amanda J. Haack, ^{‡ab} Ross C. Bretherton, ^c Wenbo Lu, ^a Cole A. DeForest, ^{*cdef} Ashleigh B. Theberge ^{*ag} and Erwin Berthier ^{*a}

Patterned deposition and 3D fabrication techniques have enabled the use of hydrogels for a number of applications including microfluidics, sensors, separations, and tissue engineering in which form fits function. Devices such as reconfigurable microvalves or implantable tissues have been created using lithography or casting techniques. Here, we present a novel open-microfluidic patterning method that utilizes surface tension forces to form hydrogel layers on top of each other, into a patterned 3D structure. We use a patterning device to form a temporary open microfluidic channel on an existing gel layer, allowing the controlled flow of unpolymerized gel in device-regions. After layer gelation and device removal, the process can be repeated iteratively to create multi-layered 3D structures. The use of open-microfluidic and surface tension-based methods to define the shape of each individual layer enables patterning to be performed with a simple pipette and with minimal dead-volume. Our method is compatible with unmodified (native) biological hydrogels, and other non-biological materials with precursor fluid properties compatible with capillary flow. With our open-microfluidic layer-by-layer fabrication method, we demonstrate the capability to build agarose, type I collagen, and polymer-peptide 3D structures featuring asymmetric designs, multiple components, overhanging features, and cell-laden regions.

Received 29th June 2019,
Accepted 6th December 2019

DOI: 10.1039/c9lc00621d

rsc.li/loc

Introduction

Hydrogels are configurable and functional materials whose 3D geometries can be patterned to obtain desired functions ranging from mechanical responses (e.g., microfluidic valves, pumps) to organotypic functions (e.g., biological models, implantable materials). Many applications such as integration in microfluidic devices as valves,^{1,2} encapsulating colorimetric indicators,³ or chemical separation of desired analytes have simple geometric requirements.^{4,5} For cell culture applications, patterned hydrogels are used for encapsulating cells in a controlled position relative to additional cell types, micro-

channels, or extracellular matrix components.^{6–14} Reliable and low-barrier entrance solutions to these applications would have the potential of widespread adoption in biology, fluidics, and engineering labs that seek prototyping solutions. Here, we present a method for multilayer hydrogel patterning in three dimensions that uses a simple setup: patterning devices are positioned above a substrate to guide the flow of hydrogel precursors using surface tension forces. Hydrogel materials are delivered with standard pipettes, minimizing dead volume, a key consideration when patterning expensive hydrogels and/or including rare cell types.

There are many established methods for hydrogel patterning, each with their own set of benefits and limitations. Researchers may choose one method based on unique application considerations. Amongst these methods, photopolymerization techniques are robust and offer resolution on the order of microns,^{1,6,10,12,13,15–19} however photoinitiators have been shown to cause cellular damage,^{20,21} and the necessity for chemical functionalization of the gel precludes the use of native (unmodified) gels. Other broadly used hydrogel patterning methods include inkjet^{22–24} and microextrusion^{25–29} printing. In these methods, the hydrogel is jetted through a nozzle that exposes any cells encapsulated within the hydrogel to shear stress, which can mechanically damage the cells and limit the types of cells that can be patterned.^{30–32} Inkjet

^a Department of Chemistry, University of Washington, Seattle, WA, USA.

E-mail: abt1@uw.edu, erwin.berthier@gmail.com

^b Medical Scientist Training Program, University of Washington School of Medicine, Seattle, WA, USA

^c Department of Bioengineering, University of Washington, Seattle, WA, USA.

E-mail: ProfCole@uw.edu

^d Department of Chemical Engineering, University of Washington, Seattle, WA, USA

^e Institute of Stem Cell & Regenerative Medicine, University of Washington, Seattle, WA, USA

^f Molecular Engineering & Sciences Institute, University of Washington, Seattle, WA, USA

^g Department of Urology, University of Washington School of Medicine, Seattle, WA, USA

† Electronic supplementary information (ESI) available. See DOI: 10.1039/c9lc00621d

‡ These authors contributed equally to this work.

and extrusion-based printing methods can also require optimization depending on the viscosity and type of gel used. Many of these hydrogel patterning techniques can require large volumes of fluid to fill vats, fluidic channels, or tubing used in typical gel 3D printing setups, limiting the use of rare cell types or expensive gels. Casting hydrogels using a fabricated negative mold provides an alternative approach, but the complexity of the gel structures obtainable is limited due to demolding considerations.^{7,33–35} A hydrogel patterning method that does not rely on photoinitiators, external pressure, tubing, or reservoirs of gel could reduce material waste and alleviate some of the stresses that can affect cell health, rendering it well suited for applications that require fragile, primary, or rare cell types.

In this manuscript, we present a novel layer-by-layer patterning method that uses open microfluidic principles and surface tension-driven flow to deposit and sequentially form hydrogel layers in user-defined patterns, each delivered directly using a pipette. To form each hydrogel layer in a controlled shape, we use a ‘patterning device’, which is either a plastic physical ‘rail’ or a hydrophilic track delineated on a hydrophobic flat surface; both enable the pre-gel solution to flow *via* capillary action without external pressure and constrain the pre-gel solution under the rail footprint *via* capillary pinning.^{36,37} The patterning device is placed above an existing hydrogel layer at a designed height. Most of the structures presented in this work were made with layer heights between 100–500 μm , although the method is not limited to heights within this range; demonstrations of the range of layer heights achieved are included in Fig. S1–S4.† The gap between the patterning device and the existing hydrogel layer forms an open microfluidic ‘channel’ in which liquid pre-gel solution can flow; the channel ‘ceiling’ is the patterning device, the ‘floor’ is the previous gel layer, and the ‘sides’ are free air–liquid interfaces (Fig. 1). The patterning device can be removed once the gel layer has formed, and another patterning device can be applied to pattern the next layer, providing the ability to build three-dimensional structures layer-by-layer. This work builds on prior publications demonstrating the use of rails to pattern a single hydrogel

layer to partition a well plate for coculture^{37–40} where due to the design constraints of the previous rail devices, the patterning device could not be removed once the hydrogel was polymerized, and thus a three dimensional hydrogel structure could not be fabricated. Here, we built multilayer hydrogel structures from native and engineered hydrogels which include unsupported overhanging features, objects comprising multiple materials and components both within a layer and across layers, asymmetric designs, and a cell-laden gel architecture. We also demonstrate the capability to spatially control the initial structure of engineered enzymatically degradable dynamic poly(ethylene glycol) (PEG)-based hydrogels. The ability to establish a full layer in a single dispensing step is distinct from extrusion or inkjet patterning methods, which require multiple passes of material deposition for a single layer. Further, in contrast to methods that use photopolymerizable gels and light as a means of patterning hydrogels, which then require washing away of unused pre-gel solution,^{1,6,16,17} we limit waste; all of the pre-gel solution that is dispensed is polymerized and incorporated as part of the patterned material.

Experimental

Patterning device design and fabrication (Fig. 2–6)

Patterning devices were designed in Solidworks 2017 and 3D printed out of clear resin (RS-F2-GPCL-04) using a Form 2 stereolithography 3D printer (Formlabs) (Fig. 2–6) or milled (Fig. 6) on a computer numerical control (CNC) mill (PCNC770, Tormach). Design files for the patterning devices in Fig. 2B and the template used as the base for all patterning devices are included in the ESI.† The patterning devices were sonicated in isopropyl alcohol (IPA) for 10 minutes and again in clean IPA for 5 minutes to remove excess uncured resin. The devices were dried with compressed air and cured under a 395–405 nm 20 W UV lamp (Quans) for 1 hour.

Plasma treating patterning devices (Fig. 2–6 and 8)

The patterning devices were plasma treated for increased wettability using a Zepto plasma treater (Diener Electronic). The chamber was pumped down to a pressure of 0.20 mbar, gas (free air) was supplied (4 min, 0.25 mbar), and power enabled (5 min, 70 W).

Agarose gel composition

Low gelling temperature agarose (MilliporeSigma) was dissolved in deionized water to a concentration of 15 mg mL^{-1} and dyed for visual aid with food dye (Spice Supreme), fluorescein labeled dextran (70 000 MW, Invitrogen), or India ink (Dr. Ph. Martin's). All agarose structures used 1.5% wt/v gel except for the multicomponent structure in Fig. 3A.

Fabrication of overhanging structures (Fig. 4)

For the seven layer overhang structure, each layer height was 500 μm . Layers 2 and 3 were designed to be 239.9 μm of overhang, whereas the following layers were designed to be 479 μm

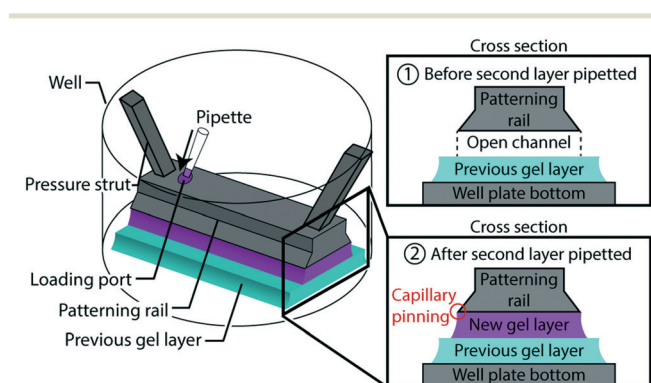


Fig. 1 Schematic showing the mechanism of layer-by-layer gel patterning using open microfluidics. An open channel is created above an existing gel layer using a rail-based patterning device.

of overhang (s in Fig. 4B). A schematic of the patterning device design and detailed dimensions can be found in the ESI.†

Fabrication of hollow double helix (Fig. 4)

Using the patterning device in a 6-well plate, each layer was allowed to set at room temperature for approximately 10–20 minutes prior to removal of the patterning rail. Each helix was constructed over 2–3 days; the total fabrication time if done at once was about 10 hours. Sacrificial water was added to the empty wells in the 6-well plates to prevent drying when stored overnight. More details on the design of each layer can be found in the ESI.†

Cell culture of human fetal lung fibroblasts (Fig. 6)

Human fetal lung fibroblasts (HFL-1, ATCC) were cultured in T-75 tissue culture flasks (Falcon; Franklin Lakes, NJ, USA) with Dulbecco's Modified Eagle Medium supplemented with 10% fetal bovine serum and 1% penicillin/streptomycin at 37 °C and 5% CO₂. Agarose prepared for cell culture experiments was dissolved in 1X PBS at 1.5% wt/v and autoclaved. Type I collagen solutions were neutralized by mixing rat tail collagen (Corning #354249) with 500 mM HEPES in a 9:1 ratio, respectively. Cell suspensions containing human fetal lung (HFL) fibroblasts (ATCC) at concentrations of ~9 million cells per mL in cell culture medium were then added to the collagen solutions in a 1:2 ratio, respectively, to give a final collagen concentration of 5 mg per mL and a final cell concentration of ~3 million cells per mL. Cell-laden structures were incubated at 37 °C, 5% CO₂ for 24 hours in Dulbecco's modified eagle medium (Gibco) prior to imaging. Cells were stained with Calcein AM and ethidium homodimer (MilliporeSigma). Cell-laden structures were imaged with a Leica TCS SP5 II confocal microscope and a 17.9 μm Z-step. Images were processed in FIJI software.

Patterning type I collagen (Fig. 6)

Patterning collagen was achieved with the addition of a flattening step (Fig. S6†). This step involves placing a patterning device over the collagen layer prior to gelling such that the collagen will wet the pattern on the device, creating a flat surface to guide flow for the next layer. When the collagen is gelled and the device removed, the height of the resulting gel layer is precisely set in the shape and location of the pattern to be flowed in the next layer. Each layer was patterned at room temperature and immediately placed in a cell culture incubator until the next layer was patterned. The entire structure took ~5 hours to fabricate.

PEG hydrogel fabrication (Fig. 7)

PEG hydrogels were generated through strain-promoted azide-alkyne cycloaddition (SPAAC) between PEG-tetraBCN (4 mM) and peptide di-azide crosslinkers (8 mM) with the inclusion of 1 mM N₃-GRGDS-NH₂ to promote cell adhesion to the hydrogel.^{15,41} More information on hydrogel and peptide syn-

thesis can be found in the ESI.† To prevent cell and gel adhesion to the rails upon removal, 3D printed patterning rails were not plasma treated and were incubated in 1% bovine serum albumin (MilliporeSigma) in water for 1–2 hours prior to patterning. Gel precursors were mixed with cell suspension, patterned using 3D printed rails, with each layer polymerized for 15 minutes at 37 °C. The design consists of 3 layers, and 4 patterning steps and the entire fabrication process took ~1.5–2 hours. More detailed information on the rail designs can be found in the ESI.†

HS5 cell culture in PEG hydrogels (Fig. 7)

HS5 transformed human bone-marrow stromal cells expressing either eGFP or mCherry were the generous gift of Dr. Brian Hayes at the Fred Hutchison Cancer Research Center. Cells were cultured in Dulbecco's modified growth medium (DMEM) (Gibco) containing 10% fetal bovine serum (FBS) and 1% penicillin/streptomycin and passaged at a 1:5 ratio at confluence. During passage, cells were encapsulated in 4 mM PEG gels as described above at a density of 20×10^6 cells per mL. Encapsulated cells were cultured for 5 days, degraded through treatment with an evolved sortase A pentamutant [SrtA(5M)]⁴² on day 5, and then cultured for an additional 5 days prior to imaging on day 10. Gels were imaged by confocal point scanning microscopy on a Leica SP8 microscope. Whole gel Z-stacks were obtained at 10× magnification with a 5 μm Z-step. Detector gain and laser power compensation were applied during acquisition to account for light attenuation through the gel.

PEG hydrogel degradation using SrtA(5M) (Fig. 7)

A SrtA(5M) working solution consisting of 50 μM SrtA(5M), 18 mM triglycine (Chem Impex; Wood Dale, IL), and 1.8 mM CaCl₂ (Sigma Aldrich; St. Louis; MO) was prepared in 1X PBS. More information on recombinant expression and purification of the SrtA(5M) can be found in the ESI.† To initiate degradation of SrtA-susceptible regions, media was aspirated from the patterned gels and replaced with 600 μL of SrtA(5M) working solution. After 90 minutes of enzyme treatment, the SrtA(5M) working solution was aspirated from gels and replaced with DMEM supplemented with 10% FBS.

Hydrophobic coating for patterning (Fig. 8)

Rectangular polystyrene (PS) pieces were cut using a CNC mill (DATRON neo) to the same width as the designed “W” pattern. All PS pieces were plasma treated using the same protocol for the 3D printed patterning devices. The “W” pattern, was cut from masking tape (3M) using a plotter cutter (Graphtec CE6000-40) and then applied to the plasma treated side of the PS, such that the edges of the “W” lined up with the edges of the PS. Two coats of step 1 of Rust-Oleum Neverwet™ hydrophobic treatment were applied, allowed to dry for 10 minutes, and then three coats of step 2 were applied, and left to dry for an additional 10 minutes. The masking tape was removed, revealing a hydrophilic pattern

with hydrophobic surroundings. Neverwet™ may affect cell viability and we do not intend to use this reagent with cell culture.

Patterning hydrogels using hydrophilic/hydrophobic interfaces (Fig. 8)

Two No. 1.5 coverslips (Fisherbrand) were stacked on top of a PS base at both ends. Double-sided tape was placed between each coverslip to prevent slipping during assembly. The total height of the coverslips and double-sided tape was measured to be 500 μm with a caliper. The patterning piece (described above in the preceding section) was placed facedown over the coverslips and base. Binder clips were used to secure the PS layers and coverslips. A picture of the setup for the first layer can be found in Fig. S7.† 1.5% w/v agarose was dyed purple and yellow using India Ink (Dr. Ph. Martin's). The first layer was patterned by placing the pipette at the edge of the hydrophilic patterning region in between the patterning piece and the base. Both ends of the W were used as inlets. The agarose was allowed to solidify for 10 minutes before the patterning device was removed. To achieve the second layer, two additional coverslips and double-sided tape were added to increase the distance between the base and the second patterning device, which was aligned by eye. The gel loading and setting process for the second layer was the same as for the first layer. A video of the patterning can be found in the ESI.†

Image processing

Images were processed using Adobe Photoshop CC 2018 using a uniform brightness/contrast adjustment.

Results and discussion

Our layer-by-layer patterning method uses open microfluidic principles to create temporary open channels on a plastic or existing hydrogel surface allowing pre-gel solution to flow in a spatially controlled area defined by a patterning rail or hydrophilic track (Fig. 1). The gel can then be polymerized to create a patterned layer of hydrogel tens to hundreds of micrometers thick. The input of gel is powered by spontaneous capillary flow (SCF), which describes the surface tension-based flow of fluids in channel geometries that can have any number of open-air interfaces along the fluid path.^{36,40} The geometric control of the gel layer is obtained by abrupt changes in geometry (in the case of a patterning rail) or hydrophilicity (in the case of hydrophilic tracks) which prevent fluids from flowing past these capillary pinning boundaries. Together, the principles of SCF and capillary pinning enable the creation of a patterned gel layer with simple laboratory equipment (e.g., pipettes) in existing laboratory platforms (e.g., well plates) without requiring actuators, electronics, or pressure sources.

Fig. 2 shows a specific embodiment of the patterning technique where a patterning rail is used to define the outline of a virtual open microfluidic channel. The patterning rail is

placed at the location where the gel will be patterned and sits tens to hundreds of micrometers over the surface of the material below. The geometrical shape of the patterning area is designed to enable the spontaneous capillary flow of pre-gel solution throughout the open channel made between the patterning rail and the surface of the material below; capillary pinning enables the pre-gel solution to remain in the defined pattern. The patterning devices can be fabricated in hard plastic, such as resin that is 3D printed from a stereolithography 3D printer or polystyrene (PS) sheets that are CNC milled. The patterning device shown in Fig. 2 fits inside of a 6-well plate, but the method is not limited to a 6-well plate form. The device sits flush to the floor of the well plate with spacers to control the height of the gel layer being formed (dotted red line in Fig. 2Ai and iv, S8 and S9†) and pressure struts to maintain concentric alignment of the rail within the well.

In this manuscript, we patterned 100–500 μm thick gel layers; numerical simulations of SCF suggest thinner layers (reduced h in eqn (1)) are achievable and, in fact, make it easier to satisfy the condition for SCF in our system which is defined by:

$$\frac{h}{w} < \frac{\cos\theta_1 + \cos\theta_2}{2} \quad (1)$$

where h is the height of the patterned layer (defined by the distance between the patterning area of the rail and the underlying substrate), w is the width of the rail perpendicular to the direction of flow, θ_1 is the contact angle of the hydrogel on the patterning device, and θ_2 is the contact angle of the hydrogel on the underlying substrate (conventionally equal to zero when flowing hydrogel over an existing hydrogel layer of the same type). To note, viscosity does not play a role in the condition for flow but does play a role in the dynamics of the flow. Higher viscosity pre-gel solutions will flow slower in the generation of a layer, ultimately extending fabrication times. A derivation of eqn (1) from the generalized Cassie equation is provided in the ESI.†

When pre-gel solution is loaded into a patterning setup, it fills the 'virtual channel', and remains suspended between the patterning device and the underlying substrate until a polymerization trigger is introduced. The ability to polymerize a layer after it has been patterned makes it possible to build multilayered structures of any hydrogel whose pre-gel solution can meet the condition for SCF. After a single layer of pre-gel solution is patterned and solidified (Fig. 2Ai and ii), the patterning device is removed (Fig. 2Aiii), and a new patterning device is placed over the gel layer to define a new area for the next layer of gel (Fig. 2Aiv). The patterning process is repeated for each additional layer (Fig. 2Av and vi). With this method we are able to deposit an entire layer in one pipetting step, as opposed to alternative nozzle-based 3D patterning methods which require multiple passes of material deposition for a single layer.

It is possible to pattern a pre-gel solution on top of an existing hydrogel layer using our method because capillary

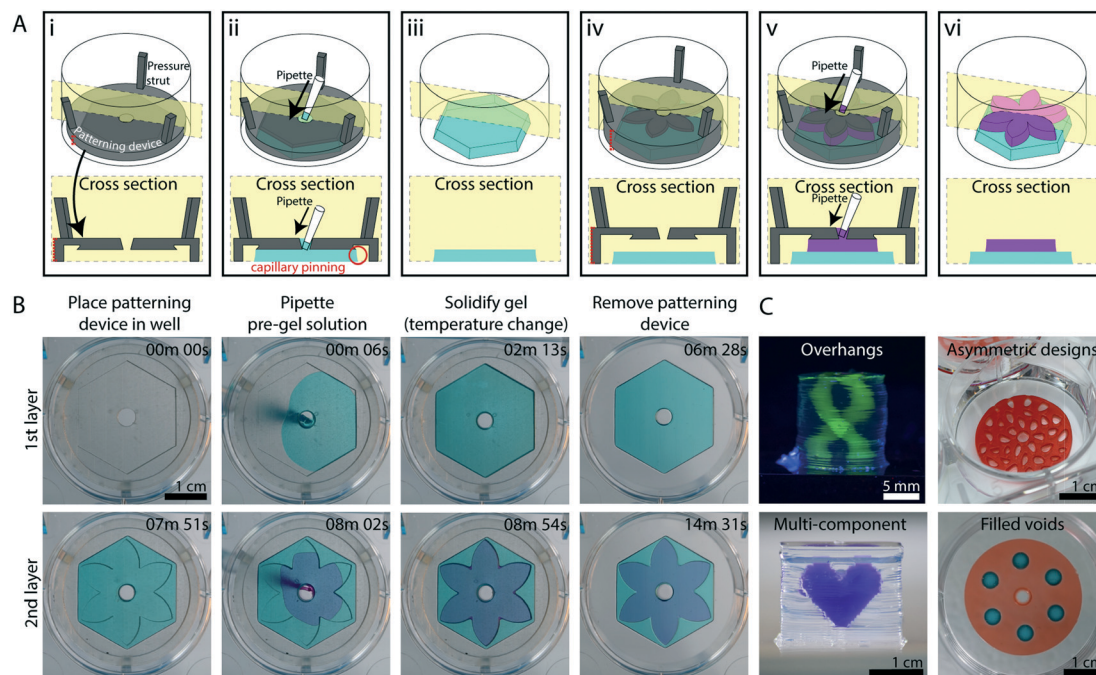


Fig. 2 Rail-based open microfluidic layered patterning of unmodified hydrogels. (A) Schematic of patterning two layers of gel. (Ai) Patterning device (rail) is placed in a 6-well plate; the patterning region sits 250 μm above the well plate surface. Red dotted line on the left indicates portion of patterning device that is adjusted to determine the thickness of the gel layer. (Aii) Pre-gel solution is pipetted into the pipette port. (Aiii) Patterning device is removed after the pre-gel solution is solidified. (Aiv-vi) Second layer is patterned using the same steps for the first layer. Red dotted line on the left in Aiv indicates distance between the well plate and the rail after an initial layer of gel is patterned. Note that the dotted line is longer than the red line seen in Ai. Cross-sections of patterning devices show capillary pinning (red circle) and 45° angle around the edges of the device to prevent capillary rise along the vertical face of the patterning device. A magnified schematic is included in Fig. S8;† an engineering drawing of the hexagon and petal devices is included in Fig. S9.† (B) Images of the patterning process for 1.5% low gelling temperature agarose dyed for visualization with teal and magenta India ink. Video was recorded from the underside of a 6-well plate. Full video available in the ESI.† (C) Various agarose structures built using rail-based open microfluidics to showcase the power of the method. Cylindrical structure with hollow unsupported winding tubes (double helix) (top, left), asymmetric geometries patterned in a well plate (top, right), a multicomponent structure (bottom, left), and a single layer of gel with islands of voids filled with a second gel in a single pipetting step (bottom, right).

pinning still occurs at the junction of the edge of the patterning area and the previous hydrogel layer, maintaining a defined pattern (Fig. 2B). However, gel overflow is observed for certain features; as seen in the video in the ESI† (corresponding to Fig. 2B), overflow of dispensed fluid at the edges of the ‘flower’ patterning device occurs because the surface tension of the pre-gel solution, which tends to favor a rounded fluid front, overcomes pinning at the acute internal angles of the patterning device. Due to the manual nature of our method in its current form, applications requiring only a few layers are more suitable for immediate use of the technology. However, we also present several structures with multiple layers (>30) to demonstrate the ability of our layer-by-layer fabrication method to create three-dimensional structures. Fig. 2C highlights some of these features we achieved with our layered patterning method which include unsupported overhangs, asymmetric geometries, multicomponent structures and cell-laden patterns. These structures are described in more detail in the subsequent figures.

The ability to pattern multiple materials in a single structure is of great interest for a variety of applications ranging from creating regions of varying material properties for study-

ing molecular transport,^{43,44} to controlling the gel porosity in specific regions of a microfluidic device for use in chemical separation assays.⁴ Patterning multiple materials is also of great importance to organotypic modelling. The cellular environment in biological tissue is heterogeneous in nature, and recapitulating this environment requires spatial control of cells in relation to multicomponent hydrogels and extracellular matrix materials. Our open microfluidic layered patterning method presents a new approach to building multicomponent structures. Fig. 3A shows how different materials can be introduced at every layer to create a structure with differential material properties in the Z-direction. In Fig. 3A, an agarose structure was erected beginning with a concentration of 2% wt/v and decreasing 0.25% wt/v every five layers to a final concentration of 0.75% wt/v. Each concentration is dyed a different color for visualization. The resulting structure has a stepwise concentration gradient in the Z-direction. The agarose concentrations were chosen here as a proof of concept to demonstrate the ability to pattern different compositions across layers. These concentrations also fall within the range of relevant concentrations used for transport models of biological systems such as the brain extracellular space; our layered patterning method has the

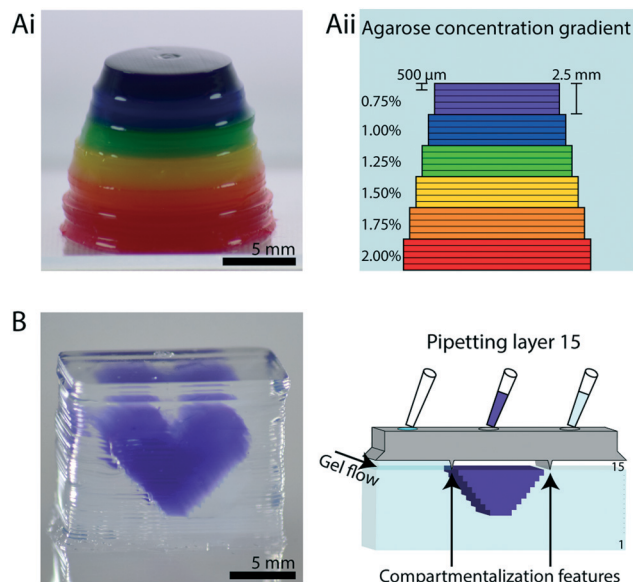


Fig. 3 Constructing heterogeneous structures. (A) Structure with multiple agarose concentrations. (Ai) Photo of agarose structure (dyed for visualization, with each color representing a different concentration) in ascending layers. Layers are 500 μm thick, and each color contains 5 layers. (Aii) Cross-sectional schematic showing the agarose concentrations in each layer. (B) Purple agarose heart inside a colorless agarose cube demonstrating the ability to pattern materials of different composition within a layer (left). Schematic of patterning layer 15 of the 34-layered structure with compartmentalization features to segregate the different gels (right). Layers are 500 μm thick.

potential to be extended for brain extracellular matrix modeling application in future work.^{44,45}

The ability to pattern multiple materials within the same layer is essential to creating a structure with spatial organization in all three dimensions. Work by others to enable single layer printing of multiple gels through a multi-nozzle 3D printing system has demonstrated the interest of this capa-

bility in 3D bioprinting.^{29,46} To demonstrate the ability to pattern materials with different compositions within a layer using our method, we built a purple agarose heart within a colorless agarose cube (Fig. 3B, left). In this case, we added a simple ridge to the patterning rail to segregate the regions of different materials (purple and colorless agarose). Thus, different agarose solutions dyed different colors were allowed to flow within each layer in a defined pattern (Fig. 3B, right).

A design challenge for patterning three-dimensional hydrogel structures is building unsupported features (*i.e.*, features that cantilever into air rather than building on base material underneath). Other systems for patterning soft materials have utilized sacrificial material as a support, which is removed in a post-processing step either physically or chemically.^{23,29,47} The structural integrity of the desired product must be maintained after the supports are removed, which restricts the types of materials that can be used. Using our method, a dissolvable sacrificial gel approach could be employed; we also show that it is possible to create overhanging, unsupported structures without the use of sacrificial material by incrementally offsetting the patterning device from the edge of the previous layer such that each layer extends past the limits of the previous layer (Fig. 4A). To exemplify this concept, the schematic in Fig. 4B illustrates a rail design without an overhang (left) and with an overhang (center and right).

We found the length of overhang achievable was improved by the addition of a downward curvature to the edge of the patterning device to allow for favorable flow over the edge of the previous gel layer (Fig. 4B, right). Without the added curvature, the bottom of the fluid front pins to the edge of the previous layer as expected, but the top of the advancing pre-gel solution does not continue along the patterning device (Fig. 4B, center). The curvature decreases the relative ratio of the air-liquid interface to the patterning device-liquid interface; minimizing this ratio is favorable

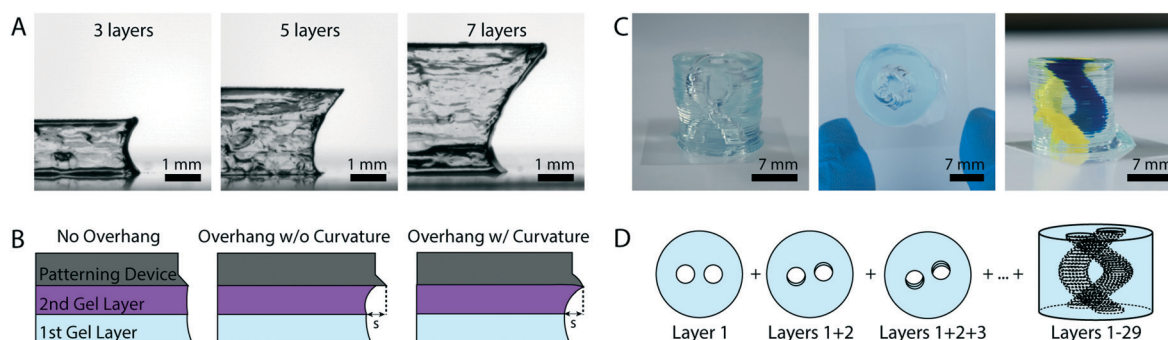


Fig. 4 Rail-based open microfluidic layered patterning of overhanging features. (A) Imaging of a cross section of an overhanging agarose structure at three different points of production, 3 layers (left), 5 layers (center) and 7 layers (right). (B) Schematic for rail design of overhanging features showing no overhang, an overhang without curvature and an overhang with downward curvature; the latter rail design was used to print the structures shown in A and C. (C) Images of cylindrical structure with hollow unsupported winding tubes (double helix) made from agarose, showing side view (left), top down image (center), and side view where tubes are filled with yellow and blue India ink dyes for visualization (right). Full description of design in the ESI† and Fig. S10. (D) Schematic showing the process for building the double helix structure, where the blue color represents the patterned agarose. Each layer is rotated about the center from the previous layer, forming a hollow helix within a cylinder of agarose.

for SCF.³⁶ Thus, the agarose fluid front continues along the surface of the patterning device, increasing the overhang capacity. Each patterning device has a different radius of curvature based on the curvature of the previous patterning device. Detailed descriptions of how these dimensions were determined are included in the ESI† and Fig. S10, and the dimensions are given in Table S1.† To fully demonstrate the capabilities of our method to produce geometries with overhanging features, we built an agarose cylinder with hollow winding tubes in the shape of a double helix (Fig. 4C and D). The helix consists of 30 layers, each 500 μm thick, and has a total rotation of 270 degrees.

Previously, other fabrication methods have utilized a sacrificial material to create void spaces and channels through a three-dimensional hydrogel structure^{29,48} or have employed a casting method to create fluidic channels.⁷ Furthermore, laser photoablation can be used to create microchannels through hydrogels with high resolution,⁴⁹ and recently multiphoton lithography has been used to photodegrade microchannels within cell-laden PEG-based hydrogels.¹⁵ The approach we have taken here and the helix geometry proof-of-concept structure demonstrates the broader capacity to create gels with three-dimensional tubing and void spaces, thereby opening up the possibility of creating three-dimensional fluidic channels spanning multiple planes through a hydrogel structure without reliance on a sacrificial material or post-fabrication step.

We also demonstrate that it is possible to add open microfluidic functionality to the top of the patterning device, where the flow is also driven by capillary action.⁵⁰ This capability can be utilized as another method by which multiple materials can be deposited in a single layer (Fig. 5). We used open channels to deliver blue colored agarose to the voids in the red colored agarose layer below, which enables a single pipetting step to fill all six voids (Fig. 5B).

Agarose is a useful hydrogel for characterizing the possible geometries and limitations of our patterning method as its structural properties make it ideal for withstanding a three-

dimensional structure. Further there are many applications in which agarose patterning is useful, such as spatially defined microbial culture.⁵¹ However, agarose does not contain extracellular matrix components and does not facilitate mammalian cell adhesion. Further, layer delamination may occur because agarose lacks intrinsic cross-linking characteristics, and the temperature dependent gelation of agarose can affect its flow depending on the starting temperature of the precursor solution. Given these limitations, we also characterized our method for use with other cell-compatible materials including unmodified type I collagen and engineered enzymatically degradable PEG-based hydrogels.

Many materials such as collagen do not have the mechanical properties necessary to create free-standing 3D structures without the use of a second support material. To overcome this challenge, we utilized the ability to pattern a single layer with multiple materials to create an agarose 'support' structure for unmodified type I collagen (7.5 mg per mL). Type I collagen was chosen because it is abundant in biological systems. Here, we demonstrate an alternative method for patterning layers of commercially available concentrations of unmodified collagen (Fig. 6). Briefly, we patterned an agarose border on each layer, which was subsequently filled with cell-free collagen. Cell-laden collagen was then patterned over the newly established layer of collagen (Fig. S6†). Fig. 6 shows 130 confocal image stacks stitched together of Calcein AM stained human fetal lung fibroblasts in a type I collagen structure. Cells in this structure were 87% viable, quantified using live/dead (Calcein AM/ethidium homodimer) staining (Fig. S5†). The '3' and 'D' patterns represent two cell populations that were printed on two different layers, each 100 μm thick and separated by a 200 μm thick cell-free layer.

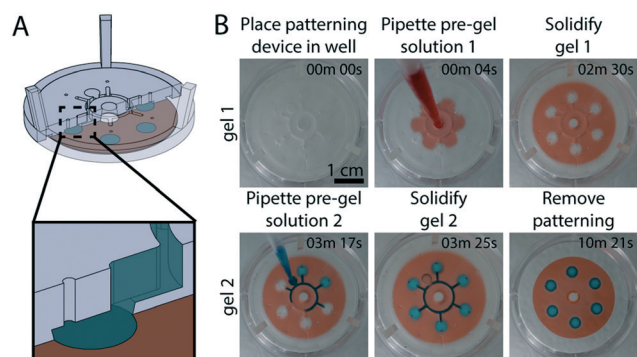


Fig. 5 Integrated fluidic channels in patterning device for depositing second material in a layer. (A) Cross-sectional schematic representation of 'void-filling' patterning device with underlying layer. (B) Video stills of patterning red colored agarose (250 μm thick) and filling voids with blue colored agarose (750 μm thick). Full video available in the ESI†

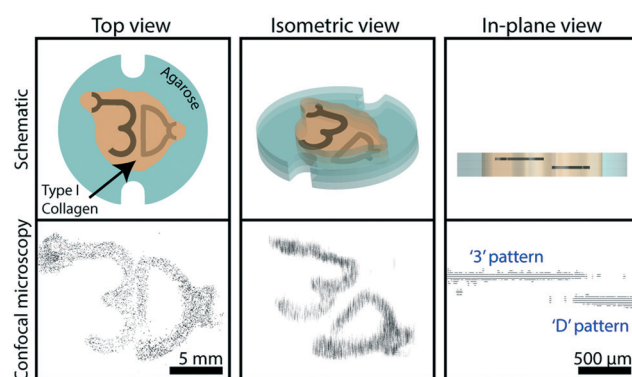


Fig. 6 Schematics and confocal images of human fetal lung fibroblasts in a type I collagen structure. Cells were stained with Calcein AM (shown in black). The top view comprises 130 fields of view (which each contain 27 Z-stacked images) stitched together. Cells that make up the "3" and "D" are each printed in separate 100 μm thick collagen layers that are separated from each other by a 200 μm thick cell-free collagen layer. Z-Step value was increased tenfold in isometric view for visualization purposes. Original confocal image file is included in the ESI† in Fig. S5. Schematic of the workflow used to achieve this structure is shown in Fig. S6;† note: the additional features on the top left of the "3" and the right of the "D" were an intentional part of the design, used as loading ports for the pre-gel solution.

A workflow schematic of the layer-by-layer collagen patterning process is shown in Fig. S6†

Stimulus-responsive biomaterials, often referred to as “4D biomaterials”, add a temporal dimension of control to a 3D material.^{52,53} Through well-defined molecular topology, these dynamic hydrogels can be chemically or physically modulated on demand in response to precise combination of environmental inputs (*e.g.*, light, small molecules, cell-secreted enzymes, exogenous enzymes) following Boolean logic.^{15,54–57} Here, we introduce and utilize novel 4D peptide-polymer hydrogels that can be enzymatically degraded with cell-secreted matrix metalloproteases (MMPs) and/or exogenously added sortase (SrtA). Transpeptidation by SrtA has been demonstrated as a rapid, bio-orthogonal means of encoding dynamic behavior into gels but offers no spatial control over degradation.^{58,59} Here, we used our 3D patterning method to create a stimulus-responsive cell-laden PEG-based hydrogel multimaterial structure featuring different enzymatically degradable crosslinkers (Fig. 7). Since these responsive PEG-peptide materials are formed through spontaneous reaction of two components in water (here, strain-promoted azide-alkyne cycloaddition),⁴¹ their formation cannot readily be patterned using conventional techniques (*e.g.*, extrusion, photopolymerization), which has placed limitations on their usage in tissue engineering.

To demonstrate 3D fabrication of cell-laden multimaterial structures and their spatially coded responsiveness, we generated a structure whose inner cavity could undergo triggered degradation (Fig. 7A). To achieve this geometry, the structure

was fabricated with a PEG-based gel with two different crosslinkers; the crosslinker in the inner cavity was degradable by SrtA OR MMP, while the crosslinker in the outer structure could only be degraded by MMPs. The total height of the structure was 0.5 mm, allowing for diffusion of nutrients through the gel when the final structure was submerged in media after fabrication. A schematic of the fabrication process and dimensions can be found in Fig. S11†. The inner core height was designed as 100 μm with a width of either 1.0 mm or 0.5 mm. Confocal images in Fig. 7 and S12† are of the larger (1.0 mm designed width of degradable cavity) geometry, and Fig. S13† shows confocal images of both geometries. Fluorescent HS5 cells were encapsulated in the gel multimaterial, with cells in the outer MMP-degradable regions expressing mCherry and those in the SrtA- OR MMP-degradable inner cavity expressing eGFP. Fig. 7A shows the timeline and schematic of the fabrication; further details are included in the Experimental section. Briefly, cells were cultured in the patterned gel for five days before SrtA treatment. At that point, the gel was treated with SrtA to facilitate degradation. The structure was incubated in DMEM media for an additional five days after the degradation before imaging. Confocal images before SrtA treatment (day 5) show the core of the structure intact with eGFP-expressing cells (green) distributed throughout the gel core and those expressing mCherry in the surrounding regions (Fig. 7Ci). After triggered degradation of the inner cavity and extended culture (day 10), the resulting structure is a fully enclosed void space (Fig. 7C and S12†), with released eGFP⁺-cells settling to the bottom of

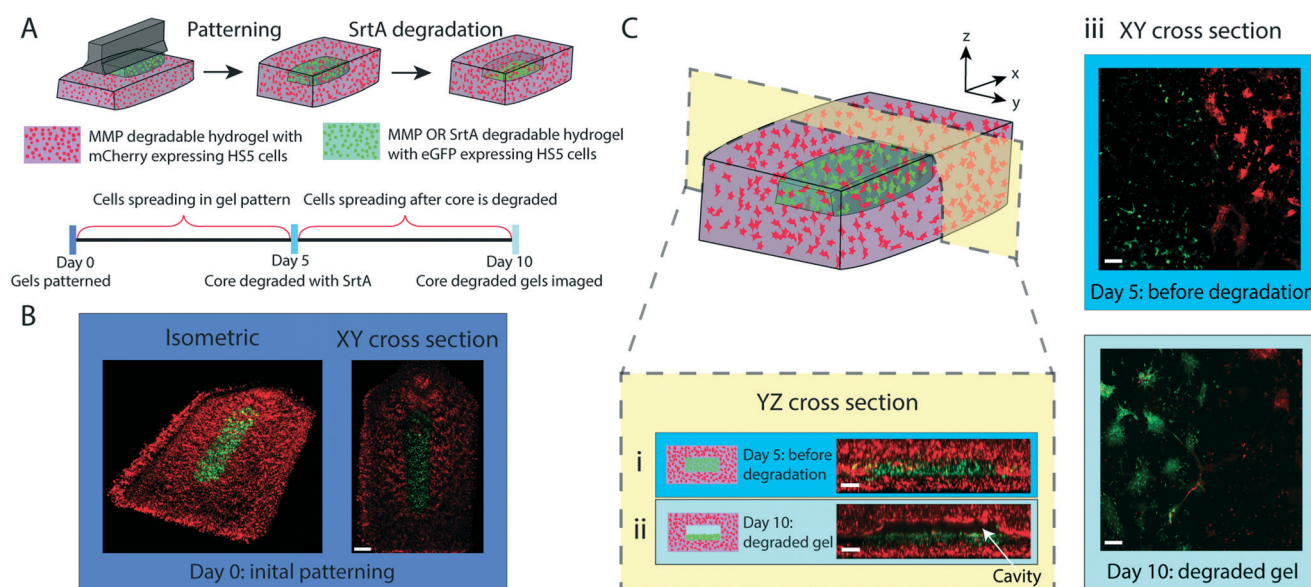


Fig. 7 Layer-by-layer patterning of enzymatically degradable PEG-based hydrogel structures. (A) Timeline of degradation experiment, highlighting SrtA treatment on day 5 that triggers degradation of the eGFP⁺-cell-containing core. (B) Confocal images acquired immediately after multimaterial gel patterning. eGFP-expressing HS5 cells (green) were encapsulated in the MMP- OR SrtA-degradable core; mCherry-expressing cells (red) are in the surrounding MMP-only degradable hydrogel. Scale bar is 1 mm. (C) YZ cross-sectional view of gels (Ci) on day 5 immediately preceding SrtA treatment, and (Cii) after 10 days of culture (5 days post core degradation), where released eGFP⁺-cells settle to the bottom of the empty cavity to form a monolayer on the intact gel layer below. Scale bars are 200 μm . (Ciii) Confocal images (XY cross sections) at the interface between the bottom and middle layers on day 5 (prior to SrtA treatment) and day 10. eGFP⁺-cells exhibit a 3D spread morphology on day 5, but transition to a 2D monolayer after release. Scale bars are 200 μm .

the degraded core to form a monolayer (Fig. 7Cii). Owing to the MMP-degradability of both the inner and outer layers, cells are able to actively remodel and spread within the hydrogel materials. As demonstrated, our generalizable patterning technique adds another dimension of control to responsive biomaterials; we view this as tremendously valuable for gel types that are incompatible with traditional additive manufacturing techniques, including the many that form through spontaneous reactions.⁶⁰

For each structure presented in Fig. 2–7, we used a separate patterning rail (fabricated by 3D printing or CNC milling) for each layer (Fig. 8Ai). While this method is convenient for development of our method, fluid patterning by SCF can also be achieved without a physical rail by using a flat surface with patterned hydrophilic and hydrophobic regions to guide fluid flow by SCF into a desired pattern; the fluid flows along the hydrophilic tracks and pins at the hydrophilic/hydrophobic boundary (Fig. 8Aii). This concept builds on past work where localized hydrophilic/hydrophobic patterning on a sin-

gle flat surface was used to constrain fluids to a hydrophilic pattern.^{61,62} Here, we extended this patterning concept to create a two-layered hydrogel structure, showing that the hydrophilic/hydrophobic patterning template can be removed after each hydrogel layer is created to iteratively build up multiple layers of hydrogel structures (Fig. 8B). In the present embodiment, we plasma treated a polystyrene sheet and masked the area we wanted to preserve as hydrophilic with tape (*i.e.*, the “W” shape shown in Fig. 8Bi). A commercially available hydrophobic treatment spray was applied to create a hydrophobic background. The tape was then removed after the hydrophobic treatment, revealing a hydrophilic patterning region surrounded by a hydrophobic background. We built a two layer hydrogel (agarose) “W” structure on a polystyrene base substrate. Using stacked, glass coverslips as spacers above the polystyrene base substrate, we created a 500 μm gap between the base substrate and the hydrophilic/hydrophobic patterning surface. The pre-gel solution flowed in this gap *via* SCF, as previously described, and pinned at the interface

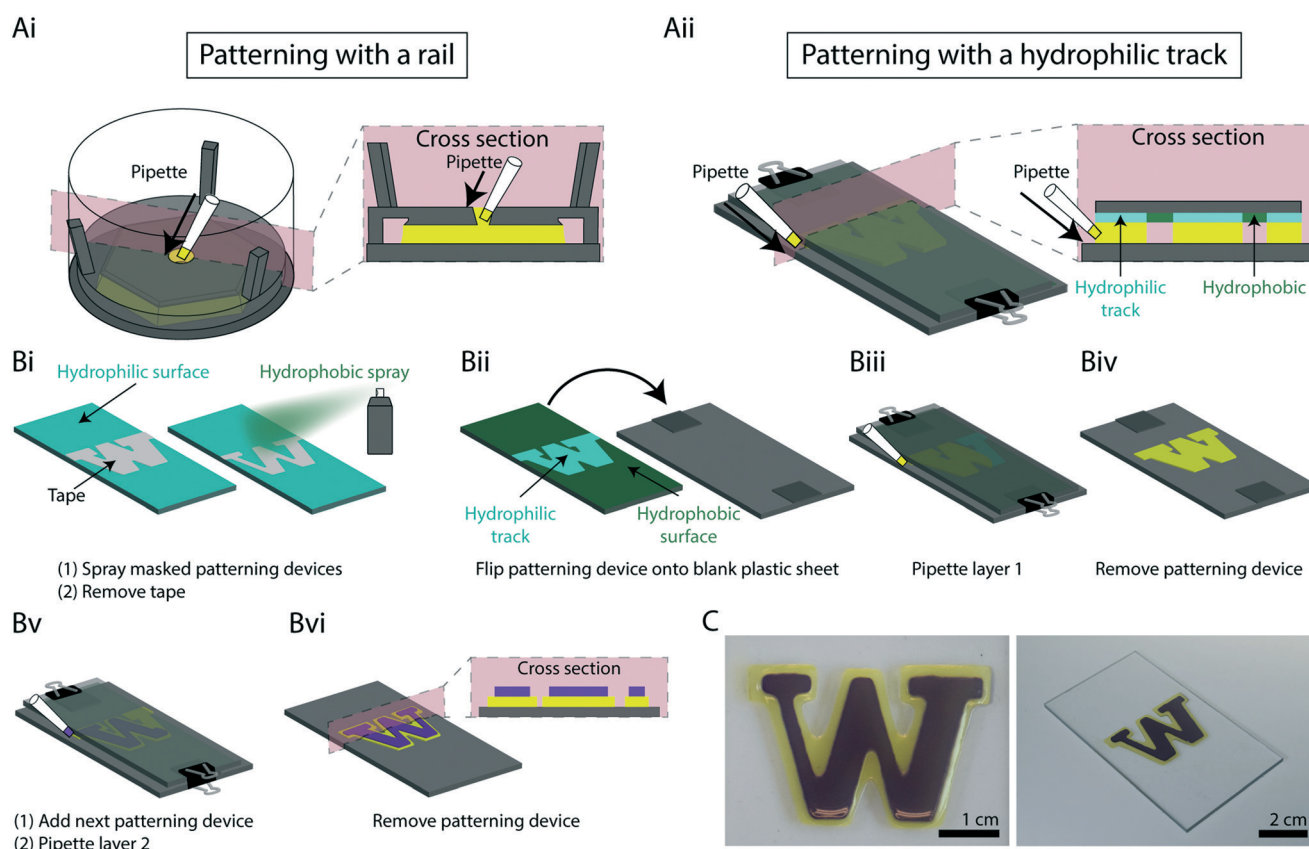


Fig. 8 Layer-by-layer hydrogel patterning without a rail. (A) Overview of two patterning processes contrasting (Ai) patterning with a rail and (Aii) patterning with hydrophilic tracks. (Bi) Plasma treated polystyrene (PS) sheets were masked with tape, and a hydrophobic spray was applied. After the hydrophobic layer had set, the tape was removed. (Bii) The hydrophobic side of the PS sheet placed face down onto a clean, plasma treated PS sheet with stacked coverslips as spacers to create a gap between the two sheets. (Biii) The patterning device was secured to the spacers and bottom substrate with binder clips and the pre-gel solution was pipetted in the gap between the patterning device and bottom substrate at both sides of the ‘W’. (Biv) The patterning device was removed after the gel solidified. (Bv) Additional coverslips were stacked on the existing spacers to create a larger gap for the second layer, and the second patterning device was aligned by eye, placed and secured with binder clips. The second layer of pre-gel solution was then pipetted in the same way. (Bvi) The patterning device was removed to reveal the 2-layered hydrogel structure. The thickness of each layer was 500 μm (C) top view (left) and isometric (right) photo of two-layered agarose ‘W’. Video of patterning process is available in the ESI†

between the hydrophilic and hydrophobic region creating the “W” pattern set by the hydrophilic region (Fig. 8B and C). This result demonstrates that our open microfluidic layer-by-layer method can be implemented without a physical rail, opening up the potential for future embodiments in which the hydrophilic/hydrophobic regions are patterned *via* reversible or actuatable approaches.

Conclusion

A novel open microfluidic method for layer-by-layer patterning of 3D hydrogel objects has been demonstrated. Our method uses fundamentally different principles—surface tension forces and open microfluidics—from existing methods to pattern hydrogel structures. Hydrogel waste is minimized in our layer-by-layer patterning method because it uses simple pipettes (with no dead volume) rather than requiring large vats of material or dispensing containers common in some hydrogel 3D printing methods, opening up the potential to use expensive hydrogels, rare cells such as primary patient samples, or precious reagents in small volume, a benefit of microfluidics.

We demonstrated the compatibility of our method with three materials: agarose, collagen, and PEG-based engineered hydrogels. Though each material type was amenable to 3D-patterned deposition, it is important to note that different gel precursors and patterned geometries have their own set of limitations and may require device optimization to achieve a desired structure. We fabricated structures that comprised representative features—specifically features that are enabled by additive manufacturing. In terms of feature geometry, we specifically found limitations in flowing around sharp corners as demonstrated in the roundedness of the acute angle of the “W” in Fig. 8. Filling out sharp corners is also challenging such as the corner of a square, particularly at higher layer heights (Fig. S1†).

Complementing our efforts to define gel geometry with a physical rail, we have demonstrated that similar multilayer structures can be generated using patterned hydrophilic/hydrophobic surface coatings. Our hydrogel patterning method, used with surface chemistries that allow for rapid reversible patterning of hydrophilic and hydrophobic regions, could be amenable to rapid automation. Further improvements in processing time could be achieved through reaction conditions (*e.g.*, temperature) optimized for specific gelation chemistries. Importantly, using the embodiment shown in the present manuscript, we demonstrated layered patterning of cell-laden structures using standard cell culture materials and procedures without subjecting the fluid to external pressure, suggesting that this method has the potential to be extended for use with other cell types. Our capacity to control the location of different gel materials within and between layers suggests the possibility to create 3D organoid models by directing the patterning of cell types and culture materials in 3D space. Building open microfluidic channels directly into the patterning device (Fig. 5) can enable efficient delivery of re-

agents, cells, or other components into void spaces with a single dispensing step. Moreover, as demonstrated, our method can be used to create overhanging structures and hollow tubes, extending the capability of adding fluidics (*e.g.*, channels, voids) throughout the gel itself, thus opening up possibilities for complex three-dimensional models and systems. Finally, we demonstrated the capability to pattern engineered dynamic hydrogels that could not be extruded or photopolymerized, enabling the 3D spatial control of multimaterial structures that respond dynamically to their environment, yielding a new breed of 4D-functional materials.

Conflicts of interest

The authors acknowledge the following potential conflicts of interest in companies pursuing open microfluidic technologies: EB: Tasso, Inc., Salus Discovery, LLC, and Stacks to the Future, LLC, ABT: Stacks to the Future, LLC.

Acknowledgements

We thank Ivor Clinton for assistance with photography, Jing Lee for video editing, and Dr. Mary Regier for helpful discussions. We thank Dale Hailey at the University of Washington Garvey Imaging Core for imaging assistance, and Scott Edgar at the UW Medicinal Chemistry Mass Spectrometry Core. We acknowledge the Biochemical Diagnostics Foundry for Translational Research supported MJ Murdock Trust. We gratefully acknowledge funding from NIH R01HD090660 (ABT, UNL), the Arnold and Mabel Beckman Foundation (Beckman Young Investigator Award, ABT, UNL, JHD, AJH, EB), NSF GRFP Grant 2018261576 (RCB), NSF DMR 1807398 (CAD), the Mary Gates Endowment for Students (JHD), and the University of Washington. This research was partially supported by NSF through the University of Washington Materials Research Science and Engineering Center DMR-1719797 (ABT, CAD, AJH). Research reported in this publication was supported in part by the Eunice Kennedy Shriver National Institute Of Child Health & Human Development of the National Institutes of Health. The content is solely the responsibility of the authors and does not necessarily represent the official views of the National Institutes of Health.

References

- 1 D. J. Beebe, J. S. Moore, J. M. Bauer, Q. Yu, R. H. Liu, C. Devadoss and B.-H. Jo, *Nature*, 2000, **404**, 588–590.
- 2 S. B. Kim, Y. Zhang, S. M. Won, A. J. Bhandodkar, Y. Sekine, Y. Xue, J. Koo, S. W. Harshman, J. A. Martin, J. M. Park, T. R. Ray, K. E. Crawford, K.-T. Lee, J. Choi, R. L. Pitsch, C. C. Grigsby, A. J. Strang, Y.-Y. Chen, S. Xu, J. Kim, A. Koh, J. S. Ha, Y. Huang, S. W. Kim and J. A. Rogers, *Small*, 2018, **14**, 1703334.
- 3 J. Choi, Y. Xue, W. Xia, T. R. Ray, J. T. Reeder, A. J. Bhandodkar, D. Kang, S. Xu, Y. Huang and J. A. Rogers, *Lab Chip*, 2017, **17**, 2572–2580.

- 4 A. E. Herr, A. V. Hatch, D. J. Throckmorton, H. M. Tran, J. S. Brennan, W. V. Giannobile and A. K. Singh, *Proc. Natl. Acad. Sci. U. S. A.*, 2007, **104**, 5268.
- 5 C.-C. Kang, K. A. Yamauchi, J. Vlassakis, E. Sinkala, T. A. Duncombe and A. E. Herr, *Nat. Protoc.*, 2016, **11**, 1508.
- 6 V. Chan, P. Zorlutuna, J. H. Jeong, H. Kong and R. Bashir, *Lab Chip*, 2010, **10**, 2062–2070.
- 7 Y. Ling, J. Rubin, Y. Deng, C. Huang, U. Demirci, J. M. Karp and A. Khademhosseini, *Lab Chip*, 2007, **7**, 756–762.
- 8 G. Ongo and D. Juncker, *Multiplexed co-culture patterning in 2D and 3D using low-cost 3D-printed monolithic pin-heads*, Kaohsiung, Taiwan, 2018.
- 9 B. H. Chueh, Y. Zheng, Y. S. Torisawa, A. Y. Hsiao, C. Ge, S. Hsiong, N. Huebsch, R. Franceschi, D. J. Mooney and S. Takayama, *Biomed. Microdevices*, 2010, **12**, 145–151.
- 10 W.-G. Koh and M. V. Pishko, *Anal. Bioanal. Chem.*, 2006, **385**, 1389–1397.
- 11 K. C. Hribar, K. Meggs, J. Liu, W. Zhu, X. Qu and S. Chen, *Sci. Rep.*, 2015, **5**, 17203.
- 12 M. S. Hahn, J. S. Miller and J. L. West, *Adv. Mater.*, 2006, **18**, 2679–2684.
- 13 V. A. Liu and S. N. Bhatia, *Biomed. Microdevices*, 2002, **4**, 257–266.
- 14 S. Khetan and J. A. Burdick, *Soft Matter*, 2011, **7**, 830–838.
- 15 C. K. Arakawa, B. A. Badeau, Y. Zheng and C. A. DeForest, *Adv. Mater.*, 2017, **29**, 1703156.
- 16 J. Liu, D. Gao, H. F. Li and J. M. Lin, *Lab Chip*, 2009, **9**, 1301–1305.
- 17 J. Decock, M. Schlenk and J.-B. Salmon, *Lab Chip*, 2018, **18**, 1075–1083.
- 18 S. J. Bryant, J. L. Cuy, K. D. Hauch and B. D. Ratner, *Biomaterials*, 2007, **28**, 2978–2986.
- 19 G. Papavasiliou, P. Songprawat, V. Pérez-Luna, E. Hammes, M. Morris, Y.-C. Chiu and E. Brey, *Tissue Eng., Part C*, 2008, **14**, 129–140.
- 20 C. G. Williams, A. N. Malik, T. K. Kim, P. N. Manson and J. H. Elisseeff, *Biomaterials*, 2005, **26**, 1211–1218.
- 21 L. Xu, N. Sheybani, W. A. Yeudall and H. Yang, *Biomater. Sci.*, 2015, **3**, 250–255.
- 22 T. Boland, X. Tao, B. J. Damon, B. Manley, P. Kesari, S. Jalota and S. Bhaduri, *Mater. Sci. Eng., C*, 2007, **27**, 372–376.
- 23 C. Xu, W. Chai, Y. Huang and R. R. Markwald, *Biotechnol. Bioeng.*, 2012, **109**, 3152–3160.
- 24 T. Xu, W. Zhao, J.-M. Zhu, M. Z. Albanna, J. J. Yoo and A. Atala, *Biomaterials*, 2013, **34**, 130–139.
- 25 A. Bandyopadhyay, V. K. Dewangan, K. Y. Vajanthri, S. Poddar and S. K. Mahto, *Biocybern. Biomed. Eng.*, 2018, **38**, 158–169.
- 26 S. Sakai, K. Mochizuki, Y. Qu, M. Mail, M. Nakahata and M. Taya, *Biofabrication*, 2018, **10**, 045007.
- 27 J.-H. Shim, J.-S. Lee, J. Y. Kim and D.-W. Cho, *J. Micromech. Microeng.*, 2012, **22**, 085014.
- 28 F. Pati, J. Jang, D.-H. Ha, S. Won Kim, J.-W. Rhie, J.-H. Shim, D.-H. Kim and D.-W. Cho, *Nat. Commun.*, 2014, **5**, 3935.
- 29 T. J. Hinton, Q. Jallerat, R. N. Palchesko, J. H. Park, M. S. Grodzicki, H.-J. Shue, M. H. Ramadan, A. R. Hudson and A. W. Feinberg, *Sci. Adv.*, 2015, **1**, e1500758.
- 30 R. Chang, J. Nam and W. Sun, *Tissue Eng., Part A*, 2008, **14**, 41–48.
- 31 K. Nair, M. Gandhi, S. Khalil, K. C. Yan, M. Marcolongo, K. Barbee and W. Sun, *Biotechnol. J.*, 2009, **4**, 1168–1177.
- 32 A. Blaeser, D. F. Duarte Campos, U. Puster, W. Richtering, M. M. Stevens and H. Fischer, *Adv. Healthcare Mater.*, 2016, **5**, 326–333.
- 33 S. Cosson and M. P. Lutolf, *Sci. Rep.*, 2014, **4**, 4462.
- 34 F. Chiellini, R. Bizzarri, C. K. Ober, D. Schmaljohann, T. Yu, R. Solaro and E. Chiellini, *Macromol. Rapid Commun.*, 2001, **22**, 1284–1287.
- 35 Y. Zheng, J. Chen, M. Craven, N. W. Choi, S. Totorica, A. Diaz-Santana, P. Kermani, B. Hempstead, C. Fischbach-Teschl, J. A. López and A. D. Stroock, *Proc. Natl. Acad. Sci. U. S. A.*, 2012, **109**, 9342.
- 36 B. P. Casavant, E. Berthier, A. B. Theberge, J. Berthier, S. I. Montanez-Sauri, L. L. Bischel, K. Brakke, C. J. Hedman, W. Bushman, N. P. Keller and D. J. Beebe, *Proc. Natl. Acad. Sci. U. S. A.*, 2013, **110**, 10111.
- 37 S. B. Berry, T. Zhang, J. H. Day, X. Su, I. Z. Wilson, E. Berthier and A. B. Theberge, *Lab Chip*, 2017, **17**, 4253–4264.
- 38 S. H. Lee, A. J. Heinz, S. Shin, Y.-G. Jung, S.-E. Choi, W. Park, J.-H. Roe and S. Kwon, *Anal. Chem.*, 2010, **82**, 2900–2906.
- 39 Y. Lee, J. W. Choi, J. Yu, D. Park, J. Ha, K. Son, S. Lee, M. Chung, H.-Y. Kim and N. L. Jeon, *Lab Chip*, 2018, **18**, 2433–2440.
- 40 J. Berthier, K. A. Brakke and E. Berthier, *Open Microfluidics*, Scrivener Publishing LLC, Beverly, MA, USA, 2016.
- 41 C. A. DeForest and D. A. Tirrell, *Nat. Mater.*, 2015, **14**, 523.
- 42 I. Chen, B. M. Dorr and D. R. Liu, *Proc. Natl. Acad. Sci. U. S. A.*, 2011, **108**, 11399.
- 43 E. J. Su, S. Jeeawoody and A. E. Herr, *APL Bioeng.*, 2019, **3**, 026101.
- 44 C. Curtis, D. Toghiani, B. Wong and E. Nance, *Colloids Surf., B*, 2018, **170**, 673–682.
- 45 P. Zarrintaj, S. Manouchehri, Z. Ahmadi, M. R. Saeb, A. M. Urbanska, D. L. Kaplan and M. Mozafari, *Carbohydr. Polym.*, 2018, **187**, 66–84.
- 46 E. Sodupe-Ortega, A. Sanz-Garcia, A. Pernia-Espinoza and C. Escobedo-Lucea, *Materials*, 2018, **11**, 1402.
- 47 D. F. Duarte Campos, A. Blaeser, M. Weber, J. Jäkel, S. Neuss, W. Jähnen-Dechent and H. Fischer, *Biofabrication*, 2012, **5**, 015003.
- 48 W. Lee, V. Lee, S. Polio, P. Keegan, J. H. Lee, K. Fischer, J. K. Park and S. S. Yoo, *Biotechnol. Bioeng.*, 2010, **105**, 1178–1186.
- 49 N. Brandenburg and M. P. Lutolf, *Adv. Mater.*, 2016, **28**, 7450–7456.
- 50 D. Juncker, H. Schmid, U. Drechsler, H. Wolf, M. Wolf, B. Michel, N. de Rooij and E. Delamarche, *Anal. Chem.*, 2002, **74**, 6139–6144.
- 51 D. G. Priest, N. Tanaka, Y. Tanaka and Y. Taniguchi, *Sci. Rep.*, 2017, **7**, 17750.
- 52 E. R. Ruskowitz and C. A. DeForest, *Nat. Rev. Mater.*, 2018, **3**, 17087.
- 53 Y. C. Li, Y. S. Zhang, A. Akpek, S. R. Shin and A. Khademhosseini, *Biofabrication*, 2016, **9**, 012001.

- 54 B. A. Badeau and C. A. DeForest, *Annu. Rev. Biomed. Eng.*, 2019, **21**, 241–265.
- 55 P. M. Gawade, J. A. Shadish, B. A. Badeau and C. A. DeForest, *Adv. Mater.*, 2019, **31**, 1902462.
- 56 E. R. Ruskowitz, M. P. Comerford, B. A. Badeau and C. A. DeForest, *Biomater. Sci.*, 2019, **7**, 542–546.
- 57 B. A. Badeau, M. P. Comerford, C. K. Arakawa, J. A. Shadish and C. A. DeForest, *Nat. Chem.*, 2018, **10**, 251.
- 58 J. Valdez, C. D. Cook, C. C. Ahrens, A. J. Wang, A. Brown, M. Kumar, L. Stockdale, D. Rothenberg, K. Renggli, E. Gordon, D. Lauffenburger, F. White and L. Griffith, *Biomaterials*, 2017, **130**, 90–103.
- 59 E. Cambria, K. Renggli, C. C. Ahrens, C. D. Cook, C. Kroll, A. T. Krueger, B. Imperiali and L. G. Griffith, *Biomacromolecules*, 2015, **16**, 2316–2326.
- 60 S. R. Caliri and J. A. Burdick, *Nat. Methods*, 2016, **13**, 405–414.
- 61 H. S. Lim, J. T. Han, D. Kwak, M. Jin and K. Cho, *J. Am. Chem. Soc.*, 2006, **128**, 14458–14459.
- 62 J. Berthier and K. A. Brakke, *The Physics of Microdroplets*, Wiley, Hoboken, NJ, USA, 2012.