

Opinion

Brain Modularity: A Biomarker of Intervention-related Plasticity

Courtney L. Gallen^{1,2,*} and Mark D'Esposito^{3,4}

Interventions using methods such as cognitive training and aerobic exercise have shown potential to enhance cognitive abilities. However, there is often pronounced individual variability in the magnitude of these gains. Here, we propose that brain network modularity, a measure of brain subnetwork segregation, is a unifying biomarker of intervention-related plasticity. We present work from multiple independent studies demonstrating that individual differences in baseline brain modularity predict gains in cognitive control functions across several populations and interventions, spanning healthy adults to patients with clinical deficits and cognitive training to aerobic exercise. We believe that this predictive framework provides a foundation for developing targeted, personalized interventions to improve cognition.

Neural Mechanisms of Individual Differences in Cognitive Plasticity

There is a rapidly growing interest to develop interventions that enhance aspects of cognition. A large body of this research has recently focused on computer-based cognitive training (e.g., [1], Box 1), although other interventions, such as aerobic exercise and brain stimulation (e.g., transcranial magnetic stimulation), have also been explored as a means to enhance cognitive abilities. Some of this work has suggested that training can improve **cognitive control** (see Glossary) abilities, such as attention, working memory, and multitasking (e.g., [2–4]; for reviews see [1,5,6]), although it is important to note that the effects of training interventions on enhancing cognitive functions have been mixed (Box 1). Nevertheless, cognitive control is fundamental for goal-directed behavior and, importantly, is linked to scholastic success in children [7,8] and the capacity for independent living in older adults [9]. Further, cognitive control deficits are common in a variety of clinical populations, such as patients with traumatic brain injury (TBI) and attention-deficit disorder. Thus, identifying interventions that can successfully strengthen cognitive control abilities in a wide variety of populations is of critical importance.

Training-related improvements in cognitive control suggest that these abilities are not immutable, as interventions can drive **cognitive plasticity** to ultimately enhance cognition. Here, we define 'cognitive plasticity' as an individual's capacity to change and adapt cognitive performance [10]. Although numerous interventions have generally shown promise, there is frequently variability in the magnitude of gains across individuals. In addition, there is also variability in the effectiveness of training across types of interventions. It is therefore crucial to understand the mechanisms that support effective interventions and, further, to understand why certain interventions work for some individuals and not others [11]. Moreover, given the cost and time investments required for training interventions, as well as the limited resources for rehabilitation in our health care system, identifying reliable **biomarkers** that could predict which individuals have the greatest likelihood of responding to an intervention would help clinicians make more informed decisions before beginning training. Despite this, a common neural mechanism that

Highlights

There is a rapidly growing interest to use interventions to enhance cognition. Although some interventions show promise, there is often variability in the magnitude of improvements across individuals.

Graph theory analyses of human neuroimaging data are a useful tool to examine large-scale network properties of the brain. Modularity is an important organizational principle that quantifies the extent to which a network is divided into distinct subnetworks, or modules.

Baseline assessments of brain modularity predict intervention-related cognitive improvements across several different populations and interventions, including patients with traumatic brain injury and healthy individuals participating in cognitive and exercise interventions.

Brain modularity is a unifying biomarker of potential for intervention success and, more broadly, cognitive plasticity.

¹Department of Neurology, University of California San Francisco, San Francisco, CA, USA

²Neuroscience, University of California San Francisco, San Francisco, CA, USA

³Helen Wills Neuroscience Institute, University of California, Berkeley, Berkeley, CA, USA

⁴Department of Psychology, University of California, Berkeley, Berkeley, CA, USA

*Correspondence: courtney.gallen@ucsf.edu (C.L. Gallen).

Box 1. Training Approaches to Enhance Cognitive Control

Cognitive control functions, such as attention and working memory, comprise a set of neural processes that underlie successful goal-directed behavior. As such, there have been increasing efforts to develop noninvasive interventions to improve cognitive control functions, particularly in the form of 'cognitive training'. In this approach, individuals are trained on one or more cognitive functions over a period of time, with the aim to improve this and related behaviors (termed 'near-transfer') as well as untrained behaviors (termed 'far-transfer').

Cognitive training interventions can take on the form of group-based therapies where participants are trained on particular goals or strategies that they practice over time (e.g., [26,30]), or through computerized training where participants are trained on tasks or games that tap particular cognitive functions (e.g., [2,4,68]). Importantly, both forms of training have been shown to be effective in clinical populations and healthy young and older adults. For example, group-based attention regulation training (i.e., strategies to reduce distractibility with mindfulness-based attention techniques) improved cognitive control abilities in patients with TBI [26]. Further, training on computer-based video games that tapped aspects of working memory and reasoning improved measures of divided attention in healthy young adults [4] and multitasking training on a custom-designed video game, *NeuroRacer*, improved behavioral and neural measures of cognitive control in healthy older adults [2].

It is important to note that the results of training studies to improve cognition have been mixed [69], especially regarding the extent to which 'far-transfer' has been observed and those that have utilized computerized training approaches (e.g., [70,71]). However, recent meta-analyses have suggested that training moderately improves cognitive abilities, for example in healthy older adults [27–29]. Further, 'near-transfer' may be achievable with some training interventions [72,73]. Since it is likely that not all training approaches will be effective at enhancing cognitive control, various intervention parameters that may influence training efficacy, such as adaptivity, dosage, and subject expectancy and motivation, should be considered [1]. Further, targeting subject's abilities using real-time personalization during training has shown promise to enhance capacity for transfer [1,2,74]. Finally, the heterogeneity of training outcomes across individuals underscores the importance of identifying biomarkers of training-related cognitive plasticity to ultimately develop personalized interventions.

can explain intervention-related plasticity across a variety of interventions and populations remains relatively under-explored.

Here, we propose that a key organizing principle of **brain networks (network modularity)**, is a unifying biomarker of plasticity associated with interventions designed to enhance cognition. A modularity metric can be derived from brain imaging data using a mathematical approach called **graph theory** (Box 2). This metric can be used to quantify the extent to which individual brain subnetworks, or **network modules**, are segregated from other modules in the whole-brain network, where networks with high modularity have many connections within modules and sparser connections between modules [12,13].

A Network Perspective for Studying Cognitive Plasticity

Noting heterogeneity of intervention-related outcomes across individuals, previous studies have attempted to identify neural biomarkers of one's potential for successful learning. This work has demonstrated that certain types of brain measurements, such as regional brain volume (e.g., striatal volume) or brain activity (e.g., frontal alpha power), are related to complex skill learning [14–17] and can also predict improvements in untrained cognitive control abilities [14]. Importantly, however, these types of predictors are not consistent across studies, demonstrating a need for neural biomarkers of outcomes that generalize across subject populations and interventions. Further, these previously identified biomarkers were largely limited to measuring structure or function within isolated brain regions, rather than identifying a biomarker of network-level interactions. We propose that the latter will lead to a more reliable biomarker of intervention-related cognitive plasticity.

As expected, there is significant individual variability in functional brain networks. This uniqueness can be captured with novel brain imaging analytic methods to identify individual

Glossary

Biomarker: a biological marker that can be used to characterize ongoing normal or abnormal biological processes, as well as to predict responses to interventions or treatments.

Brain network: a group of neural components and the connections between them. Neural components can scale to represent individual neurons to brain regions. Connections can be anatomical (e.g., white matter tracts) or functional (e.g., time series correlations of functional brain imaging data).

Cognitive control: a set of complex processes important for goal-directed behavior, including aspects of attention and working memory.

Cognitive plasticity: the capacity to change and adapt cognitive functioning.

Functional connectivity: a method to identify connections between brain regions based on statistical correlations of their activity across time. Functional connectivity is often quantified using task-free 'resting-state' functional MRI data.

Graph theory: a mathematical approach to examine properties of networks, or graphs (e.g., a mathematical object). Graphs are comprised of individual components (nodes) and the relationships between them (edges).

Network modularity: a network property that quantifies the extent to which a network is partitioned into individual subnetworks, or modules. A network with high modularity has many connections within modules and fewer connections between modules.

Network modules: a collection of nodes that form an individual subnetwork in a graph, where nodes within a module have many connections to others in their own subnetwork and fewer connections to other subnetworks.

Box 2. Brain Networks and Modularity: A Brief Methodological Framework

Graph theory is a mathematical approach to examine network properties, where networks can be represented as graphs (e.g., a mathematical object) comprised of individual units (nodes) and the relationships between them (edges). Large-scale brain networks are comprised of individual brain regions (nodes) and the connections between them (edges). Nodes can be defined anatomically (e.g., the AAL atlas [36]) or functionally, such as through task-based activation maps (e.g., brain regions that are more or less active when comparing different task conditions) or connectivity patterns that define region boundaries (e.g., the Power atlas [37]) (Figure 1A). Similarly, edges can be defined anatomically or functionally, such as through white matter structural connectivity (derived from diffusion imaging) or correlations of activity between brain regions obtained over time (e.g. a time series derived from methods such as fMRI, EEG, or magnetoencephalography), respectively (Figure 1B). In human studies, large-scale brain networks are often quantified from task-free rs-fMRI data. For functional connections, the time series from every possible pair of brain regions is correlated to form the network edges for the entire brain atlas. The resulting correlation matrix (Figure 1C) can then be thresholded and binarized to form unweighted edges (e.g., connections equal 0 or 1 based on a specific network density or correlation value) or the correlation value can be retained to form weighted edges (e.g., connections equal their original correlation value).

After a graph has been defined, various network properties can be quantified. One particularly important organization principle is modularity: the extent to which a network can be segregated into distinct subnetworks, or modules [75] (Figure 1D). Modules are groups of nodes that can be identified in a data-driven manner by using various community detection algorithms or by applying previously identified subnetworks (see [13] for a more in-depth discussion of methodological considerations related to examining network modularity). Highly modular networks have many connections within modules and fewer connections between modules. In addition to quantifying modularity of the entire network, the roles of individual nodes, or brain regions, can also be quantified based on their within- and between-module connections. For example, nodes with a high within-module degree score have many connections to other nodes in their own module and nodes with a high participation coefficient have connections distributed across many network modules [76,77].

Importantly, previous work has demonstrated evidence for modular brain network organization across a variety of organisms, including *Caenorhabditis elegans* [78], *Drosophila* [79], mouse [80], rat [81], cat [82], macaque [82], and human [83] brains. Further, recent evidence suggests that the diversity of connector hubs (i.e., brain regions with a high participation coefficient) maintains modular organization and supports task performance [84].

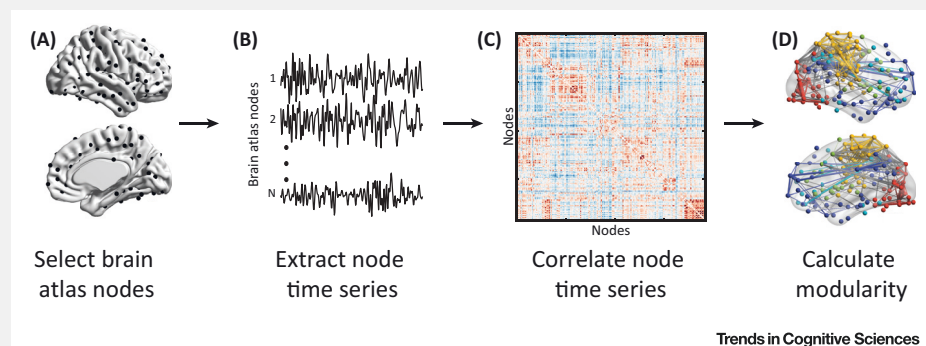


Figure 1. Functional Brain Network Analysis Pipeline. (A) The brain is first parcellated into a set of brain regions to form network nodes (e.g., the Power *et al.* atlas [37]). (B) For functional network analyses, the time series of each node is then extracted. (C) The time series of every possible pair of brain regions is then correlated to form the network edges. (D) The network is then partitioned into subnetworks or modules. Finally, the modularity of the network can be calculated by comparing within- and between-module connections. Brain network images in (A) and (D) were visualized with the BrainNet Viewer [85].

participants based on their network connectivity patterns [18,19]. There are increasing efforts to use such prediction frameworks to understand individual differences in cognition as well as to predict future behavioral outcomes [20]. Thus, we believe that a whole-brain network perspective is critical to identifying a common biomarker of intervention-related cognitive plasticity. Focusing on brain networks is likely to be particularly informative, as many interventions aim to

enhance complex cognitive processes, such as cognitive control. Such functions cannot be localized to individual brain regions or pairs of brain regions, but rather are thought to rely on the communication across widely distributed brain networks [21,22].

In this opinion article, we argue that brain modularity is a network-level biomarker of potential for intervention success and, more broadly, underlying cognitive plasticity. We base our argument on prior work with several different interventions and populations, showing that individuals with higher brain network modularity at baseline exhibit greater intervention-related cognitive gains [23–25] (Figure 1, Key Figure). After describing these empirical studies, we review other empirical and theoretical work that relates modular network organization and plasticity, forming the basis for potential mechanisms underlying the relationship between modularity and intervention-induced cognitive gains.

Brain Modularity Predicts Plasticity across Populations and Interventions

Modularity is an important feature of brain networks. Moreover, both theoretical and empirical work demonstrates that modular organization in large-scale brain networks is beneficial for behavior. Taken together, we hypothesize that a more modular network architecture confers cognitive plasticity during interventions aimed to enhance cognitive abilities, such as cognitive control. In support of this hypothesis, we present results from three studies demonstrating that individuals with higher brain network modularity at baseline (i.e., pre-intervention) exhibit larger gains in cognitive control abilities (Figure 1A). Critically, each of these studies showed that brain modularity was predictive of training outcomes beyond individual differences in baseline cognition, demonstrating that brain modularity adds unique predictive information regarding future intervention-related gains in cognition.

Patients with TBI Undergoing Cognitive Training

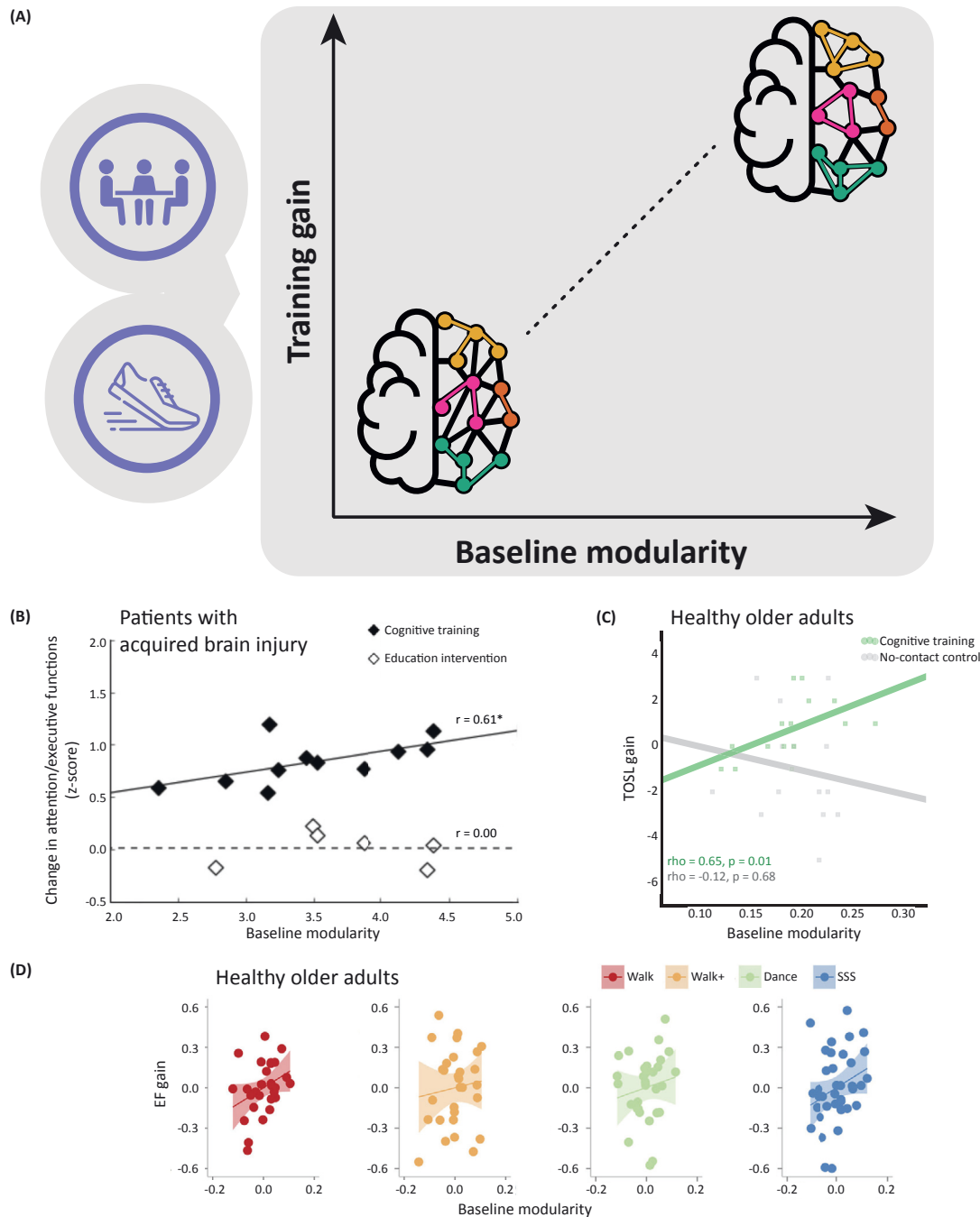
Initial work examining the relationship between baseline brain modularity and intervention gains was conducted in patients with TBI [23]. Here, patients with chronic TBI who exhibited impairments in cognitive control abilities were enrolled in a 5-week goal-oriented attention self-regulation intervention. The intervention incorporated group-based training, individual sessions with trainers, and at-home practice, with a focus on mindfulness attention regulation and practical application of these skills in daily life. Participants were randomized to this intervention or an active control brain-health education intervention. Compared with the control intervention, performance on a composite measure of cognitive control (e.g., letter number sequencing, response inhibition and switching, fluency) improved after the cognitive intervention [26]. To examine the relationship between baseline brain modularity and training-related gains, modularity was quantified from a 5-minute eyes-open ‘resting-state’ fMRI (rs-fMRI) scan. Remarkably, patients with higher modularity at baseline exhibited greater training-related cognitive gains (Figure 1B) [23]. Importantly, there was no relationship between baseline modularity and cognitive changes in the education intervention group. Further, the relationship between modularity and training-related gains could not be explained by individual differences in cognitive abilities prior to training, suggesting that modularity was a unique contributor to predicting training gains.

Healthy Individuals Undergoing Cognitive Training

In a second study, the relationship between brain modularity and training-related cognitive gains was examined in healthy older individuals [24]. While TBI patients typically exhibit cognitive control deficits, healthy older adults can also experience difficulties in these functions. A large body of recent work suggests that interventions can improve cognitive control abilities in older adults with moderate effect sizes [27–29]. In one example, a previous study demonstrated

Key Figure

Brain Network Modularity Predicts Training-related Cognitive Gains



Trends in Cognitive Sciences

(See figure legend on the bottom of the next page.)

that training improved cognitive control abilities in a group of older adults compared with a no-contact control group [30]. Here, older adults (aged 56–71 years) with nonclinical cognitive control difficulties were enrolled in 12-week gist reasoning training [strategic memory and reasoning training (SMART)] that incorporated training in small groups and at-home practice. Compared with no-contact controls, individuals in the SMART group improved on measures of gist reasoning (test of strategic learning [TOSL] [31]) and concept abstraction (Wechsler Adult Intelligence Scale-III similarities [32]). To examine the relationship between baseline brain modularity and training-related gains, modularity was quantified from a 4-minute rs-fMRI scan. As in TBI patients who completed a different type of cognitive training [23], older adults with higher brain modularity at baseline exhibited greater SMART-related improvements on the TOSL (Figure 1C) [24]. Importantly, there was no relationship between baseline brain modularity and TOSL changes in the control group. Further, the relationship between baseline brain modularity and SMART-related TOSL gains was not related to age, in-scanner motion, or baseline cognitive abilities.

While the findings in TBI patients focused on whole-brain modularity measures, there is evidence that aging has more pronounced effects on subnetworks mediating ‘associative’ functions, such as the fronto-parietal control network, compared with subnetworks mediating sensory-motor functions, such as the visual network [33]. In a secondary analysis, it was demonstrated that association cortex modularity, but not sensory-motor cortex modularity, was related to TOSL gains in the SMART group, suggesting that modularity of association networks may be more informative in predicting training-related gains in older adults.

Healthy Individuals Undergoing Exercise Training

Although a large focus of recent efforts to improve cognitive functioning has utilized group-based or computerized cognitive training, exercise interventions have also shown positive effects on brain function and behavior, particularly in older adults [34,35]. In a final study, the association between brain modularity and cognitive improvements associated with exercise training was examined [25]. Here, healthy, low active, older adults (aged 60–80 years) were enrolled in a 6-month physical exercise intervention led by trained exercise specialists. Participants were randomized to one of four groups: (i) participants in the Walk group walked within their target heart rate during training; (ii) participants in the Walk+ group walked in the same target heart rate and were provided a daily beta-alanine supplement; (iii) participants in the SSS group performed exercises focused on stretching, strengthening, and stability; and (iv) participants in the Dance group were instructed on social dance sequences. Compared with the

Figure 1. (A) Brain modularity calculated at baseline is predictive of intervention-related cognitive gains across several interventions and populations. Specifically, individuals with higher brain network modularity have larger cognitive gains than those with lower brain network modularity. Toy brain networks are comprised of nodes (circles) and edges that connect them (lines). Nodes are colored according to their module membership; within-module connections are colored to match that of nodes in their own module, while between-module connections are colored black. The network with higher modularity (right side of graph) has many within-module connections and fewer between-module connections, while the network with lower modularity (left side of graph) has fewer within-module connections and many between-module connections. (B) Baseline brain modularity predicted cognitive control gains (on a composite of attention and executive function tasks) in traumatic brain injury (TBI) patients who participated in group-based attention training, but not those who participated in a control education intervention (adapted with permission from Wolters Kluwer Health, Inc. [23]). (C) Baseline brain modularity predicted cognitive control gains (on the test of strategic learning [TOSL] [31]) in healthy older adults who participated in group-based reasoning training, but not those who were in a no-contact control group (adapted from [24]). (D) Baseline brain modularity predicted cognitive control gains [on a composite of executive function (EF) tasks] in healthy older adults who participated in exercise training, but not those who participated in a control dance intervention (after controlling for age, in-scanner motion, and baseline cognitive control functioning; adapted from [25]). It is important to note that the range of measured brain modularity values varied across studies due to differences in graph theoretical methodological decisions, such as the number of network nodes and edges and choice of atlas. Nevertheless, the relationship between baseline modularity and intervention-related gains was robust to varying analytic methods. Dance, instructed on social dance sequences; SSS, performed exercises focused on stretching, strengthening, and stability; Walk, walked within their target heart rate; Walk+, walked in their target heart rate and were provided a daily beta-alanine supplement.

Dance group, individuals in the Walk, Walk+, and SSS groups improved on a composite measure of cognitive control (e.g., spatial working memory, task switching) and cardiorespiratory fitness. To examine the relationship between baseline brain modularity and training-related gains, modularity was quantified from a 6-minute eyes-closed rs-fMRI scan. Similar to previous work, higher baseline modularity was related to greater exercise-related cognitive control gains, specifically in the groups that exhibited intervention-related cognitive improvements (i.e., Walk, Walk+, and SSS; [Figure 1D](#)) [25]. In the Walk and Walk+ groups, this relationship was stronger in individuals with lower baseline cognitive control abilities. Importantly, there was no relationship between brain modularity and cognitive changes in the Dance control group, indicating that this predictive relationship was selective to groups that showed training-related cognitive and cardiorespiratory fitness gains. Further, the relationship between baseline modularity and cognitive gains was not related to individual differences in age, in-scanner motion, years of education, or brain volume.

Robustness of Brain Modularity as a Biomarker of Plasticity

Together, the findings of these three empirical studies suggest that brain network modularity assessed during task-free rs-fMRI may be a biomarker of potential for training-related cognitive control gains that generalizes across a variety of populations and interventions ([Figure 1](#)). First, the modularity-gain relationship was observed in several different populations that exhibited intervention-related gains, on average, ranging from patients with clinical deficits to healthy individuals. Importantly, this relationship was found across individuals with a range of educational backgrounds. Second, the modularity-gain relationship was observed in several different interventions that improved functioning, ranging from group-based cognitive therapies to physical fitness interventions. Third, this relationship was found for a variety of outcome measures that were unique to each study, but all tapped aspects of cognitive control functioning.

The modularity-gain relationship also appears to be robust to methodological choices in terms of data collection and analysis. This relationship was observed in datasets with varying rs-fMRI scan length and parameters, including eyes-open or eyes-closed rest. Importantly, several steps were also taken to demonstrate that the relationship between modularity and cognitive gains was not related to in-scanner head motion. Further, the modularity-gain relationship generalized across graph theoretical analysis methods, including node selection [e.g., automated anatomical labeling (AAL) [36] or Power [37] atlases], edge selection (e.g., thresholding and binarization or retention of edge weights [33]), and methods for modularity optimization (e.g., simulated annealing [38], spectral clustering [39], or imposing predefined modules). Given that some of these methodological choices (e.g., node and edge number) can affect the range of measured modularity values, it is difficult to meaningfully compare the magnitude of the modularity metric between studies and, instead, should be compared within studies where the same analytic methods are used. Nonetheless, the correlation between baseline brain modularity and intervention-related gains was replicated in several independent studies that used somewhat different graph theoretical methods ([Figure 1](#)).

Interestingly, a similar robustness to in-scanner motion, scan sequence, and atlas selection has been found for other functional connectome prediction studies [19]. However, it should be noted that some of these choices may result in lower prediction accuracy (i.e., prediction of individual participants based on connectivity patterns), such as the use of anatomically based atlases with large network nodes or insufficient processing to account for motion artifacts [19,40]. Additionally, some work has suggested that performing a task in the scanner may increase the detectability of interindividual variability and reduce subject motion [41]. Future

work could examine the relationship between modularity quantified during a cognitive task and intervention-related cognitive gains.

Additional Work Supporting a Brain Modularity-plasticity Relationship

Results from the independent studies described above demonstrate that baseline brain network modularity is predictive of cognitive control gains in multiple populations after cognitive and exercise training. Broadly, these results suggest that modularity indexes cognitive and underlying neural plasticity. Notably, brain modularity has also recently been shown to be predictive of task learning rates in early stages of working memory training [42]. In further support of modularity as a biomarker of intervention plasticity, a metric of baseline default and visual network modularity also predicts reductions in symptom severity after cognitive behavioral therapy in patients with obsessive-compulsive disorder (OCD) [43] and default network segregation predicts clinical treatment outcomes in patients with schizophrenia [44].

Moreover, brain modularity metrics also predict outcomes associated with forms of plasticity that are not directly intervention-related, such as recovery from injury. In one study, modularity measured from resting electroencephalography (EEG) data predicted future behavioral outcomes in patients with disorders of consciousness [45]. Specifically, patients with higher modularity had more positive outcomes (i.e., recovered consciousness) approximately 1 year later. In a second study, rs-fMRI connectivity within brain subnetworks predicted future cognitive decline in cognitively normal older adults [46]. Specifically, older adults with higher baseline connectivity within ‘associative’ networks had the least cognitive decline approximately 3 years later.

Collectively, these additional studies demonstrate that brain modularity is also predictive of other clinically based outcomes, such as OCD severity and recovery of consciousness. Further, they suggest that brain modularity can be related to forms of plasticity even in the absence of an active intervention, such as recovery from brain injury and cognitive decline from normal aging.

Potential Mechanisms Underlying the Relationship between Brain Modularity and Plasticity

There is a large body of empirical and computational work demonstrating the advantages of a modular network organization. While recent reviews have described the behavioral relevance of modular network organization in detail (e.g., [47]), the specific focus of this opinion article is to propose network-level mechanisms relating brain modularity to cognitive plasticity that may, in turn, explain how interventions lead to cognitive benefits.

Empirical Work

Human studies have shown that modular brain networks are beneficial for cognitive performance. First, higher network modularity quantified from task-free ‘resting’ **functional connectivity** data is related to better working memory capacity [48] and episodic memory [33] across individuals. Further, greater modularity of sensorimotor networks is related to future motor skill learning [49] and functional networks become more segregated over the course of practice and learning [50]. Second, modular network organization is disrupted in both healthy older individuals and patients with cognitive control deficits [33,51–56]. Finally, lesions to brain regions important for maintaining modular organization [57] lead to more extensive cognitive deficits [58]. Network modularity also increases over the first weeks to months during stroke recovery and, importantly, is associated with recovery of complex cognitive functions, such as attention and memory [59]. Collectively, these empirical studies in humans suggest

that trait-like features of brain modularity predict behavioral performance, namely that a more modular intrinsic network organization measured in 'resting' states is advantageous for behavior.

Although recent work has described state-like changes in modular network organization (e.g., during task performance) in depth (e.g., [47,60]), one particularly relevant study found that individuals with higher general intelligence have smaller changes in connectivity between a task-free 'resting-state' and task performance, suggesting that these individuals have a more 'optimal' intrinsic network organization that supports more efficient changes in patterns of connectivity during task performance [61]. During cognitive training, we propose that individuals with higher network modularity may also be in a more 'optimal' network state that requires less network reconfiguration to achieve the 'optimal' network state necessary for a successful response to a training intervention. Although our hypotheses and review of previous studies emphasize trait-level differences in brain modularity, we believe that leveraging both state- and trait-based approaches in future work will be informative for identifying biomarkers, as well as understanding network-level mechanisms underlying cognitive plasticity.

Theoretical Work

Computational modeling studies provide a mechanistic framework for the empirical findings described above, as well as demonstrate evolutionary benefits of having a modular network architecture. In particular, network modularity may offer information encapsulation that, in turn, allows for faster processing [62]. Further, previous work has shown that modular networks spontaneously evolve to solve varying task goals and, additionally, networks that are more modular have greater adaptability in changing environments [63]. Similarly, other work has shown that modular networks are better at learning new skills without forgetting old ones [64]. In particular, a problem in the field of artificial intelligence referred to as catastrophic forgetting (i.e., forgetting previously acquired skills after learning new ones) was reduced in modular neural networks. It is proposed that modular networks aid new learning because processing occurs selectively in a module dedicated to learning a new task [64]. Modular biological networks may have also evolved to reduce network wiring costs [65]. Specifically, this may allow modular networks of sufficient size, similar to the scale of many biological networks, to be more efficient and faster at problem solving (e.g., identifying a subset of specific patterns from a larger set [66]).

Taken together, this computational work suggests that modular networks are more adaptable and are better at learning and problem solving. These advantages of modular networks have been attributed to the compartmentalization of connections offered by a modular organization [13]. Here, networks with many connections concentrated within modules can more independently adapt to changing external demands [67] and, further, are not as affected if other modules are modified or damaged. Relatedly, modular networks are thought to act more independently from the rest of the network because they have relatively few between-module connections, which leads to increased flexibility.

Considering the empirical and computational evidence for advantages of a modular network organization, we propose possible network-level mechanisms underlying the relationship between brain modularity and intervention-induced cognitive gains. Specifically, we hypothesize that higher network modularity represents a brain network trait that allows for greater plasticity during interventions. As the empirical work suggests, robust trait-like differences in modularity exist across individuals that are related to better behavioral performance in a variety of cognitive domains, such as working memory and episodic memory. Further, as the

computational work suggests, modular networks show greater adaptability in changing environments and are better at learning and problem solving.

In the context of cognitive training interventions, we propose that individuals with more modular brains are better at adapting to changing training demands and faster at solving novel tasks that must be learned during training. In this way, given the relationship between brain modularity and cognitive performance, individuals with a more modular brain are likely better at learning training paradigms [49]. This proposal is supported by empirical work linking modularity to early learning rates during training [42], in which individuals with more modular brains exhibited faster learning of the training paradigm than those with less modular brains. Thus, we propose that during the course of cognitive training, individuals with higher brain network modularity have a greater capacity to train more and at higher levels of difficulty sooner than individuals with lower brain network modularity, leading to larger intervention-induced cognitive improvements. Future studies can directly test these hypotheses.

Concluding Remarks and Future Directions

Based on recent studies, we propose that assessments of brain network modularity serve as a key biomarker that predicts intervention-related cognitive plasticity across individuals engaging in various forms of training. Moreover, modularity may also be a valuable metric for understanding recovery from brain injury and progression of brain pathology. We believe that this level of analysis (i.e., examining large-scale brain network organization) is critical for capturing information that is not as well explained by behavior or the activity and structure of individual brain regions. For complex behaviors like cognitive control, examining the interactions within and between brain subnetworks is likely to be informative. The extant literature provides evidence for the significance of modular brain network organization in shaping both current and future behavioral outcomes. Further, it broadly points to modularity as an important index of underlying plasticity and, as such, offers potential mechanisms for individual differences in intervention success. Finally, we anticipate that this framework can be used prospectively to guide personalized interventions that improve outcomes across individuals. Future studies should examine whether the relationship between modularity and cognitive plasticity extends to other populations, such as learning in children and adolescents (see Outstanding Questions). Importantly, these future lines of work will help generate testable hypotheses for underlying neurobiological mechanisms of brain modularity as a biomarker of plasticity.

Acknowledgments

This work was supported by a National Science Foundation SBE Postdoctoral Research Fellowship (Grant 1808384 to C. L.G.), the NIH (Grant NS79698 to M.D.), and the VA Research Administration (to M.D.). We would also like to thank Zoe D'Esposito for assistance with figure creation.

References

1. Anguera, J.A. and Gazzaley, A. (2015) Video games, cognitive exercises, and the enhancement of cognitive abilities. *Curr. Opin. Behav. Sci.* 4, 160–165
2. Anguera, J.A. et al. (2013) Video game training enhances cognitive control in older adults. *Nature* 501, 97–101
3. Buschkuhl, M. et al. (2014) Neural effects of short-term training on working memory. *Cogn. Affect. Behav. Neurosci.* 14, 147–160
4. Baniqued, P.L. et al. (2014) Cognitive training with casual video games: points to consider. *Front. Psychol.* 4, 1010
5. Mishra, J. and Gazzaley, A. (2014) Harnessing the neuroplastic potential of the human brain & the future of cognitive rehabilitation. *Front. Hum. Neurosci.* 8, 218
6. Green, C.S. and Bavelier, D. (2008) Exercising your brain: a review of human brain plasticity and training-induced learning. *Psychol. Aging* 23, 692–701
7. Gathercole, S.E. et al. (2003) Working memory assessments at school entry as longitudinal predictors of National Curriculum attainment levels. *Educ. Child Psychol.* 20, 109–122
8. Bryck, R.L. and Fisher, P.A. (2012) Training the brain: practical applications of neural plasticity from the intersection of cognitive neuroscience, developmental psychology, and prevention science. *Am. Psychol.* 67, 87–100
9. Willis, S.L. et al. (2006) Long-term effects of cognitive training on everyday functional outcomes in older adults. *JAMA* 296, 2805–2814

Outstanding Questions

Is brain modularity also predictive of underlying neural changes that occur with interventions? Intervention studies also frequently report concurrent changes in brain structure and function, but the relationship between brain modularity and training-related neural changes remains unexplored.

Is brain modularity related to intervention-related outcomes, learning, and academic achievement in children and adolescents? Variability in cognitive control abilities is related to scholastic success in children and adolescents, but the relationship between modularity and these abilities is not well understood.

Is brain modularity predictive of brain stimulation-based cognitive improvements or intervention-related gains in other cognitive domains? For example, brain stimulation (e.g., transcranial magnetic stimulation) is another promising method to improve cognitive control. Further, interventions have also shown potential to improve other aspects of complex behavior (e.g., mnemonic training to improve memory). Future research should examine the relationship between brain modularity and other interventions that enhance cognitive control as well as abilities in other cognitive domains.

Can brain network biomarkers be used prospectively to develop and guide personalized interventions? Thus far, brain modularity and other biomarkers have been used to predict intervention outcomes retrospectively. A promising line of future work will be to use network biomarkers prospectively to maximize outcomes. For example, can baseline brain modularity measures be used to identify optimal intervention dosage? Further, could brain state be manipulated prior to an intervention (e.g., increase modularity) to enhance an individual's outcome? Finally, can differential predictors of success be identified to assign individuals to an 'optimal' intervention given their baseline brain network organization?

10. Pascual-Leone, A. *et al.* (2005) The plastic human brain cortex. *Annu. Rev. Neurosci.* 28, 377–401
11. Katz, B. *et al.* (2018) How to play 20 questions with nature and lose: reflections on 100 years of brain-training research. *Proc. Natl. Acad. Sci. U. S. A.* 115, 9897–9904
12. Newman, M.E. and Girvan, M. (2004) Finding and evaluating community structure in networks. *Phys. Rev. E* 69, 026113
13. Sporns, O. and Betzel, R.F. (2016) Modular brain networks. *Annu. Rev. Psychol.* 67, 613–640
14. Mathewson, K.E. *et al.* (2012) Different slopes for different folks: alpha and delta EEG power predict subsequent video game learning rate and improvements in cognitive control tasks. *Psychophysiology* 49, 1558–1570
15. Vo, L.T.K. *et al.* (2011) Predicting individuals' learning success from patterns of pre-learning MRI activity. *PLoS One* 6, e16093
16. Basak, C. *et al.* (2011) Regional differences in brain volume predict the acquisition of skill in a complex real-time strategy videogame. *Brain Cogn.* 76, 407–414
17. Erickson, K.I. *et al.* (2010) Striatal volume predicts level of video game skill acquisition. *Cereb. Cortex* 20, 2522–2530
18. Finn, E.S. *et al.* (2015) Functional connectome fingerprinting: identifying individuals using patterns of brain connectivity. *Nat. Neurosci.* 18, 1664–1671
19. Horien, C. *et al.* (2019) The uniqueness of the individual functional connectome. In *Connectomics*, pp. 63–81, Academic Press
20. Gabrieli, J.D.E. *et al.* (2015) Prediction as a humanitarian and pragmatic contribution from human cognitive neuroscience. *Neuron* 85, 11–26
21. Medaglia, J.D. *et al.* (2015) Cognitive network neuroscience. *J. Cogn. Neurosci.* 27, 1471–1491
22. Mesulam, M.-M. (1990) Large-scale neurocognitive networks and distributed processing for attention, language, and memory. *Ann. Neurol.* 28, 597–613
23. Armemann, K.L. *et al.* (2015) Functional brain network modularity predicts response to cognitive training after brain injury. *Neurology* 84, 1568–1574
24. Gallen, C.L. *et al.* (2016) Modular brain network organization predicts response to cognitive training in older adults. *PLoS One* 11, e0169015
25. Baniqued, P.L. *et al.* (2017) Brain network modularity predicts exercise-related executive function gains in older adults. *Front. Aging Neurosci.* 9, 924
26. Novakovic-Agopian, T. *et al.* (2011) Rehabilitation of executive functioning with training in attention regulation applied to individually defined goals: a pilot study bridging theory, assessment, and treatment. *J. Head Trauma Rehabil.* 26, 325–338
27. Chiu, H.-L. *et al.* (2017) The effect of cognitive-based training for the healthy older people: a meta-analysis of randomized controlled trials. *PLoS One* 12, e0176742
28. Lampit, A. *et al.* (2014) Computerized cognitive training in cognitively healthy older adults: a systematic review and meta-analysis of effect modifiers. *PLoS Med.* 11, e1001756
29. Kelly, M.E. *et al.* (2014) Ageing research reviews. *Ageing Res. Rev.* 15, 28–43
30. Chapman, S.B. *et al.* (2015) Neural mechanisms of brain plasticity with complex cognitive training in healthy seniors. *Cereb. Cortex* 25, 396–405
31. Vas, A.K. *et al.* (2011) Higher-order reasoning training years after traumatic brain injury in adults. *J. Head Trauma Rehabil.* 26, 224–239
32. Wechsler, D. (1997) *WAIS-III, Wechsler Adult Intelligence Scale: Administration and Scoring Manual*, Psychological Corporation
33. Chan, M.Y. *et al.* (2014) Decreased segregation of brain systems across the healthy adult lifespan. *Proc. Natl. Acad. Sci.* 111, E4997–E5006
34. Voss, M.W. *et al.* (2011) Exercise, brain, and cognition across the life span. *J. Appl. Physiol.* 111, 1505–1513
35. Voss, M.W. *et al.* (2013) Bridging animal and human models of exercise-induced brain plasticity. *Trends Cogn. Sci.* 17, 525–544
36. Tzourio-Mazoyer, N. *et al.* (2002) Automated anatomical labeling of activations in SPM using a macroscopic anatomical parcellation of the MNI MRI single-subject brain. *Neuroimage* 15, 273–289
37. Power, J.D. *et al.* (2011) Functional network organization of the human brain. *Neuron* 72, 665–678
38. Kirkpatrick, S. *et al.* (1983) Optimization by simulated annealing. *Science* 220, 671–680
39. Newman, M.E. (2006) Modularity and community structure in networks. *Proc. Natl. Acad. Sci.* 103, 8577–8582
40. Chen, X. *et al.* (2018) Topological analyses of functional connectomics: a crucial role of global signal removal, brain parcellation, and null models. *Hum. Brain Mapp.* 39, 4545–4564
41. Finn, E.S. *et al.* (2017) Can brain state be manipulated to emphasize individual differences in functional connectivity? *Neuroimage* 160, 140–151
42. Iordan, A.D. *et al.* (2018) Aging and network properties: stability over time and links with learning during working memory training. *Front. Aging Neurosci.* 9, 419
43. Reggente, N. *et al.* (2018) Multivariate resting-state functional connectivity predicts response to cognitive behavioral therapy in obsessive-compulsive disorder. *Proc. Natl. Acad. Sci.* 115, 2222–2227
44. Doucet, G.E. *et al.* (2018) Baseline brain structural and functional predictors of clinical outcome in the early course of schizophrenia. *Mol. Psychiatry* 380, 1–10
45. Chennu, S. *et al.* (2017) Brain networks predict metabolism, diagnosis and prognosis at the bedside in disorders of consciousness. *Brain* 140, 2120–2132
46. Buckley, R.F. *et al.* (2017) Functional network integrity presages cognitive decline in preclinical Alzheimer disease. *Neurology* 89, 29–37
47. Wig, G.S. (2017) Segregated systems of human brain networks. *Trends Cogn. Sci.* 21, 981–996
48. Stevens, A.A. *et al.* (2012) Functional brain network modularity captures inter- and intra-individual variation in working memory capacity. *PLoS One* 7, 1–10
49. Mattar, M.G. *et al.* (2018) Predicting future learning from baseline network architecture. *Neuroimage* 172, 107–117
50. Bassett, D.S. *et al.* (2015) Learning-induced autonomy of sensorimotor systems. *Nat. Neurosci.* 18, 744–751
51. Gallen, C.L. *et al.* (2016) Reconfiguration of brain network architecture to support executive control in aging. *Neurobiol. Aging* 44, 42–52
52. Onoda, K. and Yamaguchi, S. (2013) Small-worldness and modularity of the resting-state functional brain network decrease with aging. *Neurosci. Lett.* 556, 104–108
53. Chen, Z.J. *et al.* (2011) Age-related alterations in the modular organization of structural cortical network by using cortical thickness from MRI. *Neuroimage* 56, 235–245
54. Geerligs, L. *et al.* (2014) A brain-wide study of age-related changes in functional connectivity. *Cereb. Cortex* 25, 1987–1999
55. Alexander-Bloch, A. *et al.* (2012) The discovery of population differences in network community structure: new methods and applications to brain functional networks in schizophrenia. *Neuroimage* 59, 3889–3900
56. Alexander-Bloch, A.F. *et al.* (2010) Disrupted modularity and local connectivity of brain functional networks in childhood-onset schizophrenia. *Front. Syst. Neurosci.* 4, 147
57. Gratton, C. *et al.* (2012) Focal brain lesions to critical locations cause widespread disruption of the modular organization of the brain. *J. Cogn. Neurosci.* 24, 1275–1285
58. Warren, D.E. *et al.* (2014) Network measures predict neuropsychological outcome after brain injury. *Proc. Natl. Acad. Sci.* 111, 14247–14252
59. Siegel, J.S. *et al.* (2018) Re-emergence of modular brain networks in stroke recovery. *Cortex* 101, 44–59

60. Shine, J.M. and Poldrack, R.A. (2018) Principles of dynamic network reconfiguration across diverse brain states. *Neuroimage* 180, 396–405
61. Schultz, D.H. and Cole, M.W. (2016) Higher intelligence is associated with less task-related brain network reconfiguration. *J. Neurosci.* 36, 8551–8561
62. Coltheart, M. (1999) Modularity and cognition. *Trends Cogn. Sci.* 3, 115–120
63. Kashtan, N. and Alon, U. (2005) Spontaneous evolution of modularity and network motifs. *Proc. Natl. Acad. Sci.* 102, 13773–13778
64. Ellefsen, K.O. *et al.* (2015) Neural modularity helps organisms evolve to learn new skills without forgetting old skills. *PLoS Comput. Biol.* 11, e1004128
65. Clune, J. *et al.* (2013) The evolutionary origins of modularity. *Proc. R. Soc. B* 280, 1–9
66. Tosh, C.R. and McNally, L. (2015) The relative efficiency of modular and non-modular networks of different size. *Proc. R. Soc. B* 282, 20142568
67. Schlosser, G. and Wagner, G.P., eds (2004) *Modularity in Development and Evolution*, University of Chicago Press
68. Mishra, J. *et al.* (2014) Adaptive training diminishes distractibility in aging across species. *Neuron* 84, 1091–1103
69. Simons, D.J. *et al.* (2016) Do “brain-training” programs work? *Psychol. Sci. Public Interest* 17, 103–186
70. Thompson, T.W., Waskom, M.L., Garell, K.-L.A., Cardenas-Iniguez, C., Reynolds, G.O. and Winter, R. *et al.* (2013) Failure of Working memory training to enhance cognition or intelligence. *PLoS ONE* 8, e63614
71. Kable, J.W. *et al.* (2017) No effect of commercial cognitive training on brain activity, choice behavior, or cognitive performance. *J. Neurosci.* 37, 7390–7402
72. Melby-Lervåg, M. and Hulme, C. (2013) Is working memory training effective? A meta-analytic review. *Dev. Psychol.* 49, 270–291
73. Melby-Lervåg, M. *et al.* (2016) Working memory training does not improve performance on measures of intelligence or other measures of “far transfer”. *Perspect. Psychol. Sci.* 11, 512–534
74. Mishra, J. and Gazzaley, A. (2015) Closed-loop cognition: the next frontier arrives. *Trends Cogn. Sci.* 19, 242–243
75. Newman, M.E. (2004) Detecting community structure in networks. *Eur. Phys. J. B Condens. Matter Complex Syst.* 38, 321–330
76. Guimera, R. and Amaral, L.A.N. (2005) Functional cartography of complex metabolic networks. *Nature* 433, 895–900
77. Guimera, R. *et al.* (2006) Classes of complex networks defined by role-to-role connectivity profiles. *Nat. Phys.* 3, 63–69
78. Sohn, Y. *et al.* (2011) Topological cluster analysis reveals the systemic organization of the *Caenorhabditis elegans* connectome. *PLoS Comput. Biol.* 7, e1001139
79. Shih, C.-T. *et al.* (2015) Connectomics-based analysis of information flow in the *Drosophila* brain. *Curr. Biol.* 25, 1249–1258
80. Wang, Q. *et al.* (2012) Network analysis of corticocortical connections reveals ventral and dorsal processing streams in mouse visual cortex. *J. Neurosci.* 32, 4386–4399
81. Bota, M. *et al.* (2015) Architecture of the cerebral cortical association connectome underlying cognition. *Proc. Natl. Acad. Sci.* 112, E2093–E2101
82. Hilgetag, C.C. *et al.* (2000) Anatomical connectivity defines the organization of clusters of cortical areas in the macaque and the cat. *Philos. Trans. R. Soc. Lond. B Biol. Sci.* 355, 91–110
83. Hagmann, P. *et al.* (2008) Mapping the structural core of human cerebral cortex. *PLoS Biol.* 6, e159
84. Bertolero, M.A. *et al.* (2018) A mechanistic model of connector hubs, modularity, and cognition. *Nat. Hum. Behav.* 2, 765–777
85. Xia, M. *et al.* (2013) BrainNet Viewer: a network visualization tool for human brain connectomics. *PLoS One* 8, e68910