

RESEARCH ARTICLE

# Larger active site in an ancestral hydroxynitrile lyase increases catalytically promiscuous esterase activity

Bryan J. Jones<sup>1a</sup>, Robert L. Evans, III<sup>1b</sup>, Nathan J. Mylrea<sup>2b</sup>, Debayan Chaudhury<sup>3c</sup>, Christine Luo, Bo Guan<sup>1d</sup>, Colin T. Pierce<sup>1b</sup>, Wendy R. Gordon<sup>1b</sup>, Carrie M. Wilmot<sup>1b</sup>, Romas J. Kazlauskas<sup>1b\*</sup>

Department of Biochemistry, Molecular Biology and Biophysics and The Biotechnology Institute, University of Minnesota, Saint Paul, Minnesota, United States of America

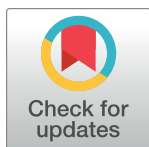
<sup>1a</sup> Current address: Bio-Techne Corporation, Minneapolis, Minnesota, United States of America

<sup>1b</sup> Current address: Pace Analytical Services, LLC, Minneapolis, Minnesota, United States of America

<sup>2c</sup> Current address: Department of Biochemistry, University of Wisconsin, Madison, Wisconsin, United States of America

<sup>1d</sup> Current address: School of Food Science, Shihezi University, Shihezi, Xinjiang, China

\* [rjk@umn.edu](mailto:rjk@umn.edu)



## OPEN ACCESS

**Citation:** Jones BJ, Evans RL, III, Mylrea NJ, Chaudhury D, Luo C, Guan B, et al. (2020) Larger active site in an ancestral hydroxynitrile lyase increases catalytically promiscuous esterase activity. PLoS ONE 15(6): e0235341. <https://doi.org/10.1371/journal.pone.0235341>

**Editor:** Oscar Millet, CIC bioGUNE, SPAIN

**Received:** April 16, 2020

**Accepted:** June 14, 2020

**Published:** June 30, 2020

**Copyright:** © 2020 Jones et al. This is an open access article distributed under the terms of the [Creative Commons Attribution License](https://creativecommons.org/licenses/by/4.0/), which permits unrestricted use, distribution, and reproduction in any medium, provided the original author and source are credited.

**Data Availability Statement:** <https://www.rcsb.org/structure/5TDX>.

**Funding:** This work was supported by NIH grants 5R01GM102205 (Antony Dean and RJK) and 5T32AR007612-17 (RLE) and NSF grant CHE 1152804 (Antony Dean and RJK). This research used resources of the Advanced Photon Source, a U.S. Department of Energy Office of Science User Facility operated for the Department of Energy Office of Science by Argonne National Laboratory under Contract DE-AC02-06CH11357. The National Institute of General Medical Sciences and National

## Abstract

Hydroxynitrile lyases (HNL's) belonging to the  $\alpha/\beta$ -hydrolase-fold superfamily evolved from esterases approximately 100 million years ago. Reconstruction of an ancestral hydroxynitrile lyase in the  $\alpha/\beta$ -hydrolase fold superfamily yielded a catalytically active hydroxynitrile lyase, HNL1. Several properties of HNL1 differ from the modern HNL from rubber tree (*HbHNL*). HNL1 favors larger substrates as compared to *HbHNL*, is two-fold more catalytically promiscuous for ester hydrolysis (*p*-nitrophenyl acetate) as compared to mandelonitrile cleavage, and resists irreversible heat inactivation to 35 °C higher than for *HbHNL*. We hypothesized that the x-ray crystal structure of HNL1 may reveal the molecular basis for the differences in these properties. The x-ray crystal structure solved to 1.96-Å resolution shows the expected  $\alpha/\beta$ -hydrolase fold, but a 60% larger active site as compared to *HbHNL*. This larger active site echoes its evolution from esterases since related esterase SABP2 from tobacco also has a 38% larger active site than *HbHNL*. The larger active site in HNL1 likely accounts for its ability to accept larger hydroxynitrile substrates. Site-directed mutagenesis of *HbHNL* to expand the active site increased its promiscuous esterase activity 50-fold, consistent with the larger active site in HNL1 being the primary cause of its promiscuous esterase activity. Urea-induced unfolding of HNL1 indicates that it unfolds less completely than *HbHNL* (*m*-value = 0.63 for HNL1 vs 0.93 kcal/mol·M for *HbHNL*), which may account for the ability of HNL1 to better resist irreversible inactivation upon heating. The structure of HNL1 shows changes in hydrogen bond networks that may stabilize regions of the folded structure.

Cancer Institute Collaborative Access Team at the Advanced Photon Source has been funded in whole or in part with federal funds from the National Cancer Institute (Grant ACB-12002) and the National Institute of General Medical Sciences (Grant AGM-12006). The Eiger 16M detector at GM/CA-XSD was funded by NIH grant S10 OD012289.

**Competing interests:** The authors have declared that no competing interests exist.

## Introduction

Divergent evolution creates superfamilies of enzymes, which share the same protein fold, but differ in substrate specificity or in the type of catalytic activities. The focus of this paper is understanding how evolution creates new catalytic activity during divergent evolution. This question is of interest to evolutionary biologists and also to protein engineers seeking to introduce and optimize new catalytic activities in proteins. Divergent evolution of enzymes to create new catalytic activity is thought to involve intermediate catalytically promiscuous enzymes [1, 2]. Catalytic promiscuity is the ability of enzymes to catalyze additional, chemically distinct reactions besides their primary reaction [3]. Duplication of the genes for these promiscuous enzymes followed by optimization of the promiscuous catalytic activity driven by increased organismal fitness is believed to give rise to enzymes with new primary activities. Support for this notion includes the observation that differing catalytic activities within a superfamily share mechanistic features or transition states and that enzymes within a superfamily often show promiscuous activities that correspond to the primary activities of other enzymes in the superfamily [4, 5]. Characterization of resurrected likely ancestral enzymes supports the hypothesis that new functions evolved from ancestors with multiple functions. Reconstructed ancestral enzymes have shown substrate promiscuity [6] and also catalytic promiscuity [7, 8].

Previous work identified three molecular mechanisms that promote catalytic promiscuity in enzymes. First, catalytic promiscuity may have less to do with the enzyme and more with the two reactions being compared. The two reactions may involve similar transition states so the interactions that stabilize the primary reaction also stabilize the promiscuous reaction. In such cases, almost all enzymes catalyzing these reaction types will show promiscuity. For example, the primary function of proteases is amide hydrolysis, but almost all proteases similarly catalyze ester hydrolysis because both reactions involve similar transition states. Second, a catalytically promiscuous enzyme may change its conformation thereby temporarily creating a different enzyme active site structure with different catalytic abilities. For example, a lactonase with promiscuous phosphotriesterase activity catalyzes lactone hydrolysis via a closed conformation, but phosphate triester hydrolysis via an open conformation [9, 10]. The third mechanism for promiscuity is a larger active site with multiple possibilities for interactions between enzyme and transition state. The enzyme active site remains the same, but substrates adopt different orientations within it. For example, phosphonate monoester hydrolase catalyzes promiscuous hydrolysis of sulfate monoesters and other analogs but contains a rigid active site. The varied substrates presumably adopt different orientations within the active site. Catalytic promiscuity correlates with larger active sites and larger polar solvent-accessible surface area [11, 12]. A large active site accommodates a broader range of substrates and allows them to bind in multiple conformations, while a large polar surface allows multiple alternative electrostatic interactions that can stabilize the transition state.

A catalytically promiscuous enzyme may simultaneously use all three of these mechanisms, for example, the lactonase mentioned above also known as paraoxonase I [9]. The enzyme catalyzed hydrolysis of both lactones and phosphate triesters. The first mechanism applies since both hydrolyses have similar negatively charged intermediates and lactonase/phosphotriesterase catalytic promiscuity is common among these enzymes. The lactone hydrolysis intermediates are tetrahedral and the phosphate triester hydrolysis intermediates are pentavalent, but they are nevertheless similar. The second mechanism occurs when different active site conformations enable the two distinct reactions. Finally, the rich catalytic network within the active site enables the third mechanism by promoting multiple reaction pathways by using subsets of active site residues or using them for different roles. In the paraoxonase I case, three amino acid residues (E53, H115, D269) near the active site calcium stabilize the attack of water on the

lactone, while only two of these residues (E53, D269) stabilize the attack of water on the phosphotriester.

A reconstructed ancestral hydroxynitrile lyase, HNL1, from the  $\alpha/\beta$ -hydrolase-fold superfamily is the focus of this paper [8]. Most enzymes in the  $\alpha/\beta$ -hydrolase-fold superfamily are esterases, which catalyze the hydrolysis of esters, but this superfamily also includes lyases, which catalyze the cleavage of hydroxynitriles and the corresponding reverse addition reaction [13]. HNL1 primarily catalyzes the cleavage of hydroxynitriles, but can also catalyze promiscuous ester hydrolysis. Both reactions involve nucleophilic attack on carbonyl compounds with tetrahedral transition states with partial negative charge on the oxygens. However, the differences in the transition states (acyl enzyme formation versus no acyl enzyme formation, hydrophobic versus polar leaving group) leads to a strong trade-off between esterase and hydroxynitrile lyase catalytic activities. Indeed, it is rare that an esterase catalyzes hydroxynitrile cleavage and vice versa. Thus, the mechanistic basis for the catalytically promiscuous esterase activity of HNL1 remains unclear.

This paper reports the first x-ray crystal structure of a catalytically promiscuous ancestral enzyme and first identifies structural features that could account for catalytic promiscuity in ancestral enzymes. We hypothesized that ancestral enzymes would use the same mechanisms for catalytic promiscuity as modern catalytically promiscuous enzymes. A comparison of HNL1 and the close modern homolog HbHNL (hydroxynitrile lyase from rubber tree, *Hevea brasiliensis*) revealed two differences. First, HNL1 has larger and more flexible active site of HNL1 as compared to HbHNL. This difference is consistent with the ability of ester substrates to adopt alternative, more catalytically productive, orientations in HNL1. Modern enzymes also use larger active sites and flexible active sites to create catalytic promiscuity. The third mechanism for catalytic promiscuity in modern enzymes—a larger polar surface area—does not contribute for this ancestral enzyme since the active sites of HNL1 and HbHNL differ only in exchanges of residues with non-polar side chains. Second, HNL1, like several other reconstructed ancestral enzymes [14–18], is more thermostable than its modern descendants as measured by melting temperatures. In addition, the denaturation of HNL1 likely only partially unfolds the protein, which allows it to resist the aggregation that causes irreversible inactivation.

## Materials and methods

### General

Chemicals were bought from commercial suppliers and used without further purification. Racemic mandelonitrile (Sigma-Aldrich, St. Louis, MO) was aliquoted in 10 mL portions and stored at  $-18^{\circ}\text{C}$ . Protein concentrations were determined from the absorbance at 280 nm using calculated extinction coefficients from the ProtParam computational web tool [19]. Protein gels were run using sodium dodecyl sulfate polyacrylamide gradient gels (NuPage 4–12% Bis-Tris gel from Invitrogen) using the BenchMark protein ladder (Invitrogen, 5  $\mu\text{L}/\text{lane}$ ) as a standard. Nickel affinity chromatography resin (NiNTA, Qiagen) was used to purify HNL1 containing a 6-His tag expressed in *Escherichia coli*. This chromatography resin was regenerated according to Qiagen protocol.  $^1\text{H}$  NMR spectra were run at 400 MHz in deuteriochloroform.

2-Hydroxy-2-(6-methoxynaphthalen-2-yl) acetonitrile, **1**. Synthesis of **1** was adapted from Bhunya et al. [20]. NaCN (~3.9 g) was added to a solution of 6-methoxy-2-naphthaldehyde (1.0 g) in acetic acid (15 mL). Caution, this reaction generates toxic hydrogen cyanide, see handling guidelines [21]. The reaction was carried in the closed fume hood at room temperature ( $22^{\circ}\text{C}$ ) for two weeks. The reaction mixture was neutralized using  $\text{NaHCO}_3$  until  $\sim\text{pH}$  5 and

extracted twice with ether/dichloromethane. The organic extract was dried using  $\text{Na}_2\text{SO}_4$  and dried by rotary evaporation. The purity was about 97% based on HPLC. The  $^1\text{H}$ -NMR in  $\text{CDCl}_3$  matched the previously reported spectrum [22] and showed no remaining starting material.

## Cloning, gene expression, and protein purification

**Ancestral enzyme reconstruction.** Ancestral enzyme reconstruction of HNL1 [8, 23] started with a Maximum Likelihood phylogenetic tree built using the software tool RAXML [24]. The tree contained 1,285  $\alpha/\beta$  hydrolase-fold enzyme sequences between 30% and 99% identical and was used to infer ancestral sequences using the same software. This clade included plant hydroxynitrile lyases (HNLs) from *Hevea brasiliensis* and *Manihot esculenta*, as well as plant esterases from *Nicotiana tabacum* and *Rauvolfia serpentina* (UniProtKB: P52704, P52705, Q6RYA0, Q9SE93 respectively). HNL1 is the reconstruction at the node that is the last common ancestor of the HNLs from *Hevea brasiliensis* (HbHNL), *Manihot esculenta* (MeHNL), and *Baliospermum montanum* (BmHNL). The gene for the ancestral enzyme HNL1 was synthesized by GenScript (Piscataway, NJ) and subcloned into a pET21a(+) vector at *Nde*I and *Xho*I restriction sites resulting in an upstream T7 promoter and lac operator and a C-terminal six His-tag. Fidelity of cloning and gene synthesis was confirmed by DNA sequencing of the gene (ACGT, Wheeling, IL). Genes for the modern HNLs, HbHNL and MeHNL were cloned and expressed in the same way.

**Site-directed mutagenesis.** The HNL1-esterase variant was created by three single-amino-acid substitutions in the gene for HNL1 added stepwise (Thr11Gly, Lys236Gly, Glu79-His) in the order listed using the QuickChange II method (Agilent Technologies) according to the manufacturer's instructions. The residues at three positions in HNL and HbHNL (121, 178 and 146) were interchanged by site-directed mutagenesis stepwise in the order listed using the Q5 site-directed mutagenesis method (New England BioLabs, Inc.) according to the manufacturer's instructions. S1 Table lists the primer pairs used for the polymerase chain reaction step of this site-directed mutagenesis. A typical procedure for the Q5 method is as follows. The polymerase chain reaction (total volume 25  $\mu\text{L}$ ) used typically 15–20 ng template DNA, 0.5  $\mu\text{M}$  each of forward and reverse primers, 12.5  $\mu\text{L}$  of 2X Q5 Hot Start High-Fidelity Master Mix and nuclease free water. The temperature program was: initial denaturation at 98 °C for 2 minutes, followed by 25 cycles of denaturation at 98 °C for 10 seconds, annealing at a temperature between the melting temperatures of the forward and reverse primers for 20 seconds, and extension at 72 °C for 3.5 minutes. The final step concluded with a 10-min extension at 72 °C followed by cooling to 4 °C for storage. 1  $\mu\text{L}$ –2.5  $\mu\text{L}$  of PCR reaction was visualized on a 1% agarose gel to confirm the presence of linear PCR product. For the Q5 site-directed mutagenesis method the PCR product was then treated with the kinase-ligase-*Dpn*I enzyme mix in a 10  $\mu\text{L}$  reaction containing 1  $\mu\text{L}$  of KLD mix, 5  $\mu\text{L}$  of KLD Buffer, 1–2  $\mu\text{L}$  of PCR product and 2–3  $\mu\text{L}$  of nuclease free water to remove the template DNA as well as to re-circularize the linear PCR product for more efficient transformation. *E. coli* DH5 $\alpha$  cells were transformed with the mutated plasmids and allowed to grow overnight at 37 °C. The plasmid DNA was isolated via miniprep (Qiagen) and sequenced prior to initiating the next mutation.

**Protein expression and purification.** HNL1 and its variants expressed well in *E. coli* BL21 and purification by Ni-affinity chromatography yielded high purity protein. Lysogeny broth media containing ampicillin (100  $\mu\text{g}/\text{mL}$ , LB-amp, 5 mL) was inoculated with a single bacterial colony from an agar plate and incubated in an orbital shaker at 37 °C and 200 rpm for 15 h to create a pre-culture. A 1-L baffled flask containing terrific broth (TB)-amp media (250 mL) was inoculated with this pre-culture. This culture was incubated at 37 °C and 250

rpm for 3–4 h until the absorbance at 600 nm reached 1.0 and transferred to 17 °C and 200 rpm for 1 h to cool. Isopropyl β-D-1-thiogalactopyranoside (IPTG, 0.75–1.0 mM final concentration) was added to induce the protein expression, and cultivation was continued for 20 h. The cells were harvested by centrifugation (8000 rpm, 10 min at 4 °C), resuspended in buffer A (10–20 mM imidazole, 50 mM NaH<sub>2</sub>PO<sub>4</sub>, 300 mM NaCl, pH 7.2, 20 mL) and disrupted by sonication (400 W, 40% amplitude for 5 min). The tube was centrifuged (4 °C, 12 000 rpm 45 min) and the supernatant was loaded onto a column containing NiNTA resin (1 mL, Qiagen) pre-equilibrated with buffer A (10 mL). The column was washed with buffer A (50 mL) followed by buffer B (50–60 mM imidazole, 50 mM NaH<sub>2</sub>PO<sub>4</sub>, 300 mM NaCl, pH 7.2, 50 mL). The His-tagged protein was eluted with elution buffer (250 mM imidazole, 50 mM NaH<sub>2</sub>PO<sub>4</sub>, 300 mM NaCl, pH 7.2, 15 mL) and concentrated to ~1 mL with an Amicon ultrafiltration centrifuge tube (10 kDa cutoff). The imidazole-containing elution buffer was exchanged by four successive additions of BES buffer (5 mM *N,N*-bis(2-hydroxyethyl)-2-aminoethanesulfonic acid, pH 7.0, 10 mL) followed by concentration to 1 mL by ultrafiltration. A 250-mL culture typically yielded 15–35 mg of protein. SDS-PAGE indicated a molecular weight of ~30 kDa in agreement with the predicted weight of 31.1 kDa. S1 Fig shows the SDS PAGE gel of HNL1 and HNL1 esterase catalysis variant.

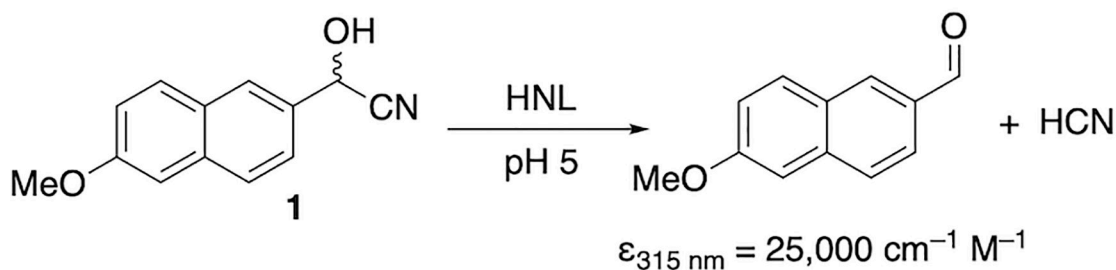
## Enzyme assays

Enzyme activity was monitored at 22±2 °C in triplicate for 10 min using a microplate reader. The rates were corrected for any spontaneous reaction.

One hydroxynitrile lyase assay, Fig 1, monitored the formation of 6-methoxy-2-naphthaldehyde ( $\epsilon_{315\text{ nm}} = 25,000\text{ cm}^{-1}\text{ M}^{-1}$ ) from cyanohydrin **1** at 315 nm. The reaction mixture (100 μL, path length 0.29 cm) in a 96-well UV microtiter plate contained 2–10 μg enzyme, 50 mM sodium citrate-phosphate buffer (pH 5.0), 450 μM of **1** and 5 vol% acetonitrile to dissolve the substrate.

Another HNL assay monitored the formation of benzaldehyde ( $\epsilon_{280\text{ nm}} = 1380\text{ cm}^{-1}\text{ M}^{-1}$ ) from racemic mandelonitrile at 280 nm. The reaction mixture (200 μL; path length 0.58 cm) in a 96-well UV microtiter plate contained 1–10 μg enzyme (0.2–2 μM), sodium citrate buffer (50–54 mM, pH 5.0), 0–32 mM mandelonitrile. The slope of increase in absorbance versus time was measured in triplicate, fit to a line using linear regression, and corrected for spontaneous cleavage of substrate with blank reactions lacking protein.

Ester hydrolysis activity was measured at 404 nm using *p*-nitrophenyl acetate (*p*NPAc), which releases the yellow *p*-nitrophenoxide. The reaction mixture (100 μL; path length 0.29 cm) contained 0.03–2.4 mM *p*NPAc, 7–8% vol % acetonitrile, 5 mM BES buffer, pH 7.0, and up to 15 μg enzyme (5 μM). The slope of increase in absorbance versus time was measured in triplicate, fit to a line using linear regression, and corrected for spontaneous hydrolysis of



**Fig 1. Colorimetric assay for hydroxynitrile lyase activity.** Cleavage of cyanohydrin **1** yields an aldehyde that absorbs light strongly at 315 nm.

<https://doi.org/10.1371/journal.pone.0235341.g001>



*p*NPAc with blank reactions lacking protein. The extinction coefficient used for calculations ( $\epsilon_{404\text{ nm}} = 11,400\text{ cm}^{-1}\text{M}^{-1}$ ) accounts for the incomplete ionization of *p*-nitrophenol at pH 7.0. For some esterase assays, the pH was 7.2 and an extinction coefficient of  $16,600\text{ cm}^{-1}\text{M}^{-1}$  was used. For steady-state kinetic measurements, the enzyme concentration was determined by average absorbance at 280 nm measured in duplicate and normalized by subtracting a buffer blank. The enzyme concentrations of purified HNL1 and the HNL1 variants in the assay solution were both  $\sim 1.75\text{ mg/mL}$  ( $56\text{ }\mu\text{M}$ ). The  $k_{\text{cat}}$  and  $K_{\text{M}}$  were determined using a non-linear fit of the experimental data to the Michaelis-Menten equation using the solver program in Microsoft Excel or using the statistical program R [25, 26]. (Huitema & Horsman, 2019). [S2 Fig](#) shows typical experimental data and fit.

**Measuring catalytic promiscuity.** To quantitatively compare the catalytic promiscuity of different enzymes, we define below a measure of promiscuity based on comparison of two substrates in analogy to substrate specificity. This focus on specific substrates facilitates identification of specific molecular features that favor one reaction over the other but suffers the disadvantage that some of these differences will be substrate-specific instead of catalytic-reaction specific. Other researchers have defined catalytic promiscuity indices based on the number of reactions catalyzed [27], but these measures do not account for changes in the relative rates of these reactions. Other promiscuity measures only apply to substrate promiscuity [28] or are based only on structure, not catalytic properties [29].

Selectivity of an enzyme is the ratio of its catalytic efficiency for a fast reaction over a slow reaction, [Eq 1](#). In most cases, this measure is used to compare two substrates. For example, enantioselectivity measures the ability of an enzyme to discriminate between the two enantiomers. A selectivity of 1 corresponds to a non-selective reaction, while large values correspond to high selectivity.

$$\text{selectivity} = \frac{(k_{\text{cat}}/K_{\text{M}})_{\text{fast rxn}}}{(k_{\text{cat}}/K_{\text{M}})_{\text{slow rxn}}} \quad (1)$$

Promiscuity is the opposite of selectivity; it is the ability to efficiently catalyze multiple reactions. We define promiscuity for any pair of comparison reactions, *P*, as the inverse of selectivity, [Eq 2](#).

$$\frac{1}{\text{selectivity}} = \text{promiscuity}, P = \frac{(k_{\text{cat}}/K_{\text{M}})_{\text{promiscuous rxn}}}{(k_{\text{cat}}/K_{\text{M}})_{\text{primary rxn}}} \quad (2)$$

A promiscuity of 1 corresponds to equal catalytic efficiency of both reactions. Values less than one correspond to lower promiscuity, while values more than one correspond to a switch in the primary reaction. As for selectivity, promiscuity is defined by specifying a pair of reactions. Substrate promiscuity is defined by a pair of substrates, while reaction promiscuity is defined by a pair of reactions where the substrate must be specified as well.

## Thermostability

Stability was assessed by three methods. The reversible unfolding on HNL1 was measured in urea solutions and at elevated temperatures. Upon prolonged heating above its melting temperature, HNL1 also inactivated irreversibly. This irreversible inactivation was evaluated by heating enzyme aliquots in a water bath at a set temperature (70–95 °C) for 15 or 30 min and then cooling on ice for at least 15 minutes. The heated and unheated enzyme samples were assayed for HNL activity using mandelonitrile as described above. Stability is expressed as the percent activity retained after heating.

Second, the melting point ( $T_m$ ) of the enzyme also indicated stability. Microplates (384-well) containing 12 replicates of each sample (10  $\mu$ L containing 300 ng protein, 50 mM sodium PIPES (piperazine-N,N'-bis(2-ethane sulfonic acid), 100 mM NaCl) were heated at 1  $^{\circ}$ C/min while monitoring the intensity and the lifetime of the intrinsic fluorescence using a NovaFluor PR instrument (Fluorescence Innovations, Inc., Minneapolis, MN). Melting curves were fit to the lifetime and intensity data and yielded similar  $T_m$  values; an average value is reported.

The third measure of stability was urea-induced unfolding. Proteins *HbHNL* and *HNL1* were placed in increasing concentrations of urea (0–7.2 M), and the resulting decrease in tryptophan fluorescence was measured using a SpectraMax GEMINI XS plus-384 plate reader with an excitation wavelength of 278 nm and an emission wavelength of 329 nm. Enzyme (20  $\mu$ L) with a concentration of 0.1–0.3 mg/mL was placed in each well of a 96-well microtiter plate, along with 180  $\mu$ L of different mixtures of buffer (5 mM BES buffer pH 7.2) and 8 M urea solution for a total of 200  $\mu$ L. The plate was equilibrated at 4  $^{\circ}$ C for 24 hours, then warmed to room temperature before measuring the fluorescence. The relative concentrations of the folded or native conformation, N, and unfolded or denatured state, U, were determined by comparing the fluorescence at different urea concentrations. The average fluorescence at low urea concentration before the changes in fluorescence occurred was taken as the fluorescence of completely folded protein, while the average fluorescence at high urea concentrations after the changes in fluorescence had occurred was taken as the fluorescence of the unfolded protein. The equilibrium ratio of folded and unfolded forms at a particular denaturant concentration yields the free energy of protein unfolding,  $\Delta G_{unfold}$ , at that denaturant concentration, Eq 3,

$$\Delta G_{unfold} = -RT \ln \left( \frac{U}{N} \right) \quad (3)$$

where R is the gas constant and T is the temperature. A plot of this free energy versus urea concentration yields a straight line of the form in Eq 4,

$$\Delta G_{unfold} = -m[\text{urea}] + \Delta G_{unfold, H_2O} \quad (4)$$

where  $m$  is the slope and represents the sensitivity to denaturation by urea.  $\Delta G_{unfold, H_2O}$  is the y-axis intercept and represents the free energy of unfolding in the absence of denaturant [30]. The linear model in the statistical software R [25] was used to fit the variation of  $\Delta G_{unfold}$  with urea concentration to a line. While the urea unfolding data fit the two-state unfolding model, if the unfolding involves partially unfolded intermediate, then the linear extrapolation method underestimates the  $m$ -value and  $\Delta G_{unfold, H_2O}$  [31].

## Crystallization and x-ray data collection

The High Throughput Crystallization Center at the Hauptman-Woodward Institute (Buffalo, NY, USA) screened crystallization conditions using droplets under oil. Droplets of protein solution (200 nL, 10 mg/mL in 5 mM BES, pH 7.2) were mixed with an equal volume of crystallization solution and equilibrated at 24  $^{\circ}$ C under oil. Crystals formed after three weeks in several conditions including ammonium citrate (2.0 M) in bis-tris propane (0.1 M, pH 7). Adapting similar conditions to a 24-well hanging drop vapor diffusion resulted in crystals suitable for x-ray data collection. Protein solution (1  $\mu$ L, 7 mg protein/mL in 5 mM BES, pH 7.2) was combined with reservoir solution (1  $\mu$ L, 1.1 M ammonium citrate, 50 mM bis-tris propane, pH 6.8) and equilibrated at 19  $^{\circ}$ C. Crystals were harvested at day 20.

Before data collection, crystals were transferred to a cryosolution consisting of a well solution with 5% glycerol for 5–10 s and flash-cooled in liquid nitrogen. The x-ray diffraction data

were collected at 100 K on beamline 23 ID-B (Eiger 16M detector) at Advanced Photon Source at Argonne National Labs, Lemont, IL.

## Structure determination

The data sets were integrated with *XDS* [32] and scaled using Aimless from the *CCP4* suite [33, 34]. The structure was determined by molecular replacement with *Phaser MR* [35] using the coordinates of *HbHNL* with pdb id 1yb6 [36], having 81% sequence identity to HNL1. Search models were derived from these coordinates by removing side chains and loop regions that differ using structure-based sequence alignment. Molecular replacement using this truncated model gave one solution that was clearly above the background, with scores: RFZ = 3.3 PAK = 0 LLG = 5261 TFZ = 29.2. Four molecules were found in the asymmetric unit. A full structural model could be built into the electron density obtained from these phases.

Phase improvement was made with *REFMAC5* [37]. Model building was done with *Coot* [38]. Residues 2–260 were modeled in all HNL1 chains, with some also including a portion of the C-terminal linker to the 6xHis tag. The 6xHis tag and methionine 1 were unable to be modeled in any of the chains. The final refinement run with *REFMAC5* included TLS refinement [39]. *MolProbity* [40] was used to analyze sterics and geometry during the refinement process.

The final model contains four polypeptide chains of HNL1, six glycerol molecules (including one in the active site of each chain), and 192 water molecules. The crystallographic data for HNL1 have been deposited in the Protein Data Bank (pdb id 5tdx). Figures of the structure were prepared with *PyMOL* (<https://www.pymol.org>).

**Normalization of B-factors.** The average and standard deviation of the B-factors for the C $\alpha$  atoms were used for the normalization of B-factors. For each C $\alpha$  B-factor, the average was subtracted and the difference was divided by the standard deviation [41]. This Z-score value identifies regions that differ from the average value in units of standard deviation. For example, the average B-factor for the C $\alpha$  atoms of chain A in 5tdx is 32.4 Å<sup>2</sup> with a standard deviation of 7.4 Å<sup>2</sup>. The C $\alpha$  atom for Ala2 has a B-factor of 61 Å<sup>2</sup>, which corresponds to Z-score of (61–32.4)/7.4 = 3.9. This C $\alpha$  carbon is 3.9 standard deviations more flexible than an average residue in this chain. High flexibility at the N- and C-terminal ends of a protein is common.

**Volume of active site.** A tunnel leading from the active site to the enzyme surface was defined for each enzyme using the web tool, MOLEonline 2.0 (<https://mole.upol.cz>; [42], with default settings. The same tunnel was compared for each enzyme. An innermost part of this tunnel corresponds to the active site. The start of the active site was defined relative to the start of the tunnel in *HbHNL* (pdb id 1yb6) and the end of the active site was defined as 10.5 Å from the start because *HbHNL* shows a pinch point in the tunnel near this point. See text for details of this choice as the end of the active site. MOLEonline calculates tunnel volumes by summing the multiple, constituent frustums (parallel truncations of right cones). At a given cross-section the three closest atoms in the tunnel define the radius *r* of a circle forming one end of each frustum. MOLEonline set the number and height of each frustum depending on the tunnel geometry. The tunnel volume is the sum of the volumes of the constituent right conical frustums, Eq 5, where *r*<sub>1</sub> and *r*<sub>2</sub> are the radii of the circles forming the ends of each frustum and *h* is the height of each frustum.

$$V_{\text{activesite}} = \sum_{\text{allfrustums } 0-10.5\text{\AA}} \frac{\pi h}{3} (r_1^2 + r_1 r_2 + r_2^2) \quad (5)$$



**Docking of *p*-nitrophenyl acetate.** SwissDock [43] was used to dock *p*NPAC to the active sites of *Hb*HNL (pdb id 1yb6), HNL1 (pdb id 5tdx), and SABP2 (pdb id 1y7i). The region of interest was centered at the O $\gamma$  of the active site serine and extended 16 Å along the x, y, and z axes. The protein side chains within 5 Å of *p*NPAC were set to flexible during docking.

## Results

### Comparison of properties of HNL1 and modern HNLs

To test the hypothesis that ancestral enzymes are more catalytically promiscuous than their modern descendants, we previously resurrected a putative ancestral hydroxynitrile lyase, HNL1, within the  $\alpha/\beta$ -hydrolase fold superfamily [8]. This ancestral enzyme separates a small group of hydroxynitrile lyases from the vast number of esterases in this superfamily. We compared the substrate specificity and catalytic promiscuity of this ancestral HNL1 to three of its modern descendants whose x-ray crystal structures have been solved: HNLs from rubber tree (*Hevea brasiliensis*, *Hb*HNL), cassava (*Manihot esculenta*, *Me*HNL), and wild castor (*Baliospermum montanum*, *Bm*HNL). HNL1 and *Hb*HNL share 81% identical amino acid residues over a comparison of 257 residues. This comparison excludes the His tag and linker. HNL1 shares 77% identical amino acid residues with *Me*HNL and 67% with *Bm*HNL.

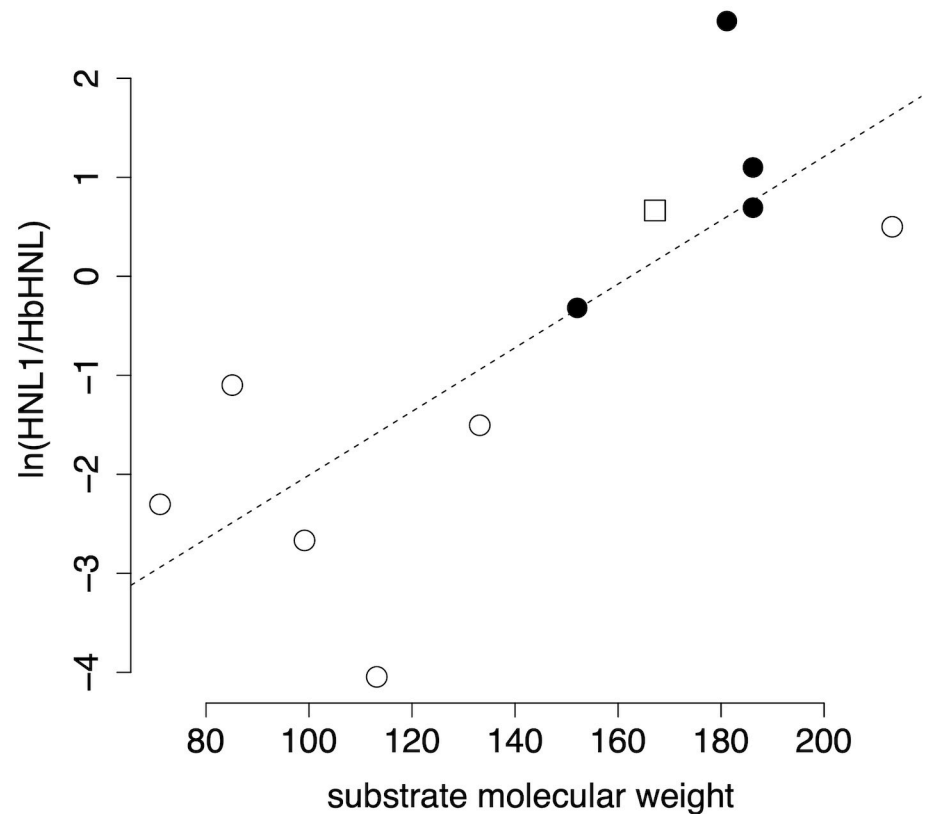
**Substrate specificity and catalytic promiscuity of HNL1.** HNL1 favors larger substrates as compared to *Hb*HNL, Fig 2. This generalization applies to both lyase-type reactions and ester hydrolysis. The lyase type reactions tested are the cleavage of various cyanohydrins and the cleavage of 2-nitro-1-phenylethanol. This second cleavage is a promiscuous reaction and is the reverse of a nitro-aldol addition. Substrate molecular weight approximates substrate size on the x-axis, while the natural logarithm of the ratio of HNL1-catalyzed rate over the *Hb*HNL-catalyzed rate compares the two rates. The logarithm avoids squeezing ratios less than one into the region between 0 and 1, but instead extends these ratios to negative values. A linear fit of the data yields a moderate  $r^2$  value of 0.61, indicating that differences in the molecular weight of the substrate account for 61% of the relative rate variation. The positive slope indicates that HNL1 favors larger substrates as compared to *Hb*HNL.

Catalytic promiscuity for hydroxynitrile lyases in this paper refers to their ability to catalyze ester hydrolysis. The comparison reactions are cleavage of mandelonitrile for the hydroxynitrile lyase activity and hydrolysis of *p*NPAC for the esterase activity. Both reactions can be measured colorimetrically. Both substrates contain one aromatic ring and have similar sizes (133 and 181 g/mol, respectively), but neither is a natural substrate. The natural substrate for *Hb*HNL is acetone cyanohydrin [44], while the natural substrate for SABP2 is methyl salicylate [45]. We define this catalytic promiscuity as the ratio of the catalytic efficiency for the hydrolysis of *p*NPAC over the catalytic efficiency of cleavage of mandelonitrile, Eq 6.

$$\text{promiscuity}, P_{MN}^{\text{EST}} = \frac{(k_{\text{cat}}/K_M)_{p\text{NPAC}}}{(k_{\text{cat}}/K_M)_{\text{HNL}}} \quad (6)$$

The two assays require slightly different pH, but are otherwise similar. Detecting the hydrolysis of *p*NPAC requires a pH above 7.2 so that the released *p*-nitrophenol ionizes to the yellow *p*-nitrophenoxide. Cleavage of mandelonitrile requires a lower pH of 6.0 to minimize the spontaneous cleavage of mandelonitrile.

The ancestral enzyme HNL1 is approximately twice as promiscuous for esterase activity as compared to *Hb*HNL, Table 1. The catalytic efficiency ( $k_{\text{cat}}/K_M$ ) of HNL1 is 2.5-fold higher than for *Hb*HNL for mandelonitrile cleavage, but is 4.5-fold higher for *p*NPAC hydrolysis. Thus, the promiscuity of HNL1 is two-fold higher than the promiscuity of *Hb*HNL. In both cases the promiscuous activity is  $\geq 1000$ -fold slower than the cleavage of mandelonitrile. The



**Fig 2. HNL1 favors larger substrates as compared to *HbHNL*.** The y-axis is the natural logarithm of the relative rate of the HNL1-catalyzed reaction versus the *HbHNL* catalyzed reaction, while the x-axis is the molecular weight of the substrate, which approximates its size. The open symbols indicate lyase-type reactions: open circles are cleavage of cyanohydrins and the open square is the cleavage of 2-nitro-1-phenyl ethanol (reverse of a nitro-aldol addition). The filled black circles indicate hydrolysis of esters. The best linear fit (dashed line) is  $y = 0.032 \pm 0.009 \cdot x - 5 \pm 1$  and the  $r^2 = 0.61$ . Data for this figure are in [S2 Table](#).

<https://doi.org/10.1371/journal.pone.0235341.g002>

site-directed mutagenesis data in [Table 1](#) are described later in this paper. Other support for the promiscuity of HNL1 is its ability to catalyze the hydrolysis of naphthyl acetate esters, while no activity was detected with *HbHNL*, [S2 Table](#).

**Thermostability of HNL1.** Another property of HNL1 that differs from its closest modern descendent *HbHNL* is thermostability. One way to measure thermostability is by comparing the midpoints of the transition between folded and unfolded structures as the proteins are heated. Since this transition is only partly reversible, it corresponds to an apparent, not true, melting temperature. The apparent melting temperature ( $T_m$ ) of HNL1 is 80–81 °C as measured by inherent fluorescence ([S3 Fig](#)). This melting temperature is 9 °C higher than for *HbHNL* ( $T_m = 71$  °C, [S3 Fig](#)) and about 10 °C higher than for *MeHNL* (~70 °C) as measured by circular dichroism [47].

Besides a higher melting temperature, HNL1 is remarkably better at avoiding aggregation and irreversible inactivation. Upon heating for 15 min at 70 °C *HbHNL* loses 50% of its activity. This stability varies slightly with buffer [48]. Similarly, *MeHNL* loses 50% of its activity upon heating for 30 min at 60 °C [47]. This inactivation stems from a fraction of the proteins unfolding at these temperatures below  $T_m$  and aggregating irreversibly. In sharp contrast, HNL1 requires heating to 95 °C, well above  $T_m$ , for 30 min to inactivate 50% of its activity, [S4](#)

Table 1. Catalytic promiscuity of hydroxynitrile lyases and variants.

variant <sup>a</sup>	HNL activity (mandelonitrile) $k_{cat}/K_M$ ( $s^{-1} mM^{-1}$ )	esterase activity (pNPAC) $k_{cat}/K_M$ ( $s^{-1} mM^{-1}$ )	promiscuity (EST/HNL)	promiscuity change
<i>HbHNL</i>	8 ± 2	0.002 ± 0.001	0.0002	-
HNL1	17 ± 3	0.009 ± 0.004	0.0005	2-fold compared to <i>HbHNL</i>
<i>HbHNL</i> + binding <sup>a</sup>	25 ± 8	0.25 ± 0.03	0.010	50-fold compared to <i>HbHNL</i>
HNL1 w/o binding <sup>a</sup>	8 ± 3	0.0006 ± 0.0003	0.0001	7-fold decrease compared to HNL1
<i>HbHNL</i> + esterase catalysis <sup>b</sup>	0.04 ± 0.02	0.17 ± 0.1	5	25,000-fold compared to <i>HbHNL</i>
HNL1 + esterase catalysis <sup>b</sup>	~0.9 <sup>c</sup>	0.2 ± 0.1	~0.2	~400-fold compared to HNL1
<i>HbHNL</i> + esterase catalysis + binding	0.03 ± 0.01	<0.0003	<0.01	-
esterase SABP2	<0.002	1.5 ± 0.2	-	-
esterase PFE	<0.002	54 ± 7	-	-

The promiscuous hydrolysis of pNPAC is compared to cleavage of mandelonitrile catalyzed by various hydroxynitrile lyases. Values less than one indicate that hydrolysis of pNPAC is the minor reaction, while values greater than one indicate that pNPAC hydrolysis is the major reaction. Esterase activity increased when site-directed mutagenesis expanded the active site of *HbHNL* (*HbHNL*+binding) and decreased when the active site of HNL was contracted (HNL1 w/o binding). Esterase activity also increased and HNL activity decreased when site-directed mutagenesis replaced HNL-associated catalytic residues with residues associated with esterase activity. (*HbHNL*+esterase catalysis, HNL1+esterase catalysis). Two esterases are included for comparison.

<sup>a</sup> Binding = enlarged active site of *HbHNL* with the three active site replacements found in HNL1 (Leu121Phe, Leu146Met, Leu178Phe). W/o binding = contracted active site of HNL1 with three active site replacements found in *HbHNL* (Phe121Leu, Met146Leu, Phe178Leu).

<sup>b</sup> Esterase catalysis = replacement of three catalytic residues associated with HNL catalysis with those associated with esterase catalysis: Thr11Gly Lys236Gly Glu79His. See [46] for details.

<sup>c</sup> Estimate based on a 19-fold lower specific activity at 5 mM mandelonitrile than for HNL1.

<https://doi.org/10.1371/journal.pone.0235341.t001>

**Fig.** This 25–35 °C difference in inactivation temperature indicates that HNL1 effectively resists irreversible aggregation even when all the protein is unfolded.

Urea-induced unfolding measurements confirm that HNL1 is more stable than *HbHNL* and suggest that unfolded HNL1 retains more folded structure than *HbHNL*, Table 2 (S5 Fig shows experimental data). The concentration of urea required to unfold half of the proteins is higher for HNL1 (3.8±0.3 M) than for *HbHNL* (2.9±0.1 M), which indicates that HNL1 is more stable than *HbHNL*. The m-value for the urea unfolding experiment (absolute value of the slope of the plots in S5 Fig panel B), which indicates the sensitivity of the protein to urea and depends on the solvent accessible surface area exposed upon unfolding [49], is significantly higher for *HbHNL* (0.93±0.02 kcal/mol·M) than for HNL1 (0.61±0.03 kcal/mol·M). The

Table 2. Urea-induced unfolding of *HbHNL* and HNL1<sup>a</sup>.

protein	$c_{1/2}$ , M <sup>b</sup>	m, kcal/mol·M <sup>c</sup>	$\Delta\Delta G^{\circ}_{unfolding}$ , kcal/mol <sup>d</sup>
<i>HbHNL</i>	2.9±0.1	0.93±0.02	-
HNL1	3.8±0.3	0.61±0.03	0.7

<sup>a</sup>Error limits are standard deviations.

<sup>b</sup>Concentration of urea where half of the protein is unfolded.

<sup>c</sup>Absolute value of the slope of the line relating urea concentration to the Gibbs energy of unfolding, S5 Fig. Larger values indicate more complete unfolding of the protein.

<sup>d</sup>Increase in stability of HNL1 as compared to *HbHNL*.

<https://doi.org/10.1371/journal.pone.0235341.t002>

m-values for both *HbHNL* and HNL1 are lower than typical values for a 30 kDa protein:  $\sim 2 \text{ kcal} \cdot \text{mol}^{-1} \cdot \text{M}^{-1}$  [50]. Similarly, the measured free energies of unfolding are low for protein with melting temperatures of  $\sim 70^\circ \text{C}$  [51]. A possible explanation is that the unfolding of HNL in urea includes a partially unfolded state. In such cases of stepwise unfolding, the linear extrapolation method underestimates the m-value and the  $\Delta G_{\text{unfold}, \text{H}_2\text{O}}$  value [30]. A homologous esterase, SABP2, unfolds with the formation of intermediates [52]. The x-ray structure below shows that the folded structures of both proteins are similar, so the lower m-value for HNL1 suggest that it exposes less solvent accessible surface area upon unfolding. The low sensitivity of HNL1 to unfolding by urea suggests that the unfolded form of HNL1 retains more folded structure than the unfolded form of *HbHNL*. This retention of structure may account for the ability of HNL1 to refold and avoid aggregation upon heat unfolding. Robic et al. [53] found that ribonuclease H from thermophiles retained partial structure upon unfolding, but homologs from mesophiles unfolded more completely. Thermostable reconstructed ancestral ribonucleases also retained partially folded structure upon unfolding [54].

The Gibbs energy of unfolding for HNL1 is estimated to be 0.7 kcal/mol higher than for *HbHNL*. This increased stability is consistent with the  $9^\circ \text{C}$  higher melting temperature of HNL1. When the slopes of the urea concentration versus unfolding Gibbs energy (m-values in Table 3) are similar, one can compare the extrapolated Gibbs energies of unfolding in pure water. This comparison incorrectly suggests that HNL1 is less stable than *HbHNL*:  $\Delta G^\circ_{\text{H}_2\text{O}} = 2.69 \pm 0.5 \text{ kcal/mol}$  for *HbHNL* and  $2.3 \pm 0.1$  for HNL1. However, when these slopes differ, as they do in this case, the unfolding processes of the two proteins differs, so this comparison is misleading and suggests that HNL1 is less stable. To compare stability when the slopes differ, Pace and Scholtz [30] recommend comparing the urea concentrations at half unfolding. To convert these to Gibbs energies, one multiplies the difference in the half-unfolding-urea concentrations (0.9 M in this case) by the average of the slopes ( $0.72 \text{ kcal/mol} \cdot \text{M}$ ), which yields 0.7 kcal/mol.

## X-ray structure of HNL1

We next solved the x-ray structure of HNL1 to identify structure differences that could explain the enhanced promiscuity. Octahedral crystals of HNL1 grew after 2–3 weeks in ammonium citrate and bis-tris propane solution at pH 6.8. The largest crystal—approximately  $200 \mu\text{m}$  across—was harvested on day 20. This crystal diffracted well, and data were collected at beamline 23 IDB at the Advanced Photon Source, Argonne National Labs, by remote access. Molecular replacement using *HbHNL* (pdb id 1yb6, 81% amino acid identity; 49 differing amino acids) found four monomers in the asymmetric unit. The refined model of HNL1 (pdb id 5tdx) contained a dimer of dimers. The four polypeptide chains; A, B, C, and D; comprised residues 2 through 261, 260, 265, and 261, respectively. The model contained six glycerol molecules, including one in each active site, and 192 water molecules. Crystallographic refinement resulted in a model to  $1.96\text{-}\text{\AA}$  resolution with an  $R_{\text{work}}/R_{\text{free}}$  of 9.0/11.6%, and other statistics listed in Table 3. Electron density provided clear, unambiguous positioning of most residues including the active site residues, Fig 3.

The asymmetric unit contains a dimer of dimers. Chains A and B form one dimer, Fig 4; chains C and D form the second dimer, and the interaction of these two dimers appears to result from crystal packing. Modern hydroxynitrile lyases form dimers both in crystals and in solution [55–59]. For HNL1, the calculated binding between chains A and B is strong ( $-16.8 \text{ kcal/mol}$ ) and statistically significant (p-value = 0.013) according to the PISA assessment of macromolecular interfaces [60]. The calculated binding between the dimers is weak and not statistically significant confirming that this interaction is the result of crystallization.

**Table 3. Data-collection and refinement statistics for HNL1 (pdb id 5tdx).**

<b>Data collection</b>	
Wavelength (Å):	1.03317
Temperature:	100 K
Space group:	P4 <sub>3</sub> 2 <sub>1</sub> 2
Unit-cell parameters (Å, °):	$a = 108.3$ , $b = 108.3$ , $c = 201.2$ , $\alpha = 90$ , $\beta = 90$ , $\gamma = 90$
Resolution (Å):	29.32–1.96 (1.99–1.96) <sup>a</sup>
Total no. of observations:	733,954
No. of unique reflections:	86,348
$R_{\text{merge}}$ :	0.097 (0.680)
$R_{\text{meas}}$ :	0.103 (0.744)
$R_{\text{p.i.m.}}$ :	0.035 (0.288)
$I/\sigma(I)$ :	13.8 (2.0)
Completeness (%):	99.3 (88.3)
Multiplicity:	8.7 (5.8)
Wilson $B$ factor (Å <sup>2</sup> ):	30.8
<b>Refinement</b>	
CC1/2	0.998 (0.772)
Resolution (Å):	29.32–1.96
No. of reflections:	81,902
$R_{\text{work}}/R_{\text{free}}$ :	0.177/0.227
No. of protein residues:	1044
No. of glycerol molecules:	6
No. of atoms	
Protein:	8513
Glycerol:	36
Water molecules:	192
$B$ factors (Å <sup>2</sup> )	
Overall:	38.1
Protein:	38.2
Glycerol:	54.1
Water:	33.1
RMS deviations	
Bond lengths (Å):	0.027
Bond angles (°):	2.346
Ramachandran plot (%)	
Favored:	95.8
Allowed:	4.2

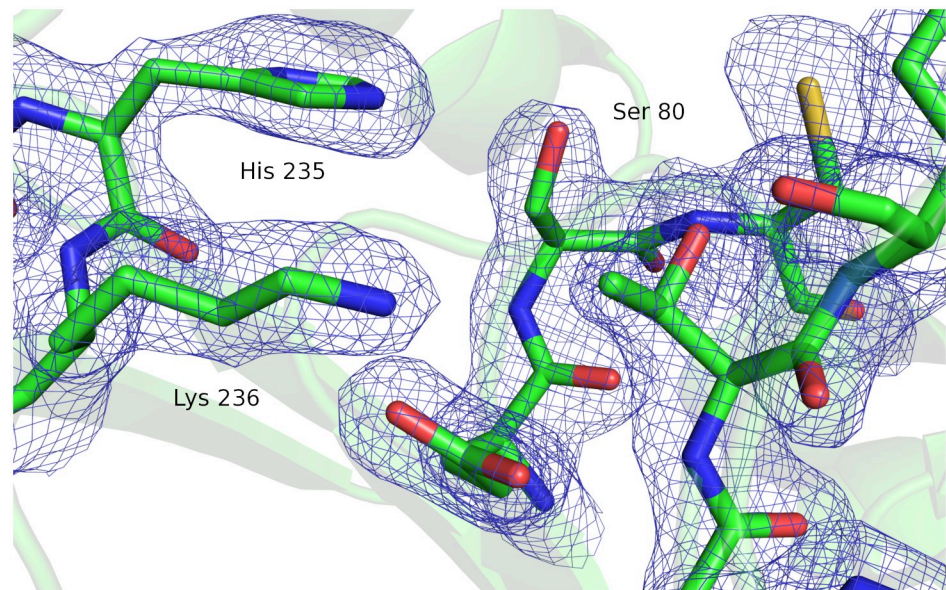
<sup>a</sup> Values in parentheses are for the outer resolution shell.

<https://doi.org/10.1371/journal.pone.0235341.t003>

Therefore, the native arrangement of HNL1 is as the dimer like the modern hydroxynitrile lyases discussed here.

Like other  $\alpha/\beta$ -hydrolase-fold enzymes, the HNL1 monomer consists of two domains: a catalytic and a cap (or lid) domain, Fig 4. The catalytic domain consists of residues 1–107 and 180–265 and contains the catalytic triad (Ser 80, His 235, and Asp 207) as well as the catalytic Lys 236. The cap domain consists of residues 108–179 and forms part of the substrate-binding portion of the active site. The catalytic domain includes a core of six parallel beta strands which are surrounded by alpha helices as is typical of  $\alpha/\beta$ -hydrolase-fold enzymes. Helices and





**Fig 3. The active site of HNL1 showing electron density (2Fo–Fc) contoured at 1 $\sigma$ .** The labels mark serine 80 and histidine 235 from the catalytic triad and the catalytically essential lysine 236.

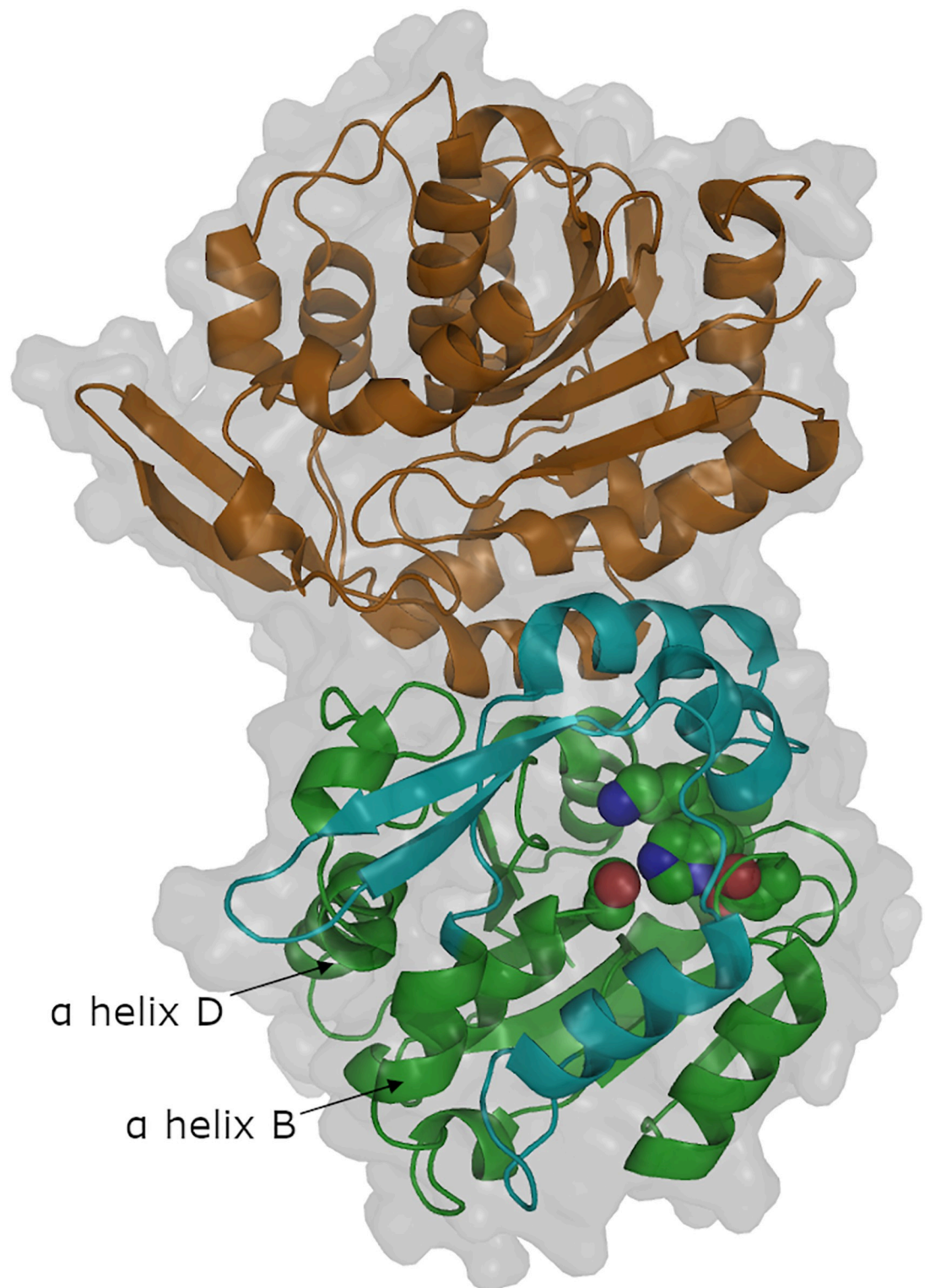
<https://doi.org/10.1371/journal.pone.0235341.g003>

strands alternate sequentially within the catalytic domain, [S6 Fig](#). All proline residues adopt the trans conformation along the peptide bond.

The 49 amino acids that differ between HNL1 and *HbHNL* occur throughout the protein, but occur more frequently in the lid domain and on the surface of the protein, [S3 Table](#), [S7 Fig](#). They are also more likely to be non-conservative replacements in these regions. These larger changes are consistent with more frequent changes during evolution in the lid domain as compared to the catalytic domain and on the protein surface as compared to the interior of the protein. The fraction of replacements in the lid domain (25%) is larger and more likely to be non-conservative (66.7% of the replacements) than in the catalytic domain: 16.8% replacements, 32.3% non-conservative. Overall about half of the replacements are conservative replacements (27, 55% of 49), while the remaining 22 are non-conservative replacements. Most of the residues in HNL1 (188 of 257, 73.2%) have at least some of their surface exposed to the solvent, [S3 Table](#). The replaced residues skew even more strongly to the surface: 40 of the 49 replacements, 81.6%. All but one of the non-conservative replacements occur on the surface.

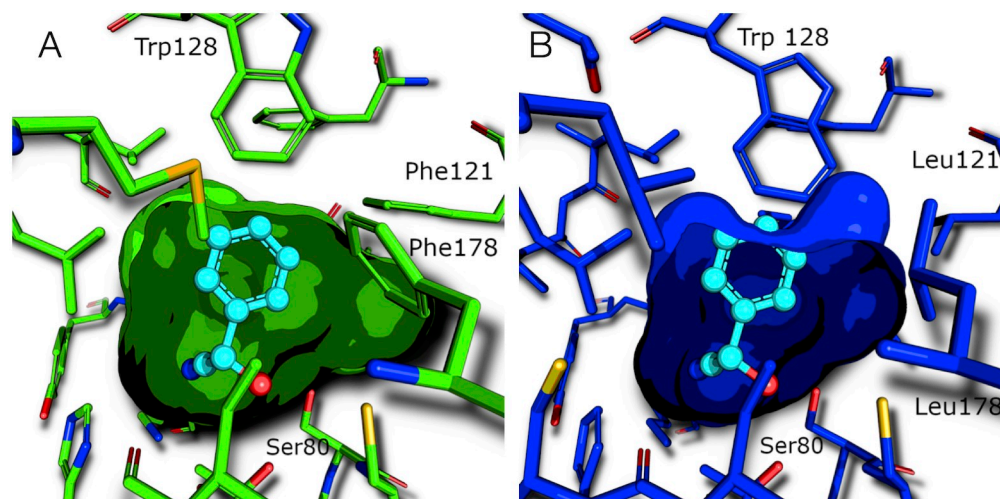
The overall structure of HNL1 is similar to that of modern hydroxynitrile lyases *HbHNL*, *MeHNL*, and *BmHNL*. The RMSD between C $\alpha$ 's (chain A in all cases) is 0.40 Å for *HbHNL* (pdb id 3c6x, comparison of 217 amino acids), 0.47 Å for *MeHNL* (pdb id 1eb9, comparison of 236 amino acids), and 0.45 Å for *BmHNL* (pdb id 3wvp, comparison of 220 amino acids). Both the catalytic triad (Ser 80, His 235, and Asp 207) as well as the catalytic Lys236, have the same orientations in the ancestral HNL1 and the modern HNLs. The structures are similar despite the 49 amino acid changes (19%) between HNL1 and *HbHNL*, including 22 that are not chemically similar. The similarity in secondary, tertiary, and quaternary structure despite the numerous changes to the primary structure is consistent with the observed catalytic activity of HNL1. Taken together, the structure and properties of HNL1 are consistent with an ancestor of modern hydroxynitrile lyases.





**Fig 4. Chains A and B form a dimer in HNL1.** The green cartoon indicates the core domain of chain A and the cyan cartoon indicates the cap domain of chain A. The catalytic triad (Ser80-His235-Asp207) and the catalytic lysine 236 are shown as space-filling. The orange cartoon indicates chain B of the dimer. The white surface indicates the solvent accessible surface. The labelled  $\alpha$ -helices are discussed later in the paper.

<https://doi.org/10.1371/journal.pone.0235341.g004>



**Fig 5. The active site of HNL1 is larger than the active site of *HbHNL*.** Since the structure of HNL1 (pdb id 5tdx, panel A) does not contain bound mandelonitrile, the structure of *HbHNL* (pdb id 3c6x, panel B) chosen for comparison also lacks bound mandelonitrile. However, mandelonitrile (cyan balls and sticks) has been added as found in another structure of *HbHNL* (pdb id 1yb6) to orient the viewer. The phenylalanines at positions 121 and 178 in HNL1 push Trp128 away from the active site. The closest distance between Ser80 and Trp128 is 8.2 Å in HNL1, but only 6.9 Å in *HbHNL*. [S8 Fig](#) shows an overlay of HNL1 and *HbHNL* active sites in stereo view.

<https://doi.org/10.1371/journal.pone.0235341.g005>

**Substrate-binding site differences.** The substrate-binding site is defined as those residues that may directly contact the substrate mandelonitrile. There are 21 amino acid residues with at least two atoms within 7 Å of the bound mandelonitrile substrate in the x-ray structure of *HbHNL* (pdb id 1yb6). Among these 21, there are three substitutions in HNL1: Leu121, Leu146 and Leu178 in *HbHNL* are replaced by Phe121, Met146 and Phe178 in HNL1, [S6 Fig](#). Although the Phe and Met residues are longer than Leu and penetrate further into the substrate binding cavity, [Fig 5](#), the active site volume of HNL1 is larger than the active site volume of *HbHNL*. The larger phenylalanines in HNL1 push the side chain of Trp128 out of the active site by 1.3 Å as compared to *HbHNL* (1 Å relative to *MeHNL*), thereby creating a larger substrate-binding region in HNL1. An overlay of the surface of the substrate-binding region of HNL1 and *HbHNL*, [Fig 5](#), shows the differences in shape of these regions. While the larger amino acids in HNL1 cause parts of the substrate binding pocket to be smaller, HNL1 provides a 1.3 Å longer pocket at the for the aromatic ring of mandelonitrile based on the *HbHNL* complex.

The active site volume of HNL1 (143 Å<sup>3</sup>) is larger than the active site volumes of *HbHNL* (94–119 Å<sup>3</sup>) and esterase SABP2 (123 Å<sup>3</sup>). These active sites were defined as the innermost section of the tunnel up to the first pinch point, which is a region where the tunnel narrows, then widens again. The start of the tunnel *HbHNL* containing bound mandelonitrile (pdb id 1yb6) was used as the starting point of the active site for all structures. The end of the active site was defined as 10.5 Å from the starting point for all structures. The tunnel for *HbHNL* containing bound mandelonitrile (pdb id 1yb6) showed a pinch point at 10.3 Å and *HbHNL* without bound substrate (pdb id 3c6x) showed a pinch point at 10.7 Å. The tunnel for HNL1 narrowed at ~10.5 Å, without a clear pinch point. The tunnel for SABP2 showed no narrowing or pinch point. To make a fair comparison, the end of the active site was defined as 10.5 Å for all enzymes, [S10](#) and [S11](#) Figs. The volumes of the active sites were calculated using MOLEonline 2.0 [42] using default settings.

**Table 4. Size of the substrate-binding region as measured by the distance between the catalytic serine and Trp128 (or equivalent).**

Enzyme (pdb id)	Ser-Trp distance <sup>a</sup>
HNL1 (5tdx)	8.2
<i>HbHNL</i> (3c6x)	6.9
<i>MeHNL</i> (4yk7)	7.2
<i>BmHNL</i> (3wwp)	7.9
<i>RsPNAE</i> (2wfl)	8.7 <sup>b</sup>
SABP2 (1y7h)	7.8

The binding site of HNL1 is larger than that of *HbHNL* and *BmHNL* and is similar to the size in the esterases *RsPNAE* and SABP2.

<sup>a</sup> Distance, in Å, between closest non-hydrogen atoms of the catalytic serine and tryptophan 128 (or equivalent residue). The structures lack bound substrate or product, but some contain molecules from the crystallization solution: *BmHNL* has 1,2-ethanediol and chloride ion, *RsPNAE* has a sulfate ion, and HNL1 has a glycerol.

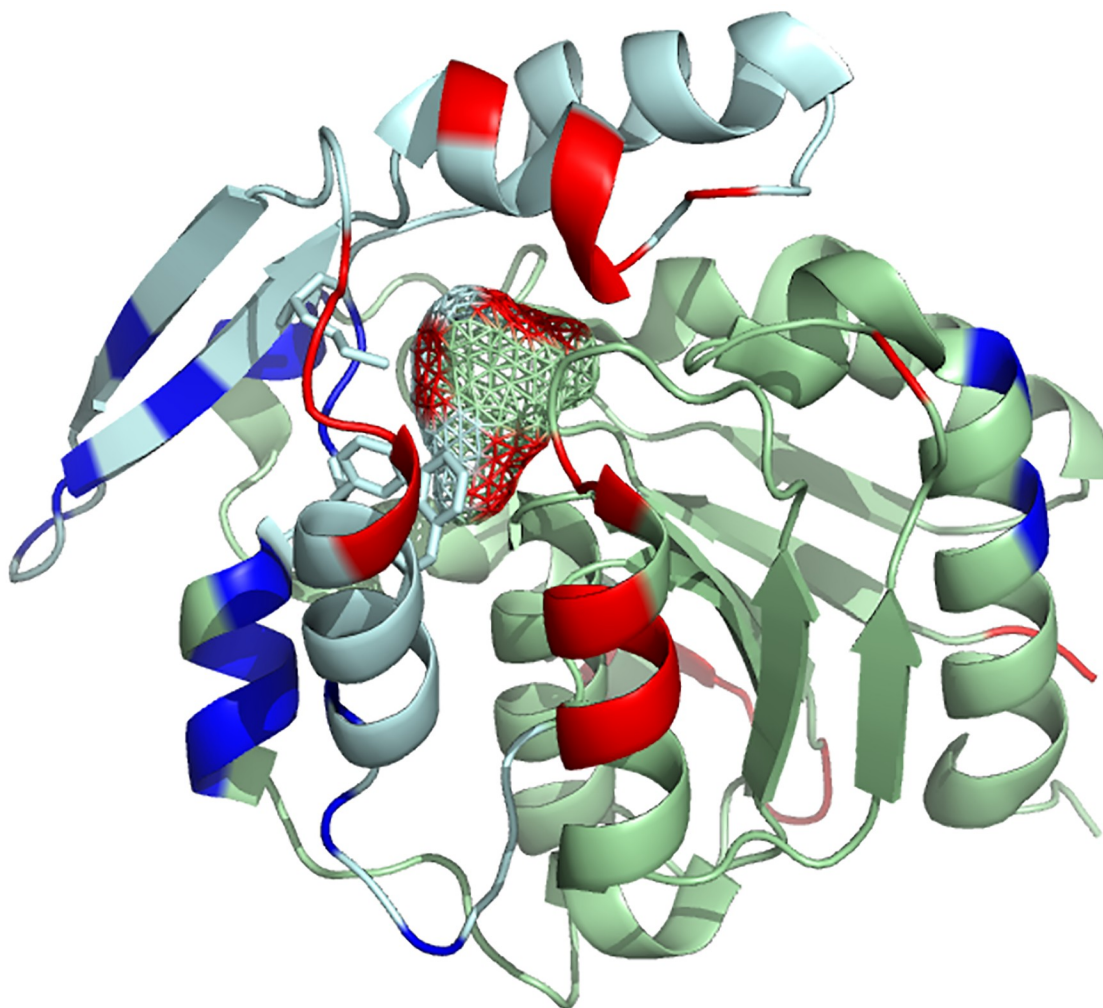
<sup>b</sup> This distance is larger in *RsPNAE* because methionine replaces tryptophan at the equivalent position.

<https://doi.org/10.1371/journal.pone.0235341.t004>

Another size comparison is the distance between the catalytic Ser80 and Trp128, [Table 4](#). The substrate binds between these two residues, so the distance between them limits substrate size and orientation. By this distance measure, the substrate-binding site of HNL1 is also larger (8.2 Å) than that of *HbHNL* (6.9 Å) and *MeHNL* (7.2 Å). The binding sites in *BmHNL* and esterase SABP2 are nearly as large as HNL1. Trp128 in *BmHNL* is in a similar position as in HNL1 [61], despite lower overall sequence similarity (68% identity) than to *HbHNL* (81%) and *MeHNL* (77%). Like HNL1, *BmHNL* accepts large aromatic substrates [56], but *BmHNL*'s natural substrate is unknown. The position of the tryptophan is also similar in the related esterase SABP2 from *N. tabacum* [62]. Esterase PNAE differs from SABP2 since the smaller amino acid methionine replaces Trp128. This replacement creates a substrate binding region even larger than observed in HNL1.

In addition to a larger substrate-binding region in HNL1 as compared to *HbHNL*, this substrate-binding region is more dynamic in HNL1. Comparison of the normalized crystallographic B-factors of HNL1 with those for *HbHNL* reveal increased dynamics in the substrate-binding region of HNL1, [Fig 6](#) and [S12 Fig](#). Crystallographic B-factors indicate the uncertainty in atom position due to thermal motion (dynamics) and due to disorder (defects in crystal packing). B-factors also vary with the resolution of the structure and with crystal packing, so they may not indicate the flexibility in solution, but it can still be informative to make these comparisons. Comparison of the B-factors for the C $\alpha$  atoms reveals differences in main chain flexibility and ignores differences in side chain movements. To compare different structures, the B-factors of each residue was normalized to the mean B-factor of the C $\alpha$  atoms. Both structures had similar resolution: 1.96 Å for HNL1 (5tdx) and 1.8 Å for *HbHNL* (1sc9). Several regions in HNL1 show increased flexibility as compared to *HbHNL*. The most relevant to catalytic promiscuity are three regions with increased flexibility that shape the active site. These regions are from slightly more than one to over three standard deviations more flexible than the corresponding residues in *HbHNL*. This higher flexibility may create alternative conformations that enable promiscuous ester hydrolysis.

Docking of *pNP*Ac into the active site of HNL1 suggests that the larger volume allows the substrate to explore a wider range of orientations. For catalysis, the *pNP*Ac must orient with the acetate group and *p*-nitrophenyl groups in the acyl and leaving pockets, respectively. Docking (SwissDock) identified 255 potential orientations of *pNP*Ac in the active site of each



**Fig 6. More flexible regions (red) of the substrate-binding site of HNL1.** The flexibility differences between HNL1 (pdb id 5tdx, chain A) and *HbHNL* (pdb id 1sc9) are mapped onto a cartoon representation of the HNL1 structure as indicated by differences (HNL1 minus *HbHNL*) in the normalized B-factors. The light blue cartoon representation indicates the lid domain, while the light green indicates the catalytic domain. Amino acids whose C $\alpha$  atoms are at least one standard deviation more flexible in HNL1 than in *HbHNL* are colored red, while less mobile amino acids are blue. The side chains of the three amino acids (Phe121, Met146, Phe178) responsible for the larger active site in HNL1 are shown as sticks. The mesh shows the space available for substrate binding. The projection of red color onto three regions of this mesh indicates that these three regions of the substrate-binding site are more flexible in HNL1 than in *HbHNL*.

<https://doi.org/10.1371/journal.pone.0235341.g006>

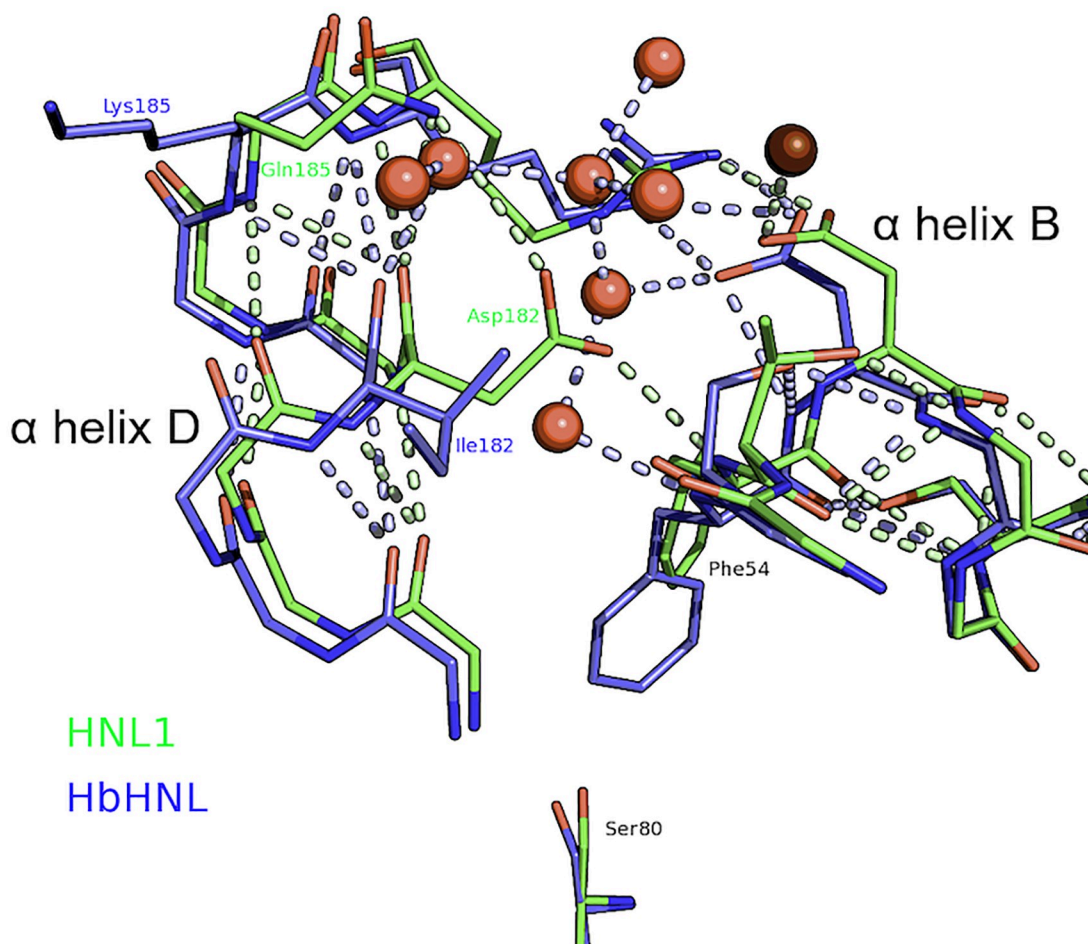
enzyme and grouped similar orientations into clusters. Three of the top ten docking clusters oriented *pNPAc* into the correct pockets for *HbHNL* and HNL1, but the catalytically non-competent orientations differed between the two enzymes. For *HbHNL* the major incorrect orientation exchanged locations of the acetate and *p*-nitrophenyl groups making catalysis impossible. For HNL1, four of the incorrect orientations were sideways orientations within the pocket that likely could rotate into a correct orientation for catalysis. This ability to explore new substrate binding orientations in HNL1 due to the larger active site may contribute to its higher promiscuous esterase activity as compared to *HbHNL*.

**Structure differences related to thermostability.** The numbers of intra-protein interactions in HNL1 and *HbHNL* are similar and do not suggest that their stabilities would



significantly differ, S4 Table. The total solvent accessible surface area of HNL1 is 1.2% larger than *HbHNL*. Since the structure of HNL1 contains 1.5% more amino acids residues in each monomer (261 vs. 257 for *HbHNL*), this difference suggests similar compactness for both structures. On one hand, HNL1 shows slightly more hydrophobic interactions: a 2.3% higher number of non-polar contacts and 1.5% less non-polar surface area at the surface. On the other hand, *HbHNL* shows slightly more electrostatic interactions: a 1.8% higher number of oppositely charged atoms within 7 Å of each other (111 vs 109) and a 2.1% higher number of hydrogen bonds (143 vs. 140).

Although the numbers of interactions are similar, an examination of individual interactions shows at least one hydrogen bond network that is stronger in HNL1 than in *HbHNL*, Fig 7. In *HbHNL*, this hydrogen bond network incorporates bridging water molecules, while in HNL1, the hydrogen bond network involved direct hydrogen bonds between protein atoms. The direct interaction is expected to be more favorable since it does not require the immobilization of water molecules.



**Fig 7. Hydrogen bonding network in HNL1 may contribute to higher thermostability.** Aspartic acid 182 in HNL1 (green) hydrogen bonds directly to glutamine 185 and the backbone nitrogen of phenylalanine 54. This interaction bridges  $\alpha$  helix B and the small  $\alpha$  helix D. In contrast, *HbHNL* (blue) hydrogen bonds indirectly to these helices via several water molecules (red spheres) that are absent from HNL1 (dark red sphere). Dashed lines indicate polar contacts. The bottom of the figure shows the catalytic serine for reference. The helices lie on the surface of the catalytic domain, but are not part of the substrate binding site. Fig 4 above shows the location of these helices within the whole structure.

<https://doi.org/10.1371/journal.pone.0235341.g007>

HNL1 contains three fewer glycine residues than *HbHNL* (14 vs 17; ignoring a glycine in the linker to the histidine tag) and one more proline residue (13 vs 12). These differences are consistent with a stabilization of HNL1 toward unfolding by reducing the flexibility of the unfolded form. Glycine is the most flexible amino acid residue, so replacing glycines with residues having fewer degrees of freedom reduces the flexibility of the unfolded form and shifts the balance toward the folded form. Proline is the least flexible amino acid residue, so replacing any residue with proline similarly reduces the flexibility of the unfolded form and shifts the balance toward the folded form.

One possible reason for the ability of HNL1 to resist aggregation is the lack of aggregation-prone regions, but Tango calculations rule out this explanation. The Tango algorithm identifies hydrophobic,  $\beta$ -sheet forming regions as possible sites for nucleation of aggregation [63]. Tango predicted several slightly aggregation prone regions in *HbHNL* and *MeHNL* and one strongly aggregation-prone region in HNL1 (residues 200–204: VYVWT, corresponds to strand  $\beta$ 5), which is not consistent with the observation that HNL1 is less prone to nucleation (S13 Fig).

### Site-directed mutagenesis

To test whether the enlarged binding site causes the increased promiscuity, we used site-directed mutagenesis to add or remove the three residues associated with the larger binding pocket, Table 1. First, we replaced these three residues in *HbHNL* with the corresponding ones in HNL1 to expand its binding site (*HbHNL* + binding, Table 2; Leu121Phe Leu146Met Leu178Phe). This expansion in *HbHNL* increased the esterase activity 125 fold. This replacement also increased HNL activity 3 fold, so the promiscuity increased 50 fold. This promiscuity is 20-fold higher than for the ancestral enzyme HNL1. This large increase in promiscuity, caused by the large increase in esterase activity, is consistent with the notion that the larger active site increases promiscuous esterase activity. In a complementary experiment, we contracted the active site of HNL1 by replacing the three residues with the corresponding residues in *HbHNL* (HNL1 w/o binding). The esterase activity of HNL1 w/o binding decreased 15 fold as compared to HNL1 and the HNL activity decreased 2 fold. The promiscuity of HNL1 w/o binding decreased 7 fold as compared to HNL1, mainly due to the decrease in esterase activity. This change is also consistent with the notion that reducing the size of the binding site would decrease esterase activity.

Expanding the binding site was not as effective in introducing esterase activity as the introduction of catalytic residues associated with esterase activity. In previous work, we switched the HNL activity of *HbHNL* to esterase activity by replacing the catalytic residues associated with HNL activity in *HbHNL* with the corresponding residues in esterases (Thr11Gly, Lys236Gly, Glu79His; [46]). This replacement decreased HNL catalytic efficiency 200 fold and increased esterase activity 85 fold. The major activity switched from HNL activity to esterase activity, but the catalytic efficiency was low compared to natural esterases. Here, we tested this same replacement in HNL1 (Thr11Gly Lys236Gly Glu79His = esterase catalysis), hypothesizing that the ancestral enzyme would be more malleable and result in a more efficient esterase. The HNL catalytic efficiency decreased 10-fold while the esterase catalytic efficiency increased 22 fold. This HNL1+esterase catalysis variant was similarly effective as an esterase, but retained more HNL activity. The esterase activities of *HbHNL*+esterase catalysis and HNL1+esterase catalysis were ~10-fold lower than that for a related esterase (SABP2).

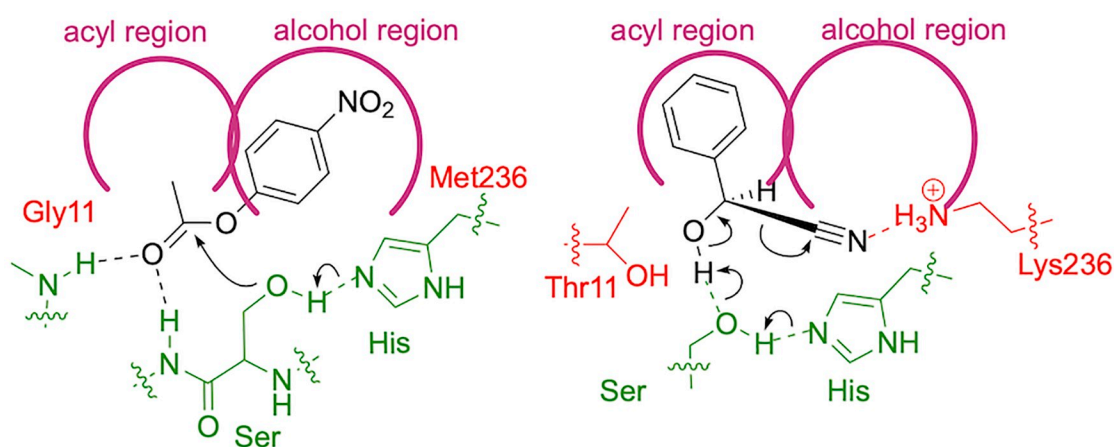
An attempt to increase the esterase activity of *HbHNL*+esterase catalysis by expanding its binding site was unsuccessful. The resulting enzyme (*HbHNL*+esterase catalysis+binding) showed no detectable esterase activity and a drop in HNL activity compared to *HbHNL*.



+esterase catalysis, Table 1. This lack of success indicates incompatibility between the two sets of substitutions, which individually increased esterase activity.

## Discussion

The three previously identified mechanisms for catalytic promiscuity are 1) similar transition states, 2) different active site conformations, and 3) rich catalytic network within the active site. The transition states and mechanisms for ester hydrolysis and cyanohydrin cleavage differ significantly. There is some evidence for differences in active site conformations since the x-ray structure suggests increased flexibility of the residues in the substrate-binding site of HNL1 as compared to *HbHNL*. These differences are likely small local changes, not large shifts in secondary structure elements. The rich catalytic network within the active site is likely the most important for catalytic promiscuity of HNL's. The active site serine can act as a nucleophile for ester hydrolysis and or as a base for cyanohydrin cleavage, Fig 8. But exploiting this rich catalytic network also requires different orientations of the substrate. The three-fold higher catalytic promiscuity of ancestral hydroxynitrile lyase HNL1 and compared to modern *HbHNL* is likely due to a larger substrate binding site in HNL1 compared to *HbHNL*. This larger substrate-binding site allows the promiscuous substrate, *p*NPAC, to orient in a catalytically productive manner. The comparison substrates, mandelonitrile and *p*NPAC, both contain aryl groups, but the catalytically productive orientation of these aryl groups differs, Fig 8. If one divides the active site into an acyl-binding region and an alcohol-binding region, then the productive orientation of *p*NPAC places the aryl group in the alcohol-binding region, but the productive orientation of mandelonitrile places the aryl group in the acyl-binding region. This differing requirement for the substrate orientation creates the expectation that a large active site that could accommodate both orientations would lead to increased catalytic promiscuity. The x-ray structure shows a larger active site in HNL1 as compared to *HbHNL*, so this difference can contribute to the 3 fold higher promiscuity of HNL1 for ester hydrolysis. Higher catalytic promiscuity in the alkaline phosphatase family was also associated with a larger active site [11].



**Fig 8. The aryl group placement differs for *p*NPAC and mandelonitrile.** During ester hydrolysis (left scheme), the *p*-nitrophenyl moiety of the ester orients in the alcohol region of the substrate binding site. During cyanohydrin cleavage, the phenyl group of mandelonitrile orients in the acyl region of the substrate-binding site. The catalytic triad and oxanion hole residues are in green, the residues associate with ester catalysis (Gly11, Met236) or HNL catalysis (Thr11, Lys236) are shown in red, the substrates are in black and the substrate binding site is shown schematically in magenta.

<https://doi.org/10.1371/journal.pone.0235341.g008>

One proposed reason for the higher thermostability of ancestral proteins is that the average earth temperatures were higher in the past [14–18, 64]. Adaptation to a warmer environment could only account for part of the 9–10 °C increase in melting temperature of HNL1. Plant defense enzymes like HNL1 likely formed during the Cretaceous period approximately 100 million years ago as flowering plants and insects co-evolved. Modern descendants of HNL1 belong to the Euphorbiaceae family of flowering plants, which diverged between 110 and 69 million years ago [65, 66]. Global temperatures during this period were only ~4 °C warmer than today [67]. Thermostability may also be a byproduct of stability to other environmental stresses such as high levels of oxidative stress or radiation [68].

A second reason for high thermostability of resurrected ancestral proteins is reconstruction bias toward stabilizing substitutions [68–70]. Stabilizing residues are more likely to be conserved in modern descendants, and thus the identity of these residues is available to correctly infer the ancestral residue, while destabilizing residues are more likely to be lost in the descendants and therefore are more likely to be missed while inferring the ancestral sequence. As proteins diverge, destabilizing residues are often mutated to stabilizing residues to offset the effects of mutations that enhance other properties [71]. This tendency means that any destabilizing residues that were present in an ancestral protein are unlikely to be conserved in modern proteins and thus cannot be correctly predicted in a reconstructed ancestor. Stabilizing residues present in an ancestor are likely to be correctly inferred more frequently. This tendency leads to a reconstructed ancestral protein like HNL1 that may be more stable than the actual ancestor.

## Supporting information

**S1 Fig. SDS-PAGE gel of HNL1 and HNL1 esterase catalysis variant.** Lane 1 is a protein ladder with an arrow marking the 30 kDa band. Lanes 2 and 3 are the cell lysate for HNL1 and HNL1-esterase catalysis variant, respectively. Lanes 4 and 5 are the purified proteins after Ni-NTA chromatography for HNL1 and HNL1-esterase catalysis variant, respectively. The strong bands at ~30 kDa in lanes 2–5 correspond to the desired proteins (expected molecular weight 31 kDa).

(TIF)

**S2 Fig. Steady state kinetics for hydrolysis of *pNP*Ac catalyzed by the HNL1 esterase catalysis variant.** Squares are experimental data and the line is the best fit to the Michaelis-Menten equation where  $K_M = 1.0 \pm 0.2$  mM and  $k_{cat} = 0.19 \pm 0.01$  s<sup>-1</sup> or  $11 \pm 1$  min<sup>-1</sup>.

(TIF)

**S3 Fig. Melting points of HNL1 (A & B) and HbHNL (C & D).** Melting points were measured by decreases in fluorescence intensity (A & C) and by decreases in fluorescence lifetime (B & D). The temperature was increased from ambient temperature to 100 °C at 1 °C/min while monitoring the fluorescent properties. The data for 12 replicates of each protein (red) were fit to a theoretical melting curve (black). The average  $T_m$  and standard deviation are shown above each graph.

(TIF)

**S4 Fig. Thermostability of HNL1 to irreversible loss of activity.** Samples were heated at the indicated temperature for 15 min (diamonds) or 30 min (circles), cooled on ice for 15 min, then assayed for HNL activity at room temperature. The activity is relative to the activity of unheated samples. Reducing the activity of HNL1 by 50% required 30 min at 95 °C.

(TIF)

**S5 Fig. Thermostability of *HbHNL* and *HNL1* measured by urea-induced unfolding.** The fluorescence of *HbHNL* (panel A) and *HNL1* (panel B) decreased in solutions of increasing urea concentrations as the proteins unfold. Half of the *HbHNL* unfolded at 2.8 M urea, while unfolding half of the *HNL1* required 3.9 M urea. (C) The slope of the free energy of unfolding versus urea concentration plot is shallower for *HNL1* (filled squares,  $m$ -value = 0.61 kcal/mol·M) than for *HbHNL* (open circles,  $m$ -value = 0.93 kcal/mol·M) indicating that *HNL1* unfolds less completely than *HbHNL*. The y-intercept corresponds to the free energy of unfolding in pure water. Since the slope differs significantly, the difference in the intercepts is not a good measure of difference in stability.

(TIF)

**S6 Fig. The amino acid sequence of *HNL1* aligned to the sequences of the modern proteins.**

The modern proteins are hydroxynitrile lyases *HbHNL* (P52704.1 pdb id 1yb6), *MeHNL* (P52705.3 pdb id 1dwo), *BmHNL* (BAI50630.1 pdb id 3wwo), and esterase from *Rauvolfia serpentina*, *RSPNAE* (Q9SE93.1 pdb id 2wfl). Yellow highlights the conserved catalytic triad of Ser, His, and Asp and blue highlights the threonine and lysine, which also contribute to HNL catalysis. Like other esterases, *RSPNAE* has a glycine in place of threonine and methionine in place of lysine. The cap domain residues are boxed. Secondary structural elements of *HNL1* are indicated above alignment and are also similarly positioned in the aligned sequences.

(TIF)

**S7 Fig. Ribbon diagram of *HNL1* showing the 49 amino acids that differ from *HbHNL*.**

Light green marks the catalytic domain, while light cyan marks the lid domain. The Ca atoms of the differing amino acids are shown as spheres. Conservative substitutions (21 in the catalytic domain, 6 in the lid domain) are in the same color as the corresponding ribbon, while non-conservative substitutions (10 in the catalytic domain, 12 in the lid) are in darker colors. The solvent glycerol bound in the active site is in pink and red sticks. The conservative substitutions in the catalytic domain are: 20, 43, 50, 53, 65, 67, 88, 98, 105, 106, 107, 186, 191, 199, 200, 206, 208, 233, 235, 240, 245; the non-conservative substitutions in the catalytic domain are: 3, 30, 52, 70, 94, 182, 188, 211, 243, 257; the conservative substitutions in the lid domain are: 133, 139, 141, 146, 153, 165; the non-conservative substitutions in the lid domain are: 113, 121, 132, 134, 138, 140, 142, 151, 160, 162, 163, 178. The three substitutions responsible for the larger active site in *HNL1* in the lid domain are labelled by residue numbers. The substitution at 146 is a conservative substitution from Leu in *HbHNL* to Met in *HNL1*. The substitutions at 121 and 178 are non-conservative substitutions from Leu in *HbHNL* to Phe in *HNL1*.

(TIF)

**S8 Fig. Substrate-binding region of *HNL1* showing electron density ( $2F_o - F_c$ ) contoured at 1  $\sigma$ .** The view is looking into the active site, which is below the plane of the page. Phenylalanines 178 and 121 prevent tryptophan 128 from pushing into the active site. In the modern *HbHNL* and *MeHNL*, two leucines replace these two phenylalanines.

(TIF)

**S9 Fig. A stereo view of the active sites of *HNL1* and *HbHNL* in sticks representation.** Since the structure of *HNL1* (pdb id 5tdx, green) does not contain bound mandelonitrile, the structure of *HbHNL* (pdb id 3c6x, blue) chosen for comparison also lacks bound mandelonitrile. However, mandelonitrile (cyan balls and sticks) has been added as found in another structure of *HbHNL* (pdb id 1yb6) to orient the viewer.

(TIF)

**S10 Fig. Active-site tunnel cross sections for several enzymes from MOLEonline.** The tunnel leading from the active site to the surface for *HbHNL* with bound mandelonitrile (pdb id 3c6x) shows a pinch point at 10.3 Å, the tunnel for *HbHNL* without substrate (pdb id 1yb6) shows a pinch point at 10.7 Å, the tunnel for HNL1 shows a narrowing at ~10.5 Å, and the tunnel for SABP2 with bound product salicylic acid (pdb id 1y7i) shows no narrowing or pinch point. The end of the active site tunnel was defined as 10.5 Å for all enzymes.

(TIF)

**S11 Fig. Tunnels containing the active sites for several proteins.** (A) *HbHNL* with bound mandelonitrile (pdb id 1yb6, MOLEonline tunnel 1), (B) *HbHNL* without bound substrate (pdb id 3c6x, MOLEonline tunnel 4), (C) HNL1 (pdb id 5tdx, MOLEonline tunnel 11), and (D) SABP2 (pdb id 1y7i, MOLEonline tunnel 4). The same tunnel is compared in each case, although the MOLEonline numbering for each tunnel differed. The start of the active site was defined as the start of the tunnel in *HbHNL* with bound mandelonitrile. This definition means that for *HbHNL* without bound substrate, the region labelled N1 in panel B is included, but N2 is not. Yellow arrows indicate the defined end of the active site, based on the consensus pinch points from the bound and unbound *HbHNL* structures.

(TIF)

**S12 Fig. Differences in dynamics of HNL1 and *HbHNL* according to crystallographic B-factors.** For each structure the B-factors for the C- $\alpha$  atoms were normalized by conversion to Z-scores to identify regions that are more or less mobile than the average. The Z-scores for the *HbHNL* (pdb id 1sc9) were subtracted from those for HNL1 (pdb id 5tdx, chain A) so positive values indicate regions where HNL1 is more mobile than *HbHNL* and negative values where HNL1 is less mobile. Differences in Z-score greater than 1 or less than -1 (marked by dotted lines) indicate regions where the difference is larger than one standard deviation of the average B-factor. Regions of the HNL1 structure corresponding to these differences are mapped to the structure in Fig 6. The light green lines indicate the catalytic domain, while the light blue line indicates the lid domain. The three substitutions in HNL1 which expand its active site (Phe121, Met146, Phe178) are indicated as black dots on the plot. The C $\alpha$  atoms that are more mobile in HNL1 by >1 standard deviation are: 2–3, 66–72, 98, 124–127, 151, 155–157, 159, 210–211, 213–216, 232, 254–256. Those less flexible by >1 standard deviation are: 47, 49, 111, 113, 135, 139, 142, 176, 184–185.

(TIF)

**S13 Fig. Predicted aggregation propensity of regions within HNLs.** *HbHNL* (red line), *MeHNL* (blue line) and HNL1 (dashed black line). All three proteins are predicted to have aggregation-prone regions. Region 200–204 in HNL1 (corresponds to strand  $\beta$ 5 in the structure) has the highest predicted aggregation propensity, but experiments showed that HNL1 is less prone to irreversible inactivation than *HbHNL* and *MeHNL*. Aggregation propensity was calculated using Tango (<http://tango.crg.es>) using the conditions 72 °C, pH 7, ionic strength 0.02, 1 mM protein.

(TIF)

**S1 Table. Mutagenic primers for site-directed mutagenesis.** The first three primers pairs are overlapping primers for site-directed mutagenesis using the QuickChange (Agilent) method; the last six primer pairs are non-overlapping, back-to-back primers for site-directed mutagenesis using the Q5 (New England Biolabs) method. “F” designates a forward primer and “R” designates a reverse primer. The mutation site is in bold red.

(PDF)

**S2 Table. Catalytic activity of ancestral enzyme HNL1 and modern enzymes *HbHNL* and *MeHNL*.**

(PDF)

**S3 Table. Location and conservative/non-conservative nature of the 49 amino acid differences between HNL1 and *HbHNL*.**

(PDF)

**S4 Table. Potential structural contributions to thermostability in *HbHNL* and HNL1.**

(PDF)

## Acknowledgments

We thank Fluorescence Innovations, Inc. (Minneapolis, MN) for measuring the melting temperature of HNL1 and Burnell Lauer for measuring heat stability by activity loss.

## Author Contributions

**Conceptualization:** Bryan J. Jones, Romas J. Kazlauskas.

**Data curation:** Robert L. Evans, III, Christine Luo.

**Formal analysis:** Robert L. Evans, III, Nathan J. Mylrea, Christine Luo.

**Funding acquisition:** Wendy R. Gordon, Carrie M. Wilmot, Romas J. Kazlauskas.

**Investigation:** Bryan J. Jones, Robert L. Evans, III, Nathan J. Mylrea, Debayan Chaudhury, Christine Luo, Bo Guan, Colin T. Pierce.

**Methodology:** Bryan J. Jones, Robert L. Evans, III, Debayan Chaudhury, Romas J. Kazlauskas.

**Project administration:** Romas J. Kazlauskas.

**Resources:** Carrie M. Wilmot.

**Supervision:** Bo Guan, Wendy R. Gordon, Romas J. Kazlauskas.

**Validation:** Robert L. Evans, III.

**Visualization:** Robert L. Evans, III, Christine Luo.

**Writing – original draft:** Bryan J. Jones, Nathan J. Mylrea, Christine Luo, Romas J. Kazlauskas.

**Writing – review & editing:** Bryan J. Jones, Robert L. Evans, III, Nathan J. Mylrea, Debayan Chaudhury, Bo Guan, Colin T. Pierce, Wendy R. Gordon, Carrie M. Wilmot, Romas J. Kazlauskas.

## References

1. Bergthorsson U, Andersson DI, Roth JR. Ohno's dilemma: evolution of new genes under continuous selection. *Proc Natl Acad Sci U S A*. 2007; 104: 17004–17009. <https://doi.org/10.1073/pnas.0707158104> PMID: 17942681
2. Näsvall J, Sun L, Roth JR, Andersson DI. Real-time evolution of new genes by innovation, amplification, and divergence. *Science*. 2012; 338: 384–387. <https://doi.org/10.1126/science.1226521> PMID: 23087246
3. Hult K, Berglund P. Enzyme promiscuity: mechanism and applications. *Trends Biotechnol*. 2007; 25: 231–238. <https://doi.org/10.1016/j.tibtech.2007.03.002> PMID: 17379338
4. Glasner ME, Gerlt JA, Babbitt PC. Evolution of enzyme superfamilies. *Curr Opin Chem Biol*. 2006; 10: 492–497. <https://doi.org/10.1016/j.cbpa.2006.08.012> PMID: 16935022

5. Gerlt JA, Babbitt PC. Divergent evolution of enzymatic function: Mechanistically diverse superfamilies and functionally distinct suprafamilies. *Ann Rev Biochem.* 2001; 70: 209–246. <https://doi.org/10.1146/annurev.biochem.70.1.209> PMID: 11395407
6. Hochberg GKA, Thornton JW. Reconstructing ancient proteins to understand the causes of structure and function. *Ann Rev Biophys.* 2017; 46: 247–269. <https://doi.org/10.1146/annurev-biophys-070816-033631> PMID: 28301769
7. Bar-Rogovsky H, Hugenmatter A, Tawfik DS. The evolutionary origins of detoxifying enzymes: the mammalian serum paraoxonases (PONs) relate to bacterial homoserine lactonases. *J Biol Chem.* 2013; 288: 23914–23927. <https://doi.org/10.1074/jbc.M112.427922> PMID: 23788644
8. Devamani T, Rauwerdink AM, Lunzer M, Jones BJ, Mooney JL, Tan MAO, et al. Catalytic promiscuity of ancestral esterases and hydroxynitrile lyases. *J Am Chem Soc.* 2016; 138: 1046–1056. <https://doi.org/10.1021/jacs.5b12209> PMID: 26736133
9. Ben-David M, Elias M, Filippi JJ, Duñach E, Silman I, Sussman JL, et al. Catalytic versatility and back-ups in enzyme active sites: the case of serum paraoxonase 1. *J Mol Biol.* 2012; 418: 181–196. <https://doi.org/10.1016/j.jmb.2012.02.042> PMID: 22387469
10. Hiblot J, Gotthard G, Elias M, Chabriere E. Differential active site loop conformations mediate promiscuous activities in the lactonase SsoPox. *PLoS ONE.* 2013; 8: e75272. <https://doi.org/10.1371/journal.pone.0075272> PMID: 24086491
11. Barrozo A, Duarte F, Bauer P, Carvalho ATP, Kamerlin SCL. Cooperative electrostatic interactions drive functional evolution in the alkaline phosphatase superfamily. *J Am Chem Soc.* 2015; 137: 9061–9076. <https://doi.org/10.1021/jacs.5b03945> PMID: 26091851
12. Pabis A, Kamerlin SCL. Promiscuity and electrostatic flexibility in the alkaline phosphatase superfamily. *Curr Opin Struct Biol.* 2016; 37: 14–21. <https://doi.org/10.1016/j.sbi.2015.11.008> PMID: 26716576
13. Rauwerdink AM, Kazlauskas RJ. How the same core catalytic machinery catalyzes 17 different reactions: the serine-histidine-aspartate catalytic triad of  $\alpha/\beta$ -hydrolase fold enzymes. *ACS Catal.* 2015; 5: 6153–6176. <https://doi.org/10.1021/acscatal.5b01539> PMID: 28580193
14. Akanuma S, Nakajima Y, Yokobori SI, Kimura M, Nemoto N, Mase T, et al. Experimental evidence for the thermophilicity of ancestral life. *Proc Natl Acad Sci U S A.* 2013; 110: 11067–11072. <https://doi.org/10.1073/pnas.1308215110> PMID: 23776221
15. Gaucher EA, Govindarajan S, Ganesh OK. Palaeotemperature trend for Precambrian life inferred from resurrected proteins. *Nature.* 2008; 451: 704–707. <https://doi.org/10.1038/nature06510> PMID: 18256669
16. Hobbs JK, Shepherd C, Saul DJ, Demetras NJ, Haaning S, Monk CR, et al. On the origin and evolution of thermophily: reconstruction of functional Precambrian enzymes from ancestors of *Bacillus*. *Mol Biol Evol.* 2012; 29: 825–835. <https://doi.org/10.1093/molbev/msr253> PMID: 21998276
17. Perez-Jimenez R, Inglés-Prieto A, Zhao ZM, Sanchez-Romero I, Alegre-Cebollada J, Kosuri P, et al. Single-molecule paleoenzymology probes the chemistry of resurrected enzymes. *Nat Struct Mol Biol.* 2011; 18: 592–596. <https://doi.org/10.1038/nsmb.2020> PMID: 21460845
18. Risso VA, Gavira JA, Mejia-Carmona DF, Gaucher EA, Sanchez-Ruiz JM. Hyperstability and substrate promiscuity in laboratory resurrections of Precambrian  $\beta$ -lactamases. *J Am Chem Soc.* 2013; 135: 2899–2902. <https://doi.org/10.1021/ja311630a> PMID: 23394108
19. Gasteiger E, Hoogland C, Gattiker A, Duvaud SE, Wilkins MR, Appel RD, et al. Protein identification and analysis tools on the ExPASy server. In: Walker JM, editor. *The Proteomics Protocols Handbook*. Humana Press; 2005. pp. 571–607. <https://doi.org/10.1385/1-59259-890-0:571>
20. Bhunya R, Mahapatra T, Nanda S. *Prunus armeniaca* hydroxynitrile lyase (ParsHNL)-catalyzed asymmetric synthesis of cyanohydrins from sterically demanding aromatic aldehydes. *Tetrahedron Asymetr.* 2009; 20: 1526–1530. <https://doi.org/10.1016/j.tetasy.2009.05.022>
21. Occupational Safety and Health Administration. Occupational safety and health guideline for hydrogen cyanide. 1996; CAS No.: 74-90-8. <http://www.cdc.gov/niosh/docs/81-123/pdfs/0333.pdf>
22. Shan G, Hammock BD. Development of sensitive esterase assays based on  $\alpha$ -cyano-containing esters. *Anal Biochem.* 2001; 299: 54–62. <https://doi.org/10.1006/abio.2001.5388> PMID: 11726184
23. Rauwerdink A, Lunzer M, Devamani T, Jones B, Mooney J, Zhang ZJ, et al. Evolution of a catalytic mechanism. *Mol Biol Evol.* 2015; 33: 971–979. <https://doi.org/10.1093/molbev/msv338> PMID: 26681154
24. Stamatakis A. RAxML-VI-HPC: maximum likelihood-based phylogenetic analyses with thousands of taxa and mixed models. *Bioinformatics* 2006; 22: 2688–2690. <https://doi.org/10.1093/bioinformatics/btl446> PMID: 16928733
25. R Core Team. R: A language and environment for statistical computing. 2019. R Foundation for Statistical Computing, Vienna, Austria. ISBN 3-900051-07-0, URL <http://www.R-project.org/>



26. Huitema C, Horsman G. Analyzing enzyme kinetic data using the powerful statistical capabilities of R. bioRxiv 316588 [Preprint]. 2019 [cited 2020 Feb 28].
27. Carbonell P, Lecoindre G, Faulon JL. Origins of specificity and promiscuity in metabolic networks. J Biol Chem. 2011; 286: 43994–44004. <https://doi.org/10.1074/jbc.M111.274050> PMID: 22052908
28. Nath A, Atkins WM. A quantitative index of substrate promiscuity. Biochemistry. 2008; 47: 157–166. <https://doi.org/10.1021/bi701448p> PMID: 18081310
29. Chakraborty S, Rao BJ. A measure of the promiscuity of proteins and characteristics of residues in the vicinity of the catalytic site that regulate promiscuity. PLoS One. 2012; 7: e32011. <https://doi.org/10.1371/journal.pone.0032011> PMID: 22359655
30. Pace CN, Scholtz JM. Measuring the conformational stability of a protein. In: Protein structure: a practical approach. 2nd ed. Creighton TE, editor. Oxford Univ Press; 1997. pp. 299–321.
31. Pace CN. Determination and analysis of urea and guanidine hydrochloride denaturation curves. Meth Enzymol. 1986; 266–280. [https://doi.org/10.1016/0076-6879\(86\)31045-0](https://doi.org/10.1016/0076-6879(86)31045-0)
32. Kabsch W. XDS. Acta Crystallogr D. 2010; 66: 125–132. <https://doi.org/10.1107/S0907444909047337> PMID: 20124692
33. Evans PR, Murshudov GN. How good are my data and what is the resolution? Acta Crystallogr D. 2013; D69: 1204–1214. <https://doi.org/10.1107/S0907444913000061> PMID: 23793146
34. Winn MD, Ballard CC, Cowtan KD, Dodson EJ, Emsley P, Evans PR, et al. Overview of the CCP4 suite and current developments. Acta Crystallogr D. 2011; 67: 235–242. <https://doi.org/10.1107/S0907444910045749> PMID: 21460441
35. McCoy AJ, Grosse-Kunstleve RW, Adams PD, Winn MD, Storoni LC, Read RJ. Phaser crystallographic software. J Appl Crystallogr. 2007; 40: 658–674. <https://doi.org/10.1107/S0021889807021206> PMID: 19461840
36. Gartler G, Kratky C, Gruber K. Structural determinants of the enantioselectivity of the hydroxynitrile lyase from *Hevea brasiliensis*. J Biotechnol. 2007; 129: 87–97. <https://doi.org/10.1016/j.jbiotec.2006.12.009> PMID: 17250917
37. Murshudov GN, Skubák P, Lebedev AA, Pannu NS, Steiner RA, Nicholls RA, et al. REFMAC5 for the refinement of macromolecular crystal structures. Acta Crystallogr D. 2011; 67: 355–367. <https://doi.org/10.1107/S0907444911001314> PMID: 21460454
38. Emsley P, Lohkamp B, Scott WG, Cowtan K. Features and development of Coot. Acta Crystallogr D Biol Crystallogr. 2010; 66: 486–501. <https://doi.org/10.1107/S0907444910007493> PMID: 20383002
39. Winn MD, Murshudov GN, Papiz MZ. Macromolecular TLS refinement in REFMAC at moderate resolutions. Meth Enzymol. 2003; 374: 300–321. [https://doi.org/10.1016/S0076-6879\(03\)74014-2](https://doi.org/10.1016/S0076-6879(03)74014-2) PMID: 14696379
40. Chen VB, Arendall WB III, Headd JJ, Keedy DA, Immormino RM, Kapral GJ, et al. MolProbity: all-atom structure validation for macromolecular crystallography. Acta Crystallogr D Biol Crystallogr. 2010; 66: 12–21. <https://doi.org/10.1107/S0907444909042073> PMID: 20057044
41. Parthasarathy S, Murthy MR. Analysis of temperature factor distribution in high-resolution protein structures. Prot Sci. 1997; 6: 2561–2567. <https://doi.org/10.1002/pro.5560061208> PMID: 9416605
42. Pravda L, Sehnal D, Toušek D, Navrátilová V, Bazgier V, Berka K, et al. MOLEonline: a web-based tool for analyzing channels, tunnels and pores (2018 update). Nucleic Acids Res. 2018; 46: W368–73. <https://doi.org/10.1093/nar/gky309> PMID: 29718451
43. Grosdidier A, Zoete V, Michielin O. SwissDock, a protein-small molecule docking web service based on EADock DSS. Nucleic Acids Res. 2011; 39: W270–W277. <https://doi.org/10.1093/nar/gkr366> PMID: 21624888
44. Wajant H, Förster S. Purification and characterization of hydroxynitrile lyase from *Hevea brasiliensis*. Plant Sci. 1996; 115: 25–31. [https://doi.org/10.1016/S0168-9452\(96\)04333-6](https://doi.org/10.1016/S0168-9452(96)04333-6)
45. Kumar D, Klessig DF. High-affinity salicylic acid-binding protein 2 is required for plant innate immunity and has salicylic acid-stimulated lipase activity. Proc Natl Acad Sci U S A. 2003; 100: 16101–6. <https://doi.org/10.1073/pnas.0307162100> PMID: 14673096
46. Nedrud DM, Lin H, Lopez G, Padhi SK, Legatt GA, Kazlauskas RJ. Uncovering divergent evolution of  $\alpha/\beta$ -hydrolases: a surprising residue substitution needed to convert *Hevea brasiliensis* hydroxynitrile lyase into an esterase. Chem Sci. 2014; 5: 4265–4277. <https://doi.org/10.1039/c4sc01544d> PMID: 25346843
47. Guterl JK, Andexer JN, Sehl T, von Langermann J, Frindi-Wosch I, Rosenkranz T, et al. Uneven twins: Comparison of two enantiocomplementary hydroxynitrile lyases with  $\alpha/\beta$ -hydrolase fold. J Biotechnol. 2009; 141: 166–173. <https://doi.org/10.1016/j.jbiotec.2009.03.010> PMID: 19433222

48. Bauer M, Geyer R, Boy M, Griengl H, Steiner W. Stability of the enzyme (S)-hydroxynitrile lyase from *Hevea brasiliensis*. *J Mol Catal B Enzym*. 1998; 5: 343–347. [https://doi.org/10.1016/S1381-1177\(98\)00030-7](https://doi.org/10.1016/S1381-1177(98)00030-7)
49. Scholtz JM, Grimsley GR, Pace CN. Solvent denaturation of proteins and interpretations of the m value. *Meth Enzymol*. 2009; 466: 549–565. [https://doi.org/10.1016/S0076-6879\(09\)66023-7](https://doi.org/10.1016/S0076-6879(09)66023-7) PMID: 21609876
50. Myers JK, Pace CN, Scholtz JM. Denaturant m values and heat capacity changes: Relation to changes in accessible surface areas of protein unfolding. *Protein Sci*. 1995; 5: 981–981. <https://doi.org/10.1002/pro.5560050521>
51. Kumar S, Tsai CJ, Nussinov R. Thermodynamic differences among homologous thermophilic and mesophilic proteins. *Biochemistry*. 2001; 40: 14152–14165. <https://doi.org/10.1021/bi0106383> PMID: 11714268
52. Jones BJ, Lim HY, Huang J, Kazlauskas RJ. Comparison of five protein engineering strategies for stabilizing an  $\alpha/\beta$ -hydrolase. *Biochemistry*. 2017; 56: 6521–6532. <https://doi.org/10.1021/acs.biochem.7b00571> PMID: 29087185
53. Robic S, Guzman-Casado M, Sanchez-Ruiz JM, Marqusee S. Role of residual structure in the unfolded state of a thermophilic protein. *Proc Nat Acad Sci U S A*. 2003; 100: 11345–11349. <https://doi.org/10.1073/pnas.1635051100> PMID: 14504401
54. Hart KM, Harms MJ, Schmidt BH, Elya C, Thornton JW, Marqusee S. Thermodynamic system drift in protein evolution. *PLoS Biol*. 2014; 12: e1001994. <https://doi.org/10.1371/journal.pbio.1001994> PMID: 25386647
55. Lauble H, Decanniere K, Wajant H, Förster S, Effenberger F. Crystallization and preliminary X-ray diffraction analysis of hydroxynitrile lyase from cassava (*Manihot esculenta*). *Acta Crystallogr D*. 1999; 55: 904–906. <https://doi.org/10.1107/s0907444998017971> PMID: 10089330
56. Dadashipour M, Yamazaki M, Momonoi K, Tamura K, Fuhshuku KI, Kanase Y, et al. S-selective hydroxynitrile lyase from a plant *Baliospermum montanum*: Molecular characterization of recombinant enzyme. *J Biotechnol*. 2011; 53: 100–110. <https://doi.org/10.1016/j.jbiotec.2011.02.004> PMID: 21352863
57. Asano Y, Kawahara N. A new S-hydroxynitrile lyase from *Baliospermum montanum*—its structure, molecular dynamics simulation, and improvement by protein engineering. *Industrial Biotechnol*. 2016; 12: 91–97. <https://doi.org/10.1089/ind.2015.0029>
58. Wagner UG, Hasslacher M, Griengl H, Schwab H, Kratky C. Mechanism of cyanogenesis: the crystal structure of hydroxynitrile lyase from *Hevea brasiliensis*. *Structure*. 1996; 4: 811–822. [https://doi.org/10.1016/s0969-2126\(96\)00088-3](https://doi.org/10.1016/s0969-2126(96)00088-3) PMID: 8805565
59. Hanefeld U, Stranzl G, Straathof AJ, Heijnen JJ, Bergmann A, Mittelbach R, et al. Electrospray ionization mass spectrometry, circular dichroism and SAXS studies of the (S)-hydroxynitrile lyase from *Hevea brasiliensis*. *Biochim Biophys Acta*. 2001; 1544: 133–142. [https://doi.org/10.1016/s0167-4838\(00\)00212-0](https://doi.org/10.1016/s0167-4838(00)00212-0) PMID: 11341923
60. Krissinel E, Henrick K. Inference of macromolecular assemblies from crystalline state. *J Mol Biol*. 2007; 372: 774–797. <https://doi.org/10.1016/j.jmb.2007.05.022> PMID: 17681537
61. Nakano S, Dadashipour M, Asano Y. Structural and functional analysis of hydroxynitrile lyase from *Baliospermum montanum* with crystal structure, molecular dynamics and enzyme kinetics. *Biochim Biophys Acta Proteins Proteom*. 2014; 1844: 2059–2067. <https://doi.org/10.1016/j.bbapap.2014.09.004> PMID: 25220808
62. Forouhar F, Yang Y, Kumar D, Chen Y, Fridman E, Park SW, et al. Structural and biochemical studies identify tobacco SABP2 as a methyl salicylate esterase and implicate it in plant innate immunity. *Proc Natl Acad Sci U S A*. 2005; 102: 1773–1778. <https://doi.org/10.1073/pnas.0409227102> PMID: 15668381
63. Fernandez-Escamilla AM, Rousseau F, Schymkowitz J, Serrano L. Prediction of sequence-dependent and mutational effects on the aggregation of peptides and proteins. *Nat Biotechnol*. 2004; 22: 1302–1306. <https://doi.org/10.1038/nbt1012> PMID: 15361882
64. Gaucher EA, Thomson JM, Burgan MF, Benner SA. Inferring the palaeoenvironment of ancient bacteria on the basis of resurrected proteins. *Nature* 2003; 425: 285–288. <https://doi.org/10.1038/nature01977> PMID: 13679914
65. Davis CC, Webb CO, Wurdack KJ, Jaramillo CA, Donoghue MJ. Explosive radiation of Malpighiales supports a mid-Cretaceous origin of modern tropical rain forests. *Am Nat*. 2005; 165: E36–E65. <https://doi.org/10.1086/428296> PMID: 15729659
66. Forest F, Chase MW. Eurosid I. title In: Hedges SB, Kumar S, editors. *The timetree of life*. New York: Oxford University Press; 2009. pp. 188–196.

67. Royer DL, Berner RA, Montañez IP, Tabor NJ, Beerling DJ. CO<sub>2</sub> as a primary driver of Phanerozoic climate. *GSA Today*. 2004; 14: 4–10. [https://doi.org/10.1130/1052-5173\(2004\)014<4:CAAPDO>2.0.CO;2](https://doi.org/10.1130/1052-5173(2004)014<4:CAAPDO>2.0.CO;2)
68. Trudeau DL, Kaltenbach M, Tawfik DS. On the potential origins of the high stability of reconstructed ancestral proteins. *Mol Biol Evol*. 2016; 33: 2633–2641. <https://doi.org/10.1093/molbev/msw138> PMID: 27413048
69. Wheeler LC, Lim SA, Marqusee S, Harms MJ. The thermostability and specificity of ancient proteins. *Curr Opin Struct Biol*. 2016; 38: 37–43. <https://doi.org/10.1016/j.sbi.2016.05.015> PMID: 27288744
70. Williams PD, Pollock DD, Blackburne BP, Goldstein RA. Assessing the accuracy of ancestral protein reconstruction methods. *PLoS Comput Biol*. 2006; 2: e69. <https://doi.org/10.1371/journal.pcbi.0020069> PMID: 16789817
71. Tokuriki N, Tawfik DS. Stability effects of mutations and protein evolvability. *Curr Opin Struct Biol*. 2009; 19: 596–604. <https://doi.org/10.1016/j.sbi.2009.08.003> PMID: 19765975