

The heterogeneity of the left dorsal premotor cortex evidenced by multimodal connectivity-based parcellation and functional characterization



Sarah Genon^{a,*}, Andrew Reid^g, Hai Li^{e,f}, Lingzhong Fan^{e,f}, Veronika I. Müller^{a,c}, Edna C. Cieslik^{a,c}, Felix Hoffstaedter^a, Robert Langner^{a,c}, Christian Grefkes^{b,d}, Angela R. Laird^h, Peter T. Foxⁱ, Tianzi Jiang^{e,f}, Katrin Amunts^{a,j}, Simon B. Eickhoff^{a,c}

^a Institute of Neuroscience and Medicine (INM-1), Research Centre Jülich, Germany

^b Institute of Neuroscience and Medicine (INM-3), Research Centre Jülich, Germany

^c Institute of Systems Neuroscience, Medical Faculty, Heinrich-Heine University Düsseldorf, Germany

^d Department of Neurology, Cologne University Hospital, Cologne, Germany

^e Brainnetome Center, Institute of Automation, Chinese Academy of Sciences, Beijing 100190, China

^f National Laboratory of Pattern Recognition, Institute of Automation, Chinese Academy of Sciences, Beijing 100190, China

^g Department of Artificial Intelligence, Donders Centre for Cognition, Radboud University Nijmegen, The Netherlands

^h Neuroinformatics and Brain Connectivity Lab, Miami, FL, USA

ⁱ Research Imaging Institute, University of Texas Health Science Center at San Antonio, TX, USA

^j C. and O. Vogt Institute for Brain Research, Heinrich-Heine-University Düsseldorf, Düsseldorf, Germany

ARTICLE INFO

Keywords:

Precentral gyrus
eye-field
meta-analytic connectivity modeling
probabilistic diffusion tractography
fMRI

ABSTRACT

Despite the common conception of the dorsal premotor cortex (PMd) as a single brain region, its diverse connectivity profiles and behavioral heterogeneity argue for a differentiated organization of the PMd. A previous study revealed that the right PMd is characterized by a rostro-caudal and a ventro-dorsal distinction dividing it into five subregions: rostral, central, caudal, ventral and dorsal. The present study assessed whether a similar organization is present in the left hemisphere, by capitalizing on a multimodal data-driven approach combining connectivity-based parcellation (CBP) based on meta-analytic modeling, resting-state functional connectivity, and probabilistic diffusion tractography. The resulting PMd modules were then characterized based on multimodal functional connectivity and a quantitative analysis of associated behavioral functions. Analyzing the clusters consistent across all modalities revealed an organization of the left PMd that mirrored its right counterpart to a large degree. Again, caudal, central and rostral modules reflected a cognitive-motor gradient and a premotor eye-field was found in the ventral part of the left PMd. In addition, a distinct module linked to abstract cognitive functions was observed in the rostro-ventral left PMd across all CBP modalities, implying greater differentiation of higher cognitive functions for the left than the right PMd.

Introduction

The dorsal premotor cortex (PMd) constitutes a transitional region between the primary motor and prefrontal cortex (Geyer et al. 2000), encompassing the dorsal portion of the precentral gyrus. While the PMd is usually referred to as a single brain region corresponding to Brodmann area 6, its diverse connectivity profile and the heterogeneity of functions attributed to this region argue for functional and anatomical diversity within it (Boussaoud 2001; Picard and Strick 2001; Hoshi and Tanji 2007; Abe and Hanakawa 2009; Hanakawa 2011). Such diversity extends that of the lateral prefrontal cortex, which is organized along different axes (including the rostro-caudal; Badre

2008; Badre and D'Esposito 2009; Cieslik et al. 2013; Bahlmann et al. 2015)). Consistent with this view, a parcellation of the precentral gyrus based on probabilistic diffusion tractography (PDT-CBP) suggested that the dorsal part of the precentral gyrus, roughly corresponding to the functional PMd, can be further subdivided into a superior and an inferior portion (Schubotz et al. 2010). Thus, several lines of evidence converge to suggest that the PMd is not a uniform functional region, but rather a functional and/or an anatomical mosaic.

In a previous study, we investigated this issue in the right hemisphere (Genon et al. 2016) using connectivity-based parcellation (CBP) based on meta-analytic connectivity modeling (MACM-CBP; (Eickhoff et al. 2011)), resting-state functional connectivity (RSFC-CBP; (Yeo

* Correspondence to: Institut für Neurowissenschaften und Medizin (INM-1), Forschungszentrum Jülich GmbH, D-52425 Jülich, Germany.
E-mail address: s.genon@fz-juelich.de (S. Genon).

et al. 2011a)) and probabilistic diffusion tractography (PDT-CBP; (Behrens et al. 2003b)). Across modalities, we found a convergent subdivision of the right PMd into five modules organized along a rostro-caudal axis and a ventro-dorsal axis (Genon et al., 2016). Functional characterization of the defined subregions revealed that the rostral-caudal organization formed by the rostral, central and caudal subregions reflected a cognitive-motor gradient. The rostral subregion was associated with higher-order functions and connected to the prefrontal cortex, the central subregion showed a mixed pattern and connections to the parietal lobe, while the caudal subregion was related to motor functions and connected to the sensorimotor network. In turn, the dorsal subregion was related to both cognitive and motor aspects of sequencing and timing while the ventral subregion showed a functional profile implicating it as a “premotor eye field” (Genon et al. 2016).

It remains an open question to what extent the organization of the left hemisphere mirrors the organization of the right hemisphere. According to previous whole brain parcellations, the left hemisphere showed a similar rostro-caudal organization to the right one, reflecting a general cognitive-motor gradient (Orban et al. 2015). There is also evidence that the frontal eye-fields should be similarly located in the ventral part of the PMd in both hemispheres (Amiez and Petrides 2009). However, the left hemisphere is known to be more functionally dominated by language functions (such as speech preparation and execution, e.g. (Kell et al. 2010)) than the right hemisphere and, in turn, less engaged in visuospatial processes (e.g. (De Schotten et al. 2011)) with such functional asymmetry including the PMd (Wager et al. 2004). Moreover, the left premotor cortex has been demonstrated to have a more pronounced engagement in bimanual coordination, motor learning (Hardwick et al., 2014) and mental calculations (Hanakawa 2011). Relatedly, eye movements and right hand movements are usually executed in unison (Kantak et al. 2012), possibly rendering the functional interaction within the left PMd more complex than in the right PMd. Based on these findings, we expected the functional organization of the left PMd to be different from the one previously demonstrated for the right PMd (Genon et al., 2016). In particular, we predicted that the functional segregation of eye-field functions and visuo-spatial integration would be less prominent in the left PMd, while language functions would be represented by a specific subregion in the left PMd. Supporting this possibility, Glasser et al. (2016) have recently proposed a “new” language subregion termed “area 55b” in the inferior portion of both the left and right PMd. In our previous study, however, we did not find evidence of such a language subregion in the right PMd, highlighting the possibility that this subregion is specific to the left hemisphere. Importantly, previous functional studies have, albeit often indirectly, already suggested a different organization of the left and right PMd. For example, when examining activations of cognitive functions attributed to the PMd with a meta-analytic approach, Hanakawa (2011) concluded: “*The right rostral premotor cortex was located 3–6 mm rostral to the left rostral premotor cortex consistently across different task sets.*” In the same line, previous whole-brain parcellations based on RSFC-CBP revealed slightly different patterns for the left and right PMd ((Yeo et al. 2011b; Laumann et al. 2015) see [Supplementary Material](#)). Nevertheless, such asymmetries may be related to peculiarities of functional imaging and resting-state modeling. Hence, a multi-modal approach is necessary to examine the presence of potentially subtle differences in the neurobiological organization of the left PMd.

We here used CBP (Eickhoff et al. 2015) in order to provide a robust picture of the organization of the left PMd. First, we investigated evidence for a topographical organization that is “modality independent” by employing three different connectivity modalities: MACM, RSFC and PDT. MACM is a functional connectivity approach that capitalizes on the robust profile of co-activations of the brain voxels across a wide range of task-based fMRI and PET studies (Eickhoff et al. 2011). That is, MACM reveals how voxels interact, or are organized, to

support a behavioral task (in an fMRI or a PET scanner). It thus provides clustering of voxels that is more “behaviorally meaningful” than other CBP approaches, but it comes with the limitation that the clustering might be driven by epiphenomena and peculiarities of task-based neuroimaging experiments such as a dominance of right-hand responses. Furthermore, as MACM is based on a meta-analytic approach, it is subject to the possibility of a publication bias (Rothstein et al. 2006). In turn, RSFC provides a clustering that is driven by the behaviorally unconstrained functional connectivity pattern of the voxels (Foster et al. 2016). Notably, the effect of noise and non-neuronal signals in RSFC is still an open issue (e.g. (Birn 2012; Murphy et al. 2013)) and therefore spurious correlations may influence the clustering patterns of voxels based on RSFC. Importantly, as both MACM and RSFC are correlative approaches, functional connectivity profiles may be indirect (e.g. driven by a third region). PDT suffers less from these limitations as it estimates structural connectivity based on diffusion data (Behrens et al. 2003b). Therefore, PDT brings into account the structural constraints of brain networks. However, despite substantial developments in PDT methods over the last years, the pattern revealed by this approach is still sensitive to technical limitations such as gyral bias and questionable validity in estimating long-distance connection (Van Essen et al. 2013). In summary, RSFC-CBP reveals an unconstrained functional organization of the voxels, MACM-CBP reveals a behavior-driven organization of the voxels, and PDT-CBP reveals a structural organization of the voxels. Each connectivity approach has its own advantages and limitations, rendering them complementary and making their integration a powerful tool for characterizing brain organization. This issue is particularly relevant when addressing the organization of a brain region as complex as the left PMd (cf. [Figure S1](#)).

By capitalizing on the complementarity of these connectivity modalities, the present study investigated subdivisions of the left PMd in a data-driven and multimodal manner. In addition, the current work capitalized on several recent developments in the field as compared to earlier work. First, MACM-CBP was performed on a higher number of available experiments in the Brainmap database. Second, RSFC-CBP and PDT-CBP were performed on a large, publicly available dataset of healthy adult subjects (enhanced NKI/Rockland sample). Finally, RSFC-CBP benefitted from recent developments in signal denoising (Salimi-Khorshidi et al. 2014). Potentially even more important, however, is the fact that the current work represents the first multi-modal CBP that employs the same analysis pipeline across modalities, rendering the actual parcellation algorithms constant. As we found a good convergence across modalities for the right PMd, we expected a similar convergence for the left one given the aforementioned improvements. The next step of the current work was then to functionally characterize the identified modules forming the left PMd mosaic with multimodal functional connectivity and functional behavioral profiling (e.g. (Clos et al. 2013; Genon et al. 2016)). In summary, our approach aimed to provide the first robust modular map of the left PMd based on multi-modal CBP combined with a detailed characterization of the behavioral functions and connectivity of the identified modules.

Methods

Pmd Volume of interest (VOI)

We used a functional approach to define a PMd VOI as previously described in detail for the right side (Genon et al., 2016). In short, we first merged PMd activation sites from multiple meta-analyses on functions attributed to the PMd such as action observation (Caspers et al. 2010), motor learning (Hardwick et al. 2013), movement perception (Grosbras et al. 2012), sustained attention (Langner and Eickhoff, 2013), and working memory (Rottschy et al. 2012). The ensuing PMd VOI was symmetrized and exclusively masked with the

cytoarchitectonic maps of primary sensorimotor areas (BA4a, 4p 3a, 3b, 1, 2) as provided by using the SPM Anatomy Toolbox (Eickhoff et al. 2005). This procedure ensured that the PMd VOI did not overlap with primary sensorimotor cortex at the caudal border. Rostrally, however, the PMd VOI was not restricted to Area 6 but rather covered the full extent of functionally defined PMd. This procedure resulted in a left PMd VOI of 4039 voxels.

Connectivity computation

We used MACM applied to the peaks of activation studies available in Brainmap database (<https://www.brainmap.org/>) as a robust measure of task-based functional connectivity while RSFC and PDT were computed respectively on the resting-state (RS) and diffusion-weighted imaging (DWI) data of 124 healthy adults (84 females; mean age 46.56 ± 17.56) from the open-access enhanced “Rockland” sample (http://fcon_1000.projects.nitrc.org/indi/enhanced).

Meta-analytic connectivity modeling (MACM)

MACM was used to identify the task-based functional connectivity profile of all left PMd VOI voxels as previously described (Clos et al. 2013; Genon et al. 2016). For each voxel within the left PMd all experiments that activated this voxel or its immediate vicinity were identified and whole-brain co-activation patterns computed using the BrainMap database. To this end, we first calculated the Euclidean distances between a given seed voxel and the individual foci of all experiments and then used a multi-filter approach including the closest 20 to 200 experiments in steps of two (i.e., retrieving the 20, 22, 24, 26, ..., 200 experiments reporting activation closest to the seed voxel) to generate robust co-activation maps (Cieslik et al. 2013; Clos et al. 2013; Genon et al. 2016). The brain-wide co-activation profile for each seed voxel given each of the 91 filter sizes was then computed by a meta-analysis over the associated experiments. This meta-analysis was performed using the revised ALE algorithm (Eickhoff et al. 2012). To take into account the complete brain-wide pattern of co-activation likelihood of each seed voxel, no height threshold was set. The brain-wide co-activation profiles for all left PMd VOI voxels were combined into a $N_S \times N_B$ connectivity matrix. N_S is the number of seed voxels (4039) and N_B the number of target voxels in the reference brain volume at $4 \times 4 \times 4$ mm resolution (26459 grey-matter voxels). Altogether, 91 individual connectivity matrices were computed, each representing the connectivity of the seed voxels for a given filter size.

Resting state functional connectivity (RSFC)

Resting-state data (TR 1.4 s) was cleaned for physiological and movement artifacts by applying FIX (FMRIB's ICA-based Xnoiseifier, version 1.061; (Salimi-Khorshidi et al. 2014)) implemented in FSL version 5.0.9 (<http://fsl.fmrib.ox.ac.uk/fsl/fslwiki/FSL>). FIX uses independent component analysis and automatically classifies noise components by using a large number of distinct spatial and temporal features via pattern classification. We utilized the training dataset provided with FIX and recommended settings for noise and movement regression (Griffanti et al. 2014). Further image processing was performed using SPM8 (Wellcome Trust Centre for Neuroimaging, London, <http://www.fil.ion.ucl.ac.uk/spm/software/spm8>). Following deletion of the first four scans preprocessing of the EPI images included affine registration to the mean EPI and normalization to MNI space using the unified segmentation approach before band-pass filtering for frequencies between 0.01–0.08 Hz. Linear (Pearson) correlations between the time series of each seed left PMd voxel and all other grey-matter voxels (at $4 \times 4 \times 4$ mm³ resolution) were computed. The correlation coefficients were Fisher-Z transformed and defined a per-subject connectivity matrix in the same form as the (per filter) connectivity matrices obtained from the MACM computation.

Of note, one recent study (published after the time of our analyses) suggested that FIX should be optimally combined with global signal

regression (Burgess et al. 2016). Therefore, we also performed Fix combined with linear global signal regression (GSR). However, addition of GSR did not impact on the subsequent RSFC-CBP parcellation as illustrated in Figure S5 in Supplementary Material. Furthermore, a high-quality dataset of RS fMRI data acquired in healthy young adults has been made available by the Human Connectome Project (HCP; <http://www.humanconnectome.org/data/>) after the time of our analysis. Therefore, we also performed RSFC-CBP on a sample from this dataset (324 young healthy adults, 164 females; mean age: 28.22 ± 3.88). This additional analysis yielded a similar parcellation pattern than the one obtained from the enhanced NKI sample as illustrated in Figure S6.

Probabilistic diffusion tractography (PDT)

Using FSL (<http://www.fmrib.ox.ac.uk/fsl>) the diffusion scans were first corrected for eddy current distortions and motion, followed by brain extraction based on the average b0 image and finally the estimation of a multi-fiber model using BEDPOSTX (which infers the existence of crossing fibers and estimates the contribution of each crossing fiber to the diffusion-weighted signal; cf. Behrens et al., 2007). In addition, linear and nonlinear transforms between diffusion and MNI-152 space were estimated using the FLIRT and FNIRT tools. Probabilistic Diffusion Tractography was then ran using Protrackx (Behrens et al. 2003a; Behrens et al. 2007), generating 5000 streamline samples for every seed voxel based on the distributions of voxel-wise principal diffusion directions (using a curvature threshold of .2 and a step-length of .5 mm). Recording for every seed-voxel the streamline-count at every voxel within the white-matter at a resolution of $3 \times 3 \times 3$ mm then defined a per-subject connectivity matrix in the same form as the (per subject) RSFC connectivity matrices and the (per filter) connectivity matrices obtained for MACM.

k-means clustering

For all the three connectivity modalities, the parcellation was performed by the same pipeline (for minor adjustments cf. Supplementary Material) using k-means clustering as implemented in the yael package (<https://gforge.inria.fr/projects/yael>). Given that we previously found a robust parcellation of the right PMd VOI into 5 clusters (Genon et al. 2016), we here investigated potential subdivisions obtained up to 7 clusters, i.e., the 2-cluster solution, 3-cluster solution, and so on, up to the 7-cluster solution. That is, we *a-priori* assumed that meaningful organizations of the left PMd can be observed at low resolution and high resolution but not at very high resolution (i.e. not in subdivision into more than 7 subregions). For each parcellation, the best solutions from 500 replications with a randomly placed initial centroid were computed. Importantly, for each k, k-means clustering is performed at the individual level (i.e. filter level for MACM-CBP, and subject level for RSFC-CBP and PDT-CBP) and the different parcellations are then combined into a single parcellation for each modality by computing the most frequent cluster assignment for each PMd VOI voxel across subjects/filter sizes.

Cluster validity criteria

Assuming that parcellations at a coarse scale (into 2-3 subregions) should represent the more stable primary patterns such as a rostro-caudal organization, we first considered these before moving to finer parcellations with a particular focus on those close to the granularity of the solution obtained for the right side, i.e., $k = 4 - 6$. Importantly, however, at these finer scales, only some solutions should be expected to represent stable and hence supposedly meaningful subdivisions, necessitating an objective choice of the solution most supported by the data (Eickhoff et al., 2015). Here we employed four different cluster-validity metrics employed individually to all three modalities. In line with our parcellation of the right PMd VOI (Genon et al., 2016), we

examined percentage of deviants and silhouette value. Of note, variation of information across filter sizes, which was investigated in our MACM-CBP of the right PMd VOI is a MACM-CBP specific metric, therefore it was not used in the current multimodal procedure. Rather, in the current multimodal CBP study, we additionally examined hierarchy index and change in inter/intra cluster distance (Clos et al. 2013). Thus, we examined four different criteria: a topological criterion (hierarchy index), a consistency criterion (percentage of deviants) and two cluster separation criteria (change in inter/intra cluster distance and silhouette value).

Hierarchy index

The topological criterion was the percentage of voxels not related to the dominant parent cluster compared to the previous ($k-1$) solution, i.e., the hierarchy-index. It corresponds to the percentage of lost voxels when only voxels consistent across the entire hierarchy are considered for the final clustering. For example, voxels assigned to cluster X in the 4-cluster solution that were assigned to cluster A (at $k=3$) would be excluded if the majority of cluster X voxels actually stemmed from cluster B (at $k=3$). A large fraction of such voxels indicates a hierarchically unstable solution (Clos et al., 2013).

Percentage of deviants

The percentage of deviants or “misclassified voxels”, i.e. the average percentage of voxels for each filter size/subject that were assigned to a different cluster compared to the most frequent (mode) assignment of these voxels across filter sizes/subjects, was used as a consistency criterion. A significant difference in percentage of deviants between a given cluster solution and the previous ($k-1$) one was tested using a two-sample *t*-test. Optimal solutions are those k parcellations where the percentage of deviants (presumably reflecting noise and local variance) is not significantly increased compared to the previous ($k-1$) solution, while the subsequent ($k+1$) solution leads to a significantly higher percentage of deviants.

Change in inter/intra cluster distance

The inter/intra cluster ratio (Chang et al. 2012), that is, the ratio between the average distance of a voxel to its cluster centre and the average distance between the cluster centers, was used as cluster separation criterion. Since the higher the distance ratio, the better is the separation, a significant increased ratio compared to the previous $k-1$ solution would indicate a better separation of the obtained clusters. However, because of the monotonous increase usually observed with this ratio, we used the first derivative to evaluate the change in this ratio across solutions. A local optimum is reached when there is a significant increase in the change from the previous $k-1$ to the current k solution while the subsequent $k+1$ solution does not show a significantly larger increase.

Silhouette value

The silhouette value ranges from -1 to 1 and assesses, for each voxel, how similar the voxel is to others within the same cluster, versus, how similar this voxel is to voxels in other clusters regarding connectivity profile. A significant difference in the silhouette value between a given cluster solution and the previous one was tested with a two-sample *t*-test. Cluster solutions were considered favorable if they show a significantly higher silhouette value, as compared to the previous ($k-1$) solution.

Identification and characterization of multimodal modules within the left PMd

To identify anatomical modules reflected by consistent subregions across the three modalities, we first identified the best solution for each of these and then performed a (spatial) minimum-statistic conjunction across the ensuing clusters (i.e. conjunctions of each cluster of each

modality with all other clusters of all other modalities) to arrive at a final, multi-modal parcellation of the left PMd VOI. In order to only retain modules that reflect meaningful overlaps between the uni-modal clusters but not, e.g., stripe-like fringe area resulting from a slight displacement of the cluster border between modalities, we additionally employed a module-size criterion of 150 continuous voxels. That is, following the identification of the best solution per modality and the parcellation of the left PMd VOI based on each aspect of brain connectivity, we computed the intersection between all possible combinations of the ensuing MACM-CBP, RSFC-CBP and PDT-CBP clusters. We then retained only those intersections between clusters from different modalities, which yielded at least 150 continuous voxels, as our final, multi-modal modules. These modules were subsequently characterized by their multi-modal functional interaction patterns and the behavioral tasks engaging them in functional neuroimaging studies.

Functional connectivity of multimodal modules

Specific task-related functional connectivity (MACM). For each obtained PMd module, an ALE meta-analysis was performed across all BrainMap experiments featuring at least one focus of activation within each of the derived modules using the same approach as described above. In contrast to the MACM underlying CBP, where ALE maps were not thresholded to retain the complete pattern of co-activation likelihoods, we here performed statistical inference to identify brain regions showing significant co-activations (correcting the cluster-level family-wise error rate (cFWE) at $p < .05$, using a cluster-forming threshold at voxel level of $p < .001$).

To compare the brain-wide co-activation pattern between modules, we performed meta-analytic contrasts as previously described (Eickhoff et al., 2011, Genon et al., 2016). Finally, we identified the specific co-activation pattern for each module, that is, brain regions that were significantly more co-activated with a given module than with any of the other ones. This was achieved by performing a minimum-statistic conjunction across the results of the four contrasts between a given module and the remaining others.

Specific resting-state functional connectivity. To compute the significant RSFC of each multimodally defined module, the time series of a given module was represented (per subject) by the first eigenvariate of the resting-state time courses of all voxels attributed to this module. Linear (Pearson) correlations between the time series of each module and all other grey-matter voxels were computed and transformed into Fisher's *z*-scores. These Fisher's *z*-scores were entered into a flexible factorial model as implemented in SPM8 to test for consistency across subjects (main effect) as well as for significant differences between the modules (again correcting the cluster-level family-wise error rate (FWE) at $p < .05$, using a cluster-forming threshold at voxel level of $p < .001$). As for MACM, we identified the specific connectivity pattern of each module by performing a minimum-statistic conjunction across the results of the four contrasts between a given module and the remaining others.

In order to identify the robust, modality-independent, (specific) functional connectivity pattern for each module, we finally combined MACM and RSFC results for each module using a minimum-statistic conjunction.

Behavioral functional characterization of multimodal modules

As in previous work (e.g. (Clos et al. 2013; Genon et al. 2016)), functional characterization of the left PMd modules was performed using the “behavioral domain” (BD) and “paradigm class” (PC) meta-data within the BrainMap database (Laird et al. 2009) for those experiments that activate the respective module. BDs include the main

categories *cognition, action, perception, emotion, interoception*, as well as their subcategories. In turn, PCs categorize the specific task employed. To robustly characterize the individual functional profile of each left PMd module, we combined quantitative “forward inference” and “reverse inference”. In forward inference, a module’s functional profile is assessed by identifying taxonomic labels for which the probability of finding activation in the respective module is significantly higher than finding activation for that label across the whole database by chance ($p < .05$ corrected for multiple comparisons using Bonferroni’s method (Clos et al. 2013; Rottschy et al., 2013)). That is, we tested whether the conditional probability of activation in a particular region given a particular label [$P(\text{Activation}|\text{Task})$] was higher than the baseline probability of activating this particular region [$P(\text{Activation})$]. In reverse inference, a module’s functional profile was determined by identifying the most likely BDs and PCs given activation in a particular module, i.e., the likelihood $P(\text{Task}|\text{Activation})$. This likelihood can be derived from $P(\text{Activation}|\text{Task})$ as well as $P(\text{Task})$ and $P(\text{Activation})$ using Bayes’ rule. Significance (at $p < .05$ corrected) was then assessed by means of a chi-squared test. In sum, forward inference assesses the probability of activation given a behavioral label, whereas reverse inference tests the probability of each behavioral label given an activation. For the sake of robustness, only behavioral labels that were significantly associated to the modules across both, forward and reverse inferences, were taken into account.

Results

Multimodal parcellation

We first examined how each of the three CBP modalities divided the left PMd VOI at lower and higher scales. Then we investigated how the different cluster-solutions were supported by the data (using various cluster-stability criteria) within each CBP modality and combined the supported parcellations to finally identify multi-modal modules. Importantly, we compared the derived multimodal modules with the three subregions defined within the superior part of Area 6 (Sigl et al. 2016) by independent mapping modality (cytoarchitecture) and with the different subregions found in by the recent multimodal mapping of the cerebral cortex (Glasser et al. 2016).

Rostral-caudal organization of the left PMd at lower scales ($k=23$)

All three modalities first subdivided the left PMd VOI along the rostral-caudal axis at lower scales. At $k=2$, all modalities differentiated a caudal part on the precentral gyrus from a rostral part. Of note, while the borders defining subregions based on functional data (i.e. MACM-CBP and RSFC-CBP) did not meet macroanatomical landmarks, the border between the rostral and the caudal subregions defined by PDT-CBP was found close to the precentral sulcus. At $k=3$, all three modalities differentiated a caudal subregion mainly covering the precentral gyrus, a central region centered on the precentral sulcus and a rostral subregion anterior to the precentral sulcus (Fig. 1).

As expected, these coarse parcellations tended to be more stable than finer parcellations in the subject-based modalities (i.e., RSFC-CBP and PDT-CBP, see Figure S4). In other words, the rostral-caudal organization into three subregions appeared as a more stable feature than further subdivisions within the left PMd VOI.

Ventro-dorsal organization of the left PMd at higher scales ($k=46$)

Subsequent splitting of the PMd VOI highlighted differences as well as similarities between modalities (Fig. 2).

All CBPs further subdivided the intermediate subregion (from $k=3$) along the ventro-dorsal axis at $k=4$. MACM and RSFC-CBPs both revealed that a “central” subregion, located at the intersection of the superior frontal and precentral gyri, can be distinguished from a more ventral and a more dorsal one as previously observed for the right PMd VOI (Genon et al., 2016). In contrast, PDT-CBP distinguished a

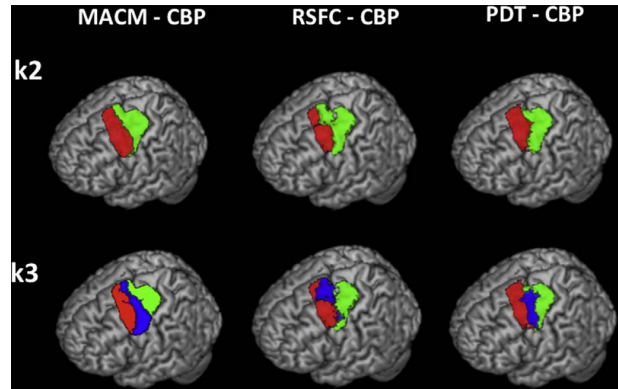


Fig. 1. Rendering of the two subregions (k2, upper row) and three subregions (k3, lower row) of the left PMd yielded by the three CBP modalities.

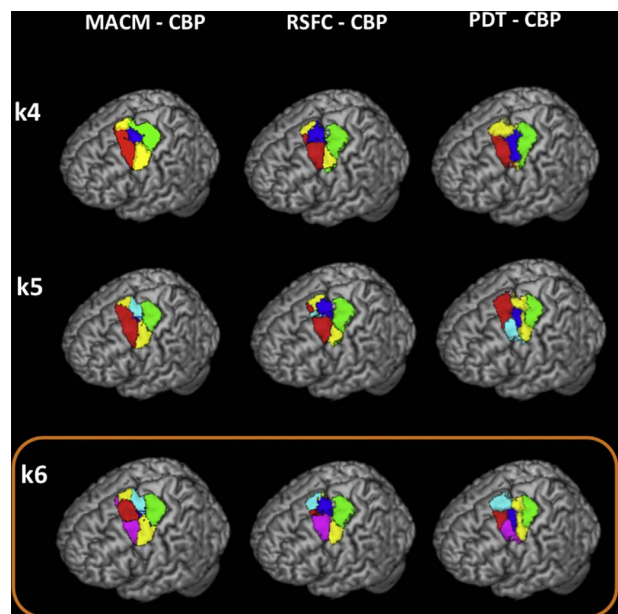


Fig. 2. Rendering of the subregions yielded by the three CBP modalities at high resolution ($k > 3$). Please note that for MACM-CBP the deeper cluster (blue) in the superior frontal sulcus is not fully illustrated in the rendering ($k=5$ and $k=6$). The orange frame denotes the three 6k parcellations that were combined for defining the multimodal modules.

superior part, roughly corresponding to the superior frontal sulcus portion of the left PMd VOI.

At $k=5$, divergence between modalities increased. Both RSFC-CBP and PDT-CBP subdivided the rostral subregion into two modules along the ventro-dorsal axis disentangling a rostral module located in the superior sulcus either from a more rostroventral subregion (PDT-CBP) or from the cortex both rostro-ventral and rostro-dorsal to it (RSFC-CBP). In contrast, MACM-CBP subdivided the central cluster into a surface subregion and a deeper subregion, in the fundus of superior frontal sulcus, where it meets the precentral gyrus.

At $k=6$, all CBPs further subdivided the superior rostral subregion along the ventro-dorsal axis. Both, RSFC-CBP and PDT-CBP isolated the extreme dorsal part. In turn, MACM-CBP distinguished the rostral module located on the superior frontal sulcus from the more rostro-ventral and rostro-dorsal subregions, in line with the subdivision revealed by RSFC-CBP at the previous clustering step ($k=5$).

Overall, for the 6 cluster solutions we identified across all three CBPs two rostral subregions: a rostral one located in the superior

frontal sulcus (consistently with our previous CBPs of the right PMd VOI) and a rostro-ventral one, a central subregion located in the posterior superior frontal sulcus, where it meets the precentral gyrus, a ventral subregion and a caudal one adjacent to primary motor area.

Selection of cluster solutions and cross-modal identification of modules within the left PMd

We next examined how the parcellations were supported by the data for the higher scales ($k=4-6$) independently for each CBP modality (MACM, RSFC and PDT; see [Supplementary Material](#) for illustration and a detailed description of the results of the cluster stability assessment).

MACM-CBP: whereas the percentage of deviants and the silhouette value were not informative for choosing a cluster solution at higher scale (see [Supplementary Material](#)), the two other criteria promoted the $k = 6$ parcellation over the other.

RSFC-CBP: whereas the intra/inter distance ratio, the percentage of deviants and the silhouette value were not informative for choosing a cluster solution at higher scale, the hierarchy index promoted the $k = 4$ and the $k = 6$ parcellations over the 5k parcellation.

PDT-CBP: whereas the percentage of the intra/inter distance ratio was not informative for choosing a cluster solution at higher scale, the silhouette value promoted the $k = 5$ parcellation at higher scale. Nevertheless, the two other criteria promoted the $k = 6$ parcellation over other k parcellations.

Thus, both within MACM-CBP and PDT-CBP, $k=6$ can be regarded as the most stable solution. Of note the 6k was also supported by examination of the percentage of voxels not with parents for RSFC-CBP (despite the 4k was also supported). Thus, the 6k appeared as a data-supported cluster solution within each modality. Importantly, MACM-CBP and PDT-CBP modalities that similarly promoted the 6k are based on different data sets. Therefore, in the sake of cross-modality validity, we focused on the $k=6$ solution to identify multimodal modules.

To identify modules consistent across the three topological organizations and infer the multimodal organization of the left PMd, we performed conjunction analyses between all possible combination of MACM, RSFC and PDT clusters. This procedure revealed 5 modules ([Fig. 3](#)): a caudal one (green, 400 voxels), a central one (blue, 333 voxels), a rostral one (red, 241 voxels), a ventral one (yellow, 158 voxels) and a rostro-ventral one (pink, 260 voxels). The volumes are available through ANIMA (<http://anima.fz-juelich.de/>), ([Reid et al. 2016](#)). These five modules were consistent with the corresponding five subregions revealed by each CBP modality independently, while the surface subregion revealed by MACM-CBP alone and the dorsal

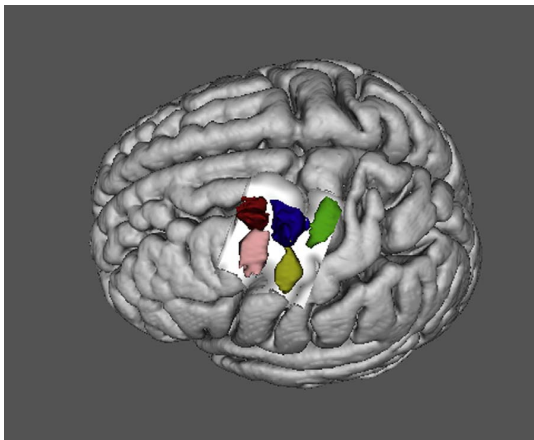


Fig. 3. The five left PMd modules identified by multimodal CBP: red, rostral subregion; pink, rostro-ventral subregion; blue, central subregion; green, caudal subregion; yellow, ventral subregion. The five volumes are available in MNI space in the ANIMA database (<http://anima.fz-juelich.de/>).

subregion revealed by RSFC-CBP and PDT-CBP were not evidenced by the conjunction across CBP modalities.

Comparison with cytoarchitecture-based mapping and multimodal cortex parcellation

Recent cytoarchitecture-based mapping of the superior part of Area 6 has revealed three distinct areas: a caudal one (6d1), a deep anterior one (6d3) and a more dorsal anterior one (6d2) ([Sigl et al. 2016](#)). The comparison of our two multimodal modules located in the superior part of Area 6, i.e., the caudal and the central one, with the caudal and deep anterior anatomical areas showed that our caudal and central modules are consistent in their spatial pattern with these anatomical areas (this comparison is illustrated in [Figure S7](#) in the [Supplementary Material](#)). Thus, the comparison of our resulting modules with ex-vivo microstructure-based mapping suggests that our conjunction of overlapping clusters across CBP modalities retains topographically valid patterns.

Recently, [Glasser et al. \(2016\)](#) proposed a surface-based multimodal parcellation of the cerebral cortex. In order to reliably relate our multimodal left PMd volumes to the multimodal surface parcels of Glasser et al., we performed a two-fold comparison (see [Figure S8](#)). We used the surface parcellation map of Glasser et al. transposed to volume in MNI space (https://figshare.com/articles/HCPMMP1_0_projected_on_MNI2009a_GM_volumetric_in_NIFTI_format/3501911) and displayed our volumes on the volume map ([Figure S8 A](#)), but we also mapped our volumes to surface with the [Connectome workbench](#) (<http://www.humanconnectome.org/software/connectome-workbench.html>) and displayed the yielded surface modules on the surface parcellation map of Glasser et al. ([Figure S8 B](#)). Both comparisons showed that our left PMd caudal module mirrors a caudal PMd subregion identified by Glasser et al. In contrast, both comparisons showed that our rostral and central modules have not been distinguished in Glasser et al.'s parcellation as they are both part of a single parcel located within the posterior part of the superior frontal sulcus in this map. Both comparisons similarly suggest that our rostro-ventral module belongs to a larger, rather prefrontal, parcel. In turn, volume definition of area 55b from Glasser et al. suggests that this region corresponds to our ventral module while surface mapping of our ventral module shows that it overlaps with both Area 55b and the area superior to this latter.

Functional characterization of left PMd modules

Multimodal functional connectivity

The specific cross-modal functional connectivity patterns of each module are illustrated in [Fig. 4](#) and detailed in [Table 1](#). For reader's information, the task-based functional connectivity (MACM) and resting-state functional connectivity (RSFC) are illustrated separately in [Figure S9](#) and [Figure S10](#), respectively, in [Supplementary Material](#). Furthermore, the corresponding maps are available in ANIMA (<http://anima.fz-juelich.de/>).

The caudal module was specifically coupled with bilateral primary sensorimotor areas, secondary somatosensory cortex and cerebellum. The central module compared to all other modules was stronger connected with bilateral superior parietal cortex/IPS, but also with the right supramarginal and inferior frontal gyri. In contrast, the rostral module was specifically coupled with bilateral middle frontal cortex, precuneus and inferior parietal cortex. In turn, the ventral module was functionally stronger connected with bilateral superior temporal cortex and pre-SMA, as well as left Broca's Area, left temporal pole and right cerebellum. Finally, the rostro-ventral cortex was specifically connected with bilateral inferior frontal, left lateral orbito-frontal, dorsomedial prefrontal and inferior parietal cortices.

Behavioral association: behavioral domains and paradigm classes

Functional characterization across behavioral domains and para-

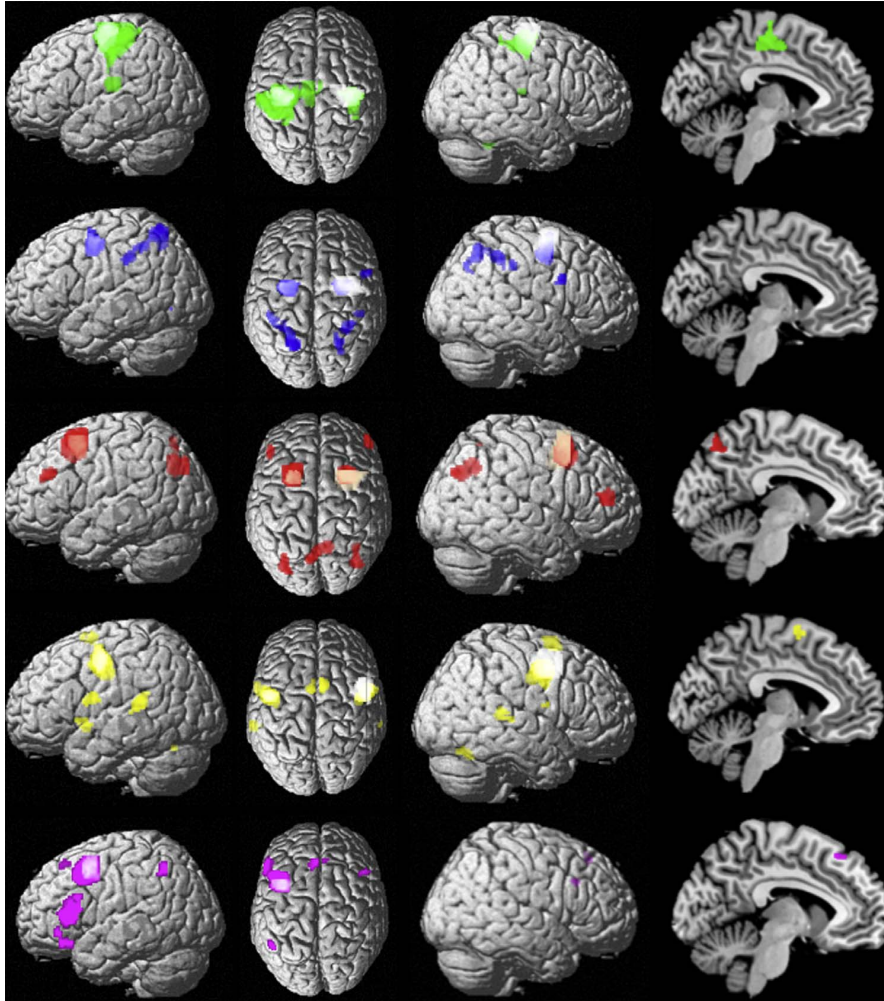


Fig. 4. Specific functional connectivity of the five left PMd modules: green, caudal; blue, central; red, rostral; yellow, ventral; violet, rostro-ventral. The left multimodal PMd modules and the right PMd clusters (previously identified in Genon et al., 2016) are illustrated as white blobs.

digm classes of the BrainMap database are summarized in Fig. 5. This functional characterization revealed that the caudal module was mainly associated with motor-related functions while the rostral module was mainly associated with executive cognitive- and visuospatial- related functions. The central subregion, in turn, showed a mixed behavioral profile including motor and visuospatial functions and paradigms, but also related to working memory and attention. In contrast, the ventral module was mainly associated with speech and also eyes-related functions. Finally, the rostro-ventral module was associated with functions and paradigms requiring abstraction abilities, namely, long-term explicit memory, scene imagination and deception.

Discussion

In this study, we addressed the heterogeneity of the left PMd using a multimodal connectivity-based parcellation (CBP) approach combining meta-analytic connectivity modeling (MACM), resting-state functional connectivity (RSFC), and probabilistic diffusion tractography (PDT). At the coarser level – that is, when dividing the PMd into two and then three subregions based on the respective connectivity profiles of its individual voxels – all three modalities congruently revealed that the left PMd is organized along the rostro-caudal axis. At finer levels, when searching for further subdivisions, some divergence, as well as

similarities, were observed across modalities. By crossing modalities and identifying voxels that are kept clustered together across parcellation modalities, we showed that five modules could be robustly distinguished within the left PMd. The five PMd subregions identified by the conjunction analyses corresponded to independent parcels within each CBP modality, suggesting that none of them could be considered as a conjunction artifact across modalities. In other words, all the five subregions identified by the conjunction analysis showed correspondence with the topographical organization revealed independently by the different modalities, thus truly reflecting convergence on the organization of the left PMd. These five subregions included a caudal module, a central module, a rostral module, a ventral module, and a rostro-ventral module.

Topographical similarities and differences between right and left PMd

The main modules identified in the right and left PMd multimodal CBP are illustrated in Fig. 6.

The convergent organization across modalities found in the left PMd showed correspondence with the topographical organization previously highlighted in the right hemisphere, in which corresponding caudal, central, rostral and ventral subregions were also identified by different CBP modalities. In line with the rostro-caudal clusters

Table 1
Specific functional connectivity of the five multimodal modules across tasks (MACM) and rest (RSFC).

Region		Overlap with cytoarchitectonic area	x	y	z	Cluster size
Specific to caudal PMd						
Primary sensorimotor cortex	L	Area 3b ^d /4 p ^e	-31	-22	58	2502
	R	Area 3b ^d /4 p ^e	38	-21	59	346
		Area 2 ^a /3b ^e	40	-39	60	12
SMA	R	NA	5	-7	51	24
	L	NA	-4	-16	68	
Cerebellum	R	Lobule V/VI ^g	19	-52	-21	419
Rolandic operculum	L	Area OP1/OP3/OP4 ^g	-48	-22	19	216
Specific to central PMd						
Superior parietal lobule/IPS	L	Area 7A ^f /Area7PC ^f /PFT/5L ^f	-27	-53	52	404
	R	Area hIP3 ^h	24	-62	48	127
		Area hIP3/Area 2 ^b	33	-44	47	121
Supramarginal gyrus	R	Area PPT ^h	45	-32	40	24
Inferior Frontal gyrus	R	Area 44 ^a	51	9	29	56
Right homotope of left central PMd	R	NA	28	-4	53	339
Specific to rostral PMd						
Right homotope of left rostral PMd	R	NA	27	12	52	441
Inferior parietal lobule	R	Area PGp ^h /NA	37	-69	37	129
	L	NA	-32	-78	35	115
Superior parietal lobule/ Precuneus	L	Area 7A ^f /7P ^f	-6	-68	51	117
	R	NA	8	-60	51	100
Middle Frontal	R	NA	47	43	14	50
	L	NA	-45	36	27	27
Specific to ventral PMd						
Superior temporal/higher auditory cortex	L	Area TE 3 ⁱ	-59	-37	14	144
	R	Area TE 3 ⁱ	59	-33	8	55
Temporal pole	L	Area TE 3 ⁱ	-53	8	-3	44
Right homotope of left ventral PMd	R	NA	50	-3	42	427
Pre-SMA	R	NA	7	6	65	126
	L	NA	-5	2	64	73
Inferior frontal	L	Area 44 ^a	-58	2	17	73
Cerebellum	R	Lobule VI ^g	29	-64	-22	58
Specific to rostro-ventral PMd						
Inferior frontal cortex	L	Area 45 ^a	-51	24	13	316
	R	NA	46	21	33	20
Lateral orbitofrontal cortex	L	NA	-43	32	-12	79
Dorsomedial prefrontal cortex	L	NA	-5	30	52	49
Inferior parietal lobule/IPS	L	NA	-48	-55	48	41

Note.

NA, not assigned to any known probability map/not applicable; PMd, dorsal Premotor Cortex; IPS, intraparietal sulcus; SMA, supplementary motor area.

^a Amunts et al., 1999;

^b Grefkes et al., 2001;

^c Geyer et al., 1996;

^d Geyer et al., 1999;

^e Eickhoff et al., 2006;

^f Scheperjans et al., 2008;

^g Diedrichsen et al., 2009;

^h Caspers et al., 2006;

ⁱ Morosan et al., 2005;

identified in the right PMd, the left rostral subregion was mainly anterior to the precentral sulcus, the central subregion was found at the level of the precentral sulcus and the caudal subregion was located on the precentral gyrus. In addition, in line with the ventral right PMd subregion, the ventral left PMd subregion was located on the ventral part of the middle portion of the precentral gyrus, bordering the ventral PMd. Nevertheless, while in our previous study of the PMd in the right hemisphere, different CBP modalities all isolated a dorsal subregion located on the superior frontal sulcus adjacent to pre-SMA, such a dorsal region was hardly distinguished from other subregions in the left

PMd. In particular, MACM-CBP maintained the extreme dorsal voxels functionally linked to, on the one hand, the rostro-ventral subregions, and on the other hand, the ventral subregion. These findings suggest that the voxels on the dorsal part of the superior frontal gyrus of the PMd may not form a coherent functional module in the left PMd. In turn, all our CBP modalities and the subsequent conjunction analysis in the left PMd isolated a rostro-ventral module located anteriorly to the precentral sulcus on the ventral part of the middle frontal gyrus that was not evidenced in the right PMd.

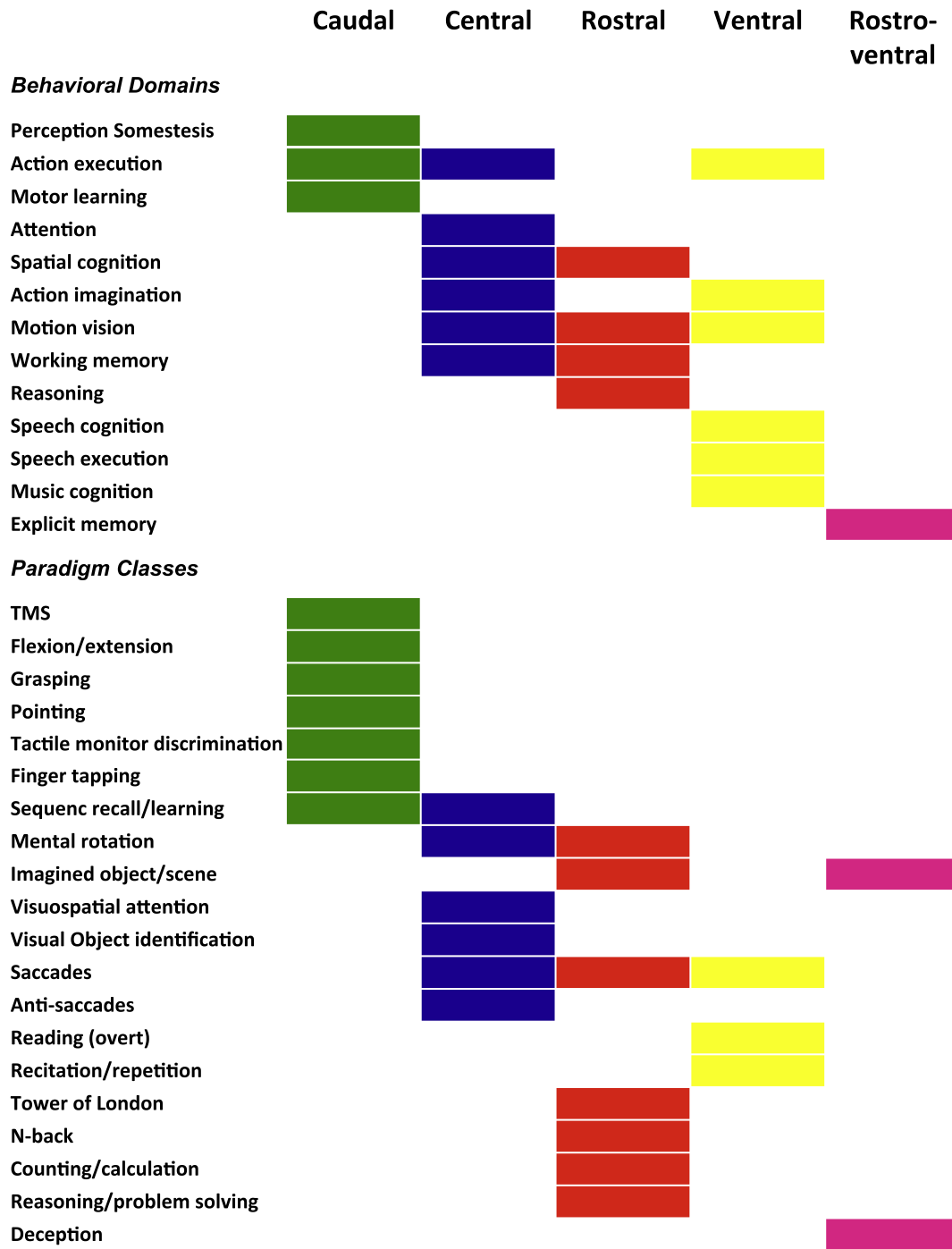


Fig. 5. Functional decoding across behavioral domains and paradigm classes of the BrainMap database of the five multimodal modules of the left PMd.

Evidence for hemispheric asymmetry of the right and left PMd

In order to further examine whether asymmetry of the right and left PMd were truly supported by the data and could not be driven by methodological artifacts, we performed additional parcellation whose results are reported and described in [Supplementary Material](#). First, to ensure that the method differences did not account for the differences in organization found in the two independent parcellations of the left and right PMd, CBP of the right PMd was performed with exactly the

same methods and dataset as used for the left PMd. The 5-cluster parcellations found in the right PMd did not mirror the 5-cluster parcellation found in the left PMd (neither in Genon et al.'s original study nor with the improved method in [Supplementary Material](#)). In particular, whereas the ventral part of the left PMd was already subdivided into two subregions with a substantial rostro-ventral subregion in the left PMd at this subdivision scale, this rostro-ventral subregion was not evidenced in any of the right PMd parcellations (see [Supplementary discussion III.2](#) and [Figure S11](#)). Second, we investi-

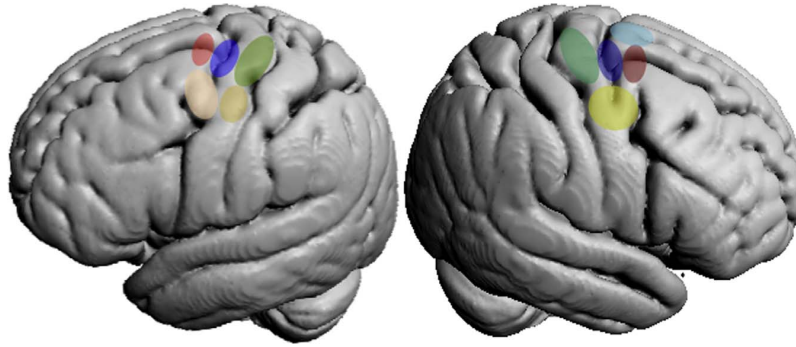


Fig. 6. Schematized PMd topography revealed by left and right (Genon et al., 2016) PMd parcellations.

gated whether a rostro-ventral subregion could be evidenced in the right PMd when further splitting this region into six clusters. However, this further subdivision revealed an inconsistent pattern across modalities (see Supplementary discussion III.2 and Figure S12), thus not supporting the hypothesis of a robust rostro-caudal subdivision in the inferior part of the right PMd. Third, in order to further investigate the hemispheric specificity hypothesis of the right dorsal PMd subregion and the left rostro-ventral PMd subregion, we examined how the PMd subregions could be clustered together across both hemispheres according to their behavior-related functional similarity. That is, we performed MACM-CBP on a bilateral PMd VOIs. The main findings (which are described and illustrated in Supplementary Material, Figure S13) confirmed that the right dorsal PMd subregion and the left rostro-ventral PMd subregion did not show respective homotopic subregions in the opposite hemisphere. Thus, altogether, these additional findings support the hypothesis of different topographical organizations in the right and left PMd. The functional characterization of each left PMd module and their (lack of) correspondence to the right PMd subregions are further discussed below.

A rostro-caudal organization mapping cognitive-motor gradient in the left PMd

At lower resolution ($k=2-3$), all CBP modalities highlighted a rostro-caudal organization, which could also be found at higher resolution ($k=5-6$) as three rostro-caudally organized modules on the superior part of the PMd: rostral, central and caudal. The ensuing functional characterization indicated a gradient from cognitive to motor functions with the rostral part being mainly connected to inferior parietal and lateral prefrontal cortex and associated with higher cognitive and visuospatial functions; the central part being associated with the top-down control network (Vossel et al. 2014) and being engaged in a wide range of behavioral functions from action execution to working memory; and the caudal part being functionally integrated in a sensorimotor network and associated with sensorimotor functions. The identified modules and their functional characterization bear similarities with the subregions described in non-human primates. The rostral module indeed mirrors area F7 (Matelli et al. 1985, 1991), a region predominantly receiving prefrontal inputs (Boussaoud et al. 1995; Rizzolatti and Luppino 2001) and supporting cognitive functions such as spatial attention or memory (Boussaoud 2001; Lebedev and Wise 2001; Nakayama et al. 2016). Similarly, the central module likely corresponds to F2vr (for a review see Abe and Hanakawa 2009), a subregion receiving inputs from dorsolateral prefrontal cortex (DLPFC) and medial IPS (Luppino et al. 2003), and assumed to support the integration of visuospatial and somatosensory/motor functions to complete a motor plan (for a review see Abe and Hanakawa 2009). The caudal module mirrors F2 itself, a subregion connected to M1 and the spinal cord (for reviews see Geyer et al. 2000; Abe and Hanakawa 2009). Furthermore, our multimodal characteriza-

tion along the rostro-caudal axis is consistent with previous parcellations of the frontal lobe showing a cognitive-motor gradient mapping a rostro-caudal organization of the frontal cortex (e.g. (Koechlin and Summerfield 2007; Bellec et al. 2010; Yeo et al. 2011c; Orban et al. 2015; Glasser et al. 2016) as well as with our previous parcellation of the right PMd (Genon et al. 2016), thus confirming that the rostro-caudal organization of the PMd is a primary principle of organization within the frontal cortex.

The left premotor eye-field 55b

On the ventral part of the middle frontal gyrus, our multimodal parcellation of the left PMd identified a ventral module that shows correspondence with the ventral subregion previously observed in the right PMd. Functional characterization of the left PMd ventral module showed a behavioral pattern dominated by visual and language-related functions. Accordingly, functional connectivity across MACM and RSFC showed that the ventral left PMd is functionally coupled with Broca's area and TE areas assigned to the ventral processing stream supporting object recognition (Gross 1994). When examining the functional profile of the left PMd ventral module and its spatial correspondence with the right PMd premotor eye-field, it appeared that the left PMd ventral module conceptually overlapped with the left premotor eye-field. In support of this view, a recent meta-analysis has identified a premotor eye-field located in our left PMd ventral module (Cieslik et al. 2016) as illustrated in Figure S14 (Supplementary Material). Nevertheless, the left premotor ventral module appeared additionally related to language functions and overlaps with Area 55b, a language-related area recently suggested by Glasser et al. (2016). However, behavioral functional characterization of the volume definition of Area 55b across the BrainMap database (reported in Supplementary Material) revealed that this subregion is also associated with simple eye movements and shows a similar profile to our ventral cluster (see Figure S15). Thus, the current evidence converges to suggest that the ventral subregion of the left PMd consists jointly of premotor eye-field and Area 55b. Such a mixed behavioral profile could reflect the integration/coordination of visual identification (visual screening) processes with word production (speech execution) processes in the ventral PMd, although future studies are needed to empirically confirm this hypothesis.

Abstraction in the rostro-ventral left PMd

At finer levels of parcellation, all CBP modalities isolated a rostro-ventral module located anteriorly to the precentral sulcus on the ventral part of the middle frontal gyrus, which was accordingly delineated by our conjunction analysis. Importantly, previous whole-brain parcellations have already suggested a finer subdivision of the inferior part of the PMd in the left hemisphere when compared to right hemisphere ((Yeo et al. 2011b; Laumann et al. 2015), see

Supplementary Material). The subsequent characterization of our delineated rostro-ventral module highlighted a conspicuous functional pattern that was both clearly distinct from other left PMd modules and any module in the right hemisphere. In particular, this region showed specific functional connectivity with the ventrolateral and dorsomedial prefrontal cortex, as well as with inferior parietal lobule. Accordingly, this module was integrated within a broader, rather prefrontal subregion in the parcellation of Glasser et al. (2016). In the present study, activity in the rostro-ventral left PMd was associated with tasks related to explicit long-term memory, object/scenes imagination, and deception paradigms. This pattern of functional interaction with higher associative regions and engagement in abstract behavioral functions suggests that this region, at the transition between left prefrontal cortex and left ventral PMd, may be involved in deriving mental abstractions from one's current ongoing situation/environment. Such abstraction involves reference to a different time frame (required for long-term memory retrieval), a different spatial frame (required for scenes imagination), and a different mental frame (required for deception). In line with whole-brain parcellation, there was no clear evidence for such rostro-ventral subregion in our right PMd parcellation suggesting that the right and left PMd are differently functionally characterized. To further confirm this hypothesis, we mirrored this module in the right hemisphere and examined its behavioral functional characterization (the results are reported in Supplementary Material, Figure S16). In this right hemisphere VOI, we did not find any significant relationship with the abstract functions evidenced in the left rostro-ventral module. Instead, this rostro-ventral part of the right PMd showed a similar behavioral characterization to the more superior rostral right PMd subregion. Therefore, we suggest that abstract functions are more predominantly represented in the posterior part of prefrontal cortex/anterior part of premotor cortex in the left hemisphere than in the right hemisphere.

Conclusion

In conclusion, for the first time, we described a parcellation, using a multimodal approach, of the left premotor cortex into five robust modules. The reliability of this approach was demonstrated by comparing the defined modules with previous coarser parcellations and the behavioral relevance of our modules was evidenced by robust functional characterization. The caudal, central and rostral left PMd modules confirmed the rostro-caudal organization reflecting a cognitive-motor gradient previously highlighted in the right PMd (Genon et al. 2016) and the frontal lobes as a whole (Yeo et al. 2011a; Glasser et al. 2016). Furthermore, our analysis suggested a left inferior PMd subregion involved in eye-field functions and thus mirroring a right premotor eye-field (Genon et al. 2016), but also engaged in language functions and overlapping with Area 55b (Glasser et al., 2016). Finally, our multimodal parcellation also revealed a specific module in the rostro-ventral subregion supporting abstract cognitive functions, not evidenced in the corresponding PMd region in the right hemisphere.

Funding

This study was supported by the Deutsche Forschungsgemeinschaft (DFG, EI 816/4-1, LA 3071/3-1, GE 2835/1-1), the National Institute of Mental Health (R01-MH074457), the Helmholtz Portfolio Theme "Supercomputing and Modelling for the Human Brain", the European Union's Horizon 2020 Research and Innovation Programme under Grant Agreement No. 7202070 (HBP SGA1) and the National Institute of Mental Health (R01-MH074457).

Appendix A. Supporting information

Supplementary data associated with this article can be found in the online version at doi:10.1016/j.neuroimage.2017.02.034.

References

- Abe, M., Hanakawa, T., 2009. Functional coupling underlying motor and cognitive functions of the dorsal premotor cortex. *Behav. Brain Res.* 198, 13–23.
- Amiez, C., Petrides, M., 2009. Anatomical organization of the eye fields in the human and non-human primate frontal cortex. *Progress. Neurobiol.* 89, 220–230.
- Amunts, K., Schleicher, A., Bürgel, U., Mohlberg, H., Uylings, H., Zilles, K., 1999. Broca's region revisited: cytoarchitecture and intersubject variability. *J. Comp. Neurol.* 412, 319–341.
- Badre, D., 2008. Cognitive control, hierarchy, and the rostro-caudal organization of the frontal lobes. *Trends Cogn. Sci.* 12, 193–200.
- Badre, D., D'Esposito, M., 2009. Is the rostro-caudal axis of the frontal lobe hierarchical? *Nat. Rev. Neurosci.* 10, 659–669.
- Bahlmann, J., Blumenfeld, R.S., D'Esposito, M., 2015. The rostro-caudal axis of frontal cortex is sensitive to the domain of stimulus information. *Cereb. Cortex* 25, 1815–1826.
- Behrens, T., Berg, H.J., Jbabdi, S., Rushworth, M., Woolrich, M., 2007. Probabilistic diffusion tractography with multiple fibre orientations: what can we gain? *NeuroImage* 34, 144–155.
- Behrens, T.E., Woolrich, M.W., Jenkinson, M., Johansen-Berg, H., Nunes, R.G., Clare, S., Matthews, P.M., Brady, J.M., Smith, S.M., 2003a. Characterization and propagation of uncertainty in diffusion-weighted MR imaging. *Magn. Reson. Med.* 50, 1077–1088.
- Tej, Behrens, Johansen-Berg, H., Woolrich, M.W., Smith, S.M., Cam, Wheeler-Kingshott, Boulby, P.A., Barker, G.J., Sillery, E.L., Sheehan, K., Ciccarelli, O., 2003b. Non-invasive mapping of connections between human thalamus and cortex using diffusion imaging. *Nat. Neurosci.* 6, 750–7757.
- Bellec, P., Rosa-Neto, P., Lyttelton, O.C., Benali, H., Evans, A.C., 2010. Multi-level bootstrap analysis of stable clusters in resting-state fMRI. *NeuroImage* 51, 1126–1139.
- Birn, R.M., 2012. The role of physiological noise in resting-state functional connectivity. *NeuroImage* 62, 864–870.
- Boussaoud, D., 2001. Attention versus intention in the primate premotor cortex. *NeuroImage* 14, S40–S45.
- Boussaoud, D., di Pellegrino, G., Wise, S.P., 1995. Frontal lobe mechanisms subserving vision-for-action versus vision-for-perception. *Behav. Brain Res.* 72, 1–15.
- Burgess, G.C., Kandala, S., Nolan, D., Laumann, T.O., Power, J.D., Adeyemo, B., Harms, M.P., Petersen, S.E., Barch, D.M., 2016. Evaluation of denoising strategies to address motion-correlated artifacts in resting-state functional magnetic resonance imaging data from the human connectome project. *Brain Connect.*
- Caspers, S., Geyer, S., Schleicher, A., Mohlberg, H., Amunts, K., Zilles, K., 2006. The human inferior parietal cortex: cytoarchitectonic parcellation and interindividual variability. *NeuroImage* 33, 430–448.
- Caspers, S., Zilles, K., Laird, A.R., Eickhoff, S.B., 2010. ALE meta-analysis of action observation and imitation in the human brain. *NeuroImage* 50, 1148–1167.
- Cieslik, E.C., Seidler, I., Laird, A.R., Fox, P.T., Eickhoff, S.B., 2016. Different involvement of subregions within dorsal premotor and medial frontal cortex for pro- and antisaccades. *Neurosci. Biobehav. Rev.* 68, 256–269.
- Cieslik, E.C., Zilles, K., Caspers, S., Roski, C., Kellermann, T.S., Jakobs, O., Langner, R., Laird, A.R., Fox, P.T., Eickhoff, S.B., 2013. Is there "One" DLPFC in cognitive action control? evidence for heterogeneity from co-activation-based parcellation. *Cereb. Cortex* 23, 2677–2689.
- Clos, M., Amunts, K., Laird, A.R., Fox, P.T., Eickhoff, S.B., 2013. Tackling the multifunctional nature of Broca's region meta-analytically: co-activation-based parcellation of area 44. *NeuroImage* 83, 174–188.
- De Schotten, M.T., Dell'Acqua, F., Forkel, S.J., Simmons, A., Vergani, F., Murphy, D.G., Catani, M., 2011. A lateralized brain network for visuospatial attention. *Nat. Neurosci.* 14, 1245–1246.
- Diedrichsen, J., Balsters, J.H., Flavell, J., Cussans, E., Ramnani, N., 2009. A probabilistic MR atlas of the human cerebellum. *NeuroImage* 46, 39–46.
- Eickhoff, S.B., Amunts, K., Mohlberg, H., Zilles, K., 2006. The human parietal operculum. II. Stereotaxic maps and correlation with functional imaging results. *Cereb. Cortex* 16, 268–279.
- Eickhoff, S.B., Bzdok, D., Laird, A.R., Kurth, F., Fox, P.T., 2012. Activation likelihood estimation meta-analysis revisited. *NeuroImage* 59, 2349–2361.
- Eickhoff, S.B., Bzdok, D., Laird, A.R., Roski, C., Caspers, S., Zilles, K., Fox, P.T., 2011. Co-activation patterns distinguish cortical modules, their connectivity and functional differentiation. *NeuroImage* 57, 938–949.
- Eickhoff, S.B., Stephan, K.E., Mohlberg, H., Grefkes, C., Fink, G.R., Amunts, K., Zilles, K., 2005. A new SPM toolbox for combining probabilistic cytoarchitectonic maps and functional imaging data. *NeuroImage* 25, 1325–1335.
- Eickhoff, S.B., Thirion, B., Varoquaux, G., Bzdok, D., 2015. Connectivity-based parcellation: critique and implications. *Human. Brain Mapp.* 36, 4771–4792.
- Foster, B.L., He, B.J., Honey, C.J., Jerbi, K., Maier, A., Saalman, Y.B., 2016. Spontaneous neural dynamics and multi-scale network organization. *Front. Syst. Neurosci.* 10, 7.
- Genon, S., Li, H., Fan, L., Muller, V.I., Cieslik, E.C., Hoffstaedter, F., Reid, A.T., Langner, R., Grefkes, C., Fox, P.T., Moebus, S., Caspers, S., Amunts, K., Jiang, T., Eickhoff, S.B., 2016. The right dorsal premotor mosaic: organization, functions, and connectivity. *Cereb. Cortex.*
- Geyer, S., Ledberg, A., Schleicher, A., Kinomura, S., Schormann, T., Bürgel, U., Klingberg, T., Larsson, J., Zilles, K., Roland, P.E., 1996. Two different areas within the primary motor cortex of man. *Nature* 382, 805–807.
- Geyer, S., Matelli, M., Luppino, G., Zilles, K., 2000. Functional neuroanatomy of the primate isocortical motor system. *Anat. Embryol.* 202, 443–474.

- Geyer, S., Schleicher, A., Zilles, K., 1999. Areas 3a, 3b, and 1 of human primary somatosensory cortex. *NeuroImage* 10, 63–83.
- Glasser, M., Coalson, T., Robinson, E., Hacker, C., Harwell, J., Yacoub, E., Ugurbil, K., Anderson, J., Beckmann, C., Jenkinson, M., 2016. A Multi-modal parcellation of human cerebral cortex. *Nature*.
- Grefkes, C., Geyer, S., Schormann, T., Roland, P., Zilles, K., 2001. Human somatosensory area 2: observer-independent cytoarchitectonic mapping, interindividual variability, and population map. *NeuroImage* 14, 617–631.
- Griffanti, L., Salimi-Khorshidi, G., Beckmann, C.F., Auerbach, E.J., Douaud, G., Sexton, C.E., Zsoldos, E., Ebmeier, K.P., Filippini, N., Mackay, C.E., Moeller, S., Xu, J., Yacoub, E., Baselli, G., Ugurbil, K., Miller, K.L., Smith, S.M., 2014. ICA-based artefact removal and accelerated fMRI acquisition for improved resting state network imaging. *NeuroImage* 95, 232–247.
- Grosbras, M.H., Beaton, S., Eickhoff, S.B., 2012. Brain regions involved in human movement perception: a quantitative voxel-based meta-analysis. *Human Brain Mapp.* 33, 431–454.
- Gross, C.G., 1994. How inferior temporal cortex became a visual area. *Cereb. Cortex* 4, 455–469.
- Hanakawa, T., 2011. Rostral premotor cortex as a gateway between motor and cognitive networks. *Neurosci. Res.* 70, 144–154.
- Hardwick, R.M., Rottschy, C., Miall, R.C., Eickhoff, S.B., 2013. A quantitative meta-analysis and review of motor learning in the human brain. *NeuroImage* 67, 283–297.
- Hoshi, E., Tanji, J., 2007. Distinctions between dorsal and ventral premotor areas: anatomical connectivity and functional properties. *Curr. Opin. Neurobiol.* 17, 234–242.
- Kantak, S.S., Stinear, J.W., Buch, E.R., Cohen, L.G., 2012. Rewiring the brain: potential role of the premotor cortex in motor control, learning, and recovery of function following brain injury. *Neurorehabilitation Neural Repair* 26, 282–292.
- Kell, C., Morillon, B., Kounesifer, F., Giraud, A., 2010. Lateralization of speech production starts in sensory cortices—a possible sensory origin of cerebral left dominance for speech. *Cerebral Cortex*:bhq167.
- Koechlin, E., Summerfield, C., 2007. An information theoretical approach to prefrontal executive function. *Trends Cogn. Sci.* 11, 229–235.
- Laird, A.R., Eickhoff, S.B., Kurth, F., Fox, P.M., Uecker, A.M., Turner, J.A., Robinson, J.L., Lancaster, J.L., Fox, P.T., 2009. ALE meta-analysis workflows via the brainmap database: progress towards a probabilistic functional brain atlas. *Front. neuroinformatics* 3.
- Langner, R., Eickhoff, S.B., 2013. Sustaining attention to simple tasks: a meta-analytic review of the neural mechanisms of vigilant attention. *Psychol. Bull.* 139, 870–900.
- Laumann, T.O., Gordon, E.M., Adeyemo, B., Snyder, A.Z., Joo, S.J., Chen, M.Y., Gilmore, A.W., McDermott, K.B., Nelson, S.M., Dosenbach, N.U., Schlaggar, B.L., Mumford, J.A., Poldrack, R.A., Petersen, S.E., 2015. Functional system and areal organization of a highly sampled individual human brain. *Neuron* 87, 657–670.
- Lebedev, M.A., Wise, S.P., 2001. Tuning for the orientation of spatial attention in dorsal premotor cortex. *Eur. J. Neurosci.* 13, 1002–1008.
- Luppino, G., Rozzi, S., Calzavara, R., Matelli, M., 2003. Prefrontal and agranular cingulate projections to the dorsal premotor areas F2 and F7 in the macaque monkey. *Eur. J. Neurosci.* 17, 559–578.
- Matelli, M., Luppino, G., Rizzolatti, G., 1985. Patterns of cytochrome oxidase activity in the frontal agranular cortex of the macaque monkey. *Behav. Brain Res.* 18, 125–136.
- Matelli, M., Luppino, G., Rizzolatti, G., 1991. Architecture of superior and mesial area 6 and the adjacent cingulate cortex in the macaque monkey. *J. Comp. Neurol.* 311, 445–462.
- Morosan, P., Schleicher, A., Amunts, K., Zilles, K., 2005. Multimodal architectonic mapping of human superior temporal gyrus. *Anat. Embryol. (Berl.)* 210, 401–406.
- Murphy, K., Birn, R.M., Bandettini, P.A., 2013. Resting-state fMRI confounds and cleanup. *NeuroImage* 80, 349–359.
- Nakayama, Y., Yamagata, T., Hoshi, E., 2016. Rostrocaudal functional gradient among the pre-dorsal premotor cortex, dorsal premotor cortex and primary motor cortex in goal-directed motor behaviour. *Eur. J. Neurosci.* 43, 1569–1589.
- Orban, P., Doyon, J., Petrides, M., Mennes, M., Hoge, R., Bellec, P., 2015. The richness of task-evoked hemodynamic responses defines a pseudohierarchy of functionally meaningful brain networks. *Cereb. Cortex* 25, 2658–2669.
- Picard, N., Strick, P.L., 2001. Imaging the premotor areas. *Curr. Opin. Neurobiol.* 11, 663–672.
- Reid, A.T., Bzdok, D., Genon, S., Langner, R., Muller, V.I., Eickhoff, C.R., Hoffstaedter, F., Cieslik, E.C., Fox, P.T., Laird, A.R., Amunts, K., Caspers, S., Eickhoff, S.B., 2016. ANIMA: a data-sharing initiative for neuroimaging meta-analyses. *NeuroImage* 124, 1245–1253.
- Rizzolatti, G., Luppino, G., 2001. The cortical motor system. *Neuron* 31, 889–901.
- Rothstein, H.R., Sutton, A.J., Borenstein, M., 2006. Publication Bias in Meta-Analysis. *Publication Bias in Meta-Analysis* John Wiley & Sons, Ltd, 1–7.
- Rottschy, C., Caspers, S., Roski, C., Reetz, K., Dogan, I., Schulz, J.B., Zilles, K., Laird, A.R., Fox, P.T., Eickhoff, S.B., 2013. Differentiated parietal connectivity of frontal regions for "what" and "where" memory. *Brain Struct. Funct.* 218, 1551–1567.
- Rottschy, C., Langner, R., Dogan, I., Reetz, K., Laird, A.R., Schulz, J.B., Fox, P.T., Eickhoff, S.B., 2012. Modelling neural correlates of working memory: a coordinate-based meta-analysis. *NeuroImage* 60, 830–846.
- Salimi-Khorshidi, G., Douaud, G., Beckmann, C.F., Glasser, M.F., Griffanti, L., Smith, S.M., 2014. Automatic denoising of functional MRI data: combining independent component analysis and hierarchical fusion of classifiers. *NeuroImage* 90, 449–468.
- Scheperjans, F., Eickhoff, S.B., Homke, L., Mohlberg, H., Hermann, K., Amunts, K., Zilles, K., 2008. Probabilistic maps, morphometry, and variability of cytoarchitectonic areas in the human superior parietal cortex. *Cereb. Cortex* 18, 2141–2157.
- Schubotz, R.I., Anwander, A., Knösche, T.R., von Cramon, D.Y., Tittgemeyer, M., 2010. Anatomical and functional parcellation of the human lateral premotor cortex. *NeuroImage* 50, 396–408.
- Sigl, B., Caspers, S., Mohlberg, H., Cieslik, E., Eickhoff, S., Amunts, K., 2016. The human dorsal premotor cortex—cytoarchitecture, maps and function. *Proceedings of the OHBM 2016 Annual Meeting*.
- Van Essen, D.C., Jbabdi, S., Sotiropoulos, S.N., Chen, C., Dikranian, K., Coalson, T., Harwell, J., Behrens, T.E., Glasser, M.F. 2013. Mapping connections in humans and nonhuman primates: aspirations and challenges for diffusion imaging. *Diffusion MRI, 2nd edition* (eds Johansen-Berg, H., Behrens, T.E.J.):337–358.
- Vossel, S., Geng, J.J., Fink, G.R., 2014. Dorsal and ventral attention systems distinct neural circuits but collaborative roles. *Neuroscientist* 20, 150–159.
- Wager, T.D., Jonides, J., Reading, S., 2004. Neuroimaging studies of shifting attention: a meta-analysis. *NeuroImage* 22, 1679–1693.
- Yeo, B.T., Krienen, F.M., Sepulcre, J., Sabuncu, M.R., Lashkari, D., Hollinshead, M., Roffman, J.L., Smoller, J.W., Zöllei, L., Polimeni, J.R., 2011a. The organization of the human cerebral cortex estimated by intrinsic functional connectivity. *J. Neurophysiol.* 106, 1125–1165.
- Yeo, B.T., Krienen, F.M., Sepulcre, J., Sabuncu, M.R., Lashkari, D., Hollinshead, M., Roffman, J.L., Smoller, J.W., Zöllei, L., Polimeni, J.R., Fischl, B., Liu, H., Buckner, R.L., 2011b. The organization of the human cerebral cortex estimated by intrinsic functional connectivity. *J. Neurophysiol.* 106, 1125–1165.
- Yeo, B.T.T., Krienen, F.M., Sepulcre, J., Sabuncu, M.R., Lashkari, D., Hollinshead, M., Roffman, J.L., Smoller, J.W., Zöllei, L., Polimeni, J.R., 2011c. The organization of the human cerebral cortex estimated by intrinsic functional connectivity. *J. Neurophysiol.* 106, 1125–1165.