
CIRCULATION IN INSECT WINGS

MANUSCRIPT

Mary K. Salcedo*

Dept. of Biomedical and Mechanical Engineering
Virginia Tech
Blacksburg, VA
msalcedo@vt.edu

John J. Socha

Dept. of Biomedical and Mechanical Engineering
Virginia Tech
Blacksburg, VA
jjsocha@vt.edu

September 1, 2020

ABSTRACT

Insect wings are living, flexible structures composed of tubular veins and thin wing membrane. Wing veins can contain hemolymph (insect blood), tracheae, and nerves. Continuous flow of hemolymph within insect wings ensures that sensory hairs, structural elements such as resilin, and other living tissue within the wings remains functional. While it is well known that hemolymph circulates through insect wings, the extent of wing circulation (e.g., whether flow is present in every vein, and whether it is confined to the veins alone) is not well understood, especially for wings with complex wing venation. Over the last 100 years, scientists have developed experimental methods including microscopy, fluorescence, and thermography to observe flow in the wings. Recognizing and evaluating the importance of hemolymph movement in insect wings is critical in evaluating how the wings function both as flight appendages, as active sensors, and as thermoregulatory organs. In this review, we discuss the history of circulation in wings, past and present experimental techniques for measuring hemolymph, and broad implications for the field of hemodynamics in insect wings.

Keywords insect wings · hemolymph · circulation · flight

Introduction: What's a wing by any other name?

Wings are a key innovation in insects, enabling a myriad of ecologically important behaviors including predation, migration, and pollination [Dudley, 2002]. Although their composition of thin membranes and long tubular veins might superficially suggest otherwise, insect wings are dynamic, living structures that require a supply of vital substances. Veins provide mechanical integrity but also act as conduits, containing tracheal tubes for gas exchange, nerves that provide sensory information in flight, and perhaps most importantly, hemolymph that serves multiple functions. Hemolymph actively circulates through wing veins and is critical for maintaining sensory structures that populate the wing [Chintapalli and Hillyer, 2016, Hillyer and Pass, 2020]. Movement of hemolymph, cells, and waste is also required for the proper development of the wing. At metamorphosis, movement of hemolymph in and out of the wing contributes to the expansion and unfolding of the wing [Pass et al., 2015]. In flight, the arrangement of wing veins and flexures influences mechanical integrity of the wing, and thereby aerodynamic performance [Wootton, 1992, Combes and Daniel, 2003a]. Furthermore, without hemolymph circulation, wings desiccate and rapidly lose their flexibility [Dirks and Taylor, 2012a]. Despite its relevance to numerous physiological functions, the mechanics of

*corresponding author

hemolymph circulation in insect wings has been understudied, which motivates us to provide an overview of the field and point to current techniques for investigating flows in insect wings to encourage new studies of wing circulation.

It is well understood that the primary function of wings is to enable flight, and the structural properties of the wing help determine their aerodynamic performance. In flight, wings deform, bending and twisting from aerodynamic and inertial forces as insects navigate complex environments [Wootton, 1992, Combes and Daniel, 2003b, Shyy et al., 2016]. Both wing shape and composition influence flexibility, which can vary locally throughout the wing [Wootton, 1981, Combes and Daniel, 2003a, Combes et al., 2010, Vanella et al., 2009]. An integrated approach to analyzing the functional mechanics of insect wings requires knowledge of 1) wing kinematics during wing deployment and flight, 2) detailed morphology of wings, 3) kinematics interpreted in aerodynamic terms, and 4) how morphology and kinematics vary across the phylogeny of insects [Wootton, 1981]. Whereas the kinematics of flapping flight and wing folding has received attention in the last few decades [Shyy et al., 2016, Bomphrey and Godoy-Diana, 2018], the physiology of the actual structural supports, particularly the veins, is still a mystery. This lack of information is partially rooted in the difficulty of studying vein dynamics in living or recently sacrificed insects.

Recent reviews [Pass, 2000, Pass et al., 2015, Pass, 2018, Hillyer and Pass, 2020] have repeatedly identified gaps in our knowledge of insect circulation, particularly in regard to how hemolymph moves into appendages including wings, legs, and antennae. However, misunderstanding about hemolymph circulation in insect wings persists. For instance, the presence of hemolymph in wings is sometimes ignored or is presumed to be absent or limited to certain veins [Dirks and Taylor, 2012b]. And, despite decades of work on the topic, we have found anecdotally that some biologists (and even entomologists) are unaware that flow occurs in the wings, part of our motivation for highlighting the role of wings as dynamic, living structures. This review focuses on circulation in insect wings, its history, and how hemolymph movement is coupled to an insect's multiple hearts, tracheal system, and gut system. Additionally, we identify challenges and open questions in wing hydraulics that are critical in shaping the future of how insect flight is measured, modeled, and engineered.

Evolutionary pressures on wing structure and sensory systems

Wing shape, venation pattern, and flight behavior are affected by many selective pressures, including ecological niche, predator avoidance, and behavior, to name a few. Within the phylogeny of insects, examples of adaptive wing shapes and modified wing structures (e.g., elytra and halteres) abound. Butterflies in the genus *Morpho* exhibit different flight patterns, such as flapping and gliding, depending on habitat (forest understory versus canopy, respectively) [DeVries et al., 2010]. Gliding male *Morpho* butterflies in the canopy exhibit longer forewings than those that inhabit the understory [DeVries et al., 2010]. Rearing migratory insects in laboratory environments compared with natural, wild populations produces populations with wings that are “weaker, paler, and less elongated” [Davis et al., 2020]. Luna moths and other Saturniid lepidopterans mitigate potential bat predator damage with “lures,” which are elongated twisty tails that branch off the hindwing [Barber et al., 2015]; the longer the hindwing, the more likely to escape a bat

attack [Rubin et al., 2018]. Bats and insects are engaged in an evolutionary predator-prey race, evolving structural and sensory strategies to effectively out-wit the other [Rubin et al., 2018]. As modified hindwings, halteres are shaped as stalks topped with a knob-like end and a base (where stalk meets body) that is covered in an array of sensory structures. In more basal dipteran families such as in crane flies (Family: Tipulidae), halteres have much longer stalks and low asymmetry compared to more derived families [Yarger and Fox, 2016]. Haltere morphology changes with evolutionary derivation, generally increasing in asymmetry [Yarger and Fox, 2016]. Other selective pressures that might act on wing shape and function include auditory performance (related to signaling and sensing), sexual selection, chemosensory performance, visual signaling, and crypsis [Taylor and Krapp, 2007]. Sensory feedback is particularly critical to many of these functions, and sensory cells require hemolymph. These pressures form the basis of a major open question: how does hemolymph circulation evolve with wing structure and mechanosensory systems in the wing and modified wing structures?

Insect sensory systems are highly adaptable with respect to their functioning within the wing's mechanical systems [Taylor and Krapp, 2007]. Hemolymph circulation must also adapt accordingly, or features such as wings would lose sensory function. Wings are instrumented with an array of mechanosensors [Dickerson et al., 2014], some of which include stretch receptors, scolopidia (sound receiving), and campaniform sensilla [Taylor and Krapp, 2007]. Haltere bases (where the stalk connects to the body) are covered in campaniform sensilla, and these sensory structures are situated where they sense maximal strain during haltere oscillation [Yarger and Fox, 2016]. In some species, such as blow flies, 400 campaniform sensilla cover each haltere, making up the majority of said sensilla on the body [Yarger and Fox, 2016]. In both flight and non-flight wing movements (e.g., folding/unfolding, courtship displays, righting-manuevers), wing mechanosensilla bend, providing active mechanosensation during wing movement [Pass, 2018]. Gustatory sensilla provide chemosensory information [Valmalette et al., 2015]. Tympanal organs on the wing make and receive sound [Miller, 1970, Sun et al., 2018]. Scent patches produce mate-attracting pheromones. Sensory feedback is also tied to wing function [Taylor and Krapp, 2007]. For example, removing function of the campaniform sensilla on the forewing eliminates regulation of forewing-twisting in *Schistocerca* locusts [Taylor and Krapp, 2007]. Throughout the body, the proper functioning of sensors requires a hemolymph supply. Thus all wing sensors and organs, epidermal cells, and branches of tracheae within the wing require hydration with hemolymph [Chintapalli and Hillyer, 2016].

Moving hemolymph into the wings

Hemolymph is pumped throughout an insect's body and appendages by wave-like contractions of the dorsal vessel, assisted by additional "hearts" or accessory pulsatile organs (APOs) [Pass et al., 2015, Hillyer and Pass, 2020]. Flow within the head, thorax, and abdomen is open (unconstrained to vessels) and pulsatile. In these regions, hemolymph is moved in bulk by pumping of the tube-like dorsal heart [Pass et al., 2015, Lee and Socha, 2009]. APOs aid in circulating hemolymph, not only in wings, but also within appendages such as the antennae, legs, and ovipositors [Boppana and Hillyer, 2014, Hustert, 1999, Hustert et al., 2014]. Antennal APOs, typically paired and of which there

are several types, can function to pulse hemolymph into the antennae (ampulla-dilator type) [Boppana and Hillyer, 2014]. In contrast, insects can have one or more thoracic APOs that aspirate hemolymph from the wings, pulling it back into the body (from the posterior veins) several times faster than it enters the wing [Chintapalli and Hillyer, 2016, Salcedo, 2019]. Unlike in the hemocoel, once it enters the wings, hemolymph is mostly constrained to a vessel network. Additionally, hemolymph flow may be affected by compression and reinflation of parts of the tracheal system, and possibly displacement of the gut system [Ko et al., 2017, Pendar et al., 2019]. Assuming that the relatively stiff cuticle of the wing means that it maintains a fixed volume, the changes in air volume in tracheae within the wing may be coupled to the hemolymph volume within the wing veins. Therefore, open questions exist whether expansion and contraction of tracheal tubes may drive or be driven by changes in hemolymph volume, governed by fluid-structure interactions. Recent work suggests that a concerted effort of the thoracic APOs, the gut system, and the tracheal network is also necessary for overall circulation [Ko et al., 2017, Harrison et al., 2013, Pendar et al., 2019, Wasserthal, 1982, Wasserthal, 1996], which would represent a new, integrative view of insect circulation. The coordination of these parts, via both active and passive elements (pumps and veins, respectively), is necessary for maintaining a continuous circulatory flow throughout the body, and proper coordination appears to depend upon maintaining appropriate fluid pressure fields and patterned, synchronous pumping.

Winged insects tend to have thoracic APOs, also termed "wing hearts," with the exception of Thysanoptera (thrips) and Aphidina (aphids), whose lack may be due to their small size [Krenn and Pass, 1994]. Wing hearts can also be lacking in apterous insects and nymphs where wings are still developing. As accessory pumps that serve the wings, these APOs are located in the thorax and exist unpaired or in pairs surrounding or attached to the dorsal vessel. Wing hearts exhibit three forms: dorsal vessel modifications, attached pulsatile diaphragms, and unattached pulsatile diaphragms [Pass et al., 2015, Krenn and Pass, 1994]. Each pump utilizes a hemolymph space (subcutellar hemocoel), formed from a raised portion of exoskeleton, which acts as a pump-casing to pull hemolymph from posterior wing veins and back into the body [Pass et al., 2015]. Some debate revolves around whether pumping elements exist in the wing itself, and whether there is actively controlled flow in the wing. So-called "pumping elements" have been observed in the wing, but it is possible that passive wing tissues move in response to pumping of the thoracic wing heart [Arnold, 1964, Tsai et al., 2020]. To investigate active control of hemolymph flows in the wing, targeted imaging of these wing surfaces and measurement of pumping frequencies of the dorsal vessel, thoracic wing hearts, and hemolymph flow speeds is needed.

Throughout the body and appendages, hemolymph circulates to move nutrients, waste, and cells [Chapman, 2012]. Hemolymph contains plasma and hemocytes, and across a diverse range of insects differentiated hemocytes are typically termed as granulocytes (adhesive cells that attack foreign substances), phasmatocytes (strongly adhesive to pathogens, dead cells, and more), spherule cells (sources of cuticular compounds), and oenocytoids (which produce enzymes) [Strand, 2008]. Cells populations can be divided further into circulating and sessile hemocytes, the latter which are

found attached to tissues [Hillyer and Strand, 2014]. Number of hemocytes and whether or not they circulate can depend on development stage and potential stress events (e.g., wounding, infection) [Strand, 2008]. For example in adult mosquitoes, there may be 500-4000 circulating hemocytes while in other dipteran, lepidopteran, and orthopteran insects cell densities range from 500-900 hemocytes per microliter [Hillyer and Strand, 2014]. Hemocytes can range in size depending on species and if the cell is "active." The mosquito hosts three types of hemocytes granulocytes (9 μm diameter but can spread to 35 μm diameters when attached to foreign surfaces), oenocytoids (9 μm diameter), and prohemocytes (4-6 μm diameter) [Hillyer and Strand, 2014]. In smaller insects, some appendages, such as wings, are too small to allow for cells to enter the wings, but hemolymph continues to circulate. For example, in mosquitoes, flowable space within the wing circuit is only 1 μm in diameter, whereas circulating hemocytes are typically 8 μm or larger in Diptera [Boppana and Hillyer, 2014, Chintapalli and Hillyer, 2016, Hillyer and Strand, 2014]. Smaller organisms such as *Plasmodium sporozoites*, bacteria, and other viruses have been found in mosquito wings, suggesting that active circulation is important for dissemination of immune factors [Akaki and Dvorak, 2005, Hillyer et al., 2007, Moreira et al., 2009].

In insects with vein diameters large enough to accommodate cells, hemocytes can be visualized and used to identify flow direction [Arnold, 1964]. In fact, entomologists first recognized hemolymph in insects by tracking visible circulating hemocytes within larger insects [Arnold, 1964]. Recently observed in Nymphalid butterflies, hemocytes clearly circulate in veins and through major organs such as scent patches [Tsai et al., 2020]. It is not known how hemolymph velocities and hemocyte circulation scale within insect wings of increasing size, nor how hemolymph movement changes with development and age. Flow metrics such as velocity, acceleration, and heart pumping frequency have been quantified for adult mosquitoes (*Anopheles gambiae*) and North American grasshoppers (*Schistocerca americana*) [Chintapalli and Hillyer, 2016, Hillyer and Strand, 2014, Salcedo, 2019]. Circulation in insects differs between species (tidal versus circuitous circulation, discussed below), but our knowledge of hemolymph fluid dynamics and wing morphology remains limited.

Brief history of wing hemodynamics

Circulation in insects has long been a subject of debate. Insect physiologists in the mid-1700s to the early 1900s disputed the presence of hemolymph not only in the wing, but also in the insect itself. In 1831, Carus first postulated a circulatory route in insect elytra and wings (an idea that would be known as the "Carus Rule"), whereby blood flows from the insect body to the anterior veins and then back toward the body in the posterior veins (Fig. 1A and C) [Yeager and Hendrickson, 1933, Arnold, 1964]. As acceptance of hemolymph began to emerge, a debate sparked in 1841 as to the presence or absence of a circulatory system. In 1841, Léon Dufour, a scientist and naturalist, published the "History of Metamorphosis and the Pretended Circulation of Insects" [Timbs, 1843]. He garnered support of well-known physiologists (such as Italian biologist and physician Marcello Malpighi), who attested that with no obvious network of blood vessels, there was a clear "testimony against a circulatory system" [Timbs, 1843]. Despite

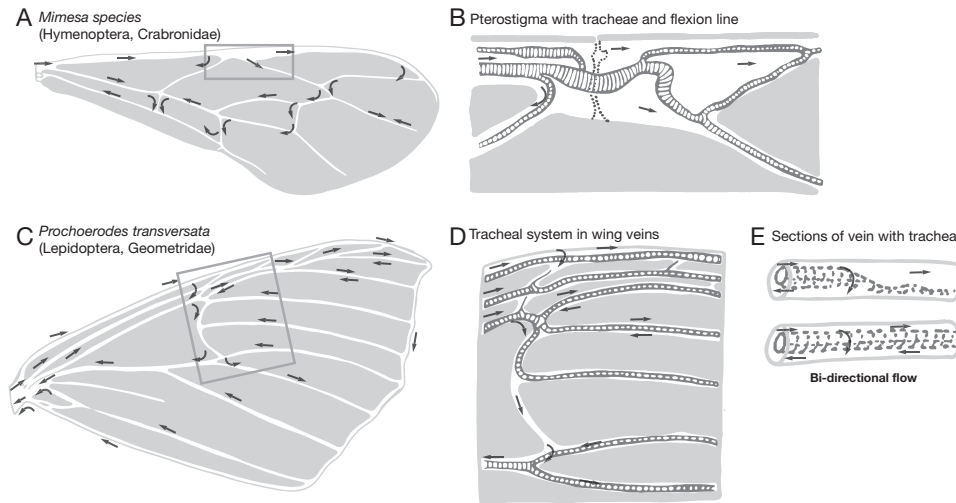


Figure 1: Circulation patterns and examples of tracheae in insect wings (adapted from [Arnold, 1964]) Arnold observed hemolymph and hemocyte movement in 100 insect species across 14 insect orders. Veins can contain tracheal tubes, and hemolymph can move across and around such tracheae. Direction of hemolymph flow is indicated by arrows, which are placed in the orientation and location as Arnold drew them. **(A)** Circulation in the forewing of *Mimesa species* (Hymenoptera) shows a circuitous pattern. **(B)** In the expanded box from A showing a costal break, tracheae (ribbed tubes) extend into the wing veins. Costal breaks, which can occur within the pterostigma (a sinus), are specialized joints for bending found in some hymenopteran species [Mountcastle and Combes, 2014]. **(C)** Another pattern of circuitous hemolymph movement is in the forewing of *Prochoerodes transversata* (Lepidoptera). **(D)** Due to partitioning flow by tracheae, hemolymph moves in two directions within the same vein. This is not observed in all Lepidoptera. **(E)** An example of how tracheal branches partition flow within sections of wing vein. Hemolymph here moves bidirectionally and also across the tracheal branch. *Wings are not shown to scale.*

a vigorous rebuttal by Verloren (1847), who documented 90 species of insects where circulation was observed by 17 authors, it took decades to reach consensus [Arnold, 1964]. In the 1850s, scientists explored the possibility that the tracheal system may transport hemolymph as a network of blood vessels. Interest in hemolymph circulation seemed to lapse in the latter 19th century and picked up with works by biologist Moseley (1871), the first to study wing circulation in cockroaches, and entomologist Brocher (1929), who studied the wings of lady beetles (Family: Coccinellidae) and also the legs, antennae, body, dorsal vessel, and pulsatile organs. Brocher became a key investigator of circulation in insects and their appendages, and in 1916 himself complained that many naturalists denied circulation existed in insects [Yeager and Hendrickson, 1933]. To clear up further confusion as to whether circulation existed in the elytron of an insect, Yeager and Hendrickson (1933) proposed a standardized method to study the circulatory route in cockroaches focusing on the elytra, wings, and wing pad of the American cockroach, *Periplaneta americana* [Yeager and Hendrickson, 1933].

In response to an increase in circulatory studies, John Arnold gave a rigorous account of circulation in insect wings, its history, and particularly highlighted circulatory observations between 1900-1964 (Fig.1) [Arnold, 1964]. His summaries and observations became a basis for much of what we know about insect wing circulation. Using an alternate method than that proposed by Yeager and Hendrickson, Arnold simply used a microscope and strong light source and ascertained hemolymph flow and directionality by visualizing the movement of hemocytes in 14 orders and 100 species. With new

descriptions of flow patterns in wings, he challenged and confirmed nearly 200 years of publications on circulation in insects. His 72 drawings of flow patterns in insect wings highlighted a circuitous flow pattern, in which hemolymph circulates into the costal and subcostal veins (which are located at the leading edge of the wing), moves towards the wing tip, and eventually returns, flowing back towards the wing base (Fig. 1A and C). In many insects (with the exception of some Lepidoptera), flow moves out to the wing tip through anterior veins near the leading edge, and back towards the body through more posterior veins near the trailing edge. Shorter, smaller-diameter cross-veins shunt flow across the wing in the chordwise direction (specifically from the leading to the trailing edge), ultimately forming a circuitous pattern of fluid flow [Arnold, 1964]. Arnold identified flow directions with clear afferent (to wing tip) and efferent (to wing base) directions (Fig. 1). He also noted structural features that serve to redirect hemolymph, such as tracheal branches, cross veins, and species-specific venation features (e.g. the arculus, a basal crossvein in dragonflies) (Fig. 1 B, D, and E). Detailed drawings of wing bases described some flows that do not enter the wing, but circulate around the wing hinge, flowing slightly into the wing and immediately back into the body. This observation has also been seen in *S. americana* [Salcedo, 2019]. In some beetles, hemolymph in and around the wing hinge can be used to hydraulically open the wing (*Dorcus titanus platymelus*) [Sun et al., 2014].

Arnold also first identified regions of “leaky” flow, where hemolymph moved from wing vein into membrane [Arnold, 1963]. This type of flow was common not only in thickened wings like elytra (in beetles and true bugs) and tegmen (in grasshoppers and crickets), but also within what appeared to be “normal” thin wing membrane. It is unknown how leakiness occurs; Arnold did not speculate, but one possibility is that pores exist in veins to allow for hemolymph to move between vein tubules to membrane. How hemolymph might be directed into the membrane, and what functions it serves, are also open questions. However, a year before his major treatise on circulation, Arnold (1963) described the leakiness of the pterostigma, a thickened portion of the wing typically seen as a melanated rectangle near the wing tip of dragonflies. The pterostigma plays a functional role in gliding flight by reducing flutter and acting as an inertial regulator of pitch angle [Norberg, 1972]. In some insects, the pterostigma is a discrete sinus where hemolymph is contained in a semi-rectangular box. In others, however, the region is less well-defined and termed a “pseudostigma,” where leakiness occurs between the two major leading edge veins (costa and subcosta). Arnold described pterostigmas and pseudostigmas in Odonata, Neuroptera, Psocoptera, Hemiptera, and Hymenoptera [Arnold, 1963].

Other observations from Arnold (1963) include tracheation of these sinuses (Fig. 1 B) and other structural features in the wing (e.g., the dragonfly arculus), indicating live tissue or areas of dense sensory demand [Arnold, 1963]. Throughout the wing, tracheal branches, besides delivering oxygen, serve to re-route flow and act as septa, diverting flow in antagonistic directions within the same vein (Fig. 1 B, D, and E), a common feature across taxa [Arnold, 1964]. In some species of large grasshoppers, compression and re-inflation of thoracic air sacs at the wing hinges can influence flow into the wing [Salcedo, 2019]. Tracheation within the wing membrane occurs, but has been described as “unusual”, as it is found in somewhat unpredictable locations within and across species [Guillermo-Ferreira et al., 2017]. Arnold

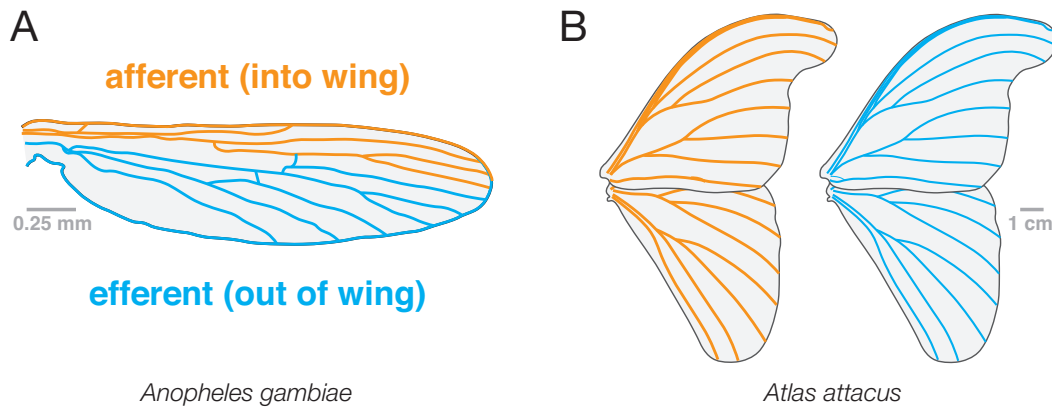


Figure 2: **Circuitous versus tidal flow patterns in insect wings** Main currents of hemolymph flow are indicated as afferent hemolymph movement (orange), which moves into the wing, and efferent movement (blue), which returns back into the insect body. (A) Circuitous flow, measured in *Anopheles gambiae* [Chintapalli and Hillyer, 2016], moves into the leading edge veins of a wing (costa, subcosta) and reverses in the wing tip, returning to the body through trailing edge veins (cubitus, annals, etc.). (B) Tidal flow, known to occur in *Atlas attacus* [Wasserthal, 1982], moves into all veins and moves out of all veins.

also tracked hemocyte movement within modified wings such as elytra and halteres [Arnold, 1964]. In both structures, hemolymph flow moves in an apparent circuit. Currently, it is difficult to measure live tissues continuously throughout a wing, especially in larger wings with dense venation. Harkening back to Arnold's history lesson, perhaps it should not be unusual to find tracheae within the membrane. Multiple authors have called for focused research attention on this topic [Pass, 2018, Hillyer and Pass, 2020], reflecting on the fact that there is still not widespread recognition of an insect wing as live tissue.

Tidal versus circuitous: relationship between circulation and respiration

Insect wings exhibit two main hemolymph flow patterns: tidal (also known as 'oscillatory') and circuitous (as defined above) (Fig.2). In the 1980s, Lutz Wasserthal challenged the historical assumption that all flow was circuitous and discovered that lepidoterans employ tidal flow, and that tracheal expansion and compression influences wing hemodynamics [Wasserthal, 1982]. Generally, a tidal pattern involves hemolymph moving into all wing veins, and then reversing direction, coordinated by wing hearts, the dorsal vessel, thoracic air sacs, and wing tracheae (Fig.2B). Quantitative measurements in Lepidoptera, Diptera, and Coleoptera suggested that tidal flows of hemolymph are possible with vigorous pumping of the wing hearts (pulling hemolymph from the wing), dorsal vessel reversals, coupling of wing tracheal tubes (expansion and compression), and inflation of thoracic air sacs. Large air sacs expand and compress between the hindwing and forewing hinges. In addition, visible through microscopy, sections of tracheal branches near the wing tip expand and contract, also affecting local flows [Salcedo, 2019].

Wasserthal studied the extremely large Atlas moth (*Attacus atlas*, wing span, 30 cm), showing a four-part bulk movement of hemolymph, in which hemolymph is pulled in and out of the wing due to coordinated pumping from thoracic APOs and tracheal distension. Thoracic APOs pump vigorously preceding air intake, creating a pressure difference that pulls hemolymph out of the wing as tracheal volume increases. Thus, as the pressure differential reverses, hemolymph

moves from wing to wing with each breath [Wasserthal, 1996], demonstrating that in the Atlas moth the circulatory and respiratory fluid systems are coupled.

Not unexpected, the actions of both systems serve to increase the overall rate of hemolymph circulation. It has been observed in the abdomen of grasshoppers (*S. americana*), that the dorsal vessel and compressions of the tracheal system operate at slightly different pumping frequencies [Lee and Socha, 2009]. In large rhinoceros beetles, hemolymph moves with each flow reversal of the dorsal heart, where anterograde (posterior to anterior) flow is correlated with hemolymph movement into the wing, and retrograde (anterior to posterior) correlated with outflow [Wasserthal, 1998]. However, in mosquitoes, which employ a circuitous flow pattern in the wing, reversals within the dorsal heart do not change the wing's circulation direction nor affect flow velocities (Fig. 2A) [Chintapalli and Hillyer, 2016]. Although some studies have examined qualitative patterns of hemolymph flow in the dorsal heart, wing hearts, and wings of particular species, few studies have quantified the overall hemodynamics and net circulatory performance arising from the combination of wing morphology, venation patterning, and fluid dynamics, or have examined variation of wing hemodynamics across the insect phylogeny.

Experimental systems to study circulation in insect wings

Exploring and quantifying complex fluid movement in insect wings requires an understanding both of the venation pattern and how/where hemolymph is flowing. To study multiple fluid systems in parallel, capturing both spatial and temporal resolution of fast-moving flows requires high speed videography combined with microscopy, technologies that are not often available together. Also, complex internal wing morphology is typically captured with histological sections or using scanning electron microscopy (SEM) to observe discrete slices of vein morphology across a wing [Song et al., 2020]. Most descriptions of whole-venation patterns have largely been qualitative, focusing on 2D information from wings that have been scanned or hand-drawn [Salcedo et al., 2019, Hoffmann et al., 2018]. These descriptions assume that wing veins are cylindrical, which is often contradicted by measurements from SEM, which have revealed variations in cross-sectional shape from circular to kidney-shaped [Appel et al., 2015]. This complex system thus requires a multi-faceted approach. In this section, we discuss how methods to observe and measure wing circulation have advanced over recent decades. Four experimental methods (detailed in Fig.3) in particular have contributed the most: direct observation with microscopy (Fig.3A), fluorescent staining (Fig.3B), contact thermography (Fig.3C), and fluorescent particle tracking with high-speed microscopy (Fig.3D). We also highlight other experimental techniques for observing wing geometries and potential solutions to examining wing structures continuously.

As discussed previously, Arnold observed circuitous flow in wings across the insect phylogeny (Fig.1). In the 1960s, he used a light source and microscope to observe hemocyte movement, choosing insects with mostly translucent wings (due to low pigmentation) [Arnold, 1964]. He laid the wings flat and pinned them with glass to observe cell movement in a 2D venation pattern. Smaller insects were left unrestrained and a glass coverslip was used to spread the wings, with a drop of water and detergent sandwiched between wings and glass (Fig.3A). Larger insects were restrained with

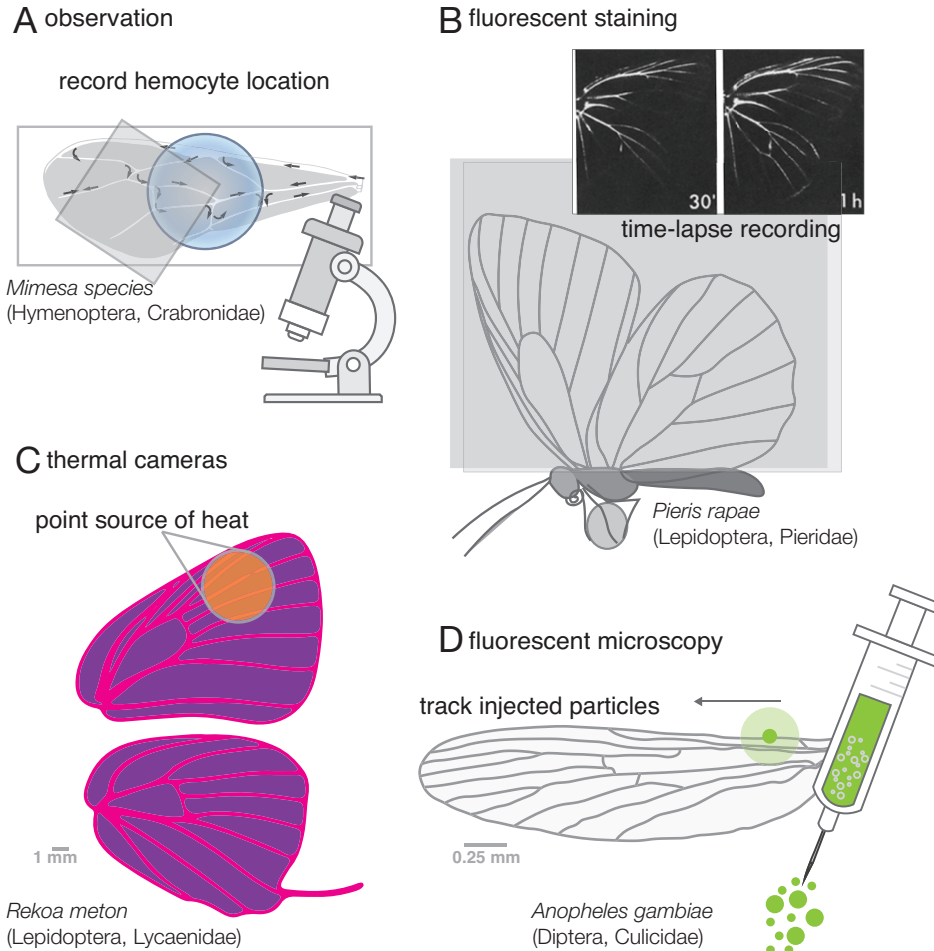


Figure 3: Methods to measure hemolymph movement in insect wings Tracking hemolymph movement in insect wings typically involve microscopy, fluorescence, or thermography. Four methods stand out as foundations to observing circulation and wing morphology. **(A)** Well-lit microscopy: By applying water between glass slides, direct observation can be made through gently restrained insects with clear or semi-clear wings. Arnold established this method, tracking hemocytes in 100 species of insects across 14 insect orders [Arnold, 1964]. **(B)** Fluorescent staining and UV fluorescence shows presence hemolymph in the wings. Hemolymph carries the stain into the wings, which accumulates and dilutes over time, showing bulk movement [Wasserthal, 1983]. **(C)** Thermography: using thermal cameras and selective heating (e.g. using a laser or contact thermistors), bulk hemolymph movement can be visualized under changing environmental conditions [Wasserthal, 1980, Schmitz and Wasserthal, 1993, Tsai et al., 2020]. **(D)** Fluorescent microscopy: injecting fluorescent particles in the abdomen or thorax allows for visualization of flow in the wings and throughout the body. Particles are pumped into the wings via accessory pulsatile organs and can be tracked [Hillyer and Strand, 2014, Chintapalli and Hillyer, 2016, Salcedo, 2019]. Wings in (A) and (B) are not shown to scale.

elastic material. In smaller insects, wing vein diameter is a limiting factor, and can prevent hemocyte entry into the wing. Because hemocyte movement is most easily seen in larger insects (wider veins), he focused on larger species, and identified patterns of the flow direction by eye. Although this pioneering work was largely qualitative and relied on 2D data, it laid the groundwork for future quantitative studies of flow.

In contrast to direct visual observation, fluorescent staining can be used to quantify flow movement, independent of hemocyte tracking. Wasserthal extended and developed this method, using diluted fluorescent stains (specifically pyrrolidino-methyl-tetracycline (TC)) and ultra-violet illumination to identify tidal flow in pierid butterflies [Wasserthal, 1983]. After stain injection in the abdomen, the stain begins to circulate in the body, eventually being

pulled through the wing by aspirating thoracic APOs. Butterflies were then mounted with wings pinned between glass slides and photographed under UV (scales on wings were gently removed due to slight fluorescence of the scales and wing themselves) (Fig.3B). The staining first appeared in the wing veins within the first 5-10 minutes of application. Wasserthal took photographs at relatively rapid intervals (1 to 15 min) in the first hour, and then at broader intervals (1 to 6 hours) each day afterwards until the end of their lives. The fluorescent stain accumulates and dilutes over time (likely as a function of heart rate, thoracic APOs, and general circulation), but the stain front showed a clear step-wise advancement from wing base to tip, showing an oscillatory pattern of hemolymph movement in the wing. These studies were the first to report tidal flow in wings and a unidirectional flow mechanism quantitatively. To test flows of hemolymph into membrane and study potential mechanisms of water loss through the wings, staining was conducted at varying humidity. In some butterfly species at high humidity, fluorescence seeped into the wing membrane driven by diffusion and evaporation, suggesting one-way flow into the wings. This research was the first to describe bulk movement of hemolymph, an important precursor to understanding instantaneous flow in the wing.

Thermal techniques have been used to observe sensory properties and hemolymph movement. Wings, especially those with dark patches, are highly effective radiation-absorbing surfaces. Thermoreceptors along wing veins sense heat, and under intense temperatures or selective heating (such as a laser beam or thermistor), insects will close their wings (basking as a protective posture) or leave for a cooler location [Wasserthal, 1975, Schmitz and Wasserthal, 1993, Tsai et al., 2020]. With the advancement of low-cost infrared cameras, thermal imaging has become a reliable way to record temperature fluctuations corresponding to hemolymph movement (Fig.3C). Such techniques are relatively non-invasive because the insect can move semi-freely, and also provide instantaneous measurements of how insects thermoregulate. Because most insects have thoracic APOs and other hemolymph sinuses that lie just below the cuticle, applied thermistors can be used to both heat and record pulsations of hemolymph flow [Wasserthal, 1980]. Such contact thermography with surface probes can be used to quantify directionality of hemolymph and bulk flow rate, and indirectly indicate behavioral responses (such as basking).

With advances in high-speed microscopy and fluorescent techniques, hemolymph movement can now be visualized instantaneously throughout the wing and body. Recent work in mosquitoes with injected fluorescent particles measured velocities and accelerations of hemolymph flow in antennae and antennal APOs [Boppana and Hillyer, 2014], and described circulation in wings, and how thoracic APOs and dorsal vessel pumping frequencies vary [Chintapalli and Hillyer, 2016]. By injecting fluorescent particles within in the abdomen or thorax, hemolymph is seeded with particles that can be tracked (as seen in Fig.3D) throughout the insect using a fluorescent microscope, but especially in appendages such as wings and antennae [Boppana and Hillyer, 2014, Chintapalli and Hillyer, 2016]. Particle sizes are critical: for the mosquito *Anopheles gambiae*, particles with diameters of 2 μm did not flow through the veins; those with diameters of 1.0 μm did flow, but only in certain veins; and in contrast, those with diameters of 0.5 μm flowed freely [Boppana and Hillyer, 2014]. The particle tracking showed that flow leaves mosquito wings four

times faster than how it enters, and an unpaired (single wing heart) thoracic APO beats at frequencies independent of those of the dorsal vessel [Chintapalli and Hillyer, 2016]. This technique is a powerful method to observe flow across an insect wing and its pumping organs. It can be used more broadly to examine flow in insects across the phylogeny, and has been applied successfully to the North American grasshopper, *S. americana* [Salcedo, 2019]. However, with particle sizes of a similar order to the diameter of the vein, this technique only provides information on bulk flow patterns. For finer details of flow within a vein, micro-PIV (particle image velocimetry) [Wereley and Meinhart, 2010] is needed; studies such as these are currently being planned in our lab.

Combined, each of these techniques (observation, fluorescent staining, thermography, fluorescent particles) has informed the other and led to the ability to observe venation pattern as a whole, not just in separate pieces. There is still a need to understand these systems from a three-dimensional perspective. One option is to use synchrotron x-ray imaging, which enables visualization of internal structures with resolutions on the scale of 1 μm [Socha et al., 2007, Socha and De Carlo, 2008]. Perhaps the most striking demonstration of the power of this technique is the three-dimensional visualization of muscles, tracheae, and tendon recorded in the thorax during tethered flight of flies [Walker et al., 2014]. Similarly complex systems such as the pumping of the dorsal vessel and compressions of the tracheal system in the abdomen of the grasshopper *S. americana* can be tracked using injected microbubbles [Lee and Socha, 2009], but thus far, only two-dimensional imaging has been successful. If combined with the previously mentioned techniques (such as adding fluorescent particles), live microtomographic imaging may be able to reveal not only the fluidic dynamics of multiple flows (hemolymph and air), but also active and passive morphology (muscles and cuticle). Although access to a synchrotron facility in the U.S. requires proposal acceptance, the cost to a research team in travel, lodging, and supplies can be relatively low when compared to a microscopy set-up in a lab. Synchrotron facilities can also be found in other locations throughout the world (<https://lightsources.org>).

A look to the future: wing material and flexibility

A wing's mechanical properties, particularly stiffness and toughness, depend highly on hydration status and how proteins interact with chitin [Vincent and Wegst, 2004]. Insect wings, with their broad surface area, are sensitive to evaporative water-loss. Although evaporation can be positive, aiding in the release of pheromones and other specific scents found on the surfaces of wings [Pass, 2018], water loss can greatly influence wing flexibility, a largely unsolved problem. If a wing is removed from an insect, it desiccates and decreases in mass by 21% and increases in stiffness by 46% in just 24 hours [Mengesha et al., 2010]. In fact upon wing removal, wings begin to immediately desiccate, and over 36 hours, damping properties decrease [Norris et al., 2013]. As an insect ages, wings become brittle and more likely to fracture. Once wings lose flexibility, flight performance declines, and individual survival is reduced [Combes et al., 2010, Arnold, 1964]. Wing flexibility plays a major role in aerodynamic force production, and improves both inertial and aerodynamic power economy [Mountcastle and Combes, 2013, Hedrick et al., 2015, Vanella et al., 2009, Reid et al., 2019]. These effects strongly suggest that hydration is essential to maintaining the mechanical function of wings, as well as for maintaining

local sensory structures [Dickerson et al., 2014, Pass, 2018, Hillyer and Pass, 2020]. Wing hydration and mechanical performance, and thus behavior, are inextricably related.

Insect cuticle is a composite material, composed of crystalline chitin nanofibers embedded in a matrix of proteins, polyphenols, water [Chapman, 2012]. Wing veins are layered with resilin, an extremely resilient elastic protein that exhibits energy return as high as 96-97% (in dragonflies up to 99%) [King, 2010, Wainwright et al., 1982]. Found configured around most wing joints and occasionally the wing membrane, the presence of resilin allows for dynamic deformation in flapping flight by storing energy and resisting long-lasting damage [Donoughe et al., 2011, Appel et al., 2015, Mountcastle and Combes, 2014]. Acting as a fail-safe against permanent damage, resilin requires a water content of 50-60% in order to function at its highest resilience [Weis-Fogh, 1960, Wainwright et al., 1982]. Although resilin is highly hygroscopic and a type of hydrogel [Kovalev et al., 2018], the importance of hemolymph circulation to its performance is far less appreciated.

Wings can be foldable, and to reduce damage, insects often store neatly pleated membrane and veins under a modified, toughened forewing, the elytra. Resilin is often embedded in each of the major pleats of folded wings, which is well-recognized in the dermapterans such as the earwig, since it enables wing expansion from their shortened elytra to 10 times their folded wing area [Haas et al., 2000a]. Unfolding wings can depend on built-in (embedded) folding patterns that are often dependent on structural elastic proteins such as resilin [Haas et al., 2000b]. To unfurl their wings, earwigs depend on bistability of a resilin-embedded wing, where the wing is most stable either closed or open [Faber et al., 2018]. This viscoelastic behavior of resilin at the wing hinge in extending and retracting a wing is best described by a duality with fast (elastic) and slow (viscous) responses [Kovalev et al., 2018]. In other beetles, unfolding wings are opened with a pulse of hemolymph into wing veins [Sun et al., 2014]. A dynamic system, wing motions such as unfolding/folding, flapping, and gliding depend on structural integrity of a hydrated resilin system.

Conversely, it is possible that the wing motion during flight itself could influence how hemolymph is circulated in the wing. Few studies have examined how hemolymph mass affects overall wing mass and influences torsional characteristics of the wing [Hou et al., 2015, Song et al., 2020]. Many models of insect wing aerodynamics fail to include not only wing flexibility, but also overlook the existence of fluid within the wing veins, modeling veins as hollow (air-filled) tubes [Hou et al., 2015, Song et al., 2020]. Consider the mosquito, where pumping organs pulse at frequencies of >3 Hz and flapping frequencies can range between 500-700 Hz. Fluid could shift during flight, with high tracheal ventilation (contribution of thoracic or abdominal air sacs) and flapping frequencies. However, hemolymph circulation in the wing likely operates at low Reynolds numbers. Using a flow speed of $100 \mu\text{m}/\text{sec}$ and diameter of $1 \mu\text{m}$ from *Anopheles gambiae* [Hillyer and Strand, 2014], and dynamic viscosity of 3 cP and density of 1 g/mL from hemolymph of *Manduca sexta* larvae [Kenny et al., 2018], the Reynolds number of flow in small insects can be estimated to be on the order of 0.003. It is unclear in theory how wingbeat patterns would change such viscous-dominated flows in the wing. Recently, a model of hemolymph hydraulics in flapping wings of Asian

ladybeetles (*Harmonia axyridis*) suggested that presence of hemolymph acts to shift the center of mass along the wing veins, suppressing unfavorable wing flutter [Song et al., 2020]. Further results indicate even stronger effects: removing the hemolymph to make a hollow hindwing reduced the wing inertia and rotational inertia by 64% relative to a fluid-filled hindwing [Song et al., 2020]. This result suggests that hemolymph-filled wing veins may play a significant role in active flapping flight. While flow experiments measure an insect at rest, high-speed cameras and extensions of described methods could be used to determine how moving fluid mass affects the flexibility of the wing and its dynamics during flapping flight.

Lastly, all winged insects at metamorphosis vigorously pump hemolymph to hydraulically expand their wings [Salcedo, 2019]. A critical bottleneck in development, this expansion phase must be successful to produce viable adults. Successful wing expansion requires a concerted effort by the circulatory and tracheal systems, which are highly dependent upon each other during this period. When wings develop, tracheae branch into the imaginal disc, supplying oxygen to the forming wing tissue [Comstock, 1918]. Tracheae can be found within a wing vein, but during development, are not active predictors of where wing veins will form [Comstock, 1918]. The mechanics of insect wing expansion, and how an expanding wing undergoes rapid changes in stiffness, can be further informed by new understanding of flows in the wing during metamorphosis.

Competing interests The authors declare no competing interests.

Author contributions MKS conceived and wrote manuscript. JS contributed significant edits and conceptual development.

Funding This research was funded by the US National Science Foundation (NSF) through the NSF Postdoctoral Research Fellowship in Biology (NSF Award ID: 1812215).

Supplementary material No supplement.

Acknowledgements The authors would like to thank Dr. Jacob Peters for thoughtful comments on the manuscript.

References

- [Akaki and Dvorak, 2005] Akaki, M. and Dvorak, J. A. (2005). A chemotactic response facilitates mosquito salivary gland infection by malaria sporozoites. *Journal of experimental biology*, 208(16):3211–3218.
- [Appel et al., 2015] Appel, E., Heepe, L., Lin, C.-P., and Gorb, S. N. (2015). Ultrastructure of dragonfly wing veins: Composite structure of fibrous material supplemented by resilin. *Journal of Anatomy*, 227(4):561–582.
- [Arnold, 1963] Arnold, J. (1963). A note on the pterostigma in insects. *The Canadian Entomologist*, 95(1):13–16.
- [Arnold, 1964] Arnold, J. W. (1964). Blood circulation in insect wings. *The Memoirs of the Entomological Society of Canada*, 96(S38):5–60.

- [Barber et al., 2015] Barber, J. R., Leavell, B. C., Keener, A. L., Breinholt, J. W., Chadwell, B. A., McClure, C. J., Hill, G. M., and Kawahara, A. Y. (2015). Moth tails divert bat attack: evolution of acoustic deflection. *Proceedings of the National Academy of Sciences*, 112(9):2812–2816.
- [Bomphrey and Godoy-Diana, 2018] Bomphrey, R. J. and Godoy-Diana, R. (2018). Insect and insect-inspired aerodynamics: Unsteadiness, structural mechanics and flight control. *Current Opinion in Insect Science*, 30:26–32.
- [Boppana and Hillyer, 2014] Boppana, S. and Hillyer, J. F. (2014). Hemolymph circulation in insect sensory appendages: functional mechanics of antennal accessory pulsatile organs (auxiliary hearts) in the mosquito *Anopheles gambiae*. *Journal of Experimental Biology*, 217(17):3006–3014.
- [Chapman, 2012] Chapman, R. (2012). The insects: structure and function, 5th edn cambridge. UK: Cambridge University Press.[Google Scholar].
- [Chintapalli and Hillyer, 2016] Chintapalli, R. T. V. and Hillyer, J. F. (2016). Hemolymph circulation in insect flight appendages: physiology of the wing heart and circulatory flow in the wings of the mosquito, *Anopheles gambiae*. *Journal of Experimental Biology*, pages jeb–148254.
- [Combes et al., 2010] Combes, S., Crall, J., and Mukherjee, S. (2010). Dynamics of animal movement in an ecological context: dragonfly wing damage reduces flight performance and predation success. *Biology Letters*, 6(3):426–429.
- [Combes and Daniel, 2003a] Combes, S. and Daniel, T. (2003a). Flexural stiffness in insect wings: I. scaling and the influence of wing venation. *Journal of Experimental Biology*, 206(17):2979–2987.
- [Combes and Daniel, 2003b] Combes, S. A. and Daniel, T. L. (2003b). Into thin air: Contributions of aerodynamic and inertial-elastic forces to wing bending in the hawkmoth *Manduca sexta*. *Journal of Experimental Biology*, 206(17):2999–3006.
- [Comstock, 1918] Comstock, J. H. (1918). *The wings of insects: an exposition of the uniform terminology of the wing-veins of insects and a discussion of the more general characteristics of the wings of the several orders of insects*. Comstock Publishing Company.
- [Davis et al., 2020] Davis, A. K., Smith, F. M., and Ballew, A. M. (2020). A poor substitute for the real thing: Captive-reared monarch butterflies are weaker, paler and have less elongated wings than wild migrants. *Biology Letters*, 16(4):20190922.
- [DeVries et al., 2010] DeVries, P., Penz, C. M., and Hill, R. I. (2010). Vertical distribution, flight behaviour and evolution of wing morphology in *Morpho* butterflies. *Journal of Animal Ecology*, 79(5):1077–1085.
- [Dickerson et al., 2014] Dickerson, B. H., Aldworth, Z. N., and Daniel, T. L. (2014). Control of moth flight posture is mediated by wing mechanosensory feedback. *Journal of Experimental Biology*, 217(13):2301–2308.
- [Dirks and Taylor, 2012a] Dirks, J.-H. and Taylor, D. (2012a). Fracture toughness of locust cuticle. *Journal of Experimental Biology*, 215(9):1502–1508.
- [Dirks and Taylor, 2012b] Dirks, J.-H. and Taylor, D. (2012b). Veins improve fracture toughness of insect wings. *PLOS ONE*, 7(8):1–9.
- [Donoughe et al., 2011] Donoughe, S., Crall, J. D., Merz, R. A., and Combes, S. A. (2011). Resilin in dragonfly and damselfly wings and its implications for wing flexibility. *Journal of Morphology*, 272(12):1409–1421.
- [Dudley, 2002] Dudley, R. (2002). *The Biomechanics of Insect Flight: Form, Function, Evolution*. Princeton University Press.
- [Faber et al., 2018] Faber, J. A., Arrieta, A. F., and Studart, A. R. (2018). Bioinspired spring origami. *Science*, 359(6382):1386–1391.
- [Guillermo-Ferreira et al., 2017] Guillermo-Ferreira, R., Appel, E., Urban, P., Bispo, P. C., and Gorb, S. N. (2017). The unusual tracheal system within the wing membrane of a dragonfly. *Biology Letters*, 13(5):20160960.
- [Haas et al., 2000a] Haas, F., Gorb, S., and Blickhan, R. (2000a). The function of resilin in beetle wings. *Proceedings of the Royal Society of London. Series B: Biological Sciences*, 267(1451):1375–1381.
- [Haas et al., 2000b] Haas, F., Gorb, S., and Wootton, R. (2000b). Elastic joints in dermapteran hind wings: materials and wing folding. *Arthropod Structure & Development*, 29(2):137–146.
- [Harrison et al., 2013] Harrison, J. F., Waters, J. S., Cease, A. J., VandenBrooks, J. M., Callier, V., Klok, C. J., Shaffer, K., and Socha, J. J. (2013). How locusts breathe. *Physiology*, 28(1):18–27.
- [Hedrick et al., 2015] Hedrick, T. L., Combes, S. A., and Miller, L. A. (2015). Recent developments in the study of insect flight. *Canadian Journal of Zoology*, 93(12):925–943.

- [Hillyer et al., 2007] Hillyer, J. F., Barreau, C., and Vernick, K. D. (2007). Efficiency of salivary gland invasion by malaria sporozoites is controlled by rapid sporozoite destruction in the mosquito haemocoel. *International journal for parasitology*, 37(6):673–681.
- [Hillyer and Pass, 2020] Hillyer, J. F. and Pass, G. (2020). The insect circulatory system: Structure, function, and evolution. *Annual Review of Entomology*, 65:121–143.
- [Hillyer and Strand, 2014] Hillyer, J. F. and Strand, M. R. (2014). Mosquito hemocyte-mediated immune responses. *Current Opinion in Insect Science*, 3:14–21.
- [Hoffmann et al., 2018] Hoffmann, J., Donoughe, S., Li, K., Salcedo, M. K., and Rycroft, C. H. (2018). A simple developmental model recapitulates complex insect wing venation patterns. *Proceedings of the National Academy of Sciences*, 115(40):9905–9910.
- [Hou et al., 2015] Hou, D., Yin, Y., Zhao, H., and Zhong, Z. (2015). Effects of blood in veins of dragonfly wing on the vibration characteristics. *Computers in Biology and Medicine*, 58:14–19.
- [Hustert, 1999] Hustert, R. (1999). Accessory hemolymph pump in the mesothoracic legs of locusts, (*Schistocerca gregaria* forsk.) (Orthoptera, Acrididae). *International Journal of Insect Morphology and Embryology*, 28(1-2):91–96.
- [Hustert et al., 2014] Hustert, R., Frisch, M., Böhm, A., and Pass, G. (2014). A new kind of auxiliary heart in insects: functional morphology and neuronal control of the accessory pulsatile organs of the cricket ovipositor. *Frontiers in zoology*, 11(1):43.
- [Kenny et al., 2018] Kenny, M. C., Giarra, M. N., Granata, E., and Socha, J. J. (2018). How temperature influences the viscosity of hornworm hemolymph. *Journal of Experimental Biology*, 221(21):jeb186338.
- [King, 2010] King, R. J. (2010). Dynamic mechanical properties of resilin. Master’s thesis, Virginia Tech.
- [Ko et al., 2017] Ko, Y., Pendar, H., and Socha, J. (2017). Kinematic analysis of gut movements in the beetle *Zophobas morio* reveals linkages to circulation and respiration. In *Integrative and Comparative Biology*, volume 57, pages E314–E314. Oxford Univ Press Inc Journals Dept, 2001 Evans Rd, Cary, NC.
- [Kovalev et al., 2018] Kovalev, A., Filippov, A., and Gorb, S. N. (2018). Slow viscoelastic response of resilin. *Journal of Comparative Physiology A*, 204(4):409–417.
- [Krenn and Pass, 1994] Krenn, H. W. and Pass, G. (1994). Morphological diversity and phylogenetic analysis of wing circulatory organs in insects, part i: Non-holometabola. *Zoology*, 98(1):7–22.
- [Lee and Socha, 2009] Lee, W.-K. and Socha, J. J. (2009). Direct visualization of hemolymph flow in the heart of a grasshopper (*Schistocerca americana*). *BMC Physiology*, 9(1):1–11.
- [Mengesha et al., 2010] Mengesha, T., Vallance, R., and Mittal, R. (2010). Stiffness of desiccating insect wings. *Bioinspiration & Biomimetics*, 6(1):014001.
- [Miller, 1970] Miller, A. (1970). Structure of the green lacewing tympanal organ (*Chrysopa carnea*, neuroptera). *Journal of Morphology*, 131(4):359–382.
- [Moreira et al., 2009] Moreira, L. A., Iturbe-Ormaetxe, I., Jeffery, J. A., Lu, G., Pyke, A. T., Hedges, L. M., Rocha, B. C., Hall-Mendelin, S., Day, A., Riegler, M., et al. (2009). A Wolbachia symbiont in *Aedes aegypti* limits infection with dengue, chikungunya, and Plasmodium. *Cell*, 139(7):1268–1278.
- [Mountcastle and Combes, 2013] Mountcastle, A. M. and Combes, S. A. (2013). Wing flexibility enhances load-lifting capacity in bumblebees. *Proceedings of the Royal Society B: Biological Sciences*, 280(1759):20130531.
- [Mountcastle and Combes, 2014] Mountcastle, A. M. and Combes, S. A. (2014). Biomechanical strategies for mitigating collision damage in insect wings: Structural design versus embedded elastic materials. *Journal of Experimental Biology*, 217(7):1108–1115.
- [Norberg, 1972] Norberg, R. Å. (1972). The pterostigma of insect wings an inertial regulator of wing pitch. *Journal of Comparative Physiology*, 81(1):9–22.
- [Norris et al., 2013] Norris, A. G., Palazotto, A. N., and Cobb, R. G. (2013). Experimental structural dynamic characterization of the hawkmoth (*Manduca sexta*) forewing. *International Journal of Micro Air Vehicles*, 5(1):39–54.
- [Pass, 2000] Pass, G. (2000). Accessory pulsatile organs: evolutionary innovations in insects. *Annual Review of Entomology*, 45(1):495–518.
- [Pass, 2018] Pass, G. (2018). Beyond aerodynamics: The critical roles of the circulatory and tracheal systems in maintaining insect wing functionality. *Arthropod Structure & Development*, 47(4):391–407.

- [Pass et al., 2015] Pass, G., Tögel, M., Krenn, H., and Paululat, A. (2015). The circulatory organs of insect wings: Prime examples for the origin of evolutionary novelties. *Zoologischer Anzeiger-A Journal of Comparative Zoology*, 256:82–95.
- [Pendar et al., 2019] Pendar, H., Aviles, J., Adjerid, K., Schoenewald, C., and Socha, J. J. (2019). Functional compartmentalization in the hemocoel of insects. *Scientific Reports*, 9(1):6075.
- [Reid et al., 2019] Reid, H. E., Schwab, R. K., Maxcer, M., Peterson, R. K., Johnson, E. L., and Jankauski, M. (2019). Wing flexibility reduces the energetic requirements of insect flight. *Bioinspiration & biomimetics*, 14(5):056007.
- [Rubin et al., 2018] Rubin, J. J., Hamilton, C. A., McClure, C. J., Chadwell, B. A., Kawahara, A. Y., and Barber, J. R. (2018). The evolution of anti-bat sensory illusions in moths. *Science Advances*, 4(7):eaar7428.
- [Salcedo, 2019] Salcedo, M. K. (2019). *An Insect Wing: Expansion, Hemodynamics, and Venation Patterns*. PhD thesis, Harvard University, Organismic Evolutionary Biology.
- [Salcedo et al., 2019] Salcedo, M. K., Hoffmann, J., Donoughe, S., and Mahadevan, L. (2019). Computational analysis of size, shape and structure of insect wings. *Biology Open*, 8(10).
- [Schmitz and Wasserthal, 1993] Schmitz, H. and Wasserthal, L. T. (1993). Antennal thermoreceptors and wing-thermosensitivity of heliotherm butterflies: their possible role in thermoregulatory behavior. *Journal of Insect Physiology*, 39(12):1007–1019.
- [Shyy et al., 2016] Shyy, W., Kang, C.-k., Chirarattananon, P., Ravi, S., and Liu, H. (2016). Aerodynamics, sensing and control of insect-scale flapping-wing flight. *Proceedings of the Royal Society A: Mathematical, Physical and Engineering Sciences*, 472(2186):20150712.
- [Socha and De Carlo, 2008] Socha, J. J. and De Carlo, F. (2008). Use of synchrotron tomography to image naturalistic anatomy in insects. In *Developments in X-Ray Tomography VI*, volume 7078, page 70780A. International Society for Optics and Photonics.
- [Socha et al., 2007] Socha, J. J., Westneat, M. W., Harrison, J. F., Waters, J. S., and Lee, W.-K. (2007). Real-time phase-contrast x-ray imaging: A new technique for the study of animal form and function. *BMC Biology*, 5(1):1–15.
- [Song et al., 2020] Song, Z., Tong, J., Yan, Y., Wu, W., and Sun, J. (2020). Effects of microfluid in the veins of the deployable hindwings of the asian ladybeetle on flight performance. *Computers in Biology and Medicine*, page 103817.
- [Strand, 2008] Strand, M. R. (2008). The insect cellular immune response. *Insect science*, 15(1):1–14.
- [Sun et al., 2014] Sun, J., Ling, M., Wu, W., Bhushan, B., and Tong, J. (2014). The hydraulic mechanism of the unfolding of hind wings in *Dorcus titanus platymelus* (order: Coleoptera). *International Journal of Molecular Sciences*, 15(4):6009–6018.
- [Sun et al., 2018] Sun, P., Mhatre, N., Mason, A. C., and Yack, J. E. (2018). In that vein: Inflated wing veins contribute to butterfly hearing. *Biology Letters*, 14(10):20180496.
- [Taylor and Krapp, 2007] Taylor, G. K. and Krapp, H. G. (2007). Sensory systems and flight stability: What do insects measure and why? *Advances in Insect Physiology*, 34:231–316.
- [Timbs, 1843] Timbs, J. (1843). *The Year-Book of Facts in Science and Art*. Simpkin, Marshall, and Company.
- [Tsai et al., 2020] Tsai, C.-C., Childers, R. A., Shi, N. N., Ren, C., Pelaez, J. N., Bernard, G. D., Pierce, N. E., and Yu, N. (2020). Physical and behavioral adaptations to prevent overheating of the living wings of butterflies. *Nature Communications*, 11(1):1–14.
- [Valmalette et al., 2015] Valmalette, J. C., Raad, H., Qiu, N., Ohara, S., Capovilla, M., and Robichon, A. (2015). Nano-architecture of gustatory chemosensory bristles and trachea in *Drosophila* wings. *Scientific Reports*, 5:14198.
- [Vanella et al., 2009] Vanella, M., Fitzgerald, T., Preidikman, S., Balaras, E., and Balachandran, B. (2009). Influence of flexibility on the aerodynamic performance of a hovering wing. *Journal of Experimental Biology*, 212(1):95–105.
- [Vincent and Wegst, 2004] Vincent, J. F. and Wegst, U. G. (2004). Design and mechanical properties of insect cuticle. *Arthropod Structure & Development*, 33(3):187–199.
- [Wainwright et al., 1982] Wainwright, S. A., Biggs, W., Gosline, J., and Currey, J. (1982). *Mechanical design in organisms*. Princeton University Press.
- [Walker et al., 2014] Walker, S. M., Schwyn, D. A., Mokso, R., Wicklein, M., Müller, T., Doube, M., Stampanoni, M., Krapp, H. G., and Taylor, G. K. (2014). In vivo time-resolved microtomography reveals the mechanics of the blowfly flight motor. *PLoS Biol*, 12(3):e1001823.
- [Wasserthal, 1996] Wasserthal, L. (1996). Interaction of circulation and tracheal ventilation in holometabolous insects. *Adv. Insect Physiol*, 26:297–351.

- [Wasserthal, 1975] Wasserthal, L. T. (1975). The role of butterfly wings in regulation of body temperature. *Journal of Insect Physiology*, 21(12):1921–1930.
- [Wasserthal, 1980] Wasserthal, L. T. (1980). Oscillating haemolymph ‘circulation’ in the butterfly *Papilio machaon* L. revealed by contact thermography and photocell measurements. *Journal of Comparative Physiology*, 139(2):145–163.
- [Wasserthal, 1982] Wasserthal, L. T. (1982). Antagonism between haemolymph transport and tracheal ventilation in an insect wing (*Attacus atlas* L.). *Journal of Comparative Physiology B: Biochemical, Systemic, and Environmental Physiology*, 147(1):27–40.
- [Wasserthal, 1983] Wasserthal, L. T. (1983). Haemolymph flows in the wings of pierid butterflies visualized by vital staining (insecta, lepidoptera). *Zoomorphology*, 103(3):177–192.
- [Wasserthal, 1998] Wasserthal, L. T. (1998). The open hemolymph system of holometabola and its relation to the tracheal space. *Microscopic Anatomy of Invertebrates*, 11:583–620.
- [Weis-Fogh, 1960] Weis-Fogh, T. (1960). A rubber-like protein in insect cuticle. *Journal of Experimental Biology*, 37(4):889–907.
- [Wereley and Meinhart, 2010] Wereley, S. T. and Meinhart, C. D. (2010). Recent advances in micro-particle image velocimetry. *Annual Review of Fluid Mechanics*, 42:557–576.
- [Wootton, 1981] Wootton, R. (1981). Support and deformability in insect wings. *Journal of Zoology*, 193:447–468.
- [Wootton, 1992] Wootton, R. (1992). Functional morphology of insect wings. *Annual Review of Entomology*, 37:113–140.
- [Yarger and Fox, 2016] Yarger, A. M. and Fox, J. L. (2016). Dipteran halteres: perspectives on function and integration for a unique sensory organ.
- [Yeager and Hendrickson, 1933] Yeager, J. F. and Hendrickson, G. O. (1933). A simple method of demonstrating blood circulation in the wings and wing-pads of the cockroach, *Periplaneta americana* Linn. *Proceedings of the Society for Experimental Biology and Medicine*, 30(7):858–860.