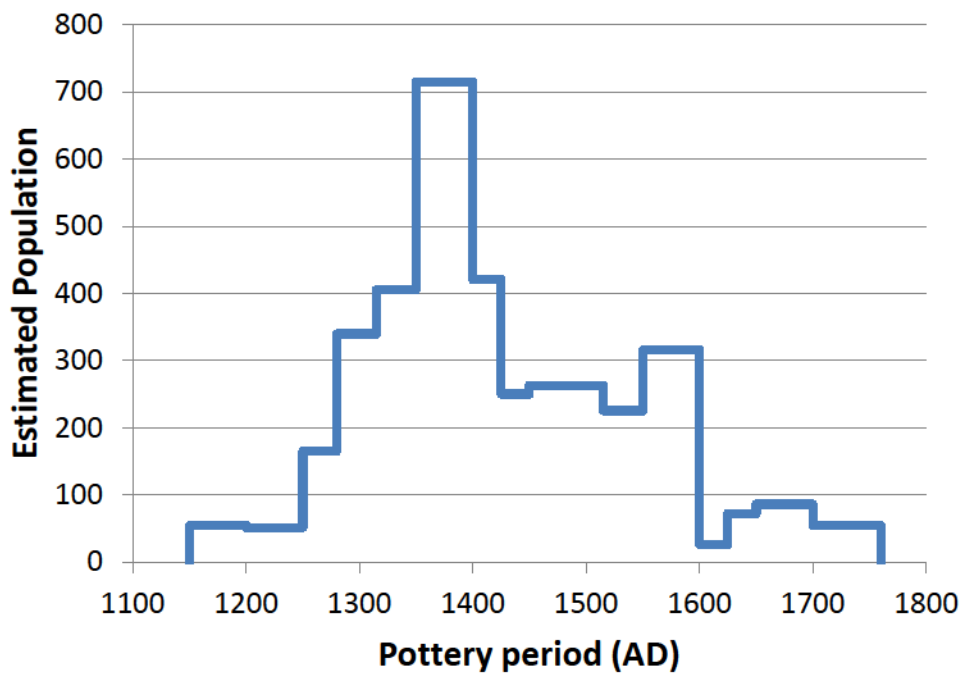
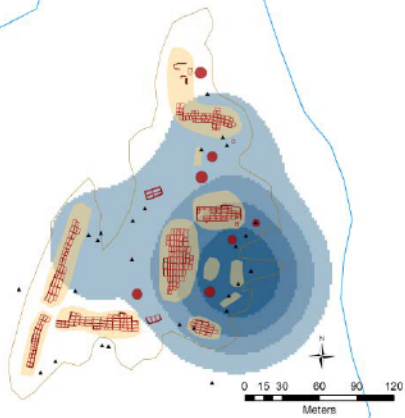


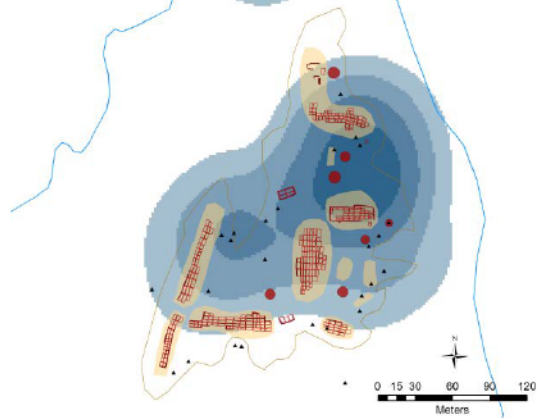
Accepted for publication in *Advances in Archaeological Practice* 8(2)



(a)



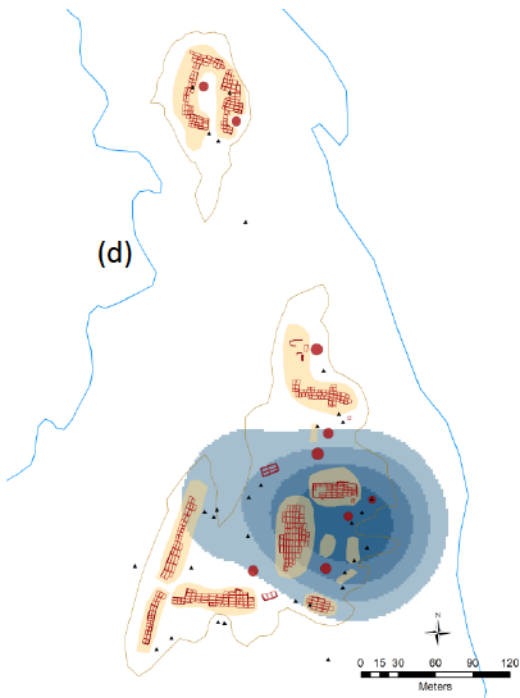
(b)



(c)



(d)



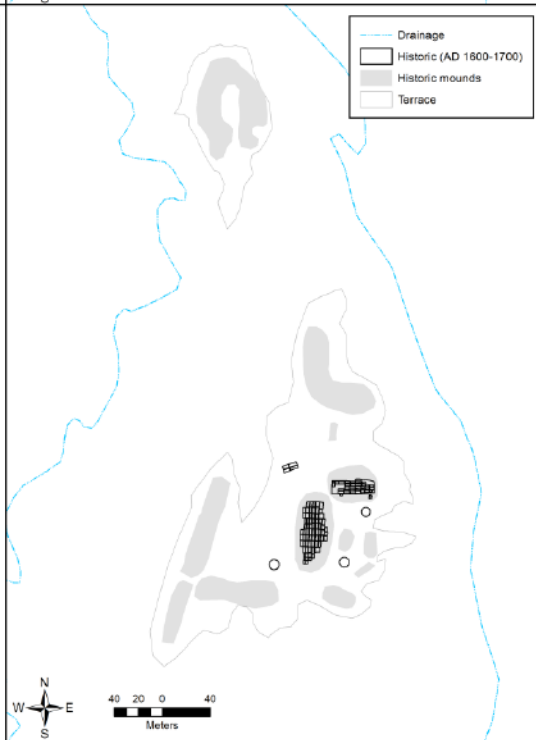
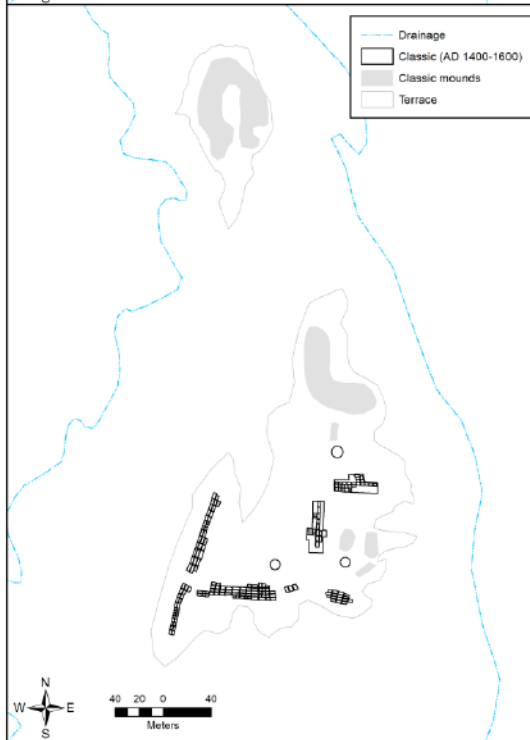
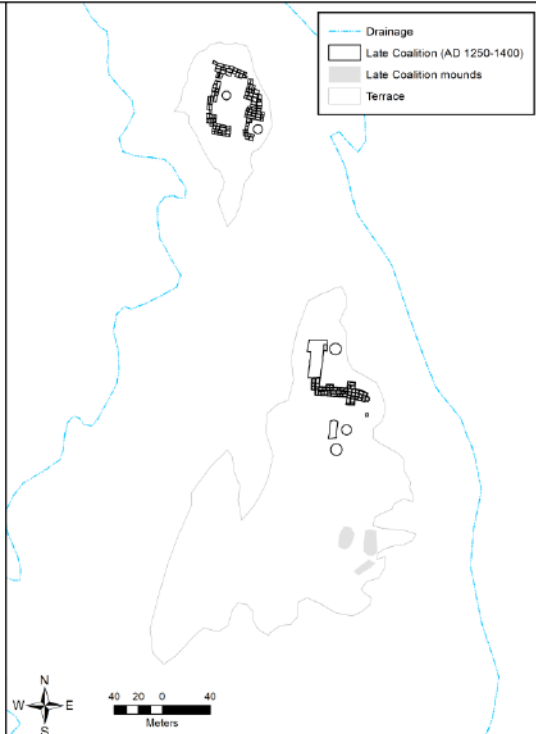
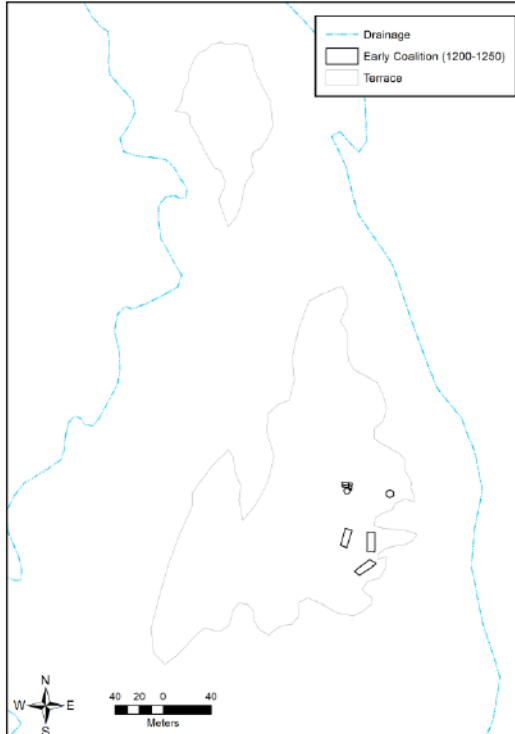


Table 1. Room count estimates for K'uuyemugeh house mounds.

Mound	Volume (m³)	Area (m²)	Average height (m)	Est. N stories	Rooms visible in ortho- photo	Ground floor rooms (area)	Total rooms (area)	Total rooms (volume)
1	499.55	1479.8	0.34	1	33	65.77	65.77	63.95
2	169.52	687.6	0.25	1	27	30.56	30.56	21.70
3	423.37	1328.7	0.32	2	59	59.05	88.58	54.20
4	1035.01	1820.6	0.57	2	71	80.92	121.37	132.49
5	637.28	1109.6	0.57	2	39	49.31	73.97	81.58
6	16.05	188.4	0.09	1		8.37	8.37	2.05
7	31.41	209.6	0.15	1		9.32	9.32	4.02
8	2.9	95.0	0.03	1		4.22	4.22	0.37
9	117.92	383.5	0.31	1	16	17.05	17.05	15.10
10	2.5	85.9	0.03	1		3.82	3.82	0.32
11	595.71	2110.1	0.28	1	55	93.78	93.78	76.26
13	1594.48	2973.5	0.54	2	112	132.15	198.23	204.11

Table 2. Surface pottery assemblage from 31 2-meter diameter dogleash sampling units in high artifact density areas at K'uuyemugeh.

	Ware and type	Date Range (A.D.)	Total
Gray ware	Indented Corrugated	1050-1280	69
	Smearred Indented Corrugated	1250-1425	1,915
	Micaceous gray	1400-1625	1,707
	Striated gray	1600-1700	69
	Plain Gray	900-1700	1,087
	Utility ware, NFS	900-1700	14
Decorated ware	Red Mesa B/w	900-1050	1
	Kwahe'e B/w	1050-1200	2
	Santa Fe B/w	1150-1350	91
	Wiyo B/w	1280-1400	707
	Santa Fe/Wiyo B/w	1150-1400	797
	Galisteo B/w	1250-1400	4
	Biscuit A	1350-1450	730
	Biscuit B	1400-1600	489
	Biscuit ware, NFS	1350-1600	578
	Potsuwi'i Incised	1450-1550	23
	Sankawi B/c	1515-1650	503
	Tewa Red	1625-1760	171
	Tewa Polychrome	1625-1760	129
	Kapo Black	1625-1760	113
Glaze ware	Glaze A	1315-1425	20
	Glaze B	1400-1450	4
	Glaze C/D	1425-1515	7
	Glaze E/F	1515-1700	11
	Glaze on Red/Yellow	1315-1450	217
	Glaze Polychrome	1315-1700	69
	Glaze ware, NFS	1315-1700	44
	Total		9,571