

RESEARCH ARTICLE

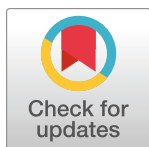
# Long-term *in vivo* biocompatibility of single-walled carbon nanotubes

Thomas V. Galassi<sup>1,2</sup>, Merav Antman-Passig<sup>1</sup>, Zvi Yaari<sup>1</sup>, Jose Jessurun<sup>3</sup>, Robert E. Schwartz<sup>2,3</sup>, Daniel A. Heller<sup>1,2,4\*</sup>

**1** Molecular Pharmacology Program, Memorial Sloan Kettering Cancer Center, New York, New York, United States of America, **2** Physiology, Biophysics, & Systems Biology Graduate Program, Weill Cornell Medical College, Cornell University, New York, New York, United States of America, **3** Division of Gastroenterology and Hepatology, Department of Medicine, Weill Medical College of Cornell University, New York, New York, United States of America, **4** Department of Pharmacology, Weill Cornell Medical College, Cornell University, New York, New York, United States of America

☞ These authors contributed equally to this work.

\* [hellerd@mskcc.org](mailto:hellerd@mskcc.org)



## OPEN ACCESS

**Citation:** Galassi TV, Antman-Passig M, Yaari Z, Jessurun J, Schwartz RE, Heller DA (2020) Long-term *in vivo* biocompatibility of single-walled carbon nanotubes. PLoS ONE 15(5): e0226791. <https://doi.org/10.1371/journal.pone.0226791>

**Editor:** Hannes C. Schniepp, The College of William and Mary, UNITED STATES

**Received:** December 4, 2019

**Accepted:** March 5, 2020

**Published:** May 6, 2020

**Copyright:** © 2020 Galassi et al. This is an open access article distributed under the terms of the [Creative Commons Attribution License](https://creativecommons.org/licenses/by/4.0/), which permits unrestricted use, distribution, and reproduction in any medium, provided the original author and source are credited.

**Data Availability Statement:** All relevant data are within the paper.

**Funding:** This work was supported in part by the NIH New Innovator Award (DP2-HD075698), NIDDK (R01-DK114321), CTSC (UL1-TR002384) NCI (R01-CA215719), the Cancer Center Support Grant (P30-CA008748), the National Science Foundation CAREER Award (1752506), the Ara Parseghian Medical Research Fund, the American Cancer Society Research Scholar Grant (GC230452), the Pershing Square Sohn Cancer Research Alliance, the Honorable Tina Brozman

## Abstract

Over the past two decades, measurements of carbon nanotube toxicity and biodistribution have yielded a wide range of results. Properties such as nanotube type (single-walled vs. multi-walled), purity, length, aggregation state, and functionalization, as well as route of administration, greatly affect both the biocompatibility and biodistribution of carbon nanotubes. These differences suggest that generalizable conclusions may be elusive and that studies must be material- and application-specific. Here, we assess the short- and long-term biodistribution and biocompatibility of a single-chirality DNA-encapsulated single-walled carbon nanotube complex upon intravenous administration that was previously shown to function as an in-vivo reporter of endolysosomal lipid accumulation. Regarding biodistribution and fate, we found bulk specificity to the liver and >90% signal attenuation by 14 days in mice. Using near-infrared hyperspectral microscopy to measure single nanotubes, we found low-level, long-term persistence in organs such as the heart, liver, lung, kidney, and spleen. Measurements of histology, animal weight, complete blood count; biomarkers of organ function all suggest short- and long-term biocompatibility. This work suggests that carbon nanotubes can be used as preclinical research tools in-vivo without affecting acute or long-term health.

## 1. Introduction

The unique physical properties of carbon nanotubes have prompted interest in many fields and potential applications in material sciences, electronics, biology, and medicine. Carbon nanotubes may exist as either single-walled carbon nanotubes (SWCNTs) or multi-walled carbon nanotubes (MWCNTs). SWCNTs are cylindrical graphene tubes with typical diameters of 0.5–2 nm and exhibit novel optical and electronic properties. These properties are dependent on the roll-up angle and diameter of nanotubes, which are defined by the integers ( $n, m$ ),

Foundation for Ovarian Cancer Research, the Expect Miracles Foundation - Financial Services Against Cancer, the Anna Fuller Fund, the Louis V. Gerstner Jr. Young Investigator's Fund, the Frank A. Howard Scholars Program, MSK's Cycle for Survival's Equinox Innovation Award in Rare Cancers, the Alan and Sandra Gerry Metastasis Research Initiative, Mr. William H. Goodwin and Mrs. Alice Goodwin and the Commonwealth Foundation for Cancer Research, the Experimental Therapeutics Center, the Imaging & Radiation Sciences Program, and the Center for Molecular Imaging and Nanotechnology of Memorial Sloan Kettering Cancer Center. R.E.S. is supported by 1K08DK101754, 1R03DK117252, R01CA234614, DOD grant W81XWH1810237, and is a Irma Hirschl Trust Research Award Scholar.

**Competing interests:** D.A.H. is named on a patent filed by MSKCC related to this work ("Composition and method for monitoring lipid", US patent #10,401,295, issued September 3, 2019). D.A.H. is a cofounder and officer with equity interest of Goldilocks Therapeutics Inc., LipidSense Inc., and Nirova Biosense Inc., as well as a member of the scientific advisory boards of Concarlo Holdings LLC and Nanorobotics Inc. M.A.P. is a cofounder in Repair Ltd. R.E.S. is a member of the scientific advisory board of Miromatrix Inc. This does not alter our adherence to PLOS ONE policies on sharing data and materials.

denoting SWCNT species/chirality[1]. MWCNTs consist of multiple concentric layers of graphene cylinders, and also exist as multiple chiralities exhibiting unique properties, with diameters that can range from 1–60 nm[2, 3].

The unique properties of carbon nanotubes and their potential applications have prompted many studies of the toxicity and biological/ecological fate of these materials over the past two decades[4, 5] that have often resulted in perceived general toxicity by many in the scientific community. Overall, however, the results of toxicology studies on carbon nanotubes have been remarkably inconsistent[4–6]. One major confounding factor in determining the biodistribution and toxicological profile of a nanotube sample is the type of nanotube under investigation. Studies investigating the effects of MWCNTs, for instance, suggest that they cause asbestos-like effects in mammals[7], while recent investigations of SWCNTs found a protective effect against several disorders, including neurodegenerative disease and stroke[8–10]. Studies also found differences between SWCNTs and MWCNTs in both cell uptake and viability, with MWCNT preparations leading to a decrease in cell viability that was not seen upon exposure with SWCNT preparations[11]. Further investigation into these results reveals that there are many factors related to carbon nanotube structure, size, preparation techniques, and route of administration that affect the biodistribution and toxicological profile of a specific carbon nanotube preparation[5,8–10].

Studies focusing on SWCNTs report a large variety of findings ranging from harmful to beneficial effects on cells or animals, depending on the preparation/derivatization. Recent work investigating the structure-dependent biocompatibility of SWCNTs found that, while singly-dispersed SWCNTs showed no significant effects on mitochondrial function and hypoxia *in vitro*, negative effects were seen upon treatment with aggregated SWCNTs which further depended on the structural integrity of the aggregated SWCNT dispersions[12]. Aggregated SWCNTs were also found, however, to attenuate the effects of methamphetamine in mice[9]. Recent work also suggests that SWCNT treatment alleviates autophagic/lysosomal defects in primary glia from a mouse model of Alzheimer's disease[8], while amine-modified SWCNTs are neuroprotective in a stroke model in rats[10]. Individually-dispersed SWCNTs functionalized with lipid-polyethylene glycol (PEG) conjugates, injected intravenously into rodents, exhibited minimal effects on rodent blood chemistry[13], despite their presence in the liver for up to four months. Such studies also highlight the effects of SWCNT functionalization on long term biodistribution. While the non-covalently functionalized SWCNTs persisted in organs such as the liver and spleen for months[13], covalently functionalized SWCNTs were shown to rapidly clear the body via the urine[14]. Investigators have studied SWCNT toxicity in animals following airway, intravenous, intraperitoneal, subcutaneous, oral, and topical exposure, leading to varying degrees of biocompatibility depending on the SWCNT preparation used[6]. Even when focusing on a single route of administration, such as intravenous injection, it has been difficult to draw general conclusions about SWCNT toxicity due to large differences in the quantity of SWCNTs injected as well as varying preparation techniques. Injected quantities of SWCNTs have ranged over three orders of magnitude. The large range of concentrations and the diverse functionalization chemistries likely contribute to large differences in biodistribution and biocompatibility. [14–18]

The diversity of results pertaining to carbon nanotube biodistribution and toxicity highlights the need for specific studies for each type, functionalization, and application of carbon nanotubes. Here, we examine the short and long-term biodistribution and toxicity of a single, purified SWCNT (n,m) species/chirality (the (9,4) species) encapsulated with a specific single-stranded DNA sequence (ssCTTC<sub>3</sub>TTC; DNA-SWCNT). This DNA-nanotube combination, when injected intravenously into mice, was recently found to function as a non-invasive reporter of Kupffer cell endolysosomal lipid accumulation[18]. Bulk measurements have

shown that this DNA-nanotube complex, ssCTTC<sub>3</sub>TTC-(9,4), localized predominantly to the liver, although single-particle measurements found small quantities in other organs. Extensive histological examinations, complete blood counts, and serum biomarker measurements results suggest that ssCTTC<sub>3</sub>TTC-(9,4) is sufficiently biocompatible for preclinical applications, while more work is needed to assess its potential for use in humans.

## 2. Methods and materials

### 2.1 Preparation of the purified DNA-nanotube complex, ssCTTC<sub>3</sub>TTC-(9,4)

1 mg/mL of raw EG 150X single walled carbon nanotubes purchased from Chasm Advanced Materials (Norman, Oklahoma) were mixed with 2 mg/mL ssDNA in 0.1 M NaCl. SWCNTs were then wrapped in ssDNA via probe tip ultrasonication (Sonics & Materials, Inc.) for 120 minutes at ~ 8 W. Dispersions were then centrifuged (Eppendorf 5430 R) for 90 minutes at 17,000 x g. The top 85% of the resulting supernatant was then collected and used for purification of the (9,4) chirality.

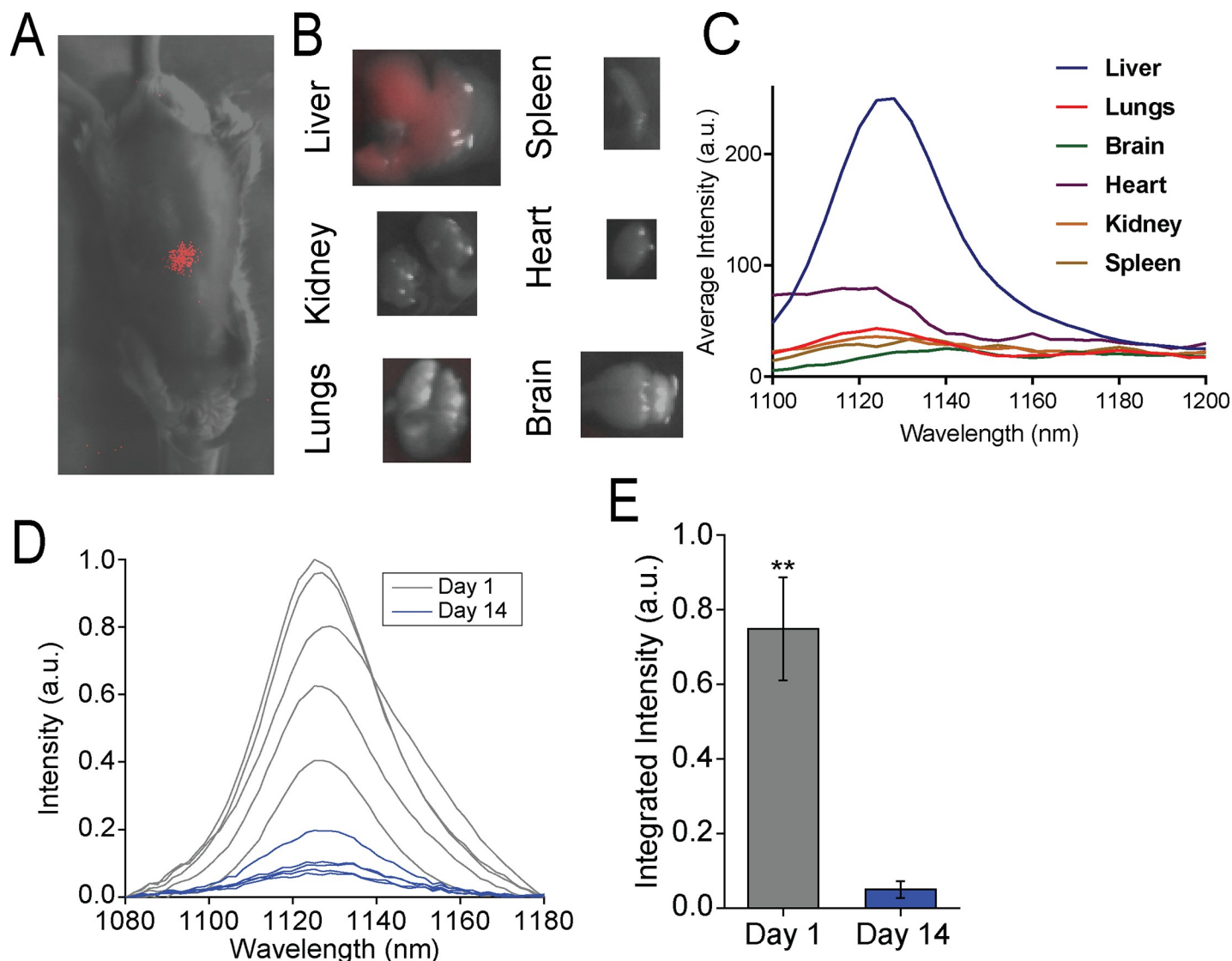
Purification of the (9,4) nanotube from the unsorted ssCTTC<sub>3</sub>TTC-SWCNT sample was performed using the aqueous two-phase extraction method[19–21]. In brief, ssCTTC<sub>3</sub>TTC-SWCNT was mixed with a solution containing a final concentration of 7.76% polyethylene glycol (PEG, molecular weight 6 kDa, Alfa Aesar), and 15.0% polyacrylamide (PAM, molecular weight 10 kDa, Sigma Aldrich). Following an overnight incubation at room temperature, the sample was vortexed and then centrifuged at 10,000 x g for 3 minutes. The top phase of the resulting solution was then collected and added to blank “bottom phase,” which was produced by removing the bottom phase of a 7.76% PEG, 15.0% PAM solution following centrifugation at 10,000 x g for 10 minutes. The resulting solution was once again vortexed and centrifuged to produce a top phase enriched in ssCTTC<sub>3</sub>TTC-(9,4) complexes. Following collection of the top phase NaSCN was added at a final concentration of 0.5 M. This solution was then incubated overnight at 4 degrees Celsius to precipitate ssCTTC<sub>3</sub>TTC-(9,4). The sample was then centrifuged at 17,000 x g for 20 minutes, causing ssCTTC<sub>3</sub>TTC-(9,4) to pellet. Following removal of the supernatant, this pellet was then suspended in diH<sub>2</sub>O and stored with 0.1 mg/mL free ssCTTC<sub>3</sub>TTC-(9,4).

### 2.2 Animal studies

All animal studies were approved and carried out in accordance with the Memorial Sloan Kettering Cancer Center Institutional Animal Care and Use Committee. All animals used in the study were male C57BL/6 mice at 6–12 weeks of age. All control and experimental mice were age matched and housed in identical environments. For near-infrared fluorescent imaging *in vivo* and *ex-vivo* mice were injected with 200  $\mu$ L of 2.3mg/L ssCTTC<sub>3</sub>TTC-(9,4) diluted in PBS and imaged following 1 hour. For the transient assessment of ssCTTC<sub>3</sub>TTC-(9,4) *in vivo*, mice were tail vein injected with 200  $\mu$ L of 0.5mg/L ssCTTC<sub>3</sub>TTC-(9,4) diluted in PBS. For all other experiments, mice were tail vein injected with 200  $\mu$ L of 1.0 mg/L ssCTTC<sub>3</sub>TTC-(9,4) diluted in PBS. For *in vivo* spectroscopy, mice were anesthetized with 2% isoflurane prior to data collection. Upon experimental end-point mice were euthanized—by CO<sub>2</sub> asphyxiation in an inhalation chamber followed by cervical dislocation.

### 2.3 Near infrared *in vivo* spectroscopy

Spectra were acquired from rodents non-invasively *in vivo* using a custom-built reflectance probe-based spectroscopy system[18, 22, 23]. The excitation was provided by injection of a

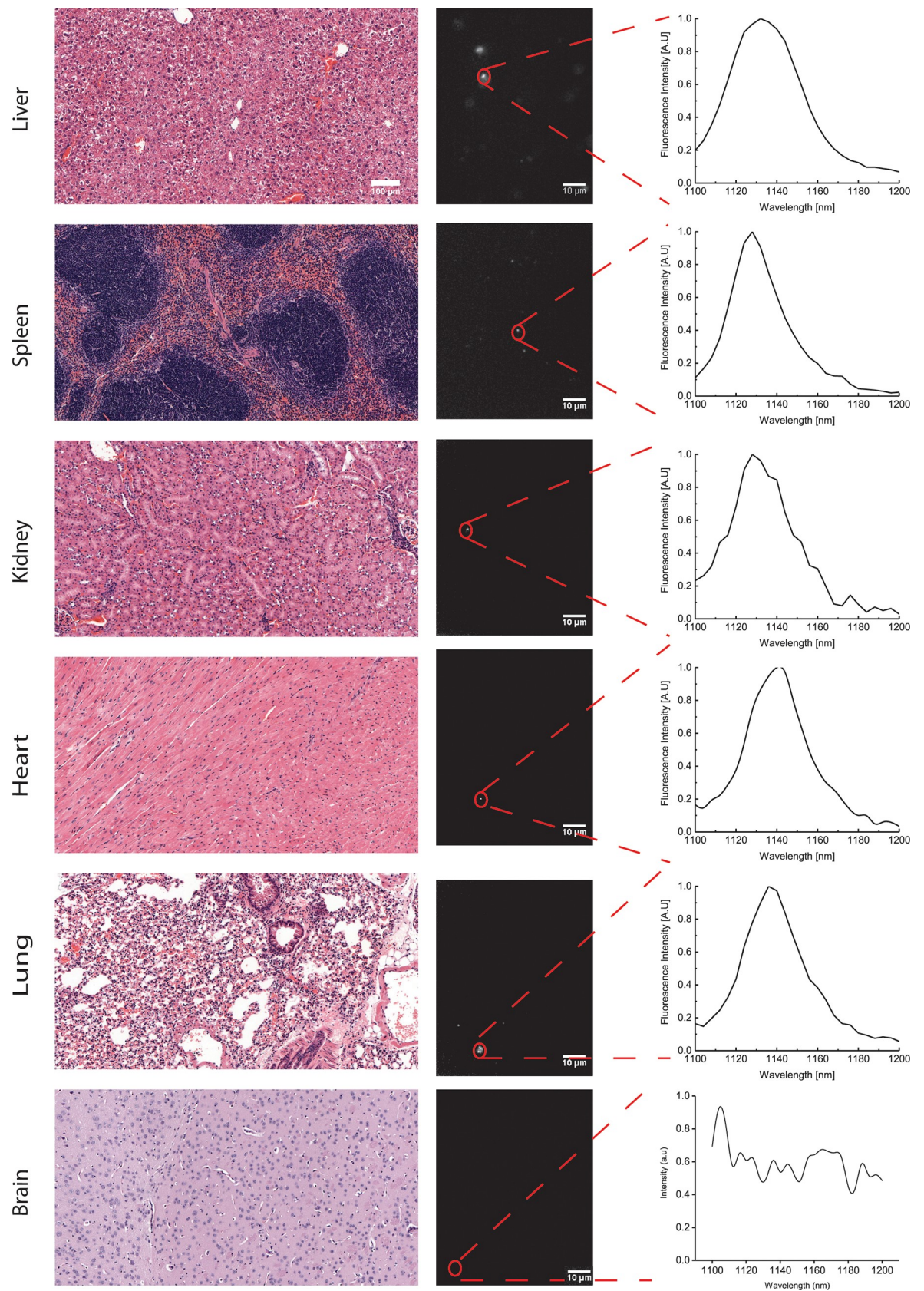


**Fig 1. Near-infrared spectroscopy of single-species DNA-nanotube complexes *in vivo* and *ex-vivo*.** A) Near-infrared fluorescence image of ssCTTC<sub>3</sub>TTC-(9,4) DNA-SWCNT complexes *in-vivo* 1 hour after intravenous injection (0.46μg). B) Near-infrared fluorescence images of the ssCTTC<sub>3</sub>TTC-(9,4) DNA-SWCNT complexes *ex-vivo* 1 hour after injection. C) Near-infrared emission spectra of ssCTTC<sub>3</sub>TTC-(9,4) DNA-SWCNT complexes of *ex-vivo* organs 1-h after injection. D) Near-infrared emission spectra of ssCTTC<sub>3</sub>TTC-(9,4) DNA-SWCNT complexes measured from the region of the mouse liver *in vivo* using a fiber optic probe device following intravenous injection into a mouse. E) Normalized integrated intensity of spectra depicted in (D). Error bars are standard deviation from N = 5 mice. \*\* = P < .01 as measured with a Student's t-test.

<https://doi.org/10.1371/journal.pone.0226791.g001>

730 nm diode laser (Frankfurt) into a bifurcated fiber optic reflection probe bundle (Thorlabs). The sample leg of the bundle included one 200 μm, 0.22 NA fiber optic cable for sample excitation located in the center of six 200 μm, 0.22 NA fiber optic cables for collection of the emitted light. The exposure time for all acquired data was 5 seconds. Light below 1050 nm was removed via long pass filters, and the emission was focused through a 410 μm slit into a Czerny-Turner spectrograph with 303 mm focal length (Shamrock 303i, Andor). The beam was dispersed by an 85 g/mm grating with 1350 nm blaze wavelength and collected by an iDus InGaAs camera (Andor). After acquisition, data was processed to apply spectral corrections for non-linearity of the InGaAs detector response, background subtraction, and baseline





**Fig 2. Imaging carbon nanotubes in murine tissues 24 hours after injection.** H&E stains (left) and hyperspectral microscopy images (middle) of various organs 24 hours after intravenous injection with ssCTTC<sub>3</sub>TTC-(9,4) complexes. Representative fluorescence spectra (right) of the denoted complexes are shown.

<https://doi.org/10.1371/journal.pone.0226791.g002>

subtraction *via* the use of OriginPro 9 software with a standard adjacent averaging smoothing method and a spline interpolation method.

## 2.4 Fluorescence imaging of SWCNT *in vivo* and *ex vivo*

Fluorescence imaging of SWCNT *in vivo* and *ex vivo* was performed using a preclinical hyperspectral mouse imaging system (Photon Etc., Montreal). Excitation was provided by two continuous wave 730 nm diode lasers each with an output power of 2 W. Lasers were reflected off optical mirrors and distributed over the entire mouse with a maximum power density of 340 mW/cm<sup>2</sup>. Emission light was filtered through an 1100 nm longpass filter to reduce autofluorescence. For hyperspectral animal imaging, light was passed through a volume Bragg grating (VBG) as described in the “Near infrared hyper spectral microscopy” section.

ssCTTC<sub>3</sub>TTC-(9,4) fluorescence *in-vivo* and from dissected liver, lung, heart, kidneys, spleen and brain was measured *ex vivo* using the instrument described in the preceding paragraph. *In vivo* and *ex vivo* fluorescence images were processed using ImageJ 1.46r. After image acquisition, background subtraction was performed using the “image calculator” function of ImageJ, where PBS injected mouse images were used as background.

## 2.5 Tissue fixation and sectioning

Organs were fixed in 10% buffered formalin phosphate and paraffin embedded. 5 µm sections were then placed on glass slides. Paraffin was removed and sections were either left unstained for near-infrared hyperspectral microscopy or stained with haematoxylin and eosin (H&E) for basic histology at the Molecular Cytology Core Facility of Memorial Sloan Kettering Cancer Center and Histowiz Inc. (Brooklyn, NY).

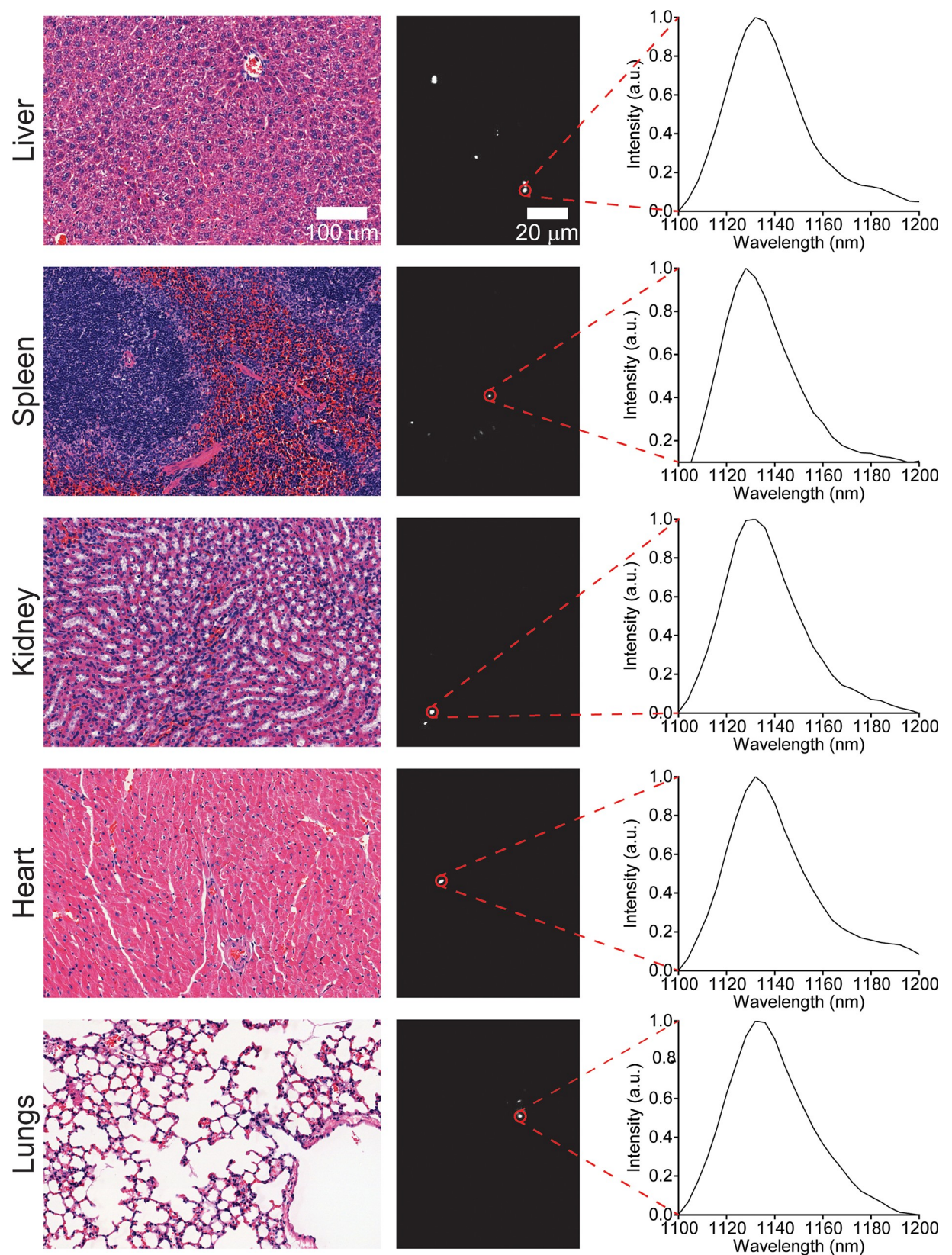
## 2.6 Near-infrared hyperspectral microscopy

Near-infrared hyperspectral microscopy was performed as previously described[24]. In brief, a continuous wave 730 nm diode laser (output power = 2 W) was injected into a multimode fiber to provide an excitation source. After passing through a beam shaping optics module to produce a top hat intensity profile (maximum 20% variation on the surface of the sample), the laser was reflected through an inverted microscope (with internal optics modified for near-infrared transmission) equipped with a 100X (UAPON100XOTIRF, NA = 1.49) oil objective (Olympus, USA) *via* a longpass dichroic mirror with a cut-on wavelength of 880 nm. Spatially resolved near-infrared emission was then passed twice through a turret-mounted volume Bragg grating (VBG) which allowed the light to be spectrally resolved. The monochromatic beam with 3.7 nm FWHM was collected by a 256 x 320 pixel InGaAs camera (Photon Etc) to result in an image. Spectrally-defined images were collected with a 4 s integration time. The VBG was rotated in 4 nm steps between 1100–1200 nm (26 images in total). Data rectification was conducted using PhySpec software (Photon Etc) to result in “hyperspectral cubes” wherein every pixel of a near-infrared image was spectrally resolved[23].

## 2.7 Analysis and processing of hyperspectral data

Hyperspectral data was saved as 16 bit arrays (320 x 256 x 26) where the first two coordinates represent the spatial location of a pixel and the last coordinate its position in wavelength space.

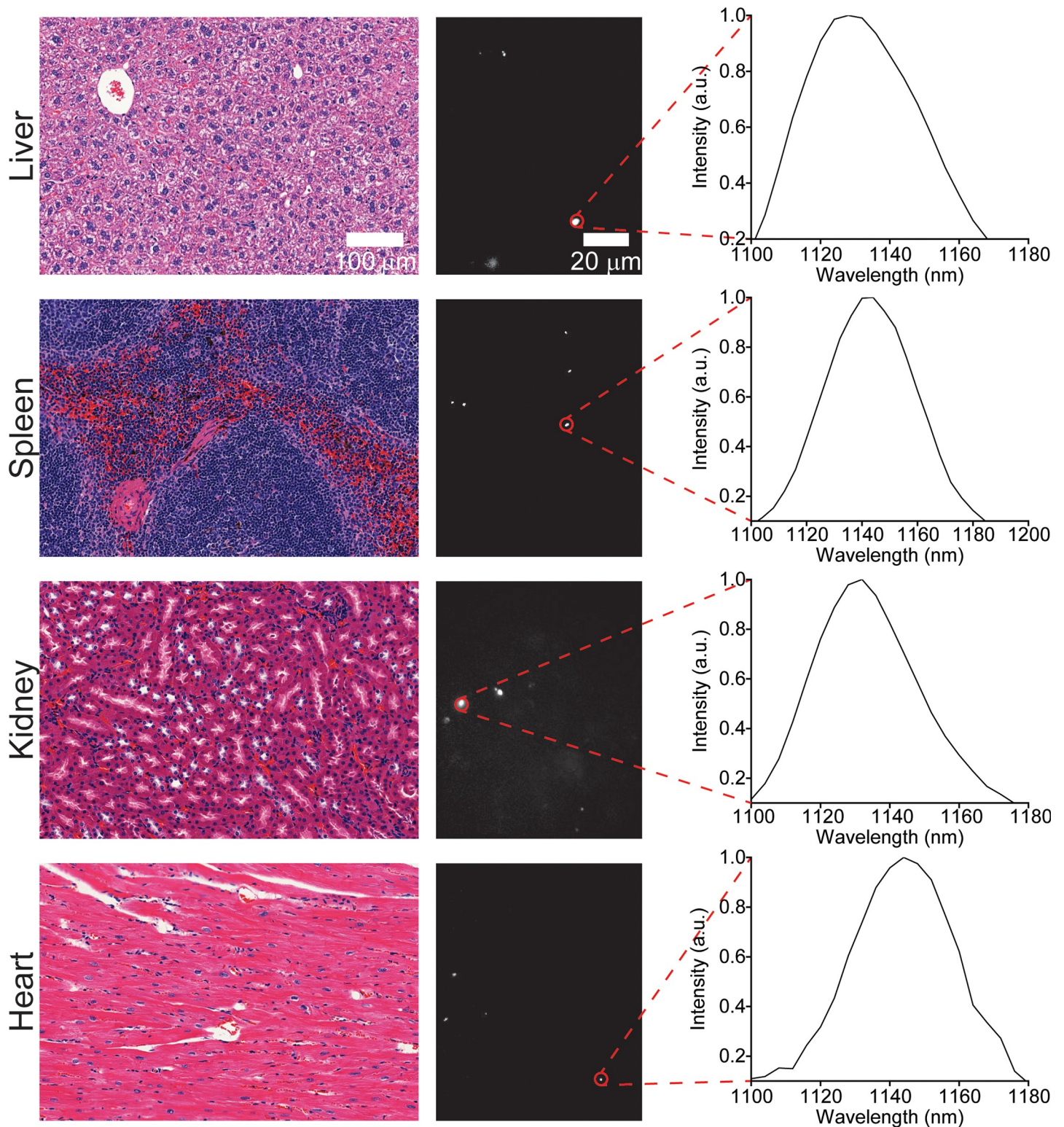




**Fig 3. Imaging carbon nanotubes in murine tissues one month after injection.** H&E stains (left) and hyperspectral microscopy images (middle) of various organs one month after intravenous injection with ssCTTC<sub>3</sub>TTC-(9,4) complexes. Representative fluorescence spectra (right) of the denoted complexes are shown.

<https://doi.org/10.1371/journal.pone.0226791.g003>

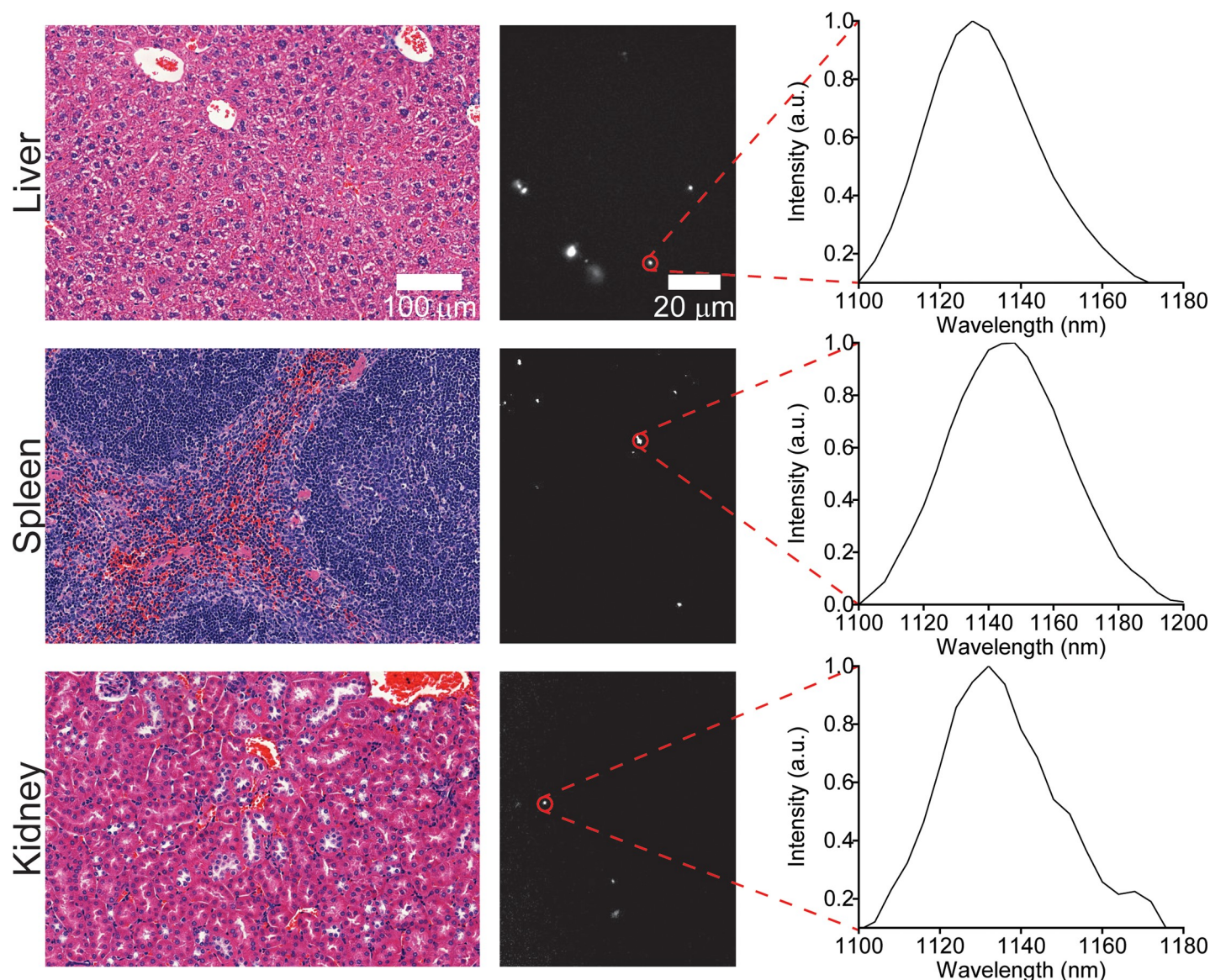




**Fig 4. Imaging carbon nanotubes in murine tissues three months after injection.** H&E stains (left) and hyperspectral microscopy images (middle) of various organs one month after intravenous injection with ssCTTC<sub>3</sub>TTC-(9,4) complexes. Representative fluorescence spectra (right) of the denoted complexes are shown.

<https://doi.org/10.1371/journal.pone.0226791.g004>





**Fig 5. Imaging carbon nanotubes in murine tissues five months after injection.** H&E stains (left) and hyperspectral microscopy images (middle) of various organs one month after intravenous injection with ssCTTC<sub>3</sub>TTC-(9,4) complexes. Representative fluorescence spectra (right) of the denoted complexes are shown.

<https://doi.org/10.1371/journal.pone.0226791.g005>

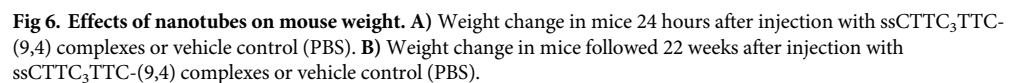
Background subtraction and intensity corrections to compensate for non-uniform excitation were applied via MATLAB code developed in the authors' lab. ROIs were then manually selected from images and spectra were obtained using the Time Series Analyzer plugin for ImageJ.

### 3. Results

#### 3.1 *In vivo* detection of ssCTTC<sub>3</sub>TTC-(9,4) DNA-nanotube complexes

Previous work describes initial *in vivo* administration and imaging of the DNA-nanotube complex, ssCTTC<sub>3</sub>TTC-(9,4), consisting of the single-stranded DNA sequence, CTTC<sub>3</sub>TTC, encapsulating the nanotube species (9,4), isolated by aqueous two-phase extraction[18,21],

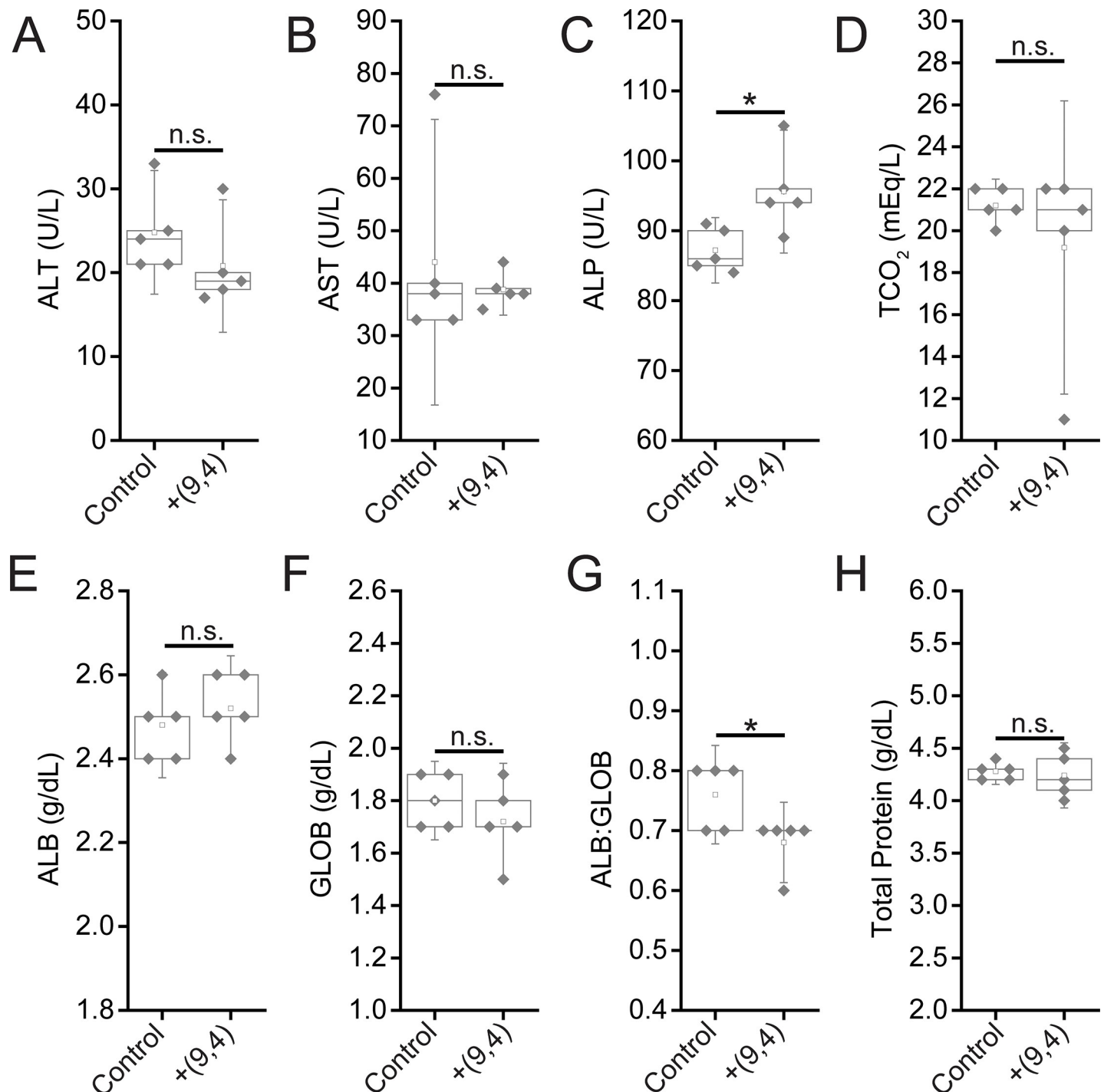




Here, we examined ssCTTC<sub>3</sub>TTC-(9,4) localization and fate in-vivo 1 hour following intravenous injection via a hyperspectral mouse imaging system. As expected, the fluorescence of the nanotube complex localized to the liver (Fig 1A). Ex-vivo, nanotube emission was detected in the liver, while the signal from the lungs, spleen, kidney, heart and brain was low or below the detection threshold (Fig 1B and 1C). The near-infrared signal from the purified DNA-nanotube complex was then assessed in-vivo transiently. Spectra of the nanotube photoluminescence in mice were acquired using a fiber optic probe-coupled spectrometer and near-infrared camera (described in Methods). The measurements found a sharp decrease in nanotube fluorescence intensity over two weeks after injection (Fig 1D and 1E). This result suggests that nanotubes were either quenched or excreted from the liver over this time period.

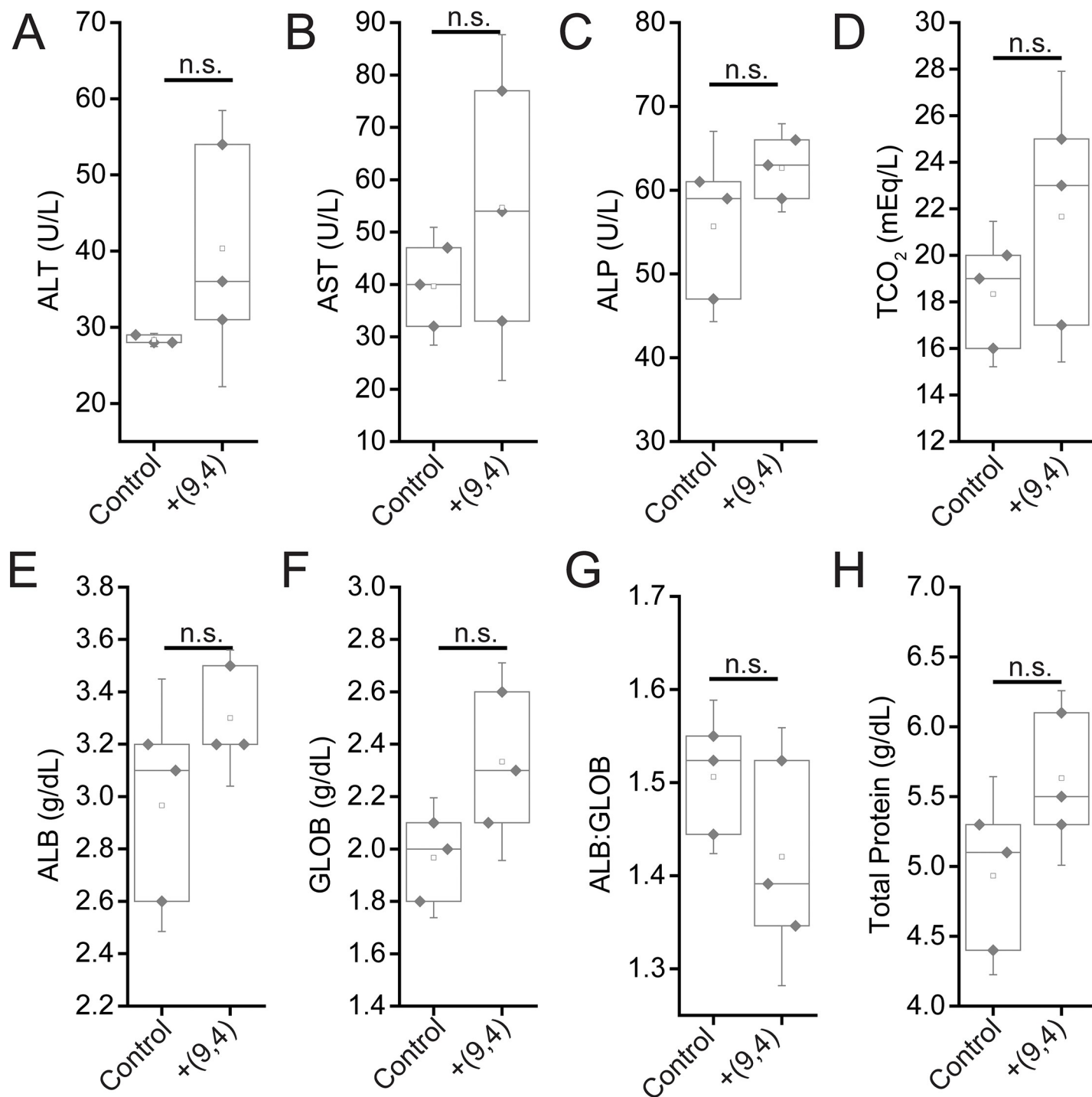
To further investigate the biodistribution of ssCTTC<sub>3</sub>TTC-(9,4) DNA-nanotube complexes following intravenous injection, we examined tissue sections via near-infrared hyperspectral microscopy. This technique can image single SWCNTs[25] in tissues even in the presence of normal tissue autofluorescence[26–28]. We resected and paraffinized tissue sections of heart, liver, lung, kidney, spleen and brain 24 hours after administration of SWCNTs and imaged using the near-infrared hyperspectral microscope at 100X magnification. Upon investigation of the near-infrared data, individual ROIs, denoting ssCTTC<sub>3</sub>TTC-(9,4) complexes, could be detected in liver, spleen, lung, kidney and heart, with highest prevalence in liver and spleen (Fig 2). The same tissues were also processed via H&E staining (Fig 2). The stained tissues were assessed by a trained pathologist; no signs of tissue injury or other abnormalities were found. No signal was detected in the brain via *in vivo* measurements (Fig 1B) or in tissue sections (Fig 2).

10 / 22



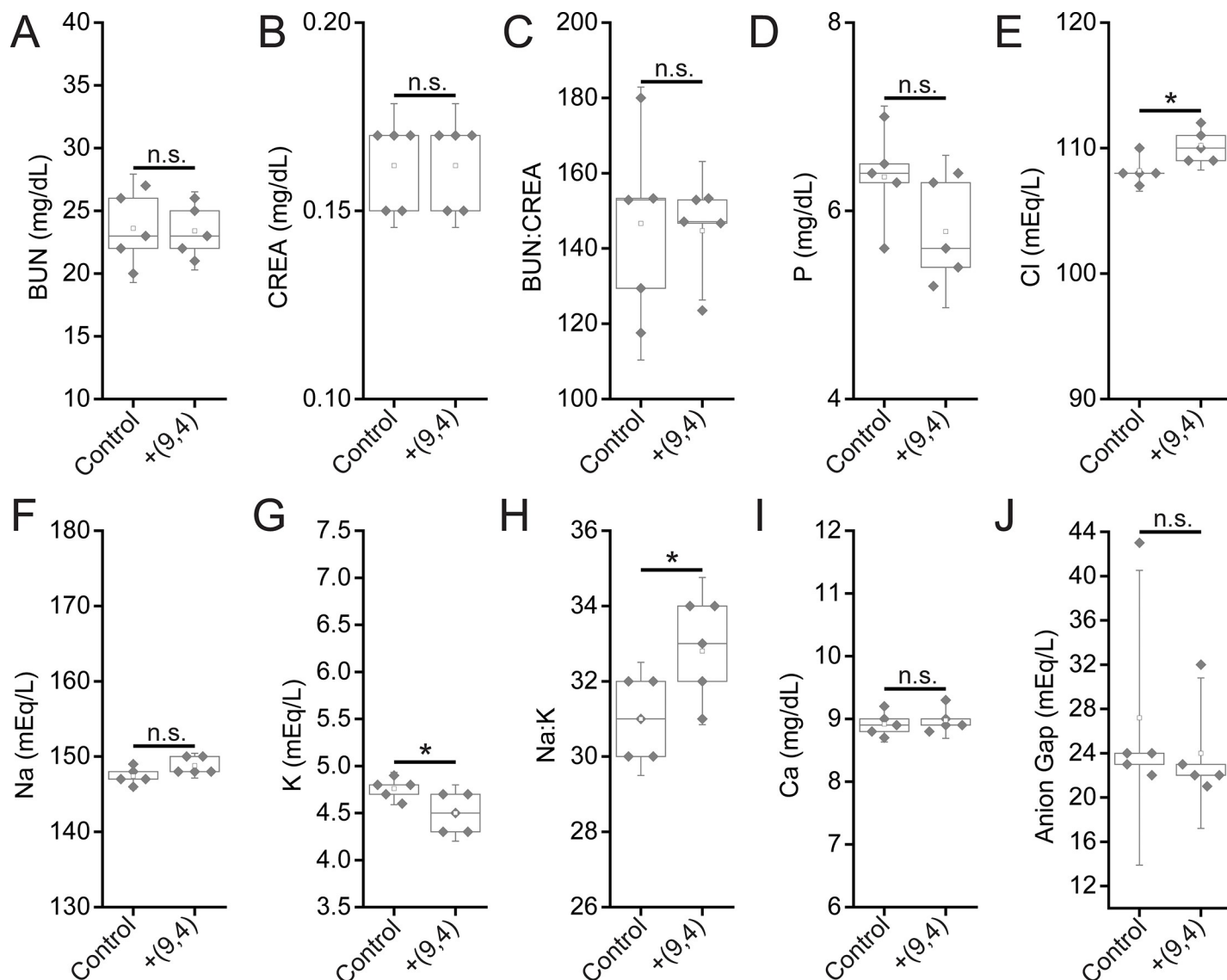
**Fig 7. Serum chemistry measurements of biomarkers of hepatic injury in mice 24 hours after injection of nanotubes.** Samples were measured 24 hours after injection of PBS (control) or ssCTTC<sub>3</sub>TTC-(9,4) DNA-nanotube complexes. **A)** Serum alanine transaminase concentrations (ALT) in mice. **B)** Serum aspartate transaminase (AST) concentrations in mice. **C)** Serum alkaline phosphatase (ALP) concentrations in mice. **D)** Serum carbon dioxide (TCO<sub>2</sub>) levels in mice. **E)** Serum albumin (ALB) levels in mice. **F)** Serum globulin (GLOB) levels in mice. **G)** Serum ALB:GLOB ratio in mice. **H)** Serum total protein levels in mice. \* = *p* < .05 as determined with a Student's two way t-test. N = 5 mice per group.

<https://doi.org/10.1371/journal.pone.0226791.g007>



**Fig 8. Serum chemistry measurements of biomarkers of hepatic injury in mice 5 months after injection of nanotubes.** Samples were measured 5 months after injection of PBS (control) or ssCTTC<sub>3</sub>TTC-(9,4) DNA-nanotube complexes. **A)** Serum alanine transaminase concentrations (ALT) in mice. **B)** Serum aspartate transaminase (AST) concentrations in mice. **C)** Serum alkaline phosphatase (ALP) concentrations in mice. **D)** Serum carbon dioxide (TCO<sub>2</sub>) levels in mice. **E)** Serum albumin (ALB) levels in mice. **F)** Serum globulin (GLOB) levels in mice. **G)** Serum ALB:GLOB ratio in mice. **H)** Serum total protein levels in mice. Statistical significance was determined with a Student's two way t-test. N = 3 mice per group.

<https://doi.org/10.1371/journal.pone.0226791.g008>

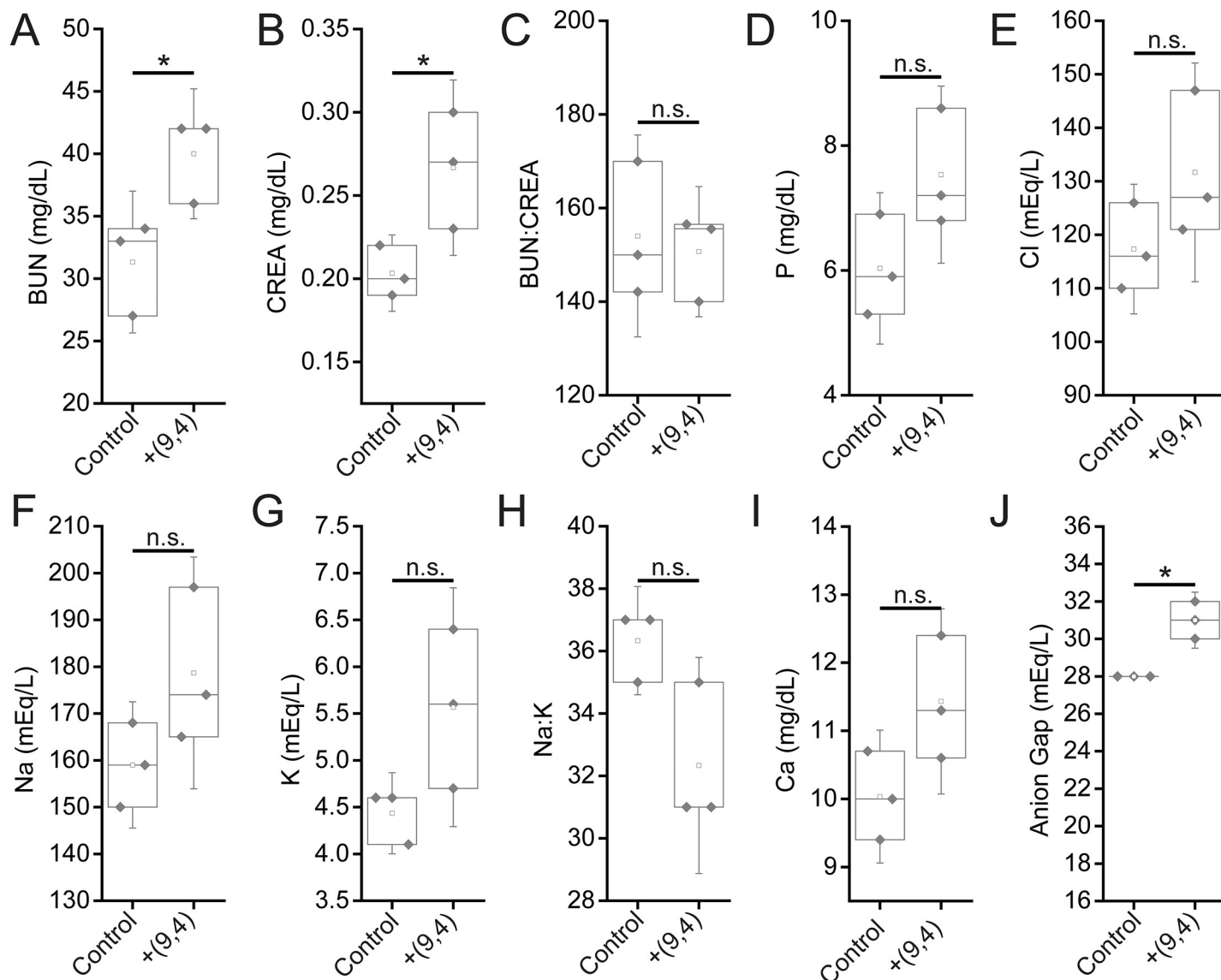


**Fig 9. Serum chemistry measurements of biomarkers of renal function in mice 24 hours after injection of nanotubes.** Samples were measured 24 hours after injection of PBS (control) or ssCTTC<sub>3</sub>TTC-(9,4) DNA-nanotube complexes. **A)** Blood urea nitrogen (BUN) concentration in mice. **B)** Serum creatinine (CREA) concentrations in mice. **C)** Serum BUN:CREA ratios in mice. **D)** Serum phosphate (P) concentration in mice. **E)** Serum chloride (Cl) concentrations in mice. **F)** Serum sodium (Na) concentrations in mice. **G)** Serum potassium (K) concentration in mice. **H)** Serum Na:K ratio in mice. **I)** Serum calcium (Ca) concentration in mice. **J)** Serum anion gap in mice. \* =  $p < .05$  as determined with a Student's two way t-test. N = 5 mice per group.

<https://doi.org/10.1371/journal.pone.0226791.g009>

The nanotubes were sparsely distributed through lung, heart, and kidney tissue, and more prevalent in the liver and spleen. Upon observation of the H&E stained tissue sections (Fig 3), no abnormalities were noted by a trained pathologist.

Murine tissues were also assessed at three and five months after injection. No nanotubes were found in lung tissue at the three-month timepoint (Fig 4), or in lung or heart tissue at five months (Fig 5), although they were found in the liver, spleen, and kidneys at both timepoints. Despite chronic exposure to ssCTTC<sub>3</sub>TTC-(9,4) in these organs, no tissue abnormalities were observed upon histological inspection of these tissues by a trained pathologist (Figs 4 and 5).



**Fig 10. Serum chemistry measurements of biomarkers of renal function in mice 5 months after injection of nanotubes.** Samples were measured 5 months after injection of PBS (control) or ssCTTC<sub>3</sub>TTC-(9,4) DNA-nanotube complexes. **A)** Blood urea nitrogen (BUN) concentration in mice. **B)** Serum creatinine (CREA) concentrations in mice. **C)** Serum BUN:CREA ratios in mice. **D)** Serum phosphate (P) concentration in mice. **E)** Serum chloride (Cl) concentrations in mice. **F)** Serum sodium (Na) concentrations in mice. **G)** Serum potassium (K) concentration in mice. **H)** Serum Na:K ratio in mice. **I)** Serum calcium (Ca) concentrations in mice. **J)** Serum anion gap in mice. \* =  $p < .05$  as determined with a Student's two way t-test. N = 3 mice per group.

<https://doi.org/10.1371/journal.pone.0226791.g010>

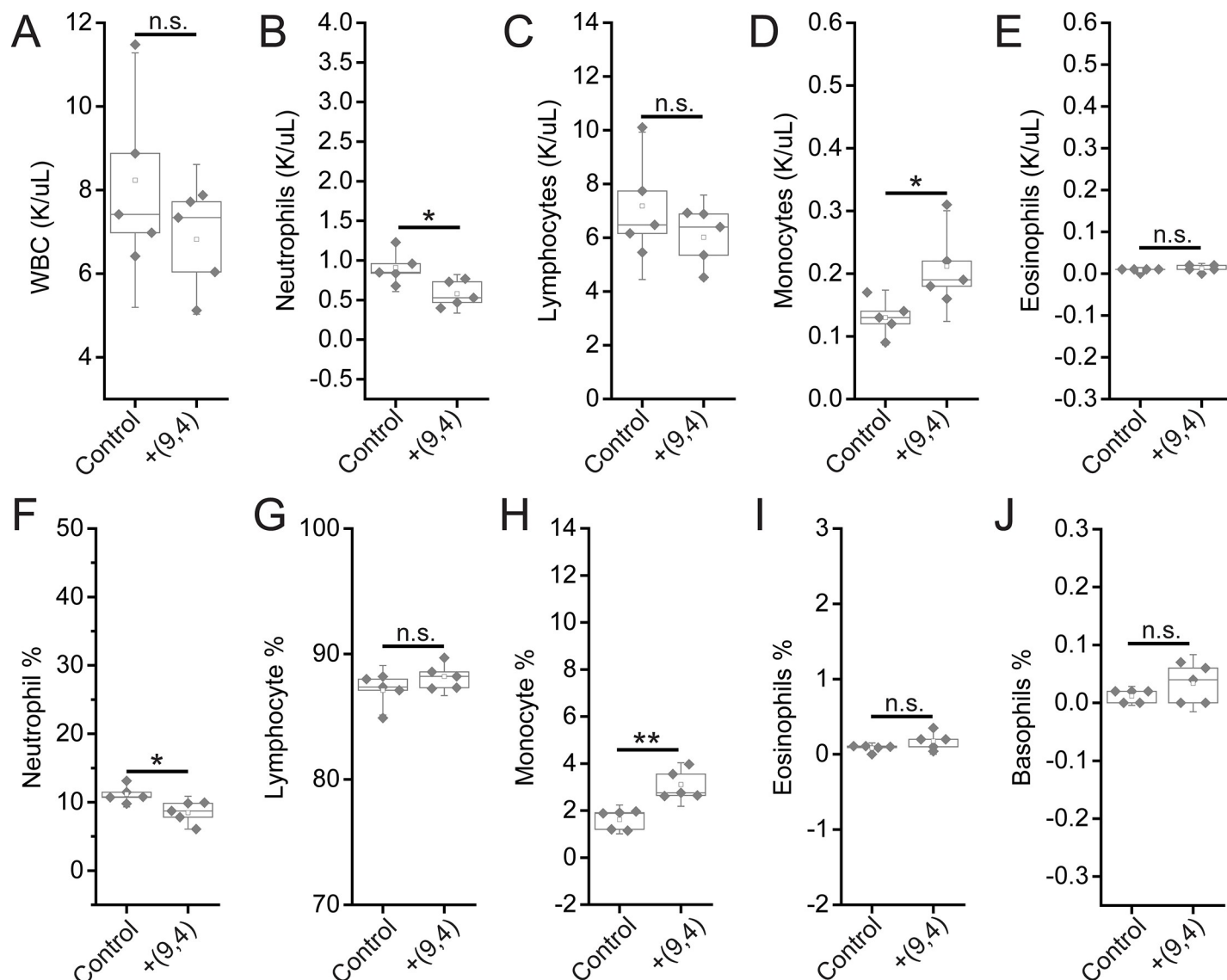
### 3.3 Mouse weight measurements

Mouse weights were measured after injection of the nanotube complexes over a period of five months. No significant difference was seen in weight changes 24 hours after injection with ssCTTC<sub>3</sub>TTC-(9,4) complexes (Fig 6A), consistent with previous results[17]. Similarly, mouse growth was not affected over a period of five months (Fig 6B).

### 3.4 Serum biomarker assessments

To further assess the effects of short and long-term exposure of the DNA-nanotube complexes, serum biomarkers, and complete blood counts were measured 24 hours and five months after

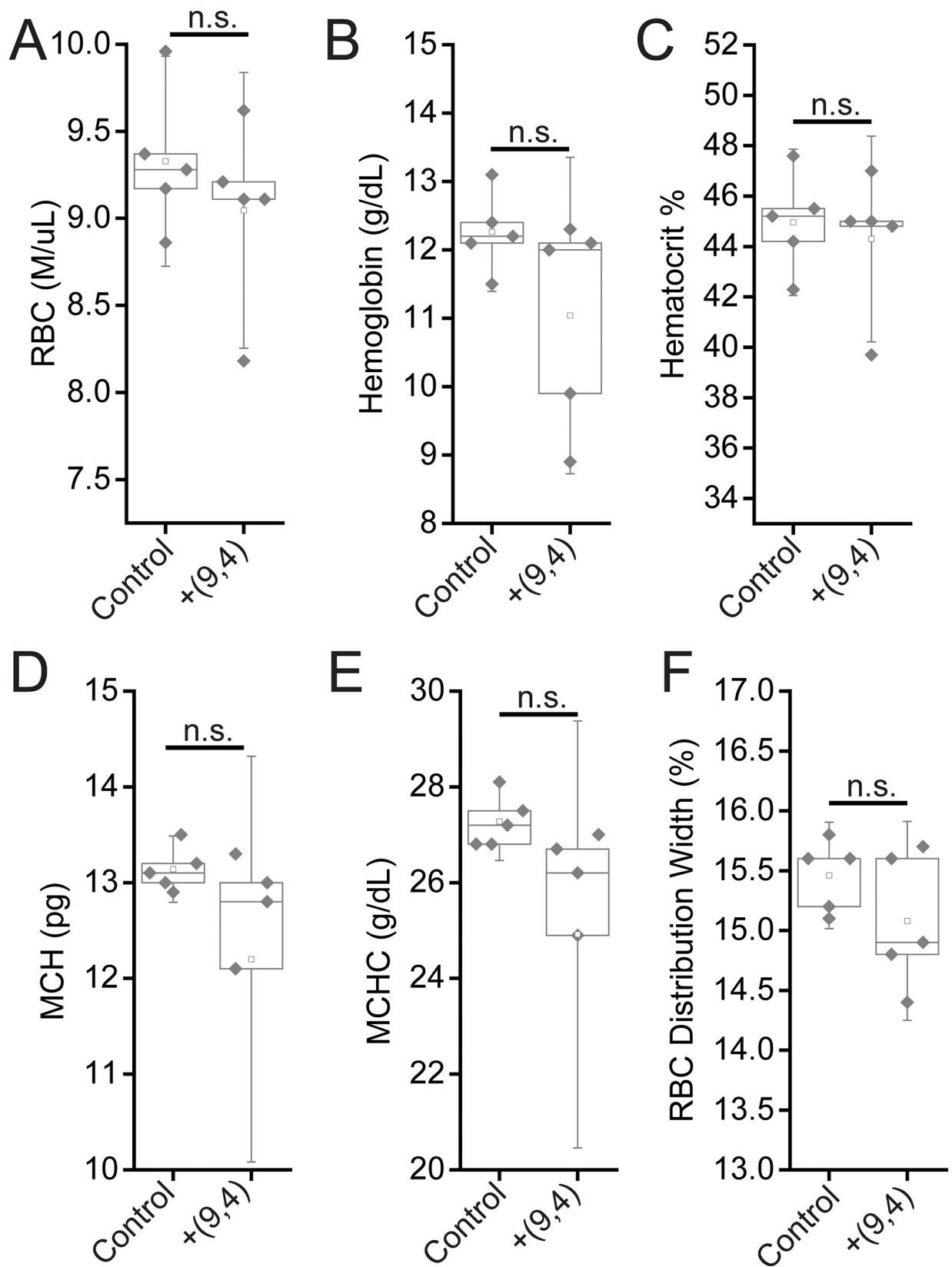




**Fig 11. Measurements of blood inflammatory markers in mice 24 hours after injection of nanotubes.** Samples were measured 24 hours after injection of PBS (control) or ssCTTC<sub>3</sub>TTC-(9,4) DNA-nanotube complexes. **A)** White blood cell (WBC) concentration in mouse blood. **B)** Neutrophil concentration in mouse blood. **C)** Lymphocyte concentration in mouse blood. **D)** Monocyte concentration in mouse blood. **E)** Eosinophil concentrations in mouse blood. **F)** Neutrophil percentage in mouse blood. **G)** Lymphocyte percentage in mouse blood. **H)** Monocyte percentage in mouse blood. **I)** Eosinophil percentage in mouse blood. **J)** Basophil percentage in mouse blood. \* =  $p < .05$  as determined with a Student's two way t-test. N = 5 mice per group.

<https://doi.org/10.1371/journal.pone.0226791.g011>

administration of the nanotubes. Biomarkers of hepatic injury were measured 24 hours and 5 months after injection of ssCTTC<sub>3</sub>TTC-(9,4). Between nanotube and PBS injected mice, no statistically significant differences were found for the biomarkers alanine aminotransferase (ALT), aspartate aminotransferase (AST), globulin (GLOB), albumin (ALB), total protein, or TCO<sub>2</sub>. A small, statistically significant increase was apparent in serum levels of serum alkaline phosphatase (Fig 7). However this slight difference is likely not biologically significant, as the values seen for nanotube injected mice here are consistent with those seen in another study that assessed ALP levels in similarly aged, male C57BL/6 mice injected with PBS [18]. A statistically significant difference is also apparent in the ALB:GLOB ratio in serum; this difference is slight and likely due to instrument limitations, as inspection of the raw data reveals that limited



**Fig 12. Measurements of blood oxygenation markers in mice 24 hours after injection of nanotubes.** Samples were measured 24 hours after injection of PBS (control) or ssCTTC<sub>3</sub>TTC-(9,4) DNA-nanotube complexes. **A)** Red blood cell (RBC) concentration in mouse blood. **B)** Hemoglobin concentration in mouse blood. **C)** Hematocrit percentage in mouse blood. **D)** Mean corpuscular hemoglobin quantity in mouse blood. **E)** Mean corpuscular hemoglobin concentration in mouse blood. **F)** Red blood cell (RBC) distribution width. Statistical significance was determined with a Student's two way t-test. N = 5 mice per group.

<https://doi.org/10.1371/journal.pone.0226791.g012>

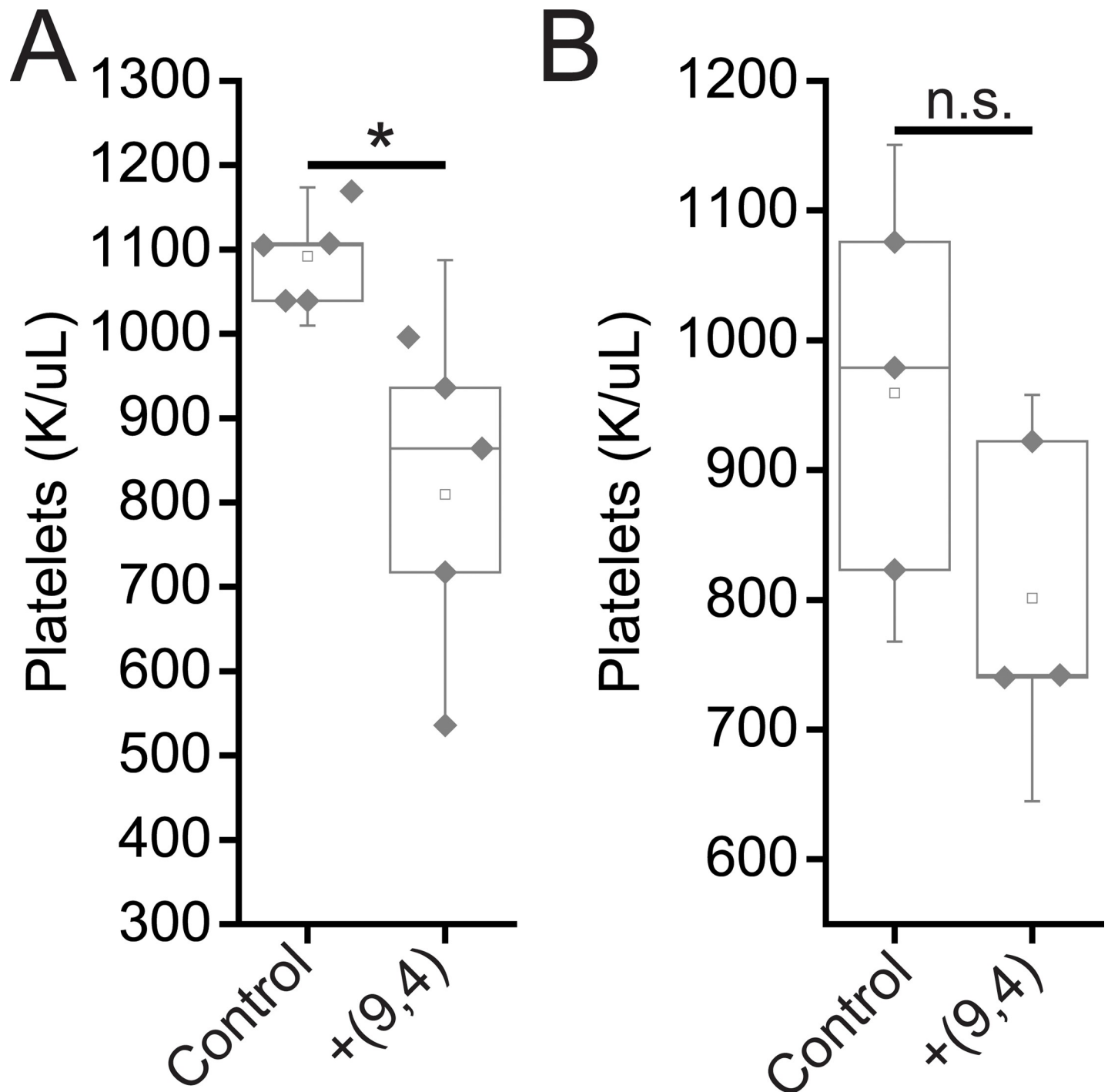
resolution in ALB:GLOB measurements is likely the cause for this significant difference (Fig 7). Despite the presence of nanotubes in the liver 5 months after injection, no signs of liver injury were evident from hepatic biomarkers (Fig 8).

Serum biomarkers of renal function were assessed 24 hours and five months after injection of the nanotube complexes. Between nanotube-injected and control mice after 24 hours, no statistically significant differences were found for the biomarkers blood urea nitrogen (BUN), creatinine (CREA), BUN:CREA, phosphate (P), sodium (Na), Na:K, and anion gap (Fig 9). While chloride levels were raised in nanotube-injected mice, the increase was less than 2% (Fig 9). Potassium (K) levels were also different between the two groups, although they were actually lower in nanotube injected mice (Fig 9) which is not a sign of renal injury (an increase in K levels would be). Finally, a significant difference was seen in the Na:K ratio between groups. A decrease in this ratio is indicative of liver/kidney stress, however, rather than the slight increase seen herein (Fig 9). Overall, biomarkers of renal function at 24 hours suggest that the nanotubes did not cause any injury. After five months, Both BUN, CREA, and measured anion gaps were slightly increased five months after injection, with other renal biomarkers showing consistent, albeit slight (and statistically non-significant) changes (Fig 10), suggesting that future work is needed to assess the effects of the long-term persistence of ssCTTC<sub>3</sub>TTC-(9,4) on renal function.

Complete blood counts (CBCs) were performed 24 hours and 5 months after injection with the nanotube complexes. Counts of white blood cells (WBCs), lymphocytes, eosinophils, and basophils did not vary significantly, while there was a slight decrease in neutrophil count 24 h after injection (Fig 11). The number of monocytes increased slightly after 24 h, however the lack of a corresponding increase in neutrophils and other inflammatory markers coupled with the normal tissue architecture observed suggests that this slight difference is the result of normal biological variation and not likely due to the injection of nanotubes (Figs 2 and 11). Blood counts associated with oxygen levels appeared normal; significant differences were not seen in red blood cell (RBC) counts, hemoglobin levels, hematocrit percentage, mean corpuscular hemoglobin quantity or concentration, or RBC distribution width (Fig 12). A slight, statically significant decrease was seen in platelet count between groups. This difference was not apparent at 5 months after administration (Fig 13). The complete blood count 5 months after injection with nanotubes, shows no significant differences between control and nanotube-injected mice (Figs 14 and 15). Overall, the results suggest minimal effects of nanotubes on any conditions measurable by CBC.

## 4. Conclusion

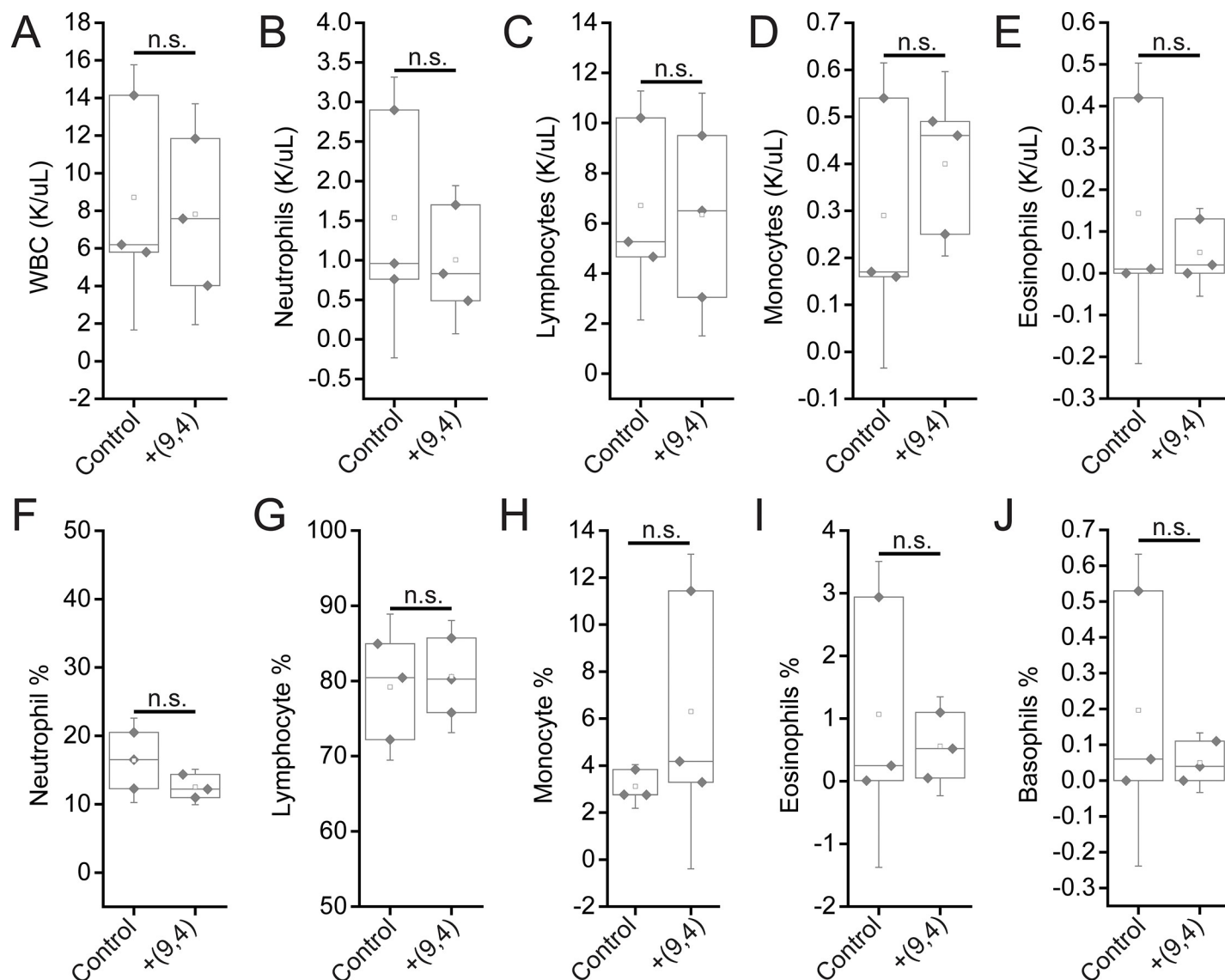
In this work, we investigated the short and long term biodistribution and biocompatibility of a purified DNA-encapsulated single-walled carbon nanotube complex consisting of an individual nanotube chirality, administered intravenously. Bulk biodistribution measurements in mice found that, consistent with previous studies on similar complexes, the nanotubes localized predominantly to the liver. Using near-infrared hyperspectral microscopy to image single nanotube complexes, nanotube complexes were found in other organs such as the kidney, spleen, hearts, and lungs and persisted in some organs at for up to 5 months. The results showed that this reporter was highly biocompatible overall, although future studies are



**Fig 13. Platelet counts in mice 24 hours and 5 months after injection of nanotubes.** Platelet counts were measured 24 hours (A) and 5 months (B) after injection of PBS (control) and ssCTTC<sub>3</sub>TTC-(9,4) complexes.

<https://doi.org/10.1371/journal.pone.0226791.g013>

warranted to more carefully assess long-term impact on organ function. Tissue histology and mouse weight measurements showed no differences upon administration of nanotubes. Measurements of serum biomarkers, including complete blood count, renal biomarkers, and hepatic markers showed negligible changes by the presence of carbon nanotubes < 4 months,

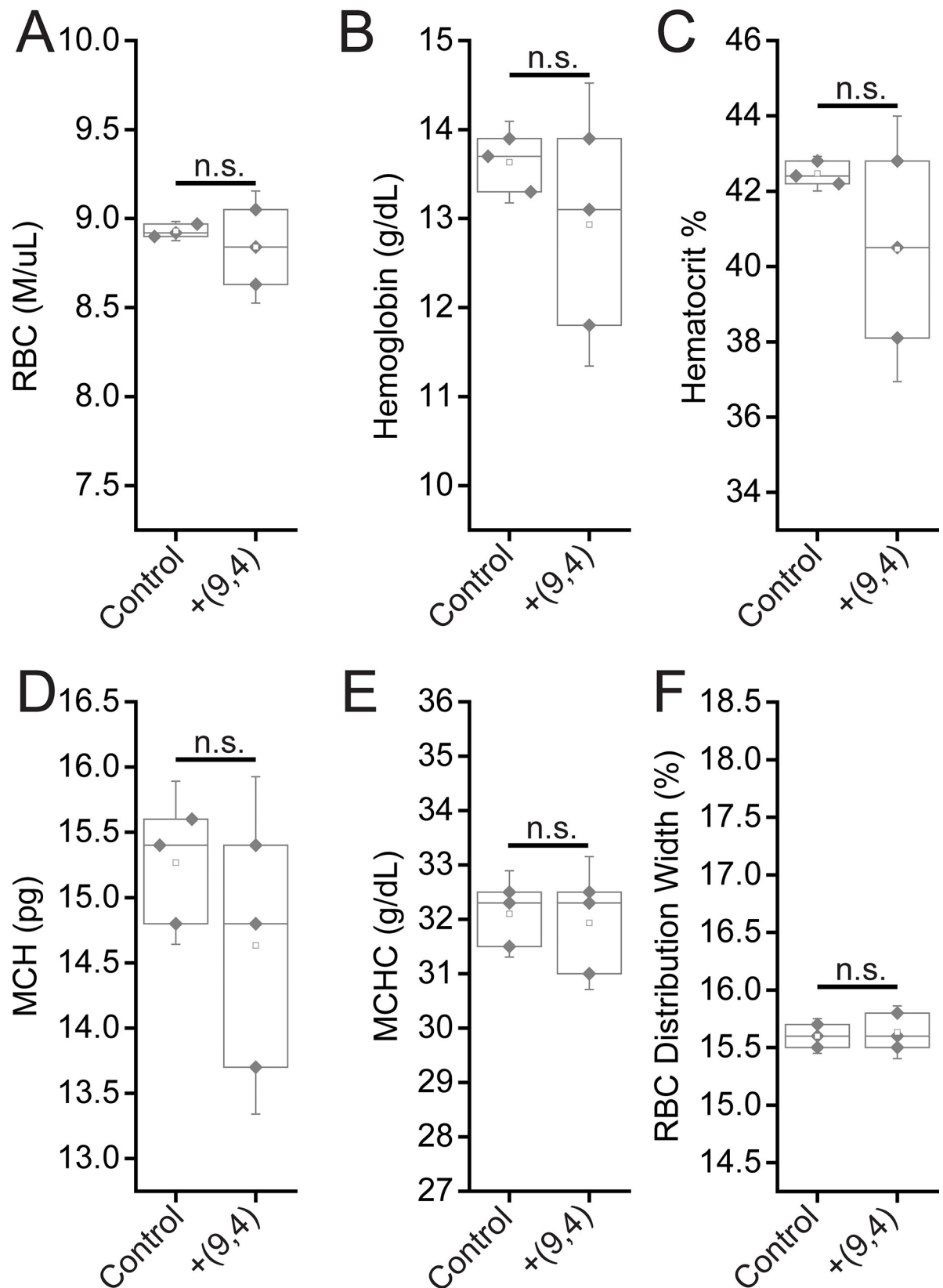


**Fig 14. Measurements of blood inflammatory markers in mice 5 months after injection of nanotubes.** Samples were measured 5 months after injection of PBS (control) or ssCTTC<sub>3</sub>TTC-(9,4) DNA-nanotube complexes. **A)** White blood cell (WBC) concentration in mouse blood. **B)** Neutrophil concentration in mouse blood. **C)** Lymphocyte concentration in mouse blood. **D)** Monocyte concentration in mouse blood. **E)** Eosinophil concentrations in mouse blood. **F)** Neutrophil percentage in mouse blood. **G)** Lymphocyte percentage in mouse blood. **H)** Monocyte percentage in mouse blood. **I)** Eosinophil percentage in mouse blood. **J)** Basophil percentage in mouse blood. Statistical significance was determined with a Student's two way t-test. N = 3 mice per group.

<https://doi.org/10.1371/journal.pone.0226791.g014>

and minor changes in renal markers at 5 months. These results indicate that carbon nanotubes, used in preclinical studies under the preparation conditions and concentrations herein, do not cause any appreciable signs of toxicities at time points less than 4 months. The work suggests that these materials are unlikely to cause significant problems in applications such as preclinical research, drug screening, and drug development. However, the long-term persistence of nanotubes in tissues suggests that additional assessments are warranted to assess the potential for use in humans. In general, these studies also suggest, in light of previous works, that carbon nanomaterial biodistribution and biocompatibility are specific to carbon nanotube type, purity, functionalization, and route of administration. This issue has implications pertinent to the wider perception and applicability of nanomaterials.





**Fig 15. Measurement of blood oxygenation markers in mice 5 months after injection of nanotubes.** Samples were measured 5 months after injection of PBS (control) or ssCTTC<sub>3</sub>TTC-(9,4) DNA-nanotube complexes. **A)** Red blood cell (RBC) concentration in mouse blood. **B)** Hemoglobin concentration in mouse blood. **C)** Hematocrit percentage in mouse blood. **D)** Mean corpuscular hemoglobin quantity in mouse blood. **E)** Mean corpuscular hemoglobin concentration in mouse blood. **F)** Red blood cell (RBC) distribution width. Statistical significance was determined with a Student's two way t-test. N = 3 mice per group.

<https://doi.org/10.1371/journal.pone.0226791.g015>

## Acknowledgments

We would like to thank Y. Shamay, R. Williams, H. Baker, C. Cupo, M. Kim and J. Budhathoki-Uprety for helpful discussions. P.Jena for MATLAB code. We also acknowledge the Molecular Cytology Core Facility at Memorial Sloan Kettering Cancer Center and the Electron Microscopy & Histology Core Facility at Weill Cornell Medicine.

## Author Contributions

**Conceptualization:** Thomas V. Galassi, Daniel A. Heller.

**Data curation:** Thomas V. Galassi, Merav Antman-Passig, Zvi Yaari, Jose Jessurun, Robert E. Schwartz.

**Formal analysis:** Jose Jessurun, Robert E. Schwartz, Daniel A. Heller.

**Funding acquisition:** Daniel A. Heller.

**Investigation:** Daniel A. Heller.

**Project administration:** Thomas V. Galassi, Daniel A. Heller.

**Supervision:** Daniel A. Heller.

**Writing – original draft:** Thomas V. Galassi.

**Writing – review & editing:** Merav Antman-Passig, Daniel A. Heller.

## References

1. Bachilo SM, Strano MS, Kittrell C, Hauge RH, Smalley RE, Weisman RB. Structure-assigned optical spectra of single-walled carbon nanotubes. *science*. 2002 Dec 20; 298(5602):2361–6. <https://doi.org/10.1126/science.1078727> PMID: 12459549
2. Lehman JH, Terrones M, Mansfield E, Hurst KE, Meunier V. Evaluating the characteristics of multiwall carbon nanotubes. *Carbon*. 2011 Jul 1; 49(8):2581–602.
3. Baughman RH, Zakhidov AA, De Heer WA. Carbon nanotubes—the route toward applications. *science*. 2002 Aug 2; 297(5582):787–92. <https://doi.org/10.1126/science.1060928> PMID: 12161643
4. Ong LC, Chung FF, Tan YF, Leong CO. Toxicity of single-walled carbon nanotubes. *Archives of toxicology*. 2016 Jan 1; 90(1):103–18. <https://doi.org/10.1007/s00204-014-1376-6> PMID: 25273022
5. Heller DA, Jena P V., Pasquali M, Kostarelos K, Delogu LG, Meidl RE, et al. Banning carbon nanotubes would be scientifically unjustified and damaging to innovation. *Nat Nanotechnol*. 2020 Mar 10; 15(3):164–6.
6. Ema M, Gamo M, Honda K. A review of toxicity studies of single-walled carbon nanotubes in laboratory animals. *Regulatory Toxicology and Pharmacology*. 2016 Feb 1; 74:42–63. <https://doi.org/10.1016/j.yrtph.2015.11.015> PMID: 26619783
7. Poland CA, Duffin R, Kinloch I, Maynard A, Wallace WA, Seaton A, et al. Carbon nanotubes introduced into the abdominal cavity of mice show asbestos-like pathogenicity in a pilot study. *Nature nanotechnology*. 2008 Jul; 3(7):423. <https://doi.org/10.1038/nnano.2008.111> PMID: 18654567
8. Xue X, Wang LR, Sato Y, Jiang Y, Berg M, Yang DS, et al. Single-walled carbon nanotubes alleviate autophagic/lysosomal defects in primary glia from a mouse model of Alzheimer's disease. *Nano letters*. 2014 Aug 21; 14(9):5110–7. <https://doi.org/10.1021/nl501839q> PMID: 25115676
9. Xue X, Yang JY, He Y, Wang LR, Liu P, Yu LS, et al. Aggregated single-walled carbon nanotubes attenuate the behavioural and neurochemical effects of methamphetamine in mice. *Nature nanotechnology*. 2016 Jul; 11(7):613. <https://doi.org/10.1038/nnano.2016.23> PMID: 26974957

10. Lee HJ, Park J, Yoon OJ, Kim HW, Kim DH, Lee WB, et al. Amine-modified single-walled carbon nanotubes protect neurons from injury in a rat stroke model. *Nature nanotechnology*. 2011 Feb; 6(2):121. <https://doi.org/10.1038/nnano.2010.281> PMID: 21278749
11. Zhang M, Yang M, Morimoto T, Tajima N, Ichiraku K, Fujita K, et al. Size-dependent cell uptake of carbon nanotubes by macrophages: A comparative and quantitative study. *Carbon*. 2018 Feb 1; 127:93–101.
12. Wang LR, Xue X, Hu XM, Wei MY, Zhang CQ, Ge GL, et al. Structure-Dependent Mitochondrial Dysfunction and Hypoxia Induced with Single-Walled Carbon Nanotubes. *Small*. 2014 Jul; 10(14):2859–69. <https://doi.org/10.1002/sml.201303342> PMID: 24677813
13. Schipper ML, Nakayama-Ratchford N, Davis CR, Kam NW, Chu P, Liu Z, et al. A pilot toxicology study of single-walled carbon nanotubes in a small sample of mice. *Nature nanotechnology*. 2008 Apr; 3(4):216. <https://doi.org/10.1038/nnano.2008.68> PMID: 18654506
14. Alidori S, Akhavein N, Thorek DL, Behling K, Romin Y, Queen D, et al. Targeted fibrillar nanocarbon RNAi treatment of acute kidney injury. *Science translational medicine*. 2016 Mar 23; 8(331):331ra39. <https://doi.org/10.1126/scitranslmed.aac9647> PMID: 27009268
15. Iverson NM, Barone PW, Shandell M, Trudel LJ, Sen S, Sen F, et al. In vivo biosensing via tissue-localizable near-infrared-fluorescent single-walled carbon nanotubes. *Nature nanotechnology*. 2013 Nov; 8(11):873. <https://doi.org/10.1038/nnano.2013.222> PMID: 24185942
16. Liu Z, Cai W, He L, Nakayama N, Chen K, Sun X, et al. In vivo biodistribution and highly efficient tumour targeting of carbon nanotubes in mice. *Nature nanotechnology*. 2007 Jan; 2(1):47. <https://doi.org/10.1038/nnano.2006.170> PMID: 18654207
17. Liu Z, Davis C, Cai W, He L, Chen X, Dai H. Circulation and long-term fate of functionalized, biocompatible single-walled carbon nanotubes in mice probed by Raman spectroscopy. *Proceedings of the National Academy of Sciences*. 2008 Feb 5; 105(5):1410–5.
18. Galassi TV, Jena PV, Shah J, Ao G, Molitor E, Bram Y, et al. An optical nanoreporter of endolysosomal lipid accumulation reveals enduring effects of diet on hepatic macrophages in vivo. *Science translational medicine*. 2018 Oct 3; 10(461):eaar2680. <https://doi.org/10.1126/scitranslmed.aar2680> PMID: 30282694
19. Ao G, Khripin CY, Zheng M. DNA-controlled partition of carbon nanotubes in polymer aqueous two-phase systems. *Journal of the American Chemical Society*. 2014 Jul 8; 136(29):10383–92. <https://doi.org/10.1021/ja504078b> PMID: 24976036
20. Ao G, Streit JK, Fagan JA, Zheng M. Differentiating left-and right-handed carbon nanotubes by DNA. *Journal of the American Chemical Society*. 2016 Dec 19; 138(51):16677–85. <https://doi.org/10.1021/jacs.6b09135> PMID: 27936661
21. Ao G, Zheng M. Preparation and Separation of DNA-Wrapped Carbon Nanotubes. *Current protocols in chemical biology*. 2015 Nov; 7(1):43–51. <https://doi.org/10.1002/9780470559277.ch140099> PMID: 25727062
22. Harvey JD, Jena PV, Baker HA, Zerze GH, Williams RM, Galassi TV, et al. A carbon nanotube reporter of microRNA hybridization events in vivo. *Nature biomedical engineering*. 2017 Apr; 1(4):0041.
23. Williams RM, Lee C, Galassi TV, Harvey JD, Leicher R, Sirenko M, et al. Noninvasive ovarian cancer biomarker detection via an optical nanosensor implant. *Science advances*. 2018 Apr 1; 4(4):eaag1090. <https://doi.org/10.1126/sciadv.aag1090> PMID: 29675469
24. Roxbury D, Jena PV, Williams RM, Enyedi B, Niethammer P, Marcet S, et al. Hyperspectral microscopy of near-infrared fluorescence enables 17-chirality carbon nanotube imaging. *Scientific reports*. 2015 Sep 21; 5:14167. <https://doi.org/10.1038/srep14167> PMID: 26387482
25. Galassi TV, Jena PV, Roxbury D, Heller DA. Single nanotube spectral imaging to determine molar concentrations of isolated carbon nanotube species. *Analytical chemistry*. 2017 Jan 4; 89(2):1073–7. <https://doi.org/10.1021/acs.analchem.6b04091> PMID: 28194986
26. Del Castillo P, Molero ML, Ferrer JM, Stockert JC. Autofluorescence and induced fluorescence in Epon embedded tissue sections. *Histochemistry*. 1986 Sep 1; 85(5):439–40. <https://doi.org/10.1007/bf00982676> PMID: 3781887
27. Viegas MS, Martins TC, Seco F, Do Carmo A. An improved and cost-effective methodology for the reduction of autofluorescence in direct immunofluorescence studies on formalin-fixed paraffin-embedded tissues. *European Journal of Histochemistry*. 2007:59–66.
28. Monici M. Cell and tissue autofluorescence research and diagnostic applications. *Biotechnology annual review*. 2005 Jan 1; 11:227–56. [https://doi.org/10.1016/S1387-2656\(05\)11007-2](https://doi.org/10.1016/S1387-2656(05)11007-2) PMID: 16216779