

## Proceedings of the International Ocean Discovery Program

---

### Volume 360

### Southwest Indian Ridge Lower Crust and Moho

Expedition 360 of the riserless drilling platform

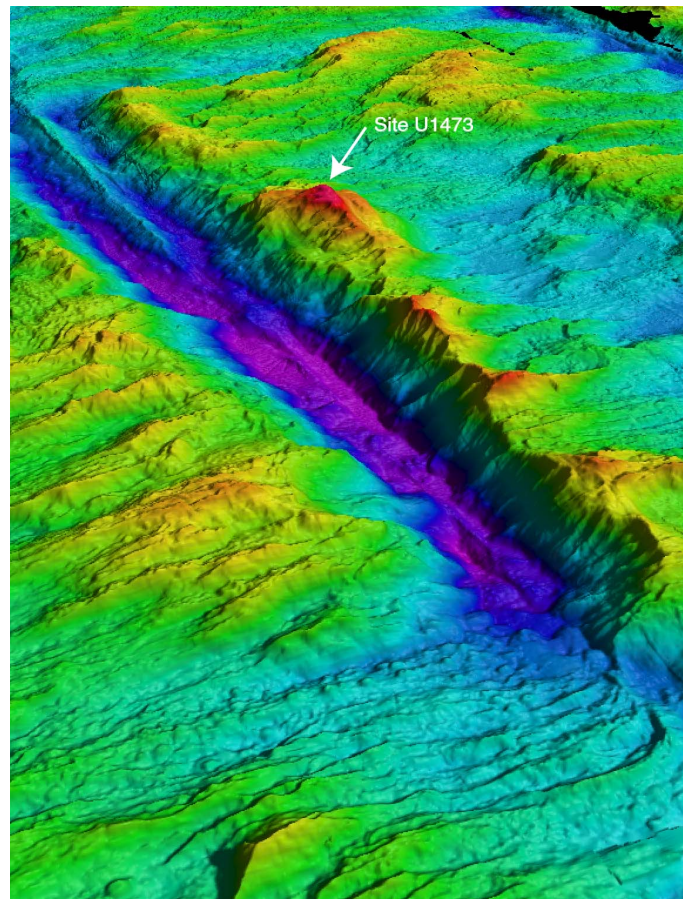
Colombo, Sri Lanka, to Port Louis, Mauritius

Site U1473

30 November 2015–30 January 2016

#### Volume authorship

MacLeod, C.J., Dick, H.J.B., Blum, P., and the Expedition 360 Scientists



## Publisher's notes

This publication was prepared by the *JOIDES Resolution* Science Operator (JRSO) at Texas A&M University (TAMU) as an account of work performed under the International Ocean Discovery Program (IODP). Funding for IODP is provided by the following international partners:

National Science Foundation (NSF), United States  
Ministry of Education, Culture, Sports, Science and Technology (MEXT), Japan  
European Consortium for Ocean Research Drilling (ECORD)  
Ministry of Science and Technology (MOST), People's Republic of China  
Korea Institute of Geoscience and Mineral Resources (KIGAM)  
Australia-New Zealand IODP Consortium (ANZIC)  
Ministry of Earth Sciences (MoES), India  
Coordination for Improvement of Higher Education Personnel (CAPES), Brazil

Any opinions, findings, and conclusions or recommendations expressed in this publication are those of the author(s) and do not necessarily reflect the views of the participating agencies, TAMU, or Texas A&M Research Foundation.

The bulk of the shipboard-collected core data from this expedition is accessible at <http://iodp.tamu.edu/database/index.html>. If you cannot access this site or need additional data, please contact Data Librarian, International Ocean Discovery Program *JOIDES Resolution* Science Operator, Texas A&M University, 1000 Discovery Drive, College Station TX 77845-9547, USA. Tel: (979) 845-8495; Fax: (979) 458-1617; Email: [database@iodp.tamu.edu](mailto:database@iodp.tamu.edu).

A complete set of the logging data collected during the expedition is available at <http://brg.ldeo.columbia.edu/logdb>. If you have problems downloading the data, wish to receive additional logging data, or have questions regarding the data, please contact Database Administrator, Borehole Research Group, Lamont-Doherty Earth Observatory of Columbia University, PO Box 1000, 61 Route 9W, Palisades NY 10964, USA. Tel: (845) 365-8343; Fax: (845) 365-3182; Email: [logdb@ldeo.columbia.edu](mailto:logdb@ldeo.columbia.edu).

Supplemental data were provided by the authors and may not conform to IODP publication formats.

JRSO expedition photos are the property of IODP and are in the public domain.

Some core photographs have been tonally enhanced to better illustrate particular features of interest. High-resolution images are available upon request.

Cover photograph shows the R/V *JOIDES Resolution* at night. Cover site map shows oblique view of the Atlantis II Transform fault looking north-northeast; Atlantis Bank and Site U1473 (red) form the northernmost and shallowest portion of the transverse ridge on the eastern flank of the transform. Photo credit: Chris MacLeod and IODP JRSO.

## Copyright

Except where otherwise noted, this work is licensed under a Creative Commons Attribution License ([http://creativecommons.org/licenses/by/4.0/deed.en\\_US](http://creativecommons.org/licenses/by/4.0/deed.en_US)). Unrestricted use, distribution, and reproduction are permitted, provided the original author and source are credited.

Examples of how to cite this volume or part of this volume are available at <http://publications.iodp.org/proceedings/360/360title.html#bib>.

### ISSN

World Wide Web: 2377-3189

### Volume DOI

<https://doi.org/10.14379/iodp.proc.360.2017>

### Publication date

30 January 2017

## Contents

### Expedition reports

#### Chapters

##### [Expedition 360 summary](#)

H.J.B. Dick et al.

##### [Expedition 360 methods](#)

C.J. MacLeod et al.

##### [Site U1473](#)

C.J. MacLeod et al.

##### [Hole 1105A redescription](#)

C.J. MacLeod et al.

##### [Hole U1473A remediation operations, Expedition 362T](#)

P. Blum et al.

#### Core descriptions

Visual core descriptions (VCDs) and thin sections are presented in PDF files for each site. The entire set of core images in PDF is available in the IMAGES directory.

##### [Site U1473](#)

##### [Visual core descriptions · Thin sections](#)

##### [Site 1105](#)

##### [Visual core descriptions · Thin sections](#)

#### Supplementary material

Supplementary material for the Volume 360 expedition reports includes affine tables and shifting method in Microsoft Excel and CSV format, DESClogik workbooks in Microsoft Excel, web galleries of photomicrographs and thin section images in JPG, lithology

averaging information in Microsoft Word and Matlab, operations summary in Microsoft Excel, paleomagnetism data in Microsoft Excel and CSV format, petrophysics data in Microsoft Excel and ASCII, and filtering information in Microsoft Word and Matlab. A full list of directories can be found in SUPP\_MAT in the volume zip folder or on the [Supplementary material for Volume 360 expedition reports](#) web page.

### Expedition research results

#### Data reports

Titles are available in [HTML](#).

#### Syntheses

Titles are available in [HTML](#).

### Drilling location maps

A site map showing the drilling locations for this expedition and maps showing the drilling locations of all International Ocean Discovery Program (IODP), produced using QGIS (<http://www.qgis.org>), and Integrated Ocean Drilling Program, Ocean Drilling Program (ODP), and Deep Sea Drilling Project (DSDP) expeditions, produced using Generic Mapping Tools (GMT) of Paul Wessel and Walter H.F. Smith (<http://gmt.soest.hawaii.edu>), are available in PDF.

##### [IODP Expedition 360 site map](#)

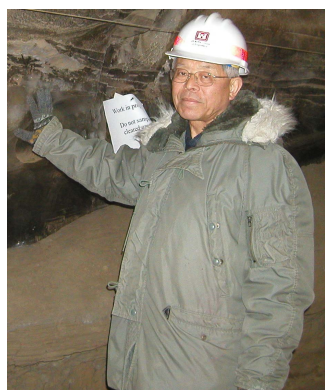
[IODP map](#) (Expeditions 349–357, 359, and 360)

[Integrated Ocean Drilling Program map](#) (Expeditions 301–348)

[ODP map](#) (Legs 100–210)

[DSDP map](#) (Legs 1–96)

## Dedication



This volume is dedicated to Hajimu Kinoshita, whose leadership of three site survey cruises supported by the Japan Agency for Marine-Earth Science and Technology was critical to documenting the geology of Atlantis Bank, a key prerequisite for enabling the SloMo Project and for reaching the crust/mantle boundary. Photo credit: K. Akazawa, copyright JAMSTEC.

## Acknowledgments

The members of the IODP Expedition 360 science party would like to thank the Siem Offshore crew and IODP support staff on board the R/V *JOIDES Resolution* during Expeditions 360 and 362T for their outstanding professionalism, skill, and extraordinary dedication at all stages of the project. The sense of camaraderie and shared mission of these individuals with the scientific party made the cruise a wonderful and noteworthy experience. The IODP JRSO Publications staff at TAMU are thanked for their help and particularly for their patience during the production of this document. The Japan Agency for Marine-Earth Science and Technology, UK Natural Environment Research Council, US National Science Foundation, and Canada National Sciences and Engineering Research Council are acknowledged with gratitude for their funding of the site surveys of Atlantis Bank.

## Foreword

The International Ocean Discovery Program (IODP) represents the latest incarnation of almost five decades of scientific ocean drilling excellence and is generally accepted as the most successful international collaboration in the history of the Earth sciences. IODP builds seamlessly on the accomplishments of previous phases: the Deep Sea Drilling Project, Ocean Drilling Program, and Integrated Ocean Drilling Program. The 2013–2023 IODP Science Plan (*Illuminating Earth's Past, Present, and Future*) defines four themes and thirteen challenges for this decade of scientific ocean drilling that are both of fundamental importance in understanding how the Earth works and of significant relevance to society as the Earth changes, at least in part in response to anthropogenic forcing. This phase of IODP represents a renewed level of international collaboration in bringing diverse drilling platforms and strategies to increasing our understanding of climate and ocean change, the deep biosphere and evolution of ecosystems, connections between Earth's deep processes and surface manifestations, and geologically induced hazards on human timeframes.

The *Proceedings of the International Ocean Discovery Program* presents the scientific and engineering results of IODP drilling projects, expedition by expedition. As in the preceding Integrated Ocean Drilling Program, expeditions in the new IODP are conducted by three implementing organizations, each providing a different drilling capability. These are the US Implementing Organization (USIO; through September 2014) and the *JOIDES Resolution* Science Operator (JRSO; as of October 2014), providing the leased commercial vessel *JOIDES Resolution* for riserless drilling operations; JAMSTEC's Center for Deep Earth Exploration (CDEX), providing the drillship *Chikyu* for riser and occasional riserless operations; and the European Consortium for Ocean Research Drilling (ECORD) Science Operator (ESO), providing "mission-specific" platforms (MSPs) for expeditions that extend the IODP operational range where neither drillship is suitable, for example, in polar environments and in shallow waters. Scheduling decisions for each capability are made by three independent Facility Boards, each of which includes scientists, operators, and platform funding partners: the *JOIDES Resolution* Facility Board (JRFB), *Chikyu* IODP Board (CIB), and ECORD Facility Board (EFB). At the beginning of the new IODP, the three Facility Boards agreed to utilize Publication Services at the USIO and now the JRSO for production of all expedition *Proceedings* volumes and reports.

The new IODP differs from prior scientific ocean drilling programs in that it has neither a central management organization nor commingled funding for program-wide activities. Yet this phase of IODP retains a fundamental integrative structural element: a "bottom-up" evaluation of all proposals for drilling expeditions by a single advisory structure composed of scientists representing all international program partners. International scientists may submit drilling proposals to the Science Support Office; all submitted proposals are then evaluated by a Science Evaluation Panel in the context of the Science Plan.

The new IODP also has a second internationally integrative level for high-level discussion and consensus-building: the IODP Forum. The Forum is charged with assessing program-wide progress toward achieving the Science Plan. At present, IODP involves 26 international financial partners, including the United States, Japan, an Australia/New Zealand consortium (ANZIC), Brazil, China, India, South Korea, and the eighteen members of ECORD (Austria, Belgium, Canada, Denmark, Finland, France, Germany, Ireland, Israel, Italy, the Netherlands, Norway, Poland, Portugal, Spain, Sweden, Switzerland, and the United Kingdom). This enhanced membership in the new IODP represents a remarkable level of international collaboration that remains one of the greatest ongoing strengths of scientific ocean drilling.

James A. Austin Jr.  
Chair, IODP Forum

# International Ocean Discovery Program

## *JOIDES Resolution* Science Operator

Website: <http://iodp.tamu.edu>

### **IODP JRSO**

International Ocean Discovery Program  
Texas A&M University  
1000 Discovery Drive  
College Station TX 77845-9547  
USA  
Tel: (979) 845-2673; Fax: (979) 845-4857  
Email: [information@iodp.tamu.edu](mailto:information@iodp.tamu.edu)

### **IODP JRSO Curation and Laboratories**

IODP Gulf Coast Repository (GCR)  
Texas A&M University  
1000 Discovery Drive  
College Station TX 77845-9547  
USA  
Tel: (979) 845-8490; Fax: (979) 845-1303  
Email: [rumford@iodp.tamu.edu](mailto:rumford@iodp.tamu.edu)

## European Consortium for Ocean Research Drilling, Science Operator (ESO)

Website: <http://www.eso.ecord.org>

### **IODP ESO Coordinator: Science, Logistics, and Operations**

British Geological Survey  
The Lyell Centre  
Research Avenue South  
Edinburgh EH14 4AP  
United Kingdom  
Tel: (44) 131-667-1000; Fax: (44) 131-668-4140  
Email: [eso@bgs.ac.uk](mailto:eso@bgs.ac.uk)

### **IODP ESO Curation and Laboratories**

IODP Bremen Core Repository (BCR)  
Center for Marine Environmental Sciences (MARUM)  
University of Bremen  
Leobener Strasse  
28359 Bremen  
Germany  
Tel: (49) 421-218-65560; Fax: (49) 421-218-98-65560  
Email: [bcr@marum.de](mailto:bcr@marum.de)

### **IODP ESO Petrophysics**

European Petrophysics Consortium  
Department of Geology  
University of Leicester  
Leicester LE1 7RH  
United Kingdom  
Tel: (44) 116-252-3611; Fax: (44) 116-252-3918  
Email: [sjd27@leicester.ac.uk](mailto:sjd27@leicester.ac.uk)

## Japan Agency for Marine-Earth Science and Technology (JAMSTEC)

Website: <http://www.jamstec.go.jp/chikyuu/e>

### **IODP Japan Science Operator**

Center for Deep Earth Exploration (CDEX)  
Japan Agency for Marine-Earth Science and Technology  
Yokohama Institute for Earth Sciences  
3175-25 Showa-machi  
Kanazawa-ku, Yokohama  
Kanagawa 236-0001  
Japan  
Tel: (81) 45-778-5643; Fax: (81) 45-778-5704  
Email: [cdex@jamstec.go.jp](mailto:cdex@jamstec.go.jp)

### **IODP Japan Curation and Laboratories**

IODP Kochi Institute for Core Sample Research (KCC)  
Japan Agency for Marine-Earth Science and Technology  
200 Monobe Otsu  
3175-25 Showa-machi  
Nankoku City, Kochi 783-8502  
Japan  
Tel: (81) 88-864-6705; Fax: (81) 88-878-2192  
Email: [kcc.contact@jamstec.go.jp](mailto:kcc.contact@jamstec.go.jp)

## Expedition 360 participants\*

### Expedition 360 scientists

**Christopher J. MacLeod**

**Co-Chief Scientist**

School of Earth and Ocean Sciences  
Cardiff University  
Main Building, Park Place  
Cardiff CF10 3AT  
Wales  
United Kingdom  
[macleod@cardiff.ac.uk](mailto:macleod@cardiff.ac.uk)

**Henry J.B. Dick**

**Co-Chief Scientist**

Department of Geology and Geophysics  
Woods Hole Oceanographic Institution  
McLean Laboratory, MS 8  
Woods Hole MA 02543-1539  
USA  
[hdick@whoi.edu](mailto:hdick@whoi.edu)

**Peter Blum**

**Expedition Project Manager/Staff Scientist**

International Ocean Discovery Program  
Texas A&M University  
1000 Discovery Drive  
College Station TX 77845-9547  
USA  
[blum@iodp.tamu.edu](mailto:blum@iodp.tamu.edu)

**Natsue Abe**

**Physical Properties Specialist/Downhole Measurements**

Institute for Research on Earth Evolution (IFREE)  
Japan Agency for Marine-Earth Science and Technology  
2-15 Natsushima-cho  
Yokosuka Kanagawa 237-0061  
Japan  
[abenatsu@jamstec.go.jp](mailto:abenatsu@jamstec.go.jp)

**Donna K. Blackman**

**Physical Properties Specialist/Downhole Measurements**

Scripps Institution of Oceanography  
University of California, San Diego  
LaJolla CA 92093-0225  
USA  
[dblackman@ucsd.edu](mailto:dblackman@ucsd.edu)

**Julie A. Bowles**

**Paleomagnetist**

Department of Geosciences  
University of Wisconsin-Milwaukee  
Lapham Hall 366  
Milwaukee WI 53201  
USA  
[bowlesj@uwm.edu](mailto:bowlesj@uwm.edu)

**Michael J. Cheadle**

**Structural Geologist**

Department of Geology and Geophysics  
University of Wyoming  
1000 University Avenue, Department 3006  
Laramie WY 82071  
USA  
[cheadle@uwyo.edu](mailto:cheadle@uwyo.edu)

**Kyungo Cho**

**Inorganic Geochemist**

Department of Environmental Exploration Engineering  
Pukyong National University  
Yongso-ro, Nam-Gu  
Busan  
Republic of Korea  
[whruddh@hanmail.net](mailto:whruddh@hanmail.net)

**Jakub Ciężela**

**Inorganic Geochemist**

Institute of Geology  
Adam Mickiewicz University  
ul. Maków Polnych 16  
61-606 Poznan  
Poland  
[ciazela@amu.edu.pl](mailto:ciazela@amu.edu.pl)

**Jeremy R. Deans**

**Structural Geologist**

Department of Geosciences  
Texas Tech University  
125 Science Building, MS 1053  
Lubbock TX 79409  
USA  
[jeremy.deans@ttu.edu](mailto:jeremy.deans@ttu.edu)

**Virginia P. Edgcomb**

**Microbiologist**

Department of Geology and Geophysics  
Woods Hole Oceanographic Institution  
McLean Laboratory, MS 8  
Woods Hole MA 02543  
USA  
[vedgcomb@whoi.edu](mailto:vedgcomb@whoi.edu)

**Carlotta Ferrando**

**Structural Geologist**

Géosciences Montpellier  
Université de Montpellier  
34095 Montpellier Cedex 05  
France  
[carlotta.ferrando@gm.univ-montp2.fr](mailto:carlotta.ferrando@gm.univ-montp2.fr)

\*Addresses at time of expedition, except where updated by participants.

**Lydéric France**

**Igneous Petrologist**

Centre de Recherches Péetrographiques et Géoehimiques  
(UMR 7358)

CNRS

Université de Lorraine

54501 Vandœuvre les Nancy

France

[lyde@crpg.cnrs-nancy.fr](mailto:lyde@crpg.cnrs-nancy.fr)

**Biswajit Ghosh**

**Igneous Petrologist**

Department of Geology

University of Calcutta

35 Ballygunge Circular Road

Kolkata West Bengal 700019

India

[bghosh\\_geol@hotmail.com](mailto:bghosh_geol@hotmail.com)

**Benoit M. Ildefonse**

**Structural Geologist**

Géosciences Montpellier

Université de Montpellier

34095 Montpellier Cedex 05

France

[benoit.ildefonse@umontpellier.fr](mailto:benoit.ildefonse@umontpellier.fr)

**Mark A. Kendrick**

**Inorganic Geochemist**

Research School of Earth Sciences

The Australian National University, Acton

Acton ACT 2601

Australia

[mark.kendrick@anu.edu.au](mailto:mark.kendrick@anu.edu.au)

**Juergen H. Koepke**

**Metamorphic Petrologist**

Institut fuer Mineralogie

University of Hannover

Callinstrasse 3

30167 Hannover

Germany

[koepke@mineralogie.uni-hannover.de](mailto:koepke@mineralogie.uni-hannover.de)

**James A.M. Leong**

**Metamorphic Petrologist**

School of Earth and Space Exploration

Arizona State University

550 East Tyler Mail PSF #686

Tempe AZ 85287

USA

[jmleong@asu.edu](mailto:jmleong@asu.edu)

**Chuanzhou Liu**

**Igneous Petrologist**

Institut of Geology and Geophysics

Chinese Academy of Sciences

19 Western Beitucheng Road

Beijing 100029

China

[chzliu@mail.iggcas.ac.cn](mailto:chzliu@mail.iggcas.ac.cn)

**Qiang Ma**

**Metamorphic Petrologist**

School of Ocean and Earth Science

Tongji University

1239 Siping Road

Shanghai

China

[tongjimaqiang@hotmail.com](mailto:tongjimaqiang@hotmail.com)

**Tomoaki Morishita**

**Igneous Petrologist**

Kanazawa University

College of Science and Engineering

Kakuma-machi

Kanazawa Ishikawa 920-1192

Japan

[moripta@staff.kanazawa-u.ac.jp](mailto:moripta@staff.kanazawa-u.ac.jp)

**Antony Morris**

**Paleomagnetist**

School of Geography, Earth and Environmental Sciences

University of Plymouth

Drake Circus

Plymouth PL4 8AA

United Kingdom

[a.morris@plymouth.ac.uk](mailto:a.morris@plymouth.ac.uk)

**James H. Natland**

**Igneous Petrologist**

Rosenstiel School of Marine and Atmospheric Science

University of Miami

Miami FL 33156

USA

[jnatland@rsmas.miami.edu](mailto:jnatland@rsmas.miami.edu)

**Toshio Nozaka**

**Metamorphic Petrologist**

Okayama University

Department of Earth Sciences

Okayama 700-8530

Japan

[nozaka@cc.okayama-u.ac.jp](mailto:nozaka@cc.okayama-u.ac.jp)

**Oliver Pluemper**

**Structural Geologist**

Institute of Earth Sciences

Utrecht University

Budapestlaan 4

3584CD Utrecht

Netherlands

[o.pluemper@uu.nl](mailto:o.pluemper@uu.nl)

**Alessio Sanfilippo**

**Igneous Petrologist**

Kanazawa University

College of Science and Engineering

Kakuma Kanazawa 920-1192

Japan

[spessio84@gmail.com](mailto:spessio84@gmail.com)

**Jason B. Sylvan**  
**Microbiologist**

Department of Oceanography  
Texas A&M University  
Eller O&M Building, Room 716  
College Station TX 77843  
USA  
[jasonsylvan@tamu.edu](mailto:jasonsylvan@tamu.edu)

**Maurice A. Tivey**  
**Paleomagnetist**

Department of Geology and Geophysics  
Woods Hole Oceanographic Institution  
360 Woods Hole Road  
Woods Hole MA 02543  
USA  
[mtivey@whoi.edu](mailto:mtivey@whoi.edu)

## Education and outreach

**Lucas Kavanagh**

**Education/Outreach Officer**

315 Arnold Avenue  
Victoria BC V8S 3L6  
Canada  
[l.kavanagh@me.com](mailto:l.kavanagh@me.com)

**Marion Burgio**

**Education/Outreach Officer**

1291 Avenue de l'amiral  
Landrin  
64110 Jurancon  
France  
[marion.burgio@gmail.com](mailto:marion.burgio@gmail.com)

**Riccardo Tribuzio**  
**Metamorphic Petrologist**

Dipartimento scienze della Terra  
Università degli studi di Pavia  
Via Ferrata 1  
27100 Pavia  
Italy  
[tribuzio@crystal.unipv.it](mailto:tribuzio@crystal.unipv.it)

**Luis G.F. Viegas**  
**Structural Geologist**

Instituto de Geociencias  
Universidade de Sao Paulo  
Rua do Lago 562  
Sao Paulo SP  
Brazil  
[lgviegas@gmail.com](mailto:lgviegas@gmail.com)

**Alejandra Martinez**

**Education/Outreach Officer**

2424 Elizabeth Circle  
Eagle Pass TX 78852  
USA  
[seafoamgreen@gmail.com](mailto:seafoamgreen@gmail.com)

**Jiansong Zhang**

**Education/Outreach Officer**

Xinhua News Agency Shanghai Branch  
Research Department  
62 Hengshan Road  
Shanghai  
China  
[13311669691@163.com](mailto:13311669691@163.com)

## Operational and technical staff

### Siem Offshore AS officials

**Terry Skinner**

Master of the Drilling Vessel

**James Samuel McLelland**

Offshore Installation Manager

### JRSO shipboard personnel and technical representatives

#### Expedition 360

**Heather Barnes**

Assistant Laboratory Officer

**Aaron de Loach**

Core Laboratory

**Susan Boehm**

X-Ray Laboratory

**David Fackler**

Applications Developer

**Adam Bogus**

Physical Properties Laboratory

**Edwin Garrett**

Paleomagnetism Laboratory

**Michael Cannon**

Marine Computer Specialist

**Jan Jurie Kotze**

Marine Instrumentation Specialist

**Etienne Claassen**

Marine Instrumentation Specialist

**Zenon Mateo**

Core Laboratory

**William Crawford**

Imaging Specialist

**Aaron Mechler**

Thin Section Laboratory

**Roy Davis**

Laboratory Officer

**Stephen Midgley**

Operations Superintendent



**Erik Moortgat**  
Chemistry Laboratory

**Chieh Peng**  
Assistant Laboratory Officer

**Vincent Percuoco**  
Chemistry Laboratory

**Alyssa Stephens**  
Publications Specialist

**Expedition 362T**

**Heather Barnes**  
Assistant Laboratory Officer

**Peter Blum**  
Expedition Project Manager/Staff Scientist

**Michael Cannon**  
Marine Computer Specialist

**Etienne Claassen**  
Marine Instrumentation Specialist

**Roy Davis**  
Laboratory Officer

**David Fackler**  
Applications Developer

**Paul Foster**  
Applications Developer

**Seth Frank**  
Marine Laboratory Specialist

**Rachel Gray**  
Marine Laboratory Specialist

**Margaret Hastedt**  
Marine Laboratory Specialist

**IODP Publication Services staff\***

**Douglas Cummings**  
Graphics Specialist II

**Gudelia (“Gigi”) Delgado**  
Senior Publications Coordinator

**Patrick H. Edwards**  
Production Specialist IV

**Jaime A. Gracia**  
Supervisor of Production and Graphics

**Jenni Hesse**  
Editor III

**Rhonda Kappler**  
Graphics Specialist III

**Shana C. Lewis**  
Editor III

**Ginny Lowe**  
Reports Coordinator

**Kerry Swain**  
Logging Engineer

**Steven Thomas**  
Marine Computer Specialist

**John Van Hyfte**  
Drilling Engineer

**Rui Wang**  
Applications Developer

**David Houpt**  
Marine Laboratory Specialist

**Jon Howell**  
Applications Developer

**Jan Jurie Kotze**  
Marine Instrumentation Specialist

**Zenon Mateo**  
Marine Laboratory Specialist

**Mike Meiring**  
Electronics Designer

**Erik Moortgat**  
Marine Laboratory Specialist

**Mike Storms**  
Operations Superintendent

**Kerry Swain**  
Drilling/Logging Engineer

**Steven Thomas**  
Marine Computer Specialist

**Rui Wang**  
Applications Developer

**Amy McWilliams**  
Editor IV

**Lorri Peters**  
Manager of Publication Services

**Kenneth Sherar**  
Production Specialist III

**Alyssa Stephens**  
Graphics Specialist III

**Crystal Wolfe**  
Production Specialist III

**Jean Wulfson**  
Graphics Specialist III

**Ann Yeager**  
Distribution Specialist

\*At time of publication.

## Expedition-related bibliography\*

### IODP publications

#### Scientific Prospectus

Dick, H.J.B., MacLeod, C.J., and Blum, P., 2015. *Expedition 360 Scientific Prospectus: Southwest Indian Ridge Lower Crust and Moho*. International Ocean Discovery Program.  
<http://dx.doi.org/10.14379/iodp.sp.360.2015>

#### Preliminary Report

Dick, H.J.B., MacLeod, C.J., Blum, P., and the Expedition 360 Scientists, 2016. *Expedition 360 Preliminary Report: Southwest Indian Ridge Lower Crust and Moho*. International Ocean Discovery Program.  
<http://dx.doi.org/10.14379/iodp.pr.360.2016>

#### Proceedings volume

MacLeod, C.J., Dick, H.J.B., Blum, P., and the Expedition 360 Scientists, 2017. *Southwest Indian Ridge Lower Crust and Moho*. Proceedings of the International Ocean Discovery Program, 360: College Station, TX (International Ocean Discovery Program).  
<http://dx.doi.org/10.14379/iodp.proc.360.2017>

#### Expedition reports

Dick, H.J.B., MacLeod, C.J., Blum, P., Abe, N., Blackman, D.K., Bowles, J.A., Cheadle, M.J., Cho, K., Ciążela, J., Deans, J.R., Edgcomb, V.P., Ferrando, C., France, L., Ghosh, B., Ildefonse, B.M., Kendrick, M.A., Koepke, J.H., Leong, J.A.M., Liu, C., Ma, Q., Morishita, T., Morris, A., Natland, J.H., Nozaka, T., Pluemper, O., Sanfilippo, A., Sylvan, J.B., Tivey, M.A., Tribuzio, R., and Viegas, L.G.F., 2017. Expedition 360 summary. *In* MacLeod, C.J., Dick, H.J.B., Blum, P., and the Expedition 360 Scientists, *Southwest Indian Ridge Lower Crust and Moho*. Proceedings of the International Ocean Discovery Program, 360: College Station, TX (International Ocean Discovery Program).  
<http://dx.doi.org/10.14379/iodp.proc.360.101.2017>

MacLeod, C.J., Dick, H.J.B., Blum, P., Abe, N., Blackman, D.K., Bowles, J.A., Cheadle, M.J., Cho, K., Ciążela, J., Deans, J.R., Edgcomb, V.P., Ferrando, C., France, L., Ghosh, B., Ildefonse, B.M., Kendrick, M.A., Koepke, J.H., Leong, J.A.M., Liu, C., Ma, Q., Morishita, T., Morris, A., Natland, J.H., Nozaka, T., Pluemper, O., Sanfilippo, A., Sylvan, J.B., Tivey, M.A., Tribuzio, R., and Viegas, L.G.F., 2017. Expedition 360 methods. *In* MacLeod, C.J., Dick, H.J.B., Blum, P., and the Expedition 360 Scientists, *Southwest Indian Ridge Lower Crust and Moho*. Proceedings of the International Ocean Discovery Program, 360: College Station, TX (International Ocean Discovery Program).  
<http://dx.doi.org/10.14379/iodp.proc.360.102.2017>

MacLeod, C.J., Dick, H.J.B., Blum, P., Abe, N., Blackman, D.K., Bowles, J.A., Cheadle, M.J., Cho, K., Ciążela, J., Deans, J.R., Edgcomb, V.P., Ferrando, C., France, L., Ghosh, B., Ildefonse, B.M., Kendrick, M.A., Koepke, J.H., Leong, J.A.M., Liu, C., Ma, Q., Morishita, T., Morris, A., Natland, J.H., Nozaka, T., Pluemper, O., Sanfilippo, A., Sylvan, J.B., Tivey, M.A., Tribuzio, R., and Viegas, L.G.F., 2017. Site U1473. *In* MacLeod, C.J., Dick, H.J.B., Blum, P., and the Expedition 360 Scientists, *Southwest Indian Ridge Lower Crust and Moho*. Proceedings of the International Ocean Discovery Program, 360: College Station, TX (International Ocean Discovery Program).  
<http://dx.doi.org/10.14379/iodp.proc.360.103.2017>

MacLeod, C.J., Dick, H.J.B., Blum, P., Abe, N., Blackman, D.K., Bowles, J.A., Cheadle, M.J., Cho, K., Ciążela, J., Deans, J.R., Edgcomb, V.P., Ferrando, C., France, L., Ghosh, B., Ildefonse, B.M., Kendrick, M.A., Koepke, J.H., Leong, J.A.M., Liu, C., Ma, Q., Morishita, T., Morris, A., Natland, J.H., Nozaka, T., Pluemper, O., Sanfilippo, A., Sylvan, J.B., Tivey, M.A., Tribuzio, R., and Viegas, L.G.F., 2017. Hole 1105A redescription. *In* MacLeod, C.J., Dick, H.J.B., Blum, P., and the Expedition 360 Scientists, *Southwest Indian Ridge Lower Crust and Moho*. Proceedings of the International Ocean Discovery Program, 360: College Station, TX (International Ocean Discovery Program).  
<http://dx.doi.org/10.14379/iodp.proc.360.104.2017>

Blum, P., MacLeod, C.J., Dick, H.J.B., Abe, N., Blackman, D.K., Bowles, J.A., Cheadle, M.J., Cho, K., Ciążela, J., Deans, J.R., Edgcomb, V.P., Ferrando, C., France, L., Ghosh, B., Ildefonse, B.M., Kendrick, M.A., Koepke, J.H., Leong, J.A.M., Liu, C., Ma, Q., Morishita, T., Morris, A., Natland, J.H., Nozaka, T., Pluemper, O., Sanfilippo, A., Sylvan, J.B., Tivey, M.A., Tribuzio, R., and Viegas, L.G.F., 2017. Hole U1473A remediation operations, Expedition 362T. *In* MacLeod, C.J., Dick, H.J.B., Blum, P., and the Expedition 360 Scientists, *Southwest Indian Ridge Lower Crust and Moho*. Proceedings of the International Ocean Discovery Program, 360: College Station, TX (International Ocean Discovery Program).  
<http://dx.doi.org/10.14379/iodp.proc.360.105.2017>

#### Supplementary material

MacLeod, C.J., Dick, H.J.B., Blum, P., and the Expedition 360 Scientists, 2017. Supplementary material.  
<http://dx.doi.org/10.14379/iodp.proc.360supp.2017>. *Supplement to* MacLeod, C.J., Dick, H.J.B., Blum, P., and the Expedition 360 Scientists, *Southwest Indian Ridge Lower Crust and Moho*. Proceedings of the International Ocean Discovery Program, 360: College Station, TX (International Ocean Discovery Program).  
<http://dx.doi.org/10.14379/iodp.proc.360.2017>

\*The Expedition-related bibliography is continually updated online (<http://publications.iodp.org/proceedings/360/360title.html#bib>). Please send updates to [PubCrd@iodp.tamu.edu](mailto:PubCrd@iodp.tamu.edu).