

High-altitude rodents have abundant collaterals that protect against tissue injury after cerebral, coronary and peripheral artery occlusion

Journal of Cerebral Blood Flow & Metabolism

2021, Vol. 41(4) 731–744

© The Author(s) 2020

Article reuse guidelines:

sagepub.com/journals-permissions

DOI: 10.1177/0271678X20942609

journals.sagepub.com/home/jcbfm

James E Faber^{1,2,3}, Jay F Storz⁴, Zachary A Cheviron⁵ and Hua Zhang¹ 

Abstract

Collateral number/density varies widely in brain and other tissues among strains of *Mus musculus* mice due to differences in genetic background. Recent studies have shown that prolonged exposure to reduced atmospheric oxygen induces additional collaterals to form, suggesting that natural selection may favor increased collaterals in populations native to high-altitude. High-altitude guinea pigs (*Cavia*) and deer mice (*Peromyscus*) were compared with lowland species of *Peromyscus*, *Mus* and *Rattus* (9 species/strains examined). Collateral density, diameter and other morphometrics were measured in brain where, importantly, collateral abundance reflects that in other tissues of the same individual. Guinea pigs and high-altitude deer mice had a greater density of pial collaterals than lowlanders. Consistent with this, guinea pigs and highlander mice evidenced complete and 80% protection against stroke, respectively. They also sustained significantly less ischemia in heart and lower extremities after arterial occlusion. Vessels of the circle of Willis, including the communicating collateral arteries, also exhibited unique features in the highland species. Our findings support the hypothesis that species native to high-altitude have undergone genetic selection for abundant collaterals, suggesting that besides providing protection in obstructive disease, collaterals serve a physiological function to optimize oxygen delivery to meet oxygen demand when oxygen is limiting.

Keywords

Collateral circulation, high-altitude genetic adaptation, stroke, coronary artery disease, peripheral artery disease

Received 30 April 2020; Revised 3 June 2020; Accepted 22 June 2020

Introduction

In the setting of acute occlusion or chronic narrowing of the trunk or a branch of an arterial tree, collaterals connecting to an adjacent tree(s) provide retrograde perfusion of the obstructed territory.^{1–4} The amount of collateral blood flow and how broadly it is distributed depend primarily on the number and diameter of the collaterals that are present (i.e. the extent or abundance of native collaterals). In mice, collateral extent exhibits remarkably wide variation due to differences in genetic background. Cerebral (pial) collateral number varies by 30-fold and diameter by 3-fold among 21 inbred strains, and infarct volume following permanent middle cerebral artery occlusion inversely mirrors these differences.^{5,6} Similar variation is present in other

¹Department of Cell Biology and Physiology, University of North Carolina at Chapel Hill, Chapel Hill, NC, USA

²Curriculum in Neuroscience, University of North Carolina at Chapel Hill, Chapel Hill, NC, USA

³McAllister Heart Institute, University of North Carolina at Chapel Hill, Chapel Hill, NC, USA

⁴School of Biological Sciences, University of Nebraska, Lincoln, NE, USA

⁵Division of Biological Sciences, University of Montana, Missoula, MT, USA

Corresponding author:

James E Faber, Department of Cell Biology and Physiology, University of North Carolina, 6309 MBRB, Chapel Hill, NC 27599-7545, USA.

Email: jefaber@med.unc.edu

tissues of the same mouse of a given strain,^{7,8} indicating that collateral extent in one tissue reflects that in other tissues of the same individual. These differences arise from polymorphisms in genes/genetic elements within the pathway that directs formation of collaterals during development, a process termed collateralogenesis.^{6,9–12} Similar genetic differences in collateral abundance may also contribute to the wide variation in collateral blood flow in patients with ischemic stroke, myocardial infarction, and atherosclerotic coronary and peripheral artery disease.^{2,4,13–15}

It has been hypothesized that collaterals may also serve a physiological function by optimizing oxygen delivery to meet oxygen demand when oxygen availability is limited.^{16,17} Collateral blood flow at baseline slowly ebbs to-and-fro, averaging zero net flow in the absence of arterial obstruction, owing to the lack of a difference in pressures in adjacent arterial trees.^{10,18} When an increase in activity/metabolism occurs in a region of a tissue supplied by one of the trees, local vasodilation occurs. This creates a drop in local pressure that increases flow into the activated region which, if the vasodilation is sufficiently robust, increases local oxygen delivery to match the increase in local oxygen demand—a process termed neurovascular coupling in brain and functional hyperemia elsewhere.^{19,20} The hemodynamic efficiency of this mechanism would be enhanced if the increase in blood flow into the activated region was supplied not only by the arterial tree serving the region but also by recruitment of flow across nearby collaterals, if present, connecting to an adjacent tree(s). An analogous principle underlies the efficient design of interconnected municipal electric power grids, wherein different communities supplied proximally by separate power plants are interconnected at their peripheries, allowing current to be drawn from more than one source when an increase in regional demand occurs.

There is indirect support for the above concept. Patients with chronic obstructive pulmonary artery disease, cyanotic heart disease, and sleep apnea have increased coronary collateral conductance,^{21–25} as do piglets following prolonged exposure to reduced inspired oxygen²⁶ and dogs made chronically anemic.^{27,28} Humans with coronary atherosclerosis have increased collateral number.²⁹ Sick cell anemia often leads to formation of moyamoya-like micro-collaterals in brain.^{30,31} In addition, we recently reported that several weeks of exposure of mice to reduced atmospheric oxygen induced a hypoxia “dose-” and duration-dependent de novo formation of additional new cerebral collaterals and outward remodeling of the native population present at baseline.¹⁷ Notably, neither effect reversed on return to normoxia, resulting in sustained decrease in infarct volume following acute

ischemic stroke when examined many weeks later. A similar hypoxemia-induced stimulation of new collateral formation and protection against ischemic injury was also seen in the heart.^{32,33} The collateralogenesis pathway is driven by oxygen-sensitive genes,^{17,33} and collateral formation occurs between the crowns of adjacent arterial trees where oxygen levels are lower than elsewhere in the arterial vasculature.^{10–12} That collaterals exist in this vascular “outpost” may account for the effect of reduced arterial oxygen to re-activate this embryonic signaling pathway in the adult, resulting in an increase in collateral density in brain and other tissues.^{17,32,33} The strength of this physiological adaption may also be subject to genetic selection for gain-of-function variants of genes within the collateralogenesis signaling pathway, leading to a greater abundance of collaterals in highlander species and populations.

A corollary arising from the hypothesis that collaterals optimize oxygen delivery to meet oxygen demand is that the advantage of abundant collaterals in healthy tissues would be minimal when oxygen availability is not limited, for example in species native to low-altitude. Consequently, natural selection for abundant collaterals would not be expected to occur in such species.¹⁷ This could explain why collateral extent exhibits so much variation among *Mus musculus* mice^{5–8} and, potentially, among humans (see above). *Mus musculus* evolved at low altitude, although commensal populations have associated with human settlements at altitudes above 2500 m (8250 ft; “high altitude”) in the past few hundred years.^{34–36} By contrast, abundant collaterals could provide an adaptive advantage in species indigenous to high altitude, evolving through positive selection on advantageous alleles of genes that direct collateralogenesis. Interestingly, expression of many of the genes thus far identified in the collateralogenesis pathway is increased by low oxygen.^{11,17,32} In support of this hypothesis, collateral blood flow in the domesticated guinea pig, *Cavia porcellus*, following acute coronary artery ligation was, remarkably, 100% of orthograde flow before ligation and 6-fold higher than the next highest species (dog) among eight species examined.³⁷ These findings were consistent with an earlier anecdotal report that guinea pigs sustained no infarction after coronary ligation.³⁸ Neither study commented on why guinea pigs might have such abundant coronary collaterals as suggested by their findings. However, evidence indicates that the immediate ancestor of *C. porcellus* is the “high montane” guinea pig, *C. tschudii*, that evolved at ~4200 m in the Andes mountains beginning 12 million years ago.^{39–42} *Cavia porcellus* was domesticated 5000 years ago by humans residing at these altitudes, then brought to Europe at the end of the 16th century and bred by “fanciers”, leading to the breeds currently available for research and pets.^{39–41} This short time of

residence at low altitude makes it unlikely that favorable alleles of genes that promote abundant collaterals would be lost, given their presence would not be envisioned to reduce fitness at low-altitude, their homozygous loss would likely be required,^{9,12} and that the guinea pig has a relatively long gestation of ~66 days. Additional support for the above hypothesis comes from the Swiss National Cohort Study which found that mortality from stroke and coronary artery disease was reduced by 12 and 22%, respectively, for every thousand feet of residence above 200 m, with an added benefit seen in those born at higher altitudes.⁴³ Mortality from stroke was also lower in high-altitude areas of Peru⁴⁴ and the United States⁴⁵ and 5-fold lower in Tibetan than in Han Chinese populations living in Lhasa (3644 m).^{44,47} As well, the prevalence of ischemic stroke and heart disease was lower in the Tibetan versus Han populations in Lhasa and in other high- versus low-altitude populations. See literature^{43,45–49} and references therein.

In the present study, we find that the density of native collaterals at baseline in two high-altitude breeds of *Cavia porcellus* and two high-altitude subspecies of the North American deer mouse, *Peromyscus maniculatus*, is greater and ischemic injury markedly diminished compared to that seen in lowlander conspecifics and *Mus musculus* mice and rats. These findings suggest that, in addition to their bypass function in obstructive disease, collaterals optimize oxygen delivery to meet oxygen demand when oxygen supply is limited and that positive genetic selection may have occurred for abundant collaterals in species native to high-altitude as a fitness advantage for survival in their low-oxygen environment.

Methods

The following animals were maintained at low altitude (89–978 m): (1) Three-to-six months-old C57BL/6J and BALB/cByJ inbred mice (*Mus musculus domesticus*, lowlanders, Jackson Laboratories, Bar Harbor, ME). Unless indicated otherwise, both sexes of these and the other species listed below were studied. Collateral number/density and diameter and other vascular morphometrics do not demonstrate sexual dimorphism,⁵⁰ thus *n*-sizes were not chosen to allow examination of sex differences. (2) Six-to-seven-months-old male and female outbred Hartley Albino and male American Tricolor guinea pigs (*Cavia porcellus*, highlander, Elm Hill Labs, Chelmsford, MA). (3) The following 4–10 months-old outbred male and female North American deer mouse species: *Peromyscus maniculatus sonoriensis* (*P.m. sonoriensis*, highlander, Peromyscus Genetic Stock Center, PGSC, University of South Carolina, Columbia, SC) originally caught near the summit of White Mountain, CA, 4344 m^{51,52}; *P.m.*

rufinus (highlander) male 12–14 months-old F2-generation; the grandparents of these mice were caught near the summit of Mount Evans, CO, 4348 m⁵³; *P.m. bairdii* originally caught near Ann Arbor, MI (277 m, PGSC), conspecific lowlander to *P.m. sonoriensis* and *P.m. rufinus*.^{51,52} (4) Three-to-six-months-old female Wistar and male and female Long-Evans outbred rats (*Rattus norvegicus domesticus*, lowlanders, Charles River Labs, Morrisville, NC). The above deer mouse species were obtained from PGSC in 2019 where they have been maintained outbred for many generations. The above ages are below those that are accompanied by a loss/reduction in collateral number and diameter that occurs by 22 and 16 months-age, respectively, in C57BL/6J mice (i.e. age-induced collateral rarefaction).⁵⁴ Angiography and morphometry were performed after maximal vasodilation with perfusion of 10^{−4}M nitroprusside in PBS followed by Microfil® (Flow Tech, Carver MA).¹⁷ Brain tissue was counterstained with Evans blue dye or 2,3,5-triphenyltetrazolium chloride (TTC).¹⁷ Vascular filling was confined to the precapillary vessels by adjusting the viscosity and perfusion pressure of the Microfil.¹⁷ Optical tissue clearing was as described.³² All collaterals between the outer branches of the ACA, MCA and PCA trees of both hemispheres were counted (Figure 1), and lumen diameter of each collateral was obtained at midpoint and averaged for each animal.¹⁷ Density of intra-tree anastomoses was determined in a defined area of the MCA tree (Figure 1). Permanent middle cerebral artery occlusion (pMCAO) was by occlusion just distal to the lenticulostriate branches, and infarct volume was measured 24 h later by TTC.¹⁷ Ligation of the ~midpoint of the left anterior descending coronary artery (LAD) was followed 24 h later by measurement of infarct volume by TTC.⁵⁵ Femoral artery ligation was by ligating immediately proximal and distal to the superior epigastric artery which was also ligated, followed by cross-cutting and separating the cut ends of the vessels by 2 mm (moderate ligation) or by ligating, cross-cutting and separating the ends of the proximal femoral artery just distal to the inguinal canal (severe ligation).⁵⁶ Hindlimb perfusion immediately after ligation was measured by laser Doppler perfusion imaging of the plantar surface of the foot.⁵⁶

Study design and statistical analysis were in accordance with the ARRIVE and STAIR guidelines^{57,58}. Due to the nature of the experiments, investigators were not blinded to species or strains with the exception of deer mice strains; No data points were identified as outliers and excluded; The discussion and citation of the literature was unbiased; N-sizes (number of animals studied) were based on our previous studies which demonstrated sufficient power to test hypotheses using the variables measured herein. Values are means ± SD, with

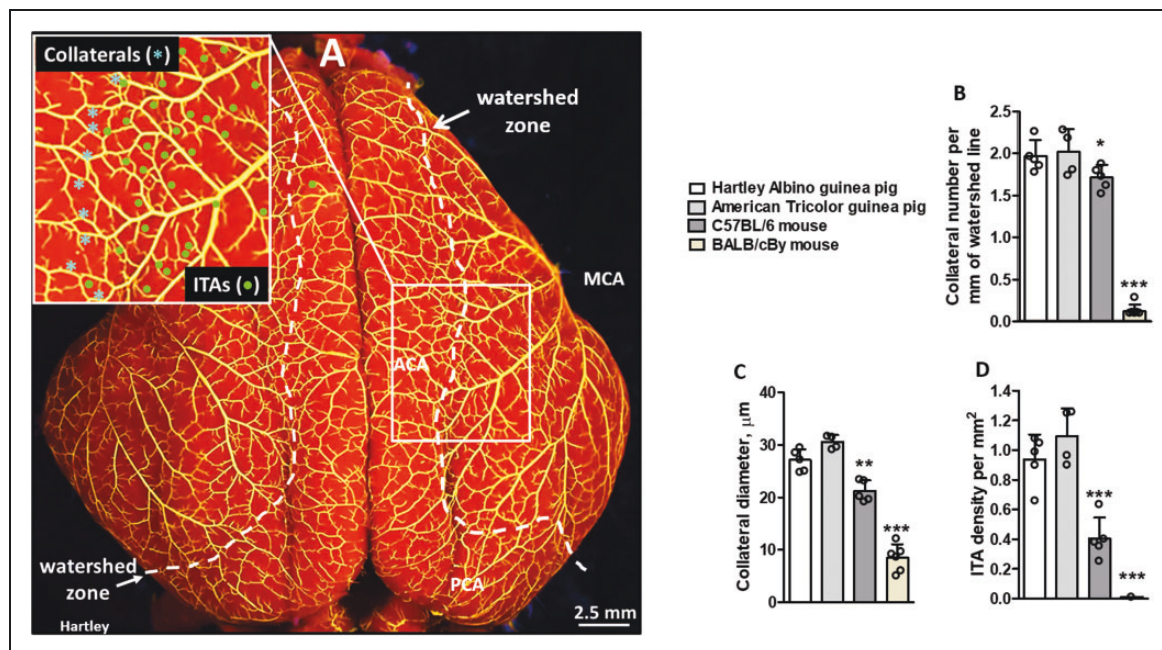


Figure 1. High altitude-evolved guinea pigs (*Cavia porcellus*) have a higher number/density of pial collaterals than the abundant-collateral C57BL/6 and sparse-collateral BALB/cBy mouse strains (*Mus musculus domesticus*, lowlander species). (a) The cerebral vasculature was maximally dilated and filled with Microfil whose viscosity and filling pressure were adjusted to limit filling to pre-capillary vessels, followed by tissue counterstaining. MCA, ACA, PCA, middle, anterior and posterior cerebral artery trees separated by a line drawn to delineate their watershed zones. For each animal, all collaterals between the trees were counted (b) and their lumen diameters were determined and averaged (c); number of intra-tree anastomoses (ITAs) in the indicated region was also determined (d, inset in a). Data in this and subsequent figures are mean \pm SD for n number of animals per group (here 5,4,5,6 per left-to-right bar in each panel). **** $P < 0.05$, 0.01, 0.001 by one-sided t -test vs. either guinea pig strain for collateral number and by two-sided t -tests for other parameters; p value symbols are identical for vs. Hartley and vs. Tricolor guinea pigs. Sidedness was pre-specified in this and subsequent figures. Values for the guinea pig breeds did not differ by two-sided t -tests.

significance denoting $p < 0.05$. N-sizes and statistical tests are given in the figure legends and Supplemental Table I. Data from each of the bars presented in the figures and Supplemental Table II that had $n > 7$, which is required for normality testing (D'Agostino-Pearson test, Graphpad Prism), were evaluated: The data in Figure 2, bars 1,4–6 in each panel, Figure 4(b), bars 4,8, Figure 4(c), both bars, and Supplemental Table II, groups 5–7, were normally distributed ($p > 0.05$) except for Figure 2(a), bar 6 ($p = 0.03$). All procedures were approved by the University of North Carolina Institutional Animal Care and Use Committee (IACUC# 18-123.0-A, 04/2019) and were conducted in compliance with the NIH Guide for the Care and Use of Laboratory Animals.

Results

High-altitude guinea pigs and deer mice have greater density of pial collaterals than lowlander species

We first examined two breeds of guinea pigs. Both have a greater density of cerebral pial collaterals, i.e. number

per mm length of the line demarcating the watersheds between the MCA, ACA and PCA trees, than the C57BL/6 and BALB/cBy mouse strains (*Mus musculus domesticus*) (Figure 1). We compared guinea pigs to these strains because: (1) No lowlander conspecific strain of *Cavia* exists, i.e. none that has resided at low-altitude for thousands of years, (2) Among 21 strains of *M.m.domesticus*, *M.m.musculus*, and *M.m.castaneus*, C57BL/6 have nearly the greatest and BALB/cBy the least number of pial collaterals (the same is true in their other tissues examined),^{6,8} thus these strains bracket well the naturally occurring variation in collateral abundance in *Mus musculus*; (3) C57BL/6, BALB/cBy and other *M.m.* mice are lowlanders, with no populations residing at high-altitude for more than several hundred years.^{34–36} Guinea pigs also have a higher density of intra-tree anastomoses (ITAs, Figure 1), i.e. vessels that cross-connect adjacent arteriole branches within a given vascular tree, than C57BL/6 and BALB/cBy mice. However, this was not seen in other species regardless of altitude status (see below), which is consistent with the inability of ITAs to recruit blood flow from adjacent arterial trees.

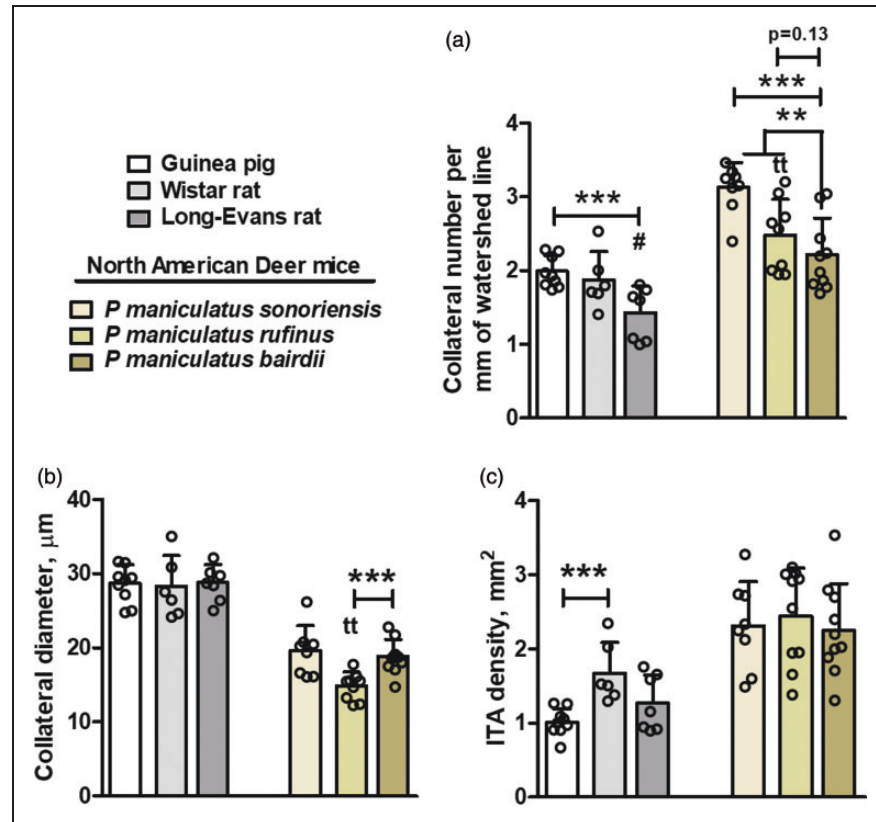


Figure 2. High-altitude evolved guinea pigs and deer mice, *Peromyscus maniculatus sonoriensis* and *P.m.rufinus*, have a greater number of pial collaterals than lowlander rats (*Rattus norvegicus domesticus*) and deer mouse *P.m.bairdii*, respectively. Data for both breeds of guinea pigs in Figure 1 were combined since they did not differ by two-sided t-tests and are shown for comparison with other species. (a,b) Collateral number and diameter. (c) Rats and deer mice have a greater density of ITAs than guinea pigs irrespective of highlander (guinea pig, *P.m.sonoriensis*, *P.m.rufinus*) versus lowlander status (other strains). Collateral diameter and ITA density do not associated with high- vs. lowlander status. N = 9,6,7,8,8,9 per left-to-right bar in each panel. Collateral number for highlanders vs. lowlanders by one-sided t-tests, other parameters by two-sided t-tests. ****, $P < 0.01, 0.001$; NS if bracket not shown; bracket end-tics identify the two bars tested. #####, $P < 0.05, 0.001$, Long-Evans vs. Wistar. tt, $P < 0.01$, *P.m.rufinus* vs. *P.m.sonoriensis*. Sidedness of t-tests same as defined in legend for Figure 1.

Anatomic diameter of pial collaterals (i.e. when fully dilated) is also greater in guinea pigs than C57BL/6 and BALB/cBy mice (Figure 1). However, guinea pigs weigh ~30-fold more than mice (Supplemental Table II), and brain weight closely follows body weight in rodents and other species. Therefore, comparing differences in collateral diameter among species is confounded by differences in body weight. However, normalizing to body or brain weight does not provide clarity because collaterals are anastomoses of distal arterioles, and both vessel types are similar in diameter among mammalian species irrespective of body weight (e.g. ~10–20 μm in mice, ~30 μm in guinea pigs and rats; see below). Consistent with this, genetic background-dependent differences in collateral diameter varied by 3-fold and collateral number by 30-fold among 21 *M.m.* strains, and neither parameter varied

significantly with body or brain weight despite as much as 2-fold differences in body weight.^{5,59}

We next compared guinea pigs to Wistar and Long-Evans rats (*Rattus norvegicus domesticus*) based on the same rationale as above for C57BL/6 and BALB/cBy mice, i.e. both strains are lowlanders and no highlander conspecific exists.⁶⁰ Both are also known to have abundant collaterals, although to our knowledge, density and diameter have not been quantified. Collateral density is greater in guinea pigs than in Long-Evans rats; however, the difference was not statistically significant for Wistar rats (Figure 2). Density of ITAs is greater in Wistar but not Long-Evans rats. In agreement with diameter in guinea pigs versus mice, differences in collateral diameter between guinea pigs and rats do not follow altitude status regardless of differences in body weight (Supplemental Table II).

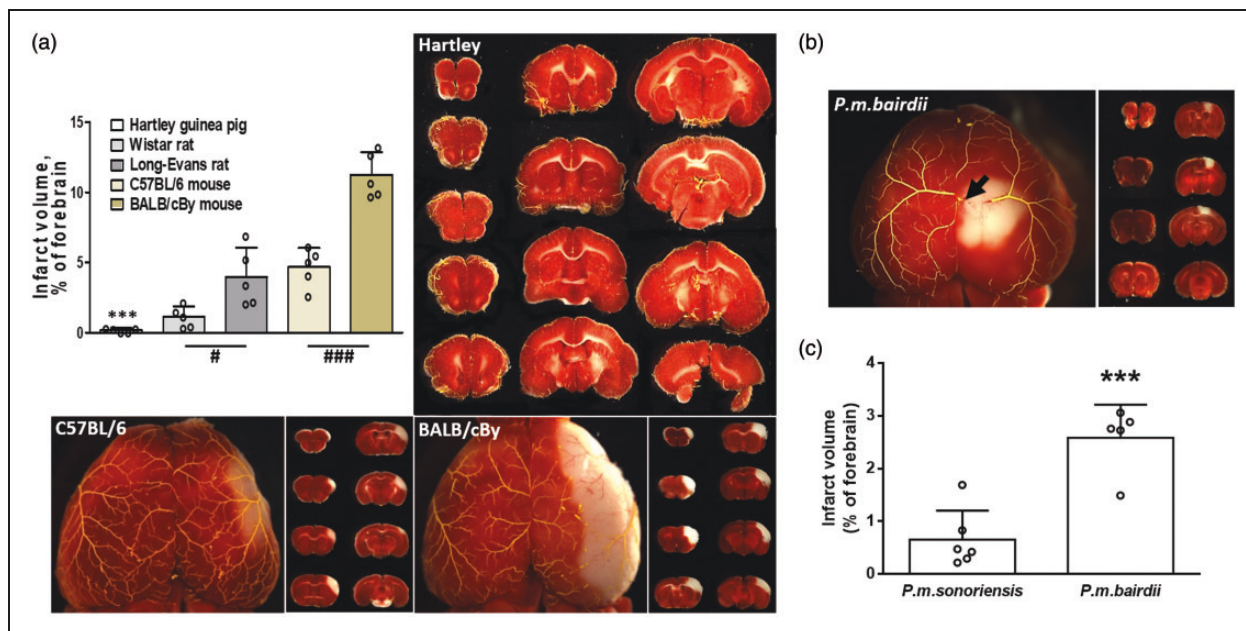


Figure 3. Guinea pigs sustain no cerebral infarction after ligation of the right MCA, and high-altitude deer mouse *Peromyscus maniculatus sonoriensis* has smaller infarctions after ligation of right ACA than its lowlander conspecific, *P.m.bairdii*. Differences in infarct volume in the seven rodent species are consistent with their differences in collateral number/density in Figures 1 and 2. Infarct volume by 2,3,5-triphenyltetrazolium chloride staining 24 h after MCA occlusion (representative images in a, b; arrow in b, ligation point). N = 5 per group in panel A, and 6, 5 in panel C. ***, $p < 0.001$ vs. each bar to the right (panel A) and vs. *P.m.sonoriensis* (panel C); #### $P < 0.05$, 0.001; t-tests pre-specified as one-sided based on differences in collateral number identified in Figures 1 and 2. Unlike guinea pigs, rats, and *Mus musculus* in which the MCA tree dominates cortical perfusion (a, see also Figure 1), the ACA tree is dominant in deer mice (b, see also Supplemental Figure I).

We also examined high-altitude deer mouse strains *Peromyscus maniculatus sonoriensis* and *P.m.rufinus* with their conspecific lowland strain, *P.m.bairdii*. Collateral density is greater in *P.m.sonoriensis* and trends the same for *P.m.rufinus* (Figure 2). All three species have a high density of ITAs irrespective of high-lander versus lowlander. Like the above in guinea pigs versus *Mus musculus* mice and rats, collateral diameter does not follow altitude status, irrespective of body weight differences (Supplemental Table 1).

Guinea pigs and high-altitude deer mice are protected from cerebral infarction after arterial occlusion

Consistent with their high pial collateral density, guinea pigs, strikingly, had no cerebral infarction after acute ligation of the MCA (Figure 3(a)). In contrast, rats and *M.m.* sustained infarctions whose volumes, as expected,⁵ varied inversely with their collateral densities given in Figures 1 and 2. Similarly, infarct volume in *P.m.sonoriensis* was significantly smaller than in lowlander *P.m.bairdii* (Figure 3 (b) and (c)); *P.m.rufinus* was not tested due lack of

availability of these wild-caught mice. Interestingly and for reasons that are unclear, unlike guinea pigs, rats, and *Mus musculus* mice (and humans) in which the MCA tree dominates perfusion of the neocortex (Figures 1 and 3(a)), the ACA tree is dominant in deer mice (Figure 3(b); Supplemental Figure I shows the same for *P.m.sonoriensis* and *P.m.rufinus*). Therefore, infarct volume was examined after ligation of the large central-most branch of the ACA just after it exits from under the mid-sagittal sinus. To our knowledge, such an exceptionally dominant ACA tree has not been reported for other mammalian species. Importantly, territory of the ACA was the same among the three strains: *P.m.sonoriensis* 77.3 ± 1.0 mm², $n = 8$; *P.m.rufinus* 77.6 ± 2.2 , $n = 10$; *P.m.bairdii* 77.3 ± 1.0 , $n = 9$.

Guinea pigs and high-altitude deer mice have more extensive collaterals in skeletal muscle than lowlander species

Previous studies of *M.m.* strains found that similar genetic-dependent and gene-targeted-induced differences in collateral abundance in brain are also seen

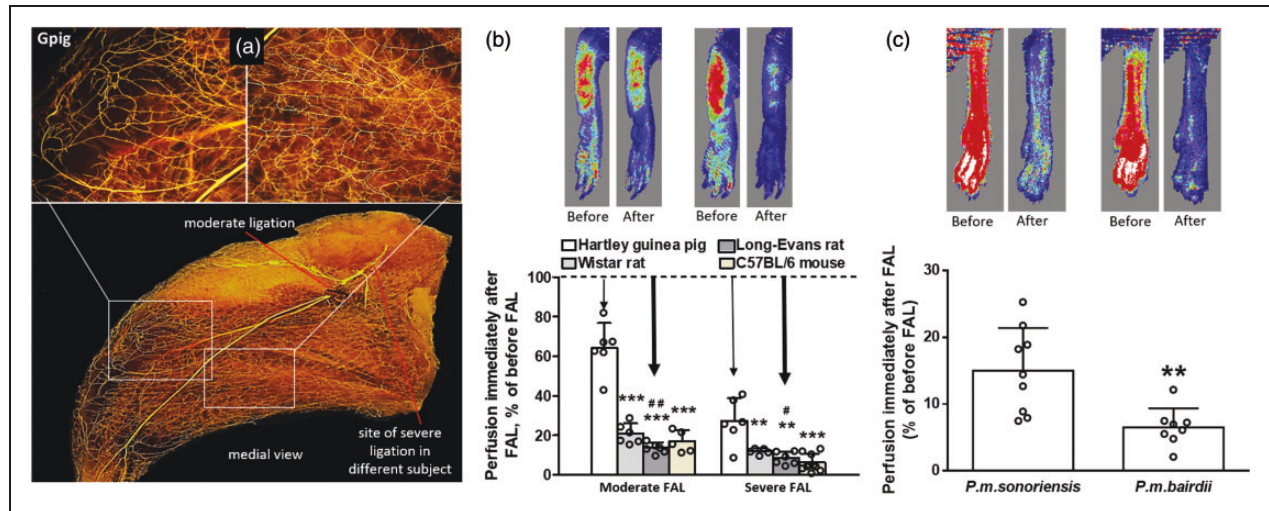


Figure 4. Guinea pigs and high-altitude deer mouse *Peromyscus maniculatus sonoriensis* have greater collateral-dependent blood flow after femoral artery ligation (FAL) than lowlander rat, C57BL/6 mouse, and conspecific deer mouse, *P.m.bairdii*. (a) Hartley guinea pig (Gpig) arterial vasculature immediately after moderate FAL (black suture; line shows site of severe ligation when performed), maximal dilation, filling with Microfil and optical clearing, showing extensive collaterals resulting in complete retrograde filling of arterial trees distal to the ligation. (b,c) Laser Doppler perfusion imaging of the plantar side of the guinea pig (b) and *P.m.sonoriensis* hindpaw (c) immediately after FAL (index of collateral-dependent blood flow). (b) Perfusion falls less after distal (moderate) and proximal (severe) FAL in guinea pigs than in rats and C57BL/6 mice. Severe ligation not tested in deer mice. N = 6,6,6,5,6,5,6,10 per left-to-right bars in panel B and 9,8 in panel C. *****, $P < 0.01$, 0.001 vs. guinea pig (b) and vs. *P.m.sonoriensis* (c), one-sided t-test. ###, $P < 0.05$, 0.01 vs. Wistar rat, one-sided t-test.

in skeletal muscle and other tissues of the same individual.^{7–9,56} These studies also found that collateral-dependent blood flow in brain and hindlimb measured immediately after arterial ligation and the severity of subsequent tissue injury mirrored the differences in collateral extent in these tissues. Unlike in brain where pial collaterals reside on the surface and are thus readily visualized, collaterals in hindlimb and most other tissues are located deeply and are thus hard to differentiate from similarly sized end-arterioles, making quantification difficult. We therefore examined blood flow in the planter region of the foot immediately after acute femoral artery ligation. Plantar perfusion is a widely used index of collateral-dependent blood flow in the hindlimb. Its value reflects the number of collaterals, primarily in skeletal muscle, that interconnect branches of the iliac and femoral arteries with the popliteal and saphenous arteries below the points of ligation.^{7–9,56} In agreement with the above findings for pial collaterals, guinea pigs have more extensive hindlimb collaterals than Wistar and Long-Evans rats and C57BL/6 mice, as evidenced by 3- to 4-fold smaller declines in blood flow after moderate or severe femoral ligation (Figure 4(a) and (b)). Likewise, perfusion fell 2.3-fold less after FAL in the high-altitude deer mouse *P.m.sonoriensis* compared to the lowlander *P.m.bairdii* strain (Figure 4(c)).

Guinea pigs have extensive collaterals in heart and are protected from myocardial infarction after coronary artery ligation

Consistent with the above in brain and hindlimb, guinea pigs also have extensive coronary collaterals and, remarkably, sustained no myocardial infarction after ligation of the proximal left anterior descending (LAD) artery (Figure 5(a) and (c)). In contrast, *M.m.* mice and rats, which have no or sparse coronary collaterals, respectively,^{32,33,55,61} evidenced large infarctions after ligation of the midpoint of the LAD (Figure 5(b) and (c)). It is not known why coronary collaterals are absent in mice and very sparse in rats, yet are present in substantial number in brain and skeletal muscle of C57BL/6 and other high-collateral strains of *M.m.*^{5–8,32,33,55,56} and rats^{61,62} (Figures 1 to 4). Unlike the above absence of infarctions that we observed in male and female six to seven-months-old Hartley guinea pigs after proximal LAD ligation, Hardwick et al.⁶³ reported that young nine-weeks-old male Hartley guinea pigs sustain a small 5.6% infarction measured as scar tissue six weeks after ligation just distal to the first diagonal branch; it is unclear whether the infarcts were produced by occlusion of flow to the surrounding tissue caused by the ligature itself. We did not evaluate myocardial infarction in deer mice because

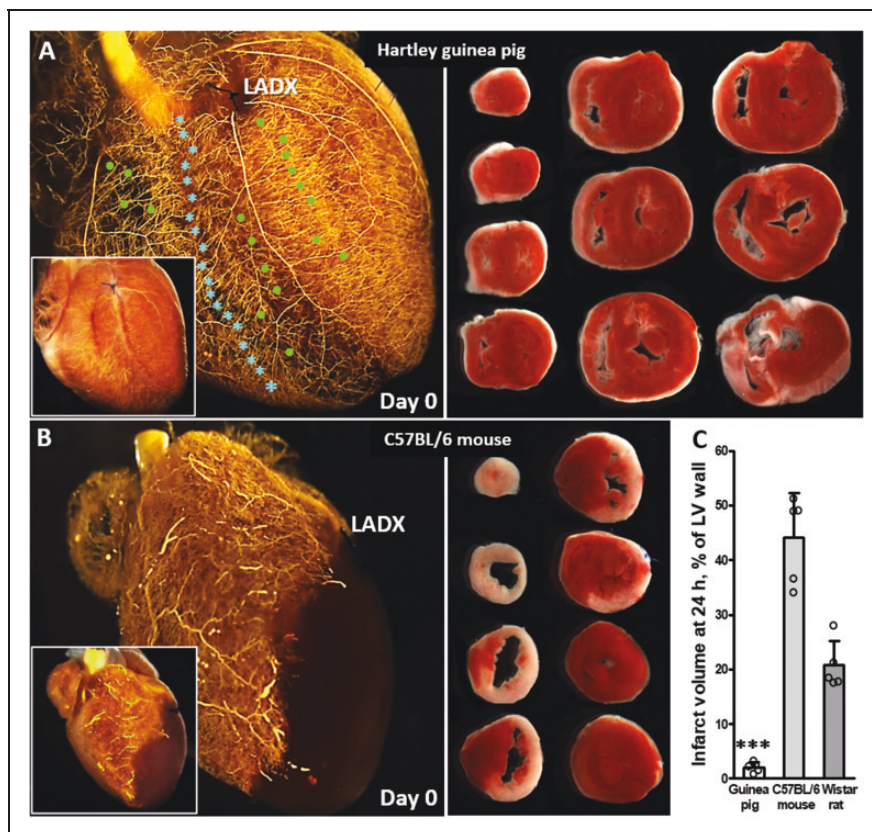


Figure 5. Guinea pigs have extensive coronary collaterals and are protected from myocardial infarction after ligation of the left anterior descending coronary artery (LADX). (a–c) left ventricular (LV) infarct volumes for Hartley guinea pig and other species by 2,3,5-triphenyltetrazolium chloride staining 24 h after LADX. Immediately after LADX (black suture in a, b) the arterial vasculature was maximally dilated and filled with Microfil as described in Figure 1, followed by optical clearing⁵⁵ (insets are before optical clearing). (a) Guinea pigs have abundant coronary collaterals and intra-tree anastomoses (green stars and blue circles identify several of each vessel type in the sub-epicardium), thus complete back-filling of the LAD tree occurs distal to the point of ligation. (b) 2% infarct volume in guinea pigs reflects ligature-induced compression of the surrounding tissue. C57BL/6 mice (and other *M. musculus* strains^{32,33,55}) lack coronary collaterals, thus no back-filling occurs. Evidence suggests rats have sparse native coronary collaterals.^{37,64} (c) N = 5 per group; *** $P < 0.001$ vs. mouse and also versus rat, one-sided t-test. Infarct volume was not determined in deer mice because, like *M. musculus*, they lack native coronary collaterals (i.e. no retrograde filling of the LAD tree occurred downstream of the acute ligation; data not shown).

preliminary studies showed that, like *M.m.*^{32,33,55} (Figure 5), deer mice lack coronary collaterals irrespective of highlander or lowlander status (i.e. no retrograde filling of the LAD tree occurred downstream of acute ligation, data not shown).

Guinea pigs and deer mice have a robust configuration of the circle of Willis

We also examined the architecture of the ventral cerebral arterial circulation, including the collateral arteries of the circle of Willis (CoW, Figure 6). Both breeds of guinea pigs have a complete, symmetric (i.e. diameters are similar on both sides) CoW primarily supplied by the posterior circulation, i.e. consistent presence in all subjects of: an exceptionally large-diameter basilar

artery (BA) relative to the internal carotid arteries (ICAs) and bilateral paired posterior cerebral arteries (P1-PCAs)—features that to our knowledge have not been reported to be simultaneously present together in another mammalian species—and large bilateral posterior communicating collateral arteries (PComs) and anterior communicating collateral artery (ACom). Some of these features in the guinea pig have been described or are evident in images from previous studies.^{64–68} Deer mice also have a complete, symmetric CoW that is primarily supplied by the ICAs, plus consistent presence of bilateral PComs and an azigos artery (functional equivalent to the ACom), irrespective of altitude status (Figure 6). We did not examine *M.m.* mice and rats because the configuration of their CoWs is known to have large ICAs and, depending on

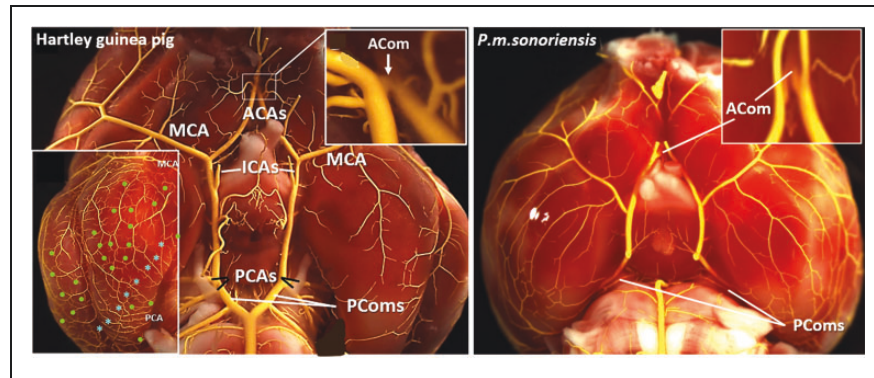


Figure 6. Ventral cerebral arterial vasculature of guinea pigs and deer mice. Images are representative of the two guinea pig breeds and three deer mouse strains examined in previous figures. Left panel, guinea pigs have a complete circle of Willis primarily supplied by the posterior circulation, i.e. consistent presence in all individuals examined of straight-coursing large-diameter: basilar artery (BA), bilateral paired PI-PCAs, anterior communicating artery (ACom), and bilaterally present posterior communicating arteries (PComs) with similar diameters. Internal carotids (ICAs) are small-diameter and located anteriorly (both features are unlike deer mice, *Mus musculus*, and rats). Right panel, *P.m.sonorienis* (and *P.m.rufinus* and *P.m.bairdii*, see Supplemental Figure I) deer mice have complete circles and, unlike *M.m.*, rats and humans, do not evidence variation for unilateral or bilateral absence or atresia of the PComs or ACom. See Faber et al.⁵⁹ and references therein. Diameter of the ACom is similar among the three deer mouse strains, whereas order of PCom diameter is *P.m.bairdii* > *P.m.rufinus* > *P.m.sonorienis*. Inset in left panel, like Figure 1, shows abundant MCA-PCA pial collaterals (blue stars) and intra-tree anastomoses (green dots) from a different subject with filling pressure optimized to fill distal precapillary pial vessels.

strain, frequently asymmetric, incomplete CoWs (i.e. often lacking bilateral PComs, with PComs and the azigos/ACom having small and varying diameters); other mammals including humans also frequently have variations similar to those described above for *M.m.*⁵⁹ and references therein.^{64–67}

Discussion

Findings in this study support the novel hypothesis that that—in addition to providing protection in obstructive disease—collaterals may help match oxygen delivery to oxygen demand under conditions of environmental hypoxia, thereby contributing to genetic adaptation in high-altitude species. By increasing the hemodynamic efficiency of regional oxygen delivery, an increase in collateral abundance could help sustain effective cognitive, sensory-motor, skeletal muscle and cardiovascular function in species living at high altitude.

Unlike collaterals, the density of intra-tree anastomoses (ITAs) that interconnect a fraction of the branches within a given arterial tree did not associate with altitude. The density of ITAs in the cerebral circulation of guinea pigs was substantially greater than in C57BL/6 mice, a strain of lowlander *Mus musculus* that, unlike the BALB/cByJ strain and other low-collateral strains, has a relatively high density of ITAs and collaterals.^{5,6,10} However, ITA density in two strains of lowlander *Rattus norvegicus* was greater

than in guinea pigs and even greater yet in deer mice irrespective of their high- or lowlander ancestry. In *M. m.* mice ITAs form late during gestation at the same time that pial collaterals form and display the same genetic background-dependent variation as collaterals in the number that form,¹⁰ indicating that formation of both vessel types, and variations in it, are driven by the same or a similar signaling pathway and its polymorphic genetic elements. However, the majority of ITAs that form are pruned away by three weeks after birth, leaving the density present in the adult.¹⁰ Our finding that ITA density does not associate with altitude status suggests that, unlike collaterals, ITA abundance is not an adaptive trait shared by high-altitude natives. Given the inability of ITAs to recruit blood flow from adjacent arterial trees, this contrasting finding vis-à-vis collaterals supports the concept that the particularly abundant collaterals in highlanders are a genetic adaptation.

The circle of Willis (CoW) which by way of its PCom and ACom collateral arteries provides alternate routes of perfusion—like pial collaterals, also displayed several unique features in the high-altitude species examined. Guinea pigs had a robust, i.e. complete and symmetric CoW with large, similarly sized bilateral PComs and consistent presence of an ACom. A previous study of juvenile Hartley guinea pigs schematically described features similar to the above.⁶⁵ However, it was unclear if the findings were based on replicate analysis, and another study concluded that AComs were

absent in guinea pigs.⁶⁸ Deer mice also had a robust CoW; however, this was true in both low- and highland strains. We did not examine *M.m.* mice and rats because the configurations of their CoWs are known, depending on strain, to frequently lack bilateral PComs and when present to be small and vary in diameter. See Faber et al.⁵⁹ and references therein. Moreover, these features vary widely among replicates of the same *M.m.* strain, indicating a high level of stochastic variability. Other low-altitude-evolved mammals including humans also frequently have variations similar to those described above for *M.m.* and rats, including absence of AComs. See literature^{59,64–67} and references therein. Interestingly, 91% of Nepalese have a complete CoW compared to 5–45% in lowlander Indian and other ethnicities.^{69–73} Paired P1-PCAs was either not observed or not commented on in previous studies in humans^{69–71} or was reportedly present in 2.4%.⁷² Considerations that aid interpretation of the presence of wide variation in the CoW in lowlanders versus robust circles in guinea pigs and high-altitude deer mice—but presence too in the latter's low-altitude conspecific—are discussed below (“Limitations”). However, besides its collateral function, the CoW also dampens pulse pressure and variation in blood flow in the cerebral arteries that arise from variations in blood flow in the ICAs and BA during normal awake behaviors.⁶⁹ It is possible that a robust CoW is an adaptive trait selected for not only in high-altitude species like guinea pigs, but also in deer mice irrespective of altitude status to assure optimal cerebral blood flow during cognitive and sensory-motor states that favor survival in certain low-altitude wild non-domesticated environments.

Although measurement of capillary density was not part of our aims, increased capillary density might be an adaptive trait in highland species. However, published data are inconsistent: Capillary density was comparable in intestine,⁷⁴ soleus⁷⁵ and stria vascularis⁷⁶ in guinea pig versus rat. Similarly, density and capillary-to-fiber ratio were comparable in left ventricle of guinea pigs either collected in the Andean mountains, born at sea level and subjected to high altitude postnatally, or born and kept at sea level.⁷⁷ In highland *P.m. rufinus*, and lowland *P.m. nebracensis* maintained at low altitude, capillary density in left ventricle was comparable⁷⁸; however, density and capillary-to-fiber ratio were increased in gastrocnemius of *P.m. rufinus*.^{79,80} The absence, in general, of increased capillary density in highlanders in the above studies may reflect that (1) capillary blood flow and the density of perfused capillaries in a tissue at a given metabolic rate depend primarily on mechanisms that control smooth muscle tone, and (2) increased capillary density is a well-known rapid and reversible acclimatization response

to high-altitude exposure.^{81,82} Myocardial capillary density in the lizard, *Phrynocephalus vlangalii*, of the Qinghai-Tibet Plateau, was greater in cohorts collected at high (4564 m) versus low altitude (2750 m).⁸³ Likewise, in the sternothyroid muscle of Andean dogs native to 4350 m, density was three times greater than in dogs native to low altitude.⁸⁴ However, capillary density in heart and several skeletal muscle of the high-altitude Andean coot, *Fulica americana peruviana*, was comparable to its sea level conspecific.⁸⁵ Moreover, residents of mixed ethnicities in La Paz (3800 m) had lower, rather than higher, capillary density and capillary-to-fiber ratios in vastus lateralis muscle than in a comparable lowland population.⁸⁶ In contrast, sublingual microvessel density in Sherpas was 30% greater than in Kathmandu lowlanders,⁸⁷ with a similar 40% greater difference in capillary density in vastus lateralis muscle.⁸⁸ In addition to the caveat stated at the end of the preceding paragraph, the variability of the findings in the above studies may also reflect differences in muscle fiber number, volume and type, which could differ in highland and lowland populations and were not measured concomitantly in most of the above studies.

No previous studies have examined the collateral circulation in species native to high-altitude. However, there is circumstantial evidence consistent with the hypothesis that limits on tissue oxygenation could favor an increase in collaterals, in addition to that cited in the Introduction. Evidence suggests that humans have inhabited the Tibetan Plateau, and the Ethiopian highlands for millennia.⁸⁹ High-altitude species have evolved numerous adaptations, and in humans,^{89–91} a number of HIF pathway genes have been identified as candidates for hypoxia adaptation in Tibetan, Andean and Ethiopian highlanders (e.g., *EPAS1*, *EGLN1/2/3*, *VEGFA*, *NOTCH1*, *CXCR4*, *NOS1/2/3*, *FLT1*, *PIK3CA*).^{89–91} Several have been shown to be involved in collaterogenesis (*EglN2*, *Vegfa*, *Notch1*, *Cxcr4*).^{1,11,12,17,32,55} An *Epas1* polymorphism in deer mice exhibits a striking altitudinal pattern of allele frequency variation, and is associated with differences in cardiovascular function as well as genome-wide transcriptional responses to hypoxia in heart and adrenal gland, including HIF-regulated genes.⁹² Future studies could investigate guinea pigs, deer mice and other high-altitude rodents to determine whether genetic variation in the collaterogenesis pathway is associated with differences in collateral abundance. It would also be interesting to investigate directly whether Tibetan, Andean or Ethiopian highlanders have a lower incidence of stroke or better outcomes, as suggested by several previous studies examining Tibetan cohorts.^{43–48}

Limitations

This study has several limitations. First, since no guinea pig population has resided at low altitude for the thousands of years required for natural selection, we compared two breeds of guinea pigs to two strains each of the lowlander species, *M.musculus* and *R.norvegicus*—a comparison that is not optimal. Second, only two highlander strains of *P.maniculatus* that have been studied widely were available for analysis. Our previous studies of collateral extent in *M.m.* make clear the limitations created by the above constraints: collateral number in 21 strains of *M.m.* varied by 30-fold, with two-thirds having abundant and one-third having sparse collaterals, like the C57BL/6 and BALB/cBy strains studied herein.^{5,6} We hypothesize that this reflects a relaxation of stabilizing selection in low-altitude populations, since variation in collateral abundance may have little or no relevance to fitness under normoxic conditions. Accordingly, the conclusions of the present study could be strengthened by studying a larger number of high-altitude strains of *P.maniculatus* and their lowlander conspecifics, if such were described and available. Our conclusions could also be strengthened by examining additional species, for example, Andean mice, *Phyllotis andium* and *P.xanthopygus*, and their lowlander conspecifics, *P.amicus* and *P.limatus*.⁹³ However, our above *M.musculus* findings indicate once again that more than just these two conspecific pair would have to be studied to reach a firm conclusion. Examining additional high-altitude evolved species such as pikas^{94,95} would also strengthen our conclusions, although these and many other high-altitude evolved species, like guinea pigs, lack a lowland comparator strain. As well, the above studies would be faced with the logistics of wild capture in remote regions. The observation that collateral abundance varies widely in low-altitude strains of *M.musculus*, which is also the cases for variation in the CoW⁵⁹ and may also be true for capillary density (see above) in this and other species including humans, means that significant numbers of high- and low-altitude populations will need to be studied. It also calls into question the conclusion that large differences in collateral blood flow exist among species of mammals, when the conclusion is based on comparing only a single strain or cohort of each species made up of closely related/reared individuals.³⁷ An additional limitation of this study is that the extent of tissue injury in response to artery ligation is affected by several factors besides collateral blood flow that could vary among the species examined, independent of altitude status. This includes ischemic threshold for cell death, factors that affect resistance in the vascular bed downstream of the

collaterals, and differences in arterial oxygen content, hemoglobin affinity and blood pressure.

Whether selection has shaped patterns of collateral abundance in high-altitude humans will require studies of natural variation in collateral extent, for example in cadavers, or collateral score in patients with acute ischemic stroke. These studies will be logistically difficult and will require adjustment for vascular risk factors that can affect collateral abundance.^{1,54,56} It will also be important in these studies to examine SNPs in genes that have been shown to be important for robust collateralogenesis during development and in the adult.^{1,11,12,17,32,55,96} Such studies could add collateral extent to the list of physiological mechanisms that contribute to hypoxia adaptation by improving oxygen transport and distribution of blood flow.^{52,53,93–95} Investigation could also be extended to populations affected by sickle cell disease and thalassemia. Identifying genetic factors that determine collateral extent in high-altitude animal and human populations may help clarify differences in susceptibility to ischemic diseases and lead to new therapeutic approaches.

Funding

The author(s) disclosed receipt of the following financial support for the research, authorship, and/or publication of this article: This work was supported by National Institutes of Health's National Institute of Neurological Diseases and Stroke NS083633 to JEF. National Institutes of Health, National Institute of Heart, Lung, and Blood Diseases HL087216 and National Science Foundation OIA-1736249 to JFS and OIA-1736249 and IOS-1354934 to ZAC.

Declaration of conflicting interests

The author(s) declared no potential conflicts of interest with respect to the research, authorship, and/or publication of this article.

Authors' contributions

HZ performed the experiments, morphometry, statistical analysis and constructed the figures; JF conceived and designed the experiments, analysis and figures and wrote the manuscript; JS and ZC provided *P.m.rufinus* mice, advice and discussion. All authors provided edits to the manuscript.

ORCID iD

Hua Zhang  <https://orcid.org/0000-0003-4625-1916>

Supplemental material

Supplemental material for this article is available online.

References

- Piedade GS, Schirmer CB, Goren O, et al. Cerebral collateral circulation: a review in the context of ischemic stroke and mechanical thrombectomy. *World Neurosurg* 2019; 122: 33–44.
- Puig J, Shankar J, Liebeskind D, et al. From “time is brain” to “imaging is brain”: a paradigm shift in the management of acute ischemic stroke. *J Neuroimaging*. Epub ahead of print 10 February 2020. DOI: 10.1111/jon.12693.
- Schaper W. Collateral circulation: past and present. *Basic Res Cardiol* 2009; 104: 5–21.
- Stoller M and Seiler C. Pathophysiology of coronary collaterals. *Curr Cardiol Rev* 2014; 10: 38–56.
- Zhang H, Prabhakar P, Sealock RW, et al. Wide genetic variation in the native pial collateral circulation is a major determinant of variation in severity of stroke. *J Cerebral Blood Flow Metab* 2010; 30: 923–934.
- Wang S, Zhang H, Wiltshire T, Sealock R, et al. Genetic dissection of the *Canql* locus governing variation in extent of the collateral circulation. *PLoS One* 2012; 7: e31910.
- Chalothorn D, Clayton JA, Zhang H, et al. Collateral density, remodeling and VEGF-A expression differ widely between mouse strains. *Physiol Genom* 2007; 30: 179–191.
- Chalothorn D and Faber JE. Strain-dependent variation in native collateral function in mouse hindlimb. *Physiol Genom* 2010; 42: 469–479.
- Sealock R, Zhang H, Lucitti JL, et al. Congenic fine-mapping identifies a major causal locus for variation in the native collateral circulation and ischemic injury in brain and lower extremity. *Circ Res* 2014; 114: 660–671.
- Chalothorn D and Faber JE. Formation and maturation of the murine native cerebral collateral circulation. *J Molec Cell Cardiol* 2010; 49: 251–259.
- Lucitti JL, Mackey J, Morrison J, et al. Formation of the collateral circulation is regulated by vascular endothelial growth factor-A and A disintegrin and metalloprotease family members 10 and 17. *Circ Res* 2012; 111: 1539–1550.
- Lucitti JL, Sealock R, Buckley BK, et al. Variants of Rab GTPase-effector binding protein-2 cause variation in the collateral circulation and severity of stroke. *Stroke* 2016; 47: 3022–3031.
- Rocha M and Jovin TG. Fast versus slow progressors of infarct growth in large vessel occlusion stroke: clinical and research implications. *Stroke* 2017; 48: 2621–2627.
- Stoller M and Seiler C. Salient features of the coronary collateral circulation and its clinical relevance. *Swiss Med Wkly* 2015; 145: w14154.
- Traupe T, Ortmann J, Stoller M, et al. Direct quantitative assessment of the peripheral artery collateral circulation in patients undergoing angiography. *Circulation* 2013; 128: 737–744.
- Faber JE, Dai X and Lucitti J. Genetic and environmental mechanisms controlling formation and maintenance of the native collateral circulation. In: Deindl IE and Schaper W (eds) *Arteriogenesis – molecular regulation, pathophysiology and therapeutics*. Aachen, GE: Shaker Verlag, 2011, pp.1–22.
- Zhang H, Rzechorzek W, Aghajanian A, et al. Hypoxemia causes de novo formation of cerebral collaterals and reduced brain injury following acute ischemic stroke. *J Cerebral Blood Flow Metab*. Epub ahead of print 19 May 2020. DOI: 10.1177/0271678X20924107.
- Toriumi H, Tatarishvili J, Tomita M, et al. Dually supplied T-junctions in arteriolo-arteriolar anastomosis in mice: key to local hemodynamic homeostasis in normal and ischemic states? *Stroke* 2009; 40: 3378–3383.
- Iadecola C. The neurovascular unit coming of age: a journey through neurovascular coupling in health and disease. *Neuron* 2017; 96: 17–42.
- Hu X, De Silva TM, Chen J, et al. Cerebral vascular disease and neurovascular injury in ischemic stroke. *Circ Res* 2017; 120: 449–471.
- Antman EM and Braunwald E. Acute myocardial infarction. In: Braunwald E, Zipes DP and Libby P (eds). *Heart disease*. 6th ed. Philadelphia: WB Saunders Co., 2001, p.1123.
- Waldman JD and Wernly JA. Cyanotic congenital heart disease with decreased pulmonary blood flow in children. *Pediatr Clin North Am* 1999; 46: 385–404.
- Gungor H, Zencir C, Babu AS, Akgullu C, Eryilmaz U, Zorlu A, et al. Influence of preoperative coronary collateral circulation on in-hospital mortality in patients undergoing coronary artery bypass graft surgery with intra-aortic balloon pump support. *Chin Med J* 2014; 127: 3077–3081.
- Masa JF, Corral J, Romero A, et al. Spanish sleep network. Protective cardiovascular effect of sleep apnea severity in obesity hypoventilation syndrome. *Chest* 2016; 150: 68–79.
- Berger S, Aronson D, Lavie P, et al. Endothelial progenitor cells in acute myocardial infarction and sleep-disordered breathing. *Am J Respir Crit Care Med* 2013; 187: 90–98.
- Reiner L, Freudenthal RR and Greene MA. Interarterial coronary anastomoses in piglets at simulated high altitude. *Arch Pathol* 1972; 93: 198–208.
- Scheel KW, Seavey E, Gaugl JF, et al. Coronary and myocardial adaptations to high altitude in dogs. *Am J Physiol* 1990; 259: H1667–1673.
- Eckstein RW. Development of interarterial coronary anastomoses by chronic anemia; disappearance following correction of anemia. *Circ Res* 1955; 3: 306–310.
- Zoll PM, Wessler S and Schlesinger MJ. Interarterial coronary anastomoses in the human heart, with particular reference to anemia and relative cardiac anoxia. *Circulation* 1951; 4: 797–815.
- Ishii Y, Tanaka Y, Momose T, et al. Chronological evaluation of cerebral hemodynamics by dynamic susceptibility contrast magnetic resonance imaging after indirect bypass surgery for Moyamoya disease. *World Neurosurg* 2017; 108: 427–435.
- Janda PH, Bellew JG and Veerappan V. Moyamoya disease: case report and literature review. *J Am Osteopath Assoc* 2009; 109: 547–553.

32. Aghajanian A, Zhang H, Buckley B, et al. Decreased inspired oxygen stimulates new collateral formation in the heart. *Circulation* 2019; 140(Suppl 1): 13291.
33. Nakada Y, Canseco DC, Thet S, et al. Hypoxemia induces adult mammalian heart regeneration. *Nature* 2017; 541: 222–227.
34. DeJager L, Libert C and Montagutelli X. Thirty years of *Mus spretus*: a promising future. *Trends Genet* 2009; 25: 234–241.
35. Storz JF, Baze M, Waite JL, et al. Complex signatures of selection and gene conversion in the duplicated globin genes of house mice. *Genetics* 2007; 177: 481–500.
36. Suzuki TA, Martins FM and Nachman MW. Altitudinal variation of the gut microbiota in wild house mice. *Mol Ecol* 2019; 28: 2378–2390.
37. Maxwell MP, Hearse DJ and Yellon DM. Species variation in the coronary collateral circulation during regional myocardial ischaemia: a critical determinant of the rate of evolution and extent of myocardial infarction. *Cardiovasc Res* 1987; 21: 737–746.
38. Schaper W, Piek JJ, Munoz-Chapuli, et al. Collateral circulation of the heart. In: Ware JA and Simons M (eds) *Angiogenesis and cardiovascular disease*. Oxford: Oxford University Press, 1999, p.163.
39. Guinea Pig. http://en.wikipedia.org/wiki/Guinea_pig (accessed 1 April 2020).
40. Walker LI, Soto MA and Spotorno AE. Similarities and differences among the chromosomes of the wild guinea pig *Cavia tschudii* and the domestic guinea pig *Cavia porcellus* (Rodentia, Caviidae). *Comp Cytogenet* 2014; 8: 153–167.
41. Forstadt MS. History of the guinea pig (*Cavia porcellus*) in South American. In: Endersby J (ed) *A guinea pig's history of biology*. Cambridge, MA, USA: Harvard University Press, 2007, pp.3–7.
42. Churakov G, Sadasivuni MK, Rosenbloom KR, et al. Rodent evolution: back to the root. *Mol Biol Evol* 2010; 27: 1315–1326.
43. Faeh D, Gutzwiller F and Bopp M; Swiss National Cohort Study Group. Lower mortality from coronary heart disease and stroke at higher altitudes in Switzerland. *Circulation* 2009; 120: 495–501.
44. Hurtado A. Some clinical aspects of life at high altitudes. *Ann Intern Med* 1960; 53: 247–258.
45. Kuller LH. Epidemiology of stroke. *Adv Neurol* 1978; 19: 281–311.
46. Zhao Y, Yao Z, D'Souza W, et al. An epidemiological survey of stroke in Lhasa, Tibet, China. *Stroke* 2010; 41: 2739–2743.
47. <http://global-disease-burden.healthgrove.com/l/42834/Ischemic-Stroke-in-Tibet> (Institute of Health Metrics and Evaluation (ghdx.healthdata.org)), (accessed 4 July 2020).
48. Fujimoto N, Matsubayashi K, Miyahara T, et al. The risk factors for ischemic heart disease in Tibetan highlanders. *Jpn Heart J* 1989; 30: 27–34.
49. Arias-Stelka J and Topilsky M. Anatomy of the coronary circulation at high altitude. In: Knight RPAJ (ed) *High altitude physiology: cardiac and respiratory aspects*. London: Churchill-Livingstone, 1971, pp. 140–157.
50. Faber JE, Moore SM, Lucitti JL, et al. Sex differences in the cerebral collateral circulation. *Transl Stroke Res* 2016; 8: 273–283.
51. Peromyscus Genetic Stock Center of the University of South Carolina, www.pgsc.cas.sc.edu/ (accessed 4 July 2020)
52. Bedford NL and Hoekstra HE. Peromyscus mice as a model for studying natural variation. *Elife* 2015; 4: e06813.
53. Storz JF and Chevion ZA. Functional genomic insights into regulatory mechanisms of high-altitude adaptation. *Adv Exp Med Biol* 2016; 903: 113–128.
54. Faber JE, Zhang H, Lassance-Soares RM, et al. Aging causes collateral rarefaction and increased severity of ischemic injury in multiple tissues. *Arterioscler Thromb Vasc Biol* 2011; 31: 1748–1756.
55. Zhang H and Faber JE. De-novo collateral formation following acute myocardial infarction: dependence on CCR2+ bone marrow cells. *J Molec Cell Cardiol* 2015; 87: 4–16.
56. Moore SM, Zhang H, Maeda N, et al. Cardiovascular risk factors cause premature rarefaction of the collateral circulation and greater ischemic tissue injury. *Angiogenesis* 2015; 18: 265–281.
57. Kilkenny C, Browne WJ, Cuthill IC, et al. Improving bioscience research reporting: the ARRIVE guidelines for reporting animal research. *PLoS Biol* 2010; 8: e1000412.
58. Lapchak PA, Zhang JH and Noble-Haeusslein LJ. RIGOR guidelines: escalating STAIR and STEPS for effective translational research. *Transl Stroke Res* 2013; 4: 279–285.
59. Faber JE, Rzechorzek W, Dai KZ, et al. Genetic and environmental contributions to variation in the posterior communicating collaterals of the circle of Willis. *Transl Stroke Res* 2018; 10: 189–203.
60. Jochmans-Lemoine A, Villalpando G, Gonzales M, et al. Divergent physiological responses in laboratory rats and mice raised at high altitude. *J Exp Biol* 2015; 218(Pt 7): 1035–1043.
61. Toyota E, Wartier DC, Brock T, et al. Vascular endothelial growth factor is required for coronary collateral growth in the rat. *Circulation* 2005; 112: 2108–2113.
62. Roseguini BT, Arce-Esquivel AA, Newcomer SC, et al. Intermittent pneumatic leg compressions enhance muscle performance and blood flow in a model of peripheral arterial insufficiency. *J Appl Physiol* 2012; 112: 1556–1563.
63. Hardwick JC, Southerland EM and Ardell JL. Chronic myocardial infarction induces phenotypic and functional remodeling in the guinea pig cardiac plexus. *Am J Physiol Regul Integr Comp Physiol* 2009; 295: R1926–R1933.
64. Lee RM. Morphology of cerebral arteries. *Pharmacol Ther* 1995; 66: 149–173.
65. Librizzi L, Biella G, Cimino C, et al. Arterial supply of limbic structures in the guinea pig. *J Comp Neurol* 1999; 411: 674–682.
66. Kim YY, Chao JR, Kim C, et al. Comparing the superficial vasculature of the central nervous system in six

- laboratory animals: a hypothesis about the role of the "circle of Willis". *Anat Rec* 2019; 302: 2049–2061.
67. Kapoor K, Kak VK and Singh B. Morphology and comparative anatomy of circulus arteriosus cerebri in mammals. *Anat Histol Embryol* 2003; 32: 347–355.
 68. Majewska-Michalska E. Vascularization of the brain in guinea pig. I. Gross anatomy of the arteries and veins. *Folia Morphol* 1994; 53: 249–268.
 69. Poudel PP and Bhattarai C. Anomalous formation of the circulus arteriosus and its clinico-anatomical significance. *Nepal Med Coll J* 2010; 12: 72–75.
 70. De Silva KR, Silva R, Amaratunga D, et al. Types of the cerebral arterial circle (circle of Willis) in a Sri Lankan population. *BMC Neurol* 2011; 11: 5.
 71. Dimmick SJ and Faulder KC. Normal variants of the cerebral circulation at multidetector CT angiography. *Radiographics* 2009; 29: 1027–1043.
 72. Kapoor K, Singh B and Dewan LI. Variations in the configuration of the circle of Willis. *Anat Sci Int* 2008; 83: 96–106.
 73. Vrselja Z, Brkic H, Mrdenovic S, et al. Function of circle of Willis. *J Cerebral Blood Flow Metab* 2014; 34: 578–584.
 74. Aharinejad S, Gangler P, Hagen D, et al. Studies on the microvascularization of the digestive tract by scanning electron microscopy of vascular corrosion casts. 1. Large intestine in rats and guinea pigs. *Acta Anat* 1992; 144: 278–283.
 75. Sillau AH. Capillarity and oxygen diffusion distances of the soleus muscle of guinea pigs and rats. Effects of hyperthyroidism. *Comp Biochem Physiol A Comp Physiol* 1985; 82: 471–478.
 76. Carlisle L and Forge A. The vessels of the stria vascularis: quantitative comparison of three rodent species. *Hear Res* 1989; 38: 111–117.
 77. Rakušan K, Turek Z and Kreuzer F. Myocardial capillaries in guinea pigs native to high altitude (Junin, Peru, 4,105m). *Pflugers Arch* 1981; 391: 22–24.
 78. Tate KB, Ivy CM, Velotta JP, et al. Circulatory mechanisms underlying adaptive increases in thermogenic capacity in high-altitude deer mice. *J Exp Biol* 2017; 220: 3616–3620.
 79. Lui MA, Mahalingam S, Patel P, et al. High-altitude ancestry and hypoxia acclimation have distinct effects on exercise capacity and muscle phenotype in deer mice. *Am J Physiol Regul Integr Comp Physiol* 2015; 308: R779–R791.
 80. Scott GR, Elogio TS, Lui MA, et al. Adaptive modifications of muscle phenotype in high-altitude deer mice are associated with evolved changes in gene regulation *Mol Biol Evol* 2015; 32: 1962–1976.
 81. Gilbert-Kawai E, Coppel J, Phillip H, et al. Changes in labial capillary density on ascent to and descent from high altitude. *F1000Res* 2016; 5: 2107.
 82. LaManna JC, Chavez JC and Pichiule P. Structural and functional adaptation to hypoxia in the rat brain. *J Exp Biol* 2004; 207: 3163–3169.
 83. He J, Xiu M, Tang X, et al. The different mechanisms of hypoxic acclimatization and adaptation in Lizard *Phrynocephalus vlangalii* living on Qinghai-Tibet Plateau. *J Exp Zool A Ecol Genet Physiol* 2013; 319: 117–123.
 84. Eby SH and Banchero N. Capillary density of skeletal muscle in Andean dogs. *Proc Soc Exp Biol Med* 1976; 151: 795–798.
 85. León-Velarde F, Sanchez J, Bigard AX, et al. High altitude tissue adaptation in Andean coots: capillarity, fibre area, fibre type and enzymatic activities of skeletal muscle. *J Comp Physiol B* 1993; 163: 52–58.
 86. Desplanches D, Hoppeler H, Tüscher L, et al. Muscle tissue adaptation of high-altitude natives to training in chronic hypoxia or acute normoxia. *J Appl Physiol* 1996; 81: 1946–1951.
 87. Gilbert-Kawai E, Coppel J, Court J, et al.; Xtreme Everest 2 Research Group. Sublingual microcirculatory blood flow and vessel density in Sherpas at high altitude. *J Appl Physiol* 2017; 122: 1011–1018.
 88. Kayser B, Hoppeler H, Claassen H, et al. Muscle structure and performance capacity of Himalayan Sherpas. *J Appl Physiol* 1991; 70: 1938–1942.
 89. Beall CM. Human adaptability studies at high altitude: research designs and major concepts during fifty years of discovery. *Am J Hum Biol* 2013; 25: 141–147.
 90. McClelland GB and Scott GR. Evolved mechanisms of aerobic performance and hypoxia resistance in high-altitude natives. *Annu Rev Physiol* 2019; 81: 3.1–3.23.
 91. Storz JF and Scott GR. Life ascending: mechanism and process in physiological adaptation to high-altitude hypoxia. *Annu Rev Ecol Evol Syst* 2019; 50: 503–526.
 92. Schweizer RM, Velotta JP, Ivy CM, et al. Physiological and genomic evidence that selection on the transcription factor *Epa1* has altered cardiovascular function in high-altitude deer mice. *PLoS Genet* 2019; 15: e1008420.
 93. Schippers MP, Ramirez O, Arana M, et al. Increase in carbohydrate utilization in high-altitude Andean mice. *Curr Biol* 2012; 22: 2350–2354.
 94. Li H, Guo S, Ren Y, et al. VEGF189 expression is highly related to adaptation of the plateau pika (*Ochotona curzoniae*) inhabiting high altitudes. *High Alt Med Biol* 2013; 14: 395–404.
 95. Dahal N, Kumar S, Noon BR, et al. The role of geography, environment, and genetic divergence on the distribution of pikas in the Himalaya. *Ecol Evol* 2020; 10: 1539–1551.
 96. Rost NS, Giese AK, Worrall BB, et al. METASTROKE consortium of the ISGC. *RABEP2* (Rab GTPase-effector binding protein-2) is associated with ischemic stroke phenotypes: a translational replication study. *Eur Stroke J* 2018; 3: 42–43.