

¹State Key Laboratory of Oil and Gas Reservoir Geology and Exploitation, and Institute of Sedimentary Geology, Chengdu University of Technology, Chengdu 610059, China; ²Key Laboratory of Orogenic Belts and Crustal Evolution of the Ministry of Education, and School of Earth and Space Science, Peking University, Beijing 100871, China; ³State Key Laboratory of Palaeobiology and Stratigraphy, Nanjing Institute of Geology and Palaeontology, and Center for Excellence in Life and Palaeoenvironment, Chinese Academy of Sciences, Nanjing 210008, China; ⁴School of Physics, Peking University, Beijing 100871, China; ⁵State Key Laboratory of Continental Dynamics, Northwest University, Xi'an 710069, China; ⁶Shaanxi Key Laboratory of Early Life and Environments, Department of Geology, Northwest University, Xi'an 710069, China; ⁷Department of Geosciences, Virginia Polytechnic Institute and State University, Blacksburg, VA 24061, USA; ⁸International Center for Isotope Effect Research, Nanjing University, Nanjing 210023, China; ⁹School of Earth Sciences and Engineering, Nanjing University, Nanjing 210023, China and ¹⁰School of Mathematical and Statistical Sciences, Arizona State University, Tempe, AZ 85287, USA

*Corresponding author. E-mail: bingshen@pku.edu.cn

Received 26 July 2020;
Revised 14 February 2021; Accepted 24 February 2021

EARTH SCIENCES

Cracking the superheavy pyrite enigma: possible roles of volatile organosulfur compound emission

Xiangguo Lang^{1,2,3}, Zhouqiao Zhao^{1,2,4}, Haoran Ma², Kangjun Huang^{5,6}, Songzhuo Li¹, Chuanming Zhou³, Shuhai Xiao⁷, Yongbo Peng^{8,9}, Yonggang Liu⁴, Wenbo Tang¹⁰ and Bing Shen^{2,*}

ABSTRACT

The global deposition of superheavy pyrite (pyrite isotopically heavier than coeval seawater sulfate in the Neoproterozoic Era and particularly in the Cryogenian Period) defies explanation using the canonical marine sulfur cycle system. Here we report petrographic and sulfur isotopic data ($\delta^{34}\text{S}_{\text{py}}$) of superheavy pyrite from the Cryogenian Datangpo Formation (660–650 Ma) in South China. Our data indicate a syndepositional/early diagenetic origin of the Datangpo superheavy pyrite, with ^{34}S -enriched H_2S supplied from sulfidic (H_2S rich) seawater. Instructed by a novel sulfur-cycling model, we propose that the emission of ^{34}S -depleted volatile organosulfur compounds (VOSC) that were generated via sulfide methylation may have contributed to the formation of ^{34}S -enriched sulfidic seawater and superheavy pyrite. The global emission of VOSC may be attributed to enhanced organic matter production after the Sturtian glaciation in the context of widespread sulfidic conditions. These findings demonstrate that VOSC cycling is an important component of the sulfur cycle in Proterozoic oceans.

Keywords: sulfur isotope, organosulfur compound, sulfur cycle, Cryogenian, Datangpo Formation

INTRODUCTION

The marine sulfur biogeochemical cycle is closely tied to the global carbon cycle via dissimilatory microbial sulfate reduction (MSR), in which sulfate (SO_4^{2-}) is reduced to hydrogen sulfide (H_2S) using organic matter (CH_2O) as an electron donor [1,2]. Because sulfate-reducing microbes preferentially utilize ^{32}S -enriched sulfate, H_2S is always depleted in ^{34}S as compared with sulfate [3–6]. Sequestration of H_2S by reaction with reactive Fe in seawater/sediments results in the precipitation of syngenetic (i.e. direct precipitation from seawater) or diagenetic (i.e. formed in sediment porewater) pyrite (FeS_2), which is the predominant sulfide mineral in sediments and sedimentary rocks. Because of negligible isotopic fractionation ($<3\text{‰}$) in pyrite formation [7], pyrite sulfur isotopic values ($\delta^{34}\text{S}_{\text{py}}$) are expected to be lower than that of contemporaneous seawater sulfate ($\delta^{34}\text{S}_{\text{sw}}$).

However, superheavy pyrite, referring to pyrite with $\delta^{34}\text{S}_{\text{py}} > \delta^{34}\text{S}_{\text{sw}}$, has been widely reported from ancient sedimentary rocks and modern

marine sediments [8]. Although pyrite with high $\delta^{34}\text{S}_{\text{py}}$ value can be explained by MSR in a close system through Rayleigh distillation process, superheavy pyrite with high abundances (>0.1 wt.%), prolonged stratigraphic occurrences (>1 million years) and global distributions [9–14] cannot be attributed to MSR and pyrite formation in a close system [15]. For example, superheavy pyrite is particularly abundant in deposits of the Cryogenian non-glacial interval (660–650 Ma) (Fig. 1A), where $\delta^{34}\text{S}_{\text{py}}$ values can be as high as $+80\text{‰}$, much higher than the non-glacial $\delta^{34}\text{S}_{\text{sw}}$ value of $\sim+30\text{‰}$ [9,16,17]. Another geological interval characterized by global occurrence of superheavy pyrite is the late Cambrian Steptoean Positive Carbon Isotope Excursion (SPICE) event (~ 499 Ma) with $\delta^{34}\text{S}_{\text{py}}$ values up to $+70\text{‰}$ [18], although the duration of SPICE is significantly shorter (~ 1 Myr). Several models have been proposed to explain the precipitation of superheavy pyrite, including sulfide oxidation, fast sedimentation rate, thermogenesis, oceanic anoxia

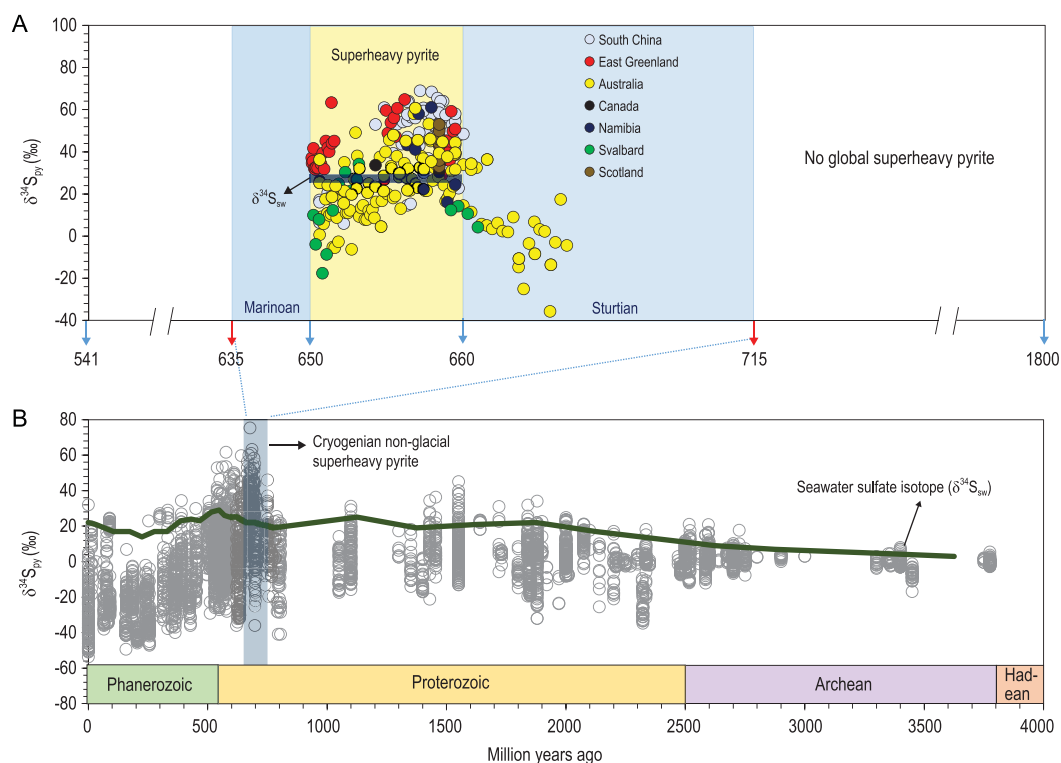


Figure 1. A compilation of $\delta^{34}\text{S}_{\text{py}}$ data showing superheavy pyrite in Earth history. (A) is an expanded view of (B), modified from Canfield and Farquhar [16], highlighting superheavy pyrite from the Cryogenian non-glacial interval in South China [11,13,21,22], East Greenland [14], Australia [9], Canada [9], Namibia [17,37], Svalbard [39] and Scotland [38]. Seawater sulfate isotope values ($\delta^{34}\text{S}_{\text{sw}}$), green line in (A), are estimated from sulfur isotopic compositions of evaporates in Australia [9].

and carbon-sulfur cycle models [18–23]. However, these models do not satisfactorily address the high abundance and global occurrence of superheavy pyrite in the Cryogenian non-glacial interval.

Most previous investigations of superheavy pyrite were based on geochemical data, but did not fully consider petrographic data, which are critical in understanding the environmental context of pyrite formation. For example, the size distributions of framboidal and euhedral pyrite can be used to infer marine redox conditions [24]. With few exceptions [21], such petrographic data (e.g. framboidal pyrite vs. euhedral pyrite; size distribution of pyrite) were not integrated in the interpretation of superheavy pyrite. The lack of sedimentological and petrographic contexts makes it difficult to assess the various models of superheavy pyrite formation.

It is widely accepted that organosulfur compounds play an important role in the modern marine sulfur cycle [25]. Some of the simplest yet most common organosulfur compounds are methanethiol (CH_3SH or MeSH) and dimethyl sulfide (CH_3SCH_3 or DMS) [26], both of which are highly volatile and accordingly termed the volatile organosulfur compounds (VOSC). VOSC can be produced in two different ways. First, VOSC can

be generated through the dimethylsulfoniopropionate (DMSP) pathway in surface ocean (DMSP-derived VOSC), in which VOSC derives from the degradation of DMSP, a product of phytoplankton [27]. It is estimated that the annual DMSP-derived VOSC flux is $\sim 1 \text{ Tmol}$, which is one-third of the riverine sulfate input ($\sim 3 \text{ Tmol yr}^{-1}$) [27]. Because there is little sulfur isotope fractionation during VOSC formation and emission [28], DMSP-derived VOSC does not change $\delta^{34}\text{S}_{\text{sw}}$. Alternatively, VOSC can be generated through H_2S methylation (H_2S -derived VOSC) in the presence of H_2S , e.g. in sulfidic water. H_2S -derived VOSC inherits the isotope signal of H_2S [28] and thus always has lower $\delta^{34}\text{S}$ values relative to $\delta^{34}\text{S}_{\text{sw}}$ [28]. H_2S methylation is expected to have been an important part of the sulfur cycle in sulfidic Proterozoic oceans [29]. Sustained emission of ^{34}S -depleted VOSC would thus elevate the $\delta^{34}\text{S}$ of the residual sulfur pool of sulfidic seawater. We suggest that the interpretation of superheavy pyrite in the geological record should consider the organosulfur cycle.

In this study, we first reviewed the occurrences of superheavy pyrite during the Cryogenian non-glacial interval. Then we presented (i) detailed petrographic observations and

(ii) paired pyrite content and sulfur isotope data of superheavy pyrite from the Cryogenian non-glacial deposits of the Datangpo Formation in South China (Figs S1 and S2). Based on the petrographic and geochemical data, the existing models were evaluated, and a quantitative analysis was applied to simulate the process of superheavy pyrite formation. Finally, a novel sulfur cycle model that incorporates organosulfur compounds was proposed to interpret the superheavy pyrite formation.

GEOLOGICAL RECORD OF SUPERHEAVY PYRITE

Compilation of pyrite sulfur isotope data shows that superheavy pyrite occurs throughout the Earth's history (Fig. 1), including Mesoproterozoic, Cryogenian non-glacial interval, Ediacaran, Cambrian, Ordovician, Devonian, Triassic, Cretaceous, Pleistocene and even modern marine sediments [16–18,20,23,30–33]. Below, we briefly review the geological records of superheavy pyrite.

It is not uncommon to find individual pyrite crystal with extremely high $\delta^{34}\text{S}_{\text{py}}$ value in either sedimentary rocks or sediments of any age. For example, individual micrometer-sized pyrite crystals from late Cretaceous sediments show a wide range of $\delta^{34}\text{S}_{\text{py}}$ values, with the highest value of +89.3‰ [34], and $\delta^{34}\text{S}_{\text{py}}$ of pyrite crystals from modern marine sediments can be more than +30‰ [8]. On the other hand, many Proterozoic sedimentary rocks, such as the Mesoproterozoic Chuanlinggou Formation in North China [30], Ediacaran Doushantuo Formation in Yangtze Block [35] and Ediacaran Nama Group in Namibia [36], have bulk-sample $\delta^{34}\text{S}_{\text{py}}$ values greater than +30‰ (the expected upper bound of Proterozoic $\delta^{34}\text{S}_{\text{sw}}$). It should be noted that, in these studies, the bulk-sample pyrite contents are typically very low (<0.1 wt.%), and there is no consistent stratigraphic occurrence.

Although pyrite is not uncommon within the geological record, the sustained precipitation of superheavy pyrite at a global scale and for millions of years was rare. There are two geological intervals characterized by worldwide distributions of superheavy pyrite, and these superheavy pyrite windows include the Cryogenian non-glacial interval (Fig. 1A) and the Cambrian SPICE event. Unlike other geological intervals with sporadically occurring superheavy pyrite, these two intervals are characterized by superheavy pyrite with consistent stratigraphic occurrences (>1 Myr), global occurrence and high pyrite content (>1 wt.%) [13,18]. In the case of the Cryogenian non-glacial interval, $\delta^{34}\text{S}_{\text{py}}$ shows a clear decreasing trend from ca. +80‰ to ca. +30‰ within 10 million years

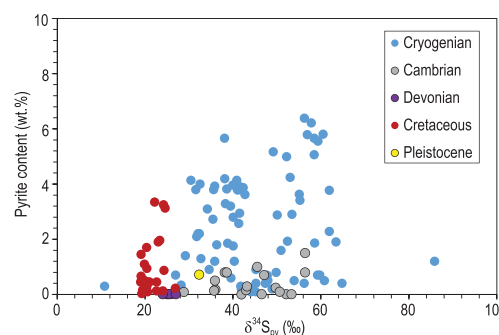


Figure 2. $\delta^{34}\text{S}_{\text{py}}$ and pyrite content of ancient superheavy pyrite in fine-grained sediments of the Cryogenian [11,13], Cambrian [18], Devonian [32], Cretaceous [31,33] and Pleistocene [19]. In contrast with superheavy pyrite of other ages, Cryogenian samples have higher contents of superheavy pyrite.

(Fig. 1A). In the SPICE event, $\delta^{34}\text{S}_{\text{py}}$ shows a prominent positive excursion to the maximum value of $\sim +70\text{‰}$, and this positive excursion can be correlated globally as well [18].

The Cryogenian non-glacial interlude might be the only period in Earth's history with global occurrence of superheavy pyrite for over ~ 10 million years. Superheavy pyrite of this geological interval has been reported from South China [11–13], Namibia [37], East Greenland [14], Scotland [38], Svalbard [39], Australia and Canada [37,40] (Fig. 1A). Bulk-sample $\delta^{34}\text{S}_{\text{py}}$ values are normally greater than +30‰ with extreme values up to +80‰ (Fig. 1A). Although the $\delta^{34}\text{S}_{\text{sw}}$ of this interval has not been systematically investigated, these $\delta^{34}\text{S}_{\text{py}}$ values are higher than the sulfur isotopic values of gypsum from coeval deposits in Australia that range from +26‰ to +30‰ [40]. Because isotope fractionation during evaporate precipitation is negligible [41], these gypsum values can be taken as $\delta^{34}\text{S}_{\text{sw}}$ values. If so, $\delta^{34}\text{S}_{\text{py}}$ of Cryogenian superheavy pyrite obviously exceeds contemporaneous $\delta^{34}\text{S}_{\text{sw}}$ values and cannot be explained by microbial sulfate reduction alone, particularly considering that these samples typically have high pyrite content (>0.1 wt.%) [13] (Fig. 2) and that $\delta^{34}\text{S}_{\text{py}}$ values appear to show a spatial gradient, with higher $\delta^{34}\text{S}_{\text{py}}$ values in deep water sections [13,22].

PETROGRAPHY AND GEOCHEMISTRY OF SUPERHEAVY PYRITE IN THE DATANGPO FORMATION

To provide further insights into the origin of Cryogenian superheavy pyrite, we investigate the petrography and geochemistry of superheavy pyrite

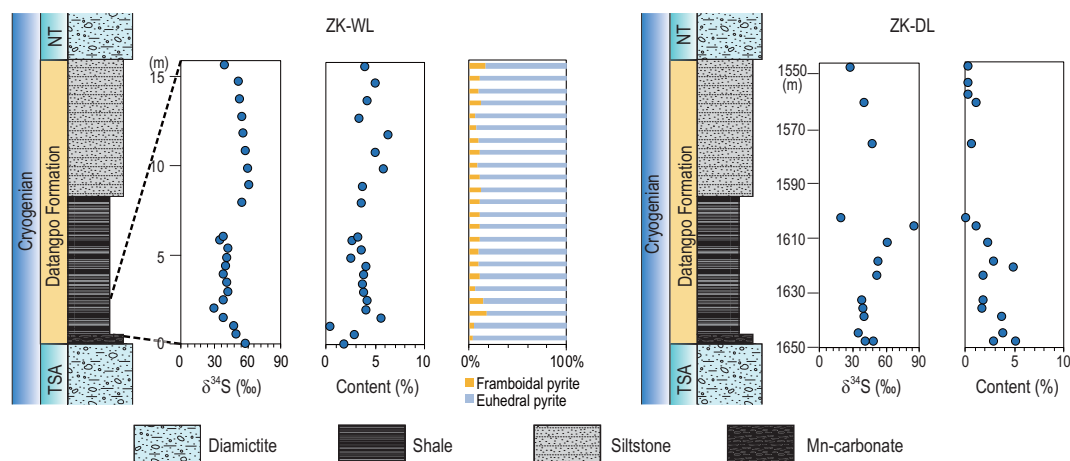


Figure 3. $\delta^{34}\text{S}_{\text{py}}$, pyrite content and pyrite morphologies of Cryogenian non-glacial deposits in the Datangpo Formation at ZK-WL and ZK-DL drill cores in South China.

from the Datangpo Formation in the Yangtze Block, South China. The Datangpo Formation is precisely dated between ~ 660 Ma and ~ 650 Ma [42,43], and represents the deposition in the Cryogenian non-glacial interval in South China. Samples were collected from two drill cores (ZK-WL and ZK-DL) in northeast Guizhou Province. In both drill cores, the Datangpo Formation begins with an Mn-rich carbonate of several meters in thickness, followed by black shale of several tens of meters in thickness. Paleogeographic reconstruction indicates that both sections were located in the continental slope of the Yangtze Block in late Neoproterozoic [44] (Figs S1 and S2).

Three types of pyrite are observed in the Datangpo Formation: pyrite nodules, pyrite laminae and disseminated pyrite (Fig. S3). Both pyrite nodules and laminae occur sporadically, but disseminated pyrite is present abundantly throughout the Datangpo Formation. The disseminated pyrite includes both euhedral and framboidal pyrite. Framboidal pyrite is composed of densely packed, spheroidal pyrite crystallites of sub-micron size (Fig. S3), and ranges from $1\ \mu\text{m}$ to $12\ \mu\text{m}$ in diameter (Fig. S4). In contrast, rhombic euhedral pyrite crystals are less common, but they range from $100\ \mu\text{m}$ to $200\ \mu\text{m}$ in size (Fig. S3). Therefore, although pyrite framboids are more numerous, euhedral pyrite accounts for $\sim 90\%$ (mean = 89.7% , $n = 23$) of total pyrite in mass (Table S1).

Most $\delta^{34}\text{S}_{\text{py}}$ values of the Datangpo Formation are greater than $+40\text{‰}$, with an average value of $+45.4\text{‰}$ ($n = 43$) (Fig. 3 and Table S2). The bulk-sample pyrite content varies between $0.1\ \text{wt.}\%$ and $6.4\ \text{wt.}\%$, with a mean value of $3.3\ \text{wt.}\%$ ($n = 43$) (Fig. 3 and Table S2). In both drill cores, $\delta^{34}\text{S}_{\text{py}}$ values and pyrite contents show a decreasing trend.

At ZK-DL, the lower 40 m interval of the Datangpo Formation has an average $\delta^{34}\text{S}_{\text{py}}$ value of $+46.7\text{‰}$ and an average pyrite content of $3.9\ \text{wt.}\%$, whereas the upper part of the Formation has lower $\delta^{34}\text{S}_{\text{py}}$ values (mean = $+37.2\text{‰}$) and pyrite contents (mean = $0.6\ \text{wt.}\%$). At ZK-WL, the Datangpo Formation has an average $\delta^{34}\text{S}_{\text{py}}$ value of $+46.8\text{‰}$ and pyrite content of $3.8\ \text{wt.}\%$ (Table S2).

SULFUR SOURCE OF DATANGPO SUPERHEAVY PYRITE

Predominant euhedral pyrite ($>80\%$, Table S1) in the Datangpo Formation suggests a diagenetic origin in sediment porewater or near sediment-water interface (SWI). Pyrite formation could be fueled by MSR in porewater, or H_2S diffusion from sulfidic seawater [15]. In the former case, $\delta^{34}\text{S}_{\text{py}}$ can be simulated by the Rayleigh distillation model, if a closed system can be assumed, or by the sulfate diffusion-advection-reaction (DAR) model in an open system [15].

Rayleigh distillation in a closed system can only produce high instantaneous $\delta^{34}\text{S}$ values during the terminal stage, at which time porewater sulfate is almost quantitatively converted to pyrite and the cumulative $\delta^{34}\text{S}_{\text{py}}$ value approaches $\delta^{34}\text{S}_{\text{sw}}$. However, cumulative $\delta^{34}\text{S}_{\text{py}}$ values of superheavy pyrite, as represented by bulk-sample measurements from the Datangpo Formation, are up to $+70\text{‰}$, notably higher than coeval $\delta^{34}\text{S}_{\text{sw}}$ ($+30\text{‰}$). Therefore, Rayleigh distillation cannot fully account for the Datangpo data reported here.

Alternatively, in an open system, porewater sulfate isotopic composition can be calculated by the DAR model. The sulfate and sulfide profiles can be

calculated by

$$\begin{aligned} \frac{\partial [{}^i\text{SO}_4^{2-}]}{\partial t} = & D_s \left(\frac{\partial^2 [{}^i\text{SO}_4^{2-}]}{\partial z^2} \right) \\ & - s \left(\frac{\partial [{}^i\text{SO}_4^{2-}]}{\partial z} \right) \\ & - R_{\text{MSR}}^i [{}^i\text{SO}_4^{2-}] [\text{CH}_2\text{O}], \end{aligned} \quad (1)$$

and

$$\begin{aligned} \frac{\partial [\text{H}_2^i\text{S}]}{\partial t} = & D_{\text{H}_2\text{S}} \left(\frac{\partial^2 [\text{H}_2^i\text{S}]}{\partial z^2} \right) \\ & - s \left(\frac{\partial [\text{H}_2^i\text{S}]}{\partial z} \right) \\ & + R_{\text{MSR}}^i [{}^i\text{SO}_4^{2-}] [\text{CH}_2\text{O}] \\ & - R_{\text{py}}^i [\text{H}_2^i\text{S}] [\text{Fe}], \end{aligned} \quad (2)$$

respectively. Here, D_s and $D_{\text{H}_2\text{S}}$ are porewater sulfate and H_2S diffusion coefficients, s is sedimentation rate, $[\text{CH}_2\text{O}]$ is organic matter content, R_{MSR}^i and R_{py}^i are reaction rate constants for MSR and pyrite formation respectively, and i is 32 or 34.

MSR and pyrite formation consume organic matter and reactive iron. Their concentration profiles in sediments can be expressed by

$$\begin{aligned} \frac{\partial [\text{CH}_2\text{O}]}{\partial t} = & -s \left(\frac{\partial [\text{CH}_2\text{O}]}{\partial z} \right) \\ & - R_{\text{MSR}}^{32} [{}^{32}\text{SO}_4^{2-}] [\text{CH}_2\text{O}] \\ & - R_{\text{MSR}}^{34} [{}^{34}\text{SO}_4^{2-}] [\text{CH}_2\text{O}], \end{aligned} \quad (3)$$

and

$$\begin{aligned} \frac{\partial [\text{Fe}]}{\partial t} = & -s \left(\frac{\partial [\text{Fe}]}{\partial z} \right) - R_{\text{py}}^{32} [\text{H}_2^{32}\text{S}] [\text{Fe}] \\ & - R_{\text{py}}^{34} [\text{H}_2^{34}\text{S}] [\text{Fe}]. \end{aligned} \quad (4)$$

Combining equations (1) to (4), $\delta^{34}\text{S}_{\text{py}}$ and pyrite content can be calculated as follows:

$$\begin{aligned} \delta^{34}\text{S}_{\text{py}} = & \ln \left(\frac{\int_0^z R_{\text{py}}^{34} [\text{H}_2^{34}\text{S}] [\text{Fe}] dz}{\int_0^z R_{\text{py}}^{32} [\text{H}_2^{32}\text{S}] [\text{Fe}] dz} \right) \\ & \times \frac{{}^{34}\text{S}_{\text{standard}}}{{}^{32}\text{S}_{\text{standard}}} \times 1000\text{‰}, \end{aligned} \quad (5)$$

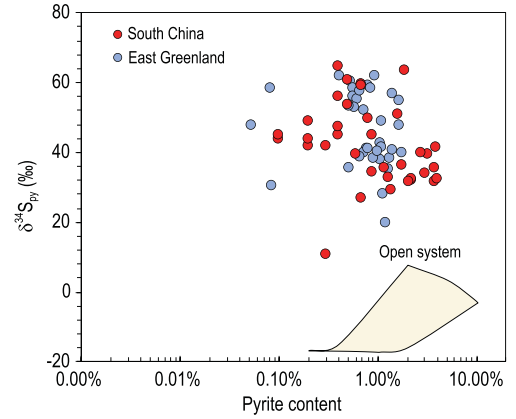


Figure 4. $\delta^{34}\text{S}_{\text{py}}$ and pyrite content data from the Cryogenian non-glacial interval in South China and East Greenland. Also shown are 1D-DAR model results (yellow area) depicting the relationship between $\delta^{34}\text{S}_{\text{py}}$ and pyrite content when MSR occurs in an open system. In this model, sulfate diffusion coefficient (D_s), MSR-associated sulfur isotope fractionation, seawater sulfate concentration and sedimentation rate are set at $3.61 \times 10^{-6} \text{ cm}^2 \text{ s}^{-1}$, 47‰, 5 mM L^{-1} , and 0.04 cm yr^{-1} , respectively, whereas R_{py}^{32} varies from 10^{-3} yr^{-1} to 25 yr^{-1} .

$$\begin{aligned} [\text{pyrite}](\%) = & \frac{M_{\text{py}} \times \varphi}{2 \times s \times (1 - \varphi) \times \rho} \\ & \cdot \int_0^z (R_{\text{py}}^{32} [\text{H}_2^{32}\text{S}] [\text{Fe}] \\ & + R_{\text{py}}^{34} [\text{H}_2^{34}\text{S}] [\text{Fe}]) dz. \end{aligned} \quad (6)$$

Organic matter content ($[\text{CH}_2\text{O}]$) is set between 1.25 wt.% and 12.5 wt.%. Sulfate diffusion coefficient (D_s), sulfate concentration and sedimentation rate (s) are $3.61 \times 10^{-6} \text{ cm}^2 \text{ s}^{-1}$ [45], 5 mM L^{-1} [46], and 0.05 cm ky^{-1} (based on the maximum thickness of 500 m and a duration time of 10 Myr), respectively. The modeling results indicate that high $\delta^{34}\text{S}_{\text{py}}$ values cannot be simulated by the sulfate-DAR model by MSR in sediment porewater with sulfate diffusion from seawater (Fig. 4).

Therefore, neither the Rayleigh distillation model nor the sulfate-DAR model can explain the coupled high $\delta^{34}\text{S}_{\text{py}}$ values and high pyrite contents of the Datangpo Formation (Fig. 4), suggesting that the Datangpo pyrite cannot be generated by MSR in sediment porewater. Below, we briefly explore the possibility that the H_2S for superheavy pyrite formation in the Datangpo Formation may have been sourced from sulfidic seawater.

Because of the small isotopic fractionation associated with pyrite precipitation from H_2S and Fe^{2+} , $\delta^{34}\text{S}_{\text{py}}$ values are mainly determined by the

isotopic composition of H_2S in sulfidic seawater ($\delta^{34}\text{S}_{\text{H}_2\text{S}}$). High $\delta^{34}\text{S}_{\text{H}_2\text{S}}$ requires high fraction of seawater sulfate reduction. On the other hand, bulk-sample pyrite content is controlled by many factors, including seawater H_2S concentration, reaction rate of pyrite formation and sedimentation rate. High seawater H_2S concentration and slow sedimentation rate would lead to high pyrite content. Thus, high $\delta^{34}\text{S}_{\text{py}}$ values and a high pyrite content of the Datangpo superheavy pyrite may result from a high fraction of sulfate reduction in sulfidic seawater, slow precipitation rate and fast pyrite precipitation in sediment porewater.

The development of oceanic euxinia is consistent with the widespread distribution of framboidal pyrite in the Datangpo Formation (Fig. S3), although it is quantitatively less important than euhedral pyrite. It is also consistent with Fe speciation data that show high $\text{Fe}_{\text{py}}/\text{Fe}_{\text{HR}}$ ratios (>0.8) [13], as well as low Mo concentrations in black shale [13,14].

Pyrite from the Cryogenian non-glacial interval is also characterized by both spatial and temporal patterns. For example, pyrite from the slope sections is more enriched in ^{34}S than that from the shelf sections, possibly indicating a $\delta^{34}\text{S}_{\text{H}_2\text{S}}$ gradient in the Yangtze Block [13,22]. Moreover, the compilation of global data indicates a decreasing trend of $\delta^{34}\text{S}_{\text{py}}$ values from the earlier to the later part of the Cryogenian non-glacial interval (Fig. 1), suggesting the secular pattern of seawater $\delta^{34}\text{S}_{\text{H}_2\text{S}}$. Therefore, the degree of sulfate reduction in sulfidic seawaters may have had systematic temporal and spatial patterns in the Cryogenian non-glacial interval. Below, we first evaluate previously published hypotheses about the origin of superheavy pyrite, followed by a quantitative model that incorporates VOSC to account for the observed spatial pattern of $\delta^{34}\text{S}_{\text{py}}$.

EVALUATING SUPERHEAVY PYRITE MODELS

Several models have been proposed to interpret superheavy pyrite formation, including the sulfide oxidation [20,23], high sedimentation rate [19], thermogenesis [21,22], ocean anoxia [13,23,47,48] and carbon-sulfur cycle models [13,18,47,48]. Based on the petrographic and geochemical analyses of the Datangpo superheavy pyrite, we argue that a successful model needs to explain the following observations and inferences about Cryogenian superheavy pyrite: (i) the global distribution and persistent stratigraphic occurrence, (ii) high pyrite contents, (iii) precipitation in sediment or near SWI, and (iv) the spatial gradient and temporal

variation of $\delta^{34}\text{S}_{\text{py}}$. Below we evaluate whether the existing models can explain these observations.

Sulfide oxidation model

The sulfide oxidation model was originally proposed to interpret superheavy pyrite in the late Ediacaran Nama Group [20]. In this model, the preferential aerobic oxidation of ^{32}S -enriched H_2S results in ^{34}S -enrichment of the remaining H_2S and precipitation of pyrite with high $\delta^{34}\text{S}_{\text{py}}$ values [20,23]. Experimental studies indicate that isotopic fractionations of 4‰ and 18‰ are associated with inorganic and biological H_2S oxidation, respectively [49]. Based on this model, high $\delta^{34}\text{S}_{\text{py}}$ values also require low seawater sulfate concentration that limits isotope fractionation in MSR [20]. The sulfide oxidation model can be applied to the Nama superheavy pyrite, because widespread storm deposits in the Nama Group indicate active sulfide oxidation in a well-mixed ocean [20]. In addition, generation of high $\delta^{34}\text{S}_{\text{py}}$ values through sulfide oxidation also implies high fraction of sulfide oxidation, resulting in low pyrite contents. Thus, the sulfide oxidation model can explain superheavy pyrite with low pyrite content from high-energy depositional settings, e.g. shallow marine settings above the fair-weather wave base. However, the Datangpo Formation is composed of black shale and fine-laminated siltstone with abundant framboidal pyrite (Figs S2 and S3). The absence of ripple marks or cross-bedding structures indicates deposition below the fair-weather wave base. This sedimentological interpretation is also consistent with Fe speciation data, redox sensitive trace element compositions (e.g. Mo) and sulfur isotopes of the Datangpo samples [13,50], arguing against the sulfide oxidation model.

Fast sedimentation rate model

The fast sedimentation model was initially proposed to explain superheavy pyrite in deposits of the Last Glacial period with a high sedimentation rate ranging from 50 cm kyr^{-1} to 250 cm kyr^{-1} [19]. Sedimentary pyrite from coarse-grained sediments has higher $\delta^{34}\text{S}_{\text{py}}$ values relative to those from fine-grained sediments, because high sedimentation rates limit the exchange between sediment porewater and seawater [19], thus limiting the supply of seawater sulfate for MSR. Quantitative reduction of porewater sulfate at fast sediment rates would limit isotopic fractionation in MSR and hence lead to high $\delta^{34}\text{S}_{\text{py}}$ values (approaching a closed system) [45]. Although it remains unclear how $\delta^{34}\text{S}_{\text{py}}$ can exceed $\delta^{34}\text{S}_{\text{sw}}$, some superheavy pyrite crystals are indeed

discovered in glacial deposits with high sedimentation rates [19]. This model may explain superheavy pyrite occurring sporadically in settings with a fast sedimentation rate, such as shoreface or delta deposition environments with coarse-grained sediments.

We argue, however, that fast sedimentation rate alone cannot explain the superheavy pyrite in the Datangpo Formation, because it is mainly composed of black shale and laminated muddy siltstone (Figs S2 and S3), which likely record slow sedimentation rates. A rough estimate of sedimentation rate of the Datangpo Formation ranges from 0.1 cm kyr^{-1} to 5 cm kyr^{-1} (based on the stratigraphic thickness of 10–500 m and the duration of 10 Myr of the Datangpo Formation) [42,43]. In addition, a numerical model shows that high sedimentation rates result in low pyrite contents, which contrast with the high pyrite contents in the Datangpo Formation [45]. Finally, since sedimentation rates are facies-dependent and are expected to vary greatly, this model cannot explain the global superheavy pyrite formation in the Cryogenian non-glacial interval.

Thermogenesis model

The thermogenesis model proposes a diagenetic origin of superheavy pyrite driven by thermochemical sulfate reduction (TSR) [21]. TSR is an abiotic process through which sulfate is reduced by organic matter at high temperatures [21]. Similar to MSR, TSR also generates ^{32}S -enriched sulfide, and the isotopic fractionation in TSR is temperature-dependent. At temperatures $>200^\circ\text{C}$, TSR is associated with $\sim 25\text{‰}$ fractionation [51]. When TSR occurs in a closed system, the late stage Rayleigh distillation can generate ^{34}S -enriched pyrite. Abundant superheavy pyrite formation through TSR requires sufficient supply of ^{34}S -enriched sulfate (e.g. with the presence of evaporite) and organic matter in sediments. Thus, the thermogenesis model may explain superheavy pyrite formation in organic-rich sediments with evaporite layers above or below. Indeed, the thermogenesis model was applied to explain high pyrite content and isotopic variations in the Nanhua basin [22]. It is proposed that hydrothermal vents would release massive TSR-derived sulfide that was immediately oxidized to sulfate [22]. Vertical mixing of the ^{34}S -enriched sulfate with seawater sulfate may contribute to the development of the spatial isotopic gradient of the superheavy pyrites. However, as TSR is typically a local or regional process, the applicability of this model to explain the global occurrence of superheavy pyrite in the 10-million-year Cryogenian non-glacial interval requires detailed assess-

ment of evidence for hydrothermal activities in all Cryogenian basins.

Marine anoxia model

Both the sulfate minimum zone (SMZ) and ocean stratification or dual-reservoir (OD) models argue for superheavy pyrite precipitation in an anoxic basin [23,47,48]. It was proposed that sulfate may have been the major oxidant in Proterozoic oceans, and thus the seawater sulfate concentration profile in the Proterozoic ocean is similar to the O_2 concentration profile in the modern ocean. A SMZ may have developed in mid-depth seawaters, analogous to the O_2 minimum zone in modern oceans [48]. The SMZ was characterized by extensive MSR, and thus had high $\delta^{34}\text{S}_{\text{sw}}$ values [48]. Pyrite precipitated from SMZ would have high $\delta^{34}\text{S}$ values [48]. Similar to the SMZ model, the OD model emphasizes the development of ocean stratification with the deep water enriched in ^{34}S -sulfate [13], and pyrite precipitation from anoxic deep water would have high $\delta^{34}\text{S}_{\text{py}}$ values [23]. This model can explain superheavy pyrite in sulfidic basins with low seawater sulfate levels. However, low seawater sulfate levels are inconsistent with the high pyrite contents that are typically associated with superheavy pyrite in the Cryogenian non-glacial interval. Thus, the SMZ and OD models do not provide a satisfactory explanation for the global occurrence of superheavy pyrite in the Cryogenian non-glacial interval.

Carbon-sulfur cycle model

The carbon-sulfur (C-S) cycle model has been proposed to explain the global occurrence of superheavy pyrite in the SPICE event [18]. The SPICE event was characterized by the coupled C and S isotope positive excursions. Superheavy pyrite occurs in the climax of the SPICE event, coincident with the maximum carbonate carbon isotopes ($\delta^{13}\text{C}_{\text{carb}}$) of $+6\text{‰}$ [18]. It is postulated that an increase of organic matter input might have stimulated MSR and enhanced pyrite burial. At a low seawater sulfate concentration, $\delta^{34}\text{S}_{\text{sw}}$ was sensitive to pyrite burial, and organic carbon and pyrite burial resulted in the concurrent increases in both $\delta^{34}\text{S}_{\text{sw}}$ and carbon isotope values of seawater-dissolved inorganic carbon [18]. This model is supported by the coupling of $\delta^{13}\text{C}_{\text{carb}}$, $\delta^{13}\text{C}_{\text{org}}$ and $\delta^{34}\text{S}_{\text{py}}$. Furthermore, it is suggested that oceanic anoxia or euxinia was developed in mid-depth seawaters below the wind-mixed surface layer [18]. However, the decreasing chemostratigraphic trend of $\delta^{34}\text{S}_{\text{py}}$ is associated with nearly invariant

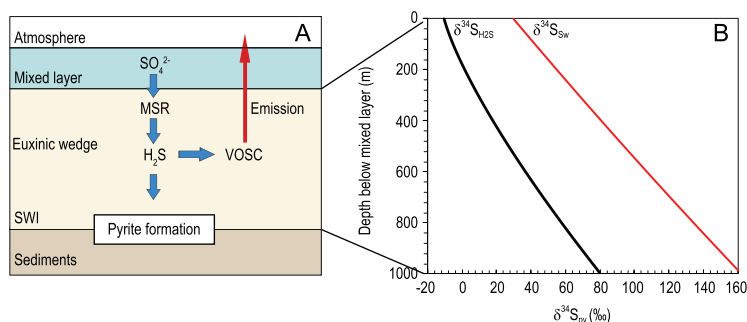


Figure 5. VOSC-integrated model structure and modeling results. (A) Basic model structure highlighting the contribution of VOSC to the formation of superheavy pyrite in a euxinic wedge. SWI: sediment-water interface. (B) End-member modeling results showing that VOSC emission in a stagnant ocean with a sulfidic deep-water column can drive an increase in both $\delta^{34}\text{S}_{\text{sw}}$ and $\delta^{34}\text{S}_{\text{py}}$ with depth. Default parameters: initial $\delta^{34}\text{S}_{\text{sw}}$ value of +30‰; MSR rate constant (k_{MSR}) at 0.0005 yr^{-1} ; VOSC generation rate constant (k_{VOSC}) at 0.001 yr^{-1} ; seawater vertical velocity (w) at 0 m yr^{-1} ; diffusion coefficient of sulfate (κ_d) at $0.028 \text{ m}^2 \text{ yr}^{-1}$.

$\delta^{13}\text{C}_{\text{org}}$ in the Datangpo Formation, suggesting the decoupling of C-S cycles [52].

Overall, all existing models can explain superheavy pyrite formation in the local or regional scales, but they have limited ability to explain the global occurrence of superheavy pyrite in the Cryogenian non-glacial interval. More importantly, all these models focus exclusively on the interplay between sulfate and sulfide, but ignore the importance of organosulfur compounds, which represent an important component of the modern marine sulfur cycle [27]. Below, we develop a new model that integrates organosulfur compound in sulfidic seawater to explain the global occurrence of superheavy pyrite in the Cryogenian non-glacial interval.

A NEW MODEL FOR CRYOGENIAN SUPERHEAVY PYRITE FORMATION

Organosulfur compounds are cycled in both non-sulfidic and sulfidic conditions [28,53,54]. In a sulfidic water column, rapid organic matter sulfurization (or H_2S methylation) can generate massive VOSC. Most VOSC is released into air where it is oxidized to SO_4^{2-} (in the form of sulfate aerosols) largely by hydroxyl radicals in the upper atmosphere. These sulfate aerosols may be cycled back to the coastal water by precipitation or riverine influx. However, a significant amount of ^{32}S -enriched VOSC or sulfate aerosols that derived from VOSC oxidation would be shuttled to the open ocean, elevating $\delta^{34}\text{S}$ of sulfidic seawater in restricted anoxic marine basins. So in essence, this would drive the difference in $\delta^{34}\text{S}_{\text{sw}}$ between the open ocean and restricted marginal marine basins. Here we propose

that VOSC emission was at least partly responsible for the formation and distribution of Cryogenian superheavy pyrite.

Petrological and geochemical evidence indicates that most (>90%) Datangpo superheavy pyrite was precipitated within sediment porewater with H_2S diffusion from sulfidic water column, suggesting $\delta^{34}\text{S}_{\text{py}}$ values recorded $\delta^{34}\text{S}_{\text{H}_2\text{S}}$ near the SWI. Thus, superheavy pyrite precipitation requires high $\delta^{34}\text{S}_{\text{H}_2\text{S}}$ value near the SWI. Below, we develop a numerical model to simulate the development of the vertical sulfur isotope gradient in the sulfidic water column.

Simulation of sulfur cycle in sulfidic conditions

Here we use the one-dimensional diffusion-advection-reaction (1D-DAR) model to simulate the $\delta^{34}\text{S}_{\text{H}_2\text{S}}$ profile in sulfidic seawater on continental margins. We assume that the sulfidic layer underlies the surface mixed layer that has a homogeneous sulfate concentration and an invariant $\delta^{34}\text{S}_{\text{sw}}$ value (Fig. 5A). With the presence of a large dissolved organic carbon (DOC) pool in Neoproterozoic deep ocean [52], sulfide methylation and VOSC formation were largely controlled by seawater H_2S concentrations [55]. MSR in the sulfidic layer is sustained by sulfate diffusion from the surface mixed layer. H_2S concentration in the sulfidic layer can be expressed as:

$$\frac{\partial[\text{H}_2\text{S}]}{\partial t} = \text{trans}(\text{H}_2\text{S}) + \text{msr}(\text{H}_2\text{S}), \quad (7)$$

where $[\text{H}_2\text{S}]$ is the concentration of H_2S , $\text{trans}(\text{H}_2\text{S})$ represents the vertical transportation rate of H_2S and $\text{msr}(\text{H}_2\text{S})$ is the *in situ* change in $[\text{H}_2\text{S}]$ due to chemical reactions or biological activities (e.g. microbial sulfate reduction, sulfide oxidation and pyrite formation). H_2S is generated by MSR. It is then converted to VOSC that is emitted into the atmosphere. Pyrite is mainly formed near SWI with Fe supply from sediment and H_2S diffusion from sulfidic seawater (Fig. 5A).

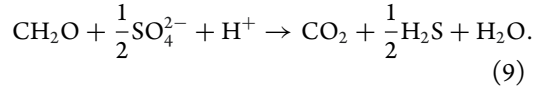
The transmission term in the model can be expressed by the one-dimensional advection-diffusion equation:

$$\text{trans}(X) = w \cdot \frac{\partial[\text{H}_2\text{S}]}{\partial z} + \frac{\partial}{\partial z} K_{\text{H}_2\text{S}} \frac{\partial[\text{H}_2\text{S}]}{\partial z}, \quad (8)$$

where w and $K_{\text{H}_2\text{S}}$ represent the seawater vertical velocity and vertical diffusion coefficient (the same

as D_{H_2S} mentioned above in equation (1)), respectively, of H_2S .

H_2S is generated by MSR, and the chemical reaction for MSR is as follows:



Assuming an unlimited supply of organic matter and invariant pH, the rate of MSR ($dmsr/dt$) is only controlled by the concentration of sulfate and the reaction rate constant (k_{MSR}):

$$dmsr = k_{MSR} \cdot [SO_4^{2-}] \cdot dt. \quad (10)$$

According to the formula of VOSC formation, with unlimited supply of organic matter, the production rate of VOSC ($dvosc/dt$) is a function of H_2S concentration:

$$dvosc = k_{VOSC} \cdot [H_2S] \cdot dt, \quad (11)$$

where k_{VOSC} represents the rate constant of H_2S methylation.

The time-dependent variation of seawater sulfate concentration can be calculated by:

$$\begin{aligned} \frac{\partial [SO_4]}{\partial t} + w \cdot \frac{\partial [SO_4]}{\partial z} &= \kappa_d \cdot \frac{\partial^2 [SO_4]}{\partial z^2} \\ &- k_{MSR} [SO_4], \end{aligned} \quad (12)$$

where κ_d is the diffusion coefficient of sulfate in seawater (the same value as the diffusion coefficient of H_2S in seawater, see equation (8)), and k_{MSR} is the rate constant of MSR. At a steady state, $\frac{\partial}{\partial t} = 0$, we arrive at:

$$\frac{d^2 [SO_4]}{dz^2} - \frac{w}{\kappa_d} \cdot \frac{d [SO_4]}{dz} - \frac{k_{MSR}}{\kappa_d} [SO_4] = 0. \quad (13)$$

The boundary condition is set to:

$$[SO_4] = C_{0,SO_4}, \quad z = 0; \quad (14)$$

$$[SO_4] = 0, \quad z \rightarrow +\infty; \quad (15)$$

where C_{0,SO_4} is the sulfate concentration in the upper mixed layer and z is the depth beneath the upper mixed layer. Combining equations (13)–(15), we arrive at:

$$\begin{aligned} [SO_4] &= C_{0,SO_4} \cdot e^{Az}, \\ A &= \frac{1}{2} \cdot \left(\frac{w}{\kappa_d} - \sqrt{\frac{w^2}{\kappa_d^2} + \frac{4k_{MSR}}{\kappa_d}} \right). \end{aligned} \quad (16)$$

The δ value of seawater sulfate can be calculated as:

$$\begin{aligned} \delta_{SO_4}^{34} &= \left(\left(\frac{{}^{34}SO_4}{{}^{32}SO_4} \right) / \left(\frac{{}^{34}SO_4}{{}^{32}SO_4} \right)_{std} - 1 \right) \\ &\times 1000\text{‰}, \end{aligned} \quad (17)$$

where ‘32’ and ‘34’ denote isotope ^{32}S and ^{34}S , respectively, and the subscript ‘std’ represents the standard reference of sulfur isotopes.

The time-dependent equation for H_2S concentration is:

$$\begin{aligned} \frac{\partial [H_2S]}{\partial t} + w \cdot \frac{\partial [H_2S]}{\partial z} &= \kappa_d \cdot \frac{\partial^2 [H_2S]}{\partial z^2} \\ &- k_{VOSC} [H_2S] + k_{MSR} [SO_4]. \end{aligned} \quad (18)$$

Assuming a steady state, i.e. $\frac{\partial}{\partial t} = 0$, we arrive at:

$$\begin{aligned} \frac{d^2 [H_2S]}{dz^2} - \frac{w}{\kappa_d} \cdot \frac{d [H_2S]}{dz} &- \frac{k_{VOSC}}{\kappa_d} [H_2S] \\ &= -\frac{k_{MSR}}{\kappa_d} C_{0,SO_4} \cdot e^{Az}. \end{aligned} \quad (19)$$

We set the following boundary condition:

$$k_{VOSC} [H_2S] = k_{MSR} [SO_4], \quad z = 0; \quad (20)$$

$$[H_2S] = 0, \quad z \rightarrow +\infty. \quad (21)$$

The solution for equation (19) is:

$$[H_2S] = C_{0,H_2S} \cdot e^{Bz} + [H_2S]_2,$$

$$B = \frac{1}{2} \cdot \left(\frac{w}{\kappa_d} - \sqrt{\frac{w^2}{\kappa_d^2} + \frac{4k_{VOSC}}{\kappa_d}} \right), \quad (22)$$

where C_{0,H_2S} is a constant, and is determined by the boundary condition; $[H_2S]_2$ is the particular solution for equation (19), and can be discussed in the following two scenarios:

$$\begin{aligned} [H_2S]_2 &= \frac{k_{MSR}}{k_{VOSC} - k_{MSR}} \cdot C_{0,SO_4} \cdot e^{Az}, \\ k_{MSR} &\neq k_{VOSC}; \end{aligned} \quad (23)$$

$$\begin{aligned} [H_2S]_2 &= \frac{k_{MSR}}{w - 2A \cdot \kappa_d} \cdot C_{0,SO_4} \cdot z \cdot e^{Az}, \\ k_{MSR} &= k_{VOSC}. \end{aligned} \quad (24)$$

The vertical profile of H_2S concentration can be expressed as:

$$[\text{H}_2\text{S}] = C_{0,\text{SO}_4} \cdot \left[\frac{k_{\text{MSR}}}{k_{\text{VOSC}} - k_{\text{MSR}}} \cdot e^{Az} - \frac{k_{\text{MSR}}^2}{k_{\text{VOSC}}(k_{\text{VOSC}} - k_{\text{MSR}})} \cdot e^{Bz} \right],$$

$$k_{\text{MSR}} \neq k_{\text{VOSC}}; \quad (25)$$

$$[\text{H}_2\text{S}] = C_{0,\text{SO}_4} \cdot \left[\frac{k_{\text{MSR}}}{w - 2A \cdot \kappa_d} \cdot z \cdot e^{Az} + \frac{k_{\text{MSR}}}{k_{\text{VOSC}}} \cdot e^{Bz} \right],$$

$$k_{\text{MSR}} = k_{\text{VOSC}}. \quad (26)$$

The δ value of seawater H_2S can be calculated as:

$$\delta^{34}\text{S}_{\text{H}_2\text{S}} = \left(\left(\frac{^{34}\text{S}_{\text{H}_2\text{S}}}{^{32}\text{S}_{\text{H}_2\text{S}}} \right) / \left(\frac{^{34}\text{S}_{\text{H}_2\text{S}}}{^{32}\text{S}_{\text{H}_2\text{S}}} \right)_{\text{std}} - 1 \right) \times 1000\text{‰}. \quad (27)$$

Assuming the $\delta^{34}\text{S}_{\text{sw}}$ value of +30‰, MSR rate constant (k_{MSR}) at 0.0005 yr^{-1} [56] and VOSC generation rate constant (k_{VOSC}) at 0.001 yr^{-1} [57], the model indicates that high VOSC emission can generate a large vertical $\delta^{34}\text{S}_{\text{H}_2\text{S}}$ gradient in sulfidic water column (Fig. 5B). It is notable that superheavy pyrite formation requires both high MSR and VOSC formation rates to maintain a strong vertical $\delta^{34}\text{S}_{\text{H}_2\text{S}}$ gradient (Fig. 6). In addition, a low sulfate concentration is also required for the development of such a vertical $\delta^{34}\text{S}_{\text{H}_2\text{S}}$ gradient, because the isotopic effect of VOSC emission could be buffered by a large sulfate reservoir. Furthermore, a low vertical mixing rate (low w value) or a nearly stagnant ocean is required for the sustention of the high $\delta^{34}\text{S}_{\text{H}_2\text{S}}$ values and strong vertical $\delta^{34}\text{S}_{\text{H}_2\text{S}}$ gradient.

Global occurrence of superheavy pyrite in the Cryogenian non-glacial interval

The modeling results indicate that the formation of superheavy pyrite requires massive VOSC emission from a largely stagnant ocean to generate and maintain a strong $\delta^{34}\text{S}_{\text{H}_2\text{S}}$ depth gradient in sulfidic conditions. In our model, superheavy pyrite in the Datangpo Formation was mainly precipitated at or near the SWI, where both seawater sulfate and sulfide have high $\delta^{34}\text{S}$ values. Our model is seemingly inconsistent with low $\delta^{34}\text{S}_{\text{sw}}$ values based on carbonate-associated sulfate data (Fig. 1). However, most carbonate deposits were probably formed at shallow water depths, such

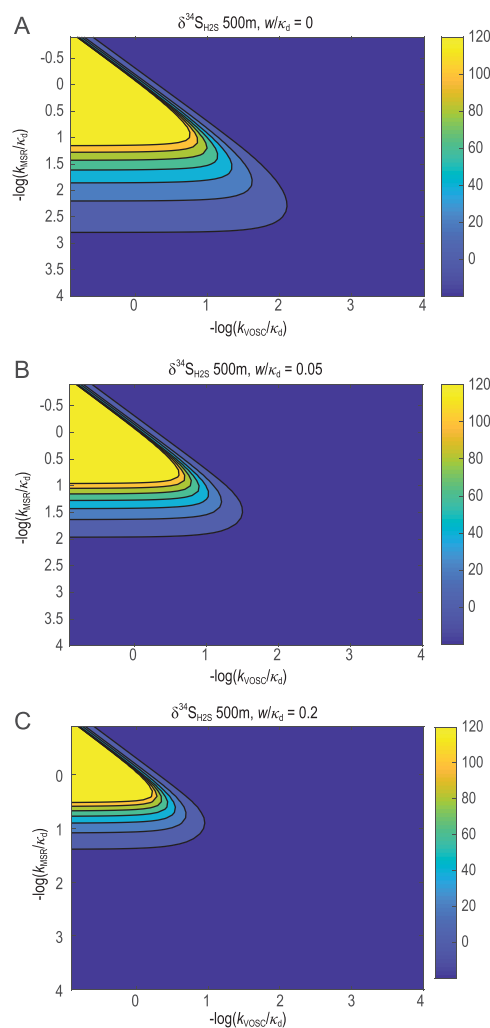


Figure 6. Sensitivity tests to evaluate the influence of microbial sulfate reduction rate constant (k_{MSR}), VOSC generation rate constant (k_{VOSC}) and vertical velocity rate (w) on $\delta^{34}\text{S}_{\text{H}_2\text{S}}$. The X and Y axes represent negative log of k_{VOSC} and k_{MSR} , respectively, relative to κ_d . The contour lines represent $\delta^{34}\text{S}_{\text{H}_2\text{S}}$. Modeling results ($w/\kappa_d = 0 \text{ m}^{-1}$ for (A), $w/\kappa_d = 0.05 \text{ m}^{-1}$ for (B), and $w/\kappa_d = 0.2 \text{ m}^{-1}$ for (C)) show that superheavy pyrite formation requires a high MSR rate, high VOSC formation rate and low vertical mixing rate. Default parameters: initial $\delta^{34}\text{S}_{\text{sw}}$ value of +30‰; $\kappa_d = 0.028 \text{ m}^2 \text{ yr}^{-1}$.

that $\delta^{34}\text{S}$ of carbonate associated sulfate likely reflects low $\delta^{34}\text{S}_{\text{sw}}$ values of shallow waters. In contrast, higher $\delta^{34}\text{S}_{\text{CAS}}$ values from authigenic Mn-carbonate in a deep-water environment [22] probably record $\delta^{34}\text{S}_{\text{sw}}$ of seawaters near the SWI.

There is no direct geological or geochemical tracer for VOSC emission in paleoceans, so the VOSC model proposed here needs to be tested further. This model can be indirectly tested by evaluating the $\delta^{34}\text{S}_{\text{H}_2\text{S}}$ depth gradient. It predicts that (i) $\delta^{34}\text{S}_{\text{H}_2\text{S}}$ in the water column should be lower than $\delta^{34}\text{S}_{\text{H}_2\text{S}}$ at the SWI or within sediment porewater, and (ii) $\delta^{34}\text{S}_{\text{py}}$ of shallow water sections should be

lower than that of deep-water sections. The latter is validated by the spatial gradient in $\delta^{34}\text{S}_{\text{py}}$ recorded in the Datangpo Formation: pyrite from the outer shelf sections has lower $\delta^{34}\text{S}_{\text{py}}$ values than the slope sections [22].

The global occurrence of superheavy pyrite also implies widespread and massive VOSC emission during the Cryogenian non-glacial interval. VOSC emission is favored by intense MSR that generates abundant H_2S as well as high DOC concentrations in a euxinic wedge [58]. We propose that high organic matter input might have sustained intense MSR in sulfidic seawater, which in turn fueled massive VOSC degassing [15,59–61] that, together with a reduced vertical mixing rate, created and maintained a strong $\delta^{34}\text{S}_{\text{H}_2\text{S}}$ depth gradient. Superheavy pyrite precipitates at the seafloor or within sediment porewater that is characterized with high $\delta^{34}\text{S}_{\text{H}_2\text{S}}$.

Large organic matter flux might be favored in the non-glacial interval due to the following reasons. First, deglacial intense continental weathering led to a surge of nutrient supply to the ocean, stimulating surface ocean primary productivity [59,62,63]. Second, possible occupation of empty niches in the surface ocean after the Sturtian glaciation may further enhance organic matter production [64]. Third, the transition from a cyanobacteria-dominated to an alga-dominated biological pump elevated the efficiency of organic carbon supply to the ocean interior (i.e. below the euphotic zone) [65]. Fourth, high temperature in the non-glacial interval might have weakened the thermohaline circulation in the ocean, favoring the expansion of sulfidic conditions. In fact, high surface ocean productivity is consistent with high values of carbonate carbon isotopes from the Tayshir Member in Mongolia and Hüttenberg Formation in northeastern Namibia [66] and widespread deposition of black shales in the non-glacial interval [67].

In summary, the global occurrence of superheavy pyrite may be related to extensive marine euxinia and massive VOSC degassing after the Sturtian glaciation. For the same reason, the decreasing trend of $\delta^{34}\text{S}_{\text{py}}$ in the non-glacial interval (Figs 1 and 2) might be attributed to the gradual weakening of euxinic wedges, resulting in a gradual transition from sulfidic to ferruginous conditions in mid-depth seawater during the non-glacial interval [13].

Sulfide methylation as an important process in Proterozoic marine sulfur cycle

In the modern ocean, high VOSC emission ($\sim 1 \text{ Tmol yr}^{-1}$) does not cause any significant

perturbation in $\delta^{34}\text{S}_{\text{sw}}$. VOSC in the modern ocean is mainly produced by the DMSP degradation pathway, while H_2S methylation is quantitatively unimportant, given that sulfidic seawater covers less than 0.1% of modern seafloor [29]. H_2S methylation is also dampened by extremely low seawater DOC concentrations, and seawater DOC is mainly composed of refractory molecules that are chemically inert [68]. Moreover, although H_2S methylation does occur in some limited sulfidic areas, such as the Black Sea [69], the possible isotopic effect is buffered by modern high seawater sulfate concentration ($\sim 28 \text{ mM L}^{-1}$) [8]. In addition, VOSC is more effectively funneled back into the ocean because of high pO_2 concentrations, and vigorous vertical oceanic mixing also homogenizes the ocean and reduces the depth gradient.

In contrast, H_2S methylation might have played a more important role in the Proterozoic sulfur cycle, when euxinic wedges were common and seawater sulfate concentrations were low [46,58,70–72]. In a euxinic wedge, H_2S is readily available for the formation of H_2S -derived VOSC. In addition, a large DOC pool in the Proterozoic ocean ensures the supply of organic carbon molecules [68]. Therefore, methylation of H_2S may be a more important process in the Proterozoic marine sulfur cycle than in the Phanerozoic.

It is notable that sulfide methylation alone does not guarantee global superheavy formation. In fact, superheavy pyrite occurred only sporadically in other geological intervals characterized by widespread sulfidic conditions, for example, during the Boring Billion (1.8–0.8 Ga, billion years ago), after the Marinoan glaciation, in the Permian-Triassic transition, and during Ocean Anoxic Events in Cretaceous [70,73]. We speculate that the absence of global superheavy pyrite precipitation after the Marinoan glaciation and in Phanerozoic may be attributed to high seawater sulfate concentrations that weakened the isotopic effects of VOSC emission and led to small $\delta^{34}\text{S}_{\text{H}_2\text{S}}$ depth gradients in sulfidic water column [74–76]. On the other hand, although seawater sulfate concentrations were low, relatively low primary productivity in the Boring Billion would limit MSR and accordingly reduce the $\delta^{34}\text{S}_{\text{H}_2\text{S}}$ depth gradient as well [77,78]. Therefore, the global occurrence of superheavy pyrite in the Cryogenian non-glacial interval may be attributed to widespread sulfidic conditions in the context of (i) the Neoproterozoic oxygenation event [13], (ii) the increase of organic matter production in the initial burst of eukaryotic primary productivity, (iii) the episodic continental nutrient supply after the Sturtian glaciation [63,65], and (iv) perhaps a more stagnant ocean.

To summarize, although additional data are needed to further test the model proposed here, our study does show that H₂S methylation is a previously underappreciated pathway in the Proterozoic marine sulfur cycle. The interpretation of Proterozoic sulfur isotope data needs to fully consider the organosulfur cycle, which may have contributed to—if it was not solely responsible for—the sustained and global occurrence of superheavy pyrite in the Cryogenian non-glacial interval.

METHODS

Sulfur isotope analysis

Stable sulfur isotope analysis was performed in the Nanjing Institute of Geology and Palaeontology, Chinese Academy of Sciences. One to three grams of powder was prepared for pyrite extraction using the chromium reduction method. Pyrite-rich powder was finally converted to Ag₂S. Dried Ag₂S powder was mixed with 1–2 mg V₂O₅, and was analyzed for S isotopic compositions on a Delta V Advantage gas source mass spectrometer coupled with an Elemental Analyzer. Sulfur isotopic compositions are expressed in standard δ -notation as per mil (‰) deviations from the VCDT standard (Vienna Canon Diablo Troilite). The analytical error is <0.2‰ based on replicate analyses of samples and laboratory standards. Samples were calibrated on two international standards: IAEA-S-1: −0.3‰; IAEA-S-2: +22.7‰.

Determination of framboidal pyrite proportion

The proportion of framboidal pyrite relative to total pyrite mass is estimated using back scattered electron images and reflected microphotographs. For each microphotograph, the proportion of framboidal pyrite can be calculated by: $f_{\text{fram}} = \frac{A_{\text{fram}}}{A_{\text{T}}} \times 100\%$, where A_{fram} is framboidal pyrite area in the microphotograph, and A_{T} is the total pyrite area in the microphotograph. The mean framboidal pyrite proportion in each section was calculated by: $f = \frac{\sum_{i=1}^N [f_{\text{fram}}]_n}{N}$ where N is the total number of analyzed microphotographs, and n is the microphotograph sequence number.

DATA AVAILABILITY

The data that support the findings of this study are available from the corresponding author upon reasonable request.

SUPPLEMENTARY DATA

Supplementary data are available at [NSR](#) online.

FUNDING

This work was supported by the Strategic Priority Research Program (B) of the Chinese Academy of Sciences (XDB18000000) and the National Natural Science Foundation of China (41802024, 41973008, 42072334 and 41322021). S.X. was funded by the National Science Foundation (EAR-2021207).

AUTHOR CONTRIBUTIONS

B.S. designed the project. X.L. and S.L. analyzed data. X.L., Z.Z., H.M. and W.T. performed model simulations. X.L., B.S. and S.X. developed the manuscript with contributions from other co-authors.

Conflict of interest statement. None declared.

REFERENCES

- Bradley AS, Leavitt WD and Johnston DT. Revisiting the dissimilatory sulfate reduction pathway. *Geobiology* 2011; **9**: 446–57.
- Canfield DE. The evolution of the Earth surface sulfur reservoir. *Am J Sci* 2004; **304**: 839–61.
- Brunner B and Bernasconi SM. A revised isotope fractionation model for dissimilatory sulfate reduction in sulfate reducing bacteria. *Geochim Cosmochim Acta* 2005; **69**: 4759–71.
- Rees C. A steady-state model for sulphur isotope fractionation in bacterial reduction processes. *Geochim Cosmochim Acta* 1973; **37**: 1141–62.
- Johnston DT, Farquhar J and Canfield DE. Sulfur isotope insights into microbial sulfate reduction: when microbes meet models. *Geochim Cosmochim Acta* 2007; **71**: 3929–47.
- Ono S, Sim MS and Bosak T. Predictive isotope model connects microbes in culture and nature. *Proc Natl Acad Sci USA* 2014; **111**: 18102–3.
- Böttcher ME, Smock AM and Cypionka H. Sulfur isotope fractionation during experimental precipitation of iron(II) and manganese(II) sulfide at room temperature. *Chem Geol* 1998; **146**: 127–34.
- Fike DA, Bradley AS and Rose CV. Rethinking the ancient sulfur cycle. *Annu Rev Earth Planet Sci* 2015; **43**: 593–622.
- Gorjan P, Veevers JJ and Walter MR. Neoproterozoic sulfur-isotope variation in Australia and global implications. *Precambrian Res* 2000; **100**: 151–79.
- Li R, Chen J and Zhang S *et al.* Spatial and temporal variations in carbon and sulfur isotopic compositions of Sinian sedimentary rocks in the Yangtze platform, South China. *Precambrian Res* 1999; **97**: 59–75.
- Feng L-J, Chu X-L and Huang J *et al.* Reconstruction of paleoredox conditions and early sulfur cycling during deposition of the Cryogenian Datangpo formation in South China. *Gondwana Res* 2010; **18**: 632–7.

12. Chen X, Li D and Ling H-F *et al.* Carbon and sulfur isotopic compositions of basal Datangpo Formation, northeastern Guizhou, South China: implications for depositional environment. *Prog Nat Sci* 2008; **18**: 421–9.
13. Li C, Love GD and Lyons TW *et al.* Evidence for a redox stratified Cryogenian marine basin, Datangpo Formation, South China. *Earth Planet Sci Lett* 2012; **331–2**: 246–56.
14. Scheller EL, Dickson AJ and Canfield DE *et al.* Ocean redox conditions between the snowballs—geochemical constraints from Arena Formation, East Greenland. *Precambrian Res* 2018; **319**: 173–86.
15. Lang X, Shen B and Peng Y *et al.* Transient marine euxinia at the end of the terminal Cryogenian glaciation. *Nat Commun* 2018; **9**: 3019.
16. Canfield DE and Farquhar J. Animal evolution, bioturbation, and the sulfate concentration of the oceans. *Proc Natl Acad Sci USA* 2009; **106**: 8123–7.
17. Hurtgen MT, Arthur MA and Halverson GP. Neoproterozoic sulfur isotopes, the evolution of microbial sulfur species, and the burial efficiency of sulfide as sedimentary pyrite. *Geology* 2005; **33**: 41–4.
18. Gill BC, Lyons TW and Young SA *et al.* Geochemical evidence for widespread euxinia in the later Cambrian ocean. *Nature* 2011; **469**: 80–3.
19. Pasquier V, Sansjofre P and Rabineau M *et al.* Pyrite sulfur isotopes reveal glacial-interglacial environmental changes. *Proc Natl Acad Sci USA* 2017; **114**: 5941–5.
20. Ries JB, Fike DA and Pratt LM *et al.* Superheavy pyrite ($\delta^{34}\text{S}_{\text{pyr}} > \delta^{34}\text{S}_{\text{CAS}}$) in the terminal proterozoic nama group, southern Namibia: a consequence of low seawater sulfate at the dawn of animal life. *Geology* 2009; **37**: 743–6.
21. Cui H, Kitajima K and Spicuzza MJ *et al.* Questioning the biogenicity of Neoproterozoic superheavy pyrite by SIMS. *Am Mineral* 2018; **103**: 1362–400.
22. Wang P, Algeo TJ and Zhou Q *et al.* Large accumulations of ^{34}S -enriched pyrite in a low-sulfate marine basin: the Sturtian Nanhua Basin, South China. *Precambrian Res* 2019; **335**: 105504.
23. Kah LC, Thompson CK and Henderson MA *et al.* Behavior of marine sulfur in the Ordovician. *Palaeogeogr Palaeoclimatol Palaeoecol* 2016; **458**: 133–53.
24. Wilkin RT, Barnes HL and Brantley SL. The size distribution of framboidal pyrite in modern sediments: an indicator of redox conditions. *Geochim Cosmochim Acta* 1996; **60**: 3897–912.
25. Amrani A, Said-Ahmad W and Shaked Y *et al.* Sulfur isotope homogeneity of oceanic DMSP and DMS. *Proc Natl Acad Sci USA* 2013; **110**: 18413–8.
26. Lomans BP, van der Drift C and Pol A *et al.* Microbial cycling of volatile organic sulfur compounds. *Cell Mol Life Sci* 2002; **59**: 575–88.
27. Kiene RP and Linn LJ. The fate of dissolved dimethylsulfoniopropionate (DMSP) in seawater: tracer studies using ^{35}S -DMSP. *Geochim Cosmochim Acta* 2000; **64**: 2797–810.
28. Oduro H, Kamyshny A and Zerkle AL *et al.* Quadruple sulfur isotope constraints on the origin and cycling of volatile organic sulfur compounds in a stratified sulfidic lake. *Geochim Cosmochim Acta* 2013; **120**: 251–62.
29. Reinhard CT, Planavsky NJ and Robbins LJ *et al.* Proterozoic ocean redox and biogeochemical stasis. *Proc Natl Acad Sci USA* 2013; **110**: 5357–62.
30. Planavsky NJ, McGoldrick P and Scott CT *et al.* Widespread iron-rich conditions in the mid-Proterozoic ocean. *Nature* 2011; **477**: 448–51.
31. Cao H, He W and Chen F *et al.* Superheavy pyrite in the Upper Cretaceous mudstone of the Songliao Basin, NE China and its implication for paleolimnological environments. *J Asian Earth Sci* 2020; **189**: 104156.
32. Chen D, Wang J and Racki G *et al.* Large sulphur isotopic perturbations and oceanic changes during the Frasnian–Famennian transition of the Late Devonian. *J Geol Soc* 2013; **170**: 465–76.
33. Huang Y, Yang G and Gu J *et al.* Marine incursion events in the Late Cretaceous Songliao Basin: constraints from sulfur geochemistry records. *Palaeogeogr Palaeoclimatol Palaeoecol* 2013; **385**: 152–61.
34. Ferrini V, Fayek M and De Vito C *et al.* Extreme sulphur isotope fractionation in the deep Cretaceous biosphere. *J Geol Soc* 2010; **167**: 1009–18.
35. McFadden KA, Huang J and Chu X *et al.* Pulsed oxidation and biological evolution in the Ediacaran Doushantuo formation. *Proc Natl Acad Sci USA* 2008; **105**: 3197–202.
36. Tostevin R, He T and Turchyn AV *et al.* Constraints on the late Ediacaran sulfur cycle from carbonate associated sulfate. *Precambrian Res* 2017; **290**: 113–25.
37. Gorjan P, Walter MR and Swart R. Global Neoproterozoic (Sturtian) post-glacial sulfide-sulfur isotope anomaly recognised in Namibia. *J Afr Earth Sci* 2003; **36**: 89–98.
38. Parnell J and Boyce AJ. Microbial sulphate reduction during Neoproterozoic glaciation, Port Askaig Formation, UK. *J Geol Soc* 2017; **174**: 850–4.
39. Kunzmann M, Bui TH and Crockford PW *et al.* Bacterial sulfur disproportionation constrains timing of Neoproterozoic oxygenation. *Geology* 2017; **45**: 207–10.
40. Gorjan P, Veevers JJ and Walter MR. Neoproterozoic sulfur-isotope variation in Australia and global implications. *Precambrian Res* 2000; **100**: 151–79.
41. Strauss H, Banerjee DM and Kumar V. The sulfur isotopic composition of Neoproterozoic to early Cambrian seawater—evidence from the cyclic Hanseran evaporites, NW India. *Chem Geol* 2001; **175**: 17–28.
42. Zhou C, Huyskens MH and Lang X *et al.* Calibrating the terminations of Cryogenian global glaciations. *Geology* 2019; **47**: 251–4.
43. Bao X, Zhang S and Jiang G *et al.* Cyclostratigraphic constraints on the duration of the Datangpo formation and the onset age of the Nantuo (Marinoan) glaciation in South China. *Earth Planet Sci Lett* 2018; **483**: 52–63.
44. Zhou C, Tucker R and Xiao S *et al.* New constraints on the ages of Neoproterozoic glaciations in south China. *Geology* 2004; **32**: 437–40.
45. Lang X, Tang W and Ma H *et al.* Local environmental variation obscures the interpretation of pyrite sulfur isotope records. *Earth Planet Sci Lett* 2020; **533**: 116056.
46. Kah LC, Lyons TW and Frank TD. Low marine sulphate and protracted oxygenation of the Proterozoic biosphere. *Nature* 2004; **431**: 834–8.
47. Shen B, Xiao S and Kaufman AJ *et al.* Stratification and mixing of a post-glacial Neoproterozoic ocean: evidence from carbon and sulfur isotopes in a cap dolostone from northwest China. *Earth Planet Sci Lett* 2008; **265**: 209–28.
48. Logan GA, Hayes JM and Hieshima GB *et al.* Terminal Proterozoic reorganization of biogeochemical cycles. *Nature* 1995; **376**: 53–6.
49. Canfield DE. Biogeochemistry of sulfur isotopes. *Rev Mineral Geochem* 2001; **43**: 607–36.
50. Cheng M, Li C and Chen X *et al.* Delayed Neoproterozoic oceanic oxygenation: evidence from Mo isotopes of the Cryogenian Datangpo formation. *Precambrian Res* 2018; **319**: 187–97.
51. Ohmoto HaG MB. Sulfur and carbon isotopes. In: Barnes HL (ed.). *Geochemistry of Hydrothermal Ore Deposits*, 3rd edn. New York: John Wiley & Sons, 1997, 517–611.
52. Peng X, Zhu X-K and Shi F *et al.* A deep marine organic carbon reservoir in the non-glacial Cryogenian ocean (Nanhua Basin, South China) revealed by organic carbon isotopes. *Precambrian Res* 2019; **321**: 212–20.
53. Raven MR, Adkins JF and Werne JP *et al.* Sulfur isotopic composition of individual organic compounds from Cariaco Basin sediments. *Org Geochem* 2015; **80**: 53–9.

54. Raven MR, Fike DA and Gomes ML *et al.* Organic carbon burial during OAE2 driven by changes in the locus of organic matter sulfurization. *Nat Commun* 2018; **9**: 3409.
55. Lomans BP, Smolders AJP and Intven LM *et al.* Formation of dimethyl sulfide and methanethiol in anoxic freshwater sediments. *Appl Environ Microbiol* 1997; **63**: 4741–7.
56. Jørgensen BB, Weber A and Zopfi J. Sulfate reduction and anaerobic methane oxidation in Black Sea sediments. *Deep Sea Res Part I* 2001; **48**: 2097–120.
57. Kiene RP and Hines ME. Microbial formation of dimethyl sulfide in anoxic sphagnum peat. *Appl Environ Microbiol* 1995; **61**: 2720–6.
58. Li C, Love GD and Lyons TW *et al.* A stratified redox model for the Ediacaran ocean. *Science* 2010; **328**: 80–3.
59. Huang K-J, Teng F-Z and Shen B *et al.* Episode of intense chemical weathering during the termination of the 635 Ma Marinoan glaciation. *Proc Natl Acad Sci USA* 2016; **113**: 14904–9.
60. Hoffman PF, Abbot DS and Ashkenazy Y *et al.* Snowball Earth climate dynamics and Cryogenian geology-geobiology. *Sci Adv* 2017; **3**: e1600983.
61. Shields GA. Neoproterozoic cap carbonates: a critical appraisal of existing models and the plumeworld hypothesis. *Terra Nova* 2005; **17**: 299–310.
62. Higgins JA and Schrag DP. Aftermath of a snowball Earth. *Geochem Geophys Geosyst* 2003; **4**: 1028.
63. Rooney AD, Macdonald FA and Strauss JV *et al.* Re-Os geochronology and coupled Os-Sr isotope constraints on the Sturtian snowball Earth. *Proc Natl Acad Sci USA* 2014; **111**: 51–6.
64. Brocks JJ. The transition from a cyanobacterial to algal world and the emergence of animals. *Emerg Top Life Sci* 2018; **2**: 181–90.
65. Brocks JJ, Jarrett AJM and Sirantoine E *et al.* The rise of algae in Cryogenian oceans and the emergence of animals. *Nature* 2017; **548**: 578–81.
66. Cui H, Kaufman AJ and Peng Y *et al.* The Neoproterozoic Hüttenberg $\delta^{13}\text{C}$ anomaly: genesis and global implications. *Precambrian Res* 2018; **313**: 242–62.
67. Halverson GP, Wade BP and Hurtgen MT *et al.* Neoproterozoic chemostratigraphy. *Precambrian Res* 2010; **182**: 337–50.
68. Rothman DH, Hayes JM and Summons RE. Dynamics of the Neoproterozoic carbon cycle. *Proc Natl Acad Sci USA* 2003; **100**: 8124–9.
69. Neretin LN, Böttcher ME and Grinenko VA. Sulfur isotope geochemistry of the Black Sea water column. *Chem Geol* 2003; **200**: 59–69.
70. Poulton SW, Fralick PW and Canfield DE. The transition to a sulphidic ocean ~1.84 billion years ago. *Nature* 2004; **431**: 173–7.
71. Li C, Cheng M and Algeo TJ *et al.* A theoretical prediction of chemical zonation in early oceans (>520 Ma). *Sci China Earth Sci* 2015; **58**: 1901–9.
72. Li C, Shi W and Cheng M *et al.* The redox structure of Ediacaran and early Cambrian oceans and its controls. *Sci Bull* 2020; **65**: 2141–9.
73. Lyons TW, Anbar AD and Severmann S *et al.* Tracking Euxinia in the ancient ocean: a multiproxy perspective and Proterozoic case study. *Annu Rev Earth Planet Sci* 2009; **37**: 507–34.
74. Sahoo SK, Planavsky NJ and Jiang G *et al.* Oceanic oxygenation events in the anoxic Ediacaran ocean. *Geobiology* 2016; **14**: 457–68.
75. Lyons TW, Reinhard CT and Planavsky NJ. The rise of oxygen in Earth's early ocean and atmosphere. *Nature* 2014; **506**: 307–15.
76. Lang X, Shen B and Peng Y *et al.* Ocean oxidation during the deposition of basal Ediacaran Doushantuo cap carbonates in the Yangtze Platform, South China. *Precambrian Res* 2016; **281**: 253–68.
77. Crockford PW, Hayles JA and Bao H *et al.* Triple oxygen isotope evidence for limited mid-Proterozoic primary productivity. *Nature* 2018; **559**: 613–6.
78. Poulton SW and Canfield DE. Ferruginous conditions: a dominant feature of the ocean through Earth's history. *Elements* 2011; **7**: 107–12.