

NTS: An R Package for Nonlinear Time Series Analysis

by Xialu Liu, Rong Chen, and Ruey Tsay

Abstract Linear time series models are commonly used in analyzing dependent data and in forecasting. On the other hand, real phenomena often exhibit nonlinear behavior and the observed data show nonlinear dynamics. This paper introduces the R package **NTS** that offers various computational tools and nonlinear models for analyzing nonlinear dependent data. The package fills the gaps of several outstanding R packages for nonlinear time series analysis. Specifically, the **NTS** package covers the implementation of threshold autoregressive (TAR) models, autoregressive conditional mean models with exogenous variables (ACMx), functional autoregressive models, and state-space models. Users can also evaluate and compare the performance of different models and select the best one for prediction. Furthermore, the package implements flexible and comprehensive sequential Monte Carlo methods (also known as particle filters) for modeling non-Gaussian or nonlinear processes. Several examples are used to demonstrate the capabilities of the **NTS** package.

Introduction: nonlinear time series analysis in R

Time series analysis investigates the dynamic dependence of data observed over time or in space. While linear time series analysis has been extensively studied in the literature with many software packages widely available, nonlinear time series analysis only attracts limited attention. Although there exist some software packages for analyzing nonlinear time series focusing on different sets of tools, there are still significant gaps in capability. The **NTS** (Tsay et al., 2020), a recent R package, provides a number of functions for simulating, analyzing, and predicting nonlinear time series data. The available models include univariate and multivariate TAR models, conditional intensity models, nonlinear state-space models, and functional time series models. The package also features various nonlinearity tests and sequential Monte Carlo (SMC) methods. While **NTS** package does not intend to be comprehensive, it fills the important missing parts of the existing packages, providing users valuable tools for analyzing dependent data with nonlinear dynamics. The package is now available from the Comprehensive R Archive Network at <http://CRAN.R-project.org/package=NTS>.

NTS incorporates the latest developments in statistical methods and algorithms for analyzing nonlinear time series data, and it makes the following contributions: (1) **NTS** offers various computational tools with a wide range of applications, and it fills the gaps left by the existing R functions. There are several R packages focusing on nonlinear time series. The **nonlinearTseries** (Garcia and Sawitzki, 2020) package implements the methods based on information theory, the **NlinTS** (Youssef, 2020) package introduces functions for causality detection and neural networks, and the **nlts** (Bjornstad, 2018) package emphasizes nonparametric autoregression and tests. **NTS**, providing computational tools for TAR models, ACMx models, convolutional functional autoregressive (CFAR) models, and non-Gaussian and nonlinear state-space models, consists of some of the missing pieces in the current coverage, hence making a more completed toolkit for nonlinear time series analysis in R. Other well-known modern methods for nonlinear data such as smoothing, deep learning and random forest that have been implemented in packages **sm** (Bowman and Azzalini, 2018), **tree** (Ripley, 2019) and **randomForest** (Breiman et al., 2018) can be adopted for nonlinear time series analysis, even though they are mainly designed for independent data. Hence, they are not included in this package. (2) **NTS** provides complete solutions with superior performance for the nonlinear models entertained. For example, **NTS** implements estimation, prediction, model building and model comparison procedures for TAR models. It allows the threshold variable in the model to be a lag variable or an exogenous variable, while the **TAR** (Zhang and Nieto, 2017) package, using Markov Chain Monte Carlo and Bayesian methods aiming to deal with missing values, assumes the threshold variable is exogenous. Threshold estimation methods in **NTS**, which perform recursive least squares or nested sub-sample searching, are more computationally efficient than the conditional least squares methods implemented in package **tsDyn** (Narzo et al., 2020). Furthermore, the threshold nonlinearity test proposed by Tsay (1989) in **NTS** is specifically designed for self-exciting TAR (SETAR) models while the existing R package **nonlinearTseries** just conducts general nonlinearity tests. In addition, **NTS** utilizes the out-of-sample forecasting to evaluate different TAR models to avoid overfitting, while other R packages such as **tsDyn** just compare TAR models based on AIC and residuals. (3) **NTS** offers additional options to existing packages with more flexibility. Specifically, **NTS** offers R functions to fit the ACMx model for time series analysis of count data, which allow the conditional distribution to be double Poisson, while the **tscount** (Liboschik et al., 2020) package uses the generalized linear models and only considers Poisson and negative binomial distributions. Another example is that

NTS implements the estimation and prediction procedures of CFAR models proposed by [Liu et al. \(2016\)](#), which give an intuitive and direct interpretation for functional time series analysis and provide more flexibility for estimation to deal with irregular observation locations compared to functional autoregressive models developed by [Bosq \(2000\)](#) introduced in the [ftsa](#) ([Hyndman and Shang, 2020](#)) package. (4) NTS provides easy access to SMC methods with various options for statistical inference. It contains different R functions which can be easily implemented for filtering and smoothing and are much more user-friendly, while the [SMC](#) ([Goswami, 2011](#)) package only writes a generic function for SMC and requires more effort from users.

The goal of this paper is to highlight the main functions of the NTS package. In the paper, we first consider different models for nonlinear time series analysis, and provide an overview of the available functions for parameter estimation, prediction and nonlinearity tests in the NTS package. Then we discuss the functions for SMC methods and demonstrate their applications via an example. Conclusions are given at the end.

Models and methods available in NTS

TAR models

TAR models are a piecewise extension of the autoregressive (AR) model proposed by [Tong \(1978\)](#). It has been widely used in many scientific fields, such as economics ([Tong and Lim, 1980](#); [Tiao and Tsay, 1989](#)), finance ([Domian and Louton, 1997](#); [Narayan, 2006](#)), among others ([Chen, 1995](#)). The models are characterized by partitioning the Euclidean space into non-overlapping regimes via a threshold variable and fitting a linear AR model in each regime ([Li and Tong, 2016](#)). The partition is by various thresholds in the domain of the threshold variable.

Let $\{r_i \mid i = 0, \dots, m\}$ be a sequence of real numbers satisfying

$$r_0 = -\infty < r_1 < r_2 < \dots < r_{m-1} < r_m = \infty.$$

A time series $\{y_t \mid t = 1, \dots, n\}$ follows an m -regime TAR model with threshold variable z_t , threshold delay $d > 0$, and order (p_1, \dots, p_m) , if

$$y_t = \begin{cases} \phi_{0,1} + \sum_{i=1}^{p_1} \phi_{i,1} y_{t-i} + \sigma_1 \epsilon_t, & \text{if } z_{t-d} \leq r_1, \\ \phi_{0,2} + \sum_{i=1}^{p_2} \phi_{i,2} y_{t-i} + \sigma_2 \epsilon_t, & \text{if } r_1 < z_{t-d} \leq r_2, \\ \dots & \\ \phi_{0,m} + \sum_{i=1}^{p_m} \phi_{i,m} y_{t-i} + \sigma_m \epsilon_t, & \text{if } r_{m-1} < z_{t-d}, \end{cases} \quad (1)$$

where $\phi_{i,j}$ are real numbers, $\sigma_1, \dots, \sigma_m$ are positive real numbers, and ϵ_t are i.i.d random variates with mean 0 and variance 1. If the threshold variable $z_t = y_t$ for $t = 1, \dots, n$, Model (1) is called a SETAR model with delay d . The coefficients $\phi_{i,j}$ must satisfy certain conditions for the stationarity of y_t . These conditions are complicated in general, but some special cases are available in the literature. See, for instance, [Chen and Tsay \(1991\)](#) and the references therein. In particular, it is interesting to point out that the stationarity of each marginal model in (1) is not needed for the stationarity of y_t . As a matter of fact, Model (1) would become more interesting when some of the marginal models are nonstationary.

Threshold estimation for two-regime TAR models

In this subsection, we introduce three algorithms for estimation of two-regime TAR models.

The two-regime TAR model can be rewritten as

$$y_t = (\beta'_1 \mathbf{x}_{t,1} + \sigma_1 \epsilon_t) I(z_{t-d} \leq r_1) + (\beta'_2 \mathbf{x}_{t,2} + \sigma_2 \epsilon_t) I(z_{t-d} > r_1), \quad (2)$$

where $I(\cdot)$ is the indicator function, $\mathbf{x}_{t,j} = (1, y_{t-1}, \dots, y_{t-p_j})'$, and $\beta_j = (\phi_{0,j}, \phi_{1,j}, \dots, \phi_{p_j,j})'$ collects the AR coefficients in regime j , for $j = 1, 2$.

Define $p = \max\{p_1, p_2, d\}$, and $\mathbf{x}_j = (\mathbf{x}_{p+1,j}, \dots, \mathbf{x}_{n,j})'$ for $j = 1, 2$. Write $\mathbf{x}_1(r) = \mathbf{x}_1 * I(z_{t-d} \leq r)$, and $\mathbf{x}_2(r) = \mathbf{x}_2 * I(z_{t-d} > r)$, where $*$ denotes the Hadamard product operator of matrices. Then Equation (2) can be re-expressed in a matrix form

$$\mathbf{y} = \mathbf{x}_1(r_1) \beta_1 + \mathbf{x}_2(r_1) \beta_2 + \boldsymbol{\varepsilon}, \quad (3)$$

where $\mathbf{y} = (y_{p+1}, \dots, y_n)'$, $\boldsymbol{\varepsilon} = (\varepsilon_{p+1}, \dots, \varepsilon_n)'$, and $\tilde{\epsilon}_t = [I(z_{t-d} \leq r_1) \sigma_1 + I(z_{t-d} > r_1) \sigma_2] \epsilon_t$ for $t = p+1, \dots, n$.

(Conditional) least squares: For each fixed threshold candidate r , least squares method can be used to estimate the AR coefficients β_1 and β_2 ,

$$\hat{\beta}_1(r) = [\mathbf{x}_1(r)' \mathbf{x}_1(r)]^{-1} \mathbf{x}_1(r)' \mathbf{y}, \quad \hat{\beta}_2(r) = [\mathbf{x}_2(r)' \mathbf{x}_2(r)]^{-1} \mathbf{x}_2(r)' \mathbf{y}. \quad (4)$$

It yields the following error function

$$S_n(r) = \mathbf{y}' \mathbf{y} - \hat{\beta}_1(r)' \mathbf{x}_1(r)' \mathbf{x}_1(r) \hat{\beta}_1(r) - \hat{\beta}_2(r)' \mathbf{x}_2(r)' \mathbf{x}_2(r) \hat{\beta}_2(r). \quad (5)$$

To get sufficient number of observations in each regime for estimation, we assume that the threshold value r_1 lies in a bounded interval $[\underline{r}, \bar{r}]$. Then it can be estimated as

$$\hat{r}_1 = \arg \min_{r \in \{z_{p-d+1}, \dots, z_{n-d}\} \cap [\underline{r}, \bar{r}]} S_n(r). \quad (6)$$

Recursive least squares: Recursive least squares method provides an efficient way to update the least squares solution with new observations, and is much less computationally expensive than the ordinary least squares method. When we traverse all possible thresholds and calculate $S_n(r)$ in (5), recursive least squares can be used to estimate β_1 and β_2 in (4) helping us effectively reduce the computational cost.

Let $\mathcal{S} = \{z_{p-d+1}, \dots, z_{n-d}\} \cap [\underline{r}, \bar{r}]$ be the set containing all candidates for the threshold value, n_0 be the number of elements in \mathcal{S} , $z_{(j)}$ be the j -th largest value in set \mathcal{S} , and $t_{(j)}$ be the time index for $z_{(j)}$. In other words, $z_{(j)} = z_{t_{(j)}}$.

Here is the algorithm of recursive least squares for TAR model estimation:

1. When $z_{(1)}$ is used as a tentative threshold value to estimate β_1 ,

$$\mathbf{P}_1(1) = [\mathbf{x}_1(z_{(1)})' \mathbf{x}_1(z_{(1)})]^{-1}, \quad \hat{\beta}_1(z_{(1)}) = \mathbf{P}_1(1) \mathbf{x}_1(z_{(1)})' \mathbf{y}.$$

When $z_{(n_0)}$ is used as a tentative threshold value to estimate β_2 ,

$$\mathbf{P}_2(n_0) = [\mathbf{x}_2(z_{(n_0)})' \mathbf{x}_2(z_{(n_0)})]^{-1}, \quad \hat{\beta}_2(z_{(n_0)}) = \mathbf{P}_2(n_0) \mathbf{x}_2(z_{(n_0)})' \mathbf{y}.$$

2. For $k = 2, \dots, n_0$, we estimate the AR coefficients in regime 1 with the following

$$\begin{aligned} \mathbf{K}_1(k) &= \mathbf{P}_1(k-1) \mathbf{x}_{t_{(k)}+d,1}' / [1 + \mathbf{x}_{t_{(k)}+d,1}' \mathbf{P}_1(k-1) \mathbf{x}_{t_{(k)}+d,1}], \\ \mathbf{P}_1(k) &= \mathbf{P}_1(k-1) - \mathbf{K}_1(k) \mathbf{x}_{t_{(k)}+d,1}' \mathbf{P}_1(k-1), \\ \hat{\beta}_1(z_{(k)}) &= \hat{\beta}_1(z_{(k-1)}) + \mathbf{K}_1(k) [\mathbf{y}_{t_{(k)}+d} - \hat{\beta}_1(z_{(k-1)})' \mathbf{x}_{t_{(k)}+d,1}]. \end{aligned}$$

For $k = n_0 - 1, \dots, 1$, we estimate the AR coefficients in regime 2 with the following

$$\begin{aligned} \mathbf{K}_2(k) &= \mathbf{P}_2(k+1) \mathbf{x}_{t_{(k)}+d,2}' / [1 + \mathbf{x}_{t_{(k)}+d,2}' \mathbf{P}_2(k+1) \mathbf{x}_{t_{(k)}+d,2}], \\ \mathbf{P}_2(k) &= \mathbf{P}_2(k+1) - \mathbf{K}_2(k) \mathbf{x}_{t_{(k)}+d,2}' \mathbf{P}_2(k+1), \\ \hat{\beta}_2(z_{(k)}) &= \hat{\beta}_2(z_{(k+1)}) + \mathbf{K}_2(k) [\mathbf{y}_{t_{(k)}+d} - \hat{\beta}_2(z_{(k+1)})' \mathbf{x}_{t_{(k)}+d,2}]. \end{aligned}$$

3. With $\hat{\beta}_1(z_{(j)})$ and $\hat{\beta}_2(z_{(j)})$ for $j = 1, \dots, n_0$, we can obtain $S_n(z_{(j)})$ and then estimate r_1 with (6).

Nested sub-sample search (NeSS) algorithm: NeSS algorithm proposed by Li and Tong (2016) produces a much faster way to search threshold candidates, and reduce the computational complexity dramatically.

Li and Tong (2016) shows that there exists a positive constant C depending only on \mathbf{y} , p_1 and p_2 , such that

$$\sup_{r \in [\underline{r}, \bar{r}]} \left| \frac{C - S_n(r)}{n} - J(r) \right| \xrightarrow{p} 0,$$

where $J(r)$ is a non-stochastic continuous function over $[\underline{r}, \bar{r}]$, and it is strictly monotonically increasing in $[\underline{r}, r_1]$ and strictly monotonically decreasing in $[r_1, \bar{r}]$. It implies that $S_n(r)$ may have only one minimum value over the set $\{k\Delta : k \in \mathbb{Z}\} \cap [\underline{r}, \bar{r}]$ for some $\Delta > 0$. This provides theoretical support for the following NeSS algorithm to seek the minimizer of $S_n(r)$.

NeSS algorithm:

0. Get the initial feasible set $\mathcal{S} = \{z_{p-d+1}, \dots, z_{n-d}\} \cap [\underline{r}, \bar{r}]$ for the threshold value estimation.
1. Obtain the 25th, 50th, and 75th percentiles of the feasible set, and define them as q_1 , q_2 and q_3 , respectively. Calculate $S_n(q_1)$, $S_n(q_2)$, and $S_n(q_3)$.

Table 1: Comparison among various R functions for SETAR model estimation (200 replicates)

Function	Sample size 200		Sample size 2000	
	Elapsed time	MSE	Elapsed time	MSE
uTAR with recursive least squares	2.802s	0.0017	44.020s	2.08e-05
uTAR with NeSS algorithm	20.360s	0.0017	25.878s	2.08e-05
setar	7.147s	0.0017	286.226s	2.08e-05

2. If $S_n(q_1) \leq S_n(q_2)$ and $S_n(q_1) \leq S_n(q_3)$, the feasible set is updated as $\mathcal{S} \cap (-\infty, q_2]$.
If $S_n(q_2) < S_n(q_1)$ and $S_n(q_2) \leq S_n(q_3)$, the feasible set is updated as $\mathcal{S} \cap [q_1, q_3]$.
Otherwise, the feasible set is updated as $\mathcal{S} \cap [q_2, +\infty)$.
Repeat Steps 1-2 until the number of elements in the new feasible set is less than a pre-specified positive integer k_0 .
3. Minimize $S_n(r)$ over the new feasible set and get \hat{r}_1 .

Comparing to the standard search algorithm which traverses all the threshold candidates, NeSS algorithm reduces the number of least squares operations from $O(n)$ to $O(\log n)$.

R functions for TAR models in NTS

In the R package **NTS**, the function `uTAR` implements recursive least squares estimation or the NeSS algorithm for TAR model estimation. The two methods both have lower computational complexity than the existing R function `setar` designed for SETAR model estimation in the **tsDyn** package, which performs least squares estimation and adopts a single grid search algorithm.

To illustrate, we use the following data generating process to compare the performance of the three methods¹.

$$y_t = \begin{cases} 1 - 0.3y_{t-1} + 0.5y_{t-2} + \epsilon_t, & \text{if } y_{t-2} \leq 0.2, \\ -1 + 0.6y_{t-1} + 0.3y_{t-2} + \epsilon_t, & \text{if } y_{t-2} > 0.2. \end{cases} \quad (7)$$

Table 1 summarizes the average elapsed time and mean squared error (MSE) of the estimated threshold value for 200 replications. Recursive least squares method and NeSS algorithm implemented by `uTAR` both take shorter time than `setar` when sample size is large. It is also seen that when sample size is large, NeSS algorithm is the fastest, but when the sample size is relatively small, the recursive least squares method is the fastest.

Besides threshold value estimation for univariate time series, the **NTS** package implements data generating, forecasting, model checking, and model comparison procedures for both univariate and multivariate time series into user-friendly computational tools. Table 2 lists these functions of **NTS** related to TAR models. In the following we will demonstrate the usage of functions for univariate time series through the data generating process in Model (7).

Table 2: List of R functions about TAR models in the package **NTS**

	Function	Description
Univariate TAR model	<code>uTAR.sim</code>	Generate a univariate SETAR process for up to 3 regimes
	<code>uTAR</code>	Estimate univariate two-regime TAR models including threshold
	<code>uTAR.est</code>	Estimate multiple regimes TAR models with known threshold(s)
	<code>uTAR.pred</code>	Predict a fitted univariate TAR model
	<code>thr.test</code>	Test for threshold nonlinearity of a scalar series
Multivariate TAR model	<code>mTAR.sim</code>	Generate a multivariate two-regime SETAR process
	<code>mTAR</code>	Estimate multivariate two-regime TAR models including threshold
	<code>mTAR.est</code>	Estimate multivariate multiple-regime TAR models
	<code>ref.mTAR</code>	Refine a fitted multivariate two-regime TAR model
	<code>mTAR.pred</code>	Predict a fitted multivariate TAR model

The function `uTAR.sim` generates data from a given univariate SETAR model for up to three regimes with following arguments: `nob` is the sample size of the generated data, `arorder` specifies the AR orders for different regimes, `phi` is a real matrix containing the AR coefficients with one row for a

¹The program is run on a personal computer with a 2.30GHz Intel Core(TM)i5-8259U CPU, 16GB RAM and 64-bit Operating system.

regime, d is the time delay, $cnst$ is a vector of constant terms for the regimes, and σ is a vector containing the standard deviations of the innovation process of the regimes. It also allows users to customize the burn-in period with option `ini`. The function returns a list of components including the generated data from the specified TAR model (`series`) and the innovation series (`at`).

We simulate the data generating process in Model (7) with the following code. Figure 1 shows the time series plot of the first 200 observations of the simulated data.

```
R> set.seed(1687)
R> y <- uTAR.sim(nob = 2000, arorder = c(2,2), phi = t(matrix(c(-0.3, 0.5, 0.6,
+   -0.3), 2, 2)), d = 2, thr = 0.2, cnst = c(1, -1), sigma = c(1, 1))
```

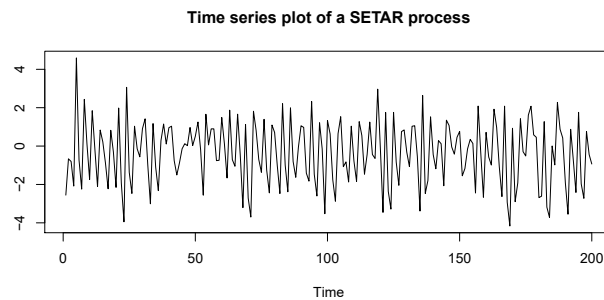


Figure 1: Time series plot of the first 200 observations generated from the SETAR model in Equation (7).

Estimation of the threshold value of the two-regime SETAR process can be done via the function `uTAR` as illustrated below:

```
R> thr.est<- uTAR(y = y$series, p1 = 2, p2 = 2, d = 2, thrQ = c(0, 1), Trim = c(0.1,
+   0.9), include.mean = T, method = "NeSS", k0 = 50)
```

Estimated Threshold: 0.1951103

Regime 1:

	Estimate	Std. Error	t value	Pr(> t)
X1	1.0356009	0.04902797	21.12265	8.946275e-85
X2	-0.3017810	0.01581242	-19.08506	2.383743e-71
X3	0.4890477	0.02707987	18.05945	7.230880e-65

nob1 & sigma1: 1236 1.017973

Regime 2:

	Estimate	Std. Error	t value	Pr(> t)
X1	-1.1352678	0.07222915	-15.717585	2.107275e-48
X2	0.5560001	0.03177212	17.499622	7.360494e-58
X3	-0.2122922	0.04641671	-4.573616	5.596852e-06

nob2 & sigma2: 762 1.034592

Overall MLE of sigma: 1.024343

Overall AIC: 101.8515

```
R> thr.est <- uTAR(y = y$series, p1 = 2, p2 = 2, d = 2, thrQ = c(0,1), Trim = c(0.1,
+   0.9), include.mean = T, method = "RLS")
```

Estimated Threshold: 0.1951103

Regime 1:

	Estimate	Std. Error	t value	Pr(> t)
X1	1.0356009	0.04902797	21.12265	8.946275e-85
X2	-0.3017810	0.01581242	-19.08506	2.383743e-71
X3	0.4890477	0.02707987	18.05945	7.230880e-65

nob1 & sigma1: 1236 1.017973

Regime 2:

	Estimate	Std. Error	t value	Pr(> t)
X1	-1.1352678	0.07222915	-15.717585	2.107275e-48
X2	0.5560001	0.03177212	17.499622	7.360494e-58
X3	-0.2122922	0.04641671	-4.573616	5.596852e-06

nob2 & sigma2: 762 1.034592

Overall MLE of sigma: 1.024343
Overall AIC: 101.8515

uTAR has the following arguments: y is a vector of observed time series, p_1 and p_2 are the AR order of regime 1 and regime 2, respectively, d is the delay, and $thrV$ contains the external threshold variable z_t which should have the same length as that of y . For SETAR models, $thrV$ is not needed and should be set to NULL. $thrQ$ determines the lower and upper quantiles to search for threshold value. $Trim$ defines the lower and upper trimmings to control the minimum sample size in each regime and determine $[\underline{L}, \bar{r}]$ for estimation. `include.mean` is a logical value for including the constant term in each linear model. `method` decides the way to search the threshold value, and there are two choices, "RLS" for recursive least squares and "NeSS" for NeSS algorithm. `k0` is only used when NeSS algorithm is selected to controls the maximum sub-sample size.

From the output, the estimated threshold value is 0.195, which is close to the true value 0.2. The estimated constant terms for regime 1 and regime 2 are 1.036 and -1.135 , respectively. The estimated AR coefficients for regime 1 and regime 2 are -0.302 , 0.489 , 0.556 , and -0.212 , respectively. The estimated standard deviations of the innovation processes in two regimes are 1.018 and 1.035. As expected, all estimates are significant and close their true parameters.

Here we provide an incomplete list of the returned values of the function uTAR:

- residuals: estimated innovations or residuals series.
- coefs: a 2-by- $(p+1)$ matrix. The first row and second row show the estimated coefficients in regime 1 and 2, respectively.
- sigma: estimated covariances of the innovation process in regime 1 and regime 2.
- thr: estimated threshold value.

Estimation of a multiple-regime TAR model with pre-specified threshold values can be done by the function uTAR.est.

```
R> est <- uTAR.est(y = y$series, arorder = c(2, 2), thr = thr.est$thr, d = 2,
+   output = FALSE)
```

Here `arorder` is a row vector of positive integers containing the AR orders of all the regimes. `thr` collects the threshold values whose length should be the number of regimes minus 1. `output` is a logical value for printing out the estimation results with default being TRUE. The function uTAR.est returns the following components: `coefs` is a matrix with m rows in which each row contains the estimated parameters for one regime, `sigma` contains the estimated innovation variances for different regimes, `residuals` collects the estimated innovations, and `sresi` shows the standardized residuals.

The following R code provides one-step-ahead prediction with function uTAR.pred.

```
R> set.seed(12)
R> pred <- uTAR.pred(model = est, orig = 2000, h = 1, iteration = 100, ci = 0.95,
+   output = TRUE)
Forecast origin: 2000
Predictions: 1-step to 1 -step
      step forecast
[1,]    1 -1.429635
Pointwise 95 % confident intervals
      step      Lowb      Uppb
int    1 -2.991667  0.6531542
```

The output above shows that the one-step ahead prediction for y_{2001} is -1.43 . Various options in the function uTAR.pred provide users the flexibility to customize the forecasting origin with `orig`, forecast horizon with `h`, number of iterations with `iterations`, and confidence level with `ci`. The function uTAR.pred returns the prediction with `pred`.

The R function `thr.test` in the NTS package implements the F test designed for SETAR models and proposed by Tsay (1989). The test helps users detect the existence of nonlinear dynamics in the data. Below is the R code and output when we perform the nonlinearity tests with `thr.test`.

```
R> thr.test(y$series, p = 2, d = 2, ini = 40, include.mean = T)
SETAR model is entertained
Threshold nonlinearity test for (p,d): 2 2
F-ratio and p-value: 213.0101 1.511847e-119
```

`ini` is the initial number of data to start the recursive least square estimation. The output shows that p -value is very small, and it indicates that there is nonlinearity in the series `y$series`.

Back-testing can be used to evaluate the forecasting performance of a model and to conduct model comparison between different models. Back-testing for a univariate SETAR model is implemented through the function `backTAR` with syntax:

```
R> backTAR(model, orig, h = 1, iter = 3000)
```

where `model` is an object returned by `uTAR` or `uTAR.est`, `h` is the forecast horizon, and `iter` controls the number of simulation iterations in prediction.

The function returns the model, out-of-sample rolling prediction errors and predicted states. It also provides information for model comparison. The following example shows the out-of-sample forecasting performance of SETAR models with delay 2 and 1, respectively. It shows that the root MSE, mean absolute error, and biases of the model with delay 2 are all smaller than those of the model with delay 1. Hence, as expected, the model with delay 2 is preferred.

```
R> set.seed(11)
R> backTAR(est, 50, 1, 3000)
Starting forecast origin: 50
1-step to 1 -step out-sample forecasts
RMSE: 1.02828
MAE: 0.8172728
Bias: -0.001337478
Performance based on the regime of forecast origins:
Summary Statistics when forecast origins are in State: 1
Number of forecasts used: 1204
RMSEj: 1.029292
MAEj: 0.8172963
Biasj: 0.00259177
Summary Statistics when forecast origins are in State: 2
Number of forecasts used: 746
RMSEj: 1.026645
MAEj: 0.817235
Biasj: -0.007679051

R> thr.est2 <- uTAR(y = y$series, p1 = 2, p2 = 2, d = 1, thrQ = c(0, 1),
+   Trim=c(0.1, 0.9), include.mean = T, method = "RLS")
R> est2 <- uTAR.est(y = y$series, arorder = c(2, 2), thr = thr.est2$thr, d = 1)
R> set.seed(11)
R> backTAR(est2, 50, 1, 3000)
Starting forecast origin: 50
1-step to 1 -step out-sample forecasts
RMSE: 1.38731
MAE: 1.105443
Bias: -0.006635381
Performance based on the regime of forecast origins:
Summary Statistics when forecast origins are in State: 1
Number of forecasts used: 1112
RMSEj: 1.360347
MAEj: 1.090989
Biasj: 0.2462278
Summary Statistics when forecast origins are in State: 2
Number of forecasts used: 838
RMSEj: 1.4223
MAEj: 1.124622
Biasj: -0.3421769
```

The usage of functions for multivariate two-regime TAR models listed in Table 2, including `mTAR.sim`, `mTAR`, `mTAR.pred`, is similar to that of the univariate counterpart functions discussed before. The only exception is that these multivariate functions take different arguments to define the vector autoregressive (VAR) coefficients:

- `phi1`, `phi2`: VAR coefficient matrices of regime 1 and regime 2.
- `sigma1`, `sigma2`: innovation covariance matrices of regime 1 and regime 2.
- `c1`, `c2`: constant vectors of regime 1 and regime 2.
- `delay`: two elements (i, d) with " i " being the index of the component to be used as the threshold variable and " d " the delay for threshold variable.

The function `mTAR` conducts the nested sub-sample search algorithm and provides different choices of criterion for threshold selection with the option `score`, namely (AIC, `det(RSS)`). It has less computational cost, but only applies to two-regime models. `mTAR.est` can handle multiple regimes. They both return a list of components with the estimated VAR coefficients in `beta`, estimated innovation covariance matrices in `sigma`, and estimated innovations in residuals.

Analysis of non-Gaussian time series

Autoregressive conditional mean (ACM) models are designed for time series of count data, starting with the autoregressive conditional Poisson models, and various extensions of ACM models were investigated. The NTS includes a function `ACMx` for the estimation of ACMx models. Let y_t be the time series of interest, \mathbf{x}_t be a vector containing the exogenous variables, and $\mathcal{F}_t = \{y_{t-1}, y_{t-2}, \dots; \mathbf{x}_t, \mathbf{x}_{t-1}, \dots\}$. The ACMx models postulate

$$y_t | \mathcal{F}_t \sim F(\cdot | \mu_t),$$

where $\mu_t = E(y_t | \mathcal{F}_t) = \exp(\mathbf{x}_t' \boldsymbol{\beta}) \lambda_t$, and λ_t follows the model

$$\lambda_t = \omega + \sum_{i=1}^p \alpha_i \left[\frac{y_{t-i}}{\exp(\mathbf{x}_{t-i}' \boldsymbol{\beta})} \right] + \sum_{j=1}^q \gamma_j \lambda_{t-j},$$

p and q are nonnegative integers, $\omega > 0$, and α_i and γ_j are parameters satisfying certain conditions so that λ_t is always positive and finite. The conditional distribution $F(y_t | \mathcal{F}_t)$ can be Poisson, negative binomial, or double Poisson (Tsay and Chen, 2018).

The estimation of ACMx models is implemented via the function `ACMx` with syntax:

```
R> ACMx(y, order = c(1, 1), X = NULL, cond.dist = "po", ini = NULL)
```

where y is the series of count data, X is the matrix of exogenous variables, `order` specifies the values for p and q , `cond.dist` determines the conditional distribution with options: "po" for Poisson, "nb" for negative binomial, and "dp" for double Poisson, and `ini` collects initial parameter estimates designed for use with "nb" or "dp".

We illustrate the function `ACMx` with an example below:

```
R> set.seed(12)
R> x <- rnorm(1000)*0.1
R> y <- matrix(0, 1000, 1)
R> y[1] <- 2
R> lambda <- matrix(0, 1000, 1)
R> for (i in 2:1000){
+   lambda[i] <- 2 + 0.2*y[i-1]/exp(x[i-1]) + 0.5*lambda[i-1]
+   set.seed(i)
+   y[i] <- rpois(1, exp(x[i]) * lambda[i])
+ }
R> ACMx(y, order = c(1, 1), x, "po")
Initial estimates: 1.056732 1.738874 0.05 0.5
loB: -1.056732 1e-06 1e-06 1e-06
upB: 3.170195 19.12762 0.5 0.999999
Maximized log-likelihood: -2373.08

Coefficient(s):
      Estimate Std. Error t value Pr(>|t|)
beta 1.0562836  0.1274853  8.28553 2.2204e-16 ***
omega 2.6696378  0.5569954  4.79293 1.6437e-06 ***
alpha 0.1579050  0.0265997  5.93634 2.9145e-09 ***
gamma 0.4427157  0.0913361  4.84711 1.2528e-06 ***
---
Signif. codes:  0 '***' 0.001 '**' 0.01 '*' 0.05 '.' 0.1 ' ' 1
```

Here a time series following the ACMx model with Poisson conditional distribution, order (1,1), $\beta = 1$, $\omega = 2$, $\alpha = 0.2$ and $\gamma = 0.5$ is generated. The R output reports the estimated coefficients which are all significant and close to their true values.

Functional time series

Functional time series analysis has received much attention since the pioneering work of Bosq (2000), and has been widely applied in many fields, including environmental science (Hormann and Kokoszka, 2010), social science (Hyndman and Shang, 2009), and finance (Diebold and Li, 2006; Horváth et al., 2013). Liu et al. (2016) proposed a new class of models called the CFAR models, which has an intuitive and direct interpretation of the dynamics of a stochastic process. The NTS encompasses functions to implement the method proposed by Liu et al. (2016).

Before presenting these R functions, we briefly introduce the CFAR model and its estimation procedure. A sequence of square integrable random functions $\{X_t \mid t = 1, \dots, T\}$ defined on $[0, 1]$ follows a CFAR model of order p if

$$X_t(s) = \sum_{i=1}^p \int_0^1 \phi_i(s-u) X_{t-i}(u) du + \epsilon_t(s), \quad s \in [0, 1],$$

where $\phi_i(\cdot)$ are square integrable and defined on $[-1, 1]$ ($i = 1, \dots, p$) and are called the convolutional coefficient functions, and ϵ_t are i.i.d. Ornstein-Uhlenbeck (O-U) processes defined on $[0, 1]$ satisfying the stochastic differential equation, $d\epsilon_t(s) = -\rho\epsilon_t(s)ds + \sigma dW_s$, $\rho > 0$, and W_s is a Wiener process.

In practice, $X_t(\cdot)$ is usually observed only at discrete points, $s_i = i/N$, $i = 0, \dots, N$ for time $t = 1, \dots, T$. Liu et al. (2016) recovers the function $X_t(\cdot)$ by linear interpolation,

$$\tilde{X}_t(s) = \frac{(s_i - s)X_t(s_{i-1}) + (s - s_{i-1})X_t(s_i)}{1/N}, \text{ for } s_{i-1} \leq s < s_i,$$

and approximates $\phi_i(\cdot)$ by cubic B-splines,

$$\phi_i(\cdot) \approx \tilde{\phi}_i(\cdot) = \sum_{j=1}^k \beta_{k,i,j} B_{k,j}(\cdot), \text{ for } i = 1, \dots, p,$$

where $\{B_{k,j}, j = 1, \dots, k\}$ are uniform cubic B-spline basis functions with k degrees of freedom.

With the above approximation, the B-spline coefficients $\beta = \{\beta_{k,i,j}\}$, ρ , and σ^2 can be estimated by maximizing the approximated log-likelihood function. Specifically

$$(\hat{\beta}, \hat{\rho}, \hat{\sigma}^2) = \arg \max Q(\beta, \rho, \sigma^2),$$

where

$$Q(\beta, \rho, \sigma^2) = C + \frac{(N+1)(T-p)}{2} \ln \left(\frac{\pi\sigma^2}{\rho} \right) - \frac{N(T-p)}{2} \ln(1 - e^{-2\rho/N}) - \frac{1}{2} \sum_{t=1}^T \mathbf{e}_t' \Sigma^{-1} \mathbf{e}_t,$$

where C is a constant, $\mathbf{e}_t = (e_{t,0}, \dots, e_{t,N})'$, $e_{t,\ell} = X_t(\ell/N) - \sum_{i=1}^p \sum_{j=1}^k \beta_{k,i,j} \int_0^1 B_{k,j}(\ell/N - u) \tilde{X}_t(s) du$ for $\ell = 0, \dots, N$, and Σ is an $(N+1)$ -by- $(N+1)$ matrix with $\sigma^2 e^{-\rho|i-j|/N}$ as its (i, j) -th entry.

The convolutional functions are estimated by

$$\hat{\phi}_i(\cdot) = \sum_{j=1}^k \hat{\beta}_{k,i,j} B_{k,j}(\cdot).$$

In the NTS package, model specification and estimation of a CFAR process can be carried out by the functions `F_test_cfar` and `est_cfar` with the syntax:

```
R> F_test_cfar(f, p.max = 6, df_b = 10, grid = 1000)
R> est_cfar(f, p = 3, df_b = 10, grid = 1000)
```

The observed functional time series is stored in `f`, which is a T -by- $(N+1)$ matrix, where T is the length of time, and $(N+1)$ is the number of discrete observations of the functional data at a given time period. `p` specifies the CFAR order. `df_b` determines the degrees of freedom k for the natural cubic splines, and `grid` is the number of grid points used to construct the functional time series and noise process.

The function `F_test_cfar` returns the test statistics and the p -values for a sequence of F -tests with $H_0 : \phi_k(\cdot) = 0, \phi_i(\cdot) \neq 0, i = 1, \dots, k-1$ versus $H_a : \phi_i(\cdot) \neq 0, i = 1, \dots, k$ for $k = 1, \dots, p.\text{max}$. The function `est_cfar` returns the following values: `phi_coef` collects the estimated spline coefficients $\hat{\beta}_{k,i,j}$ for the convolutional function(s) which is a $(df_b + 1) \times p$ matrix, and `phi_func` contains the estimated convolutional function values which is a $(2 \times \text{grid} + 1) \times p$ matrix. `rho` is the estimated ρ in the O-U process, and `sigma` is estimated standard deviation of the noise process, respectively.

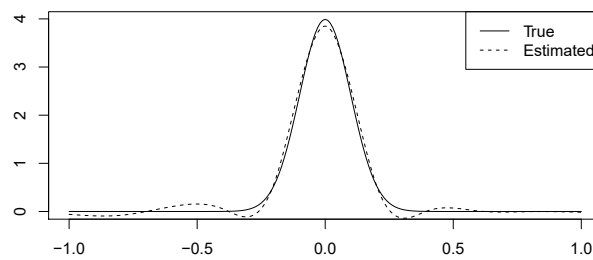


Figure 2: Plot of true convolution function $\phi(\cdot)$ and estimated convolution function $\hat{\phi}(\cdot)$ of the functional time series generated from Equation (8).

The function `g_cfar` in the `NTS` package generates a CFAR process with argument `tmax` being the length of time, `rho` is the parameter for the O-U process, `sigma` is the standard deviation of the O-U process, `phi_list` is the convolutional function(s), and `ini` is the burn-in period. It returns a list with two components. One is `cfar`, a `tmax-by-(grid+1)` matrix following the CFAR(p) model, and the other one `epsilon` is the innovation at time `tmax`. Function `p_cfar` provides the forecasts of a CFAR model with argument `model` as a result of an `est_cfar` fit and argument `m` as the forecasting horizon.

Let us consider a CFAR(1) process with the following convolutional coefficient function

$$\phi(s) = \frac{10}{\sqrt{2\pi}} e^{-50s^2}, \quad s \in [-1, 1], \quad (8)$$

where $\phi(\cdot)$ is the probability density function of a Gaussian random variable with mean 0 and standard deviation 0.1 truncated in the interval $[-1, 1]$. For the O-U process, $\rho = 5$ and its standard deviation is 1. The following R code simulates such a CFAR(1) process specified in Equation (8) with $N = 50$, $T = 1000$, and burn-in period 100, conducts an F test, performs the estimation procedure, and provides a one-step ahead prediction.

```
R> phi_func <- function(x){
+   return(dnorm(x, mean = 0, sd = 0.1))
+ }
R> t <- 1000; N <- 50
R> x <- g_cfar(t, rho = 5, phi_func, sigma = 1, ini = 100)
R> f <- x$cfar[, seq(1, 1001, 1000/N)]
R> F_test_cfar(f, p.max = 2, df_b = 10, grid = 1000)
Test and p-value of Order 0 vs Order 1:
[1] 1368.231 0.000
Test and p-value of Order 1 vs Order 2 :
[1] 0.6848113 0.7544222
R> model <- est_cfar(f, p = 1, df_b = 10, grid = 1000)
R> print(c(model$rho, model$sigma))
[1] 4.940534 1.005315
R> pred <- p_cfar(model, f, m = 3)
```

From the output, the p -values for F tests suggest that we choose CFAR(1) model for the data. $\hat{\rho} = 4.941$ and the standard deviation of the noise process is estimated as 1.005, and they are both close to their true values. Figure 2 plots the estimated convolutional coefficient function (dashed line) and true function $\phi(\cdot)$ (solid line). It can be seen that `est_cfar` performs well.

`F_test_cfarh` and `est_cfarh` in `NTS` can deal with heteroscedasticity and irregular observation locations, while the existing R package `ftsa` designed for functional time series assumes that the functional data are observed at regular locations. The two functions come with following arguments: `weight` is the heteroscedasticity weight function of the noise process with `grid+1` elements, `num_obs` is a t -by-1 vector and collects the numbers of observations at different times, and `x_pos` is a t -by- $(N+1)$ matrix and shows the observation locations, where $(N+1)$ is the maximum number of observation at a time. The R code below will yield the same results as the previous one does. Hence, the output is omitted.

```
R> num_obs <- rep(N+1, t); x_pos <- matrix(rep(seq(0, 1, 1/N), each = t), t, N+1);
R> weight0 <- function(x){return(rep(1, length(x)))}
```

```
R> F_test_cfarh(f, weight0, p.max = 2, df_b = 10, grid = 1000, num_obs, x_pos)
R> modelh <- est_cfarh(f, weight0, p = 1, df_b = 10, grid = 1000, num_obs, x_pos)
```

State-space modelings via SMC methods

It is challenging to derive analytic solutions for filtering or smoothing of nonlinear or non-Gaussian state-space models. The SMC approach fully utilizes the dynamic nature of the model, and is an effective way to solve such complex problems (Tsay and Chen, 2018). Consider the state-space model:

$$\begin{aligned} \text{State equation: } x_t &= s_t(x_{t-1}, \epsilon_t) & \text{or } x_t &\sim q_t(\cdot | x_{t-1}), \\ \text{Observation equation: } y_t &= h_t(x_t, e_t) & \text{or } y_t &\sim f_t(\cdot | x_t), \end{aligned}$$

where x_t is the unobservable state variable and y_t is the observation ($t = 1, \dots, T$). The underlying states evolve through the known function $s_t(\cdot)$ and the state innovation ϵ_t , following a known conditional distribution $q_t(\cdot)$. The information on the underlying states is observed indirectly through y_t via the known function $h_t(\cdot)$ and with observational noise e_t . The function $h_t(\cdot)$ and the distribution of e_t are known with possibly unknown parameters to be estimated.

In general, there are four main statistical inference objectives associated with a state-space model:

1. **Filtering:** obtain the marginal posterior distribution of the current state x_t given the entire history of the observations up to the current time, that is, $p(x_t | y_1, \dots, y_t)$.
2. **Prediction:** obtain the marginal posterior distribution of the future state given the current available information, that is, $p(x_{t+1} | y_1, \dots, y_t)$.
3. **Smoothing:** obtain the posterior distribution of the state at the time t given the entire available information, that is, $p(x_t | y_1, \dots, y_T)$ for $t < T$.
4. **Likelihood and parameter estimation.** SMC uses a set of weighted samples $\{x_t^{(j)}, w_t^{(j)}\}$ to evaluate the likelihood function $L(\theta) = p(y_1, \dots, y_T | \theta) = \int p(x_1, \dots, x_T, y_1, \dots, y_T | \theta) dx_1 \dots dx_T$.

SMC is a recursive procedure with three components:

- **Propagation step:** At time t for $j = 1, \dots, m$: draw $x_t^{(j)}$ from a trial distribution $g_t(x_t | \mathbf{x}_{t-1}^{(j)}, y_t)$, where m is the Monte Carlo sample size. Attach it to $\mathbf{x}_{t-1}^{(j)}$ to form $\mathbf{x}_t^{(j)} = (\mathbf{x}_{t-1}^{(j)}, x_t^{(j)})$. Compute the new weight for $x_t^{(j)}$.
- **Resampling step:** Sample a set of indices $\{I_1, \dots, I_m\}$, where $I_k \in \{1, \dots, m\}$ according to a set of priority scores $\alpha_t^{(j)}$, $j = 1, \dots, m$. Replace the sample with $\{x_t^{(I_j)}, \tilde{w}_t^{(I_j)} = w_t^{(I_j)} / \alpha_t^{(I_j)}\}$.
- **Inference Step:** Estimation of $E_{\pi_t}[h(\mathbf{x}_t)]$ for some integrable function $h(\cdot)$ using the generated weighted samples $(\mathbf{x}_t^{(j)}, w_t^{(j)})$, $j = 1, \dots, m$, where $\pi_t(\cdot)$ is the target distribution.

The selection of the propagation trial distribution $g_t(x_t | \mathbf{x}_{t-1}, y_t)$ plays a key role for an efficient implementation of SMC. Since the efficiency of SMC is determined by the variance of weight distribution, one would naturally want to choose $g_t(\cdot)$ so that the incremental weight is as close to a constant as possible. Liu and Chen (1995, 1998) proposed the trial distribution

$$g_t(x_t | \mathbf{x}_{t-1}) = p(x_t | \mathbf{x}_{t-1}, y_t) \propto q_t(x_t | x_{t-1}) f_t(y_t | x_t).$$

The proposed distribution utilizes information from both the state and observation equations, hence is termed a full information propagation step.

Algorithm: Full information propagation step

At time t , for $j = 1, \dots, m$:

1. Draw $x_t^{(j)}$ from the local posterior distribution,

$$g_t(x_t | \mathbf{x}_{t-1}^{(j)}, y_t) = p(x_t | \mathbf{x}_{t-1}^{(j)}, y_t) \propto f_t(y_t | x_t) q_t(x_t | \mathbf{x}_{t-1}^{(j)}).$$

2. Compute the incremental weight

$$u_t^{(j)} = \int f_t(y_t | x_t) q_t(x_t | \mathbf{x}_{t-1}^{(j)}) dx_t,$$

and the new weight $w_t^{(j)} = w_{t-1}^{(j)} u_t^{(j)}$.

Because using full information propagation allows for more efficient estimation procedure with Rao-Blackwellization, in **NTS** we provide a specific function for it, different from the more general function using any user designed propagation function.

It is shown that the variance of the weight distributions stochastically increases over time. Continuing to propagate the samples with small weights forward is a waste of computational resources since inference is based on weighted average of the samples. One solution is to use resampling schemes to duplicate the importance samples and to eliminate the ones with low weights. Hence resampling steps are essential in SMC implementations. Another issue to consider is how to make inference as efficient as possible. Rao-Blackwellization is one of the effective tools that can be used.

Smoothing is another important inference to make when we analyze data with state-space models. Delayed estimation (e. g. , making inference on $p(x_{t-d} | y_1, \dots, y_t)$) is a special case of smoothing. It can be achieved simply by using the weighted sample $\{(x_{t-d}, w_t^{(j)})\}$. However, when d is large, this sampling approach does not work well because resampling reduces the number of unique ancestors and thus increases the estimation errors. A more efficient algorithm is to calculate the backward smoothing weights, after obtaining the forward filtering weighted samples $\{(x_t^{(j)}, w_t^{(j)}), j = 1, \dots, m\}$. The resulting weighted sample $\{(x_t^{(j)}, \tilde{w}_t^{(j)}), j = 1, \dots, m\}$ is properly weighted.

Algorithm: Weight marginalization SMC smoother

Let $\tilde{w}_T^{(j)} = w_T^{(j)}, j = 1, \dots, m$. For $t = T - 1, T - 2, \dots, 1$ and $j = 1, \dots, m$:
Calculate

$$\tilde{u}_t^{(j)} = \sum_{i=1}^m \frac{q_{t+1}(x_{t+1}^{(i)} | x_t^{(j)})}{\sum_{k=1}^m q_{t+1}(x_{t+1}^{(i)} | x_t^{(k)}) w_t^{(k)}} \tilde{w}_{t+1}^{(i)},$$

and the smoothing weight $\tilde{w}_t^{(j)} = w_t^{(j)} \tilde{u}_t^{(j)}$.

Table 3 lists functions in **NTS** that implement the aforementioned SMC procedures. Compared to the existing R package **SMC** coming with one generic function, **NTS** provides various functions for statistical inference and are much more user-friendly.

Table 3: List of R functions about SMC in package **NTS**

Usage	Function	Description
Generic function	SMC	SMC method with delay but not using a full information propagation step
	SMC.Smooth	SMC smoothing method
	SMC.Full	SMC method using a full information propagation step
	SMC.Full.RB	SMC method using a full information propagation step with Rao-Blackwellization estimate and no delay

The SMC function can be called by:

```
R> SMC(Sstep, nobs, yy, mm, par, xx.init, xdim, ydim, resample.sch,
+     delay = 0, funH = identity)
```

The following arguments need to be specified for SMC.

- **Sstep**: A function that performs one step propagation using a proposal distribution. Its input variables include (mm, xx, logww, yyy, par, xdim, ydim), where xx and logww are the prior iteration samples and their corresponding log weights, and yyy is the observation at current time step. It returns a list that contains xx (the sample x_t) and logww (their corresponding log weights).
- **nobs**: the number of observations, T .
- **yy**: the observations with T columns and ydim rows.
- **mm**: the Monte Carlo sample size m .
- **par**: a list of parameter values to pass to Sstep.
- **xx.init**: the initial samples of x_0 .
- **xdim, ydim**: the dimension of the state variable x_t and the observation y_t .
- **resample.sch**: a binary vector of length nobs, reflecting the resampling schedule. **resample.sch[i]=1** indicates resample should be carried out at step i .
- **delay**: the maximum delay lag for delayed weighting estimation. Default is zero.
- **funH**: a user supplied function $h(\cdot)$ for estimating $E(h(x_t) | y_{1:d})$. Default is identify function for estimating the mean with no delay. The function should be able to take vector or matrix as input and operates on each element of the input.

The function returns xhat, an array with dimensions (xdim, nobs, delay+1) and the scaled log-likelihood value loglike. The functions SMC.Smooth, SMC.Full and SMC.Full.RB have similar inputs and outputs, except that SMC.Smooth needs another input function for the backward smoothing step and funH is a function for estimating $E(h(x_t) | y_1, \dots, y_T)$.

Here is an example demonstrating how to implement SMC methods using the **NTS** package. Passive sonar is often used in military surveillance systems to track a target and to reduce the chance to be detected by the target. Without using an active sonar, it collects the signals generated by the motion of the target, and thus only the direction (or bearing) of the target is observed with error. With multiple detectors, the location of the target can be identified (Peach, 1995; Kronhamn, 1998; Arulampalam et al., 2004; Tsay and Chen, 2018).

Suppose the target is moving in a two-dimensional plane and there are two stationary detectors located on the same plane at (η_{i1}, η_{i2}) ($i = 1, 2$) corresponding to a Cartesian coordinate. At each time t the observations consist of two angles ϕ_{it} ($i = 1, 2$) of the target related to the detectors with noise. Assume that the target is moving with random acceleration in both directions. We use d_{1t} and d_{2t} to denote the true locations at time t in x axis and y axis respectively, and s_{1t} and s_{2t} to denote the speed at time t in x axis and in y axis respectively. Let ΔT be the time duration between two consecutive observations and we assume that the target maintains a random but constant acceleration between two consecutive observations. ϵ_{1t} and ϵ_{2t} are the total acceleration within the period in x and y directions which are assumed to follow $N(0, q_1^2)$ and $N(0, q_2^2)$, respectively. The motion model is

$$\begin{aligned} d_{it} &= d_{it-1} + s_{t-1}\Delta T + 0.5\Delta T\epsilon_{it}, \quad \epsilon_{it} \sim N(0, q_i^2), \\ s_{it} &= s_{i,t-1} + \epsilon_{it}, \quad \text{for } i = 1, 2. \end{aligned}$$

The unobserved state variable is $x_t = (d_{1t}, d_{2t}, s_{1t}, s_{2t})'$. One observes only the directions of the target with observational errors. Assume $\Delta T = 1$, the system can be rewritten as

$$\text{State equation} \quad x_t = \mathbf{H}x_{t-1} + \mathbf{W}w_t, \quad (9)$$

$$\text{Observation equation} \quad \phi_{it} = \arctan\left(\frac{d_{2t} - \eta_{i2}}{d_{1t} - \eta_{i1}}\right) + e_{it}, \text{ for } i = 1, 2, \quad (10)$$

where

$$\mathbf{H} = \begin{pmatrix} 1 & 0 & 1 & 0 \\ 0 & 1 & 0 & 1 \\ 0 & 0 & 1 & 0 \\ 0 & 0 & 0 & 1 \end{pmatrix}, \quad \mathbf{W} = \begin{pmatrix} 0.5q_1 & 0 \\ 0 & 0.5q_2 \\ q_1 & 0 \\ 0 & q_2 \end{pmatrix},$$

$w_t = [w_{t1} \ w_{t2}]'$, $w_{it} \sim N(0, 1)$ and $e_{it} \sim N(0, r^2)$ for $i = 1, 2$. We restrict $\phi_{it} \in [-\pi/2, \pi/2]$. This problem is highly nonlinear.

In this example, the sensors are placed as $(\eta_{11}, \eta_{12}) = (0, 0)$ and $(\eta_{21}, \eta_{22}) = (20, 0)$, and the measurement errors e_{1t} and e_{2t} follow $N(0, 0.02^2)$. A target moves with an initial value $x_0 = (10, 0, 0.01, 0.01)$ and a random acceleration with variance $q_1^2 = q_2^2 = 0.03^2$ in both directions.

We use the following code to generate data.

```
R> simPassiveSonar <- function(nn = 300, q, r, W, V, s2, start, seed){
+   set.seed(seed)
+   x <- matrix(nrow = 4, ncol = nn)
+   y <- matrix(nrow = 2, ncol = nn)
+   for(ii in 1:nn){
+     if(ii == 1) x[, ii] <- start
+     if(ii > 1) x[, ii] <- H%*%x[, ii - 1] + W%*%rnorm(2)
+     y[1, ii] <- atan(x[2, ii]/x[1, ii])
+     y[2, ii] <- atan(x[2, ii]/(x[1, ii] - s2))
+     y[, ii] <- (y[, ii] + V%*%rnorm(2) + 0.5*pi)%pi - 0.5*pi
+   }
+   return(list(xx = x, yy = y, H = H, W = W, V = V))
+ }

R> s2 <- 20; nobs <- 300
R> q <- c(0.03, 0.03); r <- c(0.02, 0.02)
R> start <- c(10, 10, 0.01, 0.01)
R> H <- c(1, 0, 1, 0, 0, 1, 0, 1, 0, 0, 1, 0, 0, 0, 0, 1)
R> H <- matrix(H, ncol = 4, nrow = 4, byrow = T)
R> W <- c(0.5*q[1], 0, 0, 0.5*q[2], q[1], 0, 0, q[2])
R> W <- matrix(W, ncol = 2, nrow = 4, byrow = T)
R> V <- diag(r)
R> simu_out <- simPassiveSonar(nobs, q, r, W, V, s2, start, seed = 2000)
R> plot(simu_out$xx[1, ], simu_out$xx[2, ], xlab = 'x', ylab = 'y', type = "l")
```

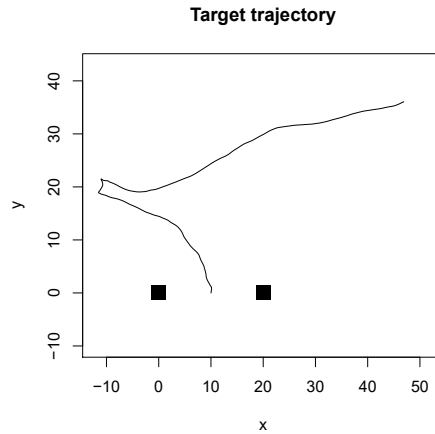


Figure 3: Simulated path of the SMC example generated from Equation (9) and Equation (10).

```
R> points(c(0, 20), c(0, 0), pch = 15, cex = 2)
```

Figure 3 shows a simulated trajectory for $t = 1, \dots, 300$, which contains two sharp turns in the middle of the observational period.

We consider using the state equation as the proposal distribution. Specifically, given $x_{t-1}^{(i)}$, generate $x_t^{(j)}$ using (9). The incremental weight $u_t^{(j)} \propto p(y_t | x_t^{(j)}) = \sum_{i=0}^m p(y_t | x_t^{(i)})$ becomes

$$u_t^{(j)} \exp \left\{ -\frac{(\phi_{1t} - \hat{\phi}_{1t}^{(j)})^2 + (\phi_{2t} - \hat{\phi}_{2t}^{(j)})^2}{2r^2} \right\}.$$

The following statements are user generated functions for SMC implementation.

```
R> SISstep.Sonar <- function(mm, xx, logww, yy, par, xdim = 1, ydim = 1){
+   H <- par$H; W <- par$W; V <- par$V; s2 <- par$s2;
+   xx <- H%*%xx + W%*%matrix(rnorm(2*mm), nrow = 2, ncol = mm)
+   y1 <- atan(xx[2, ]/xx[1, ])
+   y2 <- atan(xx[2, ]/(xx[1, ] - s2))
+   res1 <- (yy[1] - y1 + 0.5*pi)%pi - 0.5*pi
+   res2 <- (yy[2] - y2 + 0.5*pi)%pi - 0.5*pi
+   uu <- -res1**2/2/V[1, 1]**2 - res2**2/2/V[2, 2]**2
+   logww <- logww + uu
+   return(list(xx = xx, logww = logww))
+ }

R> SISstep.Smooth.Sonar <- function(mm, xxt, xxt1, ww, vv, par){
+   H <- par$H; W <- par$W;
+   uu <- 1:mm
+   aa <- 1:mm
+   xxt1p <- H%*%xxt
+   for(i in 1:mm){
+     res1 <- (xxt1[1, i] - xxt1p[1, ])/W[1, 1]
+     res2 <- (xxt1[2, i] - xxt1p[2, ])/W[2, 2]
+     aa[i] <- sum(exp(-0.5*res1**2 - 0.5*res2**2)*ww)
+   }
+   for(j in 1:mm){
+     res1 <- (xxt1[1, j] - xxt1p[1, ])/W[1, 1]
+     res2 <- (xxt1[2, j] - xxt1p[2, ])/W[2, 2]
+     uu[j] <- sum(exp(-0.5*res1**2 - 0.5*res2**2)*vv/aa)
+   }
+   vv <- ww*uu
+   return(list(vv = vv))
+ }
```

Now we are ready to run the Monte Carlo sample with size $m = 10000$.

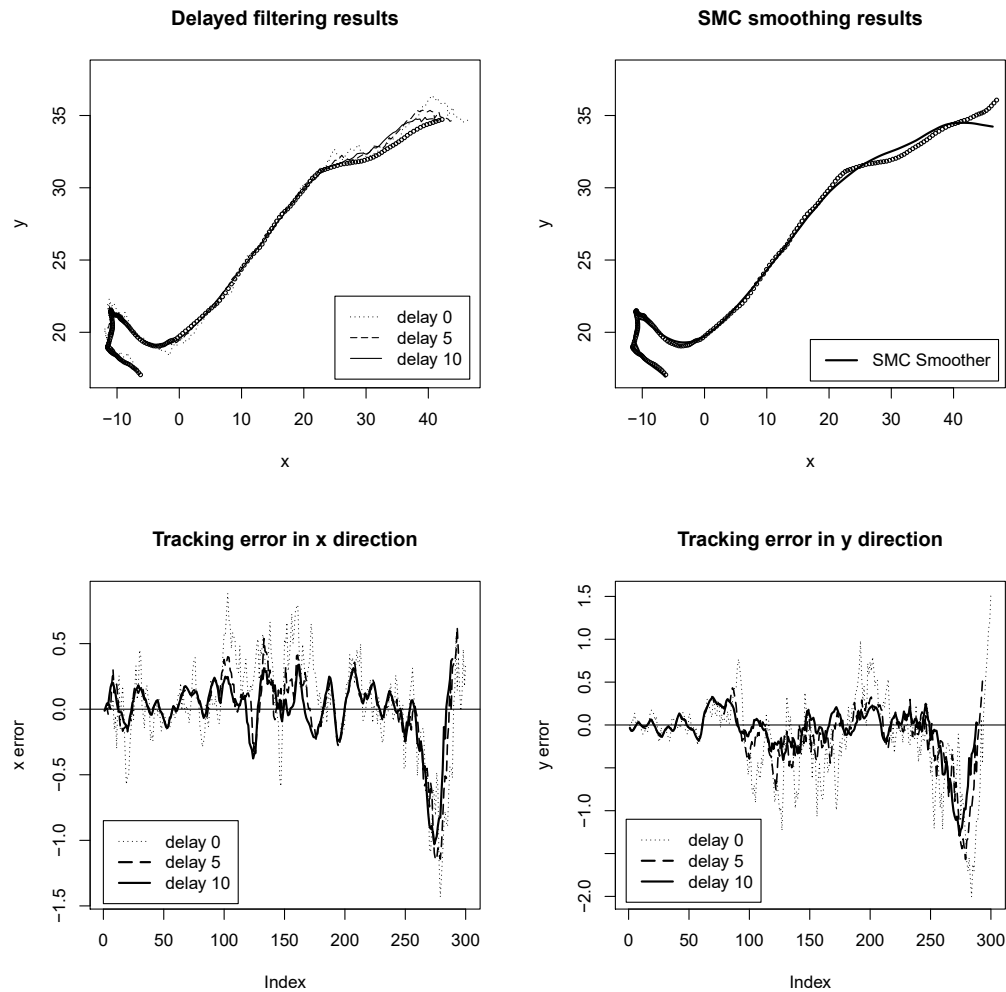


Figure 4: Delayed filtering and smoothing results for the SMC example generated from Equation (9) and Equation (10).

```
R> mm <- 100000
R> set.seed(1)
R> resample.sch <- rep(1,nobs)
R> xdim <- 4; ydim <- 2
R> mu0 <- start; SS0 <- diag(c(1, 1, 1, 1))*0.01
R> xx.init <- mu0 + SS0%%matrix(rnorm(mm*4), nrow = 4, ncol = mm)
R> par <- list(H = H, W = W, V = V, s2 = s2)
R> delay <- 10
R> out <- SMC(SISstep.Sonar, nobs, yy, mm, par, xx.init, xdim, ydim, resample.sch, delay)
R> tt <- 100:nobs
R> plot(simu_out$xx[1, tt], simu_out$xx[2, tt], xlab = 'x', ylab = 'y')
R> for(dd in c(1, 6, 11)){
+   tt <- 100:(nobs - dd)
+   lines(out$xhat[1, tt, dd], out$xhat[2, tt, dd], lty = 23 - 2*dd, lwd = 1)
+ }
> legend(25, 22.5, legend = c("delay 0", "delay 5", "delay 10"), lty = c(21, 11, 1))
```

The top left panel in Figure 4 shows the delayed estimation using the delay weighting method with delay $d = 0, 5$, and 10 , and Monte Carlo sample size $m = 10000$. The bottom panels in Figure 4 plot the estimation error in the x and y directions. The benefit of using delayed estimation can be clearly seen.

SMC smoothing can be implemented with the following R code. The top right panel in Figure 4 plots the smoothing results, and it shows that the SMC smoothing function performs very well.

```
R> set.seed(1)
```

```

R> mm <- 5000
R> par <- list(H = H, W = W, V = V, s2 = s2)
R> xx.init <- mu0 + SS0%%matrix(rnorm(mm*4), nrow = 4, ncol = mm)
R> out.s5K <- SMC.Smooth(SISstep.Sonar, SISstep.Smooth.Sonar, nobs, yy, mm, par,
+   xx.init, xdim, ydim, resample.sch)
R> plot(simu_out$xx[1, tt], simu_out$xx[2, tt], xlab = 'x', ylab = 'y')
R> lines(out.s5K$xhat[1, tt], out.s5K$xhat[2, tt], lty = 1, lwd = 2)
+   legend(17, 19.5, legend = c("SMC Smoother"), lty = 1, lwd = 2)

```

Conclusion

The paper introduces the R package **NTS** which offers a broad collection of functions for the analysis of nonlinear time series data. We briefly review various nonlinear time series models, including TAR models, ACMx models, CFAR models, and state-space models. The associated estimation, identification, and forecasting procedures are discussed. The **NTS** package provides computational tools to fit these models, to evaluate their performance, and to provide predictions. Furthermore, the functions can be used, extended, and modified within the package to analyze larger univariate/multivariate, Gaussian/non-Gaussian time series. These features enable users to carry out a comprehensive and complex analysis of time series without the constraints from software availability.

Bibliography

- D. Arulampalam, B. Ristic, N. Gordon, and T. Mansell. Bearings-only tracking of maneuvering targets using particle filters. *EURASIP Journal of Applied Signal Processing*, 2004:2351–2365, 2004. URL <https://doi.org/10.1155/S110865704405095>. [p305]
- O. Bjornstad. *nltts: Nonlinear Time Series Analysis*, 2018. URL <https://CRAN.R-project.org/package=nltts>. R package version 1.0-2. [p293]
- D. Bosq. *Linear Processes in Function Spaces, Theory and Applications*. Springer-Verlag, New York, 2000. URL <http://doi.org/10.1007/978-1-4612-1154-9>. [p294, 301]
- A. Bowman and A. Azzalini. *sm: Smoothing Methods for Nonparametric Regression and Density Estimation*, 2018. URL <https://CRAN.R-project.org/package=sm>. R package version 2.2-5.6. [p293]
- L. Breiman, A. Cutler, A. Liaw, and M. Wiener. *randomForest: Breiman and Cutler's Random Forests for Classification and Regression*, 2018. URL <https://CRAN.R-project.org/package=randomForest>. R package version 4.6-14. [p293]
- R. Chen. Threshold variable selection in open-loop threshold autoregressive models. *Journal of Time Series Analysis*, 16:461–481, 1995. URL <https://doi.org/10.1111/j.1467-9892.1995.tb00247.x>. [p294]
- R. Chen and R. Tsay. On the ergodicity of tar(1) processes. *The Annals of Applied Probability*, 1:613–634, 1991. URL <http://doi.org/10.1214/aoap/1177005841>. [p294]
- F. X. Diebold and C. Li. Forecasting the term structure of government bond yields. *Journal of Econometrics*, 130:337–364, 2006. URL <https://doi.org/10.1016/j.jeconom.2005.03.005>. [p301]
- D. Domian and D. Louton. A threshold autoregressive analysis of stock returns and real economic activity. *International Review of Economics and Finance*, 6:167–179, 1997. URL [https://doi.org/10.1016/S1059-0560\(97\)90022-8](https://doi.org/10.1016/S1059-0560(97)90022-8). [p294]
- C. Garcia and G. Sawitzki. *nonlinearTseries: Nonlinear Time Series Analysis*, 2020. URL <https://CRAN.R-project.org/package=nonlinearTseries>. R package version 0.2.10. [p293]
- G. Goswami. *SMC: Sequential Monte Carlo (SMC) Algorithm*, 2011. URL <https://CRAN.R-project.org/package=SMC>. R package version 1.1. [p294]
- S. Hormann and P. a. Kokoszka. Weakly dependent functional data. *The Annals of Statistics*, 38: 1845–1884, 2010. URL <http://doi.org/10.1214/09-aos768>. [p301]
- L. Horváth, P. Kokoszka, and R. Reeder. Estimation of the mean of functional time series and a two-sample problem. *Journal of the Royal Statistical Society: Series B (Statistical Methodology)*, 75: 103–122, 2013. URL <https://doi.org/10.1111/j.1467-9868.2012.01032.x>. [p301]

- R. Hyndman and H. L. Shang. *ftsa: Functional Time Series Analysis*, 2020. URL <https://CRAN.R-project.org/package=ftsa>. R package version 6.0. [p294]
- R. J. Hyndman and H. L. Shang. Forecasting functional time series. *Journal of the Korean Statistical Society*, 38:199–211, 2009. URL <https://doi.org/10.1016/j.jkss.2009.06.002>. [p301]
- T. Kronhamn. Bearings-only target motion analysis based on a multihypothesis kalman filter and adaptive ownship motion control. *IEE Proceedings- Radar, Sonar, and Navigation*, 145:247–252, 1998. URL <http://doi.org/10.1049/ip-rsn:19982130>. [p305]
- D. Li and H. Tong. Nested sub-sample search algorithm for estimation of threshold models. *Statistica Sinica*, 26:1543–1554, 2016. URL <http://doi.org/10.5705/ss.2013.394t>. [p294, 295]
- T. Liboschik, R. Fried, K. Fokianos, P. Probst, and J. Rathjens. *tscount: Analysis of Count Time series*, 2020. URL <https://CRAN.R-project.org/package=tscount>. R package version 1.4.3. [p293]
- J. Liu and R. Chen. Blind deconvolution via sequential imputations. *Journal of the American Statistical Association*, 90(430):567–576, 1995. URL <https://doi.org/10.2307/2291068>. [p303]
- J. Liu and R. Chen. Sequential monte carlo methods for dynamic systems. *Journal of the American Statistical Association*, 93:1032–1044, 1998. URL <https://doi.org/10.2307/2669847>. [p303]
- X. Liu, R. Chen, and H. Xiao. Convolutional autoregressive models for functional time series. *Journal of Econometrics*, 194:263–282, 2016. URL <https://doi.org/10.1016/j.jeconom.2016.05.006>. [p294, 301]
- P. Narayan. The behavior of us stock prices: Evidence from a threshold autoregressive model. *Mathematics and Computers in Simulation*, 71:103–108, 2006. URL <https://doi.org/10.1016/j.matcom.2005.11.016>. [p294]
- A. F. D. Narzo, J. L. Aznarte, M. Stigler, and H. Tsung-wu. *tsDyn: Nonlinear Time series Models with Regime Switching*, 2020. URL <https://CRAN.R-project.org/package=tsDyn>. R package version 10-1.2. [p293]
- N. Peach. Bearings-only tracking using a set of range-parameterized extended kalman filter. *IEE Proceedings- Control Theory and Applications*, 142:73–80, 1995. URL <http://doi.org/10.1049/ip-cta:19951614>. [p305]
- B. Ripley. *tree: Classification and Regression Trees*, 2019. URL <https://CRAN.R-project.org/package=tree>. R package version 1.0-40. [p293]
- G. Tiao and R. Tsay. Model specification in multivariate time series. *Journal of the Royal Statistical Society: Series B (Statistical Methodology)*, 51:157–213, 1989. URL <http://doi.org/10.1111/j.2517-6161.1989.tb01756.x>. [p294]
- H. Tong. On a threshold model. *Pattern Recognition and Signal Processing*, 1978. Sihhoff& Noordhoof, Amsterdam. [p294]
- H. Tong and K. Lim. Threshold autoregression, limit cycles and cyclical data. *Journal of the Royal Statistical Society: Series B (Statistical Methodology)*, 42(3):245–292, 1980. URL <http://doi.org/10.1111/j.2517-6161.1980.tb01126.x>. [p294]
- R. Tsay. Testing and modeling threshold autoregressive process. *Journal of the American Statistical Association*, 84:231–240, 1989. URL <https://doi.org/10.2307/2289868>. [p293, 298]
- R. Tsay and R. Chen. *Nonlinear Time Series Analysis*. John Wiley & Sons, New Jersey, 2018. ISBN 978-1-119-26407-1. URL <http://doi.org/10.1002/9781119514312>. [p300, 303, 305]
- R. Tsay, R. Chen, and X. Liu. *NTS: Nonlinear Time Series Analysis*, 2020. URL <https://CRAN.R-project.org/package=NTS>. R package version 1.1.2. [p293]
- H. Youssef. *NlinTS: Models for Non Linear Causality Detection in Time Series*, 2020. URL <https://CRAN.R-project.org/package=NlinTS>. R package version 1.4.4. [p293]
- H. Zhang and F. Nieto. *TAR: Bayesian Modeling of Autoregressive Threshold Time Series Models*, 2017. URL <https://CRAN.R-project.org/package=TAR>. R package version 1.0. [p293]

Xialu Liu
Department of Management Information Systems
San Diego State University
5500 Campanile Drive, San Diego, CA 92182
USA
xialu.liu@sdsu.edu

Rong Chen
Department of Statistics
Rutgers University
57 US Highway 1, New Brunswick, NJ 08901
USA
rongchen@stat.rutgers.edu

Ruey Tsay
Booth School of Business
University of Chicago
5807 S. Woodlawn Ave, Chicago, IL 60637
USA
ruey.tsay@chicagobooth.edu

Chen's research is supported in part by National Science Foundation grants DMS-1503409, DMS-1737857, IIS-1741390 and CCF-1934924. Tsay's research is supported in part by the Booth School of Business, University of Chicago.