



Title: Coupled Air Quality and Boundary-Layer Meteorology in Western U.S. Basins during
Winter: Design and Rationale for a Comprehensive Study

May 23, 2021

Authors:

A. Gannet Hallar*, Department of Atmospheric Sciences, University of Utah, Salt Lake City, UT

Steven S. Brown, NOAA Chemical Sciences Laboratory, Boulder, CO

Erik Crosman, Department of Life, Earth, and Environmental Sciences, West Texas A&M

University

Kelley C. Barsanti, Department of Chemical and Environmental Engineering, Center for

Environmental Research and Technology, University of California, Riverside

Christopher D. Cappa, Department of Civil and Environmental Engineering, University of

California, Davis 95616 USA

Ian Faloona, Department of Land, Air and Water Resources, University of California, Davis

Jerome Fast, Atmospheric Science and Global Change Division, Pacific Northwest

National Laboratory, Richland, Washington, USA

Heather A. Holmes, Department of Chemical Engineering, University of Utah, Salt Lake City,

UT

John Horel, Department of Atmospheric Sciences, University of Utah, Salt Lake City, UT

John Lin, Department of Atmospheric Sciences, University of Utah, Salt Lake City, UT

Ann Middlebrook, NOAA Chemical Sciences Laboratory, Boulder, CO

Early Online Release: This preliminary version has been accepted for publication in *Bulletin of the American Meteorological Society*, may be fully cited, and has been assigned DOI 10.1175/BAMS-D-20-0017.1. The final typeset copyedited article will replace the EOR at the above DOI when it is published.

24 Logan Mitchell, Department of Atmospheric Sciences, University of Utah, Salt Lake City, UT
 25 Jennifer Murphy, Department of Chemistry, University of Toronto, Toronto, Ontario, Canada
 26 Caroline C. Womack, Cooperative Institute for Research in Environmental Sciences, University
 27 of Colorado/ NOAA Chemical Sciences Laboratory, Boulder, CO
 28 Viney Aneja, Department of Marine, Earth, and Atmospheric Sciences, North Carolina State
 29 University, Raleigh, NC
 30 Munkhbayar Baasandorj, Department of Atmospheric Sciences, University of Utah, Salt Lake
 31 City, UT
 32 Roya Bahreini, Environmental Sciences, University of California, Riverside, CA
 33 Robert Banta, NOAA Chemical Sciences Laboratory, Boulder, CO
 34 Casey Bray, Department of Marine, Earth, and Atmospheric Sciences, North Carolina State
 35 University.
 36 Alan Brewer, NOAA Chemical Sciences Laboratory, Boulder, CO
 37 Dana Caulton, Department of Atmospheric Science, University of Wyoming
 38 Joost de Gouw, Cooperative Institute for Research in Environmental Sciences & Department of
 39 Chemistry, University of Colorado, Boulder, CO
 40 Stephan F.J. De Wekker, Department of Environmental Sciences, University of Virginia
 41 Delphine K. Farmer, Department of Chemistry, Colorado State University
 42 Cassandra J. Gaston, Department of Atmospheric Science - Rosenstiel School of Marine and
 43 Atmospheric Science, University of Miami
 44 Sebastian Hoch, Department of Atmospheric Sciences, University of Utah, Salt Lake City, UT
 45 Francesca Hopkins, Environmental Sciences, University of California, Riverside

46 Nakul N. Karle, Environmental Science and Engineering, The University of Texas at El Paso,
 47 TX

48 James T. Kelly, Office of Air Quality Planning and Standards, US Environmental Protection
 49 Agency, Research Triangle Park, NC

50 Kerry Kelly, Chemical Engineering, University of Utah, Salt Lake City, UT

51 Neil Lareau, Atmospheric Sciences and Environmental Sciences and Health, University of
 52 Nevada, Reno, NV

53 Keding Lu, State Key Joint Laboratory of Environmental Simulation and Pollution Control,
 54 College of Environmental Science and Engineering, Peking University, Beijing, China, 100871

55 Roy L. Mauldin III, Department of Atmospheric and Oceanic Sciences, University of Colorado,
 56 Boulder, CO.

57 Derek V. Mallia, Department of Atmospheric Sciences, University of Utah, Salt Lake City, UT

58 Randal Martin, Civil and Environmental Engineering, Utah State University, Utah Water
 59 Research Laboratory, Logan, UT

60 Daniel L. Mendoza, Department of Atmospheric Sciences, University of Utah, Salt Lake City,
 61 UT

62 Holly J. Oldroyd, Department of Civil and Environmental Engineering, University of California,
 63 Davis

64 Yelena Pichugina, NOAA Chemical Sciences Laboratory, Boulder, CO

65 Kerri A. Pratt, Department of Chemistry, University of Michigan

66 Pablo E. Saide, Department of Atmospheric and Oceanic Sciences, and Institute of the
 67 Environment and Sustainability, University of California, Los Angeles

Philip J. Silva, Food Animal Environmental Systems Research Unit, USDA-ARS, Bowling
Green, KY

William Simpson, Department of Chemistry, Biochemistry, and Geophysical Institute,
University of Alaska Fairbanks, Fairbanks, AK 99775-6160

Britton B. Stephens, Earth Observing Laboratory, National Center for Atmospheric Research,
Boulder, CO

Jochen Stutz, Department of Atmospheric and Oceanic Sciences, University of California, Los
Angeles

Amy Sullivan, Department of Atmospheric Science, Colorado State University, Fort Collins, CO

*Corresponding Author (gannet.hallar@utah.edu)

Abstract:

Wintertime episodes of high aerosol concentrations occur frequently in urban and agricultural
basins and valleys worldwide. These episodes often arise following development of persistent
cold-air pools (PCAPs) that limit mixing and modify chemistry. While field campaigns targeting
either basin meteorology or wintertime pollution chemistry have been conducted, coupling
between interconnected chemical and meteorological processes remains an insufficiently studied
research area. Gaps in understanding the coupled chemical-meteorological interactions that
drive high pollution events make identification of the most effective air-basin specific emission
control strategies challenging. To address this, a September 2019 workshop occurred with the
goal of planning a future research campaign to investigate air quality in Western U.S. basins.

Approximately 120 people participated, representing 50 institutions and 5 countries. Workshop participants outlined the rationale and design for a comprehensive wintertime study that would couple atmospheric chemistry and boundary-layer and complex-terrain meteorology within western U.S. basins. Participants concluded the study should focus on two regions with contrasting aerosol chemistry: three populated valleys within Utah (Salt Lake, Utah, and Cache Valleys) and the San Joaquin Valley in California. This paper describes the scientific rationale for a campaign that will acquire chemical and meteorological datasets using airborne platforms with extensive range, coupled to surface-based measurements focusing on sampling within the near-surface boundary layer, and transport and mixing processes within this layer, with high vertical resolution at a number of representative sites. No prior wintertime basin-focused campaign has provided the breadth of observations necessary to characterize the meteorological-chemical linkages outlined here, nor to validate complex processes within coupled atmosphere-chemistry models.

1. Introduction:

Winter episodes of high aerosol concentrations occur frequently in urban and agricultural basins and valleys across the globe (e.g., Yamuna Basin, India (Tiwari and Kulshrestha, 2019); Tokyo Basin, Japan (Osada et al. 2019); Taiyuan Basin, China (Miao et al. 2018); and the San Joaquin and Salt Lake Basins, USA (Whiteman et al. 2014; Zhang et al. 2020)). These episodes may last from several days to several weeks and often arise due to the development of persistent cold-air pools (PCAPs), within which lateral and vertical mixing are inhibited due to sheltering by

surrounding topography and a stable temperature profile (Dorninger et al. 2011; Reeves et al. 2011; Lareau et al. 2013; Sheridan et al. 2014; Holmes et al. 2015; Sun and Holmes, 2019; Ivey et al. 2019; Sun et al. 2020). While a number of field campaigns targeting either wintertime basin meteorology (e.g., Lareau et al. 2013; McCaffrey et al. 2019), or wintertime pollution chemistry (e.g., Brown et al. 2013; Franchin et al. 2018; Young et al., 2016) have been conducted in the U.S., only a few of these campaigns have explicitly considered coupling between interconnected chemical and meteorological processes (e.g., e.g., Baasandorj et al. 2017; Prabhakar et al., 2017; Salvador et al. 2021). The upcoming ALaskan Pollution And Chemical Analysis (ALPACA) is specifically targeting this knowledge gap in cold and dark conditions.

Current gaps in our understanding of the coupled chemical-meteorological interactions that result in high pollution events in many basins worldwide make identification of the most effective air-basin specific emission control strategies challenging. Meteorological processes (thermodynamic, radiative, and dynamical) influence both pollution accumulation, dispersion, and transport, and aerosol pollution chemistry; while chemical processes in turn influence radiative transfer, cloud formation, and mixing processes. Figure 1 presents a graphical illustration of some of the coupled chemical-meteorological processes that occur in basins. Some key meteorological processes that control the formation, duration, and breakdown of PCAPs include: synoptic drivers such as high pressure and associated subsidence, which can precipitate elevated thermal inversions; warm air advection aloft and large-scale winds and turbulent mixing, alongside local drivers such as the surface energy and radiation budget, which strongly influence formation and dissipation of surface-based thermal inversions; characteristics of the underlying surface (e.g., snow cover, water, urban or non-urban landscape); low clouds and fog; and local boundary-layer flows near the surface. In turn, the location and types of urban

emissions, aerosol formation and growth processes, and chemical cycling processes influence and are influenced by the ambient meteorology (Fig. 1). The unique basin topography (e.g., slope, how enclosed the basin is, and the size of basin) also play an important role in modulating the rate of pollutant build-up and vertical profiles of temperature and moisture. The interactions between these numerous meteorological processes regulating the frequency, location, and speed of chemical processes in PCAPs, and complex wintertime chemistry, has not yet been observed with sufficient detail to provide satisfactory understanding of these complex pollution episodes and their evolution in time and space

Ammonium nitrate (NH_4NO_3) is a major component of aerosol mass in many polluted boundary layers during wintertime episodes (e.g. Womack et al. 2019; Fu et al., 2020; Kelly et al., 2018; Kim et al., 2014; Aksoyoglu et al, 2017; Schaap et al., 2004). Organic aerosol (OA) can also contribute substantially (Chen et al., 2018). In some basins, the NH_4NO_3 contribution increases with the total aerosol loading while in others OA dominates at high loadings, often with differences between day and night. Understanding the factors that govern the evolution of pollution within a basin is critical for implementing effective emission control policies.

Precursor emissions and chemical transformations leading to NH_4NO_3 formation are an area of ongoing research, as are a number of processes controlling OA production and loss. While OA formation has been extensively studied in warm seasons with large emissions of volatile organic compounds (VOCs, precursors to secondary organic aerosol) often from biogenic sources, characterization for winter urban environments is lacking. Slower photochemistry occurs in the winter, and biogenic and evaporative emissions tend to decrease with temperature, suggesting that these emissions play a smaller role in wintertime OA formation. However, recent evidence of rapid and widespread OA formation (Shah et al. 2019; Schroder et al. 2018) indicate that

urban wintertime OA formation is an important contributor to PM_{2.5} mass. Sulfate is a small fraction of PM_{2.5} mass during winter in basins such as the Salt Lake Valley but is more important elsewhere (Wang et al., 2016). Mechanisms leading to winter sulfate oxidation are a topic of current interest for which detailed studies in the western U.S. may serve as a test bed. Consequently, it is imperative to better understand the mechanisms that drive local nitrate, organic and sulfate formation, alongside the emission sources of key precursor gases—e.g., nitrogen oxides, ammonia, SO₂ and VOCs. This is particularly important given recent findings showing the importance of urban VOC emissions from evaporative sources relative to those from {Figure 1 here} fuel use (McDonald et al. 2018). Process-level understanding also requires investigation of radical cycling involving VOCs and NO_x in the winter and its relationship to high pollutant levels in stagnant boundary layers.

In recent decades, overall aerosol concentrations have declined in the U.S. owing to emissions changes driven by regulatory policies (Bennett et al. 2019). However, a recent study has conclusively demonstrated that particulate levels across the U.S. are associated with mortality impacts and loss of life expectancy, with the highest rates observed within the San Joaquin Valley in California (Bennett et al., 2019). Furthermore, particulate matter with diameters less than 2.5 microns (PM_{2.5}) within major urban areas across the U.S. has declined more slowly in winter than in summer, and average winter levels are now higher in winter than in summer (Chan et al. 2019). These trends are particularly pronounced in basins across the Western U.S., where wintertime aerosol concentrations regularly approach or exceed regulatory standards (Green et al. 2015). Gaps in understanding the coupled chemical-meteorological interactions that result in high pollution events may preclude identifying the most effective

emission control strategy for a given air basin. With this challenge at the forefront, a workshop took place in September 2019 at the University of Utah with the goal of planning a future winter research campaign to investigate mountain basins of the western U.S. With funding from the National Science Foundation (NSF) Atmospheric Chemistry Program and the National Oceanic and Atmospheric Administration (NOAA) Atmospheric Chemistry, Climate and Carbon Cycle Program, the workshop brought together ~120 air quality experts and meteorologists from across the globe, representing 50 institutions and 5 countries.

As summarized in this article, the workshop outlined the rationale and design for a comprehensive study that couples atmospheric chemistry and meteorology for wintertime poor air quality episodes in mountain basins across the western U.S. The campaign framework is laid out in Section 2. The existing uncertainties and opportunities for this campaign are summarized in Sections 3-7, organized by science sub-themes. Finally, an integrated perspective on measurements and modeling is presented, along with next steps, in Section 8.

2. Design of the Research Study

The two western U.S. regions with the most severe winter aerosol pollution are Northern Utah (comprised of the Salt Lake, Utah and Cache Valleys) and the San Joaquin Valley (SJV) in California. The workshop concluded that while winter meteorology and a mix of urban and rural emissions affect basins across the western U.S. (see Figure 2), a comprehensive study should focus on these two regions, which exhibit contrasting aerosol chemistry, basin topography, climate, agricultural practices and meteorological-chemical interactions. In the Salt Lake City area, ammonium nitrate is the major contributor to wintertime PM, whereas in the SJV primary

and secondary organic aerosol (SOA) are also major contributors (Baasandorj et al. 2017; Lurmann et al. 2006; McDuffie et al. 2019; Chow and Watson, 2002). Furthermore, historical databases and previous studies provide context for an air quality study in both of these regions, as PM regulatory standard exceedances in wintertime are common to both. Finally, strong science capacity is available in these areas to conduct this research. Figure 2 shows a long-term record of PM_{2.5} at the Hawthorne monitoring site in Salt Lake City, the SJV (Bakersfield), and, for comparison, a site in California's South Coast basin (Riverside-Rubidoux). The decreasing trend in PM_{2.5} in the South Coast basin is visually apparent from Figure 2, in contrast to the SJV and Salt Lake City sites, which still regularly experience regulatory exceedances during winter, despite modestly decreasing PM_{2.5} trends (Green 2015).

{Figure 2 here}

The onset and evolution of wintertime pollution episodes in the SJV of California differs in many respects from those in the colder, smaller and frequently snow-covered Intermountain West basins. Additionally, western U.S. mountain valleys show significant variability in emissions. Emissions of nitrogen oxides (NO_x), VOCs, and ammonia (NH₃) are highly dependent on the nature of the agricultural and industrial sectors in each valley (Kelly et al. 2013; Wang et al. 2015), and their chemical transformations are dependent on many meteorological and topographical factors (Green et al. 2015; Wang et al., 2015; Kleeman et al. 2005; Pusede et al. 2016).

The proposed field program focuses on understanding how variations in coupled meteorological and chemical processes contribute to the production, transformation, cycling, and destruction of chemical species in each locale. This paper highlights the need for acquisition of chemically and meteorologically comprehensive datasets using airborne platforms with sufficient

range, coupled to extensive surface-based measurements that provide continuous, chemically detailed data at ground level where human exposure occurs. Sampling of the boundary layer at high vertical resolution will provide representative profiles that reflect regional topographical, meteorological, and emissions variability. The chemical measurements will be combined with comprehensive meteorological measurements to characterize the influences of a wide range of meteorological and land surface processes and parameters (e.g, transport and mixing, surface albedo) and topography on chemical processes during the PCAP episode.

3. Understanding the Coupling between “Cold-Air Pool” Meteorology and Air Quality

The complex cold-air pool basin meteorology that impacts pollutant dispersion and air pollution chemistry remains an active area of research worldwide (Giovannini et al. 2021). Many of the meteorological processes and their effects on air pollution transport and chemistry are still not well documented, understood, or adequately modelled despite having contributed to poor air quality in western U.S. basins for over a century (Fig. 1: see Lareau et al. 2013; Giovannini et al. 2021; Lighthall and Capitman, 2007; Mitchell, *in prep*). Figure 1 illustrates the coupling of chemical and meteorological processes wherein the atmospheric state impacts the atmospheric chemistry and, in some cases, results in feedbacks between the two (e.g., aerosols affect cloud properties and lifetime and can absorb shortwave solar radiation, which leads to alteration of the vertical temperature profile and hence pollutant vertical transport). Transport and mixing processes, insolation, and microphysical cloud processes all affect the type and extent of different chemical processes. In turn, weaker feedbacks between aerosol loading and cloud chemistry can have significant impact - via radiative feedbacks (e.g., longwave energy transfer

back to the surface from low clouds, net decreases in incoming shortwave radiation into the PCAP due to reflection of the shortwave solar energy back to space at cloud top) - on the vertical stratification and thus vertical mixing processes within the PCAPs.

The complexity of interactions between topographical and other physical characteristics of basins, meteorological, and chemical processes introduced in Fig. 1 leads to pollution with characteristics, severity, and duration differing both in time and space and across different basins. For example, variations in the vertical temperature profile and magnitude of turbulence and mixing from solar heating or wind shear can dramatically impact the amount of entrainment/dilution of pollutants and vertical layering of pollutant precursors within the basin atmosphere.

The workshop identified four critical couplings processes between meteorology and chemistry requiring investigation as part of the proposed field program : 1) surface fluxes of energy and momentum and chemistry; 2) moisture and fog, and heterogeneous, multi-phase and aqueous-phase chemistry; 3) PCAP vertical thermodynamic profiles and vertical chemical profiles, and 4) meteorology and chemistry associated with thermally and dynamically-forced exchange processes. No prior wintertime field campaign has provided the breadth of observations necessary to analyze the meteorological-chemical linkages outlined here or to validate complex processes within coupled atmosphere-chemistry models.

A critical tool for both basic research and air pollution control strategies are coupled meteorological and chemical models. Development of useful guidance for the research and regulatory communities requires improvements to both meteorological and chemical components of these models (Giovanni et al. 2021). To improve meteorological model simulations of PCAPs, considerable work is underway or has been conducted in recent years

(e.g., Saide et al. 2011, Lareau and Horel 2015b, Ahmadov et al. 2015, Saide et al. 2016, Tran et al. 2018, Sun and Holmes 2019; Kelly et al., 2018; Sun et al. 2020). Some of the key meteorological processes that are very difficult to model in stable wintertime boundary layers include vertical temperature and humidity structure, cloudiness, turbulent mixing and boundary-layer flows (Baklanov et al., 2011, Holmes et al., 2015). Improvements in and testing of the representations of heterogeneous chemical processes (Holmes et al., 2019; Brown et al., 2006b), links between aerosol phase and gas-particle equilibration and partitioning (Shiraiwa et al., 2013b, Zaveri et al., 2018), secondary organic aerosol lifecycles (Cappa et al., 2016) and organic compound oxidation pathways (Bianchi et al., 2019), especially as they occur within colder wintertime environments, is needed to accurately understand and predict both aerosol and gas-phase abundance and composition, discussed further later on.

The coupled meteorological and chemical models parameterize vertical mixing using relationships between turbulent fluxes and mean thermodynamic profiles that have significant impacts on predicted atmospheric composition. It is therefore paramount that meteorological (e.g., temperature and wind speeds to quantify mixing and transport, relative humidity and downwelling radiance to estimate liquid water path and boundary-layer moisture) and chemical vertical profile measurements be collocated with observations of the radiative and turbulent components of the surface energy balance. This approach will allow a detailed quantification of mass, moisture, heat, and chemical budgets within basins. It is also important that variations in the surface energy balance across the basins be well captured using flux sites and satellite data. Important land surface parameters to observe include the depth and age of snow (which can impact the amount of reflected solar radiation and rates of photochemical reactions), and soil

temperature and moisture (which can impact fog formation and vertical mixing processes, both which impact chemistry).

Sufficient data, both temporally and spatially, are needed to ensure that spatial gradients are captured across the basins of interest to form a three-dimensional representation of the atmospheric state for both chemical and meteorological properties. Chemical processes driven by mixing also need to be resolved alongside the meteorological measurements for turbulence, mixing, and transport, to allow linking of these two processes. A holistic, interdisciplinary, and multi-agency approach will be used in this study where existing infrastructure such as National Weather Service daily rawinsonde launches, weather stations from public and private sectors available from MesoWest (Horel et al. 2002), wind sodars, lidar profilers, and ceilometers will be supplemented with instrumentation dedicated to this field study.

One study design approach is a process-focused deployment, targeting regions of interest within a basin to investigate and quantify coupled chemical-meteorological processes. Three examples of targeted meteorological processes and their impacts on the chemistry include: 1) inter-basin exchange, 2) sidewall- and canyon-flow transport, and 3) vertical layering and exchange (Fig. 1).

In addition to using frequent rawinsonde launches and vertical-profiling wind lidars, sodars, ceilometers, and acoustic-sounding systems at fixed locations, use of mobile vertical profilers and tall buildings as instrument platforms can help resolve the vertical structure of the basin atmosphere. Mobile ground-based systems measuring both meteorology and chemistry, such as the California Air Resources Board (CARB) Mobile Measurement Platform (Park et al. 2011), or the TRAX air quality light-rail train (Mitchell et al. 2018; Mendoza et al. 2019), will fill gaps in the fixed-instrumentation networks. Mobile ground-based systems driven up canyons and slopes

can provide measurements along topographic sidewalls, and drones can obtain shallow but highly resolved vertical profiles in areas with limited topography. Coupled meteorological data (including turbulence and the surface energy balance) collected on towers and high buildings at multiple locations within the basins would also provide valuable observations in the lowest 100 m of the PCAP atmosphere. A potential exists for deploying airborne Doppler wind lidar to provide similar vertical wind-flow information along a 2-D transect, during times and in locations where fog and low stratus do not impede operations. Lidar-based vertical wind profiles at basin boundaries would greatly assist in quantifying background pollution and meteorological parameters as well as transport processes within a single basin and between adjacent basins.

The field deployment will also include modeling teams, using tools that span the scales from large eddy simulations (meters resolution) to regional coupled meteorological and chemical models (kilometers resolution), to forecast PCAP events and contribute to flight planning; this will help ensure the measurements address the modelers' needs. Complementing research-grade models and forecasts, operational air quality forecasts used to warn the public about pollution events will be evaluated to identify deficiencies and accelerate the transition of any improvements from research to operations.

4. Emissions of Relevant Short-Lived Pollutants

Within basins that experience adverse air quality in winter, direct emissions of aerosols are of interest, as well as emissions of short-lived gases, including reactive nitrogen species (e.g., NO_x and NH₃) and intermediate-volatility/volatile organic compounds (I/VOCs; e.g., hydrocarbons, amines, oxidized and reduced sulfur compounds, and oxygenated organic

compounds). Such emissions are largely from urban, agriculture, and biomass burning sources. Here, residential wood combustion is considered an urban emissions source, and biomass burning is limited to wildland fires (wildfires and prescribed burns). Different sources emit at different elevations above the surface, with consequent implications for the fate of emitted compounds and their impacts on surface air quality. For example, emissions from vehicles occur at the surface, whereas emissions from some industrial sources or the power sector may occur at elevations 10's to 100's of meters above the surface.

Mobile sources and residential wood combustion contribute significantly to primary and secondary aerosols in Salt Lake City in wintertime (e.g., Kelly et al. 2013). Similar sources contribute to elevated aerosol concentrations in the SJV; in addition to local transportation and residential wood combustion, cooking was identified as significant source of aerosols, particularly in the evening (Young et al. 2016). While emissions reductions from passenger vehicles have led to a continuing decline in on-road vehicle contributions to NO_x and aerosols (Dallman and Harley 2010; Bishop et al. 2012; Utah DAQ 2019), the contributions of older and off-road vehicles to NO_x and aerosols are not well quantified. In addition, the temperature dependence of mobile source emissions is not well-constrained for real-world conditions. Previous in-use laboratory testing has shown that lower ambient temperatures can lead to higher gaseous and particulate mass emissions from gasoline and diesel vehicles, and to changes in chemical composition (Zielinska et al. 2004). In addition, vehicle operation specific to winter conditions, such as changes in the frequency of hot vs. cold starts and an increase in idling, can affect mobile source emissions and ambient concentrations. Finally, NH₃ emissions from selective catalytic reduction systems may increase in winter, given the increase in NH₃-forming deposits with decreases in ambient temperature (Strots et al. 2010).

Reductions in mobile source I/VOC emissions spanning several decades (e.g., Warneke et al. 2012) have led to an increase in the relative importance of other, under-studied sources of I/VOCs including cooking and volatile chemical products (VCPs) (McDonald et al. 2018). A large fraction of VCP emissions occur inside buildings. More restrictive air exchange between buildings and ambient air during the winter to conserve energy may affect VCP emissions (Pagonis et al. 2019); currently, there are few constraints regarding the seasonality in VCP emissions. Evaporative emissions of transportation fuels generally decrease as ambient temperature decreases (Harley et al. 1992; Rubin et al. 2006), which also may be observed for VCPs.

Regarding residential wood burning, in areas affected by poor wintertime air quality, efforts have been made to reduce solid fuel combustion (wood, wood pellets, coal, etc.) through implementation of burn restrictions when poor air quality is forecast, and incentives to exchange wood-burning devices for natural gas heating options. Such strategies appear to be reducing the prevalence of solid-fuel burning, including wood (Kotchenruther, 2020); however it has been demonstrated that primary and secondary aerosols originating from residential wood burning persist, even when solid-fuel burning is prohibited (Glisson et al. 2019; Kotchenruther, 2020). In addition, solid fuels used in wood stoves are poor in nitrogen, which affects the emissions of nitrogen-containing VOCs, NO_x, and NH₃ (Coggon et al. 2016).

Agricultural emissions have been directly linked to atmospheric aerosol formation (Bauer et al. 2016), mainly via the dominant contribution of agriculture to NH₃ emissions both globally and in the study region (Bouwman et al., 1997; Paulot et al., 2014). Uncertainties in quantifying the contribution of NH₃ to aerosols in winter are largely associated with parameterizations of emissions as a function of temperature. NH₃ emissions from manure vary

non-linearly with temperature, with higher temperatures increasing volatility (e.g., Hempel et al. 2016). For animals in heated housing, there is concern that process-based NH_3 predictions for ambient temperature may underpredict winter emissions (Moravek et al. 2019). In addition to NH_3 , several recent studies have pointed to the importance of fertilized agricultural soils as a source of NO_x (Almaraz et al. 2018; Trousdell et al. 2019), which could have a particularly large impact in California where crop fertilization occurs in the winter months.

A number of individual agricultural VOCs have been identified, and include aliphatic and aromatic hydrocarbons, phenols, alcohols, aldehydes, ketones, esters, carboxylic acids, terpenes, heterocyclic compounds, amines, and reduced sulfur compounds (e.g., Blunden et al. 2005; Filipy et al. 2006; Shaw et al. 2007; Turan et al. 2007; Trabue et al. 2008; Rumsey et al. 2012; Rumsey and Aneja, 2014). While past studies suggested that, relative to other anthropogenic sources, agricultural VOCs do not contribute significantly to O_3 production, recent studies indicate their role has been overlooked (Pusede et al., 2014; Parrish et al., 2017; Trousdell et al., 2019). Several of these identified compound classes are known aerosol precursors, particularly amines and reduced sulfur compounds. Amines have been reported as a significant component of the carbonaceous fraction of aerosol observed during cold wintertime inversion conditions in western agricultural valleys, in Utah (Silva et al. 2008), and Washington (Bottenus, et al. 2018). Reduced sulfur compounds (e.g., dimethylsulfide, dimethyldisulfide, and methanethiol) have received less attention (Trabue et al. 2008; Rumsey et al. 2014), but agricultural contributions of such compounds can be significant (Shaw et al. 2007).

In certain states and regions, there may be unique agricultural sectors unaccounted for in emissions inventories and air quality models. For example, the state of Utah is the number two producer of mink pelts in the U.S., but such emissions are lacking in the National Emissions

Inventory because there are no data available. Also, rapid changes in agricultural source emissions may occur owing to the recent expansion of anaerobic digesters. California alone has dozens of digesters under construction for the dairy industry and they are being installed in other states as well. Few studies have been conducted to see how the digester processes might impact non-GHG emissions.

Wildland fire emissions likely contribute to the elevated $\text{PM}_{2.5}$ concentrations observed during the winter months. Fire activity in winter has become more prominent in the western U.S. For example, the Thomas Fire in California, which started in early December, became one of the largest wildfires recorded in California (Kolden and Abatzoglou, 2018). Higher summer temperatures and decreased precipitation in the fall could potentially continue to extend the western United States fire season into the winter (Guzman-Morales and Gershunov, 2019). Transported emissions from these late fall/early winter wildfires in the western US could then contribute to enhanced $\text{PM}_{2.5}$ concentrations in the SLC region.

5. Winter Atmospheric Chemical Cycles

Chemical transformations and subsequent phase partitioning of primary air pollutants such as NO_x , VOCs, and reduced nitrogen are responsible for the conversion of these primary emissions into aerosols. While the daily integrated solar radiation available to drive winter photochemistry is generally lower than summer, multiphase chemical reactions that are prevalent in winter can lead to photolabile radical sources that drive aerosol formation. The nature and magnitude of radical sources impacts the sensitivity of chemical oxidation cycles to primary emissions of NO_x and VOCs, leading to fundamental shifts in the prevalent chemical regime

during winter. The shallow, stable boundary layer associated with PCAPs tends to concentrate primary emissions, further shifting the sensitivities of oxidation cycles. This section examines some of the features of winter chemical oxidation cycles in polluted boundary layers and identifies major uncertainties.

Snow cover is conducive to the formation and intensification of PCAP conditions due to enhanced radiative cooling at the snow surface that strengthens the low-level wintertime stable layer. In the SLV, for example, $\text{PM}_{2.5}$ exceedances are observed four times as frequently on snow covered days compared to those without snow cover (Whiteman et al. 2014). The effect of snow cover is complex, since it changes both the boundary layer dynamics and atmospheric chemistry. Reflection of solar radiation by snow increases actinic flux and photochemical reaction rates. Surface snowpacks also directly impact atmospheric composition by serving as a sink/reservoir for atmospheric trace gases and particles upon deposition and as a source from reactions on and within the snow grain surface (Grannas et al. 2007). For example, nitrate deposited on the snowpack undergoes photolysis to produce NO_x and HONO released to the air above (Chen et al. 2019; Honrath et al. 2000; Michoud et al. 2015; Zatko et al. 2016). Snowpack photochemistry also contributes to near-surface OH through the production and subsequent photolysis of H_2O_2 and carbonyls, including formaldehyde, acetaldehyde, and acetone (Couch et al. 2000). Dinitrogen pentoxide (N_2O_5) reactions on saline snow grains can result in ClNO_2 formation, with the snowpack serving as a net source or sink of ClNO_2 depending on temperature (Wang et al. 2020).

The presence of large surface area in the particulate phase and in fogs also increases heterogeneous reaction rates during winter, altering levels of several criteria air pollutants including ozone (O_3), nitrogen dioxide (NO_2), SO_2 and particulate matter (Sarwar et al. 2012;

Sarwar et al. 2014). One important heterogeneous reaction known to contribute to accumulation of aerosol mass is that of N_2O_5 on deliquesced aerosol particles. N_2O_5 chemistry occurs primarily during darkness, and is favored at lower temperatures and elevated NO_x levels, which are characteristic of urban areas during winter (Chang et al. 2011). This reaction regulates the wintertime NO_x lifetime and leads to the formation of nitric acid (HNO_3) (Chang et al. 2011), which contributes to particulate nitrate levels in the presence of ammonia (McDuffie et al. 2019). Nitryl chloride (ClNO_2), a photolytic source of chlorine radicals ($\text{Cl}\cdot$) and NO_2 , is produced from N_2O_5 where chloride-containing particles are present (Osthoff et al, 2008). Atomic chlorine is highly reactive and initiates VOC oxidation cycles and SOA formation (Wang and Hildebrandt Ruiz, 2018). The fate of the reactive uptake of N_2O_5 and subsequent impacts on oxidant and PM concentrations depend on individual particle surface composition (Gaston and Thornton 2016; McNamara et al. 2020), which remains poorly constrained.

A second important wintertime heterogeneous and multiphase reaction is the production of nitrous acid (HONO), a radical reservoir whose photolysis may be a large OH source that affects urban air quality (e.g., Fu et al. 2019). Numerous heterogeneous and multiphase HONO sources have been proposed, such as photochemical generation from snowpacks (Chen et al. 2019) and photolysis of nitrate aerosol (Ye et al. 2017), although the latter remains controversial (Romer et al. 2018). Given the variety of potential HONO sources and associated uncertainties, future measurements are needed to ascertain dominant formation pathways.

Dissolution of trace gases and subsequent aqueous-phase reactions within fog droplets and deliquesced aerosol can also lead to secondary aerosol formation, including sulfate and high molecular weight organic compounds (Ervens et al. 2011). Previous SJV wintertime studies have shown aqueous-phase formation of high molecular weight organic compounds (Qin and Prather

2006), as well as hydroxymethanesulfoate (Whiteaker and Prather 2003). This compound has been suggested as a significant winter sulfate source in highly polluted regions such as China (Song et al. 2019). Aqueous phase sulfur oxidation driven by NO_2 at high aerosol pH has recently been proposed to explain rapid sulfate formation in China (Wang et al., 2011). Fog pH has been increasing in recent years within the SJV, where ammonium nitrate is a major component in the north and sulfate is prevalent in the south (Herckes et al. 2015), providing a potential test of this and other known and proposed aqueous sulfur oxidation mechanisms (Alexander et al., 2009; Calvert et al., 1985; Green et al., 2019). Studies of the multiphase processes remain too sparse to accurately parameterize their contribution to winter air quality.

O_3 and NO_2 are often collectively termed odd oxygen (O_x) and tracked together to determine the growth of O_3 beyond its rapid interconversion with NO_2 (Wood et al. 2009). Odd oxygen is frequently defined more broadly to include other nighttime reservoirs such as NO_3 , N_2O_5 and gas phase HNO_3 (Brown et al. 2006c; Liu, 1977). Recent work has expanded the definition of O_x further (referred to as $\text{O}_{x,\text{total}}$) to include additional reactive nitrogen compounds and particulate nitrate (Womack et al. 2019). Tracking $\text{O}_{x,\text{total}}$ allows for the investigation of the role that oxidation plays in the buildup of pollutants in boundary layers. During the Utah Winter Fine Particulate Study (UWFPS) (Baasandorj et al. 2018), $\text{O}_{x,\text{total}}$ increased dramatically above the 45 ppbv O_3 background during pollution episodes and rapidly became dominated by NO_2 and particulate nitrate under conditions of depleted O_3 . Box modeling demonstrated that the high ratio of NO_x to VOCs in the SLV altered the traditional O_3 photochemical cycle (Kleinman 1994; Lin et al. 1988) to primarily form particulate nitrate (Womack et al. 2019). This finding contrasts with the adjacent Uintah Basin, UT, where high concentrations of VOCs from oil and gas extraction with relatively lower NO_x levels have been shown to force the photochemical

cycle to produce $O_{x,total}$ in the form of wintertime O_3 (Ahmadov et al. 2015; Edwards et al. 2013; Edwards et al. 2014). These two analyses of air pollution in adjacent basins, SLV and Uintah, demonstrated the important role of photochemistry during winter and the utility of $O_{x,total}$ as a parameter for evaluating its role in the generation of both O_3 and particulate nitrate pollution. The contrast between the two basins shows that particulate nitrate and O_3 are closely coupled and can be regarded as chemically identical (Meng et al. 1997). Modeling techniques that have long been used for evaluating mitigation strategies for ozone can also be used for particulate nitrate (Nguyen and Dabdub 2002; Pun et al. 2009). In the wintertime SLV, a NO_x -VOC sensitivity isopleth demonstrated that the formation of $O_{x,total}$ is most sensitive to reductions in VOCs, and is NO_x -saturated, meaning that reductions in NO_x emissions would initially increase aerosol pollution (Womack et al. 2019), a result that is counterintuitive since NO_x is also the precursor to particulate nitrate, the dominant component of $PM_{2.5}$ in SLV. However, the NO_x -VOC relationship for particulate nitrate must be understood in detail in the context of the competing processes that govern particulate nitrate formation and chemical and meteorologically driven loss, which remain incompletely understood.

6. Processes Governing Particulate Matter Formation and Loss

The formation and loss of atmospheric aerosols is tightly linked to the partitioning of the chemical constituents between the particle and gas phases, and the multiphase reactions described in Section 5. Observations demonstrate that particulate nitrate and OA dominate wintertime composition in a variety of urban areas within valleys (e.g., Fresno, CA; Salt Lake City, UT; Beijing, China; Po Valley, Italy) (Bressi et al. 2016; Franchin et al. 2018; Lu et al.

2019; Young et al. 2016). Analysis of the OA composition indicates oxygenated OA, likely synonymous with SOA, often comprises a large fraction of the OA, along with OA derived from major primary sources, including biomass combustion, vehicles, and cooking (Bressi et al. 2016; Crippa et al. 2013; Lu et al. 2019; Young et al. 2016; Zhang et al. 2007; Paglione et al. 2020). Yet, substantial challenges remain regarding the ability of models to quantitatively predict ambient aerosol concentrations in these wintertime environments, especially of the secondary components (Fountoukis et al. 2016; Kleeman et al. 2019; Schroder et al. 2018). These challenges arise from the incomplete understanding of the physical, chemical, and thermodynamic processes that govern aerosol formation and partitioning, and how these are impacted by wintertime meteorological conditions. In addition, differences in the chemical environment and processes occurring within the nocturnal residual layer versus the surface layers are of particular importance in wintertime owing to shallower nocturnal boundary layers coupled with less available sunlight compared to other seasons (Baasandorj et al. 2017; Prabhakar et al. 2017; Pusede et al. 2016; Wang et al. 2018).

Dry deposition may influence ozone and particle loss rates, but particle deposition velocities in the key submicron particle range are generally small and thus dry deposition will likely only play a considerable role when the nocturnal boundary layer is particularly shallow (Emerson et al., 2020) and the aerodynamic resistance is low (i.e., vigorous turbulent mixing.) Dry deposition of gases such as HNO_3 or oxygenated VOCs can drive evaporation of particulate nitrate and organic aerosol and thus indirectly contribute to loss of $\text{PM}_{2.5}$ (Pusede et al., 2016; Knote et al., 2015). For HNO_3 , such indirect loss processes are most important in warmer, ammonia-deficient conditions, when HNO_3 comprises a large fraction of the total nitrate, and when the boundary layer is particularly shallow (Prabhakar et al, 2017) and loss of OA will be

similarly enhanced in warmer conditions. Direct measurements of dry deposition of such gases can help constrain understanding of the importance of these loss processes (e.g., Nguyen et al., 2015), and further examined through the use of process-level models (e.g., Prabhakar et al., 2017). Ozone dry deposition is highly variable based on the surface characteristics and if not measured directly, it can presumably be parameterized. However, particle loss via scavenging by fog may be important in valley regions when the fog penetrates to the surface (Gilardoni et al., 2014); chemical processing within fog may also play a role in transforming the ambient aerosol composition (Gilardoni et al., 2016). Improved treatment of scavenging by wet deposition that accounts for variability in in-cloud water has been shown to improve model skill at predicting nitric acid and particle phase nitrate under wintertime conditions (Luo et al., 2019). Strong, multi-day pollution events are often ended by a change in synoptic conditions that brings increased ventilation and, potentially, precipitation (Larger and Staquet, 2016).

One consideration is cold conditions with low absolute humidity but variable relative humidity characteristic of many wintertime valley environments. The limited availability of thermodynamic data for electrolyte solutions—especially mixtures containing organics—at low temperatures means that predictions of gas-particle partitioning and aerosol pH using existing thermodynamic models are extrapolations and may not be accurate. Direct measurements of the gas-particle distribution of inorganic and some organic species (e.g. organic acids) can serve to evaluate model predictions of equilibrium phase partitioning and aerosol pH (Murphy et al. 2017; Guo et al., 2016; Nah et al., 2018). However, the low temperatures may give rise to long equilibration timescales, making assumptions of thermodynamic equilibrium on typical model timescales questionable. Comparison between sufficiently detailed observations and model predictions will allow for investigation of sensitivities to temperature and RH (Evanoski-Cole et

al. 2017). The viscosity of particles varies over many orders of magnitude, dependent on the particle composition, ambient temperature, and relative humidity (Renbaum-Wolff et al. 2013). Consequently, particles exhibit material properties, e.g., diffusivities, ranging from liquid-like to solid (Koop et al. 2011), which affects gas-particle partitioning and equilibration timescales (Shiraiwa and Seinfeld 2012; Shiraiwa et al. 2013a), heterogeneous reactions (Gaston et al., 2014; Li et al. 2018; Liu et al. 2018), and particle growth dynamics (Shiraiwa et al. 2013b; Zaveri et al. 2014; Zaveri et al. 2018). Additionally, components within particles can undergo phase-phase separation into an organic-rich and inorganic/aqueous-rich phase, leading to unexpected internal morphologies within individual particles (Song et al. 2012; You et al. 2012). It is unclear how such phenomena impact rates of mass transfer between particles and the rates of aerosol-forming chemical processes, such as N_2O_5 reactive uptake, that occur on and within particles in the cold wintertime conditions.

Observations of N_2O_5 reactive uptake coefficients exhibit complex dependencies on particle OA mass fraction (Bertram et al. 2009), along with the OA chemical composition (e.g., the O:C atomic ratio) and potential for liquid-liquid phase separation (Gaston et al. 2014). The N_2O_5 reactive uptake coefficient may increase with decreasing temperature, perhaps owing to increased solubility of N_2O_5 (Abbatt et al. 2012; Hallquist et al. 2003; Schweitzer et al. 1998; Wagner et al. 2013), but requires further characterization for particle compositions reflective of wintertime valleys.

Particle composition and abundance vary with size, with especially large differences between submicron and supermicron particles. Compositional differences consequently engender size-varying differences in aerosol water content—critical to N_2O_5 uptake and other heterogeneous processes. The importance of considering and characterizing refractory and

supermicron particles varies between regions. For example, supermicron particle contributions in the wintertime SJV are often small (Parworth et al. 2017), while in the colder SLV it can be substantial as a result of dust, road salt and lake salt (Hrdina et al. 2020). Compared to submicron particles, field observations of supermicron particle concentration, size, and composition are often limited, challenging model-measurement comparisons. Particle composition affects both N_2O_5 uptake and resulting products (HNO_3 versus ClNO_2), and often there are differences between laboratory parameterizations and field observations of ClNO_2 yields (McDuffie et al. 2018). McNamara et al. (2020) recently showed that ClNO_2 production, driven by the surface reaction of N_2O_5 (Gaston and Thornton 2016), is explained by surface area-weighted single-particle composition and developed a new parametrization that requires testing in other environments. Notably, the SLV has two unique chloride sources – playa dust and road salt – that likely contribute to ClNO_2 (Mitroo et al. 2019; McNamara et al. 2020). Measurements completely characterizing the time and size-varying particle composition in wintertime valley environments are needed to accurately simulate nighttime production of HNO_3 via N_2O_5 uptake.

Gas-particle partitioning of HNO_3 and other acids depends on size-varying particle and gas composition. In submicron particles, acid-anion phase partitioning is strongly controlled by NH_3 availability, alongside temperature, RH, and aerosol pH, the latter of which depends on the identity and abundance of other aerosol constituents (e.g., particulate sulfate or organic aerosol) (Murphy et al. 2017). In contrast, HNO_3 can react effectively irreversibly with supermicron dust or sea salt particles, displacing CO_2 (from CaCO_3) (Usher et al., 2003) or HCl (from NaCl) (Gard et al. 1998). As dry deposition is much faster for supermicron particles than accumulation mode, uptake to supermicron particles can thus suppress submicron nitrate formation. An

observationally constrained understanding of the dynamic links between HNO_3 , NH_3 , and sub- versus supermicron reactive uptake and partitioning is needed.

Formation of SOA in valley environments during winter has received relatively little consideration compared to summer, although SOA can comprise a substantial fraction of aerosol dependent upon the conditions. Some observations indicate that the $[\text{SOA}]/[\text{NO}_3^-]$ ratio, or the $[\text{OA}]/[\text{NO}_3^-]$ ratio when the former is not available, decreases as the total aerosol loading increases, although the absolute SOA concentration tends to increase with aerosol loading (Bressi et al. 2016; Franchin et al. 2018; Lu et al. 2019; Young et al. 2016). This suggests some link between SOA and nitrate formation, potentially related to the dependence of aerosol liquid water content on particulate nitrate; higher aerosol water content can lead to enhanced uptake and reaction of water-soluble organic compounds--including at night (Hodas et al. 2014; Sullivan et al. 2016). Aqueous processing, especially of VOCs from residential wood combustion, lead to production of high molecular weight (Qin and Prather 2006) and absorbing organic aerosol (i.e., brown carbon, BrC) (Laskin et al., 2015; Gilardoni et al. 2016), which can influence the local and regional radiative budget (Mohr et al. 2013). Understanding of SOA and BrC formation in wintertime environments is lacking, both within and outside of valleys, with large model-measurement differences in some environments and a strong sensitivity to the particular SOA parameterization used (Chrit et al. 2018; Fountoukis et al. 2016; Meroni et al. 2017; Russell et al. 2018; Schroder et al. 2018; Shah et al. 2019). It may be that current parameterizations, developed almost entirely using room-temperature experimental data, are not properly capturing T-dependent changes in both gas- and particle-phase chemical pathways and in compound volatility (Bianchi et al. 2019; Stolzenburg et al. 2018; Ye et al. 2019). Winter SOA formation via reaction of NO_3 radicals with VOCs, especially from sources such as VCPs and residential

wood combustion in poorly mixed nighttime boundary layer structures has received relatively little attention (Mohr 2013, Yuan 2016), even though NO₃ chemistry has been proposed as a dominant SOA source during summer in the SJV (Rollins, 2012).

Overall, the identity and contribution of major submicron aerosol constituents in wintertime valleys is well-known, with less known about the supermicron aerosol. Still, gaps in process-level understanding of the formation pathways and diurnally varying partitioning confront the development of clear control strategies and major improvements in wintertime air quality in such regions. Further, particulate matter loss processes, including wet and dry deposition, are poorly constrained by observations, as are the loss processes of PM precursors. Targeted, comprehensive measurements that can be compared with models are necessary to close these gaps.

7. Greenhouse Gas (GHG) Emissions

The proposed field study will yield unique insights into wintertime GHG emissions and how they relate to air pollutant and associated precursor emissions in western U.S. basins. Wintertime emissions likely differ from other seasons owing to the presence of heating needs (Gurney et al. 2012; Mitchell et al. 2018). Specifically, this field campaign will link GHG to emission sectors to understand how shifts in these emissions are associated with changes in short-lived pollutants and use GHG emissions as transport tracers to elucidate meteorological processes.

Three GHG emissions sectors will be carefully considered: transportation, agriculture, and oil/gas and energy distribution. These are most relevant in the Western U.S. The on-road

transportation sector is one of the largest emitters in urban settings, often accounting for nearly 50% of CO₂ and other pollutants, but is generally the least well-constrained sector within carbon emission inventories, with large uncertainties (Gately and Hutyra, 2017; Mendoza et al. 2013). Agriculture is an important source of GHG and air pollutants in the western U.S., in particular methane (CH₄) and nitrous oxide (N₂O), respectively comprising nearly 40% and 80% of total emissions (U.S. Environmental Protection Agency, 2019). Several studies have now shown that inventories underestimate methane emissions from oil and gas production (Alvarez et al. 2018; Robertson et al. 2017; Lyon et al. 2015). To constrain the contribution of all of these (and other) source types to degradation in air quality, will require monitoring a variety of trace gases.

Changes in vehicle fleets and improvements in technology have reduced mobile-sector emissions of both CO₂ (Gately et al. 2015) and air pollutants (McDonald et al. 2018). For example, NO_x and carbon monoxide (CO) emissions in cities have fallen (Parrish et al. 2011; Hassler et al. 2016), although the decline has slowed recently (Jiang et al. 2018). Also, changes in the U.S. fuel mix (U.S. Energy Information Administration, 2019), may affect emissions of both GHGs and pollutants. These trends point to changes in the urban atmospheric composition that might manifest themselves in observed concentrations. Work in Salt Lake City (Lin et al. 2018), with the longest running urban CO₂ network, indicates that CO₂ enhancements have remained flat in the urban core. This is despite population growth, implying energy efficiency improvements, and increased CO₂ enhancements in the suburbs due to new anthropogenic emissions occurring where previously there were none (Mitchell et al. 2018a). These long-running data sets in Salt Lake City are complemented by a novel platform on the public transit light-rail trains that measure GHGs and air pollutants as the trains traverse the city (Mitchell et al. 2018b; Mendoza et al. 2019). Concentration ratios from this platform have been used to

fingerprint NO_x emission sources (Mitchell et al. 2018b) and characterize how fine scale meteorological phenomena, such as canyon flows and inter-basin transport, affect air pollution distributions (Baasandorj et al. 2018). The proposed field campaign will utilize GHG and pollutant datasets from aircraft, mobile laboratories and ground sites.

The chemical inertness of GHGs such as CO₂ and CH₄ allows for their use as passive tracers of atmospheric transport (Pataki et al. 2005). This is particularly true in the wintertime, when photosynthetic uptake of CO₂ is minimal (Pataki et al. 2003; Strong et al. 2011). Measurements of CO₂ in the SLV have revealed strong relationships between levels of CO₂ and atmospheric stability, with the presence of PCAPs associated with significant enhancements in CO₂ concentrations (Pataki et al. 2005; Bares et al. 2018; Lin et al. 2018). Therefore, if GHG emissions are constrained, levels of GHG can potentially be used to quantify the effects of atmospheric transport processes and separate the contributions of such transport effects from atmospheric chemistry.

8. Campaign Design

The recent 2017 Utah Winter Fine Particulate Study (UWFPS) in SLV was an aircraft and ground-based campaign utilizing the NOAA Twin Otter, a medium sized research aircraft (Baasandorj et al. 2018). The study demonstrated the capability to conduct in-situ aircraft measurements in shallow winter boundary layers within complex terrain during periodic episodes of low visibility. A clear lesson learned from the UWFPS study was that the complexity of the science governing wintertime air quality is better addressed through a broader suite of instrumentation and focal area than could be accommodated by the payload and range of

a Twin Otter. A larger aircraft (e.g., NSF C-130, NOAA P-3) would allow for a more extensive payload providing detailed in situ and remote sensing instrumentation, as well as the ability to sample multiple basins within a domain that could encompass most or all of the western U.S. (see Figure 1).

The workshop considered the optimal combination of both ground-based and airborne measurements and platforms required to address the science questions identified. A recurring theme was the importance of combining co-located, comprehensive meteorological and chemical measurements. The workshop attendees stressed the need for large aircraft to carry the payload required to characterize both the organic and inorganic gases and particle composition and understand their relationships. Participants also expressed the need for airborne and surface measurements of coupled meteorological and chemical processes to bring insight to not only the formation and dissipation of the PCAPs that allow for the build-up of these extreme air quality events, but especially the vertical and horizontal transport and mixing processes modulating the concentrations of pollutants and precursors and constraining chemical processes. Based on the climatology of PCAPs in these regions (Whiteman et al., 2014), the optimum period for an airborne field campaign is from approximately in mid-December early through mid-February. Measurements may not be continuous during this period and would depend on logistical considerations, such as total aircraft hour allocation to the project.

Key measurements that will be needed onboard the aircraft includes standard meteorological parameters along with fast-response measurements of VOCs, most likely using chemical ionization mass spectrometry, the various NO_x and NO_y species (e.g., NO , NO_2 , HNO_3 , N_2O_5 , HONO , NO_3) and other important trace gases (e.g., O_3 , SO_2 , HCHO , CO) and greenhouse gases (CO_2 , CH_4 , N_2O), and submicron and supermicron aerosol composition and size

distributions. A suite of ground-based measurements (in situ and remote sensing) will complement aircraft data to characterize the coupled meteorological-chemical system in three dimensions during the field campaign. These include wind and aerosol lidars, radio acoustic sounders, rawinsonde, ceilometers, and long-path Differential Optical Absorption Spectroscopy (DOAS) to provide continuous observations of vertical profiles (e.g., temperature, wind speed and, trace gases such as NO_2 , SO_2 , O_3 , HONO, HCHO, and NO_3). Specifically, a western U.S. winter air quality study should include comprehensive measurements of major radical sources, including CH_2O and other aldehydes, HONO, ClNO_2 , and O_3 , together with measurements of actinic flux to define photolysis rates and radical sources. Measurements of major radical species, including OH, HO_2 and preferably RO_2 , together with nighttime measurements of NO_3 radicals, must also be available to constrain diel radical cycles and concentrations and to compare with the process-level predictions. Speciated measurements of these radicals and their precursors are most easily carried out from ground sites. However, measuring a subset of these compounds from a research aircraft allows for extension of the conclusions regionally and as a function of altitude. Comparison of continuous measurements at a single location to vertical and horizontal distributions of radicals and/or radical precursors provides a more complete view of the radical budget.

Complete characterization requires fully instrumented aircraft measuring $\text{O}_{x,\text{total}}$ and its partitioning between nitrogen and oxygen species (O_3 , NO_2 , NO_3 , HNO_3 , N_2O_5 , ClNO_2 , etc.) within and above the boundary layer during daytime and nighttime. In general, $\text{O}_{x,\text{total}}$ budgets have not been fully quantified in valleys in the western U.S. However, it is clear that odd-oxygen species play a substantial role in the buildup of wintertime pollutants. Owing to the significance and uncertainty in HONO sources, nitrous acid measurement via multiple techniques and from

ground and aircraft platforms will be an essential component of a future western U.S. winter air quality study.

High temporal and spatial resolution measurements of NO_x , VOCs from multiple sources (transportation, VCPS, cooking, wood combustion, biogenic, industrial, agriculture), NH_3 and amines are required. Multiple tracers will enable quantitative attribution of GHG emissions to different sectors through their enhancement ratios. These include enhancement ratios of CO_2 and CH_4 relative to tracers such as CO and NO_x . For instance, using the CH_4 :CO ratio measured from aircraft, a recent study revealed that CH_4 emissions from urban areas in the East Coast corridor were drastically underestimated by inventories (Plant et al. 2019). Similarly, observed VOC:GHG correlations would allow attribution to oil/gas emissions (Petron et al. 2012). In addition, novel tracers like atmospheric O_2 will be considered for source attribution as part of the planned field campaign.

9. Summary and Conclusions

The interactions between complex wintertime chemistry and numerous meteorological processes regulating the occurrence and rates of chemical processes in PCAPs has not yet been observed in a detail needed to provide satisfactory understanding of the evolution of these complex pollution episodes. This paper provides an outline of the comprehensive chemical and meteorological datasets needed from airborne platforms with extensive range, coupled to a variety of surface-based measurements with high vertical resolution at numerous representative sites to provide enhance understanding of these pollution episodes. The workshop has outlined the design and requirements for a field campaign investigating wintertime basins to provide the

breadth of observations necessary to characterize the meteorological-chemical linkages to
validate complex processes within coupled atmosphere-chemistry models.

Acknowledgements:

NSF Atmospheric Chemistry Program (Award Number 1912664) and the NOAA Atmospheric
Chemistry, Climate and Carbon Cycle Program (Award Number NA19OAR4310078) supported
the workshop. We appreciate the assistance of Chase Brandt Hodges-Heilmann with citation
management for this article. We appreciate the assistance of Chris Rapp in website development
for the workshop. We also appreciate the administrative support from the Department of
Atmospheric Sciences at the University of Utah in hosting the workshop, specifically the help
from Holly Moreno and Nola Lucke. The views expressed in this manuscript are those of the
authors alone and do not necessarily reflect the views and policies of the U.S. Environmental
Protection Agency.

References:

- Abbatt, J.P.D., Lee, A.K.Y., Thornton, J.A., 2012. Quantifying trace gas uptake to tropospheric aerosol: recent advances and remaining challenges. *Chem. Soc. Rev.* 41, 6555–6581. <https://doi.org/10.1039/C2CS35052A>
- Ahern, A.T., Goldberger, L., Jahl, L., Thornton, J., Sullivan, R.C., 2018. Production of N₂O₅ and ClNO₂ through Nocturnal Processing of Biomass-Burning Aerosol. *Environ. Sci. Technol.* 52, 550–559. <https://doi.org/10.1021/acs.est.7b04386>
- Ahmadov, R., McKeen, S., Trainer, M., Banta, R., Brewer, A., Brown, S., Edwards, P.M., de Gouw, J.A., Frost, G.J., Gilman, J., Helmig, D., Johnson, B., Karion, A., Koss, A., Langford, A., Lerner, B., Olson, J., Oltmans, S., Peischl, J., Pétron, G., Pichugina, Y., Roberts, J.M., Ryerson, T., Schnell, R., Senff, C., Sweeney, C., Thompson, C., Veres, P.R., Warneke, C., Wild, R., Williams, E.J., Yuan, B., Zamora, R., 2015. Understanding high wintertime ozone pollution events in an oil- and natural gas-producing region of the western US. *Atmospheric Chemistry and Physics* 15, 411–429. <https://doi.org/10.5194/acp-15-411-2015>
- Alexander, B., R.J. Park, D.J. Jacob, and S. Gong, *Transition metal-catalyzed oxidation of atmospheric sulfur: Global implications for the sulfur budget*. *Journal of Geophysical Research: Atmospheres*, 2009. **114**(D2): p. D02309.
- Aksoyoglu, S., G. Ciarelli, I. El-Haddad, U. Baltensperger, and A.S.H. Prévôt, *Secondary inorganic aerosols in Europe: sources and the significant influence of biogenic VOC emissions, especially on ammonium nitrate*. *Atmos. Chem. Phys.*, 2017. **17**(12): p. 7757-7773.
- Alvarez, R.A., Zavala-Araiza, D., Lyon, D.R., Allen, D.T., Barkley, Z.R., Brandt, A.R., Davis, K.J., Herndon, S.C., Jacob, D.J., Karion, A., Kort, E.A., Lamb, B.K., Lauvaux, T.,

823 Maasakkers, J.D., Marchese, A.J., Omara, M., Pacala, S.W., Peischl, J., Robinson, A.L.,
824 Shepson, P.B., Sweeney, C., Townsend-Small, A., Wofsy, S.C., Hamburg, S.P., 2018.
825 Assessment of methane emissions from the U.S. oil and gas supply chain. *Science* 361,
826 186–188. <https://doi.org/10.1126/science.aar7204>

827 Andreae, M.O., Merlet, P., 2001. Emission of trace gases and aerosols from biomass burning.
828 *Global Biogeochemical Cycles* 15, 955–966. <https://doi.org/10.1029/2000GB001382>

829 ARUP, n.d. Deadline 2020 How cities will get the job done - Arup [WWW Document]. URL
830 [https://www.arup.com/en/perspectives/publications/research/section/deadline-2020-how-](https://www.arup.com/en/perspectives/publications/research/section/deadline-2020-how-cities-will-get-the-job-done)
831 [cities-will-get-the-job-done](https://www.arup.com/en/perspectives/publications/research/section/deadline-2020-how-cities-will-get-the-job-done) (accessed 6.22.20).

832 Aschmann, S.M., Atkinson, R., 1995. Rate constants for the gas-phase reactions of alkanes with
833 Cl atoms at 296 ± 2 K. *International Journal of Chemical Kinetics* 27, 613–622.
834 <https://doi.org/10.1002/kin.550270611>

835 Baasandorj, M., Brown, S., Hoch, S., Crosman, E., Long, R., Silva, P., Mitchell, L., Hammond,
836 I., Martin, R., Bares, R., Lin, J., Sohl, J., Page, J., n.d. 2017 Utah Winter Fine Particulate
837 Study Final Report 202.

838 Baasandorj, M., Hoch, S.W., Bares, R., Lin, J.C., Brown, S.S., Millet, D.B., Martin, R., Kelly,
839 K., Zarzana, K.J., Whiteman, C.D., Dube, W.P., Tonnesen, G., Jaramillo, I.C., Sohl, J.,
840 2017. Coupling between Chemical and Meteorological Processes under Persistent Cold-
841 Air Pool Conditions: Evolution of Wintertime PM_{2.5} Pollution Events and N₂O₅
842 Observations in Utah’s Salt Lake Valley. *Environ. Sci. Technol.* 51, 5941–5950.
843 <https://doi.org/10.1021/acs.est.6b06603>

844 Baklanov, A.A., Grisogono, B., Bornstein, R., Mahrt, L., Zilitinkevich, S.S., Taylor, P., Larsen,
845 S.E., Rotach, M.W., Fernando, H.J.S., 2011. The Nature, Theory, and Modeling of

846 Atmospheric Planetary Boundary Layers. *Bull. Amer. Meteor. Soc.* 92, 123–128.
847 <https://doi.org/10.1175/2010BAMS2797.1>

848 Banta, R.M., Pichugina, Y.L., Kelley, N.D., Hardesty, R.M., Brewer, W.A., 2013. Wind Energy
849 Meteorology: Insight into Wind Properties in the Turbine-Rotor Layer of the Atmosphere
850 from High-Resolution Doppler Lidar. *Bull. Amer. Meteor. Soc.* 94, 883–902.
851 <https://doi.org/10.1175/BAMS-D-11-00057.1>

852 Bares, R., Lin, J.C., Hoch, S.W., Baasandorj, M., Mendoza, D.L., Fasoli, B., Mitchell, L.,
853 Catharine, D., Stephens, B.B., 2018. The Wintertime Covariation of CO₂ and Criteria
854 Pollutants in an Urban Valley of the Western United States. *Journal of Geophysical*
855 *Research: Atmospheres* 123, 2684–2703. <https://doi.org/10.1002/2017JD027917>

856 Battye, W., Aneja, V.P., Schlesinger, W.H., 2017. Is nitrogen the next carbon? *Earth's Future* 5,
857 894–904. <https://doi.org/10.1002/2017EF000592>

858 Bauer, S.E., Tsigaridis, K., Miller, R., 2016. Significant atmospheric aerosol pollution caused by
859 world food cultivation. *Geophysical Research Letters* 43, 5394–5400.
860 <https://doi.org/10.1002/2016GL068354>

861 Bennett, J.E., Tamura-Wicks, H., Parks, R.M., Burnett, R.T., Iii, C.A.P., Bechle, M.J., Marshall,
862 J.D., Danaei, G., Ezzati, M., 2019. Particulate matter air pollution and national and
863 county life expectancy loss in the USA: A spatiotemporal analysis. *PLOS Medicine* 16,
864 e1002856. <https://doi.org/10.1371/journal.pmed.1002856>

865 Bertram, T.H., Thornton, J.A., Riedel, T.P., Middlebrook, A.M., Bahreini, R., Bates, T.S.,
866 Quinn, P.K., Coffman, D.J., 2009. Direct observations of N₂O₅ reactivity on ambient
867 aerosol particles. *Geophysical Research Letters* 36.
868 <https://doi.org/10.1029/2009GL040248>

869 Bettencourt, L.M.A., Lobo, J., Helbing, D., Kühnert, C., West, G.B., 2007. Growth, innovation,
870 scaling, and the pace of life in cities. *Proc. Natl. Acad. Sci. U.S.A.* 104, 7301–7306.
871 <https://doi.org/10.1073/pnas.0610172104>

872 Bianchi, F., Kurtén, T., Riva, M., Mohr, C., Rissanen, M.P., Roldin, P., Berndt, T., Crounse,
873 J.D., Wennberg, P.O., Mentel, T.F., Wildt, J., Junninen, H., Jokinen, T., Kulmala, M.,
874 Worsnop, D.R., Thornton, J.A., Donahue, N., Kjaergaard, H.G., Ehn, M., 2019. Highly
875 Oxygenated Organic Molecules (HOM) from Gas-Phase Autoxidation Involving Peroxy
876 Radicals: A Key Contributor to Atmospheric Aerosol. *Chem. Rev.* 119, 3472–3509.
877 <https://doi.org/10.1021/acs.chemrev.8b00395>

878 Bishop, G.A., Schuchmann, B.G., Stedman, D.H., Lawson, D.R., 2012. Multispecies remote
879 sensing measurements of vehicle emissions on Sherman Way in Van Nuys, California.
880 *Journal of the Air & Waste Management Association* 62, 1127–1133.
881 <https://doi.org/10.1080/10962247.2012.699015>

882 Bisht, D.S., Tiwari, S., Dumka, U.C., Srivastava, A.K., Safai, P.D., Ghude, S.D., Chate, D.M.,
883 Rao, P.S.P., Ali, K., Prabhakaran, T., Panickar, A.S., Soni, V.K., Attri, S.D., Tunved, P.,
884 Chakrabarty, R.K., Hopke, P.K., 2016. Tethered balloon-born and ground-based
885 measurements of black carbon and particulate profiles within the lower troposphere
886 during the foggy period in Delhi, India. *Science of The Total Environment* 573, 894–905.
887 <https://doi.org/10.1016/j.scitotenv.2016.08.185>

888 Blunden, J., Aneja, V.P., Lonneman, W.A., 2005. Characterization of non-methane volatile
889 organic compounds at swine facilities in eastern North Carolina. *Atmospheric*
890 *Environment* 39, 6707–6718. <https://doi.org/10.1016/j.atmosenv.2005.03.053>

891 Bottenus, C.L.H., Massoli, P., Sueper, D., Canagaratna, M.R., VanderSchelden, G., Jobson, B.T.,
 892 VanReken, T.M., 2018. Identification of amines in wintertime ambient particulate
 893 material using high resolution aerosol mass spectrometry. *Atmospheric Environment* 180,
 894 173–183. <https://doi.org/10.1016/j.atmosenv.2018.01.044>
 895 Bouwman, A.F., Lee, D.S., Asman, W. a. H., Dentener, F.J., Hoek, K.W.V.D., Olivier, J.G.J.,
 896 1997. A global high-resolution emission inventory for ammonia. *Global Biogeochemical*
 897 *Cycles* 11, 561–587. <https://doi.org/10.1029/97GB02266>
 898 Bray, C.D., Battye, W., Aneja, V.P., Tong, D.Q., Lee, P., Tang, Y., 2018. Ammonia emissions
 899 from biomass burning in the continental United States. *Atmospheric Environment* 187,
 900 50–61. <https://doi.org/10.1016/j.atmosenv.2018.05.052>
 901 Bressi, M., Cavalli, F., Belis, C.A., Putaud, J.-P., Fröhlich, R., Martins dos Santos, S., Petralia,
 902 E., Prévôt, A.S.H., Berico, M., Malaguti, A., Canonaco, F., 2016. Variations in the
 903 chemical composition of the submicron aerosol and in the sources of the organic fraction
 904 at a regional background site of the Po Valley (Italy). *Atmospheric Chemistry and*
 905 *Physics* 16, 12875–12896. <https://doi.org/10.5194/acp-16-12875-2016>
 906 Brown, S.G., Roberts, P.T., McCarthy, M.C., Lurmann, F.W., Hyslop, N.P., 2006. Wintertime
 907 vertical variations in particulate matter (PM) and precursor concentrations in the San
 908 Joaquin Valley during the California Regional Coarse PM/Fine PM Air Quality Study. *J*
 909 *Air Waste Manag Assoc* 56, 1267–1277.
 910 <https://doi.org/10.1080/10473289.2006.10464583>
 911 Brown, S.S., Dubé, W.P., Tham, Y.J., Zha, Q., Xue, L., Poon, S., Wang, Z., Blake, D.R., Tsui,
 912 W., Parrish, D.D., Wang, T., 2016. Nighttime chemistry at a high altitude site above

913 Hong Kong. *Journal of Geophysical Research: Atmospheres* 121, 2457–2475.
 914 <https://doi.org/10.1002/2015JD024566>
 915 Brown, S.S., Neuman, J.A., Ryerson, T.B., Trainer, M., Dubé, W.P., Holloway, J.S., Warneke,
 916 C., Gouw, J.A. de, Donnelly, S.G., Atlas, E., Matthew, B., Middlebrook, A.M., Peltier,
 917 R., Weber, R.J., Stohl, A., Meagher, J.F., Fehsenfeld, F.C., Ravishankara, A.R., 2006a.
 918 Nocturnal odd-oxygen budget and its implications for ozone loss in the lower
 919 troposphere. *Geophysical Research Letters* 33. <https://doi.org/10.1029/2006GL025900>
 920 Brown, S.S., Ryerson, T.B., Wollny, A.G., Brock, C.A., Peltier, R., Sullivan, A.P., Weber, R.J.,
 921 Dubé, W.P., Trainer, M., Meagher, J.F., Fehsenfeld, F.C., Ravishankara, A.R., 2006b.
 922 Variability in Nocturnal Nitrogen Oxide Processing and Its Role in Regional Air Quality.
 923 *Science* 311, 67–70. <https://doi.org/10.1126/science.1120120>
 924 Brown, S.S., Stutz, J., 2012. Nighttime radical observations and chemistry. *Chem. Soc. Rev.* 41,
 925 6405–6447. <https://doi.org/10.1039/C2CS35181A>
 926 Brown, S.S., Thornton, J.A., Keene, W.C., Pszenny, A.A.P., Sive, B.C., Dubé, W.P., Wagner,
 927 N.L., Young, C.J., Riedel, T.P., Roberts, J.M., VandenBoer, T.C., Bahreini, R., Öztürk,
 928 F., Middlebrook, A.M., Kim, S., Hübler, G., Wolfe, D.E., 2013. Nitrogen, Aerosol
 929 Composition, and Halogens on a Tall Tower (NACHTT): Overview of a wintertime air
 930 chemistry field study in the front range urban corridor of Colorado. *Journal of*
 931 *Geophysical Research: Atmospheres* 118, 8067–8085. <https://doi.org/10.1002/jgrd.50537>
 932 Brune, W.H., Baier, B.C., Thomas, J., Ren, X., Cohen, R.C., Pusede, S.E., Browne, E.C.,
 933 Goldstein, A.H., Gentner, D.R., Keutsch, F.N., Thornton, J.A., Harrold, S., Lopez-
 934 Hilfiker, F.D., Wennberg, P.O., 2016. Ozone production chemistry in the presence of
 935 urban plumes. *Faraday Discuss.* 189, 169–189. <https://doi.org/10.1039/C5FD00204D>

936 Calvert, J.G., A. Lazrus, G.L. Kok, B.G. Heikes, J.G. Walega, J. Lind, and C.A. Cantrell,
 937 *Chemical mechanisms of acid generation in the troposphere*. Nature, 1985. **317**: p. 27-35.

938 Cappa, C. D. et al. Simulating secondary organic aerosol in a regional air quality model using the
 939 statistical oxidation model – Part 2: Assessing the influence of vapor wall losses. Atmos.
 940 Chem. Phys. 16, 3041-3059, doi:10.5194/acp-16-3041-2016 (2016).

941 Chan, E.A.W., Gantt, B., McDow, S., 2017. The reduction of summer sulfate and switch from
 942 summertime to wintertime PM_{2.5} concentration maxima in the United States. Atmos
 943 Environ (1994) 175, 25–32. <https://doi.org/10.1016/j.atmosenv.2017.11.055>

944 Chang, W., Bhawe, P., Brown, S., Riemer, N., Stutz, J., Dabdub, D., 2011. Heterogeneous
 945 Atmospheric Chemistry, Ambient Measurements, and Model Calculations of N₂O₅: A
 946 Review. Aerosol Science and Technology 45, 665–695.
 947 <https://doi.org/10.1080/02786826.2010.551672>

948 Chen, C.-L., S. Chen, L.M. Russell, J. Liu, D.J. Price, R. Betha, K.J. Sanchez, A.K.Y. Lee, L.
 949 Williams, S.C. Collier, Q. Zhang, A. Kumar, M.J. Kleeman, X. Zhang, and C.D. Cappa,
 950 *Organic Aerosol Particle Chemical Properties Associated With Residential Burning and*
 951 *Fog in Wintertime San Joaquin Valley (Fresno) and With Vehicle and Firework*
 952 *Emissions in Summertime South Coast Air Basin (Fontana)*. Journal of Geophysical
 953 Research: Atmospheres, 2018. **123**(18): p. 10,707-10,731.

954 Chen, J., Lu, J., Avise, J.C., DaMassa, J.A., Kleeman, M.J., Kaduwela, A.P., 2014. Seasonal
 955 modeling of PM_{2.5} in California's San Joaquin Valley. Atmospheric Environment 92,
 956 182–190. <https://doi.org/10.1016/j.atmosenv.2014.04.030>

957 Chen, J., Yin, D., Zhao, Z., Kaduwela, A.P., Avise, J.C., DaMassa, J.A., Beyersdorf, A., Burton,
 958 S., Ferrare, R., Herman, J.R., Kim, H., Neuman, A., Nowak, J.B., Parworth, C., Scarino,

959 A.J., Wisthaler, A., Young, D.E., Zhang, Q., 2020. Modeling air quality in the San
 960 Joaquin valley of California during the 2013 Discover-AQ field campaign. *Atmospheric*
 961 *Environment: X* 5, 100067. <https://doi.org/10.1016/j.aeaoa.2020.100067>
 962 Chen, Q., Edebeli, J., McNamara, S.M., Kulju, K.D., May, N.W., Bertman, S.B., Thanekar, S.,
 963 Fuentes, J.D., Pratt, K.A., 2019. HONO, Particulate Nitrite, and Snow Nitrite at a
 964 Midlatitude Urban Site during Wintertime. *ACS Earth Space Chem.* 3, 811–822.
 965 <https://doi.org/10.1021/acsearthspacechem.9b00023>
 966 Chow, J.C., Watson, J.G., 2002. Review of PM_{2.5} and PM₁₀ apportionment for fossil fuel
 967 combustion and other sources by the chemical mass balance receptor model. *Energy &*
 968 *Fuels* 16, 222–260.
 969 Chrit, M., Sartelet, K., Sciare, J., Majdi, M., Nicolas, J., Petit, J.-E., Dulac, F., 2018. Modeling
 970 organic aerosol concentrations and properties during winter 2014 in the northwestern
 971 Mediterranean region. *Atmospheric Chemistry and Physics* 18, 18079–18100.
 972 <https://doi.org/10.5194/acp-18-18079-2018>
 973 Clements, C.B., Whiteman, C.D., Horel, J.D., 2003. Cold-Air-Pool Structure and Evolution in a
 974 Mountain Basin: Peter Sinks, Utah. *J. Appl. Meteor.* 42, 752–768.
 975 [https://doi.org/10.1175/1520-0450\(2003\)042<0752:CSAEIA>2.0.CO;2](https://doi.org/10.1175/1520-0450(2003)042<0752:CSAEIA>2.0.CO;2)
 976 Coggon, M.M., Veres, P.R., Yuan, B., Koss, A., Warneke, C., Gilman, J.B., Lerner, B.M.,
 977 Peischl, J., Aikin, K.C., Stockwell, C.E., Hatch, L.E., Ryerson, T.B., Roberts, J.M.,
 978 Yokelson, R.J., Gouw, J.A. de, 2016. Emissions of nitrogen-containing organic
 979 compounds from the burning of herbaceous and arboraceous biomass: Fuel composition
 980 dependence and the variability of commonly used nitrile tracers. *Geophysical Research*
 981 *Letters* 43, 9903–9912. <https://doi.org/10.1002/2016GL070562>

982 Collaud Coen, M., Praz, C., Haeefe, A., Ruffieux, D., Kaufmann, P., Calpini, B., 2014.
983 Determination and climatology of the planetary boundary layer height above the Swiss
984 plateau by in situ and remote sensing measurements as well as by the COSMO-2 model.
985 Atmospheric Chemistry and Physics 14, 13205–13221. [https://doi.org/10.5194/acp-14-](https://doi.org/10.5194/acp-14-13205-2014)
986 13205-2014

987 Collett, J.L., Hoag, K.J., Sherman, D.E., Bator, A., Richards, L.W., 1998. Spatial and temporal
988 variations in San Joaquin Valley fog chemistry. Atmospheric Environment 33, 129–140.
989 [https://doi.org/10.1016/S1352-2310\(98\)00136-8](https://doi.org/10.1016/S1352-2310(98)00136-8)

990 Couch, T.L., Sumner, A.L., Dassau, T.M., Shepson, P.B., Honrath, R.E., 2000. An investigation
991 of the interaction of carbonyl compounds with the snowpack. Geophysical Research
992 Letters 27, 2241–2244. <https://doi.org/10.1029/1999GL011288>

993 Crippa, M., DeCarlo, P.F., Slowik, J.G., Mohr, C., Heringa, M.F., Chirico, R., Poulain, L.,
994 Freutel, F., Sciare, J., Cozic, J., Marco, C.F.D., Elsasser, M., Nicolas, J.B., Marchand, N.,
995 Abidi, E., Wiedensohler, A., Drewnick, F., Schneider, J., Borrmann, S., Nemitz, E.,
996 Zimmermann, R., Jaffrezo, J.-L., Prévôt, A.S.H., Baltensperger, U., 2013. Wintertime
997 aerosol chemical composition and source apportionment of the organic fraction in the
998 metropolitan area of Paris. Atmospheric Chemistry and Physics 13, 961–981.
999 <https://doi.org/10.5194/acp-13-961-2013>

1000 Dallmann, T.R., Harley, R.A., 2010. Evaluation of mobile source emission trends in the United
1001 States. Journal of Geophysical Research: Atmospheres 115.
1002 <https://doi.org/10.1029/2010JD013862>

1003 Dall'Osto, M., Harrison, R.M., Coe, H., Williams, P., 2009. Real-time secondary aerosol
 1004 formation during a fog event in London. *Atmospheric Chemistry and Physics* 9, 2459–
 1005 2469. <https://doi.org/10.5194/acp-9-2459-2009>

1006 Darby, L.S., Allwine, K.J., Banta, R.M., 2006. Nocturnal Low-Level Jet in a Mountain Basin
 1007 Complex. Part II: Transport and Diffusion of Tracer under Stable Conditions. *J. Appl.*
 1008 *Meteor. Climatol.* 45, 740–753. <https://doi.org/10.1175/JAM2367.1>

1009 Day, D.A., Wooldridge, P.J., Dillon, M.B., Thornton, J.A., Cohen, R.C., 2002. A thermal
 1010 dissociation laser-induced fluorescence instrument for in situ detection of NO₂, peroxy
 1011 nitrates, alkyl nitrates, and HNO₃. *Journal of Geophysical Research: Atmospheres* 107,
 1012 ACH 4-1-ACH 4-14. <https://doi.org/10.1029/2001JD000779>

1013 De Wekker, S.F.J., Kossmann, M., Knierel, J.C., Giovannini, L., Gutmann, E.D., Zardi, D.,
 1014 2018. Meteorological Applications Benefiting from an Improved Understanding of
 1015 Atmospheric Exchange Processes over Mountains. *Atmosphere* 9, 371.
 1016 <https://doi.org/10.3390/atmos9100371>

1017 De Wekker, S.F.J., Whiteman, C.D., 2006. On the Time Scale of Nocturnal Boundary Layer
 1018 Cooling in Valleys and Basins and over Plains. *J. Appl. Meteor. Climatol.* 45, 813–820.
 1019 <https://doi.org/10.1175/JAM2378.1>

1020 Deng, H.-M., Liang, Q.-M., Liu, L.-J., Anadon, L.D., 2017. Co-benefits of greenhouse gas
 1021 mitigation: a review and classification by type, mitigation sector, and geography.
 1022 *Environ. Res. Lett.* 12, 123001. <https://doi.org/10.1088/1748-9326/aa98d2>

1023 Donaldson, M.A., Bish, D.L., Raff, J.D., 2014. Soil surface acidity plays a determining role in
 1024 the atmospheric-terrestrial exchange of nitrous acid. *PNAS* 111, 18472–18477.
 1025 <https://doi.org/10.1073/pnas.1418545112>

1026 Dorninger, M., Whiteman, C.D., Bica, B., Eisenbach, S., Pospichal, B., Steinacker, R., 2011.
 1027 Meteorological Events Affecting Cold-Air Pools in a Small Basin. *J. Appl. Meteor.*
 1028 *Climatol.* 50, 2223–2234. <https://doi.org/10.1175/2011JAMC2681.1>
 1029 Drozd, G.T., Zhao, Y., Saliba, G., Frodin, B., Maddox, C., Weber, R.J., Chang, M.-C.O.,
 1030 Maldonado, H., Sardar, S., Robinson, A.L., Goldstein, A.H., 2016. Time Resolved
 1031 Measurements of Speciated Tailpipe Emissions from Motor Vehicles: Trends with
 1032 Emission Control Technology, Cold Start Effects, and Speciation. *Environ. Sci. Technol.*
 1033 50, 13592–13599. <https://doi.org/10.1021/acs.est.6b04513>
 1034 Duren, R.M., Thorpe, A.K., Foster, K.T., Rafiq, T., Hopkins, F.M., Yadav, V., Bue, B.D.,
 1035 Thompson, D.R., Conley, S., Colombi, N.K., Frankenberg, C., McCubbin, I.B.,
 1036 Eastwood, M.L., Falk, M., Herner, J.D., Croes, B.E., Green, R.O., Miller, C.E., 2019.
 1037 California’s methane super-emitters. *Nature* 575, 180–184.
 1038 <https://doi.org/10.1038/s41586-019-1720-3>
 1039 Edwards, P.M., Aikin, K.C., Dube, W.P., Fry, J.L., Gilman, J.B., de Gouw, J.A., Graus, M.G.,
 1040 Hanisco, T.F., Holloway, J., Hübler, G., Kaiser, J., Keutsch, F.N., Lerner, B.M., Neuman,
 1041 J.A., Parrish, D.D., Peischl, J., Pollack, I.B., Ravishankara, A.R., Roberts, J.M., Ryerson,
 1042 T.B., Trainer, M., Veres, P.R., Wolfe, G.M., Warneke, C., Brown, S.S., 2017. Transition
 1043 from high- to low-NO_x control of night-time oxidation in the southeastern US. *Nature*
 1044 *Geoscience* 10, 490–495. <https://doi.org/10.1038/ngeo2976>
 1045 Edwards, P.M., Brown, S.S., Roberts, J.M., Ahmadov, R., Banta, R.M., deGouw, J.A., Dubé,
 1046 W.P., Field, R.A., Flynn, J.H., Gilman, J.B., Graus, M., Helmig, D., Koss, A., Langford,
 1047 A.O., Lefer, B.L., Lerner, B.M., Li, R., Li, S.-M., McKeen, S.A., Murphy, S.M., Parrish,
 1048 D.D., Senff, C.J., Soltis, J., Stutz, J., Sweeney, C., Thompson, C.R., Trainer, M.K., Tsai,

1049 C., Veres, P.R., Washenfelter, R.A., Warneke, C., Wild, R.J., Young, C.J., Yuan, B.,
 1050 Zamora, R., 2014. High winter ozone pollution from carbonyl photolysis in an oil and gas
 1051 basin. *Nature* 514, 351–354. <https://doi.org/10.1038/nature13767>
 1052 Edwards, P.M., Young, C.J., Aikin, K., deGouw, J., Dubé, W.P., Geiger, F., Gilman, J., Helmig,
 1053 D., Holloway, J.S., Kercher, J., Lerner, B., Martin, R., McLaren, R., Parrish, D.D.,
 1054 Peischl, J., Roberts, J.M., Ryerson, T.B., Thornton, J., Warneke, C., Williams, E.J.,
 1055 Brown, S.S., 2013. Ozone photochemistry in an oil and natural gas extraction region
 1056 during winter: simulations of a snow-free season in the Uintah Basin, Utah. *Atmospheric*
 1057 *Chemistry and Physics* 13, 8955–8971. <https://doi.org/10.5194/acp-13-8955-2013>
 1058 Emerson, E.W., Hodshire, A.L., DeBolt, H.M., Bilsback, K.R., Pierce, J.R., McMeeking, G.R.
 1059 and Farmer, D.K., 2020. Revisiting particle dry deposition and its role in radiative effect
 1060 estimates. *Proceedings of the National Academy of Sciences*, 117(42), pp.26076-26082.
 1061 Ervens, B., Turpin, B.J., Weber, R.J., 2011. Secondary organic aerosol formation in cloud
 1062 droplets and aqueous particles (aqSOA): a review of laboratory, field and model studies.
 1063 *Atmospheric Chemistry and Physics* 11, 11069–11102. [https://doi.org/10.5194/acp-11-](https://doi.org/10.5194/acp-11-11069-2011)
 1064 11069-2011
 1065 Evanoski-Cole, A.R., Gebhart, K.A., Sive, B.C., Zhou, Y., Capps, S.L., Day, D.E., Prenni, A.J.,
 1066 Schurman, M.I., Sullivan, A.P., Li, Y., Hand, J.L., Schichtel, B.A., Collett, J.L., 2017.
 1067 Composition and sources of winter haze in the Bakken oil and gas extraction region.
 1068 *Atmospheric Environment* 156, 77–87. <https://doi.org/10.1016/j.atmosenv.2017.02.019>
 1069 Faloona, I.C., Chiao, S., Eiserloh, A.J., Alvarez, R.J., Kirgis, G., Langford, A.O., Senff, C.J.,
 1070 Caputi, D., Hu, A., Iraci, L.T., Yates, E.L., Marrero, J.E., Ryoo, J.-M., Conley, S.,
 1071 Tanrikulu, S., Xu, J., Kuwayama, T., 2020. The California Baseline Ozone Transport

1072 Study (CABOTS). Bull. Amer. Meteor. Soc. 101, E427–E445.

1073 <https://doi.org/10.1175/BAMS-D-18-0302.1>

1074 Feiner, P.A., Brune, W.H., Miller, D.O., Zhang, L., Cohen, R.C., Romer, P.S., Goldstein, A.H.,

1075 Keutsch, F.N., Skog, K.M., Wennberg, P.O., Nguyen, T.B., Teng, A.P., DeGouw, J.,

1076 Koss, A., Wild, R.J., Brown, S.S., Guenther, A., Edgerton, E., Baumann, K., Fry, J.L.,

1077 2016. Testing Atmospheric Oxidation in an Alabama Forest. J. Atmos. Sci. 73, 4699–

1078 4710. <https://doi.org/10.1175/JAS-D-16-0044.1>

1079 Filipy, J., Rumburg, B., Mount, G., Westberg, H., Lamb, B., 2006. Identification and

1080 quantification of volatile organic compounds from a dairy. Atmospheric Environment 40,

1081 1480–1494. <https://doi.org/10.1016/j.atmosenv.2005.10.048>

1082 Finlayson-Pitts, B., Pitts, J., 2000. Chemistry of Upper and Lower Atmosphere.

1083 <https://doi.org/10.1016/B978-012257060-5/50010-1>

1084 Finlayson-Pitts, B.J., Ezell, M.J., Pitts, J.N., 1989. Formation of chemically active chlorine

1085 compounds by reactions of atmospheric NaCl particles with gaseous N₂O₅ and ClONO

1086 2. Nature 337, 241–244. <https://doi.org/10.1038/337241a0>

1087 Finlayson-Pitts, B.J., Jr, J.N.P., 1993. Atmospheric Chemistry of Tropospheric Ozone

1088 Formation: Scientific and Regulatory Implications. Air & Waste 43, 1091–1100.

1089 <https://doi.org/10.1080/1073161X.1993.10467187>

1090 Finlayson-Pitts, B.J., Wingen, L.M., Sumner, A.L., Syomin, D., Ramazan, K.A., 2003. The

1091 heterogeneous hydrolysis of NO₂ in laboratory systems and in outdoor and indoor

1092 atmospheres: An integrated mechanism. Phys. Chem. Chem. Phys. 5, 223–242.

1093 <https://doi.org/10.1039/B208564J>

- 1094 Foster, C.S., Crosman, E.T., Horel, J.D., 2017. Simulations of a Cold-Air Pool in Utah's Salt
1095 Lake Valley: Sensitivity to Land Use and Snow Cover. *Boundary-Layer Meteorol* 164,
1096 63–87. <https://doi.org/10.1007/s10546-017-0240-7>
- 1097 Foster, C.S., Crosman, E.T., Horel, J.D., Lyman, S., Fasoli, B., Bares, R., Lin, J.C., 2019.
1098 Quantifying methane emissions in the Uintah Basin during wintertime stagnation
1099 episodes. *Elem Sci Anth* 7, 24. <https://doi.org/10.1525/elementa.362>
- 1100 Fountoukis, C., Megaritis, A.G., Skyllakou, K., Charalampidis, P.E., Denier van der Gon,
1101 H.A.C., Crippa, M., Prévôt, A.S.H., Fachinger, F., Wiedensohler, A., Pilinis, C., Pandis,
1102 S.N., 2016. Simulating the formation of carbonaceous aerosol in a European Megacity
1103 (Paris) during the MEGAPOLI summer and winter campaigns. *Atmospheric Chemistry*
1104 *and Physics* 16, 3727–3741. <https://doi.org/10.5194/acp-16-3727-2016>
- 1105 Franchin, A., Fibiger, D.L., Goldberger, L., McDuffie, E.E., Moravek, A., Womack, C.C.,
1106 Crosman, E.T., Docherty, K.S., Dube, W.P., Hoch, S.W., Lee, B.H., Long, R., Murphy,
1107 J.G., Thornton, J.A., Brown, S.S., Baasandorj, M., Middlebrook, A.M., 2018. Airborne
1108 and ground-based observations of ammonium-nitrate-dominated aerosols in a shallow
1109 boundary layer during intense winter pollution episodes in northern Utah. *Atmospheric*
1110 *Chemistry and Physics* 18, 17259–17276. <https://doi.org/10.5194/acp-18-17259-2018>
- 1111 Fu, X., T. Wang, J. Gao, P. Wang, Y. Liu, S. Wang, B. Zhao, and L. Xue, *Persistent Heavy*
1112 *Winter Nitrate Pollution Driven by Increased Photochemical Oxidants in Northern*
1113 *China*. *Environmental Science & Technology*, 2020. **54**(7): p. 3881-3889.
- 1114 Fu, X., Wang, T., Zhang, L., Li, Q., Wang, Z., Xia, M., Yun, H., Wang, W., Yu, C., Yue, D.,
1115 Zhou, Y., Zheng, J., Han, R., 2019. The significant contribution of HONO to secondary

1116 pollutants during a severe winter pollution event in southern China. *Atmospheric*
 1117 *Chemistry and Physics* 19, 1–14. <https://doi.org/10.5194/acp-19-1-2019>
 1118 Galloway, J.N., Townsend, A.R., Erisman, J.W., Bekunda, M., Cai, Z., Freney, J.R., Martinelli,
 1119 L.A., Seitzinger, S.P., Sutton, M.A., 2008. Transformation of the Nitrogen Cycle: Recent
 1120 Trends, Questions, and Potential Solutions. *Science* 320, 889–892.
 1121 <https://doi.org/10.1126/science.1136674>
 1122 Guo, H., et al. (2016), Fine particle pH and the partitioning of nitric acid during winter in the
 1123 northeastern United States, *J. Geophys. Res. Atmos.*, 121, 10,355– 10,376,
 1124 doi:[10.1002/2016JD025311](https://doi.org/10.1002/2016JD025311).
 1125 Gard, E.E., Kleeman, M.J., Gross, D.S., Hughes, L.S., Allen, J.O., Morrical, B.D., Fergenson,
 1126 D.P., Dienes, T., Gälli, M.E., Johnson, R.J., Cass, G.R., Prather, K.A., 1998. Direct
 1127 Observation of Heterogeneous Chemistry in the Atmosphere. *Science* 279, 1184–1187.
 1128 <https://doi.org/10.1126/science.279.5354.1184>
 1129 Gaston, C.J., Thornton, J.A., 2016. Reacto-Diffusive Length of N₂O₅ in Aqueous Sulfate- and
 1130 Chloride-Containing Aerosol Particles. *J. Phys. Chem. A* 120, 1039–1045.
 1131 <https://doi.org/10.1021/acs.jpca.5b11914>
 1132 Gaston, C.J., Thornton, J.A., Ng, N.L., 2014. Reactive uptake of N₂O₅ to internally mixed
 1133 inorganic and organic particles: the role of organic carbon oxidation state and inferred
 1134 organic phase separations. *Atmospheric Chemistry and Physics* 14, 5693–5707.
 1135 <https://doi.org/10.5194/acp-14-5693-2014>
 1136 Gately, C.K., Hutyra, L.R., 2017. Large Uncertainties in Urban-Scale Carbon Emissions. *Journal*
 1137 *of Geophysical Research: Atmospheres* 122, 11,242–11,260.
 1138 <https://doi.org/10.1002/2017JD027359>

1139 Gately, C.K., Hutyra, L.R., Wing, I.S., 2015. Cities, traffic, and CO₂: A multidecadal assessment
 1140 of trends, drivers, and scaling relationships. *PNAS* 112, 4999–5004.
 1141 <https://doi.org/10.1073/pnas.1421723112>
 1142 Ge, X., Zhang, Q., Sun, Y., Ruehl, C.R., Setyan, A., 2012. Effect of aqueous-phase processing
 1143 on aerosol chemistry and size distributions in Fresno, California, during wintertime.
 1144 *Environ. Chem.* 9, 221–235. <https://doi.org/10.1071/EN11168>
 1145 Geyer, A., Alicke, B., Konrad, S., Schmitz, T., Stutz, J., Platt, U., 2001. Chemistry and oxidation
 1146 capacity of the nitrate radical in the continental boundary layer near Berlin. *Journal of*
 1147 *Geophysical Research: Atmospheres* 106, 8013–8025.
 1148 <https://doi.org/10.1029/2000JD900681>
 1149 Gilardoni, S., Massoli, P., Giulianelli, L., Rinaldi, M., Paglione, M., Pollini, F., Lanconelli, C.,
 1150 Poluzzi, V., Carbone, S., Hillamo, R. and Russell, L.M., 2014. Fog scavenging of organic
 1151 and inorganic aerosol in the Po Valley. *Atmospheric Chemistry and Physics*, 14(13),
 1152 pp.6967-6981.
 1153 Gilardoni, S., Massoli, P., Paglione, M., Giulianelli, L., Carbone, C., Rinaldi, M., Decesari, S.,
 1154 Sandrini, S., Costabile, F., Gobbi, G.P., Pietrogrande, M.C., Visentin, M., Scotto, F.,
 1155 Fuzzi, S., Facchini, M.C., 2016. Direct observation of aqueous secondary organic aerosol
 1156 from biomass-burning emissions. *PNAS* 113, 10013–10018.
 1157 <https://doi.org/10.1073/pnas.1602212113>
 1158 Giovannini, L.; Ferrero, E.; Karl, T.; Rotach, M.W.; Staquet, C.; Trini Castelli, S.; Zardi, D.
 1159 Atmospheric Pollutant Dispersion over Complex Terrain: Challenges and Needs for
 1160 Improving Air Quality Measurements and Modeling. *Atmosphere* **2021**, 11, 646.

1161 Goldberger, L.A., Jahl, L.G., Thornton, J.A., Sullivan, R.C., 2019. N₂O₅ reactive uptake kinetics
 1162 and chlorine activation on authentic biomass-burning aerosol. *Environ. Sci.: Processes*
 1163 *Impacts* 21, 1684–1698. <https://doi.org/10.1039/C9EM00330D>

1164 Gouw, J.A. de, Parrish, D.D., Brown, S.S., Edwards, P., Gilman, J.B., Graus, M., Hanisco, T.F.,
 1165 Kaiser, J., Keutsch, F.N., Kim, S.-W., Lerner, B.M., Neuman, J.A., Nowak, J.B., Pollack,
 1166 I.B., Roberts, J.M., Ryerson, T.B., Veres, P.R., Warneke, C., Wolfe, G.M., 2019.
 1167 Hydrocarbon Removal in Power Plant Plumes Shows Nitrogen Oxide Dependence of
 1168 Hydroxyl Radicals. *Geophysical Research Letters* 46, 7752–7760.
 1169 <https://doi.org/10.1029/2019GL083044>

1170 Grachev, A., Leo, L., Di Sabatino, S., Fernando, H., Pardyjak, E., Fairall, C., 2015. Structure of
 1171 Turbulence in Katabatic Flows Below and Above the Wind-Speed Maximum. *Boundary-*
 1172 *Layer Meteorology* 159. <https://doi.org/10.1007/s10546-015-0034-8>

1173 Grannas, A.M., Jones, A.E., Dibb, J., Ammann, M., Anastasio, C., Beine, H.J., Bergin, M.,
 1174 Bottenheim, J., Boxe, C.S., Carver, G., Chen, G., Crawford, J.H., Dominé, F., Frey,
 1175 M.M., Guzmán, M.I., Heard, D.E., Helmig, D., Hoffmann, M.R., Honrath, R.E., Huey,
 1176 L.G., Hutterli, M., Jacobi, H.W., Klán, P., Lefer, B., McConnell, J., Plane, J., Sander, R.,
 1177 Savarino, J., Shepson, P.B., Simpson, W.R., Sodeau, J.R., Glasow, R. von, Weller, R.,
 1178 Wolff, E.W., Zhu, T., 2007. An overview of snow photochemistry: evidence,
 1179 mechanisms and impacts. *Atmospheric Chemistry and Physics* 7, 4329–4373.
 1180 <https://doi.org/10.5194/acp-7-4329-2007>

1181 Green, J.R., M.N. Fiddler, J.S. Holloway, D.L. Fibiger, E.E. McDuffie, P. Campuzano-Jost, J.C.
 1182 Schroder, J.L. Jimenez, A.J. Weinheimer, J. Aquino, D.D. Montzka, S.R. Hall, K.
 1183 Ullmann, V. Shah, L. Jaeglé, J.A. Thornton, S. Bililign, and S.S. Brown, *Rates of*

1184 *Wintertime Atmospheric SO₂ Oxidation based on Aircraft Observations during Clear-Sky*
 1185 *Conditions over the Eastern United States*. Journal of Geophysical Research:
 1186 Atmospheres, 2019. **124**(12): p. 6630-6649.

1187 Green, M.C., Chow, J.C., Watson, J.G., Dick, K., Inouye, D., 2015. Effects of Snow Cover and
 1188 Atmospheric Stability on Winter PM_{2.5} Concentrations in Western U.S. Valleys. J. Appl.
 1189 Meteor. Climatol. 54, 1191–1201. <https://doi.org/10.1175/JAMC-D-14-0191.1>

1190 Gurney, K.R., Razlivanov, I., Song, Y., Zhou, Y., Benes, B., Abdul-Massih, M., 2012.
 1191 Quantification of Fossil Fuel CO₂ Emissions on the Building/Street Scale for a Large
 1192 U.S. City. Environ. Sci. Technol. 46, 12194–12202. <https://doi.org/10.1021/es3011282>

1193 Guzman-Morales, J., Gershunov, A., 2019. Climate Change Suppresses Santa Ana Winds of
 1194 Southern California and Sharpens Their Seasonality. Geophysical Research Letters 46,
 1195 2772–2780. <https://doi.org/10.1029/2018GL080261>

1196 Hallquist, M., Stewart, D.J., Stephenson, S.K., Cox, R.A., 2003. Hydrolysis of N₂O₅ on sub-
 1197 micron sulfate aerosols. Phys. Chem. Chem. Phys. 5, 3453–3463.
 1198 <https://doi.org/10.1039/B301827J>

1199 Hanes, R., Zhang, Y.M., Inman, D.J., Eberle, A., Heath, G.A. (ORCID:0000000160104475),
 1200 Hettinger, D.J., 2018. Spatially Explicit Modeling of Criteria Air Pollutants from
 1201 Agricultural and Forestry Feedstock Production (No. NREL/PR-6A20-72126). National
 1202 Renewable Energy Lab. (NREL), Golden, CO (United States).

1203 Harley, R.A., Hannigan, M.P., Cass, G.R., 1992. Respeciation of organic gas emissions and the
 1204 detection of excess unburned gasoline in the atmosphere. Environ. Sci. Technol. 26,
 1205 2395–2408. <https://doi.org/10.1021/es00036a010>

1206 Haskins, J.D., Lopez-Hilfiker, F.D., Lee, B.H., Shah, V., Wolfe, G.M., DiGangi, J., Fibiger, D.,
 1207 McDuffie, E.E., Veres, P., Schroder, J.C., Campuzano-Jost, P., Day, D.A., Jimenez, J.L.,
 1208 Weinheimer, A., Sparks, T., Cohen, R.C., Campos, T., Sullivan, A., Guo, H., Weber, R.,
 1209 Dibb, J., Green, J., Fiddler, M., Bililign, S., Jaeglé, L., Brown, S.S., Thornton, J.A., 2019.
 1210 Anthropogenic Control Over Wintertime Oxidation of Atmospheric Pollutants.
 1211 Geophysical Research Letters 46, 14826–14835. <https://doi.org/10.1029/2019GL085498>
 1212 Hassler, B., McDonald, B.C., Frost, G.J., Borbon, A., Carslaw, D.C., Civerolo, K., Granier, C.,
 1213 Monks, P.S., Monks, S., Parrish, D.D., Pollack, I.B., Rosenlof, K.H., Ryerson, T.B.,
 1214 Schneidemesser, E. von, Trainer, M., 2016. Analysis of long-term observations of NO_x
 1215 and CO in megacities and application to constraining emissions inventories. Geophysical
 1216 Research Letters 43, 9920–9930. <https://doi.org/10.1002/2016GL069894>
 1217 Heard, D.E., Carpenter, L.J., Creasey, D.J., Hopkins, J.R., Lee, J.D., Lewis, A.C., Pilling, M.J.,
 1218 Seakins, P.W., Carslaw, N., Emmerson, K.M., 2004. High levels of the hydroxyl radical
 1219 in the winter urban troposphere. Geophysical Research Letters 31.
 1220 <https://doi.org/10.1029/2004GL020544>
 1221 Hecobian, A., Clements, A.L., Shonkwiler, K.B., Zhou, Y., MacDonald, L.P., Hilliard, N.,
 1222 Wells, B.L., Bibeau, B., Ham, J.M., Pierce, J.R., Collett, J.L., 2019. Air Toxics and Other
 1223 Volatile Organic Compound Emissions from Unconventional Oil and Gas Development.
 1224 Environ. Sci. Technol. Lett. 6, 720–726. <https://doi.org/10.1021/acs.estlett.9b00591>
 1225 Helmig, D., 2020. Air quality impacts from oil and natural gas development in Colorado. Elem
 1226 Sci Anth 8, 4. <https://doi.org/10.1525/elementa.398>
 1227 Hempel, S., Saha, C.K., Fiedler, M., Berg, W., Hansen, C., Amon, B., Amon, T., 2016. Non-
 1228 linear temperature dependency of ammonia and methane emissions from a naturally

1229 ventilated dairy barn. *Biosystems Engineering* 145, 10–21.

1230 <https://doi.org/10.1016/j.biosystemseng.2016.02.006>

1231 Herckes, P., Marcotte, A., Wang, Y., Jr, J.L., 2015. Fog composition in the Central Valley of
 1232 California over three decades. *Atmospheric Research* 151, 20–30.

1233 <https://doi.org/10.1016/j.atmosres.2014.01.025>

1234 Hoch, S.W., Whiteman, C.D., 2010. Topographic Effects on the Surface Radiation Balance in
 1235 and around Arizona’s Meteor Crater. *J. Appl. Meteor. Climatol.* 49, 1114–1128.

1236 <https://doi.org/10.1175/2010JAMC2353.1>

1237 Hodas, N., Sullivan, A.P., Skog, K., Keutsch, F.N., Collett, J.L., Decesari, S., Facchini, M.C.,
 1238 Carlton, A.G., Laaksonen, A., Turpin, B.J., 2014. Aerosol Liquid Water Driven by
 1239 Anthropogenic Nitrate: Implications for Lifetimes of Water-Soluble Organic Gases and
 1240 Potential for Secondary Organic Aerosol Formation. *Environ. Sci. Technol.* 48, 11127–
 1241 11136. <https://doi.org/10.1021/es5025096>

1242 Hofzumahaus, A., Rohrer, F., Lu, K., Bohn, B., Brauers, T., Chang, C.-C., Fuchs, H., Holland,
 1243 F., Kita, K., Kondo, Y., Li, X., Lou, S., Shao, M., Zeng, L., Wahner, A., Zhang, Y., 2009.
 1244 Amplified Trace Gas Removal in the Troposphere. *Science* 324, 1702–1704.

1245 <https://doi.org/10.1126/science.1164566>

1246 Holmes, C. D., Bertram, T. H., Confer, K. L., Graham, K. A., Ronan, A. C., Wirks, C. K.,
 1247 & Shah, V. (2019). The role of clouds in the tropospheric NO_x cycle: A new modeling
 1248 approach for cloud chemistry and its global implications. *Geophysical Research*
 1249 *Letters*, 46, 4980–4990. <https://doi.org/10.1029/2019GL081990>

1250 Holmes, H.A., Sriramasamudram, J.K., Pardyjak, E.R., Whiteman, C.D., 2015. Turbulent Fluxes
 1251 and Pollutant Mixing during Wintertime Air Pollution Episodes in Complex Terrain.
 1252 Environ. Sci. Technol. 49, 13206–13214. <https://doi.org/10.1021/acs.est.5b02616>
 1253 Honrath, R.E., Peterson, M.C., Dziobak, M.P., Dibb, J.E., Arsenault, M.A., Green, S.A., 2000.
 1254 Release of NO_x from sunlight-irradiated midlatitude snow. Geophysical Research Letters
 1255 27, 2237–2240. <https://doi.org/10.1029/1999GL011286>
 1256 Horel, J., Splitt, M., Dunn, L., Pechmann, J., White, B., Ciliberti, C., Lazarus, S., Slemmer, J.,
 1257 Zaff, D., Burks, J., 2002. MESOWEST: COOPERATIVE MESONETS IN THE
 1258 WESTERN UNITED STATES. Bull. Amer. Meteor. Soc. 83, 211–226.
 1259 [https://doi.org/10.1175/1520-0477\(2002\)083<0211:MCMITW>2.3.CO;2](https://doi.org/10.1175/1520-0477(2002)083<0211:MCMITW>2.3.CO;2)
 1260 Hrdina, A., Murphy, J.G., Hallar, A.G., Lin, J.C., Moravek, A., Bares, R., Petersen, R.C.,
 1261 Franchin, A., Middlebrook, A.M., Goldberger, L., Lee, B.H., Baasandorj, M., Brown,
 1262 S.S., 2020. The Role of Coarse Aerosol Particles as a Sink of HNO₃ in Wintertime
 1263 Pollution Events in the Salt Lake Valley. Atmospheric Chemistry and Physics
 1264 Discussions 1–27. <https://doi.org/10.5194/acp-2020-21>
 1265 IEA, n.d. World Energy Outlook 2008 [WWW Document]. URL [https://www.oecd-](https://www.oecd-ilibrary.org/energy/world-energy-outlook-2008_weo-2008-en)
 1266 [ilibrary.org/energy/world-energy-outlook-2008_weo-2008-en](https://www.oecd-ilibrary.org/energy/world-energy-outlook-2008_weo-2008-en) (accessed 6.22.20).
 1267 Ivey, C.E., Balachandran, S., Colgan, S., Hu, Y., Holmes, H.A., 2019. Investigating fine
 1268 particulate matter sources in Salt Lake City during persistent cold air pool events.
 1269 Atmospheric Environment 213, 568–578. <https://doi.org/10.1016/j.atmosenv.2019.06.042>
 1270 Jackson-Smith, D., Jensen, E., Jennings, B., 2006. Changing Land Use in the Rural
 1271 Intermountain West. pp. 253–276. https://doi.org/10.1007/1-4020-3902-6_12

1272 Jiang, Z., McDonald, B.C., Worden, H., Worden, J.R., Miyazaki, K., Qu, Z., Henze, D.K., Jones,
 1273 D.B.A., Arellano, A.F., Fischer, E.V., Zhu, L., Boersma, K.F., 2018. Unexpected
 1274 slowdown of US pollutant emission reduction in the past decade. PNAS 115, 5099–5104.
 1275 <https://doi.org/10.1073/pnas.1801191115>

1276 John H. Seinfeld, Spyros, P.N., n.d. Atmospheric Chemistry and Physics: From Air Pollution to
 1277 Climate Change, 3rd Edition | Wiley [WWW Document]. Wiley.com. URL
 1278 [https://www.wiley.com/en-](https://www.wiley.com/en-us/Atmospheric+Chemistry+and+Physics%3A+From+Air+Pollution+to+Climate+Change%2C+3rd+Edition-p-9781118947401)
 1279 [us/Atmospheric+Chemistry+and+Physics%3A+From+Air+Pollution+to+Climate+Chang](https://www.wiley.com/en-us/Atmospheric+Chemistry+and+Physics%3A+From+Air+Pollution+to+Climate+Change%2C+3rd+Edition-p-9781118947401)
 1280 [e%2C+3rd+Edition-p-9781118947401](https://www.wiley.com/en-us/Atmospheric+Chemistry+and+Physics%3A+From+Air+Pollution+to+Climate+Change%2C+3rd+Edition-p-9781118947401) (accessed 6.19.20).

1281 Kanaya, Y., Cao, R., Akimoto, H., Fukuda, M., Komazaki, Y., Yokouchi, Y., Koike, M.,
 1282 Tanimoto, H., Takegawa, N., Kondo, Y., 2007. Urban photochemistry in central Tokyo:
 1283 1. Observed and modeled OH and HO₂ radical concentrations during the winter and
 1284 summer of 2004. Journal of Geophysical Research: Atmospheres 112.
 1285 <https://doi.org/10.1029/2007JD008670>

1286 Karandana Gamalathge, T.D., Green, M.C., Stockwell, W.R., 2020. Pillars of Solution for the
 1287 Problem of Winter PM_{2.5} Variability in Fresno—Effects of Local Meteorology and
 1288 Emissions. Atmosphere 11, 312. <https://doi.org/10.3390/atmos11030312>

1289 Karsisto, P., Fortelius, C., Demuzere, M., Grimmond, C.S.B., Oleson, K.W., Kouznetsov, R.,
 1290 Masson, V., Järvi, L., 2016. Seasonal surface urban energy balance and wintertime
 1291 stability simulated using three land-surface models in the high-latitude city Helsinki.
 1292 Quarterly Journal of the Royal Meteorological Society 142, 401–417.
 1293 <https://doi.org/10.1002/qj.2659>

1294 Keeling, R.F., Manning, A.C., 2014. Studies of Recent Changes in Atmospheric O₂ Content, in:
 1295 Treatise on Geochemistry: Second Edition. pp. 385–404. [https://doi.org/10.1016/B978-0-](https://doi.org/10.1016/B978-0-08-095975-7.00420-4)
 1296 [08-095975-7.00420-4](https://doi.org/10.1016/B978-0-08-095975-7.00420-4)

1297 Keeling, R.F., Shertz, S.R., 1992. Seasonal and interannual variations in atmospheric oxygen and
 1298 implications for the global carbon cycle. *Nature* 358, 723–727.
 1299 <https://doi.org/10.1038/358723a0>

1300 Kelly, J.T., Koplitz, S.N., Baker, K.R., Holder, A.L., Pye, H.O.T., Murphy, B.N., Bash, J.O.,
 1301 Henderson, B.H., Possiel, N.C., Simon, H., Eyth, A.M., Jang, C., Phillips, S., Timin, B.,
 1302 2019. Assessing PM_{2.5} model performance for the conterminous U.S. with comparison
 1303 to model performance statistics from 2007-2015. *Atmospheric Environment* 214, 116872.
 1304 <https://doi.org/10.1016/j.atmosenv.2019.116872>

1305 Kelly, J.T., Parworth, C.L., Zhang, Q., Miller, D.J., Sun, K., Zondlo, M.A., Baker, K.R.,
 1306 Wisthaler, A., Nowak, J.B., Pusede, S.E., Cohen, R.C., Weinheimer, A.J., Beyersdorf,
 1307 A.J., Tonnesen, G.S., Bash, J.O., Valin, L.C., Crawford, J.H., Fried, A., Walega, J.G.,
 1308 2018. Modeling NH₄NO₃ Over the San Joaquin Valley During the 2013 DISCOVER-
 1309 AQ Campaign. *Journal of Geophysical Research: Atmospheres* 123, 4727–4745.
 1310 <https://doi.org/10.1029/2018JD028290>

1311 Kelly, K.E., Jaramillo, I.C., Glisson, J., Kotchenruther, R.A., Daher, N., n.d. Wood Burning
 1312 Trends on Utah’s Wasatch Front [WWW Document]. Woodburning History. URL
 1313 <https://documents.deq.utah.gov/air-quality/technical-analysis/DAQ-2020-002118.pdf>

1314 Kelly, K.E., Kotchenruther, R., Kuprov, R., Silcox, G.D., 2013. Receptor model source
 1315 attributions for Utah’s Salt Lake City airshed and the impacts of wintertime secondary

1316 ammonium nitrate and ammonium chloride aerosol. J Air Waste Manag Assoc 63, 575–
 1317 590. <https://doi.org/10.1080/10962247.2013.774819>

1318 Kim, M., Or, D., 2019. Microscale pH variations during drying of soils and desert biocrusts
 1319 affect HONO and NH₃ emissions. Nature Communications 10, 3944.
 1320 <https://doi.org/10.1038/s41467-019-11956-6>

1321 Kim, S., VandenBoer, T.C., Young, C.J., Riedel, T.P., Thornton, J.A., Swarthout, B., Sive, B.,
 1322 Lerner, B., Gilman, J.B., Warneke, C., Roberts, J.M., Guenther, A., Wagner, N.L., Dubé,
 1323 W.P., Williams, E., Brown, S.S., 2014. The primary and recycling sources of OH during
 1324 the NACHTT-2011 campaign: HONO as an important OH primary source in the
 1325 wintertime. Journal of Geophysical Research: Atmospheres 119, 6886–6896.
 1326 <https://doi.org/10.1002/2013JD019784>

1327 Kim, Y.J., S.N. Spak, G.R. Carmichael, N. Riemer, and C.O. Stanier, *Modeled aerosol nitrate*
 1328 *formation pathways during wintertime in the Great Lakes region of North America.*
 1329 Journal of Geophysical Research: Atmospheres, 2014: p. 2014JD022320.

1330 Kleeman, M., 2019. Investigative modeling of PM_{2.5} episodes in the San Joaquin Valley Air
 1331 Basin during recent years.

1332 Kleeman, M.J., Kumar, A., Dhiman, A., n.d. Investigative Modeling of PM_{2.5} Episodes in the
 1333 San Joaquin Valley Air Basin during Recent Years [WWW Document]. Climate Change
 1334 Impact on Air Quality in California. URL
 1335 <https://ww2.arb.ca.gov/sites/default/files/classic/research/apr/past/15-301.pdf>

1336 Kleeman, M.J., Ying, Q., Kaduwela, A., 2005. Control strategies for the reduction of airborne
 1337 particulate nitrate in California's San Joaquin Valley. Atmospheric Environment 39,
 1338 5325–5341. <https://doi.org/10.1016/j.atmosenv.2005.05.044>

1339 Kleffmann, J., Gavriloaiei, T., Hofzumahaus, A., Holland, F., Koppmann, R., Rupp, L.,
 1340 Schlosser, E., Siese, M., Wahner, A., 2005. Daytime formation of nitrous acid: A major
 1341 source of OH radicals in a forest. *Geophysical Research Letters* 32.
 1342 <https://doi.org/10.1029/2005GL022524>
 1343 Kleinman, L.I., 1994. Low and high NO_x tropospheric photochemistry. *Journal of Geophysical*
 1344 *Research: Atmospheres* 99, 16831–16838. <https://doi.org/10.1029/94JD01028>
 1345 Knote, C., Hodzic, A., and Jimenez, J. L.: The effect of dry and wet deposition of condensable
 1346 vapors on secondary organic aerosols concentrations over the continental US, *Atmos.*
 1347 *Chem. Phys.*, 15, 1–18, <https://doi.org/10.5194/acp-15-1-2015>, 2015.
 1348 Kochanski, A.K., Mallia, D.V., Fearon, M.G., Mandel, J., Souri, A.H., Brown, T., 2019.
 1349 Modeling Wildfire Smoke Feedback Mechanisms Using a Coupled Fire-Atmosphere
 1350 Model With a Radiatively Active Aerosol Scheme. *Journal of Geophysical Research:*
 1351 *Atmospheres* 124, 9099–9116. <https://doi.org/10.1029/2019JD030558>
 1352 Kolden, C.A., Abatzoglou, J.T., 2018. Spatial Distribution of Wildfires Ignited under Katabatic
 1353 versus Non-Katabatic Winds in Mediterranean Southern California USA. *Fire* 1, 19.
 1354 <https://doi.org/10.3390/fire1020019>
 1355 Kolesar, K.R., Mattson, C.N., Peterson, P.K., May, N.W., Prendergast, R.K., Pratt, K.A., 2018.
 1356 Increases in wintertime PM_{2.5} sodium and chloride linked to snowfall and road salt
 1357 application. *Atmospheric Environment* 177, 195–202.
 1358 <https://doi.org/10.1016/j.atmosenv.2018.01.008>
 1359 Koop, T., Bookhold, J., Shiraiwa, M., Pöschl, U., 2011. Glass transition and phase state of
 1360 organic compounds: dependency on molecular properties and implications for secondary

1361 organic aerosols in the atmosphere. *Phys. Chem. Chem. Phys.* 13, 19238–19255.
 1362 <https://doi.org/10.1039/C1CP22617G>
 1363 Kotchenruther, R.A., 2020. Recent changes in winter PM_{2.5} contributions from wood smoke,
 1364 motor vehicles, and other sources in the Northwest U.S. *Atmospheric Environment* 237,
 1365 117724. <https://doi.org/10.1016/j.atmosenv.2020.117724>
 1366 Kotchenruther, R.A., 2016. Source apportionment of PM_{2.5} at multiple Northwest U.S. sites:
 1367 Assessing regional winter wood smoke impacts from residential wood combustion.
 1368 *Atmospheric Environment* 142, 210–219. <https://doi.org/10.1016/j.atmosenv.2016.07.048>
 1369 Kotchenruther, R.A., n.d. Trend in Source Impacts at Long-Running PM_{2.5} CSN Monitoring
 1370 Sites in the Pacific Northwest and Intermountain West [WWW Document]. PowerPoint
 1371 Presentation. URL [http://lar.wsu.edu/nw-](http://lar.wsu.edu/nw-airquest/docs/20190611_meeting/NWAQ_20190612_Kotchenruther.pdf)
 1372 [airquest/docs/20190611_meeting/NWAQ_20190612_Kotchenruther.pdf](http://lar.wsu.edu/nw-airquest/docs/20190611_meeting/NWAQ_20190612_Kotchenruther.pdf)
 1373 Kuprov, R., Eatough, D.J., Cruickshank, T., Olson, N., Cropper, P.M., Hansen, J.C., 2014.
 1374 Composition and secondary formation of fine particulate matter in the Salt Lake Valley:
 1375 Winter 2009. *Journal of the Air & Waste Management Association* 64, 957–969.
 1376 <https://doi.org/10.1080/10962247.2014.903878>
 1377 Kurtenbach, R., Becker, K.H., Gomes, J.A.G., Kleffmann, J., Lörzer, J.C., Spittler, M., Wiesen,
 1378 P., Ackermann, R., Geyer, A., Platt, U., 2001. Investigations of emissions and
 1379 heterogeneous formation of HONO in a road traffic tunnel. *Atmospheric Environment*
 1380 35, 3385–3394. [https://doi.org/10.1016/S1352-2310\(01\)00138-8](https://doi.org/10.1016/S1352-2310(01)00138-8)
 1381 Lareau, N., Horel, J., 2015. Dynamically Induced Displacements of a Persistent Cold-Air Pool.
 1382 *Boundary-Layer Meteorology* 154. <https://doi.org/10.1007/s10546-014-9968-5>

1383 Lareau, N.P., 2020. Subcloud and Cloud-Base Latent Heat Fluxes during Shallow Cumulus
1384 Convection. *J. Atmos. Sci.* 77, 1081–1100. <https://doi.org/10.1175/JAS-D-19-0122.1>

1385 Lareau, N.P., Crosman, E., Whiteman, C.D., Horel, J.D., Hoch, S.W., Brown, W.O.J., Horst,
1386 T.W., 2013. The Persistent Cold-Air Pool Study. *Bull. Amer. Meteor. Soc.* 94, 51–63.
1387 <https://doi.org/10.1175/BAMS-D-11-00255.1>

1388 Lareau, N.P., Horel, J.D., 2015. Turbulent Erosion of Persistent Cold-Air Pools: Numerical
1389 Simulations. *J. Atmos. Sci.* 72, 1409–1427. <https://doi.org/10.1175/JAS-D-14-0173.1>

1390 Largeron, Y. and Staquet, C., 2016. Persistent inversion dynamics and wintertime PM10 air
1391 pollution in Alpine valleys. *Atmospheric Environment*, 135, pp.92-108.

1392 Laskin, A., Laskin, J., Nizkorodov, S.A., 2015. Chemistry of Atmospheric Brown Carbon.
1393 *Chem. Rev.* 115, 4335–4382. <https://doi.org/10.1021/cr5006167>

1394 Levy, H., 1971. Normal Atmosphere: Large Radical and Formaldehyde Concentrations
1395 Predicted. *Science* 173, 141–143. <https://doi.org/10.1126/science.173.3992.141>

1396 Li, Q.-F., Wang-Li, L., Wang, K., Chai, L., Cortus, E., Kilic, I., Bogan, B., Ni, J.-Q., Heber, A.,
1397 2013. The national air emissions monitoring study’s Southeast Layer Site: Part II.
1398 Particulate matter. *Transactions of the ASABE (American Society of Agricultural and*
1399 *Biological Engineers)* 56, 1173–1184. <https://doi.org/10.13031/trans.56.9571>

1400 Li, Z., Smith, K.A., Cappa, C.D., 2018. Influence of relative humidity on the heterogeneous
1401 oxidation of secondary organic aerosol. *Atmospheric Chemistry and Physics* 18, 14585–
1402 14608. <https://doi.org/10.5194/acp-18-14585-2018>

1403 Lighthall, D., Capitman, J., n.d. The Long Road to Clean Air in the San Joaquin Valley: Facing
1404 the Challenge of Public Engagement. [WWW Document].

1405 Lin, J.C., Mitchell, L., Crosman, E., Mendoza, D.L., Buchert, M., Bares, R., Fasoli, B., Bowling,
1406 D.R., Pataki, D., Catharine, D., Strong, C., Gurney, K.R., Patarasuk, R., Baasandorj, M.,
1407 Jacques, A., Hoch, S., Horel, J., Ehleringer, J., 2018. CO₂ and Carbon Emissions from
1408 Cities: Linkages to Air Quality, Socioeconomic Activity, and Stakeholders in the Salt
1409 Lake City Urban Area. *Bull. Amer. Meteor. Soc.* 99, 2325–2339.
1410 <https://doi.org/10.1175/BAMS-D-17-0037.1>

1411 Lin, X., Trainer, M., Liu, S.C., 1988. On the nonlinearity of the tropospheric ozone production.
1412 *Journal of Geophysical Research: Atmospheres* 93, 15879–15888.
1413 <https://doi.org/10.1029/JD093iD12p15879>

1414 Liu, P., Li, Y.J., Wang, Y., Bateman, A.P., Zhang, Y., Gong, Z., Bertram, A.K., Martin, S.T.,
1415 2018. Highly Viscous States Affect the Browning of Atmospheric Organic Particulate
1416 Matter. *ACS Cent. Sci.* 4, 207–215. <https://doi.org/10.1021/acscentsci.7b00452>

1417 Liu, S.C., 1977. Possible effects on tropospheric O₃ and OH due to NO emissions. *Geophysical*
1418 *Research Letters* 4, 325–328. <https://doi.org/10.1029/GL004i008p00325>

1419 Liu, Y., Nie, W., Xu, Z., Wang, T., Wang, R., Li, Y., Wang, L., Chi, X., Ding, A., 2019. Semi-
1420 quantitative understanding of source contribution to nitrous acid (HONO) based on 1 year
1421 of continuous observation at the SORPES station in eastern China. *Atmospheric*
1422 *Chemistry and Physics* 19, 13289–13308. <https://doi.org/10.5194/acp-19-13289-2019>

1423 Lu, K., Fuchs, H., Hofzumahaus, A., Tan, Z., Wang, H., Zhang, L., Schmitt, S.H., Rohrer, F.,
1424 Bohn, B., Broch, S., Dong, H., Gkatzelis, G.I., Hohaus, T., Holland, F., Li, X., Liu, Ying,
1425 Liu, Yuhan, Ma, X., Novelli, A., Schlag, P., Shao, M., Wu, Y., Wu, Z., Zeng, L., Hu, M.,
1426 Kiendler-Scharr, A., Wahner, A., Zhang, Y., 2019. Fast Photochemistry in Wintertime

1427 Haze: Consequences for Pollution Mitigation Strategies. *Environ. Sci. Technol.* 53,
 1428 10676–10684. <https://doi.org/10.1021/acs.est.9b02422>

1429 Luo, G., Yu, F., and Schwab, J.: Revised treatment of wet scavenging processes dramatically
 1430 improves GEOS-Chem 12.0.0 simulations of surface nitric acid, nitrate, and ammonium
 1431 over the United States, *Geosci. Model Dev.*, 12, 3439–3447, [https://doi.org/10.5194/gmd-](https://doi.org/10.5194/gmd-12-3439-2019)
 1432 12-3439-2019, 2019.

1433 Lyon, D.R., Zavala-Araiza, D., Alvarez, R.A., Harriss, R., Palacios, V., Lan, X., Talbot, R.,
 1434 Lavoie, T., Shepson, P., Yacovitch, T.I., Herndon, S.C., Marchese, A.J., Zimmerle, D.,
 1435 Robinson, A.L., Hamburg, S.P., 2015. Constructing a Spatially Resolved Methane
 1436 Emission Inventory for the Barnett Shale Region. *Environ. Sci. Technol.* 49, 8147–8157.
 1437 <https://doi.org/10.1021/es506359c>

1438 Massey, J.D., Steenburgh, W.J., Hoch, S.W., Jensen, D.D., 2017. Simulated and Observed
 1439 Surface Energy Fluxes and Resulting Playa Breezes during the MATERHORN Field
 1440 Campaigns. *J. Appl. Meteor. Climatol.* 56, 915–935. [https://doi.org/10.1175/JAMC-D-](https://doi.org/10.1175/JAMC-D-16-0161.1)
 1441 16-0161.1

1442 McCaffrey, K., Wilczak, J.M., Bianco, L., Gritmit, E., Sharp, J., Banta, R., Friedrich, K.,
 1443 Fernando, H.J.S., Krishnamurthy, R., Leo, L.S., Muradyan, P., 2019. Identification and
 1444 Characterization of Persistent Cold Pool Events from Temperature and Wind Profilers in
 1445 the Columbia River Basin. *J. Appl. Meteor. Climatol.* 58, 2533–2551.
 1446 <https://doi.org/10.1175/JAMC-D-19-0046.1>

1447 McDonald, B.C., de Gouw, J.A., Gilman, J.B., Jathar, S.H., Akherati, A., Cappa, C.D., Jimenez,
 1448 J.L., Lee-Taylor, J., Hayes, P.L., McKeen, S.A., Cui, Y.Y., Kim, S.-W., Gentner, D.R.,
 1449 Isaacman-VanWertz, G., Goldstein, A.H., Harley, R.A., Frost, G.J., Roberts, J.M.,

1450 Ryerson, T.B., Trainer, M., 2018. Volatile chemical products emerging as largest
 1451 petrochemical source of urban organic emissions. *Science* 359, 760–764.
 1452 <https://doi.org/10.1126/science.aag0524>
 1453 McDuffie, E.E., Edwards, P.M., Gilman, J.B., Lerner, B.M., Dubé, W.P., Trainer, M., Wolfe,
 1454 D.E., Angevine, W.M., deGouw, J., Williams, E.J., Tevlin, A.G., Murphy, J.G., Fischer,
 1455 E.V., McKeen, S., Ryerson, T.B., Peischl, J., Holloway, J.S., Aikin, K., Langford, A.O.,
 1456 Senff, C.J., Alvarez, R.J., Hall, S.R., Ullmann, K., Lantz, K.O., Brown, S.S., 2016.
 1457 Influence of oil and gas emissions on summertime ozone in the Colorado Northern Front
 1458 Range. *Journal of Geophysical Research: Atmospheres* 121, 8712–8729.
 1459 <https://doi.org/10.1002/2016JD025265>
 1460 McDuffie, E.E., Fibiger, D.L., Dubé, W.P., Hilfiker, F.L., Lee, B.H., Jaeglé, L., Guo, H., Weber,
 1461 R.J., Reeves, J.M., Weinheimer, A.J., Schroder, J.C., Campuzano-Jost, P., Jimenez, J.L.,
 1462 Dibb, J.E., Veres, P., Ebben, C., Sparks, T.L., Wooldridge, P.J., Cohen, R.C., Campos,
 1463 T., Hall, S.R., Ullmann, K., Roberts, J.M., Thornton, J.A., Brown, S.S., 2018. CINO₂
 1464 Yields From Aircraft Measurements During the 2015 WINTER Campaign and Critical
 1465 Evaluation of the Current Parameterization. *Journal of Geophysical Research:*
 1466 *Atmospheres* 123, 12,994–13,015. <https://doi.org/10.1029/2018JD029358>
 1467 McDuffie, E.E., Womack, C.C., Fibiger, D.L., Dube, W.P., Franchin, A., Middlebrook, A.M.,
 1468 Goldberger, L., Lee, B.H., Thornton, J.A., Moravek, A., Murphy, J.G., Baasandorj, M.,
 1469 Brown, S.S., 2019. On the contribution of nocturnal heterogeneous reactive nitrogen
 1470 chemistry to particulate matter formation during wintertime pollution events in Northern
 1471 Utah. *Atmospheric Chemistry and Physics* 19, 9287–9308. [https://doi.org/10.5194/acp-](https://doi.org/10.5194/acp-19-9287-2019)
 1472 19-9287-2019

1473 McKenzie, L.M., Blair, B., Hughes, J., Allshouse, W.B., Blake, N.J., Helmig, D., Milmoie, P.,
 1474 Halliday, H., Blake, D.R., Adgate, J.L., 2018. Ambient Nonmethane Hydrocarbon Levels
 1475 Along Colorado's Northern Front Range: Acute and Chronic Health Risks. *Environ. Sci.*
 1476 *Technol.* 52, 4514–4525. <https://doi.org/10.1021/acs.est.7b05983>
 1477 McNamara, S.M., Kolesar, K.R., Wang, S., Kirpes, R.M., May, N.W., Gunsch, M.J., Cook, R.D.,
 1478 Fuentes, J.D., Hornbrook, R.S., Apel, E.C., China, S., Laskin, A., Pratt, K.A., 2020.
 1479 Observation of Road Salt Aerosol Driving Inland Wintertime Atmospheric Chlorine
 1480 Chemistry. *ACS Cent. Sci.* 6, 684–694. <https://doi.org/10.1021/acscentsci.9b00994>
 1481 Mendoza, D., Gurney, K.R., Geethakumar, S., Chandrasekaran, V., Zhou, Y., Razlivanov, I.,
 1482 2013. Implications of uncertainty on regional CO₂ mitigation policies for the U.S. onroad
 1483 sector based on a high-resolution emissions estimate. *Energy Policy*, Special section:
 1484 Long Run Transitions to Sustainable Economic Structures in the European Union and
 1485 Beyond 55, 386–395. <https://doi.org/10.1016/j.enpol.2012.12.027>
 1486 Mendoza, D.L., Crosman, E.T., Mitchell, L.E., Jacques, A., Fasoli, B., Park, A.M., Lin, J.C.,
 1487 Horel, J., 2019a. The TRAX Light-Rail Train Air Quality Observation Project.
 1488 <https://doi.org/10.20944/preprints201911.0114.v1>
 1489 Mendoza, D.L., Crosman, E.T., Mitchell, L.E., Jacques, A.A., Fasoli, B., Park, A.M., Lin, J.C.,
 1490 Horel, J.D., 2019b. The TRAX Light-Rail Train Air Quality Observation Project. *Urban*
 1491 *Science* 3, 108. <https://doi.org/10.3390/urbansci3040108>
 1492 Meng, Z., Dabdub, D., Seinfeld, J.H., 1997. Chemical Coupling Between Atmospheric Ozone
 1493 and Particulate Matter. *Science* 277, 116–119.
 1494 <https://doi.org/10.1126/science.277.5322.116>

1495 Meroni, A., Pirovano, G., Gilardoni, S., Lonati, G., Colombi, C., Gianelle, V., Paglione, M.,
1496 Poluzzi, V., Riva, G.M., Toppetti, A., 2017. Investigating the role of chemical and
1497 physical processes on organic aerosol modelling with CAMx in the Po Valley during a
1498 winter episode. *Atmospheric Environment* 171, 126–142.
1499 <https://doi.org/10.1016/j.atmosenv.2017.10.004>

1500 Miao, Y., Liu, S., Guo, J., Yan, Y., Huang, S., Zhang, G., Zhang, Y., Lou, M., 2018. Impacts of
1501 meteorological conditions on wintertime PM_{2.5} pollution in Taiyuan, North China.
1502 *Environ Sci Pollut Res* 25, 21855–21866. <https://doi.org/10.1007/s11356-018-2327-1>

1503 Miao, Y., Liu, S., Zheng, Y., Wang, S., 2016. Modeling the feedback between aerosol and
1504 boundary layer processes: a case study in Beijing, China. *Environ Sci Pollut Res Int* 23,
1505 3342–3357. <https://doi.org/10.1007/s11356-015-5562-8>

1506 Michoud, V., Doussin, J.-F., Colomb, A., Afif, C., Borbon, A., Camredon, M., Aumont, B.,
1507 Legrand, M., Beekmann, M., 2015. Strong HONO formation in a suburban site during
1508 snowy days. *Atmospheric Environment* 116, 155–158.
1509 <https://doi.org/10.1016/j.atmosenv.2015.06.040>

1510 Minejima, C., Kubo, M., Tohjima, Y., Yamagishi, H., Koyama, Y., Maksyutov, S., Kita, K.,
1511 Mukai, H., 2012. Analysis of $\Delta\text{O}_2/\Delta\text{CO}_2$ ratios for the pollution events observed at
1512 Hateruma Island, Japan. *Atmospheric Chemistry and Physics* 12, 2713–2723.
1513 <https://doi.org/10.5194/acp-12-2713-2012>

1514 Mitchell, L.E., Crosman, E.T., Jacques, A.A., Fasoli, B., Leclair-Marzolf, L., Horel, J., Bowling,
1515 D.R., Ehleringer, J.R., Lin, J.C., 2018a. Monitoring of greenhouse gases and pollutants
1516 across an urban area using a light-rail public transit platform. *Atmospheric Environment*
1517 187, 9–23. <https://doi.org/10.1016/j.atmosenv.2018.05.044>

1518 Mitchell, L.E., Lin, J.C., Bowling, D.R., Pataki, D.E., Strong, C., Schauer, A.J., Bares, R., Bush,
 1519 S.E., Stephens, B.B., Mendoza, D., Mallia, D., Holland, L., Gurney, K.R., Ehleringer,
 1520 J.R., 2018b. Long-term urban carbon dioxide observations reveal spatial and temporal
 1521 dynamics related to urban characteristics and growth. PNAS 115, 2912–2917.
 1522 <https://doi.org/10.1073/pnas.1702393115>
 1523 Mohr, C., Lopez-Hilfiker, F.D., Zotter, P., Prévôt, A.S.H., Xu, L., Ng, N.L., Herndon, S.C.,
 1524 Williams, L.R., Franklin, J.P., Zahniser, M.S., Worsnop, D.R., Knighton, W.B., Aiken,
 1525 A.C., Gorkowski, K.J., Dubey, M.K., Allan, J.D., Thornton, J.A., 2013. Contribution of
 1526 Nitrated Phenols to Wood Burning Brown Carbon Light Absorption in Detling, United
 1527 Kingdom during Winter Time. Environ. Sci. Technol. 47, 6316–6324.
 1528 <https://doi.org/10.1021/es400683v>
 1529 Moravek, A., Murphy, J.G., Hrdina, A., Lin, J.C., Pennell, C., Franchin, A., Middlebrook, A.M.,
 1530 Fibiger, D.L., Womack, C.C., McDuffie, E.E., Martin, R., Moore, K., Baasandorj, M.,
 1531 Brown, S.S., 2019. Wintertime spatial distribution of ammonia and its emission sources
 1532 in the Great Salt Lake region. Atmospheric Chemistry and Physics 19, 15691–15709.
 1533 <https://doi.org/10.5194/acp-19-15691-2019>
 1534 Murphy, J.G., Gregoire, P.K., Tevlin, A.G., Wentworth, G.R., Ellis, R.A., Markovic, M.Z.,
 1535 VandenBoer, T.C., 2017. Observational constraints on particle acidity using
 1536 measurements and modelling of particles and gases. Faraday Discuss. 200, 379–395.
 1537 <https://doi.org/10.1039/C7FD00086C>
 1538 Nah, T., Guo, H., Sullivan, A. P., Chen, Y., Tanner, D. J., Nenes, A., Russell, A., Ng, N. L.,
 1539 Huey, L. G., and Weber, R. J.: Characterization of aerosol composition, aerosol acidity,
 1540 and organic acid partitioning at an agriculturally intensive rural southeastern US site,

1541 Atmos. Chem. Phys., 18, 11471–11491, <https://doi.org/10.5194/acp-18-11471-2018>,
1542 2018.

1543 Neemann, E.M., Crosman, E.T., Horel, J.D., Avey, L., 2015. Simulations of a cold-air pool
1544 associated with elevated wintertime ozone in the Uintah Basin, Utah. Atmospheric
1545 Chemistry and Physics 15, 135–151. <https://doi.org/10.5194/acp-15-135-2015>

1546 Nelson, A.C., Lang, R., American Planning Association, 2011. Megapolitan America: a new
1547 vision for understanding America’s metropolitan geography. APA Planners Press ; Taylor
1548 & Francis [distributor, Chicago, Ill.; London.

1549 Nguyen, K., Dabdub, D., 2002. NO_x and VOC Control and Its Effects on the Formation of
1550 Aerosols. Aerosol Science and Technology 36, 560–572.
1551 <https://doi.org/10.1080/02786820252883801>

1552 Nguyen, T.B., Crounse, J.D., Teng, A.P., Clair, J.M.S., Paulot, F., Wolfe, G.M. and Wennberg,
1553 P.O., 2015. Rapid deposition of oxidized biogenic compounds to a temperate
1554 forest. *Proceedings of the National Academy of Sciences*, 112(5), pp.E392-E401.

1555 Nisbet, E.G., Fisher, R.E., Lowry, D., France, J.L., Allen, G., Bakkaloglu, S., Broderick, T.J.,
1556 Cain, M., Coleman, M., Fernandez, J., Forster, G., Griffiths, P.T., Iverach, C.P., Kelly,
1557 B.F.J., Manning, M.R., Nisbet-Jones, P.B.R., Pyle, J.A., Townsend-Small, A., al-Shalaan,
1558 A., Warwick, N., Zazzeri, G., 2020. Methane Mitigation: Methods to Reduce Emissions,
1559 on the Path to the Paris Agreement. *Reviews of Geophysics* 58, e2019RG000675.
1560 <https://doi.org/10.1029/2019RG000675>

1561 Oldroyd, H., Pardyjak, E., Higgins, C., Parlange, M., 2016. Buoyant Turbulent Kinetic Energy
1562 Production in Steep-Slope Katabatic Flow. *Boundary-Layer Meteorology*.
1563 <https://doi.org/10.1007/s10546-016-0184-3>

1564 Oldroyd, H.J., Katul, G., Pardyjak, E.R., Parlange, M.B., 2014. Momentum balance of katabatic
 1565 flow on steep slopes covered with short vegetation. *Geophysical Research Letters* 41,
 1566 4761–4768. <https://doi.org/10.1002/2014GL060313>

1567 Osada, K., Saito, S., Tsurumaru, H., Hoshi, J., 2019. Vehicular exhaust contributions to high
 1568 NH₃ and PM_{2.5} concentrations during winter in Tokyo, Japan. *Atmospheric*
 1569 *Environment* 206, 218–224. <https://doi.org/10.1016/j.atmosenv.2019.03.008>

1570 Osthoff, H.D., Roberts, J.M., Ravishankara, A.R., Williams, E.J., Lerner, B.M., Sommariva, R.,
 1571 Bates, T.S., Coffman, D., Quinn, P.K., Dibb, J.E., Stark, H., Burkholder, J.B., Talukdar,
 1572 R.K., Meagher, J., Fehsenfeld, F.C., Brown, S.S., 2008. High levels of nitryl chloride in
 1573 the polluted subtropical marine boundary layer. *Nature Geoscience* 1, 324–328.
 1574 <https://doi.org/10.1038/ngeo177>

1575 Paglione, M., Gilardoni, S., Rinaldi, M., Decesari, S., Zanca, N., Sandrini, S., Giulianelli, L.,
 1576 Bacco, D., Ferrari, S., Poluzzi, V., Scotto, F., Trentini, A., Poulain, L., Herrmann, H.,
 1577 Wiedensohler, A., Canonaco, F., Prévôt, A.S.H., Massoli, P., Carbone, C., Facchini,
 1578 M.C., Fuzzi, S., 2020. The impact of biomass burning and aqueous-phase processing on
 1579 air quality: a multi-year source apportionment study in the Po Valley, Italy. *Atmospheric*
 1580 *Chemistry and Physics* 20, 1233–1254. <https://doi.org/10.5194/acp-20-1233-2020>

1581 Pagonis, D., Price, D.J., Algrim, L.B., Day, D.A., Handschy, A.V., Stark, H., Miller, S.L., de
 1582 Gouw, J., Jimenez, J.L., Ziemann, P.J., 2019. Time-Resolved Measurements of Indoor
 1583 Chemical Emissions, Deposition, and Reactions in a University Art Museum. *Environ.*
 1584 *Sci. Technol.* 53, 4794–4802. <https://doi.org/10.1021/acs.est.9b00276>

1585 Pal, S., Haeffelin, M., 2015. Forcing mechanisms governing diurnal, seasonal, and interannual
 1586 variability in the boundary layer depths: Five years of continuous lidar observations over

1587 a suburban site near Paris. *Journal of Geophysical Research: Atmospheres* 120, 11,936-
1588 11,956. <https://doi.org/10.1002/2015JD023268>

1589 Pandis, S.N., Seinfeld, J.H., Pilinis, C., 1990. The smog-fog-smog cycle and acid deposition.
1590 *Journal of Geophysical Research: Atmospheres* 95, 18489–18500.
1591 <https://doi.org/10.1029/JD095iD11p18489>

1592 Park, S.S., Kozawa, K., Fruin, S., Mara, S., Hsu, Y.-K., Jakober, C., Winer, A., Herner, J., 2011.
1593 Emission Factors for High-Emitting Vehicles Based on On-Road Measurements of
1594 Individual Vehicle Exhaust with a Mobile Measurement Platform. *Journal of the Air &
1595 Waste Management Association* 61, 1046–1056.
1596 <https://doi.org/10.1080/10473289.2011.595981>

1597 Parrish, D.D., Singh, H.B., Molina, L., Madronich, S., 2011. Air quality progress in North
1598 American megacities: A review. *Atmospheric Environment* 45, 7015–7025.
1599 <https://doi.org/10.1016/j.atmosenv.2011.09.039>

1600 Parworth, C.L., Young, D.E., Kim, H., Zhang, X., Cappa, C.D., Collier, S., Zhang, Q., 2017.
1601 Wintertime water-soluble aerosol composition and particle water content in Fresno,
1602 California. *Journal of Geophysical Research: Atmospheres* 122, 3155–3170.
1603 <https://doi.org/10.1002/2016JD026173>

1604 Pataki, D.E., Bowling, D.R., Ehleringer, J.R., 2003. Seasonal cycle of carbon dioxide and its
1605 isotopic composition in an urban atmosphere: Anthropogenic and biogenic effects.
1606 *Journal of Geophysical Research: Atmospheres* 108.
1607 <https://doi.org/10.1029/2003JD003865>

1608 Pataki, D.E., Tyler, B.J., Peterson, R.E., Nair, A.P., Steenburgh, W.J., Pardyjak, E.R., 2005. Can
 1609 carbon dioxide be used as a tracer of urban atmospheric transport? *Journal of*
 1610 *Geophysical Research: Atmospheres* 110. <https://doi.org/10.1029/2004JD005723>
 1611 Paulot, Jacob, D.J., Pinder, R.W., Bash, J.O., Travis, K., Henze, D.K., 2014. Ammonia emissions
 1612 in the United States, European Union, and China derived by high-resolution inversion of
 1613 ammonium wet deposition data: Interpretation with a new agricultural emissions
 1614 inventory (MASAGE_NH3). *J. Geophys. Res. Atmos.* 119, 4343–4364.
 1615 <https://doi.org/10.1002/2013JD021130>
 1616 Perraud, V., Horne, J.R., Martinez, A.S., Kalinowski, J., Meinardi, S., Dawson, M.L., Wingen,
 1617 L.M., Dabdub, D., Blake, D.R., Gerber, R.B., Finlayson-Pitts, B.J., 2015. The future of
 1618 airborne sulfur-containing particles in the absence of fossil fuel sulfur dioxide emissions.
 1619 *PNAS* 112, 13514–13519. <https://doi.org/10.1073/pnas.1510743112>
 1620 Petäjä, T., Järvi, L., Kerminen, V.-M., Ding, A.J., Sun, J.N., Nie, W., Kujansuu, J., Virkkula, A.,
 1621 Yang, X., Fu, C.B., Zilitinkevich, S., Kulmala, M., 2016. Enhanced air pollution via
 1622 aerosol-boundary layer feedback in China. *Scientific Reports* 6, 18998.
 1623 <https://doi.org/10.1038/srep18998>
 1624 Pétron, G., Frost, G., Miller, B.R., Hirsch, A.I., Montzka, S.A., Karion, A., Trainer, M.,
 1625 Sweeney, C., Andrews, A.E., Miller, L., Kofler, J., Bar-Ilan, A., Dlugokencky, E.J.,
 1626 Patrick, L., Moore, C.T., Ryerson, T.B., Siso, C., Kolodzey, W., Lang, P.M., Conway, T.,
 1627 Novelli, P., Masarie, K., Hall, B., Guenther, D., Kitzis, D., Miller, J., Welsh, D., Wolfe,
 1628 D., Neff, W., Tans, P., 2012. Hydrocarbon emissions characterization in the Colorado
 1629 Front Range: A pilot study. *Journal of Geophysical Research: Atmospheres* 117.
 1630 <https://doi.org/10.1029/2011JD016360>

1631 Pichugina, Y.L., Banta, R.M., Bonin, T., Brewer, W.A., Choukulkar, A., McCarty, B.J., Baidar,
 1632 S., Draxl, C., Fernando, H.J.S., Kenyon, J., Krishnamurthy, R., Marquis, M., Olson, J.,
 1633 Sharp, J., Stoelinga, M., 2019. Spatial Variability of Winds and HRRR–NCEP Model
 1634 Error Statistics at Three Doppler-Lidar Sites in the Wind-Energy Generation Region of
 1635 the Columbia River Basin. *J. Appl. Meteor. Climatol.* 58, 1633–1656.
 1636 <https://doi.org/10.1175/JAMC-D-18-0244.1>
 1637 Pickers, P., Manning, A.C., Forster, G.L., van der Laan, S., Wilson, P.A., Wenger, A., Meijer,
 1638 H.A.J., Oram, D.E., Sturges, W.T., 2016. Quantifying fossil fuel CO₂ from continuous
 1639 measurements of APO: a novel approach 18, EPSC2016-469.
 1640 Plant, G., Kort, E.A., Floerchinger, C., Gvakharia, A., Vimont, I., Sweeney, C., 2019. Large
 1641 Fugitive Methane Emissions From Urban Centers Along the U.S. East Coast.
 1642 *Geophysical Research Letters* 46, 8500–8507. <https://doi.org/10.1029/2019GL082635>
 1643 Prabhakar, G., Parworth, C.L., Zhang, X., Kim, H., Young, D.E., Beyersdorf, A.J., Ziemba, L.D.,
 1644 Nowak, J.B., Bertram, T.H., Faloona, I.C., Zhang, Q., Cappa, C.D., 2017. Observational
 1645 assessment of the role of nocturnal residual-layer chemistry in determining daytime
 1646 surface particulate nitrate concentrations. *Atmospheric Chemistry and Physics* 17,
 1647 14747–14770. <https://doi.org/10.5194/acp-17-14747-2017>
 1648 Pun, B.K., Balmori, R.T.F., Seigneur, C., 2009. Modeling wintertime particulate matter
 1649 formation in central California. *Atmospheric Environment* 43, 402–409.
 1650 <https://doi.org/10.1016/j.atmosenv.2008.08.040>
 1651 Pusede, S.E., Duffey, K.C., Shusterman, A.A., Saleh, A., Laughner, J.L., Wooldridge, P.J.,
 1652 Zhang, Q., Parworth, C.L., Kim, H., Capps, S.L., Valin, L.C., Cappa, C.D., Fried, A.,
 1653 Walega, J., Nowak, J.B., Weinheimer, A.J., Hoff, R.M., Berkoff, T.A., Beyersdorf, A.J.,

1654 Olson, J., Crawford, J.H., Cohen, R.C., 2016. On the effectiveness of nitrogen oxide
 1655 reductions as a control over ammonium nitrate aerosol. *Atmospheric Chemistry and*
 1656 *Physics* 16, 2575–2596. <https://doi.org/10.5194/acp-16-2575-2016>
 1657 Pye, H.O.T., Nenes, A., Alexander, B., Ault, A.P., Barth, M.C., Clegg, S.L., Collett Jr., J.L.,
 1658 Fahey, K.M., Hennigan, C.J., Herrmann, H., Kanakidou, M., Kelly, J.T., Ku, I.-T.,
 1659 McNeill, V.F., Riemer, N., Schaefer, T., Shi, G., Tilgner, A., Walker, J.T., Wang, T.,
 1660 Weber, R., Xing, J., Zaveri, R.A., Zuend, A., 2020. The acidity of atmospheric particles
 1661 and clouds. *Atmospheric Chemistry and Physics* 20, 4809–4888.
 1662 <https://doi.org/10.5194/acp-20-4809-2020>
 1663 Qin, X., Prather, K., 2006. Impact of biomass emissions on particle chemistry during the
 1664 California Regional Particulate Air Quality Study. *International Journal of Mass*
 1665 *Spectrometry* 258, 142–150. <https://doi.org/10.1016/j.ijms.2006.09.004>
 1666 Reeves, H., Elmore, K., Manikin, G., Stensrud, D., 2011. Assessment of Forecasts during
 1667 Persistent Valley Cold Pools in the Bonneville Basin by the North American Mesoscale
 1668 Model. *Weather and Forecasting* 26, 447–467. [https://doi.org/10.1175/WAF-D-10-](https://doi.org/10.1175/WAF-D-10-05014.1)
 1669 [05014.1](https://doi.org/10.1175/WAF-D-10-05014.1)
 1670 Renbaum-Wolff, L., Grayson, J.W., Bateman, A.P., Kuwata, M., Sellier, M., Murray, B.J.,
 1671 Shilling, J.E., Martin, S.T., Bertram, A.K., 2013. Viscosity of α -pinene secondary organic
 1672 material and implications for particle growth and reactivity. *PNAS* 110, 8014–8019.
 1673 <https://doi.org/10.1073/pnas.1219548110>
 1674 Robertson, A.M., Edie, R., Snare, D., Soltis, J., Field, R.A., Burkhart, M.D., Bell, C.S.,
 1675 Zimmerle, D., Murphy, S.M., 2017. Variation in Methane Emission Rates from Well
 1676 Pads in Four Oil and Gas Basins with Contrasting Production Volumes and

1677 Compositions. *Environ. Sci. Technol.* 51, 8832–8840.
 1678 <https://doi.org/10.1021/acs.est.7b00571>
 1679 Rollins, A.W., Browne, E.C., Min, K.-E., Pusede, S.E., Wooldridge, P.J., Gentner, D.R.,
 1680 Goldstein, A.H., Liu, S., Day, D.A., Russell, L.M., Cohen, R.C., 2012. Evidence for NO_x
 1681 Control over Nighttime SOA Formation. *Science* 337, 1210–1212.
 1682 <https://doi.org/10.1126/science.1221520>
 1683 Romer, P.S., Wooldridge, P.J., Crounse, J.D., Kim, M.J., Wennberg, P.O., Dibb, J.E., Scheuer,
 1684 E., Blake, D.R., Meinardi, S., Brosius, A.L., Thames, A.B., Miller, D.O., Brune, W.H.,
 1685 Hall, S.R., Ryerson, T.B., Cohen, R.C., 2018. Constraints on Aerosol Nitrate Photolysis
 1686 as a Potential Source of HONO and NO_x. *Environ. Sci. Technol.* 52, 13738–13746.
 1687 <https://doi.org/10.1021/acs.est.8b03861>
 1688 Rubin, J.I., Kean, A.J., Harley, R.A., Millet, D.B., Goldstein, A.H., 2006. Temperature
 1689 dependence of volatile organic compound evaporative emissions from motor vehicles.
 1690 *Journal of Geophysical Research: Atmospheres* 111.
 1691 <https://doi.org/10.1029/2005JD006458>
 1692 Rumsey, I.C., Aneja, V.P., 2014. Measurement and modeling of hydrogen sulfide lagoon
 1693 emissions from a swine concentrated animal feeding operation. *Environ. Sci. Technol.*
 1694 48, 1609–1617. <https://doi.org/10.1021/es403716w>
 1695 Rumsey, I.C., Aneja, V.P., Lonneman, W.A., 2012. Characterizing non-methane volatile organic
 1696 compounds emissions from a swine concentrated animal feeding operation. *Atmospheric*
 1697 *Environment* 47, 348–357. <https://doi.org/10.1016/j.atmosenv.2011.10.055>
 1698 Russell, L.M., Cappa, C.D., Kleeman, M.J., Jacobson, M.Z., n.d. Characterizing the Climate
 1699 Impacts of Brown Carbon [WWW Document]. *Climate Change Impact on Air Quality in*

1700 California. URL <https://ww2.arb.ca.gov/sites/default/files/classic//research/apr/past/13->
 1701 330.pdf
 1702 Ryerson, T.B., Andrews, A.E., Angevine, W.M., Bates, T.S., Brock, C.A., Cairns, B., Cohen,
 1703 R.C., Cooper, O.R., Gouw, J.A. de, Fehsenfeld, F.C., Ferrare, R.A., Fischer, M.L.,
 1704 Flagan, R.C., Goldstein, A.H., Hair, J.W., Hardesty, R.M., Hostetler, C.A., Jimenez, J.L.,
 1705 Langford, A.O., McCauley, E., McKeen, S.A., Molina, L.T., Nenes, A., Oltmans, S.J.,
 1706 Parrish, D.D., Pederson, J.R., Pierce, R.B., Prather, K., Quinn, P.K., Seinfeld, J.H., Senff,
 1707 C.J., Sorooshian, A., Stutz, J., Surratt, J.D., Trainer, M., Volkamer, R., Williams, E.J.,
 1708 Wofsy, S.C., 2013. The 2010 California Research at the Nexus of Air Quality and
 1709 Climate Change (CalNex) field study. *Journal of Geophysical Research: Atmospheres*
 1710 118, 5830–5866. <https://doi.org/10.1002/jgrd.50331>
 1711 Saide, P.E., Carmichael, G.R., Spak, S.N., Gallardo, L., Osses, A.E., Mena-Carrasco, M.A.,
 1712 Pagowski, M., 2011. Forecasting urban PM₁₀ and PM_{2.5} pollution episodes in very
 1713 stable nocturnal conditions and complex terrain using WRF–Chem CO tracer model.
 1714 *Atmospheric Environment* 45, 2769–2780.
 1715 <https://doi.org/10.1016/j.atmosenv.2011.02.001>
 1716 Saide, P.E., Mena-Carrasco, M., Tolvet, S., Hernandez, P., Carmichael, G.R., 2016. Air quality
 1717 forecasting for winter-time PM_{2.5} episodes occurring in multiple cities in central and
 1718 southern Chile. *Journal of Geophysical Research: Atmospheres* 121, 558–575.
 1719 <https://doi.org/10.1002/2015JD023949>
 1720 Salmon, O.E., Shepson, P.B., Ren, X., He, H., Hall, D.L., Dickerson, R.R., Stirr, B.H., Brown,
 1721 S.S., Fibiger, D.L., McDuffie, E.E., Campos, T.L., Gurney, K.R., Thornton, J.A., 2018.
 1722 Top-Down Estimates of NO_x and CO Emissions From Washington, D.C.-Baltimore

1723 During the WINTER Campaign. *Journal of Geophysical Research: Atmospheres* 123,
 1724 7705–7724. <https://doi.org/10.1029/2018JD028539>

1725 Salvador, P., Barreiro M., Gómez-Moreno F.J., Alonso-Blanco E., Artíñano B. Synoptic
 1726 classification of meteorological patterns and their impact on air pollution episodes and
 1727 new particle formation processes in a south European air basin, *Atmospheric*
 1728 *Environment*, 245, 118016

1729 Salmon, O.E., Shepson, P.B., Ren, X., Marquardt Collow, A.B., Miller, M.A., Carlton, A.G.,
 1730 Cambaliza, M.O.L., Heimbürger, A., Morgan, K.L., Fuentes, J.D., Stirm, B.H.,
 1731 Grundman, R., Dickerson, R.R., 2017. Urban Emissions of Water Vapor in Winter. *J*
 1732 *Geophys Res Atmos* 122, 9467–9484. <https://doi.org/10.1002/2016JD026074>

1733 Sarwar, G., Simon, H., Bhawe, P., Yarwood, G., 2012. Examining the impact of heterogeneous
 1734 nitryl chloride production on air quality across the United States. *Atmospheric Chemistry*
 1735 *and Physics* 12, 6455–6473. <https://doi.org/10.5194/acp-12-6455-2012>

1736 Sarwar, G., Simon, H., Xing, J., Mathur, R., 2014. Importance of tropospheric ClNO₂ chemistry
 1737 across the Northern Hemisphere. *Geophysical Research Letters* 41, 4050–4058.
 1738 <https://doi.org/10.1002/2014GL059962>

1739 Sarzynski, R.E.L., Mark Muro, and Andrea, 1AD. Mountain Megs: America’s Newest
 1740 Metropolitan Places and a Federal Partnership to Help Them Prosper. Brookings. URL
 1741 [https://www.brookings.edu/research/mountain-megs-americas-newest-metropolitan-](https://www.brookings.edu/research/mountain-megs-americas-newest-metropolitan-places-and-a-federal-partnership-to-help-them-prosper/)
 1742 [places-and-a-federal-partnership-to-help-them-prosper/](https://www.brookings.edu/research/mountain-megs-americas-newest-metropolitan-places-and-a-federal-partnership-to-help-them-prosper/) (accessed 6.22.20).

1743 Saunio, M., Stavert, A.R., Poulter, B., Bousquet, P., Canadell, J.G., Jackson, R.B., Raymond,
 1744 P.A., Dlugokencky, E.J., Houweling, S., Patra, P.K., Ciais, P., Arora, V.K., Bastviken,
 1745 D., Bergamaschi, P., Blake, D.R., Brailsford, G., Bruhwiler, L., Carlson, K.M., Carrol,

1746 M., Castaldi, S., Chandra, N., Crevoisier, C., Crill, P.M., Covey, K., Curry, C.L., Etiope,
 1747 G., Frankenberg, C., Gedney, N., Hegglin, M.I., Höglund-Isaksson, L., Hugelius, G.,
 1748 Ishizawa, M., Ito, A., Janssens-Maenhout, G., Jensen, K.M., Joos, F., Kleinen, T.,
 1749 Krummel, P.B., Langenfelds, R.L., Laruelle, G.G., Liu, L., Machida, T., Maksyutov, S.,
 1750 McDonald, K.C., McNorton, J., Miller, P.A., Melton, J.R., Morino, I., Müller, J., Murgia-
 1751 Flores, F., Naik, V., Niwa, Y., Noce, S., O'Doherty, S., Parker, R.J., Peng, C., Peng, S.,
 1752 Peters, G.P., Prigent, C., Prinn, R., Ramonet, M., Regnier, P., Riley, W.J., Rosentreter,
 1753 J.A., Segers, A., Simpson, I.J., Shi, H., Smith, S.J., Steele, L.P., Thornton, B.F., Tian, H.,
 1754 Tohjima, Y., Tubiello, F.N., Tsuruta, A., Viovy, N., Voulgarakis, A., Weber, T.S.,
 1755 Weele, M. van, Werf, G.R. van der, Weiss, R.F., Worthy, D., Wunch, D., Yin, Y.,
 1756 Yoshida, Y., Zhang, W., Zhang, Z., Zhao, Y., Zheng, B., Zhu, Qing, Zhu, Qian, Zhuang,
 1757 Q., 2019. The Global Methane Budget 2000–2017. Earth System Science Data
 1758 Discussions 1–136. <https://doi.org/10.5194/essd-2019-128>
 1759 Schaap, M., M. van Loon, H.M. ten Brink, F.J. Dentener, and P.J.H. Builtjes, *Secondary*
 1760 *inorganic aerosol simulations for Europe with special attention to nitrate*. Atmos. Chem.
 1761 Phys., 2004. 4(3): p. 857-874.
 1762 Schroder, J.C., Campuzano-Jost, P., Day, D.A., Shah, V., Larson, K., Sommers, J.M., Sullivan,
 1763 A.P., Campos, T., Reeves, J.M., Hills, A., Hornbrook, R.S., Blake, N.J., Scheuer, E.,
 1764 Guo, H., Fibiger, D.L., McDuffie, E.E., Hayes, P.L., Weber, R.J., Dibb, J.E., Apel, E.C.,
 1765 Jaeglé, L., Brown, S.S., Thornton, J.A., Jimenez, J.L., 2018. Sources and Secondary
 1766 Production of Organic Aerosols in the Northeastern United States during WINTER.
 1767 Journal of Geophysical Research: Atmospheres 123, 7771–7796.
 1768 <https://doi.org/10.1029/2018JD028475>

1769 Schweitzer, F., Mirabel, P., George, C., 1998. Multiphase Chemistry of N₂O₅, ClNO₂, and
 1770 BrNO₂. *J. Phys. Chem. A* 102, 3942–3952. <https://doi.org/10.1021/jp980748s>

1771 Serafin, S., Adler, B., Cuxart, J., De Wekker, S.F.J., Gohm, A., Grisogono, B., Kalthoff, N.,
 1772 Kirshbaum, D.J., Rotach, M.W., Schmidli, J., Stiperski, I., Večenaj, Ž., Zardi, D., 2018.
 1773 Exchange Processes in the Atmospheric Boundary Layer Over Mountainous Terrain.
 1774 *Atmosphere* 9, 102. <https://doi.org/10.3390/atmos9030102>

1775 Serafin, S., De Wekker, S.F.J., Knierel, J.C., 2016. A Mesoscale Model-Based Climatology of
 1776 Nocturnal Boundary-Layer Characteristics over the Complex Terrain of North-Western
 1777 Utah. *Boundary Layer Meteorol* 159, 495–519. [https://doi.org/10.1007/s10546-015-0044-](https://doi.org/10.1007/s10546-015-0044-6)
 1778 6

1779 Shah, V., Jaeglé, L., Jimenez, J.L., Schroder, J.C., Campuzano-Jost, P., Campos, T.L., Reeves,
 1780 J.M., Stell, M., Brown, S.S., Lee, B.H., Lopez-Hilfiker, F.D., Thornton, J.A., 2019.
 1781 Widespread Pollution From Secondary Sources of Organic Aerosols During Winter in the
 1782 Northeastern United States. *Geophysical Research Letters* 46, 2974–2983.
 1783 <https://doi.org/10.1029/2018GL081530>

1784 Shaw, S.L., Mitloehner, F.M., Jackson, W., DePeters, E.J., Fadel, J.G., Robinson, P.H.,
 1785 Holzinger, R., Goldstein, A.H., 2007. Volatile Organic Compound Emissions from Dairy
 1786 Cows and Their Waste as Measured by Proton-Transfer-Reaction Mass Spectrometry.
 1787 *Environ. Sci. Technol.* 41, 1310–1316. <https://doi.org/10.1021/es061475e>

1788 Sheridan, P.F., 2019. Synoptic-flow interaction with valley cold-air pools and effects on cold-air
 1789 pool persistence: Influence of valley size and atmospheric stability. *Quarterly Journal of*
 1790 *the Royal Meteorological Society* 145, 1636–1659. <https://doi.org/10.1002/qj.3517>

1791 Sheridan, P.F., Vosper, S.B., Brown, A.R., 2014. Characteristics of cold pools observed in
1792 narrow valleys and dependence on external conditions. *Quarterly Journal of the Royal*
1793 *Meteorological Society* 140, 715–728. <https://doi.org/10.1002/qj.2159>

1794 Shindell, D., Faluvegi, G., Seltzer, K., Shindell, C., 2018. Quantified, localized health benefits of
1795 accelerated carbon dioxide emissions reductions. *Nature Climate Change* 8, 291–295.
1796 <https://doi.org/10.1038/s41558-018-0108-y>

1797 Shiraiwa, M., Seinfeld, J.H., 2012. Equilibration timescale of atmospheric secondary organic
1798 aerosol partitioning. *Geophysical Research Letters* 39.
1799 <https://doi.org/10.1029/2012GL054008>

1800 Shiraiwa, M., Yee, L.D., Schilling, K.A., Loza, C.L., Craven, J.S., Zuend, A., Ziemann, P.J.,
1801 Seinfeld, J.H., 2013a. Size distribution dynamics reveal particle-phase chemistry in
1802 organic aerosol formation. *PNAS* 110, 11746–11750.
1803 <https://doi.org/10.1073/pnas.1307501110>

1804 Shiraiwa, M., Zuend, A., Bertram, A.K., Seinfeld, J.H., 2013b. Gas–particle partitioning of
1805 atmospheric aerosols: interplay of physical state, non-ideal mixing and morphology.
1806 *Phys. Chem. Chem. Phys.* 15, 11441–11453. <https://doi.org/10.1039/C3CP51595H>

1807 Silva, P.J., Erupe, M.E., Price, D., Elias, J., G. J. Malloy, Q., Li, Q., Warren, B., Cocker, D.R.,
1808 2008. Trimethylamine as Precursor to Secondary Organic Aerosol Formation via Nitrate
1809 Radical Reaction in the Atmosphere. *Environ. Sci. Technol.* 42, 4689–4696.
1810 <https://doi.org/10.1021/es703016v>

1811 Silva, P.J., Vawdrey, E.L., Corbett, M., Erupe, M., 2007. Fine particle concentrations and
1812 composition during wintertime inversions in Logan, Utah, USA. *Atmospheric*
1813 *Environment* 41, 5410–5422. <https://doi.org/10.1016/j.atmosenv.2007.02.016>

1814 Simon Wang, S.-Y., Hipps, L.E., Chung, O.-Y., Gillies, R.R., Martin, R., 2015. Long-Term
 1815 Winter Inversion Properties in a Mountain Valley of the Western United States and
 1816 Implications on Air Quality. *J. Appl. Meteor. Climatol.* 54, 2339–2352.
 1817 <https://doi.org/10.1175/JAMC-D-15-0172.1>

1818 SLC Sustainability Department, n.d. SLC’s Climate Plan [WWW Document]. Sustainability.
 1819 URL <https://www.slc.gov/sustainability/climate-positive/> (accessed 6.22.20).

1820 Song, M., Marcolli, C., Krieger, U.K., Zuend, A., Peter, T., 2012. Liquid-liquid phase separation
 1821 in aerosol particles: Dependence on O:C, organic functionalities, and compositional
 1822 complexity. *Geophysical Research Letters* 39. <https://doi.org/10.1029/2012GL052807>

1823 Song, S., Gao, M., Xu, W., Sun, Y., Worsnop, D.R., Jayne, J.T., Zhang, Y., Zhu, L., Li, M.,
 1824 Zhou, Z., Cheng, C., Lv, Y., Wang, Ying, Peng, W., Xu, X., Lin, N., Wang, Yuxuan,
 1825 Wang, S., Munger, J.W., Jacob, D.J., McElroy, M.B., 2019. Possible heterogeneous
 1826 chemistry of hydroxymethanesulfonate (HMS) in northern China winter haze.
 1827 *Atmospheric Chemistry and Physics* 19, 1357–1371. [https://doi.org/10.5194/acp-19-](https://doi.org/10.5194/acp-19-1357-2019)
 1828 [1357-2019](https://doi.org/10.5194/acp-19-1357-2019)

1829 Stiperski, I., Holtslag, A.A.M., Lehner, M., Hoch, S.W., Whiteman, C.D., 2020. On the
 1830 turbulence structure of deep katabatic flows on a gentle mesoscale slope. *Quarterly*
 1831 *Journal of the Royal Meteorological Society* 146, 1206–1231.
 1832 <https://doi.org/10.1002/qj.3734>

1833 Stolzenburg, D., Fischer, L., Vogel, A.L., Heinritzi, M., Schervish, M., Simon, M., Wagner,
 1834 A.C., Dada, L., Ahonen, L.R., Amorim, A., Baccarini, A., Bauer, P.S., Baumgartner, B.,
 1835 Bergen, A., Bianchi, F., Breitenlechner, M., Brilke, S., Buenrostro Mazon, S., Chen, D.,
 1836 Dias, A., Draper, D.C., Duplissy, J., El Haddad, I., Finkenzeller, H., Frege, C., Fuchs, C.,

1837 Garmash, O., Gordon, H., He, X., Helm, J., Hofbauer, V., Hoyle, C.R., Kim, C., Kirkby,
 1838 J., Kontkanen, J., Kürten, A., Lampilahti, J., Lawler, M., Lehtipalo, K., Leiminger, M.,
 1839 Mai, H., Mathot, S., Mentler, B., Molteni, U., Nie, W., Nieminen, T., Nowak, J.B.,
 1840 Ojdanic, A., Onnela, A., Passananti, M., Petäjä, T., Quéléver, L.L.J., Rissanen, M.P.,
 1841 Sarnela, N., Schallhart, S., Tauber, C., Tomé, A., Wagner, R., Wang, M., Weitz, L.,
 1842 Wimmer, D., Xiao, M., Yan, C., Ye, P., Zha, Q., Baltensperger, U., Curtius, J., Dommen,
 1843 J., Flagan, R.C., Kulmala, M., Smith, J.N., Worsnop, D.R., Hansel, A., Donahue, N.M.,
 1844 Winkler, P.M., 2018. Rapid growth of organic aerosol nanoparticles over a wide
 1845 tropospheric temperature range. *Proc Natl Acad Sci U S A* 115, 9122–9127.
 1846 <https://doi.org/10.1073/pnas.1807604115>
 1847 Strong, C., Stwertka, C., Bowling, D.R., Stephens, B.B., Ehleringer, J.R., 2011. Urban carbon
 1848 dioxide cycles within the Salt Lake Valley: A multiple-box model validated by
 1849 observations. *Journal of Geophysical Research: Atmospheres* 116.
 1850 <https://doi.org/10.1029/2011JD015693>
 1851 Strots, V.O., Santhanam, S., Adelman, B.J., Griffin, G.A., Derybowski, E.M., 2010. Deposit
 1852 Formation in Urea-SCR Systems. *SAE International Journal of Fuels and Lubricants* 2,
 1853 283–289.
 1854 Sun, X., Holmes, H.A., 2019. Surface Turbulent Fluxes during Persistent Cold-Air Pool Events
 1855 in the Salt Lake Valley, Utah. Part I: Observations. *J. Appl. Meteor. Climatol.* 58, 2553–
 1856 2568. <https://doi.org/10.1175/JAMC-D-19-0053.1>
 1857 Sun, X., Holmes, H.A., Xiao, H., 2020. Surface Turbulent Fluxes during Persistent Cold-Air
 1858 Pool Events in the Salt Lake Valley, Utah. Part II: Simulations. *J. Appl. Meteor.*
 1859 *Climatol.* 59, 1029–1050. <https://doi.org/10.1175/JAMC-D-19-0250.1>

1860 Tian, D., Wang, Y., Bergin, M., Hu, Y., Liu, Y., Russell, A.G., 2008. Air Quality Impacts from
 1861 Prescribed Forest Fires under Different Management Practices. *Environ. Sci. Technol.*
 1862 42, 2767–2772. <https://doi.org/10.1021/es0711213>

1863 Tiwari, R., Kulshrestha, U., 2019. Wintertime distribution and atmospheric interactions of
 1864 reactive nitrogen species along the urban transect of Delhi - NCR. *Atmospheric*
 1865 *Environment* 209, 40–53. <https://doi.org/10.1016/j.atmosenv.2019.04.007>

1866 Trabue, S., Scoggin, K., Mitloehner, F., Li, H., Burns, R., Xin, H., 2008. Field sampling method
 1867 for quantifying volatile sulfur compounds from animal feeding operations. *Atmospheric*
 1868 *Environment, Agricultural Air Quality: State of the Science (AAQ-2006)* 42, 3332–3341.
 1869 <https://doi.org/10.1016/j.atmosenv.2007.03.016>

1870 Tran, T., Tran, H., Mansfield, M., Lyman, S., Crosman, E., 2018. Four dimensional data
 1871 assimilation (FDDA) impacts on WRF performance in simulating inversion layer
 1872 structure and distributions of CMAQ-simulated winter ozone concentrations in Uintah
 1873 Basin. *Atmospheric Environment* 177, 75–92.
 1874 <https://doi.org/10.1016/j.atmosenv.2018.01.012>

1875 Trousdell, J.F., Conley, S.A., Post, A., Faloona, I.C., 2016. Observing entrainment mixing,
 1876 photochemical ozone production, and regional methane emissions by aircraft using a
 1877 simple mixed-layer framework. *Atmospheric Chemistry and Physics* 16, 15433–15450.
 1878 <https://doi.org/10.5194/acp-16-15433-2016>

1879 Turan, N.G., Akdemir, A., Ergun, O.N., 2007. Emission of Volatile Organic Compounds during
 1880 Composting of Poultry Litter. *Water Air Soil Pollut* 184, 177–182.
 1881 <https://doi.org/10.1007/s11270-007-9406-0>

1882 Turnbull, J.C., Sweeney, C., Karion, A., Newberger, T., Lehman, S.J., Tans, P.P., Davis, K.J.,
 1883 Lauvaux, T., Miles, N.L., Richardson, S.J., Cambaliza, M.O., Shepson, P.B., Gurney, K.,
 1884 Patarasuk, R., Razlivanov, I., 2015. Toward quantification and source sector
 1885 identification of fossil fuel CO₂ emissions from an urban area: Results from the INFLUX
 1886 experiment. *Journal of Geophysical Research: Atmospheres* 120, 292–312.
 1887 <https://doi.org/10.1002/2014JD022555>
 1888 US EIA, n.d. Future U.S. electricity generation mix will depend largely on natural gas prices -
 1889 Today in Energy - U.S. Energy Information Administration (EIA) [WWW Document].
 1890 URL <https://www.eia.gov/todayinenergy/detail.php?id=38252> (accessed 6.22.20a).
 1891 US EIA, n.d. Utah Profile [WWW Document]. URL <https://www.eia.gov/state/print.php?sid=UT>
 1892 (accessed 6.22.20b).
 1893 US EPA, O., 2019. Inventory of U.S. Greenhouse Gas Emissions and Sinks: 1990-2017 [WWW
 1894 Document]. US EPA. URL [https://www.epa.gov/ghgemissions/inventory-us-greenhouse-](https://www.epa.gov/ghgemissions/inventory-us-greenhouse-gas-emissions-and-sinks-1990-2017)
 1895 [gas-emissions-and-sinks-1990-2017](https://www.epa.gov/ghgemissions/inventory-us-greenhouse-gas-emissions-and-sinks-1990-2017) (accessed 6.22.20).
 1896 US EPA, O., 2016a. National Air Emissions Monitoring Study [WWW Document]. US EPA.
 1897 URL <https://www.epa.gov/afos-air/national-air-emissions-monitoring-study> (accessed
 1898 6.15.20).
 1899 US EPA, O., 2016b. Basic Information of Air Emissions Factors and Quantification [WWW
 1900 Document]. US EPA. URL [https://www.epa.gov/air-emissions-factors-and-](https://www.epa.gov/air-emissions-factors-and-quantification/basic-information-air-emissions-factors-and-quantification)
 1901 [quantification/basic-information-air-emissions-factors-and-quantification](https://www.epa.gov/air-emissions-factors-and-quantification/basic-information-air-emissions-factors-and-quantification) (accessed
 1902 6.22.20).
 1903 Usher, C.R., Michel, A.E., Grassian, V.H., 2003. Reactions on Mineral Dust. *Chem. Rev.* 103,
 1904 4883–4940. <https://doi.org/10.1021/cr020657y>

1905 UT DEQ, n.d. Utah Division of Air Quality 2018 Annual Report [WWW Document]. URL
 1906 <https://documents.deq.utah.gov/air-quality/annual-reports/DAQ-2019-000949.pdf>
 1907 UT DEQ, n.d. Utah State Implementation Plan [WWW Document]. URL
 1908 <https://documents.deq.utah.gov/air-quality/pm25-serious-sip/DAQ-2018-013088.pdf>
 1909 VanReken, T.M., Dhammapala, R.S., Jobson, B.T., Bottenus, C.L., VanderSchelden, G.S.,
 1910 Kaspari, S.D., Gao, Z., Zhu, Q., Lamb, B.K., Liu, H., Johnston, J., 2017. Role of
 1911 persistent low-level clouds in mitigating air quality impacts of wintertime cold pool
 1912 conditions. *Atmospheric Environment* 154, 236–246.
 1913 <https://doi.org/10.1016/j.atmosenv.2017.01.043>
 1914 Verhoeven, E., Pereira, E., Decock, C., Garland, G., Kennedy, T., Suddick, E., Horwath, W., Six,
 1915 J., 2017. N₂O emissions from California farmlands: A review. *California Agriculture*
 1916 71, 148–159. <https://doi.org/10.3733/ca.2017a0026>
 1917 Vosper, S., Brown, A., 2008. Numerical Simulations of Sheltering in Valleys: The Formation of
 1918 Nighttime Cold-Air Pools. *Boundary-Layer Meteorology* 127, 429–448.
 1919 <https://doi.org/10.1007/s10546-008-9272-3>
 1920 Wagner, N.L., Riedel, T.P., Young, C.J., Bahreini, R., Brock, C.A., Dubé, W.P., Kim, S.,
 1921 Middlebrook, A.M., Öztürk, F., Roberts, J.M., Russo, R., Sive, B., Swarthout, R.,
 1922 Thornton, J.A., VandenBoer, T.C., Zhou, Y., Brown, S.S., 2013. N₂O₅ uptake
 1923 coefficients and nocturnal NO₂ removal rates determined from ambient wintertime
 1924 measurements. *Journal of Geophysical Research: Atmospheres* 118, 9331–9350.
 1925 <https://doi.org/10.1002/jgrd.50653>
 1926 Wang, D.S., Hildebrandt Ruiz, L., 2018. Chlorine-initiated oxidation of *n*-alkanes under high-
 1927 NO_x conditions: insights into secondary organic aerosol composition and volatility using

1928 a FIGAERO–CIMS. *Atmospheric Chemistry and Physics* 18, 15535–15553.

1929 <https://doi.org/10.5194/acp-18-15535-2018>

1930 Wang, G., R. Zhang, M.E. Gomez, L. Yang, M. Levy Zamora, M. Hu, Y. Lin, J. Peng, S. Guo, J.

1931 Meng, J. Li, C. Cheng, T. Hu, Y. Ren, Y. Wang, J. Gao, J. Cao, Z. An, W. Zhou, G. Li, J.

1932 Wang, P. Tian, W. Marrero-Ortiz, J. Secrest, Z. Du, J. Zheng, D. Shang, L. Zeng, M.

1933 Shao, W. Wang, Y. Huang, Y. Wang, Y. Zhu, Y. Li, J. Hu, B. Pan, L. Cai, Y. Cheng, Y.

1934 Ji, F. Zhang, D. Rosenfeld, P.S. Liss, R.A. Duce, C.E. Kolb, and M.J. Molina, *Persistent*

1935 *sulfate formation from London Fog to Chinese haze*. Proceedings of the National

1936 Academy of Sciences, 2016. **113**(48): p. 13630-13635.

1937 Wang, H., Lu, K., Chen, X., Zhu, Q., Wu, Z., Wu, Y., Sun, K., 2018. Fast particulate nitrate

1938 formation via N₂O₅ uptake aloft in winter in Beijing. *Atmospheric Chemistry and Physics*

1939 18, 10483–10495. <https://doi.org/10.5194/acp-18-10483-2018>

1940 Wang, S., McNamara, S.M., Kolesar, K.R., May, N.W., Fuentes, J.D., Cook, R.D., Gunsch, M.J.,

1941 Mattson, C.N., Hornbrook, R.S., Apel, E.C., Pratt, K.A., 2020. Urban Snowpack ClNO₂

1942 Production and Fate: A One-Dimensional Modeling Study. *ACS Earth Space Chem.* 4,

1943 1140–1148. <https://doi.org/10.1021/acsearthspacechem.0c00116>

1944 Wang-Li, L., Li, Q., Chai, L., Cortus, E., Wang, K., Kilic, I., Bogan, B., Ni, J.-Q., Heber, A.,

1945 2013a. The national air emissions monitoring study’s Southeast Layer Site: Part III.

1946 Ammonia concentrations and emissions. *Transactions of the ASABE* 56, 1185–1197.

1947 <https://doi.org/10.13031/trans.56.9673>

1948 Wang-Li, L., Li, Q.-F., Wang, K., Bogan, B., Ni, J.-Q., Cortus, E., Heber, A., 2013b. The

1949 national air emissions monitoring study’s Southeast Layer Site: Part I. Site characteristics

1950 and monitoring methodology. *Transactions of the ASABE (American Society of*

- 1951 Agricultural and Biological Engineers) 56, 56–1157.
- 1952 <https://doi.org/10.13031/trans.56.9570>
- 1953 Warneke, C., Gouw, J.A. de, Holloway, J.S., Peischl, J., Ryerson, T.B., Atlas, E., Blake, D.,
- 1954 Trainer, M., Parrish, D.D., 2012. Multiyear trends in volatile organic compounds in Los
- 1955 Angeles, California: Five decades of decreasing emissions. *Journal of Geophysical*
- 1956 *Research: Atmospheres* 117. <https://doi.org/10.1029/2012JD017899>
- 1957 Warner, J.X., Dickerson, R.R., Wei, Z., Strow, L.L., Wang, Y., Liang, Q., 2017. Increased
- 1958 atmospheric ammonia over the world’s major agricultural areas detected from space.
- 1959 *Geophysical Research Letters* 44, 2875–2884. <https://doi.org/10.1002/2016GL072305>
- 1960 Whiteaker, J.R., Prather, K.A., 2003. Hydroxymethanesulfonate as a tracer for fog processing of
- 1961 individual aerosol particles. *Atmospheric Environment* 37, 1033–1043.
- 1962 [https://doi.org/10.1016/S1352-2310\(02\)01029-4](https://doi.org/10.1016/S1352-2310(02)01029-4)
- 1963 Whiteman, C.D., Hoch, S.W., 2014. Pseudovertical Temperature Profiles in a Broad Valley from
- 1964 Lines of Temperature Sensors on Sidewalls. *J. Appl. Meteor. Climatol.* 53, 2430–2437.
- 1965 <https://doi.org/10.1175/JAMC-D-14-0177.1>
- 1966 Whiteman, C.D., Hoch, S.W., Horel, J.D., Charland, A., 2014. Relationship between particulate
- 1967 air pollution and meteorological variables in Utah’s Salt Lake Valley. *Atmospheric*
- 1968 *Environment* 94, 742–753. <https://doi.org/10.1016/j.atmosenv.2014.06.012>
- 1969 Whiteman, C.D., Zhong, S., Shaw, W.J., Hubbe, J.M., Bian, X., Mittelstadt, J., 2001. Cold Pools
- 1970 in the Columbia Basin. *Wea. Forecasting* 16, 432–447. [https://doi.org/10.1175/1520-](https://doi.org/10.1175/1520-0434(2001)016<0432:CPITCB>2.0.CO;2)
- 1971 [0434\(2001\)016<0432:CPITCB>2.0.CO;2](https://doi.org/10.1175/1520-0434(2001)016<0432:CPITCB>2.0.CO;2)
- 1972 Wilczak, J.M., Stoelinga, M., Berg, L.K., Sharp, J., Draxl, C., McCaffrey, K., Banta, R.M.,
- 1973 Bianco, L., Djalalova, I., Lundquist, J.K., Muradyan, P., Choukulkar, A., Leo, L., Bonin,

1974 T., Pichugina, Y., Eckman, R., Long, C.N., Lantz, K., Worsnop, R.P., Bickford, J.,
1975 Bodini, N., Chand, D., Clifton, A., Cline, J., Cook, D.R., Fernando, H.J.S., Friedrich, K.,
1976 Krishnamurthy, R., Marquis, M., McCaa, J., Olson, J.B., Otarola-Bustos, S., Scott, G.,
1977 Shaw, W.J., Wharton, S., White, A.B., 2019. The Second Wind Forecast Improvement
1978 Project (WFIP2): Observational Field Campaign. *Bull. Amer. Meteor. Soc.* 100, 1701–
1979 1723. <https://doi.org/10.1175/BAMS-D-18-0035.1>
1980 Winkler, P., 1988. The growth of atmospheric aerosol particles with relative humidity. *Phys. Scr.*
1981 37, 223–230. <https://doi.org/10.1088/0031-8949/37/2/008>
1982 Womack, C.C., McDuffie, E.E., Edwards, P.M., Bares, R., Gouw, J.A. de, Docherty, K.S., Dubé,
1983 W.P., Fibiger, D.L., Franchin, A., Gilman, J.B., Goldberger, L., Lee, B.H., Lin, J.C.,
1984 Long, R., Middlebrook, A.M., Millet, D.B., Moravek, A., Murphy, J.G., Quinn, P.K.,
1985 Riedel, T.P., Roberts, J.M., Thornton, J.A., Valin, L.C., Veres, P.R., Whitehill, A.R.,
1986 Wild, R.J., Warneke, C., Yuan, B., Baasandorj, M., Brown, S.S., 2019. An Odd Oxygen
1987 Framework for Wintertime Ammonium Nitrate Aerosol Pollution in Urban Areas: NO_x
1988 and VOC Control as Mitigation Strategies. *Geophysical Research Letters* 46, 4971–4979.
1989 <https://doi.org/10.1029/2019GL082028>
1990 Ye, C., Zhang, N., Gao, H., Zhou, X., 2017. Photolysis of Particulate Nitrate as a Source of
1991 HONO and NO_x. *Environ. Sci. Technol.* 51, 6849–6856.
1992 <https://doi.org/10.1021/acs.est.7b00387>
1993 Ye, Q., Wang, M., Hofbauer, V., Stolzenburg, D., Chen, D., Schervish, M., Vogel, A., Mauldin,
1994 R.L., Baalbaki, R., Brilke, S., Dada, L., Dias, A., Duplissy, J., El Haddad, I.,
1995 Finkenzeller, H., Fischer, L., He, X., Kim, C., Kürten, A., Lamkaddam, H., Lee, C.P.,
1996 Lehtipalo, K., Leiminger, M., Manninen, H.E., Marten, R., Mentler, B., Partoll, E.,

1997 Petäjä, T., Rissanen, M., Schobesberger, S., Schuchmann, S., Simon, M., Tham, Y.J.,
1998 Vazquez-Pufleau, M., Wagner, A.C., Wang, Y., Wu, Y., Xiao, M., Baltensperger, U.,
1999 Curtius, J., Flagan, R., Kirkby, J., Kulmala, M., Volkamer, R., Winkler, P.M., Worsnop,
2000 D., Donahue, N.M., 2019. Molecular Composition and Volatility of Nucleated Particles
2001 from α -Pinene Oxidation between $-50\text{ }^{\circ}\text{C}$ and $+25\text{ }^{\circ}\text{C}$. *Environ. Sci. Technol.* 53, 12357–
2002 12365. <https://doi.org/10.1021/acs.est.9b03265>
2003 Ying, Q., Kleeman, M., 2009. Regional contributions to airborne particulate matter in central
2004 California during a severe pollution episode. *Atmospheric Environment* 43, 1218–1228.
2005 <https://doi.org/10.1016/j.atmosenv.2008.11.019>
2006 Ying, Q., Lu, J., Allen, P., Livingstone, P., Kaduwela, A., Kleeman, M., 2008a. Modeling air
2007 quality during the California Regional PM10/PM2.5 Air Quality Study (CRPAQS) using
2008 the UCD/CIT source-oriented air quality model – Part I. Base case model results.
2009 *Atmospheric Environment* 42, 8954–8966.
2010 <https://doi.org/10.1016/j.atmosenv.2008.05.064>
2011 Ying, Q., Lu, J., Kaduwela, A., Kleeman, M., 2008b. Modeling air quality during the California
2012 Regional PM10/PM2.5 Air Quality Study (CPRAQS) using the UCD/CIT Source
2013 Oriented Air Quality Model – Part II. Regional source apportionment of primary airborne
2014 particulate matter. *Atmospheric Environment* 42, 8967–8978.
2015 <https://doi.org/10.1016/j.atmosenv.2008.05.065>
2016 You, Y., Renbaum-Wolff, L., Carreras-Sospedra, M., Hanna, S.J., Hiranuma, N., Kamal, S.,
2017 Smith, M.L., Zhang, X., Weber, R.J., Shilling, J.E., Dabdub, D., Martin, S.T., Bertram,
2018 A.K., 2012. Images reveal that atmospheric particles can undergo liquid-liquid phase

2019 separations. *Proc. Natl. Acad. Sci. U.S.A.* 109, 13188–13193.

2020 <https://doi.org/10.1073/pnas.1206414109>

2021 Young, D.E., Kim, H., Parworth, C., Zhou, S., Zhang, X., Cappa, C.D., Seco, R., Kim, S.,

2022 Zhang, Q., 2016. Influences of emission sources and meteorology on aerosol chemistry in

2023 a polluted urban environment: results from DISCOVER-AQ California. *Atmospheric*

2024 *Chemistry and Physics* 16, 5427–5451. <https://doi.org/10.5194/acp-16-5427-2016>

2025 Yu, L., Zhong, S., Bian, X., 2016. Multi-day valley cold-air pools in the western United States as

2026 derived from NARR. *International Journal of Climatology*.

2027 <https://doi.org/10.1002/joc.4858>

2028 Yuan, B., Liggio, J., Wentzell, J., Li, S.-M., Stark, H., Roberts, J.M., Gilman, J., Lerner, B.,

2029 Warneke, C., Li, R., Leithead, A., Osthoff, H.D., Wild, R., Brown, S.S., Gouw, J.A. de,

2030 2016. Secondary formation of nitrated phenols: insights from observations during the

2031 Uintah Basin Winter Ozone Study (UBWOS) 2014. *Atmospheric Chemistry and Physics*

2032 16, 2139–2153. <https://doi.org/10.5194/acp-16-2139-2016>

2033 Zapata, C.B., Yang, C., Yeh, S., Ogden, J., Kleeman, M.J., 2018. Estimating criteria pollutant

2034 emissions using the California Regional Multisector Air Quality Emissions (CA-

2035 REMARQUE) model v1.0. *Geoscientific Model Development* 11, 1293–1320.

2036 <https://doi.org/10.5194/gmd-11-1293-2018>

2037 Zatko, M., Erbland, J., Savarino, J., Geng, L., Easley, L., Schauer, A., Bates, T., Quinn, P.K.,

2038 Light, B., Morison, D., Osthoff, H.D., Lyman, S., Neff, W., Yuan, B., Alexander, B.,

2039 2016. The magnitude of the snow-sourced reactive nitrogen flux to the boundary layer in

2040 the Uintah Basin, Utah, USA. *Atmospheric Chemistry and Physics* 16, 13837–13851.

2041 <https://doi.org/10.5194/acp-16-13837-2016>

2042 Zaveri, R.A., Easter, R.C., Shilling, J.E., Seinfeld, J.H., 2014. Modeling kinetic partitioning of
2043 secondary organic aerosol and size distribution dynamics: representing effects of
2044 volatility, phase state, and particle-phase reaction. *Atmospheric Chemistry and Physics*
2045 14, 5153–5181. <https://doi.org/10.5194/acp-14-5153-2014>

2046 Zaveri, R.A., Shilling, J.E., Zelenyuk, A., Liu, J., Bell, D.M., D'Ambro, E.L., Gaston, C.J.,
2047 Thornton, J.A., Laskin, A., Lin, P., Wilson, J., Easter, R.C., Wang, J., Bertram, A.K.,
2048 Martin, S.T., Seinfeld, J.H., Worsnop, D.R., 2018. Growth Kinetics and Size Distribution
2049 Dynamics of Viscous Secondary Organic Aerosol. *Environ. Sci. Technol.* 52, 1191–1199.
2050 <https://doi.org/10.1021/acs.est.7b04623>

2051 Zhang, J., Liu, L., Xu, L., Lin, Q., Zhao, H., Wang, Z., Guo, S., Hu, M., Liu, D., Shi, Z., Huang,
2052 D., Li, W., 2020. Exploring wintertime regional haze in northeast China: role of coal and
2053 biomass burning. *Atmospheric Chemistry and Physics* 20, 5355–5372.
2054 <https://doi.org/10.5194/acp-20-5355-2020>

2055 Zhang, Q., Jimenez, J.L., Canagaratna, M.R., Allan, J.D., Coe, H., Ulbrich, I., Alfarra, M.R.,
2056 Takami, A., Middlebrook, A.M., Sun, Y.L., Dzepina, K., Dunlea, E., Docherty, K.,
2057 DeCarlo, P.F., Salcedo, D., Onasch, T., Jayne, J.T., Miyoshi, T., Shimo, A.,
2058 Hatakeyama, S., Takegawa, N., Kondo, Y., Schneider, J., Drewnick, F., Borrmann, S.,
2059 Weimer, S., Demerjian, K., Williams, P., Bower, K., Bahreini, R., Cottrell, L., Griffin,
2060 R.J., Rautiainen, J., Sun, J.Y., Zhang, Y.M., Worsnop, D.R., 2007. Ubiquity and
2061 dominance of oxygenated species in organic aerosols in anthropogenically-influenced
2062 Northern Hemisphere midlatitudes. *Geophysical Research Letters* 34.
2063 <https://doi.org/10.1029/2007GL029979>

2064 Zhang, Y., Liu, P., Liu, X.-H., Pun, B., Seigneur, C., Jacobson, M.Z., Wang, W.-X., 2010. Fine
2065 scale modeling of wintertime aerosol mass, number, and size distributions in central
2066 California. *Journal of Geophysical Research: Atmospheres* 115.
2067 <https://doi.org/10.1029/2009JD012950>

2068 Zhao, B., Wang, T., Jiang, Z., Gu, Y., Liou, K.-N., Kalandiyur, N., Gao, Y., Zhu, Y., 2019. Air
2069 Quality and Health Cobenefits of Different Deep Decarbonization Pathways in
2070 California. *Environ. Sci. Technol.* 53, 7163–7171.
2071 <https://doi.org/10.1021/acs.est.9b02385>

2072 Zhao, Y., Hennigan, C.J., May, A.A., Tkacik, D.S., de Gouw, J.A., Gilman, J.B., Kuster, W.C.,
2073 Borbon, A., Robinson, A.L., 2014. Intermediate-Volatility Organic Compounds: A Large
2074 Source of Secondary Organic Aerosol. *Environ. Sci. Technol.* 48, 13743–13750.
2075 <https://doi.org/10.1021/es5035188>

2076 Zhong, S., Fast, J., 2003. An Evaluation of the MM5, RAMS, and Meso-Eta Models at
2077 Subkilometer Resolution Using VTMX Field Campaign Data in the Salt Lake Valley.
2078 *Mon. Wea. Rev.* 131, 1301–1322. [https://doi.org/10.1175/1520-](https://doi.org/10.1175/1520-0493(2003)131<1301:AEOTMR>2.0.CO;2)
2079 [0493\(2003\)131<1301:AEOTMR>2.0.CO;2](https://doi.org/10.1175/1520-0493(2003)131<1301:AEOTMR>2.0.CO;2)

2080 Zhu, S., Kinnon, M.M., Shaffer, B.P., Samuelsen, G.S., Brouwer, J., Dabdub, D., 2019. An
2081 uncertainty for clean air: Air quality modeling implications of underestimating VOC
2082 emissions in urban inventories. *Atmospheric Environment* 211, 256–267.
2083 <https://doi.org/10.1016/j.atmosenv.2019.05.019>

2084 Zielinska, B., Sagebiel, J., McDonald, J.D., Whitney, K., Lawson, D.R., 2004. Emission rates
2085 and comparative chemical composition from selected in-use diesel and gasoline-fueled

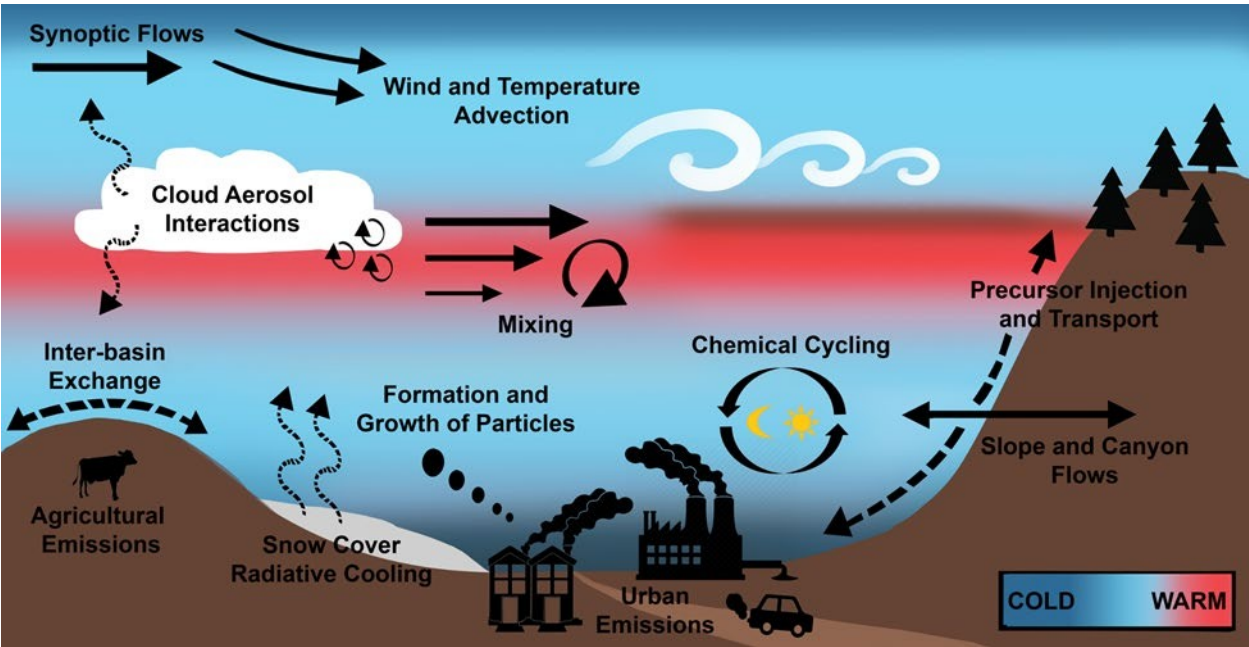


Figure 1. Schematic of various coupled meteorological and chemical processes within wintertime PCAPs. Figure is not to scale. Importantly, stable nocturnal inversions can be extremely shallow (10's of meters) and elevated inversions can also be present depending on the large-scale synoptic flow.

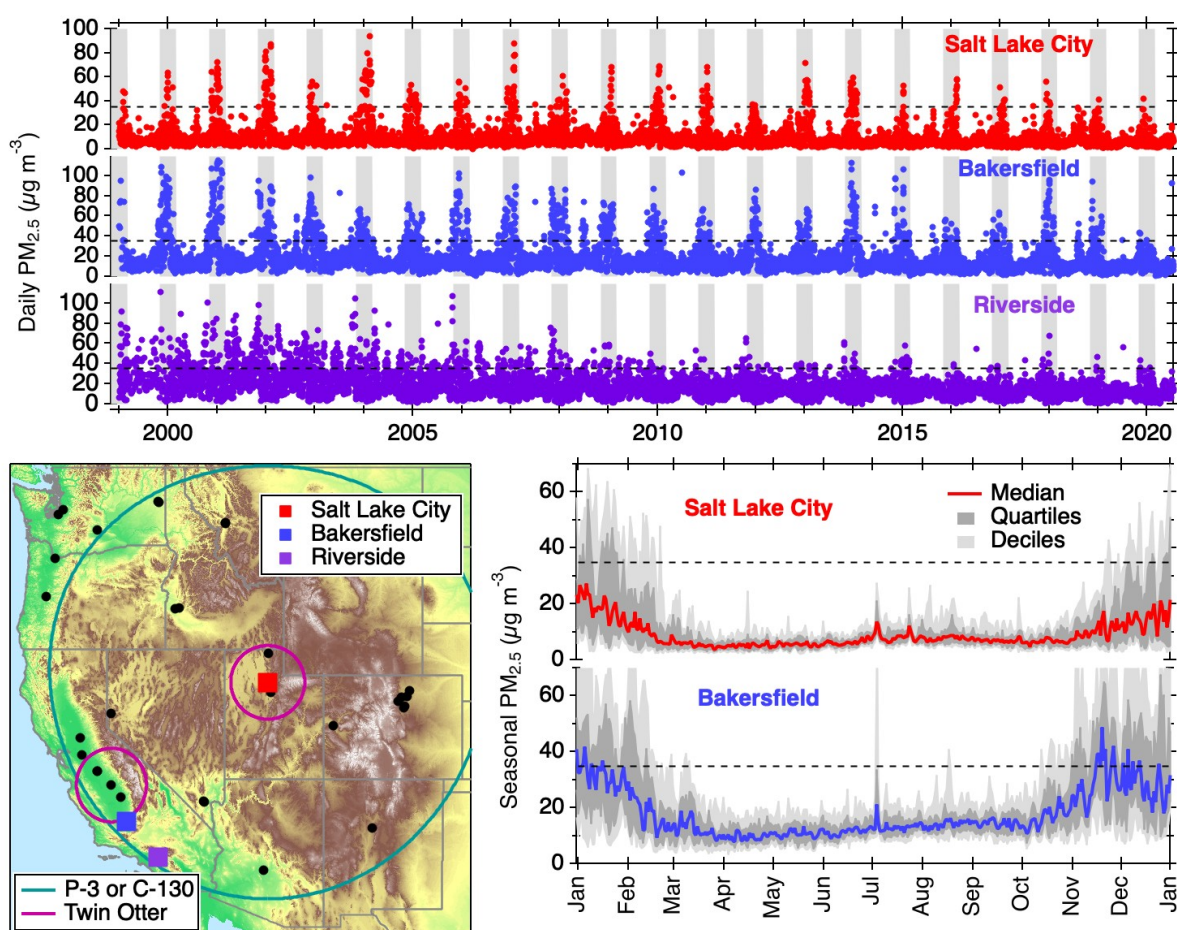


Figure 2: *Lower left*: Elevation map of the Western U.S. showing selected air quality monitoring sites (black dots) that exhibit winter maxima in PM_{2.5}. Colored markers show three sites that are highlighted in the top figure. Rings show the approximate ranges of a large research aircraft (P-3 or C-130) based out of Salt Lake City or smaller aircraft (Twin Otter) based out of either Salt Lake City, UT or Fresno, CA. *Top*: Daily PM_{2.5} at Salt Lake City, UT and Bakersfield, CA from 1999-2020. The dashed lines are the 24-hour U.S. NAAQS for PM_{2.5} of 35 µg m⁻³. Grey shaded areas indicate November - February. *Lower Right*: Median, 25th and 75th percentile, and 10th and 90th percentile PM_{2.5} at Salt Lake City, UT and Bakersfield, CA for each day of year from the record in the top figure. Dashed lines indicate the NAAQS, as in the top figure.