

# The Impact of Vaccination on Coronavirus Disease 2019 (COVID-19) Outbreaks in the United States

Seyed M. Moghadas,<sup>1,a</sup> Thomas N. Vilches,<sup>2,a</sup> Kevin Zhang,<sup>3</sup> Chad R. Wells,<sup>4</sup> Affan Shoukat,<sup>4</sup> Burton H. Singer,<sup>5</sup> Lauren Ancel Meyers,<sup>7</sup> Kathleen M. Neuzil,<sup>6</sup> Joanne M. Langley,<sup>8</sup> Meagan C. Fitzpatrick,<sup>6</sup> and Alison P. Galvani<sup>4</sup>

<sup>1</sup>Agent-Based Modelling Laboratory, York University, Toronto, Ontario, Canada, <sup>2</sup>Institute of Mathematics, Statistics and Scientific Computing, University of Campinas, Campinas SP, Brazil, <sup>3</sup>Faculty of Medicine, University of Toronto, Toronto, Ontario, Canada, <sup>4</sup>Center for Infectious Disease Modeling and Analysis (CIDMA), Yale School of Public Health, New Haven, Connecticut, USA, <sup>5</sup>Emerging Pathogens Institute, University of Florida, Gainesville, Florida, USA, <sup>6</sup>Center for Vaccine Development and Global Health, University of Maryland School of Medicine, Baltimore, Maryland, USA, <sup>7</sup>Department of Integrative Biology, The University of Texas at Austin, Austin, Texas, USA, and <sup>8</sup>Canadian Center for Vaccinology, Dalhousie University, IWK Health Centre and Nova Scotia Health Authority, Halifax, Nova Scotia, Canada

**Background.** Global vaccine development efforts have been accelerated in response to the devastating coronavirus disease 2019 (COVID-19) pandemic. We evaluated the impact of a 2-dose COVID-19 vaccination campaign on reducing incidence, hospitalizations, and deaths in the United States.

**Methods.** We developed an agent-based model of severe acute respiratory syndrome coronavirus 2 (SARS-CoV-2) transmission and parameterized it with US demographics and age-specific COVID-19 outcomes. Healthcare workers and high-risk individuals were prioritized for vaccination, whereas children under 18 years of age were not vaccinated. We considered a vaccine efficacy of 95% against disease following 2 doses administered 21 days apart achieving 40% vaccine coverage of the overall population within 284 days. We varied vaccine efficacy against infection and specified 10% preexisting population immunity for the base-case scenario. The model was calibrated to an effective reproduction number of 1.2, accounting for current nonpharmaceutical interventions in the United States.

**Results.** Vaccination reduced the overall attack rate to 4.6% (95% credible interval [CrI]: 4.3%–5.0%) from 9.0% (95% CrI: 8.4%–9.4%) without vaccination, over 300 days. The highest relative reduction (54%–62%) was observed among individuals aged 65 and older. Vaccination markedly reduced adverse outcomes, with non-intensive care unit (ICU) hospitalizations, ICU hospitalizations, and deaths decreasing by 63.5% (95% CrI: 60.3%–66.7%), 65.6% (95% CrI: 62.2%–68.6%), and 69.3% (95% CrI: 65.5%–73.1%), respectively, across the same period.

**Conclusions.** Our results indicate that vaccination can have a substantial impact on mitigating COVID-19 outbreaks, even with limited protection against infection. However, continued compliance with nonpharmaceutical interventions is essential to achieve this impact.

**Keywords.** COVID-19; vaccines; outbreak simulation; United States; pandemic.

Despite unprecedented movement restrictions, social distancing measures, and stay-at-home orders enacted in many countries [1–4], the coronavirus disease 2019 (COVID-19) pandemic has caused devastating morbidity and mortality. However, the vast majority of the global population remains susceptible to COVID-19, highlighting the need for an effective vaccine. To mitigate the mounting burden of COVID-19, vaccine development has occurred at an unprecedented pace [5]. As of 31 December 2020, safety and efficacy results for a number of

vaccines have been reported [6–8], and Phase III clinical trials for several other candidates are underway [5, 9–11].

Results from 2 large efficacy trials (Pfizer-BioNTech, Moderna) indicate a vaccine efficacy of over 90% against symptomatic and severe disease [6, 7], exceeding the preferred population-based efficacy specified by the World Health Organization [12] and the US Food and Drug Administration (FDA) [13]. These vaccines have received emergency use authorization by the FDA [14, 15], and vaccination has already started in the United States with prioritization of healthcare workers, long-term care residents, and high-risk individuals. This compels an urgent need to understand the potential population-level impact of vaccination on COVID-19 transmission and disease outcomes.

Implementation of vaccination programs will likely take several months, depending on the ability to roll out clinics and security of vaccine supply in each state. To project the impact of vaccination and rollout during ongoing outbreaks, we developed an age-structured transmission model, taking into account comorbidities and demographics of the US population [16–19]. We explored a strategy in which healthcare workers and high-risk individuals, including those with comorbidities

Received 25 November 2020; editorial decision 24 January 2021; published online 30 January 2021.

<sup>a</sup>S. M. M. and T. N. V. contributed equally to this work.

Correspondence: S. M. Moghadas, Agent-Based Modelling Laboratory, York University, Toronto, Ontario M3J 1P3, Canada (moghadas@yorku.ca).

Clinical Infectious Diseases® 2021;XX(X):0–0

© The Author(s) 2021. Published by Oxford University Press for the Infectious Diseases Society of America. This is an Open Access article distributed under the terms of the Creative Commons Attribution-NonCommercial-NoDerivs licence (<http://creativecommons.org/licenses/by-nc-nd/4.0/>), which permits non-commercial reproduction and distribution of the work, in any medium, provided the original work is not altered or transformed in any way, and that the work is properly cited. For commercial re-use, please contact journals.permissions@oup.com  
DOI: 10.1093/cid/ciab079

associated with severe COVID-19 [16, 17, 20] and individuals aged 65 and older, were prioritized for vaccination. This prioritization relies on the evidence that COVID-19 patients with preexisting health conditions, including diabetes and hypertension, are 2–4 times more likely to develop severe disease than those without comorbidities [21–23]. Moreover, severity of symptoms and risk of death increase precipitously with age [24, 25]. For sensitivity analyses, we varied vaccine efficacy against infection, vaccine coverage, and the level of preexisting immunity in the population.

## METHODS

### Model Structure

We extended a previously developed agent-based COVID-19 transmission model to include vaccination [26]. The model encapsulates the natural history of COVID-19 with classes of individuals including: susceptible, vaccinated, latently infected (not yet infectious), asymptomatic (and infectious), presymptomatic (and infectious), symptomatic with either mild or severe/critical illness, recovered, and dead (Figure 1). We stratified the population into 6 age groups of 0–4, 5–19, 20–49, 50–64, 65–79, and  $\geq 80$  years based on US demographics [19], in addition to the age-specific prevalence of comorbidities (Supplementary Table A1) [20, 27]. The number of daily contacts for each individual was sampled from a negative-binomial distribution [28] with age-dependent mean and standard deviation (Supplementary Table A2). These contacts were then distributed across age groups using an empirically determined contact network [28].

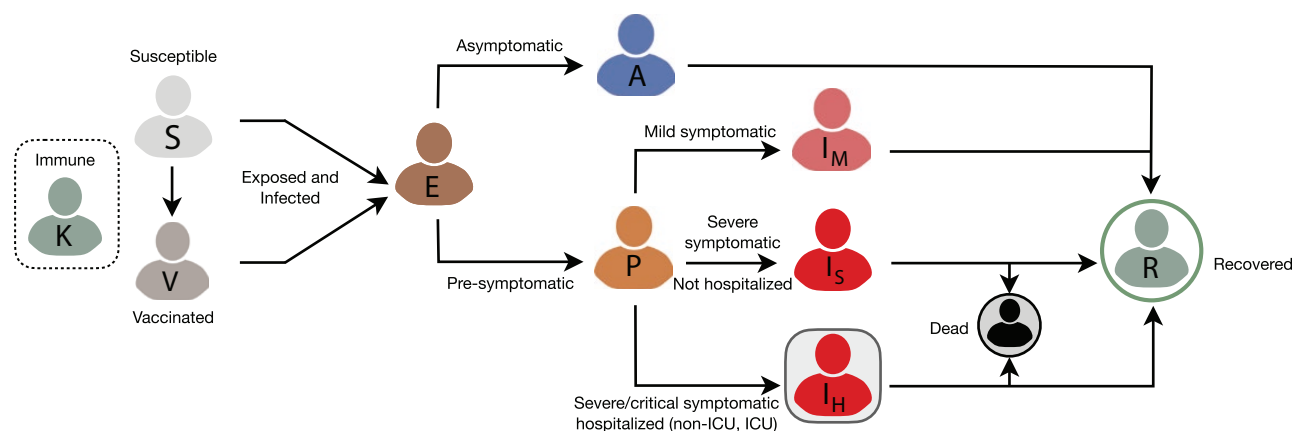
### Disease Dynamics

Disease transmission was implemented probabilistically for contacts between susceptible and infectious individuals in asymptomatic, presymptomatic, or symptomatic stages of the disease. Based on the number of secondary cases generated during each stage of the disease [29], infectivity of mild and

severe symptomatic stages was parameterized to be 44% and 89%, relative to the presymptomatic stage [29, 30]. The infectivity of asymptomatic infection was assumed to be 26% relative to symptomatic infection, based on an average estimated 3.85 times higher incidence among close contacts of a symptomatic case compared to those of an asymptomatic individual [31]. Disease-specific parameters were sampled for each individual from their associated distributions and ranges. If infection occurred, the incubation period was sampled from a Gamma distribution with a mean of 5.2 days [32]. A proportion of infected individuals develop symptoms after a highly infectious presymptomatic stage [33]. The duration of the presymptomatic stage was sampled from a Gamma distribution with a mean of 2.3 days [30, 33]. The infectious period following the onset of symptoms was sampled from a Gamma distribution with a mean of 3.2 days [34]. Symptomatic cases had an age-dependent probability of developing mild or severe/critical illness. The remaining proportion of infected individuals were asymptomatic after the latent period until recovery, with an infectious period that was sampled from a Gamma distribution with a mean of 5 days [34, 35]. We assumed that recovery from a primary infection provided adequate immunity for the remainder of the simulation, preventing reinfection. A summary of model parameterization is provided in Table 1.

### Infection Outcomes

In the model, symptomatic cases with mild illness recover without the need for hospitalization, but hospital and intensive care unit (ICU) admissions were included for a proportion of severely/critically ill patients. We assumed that mild symptomatic cases and severely ill individuals who were not hospitalized practice self-isolation immediately upon symptom onset. The contact patterns during isolation were specified by an age-dependent daily number of contacts based on a matrix derived from a representative sample population during COVID-19 lockdown [43]. Non-ICU and ICU admissions of patients were



**Figure 1.** Schematic model diagram for infection dynamics and natural history of disease.

**Table 1. Description of Model Parameters and Their Estimates**

Description	0–4	5–19	20–49	50–64	65–79	≥ 80	Source
Transmission probability per contact during presymptomatic stage	Depending on the level of herd immunity .0395, .042, .0465						Calibrated to $R = 1.2$ [36]
Incubation period (days)	LogNormal(shape: 1.434, scale: 0.661)						[32]
Asymptomatic period (days)	Gamma(shape: 5, scale: 1)						Derived from [34, 35]
Presymptomatic period (days)	Gamma(shape: 1.058, scale: 2.174)						Derived from [30, 33]
Infectious period from onset of symptoms (days)	Gamma(shape: 2.768, scale: 1.1563)						Derived from [34]
Proportion of infections that are asymptomatic	0.30	0.38	0.33	0.33	0.19	0.19	[37–39]
Proportion of symptomatic cases that exhibit mild symptoms	0.95	0.90	0.85	0.60	0.20	0.20	[26, 40]
Proportion of cases hospitalized with 1 or more comorbidities							[16, 17]
Non-ICU							67%
ICU							33%
Proportion of cases hospitalized without any comorbidities							[16, 17]
Non-ICU							75%
ICU							25%
Length of non-ICU stay (days)	Gamma(shape: 4.5, scale: 2.75)						Derived from [41, 42]
Length of ICU stay (days)	Gamma(shape: 4.5, scale: 2.75) + 2						Derived from [41, 42]

Abbreviation: ICU, intensive care unit.

parameterized based on age-stratified COVID-19 hospitalization data and the presence of comorbidities [16, 17]. For those who were hospitalized, time from symptom onset to admission was sampled in the range of 2–5 days [26, 40]. The lengths of non-ICU and ICU stays were sampled from Gamma distributions with means of 12.4 and 14.4 days, respectively [41, 42].

### Vaccination

We implemented a 2-dose vaccination campaign achieving 40% coverage of the entire population within 284 days. We assumed that 70% was the maximum achievable coverage in any age group, with an age-dependent distribution similar to seasonal influenza vaccination in the United States [44]. Vaccines were prioritized to the following groups sequentially: (i) health-care workers (5% of the total population [45]), adults with comorbidities, and those aged 65 and older (ie, protection cohort); and (ii) all other individuals aged 18–64 (ie, disruption minimization cohort) [46]. Comorbidities included cardiovascular disease, diabetes, asthma, chronic obstructive pulmonary disease, hypertension, and cancer [20]. Preexisting immunity or contemporaneous infection with COVID-19 was not a factor in vaccine allocation. The age-specific coverage resulting from this prioritization was 48% of those aged 18–49, 48% of those aged 50–64, and 70% of those aged ≥65. We specified a rollout strategy in which 30 individuals per 10 000 population would be vaccinated per day, corresponding to 6.93 million vaccine doses per week for the entire US population, for approximately 41 weeks. Vaccination occurred during this time period to reach 40% coverage, and outcomes were evaluated for 300 days. Infection dynamics continued during the simulations for susceptible and vaccinated individuals.

We included a 21-day interval between the first and second vaccine doses [6]. The vaccine efficacy ( $V_e$ ) against symptomatic

and severe disease was assumed to be 52%, 14 days after the first dose, and 95%, 1 week after the second dose [6]. In the absence of data for vaccine efficacy against infection or transmission, we assumed that the vaccine protection against infection was 50% lower than its efficacy against disease (base-case), with additional scenarios of (i) 0% and (ii) the same efficacy against disease after each dose of the vaccine. We further simulated the model for these scenarios with a 28-day interval between the 2 doses [47].

Vaccine efficacy against infection was implemented as a reduction in the probability of transmission when a vaccinated individual encountered an infectious individual. This efficacy was reduced by a factor of  $q$  in vaccinated individuals with any comorbidities or in persons older than 65 years of age, where  $q$  was sampled uniformly from the 10–50% range for each individual. This parameterization was based on observed reductions in influenza vaccine effectiveness among frail and comorbid individuals [48, 49]. For these individuals, we also assumed that vaccine efficacy against disease was reduced by the same factor  $q$ , if infection occurred postvaccination, thereby affecting hospitalization and death rates. As a sensitivity analysis, we considered vaccination scenarios without reduction of vaccine efficacy in these individuals. The immunity conferred by vaccination or infection was assumed to last longer than 1 year (ie, beyond the simulation timelines).

### Model Scenarios

In the base-case scenario, we assumed a 10% level of preexisting immunity in the population at the onset of simulations, within the range of estimates provided in recent seroprevalence studies [50, 51]. In scenario analysis, 5% preexisting immunity was considered to represent regions that have not yet been substantially affected by COVID-19 outbreaks, and alternatively 20%

preexisting immunity was used to represent the expectation that immunity will continue to accrue prior to vaccine availability. To accurately capture the age distribution of population immunity, the model was simulated in the absence of vaccination in an entirely susceptible population. The infection rates in different age groups were then derived when the overall attack rate reached 5%, 10%, and 20%, and the corresponding distributions were used as the starting population for the vaccination model (Supplementary Table A3). Additional scenarios for vaccination coverages in the range 20–60% are also presented in the Supplementary Data.

### Model Implementation

Model calibration was performed using an effective reproduction number of 1.2 to account for the effect of current nonpharmaceutical COVID-19 interventions in the United States [36]. Simulations were seeded with 3 initial cases in the presymptomatic stage in a population of 10 000 individuals (a scalable size in agent-based modeling) for different levels of herd immunity, and the results averaged over 1000 independent Monte Carlo realizations, which was sufficient for stabilization. Credible intervals (CrI) were obtained using the bias-corrected and accelerated bootstrap method. The model was implemented in Julia language and is available at: [https://github.com/thomasvilches/covid\\_vac](https://github.com/thomasvilches/covid_vac).

## RESULTS

The transmission probability per contact was calibrated to an effective reproduction number  $R_e = 1.2$  [36]. For the base-case scenario of 10% preexisting immunity, and with self-isolation of infected individuals following symptom onset, the attack rate

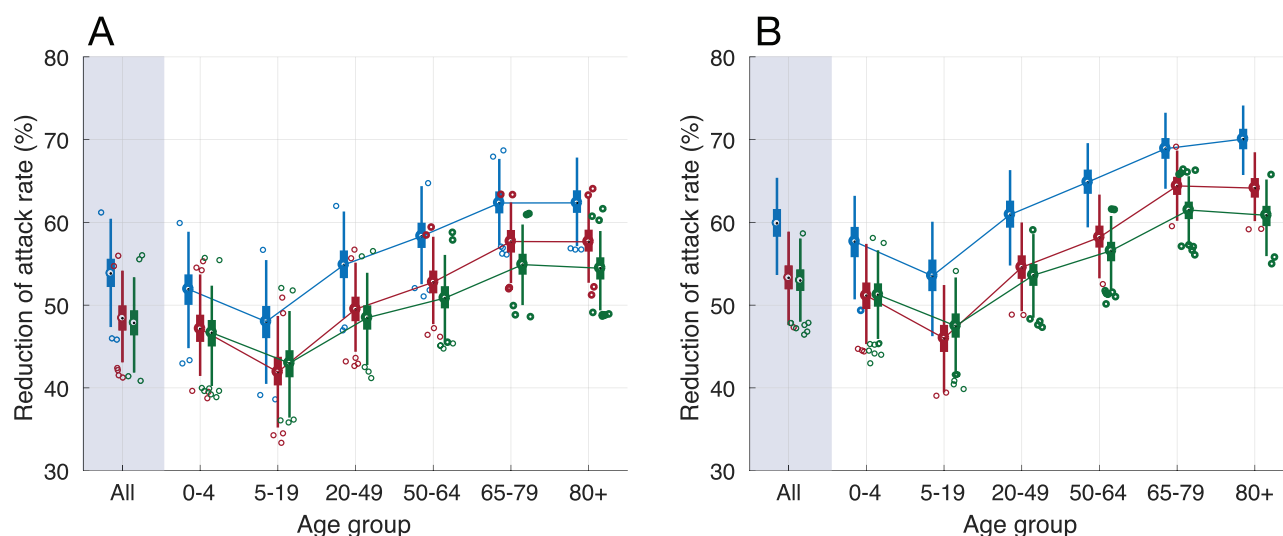
was projected to be 9.0% (95% CrI: 8.4%–9.5%) on day 300 in the absence of a vaccine.

### Attack Rate

Vaccination with 10% preexisting immunity, even with a 10–50% reduction of vaccine efficacy in elderly and comorbid individuals, substantially mitigated the attack rate across all age groups (Figure 2A), with a mean overall attack rate of 4.6% (95% CrI: 4.3%–5.0%) on day 300 (Figure 3). Achieving approximately 50% reduction compared to the no vaccination scenario, the vaccination program would avert 435 (95% CrI: 371–494) infections per 10 000 people over 300 days from the start of vaccine distribution. The attack rate was most substantially reduced among individuals aged  $\geq 65$ , by 54–62% (Figure 2). Although no children under 18 years of age were vaccinated in this model, the attack rate among those under 20 years of age was reduced by at least 36%, largely driven by indirect protection and reduced incidence among adults. Sensitivity analyses for attack rates corresponding to 5% and 20% preexisting immunity also revealed significant decreases attributed to vaccination across all age groups, but the impact of vaccination was reduced at higher levels of preexisting immunity (Figure 2).

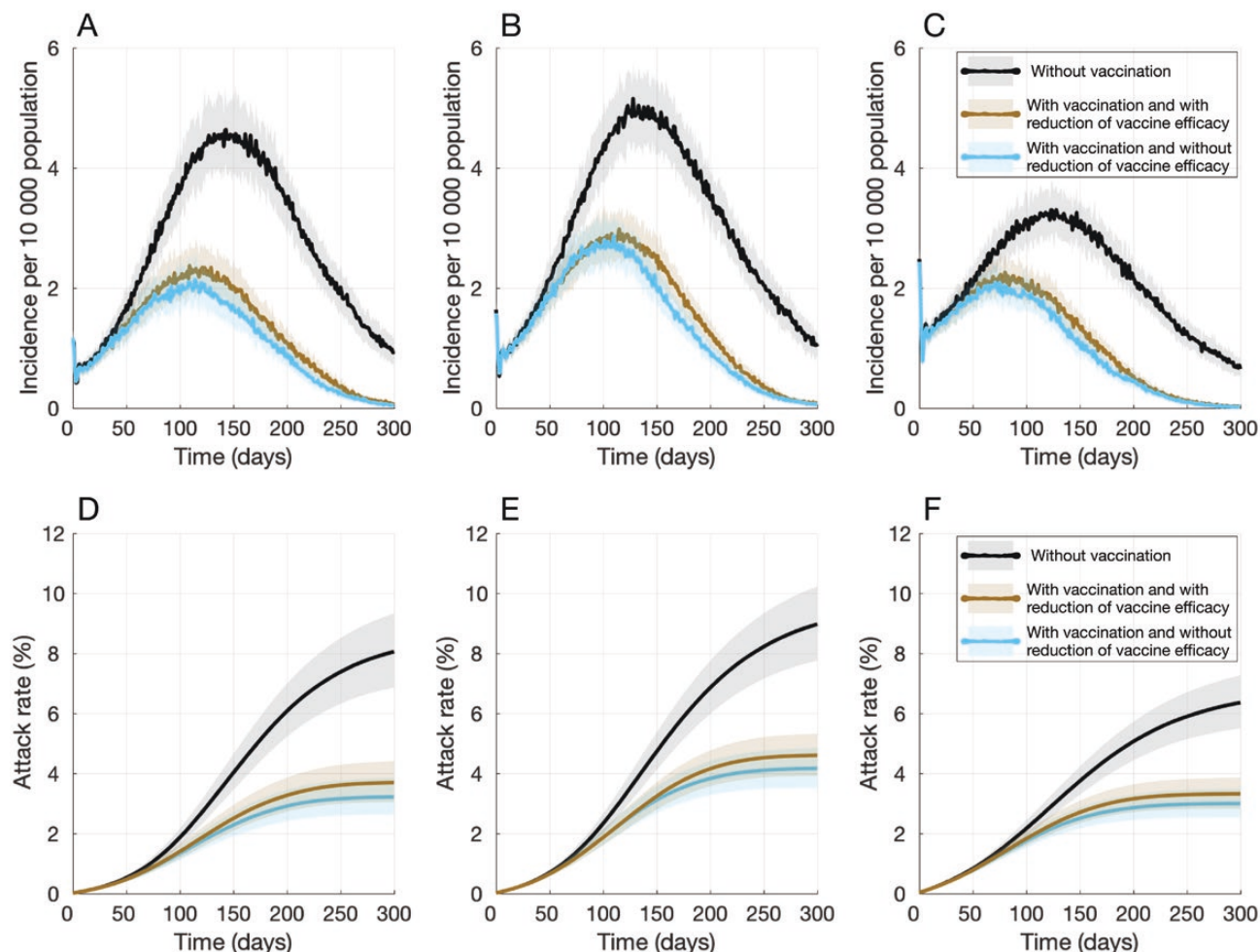
When vaccine efficacy in elderly and comorbid individuals was the same as in other subpopulations, vaccination led to a higher decrease in attack rates across all age groups (Figure 2). In this scenario, the comparative advantage of vaccination in reducing incidence and the overall attack rate was diminished as the level of preexisting immunity in the population increased (Figure 3).

We observed that, in the absence of vaccination, the daily incidence remained above 1 per 10 000 population for at least 288 days (Figure 3). However, vaccination with 40% coverage



**Figure 2.** Overall and age-specific relative reduction of mean attack rates with vaccination, as compared to the outbreak scenario in the absence of vaccination, with 5% (blue), 10% (red), and 20% (green) levels of preexisting immunity over 300 days. Panels (A) and (B) correspond, respectively, to scenarios with and without reduction of vaccine efficacy in comorbid individuals and the elderly.





**Figure 3.** Projected daily incidence of COVID-19 per 10 000 population with (A) 5%, (B) 10%, and (C) 20% levels of preexisting immunity. Projected temporal attack rates with (D) 5%, (E) 10%, and (F) 20% levels of preexisting immunity over 300 days. Vaccination started on day 0. Colored curves with vaccination correspond, respectively, to scenarios with (brown) and without (blue) reduction of vaccine efficacy in comorbid individuals and the elderly. Abbreviation: COVID-19, coronavirus disease 2019.

reduced the outbreak peak and led to a daily incidence below 1 case 2–3 months earlier, within 203–222 days from the start of vaccination. This earlier control of the outbreak in the base-case scenario with 10% preexisting immunity was also observed at other levels of preexisting immunity (Figure 3).

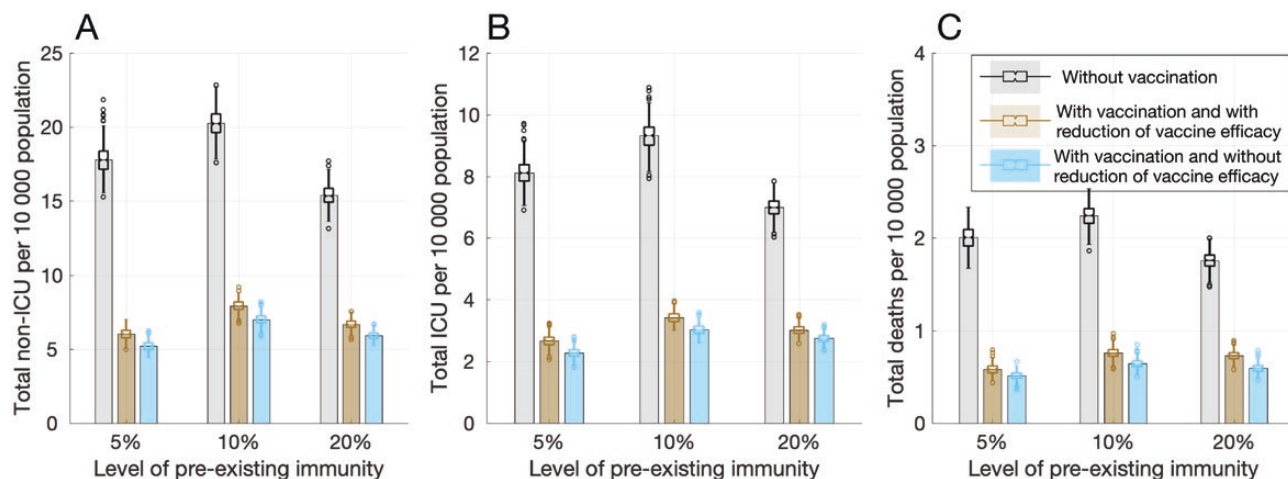
#### Hospitalizations and Deaths

In the absence of vaccination, and with 10% preexisting immunity, total non-ICU and ICU hospitalizations were projected to be 20.3 (95% CrI: 19.0–21.4) and 9.3 (95% CrI: 8.7–9.9) per 10 000 population, respectively, with 2.3 (95% CrI: 2.1–2.4) deaths per 10 000 population on day 300 (Figure 4).

Vaccination with reduced efficacy in elderly and comorbid individuals still markedly reduced hospitalizations and deaths (Figure 4). Non-ICU hospitalizations, ICU hospitalizations, and deaths would be reduced by 63.5% (95% CrI: 60.3%–66.7%), 65.6% (95% CrI: 62.2%–68.6%), and 69.3% (95% CrI: 65.5%–73.1%), respectively, over 300 days from the start of vaccination. We projected that vaccination would lead to higher reductions

in hospitalizations and deaths for 5% preexisting immunity. However, vaccine attributable reductions in non-ICU hospitalizations, ICU hospitalizations, and deaths were lower with 20% preexisting immunity and were projected to be 59.5% (95% CrI: 55.8%–62.9%), 59.5% (95% CrI: 55.6%–63.0%), and 61.6% (95% CrI: 57.0%–66.2%), respectively (Figure 4). If vaccine efficacy was not reduced in elderly and comorbid individuals, the effect of vaccination in reducing hospitalizations and deaths was increased. However, similar to the case of attack rates, this additional benefit was diminished with higher levels of preexisting immunity (Figure 4).

We performed sensitivity analyses with additional scenarios corresponding to vaccine coverages in the range 10–60%, different protection efficacy of vaccine against infection, and when the time interval between the 2 vaccine doses was 28 days. Results of these scenarios, summarized in the [Supplementary Data](#), present qualitatively similar outcomes for different levels of population immunity ( [Supplementary Sections 4 and 5](#)). There was no substantial effect of the 1 week difference in



**Figure 4.** Projected total number of (A) non-ICU hospitalizations, (B) ICU hospitalizations, and (C) deaths per 10 000 population with 5%, 10%, and 20% levels of pre-existing immunity over 300 days. Colored bars with vaccination correspond, respectively, to scenarios with (brown) and without (blue) reduction of vaccine efficacy in comorbid individuals and the elderly. Abbreviation: ICU, intensive care unit.

dosing, but a greater reduction of disease burden was achieved with higher vaccine efficacy against infection.

## DISCUSSION

COVID-19 outbreaks have caused significant global morbidity and mortality, in addition to undermining the economic and social well-being of individuals and communities. Despite this devastating toll, the majority of the population remains susceptible to severe acute respiratory syndrome coronavirus 2 (SARS-CoV-2) infection [52]. Thus, vaccine development has been a high priority. The scale and speed of vaccine development efforts have been unprecedented, and highly protective vaccines are beginning to be distributed. This study shows that COVID-19 vaccines with 95% efficacy in preventing disease, even if they conferred limited protection against infection, could substantially mitigate future attack rates, hospitalizations, and deaths.

Our findings should be interpreted within study assumptions and limitations. First, our model vaccinated a large proportion of high-risk individuals, including 70% of healthcare workers [53] and 56% of comorbid individuals. Although this coverage may be difficult to achieve in the short term [54], strategic public health campaigns and transparent communication regarding vaccine safety may be able to improve uptake. Second, we assumed that all vaccinated individuals were willing to receive both doses. If substantial dropout occurs after the first dose, vaccines could be used more quickly for the general population, and the short-term effect of dropouts may be minor. Third, the number of daily contacts in the model was age-dependent without consideration of the location of occurrence (eg, within households, workplaces, and schools). However, this is not expected to change our community-based results, because model calibration would modulate the transmission probability for a

given reproduction number. Similarly, any reduction of contacts and variation in contact patterns are accounted for in the calibration process when transmission probability is determined. Finally, the model did not explicitly simulate other mitigation measures (eg, social distancing, mask wearing, testing, and contact tracing); however, we calibrated the model to current estimates of the effective reproduction number to account for known compliance with such measures in the United States. Further studies are needed to determine the vaccine coverage required to eliminate the need for nonpharmaceutical interventions.

Given the limited population-level immunity to COVID-19 [50], vaccination remains a key preventive measure to reduce disease burden and mitigate future outbreaks. Our study suggests that a vaccine could have a substantial impact on reducing incidence, hospitalizations, and deaths, especially among vulnerable individuals with comorbidities and risk factors associated with severe COVID-19. Thus, mobilizing public health resources is imperative to achieve the proposed goal of distributing 100 million vaccine doses over 100 days in the US population by the incoming administration [55]. Our findings support the Advisory Committee on Immunization Practices recommendations [56], highlighting that a targeted vaccination strategy can effectively mitigate disease burden and the societal impact of COVID-19. We also find that, even with the relatively rapid rollout simulated here, it may take several months to control COVID-19 at the population level. Moreover, this impact is achieved in the context of continued public health efforts and is not possible without diligent attention to the other aspects of infection prevention and control, such as masking, hand hygiene, testing, contact tracing, and isolation of infected cases. If current vaccination programs are accompanied by widespread relaxation of other measures, a much higher coverage will be

necessary with a significantly higher distribution capacity. Nevertheless, our results are an encouraging signal of the power and promise of vaccines against COVID-19.

## Supplementary Data

Supplementary materials are available at *Clinical Infectious Diseases* online. Consisting of data provided by the authors to benefit the reader, the posted materials are not copyedited and are the sole responsibility of the authors, so questions or comments should be addressed to the corresponding author.

## Notes

**Reproducibility statement.** The computational system and parameters are available under an open-source license at: [https://github.com/thomasvilches/covid\\_vac](https://github.com/thomasvilches/covid_vac).

**Financial support.** Canadian Institutes of Health Research (grant number OV4 – 170643, COVID-19 Rapid Research); São Paulo Research Foundation (grant number 18/24811-1); the National Institutes of Health (grant numbers 1R01AI151176-01, 1K01AI141576-01), and the National Science Foundation (grant numbers RAPID 2027755, CCF-1918784).

**Potential conflicts of interest.** J. M. L. reports that her institution has received funding for research studies from Sanofi Pasteur, GlaxoSmithKline, Merck, Janssen and Pfizer. J. M. L. also holds the CIHR-GSK Chair in Pediatric Vaccinology at Dalhousie University. K. M. N.'s research center received funding for research studies from Pfizer. All other authors report no potential conflicts. All authors have submitted the ICMJE Form for Disclosure of Potential Conflicts of Interest. Conflicts that the editors consider relevant to the content of the manuscript have been disclosed.

## References

- Lau H, Khosrawipour V, Kocbach P, et al. The positive impact of lockdown in Wuhan on containing the COVID-19 outbreak in China. *J Travel Med* 2020; 27. Available at: <https://academic.oup.com/jtm/article/27/3/taaa037/5808003>. Accessed 24 August 2020.
- Flaxman S, Mishra S, Gandy A, et al. Estimating the effects of non-pharmaceutical interventions on COVID-19 in Europe. *Nature* 2020; 584:257–61. Available at: <https://www.nature.com/articles/s41586-020-2405-7>. Accessed 24 August 2020.
- Khosrawipour V, Lau H, Khosrawipour T, et al. Failure in initial stage containment of global COVID-19 epicenters. *J Med Virol* 2020; 92:863–7. Available at: <https://onlinelibrary.wiley.com/doi/abs/10.1002/jmv.25883>. Accessed 24 August 2020.
- The Lancet. India under COVID-19 lockdown. *Lancet Lond Engl* 2020; 395:1315. Available at: <https://www.ncbi.nlm.nih.gov/pmc/articles/PMC7180023/>. Accessed 24 August 2020.
- Thanh Le T, Andreadakis Z, Kumar A, et al. The COVID-19 vaccine development landscape. *Nat Rev Drug Discov* 2020; 19:305–6. Available at: <http://www.nature.com/articles/d41573-020-00073-5>. Accessed 9 June 2020.
- Safety and efficacy of the BNT162b2 mRNA Covid-19 vaccine. *NEJM*. Available at: <https://www.nejm.org/doi/full/10.1056/NEJMoa2034577>. Accessed 17 December 2020.
- Anderson EJ, Roupael NG, Widge AT, et al. Safety and immunogenicity of SARS-CoV-2 mRNA-1273 vaccine in older adults. *N Engl J Med* 2020; 383:2427–38. Available at: <https://doi.org/10.1056/NEJMoa2028436>. Accessed 31 December 2020.
- Voysey M, Clemens SAC, Madhi SA, et al. Safety and efficacy of the ChAdOx1 nCoV-19 vaccine (AZD1222) against SARS-CoV-2: an interim analysis of four randomised controlled trials in Brazil, South Africa, and the UK. *The Lancet* 2020; 0. Available at: [https://www.thelancet.com/journals/lancet/article/PIIS0140-6736\(20\)32661-1/abstract](https://www.thelancet.com/journals/lancet/article/PIIS0140-6736(20)32661-1/abstract). Accessed 22 December 2020.
- The New York Times. Coronavirus vaccine tracker. 2020. Available at: <https://www.nytimes.com/interactive/2020/science/coronavirus-vaccine-tracker.html>. Accessed 18 August 2020.
- World Health Organization. Draft landscape of COVID-19 candidate vaccines. Available at: <https://www.who.int/who-documents-detail-redirect/draft-landscape-of-covid-19-candidate-vaccines>. Accessed 10 June 2020.
- Graham BS. Rapid COVID-19 vaccine development. *Science* 2020; 368:945–6. Available at: <https://www.sciencemag.org/lookup/doi/10.1126/science.abb8923>. Accessed 10 June 2020.
- World Health Organization. WHO target product profiles for COVID-19 vaccines. Available at: <https://www.who.int/who-documents-detail-redirect/who-target-product-profiles-for-covid-19-vaccines>. Accessed 16 June 2020.
- U.S. Department of Health and Human Services and Food and Drug Administration. Development and licensure of vaccines to prevent COVID-19. 2020. Available at: <https://www.fda.gov/media/139638/download>. Accessed 24 August 2020.
- US Food and Drug Administration. Pfizer-BioNTech COVID-19 vaccine. FDA, 2020. Available at: <https://www.fda.gov/emergency-preparedness-and-response/coronavirus-disease-2019-covid-19/pfizer-biontech-covid-19-vaccine>. Accessed 23 December 2020.
- US Food and Drug Administration. Moderna COVID-19 vaccine. FDA, 2020. Available at: <https://www.fda.gov/emergency-preparedness-and-response/coronavirus-disease-2019-covid-19/moderna-covid-19-vaccine>. Accessed 23 December 2020.
- Centers for Disease Control and Prevention. Preliminary estimates of the prevalence of selected underlying health conditions among patients with coronavirus disease 2019—United States, February 12–March 28, 2020. *MMWR Morb Mortal Wkly Rep* 2020; 69. Available at: <https://www.cdc.gov/mmwr/volumes/69/wr/mm6913e2.htm>. Accessed 10 June 2020.
- Garg S. Hospitalization rates and characteristics of patients hospitalized with laboratory-confirmed coronavirus disease 2019—COVID-NET, 14 states, March 1–30, 2020. *MMWR Morb Mortal Wkly Rep* 2020; 69. Available at: <https://www.cdc.gov/mmwr/volumes/69/wr/mm6915e3.htm>. Accessed 10 June 2020.
- Adams ML, Katz DL, Grandpre J. Population based estimates of comorbidities affecting risk for complications from COVID-19 in the US. *medRxiv* 2020; 2020.03.30.20043919. Available at: <https://www.medrxiv.org/content/10.1101/2020.03.30.20043919v1>. Accessed 10 June 2020.
- U.S. Census Bureau QuickFacts: United States. Population demographics. 2020. Available at: <https://www.census.gov/quickfacts/fact/table/US/PST045219>. Accessed 16 April 2020.
- Adams ML, Katz DL, Grandpre J. Population-based estimates of chronic conditions affecting risk for complications from coronavirus disease, United States—Volume 26, Number 8—August 2020. *Emerg Infect Dis*. Available at: [https://wwwnc.cdc.gov/eid/article/26/8/20-0679\\_article](https://wwwnc.cdc.gov/eid/article/26/8/20-0679_article). Accessed 27 December 2020.
- Wang B, Li R, Lu Z, Huang Y. Does comorbidity increase the risk of patients with COVID-19: evidence from meta-analysis. *Aging (Albany NY)* 2020; 12:6049–57.
- Yang J, Zheng Y, Gou X, et al. Prevalence of comorbidities and its effects in patients infected with SARS-CoV-2: a systematic review and meta-analysis. *Int J Infect Dis* 2020; 94:91–5. Available at: <https://linkinghub.elsevier.com/retrieve/pii/S1201971220301363>. Accessed 9 June 2020.
- Garnier-Crussard A, Forestier E, Gilbert T, Krolak-Salmon P. Novel coronavirus (COVID-19) epidemic: what are the risks for older patients? *J Am Geriatr Soc* 2020; 68:939–40.
- Stokes EK, Zambrano LD, Anderson KN, et al. Coronavirus disease 2019 case surveillance—United States, January 22–May 30, 2020. *MMWR Morb Mortal Wkly Rep* 2020; 69:759–65. Available at: [http://www.cdc.gov/mmwr/volumes/69/wr/mm6924e2.htm?\\_cid=mm6924e2\\_w](http://www.cdc.gov/mmwr/volumes/69/wr/mm6924e2.htm?_cid=mm6924e2_w). Accessed 23 June 2020.
- Kim L, Garg S, O'Halloran A, et al. Risk factors for intensive care unit admission and in-hospital mortality among hospitalized adults identified through the U.S. coronavirus disease 2019 (COVID-19)-associated hospitalization surveillance network (COVID-NET). *Clin Infect Dis* 2020; doi:10.1093/cid/ciab079
- Shoukat A, Wells CR, Langley JM, Singer BH, Galvani AP, Moghadas SM. Projecting demand for critical care beds during COVID-19 outbreaks in Canada. *Can Med Assoc J* 2020; 192:E489–96. Available at: <http://www.cmaj.ca/lookup/doi/10.1503/cmaj.200457>. Accessed 10 June 2020.
- Divo MJ, Martinez CH, Mannino DM. Ageing and the epidemiology of multimorbidity. *Eur Respir J* 2014; 44:1055–68. Available at: <https://www.ncbi.nlm.nih.gov/pmc/articles/PMC4918092/>. Accessed 10 June 2020.
- Mossong J, Hens N, Jit M, et al. Social contacts and mixing patterns relevant to the spread of infectious diseases. *PLoS Med* 2008; 5:e74. Available at: <https://dx.plos.org/10.1371/journal.pmed.0050074>. Accessed 22 May 2020.
- Ferretti L, Wymant C, Kendall M, et al. Quantifying SARS-CoV-2 transmission suggests epidemic control with digital contact tracing. *Science* 2020; eabb6936. Available at: <https://www.sciencemag.org/lookup/doi/10.1126/science.abb6936>. Accessed 16 April 2020.
- Moghadas SM, Fitzpatrick MC, Sah P, et al. The implications of silent transmission for the control of COVID-19 outbreaks. *Proc Natl Acad Sci U S A* 2020. Available at: <https://www.pnas.org/content/early/2020/07/02/2008373117>. Accessed 9 July 2020.
- Sayampathan AA, Heng CS, Pin PH, Pang J, Leong TY, Lee VJ. Infectivity of asymptomatic versus symptomatic COVID-19. *The Lancet* 2020; 0. Available at: [https://www.thelancet.com/journals/lancet/article/PIIS0140-6736\(20\)32651-9/abstract](https://www.thelancet.com/journals/lancet/article/PIIS0140-6736(20)32651-9/abstract). Accessed 20 December 2020.
- Li Q, Guan X, Wu P, et al. Early transmission dynamics in Wuhan, China, of novel coronavirus-infected pneumonia. *N Engl J Med* 2020; 382:1199–207. Available at: <http://www.nejm.org/doi/10.1056/NEJMoa2001316>. Accessed 10 June 2020.



33. He X, Lau EHY, Wu P, et al. Temporal dynamics in viral shedding and transmissibility of COVID-19. *Nat Med* **2020**; 26:672–5. Available at: <http://www.nature.com/articles/s41591-020-0869-5>. Accessed 10 June 2020.
34. Li R, Pei S, Chen B, et al. Substantial undocumented infection facilitates the rapid dissemination of novel coronavirus (SARS-CoV-2). *Science* **2020**; 368:489–93. Available at: <https://science.sciencemag.org/content/368/6490/489>. Accessed 10 June 2020.
35. Gatto M, Bertuzzo E, Mari L, et al. Spread and dynamics of the COVID-19 epidemic in Italy: effects of emergency containment measures. *Proc Natl Acad Sci U S A* **2020**; 117:10484–91. Available at: <http://www.pnas.org/lookup/doi/10.1073/pnas.2004978117>. Accessed 10 June 2020.
36. Systrom K, Vladek T, Krieger M. Rt.live. **2020**. Available at: <https://github.com/rtcovidlive/covid-model>. Accessed 16 November 2020.
37. Mizumoto K, Kagaya K, Zarebski A, Chowell G. Estimating the asymptomatic proportion of coronavirus disease 2019 (COVID-19) cases on board the Diamond Princess cruise ship, Yokohama, Japan, 2020. *Eurosurveillance* **2020**; 25. Available at: <https://www.ncbi.nlm.nih.gov/pmc/articles/PMC7078829/>. Accessed 19 June 2020.
38. Nishiura H, Kobayashi T, Miyama T, et al. Estimation of the asymptomatic ratio of novel coronavirus infections (COVID-19). *Int J Infect Dis* **2020**; 94:154–5.
39. Kimball A. Asymptomatic and presymptomatic SARS-CoV-2 infections in residents of a long-term care skilled nursing facility—King County, Washington, March 2020. *MMWR Morb Mortal Wkly Rep* **2020**; 69. Available at: <https://www.cdc.gov/mmwr/volumes/69/wr/mm6913e1.htm>. Accessed 22 August 2020.
40. Moghadas SM, Shoukat A, Fitzpatrick MC, et al. Projecting hospital utilization during the COVID-19 outbreaks in the United States. *Proc Natl Acad Sci U S A* **2020**; 117:9122–6. Available at: <https://www.pnas.org/content/117/16/9122>. Accessed 10 June 2020.
41. Yang X, Yu Y, Xu J, et al. Clinical course and outcomes of critically ill patients with SARS-CoV-2 pneumonia in Wuhan, China: a single-centered, retrospective, observational study. *Lancet Respir Med* **2020**; 8:475–81. Available at: [https://www.thelancet.com/journals/lanres/article/PIIS2213-2600\(20\)30079-5/abstract](https://www.thelancet.com/journals/lanres/article/PIIS2213-2600(20)30079-5/abstract). Accessed 10 June 2020.
42. Sanche S, Lin YT, Xu C, Romero-Severson E, Hengartner N, Ke R. The novel coronavirus, 2019-nCoV, is highly contagious and more infectious than initially estimated. *medRxiv* **2020**; 2020.02.07.20021154. Available at: <https://www.medrxiv.org/content/10.1101/2020.02.07.20021154v1>. Accessed 10 June 2020.
43. Jarvis CI, Van Zandvoort K, Gimma A, et al. Quantifying the impact of physical distance measures on the transmission of COVID-19 in the UK. *BMC Med* **2020**; 18:124. Available at: <https://bmcmmedicine.biomedcentral.com/articles/10.1186/s12916-020-01597-8>. Accessed 9 August 2020.
44. Centers for Disease Control and Prevention. Flu vaccination coverage, United States, 2018–19 influenza season. **2019**. Available at: <https://www.cdc.gov/flu/fluview/coverage-1819estimates.htm>. Accessed 10 June 2020.
45. U.S. Bureau of Labor Statistics. Number of hospitals and hospital employment in each state in 2019: The Economics Daily: U.S. Bureau of Labor Statistics. Available at: <https://www.bls.gov/opub/ted/2020/number-of-hospitals-and-hospital-employment-in-each-state-in-2019.htm>. Accessed 27 December 2020.
46. Committee on Equitable Allocation of Vaccine for the Novel Coronavirus, National Academy of Medicine, National Academies of Sciences, Engineering, and Medicine. Discussion draft of the preliminary framework for equitable allocation of COVID-19 vaccine. Washington D.C.: National Academies Press, **2020**: 25914. Available at: <https://www.nap.edu/catalog/25914>. Accessed 28 September 2020.
47. Moderna. Moderna's COVID-19 vaccine candidate meets its primary efficacy endpoint in the first interim analysis of the phase 3 COVE study. Moderna, Inc., **2020**. Available at: <https://investors.modernatx.com/news-releases/news-release-details/modernas-covid-19-vaccine-candidate-meets-its-primary-efficacy/>. Accessed 19 November 2020.
48. Andrew MK, Shinde V, Ye L, et al.; Serious Outcomes Surveillance Network of the Public Health Agency of Canada/Canadian Institutes of Health Research Influenza Research Network (PCIRN) and the Toronto Invasive Bacterial Diseases Network (TIBDN). The importance of frailty in the assessment of influenza vaccine effectiveness against influenza-related hospitalization in elderly people. *J Infect Dis* **2017**; 216:405–14.
49. Dhakal S, Klein SL. Host factors impact vaccine efficacy: implications for seasonal and universal influenza vaccine programs. *J Virol* **2019**; 93. Available at: <https://jvi.asm.org/content/93/21/e00797-19>. Accessed 16 June 2020.
50. Anand S, Montez-Rath M, Han J, et al. Prevalence of SARS-CoV-2 antibodies in a large nationwide sample of patients on dialysis in the USA: a cross-sectional study. *The Lancet* **2020**; 0. Available at: [https://www.thelancet.com/journals/lancet/article/PIIS0140-6736\(20\)32009-2/abstract](https://www.thelancet.com/journals/lancet/article/PIIS0140-6736(20)32009-2/abstract). Accessed 28 September 2020.
51. SeroTracker. COVID-19 seroprevalence. Available at: <https://serotracker.com/Dashboard>. Accessed 9 July 2020.
52. World Health Organization. Coronavirus disease (COVID-2019) press briefings. Available at: <https://www.who.int/emergencies/diseases/novel-coronavirus-2019/media-resources/press-briefings>. Accessed 21 June 2020.
53. Hamel L, Kirzinger A, Munasna C, Brodie M. KFF COVID-19 vaccine monitor: December 2020. KFF, **2020**. Available at: <https://www.kff.org/coronavirus-covid-19/report/kff-covid-19-vaccine-monitor-december-2020/>. Accessed 23 December 2020.
54. Cornwall W, 2020, Pm 4:25. Just 50% of Americans plan to get a COVID-19 vaccine: here's how to win over the rest. **2020**. Available at: <https://www.sciencemag.org/news/2020/06/just-50-americans-plan-get-covid-19-vaccine-here-s-how-win-over-rest>. Accessed 11 July 2020.
55. Sullivan K. Biden details plan to combat coronavirus pandemic in first 100 days. Available at: <https://www.cnn.com/2020/12/08/politics/biden-100-million-vaccines-100-days/index.html>. Accessed 2 January 2021.
56. Centers for Disease Control and Prevention. ACIP vaccine recommendations and schedules. **2020**. Available at: <https://www.cdc.gov/vaccines/acip/recommendations.html>. Accessed 27 December 2020.