



Awareness-driven behavior changes can shift the shape of epidemics away from peaks and toward plateaus, shoulders, and oscillations

Joshua S. Weitz^{a,b,c,1} , Sang Woo Park^d , Ceyhan Eksin^e, and Jonathan Dushoff^{f,g}

^aSchool of Biological Sciences, Georgia Institute of Technology, Atlanta, GA 30332-0230; ^bSchool of Physics, Georgia Institute of Technology, Atlanta, GA 30332-0230; ^cCenter for Microbial Dynamics and Infection, Georgia Institute of Technology, Atlanta, GA 30332-0230; ^dDepartment of Ecology and Evolutionary Biology, Princeton University, Princeton, NJ 08544; ^eDepartment of Industrial and Systems Engineering, Texas A&M University, College Station, TX 77843; ^fDepartment of Biology, McMaster University, Hamilton, ON L8S 4L8, Canada; and ^gDeGroote Institute for Infectious Disease Research, McMaster University, Hamilton, ON L8S 4L8, Canada

Edited by Nils Chr. Stenseth, University of Oslo, Oslo, Norway, and approved November 3, 2020 (received for review May 18, 2020)

The COVID-19 pandemic has caused more than 1,000,000 reported deaths globally, of which more than 200,000 have been reported in the United States as of October 1, 2020. Public health interventions have had significant impacts in reducing transmission and in averting even more deaths. Nonetheless, in many jurisdictions, the decline of cases and fatalities after apparent epidemic peaks has not been rapid. Instead, the asymmetric decline in cases appears, in most cases, to be consistent with plateau- or shoulder-like phenomena—a qualitative observation reinforced by a symmetry analysis of US state-level fatality data. Here we explore a model of fatality-driven awareness in which individual protective measures increase with death rates. In this model, fast increases to the peak are often followed by plateaus, shoulders, and lag-driven oscillations. The asymmetric shape of model-predicted incidence and fatality curves is consistent with observations from many jurisdictions. Yet, in contrast to model predictions, we find that population-level mobility metrics usually increased from low levels before fatalities reached an initial peak. We show that incorporating fatigue and long-term behavior change can reconcile the apparent premature relaxation of mobility reductions and help understand when post-peak dynamics are likely to lead to a resurgence of cases.

epidemics | epidemiology | nonlinear dynamics | control | public health

The spread of COVID-19 has elevated the importance of epidemiological models as a means to forecast both near- and long-term spread. In the United States, the Institute for Health Metrics and Evaluation (IHME) model has emerged as a key influencer of state- and national-level policy (1). The IHME model includes a detailed characterization of the variation in hospital bed capacity, intensive care unit beds, and ventilators between and within states. Predicting the projected strains on underlying health resources is critical to supporting planning efforts. However, such projections require an epidemic “forecast.” Early versions of IHME’s epidemic forecast differed from conventional epidemic models in a significant way: IHME assumed that the cumulative deaths in the COVID-19 epidemic followed a symmetric, Gaussian-like trajectory. For example, the IHME model predicted that, if the peak is 2 wk away, then, in 4 wk, cases will return to the level of the present, and continue to diminish rapidly. But epidemics need not have one symmetric peak—the archaic Farr’s Law of Epidemics notwithstanding (see ref. 2 for a cautionary tale of using Farr’s law as applied to the HIV epidemic).

Conventional epidemic models of COVID-19 represent populations in terms of their “status” vis a vis the infectious agent, that is, susceptible, exposed, infectious, hospitalized, and recovered (3–9). New transmission can lead to an exponential increase in cases when the basic reproduction number $\mathcal{R}_0 > 1$ [the basic reproduction number denotes the average number of new infections caused by a single, typical individual in an otherwise sus-

ceptible population (10)]. Subsequent spread, if left unchecked, would yield a single peak—in theory. That peak corresponds to when “herd immunity” is reached, such that the effective reproduction number $\mathcal{R}_{\text{eff}} = 1$. The effective reproduction number denotes the number of new infectious cases caused by a single infectious individual in a population with preexisting circulation. But, even when herd immunity is reached, there will still be new cases which then diminish over time, until the epidemic concludes. A single-peak paradigm is robust insofar as the disease has spread sufficiently in a population to reach and exceed “herd immunity.” The converse is also true: As long as a population remains predominantly immunologically naive, then the risk of further infection has not passed.

In contrast to the IHME model, the Imperial College of London (ICL) model (3) used a conventional state-driven epidemic model to show the benefits of early intervention steps in reducing transmission and preserving health system resources vs. a “herd immunity” strategy. The ICL model assumed that transmission is reduced because of externalities, like lockdowns, school closings, and so on. As a result, early predictions of the ICL model suggested that lifting of large-scale public health interventions could be followed by a second wave of cases. This has turned out to be

Significance

In contrast to predictions of conventional epidemic models, COVID-19 outbreak time series have highly asymmetric shapes, with cases and fatalities declining much more slowly than they rose. Here, we investigate how awareness-driven behavior modulates epidemic shape. We find that short-term awareness of fatalities leads to emergent plateaus, persistent shoulder-like dynamics, and lag-driven oscillations in an SEIR-like model. However, a joint analysis of fatalities and mobility data suggests that populations relaxed mobility restrictions prior to fatality peaks, in contrast to model predictions. We show that incorporating fatigue and long-term behavior change can explain this phenomenon, shed light on when post-peak dynamics are likely to lead to a resurgence of cases or to sustained declines, and inform public health campaigns to control COVID-19.

Author contributions: J.S.W. and J.D. designed research; J.S.W., S.W.P., C.E., and J.D. performed research; J.S.W., S.W.P., and J.D. contributed new reagents/analytic tools; J.S.W., S.W.P., and J.D. analyzed data; and J.S.W., S.W.P., C.E., and J.D. wrote the paper.

The authors declare no competing interest.

This article is a PNAS Direct Submission.

This open access article is distributed under [Creative Commons Attribution License 4.0 \(CC BY\)](https://creativecommons.org/licenses/by/4.0/).

¹To whom correspondence may be addressed. Email: jsweitz@gatech.edu.

This article contains supporting information online at <https://www.pnas.org/lookup/suppl/doi:10.1073/pnas.2009911117/-DCSupplemental>.

First published December 1, 2020.

the case, in some jurisdictions. Yet, for a disease that is already the documented cause of more than 200,000 deaths in the United States alone, we posit that individuals are likely to continue to modify their behavior even after lockdowns are lifted. Indeed, the peak death rates in the United States and globally are not as high as potential maximums in the event that COVID-19 had spread unhindered in the population (3). Moreover, rather than a peak and near-symmetric decline, there is evidence of asymmetric plateaus and shoulder-like behavior for daily fatality rates in the spring–summer trajectory of the pandemic in US states (Fig. 1; full state-level data in *SI Appendix*, Fig. S1). These early plateaus have been followed, in many cases, with resurgence of cases and fatalities.

In this manuscript, we use a nonlinear model of epidemiological dynamics to ask the question: What is the anticipated shape of an epidemic if individuals modify their behavior in direct response to the impact of a disease at the population level? In doing so, we build upon earlier work on awareness-based models (e.g., refs. 11–14) with an initial assumption: Individuals reduce interactions when death rates are high and increase interactions when death rates are low. As we show, in con-

trast to models which do not account for behavior, short-term awareness can lead to dramatic reductions in death rates, and therefore plateaus, shoulders, and lag-driven oscillations in epidemic dynamics. We also show that dynamics can be driven from persistent spread to elimination when awareness shifts from short to long term. Notably, we find that, despite model predictions, the empirical data reveal that mobility increased even as fatalities were increasing. This reveals the potential role for fatigue and long-term changes in behavior beyond those linked to mobility (e.g., mask wearing) in shaping COVID-19 dynamics.

Results and Discussion

Susceptible–Exposed–Infectious–Removed Model with Short-Term Awareness of Risk. Consider a susceptible–exposed–infectious–removed (SEIR)-like model,

$$\dot{S} = -\frac{\beta SI}{[1 + (\delta/\delta_c)^k]} \quad [1]$$

$$\dot{E} = \frac{\beta SI}{[1 + (\delta/\delta_c)^k]} - \mu E \quad [2]$$

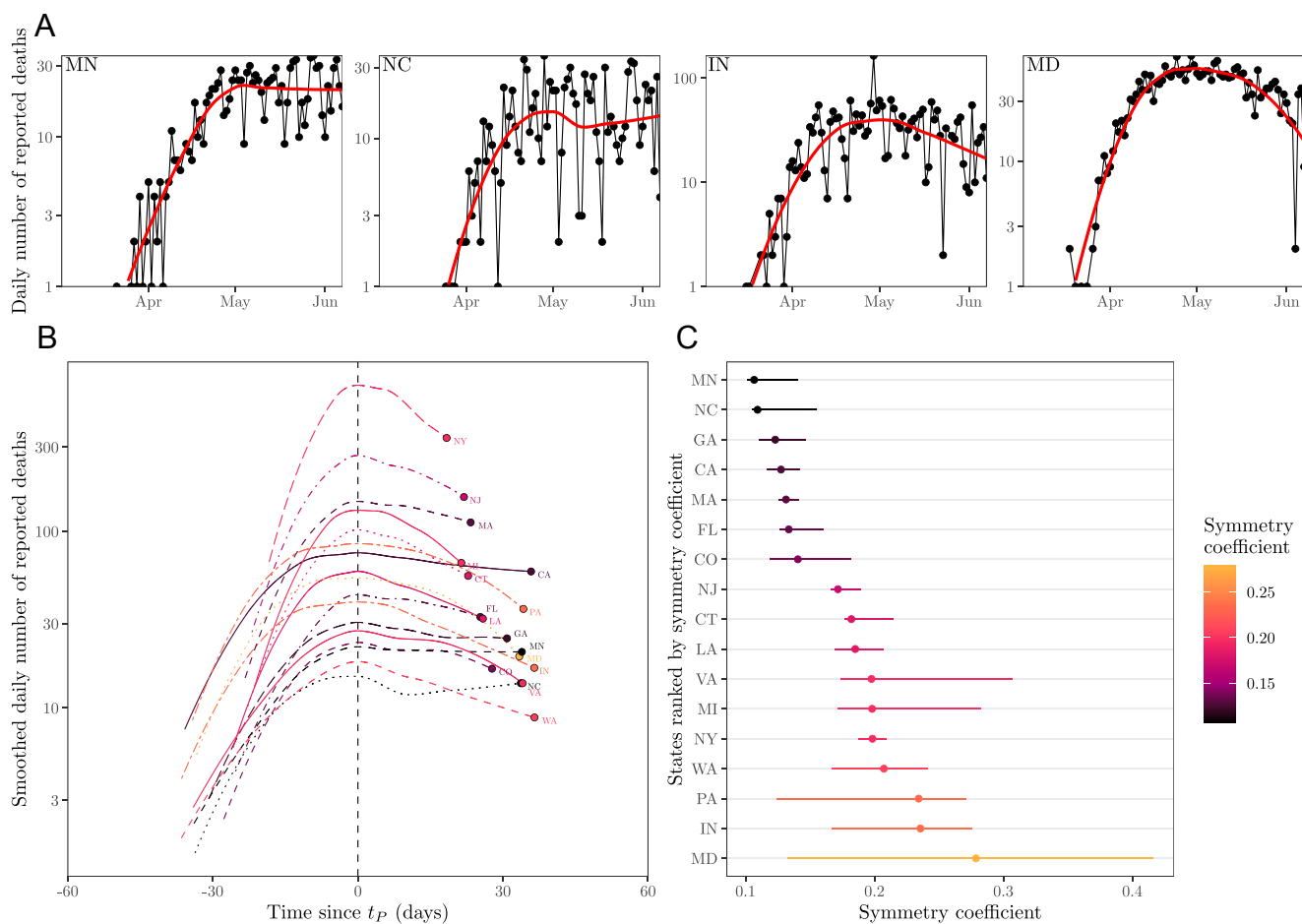


Fig. 1. Plateaus and shoulder-like dynamics in COVID-19 fatalities. (A) Examples of daily number of reported deaths for COVID-19 (black points and lines) and the corresponding LOESS curves (red lines) in four states, including two estimated to be the most plateau-like (Minnesota and North Carolina) and two estimated to be the most peak-like (Indiana and Maryland). Daily number of deaths is smoothed in log space, only including days with one or more reported deaths. We restrict our analysis to states in which the peak smoothed death is greater than 10 as of June 7, 2020 (resulting in 17 states in total). (B) Smoothed daily number of reported deaths centered around the first peak time t_P across 17 states. Smoothed death curves are plotted between $t_P - \Delta t$ and $t_P + \Delta t$, where Δt is defined such that smoothed death at time $t_P - \Delta t$ corresponds to 10% of the smoothed peak value. (C) Measured symmetry coefficient and CIs. Symmetry coefficient is calculated by dividing the death value at time $t_P - \Delta t$ by the death value at time $t_P + \Delta t$. If the death curve is symmetric, the symmetry coefficient should equal 1. CIs are calculated by bootstrapping across the date of deaths for each individual 1,000 times and recalculating the symmetry coefficient (after smoothing each bootstrap time series). LOESS is performed by using the loess function in R.

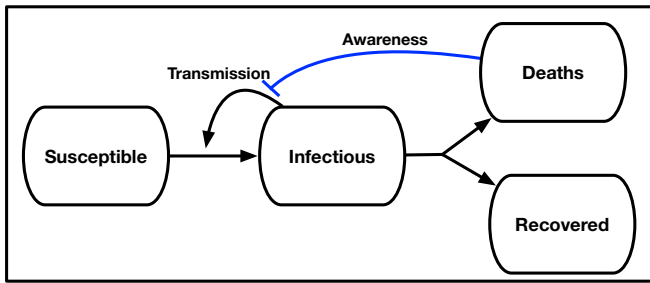


Fig. 2. Schematic of an SEIR model with awareness-driven social distancing. Transmission is reduced based on short- and/or long-term awareness of population-level disease severity (i.e., fatalities).

$$\dot{I} = \mu E - \gamma I \quad [3]$$

$$\dot{R} = (1 - f_D)\gamma I \quad [4]$$

$$\dot{D} = f_D\gamma I, \quad [5]$$

where S , E , I , R , and D denote the proportions of susceptible, exposed, infectious, recovered, and deaths, respectively, given transmission rate β days⁻¹, transition to infectious rate μ days⁻¹, and recovery rate γ days⁻¹, where f_D is the infection fatality probability. The awareness-based distancing is controlled by the death rate $\delta \equiv \dot{D}$, the half-saturation constant ($\delta_c > 0$), and the sharpness of change in the force of infection ($k \geq 1$) (see Fig. 2 for a schematic, and see Table 1 for a list of all parameters used in models). Since δ is proportional to I , this model is closely related to a recently proposed awareness-based distancing model (14) and to an independently derived feedback susceptible-infectious-removed (fSIR) model (15). Note that the present model converges to the conventional SEIR model as $\delta_c \rightarrow \infty$.

Uncontrolled epidemics in SEIR models have a single case peak, corresponding to the point where $\gamma I = \beta SI$ such that the population obtains herd immunity when only a proportion $S = 1/\mathcal{R}_0$ have yet to be infected. However, in the model above, individuals decrease transmission in response to awareness of the impacts of the disease, $\delta(t)$. In this case, infected cases can peak even when the population is far from herd immunity, specifically when

$$\gamma I = \frac{\beta SI}{[1 + (\delta/\delta_c)^k]}. \quad [6]$$

When δ_c is small compared to the per capita death rate of infectious individuals (γf_D), we anticipate that individual behavior will respond quickly to the disease outbreak. Hence, we hypothesize that the emergence of an awareness-based peak can occur early, that is, $S(t) \approx 1$, consistent with a quasi-stationary equilibrium when the death rate is

$$\delta^{(q)} \approx \delta_c (\mathcal{R}_0 - 1)^{1/k} \quad [7]$$

and the incidence of new infections $i(t)$ is given by

$$i^{(q)} \approx \frac{\delta_c}{f_D} (\mathcal{R}_0 - 1)^{1/k}. \quad [8]$$

This quasi-equilibrium is maintained not because of herd immunity but because of changes in behavior.

We evaluate this hypothesis in Fig. 3 for $k = 1$, $k = 2$, and $k = 4$ given disease dynamics with $\beta = 0.5$ per d, $\mu = 1/2$ per d, $\gamma = 1/6$ per d, $f_D = 0.01$, $N = 10^7$, and $N\delta_c = 50$ per d. As is evident, the rise and decline from peaks are not symmetric. Instead, incorporating awareness leads to dynamics where incidence decreases very slowly after a peak. The peaks occur at levels of infection far from that associated with herd immunity.

Post-peak, shoulders and plateaus emerge because of the balance between relaxation of awareness-based distancing (which leads to increases in cases and deaths) and an increase in awareness in response to increases in cases and deaths. As the steepness of response k increases, individuals become less sensitive to fatality rates where $\delta < \delta_c$ and more sensitive to fatality rates where $\delta > \delta_c$. This leads to sharper dynamics. In addition, infections can overshoot the expected plateau given that awareness is driven by fatalities which are offset with respect to new infections.

Short-Term Awareness, Long-Term Plateaus, and Oscillations. Initial analysis of an SEIR model with short-term awareness of population-level severity suggests a generic outcome: Fatalities will first increase exponentially before slowing to a plateau at a level near δ_c . Fig. 4 shows dynamics for values of δ_c ranging from 5 to 500 deaths per day in a population of 10^7 (here $k = 2$; results for $k = 1$ or $k = 4$ are similar; [SI Appendix, Fig. S2](#)). When δ_c is small compared to (γf_D) , fatalities can be sustained at near-constant levels for a long time. When δ_c is higher, then the decline of cases and fatalities due to susceptible depletion is relatively fast. However, over a wide range of assumptions about critical daily fatality rates δ_c , the population remains largely susceptible, even as sustained fatalities continue for a period far greater than the time it took to reach the plateau. To explore the impacts of lags on dynamics, we incorporated an additional class H , assuming that fatalities follow potentially prolonged hospital stays. We do not include detailed information on symptomatic transmission, asymptomatic transmission, hospitalization outcome, age structure, and age-dependent risk (as in ref. 3). Instead, we consider the extended SEIR model,

$$\dot{S} = -\frac{\beta SI}{[1 + (\delta/\delta_c)^k]} \quad [9]$$

$$\dot{E} = \frac{\beta SI}{[1 + (\delta/\delta_c)^k]} - \mu E \quad [10]$$

$$\dot{I} = \mu E - \gamma I \quad [11]$$

$$\dot{R} = (1 - f_D)\gamma I \quad [12]$$

$$\dot{H} = f_D\gamma I - \gamma_H H \quad [13]$$

$$\dot{D} = \gamma_H H, \quad [14]$$

where $T_H = 1/\gamma_H$ defines the average time in a hospital stay before a fatality. Note that we recognize that many individuals recover from COVID-19 after hospitalization; this model's hospital compartment functions as a prefilter.

Table 1. Parameter descriptions and values/ranges used for simulations

Notation	Description	Values/ranges
β	Transmission rate	1/2 days ⁻¹
$1/\mu$	Mean latent period	2 d
$1/\gamma$	Mean infectious period	6 d
$1/\gamma_H$	Mean time in a hospital stay before a fatality	7 to 28 d
f_D	Infection fatality probability	0.01
N	Population size	10^7
$N\delta_c$	Half-saturation constant for short-term awareness	5 to 500 deaths days ⁻¹
$N\delta_c$	Half-saturation constant for long-term awareness	2,500 to 10,000 deaths
k	Sharpness of change in the force of infection	1 to 4
ϵ	Time scale of behavior change	1/7 days ⁻¹

Transmission rate is chosen to match $\mathcal{R}_0 = 3$.

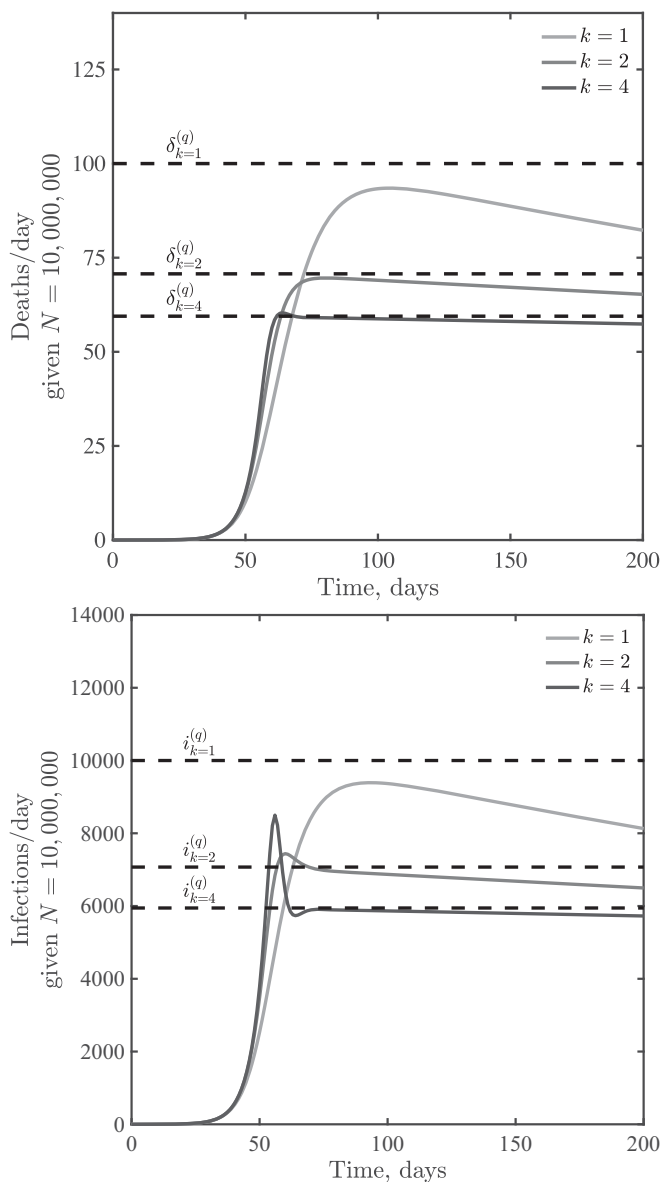


Fig. 3. Infections and deaths per day in a death-awareness-based social distancing model. Simulations have the epidemiological parameters $\beta = 0.5 \text{ days}^{-1}$, $\mu = 1/2 \text{ days}^{-1}$, $\gamma = 1/6 \text{ days}^{-1}$, and $f_D = 0.01$, with variation in $k = 1, 2$, and 4 . We assume $N\delta_c = 50$ per d in all cases.

The earlier analysis of the quasi-stationary equilibrium in fatalities holds in the case of an SEIR model with additional classes before fatalities. Hence, we anticipate that dynamics should converge to $\delta = \delta^{(q)}$ at early times. However, increased delays between cases and fatalities could lead to oscillations. Indeed, this is what we find via examination of models in which T_H ranges from 7 d to 28 d, with increasing magnitude of oscillations as T_H increases (see Fig. 5 for $k=2$, with qualitatively similar results for $k=1$ and $k=4$ shown in [SI Appendix, Fig. S3](#)).

Dynamical Consequences of Short-Term and Long-Term Awareness. Awareness can vary in duration, for example, awareness of severe acute respiratory syndrome coronavirus 2 may prepare individuals to more readily adopt and retain social distancing measures (16, 17). In previous work, long-term awareness of cumulative incidence was shown to lead to substantial decreases in final size

of epidemics compared to baseline expectations from inferred strength (14). Hence, we consider an extension of the SEIR model with lags between infection and fatalities that incorporates both short-term and long-term awareness,

$$\dot{S} = -\frac{\beta SI}{[1 + (\delta/\delta_c)^k + (D/D_c)^k]} \quad [15]$$

$$\dot{E} = \frac{\beta SI}{[1 + (\delta/\delta_c)^k + (D/D_c)^k]} - \mu E \quad [16]$$

$$\dot{I} = \mu E - \gamma I \quad [17]$$

$$\dot{R} = (1 - f_D)\gamma I \quad [18]$$

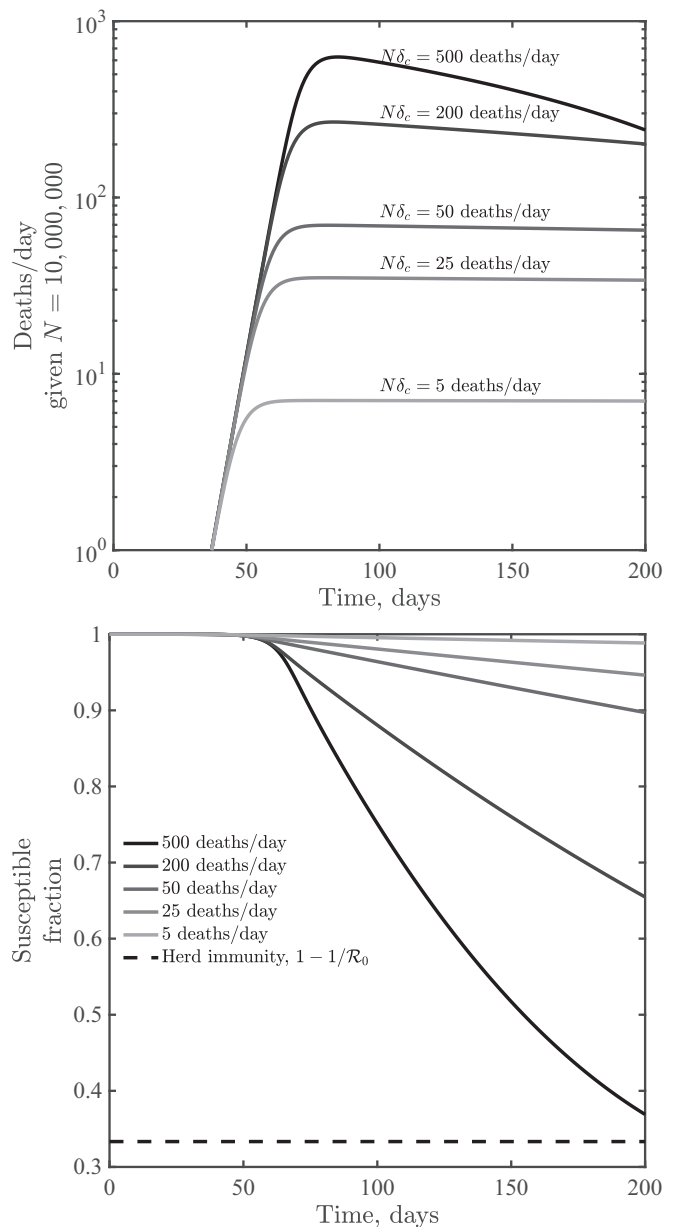


Fig. 4. Dynamics given variation in the critical fatality awareness level, δ_c , for awareness $k=2$. Shown are deaths per d (Top) and the susceptible fraction as a function of time (Bottom), the latter compared to a herd immunity level when only a fraction $1/\mathcal{R}_0$ remain susceptible. These simulations share the epidemiological parameters $\beta = 0.5 \text{ days}^{-1}$, $\mu = 1/2 \text{ days}^{-1}$, $\gamma = 1/6 \text{ days}^{-1}$, and $f_D = 0.01$.

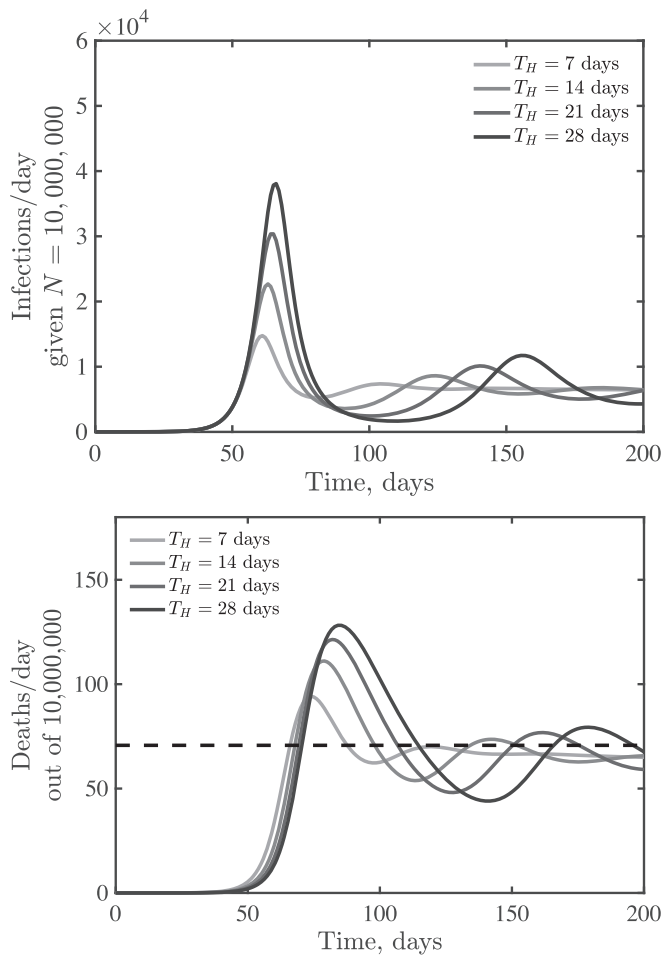


Fig. 5. Emergence of oscillatory dynamics in a death-driven awareness model of social distancing given lags between infection and fatality. Awareness is $k = 2$, and all other parameters are as in Fig. 3. The dashed lines are for fatalities expected quasi-stationary value $\delta^{(q)}$.

$$\dot{H} = f_D \gamma I - \gamma_H H \quad [19]$$

$$\dot{D} = \gamma_H H, \quad [20]$$

where D_c denotes a critical cumulative fatality level (and, formally, a half-saturation constant for the impact of long-term awareness on distancing). Note that the relative importance of short- and long-term awareness can be modulated by δ_c and D_c , respectively. Fig. 6 shows daily fatalities (Fig. 6, *Top* panel) and cumulative fatalities (Fig. 6, *Bottom* panel) for an SEIR model with $\mathcal{R}_0 = 2.5$, $T_H = 14$ d, and $N\delta_c = 50$ fatalities per day and critical cumulative fatalities of $ND_c = 2,500$, $5,000$, and $10,000$, as well as a comparison case with vanishing long-term awareness. As is evident, long-term awareness drives dynamics toward a rapid decline after reaching a peak. This decline arises because D monotonically increases; increasing fatalities beyond D_c leads to rapid suppression of transmission. However, when short-term, rather than long-term, awareness drives dynamics, then shoulders and plateaus can reemerge. In reality, we expect that individual behavior is shaped by short- and long-term awareness of risks, including the potential for fatigue and “decay” of long-term behavior change (11, 12).

Empirical Assessment of Mechanistic Drivers of Asymmetric Peaks in COVID-19 Death Rates. The models developed here suggest that awareness-driven distancing can lead to asymmetric epidemic peaks even in the absence of susceptible depletion. To

test this hypothesis mechanistically, we jointly analyzed the dynamics of fatality rates and behavior, using mobility data obtained from Google COVID-19 Community Mobility Reports (<https://www.google.com/covid19/mobility/>) as a proxy for behavior (see *Methods* for the aggregation of multiple mobility metrics via a principal component analysis [PCA]). Notably, we find that, in the bulk of states examined, aggregated rates of mobility typically began to increase before the local peak in fatality was reached (Fig. 7A). This rebound in mobility rates implies that real populations are opening up faster than our simple model could predict. Awareness-driven models, shown in Fig. 7B, show either “reversible” or “counterclockwise” dynamics. In these models, risky behavior decreases until fatalities reach their peak. Models with short-term awareness but no long-term awareness exhibit a tight link between fatality and behavior (reversible behavior, like the top curve in Fig. 7B). Models with long-term awareness exhibit counterclockwise dynamics, as risky behavior remains at low levels even as fatalities decrease; the asymmetry here is driven by the extent of long-term awareness.

In contrast, the real data (Fig. 7A) exhibit predominantly clockwise dynamics; exceptions include New York, which has a nearly reversible (but still clockwise) pattern, and Washington, which has a counterclockwise pattern anticipated by the awareness model. We hypothesized that a combination of awareness-driven distancing and fatigue could lead to clockwise dynamics: If people become fatigued with distancing behavior, then risk

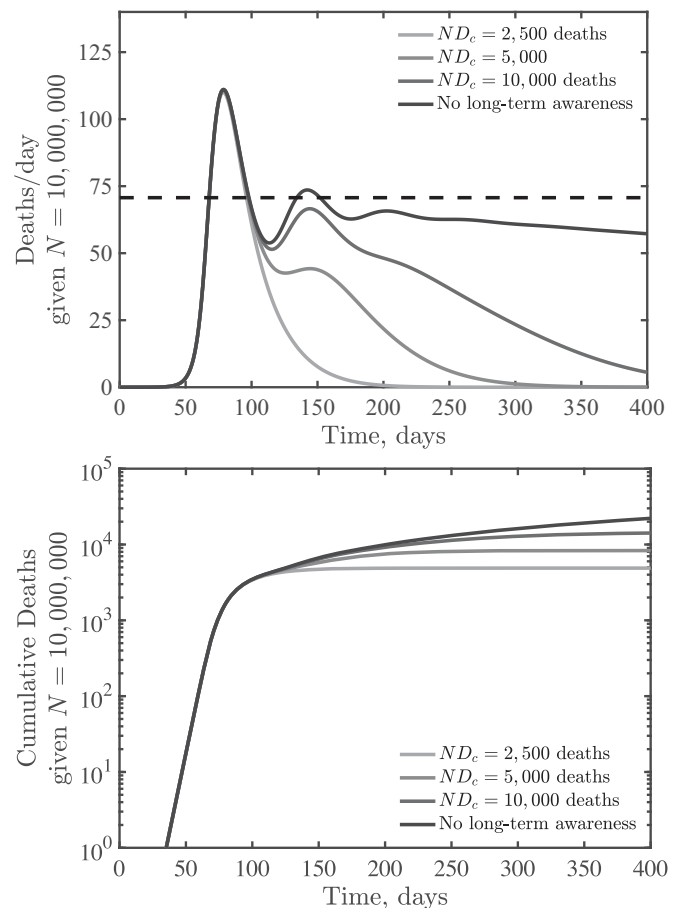


Fig. 6. SEIR dynamics with short- and long-term awareness. Model parameters are $\beta = 0.5$ days $^{-1}$, $\mu = 1/2$ days $^{-1}$, $\gamma = 1/6$ days $^{-1}$, $T_H = 14$ d, $f_D = 0.01$, $N = 10^7$, $k = 2$, and $N\delta_c = 50$ per day (short-term awareness), with varying ND_c (long-term awareness) as shown in the legend. The dashed line (*Top* panel) denotes $\delta^{(q)}$ due to short-term distancing alone.

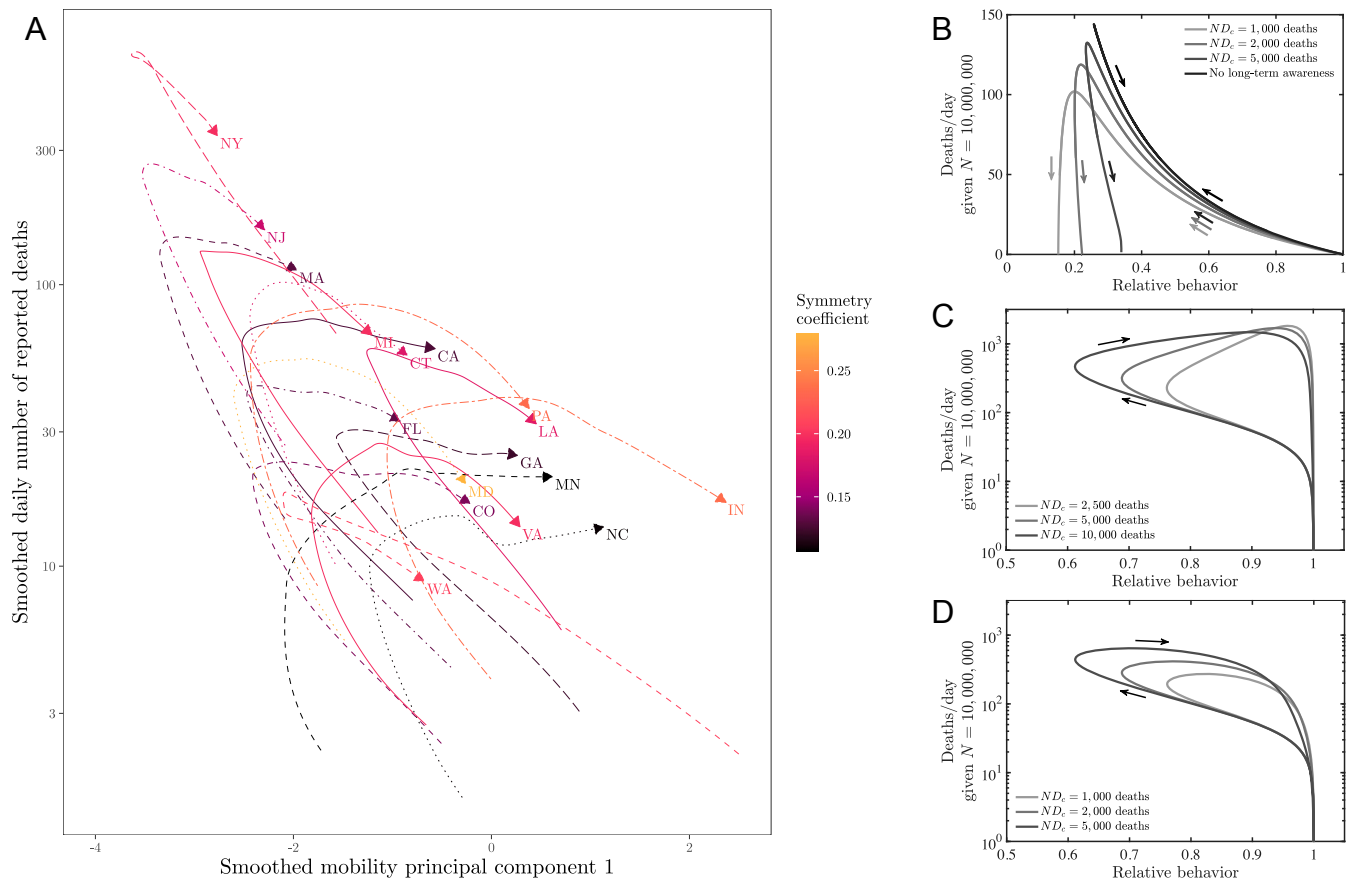


Fig. 7. Phase plane visualizations of deaths vs. mobility for (A) state-level data and (B–D) SEIR models. (A) Deaths and mobility indexes through time for the 17 analyzed states. Both data series are smoothed. Time windows as in Fig. 1. Here, the first mobility principal component represents a proxy for behavior, with positive values associated with higher mobility (see *Methods*). (B) Dynamics of effective behavior and death rates in an SEIR model with short- and long-term awareness. Curves denote different assumptions regarding long-term awareness, in each case $\beta = 0.5 \text{ days}^{-1}$, $\mu = 0.5 \text{ days}^{-1}$, and $\gamma = 1/6 \text{ days}^{-1}$, such that $R_0 = 3$, with $k = 2$, $\gamma_H = 1/21 \text{ days}^{-1}$, and $f_D = 0.01$. The short-term awareness corresponds to $N\delta_c = 50$ deaths per day. Thin lines denote full dynamics over 400 d; thick lines denote the dynamics near the case fatality peak. (C) Dynamics of effective behavior and death rates in an SEIR model with awareness and fatigue. The three different curves denote different assumptions regarding long-term awareness; in each case, $\beta = 0.5 \text{ days}^{-1}$, $\mu = 0.5 \text{ days}^{-1}$, $\gamma = 1/6 \text{ days}^{-1}$, such that $R_0 = 3$, with $k = 2$, $\gamma_H = 1/21 \text{ days}^{-1}$, $f_D = 0.01$, and $\epsilon = 1/7 \text{ days}^{-1}$. The short-term awareness corresponds to $N\delta_c = 50$ deaths per day. The force of infection does not include long-term changes in behavior beyond mobility, that is, $g(D) = 1$. (D) As in C, but the force of infection includes long-term changes in behavior, that is, $g(D) = 1/(1 + (D/D_c)^k)$.

could rise even as deaths were rising. We developed the following model as a proof of concept in which fatigue is driven directly by deaths (although alternatives could also be explored linked to cases, hospitalizations, deaths, and/or a combination):

$$\dot{S} = -g(D)\beta SI \quad [21]$$

$$\dot{E} = g(D)\beta SI - \mu E \quad [22]$$

$$\dot{I} = \mu E - \gamma I \quad [23]$$

$$\dot{R} = (1 - f_D)\gamma I \quad [24]$$

$$\dot{H} = f_D\gamma I - \gamma_H H \quad [25]$$

$$\dot{D} = \gamma_H H \quad [26]$$

$$\dot{\beta} = \frac{\epsilon}{2} \left[\frac{\left(\frac{\hat{\beta}}{1 + (\delta/\delta_c)^k} - \beta \right)}{1 + (D/D_c)^k} + (\hat{\beta} - \beta) \right]. \quad [27]$$

In this model with fatigue, the force of infection is related to the mobility denoted by $\beta(t)$ (which dictates the number of interactions per unit time) modulated by a reduction in risk per infection $g(D)$. In this model, $\hat{\beta}$ denotes the baseline behavior, and ϵ denotes a time scale for behavior change. The level

of fatigue is controlled by D_c , such that mobility returns to a baseline $\hat{\beta}$ once $D \gg D_c$. We consider two models, corresponding to $g(D) = 1$ such that the force of infection depends on mobility alone, and $g(D) = 1/(1 + (D/D_c)^k)$ corresponding to sustained changes in the risk of infection per contact (e.g., due to mask wearing, contact-less interactions, use of personal protective equipment, etc.). As shown in Fig. 7 C and D, the dynamics switch from counterclockwise to clockwise in the δ – β plane given the incorporation of fatigue. Deaths drive down mobility, but, eventually, decreases in β due to short-term awareness are overcome by fatigue, leading to increases in β . If $g(D) = 1$, then the dynamics include increases in both mobility and fatalities akin to levels expected in the absence of behavior, and, eventually, levels of infection that are stopped by herd immunity, rather than by awareness (Fig. 7C). In contrast, if there is sustained behavior change such that $g(D)$ decreases with increasing cumulative deaths, then there is a single peak that forms a clockwise loop, with the peak close to, but after the minimum in behavior (Fig. 7D), as observed in nearly all state-level data sets.

Conclusions

We have developed and analyzed a series of models that assume awareness of disease-induced death can reduce transmission, and

shown that such awareness-driven feedback can lead to highly asymmetric epidemic curves. Resulting fatality time series can exhibit extended periods of near-constant levels even as the majority of the population remains susceptible. Hence, passing a “peak” need not imply the rapid decline of risk. In these conditions, if individuals are unable to sustain social distancing policies, or begin to tolerate higher death rates, then cases and fatalities could increase [similar results have also been proposed in a recent, independently derived feedback SIR model (15)]. Indeed, detailed analysis of mobility and fatalities suggests that mobility increased before fatalities peaked, with the exceptions of Washington and New York. This increase of mobility amid rising fatalities is not consistent with simple models of awareness-driven distancing, but is consistent with more detailed models that include fatigue. Notably, we find that if mobility increases but the risk of infection per interaction decreases due to systemic changes in behavior then models suggest “clockwise” dynamics between behavior and fatality, as found in nearly all state-level datasets analyzed here. Awareness-driven endogenous changes in R_{eff} are typically absent in models that form the basis for public policy and strategic planning. Our findings highlight the potential impacts of short-term and long-term awareness in efforts to shape information campaigns to reduce transmission after early onset “peaks,” particularly when populations remain predominantly immunologically naive.

In moving from concept to intervention, it will be critical to address problems related to noise, biases, and the quantitative inference of mechanism from model–data fits. First, epidemic outbreaks include stochasticity of multiple kinds. Fluctuations could arise endogenously via process noise (especially at low levels of disease) or exogenously via time-varying parameters. Moreover, given the evidence for clustered transmission and superspreading events (18–21), extensions of the present model framework should explicitly account for awareness-driven behavior associated with risky gatherings (22, 23). Next, the link between severity and behavior change depends on reporting of disease outcomes. Biases may arise due to underreporting of fatalities, particularly amid intense outbreaks (24). Awareness may also vary with community age structure and with other factors that influence the infection fatality rate and hence the link between total cases and fatalities (25). Such biases could lead to systematic changes in awareness-driven responses. Finally, we recognize that estimating the influence of awareness-driven behavior change is nontrivial, given fundamental problems of identifiability. Nonetheless, it is important to consider the effects of behavior changes. Otherwise, reductions in cases (and fatalities) will necessarily be attributed to exogenous factors [e.g., influential analyses of the impact of non-pharmaceutical interventions on COVID-19 in Europe do not account for changes in behavior (26)]. Disentangling the impact of entangled interventions will require efforts to link model predictions with measurements of behavior, awareness, and disease dynamics.

Although the models here are intentionally simple, it seems likely that observed asymmetric dynamics of COVID-19, including slow declines and plateau-like behavior, are an emergent

property of awareness-driven behavior. Moving forward, it is essential to fill in significant gaps in understanding how awareness of disease risk and severity shapes behavior (27). Mobility data are an imperfect proxy for distancing and other preventative behaviors, and thus for transmission risk. Thus far, measurements of community mobility have been used as a leading indicator for epidemic outcomes. Prior work has shown significant impacts of changes in mobility and behavior on the COVID-19 pandemic (7). Here we have shown the importance of looking at a complementary feedback mechanism, that is, from outbreak to behavior. In doing so, we have also shown that decomposing the force of infection in terms of the number of potential transmissions and the probability of infection per contact can lead to outcomes aligned with observed state-level dynamics. Understanding the drivers behind emergent plateaus observed at national and subnational levels could help decision makers structure intervention efforts appropriately to effectively communicate awareness campaigns that may aid in collective efforts to control the ongoing COVID-19 pandemic.

Methods

Epidemiological Data. Daily number of reported deaths as of June 7, 2020 was obtained from The COVID Tracking Project (<https://covidtracking.com>).

Mobility Data. Mobility data as of June 12, 2020 were obtained from Google COVID-19 Community Mobility Reports (<https://www.google.com/covid19/mobility/>). The dataset describes percent changes in mobility across six categories (grocery and pharmacy; parks; residential; retail and recreation; transit; and workplaces) compared to the median value from the 5-wk period January 3 to February 6, 2020. Raw mobility data are plotted in *SI Appendix, Fig. S4*.

PCA. We use PCA on the mobility data to obtain a univariate index of mobility. We exclude park visits from the analysis, due to their anomalous, noisy patterns (*SI Appendix, Fig. S4*). Before performing PCA, we first calculate the 7-d rolling average for each mobility measure in order to remove the effects of weekly patterns. We combined mobility data from all 17 analyzed states, and standardized each measure (to zero mean and unit variance). The first principal component explains 93% of the total variance in this analysis, and the loading of the residential metric had a different sign from the other four mobility metrics. We thus used this component as our index of mobility (setting the direction so that only the residential metric contributed negatively to the index). To draw phase planes, we further smoothed our mobility index and daily reported deaths using locally estimated scatterplot smoothing (LOESS). Daily number of deaths is smoothed in log space, only including days with one or more reported deaths. LOESS is performed by using the loess function in R.

Data Availability. All simulation codes, figures, and data used in the development of this manuscript are available at <https://github.com/jsweitz/covid19-git-plateaus>. All study data are included in the article and *SI Appendix*.

ACKNOWLEDGMENTS. Research effort by J.S.W. was enabled by support from grants from the Simons Foundation (SCOPE Award 329108), the Army Research Office (Grant W911NF1910384), NIH (Grant 1R01AI46592-01), and NSF (Grants 1806606 and 1829636). C.E. was supported, in part, by grants from the NSF (Grants 2008855 and 1953694). J.D. was supported, in part, by grants from the Canadian Institutes of Health Research and the Natural Sciences and Engineering Research Council of Canada.

1. IHME COVID-19 health services utilization forecasting team, C. J. Murray, Forecasting COVID-19 impact on hospital bed-days, ICU-days, ventilator-days and deaths by US state in the next 4 months. *medRxiv*:10.1101/2020.03.27.20043752v1 (30 March 2020).
2. D. J. Bregman, A. D. Langmuir, Farr’s law applied to AIDS projections. *JAMA* **263**, 1522–1525 (1990).
3. N. M. Ferguson *et al.*, Impact of non-pharmaceutical interventions (NPIs) to reduce COVID-19 mortality and healthcare demand. <https://www.imperial.ac.uk/mrc-global-infectious-disease-analysis/covid-19/report-9-impact-of-npis-on-covid-19/>. Accessed 19 November 2020.
4. A. J. Kucharski *et al.*, Early dynamics of transmission and control of COVID-19: A mathematical modeling study. *Lancet Infect. Dis.* **20**, 553–558 (2020).

5. S. M. Kissler, C. Tedijanto, E. Goldstein, Y. H. Grad, M. Lipsitch, Projecting the transmission dynamics of SARS-CoV-2 through the post-pandemic period. *Science* **368**, eabb5793 (2020).
6. S. W. Park *et al.*, Reconciling early-outbreak estimates of the basic reproductive number and its uncertainty: Framework and applications to the novel coronavirus (SARS-CoV-2) outbreak. *J. Roy. Soc. Interface* **17**, 20200144 (2020).
7. M. U. G. Kraemer *et al.*, The effect of human mobility and control measures on the COVID-19 epidemic in China. *Science* **368**, 493–497 (2020).
8. R. Li *et al.*, Substantial undocumented infection facilitates the rapid dissemination of novel coronavirus (COVID-19). *Science* **368**, 489–493 (2020).
9. J. Wu *et al.*, Estimating clinical severity of COVID-19 from the transmission dynamics in Wuhan, China. *Nat. Med.* **26**, 506–510 (2020).

10. R. M. Anderson, R. M. May, *Infectious Diseases of Humans: Dynamics and Control* (Oxford University Press, 1991).
11. S. Funk, E. Gilad, C. Watkins, V. A. Jansen, The spread of awareness and its impact on epidemic outbreaks. *Proc. Natl. Acad. Sci. U.S.A.* **106**, 6872–6877 (2009).
12. S. Funk, M. Salathé, V. A. Jansen, Modeling the influence of human behavior on the spread of infectious diseases: A review. *J. R. Soc. Interface* **7**, 1247–1256 (2010).
13. C. Eksin, J. S. Shamma, J. S. Weitz, Disease dynamics in a stochastic network game: A little empathy goes a long way in averting outbreaks. *Sci. Rep.* **7**, 44122 (2017).
14. C. Eksin, K. Paarporn, J. S. Weitz, Systematic biases in disease forecasting—The role of behavior change. *Epidemics* **27**, 96–105 (2019).
15. E. Franco, A feedback SIR (fSIR) model highlights advantages and limitations of infection-based social distancing. *arXiv:2004.13216* (28 April 2020).
16. H. Chen, W. Xu, C. Paris, A. Reeson, X. Li, Social distance and SARS memory: Impact on the public awareness of 2019 novel coronavirus (COVID-19) outbreak. *medRxiv:10.1101/2020.03.11.20033688* (16 March 2020).
17. K. Leung, J. T. Wu, D. Liu, G. M. Leung, First-wave COVID-19 transmissibility and severity in China outside Hubei after control measures, and second-wave scenario planning: A modeling impact assessment. *Lancet* **395**, 1382–1393 (2020).
18. D. Adam *et al.*, Clustering and superspreading potential of severe acute respiratory syndrome coronavirus 2 (SARS-CoV-2) infections in Hong Kong. *Research Square:10.21203/rs.3-29548/v1* (21 May 2020).
19. B. M. Althouse *et al.*, Superspreading events in the transmission dynamics of SARS-CoV-2: Opportunities for interventions and control. *PLOS Biology*, 10.1371/journal.pbio.3000897 (2020).
20. M. S. Y. Lau *et al.*, Characterizing superspreading events and age-specific infectiousness of SARS-CoV-2 transmission in Georgia, USA. *Proc. Natl. Acad. Sci. U.S.A.* **117**, 22430–22435 (2020).
21. Y. Liu, R. M. Eggo, A. J. Kucharski, Secondary attack rate and superspreading events for SARS-CoV-2. *Lancet* **395**, e47 (2020).
22. T. R. Frieden, C. T. Lee, Identifying and interrupting superspreading events—Implications for control of severe acute respiratory syndrome coronavirus 2. *Emerg. Infect. Dis.* **26**, 1059–1066 (2020).
23. M. P. Kain, M. L. Childs, A. D. Becker, E. A. Mordecai, Chopping the tail: How preventing superspreading can help to maintain COVID-19 control. *medRxiv:10.1101/2020.06.30.20143115* (3 July 2020).
24. D. M. Weinberger *et al.*, Estimation of excess deaths associated with the COVID-19 pandemic in the United States, March to May 2020. *JAMA Intern. Med.* **180**, 1336–1344 (2020).
25. G. Meyerowitz-Katz, L. Merone, A systematic review and meta-analysis of published research data on COVID-19 infection-fatality rates. *Int. J. Infect. Dis.* **101**, 138–148 (2020).
26. S. Flaxman *et al.*, Estimating the number of infections and the impact of nonpharmaceutical interventions on COVID-19 in 11 European countries. *Nature* **584**, 257–261 (2020).
27. R. West, S. Michie, G. J. Rubin, R. Amlôt, Applying principles of behavior change to reduce SARS-CoV-2 transmission. *Nat. Hum. Behav.* **4**, 451–459 (2020).