

FULL PAPER

Open Access



3-D global hybrid simulations of magnetospheric response to foreshock processes

Feng Shi^{1*} , Yu Lin¹, Xueyi Wang¹, Boyi Wang² and Yukitoshi Nishimura³

Abstract

It has been suggested that ion foreshock waves originating in the solar wind upstream of the quasi-parallel ($Q\parallel$) shock can impact the planetary magnetosphere leading to standing shear Alfvén waves, i.e., the field line resonances (FLRs). In this paper, we carry out simulations of interaction between the solar wind and terrestrial magnetosphere under radial interplanetary magnetic field conditions by using a 3-D global hybrid model, and show the properties of self-consistently generated field line resonances through direct mode conversion in magnetospheric response to the foreshock disturbances for the first time. The simulation results show that the foreshock disturbances from the $Q\parallel$ shock can excite magnetospheric ultralow-frequency waves, among which the toroidal Alfvén waves are examined. It is found that the foreshock wave spectrum covers a wide frequency range and matches the band of FLR harmonics after excluding the Doppler shift effects. The fundamental harmonic of field line resonances dominates and has the strongest wave power, and the higher the harmonic order, the weaker the corresponding wave power. The nodes and anti-nodes of the odd and even harmonics in the equatorial plane are also presented. In addition, as the local Alfvén speed increases earthward, the corresponding frequency of each harmonic increases. The field-aligned current in the cusp region indicative of the possibly observable aurora is found to be a result of magnetopause perturbation which is caused by the foreshock disturbances, and a global view substantiating this scenario is given. Finally, it is found that when the solar wind Mach number decreases, the strength of both field line resonance and field-aligned current decreases accordingly.

Keywords: Solar wind, Foreshock, Magnetosphere, Field line resonance

Introduction

Planetary magnetic fields provide effective obstacles to the solar wind which exists ubiquitously in astrophysical environments (Chapman and Ferraro 1930). Since solar wind flows are supersonic, collisionless planetary bow shocks emerge to occupy an exclusive position in front of each magnetized planet (Russell 1985). The study of interactions between planetary bow shocks and magnetic fields, therefore, lends important insight not only into the associated phenomena of collisionless shocks (Lu

et al. 2009), but also into the nature of the magnetized planetary obstacles in response to the solar wind impact (Blanco et al. 2006). Among those, the Earth's bow shock as well as its geomagnetic field response is of particular interest, as so much of the planetary astrophysics was learnt from it.

It is well known that the Earth's bow shock not only primarily mediates the supermagnetosonic solar wind flow forming the magnetosheath, but also reflects a significant portion of energetic particles forming suprathermal backstreaming particles in the quasi-parallel ($Q\parallel$) shock region where the angle between the shock normal and interplanetary magnetic field (IMF) $\theta_{B_n} \lesssim 45^\circ$ (Asbridge et al. 1968; Tsurutani and Rodriguez 1981; Eastwood et al.

*Correspondence: fzs0002@auburn.edu

¹ Department of Physics, Auburn University, Auburn, USA

Full list of author information is available at the end of the article

2005). Those reflected suprathermal ions in turn interact with the incoming supersonic solar wind plasma, resulting in kinetic instabilities, generating ultralow-frequency (ULF) waves, and forming the Earth's foreshock (Omidi and Winske 1990). The foreshock disturbance phenomena, such as hot flow anomalies (Schwartz et al. 1985), foreshock cavities (Thomas and Brecht 1988) and foreshock bubbles (Omidi et al. 2010), can create significant magnetospheric impacts through the magnetosheath–magnetopause system and generate magnetospheric ULF waves (Archer et al. 2015), substantiated by recent observations from spacecrafts and ground stations (Eastwood et al. 2011; Hartinger et al. 2013; Zhao et al. 2017). Note that it is termed as foreshock disturbances in this paper for general foreshock processes and waves.

The ubiquitously pre-existing magnetospheric ULF waves are important to the planetary magnetosphere (Chian and Oliveira 1994; Zong et al. 2017), and can help us better understand the global processes between the solar wind and the magnetosphere (McPherron 2005; Claudepierre et al. 2008). These magnetospheric ULF waves have been suggested to be driven by a variety of mechanisms through either internal or external processes (Claudepierre et al. 2010). For the former, it has been shown that magnetospheric plasma with unstable configurations can lead to a local generation of ULF waves, such as the drift-mirror instability due to the pressure anisotropy in the Earth's inner magnetosphere (Hasegawa 1969). Another example regarding the internal processes is the generation of Alfvén waves by an inverted plasma energy distribution in the magnetosphere (Hughes et al. 1978). On the other hand, examples of externally driven magnetospheric ULF waves are related to Kelvin–Helmholtz instability caused by shear flows at the magnetopause (Southwood 1968; Eriksson et al. 2006), fluctuations in the solar wind dynamic pressure (Kepko et al. 2002), as well as foreshock processes (Hartinger et al. 2013; Russell et al. 1983; Takahashi et al. 1984, 2016; Menk 2011; Bier et al. 2014;). In this paper, we focus on one of the external mechanisms—ion foreshock processes.

One of the most frequently observed planetary magnetospheric ULF waves is the standing Alfvén waves, also known as toroidal Alfvén waves (with azimuthal magnetic and velocity perturbations) or field line resonances (FLRs) (Takahashi and Ukhorskiy 2007; James et al. 2019; Rusaitis et al. 2021). These toroidal Alfvén waves play important roles in the magnetospheric physics. For instance, it has been suggested that electrons can be adiabatically accelerated by a drift-resonance through the interaction with toroidal mode ULF waves (Elkington et al. 1999; Hudson et al. 2000), leading to radial transport of energetic electrons in the outer radiation belt

(Ukhorskiy et al. 2005). The FLRs are resonant Alfvénic oscillations of closed geomagnetic field lines whose foot points reside in the ionosphere. Moreover, the FLRs are of signatures of discrete frequencies, and such discrete frequencies arise from the restriction to an integral number of half wavelengths along the closed field lines (Dungey 1955; Cummings et al. 1969). This may be schematically illustrated by the classical figure of harmonic field line oscillations [e.g., Fig. 2 in Southwood and Hughes (1983)].

Theoretical endeavors have been made to describe the generation of the FLRs, which can be so far ascribed to four proposed mechanisms: resonant cavity, waveguide, surface waves and mode conversion. In the resonant cavity model (also called “box” model), the ionosphere and the magnetopause can serve as reflecting boundaries to reflect signals propagating in the magnetosphere either across (e.g., compressional waves) or along (e.g., Alfvén waves) the magnetic field lines, so that the compressional wave frequencies are quantized the same as the shear Alfvén wave frequencies (Kivelson and Southwood 1986; Mann et al. 1995). It has also been proposed in the “box” model and observed by spacecrafts that poloidal Alfvén waves can evolve into toroidal Alfvén waves through phase-mixing process (Mann and Wright 1995; Sarris et al. 2009a). The waveguide model is a revised model for cavity modes, with anti-sunward propagation and reflection of discrete frequency waves at the magnetopause and at the turning points on dipolar field lines (Samson et al. 1992; Wright 1994). The Kelvin–Helmholtz instability model assumes the shear flows on the magnetopause producing surface waves whose amplitude decays from the surface, while the compressional wave modes couple the boundary to the resonant magnetic field lines (Southwood 1974). By contrast, in the mode conversion model, the incoming compressional waves are mode-converted to shear Alfvén waves at the locations where Alfvén resonance condition is satisfied (Chen and Hasegawa 1974a), but only the standing shear Alfvén waves along the closed field lines can be finally excited inside the magnetosphere due to the reflection boundary conditions. Therefore, the mode conversion is regarded as a direct driving mechanism, which will be focused in this paper.

Recent satellite and ground-based observations have shown that the transient and localized disturbances in the foreshock, a previous neglected source providing the compressional energy, are also able to generate standing Alfvén waves in the magnetosphere (Shen et al. 2018; Wang et al. 2018, 2019, 2020). In addition to the global effects on the magnetopause, foreshock processes may also play an important role both in the longitudinal localization of magnetospheric ULF waves and in the plasma precipitation into cusp region. Obtaining a global view

of FLRs as magnetospheric response to foreshock processes from spacecraft observations is challenging, since it requires coordinated multi-point observations in the foreshock and the magnetosphere, which have been only achieved hitherto in quite a few case studies (Shen et al. 2018; Wang et al. 2020). On the other hand, although 2-D kinetic models can be used to study the entry of compressional perturbations and their propagation into the outer magnetosphere (Takahashi et al. 2020), fully 3-D global kinetic models are needed to study the magnetospheric response as a result of ion foreshock processes, as the bow shock and the magnetosheath continuously expand sunward in the 2-D approximation (see comments made in Lin and Wang (2005)) and the mode conversion at the magnetopause is of 3-D physics (Shi et al. 2013). So far, no self-consistent global simulations have been done to demonstrate such defined processes. Therefore, to fill this gap, we carry out 3-D dayside global hybrid simulations to study the FLRs in response to foreshock disturbances.

In this paper, we use the radial IMF and solar wind conditions similar to THEMIS observations by Wang et al. (2018). In addition, since the high solar wind Mach number conditions ($M_A > 3$) are prevalent at the Earth's bow shock (Wilkinson 2003), we present two supercritical foreshock cases associated with $M_A = 8$ and $M_A = 5$ to qualitatively describe the solar wind Mach number dependence. The remainder of this paper is organized as follows. Section “Model” briefly describes the hybrid model that has been used in this work. Section “Results and discussion” demonstrates the simulation results of the toroidal mode of the FLRs generated by the foreshock disturbances, and the field-aligned current (FAC) to the ionosphere produced by the FLRs. In the end, Sect. “Summary” concludes this paper.

Model

The dayside global-scale hybrid model employed in this paper was developed by Swift (1996) and then implemented in 3-D by Lin and Wang (2005). More detailed numerical discussion of this hybrid model can also be found in Shi et al. (2017). Note that in this model, ions are treated as fully kinetic particles, while electrons are regarded as a massless fluid.

The motion of ions is described by their equation of motion (in the simulation units):

$$\frac{d\mathbf{v}_i}{dt} = \mathbf{E} + \mathbf{v}_i \times \mathbf{B} - \nu(\mathbf{V}_i - \mathbf{V}_e),$$

where \mathbf{v}_i is the ion particle velocity, \mathbf{E} is the electric field, \mathbf{B} is the magnetic field, ν is the collision frequency, and \mathbf{V}_i and \mathbf{V}_e are the bulk flow velocities of ions and electrons, respectively.

The electric field is obtained from the momentum equation of the electron fluid:

$$\mathbf{E} = -\mathbf{V}_e \times \mathbf{B} - \nu(\mathbf{V}_e - \mathbf{V}_i) - \nabla P_e/N,$$

where P_e is the thermal pressure of the electrons, and N is the electron number density (equal to ion number density based on the assumption of quasi-charge neutrality), respectively.

Ampère's law is used to evaluate the electron bulk flow velocity:

$$\mathbf{V}_e = \mathbf{V}_i - \frac{\nabla \times \mathbf{B}}{\alpha N},$$

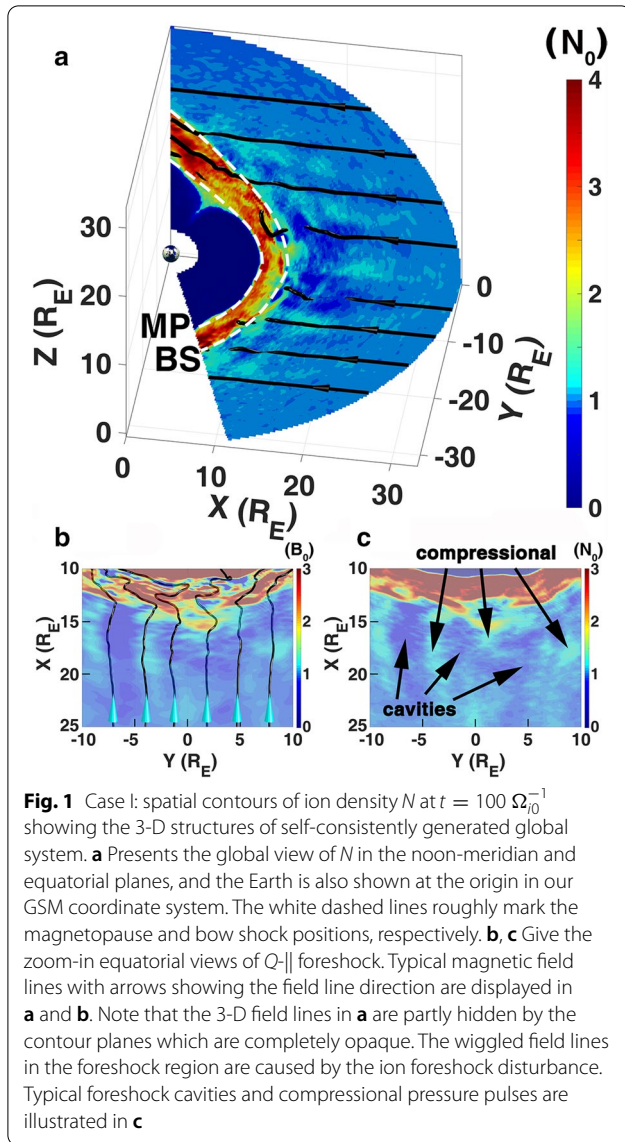
where $\alpha = 4\pi e^2/m_i c^2$, e is the electron charge, and m_i is the ion mass. Note that the constant α is related to the ion inertial length $d_i = 1/\sqrt{\alpha N} 0$.

Finally, the magnetic field is updated with Faraday's law:

$$\frac{\partial \mathbf{B}}{\partial t} = -\nabla \times \mathbf{E}.$$

For the results presented in this paper, the physical quantities are normalized as follows. The magnetic field \mathbf{B} is scaled by the IMF \mathbf{B}_0 , ion number density N by the solar wind density N_0 , time t by the inverse of the solar wind ion gyrofrequency Ω_{i0}^{-1} , plasma flow velocity by the solar wind Alfvén speed V_{A0} , temperature by $m_i V_{A0}^2$, and length by the Earth radius R_E .

Spherical coordinates are utilized in our 3-D simulation, the same as in Lin and Wang (2005) and Shi et al. (2013). The simulation domain contains the global system of the bow shock, magnetosheath, and magnetosphere in the dayside region with GSM $x > 0$ and a geocentric distance $3 R_E \leq r \leq 33 R_E$. The Earth is located at the origin $(x, y, z) = (0, 0, 0)$ as shown in Fig. 1a. The inner boundary at $r = 3 R_E$ is assumed to be perfectly conducting, and the outer boundary at $r = 33 R_E$ is applied with the solar wind inflow boundary conditions, while all other boundaries are utilized with outflow boundary conditions with the constant IMF. In addition to the fully kinetic ions which dominate in the outer magnetosphere, a cold and incompressible ion fluid is assumed to be dominant and coexist with particle ions in the inner magnetosphere, mainly occupying $r < 6.5 R_E$ (Swift 1996; Lin and Wang 2005), and its number density is given by $N_f = (1000/r^3)[1 - \tanh(r - 6.5)]$ normalized to N_0 (Lin et al. 2014). The total ion bulk flow speed is determined by $\mathbf{V}_i = (N_p/N)\mathbf{V}_p + (N_f/N)\mathbf{V}_f$, where the subscripts p and f stand for the discrete particles and the fluid, respectively. The fluid ion velocity is updated by $d\mathbf{V}_f/dt = \mathbf{E} + \mathbf{V}_f \times \mathbf{B}$ (Swift 1996). The constant N_f condition corresponds to the approximation $\Delta N/N \ll 1$,



where ΔN is the density perturbation in the inner magnetosphere. Note that in this paper the collision frequency ν (equivalent to the resistivity) is set to be zero (Shi et al. 2013). Initially the uniform solar wind and IMF are assumed to occupy the region of $r > 15 R_E$, and a centered 3-D dipole field combined with an image dipole field occupies the geomagnetic region within $r < 15 R_E$. A transition layer (with a half-width of $0.5 R_E$) exists between the two regions centered at $r = 15 R_E$.

A uniform solar wind plasma flows into the system along the $-x$ direction with an isotropic drifting Maxwellian distribution and with ion beta value $\beta_i = 0.5$, and a total number of $\sim 5 \times 10^8$ particles are utilized in the simulations. The time step interval to advance the particles is $0.05 \Omega_{i0}^{-1}$. A total grid of

$N_r \times N_\theta \times N_\phi = 250 \times 140 \times 140$ is used. Nonuniform grids are used in the radial direction, with a higher resolution of $\Delta r \sim 0.05 R_E$ through the magnetopause, magnetosheath and bow shock, while $\Delta r \sim 0.1 - 0.25 R_E$ in the upstream solar wind regions. Under radial IMF conditions, the ion foreshock disturbances are generated and propagate mostly in the radial direction, and the foreshock is located in the subsolar region. Note that such a resolution is enough to resolve the ion foreshock disturbances (spatial size up to several R_E , ref. Fig. 1) in our hybrid simulations (Lin and Wang 2005). We have performed runs with doubling spatial resolution and macro-particle number density. The results are found to be similar to those shown in this paper, indicating a good convergence of simulations.

The hybrid model is valid for low-frequency physics with $\omega \sim \Omega_i$ as well as $k\rho_i \sim 1$ (wavelength $\lambda \sim 6\rho_i$), where ω is the wave frequency, k the wave number, Ω_i the ion gyrofrequency, and ρ_i the ion Larmor radius. For this range of wave frequency and wavelength, the ion kinetic physics in the near-Earth instabilities are resolved with grid sizes $\sim \rho_i$ or ion inertial length d_i . The finite ion gyroradius effects are resolved with particle time steps Δt much smaller than the gyroperiod. It is worth noting that to save the computational resources while retaining ion kinetic effects on a global scale, i.e., while being able to resolve the particle scales of ρ_i and Ω_i , the ion inertial length of the solar wind in our simulations is chosen to be $d_{i0} = 0.1 R_E$, a few times larger than that in reality. This choice can be justified due to (but not limited to) a number of facts as follows. (I) The wavelengths of the ion foreshock disturbances in our simulations can be longer than those in reality since the physics is scaled with ρ_i , but they still satisfy the relation $d_i \ll R_E$. (II) The $Q\text{-}||$ shock width is determined by such wavelengths. (III) The ion foreshock extends to large scale regions in length ($\gg d_i$). (IV) Our hybrid model and simulations have been proved to be able to self-consistently capture the ion kinetic physics in the global system of solar wind–magnetosphere interactions (Lin and Wang 2005). For instance, Wang et al. (2009) have shown that the characteristics of wave power intensity at the $Q\text{-}||$ shock are consistent with spacecraft observations, and Lee et al. (2020) have found a good agreement by comparing the magnetosheath wave powers under the same solar wind conditions between the magnetospheric multiscale (MMS) observations and our hybrid simulations.

Results and discussion

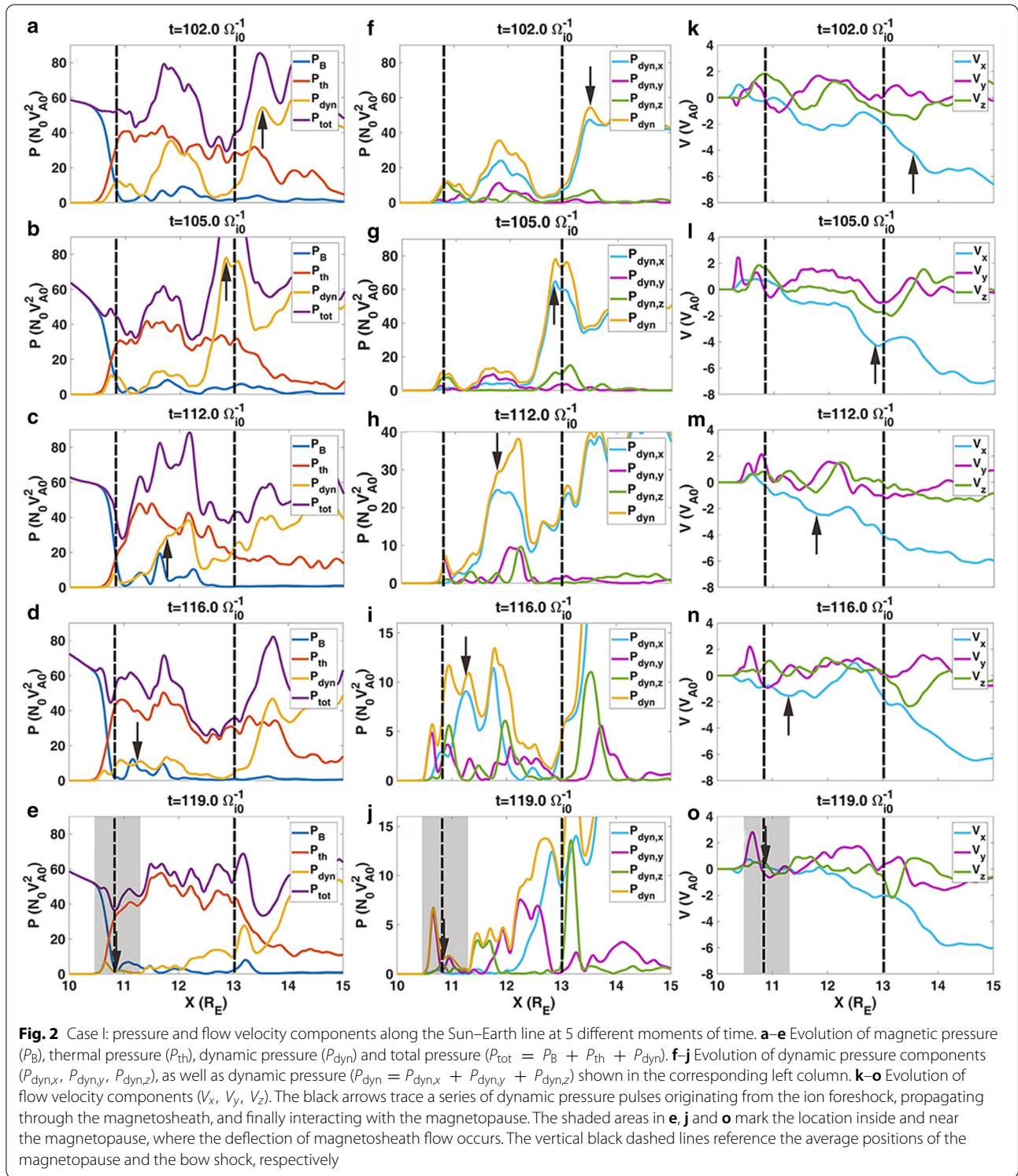
Global view and identification of foreshock structures for Case I

Figure 1a presents the global view of ion density N at $t = 100 \Omega_{i0}^{-1}$ in the noon-meridian and equatorial planes

obtained from the simulation together with typical magnetic field lines (arrows showing the field line direction), which shows the 3-D self-consistently generated dayside global system with ion foreshock, bow shock, magnetosheath, magnetopause and magnetosphere. Figure 1b, c zooms in the equatorial B and N contours of the ion foreshock, which can be identified in the upstream of the Q - $||$ shock by the perturbed/wiggled magnetic field lines as shown in b. The ion foreshock disturbances, including compressional pressure pulses (Shi et al. 2013) and diamagnetic cavities (Lin and Wang 2005), as respectively, marked in c, are generated mainly by the interaction of backstreaming ions and incoming solar wind (Lin and Wang 2005), and other wave-particle interactions and nonlinear evolution of waves which lead to the generation of structures observed in the foreshock (Eastwood et al. 2005; Wilson 2016). For instance, Wang and Lin (2006) found that in the nonlinear stage of the beam-plasma interaction, the nonresonant modes decay and the resonant modes grow through a nonlinear wave coupling, and the interaction among the resonant modes leads to the formation of filamentary structures, which are the $k \perp B$ structures of magnetic field, density, and temperature. The pressure pulses of the foreshock disturbance are carried by the super-Alfvénic solar wind into the downstream of the Q - $||$ (Lin and Wang 2005), through the magnetosheath, and onto the magnetopause (Shi et al. 2013). The bow shock can be identified from the deflection of the IMF, which is originally along the x -direction, and from the enhanced magnetic field and ion density on the earthward side. The magnetopause can be distinguished through the sharply increased (decreased) magnetic field (ion density) toward the Earth. Specifically, the self-consistently generated bow shock is around a standoff radial distance of $\sim 13 R_E$, and the magnetopause is roughly at $\sim 11 R_E$ in the subsolar region, while the magnetosheath is located in the region between the bow shock and the magnetopause. The average locations of the bow shock and the magnetosheath are marked by the white dashed lines in Fig. 1a, while their actual shapes oscillate in response to the foreshock perturbations. In the following, we provide a detailed tracking of these perturbations and analyze their direct impacts to the magnetosphere.

Shi et al. (2013) have shown that the compressional ion foreshock disturbance pulses can generate surface waves, such as kinetic Alfvén waves, at the magnetopause. In the interaction between the foreshock disturbance pulses and the magnetopause, the magnetopause is largely perturbed by the thermal and dynamic pressures due to its pressure balance nature. To see how the pressure pulses generated from the ion foreshock region penetrate through the magnetosheath and perturb the

magnetopause, Fig. 2 shows the evolution of the pressure components (i.e., magnetic pressure P_B , thermal pressure P_{th} , total pressure P_{tot} , dynamic pressure P_{dyn} and dynamic pressure components) as well as the flow velocity components along the Sun–Earth line at four different moments of time. Note that for simplicity we only consider the total pressure as $P_{tot} = P_B + P_{th} + P_{dyn}$, and $P_{dyn} = P_{dyn,x} + P_{dyn,y} + P_{dyn,z}$. At each moment of time, the black arrows trace the same series of dynamic pressure pulses originating from the ion foreshock, propagating through the magnetosheath, and finally interacting with the magnetopause. At $t = 102 \Omega_{i0}^{-1}$, a series of dynamic pressure pulses in the foreshock region emerge and marked by the black arrow in Fig. 2a, f. At this moment of time, the P_{tot} of the traced pressure pulses is almost dominated by the dynamic pressure, which is mostly determined by the x -component of the dynamic pressure ($P_{dyn,x}$). In other words, at this moment of time, the P_{tot} of traced pulses is predominated by the earthward plasma flows, since $P_{dyn,x}$ is largely determined by the earthward flow speed ($V_{ix} < 0$) as shown in Fig. 2k. It can be seen that in the foreshock and its immediate downstream, the V_{ix} dominates in the flow velocity components so that the fluctuation in V_{ix} (e.g., around the traced arrow, with a tailward enhancement) results in the dynamic pressure pulses. At $t = 105 \Omega_{i0}^{-1}$, the same dynamic pressure pulses move to the downstream of the shock as shown by the black arrows in Fig. 2b, g. The dynamic pressure of the traced pulses increases to its maximum due to the density compression though the shock, shown in Fig. 2l. At $t = 112 \Omega_{i0}^{-1}$, the traced dynamic pressure pulses move into the middle of magnetosheath as shown by the black arrows in Fig. 2c, h. It can be seen that, for the traced pulses, although $P_{dyn,x}$ still dominates P_{dyn} , the magnitude of P_{dyn} decreases as the pulses slow down towards the Earth along the Sun–Earth line, and P_{th} becomes comparable to the $P_{dyn,x}$. At $t = 116 \Omega_{i0}^{-1}$, the traced pulses are approaching the magnetopause as shown in Fig. 2d, i. Although P_{dyn} further decreases to be comparable to P_B , it can be seen that the pressure pulses are still dominated by P_{dyn} . In the meantime, the traced pulses are greatly expanded in the radial direction, and the expanded leading part at $x = 11 R_E$ begins to interact with the magnetopause, resulting in deflection of the magnetosheath flow (i.e., the increase of v_z and $P_{dyn,z}$). At $t = 119 \Omega_{i0}^{-1}$, the traced pulses interact with the magnetopause, as shown by the shaded area in Fig. 2e, j. The P_{dyn} becomes almost trivial on the magnetosheath side, while it increases on the magnetopause side as marked by the black arrow at this moment of time. The dramatic decrease in $P_{dyn,x}$ and increase in $P_{dyn,y}$ shown in (j) indicate that the pulsed magnetosheath flow is deflected by the magnetopause. At the



same time, the locally increased $P_{dyn,y}$ contribute to the P_{tot} as shown in (e). Note that the foreshock disturbance pulses are continuously generated and impinge onto the magnetopause. When stronger dynamic pressure pulses

approach and interact with the magnetopause, the magnetopause is compressed, as shown at $t = 116\Omega_{i0}^{-1}$ and at $t = 119\Omega_{i0}^{-1}$. On the other hand, when weaker dynamic pressure pulses interact with the magnetopause, the

magnetopause is relaxed, i.e., the magnetopause moves toward the Sun, as shown at $t = 112\Omega_{i0}^{-1}$. It can also be seen from Fig. 2a–e that the whole process of the traced pulses perturb the magnetopause by $\sim 0.1 - 0.2 R_E$. Note that, by definition, such traced high speed dynamic pressure pulses can also be referred to as the magnetosheath jets (Plaschke et al. 2018).

To give a closer look of the propagation of foreshock compressional waves through the magnetosheath, Fig. 3 shows the temporal evolution of spatial profiles of (a) B and (b) N along the Sun–Earth line during the time interval $t = 80 - 140 \Omega_{i0}^{-1}$. Again, the magnetopause boundary layers can be seen from the sharp increase in B and the abrupt decrease in N , while the bow shock position is roughly around $13 R_E$. Figure 3 therefore clearly shows the oscillation of the magnetopause due to the pressure pulses discussed in Fig. 2. The compressional waves can be perceived by the in-phase relation of B and N (Shi et al. 2013), and some of their propagation is marked in Fig. 3. It can be seen that the compressional waves propagate along the Sun–Earth line from the foreshock into the magnetopause boundary layer. For example, at $t \sim 100 \Omega_{i0}^{-1}$, a new packet of compressional waves emerge from the foreshock, and propagate through the magnetosheath. At $t \sim 120 \Omega_{i0}^{-1}$, the compressional pulses arrive at the magnetopause boundary layer, interact with the magnetopause, and transmit into the magnetosphere.

Previous simulations (Lin and Wang 2005; Shi et al. 2013) have shown that when the compressional wave packets interact with the magnetopause, kinetic Alfvén waves with $k_{\perp} \gg k_{\parallel}$ are excited near and inside the magnetopause boundary layer where the Alfvén resonance condition is satisfied (Chaston et al. 2005), consistent with the mode conversion process (Chen and Hasegawa 1974b; Johnson and Cheng 1997; Lin et al. 2012). According to the mode conversion model, as the broadband

remainder of compressional waves penetrates into the magnetosphere, standing toroidal Alfvén waves can be excited along the closed geomagnetic field.

It has been shown that the relatively large amplitude FLRs are produced at the source frequency that is matched to a harmonic of the Alfvén shear modes (Lee and Lysak 1991). To check this property, we plot the power spectra of the compressional (B) and toroidal (B_{ϕ}) wave components of the magnetic field along the Sun–Earth line from the foreshock into the magnetosphere in Fig. 4. It clearly shows that the self-consistently generated foreshock and toroidal Alfvén wave spectra cover a wide range including $\sim \Omega_{i0}/2$. The frequency ω normalized by the solar wind Ω_{i0} at various locations is obtained from the simulation data $t = 80 - 200 \Omega_{i0}^{-1}$. During this time interval, the bow shock is oscillating around $X \sim 13 R_E$, and the overall magnetopause position is around $X \sim 10.5 R_E$. Around the oscillating magnetopause boundary layer from $X = 9.5 - 10.5 R_E$, locally increasing compressional wave powers appear with a spectral width of $\omega \sim 0.2 - 0.4$ because most of the magnetic pressure pulses impinge onto the magnetopause and this enhances local magnetopause perturbations. Meanwhile, some of the compressional wave power is transmitted into the magnetosphere ($X < 9 R_E$).

Note that due to the Doppler effects, the frequency of the same wave mode appears to be different in the solar wind and various locations throughout the magnetosheath with the variable background flow velocities (Shi et al. 2013). The Doppler shift of the frequency is $\Delta\omega = k_x V_{sw} \sim 0.75 \Omega_{i0}^{-1}$, where k_x and V_{sw} are wave number and solar wind speed in the foreshock, respectively. The wave frequency in the solar wind plasma frames is estimated to be $\omega_r = \omega - \Delta\omega = [0.2, 0.6] - 0.75 \sim [-0.55, -0.15] \Omega_{i0}$ where ω is the frequency in the simulation (Earth) frame. The negative sign of the wave frequency ω_r corresponds

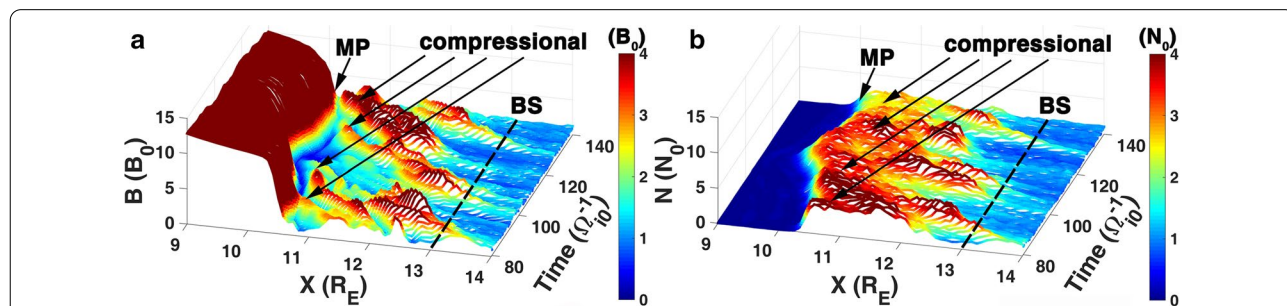
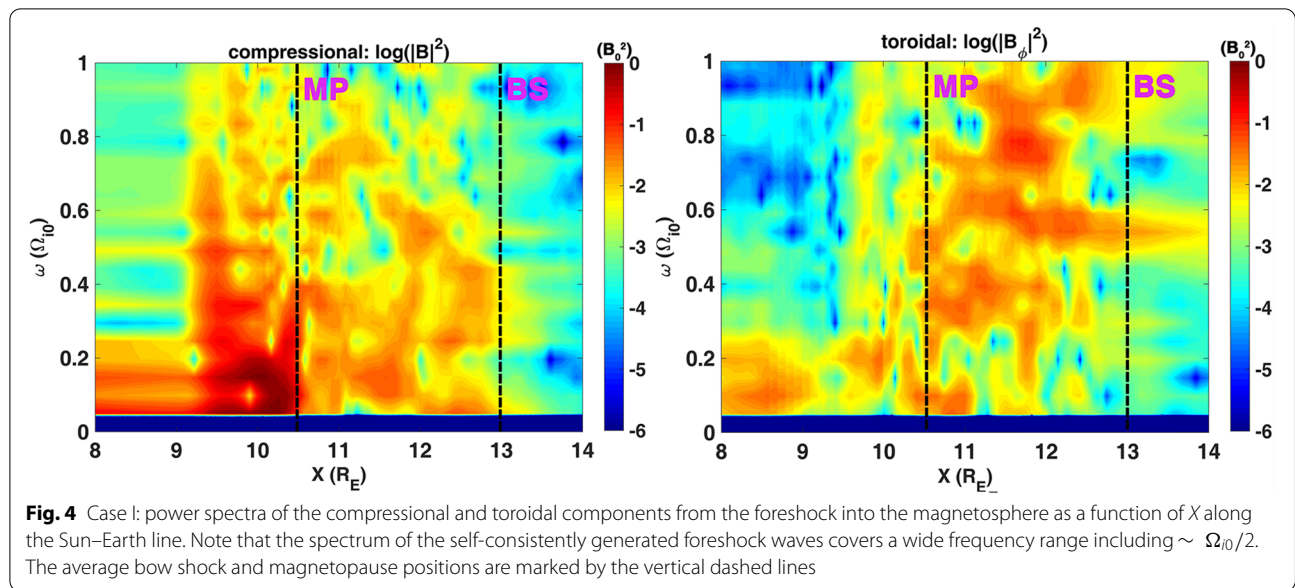


Fig. 3 Case I: temporal evolution of spatial profiles of **a** B and **b** N along the Sun–Earth line during the time interval $t = 80 - 140 \Omega_{i0}^{-1}$. The magnetopause boundary layers can be seen from the sharp increase in B or the abrupt decrease in N , while the bow shock position is around $13 R_E$ marked by the dashed line. Typical propagation of compressional waves are also marked. Note that the compressional waves can be perceived by the in-phase relation of B and N (Shi et al. 2013)

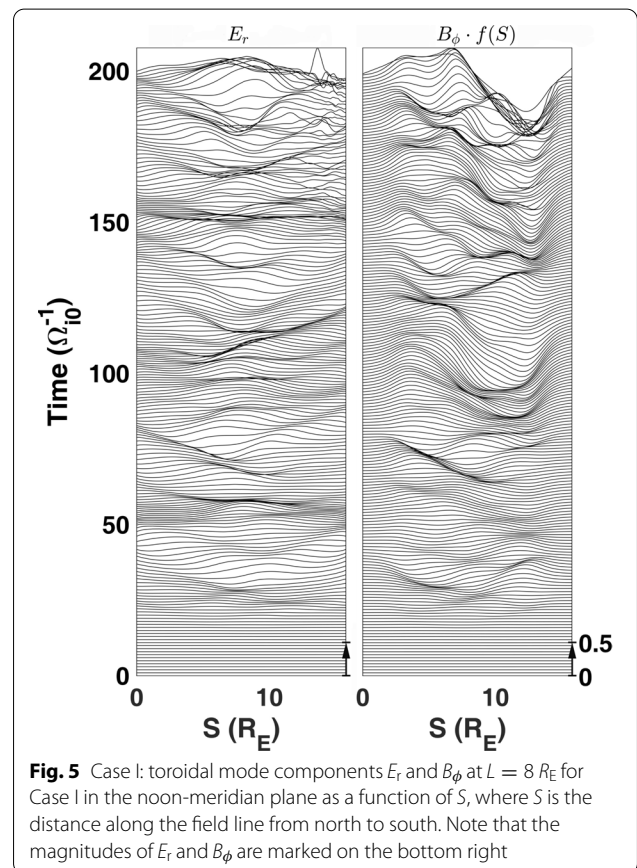


to the reversal of the phase speed direction in the simulation frame (Lin and Wang 2005; Narita et al. 2004; Guo 2021). Therefore, from Fig. 4, it can be seen that the compressional foreshock wave frequency excluding the Doppler shift effect ($[0.15, 0.55] \Omega_{i0}$) is consistent with the Alfvén wave frequency in the magnetosphere ($[0.15, 0.6] \Omega_{i0}$).

On the other hand, although toroidal wave power is also present in the magnetosheath, the toroidal waves do not propagate into the magnetosphere. This can be seen by the fact that there is a disruption at $\sim X = 9.5 R_E$, i.e., the toroidal waves are excited locally in the magnetosphere. Also note that in our simulations we do not observe cavity mode waves.

Magnetospheric response as FLRs for Case I

Figure 5 shows the time sequence of toroidal mode components B_ϕ and E_r along a closed dipole field line through the equatorial radius of $L = 8 R_E$ in the noon-meridian plane from north to south; i.e., the starting point is located at the ionospheric boundary in the north, and the ending point is in the south boundary. To emphasize the field line oscillations near the equator, B_ϕ has been multiplied by an envelope factor $f(S) = 0.5[\tanh(S - 0.2S_0) - \tanh(S - 0.8S_0)]$, where S and S_0 are the distance and field line length along the dipole field line from the north to south with the starting and ending points, respectively. The vertical axes of each plot represent the time series of the corresponding toroidal modes. Note that the selected field line is approximately the same line at different moments of time, since the magnetospheric field undergoes a



systematic low-frequency oscillation in response to the foreshock oscillations. It can be seen that the oscillation of the field lines in B_ϕ and E_r bounces between

north and south. The perturbation corresponds to the combined effects of multiple modes in k_{\parallel} between the boundaries. It can be seen that before $t \sim 20 \Omega_{i0}^{-1}$, the fluctuation along the field line is negligible, but becomes more and more stronger later on. After $t \sim 40 \Omega_{i0}^{-1}$, a nearly standing wave pattern can be perceived, and the wave mode number approximately corresponds to a half wavelength; that is, the fundamental mode is dominant. In addition, the resonance frequency satisfying $\omega = k_{\parallel} V_A$ around the equator at $L = 8 R_E$ (ref. Fig. 9 below) is found to be $\sim 0.2 \Omega_{i0}^{-1}$, consistent with the resonance period of $\sim 35 \Omega_{i0}^{-1}$ (ref. Fig. 7 at $\sim 85 - 120 \Omega_{i0}^{-1}$ below). Also note that the magnitude of the toroidal wave components E_r is ~ 1 mV/m, which is on the same order of magnitude compared with those in recent observations at similar L shells in the dayside magnetosphere (Shen et al. 2018; Wang et al. 2019; Sarris et al. 2009b). For instance, in Wang et al. (2019) the amplitude of the toroidal mode component E_r at $L \sim 9 R_E$ is ~ 2 mV/m (ref. Fig 3e), and in Sarris et al. (2009b) the E_r observed by THEMIS-D at $L \sim 8 R_E$ is about 2–3 mV/m (ref. Figs. 1, 2 THEMIS-D around 7:00UT). A close comparison, however, requires similar solar wind and IMF conditions between the simulations and observations. In the present study, the solar wind conditions are completely steady and the IMF orientations are radial, while in the observations the solar wind conditions are changing with time and the IMFs are more oblique. Since the amplitude of the FLRs arising from external drivers depends on the strength of the initial disturbance, the dependence of the FLRs on the foreshock disturbances needs to be further investigated under more general solar wind conditions.

Figure 6a shows the dominant fundamental harmonic of the eigenstructures of the toroidal component E_r between $t = 0 - 200 \Omega_{i0}^{-1}$ in time sequence. The oscillations near the equator become more and more evident at $t > 40 \Omega_{i0}^{-1}$, and the dominant wave period of the fundamental harmonic appears to be $\sim 30 \Omega_{i0}^{-1}$. Figure 6b shows the root integrated powers (RIPs) of the fundamental, second- and third-order harmonic eigenmodes of E_r along the dipole-like field line at $L = 8 R_E$. In this paper, the RIP for a given time series is defined the same way as in Claudepierre et al. (2010), and thus the RIP is a measure of the fluctuation amplitude at the frequency of interest. The fundamental harmonic eigenstructure reaches its maximum near the equator, but not exactly at the equator due to that a much longer simulation time may be needed for a more precise solution at the low frequency. It also can be seen that the second harmonic eigenstructure has two peaks off the equator, and the third harmonic eigenstructure has three peaks along the same magnetic field line. Such results are qualitatively consistent with MHD simulations under prescribed

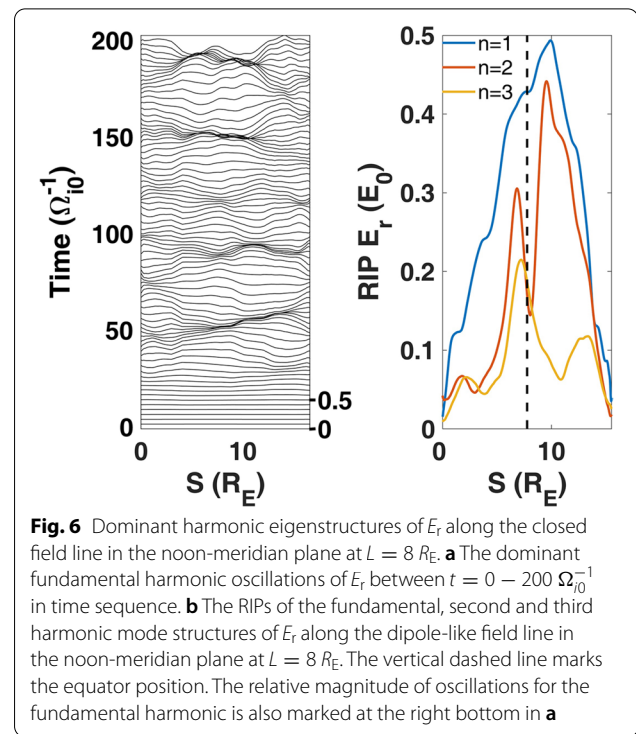


Fig. 6 Dominant harmonic eigenstructures of E_r along the closed field line in the noon-meridian plane at $L = 8 R_E$. **a** The dominant fundamental harmonic oscillations of E_r between $t = 0 - 200 \Omega_{i0}^{-1}$ in time sequence. **b** The RIPs of the fundamental, second and third harmonic mode structures of E_r along the dipole-like field line in the noon-meridian plane at $L = 8 R_E$. The vertical dashed line marks the equator position. The relative magnitude of oscillations for the fundamental harmonic is also marked at the right bottom in **a**

external driving perturbations (Claudepierre et al. 2010), as well as the FLR theories (Cummings et al. 1969). In addition, the fundamental harmonic has the largest wave amplitude along the magnetic field line, consistent with the direct observation in Fig. 5 that the fundamental mode of the FLRs is dominant. For higher order of harmonics, the power is much weaker, and the RIP calculation that includes the effects of nonuniform magnetic field along field lines in the eigenfunction analysis does not produce the results as predicted by the theories. This may be because there are other transient mode perturbations from the foreshock and the system is never in a pure steady state. In the following, to focus on the toroidal Alfvén mode for both the fundamental and the extended higher harmonics, we use a simplified wave power analysis. Specifically, we decompose the toroidal wave modes at the harmonic frequencies by using Fourier analysis into simple plane waves which satisfy the boundary conditions of the standing waves.

Figure 7 shows the first 7 harmonics of toroidal mode oscillations (top) and spectra (bottom) of E_r along the dipole field line in the noon-meridian plane at $L = 8 R_E$. The oscillations in time sequence have been rescaled to show the oscillations along field lines for each harmonic mode, while their strength can be perceived from wave power spectra in the corresponding bottom panel. The rescaling means the amplitudes of higher harmonics are magnified in order to show the harmonic oscillations,

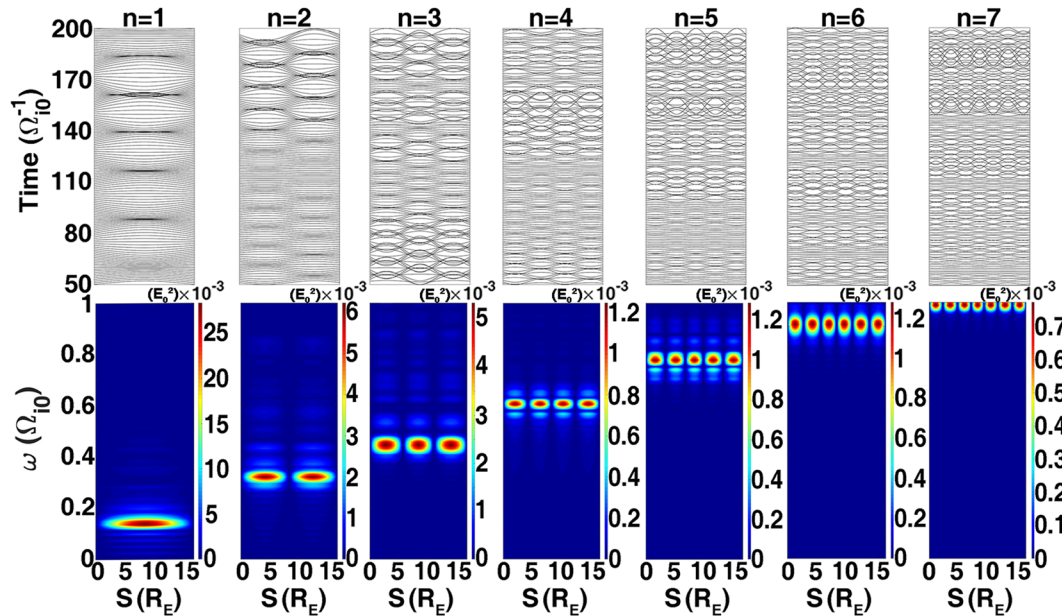


Fig. 7 Case I: various harmonic modes of E_r along the dipole-like field line in the noon-meridian plane at $L = 8 R_E$. Top panel: the first 7 harmonic modes between $t = 50 - 200 \Omega_{i0}^{-1}$ in time sequence. Bottom panel: the corresponding power spectra for each harmonic. Note that the oscillations in time sequence have been rescaled to show the bouncing of field lines for each harmonic mode, but the strength can be perceived from wave power spectra

as higher harmonics have much smaller amplitudes. It shows in the top panel that the sinusoidal bouncing oscillations become more and more evident at $t > 60 \Omega_{i0}^{-1}$, and the higher the harmonic order, the smaller the period. Specifically, the period of the fundamental mode can be seen as $\sim 30 \Omega_{i0}^{-1}$ (e.g., $t \sim 90 - 120 \Omega_{i0}^{-1}$), while the second harmonic has a period of $t \sim 15 \Omega_{i0}^{-1}$ (e.g., $t \sim 80 - 95 \Omega_{i0}^{-1}$), and so on. From the bottom panel, it is seen that the fundamental mode has the largest wave power but the lowest frequency, while as the order of harmonics goes higher, the wave power decreases but the frequency increases. Besides, the frequency of the fundamental harmonic mode is ~ 10 mHz, which is consistent with the results ($\sim 7 - 8$ mHz) from spacecraft observations around $8 R_E$ (Sarris et al. 2009b). It also clearly shows the symmetry of E_r for the harmonic modes of standing Alfvén waves about the equator. Moreover, since the perturbations in E_r are symmetric (antisymmetric) for odd (even) harmonics with respect to the equatorial plane, only odd number toroidal modes for E_r of the FLRs can be excited at the equator, while the counterparts for B_ϕ are opposite at the equator (Lee and Lysak 1989; Sarris et al. 2009b). In other words, for the harmonics of toroidal Alfvén mode component E_r , the odd (even) harmonic numbers would encounter anti-nodes (nodes) at the magnetic equator; while for B_ϕ the even (odd) harmonic numbers would encounter anti-nodes

(nodes). These alternate pattern of wave power is also obvious from the wave power spectra of E_r at the equator shown in Fig. 8. It can be seen that after $t \sim 10 \Omega_{i0}^{-1}$, the wave powers of the odd harmonic modes begin to grow, and the growth rates of these modes appear to be more or less the same. After $t \sim 40 \Omega_{i0}^{-1}$, the wave powers of

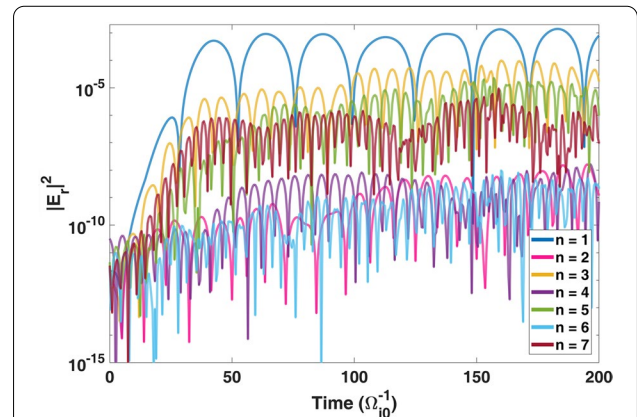


Fig. 8 Case I: wave power spectra of E_r over time for the first 7 harmonics at the subsolar equator and $L = 8 R_E$. The wave power appears not to grow or decay. It also clearly shows the wave power trend at the equator for E_r , i.e., the odd harmonics are much stronger than the negligible even harmonics, and the higher the harmonic order, the weaker the corresponding wave power

these growing modes almost reach a steady state. On the other hand, however, the wave powers of the even harmonic modes grow marginally, and remain at a negligible level. It can also be seen that the fundamental mode is almost dominant in the wave power of E_r . In addition, only the odd harmonics are excited, and the wave power of these modes decreases as harmonic order increases. It is also found that the total wave power of all the harmonic modes reaches almost a steady state after the wave amplitudes remain almost constant.

This feature is clearly seen in Fig. 9, which depicts the radial profiles of power spectral density (PSD) as a function of L for E_r in (a) and B_ϕ in (b) at the equator in the noon-meridian. The white dashed lines mark the first 7 orders of n -harmonic modes of the FLRs, and are obtained from the dipole field line approximation of local Alfvén speed in (c) by averaging B and N during $t = 50 - 250 \Omega_{i0}^{-1}$ in the simulation. The enhanced odd-harmonic numbers in E_r and even-harmonic numbers in B_ϕ are the piece of evidence for standing toroidal Alfvén waves. As the local Alfvén speed increases, the frequency

of excited toroidal mode of the FLRs increases accordingly. At the equator, the wave power of fundamental harmonic mode in E_r is the strongest, and the wave power decreases as the excited odd harmonic number increases. The same trend is seen in B_ϕ but with even harmonic numbers. In short, the lower the excited harmonic mode number, the stronger the wave power.

Inner magnetospheric signatures due to FLRs for Case I

Recent aurora observations (Wang et al. 2018, 2019) using the ground-based all-sky imager suggested that the foreshock disturbances can locally perturb the magnetopause, leading to the FLRs in the magnetosphere and the auroral FACs. Figure 10 shows the global view of (a) $J_{||}$ and (b) B_ϕ contours in the equatorial plane and at $r = 4 R_E$ with typical closed magnetic field lines near the magnetopause. Note that the azimuthal sizes of the magnetopause perturbation are about $1 - 2 R_E$. At the high latitude ($\sim 70^\circ$), the azimuthal mode with mode number $m \sim 5$ of the FACs that flow along closed geomagnetic field lines is dominant. In view of their direction to the

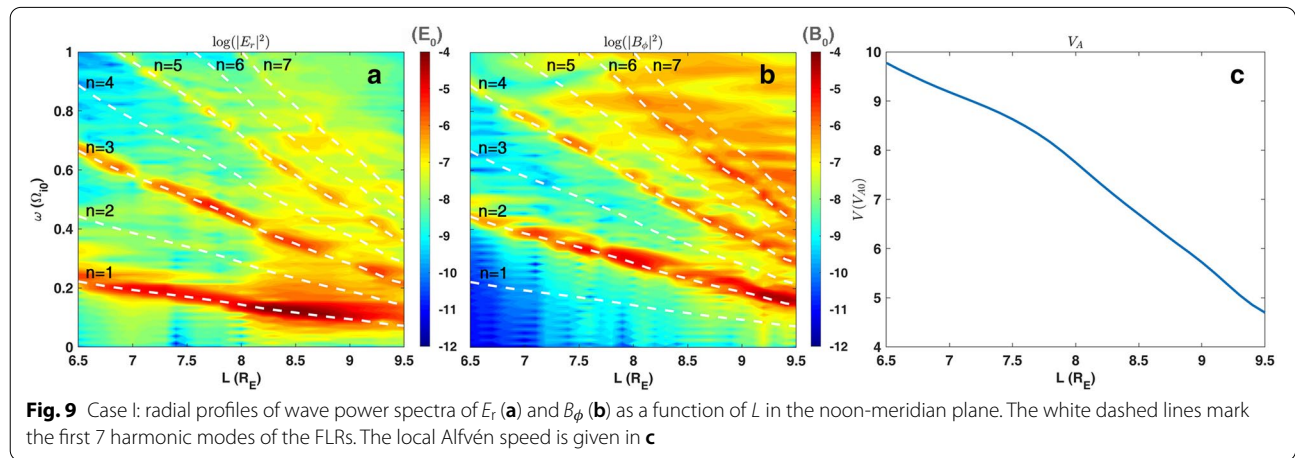


Fig. 9 Case I: radial profiles of wave power spectra of E_r (a) and B_ϕ (b) as a function of L in the noon-meridian plane. The white dashed lines mark the first 7 harmonic modes of the FLRs. The local Alfvén speed is given in c

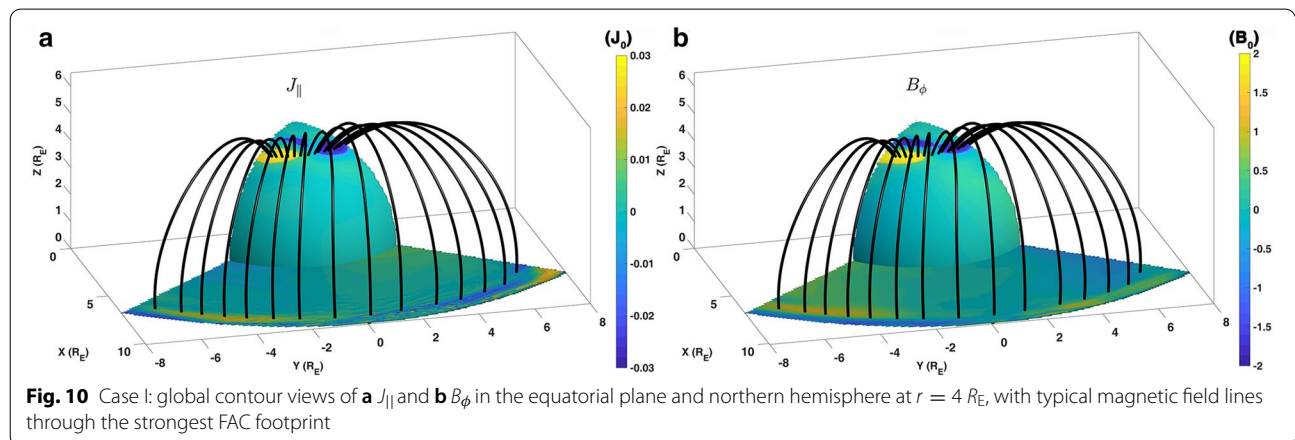


Fig. 10 Case I: global contour views of a $J_{||}$ and b B_ϕ in the equatorial plane and northern hemisphere at $r = 4 R_E$, with typical magnetic field lines through the strongest FAC footprint

polar cap in the northern hemisphere (downward near the dawn and upward near the dusk) and their connection to the region near the magnetopause (indicating that it is mainly due to the magnetopause perturbation), these dominant FACs with $m \sim 5$ azimuthal mode are consistent with the Region-1 current. It should be pointed out that fine azimuthal structures, indicating that high azimuthal wavenumber ($m \sim 140$) mode waves coupled with the FLRs (Wang 2019), are not observed in our simulations. This may be because we simply use the conducting inner magnetospheric boundary conditions in our model. Since only the FACs of Region-1 pattern are observed, it is unclear how the azimuthal mode number depends on the model assumptions. Our future work will focus on such FAC distribution including the nightside by employing an improved inner boundary conditions coupling to ionosphere.

Shi et al. (2013) have shown that the Alfvénic structures that are mode-converted from compressional waves at the magnetopause can propagate along the magnetic field lines into the cusp region (ref. Fig. 12 in that paper). In the same scenario, the low m -number $J_{||}$ shown in Fig. 10 can be caused by the perturbations originating from the compressional waves in the magnetosphere; i.e., the mode-converted Alfvén waves propagate along the closed magnetic field lines, resulting in the FACs into the cusp region. As the field line inside the magnetosphere is closed, the toroidal mode of standing shear Alfvén waves (i.e., the FLR) appears. Note that the large azimuthal modes (e.g., $m \gtrsim 60$) at even higher latitudes observed by Wang et al. (2018) are the FACs caused by the perturbations from the night side of the open magnetic field lines, so they are not considered in this paper.

Aurora phenomena, including diffuse and discrete aurora patterns, have been suggested to be an intrinsic feature of ionospheric response to the magnetospheric FLRs (Kozlovsky and Kangas 2002; Tanaka et al. 2012),

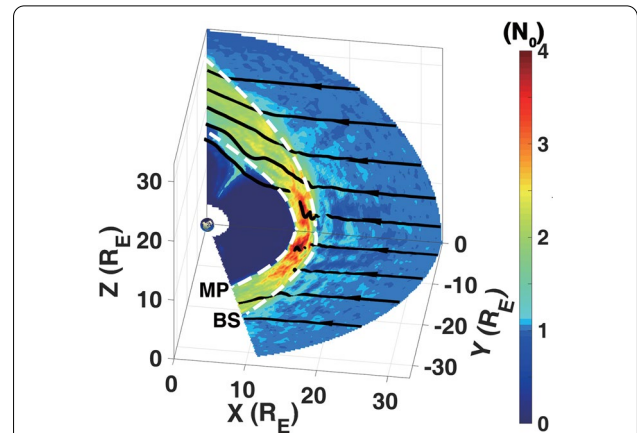


Fig. 12 Case II global view of N at $t = 100 \Omega_{i0}^{-1}$ in the noon-meridian and equatorial planes, showing the 3-D structures of the global system. The white dashed lines roughly mark the magnetopause and bow shock positions, respectively, and typical magnetic field lines are also displayed. The foreshock disturbances and the magnetosheath density are much weaker compared with Case I

and the local brightening of both aurora soon after foreshock disturbance events has been observed by all-sky imager cameras (Wang et al. 2018). It is also suggested that the discrete aurora is generated by electrons accelerated along magnetic field lines, and is associated with the FACs which correspond to energetic particle precipitations (Wang et al. 2018). Therefore, to explore these possibly observable auroral features produced by the FLRs, we traced the FAC signatures near the inner simulation boundary. Figure 11 shows a polar contour view of evolution of the FAC power $\log(J_{||}^2)$ in northern hemisphere at $r = 4 R_E$ from $t = 160 \Omega_{i0}^{-1}$ to $t = 190 \Omega_{i0}^{-1}$. The Region-1 type current shown in Fig. 10 are marked by black circles. The evolution of the FAC signatures along the closed field lines corresponding to $L \sim 6 - 8 R_E$ is tracked with purple circles with

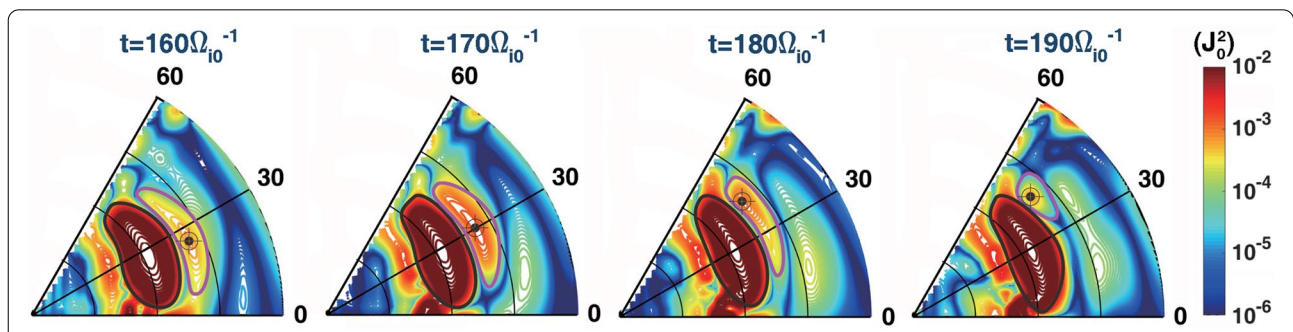


Fig. 11 Case I: polar contour view of evolution of the FAC power $\log(J_{||}^2)$ in northern hemisphere at $r = 4 R_E$ from $t = 160 \Omega_{i0}^{-1}$ to $t = 190 \Omega_{i0}^{-1}$. The azimuthally tailward moving FAC signatures along the closed field lines corresponding to $L \sim 6 - 8 R_E$ is tracked with purple circles with their peaks marked by cross-dotted targets. Note that the Region-1 type current shown in Fig. 10 are marked by black circles

their peaks marked by cross-dotted targets. It can be seen that the purple circled FACs move duskward (i.e., azimuthally tailward), consistent with the convection of the driver waves near the magnetopause. The moving speed is estimated to be ~ 400 m/s when mapped to the ionosphere (at $\sim 1.07 R_E$), consistent with poleward moving speed of the discrete aurora in observations (Kozlovsky and Kangas 2002).

Magnetospheric response for Case II

Figure 12 shows the global view of ion density N at $t = 100 \Omega_{i0}^{-1}$ in the noon-meridian and equatorial planes with typical magnetic field lines. The magnetopause and the bow shock positions are marked by the white dashed lines. The standoff radial distances of the bow shock and the magnetopause move farther away from the Earth, at $15 R_E$ and $12.5 R_E$, respectively. Since the lower Mach number results in a smaller fraction of solar wind particles being reflected at the $Q\parallel$ shock, the foreshock disturbances are weaker compared with Case I. This in turn results in a lower wave power in the foreshock and less compressive fluctuations (Gary 1993; Turc et al. 2015, 2018). Figure 13 gives the toroidal Alfvén component E_r of the fundamental harmonic mode along the closed field line in the noon-meridian plane at $L = 8 R_E$ for Case II. The oscillations of the fundamental eigenstructures are shown in the left panel. The period of the fundamental mode in Case II is roughly $50 \Omega_{i0}^{-1}$ (e.g., $t \sim 100 - 150 \Omega_{i0}^{-1}$), smaller than Case I ($\sim 30 \Omega_{i0}^{-1}$). From the right panel, it can be seen that the maximum wave power of the fundamental harmonic by using plane wave analysis is $\sim 8 \times 10^{-3} (V/m)^2/Hz$ (which is similar to the equatorial power based on the RIP method, and much smaller than the corresponding wave power $\sim 3 \times 10^{-2} (V/m)^2/Hz$ at the same location in Case I). In short, it clearly shows that as the solar wind Mach number becomes lower, the period of the FLR becomes longer and the strength becomes weaker. Figure 14 shows the radial profiles of toroidal Alfvén wave power spectra at the equator for Case II. It can be seen that the wave power decreases dramatically at the same location, while other basic features of the FLRs remain quite similar to those for Case I. Specifically, in addition to the weaker fundamental harmonic wave power, higher harmonic wave powers also become weaker when the solar wind

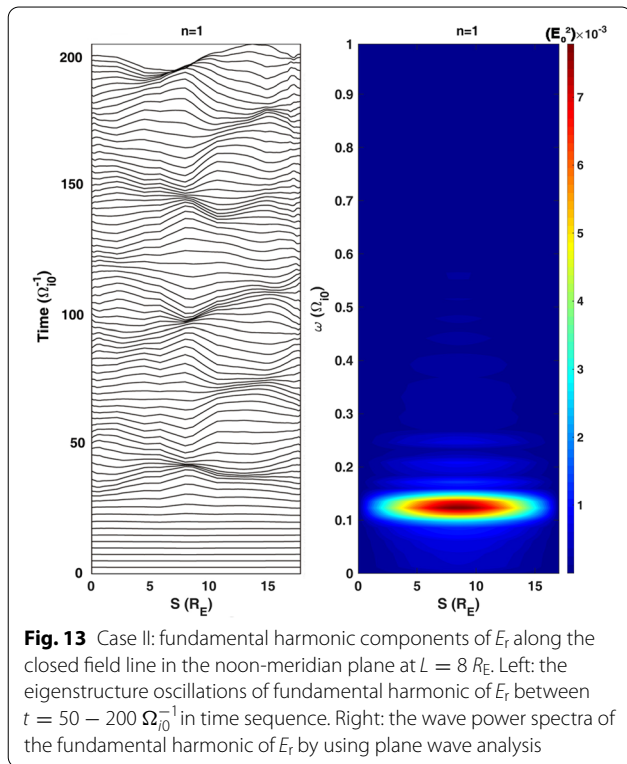


Fig. 13 Case II: fundamental harmonic components of E_r along the closed field line in the noon-meridian plane at $L = 8 R_E$. Left: the eigenstructure oscillations of fundamental harmonic of E_r between $t = 50 - 200 \Omega_{i0}^{-1}$ in time sequence. Right: the wave power spectra of the fundamental harmonic of E_r by using plane wave analysis

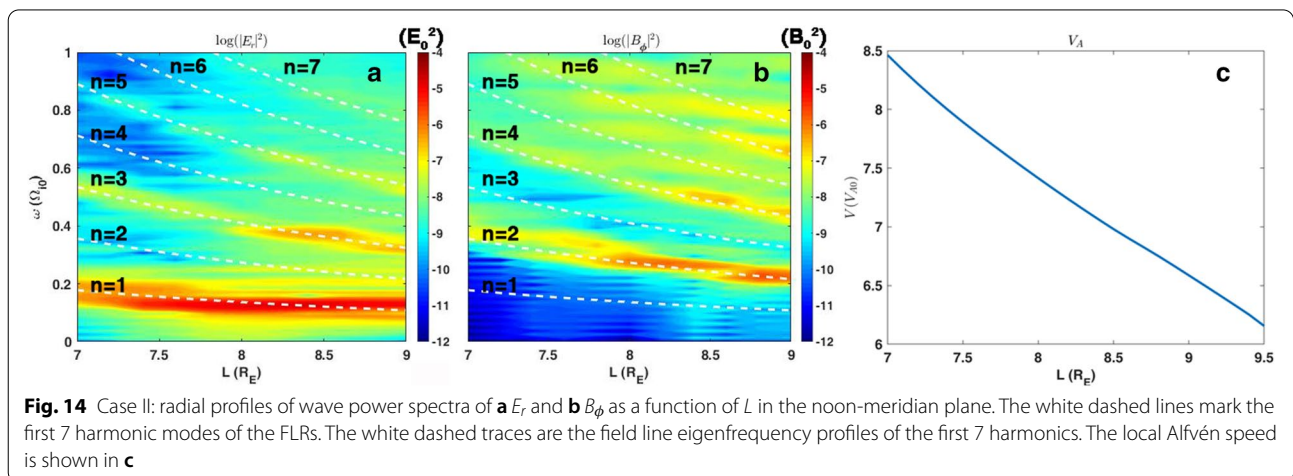


Fig. 14 Case II: radial profiles of wave power spectra of **a** E_r and **b** B_ϕ as a function of L in the noon-meridian plane. The white dashed lines mark the first 7 harmonic modes of the FLRs. The white dashed traces are the field line eigenfrequency profiles of the first 7 harmonics. The local Alfvén speed is shown in **c**

Mach number decreases. For instance, the odd-number harmonic wave powers for E_r are almost one order of magnitude smaller than those in Case I. In addition, although similar to Case I, each of the harmonic wave power decreases as L decreases (towards the Earth side), the decay rate in Case II appears to be faster than the corresponding part in Case I. Figure 15 shows the global view of (a) $J_{||}$ and (b) B_ϕ contours in the equatorial plane and at $r = 4 R_E$ with typical closed magnetic field lines near the magnetopause. It can be seen that the FAC signatures to the cusp region are similar to Case I. At the high latitudes, the azimuthal mode with mode number $m \sim 5$ of the Region-1 type FACs (with $m \sim 5$ azimuthal mode) that flow along closed geomagnetic field lines are still present and dominant, while the high m -number azimuthal mode is not observed. Although the correlated $J_{||}$ and B_ϕ can be seen, the magnitude in both $J_{||}$ and B_ϕ become smaller when the Mach number decreases.

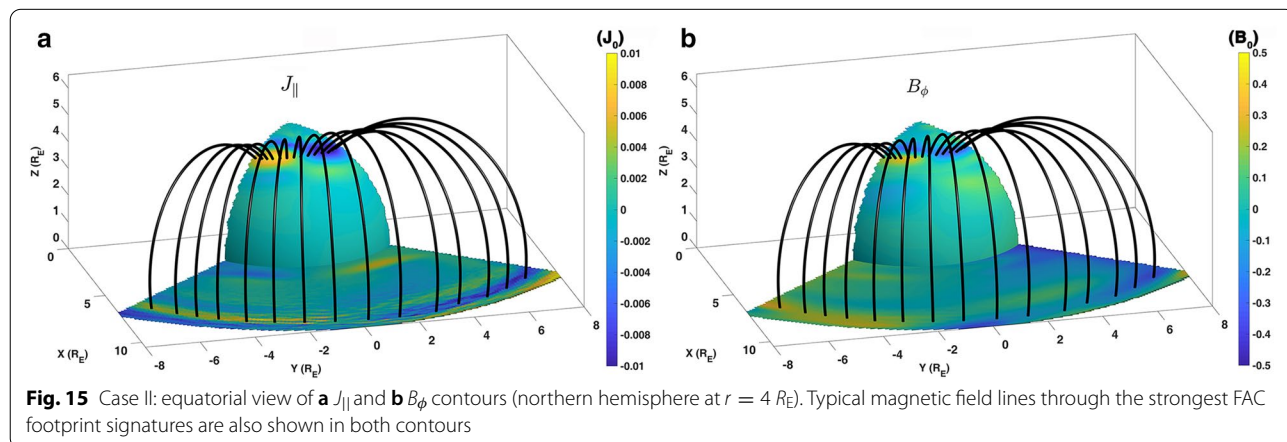
Note that the presented simulations only describe steady radial IMF cases, when the foreshock lies upstream of the subsolar bow shock. Under otherwise the same solar wind conditions, non-radial IMF configurations may result in less significant dayside foreshock disturbances, and thus weaker FLRs. Our future work will also focus on the FLRs and the FACs under more general IMF and solar wind conditions.

Summary

In this paper, self-consistent 3-D global hybrid simulations are carried out to investigate the FLRs which are generated by the foreshock disturbance processes under radial IMF conditions, and the simulation results support the scenario from the observations (Shen et al. 2018; Wang et al. 2019) that the compressional waves arising from the Q-|| foreshock region excite toroidal Alfvén waves in the magnetosphere. These results

provide insights for space environment of magnetized planets, and are summarized as follows:

1. This paper presents the first global simulations of the FLRs driven by foreshock processes.
2. The ion foreshock disturbances are generated self-consistently at the Q-|| shock by the interaction between the backstreaming superthermal and incoming supersonic ions, and it is shown that these foreshock disturbances propagate into the magnetosphere and externally drive the magnetospheric toroidal Alfvén waves, i.e., the FLRs, through the direct mode conversion process.
3. The spectrum of the self-consistently generated foreshock disturbances covers a wide frequency range including $\Omega_{i0}/2$. After considering the Doppler shift effects, it is found that the frequency band of the FLR harmonics match the source frequency range at the foreshock.
4. Although various ULF waves can be generated in the magnetosphere by the foreshock disturbances, the fundamental harmonic mode of the FLRs can still be distinguished. The analysis of harmonics modes of the FLRs shows that the fundamental mode is the strongest, and as the order of the harmonic increases, the corresponding wave power decreases. In addition, the wave power of the toroidal Alfvén waves seems to be not growing or decaying over simulation period of time. Since the solar wind inputs in the simulations are steady, it is suggested that the FLRs are part of the steady-state magnetosphere under quasi-radial IMF conditions.
5. At the equator, the alternating feature of toroidal Alfvén wave components E_r and B_ϕ is presented. As the Alfvén speed increases inwards the magnetosphere, the frequencies of toroidal Alfvén harmonic modes increase accordingly.



6. The global view of the cusp FACs indicates that the strongest perturbation sources mainly come from the region near the magnetopause. However, a low m -number azimuthal mode in the dayside driven by the FLRs is found, and the motion of these FAC structures is found to be both poleward and azimuthal.
7. When the solar wind Mach number decreases, the wave power in the foreshock and compressive fluctuations become weaker, so that the FLRs and the FACs become weaker.

Abbreviations

BS: Bow shock; FAC: Field-aligned current; FLR: Field line resonance; IMF: Interplanetary magnetic field; MP: Magnetopause; Q-||: Quasi-parallel; RIP: Root-integrated-power; ULF: Ultralow-frequency.

Acknowledgements

The authors would like to thank Dr. Zhifang Guo for his helpful advice on various technical issues examined in this paper, and special thanks to Dr. Xueyi Wang who has been maintaining our simulation codes. Lastly, the authors thank the reviewers and the editor for helpful comments on the original manuscript.

Authors' contributions

Dr. FS and Dr. YL contributed to the conception and design of the work. Dr. YL and Dr. XW were primarily responsible for the development and implementation of the code. Dr. BW and Dr. YN provided critical feedback and helped shape the analysis. All authors read and approved the final manuscript.

Funding

This work was supported by National Science Foundation EPSCoR program (OIA-1655280) and by NASA (NNX17AI47G) to the Auburn University.

Availability of data and materials

Simulation data allowing reproducing our figures are available from <http://doi.org/10.6084/m9.figshare.11587488.v3>. Requests for data used to generate or displayed in figures, graphs, or plots may also be made to the corresponding author.

Declarations

Competing interests

The authors declare no competing interests in this paper.

Author details

¹Department of Physics, Auburn University, Auburn, USA. ²Geophysical Institute, University of Alaska Fairbanks, Fairbanks, USA. ³Department of Electrical and Computer Engineering and Center for Space Physics, Boston University, Boston, USA.

Received: 19 October 2020 Accepted: 24 June 2021

Published online: 05 July 2021

References

- Archer M, Turner D, Eastwood J, SchwartzHorbury ST (2015) Global impacts of a foreshock bubble: magnetosheath, magnetopause and ground-based observations. *Planet Space Sci* 106:56–66
- Asbridge J, Bame S, Strong I (1968) Outward flow of protons from the earth's bow shock. *J Geophys Res* 73(17):5777–5782
- Bier EA, Owusu N, Engebretson MJ, Posch JL, Lessard MR, Pilipenko VA (2014) Investigating the IMF cone angle control of Pc3–4 pulsations observed on the ground. *J Geophys Res Space Physics* 119(3):1797–1813
- Blanco-Cano X, Omidji N, Russell C (2006) Macrostructure of collisionless bow shocks: 2. ULF waves in the foreshock and magnetosheath. *J Geophys Res Space Phys* 111(A10)
- Chapman S, Ferraro VC (1930) A new theory of magnetic storms. *Nature* 126(3169):129–130
- Chaston C, Peticolas L, Carlson C, McFadden J, Mozer F, Wilber M, Parks G, Hull A, Ergun R, Strangeway R (2005) Energy deposition by Alfvén waves into the dayside auroral oval: cluster and FAST observations. *J Geophys Res Space Phys* 110(A2)
- Chen L, Hasegawa A (1974a) A theory of long-period magnetic pulsations: 1. Steady state excitation of field line resonance. *J Geophys Res* 79(7):1024–1032
- Chen L, Hasegawa A (1974b) Plasma heating by spatial resonance of Alfvén wave. *The Physics of Fluids* 17(7):1399–1403
- Chian A-L, Oliveira L (1994) Magneto-hydrodynamic parametric instabilities driven by a standing Alfvén wave in the planetary magnetosphere. *Astronom Astrophys* 286:L1–L4
- Claudepierre S, Elkington S, Wiltberger M (2008) Solar wind driving of magnetospheric ULF waves: pulsations driven by velocity shear at the magnetopause. *J Geophys Res Space Phys* 113(A5)
- Claudepierre S, Hudson M, Lotko W, Lyon J, Denton R (2010) Solar wind driving of magnetospheric ULF waves: field line resonances driven by dynamic pressure fluctuations. *J Geophys Res Space Phys* 115(A11)
- Cummings W, O'Sullivan R, Coleman P Jr (1969) Standing Alfvén waves in the magnetosphere. *J Geophys Res* 74(3):778–793
- Dungey JW (1955) Electrodynamics of the outer atmosphere. *Phys Ionosphere* 229
- Eastwood J, Lucek E, Mazelle C, Meziane K, Narita Y, Pickett J, Treumann R (2005) *The foreshock*. Springer, New York City
- Eastwood J, Schwartz S, Horbury T, Carr C, Glassmeier K-H, Richter I, Koenders C, Plaschke F, Wild J (2011) Transient Pc3 wave activity generated by a hot flow anomaly: cluster, Rosetta, and ground-based observations. *J Geophys Res Space Phys* 116(A8)
- Elkington SR, Hudson MK, Chan AA (1999) Acceleration of relativistic electrons via drift-resonant interaction with toroidal-mode Pc-5 ULF oscillations. *Geophys Res Lett* 26(21):3273–3276
- Eriksson P, Blomberg LG, Schaefer S, Glassmeier K-H (2006) On the excitation of ULF waves by solar wind pressure enhancements. *Ann Geophys* 24:3161–3172
- Gary SP (1993) *Theory of space plasma microinstabilities*. Cambridge University Press, New York
- Guo Z, Lin Y, Wang X (2021) Global hybrid simulations of interaction between interplanetary rotational discontinuity and bow shock/magnetosphere: Can ion-scale magnetic reconnection be driven by rotational discontinuity downstream of quasi-parallel shock? *J Geophys Res Space Phys* 126(4):e2020JA028853
- Hartinger M, Turner D, Plaschke F, Angelopoulos V, Singer H (2013) The role of transient ion foreshock phenomena in driving Pc5 ULF wave activity. *J Geophys Res Space Physics* 118(1):299–312
- Hasegawa A (1969) Drift mirror instability in the magnetosphere. *Phys Fluids* 12(12):2642–2650
- Hudson M, Elkington S, Lyon J, Goodrich C (2000) Increase in relativistic electron flux in the inner magnetosphere: ULF wave mode structure. *Adv Space Res* 25(12):2327–2337
- Hughes W, Southwood D, Mauk B, McPherron R, Barfield J (1978) Alfvén waves generated by an inverted plasma energy distribution. *Nature* 275(5675):43
- James MK, Imber SM, Yeoman TK, Bunce EJ (2019) Field line resonance in the Hermean magnetosphere: structure and implications for plasma distribution. *J Geophys Res Space Physics* 124(1):211–228
- Johnson JR, Cheng C (1997) Kinetic Alfvén waves and plasma transport at the magnetopause. *Geophys Res Lett* 24(11):1423–1426
- Kepko L, Spence HE, Singer H (2002) ULF waves in the solar wind as direct drivers of magnetospheric pulsations. *Geophys Res Lett* 29(8):39–41
- Kivelson MG, Southwood DJ (1986) Coupling of global magnetospheric MHD Eigenmodes to field line resonances. *J Geophys Res Space Phys* 91(A4):4345–4351

- Kozlovsky A, Kangas J (2002) Motion and origin of noon high-latitude poleward moving auroral arcs on closed magnetic field lines. *J Geophys Res Space Phys* 107(A2):SM-1
- Lee D-H, Lysak RL (1989) Magnetospheric ULF wave coupling in the dipole model: the impulsive excitation. *J Geophys Res Space Phys* 94(A12):17097–17103
- Lee D-H, Lysak RL (1991) Monochromatic ULF wave excitation in the dipole magnetosphere. *J Geophys Res Space Phys* 96(A4):5811–5817
- Lee SH, Sibeck DG, Lin Y, Guo Z, Adrian ML, Silveira MVD, Cohen IJ, Mauk BH, Mason GM, Ho GC, Giles BL (2020) Characteristics of escaping magnetospheric ions associated with magnetic field fluctuations. *J Geophys Res Space Phys* 125(4):2019–027337
- Lin Y, Wang X (2005) Three-dimensional global hybrid simulation of dayside dynamics associated with the quasi-parallel bow shock. *J Geophys Res Space Phys* 110(A12)
- Lin Y, Johnson JR, Wang X (2012) Three-dimensional mode conversion associated with kinetic Alfvén waves. *Phys Rev Lett* 109(12):125003
- Lin Y, Wang X, Lu S, Perez J, Lu Q (2014) Investigation of storm time magnetotail and ion injection using three-dimensional global hybrid simulation. *J Geophys Res Space Phys* 119(9):7413–7432
- Lu Q, Hu Q, Zank G (2009) The interaction of Alfvén waves with perpendicular shocks. *Astrophys J* 706(1):687
- Mann IR, Wright AN, Cally PS (1995) Coupling of magnetospheric cavity modes to field line resonances: a study of resonance widths. *J Geophys Res Space Phys* 100(A10):19441–19456
- Mann IR, Wright AN (1995) Finite lifetimes of ideal poloidal Alfvén waves. *J Geophys Res Space Phys* 100(A12):23677–23686
- McPherron RL (2005) Magnetic pulsations: their sources and relation to solar wind and geomagnetic activity. *Surv Geophys* 26(5):545–592
- Menk FW (2011) Magnetospheric ULF waves: a review. In: *The dynamic magnetosphere*. pp 223–256
- Narita Y, Glassmeier K-H, Schäfer S, Motschmann U, Fränz M, Dandouras I, Fornacon K-H, Georgescu E, Korth A, Reme H, Richter I (2004) Alfvén waves in the foreshock propagating upstream in the plasma rest frame: statistics from Cluster observations. *Ann Geophys* 22:2315–2323
- Omidi N, Eastwood J, Sibeck D (2010) Foreshock bubbles and their global magnetospheric impacts. *J Geophys Res Space Phys* 115(A6)
- Omidi N, Winske D (1990) Steepening of kinetic magnetosonic waves into shocklets: simulations and consequences for planetary shocks and comets. *J Geophys Res Space Phys* 95(A3):2281–2300
- Plaschke F, Hietala H, Archer M, Blanco-Cano X, Kajdič P, Karlsson T, Lee SH, Omidi N, Palmroth M, Roytershteyn V (2018) Jets downstream of collisionless shocks. *Space Sci Rev* 214(5):81
- Rusaitis L, Khurana K, Kivelson M, Walker R (2021) Quasiperiodic 1-hour Alfvén wave resonances in Saturn's magnetosphere: theory for a realistic plasma/field model. *Geophys Res Lett* 48(7):e2020GL090967
- Russell C, Luhmann J, Odera T, Stuart W (1983) The rate of occurrence of dayside Pc 3, 4 pulsations. The L-value dependence of the IMF cone angle effect. *Geophys Res Lett* 10(8):663–666
- Russell C (1985) Planetary bow shocks. *Collisionless Shocks in the Heliosphere*. *Rev Curr Res* 35:109–130
- Samson J, Harrold B, Ruohoniemi J, Greenwald R, Walker A (1992) Field line resonances associated with MHD waveguides in the magnetosphere. *Geophys Res Lett* 19(5):441–444
- Sarris T, Wright A, Li X (2009a) Observations and analysis of Alfvén wave phase mixing in the Earth's magnetosphere. *J Geophys Res Space Phys* 114(A3)
- Sarris T, Liu W, Kabin K, Li X, Elkington S, Ergun R, Rankin R, Angelopoulos V, Bonnell J, Glassmeier K (2009b) Characterization of ULF pulsations by THEMIS. *Geophys Res Lett* 36(4)
- Schwartz SJ, Chaloner CP, Christiansen PJ, Coates AJ, Hall DS, Johnstone AD, Gough MP, Norris AJ, Rijnbeek RP, Southwood DJ, Woolliscroft LJ (1985) An active current sheet in the solar wind. *Nature* 318(6043):269
- Shen X-C, Shi Q, Wang B, Zhang H, Hudson MK, Nishimura Y, Hartinger MD, Tian A, Zong Q-G, Rae I (2018) Dayside magnetospheric and ionospheric responses to a foreshock transient on 25 June 2008: 1. FLR observed by satellite and ground-based magnetometers. *J Geophys Res Space Phys* 123(8):6335–6346
- Shi F, Lin Y, Wang X (2013) Global hybrid simulation of mode conversion at the dayside magnetopause. *J Geophys Res Space Phys* 118(10):6176–6187
- Shi F, Cheng L, Lin Y, Wang X (2017) Foreshock wave interaction with the magnetopause: signatures of mode conversion. *J Geophys Res Space Phys* 122(7):7057–7076
- Southwood D (1968) The hydromagnetic stability of the magnetospheric boundary. *Planet Space Sci* 16(5):587–605
- Southwood D (1974) Some features of field line resonances in the magnetosphere. *Planet Space Sci* 22(3):483–491
- Southwood D, Hughes W (1983) Theory of hydromagnetic waves in the magnetosphere. *Space Sci Rev* 35(4):301–366
- Swift DW (1996) Use of a hybrid code for global-scale plasma simulation. *J Comput Phys* 126(1):109–121
- Takahashi K, McPherron RL, Terasawa T (1984) Dependence of the spectrum of Pc 3–4 pulsations on the interplanetary magnetic field. *J Geophys Res Space Phys* 89(A5):2770–2780
- Takahashi K, Ukhorskiy AY (2007) Solar wind control of Pc5 pulsation power at geosynchronous orbit. *J Geophys Res Space Phys* 112(A11)
- Takahashi K, Hartinger MD, Malaspina DM, Smith CW, Koga K, Singer HJ, Frühauff D, Baishev DG, Moiseev AV, Yoshikawa A (2016) Propagation of ULF waves from the upstream region to the midnight sector of the inner magnetosphere. *J Geophys Res Space Phys* 121(9):8428–8447
- Takahashi K, Turc L, Kilpua E, Takahashi N, Dimmock A, Kajdic P, Palmroth M, Pfau-Kempf Y, Soucek J, Motoba T, Hartinger MD (2020) Propagation of ultralow-frequency waves from the ion foreshock into the magnetosphere during the passage of a magnetic cloud. *J Geophys Res Space Phys*. <https://doi.org/10.1029/2020JA028474>
- Tanaka Y-M, Ebihara Y, Saita S, Yoshikawa A, Obana Y, Weatherwax A (2012) Poleward moving auroral arcs observed at the South Pole Station and the interpretation by field line resonances. *J Geophys Res Space Phys* 117(A9)
- Thomas V, Brecht SH (1988) Evolution of diamagnetic cavities in the solar wind. *J Geophys Res Space Phys* 93(A10):11341–11353
- Tsurutani BT, Rodriguez P (1981) Upstream waves and particles: an overview of ISEE results. *J Geophys Res Space Phys* 86(A6):4317–4324
- Turc L, Fontaine D, Savoini P, Modolo R (2015) 3d hybrid simulations of the interaction of a magnetic cloud with a bow shock. *J Geophys Res Space Phys* 120(8):6133–6151
- Turc L, Ganse U, Pfau-Kempf Y, Hoilijoki S, Battarbee M, Juusola L, Jarvinen R, Brito T, Grandin M, Palmroth M (2018) Foreshock properties at typical and enhanced interplanetary magnetic field strengths: results from hybrid-Vlasov simulations. *J Geophys Res Space Phys* 123(7):5476–5493
- Ukhorskiy A, Takahashi K, Anderson B, Korth H (2005) Impact of toroidal ULF waves on the outer radiation belt electrons. *J Geophys Res Space Phys* 110(A10)
- Wang B, Nishimura Y, Hietala H, Shen X-C, Shi Q, Zhang H, Lyons L, Zou Y, Angelopoulos V, Ebihara Y (2018) Dayside magnetospheric and ionospheric responses to a foreshock transient on 25 June 2008: 2. 2-d evolution based on dayside auroral imaging. *J Geophys Res Space Phys* 123(8):6347–6359
- Wang B, Nishimura Y, Zhang H, Shen X-C, Lyons L, Angelopoulos V, Ebihara Y, Weatherwax A, Gerrard AJ, Frey HU (2019) 2D structure of foreshock-driven field line resonances observed by THEMIS satellite and ground-based imager conjunctions. *J Geophys Res Space Phys* 124(8):6792–6811
- Wang B, Liu T, Nishimura Y, Zhang H, Hartinger M, Shi X, Ma Q, Angelopoulos V, Frey HU (2020) Global propagation of magnetospheric Pc5 ULF waves driven by foreshock transients. *J Geophys Res Space Phys* 125(12):e2020JA028411
- Wang X, Lin Y (2006) Generation of filamentary structures by beam-plasma interaction. *Phys Plasmas* 13(5):052102
- Wang X, Lin Y, Chang S-W (2009) Hybrid simulation of foreshock waves and ion spectra and their linkage to cusp energetic ions. *J Geophys Res Space Phys* 114(A6)
- Wilkinson WP (2003) The Earth's quasi-parallel bow shock: review of observations and perspectives for Cluster. *Planet Space Sci* 51(11):629–647
- Wilson L (2016) Low frequency waves at and upstream of collisionless shocks. In: *Geophysical Monograph Series*. American Geophysical Union, vol 216. Wiley, Washington DC, pp 269–291
- Wright AN (1994) Dispersion and wave coupling in inhomogeneous MHD waveguides. *J Geophys Res Space Phys* 99(A1):159–167
- Zhao L, Zhang H, Zong Q (2017) Global ULF waves generated by a hot flow anomaly. *Geophys Res Lett* 44(11):5283–5291

Zong Q, Rankin R, Zhou X (2017) The interaction of ultra-low-frequency Pc3-5 waves with charged particles in earth's magnetosphere. *Rev Modern Plasma Phys* 1(1):10

Publisher's Note

Springer Nature remains neutral with regard to jurisdictional claims in published maps and institutional affiliations.

Submit your manuscript to a SpringerOpen[®] journal and benefit from:

- ▶ Convenient online submission
- ▶ Rigorous peer review
- ▶ Open access: articles freely available online
- ▶ High visibility within the field
- ▶ Retaining the copyright to your article

Submit your next manuscript at ▶ [springeropen.com](https://www.springeropen.com)
