

# SCULPTURAL TRADITIONALISM AND INNOVATION IN THE CLASSIC MAYA KINGDOM OF SAK TZ'I', MEXICO

Mallory E. Matsumoto <sup>a</sup>, Andrew K. Scherer <sup>b</sup>, Charles Golden <sup>c</sup> and Stephen Houston <sup>b</sup>

<sup>a</sup>Department of Religious Studies, University of Texas at Austin, 2505 University Avenue, Stop A3700, Austin, Texas 78712-1090

<sup>b</sup>Department of Anthropology, Box 1921, Brown University, Providence, Rhode Island 02912

<sup>c</sup>Department of Anthropology, Brown Social Science Center 206, Brandeis University, 415 South Street, Waltham, Massachusetts 02453

## Abstract

In this article we analyze the content and form of 58 stone monuments at the archaeological site of Lacanjá Tzeltal, Chiapas, Mexico, which recent research confirms was a capital of the Classic Maya polity Sak Tz'i' ("White Dog"). Sak Tz'i' kings carried the title *ajaw* ("lord") rather than the epithet *k'uhul ajaw* ("holy lord") claimed by regional powers, implying that Sak Tz'i' was a lesser kingdom in terms of political authority. Lacanjá Tzeltal's corpus of sculptured stone, however, is explicitly divergent and indicates the community's marked cultural autonomy from other western Maya kingdoms. The sculptures demonstrate similarities with their neighbors in terms of form and iconographic and hieroglyphic content, underscoring Lacanjá Tzeltal artisans' participation in the region's broader culture of monumental production. Nevertheless, sculptural experimentations demonstrate not only that lesser courts like Lacanjá Tzeltal were centers of innovation, but that the lords of Sak Tz'i' may have fostered such cultural distinction to underscore their independent political character. This study has broader implications for understanding interactions between major and secondary polities, artistic innovation, and the development of community identity in the Classic Maya world.

## INTRODUCTION

Architectural sculpture and freestanding carved monuments marked urban landscapes across the pre-colonial Maya region. During the Classic period (A.D. 250–900), these artistic traditions demonstrated sufficient consistency in form, content, technique, and material over time and space to become a key component in scholarly definitions of lowland Maya culture. Such a singular view of these works, however, masks significant local differences in sculpting practices across the lowlands and through time, even within a single ancient city. Ongoing advances in Classic Maya archaeology and political history (Houk et al. 2020; Martin 2020), in turn, encourage more nuanced interpretation of how local production of stone sculpture was bound up in regional participation in cultural exchange and the institution of divine kingship (compare Earley 2019; Golden et al. 2008; Vázquez López 2017).

In the western Maya lowlands, an area that we define as roughly delimited by Comalcalco in the far north, Tonala in the south and west, and the Usumacinta River Valley and San Pedro Mártir River floodplains in the east (Figure 1), Classic era sculptures exhibited great diversity in architectural placement, form, and hieroglyphic and iconographic content. Sculptural traditions varied systematically between major western political centers, most notably Palenque, Piedras Negras, Tonina, and Yaxchilan (see Clancy 2009; Miller 1998; O'Neil 2012; Tate 1992). Each royal court and its attendant artisans developed a unique style amidst ongoing exchange with each other, spurring emulation and

innovation across the region (Miller 1998; O'Neil 2012; Proskouriakoff 1950). By emphasizing distinct formats of freestanding and architectural sculpture, courtly artisans in the Maya west participated in the broader Classic Maya tradition of monumental production, but did so in very local forms—a practice that in some cases was a conscious elite strategy to “promote a specific set of memories and then to enter them time and again on the mental slate through both visual images and written texts” (Miller 1998:194; see Earley 2015; Golden et al. 2008). Dynastic representatives not only memorialized their deeds on these monuments; they presented narratives that inscribed their community's place in the western Maya world (Miller 1998:194).

A key player in western Maya geopolitics, the Sak Tz'i' dynasty developed its own approach to stone sculpture that expressed the polity's position relative to neighboring allies and antagonists alike. Recent fieldwork at the archaeological site of Lacanjá Tzeltal has confirmed that it was the seat of the Sak Tz'i' polity during much of the Late Classic period (A.D. 600–900; Golden et al. 2020). Hieroglyphic inscriptions proved critical to identifying Sak Tz'i' epigraphically and, ultimately, to locating its major center on the ground (Golden et al. 2020; see Anaya Hernández et al. 2003; Bíró 2005). But what can those same monuments tell us about the polity's position in the western Maya region, beyond their linguistic contents? More broadly, too, what can practices of sculpting stone at Lacanjá Tzeltal reveal about the formation of Classic Maya political identity and the relationship between political and cultural exchange? Placing its sculptural tradition in western Maya context reveals how Lacanjá Tzeltal's Classic era community employed monumental sculpture to simultaneously participate in regional politics and

E-mail correspondence to: [mematsumoto@austin.utexas.edu](mailto:mematsumoto@austin.utexas.edu)

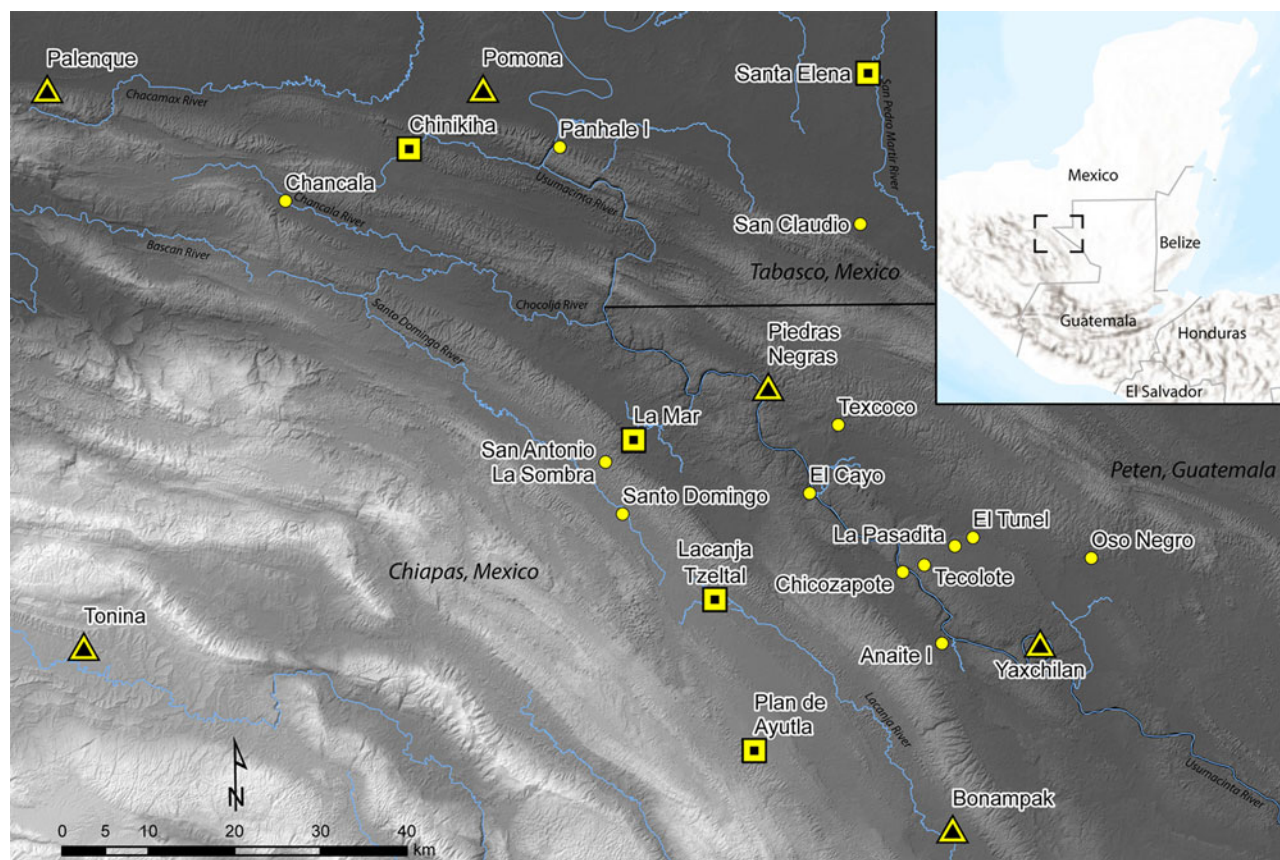


Figure 1. Regional map showing location of Classic-period Maya political centers. Triangles indicate capitals governed by *k'uhul ajaw*; squares indicate capitals governed by *ajaw*. Map by Golden.

construct a distinct political identity. Sak Tz'i' sculptors engaged with other western traditions but consciously deviated from them in key facets, an approach that paralleled the polity's struggle to establish its autonomy in a geopolitical landscape dominated by its neighbors.

Following a brief discussion of approaches to innovation and traditionalism in Classic Maya art, we discuss the recently documented corpus of monuments at Lacanjá Tzeltal, Chiapas, elaborating on initial descriptions by Laló Jacinto (1998) and Golden and colleagues (2020) (Table 1). We examine evidence for looting at the site and as yet unsuccessful attempts to draw connections to unprovenanced Sak Tz'i' inscriptions. Subsequently, we present a paleogeographic analysis of Lacanjá Tzeltal Panel 1 that situates its hieroglyphic features within the Sak Tz'i' corpus and relates it to regional trends in Classic Maya hieroglyphic writing, especially to the tradition at Palenque. Finally, we address the implications of the sculptural data for understanding Lacanjá Tzeltal's place in the Sak Tz'i' realm and the polity's position in the western Maya region. In addition to offering insights into the kingdom's cultural history and political identity, we voice lingering questions that will guide future fieldwork at the site.

## SCULPTURE, INNOVATION, AND POLITICAL IDENTITY IN THE MAYA WEST

Stone sculptures loom large in archaeological interpretations of the ancient past as both expressions and instruments of political assertion, ritual participation, and social identity. They convey

meaning through their physical presence in the world, but are also mobilized in meaning-making activities of cultural, political, or ceremonial import. Through incorporation into performances of political power, social integration, or ritual, sculpted monuments are

Table 1. Summary of sculpted stone monuments documented to date at Lacanjá Tzeltal, Chiapas.

Type	Total	Notes
Altar	11	All rounded except for Altar 5 (quadrilateral)
Stela	24	Quadrilateral or columnar form
Stucco facade	1	Apparently in situ; partially buried
Panel	1	Original location unknown (see Golden et al. 2020)
Miscellaneous sculpted stone	11	Irregular form; MSS 3-11 "squat monuments"
Unclassified monument	10	Worked stones with monumental proportions whose form could not be definitively classified
Fragment	12	Worked stone pieces with monumental proportions that could not be assigned to a known sculpture

“culturally marked as being a certain kind of thing” and thus acquire a contextually contingent meaning (Kopytoff 1986:64; see DeMarrais et al. 1996; Inomata 2006). Often their significance is intimately tied to social, religious, or political authority as “*lieux de mémoire*” in the sense of Nora (1989:7), sites “where memory crystallizes and secretes itself” in visible expressions of cultural and political identity (compare Stuart 1996; Wu Hung 1995). They thus become what Barth (1969:14) calls “diacritical features” or explicit loci of group identity, whether at the time of initial production or retrospectively among their inheritors.

Monumental sculpture is never an unequivocal tool of elite authority, however. The relative constancy of sculpted works’ form belies “their capacity for metamorphosis, an endless recycling of their meaning and an unpredictable proliferation of their ramifications” (Nora 1989:19). As is evident from ongoing contestation of the past and future of Confederate statues in the United States today (Cox 2021; Winberry 1983), sculptures are iteratively reinterpreted over time, and exposition inherently makes them vulnerable to resignification, sometimes in unanticipated ways. They may be mobilized to challenge or relocate power—in some cases, the same power that they were meant to represent—through subversive “counter-monumental performances” that provoke “disturbance, contestation and irresolution” of monuments’ meaning and role in memory-making (Moshenska 2010:7, 23; see also O’Neil 2009; Osborne 2017; Young 1992). Classic Maya viewers, too, recognized and exploited this potential, resignifying monumental expressions of elite identity through intentional destruction, defacement, looting, or displacement (see Golden et al. 2016; Harrison-Buck 2016; Just 2005; Martin 2000, 2017).

The significance of monumental sculpture is grounded, in part, in the cultural dynamics of innovation and conservatism underlying its production. Whereas innovation entails change through the “adoption of an invention on a collective scale” (Roux 2010:217), conservatism or traditionalism retains familiar practices in the face of alternatives so that “adoption lag[s] far behind awareness-knowledge of a new idea” (Rogers 1983:250; compare Dietler and Herbich 1989; Frieman 2021; Weissner 1997). Both phenomena, however, are best understood as scalar. No tradition arises *ex nihilo* from innovations alone, and even the most conservative traditions entail a baseline level of variability in production: “in every case that one can think of, copying involves repetition ... But in this act of repetition ... something else happens. Difference manifests itself in repetition and marks a transformation that happens within repetition” (Boon 2010:91; compare Inoue 2018; Wong 2013).

Yet conservatism and innovation are as much sociopolitical phenomena as they are technological developments. The decision to create new practices or to adopt those invented by others “is not a binary choice, but is a multi-staged process deeply embedded” in sociocultural context (Frieman 2021:80). Archaeologists have tended to assume that socially or politically central communities were primary sites of innovation (Champion 1989; Chase-Dunn and Hall 1991; Rowlands et al. 1987). Geographically or politically marginal ones, in contrast, are often said to react to changes coming in rather than generating their own (Hartz 1969; Kopytoff 1987). But more recent research emphasizes peripheries’ own innovative potential as places of cultural encounter whose artistic developments may influence the center (Bhabha 1994; Eberl 2018:65–99; Lightfoot and Martinez 1995; Stein 2002). In some cases, Ogundiran (2014:21) argues, the innovative character of communities who occupy what he calls “crossroads interstices” may actually provoke intervention by expansionist neighbors.

Early research on core–periphery cultural tensions in Classic Maya contexts highlighted the southeastern lowlands, where material practices integrated Maya and non-Maya traits (Schortman and Urban 1994; Schortman et al. 2001). At a regional level, the murals of Cacaxtla offer a striking case of artists innovating a local style inspired by foreign—in this case, Central Mexican and lowland Maya—canons (Brittenham 2015; Foncerrada de Molina 1980; Kubler 1980). But innovative dynamics of marginality–centrality played out more locally, too, in interactions between Maya polities of varying cultural and political influence (Halperin and Martin 2020; Iannone 2011). Sculptors at the minor polity of Chinkultic, for instance, engaged with iconographic trends from powerful peers in the Usumacinta River Basin, even as Chinkultic elites remained largely disengaged from those political networks (Earley 2015, 2019). In constructing an authority fundamentally based on a warrior identity, they adopted representational modes from distant neighbors but combined them in distinct ways or created local variants to establish a sculptural style that was “both innovative and consistent” (Earley 2019:304). When such stylistic positioning is undertaken consciously, the extent to which an artistic community perceives itself—or is perceived by others—as adhering to existing practices or innovating new ones can be core to its cultural identity (compare Dietler and Herbich 1989; Guernsey 2012; Schortman 1989).

As noted, the western area of the Classic Maya world stands out for great diachronic and, especially, synchronic variability in sculptural traditions. Stelae (often paired with altars) were the predominant monumental form in the Central Peten, where major sites such as Tikal or Calakmul are known for their largely planar, rectangular, upright stones sculpted in bas-relief (see Jones and Satterthwaite 1982; Marcus 1987). But these differed notably from the high-relief, in-the-round stelae representing individuals at Tonina and from the sculpture of Piedras Negras, where innovative bas-relief stelae were canvases for scenes of courtly ritual (O’Neil 2012; Proskouriakoff 1950:118–119, 121, 136, 138). Architectural panels, in turn, were increasingly carved in high relief at Piedras Negras but in bas-relief at Palenque and Pomona (Stuart 1996:150; see McHargue 1995: 205–243; Proskouriakoff 1950:136–137), whereas the Yaxchilan kingdom established itself as master of the inscribed stone lintel (Golden et al. 2008:263; Proskouriakoff 1950:147).

Even within the diverse landscape of the west, however, Sak Tz’it’ represented an outlier—a status that we argue was an intentional, sculptural expression of the polity’s relative autonomy in regional geopolitics. The title *ajaw* (“lord”) denoted a class of high-ranking nobility whose numerous members included both rulers, including that of Sak Tz’it’, and non-rulers (Houston and Stuart 2001; Martin 2020:238–248). *K’uhul ajaw* (“holy lord”), in contrast, was reserved for a more exclusive rank and is considered to have been both a specific statement of rulership and a general claim to power and authority (Houston and Stuart 1996; Martin 2020:69–77; Mathews 1991). For a polity to be ruled by a mere *ajaw* was not unusual, especially in the western region. Other kingdoms whose *ajaw* rulers lacked the *k’uhul* prefix included neighboring La Mar and Bonampak, who by the eighth century were close allies, if not subordinates, of Piedras Negras and Yaxchilan, respectively (Mathews 1980; Zender 2002), as well as more distant Lakamtun, a polity whose history remains poorly understood but that was likely based farther south along the Lacantún River (Stuart 1996:154, 2007; see Rivero Torres 1992; Schroder et al. 2019).

Yet the Sak Tz’it’ polity was highly divergent from its *ajaw*-governed peers, by virtue of its prominence in foreign inscriptions and its apparent maintenance of political sovereignty throughout



the Classic era. Moreover, the great quantity and diversity of Sak Tz'i' stone monuments are unprecedented for a kingdom ruled by an *ajaw* who lacked the *k'uhul* prefix claimed by most independent kings during the Late Classic period. Lacanjá Tzeltal's sculptures resembled other western Maya productions in form and iconographic and hieroglyphic content, a testament to its artisans' awareness of regional sculptural trends. Nevertheless, as we outline below, local monumental experimentations demonstrate that this lesser court functioned as a center of cultural innovation, and that the lords of Sak Tz'i' may have fostered such distinction to underscore their independent political identity.

#### PRIOR RESEARCH ON THE KINGDOM OF SAK TZ'I'

For nearly three decades, the Sak Tz'i' kingdom was known only from stone inscriptions in private and museum collections in western Europe and North America (Table 2), as well as from occasional references to actors described as Sak Tz'i' lords on monuments at Bonampak, El Cayo, Piedras Negras, Tonina, and Yaxchilan (Beliaev and Safronov 2009; Bíró 2005; Houston cited in Stuart 1987:10). In addition to offering initial clues concerning the kingdom's geographic location (Anaya Hernández et al. 2003; Schele and Grube 1994:111, 116), the unprovenanced inscriptions indicated that Sak Tz'i' rulers were independent actors who exercised prominent influence on regional politics but never achieved the hegemonic power of neighboring dynasties whose kings claimed the lofty *k'uhul ajaw* title. Identification of the kingdom's capital thus promised to fill in significant holes in the epigraphic and archaeological record of the western lowlands (compare Graham 2010:453–467, 491–496; Guenter 2005; Scherer et al. 2017).

The discovery in 2014 of the well-preserved Panel 1, whose hieroglyphic text includes the polity's emblem glyph or dynastic title and the name of a Sak Tz'i' ruler, K'ab Kante' (Golden et al. 2020:78–80; see Houston cited in Stuart 1987:10), along with subsequent archaeological research at the site, now permit us to say that Lacanjá Tzeltal was once a seat of the Sak Tz'i' dynasty, though it was unlikely to have served this role throughout the entire Classic period. The royal court probably established itself at Lacanjá Tzeltal after A.D. 600, building their pyramids and palaces atop earlier ruins (Golden et al. 2020). Initial excavations indicate that Lacanjá Tzeltal was occupied by the Middle Preclassic period (750–450 B.C.; Golden et al. 2020:77, 81). However, the absence of Early Classic (A.D.

250–600) materials suggests little to no occupation during that time, after which the site again saw significant, if shallow, construction during the Late Classic era, before final abandonment sometime in the Terminal Classic period (A.D. 800–900).

#### THE MONUMENTS OF LACANJÁ TZETAL

To date, 58 stone monuments and 12 monumental fragments have been documented at Lacanjá Tzeltal (Table 1). Although the settlement is built over a travertine substrate, the nearby hills are limestone and were likely the source for the medium- to fine-grain limestone from which all the monuments were carved. Eleven sculptures have an irregular form that defies easy categorization, for which reason we have labeled them as Miscellaneous Sculpted Stones (MSS), following the example of prior archaeological projects such as that at nearby Piedras Negras (Satterthwaite 1965; compare Stuart and Graham 2003). An additional eight remain partially buried and are identified as Unclassified Monuments pending future excavation. Panel 1 is the best-preserved sculpture at Lacanjá Tzeltal and retains the only legible multi-glyph inscription

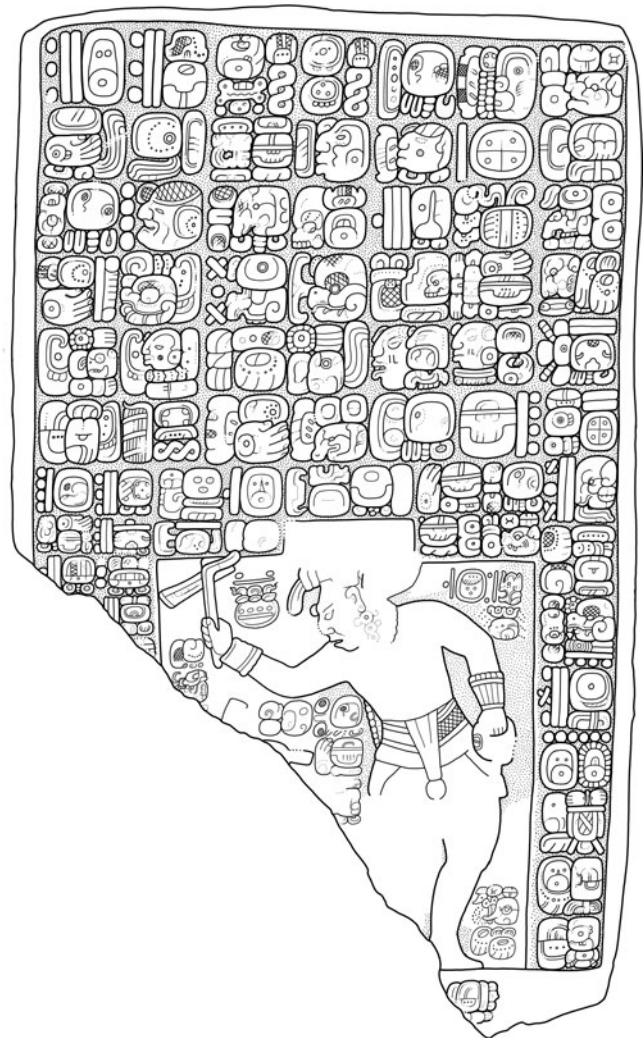


Figure 2. Lacanjá Tzeltal Panel 1. The central image shows the eighth-century Sak Tz'i' lord K'ab Kante' as the rain god Chahk. Drawing by Houston.

Table 2. Unprovenanced monuments that have been attributed to the Sak Tz'i' polity.

Monument	Dedication Date	Key Publications
Denver and Brussels Panels	9.13.1.1.6 (April 6, 693)	Anaya Hernández et al. (2003); Berlin (1974); Bíró (2005)
Stendahl Panel (Zurich Panel)	9.14.15.0.0 (September 14, 726)	Bíró (2005); Mayer (1987:10, Plate 33); Tokovinine (2006:2)
Caracas Panel (New York Panel)	9.16.3.10.11 (November 17, 754)	Bíró (2005); Golden et al. (2020:79); Mayer (1987:23, Plates 95–98)
Lausanne Stela (Josefowitz Stela, Randel Stela)	10.1.15.0.0 (September 9, 864)	Bíró (2005); Miller and Martin (2004:191)

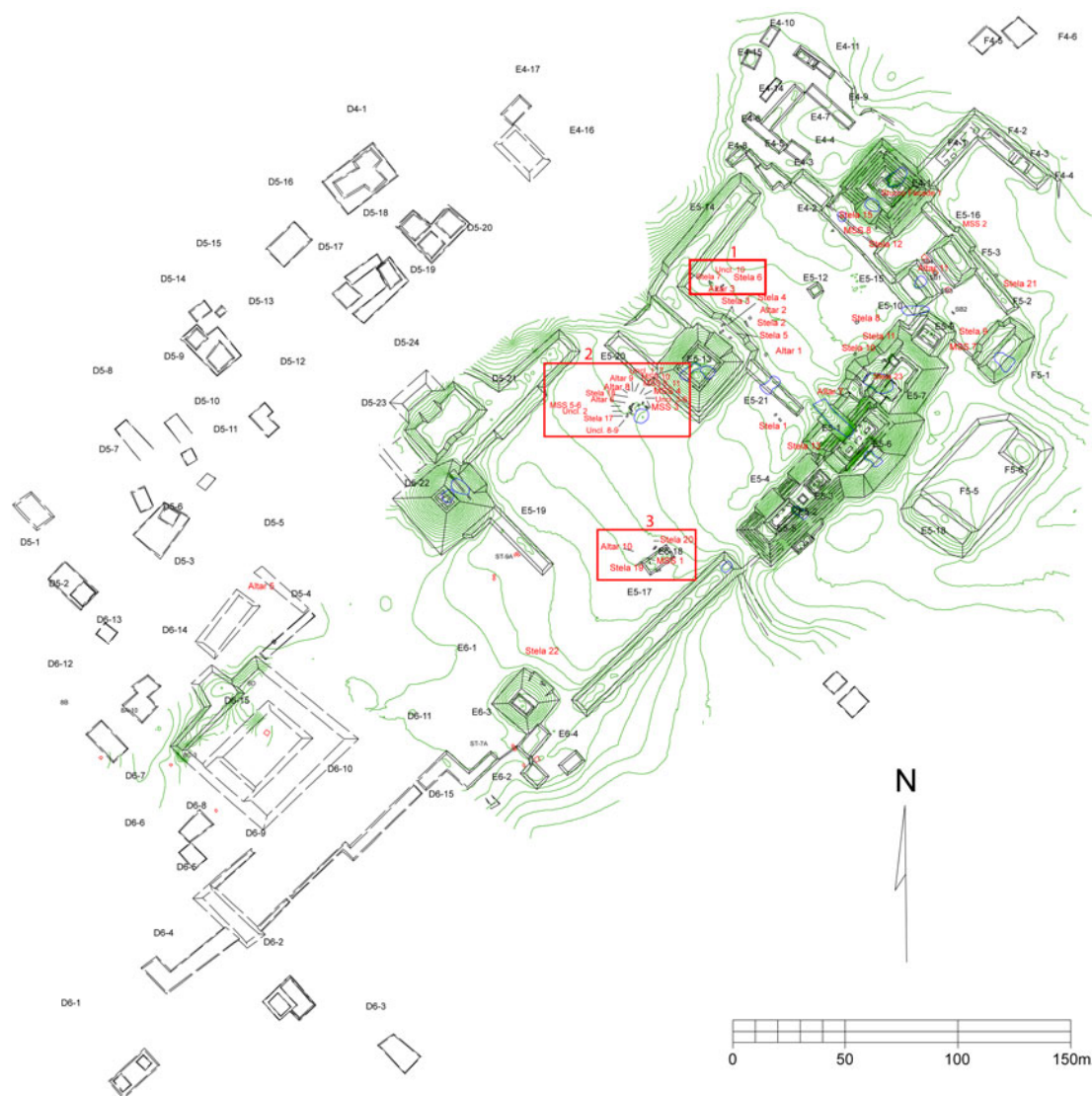


Figure 3. Map of Lacanjá Tzeltal site core, indicating the locations of documented monuments. Monument Piles 1–3 are enclosed in red and numbered. Map by Atasta Flores Esquivel, modifications by Matsumoto.

(Figure 2; see Golden et al. 2020:78–80). Most other monuments are badly eroded; few preserve discernible traces of iconography, and only five present hieroglyphs that are still (partially) recognizable, although we have not yet been able to turn over fallen monuments to equally document all their surfaces.

Prior to our local collaboration, four monuments (Panel 1; Stelae 14, 16, 24) had been moved by the landowner to protect them, and their original positions are not known. The other sculptures remain on site, where most are concentrated on Plaza Muk'ul Ton (“Monuments Plaza” in Tzeltal, the language of the adjacent modern community) or in one of three monument piles (Figure 3). Fourteen monuments are likely still in situ (Altars 1, 2, 5, 11; Stelae 2–5, 11, 13, 15, 21, 22; MSS 8). The only ones that are unequivocally associated with each other, however, are Stelae 3–5, whose aligned bases suggest that they were originally erected in a row on the north platform of Str. E5-13, facing Plaza Muk'ul Ton. Most of the site's sculptures seem to have been moved from their original placement, as will be discussed below.

The extent of damage to the monuments at Lacanjá Tzeltal reflects long-term exposure of the carved surfaces, differences in surface preparation or carving, and, in some cases, targeting by looters. Of those on site, 48 monuments and all 12 monumental fragments are still partially or completely exposed to the elements, and most remain vulnerable to further damage through looting or disturbance by local cattle. Furthermore, numerous sculptures on site at Lacanjá Tzeltal bear scars from hand or chainsaws with which fragments were removed in the recent past (Table 3). They thus present an opportunity to explore links to unprovenanced inscriptions that have been attributed to the kingdom of Sak Tz'i' (Table 4), which would significantly improve our understanding of Lacanjá Tzeltal's settlement history and position in the Classic Maya political sphere (see Bíró 2005; Golden et al. 2020). However, we have been unable to establish any definitive associations thus far.

Arguably the most significant unprovenanced monuments ascribed to the Sak Tz'i' polity are the so-called Denver and

**Table 3.** Monuments at Lacanjá Tzeltal from which portions were previously extracted with metal tools.

Monument	Damage	Sections Extracted (dimensions, cm)
Stela 1	Complete horizontal cut through stela body; lower section of top fragment shaved off	Lower section of upper fragment: l. 42, w. 63, th. $\leq 10$
Stela 2	Top portion of face removed; unfinished cuts on body	Front of stela face (curved): l. 75, w. 51, th. $\leq 18$
Stela 8	Portion of stela's carved surface shaved off; unfinished cuts on body	Portion of stela's carved surface (curved): l. approx. 80, w. 49, th. approx. 1–4.5
Stela 9	Complete horizontal cut through stela body; most of front face shaved off; unfinished cuts on body	Front of stela face (curved): north fragment l. 105, w. 49, th. max. 8.5; south fragment: l. 39, w. 48, th. ?
Stela 12	Complete horizontal cut through stela body; vertical side trimmed; top extracted; unfinished cuts on body	Top of stela: l. ?, w. $\geq 68$ , th. 33
Stela 13	Complete horizontal cut through stela body; top extracted; cuts on top of remaining base	Top of stela: l. ?, w. 74.5–80.5, th. 2.5–4.5
Stela 23	Buried in rubble, surface cuts from metal tools	Portion of stela face: l. ?, w. appr. 81, th. ?

Brussels Panels, two sections of what was originally a larger hieroglyphic narrative (Figure 4; Berlin 1974). Their text details military victories and political machinations of a Sak Tz'i' *ajaw*, likely in the late seventh century (Bíró 2005:2–8; Schele and Grube 1994:111, 116). The most obvious candidate at Lacanjá Tzeltal for the carcass of either or both panels is the truncated Stela 13 whose base remains in situ, but it is impossible to know how tall that stela originally stood. Another possibility is that either the Denver or Brussels Panel originally belonged to Stela 9, a columnar monument whose front was shaved off (Figure 5; Table 4). However, each of Stela 9's two extant fragments preserves a finished end, and their cut surfaces reach a combined height of just 144 cm, well short of either unprovenanced panel (Table 4).

**Table 4.** Dimensions of unprovenanced Sak Tz'i' monuments.

Monument	Current Dimensions (cm)	Citation
Brussels Panel	l. 165, w. 50, th. 0.26–0.36	Berlin (1974:8); Mayer (1978:12)
Denver Panel	l. 183, w. 51, th. 2.5	Mayer (1980:26)
Stendahl Panel (Zurich Panel)	?	Mayer (1980:37)
Caracas Panel (New York Panel)	l. 83.8, w. 67.3, th. ?	Mayer (1987:23)
Lausanne Stela	l. 127, w. 67, th. 4	Mayer (1980:51)

We have yet to confidently identify a Lacanjá Tzeltal sculpture with a more quadrilateral outline and looting scars that could represent the carcass of any of the other monuments that have been attributed to Sak Tz'i' (Table 4). Although more sculptures may well be recovered from the site over the course of future investigations, it is also possible that some of the unprovenanced pieces were produced elsewhere. Prior scholarship proposed Plan de Ayutla as a likely candidate for the seat of the Sak Tz'i' court (Anaya Hernández et al. 2003; Bíró 2005:13–14, 31–32; Martos López 2009), and Golden and colleagues (2020) posit that Lacanjá Tzeltal may well have been one of two or more political centers over the course of the polity's history (compare Houston 2016; Martin 2005). The unprovenanced monuments' origin(s) could thus reflect a history of transporting stone sculptures between Sak Tz'i' capitals or, perhaps, a legacy of monumental production at an unknown subsidiary site (Golden et al. 2020:Table 1).

### LACANJÁ TZELTAL MONUMENT PILES

One of the more enigmatic features of Lacanjá Tzeltal concerns the distribution of its sculptural corpus. Significant quantities of extant sculptures are concentrated in three piles, designated areas in the site core where monuments, both fragmented and whole, have been heaped in front of the remains of larger buildings (Figure 3). They contain not only sculptured pieces that have been cataloged as monuments (see Table 1), but also worked stones that appear to have been more architectural in nature. According to conversations with the landowner and his older brother (their grandfather originally acquired the land in the 1960s, when it was still forested), the piles have been there for as long as they can remember and have not accumulated as the result of recent activity from farming, ranching, or looting.

Monument Pile 1 is located on Plaza Muk'ul Ton at the corner of Str. E5-13 and E5-14 (Figure 6). Its contents are primarily distributed among two concentrations, a larger one to the north and a smaller one to the south, separated by a rounded depression. It is the smallest of the three piles and has the highest proportion of architectural remains and only four documented monuments: Altar 3, Stelae 6 and 7, and Unclassified Monument 10. Monument Pile 2 is positioned on Plaza Ts'ahk ("Wall Plaza") in front of the south side of Str. E-13, arranged in a rough half-circle along the edge of a depression that lies immediately to the south (Figure 7). More obviously than the others, Pile 2 is located next to and on top of an architectural mound. However, it remains unclear whether this or other architecture here was originally associated with the pile's monumental sculptures, which include Altars 6, 8, and 9; Stelae 17 and 18; MSS 3–6 and 9–11; and Unclassified Monuments 1–9. Finally, Monument Pile 3 is directly associated with the remains of Str. E5-18 and located in front of the north side of the platform denominated Str. E5-17 (Figure 8). Like Pile 1, its contents are roughly divided into two south and north concentrations.

It is unlikely that the monuments in these piles rest in their original positions, but their initial contexts and circumstances of relocation remain unclear, as does whether the piles were created in pre-colonial times or more recently (see also Satterthwaite 1958: 58). The Lacanjá Tzeltal piles clearly differ from the workshops excavated at Xultun, where archaeologists discovered a series of monumental stone blocks abandoned in the process of quarrying, along with quarriers' tools (Clarke 2020). Given their apparently haphazard composition and the monuments' variable states of intactness, the piles may represent ancient monument dumps, such as those identified at Kaminaljuyu (Parsons 1986:6–7,





Figure 4. (a) Denver Panel. Photo AC.8658-014 © Denver Museum of Nature and Science; (b) Brussels Panel. Photograph © RMAH, Brussels. The unprovenanced panels, which record mid-seventh-century political relations between Sak Tz'it and its neighbors La Mar and Ak'e, were presumably part of a larger text that is now lost.

52–54) or, on a smaller scale, at Tikal (Jones and Satterthwaite 1982:61). Considering that the region was largely uninhabited following the Classic-period abandonment, aside from semi-mobile Lacandon communities of the historic era, it is tempting to see the piles as acts of desecration associated with the Sak Tz'it dynasty's collapse. Such ninth-century, post-collapse movement of sculptures is documented at Piedras Negras, where the site's small column altars were gathered and placed in Str. O-7 (Golden et al. 2016: 118; Satterthwaite 2005d [1958]:332–338). Indeed, it is difficult to imagine why later Lacandon inhabitants would have been compelled to pile up the monuments (compare Stanton et al. 2008), which include many but not all of the site's smaller, more mobile sculptures.

Nonetheless, only one sculpture between the piles at Lacanjá Tzeltal, MSS 1 in Pile 3, displays clear cuts from a metal tool, either scars from attempted looting or idle knocks from passing agriculturalists (Figure 9). The dispersed surface burning visible on some sculptures likely reflects recent slash-and-burn agricultural practices at the site, not the residue of wanton destruction. We thus refer to these assemblages neutrally as “piles” rather than “dumps,” because even if they did result from ceremonial activity,

the ambiguity of its archaeological signature requires more evidence than is currently available to distinguish between “reverential” or “desecratory” behavior (Pagliaro et al. 2003:76). We do hope, however, to address these questions through future excavations, which may reveal more information about known monuments, additional sculptures that are still buried, or insights into the piles' origin and relation to adjacent architectural features.

## SCULPTURAL FORM

The sculptural corpus of Lacanjá Tzeltal is at once very typical of and notably divergent from Classic Maya regional trends. The stela is the most common sculpted form at Lacanjá Tzeltal, and many stelae were originally paired with altars, echoing Central Peten conventions but differing from nearby Piedras Negras or Yaxchilan. Yet other works at Lacanjá Tzeltal are morphologically very unusual, almost experimental compared to neighboring centers. The most notable outlier is MSS 1, a cylindrical monument with one tapered end and traces of carving on its underside (Figure 9), but other components of the Lacanjá Tzeltal corpus show more systematic deviations from typical Classic Maya traits. In the following, we highlight three especially striking phenomena: columnar sculptures, so-called squat monuments, and use of a single ballcourt altar. All these practices find analogues at other Classic Maya centers but their combination at Lacanjá Tzeltal is unique, underscoring the community's cultivation of an identity that was both politically and culturally distinct from its neighbors. Moreover, they offer inroads into better understanding sculptural monumentality as an expression of and instrument in western Maya sociopolitical relations.

### Columnar Monuments

Lacanjá Tzeltal features five columnar monuments, which have been classified as Stelae 2 and 8–11 and demonstrate conspicuous differences in circumference, ranging between 155 cm (Stela 2) and 310 cm (Stela 8), as well as in height, varying from 114 cm (Stela 10) to 256 cm (Stela 2) in their present states (Figure 10; Table 5). Although all five are fragmented and broken along their vertical axes and three manifest scars from looting, three still retain traces of surface carving, with only glyphs on Stela 11 and images of standing figures and hieroglyphic inscriptions on Stelae 2 and 10 (Figure 10). Only two, Stelae 10 and 11, are still standing in situ. However, the landowner and other local members of the field team commented that they had seen other, similar monuments at the acropolis that may now be buried under rubble, suggesting that additional sculpted columns remain to be located.

There are few documented examples of tall, freestanding, columnar monuments in the Maya region generally and in the western zone in particular. A basalt column erected at Naranjo in the valley of Guatemala may date to the mid-eighth century B.C. and may thus represent the earliest example of this form in the Maya area (Arroyo cited in Stuart 2010:285, Figure 12.1b). In general, however, erection of larger columns as freestanding monuments is better attested in northern Yucatán sites such as Sayil and Uxmal (Earley 2015:162–163; see Pollock 1980). Within the western area, Stela 2 from Santa Elena Poco Uinic has what Palacios (1928:123) describes as a “pillar-like shape,” although he does not include measurements. One probable column altar now in the Saint Louis Art Museum, dating to A.D. 715 and possibly originating from Bonampak, approximately 40 km southeast of Lacanjá



Figure 5. North fragment of Lacanjá Tzeltal Stela 9, a columnar monument whose far end and face were cut off and removed by looters. Photograph by Matsumoto.

Tzeltal, stands at just 57 cm tall and has a maximum diameter of 23 cm (Miller and Martin 2004:141, Plate 172; compare Earley 2019: Figure 16c). Such diminutive, drum-like altars are in fact characteristic of the Yaxchilan kingdom, generally standing no more than some 50 cm tall (Grube and Luin 2014; Tate 1992:185, 204, 220, 229, 231, 235). A taller example is found at Piedras Negras, in contrast, where the fragmented, columnar Stela 46 measures 51–57 cm in diameter and 157 cm in height (Morley 1938:77). Morley (1938: 77–78) compared it with the site's columnar altars based on shape but noted that Stela 46 differed by virtue of its eroded inscription, much greater height, and lack of direct association with a stela. Yet the columnar monuments at Lacanjá Tzeltal are taller still than the column altars at Piedras Negras (Golden et al. 2016:118; Satterthwaite 2005c [1944], 2005d [1958]:332–338) or even more distant Tikal (Jones and Satterthwaite 1982:83–85).

One inspiration or natural analog for upright, columnar monuments may have been speleothems. Caves were central to Classic Maya cosmology as places of emergence and interface with the underworld and its denizens (Bassie-Sweet 1996; Brady 1989; Brady et al. 1997; Thompson 1959). As Bassie-Sweet (1991: 82–84, 110–126) first proposed, speleothems were ritually significant precisely because of their physical links to these spaces (see also Brady et al. 1997). Some were clearly modified in situ by ancient visitors, but others were occasionally relocated to the settlement core (Brady et al. 1997, 2005), the best-known Usumacinta example of which is the carved stalactite at Yaxchilan known as Stela 31 (Helmke 2017). Another possibility is that the sculpted cylinders were skeuomorphs evoking wooden columns that once stood in Maya buildings or even natural trees, to judge from a reference at Xcalumkin to columnar stone roof supports as *te'* ("wood; tree";

Graham and von Euw 1992:173; see also Doyle and Houston 2014:141, n1). Regardless of the columnar form's conceptual origin, however, Lacanjá Tzeltal remains regionally unique in its strong emphasis on column production. This feature would have been immediately apparent to any visitor familiar with the monumental traditional of western Maya courts.

#### "Squat" Monuments

We introduced the category "Miscellaneous Sculpted Stone" (MSS) for Lacanjá Tzeltal to account for unusually shaped sculptures that do not fit easily into pre-existing classifications. The most confounding members of the group are a series of short, thick monuments that have been designated as MSS 3–11 (Table 6). To account for possible distinctions among them without establishing a definitive classification or impeding future comparison with other Maya sculptures, we identify this MSS subclass as "squat monuments" to highlight their dense, blocky form.

The squat monuments are generally as wide as many of the site's stelae (Table 6). However, unlike the narrow and tall stelae, the squat monuments' length is not much greater than their width. Even those that are more rectangular than square, like MSS 3–7, are much lower and stouter than Lacanjá Tzeltal's stelae (Figure 11). Their bulky forms also contrast with the Lausanne Stela or miniature stelae from the northern lowlands, which preserve the proportions typical of Maya stelae, just at a reduced scale (compare Miller and Martin 2004:191; Zender 2012). The squat monuments are notably thicker than most quadrilateral Maya sculptures, their breadth and width being roughly





Figure 6. Monument Pile 1. The white ruler south (to the left) of Altar 3 provides a scale of 2 m. Photograph and photogrammetric model by Matsumoto.

equal (Table 6). As a result, their footprint is more square in shape, in contrast with the rectilinear footprint of typical Classic Maya stelae, panels, or lintels.

The iconography on MSS 7 suggests that at least some squat monuments were displayed vertically like stelae (Figure 11). Nonetheless, only MSS 8 appears to be in situ, complicating interpretation of their intended function. Some squat monuments may have supported other monuments or structures, functionally comparable to the burdened Atlantean figures shown on the central tablet in Palenque's Temple of the Sun or on Lintel 1 from Laxtunich (Houston et al. 2017; Robertson 1991:95). But anything they sustained likely would have been perishable, as no stone candidates have been found (cf. e.g., Scott 1978:30–45). Another possibility is that the squat monuments at Lacanjá Tzeltal served as altars, similar to the thick, rectilinear monuments identified at lowland Maya sites such as Chac II and Zacpetén (Pugh 2003:420; Smyth and Rogart 2004:36), as well as in Central Mexico (e.g., Pohl 1998). Nonetheless, the squat monuments do not bear concentrated scorch marks as we might expect of altars on which burnt offerings were placed directly (compare, e.g., Palenque [Johnson 2018:86, Figure 28]; Altun Ha [Pendergast 1982:110]; Piedras Negras [Satterthwaite 2005b (1933)]).

No other western Maya polity produced sculptures similar to the squat monuments, whose form is remarkably rare throughout the Maya area. The best morphological correlates are found in the Central Peten. La Naya Stela 4 (l. 83 cm, w. 64 cm, th. 40 cm), La Pochitoca Stela 1 (l. 156 cm, w. 73 cm, th. 49 cm), Tikal Stela 36 (l. 108 cm, w. 82 cm, th. 38 cm), and Yaxha Stela 4 (l. 187 cm, w. 126 cm, th. 66 cm), for example, all demonstrate similarly stocky proportions (Grube 1999:267–268; Jones and Satterthwaite 1982:



Figure 7. Monument Pile 2. The white ruler west of (above) Stela 17 provides a scale of 2 m. Photograph by Matsumoto; photogrammetric model by Golden.





Figure 8. Monument Pile 3. The white ruler between Altar 10 and Fragment 9 provides a scale of 2 m. Photograph and photogrammetric model by Matsumoto.

76; Mayer 1999:166). Most have been dated on stylistic grounds to the Preclassic or Early Classic period, although La Naya Stela 4 is probably a Late Classic creation (Grube 1999:253, 265; Grube and Martin 2004:10; Jones and Satterthwaite 1982:76; Mayer 1999:

167). It is feasible that Lacanjá Tzeltal sculptors were influenced by the Central Peten tradition; as we discuss below, this parallel is among several that point to a non-local origin for the Sak Tz'i' court.



Figure 9. Miscellaneous Sculpted Stone I at Lacanjá Tzeltal. The unusually-shaped sculpture is the only one among the three monument piles with clear cuts from metal tools, but it nonetheless appears to be intact. Photograph by Matsumoto.



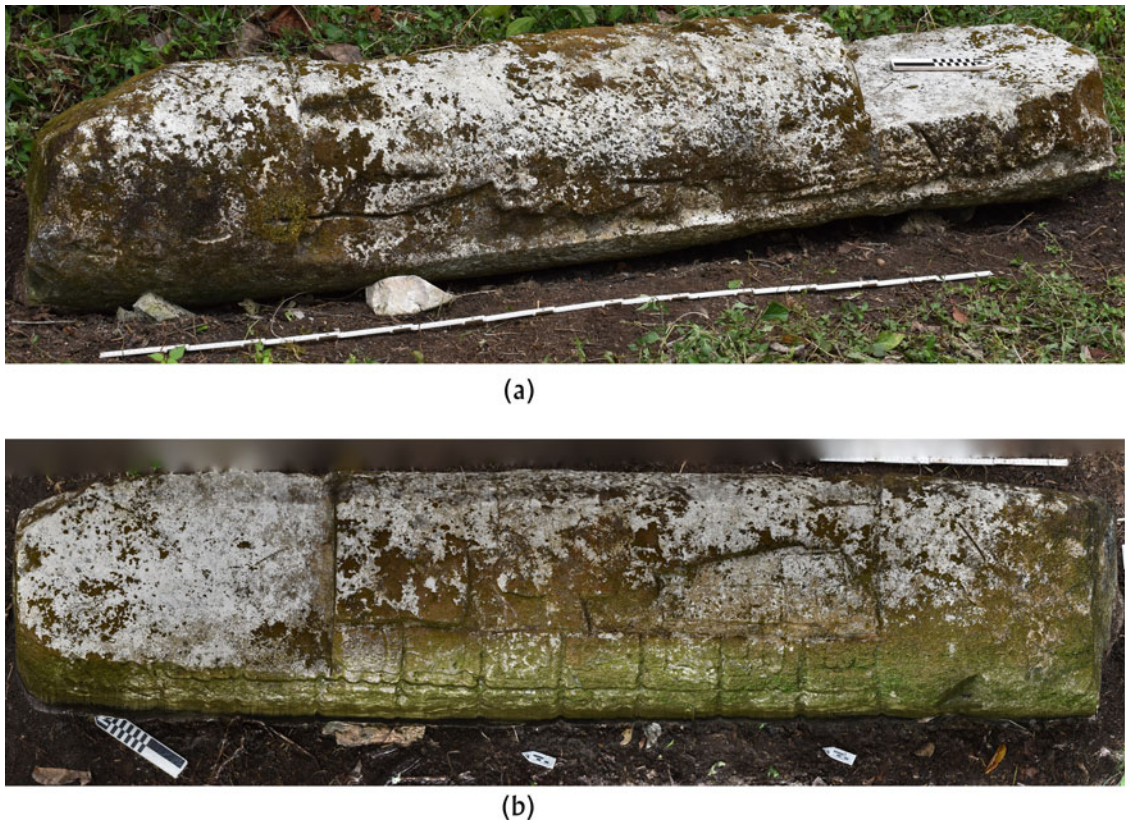


Figure 10. Lacanjá Tzeltal Stela 2, a columnar monument with eroded hieroglyphs and a standing figure. The upper portion of the stela's carved face has been looted. (a) Photograph and (b) photogrammetric model by Matsumoto.

### Central Ballcourt Marker

Of the altars at Lacanjá Tzeltal, only Altar 11 has been archaeologically excavated, as part of initial explorations in the ballcourt by Scherer and colleagues (2019; Figure 12). At 97–105 cm in diameter and 14.5–18.0 cm in height, the Late Classic sculpture is the

Table 5. Columnar monuments at Lacanjá Tzeltal.

Monument	Current Location	Height (cm)	Diameter (cm)	Surface Carving
Stela 2	Str. E5-13, N side	256	37.5–53.5	Standing figure with feet facing outward, holding unidentifiable object
Stela 8	Plaza Muk'ul Ton, west corner between Str. E5-8 and E5-9	150	87.0–98.0	Possible legs of a standing figure
Stela 9	Str. E5-9, in front of platform	237	50.0–53.0	—
Stela 10	Str. E5-1, north side	114	85.0–87.0	Standing figure, holding ceremonial bar with woven mat motif
Stela 11	Str. E5-1, north side	164	Unknown	—

largest intact, rounded altar at the site. Although eroded, its carved upper surface preserves a scene of two figures shown in profile who face each other across a single column of three or four eroded glyph blocks (Figure 12). Kneeling with their arms bound behind their backs, they probably represent captives whose bent legs may be tied as well. They are immediately enclosed by abstracted, open centipede jaws representing the underworld and signaling the men's fate as sacrificial offerings (Taube 2003: 413–416, Figure 6). An intermediate ring embellished with 21 indented dots encircles the scene immediately outside the centipede maw, in an arrangement resembling the lunar disk with solar elements that rings the seated figure on an unprovenanced altar at the North Carolina Museum of Art (object no. 82.14).

Finally, a horizontal row of 24 glyph blocks marks the outer limit of the carved surface. Unfortunately, all hieroglyphs are eroded except for the numerical prefixes and day sign cartouche of an illegible Calendar Round date (4 [tzolk'in] 2 [haab]; Figure 12). Further excavations directly below the altar revealed a cache with partial obsidian blades, chert fragments, bits of spondylus shell, and small greenstone pieces, all arranged around a chert spear point—the latter deposited under the monument so that it directly aligned with the column of glyphs between the kneeling captives. As pointed out by an anonymous reviewer, obsidian in particular has been found in other caches below ballcourt markers or altars in the western area, including a symbolically significant set of nine blades found under ballcourt monuments at Tonina, Chiapas and Quen Santo, Huehuetenango (Becquelin and Baudiez 1979:79–87; Fox 1996:485; Wölfel and Hernández 2017:86–87). However, the extent to which this represents a regional rather than



Figure 11. Miscellaneous Sculpted Stone 7, whose eroded central image shows a standing figure holding a horizontal ceremonial bar. Photograph by Matsumoto.

a generally Classic Maya trend remains to be determined (e.g., Fox 1996:485). Most obsidian recovered from the sub-Altar 11 cache represented debitage, and neither the two blades nor the chert point demonstrated clear evidence of human or animal protein when subjected to residue analysis (Roche Recinos 2021:232–233).

Ball court altars at western Maya centers such as Piedras Negras (Satterthwaite 2005a [1944]:Figure 8.1), Tenam Rosario (Agrinier 1983:243), Tonina (Mathews 1983:6–7), or Yaxchilan (Morley 1931:136–137) were positioned in sets of three along the central

playing alley. Excavations at the ends of the Lacanjá Tzeltal ball court, however, failed to produce additional altars, indicating that Altar 11 was placed in isolation. Lacanjá Tzeltal's I-shaped ball-court thus appears to follow the pattern attested at nearby Plan de Ayutla, where a single column demarcated the center of the playing field (Martos López 2009:Figure 4). Measuring 1.1 m in height and 52 cm in diameter (Martos López 2009:65), the uncarved Plan de Ayutla stone formally resembles the columnar stelae of Lacanjá Tzeltal. It was set in such a fashion, however, that only its circumferential top projected above the playing alley, whereby it superficially resembled a typical ball court altar.

## CARVED SURFACES

Although many monuments at the site are now eroded, Stelae 1–8, 10, and 24 and MSS 3 and 7 preserve traces of what appears to have been a preferred motif at Lacanjá Tzeltal: a standing figure, in a frontal pose with both sandaled feet turned outward, wearing a headdress and holding a long object. Further details are now largely indiscernible due to erosion, but the persons on Stelae 1, 3, and 10 and MSS 7 clearly hold a ceremonial bar (Figures 11 and 13). Most monuments at the site demonstrate shallow to moderate relief carving, which was typical of stelae throughout much of the Maya lowlands but not in western kingdoms like Piedras Negras, where sculptors favored moderate to high relief, or Tonina, where most extant stelae were carved in the round. An exception at Lacanjá Tzeltal is Stela 1, whose high-relief figure is particularly notable for its sculptured head that extends out up to 15 cm from the background (Figure 14). None of the Lacanjá Tzeltal stelae retains legible glyphs with identifying information about the standing figures, but their appearance on multiple publicly displayed monuments suggests that they represented local rulers who either commissioned the sculptures or were ancestors of those who did (cf. Stuart 1996).

A low-relief carving of an upright ruler with a ceremonial bar is perhaps the most common conservative motif in Classic Maya royal sculpture and is especially characteristic of stelae (see Proskouriakoff 1950:88–89). Yet it is rare among western Maya polities, where stelae iconography is notably diverse and sculptors explored greater depth of relief (Miller 1998; O'Neil 2012). The ceremonial bar was rarely depicted at western courts, and then more often with minor political figures than with the king. The bar is absent from monuments at Piedras Negras (Proskouriakoff 1950:89), where stelae instead depict lords seated on scaffolds, holding spears, and receiving captives or scattering from pouches. At

Table 6. "Squat monuments" at Lacanjá Tzeltal.

Monument	Current Location	Length (cm)	Width (cm)	Thickness (cm)	Surface Carving
Misc. Sculpted Stone 3	Monument Pile 2	96.0	59.5	23.3	Standing figure in frontal pose
Misc. Sculpted Stone 4	Monument Pile 2	116.0	79.0	31.3	(Eroded)
Misc. Sculpted Stone 5	Monument Pile 2	100.0	51.3	27.5	(Eroded)
Misc. Sculpted Stone 6	Monument Pile 2	105.0	64.5	42.6	—
Misc. Sculpted Stone 7	Str. E5-9, north platform	102.0	71.0	30.5	Standing figure in frontal pose, ceremonial bar with serpent head; 32 eroded glyph blocks
Misc. Sculpted Stone 8	Str. E4-1, west side	84.0	72.0	26.5	—
Misc. Sculpted Stone 9	Monument Pile 2	73.0	98.0	28.5	—
Misc. Sculpted Stone 10	Monument Pile 2	53.0	45.0	19.5	—
Misc. Sculpted Stone 11	Monument Pile 2	75.0	50.3	24.0	—





Figure 12. The carved upper surface of Lacanjá Tzeltal Altar II showing two bound captives and ringed by a line of eroded hieroglyphs. Photograph by Scherer; photogrammetric model by Golden.

Yaxchilan most stelae show lords receiving captives, dancing, or scattering; sculptors there, as well as at nearby Bonampak and Lacanha, also favored profile views of their protagonists, even if their legs faced outward (Proskouriakoff 1950:22). Some stelae at Tonina and the one stela at Palenque show lords clutching ceremonial bars (see Graham and Mathews 1996; Graham et al. 2006; Miller 2000:181), but they were all carved in the round similar to the stelae of Copan (McHargue 1995; Proskouriakoff 1950). In contrast, the bas-relief representation of a standing figure with a ceremonial bar at Lacanjá Tzeltal, which may be echoed on a fragmented stela at neighboring El Palma (Velázquez Valadez 1986:Figure 6), recalls sculptural traditions in the central lowlands, where such staid conventions predominated throughout the Classic period.

In other regards, however, the artisans at Lacanjá Tzeltal drew iconographic inspiration from their western neighbors. Late Classic monuments at Piedras Negras, such as Stelae 1, 3, 6–9, and 25–26 (see Maler 1901), are reminiscent of Lacanjá Tzeltal Stela 1 in their high-relief, frontal representations of rulers with ceremonial bars (compare Miller 1998:208). But other Lacanjá Tzeltal stelae with more complex scenes strongly resemble monumental imagery at western Maya courts as well. Stela 15 portrays at least two figures standing in two separate registers (Golden et al. 2020:75; Ramiro Talavera and Kollias 2018:Figures 9.8–9.9). Stacked iconographic registers are rare in Maya sculpture but do appear on Stelae 1 and 2 from La Mar (Maler 1903:Plate XXXVI), a frequent antagonist of Sak Tz'í. The fragmentary Stela 14, in turn, shows the torso of a figure in profile, probably a courtier based on his relatively kempt appearance, kneeling before a standing person now visible only as a partial torso and extended right arm (Figure 15). Regionally, this theme is closely associated with Palenque but also resembles broader compositional emphases on a standing ruler flanked by kneeling subordinates found at Yaxchilan and Piedras Negras. Such monumental scenes at the latter sites, however, tend to appear more static (compare Schele and Mathews 1979:Nos. 141–142; Stone 1989:162–163; Stuart



Figure 13. Lower fragment of Stela 3 showing a standing figure holding a diagonally positioned ceremonial bar. Photograph and photogrammetric model by Matsumoto.

2005b:Figure 4). Similarly, the incomplete Stela 12 at Lacanjá Tzeltal shows the lower bodies of two kneeling captives or supplicants, one grasping feathers, whose soles face the viewers (Golden et al. 2020:Figure 7), a highly unusual pose also found on the Temple XIX stucco pier at Palenque (Stuart 2005b:Figure 4). The missing upper portion of Stela 12 once depicted an authority figure, presumably seated on a throne (Golden et al. 2020:75, Figure 7). Similar scenes of elevated lords presiding over genuflecting subordinates are found elsewhere in the Usumacinta River area, including at Piedras Negras, La Mar, Yaxchilan, and Palenque (Miller and Brittenham 2013:154–158; Miller and Martin 2004:Figure 52; Scherer and Golden 2014).

Another notable factor in visual and monumental culture at Lacanjá Tzeltal is stela height. Although only Stelae 3, 4, 7, 11, 17, 21, and 22 seem to preserve their original vertical measurements, they and the surviving partial stelae at Lacanjá Tzeltal that are over 2 m tall suggest two general groupings according to height. One set (Stelae 1–4, 9, 12, 15, 21, 22) reached a minimum of 212 cm and sometimes exceeded 250 cm. The tallest complete stela, Stela 3, stood at 244 cm, but was probably surpassed by the now fragmentary Stelae 1, 2, and 9, which in their current states reach between 237 and 256 cm tall. The base or top of over one dozen other stelae at the site are now incomplete, too, but



Figure 14. Upper fragment of Lacanjá Tzeltal Stela 1 showing eroded sculpted head. Photograph by Matsumoto.

they originally may have reached similar heights. The other, shorter group comprised monuments such as Stelae 7, 11, and 17 that ranged between approximately 150 and 175 cm in height.

Many stelae at Yaxchilan, including the 150 cm tall Early Classic Stela 27 (Tate 1992:261), would have fit comfortably into the shorter group at Lacanjá Tzeltal, although some, like the eighth-century Stelae 1, 4, and 11 and the seventh-century Stela 19, reached at least 400 cm in height (see Tate 1992:162–264). Starker contrasts are apparent with Piedras Negras, however, where almost all known, complete stelae stand over 225 cm tall and more than a dozen over 400 cm (Stuart and Graham 2003; Teufel 2004:377–470). There, one observes a general trend toward increasing stela height, with the Early Classic Stelae 30 and 42 both under 300 cm and four of the tallest five, Stelae 17, 19, 23, and 40, ranging from 437 to 485 cm, being late eighth-century products (see Mathews 1985:Table 1; Morley 1938:47; Teufel 2004:377–470). Thus, even if the Lacanjá Tzeltal stelae demonstrated a comparable increase in height over time—a scenario that cannot be confirmed on present evidence—they remained well below the average for stelae at the two neighboring dynastic powers.

Overall, Lacanjá Tzeltal Stelae 12, 14, and 15 and Panel 1 feature more dynamic, complex representations than Stelae 1–8, 10, and 24 and MSS 3 and 7. Proskouriakoff (1950:23) first observed an iconographic transition among Late Classic Maya monuments from frontal and more static to profile and more dynamic human representation, and Miller (1989) argues that this and other modes of iconographic conservatism were persistent even in later monuments produced by sculptors at the Central Peten hegemon Tikal. As such, the latter, relatively conservative group of bas-relief monuments, each of which displays a standing figure facing forward with a ceremonial bar, may represent a cultural, if not also a



Figure 15. Lacanjá Tzeltal Stela 14 showing a man, probably a courtier, kneeling before a standing figure. 3D model by Golden.

chronological shift among Lacanjá Tzeltal sculptors. Their architectural distribution—namely, the clustering of Stelae 1–7 in front of Str. E5-13 and of Stelae 12 and 15 in front of Str. E4-1 (Figure 3)—could thus reflect parallel shifts in spatial emphasis for monument dedication. We wonder, too, if such changes in sculptural representation reflect a court that originated from the central lowlands but whose artisans increasingly engaged with western traditions after its relocation, emulating specific themes and conventions as well as an overall diversification and innovation of sculptural forms, including taller stelae. In the absence of secure dates, however, the hypothesized timeline remains untested for now.

## PALEOGRAPHY

Among the monuments on site at Lacanjá Tzeltal, traces of hieroglyphic inscriptions are only evident on Stelae 2–7, 10, 11, 14, 16, and 24. Of these, just three contain legible signs, all calendrical. Scherer et al. (2015:21) identified a legible period-ending of 9.8.0.0.0 (August 23, 593) on Stela 11 that possibly marked its dedication date, but the moment has since been buried under rubble from a looter's trench on the east side of Str. E5-7 and could not be redocumented in subsequent investigations. Consequently, our paleographic analysis relies on Panel 1 (Figure 2). Multiple discrepancies are apparent between Panel 1 and the other Sak Tz'i' inscriptions, but several are especially salient in political and cultural



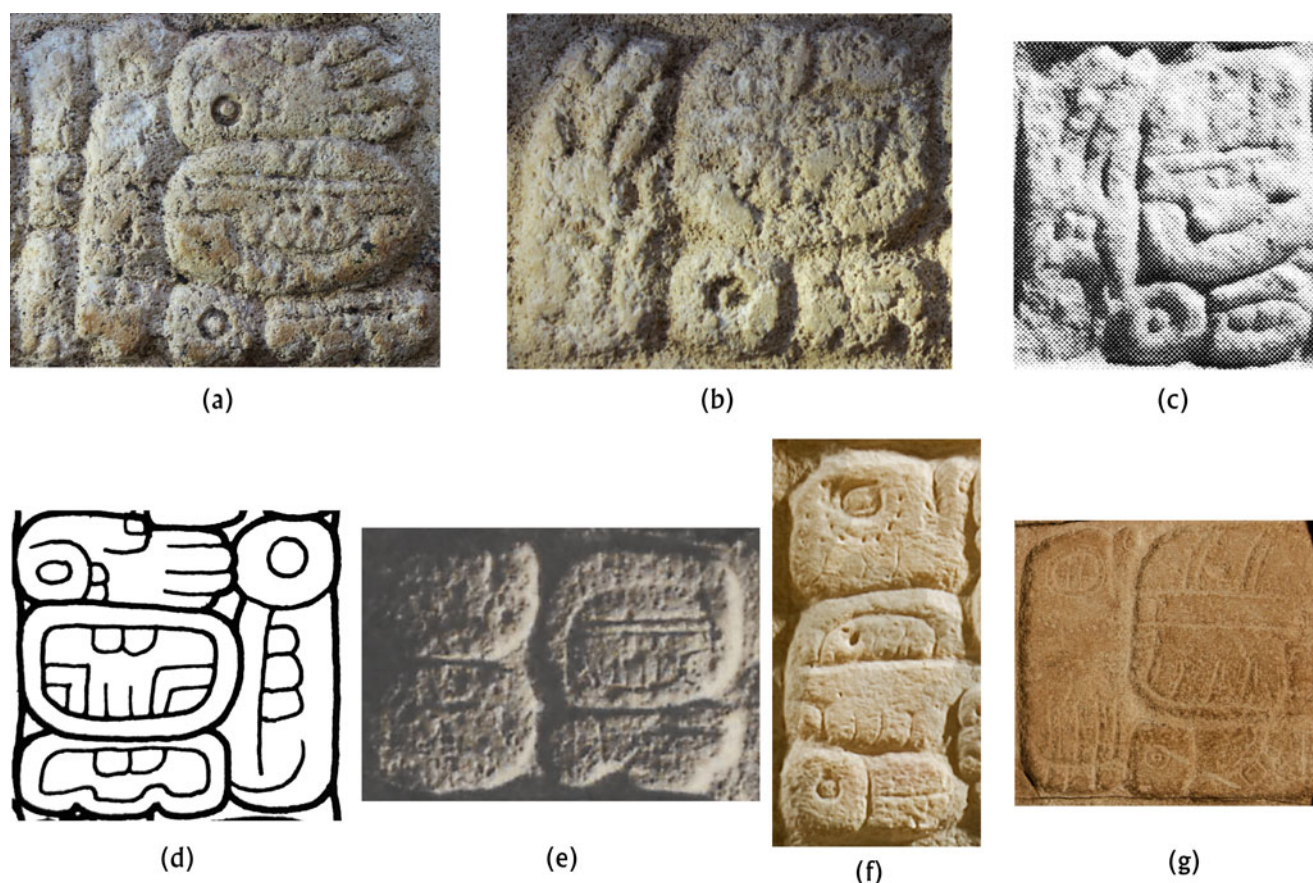


Figure 16. Spellings of the name *K'ab Kante'* using (a–d) the logograph **K'AB** or (e–g) syllabic *k'a-b'a*, on (a–b) Lacanjá Tzeltal Panel 1 (A.D. 775); (c) Caracas Panel (A.D. 754); (d) Lausanne Stela (A.D. 864); (e) Piedras Negras Stela 26 (A.D. 628); (f) Brussels Panel (A.D. 693); (g) Denver Panel (A.D. 693). Images (a–b) by Jeffrey Dobereiner and Whittaker Schroder; (c) courtesy of Sotheby's; (d) by Simon Martin; (e) by Teobert Maler, Ibero-Amerikanisches Institut; (f) © RMAH, Brussels; (g) © Denver Museum of Nature & Science.

context. For example, the title “lord of Ak'e'” (*Ak'e' ajaw*) is enhanced with the prefix *k'uhul* on every Sak Tz'i' monument, including Lacanjá Tzeltal Panel 1, except for the Brussels Panel (compare, e.g., Dumbarton Oaks Panel 1 from Lacanha, Stuart 2007:42). Comparison with nearby Piedras Negras and Yaxchilan indicates that scribes tended to be locally consistent in whether they wrote *k'uhul* in another polity's emblem glyph (Matsumoto 2021:250), suggesting either that the Denver and Brussels Panels represent an earlier stage of the scribal tradition that produced the other Sak Tz'i' inscriptions, or that they perhaps originated from a different scribal community altogether.

A more significant divergence affects spellings of *K'ab Kante'*, the name of at least two separate Sak Tz'i' lords (see Golden et al. 2020). All spellings on Panel 1 deploy the logograph T1531st **K'AB** (Figures 16a and 16b), as on the unprovenanced Nuevo Jalisco Panel (Bíró 2011:Figures 162a and 162b), the Lausanne Stela, and the Caracas Panel—the latter albeit in reference to an individual described as the “divine lord of Ak'e'” (Figures 16c and 16d). (All Maya hieroglyphs are referenced according to the current glyph catalog of the Textdatenbank und Wörterbuch des Klassischen Maya project; Prager and Gronemeyer 2018.) In contrast, the first component of the name *K'ab Kante'* is written syllabically as **k'a[ba]** (T0669st [T0501st]) on the Brussels and Denver Panels, as well as on Piedras Negras Stela 26 (Figures 16e–16g). Within

a given polity, logographic spellings of local rulers' names are sometimes accompanied by phonetic complements but are rarely replaced with syllables only (though cf. *ahk* “turtle” in dynastic names at Piedras Negras, Matsumoto 2021:Tables 4.2, 4.5). A prominent dynastic name whose orthography in monumental inscriptions varied precisely along these lines is Waxaklajuun Ubaah K'awiil. At Copan, the second component of the local Late Classic king's name is consistently written logographically with T0757st **BAAH**. Elsewhere, however, the name is often (under-)spelled with just T0501st **ba**, both in foreign references to the Copan ruler (Looper 2001:Figures 2, 4, 22; Tsukamoto and Esparza Olguín 2015:Figures 6, 12) and in citing a local dynast with the same name, as at Naranjo, Peten (Graham 1978:86). Because dynastic names were not only politically meaningful but also frequent components of monumental texts, deviations from typical orthography would have been “marked” in a semiotic sense (Battistella 1996; Jakobson 1984:1–12), salient precisely because they contrasted with what local scribes and readers perceived as the norm.

Despite their differences, a shared Sak Tz'i' affiliation of Lacanjá Tzeltal Panel 1 and the unprovenanced monuments is supported by their exclusive preference for the dog-head logograph T0752st **TZ'I'** in the title *Sak Tz'i' ajaw* (Figures 2 and 4). Some inscriptions at other sites, in contrast, represented *tz'i'* syllabically

(El Cayo Panel 1, Maler 1903:Plate XXXV; Piedras Negras Stela 26, Maler 1901:Plate XXXIII; compare Houston cited in Anaya Hernández et al. 2003:Figure 2; Stuart 1987:10). Parallel tendencies for foreign emblem glyphs to include more phonetic specificity are found in references at La Amelia to the Mut polity emblem glyph of Dos Pilas and Aguateca, to which the phonetic complement **mu** was prefixed. Likewise, the name of Yaxchilan king Yaxun Bahlam IV's foreign wife, Ix Mut Bahlam from Zapote Bobal (Martin and Grube 2000:131), is spelled on that site's Lintel 17 with a rare postposed phonetic complement (**MUT-tu**, Stuart 1993). Her title *Ix Hix Witz Ajaw*, too, is represented there and on Lintel 43 with a **wi-tzi** sequence that is atypical of the Zapote Bobal emblem. Thus, the phonetically explicit version of *tz'i'* suggests a weaker attachment to T0752st **TZ'I'**, whose canine form was probably considered iconic of the Sak Tz'i' polity. Consequently, scribes who identified with the "White Dog" polity purposefully would have deployed the emblematic logograph, whereas only foreign scribes would have spelled *tz'i'* syllabically.

Among the unprovenanced inscriptions attributed to the Sak Tz'i' polity, then, the position of Lacanjá Tzeltal Panel 1 remains equivocal. The Caracas Panel, despite being badly recarved, demonstrates the most paleographic similarity but is also the closest to Panel 1 chronologically (Figure 17; Table 2). The Stendahl Panel and Lausanne Stela are more difficult to situate, given their greater temporal distance from Panel 1's dedication and palpably distinct hands (Mayer 1987:Plate 33; Miller and Martin 2004:Plate 107). The current evidence thus does not clearly indicate whether the unprovenanced Sak Tz'i' inscriptions were composed



Figure 17. Caracas Panel, the unprovenanced Sak Tz'i' monument demonstrating the greatest paleographic similarity to Lacanjá Tzeltal Panel 1. Photograph courtesy of Sotheby's.

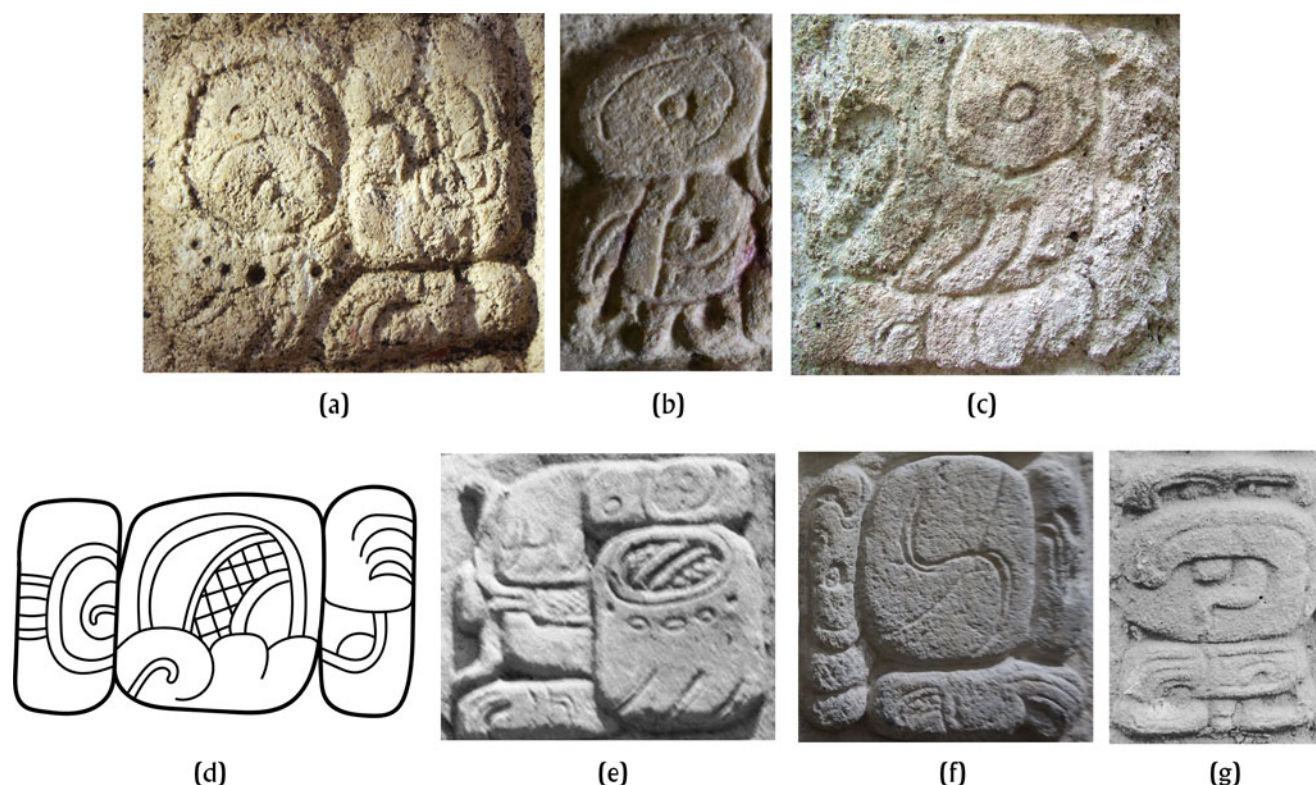
at Lacanjá Tzeltal. Zooming out to consider the broader regional context, however, we can nonetheless begin to contextualize Lacanjá Tzeltal's scribal tradition within the western region. There are several paleographic clues that the scribes of Panel 1 engaged with communities to the north, especially Palenque and Piedras Negras, a pattern that accords well with our earlier observations regarding parallels in sculptural form and content of imagery.

One rare hieroglyph on Panel 1 is a variant of T0088st **ji** with a stripe along the central vertical axis (Figure 18a). It is not unprecedented in the Maya corpus but was much more frequent in the Central Peten (Figures 18b and 18c). The closest western analogues are found on Late Classic monuments at El Cayo, a subsidiary of Piedras Negras (Chinchilla Mazariegos and Houston 1993), and the more distant Palenque, including the unprovenanced Dumbarton Oaks Panel 2 that has been attributed to the latter kingdom (Figures 18d and 18e). Interestingly, the striped T0088st variant is even attested as far south as Quirigua (Figure 18f). Another salient form on Panel 1 is a conflation of the head variant T1521st **ji** with T0526st **KAB** in the phrase *u-kabijiyi* ("the doing of; the tending of"; Figure 19a; Stuart 2005a:283–284, 2011:2–3). Scarce in the Classic Maya corpus generally, occurrences in the western region are known at Bonampak and Piedras Negras but are overwhelmingly concentrated at Palenque, where scribes created at least nine examples on monuments dedicated between the mid-seventh and late eighth centuries (Figures 19b–19d). The combination is somewhat more widespread in the Central and Eastern Peten, but the only other lowland site with a half-dozen or more uses in monumental inscriptions seems to have been Quirigua (Figures 19e–19h). These details hint at the wide-ranging networks of exchange into which Lacanjá Tzeltal's scribes were integrated, however indirect their ties to more distant polities may have been.

The major Palenque inscription that is temporally closest to Lacanjá Tzeltal Panel 1 is the Tablet of the 96 Glyphs from A.D. 783 (Miller and Martin 2004:Figure 71). Its concentration of calligraphically and hieroglyphically unique signs is unparalleled in the history of Maya writing but nonetheless includes intriguing correspondences with Panel 1. In addition to several uses of T0011st **u**, for example, the Tablet of the 96 Glyphs shares with Panel 1 several T0679st **i** variants with dots above the base, large-nosed and large-lipped human head variants, X-shaped number fillers, and a strikingly similar [**KAB**] **ji** conflation (Figure 19d). Moreover, most of these traits are uncommon elsewhere in the western area (compare Matsumoto 2021:Figure 8.17b, Table 17.12), reinforcing the likelihood that Palenque scribes exercised significant influence on their peers at late eighth-century Lacanjá Tzeltal.

Supporting these paleographic similarities are additional correspondences in iconographic and narrative content between Lacanjá Tzeltal Panel 1 and monuments at Palenque. The scene on Panel 1 of K'ab K'ante' brandishing a weapon over a now-missing subordinate aligns with the western Maya tradition of emphasizing scenes of captive-taking and presentation in monumental iconography (Figure 2; Miller 1998; Proskouriakoff 1950:5). Yet even more notably, it demonstrates parallels with the Palenque-area panel at Dumbarton Oaks (see Houston and Taube 2012), in that the local ruler is shown dancing in the guise of the rain god Chahk, with his characteristic axe and manopla in hand. Similarly, the Lacanjá Tzeltal inscription memorializes a royal death and subsequent mortuary rites much in the same spirit as the funerary panels found at Piedras Negras and its allied centers, including El Cayo and the locale featured on the unprovenanced K'an Xook Panel, as well as





**Figure 18.** Unusual variant of T0088st ji with a vertical stripe down the middle on (a) Lacanjá Tzeltal Panel 1 (A.D. 775). Image by Jeffrey Dobereiner and Whittaker Schroder; (b) La Corona Panel 1 (A.D. 677). Image by Matsumoto, courtesy of the Museo Nacional de Arqueología y Etnología de Guatemala; (c) Uxul Stela 13 (A.D. 662). Image by Proyecto Arqueológico Uxul; (d) El Cayo Altar 4 (A.D. 731). Image by Matsumoto, from Montgomery 1995:Figure 51; (e) Palenque Tablet of the Scribe (early/mid-eighth century A.D.). Gift of the Carnegie Institution of Washington, 1958. © President and Fellows of Harvard College, Peabody Museum of Archaeology and Ethnology, Harvard University, 58-34-20/53743 [detail]; (f) Dumbarton Oaks Panel 2 (early eighth century A.D.). Image by Matsumoto, © Dumbarton Oaks, Pre-Columbian Collection, Washington, DC; (g) Quirigua Stela F (A.D. 761). Gift of the Carnegie Institution of Washington, 1958. © President and Fellows of Harvard College, Peabody Museum of Archaeology and Ethnology, Harvard University, 58-34-20/73898 [detail].

on the Stendahl Panel (Golden et al. 2020; Tokovinine 2006). In addition, the opening passage on Panel 1 includes a lengthy discussion of primordial times akin to the content of panels at Palenque but unusual in regional context (see Golden et al. 2020:78–79).

## DISCUSSION AND CONCLUSIONS

The identification of Lacanjá Tzeltal and its connection with the Sak Tz'i' polity represented a major breakthrough in Classic Maya studies, permitting scholars to finally tie the known epigraphic entity to a physical site and its archaeological history (Golden et al. 2020). Yet as so often happens, many of the development's promises remain tantalizingly out of reach. Archaeological excavations at Lacanjá Tzeltal have yet to recover an in situ inscription with an emblem glyph or other unequivocal evidence of the polity's presence. Moreover, our understanding of the Late Classic occupation remains limited. One unexpected finding from initial investigations is that much monumental architecture at the site represents one or two phases of Late Classic construction overlaying a significant Late Preclassic (400 B.C.–A.D. 200) settlement established before the advent of hieroglyphic writing (Golden et al. 2020:73, 81; compare Saturno et al. 2006). Future excavations will help us determine whether local settlement stretches at least as far back as the

early seventh century, corresponding with the earliest historic mention of Sak Tz'i' on Piedras Negras Stela 26. Until then, however, the relatively shallow Classic-era occupation requires us to consider that Lacanjá Tzeltal may not have been the only Sak Tz'i' capital.

Paleographic and archaeological research offers similarly ambiguous conclusions. Lacanjá Tzeltal's on-site corpus of stone sculpture is uniquely robust for a site governed by an *ajaw* rather than a more elevated *k'uhul ajaw*. Most monuments appear never to have been carved with iconography or hieroglyphs, and the few that were have since been badly damaged by human and natural intervention. Nonetheless, Panel 1 contains enough hieroglyphs to draw some insights into the monument's position within the Sak Tz'i' polity and the involvement of Lacanjá Tzeltal's scribes and sculptors in regional networks of hieroglyphic exchange. Indeed, their position is especially interesting in the context of the political history of Sak Tz'i'. Notable here is the lack of significant sculptural correspondences with monuments at prominent southern neighbors Bonampak or Yaxchilan. Panel 1 was dedicated during an interval of increasing confrontation with Yaxchilan, which eventually culminated in the defeat of Sak Tz'i' lord Yete' K'inich at the hands of a Yaxchilan-Bonampak alliance (Anaya Hernández et al. 2003: 187; Golden et al. 2020:79, Table 1; Mathews 1980). That

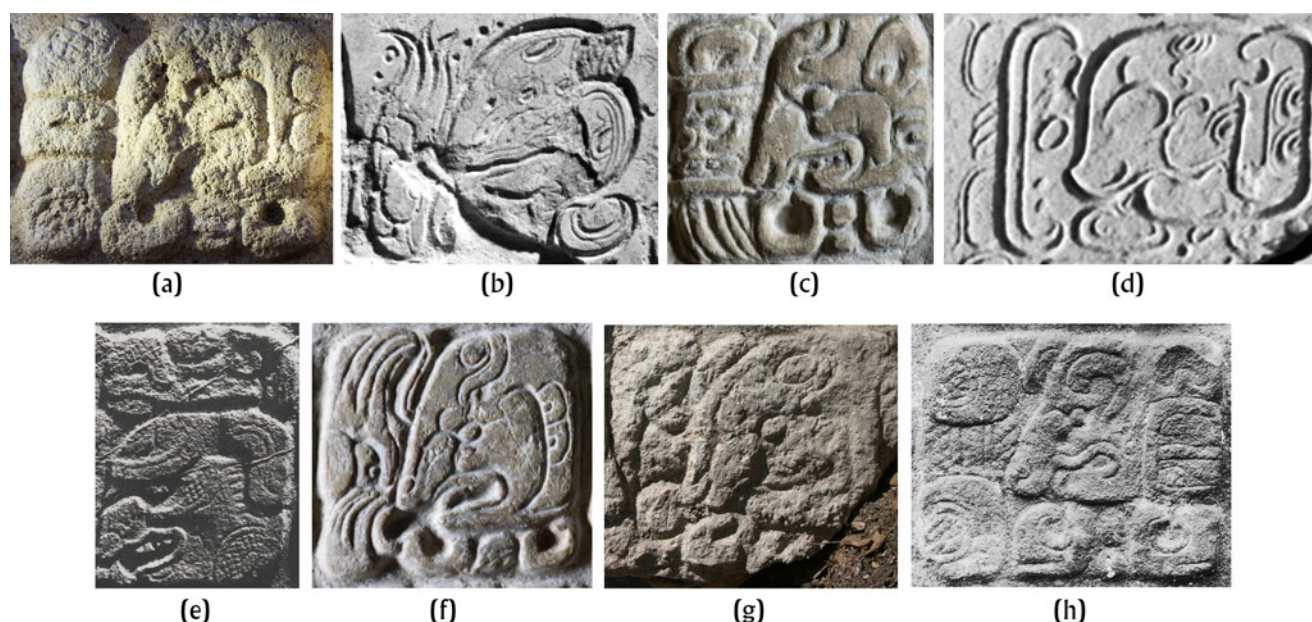


Figure 19. T1521st *ji* conflated with T0526st *KAB* in the phrase *u-kabijiiy* (“the doing of; the tending of”) on (a) Lacanjá Tzeltal Panel 1 (A.D. 775). Image by Jeffrey Dobereiner and Whittaker Schroder; (b) Bonampak Sculptured Stone 5 (A.D. 752). Gift of Ian Graham, 2004. © President and Fellows of Harvard College, Peabody Museum of Archaeology and Ethnology, Harvard University, 2004.15.1.7128.1 [detail]; (c) Piedras Negras Panel 3 (A.D. 782). Image by Matsumoto; (d) Palenque Tablet of the 96 Glyphs (A.D. 783). Gift of Ian Graham, 2004. © President and Fellows of Harvard College, Peabody Museum of Archaeology and Ethnology, Harvard University, 2004.15.1.769.2 [detail]; (e) Step VI of Naranjo Hieroglyphic Stairway 1 from Caracol (A.D. 642). Image by Teobert Maler, Ibero-Amerikanisches Institut; (f) La Corona Panel 1 (A.D. 677). Image by Matsumoto; (g) Uxul Stela 17 (Late Classic). Image by Nikolai Grube, Proyecto Arqueológico Uxul; (h) Quirigua Stela C (A.D. 775). Gift of the Carnegie Institution of Washington, 1958. © President and Fellows of Harvard College, Peabody Museum of Archaeology and Ethnology, Harvard University, 58-34-20/73894 [detail].

Lacanjá Tzeltal scribes would have been disinclined to engage with Yaxchilan during this interval is reasonable and may point to further tensions that escape mention in the known epigraphic record. Clearly, Lacanjá Tzeltal was politically removed enough from Yaxchilan’s orbit to resist any imposition on its local cultural tradition, unlike Yaxchilan’s subsidiary sites (Golden et al. 2008:253, 263). Scribal connections between Lacanjá Tzeltal and Tonina, conversely, may have comprised part of the broader interactions of Sak Tz’i’ with Tonina, leading up to the latter’s capture of a later Sak Tz’i’ ruler, Jats’ Tokal Ek’ Hix, at the end of the eighth century (Anaya Hernández 2001:71–72; Bíró 2005:26–27; Golden et al. 2020:Table 1; Martin and Grube 2000:188–189).

The affiliation with Palenque is the most compelling sculpturally but perhaps the most surprising epigraphically. Piedras Negras Stela 26 memorializes the taking of a captive from Sak Tz’i’ alongside another from Palenque and thus implies that they were allied in conflict against their common, victorious enemy in 628 (Anaya Hernández et al. 2003:186; Bíró 2005:2, 31). This initial epigraphic reference to Sak Tz’i’ is, to our knowledge, the only one that includes Palenque—at almost 100 km distant the major western center most geographically removed from Lacanjá Tzeltal. Nonetheless, current understanding of Classic Maya geopolitics makes it historically reasonable to posit that the cultural exchange with Palenque evident in Lacanjá Tzeltal’s sculptures represented an extension of the political alliance memorialized several generations earlier at Piedras Negras. Like Sak Tz’i’, Palenque remained at odds with Piedras Negras for most of its subsequent recorded

history: during the late seventh century, the two kingdoms jostled for control over Santa Elena, a small but strategically located settlement in eastern Tabasco (Martin 2020:263–268), and a Palenque *sajal* or local noble captured a Piedras Negras *sajal* in the early eighth century (Martin and Grube 2000:173).

Importantly, too, Palenque’s broader military activity in the late seventh century extended its influence southward over La Mar and Anaite, based on references at Tonina to captives from those sites who are tagged as vassals of Palenque’s king (Martin 2020:271–272; Martin and Grube 2000:170, 181–182). No epigraphic record survives of interaction between Palenque and Sak Tz’i’ during this period, but circumstantial evidence supports the idea that both Lacanjá Tzeltal and La Mar would have been convenient allies for Palenque in its recurring conflicts with Tonina; the most easily traversed route from Palenque led southward past La Mar and Lacanjá Tzeltal before turning westward to go up into the highlands to Tonina (Martin and Grube 2000:181). Nearby La Mar may have offered Lacanjá Tzeltal an additional source of Palenque-based influence, too, considering its political connections to the northern overlord and similarities in the tiered arrangement of stela iconography.

In addition, contact with Lacanjá Tzeltal artisans would have been supported by Palenque’s economic engagement with Maya polities farther south, such as Cancuen. Workshops at that site were a likely source for at least some of the jade used in K’inich Janaab’ Pakal’s funerary mask (Kovacevich et al. 2005; Neff et al. 2010:134–135), even if later production stages were realized



locally at Palenque (Melgar Tísoc et al. 2013:153–156). Excavations at Cancuen have recovered Chablekal Fine Gray wares believed to have been imported from Palenque (Kovacevich 2013:265, 268–269). Comparison of monumental iconography and hieroglyphs additionally points to substantial interchange between elite artisans at Palenque and Copan even farther south (Matsumoto 2021:460–465; Proskouriakoff 1950:116–117, 121–122; Riese 1988). One Copan inscription may even document the marriage of a woman from Palenque's royal family into the local dynasty (Marcus 1976:145; Martin 2020:184, n19; Riese 1988:181–186). Merchants, royal entourages, and others traversing the route from Copan or Cancuen up to Palenque would have passed by and likely through Sak Tz'i' territory (see Martin 2020:184, 306), bringing with them knowledge of cultural practices that they encountered along the way (compare Demarest et al. 2014:Figure 1).

In any case, several rare hieroglyphic features shared between Panel 1 at Lacanjá Tzeltal and monuments at Palenque, along with salient iconographic correspondences between the two sites' monuments, indicate that much exchange between the sculptural traditions was probably direct. We do not suggest that Palenque emissaries were involved in the production of Panel 1 or other Lacanjá Tzeltal sculptures, but it is likely that scribes and artisans traveled between the two settlements, bringing with them practical experience, inherited knowledge, and inscribed objects to share with their fellow monumental specialists. Even if Sak Tz'i' did not maintain a political alliance with Palenque after their joint, early seventh-century defeat, engagement among their respective scribes and community members appears to have continued. Relations may have shifted to focus largely on cultural exchanges that were not typically recorded in monumental texts, been integrated into larger networks of economic exchange, or even paralleled political ties that are not preserved in the epigraphic record. The depth of cultural contact between the communities is further suggested by architectural parallels, in that the superstructure on the mortuary pyramid Str. E4-1 at Lacanjá Tzeltal originally featured an inner shrine similar to those characteristic of Palenque's Cross Group (Cohodas 1979; Houston 1996; Robertson 1991), as well as of several structures at Plan de Ayutla (Tovalín Ahumada et al. 2004:61–62, 67, Figure 8).

Lacanjá Tzeltal Panel 1's hieroglyphic and iconographic correspondences with Palenque make clear that geography was not a limiting factor and that sociopolitical relations decisively influenced the degree and nature of scribal and sculptural exchange. Yet Palenque was never Lacanjá Tzeltal's sole source of monumental inspiration, nor was that affiliation the core of local sculptural identity. In this respect, development of Lacanjá Tzeltal's monumental tradition mirrors the trajectory of Quirigua, where local scribes and sculptors also relentlessly borrowed from peers while self-consciously asserting their own, unique style (Looper 2003; Miller 1983). These broader patterns in the role of secondary polities in cultural innovation, attested elsewhere in the Classic Maya world but largely overlooked by scholars, deserve closer examination in the future. Lacanjá Tzeltal, Quirigua, and other politically peripheral communities may have attracted unwelcome intervention from larger powers precisely because of their status as cultural frontrunners (compare Ogundiran 2014)—thus compelling a shift in our interpretation of the link between political power and cultural influence.

As a significant geopolitical actor in the western region whose secondary rank and strategic location made it ever susceptible to the ambitions of powerful neighbors, Lacanjá Tzeltal and the Sak Tz'i' polity sat at a confluence of geographic, political, and cultural interactions. Rather than sparking a “genesis of two social identities” with distinctly regional and local orientations (Schortman et al. 2001:325), however, the interstitial position of Lacanjá Tzeltal in western politics and monumental culture fostered a “self-consciously transgressive” stance that situated its makers at the margins of the regional tradition (Moshenska 2010:22). The morphological, hieroglyphic, and iconographic correspondences with different lowland traditions signal the diversity of interpersonal ties that shaped how Lacanjá Tzeltal artisans sculpted stone. At the same time, a cluster of unusual traits marked the community as expressly unique. Artisans at Lacanjá Tzeltal carved out a tradition that was both local in its identity and regional in its orientation, one defined by continual contestation of its place among the Sak Tz'i' kingdom's western Maya neighbors.

## RESUMEN

En este artículo se analiza el contenido y la forma de 58 monumentos esculpidos en el sitio arqueológico de Lacanjá Tzeltal, Chiapas, México. Según los resultados de investigaciones recientes, ésta era la capital de la entidad política maya conocida como Sak Tz'i' (“Perro Blanco”) durante el período clásico (250–900 d.C.). Los señores de Sak Tz'i' llevaron el título de *ajaw* (“señor”) en lugar del título *k'uhul ajaw* (“señor sagrado”) que fue utilizado por los señores de otros reinos mayas en la región occidental. Esto sugiere que Sak Tz'i' era una entidad secundaria con respecto a su autoridad política. Aun así, su corpus de esculturas difiere claramente de la de sus vecinos, lo que señala la autonomía cultural de la comunidad de Lacanjá Tzeltal. Las esculturas manifiestan semejanzas con las tradiciones vecinas en cuanto a la forma y al contenido jeroglífico e iconográfico, lo

cual evidencia la participación de los artistas en la cultura regional de producción monumental. Sin embargo, las experimentaciones escultóricas en el sitio no solamente demuestran que las cortes reales secundarias como la de Lacanjá Tzeltal fueron centros de innovación cultural, sino que los señores de Sak Tz'i' quizá cultivaron tales distinciones para resaltar el carácter independiente de su comunidad. Además, se propone que, a base de correspondencias entre sus esculturas, Palenque influyó de manera significativa en el desarrollo de la tradición en Lacanjá Tzeltal. Estos hallazgos tienen implicaciones en la forma en cómo se entienden las interacciones entre entidades políticas mayores y secundarias, la innovación artística y el desarrollo de la identidad colectiva en la sociedad maya del período clásico.

## ACKNOWLEDGMENTS

We thank the community at Lacanjá Tzeltal for the opportunity to collaborate on research at the eponymous archaeological site, as well as the Consejo de Arqueología of the Instituto Nacional de Antropología e Historia (INAH)

of Mexico for permission to carry out this work. Simon Martin, Carla Galfano (Dumbarton Oaks), Cynthia Mackey (Peabody Museum), Courtney Scheskie (Denver Museum of Nature and Science), Anja Van

Lerberghe (KMKG-MRAH), and Gregor Wolff (Ibero-Amerikanisches Institut) were especially helpful with image permissions, and we thank Alejandra Roche Recinos for correcting the Spanish abstract. We are also grateful to three anonymous reviewers for their constructive comments and to Nancy Gonlin for supporting the editorial process. Research at Lacanjá Tzeltal was supported by the Alphonso Foundation of Chicago, the National Science Foundation (BCS-1917671 and DDRIG 1821867), the Social Sciences and Humanities Research Council of Canada

## References

- Agrinier, Pierre  
1983 Tenam Rosario: Una posible relocalización del Clásico maya terminal desde el Usumacinta. In *Antropología e historia de los mixe-zoques y mayas: Homenaje a Frans Blom*, edited by Lorenzo Ochoa and Thomas A. Lee, pp. 241–254. Universidad Nacional Autónoma de México, Mexico City.
- Anaya Hernández, Armando  
2001 *Site Interaction and Political Geography in the Upper Usumacinta Region during the Late Classic: A GIS Approach*. BAR International Series 994. Archaeopress, Oxford.
- Anaya Hernández, Armando, Stanley P. Guenter, and Marc U. Zender  
2003 Sak Tz'i', a Classic Maya Center: A Locational Model Based on GIS and Epigraphy. *Latin American Antiquity* 14:179–191.
- Barth, Fredrik  
1969 Introduction. In *Ethnic Groups and Boundaries: The Social Organization of Difference*, edited by Fredrik Barth, pp. 9–38. Little, Brown, Boston.
- Bassie-Sweet, Karen  
1991 *From the Mouth of the Dark Cave: Commemorative Sculpture of the Late Classic Maya*. University of Oklahoma Press, Norman.
- 1996 *At the Edge of the World: Caves and Late Classic Maya World View*. University of Oklahoma Press, Norman.
- Battistella, Edwin L.  
1996 *The Logic of Markedness*. Oxford University Press, Oxford.
- Becquelin, Pierre, and Claude F. Baudez  
1979 *Tonina, une cité maya du Chiapas (Mexique)*. Études Mésoaméricaines Vol. 6. Mission archéologique et ethnologique française au Mexique, Mexico City.
- Beliaev, Dmitri, and Alexander Safronov  
2009 Saktz'i', 'Ak'e' and Xukalnaah: Reinterpreting the Political Geography of the Upper Usumacinta Region. Paper presented at the 14th European Maya Conference, Krakow.
- Berlin, Heinrich  
1974 A Maya Hieroglyphic Panel at the Royal Museum of Art and History: An Interpretive Essay. *Bulletin des Musées royaux d'Art et d'Histoire* 43(1):81–88.
- Bhabha, Homi K.  
1994 *The Location of Culture*. Routledge, London.
- Bíró, Péter  
2005 Sak Tz'i' in the Classic Period Hieroglyphic Inscriptions. *Mesoweb*. Electronic document, <http://www.mesoweb.com/articles/biro/SakTzi.pdf>, accessed June 29, 2021.
- 2011 Politics in the Western Maya Region (I): Ajawil/Ajawlel and Ch'e'n. *Estudios de Cultura Maya* XXXVIII:41–73.
- Boon, Marcus  
2010 *In Praise of Copying*. Harvard University Press, Cambridge.
- Brady, James E.  
1989 *An Investigation of Maya Ritual Cave Use with Special Reference to Naj Tunich, Peten, Guatemala*. Ph.D. dissertation, Department of Archaeology, University of California, Los Angeles.
- Brady, James E., Ann M. Scott, Hector Neff, and Michael Glascock  
1997 Speleothem Breakage, Movement, Removal and Caching: An Unreported Aspect of Ancient Maya Cave Modification. *Geochronology* 12:725–750.
- Brady, James E., Allan B. Cobb, Sergio Garza, Cesar Espinosa, and Robert Burnett  
2005 An Analysis of Ancient Maya Stalactite Breakage at Balam Na Cave, Guatemala. In *Stone Houses and Earth Lords: Maya Religion in the Cave Context*, edited by James E. Brady and Keith M. Prufer, pp. 213–224. University Press of Colorado, Boulder.
- (435-2019-0837), Brandeis University (Provost's Research Fund, Mandel Humanities Grant, Latin American and Latino Studies program), Brown University (Salomon Faculty Research Award and Joukowsky Summer Research Award), and McMaster University (Arts Research Board and Faculty of Social Sciences). Analysis and write-up were additionally supported by a Junior Fellowship in Precolumbian Studies from Dumbarton Oaks awarded to Matsumoto (2020–2021).
- Brittenham, Claudia  
2015 *The Murals of Cacaxtla: The Power of Painting in Ancient Central Mexico*. University of Texas Press, Austin.
- Champion, Tim (editor)  
1989 *Centre and Periphery: Comparative Studies in Archaeology*. Unwin Hyman, London.
- Chase-Dunn, Christopher K., and Thomas D. Hall (editors)  
1991 *Core/Periphery Relations in Precapitalist Worlds*. Westview Press, Boulder.
- Chinchilla Mazariégoz, Oswaldo, and Stephen D. Houston  
1993 Historia política de la zona de Piedras Negras: Las inscripciones de El Cayo. In *VI Simposio de Investigaciones Arqueológicas en Guatemala, 1992*, edited by Juan P. Laporte, Héctor L. Escobedo, and Sandra Villagrán de Brady, pp. 55–63. Museo Nacional de Arqueología y Etnología, Guatemala.
- Clancy, Flora S.  
2009 *The Monuments of Piedras Negras, an Ancient Maya City*. University of New Mexico Press, Albuquerque.
- Clarke, Mary E.  
2020 *Producing Stone and State: The Intersection of Domestic and Institutional Economies in Classic Maya Society*. Ph.D. dissertation, Archaeology Program, Boston University, Boston.
- Cohodas, Marvin  
1979 Some Unusual Aspects of Cross Group Symbolism. In *Tercera Mesa Redonda de Palenque, Part 1*, edited by Merle G. Robertson and Donnan Call Jeffers, pp. 215–232. Pre-Columbian Art Research, Robert Louis Stevenson School, Pebble Beach.
- Cox, Karen L.  
2021 *No Common Ground: Confederate Monuments and the Ongoing Fight for Racial Justice*. University of North Carolina Press, Chapel Hill.
- Demarest, Arthur A., Chloé Andrieu, Paola Torres, Melanie Forné, Tomás Barrientos, and Marc Wolf  
2014 Economy, Exchange, and Power: New Evidence from the Late Classic Maya Port City of Cancun. *Ancient Mesoamerica* 25:187–219.
- DeMarrais, Elizabeth, Luis Jaime Castillo, and Timothy Earle  
1996 Ideology, Materialization, and Power Strategies. *Current Anthropology* 37:15–31.
- Dietler, Michael, and Ingrid Herbich  
1989 Tich Matek: The Technology of Luo Pottery Production and the Definition of Ceramic Style. *World Archaeology* 21:148–163.
- Doyle, James A., and Stephen D. Houston  
2014 Confederate Curio: A Wooden Carving from Tikal, Guatemala. *Mexicon* 36:139–145.
- Earley, Caitlin C.  
2015 *At the Edge of the Maya World: Power, Politics, and Identity in Monuments from the Comitán Valley, Chiapas, Mexico*. Ph.D. dissertation, Department of Art History, University of Texas at Austin, Austin.
- 2019 "A Place So Far Removed": Dynasty and Ritual in Monuments from Chinkultic, Chiapas, Mexico. *Ancient Mesoamerica* 31:287–307.
- Eberl, Markus  
2018 *War Owl Falling: Innovation, Creativity, and Culture Change in Ancient Maya Society*. University Press of Florida, Gainesville.
- Foncerrada de Molina, Marta  
1980 Mural Painting in Cacaxtla and Teotihuacán Cosmopolitanism. In *Third Palenque Round Table, 1978, Part 2*, edited by Merle G. Robertson, pp. 183–198. Palenque Round Table Series 5. University of Texas Press, Austin.
- Fox, John Gerard  
1996 Playing with Power: Ballcourts and Political Ritual in Southern Mesoamerica. *Current Anthropology* 37:483–509.



- Frieman, Catherine J.  
2021 *An Archaeology of Innovation: Approaching Social and Technological Change in Human Society*. Manchester University Press, Manchester.
- Golden, Charles, Andrew K. Scherer, A. René Muñoz, and Rosaura Vasquez  
2008 Piedras Negras and Yaxchilan: Divergent Political Trajectories in Adjacent Maya Polities. *Latin American Antiquity* 19:249–274.
- Golden, Charles, Andrew K. Scherer, Melanie J. Kingsley, Stephen D. Houston, and Héctor Escobedo  
2016 The Life and Afterlife of the Classic Period Piedras Negras Kingdom. In *Ritual, Violence, and the Fall of the Classic Maya Kings*, edited by Gyles Iannone, Brett A. Houk, and Sonja A. Schwake, pp. 108–133. University Press of Florida, Gainesville.
- Golden, Charles, Andrew K. Scherer, Stephen Houston, Whittaker Schroder, Shanti Morell-Hart, Socorro del Pilar Jiménez Álvarez, George Van Kollias, Moises Yerath Ramiro Talavera, Mallory Matsumoto, Jeffrey Dobereiner, and Omar Alcover Firpi  
2020 Centering the Classic Maya Kingdom of Sak Tz'í. *Journal of Field Archaeology* 45:67–85.
- Graham, Ian  
1978 *Corpus of Maya Hieroglyphic Inscriptions, Volume 2, Part 2: Naranjo, Chunhuitz, Xunantunich*. Peabody Museum of Archaeology and Ethnology, Harvard University, Cambridge.
- 2010 *The Road to Ruins*. University of New Mexico Press, Albuquerque.
- Graham, Ian, and Peter Mathews  
1996 *Corpus of Maya Hieroglyphic Inscriptions: Volume 6, Part 2: Tonina*. Peabody Museum of Archaeology and Ethnology, Harvard University, Cambridge.
- Graham, Ian, and Eric von Euw  
1992 *Corpus of Maya Hieroglyphic Inscriptions: Volume 4, Part 3: Uxmal, Xcalumkin*. Peabody Museum of Archaeology and Ethnology, Harvard University, Cambridge.
- Graham, Ian, David Stuart, Peter Mathews, and Lucia R. Henderson  
2006 *Corpus of Maya Hieroglyphic Inscriptions: Volume 9, Part 2: Tonina*. Peabody Museum of Archaeology and Ethnology, Harvard University, Cambridge.
- Grube, Nikolai  
1999 Monumentos esculpidos e inscripciones jeroglíficas en el triángulo Yaxha-Nakum-Naranjo. In *El sitio maya de Topoxté: Investigaciones en una isla del lago Yaxhá, Petén, Guatemala*, edited by Wolfgang W. Wurster, pp. 249–268. Materialien zur Allgemeinen und Vergleichenden Archäologie, Band 57. Verlag Philipp von Zabern, Mainz am Rhein.
- Grube, Nikolai, and Camilo Alejandro Luin  
2014 A Drum Altar from the Vicinity of Yaxchilan. *Mexicon* 36:40–48.
- Grube, Nikolai, and Simon Martin  
2004 Patronage, Betrayal and Revenge in the Eastern Lowlands: Diplomacy and Politics in the Eastern Maya Lowlands. In *Notebook for the XXVIIIth Maya Hieroglyphic Forum at Texas, March 2004*, edited by Maya Workshop Foundation, pp. II.1–II.95. Department of Art and Art History, the College of Fine Arts, and the Institute of Latin American Studies, Austin.
- Guenther, Stanley P.  
2005 Inscribed Panel Found at La Corona Solves Site Q's Mystery. *Mexicon* 27:106–107.
- Guernsey, Julia  
2012 *Sculpture and Social Dynamics in Preclassic Mesoamerica*. Cambridge University Press, Cambridge.
- Halperin, Christina T., and Simon Martin  
2020 Ucanal Stela 29 and the Cosmopolitanism of Terminal Classic Maya Stone Monuments. *Latin American Antiquity* 31:817–837.
- Harrison-Buck, Eleanor  
2016 Killing the “Kings of Stone”: The Defacement of Classic Maya Monuments. In *Ritual, Violence, and the Fall of the Classic Maya Kings*, edited by Gyles Iannone, Brett A. Houk, and Sonja A. Schwake, pp. 61–88. University Press of Florida, Gainesville.
- Hartz, Louis  
1969 *The Founding of New Societies: Studies in the History of the United States, Latin America, South Africa, Canada, and Australia*. Houghton Mifflin, Boston.
- Helmke, Christophe  
2017 A Carved Speleothem Monument at Yaxchilan, Mexico. *PARI Journal* 17(4):16–43.
- Houk, Brett A., Bárbara Arroyo, and Terry G. Powis (editors)  
2020 *Approaches to Monumental Landscapes of the Ancient Maya*. University Press of Florida, Gainesville.
- Houston, Stephen D.  
1996 Symbolic Sweatbaths of the Maya: Architectural Meaning in the Cross Group at Palenque, Mexico. *Latin American Antiquity* 7:132–151.
- 2016 *Recrowned Kingdoms. Maya Decipherment*. Electronic document, <https://decipherment.wordpress.com/2016/12/21/recrowned-kingdoms>, accessed May 4, 2021.
- Houston, Stephen D., and David S. Stuart  
1996 Of Gods, Glyphs, and Kings: Divinity and Rulership among the Classic Maya. *Antiquity* 70:289–312.
- 2001 Peopling the Classic Maya Court. In *Royal Courts of the Ancient Maya*, Vol. 1, edited by Takeshi Inomata and Stephen D. Houston, pp. 54–83. Westview Press, Boulder.
- Houston, Stephen D., and Karl A. Taube  
2012 Carved Panel. In *Ancient Maya Art at Dumbarton Oaks*, edited by Joanne Pillsbury, Miriam Doutriaux, Reiko Ishihara-Brito, and Alexandre Tokovinine, pp. 39–47. Pre-Columbian Art at Dumbarton Oaks 4. Dumbarton Oaks, Washington, DC.
- Houston, Stephen, James Doyle, David Stuart, and Karl Taube  
2017 *A Universe in a Maya Lintel IV: Seasonal Gods and Cosmic Kings. Maya Decipherment*. Electronic document, <https://decipherment.wordpress.com/2017/09/04/a-universe-in-a-maya-lintel-iv-seasonal-gods-and-cosmic-kings>, accessed January 1, 2018. No longer accessible.
- Iannone, Gyles  
2011 Collective Memory in the Frontiers: A Case Study from the Ancient Maya Center of Minanha, Belize. *Ancient Mesoamerica* 21: 353–371.
- Inomata, Takeshi  
2006 Plazas, Performers, and Spectators: Political Theaters of the Classic Maya. *Current Anthropology* 47:805–842.
- Inoue, Miyako  
2018 Word for Word: Verbatim as Political Technologies. *Annual Review of Anthropology* 47:217–232.
- Jakobson, Roman  
1984 *Russian and Slavic Grammar: Studies 1931–1981*. Walter de Gruyter, Berlin.
- Johnson, Lisa M.  
2018 *Tracing the Ritual “Event” at the Classic Maya City of Palenque, Mexico*. Ph.D. dissertation, Department of Anthropology, University of California, Berkeley.
- Jones, Christopher, and Linton Satterthwaite  
1982 *The Monuments and Inscriptions of Tikal: The Carved Monuments*. Tikal Report 33A. University of Pennsylvania Museum of Archaeology and Anthropology, Philadelphia.
- Just, Bryan R.  
2005 Modifications of Ancient Maya Sculpture. *RES: Anthropology and Aesthetics* 48:69–82.
- Kopytoff, Igor  
1986 The Cultural Biography of Things: Commoditization as Process. In *The Social Life of Things: Commodities in Cultural Perspective*, edited by Arjun Appadurai, pp. 64–94. Cambridge University Press, Cambridge.
- 1987 The Internal African Frontier: The Making of African Political Culture. In *The African Frontier: The Reproduction of Traditional African Societies*, edited by Igor Kopytoff, pp. 5–84. Indiana University Press, Bloomington.
- Kovacevich, Brigitte  
2013 Craft Production and Distribution in the Maya Lowlands: A Jade Case Study. In *Merchants, Markets, and Exchange in the Pre-Columbian World*, edited by Kenneth G. Hirth and Joanne Pillsbury, pp. 255–282. Dumbarton Oaks, Washington, DC.
- Kovacevich, Brigitte, Hector Neff, and Ronald L. Bishop  
2005 Laser Ablation-ICP-MS Chemical Characterization of Jade from a Jade Workshop in Cancun, Guatemala. In *Laser Ablation-ICP-MS in Archaeological Research*, edited by Hector Neff and Robert J. Speakman, pp. 39–56. University of New Mexico Press, Albuquerque.
- Kubler, George A.  
1980 Eclecticism at Cacaxtla. In *Third Palenque Round Table, 1978*,

- Part 2, edited by Merle G. Robertson, pp. 163–172. Palenque Round Table Series 5. University of Texas Press, Austin.
- Laló Jacinto, Gabriel  
1998 Informe de la visita al sitio arqueológico de Lacanha Tzeltal, Municipio de Ocosingo. Report presented to the Consejo de Arqueología, Instituto Nacional de Antropología e Historia, Mexico City.
- Lightfoot, Kent G., and Antoinette Martinez  
1995 Frontiers and Boundaries in Archaeological Perspective. *Annual Review of Anthropology* 24:471–492.
- Looper, Matthew G.  
2001 *Documentation of Sculptures at Quiriguá, Guatemala*. Report, Foundation for the Advancement of Mesoamerican Studies. Electronic document, <http://www.famsi.org/reports/95015/95015Looper01.pdf>, accessed August 9, 2021.
- 2003 *Lightning Warrior: Maya Art and Kingship at Quirigua*. Linda Schele Series in Maya and Pre-Columbian Studies 4. University of Texas Press, Austin.
- Maler, Teobert  
1901 *Researches in the Central Portion of the Usumatsintla Valley: Report of Explorations for the Museum, 1898–1900*. Memoirs of the Peabody Museum of Archaeology and Ethnology. Peabody Museum of Archaeology and Ethnology, Harvard University, Cambridge.
- 1903 *Researches in the Central Portion of the Usumatsintla Valley: Reports of Explorations for the Museum, Part 2*. Memoirs of the Peabody Museum of Archaeology and Ethnology. Peabody Museum of Archaeology and Ethnology, Harvard University, Cambridge.
- Marcus, Joyce  
1976 *Emblem and State in the Classic Maya Lowlands: An Epigraphic Approach to Territorial Organization*. Dumbarton Oaks, Washington, DC.
- 1987 *The Inscriptions of Calakmul: Royal Marriage at a Maya City in Campeche, Mexico*. Museum of Anthropology, University of Michigan, Ann Arbor.
- Martin, Simon  
2000 At the Periphery: The Movement, Modification and Re-Use of Early Monuments in the Environs of Tikal. In *The Sacred and the Profane: Architecture and Identity in the Maya Lowlands (Proceedings of the 3rd European Maya Conference, University of Hamburg, November 1998)*, edited by Pierre R. Colas, Kai Delvendahl, Markus Kuhnert, and Annette Schubart, pp. 51–62. Acta Mesoamericana 10. Verlag Anton Saurwein, Markt Schwaben.
- 2005 Of Snakes and Bats: Shifting Identities at Calakmul. *PARI Journal* 6(2):5–15.
- 2017 The Caracol Hieroglyphic Stairway. *Maya Decipherment*. Electronic document, <https://decipherment.wordpress.com/2017/01/20/the-caracol-hieroglyphic-stairway>, accessed May 4, 2021.
- 2020 *Ancient Maya Politics: A Political Anthropology of the Classic Period 150–900 CE*. Cambridge University Press, Cambridge.
- Martin, Simon, and Nikolai Grube  
2000 *Chronicle of the Maya Kings and Queens: Deciphering the Dynasties of the Ancient Maya*. Thames & Hudson, London.
- Martos López, Luis Alberto  
2009 The Discovery of Plan de Ayutla, Mexico. In *Maya Archaeology I*, edited by Charles W. Golden, Stephen D. Houston, and Joel Skidmore, pp. 60–75. Precolumbia Mesoweb Press, San Francisco.
- Mathews, Peter  
1980 Notes on the Dynastic Sequence of Bonampak, Part 1. In *Third Palenque Round Table, 1978, Part 2*, edited by Merle G. Robertson, pp. 60–73. Palenque Round Table Series 5. University of Texas Press, Austin.
- 1983 *Corpus of Maya Hieroglyphic Inscriptions: Volume 6, Part 1: Tonina*. Peabody Museum of Archaeology and Ethnology, Harvard University, Cambridge.
- 1985 Early Classic Monuments and Inscriptions. In *A Consideration of the Early Classic Period in the Maya Lowlands*, edited by Gordon R. Willey and Peter Mathews, pp. 5–55. Institute for Mesoamerican Studies 10. Institute for Mesoamerican Studies, State University of New York at Albany, Albany.
- 1991 Classic Maya Emblem Glyphs. In *Classic Maya Political History: Hieroglyphic and Archaeological Evidence*, edited by T. Patrick Culbert, pp. 19–29. Cambridge University Press, Cambridge.
- Matsumoto, Mallory E.  
2021 *Sharing Script: Development and Transmission of Hieroglyphic Practice among Classic Maya Scribes*. Ph.D. dissertation, Department of Anthropology, Brown University, Providence.
- Mayer, Karl Herbert  
1978 *Maya Monuments: Sculptures of Unknown Provenance in Europe*. Maya Monuments 1. Acoma Books, Ramona.
- 1980 *Maya Monuments: Sculptures of Unknown Provenance in the United States*. Maya Monuments 2. Acoma Books, Ramona.
- 1987 *Maya Monuments: Sculptures of Unknown Provenance, Supplement 1*. Maya Monuments 4. Von Flemming, Berlin.
- 1999 Geplünderte Maya-Monumente aus La Naya, Petén, Guatemala. *Indiana* 16:159–184.
- McHargue, Janise Y.  
1995 *Maya Relief Sculpture: Regional Styles and Community Identity at Copan, Palenque, and Yaxchilan*. Ph.D. dissertation, Department of Anthropology, University of California, Berkeley.
- Melgar Tísoc, Emiliano, Reyna Beatriz Solís Ciriaco, and Laura Filloy Nadal  
2013 Análisis tecnológico de las piezas de jadeíta y pedernal del cinturón de poder y de la banda frontal de K'inich Janaab' Pakal de Palenque. In *Técnicas analíticas aplicadas a la caracterización y producción de materiales arqueológicos en el área maya*, edited by Adrián Velásquez Castro and Lynne S. Lowe, pp. 135–162. Universidad Nacional Autónoma de México, Instituto de Investigaciones Filológicas, Centro de Estudios Mayas, Mexico City.
- Miller, Arthur G.  
1983 Stylistic Implications of Monument Carving at Quirigua and Copan. In *Quirigua Reports II: Papers 6–15*, edited by Edward M. Schortman and Patricia A. Urban, pp. 129–136. University Museum Monograph 49. University Museum, University of Pennsylvania, Philadelphia.
- Miller, Mary E.  
1989 On the Eve of the Collapse: Maya Art of the Eighth Century. In *Lowland Maya Civilization in the Eighth Century A.D.: A Symposium at Dumbarton Oaks, 7th and 8th October 1989*, edited by Jeremy A. Sabloff and John S. Henderson, pp. 355–413. Dumbarton Oaks Research Library and Collection, Washington, DC.
- Miller, Mary Ellen  
1998 A Design for Meaning in Maya Architecture. In *Function and Meaning in Classic Maya Architecture*, edited by Stephen D. Houston, pp. 187–222. Dumbarton Oaks, Washington, DC.
- 2000 Guerra y escultura maya: Un argumento en favor del tributo artístico. In *La guerra entre los antiguos mayas: Memoria de la Primera Mesa Redonda de Palenque*, edited by Silvia Trejo, pp. 176–187. Consejo Nacional para la Cultura y las Artes, Instituto Nacional de Antropología e Historia, Mexico City.
- Miller, Mary, and Claudia Brittenham  
2013 *The Spectacle of the Late Maya Court: Reflections on the Murals of Bonampak*. University of Texas Press, Austin.
- Miller, Mary, and Simon Martin  
2004 *Courtly Art of the Ancient Maya*. Thames and Hudson, London.
- Montgomery, John  
1995 Sculptors of the Realm: Classic Maya Artists' Signatures and Sculptural Style during the Reign of Piedras Negras Ruler 7. Unpublished Master's thesis, Department of Art and Art History, University of New Mexico, Albuquerque.
- Morley, Sylvanus G.  
1931 Report of the Yaxchilan Expedition. *Carnegie Institution of Washington, Year Book* 30:132–139.
- 1938 *The Inscriptions of Petén. Volume III: The Inscriptions at Piedras Negras*. Carnegie Institution of Washington Publication 437. Carnegie Institution of Washington, Washington, DC.
- Moshenska, Gabriel  
2010 Charred Churches or Iron Harvests?: Counter-Monumentality and the Commemoration of the London Blitz. *Journal of Social Archaeology* 10:5–27.
- Neff, Hector, Brigitte Kovacevich, and Ronald L. Bishop  
2010 Caracterización de los compuestos de la jadeíta mesoamericana: Breve revisión a partir de los resultados obtenidos durante el estudio de la máscara de K'inich Janaab' Pakal. In *Misterios de un rostro maya: La máscara funeraria de K'inich Janaab' Pakal de Palenque*, edited by Laura Filloy Nadal, pp. 131–139. Instituto Nacional de Antropología e Historia, Mexico City.
- Nora, Pierre  
1989 Between Memory and History: Les Lieux de Mémoire. *Representations* 26:7–24.



- O'Neil, Megan E.  
2009 Ancient Maya Sculptures of Tikal, Seen and Unseen. *RES: Anthropology and Aesthetics* 55/56:119–134.  
2012 *Engaging Ancient Maya Sculpture at Piedras Negras, Guatemala*. University of Oklahoma Press, Norman.
- Ogundiran, Akinwumi  
2014 The Making of an Internal Frontier Settlement: Archaeology and Historical Process in Osun Grove (Nigeria), Seventeenth to Eighteenth Centuries. *African Archaeological Review* 31:1–24.
- Osborne, James F.  
2017 Counter-Monumentality and the Vulnerability of Memory. *Journal of Social Archaeology* 17:163–187.
- Pagliaro, Jonathan B., James F. Garber, and Travis W. Stanton  
2003 Evaluating the Archaeological Signatures of Maya Ritual and Conflict. In *Ancient Mesoamerican Warfare*, edited by Kathryn M. Brown and Travis W. Stanton, pp. 75–89. AltaMira, Walnut Creek.
- Palacios, Enrique J.  
1928 *En los confines de la selva lacandona: Exploraciones en el estado de Chiapas, Mayo–Agosto 1926*. Contribución de Mexico al 23 Congreso de Americanistas. Talleres Gráficos de la Nación, Mexico City.
- Parsons, Lee A.  
1986 *The Origins of Maya Art: Monumental Stone Sculpture of Kaminaljuyu, Guatemala, and the Southern Pacific Coast*. Studies in Pre-Columbian Art and Archaeology 28. Dumbarton Oaks, Washington, DC.
- Pendergast, David M.  
1982 *Excavations at Altun Ha, Belize, 1964–1970, Volume 2*. Royal Ontario Museum Publications in Archaeology. Royal Ontario Museum, Ontario.
- Pohl, John  
1998 Themes of Drunkenness, Violence, and Factionalism in Tlaxcalan Altar Paintings. *RES: Anthropology and Aesthetics* 33:184–207.
- Pollock, Harry E.D.  
1980 *The Puuc: An Architectural Survey of the Hill Country of Yucatan and Northern Campeche, Mexico*. Peabody Museum of Archaeology and Ethnology, Harvard University, Cambridge.
- Prager, Christian M., and Sven Gronemeyer  
2018 Neue Ergebnisse in der Erforschung der Graphemik und Graphetik des Klassischen Maya. In *Ägyptologische "Binsen"-Weisheiten III: Formen und Funktionen von Zeichenliste und Paläographie*, edited by Svenja A. Gilden, Kyra V. J. van der Moëzel, and Ursula Verhoeven-van Elsbergen, pp. 135–181. Franz Steiner Verlag, Stuttgart.
- Proskouriakoff, Tatiana  
1950 *A Study of Classic Maya Sculpture*. Carnegie Institution of Washington Publication 593. Carnegie Institution of Washington, Washington, DC.
- Pugh, Timothy W.  
2003 The Exemplary Center of the Late Postclassic Kowoj Maya. *Latin American Antiquity* 14:408–430.
- Ramiro Talavera, Moisés Y., and George Van III Kollias  
2018 Lacanjá Tzeltal: Excavaciones preliminares. In *Proyecto Arqueológico Busiljá-Chocoljá: Informe de la novena temporada de investigación presentado ante el Consejo de Arqueología del Instituto Nacional de Antropología e Historia*, edited by Andrew K. Scherer and Charles Golden, pp. 168–199. Proyecto Arqueológico Busiljá-Chocoljá, Chiapas, Mexico.
- Riese, Berthold  
1988 Epigraphy of the Southeast Zone in Relation to Other Parts of Mesoamerica. In *The Southeast Classic Maya Zone. A Symposium at Dumbarton Oaks, 6th and 7th October 1984*, edited by Elizabeth H. Boone and Gordon R. Willey, pp. 67–94. Dumbarton Oaks, Washington, DC.
- Rivero Torres, Sonia E.  
1992 *Laguna Miramar, Chiapas, México: Una aproximación histórica-arqueológica de los lacandones desde el Clásico temprano*. Gobierno del Estado de Chiapas, Consejo Estatal de Fomento a la Investigación y Difusión de la Cultura, DIF-Chiapas/Instituto Chiapaneco de Cultura, Tuxtla Gutiérrez.
- Robertson, Merle Greene  
1991 *The Sculpture of Palenque, Vol. IV: The Cross Group, the North Group, the Olvidado, and Other Pieces*. Princeton University Press, Princeton.
- Roche Recinos, Alejandra  
2021 *Regional Production and Exchange of Stone Tools in the Maya Polity of Piedras Negras, Guatemala*. Ph.D. dissertation, Department of Anthropology, Brown University, Providence.
- Rogers, Everett M.  
1983 *Diffusion of Innovations*. 3rd ed. Free Press, New York.
- Roux, Valentine  
2010 Technological Innovations and Developmental Trajectories: Social Factors as Evolutionary Forces. In *Innovation in Cultural Systems: Contributions from Evolutionary Anthropology*, edited by Stephen J. Shennan, pp. 217–234. Massachusetts Institute of Technology Press, Cambridge.
- Rowlands, Michael J., Mogens Trolle Larsen, and Kristian Kristiansen (editors)  
1987 *Centre and Periphery in the Ancient World*. Cambridge University Press, Cambridge.
- Satterthwaite, Linton  
1958 *The Problem of Abnormal Stela Placements at Tikal and Elsewhere*. Tikal Report 3. University Museum, University of Pennsylvania, Philadelphia.  
1965 Maya Practice Stone-Carving at Piedras Negras. *Expedition* 7: 9–18.  
2005a [1944] Ball Courts. In *Piedras Negras Archaeology, 1931–1939*, edited by John M. Weeks, Jane Hill, and Charles Golden, pp. 205–240. University of Pennsylvania Museum of Archaeology and Anthropology, Philadelphia.  
2005b [1933] Description of the Site, with Short Notes on the Excavations of 1931–1932. In *Piedras Negras Archaeology, 1931–1939*, edited by John M. Weeks, Jane Hill, and Charles Golden, pp. 11–29. University of Pennsylvania Museum of Archaeology and Anthropology, Philadelphia.  
2005c [1944] Temples. In *Piedras Negras Archaeology, 1931–1939*, edited by John M. Weeks, Jane Hill, and Charles Golden, pp. 184–204. University of Pennsylvania Museum of Archaeology and Anthropology, Philadelphia.  
2005d [1958] Unclassified Buildings and Substructures. In *Piedras Negras Archaeology, 1931–1939*, edited by John M. Weeks, Jane Hill, and Charles Golden, pp. 318–383. University of Pennsylvania Museum of Archaeology and Anthropology, Philadelphia.
- Saturno, William A., David Stuart, and Boris Beltrán  
2006 Early Maya Writing at San Bartolo, Guatemala. *Science* 311: 1281–1283.
- Schele, Linda, and Nikolai Grube  
1994 Taloc-Venus Warfare: The Petén Wars 8.17.0.0–9.15.13.0.0. In *Notebook for the XVIIIth Maya Hieroglyphic Workshop at Texas, March 13–14, 1994*, edited by Linda Schele, pp. 79–169. Department of Art and Art History, College of Fine Arts and Institute of Latin American Studies, Austin.
- Schele, Linda, and Peter Mathews  
1979 *The Bodega of Palenque, Chiapas, Mexico*. Trustees for Harvard University, Washington, DC.
- Scherer, Andrew, Charles Golden, Stephen Houston, and James Doyle  
2017 A Universe in a Maya Lintel I: The Lamb's Journey and the "Lost City." *Maya Decipherment*. Electronic document, <https://decipherment.wordpress.com/2017/08/25/a-universe-in-a-maya-lintel-i-the-lambs-journey-and-the-lost-city>, accessed January 1, 2018.
- Scherer, Andrew K., and Charles W. Golden  
2014 War in the West: History, Landscape, and Classic Maya Conflict. In *Embattled Bodies, Embattled Places: War in Pre-Columbian Mesoamerica and the Andes*, edited by Andrew K. Scherer and John W. Verano, pp. 57–87. Dumbarton Oaks, Washington, DC.
- Scherer, Andrew K., Charles Golden, Whittaker Schroder, and Jefferey Dobereiner  
2015 Datos preliminares del sitio arqueológico Lacanjá-Tzeltal. In *Proyecto Arqueológico Busiljá-Chocoljá: Informe de la sexta temporada de investigación presentado ante el Consejo de Arqueología del Instituto Nacional de Antropología e Historia*, edited by Whittaker Schroder, Charles Golden, and Andrew K. Scherer, pp. 9–34. Proyecto Arqueológico Busiljá-Chocoljá, Chiapas, Mexico.
- Scherer, Andrew K., Mallory Matsumoto, Joshua Schnell, Charles Golden, and Whittaker Schroder  
2019 Lacanjá Tzeltal: Operación 5B: Investigaciones de la cancha del juego de pelota. In *Proyecto Arqueológico Busiljá-Chocoljá. Informe de la décima temporada de investigación presentado ante el Consejo*

- de Arqueología del Instituto Nacional de Antropología e Historia, edited by Andrew K. Scherer and Charles Golden, pp. 165–186. Proyecto Arqueológico Busiljá-Chocoljá, Chiapas, Mexico.
- Schortman, Edward M.  
1989 Interregional Interaction in Prehistory: The Need for a New Perspective. *American Antiquity* 54:52–65.
- Schortman, Edward M., and Patricia A. Urban  
1994 Living on the Edge: Core/Periphery Relations in Ancient Southeastern Mesoamerica. *Current Anthropology* 35:401–430.
- Schortman, Edward M., Patricia A. Urban, and Marne Ausec  
2001 Politics with Style: Identity Formation in Prehispanic Southeastern Mesoamerica. *American Anthropologist* 103:312–330.
- Schroder, Whittaker, Charles Golden, Andrew Scherer, Timothy M. Murtha, and Omar Alcover Firpi  
2019 Remote Sensing and Reconnaissance along the Lacantún River: The Lakamtun Dynasty and the Sites of El Palma and Benemérito de las Américas, Primera Sección. *Mexicon* 41:157–167.
- Scott, John F.  
1978 *The Danzantes of Monte Albán*. Dumbarton Oaks, Washington, DC.
- Smyth, Michael P., and Daniel Rogart  
2004 A Teotihuacan Presence at Chac II, Yucatan, Mexico: Implications for Early Political Economy of the Puuc Region. *Ancient Mesoamerica* 15:17–47.
- Stanton, Travis W., M. Kathryn Brown, and Jonathan B. Pagliaro  
2008 Garbage of the Gods? Squatters, Refuse Disposal, and Termination Rituals among the Ancient Maya. *Latin American Antiquity* 19:227–247.
- Stein, Gil J.  
2002 From Passive Periphery to Active Agents: Emerging Perspectives in the Archaeology of Interregional Interaction. *American Anthropologist* 104:903–916.
- Stone, Andrea  
1989 Disconnection, Foreign Insignia, and Political Expansion: Teotihuacan and the Warrior Stelae of Piedras Negras. In *Mesoamerica after the Decline of Teotihuacan, A.D. 700–900*, edited by Richard A. Diehl and Janet Catherine Berlo, pp. 153–172. Dumbarton Oaks, Washington, DC.
- Stuart, David  
1987 *Ten Phonetic Syllables*. Research Reports on Ancient Maya Writing 14. Center for Maya Research, Washington, DC.
- 1993 A Decipherment of the Tikal Emblem Glyph. Electronic document, [https://decipherment.files.wordpress.com/2013/11/tikal-emblem\\_stuart.pdf](https://decipherment.files.wordpress.com/2013/11/tikal-emblem_stuart.pdf), accessed June 28, 2021.
- 1996 Kings of Stone: A Consideration of Stelae in Ancient Maya Ritual and Representation. *RES: Anthropology and Aesthetics* 29/30: 148–171.
- 2005a Ideology and Classic Maya Kingship. In *A Catalyst for Ideas: Anthropological Archaeology and the Legacy of Douglas Schwartz*, edited by Vernon L. Scarborough, pp. 257–285. School of American Research, Santa Fe.
- 2005b *The Inscriptions from Temple XIX at Palenque: A Commentary*. Pre-Columbian Art Research Institute, San Francisco.
- 2007 The Captives on Piedras Negras, Panel 12. *Maya Decipherment*. Electronic document, <https://mayadecipherment.com/2007/08/18/the-captives-on-piedras-negras-panel-12>, accessed June 28, 2021.
- 2010 Shining Stones: Observations on the Ritual Meaning of Early Maya Stelae. In *Place of Stone Monuments: Context, Use, and Meaning in Mesoamerica's Preclassic Transition*, edited by Julia Guernsey, John E. Clark, and Bárbara Arroyo, pp. 283–297. Dumbarton Oaks, Washington, DC.
- 2011 Some Working Notes on the Text of Tikal Stela 31. *Mesoweb*. Electronic document, <http://www.mesoweb.com/stuart/notes/Tikal.pdf>, accessed August 9, 2021.
- Stuart, David, and Ian Graham  
2003 *Corpus of Maya Hieroglyphic Inscriptions: Volume 9, Part 1: Piedras Negras*. Peabody Museum of Archaeology and Ethnology, Harvard University, Cambridge.
- Tate, Carolyn E.  
1992 *Yaxchilan: The Design of a Maya Ceremonial City*. University of Texas Press, Austin.
- Taube, Karl A.  
2003 Maws of Heaven and Hell: The Symbolism of the Centipede and Serpent in Classic Maya Religion. In *Antropología de la eternidad: La muerte en la cultura maya*, edited by Andrés Ciudad Ruiz, Mario Humberto Ruz Sosa, and María Josefa Iglesias Ponce de León, pp. 405–442. Sociedad Española de Estudios Mayas/Centro de Estudios Mayas, Instituto de Investigaciones Filológicas, Universidad Nacional Autónoma de México, Madrid.
- Teufel, Stefanie  
2004 *Die Monumentalskulpturen von Piedras Negras, Petén, Guatemala: Eine hieroglyphische und ikonographisch-ikonologische Analyse*. Ph.D. dissertation, Philosophische Fakultät, Rheinische Friedrich-Wilhelms-Universität Bonn, Bonn.
- Thompson, J. Eric S.  
1959 The Role of Caves in Maya Culture. *Mitteilungen aus dem Museum für Völkerkunde in Hamburg* 25:122–129.
- Tokovinine, Alexandre  
2006 Art of the Maya Epitaph: The Genre of Posthumous Biographies in the Late Classic Maya Inscriptions. In *Sacred Books, Sacred Languages: Two Thousand Years of Ritual and Religious Maya Literature*, edited by Rogelio Valencia Rivera and Geneviève Le Fort, pp. 1–19. Acta Mesoamericana 18. Anton Saurwein, Markt Schwaben.
- Tovalín Ahumada, Alejandro, Víctor M. Ortiz Villareal, and Adolfo Velázquez de León Collins  
2004 Región norte del valle del Río Lacanhá, Chiapas. *Bolom* 1:55–89.
- Tsukamoto, Kenichiro, and Octavio Q. Esparza Olguín  
2015 Ajpach' Waal: The Hieroglyphic Stairway of the Guzmán Group of El Palmar, Campeche, Mexico. In *Maya Archaeology 3*, edited by Stephen D. Houston, Joel Skidmore, and Charles W. Golden, pp. 30–55. Precolumbia Mesoweb Press, San Francisco.
- Vázquez López, Verónica Amellali  
2017 Monumental Discourse and Social Distinction: A Contextual Approach to Classic Maya Sculpture. In *Weaving Histories: Women in Mesoamerican Culture, Society and Politics*, edited by Monika Banach, Christophe Helmke, and Jaroslav Žrábka, pp. 9–48. Polish Academy of Arts and Sciences; Jagiellonian University Institute of Archaeology, Kraków.
- Velázquez Valadez, Ricardo  
1986 Localización y reconocimiento de un sitio arqueológico en la región del Marqués de Comillas: El Palma, Chiapas. In *Tres sitios arqueológicos en Chiapas: El Palma, Agua Escondida y El Cafetal*, edited by Joaquín García-Bárcena, Roberto García Moll, Daniel Juárez Cossío, Diana Santamaría, and Ricardo Velázquez Valadez, pp. 7–20. Dirección de Monumentos Prehistóricos, Instituto Nacional de Antropología e Historia, Mexico City.
- Weissner, Polly  
1997 Seeking Guidelines through an Evolutionary Approach: Style Revisited among the !Kung San (Ju/'hoansi) of the 1990s. *Archaeological Papers of the American Anthropological Association* 7:157–176.
- Winberry, John J.  
1983 “Lest We Forget”: The Confederate Monument and the Southern Townscape. *Southeastern Geographer* 23:107–121.
- Wölfel, Ulrich, and Byron Hernández  
2017 Cuarta temporada del Proyecto Arqueológico de la Región de Chaculá (PARCHA). *Mexicon* 39:85–88.
- Wong, Winnie Won Yin  
2013 *Van Gogh on Demand: China and the Readymade*. University of Chicago Press, Chicago.
- Wu, Hung  
1995 *Monumentality in Early Chinese Art and Architecture*. Stanford University Press, Stanford.
- Young, James E.  
1992 The Counter-Monument: Memory against Itself in Germany Today. *Critical Inquiry* 18:267–296.
- Zender, Marc  
2002 The Toponyms of El Cayo, Piedras Negras, and La Mar. In *Heart of Creation: The Mesoamerican World and the Legacy of Linda Schele*, edited by Andrea Stone, pp. 166–184. University of Alabama Press, Tuscaloosa.
- 2012 Miniature Stela: Maya, Uaymil, Campeche, Mexico. In *Exploring Art of the Ancient Americas: The John Bourne Collection*, edited by Dorie Reents-Budet, pp. 102–103. Walters Art Museum, in association with D. Giles, Baltimore.