

PAPER • OPEN ACCESS

Carbon fiber electrodes for intracellular recording and stimulation

To cite this article: Yu Huan *et al* 2021 *J. Neural Eng.* **18** 066033

View the [article online](#) for updates and enhancements.

You may also like

- [Electromagnetic, mechanical and thermal performance analysis of the CFETR magnet system](#)
Yong Ren, Jiawu Zhu, Xiang Gao et al.
- [Synthetic Melanin Coated Carbon Fiber Micro-Electrodes for Selective Detection of Peroxynitrite](#)
Haitham Kalil, Mitchell Thompson, Gina Pignataro et al.
- [Carbon-based neural electrodes: promises and challenges](#)
Mamta Devi, Maria Vomero, Erwin Fuhrer et al.



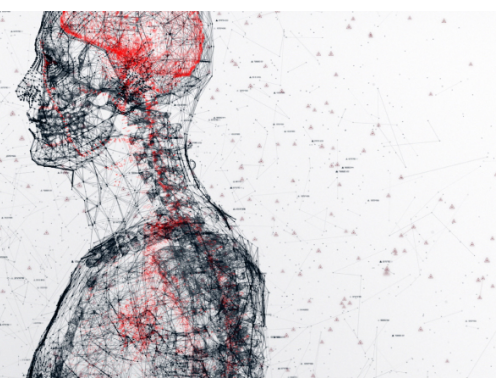
physicsworld

AI in medical physics week

20–24 June 2022

Join live presentations from leading experts
in the field of AI in medical physics.

physicsworld.com/medical-physics





PAPER

OPEN ACCESS

RECEIVED
10 August 2021

REVISED
15 November 2021

ACCEPTED FOR PUBLICATION
26 November 2021

PUBLISHED
14 December 2021

Original content from
this work may be used
under the terms of the
[Creative Commons
Attribution 4.0 licence](#).

Any further distribution
of this work must
maintain attribution to
the author(s) and the title
of the work, journal
citation and DOI.



Carbon fiber electrodes for intracellular recording and stimulation

Yu Huan^{1,*} , Jeffrey P Gill¹ , Johanna B Fritzinger² , Paras R Patel^{3,4} , Julianna M Richie^{3,4} ,
Elena Della Valle^{3,4} , James D Weiland^{3,4,5} , Cynthia A Chestek^{3,4,6,7,8} and Hillel J Chiel^{1,9,10}

¹ Department of Biology, Case Western Reserve University, Cleveland, OH, United States of America

² Department of Neurosciences, University of Rochester, Rochester, NY, United States of America

³ Department of Biomedical Engineering, University of Michigan, Ann Arbor, MI, United States of America

⁴ Biointerfaces Institute, University of Michigan, Ann Arbor, MI, United States of America

⁵ Department of Ophthalmology and Visual Sciences, University of Michigan, Ann Arbor, MI, United States of America

⁶ Department of Electrical Engineering and Computer Science, University of Michigan, Ann Arbor, MI, United States of America

⁷ Neurosciences Program, University of Michigan, Ann Arbor, MI, United States of America

⁸ Robotics Program, University of Michigan, Ann Arbor, MI, United States of America

⁹ Department of Neurosciences, Case Western Reserve University, Cleveland, OH, United States of America

¹⁰ Department of Biomedical Engineering, Case Western Reserve University, Cleveland, OH, United States of America

* Author to whom any correspondence should be addressed.

E-mail: hjc@case.edu

Keywords: intracellular recording, electrode array, sub-threshold neural activity

Abstract

Objective. To understand neural circuit dynamics, it is critical to manipulate and record many individual neurons. Traditional recording methods, such as glass microelectrodes, can only control a small number of neurons. More recently, devices with high electrode density have been developed, but few of them can be used for intracellular recording or stimulation in intact nervous systems. Carbon fiber electrodes (CFEs) are 8 μm -diameter electrodes that can be assembled into dense arrays (pitches $\geq 80 \mu\text{m}$). They have good signal-to-noise ratios (SNRs) and provide stable extracellular recordings both acutely and chronically in neural tissue *in vivo* (e.g. rat motor cortex). The small fiber size suggests that arrays could be used for intracellular stimulation. **Approach.** We tested CFEs for intracellular stimulation using the large identified and electrically compact neurons of the marine mollusk *Aplysia californica*. Neuron cell bodies in *Aplysia* range from 30 μm to over 250 μm . We compared the efficacy of CFEs to glass microelectrodes by impaling the same neuron's cell body with both electrodes and connecting them to a DC coupled amplifier. **Main results.** We observed that intracellular waveforms were essentially identical, but the amplitude and SNR in the CFE were lower than in the glass microelectrode. CFE arrays could record from 3 to 8 neurons simultaneously for many hours, and many of these recordings were intracellular, as shown by simultaneous glass microelectrode recordings. CFEs coated with platinum-iridium could stimulate and had stable impedances over many hours. CFEs not within neurons could record local extracellular activity. Despite the lower SNR, the CFEs could record synaptic potentials. CFEs were less sensitive to mechanical perturbations than glass microelectrodes. **Significance.** The ability to do stable multi-channel recording while stimulating and recording intracellularly make CFEs a powerful new technology for studying neural circuit dynamics.

1. Introduction

Clarifying the dynamics of neural circuitry continues to be a major challenge for neuroscience, and developing new technologies for monitoring and manipulating neural activity will be critical for advances in the field. Ideally, a technique for studying a neural circuit should have several features. First, the technique

needs to be able to record simultaneously from large numbers of neurons. Second, the technique should monitor intracellular potentials, including the sub-threshold membrane potentials of individual neurons, so that synaptic connections and their role in controlling neural activity can be clarified. Third, it should be possible to implant the recording and stimulating device in intact, behaving animals, and

generate stable long-term recordings. Finally, the device should both be able to record and inhibit or excite neurons to determine the causal role of individual neurons or groups of neurons in circuit function.

Obtaining stable long-term intracellular interfaces for recording and stimulation is particularly challenging. In general, intracellular electrodes penetrate the cell membrane, which could cause damage to the neuron, especially if an animal moves. The recording devices also need to have appropriate spacing to monitor as many adjacent neurons as possible without multiple penetrations of a single cell. Despite these difficulties, intracellular recordings are critical because subthreshold synaptic activity serves important physiological functions in a neural network [1, 2].

Current intracellular techniques do not meet these requirements. The sharp glass microelectrode has been a traditional tool for many years [3], and provides the ability to completely control a neuron's membrane potential and to monitor sub-threshold activity. However, an electrode is restricted to a single neuron, and will damage the neuron if the preparation moves. Voltage- and calcium-sensitive dyes can record from many neurons simultaneously and are non-invasive [4], but may induce pharmacological effects and require computational methods to facilitate signal interpretation [5, 6]. Genetically-encoded voltage sensors show great promise [7, 8], but they require genetic manipulation and high quality imaging equipment to achieve high resolution, and cannot yet be used in freely-behaving animals. Other novel electrode-like intracellular techniques have been developed, but they either have not been applied to a large number of neurons for stimulation or have limited recording stability [9–11]. Furthermore, these electrode-like intracellular techniques may be difficult to use in intact, freely-behaving animals. Improvements in devices will be needed to investigate neural network dynamics during natural, unconstrained behavior.

Carbon fiber electrodes (CFEs) are a relatively new technique that has been developed and improved over time [12–14]. Earlier work used carbon paste fibers for voltammetry [15], but the fibers are large (50 μm –1.6 mm diameter) and thus not suitable for recording from individual neurons. In more recent work on CFEs, individual carbon fibers have diameters of about 8.4 μm (including Parylene C insulation), a good signal-to-noise ratio (SNR), and generate stable extracellular recordings chronically *in vivo* [16]. The fibers can be arranged in arrays of 16 electrodes with interelectrode spacing from 80 to 150 μm . The small diameter of the electrodes suggests that it might be possible to use them for intracellular stimulation and recording. Previous work in songbird auditory forebrain nuclei reported intracellular-like action potentials recorded by small diameter CFEs

($\sim 5.5 \mu\text{m}$ including Parylene C insulation) [12], but this was not fully explored. Tests for intracellular recording and stimulation are still needed.

A suitable test subject for determining whether CFEs can be used for intracellular recording and stimulation should have large neurons that are electrically compact, and have well-defined synaptic interactions. This has been our rationale for testing the intracellular use of CFEs in the marine mollusk *Aplysia californica* [17, 18]. Motor neurons are often about 100 μm in diameter, and thus well-matched to the pitch of CFEs. In addition, *Aplysia's* neurons are electrically compact, and many details of the synaptic interactions between neurons have been intensively studied, making them ideal for testing the ability of CFEs to intracellularly record and stimulate. In particular, in the collection of nerve cells that control feeding behavior in *Aplysia*, the buccal ganglion, the relationship between a multi-action neuron (B4/B5) and its synaptic followers has been very well-characterized [19].

In this study, we investigated the effectiveness and stability of CFEs for intracellular recording and stimulation. By inserting a CFE and a traditional glass microelectrode into the same neuron to directly compare the two kinds of electrodes, we found that the CFE could measure subthreshold membrane potentials and action potentials almost as well as a glass microelectrode. We also measured the recording yield and the current needed for stimulation using CFEs. Current injected through CFEs successfully excited or inhibited neurons, suggesting that this device could be a new and effective approach to monitoring and manipulating neural circuitry. Furthermore, the CFEs showed a higher tolerance to mechanical perturbation, suggesting that it has the potential to be used in freely-moving animals.

2. Materials and methods

2.1. Animals

Aplysia californica were acquired from South Coast Bio-Marine (San Pedro, CA) or Marinus Scientific (Newport Beach, CA) and kept in aerated aquaria containing artificial seawater at 15.5 °C on a 12/12 h light/dark cycle. Animals of 100–350 g were used.

Animals were anesthetized using an injection of 333 mM isotonic magnesium chloride solution in a volume half of the animals' body weight [20]. The buccal mass was dissected out and hook electrodes were attached to buccal nerves (details below, section 2.3). The buccal ganglia were then cut away from the buccal mass. The isolated buccal ganglia were placed in a Petri dish and pinned to a Sylgard base using insect pins. The sheath of the buccal ganglion ipsilateral to the recording hook electrodes was completely removed to expose the neurons (figures 1(B), (D), (E)) in a solution that was half *Aplysia* saline (460 mM NaCl, 10 mM KCl, 22 mM

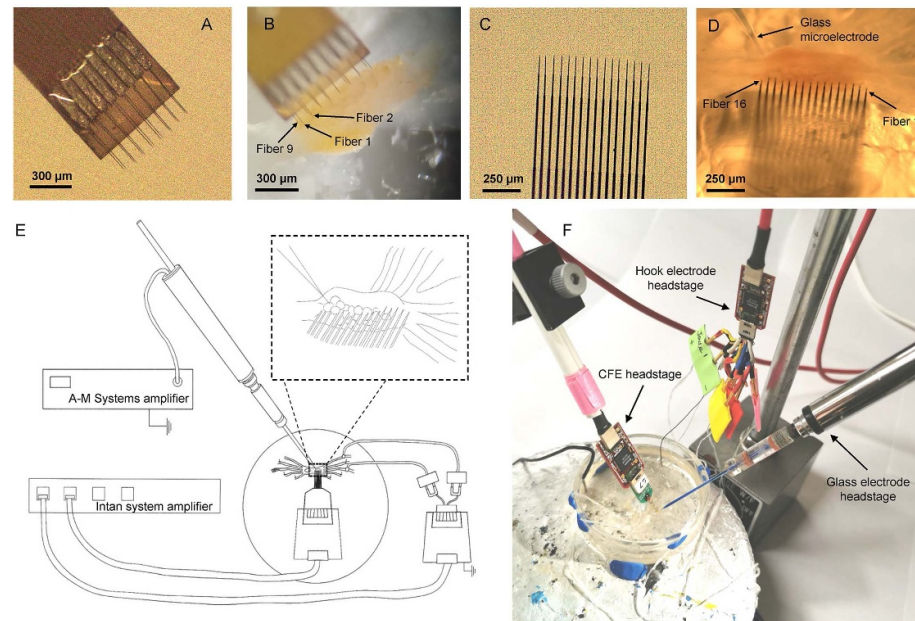


Figure 1. Carbon fiber electrode arrays for recording and stimulation. (A) A flex array. The fibers were sharpened and coated with PEDOT:pTS at the tip. See text. (B) A representative photograph of a flex array inserted into a buccal ganglion. (C) A high density carbon fiber (HDCF) array. The fibers were sharpened and coated with either PEDOT:pTS or platinum-iridium (PtIr) at the tip. (D) A representative photograph of an HDCF array inserted into a buccal ganglion along with a glass microelectrode. (E) A schematic of the experimental setup. The nerve recording headstage and the CFE recording headstage were connected to the Intan amplifier system (see text). The glass microelectrode was connected to a DC-coupled AM Systems amplifier for intracellular recordings. Inset shows a closer view of the relationship between the carbon fibers and the neurons in the ganglion. (F) A photograph of the experimental setup. The glass microelectrode and the CFE were positioned close to the buccal ganglion, and different headstages were connected to the CFEs and to the glass microelectrode.

MgCl₂, 33 mM MgSO₄, 10 mM CaCl₂, 10 mM glucose, and 10 mM MOPS, pH 7.5) and half isotonic magnesium chloride to minimize movement of the sheath during dissection. During the recordings, to maintain normal neural activity, the ganglia were kept in normal *Aplysia* saline; to inhibit polysynaptic transmission between neurons, ganglia were bathed in a high divalent cation solution (270 mM NaCl, 6 mM KCl, 120 mM MgCl₂, 33 mM MgSO₄, 30 mM CaCl₂, 10 mM glucose, and 10 mM MOPS, pH 7.5); finally, to evoke spontaneous neural activity, ganglia were bathed in a high potassium solution (420 mM NaCl, 50 mM KCl, 22 mM MgCl₂, 33 mM MgSO₄, 10 mM CaCl₂, 10 mM glucose, and 5 mM MOPS, pH 7.5).

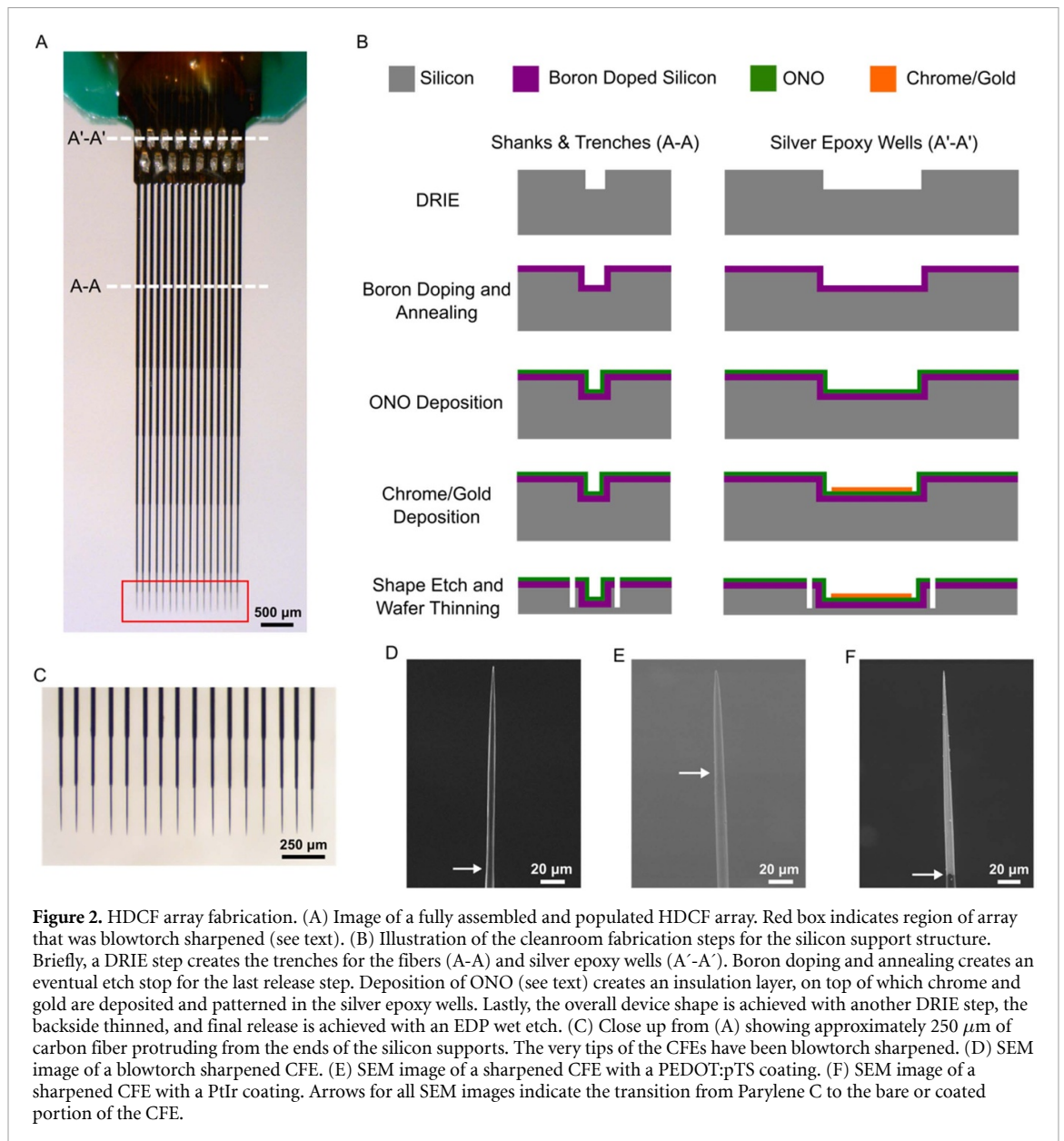
2.2. CFE fabrication

CFE arrays were fabricated in the laboratory of Dr Chestek at the University of Michigan. Two arrays with different configuration were used: a flex array (figures 1(A) and (B)) and a high density carbon fiber (HDCF) array (figures 1(C) and (D)). The flex array has a two by eight configuration, with a 132 μm pitch. Detailed fabrication instructions for the flex array can be found in [21, 22]. The HDCF array (figure 2(A)) has a one by 16 configuration, with a 100 μm pitch. This array consists of a minimally invasive silicon support structure (see below) that provides a permanent shuttle for the CFEs.

2.2.1. HDCF array—silicon support structure fabrication

The fabrication of the silicon support structure (figure 2(B)) started by deep reaction ion etching (DRIE) (STS Pegasus 4; SPTS Technologies, Newport, United Kingdom) of a 4" silicon wafer (P-10-20; Silicon Valley Microelectronics, Inc., Santa Clara, CA) to form both the silver epoxy wells and shank trenches into which the fibers would be placed. The overall length of the trenches defined the length of the device, which in this application is 6 mm. Next, the wafers were boron doped and annealed, which provides for an etch stop during the final release step. After annealing, the wafer underwent a low pressure chemical vapor deposition of high temperature oxide—nitride—high temperature oxide (ONO). Layer thicknesses, 1500–463–1500 Å, were chosen to cancel the compressive and tensile stresses introduced by the oxide and nitride films, respectively.

Next, a chrome adhesion layer ($t = 300$ Å) and gold layer ($t = 3000$ Å) were sputter deposited (Lab 18 Sputtering System, Kurt J. Lesker, Jefferson Hills, PA) and then wet etched onto the silver epoxy wells. These layers created an electrical contact between the silver epoxy wells and pads that would eventually be wire bonded to an external printed circuit board (PCB). The support structured the final shape, including the tapering of the shanks, which was defined by another DRIE step.



Before the final wet etch release, the backside of the wafers underwent a series of DRIE steps to remove approximately 450–500 μm of silicon. To remove the remaining un-doped silicon and release the device an ethylenediamine pyrocatechol (EDP) wet etch was used, which has high selectivity against boron doped silicon.

2.2.2. HDCF array—assembly

To begin, a connector (A79040-001; Omnetics, Minneapolis, MN) was soldered to a custom PCB. The pins of the connector were then covered with two-part epoxy (Sy-SS; Super Glue Corporation, Ontario, CA). Next, the silicon support structure was secured to the PCB using epoxy (301; Epoxy Technology, Billerica, MA) cured at 140 $^{\circ}\text{C}$ for 20 min. The overhanging, underside portion of the silicon support that consisted of the silver epoxy wells was reinforced to the PCB with two-part epoxy (Sy-SS; Super

Glue Corporation, Ontario, CA). Devices were then wire bonded to connect the gold pads on the silicon supports to the pads on the PCB. The wire bonds were then covered with another epoxy (353NDT; Epoxy Technology, Billerica, MA) cured at 140 $^{\circ}\text{C}$ for 20 min.

To place the individual carbon fibers, first a droplet of epoxy (NOA 61; Norland Products, Inc., Cranbury, NJ) was briefly held at the tips of the support to allow for a small amount to wick up each shank approximately one-third of the way. At the other end (silver epoxy wells), a small amount of deionized water was deposited, which also flowed along the trenches and stopped at the epoxy. Then, individual carbon fibers (T-650/35 3 K; Cytec Thornel, Woodland Park, NJ) were cut to length (~ 9 mm) and manually placed in the trenches using forceps. Care was taken to ensure that at least half the length of the silver epoxy well was occupied by each fiber. The

epoxy was cured in an UV oven (ZETA 7401; Loctite, Westlake, OH) for 2 min.

Silver epoxy (H20E; Epoxy Technology, Billerica, MA) was deposited in the silver epoxy wells using an NLP 2000 system (Advanced Creative Solutions Technology, Carlsbad, CA). The epoxy was cured at 140 °C for 20 min. The exposed gold-silver epoxy-carbon fiber bond was then covered with epoxy (NOA 61; Norland Products, Inc., Cranbury, NJ) and additional NOA 61 epoxy was applied along the shanks to fully secure the carbon fibers before UV curing. Fibers were then cut to approximately 300–350 μm and coated with approximately 800 nm of Parylene C (PDS 2035; Specialty Coating Systems, Indianapolis, IN), before final tip functionalization.

2.2.3. Tip functionalization and reference/ground wires

To functionalize the carbon fiber tips, regardless of array type, the CFEs were first blowtorch sharpened (figure 2(A) (red box), C, D) following methods described in [23]. Next, one of two materials (PEDOT:pTS or Platinum-iridium) was electrodeposited.

The first started with a mixture of 0.01 M 3,4-ethylenedioxythiophene (483 028; Sigma-Aldrich, St. Louis, MO):0.1 M sodium p-toluenesulfonate (152 536; Sigma-Aldrich, St. Louis, MO). Electrodeposition of this solution was carried out by applying 600 pA/fiber for 600 s to form a layer of poly(3,4-ethylene dioxythiophene):sodium p-toluenesulfonate (PEDOT:pTS) (figure 2(E)) [16, 23].

Prior to platinum-iridium (PtIr) plating, the CFEs underwent plasma ashing using a Glen 1000P Plasma Cleaner (pressure 200 mT, power 300 W, time 120 s, oxygen flow rate 60 sccm, and argon flow rate 7 sccm). To plate, a solution of 0.2 g l^{-1} of $\text{Na}_3\text{IrCl}_6\text{H}_2\text{O}$ (288 160; Sigma-Aldrich, St. Louis, MO) and 0.186 g l^{-1} of $\text{Na}_2\text{PtCl}_6\text{H}_2\text{O}$ (288 152; Sigma-Aldrich, St. Louis, MO) in 0.1 M of nitric acid (438 073; Sigma-Aldrich, St. Louis, MO) was used (figure 2(F)) [24]. The solution was boiled until the color became reddish and was then cooled down to room temperature. A 70 μm PtIr wire (778 000; A-M Systems, Sequim, WA) electrode was used as a counter electrode and an Ag|AgCl electrode as the reference (RE-5B; BASi, West Lafayette, IN). The potential range was set between -0.1 and 0.1 V with a scan rate of 200 mV s^{-1} for 1200 cycles, which corresponds to a coating process time of 45 min. The coating temperature was set to 56 °C and pulsed sonication at a power of 2 W ($T_{\text{ON}} = 1$ min and $T_{\text{OFF}} = 30$ sec) was used to improve the coating rate. A Gamry 600+ potentiostat (Gamry Instruments, Warminster, PA) was used to apply potential cycles and an A700 Qsonica (Qsonica L.L.C., Newtown, CT) sonicator was used for sonication.

After tip functionalization, silver reference and ground wires (AGT05100; World Precision Instrument, Sarasota, FL) were attached to the PCB.

2.2.4. Scanning electron microscopy imaging

Scanning electron microscopy (SEM) images of the CFEs were acquired using a Tescan Rise SEM (Tescan Orsay Holding, Brno—Kohoutovice, Czech Republic) in low vacuum mode with an excitation voltage between 5 and 10 kV. The low vacuum mode allows for imaging without the deposition of a conductive film (e.g. gold).

2.2.5. Cyclic voltammetry (CV) and electrochemical impedance spectroscopy (EIS)

Impedance measurements were collected before and after the coating process (1 kHz, 10 mV, PGSTAT12 Autolab, EcoChemie, Utrecht, Netherlands). Cyclic voltammetry (CV) measurements were taken after the PtIr coating by sweeping two times between -0.6 and 0.8 V versus Ag|AgCl at a scan rate of 500 mV s^{-1} . CVs were measured to establish the cathodic charge store capacity (CSC_C), used to characterize stimulation electrodes [25]. We calculated CSC_C from the time integral of the cathodic current. A Gamry 600+ potentiostat (Gamry Inc., Warminster, PA, USA) was used for CV measurement collection. Both impedance and CV measurements were performed in 1x PBS (phosphate buffered saline) solution in a three-electrode configuration at open circuit potential using stainless steel as a counter electrode and Ag|AgCl as a reference electrode (3 M NaCl, BASi, West Lafayette, IN, USA).

2.3. Glass and hook electrode fabrication

Intracellular glass microelectrodes were prepared to directly compare results from the CFEs. They were made from glass capillary tubes with a filament (615 000; A-M Systems, Everett, WA) pulled by a Flaming–Brown micropipette puller (P-80/PC; Sutter Instruments, Novato, CA) [26, 27]. Intracellular electrodes were backfilled with 3 M potassium acetate. To confirm an intracellular recording by the CFE for multiple neurons and to visualize the insertion site, several crystals of the dye Fast Green FCF (F7258; Sigma, St. Louis, MO) were added to the potassium acetate as the electrode was backfilled. The impedances of the intracellular micropipettes ranged between 2.5 and 6 M Ω .

Extracellular hook electrodes were prepared to record nerve activity during motor patterns, and to confirm that when neurons were activated by the CFEs at the soma, this activation induced propagating action potentials in the axons of the neurons that then propagated through the nerves. They were prepared as described by [20] (see section 3, steps 3–13). Briefly, hook electrodes were made from enamel-insulated stainless steel 316 wire (100 194, 25 μm

diameter, heavy polyimide insulated; California Fine Wire Company, Grover Beach, CA). Two wires were coated with silicone glue to make a single-channel twisted pair. The silicone glue and the enamel on both ends of both wires were stripped away to expose the electrically conductive wire. At one end, each wire was soldered to a male gold pin. On the other end, one wire was bent into a hook-like shape to be placed around a nerve whereas the other wire was used as a reference wire.

During the experiments, the hook electrodes were attached to buccal nerve 2 (BN2) and buccal nerve 3 (BN3) ipsilaterally for recording, because most of the key motor neurons project through these nerves [28]. A stimulating hook electrode was also attached to contralateral buccal nerve 2a (BN2-a [29], a sensory branch of buccal nerve 2, to trigger motor patterns, which helps to identify neurons [28].

2.4. CFE experiments using an intracellular amplifier

The CFEs were first tested using an intracellular amplifier (Neuroprobe Amplifier Model 1600; A-M Systems, Everett, WA). The A-M Systems amplifier is DC-coupled and provides an accurate measurement of intracellular membrane potentials. However, since the intracellular A-M Systems amplifier is designed for single channel recordings, a single CFE from a flex array was used for the test.

During the experiments, a glass microelectrode and a CFE were inserted into the soma of the same neuron and each was connected to its own intracellular A-M Systems amplifier. The hook electrodes that recorded nerve signals were connected to an extracellular amplifier (Differential AC Amplifier Model 1700; A-M Systems, Everett, WA) to monitor nerve activity. Recordings were obtained simultaneously in AxoGraph X (AxoGraph Scientific, Foster City, CA) at a sampling frequency of 10 kHz.

The sharp glass microelectrode was held by an electrode holder (671 440; A-M Systems, Everett, WA), which transmitted signals to the A-M Systems amplifier through a headstage (681 500; A-M Systems, Everett, WA). A CFE was connected to the same type of headstage through a customized connector. This connector was made by soldering a male pin connector (521 000; A-M Systems, Everett, WA) to a female nano-strip connector (A79025-001; Omnetics, Minneapolis, MN) so that it could interface with the A-M Systems intracellular amplifier. Silicone glue (GE284, ASTM C920 Class 35; GE Silicone, Rocky Hill, CT) was applied around the male pin connector to reduce signal drift and noise in the recording. Both headstages were held by hydraulic micro-manipulators (MO-203; Narishige, Tokyo, Japan), which allowed fine control of movement of both electrodes.

After desheathing the buccal ganglion and setting up the two headstages, the CFE was first inserted into

the neuron's soma, followed by the insertion of the glass microelectrode into the same soma. Since the CFE has a certain flexibility, inserting it first minimized the damage that would be done to the cell membrane by the hard tip of a glass microelectrode. After determining the suprathreshold stimulating current for the CFE, identical monophasic excitatory currents were injected alternately into each electrode to evoke action potentials which could be recorded by the other electrode.

In other experiments, minimum currents that could inhibit spontaneous activity (in high potassium saline or in normal *Aplysia* saline) or excite the neuron (in normal *Aplysia* saline) were first determined for the CFE, and then the same current was injected through the glass microelectrode.

2.5. CFE experiments using extracellular amplifiers

To obtain multiple simultaneous recordings from the entire array of CFEs and to stimulate from multiple CFEs, they were connected to an Intan RHS 32-channel system (M4200; Intan Technologies, Los Angeles, CA). The Intan system is AC-coupled with built-in analog filters and so cannot provide DC-coupled recordings, but the filters can be set so that near-DC recordings can be obtained. The array of CFEs was designed to be compatible with the Intan system headstage, so no customized connector was required.

The CFEs and the hook electrodes were both connected to the Intan system and recorded using the Intan stimulation/recording controller software. The cutoff frequencies of the two AC amplifiers could be adjusted through the software. During the data acquisition, the low-pass cutoff frequency was set to 7500 Hz and the high-pass cutoff frequency was set to 1 Hz. In some experiments, a glass microelectrode was used as a comparison. The glass microelectrode was connected to the intracellular A-M Systems amplifier through the compatible headstage and its output was recorded using Axograph X as described in the previous section. Recording obtained using the Intan software had a sampling frequency of 30 kHz. The A-M Systems amplifier used AxoGraph X (AxoGraph Scientific, Foster City, CA) with a sampling frequency of 10 kHz. The time in the two types of recording files were aligned through a common artifact in the recording that occurred whenever stimulating current was injected.

The flex array CFEs and HDCE arrays require different headstages. The flex array was connected to the RHS 32-channel stimulation/recording headstage (M4032; Intan Technologies, Los Angeles, CA). The HDCE array was connected to the RHS 16-channel stimulation/recording headstage (M4016; Intan Technologies, Los Angeles, CA). The extracellular hook electrodes were connected to a modified 18-pin Wire Adapter (B7600; Intan Technologies, Los Angeles, CA), which was attached to a RHS

16-channel stimulation/recording headstage. The headstages for the CFE array (flex or HDCF) and the glass microelectrode were held by hydraulic micromanipulators (MO-203; Narishige, Tokyo, Japan) for fine control of movement.

After desheathing the buccal ganglion and setting up all three headstages (figures 1(E) and (F)), the CFE array was carefully positioned at the surface of the buccal ganglion, oriented to ensure that fibers would penetrate as many neurons as possible (see inset of figure 1(E)). The array was then slowly inserted into the neurons of the buccal ganglion using the hydraulic micromanipulators. By looking through the microscope, it was possible to visualize when the tips of the CFEs were within the neuron somata. At the same time, it was generally possible to obtain multiple recordings in different array channels. Nerve BN2-a was then stimulated through the Intan stimulation/recording controller software via the hook electrode to activate motor patterns (2 Hz, 1 ms pulse duration, 300 μ A). These motor patterns help to identify the neurons recorded by the array [28]. After the CFE array was positioned, a glass microelectrode was carefully inserted into each neuron that showed recordings in the CFE to confirm that the recordings were intracellular.

To test the effect of mechanical perturbations on the ability to continue to perform intracellular recordings by CFEs as compared to glass microelectrodes, we compared a neuron into which a CFE was inserted with a neuron into which both a CFE and a glass microelectrode were inserted. To ensure that movements were not excessive, the base of the petri dish holding the ganglion was fixed in place using modeling clay. To induce controlled vibrations, a glass rod was tapped on the wall of the petri dish. The response of the neurons to these mechanical perturbations were recorded.

To activate a neuron, stimulation parameters were configured in the Intan software. The first protocol was a 2 s biphasic current pulse, with currents ranging from 10 to 400 nA. This protocol used a 100% charge balanced current to prevent damage to electrodes when a higher current was required to activate the neuron [25, 30].

The second protocol was a 1 s monophasic depolarizing or hyperpolarizing current ranging from 10 to 100 nA. This protocol was used to perform comparable stimulation to the monophasic stimulation of the A-M Systems amplifier when a relatively low amount of current was used. To keep the stimulation duration consistent between a CFE stimulation and a glass microelectrode stimulation, an Arduino-based (www.arduino.cc) pulse generator (<https://github.com/CWRUChielLab/ArduinoPulseGenerator>) was used to drive 1 s long currents in the A-M Systems amplifier.

For both stimulation protocols, the suprathreshold current for stimulation was first determined.

To test the effectiveness of the CFE stimulation, the amount of current was stepped by 10 or 50 nA increments to test the response of the neurons to increasing currents. To test the stability of the stimulation, the same amount of current was injected into the neuron multiple times. Between each stimulation, neurons were allowed to recover for at least 5 min.

Impedance values were measured for both the PEDOT:PTS and PtIr coated electrodes. Using the Intan system, alternating current at frequencies of 1000 Hz were passed through the electrodes to determine their impedance. Measurements were done in the following sequence: first, in *Aplysia* saline; second, after penetrating a neural cell body; third, after injecting current into the neuron (multiple measurements were made each time the neuron was stimulated); and fourth, after the electrode was removed from the neuron and cleaned (see below) and was once again placed in *Aplysia* saline.

To clean the CFEs, the fibers were immersed in a 3% hydrogen peroxide solution for 1 min to clear any adherent tissue, and then immersed in deionized water for 1 min. The CFEs were then ready for the next experiment.

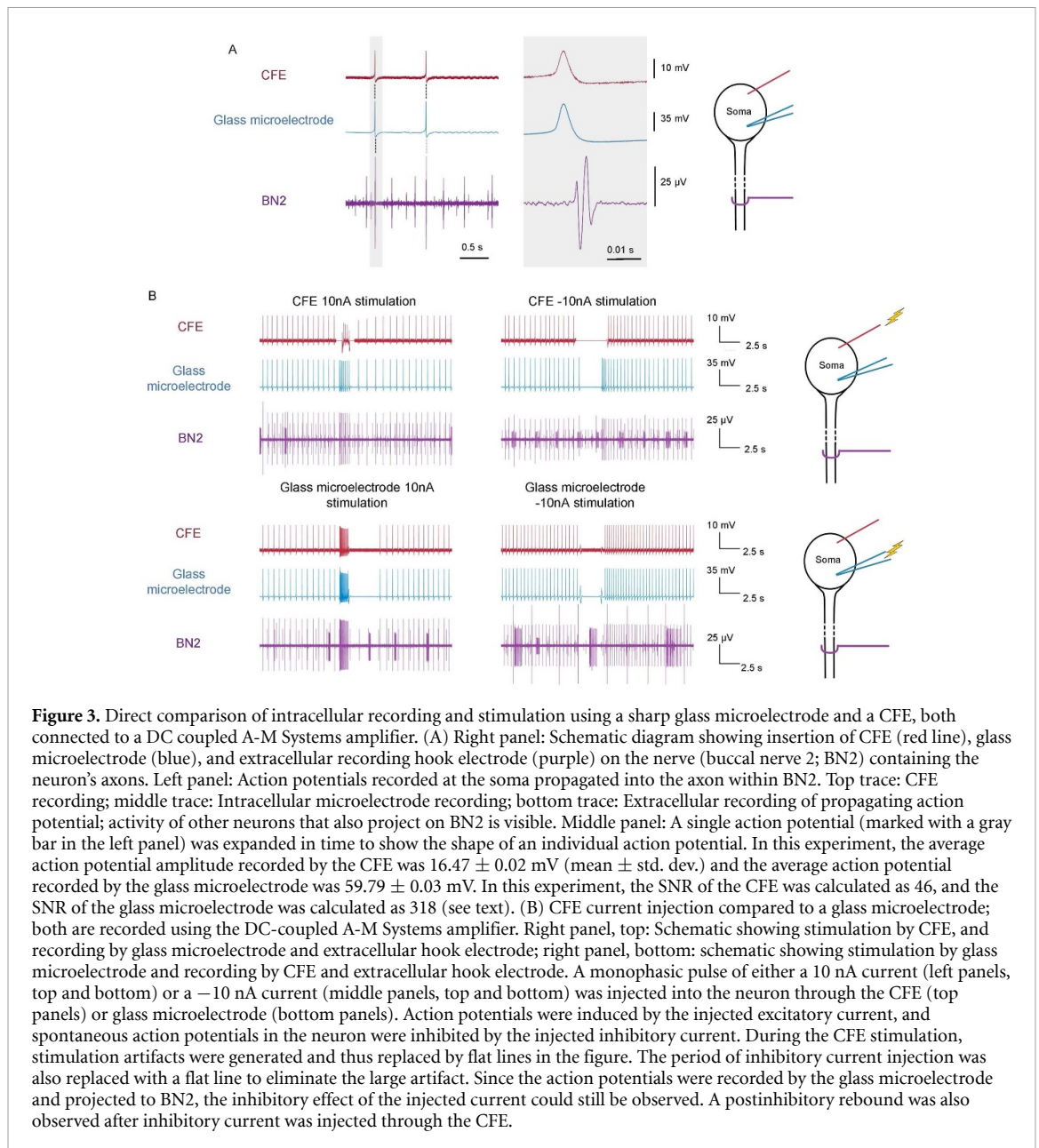
2.6. Data analysis

Recordings from both systems were plotted after filtering by a second order 3 Hz high-pass Butterworth filter using MATLAB (MathWorks, Natick, MA). This filter was used to eliminate drift and low-frequency fluctuation in the baseline which then made it possible to calculate the action potential amplitude. By comparing the original data and the filtered data, the filtering was found to have minimal influence on the overall shape of the action potentials.

To calculate SNR, the basic noise level of the recording V_{noise} was determined using an at least 2 s block of non-spiking neural activity. The peak voltage of an action potential waveform was automatically detected by MATLAB using its amplitude. The SNR was calculated by dividing the peak voltage of the waveform of an action potential by the standard deviation of V_{noise} using the equation:

$$\text{SNR} = \frac{\text{Average}(V_{\text{peak}})}{\sigma(V_{\text{noise}})}. \quad (1)$$

In the multiple channel recordings, the yield of the array was determined by the count of channels in which spiking activity was recorded divided by the total number of array fibers. Because strong firing could result in extracellular recordings on multiple fibers, the counted channels were carefully compared to the actual insertion position of the fibers within the ganglion. Only the fibers that were both in a neuron and showed corresponding spike activity were counted as a recording channel.



3. Results

3.1. CFE intracellular recordings are similar to those from an intracellular glass microelectrode

Previous work has demonstrated that CFEs can be used for chronic extracellular recording in rat motor cortex with a high SNR for up to three months [16] and can potentially record intracellular-like signals [12]. However, intracellular use of CFE arrays has not been tested in detail. To determine the quality of CFE recordings, we compared them to those obtained using a conventional glass microelectrode. Both the CFE and the glass microelectrode were used to impale the same neuron simultaneously, and each electrode's signal was amplified using a single-channel DC-coupled amplifier.

When a PEDOT:pTS-coated CFE was first inserted into a neuron, a drop in voltage was observed

in the recording trace. However, over the course of recording, drift in the baseline of the CFE voltage was larger than in the glass microelectrode recording. Part of the drift may be due to the customized connector attaching the CFE to the intracellular amplifier's headstage.

Recordings from the two different intracellular electrodes were very similar (figure 3(A)); note schematic to the right indicating the position of the two intracellular electrodes, and the extracellular electrode on the nerve which records from the neuron's axon in the nerve). Recordings of action potentials at the soma are simultaneous in both intracellular electrodes (figure 3(A), left panel), and the shapes of the action potentials are also very similar (figure 3(A), expanded time scale, right panel).

The amplitude of the CFE action potential is smaller, and the SNR for the CFE is also reduced.

The difference in the signal amplitude may vary with the depth of the CFE electrode insertion and the health status of the neuron after desheathing and electrode insertion. For glass microelectrodes, the recorded amplitudes varied from 7 to 60 mV ($N = 4$ experiments), whereas for CFEs, the recorded amplitude varied from 1.34 to 16.47 mV ($N = 4$ experiments). For each pair of results, the spike amplitude in the CFE was smaller than that in the glass microelectrode. SNR was also calculated to evaluate the recording ability of the CFE. The standard deviation of the noise in the CFE ranged from 0.10 to 0.35 mV, whereas the standard deviation of the noise in the glass microelectrodes ranged from 0.17 to 0.29 mV, and thus (using equation (1)), the SNR for the CFE ranged from 12 to 46, whereas the SNR for the glass microelectrodes ranged from 49 to 318 ($N = 4$ experiments). These are consistent with some of the recording surface of the CFE remaining outside of the cell, reducing the spike amplitude. The results suggest that PEDOT:pTS-coated CFEs are not as effective as glass microelectrodes for obtaining high SNR recordings, but they can accurately record the shape of intracellular signals as well as a glass microelectrode and have a sufficient SNR to easily distinguish an action potential from the baseline noise.

3.2. Intracellular CFE stimulation can activate or inhibit neurons

To understand the dynamics of a neural circuit, the activity of individual neurons should be manipulated, and the effects of this manipulation should be recorded in other neurons. We therefore tested whether neurons could be controlled using CFEs. With a glass microelectrode and a CFE inserted into the soma of the same neuron, identical currents were injected alternately into each electrode to evoke action potentials, and the responses of the neuron to these current injections were compared.

When a PEDOT:pTS-coated CFE was used for stimulation, the injected current successfully elicited action potentials in the neuron which propagated into the neuron's axon (figure 3(B), top left panel). During the stimulation, the shape of the action potential was still identical to that recorded by the glass microelectrode. Similarly, inhibitory current injected through the CFE could block spontaneous action potentials (figure 3(B); top middle panel). At the time that either depolarizing or hyperpolarizing current was injected into the CFE, a sudden increase or decrease in the voltage was observed in the CFE recording channel, respectively, before the baseline returned to a normal range. This effect could not be eliminated by adjusting the capacitance using the A-M Systems amplifier. In some cases, the large initial voltage offset could lead to signal saturation, making it difficult to directly record neural activity, but the axonal projection and the glass microelectrode recording still demonstrated the response of the neuron to stimulation.

Similar to a glass microelectrode, PEDOT:pTS-coated CFEs could activate or inhibit a neuron (figure 3(B)). However, CFEs with the PEDOT:pTS coating do not work well with higher currents (over 60 nA) and are less stable in their impedances after multiple stimulations. Therefore, we switched to the PtIr-coated CFEs for stimulation.

3.3. The CFE array can simultaneously record multiple neurons intracellularly

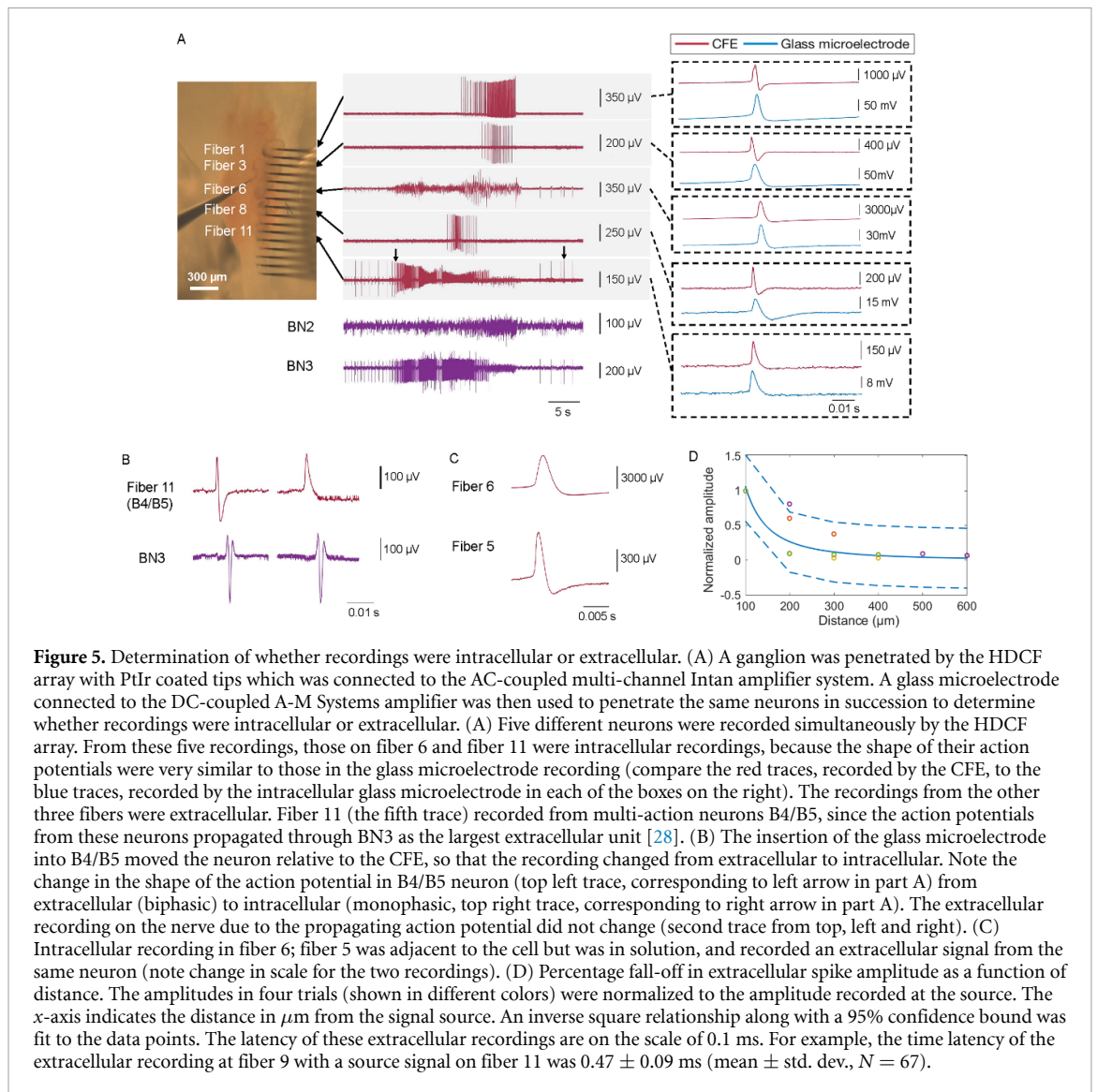
The intracellular A-M Systems amplifier only permits recording from a single channel. To record from a population of neurons and therefore make full use of the arrays, we switched to the Intan system, which could be used for multiple channel recording and stimulation.

During experiments, the array was carefully positioned above the buccal ganglion to reach the maximum possible number of neurons. Once neurons were impaled in a ganglion that had been carefully desheathed, it was possible to obtain stable recordings for at least 4–6 h.

Using the 2×8 flex arrays, on average 65% ($n = 5$ different experiments) of the channels showed recordings, with 5–8 different neurons being recorded simultaneously (for positioning of array relative to the ganglion, see figure 1(B); results of recording are shown in figure 4(A)). For the flex arrays, since the view of the bottom row of fibers was blocked, it was difficult to determine the actual number of fibers not in neurons.

Since the HDCF arrays were wider than the ganglion, not all electrodes could be positioned in neurons (figure 1(D); note that the rightmost electrodes could not be placed within neurons because they are beyond the right edge of the ganglion). During the experiments, we observed that on average 69% ($N = 7$ experiments) of the HDCF arrays' fibers were inserted into or had a near proximity to the ganglion, while the rest were in solution. Of the electrodes that could be positioned within neurons of the ganglion, on average 74% ($N = 7$ experiments) of the channels showed recordings, with 3–7 different neurons being recorded simultaneously (figure 4(B)). Since electrodes in the HDCF arrays were all in a single row, it was much easier to determine whether or not they were in a neuron. More generally, the yield of channel recording is related to the positioning of the CFE array, and the size and the natural curvature of the buccal ganglion.

Recordings from the CFEs could be intracellular, extracellular or quasi-intracellular, depending on how deeply the electrode was inserted into the neuron. During CFE insertion, the neurons could be penetrated at different depths because of the natural curvature of a buccal ganglion, causing the signals to be either dominated by intracellular recording or extracellular recording. Therefore, in both flex array recordings and HDCF array recordings, adjacent



mechanical stimuli, only the neuron penetrated with both a glass electrode and a CFE showed activation and an increased firing frequency after each tap, suggesting that the addition of a glass microelectrode resulted in more disturbance to the membrane, and was thus primarily responsible for the activation. When the mechanical stimulus was strong enough to activate both neurons (figure 6(A), right), the neuron that was only penetrated by the CFE returned to its resting state quickly and did not continue to fire, whereas the neuron penetrated by both the CFE and glass microelectrode generated many smaller action potentials. The ability of a neurons to return to its prior state after a tap clearly demonstrated that neurons penetrated by CFEs can tolerate more movement. In contrast, neurons that were penetrated by both electrodes not only showed a decreased action potential amplitude, but also continuous firing, suggesting damage to the cell membrane. In response to multiple mechanical stimuli, a neuron penetrated by a CFE showed stable intracellular recordings, whereas the neuron penetrated by both a CFE and a glass microelectrode

showed steadily decreasing action potential amplitudes (figure 6(B)).

On occasion, stimulating BN2-a would induce spontaneous movements of the sheath and ganglion, and we observed that the CFE moved along with the ganglion, and that the movements had no effect on the recordings. We also observed that the ganglion moved to conform to the CFEs when we used the hydraulic manipulator holding the headstage and the carbon fibers to move the CFEs up to 100 μm s to one side (data not shown). In contrast, the same manipulation of a glass microelectrode would inevitably kill any cell into which the microelectrode was inserted.

3.5. Platinum-Iridium coated CFE stimulation was effective and stable

PEDOT:pTS-coated fibers were first used for stimulation. Although it is possible to deliver the current through them (figure 3(B)), the impedance of the PEDOT:pTS-coated fibers was only stable for currents under 30 nA (figure 7(B), left panel). Higher currents

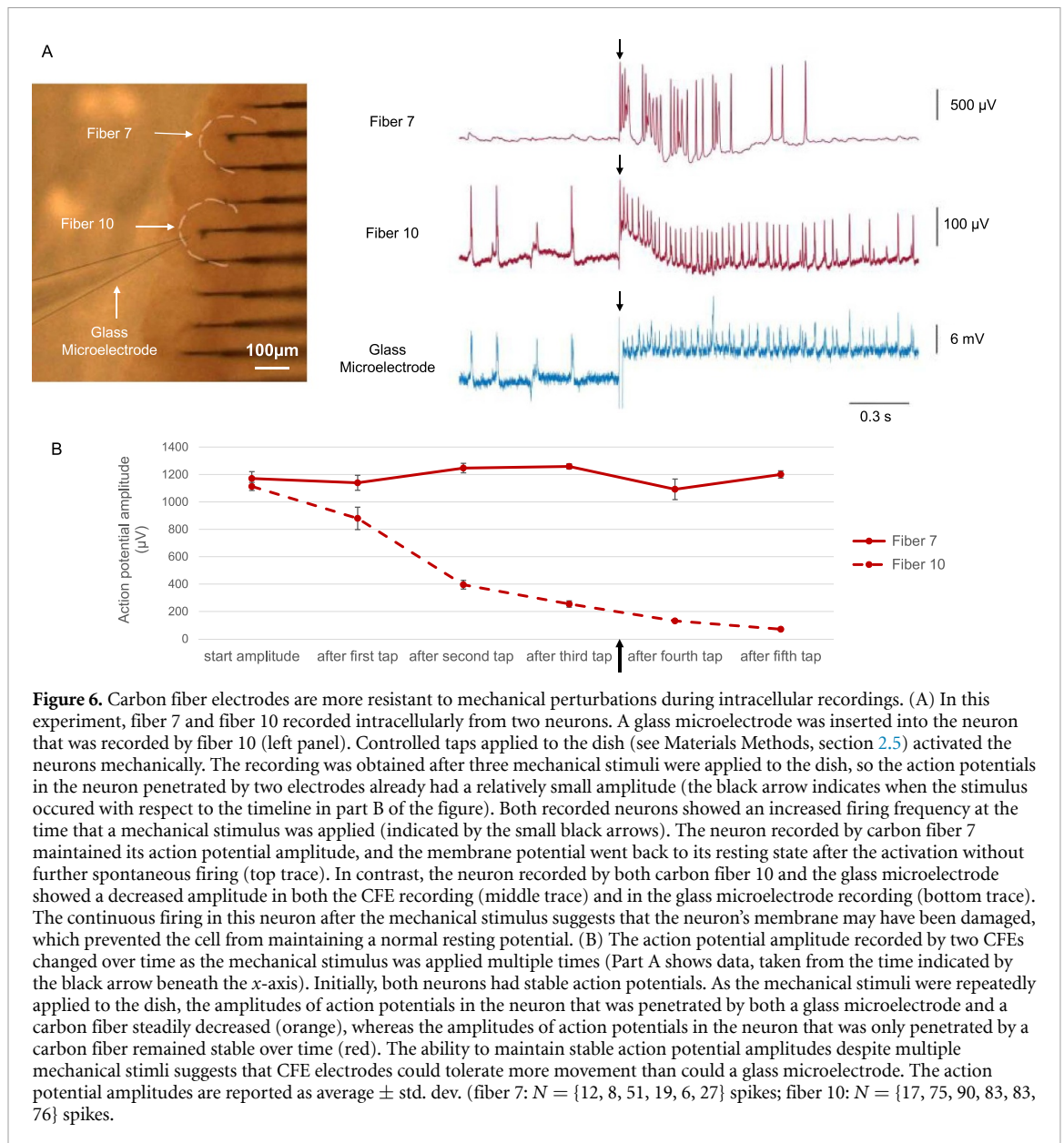


Figure 6. Carbon fiber electrodes are more resistant to mechanical perturbations during intracellular recordings. (A) In this experiment, fiber 7 and fiber 10 recorded intracellularly from two neurons. A glass microelectrode was inserted into the neuron that was recorded by fiber 10 (left panel). Controlled taps applied to the dish (see Materials Methods, section 2.5) activated the neurons mechanically. The recording was obtained after three mechanical stimuli were applied to the dish, so the action potentials in the neuron penetrated by two electrodes already had a relatively small amplitude (the black arrow indicates when the stimulus occurred with respect to the timeline in part B of the figure). Both recorded neurons showed an increased firing frequency at the time that a mechanical stimulus was applied (indicated by the small black arrows). The neuron recorded by carbon fiber 7 maintained its action potential amplitude, and the membrane potential went back to its resting state after the activation without further spontaneous firing (top trace). In contrast, the neuron recorded by both carbon fiber 10 and the glass microelectrode showed a decreased amplitude in both the CFE recording (middle trace) and in the glass microelectrode recording (bottom trace). The continuous firing in this neuron after the mechanical stimulus suggests that the neuron's membrane may have been damaged, which prevented the cell from maintaining a normal resting potential. (B) The action potential amplitude recorded by two CFEs changed over time as the mechanical stimulus was applied multiple times (Part A shows data, taken from the time indicated by the black arrow beneath the x-axis). Initially, both neurons had stable action potentials. As the mechanical stimuli were repeatedly applied to the dish, the amplitudes of action potentials in the neuron that was penetrated by both a glass microelectrode and a carbon fiber steadily decreased (orange), whereas the amplitudes of action potentials in the neuron that was only penetrated by a carbon fiber remained stable over time (red). The ability to maintain stable action potential amplitudes despite multiple mechanical stimuli suggests that CFE electrodes could tolerate more movement than could a glass microelectrode. The action potential amplitudes are reported as average \pm std. dev. (fiber 7: $N = \{12, 8, 51, 19, 6, 27\}$ spikes; fiber 10: $N = \{17, 75, 90, 83, 83, 76\}$ spikes).

(over 60 nA) would quickly increase the impedance and damaged the fibers.

Since platinum-iridium (PtIr) coating has been shown to have excellent ability to record, low impedance, and a good ability to pass current [14, 25, 34], PtIr-coated CFEs were created and used for intracellular stimulation.

3.5.1. Charge storage capacitance and impedance of PtIr-coated CFEs

Impedance was measured before and after the PtIr coating for four HDCF arrays ($N = 60$ fibers). Due to the different fiber tip exposure (100–150 μm), the electrochemical impedance spectroscopy measurements were normalized to the surface area. The mean and standard deviation of the normalized 1 kHz impedance was $10 \pm 0.9 \Omega \cdot \text{cm}^2$ and $2 \pm 1.2 \Omega \cdot \text{cm}^2$ before and after the PtIr coating respectively. The CSC_C was also measured after the coating ($N = 60$

fibers). In figure 7(A), the mean CV from one HDCF array ($N = 16$ fibers) is reported with the standard deviation shaded (CSC_C is $5.8 \pm 0.6 \text{ mC cm}^{-2}$). Over four HDCF arrays ($N = 60$ fibers) the mean CSC_C was $5.8 \pm 3 \text{ mC cm}^{-2}$.

3.5.2. Stimulation through PtIr-coated CFEs

The PtIr coated CFEs were found to be more effective and stable. Moreover, the impedance of the electrodes decreased after stimulations with higher currents than could be applied through the PEDOT:pTS-coated fibers (figure 7(B), right panel), and, after cleaning, the fibers could be re-used for stimulation in multiple experiments. Thus, our subsequent investigations of intracellular stimulation used the PtIr-coated CFEs.

To investigate stimulation efficacy, different amounts of current were injected into neurons while monitoring the generation of action potentials in

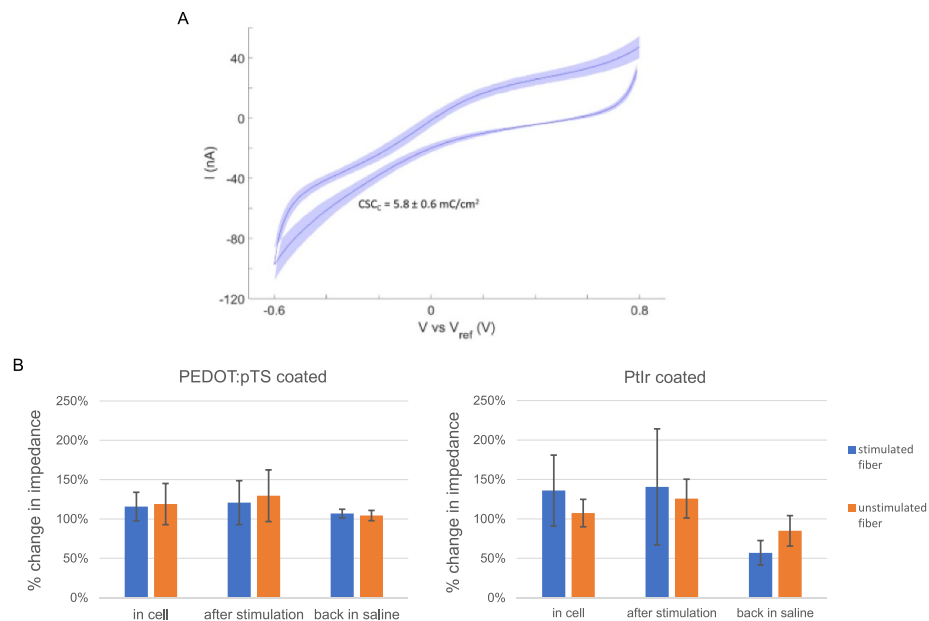


Figure 7. Charge storage capacity and impedance response. (A) Mean and standard deviation of cyclic voltammetry from one PtIr coated HDCE array ($N = 16$ fibers) with the mean and standard deviation of the CSC_C reported. (B) Normalized impedance to the initial impedance measured in the saline before the cell penetration for PEDOT:pTS-coated and PtIr-coated fibers. After penetrating the soma, electrodes with either coating showed an increase in impedance. PEDOT:pTS-coated fibers had a relatively stable impedance when stimulated with currents up to 30 nA. However, the impedance still increased slightly after the electrodes were pulled out of the cell and cleaned to remove any adherent tissue. Higher currents led to very large increases in impedance and damaged the electrodes, and so are not included in these averages. In contrast, PtIr-coated fibers could tolerate currents up to 200 nA without showing signs of damage. After removal from the neuron, these electrodes showed a decrease in impedance, even after multiple stimulations with currents of 50–100 nA. Before stimulation (in the cell), the percentage changes in impedance for stimulated and unstimulated fibers were comparable for both PEDOT:pTS- and PtIr-coated fibers (stimulated: $116\% \pm 18\%$ ($N = 6$ fibers from four experiments) vs. $136\% \pm 45\%$ ($N = 6$ fibers from four experiments); unstimulated: $119\% \pm 26\%$ ($N = 9$ fibers from four experiments) vs. $107\% \pm 17\%$ ($N = 9$ fibers from four experiments) for PEDOT:pTS- vs. PtIr-coated, mean \pm std. dev; there are no significant differences between the values for the different coatings in either condition). The middle bars (after stimulation) in the two graphs cannot be compared, because far more net current was passed through the PtIr-coated fibers. Comparing the last set of bars (back in saline) clearly shows that the PtIr-coated fibers could maintain lower impedances over multiple current injections and multiple experiments (stimulated: $107\% \pm 6\%$ ($N = 7$ fibers in five experiments) vs. $57\% \pm 16\%$ ($N = 6$ fibers in four experiments); $p < 0.0003$, t-test; unstimulated: $104\% \pm 7\%$ ($N = 9$ fibers in four experiments) vs. $85\% \pm 19\%$ ($N = 9$ fibers in 4 experiments); $p = 0.017$; t-test; since four t-tests were performed, the criterion for significance should be 0.0125).

axons through extracellular nerve recordings. Action potentials were triggered successfully at the soma (figure 8(A)). The propagation of the action potential through the axon was also observed on the corresponding nerve. Stimulations with higher currents resulted in higher frequency firing (figure 8(B)).

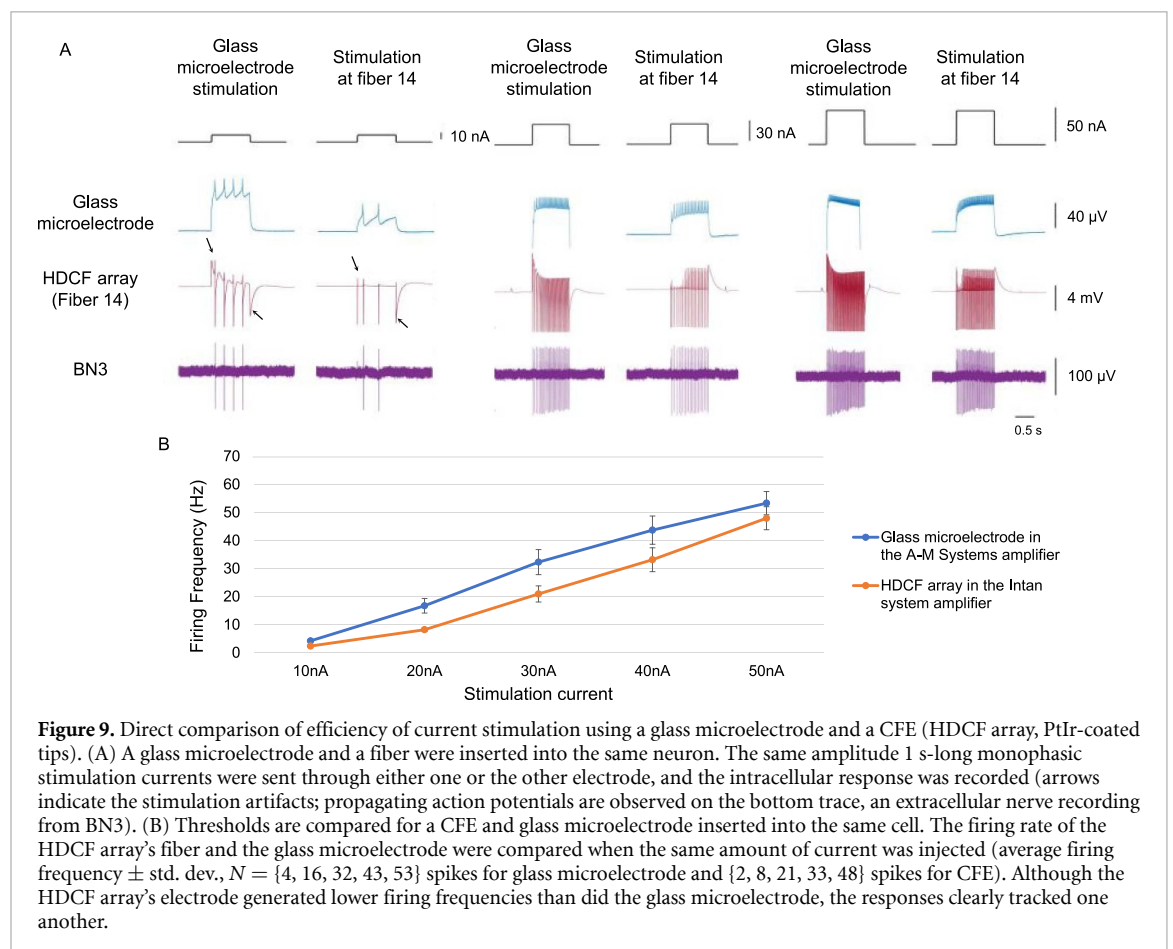
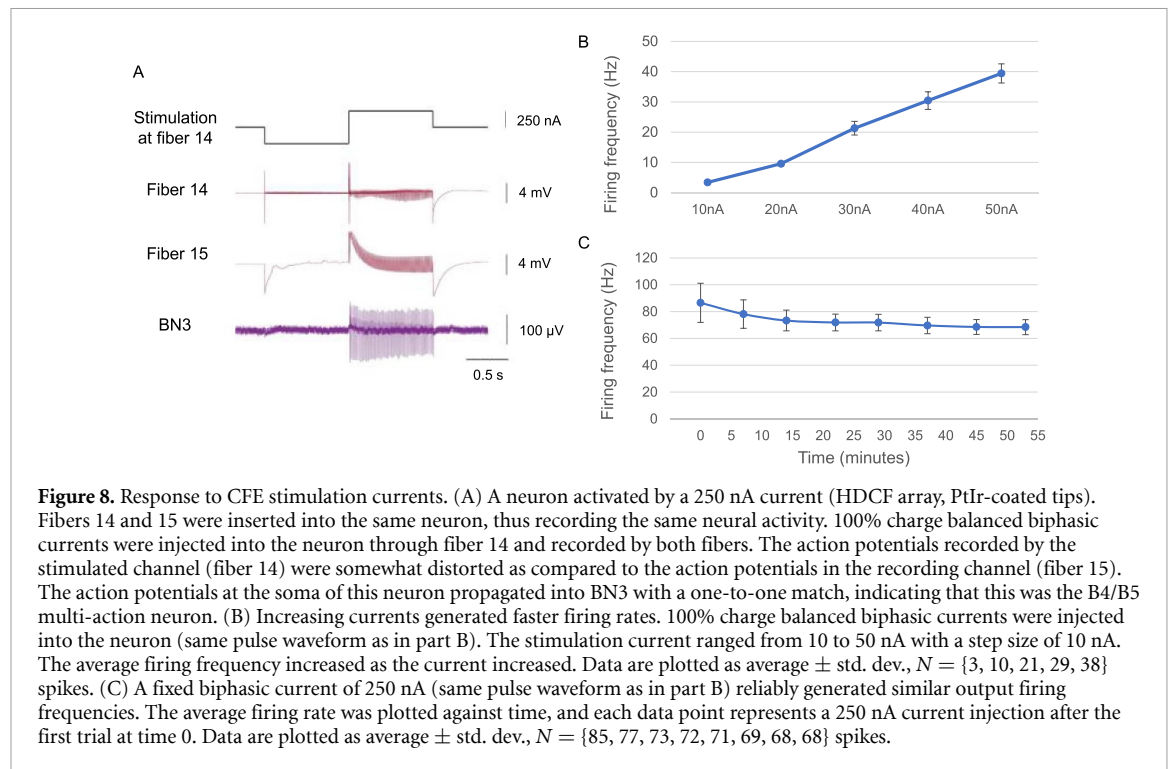
To investigate the stability of stimulation, the same amount of current was repeatedly injected into the neurons, with at least a 5 minute interval to allow the neuron to recover. Multiple stimulations using the same amount of current consistently activated neurons at a similar firing frequency (figure 8(C)).

The activation current threshold of the neurons using PtIr-coated CFE stimulation varied. For glass microelectrodes, the threshold for inducing action potentials in different neurons varied from 10 to 100 nA. When using the CFE, in some cases, a current over 200 nA was required to stimulate the neurons; in other cases, currents as low as 10 nA were sufficient. In addition to an innate difference in threshold among different neurons, the different minimum current requirement for neural activation was likely

due to fiber penetration depth. When the fiber was intracellular, the stimulation efficiency of a PtIr-coated CFE was similar to that of a glass microelectrode (figure 9). While both the glass microelectrode and CFE were inserted into the same neuron, the same amount of current was injected into the neuron by either electrode. The axonal projection indicated that action potentials were induced at the soma. The number of action potentials generated by the CFE was slightly lower than but similar to that induced by the glass microelectrode, consistent with the results obtained using the intracellular amplifier for both kinds of electrodes. During the stimulation through a fiber, the shape of the recorded action potential in the stimulated fiber was distorted. In contrast, the shape of the action potential remained unchanged in the glass microelectrode recording as it stimulated the neuron.

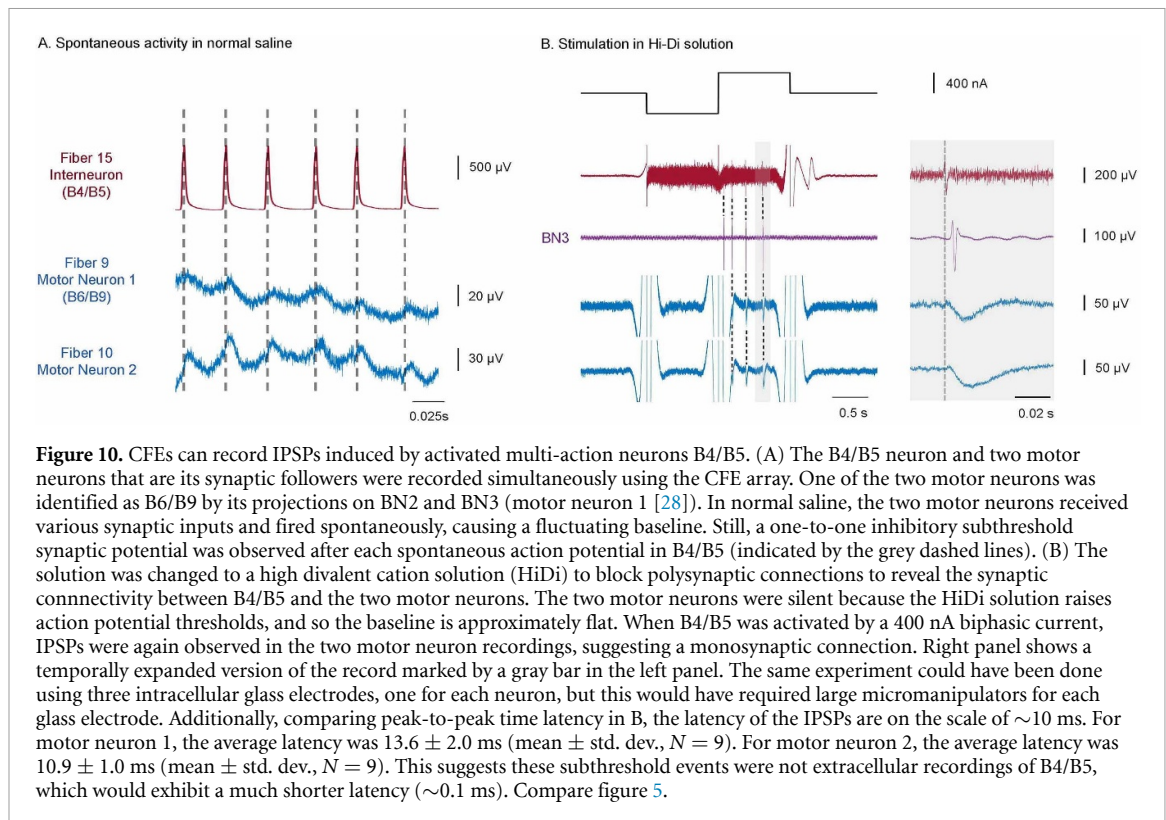
3.6. The CFE could record subthreshold synaptic activity

Subthreshold membrane potentials can regulate neural activity [1, 2]. CFEs that record intracellular



signals also record subthreshold synaptic activity in the neuron, including inhibitory postsynaptic potentials (IPSPs) and excitatory postsynaptic potentials (EPSPs).

During the experiments, multiple neurons could be recorded simultaneously in the buccal ganglion, including the multi-action neurons that have wide-ranging synaptic outputs to many motor neurons in



the buccal ganglion, B4/B5 [19]. With proper positioning of the array, both B4/B5 and some of its synaptic targets in the ganglion could be monitored intracellularly at the same time.

Although the SNR of the CFEs is lower than that of a glass microelectrode, it is sufficiently high to record the IPSPs that were triggered by the action potentials of B4/B5 in its synaptic followers (figure 1). These subthreshold synaptic potentials were distinguishable from the extracellular recording across the fibers. The subthreshold recordings only occur in the fibers that were recording intracellularly. The time latency of EPSPs (data not shown) and IPSPs was longer than the extracellular recordings on the other fibers. The peak-to-peak time latency was determined to be about 10 ms, which is far slower than the 0.1 ms time latency for extracellular recordings.

4. Discussion

4.1. Summary of results

Like glass microelectrodes, CFEs can record action potentials (figure 3(A)) and synaptic potentials (figure 10) with high accuracy. In addition, CFEs can stimulate or inhibit individual neurons (figure 3(B), 8–10) using currents that are comparable to those of glass microelectrodes (figures 8 and 9). Even though CFEs do not have as low SNR as do glass microelectrodes, and may require more current for stimulation depending on their penetration into a neuron (figure 9), they can generate stable responses over

long periods of time in response to the same current (figure 8(C)). In addition, CFEs make it possible to perform multiple intracellular and extracellular recordings at the same time (figures 4 and 5), which is much more difficult to do using glass microelectrodes. The CFEs also showed a higher tolerance to mechanical perturbations and caused minimal damage to the membrane (figure 6), suggesting that they would tolerate similar perturbations if used for an *in vivo* chronic recording.

4.2. Stimulation by PtIr-coated CFEs

Stimulus pulses used during intracellular experiments are of longer duration and lower amplitude, compared to those used for extracellular stimulation. A typical stimulus pulse applied via an extracellular electrode is 0.1–1 ms and in the range of 10 μ A to 10 mA, depending on the application. In contrast, our experiments used pulses that are up to 1 s long and current amplitudes below 1 μ A. This difference requires consideration of the charge injection capabilities of the electrodes. Using a 1 s, 100 nA pulse as an example, 0.1 μ C of charge would be applied via a PtIr coated CFE. A low impedance, as well as high charge storage capacity, are important characteristics for stimulating electrodes. PtIr decreased 1 kHz impedance approximately 80% after the coating process. PtIr charge storage capacity of 5.8 mC cm⁻² is comparable to other high-performance electrode materials such as SIROF [25, 35]. The PtIr coated carbon fiber shown in figure 2(F) is approximately

2000 μm^2 ; thus, the charge density of our example pulse is 5 mC cm^{-2} , which means that we utilize almost all the available charge storage capacity (average 5.8 mC cm^{-2}). Indeed, because intracellular pulses are long duration and low amplitude compared to a typical neural stimulation pulse, intracellular pulses may allow more complete use of charge storage capacity of a high surface material like PtIr [36]. This density is near safe stimulation levels for typical extracellular pulses. Nevertheless, high charge density may lead to unacceptable polarization of these electrodes, which may induce local changes in pH or hydrolysis with subsequent gaseous O_2 or H_2 production [37, 38]. Some pulses used in our experiments exceeded 5.8 mC cm^{-2} . In those cases, the electrodes may have been operating in a regime considered unsafe if used for continuous pulsing where harmful reactants accumulate over time. However, a single intracellular pulse may produce harmful reactants at small enough quantities that they are easily buffered by solution. Future experiments will characterize the electrochemical aspects of intracellular pulses more completely using PtIr electrodes.

4.3. Advantages and limitations of CFEs

Since glass microelectrodes are very stiff, once they are inserted into a neuron's cell body, it is crucial to keep the entire preparation from moving, or the tip of the glass microelectrode may badly damage the cell membrane. In contrast, CFEs are quite flexible along their lengths, and appear to tolerate small lateral movements. When perturbed by a mechanical stimulus that caused vibration of the ganglion, the CFE demonstrated that it could not only handle the small movements, but that the neuron it was penetrating also recovered and maintained good quality recordings, even if the mechanical stimulus was strong enough to induce the neuron to fire. Additionally, we were able to obtain stable recordings from CFEs over many hours. Indeed, we anecdotally observed that one effect of movement was to allow the carbon fibers to penetrate the neurons more deeply over time, which improved the quality of the recordings and reduced the current needed to excite or inhibit neurons.

Based on these results and observations, we are confident that CFE arrays may be very useful in semi-intact preparations [20] in which the ganglion may be subject to movement due to attached musculature. These results also suggest that the CFE could be used in freely-behaving animals. Furthermore, the flexibility in response to movement is likely to improve the quality of recordings in chronic implanted CFE-based devices.

The number of neurons that can be recorded using CFEs is already larger than the number that could be easily recorded using standard glass microelectrodes. Even larger numbers of neurons could

be recorded by placing several CFE arrays into a ganglion simultaneously. One disadvantage of the current array geometry is that ganglia have curving surfaces, and so arrays need to be positioned at different depths to reach neurons. In future work, it may be possible to incorporate CFEs into soft substrates that can curve and conform to a ganglion's surface [23], thus increasing the number of neurons that can be recorded simultaneously.

The ability to compare CFE intracellular recordings and glass microelectrode recordings was enhanced by the large soma size of *Aplysia* neurons. Since neuron somata may be much smaller in other animals and in humans, we also performed preliminary experiments on sensory neurons in *Aplysia*, whose diameters range from 20 to 30 μm , which are more similar to those observed in vertebrates and humans. We found that it was also possible to penetrate and obtain stable recordings from these smaller neurons (data not shown). These results suggest that CFEs could be used for a wide range of intracellular recordings in many other nervous systems.

CFEs can clearly be used for simultaneous intracellular and extracellular recordings. Depending on the penetration depth of the CFE, the recordings may have both intracellular and extracellular aspects. The CFE tips were treated by blowtorching to penetrate the cell membrane more easily, but the treatments could create an exposed length of approximately 140 μm at the end [22, 23], and this could lead to partial exposure of the conductive part of the CFE to the extracellular fluid. In the future, it may be possible to fabricate tips with much shorter conductive lengths, which could ensure that recordings were completely intracellular. Substituting a sulfuric acid etch for blowtorching would allow the CFE tips to be tailored to a small ($<5 \mu\text{m}$ in height), sharpened tip [39, 40].

It may also be interesting to use the dual ability of CFEs to record extracellularly and intracellularly to initially record from a group of neurons extracellularly, apply spike sorting and circuit analysis techniques that are standard for analyzing such recordings [41, 42], and then penetrate the same neurons intracellularly with the same CFEs to provide a 'ground truth' for these analysis approaches.

While many novel high channel count neural recording systems are now being deployed [43–45], these are limited to extracellular potentials, where interactions between neurons can only be inferred indirectly. Although the intracellular recordings presented here are shown in invertebrate preparation, the anecdotal report of intracellular-like potentials in a songbird model [12] might suggest that this technique could be optimized for short term intracellular recordings in mammals, using a microdrive. Overall, the ability to achieve multihour intracellular recordings adds a novel and necessary tool for neuroscience studies of circuit interactions.

4.4. Comparison to other electrodes

Carbon-based electrodes have advantages for interfacing with the nervous system when compared to other neural recording techniques such as metal wires or silicon-based electrodes. Although all of these electrodes can be flexibly arranged into different configuration that can obtain high quality neural recordings [46, 47], carbon fibers also have higher biocompatibility, inducing less inflammatory responses when implanted *in vivo* [48], making them more desirable for chronic recordings.

Different types of carbon-based electrodes can be optimal for different applications. For example, carbon nanotube (CNT) yarns have been used extracellularly for recording and stimulation in nerves and neurons [49, 50], but the greater flexibility of CNT yarns compared to carbon fiber makes it harder for the CNT yarns to be inserted into precise locations for intracellular recording [51]. Intracellular recording using CNT yarns has been reported, but they were not also used for stimulation [52]. Carbon pillar electrodes (with diameters tapering from 17 μm s at the bottom to 10 μm s at the top) using a new pyrolytic carbon material have shown a high charge storage capacity and injection capacity, suggesting that they could be used for stimulation that requires higher currents [53], but no recordings from or stimulation of neural tissues have yet been reported.

Although the CFEs have not yet been used intracellularly in freely-behaving animals, they have been successfully used for chronic *in vivo* recordings [16], and thus our studies suggest that they may be useful for chronic intracellular recording and stimulation. Reducing the exposed area at the tip of the electrode to enhance spatially selective stimulation, and altering the probe geometry to increase channel yield may be important for achieving this longer-term goal. Moreover, the small diameter of the CFEs makes it possible to vary their geometric arrangement, e.g. to form square arrays, which could then be used for recordings from larger areas of the nervous system.

Data availability statement

The data that support the findings of this study are available upon reasonable request from the authors.

Acknowledgments

HJC and YH acknowledge support from NSF Grant IOS1754869; HJC, JPG, PRP, JMR, and CAC acknowledge support from NIH Grant R01 NS118606; PRP and CAC acknowledge support from NIH UF1NS107659; PRP, CAC, JMR, JDW, and EDV acknowledge support from NSF 1707316; and HJC and JPG acknowledge support from NSF Grant DBI2015317. Thanks to the University of Michigan's Lurie Nanofabrication Facility and Michigan Center for Materials Characterization for the use of their

equipment. We are also grateful for helpful comments and suggestions from Dr Victoria Webster-Wood. Author JDW has a financial interest in PtIr coatings.

ORCID iDs

Yu Huan  <https://orcid.org/0000-0002-4548-8551>
 Jeffrey P Gill  <https://orcid.org/0000-0002-4115-8045>
 Johanna B Fritzing  <https://orcid.org/0000-0002-6212-0679>
 Paras R Patel  <https://orcid.org/0000-0001-6146-718X>
 Julianna M Richie  <https://orcid.org/0000-0002-8920-6560>
 Elena Della Valle  <https://orcid.org/0000-0001-8874-7982>
 James D Weiland  <https://orcid.org/0000-0003-3453-9074>
 Cynthia A Chestek  <https://orcid.org/0000-0002-9671-7051>
 Hillel J Chiel  <https://orcid.org/0000-0002-1750-8500>

References

- [1] Farina D, Negro F and Dideriksen J L 2014 The effective neural drive to muscles is the common synaptic input to motor neurons *J. Physiol.* **592** 3427–41
- [2] Lampl I and Yarom Y 1993 Subthreshold oscillations of the membrane potential: a functional synchronizing and timing device *J. Neurophysiol.* **70** 2181–6
- [3] Hodgkin A L and Huxley A F 1939 Action potentials recorded from inside a nerve fibre *Nature* **144** 710–1
- [4] Tada M, Takeuchi A, Hashizume M, Kitamura K and Kano M 2014 A highly sensitive fluorescent indicator dye for calcium imaging of neural activity *in vitro* and *in vivo* *Eur. J. Neurosci.* **39** 1720–8
- [5] Chemla S, Muller L, Reynaud A, Takerkart S, Destexhe A and Chavane F 2017 Improving voltage-sensitive dye imaging: with a little help from computational approaches *Neurophotonics* **4** 031215
- [6] Newton T H, Reimann M W, Abdellah M, Chevtchenko G, Muller E B and Markram H 2021 *In silico* voltage-sensitive dye imaging reveals the emergent dynamics of cortical populations *Nat. Commun.* **12** 3630
- [7] Bando Y, Grimm C, Cornejo V H and Yuste R 2019 Genetic voltage indicators *BMC Biol.* **17** 71
- [8] Piatkevich K D et al 2019 Population imaging of neural activity in awake behaving mice *Nature* **574** 413–7
- [9] Chen R, Canales A and Anikeeva P 2017 Neural recording and modulation technologies *Nat. Rev. Mater.* **2** 1–16
- [10] Zhao Y, You S S, Zhang A, Lee J-H, Huang J and Lieber C M 2019 Scalable ultrasmall three-dimensional nanowire transistor probes for intracellular recording *Nat. Nanotechnol.* **14** 783–90
- [11] Abbott J, Ye T, Krennek K, Gertner R S, Ban S, Kim Y, Qin L, Wu W, Park H and Ham D 2020 A nanoelectrode array for obtaining intracellular recordings from thousands of connected neurons *Nat. Biomed. Eng.* **4** 232–41
- [12] Guitchoyants G, Markowitz J E, Liberti W A and Gardner T J 2013 A carbon-fiber electrode array for long-term neural recording *J. Neural. Eng.* **10** 046016
- [13] Patel P R, Na K, Zhang H, Kozai T D Y, Kotov N A, Yoon E and Chestek C A 2015 Insertion of linear 8.4 μm diameter 16

- channel carbon fiber electrode arrays for single unit recordings *J. Neural. Eng.* **12** 046009
- [14] Welle E J, Patel P R, Woods J E, Petrossians A, Valle E D, Vega-Medina A, Richie J M, Cai D, Weiland J D and Chestek C A 2020 Ultra-small carbon fiber electrode recording site optimization and improved *in vivo* chronic recording yield *J. Neural Eng.* **17** 026037
 - [15] Kissinger P T, Hart J B and Adams R N 1973 Voltammetry in brain tissue—a new neurophysiological measurement *Brain Res.* **55** 209–13
 - [16] Patel P R, Zhang H, Robbins M T, Nofar J B, Marshall S P, Kobylarek M J, Kozai T D Y, Kotov N A and Chestek C A 2016 Chronic *in vivo* stability assessment of carbon fiber microelectrode arrays *J. Neural. Eng.* **13** 066002
 - [17] Kandel E R 1976 *Cellular Basis of Behavior: An Introduction to Behavioral Neurobiology* (Oxford: W. H. Freeman)
 - [18] Kandel E R 1979 *Behavioral Biology of Aplysia: A Contribution to the Comparative Study of Opisthobranch Molluscs* (San Francisco: W.H. Freeman)
 - [19] Gardner D 1977 Interconnections of identified multi-action interneurons in buccal ganglia of *Aplysia* *J. Neurophysiol.* **40** 349–61
 - [20] McManus J M, Lu H and Chiel H J 2012 An *in vitro* preparation for eliciting and recording feeding motor programs with physiological movements in *Aplysia californica* *J. Vis. Exp.* **70** e4320
 - [21] Patel P R et al 2020 High density carbon fiber arrays for chronic electrophysiology, fast scan cyclic voltammetry, and correlative anatomy *J. Neural Eng.* **17** 056029
 - [22] Richie J M, Patel P R, Welle E J, Dong T, Chen L, Shih A J and Chestek C A 2021 Open-source toolkit: benchtop carbon fiber microelectrode array for nerve *J. Vis. Exp.* **176** e63099
 - [23] Welle E J, Woods J E, Jiman A A, Richie J M, Bottorff E C, Ouyang Z, Seymour J P, Patel P R, Bruns T M and Chestek C A 2021 Sharpened and mechanically durable carbon fiber electrode arrays for neural recording *IEEE Trans. Neural. Syst. Rehabil. Eng.* **29** 993–1003
 - [24] Della Valle E, Welle E J, Chestek C A and Weiland J D 2021 Compositional and morphological properties of platinum-iridium electrodeposited on carbon fiber microelectrodes *J. Neural. Eng.* **18** 054001
 - [25] Cogan S F 2008 Neural stimulation and recording electrodes *Annu. Rev. Biomed. Eng.* **10** 275–309
 - [26] Morton D W and Chiel H J 1993 The timing of activity in motor neurons that produce radula movements distinguishes ingestion from rejection in *Aplysia* *J. Comp. Physiol. A* **173** 519–36
 - [27] Lu H, McManus J M, Cullins M J and Chiel H J 2015 Preparing the periphery for a subsequent behavior: motor neuronal activity during biting generates little force but prepares a retractor muscle to generate larger forces during swallowing in *Aplysia* *J. Neurosci.* **35** 5051–66
 - [28] Lu H, McManus J M and Chiel H J 2013 Extracellularly identifying motor neurons for a muscle motor pool in *Aplysia californica* *J. Vis. Exp.* **73** e50189
 - [29] Warman E N and Chiel H J 1995 A new technique for chronic single-unit extracellular recording in freely behaving animals using pipette electrodes *J. Neurosci. Methods* **57** 161–9
 - [30] Brummer S B and Turner M J 1977 Electrochemical considerations for safe electrical stimulation of the nervous system with platinum electrodes *IEEE Trans. Biomed. Eng.* **24** 59–63
 - [31] Brazhnik E S and Fox S E 1999 Action potentials and relations to the theta rhythm of medial septal neurons *in vivo* *Exp. Brain Res.* **127** 244–58
 - [32] Henze D A, Borhegyi Z, Csicsvari J, Mamiya A, Harris K D and Buzsáki G 2000 Intracellular features predicted by extracellular recordings in the hippocampus *in vivo* *J. Neurophysiol.* **84** 390–400
 - [33] Lu H, Chestek C A, Shaw K M and Chiel H J 2008 Selective extracellular stimulation of individual neurons in ganglia *J. Neural. Eng.* **5** 287–309
 - [34] Cassar I R, Yu C, Sambangi J, Lee C D, Whalen J J, Petrossians A and Grill W M 2019 Electrodeposited platinum-iridium coating improves *in vivo* recording performance of chronically implanted microelectrode arrays *Biomaterials* **205** 120–32
 - [35] Eick S, Wallys J, Hofmann B, van Ooyen A, Schnakenberg U, Ingebrandt S and Offenhäuser A 2009 Iridium oxide microelectrode arrays for *in vitro* stimulation of individual rat neurons from dissociated cultures *Front. Neuroeng.* **2** 16
 - [36] Hudak E M, Kumsa D W, Martin H B and Mortimer J T 2017 Electron transfer processes occurring on platinum neural stimulating electrodes: calculated charge-storage capacities are inaccessible during applied stimulation *J. Neural Eng.* **14** 046012
 - [37] Huang C Q, Carter P M and Shepherd R K 2001 Stimulus induced pH changes in cochlear implants: an *in vitro* and *in vivo* study *Ann. Biomed. Eng.* **29** 791–802
 - [38] Boehler C, Carli S, Fadiga L, Stieglitz T and Asplund M 2020 Tutorial: guidelines for standardized performance tests for electrodes intended for neural interfaces and bioelectronics *Nat. Protoc.* **15** 3557–78
 - [39] El-Giar E E-D M and Wipf D O 2006 Preparation of tip-protected poly(oxyphenylene) coated carbon-fiber ultramicroelectrodes *Electroanalysis* **18** 2281–9
 - [40] Khani H and Wipf D O 2019 Fabrication of tip-protected polymer-coated carbon-fiber ultramicroelectrodes and pH ultramicroelectrodes *J. Electrochem. Soc.* **166** B673
 - [41] Rey H G, Pedreira C and Quiroga R 2015 Past, present and future of spike sorting techniques *Brain Res. Bull.* **119** 106–17
 - [42] Rácz M, Liber C, Németh E, Fiáth R, Rokai J, Harmati I, Ulbert I and Márton G 2020 Spike detection and sorting with deep learning *J. Neural Eng.* **17** 016038
 - [43] Jun J J et al 2017 Fully integrated silicon probes for high-density recording of neural activity *Nature* **551** 232–6
 - [44] Chiang C-H et al 2020 Development of a neural interface for high-definition, long-term recording in rodents and nonhuman primates *Sci. Transl. Med.* **12** eaay4682
 - [45] Sahasrabudhe K et al 2021 The Argo: a high channel count recording system for neural recording *in vivo* *J. Neural. Eng.* **18** 015002
 - [46] Campbell P K, Jones K E, Huber R J, Horch K W and Normann R A 1991 A silicon-based, three-dimensional neural interface: manufacturing processes for an intracortical electrode array *IEEE Trans. Biomed. Eng.* **38** 758–68
 - [47] Pei W and Chen H 2018 Electrode array for neural interfaces *Micro Electro Mechanical Systems Micro/nano Technologies* ed Q-A Huang (Berlin: Springer) pp 1437–65
 - [48] Hejazi M, Tong W, Ibbotson M R, Prawer S and Garrett D J 2021 Advances in carbon-based microfiber electrodes for neural interfacing *Front. Neurosci.* **15** 403
 - [49] Vitale F, Summerson S R, Aazhang B, Kemere C and Pasquali M 2015 Neural stimulation and recording with bidirectional, soft carbon nanotube fiber microelectrodes *ACS Nano* **9** 4465–74
 - [50] McCallum G A, Sui X, Qiu C, Marmerstein J, Zheng Y, Eggers T E, Hu C, Dai L and Durand D M 2017 Chronic interfacing with the autonomic nervous system using carbon nanotube (CNT) yarn electrodes *Sci. Rep.* **7** 11723
 - [51] Zhu F, Zhu J, Zhang X, Wang Y, Su J, McCallum G A, Zhang X, Sui X and Durand D M 2019 Flexural characterization of carbon nanotube (CNT) yarn neural electrodes *Mater. Res. Express* **6** 045402
 - [52] Yoon I, Hamaguchi K, Borzenets I V, Finkelstein G, Mooney R and Donald B R 2013 Intracellular neural recording with pure carbon nanotube probes *PLoS One* **8** e65715
 - [53] Davidsen R S, Hemanth S, Keller S S, Bek T and Hansen O 2019 Evaluation of the capacitive behavior of 3D carbon electrodes for sub-retinal photovoltaic prosthesis *Micro Nano Eng.* **2** 110–6