



Fluorescent labeling of abundant reactive entities (FLARE) for cleared-tissue and super-resolution microscopy

Min Yen Lee^{1,6}, Chenyi Mao^{1,6}, Adam K. Glaser², Marcus A. Woodworth¹, Aaron R. Halpern¹, Adilijiang Ali¹, Jonathan T. C. Liu^{2,3,4} and Joshua C. Vaughan^{1,5}✉

Fluorescence microscopy is a vital tool in biomedical research but faces considerable challenges in achieving uniform or bright labeling. For instance, fluorescent proteins are limited to model organisms, and antibody conjugates can be inconsistent and difficult to use with thick specimens. To partly address these challenges, we developed a labeling protocol that can rapidly visualize many well-contrasted key features and landmarks on biological specimens in both thin and thick tissues or cultured cells. This approach uses established reactive fluorophores to label a variety of biological specimens for cleared-tissue microscopy or expansion super-resolution microscopy and is termed FLARE (fluorescent labeling of abundant reactive entities). These fluorophores target chemical groups and reveal their distribution on the specimens; amine-reactive fluorophores such as hydroxysuccinimidyl esters target accessible amines on proteins, while hydrazide fluorophores target oxidized carbohydrates. The resulting stains provide signals analogous to traditional general histology stains such as H&E or periodic acid-Schiff but use fluorescent probes that are compatible with volumetric imaging. In general, the stains for FLARE are performed in the order of carbohydrates, amine and DNA, and the incubation time for the stains varies from 1 h to 1 d depending on the combination of stains and the type and thickness of the biological specimens. FLARE is powerful, robust and easy to implement in laboratories that already routinely do fluorescence microscopy.

Introduction

Fluorescence microscopy is a technique that is commonly used in the biomedical sciences. It offers the powerful ability to visualize structures or molecules in three dimensions within biological specimens and gives relevant context to the study of the functions of these structures. However, the success of fluorescence microscopy measurements often hinges on the ability of fluorescent labels to detect the objects of interest in a specimen. Immunolabeling of specimens using antibodies is popular due to its high specificity and contrast, but it faces key challenges^{1,2}. First, many biological molecules or structures of interest lack good commercially available antibodies that are specific to relevant targets, particularly for specimens that have been heavily fixed or processed. Second, the relatively large size of antibodies (~150,000 Da, or ~15 nm, for an immunoglobulin G) can often make staining of samples >100 µm in thickness very time consuming due to slow diffusion through the sample, with sample preparation that can take weeks. Fluorescent proteins, which are also popular fluorescent probes, require genetic manipulation and are thus limited to a subset of laboratory model organisms.

To partially address these limitations, we developed a fluorescent labeling method that uses reactive probes to target abundant chemical groups on biological samples. We termed the method FLARE (fluorescent labeling of abundant reactive entities), and we have used this method successfully to label cultured cells, mouse tissues and human tissues³.

Development of FLARE

FLARE operates analogously to classic histology stains such as H&E⁴ that are widely used to reveal overall tissue or cell physiology. However, most histology stains are either nonfluorescent or have

¹Department of Chemistry, University of Washington, Seattle, WA, USA. ²Department of Mechanical Engineering, University of Washington, Seattle, WA, USA. ³Department of Laboratory Medicine and Pathology, University of Washington, Seattle, WA, USA. ⁴Department of Bioengineering, University of Washington, Seattle, WA, USA. ⁵Department of Physiology and Biophysics, University of Washington, Seattle, WA, USA. ⁶These authors contributed equally: Min Yen Lee, Chenyi Mao. ✉e-mail: jcv2@uw.edu

poor fluorescence properties, making them ill-suited to volumetric imaging. Additionally, histology stains are typically affinity-based, such that they may be washed out of thick samples during multiround processing used in some powerful, recently developed techniques in super-resolution microscopy and cleared-tissue microscopy. In contrast, FLARE utilizes covalent stains with good fluorescence properties (e.g., bright and photostable) that are compatible with volumetric imaging, as well as a range of sample fixation and sample processing methods, including paraffin embedding, super-resolution expansion microscopy (ExM) and cleared-tissue microscopy. Paraffin embedding of specimens, in the form of formalin-fixed paraffin-embedded (FFPE) blocks, is commonly used in pathology and research laboratories owing to ease of tissue sectioning and the ability to store tissues for long periods of time, but the process may degrade specimen antigenicity for labeling with antibodies. FLARE provides histology-stain-like contrast in FFPE specimens while offering greater multiplexing capabilities and high-resolution, volumetric imaging capabilities for standard thin (5–10 μm) or moderately thick FFPE sections (10–100 μm , or thicker).

While a variety of innovative super-resolution microscopy methods have been developed to date^{5–7}, ExM uses a unique approach in which swellable polymer hydrogels grown within fixed specimens uniformly enlarge the sample in three dimensions^{8–10}. This enables features to become resolvable in the enlarged state at ~70 nm resolution or better, even when using conventional microscopes that have a physical diffraction-limited resolution of ~250 nm. Importantly, FLARE is able to brightly label many of the major structures within cells and tissues, which is particularly valuable for ExM since bright signals are required for reliable detection of fluorescence after expansion. To maximize the amount of protein available for staining via FLARE, we focus on a protein-retention variation of ExM termed MAP (magnified analysis of the proteome)¹¹ that uses detergent and heat denaturation to homogenize specimens prior to expansion, although we show that FLARE can also reveal major features for enzymatic digestion-based ExM³. Tissue clearing utilizes various methods to minimize light scattering for the volumetric study of thick intact specimens (100–1,000 μm or more)^{12,13}, but labeling such thick specimens remains a persistent challenge, particularly with large labels like antibodies. Because FLARE labels are small molecules, they can be easily tuned to rapidly penetrate thick specimens to produce uniform stains. For our purposes, we adopted a relatively simple clearing procedure that uses the nontoxic clearing agent ethyl cinnamate (EC)^{14–16}, although FLARE should work well with other clearing methods.

Currently, the chemical reactions used for FLARE to label biological specimens target amine groups, which are abundant on proteins, and oxidized carbohydrates, which are abundant on basement membranes among other structures (Fig. 1). However, FLARE can also target other chemical groups (e.g., thiols, carboxylates) that are abundant in biological samples. This method can be conveniently performed using a range of fluorescent dyes that are commercially available across the visible and near-infrared ranges in order to suit a specific experiment or instrument. FLARE is generally easy to combine with other forms of stains, if desired, including immunolabeling and DNA fluorescence in situ hybridization (DNA FISH)¹⁷.

In H&E staining, hematoxylin stains negatively charged components, such as DNA, blue, while eosin stains positively charged protein components pink. Inspired by H&E staining, we employed *N*-hydroxysuccinimide (NHS)-functionalized fluorophores to covalently label amines on proteins, and fluorescent DNA-staining dyes such as Hoechst or SYBR Green to stain cell nuclei (Fig. 1b)³. In addition, we adapted the periodic acid–Schiff (PAS) stain to covalently label oxidized carbohydrates by first oxidizing the carbohydrates to aldehydes using sodium periodate (NaIO_4) and then subsequently reacting the aldehydes with hydrazide-functionalized fluorophores (Fig. 1b)³. The amine and carbohydrate-labeling reactions for FLARE are well established for protein and carbohydrate bioconjugation, but they are rarely used on intact biological samples for high-resolution and high-contrast fluorescence imaging purposes. During an early phase of the FLARE protocol development, we demonstrated the use of NHS-functionalized fluorophores to rapidly (<5 min) label the surface of unexpanded and uncleared clinical specimens to enable rapid pathology analysis of breast lumpectomy tissue^{18,19}. In addition, recently published papers by other groups also incorporated the use of NHS-functionalized fluorophores to study protein distributions on expanded cultured cells, *Caenorhabditis elegans*, zebrafish and various mouse organ tissue sections^{20–23}. Finally, a number of false-coloring algorithms have been developed to computationally render images of tissues, stained with fluorescent analogs of common pathology stains (e.g., H&E), to mimic the appearance of those (absorptive) pathology stains as viewed with a transmitted-light microscope^{24,25}.

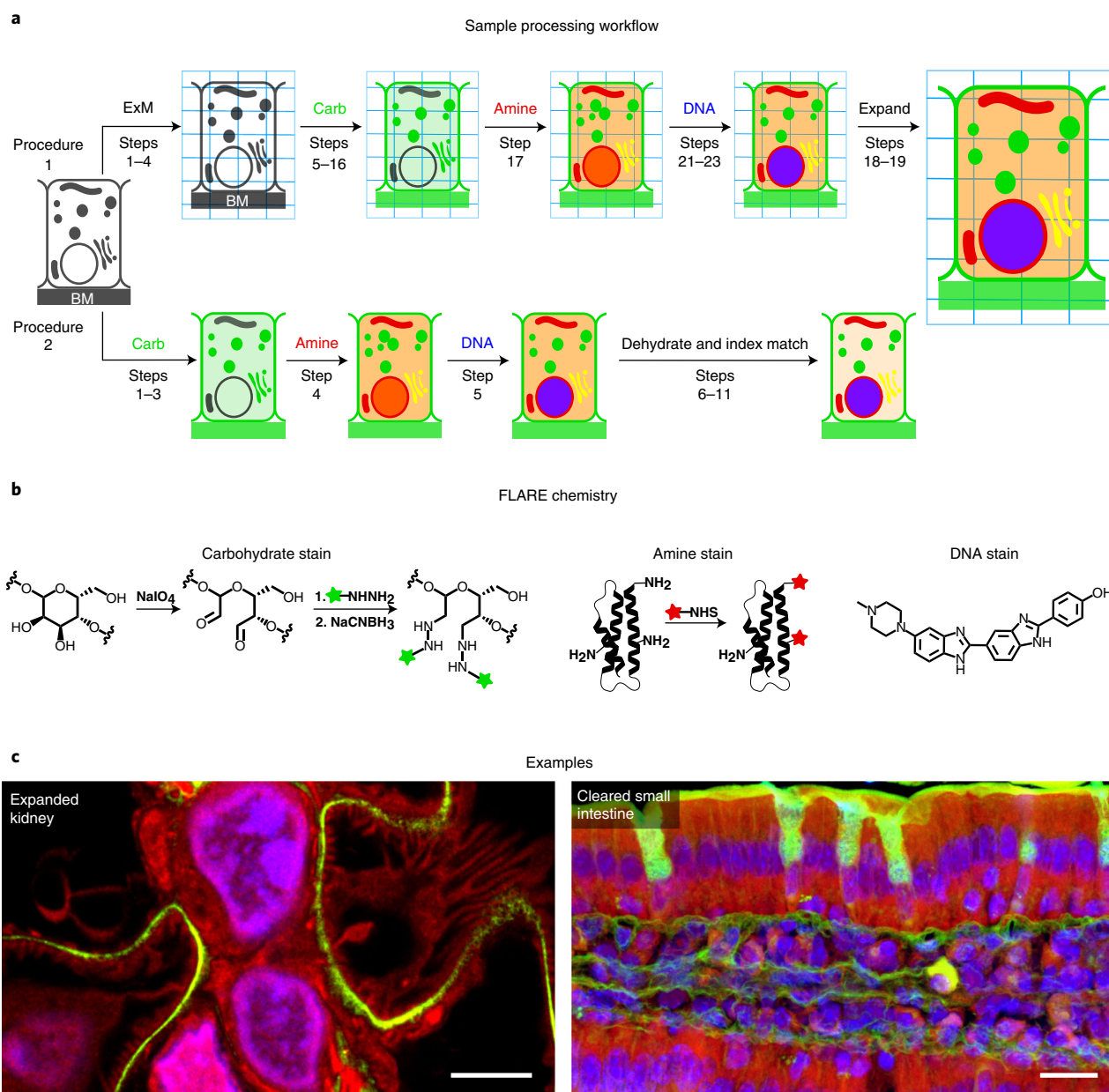


Fig. 1 | Overview of FLARE for fluorescent labeling of biological samples. **a**, General schematic for FLARE staining and sample processing workflow for ExM (Procedure 1) and cleared-tissue microscopy (Procedure 2), where BM is the basement membrane. **b**, Details of FLARE chemistry. Carbohydrates are oxidized to aldehydes using NaIO_4 , coupled to hydrazide-functionalized dyes and stabilized by reduction with NaCNBH_3 . NHS-functionalized dyes are used to label amine groups on proteins. DNA is labeled noncovalently using standard DNA-labeling dyes such as Hoechst. **c**, Example confocal microscopy images of expanded mouse kidney (100 μm thickness) and optically cleared mouse small-intestine tissues (100 μm thickness) that have been stained by FLARE, where carbohydrates are green, accessible amines (on proteins) are red, and DNA is blue. Scale bars, 3 μm (left, pre-expansion units) and 10 μm (right). **c** reproduced with permission from ref. ³, AAAS, under a Creative Commons license CC BY-NC 4.0.

Comparison with other methods

Labeling of specimens with antibodies is a powerful approach that can be used to visualize specific molecules of interest in biological specimens. However, antibodies face certain drawbacks such as poor penetration through thick complex specimens, lot-to-lot variability or sometimes inconsistent commercial availability. There can also be labeling difficulties with highly processed biological specimens, such as FFPE tissues, in which antigen targets may be degraded and not bound well by antibodies. In recent years, there has been substantial progress in improving the speed and

penetration of antibody labeling for thick specimens, such as the use of sophisticated instruments²⁶, novel sample manipulation²⁷, optimized procedures²⁸ and new tissue permeabilization reagents²⁹, even though several of the other challenges remain. If the labeling of specific molecules is required, we suggest that practitioners use antibodies or small-molecule probes that are specific for the desired target. However, if the labeling of general structures is desired, then FLARE offers many advantages, including broad compatibility with other specific labeling methods. For instance, Bertiaux et al. used NHS-ester dyes to delineate the general morphological context of malaria parasites while also studying specific proteins of its cytoskeleton³⁰.

Microscopists have, for many decades, stained specimens with a range of general-contrast, small-molecule labels that are typically examined using transmitted light (typically with thin sections), including H&E and PAS, among others³¹. While many of these stains are either nonfluorescent or have poor fluorescent properties (e.g., broad spectra or a tendency to photobleach), some of the stains have been used for fluorescent microscopy, particularly with the eosin component of H&E^{14,24,32–34}, and less commonly with the PAS stain fuchsin^{35,36}. These classical histology stains are viable options for fluorescent staining of unexpanded specimens, but care should be taken in some cases. Eosin is an affinity-based stain and can be relatively easy to wash away, so there may be challenges with retaining the stain in multistep protocols. The classic PAS histology stain, fuchsin, is covalently bound to the sample by means of a rather labile imine bond that may be hydrolyzed over time in solution, and additionally, the fluorescence emission spectrum of fuchsin is broad and can potentially hinder multiplexed imaging possibilities. On its own, eosin or fuchsin (PAS) staining may be sufficient for some experiments, particularly for thin specimens, but they are not easily used in combination. In contrast, the covalent reactions used in FLARE irreversibly bind fluorophores to amines and carbohydrates on the sample, and thus, the labels are able to tolerate many harsh processing steps (e.g., for DNA FISH, immunolabeling, tissue clearing). Additionally, NHS- and hydrazide-functionalized fluorophores are commercially available for a large number of fluorophores with outstanding properties (brightness and resistance to photobleaching) in virtually any spectral band across the visible to near infrared in the range 400–800 nm.

The radically different approach to microscopy used by ExM has created some unique requirements for fluorescent probes compared with microscopy with unexpanded specimens. Expansion tends to dilute signals substantially (e.g., fourfold linear expansion produces a 64-fold volumetric dilution), and it is challenging to retain affinity-based probes during the procedure because of the extensive washing and somewhat harsh digestion or denaturation procedures. It is therefore important to use bright fluorescent labeling and to retain probes prior to expansion. There has recently been considerable innovation in the development of small-molecule probes for ExM. For example, Shi et al.³⁷, Karagiannis et al.³⁸, Wen et al.³⁹ and Götz et al.⁴⁰ developed small-molecule ExM probes that contain three chemical groups including (1) a group to target a small molecule (e.g., to a lipid, to the actin cytoskeleton using phalloidin or to a genetically encoded reactive protein), (2) a reporting group such as a fluorophore, biotin or click-chemistry group, and (3) a label-retention group such as an acryloyl group that can be covalently linked to a polymer hydrogel. While these custom probes are very powerful, for instance in their ability to target specific molecules, their synthesis requires substantial chemical expertise beyond the scope of most biomedical researchers interested in using these tools. In contrast, FLARE only offers the ability to label relatively general structures, rather than specific molecules, but it is very bright, uses off-the-shelf reagents and can be used to label a sample before or after expansion depending on the overall desired workflow (Fig. 2).

Applications and limitations

FLARE is currently applied only to fixed specimens, but is well suited to a range of specimen types and sample processing techniques. Expanded cultured cells and fresh-fixed tissue sections labeled using FLARE revealed major landmarks and subcellular organelles in great detail (Fig. 1c and Fig. 3). During the development of FLARE, we focused on the use of retinal pigment epithelial cultured cells and mouse kidney tissue as model systems with ExM, although many ExM samples can be brightly labeled by FLARE. For instance, other groups have recently used NHS-functionalized dyes to broadly label proteins in a range of expanded specimens, including *C. elegans*, zebrafish, various mouse organ tissue sections and various cultured cell lines^{20–23}. The method for *C. elegans* expansion was able to visualize important features using NHS-functionalized dyes with adequate contrast despite potential protein loss due to enzymatic digestion. M'Saad et al.²¹ combined the MAP

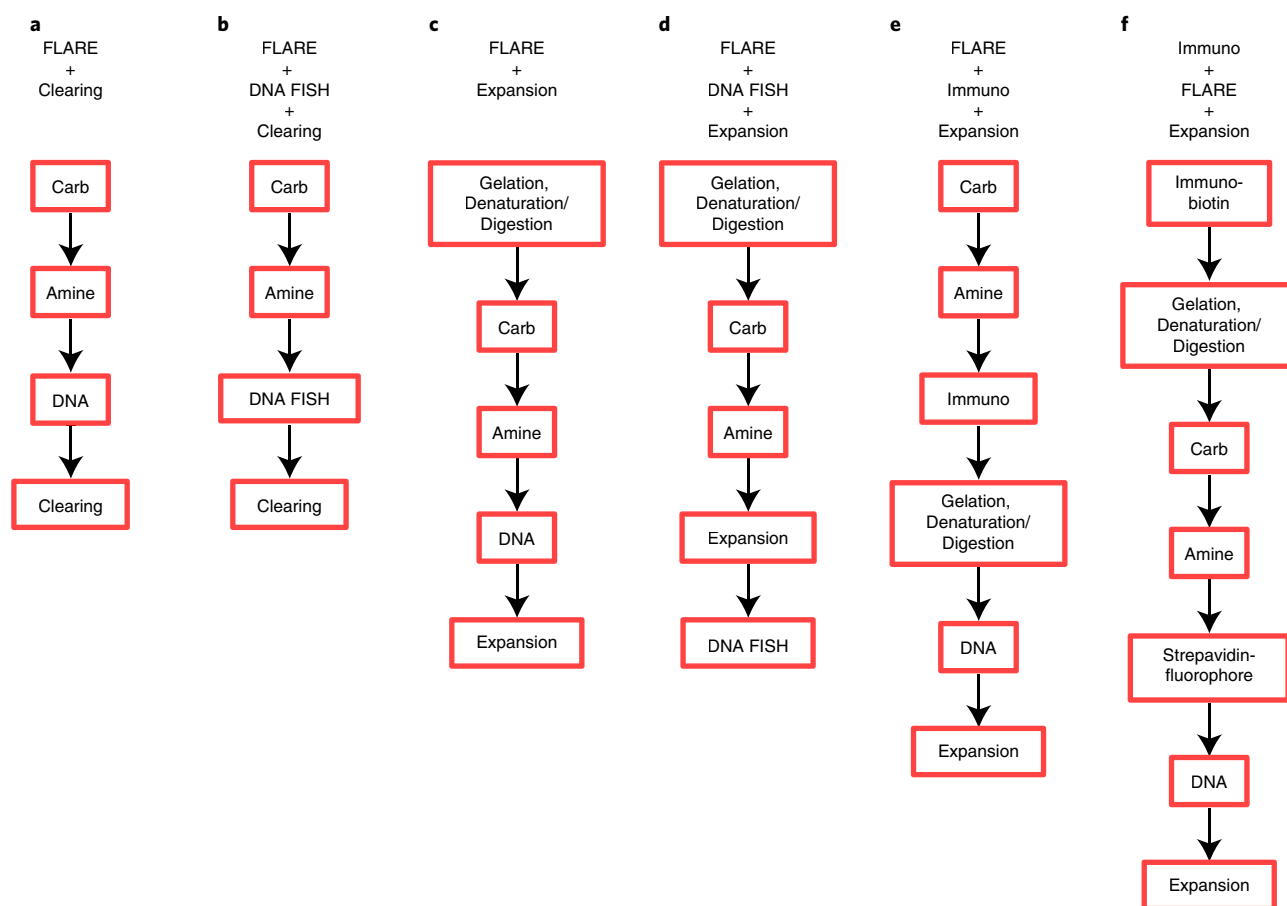


Fig. 2 | A summary of suggested workflows when combining FLARE with DNA FISH and immunofluorescence for clearing or expansion. a, A basic FLARE stain consists of carbohydrate, amine and DNA labeling and may be followed by tissue clearing for unexpanded specimens. **b**, DNA FISH may be added to workflow **a** after FLARE staining, although the noncovalent DNA stain is omitted since the stain is poor after the harsh conditions used for DNA FISH owing to possible dehybridization of double-stranded DNA. **c**, ExM and FLARE may be combined with gelation and denaturation (or digestion) of a sample, FLARE staining and expansion by incubation in water. **d**, DNA FISH may be added to workflow **c** after FLARE staining, again omitting the nonspecific DNA stain as in **b**. **e**, FLARE may be combined with immunostaining and ExM by labeling of carbohydrates, labeling of amines, immunolabeling, gelation and denaturation (or digestion), labeling of DNA and then expansion in water. **f**, Alternative protocol, if FLARE is found to perturb downstream immunolabeling. Carb, carbohydrate stain; Amine, amine stain; DNA, DNA stain; Clearing, organically cleared; Denaturation, protein denaturation using SDS; Digestion, enzymatic protein digestion; Expansion, expansion in water; Immuno, immunolabeling with standard primary and secondary antibodies; Immuno-biotin, immunolabeling with biotin-labeled primary antibodies or a combination of unlabeled primary and biotin-labeled secondary antibodies.

protocol¹¹ with iterative expansion⁴¹, which allowed expansion by ~18-fold, and labeled the resulting gels with NHS-ester-functionalized dyes to study whole-cell protein distributions at very high resolution. Damstra et al.²² reported a new single-step, approximately tenfold expansion protocol that together with NHS-ester dye labeling reveals details at a very high spatial resolution. Unexpanded tissue sections are easily labeled by FLARE either for highly processed FFPE specimens (Fig. 4) or specimens that are freshly fixed (Fig. 5) or cryopreserved. Uniform tissue labeling can be achieved for thin sections (e.g., 5- μ m-thick FFPE sections) or thick ones (1 mm fresh-fixed sections, Fig. 8), although some tuning of the labeling protocol is required as described for thick specimens and, in addition, imaging deep into thick samples generally requires optical clearing.

It is important to consider the features being stained in a given sample when using FLARE. For example, in expanded cultured cells, we found that many subcellular organelles were easily recognized, including mitochondria, lysosomes, the Golgi apparatus, nuclear pores, kinetochores and centromeres. However, other structures, notably the cytoskeleton, were not easily identified despite a relatively high protein abundance³. Subcellular organelles were not generally as easily discerned in relatively more complex 3D tissues, although we were able to observe details of nuclei and mitochondria in expanded mouse renal tubules in addition to details of basement membranes and

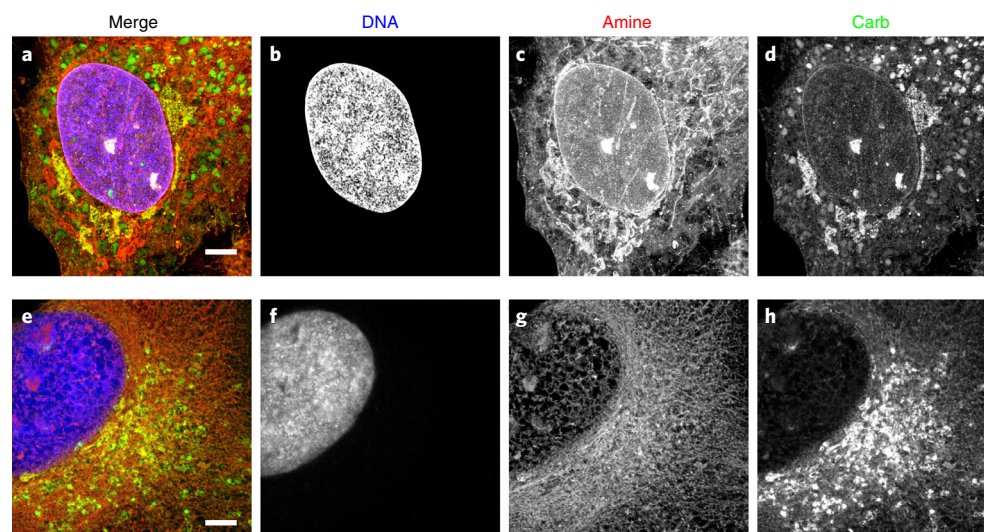


Fig. 3 | Comparison of fixation conditions for expanded RPE cells stained by FLARE. Red corresponds to amine stain, green corresponds to carbohydrate stain, and blue corresponds to nuclear stain. **a–d**, Fixation with PFA and GA showing generally preserved membrane-bound organelles and other structures. **e–h**, Fixation with glyoxal showing substantial perturbations. Scale bars (pre-expansion), 3 μm . **a–d** reproduced with permission from ref. ³, AAAS, under a Creative Commons license CC BY-NC 4.0.

interdigitated podocyte cells in expanded mouse renal glomeruli. Cell boundaries are brightly outlined in muscle cells in the carbohydrate stain (e.g., smooth muscle cells of the mouse small intestine³) but not in some other specimens, while bands of connective tissue tend to be enriched in both carbohydrates and amines in human prostate tissue.

Taken together, the above observations suggest that the features that are revealed by FLARE depend on the distribution of the reactive groups in the specimen, the relative reactivity of those groups, and overall sample processing procedures (including fixation) that may consume or mask some reactive groups. Not surprisingly, classic histology stains, which were the inspiration for FLARE, also show contrast and features that depend prominently on the sample itself⁴². While FLARE will not stain every desired structure in every specimen of interest, published examples can in some cases help practitioners judge the likelihood of success. Additionally, since FLARE is easy and inexpensive, it can be readily attempted on other specimens of interest.

There may be structures or molecules that will simply not be possible to label with high contrast using FLARE alone. In such cases, researchers will need to use traditional specific labels, such as immunolabeling of proteins or labeling of nucleic acids by FISH. If desired, however, FLARE can often be combined with the use of these specific labels (e.g., antibodies or DNA oligonucleotides), and the FLARE dyes can be chosen in virtually any spectral region across the visible or near-infrared to accommodate other probes. In terms of antibody labeling, we found that 14 out of 16 tested antibodies were able to label their targets on cells or tissues after FLARE, and that the carbohydrate oxidation step appeared to be the step that perturbed subsequent antibody labeling for 2 out of the 16 tests (amine labeling did not perturb antibody binding in any of the tests)³. If desired, it is possible to perform immunolabeling before FLARE to avoid oxidation-induced loss of antigenicity², and it may be possible to use milder oxidation that preserves antigenicity, although we have not yet tested this thoroughly. For the combination of FLARE and DNA FISH, we performed FLARE before DNA FISH and achieved the expected results (Fig. 5b,c), showing that FLARE does not substantially perturb DNA FISH.

The detailed procedures for FLARE that we describe here are compatible with a variety of types of specimens, sample formats and applications, including the examples shown for expanded cells and tissues, cleared thick tissues and thin uncleared tissue sections. Although FLARE is useful for obtaining relatively general contrast in order to quickly explore the general physiology of specimens, researchers who wish to selectively stain specific structures or molecules are advised to use traditional, specific labels. In those situations, it may nonetheless still be useful to combine FLARE with specific labels to gain the best of both worlds.

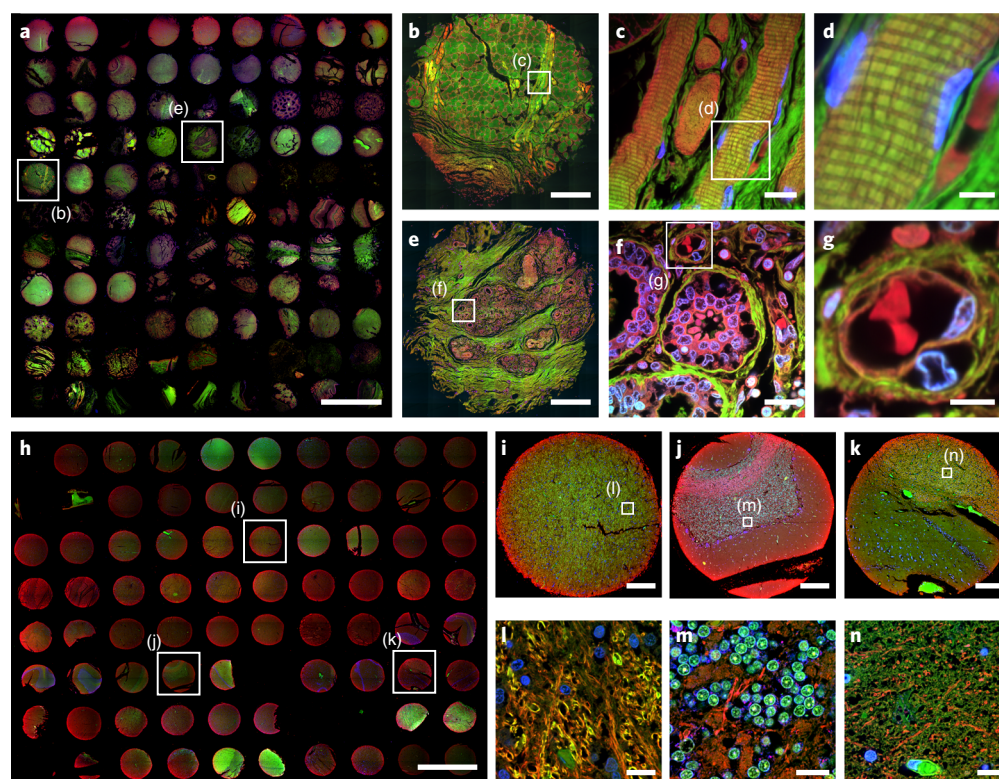


Fig. 4 | FLARE staining of 5- μ m-thick FFPE human tissue microarrays. **a–g**, Overview image of 96 human organ tissue cores that were FLARE-stained for amines (red), carbohydrates (green) and DNA (blue), and then tiled using a 4 \times objective lens on a widefield microscope (**a**). See also Supplementary Figs. 1 and 2 for a larger version of **a** as well as a diagram of which cores represent which tissues. Zoom-in views of a tonsil core from the boxed region in **a** were recorded by confocal microscopy with tiling using a 20 \times objective lens (**b**) and single-region imaging using a 60 \times objective lens (**c,d**). The cross-striations of skeletal muscle fibers are well visualized in **c** and **d**, and fibrocytes and erythrocytes are distinctively labeled in **d**. Zoom-in views of the breast core from the boxed region in **a** were recorded by confocal microscopy with tiling using a 20 \times objective lens (**e**) and single-region imaging using a 60 \times objective lens (**f,g**). Breast lobules surrounded by carbohydrate-rich connective tissue are well visualized in **e–g**, as are details of secretory alveoli and nearby blood vessels. **h**, Overview image of 75 human brain tissue cores that were FLARE-stained for amines (red), carbohydrates (green), and DNA (blue), and then tiled using a 4 \times objective lens on a widefield microscope. See also Supplementary Figs. 3 and 4 for a larger version of **h** as well as a diagram of which cores represent which regions of the brain. **i–k**, Cores for midbrain (**i**), cerebellum (**j**) and hippocampus (**k**), selected from **h**, highlighting the variable distribution of amines and carbohydrates within the brain. **l–n**, Zoom-in views of the regions indicated in boxes of **i–k** were imaged using a 60 \times objective lens, revealing highly distinct tissue morphologies such as the cell bodies of cerebellar granule cells that are brightly labeled by the carbohydrate stain in **m**. Scale bars: 3 mm (**a,h**), 300 μ m (**b,e,i–k**), 15 μ m (**c,f,l–n**), 6 μ m (**d,g**). The custom Wolfram Mathematica scripts used for stitching tiling images (Fig. 4a,h) are available as Supplementary Code.

Experimental design

When designing FLARE labeling experiments, it is crucial to consider the type of information needed from the sample. First, determine whether FLARE is to be used alone or in combination with another labeling modality. Second, decide whether expansion is needed to visualize the biological component of interest at high spatial resolution. While we focus on denaturation-based MAP in our protocol, we have also had success using enzymatic digestion-based ExM (see ‘FLARE with other modalities’). These expansion methods are well described and validated^{8–11,20,21,43,44}, and we advise selection of an expansion method suitable for the specific sample. Third, plan control experiments for labeling, especially on new biological specimens that have not already been tested and for experiments that seek to combine various labeling methods. For example, if immunolabeling is required in combination with FLARE, first establish whether the chemical stains perturb the desired immunolabel and then determine if a shift in staining workflow is necessary.

Overview of the procedures

Here we present two FLARE procedures applicable to different specimen types, where Procedure 1 outlines how to apply the method either for expanded cultured cells (option A throughout Procedure

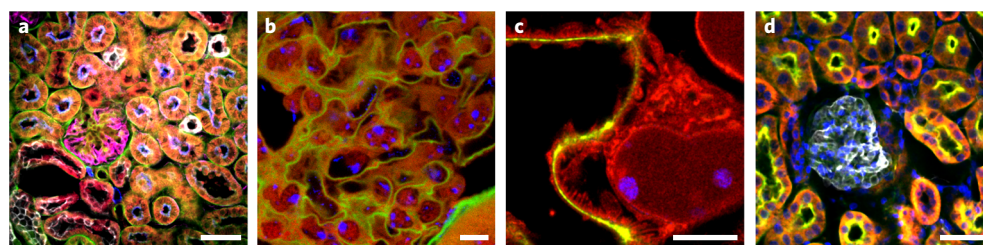


Fig. 5 | Compatibility of FLARE with diverse procedures. FLARE-stained 100- μ m-thick mouse kidney sections prepared using various procedures that include two different ExM variants, tissue clearing and the combination with either immunostaining or DNA FISH. **a**, Five-color confocal microscopy image of unexpanded mouse kidney tissue that was stained for carbohydrates (green) and amines (red), and then immunostained for podocalyxin (magenta), aquaporin-1 (blue) and cytokeratin 8+18 (gray). **b**, Confocal microscopy image of unexpanded cleared mouse kidney tissue that was stained for carbohydrates (green), amines (red) and then DNA FISH (blue) against pericentromeric major satellite (MaSat) DNA. **c**, Confocal microscopy image of expanded mouse kidney tissue that was treated by the detergent-based protocol and stained for carbohydrates (green), amines (red) and then DNA FISH (blue) against MaSat DNA. **d**, Confocal microscopy image of enzyme digested expanded mouse kidney tissue that was stained for carbohydrates (green), amines (red) and DNA (blue), and then immunostained for podocalyxin (gray). Scale bars: 50 μ m (**a,d**), 5 μ m (**b**) and 3 μ m (**c**, pre-expansion units). **a** and **c** reproduced with permission from ref. ³, AAAS, under a Creative Commons license CC BY-NC 4.0.

1) or for expanded thin (\sim 100 μ m) tissue sections (option B throughout Procedure 1), and Procedure 2 details the method for unexpanded cleared thick tissue sections (option A throughout Procedure 2) and tissue microarray (option B throughout Procedure 2). The main stages of the protocol are shown in Fig. 2 and can be divided into two sections: labeling and sample processing. The labeling is done by FLARE, which includes a carbohydrate stain (Steps 5–16 of Procedure 1 or Steps 1–3 of Procedure 2), an amine stain (Step 17 of Procedure 1 or Step 4 of Procedure 2) and a DNA stain (Steps 21–23 of Procedure 1 or Step 5 of Procedure 2). Although FLARE does not have a specific requirement for sample fixation, paraffin-embedded samples or other dehydrated samples should be rehydrated prior to performing FLARE. The sample processing steps will depend on what kind of information the researchers wish to obtain. We recommend the use of ExM sample processing (Steps 1–4, 20 of Procedure 1) if super-resolution visualization of nanoscale features is required. On the other hand, we recommend optical clearing sample processing (Steps 6–11 of Procedure 2) for relatively thick samples where volumetric information is required. For ExM, FLARE can be performed before or after expansion processing, but when combining FLARE with optical clearing, FLARE must be performed first.

To demonstrate FLARE's general utility, we describe procedures that can be applied to a wide variety of samples (including human retinal pigment epithelial (RPE-1) cells, mouse kidney tissues, FFPE human tissue microarrays), freshly fixed or paraffin-embedded, from 4 μ m to 1 mm thickness. Although several experimental parameters such as incubation times and dye concentrations vary, suggested parameters have been included for each procedure section. Since FLARE aims to label amines, carbohydrates and nucleic acids that broadly exist in biological organisms, researchers should be able to label their samples with FLARE. However, to achieve a desired result, we recommend researchers begin with a procedure that most closely matches the thickness of their samples. Based on the outcome and issues encountered, labeling can be improved by considering the specific aspects discussed below, and the troubleshooting guidance.

Sequence of labeling while combining with DNA FISH or immunolabeling

In general, the preferred sequence for using FLARE is: carbohydrate, amine and DNA. It is preferred to label carbohydrates first because the periodate oxidation step (that converts carbohydrates to aldehydes) also tends to chemically bleach fluorophores already present on the specimen. By using this order, the amine-reactive fluorophores are introduced after the oxidation step that could otherwise bleach them (Fig. 2a,c).

DNA FISH may be performed on FLARE-stained specimens using either tissue clearing or ExM processing (Fig. 2b,d). However, the harsh conditions used in DNA FISH procedures appear to dehybridize double-stranded DNA, leading to unsuccessful conventional DNA stains (e.g., DAPI). For the combination of immunolabeling with FLARE, immunolabeling can simply be performed after FLARE (Fig. 2e). In the event that an antibody does not label a sample well after FLARE, we recommend an alternative labeling sequence consisting of immunolabeling using a biotin-conjugated

primary or secondary antibody (biotin is resistant to NaIO_4 oxidation), followed by FLARE, and then a final incubation with a fluorescent streptavidin conjugate (Fig. 2f).

Integration of FLARE with ExM requires a few considerations. We generally perform FLARE either before all expansion procedures or after gelation and sample homogenization, but we have not observed clear differences in the staining patterns, making either order a viable choice. However, slightly longer incubation times are required for FLARE stains after gelation and sample homogenization, possibly to give the dyes more time to diffuse through a thicker sample after partial (approximately twofold) expansion. Unlike ExM approaches that use enzymatic digestion, MAP enables post-gel immunostaining owing to better preservation of protein epitopes¹¹. Although we have not tested immunostaining after FLARE on expanded samples, we have previously tested a range of antibodies against nonexpanded FLARE-processed samples, and we found that most antibodies successfully bound their targets (14/16) (ref.³). We, therefore, hypothesize that FLARE-processed specimens are likely to still be stained well with antibodies after expansion for scenarios where the expansion procedure does not impede antibody labeling.

Fluorophore choice

In this protocol, we typically use the commercially available reactive fluorophores AT647N-NHS and AT565-NHNH₂ to label amines and oxidized carbohydrates, respectively, but these may be easily substituted for other fluorophores that have the correct chemical functionality and non-overlapping spectra. If FLARE is performed before gelation, then it is also important to choose fluorophores that survive the oxidizing environment of the hydrogel polymerization step. AT488, AF488, AT565, AF568 and AT647N are all examples of dyes that survive the oxidizing environment of the typical hydrogel polymerization process. If combining FLARE with immunolabeling or DNA FISH, then it is also important to make sure that the spectra of all channels are isolatable from each other.

For instance, FLARE could be performed with AT647N-NHS labeling of amines (664 nm emission maximum), AT565-hydrazide labeling of oxidized carbohydrates (590 nm emission maximum) or Hoechst labeling of DNA (460 nm emission maximum), and an immunostain or DNA FISH stain could be performed using AF488 (525 nm emission maximum). The NHS- or hydrazide-functionalized dyes can be swapped for dyes in other spectral ranges by purchasing other commercially available dyes with the same reactive chemical groups. For instance, in Fig. 5b,c, we selected ATTO-488-NHS to label amines so that we could also use ATTO-647N oligonucleotides for DNA FISH. Intriguingly, Sim et al.²³ reported some dependence of the stain specificity with NHS labeling on the hydrophobicity of different fluorophores. Depending on dye availability and the specific goals for a desired experiment, it may be convenient to label specimens with dyes bearing reactive groups other than NHS ester or hydrazide. For example, isothiocyanate-functionalized dyes also efficiently react with amine groups, and hydroxylamine-functionalized dyes also efficiently react with oxidized carbohydrates⁴⁵.

Tuning of the chemistry for uniform labeling

Some reaction conditions were tuned to improve FLARE labeling. First, for both expanded and unexpanded samples, we selected a pH of ~6.0 for the AT647N-NHS incubation buffer that promotes stain uniformity, in contrast with typical protein bioconjugation reaction conditions that use a higher pH (~8.4) to promote faster or more complete reactions⁴⁵. This is because NHS esters are less reactive and also hydrolyze (to a nonreactive state) more slowly at a lower pH; under these conditions, fluorophores are able to penetrate more deeply into the sample prior to reaction/hydrolysis^{46,47}. Second, for expanded samples, due to the negative charge of the hydrogel, we used a relatively high salt concentration (1 M NaCl) in the 100 mM sodium acetate buffer to enable negatively charged molecules to penetrate better through the hydrogel network via electrostatic screening. Third, for unexpanded cleared samples, in addition to lowering the pH, we introduced the organic solvent THF as a co-solvent during the staining incubation to facilitate the dye diffusion process. Other organic solvents that are miscible with water and do not interfere with the reaction could also be used. The goal of optimizing these parameters is to increase diffusion relative to the coupling reaction in order to produce a uniform stain, especially in thick specimens. Our procedure should work well for cleared samples that are <1 mm thick and for expanded samples that are <100 μm thick. Researchers might need to adjust pH, incubation time or salt concentration (for expanded samples) when working with thicker samples.

Level of expertise needed. FLARE does not require specific expertise for the implementation. However, researchers who are not familiar with the procedures for ExM are recommended to consult previously published expansion protocols^{8–11,20,21,43,44}, and researchers who are not familiar with using EC to clear tissue are recommended to consult previously published EC protocols^{14–16}.

Materials

Biological materials

- Cell line or tissue of interest: in the procedures, we include specific instructions for the use of the following as example applications:
 - H-tert Retinal Pigment epithelium (H-tert RPE-1 cells, ATCC, cat. no. CRL-4000, RRID: [CVCL_4388](#)) **!CAUTION** The cell lines used in your research should be regularly checked to ensure they are authentic and frequently be tested for mycoplasma infection.
 - Mouse tissue (2-month-old C57BL/6 male mice) **!CAUTION** Any experiments using mouse material must conform to relevant institutional and national regulations. Use of this protocol to generate the results shown here was approved by the Institutional Animal Care and Use Committee of the University of Washington (protocol no. PROTO20180063). Procedures involving animals were conducted according to the institutional guidelines that are in compliance with National Institutes of Health policies.
 - Human tissue microarray (US Biomax, cat. no. BNC17011at, FDA999rt) **!CAUTION** Any experiments using human material must conform to relevant institutional and national regulations and require patient consent.
 - Human kidney tissue (NW Biotrust, Biomaterial ID: 312620) **!CAUTION** Any experiments using human material must conform to relevant institutional and national regulations. Use of this protocol to generate the results shown here was approved by the University of Washington Review Board with deidentification.

Reagents

- 10× phosphate-buffered saline, pH 7.4 (PBS; Fisher Bioreagents, cat. no. L-5400)
- Sodium azide (NaN_3 ; Fisher Scientific, cat. no. S2271)
- Sodium acetate, anhydrous (NaOAc ; Fisher Scientific, cat. no. S209)
- Sodium chloride (NaCl ; Fisher Scientific, cat. no. 271)
- 4-Morpholineethanesulfonic acid (MES; Sigma-Aldrich, cat. no. M8250)
- NaIO_4 (Sigma-Aldrich, cat. no. 311448)
- Sodium cyanoborohydride (NaCNBH_3 ; Sigma-Aldrich, cat. no. 156159) **!CAUTION** NaCNBH_3 is toxic and releases flammable gas upon contact with water; wear appropriate personal protective equipment (PPE) and handle with care **▲CRITICAL** NaCNBH_3 is sensitive to humidity and should be stored in a dry environment.
- ATTO 647N NHS ester (AT647N-NHS; Sigma-Aldrich, cat. no. 18373)
- ATTO 565 hydrazide (AT565-NHNH₂; ATTO-TEC GmbH, cat. no. AD565)
- Hoechst 33258 (Sigma-Aldrich, cat. no. B2883)
- SYBR Green I (Invitrogen, cat. no. S7563)
- Deionized water (DI water)
- Ammonium persulfate (APS; Bio-Rad Laboratories, cat. no. 161-0700)
- Tetramethylethylenediamine (TEMED; Bio-Rad Laboratories, cat. no. 161-0800) **!CAUTION** TEMED is flammable and a toxic respiratory hazard; handle in small amounts and work in a well-ventilated area.
- 32% (vol/vol) paraformaldehyde (PFA; Electron Microscopy Sciences, cat. no. RT15714) **!CAUTION** PFA is a toxic respiratory hazard; handle in small amounts and work in a well-ventilated area.
- 50% (vol/vol) glutaraldehyde (GA; Electron Microscopy Sciences, cat. no. 16300) **!CAUTION** GA is a toxic respiratory hazard; handle in small amounts and work in a well-ventilated area.
- 1,4-Piperazinediethanesulfonic acid (PIPES; Sigma-Aldrich, cat. no. P6757)
- Triethylene glycol diamine tetraacetic acid (EGTA; Alfa Aesar, cat. no. ALFAA16086)
- Magnesium chloride (MgCl_2 ; Sigma-Aldrich, cat. no. M8266)
- 40% (wt/vol) glyoxal (Sigma-Aldrich, cat. no. 128465)
- Sodium borohydride (NaBH_4 ; Fisher Scientific, cat. no. AC189300050) **!CAUTION** NaBH_4 is toxic and releases flammable gas upon contact with water; wear appropriate PPE and handle it in small amounts **▲CRITICAL** NaBH_4 may adversely react with some fluorophores (such as cyanine dyes).

- 40% (wt/vol) acrylamide (AA; Bio-Rad Laboratories, cat. no. 161-0140) **!CAUTION** AA is carcinogenic and may cause nervous system damage; wear appropriate PPE and work in a well-ventilated area.
- 2% (wt/vol) bis-acrylamide (BA; Bio-Rad Laboratories, cat. no. 161-0142) **!CAUTION** BA is carcinogenic and may cause nervous system damage; wear appropriate PPE and work in a well-ventilated area.
- Sodium acrylate (SA; Sigma-Aldrich, cat. no. 408220)
- VA-044 (Thermo Fisher Scientific, cat. no. NC0471397)
- Triton X-100 (Sigma-Aldrich, cat. no. X100)
- Poly-lysine (Sigma-Aldrich, cat. no. P8920)
- Sodium dodecyl sulfate (SDS; Sigma-Aldrich, cat. no. L3771)
- Tris base (Tris; Fisher Scientific, cat. no. BP152-500)
- Tetrahydrofuran (THF; Fisher Scientific, cat. no. T425) **!CAUTION** THF is volatile and flammable; wear appropriate PPE and work in a fume hood.
- Dichloromethane (DCM; Fisher Scientific, cat. no. D37) **!CAUTION** DCM is toxic, volatile and flammable; wear appropriate PPE and work in a fume hood.
- EC (Sigma-Aldrich, cat. no. 112372)
- Anhydrous dimethyl sulfoxide (DMSO; Sigma-Aldrich, cat. no. 276855)

Equipment

- Rectangular #1.5 glass coverslip (Fisher Scientific, cat. no. 12544E, 24 × 50 mm)
- 12 mm round coverslip (Electron Microscopy Sciences, cat. no. 72230-01)
- Forceps (Electron Microscopy Sciences, cat. no. 78318-3)
- Parafilm M Bemis (VWR, cat. no. 52858)
- Razor blade (American Line, cat. no. 66-0089)
- 12-well plate (Pipette, cat. no. 712011)
- Six-well plate (Pipette, cat. no. 229106)
- Paint brush (Black Art Materials, cat. no. 05130-1000)
- Scintillation vial, large enough (~28 mm diameter) to hold tissue section (Wheaton, cat. no. 986546)
- 1.5 mL microcentrifuge tube (VWR, cat. no. 76332-064)
- Heat blocks (VRW, model MDHB4)
- Rocking platform shaker (VWR, model 100)
- Cell incubator (Thermo Fisher Scientific, model 370; relative humidity 90%; CO₂ concentration 5%)

Reagent setup

1× PBS (pH 7.4)

For 1 L of 1× PBS, add 100 mL 10× PBS to 900 mL DI water. Store at room temperature (RT, 20–25 °C).

20% (vol/vol) Triton X-100 solution

For 10 mL of 20% (vol/vol) Triton X-100 solution, add 2 mL pure Triton X-100 to 8 mL DI water. **▲ CRITICAL** Warm the pure Triton X-100 in a 60 °C bath for a few minutes prior to use for easier handling. Store at 4 °C until use, with a recommended storage period of 6 months.

10× PEM buffer

For 100 mL of 10× PEM buffer, add 30.2 g of PIPES, 0.38 g of EGTA and 95 mg MgCl₂ to 90 mL of DI water. Adjust pH with aqueous 1 M NaOH or HCl to pH 7, and subsequently adjust total volume to 100 mL with DI water. Once prepared, store at 4 °C until use, with a recommended storage period of 6 months.

Extraction solution

Extraction solution contains 100 mM aqueous PIPES buffer pH 7, 1 mM EGTA, 1 mM MgCl₂ and 0.5% (vol/vol) Triton X-100 solution, and it can be prepared from above 10× PEM buffer and 20% (vol/vol) Triton X-100 solution. For 10 mL of extraction solution, add 1 mL of 10× PEM buffer, 0.25 mL of 20% (vol/vol) Triton X-100 and 8.75 mL of DI water. Prepare fresh each time.

PFA/GA fixation solution

PFA/GA fixation solution contains 100 mM aqueous PIPES buffer pH 7, 1 mM EGTA, 1 mM MgCl₂, 3.2% (vol/vol) PFA and 0.1% (vol/vol) GA, and it can be prepared from 10× PEM buffer,

32% (vol/vol) PFA stock and 50% (vol/vol) GA stock. For 10 mL of PFA/GA fixation solution, add 1 mL of 10× PEM buffer, 1 mL of 32% (vol/vol) PFA stock, 20 µL of 50% (vol/vol) GA stock and 7.98 mL of DI water. Prepare fresh each time.

PFA fixation solution

Use 10× PEM buffer and 32% (vol/vol) PFA stock to prepare a PFA fixation solution that contains 100 mM aqueous PIPES buffer (pH 7), 1 mM EGTA, 1 mM MgCl₂ and 4% (vol/vol) PFA. For 10 mL of PFA fixation solution, add 1 mL of 10× PEM buffer, 1.25 mL of 32% (vol/vol) PFA stock and 7.75 mL of DI water. Prepare fresh each time.

3% (vol/vol) glyoxal mixture solution (pH 5)

The glyoxal mixture solution contains 0.75% (vol/vol) glacial acetic acid, 3% (vol/vol) glyoxal and 19.9% (vol/vol) absolute ethanol. For 10 mL of glyoxal mixture solution, add 75 µL of glacial acetic acid, 0.3 mL of glyoxal, 1.99 mL of ethanol and 5 mL of DI water. The pH is adjusted to 5 using 1 M NaOH before adjusting the total volume to 10 mL with DI water. Prepare fresh each time.

NaOAc buffer

For 25 mL of NaOAc buffer, add 246 mg NaOAc powder to 25 mL of DI water. Adjust pH to 5 using 1 M HCl. The buffer can be stored at RT and should be stable for at least 2 weeks.

NaOAc/NaCl buffer

For 25 mL of NaOAc/NaCl buffer, add 246 mg NaOAc powder and 1.75 g NaCl to 25 mL of DI water. Adjust pH to 5 using 1 M HCl. The buffer can be stored at RT and should be stable for at least 2 weeks.

MES buffer

For 25 mL of MES buffer, add 586 mg MES and 263 mg NaCl to 25 mL of DI water. Adjust pH to 6 using 1M NaOH. The buffer can be stored at RT and should be stable for at least 2 weeks.

AT565-NHNH₂ master stock

Add 200 µL pf anhydrous DMSO to 1 mg AT565-NHNH₂ to give a concentration of 5 mg/mL (6.65 mM). Store at −20 °C until use, with recommended maximum storage of 6 months.

AT647N-NHS ester master stock

Add 200 µL of anhydrous DMSO to 1 mg of AT647N-NHS to give a concentration of 5 mg/mL (5.93 mM). Store at −20 °C until use, with recommended maximum storage of 2 months. **▲ CRITICAL** Conditions should be kept anhydrous as NHS ester is prone to hydrolysis.

SYBR Green master stock

Prepare a master stock of SYBR Green with a concentration of 10 mg/mL (19.6 mM) using anhydrous DMSO. Add 1 mL of anhydrous DMSO to 10 mg of SYBR Green. Store at −20 °C until use, with recommended storage of 12 months.

Monomer solution (cells)

A monomer solution for cells contains 20% (wt/vol) AA, 10% (wt/vol) SA, 0.05% (wt/vol) BA, 4% (wt/vol) PFA and 0.67% (wt/vol) TEMED. For 4 mL of cell monomer solution, add 2 mL of 40% (wt/vol) AA, 400 mg SA, 0.1 mL BA, 0.5 mL of 32% (vol/vol) PFA and 26.8 µL of TEMED to 1273.2 µL of 1× PBS. **▲ CRITICAL** The monomer solution can be stored at 4 °C for maximum 1 week, protected from light. The monomer solution may degrade during this period; therefore, it is recommended to prepare fresh each time if possible.

Monomer solution (tissues)

A monomer solution for tissues contains 20% (wt/vol) AA, 10% (wt/vol) SA, 0.05% (wt/vol) BA and 4% (wt/vol) PFA. Store at 4 °C for up to 1 week, protected from light. For 4 mL of tissue monomer solution, add 2 mL of 40% (wt/vol) AA, 400 mg SA, 0.1 mL BA and 0.5 mL of 32% (vol/vol) PFA to 1,300 µL of 1× PBS. **▲ CRITICAL** The monomer solution can be stored at 4 °C for maximum 1 week, protected from light. The monomer solution may degrade during this period; therefore, it is recommended to prepare fresh each time if possible.

Denaturing solution

Denaturing solution contains 200 mM SDS, 200 mM NaCl and 50 mM Tris. For 20 mL of denaturing solution, add 1.73 g SDS, 350 mg NaCl and 182 mg Tris to 20 mL of water. Adjust pH to 9.3 using 1 M HCl. Store at 37 °C until use. **▲ CRITICAL** Warm the mixture to dissolve the solids faster prior to pH adjustments.

PBST solution

PBST solution contains 0.1% Triton X-100 and 0.02% (wt/vol) NaN_3 in 1× PBS. For 1 L of PBST solution, add 13 mg of NaN_3 and 1 mL of Triton X-100 to 999 mL of 1× PBS. Store at RT until use, with recommended storage period of 6 months.

Hoechst 33258 master stock

Prepare a Hoechst 33258 master stock with a concentration of 10 mg/mL (23.4 mM) using anhydrous DMSO by adding 1 mL of anhydrous DMSO to 10 mg of Hoechst 33258. Store at −20 °C until use.

THF/NaOAc solution

For 2 mL of solution, add 1 mL of THF to 1 mL of NaOAc buffer. Prepare fresh each time.

THF/MES solution

For 2 mL of solution, add 1 mL of THF to 1 mL of MES buffer. Prepare fresh each time.

THF/PBS solution

For 2 mL of solution, add 1 mL of THF to 1 mL of 1× PBS buffer. Prepare fresh each time.

Tissue extraction

We typically obtain mouse tissue specimens following cardiac perfusion with 1× PBS for 3 min followed by 4% PFA (vol/vol) solution in 1× PBS for 5 min (7 mL/min). Organs of interest were then collected and post-fixed in 4% (vol/vol) PFA solution in 1× PBS. Depending on the size of the organ, the post-fixation period varies from 1 h (for kidney) to 6 h (for liver). Afterwards, organs were washed with a 1× PBS solution three times and sliced by a vibratome to 100 μm thickness.

Procedure 1**FLARE for expanded specimens**

▲ CRITICAL FLARE labeling of fixed and expanded specimens is described here either for routinely cultured cells (indicated as option A throughout the Procedure, where our model specimen was H-tert Retinal Pigment Epithelium cells) or for thin (~100 μm) tissue sections (option B, where our model specimen was mouse kidney tissue sections). The FLARE labeling procedure is quite general and should work well with many tissues (e.g., brain, muscle, kidney); however, expansion-based methods may require optimization to ensure uniform expansion with different specimens or thicker/thinner specimens, and researchers encountering difficulties should consult the primary literature for examples similar to their specimen. Other researchers have recently applied NHS labeling to a range of expanded specimens, including Yu et al.²⁰, who labeled whole expanded *C. elegans* organisms; Damstra et al.²², who labeled other expanded cultured cells and expanded mouse brain; and Sim et al.²³, who labeled expanded zebrafish larvae and various expanded mouse tissue sections. The expansion method used in this protocol was adapted and modified from Ku et al.¹¹ The bold numbers in brackets denote the quantities used during the experiment. As a general start, we would suggest following the processing and staining procedures as written for either the cell or tissue section. Then, optimize the label, if needed, using the Troubleshooting section.

1 To prepare cell culture samples follow option A, and for tissue samples follow option B.

(A) Cell culture preprocessing and reduction ● Timing ~12 h

- (i) Grow cells to ~70–90% confluency on #1.5 round coverslips. For H-tert RPE-1 cells, this can be achieved by seeding ~30,000–70,000 cells per well on #1.5 round coverslips in 24-well culture plates and incubate for 12 h at 37 °C.
- (ii) Fix the cells using 0.500 mL of PFA/GA fixation solution for 10 min at RT (~20 °C). Store fixed cells in 1× PBS with 3 mM NaN_3 at 4 °C prior to use.

■ PAUSE POINT Fixed cells can be stored for up to 6 months at 4 °C.

- (iii) **OPTIONAL** Prepare a fresh, aqueous 10 mM NaBH_4 solution (4 mg NaBH_4 in 10 mL DI H_2O).

▲ CRITICAL STEP Steps 1A(iii–v) reduction steps are optional, but are advised in order to quench remaining aldehydes from the fixation process and to lower the amount of GA-induced fluorescence.

- (iv) **OPTIONAL** Incubate the fixed cells with the NaBH₄ solution prepared in Step 1A(iii) for 10 min (~0.5 mL per well, 24-well plate).
- (v) **OPTIONAL** Wash cells with 1× PBS (0.5 mL per well, repeat three times).

■ PAUSE POINT Store up to 6 months in 1× PBS with 3 mM NaN₃, depending on your fixation conditions and cell sample stability.

(B) Tissue preprocessing ● Timing ~1–6 h

- (i) After removal of the organ of interest, fix the tissue in 4% (vol/vol) PFA at 4 °C. The length of time required for fixation is dependent on the thickness of the tissue (e.g., adult mouse kidney is immersion-fixed in 4% (vol/vol) PFA for 1 h, while adult mouse liver is fixed for 6 h).
- (ii) Slice the tissue on a vibratome into ~100 µm sections and store in a multiwell plate in 1× PBS buffer with 3 mM NaN₃ at 4 °C until ready for further processing.

■ PAUSE POINT Fixed tissue slices can be stored for up to 6 months at 4 °C.

Monomer infusion ● Timing 24 h

▲ CRITICAL For the relatively thin (~100 µm) tissue specimens focused on here, immersion of the sample within the monomer solution is sufficient for the production of uniform gels⁴⁸, whereas the original MAP procedure¹¹ used cardiac perfusion to enhance monomer infusion throughout relatively thick whole mouse organs. In any event, the FLARE labeling procedure is well suited to either variation of the gelation procedure.

- 2 Incubate cell samples or tissue samples with cell monomer solution or tissue monomer solution, respectively. If using cells, add the cell monomer solution to each well of a 24-well plate and incubate at RT for 24 h (0.5 mL per well). If using tissue, incubate the sample in tissue monomer solution overnight at 4 °C (1 mL per well). Protect samples from light during incubation.

Gelation

- 3 For gelation of cell samples follow option A; for tissue samples follow option B.

(A) Cell sample gelation ● Timing 30 min

- (i) Prepare a fresh, aqueous 10% (wt/vol) APS solution (10 mg APS in 100 µL DI H₂O). Keep the solution on ice until use.
- (ii) Pipette 98 µL of monomer stock solution into a microcentrifuge tube.
- (iii) Pipette 2 µL of 10% (wt/vol) APS solution into the microcentrifuge tube, quickly mix and add 70 µL of mixed solution onto a piece of Parafilm (~5 cm × 5 cm).
- (iv) Use the forceps to carefully take out the round coverslip with fixed cells from the well and carefully place the coverslip with cells facing down onto the solution prepared from the previous step.

▲ CRITICAL STEP Make sure the gelation is done on the side of the coverslip that is covered with cells.

? TROUBLESHOOTING

- (v) Wait 30 min for the solution to polymerize at RT. Protect the solution from light during polymerization. Note that any solution left in the microcentrifuge tube can be used to judge the progress of the gelation process.
- (vi) Use a ruler to measure the gel size to obtain the pre-expansion size for calculation of expansion factor later in Step 19.

(B) Tissue sample gelation ● Timing 2 h for mouse kidney tissue

- (i) Using a paint brush, spread a 100 µm section of tissue on a rectangular #1.5 coverslip (Fig. 6).
- (ii) Place two stacked small pieces of #1.5 coverslip on either side of the sample to act as spacers (Fig. 6).
- (iii) Add one drop of monomer solution (99 µL of fresh monomer solution + 1 µL of 10% (wt/vol) VA-44) on the tissue surface and place another rectangular #1.5 coverslip on top to create a tissue gelation chamber. The drop of monomer solution should cover the entire sample area (up to ~1 cm²) (Fig. 6).
- (iv) Put the sample in a glass chamber and purge with nitrogen before shutting the airtight lid. Incubate the chamber at 45 °C for 2 h.

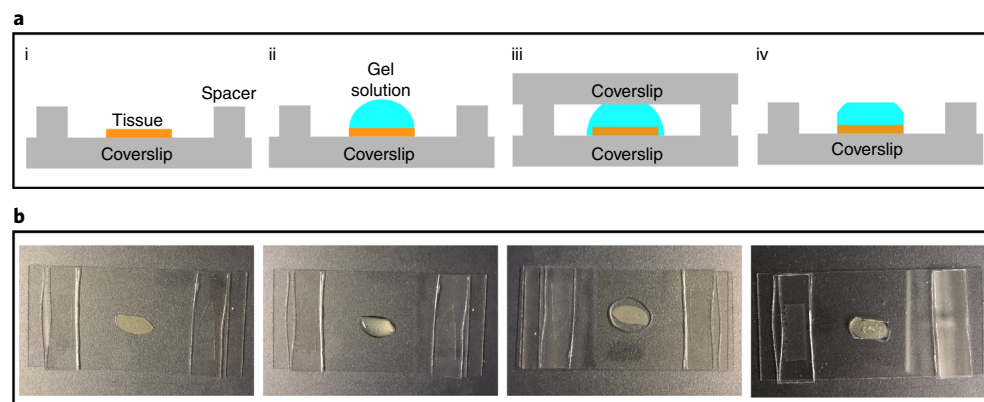


Fig. 6 | Gelation chamber setup. **a**, Schematic of tissue sample gelation: (i) spread a tissue sample on a coverslip (24 mm × 50 mm), and construct a spacer on each side using a stack of two #1.5 cover glass (~160 μm each); (ii) add a few drops of the freshly prepared gel solution to cover the entire sample area; (iii) place another coverslip (24 mm × 50 mm) on the top; (iv) once the gel has formed, peel off the top glass slide and trim off the excess gel. **b**, Step-by-step photos correspond to (i)–(iv) in **a**.

Denaturation

- 4 For denaturation of cell samples follow option A; for tissue samples follow option B.

(A) Denaturation of cell samples ● Timing 60 min

- Use a razor blade to carefully peel off the gel from the Parafilm. Avoid peeling the gel off the coverslip at this point as this could damage the cells.
- Transfer the gel attached to the round coverslip into a 20 mL scintillation vial containing denaturing solution (10 mL solution for each sample).
- Denature the cell sample for 60 min at 95 °C. Note that the hydrogel will typically expand approximately twofold during this process. The heating process can be done using heat blocks on an orbital shaker.

? TROUBLESHOOTING

- Transfer the gel to a large volume of PBST solution to wash out denaturing reagents. This wash step should be repeated three times for 30 min each time. Next, use 1× PBS to wash away detergents prior to chemical staining.

■ **PAUSE POINT** Store up to a week in 1× PBS with 3 mM NaN₃ at 4 °C.

(B) Denaturation of tissue samples ● Timing 48 h for mouse kidney tissue

- Use a razor blade to carefully peel off the gel from the cover slip. Avoid peeling the gel off the coverslip at this point as this could damage the tissue (Fig. 6d,h).
- Denature the gelled samples for the subsequent FLARE staining and expansion steps. For mouse kidney tissue demonstrated here, incubate in denaturing solution at 70 °C for 24 h followed by an additional 24 h at 90 °C⁴⁴. Thinner or more easily denatured tissues such as brain can be incubated for briefer periods, while thicker or less easily denatured tissues may require longer incubations, as described by Ku et al.¹¹. Based on the sample stiffness, harsher or milder temperatures might be needed. Researchers should determine the desired conditions for their samples. However, regardless of the success of the denaturation, the gelled samples can still be labeled using FLARE.

Carbohydrate stain of FLARE ● Timing 5 h 45 min

- Oxidation of carbohydrates to aldehydes.* Prepare a fresh, aqueous 20 mM NaIO₄ solution (43 mg NaIO₄ in 10 mL NaOAc/NaCl buffer).
- Cut a piece of either the expanded cell-based hydrogel (from Step 4A) or the expanded tissue-based hydrogel (from Step 4B) to a suitable size (e.g., 1 × 1 cm²), and transfer both the hydrogel and the 20 mM NaIO₄ solution (10 mL) into a six-well plate. We refer to both gel systems as ‘hydrogel’ in subsequent steps (Fig. 7a,b).
- Let the oxidation reaction run for 1 h while gently agitating the container on an incubator shaker at 37 °C. Protect the solution from light during the reaction.
- Remove the solution from Step 7 and wash the sample with NaOAc buffer at RT for 10 min each with gentle agitation (10 mL per wash, repeat three times).

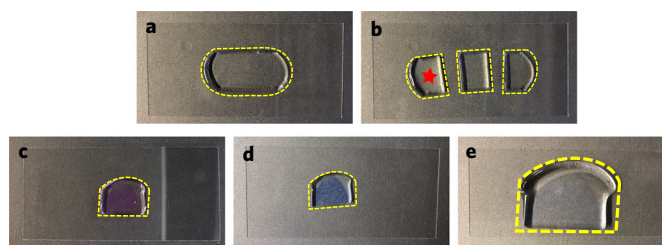


Fig. 7 | A step-by-step illustration of the FLARE procedure for the expanded sample. **a**, The gel-embedded tissue section shown in Fig. 6 partially expanded after the denaturation and became transparent. **b**, The tissue section was cut into three pieces. One piece (star) was used for FLARE staining, and the other two were saved for other purposes. **c**, The tissue section was stained pink after using ATTO 565 hydrazide for the carbohydrate stain. **d**, Subsequently, the amine stain performed by using ATTO 647N-NHS ester made the tissue section light violet. **e**, The tissue section was slightly colored even after the full expansion, demonstrating the characteristic of intense labeling of FLARE. The gel was laid down on a coverslip (24 mm × 50 mm) while the step-by-step photos were taken.

▲ CRITICAL STEP Excess NaIO_4 not removed by washing may oxidize the dyes in the subsequent coupling step, reducing fluorescence signal.

- 9 Transfer the hydrogel sample into a well of a 12-well plate.
- 10 *Hydrazone formation to couple hydrazide dye to oxidized carbohydrate aldehydes.* Dilute AT565- NHNH_2 master stock in NaOAc buffer to final concentration 5 $\mu\text{g}/\text{mL}$ and add to the well containing sample (1 μL dye in 1 mL NaOAc buffer, for 6.66 μM final concentration). Alternatively, hydroxylamine-functionalized dyes also react efficiently with oxidized carbohydrate aldehydes and do not require reduction with cyanoborohydride to stabilize the conjugation⁴⁵.

? TROUBLESHOOTING

- 11 Let the reaction run for 3 h with gentle agitation on an orbital shaker.
- 12 *Reduction to form a stable bond between the oxidized carbohydrates and fluorophore.* This reduction step is useful for longer-term retention of hydrazide-functionalized dyes after coupling to oxidized carbohydrate aldehydes, but it can be omitted if long-term preservation of signal is not necessary and/or the toxicity NaCNBH_3 is a major concern for users. Prepare a fresh 100 μL of 5 M NaCNBH_3 solution (31.4 mg NaCNBH_3 in 100 μL NaOAc buffer).
- ! CAUTION** NaCNBH_3 is toxic and releases flammable gas upon contact with water; wear appropriate PPE, use a fume hood and handle with care.
- 13 Add 20 μL of the NaCNBH_3 solution directly to the sample well of Step 10.
- 14 Allow the sample to react for 30 min with gentle agitation.
- 15 Wash the sample with the NaOAc buffer for 15 min (2 mL each, repeated twice). Then, allow the sample to remain in the NaOAc buffer for a longer period of time (1 h or overnight depending on the sample) to remove excess unconjugated hydrazide dye. The removal of dyes can be observed by the increasing lack of color in the hydrogel over time during washing (Fig. 7c).
- 16 Wash the sample with 1× PBS solution for 15 min (2 mL).

Amine stain of FLARE

- 17 To label amines on cell samples, follow option A; for amine labeling of tissue samples, follow option B.
 - (A) **Cell sample amine labeling** ● **Timing 1 h**
 - (i) Prepare 2.5 $\mu\text{g}/\text{mL}$ AT647N-NHS from master stock (add 1 μL dye to 2 mL 1× PBS for 2.97 μM final concentration).
 - ? TROUBLESHOOTING**
 - (ii) Incubate sample (from Step 16) with AT647N-NHS solution for 1 h with gentle agitation and while covered to protect from light.
 - (iii) Wash the sample with 1× PBS for 30 min (2 mL each, repeated twice). Store in 1× PBS for further use.
 - (B) **Tissue sample amine labeling** ● **Timing 6 h for mouse kidney tissue**
 - (i) Incubate tissue sample (from Step 16) with a final concentration of 5 $\mu\text{g}/\text{mL}$ (5.9 μM) AT647N-NHS in MES. We incubate for 6 h for 100- μm -thick expanded kidney tissue sections to help ensure a uniform stain (Fig. 7d). Faster stains can be achieved with a higher concentration of dye.

Expansion ● Timing 1 h

- 18 Transfer the sample to a 100 mm Petri dish and cover the dish with an excess volume of DI H₂O (~30 mL) and let the sample expand for at least 1 h. Frequent DI H₂O change speeds up the expansion process. Note that the sample should be completely submerged in water.
- 19 Carefully remove as much water as possible from the edge of the Petri dish using a plastic pipette leaving behind the expanded hydrogel sample. Use a ruler to measure the post-expansion size and divide the value by the pre-expansion size (found in Step 3) to obtain the approximate expansion factor (4.5–5-fold).
▲ CRITICAL STEP This is the macroscopic expansion factor and should be the same as the microscopic expansion factor when the ExM procedure is done properly. However, one should keep an eye out for possible discrepancies between the two expansion factors, especially in specimens that have not been previously validated for expansion (Fig. 7e).
- 20 **OPTIONAL** If you wish to undertake DNA FISH, follow the general protocol as described in Supplementary Method 1 before moving on to the next step in this procedure.

DNA stain ● Timing 35 min

- ▲ CRITICAL** While conventional DNA staining is a great tool for most samples, it might not work as well after DNA FISH. This is due to the harsh conditions used in the DNA FISH protocol that can dehybridize the double-stranded DNA, leading to poor staining by DNA dyes applied later.
- 21 Prepare a 10 µg/mL SYBR Green solution from the master stock (add 1 µL master stock dye to 1 mL DI H₂O).
? TROUBLESHOOTING
 - 22 Apply the solution directly to the surface of the gel side that contains the cells or tissues and incubate for 20 min.
? TROUBLESHOOTING
 - 23 Rinse the sample three times with an excess of DI H₂O to remove unbound SYBR Green. Note that SYBR Green is a turn-on fluorescent dye with minimal background fluorescence. However, DNA dyes such as Hoechst require thorough washing of the hydrogel to minimize background fluorescence.

Sample mounting ● Timing ~5–15 min

- 24 Temporarily transfer the gel to a clean untreated coverslip and remove excess liquid by wicking the edges with tissue paper. Excess water beneath the gel may hinder the adhesion with poly-lysine later (Step 25) and add unnecessary imaging depth.
▲ CRITICAL STEP Be careful while handling the gel as it is prone to sticking to the tissue paper.
- 25 To eliminate drift during imaging, carefully slide the gel from the untreated coverslip onto a poly-lysine coated coverslip to create strong adhesion between the gel and the poly-lysine surface. It is best to image the sample immediately.
▲ CRITICAL STEP The poly-lysine-coated coverslips for imaging may be prepared ahead of time and are stable for weeks. Evenly spread 2–3 µL of a 1 mg/mL poly-lysine solution on the surface of a hydrophilic coverslip and allow it to dry. Exposing the coverslip to an air plasma in a plasma cleaner for ~1 min is the preferred way to render the slides hydrophilic prior to spreading the poly-lysine solution, but not required.
? TROUBLESHOOTING

Imaging and image analysis ● Timing Variable (~3 h for high-resolution imaging on 100-µm-thick tissue)

- 26 Select an appropriate imaging technique for your sample type (e.g., widefield, confocal or light-sheet microscopy). See Supplementary Table 1 for a list of which of the three modalities was used for all datasets shown in this paper. For expanded samples, we often use a widefield microscope to check sample usability, and we typically use confocal microscopy for routine experiments since confocal microscopy offers straightforward high-resolution 3D imaging with good optical sectioning. For high-resolution imaging of expanded specimens whose index of refraction is approximately the same as that of pure water, we use a water-immersion lens. It is important to match the index of refraction of the specimen with the immersion medium of the objective lens to avoid serious optical aberrations. Ensure that the objective lens has a large enough working distance to image into the specimen at the desired depth.
? TROUBLESHOOTING

- 27 For all datasets from expanded samples, use the free software package ImageJ for image visualization and processing, such as channel merge, image registration and image smooth. Details for the processing we applied for each figure can be found in Supplementary Table 1.

Procedure 2

FLARE for unexpanded cleared tissue sections

▲ CRITICAL The following procedure is designed for tissue sections, where we demonstrate FLARE using specific examples of 100 μm mouse kidney tissue (option A throughout Procedure 2) and 4- μm -thick FFPE human tissue microarrays (option B throughout Procedure 2). The bold numbers included in brackets are the quantities used during the experiment. To adapt FLARE for thicker samples, we advise using the processing and staining procedure for 100- μm -thick tissue sections as a general starting point, and then further optimize the labeling using the Troubleshooting section. For instance, due to the need for dyes to travel a longer distance through thicker tissues, we recommend a longer incubation time.

Carbohydrate stain of FLARE ● Timing 4 h

- 1 Oxidation of carbohydrates to aldehydes can be performed on either tissue section samples (option A, see also Fig. 8 for an example of FLARE labeling of a ~1-mm-thick tissue sample) or tissue microarray samples (option B).

(A) Oxidation of tissue section samples

- (i) Prepare a fresh, aqueous 100 mM NaIO_4 in pH 5.0 NaOAc buffer (42.8 mg NaIO_4 in 2 mL NaOAc buffer).
- (ii) Use a paint brush to gently transfer a tissue section into the above solution in a scintillation vial. Note that having the tissue section float, initially, at the surface of the solution in the well plate makes the transfer to a scintillation vial easier and helps avoid damage to the tissue section.
- (iii) Let the reaction run for 30 min while gently agitating the sample on an orbital shaker or rocker. Ensure that the tissue is in constant motion within the solution. Protect the solution from light during the reaction.

(B) Oxidation of tissue microarray samples

- (i) Since the tissue cores are tightly mounted on the glass slide, the scintillation vial used for tissue sections is too small for the glass slide. Therefore, the oxidation solution is directly applied on the TMA. To be more specific, prepare fresh 100 mM NaIO_4 solution and drop 1 mL of the solution onto the tissue cores mounted on the glass slide before lightly covering the tissue cores using Parafilm M. Let the reaction run for 30 min.
- 2 Hydrazone formation to couple hydrazide dye to oxidized carbohydrate aldehydes can be performed on either tissue section samples (option A) or tissue microarray samples (option B). Alternatively, hydroxylamine-functionalized dyes also react efficiently with oxidized carbohydrate aldehydes and do not require reduction with cyanoborohydride to stabilize the conjugation⁴⁵.

(A) Hydrazone formation for tissue section samples

- (i) Remove the solution in Step 1A(iii) and wash the sample with NaOAc buffer (10 mL per wash, 10 min each wash, repeat three times).

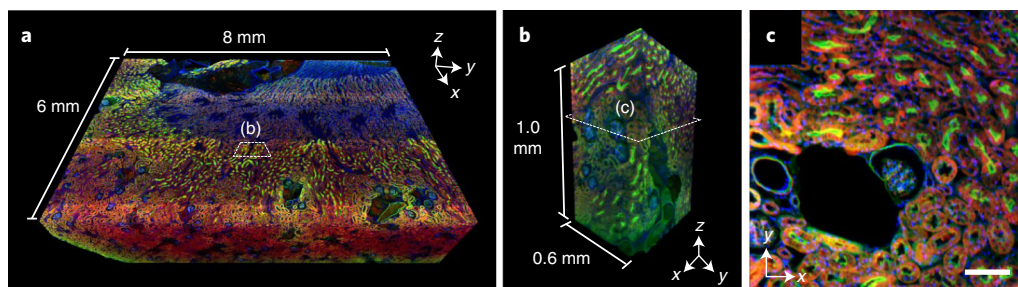


Fig. 8 | FLARE labeling of ~1-mm-thick kidney tissue. **a**, Volumetric imaging of a large cleared mouse kidney section (8 mm \times 6 mm \times 1 mm) imaged with open-top light-sheet microscopy. Amines (red), carbohydrates (green) and DNA (blue) reveal unique structures throughout the tissue. **b**, The zoom-in view from the boxed region in **a** shows that there is uniform labeling of structures through the full ~1 mm tissue thickness. **c**, A single optical section from the boxed region in **b** demonstrates highly specific amine, carbohydrate and DNA staining of kidney tissue microstructure. Scale bar, 100 μm (**c**). Figure adapted with permission from ref. ³, AAAS, under a Creative Commons license CC BY-NC 4.0.

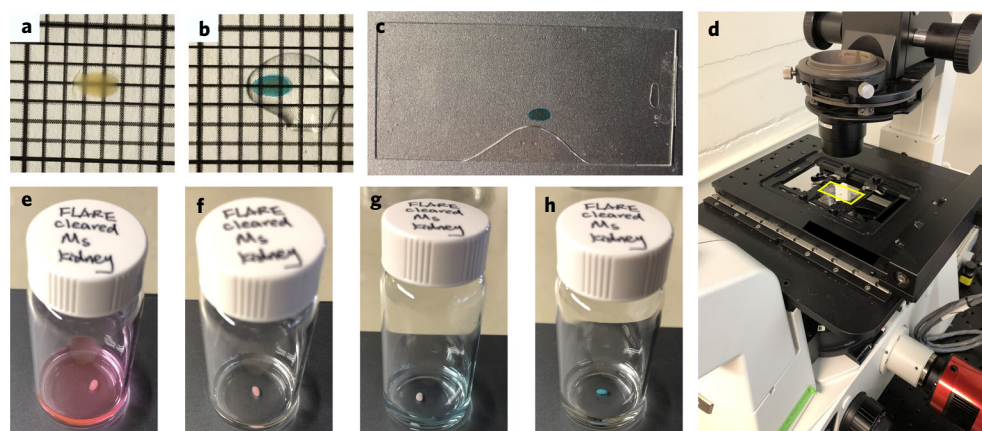


Fig. 9 | A step-by-step illustration of the FLARE procedure for the optically cleared sample. a, A flat, 200 µm mouse kidney section was placed on a #1.5 coverslip. **b,c**, The same section was processed with FLARE, optically cleared, and incubated in EC and sandwiched between two #1.5 coverslips. **d**, The mounted sample (yellow box) was directly placed on a widefield microscope. **e–h**, A scintillation vial was used to perform the FLARE procedure, including carbohydrate stain (**e**), wash (**f**), amine stain (**g**) and DNA stain (**h**). The grid lines are separated by ~2 mm. The amine labeling was not uniform on purpose to demonstrate the result without using MES/THF co-solvent mixture.

▲ CRITICAL STEP Excess NaIO_4 not removed by washing may oxidize the dyes in the subsequent coupling step, reducing fluorescence signal.

- (ii) Dilute AT565-NHNH₂ master stock in fresh THF/NaOAc solution to final concentration 2.5 µg/mL (Fig. 9e) (1 µL of master stock dye in 2 mL THF/NaOAc solution, for 3.33 µM final concentration).

? TROUBLESHOOTING

- (iii) Remove NaOAc washing buffer from Step 2A(i) and add the diluted dye solution from Step 2A(ii). Incubate the sample on the orbital shaker for 2 h. Ensure that the tissue is in constant motion within the solution. Protect the solution from light during the reaction.

(B) Hydrazone formation for TMA samples

- (i) Prepare AT565-NHNH₂ solution by diluting AT565-NHNH₂ master stock in NaOAc solution to final concentration 2.5 µg/mL.
 - (ii) Wash TMA with NaOAc solution three times (1 mL each)
 - (iii) Drop 1 mL of dye solution onto the washed tissue cores on the glass slide.
 - (iv) Cover the tissue cores on the glass slide with Parafilm M, sandwiching the dye solution in between the glass slide and the parafilm, and let the reaction run for 2 h.
- 3 Reduction to form a more stable amine bond can be performed on either tissue section samples (option A) or tissue microarray samples (option B). This reduction step is useful for longer-term retention of hydrazide-functionalized dyes after coupling to oxidized carbohydrate aldehydes, but it can be omitted if long-term preservation of signal is not necessary and/or the toxicity NaCNBH_3 is a major concern for users.

(A) Reduction of tissue section samples

- (i) Prepare 100 µL of fresh 5 M NaCNBH_3 solution (31.4 mg NaCNBH_3 in 100 µL NaOAc buffer).

! CAUTION NaCNBH_3 is toxic and releases flammable gas upon contact with water; wear appropriate PPE, use a fume hood and handle with care.

▲ CRITICAL STEP NaCNBH_3 should be stored in an inert condition. NaCNBH_3 is a milder reductant than NaBH_4 , which may react with certain fluorophores (such as many cyanine dyes).

- (ii) Add 10 µL of NaCNBH_3 solution directly into the reaction mixture in Step 2A(iii).
- (iii) Allow the sample to react for 30 min on an orbital shaker.
- (iv) Wash the sample with fresh THF/NaOAc solution (10 mL per wash, 10 min per wash, repeat two times).
- (v) Wash the sample with fresh THF/MES solution (Fig. 9f) (10 mL, 10 min).

■ PAUSE POINT Sample can be stored overnight in THF/MES solution at RT.

(B) **Reduction of tissue microarray samples**

- (i) Slowly remove the Parafilm M and then add 10 μ L of prepared 5M NaCNBH₃ solution.
- (ii) Cover the TMA sample with Parafilm M again. Let the reaction run for 30 min.
- (iii) Wash the sample with fresh NaOAc solution (1 mL, 5 min per wash, repeat two times).

Amine Stain ● Timing 2 h (100- μ m-thick specimen)

- 4 The amine stain can be performed on either tissue section samples (option A) or TMA samples (option B).

(A) **Amine stain for tissue section samples**

- (i) Prepare 2.5 μ g/mL AT647N-NHS from master stock (add 1 μ L dye stock to 2 mL THF/MES solution, for 2.97 μ M final concentration).

? TROUBLESHOOTING

- (ii) Incubate sample with AT647N-NHS solution from Step 3A for 2 h with gentle rocking. Ensure that the tissue is in constant motion within the solution (Fig. 9g). Protect the solution from light during the reaction.
- (iii) Wash the sample with fresh THF/MES solution (10 mL per wash, repeat two times).
- (iv) Wash the sample with fresh THF/PBS solution (Fig. 9h) (10 mL, 10 min).

■ PAUSE POINT Sample can be stored overnight in THF/PBS solution at RT.

(B) **Amine stain for TMA samples**

- (i) Prepare AT647N-NHS solution by diluting AT647N-NHS master stock in PBS solution to a final concentration 2.5 μ g/mL.
- (ii) Wash TMA with PBS solution three times (1 mL each).
- (iii) Drop 1 mL of the dye solution onto the washed tissue cores on the glass slide. Cover the TMA sample with Parafilm M. Let the reaction run for 30 min.
- (iv) Wash the sample with PBS solution (1 mL, 5 min per wash, repeat two times).

DNA Stain ● Timing 30 min (100- μ m-thick specimen)

- 5 The DNA stain can be applied to tissue section samples (option A) or TMA samples (option B).

(A) **DNA stain for tissue section samples**

- (i) Prepare 5 μ g/mL Hoechst 33258 solution (add 1 μ L dye stock to 2 mL THF/PBS solution).
- (ii) Incubate the sample in the solution prepared in Step 4A for 30 min with gentle rocking. Ensure that the tissue is in constant motion within the solution. Protect the solution from light during incubation.
- (iii) Briefly wash the sample with fresh THF/PBS solution with gentle rocking (10 mL per wash, repeat twice, 5 min each).

(B) **DNA stain for TMA samples**

- (i) Prepare 5 μ g/mL Hoechst 33258 solution in PBS solution.
- (ii) Drop 1 mL of the dye solution onto the washed TMA sample. Cover the TMA sample with Parafilm M. Let the reaction run for 30 min.

- (C) (Optional) If you wish to undertake DNA FISH, follow the general protocol as described in Supplementary Method 1 before moving on to the next step in this procedure. (Note that Supplementary Method 1 is written for hydrogel specimens; the procedure also works for tissue sections.)

Dehydration and refractive index matching for tissue section samples ● Timing ~3.5 h (100- μ m-thick specimen)

▲ CRITICAL Sample dehydration should only be performed on tissue sections (100 μ m) and not on TMA samples (5 μ m) because TMA samples are very thin. TMA samples are imaged with an air and/or water-immersion objective lens directly. For TMA samples, please proceed to Step 16.

- 6 Transfer the tissue section into fresh 50% (vol/vol) THF in DI water (4 mL).
- 7 Incubate the sample for 30 min with gentle rocking. Protect the solution from light during incubation.
- 8 Incubate the sample for 30 min in 80% THF (vol/vol) in DI water (3.2 mL THF and 0.8 mL DI water). Protect the solution from light during incubation.
- 9 Incubate the sample for 30 min in 100% THF (4 mL THF). Protect the solution from light during incubation.
- 10 Soak the sample in DCM until it sinks (4 mL DCM).

- 11 Incubate the sample with EC to match the refractive index (1 mL EC). The duration of the dehydration and index matching step will depend on the type of tissue and its thickness, but ~2 h is a good starting point. It may be necessary to refresh the EC solution multiple times with longer incubation times for thicker samples to ensure good index matching. The clarity of the cleared tissue is easy to judge by the unaided eye (Fig. 9b).

■ PAUSE POINT It is advisable to image as soon as possible, but we have successfully imaged following storage in EC at RT for a few days.

? TROUBLESHOOTING

Sample mounting (for 100- μ m-thick specimen only) ● Timing 5 min

- 12 Use a paint brush to transfer the tissue sample onto a rectangular #1.5 coverslip. Note that, at this point, the tissue sample is now rigid due to dehydration and thus would not entangle with the brush and can be easily transferred.
- 13 Attach a piece of double-sided tape to the surface of each of the two short edges of the coverslip.
- 14 Add one drop of EC to fully cover the sample.
- 15 Press a second rectangular #1.5 coverslip onto the first to form a sandwich structure held together by the double-sided tape. Make sure that the sample is sitting very closely to the surface of the first #1.5 coverslip in the sandwich structure and that there are no air bubbles on the specimen surfaces (Fig. 9c).

Imaging and image analysis ● Timing Variable

- 16 Image as required for study. There are some considerations in sample imaging that are similar to those mentioned in Step 26 of Procedure 1. A widefield microscope is typically used first to check for general sample quality, and a confocal microscope is then used for routine experiments (Fig. 9d). For imaging of very thin (<10 μ m) unexpanded specimens, we typically use a widefield microscope with a 4 \times objective lens. For thicker unexpanded cleared specimens (10–200 μ m), we typically use a confocal microscope with an oil-immersion objective lens to avoid optical aberrations when imaging deeper into the EC-cleared specimens. For even thicker cleared specimens (>0.1 mm), we typically use light-sheet microscopy^{49–51}.

? TROUBLESHOOTING

- 17 Analyze data. As described in Step 27 of Procedure 1, the free software package ImageJ is sufficient to analyze most datasets. However, the large mouse kidney dataset (Fig. 8) that was acquired by open-top light-sheet microscopy¹⁴ was volumetrically rendered using Imaris. Details regarding the data processing we used for each figure can be found in Supplementary Table 1.

Troubleshooting

Troubleshooting advice can be found in Table 1.

Table 1 | Troubleshooting table

Step	Problem	Possible reason	Solutions
Procedure 1, Step 4	Poor or uneven expansion, sample tearing	Inadequate denaturation or digestion of the sample may cause sample tearing or under-expanded regions in the nuclei distribution (Fig. 10)	Extend the denaturation period and/or repeat the denaturation step at a higher temperature. In the case of enzymatic digestion, an addition of another category of enzyme (such as elastase) may help with digestion ^{48,52} (Fig. 10)
Procedure 1, Steps 3, 25, 26, or Procedure 2, Step 16	No signal	Inappropriate microscope settings Issues with sample gelation Error with sample mounting	Check that the microscope settings are appropriate to the fluorophores with a suitable positive control Make sure that the hydrogel polymerization is done on the coverslip side coated with cells as it can be easy to lose track of which side of a coverslip the cells are adhered to (Fig. 11b). Make sure that the sample is positioned as close to the surface of the gel as possible in order to be within the working distance of the objective lens It is possible that the gel is upside down and the surface of the hydrogel containing the sample is outside the working distance of the objective lens (Fig. 11c). Test this by imaging the other surface of the gel

Table continued

Table 1 (continued)

Step	Problem	Possible reason	Solutions
Procedure 1, Steps 10, 12, 17, 25, 26 or Procedure 2, Steps 2, 3, 4, 16	Dim signal	Fluorophore bleaching	The NaIO ₄ oxidation step will chemically bleach many fluorophores, and adequate removal of NaIO ₄ is required prior to the hydrazide dye incubation. Repeat the procedure with more thorough washing. Importantly, the hydrazide labeling step should be performed before the NHS-dye coupling reaction, or any other fluorescent labeling reactions
		Reagent degradation can result in an inefficient reaction	If the carbohydrate stain is dim, it could indicate that NaCNBH ₃ , which can become deactivated with prolonged exposure to moist air, has been hydrolyzed, leaving the hydrazide dye conjugated to the specimen by a relatively labile hydrazone bond. If the amine channel is dim, it could indicate that the NHS groups on the NHS dye have been hydrolyzed and thus the dyes were not efficiently coupled to the sample. In either of these cases, researchers can repeat the procedure using fresh aliquots or newly purchased reagents. In addition, proper storage can help slow down the degradation of these reagents (refer to 'Reagents setup')
		Insufficient dye concentration	The sample staining intensity can be tuned to produce brighter signals by increasing the concentration of the reactive fluorophores used in the labeling reactions
		Lack of sample exposure to chemicals	With respect to the hydrogel-embedded samples, make sure that the hydrogel surface containing the sample is placed face-up in a container during the labeling reaction, or the dyes may have a harder time accessing the sample, resulting in dim signals (Fig. 11a)
Procedure 1, Steps 15, 17, or Procedure 2, Steps 2, 4	Overly bright signals	Incorrect objective lens	It is essential to carefully choose the correct objective lens for a given type of sample: water-immersion objective lenses are well suited to imaging specimens in hydrogels, whereas oil-immersion lenses are well suited to imaging organic cleared oil refractive index matched EC specimens. The use of a mismatched immersion lens may lead to optical aberrations and loss of signal at substantial depths
		Inner filter effect	See advice given for an uneven signal
		Crosstalk from an overly bright signal in a channel could swamp a weaker signal from a different spectral channel. In addition, an overly bright signal can produce inner filter effect (see 'Uneven signal' above)	
		Insufficient washing could prevent unconjugated dyes from being removed from the sample, resulting in very bright signals	Washing the sample extensively can fix this problem and improve contrast
Procedure 1, Step 26, or Procedure 2, Step 16	Uneven signal	If the dye concentration is too high, an overly bright sample may be produced	Lowering the concentration of dye(s) in the coupling reaction(s) can help tune the signal
		Uneven signals mostly occur following labeling of thick samples and could be a result of excess dye during a labeling reaction. A thick sample can be labeled so strongly at the surface that the excitation light in the microscope is substantially attenuated within the interior of the sample ('inner filter effect'), producing a very bright surface but an apparent dimmer interior, even	Section the hydrogel or the thick sample and image the cross-section to assess the sample uniformity without this complication (Fig. 12). If the stain is indeed uniform, stain a new sample with a more dilute dye to produce a dimmer stain that avoids this inner filter effect (Fig. 12). If the stain is in fact enriched at the surface, consider preparing the NHS-dye stock in ~100 mM MES buffer at pH 6.0 to slow down the hydrolysis and coupling reactions while also providing more time for the labeling reaction and dye penetration. In addition, to aid in the penetration of the dye through the expanded samples that are embedded in negatively charged hydrogel, consider using NaOAc/NaCl buffer solution to help allow charged reactants to enter the negatively charged hydrogel gel. Also, make sure that the

Table continued

Table 1 (continued)

Step	Problem	Possible reason	Solutions
Procedure 2, Steps 7–11	Poor transparency in refractive index matched samples	if the sample itself is in fact labeled uniformly	bottom surface of the tissue sample is not attached to the surface of the container during incubation (Fig. 11a) and to ensure continuous sample motion during gentle agitation. Using a lower concentration of dye may also help improve the uniformity of labeling, but possibly at the cost of decreasing the brightness of the stain
		Inadequate dehydration prior to incubation with EC or other common refractive index oil	Thorough dehydration is crucial to achieve a uniform refractive index match throughout the entire specimen thickness, and extending the dehydration periods at each stage may help improve the clarity
		Insufficient incubation with EC	Refresh the EC a couple of times, followed by waiting ~30–60 min or more (depending on the size of the tissue) for the tissue to become fully cleared and index-matched

Timing

Procedure 1, FLARE for expanded specimens

Step 1, specimen preprocessing: ~12 h (cells), ~1–6 h (mouse kidney tissue)
 Steps 2–3, monomer infusion and gelation: ~24.5 h (cells), ~26 h (mouse kidney tissue)
 Steps 4, denaturation: ~1 h (cells), ~48 h (mouse kidney tissue)
 Steps 5–16, carbohydrate stain: ~6 h
 Steps 17, amine stain: ~1–6 h
 Steps 18–20, expand: ~1 h
 Steps 21–23, DNA stain: ~35 min
 Steps 24–25, sample mounting: ~15 min
 Steps 26–27, imaging and image analysis: variable

Procedure 2, FLARE for unexpanded cleared tissue sections

Steps 1–3, carbohydrate stain: ~4 h
 Steps 4, amine stain: ~2 h
 Steps 5, DNA stain: ~30 min
 Steps 6–11, dehydration and refractive index matching: ~3.5 h
 Steps 12–15, sample mounting: ~5 min
 Steps 16–17, imaging and image analysis: variable

Anticipated results

We have applied FLARE to a wide variety of samples including cultured cells, mouse organs and human specimens, as well as different sample processing procedures such as fresh fixation, FFPE preparation, clearing or expansion. Here we present typical results seen following FLARE labeling of a range of samples (Figs. 3–5, Fig. 8). The 1-mm-thick mouse kidney tissue shown in Fig. 8 (the procedure for which is described in Supplementary Table 1) provides an example of longer dye incubation times and other optimizations for labeling thicker samples. We also include figures and data to illustrate possible issues associated with FLARE labeling (Figs. 10–12).

Effects of fixatives

Fixation is a critical part of many imaging experiments. Because FLARE is able to show the general physiology of samples extremely well, it can be a useful tool for revealing potential perturbations in fixation or other sample processing steps. For example, we compared fixation using PFA and GA (Fig. 3a–d) with fixation using glyoxal⁵³ (Fig. 3e–h) in expanded RPE cells. We found that cells fixed with PFA and GA revealed mitochondria, lysosomes, the Golgi apparatus, nuclear pores and portions of the cytoskeleton (Fig. 3a–d) while glyoxal-fixed cells showed major perturbations to many of these structures (Fig. 3e–h).

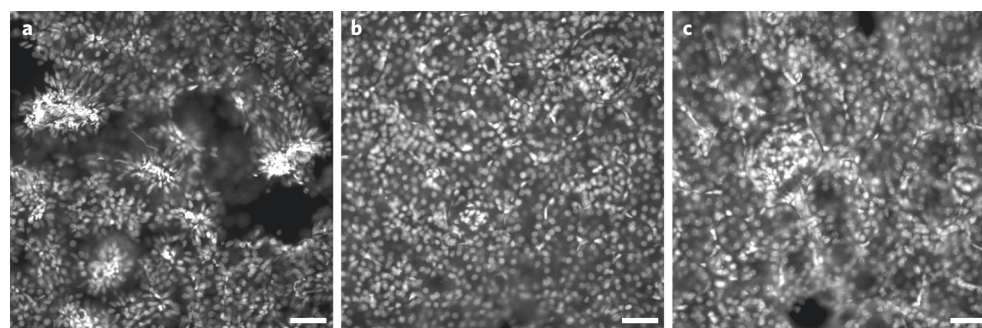


Fig. 10 | Demonstration of expansion uniformity using a MAP-based protocol. Epifluorescence images showing nuclei (DNA) stained by Sybr Green in expanded 100- μ m-thick mouse kidney tissue sections that were homogenized using a MAP-based protocol at three time points. **a**, Incomplete homogenization leads to abundant tears (empty areas) and under-expanded regions (high-density clusters) exhibiting relatively small or abnormally stretched nuclei. **b**, Extending the homogenization period (approximately five times longer than in **a**) leads to uniform sample expansion that lacks obvious distortions in the expanded state. **c**, A further extension of the homogenization period (~25 times longer than in **a**) does not cause a larger expansion factor or damage DNA. Scale bars, 200 μ m in pre-expansion units.

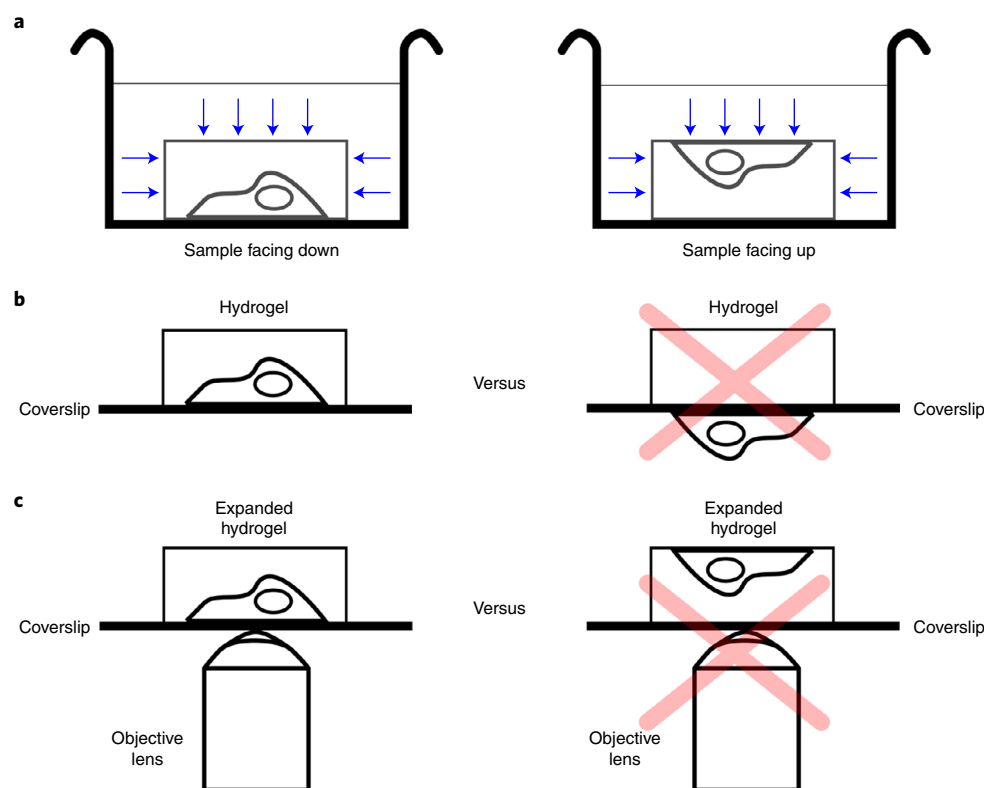


Fig. 11 | Proper sample orientation during staining and image acquisition. **a**, If the cell sample is facing down (left), the dyes often have lower accessibility to the sample (blue arrows), resulting in dimmer stains. If the cell sample is facing up (right), the dyes have higher accessibility to the sample (blue arrows), resulting in brighter stains. **b**, Hydrogel polymerization on the side coated with cells (left) versus polymerization on the incorrect side (right). If polymerization is performed on the side without the cells, then the subsequent hydrogel would not have any cells embedded, resulting in no signal under the microscope. **c**, Expanded hydrogel mounted on poly-lysine-coated coverslip, where cell sample is within the working distance of the objective (left) and the cell sample on the opposite side of coverslip (right). If the hydrogel is mounted as seen on the right, the cell sample might not be within the working distance of the objective lens.

FLARE on tissue microarrays

FLARE's simplicity and robustness make the staining method appealing for use with diverse types of samples, such as in the fluorescent staining of FFPE sections in tissue microarrays that have been embedded and stored for ~13 months (Fig. 4a–g and Supplementary Figs. 1 and 2) or 5 years

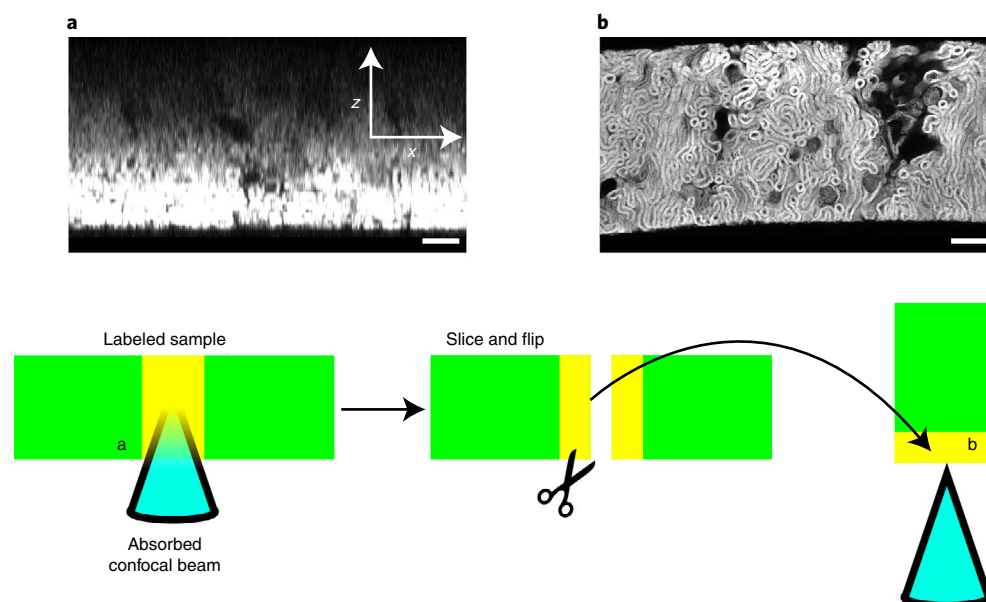


Fig. 12 | Demonstration of the inner filter effect for densely labeled samples. Confocal images of densely labeled 500 μm sections of human nephrectomy kidney tissue (deidentified and obtained from NW Biotrust) stained with AT647N-NHS ester in MES/THF co-solvent showing prominent inner filter effect, with a figure showing imaging procedure. The inner filter effect results from substantial absorption of the excitation light through the depth of a strongly labeled specimen, giving the impression that labeling is stronger at the surface of a specimen. **a**, Cross-sectional view of kidney slice z-stack showing strong signal close to the coverslip with decaying intensity at depth (increasing z distance). **b**, Reimaging of the kidney slice to show the newly revealed surface, after being cut and flipped on edge. The revealed face shows that the stain is uniform across the sample depth ($\sim 500\ \mu\text{m}$), confirming that the artifact in **a** indeed resulted from the inner filter effect. See ‘Troubleshooting’. Scale bars, 100 μm .

(Fig. 4h–n and Supplementary Figs. 3 and 4) prior to staining. FLARE is able to present the general physiology of these tissues similar to H&E (Fig. 4b,e,i–k) with an additional benefit of showing abundant multicolor details with high contrast (Fig. 4c,d,f,g,l–n). Since FLARE reveals the accessible amine and carbohydrate groups, extensive fixation or different processing procedures or storage conditions could in principle alter the staining pattern of FFPE sections.

FLARE with other modalities

If desired, FLARE can be optimized for combination with other modalities such as immunolabeling on fresh mouse kidney tissue (Fig. 5a; see Supplementary Table 2 for a summary), DNA FISH on FLARE-stained cleared unexpanded mouse kidney (Fig. 5b) and expanded mouse kidney (Fig. 5c). It is prudent to keep in mind that, while the labeling order in combination with such modalities may require optimization, FLARE is flexible and can often be applied at different steps in a protocol (Fig. 2). FLARE also reveals major features in combination with enzymatic digestion-based ExM (Fig. 5d); however, digestion-induced protein loss may alter the labeling to some extent.

FLARE on thick tissue

We used FLARE to label a relatively thick ($\sim 1\ \text{mm}$) kidney tissue specimen, and we were able to uniformly stain the specimen by tuning of buffer conditions (Fig. 8 and Supplementary Video 1). Bioconjugation with NHS esters tends to be very quick, especially at a reaction-optimized buffer pH of ~ 8 –9. However, this may result in most of the reactions happening on the tissue surface, thus creating uneven labeling because hydrolysis is also rapid at this pH and competes with bioconjugation. By using a lower buffer pH of ~ 6 and a mixed aqueous and organic solvent, we were able to slow down the bioconjugation reaction while also increasing the rate of dye diffusion, thereby allowing the dye to infiltrate the sample fully before bioconjugation could happen, resulting in a more uniform stain. An advantage of the FLARE stain for such a thick specimen is that the labeling can be done in $<24\ \text{h}$, while the use of immunolabels could take days or weeks.

In conclusion, FLARE is a valuable addition to the fluorescent labeling toolkit. It produces bright, well-contrasted and reliable stains using commercially available reagents. The fluorescence spectra of the FLARE probes can be easily tuned to meet experimental constraints or preferences by choice of commercial fluorophore, as demonstrated by the many examples we provide here and can be found in previous publications³ spanning the entire visible spectrum and into the near-infrared region.

Reporting Summary

Further information on research design is available in the Nature Research Reporting Summary linked to this article.

Data availability

Data other than those presented in the paper and in the authors' previous paper³ are available from the corresponding author upon request.

Code availability

The custom Wolfram Mathematica scripts used for stitching tiling images (Fig. 4a,h) are available as Supplementary Code.

References

- Bradbury, A. & Plückthun, A. Reproducibility: standardize antibodies used in research. *Nature* **518**, 27–29 (2015).
- Schnell, U., Dijk, F., Sjollem, K. A. & Giepmans, B. N. G. Immunolabeling artifacts and the need for live-cell imaging. *Nat. Methods* **9**, 152–158 (2012).
- Mao, C. et al. Feature-rich covalent stains for super-resolution and cleared tissue fluorescence microscopy. *Sci. Adv.* **6**, eaba4542 (2020).
- Titford, M. Progress in the development of microscopical techniques for diagnostic pathology. *J. Histotechnol.* **32**, 9–19 (2009).
- Sigal, Y. M., Zhou, R. & Zhuang, X. Visualizing and discovering cellular structures with super-resolution microscopy. *Science* **361**, 880–887 (2018).
- Schermelleh, L. et al. Super-resolution microscopy demystified. *Nat. Cell Biol.* **21**, 72–84 (2019).
- Sahl, S. J., Hell, S. W. & Jakobs, S. Fluorescence nanoscopy in cell biology. *Nat. Rev. Mol. Cell Biol.* **18**, 685–701 (2017).
- Chen, F., Tillberg, P. W. & Boyden, E. S. Expansion microscopy. *Science* **347**, 543–548 (2015).
- Chozinski, T. J. et al. Expansion microscopy with conventional antibodies and fluorescent proteins. *Nat. Methods* **13**, 485–488 (2016).
- Tillberg, P. W. et al. Protein-retention expansion microscopy of cells and tissues labeled using standard fluorescent proteins and antibodies. *Nat. Biotechnol.* **34**, 987–992 (2016).
- Ku, T. et al. Multiplexed and scalable super-resolution imaging of three-dimensional protein localization in size-adjustable tissues. *Nat. Biotechnol.* **34**, 973–981 (2016).
- Richardson, D. S. & Lichtman, J. W. Clarifying tissue clearing. *Cell* **162**, 246–257 (2015).
- Tainaka, K., Kuno, A., Kubota, S. I., Murakami, T. & Ueda, H. R. Chemical principles in tissue clearing and staining protocols for whole-body cell profiling. *Annu. Rev. Cell Dev. Biol.* **32**, 713–741 (2016).
- Glaser, A. K. et al. Multi-immersion open-top light-sheet microscope for high-throughput imaging of cleared tissues. *Nat. Commun.* **10**, 2781 (2019).
- Klingberg, A. et al. Fully automated evaluation of total glomerular number and capillary tuft size in nephritic kidneys using lightsheet microscopy. *J. Am. Soc. Nephrol.* **28**, 453–459 (2017).
- Masselink, W. et al. Broad applicability of a streamlined ethyl cinnamate-based clearing procedure. *Development* **146**, dev166884 (2019).
- Beliveau, B. J. et al. Versatile design and synthesis platform for visualizing genomes with Oligopaint FISH probes. *Proc. Natl Acad. Sci. USA* **109**, 21301–21306 (2012).
- Chen, Y. et al. Rapid pathology of lumpectomy margins with open-top light-sheet (OTLS) microscopy. *Biomed. Opt. Express* **10**, 1257 (2019).
- Xie, W. et al. Microscopy with ultraviolet surface excitation for wide-area pathology of breast surgical margins. *J. Biomed. Opt.* **24**, 12 (2019).
- Yu, C.-C. et al. Expansion microscopy of *C. elegans*. *eLife* **9**, e46249 (2020).
- M'Saad, O. & Bewersdorf, J. Light microscopy of proteins in their ultrastructural context. *Nat. Commun.* **11**, 3850 (2020).
- Damstra, H. G. J. et al. Visualizing cellular and tissue ultrastructure using Ten-fold Robust Expansion Microscopy (TREx). Preprint at *bioRxiv* <https://doi.org/10.1101/2021.02.03.428837> (2021).
- Sim, J. et al. Whole-ExM: expansion microscopy imaging of all anatomical structures of whole larval zebrafish. Preprint at *bioRxiv* <https://doi.org/10.1101/2021.05.18.443629> (2021).

24. Elfer, K. N. et al. DRAQ5 and eosin ('D&E') as an analog to hematoxylin and eosin for rapid fluorescence histology of fresh tissues. *PLoS ONE* **11**, e0165530 (2016).
25. Serafin, R., Xie, W., Glaser, A. K. & Liu, J. T. C. FalseColor-Python: a rapid intensity-leveling and digital-staining package for fluorescence-based slide-free digital pathology. *PLoS ONE* **15**, e0233198 (2020).
26. Yun, D. H. et al. Ultrafast immunostaining of organ-scale tissues for scalable proteomic phenotyping. Preprint at *bioRxiv* <https://doi.org/10.1101/660373> (2019).
27. Ku, T. et al. Elasticizing tissues for reversible shape transformation and accelerated molecular labeling. *Nat. Methods* **17**, 609–613 (2020).
28. Susaki, E. A. et al. Versatile whole-organ/body staining and imaging based on electrolyte-gel properties of biological tissues. *Nat. Commun.* **11**, 1982 (2020).
29. Zhao, S. et al. Cellular and molecular probing of intact human organs. *Cell* **180**, 796–812.e19 (2020).
30. Bertiaux, E. et al. Expansion microscopy provides new insights into the cytoskeleton of malaria parasites including the conservation of a conoid. *PLOS Biol.* **19**, e3001020 (2021).
31. *Bancroft's Theory and Practice of Histological Techniques* 7th edn (eds Suvarna, S. K. et al.) (Elsevier Churchill Livingstone, 2013).
32. Apgar et al. Fluorescence microscopy of rat embryo sections stained with haematoxylin-eosin and Masson's trichrome method: fluorescence microscopy using haematoxylin-eosin and Masson's trichrome. *J. Microsc.* **191**, 20–27 (1998).
33. Giacomelli, M. G. et al. Virtual hematoxylin and eosin transillumination microscopy using epi-fluorescence imaging. *PLoS ONE* **11**, e0159337 (2016).
34. Glaser, A. K. et al. Light-sheet microscopy for slide-free non-destructive pathology of large clinical specimens. *Nat. Biomed. Eng.* **1**, 0084 (2017).
35. Kasten, F. H., Burton, V. & Glover, P. Fluorescent Schiff-type reagents for cytochemical detection of polyaldehyde moieties in sections and smears. *Nature* **184**, 1797–1798 (1959).
36. Li, Z. et al. Application of periodic acid–Schiff fluorescence emission for immunohistochemistry of living mouse renal glomeruli by an 'in vivo cryotechnique'. *Arch. Histol. Cytol.* **69**, 147–161 (2006).
37. Shi, X. et al. Label-retention expansion microscopy. *J. Cell Biol.* **220**, e202105067 (2021).
38. Karagiannis, E. D. et al. expansion microscopy of lipid membranes. Preprint at *bioRxiv* <http://biorxiv.org/lookup/doi/10.1101/829903> (2019).
39. Wen, G. et al. Evaluation of direct grafting strategies via trivalent anchoring for enabling lipid membrane and cytoskeleton staining in expansion microscopy. *ACS Nano* **14**, 7860–7867 (2020).
40. Götz, R. et al. Nanoscale imaging of bacterial infections by sphingolipid expansion microscopy. *Nat. Commun.* **11**, 6173 (2020).
41. Chang, J.-B. et al. Iterative expansion microscopy. *Nat. Methods* **14**, 593–599 (2017).
42. Ross, M. H. *Histology: A Text and Atlas with Correlated Cell and Molecular Biology* (Lippincott Williams & Wilkins, 2006).
43. Bucur, O. et al. Nanoscale imaging of clinical specimens using conventional and rapid-expansion pathology. *Nat. Protoc.* <https://doi.org/10.1038/s41596-020-0300-1> (2020).
44. Unnersjö-Jess, D. et al. Confocal super-resolution imaging of the glomerular filtration barrier enables by tissue expansion. *Kidney Int.* <https://doi.org/10.1016/j.kint.2017.09.019> (2017).
45. Hermanson, G. *Bioconjugate Techniques* 2nd edn (Elsevier, 2008).
46. Mujumdar, R. B., Ernst, L. A., Mujumdar, S. R., Lewis, C. J. & Waggoner, A. S. Cyanine dye labeling reagents: sulfoindocyanine succinimidyl esters. *Bioconjug. Chem.* **4**, 105–111 (1993).
47. Murray, E. et al. Simple, scalable proteomic imaging for high-dimensional profiling of intact systems. *Cell* **163**, 1500–1514 (2015).
48. Chozinski, T. J. et al. Volumetric, nanoscale optical imaging of mouse and human kidney via expansion microscopy. *Sci. Rep.* <https://doi.org/10.1038/s41598-018-28694-2> (2018).
49. Power, R. M. & Huisken, J. A guide to light-sheet fluorescence microscopy for multiscale imaging. *Nat. Methods* **14**, 360–373 (2017).
50. Santi, P. A. Light sheet fluorescence microscopy: a review. *J. Histochem. Cytochem.* **59**, 129–138 (2011).
51. Liu, J. T. C. et al. Harnessing non-destructive 3D pathology. *Nat. Biomed. Eng.* <https://doi.org/10.1038/s41551-020-00681-x> (2018).
52. Jiang, N. et al. Superresolution imaging of *Drosophila* tissues using expansion microscopy. *Mol. Biol. Cell* **29**, 1413–1421 (2018).
53. Richter, K. N. et al. Glyoxal as an alternative fixative to formaldehyde in immunostaining and super-resolution microscopy. *EMBO J.* <https://doi.org/10.15252/embj.201695709> (2017).

Acknowledgements

This work was supported by the University of Washington, NIDDK Diabetic Complications Consortium grants DK076169 and DK115255 (J.C.V.), NIH grants R01 MH115767 (J.C.V.), R01 CA244170 (J.T.C.L.), R01 EB031002 (J.T.C.L.) and K99 CA240681 (A.K.G.), and DoD PCRP grant W81XWH-18-10358 (J.T.C.L.). NW BioTrust, a core service for patient consenting, and NWBioSpecimen, a core service for procurement and annotation of research biospecimens, are supported by National Cancer Institute grant P30 CA015704 (G. Gilliland, principal investigator (PI)), Institute of Translational Health Sciences grant UL1 TR000423 (M. Disis, PI), the University of Washington School of Medicine and Department of Pathology, and Fred Hutchinson Cancer Research Center.

Author contributions

C.M., M.Y.L., A.K.G., M.A.W., J.T.C.L. and J.C.V. designed the methodology. C.M., M.Y.L., A.K.G., M.A.W. and A.R.H performed the experiments and analysis. C.M., M.Y.L., A.K.G., M.A.W., J.T.C.L. and J.C.V. wrote the paper, and all authors commented on the manuscript. J.C.V. supervised the project.

Competing interests

J.T.C.L and A.K.G are co-founders and hold equity in Lightspeed Microscopy Inc., of which J.T.C.L is also a board member. The other authors declare no competing interests.

Additional information

Supplementary information The online version contains supplementary material available at <https://doi.org/10.1038/s41596-021-00667-2>.

Correspondence and requests for materials should be addressed to Joshua C. Vaughan.

Peer review information *Nature Protocols* thanks the anonymous reviewers for their contribution to the peer review of this work.

Reprints and permissions information is available at www.nature.com/reprints.

Publisher's note Springer Nature remains neutral with regard to jurisdictional claims in published maps and institutional affiliations.

Received: 18 October 2020; Accepted: 21 September 2021;

Published online: 2 February 2022

Related links

Key references using this protocol

Mao, C. et al. *Sci. Adv.* **6**, eaba4542 (2020): <https://doi.org/10.1126/sciadv.aba4542>

Chen, Y. et al. *Biomed. Opt. Express* **10**, 1257 (2019): <https://doi.org/10.1364/BOE.10.001257>

Reporting Summary

Nature Research wishes to improve the reproducibility of the work that we publish. This form provides structure for consistency and transparency in reporting. For further information on Nature Research policies, see our [Editorial Policies](#) and the [Editorial Policy Checklist](#).

Statistics

For all statistical analyses, confirm that the following items are present in the figure legend, table legend, main text, or Methods section.

n/a Confirmed

- ☒ ☐ The exact sample size (n) for each experimental group/condition, given as a discrete number and unit of measurement
- ☒ ☐ A statement on whether measurements were taken from distinct samples or whether the same sample was measured repeatedly
- ☒ ☐ The statistical test(s) used AND whether they are one- or two-sided
Only common tests should be described solely by name; describe more complex techniques in the Methods section.
- ☒ ☐ A description of all covariates tested
- ☒ ☐ A description of any assumptions or corrections, such as tests of normality and adjustment for multiple comparisons
- ☒ ☐ A full description of the statistical parameters including central tendency (e.g. means) or other basic estimates (e.g. regression coefficient) AND variation (e.g. standard deviation) or associated estimates of uncertainty (e.g. confidence intervals)
- ☒ ☐ For null hypothesis testing, the test statistic (e.g. F , t , r) with confidence intervals, effect sizes, degrees of freedom and P value noted
Give P values as exact values whenever suitable.
- ☒ ☐ For Bayesian analysis, information on the choice of priors and Markov chain Monte Carlo settings
- ☒ ☐ For hierarchical and complex designs, identification of the appropriate level for tests and full reporting of outcomes
- ☒ ☐ Estimates of effect sizes (e.g. Cohen's d , Pearson's r), indicating how they were calculated

Our web collection on [statistics for biologists](#) contains articles on many of the points above.

Software and code

Policy information about [availability of computer code](#)

- | | |
|-----------------|--|
| Data collection | commercially available widefield and confocal microscopy are used for collecting every data except the 1-mm thick kidney tissue which was imaged by a custom light-sheet microscope (https://doi.org/10.1038/s41467-019-10534-0). |
| Data analysis | the free software package ImageJ is sufficient to analyze most data sets. However the large mouse kidney data set (Fig. 6) was volumetrically rendered using Imaris, and the custom Wolfram Mathematica scripts was used for stitching tiling images (Fig. 4a and 4h). |

For manuscripts utilizing custom algorithms or software that are central to the research but not yet described in published literature, software must be made available to editors and reviewers. We strongly encourage code deposition in a community repository (e.g. GitHub). See the Nature Research [guidelines for submitting code & software](#) for further information.

Data

Policy information about [availability of data](#)

All manuscripts must include a [data availability statement](#). This statement should provide the following information, where applicable:

- Accession codes, unique identifiers, or web links for publicly available datasets
- A list of figures that have associated raw data
- A description of any restrictions on data availability

Fig. 1c, Fig. 3a-d, and Fig. 5a and 5c are reproduced from Mao et al. (DOI: 10.1126/sciadv.aba4542). The data in Fig. 6 and supplementary movie 1 were previously shown in Mao et al. (DOI: 10.1126/sciadv.aba4542), but are now presented in an alternative format. The data shown in Fig. 3e-h, Fig. 4, Fig. 5b and 5d, Fig. 10, Fig. 12 has not been published previously. Additional examples of data are available from the corresponding author upon request.

Field-specific reporting

Please select the one below that is the best fit for your research. If you are not sure, read the appropriate sections before making your selection.

☒ Life sciences ☐ Behavioural & social sciences ☐ Ecological, evolutionary & environmental sciences

For a reference copy of the document with all sections, see [nature.com/documents/nr-reporting-summary-flat.pdf](https://www.nature.com/documents/nr-reporting-summary-flat.pdf)

Life sciences study design

All studies must disclose on these points even when the disclosure is negative.

Sample size	Sample size calculation was not performed.
Data exclusions	Data were not excluded.
Replication	All reported data have been reproduced at least three times.
Randomization	Randomization was not performed as it was unnecessary for our experiments.
Blinding	Blinding was not performed and was unnecessary for our experiments.

Reporting for specific materials, systems and methods

We require information from authors about some types of materials, experimental systems and methods used in many studies. Here, indicate whether each material, system or method listed is relevant to your study. If you are not sure if a list item applies to your research, read the appropriate section before selecting a response.

Materials & experimental systems

n/a	Involved in the study
<input type="checkbox"/>	<input checked="" type="checkbox"/> Antibodies
<input checked="" type="checkbox"/>	<input type="checkbox"/> Eukaryotic cell lines
<input checked="" type="checkbox"/>	<input type="checkbox"/> Palaeontology and archaeology
<input type="checkbox"/>	<input checked="" type="checkbox"/> Animals and other organisms
<input checked="" type="checkbox"/>	<input type="checkbox"/> Human research participants
<input checked="" type="checkbox"/>	<input type="checkbox"/> Clinical data
<input checked="" type="checkbox"/>	<input type="checkbox"/> Dual use research of concern

Methods

n/a	Involved in the study
<input checked="" type="checkbox"/>	<input type="checkbox"/> ChIP-seq
<input checked="" type="checkbox"/>	<input type="checkbox"/> Flow cytometry
<input checked="" type="checkbox"/>	<input type="checkbox"/> MRI-based neuroimaging

Antibodies

Antibodies used	anti-podocalyxin (R&D Systems Inc., AF1156), aquaporin-1 (Abcam, ab15080), and cytokeratin 8+18 (Abcam, ab194130)
Validation	Antibodies were validated by the vendors indicated above; the vendors list multiple references for each antibody. We performed no additional validation steps.

Animals and other organisms

Policy information about [studies involving animals](#); [ARRIVE guidelines](#) recommended for reporting animal research

Laboratory animals	two-month-old C57BL/6 male mice
Wild animals	<i>Provide details on animals observed in or captured in the field; report species, sex and age where possible. Describe how animals were caught and transported and what happened to captive animals after the study (if killed, explain why and describe method; if released, say where and when) OR state that the study did not involve wild animals.</i>
Field-collected samples	<i>For laboratory work with field-collected samples, describe all relevant parameters such as housing, maintenance, temperature, photoperiod and end-of-experiment protocol OR state that the study did not involve samples collected from the field.</i>
Ethics oversight	University of Washington

Note that full information on the approval of the study protocol must also be provided in the manuscript.