

Quaternary Science Reviews

Volume 289, 1 August 2022, 107600

Fire and human management of late Holocene ecosystems in southern Africa

Benjamin Davies^{1*} (0000-0002-9066-098X), Mitchell J. Power^{2,3}, David R. Braun⁴, Matthew J. Douglass^{5,6}, Stella G. Mosher³ (0000-0003-2761-9199), Lynne J. Quick⁷ (0000-0002-6735-7106), Irene Esteban^{7,8,9} (0000-0002-4850-1715), Judith Sealy¹⁰ (0000-0001-5071-8211), John Parkington¹⁰ (0000-0001-6127-6826), and J. Tyler Faith^{1,2,11} (0000-0002-1101-7161)

¹Department of Anthropology, University of Utah, Salt Lake City, UT 84112, USA

²Natural History Museum of Utah, University of Utah, Salt Lake City, UT 84108, USA

³Department of Geography, University of Utah, Salt Lake City, UT 84112, USA

⁴Center for the Advanced Study of Human Paleobiology, Department of Anthropology, The George Washington University, Washington, DC 20052, USA

⁵College of Agricultural Sciences and Natural Resources, University of Nebraska-Lincoln, Lincoln, NE 68583, USA

⁶Agricultural Research Division, University of Nebraska-Lincoln, Lincoln, NE 68583, USA

⁷African Centre for Coastal Palaeoscience, Nelson Mandela University, Port Elizabeth, 6031, South Africa

⁸ERAAUB, Department of History and Archaeology, University of Barcelona, 08001 Barcelona, Spain

⁹Evolutionary Studies Institute, University of the Witwatersrand, Braamfontein 2000, Johannesburg, South Africa

¹⁰Department of Archaeology, University of Cape Town, Rondebosch, Cape Town 7701, South Africa

¹¹Origins Centre, University of the Witwatersrand, Braamfontein 2000, Johannesburg, South Africa

Corresponding author: Benjamin Davies
Department of Anthropology
University of Utah
260 S. Central Campus Dr., Room 4625
Salt Lake City, UT 84112
+1 801 201 7885
ben.davies@utah.edu

Author Contributions: B.D., M.J.P., D.R.B., M.J.D., and J.T.F. designed research; B.D., M.J.P., and J.T.F. performed research; B.D., M.J.P., S.G.M., and L.J.Q. analyzed data; B.D. wrote the first draft with contributions from all authors to revisions.

Data availability statement: Code used to produce the figures in the manuscript and supplementary information can be found at <https://doi.org/10.5281/zenodo.5130698>. This study makes use of previously published data. Data sources have been identified in the supplementary information and are also available in the code repository.

Highlights

- Sedimentary microcharcoal records from across Southern Africa were aggregated and analyzed to understand the spatial scale of fire and its relationship to climate
- Microcharcoal records after 2000 BP show a notable increase in fire that is not accounted for by shifting climate conditions
- This increase in fire corresponds with the advent of food production in Southern Africa
- Stronger signals in eastern grasslands may reflect the capacity of those ecosystems to sustain repeated firing and grazing

Abstract

Globally, fire is a primary agent for modifying environments through the long-term coupling of human and natural systems. In southern Africa, control of fire by humans has been documented since the late Middle Pleistocene, though it is unclear when or if anthropogenic burning led to fundamental shifts in the region's fire regimes. To identify potential periods of large-scale anthropogenic burning, we analyze aggregated Holocene charcoal sequences across southern Africa, which we compare to paleoclimate records and archaeological data. We show climate-concordant variability in mid-Holocene fire across much of the subcontinent. However, increased regional fire activity during the late Holocene (~2,000 BP) coincides with archaeological change, especially the introduction and intensification of food production across the region. This increase in fire is not readily explained by climate changes, but rather reflects a novel way of using fire as a tool to manage past landscapes, with outcomes conditioned by regional ecosystem characteristics.

Keywords

Paleofire; Food production; Southern Africa; Microcharcoal; Human-environment interaction

Introduction

Fire is a key determinant of ecosystem function worldwide (Bowman et al., 2009). Many ecosystems today (e.g., savannas and grasslands in tropical areas that could support forests) are a legacy of long-term fire activity and are unlikely to persist in its absence (Bond et al., 2005; Bowman et al., 2011), requiring consideration of fire history for their management (Keeley et al., 2011). In addition to natural sources of ignition, humans apply fire to modify environments across a range of ecological conditions and socioeconomic configurations (Butz, 2009; e.g. Coddling et al., 2014; Nigh and Diemont, 2013; Roos et al., 2018). Burning vegetation can produce short-term gains such as flushing out game or clearing space for agricultural activities, and can also result in delayed benefits by improving the condition of the underlying soil, inducing vegetation growth, and influencing the kinds of organisms that recolonize burned areas. By mediating the climatic and biotic factors that determine primary productivity, anthropogenic burning can act as a means of augmenting productivity and/or mitigating risk in uncertain environments, while simultaneously influencing the character and resilience of ecosystems.

There has been considerable attention paid to the role of humans influencing fire regimes and the scale of their impact on ecosystems (Archibald et al., 2012; Bond and Zaloumis, 2016; Bowman et al., 2011). Human use of fire for landscape modification is an adaptation that potentially developed deep in the past (Brown et al., 2009; MacDonald et al., 2021); however, disentangling the signals of past fire used for resource management from naturally-occurring fire is difficult (Bowman et al., 2011; Scherjon et al., 2015). This is especially true in southern Africa, which has one of the longest records of human-environment interactions in the world (Pyne, 2015). Ethnohistoric accounts attest to the use of fire by indigenous pastoralist communities (Pooley, 2014) within the last few hundred years, and it has long been assumed that prehistoric human populations would also have used fire to improve the productivity of their environments (Deacon, 1993; Huffman, 2007), but evidence for intentional landscape burning deeper in time is lacking.

With this in mind, we present data from the Holocene of southern Africa to address this long-standing problem in the history of human-environment interactions. Charcoal influx in sedimentary sequences from across the subcontinent provides evidence of broad-scale burning, while summed probabilities of radiocarbon determinations from archaeological contexts indicate relative changes in the intensity of human activity. Paleoclimate reconstructions drawn from multiple proxies are used to identify coeval patterning in aridity, allowing us to compare periods of fire-prone conditions in southern Africa with the record of past fire activity.

Climatological, Ecological and Archaeological Context

The diverse environments of present-day southern Africa are shaped by contrasting rainfall regimes (Fig 1A). Precipitation in much of eastern and central southern Africa is controlled by advection of moisture from the Indian Ocean, bringing monsoon rains concentrated in the austral summer months (the summer rainfall zone or SRZ), while the southwest has a Mediterranean climate featuring winter rainfall brought by south Atlantic westerlies (the winter rainfall zone or WRZ) (Tyson, 1986). In the boundary between these two regions, and

extending along a narrow strip of the southern coastline, is a mixed regime where rainfall is distributed more evenly throughout the year (the year-round zone or YRZ). Over millennial timescales, the SRZ and WRZ are typically out of phase, such that wetter conditions in one area often coincide with drier conditions in the other (Chase et al., 2017). Although the spatial extents of the different rainfall zones have likely varied through time and there is growing awareness of climatic variability within these regions (Chase et al., 2020), these general distinctions are thought to have persisted since the Pliocene (Lehmann et al., 2016).

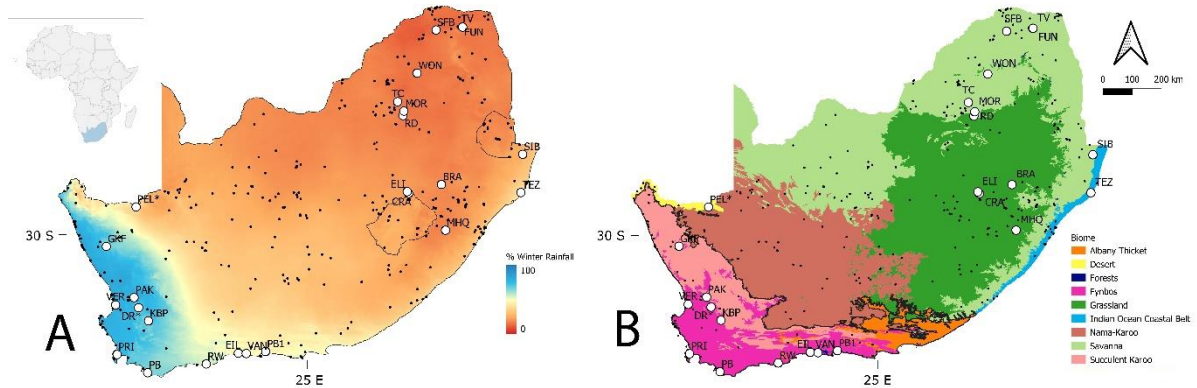


Figure 1: Locations of sediment cores (open circles) and radiocarbon determinations from archaeological sites (black dots) in southern Africa. A) rainfall seasonality expressed as the percentage of rainfall occurring during southern hemisphere winter months (June-August), B) contemporary vegetation biomes, with heavy black line showing approximate extent of Greater Cape Floristic Region. Core labels correspond with SI Table 1. Data: (Abatzoglou et al., 2018; Rutherford et al., 2006)

These climate regimes contribute to striking differences in vegetation that have implications for the likelihood of ignition and the availability of suitable fuels for fire (Fig 1B). Many of the plant communities in southern Africa are fire-adapted and require burning to limit the expansion of forests and maintain the structure of meta-communities (Bond et al., 2003; Thuiller et al., 2007). The eastern half of southern Africa is dominated by Savanna and Grassland biomes. While ignition in this region is more likely during the dry season, burning is typically fuel-limited, and larger fires coincide with build-up of burnable biomass during wetter time periods (Daniau et al., 2013). The western and southern coasts and adjacent inland areas along the Cape Fold mountain ranges are home to the Greater Cape Floristic Region (GCFR), a phytogeographic region distinguished by hyperdiverse fynbos, renosterveld, and succulent karoo plant communities (Bergh et al., 2014). Fire in the region is limited at one end of the aridity spectrum by low fuel connectivity and biomass, and on the other by low susceptibility to ignition, with the most fire prone vegetation communities existing between these two extremes (Gillson et al., 2020). Burning in fynbos systems is not necessarily fuel-limited (van Wilgen, 2009), and relationships between vegetation age structure and fire size are complex. In general, larger fires in the GCFR tend to correlate with drought conditions, though seasonality varies across the region (Kraaij and Van Wilgen, 2014).

In addition to the influences of climate and vegetation, there is also an extensive history of anthropogenic fire in southern Africa. Intentional use of fire by humans is documented from the late middle Pleistocene by the presence of *in-situ* hearths (Deacon, 1995), heat-treated stones (Brown et al., 2009), and charred food remains (Larbey et al., 2019; Wadley et al.,

2020). In a review of ethnographic cases, Scherjon et al. (2015) demonstrated that foraging populations use fire in a number of different ways, including manipulating vegetation and fauna, hunting, communication, and so on. Such activities may have intentional and unintentional consequences for the ecosystems they inhabit (Bird et al., 2020). Food production practices arrived from the north beginning in the late Holocene. In summer rainfall regions, incoming farmers introduced a mixed economy that included cultivation of crops (principally sorghum and millets), keeping of domestic animals, iron smelting, and settled village life (Mitchell and Whitelaw, 2005; Parkington and Hall, 2010). In winter rainfall regions of the west, domesticated grains could not be grown without irrigation, so farming was limited to pastoralism. The appearance of domesticated species in faunal assemblages, dating to around 2000 BP (Coutu et al., 2021; Sealy and Yates, 1994), is also associated with archaeological signals including ceramics and new stone tool technologies (Lander and Russell, 2018), isotopic evidence for dietary change (Sealy, 2010), and genetic signals among descendant populations for lactase persistence and known pastoralist lineages (Uren et al., 2016). The relative timing of these signals is debated, and their expression is not monolithic across southern Africa; however, in most cases this period is marked by the introduction of domestic stock-keeping, a practice that has been associated with novel human-environment interactions (Smith and Zeder, 2013). In pastoralist systems today, fire is used principally to clear unwanted vegetation or pests, improve the quality of forage, and reduce the risk of dangerous wildfires (Butz, 2009), and historic accounts indicate that similar practices were in use in southern Africa at the time of European contact (Pooley, 2014; Skead, 2009).

In this study, we seek to explore the drivers of fire in southern Africa and the role, if any, of past human ecosystem management. Fire activity attributed to anthropogenic sources should occur independently of shifts in local conditions that might produce similar patterning without human intervention (Bird and Cali, 1998; Thompson et al., 2021). Given the contrasting range of conditions for fire across southern Africa, especially the anti-phase relationship between precipitation in the western and eastern sub-regions, we expect that combined archives of fire activity will fail to show a coherent signal when fire systems are controlled predominantly by climate. Likewise, we expect few instances where signals in the western and eastern areas demonstrate a coordinated increases or decreases in fire activity under a climate-driven scenario. Here, we focus on the Holocene, which encompasses a long period of forager and a known shift in land use and subsistence practices with the advent of farming in southern Africa ~2000 BP (Mitchell, 2002).

Materials and Methods

Microcharcoal analyses standardization approach

Sedimentary microcharcoal analysis was used in this study to assess the history of fire activity in southern Africa. Charred particles are produced through incomplete combustion of organic matter. These are transported away from points of combustion by wind or water and collect in sedimentary basins. Sequential sediment deposition in these basins produce laminar sedimentary records, which are then sampled using various methods (e.g. coring, section sampling, etc.). Charcoal recovered from sedimentary records provides direct evidence of biomass burning over time.

Charcoal quantities are typically reported as a range of metrics, including influx, concentration, charcoal/pollen ratios, gravimetrics, image analysis, size classification etc.

Previous charcoal syntheses (Power et al., 2008) reveal that values from individual sedimentary-based charcoal sample range over 13 orders of magnitude. A protocol has been established for transforming and standardizing individual charcoal records. The protocol includes: (1) rescaling the values using a minimax transformation, (2) transforming and homogenizing the variance using the Box-Cox transformation, and (3) rescaling values once more to z-scores (see SI Appendix 1 for full details).

Charcoal data from lacustrine and terrestrial sources was obtained from the Global Charcoal Database (www.paleofire.org), National Centers for Environmental Information (www.ncei.noaa.gov), and additional published sources (Chase et al., 2015b; Neumann et al., 2011; Quick et al., 2016). These are distributed in two clusters: one in the southwest corner of South Africa, the other more widely spread in the northeast (Fig 1). Data were transformed and standardized using the *paleofire* software package (Blarquez et al., 2014) for the R statistical computing platform (R Development Core Team, 2017).

Radiocarbon analysis

To assess human occupation history, summed probability distributions (SPDs) were generated using radiocarbon determinations from archaeological surveys and excavations. These methods use the frequency of dated cultural materials recovered by archaeologists as a model for the depositional history of these kinds of materials overall (e.g., Riris and Arroyo-Kalin, 2019). Assuming that the record is not systematically biased by sampling, processing, preservation, visibility, etc. at the scale of observation, this method provides broad indications of the relative intensity of human activity over time.

Radiocarbon determinations were drawn from the Southern African Radiocarbon Database (<https://c14.arch.ox.ac.uk/sadb>), a collection of data from previously published sources (Loftus et al., 2019). In our study, analyses were limited to data from the last 10000 years from Eswatini, Lesotho, and South Africa ($n=1845$). Analyses were undertaken using the *rcarbon* v1.3 software package (Bevan et al., 2019) for the R statistical computing platform (R Development Core Team, 2017). We follow contemporary best practices to estimate sensitivity to parameter choices and characterize uncertainty and potential sources of bias, with details provided in SI Appendix 2.

Results

Composite microcharcoal records are an indicator of the relative degree of fire activity among the depositional environments under study (Power et al., 2008). Experimental studies have shown that while the frequency of larger charred particles is usually indicative of local fire events, smaller particles (e.g. $<100\mu\text{m}$) are more reflective of extralocal or regional trends in “background” fire activity (Whitlock and Anderson, 2003). We used 27 sedimentary sequences from 25 sampling sites for building composites, derived from lacustrine/estuarine cores and rock hyrax (*Procavia capensis*) midden (hyraceum) deposits (Table S1). These are distributed in two clusters: one in the west (mostly inside the WRZ/YRZ and the GCFR), the other in the east (inside the SRZ and the Grassland/Savanna biomes; see Fig 1). These clusters provide a convenient point of distinction because, as discussed above, there are notable differences in the climate, vegetation, and archaeological histories of the eastern and western parts of the subcontinent.

When records from across southern Africa are aggregated (Fig 2A), they show a peak in charcoal influx in the early mid-Holocene (~8,200) years ago, followed by short-term fluctuations over the next ~6,000 years, with higher degrees of uncertainty around most peaks. For example, the period between 7000 and 5000 BP has a median value close to zero, with confidence intervals extending between +0.5z and -0.5z. This suggests contrasting values are contributing to the aggregate picture during this period. There is an increase in fire activity just before 2,000 years ago, after which fire activity is persistently higher than average. Separating this sample into eastern and western subsets (Fig 2B-C), the two records are divergent through much of the mid-Holocene (Fig 2D). Notably, higher levels of fire activity in the west between 7000 and 5000 BP contrast with lower levels in the east, consistent with climatic and environmental differences between these two regions and helping to explain the uncertainty during this period in the aggregate record. Increases in fire activity during the early and late Holocene persist in both records, though the eastern subset is especially anomalous.

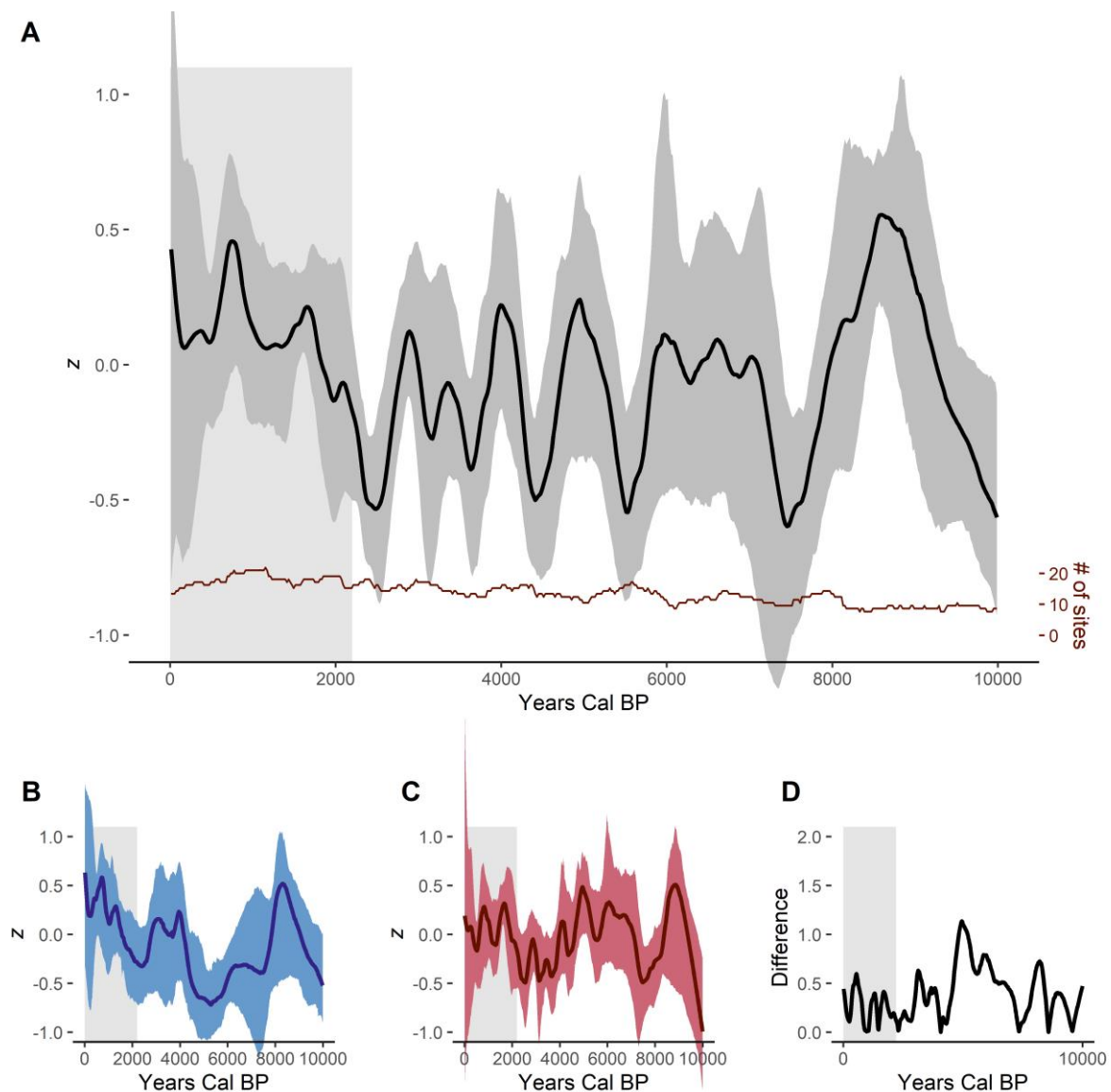


Figure 2: Holocene composite charcoal influx (z) for A) southern Africa, B) eastern subset, C) western subset, and D) difference plot between eastern and western subsets. Solid lines in A, B, and C indicate median composite influx values with LOWESS smoothing (250 half-width); envelopes indicate 95% confidence intervals. Dark red line in A shows number of sites contributing to the charcoal influx record over time (see Fig S1 for sample density). Light grey area in all plots indicates onset of novel subsistence strategies, defined here using the earliest dated archaeological instances of domesticated stock (Lander and Russell, 2018).

These shifts in fire activity can be further illustrated by exploring the spatial distribution of charcoal influx at the individual sampling sites across southern Africa (Fig 3). To do this, we calculated transformed z-scores for microcharcoal abundances in each dated record within those sites (see SI Appendix 1 for details). These z-scores were then plotted in 2000-year intervals according to direction and degree of deviation from 0. It is important to clarify that negative and positive values are not indicative of absence or presence, but that the influx is less or more than that recovered on average from that site during the base period (10,000 – 200 BP).

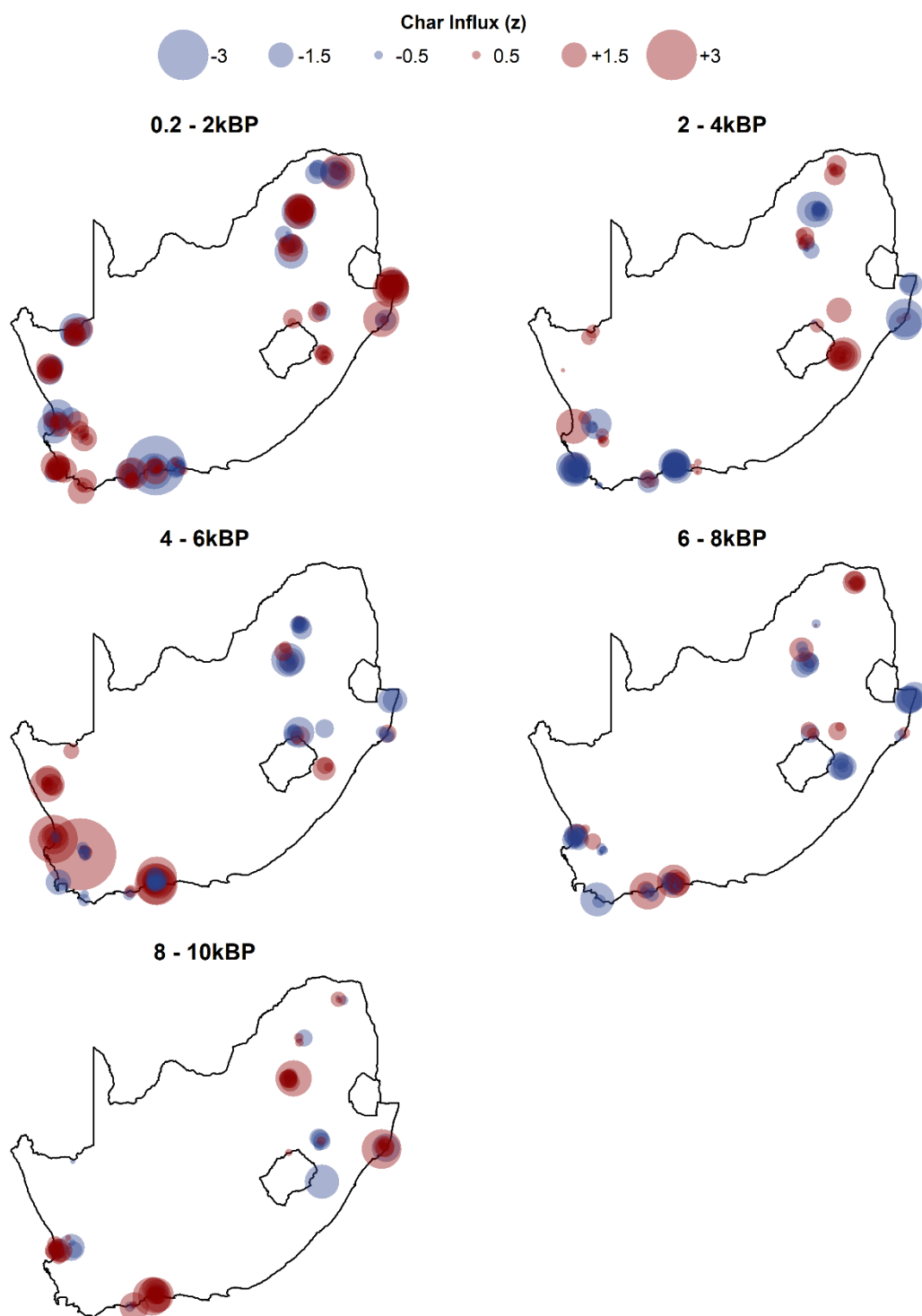


Figure 3 Maps of southern Africa at 2000-year intervals showing distribution of positive (red) and negative (blue) microcharcoal influx z-scores associated with recorded samples. Size of point indicates deviation from mean standardized value of 0. Samples plotted semi-transparently using a 0.1 degree jitter to show multiple records from the same site (darker shade indicates more overlap).

The mapping exercise shows interregional coherence in the earliest period (10- 8k BP) that is replaced by a shift toward more fire activity in the west relative to the east, especially between 6 and 4k BP. This trend is reversed between 4 and 2k BP, with marginally increased fire activity in the east and a decline in the west. The final time window (2,000 – 200 BP) shows the greatest distribution of positive fire records; of sites with records from this period ($N = 24$), 82.5% indicate positive influx and 62.5% show net positive anomalies. Using a two-sample Kolmogorov-Smirnov test between influx values before 2,000 BP ($n = 591$) and after 2,000 BP ($n = 320$) suggests that the pattern seen in the map is not an artifact of improved sampling resolution over time ($D = 0.124$, $p = 0.003$). Additional one-sample tests were used to evaluate the significance of deviations between the influx scores in each time window and the standard normal distribution. Only the 2k – 200 BP window ($D = 0.096$, $p = 0.012$) featured a significant positive shift ($\mu = 0.13$). It follows that the late Holocene trend is not just localized to a single region in southern Africa, but is reflecting increases in fire activity within regions and between them.

The observed changes in fire occurrence during the last 10,000 years, and their periodic coordination across southern Africa, cannot readily be explained by changes in climate using currently available records. In the east, where nearly half of our charcoal samples occur, the early-to-mid Holocene fire record follows closely with aridity indices derived from pollen sequences (Fig 4B) (Chevalier and Chase, 2016). This implies more fire when there is greater moisture availability, consistent with a fuel-limited fire regime (Daniau et al., 2013). However, an increase in aridity is indicated over the last 2,000 years that would be expected to drive a decrease in fire, in direct contrast to the substantial increase observed in charcoal influx (Chevalier and Chase, 2016). In the west, there is an emerging picture of regional heterogeneity in Holocene climate patterns, consistent with spatially varying influences of Atlantic and Indian Ocean systems (Chase and Quick, 2018). However, paleoclimate records sampled across this part of the subcontinent show no clear signal of changing climate conditions consistent with fire regime change around 2000 years ago (Fig 4D-F).

Increased evidence for fire could reflect a large-scale shift in human activity, such as a change in the overall population or a behavior that is associated with increased burning. Changes in the density of probabilities from archaeological radiocarbon determinations are increasingly used as a proxy for human activity (Riris and Arroyo-Kalin, 2019; Timpson et al., 2014). This method rests on assumptions about the sampling, visibility, and preservation of datable archaeological materials, and is subject to known biases in the radiocarbon calibration process (discussed in more detail in SI Appendix 2). Like the microcharcoal record, the collection of radiocarbon data in southern Africa is uneven in time and space; however, it is presently the most coherent dataset available for identifying broad trends in the intensity of human activity at regional and subcontinental scales. Summed probability distributions (SPD) were generated using 1845 determinations from 514 unique sites across southern Africa (Fig 1). The overall trend shows increases through time (Fig 4G black line), with similar patterning visible in counts of dated archaeological sites over time (Fig 4H). However, the rate of change is notably different between eastern and western areas (Fig 4G blue and red lines). The former shows an exponential rise over time, with growth rates increasing during the late Holocene, while the latter features more gradual growth over the Holocene that becomes effectively static over the last 2000 years.

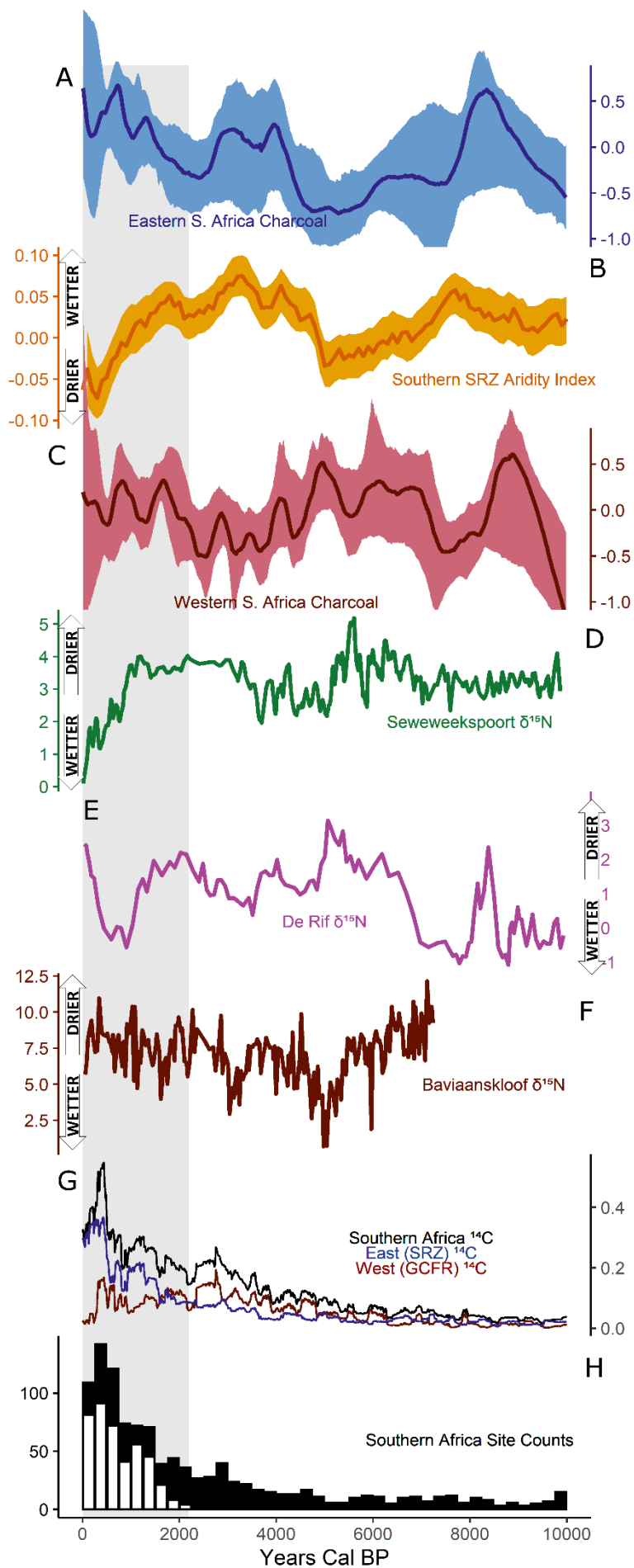


Figure 4 Comparison of (A) composite charcoal from eastern southern Africa, (B) pollen-derived aridity index from the southern SRZ (Chevalier and Chase, 2016), (C) composite charcoal from western southern Africa (D-F) hyraceum nitrogen isotope concentrations from sites across the GCFR (Chase et al. 2013; Chase et al., 2011; Chase et al. 2020), and G) summed probabilities of radiocarbon determinations from all southern Africa (black), SRZ (blue), and GCFR (red), and H) counts of all dated archaeological sites (black bars) and sites associated with pastoralism (white bars) from southern Africa. Light grey area in all plots indicates onset of novel subsistence strategies, defined here using the earliest dated archaeological instances of domesticated stock (Lander and Russell, 2018).

Discussion

Southern Africa's contrasting climate configurations allow for demonstration of human influence on systems where fire has consistently been a primary force shaping the environment. Evidence for fire activity aggregated across the subcontinent shows fluctuations during the mid-Holocene that align with predominant climate regimes that enable ignitions and control fuel availability. Increases in the years around and after 2000 BP deviate from this trend (Figure 2A), coinciding with the new subsistence strategies through the region that brought fundamental changes to human-environment interactions (Bousman, 1998; Lander and Russell, 2018; Sealy, 2010). Our study provides empirical evidence for a widespread connection between food production and novel fire regimes in southern Africa. At the same time, the contributions to this pattern differ between eastern and western regions, suggesting subtleties in the ecological scales of human impacts (Power et al., 2018), and we consider these below.

In grasslands and savannas of eastern southern Africa, changes in microcharcoal deposition show clear distinctions between periods of greater or lesser fire activity. During the last 2000 years, increased fire activity occurs in contrast to prevailing climate-fire dynamics, suggesting an alternative driver is generating more microcharcoal than would be expected from natural ignitions alone. This increase coincides with a positive rate of change in proxies for human activity such as radiocarbon summed probability distributions and site counts, in accord with established associations between human presence and fire activity (Marlon et al., 2013). These increases in evidence for fire and human activity also coincide with the advent and proliferation of new methods of food production; here, mixed farming practices. We argue this patterning in the late Holocene microcharcoal record is explainable as the outcome of a feedback loop in a coupled natural-human system (Liu et al., 2007), where burning produces outcomes that enable or encourage additional burning. Burning in these environments maintains the distribution of palatable grasses, reduces the encroachment of woody species and, outside of arid areas, may increase above-ground productivity (Little et al., 2015; Oluwole et al., 2008; Trollope et al., 2014). Since grasses in many environments can be burned regularly (~1-4 years) (Morris et al., 2021; Oluwole et al., 2008), human managers are able to exert substantial control over the distribution of resources across the landscape, enabling longer-term residence and more concentrated human activity (Bird et al., 2020; Boivin et al., 2016), and further increasing the benefit of, and capacity for, burning activity. These effects presumably would have been familiar to early farmers whose practices originated in northern areas and dispersed along grassy corridors (Chritz et al., 2015), and such regimes may have been further augmented by fire used to clear land for planting.

In the western areas of southern Africa, the aggregate microcharcoal record also indicates a modest increase in fire activity during the late Holocene, but transitions in this record throughout the Holocene are less clear when compared with the eastern areas. The GCFR has many fire-dependent species, and there has been plenty of speculation concerning the role of anthropogenic fire in the maintenance of vegetation community structure (Bond et al., 2003; Deacon, 1993; Pyne, 2015). However, if a process of intensive burning and grazing were initiated in the west, it is questionable whether it would be sustainable for long periods of time. Most fynbos-dominated habitats consist of low-nutrient vegetation and are unlikely to have supported high densities of large herbivores. While consumption of fynbos by grazers is typically limited to post-fire growth (Luyt, 2005), sustainable fire return intervals are typically less frequent in fynbos systems (~10-20 years for fynbos, ~3-7 years for renosterveld) (Kraaij and Van Wilgen, 2014; Rebelo et al., 2006). Renosterveld communities were more widespread in the past (Rouget et al., 2006), and it has been suggested on the basis of historical records that they may have had a grassier character as well (Rebelo et al., 2006; cf. Forbes et al., 2018), providing more grazing opportunities than present vegetation distributions. However, there is evidence to suggest that fire coupled with grazing in renosterveld can diminish palatable species, converting grazing lawns into unpalatable shrubland (Radloff et al., 2014). This would imply that the use of fynbos or renosterveld for grazing livestock may have required more nuanced management dependent on place-specific conditions, potentially limiting the feedback capacity for an incoming food production system and making it more difficult to distinguish from natural fire regimes in a microcharcoal record. The complex interrelationships between climate, vegetation, and fire, and their influence on different forms of economic organization, deserve additional attention.

In addition to differences in vegetation responses to anthropogenic firing when compared to eastern areas, there is also greater variability within the western areas in terms of rainfall seasonality and vegetation community structure that might influence the magnitude of changes in the aggregate microcharcoal record. This can be illustrated by contrasting the Eilandvlei and Verlorenvlei sampling sites, both of which are coastal lakes considered to lie within the GCFR (Bergh et al., 2014). Eilandvlei is located on the southern coast in the YRZ, receiving 900-1000 mm of rain per annum. This site also lies within a fynbos-forest mosaic that is generally less susceptible to burning due to lower probability of ignition (MacPherson et al., 2019). Verlorenvlei is situated on the semi-arid western coast, receiving 200-250 mm of rain per annum, and vegetation consists principally of Sandplain and Mountain fynbos as well as Strandveld succulent karoo. During the last 2000 years, Verlorenvlei shows signals like many other western sites, with a modest increase in the number of positive fire anomalies (SI Fig 2). Eilandvlei, on the other hand, stands out with high ratio of negative anomalies during this period, consistent with pollen evidence showing increasingly wet conditions in its more forested environment (Quick et al., 2018). As opposed to the eastern half of the subcontinent, where areas with climatic and vegetation differences are mostly unified by consistent rainfall seasonality and a grassy component, the diverse climate and vegetation arrangements across the GCFR are less likely to exhibit a uniform fire response through time when aggregated. More sampling across this region would be helpful for disentangling fire signals, particularly among the different vegetation communities of the GCFR (e.g. forest-fynbos mosaic vs. succulent karoo) and across the WRZ/YRZ divide.

Prior to 2000 years ago, the southern African record of fire activity and its connections to humans and climate are less clear. A peak in the composite charcoal record occurs before 8

kya (Fig 2A), a pattern that occurs in both subsets and is also observed across sub-Saharan Africa more broadly (Marlon et al., 2013). The coincidence of these fire signals across seasonal rainfall zones is suggestive of a coordinating process. A potential explanation for this is the 8.2k climate anomaly (Alley and Ágústssdóttir, 2005), a global cooling event which may have accentuated fire-positive conditions across southern Africa (Chase et al., 2015a; Voarintsoa et al., 2019). Fluctuations in the composite microcharcoal record during the mid-Holocene are likely an outcome of western and eastern climate regimes exerting contrasting influences through time (Fig 2A-C). When broken down into sub-regions, these exhibit an antiphase relationship consistent with the overall climatology. These factors suggest climate was likely a driving factor throughout the early to mid-Holocene, but other factors could also contribute to changes in fire activity during this period. Charred traces of geophytes (e.g. *Moraea* spp., *Watsonia* spp.) found in Middle and Later Stone Age archaeological deposits in southern Africa (Liengme, 1987; Wadley et al., 2020) suggest a long-term role in subsistence (Marean 2010). Connections between fire and geophyte productivity have been used to argue that earlier populations may have used fire to increase the abundance and predictability of these resources (Botha et al., 2020; Deacon, 1993). If this kind of manipulation of vegetation were occurring, though, it is difficult to detect in the composite microcharcoal record. This may speak to the relative densities of forager populations and scales of burning activities practiced by foragers compared to food producers (Nikulina et al., 2022; Roos et al., 2018; Scherjon et al., 2015).

In summary, it has long been presumed that fire was used to manage the landscapes of southern Africa in the past. While our analysis shows various couplings between climate and fire activity in southern Africa during the Holocene, we argue that an increase in fire activity during the last 2000 years, particularly in eastern areas, is likely associated with the spread of food production. However, the character of local vegetation and its constraints on the benefits realized from anthropogenic burning contribute to the patterning observed in the record. The result is a signal is not uniform across southern Africa, and likely to be different still in other ecosystems through which food production dispersed. These interrelationships between vegetation, climate, and fire are fundamental both for evaluating narratives of human history and for understanding the role of past human activity in shaping present day ecosystems.

Acknowledgments

We thank two anonymous reviewers for helpful comments in developing this article, as well as Lydie Dupont and Andrew Kandel for comments on earlier drafts. The work of the data contributors and creators of the Global Paleofire Database (<https://www.paleofire.org>) and International Paleofire Network, the Southern Africa Radiocarbon Database (<https://c14.arch.ox.ac.uk/sadb>), the Calib Marine database (<http://calib.org/marine>), and the HYRAX project (<https://www.drbrianchase.com/>) are greatly appreciated. Thanks to Brian Chase for sharing data from Baviaanskloof and Phil Riris for discussions of summed radiocarbon methods.

Funding

This work was supported by a National Science Foundation Dynamics of Coupled Natural Human Systems grant [1826666].

References cited

- Abatzoglou, J.T., Dobrowski, S.Z., Parks, S.A., Hegewisch, K.C., 2018. TerraClimate, a high-resolution global dataset of monthly climate and climatic water balance from 1958–2015. *Scientific Data* 5, 170191. <https://doi.org/10.1038/sdata.2017.191>
- Alley, R.B., Ágústssdóttir, A.M., 2005. The 8k event: cause and consequences of a major Holocene abrupt climate change. *Quaternary Science Reviews* 24, 1123–1149. <https://doi.org/10.1016/j.quascirev.2004.12.004>
- Archibald, S., Staver, A.C., Levin, S.A., 2012. Evolution of human-driven fire regimes in Africa. *Proc Natl Acad Sci U S A* 109, 847–852. <https://doi.org/10.1073/pnas.1118648109>
- Bergh, N.G., Verboom, G.A., Rouget, M., Cowling, R.M., 2014. Vegetation types of the Greater Cape Floristic Region, in: Allsopp, N., Colville, J.F., Verboom, G. Anthony, Cowling, R.M. (Eds.), *Fynbos: Ecology, Evolution, and Conservation of a Megadiverse Region*. Oxford University Press, Oxford, pp. 1–25.
- Bevan, A., Crema, E., Silva, F., 2019. rcarbon.
- Bird, M.I., Cali, J.A., 1998. A million-year record of fire in sub-Saharan Africa. *Nature* 394, 767–769. <https://doi.org/10.1038/29507>
- Bird, R.B., McGuire, C., Bird, D.W., Price, M.H., Zeanah, D., Nimmo, D.G., 2020. Fire mosaics and habitat choice in nomadic foragers. *PNAS* 117, 12904–12914. <https://doi.org/10.1073/pnas.1921709117>
- Blarquez, O., Vannière, B., Marlon, J.R., Danilau, A.-L., Power, M.J., Brewer, S., Bartlein, P.J., 2014. paleofire: An R package to analyse sedimentary charcoal records from the Global Charcoal Database to reconstruct past biomass burning. *Computers & Geosciences* 72, 255–261. <https://doi.org/10.1016/j.cageo.2014.07.020>
- Boivin, N.L., Zeder, M.A., Fuller, D.Q., Crowther, A., Larson, G., Erlandson, J.M., Denham, T., Petraglia, M.D., 2016. Ecological consequences of human niche construction: Examining long-term anthropogenic shaping of global species distributions. *PNAS* 113, 6388–6396. <https://doi.org/10.1073/pnas.1525200113>
- Bond, W., Zaloumis, N.P., 2016. The deforestation story: testing for anthropogenic origins of Africa's flammable grassy biomes. *Philosophical Transactions of the Royal Society B: Biological Sciences* 371, 20150170. <https://doi.org/10.1098/rstb.2015.0170>
- Bond, W.J., Midgley, G.F., Woodward, F.I., Hoffman, M.T., Cowling, R.M., 2003. What controls South African vegetation — climate or fire? *South African Journal of Botany, Special Issue — Acocks' Veld Types* 69, 79–91. [https://doi.org/10.1016/S0254-6299\(15\)30362-8](https://doi.org/10.1016/S0254-6299(15)30362-8)
- Bond, W.J., Woodward, F.I., Midgley, G.F., 2005. The global distribution of ecosystems in a world without fire. *New Phytologist* 165, 525–538. <https://doi.org/10.1111/j.1469-8137.2004.01252.x>
- Botha, M.S., Cowling, R.M., Esler, K.J., de Vynck, J.C., Cleghorn, N.E., Potts, A.J., 2020. Return rates from plant foraging on the Cape south coast: Understanding early human economies. *Quaternary Science Reviews, The Palaeo-Agulhas Plain: a lost world and extinct ecosystem* 235, 106129. <https://doi.org/10.1016/j.quascirev.2019.106129>
- Bousman, C.B., 1998. The chronological evidence for the introduction of domestic stock into southern Africa. *African Archaeological Review* 15, 133–150. <https://doi.org/10.1023/A:1022110818616>
- Bowman, D.M.J.S., Balch, J., Artaxo, P., Bond, W.J., Cochrane, M.A., D'Antonio, C.M., DeFries, R., Johnston, F.H., Keeley, J.E., Krawchuk, M.A., Kull, C.A., Mack, M., Moritz, M.A., Pyne, S., Roos, C.I., Scott, A.C., Sodhi, N.S., Swetnam, T.W., Whittaker, R., 2011. The human dimension of fire regimes on Earth. *J Biogeogr* 38, 2223–2236. <https://doi.org/10.1111/j.1365-2699.2011.02595.x>
- Bowman, D.M.J.S., Balch, J.K., Artaxo, P., Bond, W.J., Carlson, J.M., Cochrane, M.A., D'Antonio, C.M., DeFries, R.S., Doyle, J.C., Harrison, S.P., Johnston, F.H., Keeley, J.E., Krawchuk, M.A., Kull, C.A., Marston, J.B., Moritz, M.A., Prentice, I.C., Roos,

- C.I., Scott, A.C., Swetnam, T.W., Werf, G.R. van der, Pyne, S.J., 2009. Fire in the Earth System. *Science* 324, 481–484. <https://doi.org/10.1126/science.1163886>
- Brown, K.S., Marean, C.W., Herries, A.I.R., Jacobs, Z., Tribolo, C., Braun, D., Roberts, D.L., Meyer, M.C., Bernatchez, J., 2009. Fire as an engineering tool of early modern humans. *Science* 325, 859–862. <https://doi.org/10.1126/science.1175028>
- Butz, R.J., 2009. Traditional fire management: historical fire regimes and land use change in pastoral East Africa. *Int. J. Wildland Fire* 18, 442–450. <https://doi.org/10.1071/WF07067>
- Chase, B.M., Boom, A., Carr, A.S., Carré, M., Chevalier, M., Meadows, M.E., Pedro, J.B., Stager, J.C., Reimer, P.J., 2015a. Evolving southwest African response to abrupt deglacial North Atlantic climate change events. *Quaternary Science Reviews* 121, 132–136. <https://doi.org/10.1016/j.quascirev.2015.05.023>
- Chase, B.M., Boom, A., Carr, A.S., Meadows, M.E., Reimer, P.J., 2013. Holocene climate change in southernmost South Africa: rock hyrax middens record shifts in the southern westerlies. *Quaternary Science Reviews* 82, 199–205. <https://doi.org/10.1016/j.quascirev.2013.10.018>
- Chase, B.M., Boom, A., Carr, A.S., Quick, L.J., Reimer, P.J., 2020. High-resolution record of Holocene climate change dynamics from southern Africa's temperate-tropical boundary, Baviaanskloof, South Africa. *Palaeogeography, Palaeoclimatology, Palaeoecology* 539, 109518. <https://doi.org/10.1016/j.palaeo.2019.109518>
- Chase, B.M., Chevalier, M., Boom, A., Carr, A.S., 2017. The dynamic relationship between temperate and tropical circulation systems across South Africa since the last glacial maximum. *Quaternary Science Reviews* 174, 54–62. <https://doi.org/10.1016/j.quascirev.2017.08.011>
- Chase, B.M., Lim, S., Chevalier, M., Boom, A., Carr, A.S., Meadows, M.E., Reimer, P.J., 2015b. Influence of tropical easterlies in southern Africa's winter rainfall zone during the Holocene. *Quaternary Science Reviews* 107, 138–148. <https://doi.org/10.1016/j.quascirev.2014.10.011>
- Chase, B.M., Quick, L.J., 2018. Influence of Agulhas forcing of Holocene climate change in South Africa's southern Cape. *Quaternary Research* 90, 303–309. <https://doi.org/10.1017/qua.2018.57>
- Chase, B.M., Quick, L.J., Meadows, M.E., Scott, L., Thomas, D.S.G., Reimer, P.J., 2011. Late glacial interhemispheric climate dynamics revealed in South African hyrax middens. *Geology* 39, 19–22. <https://doi.org/10.1130/G31129.1>
- Chevalier, M., Chase, B.M., 2016. Determining the drivers of long-term aridity variability: a southern African case study. *Journal of Quaternary Science* 31, 143–151. <https://doi.org/10.1002/jqs.2850>
- Chritz, K.L., Marshall, F.B., Zagal, M.E., Kirera, F., Cerling, T.E., 2015. Environments and trypanosomiasis risks for early herders in the later Holocene of the Lake Victoria basin, Kenya. *PNAS* 112, 3674–3679. <https://doi.org/10.1073/pnas.1423953112>
- Codding, B.F., Bliege Bird, R., Kauhanen, P.G., Bird, D.W., 2014. Conservation or Co-evolution? Intermediate Levels of Aboriginal Burning and Hunting Have Positive Effects on Kangaroo Populations in Western Australia. *Hum Ecol* 42, 659–669. <https://doi.org/10.1007/s10745-014-9682-4>
- Coutu, A.N., Taurozzi, A.J., Mackie, M., Jensen, T.Z.T., Collins, M.J., Sealy, J., 2021. Palaeoproteomics confirm earliest domesticated sheep in southern Africa ca. 2000 BP. *Scientific Reports* 11, 6631. <https://doi.org/10.1038/s41598-021-85756-8>
- Daniau, A.-L., Goñi, M.F.S., Martinez, P., Urrego, D.H., Bout-Roumzeilles, V., Desprat, S., Marlon, J.R., 2013. Orbital-scale climate forcing of grassland burning in southern Africa. *PNAS* 110, 5069–5073. <https://doi.org/10.1073/pnas.1214292110>
- Deacon, H.J., 1995. Two Late Pleistocene-Holocene Archaeological Depositories from the Southern Cape, South Africa. *The South African Archaeological Bulletin* 50, 121–131. <https://doi.org/10.2307/3889061>

- Deacon, H.J., 1993. Planting an Idea: An Archaeology of Stone Age Gatherers in South Africa. *The South African Archaeological Bulletin* 48, 86–93. <https://doi.org/10.2307/3888947>
- Forbes, C.J., Gillson, L., Hoffman, M.T., 2018. Shifting baselines in a changing world: Identifying management targets in endangered heathlands of the Cape Floristic Region, South Africa. *Anthropocene* 22, 81–93. <https://doi.org/10.1016/j.ancene.2018.05.001>
- Gillson, L., MacPherson, A.J., Hoffman, M.T., 2020. Contrasting mechanisms of resilience at mesic and semi-arid boundaries of fynbos, a mega-diverse heathland of South Africa. *Ecological Complexity* 42, 100827. <https://doi.org/10.1016/j.ecocom.2020.100827>
- Huffman, T.N., 2007. *Handbook to the Iron Age*. University of KwaZulu-Natal Press, Durban.
- Keeley, J.E., Bond, W.J., Bradstock, R.A., Pausas, J.G., Rundel, P.W., 2011. *Fire in Mediterranean ecosystems: ecology, evolution and management*. Cambridge University Press, Cambridge.
- Kraaij, T., Van Wilgen, B.W., 2014. Drivers, ecology, and management of fire in Fynbos, in: Allsopp, N., Colville, J.F., Verboom, G.A. (Eds.), *Fynbos: Ecology, Evolution, and Conservation of a Megadiverse Region*. Oxford University Press, Oxford, pp. 47–72.
- Lander, F., Russell, T., 2018. The archaeological evidence for the appearance of pastoralism and farming in southern Africa. *PLOS ONE* 13, e0198941. <https://doi.org/10.1371/journal.pone.0198941>
- Larbey, C., Mentzer, S.M., Ligouis, B., Wurz, S., Jones, M.K., 2019. Cooked starchy food in hearths ca. 120 kya and 65 kya (MIS 5e and MIS 4) from Klasies River Cave, South Africa. *Journal of Human Evolution* 131, 210–227. <https://doi.org/10.1016/j.jhevol.2019.03.015>
- Lehmann, S.B., Braun, D.R., Dennis, K.J., Patterson, D.B., Stynder, D.D., Bishop, L.C., Forrest, F., Levin, N.E., 2016. Stable isotopic composition of fossil mammal teeth and environmental change in southwestern South Africa during the Pliocene and Pleistocene. *Palaeogeography, Palaeoclimatology, Palaeoecology* 457, 396–408. <https://doi.org/10.1016/j.palaeo.2016.04.042>
- Liengme, C., 1987. Botanical remains from archaeological sites in the Western Cape, in: Parkington, J.E., Hall, M. (Eds.), *Paper in the Prehistory of the Western Cape*. British Archaeological Reports, Oxford, pp. 237–261.
- Little, I.T., Hockey, P.A.R., Jansen, R., 2015. Impacts of fire and grazing management on South Africa's moist highland grasslands: A case study of the Steenkampsberg Plateau, Mpumalanga, South Africa. *Bothalia - African Biodiversity & Conservation* 45, 1–15. <https://doi.org/10.4102/abc.v45i1.178>
- Liu, J., Dietz, T., Carpenter, S.R., Alberti, M., Folke, C., Moran, E., Pell, A.N., Deadman, P., Kratz, T., Lubchenco, J., Ostrom, E., Ouyang, Z., Provencher, W., Redman, C.L., Schneider, S.H., Taylor, W.W., 2007. Complexity of Coupled Human and Natural Systems. *Science* 317, 1513–1516. <https://doi.org/10.1126/science.1144004>
- Loftus, E., Mitchell, P.J., Ramsey, C.B., 2019. An archaeological radiocarbon database for southern Africa. *Antiquity* 93, 870–885. <https://doi.org/10.15184/aqy.2019.75>
- Luyt, E. du C., 2005. *Models of Bontebok (Damaliscus pygargus pygargus, Pallas 1766) habitat preferences in the Bontebok National Park and sustainable stocking rates* (Thesis). Stellenbosch : Stellenbosch University.
- MacDonald, K., Scherjon, F., Veen, E. van, Vaesen, K., Roebroeks, W., 2021. Middle Pleistocene fire use: The first signal of widespread cultural diffusion in human evolution. *PNAS* 118. <https://doi.org/10.1073/pnas.2101108118>
- MacPherson, A.J., Gillson, L., Hoffman, M.T., 2019. Between- and within-biome resistance and resilience at the fynbos-forest ecotone, South Africa. *The Holocene* 29, 1801–1816. <https://doi.org/10.1177/0959683619862046>
- Marlon, J.R., Bartlein, P.J., Danialu, A.-L., Harrison, S.P., Maezumi, S.Y., Power, M.J., Tinner, W., Vanni re, B., 2013. Global biomass burning: a synthesis and review of Holocene paleofire records and their controls. *Quaternary Science Reviews* 65, 5–25. <https://doi.org/10.1016/j.quascirev.2012.11.029>

- Mitchell, P., 2002. *The Archaeology of Southern Africa*. Cambridge University Press, Cambridge.
- Mitchell, P., Whitelaw, G., 2005. The archaeology of southernmost Africa from c. 2000 bp to the early 1800s: a review of recent research. *The Journal of African History* 46, 209–241. <https://doi.org/10.1017/S0021853705000770>
- Morris, C.D., Everson, C.S., Everson, T.M., Gordijn, P.J., 2021. Frequent burning maintained a stable grassland over four decades in the Drakensberg, South Africa. *African Journal of Range & Forage Science* 38, 39–52. <https://doi.org/10.2989/10220119.2020.1825120>
- Neumann, F.H., Scott, L., Bamford, M.K., 2011. Climate change and human disturbance of fynbos vegetation during the late Holocene at Princess Vlei, Western Cape, South Africa. *The Holocene* 21, 1137–1149. <https://doi.org/10.1177/0959683611400461>
- Nigh, R., Diemont, S.A., 2013. The Maya milpa: fire and the legacy of living soil. *Frontiers in Ecology and the Environment* 11, e45–e54. <https://doi.org/10.1890/120344>
- Nikulina, A., MacDonald, K., Scherjon, F., A. Pearce, E., Davoli, M., Svenning, J.-C., Vella, E., Gaillard, M.-J., Zapolska, A., Arthur, F., Martinez, A., Hatlestad, K., Mazier, F., Serge, M.A., Lindholm, K.-J., Fyfe, R., Renssen, H., Roche, D.M., Kluiving, S., Roebroeks, W., 2022. Tracking Hunter-Gatherer Impact on Vegetation in Last Interglacial and Holocene Europe: Proxies and Challenges. *J Archaeol Method Theory*. <https://doi.org/10.1007/s10816-021-09546-2>
- Oluwole, F.A., Sambo, J.M., Sikhalazo, D., 2008. Long-term effects of different burning frequencies on the dry savannah grassland in South Africa. *AJAR* 3, 147–153. <https://doi.org/10.5897/AJAR.9000473>
- Parkington, J., Hall, S., 2010. The appearance of food production in southern Africa 1,000 to 2,000 years ago, in: Hamilton, C., Mbenga, B., Ross, R. (Eds.), *The Cambridge History of South Africa: Volume 1 C. 200 AD-1885*. Cambridge University Press, Cambridge, pp. 63–111.
- Pooley, S., 2014. *Burning Table Mountain: An Environmental History of Fire on the Cape Peninsula*. Springer.
- Power, M.J., Coddling, B.F., Taylor, A.H., Swetnam, T.W., Magargal, K.E., Bird, D.W., O'Connell, J.F., 2018. Human Fire Legacies on Ecological Landscapes. *Front. Earth Sci.* 6. <https://doi.org/10.3389/feart.2018.00151>
- Power, M.J., Marlon, J., Ortiz, N., Bartlein, P.J., Harrison, S.P., Mayle, F.E., Ballouche, A., Bradshaw, R.H.W., Carcaillet, C., Cordova, C., Mooney, S., Moreno, P.I., Prentice, I.C., Thonicke, K., Tinner, W., Whitlock, C., Zhang, Y., Zhao, Y., Ali, A.A., Anderson, R.S., Beer, R., Behling, H., Briles, C., Brown, K.J., Brunelle, A., Bush, M., Camill, P., Chu, G.Q., Clark, J., Colombaroli, D., Connor, S., Daniau, A.-L., Daniels, M., Dodson, J., Doughty, E., Edwards, M.E., Finsinger, W., Foster, D., Frechette, J., Gaillard, M.-J., Gavin, D.G., Gobet, E., Haberle, S., Hallett, D.J., Higuera, P., Hope, G., Horn, S., Inoue, J., Kaltenrieder, P., Kennedy, L., Kong, Z.C., Larsen, C., Long, C.J., Lynch, J., Lynch, E.A., McGlone, M., Meeks, S., Mensing, S., Meyer, G., Minckley, T., Mohr, J., Nelson, D.M., New, J., Newnham, R., Noti, R., Oswald, W., Pierce, J., Richard, P.J.H., Rowe, C., Sanchez Gofii, M.F., Shuman, B.N., Takahara, H., Toney, J., Turney, C., Urrego-Sanchez, D.H., Umbanhowar, C., Vandergoes, M., Vanniere, B., Vescovi, E., Walsh, M., Wang, X., Williams, N., Wilmshurst, J., Zhang, J.H., 2008. Changes in fire regimes since the Last Glacial Maximum: an assessment based on a global synthesis and analysis of charcoal data. *Clim Dyn* 30, 887–907. <https://doi.org/10.1007/s00382-007-0334-x>
- Pyne, S.J., 2015. *World Fire: The Culture of Fire on Earth*. University of Washington Press.
- Quick, L.J., Chase, B.M., Wündsche, M., Kirsten, K.L., Chevalier, M., Mäusbacher, R., Meadows, M.E., Haberzettl, T., 2018. A high-resolution record of Holocene climate and vegetation dynamics from the southern Cape coast of South Africa: pollen and microcharcoal evidence from Eilandvlei. *Journal of Quaternary Science* 33, 487–500. <https://doi.org/10.1002/jqs.3028>

- Quick, L.J., Meadows, M.E., Bateman, M.D., Kirsten, K.L., Mäusbacher, R., Haberzettl, T., Chase, B.M., 2016. Vegetation and climate dynamics during the last glacial period in the fynbos-afrotemperate forest ecotone, southern Cape, South Africa. *Quaternary International* 404, 136–149. <https://doi.org/10.1016/j.quaint.2015.08.027>
- R Development Core Team, 2017. R: A Language and Environment for Statistical Computing. R Foundation for Statistical Computing. ISBN 3-900051-07-0 (<http://www.R-project.org>), Vienna.
- Radloff, F.G.T., Mucina, L., Snyman, D., 2014. The impact of native large herbivores and fire on the vegetation dynamics in the Cape renosterveld shrublands of South Africa: insights from a six-yr field experiment. *Applied Vegetation Science* 17, 456–469. <https://doi.org/10.1111/avsc.12086>
- Rebelo, A.G., Boucher, C., Helme, N., Mucina, L., Rutherford, M.C., 2006. Fynbos Biome. *Strelitzia* 19, 52–219.
- Riris, P., Arroyo-Kalin, M., 2019. Widespread population decline in South America correlates with mid-Holocene climate change. *Sci Rep* 9, 1–10. <https://doi.org/10.1038/s41598-019-43086-w>
- Roos, C.I., Zedeño, M.N., Hollenback, K.L., Erlick, M.M.H., 2018. Indigenous impacts on North American Great Plains fire regimes of the past millennium. *PNAS* 115, 8143–8148. <https://doi.org/10.1073/pnas.1805259115>
- Rouget, M., Jonas, Z., Cowling, R.M., Desmet, P.G., Driver, A., Mohamed, B., Mucina, L., Rutherford, M.C., Powrie, L.W., 2006. Ecosystem status and protection levels of vegetation types, in: Mucina, L., Rutherford, M. C. (Eds.), *The Vegetation of South Africa, Lesotho and Swaziland*. Pretoria: South African National Biodiversity Institute. South African National Biodiversity Institute, Pretoria, pp. 725–737.
- Rutherford, M.C., Mucina, L., Powrie, L.W., 2006. Biomes and bioregions of southern Africa. *The vegetation of South Africa, Lesotho and Swaziland* 19, 30–51.
- Scherjon, F., Bakels, C., MacDonald, K., Roebroeks, W., 2015. Burning the Land: An Ethnographic Study of Off-Site Fire Use by Current and Historically Documented Foragers and Implications for the Interpretation of Past Fire Practices in the Landscape. *Current Anthropology* 56, 299–326. <https://doi.org/10.1086/681561>
- Sealy, J., 2010. Isotopic Evidence for the Antiquity of Cattle-Based Pastoralism in Southernmost Africa. *Journal of African Archaeology* 8, 65–81.
- Sealy, J., Yates, R., 1994. The chronology of the introduction of pastoralism to the Cape, South Africa. *Antiquity* 68, 58–67. <https://doi.org/10.1017/S0003598X00046196>
- Skead, C.J., 2009. Historical plant incidence in southern Africa: a collection of early travel records in southern Africa. South African National Biodiversity Institute, Pretoria.
- Smith, B.D., Zeder, M.A., 2013. The onset of the Anthropocene. *Anthropocene, When Humans Dominated the Earth: Archeological Perspectives on the Anthropocene* 4, 8–13. <https://doi.org/10.1016/j.ancene.2013.05.001>
- Thompson, J.C., Wright, D.K., Ivory, S.J., Choi, J.-H., Nightingale, S., Mackay, A., Schilt, F., Otárola-Castillo, E., Mercader, J., Forman, S.L., Pietsch, T., Cohen, A.S., Arrowsmith, J.R., Welling, M., Davis, J., Schiery, B., Kaliba, P., Malijani, O., Blome, M.W., O'Driscoll, C.A., Mentzer, S.M., Miller, C., Heo, S., Choi, J., Tembo, J., Mapemba, F., Simengwa, D., Gomani-Chindebvu, E., 2021. Early human impacts and ecosystem reorganization in southern-central Africa. *Science Advances*. <https://doi.org/10.1126/sciadv.abf9776>
- Thuiller, W., Slingsby, J.A., Privett, S.D.J., Cowling, R.M., 2007. Stochastic Species Turnover and Stable Coexistence in a Species-Rich, Fire-Prone Plant Community. *PLOS ONE* 2, e938. <https://doi.org/10.1371/journal.pone.0000938>
- Timpson, A., Colledge, S., Crema, E., Edinborough, K., Kerig, T., Manning, K., Thomas, M.G., Shennan, S., 2014. Reconstructing regional population fluctuations in the European Neolithic using radiocarbon dates: a new case-study using an improved method. *Journal of Archaeological Science* 52, 549–557. <https://doi.org/10.1016/j.jas.2014.08.011>

- Trollope, W., Wilgen, B. van, Trollope, L.A., Govender, N., Potgieter, A.L., 2014. The long-term effect of fire and grazing by wildlife on range condition in moist and arid savannas in the Kruger National Park. *African Journal of Range & Forage Science* 31, 199–208. <https://doi.org/10.2989/10220119.2014.884511>
- Tyson, P.D., 1986. Climatic change and variability in southern Africa. Oxford University Press, Cape Town.
- Uren, C., Kim, M., Martin, A.R., Bobo, D., Gignoux, C.R., Helden, P.D. van, Möller, M., Hoal, E.G., Henn, B.M., 2016. Fine-Scale Human Population Structure in Southern Africa Reflects Ecogeographic Boundaries. *Genetics* 204, 303–314. <https://doi.org/10.1534/genetics.116.187369>
- van Wilgen, B.W., 2009. The evolution of fire and invasive alien plant management practices in fynbos. *South African Journal of Science* 105, 335–342.
- Voarintsoa, N.R.G., Matero, I.S.O., Railsback, L.B., Gregoire, L.J., Tindall, J., Sime, L., Cheng, H., Edwards, R.L., Brook, G.A., Kathayat, G., Li, X., Michel Rakotondrazafy, A.F., Madison Razanatseho, M.O., 2019. Investigating the 8.2 ka event in northwestern Madagascar: Insight from data–model comparisons. *Quaternary Science Reviews* 204, 172–186. <https://doi.org/10.1016/j.quascirev.2018.11.030>
- Wadley, L., Backwell, L., d’Errico, F., Sievers, C., 2020. Cooked starchy rhizomes in Africa 170 thousand years ago. *Science* 367, 87–91. <https://doi.org/10.1126/science.aaz5926>
- Whitlock, C., Anderson, R.S., 2003. Fire history reconstructions based on sediment records from lakes and wetlands, in: Veblen, T.T., Baker, W.L., Montenegro, G., Swetnam, T. (Eds.), *Fire and Climatic Change in Temperate Ecosystems of the Western Americas*. Springer, New York, pp. 3–31.