



# The Influence of Ecosystem and Phylogeny on Tropical Tree Crown Size and Shape

Alexander Shenkin<sup>1\*</sup>, Lisa Patrick Bentley<sup>1,2</sup>, Imma Oliveras<sup>1</sup>, Norma Salinas<sup>1,3</sup>, Stephen Adu-Bredu<sup>4</sup>, Ben Hur Marimon-Junior<sup>5</sup>, Beatriz S. Marimon<sup>5</sup>, Theresa Peprah<sup>4</sup>, Efrain Lopez Choque<sup>6</sup>, Lucio Trujillo Rodriguez<sup>6</sup>, Edith Rosario Clemente Arenas<sup>6</sup>, Christian Adonteng<sup>4</sup>, John Seidu<sup>4</sup>, Fabio Barbosa Passos<sup>5</sup>, Simone Matias Reis<sup>5</sup>, Benjamin Blonder<sup>1</sup>, Miles Silman<sup>7</sup>, Brian J. Enquist<sup>8,9</sup>, Gregory P. Asner<sup>10</sup> and Yadvinder Malhi<sup>1</sup>

<sup>1</sup> Environmental Change Institute, School of Geography and the Environment, University of Oxford, Oxford, United Kingdom,

<sup>2</sup> Department of Biology, Sonoma State University, Rohnert Park, CA, United States, <sup>3</sup> Sección Química, Pontificia Universidad Católica del Perú, Lima, Peru, <sup>4</sup> CSIR-Forestry Research Institute of Ghana, Kumasi, Ghana, <sup>5</sup> Universidade do Estado de Mato Grosso, Nova Xavantina, Brazil, <sup>6</sup> Universidad Nacional San Antonio Abad del Cusco, Cusco, Peru,

<sup>7</sup> Department of Biology, Wake Forest University, Winston-Salem, NC, United States, <sup>8</sup> Department of Ecology and Evolutionary Biology, University of Arizona, Tucson, AZ, United States, <sup>9</sup> The Santa Fe Institute, Santa Fe, NM, United States, <sup>10</sup> Center for Global Discovery and Conservation Science, Arizona State University, Tempe, AZ, United States

## OPEN ACCESS

### Edited by:

Alice Catherine Hughes,  
Xishuangbanna Tropical Botanical  
Garden (CAS), China

### Reviewed by:

Thuy Thi Nguyen,  
Vietnamese Academy of Forest  
Science, Vietnam  
Markku Larjavaara,  
Peking University, China

### \*Correspondence:

Alexander Shenkin  
al@shenkin.org

### Specialty section:

This article was submitted to  
Tropical Forests,  
a section of the journal  
Frontiers in Forests and Global  
Change

**Received:** 30 September 2019

**Accepted:** 25 August 2020

**Published:** 09 October 2020

### Citation:

Shenkin A, Bentley LP, Oliveras I, Salinas N, Adu-Bredu S, Marimon-Junior BH, Marimon BS, Peprah T, Choque EL, Trujillo Rodriguez L, Clemente Arenas ER, Adonteng C, Seidu J, Passos FB, Reis SM, Blonder B, Silman M, Enquist BJ, Asner GP and Malhi Y (2020) The Influence of Ecosystem and Phylogeny on Tropical Tree Crown Size and Shape. *Front. For. Glob. Change* 3:501757. doi: 10.3389/ffgc.2020.501757

The sizes and shapes of tree crowns are of fundamental importance in ecology, yet understanding the forces that determine them remains elusive. A cardinal question facing ecologists is the degree to which general and non-specific vs. ecological and context-dependent processes are responsible for shaping tree crowns. Here, we test this question for the first time across diverse tropical ecosystems. Using trees from 20 plots varying in elevation, precipitation, and ecosystem type across the paleo- and neotropics, we test the relationship between crown dimensions and tree size. By analyzing these scaling relationships across environmental gradients, biogeographic regions, and phylogenetic distance, we extend Metabolic Scaling Theory (MST) predictions to include how local selective pressures shape variation in crown dimensions. Across all sites, we find strong agreement between mean trends and MST predictions for the scaling of crown size and shape, but large variation around the mean. While MST explained approximately half of the observed variation in tree crown dimensions, we find that local, ecosystem, and phylogenetic predictors account for the half of the residual variation. Crown scaling does not change significantly across regions, but does change across ecosystem types, where savanna tree crowns grow more quickly with tree girth than forest tree crowns. Crowns of legumes were wider and more voluminous than those of other taxa. Thus, while MST can accurately describe the central tendency of tree crown size, local ecological conditions and evolutionary history appear to modify the scaling of crown shape. Importantly, our extension of MST incorporating these differences accounts for the mechanisms driving variation in the scaling of crown dimensions across the tropics. We present allometric equations for the prediction of crown dimensions across tropical ecosystems. These results are critical when scaling the function of individual trees to larger spatial scales or incorporating the size and shape of tree crowns in global biogeochemical models.

**Keywords:** Metabolic Scaling Theory, allometry, tropical trees, tree crowns, tree architecture

## INTRODUCTION

The sizes and shapes of tree crowns are conspicuous and fundamental attributes of the organisms that comprise the structure of Earth's forests. Despite the key roles tree crowns play in processes including growth and competition at the individual scale, and community assembly (e.g., Iwasa et al., 1985) and function (e.g., Sapijanskas et al., 2014) at the stand scale, the forces that determine their sizes and shapes are still debated.

The forms of tree crowns and their roles in tree growth and stem form have interested foresters for over a century (Larson, 1963). Ecological interest in tree crown form gained momentum in the 1970s. Architectural (Hallé et al., 1978) and ecological niche perspectives (Horn, 1971; Ashton, 1978; Givnish, 1984) were followed by considerations of mechanical constraint (King and Loucks, 1978; King, 1981) and life history strategy (e.g., Poorter et al., 2006). Ecologically, crown shape has been seen as the result of predictable, genetically-programmed branching processes on the one hand, and stochastic disturbance and competitive ones on the other (Busgen and Munch, 1929; Hallé et al., 1978). In contrast to early focus on context-dependent ecological strategy, more recent theory, including Metabolic Scaling Theory (MST; West et al., 1997), competitive convergence (Iida et al., 2011; MacFarlane and Kane, 2017), and sphere packing (Taubert et al., 2015), has focused on the determinants of crown size from first principles. MST, for example, does not directly address the roles of niche or ontogeny, and competitive convergence and sphere packing models steer further away from ecological and physiological perspectives, given their absence of environmental and evolutionary factors. In this respect, these more recent perspectives might be classified as “general” theories, in contrast to “environmental” and “ecological” theories that privilege variation attributable to abiotic conditions in the former case, and species, niche, and life history strategy in the latter (e.g., Sapijanskas et al., 2014). In accordance with our classification, we refer to “general” and “ecological” classes of theories below.

Ecologically, tree crown size and shape may be subject to multiple tradeoffs, including lateral extension for light interception and competitor suppression vs. mechanical risk, leaf exposure vs. drought risk, and fast vs. slow growth strategies (Verbeeck et al., 2019). The above general theories do not deny mechanical and other constraints. Instead, adaptive differentiation either does not figure importantly in them or plays a secondary role. Nonetheless, general theory provides a baseline by which to assess their underlying assumptions and hypothesized drivers of variation in canopy dimensions.

Ecological theory appears best able to explain sapling crown form, when variation in crown shape and form is determined more by genetics than stochastic and local processes (e.g., King, 1998; Sterck and Bongers, 1998). Understanding variation in adult crown form, however, has proven more difficult for a number of reasons. These reasons likely include the fact that numerous architectural paths can lead to similar forms (e.g., Fisher and Hibbs, 1982); the measurement of adult crowns is more difficult than that of juvenile crowns; and general and stochastic processes may overpower competitive and genetic ones, making the latter effects difficult to detect given the

long life of trees and hence their long exposure to exogenous environmental forces such as wind (Hallé et al., 1978).

Mixed support exists for general hypotheses of crown size, including MST (Muller Landau et al., 2006; Enquist et al., 2009; Iida et al., 2011; Pretzsch and Dieler, 2012; Antin et al., 2013; Taubert et al., 2015; Blanchard et al., 2016) and competitive convergence (Iida et al., 2011). Even when scaling theories in general, and MST in particular, are confirmed, variance around the mean fit can exceed an order of magnitude (Poorter et al., 2015). We consider how the inclusion of information on ecosystem context, biogeographic region, and phylogenetic position can help explain this large variance.

Beyond their fundamental importance in understanding plants and forests, tree crown shapes and sizes are of increasing interest to communities developing dynamic global vegetation models (DGVMs). Representations of canopy structure in these models range from 1-D “single leaf” models, to 2-D multilayer models (e.g., perfect plasticity approximation Purves et al., 2007), to efforts to fuse individual-based models with DGVMs to represent the influence of variable crown allometry on ecosystem dynamics (Fischer et al., 2019). Crown allometries play a role in how trees assemble and compete in forests, so as DGVMs become more complex and attempt to represent individual dynamics, models for how crowns scale with tree size and the plasticity of those relationships are needed.

In this study we examine general patterns in tree crown size (width, depth, surface area, and volume), shape (relative depth), and allometry across an original dataset of 1144 individual tree crowns of 281 species spanning one elevation transect, one savanna-forest-precipitation gradient, and one savanna-forest gradient with constant precipitation, across the paleo- and neotropics. We evaluate predictions and underlying assumptions of MST theories in light of our data, and then examine the variance around MST fits from an ecological vantage point. To evaluate the relative contributions of general and context-specific processes, we ask if ecological predictors can improve general models. We pose ecological hypotheses across ecosystems, space, biogeography, and evolutionary history, and test them in conjunction with general predictors (**Figure 1** and **Table 1**). Finally, we present allometric equations to predict crown dimensions across different tropical ecosystem types. To our knowledge, this study represents the first test across ecosystems, and the first test across environmental gradients, of crown size and shape in the tropics.

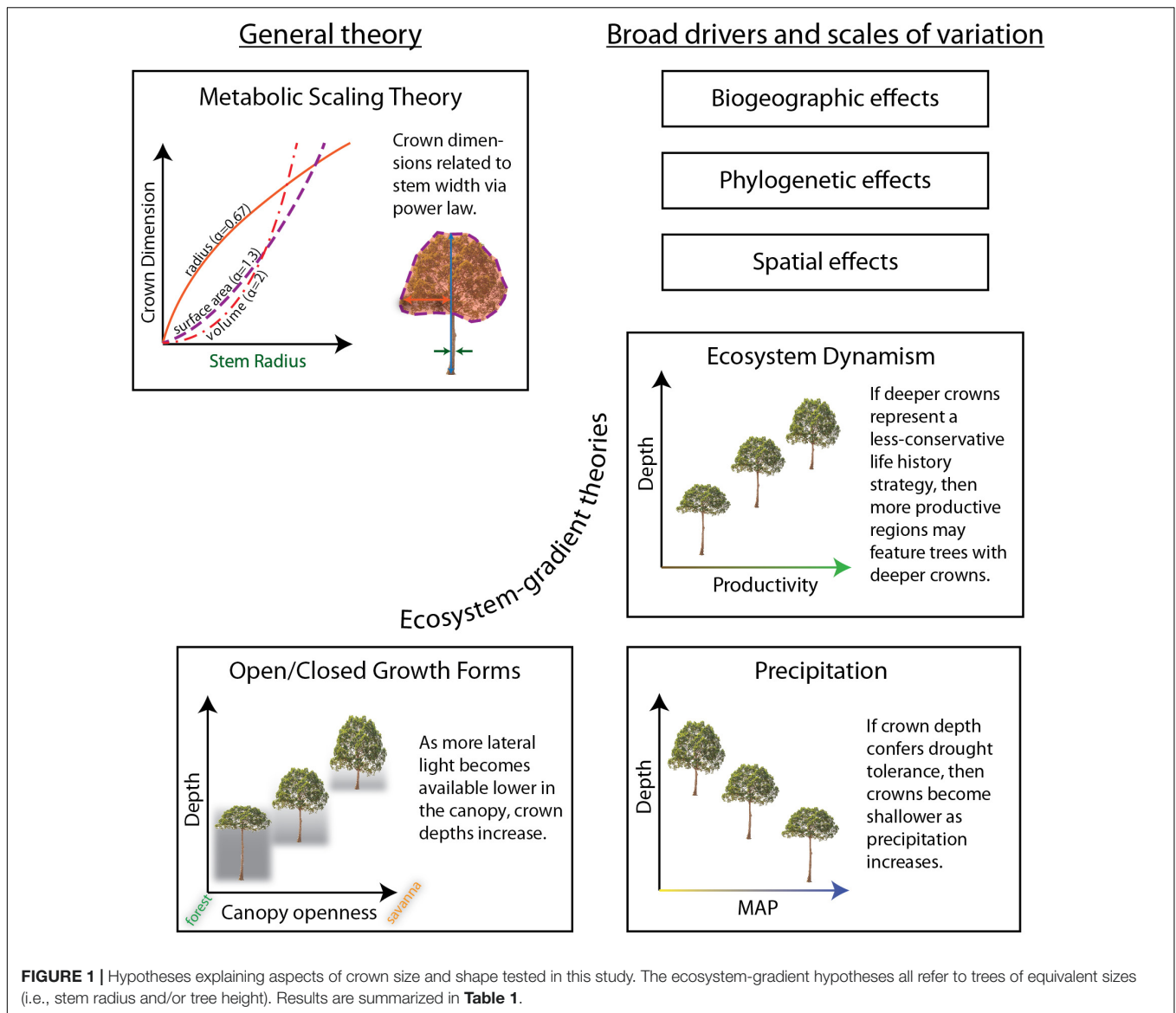
## Hypotheses

MST's predictions of crown allometry start with assuming the biomechanic principle of elastic similarity that posits the relationship between the height of a tree is proportional to the  $2/3$  power of stem radius (McMahon and Kronauer, 1976). See section “Notation” below for our notation.

$$h \propto r_{\text{stem}}^{2/3} \quad (1)$$

Second, West et al. (2009) assume that crown radius scales isometrically with tree height:

$$r_{\text{crown}} = \beta_{\text{rad},h} h^{\alpha_{\text{rad},h}}, \text{ where } \alpha_{\text{rad},h} = 1 \quad (2)$$



Third, by substitution, the relationship between crown and stem radius is derived as:

$$r_{\text{crown}} = \beta_{\text{rad}} r_{\text{stem}}^{\alpha_{\text{rad}}}, \text{ where } \alpha_{\text{rad}}=2/3 \quad (3)$$

We refer to the first two assumptions (Eqs 1, 2) as distal assumptions, and the derived prediction of  $r_{\text{crown}}$  (Eq. 3) as the proximate prediction. By further assuming a spherical, Euclidean-uniform (as opposed to fractal; Voss, 1988) crown, West et al. (2009) extend the relationship to crown surface area,

$$sa = \beta_{sa} r_{\text{stem}}^{\alpha_{sa}}, \text{ where } \alpha_{sa}=4/3 \quad (4)$$

and to crown volume,

$$vol = \beta_{vol} r_{\text{stem}}^{\alpha_{vol}}, \text{ where } \alpha_{vol}=2 \quad (5)$$

See **Supplementary Material** for an illustration (**Supplementary Figure S1**) and more detailed derivation.

MST does not make specific predictions for crown depth, but as we show in **Supplementary Material** (section 4), uniform Euclidean assumptions about crown shapes lead to the same prediction for crown depth as for crown radius:  $\alpha_{\text{depth}} = 0.67$ . MST would furthermore predict a scaling exponent for relative crown depth (depth/width) as  $\alpha_{\text{reldepth}} = \alpha_{\text{depth}} - \alpha_{\text{rad}} = 0$ , or, no relationship between stem girth and relative crown depth.

We first test the proximate predictions for crown scaling parameters above against our entire dataset (H1). We also test the crown radius vs. height (Eq. 1, H3) and height vs. stem radius (Eq. 2, H2) distal assumptions that underlie the scaling predictions (Price et al., 2012). Next, using the residuals of our scaling models, we examine how the variance from the mean fit is partitioned across taxonomic (genus and family), ecosystem type, spatial (plot), and biogeographic (regional) groups. We then

**TABLE 1 |** Hypotheses tested in this study.

Hypothesis	Dimension	Prediction	Basis	Dataset	Support
<b>General hypotheses</b>					
H1. MST (proximate predictions)	Width Depth Surface Area Volume	$\alpha_{rad} = 0.67$ carriage return $\alpha_{depth} = 0.67$ carriage return $\alpha_{sa} = 1.33$ $\alpha_{vol} = 2$	West et al., 2009	All	Yes
H2. MST height-dbh scaling (distal assumption)	Tree height vs stem radius	$\alpha_h = 0.67$	West et al., 2009	All	No
H3. MST radius-height scaling (distal assumption)	Crown width vs tree height	$\alpha_{rad,h} = 1$	West et al., 2009	All	No
H4. Phylogenetic signal	All	Residuals from scaling models exhibit phylogenetic signal.	Observed by Moncrieff et al. (2014) in savannas.	All	Yes
H5. Biogeography	All	Crown scaling differs across biogeographic regions. Test $\alpha_{BIO}$ and $\beta_{BIO}$ for significance in $r_{stem}$ , $sa$ , and $vol$ scaling models (Model 16).	Moncrieff et al., 2014	All	No
<b>Gradient-specific hypotheses</b>					
H6. Open vs. closed growth forms	Depth	Savanna tree crowns are deeper than forest tree crowns across all size classes, but especially in large trees.	Hallé et al., 1978	Brazil Forest – Savanna, Ghana Forest – Savanna	Yes
H7. Depth drought tolerance	Depth	Crowns are deeper in drier systems	Horn, 1971	Ghana Precip Gradient, All	No*
H8. Ecosystem-speed	Relative Depth	Crowns elongated in more dynamic lowland ecosystems compared to those in more conservative upland ones	Proposed here	Peru elevation gradient	Yes*

\*Indicates equivocal support or lack thereof.

examine those groups in more detail. Finishing our treatment of MST, we show how additional modifications of MST can be used to further assess the origin of variation in tree crown scaling.

We then turn to examine variation in crown scaling across environmental gradients and phylogeny to help explain the residual model variance. Specifically, we test whether crown scaling changes as a result of biogeography (H5) and phylogenetic relationship (H4) in our dataset. The variation of crown shapes across biogeographic regions and evolutionary history has not been a focus of extensive research. Blanchard et al. (2016) examined crown allometry across the wet tropics and found little biogeographically-structured variation in scaling exponents. Moncrieff et al. (2014) found that differences between crown shapes in African and Australian savannas were associated with biogeographic region and evolutionary history, not environmental variation. Different evolutionary processes and rates of traits do not lead to distinct phylogenetic patterns (Revell et al., 2008). Nonetheless, as we expect that crown size and shape is variable, adaptive, and that aboveground resources can be partitioned, we do expect to observe a phylogenetic signal. We do not expect to see a strong biogeographic signal given the large range of ecosystems we sample across each biogeographic region.

Across the individual environmental gradients, we test specific explanations of crown shape. “Open” growth form trees are characterized as being shorter for a given stem diameter at breast height (DBH) and having wider, deeper, and more hemispherical (vs. disc-like, cylindrical, etc.) crowns than trees of equivalent girth in the closed forest (Hallé et al., 1978; Harja et al., 2012). Does crown allometry reflect open vs. closed growth forms across

savanna – forest gradients (H6)? Horn (1971) hypothesized that deep crowns confer drought tolerance due to the self-shading of leaves. Are crowns of similarly sized trees deeper in drier systems as compared to wetter ones (H7)? And finally, Horn’s (1971) framework posits that fast growing trees should have deeper crowns and lower density wood than slower shade-tolerants. Do crowns become relatively shallower, and hence more conservative (i.e., shade and drought tolerant, lower photosynthetic and growth rates), in systems with slower nutrient and carbon turnover (H8)?

## MATERIALS AND METHODS

### Study Site

Different environments may select for different crown geometries. For example, differences in resource competition, climate, fire, and herbivory, may confer advantage to crowns of different shapes or sizes. We assessed the scaling of crown shape across 3 environmental gradients: a 3300 m elevation gradient extending from the Andes down to the Amazon in Peru; a savanna-forest transition in Brazil; and a savanna-forest precipitation transition in Ghana. In addition to continuous environmental variables, our study distinguishes between categorical ecosystem types: tropical forests (TF), tropical montane cloud forests (TMCF), savannas, and transitional sites between savannas and forests.

Our study employs 20 one-hectare plots across the three environmental gradient transects above



(**Supplementary Table S1**): 10 plots from the Peruvian elevation gradient, four plots from the Brazilian savanna-forest transition, and six plots from the Ghanaian savanna-forest precipitation transition. These plots comprise part of the Global Ecosystems Monitoring Network (GEM)<sup>1</sup>.

The ten Peruvian plots (**Supplementary Figure S2**) belong to a group of permanent 1-ha plots in the departments of Cusco and Madre de Dios in SE Peru. Six of the plots are montane plots in the Kosñipata Valley in the province of Paucartambo, department of Cusco (Malhi et al., 2017), spanning an elevation range 1500–3500 m (Malhi et al., 2010), two are submontane plots located in the Pantiacolla front range of the Andes (range 600–900 m), and two plots are located in the Western Amazon lowlands in Tambopata National Park (range 200–225 m). All the Peruvian plots are operated by the Andes Biodiversity Ecosystems Research Group (ABERG)<sup>2</sup>. From Feb 2013 to Jan 2014, mean annual air temperature (MAT) varied from 9°C to 24.4°C and mean annual precipitation (MAP) ranged from 1560 mm y<sup>-1</sup> to 5302 mm y<sup>-1</sup> across all sites along the gradient (**Supplementary Table S1**). Precipitation peaks strongly at ~1500 m elevation. Productivity and ecosystem carbon cycle data for these sites are reported by Malhi et al. (2017).

The Brazilian forest-savanna gradient is located near Nova Xavantina, Mato Grosso. Two well-defined seasons occur in the region: hot and wet from October to March, and cool and dry from April to September (Marimon et al., 2014). The gradient spans Amazon forest and Cerrado biomes, transitions rapidly from an Amazonian transitional dry forest to *cerrado sensu stricto* (South American woody savanna); abrupt transitions in vegetation type accompany changes in soil physical and chemical properties (Marimon Junior and Haridasan, 2005). Three of the four plots are located in Parque Municipal do Bacaba, and represent three distinct vegetation types of progressively decreasing woody biomass and stature (*cerradão*, *cerrado típico*, and *cerrado rupestre*, see Marimon Junior and Haridasan, 2005). Despite fire exclusion by park management, the first two Bacaba sites burned in 2008, while the last has not burned in over twenty years. The fourth site is located in a semi-deciduous forest, located 25 km away (SE) from Nova Xavantina in Fazenda Vera Cruz, and is not subject to a fire regime (Marimon Junior and Haridasan, 2005; Marimon et al., 2014). The close proximity of all plots suggests that variation in vegetation type is more likely driven by edaphic properties rather than by variation in rainfall.

The Ghanaian forest-savanna precipitation gradient spans three sites. Three plots are found in the Kogyae Strict Nature Reserve, in the northeast of the Ashanti region, with MAP of 1360 mm and MAT of 28°C (Janssen et al., 2018). Two semi-deciduous forest plots are in the Bobiri Reserve, 25 km from Kumasi, with a MAP of 1500 mm. The two final plots, moist evergreen and swampy evergreen forests, are in the Ankasa Reserve in southwestern Ghana with a MAP of 2000 mm (Chiti et al., 2010). The soils in the Ghana transect are more fertile than those in the Brazil sites (Malhi, unpublished data).

## Field Sampling

From April – November 2013, we measured plant traits as part of the CHAMBASA project in Peru, from March – May 2014 in the BACABA project in Brazil, and from October 2014 – March 2015 in the KWAEEMMA project in Ghana. Based on the most recently available census and diameter data, a sampling protocol was adopted wherein species were sampled that maximally contributed to plot basal area (a proxy for plot biomass or crown area). We aimed to sample the minimum number of species that contributed to 80% of basal area, although in the diverse lowland forest plots we only sampled species comprising 50–70% of plot basal area. Within each species, 3–5 individual trees were chosen for sampling (5 trees in upland Peruvian sites and 3 trees in lowland Peruvian, Brazilian, and Ghanaian sites; **Supplementary Table S2**). If 3 trees were not available in the chosen plot, we sampled additional individuals of the same species from an area immediately surrounding the plot.

## Crown Measurement

Tree crowns were measured using a laser hypsometer (TruPulse 360/360R, Laser Technology Inc., Colorado, United States). In “Missing Line” (ML) mode, the TruPulse 360 returns horizontal distance (HD), vertical distance (VD), and azimuth (AZ) between two points in space as determined by 2 laser pulse returns that determine distance coupled with azimuth measurements from the unit’s internal compass (TruPulse 360/360B User’s Manual, Laser Technology Inc., Colorado, United States). We took ML measurements between stem base and crown top, crown bottom, and usually 6–20 points around the circumference of the crown perimeter depending on the complexity of its shape. Because we were interested in tree function (e.g., gas exchange capacity), we defined the crown base as the lowest significant foliage that was not a resprout or otherwise relatively spurious, instead of using the first primary branch. We applied a convex hull to this set of points to yield a 3-D polyhedron from which crown dimensions were extracted. We estimate crown volume and surface area as the volume and surface area of the convex hull. We estimate average crown radius as the radius of a circle with the same area as the 2-D convex hull of the points when projected onto a horizontal plane.

Manual measurements of crown widths and tree heights were taken in a subset of Ghanaian trees to verify that results from the laser hypsometer method are comparable to those from more widely used techniques (see **Supplementary Information** for protocols used). Tree heights were measured with a clinometer for angle to tree top and tape measure for distance from clinometer to the point below the crown apex. Widths were measured along the crown major axis and the longest width perpendicular to the major axis (the semi-major axis), and their points of intersection were recorded. The axes will not in general intersect in their midpoints, so we calculated the projected area for each quadrant, which is characterized by two lengths, as  $\frac{1}{4}$  the area of an ellipse with the lengths from centerpoints to edges as axes, and summed them:  $A_{\text{crown}} = \frac{\pi l_1 l_2}{4} + \frac{\pi l_2 l_3}{4} + \frac{\pi l_3 l_4}{4} + \frac{\pi l_4 l_1}{4}$ . The average radius was calculated as the radius of a circle with area  $A_{\text{crown}}$ . This crown measurement protocol is available in SI.

<sup>1</sup><http://gem.tropicalforests.ox.ac.uk>

<sup>2</sup><http://www.andesconservation.org>

Dimensions from both methods corresponded closely ( $N = 20$ ; width  $R^2_{adj} = 0.83$ ,  $SE = 1.06$ ; height  $R^2_{adj} = 0.74$ ,  $SE = 2.77$ ), and are within the range for the tangent method reported by Larjavaara and Muller-Landau (2013). Larjavaara and Muller-Landau (2013) recommend the laser hypsometer method as opposed to manual clinometers for tree height measurement, especially for cross-site studies where instrument operators are different. They further note that while errors are inherent in both methods, those introduced by the laser hypsometer may lend greater weight to leaf vs. fine wood structure, which largely corresponds with our goals here.

## Intraspecific vs. Interspecific Models

MST's predictions of allometric scaling assume that the terminal vascular characteristics are approximately the same within and across species (West et al., 1997, 1999). These characteristics include: petiole conducting area, petiole length, and flow rate (West et al., 1997; Savage et al., 2008; Enquist and Bentley, 2012). In addition, to scale up to crown characteristics, West et al. (2009) assume that leaf area densities (LADs) of tree crowns are equivalent across species and tree size. If these assumptions do not hold across species then we should if possible control for this variation in one of two ways: either measure the key characteristics in each individual or species, or evaluate scaling parameters within (intraspecific), not across (interspecific) species. In effect, without independent measurements of these characteristics, MST's assumptions compel us to model scaling intraspecifically. In this study, we implement intraspecific LMMs by including species as a random effect, thereby accounting for variation between species. In our standardized major axis (SMA) regressions (see **Supplementary Material**, section 3), we group by species, and then examine the estimated overall fit.

## Notation

Our notation of model coefficients and parameters uses  $\alpha$  when referring to exponential (or scaling) parameters, and  $\beta$  when referring to linear (or normalization) parameters. Subscripts may include a comma, such as  $\alpha_{y,x}$ , in which case the first term ( $y$ ) indicates the dependent variable in the model, and the second term ( $x$ ) indicates the independent variable that coefficient is associated with. Thus,  $\alpha_{depth,h}$  indicates the exponential parameter of tree height when predicting crown depth. Since  $r_{stem}$  is the most common predictor, we omit commas for parameters associated with  $r_{stem}$ .

## Statistical and Phylogenetic Models

We employed both LMM and SMA regressions to estimate scaling parameters and test hypotheses. Our primary analyses are conducted with LMM, and confirmed with SMA in **Supplementary Material** (section 3). The LMM approach is advantageous when accounting for variation across many groups (e.g., species) via random effects, and it is appropriate for fitting allometry models (Kilmer and Rodríguez, 2016). SMA regression is often used to estimate scaling coefficients as it allows for measurement error in both dependent and independent variables (Warton et al., 2006), and while less flexible, we include it as convention dictates.

LMM grand means were estimated by deviation (or sum-to-zero *sensu* Crawley, 2012) coding of categorical grouping factors (usually grouped by site), which effectively fits the main effect as the grand mean across all individuals while taking random effects into account. In order to aid interpretation of figures, we add the grand mean to each site effect and its confidence interval unless indicated otherwise. All analyses were performed in the R programming environment (R Core Team, 2016), accessing data using the GEMTraits database and R package (Shenkin et al., 2017), using the lme4 R package (ver 1.1-13; Bates et al., 2015) to fit the LMM models, and the afex R package (ver 0.16-1; Singmann et al., 2016) to estimate variable importance. Ninety five percent parameter confidence intervals were computed using profiling methods unless indicated otherwise.

To test the MST predictions above, we fit log-log linear models to estimate the linear (normalization) and exponential (scaling) parameters that relate the crown dimension to the size of the tree. Specifically, if  $Y$  is the crown dimension and  $X$  the tree size scalar (e.g., stem radius) in the equation  $Y = \beta X^\alpha$ , the slopes predicted by these models correspond to the scaling exponents  $\alpha_{rad}$ ,  $\alpha_{sa}$ ,  $\alpha_{vol}$ , and  $\alpha_{depth}$ , and the intercepts to the normalization factors  $\beta_{rad}$ ,  $\beta_{sa}$ ,  $\beta_{vol}$ , and  $\beta_{depth}$  (Eqs. 1–5; **Table 2**, Models 5–12; see **Supplementary Material** for formula and model derivations).

LMM log-log models suffice for scaling tests with single predictors, but when multiple independent non-linear predictors are necessary, one must either accept a multiplicative relationship between predictors, or resort to non-linear mixed models (NLMM). We use NLMMs below when testing multiple non-linear predictors that cannot be expressed as a modification to an existing coefficient (see **Supplementary Material**, section 5.2). When using NLMMs below, we utilize the nlme R package (Pinheiro et al., 2016), and we include species-level random effects for each predictor unless indicated otherwise. When NLMMs would not converge, we resorted to LMMs.

MST predicts a lack of relationship between tree size and relative crown depth. We therefore fit both linear and log-log models when evaluating relative depth (**Table 2**, Models 13–15; **Supplementary Table S6**). For readability, not all models tested in **Supplementary Table S6** are listed in **Table 2**.

To examine whether ecosystem type or biogeography influenced crown size and shape allometries, we fit LMM scaling models for crown width, depth, surface area, and volume with biogeography (Peru, Brazil, and Ghana) and ecosystem type (TF, TMCF, Savanna, and Transitional) as covariates. We illustrate the equation for crown width (**Table 2**, Model 16), but omit the full suite of models tested (**Supplementary Table S8**) for readability. While MST LMMs included species as a grouping factor, LMMs used for predictions across ecosystems and biogeography (**Table 2**, Model 16) included site but not species as a random effect, since we were interested in community-level responses. Additionally, inclusion of species-level random effects in the ecosystem and biogeographic models resulted in an excessive number of predictors.

To test the crown depth – drought tolerance hypothesis (H7), we modeled precipitation as a scaled covariate in the crown depth scaling model (**Table 2** Model 17). We test the effect of

**TABLE 2** | List of modeling equations employed in this study.

Model	Dependent variable	Fixed effects	Random species	Random site
1	<b>General form of LMMs</b> $\log(Y)$	$site * \log(X)$	$1 + \log(X)$	
2	<b>MST height allometry assumption</b> $\log(h)$	$site * \log(r_{stem})$	$1 + \log(r_{stem})$	
3	<b>MST crown radius allometry assumption</b> $\log(r_{crown})$	$site * \log(h)$	$1 + \log(h)$	
4	<b>Modified MST crown radius allometry assumption</b> $\log(r_{crown})$	$\log(h) + \log(r_{stem})$	$1 + \log(r_{stem}) + \log(h)$	$1 + \log(r_{stem}) + \log(h)$
5	<b>Crown width scaling with no site covariate</b> $\log(r_{crown})$	$\log(r_{stem})$	$1 + \log(r_{stem})$	
6	<b>Crown width scaling with site exponential covariate</b> $\log(r_{crown})$	$\log(r_{stem}) + site : \log(r_{stem})$	$1 + \log(r_{stem})$	
7	<b>Crown width scaling with site-exponential and -normalization covariate</b> $\log(r_{crown})$	$site * \log(r_{stem})$	$1 + \log(r_{stem})$	
8	<b>Crown surface area scaling</b> $\log(sa)$	$site * \log(r_{stem})$	$1 + \log(r_{stem})$	
9	<b>Crown volume scaling</b> $\log(vol)$	$site * \log(r_{stem})$	$1 + \log(r_{stem})$	
10	<b>Crown depth scaling</b> $\log(depth)$	$site * \log(r_{stem})$	$1 + \log(r_{stem})$	
11	<b>Crown depth scaling with tree height (nonlinear)</b> $depth$	$r_{stem}^{site} + rand_{spp} + h^{site} + rand_{site}$		See note 1 below
12	<b>Crown depth scaling with tree height</b> $\log(depth)$	$site * \log(r_{stem}) + site * \log(h)$		$1 + \log(r_{stem}) + \log(h)$
13	<b>Relative crown depth (linear)</b> $reldepth$	$site + r_{stem} + h$	1	
14	<b>Relative crown depth with height polynomial (linear)</b> $reldepth$	$site + r_{stem} + h + h^2$	1	
15	<b>Relative crown depth (log-log)</b> $\log(reldepth)$	$site + \log(h) + \log(r_{stem})$	1	
16	<b>Crown width with ecosystem and biogeographic predictors</b> $\log(r_{crown})$	$eco\_class * \log(r_{stem}) + bio\_region * \log(r_{stem})$		$1 + \log(r_{stem})$
17	<b>Crown depth scaling with precipitation</b> $\log(depth)$	$precip * \log(h) + precip * \log(r_{stem})$	$1 + \log(r_{crown}) + \log(h)$	$1 + \log(r_{crown}) + \log(h)$

Random effects are included alongside the fixed effects and prefixed with "rand\_" for readability.

precipitation both across the Ghana precipitation gradient and across the entire study.

Partitioning of variance was computed by fitting crossed and nested random effects for the categorical variables of interest in linear mixed models using the lme4 (Bates et al., 2011) package, extracting the variance-covariance matrix, and computing the variance ( $PropVar$ ) associated with each level ( $i$ ) as  $PropVar_{i_i} = Var(i_i) / \sum Var(i_i)$ . Residuals used in this analysis were produced by fitting models similar to those used for MST tests, but with site-level random intercepts and slopes instead of fixed effects. Residuals were then calculated based on model predictions with random effects set to zero.

We created our phylogeny using Phylocom (Webb et al., 2008) with an APGIII mega-tree (The Angiosperm Phylogeny Group, 2009; megatree R20100701)<sup>3</sup> and ages file

<sup>3</sup><https://github.com/camwebb/tree-of-trees/blob/master/megatrees/R20100701.new>

(Gastauer and Meira-Neto, 2013). Node values and confidence intervals were computed with maximum likelihood methods using fastANC in the phytools R package (Revell, 2012).

### Allometric Prediction Models

We fit linear mixed models to predict crown radius, depth, surface area and volume across savannas, TMCs, tropical forests, non-savannas (i.e., all forest types but savannas), and across all plots together. Our model formulation is:

$$\log(crown\_dim) = \beta + a \log(r_{stem}) + b \log(h) + (rand_{spp}) + (rand_{site}),$$

where  $h$  is tree height,  $rand_{spp}$  is a random intercept and slope of species across  $r_{stem}$  and  $h$ , and  $rand_{site}$  is a random intercept and slope of species across  $r_{stem}$  and  $h$ . The  $r_{crown}$  models did not include  $h$  predictors.

## RESULTS

### Allometric Scaling of Tree Crowns

Here we fit MST models to our data and compare our empirical scaling exponents with theoretical predictions (H1–H3). Model equations are specified in **Table 2**. SMA results largely confirm LMM results, and details are included in **Supplementary Material** (section 3).

### Assessing Metabolic Scaling Theory's Distal Assumptions

The two assumptions underlying MST crown scaling, namely 2/3 scaling between stem radius and height and isometric scaling between height and crown radius, are both violated in our dataset. Instead, the constant stress model with a non-rigid base ( $\alpha_h = 1/2$ ) (Dean and Long, 1986) better explains the relationship between stem radius and height (Model 2;  $\alpha_h = 0.46$ , 95% CI 0.42–0.51; **Supplementary Figure S3**), and crown radius scales with height as  $\alpha_{rad,h} = 0.63$  (CI 0.53–0.73, Model 3, **Supplementary Figure S5**), with variation approaching an order of magnitude (**Supplementary Figures S4, S5**). Thus, H2 (MST height – stem radius scaling assumption) and H3 (MST crown radius – height assumption) are not supported.

The assumption of height-crown isometric scaling (Eq. 2), in particular, lacks empirical underpinnings. Instead, we propose an alternative assumption to better account for the drivers of tree form and function. Specifically, we allow crown radius to depend on both  $r_{stem}$  and  $h$  independently by modifying the second assumption (Eq. 2) to include  $r_{stem}$  (Model 4; see **Supplementary Material**, section 2.6 for derivation). Thus, the modified assumption becomes:

$$r_{crown} = \beta_{rad,h} h^{\alpha_{rad,h}} + \beta_{rad} r_{stem}^{\alpha_{rad}}$$

With plot as a random effect, this modification resulted in  $\alpha_{rad,h} = 0.16$  (SE = 0.05) and  $\alpha_{rad} = 0.59$  (SE = 0.038;  $R^2_{LMM(m)} = 0.50$ ,  $R^2_{LMM(c)} = 0.63$ ; see **Supplementary Material**, section 2.6 for details). Parameter estimates were similar across the various formulations tested, including those without plot as a random effect.

### Assessing Metabolic Scaling Theory's Proximate Predictions

We tested three models for predicting crown scaling (Models 5–7), and adopted the more complex formulation (Model 7) from here onwards because it fits nearly as well as the best model according to AIC, and is a more conservative choice for hypothesis testing (Bolker et al., 2009) (for details, see **Supplementary Material**, section 2.4).

Despite the failure of the assumptions underlying MST crown scaling (see above), we found that when aggregated by species (i.e., intraspecific scaling), our models closely agree with MST predictions for crown width, surface area, and volume scaling (**Table 3**, **Figure 2**), and thus support hypothesis H1 (MST predictions).

### Crown Depth Scaling

Crown depth was better predicted by tree height than by stem radius, but both predictors were important (AICc of model with just stem radius [10] minus that with both predictors [12] = 18; see **Supplementary Material**, section 2.4.1 for details). We therefore use the model with both predictors, but report the results from the model with just stem radius for comparison with the scaling models for other crown dimensions.

Crown depth scales with stem radius as  $\alpha_{depth} = 0.50$  (Model 10, **Supplementary Figure S21** and **Table 3**) and as  $\alpha_{depth} = 0.18$ ,  $\alpha_{depth,h} = 0.67$  when also including tree height as a predictor (Model 12, **Table 3**). Remarkably, in this formulation, crown depth scales exactly with tree height as crown width scales with stem radius. We do not support MST's prediction that crown depth scales with stem radius as 2/3. Rather, our data suggest that crown depth scales with tree height as 2/3.

### Explaining Residual Variation in Scaling

Taking the residual errors of the MST fits, we examine how this variation is structured across taxonomy, space (plots), biogeography (region), and ecosystem type (**Figure 3** and **Supplementary Table S7**). We find that residual variation in crown width leaves ~50% unexplained, while biogeography accounts for 28%, taxonomic family for 12%, and spatial (between plot) variation for 11%. Crown volume and surface area residuals are similarly structured: unexplained variation accounts for about half of the total, spatial variation account for ~20%, ecosystems for ~15%, biogeography for ~10%, and taxonomic family for 7%. Crown depth residuals (Model 12) were structured across space (24%) and biogeographic region (17%), with no taxonomic or ecosystem signal.

### Phylogenetic Structure of Crown Scaling

Crown scaling of most families do not differ significantly from each other. The crowns of Fabaceae, and particularly those of the Mimosoideae and Papilionoideae subfamilies, however, are consistently larger for a given stem radius than those of other taxa across all three study regions (Model 7, **Figure 4** and **Supplementary Figures S22, S23**). This clear phylogenetic signal supports our hypothesis that such a signal exists [H4 (Phylogenetic signal)]. Crown surface area and volume allometries show similar phylogenetic patterns, with phylogenetic differences in volume being the strongest, surface area less so, width weaker, and depth lacking a Fabaceae signal (Model 10, **Supplementary Figure S25**). Other clades with large crowns include *Celtis* and *Tapira*. Crowns of trees in the Chrysobalanaceae and Primulaceae, and some Moraceae taxa, tend to be smaller than expected. These patterns do not seem to be structured by biogeography. That is to say, clades with significantly larger or smaller crowns are largely comprised of species from all three regions.

### Trends Across Ecosystems and Biogeographic Regions

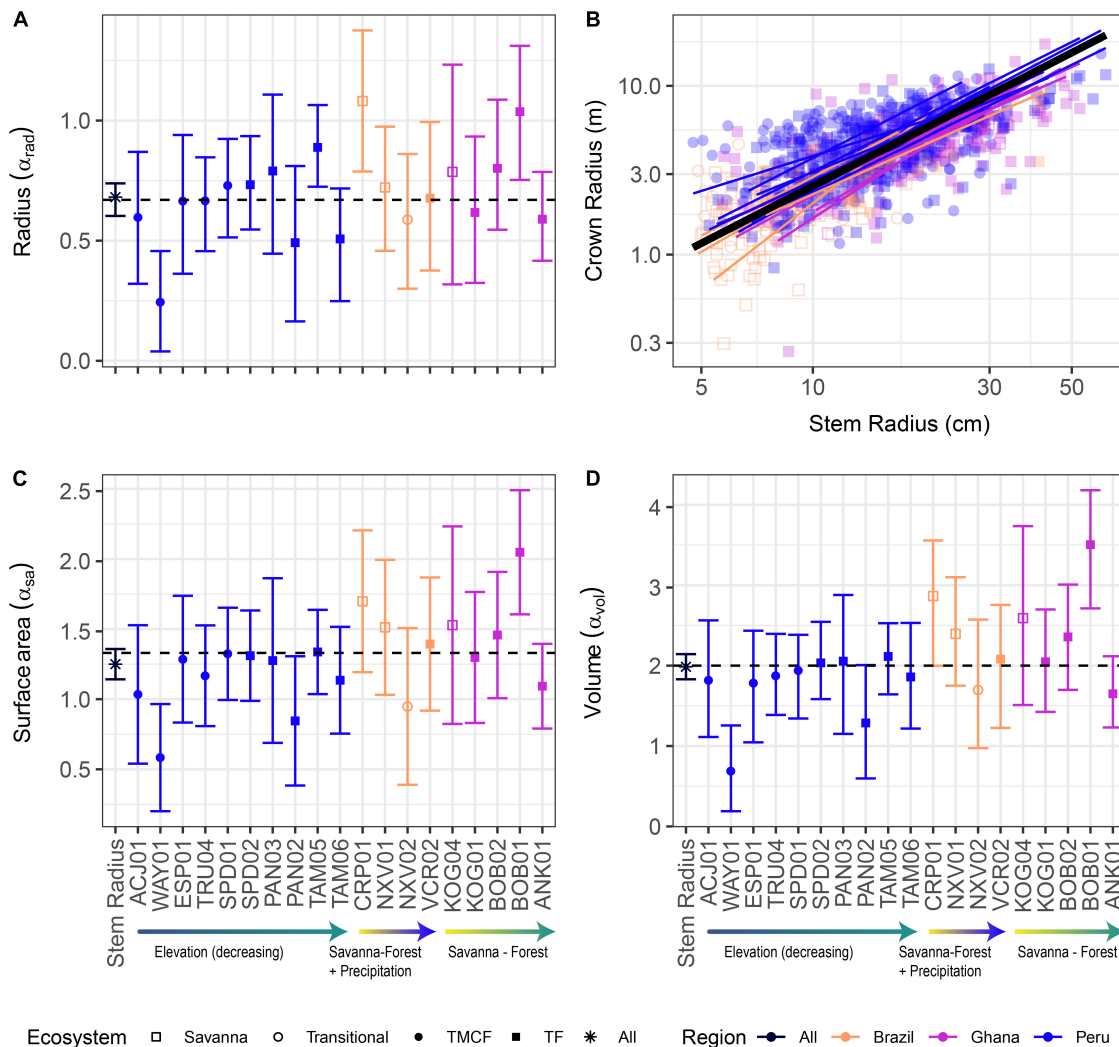
Here we examine patterns and test hypotheses of crown scaling patterns across environmental gradients (H6 – H8) and



**TABLE 3 |** Metabolic scaling parameters as fit by LMMs and SMA regressions.

Crown dimension	MST prediction	Linear mixed models				SMA regressions							
		Species random intercept + slope				No grouping		Species grouped		Genera grouped		Families grouped	
		$\alpha$	$\beta$	$R^2_{LMM(m)}$	$R^2_{LMM(c)}$	$\alpha$	$\beta$	$\alpha$	$\beta$	$\alpha$	$\beta$	$\alpha$	$\beta$
Radius	$\alpha_{rad} = 2/3$	<b>0.67</b> <b>(0.62–0.74)</b>	−0.2 (−0.28 to −0.12)	0.58	0.67	1.13 (1.08–1.18)	−0.72 (−0.78 to −0.66)	<b>0.69</b> <b>(0.28–1.1)</b>	−0.25 (−0.69 to 0.19)	<b>0.82</b> <b>(0.25–1.39)</b>	−0.37 (−0.9 to 0.15)	<b>1.14</b> <b>(0.45–1.82)</b>	−0.65 (−1.25 to −0.04)
Depth ( $r_{stem}$ predictor, model 10)	$\alpha_{depth} = 2/3$	<b>0.5</b> <b>(0.44–0.57)</b>	0.21 (0.13–0.3)	0.59	0.66								
Depth ( $r_{stem}$ and $h$ predictors, model 12)	$\alpha_{depth}$ $\alpha_{depth,h}$ No prediction	$\alpha_{depth}$ <b>0.18</b> <b>(0.08 – 0.27)</b> $\alpha_{depth,h}$ <b>0.67</b> <b>(0.55–0.80)</b>	−0.15 (−0.27 to −0.03)	0.68	0.73								
Surface Area	$\alpha_{sa} = 4/3$	<b>1.25</b> <b>(1.16–1.36)</b>	0.76 (0.62–0.88)	0.67	0.74	2.07 (1.99–2.15)	−0.2 (−0.3 to −0.1)	<b>1.27</b> <b>(0.55–1.99)</b>	0.62 (−0.14 to 1.39)	<b>0.92</b> <b>(0–1.83)</b>	1.01 (0.15–1.88)	<b>1.55</b> <b>(0.64–2.45)</b>	0.38 (−0.45 to 1.21)
Volume	$\alpha_{vol} = 2$	<b>1.95</b> <b>(1.81–2.12)</b>	−0.18 (−0.38 to 0)	0.67	0.73	3.16 (3.04–3.29)	−1.6 (−1.75 to −1.45)	<b>1.92</b> <b>(0.81–3.03)</b>	−0.39 (−1.57 to 0.79)	<b>1.36</b> <b>(−0.08 to 2.8)</b>	0.26 (−1.1 to 1.61)	<b>2.33</b> <b>(1–3.66)</b>	−0.77 (−2 to 0.46)

*Bold figures are scaling exponents for models with some level of species grouping.*



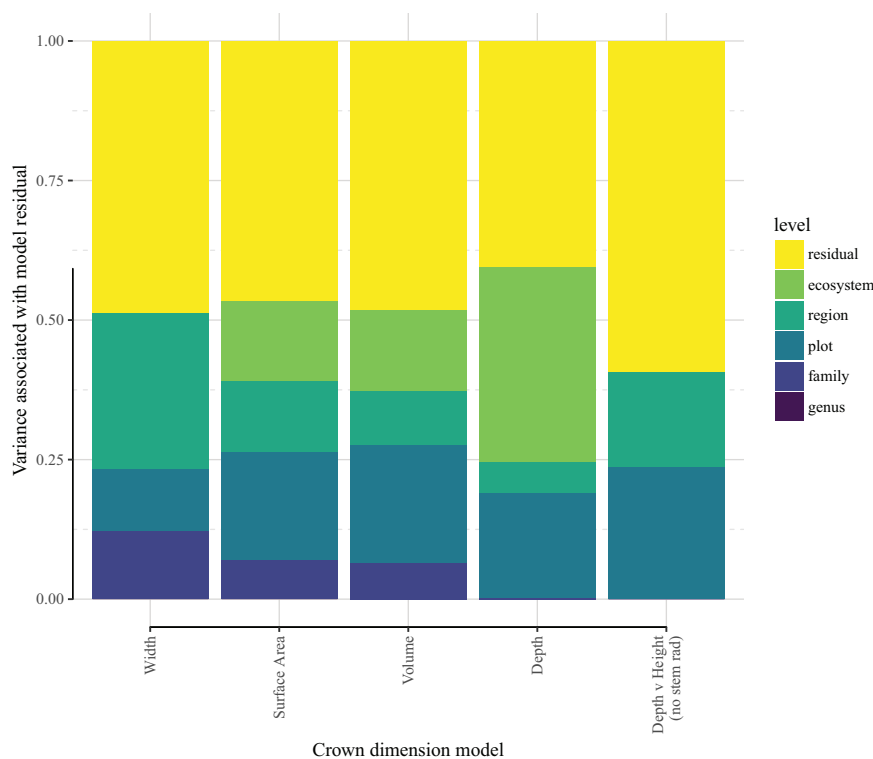
**FIGURE 2 |** Crown vs. stem radius LMM scaling exponents for crown radius (A), surface area (C), and volume (D). Data and SMA fits shown in (B) for crown radius scaling (surface area and volume fits are similar, and can be found in **Supplementary Material**). “Stem Radius” equates to  $\alpha_{dim}$  in Eq. 3. Black dotted lines indicate  $\alpha$  predicted by Metabolic Scaling Theory. Site  $\times$  stem radius interactions are indicated by the site labels below, and per-site intercepts are not shown (see **Supplementary Figures S9, S15, S20** for  $\beta$  terms and **Supplementary Figures S14, S19** for SMA fits vs. data). Model includes random intercepts and slopes per species. Error bars indicate 95% confidence intervals fit by likelihood surface profiling. Categorical site variables were encoded as deviation contrasts, which fits the magnitude of the site coefficients as the mean of the slope at that site minus the grand mean slope across all individuals. In order to aid interpretation, we added the grand mean to each site effect and its confidence interval. The Stem Radius effect represents the main effect of stem radius on crown radius, and in this context is the grand mean across all individuals, taking the species random effects into account.

biogeography (H5). We discuss our observations of these trends in detail in Supplementary Appendices (see **Supplementary Material**, section 2.1). Broad patterns of crown sizes from direct measurements can be seen in **Figure 5**.

Both ecosystem normalization ( $\beta_{eco}$ ) and exponential ( $\alpha_{eco}$ ) covariates significantly improve surface area (Kenward-Roger approximation;  $P(\alpha_{sa,eco}) = 0.02$ ,  $P(\beta_{sa,eco}) = 0.003$ ) and volume models ( $P(\alpha_{vol,eco}) = 0.01$ ,  $P(\beta_{vol,eco}) = 0.001$ ). Ecosystem type is only significant in crown width (Kenward-Roger approximation;  $P(\alpha_{rad,eco}) = 0.02$ ,  $P(\beta_{rad,eco}) = 0.005$ ) and depth (Kenward-Roger approximation;  $P(\alpha_{depth,eco}) < 0.0001$ ,  $P(\beta_{depth,eco}) = 0.004$ ) in models with biogeography removed. Tree height but not stem

radius predictors are significant in these crown depth models. Predicted crown dimensions across ecosystems are presented in **Figure 7**.

Our linear and variance partitioning models disagree about the role of biogeography in crown scaling. Linear models were generally unimproved by the addition of the biogeography predictor (**Supplementary Table S8**). The variance partitioning models, however, attribute substantial variance to biogeography, and especially in the case of crown width scaling (**Figure 3**). The unusual formulation necessitated by log-log models with covariates (see **Supplementary Material**, section 5) may explain



**FIGURE 3 |** Variance associated with species' deviation from mean crown scaling relationship. The quantity analyzed here is the mean species residual, or deviation, from the  $crown\_dimension = \beta r_{stem}^\alpha$  scaling model. LMM models were re-fit with site as a random effect, and residuals were obtained with the random effects removed.

this disagreement. We conclude that while biogeography is associated with some variance, it is a weaker influence than ecosystem type.

### Environmental Gradient Hypotheses

The observed trends across environmental gradients are described in detail in **Supplementary Material** section 2.2. Here we evaluate our specific hypotheses related to the environmental gradients our study spanned.

#### Savanna-forest transitions

Savanna trees are shorter than forest trees for the same girth (**Supplementary Figure S33**). Consequently, because crown depth scales principally with tree height, a 30 cm DBH savanna tree is shorter and has a shallower crown than a 30 cm DBH forest tree (**Supplementary Figure S32**). When controlling for tree height however, a 15 m tall savanna tree crown is more than 50% deeper than a 15 m tall forest tree (**Figure 7**). Stout savanna trees with deep crowns are consistent with our hypothesis H6 (Open growth form).

#### Precipitation gradient

We tested for effects of precipitation on crown depth across the Ghanaian transect, and across our entire study. No precipitation covariates were significant across the Ghanaian transect (**Supplementary Tables S9, S10**). Modeling the effect of precipitation on crown depth across all sites, just one

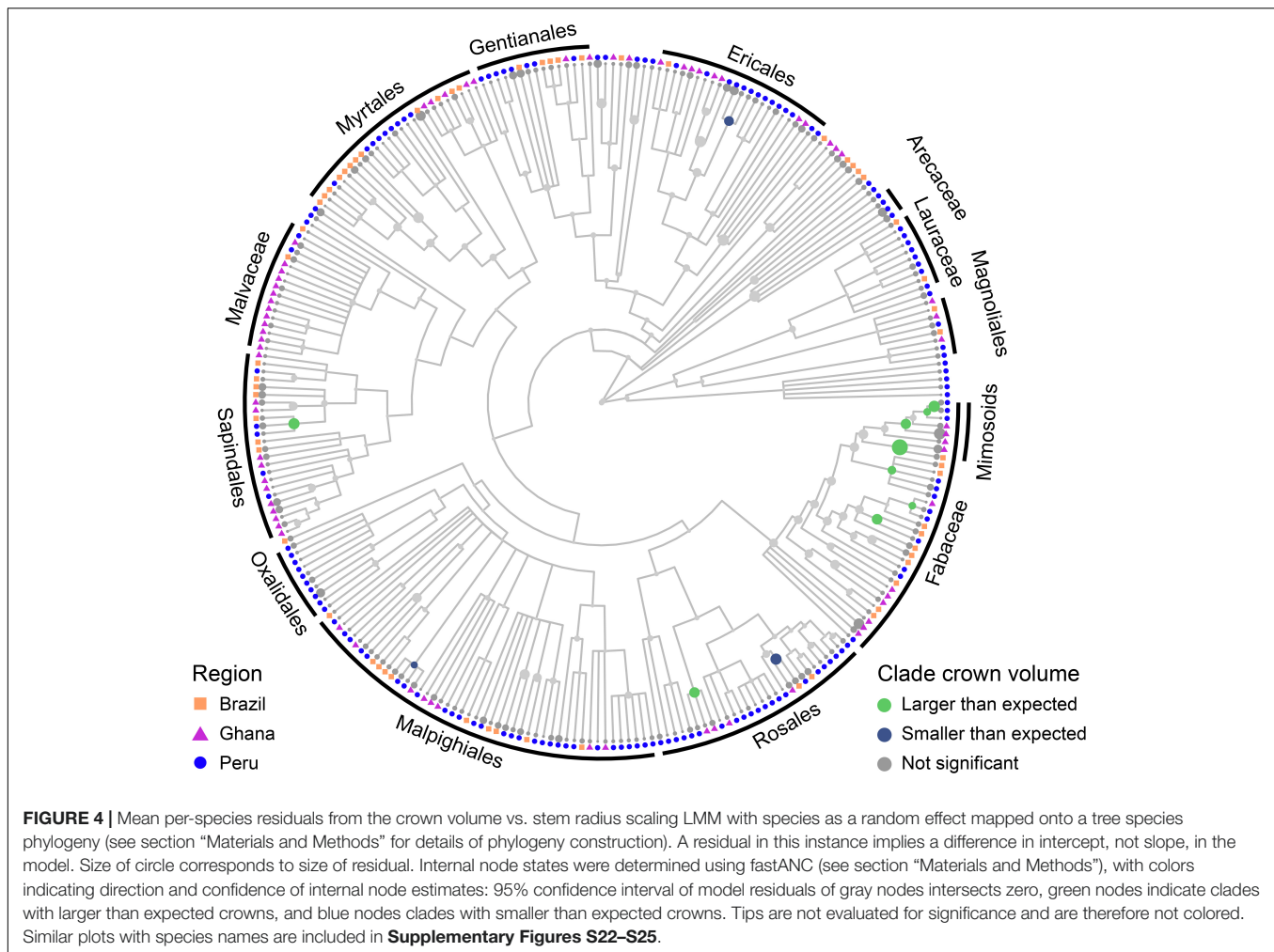
precipitation covariate was marginally significant ( $P(\alpha_{precip,h}) = 0.07$ ; **Supplementary Tables S9, S10**). Taken together, our analyses do not support hypothesis H7 (Depth drought tolerance).

#### Elevation gradient

We hypothesized that crowns will become deeper as one moves from the low productivity sites in the Andes down to the high productivity sites in the Amazon [H8 (Ecosystem speed)]. Crown widths decreased going downslope for small (10 cm) and mid-sized (30 cm) trees (**Figure 6** and **Supplementary Figure S33A**), and predictions from the linear model (Model 13) indicated that relative crown depth increased downwards through the transect. The elongation of crowns moving downslope is apparent when taking local height allometries into account (**Figures 6e,f**), but less so when assuming constant height allometries across sites (**Figure 6d** and **Supplementary Figure S28**). Our ecosystem speed hypothesis H8 is therefore supported.

#### Crown Dimension Allometric Equations

The allometric models for crown radius, depth, surface area and volume are presented in **Table 4** and **Supplementary Table S11**. Models for depth, surface area, and volume were better with height included as a predictor ( $\Delta AIC \sim 78$ ), so height has been included in those models.



## DISCUSSION

Our findings (Table 1) support the view that general MST processes describe a central tendency for the scaling of tree crowns (Muller Landau et al., 2006; Enquist et al., 2009; Pretzsch and Dieler, 2012; Antin et al., 2013; Taubert et al., 2015; Blanchard et al., 2016; Farrior et al., 2016), and that this tendency is influenced by ecosystem and evolutionary context. Scaling did not change significantly across regions, but it did across ecosystem types with savanna crowns growing more quickly with tree size than those of forests. We found that crown radius scales with stem radius (King, 1996) whereas crown depth scales with tree height, and because tree height differs more across ecosystems than stem girth, crown depth varies more across gradients than crown radius. Controlling for tree size, crowns of legumes were wider and larger than those of other taxa. Implications of specific results are discussed below.

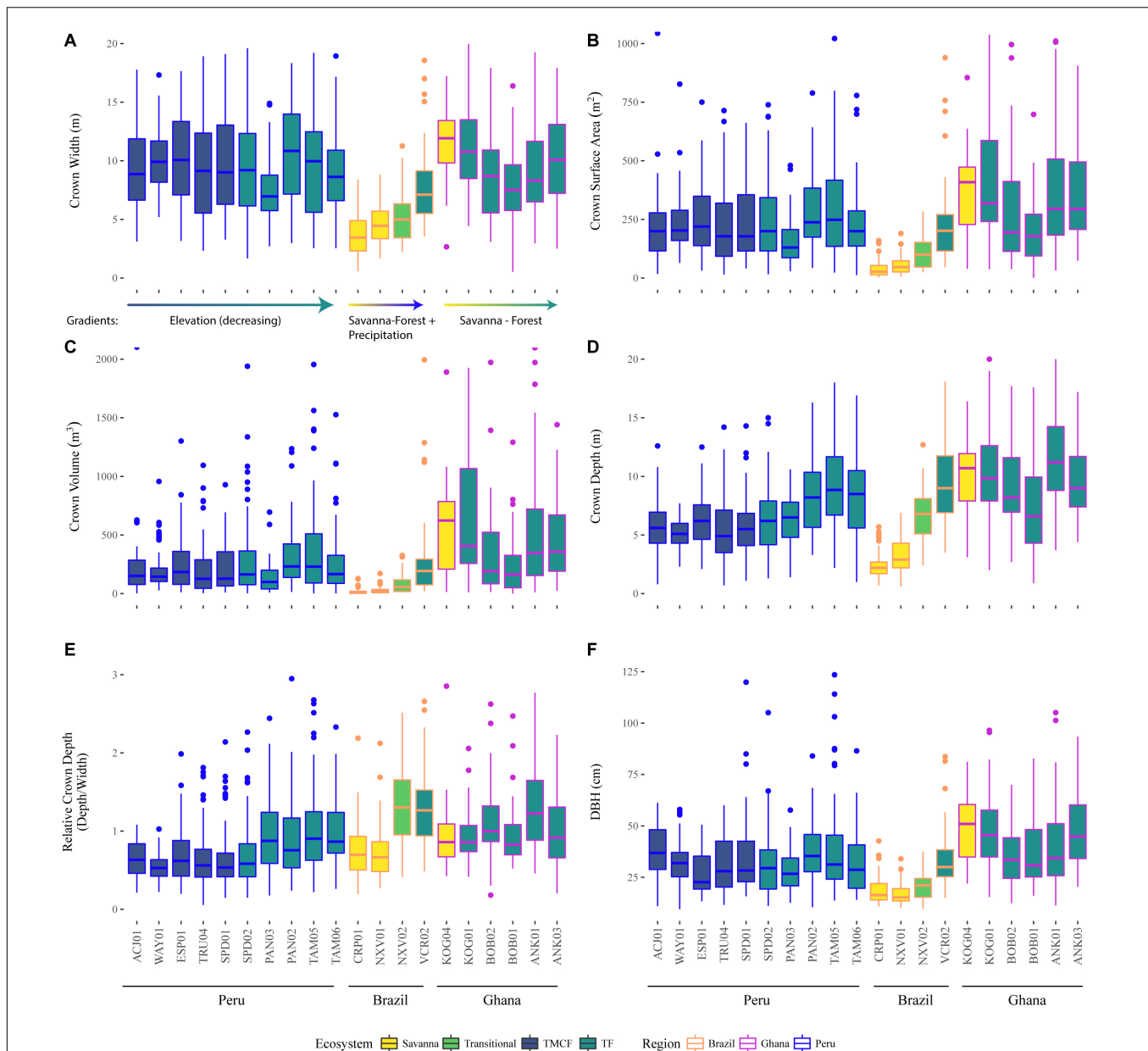
## Metabolic Scaling Theory

MST has been challenged on a number of grounds for not corroborating some empirical data sets and for not providing the most parsimonious explanation (e.g., Muller Landau et al., 2006).

Perhaps the strongest criticism from forest ecologists stems from the absence of competitive and environmental considerations in the theory (Coomes and Allen, 2009; Coomes et al., 2011; Stark et al., 2011; Pretzsch and Dieler, 2012), though some attempts have been made to incorporate these influences (Price et al., 2010, 2012; Stark et al., 2015). Our results here, tested across contrasted of tropical ecosystems, environmental gradients, and biogeographical contexts, serve as robust yet qualified confirmation of MST predictions for the relationship between crown dimensions and stem radius.

While previous studies have disagreed on whether MST provides an accurate explanation for crown scaling, those that implement interspecific models show poor fits between theory and data; those that use intraspecific models show generally good fits (e.g., Muller Landau et al., 2006; Pretzsch and Dieler, 2012; Blanchard et al., 2016, but see Tredennick et al., 2013). Because MST assumes that certain key characteristics are constant across individuals (assumption 7 in Savage et al., 2008; Enquist and Bentley, 2012), intraspecific models are the appropriate framework for tests of MST in the absence of measurements of those key characteristics. Indeed, our own





**FIGURE 5 |** Observed crown width (A), surface area (B), volume (C), depth (D), relative depth (E), and stem diameter at breast height (F), across sites (x-axis), ecosystems (fill color), and regions (outline color and annotation). See tree height in **Supplementary Figure S30**. Crowns with large relative depth values are elongated, and those with low relative depth are flatter. The data here are descriptive and have not been modeled or corrected for tree size or any other variable.

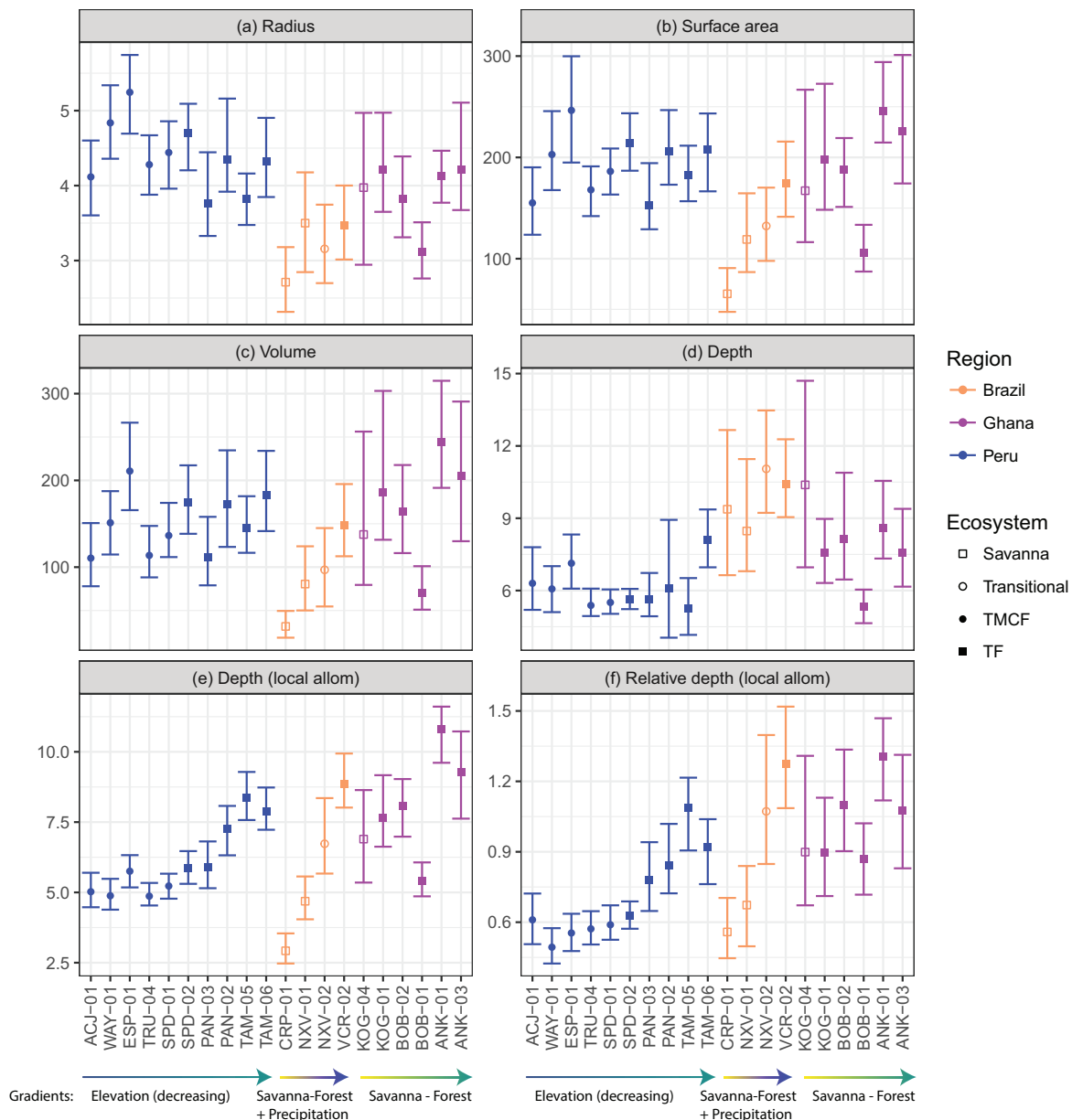
intraspecific models strongly differed from our interspecific ones. Overall then, this study adds its support of MST crown scaling across environmental gradients and biogeographic regions to the general support MST crown scaling finds in other studies.

### Modification of MST Crown Scaling Assumptions

Despite MST's almost exact prediction of our empirical  $\alpha_{rad}=0.67$ , neither of West et al.'s (2009) component assumptions of stem radius vs. tree height and tree height vs. crown radius relationships hold. Both empirical relationships were found to have significantly smaller exponents than those

predicted by MST. While West et al. (1999) acknowledge that height allometries vary (Niklas, 1995; Nogueira et al., 2008; Feldpausch et al., 2011; Banin et al., 2012), the principal MST crown scaling prediction relies on a value of  $\alpha_h=0.67$ .

MST predictions rely on chains of relationships. In this case, the linkage is between stem radius, stem height, and ultimately crown width. We modified MST's stem height/crown width assumption to include stem radius (Model 4), and found that the modification resolved the previously-incongruent chain of scaling exponents (see **Supplementary Material**, section 2.6).



**FIGURE 6 |** Modeled crown dimensions and 95% CIs for a 30 cm DBH tree. The crown depth model also included tree height, which was fixed in (d) using our height vs stem radius allometry (see **Supplementary Material**) and averaged across sites so the same DBH and height were used for each site. Tree height of a 30cm DBH tree was allowed to vary across sites in (e,f) based on the mean per-site height – DBH allometry (Model 2). Predictions are derived from the following LMM models described above: (a) Model 7, (b) Model 8, (c) Model 9, (d) Model 12, (e) Model 12, (f) Model 15. CIs were estimated using a bootstrap algorithm with 100 iterations. Units are m, m<sup>2</sup>, and m<sup>3</sup>. See **Supplementary Figure S31** for predictions for other tree sizes.

We propose that the following assumptions be used instead of equations 1 and 2:

$$h_{stem} \propto r_{stem}^{\alpha_h}$$

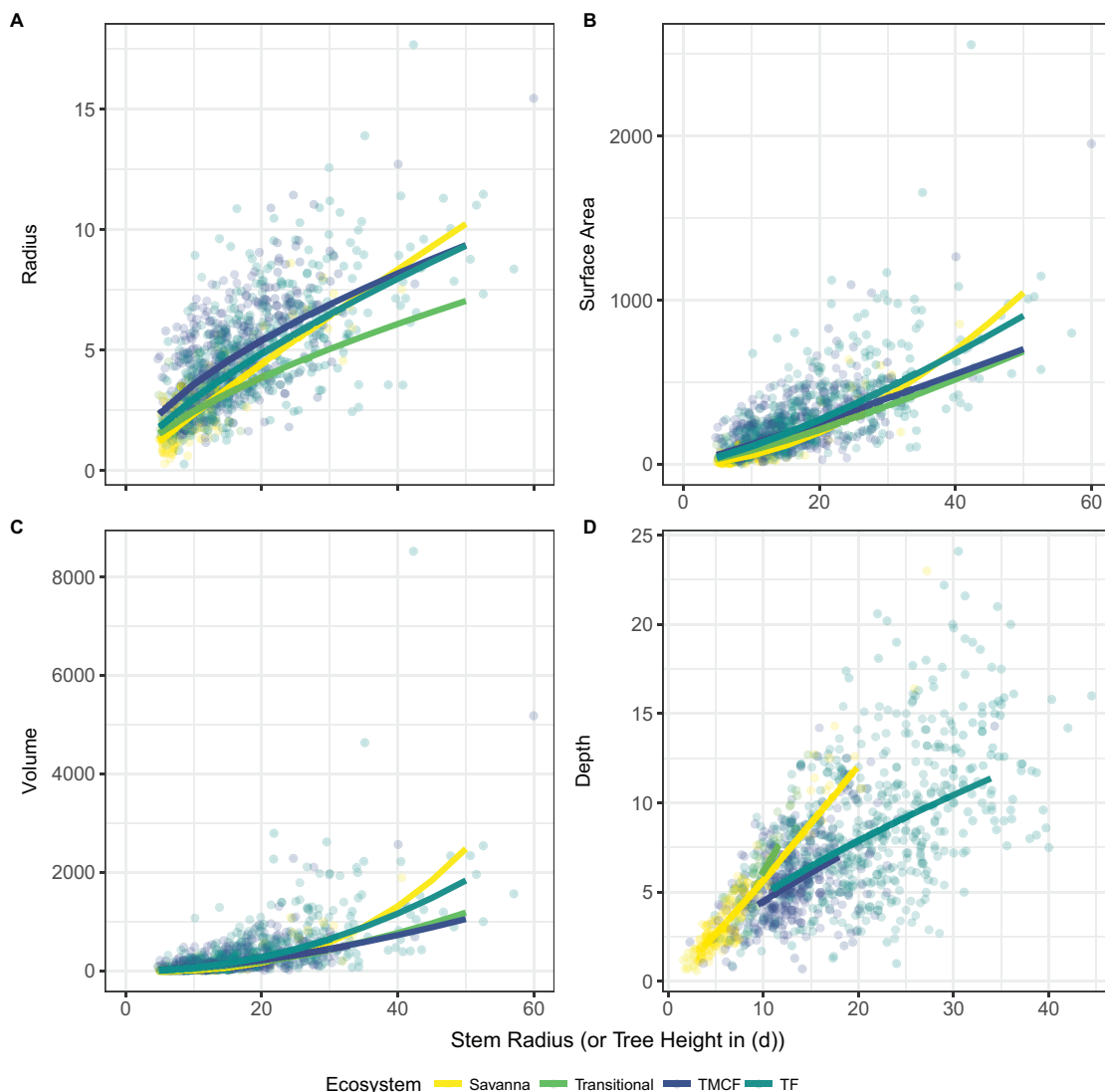
$$r_{crown} \propto h^{\alpha_{rad,h}} + r_{stem}^{\alpha'_{rad}}$$

where  $\alpha_h = 1/2$ . Empirically, we find that  $\alpha_{rad,h} = 0.16$  and  $\alpha'_{rad} = 0.59$ , but these values should be informed by further development of theory before offering them as MST assumptions.

## Phylogenetic Variation

While crown scaling did not vary amongst most families, we do find a strong, consistent, and biogeographically-wide phylogenetic signal in tree crown allometry in the large Fabaceae crowns, and in particular, in the Mimosoideae and Papilionoideae subfamilies. What is it about these subfamilies that could lead to their particularly wide crowns?

Of the three legume subfamilies, rhizobial associations that enable nitrogen fixation in root nodules are common



**FIGURE 7 |** LMM predictions (lines) and individual trees (points) across all regions, grouped by ecosystem type. The crown depth model includes both stem radius and tree height, and is plotted against tree height. For predictions, ecosystem-specific DBH-height allometries were constructed and used.

in the Mimosoideae and Papilionoideae, but less so in the Caesalpinoideae (Allen and Allen, 1981; Andrews and Andrews, 2017). A straightforward hypothesis for this pattern is that the high wood density found in legumes allows them to support large crowns. On the other hand, the fact that large crowns are concentrated in just two of the legume clades would seem to argue against this explanation. The sparse compound leaves borne by many legumes may effectively lower their wind sail area and hence allow them to bear larger crowns without suffering the biomechanical stress from wind that other species would incur. Finally, another explanation for larger crowns in species with root symbionts could be the increased carbon demand of those symbionts. If tree growth is sink- and not source-limited, then larger crowns might not be beneficial unless they are supplying symbionts or shading out neighbors. Indeed,

some evidence suggests that root symbionts may stimulate increased leaf-level photosynthesis through their role as carbon sinks (Kaschuk et al., 2009). Could such a sink-effect be reflected on a whole-plant scale? If crown sizes are matched to the metabolic requirements of the organism, and if these requirements grow as a result of root symbioses, then we might expect this pattern of larger crowns in species that have root symbioses. This question would be an interesting avenue for future research.

Large crowns may be advantageous by increasing carbon uptake due to increased leaf area and light interception, but also by suppressing neighboring crowns. Taylor et al. (2017) found that N-fixing trees inhibited growth of their neighbors and of plots where they were abundant. By harboring large crowns, these N-fixers may be shading out their neighbors.

**TABLE 4 |** Allometric models for crown dimensions across different ecosystems.

<b>Crown radius (m)</b>	
All plots	$r_{\text{crown}} = 10^{-0.231} \times r_{\text{stem}}^{0.706}$
Savannas	$r_{\text{crown}} = 10^{-0.447} \times r_{\text{stem}}^{0.833}$
TMCFs	$r_{\text{crown}} = 10^{-0.033} \times r_{\text{stem}}^{0.526}$
Tropical forests	$r_{\text{crown}} = 10^{-0.251} \times r_{\text{stem}}^{0.707}$
Non-savannas	$r_{\text{crown}} = 10^{-0.185} \times r_{\text{stem}}^{0.677}$
<b>Crown depth (m)</b>	
All plots	$d = 10^{-0.179} \times r_{\text{stem}}^{0.156} \times h^{0.696}$
Savannas	$d = 10^{-0.474} \times r_{\text{stem}}^{0.177} \times h^{1.032}$
TMCFs	$d = 10^{-0.114} \times r_{\text{stem}}^{0.168} \times h^{0.586}$
Tropical forests	$d = 10^{-0.035} \times r_{\text{stem}}^{0.193} \times h^{0.536}$
Non-savannas	$d = 10^{-0.100} \times r_{\text{stem}}^{0.169} \times h^{0.605}$
<b>Crown surface area (m<sup>2</sup>)</b>	
All plots	$sa = 10^{0.401} \times r_{\text{stem}}^{0.9525} \times h^{0.696}$
Savannas	$sa = 10^{0.004} \times r_{\text{stem}}^{1.040} \times h^{1.032}$
TMCFs	$sa = 10^{0.568} \times r_{\text{stem}}^{0.990} \times h^{0.586}$
Tropical Forests	$sa = 10^{0.482} \times r_{\text{stem}}^{0.984} \times h^{0.536}$
Non-savannas	$sa = 10^{0.462} \times r_{\text{stem}}^{0.936} \times h^{0.605}$
<b>Crown volume (m<sup>3</sup>)</b>	
All plots	$vol = 10^{-0.862} \times r_{\text{stem}}^{1.412} \times h^{1.124}$
Savannas	$vol = 10^{-1.334} \times r_{\text{stem}}^{1.504} \times h^{1.563}$
TMCFs	$vol = 10^{-0.519} \times r_{\text{stem}}^{1.457} \times h^{0.878}$
Tropical Forests	$vol = 10^{-0.596} \times r_{\text{stem}}^{1.549} \times h^{0.756}$
Non-savannas	$vol = 10^{-0.662} \times r_{\text{stem}}^{1.439} \times h^{0.940}$

See **Supplementary Table S11** for confidence intervals, significance, and number of observations.  $r_{\text{stem}}$  is in centimeters, and  $h$  is in meters. Note that  $R_{\text{stem}}$  is stem radius at breast height, not diameter. Models were fit across data from different subsets of ecosystems: (1) All plots = models fit across all available data, (2) Savannas = models fit across Brazilian and Ghanaian savannas, (3) TMCFs = models fit across tropical montane cloud forests in Peru, (4) Tropical Forests = models fit across lowland tropical forests in Peru, Ghana, and Brazil, (5) Non-savannas = models fit across all tropical forests, transitional forests, and tropical montane cloud forests. See **Figure 5** for ecosystem classifications of the plots in this study.

Does crown scaling differ between species? Iida et al. (2011) found that crown scaling parameters did not differ more than expected from the community tendency in Pasoh, Malaysia. Here we find that scaling in different forest types does differ (e.g., **Figure 2D**), and that species differ as well (e.g., **Supplementary Figure S18**). Indeed, there was a clear phylogenetic signal in allometric scaling parameters (**Figure 4**).

While foresters have been well aware of species-specific crown shape since the inception of their practice (Larson, 1963), the relationship between phylogeny and crown shape has remained largely unexplored in the scientific literature until now. Incorporating more studies across an even wider range of ecosystems and environments into larger phylogenies would be likely to yield interesting insights into the evolutionary pressures on the shapes of tree crowns.

## Ecosystem, Biogeography, and Phylogeny

Our community-wide hypothesis that crown depth decreases with increasing elevation (increasing moving downslope) in our Peruvian transect was based on Horn's (1971) individual-level

theory. Thus, while the hypothesis was partially confirmed, a number of mechanisms might underlie the observed pattern, of which we discuss four. First, "faster" ecosystems in the lowlands (see NPP and GPP in Malhi et al., 2017) could favor faster growing, acquisitive-strategy trees which, if Horn's (1971) relationships hold, would have deeper crowns. Second, if tree height is linked to crown depth, the taller trees in the lowlands would lead to deeper crowns there. Third, greater solar radiation in the lowlands may allow for more shaded leaves to maintain positive carbon balance. Finally, increasing canopy structural heterogeneity could allow lateral light to penetrate deeper into the canopy, allowing lower leaves to maintain a positive carbon balance, and thus enabling deeper crown shapes. Heterogeneity may result from differences in heights of dominant trees, from topography, or a combination.

The last two mechanisms are not supported by the data: neither solar radiation (**Supplementary Table S1**) nor canopy heterogeneity (Asner et al., 2014; **Supplementary Table S1**) reflect the pattern in crown depth. The second mechanism, tree height, is indeed closely coupled with both crown depth (i.e., absolute crown depth) and relative crown depth. We found that crown depth scales with tree height with the same allometric exponent (2/3) that crown radius scales with stem girth. It seems clear that the driver of increasing crown depths moving downslope in Peru is the lengthening of height allometries from the shorter-statured uplands to the taller-statured lowlands. This proximate "allometric" driver does not exclude the first mechanism, ecosystem productivity, as a more distal driver. Ecosystem productivity also shows a similar pattern to crown depth, and may be linked tree height allometries. Indeed, NPP and mean vegetation height exhibit similar patterns across the Peruvian transect (Malhi et al., 2017; **Supplementary Table S1**).

Crown depth exhibited a consistent response to ecosystem type. This suggests that crown depth is adaptive, but given that H7 (drought-depth hypothesis) was not supported, precipitation is not the primary factor driving it. We examined height – DBH allometries and crown depth comparisons for growth form differences, and found support for hypothesis H6 (Open growth form). Thus, savanna trees exhibit open-growth forms: they are ultimately shorter and harbor shallower crowns than forest trees of equivalent girth, but have deeper crowns than forest trees of equivalent height.

Biogeography has little effect on crown shape according to our analyses, in contrast to Moncrieff et al. (2014) who found large differences between Australian and African savanna tree crowns. One reason for this difference could be that we test across more biogeographic regions and ecosystem types. When taken together, a general biogeographical signal may not be present, when such a signal is present when examining pairwise comparisons in detail as Moncrieff et al. (2014) did. Furthermore, our data do not include Australian savannas. We conclude that while some differences between particular biogeographic regions may indeed exist, a strong general trend is unlikely to be present. Furthermore, we should expect neither deep phylogenetic patterns in nor strong influence of disparate faunal communities on crown shape. Rather, crown shape is likely more structured ecologically and competitively, and if evolution does



play a role, we might expect crown architecture to be relatively plastic evolutionarily.

## CONCLUSION

In this first look at tropical tree crown allometry across ecosystems, biogeography, and phylogeny, we find that both the lack of patterns in some instances (radius predictions across ecosystems and biogeography) and strong patterns in others (depth predictions across ecosystems, leguminous crown size) spurs further questions. In particular, ecological patterns such as ontogenetic variation and competitive effects on crown size may explain some of the observed patterns. Plasticity of crown dimensions in relation to local competition will be important to quantify for models to effectively simulate local dynamics, and this should comprise future research as well.

Our study lacks data from the Asian tropics. Thus, while we did not find a strong biogeographic signal in crown allometry, future studies that do include them and their especially tall trees may find one.

## DATA AVAILABILITY STATEMENT

The datasets generated for this study are available at <https://ora.ox.ac.uk/objects/uuid:2221c96d-2731-4707-9796-8f79f84b38de>.

## AUTHOR CONTRIBUTIONS

AS, YM, LB, BE, and GA conceived of the study. AS, LB, IO, NS, EC, LT, ECA, TP, CA, JS, FP, and SR carried out fieldwork. SA-B, IO, BHM, BSM, and BM-J managed fieldwork and logistics. AS conducted the analyses and wrote the manuscript. SA-B, BM-J, BM, and MS collected and contributed census data. YM, LB, BB, IO, MS, BE, and GA edited and contributed to the manuscript. All authors contributed to the article and approved the submitted version.

## FUNDING

This work was a product of the Global Ecosystems Monitoring (GEM) network ([gem.tropicalforests.ox.ac.uk](http://gem.tropicalforests.ox.ac.uk)) the Andes Biodiversity and Ecosystems Research Group ABERG ([andesresearch.org](http://andesresearch.org)), the Amazon Forest Inventory Network RAINFOR ([www.rainfor.org](http://www.rainfor.org)), and the Carnegie Spectranomics Project (CSP; [spectranomics.ciw.edu](http://spectranomics.ciw.edu)) research consortia. The

field campaign was funded by grants to YM from the UK Natural Environment Research Council (Grant NE/J023418/1), and from a European Research Council Advanced Investigator grant GEM-TRAITS (321131). GA and the Carnegie team were supported by the endowment of the Carnegie Institution for Science and a grant from the National Science Foundation (DEB-1146206). AS and LB were partially supported by John Fell Fellowships from the University of Oxford. IO was supported by a Marie Curie Intra-European Fellowship. BB was supported by a NSF doctoral dissertation improvement grant and a NERC independent research fellowship. BM and BM-J were partially supported by CNPq research productivity grants (Pesquisador PQ), and Brazilian co-authors are grateful to the National Council of Science and Technology of Brazil (CNPq) for financial support for project CNPq / PELD site 15 (Newton Fund/CNPq 441244/2016-5), FAPEMAT project RedeFlor (0589267/2016), CNPq/PPBio project Phytogeography of Amazonia/Cerrado Transition (457602/2012-0), coordinated by BSM and BHM, respectively and CNPq productivity grant PQ1 for BSM and BHM. Inventory work was funded by the Gordon and Betty Moore Foundation and the US National Science Foundation Long-Term Research in Environmental Biology program.

## ACKNOWLEDGMENTS

We thank the Servicio Nacional de Áreas Naturales Protegidas por el Estado (SERNANP) and personnel of Manu and Tambopata National Parks for logistical assistance and permission to work in the protected areas in Peru. We also thank the Explorers' Inn and the Pontifical Catholic University of Peru, as well as ACCA for use of the Tambopata and Wayqecha Research Stations, respectively. We are indebted to Professor Eric Cosío (Pontifical Catholic University of Peru) for assistance with research permissions and sample storage. Importantly, we are grateful to all fieldworkers (especially tree climbers) who participated in the field campaigns. We are grateful to Stephanie A. Bohlman for advice on study design, and Beisit L. Puma Vilca for manuscript feedback. Tambopata was installed by Oliver Phillips, many recensuses there were supported by RAINFOR, and Rodolfo Vasquez and Abel Monteagudo provided botanical expertise there.

## SUPPLEMENTARY MATERIAL

The Supplementary Material for this article can be found online at: <https://www.frontiersin.org/articles/10.3389/ffgc.2020.501757/full#supplementary-material>

## REFERENCES

- Allen, O. N., and Allen, E. K. (1981). *The Leguminosae, a Source Book of Characteristics, Uses, and Nodulation*. Madison, WI: University of Wisconsin press.
- Andrews, M., and Andrews, M. E. (2017). Specificity in legume-rhizobia symbioses. *Intern. J. Mol. Sci.* 18:705. doi: 10.3390/ijms18040705
- Antin, C., Pélissier, R., Vincent, G., and Coutron, P. (2013). Crown allometries are less responsive than stem allometry to tree size and habitat variations in an Indian monsoon forest. *Trees* 27, 1485–1495. doi: 10.1007/s00468-013-0896-7
- Archibald, S., and Bond, W. J. (2003). Growing tall vs growing wide: tree architecture and allometry of *Acacia karroo* in forest, savanna, and arid environments. *Oikos* 102, 3–14. doi: 10.1034/j.1600-0706.2003.12181.x

- Ashton, P. S. (1978). *Crown Characteristics of Tropical Trees*. Cambridge: Cambridge University Press.
- Asner, G. P., Anderson, C. B., Martin, R. E., Knapp, D. E., Tupayachi, R., Sinca, F., et al. (2014). Landscape-scale changes in forest structure and functional traits along an Andes-to-Amazon elevation gradient. *Biogeosciences* 11, 843–856. doi: 10.5194/bg-11-843-2014
- Asner, G. P., Mascaró, J., Anderson, C., Knapp, D. E., Martin, R. E., Kennedy-Bowdoin, T., et al. (2013). High-fidelity national carbon mapping for resource management and REDD+. *Carbon Balan. Manag.* 8, 1–14.
- Banin, L., Feldpausch, T. R., Phillips, O. L., Baker, T. R., Lloyd, J., Affum-Baffoe, K., et al. (2012). What controls tropical forest architecture? Testing environmental, structural and floristic drivers. *Glob. Ecol. Biogeogr.* 21, 1179–1190. doi: 10.1111/j.1466-8238.2012.00778.x
- Bates, D., Mächler, M., Bolker, B., and Walker, S. (2015). Fitting linear mixed-effects models using lme4. *J. Statist. Softw.* 67, 1–48.
- Bates, D., Maechler, M., and Bolker, B. (2011). *lme4: Linear Mixed-Effects Models Using Eigen and S4*. R Package Version 0.999375-42.
- Blanchard, E., Birnbaum, P., Ibanez, T., Boutreux, T., Antin, C., Ploton, P., et al. (2016). Contrasted allometries between stem diameter, crown area, and tree height in five tropical biogeographic areas. *Trees* 30, 1953–1968. doi: 10.1007/s00468-016-1424-3
- Bolker, B. M., Brooks, M. E., Clark, C. J., Geange, S. W., Poulsen, J. R., Stevens, M. H., et al. (2009). Generalized linear mixed models: a practical guide for ecology and evolution. *Trends Ecol. Evol.* 24, 127–135. doi: 10.1016/j.tree.2008.10.008
- Busgen, M., and Munch, E. (1929). *The Structure and Life of Forest Trees*. London: Chapman & Hall.
- Chiti, T., Certini, G., Grieco, E., and Valentini, R. (2010). The role of soil in storing carbon in tropical rainforests: the case of Ankasa Park Ghana. *Plant Soil* 331, 453–461. doi: 10.1007/s11104-009-0265-x
- Coomes, D. A., and Allen, R. B. (2009). Testing the metabolic scaling theory of tree growth. *J. Ecol.* 97, 1369–1373. doi: 10.1111/j.1365-2745.2009.01571.x
- Coomes, D. A., Lines, E. R., and Allen, R. B. (2011). Moving on from metabolic scaling theory: hierarchical models of tree growth and asymmetric competition for light. *J. Ecol.* 99, 748–756. doi: 10.1111/j.1365-2745.2011.01811.x
- Crawley, M. J. (2012). *The R Book*. Hoboken, NJ: John Wiley & Sons.
- Dean, T. J., and Long, J. N. (1986). Validity of constant-stress and elastic-instability principles of stem formation in *Pinus contorta* and *Trifolium pratense*. *Ann. Bot.* 58, 833–840. doi: 10.1093/oxfordjournals.aob.a087265
- Dieler, J., and Pretzsch, H. (2013). Morphological plasticity of European beech (*Fagus sylvatica* L.) in pure and mixed-species stands. *For. Ecol. Manag.* 295, 97–108. doi: 10.1016/j.foreco.2012.12.049
- Enquist, B. J., and Bentley, L. P. (2012). “Land plants: New theoretical directions and empirical prospects,” in *Metabolic Ecology: A Scaling Approach*, eds R. M. Sibly, J. H. Brown, and A. Kodric-Brown, 164–187.
- Enquist, B. J., West, G. B., and Brown, J. H. (2009). Extensions and evaluations of a general quantitative theory of forest structure and dynamics. *Proc. Natl. Acad. Sci. U.S.A.* 106, 7046–7051. doi: 10.1073/pnas.0812303106
- Farrior, C., Bohlman, S., Hubbell, S., and Pacala, S. (2016). Dominance of the suppressed: power-law size structure in tropical forests. *Science* 351, 155–157. doi: 10.1126/science.1240592
- Feakins, S. J., Bentley, L. P., Salinas, N., Shenkin, A., Blonder, B., Goldsmith, G. R., et al. (2016). Plant leaf wax biomarkers capture gradients in hydrogen isotopes of precipitation from the Andes and Amazon. *Geochim. Cosmochim. Acta* 182, 155–172. doi: 10.1016/j.gca.2016.03.018
- Feldpausch, T. R., Banin, L., Phillips, O. L., Baker, T. R., Lewis, S. L., Quesada, C. A., et al. (2011). Height-diameter allometry of tropical forest trees. *Biogeosciences* 8, 1081–1106.
- Fischer, F. J., Maréchal, I., and Chave, J. (2019). Improving plant allometry by fusing forest models and remote sensing. *New Phytol.* 223, 1159–1165. doi: 10.1111/nph.15810
- Fisher, J. B., and Hibbs, D. E. (1982). Plasticity of tree architecture: specific and ecological variations found in aubreville's model. *Am. J. Bot.* 69, 690–702. doi: 10.1002/j.1537-2197.1982.tb13309.x
- Gastauer, M., and Meira-Neto, J. A. A. (2013). Avoiding inaccuracies in tree calibration and phylogenetic community analysis using Phylocom 4.2. *Ecol. Inform.* 15, 85–90. doi: 10.1016/j.ecoinf.2013.03.005
- Girardin, C. A. J., Malhi, Y., Aragao, L., Mamani, M., Huaraca Huasco, W., Durand, L., et al. (2010). Net primary productivity allocation and cycling of carbon along a tropical forest elevational transect in the Peruvian Andes. *Glob. Chang. Biol.* 16, 3176–3192. doi: 10.1111/j.1365-2486.2010.02235.x
- Givnish, T. J. (1984). “Leaf and canopy adaptations in tropical forests,” in *Proceedings of the Physiological Ecology of Plants of the Wet Tropics: Proceedings of an International Symposium Held in Oxatepec and Los Tuxtlas, Mexico, June 29 to July 6, 1983*, eds E. Medina, H. A. Mooney, and C. Vázquez-Yanes (Dordrecht: Springer), 51–84. doi: 10.1007/978-94-009-7299-5\_6
- Hallé, F., Oldeman, R. A., and Tomlinson, P. B. (1978). *Tropical Trees and Forests: an Architectural Analysis*. New York, NY: Springer-Verlag.
- Harja, D., Vincent, G., Mulia, R., and Van Noordwijk, M. (2012). Tree shape plasticity in relation to crown exposure. *Trees* 26, 1275–1285. doi: 10.1007/s00468-012-0703-x
- Horn, H. S. (1971). *The Adaptive Geometry of Trees*. Princeton, NJ: Princeton University Press.
- Iida, Y., Kohyama, T. S., Kubo, T., Kassim, A. R., Poorter, L., Sterck, F., et al. (2011). Tree architecture and life-history strategies across 200 co-occurring tropical tree species. *Funct. Ecol.* 25, 1260–1268. doi: 10.1111/j.1365-2435.2011.01884.x
- Iwasa, Y., Cohen, D., and Leon, J. A. (1985). Tree height and crown shape, as results of competitive games. *J. Theor. Biol.* 112, 279–297. doi: 10.1016/s0022-5193(85)80288-5
- Janssen, T. A. J., Ametsitsi, G. K. D., Collins, M., Adu-Bredu, S., Oliveras, I., Mitchard, E. T. A., et al. (2018). Extending the baseline of tropical dry forest loss in Ghana (1984–2015) reveals drivers of major deforestation inside a protected area. *Biol. Conserv.* 218, 163–172. doi: 10.1016/j.biocon.2017.12.004
- Johnson, P. C. D. (2014). Extension of Nakagawa & Schielzeth's R<sup>2</sup>GLMM to random slopes models. *Methods Ecol. Evol.* 5, 944–946.
- Kaschuk, G., Kuiper, T. W., Leffelaar, P. A., Hungria, M., and Giller, K. E. (2009). Are the rates of photosynthesis stimulated by the carbon sink strength of rhizobial and arbuscular mycorrhizal symbioses? *Soil Biol. Biochem.* 41, 1233–1244. doi: 10.1016/j.soilbio.2009.03.005
- Kilmer, J. T., and Rodríguez, R. L. (2016). Ordinary least squares regression is indicated for studies of allometry. *J. Evol. Biol.* 30, 4–12. doi: 10.1111/jeb.12986
- King, D. (1981). Tree dimensions: maximizing the rate of height growth in dense stands. *Oecologia* 51, 351–356. doi: 10.1007/bf00540905
- King, D., and Loucks, O. L. (1978). The theory of tree bole and branch form. *Rad. Environ. Biophys.* 15, 141–165. doi: 10.1007/bf01323263
- King, D. A. (1996). Allometry and life history of tropical trees. *J. Trop. Ecol.* 12, 25–44. doi: 10.1017/s0266467400009299
- King, D. A. (1998). Influence of leaf size on tree architecture: first branch height and crown dimensions in tropical rain forest trees. *Trees* 12, 438–445. doi: 10.1007/s004680050172
- Kleiber, M. (1932). Body size and metabolism. *ENE* 1:E9.
- Larjavaara, M., and Muller-Landau, H. C. (2013). Measuring tree height: a quantitative comparison of two common field methods in a moist tropical forest. *Methods Ecol. Evol.* 4, 793–801. doi: 10.1111/2041-210x.12071
- Larson, P. R. (1963). Stem form development of forest trees. *For. Sci.* 9:a0001. doi: 10.1093/forestscience/9.s2.a0001
- MacFarlane, D. W., and Kane, B. (2017). Neighbour effects on tree architecture: functional trade-offs balancing crown competitiveness with wind resistance. *Funct. Ecol.* 31, 1624–1636. doi: 10.1111/1365-2435.12865
- Malhi, Y., Girardin, C. A. J., Goldsmith, G. R., Doughty, C. E., Salinas, N., Metcalfe, D. B., et al. (2017). The variation of productivity and its allocation along a tropical elevation gradient: a whole carbon budget perspective. *New Phytol.* 214, 1019–1032. doi: 10.1111/nph.14189
- Malhi, Y., Silman, M., Salinas, N., Bush, M., Meir, P., and Saatchi, S. (2010). Introduction: elevation gradients in the tropics: laboratories for ecosystem ecology and global change research. *Glob. Chang. Biol.* 16, 3171–3175. doi: 10.1111/j.1365-2486.2010.02323.x
- Marimon, B. S., Marimon-Junior, B. H., Feldpausch, T. R., Oliveira-Santos, C., Mews, H. A., Lopez-Gonzalez, G., et al. (2014). Disequilibrium and hyperdynamic tree turnover at the forest-cerrado transition zone in southern Amazonia. *Plant Ecol. Divers.* 7, 281–292. doi: 10.1080/17550874.2013.818072
- Marimon Junior, B. H., and Haridasan, M. (2005). Comparação da vegetação arbórea e características edáficas de um cerrado e um cerrado sensu stricto em áreas adjacentes sobre solo distrófico no leste de Mato Grosso, Brasil. *Acta Bot. Brasil.* 19, 913–926. doi: 10.1590/s0102-33062005000400026

- McMahon, T. A., and Kronauer, R. E. (1976). Tree structures: deducing the principle of mechanical design. *J. Theor. Biol.* 59, 443–466. doi: 10.1016/0022-5193(76)90182-x
- Moncrieff, G. R., Lehmann, C. E. R., Schnitzler, J., Gambiza, J., Hiernaux, P., Ryan, C. M., et al. (2014). Contrasting architecture of key African and Australian savanna tree taxa drives intercontinental structural divergence. *Glob. Ecol. Biogeogr.* 23, 1235–1244. doi: 10.1111/geb.12205
- Muller Landau, H. C., Condit, R. S., Chave, J., Thomas, S. C., Bohlman, S. A., Bunyavechewin, S., et al. (2006). Testing metabolic ecology theory for allometric scaling of tree size, growth and mortality in tropical forests. *Ecol. Lett.* 9, 575–588.
- Nakagawa, S., and Schielzeth, H. (2013). A general and simple method for obtaining R<sup>2</sup> from generalized linear mixed-effects models. *Methods Ecol. Evol.* 4, 133–142. doi: 10.1111/j.2041-210x.2012.00261.x
- Niklas, K. J. (1995). Size-dependent allometry of tree height. Diameter and Trunk-taper. *Ann. Bot.* 75, 217–227. doi: 10.1006/anbo.1995.1015
- Nogueira, E. M., Nelson, B. W., Fearnside, P. M., França, M. B., and Oliveira, A. C. A. D. (2008). Tree height in Brazil's 'arc of deforestation': shorter trees in south and southwest Amazonia imply lower biomass. *For. Ecol. Manag.* 255, 2963–2972. doi: 10.1016/j.foreco.2008.02.002
- Pinheiro, J., Bates, D., Debroy, S., Sarkar, D., and R Core Team (2016). *Nlme: Linear and Nonlinear Mixed Effects Models. Package Version 3*, 1–117.
- Poorter, H., Jagodzinski, A. M., Ruiz-Peinado, R., Kuyah, S., Luo, Y., Oleksyn, J., et al. (2015). How does biomass distribution change with size and differ among species? An analysis for 1200 plant species from five continents. *New Phytol.* 208, 736–749. doi: 10.1111/nph.13571
- Poorter, L., Bongers, L., and Bongers, F. (2006). Architecture of 54 moist-forest tree species: Traits, trade-offs, and functional groups. *Ecology* 87, 1289–1301. doi: 10.1890/0012-9658(2006)87[1289:aomst]2.0.co;2
- Pretzsch, H., and Dieler, J. (2012). Evidence of variant intra- and interspecific scaling of tree crown structure and relevance for allometric theory. *Oecologia* 169, 637–649. doi: 10.1007/s00442-011-2240-5
- Price, C. A., Enquist, B. J., and Savage, V. M. (2007). A general model for allometric covariation in botanical form and function. *Proc. Natl. Acad. Sci. U.S.A.* 104, 13204–13209. doi: 10.1073/pnas.0702242104
- Price, C. A., Gillooly, J. F., Allen, A. P., Weitz, J. S., and Niklas, K. J. (2010). The metabolic theory of ecology: prospects and challenges for plant biology. *New Phytol.* 188, 696–710. doi: 10.1111/j.1469-8137.2010.03442.x
- Price, C. A., Weitz, J. S., Savage, V. M., Stegen, J., Clarke, A., Coomes, D. A., et al. (2012). Testing the metabolic theory of ecology. *Ecol. Lett.* 15, 1465–1474.
- Purves, D. W., Lichstein, J. W., and Pacala, S. W. (2007). Crown plasticity and competition for canopy space: a new spatially implicit model parameterized for 250 North American tree species. *PLoS One* 2:e870. doi: 10.1371/journal.pone.0000870
- R Core Team (2016). *R: A Language and Environment for Statistical Computing*. Vienna: R Foundation for Statistical Computing.
- Revell, L. J. (2012). phytools: an R package for phylogenetic comparative biology (and other things). *Methods Ecol. Evol.* 3, 217–223. doi: 10.1111/j.2041-210x.2011.00169.x
- Revell, L. J., Harmon, L. J., and Collar, D. C. (2008). Phylogenetic signal, evolutionary process, and rate. *Syst. Biol.* 57, 591–601. doi: 10.1080/10635150802302427
- Rouvinen, S., and Kuuluvainen, T. (1997). Structure and asymmetry of tree crowns in relation to local competition in a natural mature Scots pine forest. *Can. J. For. Res.* 27, 890–902. doi: 10.1139/x97-012
- Sapijanskas, J., Paquette, A., Potvin, C., Kunert, N., and Loreau, M. (2014). Tropical tree diversity enhances light capture through crown plasticity and spatial and temporal niche differences. *Ecology* 95, 2479–2492. doi: 10.1890/13-1366.1
- Savage, V. M., Deeds, E. J., and Fontana, W. (2008). Sizing up allometric scaling theory. *PLoS Comput. Biol.* 4:e1000171. doi: 10.1371/journal.pone.1000171
- Shenkin, A., Bentley, L. P., Girardin, C., Blonder, B., Boyle, B., Doughty, C. E., et al. (2017). *GEMTraits: A Database and R Package for Accessing and Analyzing Plant Functional Traits from the Global Ecosystems Monitoring Network*. Oxford: Oxford University Research.
- Singmann, H., Bolker, B., Westfall, J., and Aust, F. (2016). *Afex: Analysis of Factorial Experiments*. Available online at: <https://CRAN.R-project.org/package=afex> (accessed April 30, 2016).
- Stark, S. C., Bentley, L. P., and Enquist, B. J. (2011). Response to coomes & allen (2009) 'Testing the metabolic scaling theory of tree growth'. *J. Ecol.* 99, 741–747.
- Stark, S. C., Enquist, B. J., Saleska, S. R., Leitold, V., Schietti, J., Longo, M., et al. (2015). Linking canopy leaf area and light environments with tree size distributions to explain Amazon forest demography. *Ecol. Lett.* 18, 636–645. doi: 10.1111/ele.12440
- Sterck, F., and Bongers, F. (1998). Ontogenetic changes in size, allometry, and mechanical design of tropical rain forest trees. *Am. J. Bot.* 85:266. doi: 10.2307/2446315
- Takahashi, K. (1996). Plastic response of crown architecture to crowding in understorey trees of two co-dominating conifers. *Ann. Bot.* 77, 159–164. doi: 10.1006/anbo.1996.0018
- Taubert, F., Jahn, M. W., Dobner, H.-J., Wiegand, T., and Huth, A. (2015). The structure of tropical forests and sphere packings. *Proc. Natl. Acad. Sci. U.S.A.* 112, 15125–15129. doi: 10.1073/pnas.1513417112
- Taylor, B. N., Chazdon, R. L., Bachelot, B., and Menge, D. N. L. (2017). Nitrogen-fixing trees inhibit growth of regenerating Costa Rican rainforests. *Proc. Natl. Acad. Sci. U.S.A.* 114, 8817–8822. doi: 10.1073/pnas.1707094114
- The Angiosperm Phylogeny Group (2009). An update of the angiosperm phylogeny group classification for the orders and families of flowering plants: APG III. *Bot. J. Linnean Soc.* 161, 105–121. doi: 10.1111/j.1095-8339.2009.00996.x
- Tredennick, A. T., Bentley, L. P., and Hanan, N. P. (2013). Allometric convergence in savanna trees and implications for the use of plant scaling models in variable ecosystems. *PLoS One* 8:e58241. doi: 10.1371/journal.pone.0058241
- Verbeeck, H., Bauters, M., Jackson, T., Shenkin, A., Disney, M., and Calders, K. (2019). Time for a plant structural economics spectrum. *Front. For. Glob. Chang.* 2:43. doi: 10.3389/ffgc.2019.00043
- Voss, R. F. (1988). "Fractals in nature: from characterization to simulation," in *The Science of Fractal Images*, eds H.-O. Peitgen and D. Saupe (New York, NY: Springer), 21–70. doi: 10.1007/978-1-4612-3784-6\_1
- Warton, D. I., Duursma, R. A., Falster, D. S., and Taskinen, S. (2012). smatr 3-an R package for estimation and inference about allometric lines. *Methods Ecol. Evol.* 3, 257–259. doi: 10.1111/j.2041-210x.2011.00153.x
- Warton, D. I., Wright, I. J., Falster, D. S., and Westoby, M. (2006). Bivariate line-fitting methods for allometry. *Biol. Rev.* 81, 259–291. doi: 10.1017/s1464793106007007
- Webb, C. O., Ackerly, D. D., and Kembel, S. W. (2008). Phylocom: software for the analysis of phylogenetic community structure and trait evolution. *Bioinformatics* 24, 2098–2100. doi: 10.1093/bioinformatics/btn358
- West, G. B., Brown, J. H., and Enquist, B. J. (1997). A general model for the origin of allometric scaling laws in biology. *Science* 276, 122–126. doi: 10.1126/science.276.5309.122
- West, G. B., Brown, J. H., and Enquist, B. J. (1999). A general model for the structure and allometry of plant vascular systems. *Nature* 400, 664–667. doi: 10.1038/23251
- West, G. B., Enquist, B. J., and Brown, J. H. (2009). A general quantitative theory of forest structure and dynamics. *Proc. Natl. Acad. Sci. U.S.A.* 106, 7040–7045. doi: 10.1073/pnas.0812294106
- Wright, I. J., Reich, P. B., Westoby, M., Ackerly, D. D., Baruch, Z., Bongers, F., et al. (2004). The worldwide leaf economics spectrum. *Nature* 428, 821–827.

**Conflict of Interest:** The authors declare that the research was conducted in the absence of any commercial or financial relationships that could be construed as a potential conflict of interest.

Copyright © 2020 Shenkin, Bentley, Oliveras, Salinas, Adu-Breda, Marimon-Junior, Marimon, Peprah, Choque, Trujillo Rodriguez, Clemente Arenas, Adonteng, Seidu, Passos, Reis, Blonder, Silman, Enquist, Asner and Malhi. This is an open-access article distributed under the terms of the Creative Commons Attribution License (CC BY). The use, distribution or reproduction in other forums is permitted, provided the original author(s) and the copyright owner(s) are credited and that the original publication in this journal is cited, in accordance with accepted academic practice. No use, distribution or reproduction is permitted which does not comply with these terms.