

MyGeoHub: A geospatial science gateway for collaborative science

Carol Song, Ph.D.

Rosen Center for Advanced Computing
Purdue University



INSciTS

Building the knowledge base
for effective team science

International Network for the Science of Team Science



June 8, 2021



MyGeoHub: Making it **easy** for non-geographic information system expert to access, use and share **geospatial** data free, **on the web**

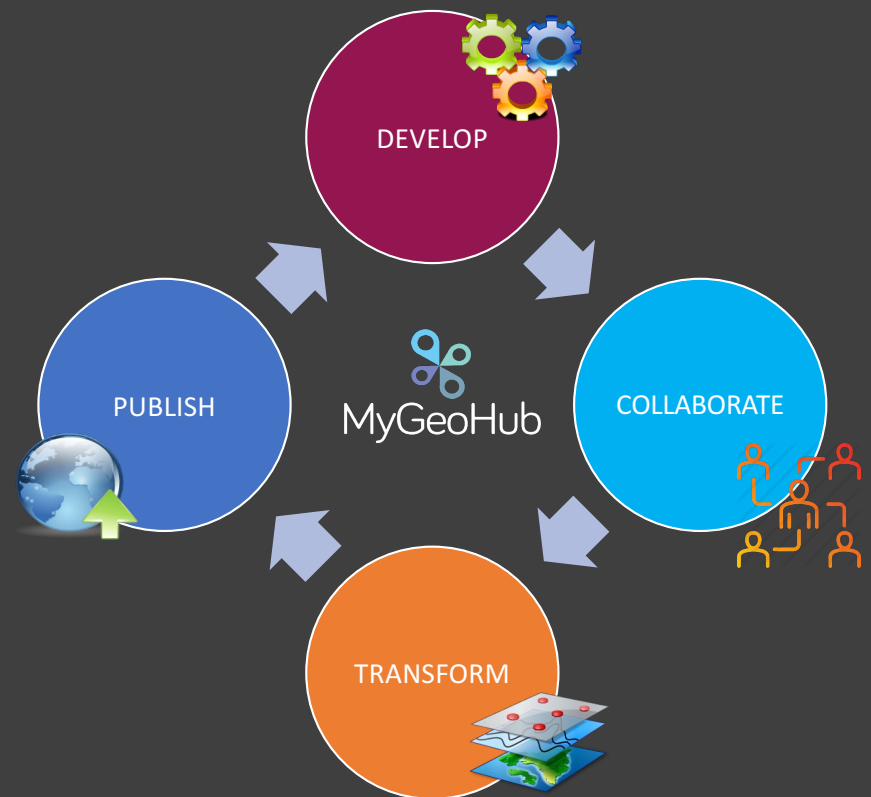
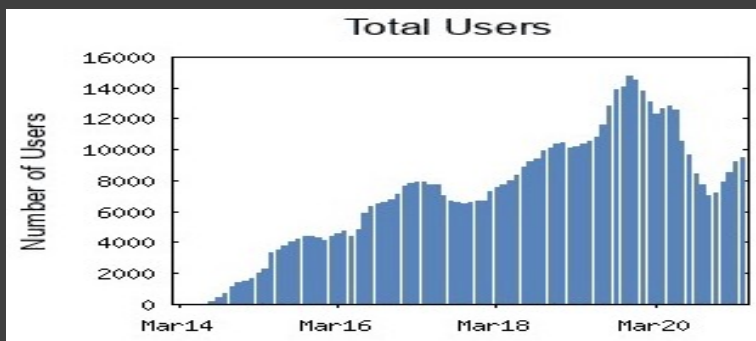
A web platform connected with powerful computing resources (campus, national)

Specialize in supporting geospatial data (maps, location related data, data that has a geographic context e.g., earth surface elevation data,

Employ a “multi-tenant model” for project hosting – shared infrastructure cost

Support >10 funded projects + more

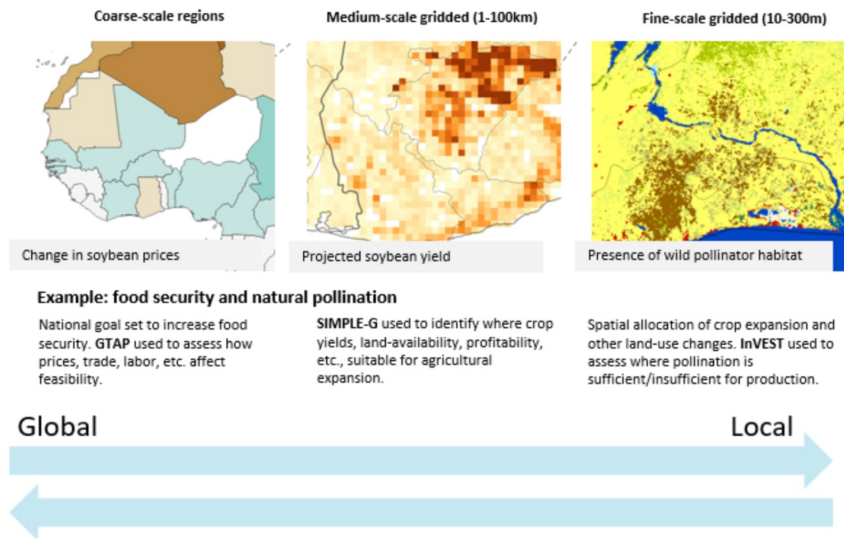
Annual users ~10,000





Global-Local-Global Analysis of Systems Sustainability
GLASSNET
An International Network of Networks

Meeting Sustainable Development Goals on a planet with limited land and water resources



Gaps and Challenges

- Incomplete, inaccurate, and non-standard data on different **scales**
- Conceptual and scale-dependent modeling differences across **disciplines**
- **Computational** challenges
- Poor **interoperability** of data, models, and software
- Lack of institutional support and **incentives for collaboration**

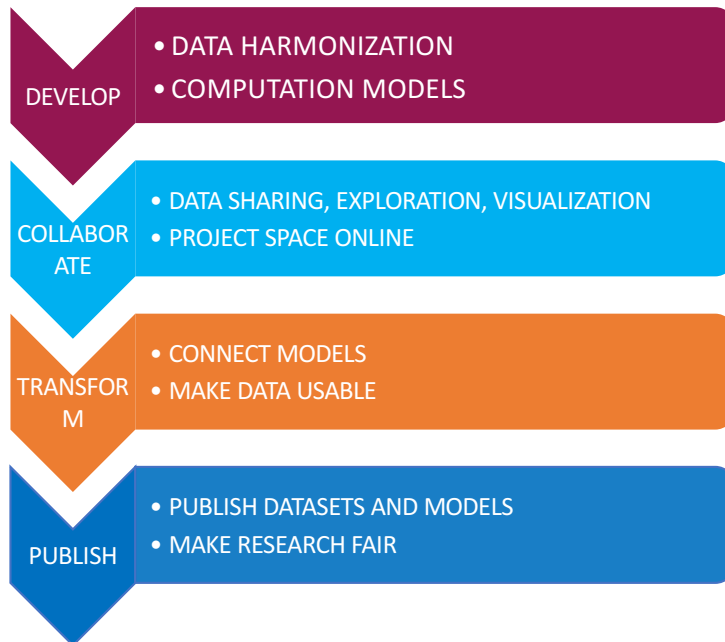
Team includes 7 networks globally, from students to senior researchers, social scientists to physical scientists



Global-Local-Global Analysis of Systems Sustainability
GLASSNET
An International Network of Networks

Meeting Sustainable Development Goals on a planet with limited land and water resources

MyGeoHub



Gaps and Challenges

- Incomplete, inaccurate, and non-standard data on different **scales**
- Conceptual and scale-dependent modeling differences across **disciplines**
- **Computational** challenges
- Poor **interoperability** of data, models, and software
- Lack of institutional support and **incentives** for collaboration

MyGeoHub: A geospatial science gateway for collaborative science

Contact: Carol Song, carolxsong@purdue.edu

Acknowledgements



NSF AWARDS
#183582,
#1261727

hubzero



G·A·B·B·S
geospatial data analysis building blocks
Global Trade Analysis Project

The
GABBs
Team

water
hub

