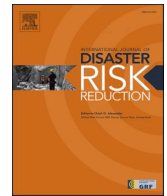




Contents lists available at ScienceDirect

International Journal of Disaster Risk Reduction

journal homepage: www.elsevier.com/locate/ijdr

Equitable community resilience: The case of Winter Storm Uri in Texas

Ali Nejat ^{a,*}, Laura Solitare ^b, Edward Pettitt ^b, Hamed Mohsenian-Rad ^c

^a Texas Tech University, USA

^b Texas Southern University, USA

^c IEEE Fellow, Bourns Family Fellow, University of California, Riverside, USA

ARTICLE INFO

Keywords:

Power grid
Equitable community resilience
Winter storm uri
Blackout

ABSTRACT

Community resilience in the face of natural hazards involves both a community's sensitivity to disaster and its potential to bounce back. A failure to integrate equity into resilience considerations results in unequal recovery and disproportionate impacts on vulnerable populations, which has long been a concern in the United States. This research investigated aspects of equity related to community resilience in the aftermath of Winter Storm Uri in Texas which led to extended power outages for more than 4 million households. County-level outage/recovery data was analyzed to explore potential significant links between various county attributes and their share of the outages during the recovery/restoration phase. Next, satellite imagery was used to examine data at a much higher geographical resolution focusing on census tracts in the city of Houston. The goal was to use computer vision to extract the extent of outages within census tracts and investigate their linkages to census tracts attributes. Results from various statistical procedures revealed statistically significant negative associations between counties' percentage of non-Hispanic whites and median household income with the ratio of outages. Additionally, at census tract level, variables including percentages of *linguistically isolated* population and *public transport users* exhibited positive associations with the group of census tracts that were affected by the outage as detected by computer vision analysis. Informed by these results, engineering solutions such as the applicability of grid modernization technologies, together with distributed and renewable energy resources, when controlled for the region's topographical characteristics, are proposed to enhance equitable power grid resiliency in the face of natural hazards.

1. Introduction

Between February 13–17, 2021, Winter Storm Uri impacted 25 states and more than 150 million Americans leading to extended power and water outages nationwide, with Texas being the hardest hit [1]. The impact of Uri on the state of Texas was far beyond expectation due to the lack of precautionary measures to withstand prolonged freezing temperatures [2]. While the electric grid in Texas is capable of withstanding extreme humidity and warm weather conditions, it was not designed to endure extended freezing temperatures, leaving administrators with no other options than to implement rolling blackouts. These blackouts were supposed to last less than an hour [3] but ranged anywhere from couple of hours to couple of days across the state [4,5]. The storm led to several deaths due to carbon monoxide poisoning, a significant halt in the administration of COVID-19 vaccines, and an economic loss that is

* Corresponding author.

E-mail address: ali.nejat@ttu.edu (A. Nejat).

<https://doi.org/10.1016/j.ijdr.2022.103070>

Received 5 February 2022; Received in revised form 17 May 2022; Accepted 17 May 2022

Available online 28 May 2022

2212-4209/© 2022 Elsevier Ltd. All rights reserved.

estimated to be around \$90 billion [6]. Meanwhile, various outlets brought to light the issue of environmental justice, and the human-centric and equity aspects of the impact [7]. While four million people lost electricity and water in Texas [7,8], the impact was disproportionate in low-income communities of color [9–11]. Low-income non-white families were reported to bear the brunt of compounding crises in the aftermath of Uri [10].

Disparate impact was also investigated by Carvallo et al. (2021) who used satellite data on nighttime lights (NL) to determine blackouts at the level of Census Block Groups (CBGs) and correlated it to demographic data from the EPA's EJScreen tool which identified the share of population in each CBG that is minority and low-income; they found that CBGs with a high share of non-white minorities were more than four times as likely to experience a blackout than predominantly white CBGs, regardless of income. Lee et al. [12] analyzed community-scale big data, including digital trace and crowdsourced data, in Harris County and found significant disparity in the extent and duration of power outages as well as the extent of burst pipes and disrupted food access for low-income and minority residents at the census tract level.

Racial and income disparities in Texas are associated with a history of redlining and gentrification [7,8] resulting in the concentration of people of color in specific areas. At the same time, low-income areas tend to lack amenities such as hospitals, which during the blackout were prioritized for power restoration together with their neighboring areas [7]. Additionally, tendency to live in neighborhoods with older homes equipped with utility systems more prone to failure was cited along with other contributing factors to this disproportionate impact for Texans of color [13].

A disparity in environmental justice was also witnessed in the aftermath of other recent storms including Sandy [14–16], Katrina [17–19], Harvey [20–22] and many others. In the aftermath of Hurricane Sandy in New Jersey, Burger et al. [14] found ethnic differences in length of evacuation, length of power outages, self-reported personal/family/healthcare impact, and federally qualified health centers (FQHC) use, need, and access. Research on the impacts of Hurricane Harvey in Houston found that communities of color suffered more extensive flooding than predominantly white neighborhoods, lower income households flooded more extensively than higher income households, and low-income communities of color were disproportionately exposed to flood-mobilized toxic pollutants and environmental hazards [20,22]. Given the fact that the disproportionate impact of disasters on vulnerable populations including low-income non-white families is not unique to Uri nor to the state of Texas, there is a dire need to demystify its contributing factors using appropriate data.

Previous studies highlighted weak planning, exploitative industries, despoiled environment, and spatial seclusions as the root causes for the existence of disparities in environmental justice among communities [23] in the wake of various natural hazards such as Hurricane Harvey. Additionally, disruption of transportation routes to evacuate and access emergency assistance was reported to be more pronounced in racial/ethnic minority communities compared to predominately white areas [23]. Finally, the presence of digital divide was shown to serve as a burden to access information for socioeconomically marginalized residents in the aftermath of Harvey. These studies suggested that interventions in early stages of disaster management cycle including mitigation and preparedness could help with ameliorating the adverse impacts of disasters and assist with environmental justice within communities. Also, these interventions are recommended to be driven by the understanding that current disasters in Gulf Coast areas would have natural and technical dimensions due to the lack of proper land use planning and the entrenched toxic infrastructure of petrochemical industries surrounding socially marginalized communities. This would imply a more extensive integration of climate change studies to enable proper handling of these complex interlinkages [23].

Community-specific vulnerability and resilience and their dependence on communities' pre-existing conditions, inequities, the severity and compounding of hazards, the influence of time, and the diversity of external factors and their impacts were underlined in Cutter et al.'s [24] disaster resilience of place (DROP) model. Inspired by this model and guided by the existing literature, our study examines the vulnerability and resilience of communities in Harris County in the wake of Winter Storm Uri to provide an intrinsic, yet theoretically useful case study. The study intends to collectively explore the importance of household-specific attributes together with the significance of built-environment in contextualizing community resilience. The case is unique in that east Texas rarely sees prolonged freezing temperatures and the impact on the electrical grid – conspicuously detachment from the Eastern and Western Interconnections – was unexpected by utilities, regulators, state leaders, and residents alike. The case is broadly useful, though, as many counties across the U.S. are experiencing more extreme and unusual climactic events and, like Harris County, are suffering from compounding disasters that strain resources for recovery. Such a study can provide opportunities to learn from what went wrong at various levels, including technical upkeep of infrastructure, precautionary measures, planning, and execution with the hope that it can be used to foster environmental justice for future community resilience planning [25,26]. This research expands disaster and vulnerability assessments to the relatively under-explored case of climate-related blackouts through collecting and extracting data at various county and census tract levels during and after Winter Storm Uri. More specifically, unlike previous studies, our study not only revealed the importance of household-specific attributes such as education and language but also highlighted the significance of the built environment through parameters such as the percentage of one-unit structures and public-transport users within census tracts. We also explore a relatively nascent methodology for assessing the impact of disaster and vulnerability through computer vision analysis of satellite imagery. This section is succeeded by Research Methodology, and Results sections. Conclusions will wrap up the paper.

2. Methodology

To address the objectives of this research, various data analysis methods were performed at both county and census tract levels. The logic behind performing various statistical methods was twofold: 1) the exploratory nature of this research study which necessitated testing our hypothesis of having disproportionate impacts in non-white communities at various levels including a coarser data

granularity level before delving into finer levels, and 2) data availability which steered the selection of these levels of data granularity. These resulted in choosing county-level outage data to check the validity for our initial speculation and was succeeded by census tract-level analysis to check the consistency of the results at both levels. Additionally, the statistical methods used followed the exploratory nature of the research. More specifically, at county-level were interested in exploring the significance of the incorporated parameters in predicting the ratio of remaining outages. This was continued by a multipronged approach for our finer resolution data in which we were initially interested in parameters' effect size which is a quantitative measure of the relationship between them and census-tract percentage of outage and their significance. This was then followed by testing the significance of each parameter in predicting whether a census tract would fall in the category of tract experiencing outage using logistic regression. Finally, by utilizing principal component analysis we aimed to explore correlations between ratio of outages and the incorporated parameters.

County level analysis was made available through the data that was acquired from a third-party company¹ that is specialized in collecting live power outage data from utilities nationwide. The first round of data analysis was performed at county-level to explore changes in power outages and potentially link them to county-specific characteristics. To do so, a macro analysis of longitudinal county-level outages during the month of February was studied. The study was mainly focused on the *recovery stage* of the blackout, which, as shown in Fig. 1b, happened between Feb. 18 – Feb. 21. The rationale behind using the *recovery* phase was the implication of human interventions through the decisions of grid operation professionals and restoration plans/policies [27–29], which in general contrasts with the *build-up* and *blackout* stages in which decisions could be made on an ad-hoc basis. Additionally, Fig. 1a shows total electric load in the ERCOT network (in GW) over a period of three weeks from February 5 until February 26. Abnormal trends in increased loading starts around February 9 due to record low temperature and peaks around February 15 (ERCOT, 2021a); Fig. 1b represents the subsequent severe blackout that affects between 2.5 million to 4.5 million customers over a period of three days together with build-up and recovery which starts around February 18. Finally, Fig. 1c shows a snapshot map of the power outages on February 20 at noon and the extent of impact (PowerOutage.US, 2021). Full recovery took more days to be achieved at certain locations across the state. More specifically, full-recovery durations tended to vary from one county to the other as an example, while over 99.6% of the households who had lost power in Collins County had their power restored by February 20 at noon; less than 47.8% percent of the households who had lost power in Nacogdoches County had their power restored by the same time. Collins County has the highest median household income in Texas. Nacogdoches county has one of the lowest median household incomes in Texas.

Next, to explore the impacts at a neighborhood scale, census tract data for Harris County was used in the second round of data analysis, including the variables shown in Table 1. Our statistical tests used census variables from the 2019 American Communities Survey (ACS 2019) 5-year estimates for Harris County Census Tracts. We selected variables that are proxies for environmental and social disparities at the neighborhood level (we use the term neighborhood interchangeably with census tract).

The selection of variables was mainly based on the review of literature. Even though within the context of disasters, there are numerous research studies on contributing parameters to social vulnerability, we based our analysis on the highly-cited research study performed by Flanagan et al. [30] in which as shown below 4 main categories were used to establish the index. The reason behind using this study as the basis for our analysis is multifold which are described as follows: 1) the focus of the aforementioned study is mainly on developing a social vulnerability index for disaster management which is well-aligned with the topic of our study, 2) the study is well rooted in disaster literature covering its various social aspects, 3) data used for the purpose of index development in the study is census-tract level aggregated data which was deemed to be an appropriate level of granularity to answer our research question to analyze data extracted from American Community Survey 2019 5-year estimate for Harris County census tracts, and 4) the work was built on previous related research studies that studied vulnerability as a resilience measure for population group post disasters [31] which again was aligned with the scope of our study. More specifically, according to Flanagan et al. [30] these parameters can be divided into 4 main categories and 15 census-tract variables that are demonstrated in Fig. 2 below. In our study, even though the incorporated parameters are essentially the same as the ones included in the work by Flanagan et al. [30], there were a few tweaks in the way they were grouped for easier interpretation purposes. More specifically, in our categorization, socioeconomic status and transportation/accessibility were grouped together to form *Economic Characteristics*, household structure and mobility were classified as *Housing Characteristics*, and finally, age, race, ethnicity, and education formed our *Social Characteristics* group.

It is worth noting that commonalities between the previous research and another well-cited study performed by Tate [32] corroborates the importance of these parameters in forming the base to study social vulnerabilities in the aftermath of disasters.

Once data at census tract level was obtained, the next step was to identify a measure that could be used as a proxy for extent of outages within the census tracts. In the absence of public access to high resolution outage data, nightlight satellite imagery² was used for this purpose. The idea was to compare the total number of black and white pixels within each census tract before and after the winter storm and evaluate the changes.

3. Results

3.1. Data analysis at county level

At county level, our study was focused on the time span during which about 10% of the total outages (~400 K units) had not yet been recovered. The primary objective was to explore potential significant links between different counties' attributes and their share of the *remaining outages* during this *final recovery/restoration phase*. Results are shown in Fig. 3 in which linear regression models were

¹ Bluefire Studios LLC <https://poweroutage.us/about>.

² <https://www.newsweek.com/satellite-photos-show-extent-texas-power-outages-space-1569942>.

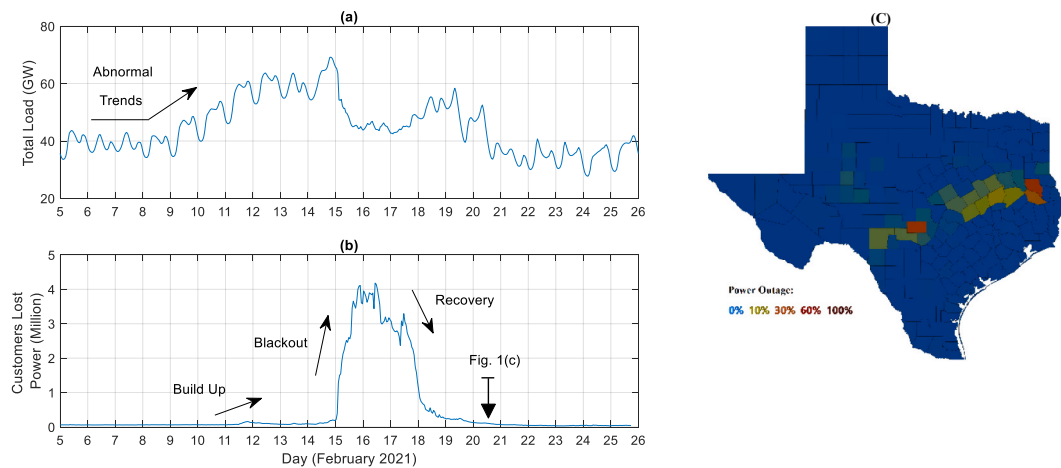


Fig. 1. Overview of the power grid conditions during Winter Storm Uri in Texas.

Table 1

Census tract variables extracted from 2019 ACS.

Social Characteristics	Housing Characteristics	Economic Characteristics
Age	Residential type	Median Household Income
Race	Vacant housing	Unemployment
Ethnicity	Owner Occupancy	Poverty
Education	Mobility	Employment Industry
Linguistically Isolated		Access to Health Insurance
Others		Transportation modes to commute to work

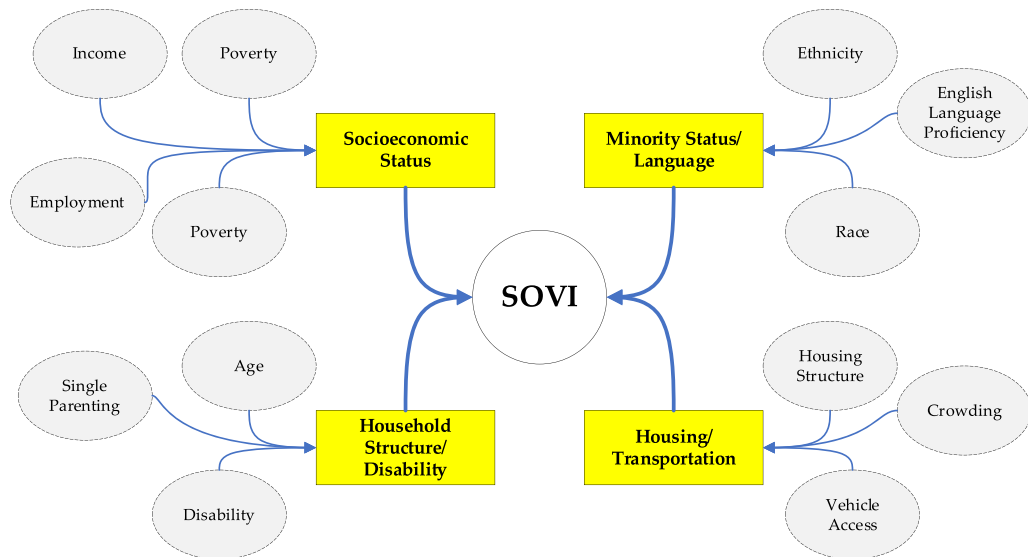


Fig. 2. Social Vulnerability Factors – Inspired by Flanagan et al. [30].

developed to investigate the significance of various county-level attributes, including counties' *percentage of non-Hispanic whites* and *median household income* in driving counties' share of the remaining outages. These two variables were selected as examples of parameters that were deemed influential and repeatedly shown to affect the impact imposed by disasters including Sandy [14–16], Katrina [17–19,33,34], Harvey [20–22] within the literature. A more comprehensive model was developed (see Fig. 3c) which turned out to corroborate the importance of race and socioeconomic status as well. More specifically, as shown in Fig. 3a, median household income was incorporated into our first model. Results indicated its significance at 0.01 level. In Model 2 (Fig. 3b), the only predictor was the percentage of white populations within counties that turn out to be borderline significant between 0.05 and 0.1 levels. In

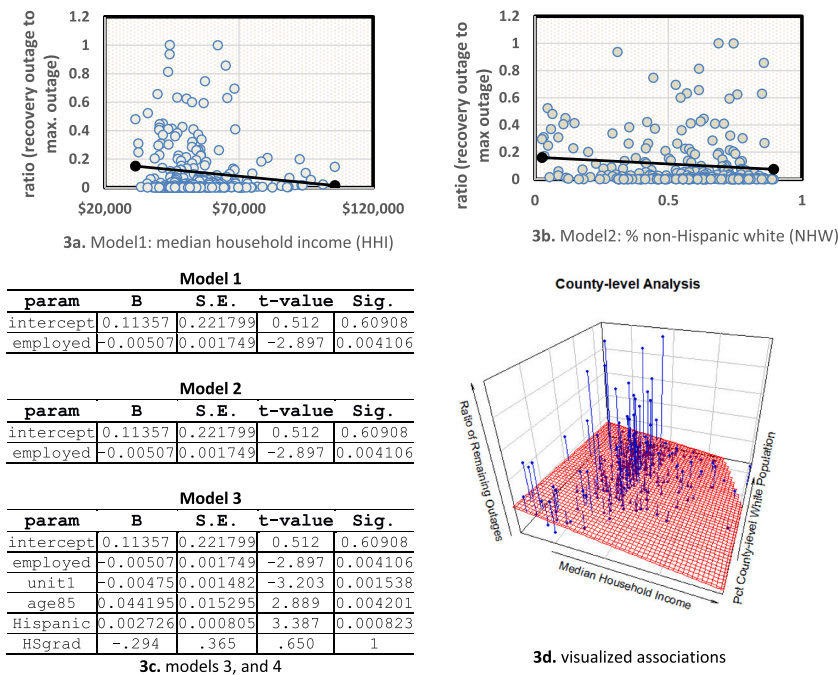


Fig. 3. Regression models at county-level.

Fig. 3d, negative associations between the remaining ratio of outages and the increase in household median income and percentage of white population at county-level were visualized in a 3d dimension graph. These preliminary results revealed statistically significant negative associations between these predictors and the dependent variable, which was set to be the ratio of remaining outages to the maximum recorded outage in the county. This would imply that counties with higher percentage of non-Hispanic whites recovered faster (lower rate of remaining outages) compared to those without. The same result can be concluded from counties with higher median household income. Finally, model 3 (Fig. 3c) represents a more comprehensive model incorporating all social vulnerability parameters as indicated in Table 1 which was reduced to a model with 5 significant predictors through stepwise backward elimination process. A process which is based on the probability of the likelihood-ratio statistic and conditional parameter estimates [35]. Among the significant variables, percentages of employed civilians, 1-unit structures turn out to have negative impact on the remaining outages at county level. The remaining parameters, including percentages of 85-year-old and above population, Hispanic population, and high school graduates turn out to have positive impact on the ratio of remaining outages. These results are consistent with our first two models in which race (Hispanic) and income (through proxies: employment, one-unit structures) were shown to be significant in predicting county-level remaining outages. The results are also aligned with the existing literature on the higher vulnerability of non-white and lower income groups within the context of disasters [31,36,37]. Even though results from this preliminary study were thought provoking, they were not conclusive and, as such, called for more in-depth bottom-up analyses to be performed. We subsequently performed a micro-level analysis of power outages at census tract level within Harris County due to its high level of impact among cities within the state of Texas [38].

3.2. Data analysis at census tract level

At census tract level, tracts' attributes as shown in Table 1 were extracted from ACS 2019 and were associated with results from computer vision analysis of their extent of outage. More specifically, in the absence of high-resolution longitudinal power outage data within greater Harris County, the following tasks as demonstrated in Fig. 4 were performed to use satellite imagery to detect the intensity of outages. First, NASA satellite images [39] of nighttime lights in Texas on Feb. 7 and Feb. 16, 2021 were downloaded from their website (Fig. 4a). The image taken on Feb. 7 was set as the benchmark displaying normal nighttime lights while the second image taken on Feb. 16 was used to evaluate changes during the outage. Second, to perform spatial analysis, downloaded images were georeferenced in ArcGIS using ArcMap georeferencing tool (Fig. 4b). Third, census tracts shapefile was downloaded from US Census TIGER/Line³ and clipped by Harris County boundaries in ArcMap (Fig. 4c). Fourth, ArcMap model builder was used to extract multiple shapefiles for each census tract and create raster files from the extracted shapefiles (Fig. 4d).

Once raster datasets were created for both before the outage and after the outage, OpenCV computer vision package⁴ was used to convert the datasets from Red-Green-Blue (RGB) to grayscale and then to black and white (see Fig. 5) and to count the number of pixels

³ <https://www.census.gov/cgi-bin/geo/shapefiles/index.php?year=2019&layergroup=Census+Tracts>.

⁴ <https://opencv.org/releases/>.

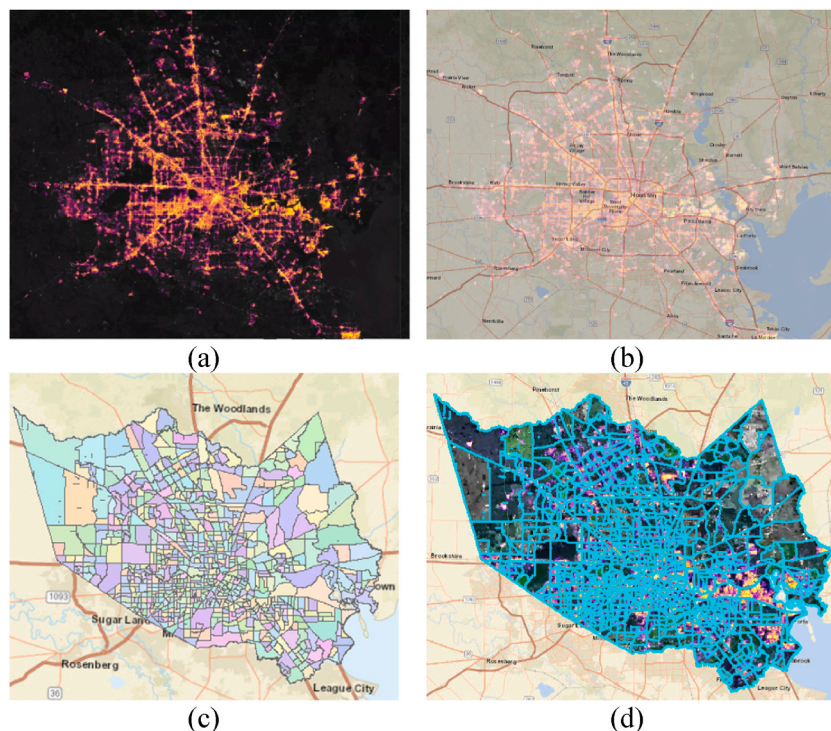


Fig. 4. Census tract computer vision process.

within each census tract. These numbers were the basis for calculating *black pixel ratio* which was used to determine the severity of outage within neighborhoods for the rest of the research study.

3.2.1. Significant variables and their effect size

Once outage intensity at census tract level was determined using satellite photos and computer vision algorithms, independent sample t-tests were performed to understand the differences between the two sample groups: neighborhoods (census tracts) that experienced a power outage compared to neighborhoods (census tracts) that did not have a power outage during Winter Storm Uri. As shown in Table 2, these tests were run using various measures to define which neighborhoods had a power outage. A key challenge in this analysis is to lower the sensitivity to normal fluctuation in customer loads, a phenomenon that is well documented in the power engineering literature due to the impact of various factors on load profiles [40]. Importantly, even if there was no blackout at the times when either of the two satellite images were taken, one could still have seen a considerable level of difference between the light pattern and intensity across the two satellite images unrelated to any outage. Of course, such normal fluctuations also exist when a comparison is made between satellite images *before* and *during* outages due to Winter Storm Uri; yet again, unrelated to the outages. Therefore, a reduction in the sensitivity of the analysis to such normal fluctuations in loading was needed.

To resolve this issue, a reliability threshold in the form of a cut-off point to be applied to the black pixel ratio was considered. First, suppose there is no normal fluctuation (e.g., those than can happen under daily use and not necessarily extreme conditions such as a power blackout), between the time of taking the first satellite image (before the outage) versus the time of taking the second satellite image (during the outage). In that case, an area of interest is deemed to have experienced *outage* if black pixel ratio is greater than 1.0. However, due to the presence of normal fluctuations in loads, there can be areas with a black pixel ratio greater than 1.0 that have not experienced outage; they have rather only experienced less loading, unrelated to the outage. Accordingly, sensitivity to such unrelated factors was reduced by examining four different cut-off points: 1.0, 1.1, 1.2, and 1.5. For the purpose of this study, the 1.2 cutoff point was chosen for two reasons: first it displayed the highest number of significant variables based on t-test results compared to the rest which can be a good indication of its higher accuracy in depicting actual outages; and second, random manual visual inspection of various raster files exhibited more accurate depiction of the actual outage under this setting. Then the effect size of the difference for the variables that had statistically significant different means between neighborhoods with power outages compared to those with power during Winter Storm Uri were determined (See Table 2).

According to the test results for variables with large effect size (0.5 and above) it can be inferred that neighborhoods (census tracts) with a power outage had fewer single-family housing, more multi-family housing, fewer owner-occupied housing, household size and more users of public transit for commuting to work together with more newcomers than neighborhoods without a power outage. Also, among variables with medium effect size (0.3–0.5), results indicated that neighborhoods with a power outage had more linguistically isolated people, more people living in poverty, more people with no health insurance, more people in the labor force, more vacant housing, more overcrowding, smaller family size, and fewer seniors than neighborhoods without a power outage.

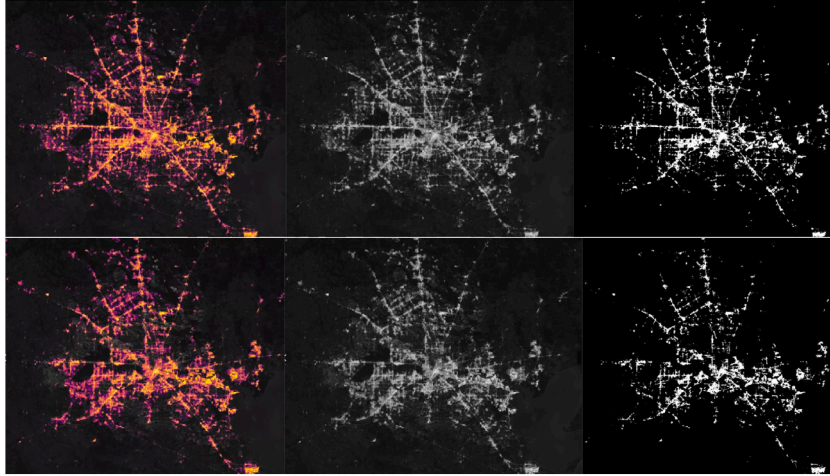


Fig. 5. Use of computer-vision to prepare census tract-level outage data.

3.2.2. Logistic regression

Identification of parameters with large and medium effect size such as *housing type*, *public transit work commute*, *mobility*, etc. Led to the next part of the study investigation to explore the significance of each of these parameters in predicting the category of each census tract with regards to their level of impact/outage. More specifically, this was carried out through the application of binary logistic regression in which changes in the log odds of belonging to an affected census tract per a unit increase in predictor variables was investigated. Odds refer to the probability ratio of being in affected group versus unaffected group. Several binary logistic regression models were run using stepwise conditional forward selection testing in SPSS v.27.

Logistic regression is a form of statistical modeling which relates a set of explanatory variables to a categorical response variable. Response variables can either have two or more than two categories and are called dichotomous or polytomous, respectively. In the case of our study, the dependent variable was census tract outage experience class which had two levels of “affected” and “not affected”. This classification of census tracts was based on their black to white pixel ratios before and after the storm. Our independent variables included all social tract-specific social vulnerability parameters (see Fig. 1) such as demographic, socioeconomic, etc. Since our response variable was nominal and could take two different categories binary logit model was pursued to perform logistic regression. Binary logit models are a member of generalized linear models or GLMs which were introduced by Nelder and Wedderburn [41]. Generalized linear models are characterized by three components which are: 1) a random factor which represents the probability distribution of the response variable; 2) a systematic component which denotes a linear function of explanatory variables that are used as regressors; and 3) the link which defines the functional relationship between the systematic component and the expected value of the random component [42]. Binary response Y with outcomes 0 and 1 is a Bernoulli random variable with mean $E(Y) = 1 \times P(Y = 1) + 0 \times P(Y = 0)$. By denoting this probability as $\pi(x)$ the variance of would be:

$$VAR(Y) = E(Y^2) - [E(Y)]^2 = \pi(x)[1 - \pi(x)] \quad (1)$$

Now for the binary response variable, a linear probability model can be defined as:

$$E(Y) = \pi(x) = \alpha + \beta x \quad (2)$$

The regression model shown in Eq-2 displays a major conceptual shortcoming associated with linear probability model, which is the occurrence of probabilities beyond the feasible range of 0–1. To address this defect, it would be more beneficial if a logistic regression function is used, which is s-shape and has a monotonic relationship with its regressor [42]. This is shown in the following equation:

$$\pi(x) = \frac{\exp(\alpha + \beta x)}{1 + \exp(\alpha + \beta x)} \quad (3)$$

As a result, the link function that should be used to make the logistic regression a GLM is a log odds transformation or the logit which is shown below [42]:

$$\log\left(\frac{\pi(x)}{1 - \pi(x)}\right) = \alpha + \beta x \quad (4)$$

Through this method, parameter entry is tested based on the significance of score statistic while removal testing is based on the probability of a likelihood-ratio statistic founded on conditional parameter estimates [43]. Among the developed models, a model with four variables as shown in Table 3 was selected after accounting for simplicity, interpretability, and goodness of fit. Included parameters consisted of *percentages of one-unit structures*, *public transportation users*, *linguistically isolated people*, and *high school graduates*

Table 2

T-test results for various Cut-Points.

	1.5 Cut Point – T-test results – statistical significance	1.2 Cut Point – T-test results – statistical significance	Cohen's D for the 1.2 Cut Point t- tests	1.1 Cut Point – T-test results – statistical significance	1.0 Cut Point – T-test results – statistical significance
1. Age: 65 and over, %	***	***	-.42	***	*
2. Race: Black or African American, %	NS	NS		NS	NS
3. Race: Asian, %	NS	*	-.18	*	NS
4. Hispanic %	NS	*	.17	NS	NS
5. Vacant Housing, %	***	***	.37	***	NS
6. 1 unit, Housing Structures, %	***	***	-1.0	***	*
7. 20 or more units, Housing Structures, %	***	***	+1.0	***	*
8. Housing Built before 1979, %	NS	NS		NS	NS
9. Owner Occupied Housing, %	***	***	-.89	***	NS
10. No Vehicle Access (owner-occupied housing), %	***	***	.56	***	NS
11. Over Crowded Housing, %	***	**	.32	**	NS
12. In Labor Force, %	***	***	.47	***	NS
13. Unemployment Rate	NS	**	-.27	*	NS
14. Public Transit for Work Commute, %	***	***	.53	***	NS
15. Retail Employment, %	*	*	-.20	NS	NS
16. FIRE Employment, %	NS	*	.20	NS	NS
17. Median Household Income, \$	***	*	-.22	*	*
18. No Health Insurance, %	***	**	.34	*	NS
19. Poverty Level, all	***	***	.40	***	NS
20. Poverty, age 65 and over, %	*	**	.37	***	NS
21. Household Size	***	***	-.61	***	**
22. Family Size	***	***	-.42	***	*
23. Education: High School Grad or equivalent, %	*	**	-.24	**	*
24. Education: Bachelor's degree, %	NS	NS	.16	NS	*
25. Mobility: Lived in Same House for at least 1 year, %	***	***	-.57	***	NS
26. Linguistically Isolated (speak English less than "well"), %	***	***	.46	***	NS

NS non-significant, * significant at 0.05 level, ** significant at 0.01 level, *** significant at 0.001 level.

within census tracts. The model had a Nagelkerke pseudo-R Square of 0.261 which was marginally lower than the model with the inclusion of all the variables (in percentages as shown in Table 1) while sharing the same significant variables. Additionally, calculated Chi-square for Hosmer and Lemeshow test turned out to be insignificant (Chi-square 7.02, p-value 0.535), indicating the model's goodness of fit [44]. It is worth noting that having a relatively low R square is the norm for logistic regression; however, they are being suggested to be used as a statistic to compare and evaluate various competing models [44]. Results from the logistic regression indicated the positive impact of *linguistically isolated people* and *public transport commute percentages* in increasing the log odds of belonging to affected census tracts. As percent of *linguistically isolated population* per census tract turns out to have a highly significant correlation with the percent of Hispanic population within the same census tract (Pearson correlation of 0.824 at 0.01 level) this can be an indication of disproportionate impact among various ethnicities within the county. The same positive impact can be seen in the

Table 3

Variables in the equation.

	B	S.E.	Wald	Sig.	Exp(B)
OneUnitStructure%	-0.027	0.004	47.652	<.001	1.028
PublicTransport%	0.067	0.032	4.455	.035	.935
LinguisticallyIsolated%	0.029	0.007	18.745	<.001	.971
HSgrad%	-0.048	0.013	14.196	<.001	1.049
Constant	-0.087	0.322	0.073	<.001	1.091

percentage of population taking public transport to work. On the other hand, higher concentration of *one-unit structures* and, subsequently, less concentration of *multifamilyhousing*, appeared to have a negative impact implying that an increase in the percentage would increase the log odds of belonging to the unaffected category. The same applies to percentage of *high school graduates* within a census tract, which resulted in a negative impact. These impacts are visualized in Fig. 6 to show how probability of belonging to an affected census tract would be affected by changes in any of these parameters when holding the rest of the parameters unchanged at their mean. As shown in Fig. 6, an increase in the percentage of public transportation users for work commute together with the percentage of linguistically isolated population within a census tract increase its probability to be located among the affected census tracts. On the other hand, this probability decreases as the percentage of single-family residences and high school graduates increases within a census tract.

3.2.3. Principal component analysis

Finally, principal component analysis (PCA) was performed using SPSS v.27 to reveal how percentage of black pixels loads on various components within our data sets. Similar to logistic regression, all the variables in percentages were used in this analysis. Number of factors was limited to four (see Fig. 7 and Table 4) as they cumulatively cover at least 60% of the variance and factors beyond four encompass less than five percent of the variance [45–47]. As shown in Table 5, results from PCA revealed noticeable positive loading of black pixel ratio on a factor which has been additionally loaded by percentage of African American population, public transport commute, poverty, vacant housing, multifamily housing, and no vehicle owner occupied units, a result which is impartially aligned with the previous approaches. Even though these results are not conclusive, they suggest possible presence of disproportionate impacts on low-income communities of color within Harris County.

4. Conclusions and future work

While the results from this study suggest disproportionate impacts among populations with various demographic and socioeconomic statuses, the question remains on how the engineering community, utilities, and policymakers can address inequities and ultimately enhance resiliency in areas that are proven to be affected disproportionately during Winter Storm Uri and other extreme events. In response, two potential power engineering interventions are proposed.

First, as it was observed in this study, when looking at the differences between neighborhoods, it was found that the neighborhoods that had power outage were disproportionately vulnerable. They had more multifamily housing, overcrowded housing, lower owner occupancy, more persons with limited English speaking, more persons without access to a car, more persons who rely on public transit for work commuting, and more persons who recently moved into the neighborhood. These results are particularly insightful within the recovery period. That is, even though different areas were affected similarly when the disaster occurred, the areas with lower household income and higher percentage of ethnic minorities remained without power for a longer period while higher-income predominantly non-Hispanic White areas recovered more quickly. This could be due to various factors, such as lack of more advanced technologies such as Fault Location, Isolation, and Service Restoration (FLISR) [48], which can significantly accelerate service restoration due to an automated ability to pinpoint the points of failure in order to assist utility personnel to restore service faster. More investment in vulnerable geographic areas might be needed to help mitigate disparities in grid resiliency.

Second, there are evolving technologies that can help maintain electricity service during extreme events in critical community resources such as at hospitals, shelters, schools, churches, etc. In particular, recent advancements in the area of microgrid technologies, in combination with the installation of onsite renewable generation and energy storage resources, are improving the ability to sustain *isolated* operation of a critical facility for several days, thereby serving the affected community until service is fully restored, e.g., see Refs. [49,50].

As part of our future work, the authors plan to investigate how critical community resources were affected during Winter Storm Uri and similar extreme events to gain a clearer understanding of disparities in resilience related to specific types of critical infrastructure. The results will help further identify the engineering challenges and potential solutions required to eliminate existing demographic disparities associated with the response to and restoration of disaster-caused electrical outages.

As extreme weather events like Winter Storm Uri become more frequent, intense, and unpredictable due to climate change, it is important to understand how they impact critical infrastructures like the power grid and how such impacts are compounded by

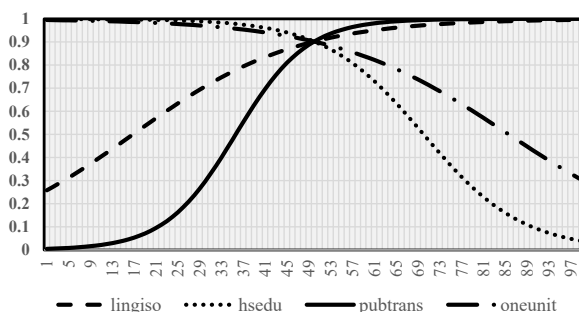


Fig. 6. Probability of belonging to affected category – Sensitivity analysis.

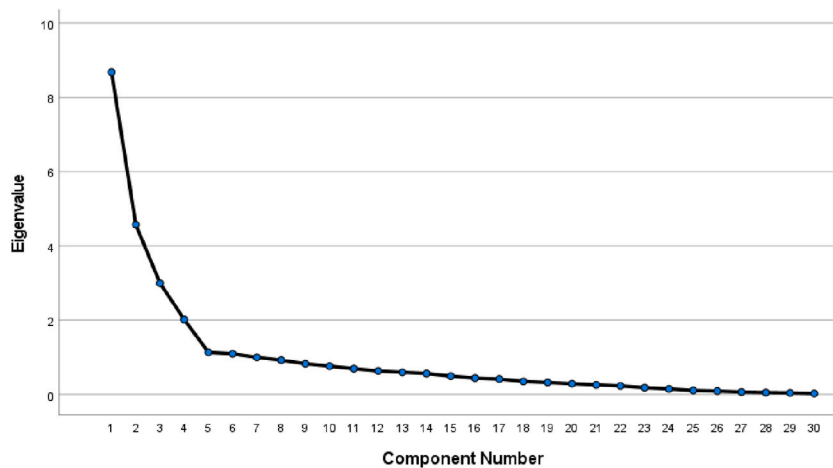


Fig. 7. Scree plot.

Table 4
Variables in the equation.

Component	Initial Eigenvalues		
	Total	% of Variance	Cumulative %
1	8.680	28.933	28.933
2	4.572	15.240	44.173
3	2.996	9.986	54.159
4	2.017	6.725	60.884
5	1.134	3.780	64.664
6	1.095	3.650	68.314

socioeconomic and racial inequalities. Our analysis of spatiotemporal and demographic data found that geographic areas with a higher percentage of single-family homes recovered from the power outages that occurred during Winter Storm Uri and possessed lower rates of remaining outages during the latter stages of the recovery/restoration phase than areas with a higher proportion multifamily housing communities. Understanding these disparate impacts of Winter Storm Uri is integral to developing appropriate response, recovery, and mitigation plans for future events that disrupt the power grid. Our findings could assist utilities and government entities to enact more equitable approaches to managed service outages and power grid resiliency in the face of natural hazards.

This can have implications at both state and federal levels to help with avoiding/mitigating the impacts together with expediting the recovery of communities facing disasters such as winter storm Uri in Texas. An example at state-level is the adoption of 16 Texas Administrative Code § 3.65 and amended § 3.17 by Railroad Commission of Texas [51] to designate natural gas providers in Texas as critical gas suppliers or customers during emergencies so that their power would remain on during emergencies. This also included terms on imposing fees on gas companies that aren't prepared to perform during emergencies. This was in response to a federal report in which 18% of outages was reported to be caused by natural gas producers power loss and their incapability to disseminate fuel to powerplants [52]. The other example is Senate Bill 3 which requires weatherization of all electricity generators and providers [53]. Additionally, federal assistance can also help with recovery and mitigation efforts. An example is FEMA public notice 4586-DR-TX [54] in which Public Assistance (PA), Individual Assistance (IA), and Hazard Mitigation Grant Program (HMGP) were included in response to damages imposed by winter storm Uri in 2021. More specifically, according to the public notice, the HGMP funds was intended to mitigate future disaster damages by construction of new facilities, modification of existing ones, relocation of facilities out of floodplains etc. Additionally, FEMA aimed at exploring how response and recovery efforts would impact low income and minority communities so that alternative actions and HMGP projects can be considered if the initial ones turn out to have adverse impacts. Other mitigation strategies specific to grid failure shall focus on increasing resiliency, such as equipment upgrade for service restoration, increased location generation capacity, such as adding renewable generation resources, or increasing transmission capacity, such as by adding additional transmission lines to increase the ability to import power. While the exact causes in the grid technologies cannot be identified without direct access to the proprietary utility data, the results in this paper do reveal the need for addressing the challenges in these geographical areas, given the outcome with respect to the patterns in the outages. Additionally, many technologies can help with bridging the current gaps including Distributed Energy Resources (DERs) and microgrid technologies [55] together with advanced Fault Location, Isolation, and Service Restoration (FLISR) [48] technologies which can significantly accelerate service restoration due to an automated ability to target failure nodes. These can be complemented by adding power lines in sub-transmission and transmission networks to increase the ability to supply power to a region from different path when a power line fails and to avoid cascading failures [56].

Table 5
Variables in the equation.

	Component			
	1	2	3	4
Age_85andover_PCT	-.164	.158	-.258	.665
Age_65andover_PCT	-.328	-.170	-.154	.837
Race_BlackAfricanAmericanr_PCT	-.152	.245	.808	.161
Race_Asian_PCT	-.368	.178	-.291	-.106
Hispanic_PCT	.908	-.142	-.026	-.203
VacantHousingUnits_PCT	.101	.594	.069	.200
1_UnitStructure_PCT	-.122	-.878	.036	.256
20ormoreunitsStructure_PCT	-.095	.821	-.243	-.142
Builtbefore1979_PCT	.598	.052	.045	.447
OwnerOccupied_PCT	-.294	-.853	-.184	.215
NoVehicles_OwnerOcc_PCT	.349	.592	.424	.298
LackPlumbing_OwnerOcc_PCT	.122	.103	.120	.147
OverCrowded_1.5_PCT	.499	.150	-.100	-.049
InLaborForce_PCT	-.318	.250	-.228	-.707
Unemployed_PCT	.074	.025	.640	.004
PublicTrans_Commute_PCT	.076	.565	.333	.160
Retail_Employment_PCT	.127	-.100	.460	-.202
FIRE_Employment_PCT	-.515	.098	-.404	.096
NoHealthInsurance_PCT	.867	.139	.197	-.182
Poverty_Family_PCT	.729	.373	.405	.061
Poverty_FemaleHHwithkids_PCT	.667	.175	.273	.062
PovertyLevel_all_PCT	.728	.408	.400	.084
PovertyLeve_65andover_PCT	.531	.297	.207	.199
FemaleHHwithkids_PCT	.357	.108	.573	-.091
Households_65andover_PCT	-.127	-.409	.046	.827
Education_HighSchoolGrad_PCT	.564	-.190	.626	-.006
Education_BachDegree_PCT	-.765	.146	-.498	.012
Mobility_SameHouse1year_PCT	.278	-.704	.030	.223
LinguisticallyIsolated_PCT	.879	.067	-.092	-.191
BPP_ratio	.131	.253	-.123	-.092

Rotation Method: Varimax with Kaiser Normalization, Rotation converged in 8 iterations.

It is worth noting that this study is not immune to limitations. Though our study focuses on the recovery stage of Winter Storm Uri, we are cognizant of Boshier et al.'s (2021) critique of the disaster cycle and the risk of underestimating the role of pre-disaster risk reduction and preparedness activities or characterizing disaster as a one-off event or technological challenge rather than a multifaceted, compounded, and evolving phenomenon. As with other disaster research, subjectivity involved in variable selection and weighting, unavailability of certain data, and difficulty with aggregation and scaling limit the validation and generalizability of results. More specifically, though our results suggest the importance of community characteristics in how they were affected by the outage they are not conclusive due to lack of high-resolution longitudinal outage data, limited public data on the grid conditions during the storm, etc.; thus, requiring a follow up confirmatory study that can collect data throughout the outage. Nevertheless, our quantitative indicators and findings are useful for demystifying the impacts of natural hazards and power outages, mapping impacts, measuring post-disaster recovery progress, and determining priorities for decisionmakers.

Declaration of competing interest

The authors declare that they have no known competing financial interests or personal relationships that could have appeared to influence the work reported in this paper.

Acknowledgements

This research was supported in by the National Science Foundation awards CMMI 2141203, 2141092, 2143902, for which the authors express their appreciation. Publication of this paper does not necessarily indicate acceptance by the funding entities of its contents, either inferred or explicitly expressed herein.

References

- [1] J. Centers, Lessons from winter storm Uri and the Texas blackout, in: *The Prepared*, 2021.
- [2] W. Englund, The Texas grid got crushed because its operators didn't see the need to prepare for cold weather, in: *Washington Post*, 2021.
- [3] R. Philipose, Explained: why did the winter storm cause widespread blackouts in energy-rich Texas?, in: *The Indian Express*, 2021.
- [4] R.W. Miller, Massive failure': why are millions of people in Texas still without power?, in: *USA TODAY*, 2021.
- [5] M. Ferman, S. Sparber, E. Limón, 2 million Texas households without power as massive winter storm drives demand for electricity, in: *The Texas Tribune*, 2021.
- [6] B.K. Sullivan, Texas deep freeze could cost \$90 billion in losses, modeler says, in: *Bloomberg Green*, 2021.
- [7] S. Stevens, Texas Winter Storm Uri exposed environmental racism, in: *North Texas Daily*, 2021.
- [8] A. Srikanth, Texas blackouts disproportionately affect low-income, nonwhite communities, in: *The Hill*, 2021.

- [9] M. Curtis, E. Campbell, Seeking Environmental Justice: the Impact of Climate Change on Communities of Color, Roll Call, 2021.
- [10] SolarOne, Climate Chaos in Action: Millions Lose Power in Winter Storm Uri, 2021.
- [11] N.d. Yancey-Bragg, R. Jervis, Texas' winter storm could make life worse for Black and Latino families hit hard by power outages, in: USA TODAY, 2021.
- [12] C.-C. Lee, M. Maron, A. Mostafavi, Community-scale Big Data Reveals Disparate Impacts of the Texas Winter Storm of 2021 and its Managed Power Outage, 2021 arXiv preprint arXiv:2108.06046.
- [13] A. Ura, J.P. Garnham, Already hit hard by pandemic, Black and Hispanic communities suffer the blows of an unforgiving winter storm, in: The Texas Tribune, 2021.
- [14] J. Burger, M. Gochfeld, C. Lacy, Ethnic differences in risk: experiences, medical needs, and access to care after hurricane Sandy in New Jersey, *J. Toxicol. Environ. Health. Part A* 82 (2) (2019) 128–141.
- [15] W. Lieberman-Cribbin, et al., Unequal social vulnerability to Hurricane Sandy flood exposure, *J. Expo. Sci. Environ. Epidemiol.* (2020) 1–6.
- [16] E.G. Carbone, M.M. Wright, Hurricane Sandy recovery science: a model for disaster research, *Disaster Med. Public Health Prep.* 10 (3) (2016) 304–305.
- [17] R.M. Zoraster, Vulnerable populations: hurricane Katrina as a case study, *Prehospital Disaster Med.* 25 (1) (2010) 74–78.
- [18] W.H. Frey, A. Singer, Katrina and Rita Impacts on Gulf Coast Populations: First Census Findings, Brookings Institution, Metropolitan Policy Program, Washington, DC, 2006.
- [19] E. Birch, S. Wachter, Rebuilding Urban Places after Disaster: Lessons from Hurricane Katrina, University of Pennsylvania Press, 2006.
- [20] C. Bodenreider, et al., Assessment of social, economic, and geographic vulnerability pre-and post-Hurricane Harvey in Houston, Texas, *Environ. Justice* 12 (4) (2019) 182–193.
- [21] J. Chakraborty, T.W. Collins, S.E. Grineski, Exploring the environmental justice implications of hurricane Harvey flooding in greater Houston, Texas, *Am. J. Publ. Health* 109 (2) (2019) 244–250.
- [22] T.W. Collins, et al., Environmental injustice and Hurricane Harvey: a household-level study of socially disparate flood exposures in Greater Houston, Texas, *USA, Environ. Res.* 179 (2019) 108772.
- [23] A.B. Flores, et al., Environmental injustice in the disaster cycle: hurricane Harvey and the Texas Gulf Coast, *Environ. Justice* 14 (2) (2021) 146–158.
- [24] S.L. Cutter, et al., A place-based model for understanding community resilience to natural disasters, *Global Environ. Change* 18 (4) (2008) 598–606.
- [25] Y. Zhang, J. Torres, Safeguarding the Grid: Diverse Resources for Resilience [In My View], vol. 18, *IEEE Power & Energy Magazine*, 2020. NREL/JA-5D00-75441).
- [26] Y. Wang, et al., Research on resilience of power systems under natural disasters—a review, *IEEE Trans. Power Syst.* 31 (2) (2015) 1604–1613.
- [27] National Academies of Sciences, E. And Medicine, Enhancing the Resilience of the Nation's Electricity System, National Academies Press, 2017.
- [28] Y. Liu, R. Fan, V. Terzija, Power system restoration: a literature review from 2006 to 2016, *J. Mod. Power Syst. Clean Energy* 4 (3) (2016) 332–341.
- [29] N.C. Koutsoukis, P.S. Georgilakis, N.D. Hatziahyriou, Service restoration of active distribution systems with increasing penetration of renewable distributed generation, *IET Gener., Transm. Distrib.* 13 (14) (2019) 3177–3187.
- [30] B.E. Flanagan, et al., A social vulnerability index for disaster management, *J. Homel. Secur. Emerg. Manag.* 8 (1) (2011).
- [31] S.L. Cutter, B.J. Boruff, W.L. Shirley, Social vulnerability to environmental hazards, *Soc. Sci. Q.* 84 (2) (2003) 242–261.
- [32] E. Tate, Social vulnerability indices: a comparative assessment using uncertainty and sensitivity analysis, *Nat. Hazards* 63 (2) (2012) 325–347.
- [33] M. Pastor, et al., Environment, disaster, and race after Katrina, *Race Poverty Environ.* 13 (1) (2006) 21–26.
- [34] C. Finch, C.T. Emrich, S.L. Cutter, Disaster disparities and differential recovery in New Orleans, *Popul. Environ.* 31 (4) (2010) 179–202.
- [35] SPSS, Logistic Regression Variable Selection Methods, 2022.
- [36] L.E. Grube, R. Fike, V.H. Storr, Navigating disaster: an empirical study of federal assistance following Hurricane Sandy, *E. Econ. J.* 44 (4) (2018) 576–593.
- [37] S. Zahran, et al., Social vulnerability and the natural and built environment: a model of flood casualties in Texas, *Disasters* 32 (4) (2008) 537–560.
- [38] Hspa, The Effects of the Winter Storm of 2021 in Harris County, 2021.
- [39] NASA, Extreme Winter Weather Causes U.S. Blackouts, 2021.
- [40] H. Mohsenian-Rad, SMART GRID SENSORS: Principles and Applications, CAMBRIDGE University Press, 2021.
- [41] J.A. Nelder, R.W. Wedderburn, Generalized linear models, *J. Roy. Stat. Soc.* 135 (3) (1972) 370–384.
- [42] A. Agresti, Categorical Data Analysis, John Wiley & Sons, 2003.
- [43] SPSS, Logistic Regression Variable Selection Methods, 2021.
- [44] D.W. Hosmer Jr., S. Lemeshow, R.X. Sturdivant, Applied Logistic Regression, vol. 398, John Wiley & Sons, 2013.
- [45] R.A. Peterson, A meta-analysis of variance accounted for and factor loadings in exploratory factor analysis, *Market. Lett.* 11 (3) (2000) 261–275.
- [46] J.F. Hair, Multivariate Data Analysis, 2009.
- [47] D.J. Bartholomew, F. Steele, I. Moustaki, Analysis of Multivariate Social Science Data, CRC press, 2008.
- [48] DOE, Fault Location, Isolation, and Service Restoration Technologies Reduce Outage Impact and Duration, 2014.
- [49] Z. Li, et al., Networked microgrids for enhancing the power system resilience, *Proc. IEEE* 105 (7) (2017) 1289–1310.
- [50] X. Liu, et al., Microgrids for enhancing the power grid resilience in extreme conditions, *IEEE Trans. Smart Grid* 8 (2) (2016) 589–597.
- [51] King and Spalding, New Railroad Commission of Texas Rules for Natural Gas Infrastructure, 2021.
- [52] M. Ferman, Texas Regulators Pass Rule Aimed at Preventing Natural Gas Producers from Having Power Cut off during Future Winter Storms, 2021.
- [53] C. Flores, Railroad Commission Implements Weatherization Law after Reports and Experts Raise Concerns, 2021.
- [54] Fema, FEMA OEHP-DR-4586-TX-public-notice_102021.pdf, 2021.
- [55] M.H. Oboudi, M. Mohammadi, M. Rastegar, Resilience-oriented intentional islanding of reconfigurable distribution power systems, *J. Mod. Power Syst. Clean Energy* 7 (4) (2019) 741–752.
- [56] U. Nakarmi, et al., Interaction graphs for cascading failure analysis in power grids: a survey, *Energies* 13 (9) (2020) 2219.