

Submillimetre galaxies in two massive protoclusters at $z = 2.24$: witnessing the enrichment of extreme starbursts in the outskirts of HAE density peaks

Yuheng Zhang^{1,2}, Xian Zhong Zheng^{1,2*}, Dong Dong Shi,¹ Yu Gao,^{3,1} Helmut Dannerbauer,^{4,5} Fang Xia An,⁶ Xinwen Shu,⁷ Zhen-Kai Gao,⁸ Wei-Hao Wang,⁸ Xin Wang,⁹ Zheng Cai,¹⁰ Xiaohui Fan,¹¹ Min Fang,^{1,2} Zhizheng Pan,^{1,2} Wenhao Liu,^{1,2} Qinghua Tan,^{1,2} Jianbo Qin¹, Jian Ren^{1,2}, Man Qiao,^{1,2} Run Wen^{1,2} and Shuang Liu^{1,2}

¹Purple Mountain Observatory, Chinese Academy of Sciences, 10 Yuanhua Road, Nanjing, Jiangsu 210023, People's Republic of China

²School of Astronomy and Space Sciences, University of Science and Technology of China, Hefei, Anhui 230026, People's Republic of China

³Department of Astronomy, Xiamen University, 1 Zengcuoan West Road, Xiamen, Fujian 361005, People's Republic of China

⁴Instituto de Astrofísica de Canarias (IAC), E-38205 La Laguna, Tenerife, Spain

⁵Universidad de La Laguna, Dpto. Astrofísica, E-38206 La Laguna, Tenerife, Spain

⁶Inter-University Institute for Data Intensive Astronomy, and Department of Physics and Astronomy, University of the Western Cape, Robert Sobukwe Road, Bellville, Cape Town 7535, South Africa

⁷Department of Physics, Anhui Normal University, Wuhu, Anhui 241000, People's Republic of China

⁸Academia Sinica Institute of Astronomy and Astrophysics (ASIAA), No. 1, Section 4, Roosevelt Rd., Taipei 10617, Republic of China

⁹Infrared Processing and Analysis Center, Caltech, 1200 E. California Blvd., Pasadena, CA 91125, USA

¹⁰Department of Astronomy, Tsinghua University, Beijing 100084, People's Republic of China

¹¹Steward Observatory, University of Arizona, 933 North Cherry Avenue, Tucson, AZ 85721, USA

Accepted 2022 March 19. Received 2022 February 25; in original form 2021 November 26

ABSTRACT

Submillimetre galaxies represent a rapid growth phase of both star formation and massive galaxies. Mapping SMGs in galaxy protoclusters provides key insights into where and how these extreme starbursts take place in connections with the assembly of the large-scale structure in the early Universe. We search for SMGs at 850 μm using JCMT/SCUBA-2 in two massive protoclusters at $z = 2.24$, BOSS1244 and BOSS1542, and detect 43 and 54 sources with $S_{850} > 4$ mJy at the 4σ level within an effective area of 264 arcmin², respectively. We construct the intrinsic number counts and find that the abundance of SMGs is 2.0 ± 0.3 and 2.1 ± 0.2 times that of the general fields, confirming that BOSS1244 and BOSS1542 contain a higher fraction of dusty galaxies with strongly enhanced star formation. The volume densities of the SMGs are estimated to be ~ 15 – 30 times the average, significantly higher than the overdensity factor (~ 6) traced by H α emission-line galaxies (HAEs). More importantly, we discover a prominent offset between the spatial distributions of the two populations in these two protoclusters – SMGs are mostly located around the high-density regions of HAEs, and few are seen inside these regions. This finding may have revealed for the first time the occurrence of violent star formation enhancement in the outskirts of the HAE density peaks, likely driven by the boosting of gas supplies and/or starburst triggering events. Meanwhile, the lack of SMGs inside the most overdense regions at $z \sim 2$ implies a transition to the environment disfavouring extreme starbursts.

Key words: galaxies: clusters – galaxies: evolution – galaxies: high-redshift – submillimetre: galaxies.

1 INTRODUCTION

Characterizing galaxy properties in different environments across cosmic time is essential to building up a complete picture of galaxy formation and evolution, and understanding when, where, and how the driving physical processes take place (Somerville & Davé 2015). A large portion of stars in the local Universe were formed at the peak epoch ($z \sim 2$ – 3) of cosmic star formation and active galactic nucleus (AGN) activities (e.g. Hopkins & Beacom 2006; Zheng et al. 2009; Madau & Dickinson 2014). Galaxy protoclusters at $z > 2$, as the progenitors of local galaxy clusters formed at the densest nodes

of the cosmic web, provide a direct probe of the rapid assembly of cosmic structures, and insights into the formation of massive galaxies in relation to the structure formation at this epoch (e.g. De Lucia & Blaizot 2007). Mapping galaxy populations from extreme starbursts to quiescent ones in these protoclusters enables us to dissect the complex processes regulating galaxy evolution and the influence of the local and global environments, making the $z \sim 2$ – 3 protoclusters unique testbeds for the theoretical models of galaxy formation and evolution (Overzier 2016).

Submillimetre galaxies (SMGs) are ultraluminous dusty star-forming galaxies (SFGs) with the vast majority of radiation energy in the far-infrared (FIR) and submillimetre bands (Smail, Ivison & Blain 1997; Barger et al. 1998; Hughes et al. 1998; Michałowski et al. 2012; Casey, Narayanan & Cooray 2014). They are extreme starbursts

* E-mail: xzzheng@pmo.ac.cn

with high star formation rate (SFR) of $\sim 10^2 - 10^3 M_{\odot} \text{ yr}^{-1}$ and high stellar mass of $\sim 10^{10-11} M_{\odot}$, located preferentially at $z \sim 2-3$ (Chapman et al. 2005; Wardlow et al. 2011; Smolčić et al. 2012; Simpson et al. 2014; Brisbin et al. 2017; Danielson et al. 2017; Michałowski et al. 2017; Smith et al. 2017; Hodge & da Cunha 2020, and references therein). The physical properties of SMGs derived from detailed studies of individual sources and large sky area submillimetre surveys suggest that SMGs represent an early evolutionary phase of all local ellipticals (Smail et al. 2002; Swinbank et al. 2006; Fu et al. 2013; Toft et al. 2014; Ikarashi et al. 2015; Miettinen et al. 2017; An et al. 2019; Gullberg et al. 2019; Dudzevičiūtė et al. 2020; Rennehan et al. 2020). Although SMGs are a rare population ($\sim 400 \text{ deg}^{-2}$ down to $S_{850} = 4 \text{ mJy}$; Simpson et al. 2019; Shim et al. 2020), they contribute a significant fraction (~ 20 per cent) of the cosmic SFR density at $z > 2$ (Bourne et al. 2017; Koprowski et al. 2017; Zavala et al. 2021). Their extreme SFRs are correlated with higher gas fractions compared to normal SFGs at the same epoch (Bothwell et al. 2013; Scoville et al. 2016; Decarli et al. 2016; Tacconi et al. 2018). The large amount of gas is thought to be supplied by gas infall via cold streams from surrounding gas reservoirs (Narayanan et al. 2015; Ginolfi et al. 2017). The extreme starbursts of this population are partially triggered by galaxy major mergers (Tacconi et al. 2008; Engel et al. 2010, but see Davé et al. 2010; Narayanan et al. 2015; McAlpine et al. 2019), while a diversity of morphologies unveiled from the rest-frame ultraviolet (UV) and optical imaging indicate galaxy interactions and disc instabilities to be important mechanisms for enhancing star formation in SMGs (Swinbank et al. 2010; Kartaltepe et al. 2012; Chen et al. 2015), as well as AGN activities (Chapman et al. 2005; Wang et al. 2013). Because the rarity and high SFR of SMGs are sensitive to the physical processes governing galaxy formation (e.g. star formation, stellar and AGN feedback, gas infall, metal enrichment, and galaxy merging/interactions), the SMG population is used to constrain cosmological models. It remains challenging to reproduce the SMG population with high SFRs matching observations at high z (Davé et al. 2010; McAlpine et al. 2019; Hayward et al. 2021; Lovell et al. 2021).

Moreover, SMGs are found to reside in massive haloes, including high- z radio galaxies (HzRGs; Stevens et al. 2003; Humphrey et al. 2011; Dannerbauer et al. 2014; Rigby et al. 2014; Zeballos et al. 2018), quasars (Jones et al. 2017; Wethers et al. 2020), and enormous Ly α nebulae (ELANs) (Arrigoni Battaia et al. 2018; Nowotka et al. 2022) in terms of their clustering (Blain et al. 2004; Hickox et al. 2012; Wilkinson et al. 2017). These massive haloes trace the dense large-scale structures (and preferentially galaxy protoclusters) in the high- z Universe. Indeed, SMGs were often detected in high- z protoclusters of galaxies, closely linked with the early formation of massive galaxies in the cluster core regions (Venemans et al. 2007; Chapman et al. 2009; Galametz et al. 2013; Dannerbauer et al. 2014; Umehata et al. 2015; Coogan et al. 2018; Lacaille et al. 2019). However, the abundance and birthplace of SMGs rely on the evolutionary stage of galaxy protoclusters and how massive galaxies form in and around the protoclusters (Shimakawa et al. 2018; Cooke et al. 2019; Shi et al. 2020). On the other hand, large-scale environment is reported to play a key role in setting of the circumgalactic medium angular momentum that governs gas infall and star formation in a galaxy (Lu et al. 2022; Wang et al. 2022). Therefore, mapping SMGs in and around the high- z protoclusters of galaxies is strongly demanded to uncover where and how extreme starbursts take place in the densest large-scale structures, and shed light on how massive galaxies form in the overdense environments (Bahé et al. 2017; Bassini et al. 2020; Lim et al. 2021).

Galaxy protoclusters at $z > 2$ are usually unvirialized and extended over a scale of $\sim 20 h^{-1}$ co-moving Mpc (cMpc; Chiang, Overzier & Gebhardt 2013; Muldrew, Hatch & Cooke 2015; Lovell, Thomas & Wilkins 2018). Using a novel approach based on groups of coherently strong Ly α absorption systems (CoSLAs) imprinted on the spectra of a number of background quasars, i.e. named the Mapping the Most Massive Overdensities Through Hydrogen (MAMMOTH; Cai et al. 2016, 2019), several extremely massive overdensity regions at $z = 2-3$ of scales of $\sim 30 h^{-1}$ cMpc have been spectroscopically confirmed, including BOSS1441 at $z = 2.32$ (Cai et al. 2017), BOSS1244 and BOSS1542 at $z = 2.24$ (Shi et al. 2021; Zheng et al. 2021). The latter two MAMMOTH overdensities are found to exhibit distinct morphologies – BOSS1244 consists of three components in assembly and BOSS1542 is a first giant filamentary structure at $z > 2$ discovered to date – suggestive of being in different assembling stages.

In this paper, we carry out a deep 850 μm survey of BOSS1244 and BOSS1542 with the Submillimetre Common-User Bolometer Array 2 (SCUBA-2) at the East Asian Observatory’s James Clerk Maxwell Telescope (JCMT) to pinpoint SMGs in the two most massive overdensities at $z = 2.24$, and explore their properties and connections with other galaxy populations. In Section 2, We briefly describe our observations and data reduction. We present the procedures for source extraction, along with the completeness estimate, flux boosting factor, position offset, and the false-detection rate (FDR) with Monte Carlo simulations. In Section 3, we present our results on number counts, the overdensity estimate, and the spatial distribution of detected SMGs. Discussion and summary of our results are given in Section 4. A standard Λ CDM cosmology with $H_0 = 70 \text{ km}^{-1} \text{ Mpc}^{-1}$, $\Omega_{\Lambda} = 0.7$ is adopted throughout the paper, giving a scale of 0.495 physical Mpc (pMpc) or 1.602 comoving Mpc (cMpc) per arcmin at $z = 2.24$.

2 DATA REDUCTIONS AND ANALYSIS

2.1 Observations

Observations of our deep 850 μm survey of two target fields BOSS1244 and BOSS1542 were performed in February and June of 2018 and March and April of 2019 (program IDs: M18AP025 and M19AP028), with the SCUBA-2 instrument on board JCMT (Holland et al. 2013). About half of the observations were done under the band-3 weather condition ($0.05 < \tau_{225\text{GHz}} \leq 0.08$), while the rest were taken under the band-2 weather condition ($0.08 < \tau_{225\text{GHz}} \leq 0.012$). The average optical depth at 850 μm was approximately $\tau_{850\mu\text{m}} \approx 0.34$.

The SCUBA-2 observing mode of PONG-900 was adopted to scan the density peak area in BOSS1244 (centred at $\alpha = 12: 43: 55.49$, $\delta = +35: 59: 37.4$) and BOSS1542 ($\alpha = 15: 42: 19.24$, $\delta = +38: 54: 14.1$), respectively. The telescope scan speed was 280 arcsec s^{-1} with 11 rotations during an integration time of 40 min to ensure a uniform sensitivity map within a circle of a 15 arcmin diameter. Finally, there are 28 and 32 useful repeated scan maps with a total effective integration time of 18.67 and 21.33 h in BOSS1244 and BOSS 1542, respectively.

2.2 Data reduction

We use two software tools, Submillimetre User Reduction Facility (SMURF) and the Pipeline for Combining and Analysing Reduced Data (PICARD) which intergrated into the STARLINK software package, to perform our data reduction. Following Chen et al. (2013), we first used the Dynamic Iterative Map Maker in SMURF with the

standard configuration of ‘*dimconfig_blank_field.lis*’ to reduce and stack each scan of our 850 μm observations. The standard reduction procedures to the raw data (e.g. down-sampling, flat-fielding, and white noise estimating) were automatically processed.

We used the updated standard Flux Conversion Factor (FCF) to calibrate fluxes for our stacked scan maps. The updated FCF was derived through the continuous analysis monitoring on the calibrators for 10 yr since 2011 (Mairs et al. 2021), giving 516 and 495 $\text{Jy pW}^{-1} \text{beam}^{-1}$ at 850 μm for the observations implemented before and after 2018 June 30. The extinction correction are calculated as following

$$C_{\text{ext}} = \exp(-\tau_{345\text{GHz}} \times AM), \quad (1)$$

where AM refers to the airmass of given observations recorded in image headers and $\tau_{345\text{GHz}}$ represents the atmospheric opacity at 850 μm . We note that $\tau_{345\text{GHz}}$ is derived from the observed atmospheric opacity at 225 GHz. The update of FCF induces a change in the conversion from $\tau_{225\text{GHz}}$ to $\tau_{345\text{GHz}}$. The original $\tau_{345\text{GHz}}$ is given by

$$\tau_{345\text{GHz,ori}} = 4.6 \times (\tau_{225\text{GHz}} - 0.0043), \quad (2)$$

while the new $\tau_{345\text{GHz}}$ is calculated using

$$\tau_{345\text{GHz,new}} = 3.7 \times (\tau_{225\text{GHz}} - 0.04 + 0.2 \times \sqrt{\tau_{225\text{GHz}}}). \quad (3)$$

We recovered our stacked scan maps from the extinction correction based on $\tau_{345\text{GHz,ori}}$, and then corrected them for the extinction with $\tau_{345\text{GHz,new}}$. After doing so, we applied the standard FCFs to our stacked scan maps. The relative calibration accuracy of peak flux has been shown to be stable to a level of 7 per cent at 850 μm (Mairs et al. 2021). Note that the updated FCF is comparable to the original FCF within the uncertainties and applied to the fluxes and the noises of the maps simultaneously, and will not affect the number of extracted sources, as well as the number counts. We applied an upward correction of 10 per cent to compensate for the flux lost in the filtering (see Chen et al. 2013). The same upward correction was also adopted in Geach et al. (2017).

After the flux calibration, all scan maps of a target field were co-added to produce a mosaic science map using the software tool PICARD with the MOSAIC_JCMT_IMAGES recipe (Jenness et al. 2008). We checked the data quality of each scan map with the histogram of pixel values in the signal-to-noise ratio (S/N) map, which is obtained by dividing the flux map by the noise map. Each scan only has a very small fraction of pixels contributed by astronomical signals as the instrument noise dominates the observed fluxes in a short-time exposure. Therefore, the histogram obeys a Gaussian function with a little excess at the positive end. We notice that the pixel histograms of four scans in BOSS1244 taken in 2018 exhibit strong excess from a normal distribution in both sides. We suspect that poor weather conditions were responsible for this abnormal distribution of instrument noise. We discarded the four scans and co-added the rest to obtain the final mosaic science map for BOSS1244. The removal of four scans only slightly increases the central noise by 6 per cent.

We applied a matched filtering to mosaic science maps to enhance the strength of point sources using the software tool PICARD with the SCUBA-2_MATCHED_FILTER recipe. A default Gaussian kernel with a broaden FWHM of 30 arcsec was used to smooth a science map.¹ The smoothed map was taken as the background to be subtracted from the original one. Then the background-subtracted

map was convolved with a point spread function (PSF) to generate the filtered science map. A final data cube is created to include flux map and the flux variance map over all scan maps. We obtained the S/N map by dividing the flux map by the square root of the flux variance map. The S/N map is used for source extraction subsequently.

We take the minimum value of the central region as the central noise (σ_{CN}) of a flux variance map. We take the noise level to measure the sensitivity of our observations. Our deep 850 μm maps of BOSS1244 and BOSS1542 reach a central noise level of $1\sigma_{\text{CN}} = 1.07$ and $0.98 \text{ mJy beam}^{-1}$, respectively. We refer the effective area as to where the instrument noise is less than $1.5 \times \sigma_{\text{CN}}$. The effective area is approximately a circle with a radii of 9/2 and slight larger than the nominal coverage of 15 arcmin with PONG-900, corresponding to 263.5 and 263.7 arcmin² for BOSS1244 and BOSS1542, respectively. The mean (median) noise levels are 1.25 (1.21) and 1.15 (1.12) mJy beam^{-1} for BOSS1244 and BOSS1542, respectively. Our source extraction is performed in the effective area of a given 850 μm map. We list central position, scan pattern, exposure time, central noise, and effective area of our observations in Table 1.

2.3 Source extraction

SMGs are found to have a size of <1 arcsec for dust emission, corresponding to several kpc at $z > 1$ (Ikarashi et al. 2015; Simpson et al. 2015; Hodge et al. 2016; Chen et al. 2017; Gullberg et al. 2019). The average beam size of SCUBA-2 at 850 μm is ~ 15 arcsec. These SMGs appear as unresolved point sources in the SCUBA-2 850 μm maps. Our 850 μm science maps are scaled to set the peak value of a point source equal to the total flux of the source. We first detect sources in the science map using the software SExtractor (Bertin & Arnouts 1996). All detected sources with $S/N > 5$ in one field are stacked to construct an empirical PSF. The empirical PSF is well modelled with the superposition of two Gaussian functions (Geach et al. 2017) and have an FWHM of $\sim 14''.9$, same as given in Simpson et al. (2019). The PSF profiles from BOSS1244 and BOSS1542 agree with each other within 2 per cent. We thus use a single empirical PSF from BOSS1542 to extract sources in the two fields.

Our source extraction is based on the commonly used ‘top-down’ algorithm, which was often adopted by SCUBA-2 deep surveys (e.g. Geach et al. 2017; Simpson et al. 2019; Shim et al. 2020). Wang et al. (2017) demonstrated that the standard method of source extraction is hard to effectively identify two sources very close to each other, and thus increase the fraction of multiply sources and overestimate the fluxes of blended sources. We find that the ‘top-down’ method creates a fake source with weak flux density when it subtracts a bright source. This is because the subtraction for a bright source inversely adds some fluxes to pixels in the groove area around the bright source caused in the matched-filtering process (see Section 2.2). Following Wang et al. (2017), we adopt an iterative procedure that acts better in resolving the mildly multiply sources to extract sources, resembling the ‘CLEAN’ de-convolution in the reduction process for data obtained with radio interferometries (Högbom 1974).

We briefly describe our iteration procedure for source extraction. First, we identify a source at the peak pixel in the 850 μm S/N map and record the coordinate and the instrument noise at the position of the peak pixel. Secondly, we subtract 5 per cent of total flux of the peak-scaled empirical PSF (called CLEAN ‘gain’ in literature) centred on this position as the preliminary flux of the source. The procedure is iterated until the peak S/N reaches the given detection threshold. Here, we adopt a detection threshold of $\geq 3\sigma$ to construct our preliminary catalog, which will be further refined with a higher

¹<https://starlink.eao.hawaii.edu/docs/sun265.htx/sun265ss20.html>

Table 1. A summary of our SCUBA-2 observations for BOSS1244 and BOSS1542.

Field	RA (J2000.0)	Dec. (J2000.0)	Scan pattern	Exposure (h)	Central noise (σ_{CN}) (mJy beam $^{-1}$)	Effective area (arcmin 2)
BOSS1244	12:43:55.49	+35:59:37.4	PONG 900	18.67	1.07	263.5
BOSS1542	15:42:19.24	+38:54:14.1	PONG 900	21.33	0.98	263.7

Central noise refers to the square root of the minimum value in the central region of the variance map. The effect area is the region where the rms sensitivity less than $1.5 \times \sigma_{\text{CN}}$.

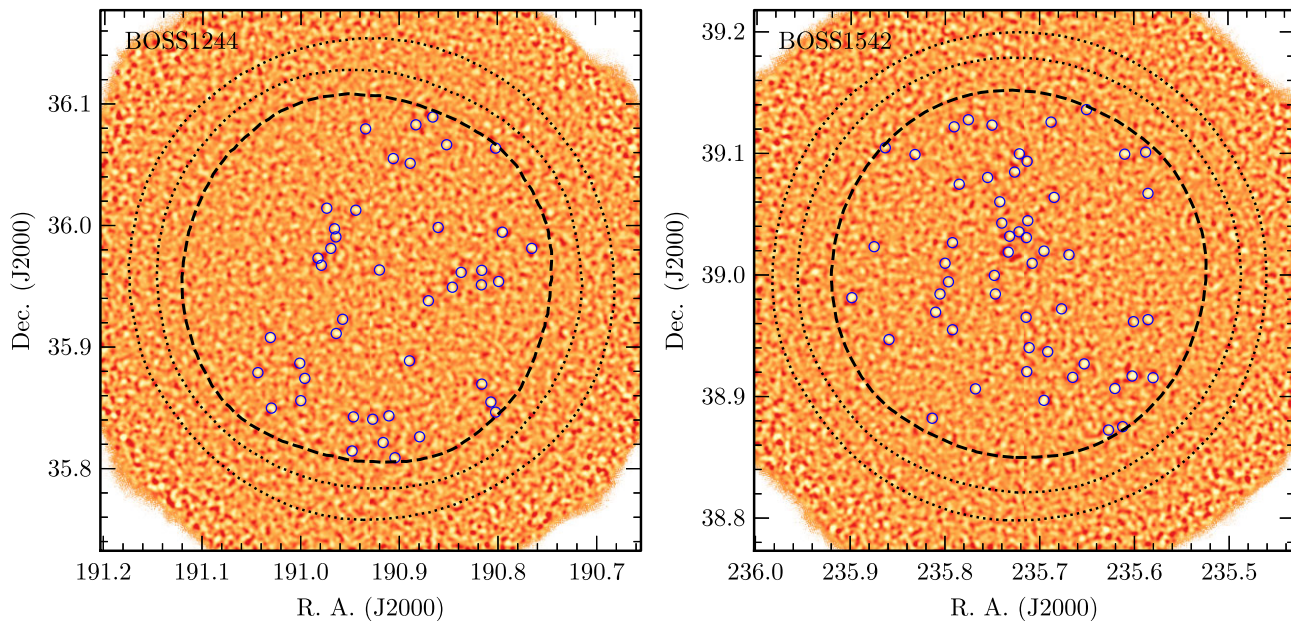


Figure 1. Deep SCUBA-2 850 μm mosaic maps of two MAMMOTH fields BOSS1244 (left) and BOSS1542 (right). Blue circles mark 43 and 54 detections at the level of $S/N \geq 4$ ($S_{850} \geq 4$ mJy) within the effective area enclosed by the thick dashed lines. The dotted lines enclose the coverage where the noise levels are 2 and 3 mJy from inside to out. There are 35 and 39 sources detected with $3.5 \leq S/N < 4$ in the effective area of BOSS1244 and BOSS1542, respectively. Due to a rapidly increasing rate of false sources at $S/N < 4$, we take sources with $S/N \geq 4$ as our SMG samples.

detection threshold. In previous works, $\geq 4\sigma$ was often adopted to decrease source contamination rate (e.g. Geach et al. 2017; Simpson et al. 2019). We note that adoption of a $\geq 4\sigma$ detection will produce a source catalogue identical to our preliminary+refined catalog. When a detection locates within the half beam (approximately 8 arcsec) of a previously detected source in the iteration, this detection will not be treated as a new source. The 5 percent of peak-scaled PSF is subtracted and the cleaned flux is superimposed into the existing one. The final flux of every extracted source is comprised of the cleaned fluxes and the remaining flux at its initial peak position. Since the iterative procedure of source extraction may also mistake the pair of sources very close to each other, this will increase the flux either and affect the boosting factor estimation (Section 2.4).

Note that the PONG-900 scan mode produces a uniform depth in the inner regions of a stacked scan map, and the noise level increases rapidly with radius in the outskirts due to a rapid decline of the integrated exposure time. We adopt the median noise level of $\sigma = 1.21(1.12)$ mJy beam $^{-1}$ within the effective area in BOSS1244 and BOSS1542 (Table 1). We perform source extraction procedure and detect 144 sources at $>3\sigma$ and 43 sources at $>4\sigma$ in BOSS1244. In BOSS1542, we detect 161 sources at $>3\sigma$ and 54 sources at $>4\sigma$. We demonstrate the SCUBA-2 850 μm S/N maps of BOSS1244 and BOSS1542 along with the detected sources at $>4\sigma$ in Fig. 1. Our results give an observed 850 μm source number density of ~ 588 (737) deg $^{-2}$ down to $S_{850} = 4.3$ (4.0) mJy at the 4σ level

in BOSS1244 (BOSS1542). We remind that the observed number density needs to be corrected for the incompleteness and flux boosting to obtain the intrinsic number density. For a comparison, the observed number density of 850 μm sources in blank fields is ~ 408 (455) deg $^{-2}$ down to $S_{850} = 4.3$ (4.0) mJy (Geach et al. 2017). Clearly, both of our two overdensity fields contain more 850 μm sources than that in the blank fields over the same area. There could be the field-to-field variance due to the depth and area coverage and we will investigate the overdensity of the two protoclusters in next section. The excess of 850 μm sources is likely contributed by SMGs associated with the $z = 2.24$ overdensities. We notice that our observed number densities of 850 μm sources in BOSS1244 and BOSS1542 agree well with that in BOSS1441, where 24 sources were detected down to $S_{850} = 4.5$ mJy within an effective area of 128 arcmin 2 covering the enormous Lyman- α nebulae MAMMOTH-1 (Arrigoni Battaia et al. 2018).

2.4 Completeness and flux boosting

Next step is to derive the number counts of 850 μm sources in our two overdensity fields in order to quantify the excess of 850 μm sources. A variety of observational and instrumental effects may contaminate source fluxes and profiles, and may bias source detection in the submillimetre bands. Among them, noises from instruments and background radiation are a dominant factor to the detection

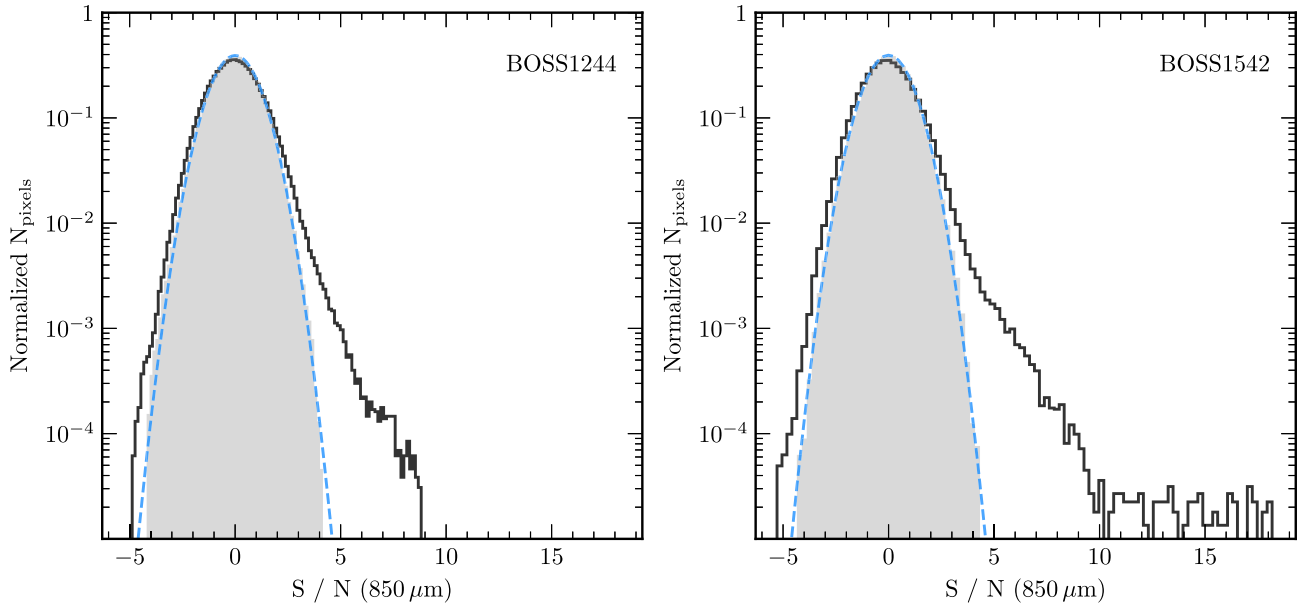


Figure 2. Histograms of pixels within the effective area in the maps of S/N (black solid) and jackknife noise (shaded region) for BOSS1244 (left) and BOSS1542 (right). The noise distribution agrees well with a Gaussian function plotted by the blue dashed line, indicating that the instrument noise is purely random. The positive excess is attributed to astronomical signals and the negative excess is due to troughs around the bright sources introduced by matched-filtering process.

incompleteness for sources with low S/N. We use Monte Carlo simulations to estimate the completeness of source detection in our observations. This is done through adding PSFs scaled by given fluxes into a map with the same noise level as our observed maps, and detecting these artificial objects with the same iteration procedure used for source extraction in our 850 μm science maps. We construct the true noise map using the jackknife resampling technique. In each of our two overdensity fields, the stacked scan maps are randomly divided into two equal groups and co-added to create two half-made mosaic maps. The two half-made maps subtract each other to obtain a source-subtracted noise map. Then the noise map is multiplied by a factor of two to match the noise level of our 850 μm science maps. We point out that another means to match the true noise level often used in literature is to scale the two half-made maps by $\sqrt{t_1 t_2 / (t_1 + t_2)}$, where t_1 and t_2 are the noise-weighted exposure times. We verify that the two methods yield maps having almost identical noise level. By doing so, all celestial sources are removed and pure noises are left in the jackknife maps. We compare S/N distributions within the effective area between our 850 μm science maps and the jackknife noise maps in Fig. 2. One can see that the jackknife maps perfectly follow a normal distribution of random noises, while the science maps exhibit two tails from the normal distribution – the positive tail is contributed by celestial sources, and the negative tail is due to the negative troughs around bright sources induced by the matched-filtering process.

We take our empirical PSF to create artificial sources of fixed flux density randomly distributed in the jackknife true noise maps. Following Geach et al. (2017), the number of sources at a given flux density follows an initial distribution described well with a Schechter function:

$$\frac{dN}{dS} = \left(\frac{N_0}{S_0}\right) \left(\frac{S}{S_0}\right)^{-\gamma} \exp\left(-\frac{S}{S_0}\right), \quad (4)$$

where dN is the source number per square degree at the given flux density S within the flux bin dS . These parameters are given by $N_0 = 7180 \text{ deg}^{-2}$, $S_0 = 2.5 \text{ mJy}$ and $\gamma = 1.5$. We simulate sources in a

flux range of 1–20 mJy. We do not consider the sources brighter than 20 mJy as this is out of the flux range of sources in our catalogues. The spatial distribution of these artificial sources is randomly set, and clustering which could increase the number counts is not taken into account (Cowley et al. 2015; Béthermin et al. 2017). We perform the same source extraction procedure as done to the science maps to recover the artificial sources. We regard a source as recovered if it is extracted within the half beam (~ 8 arcsec) of previously detected artificial sources injected into the jackknife noise maps. And we pick up the brightest one if there are more than one source located in one beam. We do not impose the minimum flux ratio on the recovered sources. Since the recovered sources with an extremely high flux ratio (thus a high boosting factor) only occupy a tiny fraction of the total source number and will not affect our results. We generate 10 000 of simulated maps and matched the input catalogues and recovered catalogues. Finally we obtain the matched catalogues with millions of recovered sources which can help us investigate the observational bias.

We define completeness as the ratio of the number of recovered sources to the number of injected sources at fixed fluxes. Fig. 3 shows the overall completeness as a function of intrinsic flux density in BOSS1244 and BOSS1542. Note that we only focus on the effective area where the noise level is less than 1.5 times the central noise. At $>3\sigma$, the completeness reaches 50 per cent (80 per cent) at the input flux density of 3.3 mJy (4.5 mJy) and 3.0 mJy (4.0 mJy) for BOSS1244 and BOSS1542, respectively. Furthermore, BOSS1244 (BOSS1542) achieves 50 per cent completeness at 4.6 (4.1) mJy, and 80 per cent completeness at 6.0 (5.3) mJy with a confidence of $>4\sigma$. A relative lower completeness indicates a higher instrument noise in BOSS1244.

Flux boosting factor refers to the ratio between the flux density evaluated from the recovered sources and their input flux density. One cause for this effect is the well-known Eddington bias (Eddington 1913). Since the number of sources decreases exponentially from the faint end to the bright end, a source in a low flux bin has a higher probability to be scattered up into higher flux bins due to the Gaussian noise fluctuation. On the other hand, the flux density

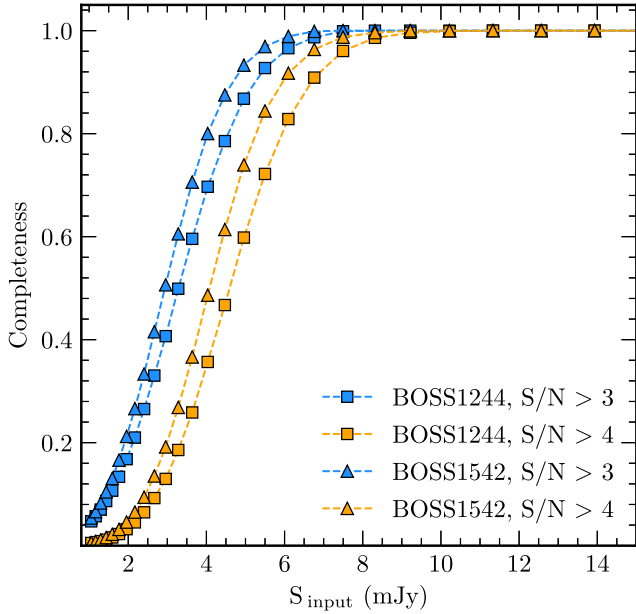


Figure 3. Completeness as a function of $850\ \mu\text{m}$ flux density within the area of $S/N > 3$ (blue) and of $S/N > 4$ (orange) in BOSS1244 (squares) and BOSS1542 (triangles). It is clear that the BOSS1244 map is slightly shallower than the BOSS1542 map and has a higher noise level. The completeness curve of BOSS1244 is shifted $\sim 0.5\ \text{mJy}$ towards the high end in comparison with that of BOSS1542.

of numerous sources below the detection limit can also contribute to the flux density of the detected sources. We utilize the recovered catalogues to estimate the deboosted (intrinsic) flux density for each source from the science maps. Specifically, the observed flux density is taken from the distribution of the intrinsic flux density, $p(S_{\text{true}})$, which can be simply estimated by the input flux density of injected sources within the observed flux density and local noise bins. For each real source, we calculate the average input flux density of the injected sources within the bins of $0.5\ \text{mJy}$ centred on its observed flux and $0.2\ \text{mJy}$ centred on its local noise as the deboosted flux density of this source. Similarly, we obtain the uncertainty of the deboosted flux density by calculating the standard deviation of the input flux density within the specific bins above. The final science catalogues contain sources with the deboosted flux density in the range of $S_{850} = 2.8\text{--}16.6\ \text{mJy}$. We use the deboosted flux density and the uncertainty of the detected sources to calculate the number counts in next section.

Geach et al. (2017) found that the average boosting factor can be well described as a power-law function of S/N . We find a similar trend in our simulations, as shown in Fig. 4. The boosting factor in BOSS1244 is slightly higher than that in BOSS1542 in the low S/N regime, while the two are consistent to each other at high S/N . This small discrepancy in the low S/N regime is driven by the slightly shallower depth in BOSS1244. The flux density of our observations seem to be enhanced more when compared to the results of Geach et al. (2017) while less than that of Shim et al. (2020) in the low S/N regime. The boosting factor is higher than that given in literature at $>6\sigma$, which can also be seen in the observations of GOODS-N (fig. 11 of Geach et al. 2017) and MAMMOTH-1 (see the catalogue in Arrighi Battaia et al. 2018). This is largely because bright sources are rare in the small coverage area, which are easily contaminated by the blended faint sources, leading to a higher boosting factor in the high S/N regime.

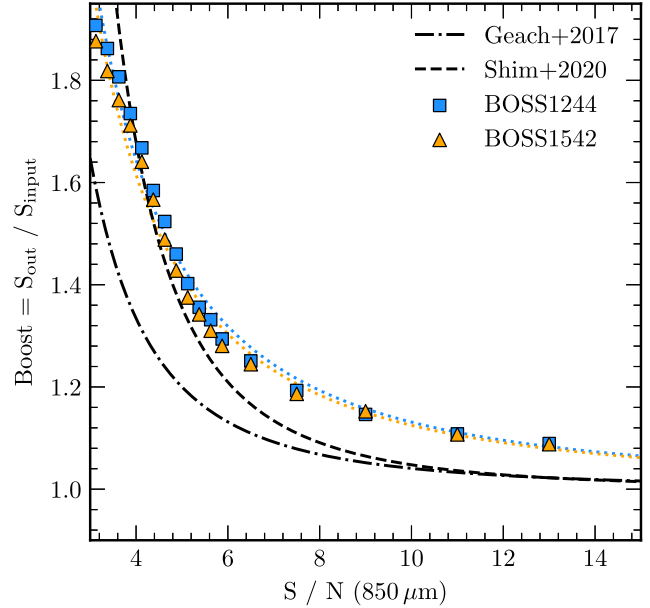


Figure 4. Boosting factor of $850\ \mu\text{m}$ source flux as a function of S/N for BOSS1244 (squares) and BOSS1542 (triangles). Here, boosting factor measures the ratio of recovered flux to injected flux of a simulated $850\ \mu\text{m}$ source. The dotted lines represent the best-fitting power-law functions to the data points. For a comparison, we plot the $850\ \mu\text{m}$ flux boosting curves from Geach et al. (2017) with dot-dashed line and Shim et al. (2020) with dashed line. Our $850\ \mu\text{m}$ flux boosting curve is apparently higher at the high- S/N end. We attribute this increase to the presence of an SMG overdensity in BOSS1244 and BOSS1542.

2.5 Positional offset

In our Monte Carlo simulations, we match the input and output catalogues and investigate the positional offset between the injected and recovered sources. The average offset as a function of S/N is shown in Fig. 5. We estimate the positional offset at 4σ to be $3''.1$ and down to $\sim 2\ \text{arcsec}$ at 6σ in both BOSS1244 and BOSS1542 with the pixel scale of $1\ \text{arcsec}$ per pixel. The positional offset drops slowly to $1\ \text{arcsec}$ at 12σ . The positional offset as a function of S/N was found to be well described by a single power-law function. We notice that our overall positional offset is slight higher than the result from the S2CLS survey (Geach et al. 2017), but almost identical to the power-law function given in Shim et al. (2020). Our results of cross-matching for the optical and near-infrared (NIR) counterparts will demonstrate that the position uncertainties are typically down to $3\ \text{arcsec}$ at the $>4\sigma$ level.

2.6 False-detection rate

Although a jackknife noise map in principle gets rid of all signals from astronomical objects, spurious ‘sources’ can be detected due to noise fluctuation. For this reason, we need to examine the FDR in our $850\ \mu\text{m}$ science maps. FDR is defined as the ratio between the number of detections in the jackknife noise map and its science map (Geach et al. 2017). We use the jackknife method to generate 50 realizations in each field to eliminate bias caused by the random selection and applied source extraction to these maps as we did with the science maps.

We estimate FDR as a function of S/N as well as the cumulative FDR above a given S/N . The results are shown in Fig. 6. At 3σ , we calculate the differential FDR to be 80 per cent. The cumulative

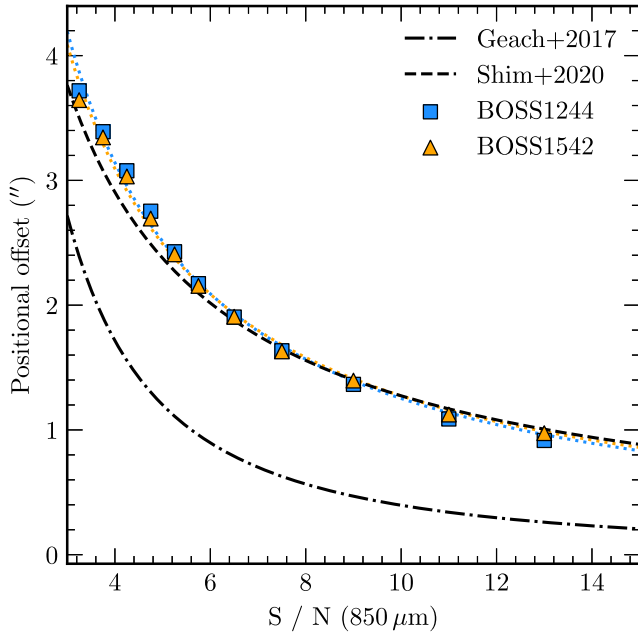


Figure 5. Positional offset of the injected and recovered $850\ \mu\text{m}$ sources in Monte Carlo simulations as a function of S/N for BOSS1244 (blue) and BOSS1542 (orange). The dotted lines represent the power-law functions best-fitting the data points. The dashed line shows the result from Shim et al. (2020), in good agreement with ours. The dot-dashed line is the positional offset curve from the S2CLS survey (Geach et al. 2017), which has a higher accuracy in pinpointing the source locations.

FDR is 45 per cent at $>3\sigma$ for both of BOSS1244 and BOSS1542, meaning that almost half objects in our preliminary catalogues appear to be spurious. When FDR decreases to 17 per cent and 18 per cent at 4σ in the two fields, the cumulative FDR drops to 7 per cent at $>4\sigma$ and even down below 2 per cent at $>4.5\sigma$ in both fields. We adopt the correction for FDR from Fig. 6 in deriving number counts (next section). We refine the preliminary catalogues with an S/N cut of $>4\sigma$ and obtain our final science catalogues. We estimate that there may be three and four spurious sources included in the science catalogues of BOSS1244 and BOSS1542, respectively. Nevertheless, we keep this in mind when conducting studies of individual sources between 4σ and 5σ . Observations with submillimetre interferometric telescopes (e.g. NOEMA and SMA) will help to verify the authenticity of these sources. We point out that the true point sources in deep $850\ \mu\text{m}$ observations of extragalactic fields are exclusively SMGs. We thus see the securely detected $850\ \mu\text{m}$ sources as SMGs in our two fields.

3 RESULTS

3.1 Number counts

The number density of SMGs provides important constraints on galaxy evolution models. We want to examine whether there is an excess of SMGs in our two MAMMOTH fields compared to blank fields, as these extreme overdensities may exhibit more galaxy interactions (e.g. merger) or gas reservoirs. To quantify the excess, we derive $850\ \mu\text{m}$ number counts using our samples of 43 (54) SMGs ($\geq 4\sigma$) in BOSS1244 (BOSS1542). The $850\ \mu\text{m}$ fluxes in our catalogues have been corrected for the boosting effect given in Fig. 4. Still, corrections for FDR given in Fig. 6 and completeness given in Fig. 3 are required to obtain the true number counts. For each source, a conversion number of $(1 - \mathcal{F}_i) / \mathcal{C}_i$ is applied, where

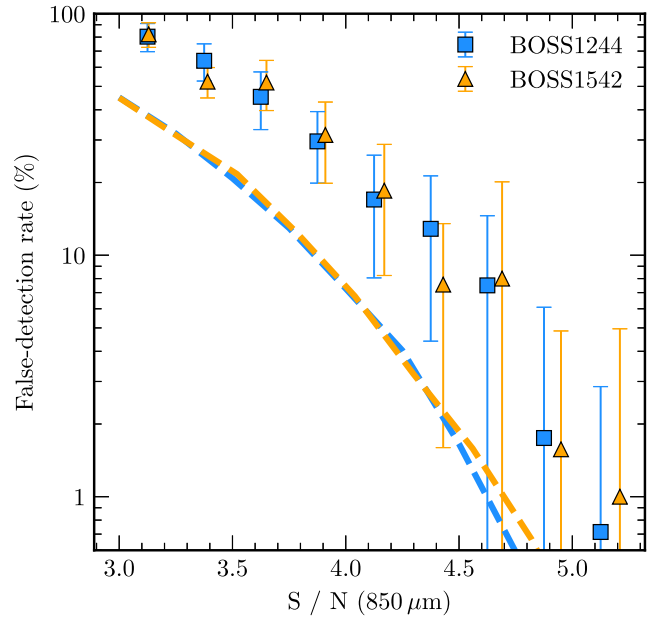


Figure 6. FDR as a function of S/N of the $850\ \mu\text{m}$ science map for BOSS1244 (blue squares) and BOSS1542 (orange triangles). The rate refers to the ratio of the average number of sources detected in 50 jackknife noise maps to the number of sources detected in the corresponding science map. Dashed lines demonstrate the cumulative FDR above a given S/N. The cumulative FDR is 7 per cent at $>4\sigma$ and below 2 per cent at $>4.5\sigma$.

\mathcal{F} and \mathcal{C} represent FDR and completeness at the deboosted flux and S/N of the source, respectively. The number density is calculated from the sum of the conversion numbers of all sources within a give flux bin averaged over the effective area and the bin width of each source. The fluxes of our detected sources range from $S_{850} = 4\ \text{mJy}$ to $S_{850} = 12\ \text{mJy}$. Here, we ignore one exceptionally bright source ($S_{850} = 18\ \text{mJy}$) in BOSS1542. We split the flux range into six even bins in the logarithm space to ensure that each bin contains enough sources to reduce the shot noise. The flux ranges are slightly different between the two fields. Doing so we obtain the differential and cumulative number counts of $850\ \mu\text{m}$ -detected SMGs in our two MAMMOTH fields. We construct the number counts to the faint end at about $3\ \text{mJy}$, reaching the lower limit of the deboosted fluxes of our source catalogues.

The errors of number counts are estimated from rebuilding the number counts with the mock fluxes fluctuating within uncertainties. The error of each source’s deboosted flux obeys a normal distribution (Fig. 4). A set of ‘new’ intrinsic fluxes can be obtained by adding randomly generated errors to the intrinsic fluxes and re-calculate the differential number counts. This procedure is repeated 1000 times for a statistics. The mean values are taken as the final number counts, and the dispersion are taken as their errors. We also construct the cumulative number counts following the same procedure described above. We list the number counts for BOSS1244 and BOSS1542 in Table 2, and show them in Fig. 7. We take the widest $850\ \mu\text{m}$ survey of S2CLS over $\sim 5\ \text{deg}^2$ (Geach et al. 2017), the SCUBA-2 COSMOS survey (S2COSMOS; Simpson et al. 2019), and the survey of the extended North Ecliptic Pole SCUBA-2 (NEPSC2) region over $2\ \text{deg}^2$ (Shim et al. 2020) as for the blank fields and plot the number counts from these surveys for comparison. The best-fitting functions to the differential number counts in S2CLS and S2COSMOS are available in literature. We best fit the differential number counts in NEPSC2 by using the published data in Shim et al. (2020). The

Table 2. The SCUBA-2 850 μm differential and cumulative number counts in BOSS1244 and BOSS1542.

Field	S_{850}	dN/dS	$N(>S)$
BOSS1244	3.5	909.6 ± 410.1	1593.1 ± 359.4
	4.4	673.9 ± 293.7	859.2 ± 271.0
	5.5	300.3 ± 156.1	337.4 ± 136.8
	6.9	86.4 ± 53.7	111.9 ± 47.8
	8.6	21.9 ± 15.5	41.5 ± 19.5
BOSS1542	10.8	7.6 ± 5.9	14.3 ± 10.7
	3.6	718.4 ± 286.4	1246.0 ± 242.5
	4.5	498.4 ± 193.7	695.1 ± 158.8
	5.6	221.2 ± 91.9	310.1 ± 80.9
	7.0	83.3 ± 37.2	131.0 ± 35.0
	8.7	27.4 ± 13.7	50.9 ± 16.8
	10.8	6.9 ± 5.7	20.4 ± 8.7

Schechter function is used to best fit the cumulative number counts in all three blank fields.

We note that both of BOSS1244 and BOSS1542 are SMG overdensities compared to general fields. The conversion number described above could be biased by the fiducial model we adopted and thus affect the derived number counts. Following Nowotka et al. (2022), we also construct the intrinsic number counts using the self-consistent method in BOSS1244 and BOSS1542 to test the results above. We first obtain the raw number counts by calculating the difference between the source counts constructed from science maps and jackknife maps. The raw number counts are best-fitting with the Schechter function using the least-squares method. Similar to the simulations above, we inject artificial sources into the jackknife maps with the best-fitting model and extract sources as before. The corrected counts are obtained by scaling the raw counts with the ratios between the input model and recovered counts. Then the best fit of the recovered counts are used as the input model in the next iteration. The parameter S_0 is fixed as 2.5 during the iterations and will not affect the results. The iterations are stopped when the recovered counts are consistent with the raw counts within the uncertainties, and the final input model is regarded as the intrinsic number counts of the two protoclusters. We find that the intrinsic models successfully reproduce the raw number counts and agree well with the number counts constructed from conversion number of the sources within the uncertainties.

The beam size of SCUBA-2 at 850 μm is relatively large (~ 15 arcsec) and leads some submillimetre sources to be composed of multiple components blended into a single beam (Wang et al. 2011; Karim et al. 2013; Hodge et al. 2013). This issue could affect the determination of number counts. Studies based on submillimetre interferometric observations revealed the fraction of single-dish detections to include multiple components increases with source flux (Stach et al. 2018). The number counts derived from ALMA observations were found to be slightly lower than those of SCUBA-2 surveys (Simpson et al. 2015; Hill et al. 2018; Stach et al. 2018). The majority of SMGs of multiplicity are found to be projections of sources at different redshifts (Hayward et al. 2018), while the physically associated multiple components are also identified for some of brightest SMGs (e.g. Fu et al. 2013). Since the number counts in BOSS1244 and BOSS1542 could be affected by multiplicity in a similar way, the changes in our estimates of the overdensity factor are expected to be negligible.

3.2 SMG overdensities

BOSS1244 and BOSS1542 are overdensities traced by $\text{H}\alpha$ emitter with an overdensity factor ($\delta_{\text{gal}} = (N_{\text{gal}} - N_{\text{field}})/N_{\text{field}}$) of 5.6 ± 0.3 and 4.9 ± 0.3 in a volume of $54 \times 32 \times 32 h^{-1} \text{cMpc}^3$, respectively (Zheng et al. 2021). Their number counts at 850 μm can be compared with those of blank fields to see whether these two protoclusters are also SMG overdensities. As shown in Fig. 7, the differential number counts in BOSS1244 and BOSS1542 are both higher than those of the blank fields (S2CLS, S2COSMOS and NEPSC2) over the flux range of $S_{850} = 4\text{--}12$ mJy. We notice that the excess of our number counts at $S_{850} > 8$ mJy appear smaller than that at the faint end, indicating that the excess of SMGs in our two overdensity fields is mostly contributed by the faint SMGs of $S_{850} < 8$ mJy. Our analyses do not involve the bright end ($S_{850} > 12$ mJy), where the number counts still have large uncertainties limited by the sample sizes (Shim et al. 2020). Another uncertainty comes from the faint-end completeness correction. We notice that the number counts in the lowest bins appear to be lower than the extrapolation from the best-fitting of other data points. This deficiency is likely due to the insufficient correction for the incompleteness at the faintest end, and induced by the combination of the S/N limitation and the uncertainty in deboosting fluxes. From the cumulative number counts, we see that BOSS1244 contains clearly more SMGs than that of blank fields particularly at the low-flux end ($S_{850} = 4\text{--}6$ mJy). We conclude that both of our two MAMMOTH fields host an excess of SMGs in compared with the blank fields. Considering the insufficient completeness correction at the faintest end, the excess in the number counts for our sample might be even larger.

We further quantify the excess of SMGs in BOSS1244 and BOSS1542 using the method made use of the differential number counts given in Arrigoni Battaia et al. (2018). We take S2CLS, S2COSMOS, and NEPSC2 as representative of blank fields. The differential number counts of the three surveys are well-constrained and best-fitting with the Schechter function given in equation (4). The best-fitting parameters from S2CLS (Geach et al. 2017) give $N_0 = 7180 \pm 1220 \text{deg}^{-2}$, $S_0 = 2.5 \pm 0.4$ mJy, and $\gamma = 1.5 \pm 0.4$. Simpson et al. (2019) reported the best-fitting parameters from S2COSMOS as $N_0 = 5.0_{-1.4}^{+1.3} \times 10^3 \text{deg}^{-2}$, $S_0 = 3.0_{-0.5}^{+0.6}$ mJy, and $\gamma = 1.6_{-0.4}^{+0.3}$. The data points of the number counts from the NEPSC2 survey are available in Shim et al. (2020). We fit a Schechter function to these data points and obtain the best-fitting parameters as $N_0 = 4191 \pm 144 \text{deg}^{-2}$, $S_0 = 1.9 \pm 0.1$ mJy, and $\gamma = 0.2 \pm 0.1$. For the differential number counts in BOSS1244 and BOSS1542, we use the Schechter function of fixed S_0 and γ from one of the above three best-fitting functions to fit the data points and obtain the best-fitting N_0 . In this way, we can fairly compare our best-fitting N_0 with that from given surveys and ascertain the the excess of SMGs in for the two MAMMOTH fields. Table 3 presents our best-fitting N_0 to the number counts of BOSS1244 and BOSS1542 and the ratios of our N_0 to those from the three surveys. The mean of the three ratios is adopted to measure the overdensity of SMGs in BOSS1244 and BOSS1542, giving 2.0 ± 0.3 and 2.1 ± 0.2 times the number density of SMGs in blank fields. We note that the N_0 ratio represents the overall scaling factor between these number counts, accounting for the discrepancies over the entire flux range examined.

The cumulative number counts are dominated by the number density of submillimetre sources at the faint end. We compare the cumulative number counts between our surveys and the three reference surveys. From Geach et al. (2017) and Shim et al. (2020), one can obtain the cumulative number counts in the S2CLS and NEPSC2 surveys as 508.0 and 391.5deg^{-2} at $S_{850} \geq 4.0$ mJy with

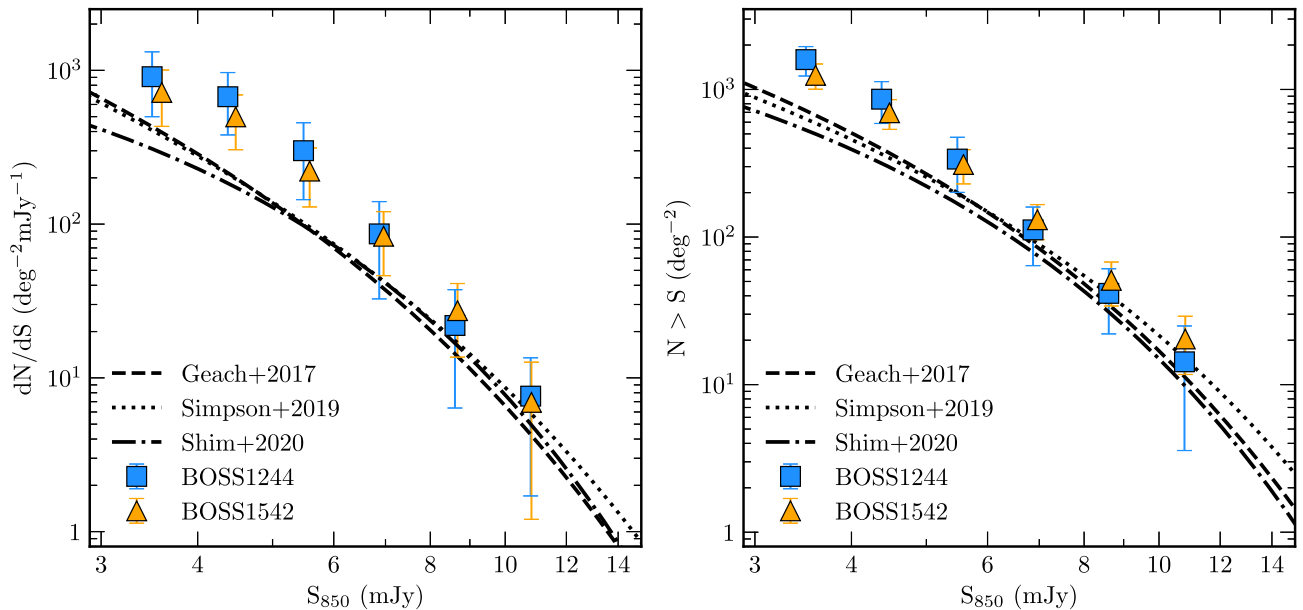


Figure 7. Differential number count (left) and cumulative number count (right) as a function of intrinsic 850 μm flux density in BOSS1244 and BOSS1542. The number counts are derived in the flux range of $S_{850} = 4\text{--}12$ mJy. We also plot the 850 μm number counts of blank fields for comparison. Note that only Geach et al. (2017) and Simpson et al. (2019) gave the best-fitting parameters of the differential number counts. The other curves are fitted to the data points using a Schechter function. For BOSS1244 and BOSS1542, the differential number counts are higher than blank fields especially at fainter flux density ($S_{850} = 4\text{--}8$ mJy) and the cumulative number counts also larger than that of the general surveys at $S_{850} > 4$ mJy, indicating that BOSS1244 and BOSS1542 are both SMGs overdensities at $z \sim 2$.

Table 3. Comparison of our 850 μm number counts in BOSS1244 and BOSS1542 with those of three surveys of blank fields.

	Number count	N_0^{fit}	Ratio
BOSS1244	Geach et al. (2017)	15672 ± 2330	2.2 ± 0.5
	Simpson et al. (2019)	9030 ± 1830	1.8 ± 0.6
	Shim et al. (2020)	8119 ± 1660	1.9 ± 0.4
	Mean	2.0 ± 0.3	
	Density peak ($r = 1$ Mpc)	5.1 ± 0.9	
BOSS1542	Geach et al. (2017)	15784 ± 958	2.2 ± 0.4
	Simpson et al. (2019)	9555 ± 1120	1.9 ± 0.2
	Shim et al. (2020)	8577 ± 989	2.0 ± 0.2
	Mean	2.1 ± 0.2	
	Density peak ($r = 1$ Mpc)	4.3 ± 0.5	

a similar survey depth. At the same flux cut, the number density of SMGs is 1138.8 and 965.6 deg^{-2} for BOSS1244 and BOSS1542, respectively. At $S_{850} \geq 4.2$ mJy, we obtain 988.0 and 838.2 deg^{-2} for BOSS1244 and BOSS1542 in comparison with 398 deg^{-2} in S2COSMOS (Simpson et al. 2019), respectively. We estimate the mean number density of SMGs to be 2.5 ± 0.3 (2.1 ± 0.2) for BOSS1244 (BOSS1542) relative to that of the blank fields, in good agreement with our results based on the fitting of the differential number counts. We remind that our number counts might be underestimated at the faintest bin (mentioned in the beginning of this Section) and thus slightly bias the cumulative number counts. We thus adopt 2.0 ± 0.3 (2.1 ± 0.2) as the number density of SMGs in BOSS1244 (BOSS1542) comparing to the blank fields.

The number density of SMGs in either BOSS1244 or BOSS1542 is significantly higher than that of the blank fields. It is reasonable to attribute the excess of SMGs to the overdensity at $z = 2.24$. This has been successfully verified with $\text{H}\alpha$ emitters (Shi et al. 2021; Zheng et al. 2021). We link the excess of SMGs in our two MAMMOTH

fields to the presence of 850 μm -detected SMG overdensity at $z = 2.24$. There are 43 (54) SMGs detected over an effective area of 264 arcmin^2 in the deep 850 μm map of BOSS1244 (BOSS1542). Considering the redshift distribution, we calculate the fraction of SMGs located in $2.2 < z < 2.3$ to be 5.7 per cent comparing to the whole redshift range in the AS2UDS survey (Dudzevičiūtė et al. 2020), which has a survey area of $\sim 1 \text{ deg}^2$ and make the cosmic variance negligible (Simpson et al. 2019). Then we obtain that the volume density of SMGs in this redshift slice is $2.6 \times 10^{-5} \text{ cMpc}^{-3}$ at $S_{850} \geq 4.0$ mJy in the blank fields. If we simply assume the two overdensities span a narrow redshift range ($\delta z < 0.042$ given by the band width of $\text{H}_2\text{S}(1)$ filter), the volume of the redshift slice of $z = 2.246 \pm 0.021$ over 264 arcmin^2 corresponds to a co-moving box of $54.3 \times 665.6 (=36142) \text{ h}^{-3} \text{ cMpc}^3$. If the excess of SMGs (i.e. $(1.8-1)/1.8 \times 54$ for BOSS1542) are associated with the $z = 2.24$ overdensities, we obtain that SMGs in the two overdensities may reach a volume density of $\sim (40\text{--}70) \times 10^{-5} \text{ cMpc}^{-3}$, 15–30 times that of the blank fields. After enlarging the redshift slice of the two protoclusters to that of blank field ($\delta z = 0.1$), we still obtain the volume density of SMG to be 6–11 times that of the blank fields. The overdensity factor of SMGs, although with large uncertainties, is even higher than that of $\text{H}\alpha$ emission-line galaxies (HAEs) in these two protoclusters (Shi et al. 2021), indicating that there are more extreme starbursts with enhanced star formation in respect to normal SFGs (i.e. HAEs) in the two $z = 2.24$ protoclusters.

Additionally, we estimate the overdensities and SFR densities in the Mpc-scale regions at the density peaks of SMGs in the two protoclusters. We focus on the most dense regions located in the valley between the NE and SW components in BOSS1244 and the void of the filament in BOSS1542. There are seven and nine submillimetre sources within a radius of 1 Mpc in these two density peaks. Using the method above, we obtain the overdensity is 5.1 ± 0.9 and 4.3 ± 0.5 that of general fields in the density peaks of BOSS1244

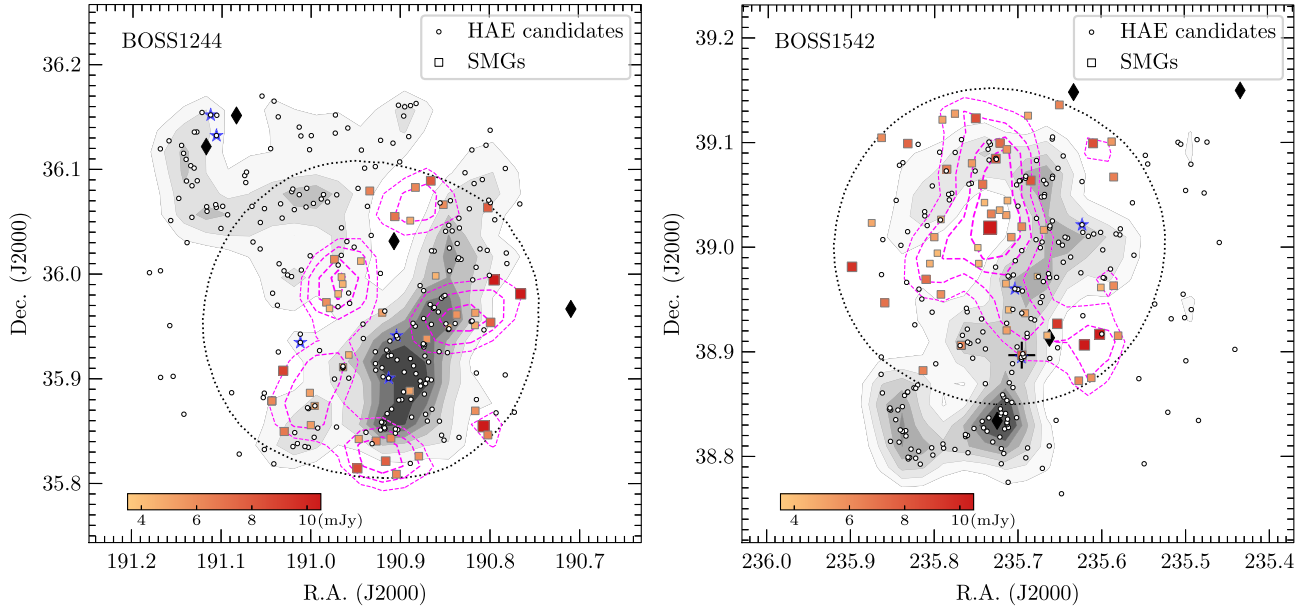


Figure 8. Comparing spatial distributions of $850\ \mu\text{m}$ sources with HAE candidates in BOSS1244 (left) and BOSS1542 (right). The HAE candidates are shown with open circles against their density maps and the filled grey contours ($[4, 8, 12, 16, 20, 24] \times 0.071\ \text{arcmin}^{-2}$) adopted from Zheng et al. (2021). The magenta-dashed lines show the contours of the surface number density of SMGs smoothed by a Gaussian kernel of $\sigma = 1.2\ \text{arcmin}$ ($1.9\ \text{cMpc}$ at $z = 2.24$). The contour levels refer to 1.6, 2.4, 3.2, and 4 times the SMG number density in the general fields ($\sim 400\ \text{deg}^{-2}$). Black diamonds mark the coherently strong Ly α absorption systems and blue stars represent the quasars at $z \sim 2.24$. The $850\ \mu\text{m}$ sources are shown with squares colour-coded and size-scaled by their observed fluxes. Black dotted curves (nearly a circle with a diameter of $9.2\ \text{arcmin}$) enclose the effective area of our deep SCUBA-2 observations. The black cross indicates the spectroscopically confirmed quasar which might be counterpart for SMG 1542.07 (see Section 3.4).

and BOSS1542, respectively, which is also listed in Table 3. We estimate SFRs from $850\ \mu\text{m}$ fluxes using the formula from Cowie et al. (2017) as

$$\text{SFR}\ (\text{M}_{\odot}\ \text{yr}^{-1}) = (143 \pm 20) \times S_{850\ \mu\text{m}}\ (\text{mJy}), \quad (5)$$

assuming a Kroupa (2001) initial mass function. We then calculate the SFR densities within a sphere of $1\ \text{Mpc}$ radius to be 1600 ± 630 and $1500 \pm 550\ \text{M}_{\odot}\ \text{yr}^{-1}\ \text{Mpc}^{-3}$ in the SMG density peaks in BOSS1244 and BOSS1542. Such high SFR densities are consistent with those in literature (Clements et al. 2014; Dannerbauer et al. 2014; Kato et al. 2016; Arrigoni Battaia et al. 2018; Nowotka et al. 2022), almost four magnitudes greater than the cosmic mean density (Madau & Dickinson 2014). This result indicates that there exist similar star formation activities in the off-peak regions of the two overdensities comparing to other protoclusters and ELANs.

3.3 Spatial distributions of SMGs

It has been shown in Zheng et al. (2021) that BOSS1244 and BOSS1542 are two massive structures of HAEs over scales of $32\ h^{-1}\ \text{comoving Mpc}$ (cMpc), having an overdensity factor of 5.6 ± 0.3 and 4.9 ± 0.3 , respectively. When focusing on the central high-density regions, the overdensity factor may increase by a factor of ~ 2 – 4 , and thus to be the most extremely galaxy overdensities at $z > 2$ discovered to date. The followup NIR spectroscopic study of their HAE candidates confirmed them to be extreme protoclusters of galaxies at $z = 2.24$ (Shi et al. 2021). In BOSS1244, the HAE density map consists of two components: one extended low-density North-East (NE) and the other elongated high-density South-West (SW) component. The latter component contains two distinct components separated from each other along the line of sight. BOSS1542 is

spectroscopically confirmed to be a giant filamentary structure at $z = 2.241$.

We examine the spatial distribution of SMGs in BOSS1244 and BOSS1542, in comparison with the spatial distribution of HAEs. We adopt the density maps of HAEs and the same contours from Zheng et al. (2021), as shown in Fig. 8. The coherently strong Ly α absorption systems (CoSLAs), which footprint on the spectra of background quasars and are used to probe these overdensities, are marked as black diamonds. Blue stars represent the quasars belonging to the two overdensities and included in the HAE sample. The dotted curves enclose the effective area of our SCUBA-2 $850\ \mu\text{m}$ science maps, being smaller than the $20 \times 20\ \text{arcmin}^2$ coverage of deep narrow and broad K_s -band observations for HAEs. The HAE candidates are shown with circles and SMGs ($\geq 4\sigma$) are shown with squares sized and colour coded by their $850\ \mu\text{m}$ fluxes. Note that these HAE candidates contain ~ 80 per cent true HAEs and the density maps are not biased by non-HAEs which are believed to be randomly located as fore- or background sources (see Shi et al. 2021; Zheng et al. 2021, for more details). Similarly, we build density maps and contours for SMGs. We divide the effective area of our $850\ \mu\text{m}$ maps into a grid of $1 \times 1\ \text{arcmin}^2$ cells, calculate the number density of SMGs within each cell, and smooth the density map with a Gaussian kernel of $\sigma = 1.5\ \text{arcmin}$. Our samples of $850\ \mu\text{m}$ sources consist of SMGs belonged to the $z = 2.24$ overdensities, as well as fore- or background SMGs. We take $400\ \text{deg}^{-2}$ as the number density of SMGs down to $S_{850} = 4\ \text{mJy}$ in the general fields and set the contour levels as 2, 3, 4, and 5 times the general-field density. The magenta long-dashed curves Fig. 8 show the density contours of SMGs in BOSS1244 and BOSS1542.

From Fig. 8 one can clearly see that SMGs do not spatially concentrate on the densest regions traced by HAEs in both BOSS1244 and BOSS1542. Instead, they locate mostly around the HAE density

peak regions. Few of our sample SMGs are seen in these density peak regions. Most of the SMGs in BOSS1244 are detected in the valley between the NE and SW components, as well as the low-density regions surrounding the SW component. No SMG is detected inside of the NE component although only half of the NE area is effectively covered by our deep SCUBA-2 observations. In BOSS1542, SMGs are located preferentially off the ridge regions of the filamentary structure. Several SMGs seen in the density peak area might be projected from the outskirts of the dense structure along the line of sight. We use the 2D Kolmogorov–Smirnov test to quantify the difference between the distributions of SMGs and HAEs in our two protoclusters (Peacock 1983; Fasano & Franceschini 1987). We calculate the observed D-statistic between the coordinates of SMGs and HAEs is 0.285 (0.398) in BOSS1244 (BOSS1542). The significance level is 0.0177 and 0.0004 in BOSS1244 and BOSS1542, meaning that the SMGs and HAEs are drawn from different spatial distributions at a confidence of 2.4σ and 4σ , respectively.

We notice that the brightest SMG with a flux density of $S_{850} = 18.1$ mJy (deboosted to $S_{850} = 16.6$ mJy) in our samples resides in a blank (HAE-free) region half encircled by the filamentary structure. Interestingly, about 10 SMGs are clustered around this source within 5 arcmin^2 and form an extreme SMG overdensity. The nature of this SMG overdensity and how it formed remain to be explored. Follow-up spectroscopic observations are strongly demanded to study the member galaxies and connections with the surrounding filamentary structure in BOSS1542. In brief, *a prominent discovery from the spatial distributions of our sample SMGs is that they are mostly located around the density peak regions of HAEs in both BOSS1244 and BOSS1542, and barely occur in these peak regions.*

3.4 Optical/NIR counterparts

Due to the coarse resolution of SCUBA-2 and the lack of the high-resolution interferometric data, it is impossible to precisely identify the optical/NIR counterparts for SCUBA-2 $850 \mu\text{m}$ sources in the two fields. On the other hand, we can examine the optical/NIR counterparts of the SMGs in a statistic manner. The optical-to-NIR colour helps to pick up the SMG counterparts because SMGs are heavily obscured by dust and usually red in the rest-frame UV-optical colour (Chen et al. 2016). It is worth noting that the optical/NIR counterparts could lie 1–8 arcsec off from the nominal position of SCUBA-2 detections, while the majority of the counterparts have $z - K_s$ colour larger than 1.5 (see fig. 4 of An et al. 2018). So we choose $z - K_s > 1.5$ as the criterion for counterparts to examine the likelihood of the optical/NIR objects within the SCUBA-2 beam. We obtained the U and z -band imaging data in the BOSS1244 field, and U , B , V , and z -band imaging data in the BOSS1542 field, using the Blue Camera on board the Large Binocular Telescope (LBT) in 2018 (Shi D. D. et al., in preparation). The z -band images of BOSS1244 (BOSS1542) reach a depth of 25.12 (25.39) mag above the 5σ significance. Our K_s images reach a 5σ depth of 23.29 and 23.23 mag for the two fields (Zheng et al. 2021). We use SEXTRACTOR to construct source catalogues from the z - and K_s -band images of BOSS1244 and BOSS1542. We remove point sources and those brighter than 18 mag that are usually low- z galaxies. Then we select the z and K_s sources around the positions of SMGs with a tolerance of $7''.5$ (i.e. the half of SCUBA-2 beam size at $850 \mu\text{m}$). Doing so we obtain 82 and 113 of optical/NIR objects as potential counterparts for SMGs in BOSS1244 and BOSS1542. Of them, 36 and 46 satisfy $z - K_s > 1.5$, as shown in Fig. 9. We estimate about 40 per cent of the optical/NIR objects within the beam size of SMGs are likely to be their counterparts.

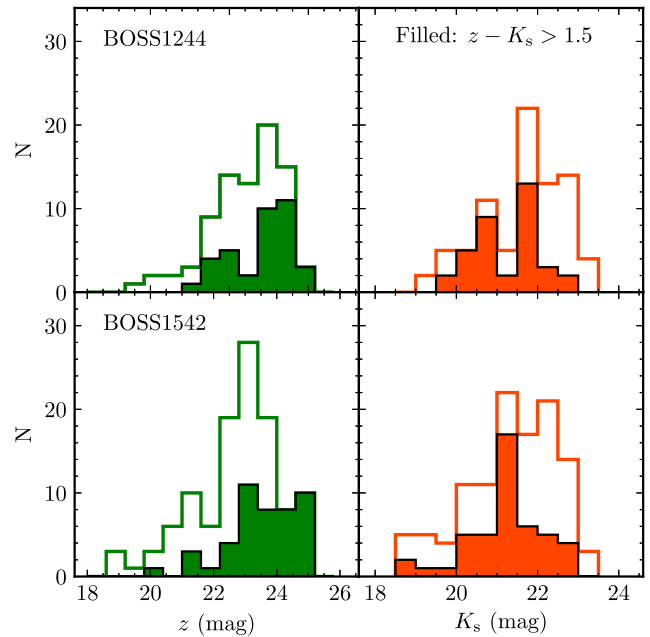


Figure 9. The z (green) and K_s (red) magnitude distributions of 82 and 113 objects detected in both z and K_s bands within the SCUBA-2 $850 \mu\text{m}$ beam size for 43 and 54 SMGs in BOSS1244 (top) and BOSS1542 (bottom), respectively. The filled histograms represent the objects with $z - K_s > 1.5$, which are more likely to be the counterparts of SMGs.

We examine the number density of the z and K_s -band sources as a function of distance from the central position of SMGs, and show the results in Fig. 10. For a comparison, we derive the average number density of the z and K_s -detected objects. This is done by randomly selecting 10 000 positions in the z and K_s images and calculating the number density as a function of radius centred at given positions. Dashed lines show the reference results in Fig. 10. Note that the number density of the z -band sources is higher than that of K_s -band sources as the z images are deeper than the K_s images. However, the source density at $R < 2$ arcsec is higher in K_s than in z , while at $R > 2$ arcsec it becomes the opposite. It can be clearly seen that the number density of either z or K_s -band sources decreases from the central position of the SCUBA-2 sources to the outer radii, and close to the reference level at the radii of >10 arcsec. It is obvious that the optical/NIR sources within $R < 2$ arcsec around the position of SMGs have the highest probability to be the true counterparts. Our results show that SMGs are less affected by dust in the K_s band and thus increase the chance to be detected, although this depends on the depths of the z and K_s imaging.

Interestingly, BOSS1244 exhibits a higher source density within $R < 3$ arcsec than BOSS1542. This difference can be seen in both z and K_s , suggesting that SMGs in BOSS1244 are statistically brighter in the optical/NIR than SMGs in BOSS1542. We attribute this to the excess at the bright end of the z and K_s magnitude distributions in BOSS1244, as we can see a higher fraction of bright sources in these two bands in the upper panel of Fig. 9. At $3 \text{ arcsec} < R < 12 \text{ arcsec}$, there is still a non-negligible excess of sources in z and K_s relative to the reference level. We attribute this excess to a stronger clustering environment that SMGs live in. The excess of the number density from the centre to $R = 13$ arcsec corresponds 1.8 ± 0.3 (1.4 ± 0.3) objects in z down to $z = 25.1$ mag and 1.6 ± 0.2 (1.3 ± 0.2) objects in K_s down to $K_s = 23.2$ mag in BOSS1244 (BOSS1542). The source excess in K_s is smaller, compared with the estimate of 2.0

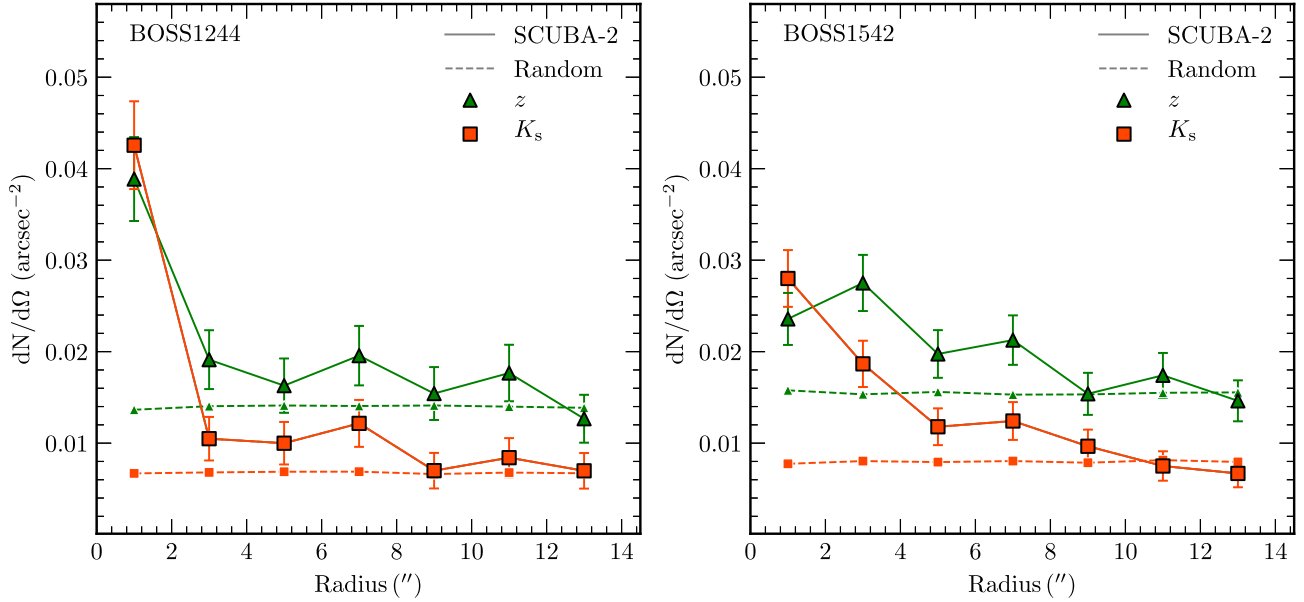


Figure 10. The surface density of the z and K_s selected galaxies around the SCUBA-2 detections and the random positions as a function of radius in BOSS1244 (left) and BOSS1542 (right). The z and K_s is distinguished by magenta and red symbols. The solid lines show the positions centred on the SCUBA-2 detections and the dashed lines are calculated from the average number density of 10000 random positions in two fields.

objects within $R = 13$ arcsec around the SCUBA-2 positions given in Simpson et al. (2019). We caution that our results of the source excess has relatively large uncertainties due to the limited number of SMGs in our samples.

We also cross-match our samples of SMGs with HAE candidates. Three SMGs in BOSS1244 and seven SMGs in BOSS1542 are found to have the HAE candidates within the SCUBA-2 beam size. Fig. 11 demonstrates the z and K_s images of the 10 SMGs. HAEs and sources with $z - K_s > 1.5$ are marked. Three of these 10 SMGs have more than one HAE candidates. Thus the fraction of multiplicity for SMGs detected with single-dish telescopes is 30 percent when only considering the HAEs, slightly lower than the fraction (3 out of 7) around the Spiderweb galaxy (Dannerbauer et al. 2014) and consistent with the estimates of multiplicity in the literature (Hodge et al. 2013; Stach et al. 2018). These groups of multiple HAEs are very likely merging galaxies, implying that a high fraction of SMGs may be merging galaxies. Among them, SMG 1244.16 matches a pair of HAEs located at the edge of the SW structure in BOSS1244. The two HAEs have a projected distance of $1''.2$. In BOSS1542, there are two HAEs and one quasar at $z = 2.234$ form a group near the position of SMG 1542.07. SMG 1542.07 is found to match an HAE and a quasar in this group but separate $7''.7$ from the quasar (see black crosses in Fig. 8). We plot all three objects around SMG 1542.07 in Fig. 11 despite the separation of an HAE is slightly larger than half of the SCUBA-2 $850\ \mu\text{m}$ beam size. If confirmed to be the same object, the host of this quasar must be a dusty starburst galaxy.

There are four HAE candidates located within the SCUBA-2 beam of four SMGs (SMG1244.16, SMG1244.29, SMG1542.07, and SMG1542.15) with $z - K_s > 1.5$, being very likely to be the dusty objects. We adopt the method of corrected Poisson probability (i.e. p-value) to quantify the robustness of SMG counterpart identification, which was first done by Dannerbauer et al. (2014) for HAEs. The calculation of the p-values was reported by Downes et al. (1986) and described as follows:

$$p = 1 - \exp(-\pi n \theta^2), \quad (6)$$

where n represents the surface density of the HAE candidates within the effective area of our SCUBA-2 observations and θ is the separation between the HAE candidates and the submillimeter detections. We adopt the HAE surface density of $0.47\ \text{arcmin}^{-2}$ and $0.42\ \text{arcmin}^{-2}$ in BOSS1244 and BOSS1542 calculated by Zheng et al. (2021). Totally, 14 HAEs located within the beams of 10 SCUBA-2 sources meet the criteria ($p < 0.05$) of the secure counterparts (Biggs et al. 2011; Dannerbauer et al. 2014), we suggest that these 10 SMGs are well identified by HAEs in BOSS1244 and BOSS1542. There are 10 out of 97 SMGs associated with the HAEs in BOSS1244 and BOSS1542, lower than the fraction (seven out of 11 SMGs) reported in Dannerbauer et al. (2014).

4 SUMMARY AND DISCUSSION

We present the results of our deep $850\ \mu\text{m}$ survey of two spectroscopically confirmed massive protoclusters of galaxies at $z = 2.24$, BOSS1244 and BOSS1542. The observations were carried out with JCMT/SCUBA-2. The final $850\ \mu\text{m}$ mosaic science maps reach a median sensitivity of $1.21(1.12)\ \text{mJy beam}^{-1}$ within an effective area of $264\ \text{arcmin}^2$ in BOSS1244 (BOSS1542). There are 43 and 54 submillimetre sources detected at the 4σ level in BOSS1244 and BOSS1542, with the deboosted flux range of $S_{850} = 2.8\text{--}16.6\ \text{mJy}$. We estimate the FDR to be 7 per cent at $>4\sigma$ and 2 per cent at $>4.5\sigma$ from the recovery tests with the jackknife noise maps. Through the Monte Carlo simulations, we demonstrate that the detection completeness reaches 50 per cent (80 per cent) at an intrinsic flux of $4.6\ \text{mJy}$ ($6\ \text{mJy}$) for BOSS1244 and at $4.1\ \text{mJy}$ ($5.3\ \text{mJy}$) for BOSS1542. The positional uncertainties of these SMGs are well confined within 3 arcsec at $>4\sigma$. These results are consistent with the estimates from previous works on similar $850\ \mu\text{m}$ observations after accounting for the differences in depths and source density.

We construct the intrinsic number counts using our samples of 43 (54) SMGs detected in the BOSS1244 (BOSS1542) field. We find that the number density of SMGs in the two fields are 2.0 ± 0.3 and 2.1 ± 0.2 times the average of blank fields (S2CLS, S2COSMOS, and

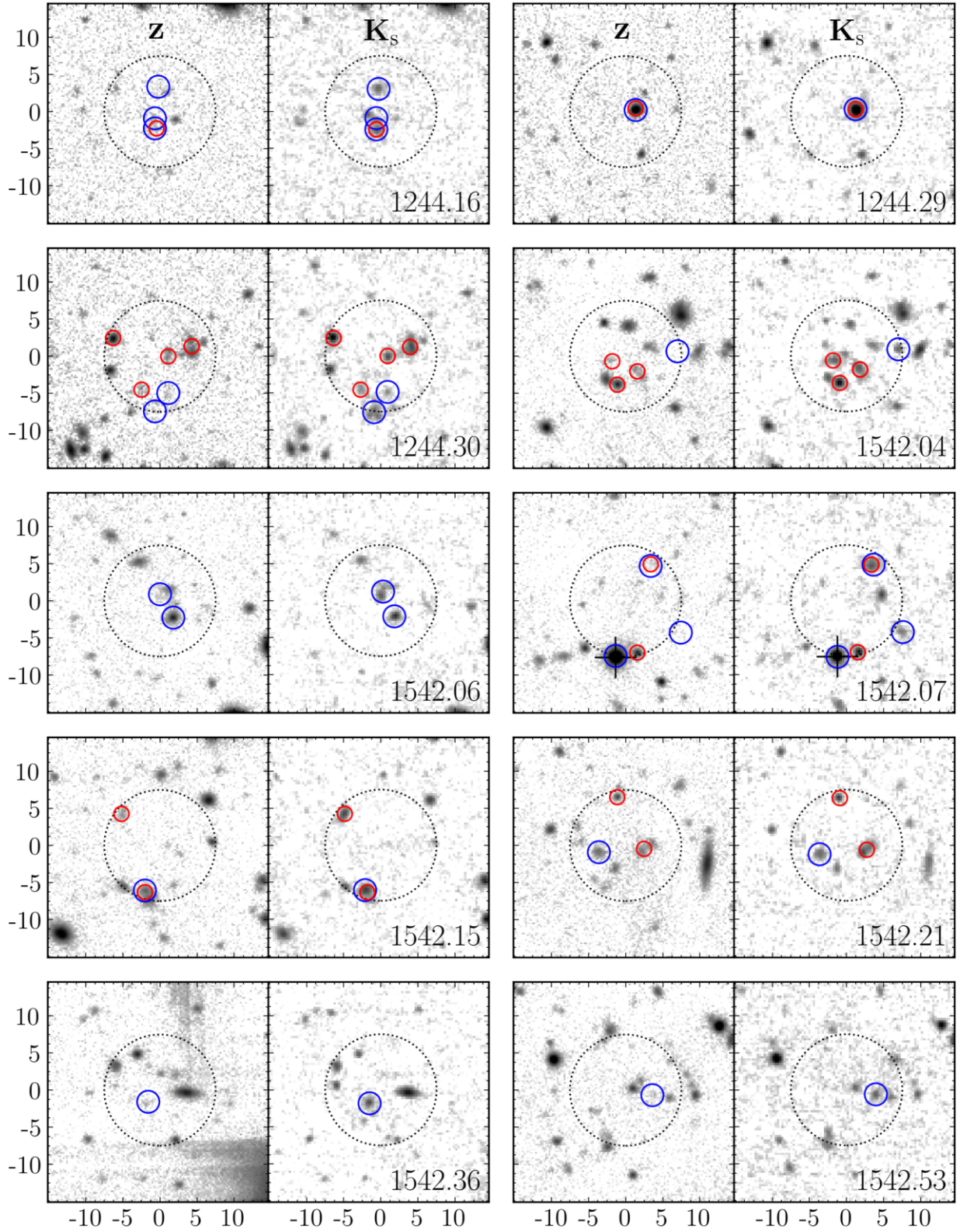


Figure 11. The z and K_s -band stamp images of the 10 HAE beam-matched SMGs in BOSS1244 and BOSS1542. There are totally 14 HAEs are located within the SCUBA-2 850 μm beam (dotted circles) of the 10 SMGs. Blue circles mark the HAE candidates, and red circles mark objects with $z - K_s > 1.5$. The ID numbers of the SMGs are given by their S/N in the catalogues. For SMG 1542.07, black crosses mark one HAE at $z = 2.24$ confirmed to be a quasar.

NEPSC2). The overdensity is even higher within the density peaks, with a factor of 5.1 ± 0.9 and 4.3 ± 0.5 in BOSS1244 and BOSS1542. It is reasonable to infer that nearly half of these SMGs belong to the $z = 2.24$ overdensities while the rest are fore-/background SMGs. Attributing the excess of SMGs to the $z = 2.24$ protoclusters, we obtain an SMG volume density of $\sim(40\text{--}70) \times 10^{-5} \text{ cMpc}^{-3}$, being 15–30 times the average of the blank fields. The excess of SMGs with the overdensity of 2–4 have been found in the Spiderweb protocluster and around HzRGs (Dannerbauer et al. 2014; Zeballos et al. 2018), as well as around WISE-selected AGNs and ELANs, with a factor of 2–6 (Jones et al. 2017; Nowotka et al. 2022). Our results clearly show that BOSS1244 and BOSS1542 are extreme overdensities at $z > 2$.

Strikingly, the spatial distributions of our sample SMGs show obvious offsets from the high-density regions of HAEs in both BOSS1244 and BOSS1542. These SMGs are located mostly in the outskirts of the high-density regions mapped by HAEs. Within the effective area of our 850 μm observations, the bulk of SMGs surround the SW density peak in BOSS1244, and in BOSS1542 SMGs are apparently clustered off the ridge peak of the giant filamentary structure. Meanwhile, inside the high-density regions, few SMGs are present. Additionally, the comparison of the distributions between SMGs and other populations are also reported. Dannerbauer et al. (2014) showed that the spatial distribution of SMGs related to the Spiderweb galaxy is similar to the filamentary structure traced by HAEs, without the centre overlapping. Arrigoni Battaia et al. (2018) reported the alignment between the two brightest SMGs and the LAE density peak in MAMMOTH-1 nebula, probably indicating the the protocluster core. In SSA22, SMGs are found to have similar distribution to that of LAEs according to their two-point angular cross correlation function (Tamura et al. 2009; Umehata et al. 2014). More studies on the distributions between SMGs, HAEs, and LAEs are needed to panoramically reveal the evolution of protoclusters. Given that SMGs at $z = 2.24$ in our samples are extreme starbursts, the overabundance of SMGs in the outskirts suggests an enhancement of gas supplies and/or an increasing frequency for starburst triggering events (e.g. galaxy mergers); and the deficiency of SMGs inside the high-density regions indicates a disfavour for violent galaxy star formation, probably due to the cut-off of gas supplies in the collapsed regime of growing dense structures.

We point out that the SW high-density region in BOSS1244 is a dominant component forming a galaxy cluster core. The surrounding galaxies are expected to infall into the dense core structure through connected filaments. In the transition regime where the infalling galaxies and gas enter the collapsed regime gravitationally bounded by the core structure, the interacting processes (e.g. accretion shock) would probably accelerate gas cooling and boost gas accretion; and tidal disruptions could easily trigger starburst in gas-rich galaxies (Narayanan et al. 2015; Rost et al. 2021). Therefore, more extreme starbursts are expected to take place in the outskirts of the high-density regions. Similar scenarios that the infalling galaxies with cold gas accretion are more active than that in the centre of the protoclusters are reported in Dannerbauer et al. (2014). By then, the infalling starbursts are probably quenched by the lack of gas accretion and the energetic AGN feedback, and eventually form massive ellipticals which are seen in the local clusters (Shimakawa et al. 2018). Such a picture is also applicable to BOSS1542, in which the bending filamentary structure appears likely to fold and collapse into a relaxed structure; and the galaxies in the regions off the ridge region could be supplied with more gas from the shrinking large-scale environment. Again, the lack of SMGs inside the high-density ridge region of BOSS1542 supports our argument on the suppression of

violent starbursts in the collapsed regime of growing dense structures. Our finding that the overabundance of SMGs emerge in the outskirts of high-density regions in the two massive protoclusters of galaxies at $z = 2.24$ provides a first direct probe for the impact of the assembly of large-scale structures on galaxy formation.

From deep z and K_s imaging, we identify 36 (46) optical/NIR objects with $z - K_s > 1.5$ located within the SCUBA-2 850 μm beam coverage of our sample of 43 (54) SMGs in BOSS1244 (BOSS1542). These red objects are more likely to be the SMG counterparts than blue objects. No counterpart candidates of $z - K_s > 1.5$ down to $z \sim 25.1$ mag and $K_s \sim 23.2$ mag (5σ) are found for some of SMGs in our samples (~ 16 per cent). Statistically, the locations of SMGs contain more objects in z and K_s relative to the places without SMGs. The excesses correspond to 1.8 (1.6) objects in z and 1.4 (1.3) objects in K_s for BOSS1244 (BOSS1542). The cross-matching between SMGs and HAE candidates gives 6 (8) HAE candidates located around 3 (7) SMGs within the 850 μm beam in BOSS1244 (BOSS1542). Three of the 10 SMGs meet more than one HAE candidate, suggesting a multiplicity fraction (~ 30 per cent) consistent with that given in literature (e.g. Stach et al. 2018). In addition, four of the 10 SMGs have matched HAE candidates with $z - K_s > 1.5$, indicating them very likely to be the actual counterparts.

We argue that more spectroscopic and imaging observations in the optical/NIR and (sub)millimetre bands will enable to obtain precise redshifts for different galaxy populations, map substructures and large-scale kinematics, and characterize the detailed properties of member galaxies in these extremely massive protoclusters and surrounding cosmic web. Doing so will draw a comprehensive picture for the formation of galaxies in connections with the assembly of large-scale structures.

ACKNOWLEDGEMENTS

We are grateful to the anonymous referee in clarifying a number of important points and thus improving this manuscript. This work is supported by the National Key Research and Development Program of China (2017YFA0402703), the National Science Foundation of China (11773076 and 12073078), the Major Science and Technology Project of Qinghai Province (2019-ZJ-A10), the science research grants from the China Manned Space Project with NO. CMS-CSST-2021-A02, CMS-CSST-2021-A04 and CMS-CSST-2021-A07, and the Chinese Academy of Sciences (CAS) through a China-Chile Joint Research Fund (CCJRF #1809) administered by the CAS South America Centre for Astronomy (CASSACA). YG acknowledges support by National Key Research and Development Program of China (2017YFA0402704) and NSFC grant 12033004. HD acknowledges financial support from the Agencia Estatal de Investigación del Ministerio de Ciencia e Innovación (AEI-MCINN) under grant (La evolución de los cúmulos de galaxias desde el amanecer hasta el mediodía cósmico) with reference (PID2019-105776GB-I00/DOI:10.13039/501100011033) and from the ACIISI, Consejería de Economía, Conocimiento y Empleo del Gobierno de Canarias and the European Regional Development Fund (ERDF) under grant with reference PROID2020010107.

The James Clerk Maxwell Telescope is operated by the East Asian Observatory on behalf of The National Astronomical Observatory of Japan; Academia Sinica Institute of Astronomy and Astrophysics; the Korea Astronomy and Space Science Institute; the National Astronomical Research Institute of Thailand; Center for Astronomical Mega-Science (as well as the National Key R&D Program of China with No. 2017YFA0402700). Additional funding support is provided by the Science and Technology Facilities Council of the

United Kingdom and participating universities and organizations in the United Kingdom and Canada. Additional funds for the construction of SCUBA-2 were provided by the Canada Foundation for Innovation.

DATA AVAILABILITY

The data underlying this article will be shared on reasonable request to the corresponding author.

REFERENCES

- An F. X. et al., 2018, *ApJ*, 862, 101
 An F. X. et al., 2019, *ApJ*, 886, 48
 Arrigoni Battaia F. et al., 2018, *A&A*, 620, A202
 Bahé Y. M. et al., 2017, *MNRAS*, 470, 4186
 Barger A. J., Cowie L. L., Sanders D. B., Fulton E., Taniguchi Y., Sato Y., Kawara K., Okuda H., 1998, *Nature*, 394, 248
 Bassini L. et al., 2020, *A&A*, 642, A37
 Bertin E., Arnouts S., 1996, *A&AS*, 117, 393
 Béthermin M. et al., 2017, *A&A*, 607, A89
 Biggs A. D. et al., 2011, *MNRAS*, 413, 2314
 Blain A. W., Chapman S. C., Smail I., Ivison R., 2004, *ApJ*, 611, 725
 Bothwell M. S. et al., 2013, *MNRAS*, 429, 3047
 Bourne N. et al., 2017, *MNRAS*, 467, 1360
 Brisbin D. et al., 2017, *A&A*, 608, A15
 Cai Z. et al., 2016, *ApJ*, 833, 135
 Cai Z. et al., 2017, *ApJ*, 839, 131
 Cai Z. et al., 2019, *ApJS*, 245, 23
 Casey C. M., Narayanan D., Cooray A., 2014, *Phys. Rep.*, 541, 45
 Chapman S. C., Blain A. W., Smail I., Ivison R. J., 2005, *ApJ*, 622, 772
 Chapman S. C., Blain A., Ibatia R., Ivison R. J., Smail I., Morrison G., 2009, *ApJ*, 691, 560
 Chen C.-C., Cowie L. L., Barger A. J., Casey C. M., Lee N., Sanders D. B., Wang W.-H., Williams J. P., 2013, *ApJ*, 776, 131
 Chen C.-C. et al., 2015, *ApJ*, 799, 194
 Chen C.-C. et al., 2016, *ApJ*, 820, 82
 Chen C.-C. et al., 2017, *ApJ*, 846, 108
 Chiang Y.-K., Overzier R., Gebhardt K., 2013, *ApJ*, 779, 127
 Clements D. L. et al., 2014, *MNRAS*, 439, 1193
 Coogan R. T. et al., 2018, *MNRAS*, 479, 703
 Cooke E. A., Smail I., Stach S. M., Swinbank A. M., Bower R. G., Chen C.-C., Koyama Y., Thomson A. P., 2019, *MNRAS*, 486, 3047
 Cowie L. L., Barger A. J., Hsu L.-Y., Chen C.-C., Owen F. N., Wang W.-H., 2017, *ApJ*, 837, 139
 Cowley W. I., Lacey C. G., Baugh C. M., Cole S., 2015, *MNRAS*, 446, 1784
 Danielson A. L. R. et al., 2017, *ApJ*, 840, 78
 Dannerbauer H. et al., 2014, *A&A*, 570, A55
 Davé R., Finlator K., Oppenheimer B. D., Fardal M., Katz N., Kereš D., Weinberg D. H., 2010, *MNRAS*, 404, 1355
 De Lucia G., Blaizot J., 2007, *MNRAS*, 375, 2
 Decarli R. et al., 2016, *ApJ*, 833, 70
 Downes A. J. B., Peacock J. A., Savage A., Carrie D. R., 1986, *MNRAS*, 218, 31
 Dudzevičiūtė U. et al., 2020, *MNRAS*, 494, 3828
 Eddington A. S., 1913, *MNRAS*, 73, 359
 Engel H. et al., 2010, *ApJ*, 724, 233
 Fasano G., Franceschini A., 1987, *MNRAS*, 225, 155
 Fu H. et al., 2013, *Nature*, 498, 338
 Galametz A. et al., 2013, *A&A*, 559, A2
 Geach J. E. et al., 2017, *MNRAS*, 465, 1789
 Ginolfi M. et al., 2017, *MNRAS*, 468, 3468
 Gullberg B. et al., 2019, *MNRAS*, 490, 4956
 Hayward C. C. et al., 2018, *MNRAS*, 476, 2278
 Hayward C. C. et al., 2021, *MNRAS*, 502, 2922
 Hickox R. C. et al., 2012, *MNRAS*, 421, 284
 Hill R. et al., 2018, *MNRAS*, 477, 2042
 Hodge J. A., da Cunha E., 2020, *R. Soc. Open Sci.*, 7, 200556
 Hodge J. A. et al., 2013, *ApJ*, 768, 91
 Hodge J. A. et al., 2016, *ApJ*, 833, 103
 Högbom J. A., 1974, *A&AS*, 15, 417
 Holland W. S. et al., 2013, *MNRAS*, 430, 2513
 Hopkins A. M., Beacom J. F., 2006, *ApJ*, 651, 142
 Hughes D. H. et al., 1998, *Nature*, 394, 241
 Humphrey A. et al., 2011, *MNRAS*, 418, 74
 Ikarashi S. et al., 2015, *ApJ*, 810, 133
 Jenness T., Cavanagh B., Economou F., Berry D. S., 2008, *ASPC*, 394, 565
 Jones S. F. et al., 2017, *MNRAS*, 469, 4565
 Karim A. et al., 2013, *MNRAS*, 432, 2
 Kartaltepe J. S. et al., 2012, *ApJ*, 757, 23
 Kato Y. et al., 2016, *MNRAS*, 460, 3861
 Koprowski M. P., Dunlop J. S., Michałowski M. J., Coppin K. E. K., Geach J. E., McLure R. J., Scott D., van der Werf P. P., 2017, *MNRAS*, 471, 4155
 Kroupa P., 2001, *MNRAS*, 322, 231
 Lacaille K. M. et al., 2019, *MNRAS*, 488, 1790
 Lim S., Scott D., Babul A., Barnes D. J., Kay S. T., McCarthy I. G., Rennehan D., Vogelsberger M., 2021, *MNRAS*, 501, 1803
 Lovell C. C., Thomas P. A., Wilkins S. M., 2018, *MNRAS*, 474, 4612
 Lovell C. C., Geach J. E., Davé R., Narayanan D., Li Q., 2021, *MNRAS*, 502, 772
 Lu S. et al., 2022, *MNRAS*, 509, 2707
 Madau P., Dickinson M., 2014, *ARA&A*, 52, 415
 Mairs S. et al., 2021, *AJ*, 162, 191
 McAlpine S. et al., 2019, *MNRAS*, 488, 2440
 Michałowski M. J., Dunlop J. S., Cirasuolo M., Hjorth J., Hayward C. C., Watson D., 2012, *A&A*, 541, A85
 Michałowski M. J. et al., 2017, *MNRAS*, 469, 492
 Miettinen O. et al., 2017, *A&A*, 606, A17
 Muldrew S. I., Hatch N. A., Cooke E. A., 2015, *MNRAS*, 452, 2528
 Narayanan D. et al., 2015, *Nature*, 525, 496
 Nowotka M., Chen C.-C., Battaia F. A., Fumagalli M., Cai Z., Lusso E., Prochaska J. X., Yang Y., 2022, *A&A*, 658, A77
 Overzier R. A., 2016, *A&AR*, 24, 14
 Peacock J. A., 1983, *MNRAS*, 202, 615
 Rennehan D., Babul A., Hayward C. C., Bottrell C., Hani M. H., Chapman S. C., 2020, *MNRAS*, 493, 4607
 Rigby E. E. et al., 2014, *MNRAS*, 437, 1882
 Rost A. et al., 2021, *MNRAS*, 502, 714
 Scoville N. et al., 2016, *ApJ*, 820, 83
 Shi K., Toshikawa J., Cai Z., Lee K.-S., Fang T., 2020, *ApJ*, 899, 79
 Shi D. D., Cai Z., Fan X., Zheng X. Z., Huang Y.-H., Xu J., 2021, *ApJ*, 915, 32
 Shim H. et al., 2020, *MNRAS*, 498, 5065
 Shimakawa R. et al., 2018, *MNRAS*, 481, 5630
 Shimakawa R. et al., 2018, *MNRAS*, 473, 1977
 Simpson J. M. et al., 2014, *ApJ*, 788, 125
 Simpson J. M. et al., 2015, *ApJ*, 799, 81
 Simpson J. M. et al., 2015, *ApJ*, 807, 128
 Simpson J. M. et al., 2019, *ApJ*, 880, 43
 Smail I., Ivison R. J., Blain A. W., 1997, *ApJ*, 490, L5
 Smail I., Ivison R. J., Blain A. W., Kneib J.-P., 2002, *MNRAS*, 331, 495
 Smith D. J. B., Hayward C. C., Jarvis M. J., Simpson C., 2017, *MNRAS*, 471, 2453
 Smolčić V. et al., 2012, *A&A*, 548, A4
 Somerville R. S., Davé R., 2015, *ARA&A*, 53, 51
 Stach S. M. et al., 2018, *ApJ*, 860, 161
 Stevens J. A. et al., 2003, *Nature*, 425, 264
 Swinbank A. M., Chapman S. C., Smail I., Lindner C., Borys C., Blain A. W., Ivison R. J., Lewis G. F., 2006, *MNRAS*, 371, 465
 Swinbank A. M. et al., 2010, *MNRAS*, 405, 234
 Tacconi L. J. et al., 2008, *ApJ*, 680, 246
 Tacconi L. J. et al., 2018, *ApJ*, 853, 179
 Tamura Y. et al., 2009, *Nature*, 459, 61
 Toft S. et al., 2014, *ApJ*, 782, 68
 Umehata H. et al., 2014, *MNRAS*, 440, 3462

- Umehata H. et al., 2015, *ApJ*, 815, L8
Venemans B. P. et al., 2007, *A&A*, 461, 823
Wang S. X. et al., 2013, *ApJ*, 778, 179
Wang S. et al., 2022, *MNRAS*, 509, 3148
Wang W.-H., Cowie L. L., Barger A. J., Williams J. P., 2011, *ApJ*, 726, L18
Wang W.-H. et al., 2017, *ApJ*, 850, 37
Wardlow J. L. et al., 2011, *MNRAS*, 415, 1479
Wethers C. F., Banerji M., Hewett P. C., Jones G. C., 2020, *MNRAS*, 492, 5280
Wilkinson A. et al., 2017, *MNRAS*, 464, 1380
Zavala J. A. et al., 2021, *ApJ*, 909, 165
Zeballos M. et al., 2018, *MNRAS*, 479, 4577
Zheng X. Z. et al., 2009, *ApJ*, 707, 1566
Zheng X. Z., Cai Z., An F. X., Fan X., Shi D. D., 2021, *MNRAS*, 500, 4354

This paper has been typeset from a $\text{\TeX}/\text{\LaTeX}$ file prepared by the author.