

PAPER • OPEN ACCESS

## Modeling seasonal vegetation phenology from hydroclimatic drivers for contrasting plant functional groups within drylands of the Southwestern USA

To cite this article: Maria Magdalena Warter *et al* 2023 *Environ. Res.: Ecology* **2** 025001

View the [article online](#) for updates and enhancements.

### You may also like

- [The feasibility of reconstructing hydroclimate over West Africa using tree-ring chronologies in the Mediterranean region](#)  
Boniface O Fosu, Edward R Cook, Michela Biasutti et al.
- [The influence of hydroclimate and management on forest regrowth across the western U.S](#)  
Zachary H Hoylman, Kelsey Jencso, Vince Archer et al.
- [Regime shift of the hydroclimate–vegetation system in the Yellow River Delta of China from 1982 through 2015](#)  
Beibei Niu, Zixuan Zhang, Xinyang Yu et al.

ENVIRONMENTAL RESEARCH  
ECOLOGY

## PAPER

## OPEN ACCESS

RECEIVED  
4 July 2022REVISED  
31 January 2023ACCEPTED FOR PUBLICATION  
7 February 2023PUBLISHED  
14 March 2023

Original content from  
this work may be used  
under the terms of the  
[Creative Commons  
Attribution 4.0 licence](#).

Any further distribution  
of this work must  
maintain attribution to  
the author(s) and the title  
of the work, journal  
citation and DOI.



## Modeling seasonal vegetation phenology from hydroclimatic drivers for contrasting plant functional groups within drylands of the Southwestern USA

Maria Magdalena Warter<sup>1,\*</sup> , Michael Bliss Singer<sup>1,2,3</sup> , Mark O Cuthbert<sup>1,2,4</sup> , Dar Roberts<sup>5</sup> , Kelly K Taylor<sup>3,5,6</sup> , Romy Sabathier<sup>1</sup> and John Stella<sup>7</sup> <sup>1</sup> School of Earth and Environmental Sciences, Cardiff University, Cardiff CF10 3AT, United Kingdom<sup>2</sup> Water Research Institute, Cardiff University, Cardiff CF10 3AT, United Kingdom<sup>3</sup> Earth Research Institute, University of California Santa Barbara, Santa Barbara, CA 93106-3060, United States of America<sup>4</sup> Connected Waters Initiative Research Centre (CWI), School of Civil and Environmental Engineering, UNSW, Sydney, NSW 2052, Australia<sup>5</sup> Department of Geography, University of California Santa Barbara, Santa Barbara, CA 93117, United States of America<sup>6</sup> Bren School of Environmental Science and Management, University of California Santa Barbara, Santa Barbara, CA 93117, United States of America<sup>7</sup> Department of Forest and Natural Resources Management, State University of New York College of Environmental Science and Forestry, Syracuse, NY 13210, United States of America

\* Author to whom any correspondence should be addressed.

E-mail: [warterm@cardiff.ac.uk](mailto:warterm@cardiff.ac.uk)**Keywords:** Arizona, ecohydrology, grasses, shrubs, riparian, groundwater-dependent ecosystems, climate changeSupplementary material for this article is available [online](#)

## Abstract

In dryland ecosystems, vegetation within different plant functional groups exhibits distinct seasonal phenologies that are affected by the prevailing hydroclimatic forcing. The seasonal variability of precipitation, atmospheric evaporative demand, and streamflow influences root-zone water availability to plants in water-limited environments. Increasing interannual variations in climate forcing of the local water balance and uncertainty regarding climate change projections have raised the potential for phenological shifts and changes to vegetation dynamics. This poses significant risks to plant functional types across large areas, especially in drylands and within riparian ecosystems. Due to the complex interactions between climate, water availability, and seasonal plant water use, the timing and amplitude of phenological responses to specific hydroclimate forcing cannot be determined *a priori*, thus limiting efforts to dynamically predict vegetation greenness under future climate change. Here, we analyze two decades (1994–2021) of remote sensing data (soil adjusted vegetation index (SAVI)) as well as contemporaneous hydroclimate data (precipitation, potential evapotranspiration, depth to groundwater, and air temperature), to identify and quantify the key hydroclimatic controls on the timing and amplitude of seasonal greenness. We focus on key phenological events across four different plant functional groups occupying distinct locations and rooting depths in dryland SE Arizona: semi-arid grasses and shrubs, xeric riparian terrace and hydric riparian floodplain trees. We find that key phenological events such as spring and summer greenness peaks in grass and shrubs are strongly driven by contributions from antecedent spring and monsoonal precipitation, respectively. Meanwhile seasonal canopy greenness in floodplain and terrace vegetation showed strong response to groundwater depth as well as antecedent available precipitation ( $aaP = P - PET$ ) throughout reaches of perennial and intermediate streamflow permanence. The timings of spring green-up and autumn senescence were driven by seasonal changes in air temperature for all plant functional groups. Based on these findings, we develop and test a simple, empirical phenology model, that predicts the timing and amplitude of greenness based on hydroclimate forcing. We demonstrate the feasibility of the model by exploring simple, plausible climate change scenarios, which may

inform our understanding of phenological shifts in dryland plant communities and may ultimately improve our predictive capability of investigating and predicting climate-phenology interactions in the future.

## 1. Introduction

Terrestrial vegetation responds to local and regional climate and its expression of the water cycle through distinct phenological events, as influenced by the seasonal variations in temperature and precipitation (Cleland *et al* 2007, Richardson *et al* 2013). Plants experience the direct and indirect effects of temperature and precipitation through the timing of leaf-on and leaf-off, as well as the seasonal availability of water in the unsaturated and saturated zone respectively, which drives vegetation productivity and composition (Richardson *et al* 2013, Schlaepfer *et al* 2017). Phases of green-up, maturity, senescence and dormancy, translate into annual peaks and troughs of greenness, which define the seasonal phenology as an expression of plant growth and vegetative health in response to hydroclimate forcing. Species-level observations have identified temperature as the main driver of spring onset and a break in cold season dormancy in temperate and boreal forests (Hunter and Lechowicz 1992, Hänninen and Kramer 2007, Berra and Gaulton 2021). However the level of climatic controls have been shown to vary between temperate and dry ecosystems (Jolly and Running 2004, Xin *et al* 2015). Particularly in semi-arid ecosystems, seasonal moisture availability is recognized as the primary controlling resource of vegetation growth and functioning (Rodriguez-Iturbe *et al* 1999, Rodriguez-Iturbe 2000). The critical link between phenology and climate variability, particularly temperature and precipitation, is considered a powerful indicator of past climate change with observed phenological changes also serving as guidance to predict the causes and consequences of potential future phenological shifts (Menzel *et al* 2006, White *et al* 2009, Diez *et al* 2012, Matthews and Mazer 2016, Munson and Long 2017, Rafferty *et al* 2020).

To date, prolonged periods of drought and increased water stress have already affected vegetation across a range of biomes, elevational gradients and species: from grasses and shrubs at low elevation (Yao *et al* 2006, Cui *et al* 2017, Munson and Long 2017) to boreal forests (de Beurs and Henebry 2010). Furthermore, changes to natural flow regimes and water table elevations, either as a result of temperature and precipitation changes or anthropogenic alterations, have increasingly put pressure on groundwater dependent ecosystems. This has led to increased mortality and widespread vegetation die-off throughout riparian ecosystems (Stromberg and Tiller 1996, Asner *et al* 2016, Goulden and Bales 2019, Kibler *et al* 2021, Rohde *et al* 2021). Similarly, shifts in the seasonal availability of soil moisture and timing of phenological events, as a result of warming temperatures, have affected soil moisture dependent vegetation, leading to prolonged periods of senescence, widespread vegetation die-back and the spread of invasive species (Liu *et al* 2012, Gremer *et al* 2015, Wallace *et al* 2016, Munson and Long 2017, Warter *et al* 2020). The effects of warming on green-up and senescence, in conjunction with changes to seasonal water availability, have subsequently raised the occurrence of early browning and senescence throughout forest and grassland ecosystems in the past. As a result, the landscape contained an abundance of dried out and easily ignitable fuel, which has amplified the extent and intensity of wildfires in recent decades, a trend which is likely to continue in the future (Westerling *et al* 2006, Abatzoglou and Williams 2016, Rao *et al* 2022).

Despite the sensitivity of phenology to climate change and observations of vegetation responses to changing climatic conditions, the magnitude and extent of the effects on vegetation phenology for specific plant functional types remain poorly understood (Cleland *et al* 2007, Körner and Basler 2010, Richardson *et al* 2013). Nevertheless, there is a growing urgency to expand and generalize our understanding of temporal vegetation responses to hydroclimate forcing in different plant biomes. This would support a more complete historical understanding of vegetation response to hydroclimate extremes and inherently improve the representation of phenology within ecohydrological and phenological modeling. An improved parameterization of phenology in water balance models would enable a better understanding of future climate-phenology interactions and generally creating a more accurate representation of phenology within climate models and global change studies (Peñuelas *et al* 2009, Diez *et al* 2012, Richardson *et al* 2012, Haynes *et al* 2019).

Climate change projections regarding the seasonal delivery of precipitation and a warming atmosphere threaten to raise physiological stress levels beyond existing tolerance thresholds, potentially propagating large-scale phenological shifts (Kimball *et al* 2010, Gremer *et al* 2015, Walker *et al* 2015). Given that dryland vegetation dynamics are primarily driven by the availability of root zone soil moisture (Rodriguez-Iturbe *et al* 1999, D'Odorico *et al* 2007, D'Odorico and Porporato 2019), plants have adapted by occupying very specific locations in the landscape in response to high air temperature and localized water availability

(Gremer *et al* 2015, Munson and Long 2017, Bradford *et al* 2020). Rapid response and recovery strategies have been observed throughout dryland grassland ecosystems to maximize favorable moisture conditions after prolonged dry periods (Pennington and Collins 2007, Munson 2013). At the same time, significant changes to natural flow regimes and water table elevations have compromised the sustainability of riparian vegetation communities (Stromberg and Tiller 1996, Stromberg *et al* 2005, 2013, Rohde *et al* 2021). The projected trends towards continued groundwater recession and rising evaporative demand in such water-limited environments thus threaten sensitive dryland vegetation. For example, vegetation shifts towards shrubbier, more drought tolerant species, and increased forest mortality, may occur as groundwater access becomes increasingly unavailable to all but the most deeply rooted species (Stromberg and Tiller 1996, Lite and Stromberg 2005a, Stromberg *et al* 2013, Sabathier *et al* 2021).

Ultimately, the true extent of these phenological shifts and overall changes to species composition within both groundwater and soil moisture dependent dryland vegetation communities is not yet fully understood. As such, further analysis is required by improving ecohydrological modeling capabilities over a range of spatiotemporal scales (Walker *et al* 2012, Gremer *et al* 2015, Munson and Long 2017, Schlaepfer *et al* 2017). Analyses of vegetation phenology through remote sensing have significantly improved our ability to track contemporary phenology and vegetation cycles on seasonal and interannual scales over a wide range of species and biomes (Choler *et al* 2010, de Beurs and Henebry 2010, Walker *et al* 2014, Lu *et al* 2015, Moon *et al* 2021). Previous studies have used climate-phenology relationships to build phenology models, however, they frequently focused on meteorological drivers such as temperature, humidity growing-degree days or vapor pressure deficit (Farrar *et al* 1994, Ji and Peters 2004, Jolly *et al* 2005, Choler *et al* 2010). Few also consider the whole seasonal cycle, but instead focus on individual phenological transition dates, such as leaf-out or senescence (Mariën *et al* 2019, Chen *et al* 2020). This is insufficient, particularly in dryland ecosystems, where seasonal water availability instead of temperature is limiting phenology (Richardson *et al* 2013, Renwick *et al* 2019). As such, there remains a need for models that capture the temporally complex vegetation dynamics of more water-controlled environments in a comprehensive way.

Therefore, in this study we use remotely sensed vegetation indices together with contemporary hydroclimate data to resolve the linkages between climate variability and phenology on a seasonal scale. The main goal of this study is to parameterize interannual variations in greenness, to support ecohydrological modeling within simple water balance models, which typically use fixed annual greenness values that are unresponsive to changes in climate and water availability. Such models often do not even incorporate the seasonality of deciduous vegetation in terms of its influence on the water balance (ET losses via transpiration should not be occurring when the plants are dormant—after leaf-off). Therefore, our modeling goes a step further because it not only captures the effects of green and senesced seasonal periods, but it allows values of greenness to respond to hydroclimatic forcing, such that, for example, high rainfall delivery in the right period will lead to a strong impact on greenness and vice versa.

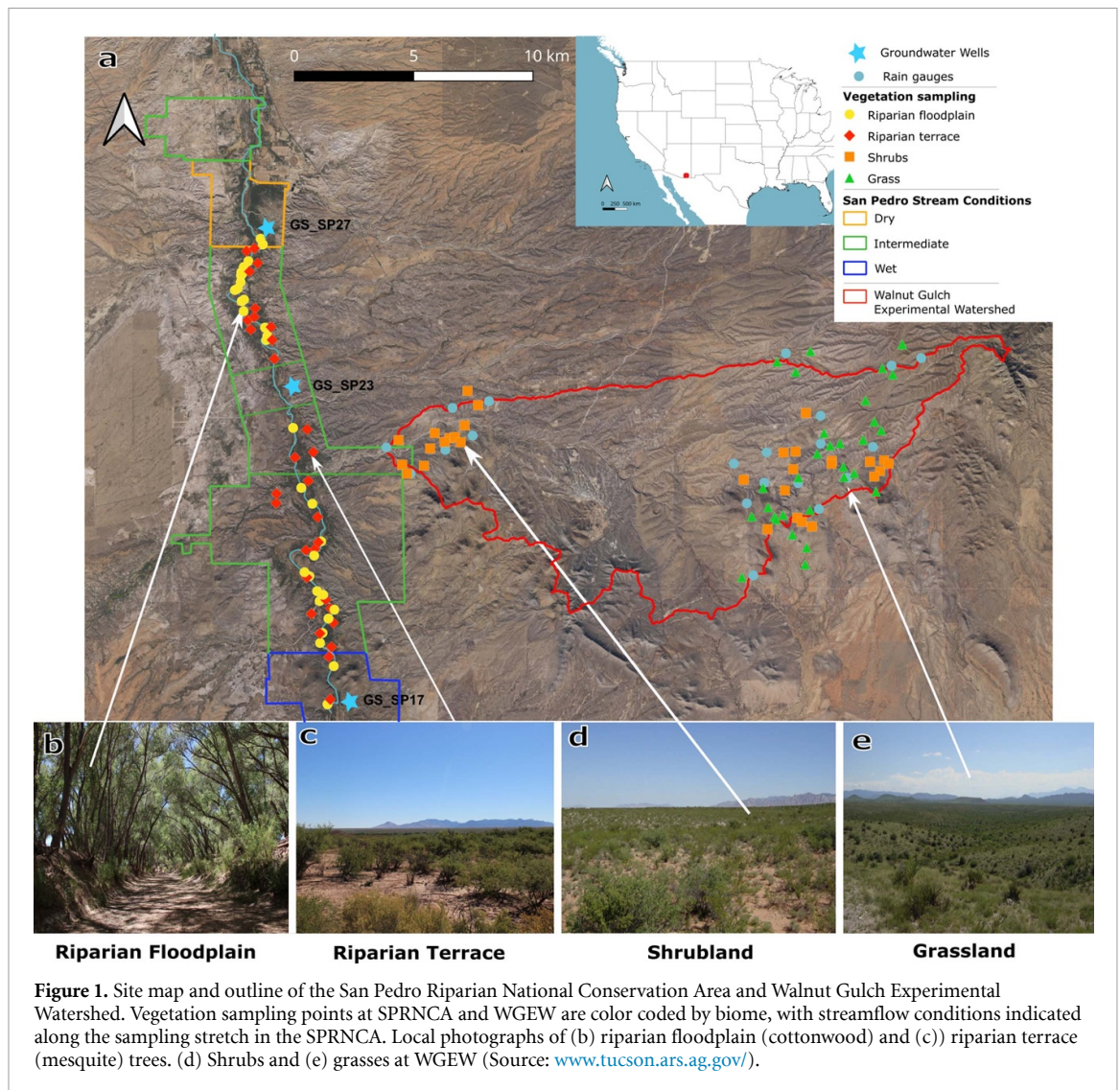
Overall, we focus on different plant functional types occupying distinct rooting locations within a dryland ecosystem in SE Arizona, from riparian trees to semi-arid grasses and shrubs. The overall objectives of this study are to (a) identify seasonal phenology patterns of different plant functional groups by exploring historical climate-phenology relationships; (b) determine key phenological events along the seasonal phenology curve; (c) develop empirical models for each key event between hydroclimate variables and vegetation greenness and (d) create synthetic seasonal phenology curves that capture vegetation greenness in response to hydroclimate forcing. We will delineate the relative controls of water availability and evaporative demand, including temperature, on phenology of four plant functional groups and use our model to explore vegetation responses under simple, plausible climate change scenarios. Although the results are specific to SE Arizona, our intent is to present a modeling framework that can be applied and tested in other dryland environments to evaluate hydroclimate-phenology relationships and the potential effects of climate change on vegetation dynamics.

## 2. Data and methods

### 2.1. Study region

We used remote sensing to sample vegetation greenness of different plant functional groups within two distinct and complementary areas in SE Arizona; the Walnut Gulch Experimental Watershed (WGEW) and San Pedro Riparian National Conservation Area (SPRNCA). The San Pedro and Walnut Gulch are both well studied dryland vegetation environments due to their characteristic hydrology and vegetation dynamics (Renard *et al* 2008, Skirvin *et al* 2008, Singer and Michaelides 2017, Stromberg *et al* 2017, Mayes *et al* 2020, Sabathier *et al* 2021). The hydrology of SE Arizona is strongly driven by the North American monsoon. Precipitation patterns exhibit a characteristic bimodal distribution with dual precipitation peaks in winter/spring and summer (Nichols *et al* 2002). Annual precipitation totals fall in the typical range between





300–400 mm year<sup>-1</sup>, with two-thirds of the annual precipitation and 90% of its runoff delivered during the summer months between July and September (Nichols *et al* 2002, Stromberg *et al* 2006, Moran *et al* 2008).

Riparian vegetation distribution and dynamics along the San Pedro River are strongly shaped by the spatial variability of available moisture, topography, as well as underlying geology and elevation (Makings 2005, Stromberg *et al* 2005, Sabathier *et al* 2021). Based on hydrology and geomorphological characteristics, the San Pedro has been divided into reach types that summarize flow conditions and associated vegetation communities along the river (Stromberg *et al* 2006). The major vegetation communities along the San Pedro include riparian woodlands on low floodplains, xero-riparian trees and shrubs on river terraces, and grasses and desert shrubs on piedmont surfaces further upland (Makings 2005, Sabathier *et al* 2021). The narrow gallery forest along the river channel is primarily populated by obligate phreatophytes such as Fremont cottonwood (*Populus fremontii*) and Goodding's willow (*Salix gooddingii*), which prefer consistent access to groundwater and are therefore strongly influenced by variations in connectivity between surface and subsurface water flows (Makings 2005, Stromberg *et al* 2017). Bordering the riparian corridor are upland terraces dominated by mesquite woodlands (*Prosopis velutina*), which have been observed to be less dependent on groundwater and more flexible in their use of seasonally available water sources, including soil moisture (Snyder and Williams 2000, Stromberg *et al* 2017).

We sampled the vegetation of the phreatophyte-dominated riparian floodplain and mesquite woodland terrace longitudinally along a 28 km stretch of the river (figure 1(a)). This includes wet, intermediate and dry riparian flow reaches, spanning a gradient from perennial to intermittent flow (Stromberg *et al* 2006, 2017, Sabathier *et al* 2021). The delineation of reaches is based on stream flow hydrology and geomorphological properties. It is also based on vegetation bioindicators that are sensitive to surface water or groundwater and has been established by Stromberg *et al* (2006) and is widely used to differentiate vegetation and hydrological conditions throughout the SPRNCA.

At Walnut Gulch, vegetation distribution is dominated by a variety of native and exotic grass (i.e. black grama (*Bouteloua eriopoda*(Torr.)), sideoats grama (*Bouteloua curtipendula*), Lehman lovegrass (*Eragrostis lehmanniana*) and various shrub species (i.e. creosote bush (*Larrea tridentata*), tarbush (*Eremophila glabra*), and snakeweed (*Gutierrezia sarothrae*)), which comprise the two main structural vegetation types (figures 1(d) and (e)) (Skirvin *et al* 2008). Total vegetation cover at Walnut Gulch is generally sparse and highly variable in space, with species distribution and density linked to soil type, aspect, and spatial precipitation variability (Skirvin *et al* 2008). Based on these predominant vegetation types at WGEG and SPRNCA, we selected four plant functional groups that can be considered characteristic (with local analogues) in similar dryland environments: (a) semi-arid grasses, (b) semi-arid shrubs, (c) riparian phreatophyte floodplain trees and (d) xeric riparian terrace trees (figures 1(a)–(d)).

## 2.2. Datasets

### 2.2.1. Hydroclimate

We downloaded several datasets of climate variables to support our analysis of hydroclimate controls on phenology. Daily precipitation and minimum/maximum air temperature data for the SPRNCA were extracted from the National Oceanic and Atmospheric Administrations (NOAA) Climate Prediction Center's (CPC) Unified Gauge-Based Analysis of Daily Precipitation (<https://psl.noaa.gov/data/gridded/data.cpc.globalprecip.html>) and Global Unified Temperature ([www.psl.noaa.gov/data/gridded/data.cpc.globaltemp.html](http://www.psl.noaa.gov/data/gridded/data.cpc.globaltemp.html)). The CPC data combines the available gauge-based precipitation information and uses an optimal interpolation objective analysis technique to create a gauge-based spatial precipitation output (M. Xie *et al* 2007, Chen *et al* 2008). We generated datasets for the period 1994–2019 with a spatial resolution of  $0.5^\circ \times 0.5^\circ$  covering our study area along the San Pedro River.

At Walnut Gulch, precipitation data were extracted from the Southwest Research Center Data Access Project ([www.tucson.ars.ag.gov/dap/](http://www.tucson.ars.ag.gov/dap/)) for the period between 1994–2019. Precipitation data is available for a multitude of gauges located throughout the catchment. However, we used only a selection of the available rain gauges (Nr: 1,3,4,5,7,8,45,46,48,50,53,56,57,58,59,62,63,64,67,72), which are closest to the vegetation sampling points of grass and shrub (figure 1(a)). We then created a spatial arithmetic mean between all gauges for our analysis. It should be noted that there was no significant difference between the stations, as they were all relatively close to each other.

At Walnut Gulch we were able to get local precipitation data from the well-studied USDA network of rain gauges in the catchment. However, at the San Pedro Riparian Area, local climate data is not readily available, thus the NOAA climate dataset at  $0.5^\circ$  was chosen as the most suitable. As such, we do not expect dramatic differences in the seasonal distribution of rainfall in this system, and the strong hydroclimatic correlations between vegetative greenness and rainfall bear this out for the different plant functional groups. Ultimately, our goal was to create a general model structure that could be applied in a variety of settings, which might also face similar data availability challenges.

Daily potential evapotranspiration was extracted from the hPET dataset for our two study sites (<https://data.bris.acuk/data/dataset/qb8ujazzda0s2aykkv0oq0ctp>). To characterize water availability to phreatophytes we obtained datasets of mean daily depth to groundwater (DTG) from the US Geological Survey's National Water Information System (<https://waterdata.usgs.gov/az/nwis/>), focusing on monitoring wells with the most continuous measurements and longest monitoring periods. We obtained records of several groundwater wells (USGS ID: 313 738 110 102 901 (GS\_SP17), 314 511 110 120 601 (GS\_SP23) and 314 904 110 125 001 (GS\_SP27)) located in the wet, intermediate and dry reaches respectively (figure 1(a)). DTG records for wells GS\_SP17 and GS\_SP23 contain daily data between 2001–2018, with 80% and 52% of the respective daily records complete. This means that data gaps exist in the timeseries, with a certain number of days missing. Therefore, a fewer number of data points could be used to assess DTG at the time of maximum greenness for riparian terrace and floodplain trees. GS\_SP27, being a periodic monitoring well, only has limited observations available between 2007–2010. Therefore, we did not use this well in our analysis due to the limited amount of data available. DTG generally varies among reaches due to local differences in the underlying geology and geomorphology, as well as proximity to tributaries and ground-water pumping sites (Lite and Stromberg 2005a). In this study, we primarily explored hydroclimate-phenology interactions for the perennial and intermittent reaches. We chose to frame our analysis within the range of a water year, which generally refers to a time period of 12 months for which precipitation totals are measured. It is usually timed to begin after a dry period, so the moisture input can be 'reset'. In many hydrological studies, it is set to start on October 1st, with days counted sequentially from the first day of the water year (DOWY) (i.e. October 1<sup>st</sup>) until the end (i.e. September 30<sup>th</sup>). In this study we set the water year from November 1<sup>st</sup> to October 31<sup>st</sup> to represent the bimodal precipitation regime of this monsoon dominated ecosystem and the associated vegetation dynamics of the region.

### 2.2.2. Satellite remote sensing of vegetation greenness

In order to measure how vegetation greenness evolves seasonally and responds to inter-annual variations in climate, we obtained continuous timeseries of surface reflectance images from the Landsat 5 Thematic Mapper, and Landsat 8 Operational Land Imager/Thermal Infrared Sensor (<https://espa.cr.usgs.gov/>). The Soil Adjusted Vegetation Index (SAVI) is considered to be a particularly suitable metric in regions with relatively low vegetation cover (Huete 1988). We only selected cloud-free images which are available at 30 m spatial resolution every 16 d. SAVI is in general closely related to the Normalized Differenced Vegetation Index (NDVI) but considered less sensitive to soil brightness. The effects of soil background reflectance in areas where vegetation cover is less dense are accounted for by including a soil brightness correction factor ( $L$ ) (Huete 1988). SAVI is defined as:

$$\text{SAVI} = \frac{(\text{NIR} - \text{RED})}{(\text{NIR} + \text{RED} + L)} * (1 + L) \quad (1)$$

where  $L$  is the soil brightness correction factor, commonly set to 0.5, which is considered applicable to suit most land cover types (Huete 1988).

To avoid mixed SAVI signatures of multiple vegetation types at Walnut Gulch, we visually identified homogenous areas where grasses and shrubs are the dominant vegetation cover type by using a map of vegetation classes previously established by Skirvin *et al* (2008), as well as most recent aerial imagery from the National Agricultural Imagery Program (NAIP) at a 1 m spatial resolution ([www.fsa.usda.gov/programs-and-services/aerial-photography/imagery-programs/naip-imagery/index](http://www.fsa.usda.gov/programs-and-services/aerial-photography/imagery-programs/naip-imagery/index)). To validate the selected SAVI pixels we checked for potential changes in land cover/ vegetation type using maps from the USGS National Land Cover Database, which is updated every five years, for the period 2001–2019 ([www.usgs.gov/centers/eros/science/national-land-cover-database](http://www.usgs.gov/centers/eros/science/national-land-cover-database)). If no significant changes in the land cover change index was found, it can be assumed that the land cover type did not significantly change during the study period. For Landsat images, we used a single pixel approach, selecting 30 individual sampling points clustered (cloud) over a homogenous area in the Walnut Gulch Catchment. For each point we extracted remote sensing data (SAVI) between 1994–2021. Similarly, at the San Pedro site we used high-resolution NAIP imagery to visually delineate the riparian floodplain and mesquite terraces and sampled multiple pixels for each plant functional type longitudinally along a 28 km stretch (figure 1(a)). To obtain the most homogenous signature of vegetation greenness for the riparian floodplain, we selected only pixels in areas where the width of the cottonwood corridor exceeded 30 m.

We further filtered the obtained SAVI data to include only years where images in June, July and August were available, which usually corresponds to the period when riparian vegetation is leafed out, and plants exhibit maximum greenness values. The SAVI from all sampled pixels was summarized into a spatial median for each plant functional group over the study period. We then aggregated the SAVI with its 16 d frequency to mean monthly values to generate 12 monthly averages per year. Each month was then averaged across years ( $n = 27$ ) into a seasonal annual composite (i.e. every January over the study period). This leaves a composite series of 12 values for every month, including standard deviation of interannual variations. This not only smooths the SAVI signal, but also removes any issues regarding aligning sampling dates from remote sensing data with climate data. We use the seasonal composite to characterize the phenology curve and determine the key phenological events and controls on timing and amplitude of greenness.

## 2.3. Phenological model development

The framework and step-wise approach for the proposed methodology of creating synthetic phenology curves is broadly illustrated in figure 2. To model the key controls of seasonal greenness of different plant functional groups, we first analyzed the statistical relationships between hydroclimate and remote sensing data. We first defined the key events along the seasonal curve and then extracted the greenness during each key event for every year. We then explored the possible link to relevant hydroclimate variables, by establishing empirical relationships between greenness at the time of the key event (i.e. maximum greenness) and a relevant hydroclimate variable. We did not create long-term mean seasonal climate variables but used the annual climate data for the regression analyses. Regression models were developed based on relationships between hydroclimate and remote sensing data and used to predict the amplitude of greenness during each event.

### 2.3.1. Key phenological events

For defining the key phenological events for all plant functional groups we considered the shape of the mean seasonal SAVI composites. The seasonal cycle of vegetation in SE Arizona can show a characteristic unimodal or bimodal cycle in response to the local hydroclimate and water availability, and depending on the plant



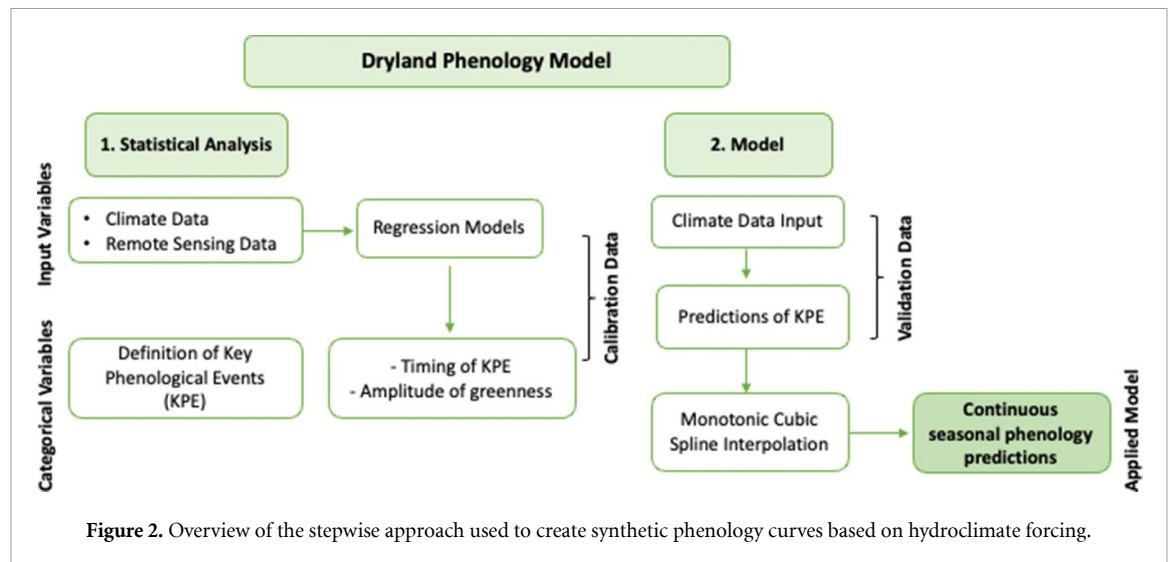


Figure 2. Overview of the stepwise approach used to create synthetic phenology curves based on hydroclimate forcing.

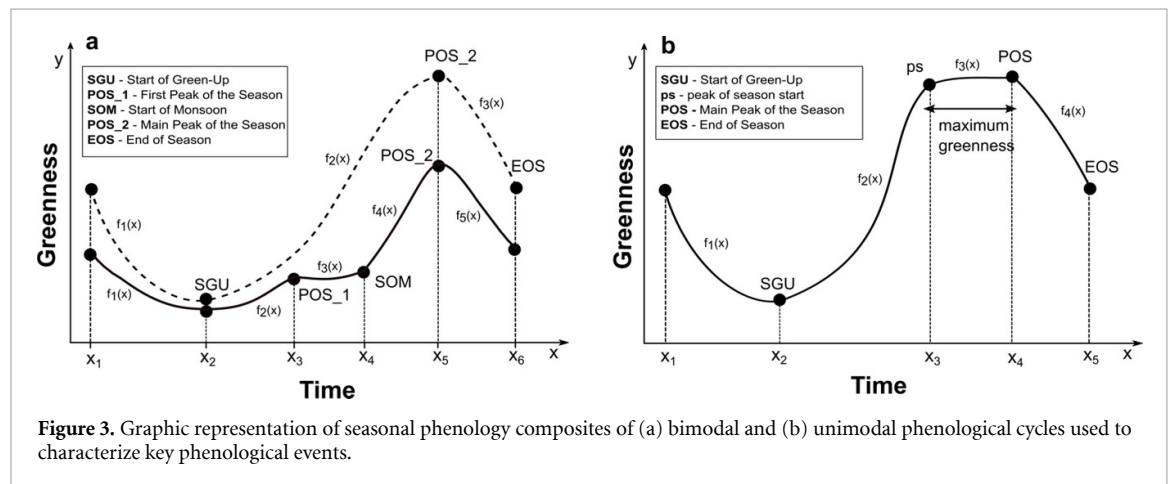
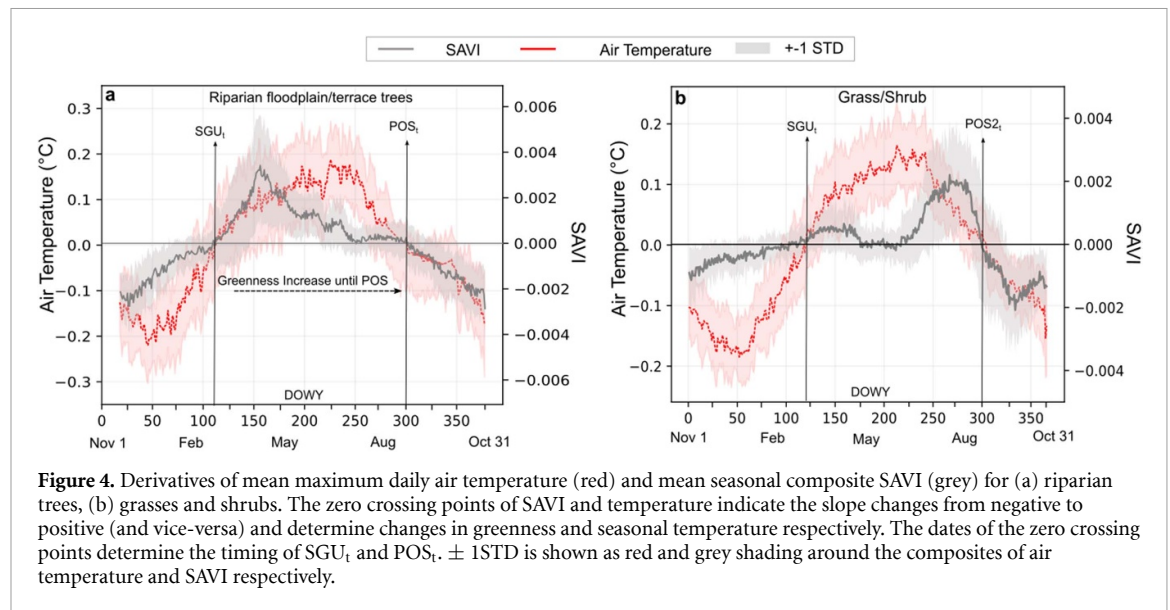


Figure 3. Graphic representation of seasonal phenology composites of (a) bimodal and (b) unimodal phenological cycles used to characterize key phenological events.

functional type (Jenerette *et al* 2010, Notaro *et al* 2010). Grasses and shrubs generally displays a bimodal seasonal cycle which can be attributed to seasonal interactions with temperature and precipitation. The plants' sensitivity to soil moisture drives the dual greenness peaks, with a first small seasonal peak in spring (POS\_1) in response to a break from cold season dormancy mediated by temperature and the accumulation of cool season precipitation (Notaro *et al* 2010). The increased transpiration and declining moisture resources incur a period of low photosynthetic activity before the arrival of the monsoon. This leads to a second larger seasonal peak (POS\_2), after which greenness starts to subsequently decline on a steady downwards trend until the end of the season (EOS) (figure 3(a)). In contrast, the unimodal cycle of riparian trees exhibits a monotonic green-up in spring and a single seasonal peak at the height of the growing season between July and August (figure 3(b)) (Notaro *et al* 2010, Walker *et al* 2014).

We defined several key phenological events based on the two characteristic phenology distributions (unimodal and bimodal), which we use as hinge points to reconstruct the seasonal phenology curves. The start of green-up (SGU) for all plant functional groups is defined as the DOWY on which the median SAVI shows consistent increase and upwards trend, representing a break in dormancy and the onset of photosynthetic activity. For bimodal plant functional types (figure 3(a)) we define a spring greenness peak (POS\_1). The next hinge point is the start of the monsoon (SOM) from where a steady increase in greenness leads to the second larger greenness peak at the height of the growing season (POS\_2). After this point, plants can be considered to start senescing as greenness starts to steadily decline until the EOS, which is estimated as the last DOWY (DOWY 365). In unimodal vegetation, after green up they only exhibit a single seasonal peak (POS\_2), after which senescence sets in and greenness declines towards the end of season. For certain trees, the peak of season (POS) shows a broader peak, indicating a more extended period of maximum greenness and maturity. In this case, an additional hinge point is defined to characterize the start of the peak greenness period (ps).





### 2.3.2. Timing of key phenological events

The first step in creating a synthetic phenology is to establish the timing of key phenological events based on greenness responses to hydroclimatic drivers. Once these are determined and greenness values are calculated for them, a synthetic curve can be fit via splines (figure 3). Previous studies observed a close link between the intra-seasonal timing of phenological events and temperature, as well as precipitation. However, temperature is typically considered the main driver of the timing of green-up and senescence (Jolly *et al* 2005, Richardson *et al* 2013, Renwick *et al* 2019). Therefore, we have adopted that concept here to define the start of the phenological green up ( $SGU_t$ ) and to indicate the timing of the highest peak of season greenness ( $POS_{2t}$ ). To extract the phenological timing for these two events, we utilize SAVI and temperature data. Given that SAVI is only measured every  $\sim 16$  d, but temperature is measured daily, we had to account for the time lags between temperature and SAVI by applying the delayed moving average method (Wu *et al* 2021) to the timeseries of daily maximum temperature, by using 16 d averages to match the temporal resolution of SAVI. Thus, we developed synchronized curves of both SAVI and temperature from which to analyze the timing of phenological metrics (figure 4).

Next, to identify the timing of SGU and POS for all plant functional groups as a function of temperature, we computed first derivatives of the time-matched curves of SAVI and temperature via the curve derivative method (Zhang *et al* 2004). Then we quantitatively compared seasonal SAVI derivatives with the derivative of temperature to identify when the slopes of both curves cross zero (change of sign, for example, where a change from negative to positive values indicates an increase in greenness associated with the SGU). The timing of the peak of season ( $POS_2$ ) is determined as the date when the SAVI derivative crosses zero again (from positive to negative), indicating the start of a monotonic decline in greenness, defined as the start of senescence (figure 4), which continues until the EOS and which is defined as the end of the water year set to October 31<sup>st</sup>. Note the relationships between these metrics in derivative space and how they compare to the actual SAVI curves (c.f., figures 3 and 4).

These steps can be carried out to determine the timing of phenological events to model a unimodal synthetic phenology curve, for example that of riparian terrace trees such as mesquite. However, some plant species exhibit more complex phenologies that require additional information. For example, riparian floodplain trees such as cottonwoods in the Southwest USA may have a prolonged, broader peak greenness that needs to be delineated by an additional hinge point, which denotes the start of the period of maximum greenness. The timing of this event is also forced by temperature, as the date when the temperature derivative exhibits maximum change (see figure 4).

For bimodal plant species with two seasonal peaks in greenness, such as for grasses and shrubs, we separately compute the timing for each peak ( $POS_1$  and  $POS_2$ , figure 3(a)). However, for these plant functional groups, we found that the temperature derivative curve does not help in defining the timing of the first spring peak, which is associated more with antecedent precipitation, which defines the store of root-zone water availability in these water-limited environments (Jolly *et al* 2005, Tang *et al* 2015). Because the bimodal phenology is closely linked to the dual precipitation distribution of the region, we determined the timing of the first peak,  $POS_1$ , and the SOM, using the derivatives of seasonal precipitation instead of

temperature.  $SOM_t$  is determined by the onset of the monsoon, as the inflection point with the steepest increase along the cumulative seasonal precipitation composite mean (Figure S1(a)).  $POS\_1_t$  is determined using the derivative of precipitation at the point where the derivative equals zero, which indicates the end of the spring rains and thus the peak of the first period of green-up (Figure S1(b)).

### 2.3.3. Greenness amplitude for key phenological events

To estimate the sensitivity of different hydroclimate variables on greenness amplitude, we performed correlation analyses between hydroclimate and observed SAVI values of key phenological events. We extracted annual values for each phenological event and tested the correlation strength between observed SAVI and concurrent and antecedent/lagged hydroclimate variables. Given the direct sensitivity of soil moisture dependent species, such as grasses and shrubs, to accumulated antecedent precipitation in the soil (Laio *et al* 2001, Porporato *et al* 2002, D'Odorico *et al* 2007), we applied the moving average method to the timeseries of daily precipitation. Using multiple 16 d composite periods we tested lags of up to 96 d to account for antecedent rainfall contributions to soil water availability (Ukkola *et al* 2021).

Vegetation dynamics of deeper rooted phreatophyte species such as riparian floodplain trees, are known to respond primarily to variations in water table depth, depending on root zone access to the water table (Porporato *et al* 2002, Laio *et al* 2009, Stromberg *et al* 2017). However, it has also been shown that riparian trees may access water from the upper soil layers to substitute water demands (Snyder and Williams 2000, Singer *et al* 2014). This soil water availability might be reasonably generalized as antecedent available precipitation ( $aaP = P - PET$ ), which we use as a proxy for deeper root zone water availability. Therefore, we analyzed both depth to groundwater and  $aaP$  as potential controls on the seasonal greenness peak for riparian corridor and terrace trees, testing the relationships between SAVI and DTG and between SAVI and  $aaP$ . Due to the unimodal phenology cycle in riparian trees, we determined POS as the most responsive phenological event to hydroclimate variations and created normal distributions based on observed values for greenness at SGU and EOS, as these showed minimal interannual variations.

To account for the differences in the DTG of different wells, observed data were normalized to the same range and scale (0–1), irrespective of absolute values. DTG values are expressed as  $DTG\_norm$  and each well is normalized as:

$$dtg_{norm,i}(t) = (dtg_{t,i} - dtg_{i,min}) / (dtg_{i,max} - dtg_{i,min}). \quad (2)$$

Based on the functional form of regressions between observed SAVI and the relevant hydroclimate variable for each phenological event, we fit linear regression models, which were calibrated using half of the available data. We used antecedent precipitation (P) for grasses and shrubs and depth to water table as well as antecedent available precipitation (P-PET) for riparian floodplain and terrace trees. Specifically, we calibrated the regression models to a subset of data using odd or even years between 1994–2021 ( $n = 13$  years) and assessed the goodness of fit using either Pearson's R or Spearman's Rho correlation. For the purposes of creating the most dynamic synthetic phenology curves, we took into account the inherent uncertainty in these relationships, by introducing a prediction interval (PI) around all regression models. The 95% PI denotes 95% confidence that this area will contain a new observation of greenness in response to a climate forcing and is defined as:

$$PI(y_{pred}) = T_{n-m}^{0.975} \sigma \sqrt{1 + \frac{1}{n} + \frac{(x^* - \bar{x})^2}{\sum_{i=1}^n (x_i - \bar{x})^2}} \quad (3)$$

where  $y_{pred}$  is the predicted value of greenness in response to climate forcing  $x^*$ ,  $T$  denotes the 97.5th percentile of the Student's t-distribution with  $n-m$  degrees of freedom, and  $\sigma$  is the standard deviation of the residuals at the confidence level (Bevington and Robinson 2003). We then used the prediction interval as a range for a Monte Carlo sampling loop to create multiple simulations ( $N = 100$ ) of stochastic greenness values that would represent the spatial and temporal variability of observed greenness values in response to hydroclimate forcing at the temporal location of each phenological event.

### 2.3.4. Modeling of synthetic phenology curves

To create continuous synthetic phenology curves, we used the coefficients from the regression models of each phenological event to estimate annual synthetic SAVI values at the timing of a key phenological event in response to hydroclimate forcing. Stochastic simulations of greenness ( $N = 100$ ) for each event within the range of the prediction interval are summarized into a sample median. We validated the performance of the regression models and the models' ability to capture greenness responses to variable hydroclimate forcing, by using the other half of the hydroclimate data, comprising the remaining years between 1994–2021 not used

for calibration ( $n = 13$  years). We used monotonic cubic spline interpolation between phenological events of an individual year and fit piecewise cubic polynomials, creating smooth continuous functions which pass through all data points without inducing unwanted oscillations in the fitted curve and insure monotonicity (Wolberg and Alf 2002). The cubic spline are fitted at an interval between phenological events, with the number of data points and intervals varying between bimodal ( $n = 5$ ) and unimodal ( $n = 3$ ) phenology cycles (figure S2). We use the *PchipInterpolator* function in python (<https://docs.scipy.org/doc/scipy/reference/generated/scipy.interpolate.PchipInterpolator.htm>) to automate the process of fitting splines between events for every year. The interpolant uses 1-D arrays of  $x$  and  $y$ , representing time and synthetic SAVI respectively, as well as optional parameters *extrapolate*, which we set to *True*.

The synthetic SAVI timeseries over the validation period were summarized into a seasonal mean composite, which was compared to the observed SAVI composite of each plant functional group. The correlation between observed and synthetic composites was assessed for using Spearman's Rho correlation while overall distributions were compared using the two-sample Kolmogorov-Smirnov statistic at a significance level of  $\alpha = 0.05$ . Additionally, to determine whether a phenological model was able to capture the variability of observed SAVI, we assessed synthetic greenness values of each key phenological event through Kruskal–Wallis testing at a significance level of  $\alpha = 0.05$ . We also evaluated timeseries of mean synthetic and observed values through Nash–Sutcliffe efficiency (NSE), as well as the coefficient of determination ( $R^2$ ) to estimate the measure of the variance explained by the model. Overall model performance was deemed adequate if no significant statistical difference between modeled and observed values was detected.

To further test and demonstrate the functionality of the model and explore the potential impacts of climate change on phenology, we created simple plausible climate change scenarios that include changes to key hydroclimate variables. Wintertime precipitation is projected to decline, while monsoon precipitation projections remain uncertain, with some regional climate models pointing towards a drying in monsoon regions of the Southwest, in addition to an overall drying trend and increased drought risk (Cook *et al* 2015, Pascale *et al* 2017, McKinnon *et al* 2021). Based on these projections, we applied a simplified scenario of reduced precipitation intensity by 20% during winter/spring (January–April) as well as during the monsoon (June–September) without changing the frequency of events. We further applied a reduction of PET by 20% to represent the rise in evaporative demand. As groundwater levels have been observed to decline in riparian areas throughout the Southwest (Stromberg and Tiller 1996, Kibler *et al* 2021, Rohde *et al* 2021), we implemented a lowered water table depth by 0.5 m to explore differential vegetation responses to a deeper water table. We chose to look at a lowered DTG independently of climate, as a representative of the potential effects of lowered precipitation and increased PET. Furthermore, we also explored the effects of temperature shifts and earlier warming, a trend which has been observed to affect vegetation phenology and advance the onset of green-up as well as senescence (Xin *et al* 2015, Munson and Long 2017, Warter *et al* 2020). We examined the impacts of such changes on vegetation responses of all plant functional groups, comparing mean growing season greenness distributions (March–September) between historic observations and model results through two-sample Kolmogorov–Smirnov testing and discuss the potential implications on vegetation and ecosystem functioning.

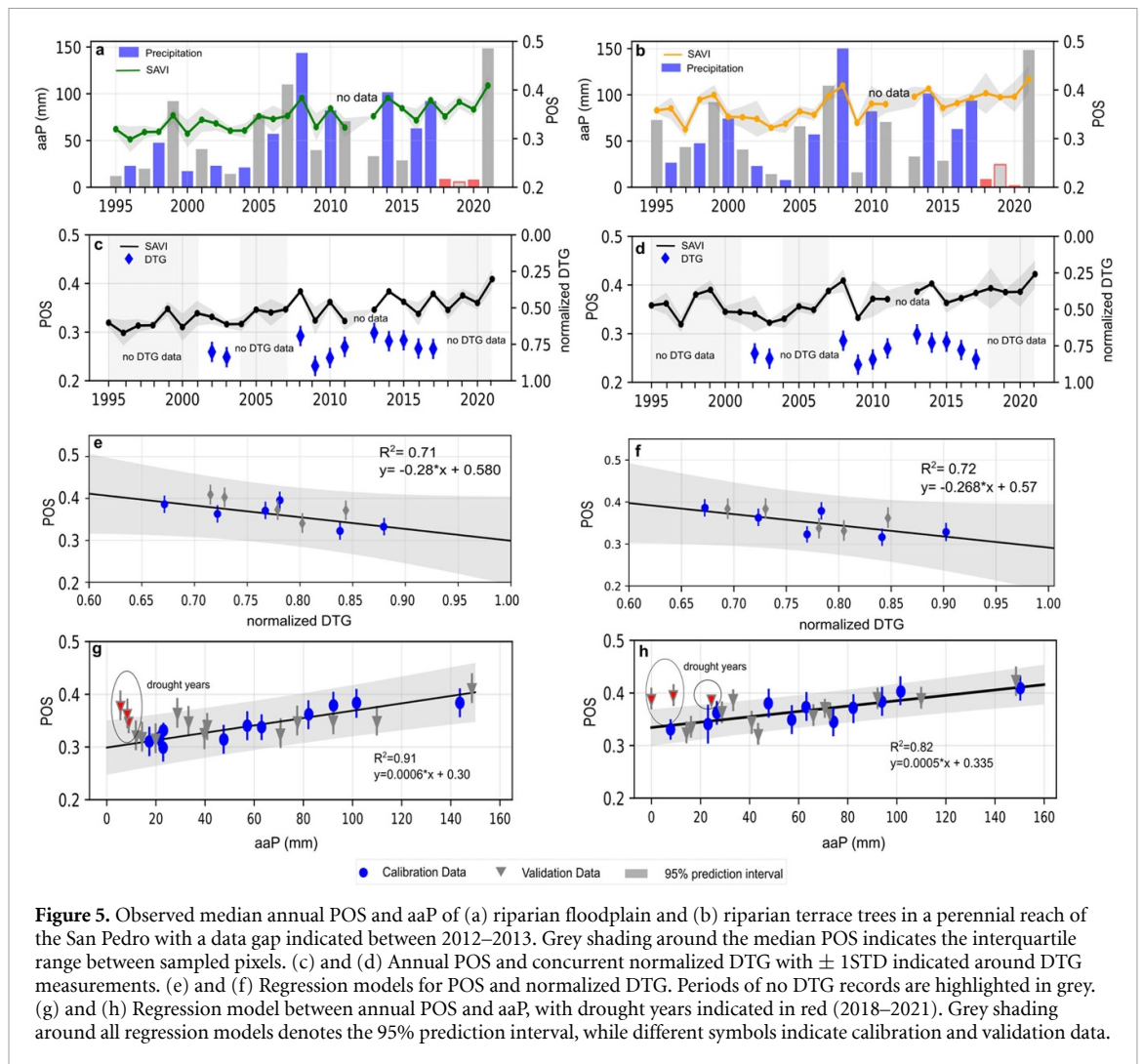
### 3. Results

#### 3.1. Timing of phenological events

A comparison of derivatives of composite SAVI and composite maximum air temperature predicted the timing the start of green-up ( $SGU_t$ ) in riparian floodplain trees in early February ( $\sim$ DOWY 110), while in terrace trees it occurred in early March ( $\sim$ DOWY 125) (figures 4(a) and (b)). The timing of the peak of season ( $POS_t$ ) was similar for trees, occurring around the same time in late August ( $\sim$ DOWY 300), linking the timing of SGU and POS to air temperature. Grasses and shrubs showed similar links between air temperature and SAVI regarding timing of SGU and the POS.  $SGU_t$  in spring occurred in early March ( $\sim$ DOWY 124), while the main summer peak  $POS_t$  occurred at the end of August ( $\sim$ DOWY 300), correlating well to the seasonal changes in maximum air temperature. The timing of SOM generally occurred between mid-June to early July ( $\sim$ DOWY 245) while  $POS_{1t}$  in shrubs and grasses usually occurred post spring rains and prior to the onset of the early dry season around mid-April ( $\sim$ DOWY 170).

#### 3.2. Greenness responses to hydroclimate forcing

We found significant correlations between DTG and maximum greenness of riparian floodplain ( $p < 0.05$ ) and terrace trees ( $p < 0.05$ ) as well as antecedent available precipitation ( $p = 0.012$  for floodplain;  $p = 0.015$  for terrace trees) (figure 5). The groundwater well in the perennial reach is in close proximity to the river ( $< 20$  m), with a shallow annual mean DTG of 1.8 m and small inter-annual fluctuations ( $\pm 0.2$  m). The

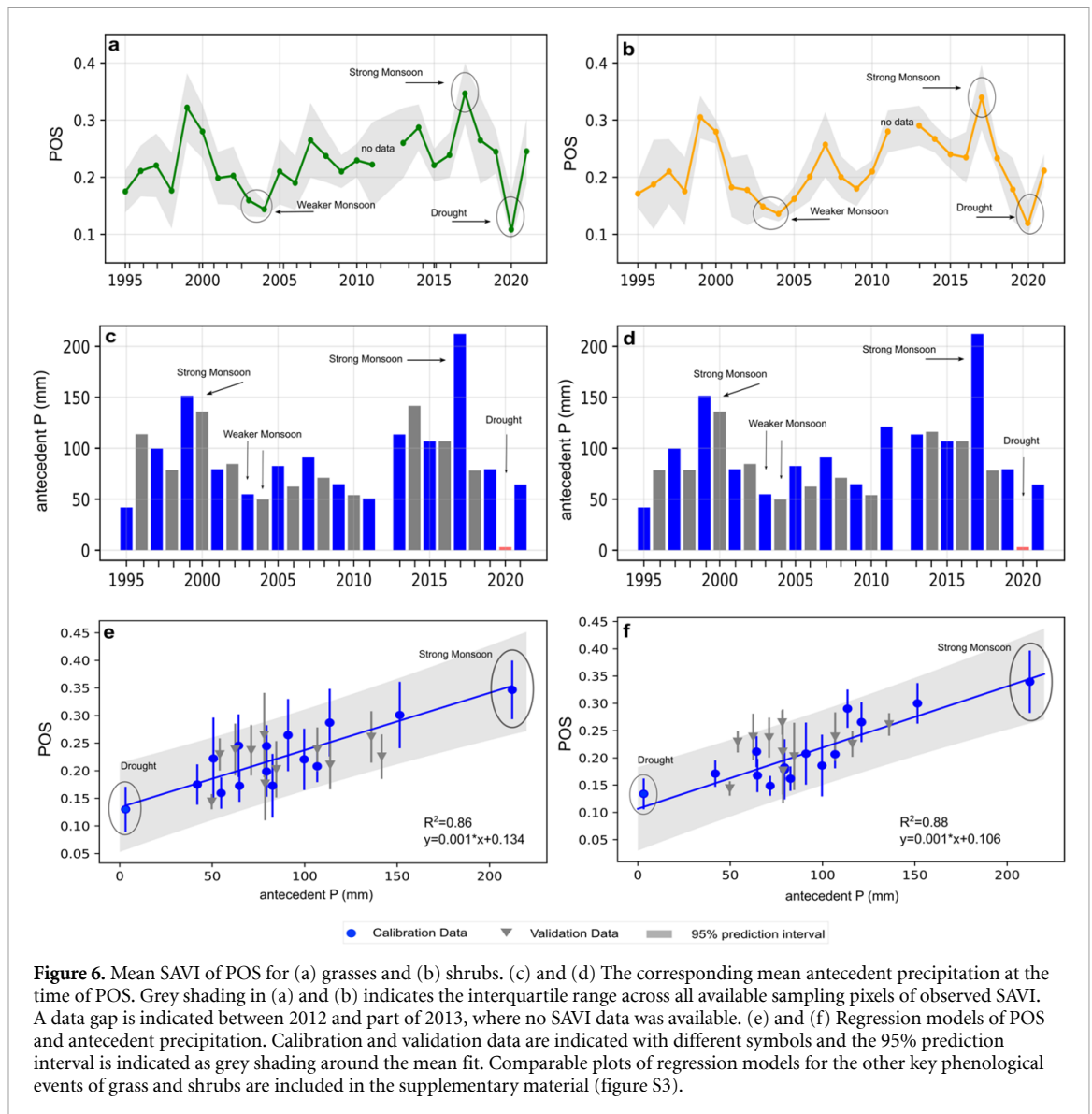


significant negative linear correlation observed between maximum SAVI and DTG, could be well explained through the regression models ( $R^2 = 0.71$ ,  $RMSE = 0.01$  for floodplain trees;  $R^2 = 0.72$ ,  $RMSE = 0.02$  for terrace trees) (figures 5(e) and (f)). At the same time, the significant positive linear trend between aaP and maximum SAVI, could also be well explained by a regression model ( $R^2 = 0.91$  for floodplain,  $RMSE = 0.1$ ;  $R^2 = 0.82$ ,  $RMSE = 0.13$  for terrace trees) (figures 5(g) and (h)). Overall, mean POS values were similar in both riparian floodplain and terrace trees, however we observed a slight upwards trend over the observation period, despite short term dry periods between 2018–2020 (figures 5(a) and (b)).

Overall, the presence of significant relationships to two different water sources makes sense, as riparian forest sites have been observed to also use shallow soil water during the rainy season (Snyder and Williams 2000). At the intermediate reach, we found the same significant relationships between POS and DTG, which could also be reasonably explained through the regression models ( $R^2 = 0.75$ ,  $RMSE = 0.08$ ;  $R^2 = 0.81$ ,  $RMSE = 0.003$ ) as well as aaP ( $R^2 = 0.72$ ,  $RMSE = 0.03$  for floodplain;  $R^2 = 0.73$ ,  $RMSE = 0.08$  for terrace trees) (figures S2(a) and (b)). The water table was moderately shallow with a mean annual depth of 2.8 m and larger interannual fluctuations ( $\pm 0.9$  m). We ultimately used the strong linear relationship between DTG and POS to establish synthetic phenology curves, as DTG is the more direct measure of vegetation greenness in groundwater-dependent riparian ecosystems. However, where groundwater data are unavailable, aaP can still be used as an alternative to force greenness responses.

In grasses and shrubs, POS showed visibly larger interannual variations than the POS in riparian trees, due the strong link to recent precipitation and the dual precipitation cycle (figure 6). Mean values of POS were similar in grasses and shrubs (0.22 and 0.20,  $\pm 0.05$  respectively) and showed a strong variability in response to interannual precipitation differences (figures 6(a) and (b)). More specifically, lower greenness values can be seen in years of lower antecedent moisture and weaker monsoon ( $< 50$  mm), such as in 2003 and 2004, during which  $> 50\%$  of Arizona was under extreme drought, as well as during summer 2020,

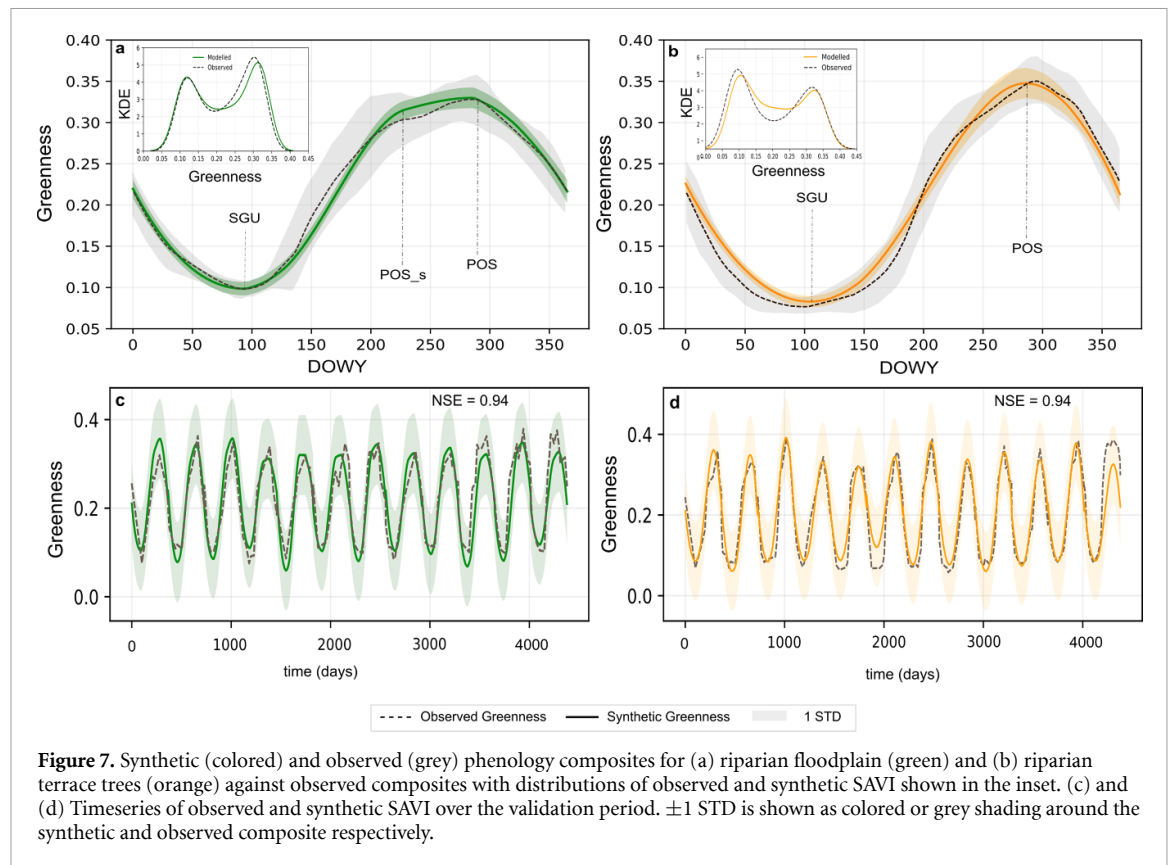




which was an exceptional drought year throughout the Southwestern US (U.S. Drought Monitor, <https://droughtmonitor.unl.edu/DmData/TimeSeries.aspx>). The highest POS was observed in response to larger monsoon totals such as in 1999 and 2000 (>140 mm) as well as in 2017, which had a particularly strong monsoon (>200 mm). Overall, POS was significantly related to antecedent monsoon precipitation of the previous month ( $p < 0.01$  for grass and shrubs). The interannual greenness variations during the POS could be well explained through the regression models ( $R^2 = 0.86$ ,  $RMSE = 0.07$  for grasses;  $R^2 = 0.88$  shrubs,  $RMSE = 0.05$ , figures 6(e) and (f)). Relationship to DTG for both, grasses and shrubs were not evaluated, because no DTG data was available for this area. Antecedent precipitation was the most significant variable also for other key phenological events. POS<sub>1</sub> was significantly related to accumulated moisture from weak synoptic rain events during the cool season ( $p < 0.01$ ) (figures S4(a) and (b)), while SOM correlated to the limited precipitation during the early summer dry period ( $p < 0.01$ ), during which time only limited increases in greenness occurred (figures S4(c) and (d)). Finally, greenness at EOS was most significantly related to antecedent precipitation from late monsoon and early autumn precipitation ( $p < 0.01$ ) (figures S4(e) and (f)).

### 3.3. Modeling synthetic phenology curves

Synthetic greenness values at POS forced by DTG for riparian floodplain and terrace trees showed no statistically significant difference to observed values ( $p = 0.81$ ,  $stat = 0.3$ ;  $p = 0.62$ ,  $stat = 0.25$ ), as did values at SGU ( $p = 0.07$ ,  $stat = 0.24$ ;  $p = 0.83$ ,  $stat = 0.06$ ) (figures 7(a) and (b)). The model showed strong predictive abilities, with a NSE of 0.94 for riparian floodplain and terrace trees between synthetic and observed timeseries (figures 7(c) and (d)). Median composite values showed strong correlation with



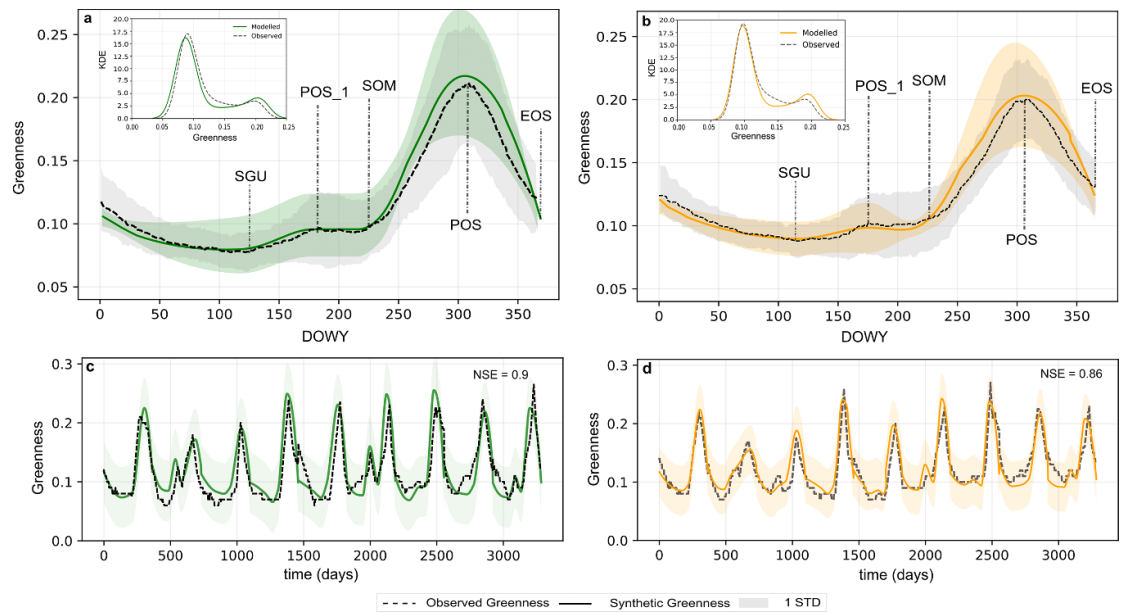
observed values, with the model capturing well the interannual variations in greenness ( $R^2 = 0.92$  riparian corridor;  $R^2 = 0.96$  terrace trees) (figures 7(c) and (d)). No significant differences could be observed between the distributions of mean seasonal synthetic and observed composites ( $p = 0.72$ ,  $stat = 0.2$ ;  $p = 0.83$ ,  $stat = 0.2$ ) (figures 7(a) and (b) inset).

In grasses and shrubs, synthetic values of POS\_1 forced by antecedent precipitation showed no statistically significant difference to observed SAVI ( $p = 0.6$ ,  $stat = 0.28$ ;  $p = 0.89$ ,  $stat = 0.02$ ). The timing of the SOM was accurately captured and greenness values at SOM showed no significant differences to observations ( $p = 0.93$ ,  $stat = 0.006$ ;  $p = 0.81$ ,  $stat = 0.06$ ) as well as similar interannual variability in response to variable precipitation totals during the early summer dry period (figures 8(a) and (b)). Synthetic POS values showed interannual variations of greenness in response to variable monsoon totals within the historic range and annual POS values showed no significant differences to observed values ( $p = 0.62$ ,  $stat = 0.25$ ;  $p = 0.9$ ,  $stat = 0.01$ ). Model performance was confirmed with synthetic and observed composite medians showing no statistically significant differences for grasses and shrubs, as well as a high coefficient of determination ( $R = 0.81$  grasses;  $R = 0.77$  shrubs). Good predictive power was confirmed through high NSE coefficients ( $NSE = 0.9$  grass;  $NSE = 0.86$  shrubs) (figures 8(c) and (d)). Table S2 contains a summary of goodness-of-fit statistics for all key phenological events and plant functional groups.

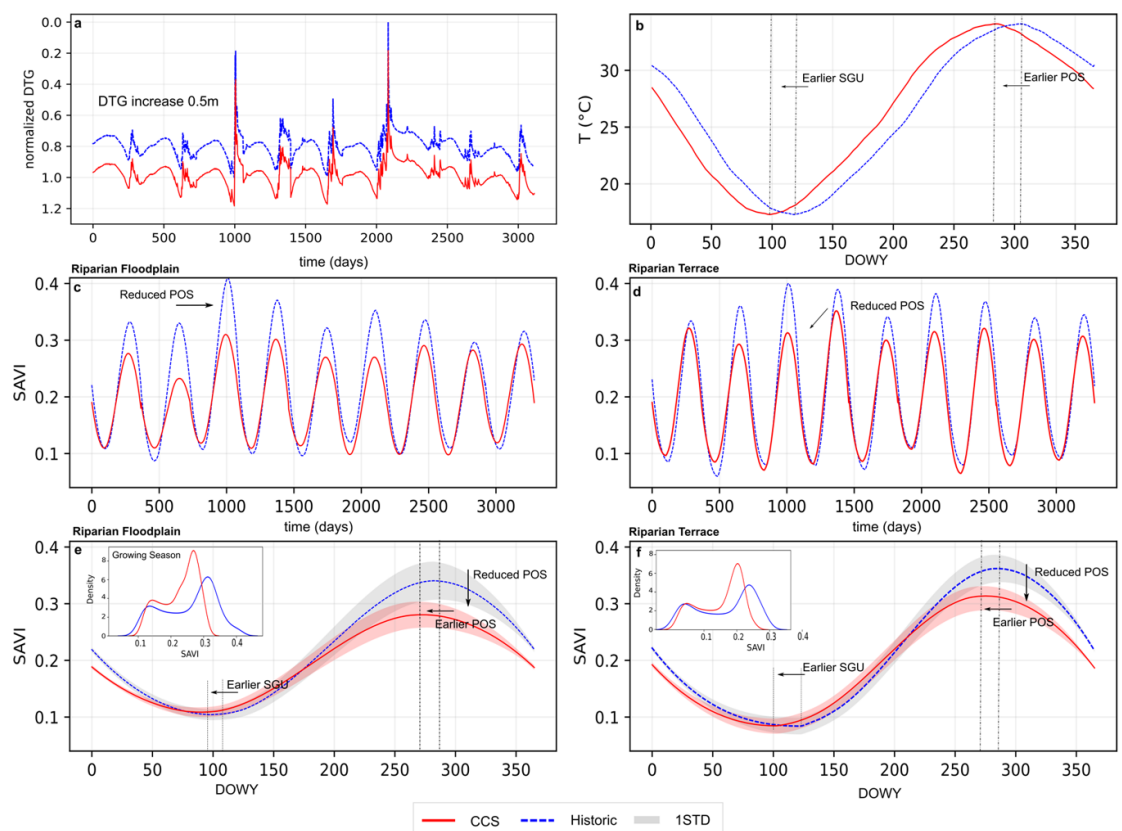
### 3.4. Vegetation responses to plausible future climate change scenarios

In riparian trees a drop in DTG of 0.5 m led to a significant reduction in annual POS values of approximately 17% in riparian floodplain and 13% in riparian terrace trees ( $p = 0.02$ ,  $stat = 0.57$ ;  $p = 0.02$ ,  $stat = 0.6$ , respectively) (figures 9(c) and (d)). Composite means further highlight the effects of shifted temperature, whereby an early onset of SGU and POS is visible. The shift towards an earlier POS, acts as a two-way effect on seasonal greenness as DTG may still be at its seasonal low level, prior to the onset of the monsoon and increase in baseflow. Growing season distributions show significant differences for riparian floodplain and terrace trees ( $p = < 0.05$ ,  $stat = 0.37$ ;  $p = < 0.05$ ,  $stat = 0.32$ , respectively), highlighting the shift towards lower POS values (figures 9(c) and (d), inset).

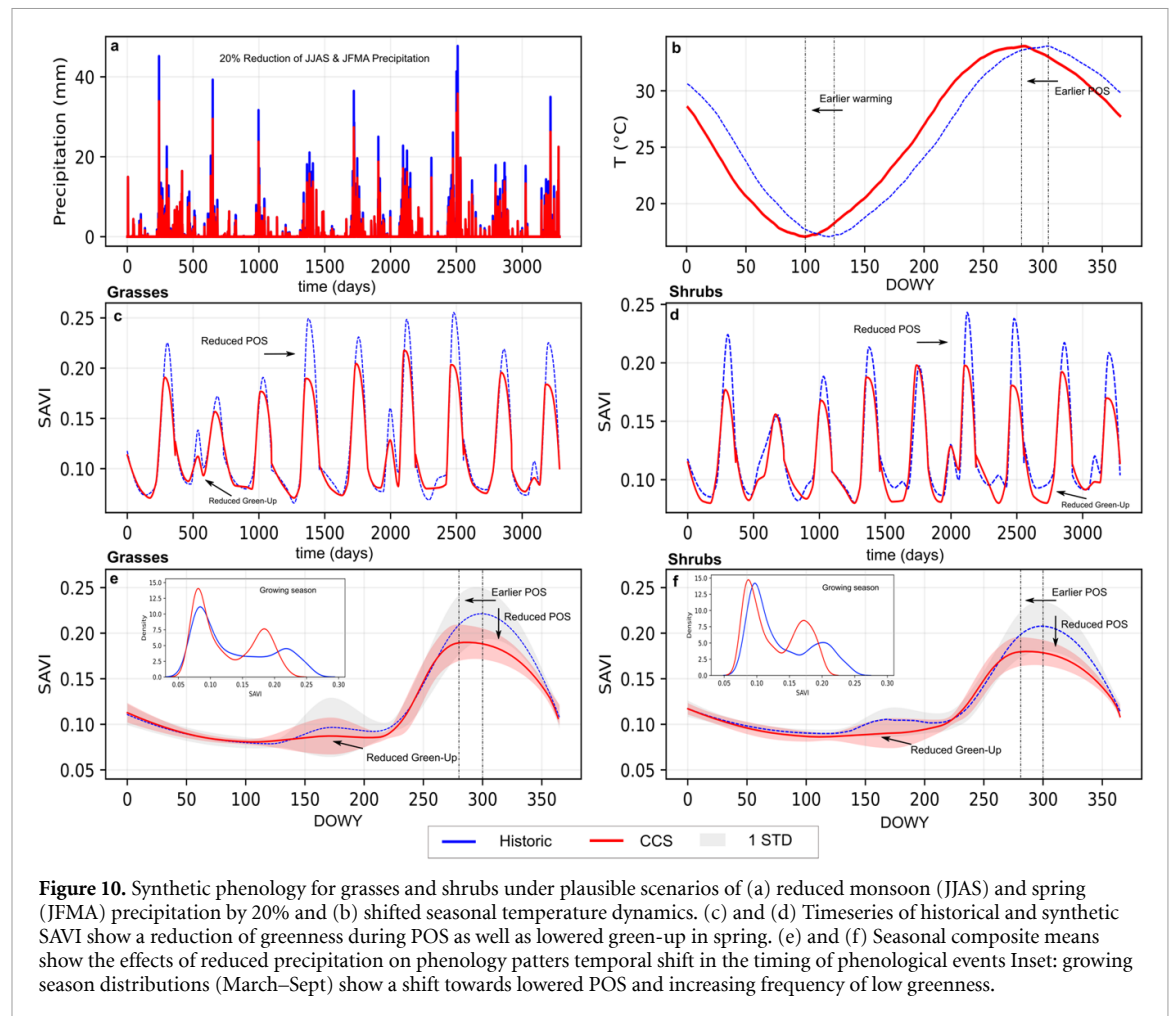
In grasses and shrubs, a 20% reduction in monsoon precipitation was sufficiently large to result in a significant decrease in greenness of POS by 15% in grass and 13% in shrubs ( $p = 0.03$ ,  $stat = 0.67$ ;  $p = 0.03$ ,  $stat = 0.66$ , respectively). Similarly, the reduced spring precipitation resulted in more muted green-up and reduced POS\_1 (figures 10(c) and (d)). The seasonal composite mean highlights the effects on seasonal phenology patterns, showing the loss of a clear spring green-up peak and shift towards a more prolonged



**Figure 8.** Synthetic (colored) and observed (grey) SAVI composites for (a) grasses (green) and (b) shrubs (orange) against the historic composite mean (grey) with distribution of synthetic and observed composites shown in the inset. (c) and (d) Timeseries of synthetic (colored) and observed (grey) SAVI.  $\pm 1$  STD is indicated as shading around the composites and the synthetic timeseries.



**Figure 9.** Observed (blue) and Synthetic (red) phenology for riparian floodplain and terrace trees under scenarios of (a) deeper water table and (b) shifted seasonal temperature. (c) Timeseries of greenness of riparian floodplain and (d) riparian terrace trees show a reduction in annual POS values in response to lower DTG. (e) and (f) Composite means further highlight the temporal shift towards earlier SGU and POS, while the shift towards lower POS can be seen throughout the growing season distributions (inset). Grey shading around the composite means indicates  $\pm 1$  STD.



**Figure 10.** Synthetic phenology for grasses and shrubs under plausible scenarios of (a) reduced monsoon (JJAS) and spring (JFMA) precipitation by 20% and (b) shifted seasonal temperature dynamics. (c) and (d) Timeseries of historical and synthetic SAVI show a reduction of greenness during POS as well as lowered green-up in spring. (e) and (f) Seasonal composite means show the effects of reduced precipitation on phenology patterns temporal shift in the timing of phenological events. Inset: growing season distributions (March–Sept) show a shift towards lowered POS and increasing frequency of low greenness.

period of senescence during spring, while the shift in temperature resulted in an earlier timing of SGU and POS (figures 10(e) and (f)). The change in growing season greenness between March and September was strongly driven by reduced antecedent precipitation ( $R^2 = 0.77$  for grass,  $R^2 = 0.81$  for shrubs) and a significant difference between historic and observed ( $p = < 0.05$ ,  $stat = 0.18$  for grass;  $p = < 0.05$ ,  $stat = 0.17$  for shrubs), with a clear trend towards lower POS and an increased frequency of lower greenness values in spring and summer (figures 10(e) and (f) inset).

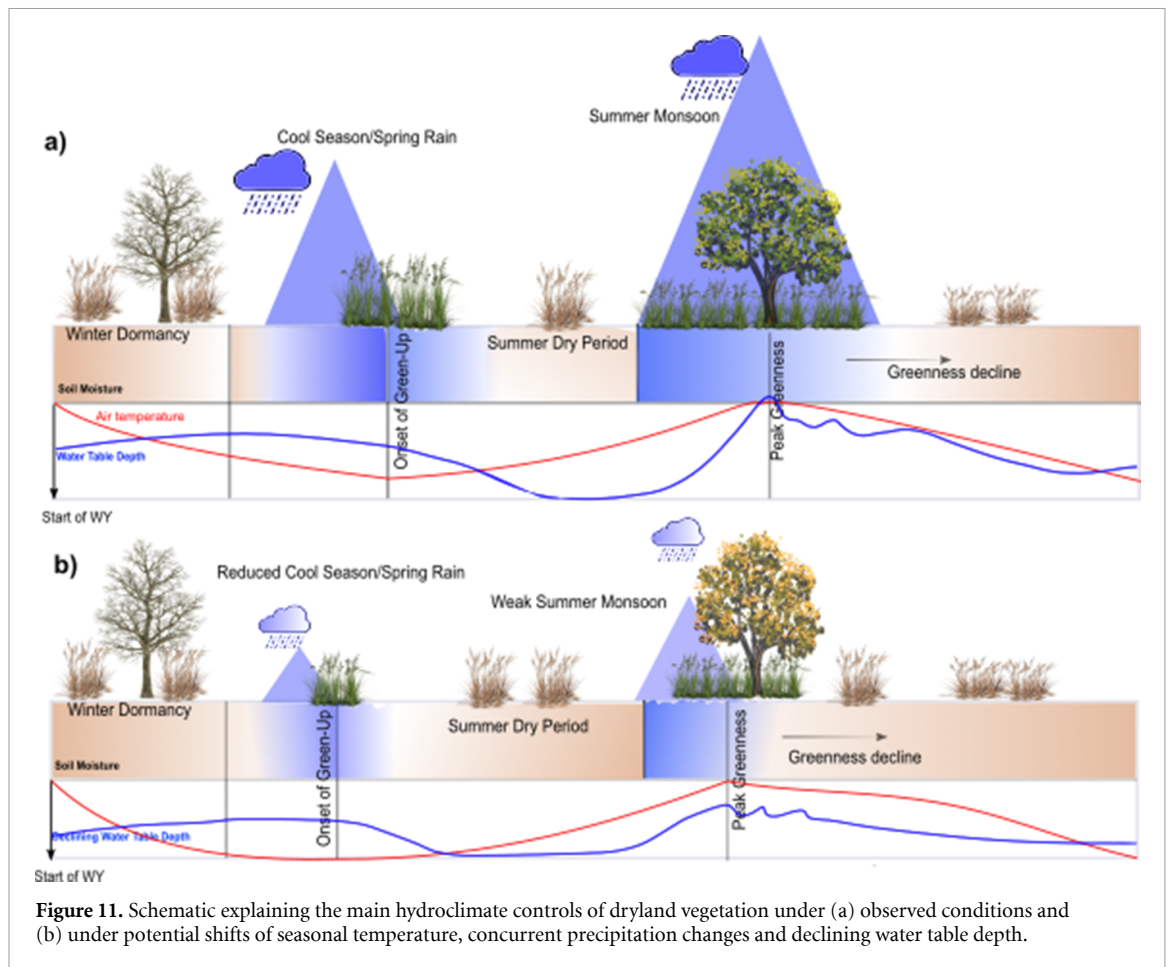
#### 4. Discussion

In this study, we demonstrate the feasibility of using remote sensing and hydroclimate data for the development of a simple, empirical phenology modeling approach for different dryland plant functional groups. In the context of shifting spring green-up and flowering times due warming temperatures, there is a need to prioritize high-resolution temporal and spatial analyses of climate drivers on plant phenology to improve our understanding of climate-phenology interactions that might be expected in the future (Zhang *et al* 2003, Ganguly *et al* 2010, Moon *et al* 2021). The mechanisms of bimodal seasonal phenology cycles have previously been explored in regions where the North American monsoon dominates, however there is remaining uncertainty associated with the complex ecohydrological relationships in drylands of the Southwest USA.

Our results have illustrated the relationships between vegetation greenness and different hydroclimate drivers (figure 11(a)) and their functionality within an empirical modeling framework to explore synthetic greenness responses under plausible climate change scenarios. Such modeling capabilities open up avenues for exploring climate-phenology feedbacks under future climate change scenarios and support the proactive development of appropriate adaptation strategies to mitigate the effects of warming temperatures, increased precipitation variability, and declining groundwater (Joyce *et al* 2013, Polley *et al* 2013).

The strong dependence of riparian floodplain and terrace vegetation on groundwater is well appreciated and has been extensively explored with renewed urgency throughout the Southwest and California, due to





**Figure 11.** Schematic explaining the main hydroclimate controls of dryland vegetation under (a) observed conditions and (b) under potential shifts of seasonal temperature, concurrent precipitation changes and declining water table depth.

rapidly declining groundwater levels and increased forest mortality (Stromberg *et al* 2006, Pettit and Froend 2018, Rohde *et al* 2021, Sabathier *et al* 2021). While individual drought years (i.e. 2020) had a relatively strong effect on grasses and shrubs (figures 6(a) and (b)), riparian trees remained unaffected. We attribute this trend to the relatively stable groundwater level and minimal seasonal fluctuations, providing trees with relatively constant access to groundwater to satisfy their transpiration demands despite seasonally limited precipitation and soil moisture. Due to the lack of groundwater observations during the dry years for this well location, we cannot verify this interpretation, however previous studies have shown that flow in the perennial reach of the San Pedro river is consistently maintained by the presence of shallow bedrock and a strong connection between the riparian aquifer and the river, thus buffering the effects of short-term dry periods (Stromberg *et al* 2006, Baillie *et al* 2007, Sabathier *et al* 2021).

Ultimately, the survival of riparian ecosystems in the future will depend entirely on the plants' ability to continue deep root growth to match declining water tables, as they are unlikely to survive solely on root zone moisture should groundwater become unavailable (Snyder and Williams 2000, Pettit and Froend 2018). Considering, for example, the effects of a climatic shift that would lead to a deeper water table and temporal shifts in the timing of green-up, on greenness responses in riparian floodplain and terrace trees (figure 11(b)); through the critical link of vegetation greenness to groundwater table depth, we found that under a scenario of a deeper water table and earlier green-up, we might expect significant changes to annual greenness values and the timing of phenological events. Subsequently, any associated changes to groundwater-flow patterns as a result of increased precipitation variability, may propagate into reduced stream flow patterns within perennial reaches and risk a shift from perennial to more intermittent flow conditions. Such changes to the seasonal availability of water would have far reaching implications for the health and survival of riparian ecosystems. As such, shifts from dense riparian vegetation towards shrubbier more drought tolerant species might occur, as groundwater becomes increasingly inaccessible or unreliable, ultimately compromising a range of ecosystem functions and risking an increased loss of sensitive habitat and species diversity.

Similarly, shallow rooted species are vulnerable to the potential impacts of precipitation changes and prolonged periods of drought, due to the strong link between antecedent precipitation and seasonal phenology (figure 11(a)) (Scott *et al* 2000, Dye *et al* 2016, Renwick *et al* 2019). By disaggregating

phenological responses into individual events and quantifying the seasonal and interannual variations, we have revealed further details about the precipitation-phenology relationships for grass and shrub plant functional groups and explored their potential vulnerability to future climate change. Simulations of simple climate change scenarios showed that a reduction of spring and monsoon totals could inherently alter phenological patterns and seasonal greenness responses (figure 10). Reduced spring precipitation pulses would lead to more muted spring green-up due to reduced moisture availability, while a weaker monsoon would lead to lower seasonal green-up during the summer. Such changes could dampen seasonal phenology patterns, ultimately leading to the loss of a clearly detectable phenological signal over multiple years. The combination of earlier green-up and limited moisture during the initial vegetation surge would most likely lead to increasingly unfavorable conditions for native vegetation communities and propagate a conversion of native shrublands into invasive annual grasslands better able to deal with the increasingly limited moisture availability. The immediate implications of prolonged senescence and early browning further extend onto increased fire activity and the availability of easily ignitable fuel, thus raising the potential of recurrent wildfires of increasing extent and intensity across the Southwestern U.S (Westerling *et al* 2006, Westerling and Bryant 2007, Abatzoglou and Kolden 2011).

With temperature increasingly driving contemporary drought in the Southwestern U.S (Gremer *et al* 2015), the interaction between precipitation and temperature is essential in determining the amount, timing and spatial extent of water available to vegetation. Observations from the Santa Rita Experimental Range have illustrated the differential effects of recent climate change, as a significant decrease in perennial grass cover and a visible reduction of vegetation density were observed due to warming temperatures and lack of essential spring and monsoon precipitation in recent years. Repeat photography has shown that the driest monsoon on record in 2020, followed by dry and hot conditions in spring 2021, led to severe vegetation die-back until the return of precipitation during the summer of 2021 resulted in a sharp increase in greenness the next year, as plants maximized their response to favorable conditions (<https://cals.arizona.edu/srer/photos.html>). Similarly, our simulations have shown that protracted periods of reduced precipitation would demonstrably lead to reduced peak greenness which could go as far as lead to early mid-summer senescence. Depending on the extent of the projected changes to precipitation timing and frequency, as well as local groundwater decline, the adaptive capabilities of dryland plant functional groups will be increasingly challenged. The usual rapid responsiveness of grasses and shrubs to favorable conditions may be compromised to a point where they are unable to respond to future precipitation events following prolonged drought periods, while at the same time riparian trees may not be able to match the speed of groundwater decline.

Based on historic climate-phenology relationships we demonstrated that the explicit inclusion of hydroclimate forcing within an empirical modeling framework is effective in capturing current and potential future vegetation responses, including seasonal changes as well as interannual variations driven by climate. A caveat to the present model is that it currently does not include other atmospheric interactions and feedbacks on phenology, such as the carbon and energy cycles. Still, the results have several implications for modeling climate-phenology interactions. The analysis provided not only insight into differential vegetation responses of various plant functional groups, but we outlined a simple empirical approach for including more dynamic phenology models into other existing ecosystem and water balance models, which might currently lack a dynamic parameterization of phenology. Especially in dryland riparian environments, improved water balance estimations have recently emerged through refined modeling frameworks (Quichimbo *et al* 2021), which consider all aspects of the dryland water balance, but still lacking a dynamic vegetation parameterization. The inclusion of dynamic climate-vegetation responses in such water balance models would inherently enhance the models' abilities to explore climate-soil-vegetation feedbacks on the dryland water balance as well as long-term seasonal greenness responses, and potential thresholds of vegetation mortality and succession under future climate change. Furthermore, an improved dynamic parameterization of vegetation within ecohydrological models would be essential to improve our understanding not only of historical ecohydrology but the range of impacts on climate-vegetation interactions and water balance estimates.

## 5. Conclusion

In this study we explored hydroclimate-phenology interactions for different plant functional types, which informed the development of a simple, parsimonious empirical phenology model. The proposed framework features several key features, such as a link to antecedent and concurrent climate variables, a continuous prediction of phenology throughout the season, the use of remote sensing data over an extended spatial and temporal scale, and a relative low level of complexity that can be transferred to different environments. Simple climate change scenarios have demonstrated the functionality of the model to explore vegetation

responses under future climate change. While antecedent precipitation was the key driver of greenness in grasses and shrubs, depth to groundwater and to a certain extent antecedent available precipitation, were influential in controlling greenness in riparian trees. The results have several implications for climate-phenology interactions, providing not only insight into differential vegetation responses of various plant functional groups, but outlining a possible approach for including vegetation phenology models into other existing ecosystem models, which might currently lack a dynamic parameterization of phenology. To fully realize the benefits of this approach of parameterizing phenology of different plant functional groups, further model development will focus on adapting the proposed framework to be included within a dryland water partitioning model (Quichimbo *et al* 2021). This will allow us to explore the effects of future climate change on climate-phenology interactions and its associated impacts on the dryland water balance under varying rainfall regimes over larger spatial and temporal scales.

## Data availability statement

The data that was used in this study is publicly available from different sources cited in the manuscript.

The data that support the findings of this study are openly available at the following URL/DOI: [10.5281/zenodo.6791901](https://doi.org/10.5281/zenodo.6791901).

## Acknowledgments

This work was supported by The National Science Foundation (BCS-1660490, EAR-1700517 and EAR-1700555) and the Department of Defense's Strategic Environmental Research and Development Program (RC18-1006). MOC gratefully acknowledges funding for an Independent Research Fellowship from the UK Natural Environment Research Council (NE/P017819/1).

## Conflict of interest

The authors declare that they have no conflict of interest.

## Author contributions

Conceptualization: MMW,MBS,KC,DR,JS

Methodology: MMW,MBS,MOC,KC

Data Curation: MMW,RS

Formal analysis: MMW,RS

Writing—Original Draft: MMW

Writing—Review & Editing: MMW,MBS,MOC,KC,DR,JS,RS

## ORCID iDs

Maria Magdalena Warter  <https://orcid.org/0000-0003-4725-0480>

Michael Bliss Singer  <https://orcid.org/0000-0002-6899-2224>

Mark O Cuthbert  <https://orcid.org/0000-0001-6721-022X>

Dar Roberts  <https://orcid.org/0000-0002-3555-4842>

Kelly K Caylor  <https://orcid.org/0000-0002-6466-6448>

Romy Sabathier  <https://orcid.org/0000-0001-9401-7871>

John Stella  <https://orcid.org/0000-0001-6095-7726>

## References

- Abatzoglou J T and Kolden C A 2011 Climate change in Western US deserts: potential for increased wildfire and invasive annual grasses *Rangel. Ecol. Manage.* **64** 471–8
- Abatzoglou J T and Williams A P 2016 Impact of anthropogenic climate change on wildfire across Western US forests *Proc. Natl Acad. Sci. USA* **113** 11770–5
- Asner G P, Brodrick P G, Anderson C B, Vaughn N, Knapp D E and Martin R E 2016 Progressive forest canopy water loss during the 2012–2015 California drought *Proc. Natl Acad. Sci. USA* **113** E249–55
- Baillie M N, Hogan J F, Ekwurzel B, Wahi A K and Eastoe C J 2007 Quantifying water sources to a semiarid riparian ecosystem, San Pedro river, Arizona *J. Geophys. Res. Biogeosci.* **112** 1–13
- Berra E F and Gaulton R 2021 Remote sensing of temperate and boreal forest phenology: a review of progress, challenges and opportunities in the intercomparison of in-situ and satellite phenological metrics *For. Ecol. Manage.* **480** 118663
- Bevington P R and Robinson K D 2003 *Data Reduction and Error Analysis for the Physical Sciences* (Boston, MA: McGraw Hill) 3rd edn

- Bradford J B, Schlaepfer D R, Lauenroth W K and Palmquist K A 2020 Robust ecological drought projections for drylands in the 21st century *Glob. Change Biol.* **2019** 3906–19
- Chen L, Hänninen H, Rossi S, Smith N G, Pau S, Liu Z, Feng G, Gao J and Liu J 2020 Leaf senescence exhibits stronger climatic responses during warm than during cold autumns *Nat. Clim. Change* **10** 777–80
- Chen M, Shi W, Xie P, Silva V B S, Kousky V E, Higgins R W and Janowiak J E 2008 Assessing objective techniques for gauge-based analyses of global daily precipitation *J. Geophys. Res. Atmos.* **113** 1–13
- Choler P, Sea W, Briggs P, Raupach M and Leuning R 2010 A simple ecohydrological model captures essentials of seasonal leaf dynamics in semi-arid tropical grasslands *Biogeosciences* **7** 907–20
- Cleland E E, Isabelle C and Annette M 2007 Shifting plant phenology in response to global change *Trends Ecol. Evol.* **22** 357–65
- Cook B I, Ault T R and Smerdon J E 2015 Unprecedented 21st century drought risks in the American south west and central plains *Sci. Adv.* **1** e1400081
- Cui T, Martz L and Guo X 2017 Grassland phenology response to drought in the Canadian prairies *Remote Sens.* **9** 12
- D'Odorico P, Caylor K, Okin G S and Scanlon T M 2007 On soil moisture-vegetation feedbacks and their possible effects on the dynamics of dryland ecosystems *J. Geophys. Res. Biogeosci.* **112** 1–10
- D'Odorico P and Porporato A 2019 *Dryland Ecohydrology* C Runyan Wilkinson Ed. Second Ed (Berlin: Springer) (<https://doi.org/10.2136/vzj2006.0053br>)
- de Beurs K M and Henebry G M 2010 A land surface phenology assessment of the northern polar regions using MODIS reflectance time series *Can. J. Remote Sens.* **36** S87–S110
- Diez J M, Ibáñez I, Miller-Rushing A J, Mazer S J, Crimmins T M, Crimmins M A, Bertelsen C D and Inouye D W 2012 Forecasting phenology: from species variability to community patterns *Ecol. Lett.* **15** 545–53
- Dye D G, Middleton B R, Vogel J M, Wu Z and Velasco M 2016 Exploiting differential vegetation phenology for satellite-based mapping of semiarid grass vegetation in the Southwestern United States and Northern Mexico *Remote Sens.* **8** 11
- Farrar T J, Nicholson S E and Lare A R 1994 The influence of soil type on the relationships between NDVI, rainfall, and soil moisture in semiarid Botswana. I. NDVI response to rainfall *Remote Sens. Environ.* **50** 107–20
- Ganguly S, Friedl M A, Tan B, Zhang X and Verma M 2010 Land surface phenology from MODIS: characterization of the collection 5 global land cover dynamics product *Remote Sens. Environ.* **114** 1805–16
- Goulden M L and Bales R C 2019 California forest die-off linked to multi-year deep soil drying in 2012–2015 drought *Nat. Geosci.* **12** 632–7
- Gremer J R, Bradford J B, Munson S M and Duniway M C 2015 Desert grassland responses to climate and soil moisture suggest divergent vulnerabilities across the Southwestern United States *Glob. Change Biol.* **21** 4049–62
- Hänninen H and Kramer K 2007 A framework for modelling the annual cycle of trees in boreal and temperate regions *Silva Fenn.* **41** 167–205
- Haynes K D, Baker I T, Denning A S, Stöckli R, Schaefer K, Lokupitiya E Y and Haynes J M 2019 Representing grasslands using dynamic prognostic phenology based on biological growth stages: 1. Implementation in the simple biosphere model (SiB4) *J. Adv. Model. Earth Syst.* **11** 4423–39
- Huete A R 1988 A soil-adjusted vegetation index (SAVI) *Remote Sens. Environ.* **25** 295–309
- Hunter A F and Lechowicz M J 1992 Predicting the timing of budburst in temperate trees *J. Appl. Ecol.* **29** 597–604
- Jenerette G D, Scott R L and Huete A R 2010 Functional differences between summer and winter season rain assessed with MODIS-derived phenology in a semi-arid region *J. Veg. Sci.* **21** 16–30
- Ji L and Peters A J 2004 A spatial regression procedure for evaluating the relationship between AVHRR-NDVI and climate in the northern great plains *Int. J. Remote Sens.* **25** 297–311
- Jolly W M, Nemani R and Running S W 2005 A generalized, bioclimatic index to predict foliar phenology in response to climate *Glob. Change Biol.* **11** 619–32
- Jolly W M and Running S W 2004 Effects of precipitation and soil water potential on drought deciduous phenology in the Kalahari *Glob. Change Biol.* **10** 303–8
- Joyce L A, Briske D D, Brown J R, Polley H W, McCarl B A and Bailey D W 2013 Climate change and North American rangelands: assessment of mitigation and adaptation strategies *Rangel. Ecol. Manage.* **66** 512–28
- Kibler C L, Schmidt E C, Roberts D A, Stella J C, Kui L, Lambert A M and Singer M B 2021 A brown wave of riparian woodland mortality following groundwater declines during the 2012–2019 California drought *Environ. Res. Lett.* **16** 8
- Kimball S, Angert A L, Huxman T E and Venable D L 2010 Contemporary climate change in the Sonoran Desert favors cold-adapted species *Glob. Change Biol.* **16** 1555–65
- Körner C and Basler D 2010 Phenology under global warming *Science* **327** 1461–2
- Laio F, Porporato A, Fernandez-Illescas C P and Rodriguez-Iturbe I 2001 Plants in water-controlled ecosystems: active role in hydrologic processes and response to water stress II. Probabilistic soil moisture dynamics *Adv. Water Resour.* **24** 745–62
- Laio F, Tamea S, Ridolfi L, D'Odorico P and Rodriguez-Iturbe I 2009 Ecohydrology of groundwater-dependent ecosystems: 1. Stochastic water table dynamics *Water Resour. Res.* **45** 1–13
- Lite S J and Stromberg J C 2005a Surface water and ground-water thresholds for maintaining populus-salix forests, San Pedro river, Arizona *Biol. Conserv.* **125** 153–67
- Liu S, Roberts D A, Chadwick O A and Still C J 2012 Spectral responses to plant available soil moisture in a Californian Grassland *Int. J. Appl. Earth Obs. Geoinf.* **19** 31–44
- Lu L, Kuenzer C, Wang C, Guo H and Li Q 2015 Evaluation of three MODIS-derived vegetation index time series for dryland vegetation dynamics monitoring *Remote Sens.* **7** 7597–614
- Makings E 2005 *Flora of the San Pedro Riparian National Conservation Area* vol 36 (Cochise County, Arizona: USDA Forest Service Proceedings) pp 92–99
- Mariën B, Balzarolo M, Dox I, Leys S, Lorène M J, Geron C, Portillo-Estrada M, Abdelgawad H, Asard H and Campioli M 2019 Detecting the onset of autumn leaf senescence in deciduous forest trees of the temperate zone *New Phytol.* **224** 166–76
- Matthews E R and Mazer S J 2016 Historical changes in flowering phenology are governed by temperature × precipitation interactions in a widespread perennial herb in Western North America *New Phytol.* **210** 157–67
- Mayes M, Caylor K K, Singer M B, Stella J C, Roberts D and Nagler P 2020 Climate sensitivity of water use by riparian woodlands at landscape scales *Hydrol. Process.* **34** 4884–903
- McKinnon K A, Poppick A and Simpson I R 2021 Hot extremes have become drier in the United States Southwest *Nat. Clim. Change* **11** 598–604



- Menzel A, Sparks T H, Estrella N and Roy D B 2006 Altered geographic and temporal variability in phenology in response to climate change *Glob. Ecol. Biogeogr.* **15** 498–504
- Moon M, Seyednasrollah B, Richardson A D and Friedl M A 2021 Using time series of MODIS land surface phenology to model temperature and photoperiod controls on spring greenup in North American deciduous forests *Remote Sens. Environ.* **260** 112466
- Moran M S, Holifield Collins C D, Goodrich D C, Qi J, Shannon D T and Olsson A 2008 Long-term remote sensing database, walnut gulch experimental watershed, Arizona, United States *Water Resour. Res.* **44** 1–8
- Munson S M 2013 Plant responses, climate pivot points, and trade-offs in water-limited ecosystems *Ecosphere* **4** 1–15
- Munson S M and Long A L 2017 Climate drives shifts in grass reproductive phenology across the Western USA *New Phytol.* **213** 1945–55
- Nichols M H, Renard K G and Osborn H B 2002 Precipitation changes from 1956 to 1996 on the walnut gulch experimental watershed *J. Am. Water Resour. Assoc.* **38** 161–72
- Notaro M, Liu Z, Gallimore R G, Williams J W, Gutzler D S and Collins S 2010 Complex seasonal cycle of ecohydrology in the Southwest United States *J. Geophys. Res. Biogeosci.* **115** 4
- Pascale S, Boos W R, Bordoni S, Delworth T L, Kapnick S B, Murakami H, Vecchi G A and Zhang W 2017 Weakening of the North American monsoon with global warming *Nat. Clim. Change* **7** 806–12
- Pennington D D and Collins S L 2007 Response of an arid land ecosystem to interannual climate variability and prolonged drought *Landsc. Ecol.* **22** 897–910
- Peñuelas J, Rutishauser T and Filella I 2009 Phenology feedbacks on climate change *Science* **324** 887–8
- Pettit N E and Froend R H 2018 How important is groundwater availability and stream perenniality to riparian and floodplain tree growth? *Hydrol. Process.* **32** 1502–14
- Polley H W, Briske D D, Morgan J A, Wolter K, Bailey D W and Brown J R 2013 Climate change and North American rangelands: trends, projections, and implications *Rangel. Ecol. Manage.* **66** 493–511
- Porporato A, D'Odorico P, Laio F, Ridolfi L and Rodriguez-Iturbe I 2002 Ecohydrology of water-controlled ecosystems *Adv. Water Resour.* **25** 1335–48
- Quichimbo E, Andrés, Singer Michael Bliss, Michaelides Katerina, Hobley Daniel E.J., Rosolem Rafael and Cuthbert Mark O. 2021 DRYP 1.0: a parsimonious hydrological model of DRYland Partitioning of the water balance *Geosci. Model Dev.* **14** 6893–6917
- Rafferty N E, Diez J M and Bertelsen C D 2020 Changing climate drives divergent and nonlinear shifts in flowering phenology across elevations. *Curr. Biol.* **30** 432–441.e3
- Rao K, Williams A P, Diffenbaugh N S, Yebra M and Konings A G 2022 Plant-water sensitivity regulates wildfire vulnerability *Nat. Ecol. Evol.* **6** 332–9
- Renard K G, Nichols M H, Woolhiser D A and Osborn H B 2008 A brief background on the U.S. department of agriculture agricultural research service walnut gulch experimental watershed *Water Resour. Res.* **44** 1–11
- Renwick K M, Fellows A, Flerchinger G N, Lohse K A, Clark P E, Smith W K, Emmett K and Poulter B 2019 Modeling phenological controls on carbon dynamics in dryland sagebrush ecosystems *Agric. For. Meteorol.* **274** 85–94
- Richardson A D *et al* 2012 Terrestrial biosphere models need better representation of vegetation phenology: results from the North American carbon program site synthesis *Glob. Change Biol.* **18** 566–84
- Richardson A D, Keenan T F, Migliavacca M, Ryu Y, Sonnentag O and Toomey M 2013 Climate change, phenology, and phenological control of vegetation feedbacks to the climate system *Agric. For. Meteorol.* **169** 156–73
- Rodriguez-Iturbe I 2000 Ecohydrology : a hydrologic perspective of climate-soil-vegetation dynamics *Water Resour. Res.* **36** 3–9
- Rodriguez-Iturbe I, D'Odorico P, Porporato A and Ridolfi L 1999 On the spatial and temporal links between vegetation, climate, and soil moisture *Water Resour. Res.* **35** 3709–22
- Rohde M M, Stella J C, Roberts D A and Singer M B 2021 Groundwater dependence of riparian woodlands and the disrupting effect of anthropogenically altered streamflow *Proc. Natl Acad. Sci. USA* **118** 1–7
- Sabathier R, Singer M B, Stella J C, Roberts D A and Caylor K K 2021 Vegetation responses to climatic and geologic controls on water availability in Southeastern Arizona *Environ. Res. Lett.* **16** 6
- Schlaepfer D R *et al* 2017 Climate change reduces extent of temperate drylands and intensifies drought in deep soils *Nat. Commun.* **8** 14196
- Scott R L, James Shuttleworth W, Goodrich D C and Maddock T 2000 The water use of two dominant vegetation communities in a semiarid riparian ecosystem *Agric. For. Meteorol.* **105** 241–56
- Singer M B and Michaelides K 2017 Deciphering the expression of climate change within the lower Colorado river basin by stochastic simulation of convective rainfall *Environ. Res. Lett.* **12** 10
- Singer M B, Sargeant C I, Piégay H, Riquier J, Wilson R J and Evans C M 2014 Floodplain ecohydrology: climatic, anthropogenic, and local physical controls on partitioning of water sources to riparian trees *Water Resour. Res.* **50** 4490–513
- Skirvin S, Kidwell M, Biedenbender S, Henley J P, King D, Collins C H, Moran S and Weltz M 2008 Vegetation data, walnut gulch experimental watershed, Arizona, United States *Water Resour. Res.* **44** 4–9
- Snyder K A and Williams D G 2000 Water sources used by riparian trees varies among stream types on the San Pedro river, Arizona *Agric. For. Meteorol.* **105** 227–40
- Stromberg J C, Bagstad K J, Leenhouts J M, Lite S J and Makings E 2005 Effects of stream flow intermittency on riparian vegetation of a semiarid region river (San Pedro river, Arizona) *River Res. Appl.* **21** 925–38
- Stromberg J C, Lite S J, Rychener T J, Levick L R, Dixon M D and Watts J M 2006 Status of the Riparian ecosystem in the upper San Pedro river, Arizona: application of an assessment model *Environ. Monit. Assess.* **115** 145–73
- Stromberg J C, McCluney K E, Dixon M D and Meixner T 2013 Dryland riparian ecosystems in the American Southwest: sensitivity and resilience to climatic extremes *Ecosystems* **16** 411–5
- Stromberg J C, Setaro D L, Gallo E L, Lohse K A and Meixner T 2017 Riparian vegetation of ephemeral streams *J. Arid Environ.* **138** 27–37
- Stromberg J C and Tiller R 1996 Effects of groundwater decline on riparian vegetation of semiarid regions: the San Pedro, Arizona *Ecol. Appl.* **6** 113–31
- Tang G, Arnone J A, Verburg P S J, Jasoni R L and Sun L 2015 Trends and climatic sensitivities of vegetation phenology in semiarid and arid ecosystems in the US Great Basin during 1982–2011 *Biogeosciences* **12** 6985–97
- Ukkola A M, de Kauwe M G, Roderick M L, Burrell A, Lehmann P and Pitman A J 2021 Annual precipitation explains variability in dryland vegetation greenness globally but not locally *Glob. Change Biol.* **27** 1–14
- Walker J J, de Beurs K M and Wynne R H 2014 Dryland vegetation phenology across an elevation gradient in Arizona, USA, investigated with fused MODIS and Landsat data *Remote Sens. Environ.* **144** 85–97

- Walker J J, de Beurs K M, Wynne R H and Gao F 2012 Evaluation of Landsat and MODIS data fusion products for analysis of dryland forest phenology *Remote Sens. Environ.* **117** 381–93
- Walker J J, de Beurs K and Wynne R H 2015 Phenological response of an Arizona dryland forest to short-term climatic extremes *Remote Sens.* **7** 10832–55
- Wallace C S A, Walker J J, Skirvin S M, Patrick-Birdwell C, Weltzin J F and Raichle H 2016 Mapping presence and predicting phenological status of invasive buffelgrass in Southern Arizona using MODIS, climate and citizen science observation data *Remote Sens.* **8** 524
- Warter M M, Singer M B, Cuthbert M, Roberts D, Caylor K, Sabathier R and Stella J 2020 Onset and propagation of drought into soil moisture and vegetation responses during the 2012–2019 drought in Southern California *Hydrol. Earth Syst. Sci. Discuss.* 1–35
- Westerling A L and Bryant B P 2007 Climate change and wildfire in California *Clim. Change* **87** 231–49
- Westerling A L, Hidalgo H G, Cayan D R and Swetnam T W 2006 Warming and earlier spring increase Western U.S. forest wildfire activity *Science* **313** 940–3
- White M A *et al* 2009 Intercomparison, interpretation, and assessment of spring phenology in North America estimated from remote sensing for 1982–2006 *Glob. Change Biol.* **15** 2335–59
- Wolberg G and Alfy I 2002 An energy-minimization framework for monotonic cubic spline interpolation *J. Comput. Appl. Math.* **143** 145–88
- Wu W, Sun Y, Xiao K and Xin Q 2021 Development of a global annual land surface phenology dataset for 1982–2018 from the AVHRR data by implementing multiple phenology retrieving methods *Int. J. Appl. Earth Obs. Geoinf.* **103** 102487
- Xie P, Yatagai A, Chen M, Hayasaka T, Fukushima Y, Liu C and Yang S 2007 A gauge-based analysis of daily precipitation over East Asia *J. Hydrometeorol.* **8** 607–26
- Xin Q, Broich M, Zhu P and Gong P 2015 Modeling grassland spring onset across the Western United States using climate variables and MODIS-derived phenology metrics *Remote Sens. Environ.* **161** 63–77
- Yao J, Peters D P C, Havstad K M, Gibbens R P and Herrick J E 2006 Multi-scale factors and long-term responses of Chihuahuan Desert grasses to drought *Landsc. Ecol.* **21** 1217–31
- Zhang X, Friedl M A, Schaaf C B and Strahler A H 2004 Climate controls on vegetation phenological patterns in northern mid- and high latitudes inferred from MODIS data *Glob. Change Biol.* **10** 1133–45
- Zhang X, Friedl M A, Schaaf C B, Strahler A H, Hodges J C F, Gao F, Reed B C and Huete A 2003 Monitoring vegetation phenology using MODIS *Remote Sens. Environ.* **84** 471–5