

Title: Origins of Mesoamerican astronomy and calendar: Evidence from the Olmec and Maya regions

Authors: Ivan Šprajc^{1*}, Takeshi Inomata², Anthony F. Aveni³

Affiliations:

¹Research Center of the Slovenian Academy of Sciences and Arts (ZRC SAZU); Ljubljana, Slovenia.

²School of Anthropology, University of Arizona; Tucson, AZ, USA.

³Colgate University; Hamilton, NY, USA.

*Corresponding author. Email: ivan.sprajc@zrc-sazu.si.

Abstract

Archaeoastronomical studies have demonstrated that the important civic and ceremonial buildings in Mesoamerica were largely oriented to sunrises or sunsets on specific dates, but the origin and spread of orientation practices were not clear. Using aerial laser scanning (lidar) data, we analyzed orientations of a large number of ceremonial complexes in the area along the southern Gulf Coast, including many recently identified Formative sites dating to 1100 BCE-250 CE. The distribution pattern of dates marked by solar alignments indicates their subsistence-related ritual significance. The orientations of complexes built between 1100 and 750 BCE, in particular, represent the earliest evidence of the use of the 260-day calendar, centuries earlier than its previously known use in textual records.

One-Sentence Summary

Architectural orientations represent the earliest evidence for astronomical observations and the 260-day calendar in Mesoamerica.

INTRODUCTION

Considering the antiquity of astronomy and its importance in ancient civilizations, it is hardly surprising that “perhaps more often than we have yet recognized, the sky provides the cues to spatial order on the terrestrial plane” (Knapp and Ashmore 1999: 3). Since the sky provides basic references for orientation in space and time, the observation of celestial regularities resulted in practically useful knowledge. But the order observed in the sky, apparently perfect and divine, also gave rise to a variety of ideas that explain the role of heavenly bodies in the cosmic order and their influence on earthly affairs. Both kinds of concepts, which in any social group are intertwined and integrated in a relatively coherent worldview, had an important role in landscape formation and conceptualization and were frequently expressed in the astronomically-based alignments that can be detected in ancient architecture and urban patterns. Studies of this aspect of spatial order can thus provide important insights into extinct cognitive worlds, which are difficult or impossible to grasp from other data sources.

While the directions materialized in a cultural landscape may derive from a variety of orientation motives, such as geomorphology, climate, defensive concerns, or geomancy, systematic archaeoastronomical research in Mesoamerica has shown that the architectural orientations exhibit a non-random distribution that can only be explained with the use of rising and setting points of celestial bodies as reference objects. Most orientations refer to sunrises and sunsets on certain dates. The intervening intervals (any solar—except a solstitial—orientation matches two sunrise and two sunset dates and each pair of dates divides the year into two complementary intervals whose sum is equal to the length of the tropical year) tend to be multiples of 13 and 20 days, indicating a relationship with the Mesoamerican calendars, particularly with the 260-day cycle, in which a series of 20 day signs intermeshed with numbers from 1 to 13. These architectural orientations most likely enabled observationally based horizon calendars that facilitated a proper scheduling of seasonal activities and the corresponding rituals. By combining the formal calendar and astronomical observations, the ancient Mesoamericans could predict the relevant dates (the dates separated by multiples of 13/20 days had the same number/sign of the 260-

day calendrical cycle), even when direct observations on those days were impeded by cloudy weather. This anticipatory aspect of astronomical observations must have been of foremost importance because there was no intercalation system for maintaining a permanent correlation between the calendrical (365-day) and the slightly longer tropical year. However, since the simple objective of timekeeping through solar observations could have been achieved without monumental constructions, the significance of orientations needs to be understood within a broader cultural context. The repeated occurrence of specific directions exhibited by civic and ceremonial architecture indicates that the appropriately oriented buildings had an important place in the worldview and cosmologically substantiated political ideology (1–5).

The prevalence of the 260-day calendar across Mesoamerica has led various scholars to suspect that Gulf Coast Olmec culture played an important role in its development and spread and that its origins date to the era of the Middle Formative Olmec center of La Venta between 800 to 400 BCE or even earlier to the apogee of the Early Formative center of San Lorenzo between 1400 and 1100 BCE (6). Reliable evidence of its origin, however, has been lacking. Prior to our study, the earliest unequivocal epigraphic evidence of the 260-day calendar was a 7 Deer day sign found in Late Formative mural paintings at the central lowland Maya site of San Bartolo, Guatemala, dated to 300-200 BCE (7). Scholars have proposed earlier evidence of calendar use, but its validity has been questioned. A ceramic cylinder seal found at the site of San Andrés located near La Venta had a design, which the excavators argued was a day sign of the 260-calendar (8). The object appears to date between 700 and 500 BCE, but Stuart et al. (7) suggest that it may be an iconographic element, not a day sign. Monument 3 of San José Mogote located in the Oaxaca Valley has a more likely 260-day calendar day sign (9). Nonetheless, its originally suggested date of 600-500 BCE has been disputed, and it may date between 100 BCE and 200 CE instead (10, 11). Architectural orientations have been expected to provide early evidence of calendar and astronomical observations, but previous studies included relatively few structures predating the Late Formative period (~400 BCE – 200 CE). Here we present the results of analyses of a large number of orientations in southern Mesoamerica, which constitute the earliest evidence of the use of the

Mesoamerican 260-day calendar dating to 1100-750 BCE. In general, our alignment data, which reflect the attention paid to both the Sun's annual motion and other celestial events, including Venus and lunar phenomena and their regularities, reveal that the observations leading to the sophisticated astronomical knowledge of the Classic and Postclassic periods were underway more than a millennium before it was first attested in epigraphic records.

DATASET

Recent lidar-based archaeological research in an area of 84,516 km² connecting the Olmec core zone with the western Maya Lowlands identified 33,935 complexes and mound groups. Among them, 478 were standardized complexes dating to the Formative period. These sites included extensive rectangular formations called the Middle Formative Usumacinta (MFU) and Veracruz Ceremonial (VC) complexes, which commonly incorporate an E Group (a standardized assemblage composed of a pyramid and an elongated platform enclosing a plaza) (Inomata 2017?). Three excavated MFU complexes date to 1100-750 BCE. VC compounds may be contemporaneous with MFUs or slightly earlier (12). The largest of the MFU sites was Aguada Fénix with its main artificial plateau measuring 1400 m long, 400 m wide, and up to 15 m in height. This construction represents the earliest and most voluminous structure known so far in the Maya area (13). Aguada Fénix and other MFU complexes were laid out based on specific designs, in some cases according to grid-like patterns. The orientations of those buildings were most likely conceived before their construction began (Supplementary Materials). Similar arrangements, but without clear rectangular forms and often with taller pyramids and mounds, are the Middle Formative Chiapas (MFC) and Middle Formative Gulf (MFG) types (14). Most MFC and MFG complexes in the study area, including La Venta, probably date to 800-400 BCE (15, 16), but a few were built later. After the apparent abandonment of these formal complexes, a number of later sites, typically with tall pyramids and numerous residential mounds, were established. We suspect that many of them date to the Late Classic period (600-1000 CE). They commonly exhibit diverse configurations, but Classic Veracruz compounds

(also called Long-Plaza plan, Quadripartite complex, or Tipo 4) found in southern Veracruz have a standardized plan, consisting of two parallel elongated structures flanking a plaza and a pyramid on one or two extremes (17–19).

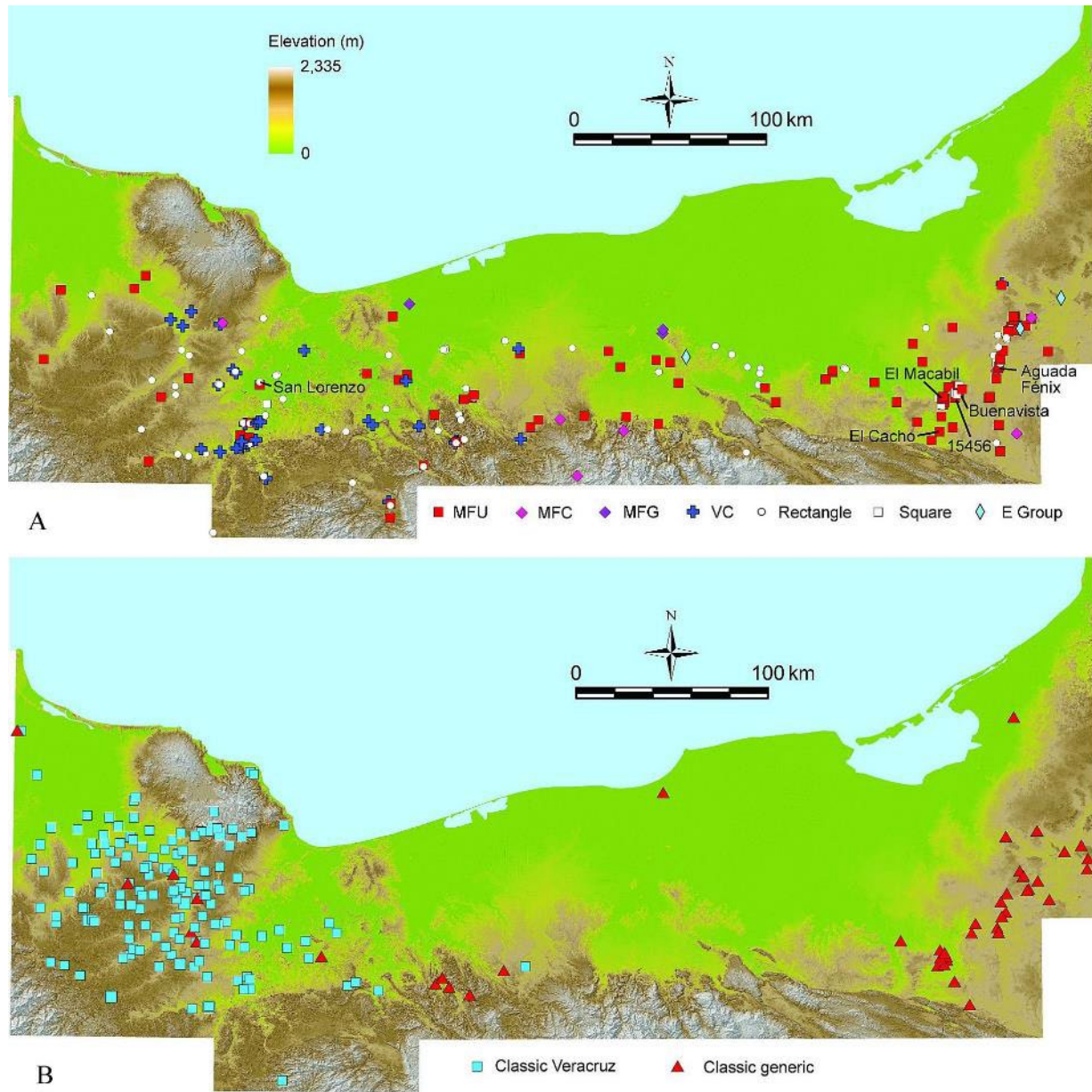


Fig. 1. Map of the area with the location of Formative (A) and Classic period sites (B) included in the study.

The symbols for E Groups only show stand-alone complexes; many more E Groups are integrated in larger complexes (MFUs, etc.).

110 A large number of sites with clearly visible layouts on the lidar-derived relief model allowed us to
 acquire alignment data on 415 Formative and Classic complexes (Fig. 1). This large dataset presents an
 important advantage for the study of architectural orientations. In the absence of independent evidence
 suggesting an astronomical rationale (iconography, written records, etc.), convincing astronomical
 interpretations can only be proposed with a sufficient number of examples. Our data also allow us to
 115 examine chronological trends in architectural orientations from the Formative to the Classic. In several
 cases, only north-south or east-west alignments could be measured (N-S: $n = 365$; E-W: $n = 344$; Table
 S1). Depending on the resolution of lidar data from different sources (12, 13), possible errors were
 estimated and assigned to each alignment azimuth, and the corresponding declinations were calculated.
 For declinations within the solar span, the corresponding dates in relevant periods and the intervening
 120 intervals were also determined. In order to assess the degree of intentionality of correspondences of
 alignments and their astronomical correlates, these data were plotted and analyzed employing kernel
 density estimation (KDE; see Materials and Methods).

RESULTS

125 The non-uniform distribution of azimuths (Fig. 2) points to an astronomical rationale. The more
 pronounced clustering of E-W than of N-S azimuths and the lack of clear correspondences of alignments
 with bright stars to the north and south indicate that astronomical events were targeted mostly by east-
 west alignments. A significant portion ($\sim 89\%$) of the E-W azimuths falls within the angle of solar
 130 movement along the horizon (between $\sim 65^\circ/245^\circ$ and $115^\circ/295^\circ$), suggesting that the orientations largely
 refer to sunrises or sunsets on certain dates (with a random distribution, only $\sim 57\%$ of E-W azimuths
 would have expectedly been within that angle. Consequently, although the possibility that some of the
 north-south alignments had stellar referents cannot be discarded, the following analysis focuses on the
 344 east-west alignments that we have determined ($45^\circ \leq \text{azimuth} \leq 135^\circ$).

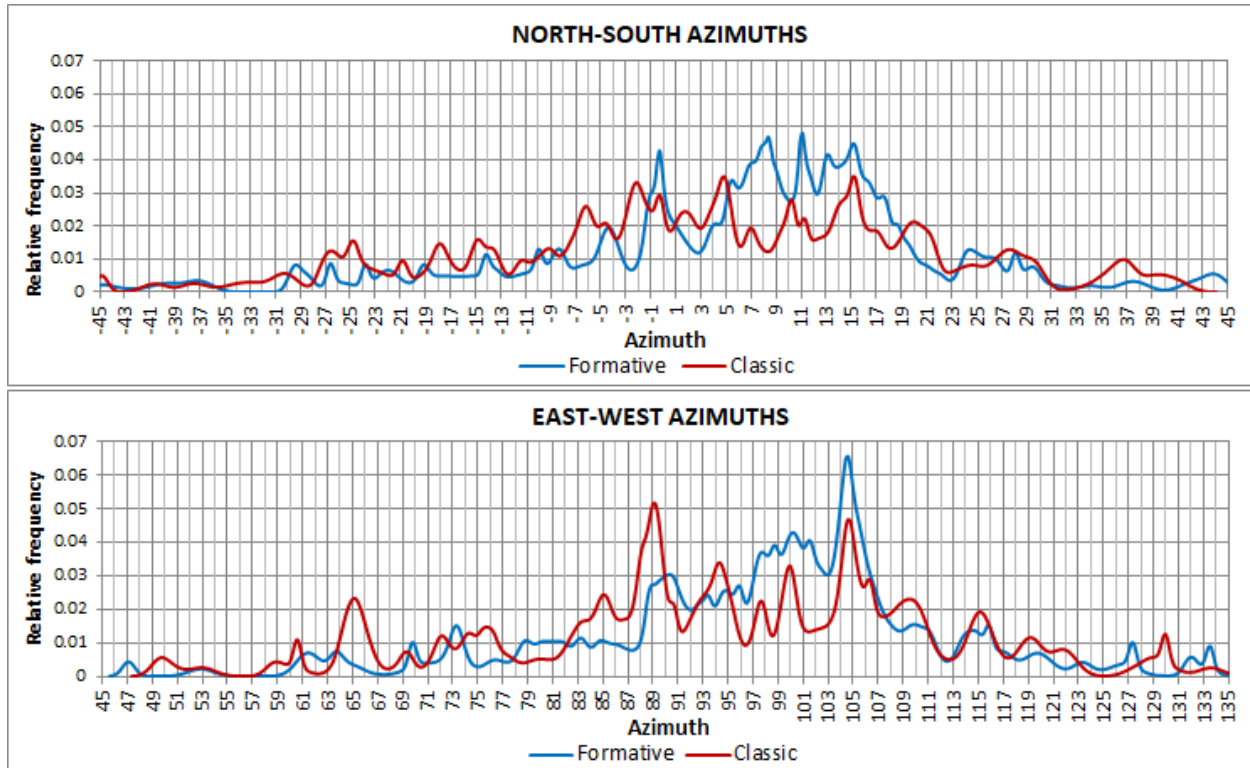


Fig. 2. Relative frequency distributions of azimuths by period.

The distributions of alignment data by structural type (Figs. S1–S3) show that, while there was a shift in orientation trends from the Formative to the Classic period, particular building types do not correlate preferentially with specific orientations. Therefore, the KDE graphs show relative frequency distributions of relevant data plotted separately for all Formative and Classic constructions (Figs. 2–4).

Since certain celestial events were marked on either the eastern or the western horizon, and due to other factors (see Materials and Methods), the targeted and unintended values often blend in these graphs. In spite of such limitations of the method, the clustering of data (declinations, dates, and intervals) indicates the existence of a few prominent orientation groups, for which an explanation other than astronomical is hardly conceivable. The groups that can be related to the Sun (declinations between $\sim 24^\circ$ and -24°) are particularly clear and labeled with numbers in Figs. 3 and 4.

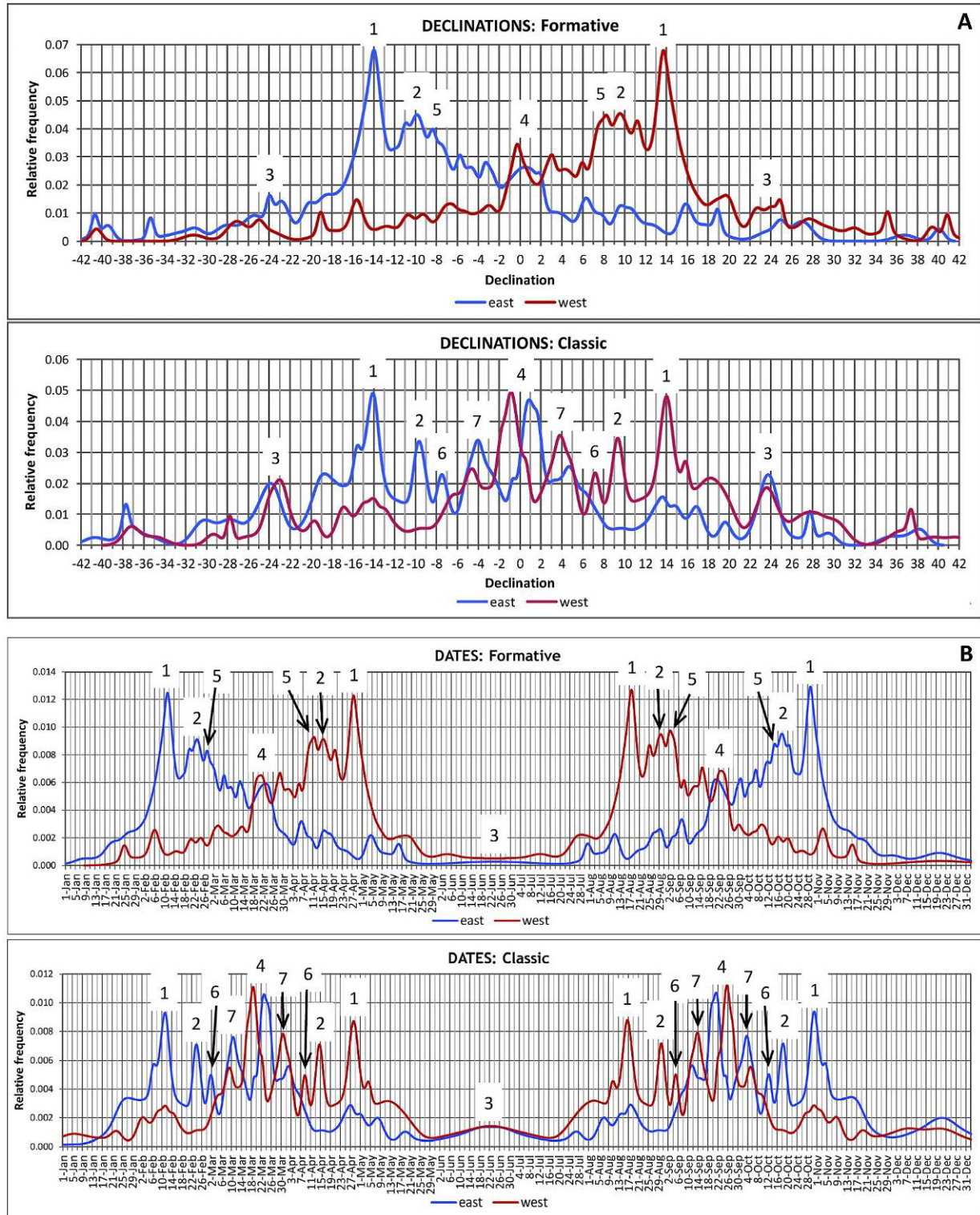


Fig. 3. Relative frequency distribution of declinations (A) and dates (B) by period. The most evident orientation groups are designated by numbers (see text).

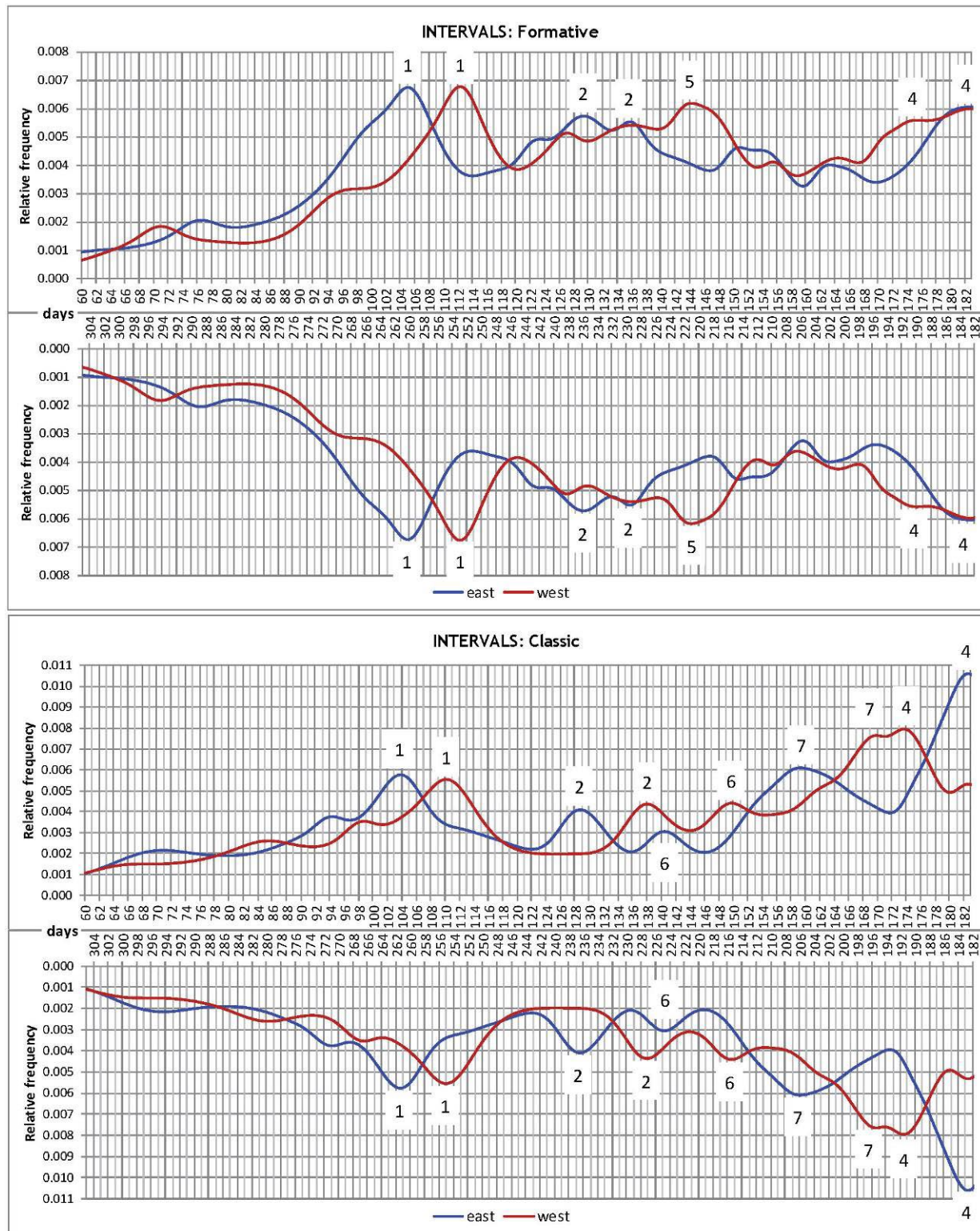


Fig. 4. Relative frequency distribution of intervals by period. The distributions of short/long intervals delimited by pairs of sunrise and sunset dates are plotted in the upper/lower parts of each graph. The interval peaks corresponding to the most evident orientation groups are designated by numbers (see text).

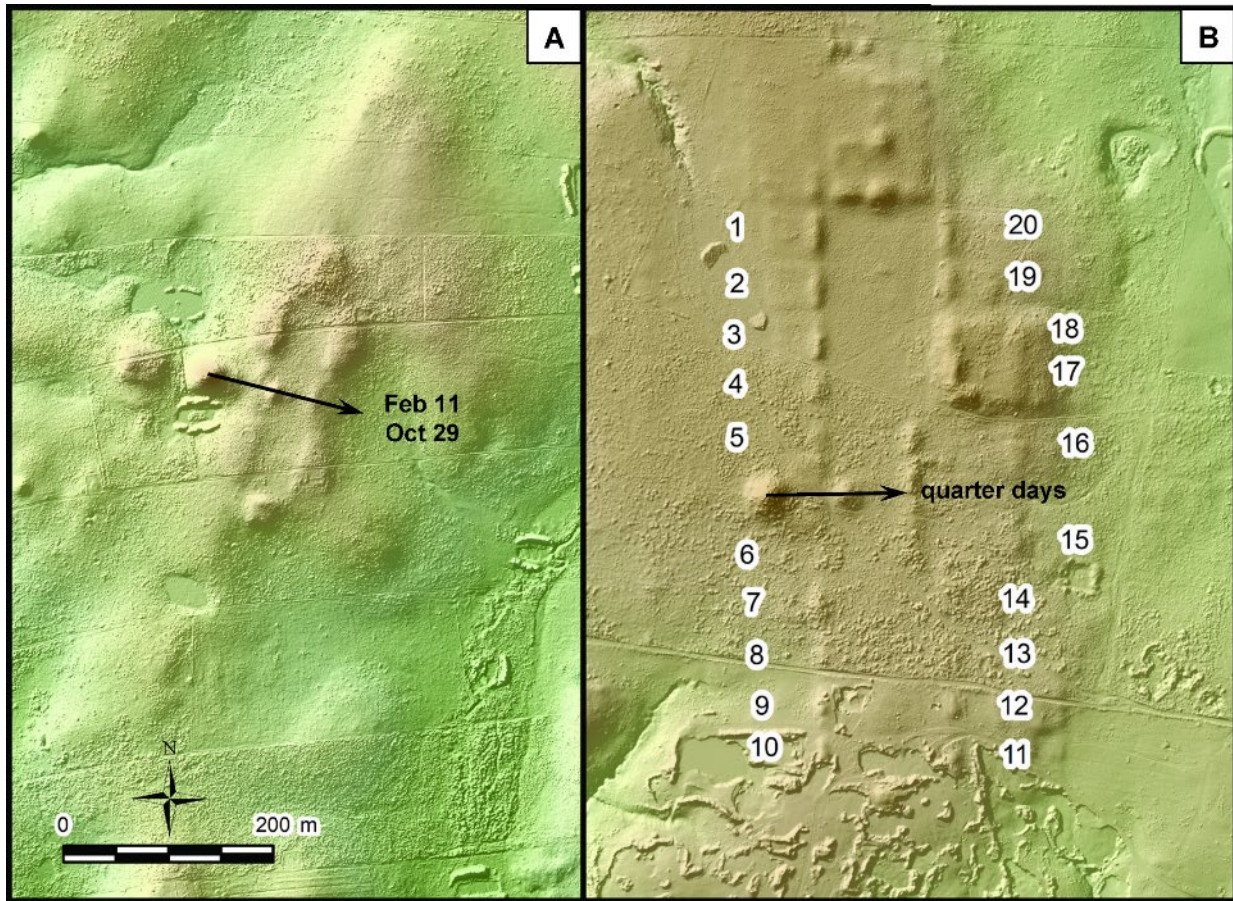


Fig. 5. Lidar-based images showing examples of solar orientations pertaining to Groups 1 (260-day interval) and 4 (quarter-day sunrises). (A) MFU and E Group at site 15456; (B) MFU and E Group at El Cacho (site 14599). The 20 edge platforms at El Cacho (and other sites: Fig. 6) likely represent the base unit of the Mesoamerican calendars. The southern part of this site is damaged by the modern extraction of construction material.

The most widespread orientation group in the Formative, clearly indicating the underlying calendrical principles, was Group 1, corresponding to sunrises on February 11 and October 29, separated by 260 days (eastern interval peaks at 105.13/260.12 days: Fig. 4). This was the most pervasive orientation group in later Lowland Maya architecture as well and very common also elsewhere in Mesoamerica (3, 4). While the sunset dates corresponding to this orientation group (around April 17 and August 27) and the intervening intervals (around 112/253 days) have no conceivable significance, the sunrises separated by 260 days occurred on the same dates of the ritual calendrical cycle, a fact that

supports the eastern directionality of these orientations and represents the most obvious reason for their popularity. The great majority of these orientations in our sample are embedded in complexes most likely dating to 1100-750 BCE, if not earlier, and thus represent the earliest evidence of the 260-day calendrical cycle. The orientations of this group, skewed south of east, marked February 11 and October 29 on the eastern horizon (Fig. 5A); however, some structures, deviated counterclockwise from cardinal directions, recorded the same dates on the western horizon (Table S1).

It seems significant that the alignment of two central mounds of MFU minor 22305 (azimuth = $104.27^\circ \pm 0.5^\circ$; Table S1), prolonged eastward, passes almost exactly over a structure about 380 m away. If this structure is contemporary and actually indicates the intended alignment (104.64° , horizon altitude 0.54° , declination -13.88°), it would have accurately recorded sunrises on February 11 and October 29, separated by 260 days (Fig. ??). The astronomically-based intentionality of this spatial relationship is supported by similar situations at several sites in the Maya Lowlands, where a building is oriented to both the Sun's position on significant dates and a structure placed in the same direction (3, 4).

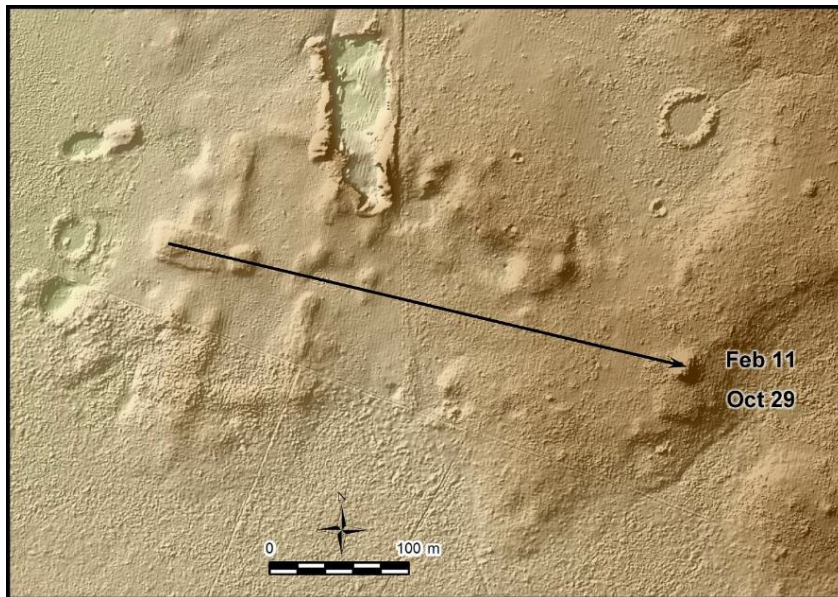


Fig. ??. Alignment of the central axis of MFU minor 22305 to a neighboring structure.

Other orientation groups also reflect the use of the 260-day calendar. Group 2, also frequent in the Formative, matches sunrises on February 24 and October 17, separated by 130 days, or half of the 260-

day count (Figs. 3 and 4; again, the intervals separating sunset dates marked by the same group, around 136/229 days, do not appear significant). A prominent example is Aguada Fénix (Fig. 6B) dated to 1100-750 BCE (13). This group was also prominent elsewhere in the Maya Lowlands, as was Group 5, which likely marked another multiple of 13 days, either 143 or 221 days, delimited by sunsets on April 11 and Sep 1/2. The 143-day interval was the more likely target because it was marked by a number of central lowland E Groups of the Formative period (20).

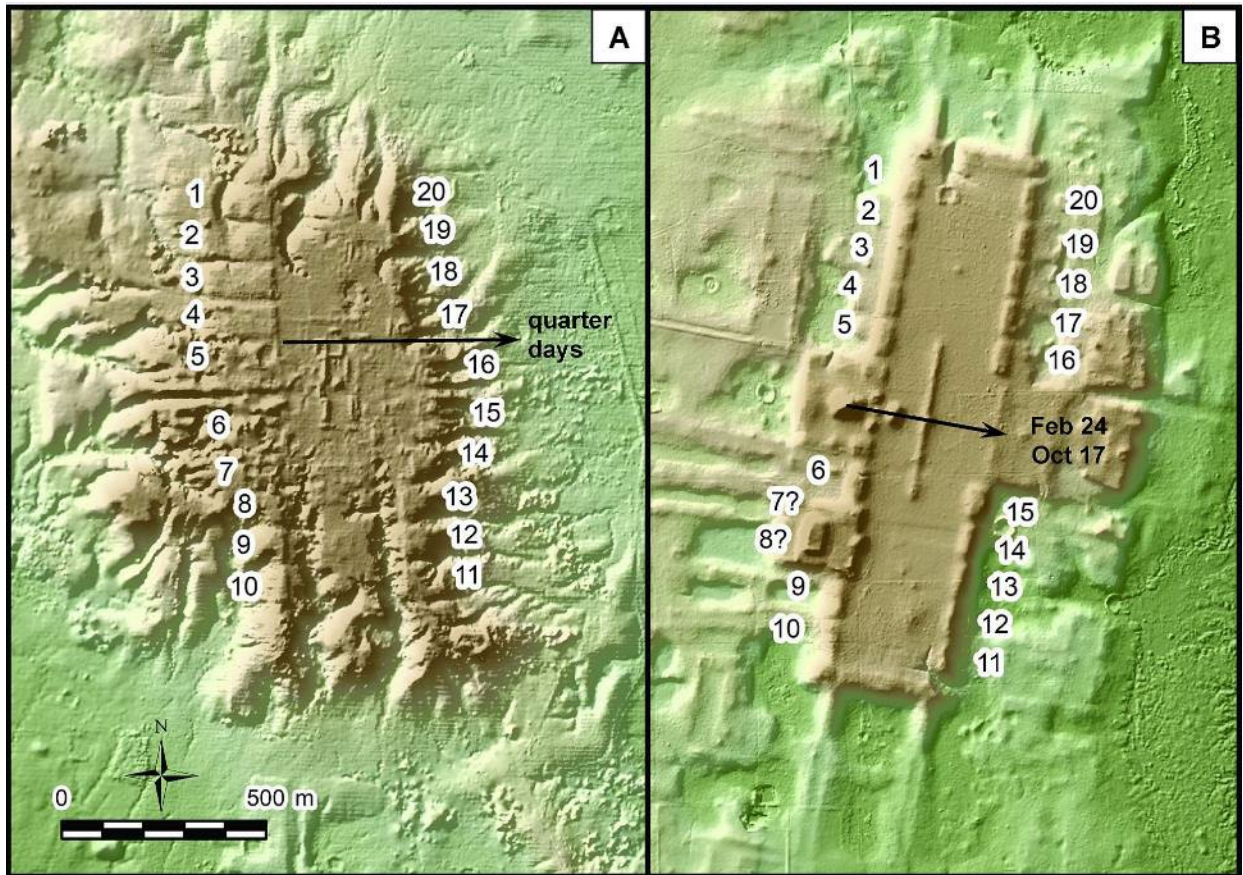


Fig. 6. Lidar-based images of San Lorenzo (A) and Aguada Fénix (B), exhibiting similar spatial plans, each with 20 edge platforms. Edge Platforms 7 and 8 of Aguada Fénix were probably buried by the later addition of the Southwestern Platform. The orientation of San Lorenzo belongs to Group 4 (quarter-day sunrises), whereas the orientation of the MFU and E Group of Aguada Fénix (Site 21347) belongs to Group 2 (130-day interval).

While the groups discussed above were less popular during the Classic period, Groups 3 and 4, referring to the solstices and quarter days of the year, were common throughout the history of the area

(Figs. 3, 4, 5B, and 6A). Since the solstices are naturally significant moments of the tropical year, marked by easily perceptible extremes of the Sun's annual movement along the horizon, they must have been the most elementary references for keeping track of the seasons, as evidenced in many ancient cultures (21–23). Their importance in Mesoamerica, attested not only by architectural orientations but also by some glyphs and designs in prehispanic manuscripts, survives among various present-day indigenous communities, which often place the world corners at the solstitial points of the horizon (Aveni 2001, pp. 148–152; Köhler 1982; Milbrath 1999, pp. 15, 19). The quarter days, falling one or two days after/before the spring/fall equinox, divide each half of the year delimited by the solstices in two equal parts. While there is no compelling evidence that the Mesoamericans were aware of the equinox as defined by modern astronomy (24), the importance of the solstices and quarter days is attested by architectural orientations throughout Mesoamerica (3).

The existence of solstitial alignments in the study area is better visible in Fig. 3A (concentration of declinations around $\pm 24^\circ$) than in Fig. 3B, because the errors in azimuth around solstitial directions correspond to large errors in days, resulting in extended curves around the solstitial dates (for details, see Text S2.1 and Fig. S?). Quarter-day orientations are indicated by the clustering of declinations (around 0.7°), dates (around March 22 and September 21), and intervals (around 182 days = 14×13 days) in Figs. 3 and 4. However, since quarter days were marked on both horizons, the KDE distributions of declinations and dates (Fig. 3) are affected by merging of similar values. To avoid this effect, the dates marked on either horizon during the span of a few days before/after the spring/fall equinox were separated from those falling during a few days after/before the spring/fall equinox. In Fig.??, which presents the result of this experiment, relative frequencies of both series of dates for the Formative and Classic periods, marked on the vertical axis on the right side, are plotted together with the changing dates of quarter days from 900 BCE to 700 CE. The peaks corresponding to Formative and Classic orientations exhibit a remarkable agreement with quarter-day dates in each period.

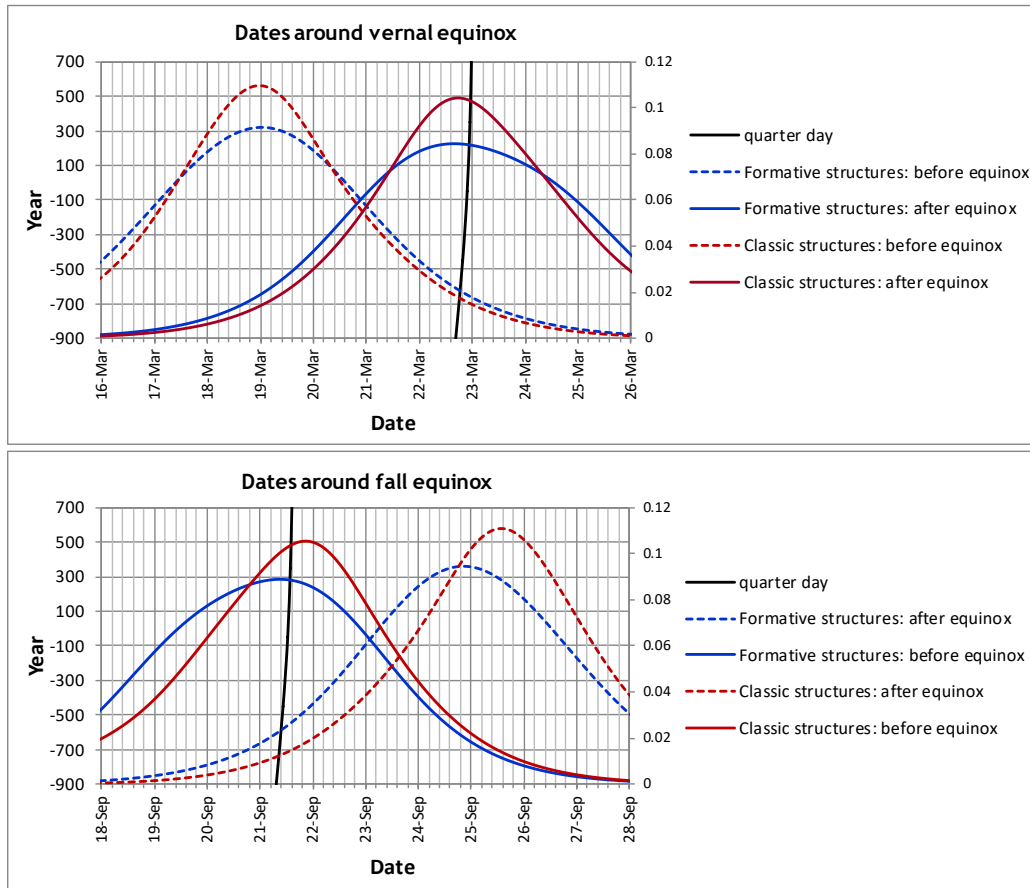


Fig. ??. Relative frequency distribution of dates falling within a few days before and after the spring and fall equinoxes, compared with varying quarter-day dates during the relevant period. The exact moments of quarter days were determined for a few years (900, 450 and 50 BCE and 350 and 700 CE) by halving the time spans delimited by the exact moments of solstices in those years (based on solar ephemeris data calculated by Horizons Web-Interface provided by the Solar System Dynamics Group, NASA Jet Propulsion Laboratory; <https://ssd.jpl.nasa.gov/?horizons>).

During the Classic period, some orientation groups apparently lost popularity, and some new groups appeared or became more prominent. Group 6 corresponds to sunrises on March 1 and October 12, separated by 140 days. The intended referents of Group 7 are less clear, but analogies from the Maya area suggest that some complexes in this group recorded sunsets on March 29 and September 14, separated by 169 ($= 13 \times 13$) days, and others sunrises on March 11 and October 2, with an intervening interval of 160 days (4, 20).

We can detect additional possible orientation groups, which were also common in the Maya area and elsewhere in Mesoamerica. As suggested by alignments to mountain tops (which are hardly attributable to chance, given the analogies from a number of Mesoamerican sites) and other more accurately determinable orientations (Text S2.3), it is particularly likely that Group 1 represents a fusion of the prevalent one marking a 260-day interval (February 11, October 29) with two or three others. One of them recorded sunsets on April 30 and August 13, also separated by 260 days. An example of this orientation is the MFU complex of La Carmelita (Fig. ??) dated to 900-750 BCE (13). The second set marked May 3 and August 11, and the third one February 9 and November 1. Each of these date pairs is separated by 100 days.



Fig. ??. MFU 14267 (La Carmelita). The central east-west axis of the E Group matches sunsets on April 30 and August 13, which could have been observed from the highest pyramid over a smaller one to the west.

While the solar orientations prevail in the study area, an astronomical basis is also very likely for a number of alignments beyond the solar angle. The orientations indicated by declination peaks near $\pm 28^\circ$

in Fig. 3A can be related to the major extremes of Venus and the Moon. The importance of both celestial
 255 bodies in Mesoamerica has long been known and is evidenced by a variety of prehispanic and early
 colonial written sources, iconography, and ethnographically documented survivals. A number of
 orientations to their extremes have also been identified (1, 3, 5, 25, 26, 58, 59). All Venus extremes are
 seasonal phenomena, but particularly interesting must have been those of the evening star, both because
 they are up to about 3° larger than those of the morning star (which never exceed notably the extremes of
 260 the Sun at the solstices) and because they approximately delimit the rainy season. Aside from the
 alignments marking the evening star extremes, there is other evidence that the Mesoamericans were aware
 of this seasonality, which thus very likely motivated the conceptual association of Venus, particularly its
 evening manifestation, with rain, maize, and fertility (25, 58). Similarly, the Moon is almost universally
 associated with earth, water, and fertility (68). Various observational facts may have been responsible for
 265 these concepts, and there is evidence that some of them were perceived by the Mesoamericans. The
 existence of orientations to both Venus and lunar extremes in our study area is strongly suggested by the
 results of quantitative analyses of alignment data and additionally supported by different types of
 contextual evidence (for a detailed discussion, see Text S2.1, Fig. S7).

Finally, the declinations clustering around $\pm 38^\circ$ (Fig. 3A) might be related to a star or a group of
 270 stars. As suggested by the analysis of the alignment data and analogies from elsewhere in the Maya
 Lowlands, the most likely referent was Fomalhaut (or an asterism in that part of the southern sky), whose
 heliacal rise (first visibility after sunrise) occurred in mid-February in the Formative but moved to March
 in the Classic (for details, see Text S2.2, Fig. S??). The significance of this time span is clearly evidenced
 by the dates recorded by solar orientations.

275 In several zones of the study area, many structures or architectural compounds are clustered and
 roughly reproduce the orientation of a major building. Similar cases, reflecting the importance of
 astronomically significant directions, have been documented at a number of Mesoamerican sites (3). At
 some sites, particularly those that exhibit clear grid patterns, the same celestial event could have been
 observed from different spots. At others, the dates marked by different orientations could have been

incorporated in a single observational calendar composed of significant intervals (for examples, see Text S2.4, Figs. S14-S17).

DISCUSSION

Our finds accord well with the general pattern found across the world. Astronomical observations were practiced in many hunter-gatherer and horticultural societies, often focusing on the solstices, lunar cycles, and certain stars. Monumental constructions built before the full establishment of agriculture in various parts of the world commonly incorporated alignments to the solstices, lunar extremes, and possibly quarter days (21–23, 27). With the establishment of agriculture, astronomical observations often became more important and elaborate (28, 29). In various parts of Mesoamerica, maize appears to have been adopted as a staple crop at varying rates between 2000 and 1000 BCE (30, 31). San Lorenzo, with its heyday between 1400 and 1100 BCE, was probably built by people relying heavily on wild resources (32). Its main plateau is oriented to quarter-day sunrises, but its 20 edge platforms suggest that calendrical concepts based on the number 20 were already in place. Moreover, observing from the core area of San Lorenzo, the Sun at the December solstice sets behind Mt. Zempoaltépetl in Oaxaca, which is still a sacred and ritually important mountain for the local Mixe. The importance of solstitial directions continued during the following Middle Formative period, particularly in the regions south of our study area, including central Chiapas and the Pacific Coast (5, 33).

Along with these orientations tied to the solstices and quarter days, MFUs and other standardized complexes began to exhibit more diversified alignments during the Early-Middle Formative transition around 1100-900 BCE. These new orientations reflect the use of observational schemes based on the 260-day calendar and its constituent periods of 13 and 20 days. Since solar horizon calendars can only function through observations made from a fixed spot (22), a factor underlying this development must have been the increasing adoption of more sedentary ways of life along with a stronger commitment to maize agriculture. During the Early Formative and the early part of the Middle Formative, mobile and

sedentary groups may have co-existed in various parts of Mesoamerica (12, 34–36). More sedentary groups probably resided at large centers, including San Lorenzo and Aguada Fénix. These groups possibly included ritual specialists, who held esoteric knowledge of astronomical observations and played a leading role in the sophistication of calendrical concepts.

The origins of the 260-day calendar have long been debated. Scholars have proposed possible underlying reasons, including the numerological significance of numbers 20 and 13 (association with body parts, particular deities, and cosmic levels), agricultural scheduling, a period of human gestation, and the interval between solar zenith passages (37, 38). Although our data are not enough to resolve this issue, they lead us to favor two alternative scenarios, each combining the numerology and the scheduling of rituals. In the first scenario, this process possibly emerged within the pre-existing tradition of annual aggregation and dispersal of mobile groups, which is also observed among ethnographically-known hunter-gatherers and horticulturalists. Some pre-agricultural monumental constructions found outside Mesoamerica, including Göbekli Tepe or Poverty Point, were most likely built during periods of seasonal gathering (23, 39). In the tropical lowland areas of Mesoamerica, the height of the dry season, when the critical resources of aquatic food become more easily accessible, was most likely the time of aggregation during Archaic and Early Formative periods. The concentration of solar alignments corresponding to dates in February and March in our study area possibly reflects this period of aggregation, collective ritual, and construction activity. To coordinate ritual schedules among participants on regional and inter-regional scales, the builders of ceremonial complexes needed to elaborate solar observational calendars, which were incorporated in building designs (23). These ritual calendars were tied to the numerology of 20 and 13, resulting in the 260-day calendar. In addition, the earlier use of stars and the Moon for timekeeping may be reflected in the alignments of some complexes with lunar extremes and with a star or asterism whose heliacal rises fell in February and March (Text S2.2).

The second possibility is that the dates most frequently recorded by solar alignments marked rituals of predominantly agricultural significance, as suggested also outside Mesoamerica (23, 40). The emergence of standardized complexes tied to the 260-day calendar in our study area around 1000 BCE

may be related to the spread of maize agriculture. This scenario is supported by the persistence of prominent orientation groups in later periods and by modern ethnographic data. Many dates marked by architectural orientations are in remarkable agreement with the timing of agricultural rituals performed by modern communities, although many of them are blended with Christian ceremonies. Some communities still use the 260-day calendar to schedule agricultural rituals that inaugurate particular stages of the canonical 260-day maize cultivation season (3–5). Despite possible variations in agricultural scheduling due to different ecological settings and farmers' individual decisions, this persistence in architectural orientations and ritual dates across time and space implies that agricultural activities were shaped by shared calendrical concepts.

Although various scholars have suspected that the 260-day calendar was established during the early Middle Formative period or earlier, it has been difficult to test this idea because of the absence of sophisticated writing systems in those periods. Our alignment data provide evidence that this calendar was in use during the period between 1100 and 750 BCE. The specific designs of MFU and other complexes from their initial construction and the presence of 20 edge platforms at San Lorenzo suggest the possibility that the 260-day calendar or related concepts existed even before 1100 BCE. In addition, our data are consistent with the hypothesis that the Gulf Coast Olmec region and adjacent areas were the primary stages for the initial development of the Mesoamerican calendrical system, as well as of astronomical practices in general.

MATERIALS AND METHODS

Alignment measurements

The orientations were measured on digital elevation model (DEM) derived from airborne laser scanning (lidar) data, using ArcGIS software and different types of visualizations. Depending on the resolution of lidar data from different sources (12, 13), possible errors were estimated and assigned to each alignment. Both north-south and east-west alignments were determined for each structure or compound (or only one,

if the other was not determinable). Each alignment corresponds to the east-west or north-south axis of a building or to a series of evidently aligned structures. Where several nearly parallel lines were determinable, the mean value of their azimuths was calculated. Observation points, required for calculating horizon altitudes, were placed on an elevated and presumably the most convenient spot of each architectural structure or complex. Although the locations of these points are hypothetical, the differences regarding the true observation points have no major relevance, because the horizon line is in most cases far away. The azimuths of alignments measured in UTM cartographic projection were corrected to true (astronomical) azimuths for grid convergence, calculated with ArcGIS tools.

All the alignments measured are listed in Table S1 (separate Excel file). Since the astronomical basis of north-south alignments is unlikely (see below: Analyses), the analyses were focused on the data corresponding to east-west alignments ($45^{\circ} \leq \text{azimuth} \leq 135^{\circ}$). These were determined for 66 MFU, 31 VC, 5 MFC and 3 MFG complexes, 52 Rectangles, 8 Squares, 19 E Groups, 114 Classic Veracruz complexes, and 46 Classic structures of other types (Classic generic). If the type is labeled “MFU & E Group” in Table S1 (or “VC & E Group”, or alike), it means that both the large complex and the integrated E Group have the same orientation, which was considered as a single one in the analyses. However, where the E Group has a different orientation (i.e. the differences in azimuth are not within the range of error estimated for each alignment), the alignment data for both the larger complex (MFU, VC etc.) and the integrated E Group (labeled “MFU E Group”, “VC E Group” etc.) are given and were included in the analyses.

Data reduction

Putative astronomical target(s) of an alignment can be identified only by calculating the corresponding declination (celestial coordinate that expresses angular distance measured from the celestial equator to the north and south and depends on the azimuth of the alignment, geographic latitude of the observer, and the horizon altitude corrected for atmospheric refraction). The declinations were calculated with the formulae of spherical astronomy routinely used in archaeoastronomical research (1, 5, 21). Horizon altitudes

required for these calculations were obtained with the Horizon software

(<http://www.agksmith.net/horizon/>), using 1-arc-second (30 m) SRTM data

(<https://www2.jpl.nasa.gov/srtm/>). The orthometric height of each observation point was determined on

the lidar-derived DEM. The latter, though more accurate than SRTM, was not convenient for calculating

horizon altitudes both because the horizon line in many cases lies beyond the area covered by lidar and

because the Skyline tool in ArcGIS is less precise and practical than the Horizon software. However, in

the cases where the horizon line is relatively near, horizon altitudes were calculated from the lidar-based

DEM. In these calculations, the height of forest canopy was considered to have been 15 m, except in the

area of clearance surrounding the observation point within the radius of 3000 m. The errors resulting from

this inevitably arbitrary decision are small and probably negligible, because the horizon line is in most

cases several kilometers away. While horizon altitudes were always corrected for atmospheric refraction

(41), the altitudes of distant points (over 80 km away) were determined with the online calculator

provided by Andrew T. Young, in which terrestrial refraction is also taken into account

(https://aty.sdsu.edu/explain/atmos_refr/altitudes.html). For the alignments potentially related to lunar

extremes, geocentric lunar declinations were calculated, considering the parallax (21, 42).

The declinations within the solar span were converted to Gregorian dates and the intervening

intervals were also calculated. Since the Sun attains a certain declination (except a solstitial one) twice a

year, two sunrise and two sunset dates correspond to each alignment and each date pair divides the year

into two intervals, whose sum is equal to the length of the tropical year (currently about 365.2422 days).

The dates are given in the proleptic Gregorian calendar (extrapolated into the past before its actual

introduction), which is the closest approximation to the tropical year, and are valid for the period of

construction of the building in question. Due to secular variations affecting the obliquity of the ecliptic,

the length of the tropical year and the heliocentric longitude of the perihelion of the Earth's orbit (the

latter element determining the length of astronomical seasons), on the one hand, and to the Gregorian

calendar intercalation system, on the other, one and the same solar declination does not always

correspond to exactly the same Gregorian date. For the three main periods in which the sites in our area

flourished (early and middle phases of Middle Formative and Late Classic), three ordinary Julian years
 were chosen for computations (900 BCE for MFU, VC, E Groups, Rectangles and Squares; 600 BCE for
 MFC and MFG; and 700 CE for Classic Veracruz and Classic generic sites; for the Late Formative El
 Tiradero, year 50 BCE was used; for architectural types and chronology, see below, and 12, 13). For each
 of these years, solar ephemeris data were generated, employing Horizons Web-Interface provided by the
 Solar System Dynamics Group of the NASA Jet Propulsion Laboratory
 (<https://ssd.jpl.nasa.gov/horizons/>). A list containing the Sun's apparent geocentric declinations calculated
 for the whole year at intervals of 6 minutes, as well as the corresponding Julian dates and hours, was
 downloaded and imported to an Excel table. In order to obtain comparable dates, the moment nearest to
 the March equinox (when the Sun's declination was nearest to 0°) was in all cases taken to be March
 21.0, Gregorian (March 21, at 0:00 hours of Universal Time) and all other Julian dates and hours in the
 table were corrected accordingly. Then the differences between all the declinations listed in the table and
 the declination corresponding to a particular alignment were calculated; after finding the smallest two
 differences, which indicated the two Gregorian dates matching the alignment's declination, the
 intervening intervals were calculated. One of the two intervals was the exact difference between the two
 dates, but since one table of ephemeris data comprised only one year, the complementary interval was
 calculated by subtracting the other from the length of the tropical year, calculated for the year in question
 with the algorithm given by Meeus and Savoie (43). As the same procedure had to be repeated for all
 declinations targeted by the alignments included in the study, a macro routine in Excel was created for
 these computations. In this routine, the errors of dates and intervals, based on the errors of declinations
 (which are the same as those estimated for the corresponding azimuths), were also calculated. All these
 data are listed in Table S1. Frequency distributions of dates are shown in Fig. S3.

It may be necessary to clarify that, if the true moment of the equinox in each year used for
 determining the dates had been considered, the analysis of their distribution would yield unreliable
 results, since the exact date corresponding to one and the same declination in different years presents
 variations of up to about ± 1 day, depending on the placement of the year in a four-year cycle and within a

four-century period of the Gregorian intercalation system. By correlating the vernal equinox invariably with March 21.0, one and the same declination corresponds to the same dates during at least two or three centuries; inaccurate chronological placements of particular structures thus have no major relevance. Due to the aforementioned secular variations in the Earth's orbital elements, the declination corresponding to one and the same date slightly changes over longer time spans, resulting in that the exact dates delimiting a certain interval may also present minor shifts. However, the differences in comparison with the “ideal” dates given in the text and corresponding to particular orientation groups rarely amount to more than a day (e.g., the 260-day interval was delimited by February 11 and October 29 during the Formative, while in the Late Classic and afterwards the dates tended to be February 12 and October 30).

As the azimuths of many alignments cannot be accurately determined (due to the current state of the structures and the resolution of lidar-derived DEM) and considering the uncertainties regarding the exact location of observation points (on which horizon altitudes depend), the attempt to achieve the precision in determining dates and intervals might appear an exaggeration. However, this effort seemed preferable, so as not to increase the errors that are inevitable.

Analyses

In the analyses of alignment data, kernel density estimation (KDE) was used (KDE; Figs. 2–4). An advantage of this method over simple histograms (Figs. S1–S3) is in that the errors assigned to individual values are taken into account. In KDE analyses, each data point is replaced by a weighting function

(kernel) with a specified distribution and a smoothing parameter (bandwidth). While there are different kernel types (González-García and Šprajc 2016), we used the Gaussian kernel, with a normal distribution centered on the nominal value and with a standard deviation (bandwidth) equal to the error assigned to each value. All normal distributions (kernels) were then summed up and plotted, employing Ms Excel Add-in Kernel.xla 1.0e (developed by Royal Society of Chemistry and downloadable as Kernel.zip at: <https://www.rsc.org/membership-and-community/connect-with-others/join-scientific-networks/subject-communities/analytical-science-community/amc/software/>), tab “Software for calculating kernel

densities”). Since the errors assigned to similar values tend to cancel out, it can be expected that the most prominent peaks of the resulting curves, which present relative frequency distributions (Figs. 2–4), closely correspond to the values targeted by particular orientation groups (graphs of this type have also been named “curvigrams” or “cumulative probability histograms” (Ruggles 1999)).

The non-uniform distribution of azimuths (Figs. 2 and S1) suggests an astronomical rationale. In addition, the distributions of the corresponding declinations and dates (Figs. 3, S2 and S3) are clearly different from those resulting from a uniform or homogenous distribution of azimuths (see Figs. 2 and 4 in González-García and Šprajc 2016). However, it is unlikely that the north-south alignments were conditioned by astronomical criteria because

- the azimuths of both Preclassic and Classic buildings tend to cluster around similar values, but the clustering is more pronounced in the distribution of E-W azimuths;
- there are few bright stars in the northern and southern sky and their rising or setting points cannot account for the peaks in Fig. 2 (the concentrations of N-W azimuths can be attributed to the fact that in many constructions they are more or less perpendicular to the E-W azimuths).

The distribution of declinations marked by north-south azimuths has not been analyzed, because their clustering is even less pronounced than that of the azimuths (the difference between declinations corresponding to different N-S azimuths is much smaller than the variation in declination corresponding to the same azimuthal difference on the eastern or western horizon). Additionally, without any independent evidence suggesting a stellar target, we cannot calculate declinations by applying the correct extinction angle (the minimum angular altitude above the horizontal plane at which a star is visible and which depends on its magnitude; note that the declinations corresponding to north-south alignments, given in Table S1, were calculated without considering any extinction angle). Therefore, and even if the possibility that some of the north-south alignments had stellar referents cannot be discarded outright, no plausible hypothesis can be based on the alignment data alone.

Given these arguments, our analyses were focused on the data corresponding to the east-west alignments. As mentioned above, the prominent peaks in KDE graphs are indicative of intended values.

However, a few notes are in order.

Due to the estimated errors of azimuths (the same errors were assigned to declinations), the values corresponding to nearby orientation groups tend to merge and some of the intended values are obscured in KDE graphs. In addition, since the celestial referents corresponding to each alignment in both directions were considered in the analyses, although most alignments were likely functional only in one direction (as previous work elsewhere in Mesoamerica has shown), several peaks of the KDE curves represent unintended values. Further, while the orientations in Mesoamerican architecture are characterized by a prevalent south-of-east skew (for possible reasons, see 44), 110 structures in our data sample (32%) are deviated north of east. As certain celestial events were marked on either the eastern or the western horizon, the targeted and unintended values often blend in the graphs. Finally, a considerable number of structures probably were not oriented astronomically, contributing to the “noise” in data distribution.

REFERENCES

1. A. F. Aveni, *Skywatchers: A Revised and Updated Version of Skywatchers of Ancient Mexico* (University of Texas Press, 2001).
2. A. Aveni, H. Hartung, *Maya City Planning and the Calendar* (Transactions of the American Philosophical Society vol. 76, part 7, Philadelphia, 1986).
3. I. Šprajc, Astronomy, architecture, and landscape in prehispanic Mesoamerica. *J. Archaeol. Res.* **26**, 197–251 (2018). <https://doi.org/10.1007/s10814-017-9109-z>
4. P. F. Sánchez Nava, I. Šprajc, *Orientaciones astronómicas en la arquitectura maya de las tierras bajas* (Instituto Nacional de Antropología e Historia, México, 2015).

5. I. Šprajc, P. F. Sánchez Nava, *Orientaciones astronómicas en la arquitectura de Mesoamérica: Oaxaca y el Golfo de México* (Prostor, kraj, čas 8, Založba ZRC, Ljubljana, 2015).
<https://doi.org/10.3986/9789612548162>
6. P. M. Rice, *Maya Calendar Origins: Monuments, Mythistory, and the Materialization of Time* (University of Texas Press, 2007).
7. D. Stuart, H. Hurst, B. Beltrán, W. Saturno, An early Maya calendar record from San Bartolo, Guatemala. *Science Advances* **8**, eabl9290 (2022). DOI: [10.1126/sciadv.abl9290](https://doi.org/10.1126/sciadv.abl9290)
8. M. E. D. Pohl, K. O. Pope, C. von Nagy, Olmec origins of Mesoamerican writing. *Science* **298**, 1984–1987 (2002). DOI: [10.1126/science.1078474](https://doi.org/10.1126/science.1078474)
9. K. V. Flannery, J. Marcus, *Excavations at San José Mogote 2: The Cognitive Archaeology* (Memoirs of the Museum of Anthropology 58, University of Michigan, 2015).
10. G. Whittaker, “The structure of the Zapotec calendar”. In *Calendars in Mesoamerica and Peru: Native American Computations of Time*, A. Aveni, G. Brotherston, Eds. (BAR International Series 174, 1983), pp. 50–86.
11. J. S. Justeson, W. M. Norman, L. Campbell, T. Kaufman, *The Foreign Impact on Lowland Mayan Language and Script* (Middle American Research Institute Publ. 53, Tulane University, 1985).
12. T. Inomata, J. C. Fernandez-Diaz, D. Triadan, M. García Mollinedo, F. Pinzón, M. García Hernández, A. Flores, A. Sharpe, T. Beach, G. W. L. Hodgins, J. J. Durón Díaz, A. Guerra Luna, L. Guerrero Chávez, M. de L. Hernández Jiménez, M. Moreno Díaz, Origins and spread of formal ceremonial complexes in the Olmec and Maya regions revealed by airborne lidar. *Nature Human Behaviour* **5**, 1487–1501 (2021). <https://doi.org/10.1038/s41562-021-01218-1>
13. T. Inomata, D. Triadan, V. A. Vázquez López, J. C. Fernandez-Diaz, T. Omori, M. B. Méndez Bauer, M. García Hernández, T. Beach, C. Cagnato, K. Aoyama, H. Nasu, Monumental architecture at Aguada Fénix and the rise of Maya civilization. *Nature* **582**, 530–533 (2020).
<https://doi.org/10.1038/s41586-020-2343-4>

14. J. E. Clark, R. D. Hansen, “Architecture of early kingship: Comparative perspectives on the origins of the Maya royal court” in *Royal Courts of the Ancient Maya, Volume 2: Data and Case Studies*, T. Inomata, S. D. Houston, Eds. (Westview Press, Boulder, 2001), pp. 1–45.
15. J. E. Clark, “Western kingdoms of the Middle Preclassic” in *The Origins of Maya States*, L. P. Traxler, R. J. Sharer, Eds. (University of Pennsylvania Museum of Archaeology and Anthropology, Philadelphia, 2016), pp. 123–224.
16. J. G. Hodgson, J. G. Clark, E. Gallaga Murrieta, Ojo de Agua Monument 3: A new Olmec-style sculpture from Ojo de Agua, Chiapas, Mexico. *Mexicon* **32**, 139–144 (2010).
17. J. A. Borstein, Epiclassic political organization in southern Veracruz, Mexico: Segmentary versus centralized integration. *Ancient Mesoamerica* **16**, 11–21 (2005).
<https://doi.org/10.1017/S095653610505008X>
18. T. W. Killion, J. Urcid, The Olmec legacy: Cultural continuity on Mexico’s southern Gulf Coast. *Journal of Field Archaeology* **28**, 3–25 (2001). <https://doi.org/10.1179/jfa.2001.28.1-2.3>
19. S. Symonds, A. Cyphers, R. Lunagómez, *Asentamiento prehispánico en San Lorenzo Tenochtitlán, Veracruz, México* (Universidad Nacional Autónoma de México, 2002).
20. I. Šprajc, Astronomical aspects of Group E-type complexes and implications for understanding ancient Maya architecture and urban planning. *PLOS ONE* **16**, e0250785 (2021).
<https://doi.org/10.1371/journal.pone.0250785>
21. C. Ruggles, *Astronomy in Prehistoric Britain and Ireland* (Yale University Press, 1999).
22. C. L. N. Ruggles, “Calendars and astronomy” in *Handbook of Archaeoastronomy and Ethnoastronomy*, C. L. N. Ruggles, Ed. (Springer, 2015), pp. 15–30.
23. C. Stanish, *The Evolution of Human Co-operation: Ritual and Social Complexity in Stateless Societies* (Cambridge University Press, 2017).
24. I. Šprajc, Equinoctial Sun and astronomical alignments in Mesoamerican architecture: Fiction and fact. *Ancient Mesoamerica* (2021), 1–17. <https://doi.org/10.1017/S0956536121000419>

25. I. Šprajc, Venus in Mesoamerica: Rain, maize, warfare, and sacrifice. *Oxford Research Encyclopedia of Planetary Science* (2018), <https://doi.org/10.1093/acrefore/9780190647926.013.60>.
26. I. Šprajc, Lunar alignments in Mesoamerican architecture. *Anthropological Notebooks* **22**, 61–85 (2016).
27. M. A. Rappenglück, “Possible calendrical inscriptions on Paleolithic artifacts” in *Handbook of Archaeoastronomy and Ethnoastronomy*, C. L. N. Ruggles, Ed. (Springer, 2015), pp. 1197–1204.
28. A. Pannekoek, The origin of astronomy. *Monthly Notices of the Royal Astronomical Society (London)* **111**, 347–356 (1951). <https://doi.org/10.1093/mnras/111.4.347>
29. J. E. Reyman, “The nature and nurture of archaeoastronomical studies”. In *Archaeoastronomy in Pre-Columbian America*, A. F. Aveni, Ed. (University of Texas Press, 1975), pp. 205–215.
30. D. J. Kennett, K. M. Prufer, B. J. Culleton, R. J. George, M. Robinson, W. R. Trask, G. M. Buckley, E. Moes, E. J. Kate, T. K. Harper, L. O’Donnell, E. E. Ray, E. C. Hill, A. Alsgaard, C. Merriman, C. Meredith, H. J. H. Edgar, J. J. Awe, S. M. Gutierrez, Early isotopic evidence for maize as a staple grain in the Americas. *Science Advances* **6**, eaba3245 (2020). DOI: [10.1126/sciadv.aba3245](https://doi.org/10.1126/sciadv.aba3245)
31. R. G. Lesure, R. J. Sinensky, T. A. Wake, “The end of the Archaic in the Soconusco region of Mesoamerica: A tipping point in the local trajectory toward agricultural village life” in *Preceramic Mesoamerica*, J. C. Lohse, A. Borejsza, A. A. Joyce, Eds. (Routledge, 2021), pp. 481–504.
32. A. Cyphers, “The Early Preclassic Olmec: An overview” in *The Origins of Maya States*, L. P. Traxler, R. J. Sharer, Eds. (University of Pennsylvania Museum of Archaeology and Anthropology, Philadelphia, 2016), pp. 83–122.
33. A. Aveni, H. Hartung, “Water, mountain, sky: The evolution of site orientations in southeastern Mesoamerica” in *In Chalchihuitl in Quetzalli: Mesoamerican Studies in Honor of Doris Heyden*, E. Quiñones Keber, Ed. (Labyrinthos, Lancaster, CA, 2000), pp. 55–65.
34. P. Arnold III, “Tecomates, residential mobility, and Early Formative occupation in coastal lowland Mesoamerica” in *Pottery and People: A Dynamic Interaction*, J. M. Skibo, G. M. Feinman, Eds. (University of Utah Press, 1999), pp. 159–170.

35. R. M. Rosenswig, “An early Mesoamerican archipelago of complexity” in *Early Mesoamerican Social Transformations: Archaic and Formative Lifeways in the Soconusco Region*, R. G. Lesure, Ed. (University of California Press, 2011), pp. 242–271.
36. T. Inomata, J. MacLellan, D. Triadan, J. Munson, M. Burham, K. Aoyama, H. Nasu, F. Pinzón, H. Yonenobu, Development of sedentary communities in the Maya Lowlands: Coexisting mobile groups and public ceremonies at Ceibal, Guatemala. *Proc. Natl. Acad. Sci. U.S.A.* **112**, 4268–4273 (2015). <https://doi.org/10.1073/pnas.1501212112>
37. D. Stuart, *The Order of Days: The Maya World and the Truth About 2012* (Potter/TenSpeed/Harmony, 2011).
38. S. Milbrath, The role of solar observations in developing the Preclassic Maya calendar. *Latin American Antiquity* **28**, 88–104 (2017). <https://doi.org/10.1017/laq.2016.4>
39. D. Graeber, D. Wengrow, *The Dawn of Everything: A New History of Humanity* (Farrar, Straus, and Giroux, 2021).
40. M. Zeilik, The ethnoastronomy of the historic Pueblos, I: Calendrical sun watching. *Archaeoastronomy* 8 (*Journal for the History of Astronomy*, Supplement to Vol. **16**), S1–S24 (1985).
41. G. G. Bennett, The calculation of astronomical refraction in marine navigation. *The Journal of Navigation* **35**, 255–259 (1982). <https://doi.org/10.1017/S0373463300022037>
42. L. V. Morrison, On the analysis of megalithic lunar sightlines in Scotland. *Archaeoastronomy* 2 (*Journal for the History of Astronomy*, Supplement to Vol. **11**), S65–S77 (1980).
43. J. Meeus, D. Savoie, The history of the tropical year. *Journal of the British Astronomical Association* **102**, 40–42 (1992).
44. I. Šprajc, “The south-of-east skew of Mesoamerican architectural orientations: Astronomy and directional symbolism” in *Etno y arqueo-astronomía en las Américas: Memorias del simposio Arq-13 del 51 Congreso Internacional de Americanistas*, M. Boccas, J. Broda, G. Pereira, Eds. (Santiago de Chile, 2004), pp. 161–176.

45. T. Inomata, The emergence of standardized spatial plans in southern Mesoamerica: Chronology and interregional interactions viewed from Ceibal, Guatemala. *Ancient Mesoamerica* **28**, 329-355 (2017).
<https://doi.org/10.1017/S0956536117000049>
46. T. Inomata, D. Triadan, J. MacLellan, M. Burham, K. Aoyama, J. M. Palomo, H. Yonenobu, F. Pinzón, H. Nasu, High-precision radiocarbon dating of political collapse and dynastic origins at the Maya site of Ceibal, Guatemala. *Proc. Natl. Acad. Sci. U.S.A.* **114**, 1293–1298 (2017).
<https://doi.org/10.1073/pnas.1618022114>
47. T. F. Doering, “An unexplored realm in the heartland of the southern Gulf Olmec: Investigations at El Marquesillo, Veracruz, Mexico,” thesis, University of South Florida, Tampa (2007).
48. T. Inomata, “The Isthmian origins of the E Group and its adoption in the Maya lowlands” in *Maya E Groups: Calendars, Astronomy, and Urbanism in the Early Lowlands*, D. A. Freidel, A. F. Chase, A. S. Dowd, J. Murdock, Eds. (University Press of Florida, 2017), pp. 215–252.
49. G. W. Lowe, “Early Formative Chiapas: The beginnings of civilization in the central depression of Chiapas” in *Archaeology, Art, and Ethnogenesis in Mesoamerican Prehistory: Papers in Honor of Gareth W. Lowe*, L. S. Lowe, M. E. Pye, Eds. (Papers of the New World Archaeological Foundation 68, Brigham Young University, 2007) pp. 63–108.
50. A. J. McDonald, *Tzutzuculi: A Middle-Preclassic site on the Pacific coast of Chiapas, Mexico* (Papers of the New World Archaeological Foundation 47, Brigham Young University, 1983).
51. P. Agrinier, *Mound 27 and the Middle Preclassic period at Mirador, Chiapas, Mexico* (Papers of the New World Archaeological Foundation 58, Brigham Young University, 2000).
52. B. R. Bachand, L. S. Lowe, “Chiapa de Corzo's Mound 11 tomb and the Middle Formative Olmec” in *Arqueología reciente de Chiapas: Contribuciones del encuentro celebrado en el 60º aniversario de la Fundación Arqueológica Nuevo Mundo*, L. S. Lowe, M. E. Pye, Eds. (Papers of the New World Archaeological Foundation 72, Brigham Young University, 2012), pp. 45–68.
53. G. W. Lowe, “Olmec horizon defined in Mound 20, San Isidro, Chiapas” in *The Olmec and Their Neighbors*, M. D. Coe, D. Grove, Eds. (Dumbarton Oaks, 1981), pp. 231–256.

54. D. E. Miller, *Excavations at La Libertad, a Middle Formative ceremonial center in Chiapas, Mexico* (Papers of the New World Archaeological Foundation 64, Brigham Young University, 2014).
55. W. F. Rust, “A settlement survey of La Venta, Tabasco, Mexico,” thesis, University of Pennsylvania,
Philadelphia (2008).
56. T. Inomata, D. Triadan, K. Aoyama, V. Castillo, H. Yonenobu, Early ceremonial constructions at
Ceibal, Guatemala, and the origins of Lowland Maya civilization. *Science* **340**, 467–471 (2013).
57. J. Meeus, *Astronomical algorithms* (Willmann-Bell, Richmond, 1991). DOI:
[10.1126/science.1234493](https://doi.org/10.1126/science.1234493)
58. I. Šprajc, The Venus-rain-maize complex in the Mesoamerican world view: Part I. *Journal for the
History of Astronomy* **24** (Parts 1/2), 17–70 (1993).
59. I. Šprajc, P. F. Sánchez Nava, A. Cañas Ortiz, *Orientaciones astronómicas en la arquitectura de
Mesoamérica: Occidente y Norte* (Prostor, kraj, čas 12, Založba ZRC, Ljubljana, 2016).
<https://doi.org/10.3986/9789612548926>
60. S. C. McCluskey, Maya observations of very long periods of Venus. *Journal for the History of
Astronomy* **14**, 92–101 (1983).
61. I. Šprajc, “Alignments upon Venus (and other planets) – Identification and analysis” in *Handbook of
Archaeoastronomy and Ethnoastronomy*, C. L. N. Ruggles, Ed. (Springer, 2015), pp. 507–516.
62. A. C. González-García, “Lunar alignments: Identification and analysis” in *Handbook of
Archaeoastronomy and Ethnoastronomy*, C. L. N. Ruggles, Ed. (Springer, 2015), pp. 493–506.
63. A. F. Aveni, H. Hartung, Los observatorios astronómicos en Chichen Itzá, Mayapán y Paalmul.
Boletín de la Escuela de Ciencias Antropológicas de la Universidad de Yucatán **6** (32), 2–13 (1978).
64. P. F. Sánchez Nava, I. Šprajc, M. Hobel, *Aspectos astronómicos de la arquitectura maya en la costa
nororiental de la península de Yucatán* (Prostor, kraj, čas 13, Založba ZRC, Ljubljana, 2016).
<https://doi.org/10.3986/9789612548964>
65. D. A. Freidel, J. A. Sabloff, *Cozumel: Late Maya Settlement Patterns* (Academic Press, 1984).

66. S. Milbrath, *Star Gods of the Maya: Astronomy in Art, Folklore, and Calendars* (University of Texas Press, 1999).
67. C. Ruggles, *Ancient Astronomy: An Encyclopedia of Cosmologies and Myth* (ABC-CLIO, Santa Barbara, 2005).
68. M. Eliade, *Traité d'histoire des religions* (Payot, Paris, 1964).
69. D. A. Bradley, M. A. Woodbury, G. W. Brier, Lunar synodical period and widespread precipitation. *Science* **137**, 748–749 (1962). DOI: 10.1126/science.137.3532.748
70. G. W. Brier, D. A. Bradley, The lunar synodical period and precipitation in the United States. *Journal of the Atmospheric Sciences* **21**, 386–395 (1964). [https://doi.org/10.1175/1520-0469\(1964\)021<0386:TLSPAP>2.0.CO;2](https://doi.org/10.1175/1520-0469(1964)021<0386:TLSPAP>2.0.CO;2)
71. R. C. Balling, R. S. Cervený, Influence of lunar phase on daily global temperatures. *Science* **267**, 1481–1483 (1995). DOI: [10.1126/science.267.5203.1481](https://doi.org/10.1126/science.267.5203.1481)
72. T. H. Carpenter, R. L. Holle, J. J. Fernandez-Partagas, Observed relationships between lunar tidal cycles and formation of hurricanes and tropical storms. *Monthly Weather Review* **100**, 451–460 (1972). [https://doi.org/10.1175/1520-0493\(1972\)100<0451:ORBLTC>2.3.CO;2](https://doi.org/10.1175/1520-0493(1972)100<0451:ORBLTC>2.3.CO;2)
73. R. S. Cervený, B. M. Svoma, R. S. Vose, Lunar tidal influence on inland river streamflow across the conterminous United States. *Geophys. Res. Lett.* **37**, L22406 (2010). doi:[10.1029/2010GL045564](https://doi.org/10.1029/2010GL045564)
74. J. A. Remington, “Current astronomical practices among the Maya” in *Native American Astronomy*, A. F. Aveni, Ed. (University of Texas Press, 1977), pp. 77–88.
75. A. M. Tozzer, *Landa's Relación de las cosas de Yucatan: A translation* (Papers of the Peabody Museum of American Archaeology and Ethnology 18, Harvard University, 1941).
76. K. Mitra, S. N. Dutta, 18.6-year luni-solar nodal and 10–11-year solar signals in rainfall in India. *Int. J. Climatol.* **12**, 839–851 (1992). DOI: 10.1002/joc.3370120807
77. R. G. Currie, R. G. Vines, Evidence for luni-solar Mn and solar cycle Sc signals in Australian rainfall data. *Int. J. Climatol.* **16**, 1243–1265 (1996). [https://doi.org/10.1002/\(SICI\)1097-0088\(199611\)16:11<1243::AID-JOC85>3.0.CO;2-E](https://doi.org/10.1002/(SICI)1097-0088(199611)16:11<1243::AID-JOC85>3.0.CO;2-E)

78. E. A. Agosta, The 18.6-year nodal tidal cycle and the bi-decadal precipitation oscillation over the plains to the east of subtropical Andes, South America. *Int. J. Climatol.* **34**, 1606–1614 (2014).
<https://doi.org/10.1002/joc.3787>
79. C. L. N. Ruggles, “Stellar alignments: Identification and analysis” in *Handbook of Archaeoastronomy and Ethnoastronomy*, C. L. N. Ruggles, Ed. (Springer, 2015), pp. 517–530.
80. B. E. Schaefer, Atmospheric extinction effects on stellar alignments. *Archaeoastronomy 10 (Journal for the History of Astronomy*, Supplement to vol. **17**), S32-S42.
<https://doi.org/10.1177/002182868601701003>
81. G. S. Hawkins, S. K. Rosenthal, 5,000- and 10,000-Year Star Catalogs. *Smithsonian Contributions to Astrophysics* **10**, 141–179 (1967).
82. I. Šprajc, *Orientaciones astronómicas en la arquitectura prehispánica del centro de México* (Instituto Nacional de Antropología e Historia, México, 2001).
83. J. Broda, S. Iwaniszewski, A. Montero, Eds., *La montaña en el paisaje ritual* (Instituto Nacional de Antropología e Historia - Universidad Autónoma de Puebla - Universidad Nacional Autónoma de México, 2001).
84. Z. Paulinyi, The butterfly bird god and his myth at Teotihuacan. *Ancient Mesoamerica* **25**, 29–48 (2014). <https://doi.org/10.1017/S0956536114000054>
85. P. Schaafsma, K. A. Taube, “Bringing the rain: An ideology of rain making in the Pueblo Southwest and Mesoamerica” in *A Pre-Columbian World*, J. Quilter, M. Miller, Eds. (Dumbarton Oaks, 2006), pp. 231–285.
86. I. Šprajc, “The relevance of archaeoastronomy to understanding urban planning and landscape formation in Mesoamerica” in *Beyond Paradigms in Cultural Astronomy*, A. C. González-García, R. M. Frank, L. D. Sims, M. A. Rappenglück, G. Zotti, J. Belmonte A., I. Šprajc, Eds. (BAR Publishing, Oxford, 2021), pp. 145–151.

Acknowledgments

The permit for fieldwork was granted by the Instituto Nacional de Antropología e Historia (INAH),
Mexico. We thank the personnel of the Centro INAH Tabasco, especially its director Carlos Giordano,
José Luis Romero, and Janet Lagunes for their help.

Funding

Funding for fieldwork was provided to Inomata by:

Alphawood Foundation

National Science Foundation (BCS-1826909)

Author contributions

Conceptualization: IŠ, TI, AFA

Data curation: TI, IŠ

Methodology: IŠ

Investigation: IŠ, TI

Visualization: TI

Funding acquisition: TI

Writing – original draft: IŠ

Writing – review & editing: IŠ, TI, AFA

Competing interests

Authors declare that they have no competing interests.

Data and materials availability

All data are available in the main text or the supplementary materials.

Supplementary Materials

740

Materials and Methods

Supplementary Text

Figs. S1 to S17

Tables S1 to S7 (Table S1 as a separate file Table S1.xlsx)

References (41–86)