





The cell biology of charophytes: Exploring the past and models for the future

David S. Domozych ^{1,*} and Kaylee Bagdan ¹

¹ Department of Biology, Skidmore Microscopy Imaging Center, Skidmore College, Saratoga Springs, New York 12866, USA

*Author for correspondence: ddomoz@skidmore.edu

D.S.D. and K.B. were responsible for the composition of this review.

The author responsible for distribution of materials integral to the findings presented in this article in accordance with the policy described in the Instructions for Authors (<https://academic.oup.com/plphys/pages/general-instructions>) is David S. Domozych (ddomoz@skidmore.edu).

Abstract

Charophytes (Streptophyta) represent a diverse assemblage of extant green algae that are the sister lineage to land plants. About 500–600+ million years ago, a charophyte progenitor successfully colonized land and subsequently gave rise to land plants. Charophytes have diverse but relatively simple body plans that make them highly attractive organisms for many areas of biological research. At the cellular level, many charophytes have been used for deciphering cytoskeletal networks and their dynamics, membrane trafficking, extracellular matrix secretion, and cell division mechanisms. Some charophytes live in challenging habitats and have become excellent models for elucidating the cellular and molecular effects of various abiotic stressors on plant cells. Recent sequencing of several charophyte genomes has also opened doors for the dissection of biosynthetic and signaling pathways. While we are only in an infancy stage of elucidating the cell biology of charophytes, the future application of novel analytical methodologies in charophyte studies that include a broader survey of inclusive taxa will enhance our understanding of plant evolution and cell dynamics.

Introduction

If you walk the paths near the thermal outflows at Yellowstone National Park, or gaze at the purple algal mats found in the Tyrol region of the Alps, or crunch through the biological soil crusts of Arizona deserts or simply note the vibrant green floating masses found in ephemeral pools, you have met charophytes. If you could go back in time, let us say 500–600+ million years ago (mya), and wander along the edges of ancient freshwater wetland or even possibly the thawed edge of a glacier, you might also encounter a charophyte and possibly one that has an impressive pre-adapted tool kit that will allow it to colonize land and ultimately give rise to land plants (de Vries and Archibald, 2018; Schreiber et al., 2022; Žárský et al., 2022). The charophytes (or “basal” streptophytes) are a diverse group of green algae that have intrigued plant biologists for decades

and now provide exciting opportunities for future studies in many areas of biology. Charophytes have piqued this interest because they are: (1) the key algal group that yielded land plants, an event that profoundly changed the biogeochemistry and natural history of the planet as well as serving as a basis for human cultural evolution; (2) important residents of many modern day aquatic and terrestrial habitats with much to reveal about stress acclimation in green plants; and (3) valuable yet underused experimental models for deciphering many of the intricacies of plant cell dynamics.

Prior to the late 1960s, the phylogeny of the green algae was not well resolved. The application of transmission electron microscopy (TEM) in green algal studies by groundbreaking pioneers Jeremy Pickett-Heaps and Marchant (1972), Pickett-Heaps (1975), Mattox and Stewart (1984),

ADVANCES

- With the emergence of sequenced genomes of charophytes, substantial insight into the roles of hormones, stress signaling/responses and cell wall dynamics in plant evolution and physiology has emerged.
- The synthesis of molecular and cellular data with field ecology studies has yielded a “whole biology” view of several charophytes, their role in aquatic and subaerial habitats and putative mechanisms that may have been key for successful transition onto land.
- The presence of cell wall polymers similar to those of land plants and other ECM components positions zygmatophytes as potentially valuable model organisms in elucidating secretory mechanisms and membrane trafficking in plants.

and others paved the way for a host of other researchers and the emergence of a paradigm in phycology, that is, the charophytes are the assemblage of green algae that are most closely related and ancestral to land plants. During this time, various charophyte taxa were also used in nonphylogenetically themed studies including those based in the studies of gravitropism, photomorphogenesis, and cell biology. There has been a major upsurge in charophyte-based research publications over the past 5+ decades, and recently sequenced genomes and transcriptomes of several taxa (see [Table 1](#)) have substantially refined if not transformed our knowledge of these algae. These now form a solid foundation for the next level of charophyte studies especially at the cellular and subcellular levels. Additionally, charophytes have some distinct features that make them outstanding model organisms for plant and algal cell biology ([Domozych et al., 2017](#)) including: (1) simple body plans (e.g. unicell or simple multicellular thallus); (2) a relative ease in culturing and laboratory experimentation; (3) being amenable to live cell labeling with antibodies and other labeling probes; and (4) being relatively simple to prepare cells for diverse technologies including rapid screening of targeted probes (e.g. chemical biology) and high-resolution microscopy imaging and analysis.

The charophytes groups

The charophytes are part of the Streptophyta, a monophyletic clade within the Viridiplantae that includes both the charophytes and land plants ([Mattox and Stewart, 1984](#); [Bremer, 1985](#); [Delwiche and Cooper, 2015](#); [Rensing, 2018](#)). Extant charophytes are currently placed in two grades ([de Vries and Archibald, 2018](#)), the KCM grade, consisting of the Klebsormidiophyceae,

Chlorokybophyceae, and Mesostigmatophyceae, the “early divergent” or lower branching charophytes. The ZCC grade consists of the Zygnematophycaneae, Coleochaetophyceae, and Charophyceae or the “later divergent” or higher branching charophytes. [Figure 1](#) provides an introduction to each group, and detailed information about charophyte body plans, development, reproduction, and ecology may be obtained in [Graham et al. \(2016\)](#). It is now thought that all land plants evolved from a single streptophyte algal progenitor 500–600+ million years ago ([Fürst-Jansen et al., 2021](#)), and phylogenomic analyses have now clearly confirmed that the Zygnematophyceae are sister to embryophytes ([Delwiche and Cooper, 2015](#); [Harholt et al., 2016](#); [de Vries and Archibald, 2018](#); [Puttick et al., 2018](#); [Zhou and von Schwartzberg, 2020](#); [Hess et al., 2022](#)).

The cell biology of charophytes

The architectural design and functional interactions of the subcellular components of individual cells of different charophytes taxa are very diverse. Highlights of the cell biology of charophytes are presented below.

Nucleus

Much of what is known about the structure and dynamics of the nucleus in charophytes comes from early cytological and ultrastructural studies, especially those focused upon mitosis ([Pickett-Heaps, 1975](#); [Brook, 1981](#)). More details of the nuclei of specific taxa will be found in studies dealing with cell division (see “Cell division”) and for a comparative study of charophyte nuclei in light of their life cycles one should read [Haig \(2010\)](#).

Two of the more distinct types of nuclei-based features in charophytes are found in *Chara* (Charophyceae) and in many zygmatophytes (e.g. *Micrasterias*). In *Chara*, each mature internodal cell may possess several thousand nuclei that are located in the streaming endoplasm ([Foissner and Wasteneys, 2014](#)). These nuclei and those in other cell types are typically products of “amitosis,” a process where rapid structural changes to nuclei occur during the cell cycle ([Vouilloud et al., 2007](#)). In some zygmatophyte taxa, a distinct migration of postmitotic nuclei takes place during cell division ([Meindl et al., 1994](#); [Holzinger and Lütz-Meindl, 2002](#); [Oertel et al., 2003](#)). The nucleus passively migrates into the growing semicell and then migrates via microtubule and myosin mediation into the isthmus of the daughter cell.

There have also been recent advances in methodology for in vitro studies using nuclei. Intact nuclei along with other organelles have been isolated from *Chara* internodal cells that can then be used for subsequent experimentation ([Gylyté et al., 2021](#)). Pure fractions of nuclei obtained from protoplasts of *Penium margaritaceum* ([Raimundo et al., 2018](#); [Domozych et al., 2020a, 2020b](#)) allowed for the isolation of nuclear DNA that was subsequently employed for sequencing of its genome ([Jiao et al., 2020](#)). The isolation of nuclei and nuclear genome size estimation of *Spirogyra* and

Table 1 Current list of sequenced genomes of charophytes

Group and specific taxon	Source
Mesostigmatophyceae	Wang et al. (2020), doi: 10.1038/s41477-019-0560-3 ;
<i>Mesostigma viride</i>	Liang et al. (2019), doi: 10.1002/adv.201901850
Chlorokybophyceae	Irissarri et al. (2021), doi: 10.1098/rspb.2021.2168 ; Wang et al. (2020), doi: 10.1038/s41477-019-0560-3
<i>Chlorokybus atmophyrticus</i> and other <i>Chlorokybus</i> isolates	Hori et al. (2014), doi: 10.1038/ncomms4978
Klebsormidiophyceae	
<i>Klebsormidium flaccidum</i>	
Charophyceae	Nishiyama et al. (2018), doi: 10.1016/j.cell.2018.06.033
<i>Chara braunii</i>	
Zygnematophyceae	Cheng et al. (2019), doi: 10.1016/j.cell.2019.10.019
<i>Spiroglea muscicola</i>	
Zygnematophyceae	Cheng et al. (2019), doi: 10.1016/j.cell.2019.10.019
<i>Mesotaenium endlicherianum</i>	
Zygnematophyceae	Jiao et al. (2020), doi: 10.1016/j.cell.2020.04.019
<i>Penium maragaritaceum</i>	

Major transcriptome studies: Van de Poel et al., *Spirogyra pratensis* transcriptome [10.1104/pp.16.00299](https://doi.org/10.1104/pp.16.00299); One thousand transcriptomes [10.1038/s41586-019-1693-2](https://doi.org/10.1038/s41586-019-1693-2). For information on *Spirotaenia*'s position in the charophytes, see Irissarri et al., 2021.

Zygnema have recently been enhanced via in vitro analyses (Feng et al., 2021; Čertnerová, 2021).

Mitochondria

Mitochondrial architecture in charophytes is similar to that observed in land plants and only a few detailed structural studies of these organelles in charophytes have been performed. In *Chara*, mitochondrial size, shape, and distribution vary depending on cell age and environmental conditions (Foissner and Wasteneys, 2014). The mitochondria of the large internodal cells are equipped with both myosin motors and kinesin that allow them to translocate in the cell. In *Micrasterias* that is exposed to ionic stress via application of KCl, NaCl, or CoCl₂, mitochondria fuse to form distinct, localized 3D networks (Steiner et al., 2020; Darehshouri et al., 2020). These high salinity treatments induce the formation of pronounced protuberances of the outer mitochondrial membrane with concurrent mitochondrial elongation and fusion (Affenzeller et al., 2009a). It is also important to note that sequencing of mitochondrial genomes of various taxa (Turmel et al., 2013) has been critical to early phylogenetic studies of charophytes.

Chloroplasts

Chloroplasts have been focal points of study in many areas of charophyte research. Their structural and functional evolution are considered to be key adaptations for successful terrestrialization (de Vries et al., 2016; Fürst-Jansen et al., 2021). Comparative analyses of the charophyte chloroplast genomes have also been important for evolutionary studies and details may be obtained in the following papers (Civañ et al., 2014; Lemieux et al., 2016; Gitzendanner et al., 2018). Insight into rubulose 1–5 biphosphate carboxylase, carbon-concentrating mechanisms in the plastid, and the functional role of pyrenoids is also available in Goudet et al. (2020).

Mesostigma (Mesostigmatophyceae) possesses a plate-like chloroplast and a pigment profile that is notably different from that found in plants and other green algae (Yoshii

et al., 2003). An eyespot made of rows of pigment globules is found in the chloroplast nearest the flagellar basal bodies and functions in phototaxis (Kreimer, 2009). In this process, the excitation of the sensory rhodopsins, specifically channel rhodopsins, generates transmembrane photoreceptor currents (i.e. they act like light-gated cation channels) that are part of the cell's sensory movement in response to light (Govorunova et al., 2022, 2011).

In the Chlorokybophyceae, Klebsormidiophyceae, and Coleochaetophyceae, most cells contain simple chloroplasts, each with pyrenoids (Graham et al., 2016). Substantial structural changes to chloroplast structure and photosynthesis-based activity in *Klebsormidium* have been described under various abiotic stressors (Holzinger et al., 2011; Kaplan et al., 2012; Karsten and Holzinger, 2014, 2012; Holzinger and Pichrtová, 2016).

In the Zygnematophyceae, most cells contain one or two chloroplasts, each typically with one or more pyrenoids. The shape of the chloroplast is taxon-specific, ranging from flat to star-shaped to spiral, and in some desmids, the plastid is nearly the same size and shape of the cell (Hall and McCourt, 2005). In some zygnematophytes like *Mougeotia*, chloroplasts move in response to specific light-induced signals that include both phytochrome and blue light receptors (Gabryś, 1985; Kianianmomeni and Hallmann, 2014). Substantial changes to chloroplast structure and biochemistry have also been elucidated in cells grown under UV stress (Holzinger and Lütz, 2006). Heat stress in *Spirogyra praetensis* results in notable changes to the chloroplast including the loss of its characteristic spiral arrangement and changes in pigmentation (de Vries et al., 2020).

In the internodal cells of *Chara*, chloroplasts are arranged in helical files that are either oriented in right- or left-handed vectors (Foissner and Wasteneys, 2014). They are firmly attached to the cell periphery and do not change position in response to light. During cell development, multiple interactions between chloroplasts also occur (Bulychev and Rybina, 2018).

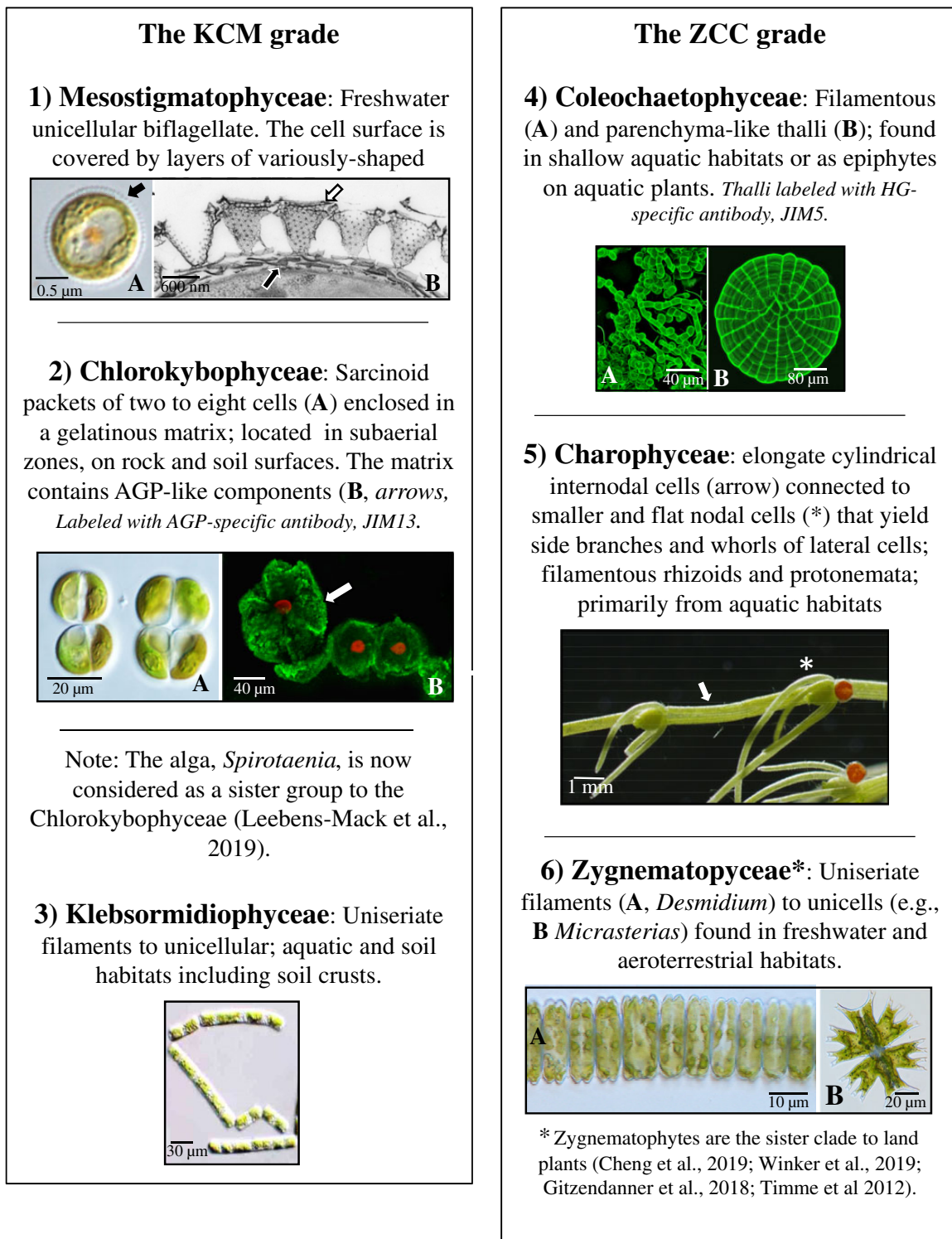


Figure 1 Overview of the charophyte grades in current classification. LM, light microscopy; HG, homogalacturonan; JIM5: John Innes monoclonal antibody 5-specific for HG.

The endomembrane system, secretory dynamics, and membrane trafficking

Charophytes possess diverse and often highly complex endomembrane systems and membrane trafficking networks that “process” (i.e. synthesize, package, transport, and retrieve) a wide array of cargo. The unicellular *Mesostigma viride*

secretes several types of highly ornate scales that cover both the cell and flagella membranes (Manton and Ettl, 1965). The main components of these scales are primarily neutral and acidic sugars including 2-keto sugars such as 3-deoxy-lyxo-2-heptulosaric acid and small amounts of protein (Domozych et al., 1991; Becker et al., 1994, 1995).

These scales also complex calcium in the form of calcium phosphate. TEM imaging has demonstrated that scales are processed within the Golgi Apparatus, transported to a vacuole-like scale reservoir, and ultimately secreted onto the cell surface (Domozych et al., 1992). The precursors of the large and spectacular basket scales are first seen in the peripheries of the Golgi cisternae of the medial zone of the Golgi cisternal stack. Fully assembled basket scales appear in the trans face cisternae and in large vesicles that emerge from these cisternae. Vacuoles situated near the Golgi body contain stores of Ca^{2+} that very likely are used in scale processing. Scale development in this and other scale-bearing algae has been critical in resolving previous “competing” theories of the movement of cargo through the Golgi cisternal stack. Scales develop via the “cisternal progression” model (Glick and Luini, 2011) as anterograde transport of the scales does not entail peripheral vesicles surrounding the Golgi stack (Melkonian et al., 1991; Becker et al., 1995).

Zygnematophytes also possess some of the most distinct membrane trafficking networks within the charophytes. This is very likely a manifestation of the large amounts and diverse types of extracellular matrix (ECM) materials that they synthesize and secrete. Ultrastructural studies of unicellular desmids like *Micrasterias denticulata* (Lütz-Meindl, 2016), *Penium margaritaceum* (Domozych et al., 2020a, 2020b), *Netrium digitus* (Eder and Lütz-Meindl, 2010), and others have revealed complex endomembrane architecture and secretory dynamics, some of which are very different from that observed in land plants. These studies have been supplemented with data from experimental interrogation of particular endomembrane system components in cells treated with targeted chemical agents and/or grown under particular stress agents (Url et al., 1993; Höftberger et al., 1995; Lütz-Meindl, 2016; Domozych et al., 2020a, 2020b).

The most well-studied endomembrane component of zygnematophytes is the Golgi Apparatus that consists of several to more than one hundred Golgi bodies per cell. The arrangement of the Golgi bodies is highly organized and precisely positioned in the cell in relation to the cytoskeletal network, endoplasmic reticulum (ER), chloroplast, mitochondria, and nucleus. In *P. margaritaceum*, 100–150 Golgi bodies form linear arrays positioned deep in the cytoplasmic valleys created by the multilobed chloroplast (Domozych et al., 2020a, 2020b). Each Golgi body contains 12–15 flattened cisternae and with clearly defined cis- and trans faces. Large vesicles containing the mucilage-like extracellular polymeric substance or extracellular polysaccharides (EPS) emerge from the peripheries of trans face cisternae. Smaller vesicles carrying cell wall materials emerge from the trans face and the trans-Golgi network (TGN). During periods of high secretory activity, adjacent Golgi bodies often fuse with each other at the cisternal peripheries of the medial and trans regions. Unlike what has been reported in many land plants, Golgi bodies of *Penium* are not mobile. Rather, EPS and wall vesicles are carried from the Golgi body to the peripheral cytoplasm where they enter into thin cytoplasmic streaming

“highways” located just under the plasma membrane. This cortical cytoplasmic streaming is actin-mediated and transports vesicles around the cell periphery. Cell wall cargo is secreted to the expanding central isthmus, while EPS-carrying vesicles fuse at various zones around the cell depending on where EPS secretion is needed. At present, little data are available describing the signaling mechanisms or the molecular architecture that define the changing secretion zones. Similar secretory machinery has also been observed in the zygnematophytes, *Closterium acerosum*, *Pleurotaenium trabecula*, *Cosmarium reniforme*, and *M. denticulata* (Domozych and Domozych, 1993; Oertel et al., 2004; Domozych et al., 2007, 2009a, 2009b). Here though, EPS vesicles traveling on the cortical cytoplasmic streaming channels appear to be directed to the inner part of the wall pore apparatuses that are found throughout the wall and penetrate the thick secondary cell wall.

Micrasterias denticulata has served as an important organism in resolving details of the structure and function of the Golgi Apparatus in zygnematophytes. Many important details of the alga’s subcellular architecture have been obtained employing high pressure freezing and freeze substitution technologies (Lütz-Meindl and Brosch-Salomon, 2000; Aichinger and Lütz-Meindl, 2005; Lütz-Meindl et al., 2015). Each Golgi body is 2–3 μm in size, consists of 11 cisternae and has clearly defined cis- and trans faces. Fifty- to seventy-nm vesicles derived from transitional regions (i.e. part rough/smooth) of adjacent ER transport membrane and inclusive cargo to the cis face Golgi body (Noguchi and Morré, 1991). Dark vesicles carrying wall cargo are found near the Golgi cisternal peripheries or at the TGN. The dark vesicles accumulate inside the plasma membrane at the growing lobes of the cell at specific fusion sites that correspond to sites of Ca^{2+} accumulation. Wall vesicle fusion with the plasma membrane and release of cargo contribute to cell morphogenesis including broadening of the cell body and the “multipolar” mechanism that forms the high symmetric lobing (Holzinger, 2000). Immunogold labeling studies have shown that pectic polysaccharides are packaged in the Golgi Apparatus and transported in high-esterified form to the cell surface (Eder and Lütz-Meindl, 2008). Arabinogalactan protein (AGP) and xyloglucan synthesis and secretion occur in the Golgi body and Golgi-derived vesicles, respectively (Eder et al., 2008). Pectins, AGPs, and nonAGP epitopes are transported together in the dark vesicles, while EPS is carried in large 400-nm vesicles in compact de-esterified form and with high Ca^{2+} -binding capacity. Focused ion beam-Scanning Electron Microscopy (SEM) imaging has identified a large trans-Golgi sheath of ER that makes contact with the TGN and membrane of both the Golgi body and associated multivesicular bodies (MVBs; Wanner et al., 2013). The intracellular movement of secretory vesicles is fueled by actin and is critical for cell morphogenesis. EPS vesicles fuse with the plasma membrane at the cell wall pores but also appear to be able to release their cargo at any surface site through the cell wall layer

(Oertel et al., 2004). Alteration of vesicle transport by targeted perturbation using optical tweezers causes irreversible malformations of the cell shape (Holzinger et al., 2002).

Micrasterias has also been used for elucidating the effects of stress on cell structure, development, and physiology including the endomembrane system. When incubated in medium with high levels of metals such as manganese or lead or placed in media that disturbs ionic homeostasis, Golgi bodies undergo a unique form of autophagy (Affenzeller et al., 2009a, 2009b; Lütz-Meindl, 2016). The cisternae transform into single membrane “balls” that appear to be absorbed by the ER. Incubation of cells in H_2O_2 results in programmed cell death (PCD) that then alters multiple subcellular systems including an increase in the number of ER compartments, abnormal dilation of cisternal rims of the Golgi bodies and the increased occurrence of MVBs (Darehshouri et al., 2008; Darehshouri and Lütz-Meindl, 2010). H_2O_2 levels are found to increase in cells kept under ionic and osmotic stress conditions and long term exposure to H_2O_2 causes an uptake of the multiple subcellular components by autophagy. *Micrasterias*, *C. acerosum*, and *P. margaritaceum* have also been used to study the specific effects of targeted inhibitors (e.g. brefeldin A, tunicamycin, and cyclopiazonic acid) on Golgi structure and dynamics (Höftberger et al., 1995; Salomon and Meindl, 1996; Domozych 1999a, 1999b; Domozych et al., 2020b).

Recent studies with transient transformed lines of zygmatophytes have revealed information about endomembrane components and secretion dynamics. Cellulose synthase (CesA) has been identified in particles concentrated at the plasma membrane of developing lobes during cell morphogenesis and Golgi bodies using transformed *Micrasterias* expressing MdCesA1-GFP fusion protein (*M. denticulata* cellulose synthase; Vannerum et al., 2010). Rab GTPase, a key protein in vesicular trafficking in ER-Golgi transfer, secretion, endosomal activity, cytokinesis, and cell morphogenesis has been localized in the ER, Golgi bodies, exocytotic vesicles and in the isthmus zone in *Micrasterias* expressing using GFP-MdRABE1 (*M. denticulata* RABE1 GTPase; Vannerum et al., 2012). Sørensen et al. (2014) located the fluorescent reporter protein, red fluorescent protein (RFP), using a combination of an N-terminal SP from polygalacturonase 2, a tomato cell wall protein, and a C-terminal ER retention sequence in the ER network of *P. margaritaceum*. RNAi-suppressed expression of a pectin methylesterase homolog was also employed by Sørensen et al. (2014) to analyze pectin secretion and assembly.

One of the more notably distinct membrane trafficking systems in charophytes is found in the Charophyceae, more specifically in *Chara australis* or *Chara corallina* and several *Nitella* species. These organisms are macroscopic and consist of a series of long cylindrical internodal cells of up to 10 cm in length and small nodal cells from which side branches and whorls of lateral cells emerge (Foissner and Wasteneys, 2014). Two types of ER are found in the internodal cells, mobile endoplasmic ER that uses the endoplasmic actin/

myosin network and cortical or ectoplasmic ER that uses microtubule-based mechanisms for organization and motility during early stages of cell elongation (Foissner et al., 2009; Sparkes et al., 2009). Mature internodal cells contain Golgi bodies that lie parallel to the ER and glide along the endoplasmic actin bundles (Foissner and Wasteneys, 2014). A TGN is found near the Golgi body and functions both as an endocytic and secretory organelle (Pesacreta and Lucas, 1984; Viotti et al., 2010). When internodal cells of *C. australis* are treated with BFA, Golgi bodies and TGN cluster together into “brefeldin compartments.”

A highly distinct membranous component of the internodal cells, nodal cells, protonemata, and rhizoids of *Chara* is the charasome (Foissner and Wasteneys, 2014; Foissner et al., 2015). This structure, a convoluted plasma membrane domain, comprised anastomosing membranous tubules that are continuous with the plasma membrane and measure ~50 nm in length and 30 nm in diameter. Charasomes form in response to light via fusion of TGN-derived vesicles and local inhibition of endocytosis (Hoepflinger et al., 2017; Absolonova et al., 2019). Charasome formation is dependent on photosynthesis but does not require close contact with chloroplasts (Foissner et al., 2015). Charasomes contain H^+ -ATPases that are involved in the acidification of their aqueous environment and subsequent facilitation of photosynthesis-dependent carbon uptake (Sommer et al., 2015). The actin cytoskeleton, but not microtubules, is necessary for charasome growth as well as facilitating charasome degradation most likely by controlling trafficking of secretory and endocytic vesicles.

In aquatic habitats that harbor *Chara*, carbon is mainly found in the HCO_3^- form which is poorly membrane permeable. The internodal cells acidify their surface either directly or via carbonic anhydrase to help facilitate the conversion of HCO_3^- to membrane-permeable CO_2 for increasing photosynthetic efficiency (Eremin et al., 2019). In order to maintain pH homeostasis of the cytoplasm, the proton efflux is balanced by either influx of H^+ or efflux of OH^- (Quade et al., 2022). The resulting pattern of alternating acid and alkaline regions or “bands” helps maintain metabolism (Beilby and Bisson, 2012). At the cell surface, areas with high charasome abundance stabilize and restrict the position of the acidic bands, whereas regions with low charasome abundance allow the formation of either stable or unstable alkaline bands (Pertl-Obermeyer et al., 2018; Absolonova et al., 2019). This acidification phenomenon has made *Chara* and other Charophycean taxa outstanding organisms for electrophysiology studies at the cellular level (Beilby and Casanova, 2014; Bulychev and Komarova, 2014; Beilby, 2016, 2019).

Chara also has a network of tip-growing rhizoids that recognize and adjust to gravity. At the expanding rhizoid tip is a special agglomeration of ER membranes, called the “Spitzenkorper” (Braun and Limbach, 2006). This subcellular component functions in guiding secretory vesicles that are needed for adjusting growth direction in response to gravity-induced statolith sedimentation.

Internal membrane components and secretory dynamics also play a key role during various types of wounding in *Chara* (Foissner and Wasteneys, 2011). During mechanical wounding, crystals and solid inclusions deposited in vacuoles are expelled from the wound zone due to the turgor and quickly occlude the hole in the cell wall (Menzel, 1988). This is followed by the synthesis of a two-layered cell wall at the wound zone. When cells are treated with Ca^{2+} ionophores which cause large influxes of Ca^{2+} at specific cell surface sites “compound exocytosis” occurs during which the products of endomembrane component fusion (e.g. ER with vesicles) are incompletely recycled by endocytosis. These are sent to and become part of the wound site. Likewise, exocytosis of vesicles carrying wall polysaccharides and membrane-bound cellulose/callose synthase are secreted at the wound site. The new cell wall material consists of pectin and callose and the membrane residues that are loaded with Ca^{2+} fill the wound site (Foissner, 1998, 1992, 1991). This represents a way for the cell to “detoxify” incoming Ca^{2+} by transferring Ca^{2+} to Ca^{2+} -binding organelles and releasing them to the extracytoplasmic space at the wound site (Foissner and Wasteneys, 2011). Microtubules are not thought to be required in the wound response but their disassembly could have a signaling function. The transient modulation of the actin cytoskeleton into a meshwork of randomly oriented filaments is required for the transport of wall-forming organelles to the wound site (Foissner and Wasteneys, 2014).

Endocytosis

Endocytosis encompasses several membrane trafficking pathways that function in membrane retrieval and vesicle transport. This helps regulate cell expansion and provide a major route for the uptake of membrane proteins, lipids, and other extracellular molecules (e.g. signaling molecules) into the cell (Fan et al., 2015). Endocytosis initiates at localized microdomains on the plasma membrane and entails different vesicle types, most notably those coated with clathrin (Yao et al., 2022). Molecules brought into cell can be recycled or degraded using the plant cell’s endosomal organelles, TGN, and vacuoles (Robinson, 2015). Endocytosis in charophytes has primarily been studied in the Charophyceae (Sommer et al., 2021). Both fluid-phase and membrane dyes are actively taken up into the *C. australis* internodal cells by clathrin-mediated endocytosis. These dyes also stain various classes of endosomes including BFA- and wortmannin (WM)-sensitive organelles (i.e. TGN and MVBs; Sommer et al., 2021), thereby illustrating the paths of materials taken up by endocytosis. BFA treatment inhibits endocytosis and substantially decreases the number of clathrin-coated pits and clathrin-coated vesicles at the plasma membrane (Foissner et al., 2020). Clathrin and clathrin-coated vesicles play a role not only in constitutive endocytosis but also in the degradation of charasomes (Hoepflinger et al., 2017).

RAB5 GTPases (e.g. Arabidopsis [*Arabidopsis thaliana*] ARA7/RABF2b) are important regulators of endosomal

membrane trafficking (Tripathy et al., 2021) and an ARA7 homolog (*CaARA7/CaRABF2*) has been isolated from *Chara* (Hoepflinger et al., 2015). Immunolabeling of the internodal cells revealed *CaARA*-epitopes located at the multivesicular endosomes (MVEs) and at MVE-containing WM compartments.

Vacuoles

Vacuoles represent a diverse array of single membrane-bound organelles that provide a wide variety of functions including maintaining turgor and serving as a lytic compartment for recycling and storing pigments, ions, proteins, carbohydrates, and metabolites (Marty, 1999). Vacuoles are also common components of charophyte cells and often take up substantial amounts of cell volume like that seen in land plants. Charophyte vacuoles have diverse morphology, development, and functions amongst the various subgroups.

Mesostigma contains both a branched vacuolar network, small smooth vacuoles that are reservoirs for Ca^{2+} and a scale reservoir where Golgi-derived scales are deposited, organized and ultimately released upon the plasma membrane surface (Manton and Ettl, 1965; Domozych et al., 1991). Zygnematophytes contain distinct vacuolar compartments. For example, many desmids contain large polar vacuoles positioned at the cell poles and a variety of smaller vacuoles found throughout the cytoplasm. Crystals of barium sulfate, strontium citrate, and other salts are often found in these vacuoles (Krejci et al., 2011a, 2011b; Niedermeier et al., 2018). In *Zygnema* and *Zygonium*, the vacuoles are stores for phenolic compounds (Newsome and van Breeman, 2012; Aigner et al., 2013; Newsome et al., 2013; Herburger et al., 2016b) and are most notable in cells experiencing substantial abiotic stress. These phenolics are glycosylated, highly branched and form complexes with iron (Fe^{3+}) that manifest in a purple color. These pigments may mask chlorophyll and provide a distinctive purple color to the filaments. The production of these pigments is thought to be in response to iron-induced oxidative stress as well as for protection against exposure to damaging UV light (Pichtová et al., 2013; Newsome et al., 2012).

The large internodal cells of *Chara* have a central vacuole that occupies up to 95% of the cell volume and is overlaid by rapidly streaming cytoplasm that mixes most of the vacuolar contents (Oikawa et al., 2011; Foissner and Wasteneys, 2014). This vacuole appears to be used for storage rather than as a lytic organelle. In *Nitella*, the central vacuole contains solid inclusions made of a protein coat surrounding a polysaccharide core (Silverberg and Sawa, 1974).

Lipid bodies

Lipid bodies are subcellular components that are integrally associated with cellular homeostasis and modulate during metabolic development of a plant cell and in response to stress (Huang et al., 2019). In *Zygnema* spp. that occur in unstable polar terrestrial habitats that experience nutrient depletion, the accumulation of lipids may likely afford an

advantage for survival (Pichrtová et al., 2016; Arc et al., 2020). In these environments, *Zygnema* forms mature vegetative cells called pre-akinetes that accumulate lipids in lipid bodies. This accumulation of lipid becomes a source of carbon for rapid growth that supplements photosynthetic carbon assimilation.

Autophagy

Autophagy is one mechanism that plant cells use to dispose of proteins, membranes, and organelles that become dysfunctional or are no longer needed (Marshall and Vierstra, 2018; Yoshimoto and Ohsumi, 2018). This process contributes to the regulation of plant growth, responses to environmental stress, and senescence/PCD (Wang et al., 2021). The most well-studied type of autophagy in plant cells is macroautophagy (Ding et al., 2018). Macroautophagy employs a unique double membrane compartment called an autophagosome that encloses a portion of the cytoplasmic constituents. The autophagosome then fuses with the vacuole membrane and the remaining single membrane structure called an autophagic body is transferred into the vacuole and broken down (Bassham, 2009).

In *M. denticulata*, salt stress, but not osmotic stress, induces macroautophagy (Affenzeller et al., 2009a). The process initiates by a swelling of ER compartments that subsequently surrounds organelles and eventually leads to the formation of autophagosomes (Affenzeller et al., 2009b). Autophagy accompanies other cell degradation processes including DNA laddering and mitochondrial disruption, all part of PCD (Lütz-Meindl, 2016). When *Micrasterias* is exposed to the photosynthesis-inhibiting herbicide, DCMU, to the glycolysis inhibitor, 2-Deoxy-d-glucose, and to complete darkness, lipid bodies form within the chloroplast (Schwarz et al., 2017). The lipid bodies are then released from the chloroplast where they become engulfed by double membranes derived from the ER and form autophagosomes. The autophagosomes then fuse with vacuoles. Molecular analysis of these stressed cells also reveals a single isoform of ATG8, the main regulator of both bulk and selective autophagy in eukaryotes. The degradation pathway of Golgi bodies in stressed *Micrasterias* does not appear to entail “classical” autophagy but occurs via disintegration of cisternae into masses that are absorbed by the ER (Lütz-Meindl, 2016).

Cytoskeleton

The diversity in cell size, shape, and development exhibited in charophytes is supported by distinct cytoskeletal architecture and dynamics. The study of charophyte cytoskeleton, specifically in Charophycean and Zygnematophycean taxa has had a long history in plant cell biology (see Foissner and Wasteneys, 2014; Lütz-Meindl, 2016).

Mesostigma viride displays a unique “flattened lifeboat” shape that is highlighted by a depression or pit from which two flagella arise (Manton and Ettl, 1965). The cortical cytoplasm including the pit is underlain by a parallel array of

microtubules that very likely maintain the cell’s unique shape. The flagella are anchored to the cell by flagellar roots that include a multilayered structure, that is, a diagnostic feature of other charophytes (Rogers et al., 1981) including zoospores of *Chlorokybus* and *Chaetosphaeridium* and spermatozooids of *Coleochaete* (Moestrup, 1974; Graham and McBride, 1979; Rogers et al., 1980). The role of microtubules in the secretion and/or adhesion of the layers of body scales to the cell surface is not yet known.

Biological soil crusts are complex communities of surface microorganisms that create water-stable aggregates that have critical ecological roles in primary production, nitrogen cycling, mineralization, water retention, and stabilization of soils (Karsten and Holzinger, 2014). The charophyte, *Klebsormidium*, is a common resident of many of these habitats and must often deal with multiple and often severe abiotic stressors by modifying subcellular components like the cytoskeleton. When *Klebsormidium* grows under desiccation conditions, substantial changes to its microtubule and microfilament networks along with associated proteins have been observed. For example, F-actin disintegrates within 20 min of exposure to dehydration stress (Holzinger et al., 2014; Blaas and Holzinger, 2017). Transcriptomic studies of *K. flaccidum* and *K. dissectum* under cold and desiccation stress (Rippin et al., 2019) reveal that the expression of the Arp2/3 complex that is needed for actin filament formation, and kinesin, that is, a key motor protein of intracellular transport, both notably decrease. The Ca^{2+} -binding actin-bundling protein required for the formation of actin bundles is also downregulated while the expression of the microtubule-severing enzyme, katanin, is enhanced. These major changes in cytoskeleton gene expression are thought to be part of the way that the organism prepares for rehydration during desiccation stress by protecting most of its cellular structures from damage and denaturation.

Taxa of the Coleochaetophyceae have been important organisms in analyzing the evolution of multicellularity in plants. Doty et al. (2014) revealed unordered microtubule patterns associated with diffuse growth during early cell expansion while in subsequent stages of elongating cells, tubulin cytoskeleton arrays similar to growth patterns associated with tip growth in other plants were noted.

In the multi-lobed *Micrasterias*, the cytoskeletal network has been shown to function in several phenomena (Lütz-Meindl, 2016; Felhofer et al., 2021). Two actin filament systems are present in an expanding cell (Meindl, 1985; Meindl et al., 1994; Pflügl-Haill et al., 2000). First, there is a cortical actin network that covers the inner surface of the cell and extends deep into the tips of the lobes in both the expanding and the nonexpanding semicell. This network also associates with the chloroplast surface. The second actin system ensheathes the nucleus at the isthmus-facing side during nuclear migration. Actin microfilaments and microtubules are key agents in moving wall and EPS vesicles from the Golgi body to the cell surface (Lütz-Meindl and Menzel, 2000; Oertel et al., 2004) most notably in the complex networks

of F-actin-based cortical and transvacuolar cytoplasmic streaming. During cell division, microfilaments and microtubules form basket-like networks that attach to daughter nuclei and translocate them to the new semi-cells. The actin-binding protein, profilin, the actin-crosslinker, spectrin, kinesin-like proteins, and myosins are also involved in regulation and/or achievement of this nuclear and chloroplast movement in *Micrasterias* and other desmids (Holzinger et al., 2000; Holzinger and Lütz-Meindl, 2002; Oertel et al., 2003). The actin architecture is also critical for morphogenesis. Experimental alteration of this architecture by physical (e.g. laser) or chemical (actin-disrupting or -stabilizing drugs) or other stress agents result in notable alterations to cell shape (Meindl et al., 1994; Holzinger et al., 2002).

The microtubule and actin cytoskeleton are central to developmental phenomena in *Spirogyra* (Grolig, 1997; Schroder and Grolig, 1998). The cytoskeleton plays a central role in rhizoid formation in *Spirogyra* (Yoshida et al., 2003; Yoshida and Shimmen, 2009). *Spirogyra* filaments also glide and undulate when exposed to various wavelengths of light. Based on a comparison of filament cytoskeleton in cells exposed to red versus blue light, it was posited that this photomovement phenomenon is the result of a two-track control of microtubules and microfilaments signaled by the combination of phytochrome and phototropin-like receptors (Kim et al., 2005; Lee and Kim, 2017). *Spirogyra* has also served as a model for the development of the “cytoplast” theory of cytoplasm–cytoskeleton interactions (Pickett-Heaps et al., 1999). This theory posits that the “cell is a domain of cytoplasm (cytoplast) organized around the nucleus by a cytoskeleton consisting of a single ‘tensegral’ unit.” “Tensegrity” proposes that the cell is organized by an integrated cytoskeleton of tension elements, actin microfilaments, that extend over compression-resistant elements, the microtubules (Galli et al., 2005).

Charophycean taxa such as *Chara* and *Nitella* have been important organisms in elucidating cytoskeletal dynamics in plant cells due to their large size and ready ability to be perfused/microinjected with cytoskeleton-targeted agents. The presence of actin and myosin was reported in these algae before their discovery in land plants (Palevitz et al., 1974; Wasteneys et al., 1996; Foissner and Wasteneys, 2014) and in turn, has led to detailed studies of the cytoskeleton (Foissner et al., 2007, 2009; Woodhouse and Goldstein, 2013). The large internodal cells possess a meshwork of actin filaments and bundles that are arranged randomly and traverse the cell through transvacuolar strands (Wasteneys et al., 1996). Later in cell development, actin bundles become oriented in the subcortical cytoplasm parallel to the long axis. The cytoplasm constitutes of a 10- μm layer that lines the inner surface of the cell wall. The chloroplasts are organized in helical rows that spiral along the cell surface (Goldstein and van de Meent, 2015). Mitochondria are found in a stagnant layer of cytoplasm called the ectoplasm that surrounds the chloroplasts. At the inner part of the cytoplasm, the endoplasm, bundled actin filaments serve as

tracts for myosins that propel subcellular structures around the cell in a streaming network. Myosin XI of *Chara* promotes streaming as fast as 100 m s^{-1} and is the fastest known in eukaryotes to date. Actin microfilaments display reversed polarity and the cytoplasm is, therefore, organized into two bands where cytoplasmic streaming occurs in opposite directions. In addition, *Chara* and *Nitella*, also have a distinct network of cortical microtubules. A notable association between the relative elemental elongation rates and transverse orientation of cortical microtubules matches patterns with cellulose microfibril orientation (Foissner and Wasteneys, 2014). The “branch form assembly” mechanism whereby new microtubules are initiated at discrete sites along the length of preexisting microtubules has been well-described in these algae (Murata et al., 2005).

Cell division

The recognition of charophytes as the progenitors of land plants, our understanding of phragmoplast-based cell division mechanisms and insight into the evolution of multicellularity in plants all stem in no small part from ultrastructural studies of cell division mechanisms that began over four decades ago (Pickett-Heaps, 1975; Mattox and Stewart, 1984). Taxa of the KCM grade possess relatively simple cell division mechanisms which may be a result of not having to construct new, large, and complex cell walls during the cell cycle. The scaly *Mesostigma* divides by simple furrowing (Manton and Ettl, 1965). *Chlorokybus* divides using centripetal plasma membrane invagination or cleavage furrow during cytokinesis and also uses centrosomes during mitotic spindle development (Lokhorst et al., 1988). The furrowing mechanism employs coated vesicles as well as transversely aligned cleavage microtubules. *Klebsormidium* and its relative, *Interfilum*, also divide by a centripetal cleavage furrow (Lokhorst and Star, 1985) that impinges on a persistent telophase spindle. In *Klebsormidium*, cell division features and their importance in taxonomic and evolutionary studies may be obtained in Mikhailuyuk et al. (2014). Further details of cell division in *Klebsormidium* and their implications in taxonomic/phylogenetic studies are found in Mikhailuyuk et al. (2014). In the related taxa, *Entransia* and *Hormidella*, the presence of periclinal centrioles has been described (Herburger et al., 2016a).

The cell division mechanisms of ZCC taxa have received much attention due to specific features that they share with land plants (Buschmann and Zachgo, 2016). An overview of the evolutionary trends observed in extant charophytes illustrates that the cytokinetic phragmoplast and preprophase band (PPB) of microtubules appeared, centrosomes disappeared, and in several groups, the cleavage furrow disappeared or was reduced.

The phragmoplast in most land plants is a microtubule-based structure that expands centrifugally (Smertenko et al., 2018) and contributes to the formation of the cell plate. Golgi-derived vesicles carrying cell wall materials collect at

the phragmoplast, fuse and release their cargo which ultimately leads to the formation of a new cross wall between daughter cells (Drakakaki, 2015; Jawaid et al., 2022). In *Chara*, phragmoplast microtubules persist throughout cytokinesis and the cell plate forms across the whole cell at once (Cook et al., 1997). Cytokinesis initiates with an assemblage of smooth membrane tubules that are closely associated with ER and Golgi membranes. Plasmodesmata are formed during cytokinesis and are even observable in the incompletely formed reticulum of forming cell plates. Cell division has also been described in *Coleochaete* (Brown et al., 1994; Cook, 2004; Dupuy et al., 2010; Doty et al., 2014) and has been shown to entail a complex orientation of cytokinetic planes with polarized cytokinesis-based phragmoplasts. Phragmoplasts appear to develop among microtubules that emanate from the polar centrosomes rather than from nuclear envelopes and/or plastids.

Cell division in zygnematophytes was originally studied in *Spirogyra* (Fowke and Pickett-Heaps, 1969a, 1969b). This and subsequent studies have shown that there has been substantial reduction in the formation and use of the phragmoplast in zygnematophytes (Pickett-Heaps and Wetherbee, 1997). Phragmoplast formation in *Spirogyra* is initiated when the cleavage furrow contacts the microtubules of the telophase spindle. Cytokinesis begins with an ingrowing cleavage furrow and subsequently, actin-related determinants control cell-plate formation in the phragmoplast that arises from interzonal microtubules from the spindle. Recently, callose deposition and its putative role in the formation of the cell plate in *Penium* has been described (Davis et al., 2020). In many species of desmids (e.g. *Micrasterias*, *Closterium*, *Netrium*, and *Cosmarium*) and filamentous Zygnematalean taxa (Yoon et al., 2010; Regensdorff et al., 2018), the phragmoplast mechanism is totally eradicated and cleavage is re-established as the only device for dividing the cell.

The PPB is a ring-like structure that encircles the premitotic cell at the position where the new cross wall will be placed after mitosis in land plants (Schaefer et al., 2017). The PPB contains microtubules, F-actin, and ER and is also an active site of endocytosis. The PPB disassembles at the onset of mitosis, but leaves behind a “preprophase memory” that during cytokinesis attracts the phragmoplast. Similar cytoskeletal components have been found in many charophytes. In *Micrasterias*, a ring of microtubules at the cell isthmus is found encircling the cell at the site of future septum formation (Lütz-Meindl, 2016). In the filamentous *Mougeotia*, PPB-like microtubule rings in the cell cortex encircle the cell at the position of the premitotic nucleus (Galway and Hardham, 1991). These microtubules then disappear but mark the zone where cytokinesis will occur. The cortical cytoplasm of *P. margaritaceum* also contains a band of microtubules located at the cell isthmus (Ochs et al., 2014). This band is associated with a transient band of actin microfilaments and most likely helps to direct the deposition of new wall material as well as to mark the plane of the future cell division. Two additional satellite bands of

microtubules arise from the original microtubular band and move to positions that mark of the future isthmus of daughter cells.

The ECM of the charophytes

One of the most intriguing features of charophytes is the diversity displayed in their extracellular matrix (ECM). Charophytes of the ZCC clade often possess cell wall constituents that are notably similar to those found in cell walls of many land plants (Popper et al., 2011; Sørensen et al., 2011, 2010; Domozych et al., 2012). These include cellulose, hemicelluloses, pectins, and glycoproteins like AGP (see Box 1). This has led to the supposition that charophytes evolved in terrestrial ecosystems (i.e. not in aquatic habitats), and their wall components were key preadaptations to successfully conquering land and the subsequent evolution of land plants (Harholt et al., 2016). Some charophytes though also produce very different if not spectacular ECMs whose chemistry, synthesis, and secretion from the cell are incompletely resolved. These include the layers of scales produced by *Mesostigma* and the recently described, *Streptofilum capillatum* (Mikhailyuk et al., 2018), as well as the mucilage- or slime-like extracellular polymeric substances (or EPS; see Box 2) produced by many taxa of the Zygnematophyceae. A detailed description of the ECM of charophytes is not possible here but a guide to components of the ECM and pertinent references are provided in Table 2.

Gravity, hormones, and stress responses in charophytes

Gravitropism

Gravitropism in plant cells entails coordinated interactions of heavy subcellular components, that is, statoliths, the cytoskeletal, and membrane trafficking (e.g. exocytosis). The tip-growing rhizoids and protonemata of Charophyceae taxa have been exceptionally important specimens in elucidating gravitropism at the subcellular level in plants (Hodick et al., 1998; Braun and Limbach, 2006; Hader and Lebert, 2001). Studies have included the use of such technologies as zero gravity exposure (Limbach et al., 2005), magnetophoresis (Scherp and Hasenstein, 2007), and experimental perturbation via optical tweezers (Leitz et al., 1995). In *Chara*, “positively” gravitropic or downward growing rhizoids anchor the alga into the substrate. The “negatively” gravitropic protonemata grow against gravity or upward in darkness to light (Braun, 2001). The signal transduction and response pathways are limited to the apical region of a single cell in both rhizoids and protonemata. Gravitropism requires the sedimentation of statoliths, that is, single-membrane-bound vacuoles containing BaSO₄ crystals and protein/carbohydrate structures (Hodick et al., 1998). Actin is integral to the sensing of gravity and the polarized growth mechanism of the gravitropic cell. Actin-based activities are regulated by several actin-binding proteins which control actin polymerization, actin filament remodeling, and the transport of vesicles

Box 1. Charophyte cell walls and AGPs

Previous analyses of the cell wall biochemistry of charophytes have revealed notable similarities with cell walls of land plants (Popper et al., 2011; Sørensen et al., 2010, 2011; Harholt et al., 2016). Most of these studies have focused on polysaccharides including cellulose, xyloglucans, other hemicelluloses and pectins (e.g. Domozych et al., 2014; Mikkelsen et al., 2014, 2021; Frankova and Fry, 2021; see Table 2). Recently though, AGP-like glycoproteins have been identified in all charophyte groups except the Mesostigmatophyceae (Sørensen et al., 2011). AGPs represent a heterogeneous class of highly glycosylated, hydroxyproline-containing proteins typically found in the cell wall or apoplastic spaces (Silva et al., 2020). AGPs may act as Ca^{2+} -capacitors, pectin plasticizers during cell expansion (Lampert and Varnai 2013; Lampert et al., 2014, 2018) and as conduits for communication between the cytoplasm and the ECM (Youl et al., 1998; Silva et al., 2020). Some AGPs act as adhesive agents (Huang et al., 2016). In charophytes, AGPs also appear to function in adhesion-based mechanisms (Palacio-Lopez et al., 2019). For example, in many desmids, short stiff fibers line the external surface of wall pores or fine fibrils cover the entire cell wall surface. These label with AGP-targeted monoclonal antibodies (e.g. JIM13) and serve as adhesion centers (Domozych et al., 2007, 2009a, 2009b; Eder et al., 2008). Adhesion efficacy is a critical trait for charophytes and other algae in that it stabilizes a cell's position in a habitat and enhances capillary uptake of water during periods of water stress. Coordination of adhesion with secretion of EPS in gliding phenomena also allows for positioning the cell for maximizing light absorption for photosynthesis and/or the establishment of communication networks with local microbiota (Domozych and Domozych, 2008). AGPs have also been studied in the cell walls of *Spirogyra praetensis* (Pfeifer et al., 2021). Interestingly, while there are biochemical similarities with typical AGPs, the lack of terminal Ara but notable amounts of terminal and 1,3-linked rhamnose indicated that these *Spirogyra* components should now be classified as “rhamnogalactan-proteins.” These recent studies of AGPs or AGP-like components in charophytes demonstrate their fundamental importance in ECM-based dynamics. Future research is needed to elucidate their biosynthesis, interactions with cell wall polymers and plasma membrane (e.g. do they have GPI-anchors?) and their adhesive properties. Likewise, do these glycoproteins also act as signaling components, that is communicating information from the external environment to the cell or cell wall?

and organelles. Actin and associated proteins work in coordination with steep gradients of cytoplasmic free Ca^{2+} for the coordination of statolith positioning. They direct statoliths to sediment at gravisensitive regions of the plasma membrane that will subsequently stimulate gravitropic growth responses (Braun 2001; Braun and Limbach 2006). The actin cytoskeleton also is involved in the structural and functional organization of the Spitzenkörper, a tip-based aggregation of endoplasmic reticulum and vesicles that deliver cell-wall material toward to apical plasma membrane for secretion and is responsible for controlling cell expansion, shape, and direction of growth (Braun et al., 1999).

Phytohormones

One of the major “headlines” arising from recent genomic and transcriptomic investigations of charophytes has been the identification of phytohormones as well as their biosynthetic and signaling pathways. This has “fueled the fires” for deciphering the roles of hormones in the evolution of multicellularity and morphogenesis and their functions in the integration of the signaling pathways in response to environmental stimuli. In a large multispecies genome-wide analysis, Wang et al. (2015) posited that auxin, cytokinin, ethylene, and strigolactone signaling pathways originated in charophyte lineages, while abscisic acid, jasmonate, and salicylic acid signaling pathways arose in the last common

ancestor of land plants. Gibberellin and brassinosteroid dynamics arose later in land plant evolution. Further detailed analyses of hormones and hormone signaling pathways in charophytes may be found in these recent publications (Mahboubi and Delaux, 2021; Hori et al., 2014; Mutte et al., 2018; Martin-Arevalillo et al., 2019; Blázquez et al., 2020; Jiao et al., 2020; Wang et al., 2020; Baez and Nemhauser, 2021). Auxin and ethylene are the most well-studied hormones in charophytes and several important details have been recently revealed.

Auxin (i.e. indole-3-acetic acid [IAA]) and auxin transporters are commonly found in algae including the charophytes (Skokan et al., 2019; Vosolobě et al., 2020). In *Chara*, auxin has been shown to hyperpolarize the membrane potential of the internodal cells (Zhang et al., 2016). Polar auxin transport in *Chara* shares the pathway for long-distance transport of nutrients through both the internodal cells and the parenchymatous nodal complexes (Raven, 2013). A strong circadian influence on metabolic pathways producing IAA has also been demonstrated in this alga (Beilby et al., 2015; Beilby, 2016). PIN-driven auxin transport has also been described in *Klebsormidium nitens*. The application of exogenous IAA and inhibitors of auxin biosynthesis and polar auxin transport stopped cell division and cell elongation in this alga (Ohtaka et al., 2017). In *Spirogyra*, ethylene has been shown to function in cell elongation, the modulation of the cell wall matrix by expansins and xyloglucan

Box 2. “Elephant in the room”: EPS and microbial partners

Many zygnetophytes secrete a mucilage-like EPS beyond the wall and often in very large amounts (Domozych et al., 2005). This material has many functions including water retention/anti-desiccation, creating cell buoyancy, fueling gliding motility, enhancing sexual reproduction efficacy, serving as the aggregate “glue” of a substrate (e.g. soil) particles, serving as a radiation trap and very likely, providing a structural conduit for interactions with local microbiota (Boney, 1981, 1980; Gerrath, 1993; Domozych and Domozych, 2008; Bellinger et al., 2010). The EPS may also serve as a high-quality carbon source for the heterotroph communities (Giroldo et al., 2005). The EPS consists primarily of complex anionic polysaccharides along with small amounts of protein (Paulsen and Veira, 1994; Domozych et al., 2005; Kiemle et al., 2007). EPS polysaccharides are highly branched, may be sulfated and chemically modulate in cells exposed to high temperature or desiccation conditions (Jiao et al., 2020). EPS is processed in the Golgi body and carried by large vesicles to the cell surface for secretion (Domozych and Domozych, 1993; Domozych et al., 2007, 2020a, 2020b; Eder and Lütz-Meindl, 2008, 2010). EPS biosynthetic pathways and the signaling cascades that turn on its production are not yet known.

The importance of land plant–microbiota interactions has been well detailed but the symbiotic ‘toolkit’ or interplay between charophytes and local microbiota are only beginning to be understood (Delaux, 2017; de Vries and Archibald, 2018; Graham et al., 2018; Nishiyama et al., 2018). Furthermore, the role of EPS in these interactions remains a mystery. Does EPS serve as a structural platform for communication networks with specific microbiota? Why is the EPS glycome so complex and what enzymes are needed by local heterotrophs to metabolize it?

In a study of Adirondack wetland biofilms (Domozych and Domozych, 2008), 23.7% of all algae and cyanobacteria were zygnetophytes. These algae were observed to be initial colonizers of new substrates and subsequently residents of biofilms. Studies of the EPS sheaths of zygnetophytes from a peat bog revealed distinct populations of diverse bacteria (Fisher and Wilcox 1996; Fisher et al., 1998). Likewise, metagenomic analysis of microbiomes associated with other charophytes like *Coleochaete pulvinata* and *Chaetosphaeridium globosum* revealed diverse bacterial and fungal taxa (Knack et al., 2015). Clearly, a huge gap in our understanding of charophyte biology is their interactions with surrounding microbes and the role of EPS. This is an “elephant in the room” mystery that will need to be addressed in future research.

Table 2 The ECM of charophytes

ECM component	Key literature references
Cellulose microfibril structure	Felhofer et al. (2021); Huang et al. (2020); Kim et al. (1996); Herth (1983); Giddings et al. (1980)
Cellulose microfibril synthesis	Kiermayer and Slettr (1979); Roberts and Roberts (2004), Roberts et al. (2002), Foissner and Wasteneys (2014), Vannerum et al. (2010); Wilson et al. (2021)
Xyloglucan structure, synthesis, evolution	Frankova and Fry (2021); Ishida and Yokoyama (2022); Mikkelsen et al. (2021); Herburger et al. (2018); Del-Bem (2018); Del-Bem and Vincentz (2010); Fry et al. (2008); Sørensen et al. (2011); Van Sandt et al. (2006)
Xylans	Hsieh and Harris (2019); Jensen et al. (2018), Sørensen et al. (2011)
Mannans	Domozych et al. (2009a, 2009b); Frankova and Fry (2021, 2020); O'Rourke et al. (2015); Sørensen et al. (2011); Yamada et al. (2003)
Mixed linkage glucans	Frankova and Fry (2021); Fry et al. (2008); Sørensen et al. (2011);
Callose	Davis et al. (2020); Herburger and Holzinger (2015), Scherp et al. (2001); Graham and Taylor (1986)
Pectin: Homogalacturonan	Permann et al. (2021); Palacio-Lopez et al. (2020); Jiao et al. (2020); Herburger et al. (2019); Mravec et al. (2017, 2014); Boyer (2016); O'Rourke et al. (2015); Domozych et al. (2014); Holzinger and Karsten (2013); Proseus and Boyer (2012a, 2012b, 2008); Sørensen et al. (2011); Eder and Lütz-Meindl (2010, 2008); Baylson et al. (2001)
Pectin; Rhamnogalacturonan-I	Palacio-Lopez et al. (2020); Sørensen et al. (2011)
AGPs/rhamnogalactan-proteins	Pfeifer et al. (2021); Palacio-Lopez et al. (2019), Sørensen et al. (2011); Domozych et al. (2009a, 2009b, 2007); Eder et al. (2008)
Extensin	Liu et al. (2016)
Expansins	Cosgrove (2014); Van de Poel et al. (2016); Vannerrum et al. (2011)
Hydrophobic components	Niklas et al. (2017); Sørensen et al. (2011); Delwiche et al. (1989); Ligrone et al. (2008); Sørensen et al. (2011); Renault et al. (2019); de Vries et al. (2017); Sørensen et al. (2011); Jiao et al. (2020); Kondo et al. (2016)
Scales	Becker et al. (1995, 1994); Domozych et al. (1991); Manton and Ettl (1965)
Extracellular polymeric substance or EPS	Boney (1981, 1980); Domozych and Domozych (2008); Domozych et al. (2020a, 2020b, 2007, 2009a, 2009b); Domozych and Domozych (1993); Jiao et al. (2020); Eder and Lütz-Meindl (2010, 2008); Kiemle et al. (2007); Paulsen and Veira (1994); Torn et al. (2014)

endotransglucosylases/hydrolases, downregulation of chlorophyll biosynthesis and photosynthesis, and activation of abiotic stress responses (Ju et al., 2015; Van de Poel et al., 2016).

Stress responses

Charophytes living at the interface of aquatic or terrestrial habitats or in subaerial zones are confronted with multiple stresses including low water, desiccation, high salt levels, substantial changes in CO₂ and O₂ levels, increased reactive oxygen species (ROS), and high levels of UV radiation (Delwiche and Cooper, 2015; de Vries and Archibald, 2018; Fürst-Jansen et al., 2021; Herburger et al., 2014). Substantial adaptive strategies to these stresses have evolved in charophytes and several taxa have been selected as models for stress studies. For example, *Klebsormidium* species, including those living in soil crusts, exhibit distinct adaptations in response to fluctuations in temperature, water levels, and high irradiance (Holzinger et al., 2011; Mikhailyuk et al., 2015; Steiner et al., 2020). When *K. crenulatum* is subjected to freezing, new cell wall layers form and act as reinforcements to counteract physical pressures of the frozen surrounding medium. Mitochondria aggregate, ER levels substantially increase, the Golgi stacks are altered and photosynthetic oxygen production modulates. Under desiccation conditions, the levels of callose increase dramatically in cell walls (Herburger and Holzinger, 2015). Callose appears to be associated with the formation of fragmented filaments (Herburger and Holzinger, 2015) that most likely enhance dispersal. *Klebsormidium* may also produce spores to cope with low temperature and high light stress (Blaas and Holzinger 2017; Miguez et al., 2020). When *Klebsormidium* or its relative, *Interfilum*, are exposed to enhanced short UV wavelengths, two mycosporine-like amino acids, called klebsormidin A and klebsormidin B are produced. These compounds (Hartmann et al., 2020) are low molecular weight polar amino acid derivatives that act as passive shielding biomolecules by dissipating the energy of the previously absorbed UV light as harmless heat. UV stress also causes major changes to the F-actin architecture of the cell.

Transcriptomic analysis of *Klebsormidium* under desiccation stress (Holzinger et al., 2014) revealed an upregulation of transcripts for photosynthesis, energy production, ROS, chaperones associated with late embryogenesis (LEA) and early response to desiccation, as well as enzymes used for biosynthesis of the raffinose family of oligosaccharides that are known to act as osmolytes. Downregulation was observed for transcripts of integrative cellular functions including DNA replication, cell division, cofactor biosynthesis, and amino acid biosynthesis. Under cold-stress, there is an enhancement of the expression of heat-shock proteins, LEA, cryoprotectant carbohydrates and modified lipids, ROS scavenging components, and substantial changes to the cytoskeleton (Rippin et al., 2019).

The multicellular *Coleochaete* exhibits major changes in morphology when grown in desiccation versus aquatic

conditions (Graham et al., 2012) and produces sporopollenin and lignin-like compounds (Delwiche et al., 1989). When wounded or placed under anoxic conditions or salt stress, *Chara* and other Charophyceae taxa exhibit notable cell wall remodeling, changes to exo- and endocytosis, and notable salt tolerance mechanisms. This includes expression of the cation transporter (*HKT*), a Na⁺/H⁺ antiport (*NHX*), a H⁺-ATPase (*AHA*), and a Na⁺-ATPase (*ENA*) (Beilby, 2015; Foissner and Wasteneys, 2014; Phipps et al., 2021a, 2021b).

Distinct molecular and cellular changes occur in zygnetophytes placed under abiotic stress. Heat stress in *Spirogyra* and *Mougeotia* results in elevated transcript levels for molecular chaperones, thylakoid components, amino acid metabolism, and changes to phosphorelay-based signal transduction, Ca²⁺ signatures, and plastid biology (de Vries et al., 2020). de Vries and Archibald (2018) posited that responses to plastid stressors were critical to the colonization of land by an algal ancestor. In other Zygnetophyceae (Rippin et al., 2017, 2019), transcriptomic changes demonstrate that culture age has a severe influence on desiccation and in natural mats, the sun exposed upper layers have substantially more transcripts that are regulated when compared to protected lower layers. In *Micrasterias*, osmotic or salt stress leads to PCD that is induced by increased H₂O₂ levels produced in the chloroplast (Darehshouri and Lütz-Meindl, 2010; Steiner et al., 2021). Another abiotic stress-induced response of some zygnetophyceae is the accumulation of phenolic compounds including purple pigments (Newsome and van Breeman, 2012; Aigner et al., 2013; Newsome et al., 2013; Herburger et al., 2016a, 2016b). These pigments are glycosylated and highly branched phenolic compounds that form complexes with iron (Fe³⁺). This response may exhibit the requirement for iron metabolism to be adapted to the cellular demands in order to maintain a sufficient redox system but to avoid cellular damage because of iron-induced oxidative stress. A more complete overview on the genetics and biochemistry of metabolites in charophytes is provided in Rieseberg et al. (2022).

When *P. margaritaceum* is exposed to osmotic stress, Hechtian strands initially form (Domozych et al., 2020a, 2020b). This is followed by the formation of wall inclusions, altered HG lattice structure in the cell wall, and increased autophagy. Cell-wall modifications have also been noted in other zygnetophytes in both vegetative cells and zygospores (Fitzek et al., 2019; Herburger et al., 2019; Permann et al., 2021).

Conclusion

Charophytes continue to capture the interest of plant researchers. Yet we are only in the infancy stage in elucidating the details of their biology. Some of the more pressing questions that need to be addressed about charophytes are provided in “Outstanding Questions.” To answer these and other questions, it will require a synthesis of data derived from both classical and novel technologies. For example, carbohydrate and protein chemistry will be needed to decipher

OUTSTANDING QUESTIONS

- What are the molecular tool boxes found in charophytes that allow them to survive at the aquatic/terrestrial interface, adapt to abiotic stressors, and form communication platforms with the surrounding microbiome?
- How do hormones and other growth regulators function in charophytes?
- How do the membrane trafficking networks and the cytoskeleton coordinate during development and environmental stress responses?
- What is the interplay between the furrowing mechanism and the phragmoplast cell plate in the ZCC taxa and how does this relate to the evolution of multicellularity?
- How do cell wall polymers interact in the architectural design of the wall and modulate during development and in response to stress?
- What are the glycomes and proteomes of the EPS and other secreted materials, their synthetic pathways, and their modulations in response to environmental stimuli?

the complex glycomes and proteomes of the ECM. Mining of recently sequenced genomes and transcriptomes will allow for the mapping of biosynthetic pathways of these various ECM components and signaling networks that govern their secretion. This information can then be incorporated into cell biology-based studies such as those applying targeted agents that disrupt specific components or processes of the endomembrane system (e.g. chemical biology) and high-resolution microscopy- and spectroscopy-based imaging. One of the most pressing future challenges though will be generating stable transformed cell lines of model charophytes expressing proteins associated with the ECM synthesis, the endomembrane system, and cytoskeletal network. Stable transformed lines have been difficult to obtain with charophytes but recent technological advances (Kawai et al., 2021) provide promise for success in the near future. This will provide possibilities for 4D imaging of live cells that can then be used to create endomembrane and cell atlases of model charophytes.

Acknowledgments

Special thanks for assistance provided in the writing of this article to Lily Sun, Catherine Domozych, and Melaina Gilbert of Skidmore College.

Funding

This work was supported by National Science Foundation (USA) grants 2129443 and 1517345 (D.S.D.).

Conflict of interest statement. None declared.

References

- Absolonova M, Foissner I, Sommer A** (2019) Cubic plasma membrane domains stabilize and restrict zones for pH band formation in *Chara* internodal cells. *Bot Lett* **166**: 283–293
- Affenzeller MJ, Darehshouri A, Andosch A, Lütz C, Lütz-Meindl U** (2009a) Salt stress-induced cell death in the unicellular green alga *Micrasterias denticulata*. *J Exp Bot* **60**: 939–954
- Affenzeller MJ, Darehshouri A, Andosch A, Lütz C, Lütz-Meindl U** (2009b) PCD and autophagy in the unicellular green alga *Micrasterias denticulata*. *Autophagy* **5**: 854–855
- Aichinger N, Lütz-Meindl U** (2005) Organelle interactions and possible degradation pathways visualized in high-pressure frozen algal cells. *J Microsc* **219**: 86–94
- Aigner S, Remias D, Karsten U, Holzinger A** (2013) Unusual phenolic compounds contribute to ecophysiological performance in the purple-colored green alga *zygogonium ericetorum* (Zygnematophyceae, Streptophyta) from a high-alpine habitat. *J Phycol* **49**: 648–660
- Arc E, Pichrtová M, Kranner I, Holzinger A** (2020) Pre-akinetes formation in *Zygnema* sp. from polar habitats is associated with metabolite re-arrangement. *J Exp Bot* **71**: 3314–3322
- Báez RR, Nemhauser JL** (2021) Expansion and innovation in auxin signaling: where do we grow from here? *Development* **148**: dev187120
- Bassham DC** (2009). Function and regulation of macroautophagy in plants. *Biochim Biophys Acta* **1793**: 1397–1403
- Baylson FA, Stevens BW, Domozych DS** (2001) Composition and synthesis of the pectin and protein components of the cell wall of *closterium acerosum* (Chlorophyta). *J Phycol* **37**: 796–809
- Becker B, Marin B, Melkonian M** (1994) Structure, composition, and biogenesis of prasinophyte cell coverings. *Protoplasma* **181**: 233–244
- Becker B, Bölinger B, Melkonian M** (1995) Anterograde transport of algal scales through the Golgi complex is not mediated by vesicles. *Trends Cell Biol* **5**: 305–307
- Beilby MJ** (2015) Salt tolerance at single cell level in giant-celled Characeae. *Front Plant Sci* doi: 10.3389/fpls.2015
- Beilby MJ** (2016) Multi-scale characean experimental system: from electrophysiology of membrane transporters to cell-to-cell connectivity, cytoplasmic streaming and auxin metabolism. *Front Plant Sci* **7**: 1052
- Beilby MJ** (2019) *Chara braunii* genome: a new resource for plant electrophysiology. *Biophys Rev* **11**: 235–239
- Beilby M, Bisson M** (2012) pH banding in charophyte algae. In AG Volkov, ed, *Plant Electrophysiology*. Springer, Berlin Heidelberg, Germany, pp 247–271
- Beilby MJ, Casanova MT** (2014) *The Physiology of Characean Cells*. Springer, Berlin, Heidelberg, Germany
- Beilby MJ, Turi CE, Baker TC, Tyym FJ, Murch SJ** (2015) Circadian changes in endogenous concentrations of indole-3-acetic acid, melatonin, serotonin, abscisic acid and jasmonic acid in Characeae (*Chara australis* Brown). *Plant Signal Behav* **2015**; **10**: e1082697
- Bellinger BJ, Gretz MR, Domozych DS, Kiemle SN, Hagerthey SE** (2010) Composition of extracellular polymeric substances from periphyton assemblages in the Florida Everglades. *J Phycol* **46**: 484–496
- Blaas K, Holzinger A** (2017) F-actin reorganization upon de- and rehydration in the aeroterrestrial green alga *Klebsormidium crenulatum*. *Micron* **98**: 34–38
- Blázquez MA, Nelson DC, Weijers D** (2020) Evolution of plant hormone response pathways. *Annu Rev Plant Biol* **71**: 327–353
- Boyer JS** (2016) Enzyme-less growth in *Chara* and terrestrial plants. *Front Plant Sci* **7**: 866
- Boney AD** (1980) Water retention and radiation transmission by gelatinous strata of the saccoderm desmid *Mesotaenium chlamydsporum* DeBary. *Nova Hedw* **33**: 949–970
- Boney AD** (1981) Mucilage: a ubiquitous algal attribute. *Br Phycol J* **16**: 115–132

- Braun M** (2001) Gravisensing in single-celled systems: characean rhizoids and protonemata. *Adv Space Res* **27**: 1031–1039
- Braun M, Limbach C** (2006) Rhizoids and protonemata of characean algae: model cells for research on polarized growth and plant gravity sensing. *Protoplasma* **229**: 133–142
- Braun M, Buchen B, Sievers A** (1999) Ultrastructure and cytoskeleton of *Chara* rhizoids in microgravity. *Adv Space Res* **1999**: 707–711
- Bremer K** (1985) Summary of green plant phylogeny and classification. *Cladistics* **1**: 369–385
- Brook AJ** (1981) *The Biology of Desmids*, Vol. **16**. University of California Press, Berkeley, CA, pp 276
- Brown RC, Lemmon BE, Graham LE** (1994) Morphogenetic plastid migration and microtubule arrays in mitosis and cytokinesis in the green alga *Coleochaete orbicularis*. *Am J Bot* **81**: 127–133
- Bulychev AA, Komarova AV** (2014) Long-distance signal transmission and regulation of photosynthesis in characean cells. *Biochemistry (Moscow)* **79**: 273–281
- Bulychev AA, Rybina AA** (2018) Long-range interactions of *Chara* chloroplasts are sensitive to plasma-membrane H⁺ flows and comprise separate photo- and dark-operated pathways. *Protoplasma* **255**: 1621–1634
- Buschman H, Zachgo S** (2016) The evolution of cell division: from streptophyte algae to land plants. *Trends Plant Sci* **21**: 872–883
- Čertnerová D** (2021) Nuclei isolation protocols for flow cytometry allowing nuclear DNA content estimation in problematic microalgal groups. *J Appl Phycol* **33**: 257
- Cheng S, Xian W, Fu Y, Marin B, Keller J, Wu T, Sun W, Li X, Xu Y, Zhang Y, et al.** (2019) Genomes of subaerial zygmatophyceae provide insights into land plant evolution. *Cell* **179**: 1057–1067
- Civaň P, Foster PG, Embley MT, Šeneca A, Cox CJ** (2014) Analyses of charophyte chloroplast genomes help characterize the ancestral chloroplast genome of land plants. *Genome Biol Evol* **6**: 897–911
- Cook ME** (2004) Cytokinesis in *Coleochaete orbicularis* (Charophyceae): an ancestral mechanism inherited by plants. *Am J Bot* **91**: 313–320
- Cook M, Graham L, Botha C, Lavin C** (1997) Comparative ultrastructure of plasmodesmata of *Chara* and selected bryophytes: toward an elucidation of the evolutionary origin of plant plasmodesmata. *Am J Bot* **84**: 1169
- Cosgrove DJ** (2016) Plant cell wall extensibility: connecting plant cell growth with cell wall structure, mechanics, and the action of wall-modifying enzymes. *J Expt Bot* **67**: 463–476
- Cosgrove DJ** (2014) Plant expansins: diversity and interactions with plant cell walls. *Curr Opin Plant Biol* **25**: 162–172
- Darehshouri A, Lütz-Meindl U** (2010) H₂O₂ localization in the green alga *Micrasterias* after salt and osmotic stress by TEM-coupled electron energy loss spectroscopy. *Protoplasma* **239**: 49–56
- Darehshouri A, Affenzeller M, Lütz-Meindl U** (2008) Cell death upon H₂O₂ induction in the unicellular green alga *Micrasterias*. *Plant Biol (Stuttg)* **10**: 732–745
- Darehshouri P, Buchner O, Andosch A, Wanner G, Neuner G, Lütz-Meindl U** (2020) Fusion of mitochondria to 3-D networks, autophagy and increased organelle contacts are important subcellular hallmarks during cold stress in plants. *Int J Mol Sci* **21**: 8753
- Davis DJ, Wang M, Sørensen I, Rose JKC, Domozych DS, Drakakaki G** (2020) Callose deposition is essential for the completion of cytokinesis in the unicellular alga *Penium margaritaceum*. *J Cell Sci* **133**: jcs249599
- Delaux PM** (2017) Comparative phylogenomics of symbiotic associations. *New Phytol* **213**: 89–94
- Del-Bem LE** (2018) Xyloglucan evolution and the terrestrialization of green plants. *New Phytol* **219**: 1150–1153
- Del-Bem LEV, Vincentz MGA** (2010) Evolution of xyloglucan-related genes in green plants. *BMC Evol Biol* **10**: 341
- de Vries J, Archibald JM** (2018) Plant evolution: landmarks on the path to terrestrial life. *New Phytol* **217**: 1428–1434
- de Vries J, Stanton A, Archibald JM, Gould SB** (2016) Streptophyte terrestrialization in light of plastid evolution. *Trends Plant Sci* **21**: 467–476
- de Vries J, de Vries S, Curtis BA, Zhou H, Penny S, Feussner K, Pinto DM, Steinert M, Cohen AM, von Schwartzberg K, Archibald JM** (2020) Heat stress response in the closest algal relatives of land plants reveals conserved stress signaling circuits. *Plant J* **103**: 1025–1048
- de Vries J, De Vries S, Slamovits CH, Rose LE, Archibald JM** (2017) How embryophytic is the biosynthesis of phenylpropanoids and their derivatives in streptophyte algae? *Plant Cell Physiol* **58**: 934–945
- Delwiche CF, Cooper ED** (2015) The evolutionary origin of a terrestrial flora. *Curr Biol* **25**: R899–910
- Delwiche CF, Graham LE, Thomson N** (1989) Lignin-like compounds and sporopollenin in *Coleochaete*, an algal model for land plant ancestry. *Science* **245**: 399–401
- Ding X, Zhang X, Otegui MS** (2018) Plant autophagy: new flavors on the menu. *Curr Opin Plant Biol* **46**: 113–121
- Domozych DS** (1999a) Perturbation of the secretory network in *Closterium acerosum* by Na⁺-selective ionophores. *Protoplasma* **206**: 41–56
- Domozych DS** (1999b) Disruption of the Golgi apparatus and secretory mechanism in the desmid, *Closterium acerosum*, by brefeldin A. *J Expt Bot* **50**: 1323–1330
- Domozych DS** (2007) Exopolymer production by the green alga *Penium margaritaceum*: implications for biofilm residency. *Int J Plant Sci* **168**: 763–774
- Domozych DS** (2014) *Penium margaritaceum*: a unicellular model organism for studying plant cell wall architecture and dynamics. *Plants* **3**: 543–558
- Domozych DS, Ciancia M, Fangel JU, Mikkelsen MD, Ulvskov P, Willats WGT** (2012) The cell walls of green algae: a journey through evolution and diversity. *Front Plant Sci* **8**: 82
- Domozych DS, Domozych CR** (1993) Mucilage processing and secretion in the green alga *closterium*. ii. Ultrastructure and immunocytochemistry. *J Phycol* **29**: 659–667
- Domozych DS, Domozych CR** (2008) Desmids and biofilms of freshwater wetlands: development and microarchitecture. *Microb Ecol* **55**: 81–93
- Domozych DS, Elliott L, Kiemle SN, Gretz MR** (2007) *Pleurotaenium trabecula*, a desmid of wetland biofilms: the extracellular matrix and adhesion mechanisms. *J Phycol* **43**: 1022–1038
- Domozych DS, Kort S, Benton S, Yu T** (2005) The extracellular polymeric substance of the green alga *Penium margaritaceum* and its role in biofilm formation. *Biofilms* **2**: 1–16
- Domozych DS, Ritter E, Lietz A, Tinaz B, Raimundo SC** (2020b) Protoplast isolation and manipulation in the unicellular model plant *Penium margaritaceum*. *Methods Mol Biol* **2149**: 111–124
- Domozych DS, Sun L, Palacio-Lopez K, Reed R, Jeon S, Mingjia Li, Jiao C, Sørensen I, Fei Z, Rose JKC** (2020a) Endomembrane architecture and dynamics during secretion of the extracellular matrix of the unicellular charophyte, *Penium margaritaceum*. *J Expt Bot* **71**: 3323–3339
- Domozych D, Sørensen I, Popper ZA** (2017) Charophytes: evolutionary ancestors of plants and emerging models for plant research. *Front Plant Sci* **8**: 338
- Domozych DS, Sørensen I, Popper ZA, Ochs J, Andreas A, Fangel JU, Pielach A, Sacks C, Brechka H, Ruisi-Besares P, et al.** (2014) Pectin metabolism and assembly in the cell wall of the charophyte green alga *Penium margaritaceum*. *Plant Physiol* **165**: 105–118
- Domozych DS, Sørensen I, Willats WGT** (2009a) The distribution of cell wall polymers during antheridium development and spermatogenesis in the Charophycean green alga, *Chara corallina*. *Ann Bot* **104**: 1045–1056
- Domozych DS, Wells B, Shaw PJ** (1991) Basket scales of the green alga, *Mesostigma viride*: Chemistry and ultrastructure. *J Cell Sci* **100**: 397–407

- Domozych DS, Wells B, Shaw PJ** (1992) Scale biogenesis in the green alga, *Mesostigma viride*. *Protoplasma* **167**: 19–32
- Domozych DS, Wilson R, Domozych CR** (2009b) Photosynthetic eukaryotes of freshwater wetland biofilms: adaptations and structural characteristics of the extracellular matrix in the green alga, *Cosmarium reniforme* (Zygnematophyceae, Streptophyta). *J Eukaryot Microbiol* **56**: 314–322
- Doty KF, Betzelberger AM, Kocot KM, Cook ME** (2014) Immunofluorescence localization of the tubulin cytoskeleton during cell division and cell growth in members of the Coleochaetales (Streptophyta). *J Phycol* **50**: 624–639
- Drakakaki G** (2015) Polysaccharide deposition during cytokinesis: challenges and future perspectives. *Plant Sci* **236**: 177–184
- Dupuy L, Mackenzie J, Haseloff J** (2010) Coordination of plant cell division and expansion in a simple morphogenetic system. *Proc Natl Acad Sci* **107**: 2711–2716
- Eder M, Lütz -Meindl U** (2008) Pectin-like carbohydrates in the green alga *Micrasterias* characterized by cytochemical analysis and energy filtering TEM. *J Microsc* **231**: 201–214
- Eder M, Lütz-Meindl U** (2010) Analyses and localization of pectin-like carbohydrates in cell wall and mucilage of the green alga *Netrium digitus*. *Protoplasma* **243**: 25–38
- Eder M, Tenhaken R, Driouch A, Lütz-Meindl U** (2008) Occurrence and characterization of arabinogalactan-like proteins and hemicelluloses in *micrasterias* (Streptophyta). *J Phycol* **44**: 1221–1234
- El Mahboubi K, Delaux PM** (2021) Plant biology: two green revolutions mediated by DELLA. *Cur Biol*, doi.org/10.1016/j.cub.2021.07.024 (August 23, 2021)
- Eremin A, Bulychev AA, Kluge C, Harbinson J, Foissner I** (2019) PH-dependent cell–cell interactions in the green alga *Chara*. *Protoplasma* **256**: 1737–1751
- Fan L, Li R, Pan J, Ding Z, Lin J** (2015) Endocytosis and its regulation in plants. *Trends Plant Sci* **20**: 388–397
- Felhofer M, Mayr K, Lütz-Meindl U, Gierlinger M** (2021) Raman imaging of *Micrasterias*: new insights into shape formation. *Protoplasma* **258**: 1323–1334
- Feng X, Holzinger A, Permann C, Anderson A, Yin Y** (2021) Characterization of two *Zygnema* strains (*Zygnema circumcarinatum* SAG 698-1a and SAG 698-1b) and a rapid method to estimate nuclear genome size of zygnematophycean green algae. *Front Plant Sci* **12**: 610381
- Fisher MM, Wilcox LW** (1996) Desmid-bacterial associations in *sphagnum*-dominated Wisconsin peatlands. *J Phycol* **32**: 543–549
- Fisher MM, Wilcox LW, Graham LE** (1998) Molecular characterization of epiphytic bacterial communities on charophycean green algae. *Appl Environ Microbiol* **64**: 4384–4389
- Fitzek E, Orton L, Entwistle S, Grayburn WS, Ausland C, Duvall MR, Yin Y** (2019) Cell wall enzymes in *Zygnema circumcarinatum* UTEX 1559 respond to osmotic stress in a plant-like fashion. *Front Plant Sci* **10**: 732
- Foissner I** (1991) Induction of exocytosis in characean internodal cells by locally restricted application of chlortetracycline and the effect of cytochalasin B, depolarizing and hyperpolarizing agents. *Plant Cell Environ* **14**: 907–915
- Foissner I** (1992) Effects of dichlorobenzonitrile on the formation of cell wall appositions (plugs) in internodal cells of *Chara corallina* Klein ex. Willd, em. R.D.W. and *Nitella flexilis* (L.). *Ag. New Phytol* **121**: 447–455
- Foissner I** (1998) Localization of calcium ions in wounded characean internodal cells. *New Phytol* **139**: 449–458
- Foissner I, Hoeffberger M, Hoepflinger MC, Sommer A, Bulychev AA** (2020), Brefeldin A inhibits clathrin-dependent endocytosis and ion transport in *Chara* internodal cells. *Biol Cell* **112**: 317–334
- Foissner I, Menzel D, Wasteneys GO** (2009) Microtubule-dependent motility and orientation of the cortical endoplasmic reticulum in elongating characean internodal cells. *Cell Motil Cytoskel* **66**: 142–155
- Foissner I, Sommer A, Hoeffberger M** (2015) Photosynthesis-dependent formation of convoluted plasma membrane domains in *Chara* internodal cells is independent of chloroplast position. *Protoplasma* **252**: 1085–1096
- Foissner I, Wasteneys GO** (2007) Wide-ranging effects of eight cytochalasins and latrunculin A and B on intracellular motility and actin filament reorganization in characean internodal cells. *Plant Cell Physiol* **48**: 585–597
- Foissner I, Wasteneys GO** (2011) The characean internodal cell as a model system for studying wound healing. *J Microsc* **247**: 10–22
- Foissner I, Wasteneys GO** (2014) Characean intermodal cells as a model system for the study of cell organization. In WJ Kwang, ed, *International Review of Cell and Molecular Biology*. Academic Press, New York, NY, pp 307–364
- Fowke LC, Pickett-Heaps JD** (1969a) Cell division in *spirogyra*. I. Mitosis. *J Phycol* **5**: 240–259
- Fowke LC, Pickett-Heaps JD** (1969b) cell division in *spirogyra*. II. Cytokinesis. *J Phycol* **5**: 273–281
- Franková L, Fry SC** (2020) Activity and action of cell-wall transglycanases. In Z Popper, ed, *The Plant Cell Wall. Methods in Molecular Biology*, Vol. **2149**. Humana, New York, NY, pp 165–192
- Franková L, Fry SC** (2021) Hemicellulose-remodelling transglycanase activities from charophytes: towards the evolution of the land-plant cell wall. *Plant J* **108**: 7–28
- Fry SC, Mohler KE, Nesselrode BH, Franková L** (2008) Mixed-linkage beta-glucan: xyloglucan endotransglucosylase, a novel wall-remodelling enzyme from Equisetum (horsetails) and charophytic algae. *Plant J* **55**: 240–252
- Fürst-Jansen JM, De Vries S, Lorenz M, von Schwartzberg K, Archibald JM, De Vries J** (2021) Submergence of the filamentous Zygnematophyceae *Mougeotia* induces differential gene expression patterns associated with core metabolism and photosynthesis. *Protoplasma* **58**: 2067–2084
- Gabryś H** (1985) Chloroplast movement in *Mougeotia* induced by blue light pulses. *Planta* **166**: 134–140
- Galway ME, Hardham AR** (1991) Immunofluorescent localization of microtubules throughout the cell cycle in the green alga *mougeotia* (Zygnemataceae). *Am J Bot* **78**: 451–461
- Galli C, Guizzardi S, Passeri G, Macaluso GM, Scandroglio R** (2005) Life on the wire: on tensegrity and force balance in cells. *Acta Biomed* **76**: 5–12
- Gerrath JF** (1993) The biology of desmids: a decade of progress. *Prog Phycol Res* **9**: 81–192
- Giddings TH, Brower DL, Staehelin LA** (1980) Visualization of particle complexes in the plasma membrane of *Micrasterias denticulata* associated with the formation of cellulose fibrils in primary and secondary cell walls. *J Cell Biol* **84**: 327–339
- Giroldo D, Vieira AAH, Paulsen BS** (2005) Microbial degradation of extracellular polysaccharides released by a tropical strain of *Staurastrum orbiculare* (Zygnematophyceae). *Phycologia* **44**: 671–677
- Gitzendanner MA, Soltis P, Wong GKS, Ruhfel BR, Soltis DE** (2018) Plastid phylogenomic analysis of green plants: a billion years of evolutionary history. *Am J Bot* **105**: 291–301
- Glick BS, Luini A** (2011) Models for Golgi traffic: a critical assessment. *Cold Spring Harb Perspect Biol* **3**: a005215
- Goldstein RE, van de Meent JW** (2015) A physical perspective on cytoplasmic streaming. *Interface Foc* **5**: 20150030
- Goudet MMM, Orr DJ, Melkonian M, Müller KH, Meyer MT, Carmo-Silva E, Griffiths H** (2020) Rubisco and carbon-concentrating mechanism co-evolution across chlorophyte and streptophyte green algae. *New Phytol* **227**: 810–823
- Govorunova EG, Sineshchekov OA, Spudich JL** (2022) Emerging diversity of channelrhodopsins and their structure-function relationships. *Front Cell Neurosci* **15**: 800313
- Govorunova EG, Spudich EN, Lane CE, Sineshchekov OA, Spudich JL** (2011) New channelrhodopsin with a red-shifted spectrum and rapid kinetics from *Mesostigma viride*. *mBio* **2**: e00115-11

- Graham LE, Arancibia-Avila P, Taylor WA, Strother PK, Cook M** (2012) Aero-terrestrial *Coleochaete* (Streptophyta, Coleochaetales) models early plant adaptation to land. *Am J Bot* **99**: 130–144
- Graham LE, Graham JE, Wilcox LW, Cook ME** (2016) *Algae*, 3rd ed. LJLM Press, Madison, WI
- Graham LE, Graham JM, Wilcox LW, Cook ME, Arancibia-Avila P, Knack JJ** (2018) Evolutionary roots of plant microbiomes and biogeochemical impacts of nonvascular autotroph-microbiome systems over deep time. *Int J Plant Sci* **179**: 505–522
- Graham LE, McBride GE** (1979) The occurrence and phylogenetic significance of a multilayered structure in *coleochaete* spermatozooids. *Am J Bot* **66**: 887–894
- Graham LE, Taylor C III** (1986) The ultrastructure of meiospores of *coleochaete pulvinata* (Charophyceae). *J Phycol* **22**: 299–307
- Grolig F** (1997) Nuclear centering in *Spirogyra*: force integration by microfilaments along microtubules. *Planta* **204**: 54–63
- Gylytė B, Jurkonienė S, Cimpmperman R, Šveikauskas V, Manusadzianas L** (2021) Biomarker identification of isolated compartments of the cell wall, cytoplasm and vacuole from the inter-nodal cell of characean *Nitellopsis obtusa*. *Peer J* **9**: e10930
- Hader DP, Lebert M** (2001) Gravitropism and gravitaxis in algae. *Adv Space Res* **27**: 861–870
- Haig D** (2010) What do we know about charophyte (Streptophyta) life cycles? *J Phycol* **46**: 860–867
- Hall JD, McCourt RM** (2005) Conjugating green algae including desmids. In *J Wehr*, ed, *Freshwater Algae of North America*, 2nd ed. Academic Press, Cambridge, MA, pp 429–457
- Harholt J, Moestrup O Ulvskov P** (2016) Why plants were terrestrial from the beginning. *Trends Plant Sci* **21**: 96–101
- Hartmann A, Glaser K, Holzinger A, Ganzera M, Karsten U** (2020) Klebsormidin A and B, two new UV-sunscreen compounds in green microalgal *Interfilum* and *Klebsormidium* species (Streptophyta) from terrestrial habitats. *Front Microbiol* **67**: 327–340
- Herburger K, Holzinger A** (2015) Localization and quantification of callose in the streptophyte green algae *Zygnema* and *Klebsormidium*: correlation with desiccation tolerance. *Plant Cell Physiol* **56**: 2259–2270
- Herburger K, Karsten U, Holzinger A** (2016a) *Entransia* and *Hormidiella*, sister lineages of *Klebsormidium* (Streptophyta), respond differently to light, temperature, and desiccation stress. *Protoplasma* **253**: 1309–1323
- Herburger K, Lewis LA, Holzinger A** (2014) Photosynthetic efficiency, desiccation tolerance and ultrastructure in two phylogenetically distinct strains of alpine *Zygnema* sp. (Zygnematophyceae, Streptophyta): role of pre-akinetes formation. *Protoplasma* **252**: 571–589
- Herburger K, Remias D, Holzinger A** (2016b) The green alga *Zygonium ericetorum* (Zygnematophyceae, Charophyta) shows high iron and aluminium tolerance: protection mechanisms and photosynthetic performance. *FEMS Microbiol Ecol* **92**: 8. doi.org/10.1093/femsec/fiw103
- Herburger K, Ryan LM, Popper ZA, Holzinger A** (2018) Localisation and substrate specificities of transglycanases in charophyte algae relate to development and morphology. *J Cell Sci* **131**: 2
- Herburger K, Xin A, Holzinger A** (2019) Homogalacturonan accumulation in cell walls of the green alga *Zygnema* sp. (Charophyta) increases desiccation resistance. *Front Plant Sci* **10**: 540
- Herth W** (1983) Arrays of plasma-membrane "rosettes" involved in cellulose microfibril formation of *Spirogyra*. *Planta* **159**: 347–356
- Hess S, Williams S, Busch A, Irisarri I, Delwiche C, De Vries S, Tatyana D, Roger A, Archibald J, Buschmann H, et al.** (2022) A phylogenomically informed five-order system for the closest relatives of land plants. *Curr Biol* **32**: 1–10
- Hodick D, Buchen B, Sievers A** (1998) Statolith positioning by microfilaments in *Chara* rhizoids and protonemata. *Adv Space Res* **21**: 1183–1189
- Hoepflinger MC, Geretschlaeger A, Sommer A, Hoefftberger M, Hametner C, Ueda T, Foissner I** (2015) Molecular analysis and localization of CaARA7 a conventional RAB5 GTPase from characean algae. *Traffic* **16**: 534–554
- Hoepflinger MC, Hoefftberger M, Sommer A, Hametner C, Foissner I** (2017) Clathrin in *Chara australis*: molecular analysis and involvement in charasome degradation and constitutive endocytosis. *Front Plant Sci* **8**: 20
- Höftberger M, Url T, Meindl U** (1995) Disturbance of the secretory pathway in *Micrasterias denticulata* by tunicamycin and cyclopi-azonic acid. *Protoplasma* **189**: 173–179
- Holzinger A** (2000) Aspects of cell development in *Micrasterias muricata* (Desmidiaceae) revealed by cryofixation and freeze substitution. *Nova Hedw* **70**: 275–288
- Holzinger A, Lütz-Meindl U** (2002) Kinesin-like proteins are involved in postmitotic nuclear migration of the unicellular green alga *Micrasterias denticulata*. *Cell Biol Int* **26**: 689–697
- Holzinger A, Lütz C** (2006) Algae and UV irradiation: effects on ultrastructure and related metabolic functions. *Micron* **37**: 190–207
- Holzinger A, Kaplan F, Blaas K, Zechmann B, Komsic-Buchmann K, Becker B** (2014) Transcriptomics of desiccation tolerance in the streptophyte green alga *Klebsormidium* reveal a land plant-like defense reaction. *PLoS One* **9**: e110630
- Holzinger A, Karsten U** (2013) Desiccation stress and tolerance in green algae: consequences for ultrastructure, physiological and molecular mechanisms. *Front Plant Sci* **4**: 327
- Holzinger A, Lütz C, Karsten U** (2011) Desiccation stress causes structural and ultrastructural alterations in the aero-terrestrial green alga *Klebsormidium crenulatum* (Klebsormidiophyceae, Streptophyta) isolated from an alpine soil crust. *J Phycol* **47**: 591–602
- Holzinger A, Monajembashi S, Greulich KO, Lütz-Meindl U** (2002) Impairment of cytoskeleton-dependent vesicle and organelle translocation in green algae: combined use of a microfocused infrared laser as microbeam and optical tweezers. *J Microsc* **208**: 77–83
- Holzinger A, Pichrtová M** (2016) Abiotic stress tolerance of charophyte green algae: new challenges for omics techniques. *Front Plant Sci* **7**: 678
- Holzinger A, Valenta R, Lütz-Meindl U** (2000) Profilin is localized in the nucleus-associated microtubule and actin system and is evenly distributed in the cytoplasm of the green alga *Micrasterias denticulata*. *Protoplasma* **212**: 197–205
- Hori K, Maruyama F, Fujisawa T, Togashi T, Yamamoto N, Seo M, Sato S, Yamada T, Mori H, Tajima N, et al.** (2014) *Klebsormidium flaccidum* genome reveals primary factors for plant terrestrial adaptation. *Nat Commun* **5**: 3978
- Hsieh YSY, Harris PJ** (2019) Xylans of red and green algae: what is known about their structures and how they are synthesised? *Polymers (Basel)* **11**: 354
- Huang Y, Wang Y, Tan L, Sun L, Petrosino J, Cui MZ, Hao F, Zhang M** (2016) Nanospherical arabinogalactan proteins are a key component of the high-strength adhesive secreted by English ivy. *Proc Natl Acad Sci USA* **113**: E3193–E2202
- Huang S, Kiemle SN, Makarem M, Kim SH** (2020) Correlation between crystalline cellulose structure and cellulose synthase complex shape: a spectroscopic study with unicellular freshwater alga *Micrasterias*. *Cellulose* **27**: 57–69
- Irisarri I, Darienko T, Pröschold T, Fürst-Jansen JMR, Jamy M, de Vries J** (2021) Unexpected cryptic species among streptophyte algae most distant to land plants. *Proc R Soc B* **288**: 20212168
- Ishida K, Yokoyama R** (2022) Reconsidering the function of the xyloglucan endotransglucosylase/hydrolase family. *J Plant Res* **135**: 145–156
- Jawaid MZ, Sinclair R, Bulone V, Cox DL, Drakakaki G** (2022) A biophysical model for plant cell plate maturation based on the contribution of a spreading force. *Plant Physiol* **188**: 795–806
- Jensen JK, Busse-Wicher M, Poulsen CP, Fangel JU, Smith PJ, Yang JY, Peña MJ, Dinesen MH, Martens HJ, Melkonian M, et al.** (2018) Identification of an algal xylan synthase indicates that there is functional orthology between algal and plant cell wall biosynthesis. *New Phytol* **218**: 1049–1060

- Jiao C, Sørensen I, Sun X, Sun H, Behar H, Alseekh S, Philippe G, Palacio Lopez K, Sun L, et al. (2020) The *Penium margaritaceum* genome: hallmarks of the origins of land plants. *Cell* **181**: 1097–1111
- Ju C, Van de Poel B, Cooper ED, Thierer JH, Gibbons TR, Delwiche CF, Chang C (2015) Conservation of ethylene as a plant hormone over 450 million years of evolution. *Nat Plants* **1**: 14004
- Kaplan F, Lewis LA, Wastian J, Holzinger A (2012) Plasmolysis effects and osmotic potential of two phylogenetically distinct alpine strains of *Klebsormidium* (Streptophyta). *Protoplasma* **249**: 789–804
- Karsten U, Holzinger A (2012) Light, temperature, and desiccation effects on photosynthetic activity, and drought-induced ultrastructural changes in the green alga *Klebsormidium dissectum* (Streptophyta) from a high alpine soil crust. *Microb Ecol* **63**: 51–63
- Karsten U, Holzinger A (2014) Green algae in alpine biological soil crust communities: acclimation strategies against ultraviolet radiation and dehydration. *Biodivers Conserv* **23**: 1845–1858
- Kawai J, Kanazawa M, Suzuki R, Kikuchi N, Hayakawa Y and Sekimoto H (2021) Highly efficient transformation of the model zyglenematophycean alga *Closterium peracerosum-strigosum-littorale* complex by square-pulse electroporation. *New Phytol* **233**: 569–578
- Kianianmomeni A, Hallmann A (2014) Algal photoreceptors: in vivo functions and potential applications. *Planta* **239**: 1–26
- Kiemle SN, Domozych DS, Gretz MR (2007) The extracellular polymeric substances of desmids (Conjugatophyceae, Streptophyta): chemistry, structural analyses and implications in wetland biofilms. *Phycologia* **46**: 617–627
- Kiermayer O, Sleytr UB (1979) Hexagonally ordered “rosettes” of particles in the plasma membrane of *Micrasterias denticulata* Bréb. and their significance for microfibril formation and orientation. *Protoplasma* **101**: 133–138
- Kim NH, Herth W, Vuong R, Chanzy H (1996) The cellulose system in the cell wall of *Micrasterias*. *J Struct Biol* **117**: 195–203
- Kim GH, Yoon M, Klotchkova TA (2005) A moving mat: phototaxis in the filamentous green algae *spirogyra* (Chlorophyta, Zygnemataceae). *J Phycol* **41**: 232–237
- Knack JJ, Wilcox LW, Delaux P-M, Ané J-M, Piotrowski, MJ, Cook ME, Graham JM, Graham LE (2015) Microbiomes of streptophyte algae and bryophytes suggest that a functional suite of microbiota fostered plant colonization of land. *Int J Plant Sci* **176**: 405–420
- Kondo S, Hori K, Sasaki-Sekimoto Y, Kobayashi A, Kato T, Yuno-Ohta N, Nobusawa T, Ohtaka K, Shimojima M, Ohta H (2016) Primitive extracellular lipid components on the surface of the charophytic alga *Klebsormidium flaccidum* and their possible biosynthetic pathways as deduced from the genome sequence. *Front Plant Sci* **7**: 952
- Kreimer G (2009) The green algal eyespot apparatus: a primordial visual system and more? *Curr Genet* **55**: 19–43
- Krejci MR, Finney L, Vogt S, Joester D (2011a) Selective sequestration of strontium in desmid green algae by biogenic co-precipitation with barite. *Chem Sus Chem* **4**: 470–473
- Krejci MR, Wasserman B, Finney L, McNulty I, Legnini D, Vogt S, Joester D (2011b) Selectivity in biomineralization of barium and strontium. *J Struct Biol* **176**: 192–202
- Lampert DTA, Tan L, Held MA, Kieliszewski MJ (2018) Pollen tube growth and guidance: Occam’s razor sharpened on a molecular arabinogalactan glycoprotein Rosetta stone. *New Phytol* **217**: 491–500
- Lampert DTA, Várnai P (2013) Periplasmic arabinogalactan glycoproteins act as a calcium capacitor that regulates plant growth and development. *New Phytol* **197**: 58–64
- Lampert DTA, Várnai P, Seal CE (2014) Back to the future with the AGP-Ca²⁺ flux capacitor. *Ann Bot* **114**: 1069–1085
- Lee JW, Kim GH (2017) Two-track control of cellular machinery for photomovement in *Spirogyra varians* (Streptophyta, Zygnematales). *Plant Cell Physiol* **58**: 1812–1822
- Leebens-Mack J, Barker MS, Carpenter EJ, Deyholos MK, Gitzendanner MA, Graham SW, Grosse I, Li Z, Melkonian M, Porsch M, et al. (2019) One thousand plant transcriptomes and the phylogenomics of green plants. *Nature* **574**: 679–685
- Leitz G, Schnepf E, Greulich KO (1995) Micromanipulation of statoliths in gravity-sensing *Chara* rhizoids by optical tweezers. *Planta* **197**: 278–288
- Lemieux C, Otis C, Turmel M (2016) Comparative chloroplast genome analyses of streptophyte green algae uncover major structural alterations in the Klebsormidiophyceae, Coleochaetophyceae and Zygnematophyceae. *Front Plant Sci* **7**: 697
- Liang Z, Geng Y, Ji C, Du H, Wong CE, Zhang Q, Zhang Y, Zhang P, Riaz A, Chachar S, et al. (2019) *Mesostigma viride* genome and transcriptome provide insights into the origin and evolution of streptophyta. *Adv Sci (Weinh)* **7**: 1901850
- Ligrone R, Carafa A, Duckett JG, Renzaglia KS, Ruel K (2008) Immunocytochemical detection of lignin-related epitopes in cell walls in bryophytes and the charalean alga *Nitella*. *Plant Syst Evol* **270**: 257–272
- Limbach C, Hauslage J, Schäfer C, Braun M (2005) How to activate a plant gravireceptor. Early mechanisms of gravity sensing studied in characean rhizoids during parabolic flights. *Plant Physiol* **139**: 1030–1040
- Liu X, Wolfe R, Welch LR, Domozych DS, Popper ZA, Showalter AM (2016) Bioinformatic identification and analysis of extensins in the plant kingdom. *PLoS One* **11**: e0150177
- Lokhorst GM, Sluiman HJ, Star, W (1988) The ultrastructure of mitosis and cytokinesis in the sarcinoid *chlorokybus atmophyticus* (Chlorophyta, Charophyceae) revealed by rapid freeze fixation and freeze substitution. *J Phycol* **24**: 237–248
- Lokhorst GM, Star W (1985) Ultrastructure of mitosis and cytokinesis in *klebsormidium mucosum* nov. Comb., formerly *ulothrix verrucosa* (chlorophyta). *J Phycol* **21**: 466–476
- Lütz-Meindl U (2016) *Micrasterias* as a model system in plant cell biology. *Front Plant Sci* **7**: 999
- Lütz -Meindl U, Brosch-Salomon S (2000) Cell wall secretion in the green alga *Micrasterias*. *J Microsc* **198**: 208–217
- Lütz -Meindl U, Luckner M, Andosch A, Wanner G (2015) Structural stress responses and degradation of dictyosomes in algae analysed by TEM and FIB-SEM tomography. *J Microsc* **26**: 129–141
- Lütz-Meindl U, Menzel D (2000) Actin and cytomorphogenesis in the giant, single-celled green algae *Acetabularia* and *Micrasterias*. In CJ Staiger, F Baluska, D Volkmann, P Barlow, eds, *Actin: A Dynamic Framework for Multiple Plant Cell Functions*. Kluwer Academic Publishers, Dordrecht, the Netherlands, pp 213–236
- Manton I, Ettl H (1965) 1965 Observations on the fine structure of *Mesostigma viride* Lauterborn. *J Linn Soc Lond Bot* **59**: 175–184
- Marshall RS, Vierstra RD (2018) Autophagy: the master of bulk and selective recycling. *Ann Rev Plant Biol* **69**: 173–208
- Martin-Arevalillo R, Thevenon E, Jégu F, Vinos-Poyo T, Vernoux T, Parcy F, Dumas R (2019) Evolution of the Auxin Response Factors from charophyte ancestors. *PLoS Genetics* **15**: e1008400
- Marty F (1999) Plant vacuoles. *Plant Cell* **11**: 587–599
- Mattox KR, Stewart KD (1984) Classification of the green algae: a concept based on comparative cytology. In D Irvine, DM John, eds, *Systematics of the Green Algae*. Academic Press. London, pp 29–72
- Meindl U (1985) Aberrant nuclear migration and microtubule arrangement in a defect mutant cell of *Micrasterias thomasiana*. *Protoplasma* **126**: 74–90
- Meindl U, Zhang D, Hepler PK (1994) Actin microfilaments are associated with the migrating nucleus and the cell cortex in the green alga *Micrasterias*. *Studies on living cells. J Cell Sci* **107**: 1929–1934
- Melkonian M, Becker B, Becker D (1991) Scale formation in algae. *J Electron Microscop Tech* **17**: 165–178
- Menzel D (1988) How do giant plant cells cope with injury? The wound response in siphonous green algae. *Protoplasma* **144**: 73–91

- Miguez F, Holzinger A, Fernandez-Marin B, García-Plazaola JI, Karsten U, Gustavs L (2020) Ecophysiological changes and spore formation: two strategies in response to low-temperature and high-light stress in *Klebsormidium* cf. *flaccidum* (Klebsormidiophyceae, Streptophyta). *J Phycol* **56**: 649–661
- Mikhailyuk T, Glaser K, Holzinger A, Karsten U (2015) Biodiversity of *Klebsormidium* (streptophyta) from alpine biological soil crusts (alps, tyrol, Austria, and Italy). *J Phycol* **51**: 750–767
- Mikhailyuk T, Holzinger A, Massalski A, Karsten U (2014) Morphology and ultrastructure of *Interfilum* and *Klebsormidium* (Klebsormidiales, Streptophyta) with special reference to cell division and thallus formation. *Eur J Phycol* **49**: 395–412
- Mikhailyuk T, Lukešová A, Glaser K, Holzinger A, Obwegeser S, Nyporko S, Friedl T, Karsten U (2018) New taxa of streptophyte algae (Streptophyta) from terrestrial habitats revealed using an integrative approach. *Protist* **169**: 406–431
- Mikkelsen MD, Harholt J, Ulvskov P, Johansen IE, Fangel JU, Doblin MS, Bacic A, Willats WGT (2014) Evidence for land plant cell wall biosynthetic mechanisms in charophyte green algae. *Ann Bot* **114**: 1217–1236
- Mikkelsen MD, Harholt J, Westereng B, Domozych D, Fry SC, Johansen IE, Fangel JU, Łężyk M, Feng T, Nancke L, et al. (2021) Ancient origin of fucosylated xyloglucan in charophyte green algae. *Commun Biol* **4**: 754
- Moestrup Ø (1974) Ultrastructure of the scale-covered zoospores of the green alga *Chaetosphaeridium*, a possible ancestor of the higher plants and bryophytes. *Biol J Linnean Soc* **6**: 111–125
- Mravec J, Kračun SK, Rydahl MG, Westereng B, Miart F, Clausen MH, Fangel JU, Daugaard M, Van Cutsem P, De Fine Licht HH, et al. (2014) Tracking developmentally regulated post-synthetic processing of homogalacturonan and chitin using reciprocal oligosaccharide probes. *Development* **141**: 4841–4850
- Mravec J, Kračun SK, Rydahl MG, Westereng B, Pontiggia D, De Lorenzo G, Domozych DS, Willats WGT (2017) An oligogalacturonide-derived molecular probe demonstrates the dynamics of calcium-mediated pectin complexation in cell walls of tip-growing structures. *Plant J* **91**: 534–546
- Murata T, Sonobe S, Baskin TI, Hyodo S, Hasezawa S, Nagata T, Horio T, Hasbe M (2005) Microtubule-dependent microtubule nucleation based on recruitment of gamma-tubulin in higher plants. *Nat Cell Biol* **2005**: 961–968
- Mutte SK, Kato H, Rothfels C, Melkonian M, Wong GKS, Weijers D (2018) Origin and evolution of the nuclear auxin response system. *eLife* **7**: e33399
- Newsome AG, van Breemen RB (2012) Characterization of the purple vacuolar pigment of *Zygonium ericetorum* alga. *Planta Med* **10**: 1055
- Newsome AG, Murphy BT, Van Breemen RB (2013) Isolation and characterization of natural blue pigments from underexplored sources. *Physical Methods in Food Analysis*. American Chemical Society, Washington, DC, pp 105–125
- Newsome AG, van Breemen RB (2012) Characterization of the purple vacuolar pigment of *Zygonium ericetorum* alga. *Planta Med* **78**: J20
- Niedermeier M, Gierlinger N, Lütz-Meindl U (2018) Biomineralization of strontium and barium contributes to detoxification in the freshwater alga *Micrasterias*. *J Plant Physiol* **230**: 80–91
- Niklas KJ, Cobb ED, Matas AJ (2017) The evolution of hydrophobic cell wall biopolymers: from algae to angiosperms. *J Expt Bot* **68**: 5261–5269
- Nishiyama T, Sakayama H, de Vries J, Buschmann H, Saint-Marcoux D, Ullrich KK, Haas FB, Vanderstraeten L, Becker D, Lang D, et al. (2018) The *Chara* genome: secondary complexity and implications for plant terrestrialization. *Cell* **174**: 448–464
- Noguchi T, Morré DJ (1991) Vesicular membrane transfer between endoplasmic reticulum and golgi apparatus of a green alga, *Micrasterias americana*. *Protoplasma* **162**: 128–139
- Ochs J, LaRue T, Tinaz B, Yongue C, Domozych DS (2014) The cortical cytoskeletal network and cell-wall dynamics in the unicellular charophyte green alga *Penium margaritaceum*. *Ann Bot* **114**: 11237–11250
- Oertel A, Aichinger N, Hochreiter R, Thalhamer J, Lütz-Meindl U (2004) Analysis of mucilage secretion and excretion in *micrasterias* (chlorophyta) by means of immunoelectron microscopy and digital time lapse video microscopy. *J Phycol* **40**: 711–720
- Oertel A, Holzinger A, Lütz-Meindl U (2003) Involvement of myosin in intracellular motility and cytomorphogenesis in *Micrasterias*. *Cell Biol Int* **27**: 977–986
- Ohtaka K, Hori K, Kanno Y, Seo M, Ohta H (2017) Primitive auxin response without TIR1 and Aux/IAA in the charophyte alga *Klebsormidium nitens*. *Plant Physiol* **174**: 1621–1632
- Oikawa A, Matsuda F, Kikuyama M, Mimura T, Saito K (2011) Metabolomics of a single vacuole reveals metabolic dynamism in an alga *Chara australis*. *Plant Physiol* **157**: 544–551
- O'Rourke C, Gregson T, Murray L, Sadler IH, Fry SC (2015) Sugar composition of the pectic polysaccharides of charophytes, the closest algal relatives of land-plants: presence of 3-O-methyl-D-galactose residues. *Ann Bot* **116**: 225–236
- Palacio-Lopez K, Sun L, Reed R, Kang E, Sørensen I, Rose JKC, Domozych DS (2020) Experimental manipulation of pectin architecture in the cell wall of the unicellular charophyte, *Penium Margaritaceum*. *Front Plant Sci* **11**: 1032
- Palacio-Lopez K, Tinaz B, Holzinger A, Domozych DS (2019) Arabinogalactan proteins and the extracellular matrix of charophytes: a sticky business. *Front Plant Sci* **10**: 447
- Palevitz BA, Ash JF, Hepler PK (1974) Actin in the green alga, *Nitella*. *Proc Natl Acad Sci USA* **71**: 363–366
- Paulsen BS, Veira AAH (1994) Structure of the capsular and extracellular polysaccharides produced by the desmid *spondylosium panduriforme* (Chlorophyta). *J Phycol* **30**: 638–641
- Permanc C, Herburger K, Niedermeier M, Felhofer M, Gierlinger N, Holzinger A (2021) Cell wall characteristics during sexual reproduction of *Mougeotia* sp. (Zygnematophyceae) revealed by electron microscopy, glycan microarrays and RAMAN spectroscopy. *Protoplasma* **258**: 1261–1275
- Pertl-Obermeyer H, Lackner P, Schulze WX, Hoepflinger MC, Hoeflberger M, Foissner I, Obermeyer G (2018) Dissecting the subcellular membrane proteome reveals enrichment of H⁺ (co-)transporters and vesicle trafficking proteins in acidic zones of *Chara* internodal cells. *PLoS One* **13**: e0201480
- Pesacreta TC, Lucas WJ (1984) Plasma-membrane coat and a coated vesicle-associated reticulum of membranes - their structure and possible interrelationship in *Chara corallina*. *J Cell Biol* **98**: 1537–1545
- Pfeifer L, Utermöhlen J, Happ K, Permanc C, Holzinger A, von Schwartzenberg K, Classen B (2021) Search for evolutionary roots of land plant arabinogalactan-proteins in charophytes: presence of a rhamnogalactan-protein in *Spirogyra pratensis* (Zygnematophyceae). *Plant J* **109**: 568–584
- Pfütz-Haill M, Vidali L, Vos JW, Hepler PK, Lütz-Meindl U (2000) Changes of the actin filament system in the green alga *Micrasterias denticulata* induced by different cytoskeleton inhibitors. *Protoplasma* **212**: 206–216
- Phipps S, Delwiche CF, Bisson MA (2021a) Salinity-induced changes in gene expression in the streptophyte alga *Chara*: the critical role of a rare Na⁺-ATPase. *J Phycol* **57**: 1004
- Phipps S, Goodman CA, Delwiche CF, Bisson MA (2021b) The role of ion-transporting proteins in the evolution of salt tolerance in charophyte algae. *J Phycol* **57**: 1014–1025
- Pichrtová M, Arc E, Stöggel W, Kranner I, Hájek T, Hackl H, Holzinger A (2016) Formation of lipid bodies and changes in fatty acid composition upon pre-akinetete formation in Arctic and Antarctic *Zygnema* (Zygnematophyceae, Streptophyta) strains. *FEMS Microbiol Ecol* **92**: 7
- Pichrtová M, Remias D, Lewis LA, Holzinger A (2013) Changes in phenolic compounds and cellular ultrastructure of arctic and

- antarctic strains of *Zygnema* (Zygnematophyceae, Streptophyta) after exposure to experimentally enhanced UV to PAR ratio. *Microb Ecol* **65**: 68–83
- Pickett-Heaps JD** (1975) Green Algae: Structure, Reproduction and Evolution in Selected Genera. Sinauer Associates, Inc., Sunderland, MA
- Pickett-Heaps JD, Wetherbee R** (1997) Spindle function in the green alga *Mougeotia*: absence of anaphase A correlates with postmitotic nuclear migration. *Cell Mot Cytoskel* **7**: 68–77
- Pickett-Heaps JD, Gunning BE, Brown RC, Lemmon BE, Cleary AL** (1999) The cytoplasm concept in dividing plant cells: cytoplasmic domains and the evolution of spatially organized cell. *Am J Bot* **86**: 153–172
- Pickett-Heaps JD, Marchant HJ** (1972) The phylogeny of the green algae: a new proposal. *Cytobios* **6**: 255–264
- Popper ZA, Michel G, Hervé C, Domozych DS, Willats WG, Tuohy MG, Kloareg B, Stengel DB** (2011) Evolution and diversity of plant cell walls: from algae to flowering plants. *Ann Rev Plant Biol* **62**: 567–590
- Proseus TE, Boyer JS** (2008) Calcium pectate chemistry causes growth to be stored in *Chara corallina*: a test of the pectate cycle. *Plant Cell Environ* **31**: 1147–1155
- Proseus TE, Boyer JS** (2012a) Calcium deprivation disrupts enlargement of *Chara corallina* cells: further evidence for the calcium pectate cycle. *J Exp Bot* **63**: 3953–3958
- Proseus TE, Boyer JS** (2012b) Pectate chemistry links cell expansion to wall deposition in *Chara corallina*. *Plant Signal Behav* **7**: 1490–1492
- Puttick, MN, Morris JL, Williams TA, Cox CM, Edwards D, Kenrick P, Pressel S, Wellman CH, Schneider H, Pisani D, et al.** (2018) The interrelationships of land plants and the nature of the ancestral embryophyte. *Curr Biol* **28**: 733–745
- Quade BN, Parker MD, Hoepflinger MC, Phipps S, Bisson MA, Foissner I, Beilby MJ** (2022) The molecular identity of the characean OH⁻ transporter: a candidate related to the SLC4 family of animal pH regulators. *Protoplasma* **259**: 615–626
- Raimundo SC, Sørensen I, Tinaz B, Ritter E, Rose JKC, Domozych DS** (2018) Isolation and manipulation of protoplasts from the unicellular green alga *Penium margaritaceum*. *Plant Meth* **14**: 18
- Raven JA** (2013) Polar auxin transport in relation to long-distance transport of nutrients in the Charales. *J Exp Bot* **64**: 1–9
- Regensdorff M, Deckena M, Stein M, Borchers A, Scherer G, Lammers M, Hänsch R, Zachgo S, Buschmann H** (2018) Transient genetic transformation of *Mougeotia scalaris* (Zygnematophyceae) mediated by the endogenous α -tubulin1 promoter. *J Phycol* **54**: 840–849
- Renault H, Werck-Reichhart D, Weng JK** (2019) Harnessing lignin evolution for biotechnological applications. *Curr Opin Biotechnol* **56**: 105–111
- Rensing SA** (2018) Great moments in evolution: the conquest of land by plants. *Curr Opin Plant Biol* **42**: 49–54
- Rieseberg TP, Dadrás A, Fürst-Jansen JMR, Dhabalia Ashok A, Darienko T, de Vries S, Irisarri I, de Vries J** (2022) Crossroads in the evolution of plant specialized metabolism. *Semin Cell Dev Biol*, doi: 10.1016/j.semcdb.2022.03.004.
- Rippin M, Becker B, Holzinger A** (2017) Enhanced desiccation tolerance in mature cultures of the Streptophytic Green Alga *Zygnema circumcarinatum* revealed by transcriptomics. *Plant Cell Physiol* **58**: 2067–2084
- Rippin M, Borchhardt N, Karsten U, Becker B** (2019) Cold acclimation improves the desiccation stress resilience of polar strains of *Klebsormidium* (Streptophyta). *Front Microbiol* **10**: 1730
- Roberts AW, Roberts E** (2004) Cellulose synthase (*CesA*) genes in algae and seedless plants. *Cellulose* **11**: 419–435
- Roberts AW, Roberts EM, Delmer DP** (2002) Cellulose synthase (*CesA*) genes in the green alga *Mesotaenium caldariorum*. *Eukary Cell* **1**: 847–855
- Robinson DG** (2015) Endocytosis: is there really a recycling from late endosomes? *Mol Plant* **8**: 1554–1556
- Rogers CE, Domozych DS, Stewart KD, Mattox KR** (1981) The flagellar apparatus of *Mesostigma viride* (Prasinophyceae): multilayered structures in a scaly green flagellate. *Plant Syst Evol* **138**: 247–258
- Rogers CE, Mattox KR, Stewart KD** (1980) The zoospore of chlorokybus atmophyticus, a charophyte with sarcinoid growth habit. *Am J Bot* **67**: 774–783
- Salomon S, Meindl U** (1996) Brefeldin A induces reversible dissociation of the Golgi apparatus in the green alga *Micrasterias*. *Protoplasma* **194**: 231–242
- Schaefer E, Belcram K, Uyttewaal M, Duroc Y, Goussot M, Legland D, Laruelle E, de Tauzia-Moreau ML, Pastuglia M, Bouchez D** (2017) The preprophase band of microtubules controls the robustness of division orientation in plants. *Science* **356**: 186–189
- Scherp P, Hasenstein KH** (2007) Anisotropic viscosity of the *Chara* (Characeae) rhizoid cytoplasm. *Am J Bot* **94**: 1930–1934
- Schreiber M, Rensing SA, Gould SB** (2022) The greening ashore. *Trend Plant Sci* **26**: 1014–1022
- Schröder J, Grolig, F** (1998) Isolation of a nucleus-associated microtubule scaffold from spirogyra (Zygnematales, Charophyceae). *J Phycol* **34**: 257–263
- Scherp P, Grotha R, Kutschera U** (2001) Occurrence and phylogenetic significance of cytokinesis-related callose in green algae, bryophytes, ferns and seed plants. *Plant Cell Rep* **20**: 143–149
- Schwarz V, Andosch A, Geretschlager A, Affenzeller M, Lütz-Meindl U** (2017) Carbon starvation induces lipid degradation via autophagy in the model alga *Micrasterias*. *J Plant Physiol* **208**: 115–127
- Silva J, Ferraz R, Dupree P, Showalter AM, Coimbra S** (2020) Three decades of advances in arabinogalactan-protein biosynthesis. *Front Plant Sci* **11**: 610377
- Silverberg BA, Sawa T** (1974) A cytochemical and ultrastructural study of the echinate cytoplasmic inclusion in *Nitella flexis* (Characeae). *Can J Bot* **52**: 159–165
- Skokan R, Medvecká E, Viaene T, Vosolobě S, Zwiewka M, Müller K, Skůpa P, Karady M, Zhang Y, Janacek DP, et al.** (2019) PIN-driven auxin transport emerged early in streptophyte evolution. *Nat Plants* **5**: 1114–1119
- Smertenko A, Hewitt, SL, Jacques, CN, Kacprzyk R, Liu Y, Marcec MJ, Moyo L, Ogden A, Oung, HM, Schmidt S, et al.** (2018) Phragmoplast microtubule dynamics – a game of zones. *J Cell Sci* **131**: jcs203331
- Sommer A, Hoeflberger M, Foissner I** (2021) Fluid-phase and membrane markers reveal spatio-temporal dynamics of membrane traffic and repair in the green alga *Chara australis*. *Protoplasma* **258**: 711–728
- Sommer A, Hoeflberger M, Hoepflinger MC, Schmalbrock S, Bulychev A, Foissner I** (2015) Convolved plasma membrane domains in the green alga *Chara* are depleted of microtubules and actin filaments. *Plant Cell Physiol* **56**: 1981–1996
- Sørensen I, Domozych D, Willats WGT** (2010) How have plant cell walls evolved? *Plant Physiol* **153**: 366–372
- Sørensen, I, Fei Z, Andreas A, Willats WGT, Domozych DS, Rose JKC** (2014), Stable transformation and reverse genetic analysis of *Penium margaritaceum*: a platform for studies of charophyte green algae, the immediate ancestors of land plants. *Plant J* **77**: 339–351
- Sørensen, I, Pettolino, FA, Bacic, A, Ralph, J, Lu, F, O'Neill, MA, Fei, Z, Rose, JKC, Domozych, DS, Willats, WGT** (2011) The charophyte green algae provide insights into the early origins of plant cell walls. *Plant J* **68**: 201–211
- Sparkes, DG, Frigerio L, Tolley N, Hawea C** (2009) The plant endoplasmic reticulum, a cell-wide web. *Biochim J* **423**: 145–155
- Steiner P, Buchner O, Andosch A, Holzinger A, Lütz-Meindl U, Neuner G** (2021) Winter survival of the unicellular green alga *Micrasterias denticulata*: insights from field monitoring and simulation experiments. *Protoplasma* **258**: 1335–1346
- Steiner P, Obwegeser S, Wanner G, Buchner O, Lütz-Meindl U, Holzinger A** (2020) Cell wall reinforcements accompany chilling and freezing stress in the streptophyte green alga *Klebsormidium crenulatum*. *Front Plant Sci* **11**: 873

- Wilson TH, Kumar M, Turner SR** (2021) The molecular basis of plant cellulose synthase complex organisation and assembly. *Biochem Soc Trans* **49**: 379–391
- Torn K, Beilby MJ, Casanova MT and Khazaaly S** (2014) Formation of extracellular polysaccharide mucilage on the salt tolerant Characeae *Lamprothamnium*. *Int Rev Hydrobiol* **99**: 326–334
- Tripathy MK, Deswal R, Sopory SK** (2021) Plant RABs: role in development and in abiotic and biotic stress responses. *Curr Genomics* **22**: 26–40
- Turmel M, Otis C, Lemieux C** (2013) Tracing the evolution of streptophyte algae and their mitochondrial genome. *Genome Biol Evol* **5**: 1817–1835
- Url T, Höftberger M, Meindl U** (1993) Cytochalasin B influences dictyosomal vesicle production and morphogenesis in the desmid *Euastrum*. *J Phycol* **29**: 667–674
- Van de Poel B, Cooper ED, Van Der Straeten D, Chang C, Delwiche CF** (2016) Transcriptome profiling of the green alga *Spirogyra pratensis* (Charophyta) suggests an ancestral role for ethylene in cell wall metabolism, photosynthesis, and abiotic stress responses. *Plant Physiol* **172**: 533–545
- Vannerum K, Abe J, Sekimoto H, Inzé D, Vyverman W** (2010) Intracellular localization of an endogenous cellulose synthase of *Micrasterias Denticulata* (Desmidiales, Chlorophyta) by means of transient genetic transformation. *J Phycol* **46**: 839–845
- Vannerum K, Huysman MJ, De Rycke R, Vuylsteke M, Leliaert F, Pollier J, Lütz-Meindl U, Gillard J, De Veylder L, Goossens A, et al** (2011) Transcriptional analysis of cell growth and morphogenesis in the unicellular green alga *Micrasterias* (Streptophyta), with emphasis on the role of expansin. *BMC Plant Biol* **11**: 128
- Vannerum K, De Rycke R, Pollier J, Goossens A, Inzé D, Vyverman W** (2012) Characterization of a rabe (ras gene from rat brain E) gtpase expressed during morphogenesis in the unicellular green alga *Micrasterias Denticulata* (Zygnematophyceae, Streptophyta). *J Phycol* **48**: 682–692
- Van Sandt VS, Stieperaere H, Guisez Y, Verbelen JP, Vissenberg K** (2006) XET activity is found near sites of growth and cell elongation in bryophytes and some green algae: new insights into the evolution of primary cell wall elongation. *Ann Bot* **99**: 39–51
- Viotti C, Bubeck J, Stierhof YD, Krebs M, Langhans M, van den Berg W, van Dongen W, Richter S, Geldner N, Takano J, et al.** (2010) Endocytic and secretory traffic in Arabidopsis merge in the trans-Golgi network/early endosome, an independent and highly dynamic organelle. *Plant Cell* **22**: 1344–1357
- Vosolsobě S, Skokan R, Petrásek J** (2020) The evolutionary origins of auxin transport: what we know and what we need to know. *J Expt Bot* **71**: 3287–3295
- Vouilloud AA, Cáceres EJ, Leonardi PI** (2007) Amitosis, including nucleolar behaviour during fragmentation, in both axial and corticating cells of *Chara contraria* (Charales, Charophyta). *Phycologia* **46**: 178–186
- Wang C, Liu Y, Li SS, Han GZ** (2015) Insights into the origin and evolution of the plant hormone signaling machinery. *Plant Physiol* **167**: 872–886
- Wang S, Li L, Li H, Sahu SK, Wang H, Xu Y, Xian W, Song B, Liang H, Cheng S, et al.** (2020) Genomes of early-diverging streptophyte algae shed light on plant terrestrialization. *Nat Plants* **6**: 95–106
- Wang P, Wang T, Han J, Li M, Zhao Y, Su T, Ma C** (2021) Plant autophagy: an intricate process controlled by various signaling pathways. *Front Plant Sci* **12**: 754982
- Wanner G, Schäfer T, Lütz-Meindl U** (2013) 3-D analysis of dictyosomes and multivesicular bodies in the green alga *Micrasterias denticulata* by FIB/SEM tomography. *J Struct Biol* **184**: 203–211
- Wasteneys GO, Collings D, Gunning BES, Hepler P, Menzel D** (1996) Actin in living and fixed characean internodal cells: identification of a cortical array of fine actin strands and chloroplast actin rings. *Protoplasma* **190**: 25–38
- Woodhouse FG, Goldstein RE** (2013) Cytoplasmic streaming in plant cells emerges naturally by microfilament self-organization. *Proc Natl Acad Sci* **110**: 14132–4137
- Yamada S., Sonobe S., Shimmen T** (2003) Synthesis of a callosic substance during rhizoid differentiation in *Spirogyra*. *Plant Cell Physiol* **44**: 1225–1228
- Yoon M, Han JW, Kim GW** (2010) Cytoskeletal changes during nuclear and cell division in the freshwater alga *Zygnema cruciatum* (Chlorophyta, Zygnematales). *Algae* **25**: 197–204
- Yoshida, K, Inoue N, Sonobe, S, Shmmen T** (2003) Involvement of microtubules in rhizoid differentiation of *Spirogyra* species. *Protoplasma* **221**: 227–235
- Yoshida K, Shimmen T** (2009), Involvement of actin filaments in rhizoid morphogenesis of *Spirogyra*. *Physiol Plant* **35**: 98–107
- Yao Y, Zhou J, Cheng C, Niu F, Zhang A, Sun B, Tu R, Wan J, Li Y, Huang Y, et al.** (2022) A conserved clathrin-coated vesicle component, OsSCYL2, regulates plant innate immunity in rice. *Plant Cell Environ* **45**: 542–555
- Yoon M, Han JW, Hwang MS, Kim GH** (2010) Cytoskeletal changes during nuclear and cell division in the freshwater alga *Zygnema cruciatum* (Chlorophyta, Zygnematales). *Algae*, doi.org/10.4490/algae.2010.25.4.197
- Yoshii Y, Takaichi S, Maoka T, Inouye I** (2003) Photosynthetic pigment composition in the primitive green alga *Mesostigma Viride* (Prasinophyceae): phylogenetic and evolutionary implications. *J Phycol* **39**: 570–576
- Yoshimoto K, Ohsumi Y** (2018) Unveiling the molecular mechanisms of plant autophagy-from autophagosomes to vacuoles in plants. *Plant Cell Physiol* **59**: 1337–1344
- Youl J, Bacic, A, Oxley D** (1998) Arabinoxylans from *Nicotiana glauca* and *Pyrus communis* contain glycosylphosphatidylinositol membrane anchors. *Proc Natl Acad Sci USA* **95**: 7921–7926
- Žárský J, Žárský V, Hanáček M, Žárský V** (2022) Cryogenian glacial habitats as a plant terrestrialization cradle - the origin of the anydrophytes and zygnematophyceae split. *Front Plant Sci* **12**: 735020
- Zhang S, de Boer AH, van Duijn B** (2016) Auxin effects on ion transport in *Chara corallina*. *J Plant Physiol* **193**: 37–44
- Zhou H, von Schwartzberg K** (2020) Zygnematophyceae: from living algae collections to the establishment of future models. *J Exp Bot* **71**: 3296–3304