



# Modeling Nitrous Oxide Emissions From Large-Scale Intensive Cropping Systems in the Southern Amazon

Ciniro Costa Jr.<sup>1,2\*</sup>, Gillian L. Galford<sup>3</sup>, Michael T. Coe<sup>2</sup>, Marcia Macedo<sup>2</sup>, KathiJo Jankowski<sup>2,4</sup>, Christine O'Connell<sup>5</sup> and Christopher Neill<sup>2,6</sup>

<sup>1</sup> CGIAR Research Program on Climate Change, Agriculture and Food Security (CCAFS), Bogotá, Colombia, <sup>2</sup> Woodwell Climate Research Center, Falmouth, MA, United States, <sup>3</sup> University of Vermont, Burlington, VT, United States, <sup>4</sup> Upper Midwest Environmental Sciences Center, United States Geological Survey, Middleton, WI, United States, <sup>5</sup> Institute on the Environment, University of Minnesota, St Paul, MN, United States, <sup>6</sup> Marine Biological Laboratory (MBL), Woods Hole, MA, United States

## OPEN ACCESS

### Edited by:

Bruno José Rodrigues Alves,  
Brazilian Agricultural Research  
Corporation (EMBRAPA), Brazil

### Reviewed by:

Dongsheng Yu,  
Institute of Soil Science, Chinese  
Academy of Sciences (CAS), China  
Beata Eموke Madari,  
Brazilian Agricultural Research  
Corporation (EMBRAPA), Brazil

### \*Correspondence:

Ciniro Costa Jr.  
C.CostaJr@cgiar.org

### Specialty section:

This article was submitted to  
Climate-Smart Food Systems,  
a section of the journal  
Frontiers in Sustainable Food Systems

**Received:** 27 April 2021

**Accepted:** 26 October 2021

**Published:** 10 December 2021

### Citation:

Costa C Jr, Galford GL, Coe MT, Macedo M, Jankowski K, O'Connell C and Neill C (2021) Modeling Nitrous Oxide Emissions From Large-Scale Intensive Cropping Systems in the Southern Amazon. *Front. Sustain. Food Syst.* 5:701416. doi: 10.3389/fsufs.2021.701416

Nitrogen (N) fertilizer use is rapidly intensifying on tropical croplands and has the potential to increase emissions of the greenhouse gas, nitrous oxide (N<sub>2</sub>O). Since about 2005 Mato Grosso (MT), Brazil has shifted from single-cropped soybeans to double-cropping soybeans with maize, and now produces 1.5% of the world's maize. This production shift required an increase in N fertilization, but the effects on N<sub>2</sub>O emissions are poorly known. We calibrated the process-oriented biogeochemical DeNitrification-DeComposition (DNDC) model to simulate N<sub>2</sub>O emissions and crop production from soybean and soybean-maize cropping systems in MT. After model validation with field measurements and adjustments for hydrological properties of tropical soils, regional simulations suggested N<sub>2</sub>O emissions from soybean-maize cropland increased almost fourfold during 2001–2010, from 1.1 ± 1.1 to 4.1 ± 3.2 Gg 10<sup>14</sup> N-N<sub>2</sub>O. Model sensitivity tests showed that emissions were spatially and seasonably variable and especially sensitive to soil bulk density and carbon content. Meeting future demand for maize using current soybean area in MT might require either (a) intensifying 3.0 million ha of existing single soybean to soybean-maize or (b) increasing N fertilization to ~180 kg N ha<sup>-1</sup> on existing 2.3 million ha of soybean-maize area. The latter strategy would release ~35% more N<sub>2</sub>O than the first. Our modifications of the DNDC model will improve estimates of N<sub>2</sub>O emissions from agricultural production in MT and other tropical areas, but narrowing model uncertainty will depend on more detailed field measurements and spatial data on soil and cropping management.

**Keywords:** GHG emission, agriculture, nitrogen fertilization management, amazon, food system

## INTRODUCTION

Agriculture directly accounts for 10–12% of worldwide anthropogenic greenhouse gas emissions (GHG), so it is a major concern for climate change policy (Smith et al., 2014). In the 2015 Paris Agreement of the United Nations Framework Convention on Climate Change, about 120 countries pledged to reduce direct agricultural GHG emissions and some pledged to reduce indirect agricultural emissions from expansion of crop and grazing lands (Richards et al., 2016).

Information on GHG emissions and potential for mitigating emissions by changing management practices is badly needed, particularly in regions of rapid cropland expansion, intensification and increased fertilizer use.

Nitrous oxide ( $\text{N}_2\text{O}$ ) has the greatest Global Warming Potential (GWP) of gases commonly produced by agriculture and 265 times higher than that of  $\text{CO}_2$  (100-year time horizon) according to a report of the Intergovernmental Panel on Climate Change (IPCC, 2013). Agricultural soils are the largest single source of total anthropogenic  $\text{N}_2\text{O}$  emissions (Smith, 2017), contributing to approximately 60% of this total (IPCC, 2019a; Tian et al., 2020).  $\text{N}_2\text{O}$  originates from the microbial processes of nitrification and denitrification and strongly depends on soil environmental conditions, biological nitrogen fixation, N fertilizer application, and aspects of crop management (Snyder et al., 2009; Butterbach-Bahl et al., 2013). The use of N fertilizers in agriculture is the major anthropogenic source of  $\text{N}_2\text{O}$  emissions from soils (IPCC, 2019a). In global scale models, fertilizer induced  $\text{N}_2\text{O}$  emissions are estimated to be approximately 1% of N fertilizer applied (Bouwman et al., 2002; IPCC, 2019b), but whether and how this relationship varies among regions of intensively fertilized agriculture globally is not well understood (Snyder et al., 2009; Huddell et al., 2020).

Most expansion and intensification of crop agriculture now occurs in tropical regions, with rapid expansion into forests and savannas where annual rainfall adequately supports at least one growing season (Gibbs et al., 2010). The effects of high N fertilizer applications on  $\text{N}_2\text{O}$  production have been documented in many temperate croplands and the effects in humid tropical regions are much less well known, and assumptions that tropical soils will behave similarly to temperate analogs may not hold true (Hickman et al., 2017; Dorich et al., 2020; Global  $\text{N}_2\text{O}$  Database, 2020; Tesfay et al., 2021). Tropical soils in regions where agriculture is expanding are typically deep and highly weathered and likely to differ mineralogically (Six et al., 2002), hydrologically (Wohl et al., 2012; Neill et al., 2013), biogeochemically (Vitousek, 1984), and microbiologically (Sul et al., 2013) compared to most temperate zone agricultural soils.

The state of Mato Grosso (MT) covers 90 million ha in the Brazilian Legal Amazon and has experienced rapid expansion of soybean cropland since 1990 (Morton et al., 2006; Galford et al., 2010; Macedo et al., 2012; MapBiomas, 2019). Agriculture now occupies ~40% of its total land area of MT and now produces ~10% of global soybean (IBGE, 2015; MapBiomas, 2019; FAO-STAT, 2021). Recently, soybean croplands in MT have been undergoing intensification by adding maize as a second crop during one growing season (Spera et al., 2014, 2016), and this has increased agricultural output threefold from 2000 to 2010. By 2010, soybeans were cultivated on almost 60% of MT's croplands, 90% of which were double cropped with maize (Spera et al., 2014). This expansion of double cropping with maize led MT to produce 1.5% of global maize in 2014 (IBGE, 2020; FAO-STAT, 2021).

The expansion of soybean-maize double cropping has potential implications for GHG emissions because maize requires N fertilizer whereas little to none is typically applied to soybean (Galford et al., 2010). As MT croplands intensified through

double cropping, the amount of N fertilizer used has almost quadrupled during the last decade from about 0.1 to 0.4 million tons (ANDAs, 2020). As a result, MT alone used the equivalent of ~5% of all N fertilizer applied in South American agriculture and 0.4% of global N fertilizer utilized (ANDAs, 2020; FAO-STAT, 2021). Brazil now faces the challenge of balancing increased maize production against the potentially harmful effects of  $\text{N}_2\text{O}$  emissions from increased cropland area and N fertilizer use.

Estimating  $\text{N}_2\text{O}$  emissions from soils is challenging because measurement is time consuming, labor intensive and costly, and because emissions vary in space and time. To date there have been few field-based estimates of  $\text{N}_2\text{O}$  emissions that correspond to varying levels of fertilization, especially from tropical croplands (Hickman et al., 2015, 2017; Meurer et al., 2016; Jankowski et al., 2018; Huddell et al., 2021). Process-based models that simulate biogeochemical activity involved in ecosystem C and N cycling while accounting for site characteristics (e.g., climate and soils) are useful to estimate  $\text{N}_2\text{O}$  emissions. Several such process-based simulation models have been developed. These include DNDC (Li et al., 1992a,b), DayCENT (Del Grosso et al., 2001), MITERRA-EUROPE (Velthof et al., 2007) and Simile (Packham et al., 2006).

These models were developed for temperate croplands, so they are not always appropriate to analyze tropical conditions. Many highly-weathered tropical soils typically have clay content that ranges from 20 to 80%. In temperate climates, soils with more than about 60% clay are considered to have low permeability, which affects soil processes represented in models (Carsel and Parrish, 1988). Often tropical soils show different emergent properties compared with temperate soils of similar clay content, including low bulk density ( $0.7\text{--}1.2\text{ Mg m}^{-3}$ ), high permeability ( $\text{Ksat} \sim 10\text{--}1,000\text{ mm h}^{-1}$ ) and low available water capacity ( $70\text{ mm m}^{-1}$ ), all of which are explained by the micro-aggregated structure of tropical soils (Tomasella and Hodnett, 1996, 2005). These physical attributes of tropical soils contribute to differences in their relative low rates of nitrification and denitrification, as well as to the relative low quantity of  $\text{N}_2\text{O}$  and nitric oxide (NO) produced when compared with temperate fertilized croplands (Kiese et al., 2005; Hickman et al., 2015; Meurer et al., 2016; Huddell et al., 2021). Accurate application of current process-based models to estimate  $\text{N}_2\text{O}$  emissions from fertilized, cultivated tropical soils requires that these distinct soil physical characteristics be considered.

The DNDC biogeochemical model estimates GHG emissions from agricultural soils at site and regional scales, but has not previously been parameterized for tropical agriculture (Li et al., 2001; Smith et al., 2010; Haas et al., 2013; Global DNDC Network, 2018). The original soil hydraulic submodel in DNDC utilizes a matrix flow for 12 soil texture classes based on pedotransfer functions (PTF) derived from the van Genuchten (1980) equation. These PTFs may not be appropriate for tropical soils, because aggregate structure, and bioturbation can increase permeability in heavier texture classes. Most tropical soils have a lower bulk density ( $0.9\text{--}1.2\text{ g cm}^{-3}$ ) compared to temperate soils and are highly permeable because of their micro-aggregated structure (Werner et al., 2007).

Here we calibrated and validated the DNDC model for fertilized Mato Grosso croplands with field measurements of crop growth and N<sub>2</sub>O emissions and used the model to evaluate two scenarios by which Brazil could meet its future crop production goals while minimizing additional N<sub>2</sub>O emissions. Our main objectives were to: (1) Re-parameterize the DNDC model in order to accurately simulate N<sub>2</sub>O emissions and crop production from single (soybean) and double cropping (soybean-maize) systems in MT and (2) apply the model in order to explore scenarios that might meet future demand for maize production while minimizing N<sub>2</sub>O emissions in this region of rapid crop intensification.

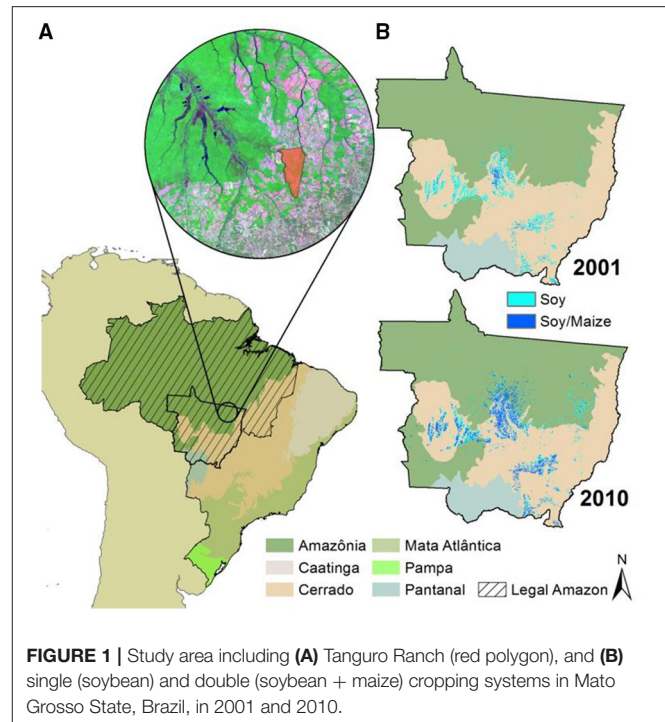
## METHODS

### DNDC Model: Description and Adaptation

The DNDC model is a process-based biogeochemical model that simulates crop growth, soil C, and N cycling and associated biosphere-atmosphere exchange of C and N trace gases, as well as N leaching (Li et al., 1992a,b; Li, 2000; Giltrap et al., 2010; Deng et al., 2013). The DNDC model runs at daily/subdaily time intervals using initial conditions such as soil properties (bulk density, pH, texture, and soil organic carbon [SOC]) and meteorological drivers (daily air temperature, precipitation, and radiation), as well as agricultural management (planting/harvest date, tillage, and fertilization). Based on interacting simulations of six submodules (soil climate; plant growth, mineralization, fermentation, nitrification, and denitrification) and input information, DNDC predicts soil layer-specific environmental conditions of substrate C and N availability, soil temperature and moisture. In addition, it predicts oxygen concentrations for partitioning of anaerobic/aerobic microsites, which drive microbial C and N turnover processes of mineralization, nitrification and denitrification as well as associated losses of N<sub>2</sub>O. The model can be run in either site or regional mode (Lugato et al., 2010; Giltrap et al., 2013).

The DNDC model was initially developed to predict soil C and N biogeochemistry in temperate agroecosystems (Li, 2000) but has largely been untested in tropical regions. Recent work has shown that the very deep soils (reaching 8 m or more) in the Mato Grosso region have high hydraulic conductivity and large pores despite fine soil textures (Scheffler et al., 2011; Dias et al., 2015). We developed new DNDC parameterizations to account for the hydraulic properties of tropical soils by adjusting soil hydraulic conductivity and soil porosity (**Supplementary Table 1**) and recalculating soil hydraulic parameters for all texture classes based on pedotransfer functions (PTFs) for Brazilian soils (Medrado and Lima, 2014) in equations for water-filled pore space (WFPS) and wilting point, respectively:

$$\begin{aligned} \text{WFPS} = & \left\{ \left( -0.01831805 \times \text{Clay} \%^{0.89935543} \right) \right. \\ & + \left( -0.01131157 \times \text{Sand} \%^{1.00134021} \right) \\ & + \left( -0.0068434 \times \text{Silt} \%^{1.11564515} \right) \\ & \left. + (0.0162212 \times \text{Soil Carbon} \%^{0.48555009}) \right\} \end{aligned}$$



**FIGURE 1 |** Study area including (A) Tanguro Ranch (red polygon), and (B) single (soybean) and double (soybean + maize) cropping systems in Mato Grosso State, Brazil, in 2001 and 2010.

$$\begin{aligned} \text{Wilting Point} = & \left\{ (0.01057297 \times) \right\} \\ & \times \left\{ \left( \frac{1}{\text{Soil Density gcm} - 3} \right) - \left( \frac{1}{2.65} \right) \right\} \\ & \left\{ (0.13461391 \times \text{Silt Density} \%^{-1.5855722}) \right. \\ & + (0.04883605 \times \text{Clay} \%^{0.19647777}) \\ & + (-0.00949548 \times \text{Sand} \%^{0.56355803}) \\ & + (-0.00005212 \times \text{Silt} \%^{1.43345189}) \\ & \left. + (2.011973831) \right\} \\ & \times \left\{ \left( \frac{1}{\text{Soil Density gcm} - 3} \right) - \left( \frac{1}{2.65} \right) \right\} \end{aligned}$$

### Site Specific Model Calibration

We compared both the standard and local parameterizations models against field observations (O'Connell, 2015; Jankowski et al., 2018) in western MT (**Figure 1**, Tanguro Ranch, 12°59'S, 52°23'W). Tanguro Ranch has a humid tropical climate (Köppen's Aw, Kottek et al., 2006) with a rainy season from October to April and a severely dry season from May to September. Mean annual precipitation averages about 1,900 mm and the mean annual temperature is 25°C. At Tanguro Ranch, soils are medium textured, highly weathered, base-poor ustic Oxisols (Latossolo vermelho-amarelo distrófico in the Brazilian Classification System). Soils and the depth of the groundwater table are deep (10–30 m), very well drained on plateaus, and have a mean soil texture of 55% sand, 2% silt and 43% clay. Soil



mean pH was 3.9 under native forest and 6.0 under established croplands (Scheffler et al., 2011; Riskin et al., 2013).

Beginning in 2010, large areas of Tanguro Ranch were converted from single cropping of soybeans to double cropping of soybeans followed by maize in a single rainy season. At Tanguro, as in most of Mato Grosso, soybeans are planted at the start of the rainy season (Oct–Nov), fertilized with phosphorus (no nitrogen), and harvested in late January to early February. Maize is planted immediately following soybean harvest (late January) and harvested at the end of the rainy season (April). N fertilizer is typically applied to maize as urea or ammonium-nitrate at the time of seeding ( $\sim 5 \text{ kg N ha}^{-1}$ ). Roughly 20–30 days after planting,  $\sim 80 \text{ kg N ha}^{-1}$  is broadcast as urea, for  $\sim 85 \text{ kg N ha}^{-1}$  total N fertilizer plus any residual N from soybeans of previous years.

To validate DNDC estimates of  $\text{N}_2\text{O}$  emissions, we used two distinct datasets of  $\text{N}_2\text{O}$  emissions from soybean-maize fields. First, to estimate emissions from the soy phase of fields planted in soybean-maize, we measured  $\text{N}_2\text{O}$  emissions from soybean-maize fields across Tanguro Ranch regularly from July 2013 through November 2014 (O’Connell, 2015). The precise amount and timing of N fertilization were not available for this dataset so only the measurements under soybean cropping were used for model validation, which involved no N fertilization. Emissions were measured using a closed chamber method (Venterea et al., 2005) where gas samples were drawn with a syringe four times after the chamber was closed. Nitrous oxide concentrations in the samples were determined using a gas chromatograph in the laboratory. The soil-to-atmosphere fluxes ( $\text{dN}_2\text{O}/\text{dt}$ ) were calculated using a linear regression of  $\text{N}_2\text{O}$  concentrations against time. The fluxes were computed based on air temperature and air pressure at the time of the measurement and total volume and basal area of the chamber (O’Connell, 2015).

Next, to account for N fertilization effects on  $\text{N}_2\text{O}$  emissions from maize, we used data collected from a field-level fertilizer manipulation experiment during the maize-growing phase of the cropping cycle in a single field at Tanguro Ranch (Jankowski et al., 2018). This experiment measured  $\text{N}_2\text{O}$  emissions from established five fertilizer treatments (0, 80, 120, 160, and  $200 \text{ kg N ha}^{-1}$ ), laid out within five replicate blocks that consisted of  $33 \text{ m}^2$  plots ( $5.5 \times 6 \text{ m}$ ) with 1 m buffers between plots. Maize was planted on 30 January 2015, the day after soybean harvest. All plots received 9 and  $31 \text{ kg K ha}^{-1}$  and all N-fertilized treatments received  $5 \text{ kg N ha}^{-1}$  as  $\text{NH}_4\text{NO}_3$  with the maize seeds sowed by machine planters. A second dose of N was added by hand (urea) to the N-fertilized treatments 21 days after planting (concurrent with application date on the surrounding field) to create total N application rates of 80, 120, 160, and  $200 \text{ kg N ha}^{-1}$ . All treatments and controls had five replicates randomly assigned within blocks.

The plots were sampled for  $\text{N}_2\text{O}$  emissions with static chambers in the same manner as above and measurements were taken daily for 1 week following both planting and fertilization and weekly or bi-weekly until harvest on 2 June 2015. Fluxes were calculated based on O’Connell (2015). Data loggers were installed in each N fertilizer treatment to measure soil temperature and water content at a depth of 10 cm. Logger measurements were

validated by field measurements of soil gravimetric moisture during gas flux measurements. We converted soil moisture content to percent of WFPS based on gravimetric moisture, bulk density and particle density. Maize biomass (dry weight from 10 maize plants per plot) was determined by harvest 125 days after seeding. Daily precipitation and average temperature were collected from a datalogger at the experimental plots (Jankowski et al., 2018).

The DNDC model performance was evaluated by the normalized root mean square prediction error (RMSE) and coefficient of determination ( $r^2$ ) based on the following equations (Moriassi et al., 2007):

$$\text{RMSE} = \frac{100}{X_{\text{mea}}} \sqrt{\frac{\sum_{i=1}^n (X_{\text{sim}} - X_{\text{mea}})^2}{n}}$$

$$r^2 = \frac{(\sum_{i=1}^n (X_{\text{mea}} - \bar{X}_{\text{mea}})(X_{\text{sim}} - \bar{X}_{\text{sim}}))^2}{\sum_{i=1}^n (X_{\text{mea}} - \bar{X}_{\text{mea}})^2 \sum_{i=1}^n (X_{\text{sim}} - \bar{X}_{\text{sim}})^2}$$

where  $X_{\text{mea}}$  is the measured value and  $X_{\text{sim}}$  is the simulated value.  $\bar{X}_{\text{mea}}$  is the average value of field measurements and  $\bar{X}_{\text{sim}}$  is the average value of model simulations.

After the tests, the local parameterized DNDC model was used for a sensitivity test. DNDC was run for the same site but with varied climate, soil, and management conditions. The purpose of the sensitivity test was to identify the most sensitive factors that could influence the  $\text{N}_2\text{O}$  emissions from the target ecosystem.

## Regional Simulation

After site validation, DNDC was used to simulate crop yields and  $\text{N}_2\text{O}$  emissions from single-cropping soybean and double-cropping soybean-maize for the entire state of Mato Grosso from 2001 to 2010 by compiling spatially distributed input data in a GIS database. To meet DNDC requirements for regional runs, the state was divided into  $5 \times 5 \text{ km}$  grids of uniform agricultural management, soil, and climate. Each grid contained information about soil properties (clay content, initial SOC, pH, and bulk density), land use management (crops, tillage, fertilization, planting, and harvesting dates) and climate (precipitation, temperature, radiation, wind speed, and air humidity). Total  $\text{N}_2\text{O}$  emissions and crop yields for the entire state were a result of the sum of the results from all grids.

Spatial data on croplands were provided by Spera et al. (2016). This data set delineated cropland areas, single and double cropping and specific crop types within each cropping pattern. The data set was derived from time series analysis of MODIS EVI with 250 meter resolution and provided a very high degree of accuracy (Galford et al., 2008; Spera et al., 2014).

We assumed all single soybean and double soybean-maize cropping systems were, respectively, cultivated under conventional tillage (plowing soil at 0–20 cm seven days before the planting date) and no-tillage systems called “plantio direto” that only disturbs the soil in sowing or planting and is widely adopted in MT (Galford et al., 2010; Arvor et al., 2012). In addition, planting, and harvesting dates were assumed to be the same as those carried out by Tanguro Ranch for the 2013/2014 crop cultivation (Table 1). Soybean crops usually receive an input

of 7 kg N ha<sup>-1</sup> in MT (Raucci et al., 2015). Soybeans typically do not require nitrogen additives, but most farmers in the region add this modest amount as “insurance” (Galford et al., 2010; Raucci et al., 2015).

Maize crops do require nitrogen fertilization even when planted immediately following soybeans. Studies show that optimal maize productivity in this region may require up to 120 kg N ha<sup>-1</sup> (Mar et al., 2003; Rezende Pereira et al., 2009), some of which may be provided by N fixed by soybeans grown as the first crop (Galford et al., 2010; Jankowski et al., 2018). At current productivity levels, maize crops in the Amazon and Cerrado regions need nitrogen fertilizer doses that range from 0 to 77 kg N ha<sup>-1</sup> (Mar et al., 2003; Cruz et al., 2005; Souza and Soratto, 2006). Applied fertilizer doses ranging from 0 to 10 kg N ha<sup>-1</sup> and 0 to 75 kg N ha<sup>-1</sup> were tested in the DNDC model as minimum and maximum values of N-fertilizer rates for soybean and maize, respectively (Table 1).

Soil organic C concentration, pH, clay content and bulk density were obtained using the MT soil map (IBGE, 2015), which was divided into three categories: oxisol, ultisol, and sandy. Physical and chemical properties of these soil types were extracted from a database of soil sampling carried out in several cropping systems in MT (Belizario, 2011) (Table 2).

Maximum and minimum air temperature, daily rainfall, wind speed, solar radiation and air humidity data from 2001 to 2014 were retrieved from the Brazilian National Institute of Meteorology (INMET, 2016). Because Mato Grosso had only 11 long-term meteorological stations over the study period (2001 to

2010) all retrieved products were spatially interpolated using the Voronoi diagram method to obtain 5 × 5 km gridded datasets (Supplementary Figures 1, 2).

## Uncertainty Analysis in Regional Simulations

Superimposing climate, soil, and management characteristics resulted in a total of 1,298 homogenous simulation grid cells for the entire decade of regional inventory. As the soil C pools were not necessarily in equilibrium at the start of each simulation, each year was run as a separate simulation. This was done rather than running a single 10-year simulation to prevent long-term changes in soil C from affecting the results (Giltrap et al., 2010). In addition, each grid was run in DNDC in “site” mode. This is preferable to “regional” mode because its use is more transparent and flexible (Perlman et al., 2013).

The error in the calculated N<sub>2</sub>O emissions was taken as the sum of the variation in soil parameters and N fertilizer rate reported in the literature that addressed the region under analysis (Tables 1, 2). This produced the maximum error range for these two sources. The errors introduced by the assumptions made about farm management practices or the climate data sets were not included in this paper.

## RESULTS AND DISCUSSION

### N<sub>2</sub>O Emissions

Measured N<sub>2</sub>O emissions of all N-fertilizer treatments of 2015 field experiment (Figure 2; Jankowski et al., 2018) increased only following the second (broadcast) N-fertilization of maize. Emissions peaked on the third day after fertilizer application (from 0.12 ± 0.10 to 0.36 ± 0.28 mg m<sup>-2</sup> h<sup>-1</sup>), but by the seventh day emissions were similar to the control. No significant emissions were detected from seeding N-fertilization, probably because of the low rate of application (5 kg N ha<sup>-1</sup>).

Cumulative measured N<sub>2</sub>O emissions from the N fertilization experiment ranged from 0.27 to 0.75 kg N ha<sup>-1</sup> and were consistent with findings that tropical soils tend to emit less N<sub>2</sub>O compared with temperate soils fertilized at similar rates (Hickman et al., 2015; Meurer et al., 2016; Jankowski et al., 2018). Estimates of fertilizer N lost as N<sub>2</sub>O-N during this period ranged from 0.10 to 0.24% (Table 3; Jankowski et al., 2018) and were well below the 1% Intergovernmental Panel on Climate Change default emission factor (IPCC, 2006). These results agreed with

**TABLE 1 |** Farming system inputs for regional simulation using the adapted DNDC model for Mato Grosso State (Brazil).

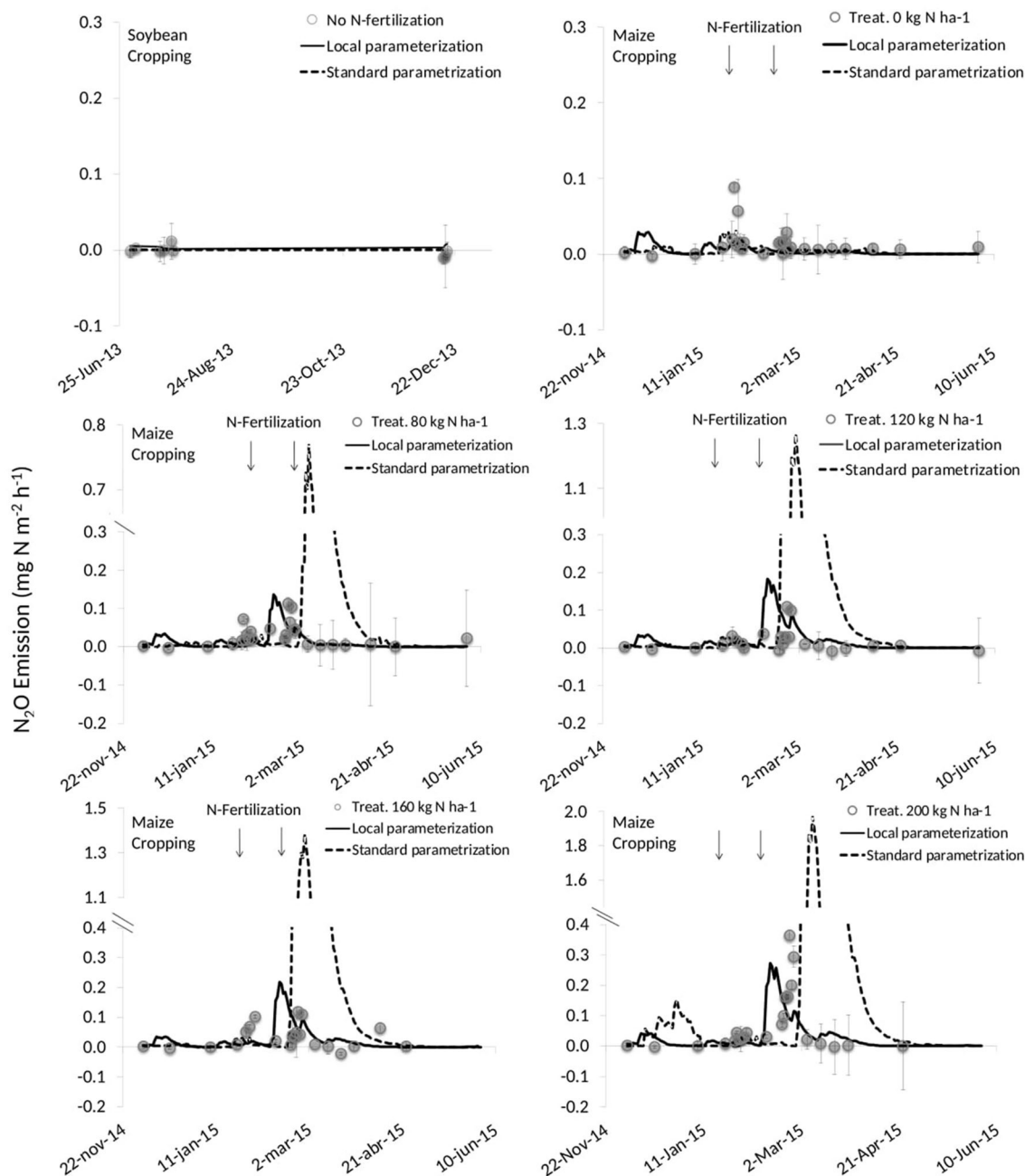
Input	Soybean	Soybean/Maize
Soil management	Conventional-tillage*	No-tillage
Seeding/harvesting dates	Nov 7/Feb 6	Feb 7/Jun 8
Nitrogen fertilization minimum-maximum rates (kg ha <sup>-1</sup> )**	0–10	0–10 (soybean)/0–75 (maize)
Harvesting residue left on field (%)	100	100

\*Plowing soil at 0–20 cm 7 days before the planting date. \*\*Urea applied at 5 kg N ha<sup>-1</sup> at seeding and the other portion applied after 21 days for maize; for soybean 10 kg N ha<sup>-1</sup> applied at seeding.

**TABLE 2 |** Soil property inputs for regional simulation using the DNDC model for Mato Grosso State (Brazil).

	SOC (kg C kg <sup>-1</sup> )		Clay (%)		pH		Density (g cm <sup>-3</sup> )	
	Max	Min	Max	Min	Max	Min	Max	Min
Clay	0.023	0.011	75.0	35.1	6.8	4	1.6	0.8
Medium	0.010	0.0091	35.0	15.1	6.8	4	1.6	0.8
Sandy	0.009	0.0075	15.0	10.0	6.8	4	1.6	0.8

In the Brazilian classification, clay soils comprise Latossolos (vermelho-amarelo, vermelho, amarelo) and nitossolos; Medium soils are Argissolos, plintossolos, cambissolos, gleissolos, vertissolos, planossolos; Sandy soils are quartzarenico, litico, and fluvico.



**FIGURE 2 |** Measured ( $n = 5$ ) and simulated  $N_2O$  emissions (before and after local parameterization of the DNDC model) from double cropping soybean (2013) and maize (2014/2015) under different nitrogen fertilization rates (treat) in Mato Grosso State (Brazil).

findings by Meurer et al. (2016), who reported that despite N fertilization increasing  $N_2O$  emissions for short periods (3 to 7 days after application), the annual responses of  $N_2O$  emissions to N application were negligible for application rates less than  $100\ kg\ N\ ha^{-1}$ .

In both the standard and local parameterized models, simulated  $N_2O$  emissions followed the same pattern of measured values for all N-fertilizer treatments (Figure 2). Despite good

agreement with the timing of  $N_2O$  peak fluxes, the unmodified DNDC model overestimated the magnitude of emissions by up to 2.5 times until adjustments for soil physical properties were made (Figure 2). After parameterizing DNDC's hydrologic variables (see Soil Temperature and Moisture, Figure 3), modeled  $N_2O$  emissions agreed closely in timing and magnitude with field measurements (Figure 2). After model calibration,  $r^2$  and the RMSE were substantially improved (Table 3). The values of

**TABLE 3** | Evaluation of model performance for simulation of N<sub>2</sub>O emissions from soil with maize planting and harvesting (double cropped with soybean) under application of different N urea fertilization rates in Mato Grosso State (Brazil).

Nitrogen rate (kg of N ha <sup>-1</sup> )	Accumulated N <sub>2</sub> O emissions (kg <sup>-1</sup> N ha <sup>-1</sup> )*			Model performance			
	Measured	Simulated		Original		Adjusted	
		Original	Adjusted	r <sup>2</sup>	RMSE**	r <sup>2</sup>	RMSE
0	0.27 ± 0.09	0.82	0.20	0.10	1.9	0.10	2.0
80	0.45 ± 0.20	2.40	0.58	0.18	23.1	0.48	3.3
120	0.38 ± 0.16	3.34	0.80	0.27	38.5	0.49	5.5
160	0.58 ± 0.16	3.73	0.90	0.20	46.6	0.26	6.7
200	0.75 ± 0.38	4.86	1.17	0.64	56.2	0.79	4.4

Mean ± standard deviation (n = 5).

\*January 30 to June 2, 2015.

\*\*RMSE, normalized root mean squared error (%).

RMSE between the standard and local parameterized models and observed N<sub>2</sub>O emissions ranged between 1.9–56.2% and 2.0–4.4%, respectively. Improved correlations between measured and simulated values showed that the hydrological modifications improved simulations of N<sub>2</sub>O emissions (Table 3).

Simulations revealed two important insights. First, the model captured the temporal pattern of N<sub>2</sub>O emissions following both fertilization events. The inputs from biological N fixation by soybean and fertilizer application (5 kg N ha<sup>-1</sup>) at the time of maize seeding produced almost no measurable N<sub>2</sub>O emissions; both the standard and local parameterized models captured that dynamic. Next, the improvement in the model that occurred with calibration to soil conditions at Tanguro Ranch indicated that soil texture and physical properties were key factors for more accurately simulating N<sub>2</sub>O fluxes.

There are remaining uncertainties in how well the model estimates fluxes with increasing fertilizer application. Compared with measured values, simulated accumulated N<sub>2</sub>O emissions were close to the 1:1 line for the two lowest levels of fertilizer application but the model overestimated emissions for the higher fertilizer application levels (Table 3; Figure 4). Thus, the model was very accurate for the current regional application rates of ~70 kg/ha (Galford et al., 2010), but may overestimate emissions if application rates increase substantially. Regional crop types were mapped with 87% accuracy (Spera et al., 2016), introducing additional error to regional emissions estimates but perhaps countering slight over estimates of GHG emissions at high fertilization rates.

## Soil Temperature and Moisture

Field surveys of soil WFPS (O'Connell, 2015) was greater between October and April (rainy season) than between July and September (dry season). Accumulated rainfall averaged 1779 and 264 mm over these seasons, respectively. Soil temperatures ranged from 20 to 30°C but showed no distinct seasonal pattern (Figure 3). Within the corn portion of the 2015 growing season, the soil WFPS in the second experimental field was higher in February–March (rainy season) than April–May (dry season). Accumulated annual rainfall averaged 360 and 98 mm during

these periods, respectively. Soil temperature averaged 27°C and differed slightly from January to June 2015 (Figure 3).

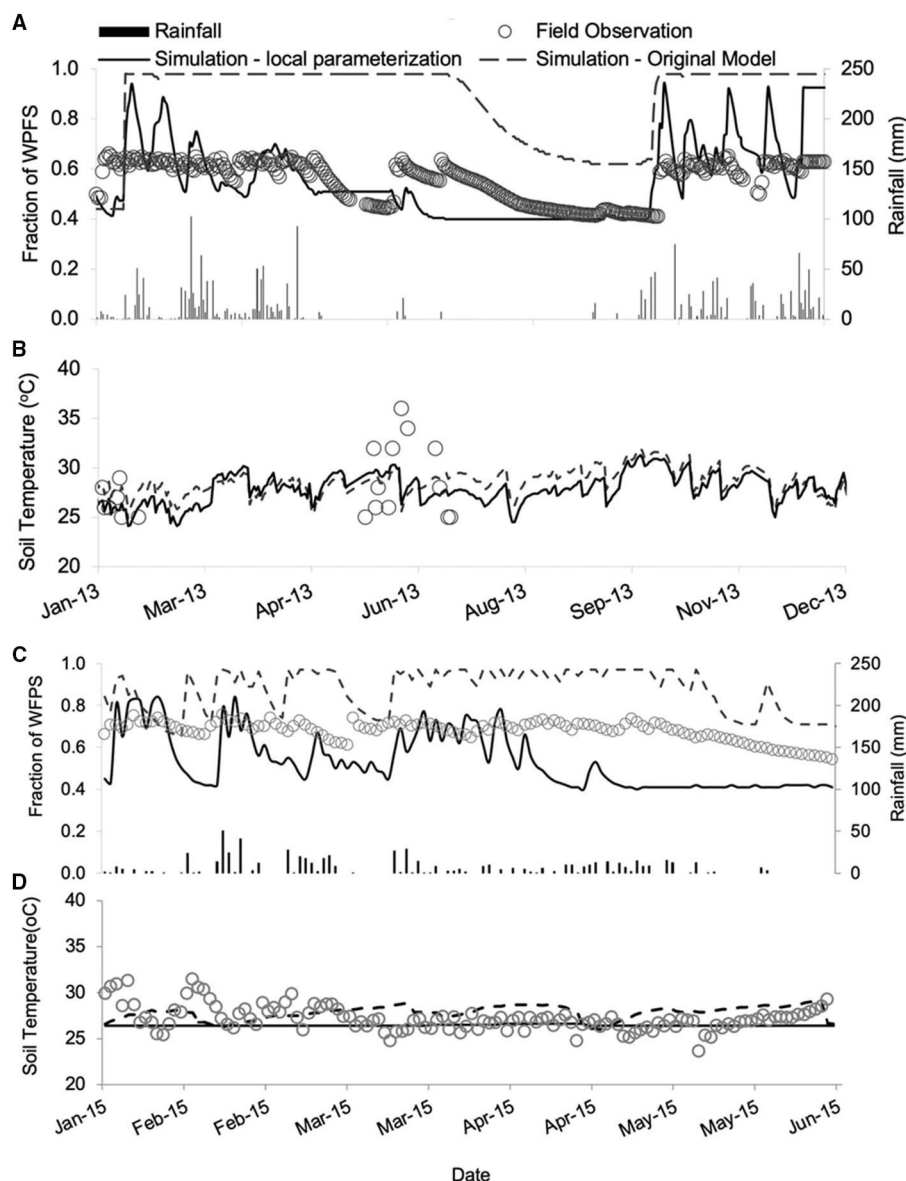
DNDC originally overestimated measured WFPS in the study system (Figure 3), however adjusting parameterizations based on infiltration measured from Tanguro Ranch improved the ability to simulate average WFPS and r<sup>2</sup> increased from 0.35 to 0.65 (Figure 3). The overestimation was consistent with a temperate-based parameterization for clay soils (55% clay in this case) as being very poorly drained. Many soils with high clay content in tropical croplands have increased permeability caused to the micro-aggregated structure of Oxisols (Tomasella and Hodnett, 1996, 2005).

Overall, model performance measures of simulated soil environmental conditions were comparable to other studies that simulated soil temperature and water dynamics (Li et al., 2006, 2012; Giltrap et al., 2010; Kim et al., 2014, 2015). Neither the original DNDC or standard and local parameterizations of DNDC captured diurnal temperature ranges observed in field data. We improved the ability of the DNDC to estimate WFPS, even though the soil temperature estimates were better than soil moisture estimates with the model adjustments for tropical conditions (Figure 3). Our study further confirms the finding that model performance in predictions of soil temperature is better than for soil moisture. Soil moisture simulations are more sensitive and dependent on a variety of inputs of physical characteristics (e.g., bulk density and saturated hydraulic conductivity) with high spatial variability that is challenging to capture. Both soil temperature and moisture deserve further refinement in future model development for Brazilian and other tropical cropland soils.

## Grain Yield

Simulated maize yields generally matched the field measurements of grain production over a range of N fertilization (Figure 5). Modeled soybean yield averaged 3.3 t DW ha<sup>-1</sup>, which agreed well with Tanguro Ranch records and official statistics of MT state (CONAB, 2015) of 3.5 and 3.1 t DW ha<sup>-1</sup> for 2015, respectively. As the field measurements and simulations both indicated, crop yields did not significantly increase once nitrogen application





**FIGURE 3** | Comparison between measured and simulated (DNDC model) soil moisture (WFPS) and temperature (°C) in the 0–10 cm depth in two field experiments in a double cropping soybean + maize in Mato Grosso State, Brazil, in 2013 (**A,B**, respectively) and 2015 (**C,D**, respectively).

rates exceeded  $\sim 100 \text{ kg N ha}^{-1}$  (Figure 5). This finding agreed with other nitrogen fertilizer trials for maize crops in Mato Grosso (Kappes, 2013; Kappes et al., 2013).

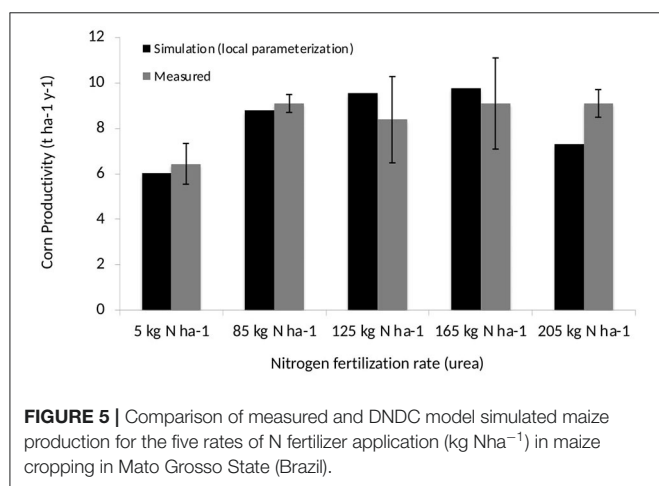
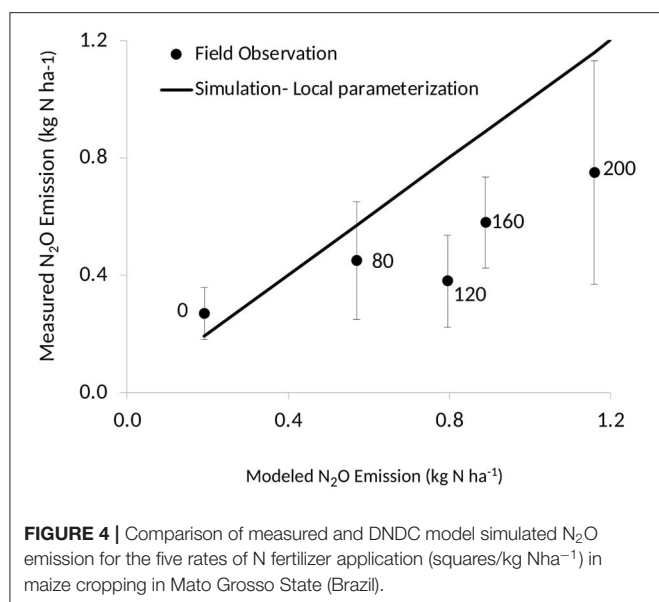
## Model Sensitivity

The sensitivity of DNDC simulated  $\text{N}_2\text{O}$  emissions to variations in input parameters has been widely tested at both site (Li et al., 2010) and regional scales (Lugato et al., 2010; Giltrap et al., 2013). These studies indicated that simulated  $\text{N}_2\text{O}$  emissions are most sensitive to input parameters of climate, soil texture, SOC, bulk density, pH and applied N rate. We examined effects on

simulated  $\text{N}_2\text{O}$  emissions by varying each of these inputs, while keeping all other attributes constant.

Results from the sensitivity tests indicated that among all the environmental factors we considered, SOC content and bulk density had the largest effects on  $\text{N}_2\text{O}$  emission rates (Figure 6). When SOC increased from 1.8 to 2.3%, the annual  $\text{N}_2\text{O}$  emission rate increased from 0.5 to  $0.7 \text{ kg N ha}^{-1} \text{ y}^{-1}$ . The modeled data indicated that higher SOC produced more dissolved organic carbon (DOC) and inorganic N (ammonium and nitrate) through decomposition that led to higher rates of nitrification and denitrification, the two processes that produce  $\text{N}_2\text{O}$  (Figure 6).





Soil texture and structure are relevant driving factors for  $N_2O$  emissions, mainly because they control nutrient availability and water balances. In general, soils with finer texture have a higher availability of N (Luizão et al., 1989) and consequently tend to emit higher amounts of  $N_2O$  than sandy soils (Matson et al., 1998). However, in our sensitivity analysis the model behaved just the opposite. This is likely a function of the local parameterization of the model that reflect rapid decrease of water content in fine soils, which makes them behave more like coarse-textured soils (Supplementary Table 1). As a result, the water holding capacity does not necessarily increase with an increase in clay content, and therefore nitrification is more likely to occur than denitrification. Tropical soils with high clay contents, formation of micro-aggregates, and high drainage can be expected to emit less  $N_2O$  than is reported for temperate soils (Meurer et al., 2016).

Sensitivity of simulated  $N_2O$  emissions to changes in bulk density was high. When soil density is doubled (from 0.8 to 1.6 g cm $^{-3}$ )  $N_2O$  emissions declined by 65% (Figure 6). This was a consequence of the implicit dependency of nitrification and denitrification on oxygen availability, and thus on the extent of anaerobic zones in the soil profile. An increase in bulk density will decrease total pore volume and thus reduce oxygen diffusion into the soil. This is notable following rainfall when the anaerobic volume fraction of the soil increases more slowly in soils with high bulk density (Stange et al., 2000; Kiese et al., 2005).

The simulated  $N_2O$  emissions were sensitive to both air temperature and precipitation (Figure 6) as these factors control the processes of decomposition, nitrification and denitrification in DNDC. In our case, the simulations suggested that higher precipitation induces higher rates of denitrification and higher temperatures stimulate microbial activity. However, the reverse effect can also occur. Higher precipitation may induce greater rates of nitrate leaching that compete with the denitrification process, together with elevated temperature that cause substantial reductions of soil moisture through increased transpiration. Nitrogen fertilizer application rates had a nearly linear effect on  $N_2O$  emissions. An increase in fertilizer application rate from 45 to 135 kg N ha $^{-1}$ y $^{-1}$  increased the  $N_2O$  emission rate from 0.5 to 1.1 kg N ha $^{-1}$ y $^{-1}$  (Figure 6).

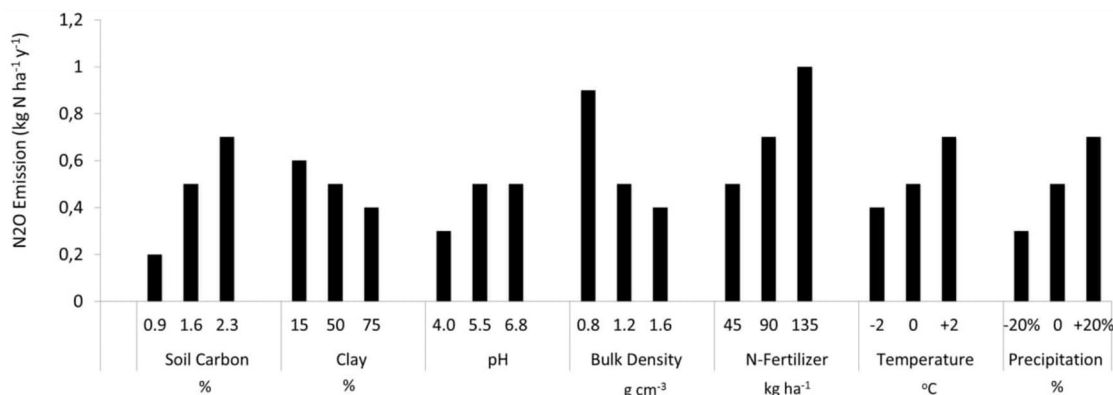
## Challenges of Model Validation

The local parameterized DNDC captured the trends in observed data much better than the original DNDC (Table 3) but validation of models operating at daily or subdaily time steps remains difficult. DNDC was developed for more data-rich temperate agricultural systems, but in emerging tropical cropping systems there are far fewer field-based measurements of GHG emissions with experimental design of multiple levels of fertilization for crops like maize (e.g., Hickman et al., 2017; Jankowski et al., 2018). The remote nature of many tropical sites and the requirements for gas chromatography including limitations on accessibility and high costs of standard gases contribute to this data scarcity.

## Regional $N_2O$ Emissions

Model simulations showed that  $N_2O$  emissions from MT single soybean and double soybean-maizecropping systems increased almost fourfold during 2001–2010, from  $1.1 \pm 1.1$  to  $4.1 \pm 3.2$  Gg N- $N_2O$ . Modeled average  $N_2O$  emissions ranged from  $0.1 \pm 0.1$  to  $0.7 \pm 0.7$  kg  $N_2O$ -N ha $^{-1}$  for single soybean and from  $0.7 \pm 0.7$  to  $1.2 \pm 1.2$  kg  $N_2O$ -N ha $^{-1}$  for double crop soybean-maize areas over MT from 2001 to 2010 (Table 4; Figure 7). Higher average values for the double cropping system show that this recent change in cropping practice enhanced regional  $N_2O$  emissions.

Simulated regional production of maize and soybeans for 2010 varied from  $5.2 \pm 0.6$  and  $3.0 \pm 0.0$  t ha $^{-1}$  (Table 4; Figure 8), which agreed well with values of 4.0 and 3.1 t ha $^{-1}$ , respectively, reported in national statistics (CONAB, 2015). Maize yields for 2001 to 2010 were probably underestimated because the model was parameterized with local data from a farm that has higher maize productivity when compared with the other simulated MT regions (Table 4; Figure 8).



**FIGURE 6 |** Sensitivity analyses using the DNDC model (local parameterization) for double cropping soybean maize in Mato Grosso State (Brazil). Baseline consists of crop and management parameters, and mean average soil properties for clay soil (shown in **Tables 1, 2**).

The largest sensitivity in regional  $\text{N}_2\text{O}$  estimates arises from uncertainty in fertilizer application rates applied to soil and soil parameters, especially soil density (**Table 2**). In this region, soil organic carbon, clay and density potentially vary from 10% to 130%. Rates of nitrogen application varied from 0 to 85 kg N  $\text{ha}^{-1} \text{y}^{-1}$  (**Tables 1, 2**). Combined, we estimated uncertainties on the amount of nitrogen fertilizer applied to soil that ranged from 42% to 80% of total uncertainties, depending on the region. Clearly, reducing the uncertainties relative to N fertilizer is a priority for reducing uncertainties in  $\text{N}_2\text{O}$  emission estimates. In addition, the methodology applied in this work of using the maximum and minimum values of each soil property produces high uncertainties. If more data were available regarding the distribution of the soil properties within a soil class then a Monte Carlo method could be used to estimate the uncertainty in a probabilistic manner rather than using the extreme values (Giltrap et al., 2013).

## Pathways to Meet Future Demands: Expanding Area vs. Increasing N Fertilization

Mato Grosso aims to increase maize production by 60% (to 38 million metric tons) to meet 2025 projected demands (IMEA, 2015). To accomplish this, the state is expected to expand its area planted to maize from 3 to 6 million ha over the next decade. With nearly three million ha currently under single soybean cultivation (plus three million ha double cropped with maize) and an additional five million ha expected to be added to support demand for soybeans that is estimated as requiring 14 million ha (IMEA, 2015). Our model results show that the area that currently exists as single-cropped soybean could easily accommodate double cropping systems to meet projected maize grain demand. Assuming no improvement in agronomic practices (and maintaining the current level of N fertilization), linearly extrapolating simulated results from 2001–2010 to 2025, to meet future demands of corn production by double cropping with corn

three million ha of soybean fields currently single cropped would double  $\text{N}_2\text{O}$  emissions compared with 2010 levels (**Figure 9**).

We also evaluated whether increased N-fertilization application rates would increase maize yield sufficiently to meet maize demand. According to technical experts in the region, maize in MT is currently underfertilized with N (Kappes, 2013; Kappes et al., 2013). This is a consequence of the history of maize cultivation as a second crop starting in the 1990s, mostly for soil cover with promotion of the *plantio direto* system, which eventually evolved to an income generating crop. Under such conditions, maize benefited from soybeans that fixed and left behind modest amounts of N after harvest so farmers did not fertilize maize to the extent recommended. As incomes from maize crops increased and soybean prices fluctuated, fertilization of maize increased.

We hypothesized that farmers are now more likely to increase fertilization rates, and evaluated how increasing N application would impact maize productivity. We simulated N-fertilizer application levels for maize from 0 to 300 kg N  $\text{ha}^{-1}$  and found that productivity peaked at 180 kg N  $\text{ha}^{-1}$ , after which point yield stabilized or declined slightly (**Figure 10**). Although this N application rate (300 kg N  $\text{ha}^{-1}$ ) is almost six times greater than that currently average estimated for MT (**Table 1**), and therefore not likely to be applied, it is similar to maximum rates in other intensively fertilized regions. We found that a fertilizer application of 180 kg N  $\text{ha}^{-1}$  produced 25% more maize compared with current practices utilizing 35 kg N  $\text{ha}^{-1}$  (**Figure 10**). If this rate of fertilization were applied across all currently double cropped areas, however,  $\text{N}_2\text{O}$  emissions would increase by 2.6 times per ha on average (**Figure 10**).

Similar results have been found in experimental trials aiming at the evaluation of maize yield potential as a result of different N-fertilizer doses in Brazil. Mar et al. (2003), Jankowski et al. (2018) found maize productivity peaked at 120 kg N  $\text{ha}^{-1}$ , with productivity reductions when doses were applied above this rate. The authors argued that the over fertilization may unbalance the plant ability to uptake other nutrients as well

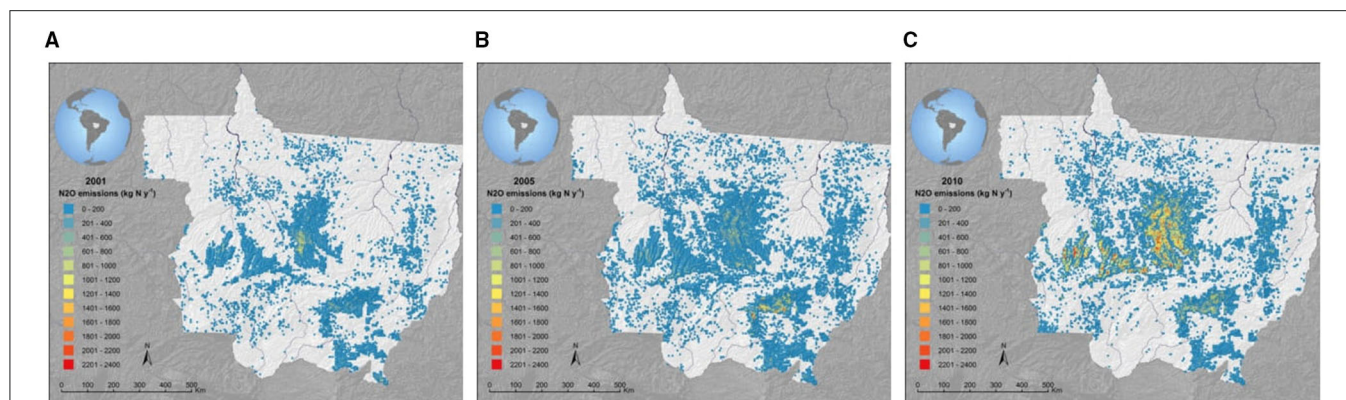
**TABLE 4 |** Simulated long-term average N<sub>2</sub>O emissions and cropping productivity (soybean and maize) for 11 microregions of Mato Grosso State (Brazil).

Region	Rainfall (2001–2011)	Temperature (2001–2011)	Soil type	Cropping area (2011)			N <sub>2</sub> O emissions (2001–2011)		Crop productivity (2001–2011)	
	mm/day	°C/day		Single cropping soybean	Double cropping soybean/corn	Single cropping soybean	Double cropping soybean/corn	Soybean	Corn	
	Thousand ha %				kg N ha <sup>−1</sup>		t ha <sup>−1</sup>			
Matupa	2.263	27.2	Clay	27.8	14.7	52.9	0.5 ± 0.5	1.2 ± 1.2	2.9 ± 0.1	5.0 ± 0.7
			Medium	20.0	10.5	52.4	0.4 ± 0.3	1.0 ± 0.9	3.0 ± 0.0	5.4 ± 0.5
			Sand	6.5	3.0	46.1	0.4 ± 0.3	1.0 ± 0.9	3.0 ± 0.0	5.4 ± 0.5
Gleba Celeste	1.424	27.1	Clay	1482.9	925.4	62.4	0.5 ± 0.5	1.1 ± 1.1	3.1 ± 0.0	5.4 ± 0.8
			Medium	0.5	0.2	39.7	0.3 ± 0.3	0.9 ± 0.9	3.1 ± 0.0	5.7 ± 0.7
			Sand	132.4	66.8	50.5	0.3 ± 0.2	1.0 ± 0.9	3.1 ± 0.0	5.7 ± 0.7
Sao Jose do Rio Claro	1.716	25.1	Clay	1615.2	805.2	49.9	0.3 ± 0.3	0.9 ± 0.9	2.8 ± 0.0	4.7 ± 0.6
			Medium	8.6	3.5	40.4	0.2 ± 0.2	0.8 ± 0.8	2.8 ± 0.0	5.1 ± 0.4
			Sand	201.8	114.1	56.6	0.2 ± 0.1	0.8 ± 0.7	2.8 ± 0.0	5.1 ± 0.4
Canarana	1.789	27.1	Clay	533.8	116.4	21.8	0.4 ± 0.4	0.9 ± 0.9	2.6 ± 0.1	4.6 ± 0.8
			Medium	79.5	21.6	27.1	0.2 ± 0.2	0.8 ± 0.8	2.7 ± 0.0	5.0 ± 0.5
			Sand	6.3	0.6	9.4	0.3 ± 0.2	0.9 ± 0.8	2.7 ± 0.0	5.0 ± 0.5
Diamantino	2.008	26.8	Clay	386.7	183.1	47.3	0.5 ± 0.5	1.2 ± 1.2	3.0 ± 0.1	4.7 ± 0.4
			Medium	34.8	7.3	21.0	0.3 ± 0.2	1.0 ± 0.9	3.0 ± 0.0	5.2 ± 0.2
			Sand	29.6	10.1	34.1	0.3 ± 0.2	1.0 ± 0.9	3.0 ± 0.0	5.2 ± 0.3
Nova Xavantina	1.387	26.7	Clay	153.0	67.5	44.1	0.7 ± 0.7	1.3 ± 1.3	3.0 ± 0.1	4.8 ± 0.5
			Medium	55.3	16.5	29.9	0.6 ± 0.5	1.3 ± 1.2	3.0 ± 0.0	5.2 ± 0.3
			Sand	127.8	47.9	37.5	0.7 ± 0.6	1.3 ± 1.2	3.1 ± 0.0	5.2 ± 0.2
Poxoreo	1.497	25.9	Clay	399.7	229.9	57.5	0.6 ± 0.6	1.1 ± 1.1	3.0 ± 0.0	5.3 ± 0.9
			Medium	52.5	20.5	39.1	0.5 ± 0.4	1.1 ± 1.0	3.0 ± 0.0	5.6 ± 0.7
			Sand	122.6	57.4	46.8	0.5 ± 0.4	1.2 ± 1.1	3.0 ± 0.0	5.5 ± 0.7
Cuiaba	1.606	27.5	Clay	0.0	0.0	0.0	0.6 ± 0.6	1.2 ± 1.2	3.1 ± 0.0	5.3 ± 0.7
			Medium	15.1	10.8	71.8	0.5 ± 0.4	1.1 ± 1.0	3.1 ± 0.0	5.7 ± 0.7
			Sand	12.3	5.4	44.3	0.5 ± 0.4	1.1 ± 1.0	3.1 ± 0.0	5.7 ± 0.7
Pd. Ricardo Remetter	1.1	26.7	Clay	32.9	19.7	59.9	0.4 ± 0.4	1.0 ± 1.0	3.0 ± 0.0	5.4 ± 0.9
			Medium	21.5	13.3	62.1	0.1 ± 0.1	0.7 ± 0.7	3.1 ± 0.0	5.6 ± 0.5
			Sand	0.0	0.0	0.0	0.1 ± 0.1	0.7 ± 0.7	2.9 ± 0.1	5.4 ± 0.8
Caceres	1.351	26.2	Clay	31.1	10.9	34.9	0.6 ± 0.6	1.2 ± 1.2	3.1 ± 0.0	5.1 ± 0.5
			Medium	26.5	8.1	30.5	0.3 ± 0.3	0.9 ± 0.9	3.1 ± 0.0	5.4 ± 0.3
			Sand	4.8	1.1	23.6	0.4 ± 0.3	1.0 ± 0.9	3.1 ± 0.0	5.3 ± 0.3
Rondonopolis	1.314	26.5	Clay	112.6	51.2	45.5	0.7 ± 0.7	1.2 ± 1.2	3.0 ± 0.1	5.1 ± 0.7
			Medium	84.9	35.7	42.1	0.6 ± 0.5	1.2 ± 1.1	3.0 ± 0.0	5.5 ± 0.5
			Sand	248.8	106.5	42.8	0.6 ± 0.5	1.2 ± 1.1	3.0 ± 0.0	5.4 ± 0.5
Average	-						0.4 ± 0.4	1.0 ± 1.0	3.0 ± 0.0	5.3 ± 0.6
Total				5734.0	2842.8	49.2	2498.6 ± 2383.1	3040.3 ± 2988.8	17716.4 ± 175.7	15185.4 ± 1943.0

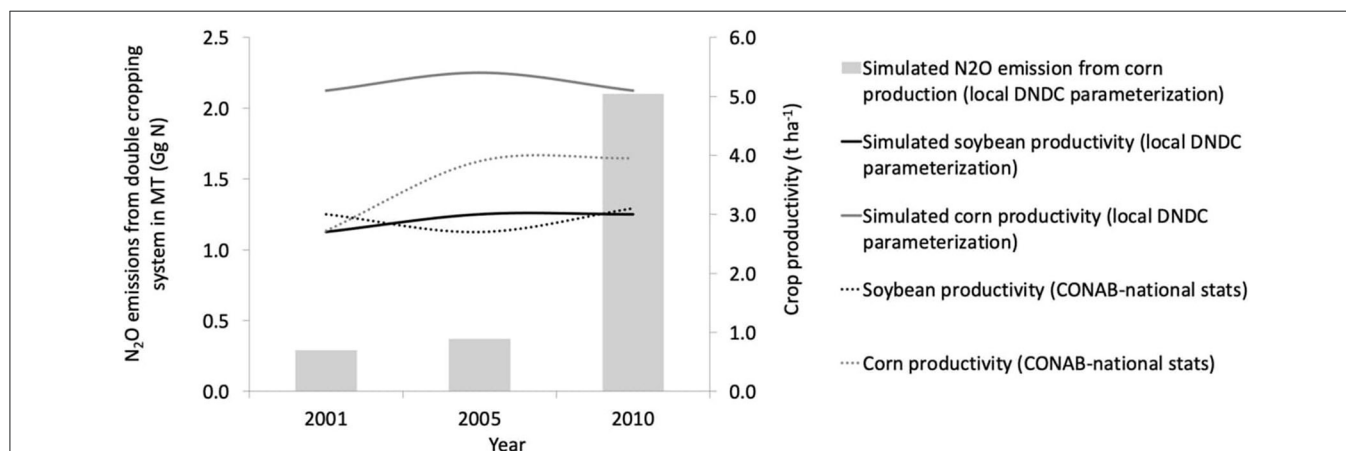
as it enhances N losses through leaching and volatilization (Jankowski et al., 2018).

These results suggest that for MT to meet estimated maize demands in the next decade, producers will have two alternatives: expand soybean-maize double cropping intensification to an additional 3.0 million ha currently used for single soybean cropping, or further intensify soybean-maize double cropping on 2.3 million ha of single cropping soybean fields and increase

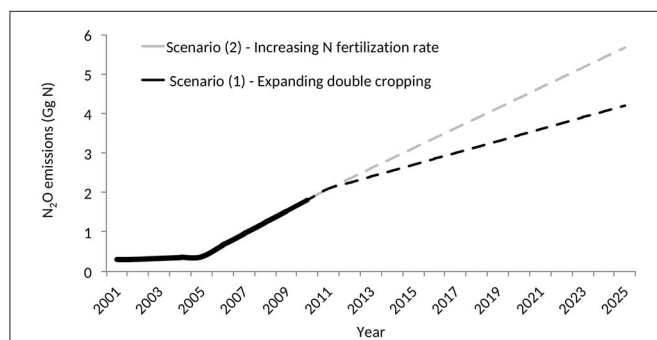
N fertilization in total soybean-maize double cropping area by five times (180 kg N ha<sup>-1</sup>). The second strategy would spare 0.7 million ha for other activities compared to the first alternative but may emit 35% more N<sub>2</sub>O than the first option (**Figure 9**) and would certainly be more costly for farmers because of the increased fertilizer use. If the target is to meet future maize demands together with reduced N<sub>2</sub>O emissions, our simulations suggest that to convert soybean areas currently producing a single



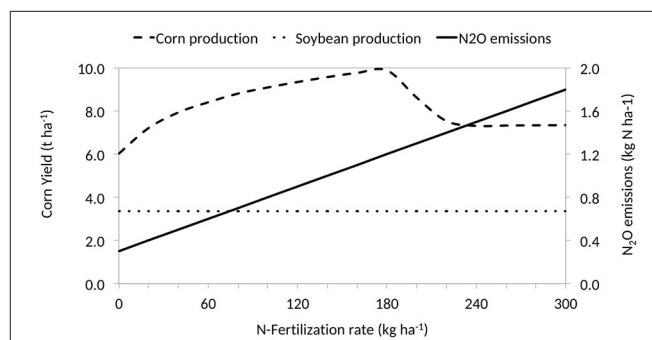
**FIGURE 7 |** Spatial distribution of DNDC model simulated (with local parameterization) nitrous oxide emissions from single soybean and double soybean + maize cropping systems in 2001 (A), 2005 (B), and 2010 (C) in Mato Grosso State (Brazil).



**FIGURE 8 |** Simulated nitrous oxide emissions (bars) and crop productivity (lines) from double cropping soybean + maize cropping areas from 2001 and 2010, Mato Grosso State (Brazil).



**FIGURE 9 |** Regional N<sub>2</sub>O-N emissions projection for meeting 2025 demand for maize from Mato Grosso State (Brazil) through two scenarios: (1) expanding double cropping of maize to existing 3.0 million ha of soybean fields using current N-fertilization rate (35 kg N ha<sup>-1</sup>) and (2) expanding double cropping with maize fertilized at 180 kg N ha<sup>-1</sup> to existing 2.7 million ha of soybean fields.



**FIGURE 10 |** Simulations of the effect of different rates of nitrogen fertilizer application on the average N<sub>2</sub>O emissions and crop productivity in Mato Grosso State (Brazil).

crop to double cropping with maize, maintaining current N fertilizer application rates must be a priority over increasing the

rate of N application. Furthermore, applying less N fertilizer has additional benefits, such as reducing N volatilization and leaching to water bodies that occur because of large and inefficient N



fertilizer applications (Carpenter et al., 1998; Kim et al., 2015; Spera et al., 2016).

## CONCLUSIONS

Reduction of emissions from agricultural lands is a priority for many countries, including Brazil, which has a commitment under the Paris Agreement. To understand current GHG emissions and opportunities for mitigation, research typically relies on models such as DNDC to simulate emissions. Therefore, the calibration and application of the DNDC model to fertilized tropical croplands to quantify N<sub>2</sub>O emissions is timely and relevant. Further, the parameterization of a robust process-based model empowers tropical countries, many of which most of which have mostly committed to reduce GHG emissions from agriculture under the Paris Agreement (United Nations, 2018) to move toward more accurate GHG emission estimates and can affect land use planning.

Our DNDC validations demonstrated, with a reasonable degree of accuracy, that a modified DNDC model is capable of simulating N<sub>2</sub>O emissions from a soybean and maize cropping system as well as under different N application rates in one of the most rapidly developing agricultural frontiers of the twenty-first century. The model sensitivity of the N<sub>2</sub>O emissions to climate conditions (temperature and rainfall) and soil properties, especially soil texture, indicates high model response to these parameters that are specific to the tropics. The local parameterized model is substantially different than the standard DNDC model in estimated magnitude and ability to match field measurements.

We see that N<sub>2</sub>O emissions from crop nitrogen fertilization are lower in this region than emissions from temperate systems. This underscores the importance of accounting for differences in soil and climate characteristics when planning future crop intensification for the tropics.

Model simulations also suggest intensification of soybean crops through double cropping with maize can be managed effectively to meet future demands for maize, while avoiding large and needless increases in nitrogen fertilization and, consequently, N<sub>2</sub>O emissions. In this context, expanding maize cropping in existing single soybean fields rather than increasing the rate of N fertilization in current maize areas would avoid 35% increase in N<sub>2</sub>O emissions by 2025.

This paper provides valuable information for decision-makers about the DNDC biogeochemical model and its potential applicability for evaluating and monitoring N<sub>2</sub>O emissions and crop productivity from large scale agriculture. However, in order to further increase the accuracy of DNDC predictions that target tropical regions and to build more robust recommendations, we

need to improve and validate the model continuously in the coming years, with regard first, to N turnover processes and associated trace gas fluxes; next, to soil hydrology (which is one of the major governing processes involved in N trace gas emissions); and finally, to improved granularity of country level data on climate, soil type and agricultural management.

## DATA AVAILABILITY STATEMENT

The original contributions presented in the study are included in the article/**Supplementary Material**, further inquiries can be directed to the corresponding author.

## AUTHOR CONTRIBUTIONS

CC, GG, MC, and CN conceived of the study. CJ carried out the DNDC modeling. KJ, CO'C, MM, and CN contributed field validation data. CC led the writing of the paper. All authors contributed to the article and approved the submitted version.

## FUNDING

This work was supported by National Science Foundation (NSF#1257944) and CNPq-Ciências Sem Fronteiras Post-Doctoral Fellowship (249380/2013-7).

## ACKNOWLEDGMENTS

Invaluable logistical and field assistance was supported by employees of the Instituto de Pesquisa Ambiental da Amazônia (IPAM) in collecting data sets used from previous publications; we are thankful for their help and the willingness of other authors to share data. We thank Paul Lafeyvre (Woodwell Climate Research Center) for supporting data processing and mapping. We acknowledge and thank Changsheng Li and Carlos C. Cerri (in memoriam) for their mentoring. This work was implemented as part of the CGIAR Research Program on Climate Change, Agriculture and Food Security (CCAFS), which is carried out with support from CGIAR Trust Fund and through bilateral funding agreements. For details please visit <https://ccafs.cgiar.org/donors>.

## SUPPLEMENTARY MATERIAL

The Supplementary Material for this article can be found online at: <https://www.frontiersin.org/articles/10.3389/fsufs.2021.701416/full#supplementary-material>

## REFERENCES

ANDA (2020). *Associação Nacional para Difusão de Adubos (Brazilian National Fertilizer Association). Anuário estatístico do setor de fertilizantes (Annual Report)*. São Paulo: ANDA, p 160.

Arvor, D., Meirelles, M., Dubreuil, V., Bégue, A., and Shimabukuro, Y. E. (2012). Analyzing the agricultural transition in Mato Grosso, Brazil, using satellite-derived indices. *Appl. Geograph.* 32, 702–713. doi: 10.1016/j.apgeog.2011.08.007

Belizario, M. H. (2011). *Changes in soil carbon stocks due to agricultural land use in Southwest Amazonian (Portuguese), MS thesis (Escola Superior de Agricultura "Luiz de Queiroz, Piracicaba: Universidade de São Paulo.*

- Bouwman, A. F., Boumans, L. J. M., and Batjes N. H. (2002). Emissions of  $N_2O$  and  $NO$  from fertilized fields. Summary of available measurement data. *Global Biogeochem. Cycles* 16, 6–13. doi: 10.1029/2001GB001811
- Butterbach-Bahl, K., Baggs, E. M., Dannenmann, M., Kiese, R., and Zechmeister-Boltenstern, S. (2013). Nitrous oxide emissions from soils: how well do we understand the processes and their controls? *Philosophic. Trans. Roy. Soc. B Biol. Sci.* 368:20130122. doi: 10.1098/rstb.2013.0122
- Carpenter, S. R., Caraco, N. F., Correll, D. L., Howarth, R. W., Sharpley, A. N., and Smith, V. H. (1998). Nonpoint pollution of surface waters with phosphorus and nitrogen. *Ecol. Appl.* 8, 559–568. doi: 10.1890/1051-0761(1998)008[0559:NPOSWW]0.CO;2
- Carsel, R. F., and Parrish, R. S. (1988). Developing joint probability distributions of soil water retention characteristics. *Water Resour. Res.* 24, 755–769. doi: 10.1029/WR024i005p0755
- CONAB (2015). *Companhia Nacional de Abastecimento*. Brasília. Available online at: <http://www.conab.gov.br/> (accessed January 22, 2016).
- Cruz, J. C., Pereira, F. T. F. P., Pereira Filho, I. A., and Coelho, A. M. (2005). *Resposta de cultivares de milho à adubação nitrogenada em cobertura*. Sete Lagoas: EMBRAPA. Dezembro, p 65.
- Del Grosso, S. J., Parton, W. J., Mosier, A. R., Hartman, M. D., Brenner, J., Ojima, D. S., et al. (2001). “Simulated interaction of carbon dynamics and nitrogen trace gas fluxes using the DAYCENT model,” in *Modeling Carbon and Nitrogen Dynamics for Soil Management*, eds Shaffer, M. J., Ma, L. and Hansen, S. (Florida: CRC Press), 303–332
- Deng, J., Zhou, Z., Zheng, X., and Li, C. (2013). Modeling impacts of fertilization alternatives on nitrous oxide and nitric oxide emissions from conventional vegetable fields in southeastern China. *Atmosphere. Environ.* 81, 642–650. doi: 10.1016/j.atmosenv.2013.09.046
- Dias, L. C. P., Macedo, M. N., Costa, M. H., Coe, T. M., and Neill, C. (2015). Effects of land cover change on evapotranspiration and streamflow of small catchments in the Upper Xingu River Basin, Central Brazil. *J. Hydrolo. Reg. Stud.* 4, 108–122. doi: 10.1016/j.ejrh.2015.05.010
- Dorich, C. D., Conant, R. T., Albanito, F., Butterbach-Bahl, K., Grace, P., Scheer, C., et al. (2020). Improving  $N_2O$  emission estimates with the global  $N_2O$  database. *Curr. Opin. Environ. Sustain.* 47, 13–20 doi: 10.1016/j.cosust.2020.04.006
- FAO-STAT (2021). *FAO Statistics, Food and Agriculture Organization of the United Nations*. Rome.
- Galford, G. L., Mellilo, J., Kicklighter, D. W., Cronin, T. W., Cerri, C. E. P., Mustard, J. F., et al. (2010). Greenhouse gas emissions from alternative futures of deforestation and agricultural management in the southern Amazon. *Proceed. Nat. Acad. Sci.* 107, 19649–19654. doi: 10.1073/pnas.1000780107
- Galford, G. L., Mustard, J. F., Melillo, J., Gendrin, A., Cerri, C. C., and Cerri, C. E. P. (2008). Wavelet analysis of MODIS time series to detect expansion and intensification of row-crop agriculture in Brazil. *Rem. Sens. Environ.* 112, 576–587. doi: 10.1016/j.rse.2007.05.017
- Gibbs, H. K., Ruesch, A. S., and Achard F. (2010). Tropical forests were the primary sources of new agricultural land in the 1980s and 1990s. *Proceed. Nat. Acad. Sci.* 107, 16,732–16,737. doi: 10.1073/pnas.0910275107
- Giltrap, D. L., Ausseil, A.-G. E., Thakur, K. P., and Sutherland, M. A. (2013). Investigating a method for estimating direct nitrous oxide emissions from grazed pasture soils in New Zealand using NZ-DNDC. *Sci. Total Environ.* 465, 7–16. doi: 10.1016/j.scitotenv.2013.03.053
- Giltrap, D. L., Saggart, D., and Li, C. (2010). DNDC: A process-based model of greenhouse gas fluxes from agricultural soils. *Agricult. Ecosyst. Environ.* 136, 292–300. doi: 10.1016/j.agee.2009.06.014
- Global DNDC Network (2018). *DNDC Network*. Publications. Available online at: <http://www.globaldndc.net/information/publications-i-3.html> (accessed September 07, 2018).
- Global  $N_2O$  Database (2020). *CGIAR Research Program on Climate Change Agriculture and Food Security (CCAFS) - Global  $N_2O$  Project*. *Proceed. Nat. Acad. Sci.* Available online at: <https://samples.cafs.cgiar.org/n2o-dashboard/>
- Haas, E., Klatt, S., Fröhlich, A., Kraft, P., Werner, C., Kiese, R., et al. (2013). LandscapeDNDC: a process model for simulation of biosphere-atmosphere-hydrosphere exchange processes at site and regional scale. *Landscape Ecol.* 28, 615–636. doi: 10.1007/s10980-012-9772-x
- Hickman, J. E., Huang, Y., Wu, S., Diru, W., Groffman, P. M., Tully, K. L., et al. (2017). Nonlinear response of nitric oxide fluxes to fertilizer inputs and the impacts of agricultural intensification on tropospheric ozone pollution in Kenya. *Glob. Change Biol.* 23, 3193–3204. doi: 10.1111/gcb.13644
- Hickman, J. E., Tully, K. L., Groffman, P. M., Diru, W., and Palm, C. A. (2015). A potential tipping point in tropical agriculture: avoiding rapid increases in nitrous oxide fluxes from agricultural intensification in Kenya. *J. Geophys. Res. Biogeosci.* 120:2015JG002913. doi: 10.1002/2015JG002913
- Huddell, A. M., Galford, G. L., Tully, K. L., Crowley, C., Palm, C. A., Neill, C., et al. (2020). Meta-analysis on the potential for increasing nitrogen losses from intensifying tropical agriculture. *Global Change Biol.* 26, 1668–1680. doi: 10.1111/gcb.14951
- Huddell, A. M., Neill, C., Maracahipes-Santos, L., Cerri, C. E. P., and Menge, D. N. L. (2021). Nitric and nitrous oxide fluxes from intensifying crop agriculture in the seasonally dry tropical Amazon-Cerrado border region. *Agrosyst. Geosci. Environ.* 4, 1–12. doi: 10.1002/agg2.20169
- IBGE (2015). *Instituto Brasileiro de Geografia e Estatística (Brazilian Institute for Geography and Statistics)*. Brasília. Available online at: <http://www.ibge.gov.br/> (accessed May 18, 2015).
- IBGE (2020). *Instituto Brasileiro de Geografia e Estatística*. Brasília. Available online at: <https://sidra.ibge.gov.br/pesquisa/lspa/tabelas>
- IMEA (2015). *Instituto Matogrossense de Economia Agrícola (Mato Grosso Institute for Agriculture Economics)*. Cuiabá. Available online at: <http://www.imea.com.br/> (accessed May 01, 2016).
- INMET (2016). *Instituto Nacional de Meteorologia (National Institute of Meteorology)*. Brasília Available online at: <http://www.inmet.gov.br/>
- IPCC (2006). “Intergovernmental Panel On Climate Change,” in *IPCC Guidelines for National Greenhouse Gas Inventories, Volume 4: Agriculture, Forestry and Other Land Use, Prepared by the National Greenhouse Gas Inventories Programme*, eds Eggleston HS, Buendia L, Miwa K, Ngara T, Tanabe K (Japan: IGES), Available online at: <http://www.ipcc-nggip.iges.or.jp/public/2006gl/vol4.html>
- IPCC (2013). “Intergovernmental Panel On Climate Change. Climate Change 2013: The Physical Science Basis,” in *Contribution of Working Group I to the Fifth Assessment Report of the Intergovernmental Panel on Climate Change*, eds Stocker, T.F., D. Qin, G.-K. Plattner, M. Tignor, S.K. Allen, J. Boschung, A. et al. (New York, NY: Cambridge University Press), 1535.
- IPCC (2019a). *Climate Change and Land: an IPCC special report on climate change, desertification, land degradation, sustainable land management, food security, and greenhouse gas fluxes in terrestrial ecosystems*, eds P.R. Shukla, J. Skea, E. Calvo Buendia, V. Masson-Delmotte, H.-O. Pörtner, D. C. Roberts, et al. In press. Available online at: [https://www.ipcc.ch/site/assets/uploads/sites/4/2021/02/05\\_Chapter-2-V5.pdf](https://www.ipcc.ch/site/assets/uploads/sites/4/2021/02/05_Chapter-2-V5.pdf)
- IPCC (2019b). *IPCC 2019, 2019 Refinement to the 2006 IPCC Guidelines for National Greenhouse Gas Inventories*, eds. E. Calvo Buendia, K. Tanabe, A. Kranjc, J. Baasansuren, M. Fukuda, S. Ngarize, A. Osako, Y. Pyrozhenko, P. Shermanau, S. Federici. Switzerland: IPCC. Available online at: <https://www.ipcc-nggip.iges.or.jp/public/2019rf/index.html>
- Jankowski, K. J., Neill, C., Davidson, E. A., Macedo, M. N., Costa Junior, C., Galford, G., et al. (2018). Deep soils modify environmental consequences of increased nitrogen fertilizer use in intensifying Amazon agriculture. *Sci. Rep.* 8:13478. doi: 10.1038/s41598-018-31175-1
- Kappes, C. (2013). *Sistemas de cultivo de milho safrinha no Mat Grosso. XII Seminário Nacional de Milho Safrinha – EMBRAPA/UFGRD*. Available at: <http://www.cpaembrapa.br/cds/milhosafinha2013/palestras/5CLAUDINEIKAPPES.pdf>
- Kappes, C., Zancanaro, L., and Jesus, F. V. (2013). *Doses de nitrogênio, via ureia e nitrato de amônio, em cobertura no milho safrinha em sucessão à soja. XII Seminário Nacional de Milho Safrinha – EMBRAPA/UFGRD*. Available online at: <http://www.cpaembrapa.br/cds/milhosafinha2013/PDF/04.pdf>
- Kiese, R., Li, C., Hilbert, D., Papen, H., and Butterbach-Bahl, K. (2005). Regional application of PnET-N-DNDC for estimating the  $N_2O$  source strength of tropical rainforests in the Wet Tropics of Australia. *Global Change Biol.* 11, 128–144. doi: 10.1111/j.1365-2486.2004.00873.x
- Kim, S., Liu, Y. Y., Johnson, F. M., Parinussa, R. M., and Sharma, A. (2015). A global comparison of alternate AMSR2 soil moisture products: Why do they differ? *Rem. Sens. Environ.* 161, 43–62. doi: 10.1016/j.rse.2015.02.002
- Kim, Y., Seo, Y., Kraus, D., Klatt, S., Haas, E., Tenhunen, J., et al. (2014). Simulation of  $N_2O$  emissions and nitrate leaching from plastic mulch radish cultivation with LandscapeDNDC. *Ecol. Res.* 29, 441–454. doi: 10.1007/s11284-014-1136-3

- Kottek, M., Grieser, J., Beck, C., Rudolf, B., and Rubel, F. (2006). World Map of the Köppen-Geiger climate classification updated. *Meteorologische Zeitschrift* 15, 259–263. doi: 10.1127/0941-2948/2006/0130
- Li, C. (2000). Modeling trace gas emissions from agricultural ecosystems. *Nutr. Cycl. Agroecosyst.* 58, 259–276. doi: 10.1007/978-94-010-0898-3\_20
- Li, C., Salas, W., De Angelo, B., and Rose, S. (2006). Assessing alternatives for mitigating net greenhouse gas emissions and increasing yields from rice production in China over the next twenty years. *J. Environ. Qual.* 35, 1554–1565. doi: 10.2134/jeq2005.0208
- Li, C., Zhuang, Y., Cao, M., Crill, P., Dai, Z., Frolking, S., et al. (2001). Comparing a process-based agro-ecosystem model to the IPCC methodology for developing a national inventory of N<sub>2</sub>O emissions from arable lands in China. *Nutr. Cycl. Agroecosyst.* 60, 159–175. doi: 10.1023/A:1012642201910
- Li, C. S., Frolking, S., and Frolking, T. A. (1992a). A model of nitrous-oxide evolution from soil driven by rainfall events: 1. model structure and sensitivity. *J. Geophysic. Res.* 97, 9759–9776. doi: 10.1029/92JD00509
- Li, C. S., Frolking, S., and Frolking, T. A. (1992b). A process-oriented model of N<sub>2</sub>O and NO emissions from forest soils: 2. model applications. *J. Geophysic. Res.* 105, 4377–4383. doi: 10.1029/1999JD900949
- Li, H., Qiu, J., Wang, L., Tang, H., Li, C., and Ranst, E. V. (2010). Modelling impacts of alternative farming management practices on greenhouse gas emissions from a winter wheat–maize rotation system in China. *Agricult. Ecosyst. Environ.* 135, 24–33. doi: 10.1016/j.agee.2009.08.003
- Li, H., Qiu, J., Wang, L., Xu, M., Liu, Z., and Wang, W. (2012). Estimates of N<sub>2</sub>O emissions and mitigation potential from a spring maize field based on DNDC model. *J. Integrat. Agricult.* 11, 2067–2078. doi: 10.1016/S2095-3119(12)60465-1
- Lugato, E., Zuliani, M., Alberti, G., Vedove, G. D., Gioli, B., B., et al. (2010). Application of DNDC biogeochemistry model to estimate greenhouse gas emissions from Italian agricultural areas at high spatial resolution. *Agricult. Ecosyst. Environ.* 139, 546–556. doi: 10.1016/j.agee.2010.09.015
- Luizão, F., Matson, P., Livingstone, G., Luizão, R., and Vitousek, P. (1989). Nitrous oxide flux following tropical land clearing Global Biogeochem. Cy. 3 281–285. doi: 10.1029/GB003i003p00281
- Macedo, M. N., DeFries, R. S., Morton, D. C., Stickler, C., Galford, G. L., and Shimabukuro, Y. E. (2012). Decoupling of deforestation and soy production in the southern Amazon during the late 2000s. *Proceed. Nat. Acad. Sci.* 109, 1341–1346. doi: 10.1073/pnas.1111374109
- MapBiomass (2019). *MapBiomass project: Collection [v.4.0] of the annual land use land cover maps of Brazil*. MapBiomass. Available online at: <http://plataforma.mapbiomas.org/stats>
- Mar, G. D., Marchetti, M. E., Ferreira de Souza, L. C., Gonçalves, M. C., and Novelino, J. O. (2003). Fertilidade do solo e nutricao de plantas: Producao do milho safrinha em funcao de doses e epocas de aplicacao de nitrogenio. *Bragantia* 62, 267–274. doi: 10.1590/S0006-87052003000200012
- Matson, P. A., Naylor, R., and Ortiz-Monasterio, I. (1998). Integration of environmental, agronomic, and economic aspects of fertilizer management. *Science* 280, 112–115. doi: 10.1126/science.280.5360.112
- Medrado, E., and Lima, J. E. F. W. (2014). Development of pedotransfer functions for estimating water retention curve for tropical soils of the Brazilian savanna. *Geoderma Reg.* 1, 59–66. doi: 10.1016/j.geodr.2014.08.003
- Meurer, K. H. E., Franko, U., Stange, C. F., Rosa, J. D., Madari, B. E., and Jungkunst, H. F. (2016). Direct nitrous oxide (N<sub>2</sub>O) fluxes from soils under different land use in Brazil—a critical review. *Environ. Res. Lett.* 11:023001. doi: 10.1088/1748-9326/11/2/023001
- Moriasi, D. N., Arnold, J. G., Van Liew, M. W., Bingner, R. L., Harmel, R. D., and Veith, T. L. (2007). Model evaluation guidelines for systematic quantification of accuracy in watershed simulations. *Trans. ASABE* 50, 885–900. doi: 10.13031/2013.23153
- Morton, D. C. R. S., DeFries, Y. E., Shimbukuro, L. O., Anderson, E., Arai, F. B., Espirito-Santo, R., and Morissette J. (2006). Cropland expansion changes deforestation dynamics in the southern Brazilian Amazon. *Proceed. Nat. Acad. Sci.* 103, 14,637–14,641. doi: 10.1073/pnas.0606377103
- Neill, C. M. T., Coe, S. H., Riskin, A. V., Krusche, H., Elsenbeer, M. N., et al. (2013). Watershed responses to Amazon soya bean cropland expansion and intensification. *Philosophic. Trans. Royal Soc. B* 368:20120425. doi: 10.1098/rstb.2012.0425
- O’Connell, C. S. (2015). *Ecological Tradeoffs to an Agricultural Amazonia: Investigating the effects of increased agricultural production on Amazonia’s contribution to global climate and nitrogen cycling*. Ph.D. thesis (University of Minnesota).
- Packham, L. E. T., Massheder, J., Smith, K. A., and Hyde, B. (2006). *The Simile Modeling Framework Modeling of Nitrous Oxide Emissions from Irish Agriculture*. EPA 2006-SS-46-MI, Ireland.
- Perlman, J., Hijmans, R. J., and Horwath, W. R. (2013). Modelling agricultural nitrous oxide emissions for large regions. *Environ. Modell. Softw.* 48, 183–192. doi: 10.1016/j.envsoft.2013.07.002
- Raucci, G. S., Moreira, C. S., Alves, P. A., Mello, F. F. C., Frazão, L. A., Cerri, C. E. P., et al. (2015). Greenhouse gas assessment of Brazilian soybean production: a case study of Mato Grosso State. *J. Clean. Product.* 96, 418–425. doi: 10.1016/j.jclepro.2014.02.064
- Rezende Pereira, J. L. A., Von Pinho, R. G., Borges, I. D., Rezende Pereira, A. M. A., and Lima, T. G. (2009). Cultivares, doses de fertilizantes e densidades de semeadura no cultivo de milho safrinha. *Ciência e Agrotecnologia* 33, 676–683. doi: 10.1590/S1413-70542009000300003
- Richards, M., Bruun, T. B., Campbell, B., Gregersen, L. E., Huyer, S., Kuntze, V., et al. (2016). *How countries plan to address agricultural adaptation and mitigation: an analysis of Intended Nationally Determined Contributions*. CCAFS dataset version 1.3. Copenhagen, Denmark: CGIAR Research Program on Climate Change, Agriculture and Food Security (CAAFS), Copenhagen.
- Riskin, S. H., Porder, S., Schipanski, M. E., Bennett, E. M., and Neill, C. (2013). Soils mediate environmental consequences of intensive soybean agriculture. *BioScience* 63, 49–54. doi: 10.1525/bio.2013.63.1.10
- Scheffler, R., Neill, C., Krusche, A. V., and Elsenbeer, H. (2011). Soil hydraulic response to land-use change associated with the recent soybean expansion at the Amazon agricultural frontier. *Agric. Ecosyst. Environ.* 144, 281–289. doi: 10.1016/j.agee.2011.08.016
- Six, J. C., Feller, K., Denef, S., Ogle, J., and Albrecht, A. (2002). Soil organic matter, biota and aggregation in temperate and tropical soils-Effects of no-tillage. *Agronomie* 22, 755–775. doi: 10.1051/agro:2002043
- Smith, K. A. (2017). Changing views of nitrous oxide emissions from agricultural soil: key controlling processes and assessment at different spatail scales. *Euro. J. Soil Sci.* 68, 137–155. doi: 10.1111/ejss.12409
- Smith, P., Bustamante, M., Ahammad, H., Clark, H., Dong, H., Elsididig, E. A., et al. (2014). “Agriculture, Forestry and Other Land Use (AFOLU),” in Kadner, S., Seyboth, K., Adler, A., Baum, I., Brunner, S., Eickemeier, P., et al. *Climate Change 2014: Mitigation of Climate Change. Contribution of Working Group III to the Fifth Assessment Report of the Intergovernmental Panel on Climate Change*, Cambridge University Press, Cambridge, United Kingdom and New York, NY, USA.
- Smith, W. N., Grant, B. B., Desjardins, R. L., Worth, D., Li, C., Boles, S. H., et al. (2010). A tool to link agricultural activity data with the DNDC model to estimate GHG emission factors in Canada. *Agric. Ecosyst. Environ.* 136, 301–309. doi: 10.1016/j.agee.2009.12.008
- Snyder, C. S., Bruulsema, T. W., Jensen, T. L., and Fixen, P. E. (2009). Review of greenhouse gas emissions from crop production systems and fertilizer management effects. *Agric. Ecosyst. Environ.* 133, 247–266. doi: 10.1016/j.agee.2009.04.021
- Souza, E., and Soratto, R. P. (2006). Efeito de fontes e doses de nitrogênio em cobertura, no milho safrinha, em plantio direto. *Revista Brasileira de Milho e Sorgo. Sete Lagoas*. 5, 387–397. doi: 10.18512/1980-6477/rbms.v5n3p395-405
- Spera, S. A., Cohn, A. S., VanWey, L. K., Mustard, J. F., Rudorff, B. F., Risso, J., et al. (2014). Recent cropping frequency, expansion, and abandonment in Mato Grosso, Brazil had selective land characteristics. *Environ. Res. Lett.* 9:064010. doi: 10.1088/1748-9326/9/6/064010
- Spera, S. A., Galford, G. L., Coe, M. T., Macedo, M. N., and Mustard, J. F. (2016). Land-Use Change Affects Water Recycling in Brazil’s Last Agricultural Frontier. *Global Change Biol.* 13:928. doi: 10.1111/gcb.13298
- Stange, F., Butterbach-Bahl, K., Papen, H., Zechmeister-Boltenstern, S., Li, C., and Aber, J. (2000). A process-oriented model of N<sub>2</sub>O and NO emissions from forest soils: 2. Sensitivity analysis and validation. *J. Geophysic. Res.* 105, 4385–4398. doi: 10.1029/1999JD900948
- Sul, W. J., Asuming-Brempong, S., Wang, Q., Tourlousse, D. M., Penton, C. R., Deng, Y., Rodrigues, J. L. M., Adiku, S. G. K., Jones, J. W., Zhou, J., Cole, J. R., and Tiedje, J. M. (2013). Tropical agricultural land

- management influences on soil microbial communities through its effect on soil organic carbon. *Soil Biol. Biochemistr.* 65, 33–38. doi: 10.1016/j.soilbio.2013.05.007
- Tesfay, K., Takele, R., Sapkota, T. B., Khatri-Chhetri, A., Solomon, D., Stirling, C., et al. (2021). Model comparison and quantification of nitrous oxide emission and mitigation potential from maize and wheat fields at a global scale. *Sci. Total Environ.* 37:107239. doi: 10.1016/j.dib.2021.107239
- Tian, H., Xu, R., Canadell, J. G., Thompson, R. L., Winiwarter, W., Suntharalingam, P., et al. (2020). A comprehensive quantification of global nitrous oxide sources and sinks. *Nature*. 586, 248–256. doi: 10.1038/s41586-020-2780-0
- Tomasella, J., and Hodnett, M. G. (1996). Soil hydraulic properties and van Genuchten parameters for an oxisol under pasture in central Amazonia. *Amazonian Deforestation Clim.* 96, 101–124.
- Tomasella, J., and Hodnett, M. G. (2005). “Pedrotransfer functions for tropical soils,” in Pachepsky Y., Rawls, W. J. eds (Org.) *Developments in Soil Science: Pedotransfer Functions in Hydrology*. 30 ed. Amsterdam: Elsevier, v. 30, p. 415429.
- United Nations (2018). *United Nations Treaty Collection, Status of the Treaties*. Available online at: [https://treaties.un.org/Pages/ViewDetails.aspx?src=TREATY&ndmtsg\\_no=XXVII-7-d&ndchapter=27&ndclang=\\_en](https://treaties.un.org/Pages/ViewDetails.aspx?src=TREATY&ndmtsg_no=XXVII-7-d&ndchapter=27&ndclang=_en) (accessed September 07, 2018).
- van Genuchten, M. T. (1980). A closed form equation for predicting the hydraulic conductivity of unsaturated soils. *Soil Sci. Soc. Am. J.* 44, 892–898, doi: 10.2136/sssaj1980.03615995004400050002x
- Velthof, G. L., Oudendag, D. A., and Oenema, O. (2007). *Development and Application of the Integrated Nitrogen Model MITERRA-EUROPE Alterra report (1663)0.1*, Wageningen.
- Venterea, R. T., Burger, M., and Spokas, K. A. (2005). Nitrogen oxide and methane emissions under varying tillage and fertilizer management. *J. Environ. Qual.* 34, 1467. doi: 10.2134/jeq2005.0018
- Vitousek, P. M. (1984). Litterfall, nutrient cycling, and nutrient limitation in tropical forests. *Ecology* 65:285. doi: 10.2307/1939481
- Werner, C., Butterbach-Bahl, K., Haas, E., Hickler, T., and Kiese, R. (2007). A global inventory of N<sub>2</sub>O emissions from tropical rainforest soils using a detailed biogeochemical model. *Global Biogeochem. Cycles* 21:GB3010. doi: 10.1029/2006GB002909
- Wohl, E., Barros, N., Brunsell, N. A., Chappell, M., Coe, T., Giambelluca, S., et al. (2012). The hydrology of the humid tropics. *Nat. Publish. Group* 2:655–662. doi: 10.1038/nclimate1556

**Author Disclaimer:** The views expressed in this document cannot be taken to reflect the official opinions of these organizations.

**Conflict of Interest:** The authors declare that the research was conducted in the absence of any commercial or financial relationships that could be construed as a potential conflict of interest.

**Publisher's Note:** All claims expressed in this article are solely those of the authors and do not necessarily represent those of their affiliated organizations, or those of the publisher, the editors and the reviewers. Any product that may be evaluated in this article, or claim that may be made by its manufacturer, is not guaranteed or endorsed by the publisher.

Copyright © 2021 Costa, Galford, Coe, Macedo, Jankowski, O'Connell and Neill. This is an open-access article distributed under the terms of the Creative Commons Attribution License (CC BY). The use, distribution or reproduction in other forums is permitted, provided the original author(s) and the copyright owner(s) are credited and that the original publication in this journal is cited, in accordance with accepted academic practice. No use, distribution or reproduction is permitted which does not comply with these terms.