



Key to sessile gnesiotrochan rotifers: Families, monospecific species in Flosculariidae, species of Atrochidae, Conochilidae, and *Limnias*


NATALIE DAVIES^{1,‡}, ALEXANDRE LAFLEUR^{1,‡}, RICK HOCHBERG², ELIZABETH J. WALSH³ & ROBERT L. WALLACE^{1,*}

¹Department of Biology, Ripon College, Ripon, WI, 54971, USA


 <https://orcid.org/0000-0002-9118-3679>

 <https://orcid.org/0000-0002-7312-8457>



²University of Massachusetts Lowell, Lowell, MA, 01854, USA

 <https://orcid.org/0000-0002-5567-5393>

³Department of Biological Sciences, University of Texas at El Paso, El Paso, TX, 79968, USA

 <https://orcid.org/0000-0002-6719-6883>

[‡]The first two authors contributed equally to this paper

*Corresponding author:  wallacer@ripon.edu;  <https://orcid.org/0000-0001-6305-4776>

Abstract

Accurate identification of species is key to understanding their ecological roles and evolutionary history. It is also essential in cataloging biodiversity for comparisons among habitat types, responses to climate change, effective management practices, and more. The paucity of taxonomic expertise is increasing and with it the ability to competently identify species, this is particularly true for small taxa including rotifers. In an effort to improve this situation, we collated information on morphological characters from the literature on all valid species of sessile Gnesiotrocha (phylum Rotifera) currently assigned to two orders and four families. We review Order Collotheceae, which comprises families Atrochidae (3 spp.) and Collotheceidae (50 spp.) and Order Flosculariaceae, which includes families Conochilidae (7 spp.) and Flosculariidae (71 species). Based on that information, we provide dichotomous keys to the Families, monospecific species in Flosculariidae, and species of Atrochidae, Conochilidae, and *Limnias*. These keys will aid researchers to identify species in these families and lead to a better understanding of freshwater biodiversity and eco-evolutionary processes.

Key words: Coloniality, dichotomous key, morphology, planktonic, sessile, solitary, Rotatoria

Introduction

Phylum Rotifera (*sensu stricto*) comprises ca. 2000 described species of minute (~ 50 to 3500 µm), aquatic metazoans that exhibit curious life cycles, live in diverse environments, feed in various ways (herbivores, detritivores, carnivores, omnivores, parasites), and possess a wide range of morphologies (Fontaneto & De Smet 2015; Wallace *et al.* 2006; Wallace *et al.* 2015). Yet within this diversity, rotifers hold four characteristics in common: (1) all possess specialized jaws called trophi; (2) all are eutelic; (3) all have an intracytoplasmic lamina (ICL) within their epidermis that is composed of two proteins; and (4) at some point during their life all possess a ciliated anterior end, which is used in locomotion and usually, in the adult, feeding (Wallace *et al.* 2006; Wallace *et al.* 2015). Rotifers are found anywhere water is available for a sufficient time for them to complete their life cycle, sometimes this occurs within a few days (Schröder *et al.* 2007). The environments that they inhabit include lakes and ponds (Obertegger & Flaim 2015; Wang *et al.* 2022), rivers and streams (da Silva *et al.* 2021; Örstan 2021), moist terrestrial (Devetter & Frouz 2011; Pourriot 1979) and boggy soils (Bielańska-Grajner *et al.* 2011; Bielańska-Grajner *et al.* 2017), phytotelmata of various plants (Błędzki & Ellison 1998), birdbaths (Birky *et al.* 2011; Örstan 2020, 2022), and ephemeral desert playas (Brown *et al.* 2020) and rockpools (Brown *et al.* 2022), as well as inland saline (Walsh *et al.* 2008), brackish (Karpowicz *et al.* 2023) and marine waters (Fontaneto *et al.* 2006, 2008).

Rotifers are important for several reasons. In aquatic ecosystems they are the food for protists, other small

zooplankton (including other rotifers and microcrustaceans), insects, and fishes; thus, they are fundamental components in both the classical food web and the microbial loop (Neury-Ormanni *et al.* 2019; Prowe *et al.* 2022; Wallace *et al.* 2015). They are used in aquaculture as food for commercially important target species, including crabs, shrimps, and fishes (Lubzens *et al.* 1989; Turgay *et al.* 2020). Certain rotifers are employed as models in aging studies (Gribble & Mark Welch 2017; Gribble & Snell 2018) and toxicology assessments of various chemicals (Park *et al.* 2022; Shin *et al.* 2022; Snell *et al.* 2019). Regardless of the type of research, it is critical that workers correctly identify the species that they are studying.

A serious problem in identifying rotifers, especially from field samples, is that when fixed in standard preserving fluids, those in which the ICL is poorly developed (illoricate species) usually contract into unidentifiable masses (Wallace *et al.* 2015). Thus, illoricate species are best examined alive. A second challenge is finding appropriate taxonomic keys. Over the past several decades various keys have been published, but many stop at the level of genus (Edmondson 1959; Fontaneto *et al.* 2008; José de Paggi *et al.* 2020; Wallace *et al.* 2016, 2019), are regional in scope (Braioni & Gelmini 1983; Pontin 1978), are written in languages that make them challenging for some to use (Bartoš 1959; Collin *et al.* 1912; Koste 1978; Kutikova 1970; Rudescu 1960), or have limited taxonomic coverage (Bartoš 1951; Meksuwan *et al.* 2018; Ruttner-Kolisko 1974; Vidrine *et al.* 1985; Wallace *et al.* 2018). Also several of these keys use outdated taxonomies. In the mid 1990s an all-encompassing series of taxonomic keys was proposed to address this problem for zooplankton living in inland waters. Each key was to cover a specific group and was to be published under the title of *Guides to the Identification of the Microinvertebrates of the Continental Waters of the World*. But while the series on Rotifera was to be an exhaustive taxonomic treatise, it was never completed (De Smet 1996; De Smet & Pourriot 1997; Nogrady *et al.* 1995; Nogrady & Segers 2002; Nogrady *et al.* 1993; Segers 1995; Wallace *et al.* 2006).

Most adult rotifers are free moving, either swimming or crawling over surfaces or between small particles in interstitial terrestrial and aquatic sediments (Błędzki & Ellison 2003; Devetter 2010; Ejsmont-Karabin & Karpowicz 2021). However, within superorder Gnesiotrocha (G., *Gnesi*, genuine, G., *trocho*, wheel) approximate 100 species are referred to as sessile rotifers, even though the adults of several species are free-swimming. The young (larvae) of all are free-swimming as well. Currently, these taxa are placed in two orders, Collothecacea (Atrochidae, Collothecidae) and Flosculariaceae (Conochilidae, Flosculariidae) (Koste 1978). As a group the sessile species have received comparatively less attention than their motile counterparts. Nevertheless, sessile rotifers have a wide ecological distribution across habitats (lakes, ponds, and bogs) and an extensive geographic distribution including all continents (Antarctica (Dartnall 1983; Dartnall & Hollowday 1985)), high arctic waters (De Smet 1993; De Smet & Bafort 1990), and islands (Dartnall 1995; Edmondson 1948; Koste & Shiel 1986; Segers & Dumont 1993).

Study of sessile rotifers is challenging for three reasons. (1) All species are illoricate, thus, as noted above, fixation in the field is futile. (2) Most, but not all, are permanently attached to a substratum as adults. Therefore, a complete inventory of the sessile community must examine a wide array of surfaces to which the animals may be bound (Bērziņš 1951; Edmondson 1940; Edmondson 1944; Franch 2021; Tiefenbacher 1972; Wallace 1977). (3) Like all rotifers, their trophi are difficult to isolate, but they also have been insufficiently described and illustrated. Moreover, despite the promise that molecular techniques offer to identify organisms to the level of species, we have not yet reached that state for a sufficient number of taxa (Meksuwan *et al.* 2015).

Although much is known about the biology of the sessile taxa, our knowledge is still inadequate. Some examples include the following. (1) Insufficient work has been done to elucidate their phylogeny (Meksuwan 2015; Meksuwan *et al.* 2015). (2) In the same genus both sessile and planktonic species and both solitary and colonial forms are known (Wallace 1980; Wallace 1987); the evo-ecological drivers of those conditions remain unstudied. (3) Some species appear to have a specific preference for a substratum (Wallace 1980); we do not understand the adaptive significance of these preferences. (4) All species possess juvenile stages (larvae) that undergo a significant rearrangement of organ structure, reminiscent of metamorphosis undergone by the larval stages of numerous aquatic invertebrates (Hochberg *et al.* 2019; Wallace 1980). Indeed neonates of sessile species are so different from adults that they appear to be different species (Wallace 1980); however, we have no knowledge on how metamorphosis is initiated. (5) While the larval corona in Flosculariaceae is retained and grows during ontogeny, the corona in larval Collothecaceae is lost at metamorphosis and is replaced by a bowl- or funnel-shaped structure called the infundibulum (L., funnel) (Hochberg *et al.* 2019). The infundibulum is not an elaboration of the corona; it is a derivative of the larval foregut, replacing the corona during larval metamorphosis (Hochberg *et al.* 2019); the ontogeny of this process and the evolution of these divergent Bauplans remains a mystery. (6) Species in the

Conochilidae and Flosculariidae form intraspecific colonies (e.g., *Floscularia*, *Limnias*, *Sinantherina*) and at least one species of *Ptygura* is known to form interspecific colonies (Wallace 1987); understanding the significance of coloniality has not been adequately addressed. (NB: Used in this context the term colony refers to assemblies of individuals into an integrated cluster, in which colony mates do not share nutritive resources, but which commonly interact (Wallace 1987; Wallace *et al.* 2015).)

In this contribution we provide morphologically based keys to adult sessile gnesiotrochan rotifers: families, monospecific species in Flosculariidae, species of Atrochidae, Conochilidae, and *Limnias*. Examples of these species are shown in Fig. 1. In future contributions we will address the remaining sessile taxa. We anticipate that others will expand these keys with information on the morphology of their trophi. That research is important as it will permit species identification from preserved samples. Finally, usable keys to the sessile taxa are a necessary step in the study of the entire phylum, which, in general, appears to be replete with cryptic species (Kordbach *et al.* 2018, 2023; Marrone *et al.* 2023; Michaloudi *et al.* 2018; Mills *et al.* 2017). If we are to refine our understanding of rotifer evolution, especially of the sessile condition, information on the morphology of their trophi and molecular data on several genes is needed.

Methods

To develop the database from which we constructed keys to the sessile taxa, we reviewed previously published works noted above, papers that covered selected taxa (Bērziņš 1951; Edmondson 1939; Edmondson 1940; Dioni 1966; Koste 1978; Wright 1949), and, when possible, the original published descriptions. Only species recognized as valid by the List of Available Names (Jersabek *et al.* 2018) and/or the Rotifer World Catalog (Jersabek & Leitner 2013) were considered. The keys here are based on adult females only.

Superorder Gnesiotrocha de Beauchamp, 1965

Within the diversity exhibited by rotifers, superorder Gnesiotrocha are distinct from superorder Pseudotrocha (order Ploima) in that all gnesiotrochans (1) possess a foot that lack toes, (2) their anterior end is either a funnel-shaped structure or possesses ciliated lobes, and (3) their trophi are either malleoramate or uncinata (Edmondson 1959; Koste 1978; Ruttner-Kolisko 1974; Wallace & Snell 2010; Wallace *et al.* 2006). Ploimids may lack a foot, and, if present, may possess toes; their anterior end and trophi do not resemble that of the sessile taxa. Uncinate trophi possess few teeth: usually one or more large, pincer-like teeth and a few smaller teeth (Fig. 2A); malleoramate trophi possess crescent-shaped manubria and unci with numerous club-shaped teeth (Fig. 2B). Teeth close to the fulcrum are usually larger than those more distant. Trophi in the Flosculariaceae characteristically exhibit a grinding or pounding-like action, which is not seen in the Collotheceae.

Dichotomous key to Collotheceidae

- 1 Anterior end of adults a small to large, cup- or funnel-shaped structure (infundibulum), corona absent; infundibulum with 0–7 extensions (apices, knobs, lobes, tentacles), elongate setae usually present (sometimes with cilia) around the margin; trophi uncinata. **Order Collotheceae** Harring, 1913
[All species are solitary; both sessile and planktonic species are known; juveniles (larvae) possess a ciliated corona used in locomotion, but this is lost at metamorphosis and replaced by the infundibulum.]
- 1' Anterior end of adults with a corona with typical ciliated lobes or fields, or ciliated bands; trophi malleoramate. **Order Flosculariaceae** Harring, 1913
[Species may be solitary or colonial; both sessile and planktonic species are known; juveniles (larvae) possess a corona that is retained (and grows) during ontogeny.]

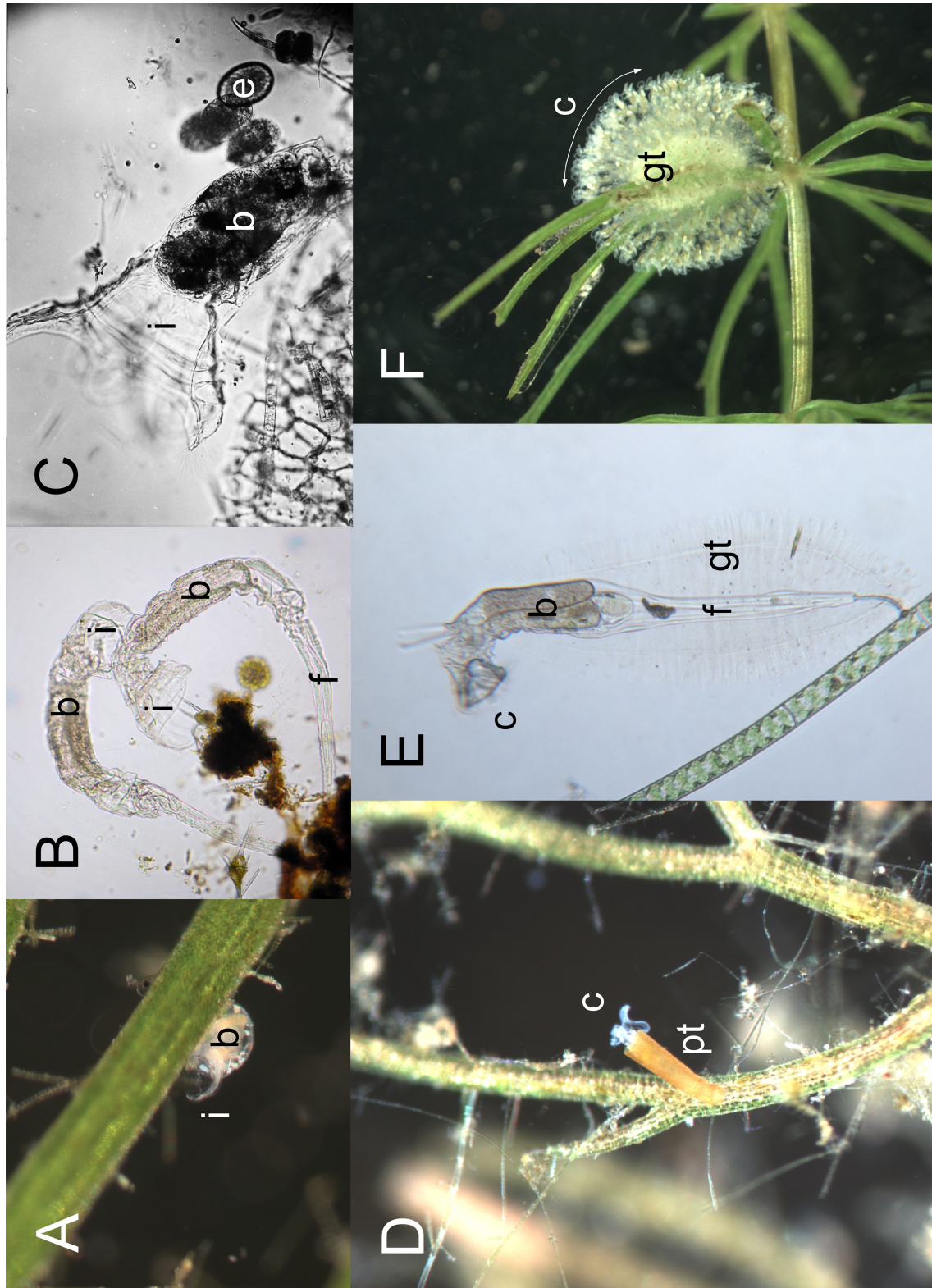


FIGURE 1. Examples of sessile gnesiotrochans *in situ*. A–C. Collothecacea (funnel-shaped anterior end): A. *Cupelothecaea*, B. *Acyclus*, C. *Collotheca*. D–F. Flosculariaceae (ciliated anterior end). D. *Floscularia*, E. *Ptygura*, F. *Lacinularia* (colony). Symbols: b = body; c = corona; e = embryo; f = foot; gt = gelatinous tube; i = infundibulum; pt = pellet tube. Arrow in F denotes the coronae of ~25% of the colony. See text for details on animal sizes.

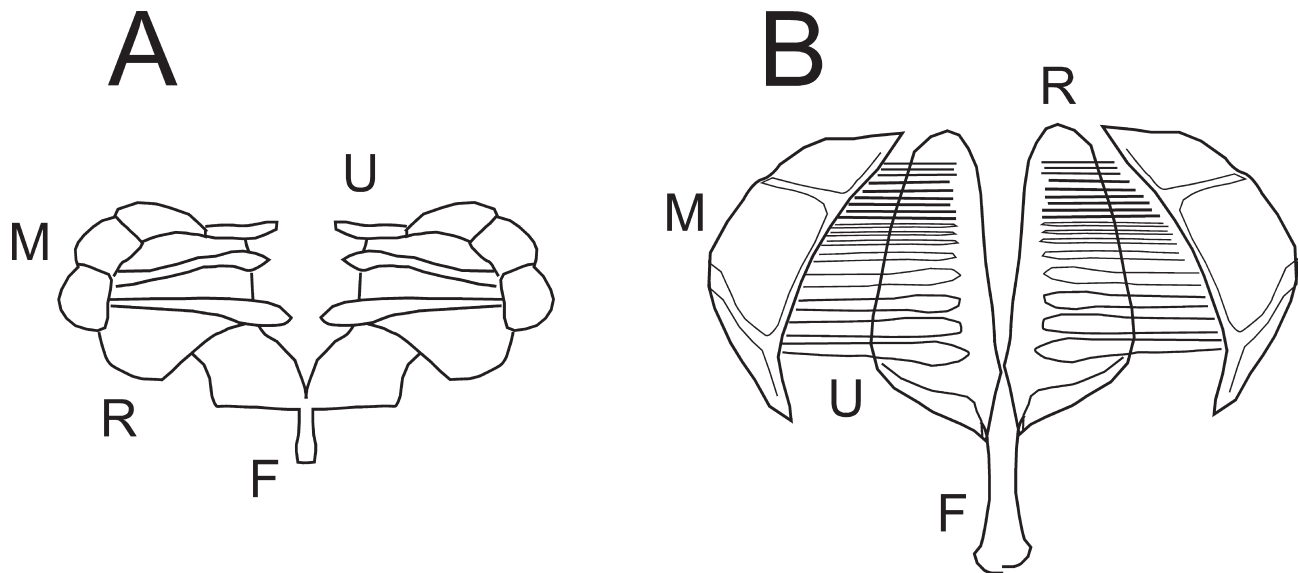


FIGURE 2. Schematic view comparing uncinata (A) and malleoramata trophi (B). Trophi are not drawn to the same scale. Symbols = F = fulcrum; M = manubrium; R = ramus; U = unci. Compare these schematics to the variation of trophi form shown in figures 13.10 and 13.11 in Wallace *et al.* (2015).

Order Collothecacea Remane, 1933 (= Paedotrocha de Beauchamp, 1965)

Collothecacea is a cosmopolitan order of two families (Atrochidae, Collothecidae) comprising a total of five genera dominated by the genus *Collothea*, which possesses ~50 species (Jersabek & Leitner 2013). Several characteristics separate this order from other taxa. All species possess uncinata trophi and a contoured anterior end that is elaborated into the infundibulum (L., funnel) (Hochberg *et al.* 2019). Prey captured in the infundibulum are moved into a temporary holding chamber called the vestibulum (L., entrance); from there the trophi eventually pull prey into the stomach for digestion. [NB: Edmondson (1959) reverses identification of these the infundibulum and vestibulum (figure 18.102b) and Remane (1929–1933) alternates use of the names in two places (compare figures 159A and 162C).] The margin of the head end may or may not possess lobes or tentacles with cilia and/or setae. All collothecans are raptorial, ambush predators. Predation has been described in *Collothea* by Meksuwan *et al.* (2013), in *Cupelopagis* by Bevington *et al.* (1995) and Preza (2017).

Generally, these rotifers possess elongate bodies, including a long slender foot. In adults of *Collothea* and *Stephanoceros* (Collothecidae) the infundibulum is usually edged with cilia or setae; in adults of *Acyclus*, *Atrochus*, and *Cupelopagis* (Atrochidae) these are absent. External gelatinous tubes that surround adult females are present in three genera: *Acyclus*, *Collothea*, and *Stephanoceros*. Unlike the species of Flosculariidae, no collothecaceans form colonies. However, aggregations of densities above 6 individuals mm² have been reported (Wallace & Edmondson 1986). These clusters probably do not represent contagious settlement by the larvae as is seen in barnacles. Rather, they may indicate recruitment due to a factor(s) associated with the surface of the preferred plant (Wallace 1980). As in the sessile Flosculariidae, *Collothea* possesses several planktonic species. The monospecific genus *Atrochus* does not affix permanently to surfaces and is capable of some crawling movement (Wierzejski 1893).

The etymon for both the order and one family (Collothecaceae; Collothecidae) refers to the gelatinous tube (G., *collo*, glue + G., *theca*, case). However, into the early part of this century, collothecids were known as *Floscularia* (L., *flosculus*, little flower), which to many observers is a better allusion to their form: a flower-shaped animal situated on a long foot stalk with a funnel-shaped head possessing numerous radiating setae. Nevertheless, for reasons of priority both names were changed by Haring (1913).

Larval collothecids are small (~100–500 µm), often spindle shaped, and with a pair of red eyespots just below a ciliated corona; these are lost in the adults of species that are permanently attached. Organ systems are not well developed and there is often a ciliated cavity at the base of their foot. Only after settlement do they begin metamorphosis to the adult body form and secrete an extracorporeal tube around their body.

Diagnosis. Corona bowl- to funnel-shaped, narrowing at its base, the margin is edged with long setae or short cilia (both often motionless), or cilia and setae lacking. The corona may be elaborated into lobes or tentacles (arms) or lobes absent. Mastax enlarged into a storage chamber (proventriculus). Trophi uncinata. Foot elongate, retractile, but not within the body. Foot ends with attachment disk or peduncle; toes absent. Most species secrete clear gelatinous tubes. Mainly sessile species, but several planktonic and ≥ 1 benthic species. All collothecans are solitary.

Dichotomous key to order Collothecacea

- 1 Infundibulum bearing setae and/or cilia; with or without lobes (tentacles, knobs, or apices); gelatinous tubes; sessile or planktonic **Collothecidae** Bartoš, 1959
- 1' Infundibulum lacking cilia or setae; unlobed or with one long, very flexible lobe, or with short, horny processes; with or without gelatinous tube; sessile or benthic (crawling) **Atrochidae** Bartoš, 1959

Dichotomous key to Collothecidae

- 1 Infundibulum with five very long lobes resembling arms, \sim trunk length or longer; arms either stout with setae in whorls or slender with long slim setae not in whorls; setae always at right angles to arms; clear gelatinous tube; body length ≤ 1500 μm ; sessile; oviparous. (Fig. 3A,B) *Stephanoceros* Ehrenberg, 1832
[In light of the fact that some members of the genus *Collotheca* also possess long lobes (e.g., *Collotheca judayi* Edmondson, 1940; *Collotheca tenuilobata* (Anderson, 1889)), Meksuwan *et al.* (2013) have recommended that the status of both genera be re-evaluated.]
- 1' Infundibulum with lobes absent or short to long, sometime knobbed at the terminus; long setae usually present extending from infundibular margin of the lobes; setae never in whorls and never held at right angles to arms; cilia often present; clear tube may be embedded with algae or with debris; body length ~ 100 –2,500 μm ; sessile or planktonic; oviparous. (Fig. 3C,D) *Collotheca* Harring, 1913
[In some species (e.g., *C. judayi*) setae are absent and the entire inside surface of the infundibulum is ciliated (Edmondson 1940). While most are sessile, *Collotheca libera* (Zacharias, 1894), *Collotheca mutabilis* (Hudson, 1885), *Collotheca pelagica* (Rousselet, 1893), and *Collotheca polyphemus* Harring, 1914 are planktonic, *Collotheca ornata* (Ehrenberg, 1830) occurs in planktonic, benthic, and sessile forms, including on the carapaces of cladocerans (Sebestyén 1957), and *Collotheca crateriformis* (Offord, 1934) is benthic. Nearly all produce a clear gelatinous tube; none are colonial, but may colonize substrata forming dense groupings (Wallace & Edmondson 1986).

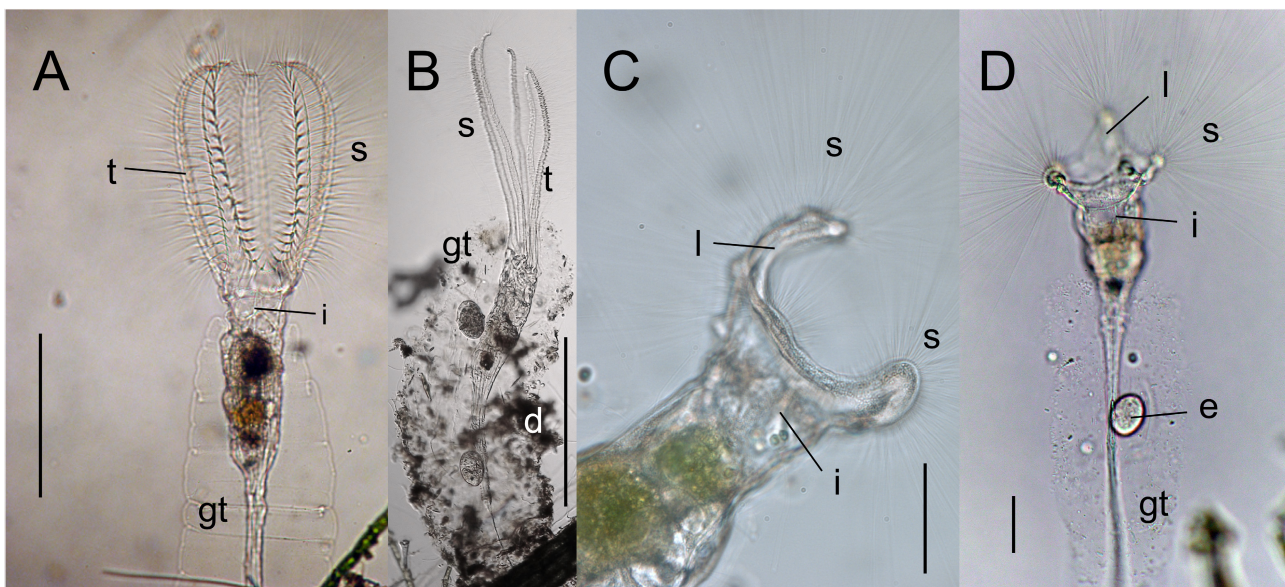


FIGURE 3. Representative Bauplans of the anterior ends of *Stephanoceros* (A, B) and *Collotheca* (C, D). A. *Stephanoceros fimbriatus*. B. *Stephanoceros millsii*. C. *Collotheca campanulata*. D. *Collotheca ornata*. Symbols: e = embryo; d = debris; gt = gelatinous tube; i = infundibulum; l = lobes; s = setae; t = tentacles. Bars: A, B = 500 μm C, D = 100 μm .

Family Collothecidae Bartoš, 1959

Of the two genera comprising this family, *Collothea* is numerically dominant; *Stephanoceros* has only two recognized species. Yet this family is commonly ignored in ecological studies and relatively few studies have been done on the general anatomy of these forms to come to meaningful conclusions regarding evolutionary trends and thereby their phylogenetic relationships (Edmondson 1944; Hochberg 2014; Hochberg *et al.* 2019; Meksuwan 2015; Meksuwan *et al.* 2013; Segers *et al.* 2010; Yang *et al.* 2019, 2021).

Unfortunately descriptions of the Collothecidae, especially in the morphology of lobes on the infundibulum and arrangement of cilia and/or setae on its margin, are inconsistent. Lobe morphology varies to such an extent that a definitive description covering all variations is nearly impossible. The issue of what constitutes a lobe presents a serious problem, at least in some species of *Collothea*. For example, in the species *Collothea edmondsoni* Bērziņš, 1951 there are three regions on the infundibular margin that possess setae, but these regions may not be recognized as lobes. Also definition and usage of the terms cilia and setae are inconsistent in the literature. In general we have retained the term(s) used by the original author; however, when the original descriptions are unclear, we use the terms cilia and setae to indicate short and long structures, respectively. Additionally, there has been no systematic study of the movements of the setae (Wright 1958).

Collothecaceans are raptorial and feed on a wide variety of prey, including diatoms, photosynthetic and colorless flagellates, dinoflagellates, ciliates, and rotifers (Bērziņš 1951; Bērziņš 1952; de Beauchamp 1912; Koste 1970; Valerio 1975; Wright 1958).

Diagnosis. Infundibulum bearing long setae and/or short cilia lining part or all of infundibular edge; infundibulum without lobes (the entire head lying within a single plane) or elaborated into lobes, bulbs, and/or tentacles (arms); these vary in number (0–7); mouth central; vestibulum present. Most sessile, but several planktonic species. Foot of sessile forms ending with an adhesive disk or peduncle. Tube, when present, a clear gelatinous matrix.

Stephanoceros Ehrenberg, 1832

The etymon of genus (G., *stephanos*, a crown) is an obvious reference to the shape of the anterior end. We follow Meksuwan *et al.* (2013) in recognizing two species in this genus, which may be distinguished based mainly on the shape of long lobes that project from their anterior end and the organization of their setae (cf. Koste 1978).

Diagnosis. Infundibulum of five, long, erect tentacles (lobes or arms) forming a basket, with short and long setae throughout the lobes, very long and radiating or set in numerous parallel rows along the length of each appendage. Adults sessile in tube of clear jelly with periodic ring-like constrictions; number of rings increasing with age. Lateral antennae minute. Foot = body length in young, but 2x body length in adult; peduncle short. Oviparous.

Dichotomous key to species of genus *Stephanoceros*

- 1 Setae on lobes in spiral fans; body length 1500–2500 µm; oviparous. (Fig. 3A) *fimbriatus* (Goldfuss, 1820)
[Information on the myo-anatomy and events during metamorphosis of *Stephanoceros* were presented by Hochberg and Hochberg (2017). Remane (1933) illustrated the growth of the gelatinous tube. Yang *et al.* (2021) provided information on the ultrastructure of the gelatinous secretions of this species and its congener. Gilbert (1993) reviewed literature that described regeneration in this species.]
- 1' Setae on lobes not in spiral fans; setae in two long rows, distally finer and longer; body length 800–1350 µm; oviparous. (Fig. 3B) *millsii* (Kellicott, 1885)
[Ciliation of *S. fimbriatus* is described and figured by Wright (1952) and Koste (1978) and that of *S. millsii* by Koste (1978).]

Atrochidae Bartoš, 1959

This small, enigmatic family comprises three monospecific genera (*Acyclus*, *Atrochus*, *Cupelopagis*). Only *Acyclus* possesses a gelatinous tube. Except for *Cupelopagis*, relatively little is known about the biology of these forms. All possess an infundibulum that is often relatively large and gaping. All possess interesting modes of feeding. *Acyclus* lives within colonies of *Sinantherina socialis* (Linnaeus, 1758) and occasionally *Lacinularia flosculosa*

(Flosculariidae), on whose ova and larvae it feeds. Lacking an attaching foot, *Atrochus* crawls slowly over the bottom and feeds on algae. Although sessile *Cupelopagis* is capable of tracking and orientating toward its animal and protistan prey by detecting vibrations in the water (Bevington *et al.* 1995). Atrochidae was separated from the family Collothecidae because of the atypical anterior end (Koste 1978). However, Koste suggests that the Atrochidae is an artificial grouping; its assignment is retained here as a matter of convenience and to emphasize the uncertain relationship of the three genera to the remaining Collothecacea.

The etymon of the family (G., a, *without* + G., *trochus*, wheel) emphasizes the lack of a ciliated corona, which is present in most Rotifera.

Diagnosis. Infundibulum variously shaped: large asymmetric bowl, or small with a dorsal hood-like lobe, or fringed with short, hollow, finger-like projections, but always lacking setae and cilia as adults. Vestibulum absent. Larvae resemble other Collothecacea: ciliated anterior end providing locomotion. Foot elongate and tapering, or a short thick stalk, or absent. Oviparous or ovoviviparous. Adults sessile with or without gelatinous tube or capable of limited locomotion (crawling).

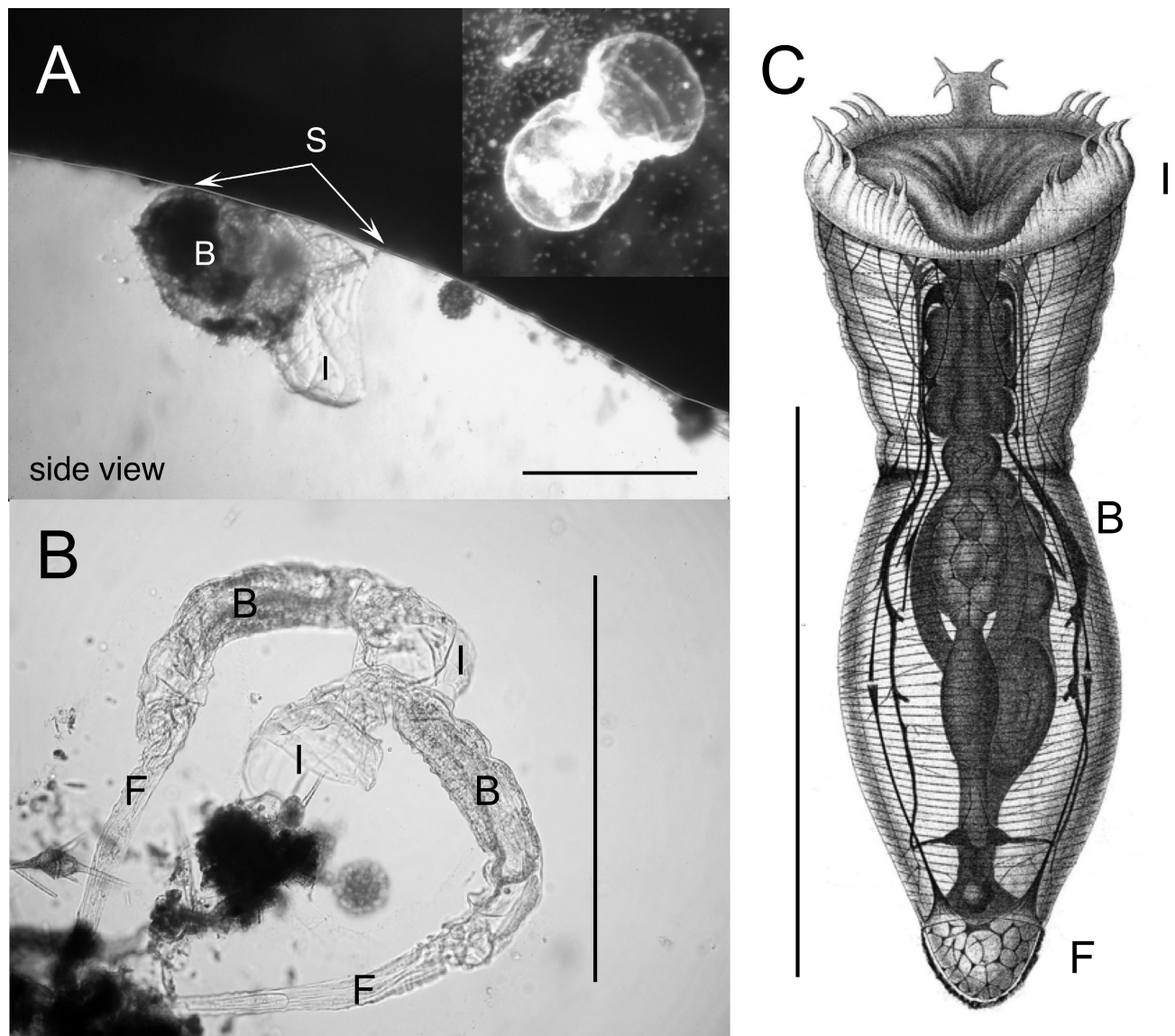


FIGURE 4. Three species in family Atrochidae. A. *Cupelopagis vorax* (Leidy, 1857), side view; insert dorsal view. B. Two individuals of *Acyclus inquietus* Leidy, 1882 removed from a colony of *S. socialis*. C. *Atrochus tentaculatus* Wierzejski, 1893. (C. After Wierzejski, 1893). Symbols: B = body; F = foot; I = infundibulum; G = gelatinous matrix; S = substratum. Bars ~1000 µm.

Dichotomous key to species of family Atrochidae

- 1 Infundibulum large, bowl-shaped, as wide as body width; body a slightly flattened spheroid; mouth (infundibulum) positioned parallel to substratum; sessile by a short, flexible centrally positioned, ventral foot; gelatinous tube absent; body size $\leq 1000\ \mu\text{m}$; ovoviviparous. (Fig. 4A) *Cupelopagis vorax* (Leidy, 1857)
[The morphology of this species is review by several workers including Cori (1925), Hünnerhoff (1931), Koste (1973), and Vasisht & Dawar (1968, 1969). Bevington *et al.* (1995) and Preze (2017) report studies on feeding.]
- 1' Infundibulum and body not as above; gelatinous tube present or absent; sessile or mobile; foot not a short stalk. 2
- 2(1) Infundibulum with long, prehensile dorsal lobe; transparent gelatinous tube; foot relatively short; sessile, often in colonies of *Sinantherina* and occasionally *Lacinularia* (Flosculariidae). Adult $\leq 1500\ \mu\text{m}$; oviparous. (Fig. 4B)
..... *Acyclus inquietus* Leidy, 1882
[*Acyclus* feeds on the ova and young of the colonial rotifers it inhabits. Hochberg *et al.* (2010) reported on the behavior, metamorphosis, and muscular anatomy of this species. An undescribed congener, reported from Thailand (Meksuwan *et al.* 2013), should be explored further.]
- 2' Infundibulum lacking long dorsal lobe, possessing finger-like projections (horny processes) on dorsal side; body elongate oval; tube absent; foot short and hemispherical in shape; 1200–1500 μm ; mobile (crawling), lying on surfaces; ovoviviparous. (Fig. 4C) *Atrochus tentaculatus* Wierzejski, 1893
[Additional work needs to be done on this enigmatic species; consult Koste *et al.* (1984) and Wierzejski (1893).]

Order Flosculariaceae Remane, 1933

Introduction

Flosculariaceae is a cosmopolitan group of five families (Conochilidae, Flosculariidae, Hexarthridae, Testudinellidae, and Trochosphaeridae); the later three are entirely planktonic and are not considered here. Adults of all Conochilidae and Flosculariidae possess four features. (1) They are illoricate, with elongate bodies, usually including a long slender foot and, in many, an elaborately contoured, ciliated corona. (2) While all Conochilidae secrete an indistinct, gelatinous matrix, the tubes of Flosculariidae are generally well-defined. They vary from gelatinous to elaborate structures comprising tubes (pipes) or pellet constructions. (3) Planktonic species are present in both, indeed all Conochilidae are planktonic. (4) Several genera exhibit some of inter- or intraspecific colony formation (Wallace 1987; Wallace *et al.* 2015).

As noted above the name for this order is in reference to the allusion to the flower-like form of the animals.

Dichotomous key to families of the Flosculariaceae

- 1 Adults planktonic, within a loose gelatinous matrix; colonies vary from 1 adult with ≥ 1 juveniles to > 300 individuals; trophi unique: asymmetrical unci, teeth of left uncus much longer than on the right **Conochilidae** Harring, 1913
- 1' Adults sessile, facultative sessile, or planktonic animals, usually within a tube of varied construction (gelatinous, pipes, or pellets); solitary or in intra- or inter-species colonies; trophi not as above, either symmetrical or asymmetrical, with teeth of right uncus much longer than on the left **Flosculariidae** Remane, 1933

Family Conochilidae Harring, 1913

Family Conochilidae was separated into two genera (*Conochilus* and *Conochiloides*) by Hlava (1904). However, Ruttner-Kolisko (1974) argued that the separation was not warranted and subsumed *Conochiloides* back into genus *Conochilus*. While this practice has continued (Fontaneto & De Smet 2015; Koste 1978), some workers have not followed this change (Bielańska-Grajner *et al.* 2015; Pontin 1978; Stemberger 1979). Segers & Wallace (2001) added *Conochilopsis* to the family; it comprises a single species, originally described as a member of the genus *Lacinularia* (Vidrine *et al.* 1985). Species secrete a gelatinous matrix that affords protection from the predatory rotifer *Asplanchna girodi* Guerne, 1888 (Gilbert 1980). In *Conochilus hippocrepis* (Schränk, 1803), colony size increases in diameter (number of individuals) in relation to the size of a sympatric predatory copepod (Diéguez and Balseiro 1998). The gelatinous matrix is often colonized by bacteria (including cyanobacteria), algae, and protozoans (Fig. 5) (Balvay & Druart 1995). Occasionally population crashes occur due to parasites invading the perivisceral cavity (blastocoel) (Ruttner-Kolisko 1977). Colonies tumble (rotate) while swimming.

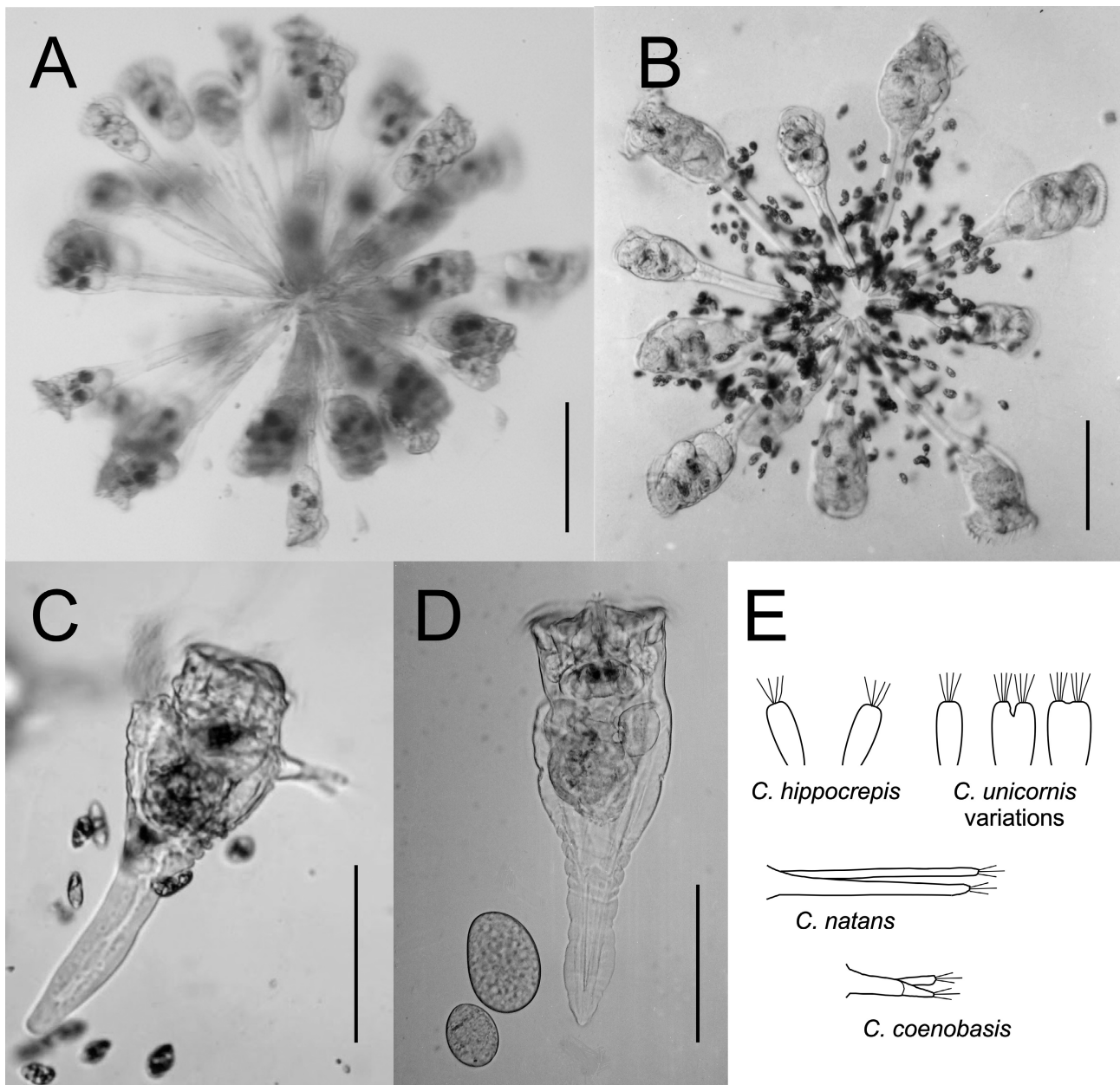


FIGURE 5. Species of Conochilidae. A. *Conochilus hippocrepis* (Schränk, 1803); B. *Conochilus unicornis* Rousselet, 1892; C. *Conochilus coenobasis* (Skorikov, 1914); D. *Conochilus exiguus* (Ahlström, 1938). This amphoteric female is evidenced by presence of a subitaneous embryo and a smaller male embryo. (The cone-lip is evident in C and D.) The foot in the variation of *C. unicornis* (*C. norvegicus*) is much longer (~4x) (see below). E. Examples of reported variation in the fusion of antennae in the *Conochilus*: consult Edmondson (1959) and Pejler (1956). Bars: 500 μ m (A,B); 100 μ m (C,D). (E. Redrawn from original art provided by W.T. Edmondson.)

The etymon for this genus (G., *cono*, a cone + G., *chilus*, a lip) was given by Ehrenberg (1834) because the apical field—the fleshy region surrounded by the corona—is inflated by two cone-shaped, lip-like structures located on either side of the mouth (Fig. 6). This structure appears to be depicted in individuals (2 of 7) in figure 3 of *Conochiloides* (*Lacinularia*) *causeyae* by Vidrine *et al.* (1985).

Diagnosis. Apical field with two inflated, cone-shaped, lip-like structures located centrally or dorsally. Corona circular to horseshoe-shaped, as a double ciliated band (trochus and cingulum) with a prominent ventral gap in the cilia present or not. Body shape conical; illoricate integument with unsegmented foot lacking toes. Paired ventral (lateral) antennae separate or fused to various degrees, within or below coronal field; dorsal antenna absent or

minute. Two dorsal eyes beneath corona. U-shaped intestine, anus exiting just above the margin of the gelatinous matrix. Trophi malleoramate: rami symmetrical or slightly to strongly asymmetrical; unci with 3–6 club-shaped (clavate) teeth near fulcrum, (number and form of clavate teeth may be different on each side); numerous, thin accessory teeth beyond clavate ones (distal to fulcrum). Planktonic, either solitary or small to large colonies (5 to >400 or more individuals per colony). Animals clustered within a gelatinous mass produced by glands in foot. Oviparous.

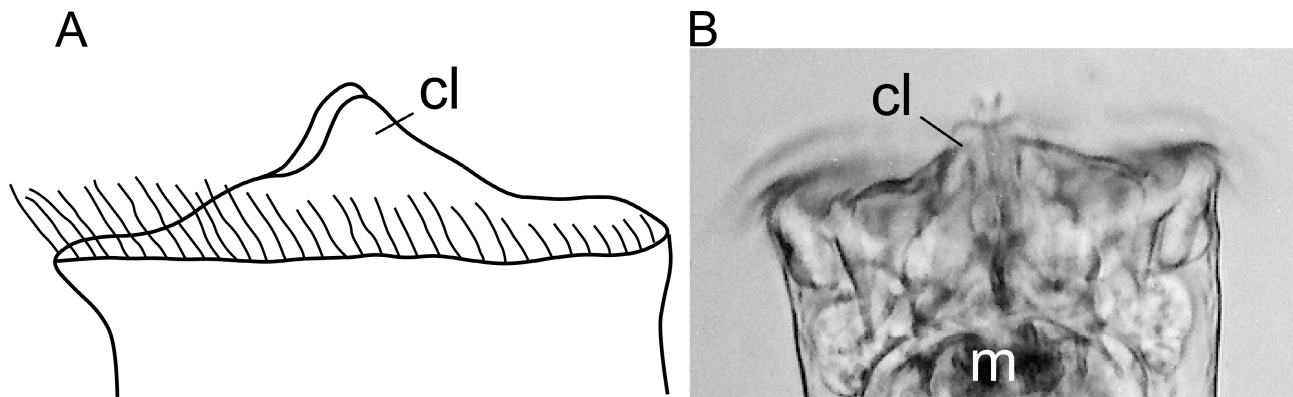


FIGURE 6. Cone-like lips that flank the mouth in Conochilidae. (A) Schematic lateral view. (B) Specimen *in vivo*. Symbols: cl = cone-lip; m = mastax.

Dichotomous key to species in family Conochilidae

- 1 Corona circular (not horseshoe-shaped) with prominent ventral gap absent; ventral (= lateral) antennae not within the corona; resting eggs with spiral furrow, but no hatching furrow evident; body length ~500 µm; monospecific genus *Conochilopsis causeyae* (Vidrine, McLaughlin, & Willis, 1985)
[Segers and Wallace (2001) described its trophi and reallocated it to a new genus in Conochilidae.]
- 1' Corona horseshoe-shaped with a prominent ventral gap 2
- 2(1') Ventral (= lateral) antennae within corona; colonies of several to many individuals; resting eggs not ornamented, but possess a hatching furrow; genus *Conochilus* (Fig. 5). 3
[Tropi for the two species in genus *Conochilus* were (SEM) are found in Segers & Wallace (2001).]
- 2' Ventral (= lateral) antennae not within corona; resting egg with spiral surface texture, but no hatching furrow evident; genus (*Conochiloides*) *Conochilus* 4
[Tropi for the four species in the former genus *Conochiloides* were drawn by Ahlstrom (1938); SEMs of the trophi for *C. dossuarius* and *C. natans* are shown in Segers and Wallace (2001).]
- 3(2) Antennae not fused; colonies of 30–100 individuals; total body length 400–850 µm (foot:body ratio, 2.2–2.4) *hippocrepis* (Schränk, 1803)
- 3' Antennae fused (except perhaps at distal end) into a single structure; small colonies (5–30 individuals) with total body length 200–450 µm and foot:body ratio, 1.2–1.7 or larger colonies (50–400 or more individuals) with total body length < 1300 µm (foot:body ratio 2.2–2.7). *unicornis* Rousselet, 1892
[Includes a form previously known as *Conochilus norvegicus* Burckhardt, 1943 that produces colonies often with large numbers of individuals possessing elongate bodies that may be the result of allometric growth (Edmondson 1959; Ruttner-Kolisko 1974). De Graaf (1953) provided information on the commensal protists that inhabit the gelatinous matrix and Yang *et al.* (2021) provided information on the ultrastructure of the secretions.]
- 4(2') Antennae not fused; rami symmetrical, with 5–6 large clavate teeth on each uncus; total body length 280–510 µm *natans* (Seligo, 1900)
- 4' Antennae at least partially fused; rami symmetrical or not; variable number of large clavate teeth on each uncus 5
- 5(4') Rami strikingly asymmetrical, one side almost triangular in shape, the other sub-rectangular; 5 clavate teeth on each uncus; total body length 280–500 µm *dossuarius* (Hudson, 1885)
- 5' Rami symmetrical or at least asymmetry scant 6
- 6(5') Unci with 3/3 teeth; total body length 200–250 µm. *coenobasis* (Skorikov, 1914)
[Amphoteric females are known in this species (Ruttner-Kolisko 1974).]
- 6' Unci with 4/5 teeth; total body length 170–190 µm. *exiguus* (Ahlstrom, 1938)
[An amphoteric female is shown in Fig. 5D.]

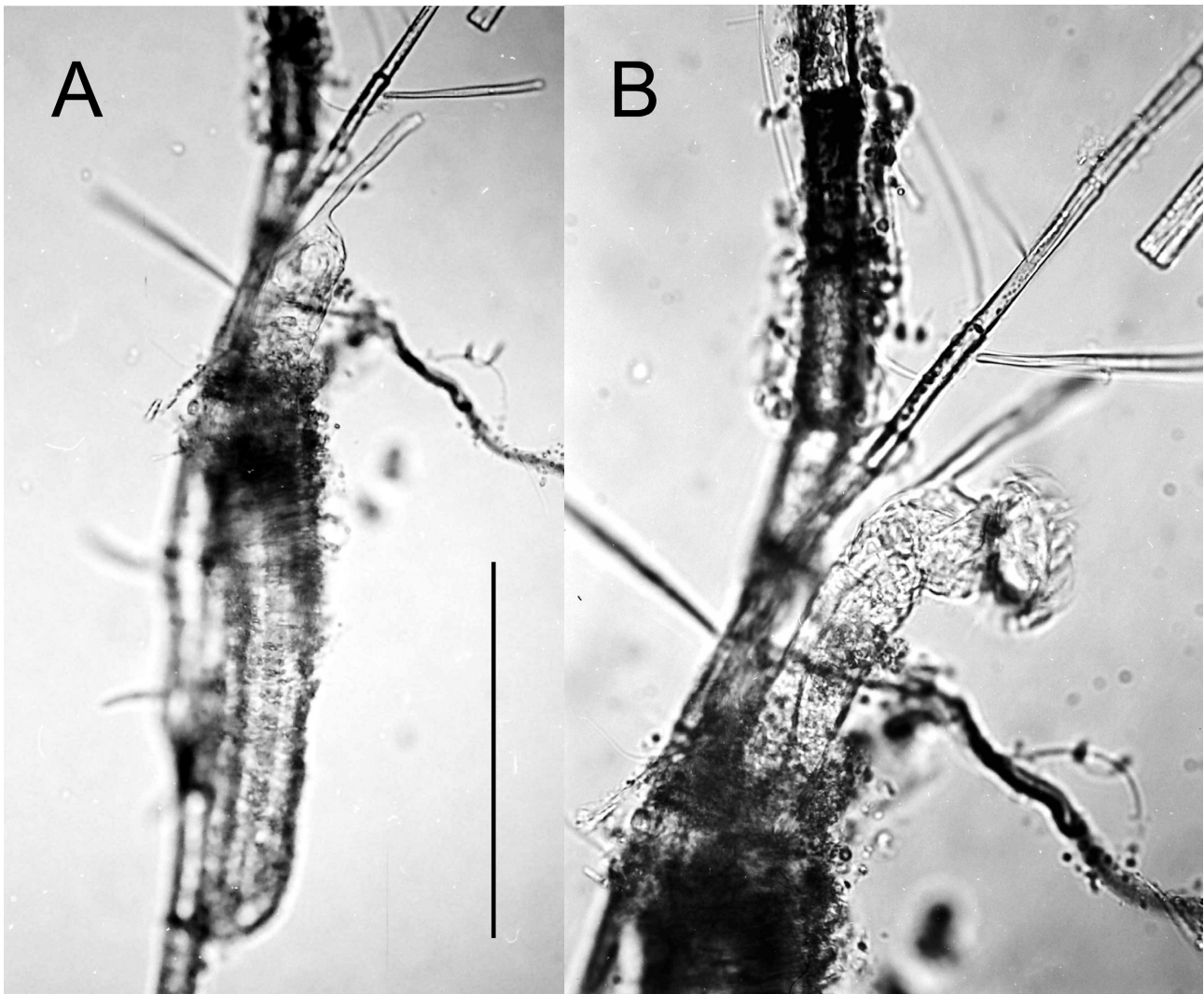


FIGURE 7. *Beauchampia crucigera* attached to filamentous algae. A. Corona retracted; B. corona expanded. Bar = 500 μ m.

Family Flosculariidae Remane, 1933

Flosculariidae is a cosmopolitan family comprising nine genera (*Beauchampia*, *Floscularia*, *Lacinularia*, *Lacinularioides*, *Limnias*, *Octotrocha*, *Pentatrocha*, *Ptygura*, *Sinantharina*) with approximately 60 named species and subspecies. The etymon of the family is as for the order.

Diagnosis. Symmetrical or asymmetrical, malleoramate trophi; typically with elongate bodies and large, circular (slightly elliptical) to lobate, heart-shaped, or ear-like corona. Animals live in a tube formed in various ways or in a secreted gelatinous matrix. They may be solitary or colonial: colonies may be intra- or interspecific. Mostly species are sessile, some are planktonic, two are facultatively sessile.

- | | | |
|------|---|---|
| 1 | Single dorsal antenna, visible when animal contracts, conspicuously long (> body width); gelatinous matrix embedded with debris; sessile; solitary; body length ≤ 1000 μ m; oviparous; monospecific (Fig. 7) | 1 |
| | <i>Beauchampia crucigera</i> (Dutrochet, 1812) | |
| 1' | Two dorsal antennae, not visible when animal contracts, not conspicuously long; gelatinous matrix present or absent | 2 |
| 2(1) | Adults with oviferon below anus | 3 |
| | [The oviferon, a specialized egg-bearing structure where eggs attach (Fig. 8) (Segers & Shiel 2008).] | |
| 2' | Adults without oviferon; gelatinous matrix or constructed tube present | 4 |
| 3(2) | Corona with five large lobes; transparent, amorphous, gelatinous matrix; sessile; typically solitary, occasionally small colonies (<3 animals); body length 3000–3500 μ m; oviparous; monospecific | |
| | <i>Pentatrocha gigantea</i> Segers & Shiel, 2008 | |
| | [Specimens of this monospecific genus were hatched from dry sediments of a temporary waterbody in Australia (Segers | |

and Shiel 2008). The original description provides illustrations of the adult and SEM photomicrographs of the trophi. Being extremely large and with a corona of five lobes *Pentatrocha* cannot be mistaken for *Sinantherina* or any other sessile rotifer (Meksuwan *et al.* 2011).]

- 3' Corona not as above (heart-shaped); gelatinous matrix is absent; sessile or planktonic; solitary or colonial; body length 750–2500 µm; oviparous. (Fig. 8) *Sinantherina* Bory de St. Vincent, 1826 [Three species possess bulbous structures called warts (Wallace *et al.* 2023) on their antero-ventral; one species has spines. Five species.]

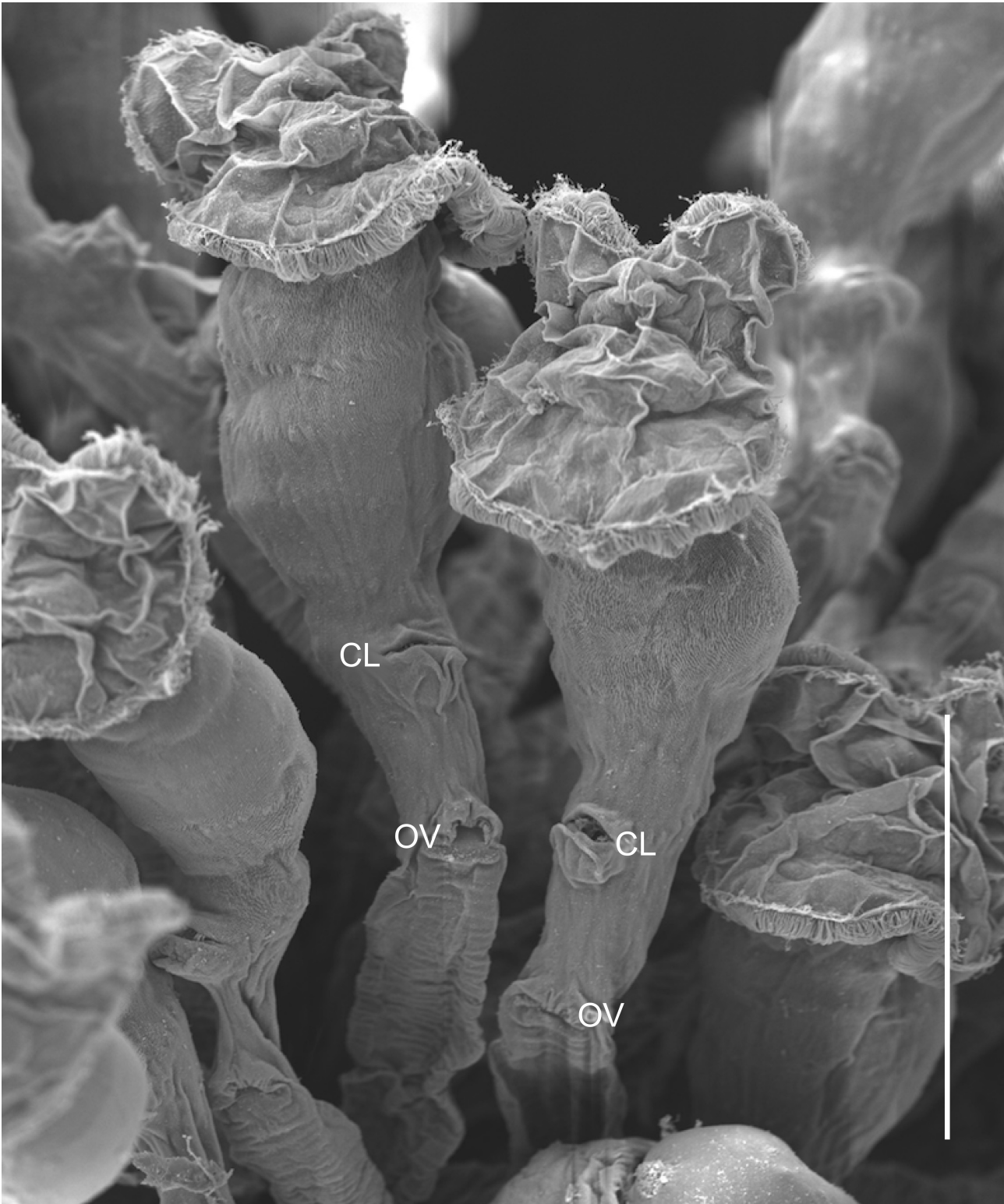


FIGURE 8. Scanning electron photomicrograph (SEM) of part of a colony of *Sinantherina socialis*. The two individuals in the center show the oviferon (OV) below the cloaca (CL). A gelatinous matrix is absent in this genus. (Bar ~ 250 µm.)

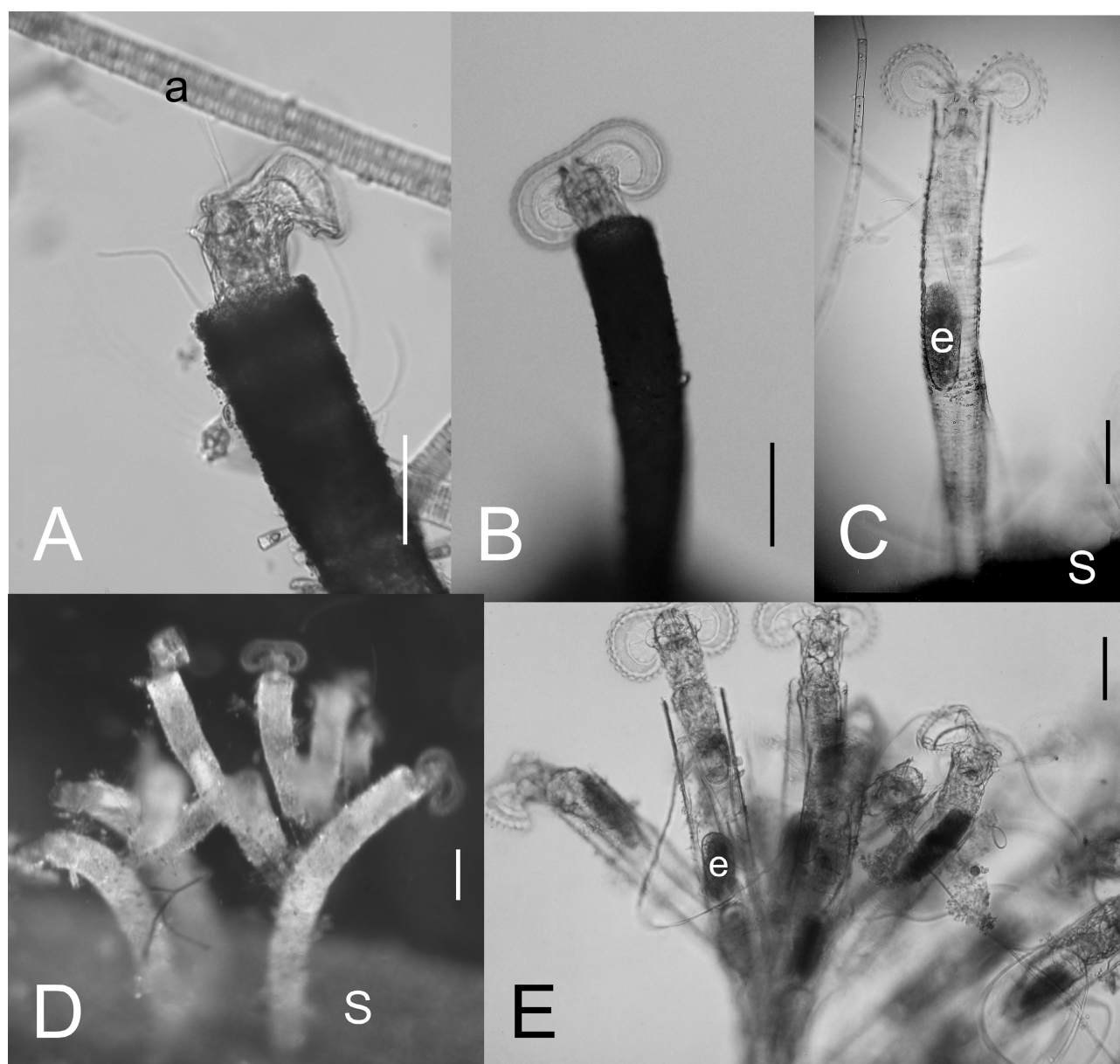


FIGURE 9. Examples of species in the genus *Limnias*: A-B. solitary *Limnias ceratophylli*-group; C. solitary *Limnias melicerta*-group; D. colonial *L. ceratophylli*-group; E. colonial *L. melicerta*-group. Symbols: a = algae; e = embryo; S = substratum. Bars ~ 100 μ m.

- 4(2') Adults in a flexible straight or slightly curved pipe of hardened secretions (either as a stack of semitransparent rings or granular, stucco-like and opaque); sessile; usually solitary (occasional small, branching, colonies, typically ≤ 15); body length ≤ 1000 μ m; oviparous. (Fig. 9)..... *Limnias* Schrank, 1803 [Corona width greater than height, with one pair of lobes; corona with wide dorsal gap and ventral depression. Two groups of *Limnias* are easily recognized by their tubes. (1) The *melicerta*-group (3 species) possess a tube with a ringed structure (Wright 1954; Yang & Hochberg 2018). (2) The *ceratophylli*-group (5 species) lacks rings, its tube resembles a stucco surface. Identification of species requires observations of the shape of the corona and the number and shape of outgrowths (horny processes or projections) on a dorsal plate just beneath the corona (Meksuwan *et al.* 2018). One species, *Limnias ceratophylli* Shrank, 1803 has been reported as epizoid on the Amazonian crocodile, *Melanosuchus niger* (Magnusson 1985). The etymon of this genus (*L.*, *limnos*, lake) apparently refers to the general habitat of these animals. Keys to species of *Limnias* are given by Meksuwan *et al.* (2018) and Wallace *et al.* (2018).]
- 4' Not as above..... 5
- 5(4) Corona with distinct lateral lobes..... 6
- 5' Corona without distinct lateral lobes..... 8

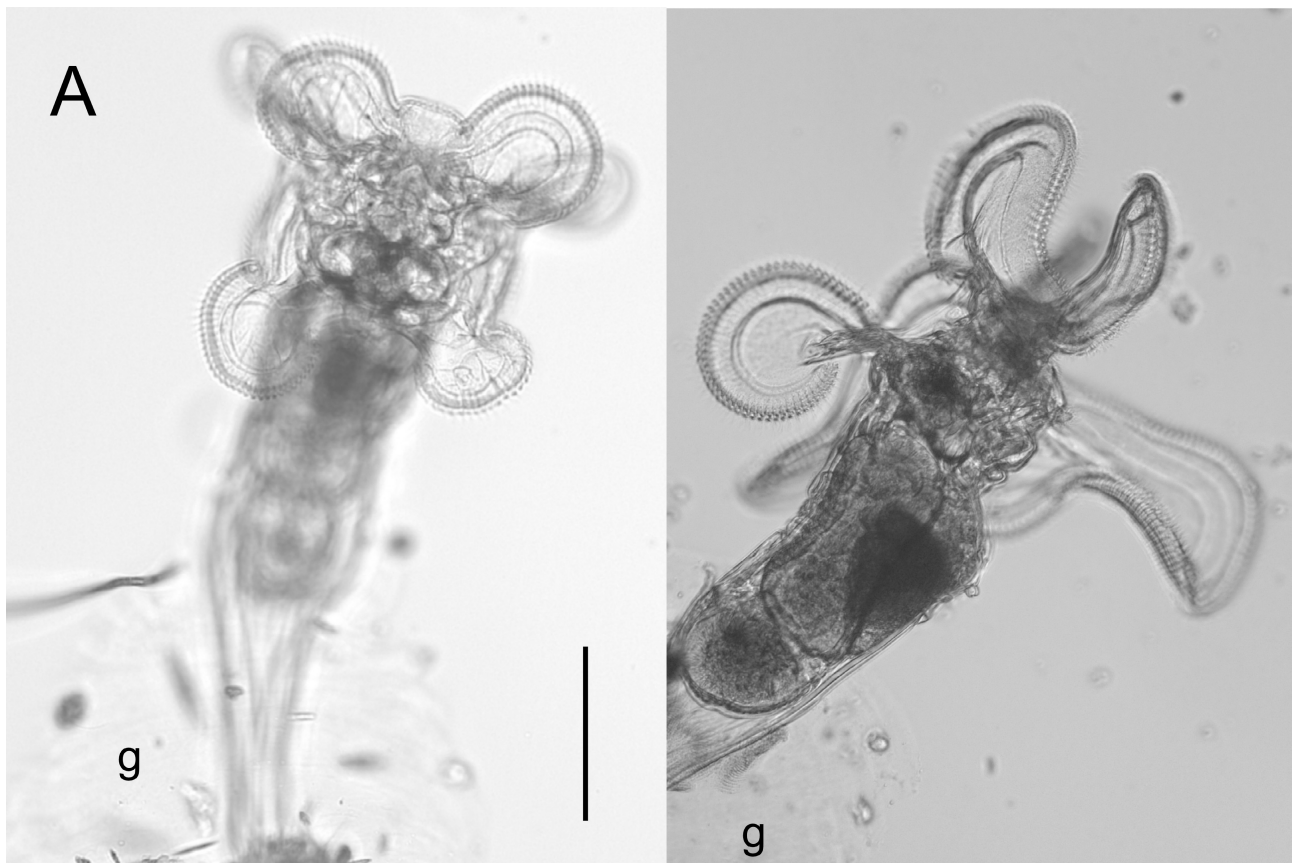


FIGURE 10. *Octotrocha speciosa*. A. dorsal view; B. partial side view which illustrates the elaborate coronal lobes. Symbol: g = gelatinous matrix (tube). Bar = 250 μ m.

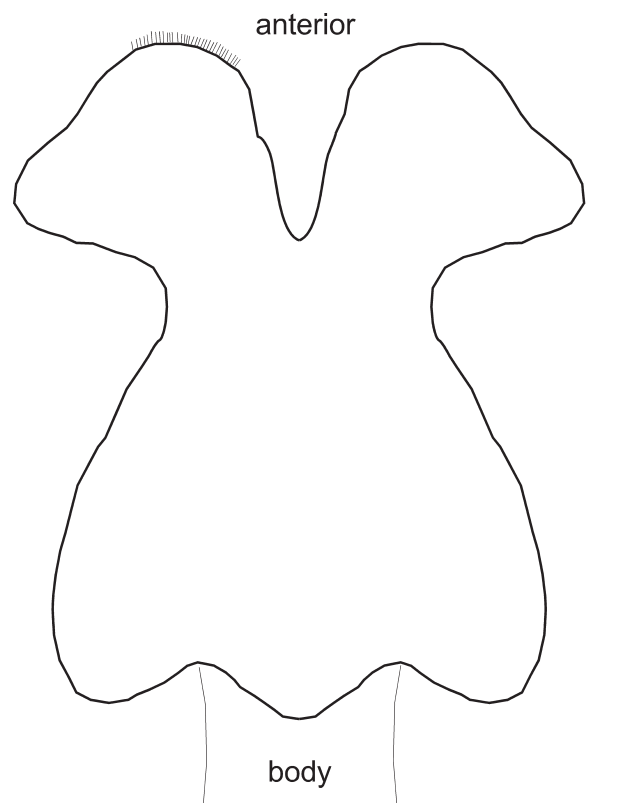


FIGURE 11. *Lacinularoides coloniensis*: schematic dorsal view of the corona. Ciliation is indicated for only a small portion of the coronal margin. Bar = 250 μ m. (Modified after Colledge, 1918).

- 6(5) Corona with four pairs of lateral lobes (= 8 lobes) one pair smaller; gelatinous tube; solitary; body length 1500–2000 µm; oviparous; monospecific. (Fig. 10). *Octotrocha speciosa* Thorpe, 1893
[Information on this monospecific genus is provided by Koste & Böttger (1989) and Segers & Shiel (2008).]
- 6' Corona otherwise 7
- 7(6) Corona with 7 lobes (2 small and 5 prominent lateral lobes); sessile in a tough gelatinous tube; solitary (stem female?) or colonial; foot long; body length ≤1300 µm; oviparous; monospecific. (Fig. 11) *Lacinularoides coloniensis* (Colledge, 1918)
[The corona resembles that of *Pentatrocha*, but this species lacks an oviferon; the corona is not as elaborate as in *Octotrocha*. The genus name was derived from the genus *Lacinularia*; a review of this monospecific genus was done by Meksuwan *et al.* (2011).]

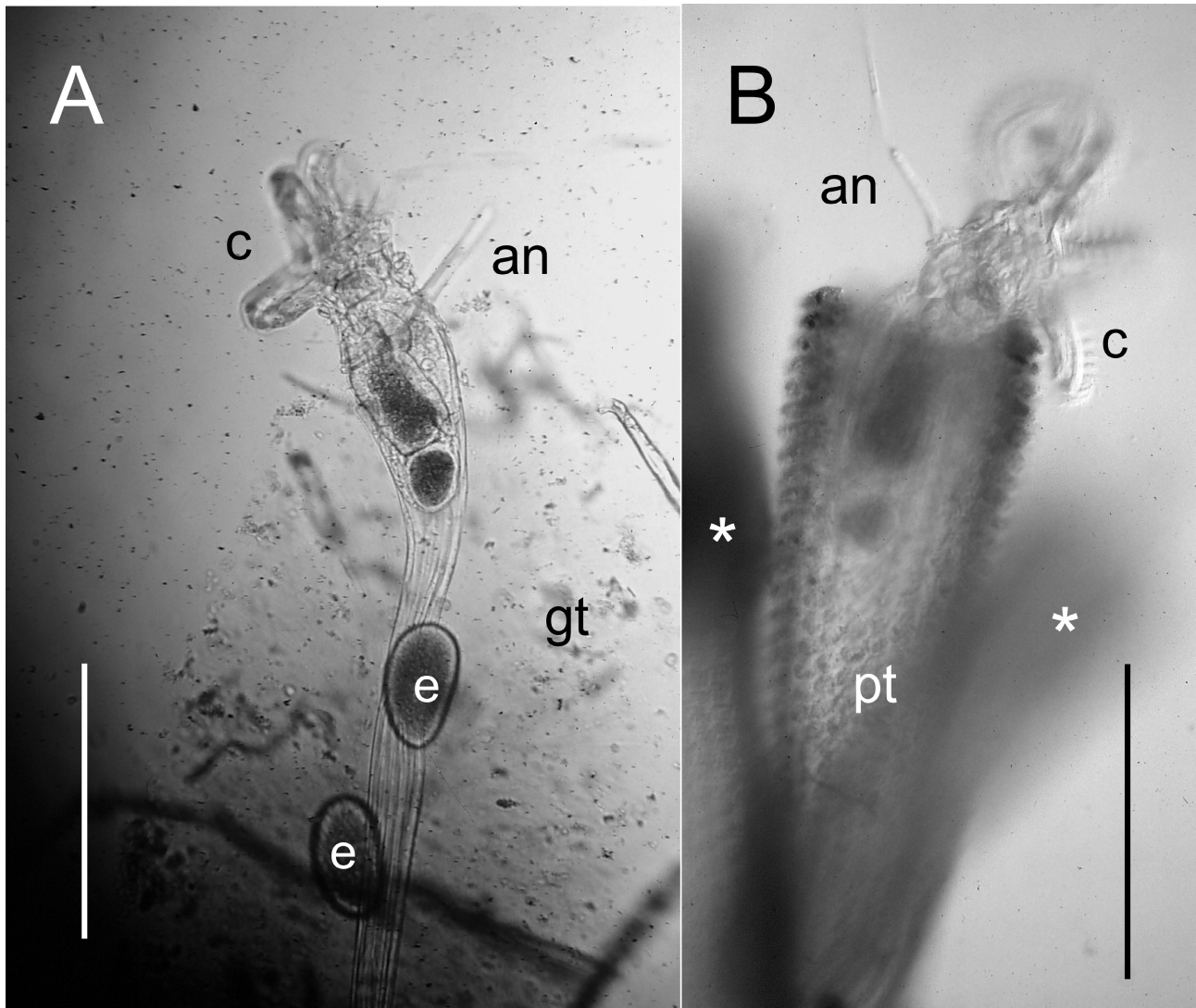


FIGURE 12. Examples of *Floscularia* species. A. *Floscularia melicerta* B. *F. Floscularia conifera* (lateral view). Symbols an = antennae; c = corona; e = embryo; gt = gelatinous tube; pt = pellet tube; * = colony mates (out of focus). Bars = 500 µm.

- 7' Corona with 4 lobes (2 pairs of distinct lateral lobes); sessile; solitary or colonial; tube composed of formed pellets, or gelatinous matrix; body length 500–2000 µm; oviparous. (Fig. 12). *Floscularia* Cuvier, 1798
[Two species (*Floscularia conifera* (Hudson, 1886) and *Floscularia ringens* (Linnaeus, 1758) are known to form allorecruitive colonies. Nine species.]
- 8(5') Corona round to slightly elliptical; animals in gelatinous matrix, often with debris (one species with fecal pellets in the matrix); usually solitary, occasionally in intra- or interspecific colonies; body length 200–1400 µm; oviparous. (Fig. 13) *Ptygura* Ehrenberg, 1832
The taxonomic history of *Ptygura* is complicated; the genus is in need of a comprehensive review (Meksuwan 2015). [30 species.]
- 8' Corona heart-shaped; animals embedded in common, flocculent gelatinous matrix; sessile or planktonic; usually colonial (usually < 200); body length 900–2000 µm; oviparous. (Fig. 14) *Lacinularia* Schweigger, 1820
[In field samples, colonies of 1000s of individuals have been seen (EJW, pers. obs. Seven species.)]

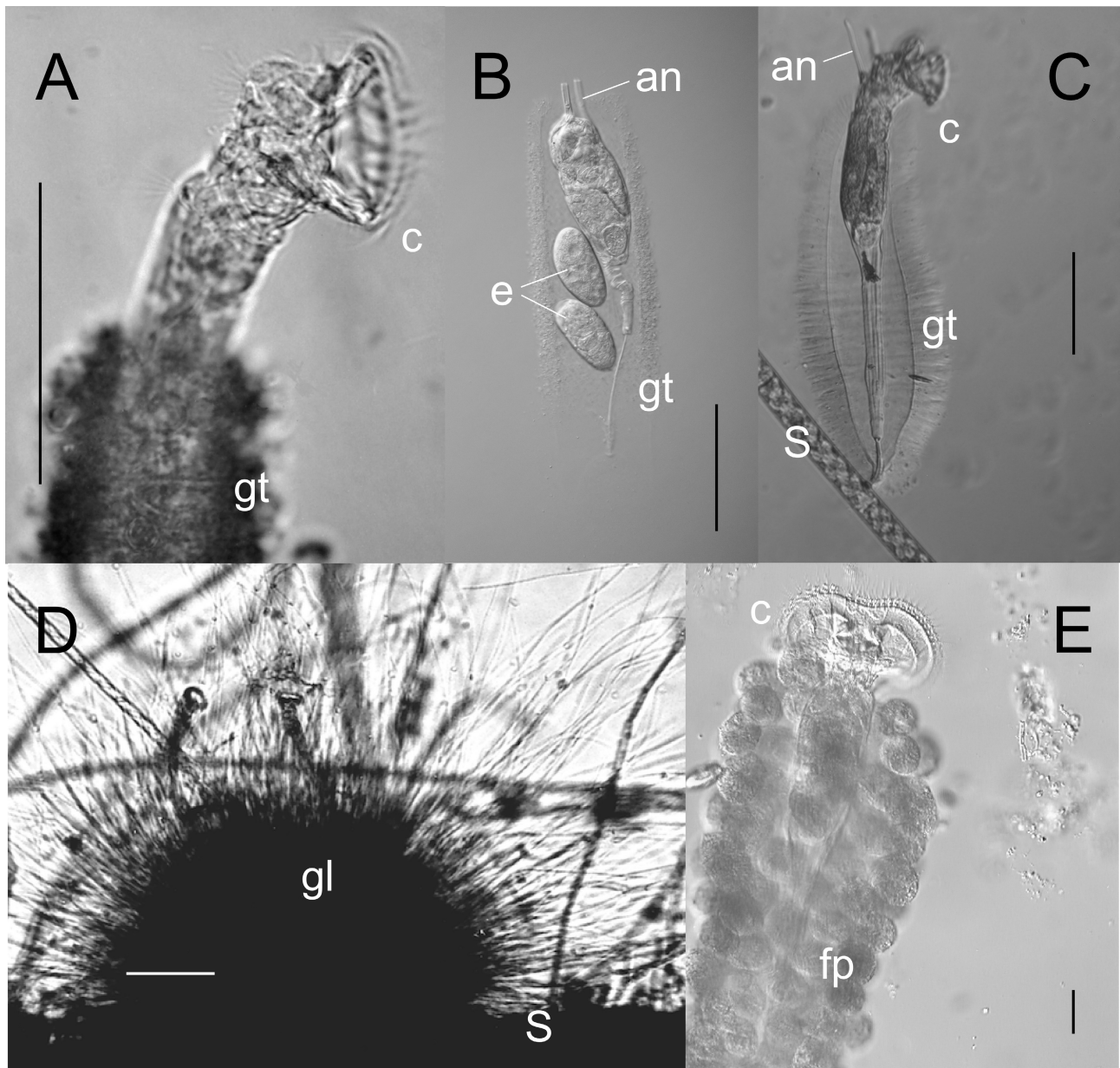


FIGURE 13. Examples of *Ptygura* species. A. *Ptygura beauchampi* Edmondson, 1940; B. *Ptygura libera* Myers, 1934; C. *Ptygura brachiata* (Hudson, 1886); D. *Ptygura mucicola* (Kellicott, 1889); E. *Ptygura pilula* (Cubitt, 1872). Symbols: an = antennae; c = corona; e = embryo; gt = gelatinous tube; fp = fecal pellets (embedded in gt); gl = *Gloeotrichia* sp. (cyanobacteria) attached to a vascular hydrophyte; S = substratum.. Bars = 100 μ m.

Declarations

Funding

This work was funded in part by several agencies including the National Science Foundation (RH: DEB 2051684; EJW: DEB 2051704; RLW: DEB 2051710) and Ripon College (funds for faculty development and the S.O.A.R. program).

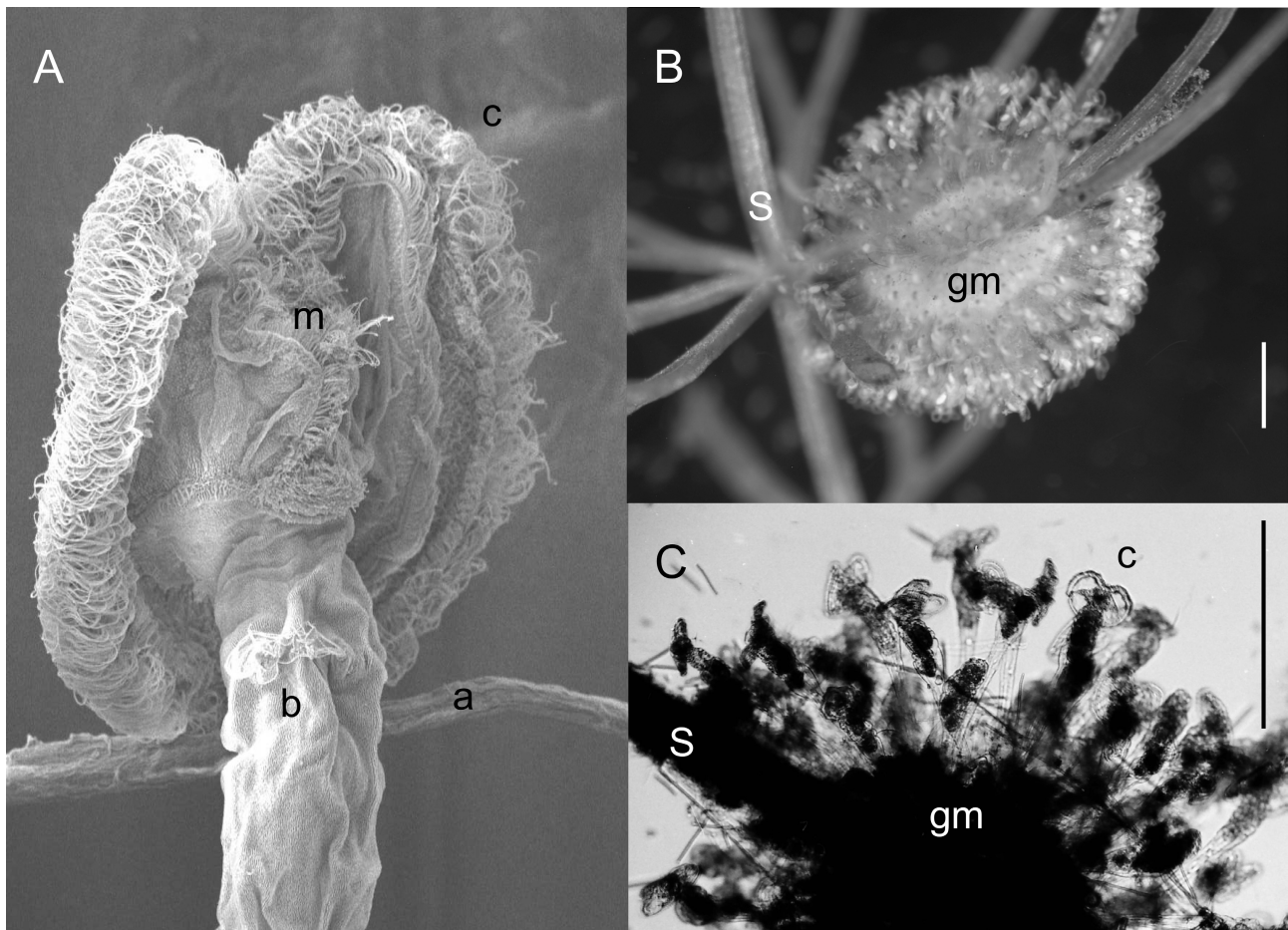


FIGURE 14. Examples of *Lacinularia*. A. SEM dorsal view; B. Complete colony attached to *Ceratophyllum demersum* Linnaeus, 1753; C. Closeup of a colony. Symbols: a = algal filament; b = body; c = corona; gm = gelatinous matrix (embryos are embedded within); m = mouth; S = substratum. Bars = 1,000 μ m.

Conflicts of interest/Competing interests

The authors have no conflicts of interest/competing interests. The sponsors had no role in the design, execution, interpretation, or writing of the study.

Availability of data and material

Not applicable

Code availability

Not applicable

Ethics Approval

No collecting permits were required for this study. None of the specimens that we collected are endangered or threatened. Sampling and processing protocols followed appropriate guidelines established by the local municipalities.

Authors' contributions

Conceptualization, R.L.W.; validation, N.D., A.L., R.L.W.; formal analysis, N.D., A.L., R.H., R.L.W., E.J.W.; investigation, N.D., A.L., R.L.W.; resources, R.L.W.; data curation, R.L.W.; preparation of the original draft, R.L.W.; writing, reviewing, and editing, N.D., A.L., R.H., R.L.W.; E.J.W.; project administration, R.L.W.; funding acquisition, R.H., R.L.W., E.J.W. All authors have read and agreed to the published version of the manuscript.

Acknowledgments

The authors the Ripon College librarians for their help in securing some of the more obscure works cited in this paper. RLW thanks Dr. John J. Gilbert for suggesting sessile rotifers as a topic for research and the late Dr. Thomas (Tommy) Edmondson for his encouragement to develop comprehensive keys to the sessile species and donation of his original artwork and documents on sessile rotifers. This work was funded in part by the National Science Foundation (RH: DEB 2051684; EJW: DEB 2051704; RLW: DEB 2051710) and Ripon College (funds for faculty development and the S.O.A.R. program).

Literature Cited

- Ahlstrom, E.H. (1938) Plankton Rotatoria from North Carolina. *Journal of the Elisha Mitchell Scientific Society*, 54, 88–110.
- Balvay, G. & Druart, J.-C (1995) Coexistence of *Conochilus unicornis* with *C. hippocrepis* in lake Geneva, and commensal organisms found in their gelatinous matrix. *Archives des sciences / editees par la Societe de physique et d'histoire naturelle de Geneve*, 48, 257–260.
- Bartoš, E. (1951) The Czechoslovak Rotatoria of the order Bdelloidea. *Vestník Československé Zoologické Společnosti*, 15, 241–500. [in Romanian]
- Bartoš, E. (1959) *Vířníci—Rotatoria. Vol. 15. Fauna ČSR*. Nakladatelství Československé Akademie Věd, Praha, 969 pp. [in Czech]
- Bērziņš, B. (1951) On the Collothecean Rotatoria with special reference to the species found in the Aneboda district, Sweden. *Arkiv für Zoologi*, 1, 565–592.
- Bērziņš, B. (1952) Notes on the feeding of some Rotifera. *Journal of the Quekett Microscopical Club*, Series 4, 3, 334–336.
- Bevington, D., White, C. & Wallace, R.L. (1995) Predatory behaviors of *Cupelopagis vorax* (Rotifera, Collotheceae; Atrochidae) on protozoan prey. *Hydrobiologia*, 313/314, 213–217.
<https://doi.org/10.1007/BF00025953>
- Bielńska-Grajner, I., Cudak, A. & Mieczan, T. (2011) Epiphytic rotifer abundance and diversity in moss patches in bogs and fens in the Polesie National Park (Eastern Poland). *International Review of Hydrobiology*, 96, 29–38.
<https://doi.org/10.1002/iroh.201011290>
- Bielńska-Grajner, I., Ejsmont-Karabin, J. & Radwan, S. (2015) *Rotifers (Rotifera): Freshwater Fauna of Poland. Vol. 32. Freshwater Fauna of Poland*. Jagiellonian University Press, Kraków, 580 pp.
- Bielńska-Grajner, I., Mieczan, T. & Cieplik, A. (2017) Ecology of moss-dwelling rotifers in a raised bog: Differentiation of rotifer communities in microhabitats. *Biologia*, 72, 175–183.
<https://doi.org/10.1515/biolog-2017-0014>
- Birky, C.W., Jr., Ricci, C., Melone, G. & Fontaneto, D. (2011) Integrating DNA and morphological taxonomy to describe diversity in poorly studied microscopic animals: new species of the genus *Abrochtha* Bryce, 1910 (Rotifera: Bdelloidea: Philodinavidae). *Zoological Journal of the Linnean Society*, 161, 723–734.
<https://doi.org/10.1111/j.1096-3642.2010.00674.x>
- Błędzki, L.A. & Ellison, A.M. (1998) Population growth and production of *Habrotrocha rosa* Donner (Rotifera: Bdelloidea) and its contribution to the nutrient supply of its host, the northern pitcher plant, *Sarracenia purpurea* L. (Sarraceniaceae). *Hydrobiologia*, 385, 193–200.
<https://doi.org/10.1023/A:1003566729588>
- Błędzki, L.A. & Ellison, A.M. (2003) Diversity of rotifers from northeastern U.S.A. bogs with new species records for North America and New England. *Hydrobiologia*, 497, 53–62.
- Braioni, M.G. & Gelmini, D. (1983) *Guide per il riconoscimento delle specie Animali delle acque interne Italiane. 23. Rotiferi Monogononti. Vol. 23*. Guide per il riconoscimento delle specie Animali delle acque interne Italiane. Consiglio Nazionale delle Ricerche, Verona. 180 pp. [in Italian]
- Brown, P.D., Schröder, T., Rios-Arana, J.V., Rico-Martinez, R., Silva-Briano, M., Wallace, R.L. & Walsh, E.J. (2022) Processes contributing to rotifer community assembly in shallow, temporary aridland waters. *Hydrobiologia*, 849, 3719–3735.
<https://doi.org/10.1007/s10750-022-04842-8>

- Brown, P.D., Schröder, T., Ríos-Arana, J.V., Rico-Martinez, R., Silva-Briano, M., Wallace, R.L. & Walsh, E.J. (2020) Patterns of rotifer diversity in the Chihuahuan Desert. *Diversity*, 12, 393.
<https://doi.org/10.3390/d12100393>
- Collin, A., Dieffenbach, H., Sachse, R. & Voigt, M. (1912) *Rotatoria und Gastrotricha. Vol. 14. Die Süßwasserfauna Deutschlands. Eine Exkursions Fauna*. Gustav Fischer, Jena, 273 pp. [in German]
- Cori, C.J. (1925) Zur Morphologie und Biologie van *Apsilus vorax* Leidy. *Zeitschrift für Wissensch Zoologie*, 125, 557–584. [in German]
- da Silva, N.J., Lansac-Tôha, F.M., Lansac-Tôha, F.A., Sales, P.C. & de Sousa Roche, J.D.R. (2021) Beta diversity patterns in zooplankton assemblages from a semiarid river ecosystem. *International Review of Hydrobiology*, 106, 29–40.
<https://doi.org/10.1002/iroh.201902018>
- Dartnall, H. (1983) Rotifers of the Antarctic and Subantarctic. *Hydrobiologia*, 104, 57–60.
https://doi.org/10.1007/978-94-009-7287-2_8
- Dartnall, H. (1995) The rotifers of Heard Island: preliminary survey, with notes on other freshwater groups. *Papers and Proceedings of the Royal of Tasmania*, 129, 7–15.
<https://doi.org/10.26749/rstpp.129.7>
- Dartnall, H. & Hollowday, E.D. (1985) *Antarctic rotifers. Vol. 100*. British Antarctic Survey. British Antarctic Survey., Cambridge, 46 pp.
- de Beauchamp, P. (1912) Rotifères communiqués par H. K. Haring et C. F. Rousselet: contributions a l'étude des Atrochidés. *Bulletin de la Société zoologique de France*, 37, 242–254. [in French]
- De Graaf, F. (1953) Commensal organisms in the colonies of *Conochilus unicornis* Rousselet with a note on *Phoridium mucicola* Huber et Naumann. *Hydrobiologia*, 5, 390–399.
<https://doi.org/10.1007/BF00018668>
- De Smet, W.H. (1993) Report on rotifers from Barentsøya, Svalbard (78°30'N). *Fauna Norvegica*, Series A, 14, 1–26.
- De Smet, W.H. (1996) *Rotifera. Vol. 4. The Proalidae (Monogononta). Guides to the Identification of the Microinvertebrates of the Continental Waters of the World. No. 9*. SPB Academic Publishing bv, Amsterdam, 102 pp.
- De Smet, W.H. & Bafort, J.M. (1990) Contributions to the rotifers of the Canadian High Arctic. 1. Monogonont rotifers from Little Cornwallis Island, Northwest Territories. *Naturaliste Canadienne*, 117, 253–261.
- De Smet, W.H. & Pourriot, R. (1997) *Rotifera. Vol. 5. The Dicranophoridae (Monogononta) and: The Ituridae (Monogononta). Guides to the Identification of the Microinvertebrates of the Continental Waters of the World. No. 12*. SPB Academic Publishing, Amsterdam, 344 pp.
- Devetter, M. (2010) A method for efficient extraction of rotifers (Rotifera) from soils. *Pedobiologia*, 53, 115–118.
<https://doi.org/10.1016/j.pedobi.2009.07.001>
- Devetter, M. & Frouz, J. (2011) Primary succession of soil rotifers in clays of brown coal post-mining dumps. *International Review of Hydrobiology*, 96, 164–174.
<https://doi.org/10.1002/iroh.201011251>
- Diéguez, M. & Balseiro, E. (1998) Colony size in *Conochilus hippocrepis*: defensive adaptation to predator size. *Hydrobiologia*, 387/388, 421–425.
<https://doi.org/10.1023/A:1017042610913>
- Edmondson, W.T. (1939) New species of Rotatoria, with notes on heterogonic growth. *Transactions of the American Microscopical Society*, 58, 459–472.
<https://doi.org/10.2307/3222788>
- Edmondson, W.T. (1940) The sessile Rotatoria of Wisconsin. *Transactions of the American Microscopical Society*, 59, 433–459.
<https://doi.org/10.2307/3222991>
- Edmondson, W.T. (1944) Ecological studies of sessile Rotatoria, Part I. Factors affecting distribution. *Ecological Monographs*, 14, 32–66.
<https://doi.org/10.2307/1961631>
- Edmondson, W.T. (1948) Rotatoria from Penikese Island, Massachusetts, with a description of *Ptygura agassizi* n. sp. *The Biological Bulletin*, 94, 263–266.
- Edmondson, W.T. (1959) Rotifera. In: Edmondson, W.T. (Ed.), *Freshwater Biology. 2nd Edition*. John Wiley & Sons, Inc., New York, New York, pp. 420–494.
- Ehrenberg, C.G. (1834) Dritter Beitrag zur Erkenntnis grosser Organisation in der Richtung des kleinsten Raumes. *Abhandlungen der Königlichen Akademie der Wissenschaften zu Berlin*, 145–336. [in German]
- Ejsmont-Karabin, J. & Karpowicz, M. (2021) Rotifera in lake subhabitats. *Aquatic Ecology*, 55, 1285–1296.
<https://doi.org/10.1007/s10452-020-09818-1>
- Fontaneto, D. & De Smet, W.H. (2015) Rotifera. In: Schmidt-Rhaesa, A. (Ed.), *Handbook of Zoology: Gastrotricha, Cycloneuralia and Gnathifera. Vol. 3. Gastrotricha and Gnathifera. Vol. 3*. De Gruyter, Berlin, pp. 217–300. [<http://www.degruyter.com/view/product/180465?format=G>]
- Fontaneto, D., De Smet, W.H. & Melone, G. (2008) Identification key to the genera of marine rotifers worldwide. *Meiofauna Marina*, 16, 75–99.
- Fontaneto, D., De Smet, W.H. & Ricci, C. (2006) Rotifers in saltwater environments, re-evaluation of an inconspicuous taxon.

- Franch, V. (2021) First record for the Palearctic region of a rare rotifer from the *Ptygura elsteri* group (Rotifera: Monogononta: Flosculariaceae: Flosculariidae) with description and biogeography of a new species: *Ptygura innominata* n. sp. *Biogeographia—The Journal of Integrative Biogeography*, 36, a012.
<https://doi.org/10.21426/b636052746>
- Gilbert, J.J. (1980) Observations on the susceptibility of some protists and rotifers to predation by *Asplanchna girodi*. *Hydrobiologia*, 73, 87–91.
https://doi.org/10.1007/978-94-009-9209-2_17
- Gilbert, J.J. (1993) Rotifera. In: Adiyodi, K.G. & Adiyodi, R.G. (Eds.), *Reproductive biology of invertebrates. Vol. VI. Part A*. Oxford & IBH Publishing Co., PVT. Ltd., New Delhi, 231–263 pp.
- Gribble, K.E. & Mark Welch, D.B. (2017) Genome-wide transcriptomics of aging in the rotifer *Brachionus manjavacas*, an emerging model system. *BMC Genomics*, 18, 217.
<https://doi.org/10.1186/s12864-017-3540-x>
- Gribble, K.E. & Snell, T.W. (2018) Rotifers as a model for the biology of aging. In: Ram, J.L. & Conn, P.M. (Eds.), *Conn's Handbook of Models for Human Aging*. Academic Press, London, pp. 483–495.
- Harring, H.K. (1913) A list of the Rotatoria of Washington and vicinity, with descriptions of a new genus and ten new species. *Proceedings of the United States National Museum*, 46, 387–405.
- Hlava, S. (1904) Einige Bemerkungen über die Exkretionsorgane der Rädertierfamilie Melicertidae und die Aufstellung eines neues Genus *Conochiloides*. *Zoologischer Anzeiger*, 27, 247–253. [in German]
- Hochberg, A. (2014) Comparative myoanatomy of collothecid rotifers (Rotifera: Gnesiotrocha: Collothecaceae) with details on larval metamorphosis and development of the infundibulum in species of *Stephanoceros*. University of Massachusetts at Lowell, Boston, Massachusetts, 98 pp.
- Hochberg, A. & Hochberg, R. (2017) Musculature of the sessile rotifer *Stephanoceros fimbriatus* (Rotifera: Gnesiotrocha: Collothecaceae) with details on larval metamorphosis and development of the infundibulum. *Zoologischer Anzeiger*, 268, 84–95.
<https://doi.org/10.1016/j.jcz.2016.09.002>
- Hochberg, R., O'Brien, S. & Puleo, A. (2010) Behavior, metamorphosis, and muscular organization of the predatory rotifer *Acyclus inquietus* (Rotifera, Monogononta). *Invertebrate Biology*, 129, 210–219.
<https://doi.org/10.1111/j.1744-7410.2010.00202.x>
- Hochberg, R., Yang, H., Hochberg, A., Walsh, E.J. & Wallace, R.L. (2019) When heads are not homologous: the coronae of larval and adult collothecid rotifers (Rotifera: Monogononta: Collothecaceae). *Hydrobiologia*, 844, 191–207.
<https://doi.org/10.1007/s10750-018-3760-3>
- Hünnerhoff, E. (1931) Über ein bisher unbekanntes Larvenorgan und die Regeneration bei dem Rädertier *Apsilus vorax*. *Zoologischer Anzeiger*, 92 (11/12), 327–332.
- Jersabek, C.D., De Smet, W.H., Hinz, C., Fontaneto, D., Hussey, C.G., Michaloudi, E., Wallace, R.L. & Segers, H. (2018) List of Available Names in Zoology, Candidate Part Phylum Rotifera, species-group names established before 1 January 2000. Available from: <https://archive.org/details/LANCandidatePartSpeciesRotifera> (accessed 21 August 2023)
- Jersabek, C.D. & Leitner, M.F. (2013) The Rotifer World Catalog. World Wide Web electronic publication. Available from: <http://www.rotifera.hausdernatur.at/Species/Index/222> (accessed 21 August 2023)
- José de Paggi, S., Wallace, R., Fontaneto, D. & Marinone, M.C. (2020) Phylum Rotifera. In: Damborenea, C., Thorp, J.H. & Rogers, D.C. (Eds.), *Thorp and Covich's freshwater invertebrates. Vol. 5. 4th Edition. Keys to Neotropical and Antarctic Fauna*. Elsevier, New York, New York, pp. 145–200.
<https://doi.org/10.1016/B978-0-12-804225-0.00008-3>
- Karpowicz, M., Kornijów, R. & Ejsmont-Karabin, J. (2023) Not a good place to live for most, but excellent for a few—Diversity of zooplankton in a shallow coastal ecosystem. *Sustainability*, 15, 2345.
<https://doi.org/10.3390/su15032345>
- Kordbacheh, A., Rahimian, H. & Fontaneto, D. (2023) Mechanisms of reproductive isolation among cryptic species in monogonont rotifers. *Hydrobiologia*, 850, 4705–4718.
<https://doi.org/10.1007/s10750-022-05131-0>
- Kordbacheh, A., Wallace, R.L. & Walsh, E.J. (2018) Evidence supporting cryptic species within two sessile microinvertebrates, *Limnias melicerta* and *L. ceratophylli* (Rotifera, Gnesiotrocha). *PLoS ONE*, 13, e0205203.
<https://doi.org/10.1371/journal.pone.0205203>
- Koste, W. (1970) Das Rädertiere-Porträt. *Collotheca trilobata*, ein seltenes sessiles Rädertier. *Mikrokosmos*, 59, 195–200. [in German]
- Koste, W. (1973) Das Rädertier-Porträt. Ein merkwürdiges festitzendes Rädertier: *Cupelopagis vorax*. *Mikrokosmos*, 62, 101–106. [in German]
- Koste, W. (1978) *Rotatoria. Die Rädertiere Mitteleuropas. 2 Vols.* Gebrüder Borntraeger, Stuttgart, 673 pp. (text), Tafel 234 pp. (tafel) [in German]
- Koste, W. & Böttger, K. (1989) Rotatorien aus Gewässern Ecuadors. *Amazoniana*, 10, 407–438. [in German]
- Koste, W., Robertson, B. & Hardy, E. (1984) Further taxonomical studies of the Rotifera from Lago Camaleão, a Central

- Amazonian varzea lake (Ilha de Marchantaria, Rio Solimões, Amazonas Brazil). *Amazonia*, 8, 555–576.
- Koste, W. & Shiel, R.J. (1986) New Rotifera (Aschelminthes) from Tasmania. *Transactions of the Royal Society of South Australia*, 109, 93–109.
- Kutikova, L.A. (1970) The rotifer fauna of USSR. *Keys of the fauna of USSR*, 104, 1–744. [in Russian]
- Lubzens, E., Tandler, A. & Minkoff, G. (1989) Rotifers as food in aquaculture. *Hydrobiologia*, 186/187, 387–400.
<https://doi.org/10.1007/bf00048937>
- Magnusson, W.E. (1985) Habitat selection, parasites and injuries in Amazonian crocodilians. *Amazoniana*, 9, 193–204.
- Marrone, F., Fontaneto, D. & Naselli-Flores, L. (2023) Cryptic diversity, niche displacement and our poor understanding of taxonomy and ecology of aquatic microorganisms. *Hydrobiologia*, 850, 1221–1236.
<https://doi.org/10.1007/s10750-022-04904-x>
- Meksuwan, P. (2015) Systematics and phylogeny of sessile rotifers (Rotifera, Monogononta, Gnesiotrocha). Prince of Songkla University, Hat Yai, 140 pp.
- Meksuwan, P., Jaturapruek, R. & Maiphae, S. (2018) Two new species of genus *Limnias* (Rotifera, Gnesiotrocha) from Thailand. *Zookeys*, 787, 1–15.
<https://doi.org/10.3897/zookeys.787.28098>
- Meksuwan, P., Pholpunthin, P. & Segers, H. (2011) Diversity of sessile rotifers (Gnesiotrocha, Monogononta, Rotifera) in Thale Noi Lake, Thailand. *Zootaxa*, 2997, 1–18.
- Meksuwan, P., Pholpunthin, P. & Segers, H. (2013) The Collothecidae (Rotifera, Collothecacea) of Thailand, with the description of a new species and an illustrated key to the Southeast Asian fauna. *ZooKeys*, 315, 1–16.
<https://doi.org/10.3897/zookeys.315.5330>
- Meksuwan, P., Pholpunthin, P. Segers, H. (2015) Molecular phylogeny confirms Conochilidae as ingroup of Flosculariidae (Rotifera, Gnesiotrocha). *Zoologica Scripta*, 44, 562–573.
<https://doi.org/10.1111/zsc.12114>
- Michaloudi, E., Papakostas, S., Stamou, G., Nedela, V., Tihlarikova, E., Zhang, W. & Declerck, S.A.J. (2018) Reverse taxonomy applied to the *Brachionus calyciflorus* cryptic species complex: Morphometric analysis confirms species delimitations revealed by molecular phylogenetic analysis and allows the (re)description of four species. *PLoS One*, 13, e0203168.
<https://doi.org/10.1371/journal.pone.0203168>
- Mills, S., Alcántara-Rodríguez, J.A., Ciro-Pérez, J., Gómez, A., Hagiwara, A., Galindo, K.H., Jersabek, C.D., Malekzadeh-Viaeh, R., Leasi, F., Lee, J.-S., Mark Welch, D.B., Papakostas, S., Riss, S., Segers, H., Serra, M., Shiel, R., Smolak, R., Snell, T.W., Stelzer, C.-P., Tang, C.Q., Wallace, R.L., Fontane, D. & Walsh, E.J. (2017) Fifteen species in one: deciphering the *Brachionus plicatilis* species complex (Rotifera, Monogononta) through DNA taxonomy. *Hydrobiologia*, 796, 39–58.
<https://doi.org/10.1007/s10750-016-2725-7>
- Neury-Ormanni, J., Vedrenne, J., Wagner, M., Jan, G. & Morin, S. (2019) Micro-meiofauna morphofunctional traits linked to trophic activity. *Hydrobiologia*, 847, 2725–2736,
<https://doi.org/10.1007/s10750-019-04120-0>
- Nogrady, T., Pourriot, R. & Segers, H. (1995) *Rotifera. Vol. 3. The Notommatidae and: The Scardiidae. Guides to the Identification of the Microinvertebrates of the Continental Waters of the World. No. 8.* SPB Academic Publishing, The Hague, 248 pp.
- Nogrady, T. & Segers, H. (Eds.) (2002) *Rotifera. Vol. 6. Asplanchnidae, Gastropodidae, Lindiidae, Microcodidae, Synchaetidae, Trochosphaeridae and Filinia.* Guides to the Identification of the Microinvertebrates of the Continental Waters of the World, No. 18. SPB Academic Publishers bv, The Hague. 264 pp.
- Nogrady, T., Wallace, R.L. & Snell, T.W. (1993) *Rotifera. Vol. 1. Biology, Ecology and Systematics. Guides to the Identification of the Microinvertebrates of the Continental Waters of the World. No. 4.* SPB Academic Publishing bv, The Hague, 142 pp.
- Obertegger, U. & Flaim, G. (2015) Community assembly of rotifers based on morphological traits. *Hydrobiologia*, 753, 31–45.
<https://doi.org/10.1007/s10750-015-2191-7>
- Örstan, A. (2020) Birdbath rotifers: masters of survival. *Quekett Bulletin*, 79, 14–16.
- Örstan, A. (2021) An extraordinary new fluvial bdelloid rotifer, *Coronistomus impossibilis* gen. nov., sp. nov., with adaptations for turbulent flow (Rotifera: Bdelloidea: Coronistomidae fam. nov.). *Zootaxa*, 4966 (1), 16–28.
<https://doi.org/10.11646/zootaxa.4966.1.2>
- Örstan, A. (2022) The monster in the garden: a new carnivorous bdelloid rotifer from a birdbath. *Quekett Journal of Microscopy*, 44, 179–187.
- Park, J.J.C., Kim, D.H., Kim, M.S., Sayed, A.E.D.H., Hagiwara, A., Hwang, U.K., Park, H.G. & Lee, J.S. (2022) Comparative genome analysis of the monogonont marine rotifer *Brachionus manjavacas* Australian strain: Potential application for ecotoxicology and environmental genomics. *Marine Pollution Bulletin*, 180, 113752.
<https://doi.org/10.1016/j.marpolbul.2022.113752>
- Pejler, B. (1956) Introgression in planktonic Rotatoria with some points of view on its causes and conceivable Results. *Evolution*, 10 (3), 246–261.
<https://doi.org/10.2307/2406010>
- Pontin, R.M. (1978) A key to British freshwater planktonic Rotifera. Freshwater Biological Association, Ambleside, 178 ppp.

- Pourriot, R. (1979) Rotifères du sol. *Revue d'Ecologie et de Biologie du Sol*, 16, 279–312. [in French]
- Preza, E. (2017) Predatory behavior and neuroanatomy of the sessile rotifer, *Cupelopagis vorax*. *Department of Biological Sciences*. The University of Texas at El Paso, El Paso, pp. 70
- Prowe, A.E.F., Su, B., Nejstgaard, J.C. & Schartau, M. (2022) Food web structure and intraguild predation affect ecosystem functioning in an established plankton model. *Limnology and Oceanography*, 67, 843–855.
<https://doi.org/10.1002/lno.12039>
- Remane, A. (1929–1933) Rotatoria. In: Grimpe, G. (Ed.), *Bronn's Klassen und Ordnungen des Tierreiches IV. (Vermes). 2 (Aschelminthes). I (Rotatorien, Gastrotrichen und Kinorhychen)*. Akademische Verlagsgesellschaft, Leipzig, pp. 1–448. [in German]
- Rudescu, L. (1960) Rotatoria. Vol. II. *Fuana Republicii Populare Romîne. Trochelminthes*. Editura Academiei Republicii Populare Romîne, Bucuresti, 1192 pp. [in Romanian]
- Ruttner-Kolisko, A. (1974) Planktonic rotifers: biology and taxonomy. *Die Binnengewässer Supplement*, 26, 1–146.
- Ruttner-Kolisko, A. (1977) The effect of the microsporid *Plistophora asperospora* on *Conochilus unicornis* in Lunzer Untersee (LUS). *Archiv für Hydrobiologie*, 8, 135–137.
- Schröder, T., Howard, S., Arroyo, L. & Walsh, E.J. (2007) Sexual reproduction and diapause of *Hexarthra* sp. (Rotifera) in short-lived Chihuahuan Desert ponds. *Freshwater Biology*, 52, 1033–1042.
<https://doi.org/10.1111/j.1365-2427.2007.01751.x>
- Sebestyén, O. (1957) Investigations on an epizoic *Collotheca* (Rotifera). *Annales Instituti Biologici Tihany*, 24, 183–192. [in Hungarian]
- Segers, H. (1995) Rotifera. Vol. 2. *The Lecanidae (Monogononta)*. *Guides to the Identification of the Microinvertebrates of the Continental Waters of the World, No. 6*. SPB Academic Publishing bv, Amsterdam, 226 pp.
- Segers, H. & Dumont, H.J. (1993) Zoogeography of Pacific Ocean islands: a comparison of the rotifer faunas of Easter Island and the Galapagos archipelago. *Hydrobiologia*, 255/256, 475–480.
https://doi.org/10.1007/978-94-011-1606-0_63
- Segers, H., Meksuwan, P. & Sanoamuang, L. (2010) New records of sessile rotifers (Phylum Rotifera: Flosculariacea, Collothecacea) from Southeast Asia. *Belgian Journal of Zoology*, 140, 235–240.
- Segers, H. & Shiel, R.J. (2008) Diversity of cryptic Metazoa in Australian freshwaters: a new genus and two new species of sessile rotifer (Rotifera, Monogononta, Gnesiotrocha, Flosculariidae). *Zootaxa*, 1750 (1), 19–31.
<https://doi.org/10.11646/zootaxa.1750.1.2>
- Segers, H. & Wallace, R.L. (2001) Phylogeny and classification of the Conochilidae (Rotifera, Monogononta, Flosculariacea). *Zoologica Scripta*, 30, 37–48.
<https://doi.org/10.1046/j.1463-6409.2001.00048.x>
- Shin, H., Sukumaran, V., Yeo, I.-C., Shim, K.-Y., Lee, S., Choi, H.-K., Ha, S.Y., Kim, M., Jung, J.-H., Lee, J.-S. & Jeong, C.-B. (2022) Phenotypic toxicity, oxidative response, and transcriptomic deregulation of the rotifer *Brachionus plicatilis* exposed to a toxic cocktail of tire-wear particle leachate. *Journal of Hazardous Materials*, 438, 129417.
<https://doi.org/10.1016/j.jhazmat.2022.129417>
- Snell, T.W., Johnston, R.K., Matthews, A.B., Park, N., Berry, S. & Brashear, J. (2019) Using *Proales similis* (Rotifera) for toxicity assessment in marine waters. *Environmental Toxicology*, 34, 634–644.
<https://doi.org/10.1002/tox.22729>
- Stemberger, R.S. (1979) *A guide to rotifers of the Laurentian Great Lakes*. US Environmental Protection Agency, Cincinnati, Ohio and National Technical Information Service (PB80-101280), Springfield, Virginia, 185 pp.
- Tiefenbacher, L. (1972) Beiträge zur Biologie und Ökologie sessiler Rotatorien unter besonder Berücksichtigung des Gehäusebaues und der Regenerationsfähigkeit. *Archiv für Hydrobiologie, Beiheft 71*, 31–78. [in German]
- Turgay, E., Steinum, T.M., Eryalcin, K.M., Yardimci, R.E. & Karatas, S. (2020) The influence of diet on the microbiota of live-feed rotifers (*Brachionus plicatilis*) used in commercial fish larviculture. *FEMS Microbiol Letters*, 367, fnaa020.
<https://doi.org/10.1093/femsle/fnaa020>
- Valerio, C.E. (1975) Mecanismos para la captura y selection del alimento en Rotiferos especializados. *Bremesia*, 5, 39–45. [in Spanish]
- Vasisht, H.S. & Dawar, B.L. (1968) The male of the rotifer *Cupelopagis vorax* (Leidy). *Current Science*, 37, 466–467.
- Vasisht, H.S. & Dawar, B.L. (1969) Anatomy and histology of the rotifer *Cupelopagis vorax* Leidy. *Research Bulletin of the Panjab University, New Series*, 20, 207–221.
- Vidrine, M.F., McLaughlin, R.E. & Willis, O.R. (1985) Free-swimming colonial rotifers (Monogononta: Flosculariacea: Flosculariidae) in Southwestern Louisiana rice fields. *Freshwater Invertebrate Biology*, 4, 187–193.
<https://doi.org/10.2307/1467160>
- Wallace, R.L. (1977) Distribution of sessile rotifers in an acid bog pond. *Archiv für Hydrobiologie*, 79, 478–505.
- Wallace, R.L. (1980) Ecology of sessile rotifers. *Hydrobiologia*, 73, 181–193.
<https://doi.org/10.1007/BF00019445>
- Wallace, R.L. (1987) Coloniality in the phylum Rotifera. *Hydrobiologia*, 147, 141–155.
<https://doi.org/10.1007/BF00025737>
- Wallace, R.L., Dash, K.M., Araujo, Q., Walsh, E.J., Das, S. & Hochberg, R. (2023) Ultrastructural characterization of the putative defensive glands (warts) in the sessile, colonial rotifer *Sinantherina socialis* (Gnesiotrocha; Flosculariidae). *Zoologischer*

- Anzeiger*, 304, 10–20.
<https://doi.org/10.1016/j.jcz.2023.03.001>
- Wallace, R.L. & Edmondson, W.T. (1986) Mechanism and adaptive significance of substrate selection by a sessile rotifer. *Ecology*, 67, 314–323.
<https://doi.org/10.2307/1938575>
- Wallace, R.L., Korbacheh, A. & Walsh, E.J. (2018) Key to the currently recognized species of *Limnias* Schrank, 1803 (Rotifera, Monogononta, Gnesiotrocha, Flosculariidae). *Zootaxa*, 4442 (2), 307–318.
<https://doi.org/10.11646/zootaxa.4442.2.7>
- Wallace, R.L., Snell, T., Walsh, E.J., Sarma, S.S.S. & Segers, H. (2016) Phylum Rotifera. In: Thorp, J.H. & Rogers, D.C. (Eds.), *Thorp and Covich's freshwater invertebrates, Keys to Nearctic fauna. Vol. 2. 4th Edition*. Elsevier, New York, New York, pp. 131–167.
<https://doi.org/10.1016/B978-0-12-385028-7.00008-1>
- Wallace, R.L. & Snell, T.W. (2010) Rotifera. In: Thorp, J. & Covich, A. (Eds.) *Ecology and Classification of North American Freshwater Invertebrates. 3rd Edition*. Elsevier, Inc, Amsterdam, pp. 173–235.
<https://doi.org/10.1016/B978-0-12-374855-3.00008-X>
- Wallace, R.L., Snell, T.W., Ricci, C. & Nogrady, T. (2006) *Rotifera. Vol. 1. Biology, Ecology and Systematics. 2nd Edition. Guides to the Identification of the Microinvertebrates of the Continental Waters of the World. No. 23*. Backhuys Publishers, Leiden, 299 pp.
- Wallace, R.L., Snell, T.W. & Smith, H.A. (2015) Phylum Rotifera. In: Thorp, J.H. & Rogers, D.C. (Eds.), *Thorp and Covich's Freshwater Invertebrates. Vol. I. Ecology and General Biology*. Elsevier, Waltham, Massachusetts, pp. 225–271.
<https://doi.org/10.1016/B978-0-12-385026-3.00013-9>
- Wallace, R.L., Snell, T.W., Walsh, E.J., Sarma, S.S.S. & Segers, H. (2019) Phylum Rotifera. In: Rogers, D.C. & Thrope, J. (Eds.), *Thorp and Covich's Freshwater Invertebrates. Vol. IV. Keys to the Palaearctic Fauna. Vol. IV*. Academic Press, London, pp. 219–267.
<https://doi.org/10.1016/b978-0-12-385024-9.00008-3>
- Walsh, E.J., Schröder, T., Wallace, R.L., Rios-Arana, J.V. & Rico-Martínez, R. (2008) Rotifers from selected inland saline waters in the Chihuahuan Desert of México. *Saline Systems*, 4, 7.
<https://doi.org/10.1186/1746-1448-4-7>
- Wang, Q., Feng, K., Du, X., Yuan, J., Liu, J. & Li, Z. (2022) Effects of land use and environmental gradients on the taxonomic and functional diversity of rotifer assemblages in lakes along the Yangtze River, China. *Ecological Indicators*, 142, 109199.
<https://doi.org/10.1016/j.ecolind.2022.109199>
- Wierzejski, A. (1893) *Atrochus tentaculatus* nov. gen. et sp. Ein Räderthier ohne Räderorgan. *Zeitschrift für Wissenschaftliche Zoologie*, 55, 696–712. [in German]
- Wright, H.G.S. (1949) A rare sessile rotifer, *Collotheca stephanochaeta*. *Journal of the Quekett Microscopical Club*, Series 4, 2, 339–341.
- Wright, H.G.S. (1952) Ciliation of *Stephanoceros fimbriatus* Goldfuss. *Journal of the Quekett Microscopical Club*, Series 4, 3, 361–366.
- Wright, H.G.S. (1954) The ringed tube of *Limnias melicerta* Weisse. *Microscopy*, 10, 13–19.
- Wright, H.G.S. (1958) Capture of food by collothecid Rotatoria. *Journal of the Quekett Microscopical Club*, Series 4, 4, 36–40.
- Yang, H. & Hochberg, R. (2018) Ultrastructure of the extracorporeal tube and “cement glands” in the sessile rotifer *Limnias melicerta* (Rotifera: Gnesiotrocha). *Zoomorphology*, 137, 1–12.
<https://doi.org/10.1007/s00435-017-0371-x>
- Yang, H., Hochberg, R., Walsh, E.J. & Wallace, R.L. (2019) Systematic distribution of birefringent bodies in Rotifera and first evidence of their ultrastructure in *Acyclus inquietus* (Gnesiotrocha: Collothecaceae). *Hydrobiologia*, 844, 209–219.
<https://doi.org/10.1007/s10750-018-3784-8>
- Yang, H., Hochberg, R., Walsh, E.J. & Wallace, R.L. (2021) Ultrastructure of the extracorporeal secretions of four sessile species of Rotifera (Gnesiotrocha) with observations on the chemistry of the gelatinous tube. *Invertebrate Biology*, 140, e12318.
<https://doi.org/10.1111/ivb.12318>