





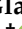


Correction

Correction: Garza-Lopez et al. Protocols for Generating Surfaces and Measuring 3D Organelle Morphology Using Amira. *Cells* 2022, 11, 65

Edgar Garza-Lopez ^{1,†}, Zer Vue ^{2,†}, Prasanna Katti ^{3,†} , Kit Neikirk ⁴, Michelle Biete ⁴ , Jacob Lam ⁵, Heather K. Beasley ^{2,6} , Andrea G. Marshall ², Taylor A. Rodman ², Trace A. Christensen ⁷, Jeffrey L. Salisbury ^{7,8}, Larry Vang ², Margaret Mungai ⁵, Salma AshShareef ⁵, Sandra A. Murray ⁹ , Jianqiang Shao ¹⁰, Jennifer Streeter ^{5,11}, Brian Glancy ³, Renata O. Pereira ^{5,11,*} , E. Dale Abel ^{5,11,*} , and Antentor Hinton, Jr. ^{1,2,*,‡} 

- ¹ Hinton and Garza Lopez Family Consulting Company, Iowa City, IA 52246, USA; egarzalopez@gmail.com
- ² Department of Molecular Physiology and Biophysics, Vanderbilt University, Nashville, TN 37232, USA; zer.vue@vanderbilt.edu (Z.V.); heather.k.beasley@vanderbilt.edu (H.K.B.); andrea.g.marshall@vanderbilt.edu (A.G.M.); tarabia0702@gmail.com (T.A.R.); vanglarry@gmail.com (L.V.)
- ³ National Heart, Lung, and Blood Institute, National Institutes of Health, Bethesda, MD 20892, USA; prasannakatti.katti@nih.gov (P.K.); brian.glancy@nih.gov (B.G.)
- ⁴ Department of Biology, University of Hawaii at Hilo, Hilo, HI 96720, USA; kneikirk@hawaii.edu (K.N.); mbiete@hawaii.edu (M.B.)
- ⁵ Department of Internal Medicine, Carver College of Medicine, University of Iowa, Iowa City, IA 52242, USA; jacob-lam@uiowa.edu (J.L.); margaretmungai24@gmail.com (M.M.); salma-ashshareef@uiowa.edu (S.A.); jennifer-streeter-1@uiowa.edu (J.S.)
- ⁶ Department of Biochemistry, Cancer Biology, Neuroscience and Pharmacology, School of Graduate Studies and Research, Meharry Medical College, Nashville, TN 37208, USA
- ⁷ Microscopy and Cell Analysis Core Facility, Mayo Clinic, Rochester, MN 55905, USA; christensen.trace@mayo.edu (T.A.C.); salisbury@mayo.edu (J.L.S.)
- ⁸ Department of Biochemistry and Molecular Biology, Mayo Clinic, Rochester, MN 55905, USA
- ⁹ Department of Cell Biology, School of Medicine, University of Pittsburgh, Pittsburgh, PA 52013, USA; smurray@pitt.edu
- ¹⁰ Central Microscopy Research Facility, University of Iowa, Iowa City, IA 52242, USA; jian-shao@uiowa.edu
- ¹¹ Fraternal Order of Eagles Diabetes Research Center, Iowa City, IA 52242, USA
- * Correspondence: renata-pereira@uiowa.edu (R.O.P.); drcadmin@uiowa.edu (E.D.A.); antentor.o.hinton.jr@vanderbilt.edu (A.H.J.)
- † These authors contributed equally to this work.
- ‡ These authors share senior authorship.



Citation: Garza-Lopez, E.; Vue, Z.; Katti, P.; Neikirk, K.; Biete, M.; Lam, J.; Beasley, H.K.; Marshall, A.G.; Rodman, T.A.; Christensen, T.A.; et al. Correction: Garza-Lopez et al.

Protocols for Generating Surfaces and Measuring 3D Organelle Morphology Using Amira. *Cells* 2022, 11, 65. *Cells* 2023, 12, 1356. <https://doi.org/10.3390/cells12101356>

Received: 28 March 2023

Accepted: 12 April 2023

Published: 10 May 2023



Copyright: © 2023 by the authors. Licensee MDPI, Basel, Switzerland. This article is an open access article distributed under the terms and conditions of the Creative Commons Attribution (CC BY) license (<https://creativecommons.org/licenses/by/4.0/>).

In the original publication [1], the legend of Figure 3 has the number “405” in the last sentence. This should be disregarded.

In Section 7.4, instead of “Other useful metrics are available in Amira that are not used here which include mitochondrial branching index and is calculated by the following equation: $SA^3/16\pi^2V^2$ [23]. Mitochondrial complexity measures the ratio between transverse and longitude tissue surrounding the mitochondria [23]”, it should read “Other useful metrics are available in Amira that are not used here, which include mitochondrial complexity index and is calculated by the following equation: $SA^3/16\pi^2V^2$ [23]. Mitochondrial branching index calculates the relative branching between the transverse and longitudinal mitochondrial orientations [23]”.

In Figure 1A,E and Figure 2A, the x- and y- dimensions currently read 10 nm by 10 nm, these should correctly read 10 μ m by 10 μ m.

The corrected Figures 1 and 2 appear below:

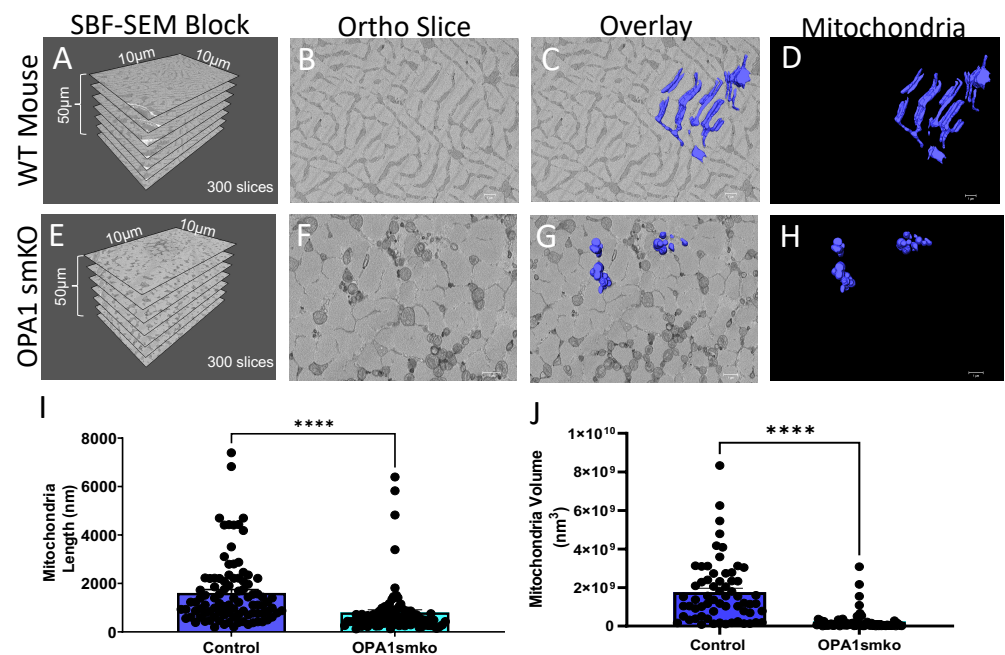


Figure 1. Skeletal muscle specific knockout of *OPA1* (*OPA1* smKO) in mouse leads to changes in mitochondrial morphology in the mouse. The 3D distribution of single continuous and stationary mitochondria (blue), reconstructed from serial block facing-scanning electron microscopy (SBF-SEM) image stacks of gastrocnemius muscle from *OPA1* smKO mouse (A–H). (A) The dimensions of the captured tissue in wild type mouse and (E) *OPA1* smKO, (B,F) along with an example ortho slice for each. (C) The overlay of the 3D surface rendering of mitochondria in a wild type mouse, on top of a representative ortho slice and (D) the 3D surface rendering of mitochondria alone. (G) The overlay of the 3D rendering of mitochondria in *OPA1* smKO, on top of a representative ortho slice and (H) the 3D surface rendering of mitochondria alone. (I,J) The 3D mitochondrial length and volume decreased (**** $p < 0.001$) upon *OPA1* smKO.

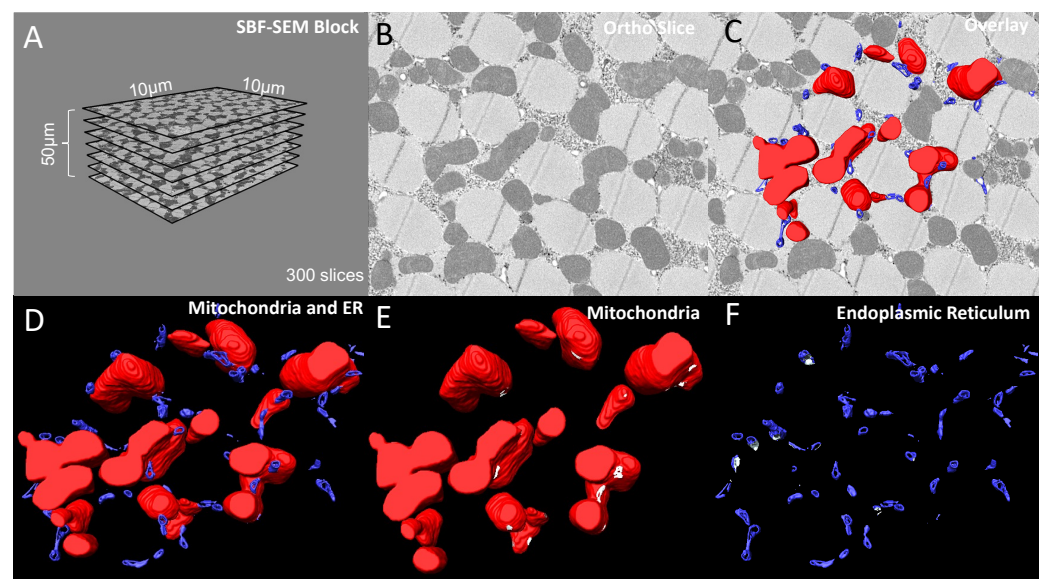


Figure 2. 6-panel presentation of 3D reconstruction images and ortho slices from wildtype *Drosophila* flight muscle. This figure is an example of how to present the ortho slices and the 3D reconstruction images. This example shows 3D reconstruction of several organelles in *Drosophila* flight muscle. (A) On the left, several representative ortho slices are presented. The dimensions and amounts of

ortho slices for data acquisition and conversion to 3D models are shown. **(B)** The raw image of an ortho slice. **(C–F)** Mitochondria are colored red, ER are colored blue, and MERCs are colored white. These data are best presented in several ways. **(C)** 3D reconstruction overlaid over the ortho image allows for better visualization of the specific structures in the ortho image that are reconstructed. **(D)** In contrast, the 3D reconstruction not overlaid on the ortho image allows for better visualization of interactions between the 3D structures. **(E,F)** Finally, Amira also allows for the graying out of specific structures such that only mitochondria or ER are shown in the 3D reconstruction. This is useful to view otherwise difficult to see areas including MERCs.

The authors apologize for any inconvenience caused and state that the scientific conclusions are unaffected. This correction was approved by the Academic Editor. The original publication has also been updated.

Reference

1. Garza-Lopez, E.; Vue, Z.; Katti, P.; Neikirk, K.; Biete, M.; Lam, J.; Beasley, H.K.; Marshall, A.G.; Rodman, T.A.; Christensen, T.A.; et al. Protocols for Generating Surfaces and Measuring 3D Organelle Morphology Using Amira. *Cells* **2022**, *11*, 65. [[CrossRef](#)] [[PubMed](#)]

Disclaimer/Publisher's Note: The statements, opinions and data contained in all publications are solely those of the individual author(s) and contributor(s) and not of MDPI and/or the editor(s). MDPI and/or the editor(s) disclaim responsibility for any injury to people or property resulting from any ideas, methods, instructions or products referred to in the content.