

Article

Remarks on Regularized Stokeslets in Slender Body Theory

Laurel Ohm 

Courant Institute of Mathematical Sciences, New York, NY 10012, USA; lo2083@cims.nyu.edu

Abstract: We remark on the use of regularized Stokeslets in the slender body theory (SBT) approximation of Stokes flow about a thin fiber of radius $\epsilon > 0$. Denoting the regularization parameter by δ , we consider regularized SBT based on the most common regularized Stokeslet plus a regularized doublet correction. Given sufficiently smooth force data along the filament, we derive L^∞ bounds for the difference between regularized SBT and its classical counterpart in terms of δ , ϵ , and the force data. We show that the regularized and classical expressions for the velocity of the filament itself differ by a term proportional to $\log(\delta/\epsilon)$; in particular, $\delta = \epsilon$ is necessary to avoid an $O(1)$ discrepancy between the theories. However, the flow at the surface of the fiber differs by an expression proportional to $\log(1 + \delta^2/\epsilon^2)$, and any choice of $\delta \propto \epsilon$ will result in an $O(1)$ discrepancy as $\epsilon \rightarrow 0$. Consequently, the flow around a slender fiber due to regularized SBT does not converge to the solution of the well-posed *slender body PDE* which classical SBT is known to approximate. Numerics verify this $O(1)$ discrepancy but also indicate that the difference may have little impact in practice.

Keywords: slender body theory; regularized Stokeslets; error analysis



Citation: Ohm, L. Remarks on Regularized Stokeslets in Slender Body Theory. *Fluids* **2021**, *6*, 283. <https://doi.org/10.3390/fluids6080283>

Academic Editors: Ricardo Cortez and Sarah D. Olson

Received: 6 July 2021
Accepted: 11 August 2021
Published: 14 August 2021

Publisher's Note: MDPI stays neutral with regard to jurisdictional claims in published maps and institutional affiliations.



Copyright: © 2021 by the author. Licensee MDPI, Basel, Switzerland. This article is an open access article distributed under the terms and conditions of the Creative Commons Attribution (CC BY) license (<https://creativecommons.org/licenses/by/4.0/>).

1. Introduction

The method of regularized Stokeslets was introduced by Cortez in [1] to eliminate the need to integrate a singular kernel in boundary integral methods for Stokes flow. Since then, regularized Stokeslets have enjoyed widespread use in models of general fluid–structure interaction [2–8]. The method of regularized Stokeslets has become especially popular for modeling the dynamics of thin fibers in a three-dimensional fluid, providing an alternative way to deal with the singular integrals arising in the classical slender body theories of Lighthill [9], Keller–Rubinow [10], and Johnson [11]. Slender body models based on regularized Stokeslets have found wide use in biophysical modeling applications [12–19] and have led to advances in numerical methods [20–24] as well as further modeling extensions [25–27].

In this paper we aim to compare slender body theory based on regularized Stokeslets [28] to its classical counterpart [9–11,29–31]. This type of question has been addressed previously in various forms. Some authors have studied the convergence of a single regularized Stokeslet to a singular Stokeslet in the far field and as the regularization parameter $\delta \rightarrow 0$ [32–34]. Others have considered regularized SBT specifically, as a line integral of either regularized Stokeslets [13] or regularized Stokeslets plus doublet corrections [28], and have explored the relation to classical SBT in terms of both the fiber radius ϵ and the regularization parameter δ . In particular, Cortez and Nicholas [28] used a matched asymptotic expansion of the regularized SBT velocity field at the filament surface to compare the regularized fiber velocity to the classical Lighthill [9] and Keller–Rubinow [10] slender body theories.

Here we consider the regularized SBT expression used in Cortez–Nicholas [28], but rather than comparing an asymptotic expansion of regularized SBT to classical SBT, we compare the direct evaluation of the regularized expression along the fiber centerline, which is more like what is used in practice. We also consider the fluid flow around the slender body generated by regularized SBT and compare this to classical SBT. Recently, classical slender body theory has been shown to approximate the solution to a well-posed

boundary value problem for Stokes flow around a slender 3D filament [35,36], placing the classical approximation on rigorous theoretical footing. We also aim to consider regularized SBT within this framework.

We show the following results. For the velocity of the fiber itself, while it is known that the regularization parameter δ should be chosen to be proportional to the fiber radius ϵ for highest accuracy, we show that in fact $\delta = \epsilon$ is necessary to achieve asymptotic agreement between regularized and classical SBT as $\epsilon \rightarrow 0$. However, the flow at the surface of the filament due to regularized SBT cannot be made to converge to the flow due to classical SBT for any choice of δ proportional to ϵ . An $O(1)$ difference in the force-per-unit-length at the fiber surface is also noted. As a consequence of this discrepancy, the flow around the filament due to regularized Stokeslets does not converge to the flow due to classical SBT as $\epsilon \rightarrow 0$. This discrepancy is perhaps not unexpected: since the leading order term of SBT blows up like $\log \epsilon$ as $\epsilon \rightarrow 0$, different methods designed to capture the leading order in ϵ may still differ by an $O(1)$ quantity. Part of the issue stems from balancing the effects of two small parameters, ϵ and δ , and trying to relate them in a physically meaningful yet practically useful way. This type of issue does not arise for regularized Stokeslets in 2D or over surfaces in 3D.

Finally, we verify the above differences numerically and provide numerical evidence that the small magnitude and extent of the discrepancy between regularized and classical SBT may mean that their difference is more of a moral issue than a practical one.

1.1. Classical Slender Body Theory and the Slender Body PDE

We begin with a precise definition of the slender body geometry considered here. We consider a closed, non-self-intersecting C^2 curve $\Gamma_0 \in \mathbb{R}^3$ whose coordinates are given by $\mathbf{X} : \mathbb{T} = \mathbb{R}/\mathbb{Z} \rightarrow \mathbb{R}^3$, where \mathbf{X} is parameterized by arclength s . The non-self-intersection requirement means that there exists a constant $c_\Gamma > 0$ such that

$$\inf_{s \neq s'} \frac{|\mathbf{X}(s) - \mathbf{X}(s')|}{|s - s'|} \geq c_\Gamma.$$

At each point along Γ_0 we define the unit tangent vector

$$\mathbf{e}_s(s) = \frac{d\mathbf{X}}{ds},$$

and consider the orthonormal frame $(\mathbf{e}_s(s), \mathbf{e}_{n_1}(s), \mathbf{e}_{n_2}(s))$ defined in [35], which satisfies the ODEs

$$\frac{d}{ds} \begin{pmatrix} \mathbf{e}_s(s) \\ \mathbf{e}_{n_1}(s) \\ \mathbf{e}_{n_2}(s) \end{pmatrix} = \begin{pmatrix} 0 & \kappa_1(s) & \kappa_2(s) \\ -\kappa_1(s) & 0 & \kappa_3 \\ -\kappa_2(s) & \kappa_3 & 0 \end{pmatrix} \begin{pmatrix} \mathbf{e}_s(s) \\ \mathbf{e}_{n_1}(s) \\ \mathbf{e}_{n_2}(s) \end{pmatrix}. \quad (1)$$

This frame is the periodic version of the Bishop frame [37] for free-ended curves, which is constructed by parallel transport of a choice of normal vectors along $\mathbf{X}(s)$, and for which $\kappa_3 = 0$. Here $\kappa_3, |\kappa_3| < \pi$, is a constant that may not necessarily be chosen to vanish and which serves to slowly rotate the pair $(\mathbf{e}_{n_1}(s), \mathbf{e}_{n_2}(s))$ along $\mathbf{X}(s)$ such that the frame is periodic in s . The coefficients $\kappa_1(s)$ and $\kappa_2(s)$ are related to the curvature $\kappa(s) = |\frac{d^2\mathbf{X}}{ds^2}|$ of Γ_0 via

$$\kappa(s) = \sqrt{\kappa_1^2(s) + \kappa_2^2(s)}.$$

We define

$$\kappa_{\max} = \max_{s \in \mathbb{T}} |\kappa(s)|.$$

We also define the following cylindrical unit vectors with respect to the orthonormal frame (1):

$$\mathbf{e}_\rho(s, \theta) = \cos \theta \mathbf{e}_{n_1}(s) + \sin \theta \mathbf{e}_{n_2}(s), \quad \mathbf{e}_\theta(s, \theta) = -\sin \theta \mathbf{e}_{n_1}(s) + \cos \theta \mathbf{e}_{n_2}(s). \quad (2)$$

We may then define the slender body Σ_ϵ and its surface Γ_ϵ as

$$\Sigma_\epsilon = \{\mathbf{x} \in \mathbb{R}^3 : \mathbf{x} = \mathbf{X}(s) + \rho \mathbf{e}_\rho(s, \theta), s \in \mathbb{T}, \rho < \epsilon\}; \quad \Gamma_\epsilon = \partial \Sigma_\epsilon = \mathbf{X}(s) + \epsilon \mathbf{e}_\rho(s, \theta).$$

Along the slender body surface Γ_ϵ we define the Jacobian factor

$$\mathcal{J}_\epsilon(s, \theta) = \left| \frac{\partial \Gamma_\epsilon}{\partial s} \times \frac{\partial \Gamma_\epsilon}{\partial \theta} \right| = \epsilon(1 - \epsilon \hat{\kappa}(s, \theta)), \quad (3)$$

$$\hat{\kappa}(s, \theta) := \kappa_1(s) \cos \theta + \kappa_2(s) \sin \theta. \quad (4)$$

We consider Σ_ϵ immersed in Stokes flow, where the fluid velocity $\mathbf{u}(\mathbf{x})$ and pressure $p(\mathbf{x})$ satisfy

$$\begin{aligned} -\mu \Delta \mathbf{u} + \nabla p &= 0, \\ \operatorname{div} \mathbf{u} &= 0 \quad \text{in } \Omega_\epsilon = \mathbb{R}^3 \setminus \overline{\Sigma_\epsilon}. \end{aligned}$$

Here μ is the fluid viscosity, which for convenience we will henceforth scale to $\mu = 1$.

The fundamental idea of slender body theory is to exploit the slenderness of the body to approximate the 3D fluid velocity about Σ_ϵ as the flow due to a 1D curve of point forces along Γ_0 . The most basic form of SBT, due to figures such as Hancock [38], Cox [39], and Batchelor [40], places a curve of *Stokeslets*, the free-space Green's function for the Stokes equations, along the centerline of the filament. In \mathbb{R}^3 , the Stokeslet is given by

$$\mathcal{S}(\mathbf{x}) = \frac{\mathbf{I}}{|\mathbf{x}|} + \frac{\mathbf{x}\mathbf{x}^T}{|\mathbf{x}|^3}. \quad (5)$$

For improved accuracy, other authors, including Keller and Rubinow [10], Lighthill [9], and Johnson [11], include higher order corrections to the Stokeslet to account for the finite radius of the fiber. The natural choice of correction, often known as the *doublet*, is given by the Laplacian of the Stokeslet:

$$\mathcal{D}(\mathbf{x}) = \frac{1}{2} \Delta \mathcal{S}(\mathbf{x}) = \frac{\mathbf{I}}{|\mathbf{x}|^3} - \frac{3\mathbf{x}\mathbf{x}^T}{|\mathbf{x}|^5}. \quad (6)$$

Combining the Stokeslet and doublet correction leads to the following approximation for the fluid velocity about the slender body:

$$\mathbf{u}^{\text{SB}}(\mathbf{x}) = \frac{1}{8\pi} \int_{\mathbb{T}} \left(\mathcal{S}(\mathbf{x} - \mathbf{X}(s')) + \frac{\epsilon^2}{2} \mathcal{D}(\mathbf{x} - \mathbf{X}(s')) \right) \mathbf{f}(s') ds'. \quad (7)$$

The doublet coefficient $\frac{\epsilon^2}{2}$ is chosen to cancel (to leading order in ϵ) the angular dependence of the velocity field (7) at the fiber surface Γ_ϵ , giving rise to an expression that to leading order depends only on arclength. Specifically, for $\mathbf{x} = \mathbf{X}(s) + \epsilon \mathbf{e}_\rho(s, \theta) \in \Gamma_\epsilon$, expression (7) satisfies [35,36]

$$\left| \frac{\partial \mathbf{u}^{\text{SB}}}{\partial \theta}(\mathbf{x}) \right| \leq C\epsilon |\log \epsilon| \|\mathbf{f}\|_{C^1(\mathbb{T})}. \quad (8)$$

This θ -independence is sometimes known as the *fiber integrity condition* [35,36] and ensures that cross sections of the slender body do not deform. In particular, the fiber integrity condition, enforced by including the doublet correction, serves to give the fiber a

3D structure that can be detected by the surrounding fluid velocity field. Throughout the paper we will refer to expression (7) as *classical slender body theory*.

One difficulty with the classical SBT expression (7) is that the Stokeslet \mathcal{S} and doublet \mathcal{D} are singular at $\mathbf{x} = \mathbf{X}(s)$, which raises the question of how to obtain a useful expression for the velocity of the fiber itself.

The most common method for obtaining a fiber velocity expression is to perform a matched asymptotic expansion of (7) about $\epsilon = 0$. The resulting expression, which we will denote by $\mathbf{u}_C^{\text{SB}}(\mathbf{X}(s))$ to emphasize that the integral kernel is distinct from (7), is given by

$$8\pi \mathbf{u}_C^{\text{SB}}(\mathbf{X}(s)) = [(\mathbf{I} - 3\mathbf{e}_s \mathbf{e}_s^T) - 2(\mathbf{I} + \mathbf{e}_s \mathbf{e}_s^T) \log(\pi\epsilon/4)] \mathbf{f}(s) + \int_{\mathbb{T}} \left[\left(\frac{\mathbf{I}}{|\bar{\mathbf{X}}|} + \frac{\bar{\mathbf{X}} \bar{\mathbf{X}}^T}{|\bar{\mathbf{X}}|^3} \right) \mathbf{f}(s') - \frac{\mathbf{I} + \mathbf{e}_s(s) \mathbf{e}_s(s)^T}{|\sin(\pi(s-s'))/\pi|} \mathbf{f}(s) \right] ds', \quad (9)$$

where $\bar{\mathbf{X}}(s, s') = \mathbf{X}(s) - \mathbf{X}(s')$. We refer to (9) as Keller–Rubinow SBT, as Keller and Rubinow [10] were the first to arrive at (the non-periodic version of) the expression (9), although they did so by slightly different means.

However, one well-documented issue with Keller–Rubinow SBT is that the form of the integral operator in (9) gives rise to high wavenumber instabilities [29–31,41]. Specifically, the eigenvalues of (9) are known to cross zero and switch signs at high frequency, which is nonphysical behavior and leads to noninvertibility of (9).

Various methods have been proposed to eliminate this high wavenumber instability in an asymptotically consistent way. One method, due to Shelley and Ueda [30] and Tornberg and Shelley [31], involves inserting a parameter proportional to the fiber radius into the integrand of (9) to regularize the integral kernel, leading to the fiber velocity expression

$$8\pi \mathbf{u}_C^{\text{SB}}(\mathbf{X}(s)) = [(\mathbf{I} - 3\mathbf{e}_s \mathbf{e}_s^T) - 2(\mathbf{I} + \mathbf{e}_s \mathbf{e}_s^T) \log(\pi\epsilon/4)] \mathbf{f}(s) + \int_{\mathbb{T}} \left[\frac{\mathbf{I} + \widehat{\bar{\mathbf{X}}} \widehat{\bar{\mathbf{X}}}^T}{(|\bar{\mathbf{X}}|^2 + \eta^2 \epsilon^2)^{1/2}} \mathbf{f}(s') - \frac{\mathbf{I} + \mathbf{e}_s(s) \mathbf{e}_s(s)^T}{(|\sin(\pi(s-s'))/\pi|^2 + \eta^2 \epsilon^2)^{1/2}} \mathbf{f}(s) \right] ds'. \quad (10)$$

Here $\widehat{\bar{\mathbf{X}}} = \bar{\mathbf{X}}/|\bar{\mathbf{X}}|$ and $\eta > \sqrt{\epsilon}$ is a parameter chosen such that the operator in (10) is (at least in simple geometries) positive definite. Note that via the integral identities

$$\int_{-1/2}^{1/2} \left(\frac{1}{|\sin(\pi s)/\pi|} - \frac{1}{|s|} \right) ds = 2 \log(4/\pi); \quad \left| \int_{-1/2}^{1/2} \frac{1}{\sqrt{s^2 + \eta^2 \epsilon^2}} ds + 2 \log(\eta\epsilon) \right| \leq C\epsilon^2,$$

the second term in the integrand of (10) may be integrated asymptotically to instead yield a local term with coefficient $+2 \log(\eta)$ in place of $-2 \log(\pi\epsilon/4)$.

More recently, Andersson et al. [42] proposed making use of the fiber integrity condition (8) along the fiber surface to simply eliminate all θ -dependent terms and obtain the following expression for the fiber velocity:

$$8\pi \mathbf{u}_C^{\text{SB}}(\mathbf{X}(s)) = 2 \log(\eta) \mathbf{f}(s) + \int_{\mathbb{T}} \left[\frac{\mathbf{I}}{(|\bar{\mathbf{X}}|^2 + \eta^2 \epsilon^2)^{1/2}} + \frac{\bar{\mathbf{X}} \bar{\mathbf{X}}^T}{(|\bar{\mathbf{X}}|^2 + \epsilon^2)^{3/2}} + \frac{\epsilon^2}{2} \left(\frac{\mathbf{I}}{(|\bar{\mathbf{X}}|^2 + \epsilon^2)^{3/2}} - \frac{3\bar{\mathbf{X}} \bar{\mathbf{X}}^T}{(|\bar{\mathbf{X}}|^2 + \epsilon^2)^{5/2}} \right) \right] \mathbf{f}(s') ds'. \quad (11)$$

Here the parameter $\eta \geq 1$ can be used to convert (11) to a second-kind integral equation, if desired.

For $\mathbf{x} = \mathbf{X}(s) + \epsilon \mathbf{e}_\rho(s, \theta) \in \Gamma_\epsilon$, each of (9)–(11) satisfy (see [35,36,42]):

$$\left| \mathbf{u}_C^{\text{SB}}(\mathbf{X}(s)) - \mathbf{u}^{\text{SB}}(\mathbf{x}) \right| \leq C\epsilon |\log \epsilon| \| \mathbf{f} \|_{C^1(\mathbb{T})}. \quad (12)$$

Moreover, classical SBT is known to closely approximate the velocity field about a 3D filament given by the solution to a well-posed *slender body PDE*, defined by Mori–Ohm–Spirn [35,36] as the following boundary value problem for the Stokes equations:

$$\begin{aligned} -\Delta \mathbf{u} + \nabla p &= 0, \quad \operatorname{div} \mathbf{u} = 0 \quad \text{in } \Omega_\epsilon = \mathbb{R}^3 \setminus \Sigma_\epsilon, \\ \int_0^{2\pi} (\boldsymbol{\sigma} \mathbf{n}) \mathcal{J}_\epsilon(s, \theta) d\theta &= \mathbf{f}(s) \quad \text{on } \Gamma_\epsilon, \\ \mathbf{u}|_{\Gamma_\epsilon} &= \mathbf{u}(s) \quad (\text{unknown but independent of } \theta), \\ |\mathbf{u}| &\rightarrow 0 \text{ as } |\mathbf{x}| \rightarrow \infty. \end{aligned} \quad (13)$$

Here $\boldsymbol{\sigma} = (\nabla \mathbf{u} + (\nabla \mathbf{u})^T) - p\mathbf{I}$ is the fluid stress tensor, $\mathbf{n}(\mathbf{x})$ is the unit normal vector directed into Σ_ϵ at $\mathbf{x} \in \Gamma_\epsilon$ and \mathcal{J}_ϵ is the Jacobian factor on Γ_ϵ defined in (3). In the slender body PDE formulation (13), the fiber integrity condition is strictly enforced as a partial Dirichlet boundary condition on the fiber surface. The prescribed 1D force density $\mathbf{f}(s)$ is defined to be the total surface stress over each cross section of the slender body.

One reason that the slender body PDE is a physically meaningful framework in which to place SBT is the following energy identity satisfied by solutions to (13):

$$\int_{\Omega_\epsilon} 2|\mathcal{E}(\mathbf{u})|^2 d\mathbf{x} = \int_{\mathbb{T}} \mathbf{u}(s) \mathbf{f}(s) ds, \quad \mathcal{E}(\mathbf{u}) = \frac{\nabla \mathbf{u} + (\nabla \mathbf{u})^T}{2}. \quad (14)$$

Here the viscous dissipation (left hand side) balances the power (right hand side) exerted by the slender filament on the fluid. This identity arises naturally in describing a swimming body in Stokes flow [43].

In [35,36], it is shown that the difference between the velocity field $\mathbf{u}^{\text{SB}}(\mathbf{x})$ given by classical SBT (7) and the solution $\mathbf{u}(\mathbf{x})$ to (13) satisfies

$$\|\mathbf{u}^{\text{SB}} - \mathbf{u}\|_{L^2(\Omega_\epsilon)} \leq C\epsilon |\log \epsilon| \|\mathbf{f}\|_{C^1(\mathbb{T})}. \quad (15)$$

Furthermore, the fiber velocity expressions given by any of (9)–(11) satisfy

$$\|\mathbf{u}_C^{\text{SB}} - \mathbf{u}|_{\Gamma_\epsilon}\|_{L^2(\mathbb{T})} \leq C\epsilon |\log \epsilon|^{3/2} \|\mathbf{f}\|_{C^1(\mathbb{T})}. \quad (16)$$

1.2. Method of Regularized Stokeslets

A different approach to addressing the difficulties associated with the singular kernel arising in classical SBT and, more broadly, in boundary integral methods for Stokes flow, is the method of regularized Stokeslets, developed by Cortez in [1] with additional developments in [2,4,28].

Instead of singular Stokeslets (5), the method relies on regularized Stokeslets, which are derived by solving the Stokes equations in \mathbb{R}^3 with a smooth right hand side forcing:

$$\begin{aligned} -\Delta \mathbf{v} + \nabla q &= \mathbf{f} \phi_\delta(\mathbf{x}) \\ \operatorname{div} \mathbf{v} &= 0. \end{aligned} \quad (17)$$

Here ϕ_δ is an approximation to the identity, or *blob function*, whose width is controlled by the parameter δ , i.e.,

$$\phi_\delta(\mathbf{x}) = \frac{1}{\delta^3} \phi\left(\frac{\mathbf{x}}{\delta}\right); \quad \int_{\mathbb{R}^3} \phi_\delta(\mathbf{x}) d\mathbf{x} = 1, \quad \lim_{\delta \rightarrow 0} \phi_\delta(\mathbf{x}) = \delta(\mathbf{x}). \quad (18)$$

Here we use boldface δ to denote the Dirac delta rather than the parameter δ . The blob function ϕ_δ can be compactly supported or not, and is not required to be strictly positive [33,34]. For any such ϕ_δ , the solution to (17) may be written as $\mathbf{v} = \frac{1}{8\pi} \mathcal{S}_\delta(\mathbf{x}) \mathbf{f}$, where $\mathcal{S}_\delta(\mathbf{x})$ is known as a regularized Stokeslet and is smooth everywhere in \mathbb{R}^3 .

One of the most common choices of ϕ_δ is

$$\phi_\delta(\mathbf{x}) = \frac{15\delta^4}{8\pi(|\mathbf{x}|^2 + \delta^2)^{7/2}}, \quad (19)$$

because this gives rise to a simple, easy-to-use regularized Stokeslet that looks very similar to the singular Stokeslet (5):

$$\mathcal{S}_\delta(\mathbf{x}) = \frac{\mathbf{I}}{(|\mathbf{x}|^2 + \delta^2)^{1/2}} + \frac{\mathbf{x}\mathbf{x}^T + \delta^2\mathbf{I}}{(|\mathbf{x}|^2 + \delta^2)^{3/2}}. \quad (20)$$

Many other choices of blob function are possible, including different power laws, exponentially decaying blobs, and compactly supported mollifiers [5,34]. The exponentially decaying and compactly supported blobs converge quickly to the singular Stokeslet in the far field, away from $\mathbf{x} = 0$; however, we will not consider these here as they do not give rise to such a practically useful expression at $\mathbf{x} = 0$ (i.e., along the centerline of the fiber). Power law blob functions satisfying additional moment conditions may be constructed, which lead to improved convergence to singular Stokeslets in the far field [33,34]. However, a similar result to Theorem 1 holds even for these blobs, as we will discuss further in Remark 2. As such, for the remainder of this paper we will be considering in detail the regularized Stokeslet of the form (20).

Given that regularized Stokeslets are everywhere smooth by construction, it is natural to consider using them in slender body theory as a simple fix for the aforementioned difficulties arising due to the singular nature of (7) along the fiber centerline. Various authors [7,12,13,27,28] have developed and studied versions of SBT based on regularized Stokeslets, although our approach differs in that we consider a regularized doublet correction as in [27,28], but also place our analysis within the context of the slender body PDE framework and consider the convergence of the flow about the slender body as $\epsilon \rightarrow 0$ as well.

As mentioned, to best approximate the flow about Σ_ϵ using regularized Stokeslets, we will still need some form of higher order correction, since (20) alone still gives rise to $O(1)$ angular dependence along the surface of the fiber. Thus we also need to make use of regularized doublets. In analogy to (6), we will define a regularized doublet as the $1/2$ Laplacian of a regularized Stokeslet. Note that this definition differs slightly from [5,7,28], where the doublet is defined as the negative Laplacian of a regularized Stokeslet. Here we use $+1/2$ rather than -1 for ease of comparison with classical SBT; note that due to the choice of doublet coefficient (23) the final expression (22) for regularized SBT is exactly the same as in [7,28].

It turns out that to best serve the purpose of asymptotically cancelling certain unwanted $O(1)$ terms arising from the regularized Stokeslet in SBT, it often makes sense to use a different blob function to derive the regularized doublet [2,28]. In particular, the regularized doublet corresponding to (20) for the purposes of SBT is given by

$$\mathcal{D}_\delta(\mathbf{x}) = \frac{\mathbf{I}}{(|\mathbf{x}|^2 + \delta^2)^{3/2}} - 3\frac{\mathbf{x}\mathbf{x}^T + \delta^2\mathbf{I}}{(|\mathbf{x}|^2 + \delta^2)^{5/2}}, \quad (21)$$

which arises from the blob function

$$\phi_\delta = \frac{3\delta^2}{4\pi(|\mathbf{x}|^2 + \delta^2)^{5/2}}.$$

Again, the purpose of a doublet correction in SBT is to asymptotically cancel undesired $O(1)$ terms at the fiber surface that arise from integrating the regularized Stokeslet over the fiber centerline. In classical SBT, there is just one such undesired term, which arises due to the θ -dependence of $\mathbf{x}\mathbf{x}^T$ on Γ_ϵ . In regularized SBT, different choices of regularized

Stokeslets give rise to additional $O(1)$ terms, which require cancellation. In the case of (20), for example, the additional $\delta^2 \mathbf{I}$ term also requires cancellation.

In analogy to classical SBT (7), we may then consider the following approximation to the flow about the slender body Σ_ϵ using the regularized Stokeslet (20) and regularized doublet (21) [28]:

$$\mathbf{u}^\delta(\mathbf{x}) = \frac{1}{8\pi} \int_{\mathbb{T}} \left(\mathcal{S}_\delta(\mathbf{x} - \mathbf{X}(s')) + \beta(\mathbf{x}) \mathcal{D}_\delta(\mathbf{x} - \mathbf{X}(s')) \right) \mathbf{f}(s') ds', \quad (22)$$

$$\beta(\mathbf{x}) = \begin{cases} \frac{\epsilon^2 + \delta^2}{2}, & \mathbf{x} \in \overline{\Omega}_\epsilon \\ \frac{\delta^2}{2}, & \mathbf{x} = \mathbf{X}(s) \in \Gamma_0. \end{cases} \quad (23)$$

Now the kernel of (22) is smooth along the fiber centerline; in particular, to obtain an expression for the velocity of the filament itself, we can simply evaluate (22) at $\mathbf{x} = \mathbf{X}(s)$. Note that in order to achieve the desired cancellation properties with the regularized doublet, the doublet coefficient $\beta(\mathbf{x})$ must be different depending on whether we are considering points \mathbf{x} along the fiber centerline or in the bulk fluid, up to and including the surface of the actual 3D fiber. This will be discussed further in Remark 1.

In addition to the velocity approximation (22), a regularized approximation to the fluid pressure field about the slender body may also be defined. For the choice of blob function (19), the regularized slender body pressure approximation is given by [4]

$$p^\delta(\mathbf{x}) = \frac{1}{4\pi} \int_{\mathbb{T}} \left(\frac{\mathbf{R} \cdot \mathbf{f}(s')}{(|\mathbf{R}|^2 + \delta^2)^{3/2}} + \frac{3\delta^2 \mathbf{R} \cdot \mathbf{f}(s')}{2(|\mathbf{R}|^2 + \delta^2)^{5/2}} \right) ds'. \quad (24)$$

Note that we have rewritten the pressure tensor from [4] to isolate the δ^2 term for ease of comparison with the non-regularized counterpart.

For a complete comparison between SBT based on regularized Stokeslets (22) and its classical counterpart (7), we will also consider the force-per-unit-length along the surface of the fiber due to the regularized Stokeslet velocity and pressure fields. For $s \in \mathbb{T}$, we define the force density $\mathbf{f}^\delta(s)$ analogously to (13) as

$$\mathbf{f}^\delta(s) = \int_0^{2\pi} \left(2\mathcal{E}(\mathbf{u}^\delta) \mathbf{n} - p^\delta \mathbf{n} \right) \mathcal{J}_\epsilon(s, \theta) d\theta. \quad (25)$$

Here $\mathbf{n}(s, \theta)$ is the unit vector normal to the fiber surface at $\mathbf{x}(s, \theta) \in \Gamma_\epsilon$, which points into the slender body. Each of $\mathcal{E}(\cdot)$, \mathbf{u}^δ , p^δ , and \mathcal{J}_ϵ are as defined in (14), (22), (24) and (3), respectively.

Note that the analogous force-per-unit-length due to classical SBT, which we denote \mathbf{f}^{SB} , may be defined similarly to (25) without issue, since the expressions are evaluated on the fiber surface rather than centerline and thus are not singular. From [35], we have that \mathbf{f}^{SB} satisfies

$$\left| \mathbf{f}(s) - \mathbf{f}^{\text{SB}}(s) \right| \leq C\epsilon \|\mathbf{f}\|_{C^1(\mathbb{T})}. \quad (26)$$

The estimate (26) is an essential ingredient in proving the convergence estimates (15) and (16) to the slender body PDE solution, and therefore we are also interested in determining what type of estimate holds in the case of regularized Stokeslets.

1.3. Statement of Main Result

Our main result is the following theorem.

Theorem 1. Consider a slender body Σ_ϵ satisfying the geometric constraints of Section 1.1. Given a line force density $\mathbf{f} \in C^1(\mathbb{T})$, let $\mathbf{u}^\delta(\mathbf{x})$ be the slender body approximation (22) due to the method of regularized Stokeslets, using (20) and (21) as the regularized Stokeslet and doublet, respectively. Let $\mathbf{u}^{\text{SB}}(\mathbf{x})$ and $\mathbf{u}_C^{\text{SB}}(\mathbf{X}(s))$ be the bulk and centerline velocity expressions, respectively, due to classical SBT (see (7) and (9)). The following series of estimates holds.

- (a.) (Centerline difference) Along the fiber centerline $\mathbf{X}(s) = \mathbf{x} \in \Gamma_0$, the difference between \mathbf{u}^δ and \mathbf{u}_C^{SB} satisfies

$$\left| 8\pi(\mathbf{u}^\delta(\mathbf{X}(s)) - \mathbf{u}_C^{\text{SB}}(\mathbf{X}(s))) + 2 \log\left(\frac{\delta}{\epsilon}\right)(\mathbf{I} + \mathbf{e}_s \mathbf{e}_s^T) \mathbf{f}(s) \right| \leq C(\epsilon |\log \epsilon| + \delta |\log \delta|) \|\mathbf{f}\|_{C^1(\mathbb{T})}. \quad (27)$$

In particular, if the regularization δ is proportional to ϵ , then in fact $\delta \equiv \epsilon$ is necessary to eliminate an $O(1)$ discrepancy between the fiber velocity approximations.

- (b.) (Surface difference) For $\mathbf{x} \in \Gamma_\epsilon$, along the actual surface of the fiber, the difference $\mathbf{u}^\delta - \mathbf{u}^{\text{SB}}$ satisfies

$$\left| 8\pi(\mathbf{u}^\delta(\mathbf{x}) - \mathbf{u}^{\text{SB}}(\mathbf{x})) + \log\left(1 + \frac{\delta^2}{\epsilon^2}\right)(\mathbf{I} + \mathbf{e}_s \mathbf{e}_s^T) \mathbf{f}(s) \right| \leq C\sqrt{\epsilon^2 + \delta^2} \log(\epsilon^2 + \delta^2) \|\mathbf{f}\|_{C^1(\mathbb{T})}. \quad (28)$$

Here there is an $O(1)$ discrepancy that cannot be eliminated by any choice of $\delta \propto \epsilon$.

- (c.) (Force difference) Along the fiber surface Γ_ϵ , the regularized force density \mathbf{f}^δ (25) satisfies

$$\left| \mathbf{f}^\delta(s) - \frac{\mathbf{f}(s)}{(1 + \delta^2/\epsilon^2)^2} \right| \leq C\sqrt{\epsilon^2 + \delta^2} \|\mathbf{f}\|_{C^1(\mathbb{T})}. \quad (29)$$

- (d.) (Bulk difference decay) For any fluid point \mathbf{x} that is a distance $\epsilon^{1-\alpha}$, $0 < \alpha < 1$, away from the fiber centerline, if \mathbf{x} can be uniquely represented in the fiber frame (1) (i.e., there exists a unique closest point to \mathbf{x} on the fiber centerline), then

$$\left| \mathbf{u}^\delta(\mathbf{x}) - \mathbf{u}^{\text{SB}}(\mathbf{x}) \right| \leq \frac{C\delta^2}{\epsilon^{2(1-\alpha)}} \|\mathbf{f}\|_{C^0(\mathbb{T})}. \quad (30)$$

In particular, for $\delta \propto \epsilon$, we obtain $O(\epsilon^{2\alpha})$ convergence.

The main takeaways of Theorem 1 can be summarized estimate-by-estimate as follows.

a. (Centerline difference, estimate (27)) The regularized Stokeslet approximation $\mathbf{u}^\delta(\mathbf{X}(s))$ for the velocity of the fiber itself can be made to agree asymptotically with the classical Keller–Rubinow expression (9) (and hence the fiber velocity given by the slender body PDE as well, due to estimate (16)), but only for the choice of regularization parameter $\delta = \epsilon$. In particular, choosing $\delta = c\epsilon$, $c \neq 1$, leads to an $O(1)$ discrepancy between classical SBT and the method of regularized Stokeslets as $\epsilon \rightarrow 0$; specifically, a difference of the form $\frac{1}{4\pi} \log(c)(\mathbf{I} + \mathbf{e}_s \mathbf{e}_s^T) \mathbf{f}(s)$. The necessity of choosing $\delta = \epsilon$ here stems from the fact that the leading order behavior of SBT scales like $\log \epsilon$ and is thus very sensitive to small perturbations.

This behavior may be contrasted with that of the parameter η in the Tornberg–Shelley formulation (10) and also in Andersson [42]. Note that in both formulations, η may be taken to be larger than 1 (in fact, $\eta > \sqrt{\epsilon}$ is used in (10)) and both velocity expressions still converge to the slender body PDE solution (13) by (16). This is because the effect of $\eta > 1$ is cancelled by the local $\log(\eta)$ term in (11) or by the η in the denominator of the second term of the integrand in (10) (note that this term can be integrated asymptotically to yield a similar local $\log(\eta)$ term). In particular, the leading order effect of inserting the parameter η is cancelled, which preserves the asymptotic consistency with Keller–Rubinow SBT (9) for values of η besides $\eta = 1$.

b. (Surface difference, estimate (28)) However, at the surface Γ_ϵ of the slender body, there is always an $O(1)$ discrepancy between classical SBT and the method of regularized Stokeslets for any choice of δ proportional to ϵ of the form $\frac{1}{8\pi} \log(1 + \frac{\delta^2}{\epsilon^2})(\mathbf{I} + \mathbf{e}_s \mathbf{e}_s^T) \mathbf{f}(s)$. In particular, due to takeaway #1, the fiber velocity $\mathbf{u}^\delta(\mathbf{X}(s))$ actually differs from the velocity at the fiber surface by an $O(1)$ quantity, i.e., there is no sense of 3D structure to the filament, and the slender body PDE assumption (13) of a constant velocity across fiber cross sections is not even approximately satisfied.

Again, since the leading order term of SBT blows up like $\log \epsilon$ for small ϵ , other methods that capture this leading order behavior may still differ by an $O(1)$ quantity. The presence of an additional δ^2 in each denominator of (20) and (21) when evaluating on the fiber surface Γ_ϵ (i.e., the denominators look like $|\bar{\mathbf{X}}|^2 + \epsilon^2 + \delta^2$) means that the surrounding fluid behaves as if the fiber actually has a thickness of $\sqrt{\epsilon^2 + \delta^2}$ rather than ϵ . Because of the logarithmic leading order behavior (coming from integrating $1/(|\bar{\mathbf{X}}|^2 + \epsilon^2 + \delta^2)^{1/2}$ along the centerline), this is not a small perturbation even when $\delta \propto \epsilon$. Note that this discrepancy is also apparent in the asymptotic analysis in Cortez–Nicholas [28], where the authors perform an asymptotic expansion of (22), evaluated at the fiber surface Γ_ϵ , about $\epsilon = 0$ and obtain the same logarithmic disagreement with classical SBT (9) in the local term. Note that the claim following [28], Equation (23), that this disagreement can be cancelled for a periodic fiber with a particular choice of $\delta \sim \epsilon$ is not true, as the resulting expression does not agree with the *periodic* Keller–Rubinow expression (9), where the local logarithmic coefficient should be of the form $-2 \log(\pi\epsilon/4)$. This discrepancy can, however, be avoided by using the centerline evaluation of (22) as the fiber velocity instead.

c. (*Force difference, estimate (29)*) The nonconvergence of regularized SBT to both classical SBT and the slender body PDE as $\epsilon \rightarrow 0$ is further manifested in the force estimate (29) along Γ_ϵ . Instead of recovering the prescribed force density $f(s)$ at the fiber surface as in (26), the method of regularized Stokeslets spreads the prescribed force density f into the surrounding fluid domain, giving rise to an additional body force in the fluid [34]. If $\delta = \epsilon$, for example, then $1/4$ of f is recovered at the surface of the filament, while the rest of the forcing is spread into the fluid bulk. In particular, SBT based on the method of regularized Stokeslets does not (asymptotically) satisfy the energy identity (14) associated with swimming in Stokes flow.

d. (*Bulk difference decay, estimate (30)*) Despite the $O(1)$ discrepancy at the fiber surface, due to (30) we have that the difference in velocity expressions at any fluid point x near but not on the surface of the fiber actually does converge to 0 as $\epsilon \rightarrow 0$. The rate of convergence (in ϵ) goes to zero as x approaches the fiber surface. Due to this decay estimate (30) and to the small magnitude of the $O(1)$ difference $\mathbf{u}^\delta - \mathbf{u}^{\text{SB}}$ at the fiber surface (note that when $\delta = \epsilon$, for example, this difference is $\frac{1}{4\pi} \log(2) \approx 0.05516$), the discrepancy between the flows due to regularized and classical SBT may not have a qualitatively noticeable effect in practice. In particular, numerical demonstrations in Section 3 indicate that even when multiple fibers interact hydrodynamically, the discrepancy between regularized and classical SBT may not be large enough to produce significantly different velocity fields around the fibers.

Remark 1 (Doublet coefficient). We would like to address the different choice of doublet coefficient for the bulk versus centerline expressions in regularized SBT (22). If the same coefficient is used for both expressions, then there will be an additional $O(1)$ quantity appearing in either the centerline or bulk expression (depending on which coefficient is used) that is not cancelled asymptotically. For example, if the centerline doublet coefficient $\frac{\delta^2}{2}$ is used in the bulk, then a term

$$-\frac{\epsilon^2}{2} \int_{\mathbb{T}} \mathcal{D}_\delta(\mathbf{x} - \mathbf{X}(s')) f(s') ds'$$

must be added to the $\mathbf{u}^\delta(\mathbf{x})$ given in (22). Using Lemma 1, which will be introduced in Section 2, this term can be shown to contribute an $O(1)$ term of the form

$$\frac{1}{(\epsilon^2 + \delta^2)^2} \left(-(\epsilon^4 - \epsilon^2 \delta^2) \mathbf{I} + (\epsilon^4 + \epsilon^2 \delta^2) \mathbf{e}_s \mathbf{e}_s^T + 2\epsilon^4 \mathbf{e}_\rho \mathbf{e}_\rho^T \right) f(s)$$

at the fiber surface. Although the \mathbf{I} term can be eliminated by choosing $\delta = \epsilon$, this term still gives

rise to an even greater discrepancy than (28) with classical SBT. Similarly, if the bulk coefficient $\frac{\delta^2 + \epsilon^2}{2}$ is used instead along the fiber centerline, then an additional term

$$\frac{\epsilon^2}{2} \int_{\mathbb{T}} \mathcal{D}_\delta(\bar{\mathbf{X}}(s, s')) f(s') ds'$$

is added to the centerline expression (22), which can be shown (again via Lemma 1 in Section 2) to have an $O(1)$ contribution

$$\frac{1}{(\epsilon^2 + \delta^2)^2} ((\epsilon^4 - \epsilon^2 \delta^2) \mathbf{I} - (\epsilon^4 + \epsilon^2 \delta^2) \mathbf{e}_s \mathbf{e}_s^T) f(s)$$

to the fiber velocity. Again, only the \mathbf{I} term may be eliminated by choosing $\delta = \epsilon$. Note that the need to choose different doublet coefficients removes one of the apparent benefits of regularized SBT, however; namely, the same kernel cannot be used to describe both the fiber velocity and the flow around it.

Remark 2 (Other blob functions). The results of Theorem 1 hold even for power law blobs satisfying additional moment conditions that lead to better convergence (in terms of δ) to singular Stokeslets in the far field. For example, we may consider the blob

$$\phi_\delta(\mathbf{x}) = \frac{15\delta^4(5\delta^2 - 2|\mathbf{x}|^2)}{16\pi(|\mathbf{x}|^2 + \delta^2)^{9/2}}, \quad (31)$$

which gives rise to the regularized Stokeslet

$$\mathcal{S}_\delta(\mathbf{x}) = \frac{\mathbf{I}}{(|\mathbf{x}|^2 + \delta^2)^{1/2}} + \frac{\mathbf{x}\mathbf{x}^T}{(|\mathbf{x}|^2 + \delta^2)^{3/2}} + \frac{4\delta^4\mathbf{I} + \delta^2|\mathbf{x}|^2\mathbf{I} + 3\delta^2\mathbf{x}\mathbf{x}^T}{2(|\mathbf{x}|^2 + \delta^2)^{5/2}}. \quad (32)$$

The regularized doublet corresponding to (32) (in the sense of the cancellation properties discussed following Equation (21)) is given by

$$\mathcal{D}_\delta(\mathbf{x}) = \frac{\mathbf{I}}{(|\mathbf{x}|^2 + \delta^2)^{3/2}} - \frac{3\mathbf{x}\mathbf{x}^T}{(|\mathbf{x}|^2 + \delta^2)^{3/2}} - \frac{12\delta^4\mathbf{I} - 3\delta^2|\mathbf{x}|^2\mathbf{I} + 15\delta^2\mathbf{x}\mathbf{x}^T}{2(|\mathbf{x}|^2 + \delta^2)^{7/2}}, \quad (33)$$

and arises from the blob function

$$\phi_\delta(\mathbf{x}) = \frac{15\delta^4}{8\pi(|\mathbf{x}|^2 + \delta^2)^{7/2}}.$$

Note that we are again defining the regularized doublet as the $+1/2$ Laplacian of the regularized Stokeslet, rather than the -1 Laplacian. Both of the above blobs are constructed to have a vanishing second moment, i.e.,

$$\int_0^\infty r^4 \phi_\delta(r) dr = 0,$$

which has been shown to yield regularized Stokeslets and doublets with improved convergence to their non-regularized counterparts as $\mathbf{x} \rightarrow \infty$ [33,34]. We may consider using (32) and (33) in the regularized SBT expression (22) in place of (20) and (21). However, the logarithmic discrepancy noted in Theorem 1 remains: it is fundamentally a local issue rather than a decay issue, stemming from the additional δ present in the regularized Stokeslet denominator when evaluating at the fiber surface. It is the behavior of regularized Stokeslets at distances $O(\epsilon)$ from the fiber centerline that causes disagreement between regularized and classical SBT. Using a blob function that is compactly supported within the slender body would likely remedy this issue, but at the expense of simplicity and some practical utility.

The remainder of the paper is structured as follows. In Section 2, we prove Theorem 1, beginning in Section 2.1 with some preliminary definitions and a key lemma based on [35]. We then proceed to show each of the velocity estimates in Section 2.2 and the force estimate in Section 2.3. We conclude with a numerical study of the difference between regularized and classical SBT to assess the practical implications of Theorem 1.

2. Proof of Theorem 1

2.1. Preliminaries

We begin by defining some notation and a crucial lemma for estimating the integral expressions appearing in (22) and (7).

For $s, s' \in \mathbb{T}$, it will be useful to work in terms of the difference $\bar{s} = s - s'$ rather than s' . Then, for $x(s, \theta) = X(s) + \epsilon e_\rho(s, \theta)$ along Γ_ϵ , let

$$R(s, \bar{s}, \theta) = x - X(s - \bar{s}) = \bar{X}(s, s - \bar{s}) + \epsilon e_\rho(s, \theta), \quad (34)$$

where $\bar{X}(s, s - \bar{s}) = X(s) - X(s - \bar{s})$. Since we assume $X \in C^2$, we may make use of the following expansion for R :

$$R(s, \bar{s}, \theta) = \bar{s}e_s + \epsilon e_\rho(s, \theta) + \bar{s}^2 Q \quad \text{for some } |Q| \leq \frac{\kappa_{\max}}{2}. \quad (35)$$

Throughout the following, for any function $g \in C^1(\mathbb{T})$, we will denote

$$\|g\|_{C^1(\mathbb{T})} = \|g\|_{C^0(\mathbb{T})} + \|g'\|_{C^0(\mathbb{T})}, \quad \text{where } \|g\|_{C^0(\mathbb{T})} = \max_{s \in \mathbb{T}} |g(s)|.$$

The proof of Theorem 1 relies essentially entirely on the following lemma, which is a simple adaptation of Lemmas 3.3–3.6 in [35].

Lemma 1. *Let R be as defined in (35). For ϵ, δ sufficiently small, the following estimates hold.*

(a.) *For m, n integers with $m \geq 0, n > 0$, we have*

$$\int_{-1/2}^{1/2} \frac{|\bar{s}|^m}{(|R|^2 + \delta^2)^{n/2}} \leq \begin{cases} C |\log(\epsilon^2 + \delta^2)|, & n = m + 1 \\ C(\epsilon^2 + \delta^2)^{(m+1-n)/2}, & n \geq m + 2. \end{cases} \quad (36)$$

(b.) *For $g \in C^1(\mathbb{T})$, if $m > 0$ is odd and $n \geq m + 2$, we may obtain the following refinement:*

$$\left| \int_{-1/2}^{1/2} \frac{\bar{s}^m}{(|R|^2 + \delta^2)^{n/2}} g(\bar{s}) d\bar{s} \right| \leq \begin{cases} C \|g\|_{C^1(\mathbb{T})} |\log(\epsilon^2 + \delta^2)|, & n = m + 1 \\ C \|g\|_{C^1(\mathbb{T})} (\epsilon^2 + \delta^2)^{(m+2-n)/2}, & n \geq m + 3. \end{cases} \quad (37)$$

(c.) *If $m \geq 0$ is even and $n \geq m + 3$, we have*

$$\left| \int_{-1/2}^{1/2} \frac{\bar{s}^m}{(|R|^2 + \delta^2)^{n/2}} g(\bar{s}) d\bar{s} - (\epsilon^2 + \delta^2)^{(m+1-n)/2} d_{mn} g(0) \right| \leq C(\epsilon^2 + \delta^2)^{(m+2-n)/2} \|g\|_{C^1(\mathbb{T})} \quad (38)$$

where

$$d_{mn} = \int_{-\infty}^{\infty} \frac{\tau^m}{(\tau^2 + 1)^{n/2}} d\tau; \\ d_{03} = 2, \quad d_{05} = \frac{4}{3}, \quad d_{07} = \frac{16}{15}, \quad d_{25} = \frac{2}{3}, \quad d_{27} = \frac{4}{15}.$$

(d.) Finally, if $n = 1$ or $n = 3$, we have

$$\begin{aligned} & \left| \int_{-1/2}^{1/2} \frac{\bar{s}^{n-1}}{(|\mathbf{R}|^2 + \delta^2)^{n/2}} \mathbf{g}(\bar{s}) d\bar{s} \right. \\ & \quad \left. - \int_{-1/2}^{1/2} \left(\frac{\bar{s}^{n-1}}{|\bar{\mathbf{X}}|^n} \mathbf{g}(\bar{s}) - \frac{\mathbf{g}(0)}{|\bar{s}|} \right) d\bar{s} + \mathbf{g}(0) \log(\epsilon^2 + \delta^2) + (n-1) \mathbf{g}(0) \right| \\ & \leq C \|\mathbf{g}\|_{C^1(\mathbb{T})} (\epsilon^2 + \delta^2)^{1/2} \left| \log(\epsilon^2 + \delta^2) \right|. \end{aligned} \quad (39)$$

In each of the above bounds, the constant C depends only on n , c_Γ , and κ_{\max} .

Proof. The estimates (36)–(39) are straightforward adaptations of Lemmas 3.3–3.6, respectively, in [35], to include a factor of δ^2 in the denominator. \square

Note that Lemma 1 may also be applied with $\delta = 0$, which is the case used in [35].

2.2. Velocity Differences

To prove Theorem 1, we begin by showing part (b.), the surface estimate (28) for the difference $\mathbf{u}^\delta - \mathbf{u}^{\text{SB}}$ along Γ_ϵ in full detail. We then show that part (a.), the centerline estimate (27), and part (d.), the bulk (decay) estimate (30), can be proved following the same outline.

At any $\mathbf{x} = \mathbf{x}(s, \theta)$ on the fiber surface Γ_ϵ , we write the difference $\mathbf{u}^\delta(\mathbf{x}(s, \theta)) - \mathbf{u}^{\text{SB}}(\mathbf{x}(s, \theta))$ as

$$\begin{aligned} \mathbf{u}^\delta(\mathbf{x}(s, \theta)) - \mathbf{u}^{\text{SB}}(\mathbf{x}(s, \theta)) &= \frac{1}{8\pi} \left(S_1 + S_2 + S_3 + D_1 + D_2 + D_3 \right); \\ S_1 &= \int_{-1/2}^{1/2} \left(\frac{1}{(|\mathbf{R}|^2 + \delta^2)^{1/2}} - \frac{1}{|\mathbf{R}|} \right) \mathbf{f}(s - \bar{s}) d\bar{s} \\ S_2 &= \int_{-1/2}^{1/2} \left(\frac{1}{(|\mathbf{R}|^2 + \delta^2)^{3/2}} - \frac{1}{|\mathbf{R}|^3} \right) (\mathbf{R}\mathbf{R}^T) \mathbf{f}(s - \bar{s}) d\bar{s} \\ S_3 &= \int_{-1/2}^{1/2} \frac{\delta^2}{(|\mathbf{R}|^2 + \delta^2)^{3/2}} \mathbf{f}(s - \bar{s}) d\bar{s} \\ D_1 &= \frac{1}{2} \int_{-1/2}^{1/2} \left(\frac{\epsilon^2 + \delta^2}{(|\mathbf{R}|^2 + \delta^2)^{3/2}} - \frac{\epsilon^2}{|\mathbf{R}|^3} \right) \mathbf{f}(s - \bar{s}) d\bar{s} \\ D_2 &= -\frac{3}{2} \int_{-1/2}^{1/2} \left(\frac{\epsilon^2 + \delta^2}{(|\mathbf{R}|^2 + \delta^2)^{5/2}} - \frac{\epsilon^2}{|\mathbf{R}|^5} \right) (\mathbf{R}\mathbf{R}^T) \mathbf{f}(s - \bar{s}) d\bar{s} \\ D_3 &= -\frac{3}{2} \int_{-1/2}^{1/2} \frac{\delta^2(\epsilon^2 + \delta^2)}{(|\mathbf{R}|^2 + \delta^2)^{5/2}} \mathbf{f}(s - \bar{s}) d\bar{s} \end{aligned}$$

We proceed to estimate each term separately. By Lemma 1 (d.), subtracting estimate (39) with $\delta = 0$ from (39) with $\delta > 0$, the difference S_1 satisfies

$$\begin{aligned} \left| S_1 + \log \left(1 + \frac{\delta^2}{\epsilon^2} \right) \mathbf{f}(s) \right| &= \left| S_1 + (\log(\epsilon^2 + \delta^2) - \log(\epsilon^2)) \mathbf{f}(s) \right| \\ &\leq C \|\mathbf{f}\|_{C^1(\mathbb{T})} (\epsilon^2 + \delta^2)^{1/2} \left| \log(\epsilon^2 + \delta^2) \right|. \end{aligned}$$

For S_2 , we use (35) to write

$$\begin{aligned} \mathbf{R}\mathbf{R}^T &= \mathbf{R}_1 + \mathbf{R}_2 + \mathbf{R}_3; \\ \mathbf{R}_1 &= \bar{s}^2 \mathbf{e}_s \mathbf{e}_s^T + \epsilon^2 \mathbf{e}_\rho \mathbf{e}_\rho^T \\ \mathbf{R}_2 &= \bar{s} \epsilon (\mathbf{e}_s \mathbf{e}_\rho^T + \mathbf{e}_\rho \mathbf{e}_s^T) + \epsilon \bar{s}^2 (\mathbf{e}_\rho \mathbf{Q}^T + \mathbf{Q} \mathbf{e}_\rho^T) \\ \mathbf{R}_3 &= \bar{s}^3 (\mathbf{e}_s \mathbf{Q}^T + \mathbf{Q} \mathbf{e}_s^T) + \bar{s}^4 \mathbf{Q} \mathbf{Q}^T \end{aligned} \quad (40)$$

and also note

$$\left| \frac{1}{(|\mathbf{R}|^2 + \delta^2)^{n/2}} - \frac{1}{|\mathbf{R}|^n} \right| = \left| \frac{-\delta^2}{|\mathbf{R}| \sqrt{|\mathbf{R}|^2 + \delta^2} (|\mathbf{R}| + \sqrt{|\mathbf{R}|^2 + \delta^2})} \sum_{\ell=0}^{n-1} \frac{1}{(|\mathbf{R}|^2 + \delta^2)^{\ell/2} |\mathbf{R}|^{n-1-\ell}} \right| \leq \frac{\delta^2}{|\mathbf{R}|^{n+2}}. \quad (41)$$

Then, using Lemma 1 (a.) (estimate (36)) along with Equation (41), we have

$$\left| \int_{-1/2}^{1/2} \left(\frac{1}{(|\mathbf{R}|^2 + \delta^2)^{3/2}} - \frac{1}{|\mathbf{R}|^3} \right) R_3 f(s - \bar{s}) d\bar{s} \right| \leq \frac{C\delta^2}{(\epsilon^2 + \delta^2)^{1/2}} \|f\|_{C^0(\mathbb{T})}.$$

Furthermore, using Lemma 1 (c.) and (b.) (estimates (37) and (36)), along with (41), we obtain

$$\left| \int_{-1/2}^{1/2} \left(\frac{1}{(|\mathbf{R}|^2 + \delta^2)^{3/2}} - \frac{1}{|\mathbf{R}|^3} \right) R_2 f(s - \bar{s}) d\bar{s} \right| \leq \frac{C\delta^2\epsilon}{\epsilon^2 + \delta^2} \|f\|_{C^1(\mathbb{T})}.$$

Finally, subtracting the estimates (39) and (38) with $\delta = 0$ from (39) and (38) with $\delta > 0$, we obtain

$$\begin{aligned} & \left| \int_{-1/2}^{1/2} \left(\frac{1}{(|\mathbf{R}|^2 + \delta^2)^{3/2}} - \frac{1}{|\mathbf{R}|^3} \right) R_1 f(s - \bar{s}) d\bar{s} \right. \\ & \quad \left. + \log(1 + \delta^2/\epsilon^2) e_s(e_s \cdot f(s)) + \frac{2\delta^2}{\epsilon^2 + \delta^2} e_\rho(e_\rho \cdot f(s)) \right| \\ & \leq C \left(\sqrt{\epsilon^2 + \delta^2} \left| \log(\epsilon^2 + \delta^2) \right| + \frac{\epsilon^2}{(\delta^2 + \epsilon^2)^{1/2}} \right) \|f\|_{C^1(\mathbb{T})}. \end{aligned}$$

Altogether, the term S_2 satisfies

$$\left| S_2 + \log \left(1 + \frac{\delta^2}{\epsilon^2} \right) e_s(e_s \cdot f(s)) + \frac{2\delta^2}{\epsilon^2 + \delta^2} e_\rho(e_\rho \cdot f(s)) \right| \leq C(\epsilon^2 + \delta^2)^{1/2} \left| \log(\epsilon^2 + \delta^2) \right| \|f\|_{C^1(\mathbb{T})}.$$

Next, using Lemma 1 (c.) (estimate (38)), the final Stokeslet term S_3 satisfies

$$\left| S_3 - \frac{2\delta^2}{\epsilon^2 + \delta^2} f(s) \right| \leq \frac{C\delta^2}{(\epsilon^2 + \delta^2)^{1/2}} \|f\|_{C^1(\mathbb{T})}.$$

We now turn to the doublet terms. Using Lemma 1 (c.), subtracting estimate (38) with $\delta = 0$ from (38) with $\delta > 0$, the $O(1)$ terms cancel to leave

$$|D_1| \leq C \left((\epsilon^2 + \delta^2)^{1/2} + \frac{\epsilon^2}{\sqrt{\epsilon^2 + \delta^2}} \right) \|f\|_{C^1(\mathbb{T})} \leq C(\epsilon^2 + \delta^2)^{1/2} \|f\|_{C^1(\mathbb{T})}.$$

To estimate D_2 , we again use the expansion (40) of $\mathbf{R}\mathbf{R}^T$ as well as the bound (41). By Lemma 1 (a.) (Equation (36)), we have

$$\left| -\frac{3}{2} \int_{-1/2}^{1/2} \left(\frac{\epsilon^2 + \delta^2}{(|\mathbf{R}|^2 + \delta^2)^{5/2}} - \frac{\epsilon^2}{|\mathbf{R}|^5} \right) R_3 f(s - \bar{s}) d\bar{s} \right| \leq \frac{C\delta^2}{(\delta^2 + \epsilon^2)^{1/2}} \left(\frac{\epsilon^2}{\delta^2 + \epsilon^2} + 1 \right) \|f\|_{C^0(\mathbb{T})}.$$

Furthermore, using Lemma 1 (b.) and (a.) (Equations (37) and (36)), we have

$$\left| -\frac{3}{2} \int_{-1/2}^{1/2} \left(\frac{\epsilon^2 + \delta^2}{(|\mathbf{R}|^2 + \delta^2)^{5/2}} - \frac{\epsilon^2}{|\mathbf{R}|^5} \right) R_2 f(s - \bar{s}) d\bar{s} \right| \leq \frac{C\delta^2\epsilon}{\delta^2 + \epsilon^2} \left(\frac{\epsilon^2}{\delta^2 + \epsilon^2} + 1 \right) \|f\|_{C^1(\mathbb{T})}.$$

Lastly, using Lemma 1 (c.) and subtracting the estimate (38) with $\delta = 0$ from (38) with $\delta > 0$, we obtain

$$\left| -\frac{3}{2} \int_{-1/2}^{1/2} \left(\frac{\epsilon^2 + \delta^2}{(|\mathbf{R}|^2 + \delta^2)^{5/2}} - \frac{\epsilon^2}{|\mathbf{R}|^5} \right) R_1 f(s - \bar{s}) d\bar{s} - \frac{2\delta^2}{\epsilon^2 + \delta^2} \mathbf{e}_\rho (\mathbf{e}_\rho \cdot \mathbf{f}(s)) \right| \leq C(\epsilon^2 + \delta^2)^{1/2} \|f\|_{C^1(\mathbb{T})}.$$

Putting the above three bounds together, we obtain the following estimate for D_2 :

$$\left| D_2 - \frac{2\delta^2}{\epsilon^2 + \delta^2} \mathbf{e}_\rho (\mathbf{e}_\rho \cdot \mathbf{f}(s)) \right| \leq C(\epsilon^2 + \delta^2)^{1/2} \|f\|_{C^1(\mathbb{T})}.$$

We can see that D_2 serves to cancel the leading order $\mathbf{e}_\rho \mathbf{e}_\rho^T$ term of S_2 , but does not cancel the logarithmic term.

Finally, we may estimate D_3 using Lemma 1 (c.) (Equation (38)) with $m = 0$ and $n = 5$ to yield

$$\left| D_3 + \frac{2\delta^2}{\epsilon^2 + \delta^2} f(s) \right| \leq \frac{C\delta^2}{(\delta^2 + \epsilon^2)^{1/2}} \|f\|_{C^1(\mathbb{T})}.$$

Note that this term exactly cancels the $O(1)$ contribution from the regularized Stokeslet term S_3 .

Combining the above estimates for the three Stokeslet terms and the three doublet terms, we have, for $\mathbf{x} \in \Gamma_\epsilon$,

$$\begin{aligned} & \left| 8\pi(\mathbf{u}^\delta(\mathbf{x}) - \mathbf{u}^{\text{SB}}(\mathbf{x})) + \log \left(1 + \frac{\delta^2}{\epsilon^2} \right) (\mathbf{I} + \mathbf{e}_s \mathbf{e}_s^T) \mathbf{f}(s) \right| \\ & \leq \left| S_1 + \log \left(1 + \frac{\delta^2}{\epsilon^2} \right) f(s) \right| + \left| S_2 + \log \left(1 + \frac{\delta^2}{\epsilon^2} \right) \mathbf{e}_s (\mathbf{e}_s \cdot \mathbf{f}(s)) + 2 \frac{\delta^2}{\epsilon^2 + \delta^2} \mathbf{e}_\rho (\mathbf{e}_\rho \cdot \mathbf{f}(s)) \right| \\ & \quad + \left| S_3 - \frac{2\delta^2}{\epsilon^2 + \delta^2} f(s) \right| + |D_1| + \left| D_2 - 2 \frac{\delta^2}{\epsilon^2 + \delta^2} \mathbf{e}_\rho (\mathbf{e}_\rho \cdot \mathbf{f}(s)) \right| + \left| D_3 + \frac{2\delta^2}{\delta^2 + \epsilon^2} f(s) \right| \\ & \leq C\sqrt{\epsilon^2 + \delta^2} \log(\epsilon^2 + \delta^2) \|f\|_{C^1(\mathbb{T})}. \end{aligned}$$

To show part (a.), the centerline estimate (27), of Theorem 1, we compare $\mathbf{u}^\delta(\mathbf{X}(s))$, evaluated along the fiber centerline, to $\mathbf{u}_C^{\text{SB}}(\mathbf{X}(s))$, the centerline expression arising from classical SBT. To prove (27), it will be most convenient to use the expression (11) with $\eta = 1$, which is shown in [42] to satisfy the estimate (12); i.e., the centerline expression (11) asymptotically approaches the classical SBT expression (7) evaluated at the slender body surface to $O(\epsilon \log \epsilon)$.

Along the fiber centerline, the regularized Stokeslet expression \mathbf{u}^δ is given by (22) with the doublet coefficient $\beta = \frac{\delta^2}{2}$ (23). Again, this choice of doublet coefficient is due to the need to cancel certain $O(1)$ terms from the regularized Stokeslet (see Remark 1).

Using these expressions, we may write out the fiber velocity difference $\mathbf{u}^\delta(\mathbf{X}(s)) - \mathbf{u}_C^{\text{SB}}(\mathbf{X}(s))$ as

$$\begin{aligned}
 \mathbf{u}^\delta(\mathbf{X}(s)) - \mathbf{u}_C^{\text{SB}}(\mathbf{X}(s)) &= \frac{1}{8\pi} \left(I_1 + I_2 + I_3 + J_1 + J_2 + J_3 \right), \\
 I_1 &= \int_{-1/2}^{1/2} \left(\frac{1}{(|\bar{\mathbf{X}}|^2 + \delta^2)^{1/2}} - \frac{1}{(|\bar{\mathbf{X}}|^2 + \epsilon^2)^{1/2}} \right) \mathbf{f}(s - \bar{s}) d\bar{s} \\
 I_2 &= \int_{-1/2}^{1/2} \left(\frac{\bar{\mathbf{X}}\bar{\mathbf{X}}^T}{(|\bar{\mathbf{X}}|^2 + \delta^2)^{3/2}} - \frac{\bar{\mathbf{X}}\bar{\mathbf{X}}^T}{(|\bar{\mathbf{X}}|^2 + \epsilon^2)^{3/2}} \right) \mathbf{f}(s - \bar{s}) d\bar{s} \\
 I_3 &= \int_{-1/2}^{1/2} \frac{\delta^2}{(|\bar{\mathbf{X}}|^2 + \delta^2)^{3/2}} \mathbf{f}(s - \bar{s}) d\bar{s} \\
 J_1 &= \frac{1}{2} \int_{-1/2}^{1/2} \left(\frac{\delta^2}{(|\bar{\mathbf{X}}|^2 + \delta^2)^{3/2}} - \frac{\epsilon^2}{(|\bar{\mathbf{X}}|^2 + \epsilon^2)^{3/2}} \right) \mathbf{f}(s - \bar{s}) d\bar{s} \\
 J_2 &= -\frac{3}{2} \int_{-1/2}^{1/2} \left(\frac{\delta^2 \bar{\mathbf{X}}\bar{\mathbf{X}}^T}{(|\bar{\mathbf{X}}|^2 + \delta^2)^{5/2}} - \frac{\epsilon^2 \bar{\mathbf{X}}\bar{\mathbf{X}}^T}{(|\bar{\mathbf{X}}|^2 + \epsilon^2)^{5/2}} \right) \mathbf{f}(s - \bar{s}) d\bar{s} \\
 J_3 &= -\frac{3}{2} \int_{-1/2}^{1/2} \frac{\delta^4}{(|\bar{\mathbf{X}}|^2 + \delta^2)^{5/2}} \mathbf{f}(s - \bar{s}) d\bar{s}.
 \end{aligned}$$

Each of the above quantities can be estimated using a straightforward adaptation of Lemma 1 (a.)–(d.). In particular, replacing $\mathbf{R} = \bar{\mathbf{X}} + \epsilon \mathbf{e}_\rho$ with $\bar{\mathbf{X}} = \mathbf{X}(s) - \mathbf{X}(s - \bar{s})$ in each denominator, we obtain analogous bounds to estimates (36)–(39), which depend on δ but not ϵ . Note that these estimates can also be applied for $\delta = \epsilon$, in which case the resulting bound solely depends on ϵ (which can be used to estimate terms coming from \mathbf{u}_C^{SB}). Then the above quantities may be estimated in an analogous manner to the previous surface velocity estimates, yielding

$$\begin{aligned}
 \left| I_1 + \log(\delta^2/\epsilon^2) \mathbf{f}(s) \right| &\leq C(\epsilon |\log \epsilon| + \delta |\log \delta|) \|\mathbf{f}\|_{C^1(\mathbb{T})} \\
 \left| I_2 + \log(\delta^2/\epsilon^2) \mathbf{e}_s(\mathbf{e}_s \cdot \mathbf{f}(s)) \right| &\leq C(\epsilon |\log \epsilon| + \delta |\log \delta|) \|\mathbf{f}\|_{C^1(\mathbb{T})} \\
 |I_3 - 2\mathbf{f}(s)| &\leq C(\epsilon + \delta) \|\mathbf{f}\|_{C^1(\mathbb{T})} \\
 |J_1| &\leq C(\epsilon + \delta) \|\mathbf{f}\|_{C^1(\mathbb{T})} \\
 |J_2| &\leq C(\epsilon + \delta) \|\mathbf{f}\|_{C^1(\mathbb{T})} \\
 |J_3 + 2\mathbf{f}(s)| &\leq C(\epsilon + \delta) \|\mathbf{f}\|_{C^1(\mathbb{T})}.
 \end{aligned}$$

Combining the six estimates above, we obtain

$$\left| 8\pi(\mathbf{u}^\delta(\mathbf{X}(s)) - \mathbf{u}_C^{\text{SB}}(\mathbf{X}(s))) + 2 \log\left(\frac{\delta}{\epsilon}\right) (\mathbf{I} + \mathbf{e}_s \mathbf{e}_s^T) \mathbf{f}(s) \right| \leq C(\epsilon |\log \epsilon| + \delta |\log \delta|) \|\mathbf{f}\|_{C^1(\mathbb{T})}.$$

Finally, we show the velocity decay estimate (30) for fluid points \mathbf{x} away from the surface of the 3D filament. For simplicity we consider the velocity difference $\mathbf{u}^\delta - \mathbf{u}^{\text{SB}}$ only at points \mathbf{x} that are close enough to the fiber surface to have a unique representation in the fiber frame (1). In particular, estimate (30) is meant to be a statement about velocity differences close to the fiber surface, rather than far-field agreement.

Writing \mathbf{x} with respect to the fiber frame (1) as $\mathbf{x} = \mathbf{X}(s) + \epsilon^{1-\alpha} \mathbf{e}_\rho(s, \theta)$, we define

$$\mathbf{R}_\alpha = \mathbf{x} - \mathbf{X}(s - \bar{s}) = \bar{\mathbf{X}}(s, \bar{s}) + \epsilon^{1-\alpha} \mathbf{e}_\rho(s, \theta).$$

We then consider the difference $\mathbf{u}^\delta(\mathbf{x}) - \mathbf{u}^{\text{SB}}(\mathbf{x})$ as

$$\begin{aligned}
\mathbf{u}^\delta(\mathbf{x}) - \mathbf{u}^{\text{SB}}(\mathbf{x}) &= \frac{1}{8\pi} \left(S_{\alpha,1} + S_{\alpha,2} + D_{\alpha,1} + D_{\alpha,2} \right); \\
S_{\alpha,1} &= \int_{-1/2}^{1/2} \left(\frac{\mathbf{I}}{(|\mathbf{R}_\alpha|^2 + \delta^2)^{1/2}} - \frac{\mathbf{I}}{|\mathbf{R}_\alpha|} + \frac{\mathbf{R}_\alpha \mathbf{R}_\alpha^T}{(|\mathbf{R}_\alpha|^2 + \delta^2)^{3/2}} - \frac{\mathbf{R}_\alpha \mathbf{R}_\alpha^T}{|\mathbf{R}_\alpha|^3} \right) f(s - \bar{s}) d\bar{s} \\
S_{\alpha,2} &= \int_{-1/2}^{1/2} \frac{\delta^2}{(|\mathbf{R}_\alpha|^2 + \delta^2)^{3/2}} f(s - \bar{s}) d\bar{s} \\
D_{\alpha,1} &= \frac{\epsilon^2}{2} \int_{-1/2}^{1/2} \left(\frac{\mathbf{I}}{(|\mathbf{R}_\alpha|^2 + \delta^2)^{3/2}} - \frac{\mathbf{I}}{|\mathbf{R}_\alpha|^3} - 3 \left(\frac{\mathbf{R}_\alpha \mathbf{R}_\alpha^T}{(|\mathbf{R}_\alpha|^2 + \delta^2)^{5/2}} - \frac{\mathbf{R}_\alpha \mathbf{R}_\alpha^T}{|\mathbf{R}_\alpha|^5} \right) \right) f(s - \bar{s}) d\bar{s} \\
D_{\alpha,2} &= \frac{\delta^2}{2} \int_{-1/2}^{1/2} \left(\frac{\mathbf{I}}{(|\mathbf{R}_\alpha|^2 + \delta^2)^{3/2}} - \frac{3\mathbf{R}_\alpha \mathbf{R}_\alpha^T}{(|\mathbf{R}_\alpha|^2 + \delta^2)^{5/2}} - \frac{3(\epsilon^2 + \delta^2)\mathbf{I}}{(|\mathbf{R}_\alpha|^2 + \delta^2)^{5/2}} \right) f(s - \bar{s}) d\bar{s}.
\end{aligned}$$

We proceed to estimate each term in turn. First note that, in analogy with estimate (41), we have

$$\left| \frac{1}{(|\mathbf{R}_\alpha|^2 + \delta^2)^{n/2}} - \frac{1}{|\mathbf{R}_\alpha|^n} \right| \leq \frac{\delta^2}{|\mathbf{R}_\alpha|^{n+2}}. \quad (42)$$

Using (42), we have

$$\begin{aligned}
|S_{\alpha,1}| &\leq 2\|f\|_{C^0(\mathbb{T})} \int_{-1/2}^{1/2} \frac{\delta^2}{|\mathbf{R}_\alpha|^3} d\bar{s} \leq \frac{C\delta^2}{\epsilon^{2(1-\alpha)} + \delta^2} \|f\|_{C^0(\mathbb{T})} \\
&\leq \frac{C\delta^2}{\epsilon^{2(1-\alpha)}} \|f\|_{C^0(\mathbb{T})},
\end{aligned}$$

where we have used Lemma 1 (a.) (estimate (36)) with $\epsilon^{1-\alpha}$ in place of ϵ .

Similarly, again using (42) along with estimate (36) (again replacing ϵ with $\epsilon^{1-\alpha}$), we have

$$\begin{aligned}
|D_{\alpha,1}| &\leq 2\epsilon^2 \|f\|_{C^0(\mathbb{T})} \int_{-1/2}^{1/2} \frac{\delta^2}{|\mathbf{R}_\alpha|^5} d\bar{s} \leq \frac{C\delta^2 \epsilon^2}{(\epsilon^{2(1-\alpha)} + \delta^2)^2} \|f\|_{C^0(\mathbb{T})} \\
&\leq \frac{C\delta^2}{\epsilon^{2(1-2\alpha)}} \|f\|_{C^0(\mathbb{T})}.
\end{aligned}$$

Finally, using Lemma 1 (a.) (estimate (36)) with $\epsilon^{1-\alpha}$ in place of ϵ , we may bound $S_{\alpha,2}$ and $D_{\alpha,2}$ as

$$|S_{\alpha,2}| \leq \frac{C\delta^2}{\epsilon^{2(1-\alpha)} + \delta^2} \leq \frac{C\delta^2}{\epsilon^{2(1-\alpha)}} \|f\|_{C^0(\mathbb{T})}$$

and

$$\begin{aligned}
|D_{\alpha,2}| &\leq \|f\|_{C^0(\mathbb{T})} \int_{-1/2}^{1/2} \left(\frac{2\delta^2}{(|\mathbf{R}_\alpha|^2 + \delta^2)^{3/2}} + \frac{3\delta^2(\epsilon^2 + \delta^2)}{2(|\mathbf{R}_\alpha|^2 + \delta^2)^{5/2}} \right) d\bar{s} \\
&\leq \frac{C\delta^2}{\epsilon^{2(1-\alpha)} + \delta^2} \left(1 + \frac{\epsilon^2 + \delta^2}{\epsilon^{2(1-\alpha)} + \delta^2} \right) \|f\|_{C^0(\mathbb{T})} \leq \frac{C\delta^2}{\epsilon^{2(1-\alpha)}} \|f\|_{C^0(\mathbb{T})}.
\end{aligned}$$

Combining the above four estimates, we obtain the decay bound (30) near the slender body surface.

2.3. Force Along Fiber Surface

To show part (c.), the force estimate (29), from Theorem 1, we first call attention to the two terms appearing in the \mathbf{u}^δ expression (22) of the form

$$\mathbf{d}_n^\delta[\mathbf{f}](\mathbf{x}) = \frac{1}{8\pi} \int_{\mathbb{T}} \frac{\delta^2 \mathbf{f}(s')}{(|\mathbf{R}|^2 + \delta^2)^{n/2}} ds',$$

one due to the regularized Stokeslet and the other due to the regularized doublet. In addition, we focus on the term from the regularized pressure (24) of the form

$$\mathbf{d}_5^\delta[\mathbf{f} \cdot \mathbf{R}] = \frac{1}{8\pi} \int_{\mathbb{T}} \frac{\delta^2 \mathbf{R} \cdot \mathbf{f}(s')}{(|\mathbf{R}|^2 + \delta^2)^{5/2}} ds'.$$

The contribution of these three terms to the force density $\mathbf{f}^\delta(s)$ (25) along Γ_ϵ is given by

$$\mathbf{F}^\delta(s) := \int_0^{2\pi} \left(2\mathcal{E}(\mathbf{d}_3^\delta[\mathbf{f}])\mathbf{n} - 3(\epsilon^2 + \delta^2)\mathcal{E}(\mathbf{d}_5^\delta[\mathbf{f}])\mathbf{n} - 3(\mathbf{d}_5^\delta[\mathbf{f} \cdot \mathbf{R}])\mathbf{n} \right) \mathcal{J}_\epsilon(s, \theta) d\theta. \quad (43)$$

Note that besides the three \mathbf{d}^δ terms, each of the other terms contributing to the regularized force definition (25) have direct non-regularized analogues along the fiber surface. Thus each term of $\mathbf{f}^\delta - \mathbf{F}^\delta$ may be estimated following the exact same procedure as in ([35], Section 3.3), but using the δ -dependent estimates of Lemma 1 (a.)–(d.) in place of Lemmas 3.3–3.5 in [35]. In doing this, we obtain the following bound on $\mathbf{f}^\delta - \mathbf{F}^\delta$:

$$\left| (\mathbf{f}^\delta - \mathbf{F}^\delta) - \frac{\mathbf{f}}{1 + \delta^2/\epsilon^2} \right| \leq C\sqrt{\epsilon^2 + \delta^2} \|\mathbf{f}\|_{C^1(\mathbb{T})}. \quad (44)$$

Therefore to show part (c.), the force estimate (29), of Theorem 1, it remains to calculate the additional force contribution from \mathbf{F}^δ .

Lemma 2. *Given a force density $\mathbf{f} \in C^1(\mathbb{T})$, let \mathbf{F}^δ be given by (43). Then, for ϵ, δ sufficiently small we have*

$$\left| \mathbf{F}^\delta(s) + \frac{\delta^2/\epsilon^2}{(1 + \delta^2/\epsilon^2)^2} \mathbf{f}(s) \right| \leq C\sqrt{\epsilon^2 + \delta^2} \|\mathbf{f}\|_{C^1(\mathbb{T})}. \quad (45)$$

Proof. Using that $\mathbf{n}(s, \theta) = -\mathbf{e}_\rho(s, \theta)$, we begin by noting that

$$\begin{aligned} & 2\mathcal{E}(\mathbf{d}_n^\delta[\mathbf{f}])\mathbf{n} \\ &= \int_{\mathbb{T}} \frac{n\delta^2}{(|\mathbf{R}|^2 + \delta^2)^{(n+2)/2}} \left((\mathbf{R} \cdot \mathbf{e}_\rho) \mathbf{f}(s') + (\mathbf{f}(s') \cdot \mathbf{e}_\rho) ((\mathbf{R} \cdot \mathbf{e}_\rho) \mathbf{e}_\rho + (\mathbf{R} \cdot \mathbf{e}_\theta) \mathbf{e}_\theta + (\mathbf{R} \cdot \mathbf{e}_s) \mathbf{e}_s) \right) ds'. \end{aligned}$$

Using the definition (43) of F^δ , we may write

$$\begin{aligned} F^\delta &= F_1 + F_2 + F_3 + F_4 + F_5 + F_6; \\ F_1 &= \int_0^{2\pi} \int_{-1/2}^{1/2} \left(2\mathcal{E}(d_3^\delta[f])\mathbf{n} - 3(\epsilon^2 + \delta^2)\mathcal{E}(d_5^\delta[f])\mathbf{n} - 3(d_5^\delta[f \cdot \mathbf{R}])\mathbf{n} \right) d\bar{s} (-\epsilon^2 \hat{\kappa}) d\theta \\ F_2 &= \frac{1}{8\pi} \int_0^{2\pi} \int_{-1/2}^{1/2} \frac{3\delta^2}{(|\mathbf{R}|^2 + \delta^2)^{5/2}} \left((\mathbf{R} \cdot \mathbf{e}_\theta)\mathbf{e}_\theta + (\mathbf{R} \cdot \mathbf{e}_s)\mathbf{e}_s \right) (f(s - \bar{s}) \cdot \mathbf{e}_\rho) d\bar{s} \epsilon d\theta \\ F_3 &= \frac{1}{8\pi} \int_0^{2\pi} \int_{-1/2}^{1/2} \frac{3\delta^2}{(|\mathbf{R}|^2 + \delta^2)^{5/2}} (\mathbf{R} \cdot \mathbf{e}_\rho) \left(f(s - \bar{s}) + (f(s - \bar{s}) \cdot \mathbf{e}_\rho)\mathbf{e}_\rho \right) d\bar{s} \epsilon d\theta \\ F_4 &= -\frac{15}{16\pi} \int_0^{2\pi} \int_{-1/2}^{1/2} \frac{\delta^2(\epsilon^2 + \delta^2)}{(|\mathbf{R}|^2 + \delta^2)^{7/2}} \left((\mathbf{R} \cdot \mathbf{e}_\theta)\mathbf{e}_\theta + (\mathbf{R} \cdot \mathbf{e}_s)\mathbf{e}_s \right) (f(s - \bar{s}) \cdot \mathbf{e}_\rho) d\bar{s} \epsilon d\theta \\ F_5 &= -\frac{15}{16\pi} \int_0^{2\pi} \int_{-1/2}^{1/2} \frac{\delta^2(\epsilon^2 + \delta^2)}{(|\mathbf{R}|^2 + \delta^2)^{7/2}} (\mathbf{R} \cdot \mathbf{e}_\rho) \left(f(s - \bar{s}) + (f(s - \bar{s}) \cdot \mathbf{e}_\rho)\mathbf{e}_\rho \right) d\bar{s} \epsilon d\theta \\ F_6 &= \frac{1}{8\pi} \int_0^{2\pi} \int_{-1/2}^{1/2} \frac{3\delta^2}{(|\mathbf{R}|^2 + \delta^2)^{5/2}} (\mathbf{R} \cdot f(s - \bar{s}))\mathbf{e}_\rho d\bar{s} \epsilon d\theta. \end{aligned}$$

As with the previous velocity bounds, we estimate each of the above terms individually. The first term F_1 arises due to the nonzero curvature (4) of the fiber. By Lemma 1 (a.) (estimate (36)), we have that

$$|F_1| \leq C\|f\|_{C^0(\mathbb{T})} \int_{-1/2}^{1/2} \left(\frac{\delta^2 \epsilon^2}{(|\mathbf{R}|^2 + \delta^2)^2} + \frac{\delta^2 \epsilon^2 (\delta^2 + \epsilon^2)}{(|\mathbf{R}|^2 + \delta^2)^3} \right) d\bar{s} \leq \frac{C\epsilon^2 \delta^2}{(\epsilon^2 + \delta^2)^{3/2}} \|f\|_{C^0(\mathbb{T})}.$$

To bound the remaining terms, we will need that

$$\mathbf{R} \cdot \mathbf{e}_\rho = \bar{s}^2(\mathbf{Q} \cdot \mathbf{e}_\rho) + \epsilon, \quad \mathbf{R} \cdot \mathbf{e}_\theta = \bar{s}^2(\mathbf{Q} \cdot \mathbf{e}_\theta), \quad \mathbf{R} \cdot \mathbf{e}_s = \bar{s} + \bar{s}^2(\mathbf{Q} \cdot \mathbf{e}_s). \quad (46)$$

Then, using Lemma 1 (b.) and (a.) (estimates (37) and (36)), we have

$$\begin{aligned} |F_2| &= \left| \frac{1}{8\pi} \int_0^{2\pi} \int_{-1/2}^{1/2} \frac{3\delta^2 \epsilon}{(|\mathbf{R}|^2 + \delta^2)^{5/2}} \left(\bar{s}\mathbf{e}_s + \bar{s}^2((\mathbf{Q} \cdot \mathbf{e}_\theta)\mathbf{e}_\theta + (\mathbf{Q} \cdot \mathbf{e}_s)\mathbf{e}_s) \right) (f(s - \bar{s}) \cdot \mathbf{e}_\rho) d\bar{s} d\theta \right| \\ &\leq \frac{C\delta^2 \epsilon}{\delta^2 + \epsilon^2} \|f\|_{C^1(\mathbb{T})}. \end{aligned}$$

Similarly, the term F_4 satisfies

$$\begin{aligned} |F_4| &= \left| \frac{15}{16\pi} \int_0^{2\pi} \int_{-1/2}^{1/2} \frac{(\epsilon^2 + \delta^2)\delta^2 \epsilon}{(|\mathbf{R}|^2 + \delta^2)^{7/2}} \left(\bar{s}\mathbf{e}_s + \bar{s}^2((\mathbf{Q} \cdot \mathbf{e}_\theta)\mathbf{e}_\theta + (\mathbf{Q} \cdot \mathbf{e}_s)\mathbf{e}_s) \right) (f(s - \bar{s}) \cdot \mathbf{e}_\rho) d\bar{s} d\theta \right| \\ &\leq \frac{C\delta^2 \epsilon}{\delta^2 + \epsilon^2} \|f\|_{C^1(\mathbb{T})}. \end{aligned}$$

To estimate F_3 and F_5 , we will need to use that Lemma 1 (c.) (estimate (38)) implies that for any $\mathbf{g} \in C^1(\Gamma_\epsilon)$, along the surface of the fiber, we have

$$\begin{aligned} &\left| \int_0^{2\pi} \int_{-1/2}^{1/2} \frac{\bar{s}^m}{(|\mathbf{R}|^2 + \delta^2)^{n/2}} \mathbf{g}(\bar{s}, \theta) d\bar{s} d\theta - (\epsilon^2 + \delta^2)^{(m+1-n)/2} d_{mn} \int_0^{2\pi} \mathbf{g}(0, \theta) d\theta \right| \\ &\leq C \max_{0 \leq \theta < 2\pi} \|\mathbf{g}(\cdot, \theta)\|_{C^1(\mathbb{T})} (\epsilon^2 + \delta^2)^{(m+2-n)/2}, \end{aligned} \quad (47)$$

where m, n and d_{mn} are as in Equation (38). Note furthermore that, using (2),

$$\int_0^{2\pi} \mathbf{e}_\rho(s, \theta) \mathbf{e}_\rho(s, \theta)^T d\theta = \pi(\mathbf{e}_{n_1} \mathbf{e}_{n_1}^T + \mathbf{e}_{n_2} \mathbf{e}_{n_2}^T) = \pi(\mathbf{I} - \mathbf{e}_s \mathbf{e}_s^T)$$

Then, using (46), (36), and estimate (47), F_3 satisfies

$$\left| F_3 - \frac{\delta^2 \epsilon^2}{2(\delta^2 + \epsilon^2)^2} (3\mathbf{I} - \mathbf{e}_s \mathbf{e}_s^T) \mathbf{f}(s) \right| \leq \frac{C\delta^2 \epsilon^2}{(\delta^2 + \epsilon^2)^{3/2}} \|\mathbf{f}\|_{C^1(\mathbb{T})},$$

while the term F_5 satisfies

$$\left| F_5 + \frac{\delta^2 \epsilon^2}{(\delta^2 + \epsilon^2)^2} (3\mathbf{I} - \mathbf{e}_s \mathbf{e}_s^T) \mathbf{f}(s) \right| \leq \frac{C\delta^2 \epsilon^2}{(\delta^2 + \epsilon^2)^{3/2}} \|\mathbf{f}\|_{C^1(\mathbb{T})}.$$

Finally, using (35) along with Lemma 1 (a.)–(c.) (estimates (36)–(38)), we have that the pressure term F_6 satisfies

$$\begin{aligned} \left| F_6 - \frac{\delta^2 \epsilon^2}{2(\delta^2 + \epsilon^2)^2} (\mathbf{I} - \mathbf{e}_s \mathbf{e}_s^T) \mathbf{f}(s) \right| &= \left| \frac{1}{8\pi} \int_0^{2\pi} \int_{-1/2}^{1/2} \frac{3\delta^2 \epsilon (\bar{s} \mathbf{e}_s + \epsilon \mathbf{e}_\rho + \bar{s}^2 \mathbf{Q})}{(|\mathbf{R}|^2 + \delta^2)^{5/2}} \cdot \mathbf{f}(s - \bar{s}) \mathbf{e}_\rho d\bar{s} d\theta \right. \\ &\quad \left. - \frac{\delta^2 \epsilon^2}{2(\delta^2 + \epsilon^2)^2} (\mathbf{I} - \mathbf{e}_s \mathbf{e}_s^T) \mathbf{f}(s) \right| \\ &\leq \left| \frac{1}{8\pi} \int_0^{2\pi} \int_{-1/2}^{1/2} \frac{3\delta^2 \epsilon^2 \mathbf{e}_\rho \mathbf{e}_\rho^T}{(|\mathbf{R}|^2 + \delta^2)^{5/2}} \mathbf{f}(s - \bar{s}) d\bar{s} d\theta \right. \\ &\quad \left. - \frac{\delta^2 \epsilon^2}{2(\delta^2 + \epsilon^2)^2} (\mathbf{I} - \mathbf{e}_s \mathbf{e}_s^T) \mathbf{f}(s) \right| + \frac{C\delta^2 \epsilon}{\delta^2 + \epsilon^2} \|\mathbf{f}\|_{C^1(\mathbb{T})} \\ &\leq \frac{C\delta^2 \epsilon^2}{(\delta^2 + \epsilon^2)^{3/2}} \|\mathbf{f}\|_{C^1(\mathbb{T})}. \end{aligned}$$

Altogether, the additional force contribution from \mathbf{F}^δ along Γ_ϵ satisfies

$$\begin{aligned} \left| \mathbf{F}^\delta + \frac{\delta^2 \epsilon^2}{(\delta^2 + \epsilon^2)^2} \mathbf{f}(s) \right| &\leq |F_1| + |F_2| + |F_3| + \left| F_4 - \frac{\delta^2 \epsilon^2}{2(\delta^2 + \epsilon^2)^2} (3\mathbf{I} - \mathbf{e}_s \mathbf{e}_s^T) \mathbf{f}(s) \right| \\ &\quad + \left| F_5 + \frac{\delta^2 \epsilon^2}{(\delta^2 + \epsilon^2)^2} (3\mathbf{I} - \mathbf{e}_s \mathbf{e}_s^T) \mathbf{f}(s) \right| + \left| F_6 - \frac{\delta^2 \epsilon^2}{2(\delta^2 + \epsilon^2)^2} (\mathbf{I} - \mathbf{e}_s \mathbf{e}_s^T) \mathbf{f}(s) \right| \\ &\leq \frac{C\epsilon\delta}{\sqrt{\epsilon^2 + \delta^2}} \|\mathbf{f}\|_{C^1(\mathbb{T})}, \end{aligned}$$

from which we obtain Lemma 2. \square

3. Numerical Comparison

To gain a better sense of the practical implications of Theorem 1, we turn to numerics to better visualize discrepancies. We aim to address whether Theorem 1 actually has a noticeable effect in practice.

3.1. Centerline Difference

In Table 1 we provide numerical verification of the velocity difference along the fiber centerline predicted by (27). Here we consider a slender torus of length 1 centered at the origin whose centerline lies in the xy -plane, and we prescribe a constant force $\mathbf{f} = \mathbf{e}_x$ along the fiber. We can see that even in this very simple scenario, choosing $\delta = \epsilon$ eliminates a sizeable $O(1)$ discrepancy between regularized and classical SBT.

Table 1. L^∞ norm of the difference between fiber velocity expressions $\mathbf{u}^\delta(\mathbf{X}(s))$ (22) and $\mathbf{u}_C^{\text{SB}}(\mathbf{X}(s))$ (11) for different ratios of δ/ϵ . Note that $\frac{\delta}{\epsilon} = 1$ is necessary to avoid an $O(1)$ difference that is much larger than the fiber radius. Here we have prescribed the constant force $\mathbf{f} = \mathbf{e}_x$ and use $\frac{2}{\epsilon}$ discretization points to fully resolve the behavior of the nearly singular integrals.

$\ \mathbf{u}^\delta(\mathbf{X}(\cdot)) - \mathbf{u}_C^{\text{SB}}\ _{L^\infty(\mathbb{T})}$					
ϵ	$\frac{\delta}{\epsilon} = \frac{1}{3}$	$\frac{\delta}{\epsilon} = \frac{1}{2}$	$\frac{\delta}{\epsilon} = 1$	$\frac{\delta}{\epsilon} = 2$	$\frac{\delta}{\epsilon} = 3$
0.01	0.1705	0.1093	9.6153×10^{-5}	0.1088	0.1715
0.005	0.1708	0.1095	1.9382×10^{-5}	0.1099	0.1738
0.001	0.1709	0.1096	1.3324×10^{-5}	0.1103	0.1748
0.0005	0.1709	0.1096	1.4773×10^{-5}	0.1103	0.1748
$\left \frac{1}{2\pi} \log(\delta/\epsilon)\right $	0.17485	0.11032	0	0.11032	0.17485

3.2. Bulk Difference

In the bulk, where an $O(1)$ discrepancy between regularized and classical SBT cannot be eliminated, we are interested in visualizing flow differences around the slender body and their effects on multiple interacting fibers. For each of the following figures we use the regularization parameter $\delta = \epsilon$, since this results in the best agreement in fiber velocity expressions.

We first consider the flow around a single torus of length 1 with centerline in the xy -plane, and again consider the constant force $\mathbf{f} = \mathbf{e}_x$. Figure 1 shows the resulting difference $|\mathbf{u}^\delta(\mathbf{x}) - \mathbf{u}^{\text{SB}}(\mathbf{x})|$ for fluid points \mathbf{x} around and up to the surface of the fiber for two different fiber radii ($\epsilon = 0.01$ and $\epsilon = 0.001$). Note that the magnitude of the maximum discrepancy between regularized and classical SBT remains the same as ϵ decreases, as stated in Theorem 1 (b.), but the magnitude of this discrepancy is quite small (since $\delta = \epsilon$, the maximum discrepancy is $\frac{1}{4\pi} \log(2) \approx 0.05516$). We can also see that the discrepancy is largest where the prescribed force $\mathbf{f} = \mathbf{e}_x$ is tangent to the fiber surface (i.e., along the top and bottom of the fiber), but the discrepancy extends further into the bulk when the force is normal to the fiber. Away from the surface of the fiber, we can see how the difference between $\mathbf{u}^\delta(\mathbf{x})$ and $\mathbf{u}^{\text{SB}}(\mathbf{x})$ does decrease with ϵ , as noted in Theorem 1 (d.). In particular, any major discrepancies are localized very close to the fiber surface for small ϵ .

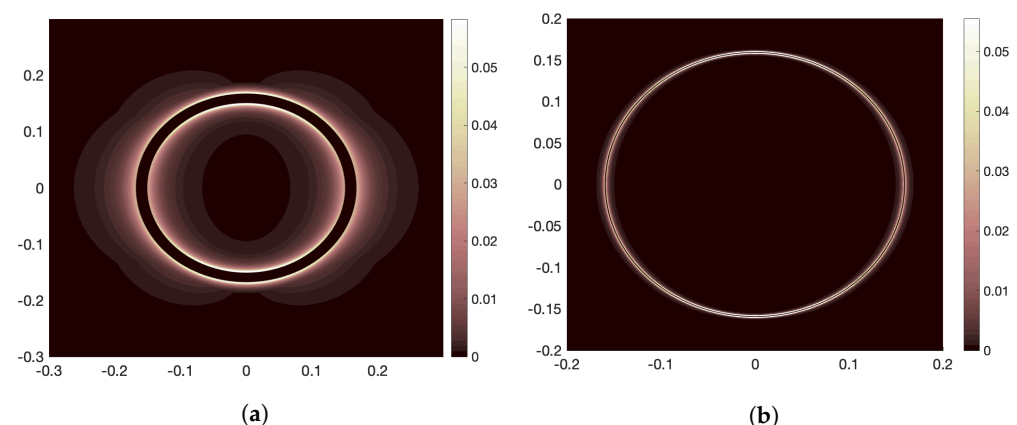


Figure 1. Plot of the difference $|\mathbf{u}^\delta(\mathbf{x}) - \mathbf{u}^{\text{SB}}(\mathbf{x})|$ for \mathbf{x} around a thin torus of length 1 with centerline in the xy -plane, subject to the forcing $\mathbf{f} = \mathbf{e}_x$, for (a) $\epsilon = 0.01$ and (b) $\epsilon = 0.001$. The maximum difference $\frac{1}{4\pi} \log(2) \approx 0.05516$ occurs at the fiber surface along the top and bottom of the fiber, where the force is tangent to the fiber surface. Note, however, that discrepancies extend further into the bulk on the left and right sides of the fiber, where the force is normal to the centerline.

We next consider the interaction between two nearby fibers as well as the flow around them. Figure 2 shows two thin tori of length 1 and radius $\epsilon = 0.01$ with centerlines in the xy -plane, both centered along the x -axis at $x = 0$ and $x = 0.4$. For the constant force $\mathbf{f} = \mathbf{e}_x$, we plot the difference $|\mathbf{u}^\delta(\mathbf{x}) - \mathbf{u}^{\text{SB}}(\mathbf{x})|$.

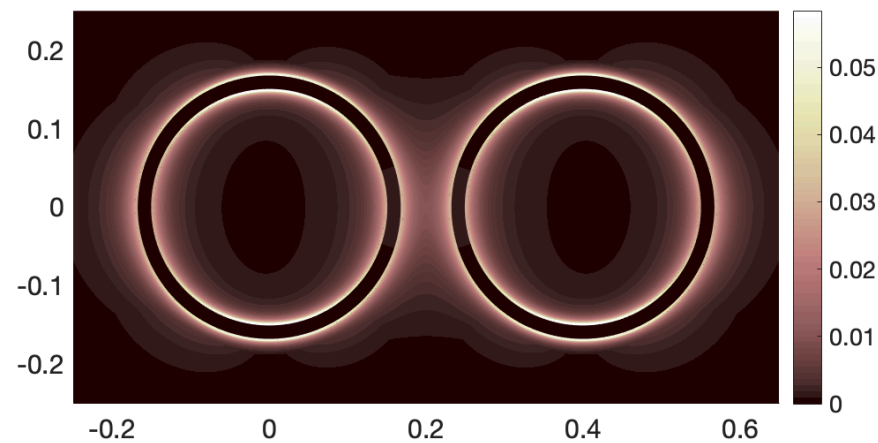


Figure 2. Plot of the difference $|\mathbf{u}^\delta(\mathbf{x}) - \mathbf{u}^{\text{SB}}(\mathbf{x})|$ for \mathbf{x} around two thin tori in the xy -plane, both subject to the constant force $\mathbf{f} = \mathbf{e}_x$. Both tori have radius $\epsilon = 0.01$. The maximum difference is almost exactly the same as in the single torus case, indicating that the $O(1)$ surface discrepancy between regularized and classical SBT may not noticeably affect the flow between multiple hydrodynamically interacting fibers.

For two thin tori interacting hydrodynamically, we also take a closer look at velocity differences between regularized and classical SBT along the fiber itself. We first consider two tori of radius $\epsilon = 0.01$ with centerlines in the xy -plane (see Figure 3). The difference in fiber velocities $\mathbf{u}^\delta(\mathbf{X}(s))$ and $\mathbf{u}^{\text{SB}}(\mathbf{X}(s))$ is largest where the fibers are closest to each other, but the magnitude of this difference is still smaller than the fiber radius, even when the fibers are very close together (see Figure 3, top right).

We also consider two tori of radius $\epsilon = 0.01$ with xy -planar centerlines that are stacked in the z -direction (see Figure 4). The fibers are a distance 0.01 from each other at every point, and subject to a constant force $\mathbf{f} = \mathbf{e}_x$ (left) and $\mathbf{f} = \mathbf{e}_z$ (right). Again, the largest difference $\|\mathbf{u}^\delta(\mathbf{X}(\cdot)) - \mathbf{u}^{\text{SB}}(\mathbf{X}(\cdot))\|_{L^\infty(\mathbb{T})} = 0.0076$ (Figure 4, right) is still smaller than the fiber radius. This difference is, however, significantly larger than when only a single fiber is present (compare to Table 1, center column).

The main takeaway from Figures 2–4 is that the magnitude of the discrepancy between regularized and classical SBT noted in Theorem 1 is small and may not have a significant qualitative effect on fiber dynamics in practice, even when multiple fibers are closely interacting.

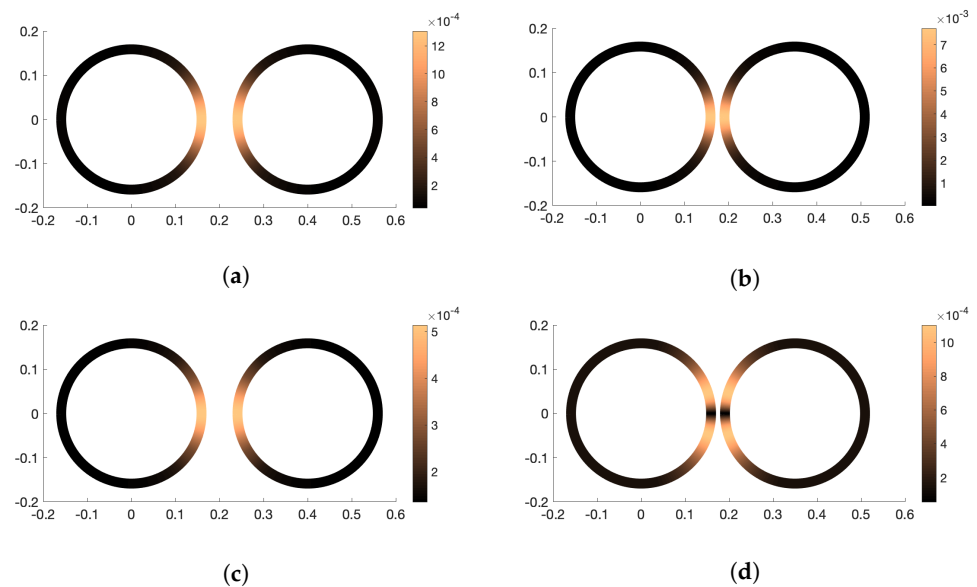


Figure 3. Plot of the centerline difference $\left| \mathbf{u}^\delta(\mathbf{X}(s)) - \mathbf{u}_C^{\text{SB}}(\mathbf{X}(s)) \right|$ for two hydrodynamically interacting thin tori in the xy -plane. Both tori have radius $\epsilon = 0.01$. The fibers in figures (a,b) are subject to the force $\mathbf{f} = \mathbf{e}_x$, while the fibers in figures (c,d) are subject to the force $\mathbf{f} = \mathbf{e}_y$. The fibers in figures (a,c) are 0.0617 apart at their closest point, while the fibers in figures (b,d) are 0.0117 apart at their closest point. The maximum differences $\left\| \mathbf{u}^\delta(\mathbf{X}(\cdot)) - \mathbf{u}_C^{\text{SB}}(\mathbf{X}(\cdot)) \right\|_{L^\infty(\mathbb{T})}$ are (a) 0.0013, (b) 0.0077, (c) 0.00051, (d) 0.0011. These differences are small, but significantly larger than when only a single fiber is present (see Table 1, middle column).

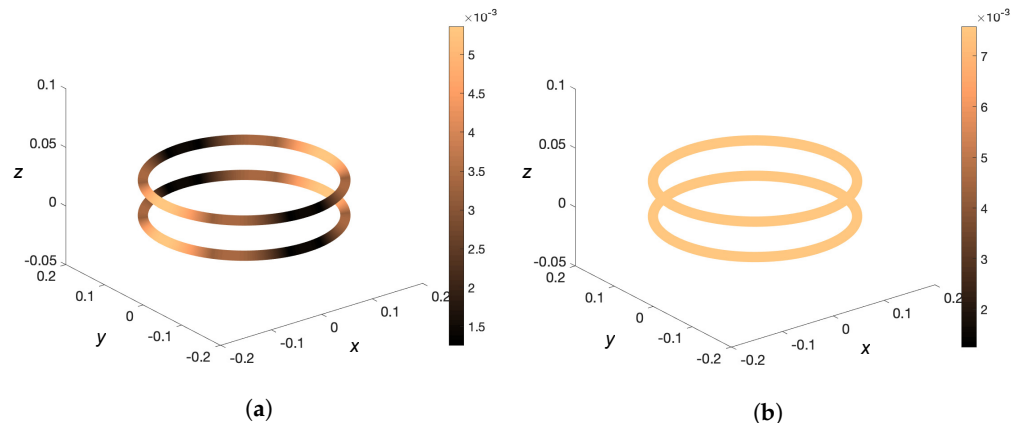


Figure 4. Plot of the centerline difference $\left| \mathbf{u}^\delta(\mathbf{X}(s)) - \mathbf{u}_C^{\text{SB}}(\mathbf{X}(s)) \right|$ for two hydrodynamically interacting thin tori of radius $\epsilon = 0.01$, stacked in the z -direction at a distance 0.01 from each other. The fibers in (a) are subject to the constant force $\mathbf{f} = \mathbf{e}_x$ and have a maximum difference of 0.0054. The fibers in (b) are subject to the force $\mathbf{f} = \mathbf{e}_z$ and have a maximum difference of 0.0076.

Funding: This research was funded by NSF postdoctoral fellowship DMS-2001959.

Conflicts of Interest: The author declares no conflicts of interest.

References

1. Cortez, R. The method of regularized Stokeslets. *SIAM J. Sci. Comput.* **2001**, *23*, 1204–1225. [\[CrossRef\]](#)
2. Ainley, J.; Durkin, S.; Embid, R.; Boindala, P.; Cortez, R. The method of images for regularized Stokeslets. *J. Comput. Phys.* **2008**, *227*, 4600–4616. [\[CrossRef\]](#)
3. Cogan, N.; Chellam, S. Regularized Stokeslets solution for 2-D flow in dead-end microfiltration: Application to bacterial deposition and fouling. *J. Membr. Sci.* **2008**, *318*, 379–386. [\[CrossRef\]](#)
4. Cortez, R.; Fauci, L.; Medovikov, A. The method of regularized Stokeslets in three dimensions: Analysis, validation, and application to helical swimming. *Phys. Fluids* **2005**, *17*, 031504. [\[CrossRef\]](#)

5. Cortez, R.; Varella, D. A general system of images for regularized Stokeslets and other elements near a plane wall. *J. Comput. Phys.* **2015**, *285*, 41–54. [\[CrossRef\]](#)
6. Fauci, L.J.; Dillon, R. Biofluidmechanics of reproduction. *Annu. Rev. Fluid Mech.* **2006**, *38*, 371–394. [\[CrossRef\]](#)
7. Nguyen, H.; Cortez, R.; Fauci, L. Computing flows around microorganisms: Slender-body theory and beyond. *Am. Math. Mon.* **2014**, *121*, 810–823. [\[CrossRef\]](#)
8. Sun, Q.; Klaseboer, E.; Khoo, B.C.; Chan, D. Boundary regularized integral equation formulation of Stokes flow. *Phys. Fluids* **2015**, *27*, 023102. [\[CrossRef\]](#)
9. Lighthill, J. Flagellar hydrodynamics. *SIAM Rev.* **1976**, *18*, 161–230. [\[CrossRef\]](#)
10. Keller, J.B.; Rubinow, S.I. Slender-body theory for slow viscous flow. *J. Fluid Mech.* **1976**, *75*, 705–714. [\[CrossRef\]](#)
11. Johnson, R.E. An improved slender-body theory for Stokes flow. *J. Fluid Mech.* **1980**, *99*, 411–431. [\[CrossRef\]](#)
12. Bouzarth, E.L.; Layton, A.T.; Young, Y.N. Modeling a semi-flexible filament in cellular Stokes flow using regularized Stokeslets. *Int. J. Numer. Methods Biomed. Eng.* **2011**, *27*, 2021–2034. [\[CrossRef\]](#)
13. Bouzarth, E.L.; Minion, M.L. Modeling slender bodies with the method of regularized Stokeslets. *J. Comput. Phys.* **2011**, *230*, 3929–3947. [\[CrossRef\]](#)
14. Buchmann, A.; Fauci, L.J.; Leiderman, K.; Strawbridge, E.; Zhao, L. Mixing and pumping by pairs of helices in a viscous fluid. *Phys. Rev. E* **2018**, *97*, 023101. [\[CrossRef\]](#)
15. Buchmann, A.L.; Fauci, L.J.; Leiderman, K.; Strawbridge, E.M.; Zhao, L. Flow induced by bacterial carpets and transport of microscale loads. In *Applications of Dynamical Systems in Biology and Medicine*; Springer: Berlin/Heidelberg, Germany, 2015; pp. 35–53.
16. Cisneros, L.H.; Cortez, R.; Dombrowski, C.; Goldstein, R.E.; Kessler, J.O. Fluid dynamics of self-propelled microorganisms, from individuals to concentrated populations. In *Animal Locomotion*; Springer: Berlin/Heidelberg, Germany, 2010; pp. 99–115.
17. Gillies, E.A.; Cannon, R.M.; Green, R.B.; Pacey, A.A. Hydrodynamic propulsion of human sperm. *J. Fluid Mech.* **2009**, *625*, 445–474. [\[CrossRef\]](#)
18. Lee, W.; Kim, Y.; Olson, S.D.; Lim, S. Nonlinear dynamics of a rotating elastic rod in a viscous fluid. *Phys. Rev. E* **2014**, *90*, 033012. [\[CrossRef\]](#)
19. Olson, S.D.; Lim, S.; Cortez, R. Modeling the dynamics of an elastic rod with intrinsic curvature and twist using a regularized Stokes formulation. *J. Comput. Phys.* **2013**, *238*, 169–187. [\[CrossRef\]](#)
20. Gallagher, M.T.; Choudhuri, D.; Smith, D.J. Sharp quadrature error bounds for the nearest-neighbor discretization of the regularized stokeslet boundary integral equation. *SIAM J. Sci. Comput.* **2019**, *41*, B139–B152. [\[CrossRef\]](#)
21. Gallagher, M.T.; Smith, D.J. Passively parallel regularized stokeslets. *Philos. Trans. R. Soc. A* **2020**, *378*, 20190528. [\[CrossRef\]](#)
22. Rostami, M.W.; Olson, S.D. Kernel-independent fast multipole method within the framework of regularized Stokeslets. *J. Fluids Struct.* **2016**, *67*, 60–84. [\[CrossRef\]](#)
23. Smith, D.J. A boundary element regularized Stokeslet method applied to cilia-and flagella-driven flow. *Proc. R. Soc. A Math. Phys. Eng. Sci.* **2009**, *465*, 3605–3626. [\[CrossRef\]](#)
24. Smith, D.J. A nearest-neighbour discretisation of the regularized stokeslet boundary integral equation. *J. Comput. Phys.* **2018**, *358*, 88–102. [\[CrossRef\]](#)
25. Cortez, R. Regularized Stokeslet segments. *J. Comp. Phys.* **2018**, *375*, 783–796. [\[CrossRef\]](#)
26. Walker, B.J.; Ishimoto, K.; Gadêlha, H.; Gaffney, E.A. Filament mechanics in a half-space via regularised Stokeslet segments. *J. Fluid Mech.* **2019**, *879*, 808–833. [\[CrossRef\]](#)
27. Walker, B.J.; Curtis, M.P.; Ishimoto, K.; Gaffney, E.A. A regularised slender-body theory of non-uniform filaments. *J. Fluid Mech.* **2020**, *899*, A3. [\[CrossRef\]](#)
28. Cortez, R.; Nicholas, M. Slender body theory for Stokes flows with regularized forces. *Commun. Appl. Math. Comput. Sci.* **2012**, *7*, 33–62. [\[CrossRef\]](#)
29. Götz, T. Interactions of Fibers and Flow: Asymptotics, Theory and Numerics. Ph.D. Thesis, University of Kaiserslautern, Kaiserslautern, Germany, 2000.
30. Shelley, M.J.; Ueda, T. The Stokesian hydrodynamics of flexing, stretching filaments. *Physica D* **2000**, *146*, 221–245. [\[CrossRef\]](#)
31. Tornberg, A.K.; Shelley, M.J. Simulating the dynamics and interactions of flexible fibers in Stokes flows. *J. Comput. Phys.* **2004**, *196*, 8–40. [\[CrossRef\]](#)
32. Mitchell, W.H.; Pantova, D. There’s more than one way to cancel a regularized Stokeslet. *arXiv* **2019**, arXiv:1903.00346.
33. Nguyen, H.N.; Cortez, R. Reduction of the regularization error of the method of regularized Stokeslets for a rigid object immersed in a three-dimensional Stokes flow. *Commun. Comput. Phys.* **2014**, *15*, 126–152. [\[CrossRef\]](#)
34. Zhao, B.; Lauga, E.; Koens, L. Method of regularized stokeslets: Flow analysis and improvement of convergence. *Phys. Rev. Fluids* **2019**, *4*, 084104. [\[CrossRef\]](#)
35. Mori, Y.; Ohm, L.; Sporn, D. Theoretical justification and error analysis for slender body theory. *Comm. Pure Appl. Math.* **2020**, *73*, 1245–1314. [\[CrossRef\]](#)
36. Mori, Y.; Ohm, L.; Sporn, D. Theoretical justification and error analysis for slender body theory with free ends. *Arch. Ration. Mech. Anal.* **2020**, *235*, 1905–1978. [\[CrossRef\]](#)
37. Bishop, R.L. There is more than one way to frame a curve. *Am. Math. Mon.* **1975**, *82*, 246–251. [\[CrossRef\]](#)
38. Hancock, G. The self-propulsion of microscopic organisms through liquids. *Proc. R. Soc. Lond. A* **1953**, *217*, 96–121.

-
39. Cox, R. The motion of long slender bodies in a viscous fluid part 1. general theory. *J. Fluid Mech.* **1970**, *44*, 791–810. [[CrossRef](#)]
 40. Batchelor, G. Slender-body theory for particles of arbitrary cross-section in Stokes flow. *J. Fluid Mech.* **1970**, *44*, 419–440. [[CrossRef](#)]
 41. Mori, Y.; Ohm, L. Accuracy of slender body theory in approximating force exerted by thin fiber on viscous fluid. In *Studies in Applied Mathematics*; Wiley: Hoboken, NJ, USA, 2021.
 42. Andersson, H.I.; Celledoni, E.; Ohm, L.; Owren, B.; Tapley, B.K. An integral model based on slender body theory, with applications to curved rigid fibers. *Phys. Fluids* **2021**, *33*, 041904. [[CrossRef](#)]
 43. Lauga, E. *The Fluid Dynamics of Cell Motility*; Cambridge University Press: Cambridge, UK, 2020; Volume 62,