

# ANALYSIS & PDE

Volume 18

No. 1

2025

ALEXANDER KISELEV, JAEMIN PARK AND YAO YAO

**SMALL SCALE FORMATION  
FOR THE 2-DIMENSIONAL BOUSSINESQ EQUATION**





# SMALL SCALE FORMATION FOR THE 2-DIMENSIONAL BOUSSINESQ EQUATION

ALEXANDER KISELEV, JAEMIN PARK AND YAO YAO

We study the 2-dimensional incompressible Boussinesq equations without thermal diffusion, and aim to construct rigorous examples of small scale formations as time goes to infinity. In the viscous case, we construct examples of global smooth solutions satisfying  $\sup_{\tau \in [0, t]} \|\nabla \rho(\tau)\|_{L^2} \gtrsim t^\alpha$  for some  $\alpha > 0$ . For the inviscid equation in the strip, we construct examples satisfying  $\|\omega(t)\|_{L^\infty} \gtrsim t^3$  and  $\sup_{\tau \in [0, t]} \|\nabla \rho(\tau)\|_{L^\infty} \gtrsim t^2$  during the existence of a smooth solution. These growth results hold for a broad class of initial data, where we only require certain symmetry and sign conditions. As an application, we also construct solutions to the 3-dimensional axisymmetric Euler equation whose velocity has infinite-in-time growth.

## 1. Introduction

The incompressible Boussinesq equations describe the motion of incompressible fluid under the influence of gravitational forces [Gill and Adrian 1982; Majda 2003; Pedlosky 1979]. Let us denote by  $\rho(x, t)$  the density of the fluid (it can also represent the temperature, depending on the physical context) and  $u(x, t)$  the velocity field. Throughout this paper, we consider the 2-dimensional incompressible Boussinesq equations in the absence of density/thermal diffusivity:

$$\begin{aligned} \rho_t + u \cdot \nabla \rho &= 0, \\ u_t + u \cdot \nabla u &= -\nabla p - \rho e_2 + \nu \Delta u, \quad x \in \Omega, \quad t > 0, \\ \nabla \cdot u &= 0, \end{aligned} \tag{1-1}$$

where the initial condition is  $u(\cdot, 0) = u_0$  and  $\rho(\cdot, 0) = \rho_0$ . Here  $e_2 := (0, 1)^T$ , and  $\nu \geq 0$  is the viscosity coefficient. We assume the spatial domain  $\Omega$  is one of the following: the whole space  $\mathbb{R}^2$ , the torus  $\mathbb{T}^2 := (-\pi, \pi]^2$ , or the strip  $\mathbb{T} \times [0, \pi]$  that is periodic in  $x_1$ . When  $\Omega$  is the strip, we impose the no-slip boundary condition  $u|_{\partial\Omega} = 0$  if  $\nu > 0$ , and the no-flow boundary condition  $u \cdot n|_{\partial\Omega} = 0$  if  $\nu = 0$ .

In the past decade, much progress has been made on the analysis of (1-1) in both the viscous case  $\nu > 0$  and inviscid case  $\nu = 0$ . Below we briefly review the relevant literature and state our main results in each case.

**1.1. The viscous case  $\nu > 0$ .** If the equation for  $\rho$  has an additional thermal diffusion term  $\kappa \Delta \rho$ , global regularity of solutions is well known (see, e.g., [Temam 1988]) and follows from the classical methods for Navier–Stokes equations. In the absence of thermal diffusion, the first global-in-time regularity results were obtained by Hou and Li [2005] in the space  $(u, \rho) \in H^m(\mathbb{R}^2) \times H^{m-1}(\mathbb{R}^2)$  for  $m \geq 3$ , and by

MSC2020: 35Q35, 76B03, 76D03.

Keywords: small scale creation, 2-dimensional Boussinesq system.

Chae [2006] in the space  $H^m(\mathbb{R}^2) \times H^m(\mathbb{R}^2)$  for  $m \geq 3$ . When  $\Omega \subset \mathbb{R}^2$  is a bounded domain, Lai, Pan, and Zhao [Lai et al. 2011] proved global well-posedness of solutions in  $H^3(\Omega) \times H^3(\Omega)$  with the no-slip boundary condition, and showed that the kinetic energy is uniformly bounded in time. The function space was improved by Hu, Kukavica, and Ziane [Hu et al. 2013] to  $(u, \rho) \in H^m(\Omega) \times H^{m-1}(\Omega)$  for  $m \geq 2$ , where  $\Omega$  is either a bounded domain,  $\mathbb{R}^2$ , or  $\mathbb{T}^2$ . In spaces with lower regularity, global well-posedness of weak solutions was obtained in [Abidi and Hmidi 2007; Danchin and Paicu 2011; Hmidi and Keraani 2007; Larios et al. 2013]. For the temperature patch problem, Gancedo and García-Juárez [2017; 2020] proved global regularity in two dimensions and local regularity in three dimensions.

Regarding upper bounds of the global-in-time solutions, for a bounded domain, Ju [2017] obtained that  $\|\rho\|_{H^1(\Omega)} \lesssim e^{Ct^2}$ . The  $e^{Ct^2}$  bound was improved to an exponential bound  $e^{Ct}$  in [Kukavica and Wang 2020] for  $\Omega = \mathbb{T}^2$  or a bounded domain, and a super-exponential bound  $e^{Ct^{1+\beta}}$  for some constant  $\beta \approx 0.29$  for  $\Omega = \mathbb{R}^2$ . When  $\Omega = \mathbb{T}^2$ , they also obtained the uniform-in-time bound  $\|u\|_{W^{2,p}(\mathbb{T}^2)} \leq C(p)$  for all  $p \in [2, \infty)$ . In recent work by Kukavica, Massatt, and Ziane [Kukavica et al. 2023], when  $\Omega$  is a bounded domain, the upper bound of the norm of  $\rho$  has been improved to  $\|\rho\|_{H^2(\Omega)} \leq C_\epsilon e^{\epsilon t}$  for all  $\epsilon > 0$ , and they also showed  $\|u\|_{H^3} \leq C_\epsilon e^{\epsilon t}$  for all  $\epsilon > 0$ .

We would like to point out that all these results deal with *upper bounds* of solutions, and it is a natural question whether certain norms of solutions *can* actually grow to infinity as  $t \rightarrow \infty$ . When  $\nu > 0$  and  $\Omega = \mathbb{R}^2$ , Brandolese and Schonbek [2012] proved that when the initial data  $\rho_0$  does not have mean zero,  $\|u(t)\|_{L^2(\mathbb{R}^2)}$  must grow to infinity like  $(1+t)^{1/4}$ . Here the growth mechanism is due to potential energy converting into kinetic energy, and does not necessarily imply growth in higher derivatives of  $u$  or  $\rho$ . To the best of our knowledge, there has been no example in the literature showing that  $\|\rho(t)\|_{\dot{H}^m}$  or  $\|u(t)\|_{\dot{H}^m}$  can actually grow to infinity as  $t \rightarrow \infty$  for some  $m \geq 1$ . The goal of this paper is exactly to construct such examples in  $\mathbb{R}^2$  and  $\mathbb{T}^2$ , where  $\|\rho(t)\|_{\dot{H}^m} \rightarrow \infty$  as  $t \rightarrow \infty$  for all  $m \geq 1$ . Since  $\|\rho(t)\|_{L^2}$  is preserved in time, growth of  $\|\rho(t)\|_{\dot{H}^m}$  implies that  $\rho$  has some small scale formation as  $t \rightarrow \infty$ .

In the viscous case, we set the spatial domain to be either  $\mathbb{R}^2$  or  $\mathbb{T}^2$ , and assume that the initial data  $(\rho_0, u_0)$  satisfies the following assumptions (here we write  $u_0 = (u_{01}, u_{02})^T$ ). See Figure 1 for an illustration of the assumptions on  $\rho_0$ .

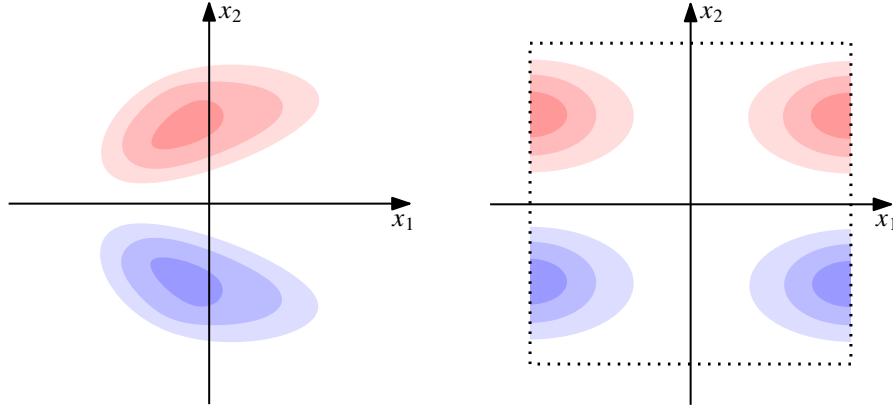
(A1)  $\rho_0, u_0 \in C^\infty(\Omega)$ . If  $\Omega = \mathbb{R}^2$ , assume in addition that  $\rho_0, u_0 \in C_c^\infty(\mathbb{R}^2)$ .

(A2)  $\rho_0$  and  $u_{02}$  are odd in  $x_2$ , and  $u_{01}$  is even in  $x_2$ . If  $\Omega = \mathbb{T}^2$ , assume in addition that  $\rho_0$  and  $u_{02}$  are even in  $x_1$ ,  $u_{01}$  is odd in  $x_1$ , and  $\rho_0 = 0$  on the  $x_2$ -axis.<sup>1</sup>

(A3)  $\rho_0$  is not identically zero, and  $\rho_0 \geq 0$  for  $x_2 \geq 0$ .

As we show in Section 2.1, under these assumptions, both the potential energy  $E_P(t) := \int_\Omega \rho(x, t)x_2 dx$  and kinetic energy  $E_K(t) = \frac{1}{2}\|u(t)\|_{L^2(\Omega)}^2$  of the solution remain bounded for all times, and the total energy is decreasing in time. We prove that, for all  $s \geq 1$ , the Sobolev norm  $\|\rho(t)\|_{\dot{H}^s}$  grows to infinity at least algebraically in  $t$ .

<sup>1</sup>Note that if the  $\rho_0 = 0$  on the  $x_2$ -axis assumption is removed, the initial data would include some steady states with horizontally stratified density, which clearly would not lead to any growth.



**Figure 1.** Illustration of the symmetry and sign assumptions on  $\rho_0$  in the plane  $\mathbb{R}^2$  (left) and torus  $\mathbb{T}^2$  (right) for the viscous Boussinesq equations. Here red denotes positive  $\rho_0$  and blue denotes negative  $\rho_0$ .

**Theorem 1.1.** Assume  $\nu > 0$ , and let  $\Omega = \mathbb{R}^2$  or  $\mathbb{T}^2$ . For any initial data  $(\rho_0, u_0)$  satisfying (A1)–(A3), the global-in-time smooth solution  $(\rho, u)$  to (1-1) satisfies the following:

- If  $\Omega = \mathbb{R}^2$ , we have

$$\limsup_{t \rightarrow \infty} t^{-s/10} \|\rho(t)\|_{\dot{H}^s(\Omega)} = +\infty \quad \text{for all } s \geq 1. \quad (1-2)$$

- If  $\Omega = \mathbb{T}^2$ , we have

$$\limsup_{t \rightarrow \infty} t^{-s(2s-1)/(8s-2)} \|\rho(t)\|_{\dot{H}^s(\Omega)} = +\infty \quad \text{for all } s \geq 1. \quad (1-3)$$

**Remark 1.2.** It is a natural question whether these growth rates are sharp. While the powers are likely nonsharp, we point out that  $\|\rho(t)\|_{H^1}$  cannot have exponential growth under the assumptions (A1)–(A3). Namely, following arguments similar to [Kukavica and Wang 2020], we show in Proposition 2.4 that, under the assumptions (A1)–(A3),  $\|\rho(t)\|_{H^1}$  has a refined subexponential upper bound

$$\|\rho(t)\|_{H^1(\Omega)} \lesssim \exp(Ct^\alpha) \quad \text{for all } t > 0$$

for some constant  $\alpha \in (0, 1)$ . Therefore in this setting, the fastest possible growth rate of  $\|\rho(t)\|_{H^1(\Omega)}$  is somewhere between algebraic and subexponential.

The proof of Theorem 1.1 is motivated by a recent result on small scale formation in solutions to incompressible porous media (IPM) equation by the first and third author [Kiselev and Yao 2023]. The main idea there was to use the monotonicity of the potential energy  $E_P(t) = \int \rho(x, t)x_2 dx$ : on the one hand, for solutions with certain symmetries,  $E_P(t)$  is bounded below with  $E'_P(t) = -\|\partial_1 \rho(t)\|_{\dot{H}^{-1}}^2$ , thus the integral  $\int_0^\infty \|\partial_1 \rho(t)\|_{\dot{H}^{-1}}^2 dt$  is finite; on the other hand, under certain symmetries, one can show that  $\|\partial_1 \rho(t)\|_{\dot{H}^{-1}}^2$  can only be small if  $\|\rho(t)\|_{H^s} \gg 1$  for some  $s > 0$ , leading to growth of  $\rho$  in Sobolev norms.

The IPM and Boussinesq equations are related in the sense that, in both equations, the density  $\rho$  is transported by an incompressible  $u$ , where  $u = -\nabla p - \rho e_2$  in IPM, whereas  $Du/Dt = -\nabla p - \rho e_2 + \nu \Delta u$  in Boussinesq equations. Since the velocity in Boussinesq equations has one more time derivative than

IPM, we formally expect that  $E_p''(t)$  should be related to  $-\|\partial_1 \rho(t)\|_{H^{-1}}^2$ . While this turns out to be true, the situation is more delicate for the Boussinesq equations because  $E_p''(t)$  also contains other terms coming from the pressure and viscosity terms. By carefully controlling these additional terms, we prove that if  $\|\rho(t)\|_{H^s}$  grows too slowly for  $s \geq 1$ ,  $E_p'(t)$  would become unbounded below, contradicting the uniform-in-time bound of energy.

**1.2. The inviscid case  $\nu = 0$ .** For the inviscid Boussinesq equations in two dimensions, it is well known that the system (1-1) can be rewritten into an equivalent system for the density  $\rho$  and the vorticity  $\omega = \partial_1 u_2 - \partial_2 u_1$ :

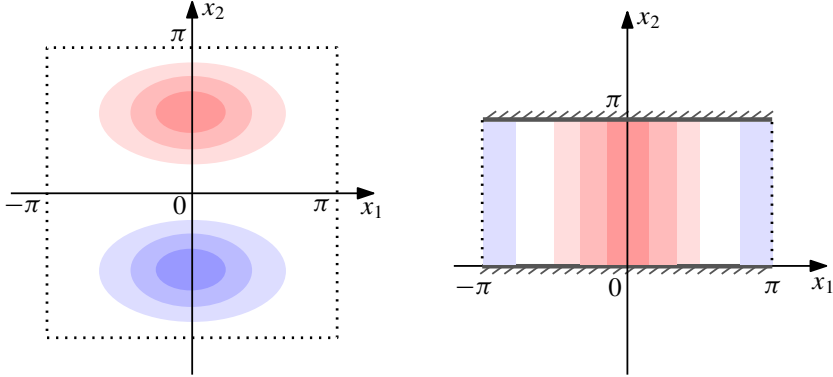
$$\begin{aligned}\rho_t + u \cdot \nabla \rho &= 0, \\ \omega_t + u \cdot \nabla \omega &= -\partial_1 \rho,\end{aligned}\tag{1-4}$$

where the velocity  $u$  can be recovered from the vorticity  $\omega$  from the Biot–Savart law  $u = \nabla^\perp (-\Delta)^{-1} \omega$ . While local well-posedness results are available in a variety of functional spaces for  $\Omega = \mathbb{R}^2$ ,  $\mathbb{T}^2$ , or a bounded domain [Chae and Nam 1997; Chae et al. 1999; Danchin 2013], whether smooth initial data in  $\mathbb{T}^2$  or  $\mathbb{R}^2$  with finite energy can develop a finite-time singularity is an outstanding open question in fluid dynamics. Note that smooth, infinite-energy initial data can lead to a finite-time blowup, as shown in [Sarria and Wu 2015].

In the presence of boundary, there have been many exciting developments regarding finite-time singularity formation of solutions in the past few years. Luo and Hou [2014] provided numerical evidence for finite-time blowup in smooth solutions of the 3-dimensional axisymmetric Euler equation in a cylinder. When the domain has a corner, Elgindi and Jeong [2020] proved that blow-up can happen for inviscid Boussinesq equations with smooth initial data. When  $\Omega = \mathbb{R}_+^2$  is the upper half-plane, Chen and Hou [2021] proved that solutions with  $C^{1,\alpha}$  velocity and density can have a nearly self-similar finite-time blowup. Recently, for smooth initial data, Wang, Lai, Gómez-Serrano, and Buckmaster [Wang et al. 2023] used physics-informed neural networks to construct an approximate self-similar blow-up solution numerically. In a very recent preprint, Chen and Hou [2022] put forward an argument combining impressive analytical tools and computer assisted estimates to show that smooth initial data can lead to a stable nearly self-similar blowup.

Note that the inviscid Boussinesq equations (1-4) become the 2-dimensional Euler equation when  $\rho \equiv 0$ , where it is well known that  $\|\nabla \omega(t)\|_{L^\infty}$  can have infinite-in-time growth [Denisov 2009; 2015; Kiselev and Šverák 2014; Nadirashvili 1991; Zlatoš 2015]. Therefore we will only focus on proving infinite-in-time growth of either  $\nabla \rho$  (since  $\rho$  itself is preserved along the trajectory, one can at most obtain growth results for  $\nabla \rho$ ) or  $L^p$  norms of  $\omega$  itself not involving any derivatives (where such growth is not possible for the 2-dimensional Euler equation since  $\|\omega\|_{L^p}$  is preserved in time).

Our first result is set up in the periodic domain  $\Omega = \mathbb{T}^2$ . We show that, for all smooth initial data  $(\rho_0, \omega_0)$  in  $\mathbb{T}^2$  under some symmetry assumptions, as long as  $\rho_0$  takes values of different sign along the two line segments  $\{0\} \times [0, \pi]$  and  $\{\pi\} \times [0, \pi]$  (see the left figure of Figure 2 for an illustration),  $\|\nabla \rho(t)\|_{L^\infty}$  must grow to infinity at least algebraically in time for all time during the existence of a smooth solution.



**Figure 2.** Illustration of the symmetry and sign assumptions on  $\rho_0$  in the torus  $\mathbb{T}^2$  (left) and the strip  $\mathbb{T} \times [0, \pi]$  (right) for the inviscid Boussinesq equation. Here red denotes positive  $\rho_0$  and blue denotes negative  $\rho_0$ .

**Theorem 1.3.** Let  $\rho_0 \in C^\infty(\mathbb{T}^2)$  be odd in  $x_2$  and even in  $x_1$ , and  $\omega_0 \in C^\infty(\mathbb{T}^2)$  be odd in both  $x_1$  and  $x_2$ . Assume  $\rho_0 \geq 0$  on  $\{0\} \times [0, \pi]$  with  $k_0 := \sup_{x_2 \in [0, \pi]} \rho_0(0, x_2) > 0$ , and  $\rho_0 \leq 0$  on  $\{\pi\} \times [0, \pi]$ . Then there exists some constant  $c(\rho_0, \omega_0) > 0$  such that the corresponding solution  $(\rho, \omega)$  to (1-4) satisfies

$$\sup_{\tau \in [0, t]} \|\nabla \rho(\tau)\|_{L^\infty(\mathbb{T}^2)} > c(\rho_0, \omega_0) t^{1/2} \quad \text{for all } t \in [0, T), \quad (1-5)$$

where  $T$  is the lifespan of the smooth solution  $(\rho, \omega)$ .

Next we consider the inviscid Boussinesq equation in the strip  $\mathbb{T} \times [0, \pi]$ . Here the presence of boundary allows us to obtain a faster growth rate in  $\|\nabla \rho(t)\|_{L^\infty}$ : we prove that the growth is at least like  $t^2$  in the strip (as compared to  $t^{1/2}$  in Theorem 1.3). We are also able to obtain a superlinear lower bound for  $\|\omega(t)\|_{L^p}$  (for  $p = \infty$  it grows like  $t^3$ ) and a linear lower bound for  $\|u(t)\|_{L^\infty}$ . Although these algebraic lower bounds are far from finite-time blowup, they hold for a broad class of initial data: no assumption on  $\omega_0$  is needed other than being odd in  $x_1$ , and  $\rho_0$  only needs to be even in  $x_1$  and satisfy some sign conditions along two line segments (see the right figure of Figure 2 for an illustration). The proofs are soft but might provide an insight into the behavior of smooth solutions during their lifespan.

**Theorem 1.4.** Let  $\Omega = \mathbb{T} \times [0, \pi]$ . Let  $\rho_0 \in C^\infty(\Omega)$  be even in  $x_1$  and  $\omega_0 \in C^\infty(\Omega)$  be odd in  $x_1$ . Assume that there exists  $k_0 > 0$  such that  $\rho_0 \geq k_0 > 0$  on  $\{0\} \times [0, \pi]$  and  $\rho_0 \leq 0$  on  $\{\pi\} \times [0, \pi]$ . Then there exist some constants  $T_0(\rho_0, \omega_0) \geq 0$  and  $c(\rho_0, \omega_0) > 0$  such that the corresponding solution  $(\rho, \omega)$  to (1-4) satisfies

$$\|\omega(t)\|_{L^p(\Omega)} \geq ct^{3-2/p} \quad \text{for all } p \in [1, \infty], \quad t \in [T_0, T), \quad (1-6)$$

$$\|u(t)\|_{L^\infty(\Omega)} \geq ct \quad \text{for all } t \in [T_0, T), \quad (1-7)$$

and

$$\sup_{\tau \in [0, t]} \|\nabla \rho(\tau)\|_{L^\infty(\Omega)} > ct^2 \quad \text{for all } t \in [0, T), \quad (1-8)$$

where  $T$  is the lifespan of the smooth solution  $(\rho, \omega)$ . In particular, if  $\int_{[0, \pi] \times [0, \pi]} \omega_0 dx \geq 0$ , then  $T_0 = 0$  in all the estimates above.

**Remark 1.5.** In the estimates for  $\|\omega(t)\|_{L^p(\Omega)}$  and  $\|u(t)\|_{L^\infty(\Omega)}$  above, it is necessary to have a “waiting time”  $T_0$  depending on the initial data. This is because, for any  $t_1 > 0$ , there exists some initial data satisfying the assumption of Theorem 1.4 with  $\omega(\cdot, t_1) \equiv 0$ . (To see this, one can start with  $\omega(\cdot, t_1) \equiv 0$  and go backwards in time.) That being said, it can be easily seen from the proof that, if  $\int_{[0,\pi] \times [0,\pi]} \omega_0 dx \geq 0$ , no waiting time is needed.

**Remark 1.6.** If the symmetry assumptions on  $\rho_0$  and  $\omega_0$  are dropped, we still have  $\|\omega(t)\|_{L^1(\Omega)} \gtrsim t$  for  $t \gg 1$ . This infinite-in-time growth implies that, given any steady state  $\omega_s$  for the 2-dimensional Euler equation on the strip, we have  $(0, \omega_s)$  is a nonlinearly unstable steady state for the inviscid Boussinesq equation. See Remark 3.3 for more discussions.

**Remark 1.7.** Note that the growth result in Theorem 1.4 also holds for the rectangular domain  $[-\pi, \pi] \times [0, \pi]$ , since the symmetries imposed on the initial data automatically implies  $u \cdot n = 0$  on all boundaries of  $[-\pi, \pi] \times [0, \pi]$  for all time. However, the proof of Theorem 1.4 does not apply to domains with smooth boundary. That being said, for any bounded domain that is symmetric about both the  $x_1$  and  $x_2$  axis and has a smooth boundary, one can proceed similarly as in Theorem 1.3 (and Lemma 3.1) to obtain the same growth of  $\|\nabla \rho\|_{L^\infty}$  as in Theorem 1.3. We leave the details of the argument to interested readers.

For both Theorems 1.3 and 1.4, the proof is based on an interplay between various monotone and conservative quantities. Under the symmetry assumptions, one can easily check that the sign assumptions  $\rho \geq 0$  on  $\{0\} \times [0, \pi]$  and  $\rho \leq 0$  on  $\{\pi\} \times [0, \pi]$  remain true for all times. This allows us to make the elementary but important observation that the vorticity integral  $\int_{[0,\pi] \times [0,\pi]} \omega(x, t) dx$  is monotone increasing for all times. More precisely, for the strip, the growth is linear for all times during the existence of a smooth solution, whereas in  $\mathbb{T}^2$  we relate the growth with  $\|\nabla \rho(t)\|_{L^\infty}$ . Another key ingredient is the relation between the vorticity integral and kinetic energy: since the kinetic energy has a uniform-in-time bound, we prove that if the vorticity integral is large, the  $L^p$  norm of vorticity must be much larger. For a strip, this allows us to upgrade the linear growth of  $\|\omega(t)\|_{L^1}$  to superlinear growth for  $\|\omega(t)\|_{L^p}$  for  $p \in (1, \infty]$ .

**1.3. Infinite-in-time growth for the 3-dimensional axisymmetric Euler equation.** The question whether the incompressible Euler equation in  $\mathbb{R}^3$  can have a finite-time blowup from smooth initial data of finite energy is an outstanding open problem in nonlinear PDE and fluid dynamics. As we mentioned earlier, for the 3-dimensional axisymmetric Euler equation, when the equation is set up in a cylinder with boundary, Luo and Hou [2014] gave convincing numerical evidence that smooth initial data can lead to a finite-time singularity formation on the boundary. Recent numerical evidence by Hou and Huang [2022; 2023] and Hou [2022] suggests that the blowup can also happen in the interior of domain, but apparently not in self-similar fashion. The first rigorous blow-up result for finite-energy solutions was established in domains with corners by Elgindi and Jeong [2019]. For initial data in  $C^{1,\alpha}$  in  $\mathbb{R}^3$ , Elgindi [2021] showed that such initial data can lead to a self-similar blowup. Very recently, using the connection between 3-dimensional axisymmetric Euler and Boussinesq equations, Chen and Hou [2022] set up a computer-assisted argument that smooth solutions to 3-dimensional axisymmetric Euler equation can



form a stable nearly self-similar blowup. The singularity formation happens for initial data in a small neighborhood of a profile that is selected carefully with computer assistance.

In addition to the blow-up v.s. global-in-time regularity question, it is also interesting to investigate whether Sobolev norms of solutions to the 3-dimensional Euler equation can have infinite-in-time growth for broader classes of initial data. Choi and Jeong [2023] constructed smooth compactly supported initial data in  $\mathbb{R}^3$  with  $\|\nabla^2 \omega(t)\|_{L^\infty}$  growing algebraically for all times, and  $\|\omega(t)\|_{L^\infty}$  growing exponentially for finite (but arbitrarily long) time. It is also well known that the “two-and-a-half dimensional” solutions (i.e., where  $u$  only depends on  $x, y$ , not  $z$ ) can lead to infinite-in-time linear growth of  $\omega$ ; see [Bardos and Titi 2007, Remark 3.1] for example. See the excellent survey [Drivas and Elgindi 2023] for more results on growth and singularity formation for 2-dimensional and 3-dimensional Euler equations.

It is well known that, away from the axis of symmetry, the 3-dimensional axisymmetric Euler equation is closely related to the inviscid 2-dimensional Boussinesq equations; see [Majda and Bertozzi 2002, Section 5.4.1]. To see this connection, recall that the 3-dimensional axisymmetric Euler equation can be reduced to the system

$$D_t(ru^\theta) = 0, \quad D_t\left(\frac{\omega^\theta}{r}\right) = \frac{\partial_z(ru^\theta)^2}{r^4}, \quad (1-9)$$

where  $u^\theta$  and  $\omega^\theta$  only depend on  $r, z, t$ , and  $D_t := \partial_t + u^r \partial_r + u^z \partial_z$  is the material derivative. Heuristically speaking,  $ru^\theta$  plays the role of  $\rho$  in the Boussinesq equation, whereas  $\omega^\theta/r$  plays the role of  $\omega$  in the Boussinesq equation. Here  $(u^r, u^z)$  can be recovered from  $\omega^\theta/r$  by the Biot–Savart law

$$(u^r, u^z) = \frac{1}{r}(-\partial_z \psi, \partial_r \psi), \quad \text{where } -\frac{1}{r} \partial_r \left( \frac{1}{r} \partial_r \psi \right) - \frac{1}{r^2} \partial_z^2 \psi = \frac{\omega^\theta}{r}. \quad (1-10)$$

We note that the analog of Theorem 1.4 holds for the 3-dimensional axisymmetric Euler equation. We set the spatial domain to be a (not rotating) Taylor–Couette tank

$$\Omega = \{(r, \theta, z) : r \in [\pi, 2\pi], \theta \in \mathbb{T}, z \in \mathbb{T}\}, \quad (1-11)$$

with no-penetration boundary condition at  $r = \pi, 2\pi$  and periodic boundary conditions in  $z$ . Our assumptions and results are as follows.

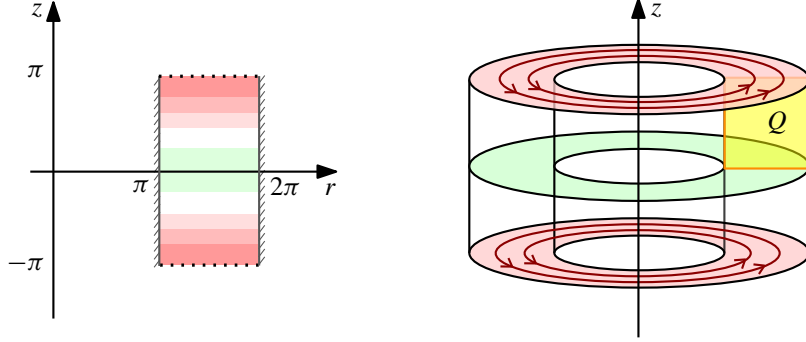
**Theorem 1.8.** *Consider the 3-dimensional axisymmetric Euler equation (1-9)–(1-10) set on the domain  $\Omega$  in (1-11). Let  $u_0^\theta \in C^\infty(\Omega)$  be even in  $z$  and  $\omega_0^\theta \in C^\infty(\Omega)$  be odd in  $z$ . Assume that there exists  $k_0 > 0$  such that  $u_0^\theta \geq k_0 > 0$  on  $z = \pi$  and  $|u_0^\theta| \leq \frac{1}{8}k_0$  on  $z = 0$ . Then there exist some constants  $T_0(u_0) \geq 0$  and  $c(u_0) > 0$  such that the corresponding solution satisfies*

$$\|\omega^\theta(t)\|_{L^p(\Omega)} \geq ct^{3-2/p} \quad \text{for all } p \in [1, \infty], \quad t \in [T_0, T) \quad (1-12)$$

and

$$\|u(t)\|_{L^\infty(\Omega)} \geq ct \quad \text{for all } t \in [T_0, T), \quad (1-13)$$

where  $T$  is the lifespan of the smooth solution. In particular, if  $\int_0^\pi \int_\pi^{2\pi} \omega_0^\theta dr dz \geq 0$ , then  $T_0 = 0$  in both estimates above.



**Figure 3.** Illustration of the domain and assumptions on  $u_0^\theta$  for the 3-dimensional axisymmetric Euler equation. The left figure illustrates  $u_0^\theta$  on the  $rz$  plane, and the right figure shows the 3-dimensional setting. Here red denotes positive  $u_0^\theta$  (and deeper color means larger magnitude), and green denotes  $u_0^\theta$  with a smaller magnitude (whose sign can be positive or negative). With such initial data, we will show that the “secondary flow” within the yellow square  $Q$  grows to infinity as  $t \rightarrow \infty$ .

See Figure 3 for an illustration of the domain and initial data. Note that our setting is almost the same as the Hou–Luo scenario [Luo and Hou 2014], except that we replace the cylinder by an annular cylinder. While our growth estimates are far from a finite-time blowup, they hold for a broad class of initial data: in addition to some symmetry assumptions on  $u_0^\theta$  and  $\omega_0^\theta$ , all we need is  $u_0^\theta$  being uniformly positive on  $z = \pi$  and having small magnitude on  $z = 0$ . The proof is a simple argument analogous to Theorem 1.4 for Boussinesq equations, where the key idea is the interplay between the monotonicity of a vorticity integral and the boundedness of kinetic energy.

After the completion of this manuscript, we became aware of work by Serre [1991; 1999], where he studied the 3-dimensional axisymmetric Euler equation in the same domain as in our setting and obtained linear growth of vorticity.

## 2. Small scale formation for viscous Boussinesq equation

In this section, we aim to prove Theorem 1.1. To begin with, we discuss some properties on the solution  $(\rho, u)$  when the initial data satisfies (A1)–(A3). Under the assumption (A1), it is well known that  $\rho(\cdot, t)$  and  $u(\cdot, t)$  remain in  $C^\infty(\Omega)$ . And if  $\Omega = \mathbb{R}^2$ , we have  $\rho(\cdot, t) \in C_c^\infty(\mathbb{R}^2)$  and  $u(\cdot, t) \in H^k(\mathbb{R}^2)$  for all  $k \in \mathbb{N}$  and  $t \geq 0$ ; see, e.g., [Chae 2006; Hou and Li 2005].

Note that the symmetry in (A2) holds true for all times thanks to the uniqueness of solutions. If  $\Omega = \mathbb{T}^2$ , the additional symmetry in  $x_1$  leads to  $u_1(\cdot, t) = 0$  on the  $x_2$ -axis for all times, thus  $\rho(0, x_2, t) = 0$  for all  $x_2 \in \mathbb{T}$  and  $t \geq 0$ .

The symmetry in  $x_2$  in (A2) also gives  $u_2(\cdot, t) = 0$  on the  $x_1$ -axis for all times, and combining it with (A3) gives  $\rho(x, t) \geq 0$  for  $x_2 \geq 0$  and all  $t \geq 0$ .

We also note that, due to the incompressibility of  $u$ , all  $L^p$  norms of  $\rho$  are conserved in time; that is,

$$\|\rho(t, \cdot)\|_{L^p(\Omega)} = \|\rho_0\|_{L^p(\Omega)} \quad \text{for all } t \geq 0, \quad p \in [1, \infty]. \quad (2-1)$$

**2.1. Evolution of the potential and kinetic energy.** Let us define the *potential energy* and *kinetic energy* of the solution as, respectively,

$$E_P(t) := \int_{\Omega} \rho(x, t) x_2 dx \quad \text{and} \quad E_K(t) := \frac{1}{2} \int_{\Omega} |u(x, t)|^2 dx. \quad (2-2)$$

As we will see, the evolution of these energies plays a crucial role in the proof of Theorem 1.1. The rate of change of  $E_P$  can be easily computed as

$$E'_P(t) = \int_{\Omega} \rho_t x_2 dx = \int_{\Omega} -u \cdot (\nabla \rho) x_2 dx = \int_{\Omega} \rho u_2 dx, \quad (2-3)$$

where the last equality follows from the divergence theorem and  $\nabla \cdot u = 0$ , and note that the boundary integral in the divergence theorem is zero: in  $\mathbb{R}^2$  it follows from  $\rho(\cdot, t)$  having compact support, and in  $\mathbb{T}^2$  it follows from the symmetries in (A2).

Similarly, one can compute the rate of change of the kinetic energy  $E_K$  as

$$E'_K(t) = - \int_{\Omega} \rho u_2 dx - \nu \int_{\Omega} |\nabla u|^2 dx.$$

Combining the two equations, the total energy  $E_P(t) + E_K(t)$  is nonincreasing in time, and more precisely we have

$$E_P(t) + E_K(t) + \nu \int_0^t \int_{\Omega} |\nabla u(x, s)|^2 dx ds = E_K(0) + E_P(0) \quad \text{for all } t \geq 0. \quad (2-4)$$

From our discussion above,  $\rho(\cdot, t)$  remains odd in  $x_2$  for all  $t \geq 0$ , and the property (A3) holds for all  $t \geq 0$ . Thus  $E_P(t)$  is positive for all times. Combining this with (2-4) gives

$$0 \leq E_P(t) \leq E_P(0) + E_K(0) \quad \text{and} \quad 0 \leq E_K(t) \leq E_P(0) + E_K(0) \quad \text{for all } t \geq 0. \quad (2-5)$$

In addition, using that  $E_P(t) \geq 0$  and  $E_K(t) \geq 0$  for all  $t \geq 0$ , we can send  $t \rightarrow \infty$  in (2-4) to obtain

$$\nu \int_0^\infty \|\nabla u(t)\|_{L^2(\Omega)}^2 dt \leq E_P(0) + E_K(0). \quad (2-6)$$

In the next lemma we compute the second derivative of  $E_P$ , which will be used later.

**Lemma 2.1.** *Let  $(\rho, u)$  be a solution to (1-1) with initial data  $(\rho_0, u_0)$  satisfying (A1)–(A3). Then the potential energy  $E_P$  defined in (2-2) satisfies*

$$E''_P(t) = A(t) + B(t) - \delta(t) \quad \text{for all } t \geq 0, \quad (2-7)$$

where

$$A(t) := \sum_{i,j=1}^2 \int_{\Omega} ((-\Delta)^{-1} \partial_2 \rho) \partial_i u_j \partial_j u_i dx, \quad B(t) := \nu \int_{\Omega} \rho \Delta u_2 dx, \quad \text{and} \quad \delta(t) := \|\partial_1 \rho\|_{\dot{H}^{-1}(\Omega)}^2. \quad (2-8)$$

*Proof.* Differentiating (2-3) in time, we get

$$E''_P(t) = \int_{\Omega} -u \cdot \nabla(\rho u_2) + \rho(-\partial_2 p - \rho + \nu \Delta u_2) dx = \int_{\Omega} \rho(-\partial_2 p - \rho + \nu \Delta u_2) dx, \quad (2-9)$$

where the second equality follows from the incompressibility of  $u$  and the fact that the boundary integral is zero as we apply the divergence theorem: for  $\Omega = \mathbb{R}^2$  it follows from  $\rho(\cdot, t)$  having compact support, whereas for  $\Omega = \mathbb{T}^2$  we are using  $u \cdot n = 0$  on the boundary of  $[-\pi, \pi]^2$  due to our symmetry assumptions in (A2). Comparing (2-9) with our goal (2-7), it suffices to show that

$$\int_{\Omega} \rho(-\partial_2 p - \rho) dx = A(t) - \delta(t). \quad (2-10)$$

To do so, we take divergence in the equation for  $u$  in (1-1). Using the incompressibility of  $u$ , we get  $\nabla \cdot (u \cdot \nabla u) = -\Delta p - \partial_2 \rho$ , and hence

$$p = (-\Delta)^{-1} \nabla \cdot (u \cdot \nabla u) + (-\Delta)^{-1} \partial_2 \rho,$$

where  $(-\Delta)^{-1}$  is the inverse Laplacian in  $\Omega$  (which is either  $\mathbb{R}^2$  or  $\mathbb{T}^2$ ) defined in the standard way using Fourier transform (for  $\Omega = \mathbb{R}^2$ ) or Fourier series (for  $\Omega = \mathbb{T}^2$ ). Therefore it follows that

$$\begin{aligned} -\partial_2 p - \rho &= -\partial_2 (-\Delta)^{-1} \nabla \cdot (u \cdot \nabla u) - (-\Delta)^{-1} \partial_{22} \rho - \rho \\ &= - \sum_{i,j=1}^2 \partial_2 (-\Delta)^{-1} (\partial_i u_j \partial_j u_i) + (-\Delta)^{-1} \partial_{11} \rho. \end{aligned}$$

This immediately yields that

$$\begin{aligned} \int_{\Omega} \rho(-\partial_2 p - \rho) dx &= - \sum_{i,j=1}^2 \int_{\Omega} \rho \partial_2 (-\Delta)^{-1} (\partial_i u_j \partial_j u_i) dx + \int_{\Omega} \rho (-\Delta)^{-1} \partial_{11} \rho dx \\ &= A(t) - \delta(t), \end{aligned}$$

where the second equality follows from integration by parts. This finishes the proof.  $\square$

The relation between  $\delta(t)$  and  $\|\rho(t)\|_{\dot{H}^s(\Omega)}$  has been investigated in [Kiselev and Yao 2023]. Below we state the results from that paper and give a slightly improved estimate for the  $\Omega = \mathbb{R}^2$  case.<sup>2</sup> For the sake of completeness, we give a proof in the Appendix. In the statement of the lemma we replace  $\rho(t)$  by  $\mu$  to emphasize that the estimate does not depend on the equation that  $\rho(t)$  satisfies.

**Lemma 2.2.** (a) Assume  $\Omega = \mathbb{R}^2$ . Consider all  $\mu \in C_c^\infty(\mathbb{R}^2)$  that are odd in  $x_2$  and not identically zero. For all such  $\mu$ , there exists  $c_1(s, \|\mu\|_{L^1}, \|\mu\|_{L^2}) > 0$  such that

$$\|\mu\|_{\dot{H}^s(\mathbb{R}^2)} \geq c_1 (\|\partial_1 \mu\|_{\dot{H}^{-1}(\mathbb{R}^2)}^2)^{-s/4} \quad \text{for all } s > 0. \quad (2-11)$$

(b) Assume  $\Omega = \mathbb{T}^2$ . Consider all  $\mu \in C^\infty(\mathbb{T}^2)$  that are not identically zero, odd in  $x_2$ , even in  $x_1$ , with  $\mu = 0$  on the  $x_2$ -axis, and  $\mu \geq 0$  in  $\mathbb{T} \times [0, \pi]$ . For all such  $\mu$ , there exists  $c_2(s, \int_{\mathbb{T} \times [0, \pi]} \mu^{1/3} dx) > 0$  such that

$$\|\mu\|_{\dot{H}^s(\mathbb{T}^2)} \geq c_2 (\|\partial_1 \mu\|_{\dot{H}^{-1}(\mathbb{T}^2)}^2)^{-s+1/2} \quad \text{for all } s > \frac{1}{2}. \quad (2-12)$$

<sup>2</sup>In [Kiselev and Yao 2023], the estimate corresponding to (2-11) is [Kiselev and Yao 2023, (3.4)], where an extra condition  $\|\partial_1 \mu\|_{\dot{H}^{-1}}^2 < \frac{1}{4} \|\mu\|_{L^2}^2$  was imposed. In this lemma we give a slightly improved estimate where this assumption is dropped.



**2.2. Infinite-in-time growth of Sobolev norms.** Using Lemma 2.1, for any  $t_2 > t_1 \geq 0$ , integrating  $E_p''$  from  $t_1$  to  $t_2$  we get

$$E_p'(t_2) - E_p'(t_1) = \int_{t_1}^{t_2} A(t) dt + \int_{t_1}^{t_2} B(t) dt - \int_{t_1}^{t_2} \delta(t) dt. \quad (2-13)$$

In the next lemma we estimate the two integrals  $\int_{t_1}^{t_2} A(t) dt$  and  $\int_{t_1}^{t_2} B(t) dt$  on the right-hand side.

**Lemma 2.3.** *Assume  $\nu > 0$ . Let  $(\rho, u)$  be a solution to (1-1) with initial data  $(\rho_0, u_0)$  satisfying (A1)–(A3). Then, for all  $t_2 > t_1 \geq 0$ ,  $A(t)$  defined in (2-8) satisfies*

$$\int_{t_1}^{t_2} |A(t)| dt \leq C(\rho_0) \int_{t_1}^{t_2} \|\nabla u(t)\|_{L^2(\Omega)}^2 dt. \quad (2-14)$$

Furthermore, for all  $s \geq 1$  and  $t_2 > t_1 \geq 0$ ,  $B(t)$  defined in (2-8) satisfies

$$\int_{t_1}^{t_2} |B(t)| dt \leq C(s, \rho_0) \nu \left( \int_{t_1}^{t_2} \|\nabla u(t)\|_{L^2(\Omega)}^2 dt \right)^{1/2} \left( \int_{t_1}^{t_2} \|\rho(t)\|_{\dot{H}^s(\Omega)}^{2/s} dt \right)^{1/2}. \quad (2-15)$$

*Proof.* Let us show (2-14) first. Let  $f := (-\Delta)^{-1} \partial_2 \rho$ ; we claim that

$$\|f(\cdot, t)\|_{L^\infty(\Omega)} \leq C(\rho_0) \quad \text{for all } t \geq 0. \quad (2-16)$$

Once this is proved, it follows that

$$\int_{t_1}^{t_2} |A(t)| dt \leq \int_{t_1}^{t_2} \|f\|_{L^\infty(\Omega)} \|\nabla u\|_{L^2(\Omega)}^2 dt \leq C(\rho_0) \int_{t_1}^{t_2} \|\nabla u\|_{L^2(\Omega)}^2 dt.$$

To estimate  $\|f\|_{L^\infty(\Omega)}$ , we recall the following Hardy–Littlewood–Sobolev inequality for  $\Omega = \mathbb{R}^2$  or  $\mathbb{T}^2$ : (when  $\Omega = \mathbb{T}^2$ , the function  $g$  needs to satisfy an additional assumption  $\int_\Omega g(x) dx = 0$ )

$$\|(-\Delta)^{-\alpha/2} g\|_{L^q(\Omega)} \leq C(\alpha, p, q) \|g\|_{L^p(\Omega)} \quad \text{for } 0 < \alpha < 2, \quad 1 < p < q < \infty, \quad \text{and } \frac{1}{q} = \frac{1}{p} - \frac{\alpha}{2}.$$

We choose  $\alpha = 1$ ,  $q = 4$ ,  $p = \frac{4}{3}$ , and  $g = (-\Delta)^{1/2} f(\cdot, t)$  (note that  $g = (-\Delta)^{-1/2} \partial_2 \rho$  indeed has mean zero when  $\Omega = \mathbb{T}^2$ ). Then the above inequality becomes

$$\|f(\cdot, t)\|_{L^4(\Omega)} \leq C \|(-\Delta)^{1/2} f\|_{L^{4/3}(\Omega)} = C \|(-\Delta)^{-1/2} \partial_2 \rho\|_{L^{4/3}(\Omega)} \leq C \|\rho\|_{L^{4/3}(\Omega)} \leq C(\rho_0),$$

and we also have

$$\|(-\Delta)^{1/2} f(\cdot, t)\|_{L^4(\Omega)} = \|(-\Delta)^{-1/2} \partial_2 \rho\|_{L^4(\Omega)} \leq C \|\rho\|_{L^4(\Omega)} \leq C(\rho_0).$$

In the above two estimates, the second-to-last inequality in both equations is due to the Riesz transform being bounded in  $L^p(\Omega)$  for  $1 < p < \infty$ , and the last inequality in both equations comes from (2-1). Combining these estimates together, we have

$$\|f(\cdot, t)\|_{W^{1,4}(\Omega)} \leq C(\rho_0) \quad \text{for all } t \geq 0.$$

Then the boundedness of  $f$  follows immediately from Morrey's inequality  $W^{1,4}(\Omega) \subset C^{0,1/2}(\Omega)$  for both  $\Omega = \mathbb{R}^2$  and  $\mathbb{T}^2$ . This leads to  $\|f(\cdot, t)\|_{L^\infty(\Omega)} \leq C \|f(\cdot, t)\|_{W^{1,4}(\Omega)} \leq C(\rho_0)$  for all  $t \geq 0$ , which proves (2-16).

Now we turn to the estimate for  $B(t)$ . Applying the divergence theorem to the definition of  $B(t)$  from (2-8), we see that

$$\int_{t_1}^{t_2} |B(t)| dt = \nu \int_{t_1}^{t_2} \left| \int_{\Omega} \nabla \rho \cdot \nabla u_2 dx \right| dt \leq \nu \left( \int_{t_1}^{t_2} \|u(t)\|_{\dot{H}^1(\Omega)}^2 dt \right)^{1/2} \left( \int_{t_1}^{t_2} \|\rho(t)\|_{\dot{H}^1(\Omega)}^2 dt \right)^{1/2}, \quad (2-17)$$

where we used the Cauchy–Schwarz inequality in the last step. Using the Gagliardo–Nirenberg interpolation inequality, we obtain

$$\begin{aligned} \int_{t_1}^{t_2} |B(t)| dt &\leq \nu \left( \int_{t_1}^{t_2} \|\nabla u(t)\|_{L^2(\Omega)}^2 dt \right)^{1/2} \left( \int_{t_1}^{t_2} C(s) \|\rho(t)\|_{L^2}^{2(1-1/s)} \|\rho(t)\|_{\dot{H}^s(\Omega)}^{2/s} dt \right)^{1/2} \\ &\leq C(s, \rho_0) \nu \left( \int_{t_1}^{t_2} \|\nabla u(t)\|_{L^2(\Omega)}^2 dt \right)^{1/2} \left( \int_{t_1}^{t_2} \|\rho(t)\|_{\dot{H}^s(\Omega)}^{2/s} dt \right)^{1/2}, \end{aligned}$$

where the last inequality follows from (2-1). This finishes the proof of (2-15).  $\square$

Now we are ready to prove Theorem 1.1.

*Proof of Theorem 1.1.* The main idea of the proof is to estimate all terms in (2-13) for  $t_1 = T$  and  $t_2 = 2T$  for  $T \gg 1$ , and obtain a contradiction if  $\sup_{t \in [T, 2T]} \|\rho(t)\|_{\dot{H}^s}$  grows slower than a certain power of  $T$ .

First, to bound the left-hand side of (2-13), note that (2-3) and the Cauchy–Schwarz inequality yield

$$|E'_P(t)| \leq \|\rho(t)\|_{L^2} \|u(t)\|_{L^2} \leq \|\rho_0\|_{L^2} \sqrt{2E_K(t)} \leq C(\rho_0, u_0) < \infty \quad \text{for all } t \geq 0, \quad (2-18)$$

where the second inequality follows from (2-1) and the definition of  $E_K$  in (2-2), and the third inequality follows from (2-5). Thus

$$|E'_P(2T) - E'_P(T)| \leq C_0(\rho_0, u_0) < \infty \quad \text{for all } T > 0. \quad (2-19)$$

Plugging the estimates (2-19) and (2-14) into the identity (2-13), we have

$$\int_T^{2T} \delta(t) dt \leq C_0(\rho_0, u_0) + C_1(\rho_0) \int_T^{2T} \|\nabla u(t)\|_{L^2(\Omega)}^2 dt + \int_T^{2T} |B(t)| dt \quad \text{for all } T > 0. \quad (2-20)$$

Next we will bound the two integrals on the right-hand side from above, and  $\int_T^{2T} \delta(t) dt$  from below. Let us define

$$\eta(T) := \int_T^{2T} \|\nabla u(t)\|_{L^2(\Omega)}^2 dt \quad \text{and} \quad M_s(T) := \sup_{t \in [T, 2T]} \|\rho(t)\|_{\dot{H}^s(\Omega)}.$$

Combining (2-4) and (2-5) yields

$$\int_0^\infty \|\nabla u(t)\|_{L^2(\Omega)}^2 dt \leq \nu^{-1} C(\rho_0, u_0) < \infty,$$

where we also used the assumption  $\nu > 0$ . This implies

$$\lim_{T \rightarrow \infty} \eta(T) = 0. \quad (2-21)$$

To bound  $\int_T^{2T} |B(t)| dt$ , we use (2-15) and the definitions of  $\eta(T)$  and  $M_s(T)$  to get

$$\begin{aligned} \int_T^{2T} |B(t)| dt &\leq C(s, \rho_0) \nu \left( \int_T^{2T} \|\nabla u\|_{L^2(\Omega)}^2 dt \right)^{1/2} \left( \int_T^{2T} \|\rho\|_{\dot{H}^s(\Omega)}^{2/s} dt \right)^{1/2} \\ &\leq C_2(s, \rho_0, \nu) \eta(T)^{1/2} M_s(T)^{1/s} T^{1/2} \quad \text{for all } s \geq 1, \quad T > 0. \end{aligned} \quad (2-22)$$

Next we will bound the integral  $\int_T^{2T} \delta(t) dt$  from below. If  $\Omega = \mathbb{R}^2$ , assumption (A2) allows us to apply Lemma 2.2 (a) to  $\rho(\cdot, t)$  (and note that its  $L^1$  and  $L^2$  norms are preserved in time), so there exists  $c_3(s, \rho_0) > 0$  such that

$$\|\rho(t)\|_{\dot{H}^s(\mathbb{R}^2)} \geq c_3(s, \rho_0) \delta(t)^{-s/4} \quad \text{for all } s > 0, \quad t > 0. \quad (2-23)$$

And if  $\Omega = \mathbb{T}^2$ , using assumptions (A2) and (A3) (note that these imply that  $\int_{\mathbb{T} \times [0, \pi]} \rho(x, t)^{1/3} dx$  is preserved in time), by Lemma 2.2 (b), there exists  $c_4(s, \rho_0) > 0$  such that

$$\|\rho(t)\|_{\dot{H}^s(\mathbb{T}^2)} \geq c_4(s, \rho_0) \delta(t)^{-(s-1/2)} \quad \text{for all } s > \frac{1}{2}, \quad t > 0. \quad (2-24)$$

Let us rewrite (2-23) and (2-24) above in a unified manner for the two cases  $\Omega = \mathbb{R}^2$  and  $\mathbb{T}^2$ , so we do not need to repeat similar proofs twice. For  $\Omega$  either being  $\mathbb{R}^2$  or  $\mathbb{T}^2$ , let us define

$$\alpha_\Omega := \begin{cases} \frac{1}{4}s & \Omega = \mathbb{R}^2, \\ s - \frac{1}{2} & \Omega = \mathbb{T}^2, \end{cases} \quad \underline{s}_\Omega := \begin{cases} 0 & \Omega = \mathbb{R}^2, \\ \frac{1}{2} & \Omega = \mathbb{T}^2, \end{cases} \quad c_\Omega(s, \rho_0) := \begin{cases} c_3(s, \rho_0) & \Omega = \mathbb{R}^2, \\ c_4(s, \rho_0) & \Omega = \mathbb{T}^2. \end{cases} \quad (2-25)$$

With this notation, (2-23) and (2-24) become

$$\|\rho(t)\|_{\dot{H}^s(\Omega)} \geq c_\Omega(s, \rho_0) \delta(t)^{-\alpha_\Omega} \quad \text{for all } s > \underline{s}_\Omega, \quad t > 0. \quad (2-26)$$

Combining (2-26) with the definition of  $M_s$  gives

$$\int_T^{2T} \delta(t) dt \geq \int_T^{2T} c_\Omega^{1/\alpha_\Omega} \|\rho(t)\|_{\dot{H}^s(\Omega)}^{-1/\alpha_\Omega} dt \geq c_\Omega^{1/\alpha_\Omega} M_s(T)^{-1/\alpha_\Omega} T \quad \text{for all } s > \underline{s}_\Omega, \quad T > 0. \quad (2-27)$$

Applying the bounds (2-22) and (2-27) and the definition of  $\eta(T)$  to the inequality (2-20) (and noting that  $\underline{s}_\Omega < 1$ ), we have

$$c_5 M_s(T)^{-1/\alpha_\Omega} T \leq C_0 + C_1 \eta(T) + C_2 \eta(T)^{1/2} M_s(T)^{1/s} T^{1/2} \quad \text{for all } s \geq 1, \quad T > 0,$$

where  $c_5 := c_\Omega(s, \rho_0)^{1/\alpha_\Omega}$ ,  $C_0 := C_0(\rho_0, u_0)$ ,  $C_1 := C_1(\rho_0)$ , and  $C_2 := C_2(s, \rho_0, \nu)$  — note that they are all strictly positive and do not depend on  $T$ . Rearranging the terms, the inequality is equivalent to

$$(c_5 - C_2 \eta(T)^{1/2} T^{-1/2} M_s(T)^{1/s+1/\alpha_\Omega}) M_s(T)^{-1/\alpha_\Omega} T \leq C_0 + C_1 \eta(T) \quad \text{for all } s \geq 1, \quad T > 0. \quad (2-28)$$

We claim that this implies

$$\limsup_{T \rightarrow \infty} T^{-1/2} M_s(T)^{1/s+1/\alpha_\Omega} = +\infty \quad \text{for all } s \geq 1. \quad (2-29)$$

Towards a contradiction, assume

$$A := \limsup_{T \rightarrow \infty} T^{-1/2} M_s(T)^{1/s+1/\alpha_\Omega} < \infty \quad \text{for some } s \geq 1.$$

Combining this assumption with (2-21) gives

$$\limsup_{T \rightarrow \infty} \eta(T)^{1/2} T^{-1/2} M_s(T)^{1/s+1/\alpha_\Omega} = \left( \limsup_{T \rightarrow \infty} T^{-1/2} M_s(T)^{1/s+1/\alpha_\Omega} \right) \left( \lim_{T \rightarrow \infty} \eta(T)^{1/2} \right) = 0,$$

so the parenthesis in (2-28) converges to  $c_5$  as  $T \rightarrow \infty$ . For the remaining term on the left-hand of (2-28), we have

$$\begin{aligned} \liminf_{T \rightarrow \infty} M_s(T)^{-1/\alpha_\Omega} T &= \liminf_{T \rightarrow \infty} (T^{-1/2} M_s(T)^{1/s+1/\alpha_\Omega})^{-s/(s+\alpha_\Omega)} T^{(s+2\alpha_\Omega)/(2(s+\alpha_\Omega))} \\ &= \liminf_{T \rightarrow \infty} A^{-s/(s+\alpha_\Omega)} T^{(s+2\alpha_\Omega)/(2(s+\alpha_\Omega))} = +\infty. \end{aligned} \quad (2-30)$$

The above discussion yields that the liminf of the left-hand side of (2-28) is  $+\infty$ . This contradicts (2-21), which says the right-hand side of (2-28) goes to  $C_0 < \infty$  as  $T \rightarrow \infty$ . This finishes the proof of the claim (2-29).

Finally, using the definition of  $M_s$ , we have that (2-29) is equivalent to

$$\limsup_{t \rightarrow \infty} t^{-1/2} \|\rho(t)\|_{H^s}^{1/s+1/\alpha_\Omega} = +\infty.$$

Recalling the definition of  $\alpha_\Omega$  from (2-25), we see that the desired estimates (1-2) and (1-3) follow immediately.  $\square$

Although it is unclear whether the algebraic rates are sharp, in the next proposition we show that, under the assumptions (A1)–(A3),  $\|\rho(t)\|_{H^1(\Omega)}$  can at most have subexponential growth.

**Proposition 2.4.** *Let  $\Omega = \mathbb{R}^2$  or  $\mathbb{T}^2$ . For any initial data  $(\rho_0, u_0)$  satisfying (A1)–(A3),  $\|\rho(t)\|_{H^1(\Omega)}$  satisfies the subexponential bound*

$$\|\rho(t)\|_{H^1(\Omega)} \lesssim \exp(Ct^\alpha) \quad \text{for all } t > 0,$$

for some constant  $\alpha \in (0, 1)$ .

*Proof.* The proposition can be proved by making a slight modification to [Kukavica and Wang 2020, Theorem 3.1]. For the sake of completeness, we will provide a sketch of the proof. For both  $\Omega = \mathbb{T}^2$  and  $\mathbb{R}^2$ , standard energy estimates give that  $\|\nabla \rho(t)\|_{L^2(\Omega)}$  satisfies the estimate

$$\frac{d}{dt} \|\nabla \rho(t)\|_{L^2(\Omega)} \leq \|\nabla u(t)\|_{L^\infty} \|\nabla \rho(t)\|_{L^2(\Omega)},$$

which leads to

$$\|\nabla \rho(t)\|_{L^2(\Omega)} \lesssim \exp\left(\int_0^t \|\nabla u(s)\|_{L^\infty(\Omega)} ds\right) \|\nabla \rho_0\|_{L^2(\Omega)}. \quad (2-31)$$

Recall that (2-6) gives

$$\int_0^\infty \|\nabla u(t)\|_{L^2}^2 dt \leq C(v, \rho_0, u_0). \quad (2-32)$$

Here the time integrability of  $\|\nabla u(t)\|_{L^2}^2$  follows from the symmetry assumptions in our setting, and it allows us to obtain a refined upper bound compared to [Kukavica and Wang 2020, Theorem 3.1]. Namely, combining (2-32) with the Gagliardo–Nirenberg inequality

$$\|\nabla u\|_{L^\infty(\Omega)} \leq \|\nabla u\|_{L^2(\Omega)}^{(p-2)/(2p-2)} \|\nabla^2 u\|_{L^p(\Omega)}^{p/(2p-2)} \quad \text{for } p > 2 \quad (2-33)$$



and Hölder's inequality, the exponent in (2-31) can be bounded above by

$$\int_0^t \|\nabla u(s)\|_{L^\infty(\Omega)} ds \leq C(p, \nu, \rho_0, u_0) \left( \int_0^t \|\nabla^2 u\|_{L^p(\Omega)}^{(2p)/(3p-2)} ds \right)^{(3p-2)/(4p-4)}. \quad (2-34)$$

When  $\Omega = \mathbb{T}^2$ , by [Kukavica and Wang 2020, Theorem 2.1],  $\|u(t)\|_{W^{2,p}} < C(p, \nu, \rho_0, u_0)$  for all  $p < \infty$ . So one can choose  $p \gg 1$  to obtain the subexponential upper bound

$$\|\nabla \rho(t)\|_{L^2} \leq C(\rho_0) \exp(C(\epsilon, \nu, \rho_0, u_0) t^{3/4+\epsilon}) \quad \text{for any } \epsilon > 0, \quad t > 0. \quad (2-35)$$

Next we move on to the  $\Omega = \mathbb{R}^2$  case. In this case, it suffices to prove  $\|\nabla^2 u(t)\|_{L^p} < C(p, \nu, \rho_0, u_0)$  for all  $p < \infty$  under our symmetry setting. Once this is shown, an identical argument as (2-31)–(2-35) again leads to the subexponential growth, since all these estimates also hold for  $\mathbb{R}^2$ .

To begin with, we show that  $\|\omega(t)\|_{L^2}$  is uniformly bounded in time under our symmetry assumptions. Noting from (1-1) that  $\omega$  satisfies  $\omega_t + u \cdot \nabla \omega = \nu \Delta \omega - \partial_1 \rho$ , we can obtain a standard energy inequality

$$\begin{aligned} \frac{d}{dt} \|\omega(t)\|_{L^2(\mathbb{R}^2)}^2 + \nu \|\nabla \omega(t)\|_{L^2(\mathbb{R}^2)}^2 &= 2 \int_{\mathbb{R}^2} \rho(t, x) \partial_1 \omega(t, x) dx \\ &\leq \frac{1}{2} \nu \|\nabla \omega(t)\|_{L^2(\mathbb{R}^2)}^2 + C(\nu) \|\rho(t)\|_{L^2(\mathbb{R}^2)}. \end{aligned}$$

Since  $\|\rho(t)\|_{L^2}$  is conserved, the above estimate leads to  $(d/dt)\|\omega(t)\|_{L^2(\mathbb{R}^2)}^2 \leq C(\nu, \rho_0)$ . Combining this with (2-32) (and recall  $\|\omega\|_{L^2} = \|\nabla u\|_{L^2}$ ), we have

$$\|\omega(t)\|_{L^2(\mathbb{R}^2)} < C(\nu, \rho_0, u_0) \quad \text{for all } t \geq 0. \quad (2-36)$$

Following the notation from [Kukavica and Wang 2020], let us define  $\zeta = \omega - \partial_1(I - \Delta)^{-1}\rho$  to be the modified vorticity. Since one has  $\|\partial_1(I - \Delta)^{-1}\rho\|_{W^{1,p}} \leq C(p, \rho_0)$  for all  $1 < p < \infty$ , it implies

$$\|\zeta - \omega\|_{L^p} \leq C(p, \rho_0) \quad \text{and} \quad \|\nabla \zeta - \nabla \omega\|_{L^p} \leq C(p, \rho_0). \quad (2-37)$$

Combining (2-36) and (2-37) gives a uniform-in-time bound  $\|\zeta(t)\|_{L^2} < C(\nu, \rho_0, u_0)$ . Now, let us define  $\psi_p(t) := \int_{\mathbb{R}^2} |\nabla \zeta(t)|^p$  for  $p \geq 2$ . Using (1-1), one can express the equation for  $\zeta$  as [Kukavica and Wang 2020, (2.21)]

$$\zeta_t + u \cdot \nabla \zeta = \nu \Delta \zeta + F, \quad F := [\partial_1(I - \Delta)^{-1}, u \cdot \nabla] \rho - ((I - \Delta)^{-1} \Delta - I) \partial_1 \rho.$$

A straightforward calculation yields that  $\psi_2'(t) = 2 \int_{\mathbb{R}^2} \nabla \zeta \cdot \nabla F dx - 2\nu \int_{\mathbb{R}^2} |\nabla^2 \zeta|^2 dx$ . Using the interpolation inequality

$$\|\nabla^2 \zeta\|_{L^2} \geq \frac{\|\nabla \zeta\|_{L^2}^2}{C \|\zeta\|_{L^2}},$$

we obtain

$$\psi_2'(t) + \frac{\psi_2^2}{C \|\zeta\|_{L^2}^2} \leq 2 \int_{\mathbb{R}^2} \nabla \zeta \cdot \nabla F dx.$$

To obtain an estimate of the right-hand side, a more careful analysis is required, and the same argument as in [Kukavica and Wang 2020, (3.2)] gives that

$$\psi_2'(t) + \frac{\psi_2^2}{C\|\zeta\|_{L^2}^2} \leq C\psi_2 + C.$$

Thus the above uniform-in-time bound for  $\|\zeta\|_{L^2}^2$  gives a uniform-in-time bound for  $\psi_2(t)$ . For any  $2 \leq p < \infty$ , [Kukavica and Wang 2020, (3.3)] gives

$$\psi_{2p}'(t) + \frac{\psi_{2p}^2}{C\psi_p^2} \leq Cp^2\psi_{2p} + Cp^5\psi_{2p}^{(p-1)/p}.$$

One can use induction (for  $p = 2, 4, 8, \dots$ ) to obtain a uniform-in-time bound  $\psi_p(t) \leq C(p, \nu, \rho_0, u_0)$ , and combining this bound with (2-37) gives

$$\|\nabla^2 u(t)\|_{L^p} \leq C(p)\|\nabla \omega(t)\|_{L^p} \leq C(p)(\|\nabla \zeta(t)\|_{L^p} + C(p, \rho_0)) \leq C(p, \nu, \rho_0, u_0).$$

Finally, choosing an arbitrarily large  $p \gg 1$  and plugging the above uniform-in-time estimate into (2-34), we again have the subexponential upper bound (2-35) for  $\Omega = \mathbb{R}^2$ .  $\square$

### 3. Infinite-in-time growth for inviscid Boussinesq and 3-dimensional Euler

**3.1. Vorticity lemma for flows with fixed kinetic energy.** Before proving the main theorems, let us start with a simple observation: it says that for any vector field  $u$  in a square  $Q = [0, \pi]^2$  with a fixed kinetic energy, if its vorticity integral  $A := \int_Q \omega \, dx$  is big, then, for  $1 < p \leq \infty$ ,  $\|\omega\|_{L^p}$  must be even bigger, at least of order  $A^{3-2/p}$ .

**Lemma 3.1.** *Let  $Q := [0, \pi]^2$ . For any vector field  $u \in C^\infty(Q)$ , let  $\omega := \partial_1 u_2 - \partial_2 u_1$ . Let us define*

$$E_0 := \int_Q |u|^2 \, dx \quad \text{and} \quad A := \int_Q \omega(x) \, dx.$$

*Then we have the following lower bound for  $\|\omega\|_{L^p(Q)}$ :*

$$\|\omega\|_{L^p(Q)} \geq c_0 \max\{E_0^{-1+1/p} |A|^{3-2/p}, |A|\} \quad \text{for all } p \in [1, \infty], \quad (3-1)$$

*where  $c_0 = (128\pi^2)^{-1} > 0$  is a universal constant.*

*Proof.* Without loss of generality, assume  $A > 0$ . (If  $A < 0$ , we can prove the estimate for  $-u$ , whose vorticity integral would be positive.) By Green's theorem, we have

$$\int_{\partial Q} |u(x)| \, ds \geq \int_{\partial Q} u(x) \cdot dl = \int_Q \omega(x) \, dx = A,$$

where the integral in  $ds$  denotes the (scalar) line integral with respect to arclength, and the integral in  $dl$  denotes the (vector) line integral counterclockwise along  $\partial Q$ .

For any  $r \in [0, \frac{\pi}{2})$ , let us define

$$Q_r := [r, \pi - r] \times [r, \pi - r].$$

Note that  $Q_0 = Q$  and  $Q_r$  shrinks to a point as  $r \nearrow \frac{\pi}{2}$ . Let us define

$$r_0 := \inf \left\{ r \in [0, \frac{\pi}{2}) : \int_{\partial Q_r} |u(x)| ds = \frac{1}{2} A \right\}.$$

Since

$$\int_{\partial Q_0} |u(x)| ds > A \quad \text{and} \quad \int_{\partial Q_r} |u(x)| ds \rightarrow 0 \quad \text{as } r \nearrow \frac{\pi}{2},$$

the above definition leads to a well-defined  $r_0 \in (0, \frac{\pi}{2})$ , and in addition we have

$$\int_{\partial Q_r} |u(x)| ds > \frac{1}{2} A \quad \text{for all } r \in [0, r_0).$$

Next we claim that

$$r_0 < 16\pi E_0 A^{-2}. \quad (3-2)$$

To show this, note that, for all  $0 < r < r_0$ , we can apply the Cauchy–Schwarz inequality on  $\partial Q_r$  (and use  $|\partial Q_r| < 4\pi$ ) to obtain

$$\int_{\partial Q_r} |u|^2 ds \geq \frac{1}{4\pi} \left( \int_{\partial Q_r} |u| ds \right)^2 > \frac{A^2}{16\pi}.$$

Integrating the above inequality for  $r \in (0, r_0)$  over the direction transversal to  $\partial Q_r$  (and noting that  $\bigcup_{r \in (0, r_0)} \partial Q_r = Q \setminus Q_{r_0}$ ), we obtain

$$E_0 \geq \int_{Q \setminus Q_{r_0}} |u|^2 dx = \int_0^{r_0} \int_{\partial Q_r} |u|^2 ds dr > \frac{A^2 r_0}{16\pi},$$

which yields the claim (3-2). Note that (3-2) implies

$$|Q \setminus Q_{r_0}| = \int_0^{r_0} |\partial Q_r| dr \leq \min\{4\pi r_0, \pi^2\} \leq \min\{64\pi^2 E_0 A^{-2}, \pi^2\}. \quad (3-3)$$

By Green's theorem and the definition of  $r_0$ ,

$$\int_{Q \setminus Q_{r_0}} \omega dx = \int_{\partial Q} u \cdot dl - \int_{\partial Q_{r_0}} u \cdot dl \geq A - \frac{1}{2} A = \frac{1}{2} A. \quad (3-4)$$

Finally, we apply Hölder's inequality to bound  $\|\omega\|_{L^p(Q)}$  from below for  $p \in [1, \infty]$ :

$$\|\omega\|_{L^p(Q)} \geq \|\omega\|_{L^p(Q \setminus Q_{r_0})} \geq \left( \int_{Q \setminus Q_{r_0}} \omega dx \right) |Q \setminus Q_{r_0}|^{-1+1/p} \quad \text{for all } p \in [1, \infty].$$

Applying the estimates (3-4) and (3-3) in the above inequality finishes the proof of (3-1) with a universal constant  $c_0 = (128\pi^2)^{-1}$ .  $\square$

**3.2. Infinite-in-time growth for inviscid Boussinesq equations.** Now we are ready to prove the infinite-in-time growth results. Let us start with Theorem 1.3 for  $\Omega = \mathbb{T}^2$ .

*Proof of Theorem 1.3.* Using the Biot–Savart law  $u = \nabla^\perp(-\Delta)^{-1}\omega$ , one can easily check that, in  $\mathbb{T}^2 = (-\pi, \pi]^2$ , the even-odd symmetry of  $\rho$  and odd-odd symmetry of  $\omega$  is preserved for all times. This implies the odd-even symmetry of  $u_1$  and even-odd symmetry of  $u_2$  hold for all times. In particular, defining

$$Q := [0, \pi] \times [0, \pi],$$

we have  $u \cdot n = 0$  on  $\partial Q$  for all times.

For any  $x \in \mathbb{T}^2$  and  $t \geq 0$ , let  $\Phi_t(x)$  be the flow map defined by

$$\partial_t \Phi_t(x) = u(\Phi_t(x), t), \quad \Phi_0(x) = x.$$

Using  $u \cdot n = 0$  on  $\partial Q$  for all times (and  $u = 0$  at the four corners of  $\partial Q$ ), for any  $x \in \partial Q$ ,  $\Phi_t(x)$  remains on the same side of  $\partial Q$  for all times during the existence of a smooth solution. Combining this with the fact that  $\rho$  is preserved along the flow map, the assumptions on  $\rho_0$  implies

$$\rho(0, x_2, t) \geq 0 \quad \text{and} \quad \rho(\pi, x_2, t) \leq 0 \quad \text{for all } x_2 \in [0, \pi], \quad t \geq 0. \quad (3-5)$$

Note that the odd-in- $x_2$  symmetry of  $\rho_0$  yields  $\rho_0(0, 0) = \rho_0(0, \pi) = 0$ , so the supremum in  $k_0 := \sup_{x_2 \in [0, \pi]} \rho_0(0, x_2) > 0$  is achieved at some  $\rho(0, a)$  for  $a \in (0, \pi)$ . In addition, by continuity of  $\rho_0$ , there exists some  $b \in (0, a)$  such that  $\rho_0(0, b) = \frac{1}{2}k_0$  and  $\rho_0 \geq \frac{1}{2}k_0$  on  $\{0\} \times [b, a]$ .

Since  $u \cdot n = 0$  on  $\partial Q$  for all times,  $\Phi_t(0, a)$  and  $\Phi_t(0, b)$  remain on the line segment  $\{0\} \times (0, \pi)$  for all times. Define

$$h(t) := |\Phi_t(0, b) - \Phi_t(0, a)|, \quad (3-6)$$

which is strictly positive as long as  $u$  remains smooth. Note  $\rho(\Phi_t(0, a), t) = k_0$  and  $\rho(\Phi_t(0, b), t) = \frac{1}{2}k_0$  for all times. This implies

$$\|\nabla \rho(t)\|_{L^\infty(Q)} \geq \frac{|\rho(\Phi_t(0, b), t) - \rho(\Phi_t(0, a), t)|}{|\Phi_t(0, b) - \Phi_t(0, a)|} \geq \frac{1}{2}k_0 h(t)^{-1} \quad (3-7)$$

for all times during the existence of a smooth solution.

Next let us define

$$A(t) := \int_Q \omega(x, t) dx;$$

we make a simple but useful observation about the monotonicity of  $A(t)$ . Using the symmetries and the facts  $\nabla \cdot u = 0$  in  $Q$  and  $u \cdot n = 0$  on  $\partial Q$ , we find

$$\begin{aligned} A'(t) &= - \int_Q u(x, t) \cdot \nabla \omega(x, t) dx - \int_Q \partial_{x_1} \rho(x, t) dx \\ &= \int_0^\pi \rho(0, x_2, t) dx_2 - \int_0^\pi \rho(\pi, x_2, t) dx_2 \geq \frac{1}{2}k_0 h(t), \end{aligned} \quad (3-8)$$



where the inequality follows from (3-5), the definition of  $h(t)$ , and the fact that  $\rho(\cdot, t) \geq \frac{1}{2}k_0$  on the line segment connecting  $\Phi_t(0, a)$  and  $\Phi_t(0, b)$ . We now integrate (3-8) in  $[0, t]$  and apply (3-7). This yields

$$A(t) \geq \frac{1}{4}k_0^2 \int_0^t \|\nabla \rho(\tau)\|_{L^\infty(Q)}^{-1} d\tau + A(0). \quad (3-9)$$

In order to apply Lemma 3.1, we need to bound  $\|u(t)\|_{L^2(Q)}^2$  from above. From the same calculation in Section 2.1, the sum of the kinetic and potential energies is conserved in  $\mathbb{T}^2$ , and hence it is also conserved in  $Q$  due to the symmetries

$$\frac{1}{2} \int_Q |u(x, t)|^2 dx + \int_Q x_2 \rho(x, t) dx = \frac{1}{2} \int_Q |u_0(x)|^2 dx + \int_Q x_2 \rho_0(x) dx.$$

Since  $\rho$  is advected by the flow,  $\|\rho(t)\|_{L^1(Q)}$  is conserved in time, so  $|\int_Q x_2 \rho(x, t) dx| \leq \pi \|\rho_0\|_{L^1(Q)}$  for all times. This implies

$$\int_Q |u(x, t)|^2 dx \leq \int_Q |u_0(x)|^2 dx + 4\pi \|\rho_0\|_{L^1(Q)} =: E_0(\rho_0, u_0)$$

for all times. Now we can apply Lemma 3.1 with  $p = +\infty$  to conclude

$$\|\omega(t)\|_{L^\infty} \geq c_0 E_0^{-1} A(t)^3 \geq c_0 E_0^{-1} \left( \frac{1}{4}k_0^2 \int_0^t \|\nabla \rho(\tau)\|_{L^\infty}^{-1} d\tau + A(0) \right)^3, \quad (3-10)$$

where we used (3-9) in the last step. Note that  $A(0)$  may be positive or negative.

On the other hand, the Lagrangian form of the evolution equation for vorticity

$$\frac{d}{dt} \omega(\Phi_t(x), t) = -\partial_{x_1} \rho(\Phi_t(x), t)$$

implies that

$$\|\omega(t)\|_{L^\infty} \leq \int_0^t \|\nabla \rho(\tau)\|_{L^\infty} d\tau + \|\omega_0\|_{L^\infty}. \quad (3-11)$$

Combining (3-10) and (3-11), we arrive at

$$\int_0^t \|\nabla \rho(\tau)\|_{L^\infty} d\tau + \|\omega_0\|_{L^\infty} \geq c_0 E_0^{-1} \left( \frac{1}{4}k_0^2 \int_0^t \|\nabla \rho(\tau)\|_{L^\infty}^{-1} d\tau + A_0 \right)^3. \quad (3-12)$$

Let us define

$$F(t) := \int_0^t \|\nabla \rho(\tau)\|_{L^\infty} d\tau.$$

Since the Cauchy–Schwarz inequality yields

$$\int_0^t \|\nabla \rho(\tau)\|_{L^\infty}^{-1} d\tau \geq t^2 \left( \int_0^t \|\nabla \rho(\tau)\|_{L^\infty} d\tau \right)^{-1} \geq t^2 F(t)^{-1} \quad \text{for all } t > 0,$$

plugging it into (3-12) gives an inequality relating  $F(t)$  to itself:

$$F(t) \geq c_0 E_0^{-1} \left( \frac{1}{4}k_0^2 t^2 F(t)^{-1} + A_0 \right)^3 - \|\omega_0\|_{L^\infty}. \quad (3-13)$$

Our goal is to show that there exists some  $c_1(\rho_0, \omega_0) > 0$  such that

$$F(t) \geq c_1(\rho_0, \omega_0) t^{3/2} \quad \text{for all } t \geq 1. \quad (3-14)$$

Towards a contradiction, suppose (3-14) does not hold at some  $t_1 \geq 1$ , so  $t_1^2 F(t_1)^{-1} \geq c_1^{-1} t_1^{1/2}$ . Since  $t_1 \geq 1$ , one can choose  $c_1$  sufficiently small (only depending on initial data) such that the right-hand side of (3-13) is bounded below by  $4^{-4} c_0 E_0^{-1} k_0^6 c_1^{-3} t_1^{3/2}$ . On the other hand, the left-hand side is bounded above by  $c_1 t_1^{3/2}$ . Thus we obtain a contradiction if we further require  $c_1 < 4^{-1} (c_0 E_0^{-1} k_0^6)^{1/4}$ .

Finally, note that (3-14) directly implies  $\sup_{\tau \in [0, t]} \|\nabla \rho(\tau)\|_{L^\infty} \geq c_1(\rho_0, \omega_0) t^{1/2}$  for all  $t \geq 1$ . For  $t \in (0, 1)$ , recall that the definition of  $k_0$  and the fact  $\rho(0, 0, t) = 0$  yield

$$\|\nabla \rho(t)\|_{L^\infty} \geq \frac{1}{\pi} k_0 \geq \left(\frac{1}{\pi} k_0\right) t^{1/2} \quad \text{for } t \in (0, 1).$$

Combining these two estimates finishes the proof.  $\square$

**Remark 3.2.** Theorem 1.3 does not give us an infinite-in-time growth result for  $\omega(\cdot, t)$ . All we have is the following conditional growth estimate coming from (3-10): if  $\limsup_{t \rightarrow \infty} t^{-1} \|\nabla \rho(t)\|_{L^\infty} < \infty$ , this must imply  $\lim_{t \rightarrow \infty} \|\omega(t)\|_{L^\infty} = \infty$ .

*Proof of Theorem 1.4.* The proof is similar to the previous one, and in fact it is easier due to the uniform positivity of  $\rho_0$  on  $\{0\} \times [0, \pi]$ . Using the Biot–Savart law, one can check that the even-in- $x_1$  symmetry of  $\rho$  and odd-in- $x_1$  symmetry of  $\omega$  is preserved for all times. Defining  $Q := [0, \pi] \times [0, \pi]$ , the symmetries and the boundary condition yield that  $u \cdot n = 0$  on  $\partial Q$  for all times. In particular, this implies

$$\rho(0, x_2, t) \geq k_0 > 0 \quad \text{and} \quad \rho(\pi, x_2, t) \leq 0 \quad \text{for all } x_2 \in [0, \pi], \quad t \geq 0, \quad (3-15)$$

during the existence of a smooth solution.

Again, let us define  $A(t) := \int_Q \omega(x, t) dx$ . A calculation similar to the previous proof shows that in this case

$$A'(t) \geq \int_0^\pi \rho(0, x_2, t) dx_2 - \int_0^\pi \rho(\pi, x_2, t) dx_2 \geq k_0 \pi,$$

where the last inequality follows from (3-15). This gives us a lower bound

$$A(t) \geq k_0 \pi t + A(0) \quad \text{for all } t \geq 0. \quad (3-16)$$

An identical argument as in the proof of Theorem 1.3 gives

$$\int_\Omega |u(x, t)|^2 dx \leq E_0(\rho_0, u_0)$$

uniformly in time; thus we can apply Lemma 3.1 to obtain

$$\|\omega\|_{L^p(Q)} \geq c_0 E_0^{-1+1/p} |A(t)|^{3-2/p} \quad \text{for all } p \in [1, \infty]. \quad (3-17)$$

Also, note that Green's theorem yields

$$A(t) = \int_{\partial Q} u \cdot dl \leq 4\pi \|u(t)\|_{L^\infty}. \quad (3-18)$$

Regarding the growth of  $\nabla \rho$ , note that (3-11) still holds in a strip, so

$$\sup_{\tau \in [0, t]} \|\nabla \rho(\tau)\|_{L^\infty} \geq t^{-1} (\|\omega(t)\|_{L^\infty} - \|\omega_0\|_{L^\infty}) \quad \text{for all } t > 0. \quad (3-19)$$

Below we discuss two cases.

Case 1:  $A(0) \geq 0$ . In this case (3-16) gives

$$A(t) \geq k_0 \pi t \quad \text{for all } t > 0.$$

We then apply (3-17) and (3-18) to obtain lower bounds for  $\|\omega(t)\|_{L^p(Q)}$  and  $\|u(t)\|_{L^\infty}$ :

$$\|\omega(t)\|_{L^p(Q)} \geq c_1(\rho_0, \omega_0) t^{3-2/p} \quad \text{for all } p \in [1, +\infty], \quad t \geq 0, \quad (3-20)$$

$$\|u(t)\|_{L^\infty(Q)} \geq \frac{1}{4} k_0 t \quad \text{for all } t \geq 0. \quad (3-21)$$

Regarding the growth of  $\nabla \rho$ , we apply (3-20) with  $p = +\infty$  and combine it with (3-19) to obtain

$$\sup_{\tau \in [0, t]} \|\nabla \rho(\tau)\|_{L^\infty} \geq t^{-1} (c_1(\rho_0, \omega_0) t^3 - \|\omega_0\|_{L^\infty}),$$

which implies

$$\sup_{\tau \in [0, t]} \|\nabla \rho(\tau)\|_{L^\infty} \geq c_1(\rho_0, \omega_0) t^2 \quad \text{for all } t \geq \left( \frac{\|\omega_0\|_{L^\infty}}{c_1(\rho_0, \omega_0)} \right)^{1/3}.$$

Combining this large time estimate with the trivial lower bound  $\|\nabla \rho(t)\|_{L^\infty} \geq \frac{1}{\pi} k_0$  for all times, there exists some  $c_2(\rho_0, \omega_0) > 0$  such that

$$\sup_{\tau \in [0, t]} \|\nabla \rho(\tau)\|_{L^\infty} \geq c_2(\rho_0, \omega_0) t^2 \quad \text{for all } t \geq 0. \quad (3-22)$$

Case 2:  $A_0 < 0$ . In this case the right-hand side of (3-16) becomes positive for  $t > |A_0|/(k_0 \pi)$ . In addition, we have

$$A(t) \geq \frac{1}{2} k_0 \pi t \quad \text{for all } t \geq T_0 =: \frac{2|A_0|}{k_0 \pi}.$$

Once we obtain this (positive) linear lower bound for  $t \geq T_0$ , we can argue as in Case 1 to obtain lower bounds for  $\|\omega(t)\|_{L^p(Q)}$ ,  $\|u(t)\|_{L^\infty}$ , and  $\sup_{\tau \in [0, t]} \|\nabla \rho(\tau)\|_{L^\infty}$  for all  $t \geq T_0$ . In addition, combining the lower bound for  $\|\nabla \rho(t)\|_{L^\infty}$  for  $t \geq T_0$  with the trivial lower bound  $\|\nabla \rho(t)\|_{L^\infty} \geq k_0/\pi$  for all times, we again have (3-22) with a smaller coefficient  $c(\rho_0, \omega_0) > 0$  that only depends on the initial data.  $\square$

**Remark 3.3.** If the assumptions on symmetries of  $\rho_0$  and  $\omega_0$  are dropped, the following simple argument still gives  $\|\omega(t)\|_{L^1} \gtrsim t$  for  $t \gg 1$ . Let  $Q_t := \{\Phi_t(x) : x \in [0, \pi] \times [0, \pi]\}$ , and denote by

$$\Gamma_t^1 := \{\Phi_t(x) : x \in \{0\} \times [0, \pi]\} \quad \text{and} \quad \Gamma_t^2 := \{\Phi_t(x) : x \in \{\pi\} \times [0, \pi]\}$$

the left and right boundary of  $Q_t$ . (Since  $u \cdot n = 0$  on  $\partial \Omega$ , the top and bottom boundaries of  $Q_t$  remain on  $\partial \Omega$  for all times.) In addition, since  $\rho$  is preserved along the flow, at each  $t$  we have  $\rho(\cdot, t)|_{\Gamma_t^1} \geq k_0 > 0$  and  $\rho(\cdot, t)|_{\Gamma_t^2} \leq 0$ . Thus a computation similar to (3-8) in the moving domain  $Q_t$  gives

$$\frac{d}{dt} \int_{Q_t} \omega(x, t) dx = \int_{Q_t} -\partial_{x_1} \rho(t) dx \geq k_0 \pi \quad \text{for all } t \geq 0.$$

Therefore, as long as the solution  $(\rho, \omega)$  remains smooth, we have

$$\|\omega(t)\|_{L^1} \geq \int_{Q_t} \omega(x, t) dx \geq k_0 \pi t - \|\omega_0\|_{L^1} \quad \text{for all } t \geq 0. \quad (3-23)$$

However, since  $Q_t$  is in general largely deformed from a square for  $t \gg 1$ , we are not able to apply Lemma 3.1 to obtain faster growth rate for higher  $L^p$  norms.

Note that given any steady state  $\omega_s$  of the 2-dimensional Euler equation on the strip  $\Omega$ ,  $(0, \omega_s)$  is automatically a steady state of the inviscid Boussinesq equations (1-4). Thus the infinite-in-time growth estimate (3-23) directly implies that any such steady state (with zero density) is nonlinearly unstable, in the sense that, for any  $0 < k_0 \ll 1$ , an arbitrarily small perturbation  $\rho_0 = k_0 \cos(x_1)$ ,  $\omega_0 = \omega_s$  leads to  $\lim_{t \rightarrow \infty} \|\omega(t)\|_{L^1} = \infty$ . See [Bedrossian et al. 2023; Castro et al. 2019; Deng et al. 2021; Doering et al. 2018; Masmoudi et al. 2022; Tao et al. 2020; Zillinger 2023] for more results on stability/instability of steady states of the inviscid or viscous Boussinesq equations.

**3.3. Application to 3-dimensional axisymmetric Euler equation.** In this subsection we will prove Theorem 1.8, whose proof is a close analog of Theorem 1.4.

*Proof of Theorem 1.8.* Using the Biot–Savart law, one can easily check that  $\omega^\theta$  remains odd in  $z$  and  $u^\theta$  remains even in  $z$  for all times while the solution stays smooth. Combining these symmetries with the Biot–Savart law (1-10) gives  $u^z = 0$  for  $z = 0$  and  $z = \pi$  for all times. For a point  $x$  on the  $rz$ -plane, let us define the flow-map  $\Phi_t(x) : [\pi, 2\pi] \times \mathbb{T} \rightarrow [\pi, 2\pi] \times \mathbb{T}$ , given by

$$\frac{d}{dt} \Phi_t(x) = (u_r(\Phi_t(x), t), u_z(\Phi_t(x), t)).$$

Since  $u_z = 0$  on  $z = \pi$ , for any  $x \in [\pi, 2\pi] \times \{\pi\}$ , we have  $\Phi_t(x)$  remains on  $[\pi, 2\pi] \times \{\pi\}$ . From the first equation in (1-9), we have  $ru^\theta$  is conserved along the trajectory. Thus, for any point  $(r, \pi)$  with  $r \in [\pi, 2\pi]$ , we have

$$ru^\theta(r, \pi, t) \geq \pi u_0^\theta(\Phi_t^{-1}(r, \pi), 0) \geq \pi k_0,$$

where the last inequality follows from the assumption  $u_0^\theta \geq k_0 > 0$  on  $z = \pi$  and the fact that  $\Phi_t^{-1}(r, \pi) \in [\pi, 2\pi] \times \{\pi\}$ . This implies

$$u^\theta(r, \pi, t) \geq \frac{1}{2}k_0 > 0 \quad \text{for all } r \in [\pi, 2\pi], \quad t \geq 0. \quad (3-24)$$

Applying a similar argument for  $z = 0$ , the assumption  $|u_0^\theta| < \frac{1}{8}k_0$  on  $z = 0$  leads to

$$|u^\theta(r, 0, t)| \leq \frac{1}{4}k_0 \quad \text{for all } r \in [\pi, 2\pi], \quad t \geq 0. \quad (3-25)$$

Defining  $Q := [\pi, 2\pi] \times [0, \pi]$  to be a square on the  $rz$ -plane, the above symmetry results give  $(u^r, u^z) \cdot n = 0$  on  $\partial Q$  for all times. Using this boundary condition as well as the divergence-free property of  $(ru^r, ru^z)$  in  $(r, z)$  (which follows from (1-10)), we apply the divergence theorem to obtain

$$\begin{aligned} \frac{d}{dt} \int_Q \omega^\theta(r, z, t) dr dz &= \int_Q (ru_r, ru_z) \cdot \nabla_{r,z} \left( \frac{\omega^\theta}{r} \right) + \frac{\partial_z(u^\theta)^2}{r} dr dz \\ &= \int_Q \frac{\partial_z(u^\theta)^2}{r} dr dz \\ &= \int_\pi^{2\pi} \frac{1}{r} (u^\theta(r, \pi, t)^2 - u^\theta(r, 0, t)^2) dr \\ &\geq \ln 2 \frac{3}{16} k_0^2 \geq \frac{1}{10} k_0^2 \end{aligned}$$

for all times during the existence of a smooth solution, where the last inequality follows from (3-24) and (3-25). This directly implies

$$A(t) := \int_Q \omega^\theta(r, z, t) dr dz \geq \frac{1}{10} k_0^2 t + \int_Q \omega_0^\theta dr dz.$$

In particular, if  $\int_Q \omega_0^\theta dr dz \geq 0$ , this implies

$$A(t) \geq \frac{1}{10} k_0^2 t \quad \text{for all } t \geq 0, \quad (3-26)$$

and if  $\int_Q \omega_0^\theta dr dz < 0$ , we have

$$A(t) \geq \frac{1}{20} k_0^2 t \quad \text{for all } t \geq T_0 =: 20 k_0^{-2} \left| \int_Q \omega_0^\theta dr dz \right|. \quad (3-27)$$

Another ingredient we need is the energy conservation. It is well known that the kinetic energy is conserved for the 3-dimensional Euler equation, i.e.,  $\int_\Omega |u(x, t)|^2 dx = \int_\Omega |u_0|^2 dx$ . Since  $\Omega$  has an inner boundary with positive radius  $\pi$ , this implies, in the domain  $Q$  in the  $rz$  plane, we also have

$$\int_Q (u^r(r, z, t)^2 + u^z(r, z, t)^2) dr dz \leq E_0(u_0).$$

Recall that  $\omega^\theta$  and  $(u^r, u^z)$  are related by  $\omega^\theta = \partial_r u^z - \partial_z u^r$ . Thus we can apply Lemma 3.1 to conclude that

$$\|\omega^\theta(t)\|_{L^p(Q)} \geq c_0 E_0^{-1+1/p} |A(t)|^{3-2/p} \quad \text{for all } p \in [1, \infty], \quad t \geq 0,$$

which directly leads to (1-12) once we plug estimates (3-26) and (3-27) of  $A(t)$  into the above equation.

Finally, applying Green's theorem in  $Q$ , we have

$$A(t) = \int_Q \omega^\theta dr dz = \int_Q (\partial_r u^z - \partial_z u^r) dr dz = \int_{\partial Q} u \cdot dl \leq 4\pi \|u(t)\|_{L^\infty}.$$

Combining this with the estimates (3-26) and (3-27) directly gives (1-13), finishing the proof.  $\square$

### Appendix: Proof of Lemma 2.2

In the appendix we prove Lemma 2.2. The proof is almost the same as in [Kiselev and Yao 2023] other than a small improvement in part (a). We sketch a proof for both parts below for the sake of completeness.

*Proof of Lemma 2.2 (a).* Here the proof mostly follows [Kiselev and Yao 2023, (3.4)], except that we make a small improvement dropping the assumption  $\|\partial_1 \mu\|_{\dot{H}^{-1}}^2 < \frac{1}{4} \|\mu\|_{L^2}^2$  in that paper. Let us define

$$\delta := \|\partial_1 \mu\|_{\dot{H}^{-1}(\mathbb{R}^2)}^2, \quad A := \|\mu\|_{L^2(\mathbb{R}^2)}^2.$$

Clearly,

$$\delta = \int_{\mathbb{R}^2} \frac{\xi_1^2}{|\xi|^2} |\hat{\mu}|^2 d\xi \leq A.$$

Let us discuss the following two cases.



Case 1:  $\delta < \frac{1}{4}A$ . In this case let us define

$$D_\delta := \left\{ (\xi_1, \xi_2) : \frac{|\xi_1|}{|\xi|} \geq \sqrt{\frac{2\delta}{A}} \right\}.$$

By definition of  $D_\delta$ , we have

$$\delta \geq \int_{D_\delta} \frac{\xi_1^2}{|\xi|^2} |\hat{\mu}(\xi)|^2 d\xi \geq \frac{2\delta}{A} \int_{D_\delta} |\hat{\mu}|^2 d\xi.$$

This gives  $\int_{D_\delta} |\hat{\mu}|^2 d\xi \leq \frac{1}{2}A$ , and thus  $\int_{D_\delta^c} |\hat{\mu}|^2 d\xi \geq \frac{1}{2}A$ . Note that  $D_\delta^c$  can be expressed in polar coordinates as

$$D_\delta^c = \left\{ (r \cos \theta, r \sin \theta) : r \geq 0, |\cos \theta| < \sqrt{\frac{2\delta}{A}} \right\}.$$

Since  $\mu \in C_c^\infty(\mathbb{R}^2)$ , we have

$$\|\hat{\mu}\|_{L^\infty(\mathbb{R}^2)} \leq (2\pi)^{-1} \|\mu\|_{L^1(\mathbb{R}^2)} =: B.$$

Let  $h_\delta > 0$  be such that  $|D_\delta^c \cap \{|\xi_2| < h_\delta\}| = (4B^2)^{-1}A$ , which we will estimate later. Such a definition gives

$$\int_{D_\delta^c \cap \{|\xi_2| \geq h_\delta\}} |\hat{\mu}|^2 d\xi = \int_{D_\delta^c} |\hat{\mu}|^2 d\xi - \int_{D_\delta^c \cap \{|\xi_2| < h_\delta\}} |\hat{\mu}|^2 d\xi \geq \frac{1}{2}A - (4B^2)^{-1}AB^2 = \frac{1}{4}A,$$

which implies

$$\|\mu\|_{\dot{H}^s(\mathbb{R}^2)}^2 \geq \int_{\mathbb{R}^2} |\xi_2|^{2s} |\hat{\mu}|^2 d\xi \geq h_\delta^{2s} \int_{D_\delta^c \cap \{|\xi_2| \geq h_\delta\}} |\hat{\mu}|^2 d\xi \geq \frac{1}{4}Ah_\delta^{2s}. \quad (\text{A-1})$$

To estimate  $h_\delta$ , let us define  $\theta_0 := \cos^{-1}(\sqrt{2\delta/A})$ . Since  $D_\delta^c \cap \{|\xi_2| < h_\delta\}$  consists of two identical triangles with height  $h_\delta$  and base  $2h_\delta \cot \theta_0$ , we have

$$(4B^2)^{-1}A = |D_\delta^c \cap \{|\xi_2| < h_\delta\}| = 2h_\delta^2 \cot \theta_0 \leq 4\sqrt{\delta}A^{-1/2}h_\delta^2,$$

where the inequality follows from  $\cos \theta_0 = \sqrt{2\delta/A}$  and  $\sin \theta_0 = \sqrt{1 - 2\delta/A} \geq 1/\sqrt{2}$ , due the assumption  $\delta < \frac{1}{4}A$  in Case 1. Therefore  $h_\delta \geq (4B)^{-1}A^{3/4}\delta^{-1/4}$ . Plugging it into (A-1) yields

$$\|\mu\|_{\dot{H}^s(\mathbb{R}^2)} \geq \frac{1}{2}\sqrt{A}h_\delta^s \geq c(s, A, B)\delta^{-s/4},$$

finishing the proof of Lemma 2.2 in Case 1.

Case 2:  $\delta \geq \frac{1}{4}A$ . As in Case 1, let us define  $\|\hat{\mu}\|_{L^\infty(\mathbb{R}^2)} \leq (2\pi)^{-1} \|\mu\|_{L^1(\mathbb{R}^2)} =: B$ . Let  $r_0 := (A/(2\pi B^2))^{1/2}$ . Such a definition leads to

$$\int_{B(0, r_0)} |\hat{\mu}|^2 d\xi \leq \pi r_0^2 \|\hat{\mu}\|_{L^\infty(\mathbb{R}^2)}^2 \leq \frac{1}{2}A,$$

and thus

$$\|\mu\|_{\dot{H}^s(\mathbb{R}^2)}^2 \geq \int_{B(0, r_0)^c} |\xi|^{2s} |\hat{\mu}|^2 d\xi \geq r_0^{2s} \frac{1}{2}A \geq c(s, A, B)\delta^{-s/4},$$

where the last inequality follows from the assumption  $\delta \geq \frac{1}{4}A$  in Case 2. This finishes the proof of part (a).  $\square$

*Proof of Lemma 2.2 (b).* This part is equivalent to the last (unnumbered) equation in the proof of Theorem 1.2 in [Kiselev and Yao 2023]. We sketch a proof below for completeness, and also to clarify the dependence of  $c_2(s, \int_{\mathbb{T} \times [0, \pi]} \mu^{1/3} dx)$  in (2-12).

For any  $k = (k_1, k_2) \in \mathbb{Z}^2$ , the Fourier coefficient  $\hat{\mu}(k_1, k_2)$  can be written as

$$\begin{aligned} \hat{\mu}(k_1, k_2) &= \frac{1}{(2\pi)^2} \int_{\mathbb{T}} e^{-ik_1 x_1} \int_{\mathbb{T}} e^{-ik_2 x_2} \mu(x_1, x_2) dx_2 dx_1 \\ &= \frac{1}{(2\pi)^2} \int_{\mathbb{T}} e^{-ik_1 x_1} (-2i) \underbrace{\int_0^\pi \sin(k_2 x_2) \mu(x_1, x_2) dx_2}_{=: g(x_1, k_2)} dx_1, \end{aligned} \quad (\text{A-2})$$

where the last identity is due to  $\mu$  being odd in  $x_2$ . With  $g(x_1, k_2)$  defined in the last line of (A-2), when setting  $k_2 = 1$ , we claim that  $g(x_1, 1)$  satisfies the following properties:

- (a)  $g(x_1, 1)$  is even in  $x_1$  and nonnegative for all  $x_1 \in \mathbb{T}$ .
- (b)  $g(0, 1) = 0$ .
- (c)  $\int_{\mathbb{T}} g(x_1, 1) dx_1 \geq c \left( \int_D \mu(x)^{1/3} dx \right)^3$  for some universal constant  $c > 0$ .

Here property (a) follows from the facts that  $\mu$  is even in  $x_1$  and nonnegative on  $D := [0, \pi]^2$ . Property (b) follows from  $\mu(0, \cdot) \equiv 0$ . For property (c), note that

$$\int_{\mathbb{T}} g(x_1, 1) dx_1 = 2 \int_0^\pi g(x_1, 1) dx_1 = 2 \int_D \sin(x_2) \mu(x) dx.$$

Combining Hölder's inequality with the fact that  $\sin(x_2) \mu(x) \geq 0$  in  $D$ , we have

$$\int_D \sin(x_2) \mu(x) dx \geq \left( \int_D \sin(x_2)^{-1/2} dx \right)^{-2} \left( \int_D \mu(x)^{1/3} dx \right)^3 \geq c_0 \left( \int_D \mu(x)^{1/3} dx \right)^3$$

for some universal constant  $c_0 > 0$ . This proves property (c).

For any  $k_1 \in \mathbb{Z}$ , let  $\hat{g}(k_1)$  be the Fourier coefficient of  $g(\cdot, 1)$ ; that is,

$$\hat{g}(k_1) := \frac{1}{2\pi} \int_{\mathbb{T}} e^{-ik_1 x_1} g(x_1, 1) dx. \quad (\text{A-3})$$

Denote by  $\bar{g} := \frac{1}{2\pi} \int_{\mathbb{T}} g(x_1, 1) dx_1$  the average of  $g(\cdot, 1)$ . Applying the definition of  $\hat{g}$  to (A-2) gives

$$\hat{\mu}(k_1, 1) = \frac{-2i}{2\pi} \hat{g}(k_1) \quad \text{for any } k_1 \in \mathbb{Z}. \quad (\text{A-4})$$

This allows us to bound  $\delta := \|\partial_1 \mu\|_{\dot{H}^{-1}(\mathbb{T}^2)}^2$  from below as

$$\begin{aligned} \delta &\geq (2\pi)^2 \sum_{k_1 \in \mathbb{Z} \setminus \{0\}} \frac{k_1^2}{k_1^2 + 1} |\hat{\mu}(k_1, 1)|^2 \\ &\geq 2 \sum_{k_1 \in \mathbb{Z} \setminus \{0\}} |\hat{g}(k_1)|^2 = \frac{1}{\pi} \int_{\mathbb{T}} |g(x_1, 1) - \bar{g}|^2 dx_1. \end{aligned} \quad (\text{A-5})$$

By property (c),  $\bar{g} \geq c \left( \int_D \mu(x)^{1/3} dx \right)^3 > 0$ . Applying [Kiselev and Yao 2023, Lemma 3.3] to  $g(x_1, 1)$  yields

$$\|g(\cdot, 1)\|_{\dot{H}^s(\mathbb{T})} \geq c \left( s, \int_D \mu(x)^{1/3} dx \right) \delta^{-s+1/2} \quad \text{for all } s > \frac{1}{2}. \quad (\text{A-6})$$

Note that

$$\|g(\cdot, 1)\|_{\dot{H}^s(\mathbb{T})}^2 = 2\pi^3 \sum_{k_1 \neq 0} |k_1|^{2s} |\hat{\mu}(k_1, 1)|^2 \leq \frac{\pi}{\sqrt{2}} \|\partial_1 \mu\|_{\dot{H}^{s-1}(\mathbb{T}^2)}^2 \leq \frac{\pi}{\sqrt{2}} \|\mu\|_{\dot{H}^s(\mathbb{T}^2)}^2, \quad (\text{A-7})$$

where the first inequality follows by the assumption  $s > \frac{1}{2}$ . Finally, combining inequalities (A-6) and (A-7) gives (2-12).  $\square$

### Acknowledgements

Kiselev was partially supported by NSF-DMS grants 2006372 and 2306726. Park was partially supported by the SNF grant 212573-FLUTURA and the Ambizione fellowship project PZ00P2-216083. Yao was partially supported by the NUS startup grant A-0008382-00-00 and MOE Tier 1 grant A-0008491-00-00.

### References

- [Abidi and Hmidi 2007] H. Abidi and T. Hmidi, “On the global well-posedness for Boussinesq system”, *J. Differential Equations* **233**:1 (2007), 199–220. MR Zbl
- [Bardos and Titi 2007] C. Bardos and E. S. Titi, “Euler equations for an ideal incompressible fluid”, *Uspekhi Mat. Nauk* **62**:3(375) (2007), 5–46. In Russian; translated in *Russian Math. Surv.* **62**:3 (2007), 409–451. MR Zbl
- [Bedrossian et al. 2023] J. Bedrossian, R. Bianchini, M. C. Zelati, and M. Dolce, “Nonlinear inviscid damping and shear-buoyancy instability in the two-dimensional Boussinesq equations”, *Comm. Pure Appl. Math.* **76**:12 (2023), 3551–4136. Zbl
- [Brandolese and Schonbek 2012] L. Brandolese and M. E. Schonbek, “Large time decay and growth for solutions of a viscous Boussinesq system”, *Trans. Amer. Math. Soc.* **364**:10 (2012), 5057–5090. MR Zbl
- [Castro et al. 2019] Á. Castro, D. Córdoba, and D. Lear, “On the asymptotic stability of stratified solutions for the 2D Boussinesq equations with a velocity damping term”, *Math. Models Methods Appl. Sci.* **29**:7 (2019), 1227–1277. MR Zbl
- [Chae 2006] D. Chae, “Global regularity for the 2D Boussinesq equations with partial viscosity terms”, *Adv. Math.* **203**:2 (2006), 497–513. MR Zbl
- [Chae and Nam 1997] D. Chae and H.-S. Nam, “Local existence and blow-up criterion for the Boussinesq equations”, *Proc. Roy. Soc. Edinburgh Sect. A* **127**:5 (1997), 935–946. MR Zbl
- [Chae et al. 1999] D. Chae, S.-K. Kim, and H.-S. Nam, “Local existence and blow-up criterion of Hölder continuous solutions of the Boussinesq equations”, *Nagoya Math. J.* **155** (1999), 55–80. MR Zbl
- [Chen and Hou 2021] J. Chen and T. Y. Hou, “Finite time blowup of 2D Boussinesq and 3D Euler equations with  $C^{1,\alpha}$  velocity and boundary”, *Comm. Math. Phys.* **383**:3 (2021), 1559–1667. Correction in **399**:1 (2023), 573–575. MR Zbl
- [Chen and Hou 2022] J. Chen and T. Y. Hou, “Stable nearly self-similar blowup of the 2D Boussinesq and 3D Euler equations with smooth data, I: Analysis”, preprint, 2022. Zbl arXiv 2210.07191
- [Choi and Jeong 2023] K. Choi and I.-J. Jeong, “Filamentation near Hill’s vortex”, *Comm. Partial Differential Equations* **48**:1 (2023), 54–85. MR Zbl
- [Danchin 2013] R. Danchin, “Remarks on the lifespan of the solutions to some models of incompressible fluid mechanics”, *Proc. Amer. Math. Soc.* **141**:6 (2013), 1979–1993. MR Zbl
- [Danchin and Paicu 2011] R. Danchin and M. Paicu, “Global existence results for the anisotropic Boussinesq system in dimension two”, *Math. Models Methods Appl. Sci.* **21**:3 (2011), 421–457. MR Zbl

- [Deng et al. 2021] W. Deng, J. Wu, and P. Zhang, “Stability of Couette flow for 2D Boussinesq system with vertical dissipation”, *J. Funct. Anal.* **281**:12 (2021), art. id. 109255. MR Zbl
- [Denisov 2009] S. A. Denisov, “Infinite superlinear growth of the gradient for the two-dimensional Euler equation”, *Discrete Contin. Dyn. Syst.* **23**:3 (2009), 755–764. MR Zbl
- [Denisov 2015] S. A. Denisov, “Double exponential growth of the vorticity gradient for the two-dimensional Euler equation”, *Proc. Amer. Math. Soc.* **143**:3 (2015), 1199–1210. MR Zbl
- [Doering et al. 2018] C. R. Doering, J. Wu, K. Zhao, and X. Zheng, “Long time behavior of the two-dimensional Boussinesq equations without buoyancy diffusion”, *Phys. D* **376/377** (2018), 144–159. MR Zbl
- [Drivas and Elgindi 2023] T. D. Drivas and T. M. Elgindi, “Singularity formation in the incompressible Euler equation in finite and infinite time”, *EMS Surv. Math. Sci.* **10**:1 (2023), 1–100. MR Zbl
- [Elgindi 2021] T. Elgindi, “Finite-time singularity formation for  $C^{1,\alpha}$  solutions to the incompressible Euler equations on  $\mathbb{R}^3$ ”, *Ann. of Math. (2)* **194**:3 (2021), 647–727. MR Zbl
- [Elgindi and Jeong 2019] T. M. Elgindi and I.-J. Jeong, “Finite-time singularity formation for strong solutions to the axisymmetric 3D Euler equations”, *Ann. PDE* **5**:2 (2019), art. id. 16. MR Zbl
- [Elgindi and Jeong 2020] T. M. Elgindi and I.-J. Jeong, “Finite-time singularity formation for strong solutions to the Boussinesq system”, *Ann. PDE* **6**:1 (2020), art. id. 5. MR Zbl
- [Gancedo and García-Juárez 2017] F. Gancedo and E. García-Juárez, “Global regularity for 2D Boussinesq temperature patches with no diffusion”, *Ann. PDE* **3**:2 (2017), art. id. 14. MR Zbl
- [Gancedo and García-Juárez 2020] F. Gancedo and E. García-Juárez, “Regularity results for viscous 3D Boussinesq temperature fronts”, *Comm. Math. Phys.* **376**:3 (2020), 1705–1736. MR Zbl
- [Gill and Adrian 1982] A. E. Gill and E. Adrian, *Atmosphere-ocean dynamics*, Int. Geophys. Ser. **30**, Academic Press, New York, 1982. Zbl
- [Hmidi and Keraani 2007] T. Hmidi and S. Keraani, “On the global well-posedness of the two-dimensional Boussinesq system with a zero diffusivity”, *Adv. Differential Equations* **12**:4 (2007), 461–480. MR Zbl
- [Hou 2022] T. Y. Hou, “Potential singularity of the 3D Euler equations in the interior domain”, *Found. Comput. Math.* (online publication September 2022). Zbl
- [Hou and Huang 2022] T. Y. Hou and D. Huang, “A potential two-scale traveling wave singularity for 3D incompressible Euler equations”, *Phys. D* **435** (2022), art. id. 133257. MR Zbl
- [Hou and Huang 2023] T. Y. Hou and D. Huang, “Potential singularity formation of incompressible axisymmetric Euler equations with degenerate viscosity coefficients”, *Multiscale Model. Simul.* **21**:1 (2023), 218–268. MR Zbl
- [Hou and Li 2005] T. Y. Hou and C. Li, “Global well-posedness of the viscous Boussinesq equations”, *Discrete Contin. Dyn. Syst.* **12**:1 (2005), 1–12. MR Zbl
- [Hu et al. 2013] W. Hu, I. Kukavica, and M. Ziane, “On the regularity for the Boussinesq equations in a bounded domain”, *J. Math. Phys.* **54**:8 (2013), art. id. 081507. MR Zbl
- [Ju 2017] N. Ju, “Global regularity and long-time behavior of the solutions to the 2D Boussinesq equations without diffusivity in a bounded domain”, *J. Math. Fluid Mech.* **19**:1 (2017), 105–121. MR Zbl
- [Kiselev and Šverák 2014] A. Kiselev and V. Šverák, “Small scale creation for solutions of the incompressible two-dimensional Euler equation”, *Ann. of Math. (2)* **180**:3 (2014), 1205–1220. MR Zbl
- [Kiselev and Yao 2023] A. Kiselev and Y. Yao, “Small scale formations in the incompressible porous media equation”, *Arch. Ration. Mech. Anal.* **247**:1 (2023), art. id. 1. MR Zbl
- [Kukavica and Wang 2020] I. Kukavica and W. Wang, “Long time behavior of solutions to the 2D Boussinesq equations with zero diffusivity”, *J. Dynam. Differential Equations* **32**:4 (2020), 2061–2077. MR Zbl
- [Kukavica et al. 2023] I. Kukavica, D. Massatt, and M. Ziane, “Asymptotic properties of the Boussinesq equations with Dirichlet boundary conditions”, *Discrete Contin. Dyn. Syst.* **43**:8 (2023), 3060–3081. MR Zbl
- [Lai et al. 2011] M.-J. Lai, R. Pan, and K. Zhao, “Initial boundary value problem for two-dimensional viscous Boussinesq equations”, *Arch. Ration. Mech. Anal.* **199**:3 (2011), 739–760. MR Zbl

- [Larios et al. 2013] A. Larios, E. Lunasin, and E. S. Titi, “Global well-posedness for the 2D Boussinesq system with anisotropic viscosity and without heat diffusion”, *J. Differential Equations* **255**:9 (2013), 2636–2654. MR Zbl
- [Luo and Hou 2014] G. Luo and T. Y. Hou, “Potentially singular solutions of the 3D axisymmetric Euler equations”, *Proc. Nat. Acad. Sci.* **111**:36 (2014), 12968–12973. Zbl
- [Majda 2003] A. Majda, *Introduction to PDEs and waves for the atmosphere and ocean*, Courant Lecture Notes in Math. **9**, Courant Inst. Math. Sci., New York, 2003. MR Zbl
- [Majda and Bertozzi 2002] A. J. Majda and A. L. Bertozzi, *Vorticity and incompressible flow*, Cambridge Texts in Appl. Math. **27**, Cambridge Univ. Press, 2002. MR Zbl
- [Masmoudi et al. 2022] N. Masmoudi, B. Said-Houari, and W. Zhao, “Stability of the Couette flow for a 2D Boussinesq system without thermal diffusivity”, *Arch. Ration. Mech. Anal.* **245**:2 (2022), 645–752. MR Zbl
- [Nadirashvili 1991] N. S. Nadirashvili, “Wandering solutions of the two-dimensional Euler equation”, *Funktsional. Anal. i Prilozhen.* **25**:3 (1991), 70–71. In Russian; translated in *Funct. Anal. Appl.* **25**:3 (1992), 220–221. MR Zbl
- [Pedlosky 1979] J. Pedlosky, *Geophysical fluid dynamics*, Springer, 1979. Zbl
- [Sarria and Wu 2015] A. Sarria and J. Wu, “Blowup in stagnation-point form solutions of the inviscid 2d Boussinesq equations”, *J. Differential Equations* **259**:8 (2015), 3559–3576. MR Zbl
- [Serre 1991] D. Serre, “Écoulement parfait incompressible à rotationnel croissant avec le temps”, *C. R. Acad. Sci. Paris Sér. I Math.* **312**:3 (1991), 315–318. MR Zbl
- [Serre 1999] D. Serre, “La croissance de la vorticit  dans les  coulements parfaits incompressibles”, *C. R. Acad. Sci. Paris S r. I Math.* **328**:6 (1999), 549–552. MR Zbl
- [Tao et al. 2020] L. Tao, J. Wu, K. Zhao, and X. Zheng, “Stability near hydrostatic equilibrium to the 2D Boussinesq equations without thermal diffusion”, *Arch. Ration. Mech. Anal.* **237**:2 (2020), 585–630. MR Zbl
- [Temam 1988] R. Temam, *Infinite-dimensional dynamical systems in mechanics and physics*, Appl. Math. Sci. **68**, Springer, 1988. MR Zbl
- [Wang et al. 2023] Y. Wang, C.-Y. Lai, J. G mez-Serrano, and T. Buckmaster, “Asymptotic self-similar blow-up profile for three-dimensional axisymmetric Euler equations using neural networks”, *Phys. Rev. Lett.* **130**:24 (2023), art. id. 244002. MR
- [Zillinger 2023] C. Zillinger, “On stability estimates for the inviscid Boussinesq equations”, *J. Nonlinear Sci.* **33**:6 (2023), art. id. 106. MR Zbl
- [Zlato  2015] A. Zlato , “Exponential growth of the vorticity gradient for the Euler equation on the torus”, *Adv. Math.* **268** (2015), 396–403. MR Zbl

Received 1 Dec 2022. Revised 6 Jun 2023. Accepted 18 Sep 2023.

ALEXANDER KISELEV: kiselev@math.duke.edu

Department of Mathematics, Duke University, Durham, NC, United States

JAEMIN PARK: jpark776@yonsei.ac.kr

Departement Mathematik und Informatik, University of Basel, Basel, Switzerland

Current address: Department of Mathematics, Yonsei University, Seoul, South Korea

YAO YAO: yaoyao@nus.edu.sg

Department of Mathematics, National University of Singapore, Singapore

# Analysis & PDE

msp.org/apde

## EDITOR-IN-CHIEF

Clément Mouhot Cambridge University, UK  
c.mouhot@dpmms.cam.ac.uk

## BOARD OF EDITORS

Massimiliano Berti	Scuola Intern. Sup. di Studi Avanzati, Italy berti@sissa.it	William Minicozzi II	Johns Hopkins University, USA minicozz@math.jhu.edu
Zbigniew Blocki	Uniwersytet Jagielloński, Poland zbigniew.blocki@uj.edu.pl	Werner Müller	Universität Bonn, Germany mueller@math.uni-bonn.de
Charles Fefferman	Princeton University, USA cf@math.princeton.edu	Igor Rodnianski	Princeton University, USA irod@math.princeton.edu
David Gérard-Varet	Université de Paris, France david.gerard-varet@imj-prg.fr	Yum-Tong Siu	Harvard University, USA siu@math.harvard.edu
Colin Guillarmou	Université Paris-Saclay, France colin.guillarmou@universite-paris-saclay.fr	Terence Tao	University of California, Los Angeles, USA tao@math.ucla.edu
Ursula Hamenstaedt	Universität Bonn, Germany ursula@math.uni-bonn.de	Michael E. Taylor	Univ. of North Carolina, Chapel Hill, USA met@math.unc.edu
Peter Hintz	ETH Zurich, Switzerland peter.hintz@math.ethz.ch	Gunther Uhlmann	University of Washington, USA gunther@math.washington.edu
Vadim Kaloshin	Institute of Science and Technology, Austria vadim.kaloshin@gmail.com	András Vasy	Stanford University, USA andras@math.stanford.edu
Izabella Laba	University of British Columbia, Canada ilaba@math.ubc.ca	Dan Virgil Voiculescu	University of California, Berkeley, USA dvv@math.berkeley.edu
Anna L. Mazzucato	Penn State University, USA alm24@psu.edu	Jim Wright	University of Edinburgh, UK j.r.wright@ed.ac.uk
Richard B. Melrose	Massachusetts Inst. of Tech., USA rbm@math.mit.edu	Maciej Zworski	University of California, Berkeley, USA zworski@math.berkeley.edu
Frank Merle	Université de Cergy-Pontoise, France merle@ihes.fr		

## PRODUCTION

production@msp.org  
Silvio Levy, Scientific Editor

Cover image: Eric J. Heller: “Linear Ramp”

---

See inside back cover or [msp.org/apde](http://msp.org/apde) for submission instructions.

---

The subscription price for 2025 is US \$475/year for the electronic version, and \$735/year (+\$70, if shipping outside the US) for print and electronic. Subscriptions, requests for back issues from the last three years and changes of subscriber address should be sent to MSP.

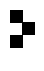
---

Analysis & PDE (ISSN 1948-206X electronic, 2157-5045 printed) at Mathematical Sciences Publishers, 798 Evans Hall #3840, c/o University of California, Berkeley, CA 94720-3840, is published continuously online.

---

APDE peer review and production are managed by EditFlow® from MSP.

PUBLISHED BY

 **mathematical sciences publishers**  
nonprofit scientific publishing

<http://msp.org/>

© 2025 Mathematical Sciences Publishers

# ANALYSIS & PDE

Volume 18    No. 1    2025

---

Mathematics of internal waves in a two-dimensional aquarium SEMYON DYATLOV, JIAN WANG and MACIEJ ZWORSKI	1
Large sets containing no copies of a given infinite sequence MIHAIL N. KOLOUNTZAKIS and EFFIE PAPAGEORGIOU	93
The 3D strict separation property for the nonlocal Cahn–Hilliard equation with singular potential ANDREA POIATTI	109
The Kato square root problem for weighted parabolic operators ALIREZA ATAEI, MORITZ EGERT and KAJ NYSTRÖM	141
Small scale formation for the 2-dimensional Boussinesq equation ALEXANDER KISELEV, JAEMIN PARK and YAO YAO	171
$C^\infty$ partial regularity of the singular set in the obstacle problem FEDERICO FRANCESCHINI and WIKTORIA ZATOŃ	199
Dimensions of Furstenberg sets and an extension of Bourgain’s projection theorem PABLO SHMERKIN and HONG WANG	265