



# First observations of continuum emission in dayside aurora

Noora Partamies<sup>1</sup>, Rowan Dayton-Oxland<sup>2</sup>, Katie Herlingshaw<sup>1</sup>, Ilkka Virtanen<sup>3</sup>, Bea Gallardo-Lacourt<sup>4,5</sup>, Mikko Syrjäsoo<sup>1</sup>, Fred Sigernes<sup>1</sup>, Takanori Nishiyama<sup>6</sup>, Toshi Nishimura<sup>7</sup>, Mathieu Barthelemy<sup>8</sup>, Anasuya Aruliah<sup>9</sup>, Daniel Whiter<sup>2</sup>, Lena Mielke<sup>1</sup>, Maxime Grandin<sup>10</sup>, Eero Karvinen<sup>11</sup>, Marjan Spijkers<sup>12</sup>, and Vincent E. Ledvina<sup>13</sup>

<sup>1</sup>Department of Arctic Geophysics, The University Centre in Svalbard, Longyearbyen, Norway

<sup>2</sup>Department of Physics and Astronomy, University of Southampton, Southampton, UK

<sup>3</sup>Space Physics and Astronomy, University of Oulu, Oulu, Finland

<sup>4</sup>NASA Goddard Space Flight Center, Greenbelt, MD 20771, USA

<sup>5</sup>Department of Physics, The Catholic University of America, NE Washington, DC 20064, USA

<sup>6</sup>National Institute of Polar Research, Tokyo, Japan

<sup>7</sup>Department of Electrical and Computer Engineering and Center for Space Physics, Boston University, Boston, MA, USA

<sup>8</sup>IPAG, Université Grenoble Alpes, CNRS, Grenoble, France

<sup>9</sup>Department of Physics and Astronomy, University College London, London, UK

<sup>10</sup>Finnish Meteorological Institute, Helsinki, Finland

<sup>11</sup>URSA, Skywarden service, Finland

<sup>12</sup>Noorderlicht en meer, Zomerdijkstraat 23, 8043 HW Zwolle, Netherlands

<sup>13</sup>Geophysical Institute, University of Alaska Fairbanks, Fairbanks, Alaska, USA

**Correspondence:** Noora Partamies (noora.partamies@unis.no)

Received: 23 November 2024 – Discussion started: 29 November 2024

Revised: 13 March 2025 – Accepted: 17 March 2025 – Published: 3 July 2025

**Abstract.** We report the first observations of continuum emission at the poleward boundary of the dayside auroral oval. Spectral measurements of high-latitude continuum emissions resemble those of Strong Thermal Emission Velocity Enhancement (STEVE), with light characterized by colours such as white, pale pink, or mauve. The emission enhancement spans the entire visible wavelength range. However, unlike STEVE, the high-latitude dayside continuum emission events tightly follow the auroral particle precipitation, often forming field-aligned rays and other dynamic shapes. Some dayside emissions appeared as wide arcs or cloud-like structures within the red-emission-dominated dayside aurora. Our spectral measurements further suggest that the broadband continuum emission may extend into the near-infrared (NIR) regime. Similar to the STEVE emission, low-Earth-orbit measurements of plasma flow in the region of continuum emission show a strong horizontal cross-track velocity shear. Ground-based radar and optical observations provide evidence of both plasma and neutral heating, as well as upwelling, in connection to the continuum emissions. We conclude that the interplay between different heating mecha-

nisms may be an important factor in generating high-latitude continuum emissions.

## 1 Introduction

Continuum emissions in the night sky have been observed for decades. One of the earliest reports by Meinel (1953) describes continuum emissions observed in wavelengths between 390 and 480 nm. In nightglow studies, in particular, continuum emissions have been recognized as a well-known emission type (Noll et al., 2024). In recent years, continuum emissions have also gained interest in the auroral community following the discovery of a new optical phenomenon known as Strong Thermal Emission Velocity Enhancement or STEVE (MacDonald et al., 2018). STEVE appears as a mauve–white arc just equatorward of the auroral oval in the sub-auroral ionosphere. STEVE is narrow ( $\sim 0.5^\circ$  latitudinal extent) and spans several hours in magnetic local time (MLT) (Gallardo-Lacourt et al., 2018a). Satellite observations have identified STEVE as the optical manifestation of

extreme sub-auroral ion drifts (Archer et al., 2019a). Initially, STEVE was identified to occur during active geomagnetic conditions, which are consistent with storm-time conditions. However, more recent observations have reported STEVE to occur during quiet geomagnetic conditions, raising questions about the generation mechanism of these intense sub-auroral ion drifts and the role of the magnetosphere in the process (Gallardo-Lacourt et al., 2018a; Martinis et al., 2022; Gallardo-Lacourt et al., 2024; Nishimura et al., 2024). Interestingly, particle detectors on board low-Earth-orbit satellites have determined that STEVE is not related to particle precipitation, suggesting that STEVE emissions could be generated locally in the ionosphere (Gallardo-Lacourt et al., 2018b; Nishimura et al., 2019). Consistently, field-aligned current (FAC) measurements by satellites have confirmed the presence of a downward FAC co-located with STEVE observations (Archer et al., 2019a; Nishimura et al., 2019). A more recent report on STEVE-like pale emissions located poleward of the green morning sector aurora (Nanjo et al., 2024) suggests that strong gradients at the boundary of Region-1 and Region-2 currents are critical for generating strong ion flows and heating.

These significant discrepancies with traditional auroral processes prompted further research into STEVE's spectral characteristics. Gillies et al. (2019) determined STEVE's spectrum for the first time using a spectrograph from the Transition Region Explorer (TReX) array capable of analysing emissions between 400 and 800 nm. These analyses revealed a continuum emission with elevated intensities at all measured wavelengths, solidifying the understanding that STEVE is not produced by particle precipitation but potentially by local ionospheric processes. Further analysis of STEVE's spectrum and optical properties supports these findings (Mende and Turner, 2019; Gillies et al., 2023).

One of the most intriguing questions in STEVE research is understanding the processes involved in its generation and unusual spectrum. Harding et al. (2020) used a simple photochemical model to demonstrate that the fast sub-auroral ion drifts (SAIDs) measured alongside STEVE observations could excite nitrogen molecules into vibrationally excited states. This then results in nitrogen oxide that combines with ambient oxygen to produce NO<sub>2</sub> and a spectrally continuous emission. Additionally, feedback-unstable magnetosphere–ionosphere interactions have been evaluated as possible generation mechanisms for STEVE (Mishin and Streltsov, 2019), challenging the photochemical mechanism proposed by Harding et al. (2020). Currently, there is no consensus on how these continuous emissions are created, and measurements are scarce. Future missions, such as NASA's planned Geospace Dynamics Constellation (GDC) and DYNAMIC missions, could help elucidate the physical mechanisms at play in STEVE from the magnetosphere–ionosphere coupling perspective.

Recent studies have revealed the presence of auroral structures with continuum emissions within the auroral oval,

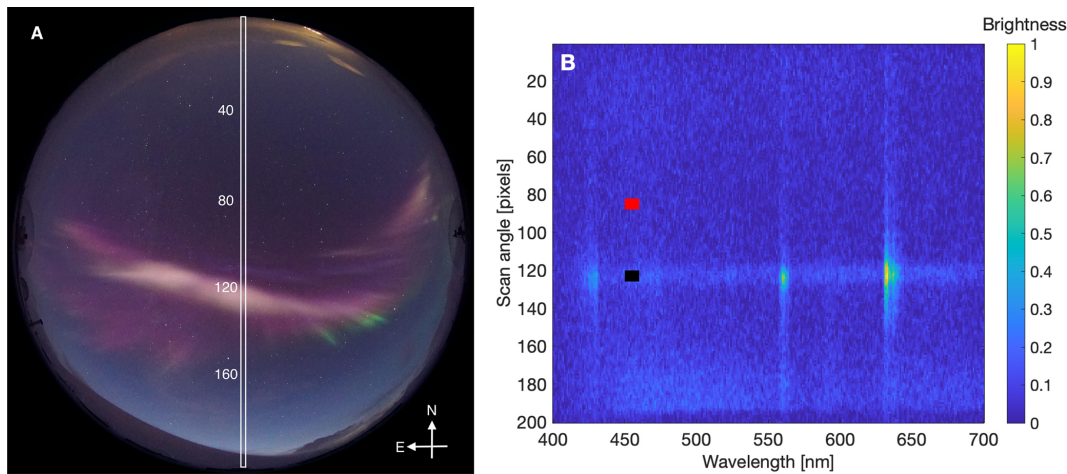
which is different from STEVE. Using the TReX colour imagers (RGB) and spectrograph array, researchers have identified this type of emission, which would otherwise be overlooked or mistaken for a single-wavelength emission in panchromatic images. In the absence of full spectral measurements, continuum emissions could easily be misinterpreted as enhancements of individual emission lines or a combination of individual emission lines and certain conditions of background sky illumination in the same line of sight. Interestingly, these new observations of continuum emission are closely associated with auroral dynamics and precipitation. Events captured by the TReX RGB cameras, when compared to spectrograph data, not only confirmed the presence of continuum emission but also uncovered embedded auroral emissions within the same region (Spanswick et al., 2024). While more events are needed to understand the frequency, spatial distribution, and other characteristics of these continuum emissions, they appear to be not uncommon within the auroral oval but rather overlooked due to the instrumentation designed to measure specific wavelengths.

This study reports the first observations of continuum emissions detected around the polar cap boundary over Svalbard (78° N) in arctic Norway. The continuum emission events reported in this paper occurred within the dayside aurora, but we also show events in the afternoon and nightside aurora, which are likely to be continuum emissions. Our observations align with those of Spanswick et al. (2024) in that they follow the particle precipitation and auroral dynamics. They may also be influenced by strong gradients at the poleward boundary of the auroral oval, as reported by Nanjo et al. (2024), and could even be associated with strong plasma flow shears, similarly to STEVE.

In the following sections, we describe our observational setup (Sect. 2) and our four sample events (Sect. 3). The sample events were chosen based on the data coverage and their MLT occurrence to demonstrate the variety of different ionospheric conditions in which continuum emissions may appear. Sections 4 and 5 are dedicated to the discussion of the results and conclusions, respectively.

## 2 Data and instrumentation

As the continuum emission is enhanced across the entire visible wavelength range, the best way to observe it is with instrumentation covering the whole spectral range. We use a full-colour all-sky camera (ASC) and an imaging spectrograph. In full-colour images, the colour of the continuum emission does not correspond to any known individual emission line. An example of this can be seen in Fig. 1a as an arc-like region of pale-pink colour. To confirm the correct identification of the continuum emission, spectral measurements are necessary. An example of the visible range spectra, collected along the local magnetic meridian and corresponding to the centre column of the all-sky image (white rectangle),



**Figure 1.** (a) A full-colour all-sky image from Kjell Henriksen Observatory (KHO), Svalbard, exemplifying the pale-pink continuum emission as an arc-like structure in the middle of red-dominated auroral emission. The image was taken on 3 January 2020 at 08:48:56 UT. North is to the top, and east is to the left of the image. The white rectangle marks the location of the spectrometer field of view in the image, and the white numbers indicate the approximate scan angle pixel values of the spectrograph in panel (b). The Sun was located at an elevation angle of about  $-13^\circ$  relative to the horizon with an azimuth of  $149^\circ$  (SSE). The ionosphere above about 160 km altitude was sunlit. (b) Spectra measured by Meridian Imaging Svalbard Spectrograph (MISS) at 08:49 UT. Spectra across the visible wavelength range at 400–700 nm are collected along the magnetic meridian. The colour scale is non-calibrated brightness, i.e. normalized counts. The continuum emission in the image corresponds to the spectral enhancement at the scan angles of about 120, marked by the black square. An empty sky reference scan angle is indicated by the red square at the scan angle of about 90.

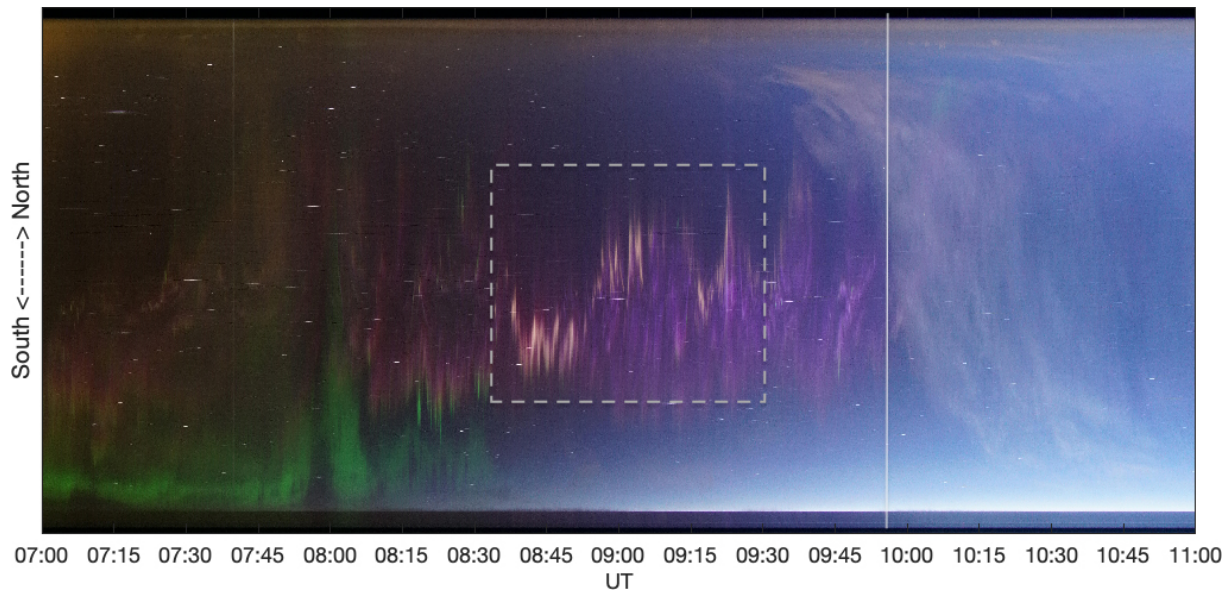
is shown in Fig. 1b. The spectra around the scan angle of 120 (indicated by the black rectangle) show enhancement at auroral emission wavelengths of 428, 558, and 630 nm as well as across all the displayed wavelengths from 400 to 700 nm.

Kjell Henriksen Observatory (KHO,  $78^\circ$  N) hosts a full-colour mirrorless camera (Sony  $\alpha$ 7S; for details, see e.g. Dreyer et al., 2021) as well as the Meridian Imaging Svalbard Spectrograph (MISS) described in a recent KHO science review by Herlingshaw et al. (2024). The camera has been in operation since 2015 but has been preceded by another full-colour DSLR since 2008. The current imaging cadence is about 12 s with a nighttime exposure of 4 s. The full pixel resolution of the images is  $2832 \times 2832$ .

The MISS spectrograph, installed in late 2019, provides a spectral image along the magnetic meridian every minute. The optics incorporate a 0.1 mm slit, which provides a roughly  $1^\circ$  wide field of view along the meridian. The spectral resolution capability is 1.5 nm. However, due to the internal optics being out of focus, the spectral resolution of the data used in this study was deteriorated to about 5 nm, which still works well for the purpose of this study. The data are wavelength-calibrated using the three strongest auroral emission lines at 428, 558, and 630 nm as references, with a second-order polynomial fitted to the wavelength regions in between. The charge-coupled device (CCD) background has been subtracted based on pixel values outside the slit region (cropped out of the displayed data), and no absolute intensity calibration is done for these data.

Additional spectral information has been gathered from the Near-InfraRed Aurora and airglow Camera (NIRAC) that measures molecular nitrogen ion emission of  $N_2^+$  Meinel (0, 0) band at  $1 \mu\text{m}$  (Nishiyama et al., 2024). This emission is primarily prompted by electrons penetrating down to about 100 km altitude, which corresponds to precipitating electron energies up to 10 keV. The emission can also be generated above 140 km by charge exchange between molecular nitrogen ( $N_2$ ) and atomic oxygen ( $O^+$ ). NIRAC's field of view is  $84^\circ \times 68^\circ$ , and the nominal temporal resolution is 20 s.

High-resolution spectra have been obtained by the High-Throughput Imaging Echelle Spectrograph (HiTIES, Chakrabarti et al., 2001), located at the KHO. The instrument includes an Echelle spectrograph grating; an electron-multiplying charge-coupled device (EMCCD) detector; and a mosaic filter which is used to select multiple overlapping spectral orders, enabling observation of multiple non-contiguous wavelength bands at high resolution ( $< 0.1$  nm). The mosaic filter selects the  $H\alpha$  band at 649–663 nm used for observing proton precipitation,  $O^+$  green line and OH(8, 3) band at 728–743 nm, and OH(5, 1) band at 790–807 nm. HiTIES is directed at the magnetic zenith with an  $8^\circ$  by  $0.05^\circ$  field of view. The imaging cadence is 2 Hz, giving a temporal resolution of 0.5 s. The spectra in this study have been spatially and temporally integrated to improve the signal-to-noise ratio. The background has been subtracted based on pixel values outside of the filter mosaic, and the data are not calibrated for absolute intensity. Dark frames are



**Figure 2.** Keogram of Sony images at 07:00–11:00 UT on 3 January 2020. The y axis is a slice through the sky from magnetic south (bottom) to magnetic north (top). The most intense pale-pink continuum emission is seen in the time period of 08:30–09:30 UT indicated by the rectangle. The appearance of a thin cloud layer is marked by a vertical line.

taken every 20 min, and flat fields are taken at the beginning of the observing season.

The EISCAT Svalbard Radar (ESR) (Wannberg et al., 1997) is located about 1 km north of KHO, and provides profiles of ionospheric plasma parameters within the zenith region of the Sony camera field-of-view. The data consist of height profiles of electron density, electron and ion temperature, and ion velocity as a standard set of parameters along the radar beam with a temporal resolution of 1 min. The radar experiment that was run during one of our events was *ipy*, which has a height resolution of about 4–5 km in the ionospheric E region. In this study, we only use data from the non-steerable parabolic antenna (42 m in diameter), which measures plasma profiles along the geomagnetic field direction.

The Fabry–Pérot interferometer (FPI) at KHO can determine the neutral winds and temperatures in the thermosphere at the heights of red auroral and airglow emission (630.0 nm), which typically has a peak emission at around 240–250 km (Aruliah and Griffin, 2001; Aruliah et al., 2019). The thermospheric neutral winds and neutral temperatures are calculated by fitting a convolved instrument function and Gaussian profile to the observed 630.0 nm emission line. The Doppler shift and thermal broadening of the emission lines then give the estimates for the wind and temperature. The magnitude of the error depends on the signal-to-noise ratio. The FPI has well-separated look directions towards zenith, north, east, south, and west at an elevation angle of 30°. The wind and temperature estimates have a temporal resolution of 8 min. The line-of-sight wind measurements can be converted to horizontal estimates by assuming that there is zero vertical

wind. In this study, we only use the zenith line-of-sight location to estimate the neutral upwelling.

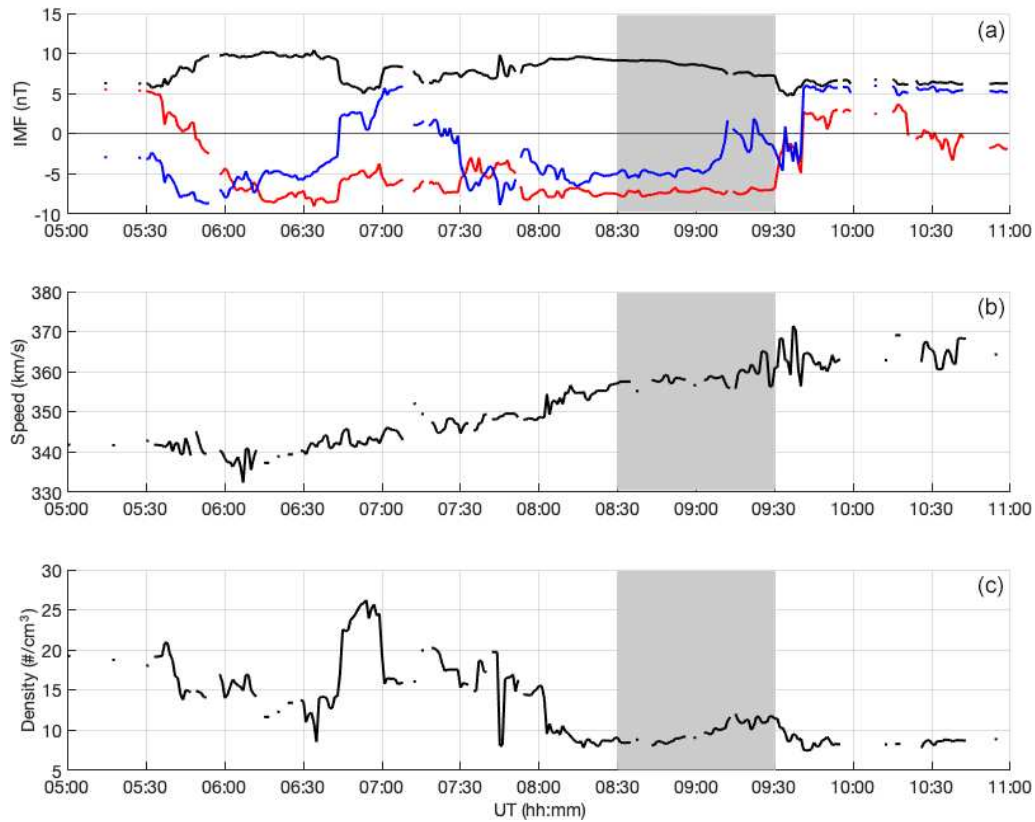
The Defense Meteorological Satellite Program (DMSP) F17 satellite flew over one of our continuum emission events. In our analysis, we use the horizontal cross-track plasma flow measurements from F17 (Cornelius and Mazzella, 1994). These data are archived in the Coupling Energetics and Dynamics of Atmospheric Regions (CEDAR) madrigal database.

The geomagnetic disturbance level for our continuum emission events was 2–4 in the Kp index range, and the magnetic local time (MLT) in Svalbard is approximately UT+3 h. We use the OMNIWeb solar wind and interplanetary magnetic field (IMF) measurements to assess the solar wind driving conditions for our events (Papitashvili and King, 2020).

### 3 Continuum emission observations

#### 3.1 Dayside continuum on 3 January 2020

Figure 2 shows a full-colour keogram compiled of the all-sky images captured by the Sony camera at 07:00–11:00 UT on 3 January 2020. The first 1.5 h displays a combination of red emission overhead and diffuse green towards the southern horizon. The most intense pale-pink continuum emissions are seen in the time frame of 08:30–09:30 UT (rectangular region in the figure), where during the first half-hour they appear particularly intense and wide. At 09:03–09:14 UT, the continuum emission structures were very thin, but another wide continuum emission was observed

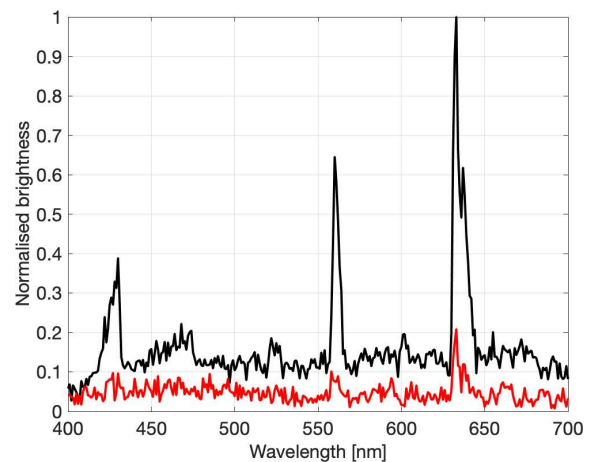


**Figure 3.** Solar wind and IMF parameters on 3 January 2020. **(a)** IMF magnitude (black),  $B_y$  (red), and  $B_z$  (blue) in nT. **(b)** Solar wind speed in  $\text{km s}^{-1}$ . **(c)** Solar wind proton density in the number of particles per  $\text{cm}^3$ . Shaded region indicates the time period of most intense continuum emission observations. These measurements are propagated to the bow shock.

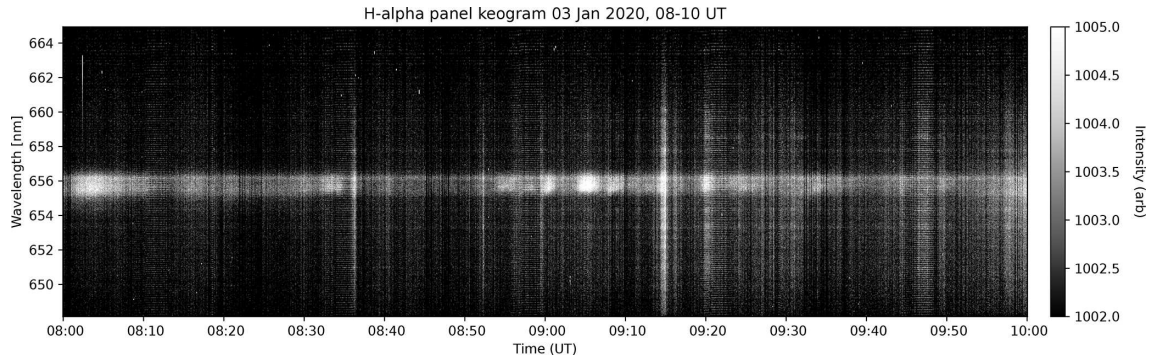
at around 09:15 UT, and a continuum-bracketed corona was seen at around 09:21 UT. From about 09:00 UT until about 10:00 UT, the dominant emission colour in the aurora is pink due to resonant scattering (Shiokawa et al., 2019), and the last hour is obscured by thin clouds (right of the vertical line). Some individual thin arcs including the pale colour of the continuum emission took place earlier and later, but the structures were too thin to be differentiated from the background in our spectral measurements.

During the time of the continuum emission observations, the IMF was moderately and steadily negative ( $z$  component about  $-5$  nT), as seen in Fig. 3. The solar wind speed was well below  $400 \text{ km s}^{-1}$ , while the proton density was above  $15 \text{ cm}^{-3}$  over the time period of IMF turning negative at about 07:25 UT. Thereafter, the proton density decreased to about  $10 \text{ cm}^{-3}$  during the continuum emission observations.

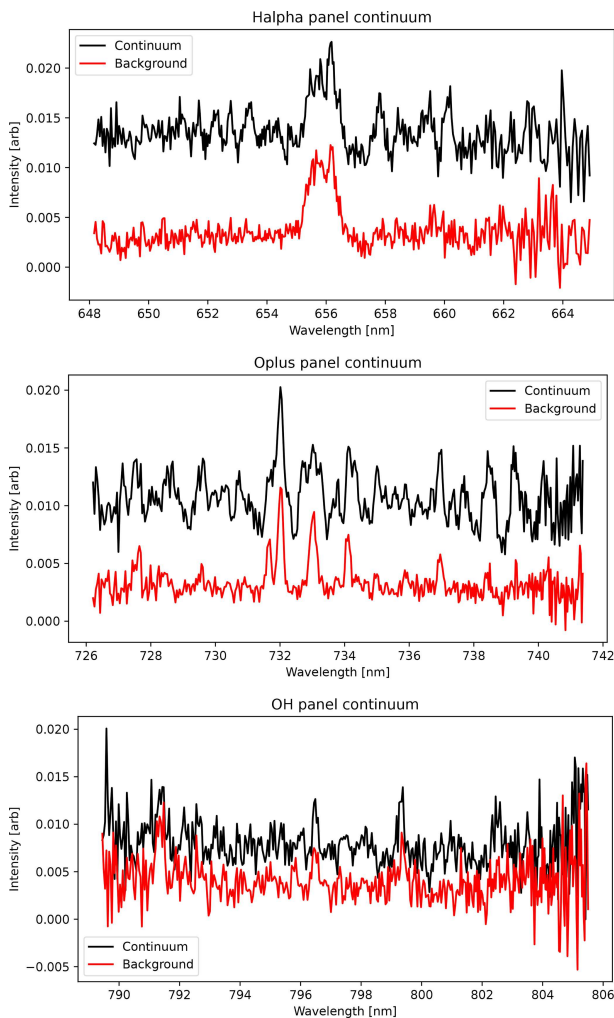
The left panel of Fig. 1 shows an example of a pale-pink arc-like structure captured with an all-sky camera during the first intense period of the continuum emission. The image was taken at 08:48:56 UT. No auroral structures can be seen poleward of the continuum emission, and therefore this continuum emission was located at the poleward boundary of the auroral oval. This pale-pink structure crossed the centre



**Figure 4.** Continuum spectrum (black) and an empty-sky reference spectrum (red) measured by MISS at 08:49 UT on 3 January 2020. The y axis values are non-calibrated brightness values normalized to the maximum of the continuum spectrum for the sum of scan angles around the continuum (118–128) and the reference spectrum (80–90). The solar elevation angle was about  $-13^\circ$  and the ionosphere above about 160 km altitude was sunlit.



**Figure 5.** HiTIES data on 3 January 2020: the y axis is the spatially integrated spectrograph slit, in 0.5 s second increments along the x axis. The keogram shows proton precipitation Doppler shifted over  $\sim 1$  nm from the rest H $\alpha$  wavelength at 656.3 nm, occurring in short bursts during the event. The continuum emission crosses the spectrograph slit, and is visible as a vertical bright line at, for instance, 09:15 UT.

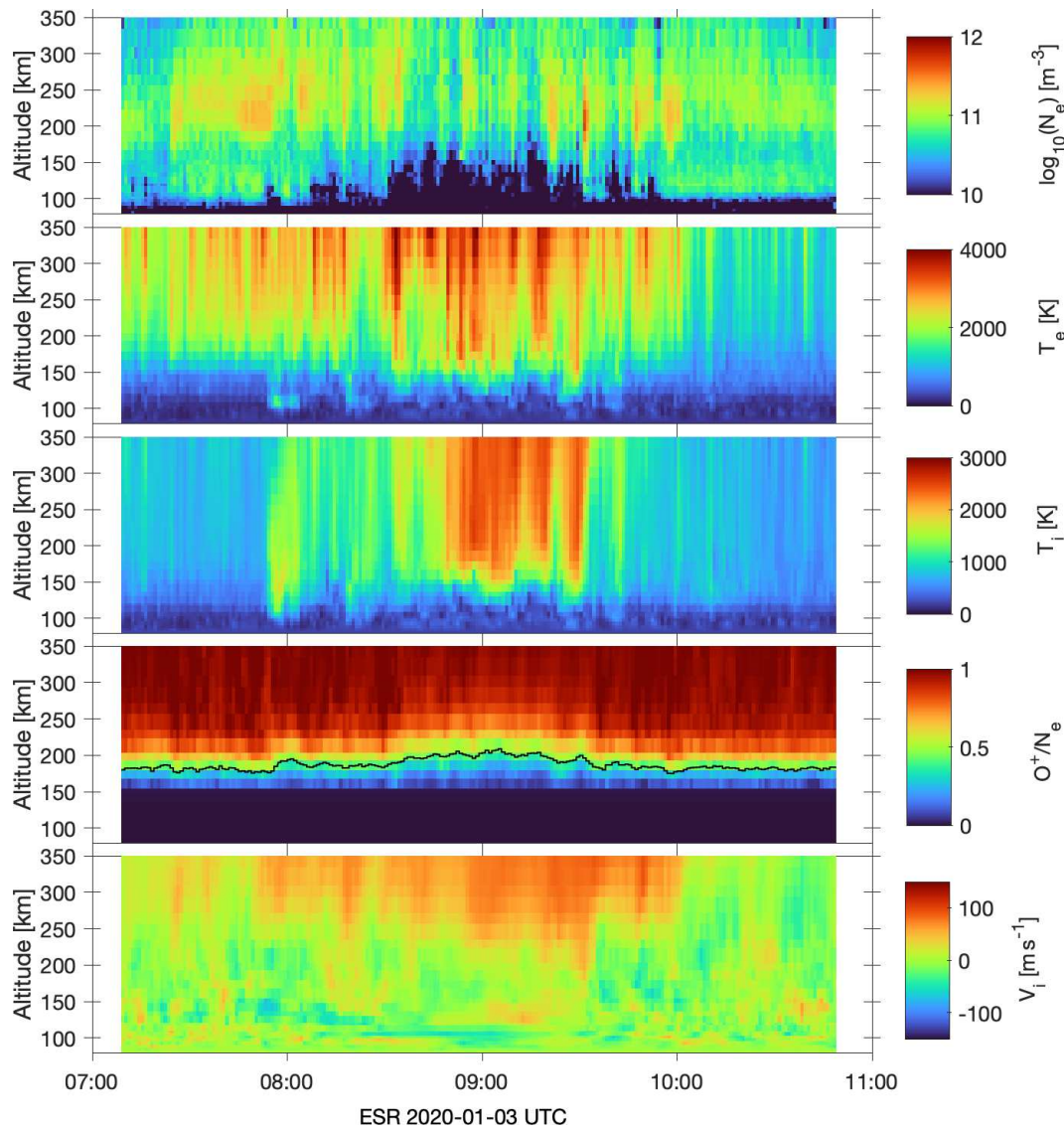


**Figure 6.** High-resolution HiTIES spectra of continuum (black) of 3 January 2020, at 09:15 UT, compared to background (red) taken from 09:11 UT same date. The measured intensity in arbitrary units is plotted against the wavelength in nanometres.

meridian of the images. The MISS spectrograph measured a clear emission enhancement across the entire wavelength region at 08:49 UT (right panel in Fig. 1). We compare the continuum emission spectrum at the meridian location of the black square in Fig. 1 to a reference spectrum that is taken from the north side of the continuum and auroral emissions (meridian location of the red square in Fig. 1). The reference spectrum location is chosen so that there is no obvious emission in the sky as seen in the all-sky image. The reference spectrum is represented by the red curve in Fig. 4 and only shows mild enhancements at 558, and 630 nm. The continuum spectrum (black curve in Fig. 4) shows strongly enhanced auroral emission lines at 428, 558 and 630 nm in addition to elevated brightness counts throughout the measured wavelength range.

At the time the image and spectra in Figs. 1 and 4 were captured, the solar elevation angle was estimated to be about  $-13^\circ$ . This places the shadow height at about 160 km, making all dayside auroral emission sunlit, which explains the purple hue of the auroral display due to resonance scattering. The shadow height estimates for the dayside events displayed in this study have been calculated by the following geometry with the assumption of a spherical Earth:  $h = R_E / \cos(\theta - 90) - R_E$ , where  $h$  is the shadow height,  $R_E$  is the radius of the Earth (6371 km), and  $\theta$  is the solar zenith angle in degrees.

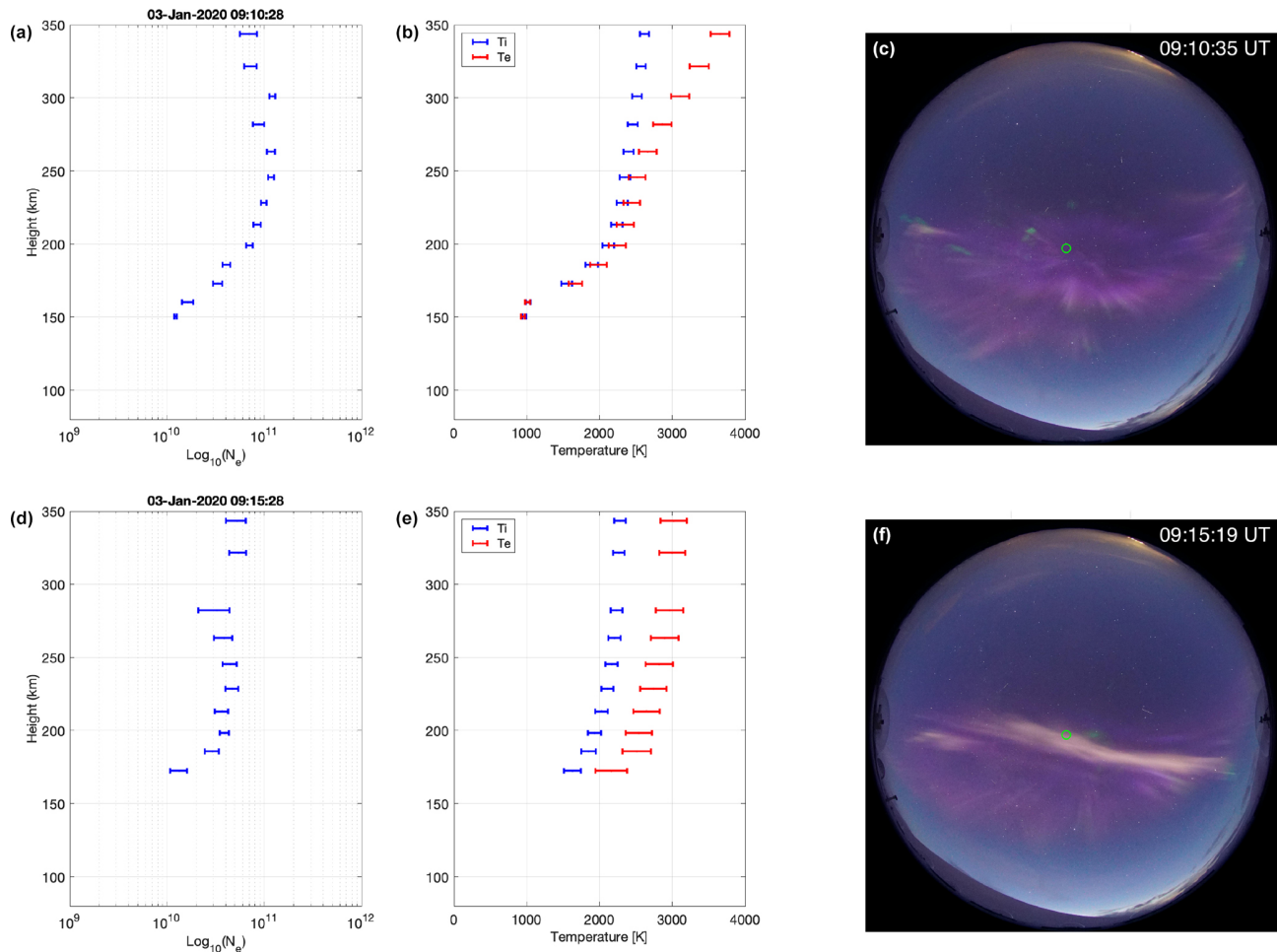
In the continuum spectrum in Fig. 4 (black curve), we can identify some specific spectral features. The blue auroral emission at around 428 nm, which is the signature of sunlit aurora, is strongly enhanced. Another milder enhancement at about 470 nm is also most likely from the  $N_2^+$  first negative band with the nominal wavelength of 471 nm. At about 520 nm, a 10 nm wide feature may consist of both the atomic nitrogen line at 520 nm and the  $N_2^+$  first negative band at 522 nm. Further in the long wavelength regime, a narrower emission signature at around 600 nm can be due to an enhancement of the  $O_2^+$  band at 602.6 nm (Chamberlain and Oliver, 1953; Chamberlain, 1961).



**Figure 7.** EISCAT Svalbard Radar (ESR) data on 3 January 2020. Electron density (top), electron temperature (second), ion temperature (third), ion composition ratio (fourth), and ion drift velocity (bottom) as a function of time and height are analysed by the Bayesian filtering method (BAFIM) using chemical Flipchem model.

The HiTIES spectrum for the proton band ( $H\alpha$ ) shows an increase in the proton emission during the continuum event, as seen in Fig. 5. The proton precipitation is visible as a wide, bright band of proton aurora. It is blue-shifted from the  $H\alpha$  rest wavelength at 656.3 nm due to the downward velocity of the precipitating protons. The proton aurora brightens in short bursts throughout the event, including a bright burst as the continuum passes through the HiTIES slit at 09:15 UT at the centre of the ASC field of view (image in the top panel of Fig. 8). This variation may be temporal or spatial, though it is not possible to determine which one. High-resolution spectra of the continuum from HiTIES at 09:15 UT are shown in Fig. 6 and compared to a reference spectrum taken at 09:11 UT when only proton aurora emissions were within

the instrument's field of view. These spectra show clearly the continuum nature of the emission in the observed bands, as well as some specific emission features. The background features are proton aurora (top panel),  $O^+$  aurora (centre panel), and OH airglow (centre and bottom panels); these emission lines do not appear to be affected by the presence of the continuum. From the OH panel, we can see that the continuum is also present in the very near infrared (NIR). Since these data are not calibrated for absolute intensity, we can instead use the relative intensity of the continuum compared to the background to observe that the continuum becomes less bright towards the longer wavelengths, i.e. tapers off towards the infrared.

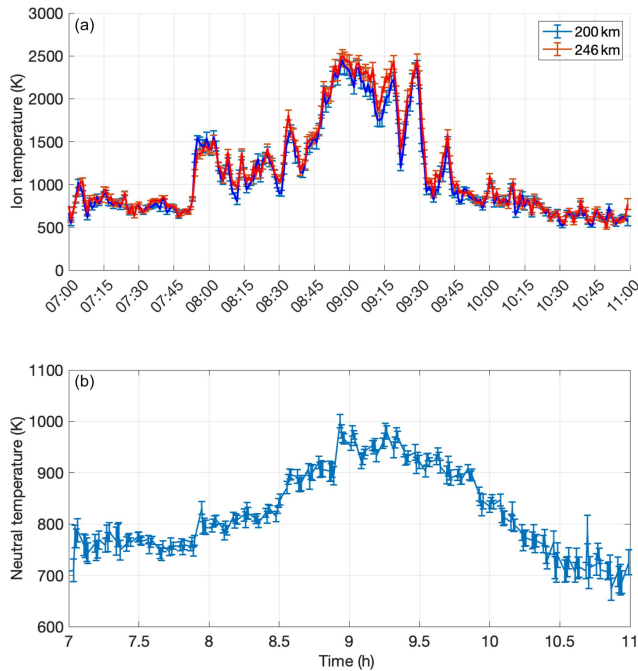


**Figure 8.** (a, d) Electron density profiles measured by ESR at 80–350 km on 3 January 2020. The scale is logarithmic and all electron densities below  $10^{10} \text{ m}^{-3}$  have been omitted as uncertain. (b, e) Ion (blue) and electron (red) temperature profiles (in K) for the same height range and the same time instants. All temperature values corresponding to heights of omitted electron densities have been excluded. (c, f) All-sky images taken closest to the ESR measurements. ESR profiles times are 09:10:28 UT (a, b) and 09:15:28 UT (d, e). The corresponding image times are 09:10:35 UT (c) and 09:15:19 UT (f). At 09:15 UT the Sun was located at an elevation angle of about  $-12^\circ$  relative to the horizon with an azimuth angle of  $155^\circ$  (SSE). The ionosphere was sunlit above the altitude of 145 km. The green circle in the images marks the approximate pointing direction of the radar beam at 150 km altitude.

At the time of the main continuum emission observations (08:30–09:30 UT), EISCAT data show transient enhancements of electron density which were mainly limited to the F region (top panel in Fig. 7). E-region electron density was very low, making all E-region observations highly uncertain. Particle heating can be seen as electron temperature increases at and above 150 km (second panel). Ion heating is also mainly concentrated in the F-region heights above about 150 km (third panel). Ion heating is interpreted as Joule heating, which generally requires a horizontal electric field. It is not obvious if the heating is directly related to the particle precipitation and to the pale-pink emission that is drifting into the EISCAT beam or if the timing is just a coincidence. The EISCAT data were analysed with a Bayesian filtering method (BAFIM, Virtanen et al., 2021) with an inclusion

of the F-region chemical model Flipchem (Virtanen et al., 2024). This chemical model inclusion allows for a variable ion composition ratio (fourth panel) and therefore produces more reliable electron and ion temperatures. Ion upflow is seen to correspond the ion heating (bottom panel), mainly above 200 km.

Individual ionospheric profiles and images captured at 09:10:30 and 09:15:30 UT are shown in Fig. 8. These are close to the times the HiTIES spectra was taken for the background and the continuum emissions in Fig. 6. Initially (panels a–c), the radar beam points (green circle in panels c and f) into faint red emission region corresponding to mildly increased electron density above 200 km. Later (panels d–f), the beam points into the continuum emission. The electron density profile within the continuum is less enhanced in the

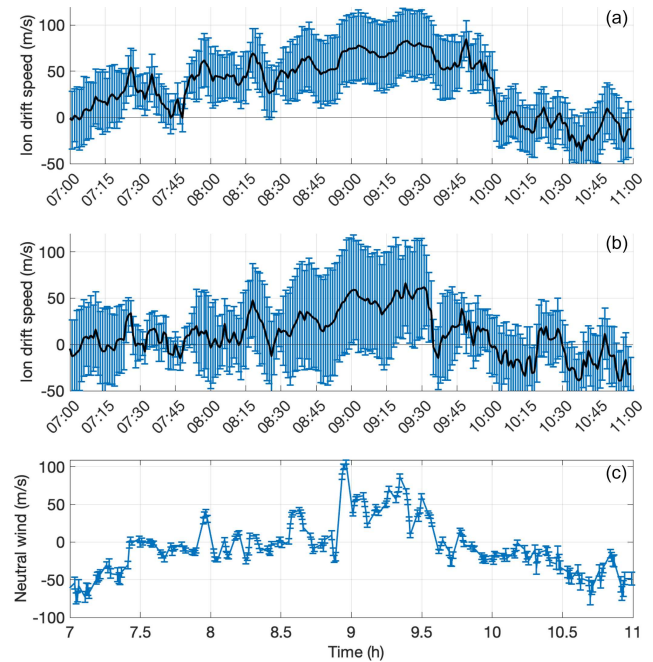


**Figure 9.** F-region ion temperature measurements by ESR (a) at the heights of 200 and 246 km on 3 January 2020. The errors in the ion temperatures are an output of BAFIM–Flipchem fitting with mean values of about  $\pm 40$  K. Thermospheric neutral temperature measured by FPI (b). The average error in the neutral temperature is about  $\pm 15$  K.

F region than in the non-continuum profile. The same applies to the ion temperature (blue curves in panels b and e). Both time instances comprise soft electron precipitation. However, electron temperature is enhanced by about 500 K at about 200–250 km at the time of the continuum (panel e) as compared to the non-continuum profile (panel b).

FPI measurements of red emission can be used to estimate thermospheric neutral temperatures and winds at the heights of red emission.

Figure 9 shows the comparison between the EISCAT measurements of F-region ion temperature time series from the heights of 200 and 246 km (top panel) and the thermospheric neutral temperature measured by FPI (bottom panel). FPI temperatures are estimated in the vertical line-of-sight direction, which is the closest direction to the field-aligned ion temperature measurements. The temporal correspondence between the two is very good. There is more variability in the ion temperature, but the initial enhancement takes place at the same time (at about 07:52 UT). The initial temperature for ions and neutrals is similar (around 700–750 K), and the temperatures peak closely at the same time (at about 08:56 UT) and decay during the same time period, although the neutral temperature decay takes about an hour longer (until about 10:30 UT). The maximum temperature for ions is about 2.5 times higher than the neutral maximum tempera-

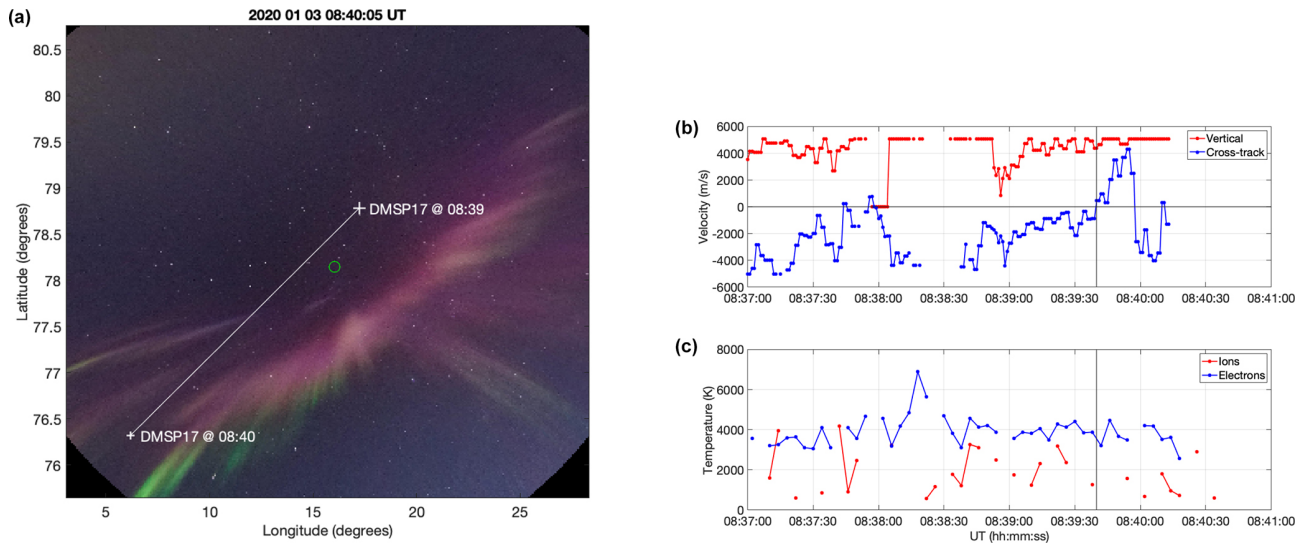


**Figure 10.** F-region ion drift speed measurements by the ESR at the heights of 301 km on 3 January 2020 (a) and at the height of 246 km (b). The error bars of the ion velocity are the errors of the BAFIM–Flipchem fitting with values of about  $\pm 30$   $\text{m s}^{-1}$ . Thermospheric neutral upflow speed (vertical line of sight) measured by the FPI (c). Positive speed is upward in both measurements. The average error in the neutral upflow is about  $\pm 5$   $\text{m s}^{-1}$ .

ture, which is in agreement with Aruliah et al. (2010), who pointed out that the neutral temperature provides the lower boundary for the ion temperature variability.

The FPI data also show neutral upwelling in the vertical line-of-sight direction in the time frame of ion upflow, as shown by Fig. 10. The radar measurements are displayed for two heights in the range of the strongest heating and upflow. The neutral upflow reaches higher speeds than the median speed of ions by about  $40$   $\text{m s}^{-1}$  but only for a very short period (about 10 min) just before 09:00 UT. The neutral upflow correlates best with ion upflow at 246 km height (middle panel), which is a likely height for the red auroral emission to occur. The enhanced ion drift continues for about half an hour after the neutral flow had decayed. Observed upflow speeds and temperature enhancements are similar to previous upflow measurements at the polar cap boundary of the auroral oval during moderate geomagnetic activity (e.g. Innis et al., 1997). Also, neutral and plasma upflow have been observed to correlate in the vicinity of auroral activity (e.g. Shinagawa et al., 2003). The flow and heating observations during the continuum emission are therefore not exceptional or extreme.

The DMSP F17 spacecraft flew over the region of the continuum emission at 08:39–08:40 UT at an altitude of about 800 km. Its footprint locations are plotted in the ASC im-



**Figure 11.** (a) DMSP F17 overpass through the arc-like continuum emission. The white crosses mark the footpoint locations of the spacecraft at 08:39 and 08:40 UT. The time-wise closest ASC image at 08:40:05 UT has been plotted on geographic coordinates with the height assumption of 150 km and a linear lens model. (b) DMSP measurements of vertical (red) and cross-track (blue) velocities during the overpass at 08:37–08:41 UT. Positive flow directions are upward and sunward (northwest here). (c) DMSP measurements of ion (red) and electron (blue) temperatures during the overpass. The time of the estimated continuum crossing is marked by a vertical line at 08:39:40 UT.

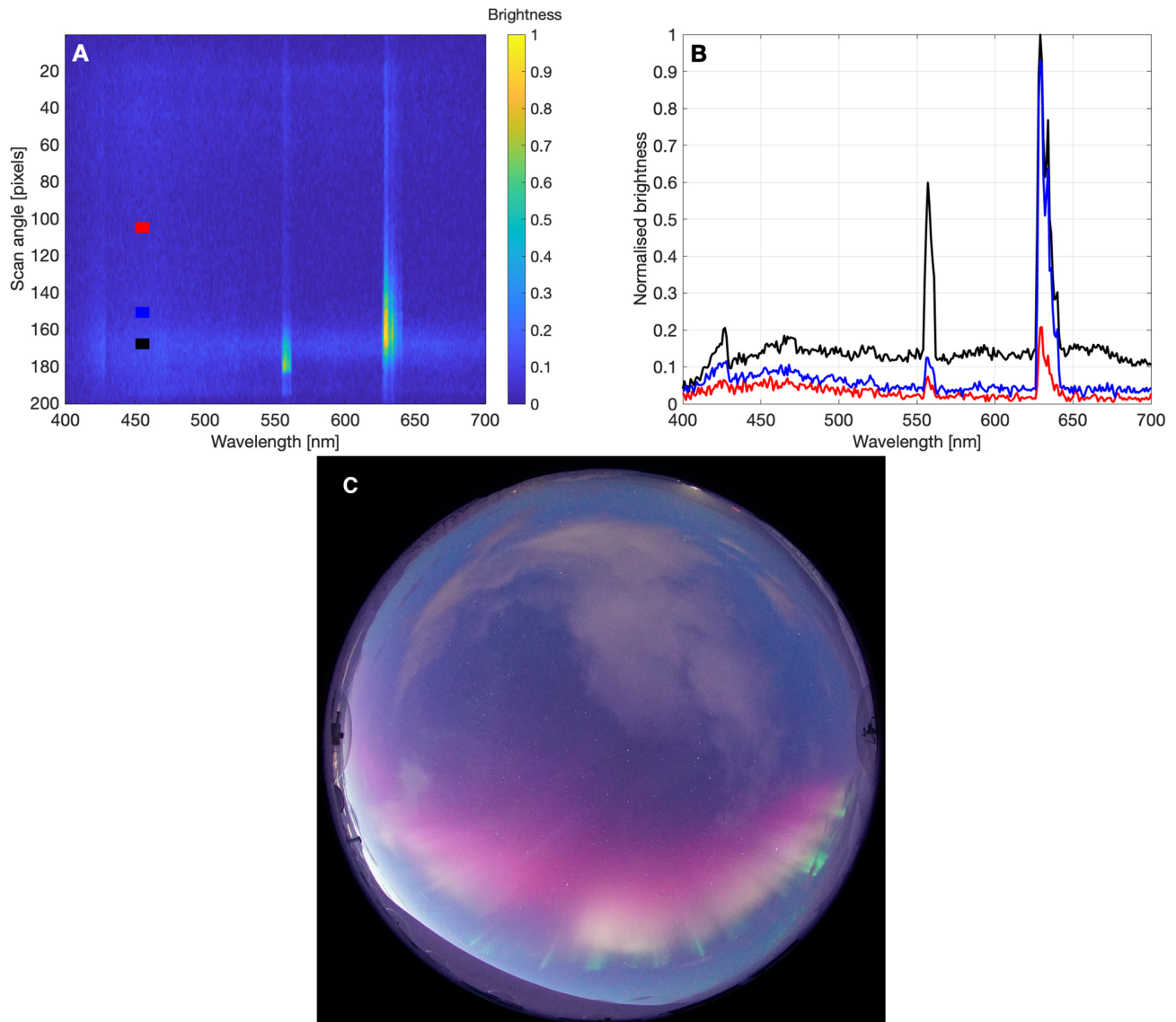
age taken at 08:40:05 UT in Fig. 11a. This image is selected as it is the closest in time to the DMSP overpass. The thin white line linearly connects the footpoint locations at 08:39 and 08:40 UT. The image is converted to geographic coordinates assuming an emission height of 150 km, which is at the bottom of the heated height range measured by EISCAT. The continuum emission moved southwest in the time between the two DMSP footpoint locations, so the spacecraft is estimated to have crossed the continuum at 08:39:40 UT (northeastward of the location seen in the image). This time is marked by a vertical line in the plot of velocities and temperatures measured by DMSP in Fig. 11b and c. Figure 11b shows the vertical (red) and horizontal cross-track velocity (blue), where the positive directions are upward and sunward (northwest here). Figure 11c shows the ion (red) and electron (blue) temperatures. The ion temperature varies around 2000 K and the electron temperature around 4000 K, which is in agreement with the EISCAT measurement some 400 km further down (Fig. 7). While the magnitude of the vertical flow measured by DMSP may not be reliable, the flow direction is upward (positive). The horizontal cross-track flow measured by DMSP experiences a strong shear from negative (southeast) to positive (northwest) over the time of the continuum overpass. The cross-track shear flow converges towards the region of continuum emission, which is in agreement with the upflow measured by EISCAT.

### 3.2 Morning continuum on 11 February 2024

Another continuum emission event was observed over Svalbard on 11 February 2024, but this time in the morning sector.

During this event, solar wind density peaked at an extremely high value ( $\sim 40 \text{ cm}^{-3}$ ) right after 02:00 UT when optical instruments were in the dawn sector. Some continuum-like thin structures were visible as early as 02:29 UT. Strong red emission could be observed despite variable cloudiness from about 02:40 UT onwards. The first obvious continuum signatures were measured in the emission spectra at 05:23 UT in the southern part of the sky. These were wide-arc and cloud-like structures of pale-pink emission within a bright-pink sunlit aurora (Fig. 12). By about 06:00 UT, the region of auroral emission had returned to the southern horizon, and by 06:30 UT, it had become undetectable due to daylight. As long as any emission colours were visible, the continuum emission was also present.

The MISS spectrograph data show a particularly big difference ( $\sim 800$  counts) between the continuum (black) and the background (red) for this event. This is illustrated by the continuum emission and reference spectra at 05:46 UT in Fig. 12a and b. The sky is lighter in the region of the continuum emission than in the region of the reference spectrum due to the increasing daylight towards the southern horizon (Fig. 12c). Some of the spectral difference at the short-wavelength end of the spectrum ( $< 500 \text{ nm}$ ) can therefore be due to the daylight, while the broadband enhancement is due to the continuum. Most of the individual emission bands that were identified in the spectrum of the previous event are visible in this case as well, except the enhancement of the  $\text{O}_2^+$  band at 602.6 nm. An additional spectrum is included just north of the continuum emission structure (blue). That captures the typical spectral properties of sunlit auroral emis-



**Figure 12.** (a) MISS spectrogram data at 05:46 UT on 11 February 2024 with the meridian locations of the reference spectrum (red), the continuum spectrum (black), and an example of the sunlit dayside aurora spectrum (blue). (b) Continuum spectrum (black), an empty sky reference spectrum (red), and a sunlit spectrum (blue) measured at 05:46 UT. The y-axis values are non-calibrated brightness values of the summed counts for scan angles (in pixels) of 163–173 for the continuum, 146–156 for the sunlit spectrum, and 100–110 for the reference spectrum. C: ASC image taken at 05:46:03 UT. North is to the top and east to the left of the image. The solar elevation angle was  $-12^\circ$  relative to the horizon with an azimuth of  $102^\circ$  (ESE), and the sunlit boundary of the ionosphere was at 142 km.

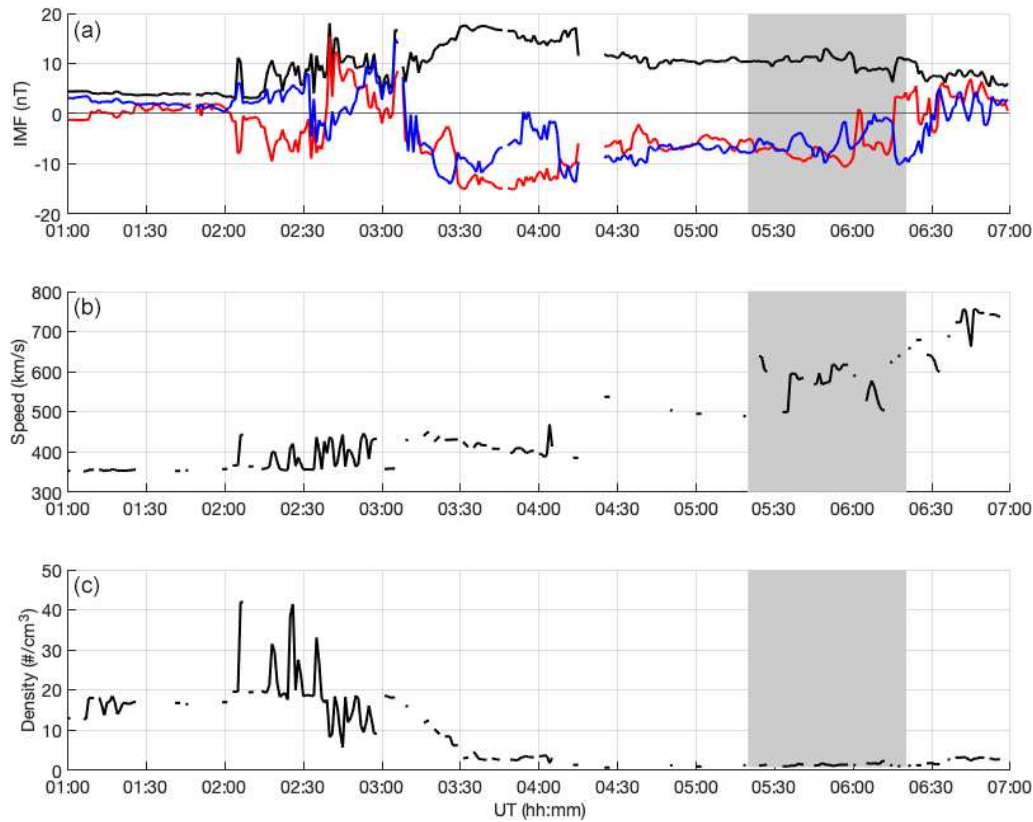
sion in the red-dominated dayside aurora. As compared to the continuum spectrum, the broadband enhancement does not exist, but the red emission is equally strong, while, compared to the reference spectrum, the auroral blue emission is enhanced in the region of red aurora.

Prior to and during the continuum emission observations, the IMF  $B_z$  was negative (around  $-10$  nT) for an extended period of time (see Fig. 13). The solar wind speed increased from about  $400$  km  $s^{-1}$  to about  $700$  km  $s^{-1}$  during the time period of the continuum emission observations. The proton density in the solar wind peaked at values above  $30$ – $40$  cm $^{-3}$

previously but declined to values below  $10$  cm $^{-3}$  before the strongest continuum emissions were observed in the dawn sector.

### 3.3 Afternoon continuum on 1 December 2023

A strong red auroral emission was observed on 1 December 2023, in particular in the afternoon. Most of the continuum emission structures were either off the meridian/zenith or were very thin structures. The spectral comparison between the continuum and the background sky, such that was



**Figure 13.** Solar wind and IMF parameters on 11 February 2024 propagated to the bow shock. **(a)** IMF magnitude (black),  $B_y$  (red), and  $B_z$  (blue) in nT. **(b)** Solar wind speed in  $\text{km s}^{-1}$ . **(c)** Solar wind proton density in the number of particles per  $\text{cm}^3$ . The shaded region indicates the time period of most intense continuum emission observations.

done for the previous events, was therefore not possible. The colour of the observed emission, however, strongly suggests the structure was a continuum emission. The thin continuum-like structures appeared as early as about 08:30–10:00 UT, while more clearly field-aligned structures were seen at about 15:00–16:00 UT. Some of the continuum-like rays were captured by photographers.

The photograph in Fig. 14b was taken independently by a citizen scientist and captured the same thin structure observed in Fig. 14a. This photo provides a side view into the thin continuum emission clearly showing the field-aligned orientation of the thin pale structure. The all-sky images show the thin continuum emission persisting for 1 min, from 15:11:10 to 15:12:10 UT. Similarly, the pale-pink rays seen in Fig. 14c were clearly visible in the ASC images for about 1 min.

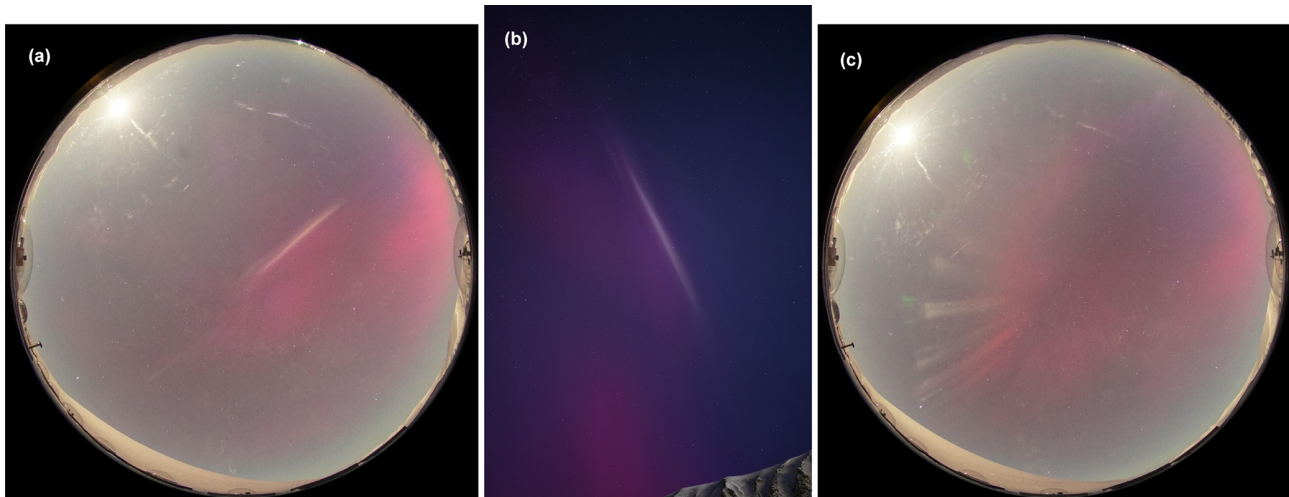
The infrared camera NIRAC also detected the thin emission structure, which overlaps with the continuum-like field-aligned structure in the left panel of Fig. 14. The NIRAC image displayed in Fig. 15 shows no enhancements related to the surrounding red emission (630 nm) but an enhanced thin structure of the continuum at  $1.1 \mu\text{m}$ .

This demonstrates that the wide spectral enhancement of the continuum emission may not be limited to the visible wavelength range but may extend deep into the infrared regime. During this event, NIRAC was operated at 5 s cadence. This infrared emission from molecular nitrogen is likely to be caused by charge exchange from atomic oxygen ion as it is likely occurring in the F region together with the surrounding red emission.

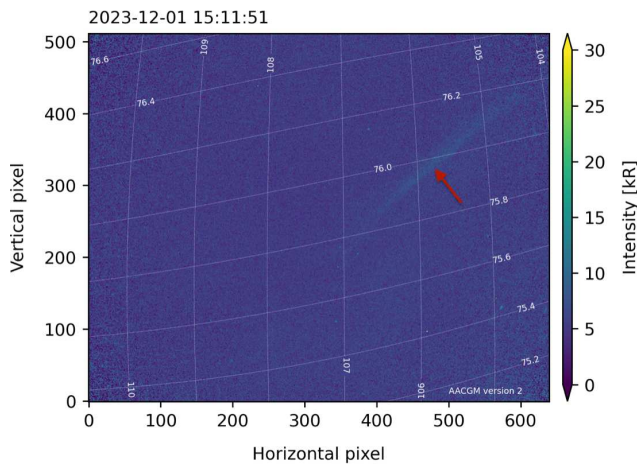
Prior to and during the continuum emission observations, the IMF magnitude was relatively stable and high (around 20 nT), as seen in Fig. 16. The  $z$  component of the IMF was strongly negative (about  $-20$  nT) until about 13:20 UT. The solar wind speed was above  $500 \text{ km s}^{-1}$  throughout most of the time prior to and during the continuum emission. The proton density in the solar wind varied primarily above  $20 \text{ cm}^{-3}$ , reaching the peak values above  $50 \text{ cm}^{-3}$  between around 11:00 and 13:00 UT.

### 3.4 Nighttime continuum on 8 February 2019

Continuum-looking arc-like features were observed in the ASC images close to the zenith/centre meridian several times during the first hour of the day on 8 February 2019. As seen in the example images in Fig. 17, these events are faint and



**Figure 14.** Example Sony images of the afternoon continuum taken on 1 December 2023 at 15:11:58 UT (a) and 16:00:56 UT (c). The thin arc in panel (a) was shown to be a field-aligned structure based on the photograph taken independently in the same region and within the same minute by Marjan Spijkers (b). The photo was taken with 8 s exposure time and viewing the sky towards west. Pale bundles of field-aligned rays are seen in panel (c). North is to the top and east to the left in ASC images (a, c). At 15:11:58 UT, the Sun was located at an elevation angle of  $-17^\circ$  with an azimuth of  $243^\circ$  (WSW). The ionosphere was sunlit above an altitude of 284 km.



**Figure 15.** An infrared image of the thin structure in the images of Fig. 14. No red emission at 630 nm is seen, but the continuum structure is clearly visible at  $1.1 \mu\text{m}$ . The white grid indicates the geomagnetic coordinates. The red arrow points at the faint continuum arc structure.

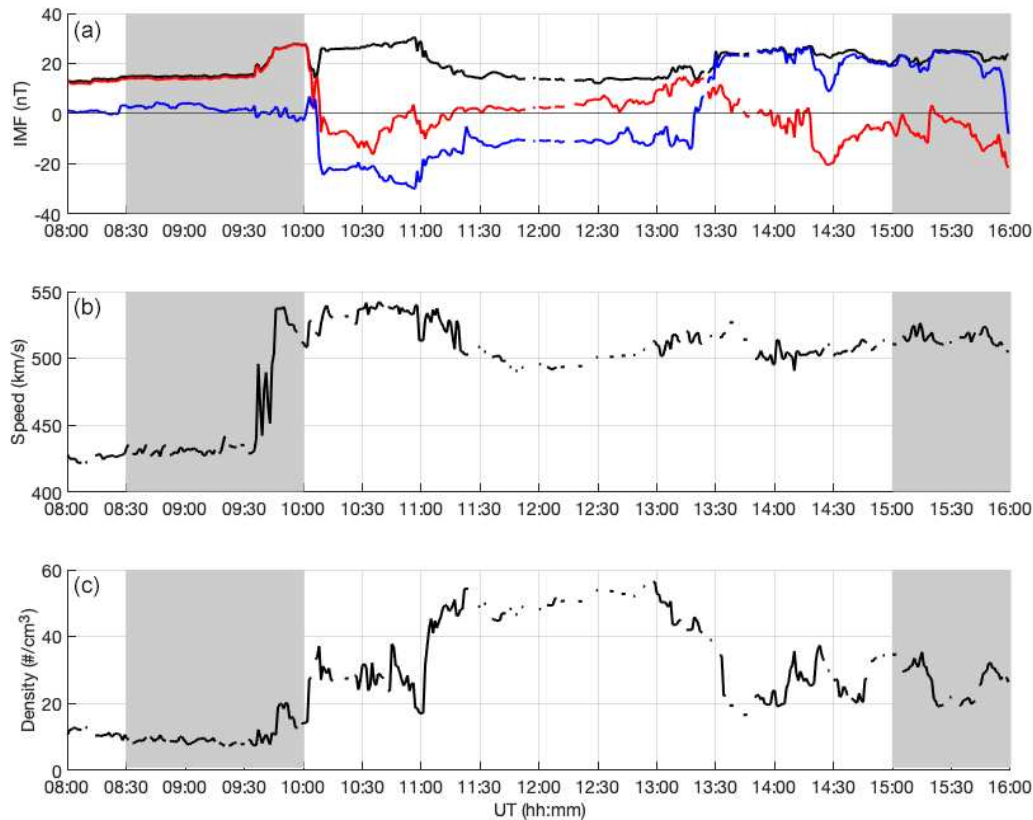
narrow structures and therefore hard to detect even for a trained human observer. The meridian imaging spectrograph was not able to resolve the continuum from the background sky spectrum, but the colour of the emission cannot be explained by any other known emission than the continuum.

The thin continuum-like structures developed in the image data for about 8 min (from about 00:26 until 00:34 UT). The solar wind prior to and during the event was slow (about  $400 \text{ km s}^{-1}$ ), with a moderate density of  $4\text{--}5 \text{ cm}^{-3}$ . The IMF  $z$  component varied between  $-4$  and  $+2 \text{ nT}$  (data not shown).

## 4 Discussion

In this study, we present the first continuum emission observations captured near the poleward boundary of the day-side auroral oval. We described two spectrally confirmed intense continuum emission events on 3 January 2020 and on 11 February 2024 in the noon and dawn sector, respectively. Additionally, we show nighttime and afternoon events, which is not confirmed by spectral measurements but are classified as continuum emission based on their pale-pink colour showing visual similarities to the spectrally confirmed events. The afternoon sector event mainly manifested itself as thin field-aligned structures of continuum-like emissions. An example of a nighttime continuum-like emission event appeared as a narrow arc at the poleward boundary of the green aurora.

Auroral conditions similar to those seen on 1 December 2023 with strong red-dominated emission and thin continuum-like emission structures were visually found at least on 12, 21, 23–27, and 30 November 2022; 1, 6, and 7 November 2023; 2–3, 6, and 15–16 December 2023; and 6 February 2024. These are all likely to be continuum emissions, in which case, this type of emission is not a rarity at high latitudes. It rather seems infrequent to see it be so strong and wide that it is unambiguously visible in the spectrograph data and keograms. The observed pale-pink emission moves with the auroral particle precipitation and often appears as field-aligned rays that may evolve quickly in time. Because the individual continuum emission structures last typically on the order of 1 min or less, the mismatch in the timing between the ASC images and the spectra plays a role in the number of spectrally confirmed observations.



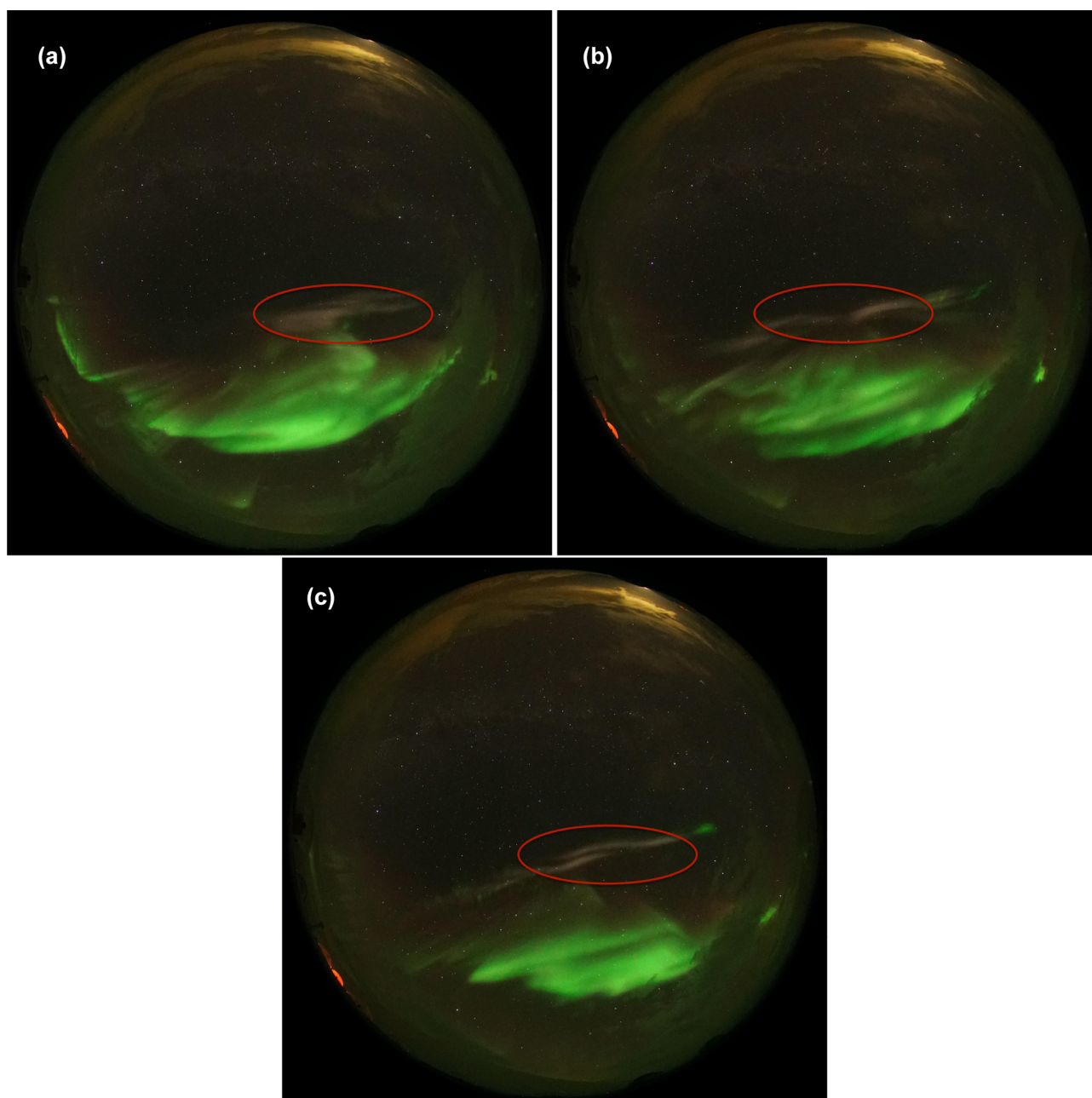
**Figure 16.** Solar wind and IMF parameters on 1 December 2023 propagated to the bow shock. **(a)** IMF magnitude (black),  $B_y$  (red), and  $B_z$  (blue) in nT. **(b)** Solar wind speed in  $\text{km s}^{-1}$ . **(c)** Solar wind proton density in the number of particles per  $\text{cm}^3$ . The shaded regions indicate the time periods of most intense continuum emission observations.

Interestingly, during each of the continuum emission events shown in this study, fragmented aurora-like emissions (FAEs) occurred nearby (such as in top panel of Fig. 8). Fragments were first described by Dreyer et al. (2021) as localized emission regions, which lack the field-aligned extent. While there is no commonly established generation mechanism for fragments, the authors concluded that fragments were not caused directly by particle precipitation but that local instabilities would play a key role in producing the observed emission. Not all fragment observations align with observations of continuum emissions, but vice versa seems to be true, suggesting that the strong ionospheric heating may lead to favourable conditions for fragment formation.

The behaviour of the continuum emission of STEVE is different from our observations of the high-latitude continuum emission. STEVE typically appears before the magnetic midnight, relates to the substorm recovery phase, and lasts for about 1 h (Gallardo-Lacourt et al., 2018a). In contrast, our examples of continuum emissions are transient structures, with lifetimes of minutes, distributed across different magnetic local times from midnight to dayside cusp hours and the late afternoon. Apart from the midnight event, our continuum emissions take place in time sectors multiple hours

away from substorm activity. While the STEVE continuum is often seen as a narrow horizontal arc, our events show variable morphological structures from thin to wide arcs, perturbed arcs, and field-aligned rayed structures. However, field-aligned rays are sometimes observed as a fine-structure of STEVE too, so the rayed continuum emission structure is not fully absent, just perhaps not as frequent in STEVE as it is among the events reported in this study. The dynamic behaviour of the continuum emission events reported here is similar to the continuum emission events found embedded in the auroral oval (Spanswick et al., 2024). Similar patchiness is also seen in our continuum emission events as reported by Nanjo et al. (2024). One of the structures reported here was related to a strong flow shear measured in low Earth orbit, comparable to the extreme sub-auroral ion drift associated with STEVE (MacDonald et al., 2018; Archer et al., 2019a). It remains to be discovered if strong flow shears are also commonly associated with high-latitude continuum emissions.

According to Nishiyama et al. (2024), the molecular nitrogen Meinel band in the infrared range can be excited by charge exchange with atomic oxygen ions. In particular, the excited D state of the atomic oxygen may be an important source of ionized molecular nitrogen emission in the infrared



**Figure 17.** Example images of our only nightside continuum event on 8 February 2019. This continuum emission lasted for about 10 min and showed a temporal evolution like any auroral event. Images are taken at 00:26:55 (a), 00:27:55 (b), and 00:28:43 UT (c). North is to the top and east to the left in the images. The Sun's elevation angle was  $-26^\circ$  relative to the horizon, and the shadow height was above 700 km. The red oval encircles the main region of faint and thin continuum emission structures in the images.

range ( $N_2^+$  Meinel band). If this IR band was an extension of the continuum, the measurements of this emission would support atomic oxygen ions having an important role in the continuum process whether they were produced by particle precipitation or enhanced through ion upflow. Furthermore, spectral measurements between the proton bands and the  $N_2$  Meinel band deeper in the infrared would be helpful to confirm if the continuum emission truly extends all the way to

over 1100 nm or if the continuum emission and the enhanced IR Meinel band measurements coexist due to another reason during this particular event. As indicated in the discussion of Fig. 4, the observed broadband spectral enhancement may build up from contributions of many thermally excited species. Further work on spectral measurements in combination with emission modelling is required to fully reveal the contributions of different emitting species. Careful examina-

tion of the heating and energy transition processes is also needed to fully resolve which conditions are required for the continuum emission to appear and how wide of a wavelength region it can involve.

During the continuum event on 3 January 2020, the ESR measured the strongest ion heating, above about 200 km, and electron heating, above about 250 km. Ion temperatures reached about 2500 K at 150–350 km heights during our continuum event, which is similar to the values that have been measured during the STEVE continuum (Archer et al., 2019b; Liang et al., 2019). The heating-induced emission that was proposed to explain STEVE emissions is based on the availability of vibrationally excited molecular nitrogen that produces NO, which further reacts with atomic oxygen to result in NO<sub>2</sub> and light (Harding et al., 2020). The brightness of the resulting NO<sub>2</sub> continuum was deemed sensitive to neutral heating and upwelling. In our case, the upward ion drift is the strongest above 150 km. The electron precipitation during the observed continuum emission occasionally reaches 150 km. This places both enhanced electron density and upward moving ions in the height range typical of the red-dominated auroral emission. More detailed observations and modelling of this region are required to judge if the observed heating and upwelling can produce enough NO<sub>2</sub> continuum to explain the observed emission.

During the afternoon of 1 December 2023, when thin field-aligned continuum emissions were observed, the ESR measured particle precipitation and heating of the same order of magnitude as those seen during the continuum on 3 January 2020 in Fig. 7 (electron temperatures up to about 3000–4000 K and ion temperatures up to about 2000 K at 300 km). However, no continuum emission was observed within the radar beam or in the vicinity. This may suggest that either an additional local heating mechanism is needed to produce the continuum or particle and Joule heating are required to reach down to at least 200 km altitude before sufficient atmospheric composition is available for the production of the continuum emission.

A common driver for the two strong dayside continuum emission events as well as the afternoon continuum described in this study may be the high solar wind particle density during or before the event of continuum emissions. Kataoka et al. (2024) studied the storm on 1 December 2023, which had a moderate Dst but very intense red auroral emission seen at exceptionally low latitudes. They concluded that high solar wind density (pressure) drives the strongly red-dominated auroral emission by compression of the magnetopause. This intense red emission was observed in our continuum events as well. For our nighttime continuum event, the driver is less obvious. This event is also much less prominent than the dayside events. While large numbers of particles from the solar wind entering the magnetosphere–ionosphere system could indeed heat up the upper atmosphere, the ionospheric and solar wind driving conditions for the events presented in this study are very different. There-

fore, further research is required to resolve the necessary conditions to facilitate continuum emission.

## 5 Conclusions

We present the first observations of high-latitude dayside continuum emissions. The events, which were confirmed to be continuum emissions by spectral measurements, were seen at the polar cap boundary of the dayside auroral oval. We additionally present visually identified continuum-like events across other MLT sectors. These events are classified as continuum based on the observed emission colour, which cannot be explained by any other known emission. All continuum (and alike) emission events shown in this study involve a range of different ionospheric conditions. For the one event for which ESR, FPI, and DMSP data are available, we see enhanced temperatures in electron, ion, and neutral particle populations. These temperature increases suggest both precipitating particles and Joule heating to be present. We also identify a strong horizontal plasma flow shear in the region of the continuum emission, which may further contribute to the heating and upflow of ions and neutrals.

Our measurements reveal that a number of different emission lines and bands contribute to the broadband continuum emissions. Even emission structures in the near and far infrared were observed, which suggests multiple emitting species to be responsible for the observed spectral enhancements.

Resolving the exact spectral structure and chemical constituents of the continuum will require further investigations involving both observations and modelling. Also, understanding the required ionospheric conditions for continuum emissions will be examined in the future with more observational evidence.

*Code availability.* Software for wavelength calibration and plotting of MISS data is available at <https://github.com/UNISvalbard/KHO-MISS/> (Syrjäsuo, 2025a). The star calibration and mapping of Sony images is done with software found at <https://github.com/UNISvalbard/KHO-starcalibration> (Syrjäsuo, 2025b). The BAFIM software (Virtanen et al., 2024) is available at <https://doi.org/10.5281/zenodo.4033903> (Virtanen, 2024). The Flipchem Python interface for the IDC package is available at <https://doi.org/10.5281/zenodo.3688853> (Reimer et al., 2021).

*Data availability.* Solar wind data were downloaded from OMNI-Web (<https://doi.org/10.48322/45bb-8792>, Papitashvili and King, 2020). DMSP and EISCAT data are available through CEDAR Madrigal database (<http://cedar.openmadrigal.org>, Rideout and Cariglia, 2025). MISS, Sony, HiTIES, and FPI datasets of this study are available at <https://doi.org/10.5281/zenodo.13960606> (Partamies, 2024).

*Video supplement.* Animation of the Sony image on 3 January 2020 at 07:00–11:00 UT is included in the article dataset (<https://doi.org/10.5281/zenodo.13960606>, Partamies, 2024).

*Author contributions.* NP, RDO, and KH conceptualized the study, selected the events, and wrote most of the manuscript. BGL wrote the Introduction and high-latitude continuum comparison with STEVE observations. TN provided DMSP data and helped with their interpretation. RDO and DW analysed proton precipitation data and helped with the interpretation of the continuum spectra. IV analysed ESR data for this study and helped with their interpretation. TN provided IR spectra for the continuum and helped with the interpretation of the continuum spectrum. MB contributed to the interpretation and modelling of the continuum spectra. FS helped with the technical interpretation of MISS data and ran the instrument calibration for this work. MiS provided the MISS data access and helped with cleaning, plotting, and wavelength calibration of those data. AA provided the FPI data and assisted with the analysis. MaS provided and processed the photo of an FA continuum. LM calculated the solar elevation angle and shadow heights. All authors participated in the discussions of the observations, interpretation of the results, and editing of the manuscript.

*Competing interests.* The contact author has declared that none of the authors has any competing interests.

*Disclaimer.* Publisher's note: Copernicus Publications remains neutral with regard to jurisdictional claims made in the text, published maps, institutional affiliations, or any other geographical representation in this paper. While Copernicus Publications makes every effort to include appropriate place names, the final responsibility lies with the authors.

*Acknowledgements.* This research was supported by the International Space Science Institute (ISSI) in Bern through the ISSI Working Group project ARCTICS. The authors thank the Sony camera principal investigator (PI) Dag Lorentzen for the use of images. Katie Herlingshaw and Lena Mielke are financed by the Norwegian Research Council under contract no. 343302. The work of Daniel Whiter is supported by the Natural Environment Research Council of the UK (grant no. NE/S015167/1). Rowan Dayton-Oxland was supported by the Natural Environmental Research Council of the UK (grant no. NE/S007210/1). Maxime Grandin is supported by the Research Council of Finland grant nos. 338629-AERGELC'H and 360433-ANAON. Eero Karvinen is supported by the Magnus Ehrnrooth Foundation. We acknowledge the EISCAT Scientific Association for the radar data. EISCAT is an international association supported by research organizations in China (CRIRP), Finland (SA), Japan (NIPR and ISEE), Norway (NFR), Sweden (VR), and the United Kingdom (UKRI).

*Financial support.* This research has been supported by the International Space Science Institute (ARCTICS), the Norges Forskningsråd (grant no. 343302), the Natural Environment Research

Council (grant nos. NE/S015167/1 and NE/S007210/1), and the Research Council of Finland (grant nos. 338629 and 360433).

*Review statement.* This paper was edited by Dalia Buresova and reviewed by Mike J. Kosch and one anonymous referee.

## References

- Archer, W. E., Gallardo-Lacourt, B., Perry, G. W., St.-Maurice, J. P., Buchert, S. C., and Donovan, E.: Steve: The Optical Signature of Intense Subauroral Ion Drifts, *Geophys. Res. Lett.*, 46, 6279–6286, <https://doi.org/10.1029/2019GL082687>, 2019a.
- Archer, W. E., Maurice, J.-P. S., Gallardo-Lacourt, B., Perry, G. W., Cully, C. M., Donovan, E., Gillies, D. M., Downie, R., Smith, J., and Eurich, D.: The Vertical Distribution of the Optical Emissions of a Steve and Picket Fence Event, *Geophys. Res. Lett.*, 46, 10719–10725, <https://doi.org/10.1029/2019GL084473>, 2019b.
- Aruliah, A., Förster, M., Hood, R., McWhirter, I., and Doornbos, E.: Comparing high-latitude thermospheric winds from Fabry–Perot interferometer (FPI) and challenging mini-satellite payload (CHAMP) accelerometer measurements, *Ann. Geophys.*, 37, 1095–1120, <https://doi.org/10.5194/angeo-37-1095-2019>, 2019.
- Aruliah, A. L. and Griffin, E.: Evidence of meso-scale structure in the high-latitude thermosphere, *Ann. Geophys.*, 19, 37–46, <https://doi.org/10.5194/angeo-19-37-2001>, 2001.
- Aruliah, A. L., Griffin, E. M., Yiu, H.-C. I., McWhirter, I., and Charalambous, A.: SCANDI – an all-sky Doppler imager for studies of thermospheric spatial structure, *Ann. Geophys.*, 28, 549–567, <https://doi.org/10.5194/angeo-28-549-2010>, 2010.
- Chakrabarti, S., Pallamraju, D., Baumgardner, J., and Vailancourt, J.: HiTIES: A High Throughput Imaging Echelle Spectrograph for ground-based visible airglow and auroral studies, *J. Geophys. Res.-Space Phys.*, 106, 30337–30348, <https://doi.org/10.1029/2001JA001105>, 2001.
- Chamberlain, J. W.: *Physics of the Aurora and Airglow*, Academic Press, ISBN 9781483222530 (e-Book), 1961.
- Chamberlain, J. W. and Oliver, N. J.: Atomic and molecular transitions in auroral spectra, *J. Geophys. Res.*, 58, 457–472, <https://doi.org/10.1029/JZ058i004p00457>, 1953.
- Cornelius, J. R. and Mazzella, Andrew J., J.: The topside ionospheric plasma monitor (SSIES, SSIES-2 and SSIES-3) on the spacecraft of the Defense Meteorological Satellite Program (DMSP), user's guide. Volume 2: Programmer's guide for software at AFSFC, Scientific Report No. 4 RDP, Inc., Waltham, MA, 1994.
- Dreyer, J., Partamies, N., Whiter, D., Ellingsen, P. G., Baddeley, L., and Buchert, S. C.: Characteristics of fragmented aurora-like emissions (FAEs) observed on Svalbard, *Ann. Geophys.*, 39, 277–288, <https://doi.org/10.5194/angeo-39-277-2021>, 2021.
- Gallardo-Lacourt, B., Nishimura, Y., Donovan, E., Gillies, D. M., Perry, G. W., Archer, W. E., Nava, O. A., and Spanswick, E. L.: A Statistical Analysis of STEVE, *J. Geophys. Res.-Space Phys.*, 123, 9893–9905, <https://doi.org/10.1029/2018JA025368>, 2018a.
- Gallardo-Lacourt, B., Liang, J., Nishimura, Y., and Donovan, E.: On the Origin of STEVE: Particle Precipitation or Ionospheric Skyglow?, *Geophys. Res. Lett.*, 45, 7968–7973, <https://doi.org/10.1029/2018GL078509>, 2018b.

- Gallardo-Lacourt, B., Nishimura, Y., Kepko, L., Spanswick, E. L., Gillies, D. M., Knudsen, D. J., Burchill, J. K., Skone, S. H., Pinto, V. A., Chaddock, D., Kuzub, J., and Donovan, E. F.: Unexpected STEVE Observations at High Latitude During Quiet Geomagnetic Conditions, *Geophys. Res. Lett.*, 51, e2024GL110568, <https://doi.org/10.1029/2024GL110568>, 2024.
- Gillies, D. M., Donovan, E., Hampton, D., Liang, J., Connors, M., Nishimura, Y., Gallardo-Lacourt, B., and Spanswick, E.: First Observations From the TReX Spectrograph: The Optical Spectrum of STEVE and the Picket Fence Phenomena, *Geophys. Res. Lett.*, 46, 7207–7213, <https://doi.org/10.1029/2019GL083272>, 2019.
- Gillies, D. M., Liang, J., Gallardo-Lacourt, B., and Donovan, E.: New Insight Into the Transition From a SAR Arc to STEVE, *Geophys. Res. Lett.*, 50, e2022GL101205, <https://doi.org/10.1029/2022GL101205>, 2023.
- Harding, B. J., Mende, S. B., Triplett, C. C., and Wu, Y.-J. J.: A Mechanism for the STEVE Continuum Emission, *Geophys. Res. Lett.*, 47, e2020GL087102, <https://doi.org/10.1029/2020GL087102>, 2020.
- Herlingshaw, K., Partamies, N., van Hazendonk, C. M., Syrjäsuo, M., Baddeley, L., Johnsen, M., Eriksen, N. K., McWhirter, I., Aruliah, A. L., Engebretson, M. J., Oksavik, K., Sigernes, F., Lorentzen, D. A., Nishiyama, T., Cooper, M. B., Meriwether, J. W., Haaland, S., and Whiter, D. K.: Science Highlights from the Kjell Henriksen Observatory on Svalbard, *Arct. Sci.*, 11, 1–25, <https://doi.org/10.1139/as-2024-0009>, 2024.
- Innis, J., Dyson, P., and Greet, P.: Further observations of the thermospheric vertical wind at the auroral oval/polar cap boundary, *J. Atmos. Solar-Terr. Phys.*, 59, 2009–2022, [https://doi.org/10.1016/S1364-6826\(97\)00034-5](https://doi.org/10.1016/S1364-6826(97)00034-5), 1997.
- Kataoka, R., Miyoshi, Y., Shiokawa, K., Nishitani, N., Keika, K., Amano, T., and Seki, K.: Magnetic Storm-Time Red Aurora as Seen From Hokkaido, Japan on 1 December 2023 Associated With High-Density Solar Wind, *Geophys. Res. Lett.*, 51, e2024GL108778, <https://doi.org/10.1029/2024GL108778>, 2024.
- Liang, J., Donovan, E., Connors, M., Gillies, D., St-Maurice, J. P., Jackel, B., Gallardo-Lacourt, B., Spanswick, E., and Chu, X.: Optical Spectra and Emission Altitudes of Double-Layer STEVE: A Case Study, *Geophys. Res. Lett.*, 46, 13630–13639, <https://doi.org/10.1029/2019GL085639>, 2019.
- MacDonald, E. A., Donovan, E., Nishimura, Y., Case, N. A., Gillies, D. M., Gallardo-Lacourt, B., Archer, W. E., Spanswick, E. L., Bourassa, N., Connors, M., Heavner, M., Jackel, B., Kosar, B., Knudsen, D. J., Ratzlaff, C., and Schofield, I.: New science in plain sight: Citizen scientists lead to the discovery of optical structure in the upper atmosphere, *Sci. Adv.*, 4, eaaq0030, <https://doi.org/10.1126/sciadv.aaq0030>, 2018.
- Martinis, C., Griffin, I., Gallardo-Lacourt, B., Wroten, J., Nishimura, Y., Baumgardner, J., and Knudsen, D. J.: Rainbow of the Night: First Direct Observation of a SAR Arc Evolving Into STEVE, *Geophys. Res. Lett.*, 49, e2022GL098511, <https://doi.org/10.1029/2022GL098511>, 2022.
- Meinel, A. B.: Origin of the Continuum in the Night-Sky Spectrum, *Astrophys. J.*, 118, 200, <https://doi.org/10.1086/145742>, 1953.
- Mende, S. B. and Turner, C.: Color Ratios of Subauroral (STEVE) Arcs, *J. Geophys. Res.*, 124, 5945–5955, <https://doi.org/10.1029/2019JA026851>, 2019.
- Mishin, E. and Streltsov, A.: STEVE and the Picket Fence: Evidence of Feedback-Unstable Magnetosphere-Ionosphere Interaction, *Geophys. Res. Lett.*, 46, 14247–14255, <https://doi.org/10.1029/2019GL085446>, 2019.
- Nanjo, S., Hofstra, G., and Shiokawa, K. E. A.: Post-midnight purple arc and patches appeared on the high latitude part of the auroral oval: Dawnside counterpart of STEVE?, *Earth Planet. Space*, 76, e2020GL087102, <https://doi.org/10.1186/s40623-024-01995-9>, 2024.
- Nishimura, Y., Gallardo-Lacourt, B., Zou, Y., Mishin, E., Knudsen, D. J., Donovan, E. F., Angelopoulos, V., and Raybell, R.: Magnetospheric Signatures of STEVE: Implications for the Magnetospheric Energy Source and Interhemispheric Conjugacy, *Geophys. Res. Lett.*, 46, 5637–5644, <https://doi.org/10.1029/2019GL082460>, 2019.
- Nishimura, Y., Gallardo-Lacourt, B., Donovan, E. F., Angelopoulos, V., and Nishitani, N.: Auroral and magnetotail dynamics during quiet-time STEVE and SAID, *J. Geophys. Res.-Space Phys.*, 129, e2024JA032941, <https://doi.org/10.1029/2024JA032941>, 2024.
- Nishiyama, T., Kagitani, M., Furutachi, S., Iwasa, Y., Ogawa, Y., Tsuda, T. T., Dalin, P., Tsuchiya, F., Nozawa, S., and Sigernes, F.: The first simultaneous spectroscopic and monochromatic imaging observations of short-wavelength infrared aurora of Meinel (0,0) band at 1.1  $\mu\text{m}$  with incoherent scatter radar, *Earth Planet. Space*, 76, 30, <https://doi.org/10.1186/s40623-024-01969-x>, 2024.
- Noll, S., Plane, J. M. C., Feng, W., Kalogerakis, K. S., Kausch, W., Schmidt, C., Bittner, M., and Kimeswenger, S.: Structure, variability, and origin of the low-latitude nightglow continuum between 300 and 1800 nm: evidence for HO<sub>2</sub> emission in the near-infrared, *Atmos. Chem. Phys.*, 24, 1143–1176, <https://doi.org/10.5194/acp-24-1143-2024>, 2024.
- Papitashvili, N. E. and King, J. H.: OMNI 5-min Data Set, NASA Space Physics Data Facility [data set], <https://doi.org/10.48322/gbpg-5r77>, 2020.
- Papitashvili, N. E. and King, J. H.: OMNI 1-min Data, NASA Space Physics Data Facility [data set], <https://doi.org/10.48322/45bb-8792> (last access: 12 June 2025), 2020.
- Partamies, N.: First observations of continuum emission in dayside aurora, Zenodo [data set], <https://doi.org/10.5281/zenodo.13960606>, 2024.
- Reimer, A., amir-user, and Guenzkofer, F.: amir/flipchem: v2021.2.2 Bugfix Release (v2021.2.2), Zenodo [code], <https://doi.org/10.5281/zenodo.5719844>, 2021.
- Rideout, W. and Cariglia, K.: CEDAR Madrigal Database, CEDAR [data set], <https://cedar.openmadrigal.org>, last access: 12 June 2025.
- Shinagawa, H., Oyama, S., Nozawa, S., Buchert, S., Fujii, R., and Ishii, M.: Thermospheric and ionospheric dynamics in the auroral region, *Adv. Space Res.*, 31, 951–956, [https://doi.org/10.1016/S0273-1177\(02\)00792-5](https://doi.org/10.1016/S0273-1177(02)00792-5), 2003.
- Shiokawa, K., Otsuka, Y., and Connors, M.: Statistical Study of Auroral/Resonant-Scattering 427.8-nm Emission Observed at Subauroral Latitudes Over 14 Years, *J. Geophys. Res.-Space Phys.*, 124, 9293–9301, <https://doi.org/10.1029/2019JA026704>, 2019.

- Syrjäsuo, M.: Software for Meridian Imaging Svalbard Spectrograph (MISS), Github [code], <https://github.com/UNISvalbard/KHO-MISS>, last access: 2 July 2025a.
- Syrjäsuo, M.: Star calibration of all-sky images, Github [code], <https://github.com/UNISvalbard/KHO-starcalibration>, last access: 2 July 2025b.
- Spanswick, E., Liang, J., Houghton, J., Donovan, E., Gallardo-Lacourt, B., Nishimura, Y., Chaddock, D., Keenan, C., Rosehart, J., and Gillies, D.: Association of structured continuum emission with dynamic aurora, *Nat. Commun.*, 15, 10802, <https://doi.org/10.1038/s41467-024-55081-5>, 2024.
- Virtanen, I. I.: Bayesian Filtering Module (v0.2), Zenodo [code], <https://doi.org/10.5281/zenodo.10656396>, 2024.
- Virtanen, I. I., Tesfaw, H. W., Roininen, L., Lasanen, S., and Aikio, A.: Bayesian Filtering in Incoherent Scatter Plasma Parameter Fits, *J. Geophys. Res.-Space Phys.*, 126, e2020JA028700, <https://doi.org/10.1029/2020JA028700>, 2021.
- Virtanen, I. I., Tesfaw, H. W., Aikio, A. T., Varney, R., Kero, A., and Thomas, N.: F1 Region Ion Composition in Svalbard During the International Polar Year 2007–2008, *J. Geophys. Res.-Space Phys.*, 129, e2023JA032202, <https://doi.org/10.1029/2023JA032202>, 2024.
- Wannberg, G., Wolf, I., Vanhainen, L.-G., Koskenniemi, K., Röttger, J., Postila, M., Markkanen, J., Jacobsen, R., Stenberg, A., Larsen, R., Eliassen, S., Heck, S., and Huuskonen, A.: The EISCAT Svalbard radar: A case study in modern incoherent scatter radar system design, *Radio Sci.*, 32, 2283–2307, <https://doi.org/10.1029/97RS01803>, 1997.